

BOOK 3693

# FIELD NOTES

OF THE RETRACEMENT OF

Part of the Amended South boundary of the White Mountain or San Carlos Indian Reservation,

OF THE RESURVEY OF THE

South boundary,

AND OF THE SURVEY OF

Part of the West boundary, and

part of the Subdivision lines,

ALL OF TOWNSHIP 3 SOUTH, RANGE 17 EAST,

*Of the Gila and Salt River Base and Meridian,*

*In the State of Arizona.*

EXECUTED BY

Dupree R. Averill, U. S. Surveyor,

and

Roger F. Wilson, U. S. Transitman,

*In the capacity of U. S. Surveyors, under Special Instructions dated October 19, 1919 issued by the United States Surveyor General to govern surveys included in Group No. 124, Arizona, which were approved by the Commissioner of the General Land Office, October 24, 1919, and Assignment Instructions dated January 2, 1924.*

Retracement,  
Resurvey and Survey commenced January 2, 1924.

Retracement,  
Resurvey and Survey completed January 24, 1924.

3693

3693

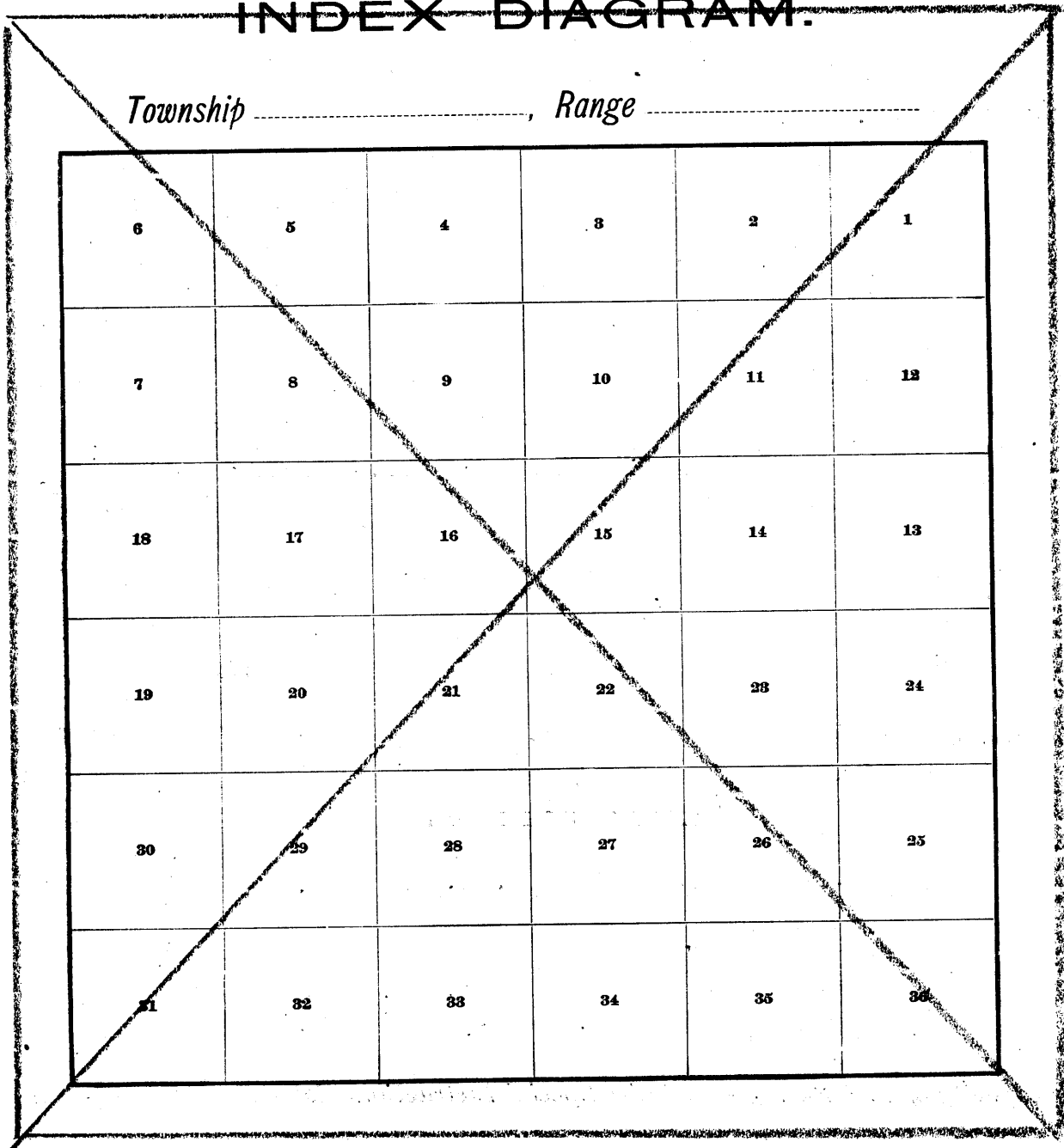
Book "D"

Group 124 - Arizona.

1888-1900

# INDEX DIAGRAM.

Township \_\_\_\_\_, Range \_\_\_\_\_

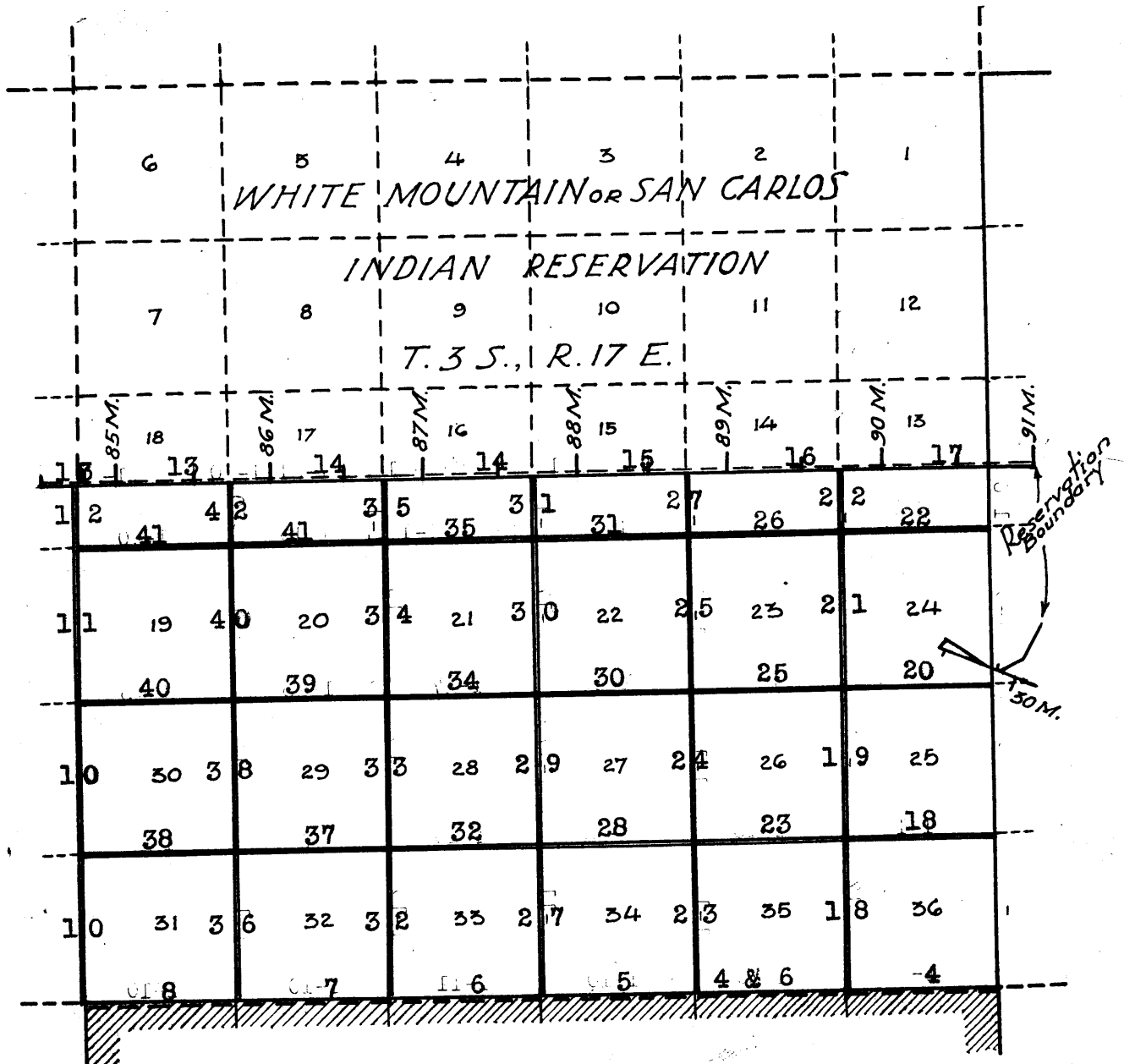


BOOK 3693

Book "D"

Group 124 - - Arizona

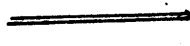
INDEX DIAGRAM.



Lines surveyed under this Group



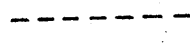
Lines resurveyed under this Group



Lines retraced under this Group



Accepted surveys.



Unsurveyed lines.



Areas surveyed as per accepted plats on file.

BOOK 3693

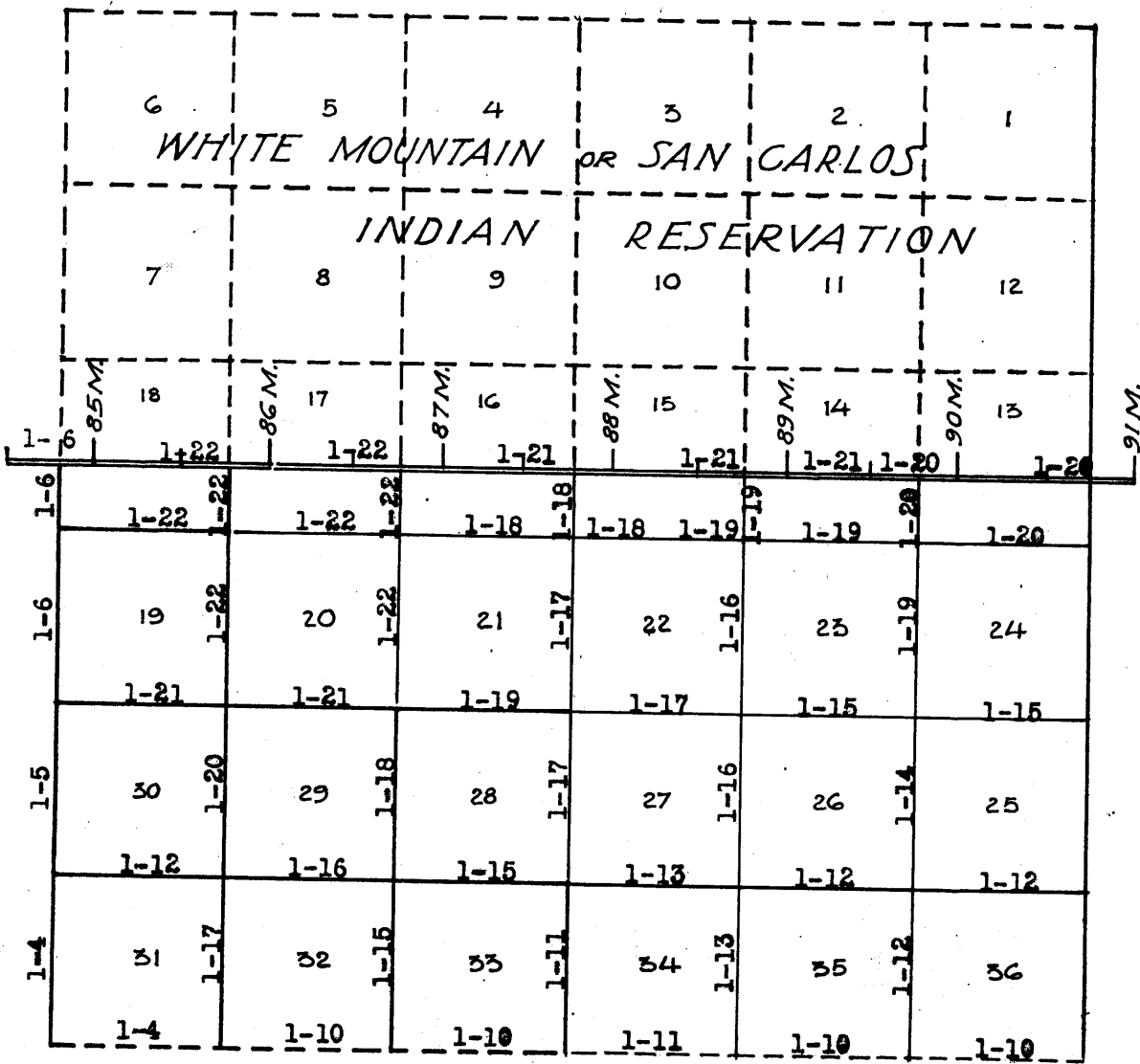
Book "D"

Group 124 - - Arizona

Township 3 South, Range 17 East

DATE DIAGRAM

1924



- Surveyed on dates shown thereon by Roger F. Wilson, U. S. Transitman.
- - - - - Resurveyed on dates shown thereon by Roger F. Wilson, U. S. Transitman.
- ===== Retraced on dates shown thereon by Roger F. Wilson, U. S. Transitman.
- Surveyed on dates shown thereon by Dupree R. Averill, U. S. Surveyor.
- - - - - Resurveyed on dates shown thereon by Dupree R. Averill, U. S. Surveyor.
- ===== Retraced on dates shown thereon by Dupree R. Averill, U. S. Surveyor.

Retracements, resurveys and surveys herein described were executed on dates shown on diagram of page 1-a hereof, by Dupree R. Averill, U.S.S.; and Roger F. Wilson, U. S. T., using respectively Young and Sons light mountain transit No. 8540 and Buff and Buff light mountain transit No. 9221, each equipped with full vertical circle and Smith solar attachment. Unless otherwise specified all azimuth determinations are accomplished with the solar attachment.

Polaris observation and field test by Roger F. Wilson, using instrument No. 9221

January 2, 1924: I examine the adjustments of the transit and correct all errors, then to test the solar apparatus by comparing its indications resulting from observations made during a.m., and p.m., hours with a meridian established by Polaris observation, I proceed as follows:

January 3, 1924: At camp near the center of sec., 16 T.4 S., R.16 E., G. & S.R.B. & M., latitude 33° 05' N., longitude 110° 42' 30" W.; at 00h. 46m. a.m., l.m.t., I observe Polaris at western elongation, making four observations with the telescope in direct and reversed positions, and mark the mean point in the line thus determined by a tack in a peg driven firmly in the ground 6.00 chs., N.,

Azimuth of Polaris at western elongation: 1° 18' 39".

At 8h. 00m., a.m., l.m.t., I lay off the azimuth of Polaris 1° 18½' to the east and mark the meridian thus determined by a tack in a peg driven firmly in the ground 6 chs., N.,

At 9h. 00m. a.m., l.m.t., I set off 33° 05' N., on the latitude arc, 22° 52' S., on the decl., arc, and determine a meridian with the solar apparatus. The solar meridian coincides with the true meridian previously determined.

At appt., noon, with the latitude arc unchanged I observe the sun upon the meridian; the resulting reading on the decl., arc is 22° 52' S., which agrees with the computed declination of the sun.

At 3h. 00m., p.m., l.m.t., with the lat., arc unchanged and a setting of 22° 50½' S. on the decl., arc., I determine a meridian with the solar. This determination agrees with the true meridian.

As all solar observations during the usual hours of solar work fall within 1' of the true meridian I conclude that the adjustments of the transit are satisfactory.

Field test by Dupree R. Averill, using transit No. 8540.

I examine the adjustments of the transit and correct all errors, then to test the solar apparatus by comparing its indications, resulting from observations made during a.m., and p.m., hours with a true meridian established by Polaris observation, I proceed as follows:

January 6, 1924: At camp in sec. 16, T.4 S., R.16 E., upon the meridian previously established by Roger F. Wilson, U.S. Transitman, at 9h. 00m., a.m., l.m.t., I set off 33° 05' N. on the lat., arc, 22° 33½' S. on the decl., arc and determine a meridian with the

solar apparatus. This meridian coincides with the true meridian previously determined by Polaris observation.

At appt., noon, with the lat., arc unchanged I observe the sun upon the meridian. The resulting declination is  $22^{\circ} 33' S.$ , which agrees with the computed declination of the sun.

At 3h. 00m., pm. l.m.t., with the lat., arc unchanged and a reading of  $22^{\circ} 31\frac{1}{2}' S.$ , on the decl., arc I determine a meridian with the solar attachment. This meridian falls 30" to the east of the true meridian.

As all observations made during the usual hours of solar work agree well within 1' of arc of the true meridian I conclude that the adjustments of the transit are satisfactory.

Final tests of transits Nos. 9221 and 8540.

Jan., 24, 1924. At camp in sec.16, T.4 S., R.16 E., G.& S. R. E. & M., latitude  $33^{\circ} 05' N.$ , longitude  $110^{\circ} 42' 30'' W.$ , at 3h. 00m. p.m., l.m.t., I set off  $33^{\circ} 05' N.$  on the lat. arc,  $19^{\circ} 15' S.$  on the decl. arc, and determine a meridian with the solar and mark the position of this line by a tack in a peg driven firmly in the ground 5 chs., N., of my station.

At 5h. 23m., p.m., l.m.t., I observe Polaris at upper culmination, taking four observations with the telescope in direct and reversed positions, and note that the meridian thus determined coincides with the solar meridian previously established.

Jan., 25, 1924. At 8h. 00m., a.m., l.m.t., I set off  $33^{\circ} 05' N.$ , on the latitude arc,  $19^{\circ} 07' S.$ , on the decl arc, and observe that the solar meridian agrees with the true meridian determined by Polaris observation.

Unless otherwise specified all measurements are made with a Lallie steel tape, 5 chs., in length, first compared with a Lufkin 1 ch., standard steel tape and found correct. All measurements are made on the slope, the slope angles determined by transit or clinometer readings and the slope measurements properly reduced to their true horizontal equivalents.

Resurvey of the S., Bdy., of T.3 S., R.17 E.

chains

From the cor., of Ts. 3 & 4 S., Rs. 17 & 18 E., hereinafter described.

West on random line bet. secs. 1 and 36.

47.00 Set temp.,  $\frac{1}{4}$  sec. cor.

48.00 No. trace of original<sup>2</sup> witness  $\frac{1}{4}$  sec. cor.

80.06 Fall 15 lks., S. of original cor., of secs., 1, 2, 35 and 36 which is a lava stone, 10 x 8 x 4 ins., above ground, in an old mound of stone, marked with 1 notch on the E. and 5 notches on the W. In place of the stone, which I deposit alongside, set an iron post, 3 ft. long, 2 ins., diam., 16 ins., in the ground, to bedrock, supported in a mound of stone, 3 ft. base, 1 $\frac{1}{2}$  ft. high, for the cor., of secs. 1, 2, 35 and 36, with brass cap marked

T 3 S R 17 E

S 35	S 36
S 2	S 1

1924

Thence

S 89 54'E., on true line bet. secs., 1 and 36.

Over mountainous land, thru scattered undergrowth.

Desc. E. slope 37 ft.

2.50 Gulch, course NE.

6.90 Canyon, course N.

Asc. NW. slope. 409 ft.,

28.00 Top of spur, bears N.

Desc. E. slope 200 ft.

38.50 Precipitous gulch, course NE.

Along N. slope, across cliffs and ledges, asc. 30 ft.

40.03 Mid point: Set an iron post, 3 ft. long, 1 in., diam., 12 ins., in the ground, to rock, with marked stone (X) 6 x 4 x 4 ins., alongside, supported in a mound of stone, 4 ft. base, 2 ft. high, for  $\frac{1}{4}$  sec. cor., with brass cap marked

$\frac{1}{4}$	S 36
	S 1

1924

42.00 Rocky spur, slopes NE.

Desc., NE. slope 420 ft.

52.00 Gulch, course NE.

66.50 Draw, course N.,

Asc. W. slope 280 ft.,

80.06 The cor., of Ts. 3 & 4 S., Rs. 17 & 18 E., which is an iron post, 3 ins., diam., firmly set, 9 ins., above ground, alongside of which is a sandstone 24, x 12 x 8 ins.; above ground, marked with 6 notches on the N, S, E, and W., faces. West of the cor., is a mound of stone, 4 ft., base, 2 ft. high. From the cor.;

A paloverde, 6 ins., diam., bears S. 14 E., 182 lks., dist., marked T 4 S R 1 8 E S 6 B T

A paloverde, 6 ins., diam., bears N. 61 $\frac{1}{2}$  W., 226 lks. dist., marked T 3 S R 1 7 E S 3 6 B T

Land, rough and mountainous.

Soil, rocky, 3rd. and 4th. rate.

Timber, none.

Undergrowth, paloverde, catclaw, greasewood, buckbrush, mahogany, scruboak, bayonet and cacti.

From the cor. of secs., 1, 2, 35 and 36 hereinbefore described.

West on random line bet. secs., 2 and 35.

Resurvey of a portion of the S. Bdy., of T.3 S., R.17 E.

chains

40.22 Intersect original  $\frac{1}{4}$  sec.cor., which is a sandstone, 24 x 14 x 7 ins., set in a mound of stone, marked  $\frac{1}{4}$  on the N., face. In place of the stone, which I deposit alongside, set an iron post, 3 ft.long, 1 in., diam., 16 ins., in the ground, to rock, supported in a mound of stone, 3 ft.base, 14 ins., high, for  $\frac{1}{4}$  sec.cor., with brass cap marked

$\frac{1}{4}$  S 35  
S 2

1924

raise a mound of stone 2 ft.base, 1 $\frac{1}{2}$  ft.high, N., of cor.,

Thence

East on true line bet.secs. 2 and 35.  
Over broken land, thru scattered undergrowth.  
Across flat, draining N.

4.00 Desc. E. slope 185 ft.  
20.80 Draw, course N.20 E.  
Asc., NW. slope 110 ft.  
28.60 Spur, slopes NE. Trail bears NE. and S., along spur.  
Desc., E., slope 210 ft.  
40.22 The cor., of secs., 1, 2, 35 and 36.

I return to the  $\frac{1}{4}$  sec.cor., bet.secs., 2 and 35.

Thence

West on random line bet.secs., 2 and 35.  
38.00 No trace of witness cor., for secs., 2, 3, 34 and 35.  
40.00 Set temp., cor., for secs., 2, 3, 34 and 35.

Thence

West on random line bet.secs., 3 and 34.  
37.60 No trace of witness  $\frac{1}{4}$  sec.cor.,  
40.00 Set temp.,  $\frac{1}{4}$  sec.cor.,  
80.51 Fall 74 lks., N. of original cor., for secs., 3, 4, 33 and 34 which is a granite boulder 8 x 6 x 6 ft., marked with cross (X) on the top, with three notches to the E., and W., of cross, with a mound of stone, 2 ft.base, 1 $\frac{1}{2}$  ft., high to the W., In a crevice in the boulder, adjacent to the original markings, I deposit an iron post, 3 ft., long, 2 ins., diam., 24 ins., deep, grouted with rocks and gravel.

Thence

N.89 39'E., on true line bet.secs., 3 and 34.  
Over rough mountainous land, thru scattered undergrowth.  
Desc., E. slope 150 ft.

6.00 Gulch, course N.,  
Asc. W. slope 200 ft.  
11.60 Spur, slopes N., Desc., 150 ft.  
17.70 Gulch, course N., Asc., NW. slope 720 ft.

35.15 Ravine, course NW.

40.17 Proportionate dist., Set an iron post, 3 ft.long, 1 in., diam., 16 ins., in the ground, to rock, with marked stone (X) 13 x 4 x 4 ins., alongside, supported in a mound of stone, 3 ft.base, 1 $\frac{1}{2}$  ft.high, for  $\frac{1}{4}$  sec.cor., with brass cap marked

$\frac{1}{4}$  S 34  
S 3

1924

42.70 Spur, slopes N., Desc., E. slope 520 ft.  
61.50 Gulch, course NE. Asc., NW, slope 100 ft.  
71.10 Small spur, slopes N., Desc., NE. slope 110 ft.  
75.60 Canyon, course NW., Asc. W. slope 100 ft.,  
80.34 Proportionate dist., Set an iron post, 3 ft.long, 2 ins., diam., 20 ins., in the ground, to rock, with marked stone (X) 18 x 8 x 6 ins., alongside, supported in a mound of



Resurvey of the South Boundary of T. 3 S., R. 17 E.

Chains

stone, 3 ft. base, 14 ins. high, for the cor. of secs. 2, 3, 34 and 35, with brass cap marked

T 3 S	R 17 E
S 34	S 35
S 3	S 2
T 4 S	
1924	

Land; rough, mountainous.  
Soil, rocky, 3rd and 4th rate.  
Timber; cedar and palo verde.  
Undergrowth; greasewood, mahogany, oak and cacti.

N. 89° 39' E., on true line, bet. secs. 2 and 35.  
Over rough mountains, thru scattered undergrowth.  
Asc. W. slope 10 ft.

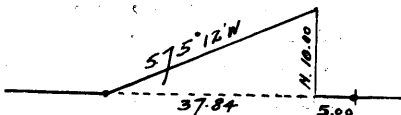
- .50 Foot of vertical wall of rock, 60 ft. high, bears NE., and SW.
- 1.00 Top of cliff. Asc. W. slope 160 ft.
- 13.00 Top of flat knoll. Desc. E. slope 70 ft.
- 16.00 Across flat, draining N.
- 33.70 Gully, course N.
- 40.17 The 1/4 sec. cor., bet. secs. 2 and 35, hereinbefore described.

Land; broken mountains.  
Soil; rocky, 3rd and 4th rate.  
Timber; none.  
Undergrowth; mahogany, oak and cacti.

From the cor. of secs. 3, 4, 33 and 34, hereinbefore described.

West, on random line, bet. secs. 4 and 33.  
Asc. E. slope.

- 5.00 Spur, slopes N. Drift fence, wire, extends N. and S. Precipitous slopes and cliffs to the W., prevent direct measurement. Set a flag on line to the W., the vertical angle to which is 14°, and run a base north 10 chs. dist., from which point the flag bears S. 75° 12' W. All bearings checked by direct readings of the solar and all angles by deflection:



Distance on random line	5.00 chs.
Distance by triangulation	37.84 chs.
	<u>42.84 chs.</u>

- 42.84 Fall 25 lks. N. of original W. C. 1/4 sec. cor. for secs. 4 and 33, which is a cross (X) cut into surface rock, mkd. 1/4 to the N. As the true point for cor. is inaccessible at original W. C. 1/4 sec. cor., set an iron post, 3 ft. long, 1 in. diam., supported in a mound of stone 4 ft. base, 2 1/2 ft. high as witness cor., to the 1/4 sec. cor., with brass cap marked

1/4	S 33	W
	S 4	C
1924.		

Resurvey of the South Boundary of T. 3 S., R. 17 E.

Chains Thence, from W. C.  $\frac{1}{4}$  sec. cor.,  
N.  $89^{\circ} 47'$  E., on true line, bet. secs. 4 and 33.  
Over rough, mountainous, land; perpendicular bluffs and  
ledges extend N. and S.  
2.50 True point for  $\frac{1}{4}$  sec. cor., falls upon broken ledge;  
position inaccessible.

Thence N.  $89^{\circ} 40'$  E.,  
23.00 Draw, course NE. Asc., NW. slope.  
37.84 Triangulation point; spur, slopes N.. Desc. E. slope.  
42.84 The cor. of secs. 3, 4, 33 and 34.

I return to the witness  $\frac{1}{4}$  sec. cor. for secs. 4 and 33,  
Thence  
West, on random line, bet. secs. 4 and 33.  
37.38 Fall 15 lks. N. of original cor. of secs. 4, 5, 32 and  
33, which is a limestone 10 x 10 x 6 ins. above ground,  
firmly set, marked with 4 notches on the E., and 2  
notches on the W., with a mound of stone, 2 ft. base,  
 $1\frac{1}{2}$  ft. high, to the W.  
In place of the stone, which I deposit alongside, set an  
iron post, 3 ft. long, 2 ins. diam., 24 ins. in the  
ground, to rock, for the cor. of secs. 3, 4, 34 and  
35, with brass cap marked  
33

T 3 S	R 17 E
S 32	S 33
S 5	S 4
T 4 S	
1924	

Thence  
N.  $89^{\circ} 47'$  E., on true line, bet. secs. 4 and 33.  
Over rough mountainous land, thru scattered undergrowth.  
Desc. gradual E. slope.  
.70 Head of drain, course S.  $20^{\circ}$  E. Asc. SW. slope 58 ft.  
12.50 Spur, slopes S. Desc. SE. slope 350 ft.  
27.40 Ravine, course SE. Asc. SW. slope 130 ft.  
37.00 Apex of high spur, bearing N.  
37.38 Top of ledge, bears N. and S. The witness  $\frac{1}{4}$  sec. cor.,  
hereinbefore described.  
39.88 True corner point, for  $\frac{1}{4}$  sec. cor.  
Land; rough, broken mountains.  
Soil; rocky, 4th rate.  
Timber; none.  
Undergrowth; mahogany, catclaw, cacti.

From the cor. of secs. 4, 5, 32 and 33.  
West, on random line bet. secs. 5 and 32.  
39.82 Fall 15 lks. N. of original  $\frac{1}{4}$  sec. cor., which is a lime-  
stone 14 x 10 x 8 ins. above ground, firmly set,  
marked  $\frac{1}{4}$  on the N., with a mound of stone 2 ft. base,  
 $1\frac{1}{2}$  ft. high, to the N.  
In place of the stone, which I deposit alongside, set an  
iron post, 3 ft. long, 1 in. diam., 26 ins. in the  
ground, for  $\frac{1}{4}$  sec. cor., with brass cap marked

$\frac{1}{4}$ S 32
S 5
1924

Thence  
N.  $89^{\circ} 47'$  E., on true line, bet. secs. 5 and 32.  
Over rough, mountainous land, thru scattered undergrowth

Retracement of a Resurvey of the S. bdy. of T3S, R17E.

Chains.

Asc. 410 ft. over SW. slope.  
 10.70 Spur, slopes SE.; change to SE. slope.  
 17.90 Drain, course SE.  
 32.00 Change to W. slope.  
 37.20 Deer Creek and Gila River divide, brs N. and S.  
 Desc. E. slope 30 ft.  
 39.82 The cor. of secs. 4, 5, 32, and 33.

I return to the  $\frac{1}{4}$  sec. cor., for secs. 5 and 32.  
 Thence  
 West, on random line bet. secs. 5 and 32.  
 39.86 Fall 15 lks. N. of the original cor. for secs., 5, 6, 31,  
 and 32, which is a limestone, 12x10x8 ins. above  
 ground, firmly set, marked 5 notches on the E. and 1  
 notch on the W., with a mound of stone, 2 ft. base, 1 $\frac{1}{2}$  ft.  
 high, w<sup>o</sup> the W.  
 In place of the stone, which I deposit alongside, set  
 an iron post, 3 ft. long, 2 ins. diam., 12 ins. in the  
 ground, to bed rock, supported in a mound of stone,  
 4 ft. base, 18 ins. high, for the cor. of secs. 5, 6, 31,  
 and 32, with brass cap marked

T3S R17E  
 S31 | S32  
 S 6 | S 5

1924

Thence  
 N. 89° 47' E., on true line bet. secs. 5 and 32.  
 Over rough mountainous land, through scattered under-  
 growth.  
 Asc. W. slope 220 ft.  
 21.50 Spur, slopes SW.  
 23.80 Gulch, course SW.  
 Asc. 300 ft. over NW. slope.  
 27.50 Change to SW. slope.  
 39.86 The  $\frac{1}{4}$  sec. cor. for secs. 5 and 32, hereinbefore describ-  
 ed.

Land, rough mountains.  
 Soil, rocky, 4th rate.  
 Timber, none.  
 Undergrowth, catclaw, bayonet and cacti.

From the cor. of secs. 5, 6, 31, and 32.  
 West on a random line bet. secs. 6 and 31.  
 39.92 Fall 15 lks. N. of the original  $\frac{1}{4}$  sec. cor., which is a  
 granite stone 14x12x8 ins. above ground, firmly set,  
 marked  $\frac{1}{4}$  on N. side, with a mound of stone, 2 ft. base,  
 1 $\frac{1}{2}$  ft. high, N. of cor. Along side of stone, I set an  
 iron post, 3 ft. long, 1 in. diam., 6 ins. in the ground  
 to bed rock, supported by a mound of stone 4 ft. base,  
 2 ft. high, around post, marked on brass cap

$\frac{1}{4}$  S31  
 S 6

1924

Thence  
 N. 89° 47' E., on true line bet. secs. 6 and 31.  
 Over mountainous land, through scattered undergrowth.  
 Asc. 87 ft. along SW. slope.  
 7.80 Gulch, course S. 80° W.; asc. 200 ft. over NW. slope.  
 30.00 Spur, slopes SW.; desc. 21 ft. over E. slope.  
 35.70 Gulch, course S. 10° W.; asc. slightly over W. slope.

Chains

39.92

The cor. of secs. 5, 6, 31, and 32.  
I return to the 1/4 sec. cor. for secs. 6 and 31.  
Thence

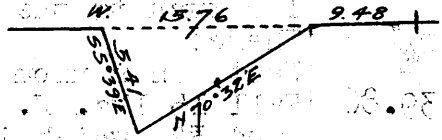
9.48

West, on a random line bet. secs. 6 and 31,  
Set triangulation flag. Further chaining across Gila  
river is impracticable on account of cliffs and the  
precipitous nature of the country. Therefore  
triangulate as follows:

From a point ahead on random  
line, measure a base S. 5° 39' E.  
5.41 chs.

From the south end of base the  
flag brs N. 70° 32' E.

From the north end of the base  
the vertical angle to the flag  
is -20°



Distance triangulated = 15.76 chs. West  
Distance measured by chain = 9.48 chs. West

25.24

Total distance on random = 25.24 chs. West.  
Triangulation point.

39.41

Fall 15 lks. N. of the cor. of Tps. 3 and 4 S., Rs. 16  
and 17 E., which is a limestone, 10x8x6 ins. above ground  
, firmly set and marked with 6 notches on N, S, E, and W.  
sides, from which

A palo verde, 4 ins. diam., brs N. 26 1/2° E., 50 lks.  
dist. marked T3S R17E S31 BT.

A palo verde, 4 ins. in diam., brs S. 37° W., 52 lks.  
dist., marked T4S R16E S1 BT.

A palo verde, 4 ins. in diam., brs S. 58 1/2° W., 46 lks.  
dist., marked T4S R16E S1 BT.

A palo verde, 4 ins. in diam., brs N. 57 1/2° W., 35 lks.  
dist., marked T3S R16E S36 BT.

Mound of stone, 3 ft. base, 2 ft. high, S. of cor.

Thence

N. 89° 47' E., on true line bet. secs. 6 and 31. (W 1/2)  
Over mountainous land, through scattering undergrowth.  
Desc. E. slope 147 ft.

14.17

Triangulation point.  
Thence by triangulation.

Desc. 340 ft. over precipitous E. slope to river.

24.00

(Approximate) Right bank of Gila river, course S.

26.00

(Approximate) Left bank of Gila river, course S.  
Asc. 100 ft. over W. slope to triangulation point.

29.93

Triangulation point.  
Continue measurement on true line by chaining..

Asc. 75 ft. over W. slope to cor.

39.41

The 1/4 sec. cor. bet. secs. 6 and 31, hereinbefore describ-  
ed.

Land, mountainous.

Soil, rocky, 4th rate.

Timber, none.

Undergrowth, cat claw, cacti, and spanish bayonet.

153  
0 2

ASCI

Survey of a portion of the W. bdy. of T.3 S., R17 E.

Chains.

From the cor. of tps. 3 and 4 S., Rs. 16 and 17 E.;  
 hereinbefore described.  
 North, on true line bet. secs. 31 and 36  
 Over mountainous land, through scattering undergrowth.  
 Asc. 74 ft. over SE. slope.  
 6:50 Spur, slopes S. 10° W.; desc. gradual NW. slope slightly  
 9.10 Gulch, course S. 10° W.; asc. 202 ft. along E. side of  
 gulch.  
 22.70 Same gulch, course S. 5° E.; asc. 425 ft. over broken SE.  
 slope.  
 40.00 Set an iron post, 3 ft. long, 1 in. in diam., 20 ins. in  
 the ground to bed rock, supported by a mound 2 ft. base,  
 1 ft. high, marked on brass cap

$\frac{1}{4}$

S36 | S31

1924

Raise a mound of stone, 2 ft. base, 1½ ft. high, W. of cor.  
 Asc. 267 ft. over SW. slope.  
 55.70 Spur, slopes S. 20° W.; desc. 40 ft. over NW. slope.  
 59.40 Gulch, course S. 20° W.; asc. 236 ft. over SE. slope.  
 67.50 Spur, slopes SW.; desc. 46 ft. over NW. slope.  
 71.60 Ravine, course SW.; asc. 198 ft. over SE. slope.  
 80.00 Set an iron post, 3 ft. long, 2 ins. in diam., 4 ins. in  
 the ground to bed rock, supported in a mound of stone  
 4 ft. base, 2 ft. high, marked on brass cap

T3S

R16E | R17E

S25 | S30

S36 | S31

1924

from which

A cedar, 8 ins. in diam., brs. S. 45° E., 195 lks. dist.,  
 marked T3S R17E S31 BT.

Land, rough mountains.

Soil, rock 4th rate.

Timber, very scattered scrub cedar and palo verde.

Undergrowth, cacti, ocotilla, and mescal.

North, on true line bet. secs. 25 and 30  
 Over mountainous land, through scattering timber and  
 undergrowth.  
 Asc. 132 ft. over SE. slope.  
 11.30 Spur, slopes SW.; desc. 137 ft. over NW. slope.  
 13.30 A perpendicular rim, 15 ft. high, brs. E. and W.  
 17.40 Ravine, course W.; asc. 107 ft. over S. slope.  
 25.00 Spur, slopes W.; desc. 117 ft. over NW. slope.  
 37.00 Head of draw, course W.; asc. 17 ft. over SW. slope.  
 40.00 Set an iron post, 1 in. diam., 3 ft. long, 26 ins. in  
 the ground, for  $\frac{1}{4}$  sec. cor., marked on brass cap

$\frac{1}{4}$

S25 | S30

1924

Raise a mound of stone, 2 ft. base, 1½ ft. high, W. of cor.  
 Asc. 146 ft. over SW. slope.  
 49.90 Divide, brs NW. and SE.; desc. slightly across head  
 of ravine, course E.

Survey of a portion of the W. bdy. of T.3 S., R.17 E.

Chains.

59.10 Ridge, brs. NE. and SW.; desc. 534 ft. over NW. slope.  
 66.90 Trail, brs. NE. and SW.  
 79.85 Set an iron post, 3 ft. long, 2 ins. in diam., 24 ins. in the ground for witness to cor. of secs. 19, 24, 25, and 30, marked on brass cap

WC  
 T3S  
 R16E R17E  
 S24 | S19  
 ---  
 S25 | S30

1924

from which  
 A pinyon, 12 ins. in diam., brs N.57°W., 119 lks. dist., marked T3S R16E S24 WC BT  
 A cedar, 12 ins. diam. brs. S.74½°E., 137 lks. dist., marked T3S R17E S30 WC BT  
 80.00 True point for cor. of secs. 19, 24, 25, and 30 falls on small rocky ledge, unsuitable for permanent cor. Land, rough mountains. Soil, rocky 4th rate. Timber, scattered pinyon and cedar. Undergrowth, cat claw, cacti, ocotilla sotol and mescal

From the true point for cor. of secs. 19, 24, 25, and 30. North on true line bet. secs. 19 and 24. Over mountainous land, through scattering timber and undergrowth.

9.90 Desc. 224 ft. over NW. slope.  
 13.10 Gulch, course NE.; asc. 107 ft. over S. slope.  
 13.10 Trail brs NW. and SW.  
 12.50 Spur, slopes E.; desc. 193 ft. over N. slope.  
 23.80 Ravine, course N.70°E.; asc. 227 ft. over S. slope.  
 33.09 Wire fence brs E. and W.  
 40.00 Set an iron post, 3 ft. long, 1 in. diam., 26 ins. in the ground, for ¼ sec. cor., marked on brass cap

¼

S24 | S19

1924

Raise mound of stone, 3 ft. base, 1½ ft. high, W. of cor. The ¼ sec. cor. falls on spur, sloping E.; desc. 100 ft. over NE. slope.  
 55.90 Drain, course NE.; asc. 117 ft. over SE. slope.  
 60.40 Spur, slopes E.; desc. 35 ft. over NE. slope.  
 66.67 Drain, course SE.; asc 6 ft. over SW. slope.  
 73.70 Trail, brs E. and W. on saddle, brs. E. and W.; asc 70 ft. over head of drain, course W.  
 80.00 Set an iron post, 3 ft. long, 2 ins. in diam., 12 ins. in the ground to bed rock, supported by a mound of stone 3 ft. base, 2 ft. high around post, marked on brass cap

T3S  
 R16E R17E  
 S13 | S18  
 ---  
 S24 | S19

1924

Deposit stone marked at cross (X) at base of post.

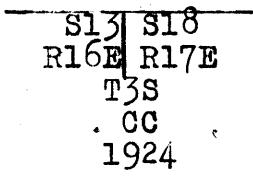
Survey of a portion of the W. bdy. of T.3 S., R.17 E.

Chains.

Land, rough mountains.  
Soil, rocky 4th rate.  
Timber, pinyon and cedar.  
Undergrowth, cat claw, cacti, ocotilla, sotol, and mescal.

- 3.20 North, on true line bet. secs. 13 and 18.
- 15.70 Over mountainous land, through scattering timber and undergrowth.
- 16.80 Asc. 72 ft. over S. slope.
- 29.56 Spur, slopes NW.; desc. 412 ft. over N. slope.
- Wire fence, brs E. and W.
- Mescal creek, 150 lks. wide, course S.70°E. (Stream in bottom 3 lks. wide, 1 in. deep, ). Asc. 98 ft. over S. slope.
- Intersect the south bdy. of the White Mountain Indian Reservation at a point 16.65 chs. West of the true point for the 85 mile cor., hereinafter described.
- At point of intersection set an iron post, 3 ft. long, 3 ins. in diam., 24 ins. in the ground, for closing cor. of secs. 13 and 18, marked on brass cap.

WMIRASB



Raise a mound of stone, 3 ft. base, 2 ft. high, S. of cor.

Land, rough mountains.  
Soil, rocky 4th rate.  
Timber, pinyon and cedar  
Undergrowth, catclaw, cacti, ocotilla, sotol, and mescal.

amended

Retracement of the ~~AS~~ bdy. of the White Mountain  
Indian Reservation, through Range 17 East

13

Chains.	<p>true point for From the <math>84\frac{1}{2}</math> mile cor. which is an iron post, 12 ins. above mound of stone that is 2 ft. base and 12 ins. high , marked on brass cap .</p> <p style="text-align: center;"><math>84\frac{1}{2}</math> WC WMIRASB PL 1915</p> <p>and witnessed by a mound of stone 2 ft. base, <math>1\frac{1}{2}</math> ft. high N. of cor.</p> <p>Thence East on random line along bdy. Over mountainous land, through scattering timber and undergrowth.</p> <p>.54 Drain, course S; asc. 23 ft. over N. slope. 2.44 Spur, slopes S.; desc. 139 ft. over E. slope. 18.44 Wash, 100 lks. wide, 1 ft. deep, course S.; asc. 100 ft. over SW. slope.</p> <p>40.94 Wash, 70 lks. wide, course S. True point for 85 mile corner falls in this wash. 41.44 Which point is 50 lks. E. of true point for 85 mile cor., Intersect the 85 mile cor., which is an iron post, 3 ins. in diam. set in mound of stone, 3 ft. base, 2 ft. high, marked on brass cap</p> <p style="text-align: center;">W C WMIRASB PL 1915</p> <p>and witnessed by a mound of stone, 4 ft. base, 3 ft. high N. of post.</p> <p>(True course and dist. of this half mile are therefore East, 40.94 chs.</p> <p>Land, mountainous. Soil, rocky, 4th rate. Timber, scattered scrub oak and juniper. Undergrowth, scrub oak, catclaw, cactus, and mesquite.</p> <hr/> <p>From true point for 85 mile cor. East, on retracement of 85th mile (<math>W\frac{1}{2}</math>) .50 Witness to 85 th mile cor., hereinbefore described. Over mountainous land, through scattering timber and undergrowth. Asc. 185 ft. over SW. slope. 15.39 Spur, slopes SW.; desc. 129 ft. over E. slope. 21.29 Gulch, course S. <math>30^\circ</math>W; asc. 222 ft. over SW. slope to <math>85\frac{1}{2}</math> mile cor. 39.94 Intersect the <math>85\frac{1}{2}</math> mile cor., which is an iron post, 1 in. in diam., 26 ins. above ground, set in a mound of stone 3 ft. base, <math>1\frac{1}{2}</math> ft. high, marked on brass cap</p> <p style="text-align: center;"><math>85\frac{1}{2}</math>M WMIRASB PL 1924</p> <p>Thence from cor. East, on retracement of 85th mile. (<math>E\frac{1}{2}</math>) Asc. 762 ft. over SW. slope</p> <p>38.89 Intersect the 86th mile cor., which is an iron post, 3 ins. diam., set in mound of stone 4 ft. base, <math>2\frac{1}{2}</math> ft. high, marked on brass cap</p>
---------	--



Retracement of the amended S. bdy. of the White Mountain Indian Reservation, through Range 17 East.

Chains.

86M  
WMIRABB

PL  
1915 and witnessed by  
a mound of stone 4 ft. base, 2 ft. high, N. of post.

Land, mountainous.  
Soil, rocky, 4th rate.  
Timber, none.  
Undergrowth, cacti, catclaw, sage brush.

East, on retracement of the 86 mile (W. 1/2)  
Over mountainous land, through scattering timber and  
undergrowth.  
Asc. 34 ft. over SW. slope.  
2.37 Ridge, brs NE. and SW.; desc. 544 ft. over SE. slope.  
39.87 Intersect the 86 1/2 mile cor., which is an iron post, 1 in.  
in diam., 9 ins. above ground, marked on brass cap

86 1/2 M  
WMIRASB

PL  
1915 and witnessed by  
a mound of stone, 3 ft. base, 2 ft. high, N. of cor.

Thence from cor.  
East, on retracement of the 86th mile. (E 1/2)  
Desc. 102 ft. over SE. slope.  
7.00 Gulch, course SE.; asc. 29 ft. over SW. slope.  
17.00 Spur, slopes S. thence along S. slope.  
28.30 Spur, slopes SE.; desc. 152 ft. over NE. slope.  
40.02 Fall 5 lks. S. of the 87th mile cor., which is an iron  
post, 3 ins. in diam., 12 ins. above ground, marked on  
brass cap.

87M  
WMIRASB

PL  
1915 and witnessed by a  
mound of stone, 3 ft. base, 2 ft. high, N. of cor.  
True course and dist. of this half mile are therefore  
N. 89° 56' E., 40.02 chs.

Land, mountainous.  
Soil, rocky, 4th rate.  
Timber, scattered cedar.  
Undergrowth, cacti, catclaw, ocotilla and sage brush.

East, on retracement of the 87th mile. (W. 1/2)  
Over mountainous land, through scattering undergrowth.  
Desc. 327 ft. over NE. slope.  
25.06 Ravine, course N.; asc. 29 ft. over NW. slope.  
31.40 Spur, slopes N.; desc. 327 ft. over E. slope.  
39.06 Gulch, course SE.; asc. slightly to cor.  
40.06 Fall 3 lks. N. of the 87 1/2 mile cor., which is an iron  
post, 1 in. diam., 6 ins. above ground, marked on brass  
cap

Retracement of the amended S. bdy. of the White Mountain Indian Reservation through Range 17 East.

Chains.

87 1/2 M  
WMIRASB

PL  
1915

from which

A cedar limb, 5 ins. dia., brs N.79 3/4° W., 140 lks. dist., mkd. 87 1/2 MWMIRASBBT

A cedar, 14 ins. dia., brs S.10° W., 127 lks. dist., mkd 87 1/2 M PLBT

True course and distance of this half mile are therefore S.89°57'E., 40.06 chs.

Thence

East, on retracement on 87th mile. (E. 1/2)

Asc. 155 ft. over SW. slope.

6.60 Spur, slopes S.; desc. 174 ft. over SE. slope.

14.40 Ravine, course S.; asc. 35 ft. over SW. slope.

19.00 Spur, slopes S.; desc. 110 ft. over SE. slope.

24.00 Gulch, course NE.; asc. 55 ft. over NW. slope.

33.80 Spur, slopes N.; desc. 74 ft. over NE. slope.

39.87 Fall 2 lks. S. of the 88th mile cor., which is an iron post, 3 ins. in diam.; 18 ins. above ground, supported by a mound of stone, marked on brass cap

88 M  
WMIRASB

PL  
1915 and witnessed by bearing objects as described by Surveyor General. True course and distance of this half mile are therefore N.89°58'E., 39.87 chs.

Land, rough mountains.

Soil, rocky, 4th rate.

Timber, scattered cedar.

Undergrowth, cacti, catclaw, and ocotilla

East, on retracement of the 88th mile. (W. 1/2)

Over mountainous land, through scattering timber and undergrowth.

Desc. slightly

2.00 Gulch, course SE.; asc. 156 ft. over SW. slope.

11.50 Spur, slopes S.; desc. 150 ft. over SE. slope.

21.00 Gulch, course SW.; asc. 661 ft. over W. slope.

38.50 Spur, slopes S.; desc. 61 ft. over SE. slope.

39.98 Fall 9 lks. S. of the 88 1/2 mile cor., which is an iron post, 1 in. diam., 9 ins. above ground, marked on brass cap

88 1/2 M  
WMIRASB

PL  
1915 and witnessed by bearing objects as described in original field notes. True course and dist. of this half mile are therefore N.89°52'E., 39.98 chs.

Thence from cor.

East, on retracement of the 88th mile. (E. 1/2)

Desc. 429 ft. over SE. slope.

24.82 Gulch, course S.; asc desc. 40 ft. over SE. slope.

Retracement of the amended S. bdy. of the White Mountain Indian Reservation through Range 17 East.

Chains.

34.32  
38.82  
39.82

Ravine, course S. ;; asc. 154 ft. over SW. slope.  
Spur, slopes S.; desc. 10 ft. over E. slope.  
Fall 9 lks. N. of the 89th mile monument, which is an iron post, 3 ins. in diam., 12 ins. above ground, firmly set, marked on brass cap

.89M  
WMIRASB

.PL  
1915 and witnessed by one bearing tree south east of cor. as given in the original field notes.  
True course and distance of this half mile are therefore S.89°52'E., 39.82 chs..

Land, mountainous.  
Soil, rocky, 4th rate.  
Timber, very scattered cedar.  
Undergrowth, cacti, ocotilla, and catclaw.

8.26  
15.40  
30.84  
39.94

East, on retracement of the 89th mile. (W. 1/2)  
Over mountainous land, through scattered timber and undergrowth.  
Desc. 162 ft. over SE. slope.  
Gulch, course S.; asc. 150 ft. over SW. slope.  
Spur, slopes S.; desc. 342 ft. over E. slope.  
Gulch, course SE.; asc. 109 ft. over SW. slope.  
Fall 11 lks. N. of the 89 1/2 mile monument, which is an iron post, 1 in. diam., 12 ins. above ground, firmly set, marked on brass cap

89 1/2 M  
WMIRASB

PL  
1915 and witnessed by a mound of stone, 3 ft. base, 2 ft. high, N. of cor.  
True course and dist. of this half mile are therefore S.89°51'E., 39.94 chs.

.36  
15.96  
22.36  
39.77

Thence  
East, on retracement of the 89th mile. (E 1/2)  
Asc. slightly  
Spur, slopes S.; desc. 165 ft. over SE. slope.  
Gulch, course S.; asc. 120 ft. over SW. slope.  
Spur, slopes S.; desc. 291 ft. over SE. slope.  
Fall 19 lks. S. of the 90th mile monument, which is an iron post, 3 ins. in diam., 9 ins. above ground, firmly set, marked on brass cap

90M  
WMIRASB

PL  
1915 and witnessed by two bearing trees, NE. and SE. of post as given in the original field notes.  
True course and dist. of this half mile are therefore N.89°44'E., 39.77 chs.

Land, mountainous.  
Soil, rocky, 4th rate.  
Timber, very scattered cedar.  
Undergrowth, sage brush, cacti, and catclaw.

Retracement of the amended S. bdy. of the White Mountain Indian Reservation, through Range 17 East.

## Chains.

East, on retracement of the 90th mile. (W.  $\frac{1}{2}$ )  
 Over mountainous land, through scattering timber and undergrowth.  
 Desc. slightly over SE. slope.  
 1.20 Gulch, course SE.; asc. 464 ft. over SW. slope.  
 11.10 Spur, slopes S.; desc. slightly over E. slope.  
 12.30 Gulch, course SE.; asc.  
 34.50 Spur, slopes S.; desc. 118 ft. over SE. slope.  
 38.00 Gulch, course S.; asc. 31 ft. over SW. slope.  
 39.99 Fall 1 lks. S. of the 90 $\frac{1}{2}$  mile monument, which is an iron post, 1 in. diam., set in mound of stone, firmly set, marked on brass cap

90 $\frac{1}{2}$ M  
 WMIRASB

PL  
 1915 and witnessed by a mound of stone, 3 ft. base, 2 ft. high.

True course and distance of this half mile are therefore N. 89° 59' E., 39.99 chs.

## Thence

East, on retracement of the 90th mile, along S. bdy.  
 3.40 Spur ridge, brs. S.; desc. SE. slope.  
 10.00 Wash, 20 lks. wide, course S.; asc. SW. slope.  
 12.30 Spur, brs S. 20 chs. dist.; desc. SE. slope.  
 15.50 Wash, course., 10 lks. wide; asc. SW. slope  
 24.82 Intersect the closing cor. for secs. 13 and 18, which is an iron post, 3 ins. in diam., 12 ins. above ground, firmly set, marked on brass cap.

WMIR  
 T3S  
 R17E R18E  
 S13 S18

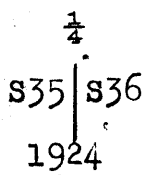
C C  
 1915 and witnessed by a mound of stone, 4 ft. base, 2 ft. high, S. of cor.

This line was carried eastward to 91 mile monument for alignment only, intersecting same.

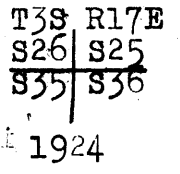
Survey of a portion of the Subdivision of T. 3 S., R. 17 E.

Chains.

From the reestablished cor. of secs. 1, 2, 35, and 36 on the S. bdy. of the Tp., hereinbefore described. N. 0° 01' W., bet. secs. 35 and 36. Over mountainous land, through scattered timber and undergrowth. Asc. 144 ft. over SE. slope.  
 14.30 Spur, slopes NE.; desc. 137 ft. over N. slope.  
 23.00 Spur, slopes NE.; continue descent.  
 40.00 Set an iron post, 3 ft. long, 1 in. diam., 8 ins. in the ground to bed rock, deposit a stone marked cross (X) at base of post, and raise mound of stone around post, 4 ft. base, 2 ft. high, for ~~base~~ ~~secs.~~, marked on brass cap

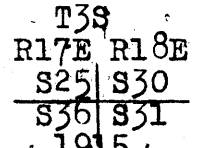


Asc. 109 ft. over SW. slope.  
 50.00 Rim of canyon, brs NE. and SW. ; desc. 100 ft. on NW. slope.  
 52.00 Gulch, course NE.; asc. 200 ft. to N. rim, over S. slope.  
 66.46 N. rim of small canyon brs NE. and SW. Asc. slightly over SE. slope.  
 70.00 Spur, slopes NE.; desc. 279 ft. over NE. slope.  
 80.00 Set an iron post, 3 ft. long, 2 ins. in diam., 12 ins. in the ground to bed rock, deposit a stone marked cross (X) at base of post, and raise a mound of stone 3 ft. base, 2 ft. high around post, for cor. of secs. 25, 26, 35, and 36, marked on brass cap



Land, mountainous.  
 Soil, rocky, 4th rate.  
 Timber, scattered palo verde.  
 Undergrowth, catclaw, mescal, cacti, and sage brush

S. 89° 54' E., on random line bet. secs. 25 and 36.  
 40.00 Set temp.  $\frac{1}{4}$  sec. cor.  
 79.86 Intersect the E. bdy. of the tp., 37 lks. S. of the cor. of secs. 25, 30, 31, and 36, which is an iron post, 3 ins. in diam., 18 ins. above ground, firmly set, marked on brass cap



and witnessed by a mound of stone, 3 ft. base, 2 ft. high, W. of cor.

Thence S. 89° 50' W., on true line bet. secs. 25 and 36. Over mountainous land, through scattering timber and undergrowth. Desc. 130 ft. over SW. slope.  
 14.75 Gulch, course SE.; asc. 204 ft. over SE. slope.  
 27.30 Spur, slopes NE.; trail along top of spur brs NE. and SW.  
 Desc. 82 ft. over NW. slope.  
 35.85 Gulch, course N.; asc. 56 ft. over E. slope.

Survey of a portion of the subdivision of T.3S, R17E.

Chains.

39.93 Set an iron post, 3 ft. long, 1 in. diam., 18 ins. in the ground to bed rock, deposit a granite stone 12x10x2 ins. at base of post, and raise a mound of stone around post, marked on brass cap

$\frac{1}{2}$  S25  
S36  
1924

44.50 Asc. 130 ft. over NE. slope.  
60.60 Spur, slopes NW.; desc. 254 ft. over W. slope.  
79.86 Gulch, course NW.; asc. 351 ft. over NE. slope.  
The cor. of secs. 25, 26, 35, and 36.

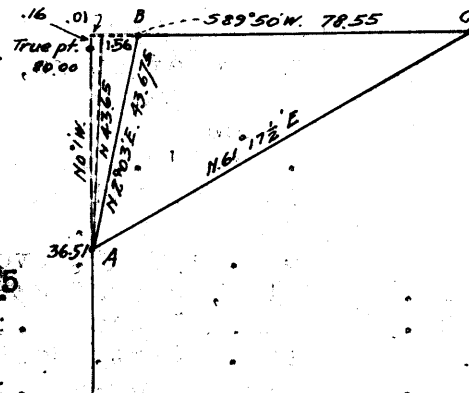
Land, mountainous.  
Soil, rocky, 4th rate.  
Timber, scattering palo verde and cedar.  
Undergrowth, catclaw, cacti, and mescal.

N.0°01'W., bet. secs. 25 and 26.  
Over mountainous land, through scattering timber and undergrowth.

4.00 Desc. 107 ft. over NE. slope.  
11.00 Gulch, course NE.; asc. 335 ft. over SE. slope, to spur.  
26.60 Ravine, course E.; asc.  
33.70 Spur, slopes E.; desc. 266 ft. over NW. slope.  
35.00 Ravine, course NW.  
36.51 Spur, slopes NW..  
36.60 Set triangulation flag "A"  
Set an iron post, 3 ft. long, 1 in. diam., 12 ins. in the ground to bed rock, deposit a stone marked cross (X) at base of post, and raise a mound of stone 3 ft. base  $1\frac{1}{2}$  ft. high around post, for  $\frac{1}{4}$  sec. cor., marked on brass cap witness to

WC  
 $\frac{1}{4}$   
S26 | S25  
1924

36.80 Rock bluff, brs E. and W.; desc. approximately 800 ft. over precipitous bluffs on N. slope to river.  
40.00 True point for  $\frac{1}{4}$  sec. cor. falls on precipitous bluff. Beyond the 36.80 ch. point chaining is impracticable, therefore triangulate as follows:  
Owing to the nature of the surface it is impracticable to complete the survey of this line prior to survey of random line bet. secs. 24 and 25, therefore to secure a base for triangulation, survey the random line bet. secs. 24 and 25, S.89°50'W, 78.55 chs. and set flag "B" which bears N.2°03'E. from point "A" on sec. line bet. secs. 25 and 26 with a vertical angle therefrom of -11°  
Set another flag "C" at the cor. of secs. 19, 24, 25, and 30 on the E. bdy. of the tp., hereinafter described, which bears N.61°17'E. from triangulation point "A".  
The base for this triangulation (C-B) is therefore S.89°50'W., 78.55 chs.  
Triangulated dist. (A-B) = 43.675 chs. N.2°03'E., the latitude of which is 43.65 chs. N. and the departure 1.56 chs. E.



Survey of a portion of the Subdivision of T3S, R17E.

Chains									
	The departure of the sec. line in 43.68 chs. is 0.01 chs. W., therefore triangulation point "B" is 1.57 chs. E. of a point 80.16 chs. N.0°01'W. from cor. of secs. 25, 26, 35, and 36, or 0.16 chs. N.0°01'W. from point for cor. of secs. 23, 24, 25, and 26.								
	From point "B" chain measurement, South 0.16 chs., thence West 1.57 chs. to the point for establishment of the cor. of secs. 23, 24, 25, and 26.								
51.00	(Approximate) Gila river, 3.00 chs. wide, 6 ft. deep., course SW.; asc. about 300 ft. over SE. slope to sec. cor.								
69.00	Gulch, course SE. (Approximate).								
80.00	Set an iron post, 3 ft. long, 2 ins. in diam., 27 ins. in the ground for cor. of secs. 23, 24, 25, and 26, marked on brass cap								
	<table border="0"> <tr><td>T3S</td><td>R17E</td></tr> <tr><td>S23</td><td>S24</td></tr> <tr><td>S26</td><td>S25</td></tr> </table>	T3S	R17E	S23	S24	S26	S25		
T3S	R17E								
S23	S24								
S26	S25								
	1924								
	Raise mound of stone, 2 ft. base, 1½ ft. high, W. of cor.								
	Land, mountainous.								
	Soil, rocky, 4th rate.								
	Timber, none.								
	Undergrowth, catclaw, mescal, cacti.								
-----									
	As having been impracticable to complete line bet. secs. 25 and 26, prior to survey of random line bet. secs. 24 and 25.								
	S.89°50'W., on random line bet. secs. 24 and 25.								
40.00	Set temp. ¼ sec. cor.								
78.55	Triangulation point of triangulation used for completion of survey of line bet. secs. 25 and 26, which is 1.57 chs. E. and 0.16 chs. N. of the sec. cor. point.								
	The random line extended would therefore at								
80.12	Fall 16 lks. N. of the cor. of secs. 23, 24, 25, and 26. The true course and dist. of this mile are therefore S.89°43'W., 80.12 chs.								
	I return to the cor. of secs. 19, 24, 25, and 30, which is an iron post, 3 ins. in diam., 14 ins. above ground, firmly set, and marked on brass cap								
	<table border="0"> <tr><td>T3S</td><td></td></tr> <tr><td>R17E</td><td>R18E</td></tr> <tr><td>S24</td><td>S19</td></tr> <tr><td>S25</td><td>S30</td></tr> </table>	T3S		R17E	R18E	S24	S19	S25	S30
T3S									
R17E	R18E								
S24	S19								
S25	S30								
	1915 and witnessed by								
	a mound of stone, 2 ft. base, 1½ ft. high, W. of cor.								
	Thence								
	S.89°43'W., on true line bet. secs. 24 and 25.								
	Over mountainous land, through scattering timber and undergrowth.								
	Desc. slightly over bench land.								
6.31	Wire fence, brs. NE. and SW.								
8.90	Wire fence brs SE. and NW.; desc. 69 ft. over W. slope.								
12.00	Foot of descent, brs. NW. and SE.; thence across bottom.								
14.40	Hawk creek, 2.00 chs. wide, 1 ft. deep, course N W., continue on slight ascent.								
18.57	Wire fence brs NW. and SE.								
20.00	NW. cor. of house brs S.20°W., 2.40 chs. dist.								
26.80	Wire fence, brs NW. and SE.								
27.50	Asc. 86 ft. over NE. slope.								
30.00	Spur, slopes NW.; desc. 139 ft. over NW. slope.								

Survey of a portion of the Subdivision of T3S, R17E.

Chains.

- 37.70 Wire fence, brs N. and S.
- 40.06 True point for  $\frac{1}{4}$  sec. cor. falls near river on unsafe ground.
- 41.50 Left bank of Gila river, course S.
- 43.50 Right bank of Gila river, course S.
- Asc. slightly to witness cor.
- 45.06 Set an iron post, 3 ft. long, 1 in. diam., 1 in. in ground to surface, rock, mark cross (x) on surface rock at base of post, and raise a mound of stone around same for witness  $\frac{1}{4}$  sec. cor., marked on brass cap

WC  
 $\frac{1}{4}$  S24  
 S25  
 1924

- Asc. 248 ft. over SW. slope.
- 59.00 Spur, slopes S.; desc. 160 ft. over W. slope.
- 72.80 Gulch, course S.; asc. 59 ft. over E. slope.
- 78.50 Spur, slopes S.; desc. 29 ft. over SW. slope.
- 80.12 The cor. of secs. 23, 24, 25, and 26.

Land, rolling and mountainous.  
 Soil, rocky 4th rate.  
 Timber, very scattered cedar.  
 Undergrowth, cacti, catclaw, and mescal.

N. 0° 01' W. bet. secs. 23 and 24.  
 Over mountainous land, through scattering undergrowth.  
 Asc. 328 ft. over SW. slope.

- 25.80 Gulch, course SE.; continue asc.
- 40.00 Set an iron post, 3 ft. long, 1 in. diam., 20 ins. in the ground to bed rock, deposit a granite stone 8x6x4 ins at base of post, and raise a mound of stone 3 ft base  $1\frac{1}{2}$  ft. high, around post, for  $\frac{1}{4}$  sec. cor., marked on brass cap

$\frac{1}{4}$   
 S23 | S24  
 1924

- Asc. slightly
- 42.00 Spur, slopes S. 15° E.; desc. 69 ft. over NE. slope.
- 57.80 Gulch, course SE.; asc. 226 ft. over S. slope.
- 70.00 Gulch, course SW.; continue asc.
- 74.50 Spur, slopes E.; desc. 52 ft. over NE. slope.
- 80.00 Set an iron post, 3 ft. long, 2 ins. in diam., 4 ins. in the ground to bed rock, deposit a stone marked cross (X) at base of post, and raise a mound of stone around post 5 ft. base  $2\frac{1}{2}$  ft. high, for cor. of secs. 13, 14, 23, and 24, marked on brass cap

T3S R17E  
 S14 | S13  
 S23 | S24

1924

Land, mountainous.  
 Soil, rocky, 4th rate.  
 Timber, none.  
 Undergrowth, catclaw, mescal, and ocotilla.



Survey of a portion of the Subdivision of T3S, R17E.

Chains.

40.00 N. 89°43'E., on random line bet. secs. 13 and 24  
 Set temp.  $\frac{1}{4}$  sec. cor.  
 80.06 Intersect the E. bdy. of the tp., 9 lks. S. of the cor.  
 of secs. 13, 18, 19, and 24, which is an iron post,  
 3 ins. in diam., 12 ins. above ground, and marked on  
 brass cap

T3S	
R17E	R18E
S13	S18
S24	S19

1915 witnessed by  
 a mound of stone, 2 ft. base,  $1\frac{1}{2}$  ft. high, W. of cor.

Thence  
 S. 89°39'W., on true line bet. secs. 13 and 24.  
 Over rolling and mountainous land, through scattering  
 undergrowth.

Desc. slightly  
 2.50 Ravine, course SE.; asc. 19 ft. over SE. slope.  
 12.60 Spur, slopes S.; desc. 60 ft. over SW. slope.  
 19.00 Ravine, course S.; thence over gently rolling land.

40.03 Set an iron post, 3 ft. long, 1 in. diam., 27 ins. in  
 the ground, for  $\frac{1}{4}$  sec. cor., marked on brass cap.

$\frac{1}{4}$ S13
S24
1924

41.00 Raise mound of stone, 2 ft. base,  $1\frac{1}{2}$  ft. high, N. of cor.  
 Gulch, course SE. with small stream of water.  
 Asc. 249 ft. over E. slope.  
 60.00 Spur, slopes S.; desc. 41 ft. over SW. slope.  
 65.50 Ravine, course SE.; asc. 213 ft. over E. slope.  
 80.06 The cor. of secs. 13, 14, 23, and 24.

Land, rolling and mountainous.  
 Soil, rocky, 4th rate.  
 Timber, none.  
 Undergrowth, ocotilla, cacti, and catclaw.

N. 0°01'W., bet. secs. 13 and 14.  
 Over mountainous land, through scattering undergrowth.  
 Asc. 23 ft. over SE. slope.  
 5.00 Spur, slopes E.; desc. 179 ft. over NE. slope.  
 14.30 Gulch, course E.; asc. 208 ft. over S. slope.  
 23.00 Spur, slopes E.; desc. 35 ft. over NE. slope.  
 27.74 Intersect the amended S. bdy. of the White Mountain  
 Indian Reservation at a point 15.21 chs. S. 89°44'W.  
 of the 90th mile cor., hereinbefore described.  
 At point of intersection, set an iron post, 3 ft. long,  
 2 ins. in diam., 24 ins. in the ground, for the closing  
 cor. of secs. 13 and 14., marked on brass cap

T3S	
WMIRASB	
S14	S13
T3S	R17E
C C	
1924	

Raise mound of stone, 2 ft. base,  $1\frac{1}{2}$  ft. high, S. of cor.

## Survey of a portion of the Subdivisions of T3S, R17 E.

Chains.

Survey of the E. bdy. of sec. 13.

At a point midway bet. the closing cor. of secs. 13 and 18 on the E. bdy. of the tp. and the closing cor. of secs. 13 and 14, both hereinbefore described and at a point  $N. 89^{\circ} 59' E.$ , 24.79 chs., from the 90th mile monument, set an iron post, 3 ft. long, 1 in. in diam., 27 ins. in the ground, for  $\frac{1}{4}$  sec. cor. for sec. 13 only, marked on brass cap

MIRASB

$\frac{1}{4}$  S13  
1924

Raise mound of stone, 4 ft. base, 2 ft. high, S. of cor.

From the cor. of secs. 34 and 35 on the S. bdy. of the tp., hereinbefore described.

$N. 0^{\circ} 01' W.$ , bet. secs. 34 and 35.

Over mountainous land, through scattering timber and undergrowth.

Desc. 439 ft. over NW. slope to ravine at 33.10 chs.

8.00 Ravine, course NW.  
19.00 Ravine, course W.  
27.10 Ravine, course NW.  
33.10 Ravine, course W.; asc. 124 ft. over SW. slope.  
37.00 Rock ledge, 40 ft. high, facing S.  
38.00 Spur, slopes NW.; desc. 134 ft. over NW. slope.  
40.00 Set an iron post, 3 ft. long, 1 in. diam., 4 ins. in the ground to bed rock, deposit a limestone  $8 \times 6 \times 4$  ins. marked cross (X) at base of post, and raise a mound of stone 4 ft. base,  $2\frac{1}{2}$  ft. high around post, for  $\frac{1}{4}$  sec. cor., marked on brass cap

$\frac{1}{4}$   
S34 | S35

1924

Desc. 134 ft. over NW. slope.

44.20 Ravine, course W.; then along W. slope.  
49.00 Ravine, course W.; asc. 76 ft. over SW. slope.  
58.00 Spur, slopes NW.; desc. 582 ft. over N. slope.  
73.50 Gulch, course SE.; then along W. slope.  
80.00 Set an iron post, 3 ft. long, 2 ins. in diam., 10 ins. in the ground to bed rock, deposit a sand stone  $10 \times 8 \times 6$  ins. marked cross (X) at base of post, and raise a mound of stone 4 ft. base, 2 ft. high, around post, for cor. of secs. 34, and 35, marked on brass cap

sec. N013S R17E

at S27 | S26

at S34 | S35

1924

Land, rough mountains.

Soil, rocky, 4th rate.

Timber, paloverde.

Undergrowth, cacti, ocotilla, and sage brush.

East, on random line bet. secs. 26 and 35.

Survey of a portion of the Subdivisions of T3S, R17E.

Chains.

40.00 Set temp.  $\frac{1}{4}$  sec. cor.  
 80.26 Intersect N. and S. line, 40 lks. S. of the cor. of secs. 25, 26, 35, and 36.  
 Thence  
 S.  $89^{\circ}43'W.$ , on true line bet. secs. 26 and 35.  
 Over mountainous land, through scattering timber and undergrowth.  
 Asc. 676 ft. over NE. slope. to spur.  
 3.50 Ravine, course NE.  
 11.60 Rock bluff, 50 ft. high.  
 29.60 Spur, slopes NW.; desc. 1309 ft. over W. slope to  $\frac{1}{4}$  sec. cor.  
 40.13 Set an iron post, 3 ft. long, 1 in. in diam., 6 ins. in the ground to bed rock, deposit a stone, 8x6x4 ins. marked cross (X) at base of post, and raise a mound of stone around post, 3 ft. base,  $2\frac{1}{2}$  ft. high, for  $\frac{1}{4}$  sec. cor., marked on brass cap.

$\frac{1}{4}$  S26  
 535  
 1924

Desc. 740 ft. over W. slope to sec. cor.

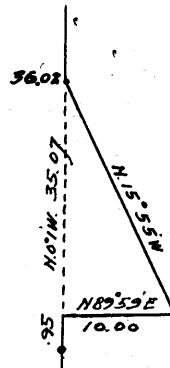
80.26 The cor. of secs. 26, 27, 34, and 35,

Land, mountainous.  
 Soil, rocky, 4th rate.  
 Timber, scattering palo verde.  
 Undergrowth, cacti, mescal, sage brush.

N.  $0^{\circ}01'W.$ , bet. secs. 26 and 27.  
 Over very rough mountains, through scattering undergrowth.  
 .90 Rim of canyon, brs NE. and SW. Desc. 700 ft. over precipitous NW. slope.

.95 Set triangulation point "A"  
 Owing to the precipitous nature of the country across the Gila river canyon, chaining is rendered impracticable, therefore triangulate as follows.

Set a flag ahead on sec. line on opposite side of canyon, the vertical angle to which is  $+3^{\circ}$   
 From triangulation point "A" measure a base N.  $89^{\circ}59'E.$ , 10.00 chs. to point "B"  
 From point "B" the flag at point "C" brs. N.  $15^{\circ}55'W.$



Distance triangulated = 35.07 chs.  
 Distance on sec line = .95 chs.  
 Total distance to "C" = 36.02 chs.  
 (Approximate)

10.00 Gila river, 3.50 chs. wide, 8 ft. deep, course SW.;  
 Asc. 900 ft. over very broken S. slope, to triangulation point "C"

36.02 Triangulation point "C" Continue chaining from this point.

Desc. slightly over NE. slope.  
 40.00 Set an iron post, 3 ft. long, 1 in. diam., 20 ins. in the ground to bed rock, deposit a stone marked cross (X) at base of post, and raise a mound of stone around post, 3 ft. base,  $1\frac{1}{2}$  ft. high, for  $\frac{1}{4}$  sec. cor., marked on brass cap

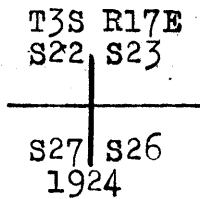
$\frac{1}{4}$   
 S27 | S26  
 1924

The  $\frac{1}{4}$  sec. cor. falls at base of cliff 250 ft. high facing E

Survey of a portion of the Subdivision of T3S,R17E.

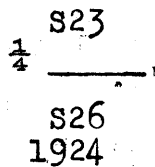
Chains.

- 44.70 Spur, slopes E.; desc. 234 ft. over broken NE. slope to ravine at 68.00 chs.
- 50.50 Gulch, course E.; continue desc.
- 54.00 Spur, slopes E.; continue desc.
- 68.00 Ravine, course E.; asc. 23 ft. over SE. slope.
- 69.60 Spur, slopes E.; desc. 24 ft. over NE. slope.
- 71.00 Ravine, course E.; asc. 17 ft. over SE. slope.
- 76.00 Spur, slopes E.; desc. 32 ft. over NE. slope.
- 80.00 Set an iron post, 3 ft. long, 2 ins. in diam., 18 ins. in the ground to bed rock, deposit a lava stone, 8x6x4 ins. at base of post and raise a mound of stone 3 ft. base 1 1/2 ft. high around post, for cor. of secs. 22, 23, 26, and 27, marked on brass cap



Land, mountainous.  
 Soil, rocky, 4th rate.  
 Timber, none.  
 Undergrowth, cacti, mescal, and sage brush.

- 40.00 N. 89° 43' E., on random line bet. secs. 23 and 26. Set temp. 1/4 sec. cor.
- 80.40 Intersect the N. and S. line, 5 lks. S. of the cor. of secs. 23, 24, 25, and 26. Thence S. 89° 41' W., on true line bet. secs. 23 and 26. Over mountainous land, through scattering undergrowth. Desc. 32 ft. over W. slope.
- 3.00 Gulch, course S. (40 lks. wide); asc. 143 ft. over SE. slope.
- 14.70 Top of small hill, sloping all directions; desc. 168 ft. over W. slope.
- 21.00 Ravine, course SE.; asc. 136 ft. over E. slope.
- 35.00 Spur, slopes NE.; desc. 74 ft. over NW. slope.
- 40.20 Set an iron post, 3 ft. long, 1 in. diam., 24 ins. in the ground to bed rock, supported by a mound of stone, for 1/4 sec. cor., marked on brass cap



- 48.50 Raise mound of stone, 3 ft. base, 2 ft. high N. of cor. Desc. 74 ft. over NW. slope.
- Gulch, course SW.; then desc. 85 ft. along S. slope.
- 66.00 Fence, brs NE. and SW.
- 69.50 Creek (Dry), course S.; asc. 136 ft. over E. slope.
- 80.40 The cor. of secs. 22, 23, 26, and 27.

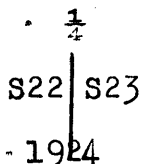
Land, mountainous.  
 Soil, rocky, 4th rate.  
 Timber, none.  
 Undergrowth, cacti, mescal, and sagebrush.

N. 0° 01' W., bet. secs. 22 and 23.  
 Over mountainous land, through scattering undergrowth.

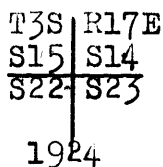
Survey of a portion of the Subdivision of T3S, R17E.

Chains.

Desc. 97 ft. over NE. slope to creek.  
 3.00 Ravine, course E.; continue desc.  
 5.00 Spur, slopes E.; continue desc.  
 21.00 Fence, brs NW. and SE.  
 23.00 Creek, 3 lks. wide, 2 ins. deep, course SE.; asc. 487 ft. over SW. slope.  
 27.00 Ravine, course SW.; continue asc.  
 40.00 Set an iron post, 3 ft. long, 1 in. diam., 12 ins. in the ground to bed rock, deposit a stone marked cross (X), 12x8x5 ins. at base of post, and raise a mound of stone 4 ft. base, 2 ft. high around post, for  $\frac{1}{4}$  sec. cor., marked on brass cap



40.50 Spur, slopes W.; desc. 261 ft. over N. slope  
 50.20 Gulch, course NW.; continue descent.  
 52.60 Ravine, course SW.; asc. 401 ft. over S. slope.  
 80.00 Set an iron post, 3 ft. long, 2 ins. in diam., 8 ins. in the ground to bed rock, deposit a granite stone 8x6x5 ins. marked cross (X) at base of post, and raise a mound of stone around post, 4 ft. base 2 ft. high, for cor. of secs. 14, 15, 22, and 23, marked on brass cap

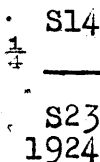


Land, mountainous.  
 Soil, rocky, 4th rate.  
 Timber, none.  
 Undergrowth, catclaw, cacti, and sage brush.

N. 89° 41' E., on random line bet. secs. 14 and 23.  
 40.00 Set temp.  $\frac{1}{4}$  sec. cor.  
 80.44 Intersect the N. and S. line, 7 lks. N. of the cor. of secs 13, 14, 23, and 24.

Thence  
 S. 89° 44' W., on true line bet. secs. 14 and 23.  
 Over mountainous land, through scattering undergrowth.  
 Asc. 57 ft. over NE. slope.

6.74 Spur, slopes N.; continue descent. Desc. 80 ft. on SW. slope  
 14.54 Gulch, course SW.; continue descent.  
 23.00 Ravine, course S.; asc. 153 ft. over SE. slope.  
 30.10 Spur, slopes S.; desc. 68 ft. over SW. slope.  
 35.84 Gulch, course S.; asc. 14 ft. over SE. slope.  
 40.00 Spur, slopes S.; desc. slightly  
 40.22 Set an iron post, 3 ft. long, 1 in. diam., 12 ins. in the ground to bed rock, deposit a granite stone marked cross (X) at base of post, and raise a mound of stone around post, 4 ft. base 2 ft. high, for  $\frac{1}{4}$  sec. cor., marked on brass cap



Desc. 175 ft. over W. slope.  
 53.00 Ravine, course SW.; then along S. slope.  
 57.50 Ravine, course S.; asc. 214 ft. over E. slope.  
 80.44 The cor. of secs. 14, 15, 22, and 23.

survey of a portion of the Subdivision of T3S,R17E.

Chains.

Land, mountainous.  
Soil, rocky, 4th rate.  
Timber, none.  
Undergrowth, catclaw, cacti, ocotilla, and mescal.

N.0°01'W., bet. secs. 14 and 15.

Over mountainous land, through scattering undergrowth.  
Asc. slightly.

1.00  
8.20  
28.08

Spur, slopes SW.; desc. 157 ft. over NW. slope,  
Ravine, course W.; asc. 226 ft. over SW. slope.  
Intersect the amended S. bdy. of the White Mountain  
Indian Reservation at a point N.89°52'W., 15.78 chs.  
from the 89th mile monument, hereinbefore described.  
At point of intersection, set an iron post, 3 ft. long,  
2 ins. in diam., 12 ins. in the ground to bed rock,  
deposit a granite stone 16x7x5 ins. marked cross (X)  
at base of post, and raise a mound of stone 3 ft. base,  
1½ ft. high around post, for closing cor. of secs. 14  
and 15, marked on brass cap.

WMIRASB  
S15 | S14  
T3S | R17E  
C C  
1924

Land, mountainous.  
Soil, rocky 4th rate.  
Timber, none.  
Undergrowth, mescal, cacti, and catclaw.

Survey of the N. bdy. of sec. 14.

At a point midway bet. the closing cor. of secs. 13  
and 14 and the closing cor. of secs. 14 and 15, or  
40.14 chs. from either one, and at a point S.89°51'E.,  
24.36 chs. from the 89th mile monument, hereinbefore  
described, set an iron post, 3 ft. long, 1 in. diam.,  
24 ins. in the ground to bed rock, for ¼ sec. cor. for  
sec. 14 only, marked on brass cap

WMIRASB

¼ S 14

1924

Raise a mound of stone, 3 ft. base, 2 ft. high S. of cor.

From the cor. of secs. 3, 4, 33, and 34 on the S. bdy.  
of the tp., hereinbefore described.

N.0°02'W., bet. secs. 33 and 34.

Over mountainous land, through scattering timber and  
undergrowth.

Asc. 45 ft. over SE. slope.

.40  
1.60  
14.40

Foot of perpendicular cliff, brs NE. and SW.

Top of cliff 45 ft. high, brs NW. and SE.; desc. 371  
ft. over NE. slope.

Gulch, course E.; asc. 78 ft. over S. slope.

Survey of a portion of the Subdivision of T3S, R17E.

Chains.

- 15.80 Spur, slopes SE.; desc. 96 ft. over NE. slope.
- 23.80 Drain course E.; asc. 28 ft. over SE. slope.
- 26.10 Spur, slopes E.; desc. 64 ft. over N. slope.
- 30.00 Ravine, course E.; asc. 185 ft. over S. slope.
- 34.60 Spur, slopes E.; desc. 50 ft. over N. slope.
- 36.80 Drain, course E.; asc. 71 ft. over S. slope.
- 40.00 Set an iron post, 3 ft. long, 1 in. diam., 26 ins. in the ground, for  $\frac{1}{4}$  sec. cor., marked on brass cap

$\frac{1}{4}$   
S33 | S34

1924

Raise mound of stone, 2 ft. base,  $1\frac{1}{2}$  ft. high, W. of cor. Asc. 94 ft. over S. slope.

- 43.10 Spur, slopes E.; desc. 182 ft. over N. slope.
- 50.00 Gulch, course E.; asc. 370 ft. over S. slope.
- 63.00 Spur, slopes E.; desc. 289 ft. over NE. slope.
- 80.00 Set an iron post, 3 ft. long, 2 ins. in diam., on surface rock, mark cross (X) at base of post, and raise a mound of stone, 4 ft. base, 3 ft. high around post, for cor. of secs. 27, 28, 33, and 34, marked on brass cap

T3S, R17E  
S28 | S27  
S33 | S34

1924

from which

A granite boulder, 5x4x3 ft. brs N.44°W., 61 lks. dist., marked X B O.

A granite boulder, 4x3x3 ft. brs N.65 $\frac{1}{4}$ °E., 56 lks. dist., marked X B O

Land, rough mountains..

Soil, rocky 4th rate..

Timber, scattering palo verde.

Undergrowth, catclaw, oak, cacti, mescal, corona christe.

- 40.00 N.89°39'E., on random line bet. secs. 27 and 34.
- 80.24 Set temp.  $\frac{1}{4}$  sec. cor.
- Intersect the N. and S. line, 3 lks. N. of the cor. of secs. 26, 27, 34, and 35.
- Thence
- S.89°40'W., on true line bet. secs. 27 and 34.
- Over very rough mountains, through scattering undergrowth
- Desc. 88 ft. over SW. slope.
- 5.69 Rim of canyon, brs NE. and SW.; desc. over precipitous NW. slope 600 ft.
- 15.00 Gila river, 2.00 chs. wide, 4 ft. deep, course SW.
- Asc. 300 ft. over precipitous SE. slope.
- 20.00 Rim of canyon, brs NE. and SW.; then along S. slope, on slight ascent.
- 30.00 Spur, slopes S.; desc. 140 ft. over SW. slope.
- 40.00 Stone house brs S.8°W., 9.00 chs. dist.
- 40.12 Set an iron post, 3 ft. long, 1 in. diam., 18 ins. in the ground to bed rock, deposit a stone 10x6x4 ins., marked cross (X) at base of post, and raise a mound of stone, 3 ft. base,  $1\frac{1}{2}$  ft. high around post, for  $\frac{1}{4}$  sec. cor., marked on brass cap

$\frac{1}{4}$  S27

S34  
1924

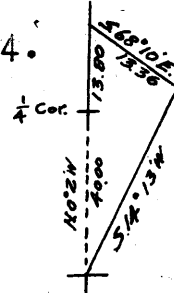
Survey of a portion of the Subdivision of T3S,R17E.

Chains.

- 43.80 Desc. 160 ft. over SW. slope.
  - 46.60 Wire fence, brs NW, and SE.
  - 52.25 Wire fence, brs NW. and SE.
  - 53.75 Right bank of Gila river, course NW.
  - 53.75 Left bank of Gila river, course NW.
  - 80.24 Asc. 500 ft. over precipitous NE. slope.
  - 80.24 The cor. of secs. 27, 28, 33, and 34.
- Land, rough mountains.  
Soil, rocky, 4th rate.  
Timber, none.  
Undergrowth, cacti, sage brush, ocotilla, and mescal.

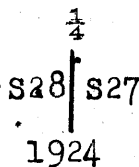
N.0°02'W., bet. secs. 27 and 28.  
Over mountainous land, through scattering undergrowth  
Desc. approximately 600 ft. over N. slope to river  
Owing to the precipitous nature of the country, chaining  
is rendered impracticable, therefore triangulate as  
follows:

- Set flag on cor. of secs. 27, 28, 33, and 34.
- From a point ahead on sec.  
line measure a Base S.68°10'E,  
13.36 chs. dist.
- From E. end of base, the flag  
brs. S.14°13'W.
- From W. end of Base the verti-  
cal angle to flag is -01°

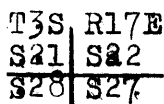


Distance triangulated 53.80 chs. N.0°02'W  
Distance by return measurment 13.80 chs. S.0°02'E.  
40.00 chs. Distance from  
cor. of secs. 27, 28, 33, and 34 to 1/4 sec. cor. bet. secs  
27 and 28.

- 21.40 (Approximate) Gila river, 2.00 chs. wide
- 40.00 Asc. about 400 ft. over SW. slope.
- 40.00 Set an iron post, 3 ft. long, 1 in. diam., 12 ins. in  
the ground to bed rock, deposit a lava stone 9x6x4 ins.  
marked cross (X) at base of post, and raise a mound  
of stone, 3 ft. base 2 ft. high around post, for 1/4 sec.  
cor., marked on brass cap.



- 43.70 Asc. 376 ft. over SW. slope.
- 43.70 Spur, slopes SW.; continue ascent.
- 54.50 Spur, slopes W.; desc. 95 ft. over NW. slope
- 58.80 Gulch, course W.; then along W. slope.
- 63.50 Ravine, course W.; asc. 226 ft. over SW. slope to cor.
- 80.00 Set an iron post, 3 ft. long, 2 ins. in diam., 26 ins.  
in the ground, for cor. of secs. 21, 22, 27, and 28,  
marked on brass cap



- 1924 Raise mound of stone, 2 ft. base, 1 1/2 ft. high, W. of cor.
- Land, mountainous.
- Soil, rocky, 4th rate.
- Timber, none.
- Undergrowth, mescal, catclaw, and cacti.



Survey of a portion of the Subdivision of T3S,R17E.

Chains.

40.00 N. 89°40'E., on random line bet. secs. 22 and 27.  
 Set temp. 1/4 sec. cor.  
 80.50 Intersect the N. and S. line, 5 lks. N. of the cor. of  
 secs. 22, 23, 26, and 27.

Thence  
 S. 89°42'W., on true line bet. secs. 22 and 27.  
 Over mountainous land, through scattering undergrowth.  
 Asc. 819 ft. over E. slope to 1/4 sec. cor.  
 .50 Ravine, course NE.; continue ascent.  
 24.00 Spur, slopes NE.; continue ascent.  
 29.00 Ravine, course NE.; continue ascent.  
 33.50 Ravine, course NE.; continue ascent.  
 40.00 Spur, slopes NE.  
 40.25 Set an iron post, 3 ft. long, 1 in. diam., 18 ins. in  
 the ground to bed rock, deposit a lime stone 8x6x5 ins.  
 marked cross (X) at base of post, and raise a mound of  
 stone around post, 3 ft. base, 1 1/2 ft. high, for 1/4 sec.  
 cor., marked on brass cap

S22

1/4

S27

1924

Along N. slope.  
 46.00 Ravine, course NE.; asc. 210 ft. over NE. slope  
 66.50 Ridge, brs SE. and NW.; desc. ; desc. 446 ft. over  
 precipitous W. slope.  
 71.80 Bluff, 60 ft. high, facing W.; continue descent.  
 80.50 The cor. of secs. 21, 22, 27, and 28.

Land, mountainous.  
 Soil, rocky 4th rate.  
 Timber, none.  
 Undergrowth, mescal, catclaw, and cacti.

N. 0°02'W., bet. secs. 21 and 22.  
 Over mountainous land, through scattering undergrowth.  
 Asc. 363 ft. over SW. slope to ridge.  
 7.20 Gulch, course SW. ; continue asc.  
 21.60 Ridge, brs NW. and SE.; desc. 527 ft. over N. slope.  
 38.00 Gulch, course E. asc. slightly to 1/4 sec. cor.  
 40.00 Set an iron post, 3 ft. long, 1 in. diam., 26 ins. in  
 the ground for 1/4 sec. cor., marked on brass cap

1/4

S21 S22

1924

Raise mound of stone, 2 ft. base, 1 1/2 ft. high, W. of cor.  
 Asc. 849 ft. over S. slope to sec. cor.  
 48.00 Spur, slopes SE.; continue ascent.  
 57.30 Gulch, course SE.; continue asc.  
 79.60 Top of lime stone peak.  
 80.00 Set an iron post, 3 ft. long, 2 ins. in diam., 12 ins.  
 in the ground to bed rock, deposit a lime stone 16x6x4  
 ins. marked cross (X) at base of post, and raise a  
 mound of stone 4 ft. base, 2 ft. high, around post,  
 for cor. of secs. 15, 16, 21, and 22, marked on brass cap

T3S R17E

S16 S15

S21 S22

1924

## Survey of a portion of the Subdivision of T3S, R17E

## Chains.

Land, mountainous.  
Soil, rocky 4th rate.  
Timber, none.  
Undergrowth, cacti, catclaw, and ocotilla

N. 89°42'E. on random line bet. secs. 15 and 22.  
40.00 Set temp.  $\frac{1}{4}$  sec. cor.  
80.30 Intersect the N. and S. line, 4 lks. N. of the cor. of  
secs. 14, 15, 22, and 23

Thence  
S. 89°44'W., on true line bet. secs. 15 and 22.  
Over mountainous land, through scattering undergrowth.  
Desc. 426 ft. over NW. slope.  
26.50 Gulch, course SW. & asc. 22 ft. over SE. slope.  
30.20 Spur, slopes S.; desc. 46 ft. over SW. slope.  
35.00 Main draw, 100 lks. wide, course S.; asc. 89 ft. over  
E. slope.  
40.15 Set an iron post, 3 ft. long, 1 in. diam., 8 ins. in  
the ground to bed rock, deposit a granite stone, 16x8x6  
ins., marked cross (X) at base of post, and raise a  
mound of stone around post, 4 ft. base, 2 ft. high,  
for  $\frac{1}{4}$  sec. cor., marked on brass cap

S15

S22

1924

Asc. 900 ft. over NE. slope.  
73.60 Divide, brs SE. and NW.  
78.80 Ridge, brs NE. and SW.  
80.30 The cor. of secs. 15, 16, 21, and 22.

Land, mountainous.  
Soil, rocky, 4th rate.  
Timber, none.  
Undergrowth, catclaw, mescal, and cacti.

N. 0°02'W., bet. secs. 15 and 16.  
Over mountainous land, through scattering undergrowth.  
Desc. 1018 ft. over broken N. slope.  
28.40 Wash, 50 lks. wide, course E.  
28.60 Intersect the amended S. Bdy. of the White Mountain  
Indian Reservation at a point S. 89°58'W., 16.29 chs.  
from the 88th mile monument, hereinbefore described.  
At intersection, set an iron post, 3 ft. long, 2 ins.  
in diam., 22 ins. in the ground to bed rock, and raise  
a mound of stone, 2 ft. base, 1 ft. high around post,  
for closing cor. of secs. 15 and 16, marked on brass  
cap

WMIRASB

S16	S15
T3S	R17E
C C	
1924	

Raise mound of stone 2 ft. base, 1½ ft. high S. of cor.

Land, mountainous.  
Soil, rocky, 4th rate.  
Timber, none.  
Undergrowth, cacti, catclaw, and sage brush.

Survey of a portion of the Subdivision of T3S, R17E.

Chains.

Survey of the N. bdy. of sec. 15.

At a point midway bet. the closing cor. of secs. 14 and 15 and the closing cor. of secs. 15 and 16, or 40.15½ chs. from either one, and at a point N.89°52'E. 23.90 chs. from the 88th mile monument, hereinbefore described, set an iron post, 3-ft. long, 1 in. diam., on surface rock, mark cross (X) at base of post and raise mound of stone 4 ft. base, 27 ins. high around post, for ¼ sec. cor. for sec. 15 only, marked on brass cap.

¼  
S15  
1924

From the cor. of secs. 4, 5, 32, and 33, on the S. bdy. of the tp., hereinbefore described.

N.0°02'W., bet. secs. 32 and 33.

Over mountainous land, through scattering timber and undergrowth.

Asc. 55 ft. over SE. slope.

4.00 Divide, brs N.20°E. and S.20°W.; asc. 302 ft. along SW. slope.

30.60 Divide, brs E. and W.; desc. 63 ft. along NE. slope.

40.00 Set an iron post, 3 ft. long, 1 in. diam., 6 ins. in the ground to bed rock, deposit a stone marked cross (X) at base of post, and raise a mound of stone 3 ft. base, 20 ins. high around post, for ¼ sec. cor., marked on brass cap

¼  
S32 | S33  
1924

from which

A pinyon, 8 ins. in diam., brs N.82½°E., 95 lks. dist., marked ¼ S33 BT.

Desc. 150 ft. over NE. slope.

41.01 Top of perpendicular bluff, brs NW. and SE.; continue descent.

65.00 Gulch, course NE.; asc. 180 ft. over SE. slope.

80.00 Set an iron post, 3 ft. long, 2 ins. in diam., 12 ins. in the ground, deposit a stone marked cross (X) at base of post, and raise a mound of stone 3 ft. base, 2 ft. high, around post, for cor. of secs. 28, 29, 32, and 33, marked on brass cap.

T3S R17E  
S29 | S28  
S32 | S33  
1924

Land, rough mountains.

Soil, rocky, 4th rate.

Timber, scattered pinyon.

Undergrowth, oak brush, catclaw, cacti, mescal, spanish dagger and sotol.

N.89°43'E., on random line bet. secs. 28 and 33.

40.00 Set temp. ¼ sec. cor.

79.94 Intersect the N. and S. line; 5 lks. N. of the cor. of secs. 27, 28, 33, and 34.

Survey of a portion of the Subdivision of T3S, R17E.

Chains.

Thence  
 S.89°45'W., on true line bet. secs. 28 and 33.  
 Over rough mountains, through scattering undergrowth.  
 Desc. 207 ft. over SW. slope.  
 10.10 Gulch, course N.; asc. 93 ft. over E. slope.  
 12.50 Spur, slopes N.; desc. 233 ft. over N. slope.  
 18.00 Ravine, course N.; Spring in ravine, 3.00 chs. S.  
 Asc. 410 ft. over NE. slope to  $\frac{1}{4}$  sec. cor.  
 30.69 Top of perpendicular outcropping, 20 ft. high, brs N. and S.  
 39.97 True point for  $\frac{1}{4}$  sec. cor. falls on large sloping boulder  
 Mark cross (X) at true point for cor.  
 40.12 Set an iron post, 3 ft. long, 1 in. diam., 26 ins. in  
 the ground, for witness to  $\frac{1}{4}$  sec. cor., marked on brass  
 cap

S28  
 WC  $\frac{1}{4}$  \_\_\_\_\_  
 S33  
 1924

Raise mound of stone, 2 ft. base, 1½ ft. high, N. of cor.

41.50 Spur, slopes N.; desc. 130 ft. over NW. slope.  
 51.90 Gulch, course NE.; asc. 1079 ft. over SE. slope.  
 78.35 Shelf, 100 ft. high, brs N. and S. on top of ridge,  
 79.94 The cor. of secs. 28, 29, 32, and 33.

Land, mountainous.  
 Soil, rocky, 4th rate.  
 Timber, none.  
 Undergrowth, mescal, cacti, oak brush and catclaw.

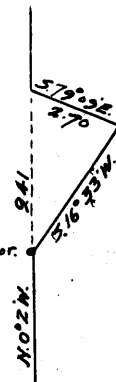
N.0°02'W. bet. secs. 28 and 29  
 Over mountainous land, through scattering undergrowth.  
 Desc. over precipitous N. slope 2100 ft.

40.00 Set an iron post, 3 ft. long, 1 in. diam., 16 ins. in  
 the ground to bed rock, deposit stone marked cross (X)  
 at base of post, and raise a mound of stone 2 ft. base,  
 1 ft. high, around post, for  $\frac{1}{4}$  sec. cor., marked on brass  
 cap

$\frac{1}{4}$   
 S29 | S28  
 1924

The precipitous nature of the country, in crossing the  
 Gila river, renders chaining impracticable, therefore  
 triangulate as follows.

Set a flag at the  $\frac{1}{4}$  sec. cor.  
 From a point ahead on opposite  
 side of river on sec. line,  
 measure a base S.79°09'E.,  
 2.70 chs. dist.  
 From the east end of base the  
 flag brs. S.16°33'W.



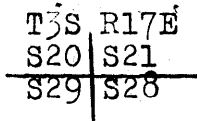
Distance on sec. line = 49.41 chs.  $\frac{1}{4}$  Cor.  
 N.0°02'W.  
 Distance triangulated = 9.41 chs.  
 N.0°02'W.  
 Total distance 49.41 chs.  
 N.0°02'W.

47.00 (Approximate) Gila river, 3.00 chs. wide.; asc. 569 ft.  
 over steep S. slope,  
 65.00 Spur, slopes W.; desc. slightly over N. slope.

Survey of a portion of the Subdivisions of T3S,R17E.

Chains.

67.50 Gulch, course SW.; asc. 330 ft. over steep S. slope.  
 80.00 Set an iron post, 3 ft. long, 2 ins. in diam., 6 ins. in the ground to bed rock, deposit a stone marked cross (X) at base of post, and raise a mound of stone around post, 4 ft. base, 2 ft. high, for cor. of secs. 20, 21, 28, and 29, marked on brass cap



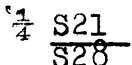
1924

Land, rough mountains.  
 Soil, rocky, 4th rate.  
 Timber, none.  
 Undergrowth, mescal, ocotilla, cacti, and sotol.

40.00 N. 89°45'E., on random line bet. secs. 21 and 28.  
 Set temp.  $\frac{1}{4}$  sec. cor.  
 80.02 Intersect the N. and S. line, 19 lks. N. of the cor. of secs. 21, 22, 27, and 28.

Thence

S. 89°53'W., on true line bet. secs. 21 and 28  
 Over mountainous land, through scattering undergrowth.  
 Desc. 64 ft. over W. slope.  
 8.00 Ravine, course S. 30°W.; asc. 77 ft. over E. slope.  
 14.40 Spur, slopes S.; desc. 205 ft. over W. slope.  
 23.20 Gulch, course S.; asc. 25 ft. over E. slope.  
 24.00 Spur, slopes S.; desc. 26 ft. over W. slope.  
 25.40 Gulch, course S.; asc. 294 ft. over E. slope.  
 40.01 Set an iron post, 3 ft. long, 1 in. diam., 26 ins. in the ground, for  $\frac{1}{4}$  sec. cor., marked on brass cap

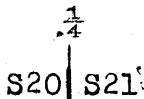


1924

Raise mound of stone 2 ft. base, 1 $\frac{1}{2}$  ft. high, N. of cor.  
 Asc. 200 ft. over E. slope.  
 51.20 Ridge, brs N. and S.; desc. 209 ft. over SW. slope.  
 60.12 Gulch, course SW.; asc. 45 ft. over E. slope.  
 62.00 Spur, slopes SW.; desc. 414 ft. over W. slope.  
 80.02 The cor. of secs. 20, 21, 28, and 29.

Land, rough and mountainous.  
 Soil, rocky, 4th rate.  
 Timber, scattering palo verde.  
 Undergrowth, ocotilla, sotol, mescal, and cacti.

N. 0°02'W. bet. secs. 20 and 21  
 Over mountainous land, through scattering undergrowth.  
 Asc. 955 ft. over SW. slope to ridge.  
 19.40 Gulch, course SW.; continue asc.  
 34.40 Ridge, brs NW. and SE.; desc. 105 ft. over NE. slope.  
 40.00 Set an iron post, 3 ft. long, 1 in. diam., 27 ins. in the ground, for  $\frac{1}{4}$  sec. cor., marked on brass cap



1924

Raise mound of stone 2 ft. base, 1 $\frac{1}{2}$  ft. high, W. of cor.  
 40.30 Trail, brs E. and W.

## Survey of a portion of the Subdivision of T3S,R17E.

## Chains.

40.90 Gulch, course SE.; asc. 97 ft. over SE. slope.  
 48.00 Spur, slopes E.; desc. 390 ft. over NE. slope.  
 60.40 Gulch, course SE.; continue desc.  
 70.40 Gulch, course E.; asc. 49 ft. over SE. slope.  
 74.10 Spur, slopes E.; desc. slightly.  
 77.50 Gulch, course SE.; asc. slightly to cor.  
 80.00 Set an iron post, 3 ft. long, 2 ins. in diam., 18 ins. in the ground to bed rock, deposit a lava stone 9x6x4 ins. marked cross (X) at base of post, and raise a mound of stone around post, 4 ft. base, 1½ ft. high, for cor. of secs. 16, 17, 20, and 21, marked on brass cap

T3S R17E

S17 | S16

S20 | S21

1924

Land, mountainous.

Soil, rocky, 4th rate.

Timber, none.

Undergrowth, catclaw, ocotilla, cacti, and sagebrush.

N. 89° 53' E., on random line bet. secs. 16 and 21.  
 40.00 Set temp. ¼ sec. cor.  
 80.04 Intersect the N. and S. line, 25 lks. S. of the cor. of secs. 15, 16, 21, and 22.  
 Thence  
 S. 89° 42' W., on true line bet. secs. 16 and 21.  
 Over mountainous land, through scattering undergrowth.  
 Desc. 500 ft. over NW. slope.  
 26.50 Ravine, course S.  
 38.00 Ravine, course S.  
 40.02 Set an iron post, 3 ft. long, 1 in. diam., 20 ins. in the ground to bed rock, deposit a stone 8x9x6 ins. marked cross (X) at base of post, and raise a mound of stone 2 ft. base, 1½ ft. high around post, for ¼ sec. cor., marked on brass cap.

¼ S16

S21

1924

Thence along S. slope.  
 43.40 Gulch, course SE.; asc. 173 ft. over SE. slope.  
 63.80 Spur, slopes SE.; then asc. 29 ft. along S. slope.  
 80.04 The cor. of secs. 16, 17, 20, and 21

Land, mountainous.

Soil, rocky, 4th rate.

Timber, none.

Undergrowth, cacti, mescal, and catclaw.

N. 0° 02' W. bet. secs. 16 and 17  
 Over mountainous land, through scattering undergrowth.  
 Asc. 129 ft. over S. slope.  
 13.00 Spur, slopes SE.; desc. 187 ft. over N. slope.  
 21.80 Gulch, course SE.; asc. 150 ft. over S. slope.  
 29.10 Intersect the Amended S. bdy. of the White Mountain Indian Reservation, at a point S. 89° 56' W., 16.59 chs. dist. from the 87th mile monument, hereinbefore described. At point of intersection, set an iron post, 3 ft. long, 1 in. diam., 27 ins. in the ground, for closing cor. of secs. 16 and 17, marked on brass cap

Survey of a portion of the Subdivision of T3S,R17E.

Chains.

WMIRASB

S17 | S16  
T3S | R17E  
C C  
1924

Raise mound of stone, 2 ft. base, 1½ ft. high, S. of cor.  
Land, mountainous.  
Soil, rocky, 4th rate.  
Timber, none.  
Undergrowth, mescal, cacti, and catclaw.

Survey of the N. bdy. of sec. 16

At a point midway bet. the closing cor. of secs. 15 and 16 and the closing cor. of secs. 16 and 17, or 40.11½ chs. from either one, and at a point S. 89° 57' E. 23.53 chs. from the 87th mile monument, hereinbefore described, set an iron post, 3 ft. long, 1 in. diam., 27 ins. in the ground, for ¼ sec. cor. for sec. 16 only, marked on brass cap

WMIRASB

¼ S16  
1924

Raise mound of stone, 2 ft. base, 1½ ft. high S. of cor.

3.80  
17.30  
21.00  
30.43

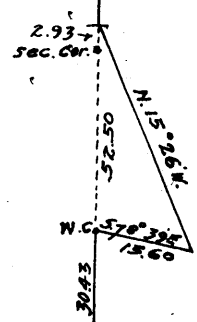
From cor. of secs. 5, 6, 31, and 32 on S. bdy. of Tp. N. 0° 03' W., bet. secs. 31 and 32.  
Over mountainous land, through scattering undergrowth.  
Desc. 64 ft. along W. slope.  
Gulch, course SW.; asc. 349 ft. over SE. slope.  
Spur, slopes SW.; desc. 94 ft. over NW. slope.  
Gulch, course SW.; asc. 140 ft. over SE. slope.  
Set an iron post, 3 ft. long, 1 in. diam., 4 ins. in the ground to bed rock, deposit a stone marked cross (X) at base of post, and raise a mound of stone around post, 4 ft. base, 2 ft. high, for witness to ¼ sec. cor., marked on brass cap.

WC  
¼

S31 | S32  
1924

Rim of Gila river Canyon brs NE. and SW. Owing to cliffs and the precipitous nature of the country, further chaining is rendered impracticable, therefore triangulate as follows:

Set a flag ahead on section line, the vertical angle to which is -24° from WC ¼ sec. cor.  
From WC ¼ sec. cor. bet. secs 31 and 32, measure a base S. 78° 39' E., 15.60 chs. dist.  
From east end of base, flag brs



## Survey of a Portion of the Subdivision of T3S, R17E.

Chains.	N.15°26'W.						
	Distance on sec. line = 30.43 chs. N.0°03'W						
	Distance triangulated = 52.50 chs. N.0°03'W						
	Total distance = 82.93 N.0°03'W						
	By return measurement = 2.93 chs. S.0°03'E						
	Distance to sec. cor. = 80.00 chs. N.0°03'W.						
	Desc. 1422 ft. over precipitous N. slope.						
40.00	True point for $\frac{1}{4}$ sec. falls on cliff, where it is impossible to set cor.						
77.00	Gila river, (Approximate) 5.00 chs. wide, course SW. Asc. slightly to sec. cor. over SE. slope.						
80.00	Set an iron post, 3 ft. long, 2 ins. in diam., 12 ins. in the ground to bed rock, deposit a stone marked cross (X) at base of post, and raise a mound of stone 5 ft. base 2 ft. high around post, for cor. of secs. 29, 30, 31, and 32, marked on brass cap						
	<table border="1"> <tr><td colspan="2">T3S R17E</td></tr> <tr><td>S30</td><td>S29</td></tr> <tr><td>S31</td><td>S32</td></tr> </table>	T3S R17E		S30	S29	S31	S32
T3S R17E							
S30	S29						
S31	S32						
	1924						
	Land, very rough mountains. Soil, rocky 4th rate. Timber, none. Undergrowth, oak, mescal, sotol, cacti, and palo verde.						
	-----						
	N.89°47'E., on random line bet. secs. 29 and 32.						
40.00	Set temp. $\frac{1}{4}$ sec. cor.						
79.79	Intersect the N. and S. line, 7 lks. N. of the cor. of secs. 28, 39, 32, and 33.						
	Thence						
	S.89°50'W., on true line bet. secs. 29 and 32						
	Over rough mountainous land, through scattering undergrowth.						
	Desc. 650 ft. over broken NW. slope to $\frac{1}{4}$ sec. cor.						
17.00	Gulch, course NW.; continue desc.						
28.00	Spur, slopes NW.; continue descent.						
39.90 $\frac{1}{2}$	Set an iron post, 3 ft. long, 1 in. diam., 27 ins. in the ground, for $\frac{1}{4}$ sec. cor., marked on brass cap						
	S29						
	—						
	S32						
	1924						
	Raise mound of stone, 2 ft. base, 1 $\frac{1}{2}$ ft. high, N. of cor.						
	Desc. 1,000 ft. over broken NW. slope to river						
57.50	Gulch, course NW.; continue descent.						
77.50	Left bank Gila river, bears S.						
78.50	Center of Gila river course S.						
79.50	Right bank Gila river, bears S.						
	Asc. E. slope slightly to cor.						
79.79	The cor. of secs. 29, 30, 31, and 32.						
	Land, rough mountains. Soil, rocky, 4th rate. Timber, none. Undergrowth, sotol, mescal, scrub oak, and cacti.						

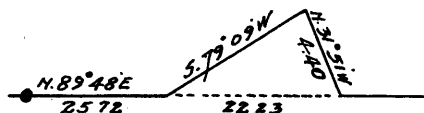


Survey of a portion of the Subdivision of T3S, R17E.

Chains.

It is impracticable to run the random line bet. secs. 30 and 31 from east to west. Therefore, reverse the random line.  
 From the cor. of secs. 25, 30, 31, and 36, on the W. bdy. of the tp., hereinbefore described.  
 N. 89°48'E., on random line bet. secs. 30 and 31  
 25.72 Set triangulation flag. Further chaining is impracticable on account of precipitous cliffs. Triangulate as follows:

From a point ahead on sec. line, measure a base N. 31°51'W., 4.40 chs.  
 From N. end of base, the flag brs S. 79°09'W.  
 The vertical angle from S. end of base to flag is +27½°



Distance on sec. line = 25.72 chs. N. 89°48'E.  
 Triangulated dist. = 22.23 chs. N. 89°48'E.

Total distance 47.95 chs. N. 89°48'E.  
 Distance by return measurement 8.65 chs. S. 89°48'W.

Temp ¼ sec. cor is set at 39.30 chs. N. 89°48'E.

39.30 Set temp. ¼ sec. cor.  
 79.34 Intersect the N. and S. line at the cor. of secs. 29, 30, 31, and 32.

Thence, return to the cor. of secs. 25, 30, 31, and 36, on the W. bdy. of the tp., hereinbefore described.

N. 89°48'E., on true line bet. secs. 30 and 31.  
 Over mountainous land, through scattering undergrowth.  
 Asc. 128 ft. over SW. slope.

13.00 Spur, slopes SW.; desc. 60 ft. over SE. slope.  
 20.00 Head of gulch, course S.; asc. 89 ft. over W. slope.  
 25.72 Bluff, brs N. and S. Then by triangulation.

Desc. 600 ft. over broken E. slope to ¼ sec. cor.  
 39.34 Set an iron post, 3 ft. long, 1 in. diam., 10 ins. in the ground to bed rock, deposit a stone marked cross (X) at base of post, and raise a mound of stone, 4 ft. base, 2 ft. high, around post, for ¼ sec. cor., marked on brass cap

S30  
 ¼

S31  
 1924

Desc. slightly.

40.70 Head of gulch, course SE.; asc. 93 ft. over SW. slope.  
 47.95 Triangulation point

Thence continue by chaining.  
 48.10 Spur, slopes SE.; desc. 850 ft. over cliffs and ledges on broken SE. slope.

79.34 The cor. of secs. 29, 30, 31, and 32

Land, mountainous.  
 Soil, rocky, 4th rate.  
 Timber, none.  
 Undergrowth, palo verde, cacti, ocotilla, and mescal.

N. 0°03'W., bet. secs. 29 and 30  
 Over mountainous land, through scattering undergrowth.  
 Along E. slope.

10.20 Start asc. of 548 ft. over SE. slope.

14.00 Trail, brs NE. and SW.

## Survey of a portion of the Subdivision of T3S, R17E.

## Chains.

- 34.00 Spur, slopes E.; desc. 112 ft. over NE. slope.  
40.00 Set an iron post, 3 ft. long, 1 in. diam., 4 ins. in the ground to bed rock, deposit a stone 8x6x4 ins. at base of post, marked cross (X) and raise a mound of stone around post, 4 ft. base, 2 ft. high, for  $\frac{1}{4}$  sec. cor., marked on brass cap
- $\frac{1}{4}$   
S30 | S29  
1924
- 50.10 Desc. 191 ft. over N. slope.  
59.30 Ravine, course E.; asc. 339 ft. over S. slope.  
60.90 Ridge, brs N.70°W. and S.70°E.; desc. 200 ft. over N. slope.  
75.30 Trail, brs NE. and SW.  
80.00 Trail, brs E. and W.  
Set an iron post, 3 ft. long, 2 ins. in diam., 24 ins. in the ground, for cor. of secs. 19, 20, 29, and 30, marked on brass cap
- T3S R17E  
S19 | S20  
S30 | S29  
1924
- Raise mound of stone, 3 ft. base, 2 ft. high, W. of cor.
- Land, rough mountains.  
Soil, rocky, 4th rate.  
Timber, palo verde,  
Undergrowth, cacti, ocotilla, mescal, sotol, spanish dagger.
- 
- 40.00 N.89°50'E., on random line bet. secs. 20 and 29.  
Set temp.  $\frac{1}{4}$  sec. cor.  
79.90 Intersect the N. and S. line, 7 lks. N. of the cor. of secs. 20, 21, 28, and 29.
- Thence  
S.89°53'W. on true line bet. secs. 20 and 29.  
Over mountainous land, through scattering undergrowth.  
Desc. 167 ft. over W. slope.
- 11.20 Gulch, course S.; asc. 142 ft. over E. slope.  
19.60 Spur, slopes S.; desc. 105 ft. over W. slope.  
33.90 Gulch, course S.70°W.; asc. 48 ft. over SE. slope.  
38.00 Spur, slopes SW.; desc. slightly to cor.  
39.95 Set an iron post, 3 ft. long, 1 in. diam., 8 ins. in the ground, to bed rock, deposit a stone marked cross (X) at base of post, and raise a mound of stone, 4 ft. base, 2 ft. high, around post, for  $\frac{1}{4}$  sec. cor., marked on brass cap
- S20  
 $\frac{1}{4}$   
S29  
1924
- 59.40 Desc. 417 ft. over W. slope.  
60.30 Wash, 30 lks. wide, course S.; asc. 34 ft. over E. slope.  
73.20 Spur, slopes S.; desc. 150 ft. over W. slope.  
74.70 Wire fence, brs NW. and SE.  
Mescal creek, 200 lks. wide, with stream of water 5 lks. wide, 4 ins. deep, in bottom, course SE.; asc. 129 ft. over E. slope.  
79.10 Spur, slopes NE.; desc. 26 ft. over NW. slope to cor.  
79.90 The cor. of secs. 19, 20, 29, and 30.

Survey of a portion of the Subdivision of T3S, R17E.

Chains.

Land, rough mountains.  
Soil, rocky, 4th rate.  
Timber, none.  
Undergrowth, ocotilla, mescal, and cacti.

S. 89° 48' W., on random line bet. secs. 19 and 30  
40.00 Set temp.  $\frac{1}{4}$  sec. cor.  
79.18 Intersect the W. bdy. of the tp., 5 lks. N. of the true point for cor. of secs. 19, 24, 25, and 30, hereinbefore described.

Thence from true point for cor.  
N. 89° 46' E., on true line bet. secs. 19 and 30.  
Over mountainous land, through scattering undergrowth.  
Asc. 304 ft. over NW. slope.  
13.68 Spur, slopes N.; desc. 58 ft. over NE. slope.  
18.68 Head of gulch, course NW.; asc. 65 ft. over W. slope.  
23.88 Spur, slopes N. 20° E.; desc. 452 ft. over NE. slope  
39.18 Set an iron post, 3 ft. long, 1 in. diam., 26 ins. in the ground, for  $\frac{1}{4}$  sec. cor., marked on brass cap

$\frac{1}{4}$  S19  
S30  
1924

Raise mound of stone, 2 ft. base, 1 $\frac{1}{2}$  ft. high, N. of cor.  
42.38 Desc. 29 ft. over NE. slope.  
Trail, brs NE. and SW.  
44.18 Head of draw, course NE.; asc. 57 ft. over NW. slope.  
49.38 Spur, slopes NE.; desc. 828 ft. over NE. slope.  
75.48 Drain, course N. 79° E.; asc. slightly to cor.  
79.18 The cor. of secs., 19, 20, 29, and 30.

Land, mountainous.  
Soil, rocky, 4th rate.  
Timber, none.  
Undergrowth, ocotilla, cacti, sotol, and mescal.

N. 0° 03' W., bet. secs. 19 and 20.  
Over mountainous land, through scattering undergrowth.  
Desc. slightly over N. slope.  
.80 Drain, course E.; asc. slightly over S. slope.  
2.60 Spur, slopes E.; desc. 71 ft. over N. slope.  
10.70 Mescal creek; 2.00 chs. wide, with stream of water 5 lks. wide, 4 ins. deep in bottom, course SE.  
11.00 Foot of perpendicular bluff, 130 ft. high, brs E. and W.  
23.00 Foot of perpendicular bluff, 120 ft. high, brs E. and W.  
27.40 Mescal warm springs brs east, about 8.00 chs. dist.  
27.40 Wire fence, brs E. and W.  
28.90 Wire fence, brs E. and W.  
32.40 Trail, brs E. and W.  
38.20 Spur, slopes N.; desc. 25 ft. over N. slope.  
40.00 Set an iron post, 3 ft. long, 1 in. diam., 8 ins. in the ground to bed rock, deposit a stone marked cross (X) at base of post, and raise a mound of stone, 3 ft. base, 2 ft. high, around post, for  $\frac{1}{4}$  sec. cor., marked on brass cap

S19 | 20

1924

42.00 Desc. slightly  
Drain, course W.; asc. 29 ft. over S. slope.

## Survey of a portion of the Subdivision of T3S, R17E.

Chains.

- 58.00 Spur, slopes W.; desc. slightly over N. slope.  
 60.50 Wash, 40 lks. wide, course SW.; ascend 327 ft. over SW. slope.  
 80.00 Set an iron, 3 ft. long, 2 ins. in diam., 6 ins. in the ground to bed rock, deposit a stone marked cross (X) at base of post, and raise a mound of stone around post, 4 ft. base, 2 ft. high, for cor. of secs. 17, 18, 19, and 20, marked on brass cap

T3S	R17E
S18	S17
S19	S20

1924

Land, mountainous.  
 Soil, rocky, 4th rate.  
 Timber, none.  
 Undergrowth, palo verde, mescal, sotol, cacti, catclaw and sagebrush

- 40.00 N. 89° 53' E., on random line bet. secs. 17 and 20.  
 79.98 Set temp.  $\frac{1}{4}$  sec. cor.  
 Intersect the N. and S. line, 16 lks. N. of the cor. of secs. 16, 17, 20, and 21.

Thence

- West, on true line bet. secs. 17 and 20.  
 Over mountainous land, through scattering undergrowth.  
 Asc. 292 ft. over broken E. slope to spur.  
 7.50 Gulch, course SE.; continue asc.  
 14.70 Same gulch, course NE; continue asc.  
 22.50 Spur, slopes NE.; desc. 32 ft. over NW. slope.  
 25.60 Gulch, course N.; asc. 279 ft. over NE. slope.  
 39.99 Set an iron post, 3 ft. long, 1 in. diam., 20 ins. in the ground, to bed rock, deposit a stone 20x9x4 ins. marked cross (X) at base of post, and raise a mound of stone, 3 ft. base, 1 ft. high around post, for  $\frac{1}{4}$  sec. cor., marked on brass cap

S17

S20

1924

- 44.70 Asc. 120 ft. over E. slope.  
 79.98 Ridge, brs. N. and S.; desc. 609 ft. over W. slope.  
 The cor. of secs. 17, 18, 19, and 20.

Land, mountainous.  
 Soil, rocky, 4th rate.  
 Timber, none.  
 Undergrowth, cacti, sagebrush, catclaw, and ocotilla.

- 40.00 S. 89° 46' W., on random line bet. secs. 18 and 19  
 79.01 Set temp.  $\frac{1}{4}$  sec. cor.  
 Intersect the cor. of secs. 13, 18, 19, and 24 on the N. bdy. of the Twp., hereinbefore described.

Thence

- N. 89° 46' E., on true line bet. secs. 18 and 19  
 Over mountainous land, through scattering undergrowth.  
 Asc. gradually over SW. slope.  
 7.00 Ridge, brs. NW. and SE.; desc. 405 ft. over E. slope.  
 29.50 Cabin of Pollard Pearson, brs. N., 4.00 chs. dist.  
 30.70 Mescal creek, with stream of water 5 lks. wide, 3 ins. deep, course SE.; asc. 57 ft. over SW. slope.

Survey of a portion of the Subdivision of T3S,R17E.

Chains.

- 31.90 Wire fence, brs. N. and S.
- 33.20 Wire fence, brs N. and S.
- 37.90 Spur, slopes SW.; desc. slightly to 1/4 sec. cor.
- 39.01 Set an iron post, 3 ft. long, 1 in. diam., 26 ins. in the ground for 1/4 sec. cor., marked on brass cap

1/4 S18  
S19  
1924

Raise mound of stone 3 ft. base, 2 ft. high, N. of cor.

- 40.50 Desc. slightly over E. slope.  
Gulch, with stream of water, 3 lks. wide, 2 ins. deep, course SW.; asc. 610 ft. over SW. slope.
- 79.01 The cor. of secs. 17,18,19, and 20

Land, mountainous.  
Soil, rocky, 4th rate.  
Timber, none.  
Undergrowth, ocotilla, catclaw, sotol, mescal and cacti.

N.0°03'W., bet. secs. 17 and 18.  
Over mountainous land, through scattering undergrowth.  
Asc. 233 ft. over SW. slope.

- 10.80 Spur, slopes W.; desc. slightly over N. slope.
- 12.90 Drain, course W.; asc. 187 ft. over SW. slope.
- 29.22 Intersect the S. bdy. of the White Mountain Indian Reservation at a point 16.54 chs. West of the 86th mile monument, hereinbefore described.  
At point of intersection, set an iron post, 3 ft. long, 2 ins. in diam., 4 ins. in the ground to bed rock, deposit a stone marked cross (X) at base of post, and raise a mound of stone 4 ft. base, 2 ft. high, around post, for closing cor. of secs. 17 and 18, marked on brass cap

WMIRASB

S18 | S17  
T3S | R17E  
C O  
1924

Land, rough mountains.  
Soil, rocky, 4th rate.  
Timber, none.  
Undergrowth, ocotilla, cacti, mescal, sotol, and catclaw.

Survey of the N. bdy. of sec. 17

At a point midway bet. the closing cor. of secs. 16 and 17 and the closing cor. of secs. 17 and 18, or 39.92 chs. from either one, and at a point 23.38 chs. East of the 86th mile monument, hereinbefore described, set an iron post, 3 ft. long, 1 in. in diam., 18 ins. in the ground to bed rock, deposit a stone marked cross (X) at base of post and raise a mound of stone around post, 3 ft. base, 1 1/2 ft. high, for 1/4 sec. cor. for sec. 17 only, marked on brass cap

WMIRASB

1/4 S17  
1924

Chains.

Survey of the N. bdy. of sec. 18

At a point 40.00 chs. West of the closing cor. of secs 17 and 18, which is also 22.29 chs. East of the 85<sup>th</sup> mile monument, hereinbefore described, set an iron post, 3 ft. long, 1 in. in diam., 8 ins. in the ground to bed rock, deposit a stone marked cross (X) at base of post, and raise a mound of stone, 3 ft. base 1½ ft. high, around post, for ¼ sec. cor. for sec. 18 only, marked on brass cap.

WMIRASB

S18  
1924

Boundaries of fractional Township 3 South,  
Range 17 East.  
Latitudes, departures and closing errors.

Line designated.	True bearing	Distance	Latitudes		Departures	
			N.	S.	E.	W.
South boundary	N. 89° 54' W.	80.06	.14			80.06
	West	40.22				40.22
	S. 89° 39' W.	120.51		.73		120.51
	S. 89° 40' W.	40.34		.23		40.34
	S. 89° 47' W.	198.89		.76		198.89
West boundary	North	269.56	269.56			
North boundary	East	135.35			135.35	
	N. 89° 56' E.	40.02	.05		40.02	
	S. 89° 57' E.	40.06		.04	40.06	
	N. 89° 58' E.	39.87	.02		39.87	
	N. 89° 52' E.	39.98	.09		39.98	
	S. 89° 52' E.	39.82		.09	39.82	
	S. 89° 51' E.	39.94		.11	39.94	
	N. 89° 44' E.	39.77	.19		39.77	
	N. 89° 59' E.	39.99	.01		39.99	
	East	24.82			24.82	
East boundary	South	267.21		267.21		
Convergency						.27
			270.06	269.17	479.89	480.02
			269.17			479.89
	Error in latitude---		.89			
				Error in departure---		.13

GENERAL DESCRIPTION

Land varies from rough precipitous mountains in the South to high rolling mountains in the north. The Gila river flows through several boxed gorges, entering the township in section 24 on the E. bdy. and leaving near the south west corner.

The soil is worthless, varying ffrom surface limestone to course rocky gravel, all 4th rate.

The undergrowth consists of scattered desert timber, cacti, mescal, spanish dagger, palo verde, catclaw, and sage brush.

Some grazing is undertaken, although it is not profitable. A warm spring, adjacent to Mescal creek offers a good flow of warm water.

There is a dewlling and corrals in the NE.  $\frac{1}{4}$  of sec. 25 along Hawk creek. Pollard's cabin and corrals are situated on Mescal creek in the SW  $\frac{1}{4}$  of section 18.

BOOK 3893

4-680

FIELD ASSISTANTS.  
to  
Roger F. Wilson, U. S. Transitman,

NAMES.	CAPACITY.
Frank T. Burgess	1st chainman
Howard Beard	2nd chainman
Carl Anderson	flagman
Allen H. Moore	axman
Roy I. Cooper	moundsman.



CERTIFICATE OF UNITED STATES TRANSITMAN,

I, Roger F. Wilson, U. S. Transitman, Surveyor, hereby certify upon honor that, in pursuance of special instructions received from the U. S. Surveyor General, for Group 124, Arizona, bearing date of the 19th day of October, 1919, I have well, faithfully, and truly in my own proper person, and in strict conformity with said instructions, the Manual of Surveying Instructions, and the laws of the United States, retraced surveyed all those parts or portions of the Amended South bdy. of the White Mountain or San Carlos Indian Reservation; and resurveyed all those parts or portions of the South boundary; and surveyed all those parts or portions of the West boundary and Subdivision lines of

TOWNSHIP 3 SOUTH, RANGE 17 EAST, of the Gila and Salt

River Base and Meridian, in the State of Arizona, which are represented in the foregoing field notes as having been executed by me, and under my direction; and that all the corners of said retracement, resurvey and survey have been established and perpetuated in strict accordance with the Manual of Surveying Instructions, and the special written instructions of the U. S. Surveyor General, for Group 124, Arizona, and in the specific manner described in the field notes, and that the foregoing are the original field notes of such retracement, resurvey and survey.

Place: Canyon, Arizona U. S. Transitman.

Date: October 3, 1919

APPROVAL.

OFFICE OF THE UNITED STATES SURVEYOR GENERAL,

, 191

The foregoing field notes of the survey of

executed by

under his special instructions dated, 191, having been critically examined, and the necessary corrections and explanations made, the said field notes, and the surveys they describe, are hereby approved.

U. S. Surveyor General.

I certify that the foregoing transcript of the field notes of the above-described surveys in, has been correctly copied from the original notes on file in this office.

U. S. Surveyor General.

BOOK 3693

4-680

**FIELD ASSISTANTS.**  
to

Dupree R. Averill, U. S. Surveyor

NAMES.	CAPACITY.
Otis O. Gould	1st chainman
R. A. Fye	2nd chainman
William Knott	flagman
R. L. Sidell	axman
R. L. Shackelford	cornerman.

CERTIFICATE OF UNITED STATES SURVEYOR.

I, Dupree R. Averill, U. S. Surveyor, hereby certify upon honor that, in pursuance of special instructions received from the U. S. Surveyor General, for Group 124, Arizona, bearing date of the 19th day of October, 1919, I have well, faithfully, and truly in my own proper person, and in strict conformity with said instructions, the Manual of Surveying Instructions, and the laws of the United States, ~~surveyed~~ <sup>retraced</sup> all those parts or portions of the Amended South bdy. of the White Mountain or San Carlos Indian Reservation; and resurveyed all those parts or portions of the South bdy.; and surveyed all those parts or portions of the Subdivision lines of TOWNSHIP 3 SOUTH, RANGE 17 EAST, of the Gila and Salt River Base and Meridian, in the State of Arizona, which are represented in the foregoing field notes <sup>and by diagram on page 1-a hereof</sup> as having been executed by me, and under my direction; and that all the corners of said retracement, resurvey and survey have been established and perpetuated in strict accordance with the Manual of Surveying Instructions, and the special written instructions of the U. S. Surveyor General, for Group 124, Arizona, and in the specific manner described in the field notes, and that the foregoing are the original field notes of such retracement, resurvey and survey.

Place: Campa, California  
 Date: March 3, 1926

Dupree R. Averill  
 U. S. Surveyor.

APPROVAL.

OFFICE OF THE U.S. SUPERVISOR OF SURVEYS,

Denver, Colorado, March 17, 1926.

The foregoing field notes of the retracement of Part of the Amended South boundary of the White Mountain or San Carlos Indian Reservation; of the resurvey of the South boundary; and of the survey of Parts of the West boundary and Subdivision lines of

TOWNSHIP 3 SOUTH, RANGE 17 EAST,

of the Gila and Salt River Base and Meridian, in the State of Arizona, executed by Dupree R. Averill, U.S. Surveyor, and Roger F. Wilson, U.S. Transitman, under his special instructions dated October 19, 1929, for Group 124, Arizona, 191, having been critically examined, and the necessary corrections and explanations made, the said field notes, and the retracements and surveys they describe, are hereby approved.

Roger F. Wilson  
 U. S. Supervisor of Surveys.

I certify that the foregoing transcript of the field notes of the above-described surveys in \_\_\_\_\_, has been correctly copied from the original notes on file in this office.

U. S. Surveyor General.