

In November 2005,
when the files were moved into the new filing system the

 X FIELD NOTES

were found missing.

They are filmed on the microfiche for the township.

The attached

is a print

from the microfiche

VOLUME

R. 3739

277

FIELD NOTES

OF THE RESURVEY OF

Part of West Boundary of Township 15 North, Range 3 West,

Part of East Boundary of Township 15 North, Range 5 West,
and

Part of East Boundary of Township 16 North, Range 5 West,

AND OF THE SURVEY OF

West Boundary,

West Boundary and

Division Lines of

Tract No. 39, Township 15½ North, Range 4 West,

and

Boundary of Tract No. 39, of

Sectional Township 15½ North, Range 4 West,

of the Gila and Salt River Base and Meridian,

the State of Arizona

EXECUTED BY

Sidney E. Blout,

U. S. Cadastral Engineer

in the capacity of U. S. Surveyor, under Special Instructions dated February 11, 1924,

issued by the United States Surveyor General to govern surveys included in Group

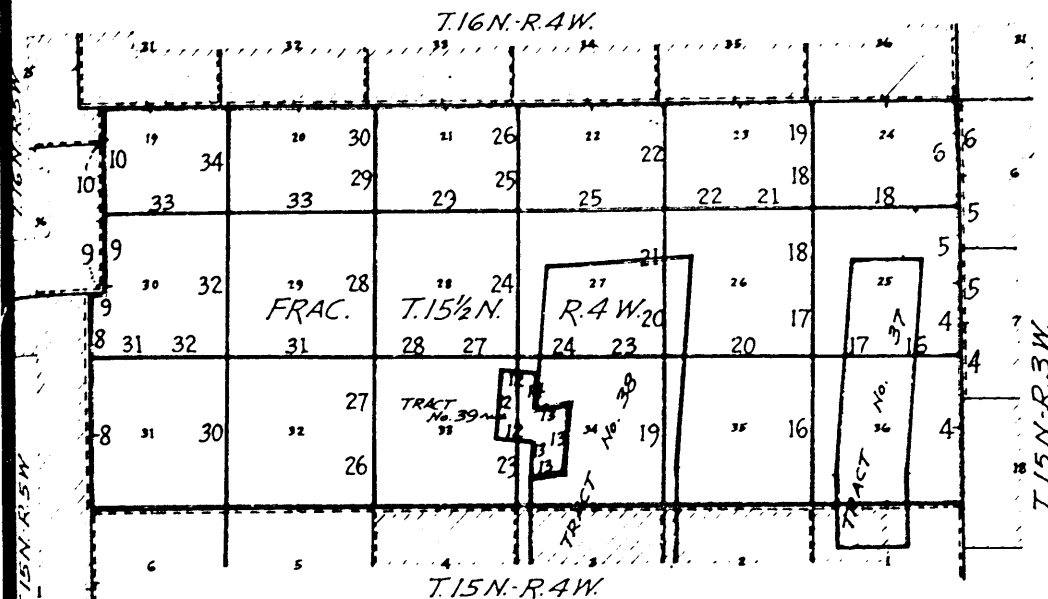
No. 128, Arizona, which were approved by the Commissioner of the General Land

Office, March 10, 1924, and Assignment Instructions dated May 1, 1924.

Survey & Survey commenced June 10, 1924.

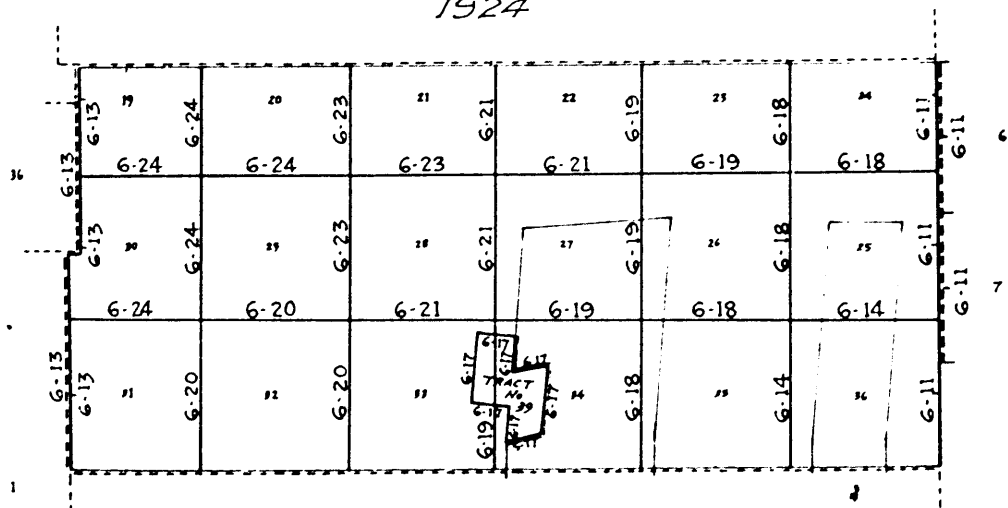
Survey & Survey completed June 24, 1924.

Book "B" 279
INDEX DIAGRAM



- Surveyed under this group.
- - - - - Resurveyed under this group.
- - - - - Surveyed with reference to one township. } This group
- - - - - Resurveyed with reference to one township. }
- Accepted surveys.
- TRACT No. 39 Tracts surveyed under this group.
- Areas surveyed as per accepted plats on file.

• DATE DIAGRAM •
1924



- Surveyed by Sidney E. Blout, U.S. Cadastral Engineer on dates shown thereon
- - - - - Resurveyed by Sidney E. Blout, U.S.C.E. on dates shown thereon.
- - - - - Surveyed by S.E. Blout, U.S.C.E. - Notes and dates in other books of this group.
- - - - - Resurveyed by S.E. Blout, U.S.C.E. - Notes and dates in other books of this group.

Resurveys and surveys hereinafter described were executed on dates shown on diagram on page 1 hereof, by Sidney E. Blout, U. S. Cadastral Engineer, using a Buff Rocky Mountain Favorite Solar transit No. 16724 with U-shaped standards, 4 1/2 inch horizontal circle, 4 inch vertical circle and Improved Smith solar attachment.

Chains The

The instrument was examined, tested on the meridian at the Federal Building at Phoenix, Ariz., April 30, 1924 found correct and was approved May 1, 1924, by the Assistant Supervisor of Surveys for Arizona and California, conditional upon satisfactory field tests.

The

Unless otherwise specified, all azimuth determinations are accomplished with the solar attachment, except the special observations on Polaris and the sun for meridian upon which to test the solar apparatus as stated in the field notes.

All measurements are made with a Luffkin 5-chain steel tape compared with a Chesterman standard steel tape and found correct. The measurements are made on the slope, the vertical angles determined, and the slope measurements properly reduced to true horizontal distances.

The

TEST OF BUFF SOLAR TRANSIT NO. 16724.

June 10, 1924: At camp near the cor. of secs. 3, 4, 33 and 34, on S. bdy. of fractional T. 15 1/2 N., R. 4 W., of the Gila and Salt River Base and Meridian, Arizona, in lat. 34° 40' 31" N., and longitude 112° 41' 20" W., examine the adjustments of the transit and find them correct, then, to test the solar apparatus by comparing its indications, resulting from solar observations made during a. m. and p. m. hours with a meridian established by observations on Polaris; proceed as follows:

June 10, 1924: at 3 h. 00 m., p. m., l. m. t., set off 34° 40 1/2' N. on the lat. arc, 23° 3 1/2' N. on the decl. arc and determine a meridian with the solar and mark a point thereon on a granite boulder about 6 chains N.

Pro

At same station, at 10 h. 46 m., p. m., by watch set by Western Union clock to read correct local mean time; observe Polaris east of the meridian making four observations, two each with the telescope in direct and reversed positions and mark the mean point in the line thus determined on a stake driven firmly in the ground about 6 chains N.

Sou

Fin
121.71 Fel

Tru

Azimuth of Polaris = 0° 48.3' E.

June 11, 1924: lay off the azimuth of Polaris 0° 48' to the west and mark the meridian thus determined by a notch chiseled in the boulder about 6 chains N. on which the meridian falls 1' E. of the mark determined last evening by the solar.

Ret

At same station at 7 h. 00 m., a. m., l. m. t.; set off 34° 40 1/2' N. on the lat. arc, 23° 7' N. on the decl. arc and determine a meridian with the solar which falls 0 1/2' E. of the true meridian.

Pro

As all the solar observations made during the usual hours of solar work agree within 1' of the meridian established by the Polaris observations, conclude that the adjustments of the instrument are satisfactory.

Survey of East Bdy. of Fractional Township 15 $\frac{1}{2}$ North, R. 4 W., and Resurvey of Part of West Boundary of T. 15 N., R. 3 W..

Chains The north half of west boundary of T. 15 N., R. 3 W., was surveyed due south, by S. W. Foreman, U. S. D. S., in 1871, establishing quarter-section and section corners alternately thereon at 40.00 chain intervals, with a common reference to areas on both sides of the line. No retracement or resurvey of this part of the range line is of record, and the south half of west boundary of T. 15 N., R. 3 W., in unsurveyed.

The north half of east boundary of T. 15 N., R. 4 W., was resurveyed, and the south half of same boundary surveyed as described in Book "A" of this group, in which resurvey the NE. cor. of T. 15 N., R. 4 W., was reestablished at 92.70 chains due south of the original quarter-section corner of Secs. 7 and 12, T. 15 N., Rs. 3 and 4 W. No original cor. monuments could be found south from said quarter-section corner. In said resurvey and survey, section and quarter-section corner monuments were reestablished and established to refer to areas in T. 15 N., R. 4 E., and no cor. referring to T. 15 N., R. 3 W., were established or reestablished on said line.

The following notes describe a survey of the East boundary of Fractional T. 15 $\frac{1}{2}$ N., R. 4 W., combined with a resurvey of the North two miles of west boundary of T. 15 N., R. 3 W., establishing quarter-section and section corners referring to areas in Fractional T. 15 $\frac{1}{2}$ N., R. 4 W., only, alternately, at intervals of 40.00 chains in northing counting from the south, reestablishing cor. of secs. 7 and 12, T. 15 N., R. 3 W., at 40.00 chains S. from original quarter-section cor. of secs. 7 and 12, reconstructing said original quarter-section corner in same position with altered reference to quarters of section 7, only, and reestablishing missing original corners at proportional intervals between said original quarter-section corner and the original corner of Ts. 15 and 16 N., Rs. 3 and 4 W.

Retracement for SURVEY and RESURVEY.

From orig. cor. of Ts. 15 and 16 N., Rs. 3 and 4 W., hereinafter described. South, on a random line, searching diligently at record intervals for the original corner monuments, and setting temp. corners at such intervals. Find no trace of any old cor. on the line until at 121.71 Fall 290 lks. W. of the orig. $\frac{1}{2}$ sec. cor. of secs. 7 and 12 hereinafter described. True course and dist. of range line back to T. cor. are, therefore, N. 1° 22' W., 121.74 chs., which to maintain orig. position bet. cor. intervals gives three intervals of 40.58 chs. each for reestablishment of missing corners referring to T. 15 N., R. 3 W.

Retracement of S. $\frac{1}{2}$ of W. bdy. of sec. 7, and all of W. bdy. of sec. 12, executed as described in Book "A" and no orig. cor. monuments were found.

SURVEY.

From the reestablished cor. of T. 15 N., R. 4 W. (NE. Cor.) described in Book "A" of this group.

and were execut-
hereof, by
er, using a
sit No. 16724
ental circle,
ith solar at-

meridian at
April 30, 1924
1924, by the As-
ona and Cali-
field tests.

eterminations
cept the
er meri-
stated

each steel
steel tape
e made on the
and the slope
horizontal

16724.

sec. 3, 4, 33
N., R. 4 W.,
ridian, Arizona,
112° 41' 20" W.,
and find them
atus by compar-
lar observations
a meridian es-
posed as follow:

m. t.; set off
on the decl.
erian and mark a
chains N.

by each row by
each line;
each obser-
each direct and
each on the line
each in the ground

erian 0° 48' to
etermined by a
chains N. on
mark determined

m. t.; set off
on the decl.
solar which

the usual hours
meridian estab-
clude that the
factory.

Survey of East Boundary of Fractional T. 15 $\frac{1}{2}$ N., R. 4 W.,
and Resurvey of Part of West Boundary of T. 15 N., R. 3 W.

- Chains North, on true line, on E. bdy. of sec. 36.
Over gently rolling land, thru scattering timber and
dense undergrowth. Desc. 16 ft. over NE. slope to
3.20 Foot of descent, brs. NW. and SE. Enter nearly level
land.
8.50 Center of wash, 100 lks. wide, 2 ft. deep, course N.80°W.
16.20 Leave nearly level and enter rolling land.
Ascend 70 ft. over S. slope.
28.00 Low ridge, brs. E. and W. Desc. 39 ft. over NW. slope
to
40.00 Set an iron post, 3 ft. long, 1 in. in diam., 27 ins. in
the ground and deposit a stone marked with a cross
(X) at base of post for $\frac{1}{2}$ sec. cor. of sec. 36, only,
marked on brass cap.

T 15 $\frac{1}{2}$ N | T 15 N
S 36 | S 7
R 4 W | S 18
R 3 W
1924

- No bearing trees available.
Descend gradually over W. slope to
52.70 (40.00 chs. S. of $\frac{1}{2}$ sec. cor. of sec. 7)
Set an iron post, 3 ft. long, 2 ins. in diam., 27 ins. in
the ground, and deposit a stone marked with a cross
(X) at base of post, for reestablished cor. of secs.
7 and 18, only, marked on brass cap.

T 15 $\frac{1}{2}$ N | T 15 N
S 36 | S 7
R 4 W | S 18
R 3 W
1924

- No bearing trees available.
Continue line and measurement, surveying E. bdy. of
fractional T. 15 $\frac{1}{2}$ N., R. 4 W., and resurveying part
of W. bdy. of T. 15 N., R. 3 W.
Descend gradually over W. slope.
60.70 Low ridge, bears N. and S. 30° E. Desc. gradually along
top of low ridge to
80.00 Set an iron post, 3 ft. long, 2 ins. in diam., 27 ins.
in the ground and deposit a stone marked with a cross
(X) at base of post for cor. of secs. 25 and 36, only,
marked on brass cap.

T 15 $\frac{1}{2}$ N | T 15 N
S 25 | S 7
S 36 | R 3 W
R 4 W
1924

- No bearing trees available.
Land, rolling and nearly level.
Soil, gravelly and stony, 2nd and 3rd rate.
Timber, juniper and cedar.
Undergrowth, scrub juniper, cedar and oak.

- North, on true line on E. bdy. of sec. 25.
Over rolling land, thru scattering timber and dense
undergrowth. Descend gradually along top of low ridge
9.25 Leave top of ridge, brs. NW. and S.
Desc. gradually over NE. slope to.
12.70 (40.00 chs. N. from cor. of secs. 7 and 18).
Intersect the original $\frac{1}{2}$ sec. cor. of secs. 7 and 12,
which is a granite stone 6 x 8 x 8 ins. above ground,
firmly set, marked $\frac{1}{2}$ on W. face, and witnessed by a
mound of stone W. of cor. No bearing trees.
Reconstruct this cor. monument and alter same to refer

Survey of East
and Resurvey of

Chains to the qu
Alongside of
in diam.,
sec. cor.

No bearing
Destroy the
of stone
thence
N.-1° 22' W.
bdy. of
Descend 46
40.01 (40.00 chs.
Set an iron
the grou
brass cap

from whi
A J
A J

Descend sli
41.50 Wash, 5 lks
slope to
55.28 (Proportion
sec. cor
Set an iron
the grou
(X) at b
6 and 7.

No bearing
53.30 Low ridge,
slope to
76.00 Leave timbe
80.02 (80.00 chs.
Set an iron
in the g
(X) at b
only, me

Land, rolli
Soil, sandy
Timber, spr
Undergrowth

Survey of East Boundary of Fractional T. 15 1/2 N., R. 4 W., and Resurvey of Part of West Boundary of T. 15 N., R. 3 W.

R. 4 W., R. 3 W.

g timber and NE. slope to nearly level

sp. course N.80°W. nd.

ever NW. slope diam., 27 ins. in ed with a cross of sec. 36, only,

27 ins. in ed with a cross ed cor. of secs.

g E. bdy. of resurveying part

gradually along

diam., 27 ins. ed with a cross at 36 and 36, only,

rate oak.

25. ber and dense long top of low ridge

nd 18). secs. 7 and 12, ins. above ground, d witnessed by a ng trees. er came to refer

Chains to the quarters of sec. 7, only, as follows: Alongside old stone, set an iron post, 3 ft. long, 1 in. in diam., 27 ins. in the ground, for reestablished 1/4 sec. cor. of sec. 7, only, marked on brass cap

1/4 3 7 1924

No bearing trees available. Destroy the old stone mound W. of cor. and raise a mound of stone 2 ft. base, 1 1/2 ft. high E. of cor.

Thence N.-1° 22' W., on true line, continuing measurement of E. bdy. of sec. 25

Descend 46 ft. over NE. slope to 40.01 (40.00 chs. in northing). Set an iron post, 3 ft. long, 1 in. in diam., 27 ins. in the ground for 1/4 sec. cor. of sec. 25, only, marked on brass cap

1/4 3 25 1924

from which A juniper, 4 ins. in diam., brs. N. 82° W., 26 lks. dist., marked 1/4 3 25 B T. A juniper, 6 ins. in diam., brs. S. 25 1/2° W., 66 lks. dist., marked 1/4 3 25 B T.

Descend slightly over NE. slope. 41.50 Wash, 5 lks. wide, course NW. Asc. 72 ft. over SW. slope to 55.28 (Proportional dist. of 40.58 chs. N. 1° 22' W., from 1/4 sec. cor. of sec. 7). Set an iron post, 3 ft. long, 2 ins. in diam., 27 ins. in the ground, and deposit a stone, marked with a cross (X) at base of post, for reestablished cor. of secs. 6 and 7, only, marked on brass cap

T 15 1/2 N | T 15 N 3 25 | 3 7 R 4 W | R 3 W 1924

No bearing trees available. 55.30 Low ridge, brs. NE. and SE. Desc. gradually over NE. slope to sec. cor.

76.00 Leave timber, brs. NW. and SE. 80.02 (80.00 chs. northing) Set an iron post, 3 ft. long, 2 ins. in diam., 27 ins. in the ground and deposit a stone marked with a cross (Z) at base of post, for cor. of secs. 24 and 25, only, marked on brass cap

T 15 1/2 N | T 15 N 3 24 | 3 6 3 25 | R 3 W R 4 W 1924

Land, rolling. Soil, sandy and stone, 2nd and 3rd rate. Timber, scattering juniper and cedar. Undergrowth, scrub oak, juniper and cedar.

Survey of East Boundary of Fractional T. 15 $\frac{1}{2}$ N., R. 4 W.,
and Resurvey of Part of West Boundary of T. 15 N., R. 3 W.

Resurvey

Chains N. 1° 22' W., on true line, on E. bdy. of sec. 24.
Over rolling land, thru dense undergrowth.
Desc. gradually over NE. slope to
13.84 (Proportional dist. of 40.58 chs. N. 1° 22' W., from
cor. of secs. 6 and 7)
Set an iron post, 3 ft. long, 1 in. in diam., 27 ins. in
the ground, and deposit a stone marked with a cross
(X) at base of post, for reestablished $\frac{1}{4}$ sec. cor. of
sec. 6, only, marked on brass cap

Chains The e
Ph
c
Rs
co
me
N.

$\frac{1}{4}$ S 6
1924

The E
by
ne
4
an
ab
es
en
of

No bearing trees available.
Descend gradually over NE. slope
25.30 Wash, 40 lks. wide, 3 ft. deep, course NW. Asc. 55 ft.
over SW. slope to $\frac{1}{4}$ sec. cor.
39.30 Wire fence, bears N. 60 $\frac{1}{2}$ ° E. and S. 60 $\frac{1}{2}$ ° W.
40.01 (40.00 chs. in northing) Set an iron post, 3 ft. long,
1 in. in diam., 27 ins. in the ground and deposit a
stone marked with a cross (X) at base of post for
 $\frac{1}{4}$ sec. cor. of sec. 24, only, marked on brass cap

The s
we
of
th

$\frac{1}{4}$ S 24
1924

The f
ar
a
T.
of
8.
qu
in
al
fr
th
fe

No bearing trees available.
Ascend gradually over SW. slope to T. cor.
54.42 (40.58 chs. N. 1° 22' W., from $\frac{1}{4}$ sec. cor. of sec. 6).
Intersect the original cor. of Ts. 15 and 16 N., Rs. 3
and 4 W., which is a cedar stake, 2 ft. long, 2 $\frac{1}{2}$ ins.
square, mkd. T XVI N S XXXI on NE. face,
R III W S VI on SE. face,
T XV N S I on SW. face,
R IV W S XXXI on NW. face, 6 notches
on each of E., W., N. and S. edges and firmly set
in a mound of stone. No bearing trees.
Reconstruct this corner monument as follows:
Alongside the old stake, set an iron post, 3 ft. long,
3 ins. in diam., 27 ins. in the ground, and deposit
a stone marked with a cross (X) at base of post, for
cor. of Frac. T. 15 $\frac{1}{2}$ N., R. 4 W., T. 15 N., R. 3 W.,
and Ts. 16 N., Rs. 3 and 4 W., marked on brass cap

The s
pa
N.
of
of
T.

| | |
|----------------------|--------|
| T 16 N | |
| R 4 W | R 3 W |
| S 36 | S 31 |
| S 24 | S 6 |
| T 15 $\frac{1}{2}$ N | T 15 N |
| R 4 W | R 3 W |
| 1924 | |

For no
5
of

No bearing trees available.
Land, rolling.
Soil, sandy and gravelly, 2nd and 3rd rate.
Timber, none.
Undergrowth, scrub oak, manzanita and sage brush.

From t
des
North,
40.12 Fall 2
cor
True b
are
Thence
North,
40.07 Fall 1
sec
True c
the

295

7

Survey of West Boundary of Fractional T. 15 $\frac{1}{2}$ N., R. 4 W.,
Resurvey of Part of East Boundary of T. 15 N., R. 5 W.,
and Part of East Boundary of T. 16 N., R. 5 W.

R. 4 W.,
R. 3 W.

sec. 24.

W., from

27 ins. in
with a cross
sec. cor. of

56 ft.

long,
and deposit a
of post for
brass cap

of sec. 31.
16 N., Rs. 3
long, 2 $\frac{1}{2}$ ins.

6 notches
firmly set

3 23 long,
and deposit
of post, for
R. 3 W.,
brass cap

brush.

Chains The east boundary of T. 15 N., R. 5 W., was surveyed by Philip Contzen, U. S. D. S., in 1897, establishing all corners thereon with a common reference to T. 15 N., Rs. 4 and 5 W., and terminating same with a closing cor. on the S. bdy. of T. 16 N., R. 5 W. No retracement or resurvey of any portion of E. bdy. of T. 15 N., R. 5 W., is of record.

The E. bdy. of T. 16 N., R. 5 W., was surveyed in 1871, by S. W. Foreman, U. S. D. S., establishing all corners thereon with a common reference to T. 16 N., Rs. 4 and 5 W. In 1903, A. D. Mader, U. S. D. S., made an independent resurvey of this township boundary about 20.00 chs. E. of its original position and re-established all corners thereon with a common reference to T. 16 N., Rs. 4 and 5 W. No other resurvey of the line is of record.

The south 494.38 chs. of E. bdy. of T. 15 N., R. 5 W., was resurveyed in connection with resurvey of W. bdy. of T. 15 N., R. 4 W., as described in Book "A" of this group.

The following notes describe a survey of the west boundary of Fractional T. 15 $\frac{1}{2}$ N., R. 4 W., combined with a resurvey of the North 117.50 chains of E. bdy. of T. 15 N., R. 5 W., and the south one mile of East bdy. of T. 16 N., R. 5 W. (Mader's resurvey), offsetting 8.85 chs. on the S. bdy. of T. 16 N., R. 5 W. The quarter-section and section corners referring to areas in Frac. T. 15 $\frac{1}{2}$ N., R. 4 W., only, are established alternately at 40.00 chains in northing, counting from the south, and proper alterations are made in the old cor. monuments in order to change their reference.

The east half of S. bdy. of Sec. 36, T. 16 N., R. 5 W., part of which forms a part of W. bdy. of Frac. T. 15 $\frac{1}{2}$ N., R. 4 W., is resurveyed as described in Book "D" of this group, which book also contains description of the resurvey of the remainder of the E. bdy. of T. 16 N., R. 5 W.

Retracement for SURVEY and RESURVEY.

For notes of retracement of the E. bdy. of T. 15 N., R. 5 W., see notes of the resurvey of the west boundary of T. 15 N., R. 4 W., in Book "A" of this group.

From the cor. of Ts. 16 N., Rs. 4 and 5 W., hereinafter described.

North, on a random line on E. bdy. of sec. 36 (S. $\frac{1}{2}$).
40.12 Fall 2 lks. E. of the previously reestablished $\frac{1}{2}$ sec.
cor. of secs. 31 and 36, hereinafter described.

True bearing and distance of S. $\frac{1}{2}$ of E. bdy. of sec. 36
are, therefore, N. 0° 02' W., 40.12 chs.

Thence

North, on a random line on E. bdy. of sec. 36 (N. $\frac{1}{2}$).
40.07 Fall 12 lks. W. of the previously reestablished cor. of
secs. 25, 30, 31 and 36, hereinafter described.

True course and dist. of N. $\frac{1}{2}$ of E. bdy. of sec. 36 are,
therefore, N. 0° 10' E., 40.07 chs.

Survey of West Boundary of Fractional T. 15 $\frac{1}{2}$ N., R. 4 W.,
Resurvey of Part of East Boundary of T. 15 N., R. 5 W.,
and Part of East Boundary of T. 16 N., R. 5 W.

Chains North, on a random line, on E. bdy. of sec. 25 (S. $\frac{1}{2}$).
18.60 Intersect the resurveyed S. bdy. of T. 16 N., R. 4 W.,
at a point 15.93 chs. S. 89° 51' E., from reestablish-
ed cor. of T. 16 N., R. 4 W. (SW. cor.) described in
Book "C" of this group.
Set temp. closing cor. and continue line and measurement.
39.91 Fall 9 lks. E. of the previously reestablished $\frac{1}{4}$ sec.
cor. of secs. 25 and 30, described in Book "D".
True course and distance of S. $\frac{1}{2}$ of the Mader resurveyed
E. bdy. of sec. 25 are, therefore, N. 3° 08' W., 39.91
chs., and the true line will intersect the S. bdy. of
T. 16 N., R. 4 W., at 15.94 chs., S. 89° 51' E., from
reestablished cor. of T. 16 N., R. 4 W. (SW. Cor.)

SURVEY and RESURVEY.

From the cor. of T. 15 N., R. 4 W. (N. Cor.) and Frac.
T. 15 $\frac{1}{2}$ N., R. 4 W. (SW. Cor.), described in Book "A"
of this group.
North, on true line on W. bdy. of sec. 31.
Over stony mountainous land, thru dense undergrowth.
Asc. 63 ft. over SE. slope.
8.00 Ridge, bears N. 70° E., and S. 70° W. Desc. 240 ft. over
rocky NW. slope.
22.40 Wash, 8 lks. wide, course N. 30° W. Desc. gradually over
W. slope to
40.00 Set an iron post, 3 ft. long, 1 in. in diam., 27 ins. in
the ground and deposit a stone marked with a cross
(X) at base of post, for $\frac{1}{4}$ sec. cor. of sec. 31, only,
marked on brass cap

$\frac{1}{4}$ S 31
1924

No bearing trees available.
50.70 Bottom of ravine, 10 lks. wide, course NE.
Ascend 114 ft. over SE. slope.
52.30 Wire fence, bears NE. and SW.
70.00 Top of ascent on E. slope of spur, Desc. 34 ft. over
NE. slope to
80.00 Set an iron post, 3 ft. long, 2 ins. in diam., 27 ins.
in the ground and deposit a stone marked with a cross
(X) at base of post, for cor. of secs. 30 and 31,
only, marked on brass cap

| | |
|--------|----------------------|
| T 15 N | T 15 $\frac{1}{2}$ N |
| 31 | 3 30 |
| | 3 31 |
| R 5 W | R 4 W |
| 1924 | |

No bearing trees available.
Raise a mound of stone 2 ft. base, 1 $\frac{1}{2}$ ft. high E. of cor.
Land, mountainous.
Soil, stony, 3rd rate.
Timber, none.
Undergrowth, mountain mahogany, manzanita and scrub oak.

North, on true line, on W. bdy. of sec. 30.
Over mountainous land, thru dense undergrowth and scatter-

Surv
Resu
Chains
Desc
30.00 Foot
en
37.50 (159
R
Inte
W.
3
C
5
C
R
O
Then
R
5
37.58 (in
Inte
a
s
f
i
This
(
f
o
Then
N. C
T
40.00 (fr
l
s
f
50 l
1
Des
54.00 Roch
(
77.70 (40
Inte
The
I.
80.00 Set

Survey of West Boundary of Fractional T. 15 1/2 N., R. 4 W.,
Resurvey of Part of East Boundary of T. 15 N., R. 5 W.,
and Part of East Boundary of T. 16 N., R. 5 W.

Chains ing timber.

Desc. 195 ft. over broken NE. slope to

30.00 Foot of descent, hrs. NW. and SE. Leave mountainous and enter rolling land in valley.

57.50 (159.10 chs. N. from 1/4 sec. cor. of sec. 1, T. 15 N., R. 5 W.).

Intersect the closing cor. of T. 15 N., Rs. 4 and 5 W., which is a red granite stone 6 x 8 x 8 ins. above ground, marked C C on S. face, with 6 grooves on each of E., S. and W. faces, and witnessed by three pits crosswise on each line E. and W. 3 ft. and S. of stone 5 ft. dist., and remains of an earth mound S. This cor. now becomes a closing cor. of Frac. T. 15 1/2 N., R. 4 W., and T. 15 N., R. 5 W. Obliterate grooves on E. face of the stone.

Thence offset 8.83 chs. N. 89° 29' E., as per result of resurvey of E. 1/2 of S. bdy. of sec. 36, T. 16 N., R. 5 W., as described in Book "D".

37.58 (in northing from the cor. of secs. 30 and 31).

Intersect the cor. of T. 16 N., Rs. 4 and 5 W., which is a granite stone 12 x 6 x 8 ins. above ground, firmly set, marked with 6 notches on each of N., E. and W. faces, and witnessed by a mound of stone N. No bearing trees.

This cor. now becomes a cor. of T. 16 N., R. 5 W., only (SE. Cor.) therefore obliterate the notches on E. face of stone, and destroy the old stone mound and raise a mound of stone 2 ft. base, 1 1/2 ft. high NW. of cor.

Thence

N. 0° 02' E., on true line, continuing northing of W. bdy. of sec. 30, and resurveying part of N. bdy. of T. 16 N., R. 5 W.

40.00 (from cor. of secs. 30 and 31). Set an iron post, 3 ft. long, 1 in. in diam., 27 ins. in the ground for 1/4 sec. cor. of sec. 30, T. 15 1/2 E., R. 4 W., marked on brass cap

1 1/2 3 30
1924

No bearing trees available. Raise a mound of stone, 2 ft. base, 1 1/2 ft. high, E. of cor.

Desc. 40 ft. over NW. slope.

54.00 Rocky wash, 30 lbs. wide, 3 ft. deep, course N. 20° E. Thence over gently rolling valley. Desc. gradually over SE. slope to

77.70 (40.12 chs. N. 0° 2' E., from SE. cor. of T. 16 N., R. 5 W.)

Intersect the previously reestablished 1/4 sec. cor. of secs. 31 and 36, which is a cedar post 4 ins. sq. projecting 12 ins. above ground, firmly set, marked S 31 on E. face and S 36 on W. face, witnessed by one bearing tree NW., two pits, one each E. and S. of post, and a mound of earth N. of cor. This cor. monument now refers to the quarters of sec. 36, only, therefore obliterate the section number on E. face of post.

Thence

N. 0° 10' E., on true line, continuing northing of W. bdy. of sec. 30. Descend gradually over NE. slope to

80.00 Set an iron post, 3 ft. long, 2 ins. in diam., 27 ins. in the ground for cor. of secs. 19 and 30, only, marked on brass cap

1/4 Sec. N. 4 W.,
R. 5 W.,
S. 6 W.

sec. 35 (S. 1/4).
16 N., R. 4 W.,
from reestablish.
(.) described in

and measurement.
finished 1/4 sec.

Book "D".
Under resurveyed
0° 08' W., 39.91
at the S. bdy. of
89° 01' E., from
W. (SE. Cor.)

and Frac.
Book "A"

Undergrowth.

Desc. 240 ft. over

se gradually over

diam., 27 ins. in
with a cross
of sec. 31, only,

ft. over

27 ins.
with a cross
and 31,

ft. high E. of cor.

ta and scrub oak.

30.
rowth and scatter-

Survey of West Boundary of Fractional T. 15 $\frac{1}{2}$ N., R. 4 W.,
 Resurvey of Part of East Boundary of T. 15 N., R. 5 W.,
 and Part of East Boundary of T. 16 N., R. 5 W.

Survey of West
 Resurvey of
 and Part

Chains

| | |
|--------|----------------------|
| T 16 N | T 15 $\frac{1}{2}$ N |
| S 36 | S 19 |
| | S 30 |
| R 5 W | R 4 W |
| 1924 | |

Chains

from which

- A juniper 10 ins. in diam., bears N. 77° E., 111 lks. dist., marked T 15 $\frac{1}{2}$ N R 4 W S 19 B T.
- A juniper 4 ins. in diam., bears S. 50 $\frac{1}{2}$ ° E., 116 lks. dist., marked T 15 $\frac{1}{2}$ N R 4 W S 30 B T.

Land, mountainous and gently rolling.
 Soil, stony 2nd and 3rd rate.
 Timber, cedar, juniper and oak.
 Undergrowth, manzanita and scrub oak.

from wh
 A
 A
 A

N. 0° 10' E., on true line, on W. bdy. of sec. 19.
 Over gently rolling land, thru scattering timber and dense undergrowth. Desc. gradually over NE. slope.

- 7.50 Wash, 10 lks. wide, 3 ft. deep, course NE.
- 37.00 Wire fence, bears NW. and SE.
- 37.77 (40.07 chs. N. 0° 10' E., from $\frac{1}{4}$ sec. cor. of sec. 36.)

Intersect the previously reestablished cor. of secs. 25, 30, 31 and 36, which is a cedar post, 4 ins. sq., projecting 18 ins. above ground, firmly set, marked
 T 16 N S 30 on NE. face,
 R 4 W S 31 on SE. face,
 S 36 on SW. face, and
 R 5 W S 25 on NW. face, with 5 notches on W. edge, and 1 notch on S. edge, and witnessed by four bearing trees, one each NE., SE., SW. and NW. of cor. This cor. monument now refers to secs. 25 and 36, T. 16 N., R. 5 W., only, therefore obliterate marks on the NE. and SE. faces of post and also the marks on the NE. and SE. bearing trees and add marking
 T 16 N., to SW. face of post.

The resurvey of the east boundary of T. 16 N., R. 5 W., northerly from this cor. is described in Book "D" of this group.

Thence
 N. 0° 6' E., on true line, continuing measurement of W. bdy. of sec. 19. Desc. slightly over NE. slope to

- 40.00 Set an iron post, 3 ft. long, 1 in. in diam., 27 ins. in the ground for $\frac{1}{4}$ sec. cor. of sec. 19, only, marked on brass cap

| |
|--------------------|
| $\frac{1}{4}$ S 19 |
| 1924 |

from which

- A juniper, 10 ins. in diam., bears N. 53 $\frac{1}{2}$ ° E., 67 lks. dist., marked $\frac{1}{4}$ S 19 B T.
- A juniper, 20 ins. in diam., bears S. 85 $\frac{1}{2}$ ° E., 66 lks. dist., marked $\frac{1}{4}$ S 19 B T.

- 55.00 Road to Prescott, bears E. and W.
- 56.00 Wash, 30 lks. wide, 4 ft. deep, course N. 70° E.
- 56.37 Intersect the S. bdy. of T. 16 N., R. 4 W., at a point 15.94 chs. S. 89° 51' E., from the reestablished cor. of T. 16 N., R. 4 W. (SW. cor.), described in Book "A". At this point of intersection set an iron post, 3 ft. long 3 ins. in diam., 27 ins. in the ground for closing cor. of Frac. T. 15 $\frac{1}{2}$ N., R. 4 W., and T. 16 N., R. 5 W., marked on brass cap

Land, roll
 Soil, sandy
 Timber, ju
 Undergrowt

Boundarie
 Lat

| | |
|-----------------|---|
| Line designated | T |
| South Boundary | S |
| West Boundary | N |
| North Boundary | S |
| East Boundary | S |
| Convergency | |
| Totals | |
| Error in L | |
| Error in D | |

15 1/2 N., R. 4 W.,
15 N., R. 5 W.,
15 N., R. 5 W.

Survey of West Boundary of Fractional T. 15 1/2 N., R. 4 W.,
Resurvey of Part of East Boundary of T. 15 N., R. 5 W.,
and Part of East Boundary of T. 16 N., R. 5 W.

Chains
T 16 N
R 4 W
S 31
S 25 | S 19
T 16 N | T 15 1/2 N
R 5 W | R 4 W
C C
1984

from which

- A granite stone, 12 x 10 x 8 ins. above ground, marked F S M 1 bears S. 56 1/2° E., 15 lks. dist.
- A walnut, 8 ins. in diam., bears S. 41° E., 55 lks. dist., marked T 15 1/2 N R 4 W S 19 CC BT.
- A walnut, 6 ins. in diam., bears S. 75° W., 87 lks. dist., marked T 16 N R 5 W S 25 C C BT.

Land, rolling.
Soil, sandy and stony, 2nd and 3rd rate.
Timber, juniper, walnut and oak.
Undergrowth, scrub oak and juniper.

Boundaries of Fractional Township 15 1/2 North, Range 4 West

Latitudes, Departures and Closing Errors.

| Line designated | True course | Dist- ance | Latitudes | | Departures | |
|--------------------|---------------|---------------|-----------|--------|------------|--------|
| | | | N. | S. | E. | W. |
| South Boundary | S. 89° 57' W. | 475.10 | | .41 | | 475.10 |
| West Boundary | North | 117.50 | 117.50 | | | |
| | N. 89° 29' E. | 8.83 | .08 | | 8.83 | |
| | N. 0° 2' W. | 40.12 | 40.12 | | | .02 |
| | N. 0° 10' E. | 40.07 | 40.07 | | .12 | |
| North Boundary | N. 0° 8' W. | 18.60 | 18.60 | | | .04 |
| | S. 89° 51' E. | 422.56 | | 1.11 | 422.56 | |
| East Boundary | S. 39° 52' E. | 40.32 | | .09 | 40.32 | |
| | S. 1° 22' E. | 121.74 | | 121.71 | 2.90 | |
| | South | 92.70 | | 92.70 | | |
| Convergency | | | | | .22 | |
| Totals | | | 216.37 | 216.02 | 474.95 | 475.16 |
| | | | 216.02 | | | 474.95 |
| Error in Latitude | | | 0.35 | | | |
| Error in Departure | | | | | | 0.21 |

N. 77° E., 111
4 W S 19 B T.
S. 50 1/2° E., 116
4 W S 30 B T.

... and
... slope.

of sec. 36.)
of secs. 25,
4 ins. sq., pro-
set, marked

atches on N.
essed by four
and 20 of cor.
5 and 56. T. 16
ts marks on the
marks on the
king

15 N., R. 5 W.,
Book "D" of

acement of W.
slope to
ins. in
marked

N. 50 1/2° E., 67
T.
S. 85 1/2° E., 66
T.

70° E.
., at a point
established cor.
bed in Book "A".
post, 3 ft. log
for closing cor.
N., R. 5 W.,

Survey of TRACT NO. 39 of Frac. T. 15 $\frac{1}{2}$ N., R. 4 W.

Chains comprising the following described lands in original T. 15 $\frac{1}{2}$ N., R. 4 W. The $\frac{1}{4}$ of the SW $\frac{1}{4}$ of Sec. 3A and the SE $\frac{1}{4}$ of the NE $\frac{1}{4}$, and the NE $\frac{1}{4}$ of the SE $\frac{1}{4}$ of Sec. 4A, patented January 20, 1896 to Redmond Keehey.

The location of this tract is controlled by the identified original corner of Secs. 2, 3, 2A and 3A, the original quarter-section corner of secs. 3 and 4, and the original $\frac{1}{2}$ sec. cor. of secs. 4 and 4A, all of T. 15 $\frac{1}{2}$ N., R. 4 W., and by the record of the original survey thereof.

At a point 30.00 chains N. 4 $^{\circ}$ 40' E. (record bearing and distance) from the restored point for cor. of secs. 3, 4, 3A and 4A, T. 15 $\frac{1}{2}$ N., R. 4 W.

Set an iron post, 5 ft. long, 1 in. in diam., 27 ins. in the ground for cor. No. 1 (NE.Cor.) of Tract No. 39, of Frac. T. 15 $\frac{1}{2}$ N., R. 4 W., marked on brass cap

| | |
|----------------------|-------|
| T 15 $\frac{1}{2}$ N | |
| R 4 W | |
| 3 34 | |
| AP 1 | TR 38 |
| Tr 39 | |
| 1924 | |

Thence N. 86 $^{\circ}$ 32' 4. (computed bearing) along line 1-2 of Bdy. of Tract No. 39.

20.20 (Proportional dist.) Set an iron post, 5 ft. long, 1 in. in diam., 27 ins. in the ground for cor. No. 2 of Tract No. 39, marked on brass cap

| | |
|----------------------|-------|
| T 15 $\frac{1}{2}$ N | R 4 W |
| 3 33 | |
| | AP 2 |
| | Tr 39 |
| | 1924 |

Thence S. 4 $^{\circ}$ 40' W. (record bearing), along line 2-3 of Bdy. of Tract No. 39.

40.00 (Record dist.) Set an iron post, 5 ft. long, 1 in. in diam., 27 ins. in the ground for cor. No. 3 of Tract No. 39, marked on brass cap

| | |
|----------------------|-------|
| T 15 $\frac{1}{2}$ N | TR 39 |
| R 4 W | AP 3 |
| 3 33 | |
| 1924 | |

Thence S. 86 $^{\circ}$ 32' E. (Computed bearing) along line 3-4 of Bdy. of Tract No. 39.

20.20 (Proportional dist.) Set an iron post, 5 ft. long, 1 in. in diam., 27 ins. in the ground for cor. No. 4 of Tract No. 39, marked on brass cap

| | |
|----------------------|-------|
| | AP 4 |
| T 15 $\frac{1}{2}$ N | TR 39 |
| R 4 W | |
| 3 34 | |
| 1924 | |

Survey

Chains Thence
S. 4 $^{\circ}$ 40'
Tract
20.00 (Record
of s
al w
T. 15
of T.
estal
From tru
N. 86 $^{\circ}$ 32'
No. 1
line
0.49 Intersec
of T.
39, c
post
firm

20.26 (Proport
38, 1
Tract
iron
grou

Thence
N. 4 $^{\circ}$ 40'
of Tr
with
R. 4
40.00 (Record
T. 15
No. 3
post
firm

Thence
S. 89 $^{\circ}$ 1'
of T.
al w
R. 4
20.26 (Proport
T. 15
No. 3
post
firm

Survey of TRACT NO. 39 of Frac. T. 15 1/2 N., R. 4 W.

Chains Thence

S. 4° 46' W. (record bearing) along line 4-5 of Bdy. of Tract No. 39.

20.00 (Record dist.) Intersect the point for reestablished cor. of secs. 3, 4, 3A and 4A, T. 15 N., R. 4 W., identical with point for cor. No. 5 of Tract No. 39, of Frac. T. 15 1/2 N., R. 4 W., and cor. No. 6, of Tract No. 38, of T. 15 N., R. 4 W., in creek bed. Witness cor. established at 48 lks. N. 86° 11' E.

From true point for cor. No. 5. N. 86° 11' E., (computed bearing) along line 5-6 of Tract No. 39 of Frac. T. 15 1/2 N., R. 4 W., identical with line 5-6 of Bdy. of tract No. 38 of T. 15 N., R. 4 W.

0.43 Intersect the witness cor. to cor. No. 6 of Tract No. 38 of T. 15 N., R. 4 W., and to cor. No. 5 of Tract No. 39, of Frac. T. 15 1/2 N., R. 4 W., which is an iron post 1 in. in diam., projecting 9 ins. above ground, firmly set, marked on brass cap

| | |
|------------|-------|
| T 15 1/2 N | TR 39 |
| R 4 W W C | AP 5 |
| | AP 6 |
| 3 34 | TR 38 |
| | 1924 |

20.26 (Proportional dist.) Intersect cor. No. 5 of Tract No. 38, T-15 N., R. 4 W., identical with cor. No. 6 of Tract No. 39 of Frac. 15 1/2 N., R. 4 W., which is an iron post, 1 in. in diam., projecting 9 ins. above ground, firmly set, marked on brass cap

| | |
|-------|-------|
| TR 39 | |
| AP 6 | AP 5 |
| | TR 38 |
| | 1924 |

Thence

N. 4° 46' E., (record bearing) along line 6-7 of Bdy. of Tract No. 39 of Frac. T. 15 1/2 N., R. 4 W., identical with line 4-5 of Bdy. of Tract No. 38 of T. 15 N., R. 4 W.

40.00 (Record dist.) Intersect cor. No. 4 of Tract No. 38, T. 15 N., R. 4 W., identical with cor. No. 7 of Tract No. 39 of Frac. T. 15 1/2 N., R. 4 W., which is an iron post 1 in. in diam., projecting 9 ins. above ground, firmly set marked on brass cap

| | |
|-------|-------|
| AP 4 | |
| AP 7 | TR 38 |
| TR 39 | |
| | 1924 |

Thence

S. 89° 11' W. (computed bearing) along line 7-8 of bdy of Tract No. 39, of Frac. T. 15 1/2 N., R. 4 W., identical with line 3-4 of Bdy. of Tract No. 38, T. 15 N., R. 4 W.

20.26 (Proportional dist.) Intersect cor. No. 3 of Tract No. 38, T. 15 N., R. 4 W., identical with cor. No. 8 of Tract No. 39, of Frac. T. 15 1/2 N., R. 4 W., which is an iron post 1 in. in diam., projecting 9 ins. above ground firmly set, marked on brass cap

Survey of TRACT NO. 39 of Prac. T. 15 $\frac{1}{2}$ N., R. 4 W.

Chains

TR 38
AP 3
AP 8
TR 39
1924

Thence

N. 4° 46' E. (record bearing) along line 8-1 of Bdy. of
Tract No. 39 of Prac. T. 15 $\frac{1}{2}$ N., R. 4 W., identical
with part of line 2-3 of Tract No. 38 of T. 15 N.,
R. 4 W.

20.00 Intersect Cor. No. 1 (NE. cor.) of Tract No. 39, the
place of beginning, hereinbefore described.

Survey of the Subdivision Lines of Fractional T. 15 $\frac{1}{2}$ N., R. 4 W.

Chains From the cor. of secs. 1, 2, 35 and 36 on S. bdy. of Tp., described in Book "A" of this group.
 N. 0° 01' W., bet. secs. 35 and 36.
 Over rolling land, thru scattering undergrowth. Ascend slightly over SW. slope.
 3.00 Desc. slightly over W. slope.
 10.00 Desc. 30 ft. over NW. slope.
 16.20 Wash, 4 lks. wide, course W. Asc. 140 ft. over S. slope.
 33.80 Top of stony hill bears E. and W. Descend 110 ft. over N. slope to $\frac{1}{4}$ sec. cor.
 37.00 Enter scattering timber and dense undergrowth, bears NW. and SE.
 40.00 Set an iron post, 3 ft. long, 1 in. in diam., 27 ins. in the ground for $\frac{1}{4}$ sec. cor., marked on brass cap

$\frac{1}{4}$
 S 35 | S 36
 1924

from which

A juniper, 5 ins. in diam., bears S. 57 $\frac{1}{2}$ ° E., 61 lks. dist., marked $\frac{1}{4}$ S 36 B T.
 A juniper, 24 ins. in diam., bears S. 62 $\frac{1}{2}$ ° W., 122 lks. dist., marked $\frac{1}{4}$ S 35 B T.
 Cor. No. 3 of Frank Kass's unsurveyed Forest Homestead bears N. 48 $\frac{1}{2}$ ° W., 19.55 chs. dist.
 Descend 48 ft. over N. slope.
 49.70 Wire fence bears E. and W. Fence cor. brs. E- 150 lks. dist. from which wire fences extend W. and N. Fence cor. bears W. about 20.00 chs. dist., from which wire fences extend E. and N.
 50.50 Wash, 50 lks. wide, 2 ft. deep, course N. 70° W. Ascend 58 ft. over SW. slope.
 56.00 Descend, gradually over W. and NW. slopes to sec. cor.
 69.20 Road from Frank Kass's house to Skull Valley - Prescott road, bears E. and W.
 70.70 Wire fence, bears NE. and SW. Leave undergrowth and timber. Enter cultivated land, brs. NE. and SW.
 72.50 Same fence, bears NW. and SE. Leave cultivated land, brs. NW. and SE. Enter dense undergrowth.
 80.00 Set an iron post, 3 ft. long, 2 ins. in diam., 27 ins. in the ground, and deposit a stone marked with a cross (X) at base of post for cor. of secs. 25, 26, 35 and 36, marked on brass cap

T 15 $\frac{1}{2}$ N R 4 W
 S 26 | S 25
 S 35 | S 36
 1924

No bearing trees available.

Frank Kass's house bears N. 67 $\frac{1}{2}$ ° W., about 17.00 chs. dist.
 Land, rolling.
 Soil, sandy and stony. 2nd and 3rd rate.
 Timber, oak and juniper.
 Undergrowth, scrub oak and juniper.

N. 89° 57' E., on a random line, bet. secs. 25 and 36.
 40.00 Set temp. $\frac{1}{4}$ sec. cor.
 79.88 Intersect E. bdy. of T., 3 lks. N. of the cor. of secs. 25 and 36, hereinbefore described.
 Thence
 S. 89° 58' W., on true line, bet. secs. 25 and 36.
 Over rolling land, through scattering timber and undergrowth. Desc. 115 ft. over W. slope.
 11.68 Wire fence bears N. and S.
 22.06 Intersect line 6-1 of Tract No. 37 of T. 15 N., R. 4 W., at a point 52.69 chs. S. 4° 52' W., from cor. No. 1. (NE. cor) thereof. Thence across said Tract.

Survey of S

Chains
 34.88 Leave roll
 39.94 Set an ir
 No trees a
 Raise a m
 40.50 Leave leve
 52.28 Road from
 62.06 Interest
 63.48 Wire fence
 79.88 The cor. of
 Land, rolli
 Soil grave
 Timber, sea
 Undergrowt
 The north
 being
 rang
 Survey a S
 secs
 bdy.
 eles
 Establish
 from
 Complete t
 line
 From the c
 North, on S
 Over rolli
 und
 29.90 Sand wash
 rel
 30.90 Wire fence
 32.70 Wire fence
 W.;
 abo
 40.00 Set an ire
 gre
 Deposit m

Survey of Subdivision lines of Fractional T. 15 N., R. 4 W.

Chains

- 34.88 Leave rolling land, bears NW. and SE.; Enter level sandy valley land.
- 39.94 Set an iron post 3 ft. long, 1 in. in diam. 27 ins. in the ground for 1/2 sec. cor., marked on brass cap

1/2 S 25
1/2 S 36

1924

- No trees suitable for bearing trees within limits.
- Raise a mound of stone 2 ft. base, 1 1/2 ft. high N. of cor.
- 40.50 Leave level valley land, bears NW. and SE.; Enter rolling land.
- 52.28 Road from Skull Valley to Prescott Arizona, bears NE. and SW.
- 62.06 Interest line 2-3 of Tract No. 37, T15N., R4W. 52.72 chs. - S 4° 52' W. of cor. No. 2 of said tract.
- 63.48 Wire fence bears N. and S.
- 79.88 The cor. of secs. 25, 26, 35, and 36.

Land, rolling and level.
Soil gravelly and stony 2nd. and 3rd. rate.
Timber, scattering oak and juniper.
Undergrowth, oak brush.

The north 121.74 chs. of the east boundary of the township being defective, complete the survey of the first range of sections in the township as follows;
Survey a Sectional Guide Meridian, north from the cor. of secs. 25, 26, 35, and 36, to an intersection with the S. bdy. of T16N., R4W. at which point establish a closing cor. of fractional secs. 23 and 24.
Establish the 1/2 sec. cor. of secs. 24 and 25 at 40.00 chs. from the west.
Complete the survey of the remainder of the subdivision lines in the township in the regular manner.

- From the cor. of secs. 25, 26, 35, and 36, North, on Sectional Guide Meridian, bet. secs. 25 and 26.
- Over rolling sandy and gravelly land, through scattering undergrowth
- 29.90 Sand wash 30 lks. wide, 4 ft. deep, course N10° E.; Leave rolling land, bears NE. and SW.; Enter level land.
- 30.90 Wire fence, bears E. and W.
- 32.70 Wire fence, bears E. and W.; Leave undergrowth, bears E. and W.; Enter cultivated land bears E. about 4 chs. and W. about 15 chs. dist.
- 40.00 Set an iron post 3 ft. long, 1 in. in diam. 27 ins. in the ground for 1/2 sec. cor. marked on brass cap

S 26 S 25

1924

Deposit marked stone at base of monument.

Survey of Subdivision lines of Fractional T.15 $\frac{1}{2}$ N., R.4 W.

Survey

Chains
 68.60 Wire fence, bears E. about 2 chs. and W. about 15. chs. dist.
 78.50 Wire fence bears N7°W. and S7°E.; Leave cultivated land
 bears NW. and SE.
 79.90 Left bank of sand wash, bears N10°W. and S10°E.
 80.00 The point for cor. of secs. 23, 24, 25, and 26, falls in bed of
 sand wash where prevailing conditions would insure
 the destruction of the cor.; Witness cor. of secs.
 23, 24, 25, and 26, established 4.00 chs. North as
 hereinafter described.

Chains
 6.20 Road from
 11.00 Leave le
 14.00 Enter so
 27.00 Wire fe
 40.00 Set an i

Land level and rolling.
 Soil sandy 1st. and 2nd. rats.
 Timber, none.
 Undergrowth, scattering oak brush.

40.00 From true point for cor. of secs. 23, 24, 25, and 26.
 78.24 N 89°58'E, on a random line bet. secs. 24 and 25.
 Set temp. $\frac{1}{4}$ sec. cor.
 Intersect E. bdy. of Tp. 18 lks. N. of the cor. of secs. 24 and
 25, hereinbefore described.
 Thence
 N 89°54'W. on true line bet. secs. 24 and 25.
 Ascend 29 ft. over NE. slope over stony hilly land, through
 scattering juniper timber and oak brush under-
 growth.
 7.30 Top of low ridge, bears NW. and SE.; Descend 32 ft. over SW.
 slope.
 19.00 Wire fence bears N. and S.
 38.24 Set an iron post 3 ft. long, 1 in. in diam. with marked
 stone at the base, 27 ins. in the ground for $\frac{1}{4}$ sec.
 cor., marked on brass cap

Note: Pro
 Goo
 54.58 Intersect
 the
 in
 Set an ir
 at
 of

$\frac{1}{4}$ S 24
 $\frac{1}{4}$ S 25
 1924

Land, leve
 Soil sand
 Timber, no
 Undergrow

74.00 Foot of descent.; Enter valley, bears NW. and SE.
 76.30 Road from Skull Valley to Prescott Arizona, bears N20°W.
 and S20°E.
 77.75 Right bank of sand wash 4 ft. high, bears N13°W. and S13°E
 78.00 Center of sand wash, course N13°W.
 78.24 The true point for cor. of secs. 23, 24, 25, and 26.
 Land level and rolling hills.
 Soil sandy and gravelly 1st. and 2nd. rate.
 Timber, scattering juniper and oak.
 Undergrowth, oak brush.

From th
 N 0°01'
 Over SW
 2.50 Top of
 40.00 Set an

3.00 From true point for cor. of secs. 23, 24, 25, and 26,
 North on sectional Guide Meridian bet. secs. 23 and 24.
 Over dry bed of sand wash.
 4.00 Top of right bank of sand wash 4 ft. high, bears N13°W. and
 S13°E., thence over level land.
 Set an iron post 3 ft. long, 2 ins. in diam. with marked stone
 at the base, 27 ins. in the ground for witness cor.
 to cor. of secs. 23, 24, 25, and 26, marked on brass cap

No bearing
 80.00 Set an ir
 st
 of

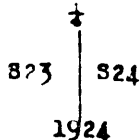
$\frac{1}{4}$ S 23 | E 4 W
 823 | 824
 826 | 825
 1924

Survey of the subdivision lines of Frac. T. 15 1/2 N. R. 4 W.

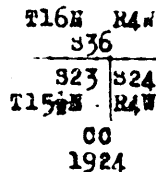
Chains

... R. 4 W.
... about 15 chs. dist.
... cultivated land
... S10°E.
... 26, falls in bed of
... tions would insure
... ss cor. of secs.
... chs. North as

- 6.20 Road from Skull Valley to Prescott Arizona, bears N20°W., and S20°E.
- 11.00 Leave level valley land, bears NW. and SE.; Enter low hills bears NW. and SE.
- 14.00 Enter scattering oak brush undergrowth, bears NW. and SE.
- 27.00 Wire fence, bears N. and W.
- 40.00 Set an iron post 3 ft. long, 1 in. in diam. with marked stone at the base, 27 ins. in the ground for 1/4 sec. cor., marked on brass cap



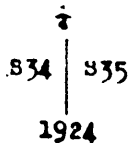
- Note: From this point, Cor. No. 4 of H.E.S., (claimant J.E. Goodwin), bears S71°36'W. 23.42 chs. dist.
- 54.58 Intersect the s. bdy. of T16N., R4W., 3.49 chs. S89°51'W. of the reestablished cor. of secs. 35 and 36., described in Book "C".; At point of intersection, Set an iron post 3 ft. long, 2 ins. in diam. with marked stone at the base, 27 ins. in the ground for closing cor. of secs. 23 and 24, marked on brass cap



Land, level and hilly. . .
Soil sandy and gravelly, 2nd. rate.
Timber, none.
Undergrowth, oak brush.

... cor. of secs. 24. and
... 25.
... hilly land, through
... oak brush under-
... 32 ft. over SE.
... diam. with marked
... ground for 1/4 sec.

- From the cor. of secs. 2, 3, 34, and 35 on s. bdy. of Tp. described in Book "A"
- N 0°01'W. bet. secs. 34 and 35
- Over SE. slope over rolling sandy land, through scattering juniper and oak timber and brush undergrowth
- 2.50 Top of ridge bears NW. and SE.; Desc. gradually over NE. slope
- 40.00 Set an iron post 3 ft. long, 1 in. in diam. with marked stone at the base, 27 ins. in the ground for 1/4 sec. cor. marked on brass cap



- No bearing trees available.
- 80.00 Set an iron post 3 ft. long, 2 ins. in diam. with marked stone at the base, 27 ins. in the ground for cor. of secs. 26, 27, 34, and 35, marked on brass cap

... and 26,
... secs. 23 and 24.
... high, bears N13°W. and
... diam. with marked stone
... and for witness cor.
... marked on brass cap

Survey of the subdivision lines of Frac. T. 15 1/2 N., R. 4 W.

Chains

Chains

| | |
|-----------|------|
| T15 1/2 N | R4 W |
| S27 | S26 |
| 834 | 835 |

1924

No bearing trees available.
 Land rolling.
 Soil sandy and stone 2nd. and 3rd. rate.
 Timber, scattering juniper and oak.
 Undergrowth, oak and juniper brush.

40.00 N 89°57'E. on a random line bet. secs. 26 and 35.
 80.26 Set temp 1/2 sec. cor.
 Intersect E. and S. line 5 lks. N. of the cor. of secs. 25, 26, 35, and 36.

Thence
 S 89°59'W. on true line bet. secs. 26 and 35.
 Over rolling sandy land, slopes W.
 .86 Wire fence bears N. and S.; Enter cultivated land.
 3.96 Sand wash 50 lks. wide, 3 ft. deep, course N.
 8.86 Wire fence, bears N. and S.; Leave cultivated land bears N. and S.; Enter scattering oak brush undergrowth, bears N. and S.

10.36 Road from the Skull Valley-Prescott road to Frank Kass's house bears NW. and SE.
 13.76 Enter scattering oak and juniper timber and dense oak and manzanita brush undergrowth, bears NW. and SE.
 14.86 wire fence bears N. and S.
 18.76 Old wood road bears NE. and SW.
 40.13 Set an iron post 3 ft. long, 1 in. in diam. with marked stone at the base, 27 ins. in the ground for 1/2 sec. cor., marked on brass cap

| |
|-----|
| 826 |
| 835 |

1924

49.86 No bearing trees available.
 Sand wash 10 lks. wide, 3 ft. deep, course NE.; also over SE. slope.
 67.69 Intersect line 1-11 of Tract No. 38, T15N., R4W. S 5°W. 57.53 chs. dist. from cor. No. 1 of said tract.
 80.26 The cor. of secs. 26, 27, 34, and 35.

Land rolling.
 Soil sandy and stony 1st. and 2nd. rate.
 Timber, scattering juniper and oak.
 Undergrowth, oak and manzanita brush.

N 0°01'W. bet. secs. 26 and 27.

40.00 Over rolling sandy and stony land, through scattering juniper and oak timber and dense brush undergrowth
 Set an iron post 3 ft. long 1 in. in diam. 27 ins. in the ground for 1/2 sec. cor., marked on brass cap

A ju
 A ju
 56.37 Inte
 60.20 Guloi
 77.50 Sand
 80.00 Set
 fro
 A ju
 a pi
 a ju
 Ho ot
 Raise
 Land
 Soil
 Timbe
 Under

N 89
 Set
 80.20 Inte
 Ther
 S 89
 Over
 .10 Left
 .30 Wire
 10.80 Wire
 11.20 Road
 22.50 Wire
 40.10 Set

Survey of the Subdivision lines of Frac. T. 15 1/2 N., R. 4 W.

Chains

S23
+-----+
S26

1924

No bearing trees available .
Ascend 79 ft. over R. slope.
50.20 Sand wash 15 lks. wide, 3 ft. deep, course NR.; Enter dense oak and manzanita brush undergrowth.
Ascend 29 ft. over SR. slope
59.20 Sand wash 5 lks. wide 6 ft. deep, course NR.
77.20 Sand wash 15 lks. wide 6 ft. deep, course NR.; Asc. about 5 ft. over SE. slope to
80.20 The cor. of secs. 22, 23, 26, and 27.
Land level, rolling, and hilly.
Soil sandy and stone 1st, 2nd., and 3rd., rate.
Timber, scattering, juniper and oak .
Undergrowth, oak, and manzanita brush.

N 0°01' W. bet. secs. 22 and 23.
Ascend 29 ft. over SR. slope, through dense oak and manzanita brush undergrowth.

5.00 Top of ascent; Desc. 46 ft. over N. slope.
28.50 wire fence bears E. and W.
32.00 wash 10 lks. wide 1 1/2 ft. deep, course NR.
40.00 Set an iron post 3 ft. long, 1 in. in diam. 27 ins. in the ground for 1/4 sec. cor., marked on brass cap

+
S22 | S23

1924

46.20 Raise a mound of stone 2 ft. base, 1 1/2 ft. high W. of cor.
Ravine 15 lks. wide 5 ft. deep, course E.; Asc. 99 ft. over stony S. slope over hilly land.
54.82 Intersect the S. bdy. of T16N., R4W. 3.32 obs. S89°51' E. of the reestablished cor. of secs. 24 and 25. T. 15 1/2 N., R. 4 W. described in Book "C"; it point of int. bearing.
Set an iron post 3 ft. long, 2 ins. in diam. 27 ins. in the ground for closing cor. of secs. 22 and 23, marked on brass cap

T16N R4W
S35
S22 | S23
T15 1/2 N | R4W

CC
1924

Raise a mound of stone 2 ft. base, 1 1/2 ft. high S. of cor.
Land, hilly.
Soil stony 3rd. rate.
Timber, none.
Undergrowth, oak and manzanita brush.

Survey

Chains.

from th
N 0°02'
Over ro
1.80 Corral
2.00 Road fr
7.50 sand wa
7.80 Left bu
16.60 same roa
26.50 Top of s
34.58 Intersec
40.00 Set an s

Raise a
42.00 Foot of
48.00 Road fr
50.00 Wire fe
50.20 Enter c
57.30 Enter r
74.65 Intersec
80.00 Set an

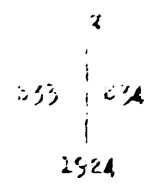
40.00
75.00
Intersec
These
2 00'

R 4W.

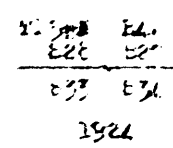
Survey of the subdivision lines of Tract 1, 1 1/2 N, R 4W

Chains.

- from the cor. of secs. 3, 4, 33, and 34 on S. 1/2 of Tp. described in Book "A"
- M 0°02' W. bet. secs. 33 and 34.
- Over rolling land, slopes NW.
- 1.80 Corral fence bears E. 80 lks. and W. about 40 lks. dist.
- 2.00 Road from Skull Valley to Redmond Toohy's ranch bears NW. and NE.
- 7.50 Sand wash 50 lks. wide, banks 4 ft. high, course NW. through 5 lks. wide 2 in. deep, flows NE.
- 7.80 Left bank of wash, bears E. and W.; ascend 37 ft. over NW. slope, through dense oak brush undergrowth.
- 16.60 Same road from Skull Valley to Redmond Toohy's ranch, bears NE. and SW.
- 26.50 Top of spur bears NE. and SW.; Desc. 75 ft. over NW. slope
- 34.58 Intersect line 3-4 of Tract No. 39, T19N., R4W., S. 1/2 Sec. 3, N86°32' of cor. No. 4 of said tract.
- 40.00 Set an iron post 3 ft. long, 1 in. in diam., 27 in. in the ground, for 2 sec. cor., marked as corner 3.



- 42.00 Raise a mound of stone 2 ft. base, 1 1/2 ft. high at cor. Foot of descent in valley; leave Lilly and willow grove bears N50°E and S50°E; water level valley at 6.
- 48.00 Road from the Toohy ranch to Prescott's place, bears NE.
- 50.00 Wire fence bears N15°E and S15°E. Note: from this point Redmond Toohy's house bears S50°E about 12.00 dist. a windmill bears S77°W about 20.00 dist.
- 50.20 Enter cultivated land bears NE. and SE.
- 57.30 Ranch road bears NE. and SE.
- 74.05 Intersect line 2-3 of Tract No. 39, T19N., R4W., S. 1/2 Sec. 3, N86°32' of cor. No. 4 of said tract.
- 80.00 Set an iron post 3 ft. long, 2 in. in diam., with brown glass bottle deposited at base, 27 in. in the ground for cor. of secs. 21, 22, 23, and 34, marked as corner 3.



land level, rolling, and hills;
 soil sandy and stony, 1/2 in. to 3/4 in. rate.
 timber, mostly oak.
 Undergrowth, oak brush.

- 40.00 Set iron post at cor. of sec. 3 and 34
- 45.00 Intersect line 3-4 of Tract No. 39, T19N., R4W., S. 1/2 Sec. 3, N86°32' of cor. No. 4 of said tract.
- These
- are 80°50' W. or W. line bet. secs. 2 and 34

NR: Enter dense growth.

33. Asc. about

oak and manzan-

ins. in the brass cap

W. of cor. ft. over

of th
2.2
ins. in the 22 and 23, marked

ft. high S. of cor.

Survey of the subdivision lines of Frac. T. 15 1/2 N., R. 4 W.

Chains
 4.94 Over rolling sandy land, through oak and juniper timber and brush undergrowth
 Ridge bears NW. and SE.; Descend 161 ft. over W. slope over stony hilly land.
 39.97 Set an iron post 3 ft. long, 1 in. in diam. 27 ins. in the ground for 1/4 sec. cor., marked on brass cap

827.
 +
 834

1924

No trees within limits.; Raise a mound of stone 2 ft. base 1 1/2 ft. high N. of cor.

50.44 Wire fence, bears N 13 1/2° E. and S 13 1/2° W.
 57.94 Sand wash 30 lks. wide 4 ft. deep, course NW.
 65.24 Wire fence bears NW. and SE.; Leave timber and undergrowth bears NW. and SE.; Enter cultivated land.
 65.50 Leave hilly land bears NW. and SE.; Enter level sandy valley
 68.04 Intersect line 2-3 of tract No. 38., 215 N., R. 4 W. 52.85 chs. S 4° 46' W. of cor. No. 2 of said tract.
 72.94 Sand wash 150 lks. wide, 1 ft. deep, course N 20° W.
 79.54 The cor. of secs. 27, 28, 33, and 34. Land level rolling, and hilly. Soil sandy and stony 1st., 2nd., and 3 rd. rate. Timber, juniper and oak. Undergrowth, oak and manzanita brush.

N 0° 02' W. bet. secs. 27 and 28

1.70 Over level sandy cultivated land in valley. Leave cultivated land, bears NE. and SW.; Enter scattering oak timber bears NE. and SW.
 1.75 Road from Redmond Toohy's ranch to Prescott Arizona, bears NE. and SW.
 5.30 A vacant frame house bears E. 50 lks. dist.
 24.80 Road bears W. and S 10° E.
 25.10 Sand wash 15 lks. wide 3 ft. deep, course N 70° E.
 28.10 Wire fence bears E. and W.
 38.50 Set an iron post 3 ft. long, 1 in. in diam. with marked stone at the base, 27 ins. in the ground for witness cor. to the 1/4 sec. cor. marked on brass cap

NO
 +
 326 | 327

1924

39.00 Enter sand wash 75 lks. wide, 3 ft. deep, course N 3° W.
 40.00 Point for 1/4 sec. cor. falls in bed of wash, where the prevailing conditions would insure the destruction of the cor.
 59.20 Leave sand wash over level bottom land, bears NW. and SE.
 70.00 Wire fence bears N 27° W. and S 27° E.
 74.00 Leave level valley bears NE. and SW.; Enter hilly land ascend 57 ft. over SE. slope to
 82.20 Wire fence bears N 5 1/2° E. and S 5 1/2° W.
 80.00 Set an iron post 3 ft. long, 2 ins. in diam. with marked stone at the base 18 ins. in the ground to bedrock supported in a mound of stone for cor. of secs. 21, 22, 27, and 28., marked on brass cap

Survey of
 Chains
 No bearing
 Land level
 Soil sandy
 Timber, jun
 Undergrowt
 M 89° 56' E.
 Set temp
 Intersect
 22,
 Thence
 M 89° 54' W.
 Ascend NE.
 seat
 brus
 36.96 Wire fence
 39.56 Top of rid
 slop
 39.98 Set an iro
 the
 From which
 A juniper
 A juniper
 Road from
 Foot of de
 The cor. c
 Land hilly
 Soil stony
 Timber, jun
 Undergrowt
 N 0° 02' W. 1
 Ascend 46
 the
 und
 10.00 Top of sto
 NW.
 40.00 Set an iro
 gro
 for

... N, R. 4 W.

Survey of the subdivision lines of Frac. T. 15 1/2 N., R. 4 W.

Chains

| | |
|-----------|------|
| T15 1/2 N | R4 W |
| S21 | S22 |
| S28 | S27 |

1924

No bearing trees available

Land level and hilly.
Soil sandy and stony 1st. and 2nd. rate.
Timber, juniper and oak.
Undergrowth oak brush.

... juniper timber
... over W. slope over
diam. 27 ins. in the
on brass cap

... of stone 2 ft. base

... undergrowth
... level sandy valley
52.85 obs.
rest.
... N20°W.

M 89°56'E. on a random line bet. secs. 22 and 27.
Set temp $\frac{1}{2}$ sec. cor.
Intersect N. and S. line 24 lks. N. of the cor. of secs.
22, 23, 26, and 27.

Thence
M 89°54'W. on true line bet. secs. 22 and 27.
Ascend NE. slope over broken stony hilly land, through
scattering oak and juniper timber and dense
brush undergrowth.

36.96 Wire fence, bears N3°W. and S3°E.
39.56 Top of ridge bears NW. and SE.; ascend 120 ft. over SW.
slope.

39.98 Set an iron post 3 ft. long, 1 in. in diam. 27 ins. in
the ground for $\frac{1}{2}$ sec. cor., marked on brass cap

| |
|------|
| 6 22 |
| 8 27 |

1924

from which,

A juniper 5 ins. in diam. bears N24°W. 48 lks. dist.,
marked $\frac{1}{2}$ S 22 BT.

A juniper 6 ins. in diam. bears S24°W. 19 lks. dist.,
marked $\frac{1}{2}$ S 27 BT.

64.36 Road from Redmond Toohy's ranch to Prescott Arizona,
bears NE. and SW.

65.96 Foot of descent in sand wash 20 lks. wide, 2 ft. deep,
course SW.; ascend about 15 ft. over SE. slope to

79.96 The cor. of secs. 21, 22, 27, and 28.
Land hilly and broken.
Soil stony 2nd. and 3rd. rate.
Timber, juniper and oak.
Undergrowth oak and juniper brush.

... lley.
... scattering
... Arizona,
...
... marked
... witness

... course N3°W.
... wash, where the
... the destruction

... bears N. and SE.

... enter hilly land

... diam. with marked
... ground to bedrock
... of cor. of secs.

S 0°02' S. bet. secs. 21 and 22.
Ascend 46 ft. over SE. slope over stony hilly land,
through heavy cedar timber and dense brush
undergrowth.

10.00 Top of stony ridge bears NE. and SW.; Descend 52 ft. over
NW. slope

40.00 Set an iron post 3 ft. long, 1 in. in diam. 4 ins. in the
ground to bedrock, supported in a mound of stone
for $\frac{1}{2}$ sec. cor., marked on brass cap

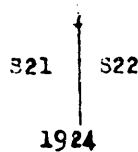
... cap

Survey of the subdivision lines of Frac. T. 15 1/2 N., R. 4 W.

Survey

Chains

Chains



from which,

- A juniper 22 ins. in diam., bears N53 1/4° E. 55 lks. dist., marked τ S 22 BT.
- A juniper 10 ins. in diam., bears N53° W. 55 lks. dist., marked τ S21 BT.
- 47.00 Ravine 6 lks. wide, course S70° W.; Ascend about 10 ft. over SE. slope
- 53.00 Top of ridge bears E. and W.
- 55.05 Intersect S. bdy. of T16N., R4W. 3.37 chs. S 89° 51' E. of the reestablished cor. of secs. 33 and 34, described in Book "C"; At the point of intersection Set an iron post 3 ft. long, 2 ins. in diam. 27 ins. in the ground for closing cor. of secs. 21 and 22, marked on brass cap

- A juniper
- A cedar
- 53.80 Sand wa
- 60.00 Descend
- 79.40 Ravine
- 80.00 Set an



from which

- A juniper 30 ins. in diam. bears S64 1/2° E. 134 lks. dist., marked T15 1/2 N., R4W., S22 CG BT.
- A juniper 18 ins. in diam. bears S183/4° W. 178 lks. dist., marked T15 1/2 N., R4W., S21 CG BT.
- Land hilly.
- Soil stony 3rd. rate.
- Timber, oak and juniper.
- Undergrowth, oak and juniper brush.

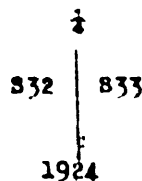
- from w
- A juniper
- A cedar
- A juniper
- A juniper

- Land ro
- Soil sa
- Timber,
- Undergr

- 40.00 S RC*5
- 80.06 Set to
- Inters

- From the cor. of secs. 4, 5, 32, and 33, on S. bdy. of Tp., described in Book "A"
- N 0° 02' W. bet. secs. 32 and 33.
- ascend 46 ft. over stony SE. slope of spur over mountainous land, through juniper and oak timber and dense brush undergrowth.
- 2.60 Top of braken spur bears NE.; Descend 46 ft. over NW. slope
- 8.00 Foot of descent.; Leave mountainous land, bears NE. and SW. Enter rolling land.
- 27.60 Ravine 4 lks. wide 1 ft. deep, course NE.
- 40.00 Set an iron post 3 ft. long, 1 in. in diam. 27 ins. in the ground for τ sec. cor. marked on brass cap

- 1.00 Thence
- 1.26 S RC*5
- Over 1
- Leave
- 4.76 Road
- 5.06 Wire
- 20.06 Ravine
- 36.26 Road
- 40.03 Sand w
- Set an



from which

So den

1/4 Sec 4W

Survey of the Subdivision line of Frac. T15 1/2 N. R. 4W.

Chains

- A juniper 15 ins. in diam. bears N62°E. 69 lks. dist., marked T 3 33 BT.
- A cedar 27 ins. in diam. bears S83 1/2°W. 57 lks. dist., marked T 3 32 BT.

- 53.80 Sand wash 15 lks. wide 2 1/2 ft. deep, course NE, Ascend 30 ft.
- 60.00 Descend 34 ft. over NW. slope.
- 79.40 Ravine 10 lks. wide, course NE, Asc. about 15 ft. over SE. slope.
- 80.00 Set an iron post 3 ft. long 2 ins. in diam. 27 ins. in the ground for cor. of secs. 28, 29, 32, and 33, marked on brass cap

5 lks. dist.,
5 lks. dist.,
both 10 ft. over

at the
the
described
division
in
22,

| | |
|-----------|------|
| T15 1/2 N | R4 W |
| 829 | 328 |
| 332 | 833 |
| 1924 | |

from which

- A juniper 40 ins. in diam. bears N7°E. 4.00 chs. dist., marked T15 1/2°N., R4 W., 328 BT.
- A cedar 40 ins. in diam. bears S28 3/4°E. 135 lks. dist., marked T15 1/2°N., R4 W., 333 BT.
- A juniper 18 ins. in diam. bears S47°W. 70 lks. dist., marked T15 1/2°N., R4 W., 332 BT.
- A juniper 24 ins. in diam. bears S40°W. 207 lks. dist., marked T15 1/2°N., R4 W., 329 BT.

Land rolling and mountainous.
Soil sandy and stony 2nd. and 3rd. rate.
Timber, cedar, juniper, and oak.
Undergrowth, oak, juniper, and manzanita brush.

34 lks. dist.,
176 lks. dist.,

- 40.00 S 80°57'E. on a random line bet. secs. 28 and 33.
- 80.06 Set temp. cor.
- Intersect E. and N. line 8 lks. W. of the cor. of secs. 27, 28, 33, and 34.

Thence

- S 80°54'W. on true line bet. secs. 28 and 33.
- Over level cultivated land in valley.
- 1.00 Leave cultivated land bears NE. and S.
- 1.26 Road from Redmond Toohy's ranch to Prescott Arizona, bears NE. and S.; Enter scattering oak timber and brush undergrowth. bears S. and E.
- 4.76 Wire fence bears S. and E.
- 5.06 Ravine 5 lks. wide 2 ft. deep, course NE.
- 20.06 Road from Redmond Toohy's ranch to Fair Lake, bears NW. and SE.
- 36.26 Sand wash 5 lks. wide 2 1/2 ft. deep, course NE.
- 40.03 Set an iron post 3 ft. long, 2 in. in diam. with marked stone at the base, 27 ins. in the ground for 1/2 sec. cor. marked on brass cap

mountainous
dense
over NW. slope
NW. and SW.
27 ins. in the
brass cap

| |
|------|
| E 28 |
| 3 |
| E 33 |
| 1924 |

No bearing trees available.

Survey of the Subdivision lines of Frac. T15 1/2 N. R. 4 W.

Chains

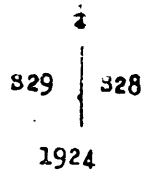
- 40.26 Wire fence bears N60°W. and S60°E.; Enter dense undergrowth bears N. and S.; ascend 28 ft. over E. slope of spur over broken hilly land.
- 44.56 Top of spur bears N.; Descend 62 ft. over W. slope
- 57.06 Rocky ravine 15 lks. wide, course N.; Ascend 79 ft. over E. slope.
- 59.56 Wire fence bears N. and S.
- 64.06 Descend 58 ft. over NW. slope.
- 78.86 Sand wash 30 lks. wide, course NE.; Asc. about 5 ft..
- 80.06 The cor. of secs. 28, 29, 32, and 33.
Land level, rolling, and hilly.
Soil sandy and stony 1st, 2nd., and 3rd. rate.
Timber, cedar, juniper, and oak.
Undergrowth oak and juniper brush.

Chains

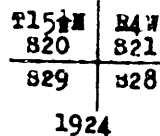
- N 80
- 40.00 Set
- 80.20 Inte
- They
- S 80
- Desc
- 13.70 Foot
- 22.70 Leav
- 32.40 Dry
- 35.20 Leav
- 40.10 Set

N 0°02'W. bet. secs. 28 and 29.
Ascend 11 ft. over SE. slope over stony hilly land, through juniper, cedar, and oak timber and brush undergrowth

- 7.30 Top of spur bears NE.; Descend 34 ft. over NW. slope.
- 15.30 Sand wash 15 lks. wide 3 ft. deep, course N70°E.; Ascend 72 ft. over SE. slope
- 27.90 Wire fence, bears N34°W. and S34°E.
- 32.00 Top of spur, bears S70°E.; Descend 70 ft. over NE. slope.
- 40.00 Set an iron post 3 ft. long, 1 in. in diam. with marked stone at the base, 27 ins. in the ground for 1 sec. cor., marked on brass cap



- No bearing trees available.
- 43.00 Divide bears NE. and SW.; Descend over NW. slope
- 54.00 Ravine 15 lks. wide 5 ft. deep, course NW.; ascend 70 ft. over SW. slope
- 56.50 Road from Redmond Toohy's ranch to Fair Oaks ranch, bears NW. and SE.
- 71.00 Top of spur bears W.; Descend 100 ft. over E. slope.
- 80.00 Set an iron post 3 ft. long, 2 ins. in diam. 27 ins. in the ground for cor. of secs. 20, 21, 28, and 29., marked on brass cap



No bearing trees available.
Raise a mound of stone 2 ft. base, 1 1/2 ft. high W. of cor.
Land hilly.
soil stony 3rd. rate.
Timber, cedar, juniper, and oak.
Undergrowth, oak and juniper brush.

- 50.20 Top c
- 63.20 West
- 80.20 The c
- Land
- Soil
- Timbe
- Under
- N 0°0
- Over
- 26.00 Sand
- 32.20 Wire
- 40.00 Set a

from w
a pini

T.15 1/2 N., R.4 W.

Survey of the subdivision lines of Frac. T.15 1/2 N., R.4 W.

Chains

er dense undergrowth
over E. slope of

40.00 N 89°54'E. on a random line bet. secs. 21 and 28.
Set temp. 1/4 sec. cor.
80.20 Intersect N. and S. line 14 lks. S. of the cor. of secs.
21, 22, 27, and 28.

er W. slope
end 79 ft. over E.

Thence
S 89°48'W. on true line bet. secs. 21 and 28.
Descend 60 ft. over SW. slope, through oak and juniper timber
and brush undergrowth. over mountainous land.

about 5 ft..

13.70 Foot of descent in sand wash, course N70°W.
22.70 Leave sand wash over rolling valley land.

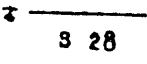
rate.

32.40 Dry ravine 40 lks. wide 2 ft. deep, course N20°E.
35.20 Leave valley land, bears NW. and SE.; Ascend 201 ft. over
NE. slope.

40.10 Set an iron post 3 ft. long, 1 in. in diam. 8 ins. in the
ground to bedrock, supported in a mound of stone
for 1/4 sec. cor., marked on brass cap

S 21

hilly land, through
undergrowth
N70°E.; Ascend



1924

over NE. slope.
diam. with marked
ground for 1/4 sec.

from which

A juniper 6 ins. in diam. bears N13°E. 95 lks. dist.,
marked 1/4 S 21 BT.
A juniper 16 ins. in diam. bears South, 23 lks. dist.,
marked 1/4 S 28 BT.

50.20 Top of ascent on spur, bears NW., thence over nearly level
land.

63.20 West edge of spur.; Descend 171 ft. over W. slope to
80.20 The cor. of secs. 20, 21, 28, and 29.

Land mountainous and rolling.
Soil sandy and stone 2nd. and 3rd. rate.
Timber, cedar, juniper, and oak.
Undergrowth, juniper and oak brush.

W. slope
end 70 ft.

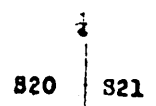
the ranch, bears

N 0°02'W. bet. secs. 20 and 21.
Over rolling stony land, through scattering, juniper and
oak timber and brush undergrowth.

26.00 Sand wash 50 lks. wide 1 ft. deep, course N70°E.

32.20 Wire fence, bears N40°E. and S40°W.; Leave rolling land,
bears NE. and SW.; Ascend 40 ft. over rocky SE.
slope.

40.00 Set an iron post 3 ft. long, 1 in. in diam. 27 ins. in the
ground for 1/4 sec. cor., marked on brass cap



1924

high W. of cor.

from which

a pinion 8 ins. in diam. bears S39 3/4°E 78 lks. dist.,
marked 1/4 S 21 BT.

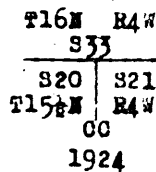
Survey of the subdivision lines of Frac. T. 15 1/2 N., R. 4 W.

Surv

Chains

Chains

a pinion 6 ins. in diam. bears S263/4°W. 100 lks. dist.,
marked † B 20 BT.
Ascend 120 ft. over granite boulders.
55.54 Intersect S. bdy. of T16N., R4W. 3.29 chs. S89°51'W. of the
reestablished cor. of secs. 32 and 33, described in
Book "C". At the point of intersection
Set an iron post 3 ft. long, 2 ins. in diam. 8 ins. in the
ground to bedrock, supported in a mound of stone
for closing cor. of secs. 20 and 21, marked on brass
cap

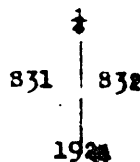


from which

A pine 14 ins. in diam. bears S78°E. 63 lks. dist.,
marked T15 1/2 N., R4W., S21 00 BT.
A pine 12 ins. in diam. bears S13 1/2°W. 11 lks. dist.,
marked T15 1/2 N., R4W., S20 00 BT.

Land rolling and mountainous.
Soil stony 2nd., 3rd., and 4th. rate.
Timber, cedar, juniper, and oak.
Undergrowth, oak, and manzanita brush.

9.00 Top of spur, bears S15°E., thence over NE. slope.
25.00 Top of same spur, bears S10°W., thence along W. slope.
39.00 Top of ridge bears NW. and SE.
40.00 Set an iron post 3 ft. long, 1 in. in diam. 27 ins. in the
ground for † sec. cor., marked on brass cap



from which

a juniper 30 ins. in diam. bears N373/4°E. 160 lks. dist.,
marked † S 32 BT.
a juniper 8 ins. in diam. bears N35°E. 92 lks. dist.,
marked † S 31 BT.
80.00 Descend 319 ft. over NE. slope of ridge.
Set an iron post 3 ft. long, 2 ins. in diam. 15 ins. in the
ground to bedrock, supported in a mound of stone
for cor. of secs. 29, 30, 31, and 32., marked on
brass cap

fr
a jun
a jun
No of
Depos
Land
Soil
Timbe
Under

89°
Set
Inter
Ther
N. 89°
Ascen
29.00 Top of
40.04 Set

No be
ascen
Ravin
The co
Land h
Soil s
Timber
Underg

S 89°
Set t
Inter
Ther
S 89°
Desce
9.02 Ravin
21.52 Top c

Survey of the Subdivision lines of Frac. T. 15 1/2 N., R. 4 W.

Chains

130 lks. dist.,

89°51' W. of the
33. described in
section
diam. 8 ins. in the
mound of stone
1, marked on brass

| | |
|-----------|------|
| T15 1/2 N | R4 W |
| 830 | 829 |
| 831 | 832 |

1924

from which

A juniper 14 ins. in diam. bears 833 1/2° E. 15 lks. dist.
marked T15 1/2 W., R4 W., 832 BT.

A juniper 32 ins. in diam. bears 835° W. 25 lks. dist.,
marked T15 1/2 W., R4 W., 831 BT.

No other trees available for bearing trees
Deposit a marked stone at base of monument.
Land mountainous.
Soil stony 3rd. and 4th. rate.
Timber, scattering juniper, and oak.
Undergrowth, oak and juniper brush.

lks. dist.,

11 lks. dist.,

40.00
80.08

N 89°57' E. on a random line bet. secs. 29 and 32.

Set temp. 1/2 sec. cor.

Intersect n. and s. line 16 lks. N. of the cor. of secs. 28,
29, 32, and 33.

Thence

N. 89°56' W. on true line bet. secs. 29 and 32.

Ascend 59 ft. over E. slope over stony hilly land, through
juniper and oak timber and brush undergrowth

29.00
40.04

Top of spur bears N.; Descend 23 ft. over W. slope to

Set an iron post 3 ft. long, 1 in. in diam. with marked
stone at the base, 27 ins. in the ground for 1/2 sec.
cor., marked on brass cap

829

832

1924

Body of Tp.

or steep mountain-
ipier and oak timber

lope.

ins. in the
cap

70.00
80.08

No bearing trees available.

Ascend 233 ft. over E. slope of ridge.

Ravine 5 lks. wide 2 1/2 ft. deep, course N.

The cor. of secs. 29, 30, 31, and 32.

Land hilly and mountainous.

Soil stony 2nd. and 3rd. rate.

Timber, juniper and oak.

Undergrowth, oak and juniper brush.

160 lks. dist.,

40.00
74.82

S 89°57' W. on a random line bet. secs. 30 and 31.

Set temp. 1/2 sec. cor.

Intersect N. body of Tp. 7 lks. S. of the cor. of secs. 30
and 31, heretofore described.

Thence

N 89°54' E. on true line bet. secs. 30 and 31.

Descend 101 ft. over E. slope over stony mountainous
land, through scattering oak and juniper timber and
dense oak and mountain mahogany brush undergrowth.

9.02

Ravine 10 lks. wide, course E.; Ascend 250 ft. over W.
slope.

21.52

Top of ridge bears N20° E. and S20° W. thence over nearly

diam. 1 1/2 ins. in the
mound of stone
2, marked on

Survey of the subdivision lines of Frac. T. 15 1/2 N., R. 4 W.

Chains
 level land on ridge.
 34.82 Set an iron post 3 ft. long, 1 in. in diam. with marked stone at the base, 27 ins. in the ground for 1/4 sec. cor., marked on brass cap

S30

1/4
 S31

1924

No bearing trees available.

41.62 Descend 75 ft. over E. slope.
 Rocky ravine 5 lks. wide, course N.; ascend 90 ft. over W. slope

51.82 Top of ridge bears N. and SE., thence over NE. slope.

54.82 Wire fence, bears N44°E. and S44°W.

66.82 Top of spur bears NE.; Descend 219 ft. over SE. slope to

74.82 The cor. of secs. 29, 30, 31, and 32.

Land, mountainous.

Soil stony 3rd. and 4th. rate.

Timber, scattering juniper and oak.

Undergrowth, oak and mountain mahogany brush.

N0°-03'W. bet. secs. 29 and 30.

Descend 177 ft. over NE. slope over stony mountainous land, through scattering, cedar, juniper, and oak timber and brush undergrowth

12.00 Point of spur bears NE.

23.00 Head of ravine 4 lks. wide, course NE.

26.30 Wire fence, bears N35°E. and S35°W.

40.00 Set an iron post 3 ft. long, 1 in. in diam. with marked stone at the base, 27 ins. in the ground for 1/4 sec. cor., marked on brass cap

S30 | S29

1924

No bearing trees available.

45.00 Leave mountainous land, bears NW. and SE.; Enter rolling land

80.00 Set an iron post 3 ft. long 2 ins. in diam. with marked stone at the base, 27 ins. in the ground for cor. of secs. 19, 20, 29, and 30., marked on brass cap

T15 1/2 N | R4 W
 S19 | S20
 S30 | S29

1924

No bearing trees available.

Land rolling and mountainous.

Soil stony 2nd. and 3rd. rate.

Timber, scattering cedar, juniper, and oak.

Undergrowth, oak and juniper brush.

Chains

S 89
 40.00 Set
 80.20 Inte

Then
 N 80
 Over

6.50 Sand
 15.20 Road

21.50 Wire
 40.10 Set

from

a jun

a jun

48.70 Sand v
 80.20 The oc
 Land
 Soil a
 Timber
 Underg

S 89°
 40.00 Set t
 65.96 Inter

Thence
 N 89°
 Over

4.76 Rocky
 25.96 Set at

No tree
 35.46 Leave r

43.96 Top of

61.76 Ravine
 65.96 The cor

Survey of the subdivision lines of Frac. T. 15 1/2 N., R. 4 W.

Chains

40.00 S 89°56'E. on a random line bet. secs. 20 and 29.
 80.20 Set temp. 1/4 sec. cor.
 Intersect N. and S. line 3 lks. S. of the cor. of secs. 20, 21, 28, and 29.
 Thence
 N 89°57'W. on true line bet. secs. 20 and 29
 Over rolling stony land, through juniper and oak timber and brush undergrowth.
 6.50 Sand wash 40 lks. wide 2 ft. deep, course N.
 15.20 Road from Redmond Toohy's ranch to Fair Oaks ranch, bears N. and SE.
 21.50 Wire fence, bears N20°W. and S20°E.
 40.10 Set an iron post 3 ft. long, 1 in. in diam. 27 ins. in the ground for 1/4 sec. cor., marked on brass cap

1/4 S 20
 S 29
 1924

from which

a juniper 24 ins. in diam. bears N16 1/2°E. 84 lks. dist., marked 1/4 S 20 BT.
 a juniper 20 ins. in diam. bears S86 1/2°E. 162 lks. dist., marked 1/4 S 29 BT.
 48.70 Sand wash 5 lks. wide, 2 ft. deep, course NR.
 80.20 The cor. of secs. 19, 20, 29, and 30.
 Land rolling,
 Soil stony 3rd. rate.
 Timber, scattering juniper and oak.
 Undergrowth, oak and juniper brush.

40.00 S 89°54'W. on a random line bet. secs. 19 and 30.
 65.96 Set temp. 1/4 sec. cor.
 Intersect W. bdy. of Tp. 7 lks. S. of the cor. of secs. 19 and 30. hereinbefore described.
 Thence
 N 89°58'E. on true line bet. secs. 19 and 30
 Over rolling land, through juniper and oak timber and dense brush undergrowth.
 4.76 Rocky ravine 20 lks. wide 4 ft. deep, course N20°W.
 25.96 Set an iron post 3 ft. long, 1 in. in diam. with marked stone at the base, 27 ins. in the ground for 1/4 sec. cor., marked on brass cap

1/4 S 19
 S 30

1924

35.46 No trees suitable for bearing trees available.
 Leave rolling land, bears NE. and SW.; ascend 70 ft. over W. slope over hilly land.
 43.96 Top of ridge bears NE. and SW.; Descend 112 ft. over SE. slope.
 61.76 Ravine 4 lks. wide, course NR.
 65.96 The cor. of secs. 19, 20, 29, and 30.

Sec. 1. 15 1/2 N., R. 4 W.

in diam. with marked in the ground for 1/4 sec.

ascend 90 ft. over

slope.

SE. slope to

oak brush.

stony mountainous cedar, juniper, and oak

in diam. with marked in the ground for 1/4 sec.

Enter rolling land in diam. with marked the ground for cor. of on brass cap

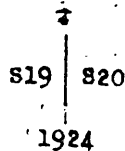
oak.

Survey of the Subdivision lines of Frac. T. 15 1/2 N. R. 4 W.

Chains

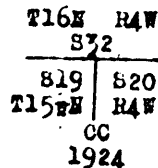
Land rolling and hilly.
Soil stony 2nd. and 3rd. rate.
Timber, scattering cedar, oak, and juniper.
Undergrowth, oak and juniper brush.

- N 0° 03' S. bet. secs. 19 and 20.
- Over stony hilly land, through scattering juniper and oak timber and brush undergrowth
- 4.40 Ravine 5 lks. wide 2 ft. deep, course N 70° E.
- 13.00 Ravine 6 lks. wide, 2 1/2 ft. deep, course S 70° E.; Ascend 44 ft. over SW. slope.
- 18.50 Top of spur bears S 70° E.; Descend 94 ft. over NE. slope.
- 39.40 Road from Redmond Toohy's ranch to Fair Oaks ranch, bears N.W. and S.E.; Leave hilly land, bears N.W. and S.E.; Enter rolling land.
- 40.00 Set an iron post 3 ft. long, 1 in. in diam. 27 ins. in the ground for 1/4 sec. cor., marked on brass cap



from which

- A juniper 12 ins. in diam. bears N 81 1/2° E. 68 lks. dist., marked 1/4 S 20 BT.
- A juniper 10 ins. in diam. bears N 13 1/2° W. 170 lks. dist., marked 1/4 S 19 BT.
- 55.89 Intersect S. bdy. of T16N., R4W. 3.10 chs. S 89° 51' E. of the reestablished cor. of secs. 31 and 32, previously described in Book "C"
- At point of intersection, Set an iron post 3 ft. long, 2 ins. in diam. 27 ins. in the ground for closing cor. of secs. 19 and 20, marked on brass cap



from which

- A juniper 7 ins. in diam. bears S 46 1/2° E. 252 lks. dist., marked T15 1/2 N., R4W., S 20 00 BT.
- A juniper 26 ins. in diam. bears S 62° W. 220 lks. dist., marked T15 1/2 N., R4W., S 19 00 BT.
- Land rolling and hilly.
- Soil stony 3rd. rate.
- Timber, scattering oak and juniper.
- Undergrowth oak brush.

GENERAL DESCRIPTION.

The land in this township varies from level valleys to

to rough mountain spurs and the soil ranges from a sandy loam to barren granite cliffs.

The land is highest in the vicinity of the southwest corner, the elevation diminishing gradually across the township in a northerly direction.

The drainage of the township is to the north through several large sand washes which cross through the township in a northerly direction.

The soil of the bottom lands along the two largest sand washes, which cross through secs. 23, 26, and 35 and secs 21, 27, 28, 33, and 34 is generally a rich sandy loam in character capable of producing good crops without the aid of irrigation. The soil of the remainder of the township including the mountainous portions is a stony clay loam and unsuitable for agricultural purposes, is covered with a good growth of nutritious grasses which afford excellent pasture for a large number of horses, cattle, and sheep.

The township is watered by a small stream flowing in the sand wash in sec. 34 and by two wells in sec. 26 and one in sec. 34 at the Redmond Toohy ranch.

The township is timbered over the higher portions with a scattering growth of cedar, juniper, and oak, while along the sand washes which form the drainage arteries of the township is found cottonwood, wild cherry, and walnut.

No mineral of any kind was found in the township.

There are two settlers residing on the land in sec. 26 and one in sec. 34. The occupation of these settlers is that of farming and stock raising

The continued satisfactory adjustment of the solar apparatus of the instrument used in the execution of the resurveys and surveys described in the foregoing notes is indicated from field tests of said instrument described in Book "C" of this group.

1/2 N. R. 4 W.

R.

ng juniper and oak

70° E.
S 70° W. Ascend 44 ft.

. 1/2 SE. slope,
T. Toohy ranch, bears
S 70° W. and SE.;

1/2 17 ins. in
and 1/2 brass cap

. 68 lbs. dist.,

. 176 lbs. dist.,

. S 89° 12' E. of the
land 1/2

"C"
post 5 ft. long,
ground for closing
on brass cap

. 252 lbs. dist.,

. 220 lbs. dist.,

and valleys to

4-680

FIELD ASSISTANTS.

to
Sidney E. Blout, U. S. Cadastral Engineer

| NAMES. | CAPACITY. |
|----------------|--------------|
| Ben Mollette | 1st Chainman |
| Clifford Hook | 2nd Chainman |
| John Slaughter | Flagman |
| Stanley Palmer | Houndman |
| S. A. Blout | Axman |

CERTIFICATE OF UNITED STATES SURVEYOR.

I, **Sidney E. Blout**, U.S. Cadastral Engineer, hereby certify upon honor that, in pursuance of special instructions received from the U. S. Surveyor General, for **Group 128, Arizona**, bearing date of the **11th** day of **February**, 19**24**, I have well faithfully, and truly in my own proper person, and in strict conformity with said instructions, the Manual of Surveying Instructions, and the laws of the United States, resurveyed all those parts or portions of **the West boundary of Township 15 North, Range 3 West, the East boundary of Township 15 North, Range 5 West, and East boundary of Township 16 North, Range 5 West, and surveyed all those parts or portions of the East and West boundaries and Subdivision lines of Fractional Township 15½ North, Range 4 West, and boundary of Tract No. 39 of Frac. T. 15½ N. R. 4 W.,** of the **Gila and Salt River Base and Meridian**, in the State of **Arizona**, which are represented in and by diagram on page 1 hereof the foregoing field notes/as having been executed by me, and under my direction; and that all the corners of said resurvey and survey have been established and perpetuated in strict accordance with the Manual of Surveying Instructions, and the special written instructions of the U. S. Surveyor General, for **Group 128, Arizona**, and in the specific manner described in the field notes, and that the foregoing are the original field notes of such resurvey and survey.

Place: **Phoenix, Arizona,**..... **Sidney E. Blout**.....*U.S. Cadastral Engineer.*Date: **July 25, 1925**

APPROVAL.

OFFICE OF THE U. S. SUPERVISOR OF SURVEYS

Denver, Colo., December 28, 1926

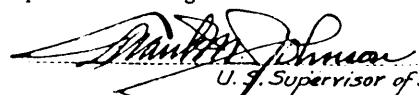
The foregoing field notes of the resurvey of **Part of West Boundary of Township 15 North, Range 3 West, Part of East Boundary of Township 15 North, Range 5 West, and Part of East Boundary of Township 16 North, Range 5 West, and of the SURVEY of the East and West bdrs. and Subdivision lines of Fractional Township 15½ North, Range 4 West, and Boundary of Tract No. 39 of Frac. Township 15½ North, Range 4 West, of the GILA and Salt River Base and Meridian, in the State of Arizona,**

executed by **Sidney E. Blout, U. S. Cadastral Engineer,**

under his special instructions dated **February 11, 1924, for Group 128, Ariz.,** having been critically examined, and the necessary corrections and explanations made, the said field notes, and the **resurvey and surveys** they describe, are hereby approved.

..... **Frank M. Johnson,***U.S. Supervisor of Surveys.*

I certify that the foregoing transcript of the field notes of the above-described **resurveys and surveys** in **Book "B" of Group 128, Ariz.,** has been correctly copied from the original notes.



U.S. Supervisor of Surveys.

319

FIELD NOTES

OF THE RESURVEY OF

the 4th Standard Parallel North thru Range 4 West,

the South Boundary

East Boundary

West Boundary

North Boundary and

Subdivision Lines of

Township 16 North, Range 4 West

and of the SURVEY of

North Boundary of

frac. Township 15½ North, Range 4 West,

Of the Gila and Salt River Base and Meridian,

in the State of Arizona

EXECUTED BY

Sidney E. Blout,

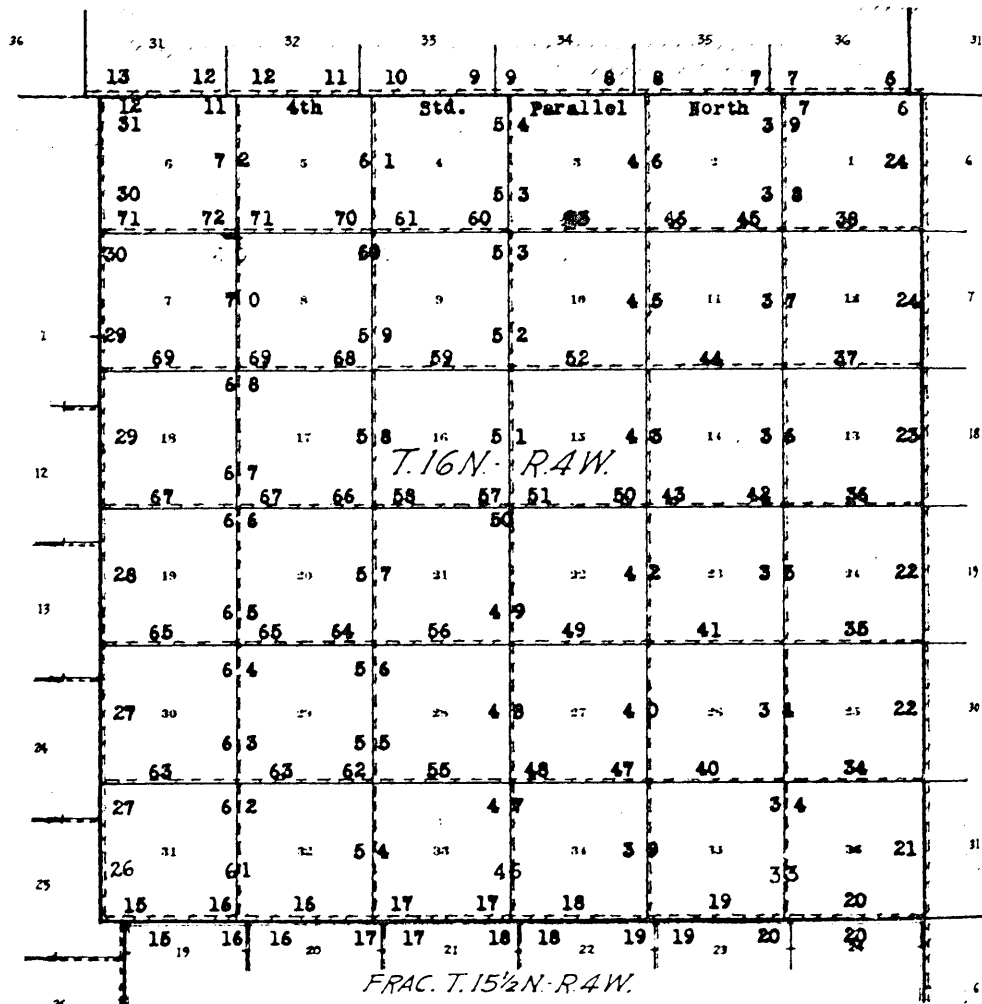
U. S. Cadastral Engineer

In the capacity of U. S. Surveyor, under Special Instructions dated February 11, 1924 issued by the United States Surveyor General to govern surveys included in Group No. 122, Arizona, which were approved by the Commissioner of the General Land Office, March 10, 1924, and Assignment Instructions dated May 1, 1924.

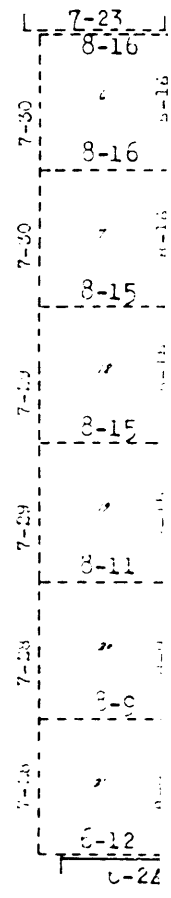
Resurvey and Survey commenced June 25, 1924.

Resurvey and Survey completed August 19, 1924.

INDEX DIAGRAM.



- Surveyed with reference to one township
- Resurveyed with reference to one township
- Executed under this group
- Surveyed under this group
- Retraced under this group
- Resurveyed under this group.
- Accepted surveys.
- Areas surveyed as per accepted plats on file.



Book "C"
Group 128 Arizona

324

DATE DIAGRAM
1924

1

T.17 N., R.4 W.

| | 31 | 32 | 33 | 34 | 35 | 36 |
|------|-----------------------------|------|------|------|------|------|
| | 4th Standard Parallel North | | | | | |
| | 7-23 | 7-23 | 7-23 | 7-23 | 7-23 | 7-23 |
| | 8-16 | 8-16 | 8-14 | 8-13 | 8-12 | 8-11 |
| 7-30 | 8-16 | 8-16 | 8-14 | 8-13 | 8-12 | 8-11 |
| 7-30 | 8-15 | 8-15 | 8-14 | 8-13 | 8-12 | 8-11 |
| 7-29 | 8-15 | 8-15 | 8-14 | 8-12 | 8-11 | 8-7 |
| 7-29 | 8-11 | 8-9 | 8-9 | 8-8 | 8-7 | 8-6 |
| 7-28 | 8-10 | 8-9 | 8-8 | 8-8 | 8-7 | 8-6 |
| 7-28 | 8-12 | 8-12 | 8-12 | 8-12 | 8-11 | 8-11 |
| | 8-24 | 8-24 | 8-23 | 8-21 | 8-19 | 8-19 |

Trac. T. 15 N., R. 4 W.

Surveyed by Stanley A. Blount, U.S. Geol. Surv., 1924.

Resurveyed by Stanley A. Blount, U.S. Geol. Surv., 1924.

outed under this group

The resurveys and surveys hereinafter described were executed on dates shown on diagram on page 1 hereof by Sidney E. Blout, U.S. Cadastral Engineer, using Buff Rocky Mountain Favorite Solar Transit No. 16724 on all work prior to July 30, 1924, and A. Sietz transit No. 6166 on all work after that date.

The Buff transit is equipped with U-shaped standards, 4 inch horizontal circle, 4 inch vertical circle, and Improved Smith solar attachment.

The Sietz transit is equipped with a full vertical circle and the Smith solar attachment.

Unless otherwise specified all azimuth determinations are accomplished with the solar attachment, except the special observations on Polaris for meridian, upon which to test the solar apparatus, as stated in the field notes.

All measurements are made with a Lufkin 5-chain steel tape, compared with a Chesterman standard 1-chain steel tape and found correct. The measurements are made on the slope, vertical angles determined with clinometer, and the slope measurements properly reduced to horizontal distances for entry in the field notes.

The instruments were both examined, tested on the true meridian at the Federal Building in Phoenix, Arizona, found correct, and were approved by the Assistant Supervisor of Surveys for Arizona and California on May 1, 1924, conditional upon satisfactory field tests.

TEST of BUFF SOLAR TRANSIT No. 16724

June 25, 1924; Examine the adjustments of the transit and correct the level and collimation errors; then, to test the solar apparatus by comparing its indications, resulting from solar observations made during a.m. and p.m. hours with a meridian established by observations on Polaris; proceed as follows:

June 25, 1924; at camp, at the J.W. Stewart ranch, in NE. 1/4 of sec. 15, T. 16 N., R. 4 W., Gila and Salt River Base and Meridian, Arizona, latitude $34^{\circ}46'15''$ N., and longitude $112^{\circ}40'3''$ W., at 4 h., 00 m. p.m. l.m.t., set off $34^{\circ}46' N.$ on the lat. arc, $23^{\circ}23' N.$ on the decl. arc, and determine a meridian with the solar and mark a point thereon by a tack in a peg driven firmly in ground about 8 chs. N. of station.

June 26, 1924; at same station, at 1 h., 21 m. a.m. by watch set by Western Union Telegraph clock to read correct local mean time, observe Polaris at eastern elongation, making four observations, two each with the telescope in direct and reversed positions, and mark mean point in the line thus determined by a tack in a peg set firmly in the ground about 8 chs. N.
Azimuth of Polaris at eastern elongation = $1^{\circ}20'50''$

June 26, 1924; at 8 h., 00 m. a.m. lay off azimuth of Polaris $1^{\circ}21'$ to the west and mark meridian thus determined by a tack in the peg set last evening, on which the meridian falls about $\frac{1}{2}'$ east of the mark determined by the solar.

at 8 h., 30 m. a.m. l.m.t. set off $34^{\circ}46' N.$ on the lat. arc, $23^{\circ}22' N.$ on the decl. arc, and determine with the solar a meridian and mark a point thereon by a tack in the peg set last evening. This point falls $1'$ in arc east of the meridian established by Polaris observation.

As all of the solar observations made during the usual hours of

cribed were
page 1 herof
eer, using
nit No.16724
A. Lietz transit

standards, 4
circles, and

vertical circle
terminations
ment, except the
riding, upon
stated in the

steel
steel
was on
anometer,
ded to
field notes.
on the true
denix, Arizona,
assistant
California on
ory field tents.

16724

the transit and
rs; then, to test
indications,
during a.m. and
by observations

ranck, is No. 1
Base and
and latitude
14°46'N.,
determine
on by
8 chs.

watch
used correct
ern elongation,
the telescope
ix main point
in a peg set

1°20'50"

uth of Polaris
s determined by
which the merid-
etermined by the

on the lat. arc,
e with the solar
a tack in the
1' in arc east
observation.

ing the usual

solar work come within 1' of the true meridian, conclude
that the adjustment of the instrument is satisfactory.

The magnetic bearing of the true meridian is N.15° W.

TEST OF THE A. LIETZ TRANSIT NO. 6166

July 29, 1914, at same station, examine the adjustments of
the transit and correct the level and collimation
errors; then, to test the solar apparatus, by comparing
its indications resulting from solar observations
made during a.m. and p.m. hours with a meridian estab-
lished by observations on Polaris, proceed as follows:

July 29, 1914, at 4 h., 30 m. p.m. l.m.t., set off 34° 46' N.,
on the lat. arc, 18° 40' N. on the decl. arc and determine
a meridian with the solar and mark a point thereon
by a tack driven in the stake already set about 8 chs.
N. of station. This mark falls 1 1/2' E. of the meridian
established by the Polaris observations.

July 30, 1914, at 7 h., 00 m. a.m. l.m.t., with the lat. arc
unchanged, set off 18° 31' N. on the decl. arc and determine
a meridian with the solar and mark a point thereon by
a nail driven in the stake already set about 2 chs. N.
of station. This mark falls 2' W. of the meridian
established by the Polaris observations.

Each solar observation agrees within 1 1/2' with the meridian
established by Polaris observations, therefore conclude
that the adjustment of the instrument is satisfactory.

The magnetic bearing of the true meridian is N.14°55' W.

325

Resurvey of
4th Standard Parallel North thru Range 4 East
and North Boundary of Township 16 North, Range 4 East

Retracement for Resurvey.

East
Range 4 East
The west was
found and no retracement
parallel is of

monumenting of all
the original corners
of earth, with
bearing

It is found that
Tn. 17 N., R. 4
original position
std. cor. of Tn. 17
N., R. 4. In
the field of

According to the
plan of the std.
the location of the
corner is marked with

the following theories.
It is known that
of them were
to the location
detected many years
earlier and that
that all of said
the original cor.

Every
division lines of
Range 4 East. In
the field several
lines are visible
which are closing
lines of Range 4
East to any of

surveyed in 1933
the closing cor.
of Range 4 East
is found with a
bearing

The closing cor.
of Range 4 East
is found, no
closing cor. of Tn. 16
N., R. 4.

The closing cor.
of the
Range 4 East.

The closing cor.
of the original
divisional
lines is found
the closing cor.

The closing cor.
of the original
divisional lines is
found with the
closing cor. of Tn. 16
N., R. 4 and 4

The closing cor.
of the original
divisional lines is
found with the
closing cor. of the
original divisional
lines.

The closing cor.
of the original
divisional lines is
found with the
closing cor. of the
original divisional
lines.

- From std. cor. of Tn. 17 N., R. 4 and 5, hereinafter described.
- 8.30 East, on random line, on S. 1/4 of sec. 31 (E. 2). Diligent search in this vicinity fails to reveal any trace of the original closing cor. of Tn. 16 N., R. 4 & 5. Set temp. C.C.
- 40.45 Intersect the std. sec. cor. hereinafter described. True course and dist. of S. 1/4 of S. 1/4 of sec. 31 are therefore, east, 40.45 chs.
- 40.20 Thence East, on random line, on S. 1/4 of sec. 31 (E. 2). Fall 46 lks. S. of the std. cor. of sec. 31 and 32, hereinafter described. True course and dist. of S. 1/4 of S. 1/4 of sec. 31 are therefore, S. 80° 20' W., 40.20 chs.

- 6.50 East, on random line, on S. 1/4 of sec. 32 (E. 2). Diligent search in this vicinity fails to reveal any trace of the original closing cor. of sec. 31 and 32. Set temp. C.C.
- 40.01 Fall 57 lks. S. of the std. sec. cor. hereinafter described. True course and dist. of S. 1/4 of S. 1/4 of sec. 32 are therefore, S. 80° 11' W., 40.01 chs.
- 39.00 Thence East, on random line, on S. 1/4 of sec. 32 (E. 2). Fall 42 lks. S. of std. cor. of sec. 32 and 33, hereinafter described. True course and dist. of S. 1/4 of S. 1/4 of sec. 32 are therefore, S. 80° 22' W., 39.00 chs.

- 6.09 East, on random line, on S. 1/4 of sec. 33 (E. 2). Diligent search in this vicinity fails to reveal any trace of original closing cor. of sec. 32 and 33. Set temp. C.C.
- 39.00 Fall 29 lks. S. of std. sec. cor. hereinafter described. True course and dist. of S. 1/4 of S. 1/4 of sec. 33 are therefore, S. 80° 25' W., 39.00 chs.
- 40.07 Thence East, on random line, on S. 1/4 of sec. 33 (E. 2). Fall 15 lks. S. of std. cor. of sec. 33 and 34, hereinafter described. True course and dist. of S. 1/4 of S. 1/4 of sec. 33 are therefore, S. 80° 17' W., 40.07 chs.

- 8.16 East, on random line, on S. 1/4 of sec. 34 (E. 2). Diligent search in this vicinity fails to reveal any trace of original closing cor. of sec. 33 and 34. Set temp. C.C.
- 39.00 Fall 02 lks. S. of std. sec. cor. hereinafter described. True course and dist. of S. 1/4 of S. 1/4 of sec. 34 are therefore, S. 80° 21' W., 39.00 chs.
- 41.07 Thence East, on random line, on S. 1/4 of sec. 34 (E. 2). Fall 52 lks. S. of std. cor. of sec. 34 and 35, hereinafter described. True course and dist. of S. 1/4 of S. 1/4 of sec. 34 are therefore, S. 80° 25' W., 41.07 chs.

- East, on random line, on S. 1/4 of sec. 35 (E. 2). Diligent search in this vicinity fails to reveal any trace of original closing cor. of sec. 34 and 35. Set temp. C.C.
- 41.07 Fall 52 lks. S. of std. cor. hereinafter described. True course and dist. of S. 1/4 of S. 1/4 of sec. 35 are therefore, S. 80° 25' W., 41.07 chs.