

3750

Book "D"

4-679

87

(1)

BOOK 3750

FIELD NOTES

OF THE SURVEY OF THE

First Guide Meridian East, through Townships 36 North, between

Ranges 4 and 5 East, and the South boundary lines of all

the ~~th~~ SOUTH boundary lines of T. 36 N., R. 4 E.

WEST boundary

and

SUBDIVISION lines of

Township 36 North, Range 4 East

Of the Gila and Salt River Base and Meridian,

In the State of Arizona

EXECUTED BY

William E Hiester, U.S. Surveyor

AND

David M Daugherty, U.S. Transitman

In the capacity of U. S. Surveyors, under ^{Supplemental} Special Instructions dated September 12, 1925, issued by the U.S. District Cadastral Engineer to govern surveys included in Group No. 126 Arizona, which were approved by the Commissioner of the General Land Office, September 26, 1925, and Assignment Instructions dated October 26, 1925

Survey commenced December 10, 1925

Survey completed December 22, 1925

3750

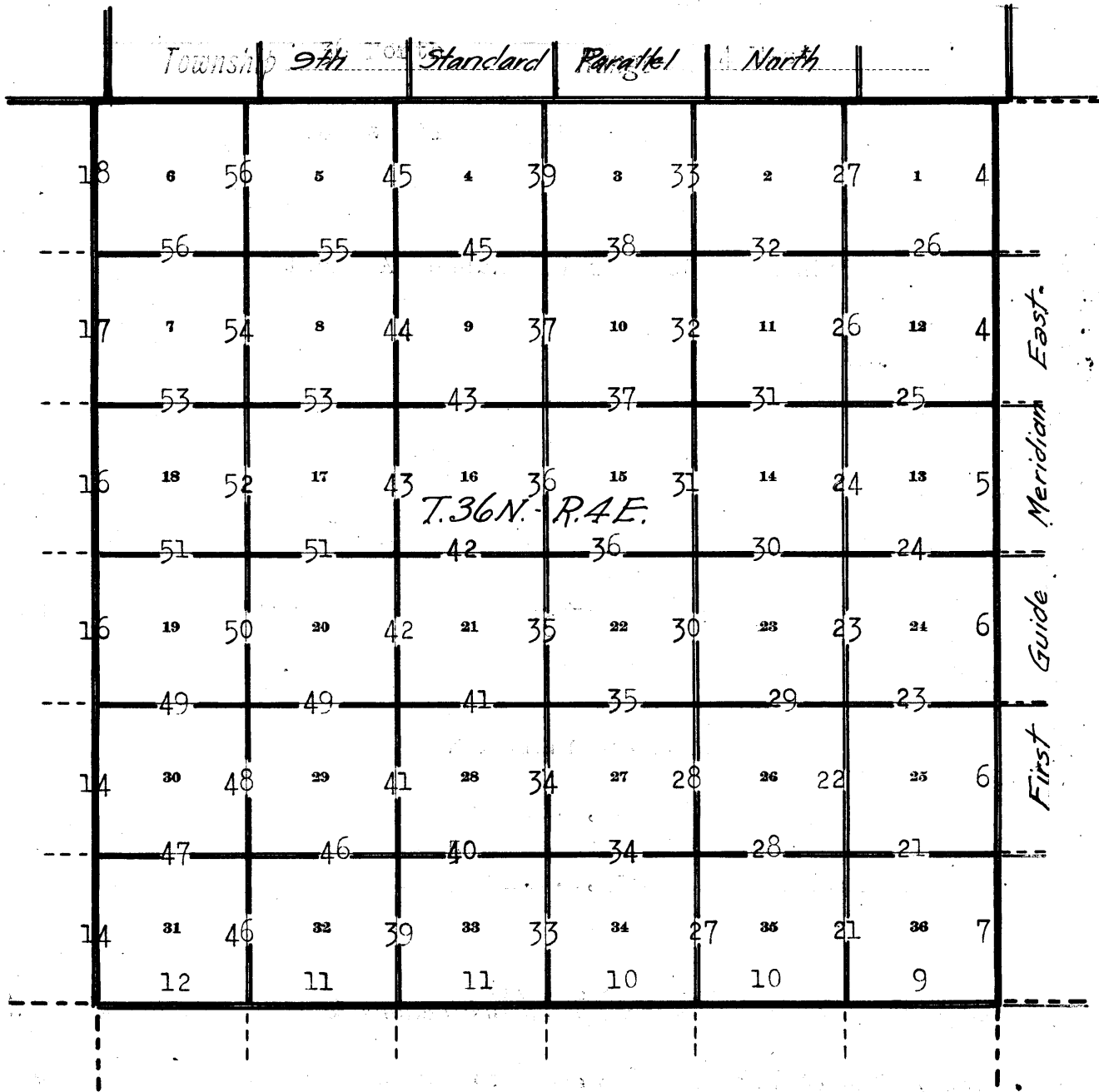
3750

Book "D"

Group 126- Arizona

BOOK 3750

INDEX DIAGRAM.



———— Surveyed under this group.

----- Unsurveyed.

----- To be surveyed under current Group No. 139.

BOOK 3750

Book "D"

Group 126 Arizona

Township 36 North., Range 4 East.

DATE DIAGRAM

1925

For dates of survey of 9th Std. Par. N. thru R. 3 & 4 E., see Books "B" and "C"

31 32 33 34 35 36
9 th. Standard Parallel North.

12-18-25	12-19-25	12-22-25	12-19-25	12-19-25	12-14-25	12-10-25
6	5	4	3	2	1	
12-17-25	12-19-25	12-19-25	12-18-25	12-19-25	12-14-25	12-10-25
7	8	9	10	11	12	
12-17-25	12-16-25	12-16-25	12-18-25	12-18-25	12-12-25	12-10-25
18	17	16	15	14	13	
12-16-25	12-12-25	12-21-25	12-18-25	12-12-25	12-12-25	12-10-25
19	20	21	22	23	24	
12-15-25	12-15-25	12-22-25	12-22-25	12-12-25	12-11-25	12-10-25
30	29	28	27	26	25	
12-14-25	12-15-25	12-17-25	12-12-25	12-11-25	12-11-25	12-10-25
31	32	33	34	35	36	
12-14-25	12-12-25	12-12-25	12-11-25	12-11-25	12-11-25	12-10-25
12-15-25	12-15-25	12-22-25	12-22-25	12-12-25	12-11-25	12-10-25
30	29	28	27	26	25	
12-16-25	12-12-25	12-21-25	12-18-25	12-12-25	12-12-25	12-10-25
19	20	21	22	23	24	
12-17-25	12-19-25	12-19-25	12-18-25	12-19-25	12-14-25	12-10-25
7	8	9	10	11	12	
12-18-25	12-19-25	12-22-25	12-19-25	12-19-25	12-14-25	12-10-25
6	5	4	3	2	1	

1 st. Guide Meridian East.

Indicates lines surveyed by William E Hiester, U.S. Surveyor, on dates shown thereon.

Indicates lines surveyed by David M Daugherty, U.S. Transitman, on dates shown thereon.

The surveys hereinafter described were commenced on December 10, 1925 and executed on dates shown on diagram on page 1 hereof, by William E. Hiester, U.S. Surveyor, using Buff transit No. 9977, and David M. Daugherty, U.S. Transitman, using Young and Sons transit No. 8534. ; Each instrument is equipped with full vertical circle and improved Smith solar attachment. The horizontal limb of each is provided with two double verniers, placed opposite to each other, reading to single minutes of arc which is also the least count of the verniers of the latitude and declination arcs. Unless otherwise specified all azimuth determinations are accomplished with the solar attachment, except the special observations on Polaris, for meridian upon which to test the solar apparatus, as stated in the field notes

The instruments were examined, tested on the true meridian at the Federal Building at Phoenix Arizona, found correct, and were approved by the District Cadastral Engineer for Arizona and California, October 26, 1925 conditional upon satisfactory field tests.

FIELD TEST OF BUFF TRANSIT NO. 9977.

December 9, 1925, Examine the adjustments of the transit and correct all errors, then, to test the solar apparatus by comparing its indications resulting from solar observations made during a.m., and p.m. hours with a meridian established by observations on Polaris, proceed as follows;

December 9, 1925, At camp near the cor. of secs. 29, 30, 31, and 32, T37N., R4E., Gila and Salt River Base and Meridian, Arizona, ; latitude $36^{\circ}34'N.$ and longitude $112^{\circ}01'W.$ At $2^h 20^m$ a.m., l.m.t., observe Polaris at western elongation, making four observations, two each with telescope in direct and reversed position, and mark the mean point in the line thus determined by a tack driven in a peg set firmly in the ground 10-chs. N.

Azimuth of Polaris at western elongation $= 1^{\circ}21'25''$

December 9, At 8 a.m., lay off the azimuth of Polaris $1^{\circ}21\frac{1}{2}'$ to the east and mark the true meridian thus determined by a tack driven in a stake set firmly in the ground 10-chs. N.

December 9, At 9 00 a.m., app. time, set off $36^{\circ}34'N.$ on the lat. arc, $22^{\circ}47'S.$ on the decl. arc, and determine a meridian with the solar, and mark a point thereof on the stake already set 10-chs. N. on which the meridian falls 1' east of the meridian established by the Polaris observations.

At apparent noon, set off $22^{\circ}48\frac{1}{2}'S.$ on the decl. arc, and observe the sun on the meridian and obtain a reading of $36^{\circ}34'N.$ on the lat. arc, which agrees with the calculated latitude of the place.

December 9, At 3 00 p.m., app. time, with the lat. arc unchanged, set off $22^{\circ}48\frac{1}{2}'S.$ on the decl. arc, and determine a meridian with the solar, and mark a point thereof on the stake already set 10-chs. N. This mark falls $\frac{1}{2}'$ west of the meridian established by the Polaris observations.

The above, and other tests of the solar, made during the usual hours of solar work, show the instrument to be in satisfactory adjustment.

FIELD TEST OF YOUNG AND SONS TRANSIT NO. 8534

h. m.

December 9, 1925, At 8.30 a.m., app. time, on the true meridian described above, set off $36^{\circ}34'$ N. on the lat. arc, $22^{\circ}46'$ S. on the decl. arc, and determine a meridian with the solar, and mark a point thereof by a tack driven in the stake already set 10-Chains N. on which the meridian thus determined falls $01\frac{1}{2}'$ W. of the meridian established by the Polaris observations.

At apparent noon, Dec. 9, set off $22^{\circ}48\frac{1}{2}'$ S. on the decl. arc, and observe the sun on the meridian, and obtain a reading of $36^{\circ}34'$ N. on the lat. arc, which agrees with the calculated lat. of this place.

h. m.

At 2 00 p.m. app. time, with the lat. arc. unchanged, set off $22^{\circ}48\frac{1}{2}'$ S. on the decl. arc, and determine a meridian with the solar which coincides with the true meridian established by the Polaris observations.

These and other tests of the solar, made during the usual hours of solar work define positions for meridian, which agree within $1'30''$ with the true meridian established by the polaris observations, therefore conclude that the adjustments of the instrument are satisfactory.

Unless otherwise specified all measurements are made with Lufkin 5-Chain steel tapes, compared with a Chesterman standard steel tape and found correct. All measurements are made on the slope, the vertical angles determined with clinometers, and the slope measurements properly reduced to true horizontal distances for entry in the final record.

(First Guide Meridian East)
 Survey of the East boundary of Township 36 North., Range 4 East .

Chains

At a point 8.54 chs. .(theoretical dist.) west of the Standard cor. of Ts. 37 N., Rs. 4 and 5 E., Set an iron post 3 ft. long, 3 ins. in diam. 27 ins. in the ground for closing cor. of Ts. 36 N., Rs. 4 and 5 E., marked on brass cap

T37N R4E	
S 36	
C C	
S 1	S 6
R4E	R5E
T36N	
1925	

Raise a mound of stone 3 ft. base, 2 ft. high S. of cor.

Thence

South bet. secs. 1 and 6

40.00

Over rolling sandy land, through sagebrush undergrowth. Set an iron post 3 ft. long 1 in. in diam. with stone 12x4x3 ins. marked with a cross (x) alongside, 12 ins. in the ground to bed rock, supported in a mound of stone 3½ ft. base, 2 ft. high for ¼ sec. cor., marked on brass cap

¼	
S 1	S 6
1925	

80.00

Set an iron post 3 ft. long, 2 ins. in diam. with limestone 14x13x12 ins. marked with a cross (x) alongside, 8 ins. in the ground to bedrock, supported in a mound of stone 3½ ft. base, 2½ ft. high for cor. of secs. 1, 6, 7, and 12, marked on brass cap.

T37N	
R4E	R5E
S 1	S 6
S 12	S 7
1925	

Land, rolling.
 Soil, sandy 3rd. rate.
 Timber, none.
 Undergrowth, sagebrush.

South bet. secs. 7 and 12.

Ascend 24 ft. over N. slope over rolling sandy land, thru. sagebrush undergrowth.

40.00

Set an iron post 3 ft. long, 1 in. in diam. with stone 16x10x4 ins., marked with a cross (x) alongside, 2 ins. in the ground to bedrock, supported in a mound of stone 3½ ft. base, 2½ ft. high for ¼ sec. cor., marked on brass cap

¼	
S 12	S 7
1925	

(First Guide Meridian East)
 Survey of the East boundary of Township 36 North., Range 4 East.

Chains

- 78.50 Top of broken ridge, bears E. and W.; Desc. 8 ft. over broken S. slope into South Canyon Wash.
 80.00 Set an iron post 3 ft. long, 2 ins. in diam. with lime stone 8x6x4 ins. marked with a cross (x) alongside, 4 ins. in the ground to bedrock, supported in a mound of stone 4 ft. base, 2½ ft. high for cor. of secs. 7, 12, 13, and 18, marked on brass cap

T 36 N	
R 4 E	R 5 E
S 12	S 7
S 13	S 18

1925

Land rolling and broken.
 Soil, sandy and stony 3rd. rate.
 Timber, none.
 Undergrowth, sagebrush.

- 40.00 South bet. secs. 13 and 18.
 Descend 122 ft. over broken south slope into South Canyon Wash.
 Set an iron post 3 ft. long, 1 in. in diam. 27 ins. in the ground for ¼ sec. cor., marked on brass cap

S 13	↑	S 18
------	---	------

1925

- 45.00 Raise a mound of stone 2 ft. base, 1½ ft. high W. of cor. Wash, 12 lks. wide, 1½ ft. deep, from N. 25° W., at junction with South Canyon Wash, 20 lks. wide, 3 ft. deep, course S 80° E. from S 75° W.; Ascend 131 ft. over broken N. slope.
 65.00 Top of ascent on N. slope, thence along E. slope continuing gradual ascent.
 80.00 Set an iron post 3 ft. long, 2 ins. in diam. 2 ins. in the ground over cross (x) on bedrock, supported in a mound of stone 5 ft. base, 2½ ft. high for cor. of secs. 13, 18, 19, and 24, marked on brass cap

T 36 N	
R 4 E	R 5 E
S 13	S 18
S 24	S 19

1925

The Colorado River bears East about 25.00 chs. dist.

Land, broken.
 Soil sandy and stony, 3rd. rate.
 Timber, none.
 Undergrowth, sagebrush.
 Good grass.

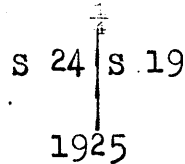
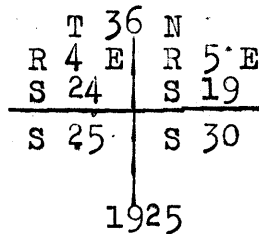
(First Guide Meridian East)
 Survey of the East boundary of Township 36 North., Range 4 East.

Chains

South bet. secs. 19 and 24.

Ascend 11 ft. over broken E. slope, through sagebrush undergrowth.

2.50 Top of ascent.; Descend 108 ft. over SE. slope.

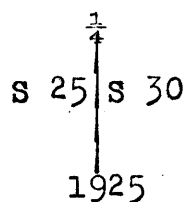
29.93 South fork of South Canyon Wash 25 lks. wide $1\frac{1}{2}$ ft. deep course $N40^{\circ}E$.32.13 Same wash 25 lks. wide, 2 ft. deep, course $N15^{\circ}W$. Asc. 45 ft. over broken E. slope.40.00 Set an iron post 3 ft. long, 1 in. in diam. with stone $14 \times 12 \times 8$ ins. marked with a cross (x) alongside, 2 ins. in the ground to bedrock, supported in a mound of stone 4 ft. base, $2\frac{1}{2}$ ft. high for $\frac{1}{4}$ sec. cor., marked on brass cap56.24 Same wash 25 lks. wide, 2 ft. deep, in bend, course $N15^{\circ}E$; from $S80^{\circ}W$.; Ascend 93 ft. over broken N. slope to80.00 Set an iron post 3 ft. long, 2 ins. in diam. with line stone $8 \times 4 \times 2$ ins. marked with a cross (x) alongside, 8 ins. in the ground to bedrock, supported in a mound of stone 4 ft. base 2 ft. high, for cor. of secs 19, 24, 25, and 30, marked on brass cap

Land, broken.
 Soil, stony 3rd. rate.
 Timber, none.
 Undergrowth, sagebrush.

South bet. secs. 25 and 30

Ascend 52 ft. over broken stony N. slope of spur,

10.00 Top of spur, slopes W. 4 chs. thence N.; Desc. 79 ft. over S. slope.

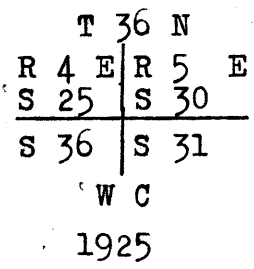
24.90 Draw, course $N75^{\circ}W$.; Asc. 60 ft. over N. slope to40.00 Set an iron post 3 ft. long, 1 in. in diam. with limestone $6 \times 5 \times 4$ ins. marked with cross (x) alongside, 2 ins. in the ground to bedrock supported in a mound of stone 4 ft. base $2\frac{3}{4}$ ft. high for $\frac{1}{4}$ sec. cor., marked on brass cap

62.50 Ascend 85 ft. over broken N. slope of ridge.
 Top of ridge bears $N70^{\circ}E$. and $S70^{\circ}W$. Desc. 46 ft. over SE. slope to

(First Guide Meridian East)
Survey of the East boundary of Township 36 North., Range 4 East.

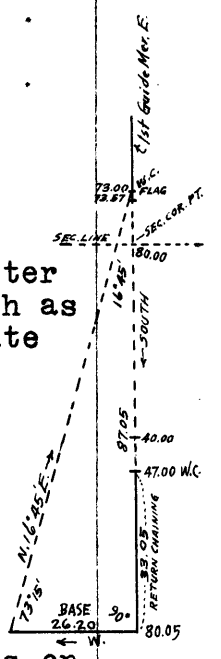
Chains

73.00 Set an iron post 3 ft. long, 2 ins. in diam. 4 ins. in the ground to bedrock, deposit a granite stone 8x6x4 ins. marked with a cross (x) alongside, and raise a mound of stone 4 ft. base, 2 1/2 ft. high around post, for witness cor. to cor. of secs. 25, 30, 31, and 36, marked on brass cap



73.57 North rim of Fence canyon with perpendicular walls, bears N80°E and S80°W. ; The precipitous character of the canyon walls beyond this point, being such as to render chaining on line impossible, triangulate as follows;

Set a flag on line at the WC. to cor. of secs. 25, 30, 31, and 36.
From a point ahead on range line measure a base West 26.20 chs. from the end of which the flag at the WC. bears N 16°45'E.
Dist. triangulated = 87.05 chs.



80.00 The true point for cor. of secs. 25, 30, 31, and 36 falls on precipitous N. wall of canyon, where it is inaccessible.; Witness cor. established on range line at 7.00 chs. North as described above.
The Colorado River bears East, about 25.00 chs. dist.

Land, broken.
Soil, stony 3 rd. and 4th. rate.
Timber, none.
Undergrowth, sagebrush.

10.00 South from true point for cor. of secs. 25, 30, 31, and 36, bet. secs. 31 and 36.
Descend (approx.) 1000 ft. over precipitous N. wall of Fence canyon.

40.00 (Approx.) Bottom of Fence canyon, course N80°E.; Ascend (approx.) 1500 ft. over precipitous S. wall of canyon.

40.00 True point for 1/4 sec. cor. falls on precipitous S. wall of canyon, where it is inaccessible; Witness cor. established on range line at 7.00 chs. South as hereinafter described.

Dist. of triangulation flag on range line from true point for cor. of secs. 25, 30, 31, and 36 by triangulation previously described = 80.05 chs.
Dist by return measurement = 33.05 "
47.00

47.00 Top of S. rim of Fence canyon, bears E. and W.; Set an iron post 3 ft. long, 1 in. in diam. 6 ins. in the ground to bedrock, deposit a lime stone 34x10x7 ins. marked with a cross (x) alongside, and raise a mound of stone 4 ft. base, 1 1/2 ft. high around post for witness cor. to the 1/4 sec. cor., marked on brass cap

(First Guide Meridian East)
 Survey of the East boundary of Township 36 North., Range 4 East.

Chains

W C
 $\frac{1}{4}$
 S. 36 | S 31
 1925

- Continue line and measurement by chaining.
 Descend 95 ft. over SE. slope over broken stony land.
 52.91 Wash 20 lks. wide 2 ft. deep, course N30°E.; Ascend 127 ft.
 over NW. slope to
 80.00 Set an iron post 3 ft. long, 3 ins. in diam. 12 ins. in the
 ground to bedrock, deposit a limestone 19x12x3 ins.
 marked with a cross (x) alongside, and raise a
 mound of stone 4 ft. base, 1 $\frac{1}{2}$ ft. high around post
 for cor. of Ts. 35 and 36 N., Rs. 4 and 5 E., marked
 on brass cap

T 36 N
 R 4 E | R 5 E
 S 36 | S 31
 S 1 | S 6
 T 35 N
 1925

Land, broken.
 Soil, stony 3rd. and 4th. rate.
 Timber, none.
 Undergrowth, sagebrush.

Survey of the South boundary of Township 36 North., Range 4 East.

Chains

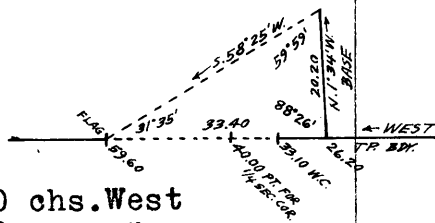
From the cor. of Tps. 35 and 36 N., Rs. 4 and 5 E., herein-
before described,
West on true line bet. secs. 1 and 36
Descend 54 ft. over W. slope over broken stony land, through
sagebrush undergrowth.
8.40 Wash 12 lks. wide, 2 ft. deep, course N30°E.;
Ascend 85 ft. over E. slope.
26.20 Top of spur, slopes N15°E.
Descend 146 ft. over W. slope.
33.10 East rim of Fence canyon with perpendicular walls, bears
N15°E. and S15°W. The precipitous character of the
canyon walls beyond this point renders further
chaining on line impossible, therefore,
Set an iron post 3 ft. long, 1 in. in diam. 6 ins. in the
ground to bedrock, deposit a lime stone 14x12x8 ins.
marked with a cross (x) alongside, and raise a mound
of stone 3½ ft. base 2½ ft. high around post for
witness cor. to the ¼ sec. cor., marked on brass cap

$$WC \frac{1}{4} \frac{S 36}{S 1}$$

1925

To obtain dist. across canyon, triangulate as follows;
Set a flag ahead on line on W. rim
of canyon.

At station on top of spur 26.20 chs.
West of Tp. cor. measure a base
N1°34'W., 20.20 chs., from the N. end
of which the flag on line on W. rim
of canyon, bears S58°25'W.



Dist. on line bet. secs. 1 and 36 = 26.20 chs. West
Dist by triangulation = 33.40 " "
Total dist. = 59.60 " "

40.00 The true point for ¼ sec. cor. falls on precipitous E.
wall of canyon, where it is inaccessible.; Witness
cor. established on township line at 6.90 chs. East
as described above.
49.50 (Approx.) Bottom of Fence canyon about 1400 ft. deep, course
N20°E.;
Ascend (Approx.) 1400 ft. over precipitous W. wall of canyon
59.60 Triangulation point on line on W. rim of canyon, bears
NE. and SW. continue line and measurement by chaining.
Descend 100 ft. over SW. slope into canyon.
65.66 Bottom of box canyon, course N70°E.
Ascend 91 ft. over SE. slope to
80.00 Set an iron post 3 ft. long, 2 ins. in diam. 6 ins. in the
ground to bedrock, deposit a lime stone 14x10x8 ins,
marked with a cross (x) alongside, and raise a mound
of stone 3½ ft. base, 2½ ft. high around post for
cor. of secs. 1, 2, 35, and 36, marked on brass cap

T 36 N	R 4 E
S 35	S 36
S 2	S 1

T 35 N
1925

Land, broken.
Soil, stony 3rd. rate.
Timber, none.
Undergrowth, sagebrush.

Survey of the South boundary of Township 36 North., Range 4 East.

Chains.

West bet. secs. 2 and 35.

Ascend along S. slope 94 ft. over stony broken land, through sagebrush undergrowth.

40.00 Set an iron post 3 ft. long, 1 in. in diam. 12 ins. in the ground to bedrock, deposit a lime stone 12x10x6 ins. marked with a cross (x) alongside, and raise a mound of stone 3½ ft. base, 2 ft. high around post for ¼ sec. cor. marked on brass cap

¼ S 35
S 2

1925

55.00 Top of ridge bears N70°E. and S70°W.

Descend 20 ft. over NW. slope to

80.00 Set an iron post 3 ft. long, 2 ins. in diam. 12 ins. in the ground to bedrock, deposit a lime-stone 14x10x4 ins. marked with a cross (x) alongside, and raise a mound of stone 4 ft. 2 ft. high around post, for cor. of secs. 2, 3, 34, and 35, marked on brass cap

T 36 N	R 4 E
S 34	S 35
S 3	S 2

T35N
1925

Land, rolling and broken.
Soil, sandy and stony 3rd. rate.
Timber, none.
Undergrowth, sagebrush.

West bet. secs. 3 and 34.

Descend 23 ft. over rolling sandy land, slopes to the north through sagebrush undergrowth.

40.00 Set an iron post 3 ft. long, 1 in. in diam. 28 ins. in the ground for ¼ sec. cor., marked on brass cap

¼ S 34
S 3

1925

45.20 Raise a mound of stone 2 ft. base, 1½ ft. high N. of cor. Gulch 5 lks. wide, course N25°E.

Ascend 50 ft. over E. slope.

70.00 Top of ridge, bears N15°E. and S15°W.

Descend 25 ft. over W. slope to

80.00 Set an iron post 3 ft. long, 2 ins. in diam. 27 ins. in the ground for cor. of secs. 3, 4, 33 and 34., marked on brass cap

T 36 N	R 4 E
S 33	S 34
S 4	S 3

T35N
1925

Survey of the South boundary of Township 36 North., Range 4 East.

Chains

Raise a mound of stone 2 ft. base, 1 1/2 ft. high W. of cor.
Land, rolling.
Soil, sandy 3rd. rate
Timber, none.
Undergrowth, sagebrush.

40.00 West bet. secs. 4 and 33.
Over rolling sandy land, through sagebrush undergrowth.
Set an iron post 3 ft. long, 1 in. in diam. 18 ins. in the ground to bedrock, deposit a limestone 14x10x8 ins. marked with a cross (x) alongside, and raise a mound of stone 4 ft. base, 1 1/2 ft. high around post for 1/4 sec. cor., marked on brass cap

1/4 S 33
S 4

1925

45.15 Wash 10 lks. wide 1 ft. deep, course N20°E.
55.19 Wash 8 lks. wide 1 ft. deep, course N45°E.
59.30 Road from Kane Utah to Saddle Mountain, bears N. and S.
64.00 Top of spur slopes S.
Descend 24 ft. over W. slope.
73.15 Wash 10 lks. wide 1 ft. deep, course N15°W.
Ascend 17 ft. over E. slope. to
80.00 Enter scattering cedar timber bears N. and S.
Set an iron post 3 ft. long, 2 ins. in diam. 12 ins. in the ground to bedrock, deposit a limestone 12x6x4 ins. marked with a cross (x) alongside, and raise a mound of stone 4 ft. base, 1 1/2 ft. high around post for cor. of secs. 4, 5, 32; and 33., marked on brass cap

T 36 N | R 4 E
S 32 | S 33
S 5 | S 4
T 35 N
1925

from which
A cedar 6 ins. in diam. bears S 13°E. 531 lks. dist., marked T35N., R4E. S4 BT.
A cedar 8 ins. in diam. bears S64°W. 606 lks. dist., marked T35N., R4E., S5 BT.
A cedar 4 ins. in diam. bears N59°W. 397 lks. dist., marked T36N., R4E., S32 BT.
No other trees available.

Land rolling.
Soil sandy and stony 3 rd. rate.
Timber, scattering cedar.
Undergrowth, sagebrush.

20.00 West bet. secs. 5 and 32.
Over broken stony land, through scattering cedar timber and sagebrush undergrowth.
Top of ridge bears N. and S.
Descend 63 ft. over W. slope.

Survey of the South boundary of Township 36 N., Range 4 East.

Chains

25.33 North canyon wash 30 lks. wide 5 ft. deep, course NE.
Ascend 86 ft. over broken E. slope .

40.00 Set an iron post 3 ft. long, 1 in. in diam. 18 ins. in the
ground to bedrock and raise a mound of stone
 $3\frac{1}{2}$ ft. base $1\frac{1}{2}$ ft. high around post for $\frac{1}{4}$ sec.
cor., marked on brass cap

$$\frac{1}{4} \begin{array}{r} S 32 \\ \hline S 5 \end{array}$$

1925

from which

A cedar 12 ins. in diam. bears N66 $\frac{1}{2}$ °E 258 lks. dist.,
marked $\frac{1}{4}$ S32 BT.

A cedar 5 ins. in diam. bears S12 $\frac{3}{4}$ °W. 88 lks. dist., marked
 $\frac{1}{4}$ S5 BT.

57.50 Wash 12 lks. wide $1\frac{1}{2}$ ft. deep, course N15°E.
Ascend 34 ft. over SE. slope to

80.00 Set an iron post 3 ft. long, 2 ins. in diam. 27 ins. in
the ground for cor. of secs. 5, 6, 31, and 32, marked on
brass cap

T 36 N	R 4 E
S 31	S 32
S 6	S 5
T 35 N	
1925	

from which

A cedar 8 ins. in diam. bears N45°E. 150 lks. dist.,
marked T36N., R4E S32 BT.

A cedar 9 ins. in diam. bears S46 $\frac{1}{2}$ °E. 170 lks. dist.,
marked T35N., R4E S5 BT.

A cedar 15 ins. in diam. bears S51 $\frac{1}{2}$ °W. 50 lks. dist.,
marked T35N., R4E., S6 BT.

A cedar 11 ins. in diam. bears N15 $\frac{1}{2}$ °W. 135 lks. dist.,
marked T36N., R4E S31 BT.

Land, broken.

Soil sandy and stony 3 rd. rate.

Timber, scattering cedar.

Undergrowth, sagebrush.

West bet. secs. 6 and 31.

Over broken stony land, through scattering cedar and
pinion timber and sagebrush undergrowth.

9.35 Dry wash 10 lks. wide, course NE.
Ascend 145 ft. over E. slope of Buckskin mountains over
mountainous land.

17.60 Wire fence bears N15°E. and S15°W.

28.20 Top of spur bears SE.

32.40 Descend 12 ft. over SW. slope.

Wash course SE.

Ascend 207 ft. over SE. slope to

40.00 Set an iron post 3 ft. long, 1 in. in diam. 12 ins. in the
ground to bedrock and raise a mound of stone around
post for $\frac{1}{4}$ sec. cor., marked on brass cap

$$\frac{1}{4} \begin{array}{r} S 31 \\ \hline S 6 \end{array}$$

1925

Survey of the South boundary of Township 36 North., Range 4 East.

Chains

64.15
64.15
78.40

from which,
 A pinion 14 ins. in diam. bears N37°W.84 lks. dist.,
 marked $\frac{1}{4}$ S31 BT.
 A pinion 12 ins. in diam. bears S17°E.26 lks. dist.,
 marked $\frac{1}{4}$ S6 BT.
 Continue ascent 569 ft. over SE. slope
 Wash, course SE.
 (Theoretical dist.) Set an iron post 3 ft. long, 3 ins. in
 diam. 6 ins. in the ground to bedrock and raise a mo-
 und of stone 6 ft. base, 2 ft. high around post for
 cor. of Tps. 35 and 36 N., Rs. 3 and 4 E., marked on
 brass cap

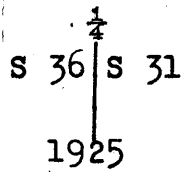
T 36 N	
R 3 E	R 4 E
S 36	S 31
S 1	S 6
T35N	
1925	

from which

A pinion 12 ins. in diam. bears N5°E. 20 lks. dist.,
 marked T36N., R4E., S31 BT.
 A pinion 12 ins. in diam. bears S37 $\frac{1}{4}$ °E. 122 lks. dist.,
 marked T35N., R4E., S6 BT.
 A pinion 10 ins. in diam. bears S39 $\frac{1}{2}$ °W. 74 lks. dist.,
 marked T35N., R3E., S1 BT.
 A pinion 12 ins. in diam. bears N72°W. 131 lks. dist.,
 marked T36N., R3E., S36 BT.
 Land, broken and mountainous.
 Soil, sandy and stony, 3rd. and 4th. rate.
 Timber, cedar and pinion.
 Undergrowth, sagebrush and cedar.

Survey of the West boundary of Township 36 North., Range 4 East.

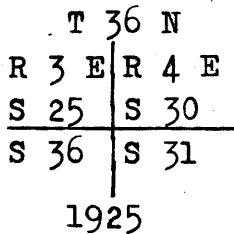
Chains. From the cor. of Tps. 35 and 36 N., Rs. 3 and 4 E., hereinbefore described
 North bet. secs. 31 and 36.
 Over broken mountainous land, slopes E., through scattering cedar and pinion timber and sagebrush undergrowth.
 .80 Top of spur falls SE.
 Descend 122 ft. over NE. slope.
 10.40 Wash, course SE.
 Ascend 17 ft. over SW. slope.
 23.50 Top of spur slopes E.
 Descend 157 ft. over N. slope.
 30.70 Wash 20 lks. wide, course E.
 Ascend 118 ft. over S. slope.
 40.00 Set an iron post 3 ft. long, 1 in. in diam. 18 ins. in the ground to bedrock and raise a mound of stone 3 ft. base 1½ ft. high around post for ¼ sec. cor., marked on brass cap



from which

A pinion 10 ins. in diam. bears N48°W. 54 lks. dist., marked ¼ S36 BT.
 A pinion 10 ins. in diam. bears S25°E. 62 lks. dist., marked ¼ S31 BT.

48.50 Top of spur, slopes E.
 Descend 497 ft. over broken rocky N. slope. to
 80.00 Set an iron post 3 ft. long, 2 ins. in diam. 22 ins. in the ground to bedrock, deposit a limestone 14x10x3 ins. marked with a cross (x) alongside, and raise a mound of stone 3 ft. base, 1 ft. high around post for cor. of secs. 25, 30, 31, and 36., marked on brass cap



from which,

A cedar 10 ins. in diam. bears N79¼°E. 53 lks. dist., marked T36N., R4E., S30 BT.
 A pinion 8 ins. in diam. bears S88½°E. 122 lks. dist., marked T36N., R4E., S31 BT.
 A cedar 12 ins. in diam. bears S50°W. 25 lks. dist., marked T36N., R3E., S36 BT.
 No other trees available.

Land, mountainous.
 Soil stony, 3rd. and 4th. rate.
 Timber, cedar and pinion.
 Undergrowth, sagebrush and cedar.

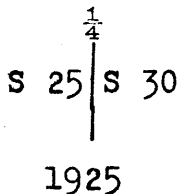
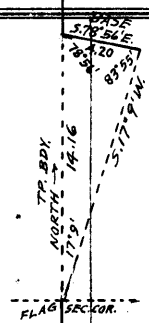
Note This cor. is situated at top of precipitous slope into canyon.

North bet. secs. 25 and 30.
 Descend precipitous N. slope over mountainous land, through scattering cedar and pinion timber and sagebrush undergrowth, impracticable to chain on line, Triangulate as follows;

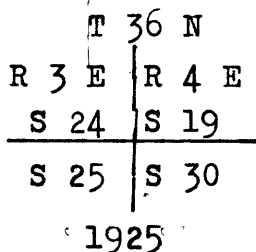
Survey of the West boundary of Township 36 North, Range 4 East.

Chains

Set a flag ahead on range line on N. side of canyon.
 From flag on range line, measure a base S78°56'E. 4.20 chs. dist. from the SE. end of which a flag at the cor. of secs. 25, 30, 31, and 36 bears S17°09'W.
 Dist. by triangulation across canyon = 14.16 chs.
 2.50 (Approx.) Bottom of canyon, course SE. about 400 ft. deep.
 Ascend precipitous N. wall of canyon over cliffs.
 14.16 Triangulation point on range line on N. rim of canyon bears NW. and SE.
 Continue line and measurement by chaining.
 Ascend 39 ft. over SE. slope of spur.
 18.00 Top of ridge bears E. and W. thence over nearly level land on ridge.
 33.00 Descend 79 ft. over N. slope. to
 40.00 Set an iron post 3 ft. long, 1 in. in diam. 3 ins. in the ground to bedrock, and raise a mound of stone 4 ft. base 2½ ft. high around post for ¼ sec. cor., marked on brass cap



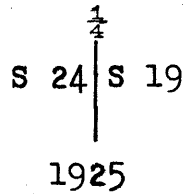
from which,
 A pinion 12 ins. in diam. bears N40½°W. 54 lks. dist., marked ¼ S25 BT.
 A pinion 14 ins. in diam. bears S76½°E. 60 lks. dist., marked ¼ S30 BT.
 Continue descent 124 ft. over N. slope.
 44.63 Wash 12 lks. wide 2 ft. deep, course S80°E.
 Ascend 145 ft. over SW. slope
 58.92 Top of spur slopes E.
 Descend 27 ft. over N. slope.
 72.92 Wash 8 lks. wide 2 ft. deep, course E.
 Ascend 137 ft. over S. slope. to
 80.00 Set an iron post 3 ft. long, 2 ins. in diam. 6 ins. in the ground to bedrock, and raise a mound of stone 5 ft. base, 2½ ft. high around post for cor. of secs. 19, 24, 25, and 30, marked on brass cap



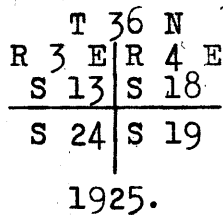
from which,
 A pinion 14 ins. in diam. bears N57½°E. 69 lks. dist., marked T36N., R4E., S19 BT.
 A pinion 10 ins. in diam. bears S63½°E. 98 lks. dist., marked T36N., R4E., S30 BT.
 A pinion 10 ins. in diam. bears S26°W. 120 lks. dist., marked T36N., R3E., S25 BT.
 A pinion 14 ins. in diam. bears N62°W. 51 lks. dist., marked T36N., R3E., S24 BT.
 Land mountainous.
 Soil, stony 4th. rate.
 Timber, scattering cedar and pinion.
 Undergrowth, sagebrush and cedar.

Survey of the West boundary of Township 36 North, Range 4 East.

Chains
 North bet. secs.19 and 24.
 Ascend 73 ft. over stony S.slope,over mountainous land,
 through scattering cedar and pinion timber and
 sagebrush undergrowth.
 6.00 Top of spur,slopes S75°E.
 Descend 14 ft. over rolling NE.slope.
 15.60 Bottom of draw,course E.
 Ascend 23 ft. over S. slope.
 21.90 Top of spur,slopes S80°E.
 Descend 72 ft. over N. slope.
 25.27 Wash 12 lks. wide,1 ft. deep,course S80°E.
 Ascend 113 ft. over S. slope
 34.80 Top of ridge,bears E. and W.
 Descend 125 ft. over NE. slope.
 40.00 Set an iron post 3 ft. long,1 in. in diam.16 ins. in the
 ground to bedrock,and raise a mound of stone
 3 ft. base,1½ ft. high around post for ¼ sec. cor.
 marked on brass cap



from which,
 A pinion 8 ins. in diam.bears N61½°E.55 lks. dist.,
 marked ¼ S19 BT.
 A cedar 4 ins. in diam.bears S29½°W.29 lks. dist.,
 marked ¼ S24 BT.
 50.72 Wash 12 lks. wide 12 ft.deep in bottom of canyon,course
 S75°E.
 Ascend 133 ft. over SW.slope.
 60.00 Top of ridge bears E. and W.
 Descend 160 ft. over N. slope.
 71.29 Wash 12 lks. wide 3 ft. deep,course S80°E.
 Ascend 135 ft. over S. slope to.
 80.00 Set an iron post 2 ft. long,2 ins.in diam.20 ins. in the
 ground to bedrock,and raise a mound of stone
 3 ft. base,1 ft. high around post for cor.of
 secs.13,18,19,and 24.,marked on brass cap



from which,
 A pinion 6 ins. in diam.bears N66°E. 64 lks. dist.,
 marked T36N.,R4E.,S18 BT.
 A pinion 10 ins. in diam. bears S80½°E.145 lks. dist.,
 marked T36N.,R4E.,S19 BT.
 A pinion 12 ins. in diam. bears S45½°W.74 lks. dist.,
 marked T36N.,R3E.,S24 BT.
 A pinion 12 ins. in diam.bears N12½°W.43 lks. dist.,
 marked T36N.,R3E.,S13 BT.
 Land,mountainous.
 Soil,stonny 4th. rate.
 Timber,scattering cedar and pinion.
 Undergrowth,sagebrush.

North bet. secs.13 and 18.

Survey of the West boundary of Township 36 North., Range 4 East.

Chains	
	Ascend 6 ft. over S. slope over stony mountainous land, through heavy cedar and pinion timber and brush undergrowth.
2.00	Top of ridge, bears E. and W. Descend 150 ft. over N. slope.
10.63	Wash 10 lks. wide 12 ft. deep, course E. Ascend 135 ft. over S. slope.
21.00	Top of spur slopes N80°E. Descend 127 ft. over N. slope.
26.40	Wash 10 lks. wide 2 ft. deep, course N75°E. Ascend 148 ft. over SE. slope.
39.00	Top of spur, slopes E. Descend 215 ft. over broken N. slope.
40.00	Set an iron post 3 ft. long, 1 in. in diam. 28 ins. in the ground for $\frac{1}{4}$ sec. cor., marked on brass cap

$\frac{1}{4}$
 S 13 | S 18
 1925

from which,

	A pinion 8 ins. in diam. bears N47°E. 54 lks. dist., marked $\frac{1}{4}$ S18 BT.
	A pinion 26 ins. in diam. bears S36 $\frac{1}{4}$ °W. 24 lks. dist., marked $\frac{1}{4}$ S 13 BT.
54.46	Wash 12 lks. wide 2 ft. deep, course S80°E. Ascend 219 ft. over stony SE. slope.
64.00	Top of spur, slopes E. Descend 150 ft. over N. slope. to
80.00	Set an iron post 3 ft. long, 2 ins. in diam. 27 ins. in the ground for cor. of secs. 7, 12, 13, and 18, marked on brass cap

T 36 N
 R 3 E | R 4 E
 S 12 | S 7
 S 13 | S 18
 1925

from which,

	A pinion 6 ins. in diam. bears N48 $\frac{3}{4}$ °E. 98 lks. dist., marked T36N., R4E., S7 BT.
	A pinion 6 ins. in diam. bears S79°E. 100 lks. dist., marked T36N., R4E., S18 BT.
	A pinion 12 ins. in diam. bears S9 $\frac{1}{4}$ °W. 95 lks. dist., marked T36N., R3E., S13 BT.
	A pinion 30 ins. in diam. bears N53 $\frac{1}{2}$ °W. 74 lks. dist., marked T36N., R3E., S12 BT.

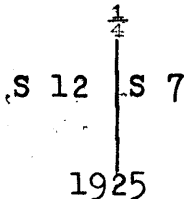
Land, mountainous.
Soil, stony 4th. rate.
Timber, heavy cedar and pinion.
Undergrowth, sagebrush.

	North bet. secs. 7 and 12. Over stony mountainous land, through heavy cedar and pinion timber and sagebrush undergrowth.
1.20	Wash 5 lks. wide 1 ft. deep, course E. Ascend 123 ft. over SE. slope.
13.30	Top of spur slopes E. Descend 176 ft. over N. slope.

Survey of the West boundary of Township 36 North., Range 4 East.

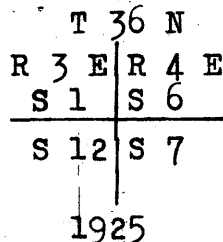
Chains

- 20.15 Wash 10 lks. wide 2 ft. deep, course $N80^{\circ}E$.
Ascend 239 ft. over rocky SE. slope.
- 36.00 Top of ridge bears E. and W.
Descend 150 ft. over N. slope.
- 40.00 Set an iron post 3 ft. long, 1 in. in diam. 20 ins. in the
ground to bedrock, and raise a mound of stone 4 ft.
base $1\frac{1}{2}$ ft. high around post for $\frac{1}{4}$ sec. cor., marked
on brass cap



from which,

- A pinion 8 ins. in diam. bears $N76^{\circ}E$. 26 lks. dist.,
marked $\frac{1}{4}$ S7 BT.
- A pinion 8 ins. in diam. bears $N42\frac{1}{4}^{\circ}W$. 28 lks. dist.,
marked $\frac{1}{4}$ S12 BT.
- 50.98 Wash 10 lks. wide 1 ft. deep in bottom of draw, course
E.
Ascend 87 ft. over S. slope.
- 56.00 Top of spur, slopes E.
Descend 110 ft. over NE. slope. to
- 80.00 Set an iron post 3 ft. long, 2 ins. in diam. 8 ins. in the
ground to bedrock, and raise a mound of stone
4 ft. base $2\frac{1}{2}$ ft. high around post for cor. of
secs. 1, 6, 7, and 12, marked on brass cap



from which,

- A pinon 8 ins. in diam bears $N62\frac{1}{2}^{\circ}E$. 19 lks. dist.,
marked T36N., R4E., S6 BT.
- A pinion 8 ins. in diam. bears $S83\frac{1}{4}^{\circ}E$. 81 lks. dist.,
marked T36N., R4E., S7 BT.
- A pinion 8 ins. in diam. bears $S71\frac{1}{4}^{\circ}W$. 73 lks. dist.,
marked T36N., R3E., S12 BT.
- A pinion 8 ins. in diam. bears $N85^{\circ}W$. 39 lks. dist.,
marked T36N., R3E S1 BT.

Land, mountainous.

Soil, stony 4th. rate.

Timber, heavy cedar and pinion.

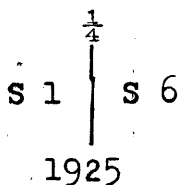
Undergrowth, sagebrush.

- North bet. secs. 1 and 6.
Descend 110 ft. over N. slope through heavy cedar and
pinion timber over stony mountainous land.
- 3.63 Wash 10 lks. wide 1 ft. deep in bottom of draw, course E.
Ascend 134 ft. over S. slope
- 20.00 Top of spur slopes E.
Descend 170 ft. over N. slope.
- 26.71 Wash 10 lks. wide 1 ft. deep in bottom of draw, course
 $N60^{\circ}E$.
Ascend 157 ft. over SE. slope .

Survey of the West boundary of Township 36 North., Range 4 East.

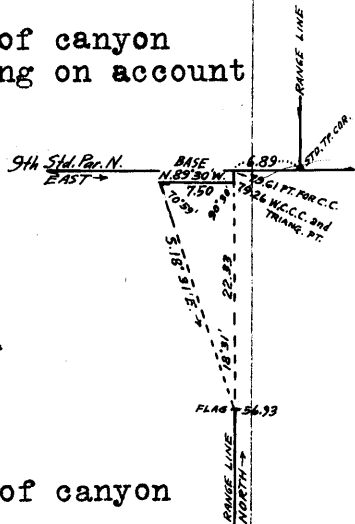
Chains

- 36.00 Top of spur slopes N80°E.; Descend 68 ft. over N. slope .
- 40.00 Set an iron post 3 ft. long, 1 in. in diam. 27 ins. in the ground for 1/4 sec. cor., marked on brass cap

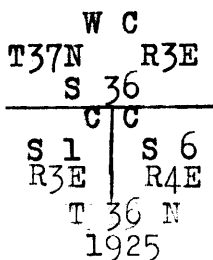


- 42.65 Continue descent 80 ft. over N. slope . Wash 12 lks. wide 2 ft. deep, course S80°E. Ascend 123 ft. over SW. slope.
- 50.00 Top of ridge bears E. and W. Descend 53 ft. over N. slope. to
- 56.93 To edge of precipitous cliffs along S. side of canyon bears NE. and SW.; Discontinue chaining on account of cliffs. Triangulate as follows.

Set a flag on line in bottom of canyon. vert. angle to said flag = -27 1/4°
 From flag on line in bottom of canyon measure a base N89°30'W. 7.50 chs. dist. from W. end of which a flag at 56.93 chain station bears S 18°31'E.
 Dist. on line = 56.93 chs.
 Dist by triang. 22.33 "
 Total Dist = 79.26 "



- 79.26 Triangulation point on range line in bottom of canyon 720 ft. below top of rim. Set an iron post 3 ft. long 3 ins. in diam. 27 ins. in the ground for witness cor. to the closing cor. of Tps. 36 N., Rs. 3 and 4 E. on the 9 th. Std. Par. N., marked on brass cap



- 79.61 from which, A pinion 12 ins. in diam. bears S53 1/4°E. 392 lks. dist. marked T36N., R4E. S6 CC WC. BT. A pinion 6 ins. in diam. bears S10 1/4°W. 83 lks. dist., marked T36N., R3E., S1 CC WC. BT. Continue line and measurement by chaining. Intersect the 9 th. Stan. Par. N. 6.89 chs. West of the Std. cor. of Tps. 37 N., Rs. 3 and 4 E. described in book "B" of this group. This point falls in bed of wash where prevailing conditions would insure the destruction of the cor.; Witness cor. established on range line at 35 lks. South as described above.

Land, mountainous.
 Soil, stony 4th. rate.
 Timber, heavy cedar and pinion.
 Undergrowth, sagebrush.

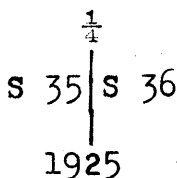
Boundaries of Township 36 North., Range 4 East.

Latitudes, Departures, and closing errors.

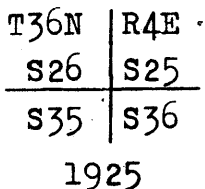
Line Designated	True course	Dist. Chs.	Latitudes		Departures	
			N. Chs.	S. Chs.	E. Chs.	W. Chs.
South Boundary	West	478.40				478.40
West Boundary	North	479.61	479.61			
North Boundary (9th. Std. Par. N.)	East	478.35			478.35	
East Boundary	South	480.00		480.00		
Convergency					.54	
Totals-----			479.61	480.00	478.89	478.40
				479.61	478.40	
Error in latitude			0.39		0.49	
Error in departure					0.49	

Survey of Subdivision of Township 36 North., Range 4 East.

- Chains. From the cor. of secs. 1, 2, 3, 5, and 36 on S. bdy. of Tp. herein before described
N 0°01'W. bet. secs. 35 and 36.
Ascend SE. slope 117 ft. over hilly land, through sagebrush undergrowth.
- 17.90 Top of spur slopes NE., leave hilly land bears NE. and SW., enter rolling land slopes W.
- 40.00 Set an iron post 3 ft. long, 1 in. in diam. 10 ins in the ground to bedrock, deposit a limestone 8x8x6 ins. marked with a cross (x) alongside, and raise a mound of stone 2½ ft. base. 2 ft. high around post for ¼ sec. cor., marked on brass cap



- 80.00 Set an iron post 3 ft. long, 2 ins. in diam. 10 ins. in the ground to bedrock, deposit a limestone 8x8x6 ins. marked with a cross (x) alongside, and raise a mound of stone 3 ft. base, 2 ft. high around post for cor. of secs. 25, 26, 35, and 36, marked on brass cap

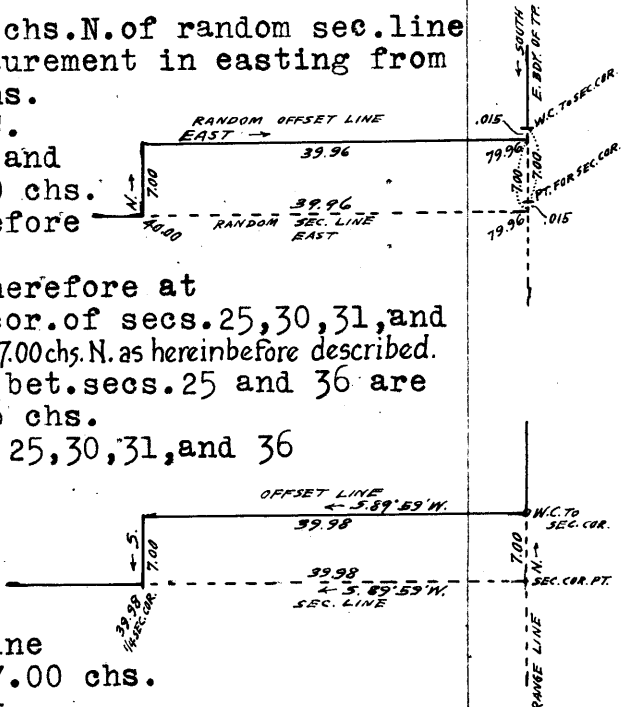


Land, hilly and rolling.
Soil, stony 3rd. rate.
Timber, none.
Undergrowth, sagebrush.

- 40.00 East, on a random line, bet. secs. 25 and 36.
Set temp. ¼ sec. cor.
Thence, North, 7.00 chs., on offset line to Offset point.,
Thence
East, on random offset line, 7.00 chs. N. of random sec. line position, continuing measurement in easting from sec. cor., and at 79.96 chs. fall 1½ lks. S. of the WC. to cor. of secs. 25, 30, 31, and 36, on E. bdy. of Tp. (7.00 chs. N. of cor. point), hereinbefore described.

- 79.96 The random line, extended, would therefore at
Fall 1½ lks. S. of true point for cor. of secs. 25, 30, 31, and 36, on E. bdy. of Tp., witnessed 7.00 chs. N. as hereinbefore described.
The true course and dist. of line bet. secs. 25 and 36 are therefore S 89°59'W. 79.96 chs.
From true point for cor. of secs. 25, 30, 31, and 36 North 7.00 chs. (measurement by triangulation hereinbefore described) to witness cor. to secs. 25, 30, 31, and 36

- Thence
S 89°59'W., 39.98 chs., on offset line parallel to true sec. line and 7.00 chs. North therefrom, to offset point.
Thence
South, 7.00 chs. on offset line to ¼ sec. cor.



Survey of the Subdivision of Township 36 North., Range 4 East

Chains

- The eastern part of the sec. line passes over precipitous SE. slope of N. wall of Fence Canyon.
- 26.50 (Approx.) North rim of Fence Canyon, bears NE. and SW. Leave canyon; Enter nearly level land.
- 39.98 Set an iron post 3 ft. long, 1 in. in diam. 26 ins. in the ground for $\frac{1}{4}$ sec. cor., marked on brass cap

$$\frac{1}{4} \begin{array}{l} \text{S } 25 \\ \text{S } 36 \end{array}$$

1925

- Raise a mound of stone 2 ft. base, $1\frac{1}{2}$ ft. high N. of cor. Thence
- S $89^{\circ}59'$ W. on true line bet. secs. 25 and 36 continuing measurement from point for cor. of secs. 25, 30, 31, and 36 over nearly level land devoid of timber or undergrowth.
- 60.30 Head of wash 3 lks. wide 1 ft. deep, course N 10° E. Ascend 64 ft. over E. slope.
- 69.60 Top of spur, slopes N. Descend 86 ft. over W. slope to
- 79.96 The cor. of secs. 25, 26, 35, and 36. Land, rolling and broken. Soil, stony 3rd. rate. Timber, none.

- N $0^{\circ}01'$ W. bet. secs. 25 and 26. Descend 20 ft. over NW. slope over rolling sandy land.
- 11.20 Bottom of draw, course N 50° E. Enter nearly level prairie land bears NE. and SW.
- 40.00 Set an iron post 3 ft. long 1 in. in diam. 12 ins. in the ground to bedrock, deposit a limestone $10 \times 8 \times 4$ ins. marked with a cross (x) alongside, and raise a mound of stone $2\frac{1}{2}$ ft. base 2 ft. high around post for $\frac{1}{4}$ sec. cor., marked on brass cap

$$\frac{1}{4} \begin{array}{l} \text{S } 26 \\ \text{S } 25 \end{array}$$

1925

- Descend 65 ft. over N. slope over rolling and broken land
- 47.53 Wash 8 lks. wide 2 ft. deep, course N 60° W. Ascend 42 ft. over SW. slope.
- 56.51 Top of spur slopes W. 5 chs. Descend 34 ft. over N. slope to
- 80.00 Set an iron post 3 ft. long, 2 ins. in diam. 4 ins. in the ground to bedrock, deposit a limestone $10 \times 6 \times 4$ ins. marked with cross (x) alongside, and raise a mound of stone 4 ft. base, $2\frac{1}{2}$ ft. high around post for cor. of secs. 23, 24, 25, and 26, marked on brass cap

$$\begin{array}{l} \text{T36N} | \text{R4E} \\ \text{S } 23 | \text{S } 24 \\ \text{S } 26 | \text{S } 25 \end{array}$$

1925

Survey of the Subdivision of Township 36 North., Range 4 East.

Chains

Land, rolling and broken.
Soil, sandy 3rd. rate.
Timber, none
Undergrowth, none.

40.00 N 89°59'E. on a random line bet. secs. 24 and 25.
Set temp. 1/4 sec. cor.
79.98 Intersect E. bdy. of Tp. 10 lks. N. of the cor. of secs. 19, 24, 25 and 30, hereinbefore described.

Thence
N 89°57'W. on true line bet. secs. 24 and 25.
Descend 52 ft. over W. slope over rolling sandy land, thru sagebrush undergrowth.

2.55 Sand wash 6 lks. wide 2 ft. deep, course N.
Ascend 83 ft. over E. slope.
8.17 Top of spur, slopes N.
Descend 106 ft. over W. slope.
15.98 Wash 10 lks. wide 2 ft. deep, course N5°E.
Ascend 123 ft. over SE. slope.
25.48 Top of ascent on spur slopes N.
Over level land.
39.99 Set an iron post 3 ft. long, 1 in. in diam. 28 ins. in the ground for 1/4 sec. cor., marked on brass cap

1/4 S 24
1/4 S 25

1925

68.18 Raise a mound of stone 2 ft. base, 1 1/2 ft. high N. of cor.
Leave level land bears N. and S.
79.98 Descend 31 ft. over W. slope over rolling land to
The cor. of secs. 23, 24, 25, and 26.
Land, level and rolling.
Soil, sandy and rocky 3 rd. rate.
Timber, none.
Undergrowth, sagebrush.

N 0°01'W. bet. secs. 23 and 24.
Along W. slope over rolling and broken sandy land ; No undergrowth.
40.00 Set an iron post 3 ft. long, 1 in. in diam. 6 ins. in the ground to bedrock, deposit stone marked with a cross (x) alongside, and raise a mound of stone 4 ft. base, 2 1/2 ft. high around post for 1/4 sec. cor. marked on brass cap

1/4
S 23 | S 24

1925

47.00 Descend 36 ft. over NW. slope
Wash 5 lks. wide 2 ft. deep, course N40°E.
Ascend 15 ft. over SE. slope
62.00 Top of spur slopes N70°E.
Descend 18 ft. over NW. slope
65.40 Wash 10 lks. wide 2 ft. deep, course N80°E.
Ascend 47 ft. over SE. slope to

Survey of the Subdivision of Township 36 North., Range 4 East.

Chains

80.00 Set an iron post 3 ft. long, 2 ins. in diam. 6 ins. in the ground to bedrock, deposit a limestone 8x8x6 ins, marked with a cross (x) alongside, and raise a mound of stone 4 ft. base 2 ft. high around post for cor. of secs. 13, 14, 23, and 24., marked on brass cap

T36N	R4E
S 14	S 13
S 23	S 24

1925

Land, rolling.
Soil, sandy and stony 3 rd. rate.
Timber, none.
Undergrowth, none.

40.00 S 89°57'E. on a random line bet. secs. 13 and 24
Set temp. $\frac{1}{4}$ sec. cor.
80.02 Intersect E. bdy. of Tp. 2 lks. S. of the cor. of secs. 13, 18, 19, and 24. hereinbefore described.

Thence
N 89°58'W. on true line bet. secs. 13 and 24.
Ascend 30 ft. over E. slope over rolling stony land.
5.91 Top of spur slopes N15°E.
Descend 122 ft. over NW. slope.
18.10 Wash 15 lks. wide 1 ft. deep, course N5°E.
Ascend 79 ft. over E. slope.
22.68 Top of spur bears N10°E. 20 chs. dist.
Descend 81 ft. over NW. slope.
40.01 Set an iron post 3 ft. long, 1 in. in diam. 28 ins. in the ground for $\frac{1}{4}$ sec. cor., marked on brass cap

$\frac{1}{4}$	S 13
	S 24

1925

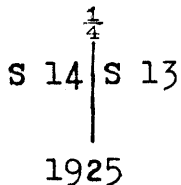
51.38 Raise a mound of stone 2 ft. base, 1½ ft. high N. of cor.
Wash 15 lks. wide, 2 ft. deep, course N55°E.
Ascend 29 ft. over NE. slope.
62.36 Top of spur slopes NE.
Descend 17 ft. over NW. slope.
64.90 Wash 8 lks. wide 1 ft. deep, course N45°E.
Ascend 59 ft. over SE. slope. to
80.02 The cor. of secs. 13, 14, 23, and 24.
Land, rolling.
Soil, stony 3 rd. rate.
Timber, none.
Undergrowth, none.

20.00 N 0°01'W. bet. secs. 13 and 14.
Over rolling SE. slope, devoid of undergrowth.
Top of spur, slopes N20°E.
Thence over rolling land slopes W.

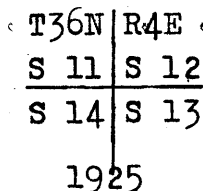
Survey of the Subdivision of Township 36 North., Range 4 East.

Chains

40.00 Set an iron post 3 ft. long, 1 in. in diam. 8 ins. in the ground to bedrock, deposit a lime stone 12x10x3 ins. marked with a cross (x) alongside, and raise a mound of stone 4 ft. base 1½ ft. high around post, for ¼ sec. cor., marked on brass cap



70.00 Descend 20 ft. over NW. slope to
80.00 Set an iron post 3 ft. long, 2 ins. in diam. 28 ins. in the ground for cor. of secs. 11, 12, 13, and 14, marked on brass cap

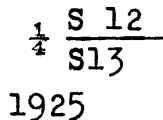


Raise a mound of stone 2 ft. base, 1½ ft. high W. of cor. Land, rolling. Soil sandy and stony 3 rd. rate. Timber, none. Undergrowth, none.

40.00 S 89°58'E. on a random line bet. secs. 12 and 13. Set temp. ¼ sec. cor.
80.06 Intersect E. bdy. of Tp. 2 lks. S. of the cor. of secs. 7, 12, 13, and 18. hereinbefore described.

Thence N 89°59'W. on true line bet. secs. 12 and 13. Over rolling prairie land, slopes SE.
32.16 Top of spur, slopes S20°E.
Thence over W. slope.

40.03 Set an iron post 3 ft. long, 1 in. in diam. 8 ins. in the ground to bedrock, deposit a limestone 8x6x3 ins., marked with a cross (x) alongside, and raise a mound of stone 4 ft. base, 1½ ft. high around post for ¼ sec. cor., marked on brass cap



80.06 The cor. of secs. 11, 12, 13, and 14. Land, rolling. Soil stony 3 rd. rate. Timber, none. Undergrowth, none. Good grass.

N 0°01'W. bet. secs. 11 and 12.

Survey of the Subdivision of Township 36 North., Range 4 East.

Chains.
40.00 Over rolling sandy land devoid of undergrowth.
Set an iron post 3 ft. long, 1 in. in diam. 6 ins. in the ground to bedrock, deposit a sandstone 6x4x2 ins., marked with a cross (x) alongside, and raise a mound of stone 4 ft. base, 2 ft. high around post for $\frac{1}{4}$ sec. cor., marked on brass cap

$$\begin{array}{c} \frac{1}{4} \\ | \\ \text{S } 11 \text{ | S } 12 \\ | \\ 1925 \end{array}$$

80.00 Set an iron post 3 ft. long, 2 ins. in diam. 10 ins. in the ground to bedrock, deposit a limestone 6x4x3 ins., marked with a cross (x) alongside, and raise a mound of stone 4 ft. base, 1 $\frac{1}{2}$ ft. high around post for cor. of secs. 1, 2, 11, and 12, marked on brass cap

$$\begin{array}{c} \text{T36N | R4E} \\ \text{S } 2 \text{ | S } 1 \\ \hline \text{S11 | S12} \\ 1925 \end{array}$$

Note: From this cor. a G.S. Monument bears S42°20'W.

Land, rolling.
Soil sandy 3 rd. rate.
Timber, none.
Undergrowth, none.

40.00 S 89°59'E. on a random line bet. secs. 1 and 12.
Set temp. $\frac{1}{4}$ sec. cor.
80.10 Intersect E. bdy. of Tp. 2 lks. S. of the cor. of secs. 1, 6, 7, and 12 hereinbefore described.

Thence
West on true line bet. secs. 1 and 12.
Over rolling sandy land slopes W.; No undergrowth.
40.05 Set an iron post 3 ft. long, 1 in. in diam. 10 ins. in the ground to bedrock, deposit a limestone 8x6x2 ins. marked with a cross (x) alongside, and raise a mound of stone 3 ft. base, 2 ft. high around post for $\frac{1}{4}$ sec. cor., marked on brass cap

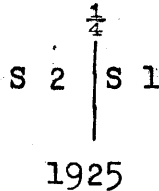
$$\begin{array}{c} \frac{1}{4} \text{ S } 1 \\ \hline \text{S12} \\ 1925 \end{array}$$

65.10 Bottom of draw course N20°E.
Ascend 11 ft. over SE. slope to
80.10 The cor. of secs. 12, 11, and 12
Land, rolling.
Soil, sandy 3 rd. rate.
Timber, none.
Undergrowth, none.

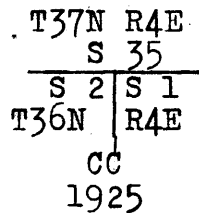
Survey of the Subdivision of Township 36 North., Range 4 East.

Chains

40.00 N 0°01'W. on true line bet. secs. 1 and 2.
Over rolling sandy land devoid of undergrowth.
Set an iron post 3 ft. long, 1 in. in diam. 6 ins. in the ground to bedrock, deposit a limestone 8x6x2 ins. marked with a cross (x) alongside, and raise a mound of stone 3½ ft. base 2 ft. high around post for ¼ sec. cor., marked on brass cap

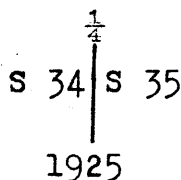


60.00 Descend 25 ft. over rolling NE. slope.
66.50 Wash 5 lks. wide 1 ft. deep, course N45°W.
Thence over broken land.
79.98 Intersect the 9 th. Std Par. N. 8.75 chs. West of the Std. cor. of secs. 35 and 36, T37N., R4E. described in Book C
At the point of intersection,
Set an iron post 3 ft. long, 2 ins. in diam. 8 ins. in the ground to bedrock, deposit a limestone 8x6x4 ins. marked with a cross (x) alongside, and raise a mound of stone 4 ft. base, 2 ft. high around post for closing cor. of secs. 1 and 2., marked on brass cap



Land, rolling.
Soil, sandy and stony 3 rd. rate.
Timber, none.
Undergrowth none.

From the cor. of secs. 2, 3, 34, and 35 on S. bdy. of Tp. herein before described,
N 0°01'W. bet. secs. 34 and 35.
Descend 36 ft. over N. slope over rolling sandy and stony land devoid of undergrowth.
19.00 Wash 2 lks. wide 1 ft. deep, course N80°W.
Ascend 8 ft. over SW. slope.
25.00 Top of ascent, thence over level prairie land, bears NW. and SE.
40.00 Set an iron post 3 ft. long, 1 in. in diam. 6 ins. in the ground to bedrock, deposit a limestone 8x6x3 ins., marked with a cross (x) alongside, and raise a mound of stone 4 ft. base, 2½ ft. high around post for ¼ sec. cor., marked on brass cap



Survey of the Subdivision of Township 36 North., Range 4 East.

Chains
 55.00 Descend 93 ft. over N.slope.
 64.50 Wash 2 lks. wide 1 ft. deep, course N80°E.
 Ascend 25 ft. over S. slope.
 68.32 Top of ascent on S. edge of prairie land bears NE and SW.
 Descend 16 ft. over N.slope
 80.00 Set an iron post 3 ft. long, 2 ins. in diam. 6 ins. in the
 ground to bedrock, deposit a limestone 10x6x3 ins.,
 marked with a cross (x) alongside, and raise a
 mound of stone 4 ft. base, 2½ ft. high around post
 for cor. of secs. 26, 27, 34, and 35., marked on brass
 cap

T36N | R4E
 S 27 | S 26
 S 34 | S 35
 1925

Land, rolling.
 Soil, sandy and stony 3 rd. rate.
 Timber, none.
 Undergrowth, none.

40.00 East on a random line bet. secs. 26 and 35.
 Set temp. ¼ sec. cor.
 79.96 Fall 07 lks. N. of the cor. of secs. 25, 26, 35, and 36.
 Thence
 N 89°57'W. on true line bet. secs. 26 and 35.
 Descend 14 ft. over NW. slope over rolling prairie land.
 5.96 Draw course N50°E.
 Continue over rolling land.
 39.98 Set an iron post 3 ft. long, 1 in. in diam. 4 ins. in the
 ground to bedrock, deposit a limestone 10x10x4 ins.
 marked with a cross (x) alongside, and raise a mound
 of stone 3 ft. base, 2½ ft. high around post for
 ¼ sec. cor., marked on brass cap

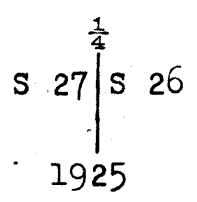
¼ S 26
 S 35
 1925

44.66 Head of wash course N55°E. thence over NE. slope.
 63.55 Leave rolling prairie, bears N. and S.
 Descend 43 ft. over W. slope.
 71.96 Bottom of draw course North.
 Ascend 34 ft. over E. slope to
 79.96 The cor. of secs. 26, 27, 34, and 35.
 Land, rolling.
 Soil, sandy and stony 3 rd. rate.
 Timber, none.
 Undergrowth, none.

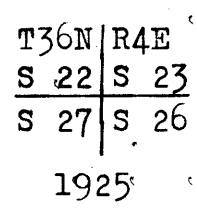
40.00 N 0°01'W. bet. secs. 26 and 27.
 Descend 46 ft. over NE. slope over rolling prairie land.
 devoid of undergrowth.
 Set an iron post 3 ft. long, 1 in. in diam. 27 ins. in the
 ground for ¼ sec. cor., marked on brass cap

Survey of the Subdivision of Township 36 North., Range 4 East.

Chains

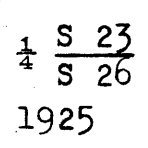


44.50 Raise a mound of stone 2 ft. base, $1\frac{1}{2}$ ft. high W. of cor.
 Bottom of grassy draw course N30°E.
 80.00 Set an iron post 3 ft. long, 2 ins. in diam. 6 ins. in the
 ground to bedrock, deposit a limestone 12x10x4 ins.,
 marked with a cross (x) alongside, and raise a mound
 of stone 4 ft. base $2\frac{1}{2}$ ft. high around post for cor.
 of secs. 22, 23, 26, and 27., marked on brass cap



Land, rolling.
 Soil sandy and stony 3 rd. rate.
 Timber, none.
 Undergrowth, none.
 Good grass.

40.00 S 89°57'E on a random line bet. secs. 23 and 26.
 Set temp. $\frac{1}{4}$ sec. cor.
 79.96 Fall 02 lks. S. of the cor. of secs. 23, 24, 25, and 26.
 Thence
 N 89°58'W. on true line bet. secs. 23 and 26.
 Descend 29 ft. over W. slope over rolling sandy and stony
 land, devoid of undergrowth.
 6.13 Wash 5 lks. wide 1 ft. deep, course N5°W.
 Ascend 56 ft. over E. slope.
 10.55 Top of ascent on spur bears North
 11.25 Descend 51 ft. over W. slope.
 18.70 Wash 6 lks. wide, 1 ft. deep course North.
 Ascend 40 ft. over E. slope.
 23.66 Top of ascent on E. edge of rolling prairie, bears N. and S.
 39.98 Set an iron post 3 ft. long, 1 in. in diam. 20 ins. in
 the ground to bedrock, deposit a limestone 6x6x4 ins.
 marked with a cross (x) alongside, and raise a mound
 of stone 2 ft. base, $1\frac{1}{2}$ ft. high around post for
 $\frac{1}{4}$ sec. cor., marked on brass cap

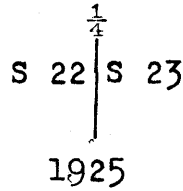


64.26 Bottom of grassy draw, course North.
 Ascend 12 ft. over E. slope to
 79.96 The cor. of secs. 22, 23, 26, and 27.
 Land, rolling prairie.
 Soil, sandy and stony 3 rd. rate.
 Timber, none.
 Undergrowth, none.
 Good grass.

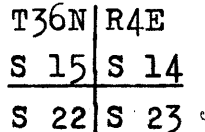
Survey of the Subdivision of Township 36 North., Range 4 East.

Chains.

40.00 N 0°01'W. bet. secs.22 and 23.
Over rolling sandy prairie land
Set an iron post 3 ft. long, 1 in. in diam.27 ins. in the ground for $\frac{1}{4}$ sec. cor.,marked on brass cap



44.00 Raise a mound of stone 2 ft. base, 1 1/2 ft. high W. of cor.
Wash course NE.
71.60 Wash 5 lks. wide, course NE.
80.00 Set an iron post 3 ft. long, 2 ins. in diam.16 ins. in the ground to bedrock, deposit a limestone 18x10x10 ins. marked with a cross (x) alongside, and raise a mound of stone 4 ft. base 1 1/2 ft. high around post for cor. of secs.14,15,22, and 23, marked on brass cap

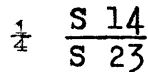


1925

Land, rolling prairie.
Soil, sandy and stony 3 rd. rate.
Timber, none.
Undergrowth, none.
Good grass.

40.00 S 89°58'E on a random line bet. secs.14 and 23
Set temp. $\frac{1}{4}$ sec. cor.
80.00 Fall 21 lks. N. of the cor. of secs.13,14,23, and 24.
Thence

40.00 N 89°49'W. on true line bet. secs.14 and 23.
Over rolling sandy prairie land.
Set an iron post 3 ft. long, 1 in. in diam.12 ins. in the ground to bedrock, deposit a limestone 14x8x6 ins. marked with a cross (x) alongside, and raise a mound of stone 3 1/2 ft. base, 2 ft. high around post for $\frac{1}{4}$ sec. cor., marked on brass cap



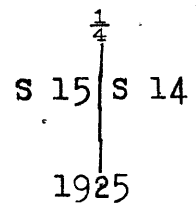
1925

48.70 Wash course S70°E.
58.50 Wash, course N30°E.
74.40 Wash, course NE.
80.00 The cor. of secs.14,15,22, and 23.
Land, rolling prairie.
Soil, sandy and stony 3 rd. rate.
Timber, none.
Undergrowth, none.
Good grass.

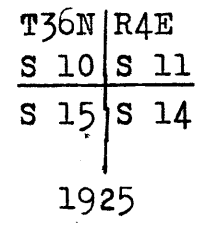
Survey of the Subdivision of Township 36 North., Range 4 East.

Chains

40.00 N 0°01'W. bet. secs. 14 and 15.
 Over rolling sandy prairie land devoid of undergrowth.
 Set an iron post 3 ft. long, 1 in. in diam. 18 ins. in the
 ground to bedrock, deposit a limestone 10x10x8 ins.,
 marked with a cross (x) alongside, and raise a mound
 of stone 2½ ft. base 1 ft. high around post for ¼
 sec. cor., marked on brass cap



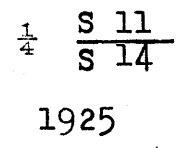
45.00 Bottom of draw, course N35°E.
 80.00 Set an iron post 3 ft. long, 2 ins. in diam. 16 ins. in
 the ground to bedrock, deposit a limestone 10x8x6 ins.
 marked with a cross (x) alongside, and raise a mound of
 stone 3 ft. base 1½ ft. high around post for cor. of
 secs. 10, 11, 14, and 15., marked on brass cap



Note: From this cor. a Geological Monument bears N52°21'E.

Land, rolling prairie.
 Soil sandy 3 rd. rate.
 Timber, none.
 Undergrowth, none.

40.00 S 89°49'E on a random line bet. secs. 11 and 14.
 Set temp. ¼ sec. cor.
 80.14 Intersect the cor. of secs. 11, 12, 13, and 14.
 Thence
 N 89°49'W. on true line bet. secs. 11 and 14.
 Over rolling sandy prairie land, devoid of undergrowth.
 11.64 Bottom of draw, course N10°E.
 Ascend 16 ft. over E. slope.
 35.14 Top of spur, slopes N.
 Descend 18 ft. over W. slope.
 40.07 Set an iron post 3 ft. long 1 in. in diam. 10 ins. in the
 ground to bedrock, deposit a limestone 16x8x6 ins.
 marked with a cross (x) alongside, and raise a mound
 of stone 3 ft. base 2 ft. high around post for
 ¼ sec. cor. marked on brass cap



60.14 Bottom of draw, course N20°E.
 Ascend 23 ft. over NE. slope to
 80.14 The cor. of secs. 10, 11, 14, and 15.

Survey of the Subdivision of Township 36 North., Range 4 East.

Chains

Land, rolling prairie.
Soil, sandy 3 rd, rate.
Timber, none.
Undergrowth, none.
Good grass.

N 0°01'W. bet. secs. 10 and 11.
Descend 129 ft. over N. slope over rolling sandy and stony
land through sagebrush undergrowth.
34.40 North Canyon wash 70 lks. wide 4 ft. deep, course N25°E.
Ascend 20 ft. over SE. slope to
40.00 Set an iron post 3 ft. long, 1 in. in diam. 28 ins. in the
ground for $\frac{1}{4}$ sec. cor., marked on brass cap

$\frac{1}{4}$
 S10 | S11
 1925

80.00 Raise a mound of stone 2 ft. base, $1\frac{1}{2}$ ft. high W. of cor.
Top of spur slopes NE.
Set an iron post 3 ft. long, 2 ins. in diam. 28 ins. in the
ground for cor. of secs. 2, 3, 10, and 11., marked on
brass cap

T36N | R4E
 S 3 | S 2
 S 10 | S 11
 1925

Raise a mound of stone 2 ft. base, $1\frac{1}{2}$ ft. high W. of cor.
Land, rolling.
Soil, sandy and stony 3 rd. rate .
Timber, none .
Undergrowth, sagebrush.

40.00 S 89°49'E. on a random line bet. secs. 2 and 11.
Set temp. $\frac{1}{4}$ sec. cor.
80.25 Fall 8 lks. N. of the cor. of secs. 1, 2, 11, and 12.
Thence
N 89°46'W. on true line bet. secs. 2 and 11.
Over rolling sandy land, through sagebrush undergrowth.
40.13 Set an iron post 3 ft. long, 1 in. in diam. 18 ins. in the
ground to bedrock, deposit a limestone 18x12x6 ins.
marked with a cross (x) alongside, and raise a mound
of stone $3\frac{1}{2}$ ft. base, $1\frac{1}{2}$ ft. high around post for
 $\frac{1}{4}$ sec. cor., marked on brass cap

$\frac{1}{4}$ S 2
 S 11
 1925

60.45 North Canyon wash 100 lks. wide 5 ft. deep, course North.
Ascend 65 ft. over rolling E. slope to.
80.25 The cor. of secs. 2, 3, 10, and 11.

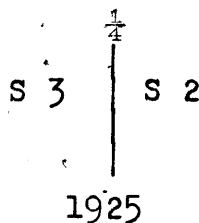
Survey of the Subdivision of Township 36 North., Range 4 East.

Chains.

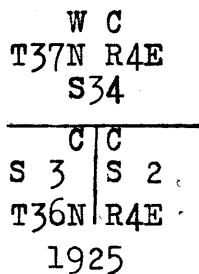
Land, rolling.
Soil, sandy 3 rd. rate.
Timber, none.
Undergrowth, sagebrush.

N 0°01'W. on true line bet. secs. 2 and 3 .
Descend 29 ft. over N. slope over rolling sandy land,
through sagebrush undergrowth.

- 10.09 Wash, course N45°E.
- Ascend 14 ft. over SE. slope.
- 39.00 Top of spur, bears NE.
- Descend 84 ft. over NW. slope.
- 40.00 Set an iron post 3 ft. long, 1 in. in dia. 10 ins. in the ground to bedrock, deposit a limestone 16x10x8 ins marked with a cross (x) alongside, and raise a mound of stone 3 ft. base, 2 ft. high around post for $\frac{1}{4}$ sec. cor., marked on brass cap

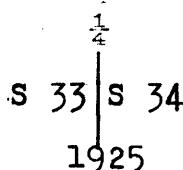


- 78.52 Set an iron post 3 ft. long 2 ins. in diam. 27 ins. in the ground for witness cor. to closing cor. of secs. 2 and 3 on the 9 th. Std. Par. N., marked on brass cap



- 79.72 Intersect the 9th. Std. Par. N. 9.09 chs. W. of the Std. cor. of secs. 34 and 35, T37N., R4E., described in Book C This point falls in the bed of wash where prevailing conditions would insure the destruction of a cor. Witness cor. established at 1.20 chs. S0°01'E. of true point as described above.
Land, rolling.
Soil, sandy 3 rd. rate .
Timber, none.
Undergrowth, sagebrush.

- 40.00 From the cor. of secs. 3, 4, 33, and 34, ^{on S. bdy. of the Tp,} hereinbefore described, N. 0°02'W., bet. secs. 33 and 34. Over rolling sandy land, through sagebrush undergrowth. Set an iron post 3 ft. long, 1 in. in diam. 27 ins. in the ground, for $\frac{1}{4}$ sec. cor., marked on brass cap



Survey of the Subdivision of Township 36 North., Range 4 East.

Chains

71.50 Dig pits 18X18X12 ins. N. and S. of post 3 ft. dist.
 Wash 6 lks. wide, course NE.
 80.00 Set an iron post 3 ft. long, 2 ins. in diam. 26 ins. in the
 the ground to bedrock, for cor. of secs. 27, 28, 33, and 34
 marked on brass cap

T36N	R4E
S 28	S 27
S 33	S 34

1925

Raise a mound of stone 2 ft. base, $1\frac{1}{2}$ ft. high W. of cor.
 Land, rolling.
 Soil sandy 3rd. and 4th. rate.
 Timber, none.
 Undergrowth, sagebrush.

40.00 East on a random line bet. secs. 27 and 34
 Set temp. $\frac{1}{4}$ sec. cor.
 80.10 Fall 8 lks. N. of the cor. of secs. 26, 27, 34, and 35.
 Thence
 N $89^{\circ}57'$ W. on true line bet. secs. 27 and 34.
 Over rolling sandy land, through sagebrush undergrowth.
 40.05 Set an iron post 3 ft. long, 1 in. in diam. 12 ins. in
 the ground to bedrock, deposit a limestone 8x6x6 ins.
 marked with a cross (x) alongside, and raise a
 mound of stone 4 ft. base 2 ft. high around post
 for $\frac{1}{4}$ sec. cor. marked on brass cap.

$\frac{1}{4}$	S 27	
	S 34	

1925

76.10 Wash 6 lks. wide, course North.
 80.10 The cor. of secs. 27, 28, 33, and 34.
 Land, rolling.
 Soil, sandy 3rd. rate.
 Timber, none.
 Undergrowth, sagebrush.

40.00 N $0^{\circ}02'$ W. bet. secs. 27 and 28.
 Over rolling prairie land, through sagebrush undergrowth.
 Set an iron post 3 ft. long, 1 in. in diam. 27 ins. in
 the ground for $\frac{1}{4}$ sec. cor., marked on brass cap

$\frac{1}{4}$	S 28	S 27
---------------	------	------

1925

80.00 Raise a mound of stone 2 ft. base, $1\frac{1}{2}$ ft. high W. of cor.
 Set an iron post 3 ft. long 2 ins. in diam. 26 ins. in the
 ground for cor. of secs. 21, 22, 27, and 28. marked on
 brass cap

Survey of the Subdivision of Township 36 North., Range 4 East.

Chains

T36N	R4E
S 21	S 22
S 28	S 27

1925

Raise a mound of stone 2 ft. base, $1\frac{1}{2}$ ft. high W. of cor.
 Land, rolling.
 Soil, sandy and stony 3 rd. and 4 th. rate.
 Timber, none.
 Undergrowth, sagebrush.

- 40.00 S 89°57'E. on a random line bet. secs. 22 and 27.
Set temp. $\frac{1}{4}$ sec. cor.
- 80.21 Fall 8 lks. N. of the cor. of secs. 22, 23, 26, and 27.
Thence
N 89°54'W. on true line bet. secs. 22 and 27.
Over rolling sandy prairie land, through sagebrush
undergrowth.
- 40.11 Set an iron post 3 ft. long, 1 in. in diam. 12 ins. in the
ground to bedrock, deposit a limestone 12x12x10 ins.
marked with a cross (x) alongside, and raise a mound
of stone 4 ft. base, 2 ft. high around post for $\frac{1}{4}$
sec. cor. marked on brass cap

$\frac{1}{4}$	S 22
	S 27

1925

- 76.51 Wash 10 lks. wide 1 ft. deep, course N5°E.
- 80.21 The cor. of secs. 21, 22, 27, and 28.
Land, rolling prairie.
Soil, sandy 3 rd. rate.
Timber, none.
Undergrowth, sagebrush.

- 21.50 N 0°02'W. bet. secs. 21 and 22.
Descend 75 ft. over N. slope over rolling stony land,
through sagebrush undergrowth.
- 40.00 North Canyon wash 50 lks. wide $2\frac{1}{2}$ ft. deep at junction
of wash from south, course NE.
- 40.00 Set an iron post 3 ft. long, 1 in. in diam. 27 ins. in
the ground for $\frac{1}{4}$ sec. cor., marked on brass cap

$\frac{1}{4}$	
S 21	S 22

1925

- 65.10 Raise a mound of stone 2 ft. base, $1\frac{1}{2}$ ft. high W. of cor.
Dry wash 15 lks. wide 2 ft. deep at junction with wash
from west, course NE.
- 80.00 Set an iron post 3 ft. long, 2 ins. in diam. 12 ins. in
the ground to bedrock, deposit a limestone 12x12x12
ins. marked with a cross (x) alongside, and raise

Survey of the Subdivision of Township 36 North., Range 4 East.

Chains

a mound of stone $3\frac{1}{2}$ ft. base, 2 ft. high around post for cor. of secs. 15, 16, 21, and 22, marked on brass cap

T36 N	R4 E
<u>S 16</u>	<u>S 15</u>
S 21	S 22

1925

Land, rolling prairie.
Soil, sandy and stony 3 rd. and 4th. rate.
Timber, none.
Undergrowth, sagebrush.
Good grass.

- 40.00 S $89^{\circ}54'E$. on a random line bet. secs. 15 and 22.
Set temp. $\frac{1}{4}$ sec. cor.
- 80.21 Fall 8 lks. S. of the cor. of secs. 14, 15, 22, and 23.
Thence
N $89^{\circ}57'W$. on true line bet. secs. 15 and 22.
Over rolling sandy prairie land, through sagebrush undergrowth.
- 39.60 Dry sand wash 15 lks. wide, course N.
Ascend 20 ft. over E. slope.
- 40.11 Set an iron post 3 ft. long 1 in. in diam. 26 ins. in the ground for $\frac{1}{4}$ sec. cor., marked on brass cap

$\frac{1}{4}$	S 15
	S 22

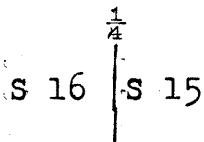
1925

- 41.50 Raise a mound of stone 2 ft. base, $1\frac{1}{2}$ ft. high N. of cor.
Top of sharp spur, slopes N.;
Descend 34 ft. over W. slope.
- 49.30 North Canyon wash 20 lks. wide 6 ft. deep, course NE.
Ascend 41 ft.
- 64.80 Wash 10 lks. wide course NE.
- 80.21 The cor. of secs. 15, 16, 21, and 22.
Land, rolling.
Soil, sandy and stony 3 rd. and 4 th. rate.
Timber, none.
Undergrowth, sagebrush.
Good grass.

- 8.20 N $0^{\circ}02'W$ bet. secs. 15 and 16.
Descend 34 ft. over NW. slope over rolling sandy land, through sagebrush undergrowth.
- 40.00 Dry wash 10 lks. wide 5 ft. deep, course $N60^{\circ}E$.
Ascend 9 ft. over SE. slope.
Set an iron post 3 ft. long, 1 in. in diam. 12 ins. in the ground to bedrock, deposit a limestone $14 \times 6 \times 6$ ins. marked with a cross (x) alongside, and raise a mound of stone $3\frac{1}{2}$ ft. base, 2 ft. high around post for $\frac{1}{4}$ sec. cor. marked on brass cap

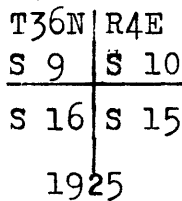
Survey of the Subdivision of Township 36 North., Range 4 East.

Chains



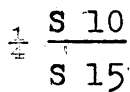
1925

- 45.00 Wash 5 lks. wide 1 ft. deep course NE.
- 59.00 Wash 10 lks. wide 2 ft. deep, course East.
- 80.00 Set an iron post 3 ft. long, 2 ins. in diam. 24 ins. in the ground to bedrock, deposit a limestone 12x6x4 ins. marked with a cross (x) alongside, and raise a mound of stone 3 ft. base, 1 ft. high around post for cor. of secs. 9, 10, 15, and 16.; marked on brass cap



Land, rolling prairie.
 Soil, sandy 3 rd. rate.
 Timber, none.
 Undergrowth, sagebrush.
 Good grass.

- 40.00 S 89°57'E. on a random line bet. secs .10 and 15.
Set temp. $\frac{1}{4}$ sec. cor.
- 80.20 Fall 12 lks. N. of the cor. of secs .10, 11, 14, and 15.
Thence
N 89°52'W. on true line bet. secs. 10 and 15.
Descend 54 ft. over NW. slope over rolling sandy land, through sagebrush undergrowth.
- 19.25 Canyon wash 60 lks. wide, 4 ft. deep, course N30°E.
Ascend 69 ft. over E. slope.
- 40.10 Set an iron post 3 ft. long, 1 in. in diam. 26 ins. in the ground to bedrock, for $\frac{1}{4}$ sec. cor., marked on brass cap



1925

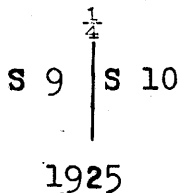
- 70.10 Raise a mound of stone 2 ft. base, 1 $\frac{1}{2}$ ft. high N. of cor.
Wash course NE.
- 80.20 The cor. of secs. 9, 10, 15, and 16.
Land, rolling.
Soil sandy 3 rd. and 4th. rate.
Timber, none.
Undergrowth, sagebrush.
Good grass.

- N 0°02'W. bet. secs. 9 and 10.
Over rolling sandy prairie land, through sagebrush undergrowth.
- 30.70 Wash 5 lks. wide 1 ft. deep, course N55°E.

Survey of the Subdivision of Township 36 North., Range 4 East.

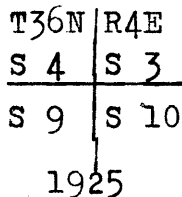
Chains

40.00 Set an iron post 3 ft. long, 1 in. in diam. 26 ins. in the ground for $\frac{1}{4}$ sec. cor., marked on brass cap



70.00 Raise a mound of stone 2 ft. base, $1\frac{1}{2}$ ft. high W. of cor. Head of wash 4 lks. wide, course NE.

80.00 Set an iron post 3 ft. long, 2 ins. in diam. 12 ins. in the ground to bedrock, deposit a limestone 12x9x4 ins. marked with a cross (x) alongside, and raise a mound of stone $3\frac{1}{2}$ ft. base, $1\frac{1}{2}$ ft. high around post for cor. of secs. 3, 4, 9, and 10., marked on brass cap



Land, rolling prairie .
Soil, sandy 3rd. rate.
Timber, none.
Undergrowth, sagebrush.
Good grass.

40.00 S 89°52'E on a random line bet. secs. 3 and 10. Set temp. $\frac{1}{4}$ sec. cor.

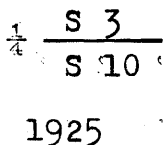
80.20 Fall 14 lks. S. of the cor. of secs. 2, 3, 10, and 11. Thence

N 89°58'W. on true line bet. secs. 3 and 10.

Over rolling sandy land, through sagebrush undergrowth.

16.00 Sand wash 4 lks. wide 1 ft. deep, course N50°E.

40.10 Set an iron post 3 ft. long, 1 in. in diam. 14 ins. in the ground to bedrock, deposit a limestone 16x6x4 ins., marked with a cross (x) alongside, and raise a mound of stone 3 ft. base, $1\frac{1}{2}$ ft. high around post for $\frac{1}{4}$ sec. cor., marked on brass cap



69.48 Wash 8 lks. wide 1 ft. deep, course N45°E.
80.20 The cor. of secs. 3, 4, 9, and 10

Land, rolling prairie.
Soil, sandy 3rd. rate.
Timber, none.
Undergrowth, sagebrush.
Good grass.

Survey of the Subdivision of Township 36 North., Range 4 East.

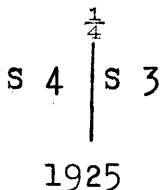
Chains

N 0°02'W. on true line bet. secs.3 and 4 .
Descend 15 ft. over NW. slope over rolling sandy prairie
land, through sagebrush undergrowth.

9.37 Wash 8 lks. wide, 3 ft. deep, course N55°E.
Ascend 5 ft. over SE. slope.

23.00 Top of spur, slopes N60°E.
Descend 11 ft..

40.00 Set an iron post 3 ft. long, 1 in. in diam. 12 ins. in the
ground to bedrock, deposite a limestone 8x8x6 ins.
marked with a cross (x) alongside, and raise a
mound of stone 3 ft. base, 2 ft. high around post for
for 1/4 sec. cor., marked on brass cap



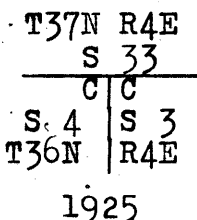
45.20 Wash 30 lks. wide 7 ft. deep, course N85°E.

55.70 Wash 3 lks. wide 1 ft. deep, course East.

61.45 Wash 6 lks. wide 3 ft. deep, course S70°E.

79.77 Intersect the 9 th. Std. Par. N. 9.28 chs. West of the Std.
cor. of secs. 33 and 34, T37N., R4E., described in
Book C.

At point of intersection,
Set an iron post 3 ft. long, 2 ins. in diam. 28 ins. in the
ground for closing cor. of secs. 3 and 4., marked
on brass cap



Dig pits 18x18x12 ins., S, E, and W. on line, 3 ft. dist.
Land, rolling prairie.
Soil sandy, 3 rd. rate.
Timber, none.
Undergrowth, sagebrush.
Good grass.

From the cor. of secs. 4, 5, 32, and 33 on S. bdy. of Tp.
hereinbefore described.

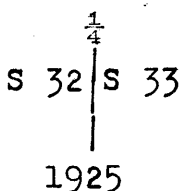
N 0°03'W. bet. secs. 32 and 33.

Over E. slope over rolling sandy land, through scattering
cedar timber

20.00 Top of low spur slopes NE.

Leave scattering timber, bears NE. and SW.

40.00 Set an iron post 3 ft. long, 1 in. in diam. 22 ins. in the
ground to bedrock, deposit a lime stone 6x6x4 ins.
alongside, and raise a mound of stone 3 ft. base,
1 ft. high around post for 1/4 sec. cor. marked on
brass cap



Survey of the Subdivision of Township 36 North., Range 4 East.

Chains

- 41.10 Old road, bears N50°E. and S50°W.
Enter scattering cedar timber bears NE. and SW. Descend
NW. slope.
- 63.47 Wash 8 lks. wide 6 ft. deep, course N20°E.
Ascend 40 ft. over SE. slope.; Leave timber, bears NE. and
SW.
- 68.43 Top of spur slopes N70°E.
Descend 34 ft. over N. slope.
- 80.00 Set an iron post 3 ft. long, 2 ins. in diam. 25 ins. in the
ground to bedrock for cor. of secs. 28, 29, 32, and 33,
marked on brass cap

T36N	R4E
S 29	S 28
S 32	S 33

1925

Raise a mound of stone 2 ft. base, 1½ ft. high W. of cor.
Land, rolling.
Soil, sandy 3 rd. rate.
Timber, scattering cedar.
Undergrowth, sagebrush.

- 40.00 East on a random line bet. secs. 28 and 33.
Set temp. ¼ sec. cor.
- 79.96 Fall 10 lks. N. of the cor. of secs. 27, 28, 33, and 34.
Thence
N 89°56'W. on true line bet. secs. 28 and 33.
Over rolling sandy land, through sagebrush undergrowth.
- 10.40 Wash 5 lks. wide 1 ft. deep, course N30°E.
- 27.55 Wash 8 lks. wide 2 ft. deep, course N25°E.
- 39.98 Set an iron post 3 ft. long, 1 in. in diam. 14 ins. in the
ground to bedrock, deposit a limestone 12x10x10 ins.
marked with a cross (x) alongside, and raise a mound
of stone 2½ ft. base, 1½ ft. high around post for
¼ sec. cor., marked on brass cap

¼	S 28
	S 33

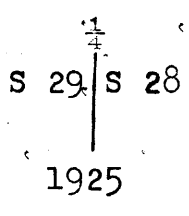
1925

- 60.91 E. side of pole corral, bears N10°W. 250 lks. dist. and S10°E
300 lks. dist.
- 63.28 W. side of corral, bears N10°W. 250 lks. dist. and S10°E.
300 lks. dist.
- 63.90 Road from Kane Utah to Saddle Mountain bears N30°W. and
S20°E.
South end of narrow strip of scattering cedars, bears N.
about 15.00 chs. dist.
- 72.57 North Canyon wash 45 lks. wide 5 ft. deep, course N20°E.
- 79.96 The cor. of secs. 28, 29, 32, and 33.
Land, rolling prairie.
Soil, sandy 3 rd. rate.
Timber, scattering cedar N. of line.
Undergrowth, sagebrush.
Fair grass.

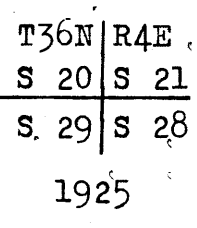
Survey of the Subdivision of Township 36 North., Range 4 East.

Chains

N 0°03'W. bet. secs. 28 and 29.
 Over rolling sandy land, slopes N. through sagebrush undergrowth.
 3.40 Wash 6 lks. wide, 3 ft. deep, course N80°E.
 Ascend 13 ft. over SE. slope.
 5.10 Top of ascent.
 Enter prairie land, slopes E.
 18.40 Road from Kane Spring to Saddle Mountain, bears E. and W.
 23.00 Wash 18 ft. deep, course N65°E.
 34.50 Descend 29 ft. over N. slope.
 39.50 Wash 6 lks. wide 2 ft. deep, course East.
 40.00 Set an iron post 3 ft. long, 1 in. in diam. 28 ins. in the ground for 1/4 sec. cor., marked on brass cap

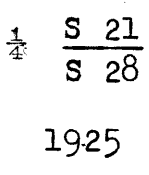


80.00 Raise a mound of stone 2 ft. base, 1 1/2 ft. high W. of cor.
 Set an iron post 3 ft. long, 2 ins. in diam. 15 ins. in the ground to bedrock, deposit a limestone 12x10x3 ins. marked with a cross (x) alongside, and raise a mound of stone 2 ft. base, 1 ft. high around post for cor. of secs. 20, 21, 28, and 29., marked on brass cap



Land, rolling.
 Soil, sandy and stony 3 rd. rate.
 Timber, none.
 Undergrowth, sagebrush.
 Good grass.

40.00 S. 89°56'E., on a random line, bet. secs. 21 and 28
 Set temp. 1/4 sec. cor.
 79.94 Fall 8 lks. N. of cor. of secs. 21, 22, 27 and 28.
 Thence,
 N. 89°53'W., on true line, bet. secs. 21 and 28.
 Over rolling sandy land, thru sagebrush undergrowth.
 5.19 Wash, 10 lks. wide, 3 ft. deep, course North, Ascend E. slope
 6.00 Top of spur, slopes N. Enter broken land. Descend.
 26.60 North Canyon Wash, 80 lks. wide, 3 ft. deep, course N. 20°E.
 Ascend gradually over NE. slope to top of growth.
 39.97 Set an iron post 3 ft. long, 1 in. in diam. 12 ins. in the ground to bedrock, deposit a limestone 12x12x10 ins. marked with a cross (x) alongside, and raise a mound of stone 4 ft. base, 2 ft. high around post for 1/4 sec. cor., marked on brass cap



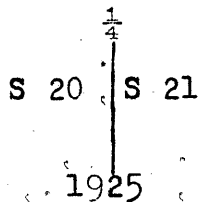
57.34 North Canyon Wash, 40 lks. wide, 3 ft. deep, course N20°E.
 Ascend gradually over NE. slope to
 73.64 Top of spur, slopes E.
 Descend over N. slope.
 74.75 Wash 12 lks. wide, 3 ft. deep, course North.
 Ascend 30 ft. over N. slope to.

Survey of the Subdivision of Township 36 North., Range 4 East.

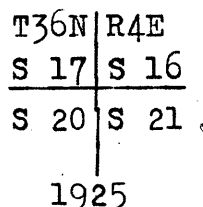
Chains

79.94 The cor. of secs. 20, 21, 28, and 29.
Land, rolling and broken.
Soil sandy and rocky 3 rd. rate.
Timber, none.
Undergrowth, sagebrush.
Good grass.

N 0°03'W. bet. secs. 20 and 21.
Over rolling prairie land, through sagebrush undergrowth.
10.00 Head of wash course N50°E.
30.00 Wash 12 lks. wide, 3 ft. deep, course N65°E.
40.00 Set an iron post 3 ft. long, 1 in. in diam. 16 ins. in the
ground to bedrock, deposit a limestone 6x6x4 ins.
marked with a cross (x) alongside, and raise a mound
of stone 3½ ft. base, 1½ ft. high around post for ¼
sec. cor. marked on brass cap



47.60 Wash 5 lks. wide 1 ft. deep, course N85°E.
65.00 Wash 18 ft. deep, course East.
80.00 Set an iron post 3 ft. long 2 ins. in diam. 20 ins. in the
ground to bedrock and raise a mound of stone
3 ft. base, 1½ ft. high around post for cor. of
secs. 16, 17, 20, and 21., marked on brass cap



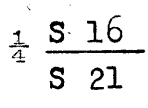
Raise a mound of stone 2 ft. base, 1½ ft. high W. of cor.
Land, rolling.
Soil, sandy and gravelly, 3 rd. rate.
Timber, none.
Undergrowth, sagebrush.
Good grass.

40.00 S 89°53'E. on a random line bet. secs. 16 and 21.
Set temp. ¼ sec. cor.
79.94 Fall 02 lks. S. of the cor. of secs. 15, 16, 21, and 22.
Thence
N 89°54'W. on true line bet. secs. 16 and 21.
Over rolling prairie land, through scattering sagebrush
undergrowth.
15.00 Descend 18 ft. over NW. slope.
24.12 Wash 12 lks. wide 4 ft. deep, course N75°E.
Ascend 41 ft. over SE. slope.
39.97 Set an iron post 3 ft. long, 1 in. in diam. 6 ins. in
the ground to bedrock, deposit a limestone 14x10x6
ins. marked with a cross (x) alongside, and raise a
mound of stone 5 ft. base, 2½ ft. high around post

Survey of the Subdivision of Township 36 North., Range 4 East.

Chains

for 1/4 sec. cor., marked on brass cap



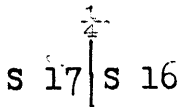
1925

56.94 Bottom of draw 10 ft. deep, course N65°E.
 79.94 The cor. of secs. 16, 17, 20, and 21.

Land, rolling.
 Soil sandy, 3 rd. rate.
 Timber, none.
 Undergrowth, sagebrush.
 Fair grass.

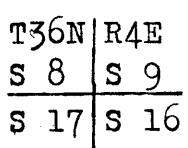
N 0°03'W. bet. secs. 16 and 17.
 Descend 11 ft. over N. slope over rolling sandy land,
 through sagebrush undergrowth.

6.30 Bottom of draw, course N80°E.
 16.00 Bottom of draw, course S85°E.
 26.70 Wash 8 lks. wide 3 ft. deep, course S80°E.
 40.00 Set an iron post 3 ft. long, 1 in. in diam. 28 ins. in the
 ground for 1/4 sec. cor., marked on brass cap



1925

74.50 Raise a mound of stone 2 ft. base, 1 1/2 ft. high W. of cor.
 Head of wash, course East.
 80.00 Set an iron post 3 ft. long, 2 ins. in diam. 10 ins. in the
 ground to bedrock, deposit a limestone 12x10x8 ins.
 marked with a cross (x) alongside, and raise a
 mound of stone 4 ft. base, 2 1/2 ft. high around post
 for cor. of secs. 8, 9, 16, and 17, marked on brass cap



1925

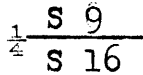
Land, rolling.
 Soil gravelly and sandy 3 rd. rate.
 Timber, none.
 Undergrowth, sagebrush
 Fair grass.

40.00 S 89°54'E. on a random line bet. secs. 9 and 16.
 Set temp. 1/4 sec. cor.
 79.95 Intersect cor. of secs. 9, 10, 15, and 16.
 Thence
 N 89°54'W. on true line bet. secs. 9 and 16.

Survey of the Subdivision of Township 36 North., Range 4 East.

Chains

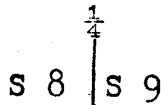
39.97 Over rolling prairie land, devoid of undergrowth.
Set an iron post 3 ft. long, 1 in. in diam. 24 ins. in the ground to bedrock, and raise a mound of stone 1 ft. base, $\frac{1}{2}$ ft. high around post for $\frac{1}{4}$ sec. cor., marked on brass cap



1925

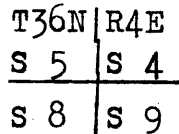
51.15 Raise a mound of stone 2 ft. base, $1\frac{1}{2}$ ft. high N. of cor.
79.95 Wash, course S70°E.
The cor. of secs. 8, 9, 16, and 17.
Land rolling.
Soil, sandy 3 rd. rate .
Timber, none.
Undergrowth, none.
Good grass.

5.00 N 0°03'W. bet. secs. 8 and 9.
Descend 18 ft. over N. slope over rolling sandy land, devoid of undergrowth.
Wash 5 lks. wide 1 ft. deep, course N70°E.
Ascend 18 ft. over S. slope.
23.90 Head of wash, course N75°E.
40.00 Set an iron post 3 ft. long, 1 in. in diam. 20 ins. in the ground to bedrock, deposit a lime stone 12x10x6 ins. marked with a cross (x) alongside and raise a mound of stone 3 ft. base, 2 ft. high around post for $\frac{1}{4}$ sec. cor., marked on brass cap



1925

56.00 Wash 20 lks. wide 1 ft. deep, course S85°E.
80.00 Set an iron post 3 ft. long, 2 ins. in diam. 8 ins. in the ground to bedrock, deposit a limestone 10x8x4 ins. marked with a cross (x) alongside, and raise a mound of stone 4 ft. base, $2\frac{1}{2}$ ft. high around post for cor. of secs. 4, 5, 8, and 9. marked on brass cap



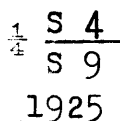
1925

Land, rolling .
Soil, gravelly and sandy 3 rd. rate.
Timber, none.
Undergrowth, none.

Survey of the Subdivision of Township 36 North., Range 4 East.

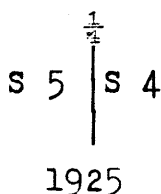
Chains

40.00 S 89°54'E. on a random line bet. secs.4 and 9.
 Set temp. $\frac{1}{4}$ sec. cor.
 79.91 Fall 8 lks. S of the cor. of secs.3,4,9,and 10.
 Thence
 N 89°57'W. on true line bet. secs.4 and 9.
 Over rolling sandy and gravelly prairie land, devoid of
 undergrowth.
 28.52 Wash 7 lks. wide 2 ft. deep, course N5°E.
 Ascend 13 ft. over E. slope to
 29.91 Top of ascent., thence over rolling land.
 39.95 Set an iron post 3 ft. long, 1 in. in diam. 12 ins. in the
 ground to bedrock, deposit a limestone 14x12x6 ins.,
 marked with a cross (x) alongside, and raise a mound
 of stone 3 ft. base, 2 ft. high around post for $\frac{1}{4}$
 sec. cor., marked on brass cap

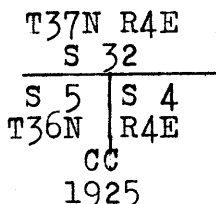


79.91 The cor. of secs.4,5,8,and 9.
 Land, rolling.
 Soil sandy and gravelly 3 rd. rate.
 Timber, none.
 Undergrowth, none.
 Good grass.

17.60 N 0°03'W. on true line bet. secs.4 and 5.
 Over rolling sandy prairie land
 32.75 Wash 5 lks. wide 2 ft. deep, course N60°E.
 40.00 Wash 12 lks. wide 4 ft. deep, course N80°E.
 Set an iron post 3 ft. long, 1 in. in diam. 28 ins. in the
 ground for $\frac{1}{4}$ sec. cor. marked on brass cap



53.80 Raise a mound of stone 2 ft. base $1\frac{1}{2}$ ft. high W. of cor.
 79.58 Wash 16 lks. wide 6 ft. deep, course N60°E.
 79.69 Wash 8 lks. wide 4 ft. deep, course S70°E.
 Intersect the 9 th. Std. Par. N. 9.17 chs. West of the Std.
 cor. of secs.32 and 33, T37N., R4E. described in
 Book C
 At point of intersection,
 Set an iron post 3 ft. long, 2 ins. in diam. 20 ins. in the
 ground to bedrock, deposit a limestone 16x12x10
 ins. marked with a cross (x) alongside, and raise a
 mound of stone $1\frac{1}{2}$ ft. base, 1 ft. high around post
 for closing cor. of secs.4 and 5, marked on brass
 cap



Raise a mound of stone 4 ft. base, 3 ft. high S. of cor.

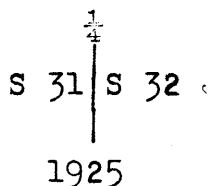
Survey of the Subdivision of Township 36 North., Range 4 East.

Chains

Land, rolling.
Soil, sandy 3 rd. rate.
Timber, none.
Undergrowth, none.
Good grass.

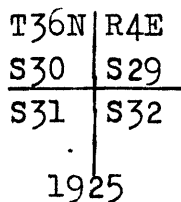
From the cor. of secs. 5, 6, 31, and 32 on S. bdy. of Tp. hereinbefore described
N 0°03'W. bet. secs. 31 and 32.
Over rolling and broken stony land, through scattering cedar and pinion, timber and sagebrush undergrowth.

2.80 Wash 20 lks. wide 8 ft. deep, course N70°E.
14.90 Wash 10 lks. wide 1 ft. deep, course N70°E.
33.00 Wash 15 lks. wide 2 ft. deep at mouth of canyon, course N60°E.
33.98 Wire fence bears N15°E. and S15°W.
Spur slopes N70°E.
40.00 Set an iron post 3 ft. long, 1 in. in diam. 26 ins. in the ground for 1/4 sec. cor., marked on brass cap



from which,
A cedar 10 ins. in diam. bears N20°E. 107 lks. dist., marked 1/4 S 32 BT
A cedar 12 ins. in diam. bears N88 1/2°W. 217 lks. dist., marked 1/4 S 31 BT.

Note From this cor. Pigeon pockets spring bears S68°18'W. 45 chs. dist.
44.65 Wash 15 lks. wide 3 ft. deep, course N85°E.
Ascend 14 ft. over S. slope to
49.00 Top of ascent, thence over rolling land. slopes E.
80.00 Set an iron post 3 ft. long, 2 ins. in diam. 28 ins. in the ground for cor. of secs. 29, 30, 31, and 32., marked on brass cap



from which
A cedar 7 ins. in diam. bears S57 1/2°E. 195 lks. dist., marked T36N., R4E., S32 BT.
A cedar 8 ins. in diam. bears S29 1/2°W. 509 lks. dist., marked T36N., R4E., S31 BT.
No other trees available
Raise a mound of stone 2 ft. base, 1 1/2 ft. high W. of cor.
Land, broken and rolling.
Soil, sandy and stony 3 rd. rate.
Timber, scattering cedar and pinion.
Undergrowth, sagebrush.

40.00 East on a random line bet. secs. 29 and 32.
Set temp. 1/4 sec. cor.
79.98 Fall 10 lks. N. of the cor. of secs. 28, 29, 32, and 33

Survey of the Subdivision of Township 36 North., Range 4 East

Chains

Thence
N 89°56'W. on true line bet. secs.29 and 32.
Over rolling gravelly land, through scattering sagebrush
undergrowth.

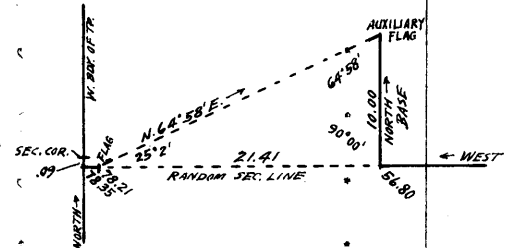
- 4.00 Wash 8 lks. wide, 3 ft. deep, course N80°E.
- Ascend 47 ft. over SE. slope
- 8.46 Top of ascent, thence over rolling prairie land.
- 26.50 Old road bears N10°E. and S10°W.
- 39.99 Set an iron post 3 ft. long, 1 in. in diam. 20 ins. in
the ground to bedrock and raise a mound of stone
1 ft. base, 8 ins. high around post for 1/4 sec. cor.
marked on brass cap

$$\frac{1}{4} \frac{S \ 29}{S \ 32}$$

1925

- 79.98 Raise a mound of stone 2 ft. base, 1 1/2 ft. high N. of cor.
The cor. of secs. 29, 30, 31, and 32.
Land, rolling.
Soil, sandy and gravelly 3 rd. rate.
Timber, none.
Undergrowth, scattering sagebrush.

- 40.00 West on a random line bet. secs. 30 and 31.
- Set temp. 1/4 sec. cor.
- 56.80 Top of precipitous cliffs; vertical angle to flag on
random line = -14°; Auxiliary
flag bears North 10.00 chs.
dist.; from flag on random
line the auxiliary flag bears
N64°58'E.
Dist on random line = 56.80 chs.
Dist by triangulation = 21.41 "
78.21 "



- 78.21 Triangulation point on random line; continue random line
and measurement by chaining.
- 78.35 Interséct W. bdy. of Tp. 09 lks. S. of the cor. of secs. 25,
30, 31, and 36, hereinbefore described.

Thence
S 89°56'E. on true line bet. secs. 30 and 31
Descend NE. slope 31 ft. over broken stony land, through
scattering cedar and juniper timber and sagebrush
undergrowth.

- 11.55 Wash 20 lks. wide 5 ft. deep, course SE.
- Ascend 335 ft. over SW. slope over broken cliffs.
- 21.55 Top of spur, slopes SE.
- Descend 207 ft. over NE. slope to
- 38.35 Set an iron post 3 ft. long, 1 in. in diam. over cross (x)
on exposed limestone ledge and raise a mound of
stone 4 ft. base, 3 ft. high around post for 1/4 sec.
cor. marked on brass cap

$$\frac{1}{4} \frac{S \ 30}{S \ 31}$$

1925

from which,
A pinion 12 ins. in diam. bears N67°W. 115 lks. dist.,
marked 1/4 S 30 BT.
A pinion 10 ins. in diam. bears S55°E. 107 lks. dist.,
marked 1/4 S 31 BT.

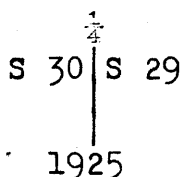
Survey of the Subdivision of Township 36 North., Range 4 East.

Chains

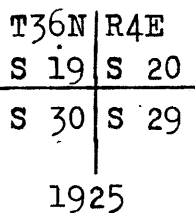
76.35 Descend 447 ft. over NE. slope of Buckskin mountains
 78.35 Wash 3 lks. wide 1 ft. deep, course N80°E.
 The cor. of secs. 29, 30, 31, and 32.
 Land broken and mountainous.
 Soil, stony 3 rd. and 4 th. rate.
 Timber, scattering cedar and pinion.
 Undergrowth, sagebrush.

N 0°03 'W. bet. secs. 29 and 30 .
 Ascend 31 ft. over SE. slope over broken stony land, thru.
 scattering cedar and pinion timber and sagebrush
 undergrowth.

7.50 Point of spur, slopes E; descend 29 ft. over NE. slope.
 10.50 Wash 10 lks. wide 1 ft. deep, course E.
 Ascend 39 ft. over SE. slope.
 21.00 Top of spur, slopes East.
 Descend 57 ft. over N. slope.
 39.60 Wash 12 lks. wide, 1 ft. deep, course S50°E.
 Ascend 98 ft. over SW. slope.
 40.00 Set an iron post 3 ft. long, 1 in. in diam. 28 ins. in the
 ground for $\frac{1}{4}$ sec. cor., marked on brass cap



52.00 No bearing trees within limits.
 Raise a mound of stone 2 ft. base, $1\frac{1}{2}$ ft. high W. of cor.
 Top of spur, slopes S80°E.
 61.41 Descend 65 ft. over NE. slope.
 Wash 15 lks. wide 2 ft. deep, course East.
 Ascend 64 ft. over S. slope.
 69.76 Top of spur, slopes S80°E.
 Descend 125 ft. over NE. slope.
 78.45 Wash 20 lks. wide 1 ft. deep, course East.
 Ascend 12 ft. over S. slope to.
 80.00 Set an iron post 3 ft. long 2 ins. in diam. 28 ins. in
 the ground for cor. of secs. 19, 20, 29, and 30, marked
 on brass cap



from which,
 A pinion 10 ins. in diam. bears N21 $\frac{3}{4}$ °W. 173 lks. dist.,
 marked T36N., R4E., S19 BT,
 No other bearing trees available.
 Raise a mound of stone 2 ft. base, $1\frac{1}{2}$ ft. high W. of cor.
 Land, broken.
 Soil, stony 3 rd. rate.
 Timber, scattering cedar and pinion.
 Undergrowth, sagebrush.
 Fair grass.

Survey of the Subdivision of Township 36 North., Range 4 East.

Chains.

40.00 S 89°56'E. on a random line bet. secs.20 and 29.
 Set temp. $\frac{1}{4}$ sec. cor.
 79.86 Fall 10 lks. S. of the cor. of secs.20,21,28, and 29.
 Thence
 West on true line bet. secs.20 and 29.
 Over broken stony land, through sagebrush undergrowth.
 23.86 Wash 10 lks. wide 1 ft. deep, course N30°E.
 32.06 Road from Kane Springs to Saddle Mountain, bears N10°W. and
 S10°E.
 39.93 Set an iron post 3 ft. long, 1 in. in diam. 28 ins. in the
 ground for $\frac{1}{4}$ sec. cor., marked on brass cap

$\frac{1}{4}$ S 20
 S 29

1925

40.96 Raise a mound of stone 2 ft. base, 1 $\frac{1}{2}$ ft. high N. of cor.
 Old road bears N25°E. and S25°W.
 Ascend 106 ft. over SE. slope to
 79.86 The cor. of secs.19,20,29, and 30.
 Land, broken.
 Soil, stony 3 rd. rate.
 Timber, none.
 Undergrowth, sagebrush.
 Fair grass.

40.00 N 89°56'W. on a random line bet. secs .19 and 30
 Set temp $\frac{1}{4}$ sec. cor.
 78.37 Intersect W.bdy. of Tp. 11 lks. N. of the cor. of secs.19,
 24,25, and 30, hereinbefore described.
 Thence
 N 89°59'E. on true line bet. secs.19 and 30.
 Ascend 41 ft. over broken stony SW. slope over mountain-
 ous land, through scattering cedar and pinion
 timber and sagebrush undergrowth.
 9.48 Top of spur, slopes S40°E.
 Descend 427 ft. over rocky NE. slope.
 38.37 Set an iron post 3 ft. long, 1 in. in diam. 4 ins. in the
 ground to bedrock and raise a mound of stone
 5 ft. base, 2 $\frac{1}{2}$ ft. high around post for $\frac{1}{4}$ sec. cor.
 marked on brass cap

$\frac{1}{4}$ S 19
 S 30

1925

from which
 A pinion 10 ins. in diam. bears N72°W. 85 lks. dist., marked
 $\frac{1}{4}$ S 19 BT.
 A pinion 10 ins. in diam. bears S55°E. 21 lks. dist.,
 marked $\frac{1}{4}$ S30 BT.
 39.70 Wash 6 lks. wide 2 ft. deep, course S80°E.
 Ascend 20 ft. over SW. slope.
 48.59 Top of spur, slopes S55°E.
 Descend 310 ft. over NE. slope.
 60.89 Wash 10 lks. wide 6 ft. deep, course S70°E.
 Ascend 10 ft. over SW. slope.
 63.08 Top of spur, slopes South.
 Descend 157 ft. over SE. slope. to
 78.37 The cor. of secs.19,20,29, and 30.

Survey of the Subdivision of Township 36 North., Range 4 East.

Chains.

Land, mountainous.
Soil, stony 4 th. rate.
Timber, scattering cedar and pinion.
Undergrowth, sagebrush.

- N 0°03'W. bet. secs.19 and 20.
Ascend 66 ft. over S. slope over stony mountainous land,
through scattering cedar and pinion timber and
sagebrush undergrowth.
- 9.93 Top of spur slopes East.
Descend 117 ft. over N. slope.
- 18.95 Wash 8 lks. wide 3 ft. deep, course S85°E.
Ascend 96 ft. over rocky SW. slope.
- 23.52 Top of spur slopes East.
Descend 69 ft. over N. slope.
- 28.05 Wash 3 lks. wide 1 ft. deep, course N85°E.
Ascend 44 ft. over SE. slope.
- 31.13 Top of spur, slopes N85°E.
Descend 23 ft. over NW. slope
- 33.11 Wash 8 lks. wide, 2 ft. deep, course N85°E.
Ascend 71 ft. over SE. slope
- 38.55 Top of spur, slopes East.
Descend 54 ft. over N. slope.
- 40.00 Set an iron post 3 ft. long, 1 ins. in diam. over cross
(x) on exposed limestone ledge and raise a mound of
stone 5 ft. base, 2½ ft. high around post for ¼ sec.
cor., marked on brass cap

$\frac{1}{4}$
 S 19 | S 20
 1925

from which

A pinion 12 ins. in diam. bears S23°E. 85 lks. dist.,
marked $\frac{1}{4}$ S 20 BT.

A pinion 6 ins. in diam. bears S78°W. 10 lks. dist.,
marked $\frac{1}{4}$ S19 BT.

- 40.90 Wash 6 lks. wide 2 ft. deep, course S85°E.
Ascend 98 ft. over rocky S. slope.
- 46.41 Top of spur, slopes S80°E.
Descend 100 ft. over NE. slope.
- 52.73 Wash 10 lks. wide 3 ft. deep, course N80°E.
Ascend 61 ft. over SE. slope.
- 61.46 Top of spur, slopes N80°E.
Descend 85 ft. over NW. slope.
- 64.85 Wash 8 lks. wide 2 ft. deep, course N80°E.
Ascend 86 ft. over SE. slope to
- 80.00 Set an iron post 3 ft. long, 2 ins. in diam. 6 ins. in the
ground to bedrock; deposit a limestone 12x10x2 ins.
marked with a cross (x) alongside, and raise a mound
of stone 5 ft. base, 2½ ft. high around post for
cor. of secs. 17, 18, 19, and 20., marked on brass cap

T36N | R4E
 S 18 | S 17
 S 19 | S 20
 1925

No bearing trees available

Survey of the Subdivision of Township 36 North., Range 4 East.

Chains

Land, mountainous.
Soil, stony 4 th. rate.
Timber, scattering, cedar and pinion.
Undergrowth, sagebrush.

40.00 East on a random line bet. secs. 17 and 20.
Set temp. $\frac{1}{4}$ sec. cor.
79.91 Intersect the cor. of secs. 16, 17, 20, and 21.
Thence
West on a true line bet. secs. 17 and 20.
Over rolling gravelly land, slopes SE., through scattering
sagebrush undergrowth.
36.51 Road from Kane Springs to Saddle Mountain, bears N. and S.
39.95 Set an iron post 3 ft. long, 1 in. in diam. 28 ins. in the
ground for $\frac{1}{4}$ sec. cor., markee on brass cap

$\frac{1}{4}$ S 17
S 20

1925

52.41 Raise a mound of stone 2 ft. base, $1\frac{1}{2}$ ft. high N. of cor.
Road from Kane Springs to Saddle Mountain, bears N20°E, and
S20°W.
63.14 Leave rolling prairie land, bears N. and S.; Enter broken
land.
Ascend 177 ft. over E. slope to
79.91 The cor. of secs. 17, 18, 19, and 20.
Land, rolling and broken.
Soil, sandy and gravelly, 3 rd. rate.
Timber, none.
Undergrowth, sagebrush.
Good grass.

40.00 S 89°59'W. on a random line bet. secs. 18 and 19.
Set temp. $\frac{1}{4}$ sec. cor.
78.32 Intersect W. bdy. of Tp. 05 lks. S. of the cor. of secs. 13, 18,
19, and 24, hereinbefore described.

Thence
S 89°59'E. on true line bet. secs. 18 and 19.
Over rolling gravelly and stony land along top of spur,
through scattering cedar and pinion timber and
sagebrush undergrowth.

10.00 Descend 870 ft. over SE. slope over hilly land.
38.32 Set an iron post 3 ft. long, 1 in. in diam. over cross
(x) on exposed limestone ledge and raise a mound of
stone 4 ft. base, 3 ft. high around post for $\frac{1}{4}$ sec.
cor. marked on brass cap

$\frac{1}{4}$ S 18
S 19

1925

from which

A pinion 8 ins. in diam. bears N16°W. 137 lks. dist.,
marked $\frac{1}{4}$ S18 BT.
A cedar 14 ins. in diam. bears S35 $\frac{1}{2}$ °E. 84 lks. dist.,
marked $\frac{1}{4}$ S19 BT.

Survey of the Subdivision of Township 36 North., Range 4 East.

Chains	
69.54	Wash 15 lks. wide 8 ft. deep, course N70°E. Ascend 64 ft. over NW. slope.
72.11	Top of spur, slopes N70°E. Descend 11 ft. over SE. slope. to
78.32	The cor. of secs. 17, 18, 19, and 20. Land, rolling and hilly. Soil, gravelly and stony, 4 th. rate. Timber, cedar and pinion. Undergrowth, sagebrush. Fair grass.
N 0°03'W. bet. secs. 17 and 18. Ascend 26 ft. over rocky S. slope, through scattering cedar and pinion timber and sagebrush undergrowth.	
2.77	Top of spur slopes N80°E. Descend 97 ft. over NW. slope.
6.67	Wash 12 lks. wide 4 ft. deep, course N85°E. Ascend 92 ft. over SE. slope.
14.66	Top of spur, slopes N85°E. Descend 25 ft. over NW. slope.
21.73	Wash 8 lks. wide 2 ft. deep, course N80°E. Ascend 77 ft. over SE. slope.
29.70	Top of spur, slopes S70°E. Descend 34 ft. over NE. slope.
37.27	Wash 8 lks. wide 4 ft. deep, course S55°E. Ascend 138 ft. over S. slope
40.00	Set an iron post 3 ft. long, 1 in. in diam. over cross (x) on exposed limestone ledge, deposit a limestone marked with a cross (x) at base, and raise a mound of stone 4 ft. base, 3 ft. high around post for $\frac{1}{4}$ sec. cor. marked on brass cap
$\begin{array}{c} \frac{1}{4} \\ \\ \text{S } 18 \mid \text{S } 17 \\ \\ 1925 \end{array}$	
50.04	No bearing trees available. Top of spur, slopes S75°E. Descend 163 ft. over NE. slope.
59.47	Wash 6 lks. wide 3 ft. deep, course S80°E. Ascend 78 ft. over SW. slope.
68.08	Top of spur, bears N80°E. Descend 50 ft. over NW. slope.
72.09	Wash 10 lks. wide 4 ft. deep, course N85°E. Ascend 63 ft. over SE. slope.
77.20	Top of spur, slopes N80°E. Descend 53 ft. over NW. slope.
79.57	Wash 6 lks. wide 2 ft. deep, course N80°E. Ascend 5 ft. over SE. slope to
80.00	Set an iron post 3 ft. long, 2 ins. in diam. 28 ins. in the ground for cor. of secs. 7, 8, 17, and 18., marked on brass cap

T36N	R4E
S 7	S 8
S 18	S 17

1925

from which,
A pinion 10 ins. in diam. bears N9°E. 84 lks. dist.,
marked T36N., R4E., S8 BT.

Survey of the Subdivision of Township 36 North., Range 4 East.

Chains	
	<p>A pinion 8 ins. in diam. bears S40°E. 71 lks. dist., marked T36N. R4E., S17 BT.</p> <p>A pinion 10 ins. in diam. bears S29½°W. 86 lks. dist., marked T36N., R4 E., S18 BT.</p> <p>A pinion 10 ins. in diam. bears N30½°W. 87 lks. dist., marked T36N., R4E., S7 BT.</p> <p>Land, hilly. Soil, stony 4 th. rate. Timber, scattering cedar and pinion. Undergrowth, sagebrush. Fair grass.</p>
40.00	East on a random line bet. secs. 8 and 17.
79.97	Set tem. ¼ sec. cor. Intersect the cor. of secs. 8, 9, 16, and 17. Thence
	West on true line bet. secs. 8 and 17.
6.60	Over rolling prairie land, devoid of undergrowth.
35.60	Wash 4 lks. wide 1 ft. deep, course N75°E. Road from Kane Springs to Saddle Mountain, bears N10°W. and S10°E.
39.99	Set an iron post 3 ft. long, 1 in. in diam. 4 ins. in the ground to bedrock, deposit a limestone 10x8x6 ins. marked with a cross (x) alongside, and raise a mound of stone 4 ft. base, 2½ ft. high around post for ¼ sec. cor., marked on brass cap
	$\frac{1}{4} \begin{array}{l} S 8 \\ S 17 \end{array}$ 1925
62.20	Wash 4 lks. wide 1 ft. deep, course N55°E. Ascend 110 ft. over SE. slope.
70.35	Top of spur, slopes South.; Descend 11 ft. over NW. slope.
79.97	The cor. of secs. 7, 8, 17, and 18. Land, rolling. Soil, stony 3 rd. rate. Timber, none. Undergrowth, none. Fair grass.
40.00	N 89°59'W. on a random line bet. secs. 7 and 18. Set temp. ¼ sec. cor.
78.18	Intersect W. bdy. of Tp. 5 lks. S. of the cor. of secs. 7, 12, 13, and 18., hereinbefore described. Thence, S 89°57'E. on true line bet. secs. 7 and 18. Over stony NE. slope over mountainous land, through scattering cedar and pinion timber and sagebrush undergrowth.
4.52	Draw course N45°E. Ascend NW. slope 10 ft.
13.18	Top of spur, slopes N45°E. Descend 66 ft. over SE. slope
19.44	Head of wash, course N70°E. Ascend 30 ft.
23.95	Top of spur, slopes N20°E. Descend
29.12	Head of wash, course N75°E.
38.18	Set an iron post 3 ft long, 1 in. in diam. 4 ins. in the ground to bedrock, deposit a limestone 12x10x3 ins. marked with a cross (x) at base, and raise a mound

Survey of the Subdivision of Township 36 North., Range 4 East

Chains

of stone 4 ft. base, 2½ ft. high around post for ¼ sec. cor. marked on brass cap

¼ S 7
S 18

1925

from which

A pinion 10 ins. in diam. bears N5½°E. 105 lks. dist., marked ¼ S7 BT.

A pinion 10 ins. in diam. bears S64½°W. 52 lks. dist., marked ¼ S18 BT.

Continue descent 660 ft. over foothills of the Buckskin mountains. through heavy timber bears NE. and SW.

47.09 Wash 8 lks. wide 2 ft. deep, course N80°E.

66.29 Top of spur, slopes N85°E.; Leave heavy timber bears N. and S

Descend over rocky SE. slope to

78.18 The cor. of secs. 7, 8, 17, and 18.

Land, mountainous.
Soil stony 4 th. rate.

Timber, cedar and pinion.

Undergrowth, sagebrush.

N 0°03'W. bet. secs. 7 and 8.

Ascend 72 ft. over rocky SE. slope over mountainous land, through scattering cedar and pinion timber and sagebrush undergrowth.

3.83 Top of spur, slopes N85°E.

Descend 106 ft. over N. slope.

8.25 Wash 8 lks. wide, 4 ft. deep, course N60°E.

Ascend 4 ft. over SE. slope.

13.59 Top of spur, slopes East.

Descend N slope 10 ft.

15.49 Wash 6 lks. wide 2 ft. deep, course S70°E.

Ascend 105 ft. over SW. slope.

21.88 Top of spur, slopes N80°E.

Descend 125 ft. over NW. slope.

30.87 Wash 20 lks. wide 10 ft. deep, course N80°E.

Ascend 146 ft. over SE. slope.

40.00 Set an iron post 3 ft. long, 1 in. in diam. 4 ins. in the ground to bedrock, and raise a mound of stone 4 ft. base, 2½ ft. high around post for ¼ sec. cor., marked on brass cap

¼
S 7 | S 8

1925

from which

A pinion 10 ins. in diam. bears S26¼°E. 148 lks. dist., marked ¼ S8 BT.

A pinion 8 ins. in diam. bears S74¼°W. 66 lks. dist., marked ¼ S7 BT.

44.48 Top of spur slopes East.

Descend 186 ft. over N. slope.

54.59 Wash 18 lks. wide 5 ft. deep, course N80°E.

Ascend 132 ft. over SE. slope.

63.47 Top of spur, slopes N85°E.

Descend 150 ft. over NW. slope

Survey of the Subdivision of Township 36 North., Range 4 East.

Chains

74.00 Wash 8 lks. wide, 4 ft. deep, course N85°E.
 Ascend 67 ft. over SE. slope
 78.00 Top of spur, slopes East.
 Descend 5 ft. over N. slope to
 80.00 Set an iron post 3 ft. long, 2 ins. in diam. over cross (x)
 on exposed limestone ledge and raise a mound of
 stone 5 ft. base, 3 ft. high around post for cor. of
 secs. 5, 6, 7, and 8., marked on brass cap

T36N	R4E
S 6	S 5
S 7	S 8

1925

from which

- A pinion 10 ins. in diam. bears N82 $\frac{1}{4}$ °E. 36 lks. dist., marked T36N., R4E., S5 BT.
- A pinion 10 ins. in diam. bears S67 $\frac{1}{4}$ °E. 84 lks. dist. marked T36N., R4E., S8 BT.
- A pinion 10 ins. in diam. bears S74°W. 194 lks. dist., marked T36N., R4E., S7 BT.
- A pinion 8 ins. in diam. bears N8 $\frac{3}{4}$ °W. 104 lks. dist., marked T36N., R4E., S6 BT.

Land, mountainous.
 Soil, stony 4 th. rate.
 Timber, cedar and pinion.
 Undergrowth, sagebrush.

40.00 East on a random line bet. secs. 5 and 8.
 Set temp. $\frac{1}{4}$ sec. cor.
 79.95 Fall 02 lks. N. of the cor. of secs. 4, 5, 8, and 9.
 Thence
 N 89°59'W. on true line bet. secs. 5 and 8.
 Over rolling stony land, through scattering sagebrush
 undergrowth.
 31.65 Wash 6 lks. wide 3 ft. deep, course N70°E.
 Ascend 235 ft. over SE. slope
 39.98 Set an iron post 3 ft. long, 1 in. in diam. 28 ins. in the
 ground for $\frac{1}{4}$ sec. cor., marked on brass cap

$\frac{1}{4}$ S 5
S 8

1925

43.15 Raise a mound of stone 2 ft. base, 1 $\frac{1}{2}$ ft. high N. of cor.
 Road from Kane Springs to Saddle mountain, bears N10°W
 and S10°E.
 45.60 Wash course N60°E.
 61.05 Wash 14 lks. wide 2 ft. deep, course N20°E.
 70.00 Enter scattering cedar and pinion timber, bears N. and S.
 79.95 The cor. of secs. 5, 6, 7, and 8.
 Land, rolling and hilly.
 Soil, stony 3 rd. rate.
 Timber, cedar and pinion.
 Undergrowth, scattering sagebrush.
 Good grass.

Survey of the Subdivision of Township 36 North., Range 4 East.

Chains

- N 89°57'W. on a random line bet. secs. 6 and 7.
 40.00 Set temp. $\frac{1}{4}$ sec. cor.
 78.13 Intersect W. bdy. of Tp. 8 lks. S. of the cor. of secs. 1, 6, 7, and 12. hereinbefore described.
- Thence
 S 89°54'E. on true line bet. secs. 6 and 7.
 Descend 29 ft. over stony NE. slope over hilly land through scattering cedar and pinion timber and sagebrush undergrowth.
- 6.17 Wash, course N20°E.
 Ascend 60 ft. over NW. slope
- 10.15 Top of spur, slopes N20°E.
 Descend 525 ft. over SE. slope
- 38.13 Set an iron post 3 ft. long, 1 in. in diam. 4 ins. in the ground to bedrock and raise a mound of stone 4 ft. base, $2\frac{1}{2}$ ft. high around post for $\frac{1}{4}$ sec. cor. marked on brass cap

$$\frac{1}{4} \frac{S 6}{S 7}$$

1925

from which

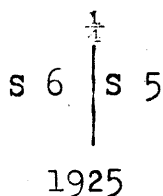
- A pinion 10 ins. in diam. bears N20 $\frac{3}{4}$ °W. 14 lks. dist., marked $\frac{1}{4}$ S6 BT.
 A pinion 8 ins. in diam. bears S76 $\frac{3}{4}$ °W. 104 lks. dist., marked $\frac{1}{4}$ S7 BT.
- 49.23 Wash 8 lks. wide 2 ft. deep, course N70°E.
 Ascend 74 ft. over NW. slope.
- 51.11 Top of spur, slopes N45°E.
 Descend over SE. slope. 143 ft.
- 60.21 Head of wash 6 lks. wide 2 ft. deep, course N80°E.
 Continue descent.
- 78.13 The cor. of secs. 5, 6, 7, and 8.
 Land, hilly.
 Soil, stony 4 th. rate.
 Timber, cedar and pinion.
 Undergrowth, sagebrush.
 Good grass.

- N 0°03'W. on true line bet. secs. 5 and 6.
 Descend 82 ft. over N. slope over stony hilly land, through cedar and pinion timber, and sagebrush undergrowth.
- 2.70 Wash 8 lks. wide 2 ft. deep, course N85°E.
 Ascend 52 ft. over SE. slope.
- 5.01 Top of spur, slopes East.
 Descend 80 ft. over N. slope.
- 11.45 Wash 8 lks. wide 2 ft. deep, course N80°E.
 Ascend 76 ft. over S. slope.
- 18.66 Top of spur, slopes East.
 Descend 64 ft. over N. slope.
- 26.32 Wash 9 lks. wide 3 ft. deep, course S85°E.
 Ascend 77 ft. over S. slope.
- 29.92 Top of spur, slopes S80°E.
 Descend 99 ft. over NE. slope.
- 35.30 Wash 10 lks. wide 3 ft. deep, course S70°E.
 Ascend 72 ft. over SW. slope to
- 40.00 Top of spur, bears S55°E.
 Set an iron post 3 ft. long, 1 in. in diam. 4 ins. in the ground to bedrock, deposit a limestone 8x6x6 ins. marked with a cross (x) alongside, and raise a mound of stone 4 ft. base, $2\frac{1}{2}$ ft. high around post

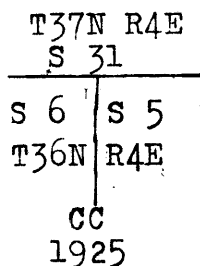
Survey of the Subdivision of Township 36 North., Range 4 East.

Chains

for $\frac{1}{4}$ sec. cor., marked on brass cap



- No bearing trees available.
 - Descend 39 ft. over N. slope.
 - 45.53 Wash 5 lks. wide 1 ft. deep, course S85°E.
 - Ascend 39 ft. over SW. slope.
 - 49.00 Top of spur, slopes East.
 - Descend 57 ft. over N. slope.
 - 53.92 Wash 15 lks. wide 2 ft. deep, course N85°E.
 - Ascend 33 ft. over SE. slope
 - 58.60 Top of spur, slopes S85°E.
 - Descend 54 ft. over NE. slope.
 - 66.35 Wash 6 lks. wide 2 ft. deep, course East.
 - Ascend 32 ft. over S. slope.
 - 72.06 Top of spur, slopes S85°E.
 - 75.26 Wash 5 lks. wide 2 ft. deep, course S80°E.
 - 79.05 Wash 14 lks. wide 5 ft. deep, course N80°E.
 - 79.71 Intersect the 9 th. Std. Par. N. 9.17 chs. West of the Std. cor. of secs. 31 and 32 T37N., R4E., described in Book C
- At the point of intersection,
Set an iron post 3 ft. long, 2 ins. in diam. 28 ins. in the ground, for closing cor. of secs. 5 and 6, marked on brass cap



No bearing trees available.
Raise a mound of stone 2 ft. base, 1 1/2 ft. high S. of cor.
Land, hilly.
Soil, stony 4 th. rate.
Timber, cedar and pinion.
Undergrowth, sagebrush.
Fair grass.

General Description

The land embraced in this township comprises every variety from level to mountainous and the soil ranges from sandy loam to barren cliffs.
The township is highest along the west boundary and slopes in a northeasterly direction towards the Colorado River into which the drainage of the township empties.
The drainage of the township is through the North Canyon Wash and numerous smaller washes and canyons which head in the foothills of the Buckskin mountains in the vicinity of the west boundary and flow in a northeasterly direction across the township.
The township is sparsely timbered with cedar and pinion

Township 36 North., Range 4 East.

in the rougher portion along the west boundary. The township is poorly watered, the only living water found in the township was that at the place called Pigeon Pockets near the center of sec. 31. No mineral deposits of any kind were found in the township. There are no settlers residing on the land in the township. The land over the major portion of the township supports a fair growth of nutritious grasses, which adapts the township for grazing purposes.

FINAL TESTS OF INSTRUMENTS:

December 20, 1925; At camp near the cor. of secs. 15, 16, 21, and 22, T36N., R4E.G & S.R.B.&M. Arizona. Latitude $36^{\circ}30'40''$ N., Longitude $111^{\circ}58'49''$ W., at 1^h39^m a.m., 1, m.t., observe Polaris at western elongation, making two observations, one each with telescope in direct and reversed positions and mark the mean point in the line thus determined by a tack driven in a stake driven firmly in the ground about 5.00 chs.N.

Azimuth of Polaris at western elongation = $1^{\circ}21'18''$.
h. m.

December 20, At 8 00 a.m., lay off the azimuth of Polaris $1^{\circ}21\frac{1}{2}'$ to the east and mark the true meridian thus determined by a tack driven in a stake set firmly in the ground about 5.00 chs.N.

FINAL TEST OF BUFF TRANSIT NO. 9977

h. m.

Dec. 20, 1925, At 9 00 a.m. app. time, set off $36^{\circ}30\frac{1}{2}'$ N. on the lat arc, $23^{\circ}23\frac{1}{2}'$ S. on the decl. arc, and determine a meridian with the solar which agrees with the true meridian, established by the Polaris observation.

h. m.

At 3 00 p.m., app. time, with the lat. arc unchanged, set off $23^{\circ}24'$ S. on the decl. arc, and determine a meridian with the solar and mark a point thereof by a tack driven in the stake already set about 5.00 chs.N. This mark falls 01' W. of the meridian established by the Polaris observations.

These and other observations made during the usual hours of solar work all define positions for meridians which agree within 1' with the true meridian established by the Polaris observations, from which conclude that the instrument has maintained a satisfactory adjustment during the survey of Township 36 North., Range 4 East.

FINAL TEST OF YOUNG AND SONS TRANSIT NO 8534

December 20, 1925, Set up instrument on the meridian described above and at 9^h00^m a.m. app. time, set off $36^{\circ}30\frac{1}{2}'$ N. on the lat. arc, $23^{\circ}23\frac{1}{2}'$ S. on the decl. arc and determine a meridian with the solar and mark a point thereof by a tack driven in the stake already set about 5.00 chs.N.; This mark falls 01' E. of the mark determined by the Polaris observation

h m

At 2 00 p.m., app. time, with the lat. arc unchanged, set off $23^{\circ}24'$ S. on the decl. arc, and determine a meridian

Township 36 North., Range 4 East.

with the solar and mark a point thereof by a tack driven in the stake already set about 5.00 chs.N. on which the meridian falls 01' W. of the meridian established by the Polaris observations.

These and other observations taken during the usual hours of solar work all define positions for meridians which agree within 01' with the true meridian, determined by the Polaris observations, from which conclude that the instrument has maintained its adjustment during the survey of Township 36 North., Range 4 East.

4-680

FIELD ASSISTANTS.

TO

William E. Hiester, U.S. Surveyor and David M. Daugherty, U.S. Transitman.

NAMES.	CAPACITY.
Clifford E. Way	First chainman
Clyde P. Cowper	First chainman
Harold Hawkins	Second chainman
Chester Stewart	Second chainman
Leland Hall	Flagman
Owen Wright	Flagman
Athole J. J. ...	Cornerman
Pilo Stansworth	Cornerman
Clarence Laub	Axman

CERTIFICATE OF UNITED STATES SURVEYORS.

We, William E. Hiester, U.S. Surveyor and David M. Daugherty, U.S. Transitman hereby certify upon honor that, in pursuance of supplemental special instructions received from the U.S. District Cadastral Engineer for Group 126, Ariz., bearing date of the twelfth day of September, 1925, we have well, faithfully, and truly in our own proper persons, and in strict conformity with said instructions, the Manual of Surveying Instructions, and the laws of the United States, surveyed all those parts or portions of the First the First Guide Meridian East in Township 36 North, Range 4 East the South and West boundaries and Subdivision lines of

Township 36 North, Range 4 East

of the Gila and Salt River

Base and Meridian, in the State of Arizona, which are represented in and by diagram on page 1 hereof the foregoing field notes as having been executed by us, and under our direction; and that all the corners of said survey have been established and perpetuated in strict accordance with the Manual of Surveying Instructions, and the supplemental special written instructions of the U.S. District Cadastral Engineer, for Group 126, Arizona and in the specific manner described in the field notes, and that the foregoing are the original field notes of such survey.

Place: Phoenix, Arizona

Date: November 17, 1926.

Place: Carlsbad, New Mexico.

Date: February 12, 1927.

William E. Hiester
U. S. Surveyor.

David M. Daugherty
U. S. Transitman.

APPROVAL.

OFFICE OF THE U.S. SUPERVISOR OF SURVEYS,

Denver, Colo., April 29, 1927

The foregoing field notes of the survey of the First Guide Meridian East thru T. 36 N.,
The South and West boundaries and
Subdivision lines of
Township 36 North, Range 4 East
of the Gila and Salt River Base and Meridian,
in the State of Arizona

executed by William E. Hiester, U.S. Surveyor & David M. Daugherty, U.S. Transitman under special instructions dated Sept. 12, 1925 for Group 126, Arizona, having been critically examined, and the necessary corrections and explanations made, the said field notes, and the surveys they describe, are hereby approved.

David M. Daugherty
U. S. Supervisor of Surveys.

~~I certify that the foregoing transcript of the field notes of the above-described surveys in~~
~~has been correctly copied from the original notes on file in this office.~~