

BOOK 3769
FIELD NOTES

OF THE RESURVEY OF

Part of the West Boundary, of Township 19 South, Range 28 East and

Part of the Subdivision lines, of Township 19 South, Range 27 East

AND OF THE SURVEY OF

Part (completion) of the Subdivision lines of

TOWNSHIP 19 SOUTH, RANGE 27 EAST

Of the Gila and Salt River Base and Meridian,

In the State of Arizona

EXECUTED BY

D. R. Averill, U. S. Surveyor

In the capacity of U. S. Surveyor, under Special Instructions dated June 19, 1924,
issued by the United States Surveyor General to govern surveys included in Group
No. 133, Arizona, which were approved by the Commissioner of the General Land
Office, July 15, 1924, and Assignment Instructions dated January 5, 1925.

Resurvey & Survey commenced March 7, 1925.

Resurvey & Survey completed March 9, 1925.

3769

3769

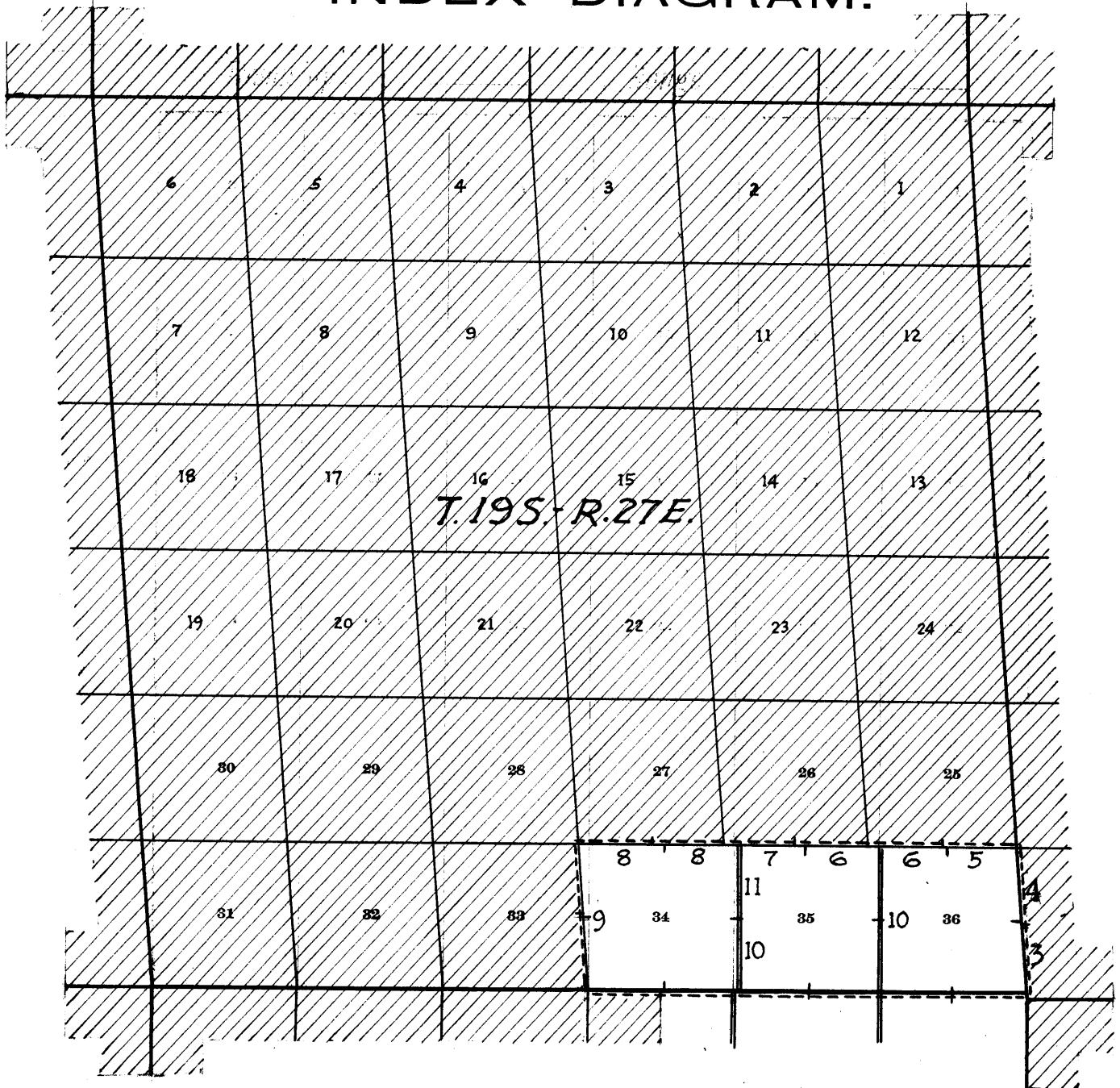
1A





Book "G"

Group 133 - Arizona

BOOK 3769

INDEX DIAGRAM.



-  Surveyed under this group.
-  Resurveyed under this group.
-  Accepted surveys, retracements, or resurveys.
-  Areas surveyed as per accepted plats on file.

16

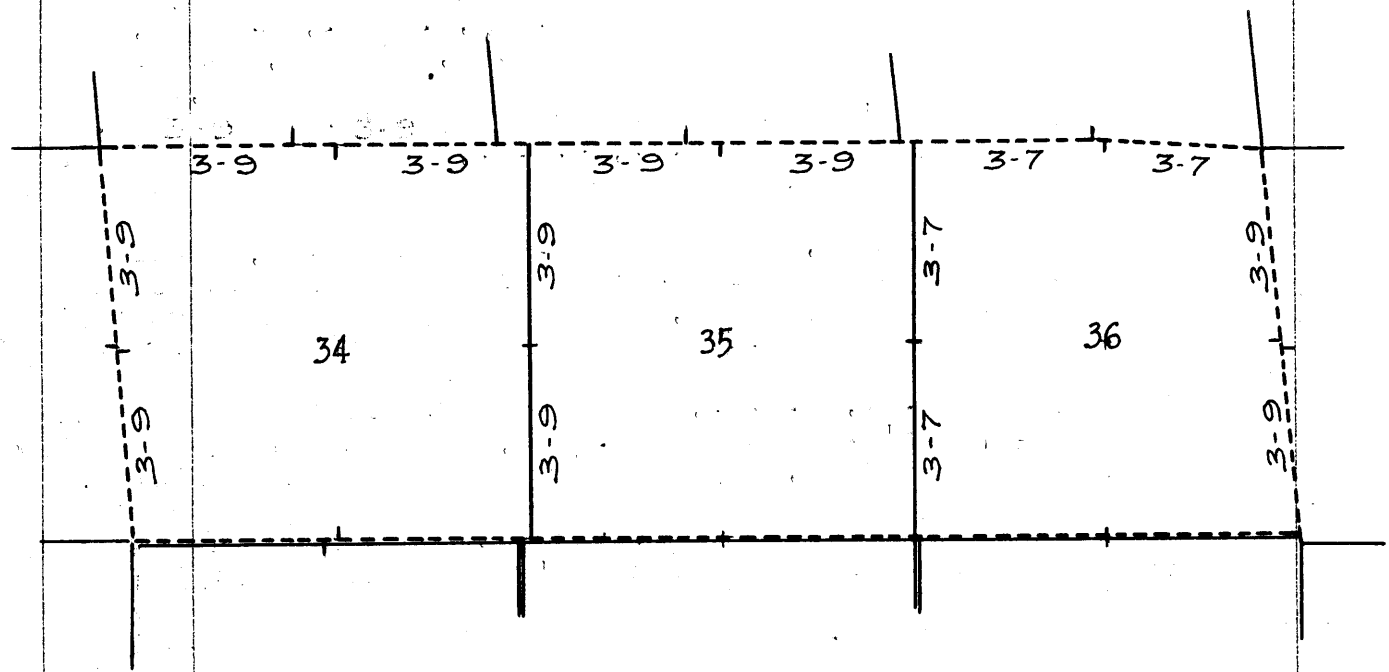
Book "G"

Group 133---Arizona

Township 19 South, Range 27 East.
(Secs. 34, 35 & 36)

DATE DIAGRAM

1925



- Indicates surveys executed by D. R. Averill, U.S. Surveyor, on dates shown thereon.
- - - Indicates resurveys executed by D. R. Averill, U.S. Surveyor, on dates shown thereon.
- Indicates surveys by D. R. Averill U.S.S. Notes and dates in Book "F" of this group.
- - - Indicates resurveys by D. R. Averill U.S.S. Notes and dates in Book "F" of this group.
- Indicates accepted surveys, resurveys or retracements.

Resurveys and surveys hereinafter described were executed on dates shown on diagram on page 1, hereof, by D.R. Averill, U.S. Surveyor, using Buff and Buff solar transit No. 9984. The instrument is equipped with full vertical circle and Smith solar attachment. Unless otherwise specified, all azimuth determinations are accomplished with the solar attachment.

March 1, 1925: examine the adjustments of the instrument and find no errors; then to test the solar apparatus by comparing its indications resulting from observations made during a.m. and p.m. hours with a meridian established by observation on Polaris, proceed as follows:

In camp near the center of sec. 14, T.20 S., R.27 E., Gila and Salt River Base and Meridian, Arizona, on meridian described on page 2 of Book "A" of this Group, set off $31^{\circ}41\frac{1}{2}'$ N. on the lat. arc and $7^{\circ}35'$ S. on the decl. arc, and at $8^{\text{h}} 00^{\text{m}}$ a.m., app.t., determine a meridian with the solar, which coincides with the true meridian.

At apparent noon, with the lat. arc unchanged, observe the sun on the meridian; the resulting reading of the decl. arc is $7^{\circ}32'$ S., which agrees with the computed decl. of the sun.

At $4^{\text{h}} 00^{\text{m}}$ p.m., app.t., with the lat. arc unchanged, set off $7^{\circ}29'$ S. on the decl. arc, and determine a meridian with the solar, which agrees with the true meridian.

As all of the solar observations taken during the usual working hours come within 1' of the true meridian, conclude that the adjustments of the instrument are satisfactory.

Unless otherwise specified, all measurements are made with Lufkin steel tapes, 5 chains in length, compared with a Lufkin standard steel tape, 1 chain in length and found correct. The measurements are made on the slope, the vertical angles determined, and the slope measurements properly reduced to true horizontal distances for entry in the field notes.

Resurvey of Part of West boundary of Township 19 S., Range 28 E.

chains	<p>The West bdy. of T. 19 S., R. 28 E. was surveyed in 1885 by R. C. Powers, U.S.D.S., on a bearing of S. 4° 41' E., establish- thereon all sec. and $\frac{1}{4}$ sec. cors. with a common reference to areas both sides of the line.</p> <p>In 1902, F. B. Jacobs, U.S.D.S. resurveyed the north two miles of this tp. bdy.</p> <p>No other resurvey or retracement of this tp. bdy. is of record.</p> <p>The following notes describe a resurvey of the W. bdy. of sec. 31, T. 19 S., R. 28 E., reconstructing the original $\frac{1}{4}$ sec. cor. and altering same to refer to the quarters of sec. 31 only, and reestablishing the $\frac{1}{4}$ sec. cor. of sec. 36 at 40.00 chs. in northing from the SE. cor. of T. 19 S., R. 27 E.</p> <p>----- Retracement for Resurvey. -----</p> <p>From original cor. of Ts. 19 & 20 S., Rs. 27 & 28 E., described in Book "F" of this group, N. 4° 41' W., on random line, on W. bdy. of sec. 31 (S. $\frac{1}{2}$)</p> <p>40.38 Fall 5 lks. E. of original $\frac{1}{4}$ sec. cor. of secs. 31 & 36, hereinafter described. True course and dist. of S. $\frac{1}{2}$ of W. bdy. of sec. 31 are therefore, N. 4° 45' W., 40.38 chs.</p> <p>Thence N. 4° 41' W., on random line, on W. bdy. of sec. 31 (N. $\frac{1}{2}$)</p> <p>39.94 Fall 5 lks. E. of original cor. of secs. 25, 30, 31 & 36, hereinafter described. True course and dist. of N. $\frac{1}{2}$ of W. bdy. of sec. 31 are therefore, N. 4° 45' W., 39.94 chs.</p> <p>----- RESURVEY. -----</p> <p>From cor. of Ts. 19 & 20 S., R. 28 E., described in Book "F" of this group, N. 4° 45' W., on true line, on W. bdy. of sec. 31 (S. $\frac{1}{2}$) Over mountainous land, thru scattering undergrowth. Descend 20 ft. over NE. slope to</p> <p>1.31 Intersect N. bdy. of T. 20 S., R. 27 E., resurveyed due East. Closing cor. of Ts. 19 & 20 S., R. 27 E. established at this point as described in Book "F" of this group. Continue line and measurement Descend 140 ft. over NE. slope</p> <p>7.60 Drain, 3 lks. wide, course E. Ascend 150 ft. over S. slope</p> <p>19.10 Spur, slopes E. Descend 190 ft. over NE. slope</p> <p>29.60 Ascend 88 ft. over SE. slope to</p> <p>40.38 Intersect the original $\frac{1}{4}$ sec. cor. of secs. 31 & 36, which is a lava stone, 12x9x6 ins. above ground, firmly set, and marked $\frac{1}{4}$ on W. face. No accessories. Reconstruct this cor. monument and alter same to refer to the quarters of sec. 31 only as follows: alongside old stone, set an iron post, 3 ft. long, 1 in. in diam., 8 ins. in ground to bedrock, deposit a stone marked with a cross (X) at base of post, and raise a mound of stone around post, for $\frac{1}{4}$ sec. cor. of sec. 31 only, with brass cap marked</p> <p style="text-align: center;"> $\frac{1}{4}$ S 31</p> <p style="text-align: center;">1925</p> <p>No bearing trees available.</p> <p>Thence N. 4° 45' W., on true line, on W. bdy. of sec. 31 (N. $\frac{1}{2}$) Over rolling land, thru scattering undergrowth. Ascend 8 ft. over SE. slope to</p> <p>1.07 (40.00 chs. in northing from C.C. of Ts. 19 & 20 S., R. 27 E.) Set an iron post, 3 ft. long, 1 in. in diam., 12 ins. in ground to bedrock, deposit a stone marked with a cross (X) at base of post, and raise a mound of stone around post, for reestablished $\frac{1}{4}$ sec. cor. of sec. 36 only, with brass cap marked</p>
--------	--------------------------------------------------------------------------------------------------------------------------------------------------------------------------------------------------------------------------------------------------------------------------------------------------------------------------------------------------------------------------------------------------------------------------------------------------------------------------------------------------------------------------------------------------------------------------------------------------------------------------------------------------------------------------------------------------------------------------------------------------------------------------------------------------------------------------------------------------------------------------------------------------------------------------------------------------------------------------------------------------------------------------------------------------------------------------------------------------------------------------------------------------------------------------------------------------------------------------------------------------------------------------------------------------------------------------------------------------------------------------------------------------------------------------------------------------------------------------------------------------------------------------------------------------------------------------------------------------------------------------------------------------------------------------------------------------------------------------------------------------------------------------------------------------------------------------------------------------------------------------------------------------------------------------------------------------------------------------------------------------------------------------------------------------------------------------------------------------------------------------------------------------------------------------------------------------------------------------------------------------------------------------------------------------------------------------------------------------------------------------------------------------------------------------------------------------------------------------------------------------------------------------------------------------------------------------------------------------------------------------------------------------------------------------------------------------------------------------------------------------------------------------------------------------------------------------------------------------------------------------------------------------------------------------------------------------------------------------------------------------------------------------------------------------------------------------------------------------------------------------------------------------------------------------------------------------------------------------------------------------------------------------------------------------------------------------------------------------------------------------------------------------------------------------------------------------------------------------------------------------------------------------------------------------------------------------------------------------------------------------------------------------------------------------------------------------------------------

Resurvey of Part of West boundary of Township 19 S., Range 28 E.

chains

 $\frac{1}{4}$ S 36

1925

No bearing trees available,
Ascend 110 ft. over SE. slope

32.95 Top of knoll.

Leave rolling and enter mountainous land:

Descend 175 ft. over N. slope to

39.94 (38.87 chs. N. $4^{\circ}45'$ W. from $\frac{1}{4}$ sec. cor. of sec. 36) intersect
the original cor. of secs. 25, 30, 31 & 36, which is a lava
stone 18x18x8 ins. above ground, firmly set, marked with
5 notches on N. face and 1 notch on S. face, and witness-
ed by a mound of stone W. of cor. No bearing trees.

Reconstruct this cor. monument as follows:

alongside old stone, set an iron post, 3 ft. long, 2 ins.
in diam., 10 ins. in the ground to bedrock, deposit a
stone marked with a cross (X) at base of post, and
raise a mound of stone around post, for cor. of secs. 25,
30, 31 & 36, with brass cap marked.

T19S

R27E | R28E

S25 | S30

S36 | S31

1925

No bearing trees available.

Land, mountainous and rolling.

Soil, rocky, 3rd rate.

Timber, none.

Undergrowth, catclaw, greasewood, mountain mahogany,
spanish bayonet and cactus.

Resurvey of Part of the Subdivision Lines of T.19 S., R.27 E.

chains

All of the subdivision lines of T.19 S., R.27 E. except the E. and W. bdrs. of sec. 35, were surveyed in 1885 by Lewis Wolfley U.S.D.S.

No retracement or resurvey of any part of the subdivision lines of this tp. is of record.

The following notes describe a resurvey of the W. bdy. of sec. 34, and the N. bdrs. of secs. 34, 35 & 36, reconstructing all the original sec. and $\frac{1}{4}$ sec. cor. monuments thereon, altering the reference of same to the previously surveyed areas only, except the cor. of secs. 27, 28, 33 & 34, and reestablishing $\frac{1}{4}$ sec. cors. thereon referring to secs. 34, 35, and 36 only.

Closing cor. of secs. 34 & 35, and C.C. of secs. 35 & 36, are established on the S. bdrs. of secs. 25 & 26 as hereinafter described in notes of "Survey of Part (completion) of the Subdivision Lines of T.19 S., R.27 E."

Retracement for Resurvey.

From cor. of secs. 3, 4, 33 & 34, on S. bdy. of Tp., described in Book "F" of this group,

N. $4^{\circ}41'W.$, on random line, bet. secs. 33 & 34.

40.00 Diligent search in this vicinity fails to reveal any trace of original $\frac{1}{4}$ sec. cor. Set temp. cor.

82.04 Fall 40 lks. W. of original cor. of secs. 27, 28, 33 & 34, hereinafter described, therefore, true line is N. $4^{\circ}24'W.$, 82.04 chs.

S. $89^{\circ}47'E.$, on random line, on S. bdy. of sec. 27 (W. $\frac{1}{4}$)

40.20 Fall 14 lks. S. of original $\frac{1}{4}$ sec. cor. of secs. 27 & 34, hereinafter described, therefore, true line is N. $89^{\circ}59'W.$, 40.20 chs.

Thence

S. $89^{\circ}47'E.$, on random line, on S. bdy. of sec. 27 (E. $\frac{1}{4}$)

42.62 Fall 43 lks. S. of original cor. of secs. 26, 27, 34 & 35, hereinafter described, therefore, true line is S. $89^{\circ}38'W.$, 42.62 chs.

S. $89^{\circ}47'E.$, on random line, on S. bdy. of sec. 26 (W. $\frac{1}{4}$)

39.95 Fall 5 lks. N. of original $\frac{1}{4}$ sec. cor. of secs. 26 & 35, hereinafter described, therefore, true line is N. $89^{\circ}43'W.$, 39.95 chs.

Thence

S. $89^{\circ}47'E.$, on random line, on S. bdy. of sec. 26 (E. $\frac{1}{4}$)

43.74 Fall 57 lks. S. of original cor. of secs. 25, 26, 35 & 36, hereinafter described, therefore, true line is S. $89^{\circ}28'W.$, 43.74 chs.

S. $89^{\circ}47'E.$, on random line, on S. bdy. of sec. 25 (W. $\frac{1}{4}$)

40.60 Fall 67 lks. S. of original $\frac{1}{4}$ sec. cor. of secs. 25 & 36, hereinafter described, therefore, true line is S. $89^{\circ}16'W.$, 40.60 chs.

Thence

S. $89^{\circ}47'E.$, on random line, on S. bdy. of sec. 25 (E. $\frac{1}{4}$)

36.09 Fall 384 lks. N. of the cor. of secs. 25, 30, 31 & 36 on the E. bdy. of the Tp., hereinbefore described, therefore, true line is N. $83^{\circ}43'W.$, 36.31 chs.

RESURVEY.

From cor. of secs. 25, 30, 31 & 36 on E. bdy. of Tp., hereinbefore described,

N. $83^{\circ}43'W.$, on true line, on N. bdy. of sec. 36.

Over mountainous land, thru scattering undergrowth.

Descend 233 ft. over N. slope

30.00 Drain, 12 lks. wide, course N.

Ascend gradually to

33.76 (40.00 chs. in easting from C.C. of secs. 35 & 36)

Set an iron post, 3 ft. long, 1 in. in diam., 16 ins. in

Resurvey of Part of the Subdivision Lines of T.19 S., R.27 E.

chains the ground to bedrock, deposit a stone marked with a cross (X) at base of post, and raise a mound of stone around post, for reestablished $\frac{1}{4}$ sec. cor. of sec. 36 only, with brass cap marked

$\frac{1}{4}$ S 36

1925

No bearing trees available.

36.31 Ascend 40 ft. over SE. slope to
Intersect the original $\frac{1}{4}$ sec. cor. of secs. 25 & 36, which is an igneous stone, 10x9x8 ins. above ground, firmly set, marked $\frac{1}{4}$ on N. face, and witnessed by a mound of stone N. of cor. No bearing trees.
Reconstruct this cor. monument and alter its reference as follows:
alongside old stone, set an iron post, 1 in. in diam., 8 ins. in ground to bedrock, deposit a stone marked with a cross (X) at base of post, and raise a mound of stone around post, for $\frac{1}{4}$ sec. cor. of sec. 25 only, with brass cap marked

$\frac{1}{4}$ S 25

1925

No bearing trees available.

Thence
S. 89° 16' W., on true line, continuing measurement of N. bdy. of sec. 36.

Over rolling land, thru scattering undergrowth.

Ascend 30 ft. over SE. slope

39.30 Low ridge, brs. N. and S.

Descend 80 ft. over W. slope

49.50 Drain, 15 lks. wide, course N.

Ascend 110 ft. to

73.78 Intersect the subdivision line bet. secs. 35 & 36, surveyed due North.

Closing cor. of said secs. established at this point as hereinafter described.

Land, mountainous and rolling.

Soil, rocky, 3rd rate.

Timber, none.

Undergrowth, catclaw, scrub mesquite, greasewood, mesquite and cactus.

From closing cor. of secs. 35 & 36, hereinafter described, S. 89° 16' W., on true line, on N. bdy. of sec. 35.

Over rolling land, thru scattering undergrowth.

Ascend 30 ft. to

3.13 (40.60 chs. S. 89° 16' W. from $\frac{1}{4}$ sec. cor. of sec. 25)

Intersect the original cor. of secs. 25, 26, 35 & 36, which is a quartz stone, 14x9x5 ins. above ground, firmly set, marked with one notch on each of E. and S. faces and witnessed by a mound of stone W. of cor.
No bearing trees.

Reconstruct this cor. monument and alter its reference as follows:

alongside old stone, set an iron post, 3 ft. long, 2 ins. in diam., 14 ins. in the ground to bedrock, deposit a stone marked with a cross (X) at base of post, and raise a mound of stone around post, for cor. of secs. 25 and 26 only, with

Resurvey of Part of the Subdivision lines of T.19 S., R.27 E.

chains	<p>brass cap marked</p> <p style="text-align: center;"> <table border="1" style="margin: auto;"> <tr> <td>T19S</td> <td>R27E</td> </tr> <tr> <td>S26</td> <td>S25</td> </tr> <tr> <td colspan="2" style="text-align: center;">S35</td> </tr> </table> </p> <p style="text-align: center;">1925</p> <p>No bearing trees available. Destroy the old mound of stone W. of cor.</p> <p>Thence S.89°28'W., on true line, continuing measurement of N. bdy. of sec. 35</p> <p>Ascend 33 ft. over SE. slope</p> <p>16.80 Descend 190 ft. over SW. slope.</p> <p>39.80 Wash, 15 lks. wide, course NW. Ascend over NE. slope to</p> <p>40.03 (Midpoint of N. bdy. of sec. 35) Set an iron post, 3 ft. long, 1 in. in diam., 26 ins. in ground, for reestablished $\frac{1}{4}$ sec. cor. of sec. 35 only, with brass cap marked,</p> <p style="text-align: center;">$\frac{1}{4}$ S 35</p> <p style="text-align: center;">1925</p> <p>No bearing trees available. Raise a mound of stone, 3 ft. base, 1$\frac{1}{2}$ ft. high, S. of cor.</p> <p>Ascend 70 ft. over NE. slope to $\frac{1}{4}$ sec. cor. of sec. 26.</p> <p>41.20 Road, bears SE. and NW.</p> <p>46.87 (43.74 chs. S.89°28'W. from cor. of secs. 25 & 36) Intersect the original $\frac{1}{4}$ sec. cor. of secs. 26 and 35, which is a cross (X) marked on a lava ledge, with $\frac{1}{4}$ marked N. of cross, and witnessed by a mound of stone N. of cor, No bearing trees.</p> <p>Reconstruct this cor. monument, and alter its reference as follows: Alongside the cross (X), set an iron post, 3 ft. long, 1 in. in diam., 12 ins. in ground to bedrock, and raise a mound of stone around post, for $\frac{1}{4}$ sec. cor. of sec. 26 only, with brass cap marked</p> <p style="text-align: center;">$\frac{1}{4}$ S 26</p> <p style="text-align: center;">1925</p> <p>No bearing trees available..</p> <p>Thence N.89°43'W., on true line, continuing measurement of N. bdy. of secs 35.</p> <p>Ascend 100 ft. over NE. slope</p> <p>59.20 Spur, slopes N. Descend 109 ft. to C.C.</p> <p>77.13 Fence, brs. NE. and SW.</p> <p>80.06 Intersect the subdivision line bet. secs. 34 and 35, surveyed N.0°1'W. Closing cor. of said secs. established at this point as hereinafter described.</p> <p>Land, rolling. Soil, rocky, 3rd rate. Timber, none. Undergrowth, greasewood, catclaw, scrub mesquite, mescal, and cactus.</p>	T19S	R27E	S26	S25	S35	
T19S	R27E						
S26	S25						
S35							

Resurvey of Part of the Subdivision Lines of T.19 S., R.27 E.

chains	N.89°43'W., on true line, on N.bdy. of sec.34. Over rolling land, thru scattering undergrowth. Descend gradually over NW.slope				
5.20	Wash, 20 lks.wide, course NW. Ascend 40 ft. over NE.slope to				
6.76	(39.95 chs. N.89°43'W. from $\frac{1}{4}$ sec.cor. of sec.26) Intersect the original cor. of secs.26,27,34 & 35, which is a quartz stone 7x6x6 ins. above ground, firmly set, marked with 1 notch on S. face and 2 notches on E. face, and witnessed by a mound of stone W. of cor. No bearing trees. Reconstruct this cor. monument and alter its reference as follows: alongside old stone, set an iron post, 3 ft. long, 2 ins. in diam., 27 ins. in ground, for cor. of secs.26 and 27 only, with brass cap marked				
	<table border="1"> <tr> <td>T19S</td> <td>R27E</td> </tr> <tr> <td>S27</td> <td>S26</td> </tr> </table>	T19S	R27E	S27	S26
T19S	R27E				
S27	S26				
	S34 1925				
	No bearing trees available. Destroy old mound of stone W. of cor. Raise a mound of stone, 3 ft. base, $1\frac{1}{2}$ ft. high, N. of cor. Thence S.89°38'W., on true line, continuing measurement of N. bdy. of sec.34. Ascend 170 ft. over NE.slope				
32.50	Ridge, bears NW. and SE. Descend 300 ft. over SW.slope				
40.00	Set an iron post, 3 ft. long, 1 in. in diam., 27 ins. in the ground, for reestablished $\frac{1}{4}$ sec.cor. of sec.34 only, with brass cap marked				
	$\frac{1}{4}$ S 34 1925.				
	No bearing trees available. Raise a mound of stone, 2 $\frac{1}{2}$ ft. base, $1\frac{1}{2}$ ft. high, S. of cor.				
43.20	Wash, 4 lks.wide, course SW. Leave rolling and enter level land.				
49.38	(42.62 chs. S.89°38'W. from cor. of secs.26 & 27) Intersect the original $\frac{1}{4}$ sec.cor. of secs.27 & 34, which is a lava stone 10x8x7 ins. above ground, firmly set, marked $\frac{1}{4}$ on N. face. No accessories. Reconstruct this cor. monument and alter its reference as follows: alongside old stone, set an iron post, 3 ft. long, 1 in. in diam., 26 ins. in ground, for $\frac{1}{4}$ sec.cor. of sec.27 only, with brass cap marked				
	$\frac{1}{4}$ S 27 1925				
	No bearing trees available. Raise a mound of stone, 2 $\frac{1}{2}$ ft. base, $1\frac{1}{2}$ ft. high, N. of cor. Thence N.89°59'W., on true line, continuing measurement of N. bdy. of sec.34.				
89.58	(40.20 chs. N.89°59'W. from $\frac{1}{4}$ sec.cor. of sec.27) Intersect the original cor. of secs.27,28,33 & 34, which is a lava stone 12x9x9 ins. above ground, firmly set, marked with 1 notch on S. face and 3 notches on E. face. No accessories. Reconstruct this cor. and alter its reference as follows: alongside old stone, set an iron post, 3 ft. long, 2 ins. in diam., 12 ins. in ground to bedrock, for cor. of secs. 27,28,33 and 34, with brass cap marked				

Resurvey of part of Subdivision Lines of T.19 S., R.27 E.

Chains

T19S R27E
 S28 | S27
 S33 | S34
 1925

Raise a mound of stone, 5 ft. base, 1 1/2 ft. high, around post.
 No bearing trees available.

Land: level and heavily rolling.
 Soil: rocky loam, 2nd rate.
 Timber: none.
 Undergrowth: greasewood, catclaw and cactus.

13.60
 20.75
 40.12

From the cor. of secs. 3, 4, 33 and 34, on the S. bdy. of the Tp., described in Book "F" of this Group. N. 4° 24' W., on a true line, on the W. bdy. of sec. 34. Over level land; thru scattering undergrowth. Asc. 200 ft. over S. slope. Over rolling land. Ridge brs. E. and W. Desc. 175 ft. over N. slope to (40.00 chs. Northing from the SW. cor. of sec. 34) Set an iron post, 3 ft. long, 1 in. in dia., 27 ins. in ground, for reestablished 1/4 sec. cor. of sec. 34, only, with brass cap marked

1/4 S34
 1925

No trees available.
 Raise a mound of stone, 3 ft. base, 2 ft. high, E. of cor.

41.02

Continuing line and measurement. (Midpoint of E. bdy. of sec. 33) Set an iron post, 3 ft. long, 1 in. in dia., 8 ins. in the ground, with a stone marked with a cross (X) deposited at base, for reestablished 1/4 sec. cor. of sec. 33, only, with brass cap marked

1/4 S33
 1925

Raise a mound of stone, 4 ft. base, 2 ft. high, around post.
 No bearing trees available.

Continuing line and measurement.
 Over level land.

82.04

Intersect the cor. of secs. 27, 28, 33 and 34, hereinbefore described.

Land: level and rolling.
 Soil: gravelly, 2nd rate.
 Timber: none.
 Undergrowth: greasewood, catclaw and cactus.

Survey of part (completion of Subdivision lines of T.19 S., R.27 E.

Chains

From the re-established cor. of secs. 1, 2, 35 and 36, on the S. bdy. of the Tp., described in Book "F" of this Group.

North, on a true line, bet. secs. 35 and 36.

Over rolling land; thru scattering undergrowth.

Asc. gradually 257 ft. along rounded ridge.

28.70 Desc. 30 ft. along W. side of ridge, which brs. N.10°E. and S.10°W.

40.00 Set an iron post, 3 ft. long, 1 in. in dia., over a cross (X) on bedrock, for 1/4 sec. cor., with brass cap marked



Raise a mound of stone, 4 ft. base, 2 1/2 ft. high, around post.

No bearing trees available.

Along broken W. slope.

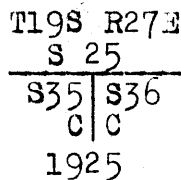
78.50 Drain, 4 lks. wide, course W.

82.28 Intersect the S. bdy. of sec. 25 at a point 3.13 chs.

N.89°16'E. of the cor. of secs. 25 and 26, only, hereinbefore described and described.

At point of intersection,

Set an iron post, 3 ft. long, 2 ins. in dia., 14 ins. in the ground, for closing cor. of secs. 35 and 36, with brass cap marked



Raise a mound of stone, 3 ft. base, 1 1/2 ft. high, around post.

No trees available.

Land: rolling.

Soil: rocky, 3rd rate.

Timber: none.

Undergrowth: greasewood, catclaw, mahogany, mesquite, bayonet and cactus.

From re-established cor. of secs. 2, 3, 34 and 35, on the S. bdy. of the Tp., described in Book "F" of this group, and "G" of this group.

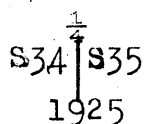
N.0°W, on a true line, bet. secs. 34 and 35.

Over rolling-mountainous land; thru scattering undergrowth.

Asc. Ridge, brs. NW. and SE.

35.50 Desc. 40 ft. to

40.00 Set an iron post, 3 ft. long, 1 in. in dia., 27 ins. in the ground, for 1/4 sec. cor., with brass cap marked



No trees available.

Raise a mound of stone, 3 ft. base, 2 ft. high, W. of cor.

Desc. 310 ft. over NE. slope.

69.20 Wash, 12 lks. wide, course N. 20°W.

Over broken land.

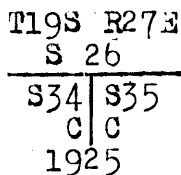
73.80 Junction of washes, each 10 lks. wide, from S.20°E. and

Survey of part(completion) of Subdivision lines of T.19 S., R.27 E.

Chains

80.55
82.00

S.30°W., course NE.
Fence, brs. NE. and SW.
Intersect the S. bdy. of sec. 26 at a point 6.76 chs.
S.89°43'E. of the cor. of secs. 26 and 27, only,
hereinbefore described and described.
At point of intersection,
Set an iron post, 3 ft. long, 2 ins. in dia., 10 ins. in
the ground, for closing cor. of secs. 34 and 35, with
brass cap marked



Raise a mound of stone, 4 ft. base, 2 ft. high, around
post.
No bearing trees available.

Land: rolling-mountainous.
Soil: rocky, 3rd rate.
Timber: none.
Undergrowth: greasewood, catclaw, mesquite, mescal and
cactus.

The continued satisfactory adjustment of the instrument
throughout the survey of the completion of the Tp. is
indicated from tests shown in Book "H".

Boundaries of part of T.19 S., R.27 E.
(Secs. 34, 35 and 36)
LATITUDES, DEPARTURES and CLOSING ERRORS.

Line designated	' True bearing	Dist- ance	Latitudes		Departures	
			N.	S.	E.	W.
South Boundary	West S.89°41'W.	202.88 40.40	.22	.22		202.88 40.40
Subdivisional Boundary	N.4°24'W.	82.04	81.80			6.29
	S.89°59'E.	40.20		.01	40.20	
	N.89°38'E.	42.62	.27		42.62	
	S.89°43'E.	39.95		.20	39.95	
	N.89°28'E.	43.74	.41		43.74	
	N.89°16'E.	40.60	.52		40.60	
East Boundary	S.4°45'E.	79.01		78.74	6.54	
Convergency					.04	
Totals			83.00	83.14	249.78	249.57
			82.53	83.00	249.57	
Error in latitude			0.25	0.14		
Error in departure					0.21	

GENERAL DESCRIPTION

Of secs. 34, 35 and 36.

Land lies in foothills of Swisshelm Mountains. It is generally mountainous and heavily rolling with the exception of some level land in sec. 34.

Its soil is shallow almost everywhere and much mixed with rocks and gravel. The rock and soil are usually of volcanic origin.

There is no timber.

It has a good crop of grass and a moderate amount of the desert types of undergrowth.

No settlers or improvements except an inferior road entering sec. 35 from the South.

No mineral was observed.

CERTIFICATE OF UNITED STATES SURVEYOR.

I, Dupree R. Averill, U. S. Surveyor, hereby certify upon honor that, in pursuance of special instructions received from the U. S. Surveyor General, for Group 133, Arizona bearing date of the 19th day of June, 19 24 I have well, faithfully, and truly in my own proper person, and in strict conformity with said instructions, the Manual of Surveying Instructions, and the laws of the United States, ~~SURVEYED~~ RESURVEYED all those parts or portions of the West boundary of T. 19 S., R. 28 E., and Subdivision Lines of T. 19 S., R. 27 E. and ~~SURVEYED~~ RESURVEYED all those parts or portions of the Subdivision Lines of 27 East Township 19 South, Range 27 East

of the Gila and Salt River Base and Meridian, in the State of Arizona, which are represented in and by diagram on page 1 hereof the foregoing field notes as having been executed by me, and under my direction; and that all the corners of said resurvey and survey have been established and perpetuated in strict accordance with the Manual of Surveying Instructions, and the special written instructions of the U. S. Surveyor General, for Group 133, Arizona and in the specific manner described in the field notes, and that the foregoing are the original field notes of such resurvey and survey.

Place San Cruz, Calif.  U. S. Surveyor.

Date June 9, 1926 APPROVAL.

OFFICE OF THE U. S. SUPERVISOR OF SURVEYS, Denver, Colorado, May 4, 1927

The foregoing field notes of the resurvey of Part of West bdy of T. 19 S., R. 28 E., and Part of the Subdivision Lines of T. 19 S., R. 27 E. and of the survey of Part (completion) of the Subdivision Lines of TOWNSHIP 19 SOUTH, RANGE 27 EAST

of the Gila and Salt River Base and Meridian, in the State of Arizona executed by D. R. Averill, U. S. Surveyor

under his special instructions dated June 19, 1924, for Group 133, Arizona having been critically examined, and the necessary corrections and explanations made, the said field notes, and the RESURVEYS and SURVEYS they describe, are hereby approved.

 U. S. Supervisor of Surveys.

~~I certify that the foregoing transcript of the field notes of the above described surveys in~~ has been correctly copied from the original notes on file in this office.