

BOOK 3775

FIELD NOTES

OF THE RETRACEMENT OF

Part of the Subdivision Lines of Township 18 South, Range 8 East,

OF THE RESURVEY OF

Part of the South Boundary of Township 17 South, Range 8 East,

Part of the South Boundary, and

Part of the Subdivision Lines of Township 18 South, Range 8 East,

AND OF THE SURVEY OF

West Boundary, and

Part (Completion) of the Subdivision Lines of

Township 18 South, Range 8 East

Of the Gila and Salt River Base and Meridian,

In the State of ARIZONA

EXECUTED BY

William H. Thorn, U. S. Cadastral Engineer,

and

Otis O. Gould, U. S. Transitman.

In the capacity of U. S. Surveyors, under Special Instructions dated January 21, 1926, issued by the United States Surveyor General to govern surveys included in Group No. 134, Arizona, which were approved by the Commissioner of the General Land Office, February 12, 19 25, and Assignment Instructions dated October 17, 19 25, and December 2, 1925.

Retracement,
Resurvey and Survey commenced February 18, 19 26.

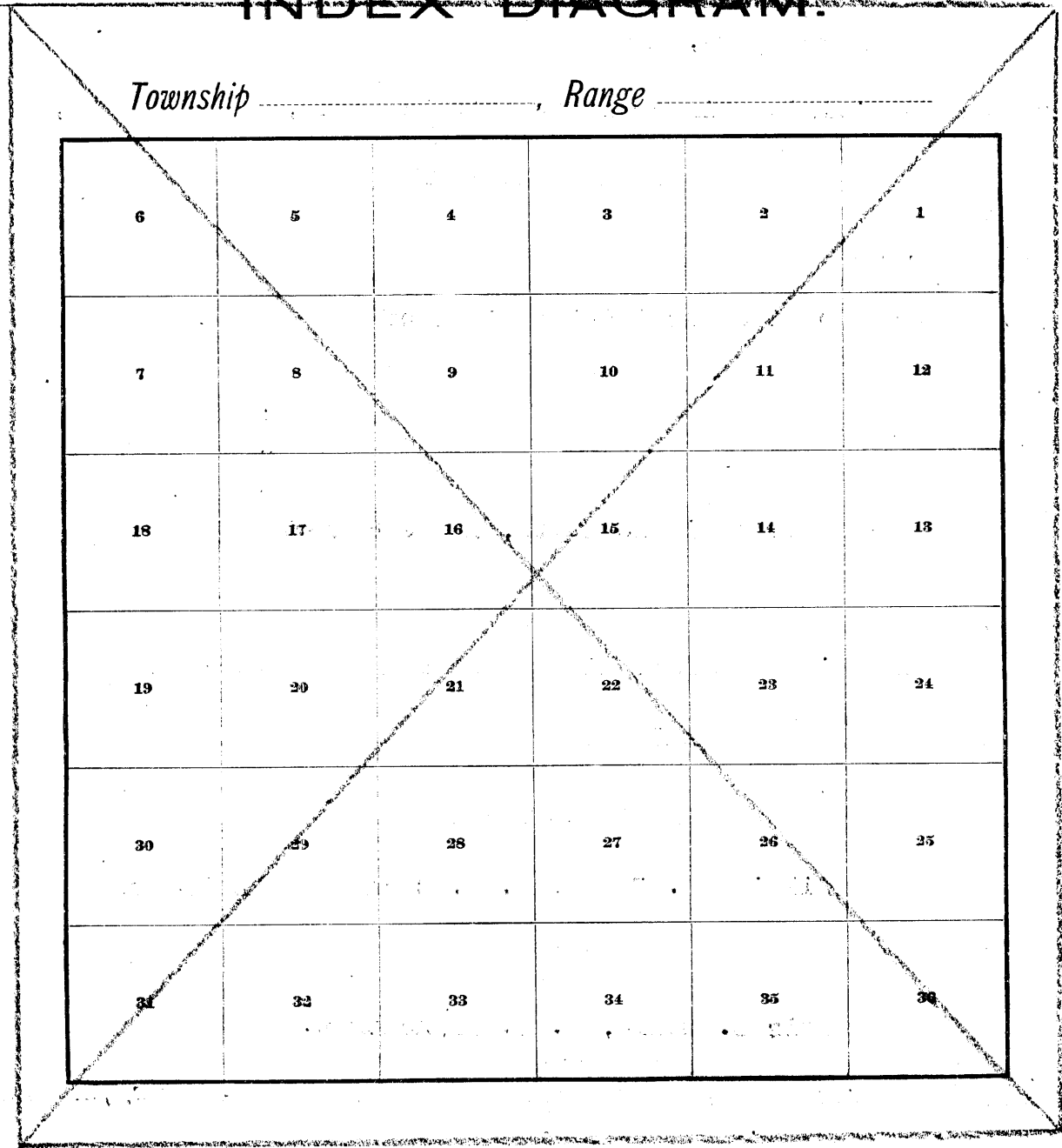
Retracement,
Resurvey and Survey completed March 6, 19 26.

3775

3775

27

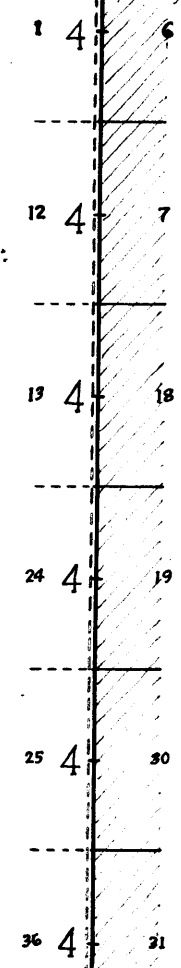
INDEX DIAGRAM.



1A

INDEX DIAGRAM

New bearing trees
established for Tp. Cor.
Page 4

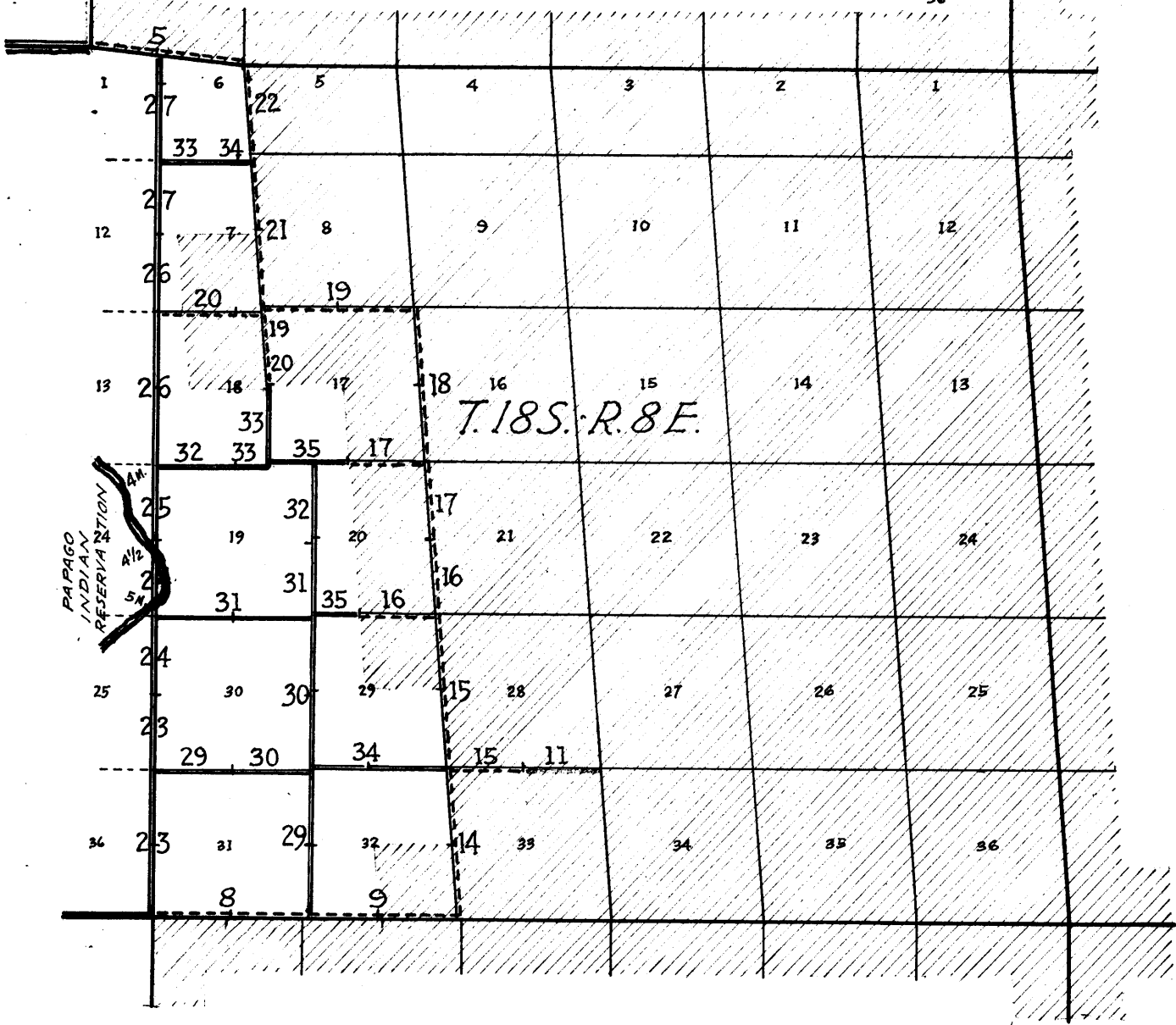


- Surveyed under this group.
- Retraced under this group.
- Resurveyed under this group.
- Retracement for Resurvey.
- Accepted surveys.
- Surveyed under Group No. 100.
- Unsurveyed.
- Areas surveyed as per accepted plats on file.

T. 17 S. ~ R. 8 E.

T. 18 S. ~ R. 8 E.

PAPAGO
INDIAN
RESERVATION



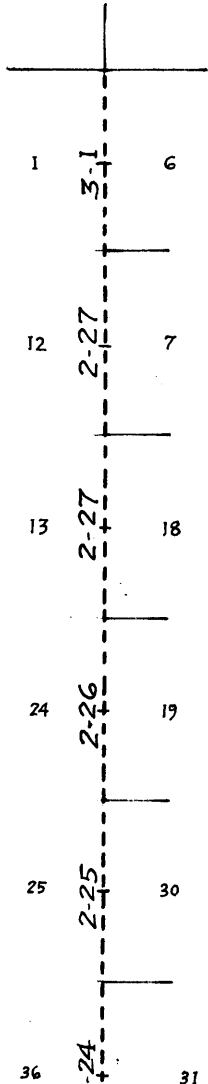
2

BOOK 3775

~ Book "D" ~

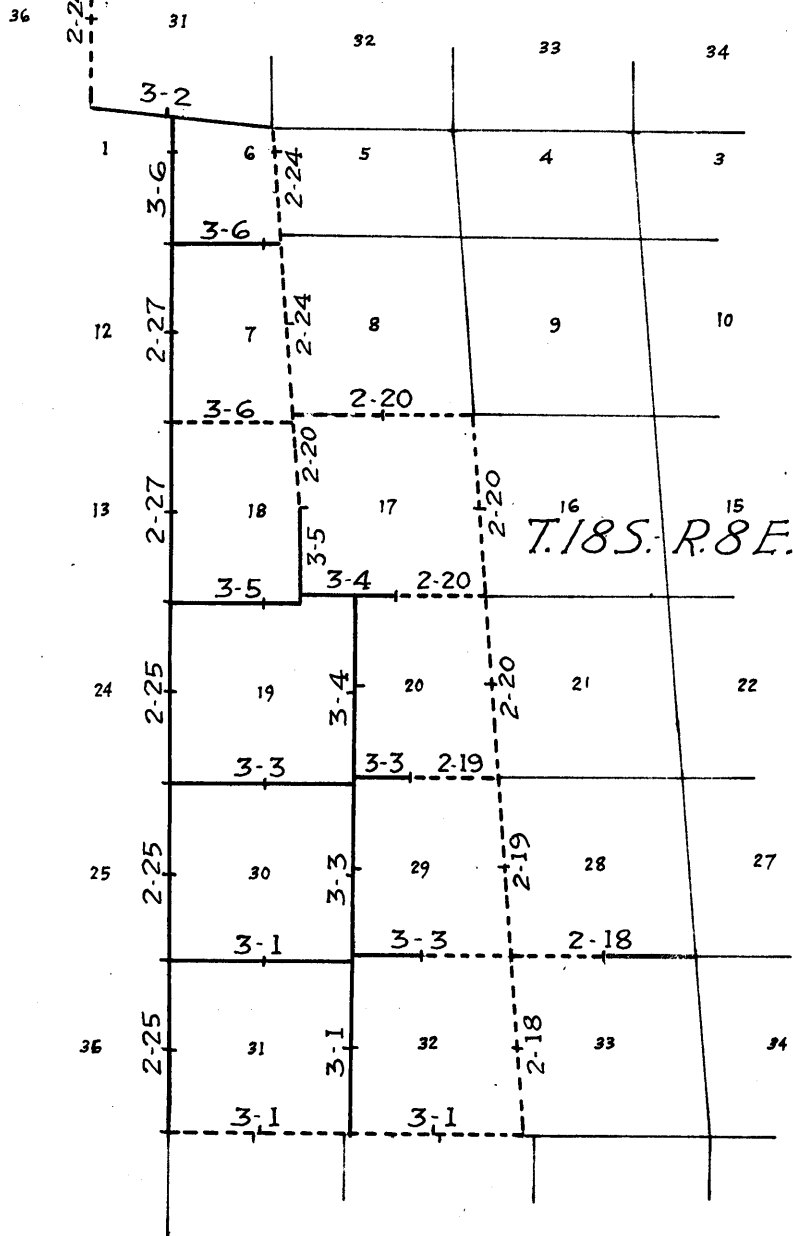
Group 134 - Arizona

DATE DIAGRAM
1926



- Surveyed by W.H.Thorn, U.S.Cadastral Engineer on dates shown thereon.
- - - - - Resurveyed by W.H.Thorn, U.S.Cadastral Engineer on dates shown thereon.
- Retraced by W.H.Thorn, U.S.Cadastral Engineer on dates shown thereon.
- Resurveyed by Otis O.Gould, U.S.Transitman, on dates shown thereon.
- - - - - Retracement for Resurvey by Otis O.Gould, U.S.T. on dates shown thereon.
- Accepted surveyed lines.

T.17S.-R.8E.



Chains Surveys herein described were executed on dates shown on diagram on page 2 hereof, by William H. Thorn, U. S. Cadastral Engineer, and Otis O. Gould, U. S. Transitman, using Young and Sons light mountain transits Nos. 8592 and 8541, respectively, each equipped with full vertical circle and Smith Solar attachment; unless otherwise specified, all azimuth determinations were accomplished with the solar attachments.

PRELIMINARY TEST OF INSTRUMENTS

by

William H. Thorn, U. S. Cadastral Engineer.

February 18, 1926: Examine the adjustments of the transits and correct all errors; then, to test the solar apparatus, by comparing their indications, resulting from observations made during a. m. and p. m. hours, with a meridian established by Polaris observations, proceed as follows:

February 21, 1926: At camp near the $\frac{1}{4}$ sec. cor. of secs. 27 and 34, T. 18 S., R. 8 E., Gila and Salt River Base and Meridian, Arizona, latitude $31^{\circ} 49' 31''$ N., longitude $111^{\circ} 30' 42''$ W., at 9 h. 00 m., a. m., lapp. t., set off $31^{\circ} 49\frac{1}{2}'$ N., on the lat. arcs; $10^{\circ} 38' S.$, on the decl. arcs, and determine a meridian with each solar, and mark a point in same on a peg driven in ground 5.00 chs. N. Both of these meridians coincide.

At 9 h., 26 m., a. m., l. m. t., using Young and Sons transit No. 8592, observe Polaris at eastern elongation, making four observations, two each with the telescope in direct and reversed positions, and mark the mean point in the line thus determined on a peg driven firmly in the ground 5.00 chs. N.

Azimuth of Polaris at eastern elongation = $1^{\circ} 16' 53''$.

Lay off the azimuth of Polaris $1^{\circ} 17'$ to the west, and the true meridian thus determined coincides with the meridian determined with the solar.

At 3 h. 0 m., p. m., lapp. t., set off $31^{\circ} 49\frac{1}{2}'$ N., on lat. arcs, $10 32\frac{1}{2}' S.$, on decl. arcs, and determine a meridian with each solar, which agrees with the true meridian.

As all of the solar observations during the usual hours of solar work come within $1' 00''$ of the true meridian, conclude that the adjustments of the instruments are satisfactory.

Unless otherwise specified, all measurements are made with Luffkin steel tapes, 5.00 chains in length, compared with a Luffkin 1-chain standard steel tape and found correct.

The measurements are made on the slope, the vertical angles determined and the slope measurements properly reduced to true horizontal distances.

Resurvey of Part of South Boundary of T. 17 S., R. 8 E.

Chains The South Boundary of T. 17 S., R. 8 E., was surveyed in 1884, by J. C. Smith, U. S. D. S., and no retracement or resurvey of any part of same is of record.

The following notes describe a resurvey of the south boundary of sec. 31, reconstructing the cor. of secs. 5, 6, 31 and 32, in its original position with its original four-section reference, and reestablishing the quarter-section cor. and the township corner and changing them to refer to areas N. of line, only.

Retracement for Resurvey.

From orig. cor. of secs. 5, 6, 31 and 32, hereinafter described.

West, (Record course) on random line, on S. bdy. of sec. 31.

40.00 Diligent search in this vicinity fails to reveal any trace of the original $\frac{1}{4}$ sec. cor. of secs. 6 and 31. Set temp. $\frac{1}{4}$ sec. cor. and continue line and measurement.

78.64 (Record dist.) Diligent search in this vicinity fails to reveal any trace of the original cor. of Ts. 17 and 18 S., Rs. 7 and 8 E. Set temp. cor. (A) of T. 17 S., Rs. 7 and 8 E.

From temp. cor. (A) of T. 17 S., Rs. 7 and 8 E., retrace North on W. bdy. of T. 17 S., R. 8 E., searching diligently at record intervals for the original cor. monuments established in 1884 by J. C. Smith, U. S. D. S., in his survey of the range line.

Fail to find a trace of any quarter-section or sec. cor. on random line North from temp. township cor. (A) and at 489.40 chs. N. fall 1.06 chs. E. of the original cor. of Ts. 16 and 17 S., R. 7 and 8 E., which is a granite stone 12 x 10 x 8 ins. above ground, firmly set, marked with 6 notches on each of E., W., N. and S. faces and witnessed by a mound of stone S. of cor. No bearing trees.

This cor. monument being a good durable stone and properly marked, conclude that it is unnecessary to set an iron post alongside, however, to further insure its permanency, establish four bearing trees to this cor. as follows:

An oak, 6 ins. in diam., brs. N. 91° E., 47 lks. dist., marked T 16 S R 8 E S 36 B T.

An oak, 8 ins. in diam., brs. S. 78° E., 54 lks. dist., marked T 17 S R 8 E S 6 B T.

An oak, 6 ins. in diam., brs. S. 66° W., 130 lks. dist., marked T 17 S R 7 E S 12 B T.

An oak, 6 ins. in diam., brs. N. 79° W., 99 lks. dist., marked T 16 S R 7 E S 36 B T.

Thence

South, on random line, again making search at record intervals for the original corner monuments. Fail to find any trace of any old cor. and at

480.00 (Record dist.) Set temp. cor. (B) of T. 17 S., Rs. 7 and 8 E.

To maintain record westing for S. bdy. of sec. 31 and record northing for the west boundary of T. 17 S., R. 8 E., the point for reestablishment of the cor. of T. 17 S., Rs. 7 and 8 E., will be at 9.40 chs. N. from temp. cor. (A) and 1.06 chs. E. from temp. cor. (B).

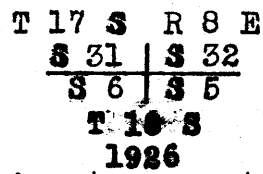
The resulting true courses and distances of the south boundary of sec. 31 and the W. bdy. of T. 17 S., R. 8 E., are, therefore, N. $83^{\circ} 11'$ W., 79.20 chs. and N. $0^{\circ} 8'$ W., 480.00 chains respectively.

Resurvey of Part of South Boundary of T. 17 S., R. 8 E.

Chains The original cor. of secs. 5, 6, 31 and 32, is a granite stone 10 x 10 x 10 ins. above ground, marked with 1 notch on W. face and 5 notches on E. face, firmly set, and witnessed by one bearing tree

A white oak, 20 ins. in diam., S. 53 $\frac{1}{2}$ ° E., 19 lks. dist., marked T 18 S R 8 E S 5 B T.

Reconstruct this cor. monument as follows:
 Alongside old cor. stone, set an iron post, 3 ft. long, 2 ins. in diam., 26 ins. in the ground, for cor. of secs. 5, 6, 31 and 32, with brass cap marked



In addition to old bearing tree, establish three new bearing trees as follows:

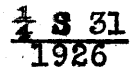
A white oak, 14 ins. in diam., brs. N. 40° E., 74 lks. dist., marked T 17 S R 8 E S 32 B T.

A white oak, 12 ins. in diam., brs. S. 65 $\frac{1}{2}$ ° W., 191 lks. dist., marked T 18 S R 8 E S 6 B T.

A white oak, 12 ins. in diam., brs. N. 65° W., 170 lks. dist., marked T 17 S R 8 E S 31 B T.

Thence N. 83° 11' W., on true line, on S. bdy. of sec. 31. Over mountainous land, thru scattering timber and undergrowth. Desc. 93 ft. over NW. slope.

- 7.51 Wash, 20 lks. wide, course NE. Asc. 135 ft. over E. slope
- 32.48 Spur, slopes NE. Desc. 36 ft. over NW. slope.
- 38.00 Wash, 20 lks. wide, in gulch, course NE. Asc. 40 ft. over E. slope to $\frac{1}{4}$ sec. cor.
- 39.31 Intersect W. bdy. of T. 18 S., R. 8 E., surveyed due north. Closing cor. of T. 18 S., Rs. 7 and 8 E., established at this point of intersection as hereinafter described.
- 40.29 (40.00 chs. in westing) Set an iron post, 3 ft. long, 1 in. in diam., 8 ins. in the ground to bed rock, and raise a mound of stone, 5 ft. base, 2 ft. high, around post for reestablished $\frac{1}{4}$ sec. cor. of sec. 31, only, with brass cap marked



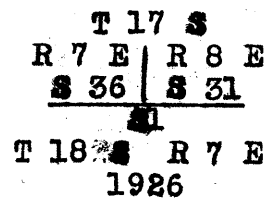
From which

A mesquite, 10 ins. in diam., brs. S. 37° E., 176 lks. dist., marked B T. only.

A mesquite, 6 ins. in diam., brs. N. 38 $\frac{1}{2}$ ° E., 73 lks. dist., marked $\frac{1}{4}$ S 31 B T.

No other bearing tree N. of line is available. Asc. 735 ft. over steep E. slope.

- 75.00 Top of ridge, bearing NE. and SW., with spur sloping SE. from this point. Desc. 86 ft. over NW. slope to
- 79.20 (78.64 chs. or record dist., in westing) Set an iron post, 3 ft. long, 3 ins. in diam., 27 ins in the ground, for reestablished cor. of T. 17 S., R. 7 and 8 E., only, with brass cap marked



Resurvey of Part of the South Boundary of T. 17 S., R. 8 E.

Chains

From which

An oak, 6 ins. in diam., brs. N. 68° E., 39 lks. dist.,
marked T 17 S R 8 E S 31 B T.

An oak, 7 ins. in diam., brs. N. 61½° W., 52 lks.
dist., marked T 17 S R 7 E S 33 B T.

Land, mountainous.

Soil, rocky, 4th rate.

Timber, oak and mesquite.

Undergrowth, scrub oak, mesquite and catclaw, and cactus.



Steel
Sage

[The following text is extremely faint and largely illegible due to bleed-through and low contrast. It appears to contain survey data, bearings, and distances, but cannot be transcribed accurately.]

[Faint, illegible text at the bottom of the page, possibly a signature or date.]

Resurvey of Part of South Boundary of T. 18 S., R. 8 E.

Chains The East 4 1/2 miles of the south bdy. of T. 18 S., R. 8 E., were surveyed in 1885 by G. J. Roskrige, U. S. D. S., establishing the 1/2 sec. and sec. cors. alternately thereon, with common reference to areas north and south of line, at intervals of 40.00 chains, counting from the east.

The completion of the survey of this township boundary (west one and one-half miles) was executed in 1918 by J. P. Davis, U. S. S., surveying said line due east from the cor. of Ts. 18 and 19 S., Rs. 7 and 8 E., establishing thereon the 1/2 sec. cor. of secs. 6 and 31, and the cor. of secs. 5, 6, 31 and 32 at 40.00 and 80.00 chains respectively, from the township corner, and placing a deficiency in measurement in the west half of south boundary of sec. 32.

Surveyor Davis in 1918 also retraced the mile between secs. 3 and 34, and resurveyed the south boundary of sec. 33 and the east half of the south boundary of sec. 32. In said resurvey the cor. of secs. 4, 5, 32 and 33, and the two quarter-section corners were altered to refer to areas N. of line only, and the 1/2 sec. cor. of sec. 5, the cor. of secs. 4 and 5, and the 1/2 sec. cor. of sec. 4 were reestablished at intervals of 40.00 chains, counting from the cor. of secs. 5, 6, 31 and 32..

No other retracement or resurvey on this township bdy. is of record. The following notes describe a resurvey of the S. bdrs. of secs. 31 and 32, T. 18 S., R. 8 E., reestablishing the 1/2 sec. cor. of sec. 31, and the cor. of secs. 31 and 32, thereon, at 40.00 and 80.00 chains respectively, E. from the township corner, and altering the 1/2 sec. cor. of secs. 6 and 31, and the cor. of secs. 5, 6, 31 and 32 to refer to areas S. of line, only.

Retracement for Resurvey.

37.52 From cor. of secs. 32 and 33, hereinafter described, S. 87° 55' W., on random line, on S. bdy. of sec. 32 (E. 1/2) intersect the 1/2 sec. cor. of sec. 5, hereinafter described. Continue line and measurement.

41.28 Intersect the 1/2 sec. cor. of sec. 32, hereinafter described.

True course and dist. of E. 1/2 of S. bdy. of sec. 32 are, therefore, N. 87° 55' E., 41.28 chs.

From 1/2 sec. cor. of sec. 32, West, on random line.

36.23 Intersect the cor. of secs. 5, 6, 31 and 32, hereinafter described. Continue line and measurement.

75.98 Intersect the 1/2 sec. cor. of secs. 6 and 31, hereinafter described. Continue line and measurement.

115.33 Intersect the cor. of Ts. 18 and 19 S., Rs. 7 and 8 E., hereinafter described.

True course and distance of south boundary of sec. 31 and W. 1/2 of south boundary of sec. 32 are, therefore, East 80.00 and 35.33 chs. respectively.

RESURVEY.

The original cor. of Ts. 18 and 19 S., Rs. 7 and 8 E., is an iron post, 3 ins. in diam., projecting 10 ins. above ground, firmly set, properly marked on brass cap and witnessed by a mound of stone S. of cor. Establish bearing trees to this cor. as follows:

A white oak, 20 ins. in diam., brs. S. 36° W., 130 lks. dist., marked T 19 S R 7 E S 1 B T.

Resurvey of Part of South Boundary of T. 18 S., R. 8 E.

Chains A white oak, 16 ins. in diam., brs. N. 1 1/2° W.,
 267. lks. dist., marked T 18 S R 7 E S 36 B T.
 No other bearing trees available.
 Thence
 East, on true line, on S. bdy. of sec. 31.
 Over mountainous land, thru very scattering timber and
 scattering undergrowth. Desc. 55 ft. over SE. slope.
 2.50 Ravine, course NE. Asc. 209 ft. over NW. slope.
 15.46 Spur, slopes NE. Desc. 398 ft. over steep E. slope.
 32.15 Bottom of Rebale Canyon, course N. Asc. 135 ft. over
 steep W. slope to
 39.35 Intersect the original 1/2 sec. cor. of secs. 6 and 31,
 which is an iron post, 1 in. in diam., projecting 10
 ins. above ground, firmly set, properly marked on
 brass cap, and witnessed by a mound of stone N. of
 cor. No bearing trees.
 Alter this cor. monument to refer to the quarters of sec.
 6, only, by changing the marking on the brass cap to
 read:

1/2 S 6
 1918-26

No bearing trees available.
 No change in the old accessory is required.
 Continue line and measurement.
 Ascend 18 ft. over steep W. slope to
 40.00 Set an iron post, 3 ft. long, 1 in. in diam., 12 ins. in
 the ground, to bed rock, deposit a stone marked with
 a cross (X) at base of post, and raise a mound of
 stone, 3 ft. base, 2 ft. high, around post, for re-
 established 1/2 sec. cor. of sec. 31 only, with brass
 cap marked
 1/2 S 31
 1926

No bearing trees available. Asc. 520 ft. over steep W.
 slope.
 58.10 Spur, slopes N. Desc. 370 ft. over steep E. slope to
 75.30 Ravine, course NE. Desc. 50 ft. over N. slope to
 79.10 (39.75 chs. E. from 1/2 sec. cor. of sec. 6) Intersect
 the original cor. of secs. 5, 6, 31 and 32, which is
 an iron post, 1 in. in diam., projecting 10 ins.
 above ground, firmly set, properly marked on brass
 cap, and witnessed by a mound of stone, W. of cor,
 No bearing trees. Alter this cor. monument to refer
 to secs. 5 and 6 by changing the marking on the brass
 cap to read

T 18 S R 8 E

 S 6 | S 5
 T 19 S
 1918-26.

Move the mound of stone from W. to S. of cor.
 Establish bearing trees to this cor. as follows:
 A white oak, 16 ins. in diam., brs. S. 49° E., 28 lks.
 dist., marked T 19 S R 8 E S 5 B T.
 A white oak, 16 ins. in diam., brs. S. 55 1/2° W., 19
 lks. dist., marked T 19 S R 8 E S 6 B T.
 Continue line and measurement. Desc. 17 ft. over N.
 slope to
 80.00 Set an iron post, 3 ft. long, 2 ins. in diam., 26 ins.
 in the ground, for reestablished cor. of secs. 31 and
 32, only, with brass cap marked

Resurvey of Part of the South Boundary of T. 18 S., R. 8 E.

Chains

T 18 S R 8 E
 S 31 | S 32
 S 5
 T 19 S
 1926

From which

A white oak, 18 ins. in diam., brs. N. $21\frac{1}{2}^{\circ}$ E., 28 lks. dist., marked T 18 S R 8 E S 32 B T.

A white oak, 18 ins. in diam., brs. N. $54\frac{1}{2}^{\circ}$ W., 62 lks. dist., marked T 18 S R 8 E S 31 B T.

Land, mountainous.

Soil, rocky, 4th rate.

Timber, oak.

Undergrowth, scrub oak, mesquite and catclaw, and cactus.

From cor. of secs. 31 and 32.

East, on true line, on S. bdy. of sec. 32 (W. $\frac{1}{4}$).

Over mountainous land, thru scattering timber and undergrowth. Desc. 263 ft. over steep N. slope to

17.40 Spur, slopes NE. Desc. 275 ft. over E. slope to
 35.33 (36.23 chs. E. from cor. of secs. 5 and 6).

Intersect the $\frac{1}{4}$ sec. cor. of sec. 32, which is a granite stone, 16 x 14 x 6 ins. above ground, marked $\frac{1}{4}$ on N. face, firmly set, and witnessed by a mound of stone N. of cor. and one bearing tree:

A white oak, 18 ins. in diam., N. 32° E., 175 lks. dist., marked $\frac{1}{4}$ S B T.

This cor. monument being a good durable stone, properly marked and witnessed for reference to the quarters of sec. 32 only, no reconstruction or alteration of same is required,

No other bearing tree N. of line is available.

Thence

N. $87^{\circ} 55'$ E., on true line on S. bdy. of sec. 32 (E. $\frac{1}{4}$).

Over mountainous land, thru scattering timber and undergrowth. Desc. 5 ft. over E. slope.

0.50 Ravine, course NE. Asc. 20 ft. over NW. slope to

3.76 Intersect the $\frac{1}{4}$ sec. cor. of sec. 5, which is an iron post, 1 in. in diam., projecting 16 ins. above ground, properly marked on brass cap, firmly set in ground and mound of stone, and witnessed by a mound of stone S. of cor. No bearing trees.

Continue line and measurement.

Ascend 242 ft. over NW. slope.

22.95 Spur, slopes N. Desc. 27 ft. over NE. slope.

31.60 Asc. 35 ft. over NW. slope.

34.65 Spur, slopes NE. Desc. 101 ft. over SE. slope to

41.28 Intersect the cor. of secs. 32 and 33, which is a granite stone, 18 x 12 x 5 ins., marked with 4 notches on E. face and 2 notches on W. face, firmly set in a mound of stone.

No accessories.

Reconstruct this corner monument as follows:

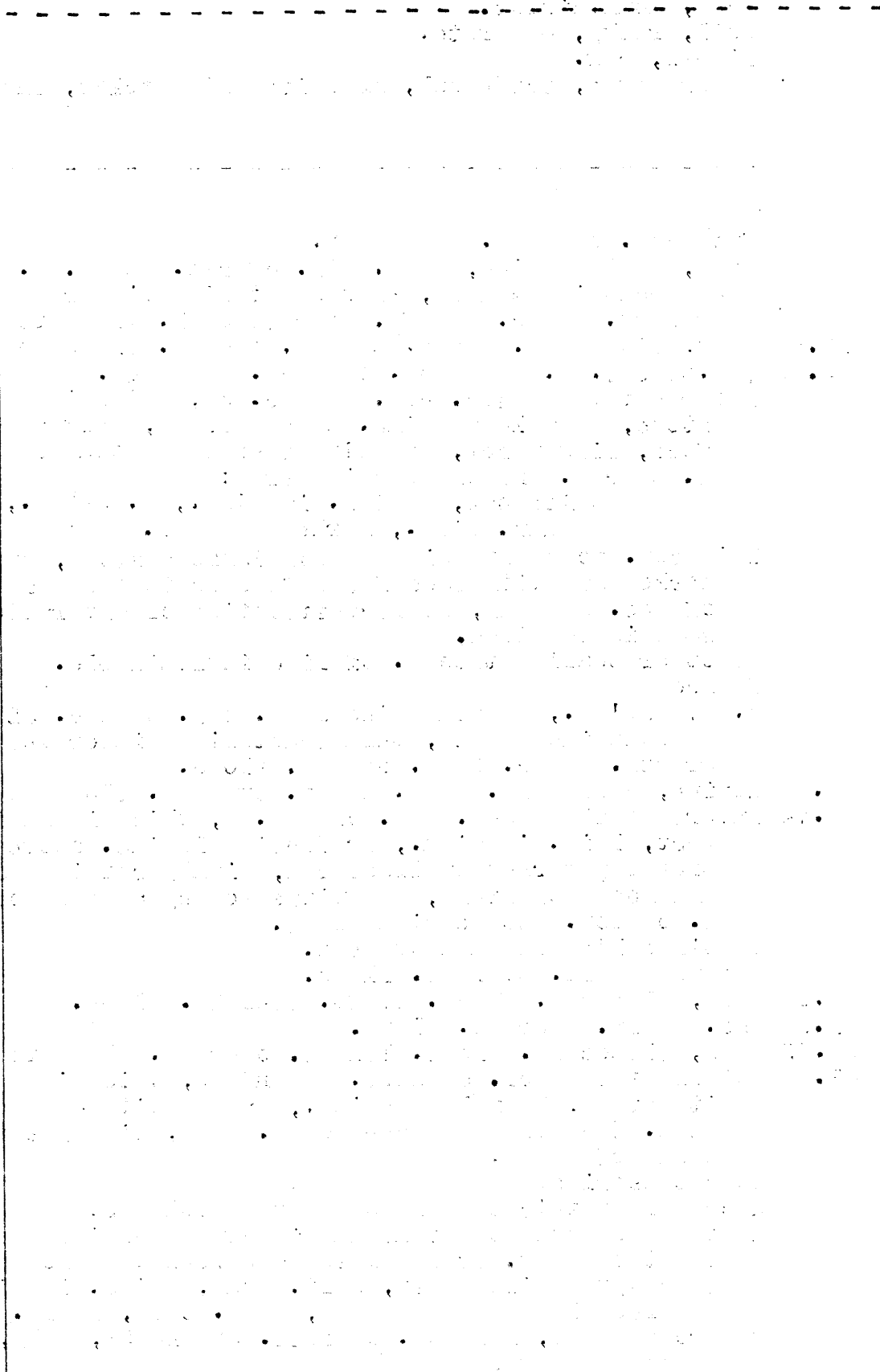
Remove the mound of stone and in center of its position reset old cor. stone on surface rock and alongside same set an iron post, 3 ft. long, 2 ins. in diam., and rebuild mound of stone, 4 ft. base, $2\frac{1}{2}$ ft. high, around post, for cor. of secs. 32 and 33, only, with brass cap marked

Resurvey of Part of the South Boundary of T. 18 S., R. 8 E.

Chains

T 18 S	R 8 E
S 32	S 33
S 5	
T 19 S	
1926	

No bearing trees available.
 Land, mountainous.
 Soil, rocky, 4th. rate.
 Timber, oak and mesquite.
 Undergrowth, scrub oak, mesquite and catclaw, and cactus.



Retracement of Part of Subdivision Lines of T. 18 S., R. 8 E.

Chains The subdivision lines of the east four ranges of secs. 5, 6, 7 and 8, the subdivision lines bounding secs. 5 and 8, the line bet. secs. 7 and 18, the N. $\frac{1}{2}$ of line bet. secs. 17 and 18, the E. $\frac{1}{2}$ of line bet. secs. 17 and 20, and the E. $\frac{1}{2}$ of line bet. secs. 20 and 29, all of T. 18 S., R. 8 E., were surveyed by G. J. Roskruge, U. S. D. S., in 1886, and no retracement or resurvey of any part of same is of record.

The survey of the remainder of the subdivision lines of this township was executed under Group No. 134, Arizona, as hereinafter described.

The following notes describe a retracement of the east half of line between secs. 28 and 33.

The orig. cor. of secs. 27, 28, 33 and 34, is a granite stone 10 x 9 x 8 ins. above ground, marked with 1 notch on S. face, and 3 notches on E. face, firmly set, and witnessed by one bearing tree;
A mesquite, 8 ins. in diam., S. 81° W., 172 lks. dist., marked T 18, S R 8 E S 33 B T.

No other accessories.

Thence

West, on random line, bet. secs. 28 and 33 (E. $\frac{1}{2}$).

Over rolling land, thru scattering timber and undergrowth. Ascend 72 ft. over NE. slope.

14.23 Spur, slopes SE. From this point a group of rocks bearing Indian markings, bears N., 100 lks. dist. Desc. 40 ft. over SW. slope.

19.00 Wash, 20 lks. wide, course SE. Asc. 48 ft. over SE. slope to

40.99 Fall 7 lks. N. of the original $\frac{1}{4}$ sec. cor. of secs. 28 and 33, which is a granite stone, 8 x 8 x 5 ins., above ground, mkd. $\frac{1}{4}$ on N. face, firmly set, and witnessed by two bearing trees:

A mesquite, 8 ins. in diam., S. 50° E., 82 lks. dist., marked $\frac{1}{4}$ S 33 B T.

A mesquite, 10 ins. in diam., N. 5° W., 75 lks. dist., marked $\frac{1}{4}$ S 28 B T.

True course and dist. of E. $\frac{1}{2}$ of line, bet. secs. 28 and 33 are, therefore, S. 89° 54' W., 40.99 chs.

Land, rolling.

Soil, gravelly, 3rd rate.

Timber, mesquite.

Undergrowth, scrub mesquite and catclaw.

Resurvey of Part of Subdivision Lines of T. 18 S., R. 8 E.

- Chains The following notes describe a resurvey of the $W.\frac{1}{2}$ of line bet. secs. 28 and 33, and all the subdivision lines forming parts of the boundaries of secs. 6, 7, 17, 18, 20, 29 and 32, of T. 18 S., R. 8 E.
- The line between secs. 7 and 18 is independently resurveyed due East from the sec. cor. on west boundary of the township, but all the other subdivisional lines are dependently resurveyed.
- - - - -
Retracement for Resurvey.
- - - - -
- From cor. of secs. 32 and 33 on S. bdy. of township, hereinbefore described,
N. $5^{\circ} 5'$ W., on random line, bet. secs. 32 and 33.
- 40.00 Diligent search in this vicinity fails to reveal any trace of the original $\frac{1}{4}$ sec. cor. of secs. 32 and 33. Set temp. $\frac{1}{4}$ sec. cor., and continue line and measurement.
- 80.32 Fall 30 lks. E. of the orig. cor. of secs. 28, 29, 32 and 33, hereinafter described.
True course and distance of line bet. secs. 32 and 33, are, therefore, N. $5^{\circ} 18'$ W., 80.32 chs.
- - - - -
- From cor. of secs. 28, 29, 32 and 33.
East, on random line, bet. secs. 28 and 33 ($W.\frac{1}{2}$).
- 41.61 Fall 2 lks. S. of the orig. $\frac{1}{4}$ sec. cor. of secs. 28 and 33, hereinbefore described.
True course and dist. of $W.\frac{1}{2}$ of line bet. secs. 28 and 33, are therefore S. $89^{\circ} 58'$ W., 41.61 chs.
- - - - -
- From cor. of secs. 28, 29, 32 and 33.
N. $5^{\circ} 5'$ W., on random line, bet. secs. 28 and 29 ($S.\frac{1}{2}$).
- 39.66 Fall 171 lks. W. of the original $\frac{1}{4}$ sec. cor. of secs. 28 and 29, hereinafter described.
True course and distance of $S.\frac{1}{2}$ of line bet. secs. 28 and 29 are, therefore, N. $2^{\circ} 37'$ W., 39.55 chs.
- Thence
- 40.34 Fall 66 lks. W. of the original cor. of secs. 20, 21, 28 and 29, hereinafter described.
True course and distance of $N.\frac{1}{2}$ of line bet. secs. 28 and 29 are, therefore, N. $4^{\circ} 9'$ W., 40.28 chs.
- - - - -
- From cor. of secs. 20, 21, 28 and 29.
West, on random line, bet. secs. 20 and 29 ($E.\frac{1}{2}$).
- 40.28 Fall 10 lks. S. of the original $\frac{1}{4}$ sec. cor. of secs. 20 and 29, hereinafter described.
True course and distance of $E.\frac{1}{2}$ of line bet. secs. 20 and 29, are, therefore, N. $89^{\circ} 51'$ W., 40.28 chs.
- - - - -
- From cor. of secs. 20, 21, 28 and 29,
N. $5^{\circ} 5'$ W., on random line, bet. secs. 20 and 21 ($S.\frac{1}{2}$).
- 40.47 Fall 35 lks. W. of the original $\frac{1}{4}$ sec. cor. of secs. 20 and 21, hereinafter described.
True course and distance of $S.\frac{1}{2}$ of line bet. secs. 20 and 21, are therefore N. $4^{\circ} 35'$ W., 40.44 chs.
- Thence
- 40.17 Fall 36 lks. W. of the orig. cor. of secs. 16, 17, 20 and 21, hereinafter described.
True course and distance of N. half of line bet. secs. 20 and 21 are, therefore, N. $4^{\circ} 34'$ W., 40.14 chs.
- - - - -
- From cor. of secs. 16, 17, 20 and 21.
West, on random line, bet. secs. 17 and 20 ($E.\frac{1}{2}$).
- 39.71 Fall 10 lks. S. of the original $\frac{1}{4}$ sec. cor. of secs. 17 and 20, hereinafter described.
True course and distance of $E.\frac{1}{2}$ of line bet. secs. 17 and 20, are therefore N. $89^{\circ} 51'$ W., 39.71 chs.
- - - - -

Resurvey of Part of Subdivision Lines of T. 18 S., R. 8 E.

- Chains From cor. of secs. 16, 17, 20 and 21.
N. $5^{\circ} 5'$ W., on random line, bet. secs. 16 and 17 ($S. \frac{1}{2}$)
- 40.19 Fall 21 lks. W. of the orig. $\frac{1}{4}$ sec. cor. of secs. 16 and 17, hereinafter described.
True course and dist. of $S. \frac{1}{2}$ of line, bet. secs. 16 and 17, are therefore N. $4^{\circ} 47'$ W., 40.17 chs.
Thence
- 40.21 N. $5^{\circ} 5'$ W., on random line, bet. secs. 16 and 17 ($N. \frac{1}{2}$).
Fall 53 lks. W. of the original cor. of secs. 8, 9, 16 and 17, hereinafter described.
True course and distance of N. $\frac{1}{2}$ of line bet. secs. 16 and 17, are therefore N. $4^{\circ} 20'$ W., 40.16 chs.
- From cor. of secs. 8, 9, 16 and 17.
West, on random line, bet. secs. 8 and 17 ($E. \frac{1}{2}$).
- 40.32 Fall 6 lks. S. of the original quarter sec. cor. of secs. 8 and 17, hereinafter described.
True course and distance of E. $\frac{1}{2}$ of line bet. secs. 8 and 17 are therefore N. $89^{\circ} 55'$ W., 40.32 chs.
Thence
- 41.27 West, on random line, bet. secs. 8 and 17 ($W. \frac{1}{2}$)
Fall 28 lks. N. of the original cor. of secs. 7, 8, 17 and 18, hereinafter described.
True course and distance of W. $\frac{1}{2}$ of line bet. secs. 8 and 17 are therefore S. $89^{\circ} 37'$ W., 41.27 chs.
- From cor. of secs. 7, 8, 17 and 18,
S. $5^{\circ} 5'$ W., on random line, on W. bdy. of sec. 17 ($N. \frac{1}{2}$)
- 39.96 Fall 76 lks. E. of the original $\frac{1}{4}$ sec. cor. of secs. 17 and 18 hereinafter described.
True course and dist. of N. $\frac{1}{2}$ of W. bdy. of sec. 17 are therefore S. $4^{\circ} 00'$ E., 39.90 chs.
- Note: The line bet. secs. 7 and 18 is to be independently resurveyed therefore no retracement of this line is made.
- From cor. of secs. 7, 8, 17 and 18.
N. $5^{\circ} 5'$ W., on random line, on W. bdy. of sec. 8 ($S. \frac{1}{2}$).
- 39.64 Fall 11 lks. E. of the original $\frac{1}{4}$ sec. cor. of secs. 7 and 8, hereinafter described.
True course and distance of S. $\frac{1}{2}$ of W. bdy. of sec. 8 are therefore N. $5^{\circ} 15'$ W., 39.65 chs.
Thence
- 42.57 N. $5^{\circ} 5'$ W., on random line on W. bdy. of sec. 8 ($N. \frac{1}{2}$)
Fall 14 lks. E. of the original cor. of secs. 5, 6, 7 and 8, hereinafter described.
True course and dist. of N. $\frac{1}{2}$ of W. bdy. of sec. 8 are therefore N. $5^{\circ} 16'$ W., 42.58 chs.
- From cor. of secs. 5, 6, 7 and 8,
N. $5^{\circ} 5'$ W., on random line, on W. bdy. of sec. 5 ($S. \frac{1}{2}$).
- 37.78 Fall 75 lks. W. of the orig. cor. of secs. 5 and 6, hereinafter described.
True course and distance of S. $\frac{1}{2}$ of W. bdy. of sec. 5 are, therefore N. $3^{\circ} 57'$ W., 37.70 chs.
Thence
- 7.74 N. $5^{\circ} 5'$ W., on random line, on W. bdy. of sec. 5 ($N. \frac{1}{2}$).
Fall 19 lks. E. of the cor. of secs. 5, 6, 31 and 32, on the N. bdy. of the township, hereinbefore described.
True course and distance of N. $\frac{1}{2}$ of W. bdy. of sec. 5 are therefore N. $6^{\circ} 29'$ W., 7.76 chs.

Resurvey of Part of Subdivision Lines of T. 18 S., R. 8 E.

- Chains From the cor. of secs. 32 and 33, on the S. bdy. of the township hereinbefore described.
- N. $5^{\circ} 18'$ W., on true line, bet. secs. 32 and 33.
- Over mountainous land, thru scattering timber and undergrowth. Asc. 83 ft. over SE. slope.
- 3.23 Spur, slopes NE. Desc. 38.7 ft. over steep N. slope.
- 21.80 Gully, course NE. Enter rolling land. Asc. 10 ft. over SE. slope.
- 22.82 Descend 6 ft. over N. slope.
- 23.57 Wash, 50 lks. wide, course E. Asc. 16 ft. over S. slope.
- 25.60 Spur, slopes E. Desc. 76 ft. over N. slope.
- 36.32 Center of dry bed of Otero Creek, 200 lks. wide, course E. - Asc. 12 ft. over nearly level SE. slope to $\frac{1}{4}$ sec. cor.
- 38.12 Road, brs. E. and W.
- 40.16 Set an iron post, 3 ft. long, 1 in. in diam., 26 ins. in the ground, for reestablished $\frac{1}{4}$ sec. cor. of secs. 32 and 33, with brass cap marked

$\frac{1}{4}$
 S 32 | S 33
 1926

From which

A mesquite, 18 ins. in diam., brs. N. 50° W., 11 lks. dist., mkd. $\frac{1}{4}$ S 32 B T.

A mesquite, 12 ins. in diam., brs. S. 71° E., 51 lks. dist., mkd. $\frac{1}{4}$ S 33 B T.

Bryan Peters ranch house brs. East, 100 lks. dist.

Wash, house, brs. West 20 lks. dist.

Windmill, brs. S. 80° W., about 5.00 chs. dist.

Continue over nearly level SE. slope.

43.30 House on line.

45.02 Wire fence, brs. E. and W. Enter rolling land. Asc. 120 ft. over SE. slope.

48.93 Wire fence, brs. NE. and SW.

49.47 Wire fence, brs. N. 20° W., and S. 20° E.

65.31 Wire fence, brs. NE. and SW.

67.42 Top of bank of gulch, brs. E. and W. Enter mountainous land. Descend 40 ft. over N. slope.

72.30 Center of wash, 200 lks. wide, in bottom of gulch, course E. Asc. 120 ft. over steep SE. slope to

78.30 Point of spur, slopes SE. Asc. 18 ft. over steep E. slope to

80.32 Intersect the original cor. of secs. 28, 29, 32 and 33, which is a granite stone 20 x 12 x 8 ins. marked with 1 notch on S. face and 4 notches on E. face and firmly set in a mound of stone. No accessories.

Reconstruct this cor. monument as follows:

Remove the mound of stone and in center of its position reset old cor. stone on surface rock, and alongside same set an iron post, 3 ft. long, 2 ins. in diam., deposit a stone marked with a cross (X) at base of post and rebuild mound of stone 4 ft. base, $2\frac{1}{2}$ ft. high, around post, for cor. of secs. 28, 29, 32 and 33, with brass cap marked.

T 18 S R 8 E

S 29 | S 28

S 32 | S 33

1926

No bearing trees available.

Land, mountainous, rolling and nearly level.

Soil, sandy and rocky clay, 3rd rate.

Timber, mesquite and catclaw.

Undergrowth, scrub mesquite and catclaw, and cactus.

Resurvey of Part of Subdivision Lines of T. 18 S., R. 8 E.

Chains From original $\frac{1}{4}$ sec. cor. of secs. 28 and 33, hereinbefore described.

S. $89^{\circ} 58'$ W., on true line, bet. secs. 28 and 33 ($W. \frac{1}{2}$).
Over rolling land, thru scattering timber and undergrowth
Asc. 25 ft. over SE. slope.

11.60 Wire fence, brs. NW. and SE.

12.50 Wash, 20 lks. wide, course SE. Asc. 86 ft. over SE. slope to

30.00 Center of wash, 100 lks. wide, course SE. Asc. slightly over E. slope to.

31.84 Wire fence, brs. N. and S. Enter mountainous land.
Asc. 166 ft. over steep E. slope to

41.61 Intersect the cor. of secs. 28, 29, 32 and 33.
Land, rolling and mountainous.
Soil, gravelly and rocky, 3rd rate.
Timber, mesquite and catclaw.
Undergrowth, scrub mesquite and catclaw.

From cor. of secs. 28, 29, 32 and 33.
N. $2^{\circ} 37'$ W., on true line, bet. secs. 28 and 29 ($S. \frac{1}{2}$).
Over mountainous land, thru scattering timber and undergrowth. Asc. 20 ft. over steep E. slope to

4.00 Ravine, course SE., near head. Asc. 162 ft. over SW. slope.

11.60 Spur, slopes SE. Desc. 24 ft. over NE. slope.

18.75 Ravine, course SE. Asc. 220 ft. over S. slope.

27.00 Spur, slopes E. Desc. 292 ft. over N. slope to

39.55 Intersect the original $\frac{1}{4}$ sec. cor. of secs. 28 and 29, which is a granite stone 12 x 10 x 6 ins., above ground, marked $\frac{1}{4}$ on W. face, firmly set, and witnessed by a mound of stone 3 ft. base 2 ft. high, W. of cor. No bearing trees.

Reconstruct this cor. monument as follows:
Alongside old cor. stone, set an iron post, 3 ft. long, 1 in. in diam., 24 ins. in ground for $\frac{1}{4}$ sec. cor. of secs. 28 and 29, with brass cap marked

$\frac{1}{4}$
S 29 | S. 28
1926

No bearing trees available.

Thence

N. $4^{\circ} 9'$ W., on true line, bet. secs. 28 and 29 ($N. \frac{1}{2}$)
Over mountainous land, thru scattering timber and undergrowth. Desc. 20 ft. over N. slope to

1.00 Ravine, course NE. Desc. 160 ft. over NE. slope to

12.50 Ravine, course NE. Desc. 70 ft. over NE. slope

16.00 Stone fence, bears NE. and SW.

18.00 Ravine, course NE. Enter rolling land. Desc. 55 ft. over NE. slope to

27.00 Ravine, course NE. Desc. 34 ft. over NE. slope to

35.50 Center of wash, 100 lks. wide, course N. 80° E. Enter gently rolling land. Desc. slightly over NE. slope to

40.28 Intersect the orig. cor. of secs. 20, 21, 28 and 29, which is a granite stone 10 x 8 x 6 ins. above ground, marked with 2 notches on S. face and 4 notches on E. face, firmly set, and witnessed by a mound of stone S. of cor. and two bearing trees:
A mesquite, 10 ins. in diam., N. 53° E., 283 lks. dist., marked T 18 S R 8 E S 21 B T.
A mesquite, 10 ins. in diam., N. 44° E., 265 lks. dist., marked T 18 S R 8 E S 21 B T.

Resurvey of Part of Subdivision Lines of T. 18 S., R. 8 E.

Chains Reconstruct this cor. monument as follows:
 Alongside old cor. stone, set an iron post, 3 ft. long,
 2 ins. in diam., 24 ins. in the ground, for cor. of
 secs. 20, 21, 28 and 29, with brass cap marked:

T 18 S. R 8 E

S 20 | S 21

S 29 | S 28

1926

No other bearing trees available.

Destroy the mound of stone S. of cor. and raise a mound
 of stone 3 ft. base, 2 ft. high, W. of cor.

Land, mountainous, rolling and nearly level.

Soil, gravelly and rocky, clay, 3rd rate.

Timber, mesquite.

Undergrowth, scrub mesquite and catclaw, soto, Spanish
 dagger and ocotillo.

From cor. of secs. 20, 21, 28 and 29.

N. 89° 51' W., on true line, bet. secs. 20 and 29 (E. $\frac{1}{2}$)

Over gently rolling bottom land, thru scattering timber
 and undergrowth. Asc. 35 ft. over NE. slope to

8.00 Wash, 30 lks. wide, course N. 80° E. from W. Asc. 30 ft.
 in wash to

16.00 Leave wash, course E., from SW. Asc. 47 ft. over gradual
 E. slope to

25.00 Foot of steep slope brs. N. and S. Enter mountainous
 land. Asc. 147 ft. over steep E. slope to

33.50 Spur, slopes N. 5° E. Desc. 75 ft. over NW. slope to

39.50 Wash, 50 lks. wide, course N. Asc. slightly over NE.
 slope to

40.28 Intersect the orig. $\frac{1}{4}$ sec. cor. of secs. 20 and 29, which
 is a granite stone 14 x 12 x 6 ins. above ground,
 marked $\frac{1}{4}$ on N. face, firmly set, and witnessed by a
 mound of stone 5 ft. base, 3 ft. high, N. of cor.,
 and two bearing trees:

An oak, 12 ins. in diam., S. 17 $\frac{1}{2}$ ° E., 86 lks.
 dist., mkd. $\frac{1}{4}$ S B T.

An oak, 24 ins. in diam., S. 15° W., 180 lks.
 dist., mkd. $\frac{1}{4}$ S B T.

Reconstruct this cor. monument as follows: Alongside
 old cor. stone, set an iron post, 3 ft. long, 1 in.
 in diam., 24 ins. in the ground, for $\frac{1}{4}$ sec. cor. of
 secs. 20 and 29, with brass cap marked

$\frac{1}{4}$ S 20

$\frac{1}{4}$ S 29

1926

No other bearing trees available. Add marking 29 to
 each of the old bearing trees.

Land, rolling and mountainous.

Soil, gravelly clay, 3rd rate.

Timber, mesquite and oak.

Undergrowth, scrub oak, mesquite and catclaw.

From cor. of secs. 20, 21, 28 and 29.

N. 4° 35' W., on true line, bet. secs. 20 and 21 (S. $\frac{1}{2}$)

Over gently rolling bottom land, thru dense undergrowth.

Desc. slightly over NE. slope.

3.20 Wash, 30 lks. wide, course NE. Continue gradual descent
 over NE. slope to $\frac{1}{4}$ sec. cor.

36.80 An old adobe house, brs. East 110 lks. dist.

Resurvey of Part of Subdivision Lines of T. 18 S., R. 8 E.

Chains

.40.44 Intersect the original $\frac{1}{4}$ sec. cor. of secs. 20 and 21, which is a granite stone, 10 x 6 x 6 ins., above ground, marked $\frac{1}{4}$ on N. face, firmly set and witnessed by a mound of stone 4 ft. base, 3 ft. high, W. of cor. and one bearing tree:

A mesquite, 18 ins. in diam., S. 67° E., 105 lks. dist., marked $\frac{1}{4}$ S B T.

No trace of the original NE. bearing tree can be found. Reconstruct this cor. monument as follows:

Alongside old cor. stone, set an iron post, 3 ft. long, 1 in. in diam., 26 ins. in the ground for $\frac{1}{4}$ sec. cor. of secs. 20 and 21, with brass cap marked

$\frac{1}{4}$
S 20 | S 21
1926

No other bearing tree available. Add marking 21 to the old bearing tree.

Thence

N. 4° 34' W., on true line, bet. secs. 20 and 21 (N. $\frac{1}{4}$)
Over gently rolling bottom land, thru dense undergrowth.
Desc. gradually over NE. slope.

0.90 Stone fence, bears NE. and SW.

2.10 Wash, 50 lks. wide, course E., from SW., joined at this point by a wash from NW. Continue over gently rolling land. Asc. slightly over E. slope.

17.50 Wash, 30 lks. wide, course E. Asc. gradually over S. slope.

18.50 SE. end of stone fence, 20 chs. long, bearing N. 20° W., and S. 20° E.

20.00 Foot of hill; hrs. E. and W.. Enter mountainous land. Ascend 153 ft. over S. slope.

34.30 Top of hill, with spur sloping S. 70° E. Desc. 143 ft. over NE. slope to

40.14 Intersect the original cor. of secs. 16, 17, 20 and 21, which is a granite stone 14 x 10 x 4 ins. above ground, marked with 4 notches on E. face and 3 notches on S. face, firmly set, and witnessed by a mound of stone 4 ft. base, 3 ft. high, W. of cor. No bearing trees.

Reconstruct this cor. monument as follows:

Alongside the old cor. stone, set an iron post, 3 ft. long, 2 ins. in diam., 24 ins. in the ground, for cor. of secs. 16, 17, 20 and 21, with brass cap marked

T 18 S R 8 E
S 17 | S 16
S 20 | S 21
1926

No bearing trees available.

Land, gently rolling and mountainous.

Soil, gravelly and rocky, 3rd and 4th rate.

Timber, none.

Undergrowth, scrub mesquite, catclaw and hackberry, ocotillo, whitethorn and cactus.

From cor. of secs. 16, 17, 20 and 21.

N. 89° 51' W., on true line, bet. secs. 17 and 20 (E. $\frac{1}{4}$).
Over mountainous land, thru scattering undergrowth.

Asc. 120 ft. over NE. slope.

12.00 Top of ascent on N. side of hill. Desc. 86 ft. over NW. slope.

Resurvey of Part of Subdivision Lines of T. 18 S., R. 8 E.

Chains

- 22.00 Head of ravine, course NE. Asc. 206 ft. over broken NE. slope to
- 39.71 Intersect the original $\frac{1}{4}$ sec. cor. of secs. 17 and 20, which is a granite stone 16 x 12 x 8 ins. above ground, marked $\frac{1}{4}$ on N. face, firmly set, and witnessed by a mound of stone 4 ft. base, 2 ft. high, N. of cor. No bearing trees.
- Reconstruct this cor. monument as follows:
Alongside old cor. stone, set an iron post, 3 ft. long, 1 in. in diam., 14 ins. in the ground to bed rock, and raise a mound of stone, 3 ft. base, $1\frac{1}{2}$ ft. high, around post, for $\frac{1}{4}$ sec. cor. of secs. 17 and 20, with brass cap marked
- $\frac{1}{4}$ $\frac{S\ 17}{S\ 20}$
1926
- No bearing trees available.
Land, mountainous.
Soil, gravelly and rocky, 3rd and 4th rate.
Timber, none.
Undergrowth, scrub mesquite, catclaw and hackberry, ocotillo, whitethorn and cactus.
-
- From cor. of secs. 16, 17, 20 and 21.
N. $4^{\circ} 47'$ W., on true line, bet. secs. 16 and 17 ($S.\frac{1}{4}$).
Over mountainous land, thru scattering undergrowth.
Desc. 114 ft. over NE. slope to
- 10.00 Foot of hill, brs. E. and W. Enter gently rolling bottom land. Desc. gradually over NE. slope.
- 28.30 Wash, 30 lks. wide, course NE. Asc. 30 ft. over SE. slope to
- 40.17 Intersect the original $\frac{1}{4}$ sec. cor. of secs. 16 and 17, which is a granite stone 14 x 12 x 12 ins. above ground, marked $\frac{1}{4}$ on W. face, and witnessed by a mound of stone, 4 ft. base, 3 ft. high, W. of cor.
No bearing trees.
This cor. monument being a good durable stone, properly marked and witnessed, make no reconstruction or alteration of same.
Thence
N. $4^{\circ} 20'$ W., on true line, bet. secs. 16 and 17 ($N.\frac{1}{4}$).
Over gently rolling bottom land, thru scattering undergrowth.
Ascend 33 ft. over SE. slope.
- 15.00 Desc. 45 ft. over N. slope.
- 32.00 Wash, 30 lks. wide, course S. 70° E. Asc. 35 ft. over SE. slope to
- 40.16 Intersect the orig. cor. of secs. 8, 9, 16 and 17, which is a granite stone 12 x 12 x 12 ins. above ground, marked with 4 notches on each of E. and S. faces.
No trace of the original bearing trees or the pits and mound of earth, can be found.
The old cor. monument being a good durable stone properly marked and firmly set it is unnecessary to set an iron post alongside.
No bearing trees available.
Raise a mound of stone, 3 ft. base, $1\frac{1}{2}$ ft. high, W. of cor.
Land, mountainous and gently rolling.
Soil, gravelly and rocky, 2nd and 3rd rate.
Timber, none.
Undergrowth, scrub mesquite, catclaw, whitethorn, broomweed and cactus.
-

Resurvey of Part of Subdivision Lines of T. 18 S., R. 8 E.

Chains From cor. of secs. 8, 9, 16 and 17.
 N. 89° 55' W., on true line, bet. secs. 8 and 17 (E. $\frac{1}{2}$)
 Over gently rolling land, thru dense undergrowth.
 Asc. gradually over SE. slope to
 40.32 Intersect the original $\frac{1}{2}$ sec. cor. of secs. 8 and 17,
 which is a granite stone, 14 x 12 x 6 ins. above
 ground, marked $\frac{1}{2}$ on N. face, firmly set, and witness-
 ed by two bearing trees:
 A mesquite, 14 ins. in diam., S. 25° W., 60 lks.
 dist., marked $\frac{1}{2}$ S B T.
 A mesquite, 14 ins. in diam., N. 2° W., 101 lks.
 dist., marked $\frac{1}{2}$ S B T.
 Reconstruct this cor. monument as follows:
 Alongside old cor. stone, set an iron post, 3 ft. long,
 1 in. in diam., 26 ins. in the ground, for $\frac{1}{2}$ sec. cor.
 of secs. 8 and 17, with brass cap marked.

$\frac{1}{2}$ $\frac{S 8}{S 17}$
 1926.

No other bearing trees available. Add marking 8 to old
 NW. bearing tree, and 17 to old SW. bearing tree.

Thence
 S. 89° 37' W., on true line, bet. secs. 8 and 17 (W. $\frac{1}{2}$)
 Over gently rolling land, thru dense undergrowth.
 Ascend gradually over SE. slope to sec. cor.
 18.00 Wash, 40 lks. wide, course S. 80° E.

41.27 Intersect the original cor. of secs. 7, 8, 17 and 18,
 which is a granite stone 12 x 10 x 10 ins. above
 ground, marked with 4 notches on S. face and 5 notches
 on E. face, and witnessed by four bearing trees:
 A mesquite, 14 ins. diam., N. 29° E., 156 lks.
 dist., mkd. T 18 S R 8 E S 8 B T.
 A mesquite, 14 ins. diam., N. 61° E., 152 lks.
 dist., mkd. T 18 S R 8 E S 8 B T.
 A catclaw, 8 ins. in diam., S. 46° W., 96 lks.
 dist., mkd. T 18 S R 8 E S 18 B T.
 A mesquite, 12 ins. in diam., N. 19° W., 192 lks.
 dist., mkd. T 18 S R 8 E S 7 B T.
 Reconstruct this cor. monument and alter same to refer
 to secs. 8 and 17, only, as follows: Alongside old
 cor. stone, set an iron post, 3 ft. long, 2 ins. in
 diam., 26 ins. in the ground, for cor. of secs. 8
 and 17, only, with brass cap marked

T 18 S R 8 E
 $\frac{S 7}{S 17}$
 1926

Change marking on the old NW. and SW. bearing trees to
 read BT. only.

Land, gently rolling.
 Soil, gravelly and rocky, 2nd and 3rd rate.
 Timber, none.
 Undergrowth, scrub mesquite, catclaw and hackberry and
 cactus.

From cor. of secs. 8 and 17.
 S. 4° 00' E., on true line, on W. bdy. of sec. 17 (N. $\frac{1}{2}$).
 Over gently rolling land, thru dense undergrowth and
 scattering timber. Desc. slightly over SE. slope.
 1.45 Intersect subdivision line bet. secs. 7 and 18, independ-
 ently resurveyed due East. Closing cor. of said secs.

Resurvey of Part of Subdivision Lines of T. 18 S., R. 8 E.

Chains	established at this point of intersection as herein- after described. Continue line and measurement.
2.00	Wash, 40 lks. wide, course E. Asc. gradually over NE. slope to
24.80	Enter rolling land. Ascend 138 ft. over NE. slope to
39.90	Intersect the original $\frac{1}{4}$ sec. cor. of secs. 17 and 18, which is a volcanic stone, 12 x 10 x 8 ins. above ground, mkd. $\frac{1}{4}$ on W. face, firmly set, and witnessed by two bearing trees: A mesquite, 10 ins. in diam., S. 27° W., 188 lks. dist., mkd. $\frac{1}{4}$ S B T. A mesquite, 10 ins. in diam., N. 77° E., 177 lks. dist., mkd. $\frac{1}{4}$ S B T. Reconstruct this cor. monument and alter its reference, as follows: Alongside old cor. stone, set an iron post, 3 ft. long, 1 in. in diam., 26 ins. in the ground, for $\frac{1}{4}$ sec. cor. of sec. 17, only, with brass cap marked: $\frac{1}{4}$ S 17 1926 Add marking 17 to the old NE. bearing tree. No other bearing tree E. of line is available. Land, gently rolling and rolling. Soil, gravelly and rocky, 3rd and 4th rate. Timber, mesquite, catclaw, hackberry and oak. Undergrowth, scrub mesquite and catclaw, ocotillo and cactus.

	From reestablished corner of secs. 7, 12, 13 and 18, on the W. bdy. of the township hereinafter described. East, on true line, bet. secs. 7 and 18. Over mountainous land, thru scattering timber and dense undergrowth. Desc. 430 ft. over steep E. slope.
8.96	From this point the orig. $\frac{1}{4}$ sec. cor. of secs. 7 and 18, bears North 157 lks. dist., which is a granite stone 12 x 10 x 10 ins., above ground, mkd. $\frac{1}{4}$ on N. face, firmly set and witnessed by two bearing trees: A mesquite, 12 ins. in diam., S. 71° W., 44 lks. dist., mkd. $\frac{1}{4}$ S B T. A mesquite, 12 ins. in diam., S. 55° W., 83 lks. dist., mkd. $\frac{1}{4}$ S B T. Obliterate the marking on the stone and bearing trees.
31.00	Enter wash, 100 lks. wide, course East, from S. 70° W. Desc. gradually in wash to
39.50	Leave wash, course S. 80° E., from W. Enter gently roll- ing land. Desc. slightly over SE. slope to
40.00	Set an iron post, 3 ft. long, 1 in. in diam. 26 ins. in the ground, for reestablished $\frac{1}{4}$ sec. cor. of secs. 7 and 18 with brass cap marked $\frac{1}{4}$ $\frac{S 7}{S 18}$ 1926
	From which A mesquite, 18 ins. in diam., brs. N. 77° E., 48 lks. dist., mkd. $\frac{1}{4}$ S 7 B T. A mesquite, 12 ins. in diam., brs. S. 33° E., 80 lks. dist., mkd. $\frac{1}{4}$ S 18 B T. Continue over gently rolling land, thru scattering timber and dense undergrowth. Desc. gradually over SE. slope to closing cor.
41.36	Wash, 40 lks. wide, course S. 70° E.
50.06	Intersect the W. bdy. of sec. 17 at a point 1.45 chs. S.

Resurvey of Part of Subdivision Lines of T. 18 S., R. 8 E.

Chains 4° 00' E., from cor. of secs. 8 and 17.
At point of intersection set an iron post, 3 ft. long,
2 ins. in diam., 26 ins. in the ground, for closing
cor. of secs. 7 and 18, with brass cap marked

T 18 S R 8 E
C. C. $\frac{S}{S} \frac{7}{18} | \frac{S}{S} 17$
1926

From which

A hackberry, 16 ins. in diam., brs. N. 1° 3' W., 48
lks. dist., mkd. T 18 S R 8 E S 7 C C B T.

A mesquite, 12 ins. in diam., brs. S. 33° W., 80 lks.
dist., mkd. T 18 S R 8 E S 18 C C B T.

Land, mountainous and gently rolling.

Soil, gravelly and rocky, 3rd rate.

Timber, mesquite and hackberry.

Undergrowth, scrub mesquite and catclaw, and cactus.

From cor. of secs. 8 and 17.
N. 5° 15' W., on true line, on W. bdy. of secs 8 (S. $\frac{1}{2}$)
Over gently rolling land, thru scattering timber and
dense undergrowth. Asc. slightly over SE. slope to
4.50 Wash, 40 lks. wide, course S. 80° E. Asc. slightly over
S. slope to
10.00 Enter rolling land. Asc. 50 ft. over gradual S. slope to
24.00 Foot of steep slope, bears E. and W. Enter mountainous
land. Asc. 249 ft. over S. slope to $\frac{1}{4}$ sec. cor.
38.71 (Midpoint of E. bdy. of sec. 7). Point for $\frac{1}{4}$ sec. cor.
of sec. 7, only. No monument set.
39.65 Intersect the orig. $\frac{1}{4}$ sec. cor. of secs. 7 and 8, which
is a granite stone, 12 x 10 x 8 ins., above ground,
mkd. $\frac{1}{4}$ on W. face, and firmly set, and witnessed by a
mound of stone, 4 ft. base, 3 ft. high, W. of cor. No
bearing trees.
Reconstruct this cor. monument and alter its reference as
follows:
Alongside old stone, set an iron post, 3 ft. long, 1 in.
in diam., 26 ins. in the ground, for $\frac{1}{4}$ sec. cor. of
sec. 8, only, with brass cap marked:

| $\frac{1}{4}$ S 8
1926

No bearing trees available. Destroy old md. of stone W.
of cor. and raise a mound of stone, 4 ft. base, 3 ft.
high, E. of cor.

Thence

N. 5° 16' W., on true line, on W. bdy. of sec. 8 (N. $\frac{1}{4}$)
Over mountainous land, thru scattering timber and under-
growth. Asc. 81 ft. over S. slope.

8.00 Spur, slopes E. Desc. 237 ft. over steep N. slope to
17.44 Foot of steep slope, brs. E. and W. Enter rolling land.
Desc. 65 ft. over gradual N. slope.
32.50 Wash, 30 lks. wide, course E. Asc. 17 ft. over gradual
S. slope to
35.60 Foot of steep slope, brs. E. and W. Enter mountainous
land, strewn with boulders. Asc. 100 ft. over steep
S. slope to
39.23 Intersect the subdivision line bet. secs. 6 and 7, sur-
veyed due East. Closing cor. of said secs. establish-
ed at this point of intersection as hereinafter des-
cribed. Asc. 37 ft. over S. slope to
42.58 Intersect the orig. cor. of secs. 5, 6, 7 and 8, which

Resurvey of Part of Subdivision Lines of T. 18 S., R. 8 E.

Chains is a granite stone, 10 x 10 x 8 ins. above ground, mkd. with 5 notches on each of E. and S. faces, and witnessed by a mound of stone, 4 ft. base, 3 ft. high, W. of cor. No bearing trees.

Reconstruct this cor. monument and alter its reference as follows:

Alongside old cor. stone, set an iron post, 3 ft. long, 2 ins. in diam., 12 ins. in the ground, to bed rock, and raise a mound of stone 4 ft. base, 1½ ft. high, around post, for cor. of secs. 5 and 8, only, with brass cap marked:

T 18 S R 8 E
S 6 | S 5
 | S 8
 1926

No bearing trees available. Destroy old md. of stone W. of cor., and raise a md. of stone, 4 ft. base, 3 ft. high, E. of cor.

Land, gently rolling, rolling and mountainous.

Soil, rocky, 3rd and 4th rate.

Timber, mesquite and oak.

Undergrowth, scrub mesquite, oak and catclaw, ocotillo, white thorn and cactus.

From cor. of secs. 5 and 8.

N. 3° 57' W., on true line, on W. bdy. of sec. 5 (S. ¼). Over mountainous land, thru scattering timber and undergrowth. Asc. 55 ft. over S. slope.

7.04 Spur, slopes S. 70° E. Desc. 159 ft. over NE. slope.

24.70 Head of ravine, course E. Asc. 225 ft. over SE. slope.

35.00 Large spur, slopes NE. Desc. 43 ft. over NW. slope to ¼ sec. cor. of sec. 5.

36.75 (40.00 chs. in northing from CC. of secs. 6 and 7).

Point for ¼ sec. cor. of sec. 6, only. No monument set.

37.70 Intersect the original ¼ sec. cor. of secs. 5 and 6, which is a granite stone 16 x 12 x 10 ins. above ground, mkd. ¼ on W. face, firmly set, and witnessed by a mound of stone W. of cor., and two bearing trees:

A white oak, 18 ins. diam., S. 9½° E., 47 lks. dist., mkd. ¼ S B T.

A white oak, 12 ins. diam., S. 57½° W., 64 lks. dist., mkd. ¼ S B T.

Reconstruct this cor. monument and alter its reference as follows:

Alongside old cor., set an iron post, 3 ft. long, 1 in. in diam., 26 ins. in the ground for ¼ sec. cor. of sec. 5, only, with brass cap marked

| ¼ S 5
1926

Add marking 5 to old SE. bearing tree. No other bearing tree E. of line is available.

Destroy old mound of stone W. of cor., and raise a mound of stone 4 ft. base, 3 ft. high, E. of cor.

Thence

N. 6° 29' W., on true line, on W. bdy. of sec. 5 (N. ¼). Over mountainous land, thru scattering timber and undergrowth. Desc. 150 ft. over NW. slope to sec. cor.

0.62 A white oak tree, 12 ins. in diam., on line. Mark 2 notches on each of N. and S. faces of this tree.

7.76 Intersect the cor. of secs. 5, 6, 31 and 32, on N. bdy. of the township, hereinbefore described,

Land, mountainous.

Soil, rocky, 4th rate.

Timber, oak and mesquite.

Undergrowth, scrub oak, mesquite and catclaw, ocotillo, white thorn and cactus.

Survey of West Boundary of Township 18 South, Range 8 East.

Chains From the cor. of Ts. 18 and 19 S., Rs. 7 and 8 E., herein-
before described:
North, on a true line, bet. secs. 31 and 36.
Over mountainous land, thru scattering timber and under-
growth. Asc. 34 ft. over SE. slope.

2.50 Spur, slopes NE. Desc. 120 ft. over NW. slope.

14.10 Otero Creek, containing small stream of water, course
NE. from NW. Asc. 759 ft. over steep S. slope.

38.50 Spur, sloping S. 60° E. Desc. 50 ft. over NE. slope to

40.00 Set an iron post, 3 ft. long, 1 in. in diam., 26 ins. in
the ground for $\frac{1}{4}$ sec. cor. of secs. 31 and 36, with
brass cap marked

S 36		S 31
1926		

From which

A white oak, 20 ins. in diam., brs. S. 3 $\frac{1}{2}$ ° E., 30 lks.
dist., marked $\frac{1}{4}$ S 31 B T.

A white oak, 30 ins. in diam., brs. N. 77 $\frac{1}{2}$ ° W., 118
lks. dist., marked $\frac{1}{4}$ S 36 B T.

Descend slightly over NE. slope to

40.25 Drain, course S. 60° E. Asc. 328. ft. over S. slope to

53.50 Spur, slopes S. 60° E. Asc. gradually over steep broken
E. slope to

63.30 Head of ravine, course S. 60° E. Asc. 236 ft. over
steep broken SE. slope.

76.50 Large spur, slopes S. 60° E. Desc. gradually over NE.
slope to.

80.00 Set an iron post, 3 ft. long, 2 ins. in diam., 26 ins.
in the ground for cor. of secs. 25, 30, 31 and 36,
with brass cap marked:

T 18 S	
R 7 E	R 8 E
S 25	S 30
S 36	S 31
1926	

From which

A white oak, 18 ins. in diam., brs. N. 11 $\frac{1}{2}$ ° E., 42
lks. dist., marked T 18 S R 8 E S 30 B T.

A white oak, 12 ins. in diam., brs. S. 61° E., 58 lks.
dist., marked T 18 S R 8 E S 31 B T.

A white oak, 16 ins. in diam., brs. S. 85° W., 26 lks.
dist., marked T 18 S R 7 E S 36 B T.

A white oak, 18 ins. in diam., brs. N. 9° W., 56 lks.
dist., marked T 18 S R 7 E S 25 B T.

Land, mountainous.

Soil, rocky clay, 3rd and 4th rate.

Timber, oak and pine.

Undergrowth, scrub oak, mesquite and cat claw and cactus.

North, on a true line, bet. secs. 25 and 30.
Over mountainous land, thru scattering timber and under-
growth. Desc. gradually over NE. slope to.

3.50 Desc. 102 ft. over steep NE. slope.

9.50 Ravine, course SE. Asc. 976 ft. over steep S. slope

31.12 Top of high ridge, bearing E. and W.
Set an iron post, 3 ft. long, 1 in. in diam., on rock,
deposit a stone marked with a cross (X) at base of
post, and raise a mound of stone, 3 ft. base, 2 ft.
high, for witness cor. to $\frac{1}{4}$ sec. cor. of secs. 25
and 30, with brass cap marked

Survey of West Boundary of Township 18 South, Range 8 East.

Chains

W C

$\frac{1}{4}$
 S 25 | S 30
 1926

No bearing trees available.

Top of peak 6300 ft. above sea level, bears west about 3.00 chs. dist.

31.20 Top of cliff, 50 ft. high, bearing NW. and SE. facing NE. Desc. 350 ft. over cliffs on NE. slope.

40.00 True point for $\frac{1}{4}$ sec. cor. falls on face of cliff where it cannot be monumented, therefore establish witness cor. at 8.88 chs. south as described above.

50.00 Change to steep broken E. slope. Desc. 23 ft.

55.00 Asc. 75. ft.

69.00 Desc. 35 ft. to

80.00 Set an iron post, 3 ft. long, 2 ins. in diam., 26 ins. in the ground for cor. of secs. 19, 24, 25 and 30, with brass cap marked

T 18 S
 R 7 E | R 8 E
 S 24 | S 19
 S 25 | S 30
 1926

From which

A white oak, 12 ins. in diam., brs. N. $54\frac{1}{2}^{\circ}$ E., 153 lks. dist., marked T 18 S R 8 E S 19 B T.A white oak, 16 ins. in diam., brs. S. $19\frac{1}{2}^{\circ}$ E., 61 lks. dist., marked T 18 S R 8 E S 30 B T.A white oak, 16 ins. in diam., brs. S. 73° W., 115 lks. dist., marked T 18 S R 7 E S 25 B T.A white oak, 16 ins. in diam., brs. N. 5° W., 43 lks. dist., marked T 18 S R 7 E S 24 B T.

Land, mountainous.

Soil, rocky clay, 3rd and 4th rate.

Timber, oak and pine.

Undergrowth, scrub oak, laurel, mountain mahogany, pampas grass, soto, ocotillo and cactus.

North, on a true line, bet. secs. 19 and 24.

Over mountainous land, thru scattering timber and undergrowth. Asc. 80 ft. over SE. slope to

3.97 Saddle in main ridge of the Baboquivari Mountains, bearing NE. and SW.

Intersect the boundary of the Papago Indian Reservation at a point 0.95 chs. N. $54\frac{1}{2}^{\circ}$ E., from the Five-Mile monument thereon, described in Book "P" of Group No. 100p.

At this point of intersection, set an iron post, 3 ft. long, 1 in. in diam., (no two-inch iron post available) 8 ins. in the ground to bed rock, deposit a stone, marked with a cross (X) at base of post and raise a mound of stone, 3 ft. base, 2 ft. high, around post for closing cor. of secs. 19 and 24, with brass cap marked

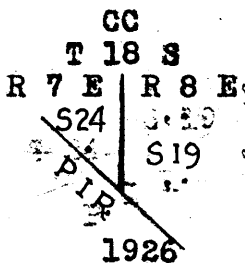
I R
 P | S 19
 S 24 |
 R 7 E | R 8 E
 T 18 S
 CC
 1926

Survey of West Boundary of Township 18 South, Range 8 East.

Chains No bearing trees available. Continue line and measurement, on blank line across Papago Indian Reservation. Asc. 477 ft. over steep broken SW. slope.

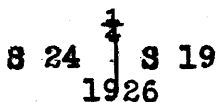
35.67 Main ridge of the Baboquivari Mountains brs. NW. and SE. Intersect the boundary of the Papago Indian Reservation at a point 2.75 chs. S. $11\frac{1}{2}^\circ$ E., from the $4\frac{1}{2}$ mile monument thereon, described in Book "P" of Group No. 100.

At this point of intersection:
Set an iron post, 3 ft. long, 1 in. in diam., (no two-inch iron post available) on surface rock, deposit a stone marked with a cross (X) at base of post, and raise a mound of stone 4 ft. base, $2\frac{1}{2}$ ft. high, around post, for closing cor. of secs. 19 and 24, with brass cap marked



No bearing trees available. Leave Papago Indian Reservation. Desc. 70 ft. over steep NE. slope to

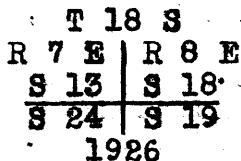
40.00 Set an iron post, 3 ft. long, 1 in. in diam., on surface rock, deposit a stone marked with a cross (X) at base of post and raise a mound of stone, 3 ft. base, $2\frac{1}{2}$ ft. high, around post, for $\frac{1}{2}$ sec. cor. of secs. 19 and 24, with brass cap marked



No bearing trees available. Desc. 1154. ft. over steep broken NE. and E. slopes to

79.00 Spur, slopes NE. Desc. 12 ft. over NW. slope to

80.00 Set an iron post, 3 ft. long, 2 ins. in diam., 26 ins. in the ground for cor. of secs. 13, 18, 19 and 24, with brass cap marked



- From which
- A black oak, 14 ins. in diam., brs. N. 76° E., 45 lks. dist., marked T 18 S R 8 E S 18 B T.
 - A black oak, 14 ins. in diam., brs. S. $29\frac{1}{2}^\circ$ E., 110 lks. dist., marked T 18 S R 8 E S 19 B T.
 - A black oak, 14 ins. in diam., brs. S. $14\frac{1}{2}^\circ$ W., 113 lks. dist., marked T 18 S R 7 E S 24 B T.
 - A black oak, 14 ins. in diam., brs. N. 62° W., 61 lks. dist., marked T 18 S R 7 E S 13 B T.

Land, mountainous.
Soil, gravelly and rocky, 3rd and 4th rate.
Timber, oak and pine.
Undergrowth, laurel, scrub oak, mountain mahogany, pampas grass, soto, Spanish dagger and cactus.

Survey of West Boundary of Township 18 South, Range 8 East

- Chains North, on true line, bet. secs. 13 and 18.
Over mountainous land, thru dense timber and undergrowth.
Desc. 227 ft. over NW. slope.
- 9.10 Ravine, course NE. Asc. 205 ft. over steep SE. and E. slopes, to
- 25.00 Spur, slopes N, .60° E. Desc. 254 ft. over steep broken NW. slope.
- 30.20 Ravine, course N. 60° E. Asc. 209 ft. over broken SE. slope to
- 40.00 Set an iron post, 3 ft. long, 1 in. in diam., 26 ins. in the ground for $\frac{1}{4}$ sec. cor. of secs. 13 and 18, with brass cap marked

S 13 | S 18
1926

From which

- A black oak, 10 ins. in diam., brs. N. 61° E., 39 lks. dist., marked $\frac{1}{4}$ S 18 B T.
- A black oak, 16 ins. in diam., brs. N. 71 $\frac{3}{4}$ ° W., 10 lks. dist., marked $\frac{1}{4}$ S 13 B T.
- 42.00 Large spur, slopes NE. Desc. 573 ft. over steep broken N. slope to
- 63.00 Leave timber. Continue thru dense undergrowth. Desc. 132 ft. over NE. and E. slopes to
- 80.00 Set an iron post, 3 ft. long, 2 ins. in diam., 12 ins. in the ground to bed rock deposit a stone marked with a cross (X) at base of post, and raise a mound of stone 3 ft. base, 1 $\frac{1}{2}$ ft. high, around post for re-established cor. of secs. 7, 12, 13 and 18, with brass cap marked

T 18 S
R 7 E | R 8 E
S 12 | S 7
S 13 | S 18
1926

No bearing trees available.

Note: This cor. was established in 1886 by G. J. Roskrige, U. S. D. S., in connection with his survey of the subdivision line bet. secs. 7 and 18, T. 18 S., R. 8 E., at 78.80 chs. due west from the cor. of secs. 7, 8, 17 and 18, of said township.

The original sec. cor. monument is a granite stone 20 x 14 x 10 ins. above ground, mkd. with 4 notches on S. face and 2 notches on N. face, firmly set, witnessed by a mound of stone W. of cor., and bears N. 86° 42' W., 28.54 chs. dist from the above described reestablished cor. of secs. 7, 12, 13 and 18. Destroy the mkg. on the orig. sec. cor. monument and scatter the md. of stone W. of same.

Land, mountainous.

Soil, gravelly and rocky, clay, 3rd and 4th rate.

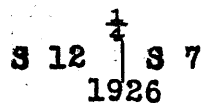
Timber, oak and pine.

Undergrowth, laurel, scrub oak, mountain mahogany and cactus.

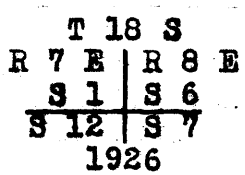
- North, on a true line, bet. secs. 7 and 12.
Over mountainous land, thru dense undergrowth. Desc. slightly over E. slope to
- 1.65 Asc. 28 ft. over E. slope to
- 10.70 Desc. 28 ft. over E. slope to
- 20.00 Wash, 40 lks. wide, course E. Asc. gradually over SE. slope to
- 32.80 Wash, 20 lks. wide, course S. 60° E. Asc. 88 ft. over

Survey of West Boundary of Township 18 South, Range 8 East.

Chains broken S. slope to
 40.00 Set an iron post, 3 ft. long, 1 in. in diam., 6 ins. in the ground to bed rock, deposit a stone marked with a cross (X) at base of post, and raise mound of stone 3 ft. base, 2 ft. high, around post for $\frac{1}{4}$ sec. cor. of secs. 7 and 12, with brass cap marked



No bearing trees available. Asc. 709 ft. over steep broken S. slope
 65.50 Ridge, brs. E. and W. Enter scattering timber. Desc. 224 ft. over broken NE. slope
 75.00 Head of ravine, course E. Asc. 57 ft. over SE. slope to
 80.00 Set an iron post, 3 ft. long, 2 ins. in diam., 26 ins. in the ground for cor. of secs. 1, 6, 7 and 12, with brass cap marked



No bearing trees available.
 Raise a mound of stone, 3 ft. base, 2 $\frac{1}{2}$ ft. high, W. of cor.
 Land, mountainous.
 Soil, rocky, 3rd and 4th. rate..
 Timber, oak.
 Undergrowth, scrub oak, mesquite and cat claw, and cactus.

North, on a true line, bet. secs. 1 and 6.
 Over mountainous land, thru scattering timber and undergrowth.. Asc. 88 ft. over SE. slope.
 7.00 Ridge, brs. N. 60° E. and S. 60° W. Desc. 228 ft. over steep broken NW. slope.
 14.70 Ravine, course NE. Asc. 200 ft. over broken SE. slope.
 28.00 Point of spur, slopes NE. Desc. 354 ft. over steep broken N. slope to
 40.00 Set an iron post, 3 ft. long, 1 in. in diam., 6 ins. in the ground to bed rock, deposit a stone marked with a cross (X) at base of post, and raise a mound of stone 3 ft. base, 2 ft. high, around post, for $\frac{1}{4}$ sec. cor. of secs. 1 and 6, with brass cap marked



From which
 A black oak, 8 ins. in diam., brs. N. 10° E., 37 lks. dist., marked $\frac{1}{4}$ S 6 B T.
 A black oak, 10 ins. in diam., brs. N. 30° W., 87 lks. dist., marked $\frac{1}{4}$ S 1 B T.
 Desc. 227 ft. over N. slope.
 50.00 Wash, 20 lks. wide, in gulch, course NE. Asc. 26 ft. over SE. slope to
 53.47 Intersect S. bdy. of T. 17 S., R. 8 E., at a point 98 lks. S. 83° 11' E., from reestablished $\frac{1}{4}$ sec. cor. of sec. 31, hereinbefore described.
 At point of intersection:
 Set an iron post, 3 ft. long, 3 ins. in diam., on surface

Survey of West Boundary of Township 18 South, Range 8 East.

Chains rock, deposit a stone marked with a cross (X) at base of post and raise mound of stone, 4 ft. base, 3 ft. high, around post, for closing cor. of T. 18 S., Rs. 7 and 8 E., with brass cap marked

T 17 S
S 31
S 1 | S 6
R 7 E | R 8 E
T 18 S
CC
1926

No bearing trees available.
Land, mountainous.
Soil, rocky, 3rd and 4th rate.
Timber, oak.
Undergrowth, scrub oak, mesquite and cat claw, and cactus.

Boundaries of that part of Township 18 South, Range 8 East included within the limits of the resurveys and surveys hereinbefore described.

Latitudes, Departures and Closing Errors.

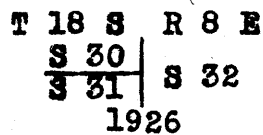
Line designated	True course	Dist- ance.	Latitudes		Departures	
			N.	S.	E.	W.
South Boundary	S.87°55'W. WEST	41.28 115.33		1.50		41.25 115.33
West Boundary	NORTH	453.47	453.47			
North Boundary	S.83°11'E.	39.31		4.67	39.03	
Subdivisional Lines	S. 6°29'E.	7.76		7.71	.88	
	S. 3°57'E.	37.70		37.61	2.60	
	S. 5°16'E.	42.58		42.40	3.91	
	S. 5°15'E.	39.65		39.48	3.63	
	N.89°37'E.	41.27	.28		41.27	
	S.89°55'E.	40.32		.06	40.32	
	S. 4°20'E.	40.16		40.04	3.03	
	S. 4°47'E.	40.17		40.03	3.35	
	S. 4°34'E.	40.14		40.01	3.20	
	S. 4°35'E.	40.44		40.31	3.23	
S. 4° 9'E.	40.28		40.17	2.91		
S. 2°37'E.	39.55		39.51	1.80		
S. 5°18'E.	80.32		79.98	7.42		
Convergency					.09	
Totals			453.75	453.48	156.67	156.58
			453.48		156.58	
Error in latitude			0.27			
Error in departure					0.09	

Survey of Part (Completion) of Subdivision Lines of T. 18 S., R. 8 E.

- Chains From the reestablished corner of secs. 31 and 32 on the S. bdy. of the township, hereinbefore described.
- Thence
N. 0° 1' E., on a true line on E. bdy. of sec. 31.
Over mountainous land, thru scattering timber and undergrowth. Desc. 113 ft. over N. slope.
- 4.00 Ravine, course NE. Asc. 37 ft. over SE. slope.
 - 9.00 Spur, slopes NE. Desc. 496 ft. over steep broken NW. slope.
 - 25.30 Center of Otero Creek, 100 lks. wide, containing a small stream of water, course East. Asc. 165 ft. over broken SW. slope to
 - 40.00 Set an iron post, 3 ft. long, 1 in. in diam., 26 ins. in the ground for $\frac{1}{4}$ sec. cor. of secs. 31 and 32, with brass cap marked

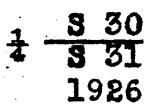


- No bearing trees available.
Raise a mound of stone $2\frac{1}{2}$ ft. base, $1\frac{1}{2}$ ft. high W. of cor. Asc. 397 ft. over steep broken SW. and W. slopes to
- 62.30 Ravine, course SW. Asc. 540 ft. over SE. slope to
 - 80.00 Set an iron post, 3 ft. long, 2 ins. in diam., 6 ins. in ground to bed rock, deposit a stone marked with a cross (X) at base of post and raise a mound of stone 3 ft. base, 2 ft. high, around post, for cor. of secs. 30 and 31, only, with brass cap marked



No bearing trees available
Land, mountainous.
Soil, rocky clay, 3rd and 4th rate.
Timber, oak, hackberry, sycamore, mesquite, ash and walnut, along Otero Creek.
Undergrowth, scrub oak, catclaw and mesquite, mountain mahogany and cactus.

- West, on a random line, bet. secs. 30 and 31.
- 40.00 Set temp. $\frac{1}{4}$ sec. cor.
 - 80.02 Fall 12 lks. N. of the cor. of secs. 25, 30, 31 and 36, on the west boundary of the township, hereinbefore described.
- Thence
N. 89° 55' E., on a true line, bet. secs. 30 and 31.
Over mountainous land, thru scattering timber and dense undergrowth. Desc. gradually over NE. slope to
- 2.90 Desc. 992 ft. over cliffs and steep NE. slope to
 - 30.96 Fork of two large ravines, one from N. 75° W., and one from N. 5° W., forming one ravine, course S. 40° E. Asc. 52 ft. over W. slope to
 - 40.01 Set an iron post, 3 ft. long, 1 in. in diam., over a cross (X) marked on surface rock, and raise a mound of stone 3 ft. base, $2\frac{1}{2}$ ft. high, around post for $\frac{1}{4}$ sec. cor. of secs. 30 and 31, with brass cap marked



Survey of Part (Completion) of the Subdivision Lines of T.18 S., R.8 E.

Chains No bearing trees available. Asc. 90 ft. over W. slope.
 46.10 Point of spur, slopes SW. Desc. 25 ft. over SE. slope.
 51.00 Asc. 144 ft. over S. slope.
 56.65 Desc. 30 ft. over SE. slope.
 61.60 Asc. 146 ft. over S. slope.
 65.80 Desc. 62 ft. over SE. slope.
 71.90 Draw, course SW. Asc. 185 ft. over NW. slope.
 77.80 Spur, slopes SW. Desc. 42 ft. over SE. slope to
 80.02 The cor. of secs. 30 and 31.
 Land, mountainous, soil, 4th rate.
 Soil, rocky, 4th rate.
 Timber, oak, pine, hackberry and walnut.
 Undergrowth, scrub oak, mesquite, and catclaw, and cactus.

N. 0° 1' E., on a true line, on E. bdy. of sec. 30.
 Over mountainous land, thru scattering timber and under-
 growth. Asc. 47 ft. over SE. slope to
 1.21 Intersect the subdivision line, between secs. 29 and 32.
 Closing cor. of said secs. established at this point
 of intersection as hereinafter described. Asc. 81
 ft. over SE. slope.
 2.68 Spur, slopes SW. Asc. 191 ft. over W. slope to
 8.20 Ridge, brs. NW. and SE. with large spur, sloping NE..
 from this point. Enter dense timber. Desc. 931 ft.
 over steep NW. slope.
 10.20 Wire fence, bears NE. and SW.
 39.00 Ravine, course N. 30° E. Leave dense and enter scatter-
 ing timber. Asc. 10 ft. over SE. slope to
 40.00 Set an iron post, 3 ft. long, 1 in. in diam., 26 ins. in
 the ground for $\frac{1}{4}$ sec. cor. of sec. 30, only, with
 brass cap marked

$\frac{1}{4}$ S 30 |
 1926

From which

A black oak, 10 ins. in diam., brs. S. 31° W., 7 lks.
 dist., marked $\frac{1}{4}$ S 30 B T.

No other bearing tree west of line is available.

A white oak, 14 ins. in diam., brs. N. 82° E., 110
 lks. dist., marked B T., only.

Asc. slightly over SE. slope to
 40.76 (40.00 chs. in southing from C. C. of secs. 20 and 29)
 Set an iron post, 3 ft. long, 1 in. in diam., 10 ins. in
 the ground to bed rock, deposit a stone marked with a
 cross (X) at base of post and raise a mound of stone
 around post, 3 ft. base, 2 ft. high, for $\frac{1}{4}$ sec. cor.
 of sec. 29, only, with brass cap marked

| $\frac{1}{4}$ S 29
 1926

No bearing trees available. Asc. 20 ft. over SE. slope
 to

45.00 Desc. 313 ft. over E. slope to
 71.30 Asc. 30 ft. over SE. slope
 76.90 Spur, slopes NE. Desc. 45 ft. over NW. slope to
 80.00 Set an iron post, 3 ft. long, 2 ins. in diam., 6 ins. in
 the ground to bed rock and raise a mound of stone,
 3 ft. base, 2 ft. high, around post, for cor. of
 secs. 19 and 30, only, with brass cap marked

T 18 S R 8 E
 S 19 |
 S 30 | S 29
 1926

Survey of Part (Completion) of Subdivision Lines of T. 18 S., R. 8 E.

Chains	<p>From which</p> <p>A black oak, 18 ins. in diam., brs. N. 57° W., 26 lks. dist., marked T 18 S R 8 E S 19 B T.</p> <p>Black oak, 14 ins. in diam., brs. S. 6° W., 35 lks. dist., marked T 18 S R 8 E S 30 B T.</p> <p>Land, mountainous.</p> <p>Soil, rocky, 3rd and 4th rate.</p> <p>Timber, oak, pine, hackberry, sycamore and walnut.</p> <p>Undergrowth, scrub oak, mesquite and catclaw and cactus.</p> <p>-----</p> <p>West, on a random line, bet. secs. 19 and 30.</p> <p>40.00 Set temp. ¼ sec. cor.</p> <p>80.00 Fall 23 lks. N. of the cor. of secs. 19, 24, 25 and 30, on the W. bdy. of the township, hereinbefore described</p> <p>Thence</p> <p>N. 89° 50' E., on a true line, bet. secs. 19 and 30.</p> <p>Over mountainous land, thru scattering timber and undergrowth. Desc. slightly over SE. slope.</p> <p>3.90 Asc. 22 ft. over SW. slope.</p> <p>8.80 Spur, slopes S. 20° E. Desc. 1040 ft. over steep broken E. slope to</p> <p>40.00 Set an iron post, 3 ft. long, 1 in. in diam., on surface rock, deposit a stone marked with a cross (X) at base of post and raise a mound of stone, 4 ft. base, 2½ ft. high, around post for ¼ sec. cor. of secs. 19 and 30, with brass cap marked</p> <p style="text-align: center;"> $\frac{1}{4} \frac{S 19}{S 30}$ 1926 </p> <p>No bearing trees available. Desc. 442 ft. over broken E. slope to</p> <p>68.20 Enter wash, 100 lks. wide, course E., formed by junction of two washes, one from NW., and the other from SW. Desc. 60 ft. in wash to</p> <p>78.00 Leave wash, course N. 70° E., from W. Asc. 28 ft. over NW. slope to</p> <p>80.00 The cor. of secs. 19 and 30.</p> <p>Land, mountainous.</p> <p>Soil, rocky, 3rd and 4th rate.</p> <p>Timber, oak, hackberry, sycamore and walnut.</p> <p>Undergrowth, scrub oak, mesquite and catclaw, white thorn and cactus.</p> <p>-----</p> <p>N. 0° 1' E., on a true line; on east boundary of sec. 19.</p> <p>Over mountainous land, thru scattering timber and dense undergrowth: Desc. 16 ft. over NW. slope to</p> <p>0.76 Intersect the subdivision line between secs. 20 and 29. Closing cor. of said secs. established at this point of intersection as hereinafter described. Desc. 22 ft. over NW. slope.</p> <p>1.80 Center of wash, 100 lks. wide, course N. 60° E. Asc. 371 ft. over SE. slope.</p> <p>1.90 Spring, brs. East, 50 lks. dist.</p> <p>27.00 Point of large spur, slopes east. Desc. 294 ft. over broken NE. slope to</p> <p>40.00 Set an iron post, 3 ft. long, 1 in. in diam., 12 ins. in the ground to bed rock, deposit a stone marked with a cross (X) at base of post, supported by mound of stone 3 ft. base, 1½ ft. high, around post for ¼ sec. cor. of sec. 19, only, with brass cap marked</p>
--------	--

Survey of Part (Completion) of Subdivision Lines of T. 18 S., R. 8 E.

Chains

 $\frac{1}{4}$ S 19 |
1926

- No bearing trees available. Desc. slightly over NE. slope to
- 40.98 (Mid-point of W. bdy. of sec. 20). Set an iron post, 3 ft. long, 1 in. in diam., 8 ins. in the ground to bed rock, deposit a stone mkd. with a cross (X) at base of post, and raise a md. of stone 3 ft. base, 2 ft. high, around post for $\frac{1}{4}$ sec. cor. of sec. 20, only, with brass cap marked

 $\frac{1}{4}$ S 20
1926

- No bearing trees available. Desc. 224 ft. over broken NE. slope.
- 51.50 Wash, 50 lks. wide, course East. Asc. 33 ft. over S. slope to
- 52.75 Top of bank, brs. E. and W. Thence over nearly level land.
- 70.20 Wash, 10 lks. wide, course S. 70° E. Enter mountainous land. Asc. 74 ft. over S. slope to
- 72.00 Top of quartz cliff, bearing E. & W., facing S. Asc. 115 ft. over SW. slope to
- 81.20 Intersect the S. bdy. of Sec. 17, at a point 17.79 chs. N. 89° 51' W., from the $\frac{1}{4}$ sec. cor. of secs. 17 and 20, hereinbefore described.
- At point of intersection
Set an iron post, 3 ft. long, 2 ins. in diam., 26 ins. in the ground, for closing cor. of secs. 19 and 20, with brass cap marked

S 17
S 19 | S 20
T 18 S R 8 E
CC
1926

No bearing trees available. Raise a mound of stone 3 ft. base, 2 ft. high, S. of cor.
Land, mountainous and nearly level.
Soil, rocky, 3rd and 4th rate.
Timber, oak and mesquite.
Undergrowth, scrub oak, mesquite and catclaw and cactus.

- From the $\frac{1}{4}$ sec. cor. of sec. 17, hereinbefore described, South, on a random line on E. bdy. of sec. 18.
- 40.00 Set temp. cor. of sec. 17, only (SW. Cor.)
- 41.65 (80.00 chs. in southing from CC. of secs. 7 and 18). Set temp. cor. of sec. 18, only (SE. cor.)
- From the cor. of secs. 13, 18, 19 and 24, on the W. bdy. of the township, hereinbefore described, East, on a true line, bet. secs. 18 and 19.
- Over mountainous land, thru scattering timber and dense undergrowth. Asc. slightly over NW. slope.
- 0.50 Spur, slopes NE. Desc. 125 ft. over SE. slope.
- 4.00 Ravine, course N. 30° E. Asc. 290 ft. over steep NW. slope.
- 21.40 Ridge, brs. NE. and SW. Desc. 305 ft. over steep broken SE. slope.
- 36.80 Head of ravine, course SE. Asc. 75 ft. over SW. slope to
- 40.00 Set an iron post, 3 ft. long, 1 in. in diam., on surface rock, deposit a stone, mkd. with a cross (X) at base of post, and raise a mound of stone, 4 ft. base, 2½ ft. high, around post, for $\frac{1}{4}$ sec. cor. of secs. 18 and 19, with brass cap marked

Survey of Part (Completion) of Subdivision Lines of T. 18 S., R. 8 E.

Chains

$\frac{1}{4}$ $\frac{3}{8}$ 18
 $\frac{1}{4}$ $\frac{3}{8}$ 19
 1926

No bearing trees available. Asc. 21 ft. over SW. slope.
 42.30 Spur, slopes SE. Desc. 171 ft. over broken SE. slope.
 51.50 Head of ravine, course S. Asc. 52 ft. over SW. slope to
 52.62 Intersect random E. bdy. of sec. 18, at a point 34 lks.
 N. of the temp. SE. cor. of said sec. set at 41.65
 chs. S. of the $\frac{1}{4}$ sec. cor. of sec. 17.
 At point of intersection
 Set an iron post, 3 ft. long, 2 ins. in diam., 8 ins. in
 the ground to bed rock, deposit a stone marked with a
 cross (X) at base of post, and raise a mound of stone,
 3 ft. base, 2 ft. high, around post for cor. of sec.
 18, only (SE. Cor.) with brass cap marked

T 18 S
 R 8 E
 S 18
 S 19
 1926

No bearing trees available.
 Land, mountainous.
 Soil, rocky, 3rd and 4th rate.
 Timber, oak and pine.
 Undergrowth, scrub oak, mesquite and catclaw, and cactus.

From the SE. cor. of sec. 18.
 North, on a true line on E. bdy. of sec. 18
 Over mountainous land, thru scattering timber and under-
 growth. Asc. 48 ft. over SW. slope to
 1.51 Intersect the subdivision line, bet. secs. 17 and 20,
 surveyed N. 89° 51' W. SW. cor. of sec. 17, estab-
 lished at this point of intersection as hereinafter
 described. Continue line and measurement. Asc. 82
 ft. over SW. slope.
 4.81 Ridge, bears E. and W. Desc. 829 ft. over steep broken
 NE. slope to $\frac{1}{4}$ sec. cor. of sec. 17.
 39.83 (Mid-point in latitude of E. bdy. of sec. 18) Point for
 $\frac{1}{4}$ sec. cor. of sec. 18 only. No monument set.
 41.31 (39.80 chs. N. from SW. cor. of sec. 17). Intersect the
 $\frac{1}{4}$ sec. cor. of sec. 17, only, hereinbefore described.
 Land, mountainous.
 Soil, gravelly and rocky, 3rd and 4th rate,
 Timber, oak and pine.
 Undergrowth, scrub oak, mesquite and catclaw, ocotillo
 and cactus.

From the cor. of secs. 1, 6, 7, and 12, on the W. bdy. of
 the township, hereinbefore described,
 East, on a true line, bet. secs. 6 and 7.
 Over mountainous land, thru scattering timber and under-
 growth. Desc. 723 ft. over broken SE. slope.
 39.50 Head of short ravine, course SE. Asc. 8 ft. over SW.
 slope to
 40.00 Set an iron post, 3 ft. long, 1 in. in diam., 6 ins. in
 the ground to bed rock, deposit a stone marked with a
 cross (X) at base of post and raise a mound of stone
 3 ft. base, 2 ft. high, around post for $\frac{1}{4}$ sec. cor. of
 secs. 6 and 7, with brass cap marked

$\frac{1}{4}$ $\frac{3}{8}$ 6
 $\frac{1}{4}$ $\frac{3}{8}$ 7
 1926

Survey of Part (Completion) of Subdivisional Lines of T. 18 S., R. 8 E.

Chains No bearing trees available.
 Asc. 40 ft. over SW. slope to
 42.70 Intersect the west boundary of sec. 8, at a point 3.35
 chs. S. 5° 16' E., from cor. of secs. 5 and 8, herein-
 before described.
 Set an iron post, 3 ft. long, 2 ins. in diam., 10 ins. in
 the ground to bed rock, deposit a stone marked with a
 cross (X) at base of post and raise a mound of stone
 3 ft. base, 2 ft. high, around post, for closing cor.
 of secs. 6 and 7, with brass cap marked.

T. 18 S. R. 8 E
 C C $\frac{36}{37}$ S 8
 1926

No bearing trees available.
 Land, mountainous.
 Soil, rocky, 3rd and 4th rate.
 Timber, oak.
 Undergrowth, scrub oak, mesquite and catclaw and cactus.

 From the cor. of secs. 28, 29, 32 and 33, hereinbefore
 described.
 West, on a true line, bet. secs. 29 and 32.
 Over mountainous land, thru scattering timber and under-
 growth. Asc. 78 ft. over steep broken E. slope.
 4.00 Spur, slopes S. Desc. 35 ft. over SW. slope to
 14.60 Asc. 55 ft. over S. slope to
 26.70 Ravine, course SE. Asc. 354 ft. over steep broken NE.
 slope to
 40.00 Set an iron post, 3 ft. long, 1 in. in diam., on surface
 rock, deposit a stone marked with a cross (X) at
 base of post and raise a mound of stone, 3 ft. base,
 2½ ft. high, around post, for ¼ sec. cor. of secs.
 29 and 32, with brass cap marked

¼ $\frac{329}{332}$
 1926

No bearing trees available. Asc. 740 ft. over steep
 broken NE. slope.
 62.20 Ridge, brs. NW. and SE. Desc. 165 ft. over steep broken
 SW. slope.
 66.30 Ravine, course SW., near head. Asc. 54 ft. over SE.
 slope to
 68.87 Intersect E. bdy. of sec. 30, at a point 1.21 chs. N.
 0° 1' E., from cor. of secs. 30 and 31, hereinbefore
 described. At point of intersection
 Set an iron post, 3 ft. long, 2 ins. in diam., on sur-
 face rock, deposit a stone, marked with a cross (X)
 at base of post, and raise a mound of stone, 3 ft.
 base, 2½ ft. high around post for closing cor. of
 secs. 29 and 32, with brass cap marked

T. 18 S. R. 8 E
 S 30 $\frac{329}{332}$ C C
 1926

No bearing trees available.
 Land, mountainous.
 Soil, rocky clay, 3rd and 4th rate.
 Timber, oak.
 Undergrowth, scrub oak, mesquite and catclaw, mountain
 mahogany and cactus.

Survey of Part (Completion) of Subdivisional Lines of T. 18 S., R. 8 E.

Chains From the $\frac{1}{4}$ sec. cor. of secs. 20 and 29, hereinbefore described,
 N. $89^{\circ} 51'$ W., on a true line, bet. secs. 20 and 29 ($W. \frac{1}{4}$)
 Over mountainous land, thru scattering timber and dense undergrowth. Asc. 92 ft. over E. slope
 15.68 Spur, slopes NE. Desc. 56 ft. over NW. slope to point for closing cor.
 22.92 Set an iron post, 3 ft. long, 2 ins. in diam., 6 ins. in the ground to bed rock, deposit a stone marked with a cross (X) at base of post, and raise a mound of stone, 3 ft. base, 2 ft. high, around post for witness cor. to closing cor. of secs. 20 and 29, with brass cap marked

T 18 S R 8 E
 W C | $\frac{S 20}{S 29}$ C C
 1926

No bearing trees available..
 23.73 Intersect the E. bdy. of sec. 19, at a point 0.76 chs. N. $0^{\circ} 1'$ E., from cor. of secs. 19 and 30, hereinbefore described.
 This true point for closing cor. of secs. 20 and 29, falls on face of small bluff where it is impracticable to set monument, therefore, establish witness cor. to closing cor. at 0.81 chs, S. $89^{\circ} 51'$ E., as described above.
 Land, mountainous.
 Soil, rocky clay, 3rd rate.
 Timber, oak and mesquite.
 Undergrowth, scrub oak, mesquite and catclaw, white thorn and cactus.

 From the $\frac{1}{4}$ sec. cor. of secs. 17 and 20, hereinbefore described,
 N. $89^{\circ} 51'$ W., on a true line, bet. secs. 17 and 20 ($W. \frac{1}{4}$)
 Over mountainous land, thru scattering undergrowth. Asc. 304 ft. over NE. slope.
 15.79 Ridge, brs. S. 70° E., and N. 70° W. Desc. 54 ft. over SW. slope to
 17.79 Intersect the subdivision line bet. secs. 19 and 20, surveyed N. $0^{\circ} 1'$ E. Closing cor. of said secs. established at this point of intersection as hereinbefore described. Desc. 82 ft. over SW. slope.
 25.29 Head of ravine, course SE. Asc. 518 ft. over steep broken SE. and S. slopes to
 45.33 Intersect E. bdy. of sec. 18, at a point 1.51 chs. North from the SE. cor. thereof, hereinbefore described.
 At point of intersection, set an iron post, 3 ft. long, 2 ins. in diam., 12 ins. in ground to bed rock, deposit a stone marked with a cross (X) at base of post and raise a mound of stone, 3 ft. base, $1\frac{1}{2}$ ft. high around post, for cor. of sec. 17, only (SW. cor), with brass cap marked

T 18 S
 R 8 E
 S 18 | $\frac{S 17}{S 19}$
 1926

No bearing trees available.
 Land, mountainous.
 Soil, gravelly and rocky, 3rd rate.
 Timber, none.
 Undergrowth, scrub mesquite, hackberry and catclaw, ocotillo, white thorn and cactus,

The continued satisfactory adjustment of the solar apparatus of the transits used in the execution of the surveys herein described, is indicated from field tests described in Book "F" of this group.

GENERAL DESCRIPTION.

The surface of the portions of this township surveyed as described in the foregoing notes, is mountainous, being on the east slope of the main divide of the Baboquivari Mountains. There is some gently rolling surface in Secs. 17 and 20.

The drainage is to the east, thru ravines and washes. Otero Creek, course E., thru secs. 31 and 32, drains said sections and carries a small stream of water. This is the only running water with the exception of a spring in the SW. cor. of sec. 20.

The soil is 3rd and 4th rate, being composed of clay, gravel, loose rock, and outcropping ledges.

The timber on the high slopes is white and black oak, pine and black walnut. Along Otero Creek is a growth of oak, ash, walnut, hackberry and sycamore.

Undergrowth, in dense and scattering growths, is prevalent in all sections and consists of scrub oak, mesquite and catclaw, white thorn, mountain mahogany, laurel, ocotillo, pampas grass, Spanish dagger, soto, century plant and cactus.

On the lower slopes there is a good growth of native grasses, such as black gramma, fillera and bunch grass.

There is a mineral prospect hole in Sec. 19, near the summit of the main ridge of the Baboquivari Mountains. Bryan Peters Ranch house, rest camp and several dwellings and corrals is located in secs. 32 and 33, near the $\frac{1}{4}$ sec. cor. of said secs.

The only road is one leading out of sec. 32 along Otero creek.

The Boundary of the Papago Indian Reservation follows the top of the Baboquivari Mountains, and part of sec. 19 of this township is within said reservation.

CERTIFICATE OF U. S. TRANSITMAN.

I, Otis O. Gould U.S. Transitman, hereby certify upon honor that, in pursuance of special instructions received from the U. S. District Cadastral Engineer Surveyor General, for Group No. 134, Arizona, bearing date of the 21st day of January, 1926, I have well, faithfully, and truly in my own proper person, and in strict conformity with said instructions, the Manual of Surveying Instructions, and the laws of the United States, RESURVEYED all those parts or portions of

the South Boundary of

Township 17 South, Range 8 East

of the Gila & Salt

River Base & Meridian, in the State of Arizona, which are represented in and by diagram on page 2 hereof the foregoing field notes/as having been executed by me, and under my direction; and that all the corners of said resurvey have been established and perpetuated in strict accordance with the Manual of Surveying Instructions, and the special written instructions of the U. S. District Cadastral Engineer Surveyor General, for Group No. 134, Arizona and in the specific manner described in the field notes, and that the foregoing are the original field notes of such resurvey.

Place: Phoenix, Arizona.

Date, May 1, 1926

Signature of Otis O. Gould, U.S. Transitman

APPROVAL

OFFICE OF THE UNITED STATES SURVEYOR GENERAL

10

The foregoing field notes of the survey of

executed by

under his special instructions dated, 19, having been critically examined, and the necessary corrections and explanations made, the said field notes, and the surveys they describe, are hereby approved.

U. S. Surveyor General

I certify that the foregoing transcript of the field notes of the above described surveys in

has been correctly copied from the original notes on file in this office.

U. S. Surveyor General

EOOK 3775

4-680

FIELD ASSISTANTS.

TO

William H. Thorn, U.S. Cadastral Engineer.

NAMES.	CAPACITY.
<i>Walter Thomas</i>	<i>1st Chainman</i>
<i>Albert L. Bailey</i>	<i>2nd Chainman</i>
<i>George M. Tucker</i>	<i>Flagman</i>
<i>Homer Pepper</i>	<i>Cornerman</i>
<i>James S. Hayward</i>	<i>Cornerman</i>

CERTIFICATE OF U.S. CADASTRAL ENGINEER.

I, William H. Thorn, U.S. Cadastral Engineer, hereby certify upon honor that, in pursuance of special instructions received from the U. S. ^{District Cadastral Engineer} ~~Surveyor General~~, for Group No. 134, Arizona, bearing date of the 21st day of January, 1926, I have well, faithfully, and truly in my own proper person, and in strict conformity with said instructions, the Manual of Surveying Instructions, and the laws of the United States, ~~RETRACED~~ all those parts or portions of the Subdivision Lines ~~RESURVEYED~~ all those parts or portions of the South Boundary and Subdivision Lines, and SURVEYED all those parts or portions of the West Boundary and Subdivision Lines of Township 18 South, Range 8 East of the Gila and Salt River Base and Meridian, in the State of Arizona, which are represented in the foregoing field notes ^{and by diagram on page 2 hereof} as having been executed by me, and under my direction; and that all the corners of said ~~retracement, resurvey~~ ^{and survey} have been established and perpetuated in strict accordance with the Manual of Surveying Instructions, and the special written instructions of the U. S. ^{District Cadastral Engineer} ~~Surveyor General~~, for Group No. 134, Arizona, and in the specific manner described in the field notes, and that the foregoing are the original field notes of such ~~retracement, resurvey and survey~~.

Place Phoenix Ariz
 Date May 21^o 1926

William H. Thorn
 U.S. Cadastral Engineer

APPROVAL.

OFFICE OF THE U.S. SUPERVISOR OF SURVEYS,

Denver, Colorado, June 11, 1927.

The foregoing field notes of the ~~RETRACEMENT~~ of Part of the Subdivision Lines of Township 18 South, Range 8 East, of the RESURVEY of Part of the South Boundary of Township 17 South, Range 8 East; Part of the South Bdy. and Part of the Subdivision Lines of Township 18 South, Range 8 East; and of the SURVEY of the West Bdy. and Part (Completion) of the Subdivision Lines of Township 18 South, Range 8 East, of the Gila and Salt River Base and Meridian, in the State of Arizona

executed by William H. Thorn, U.S. Cadastral Engineer & Otis O. Gould, U.S. Transitman under ~~his~~ special instructions dated January 21, 1926 for Group 134 Arizona, having been critically examined, and the necessary corrections and explanations made, the said field notes, and the ~~RETRACEMENTS, RESURVEYS AND SURVEYS~~ they describe, are hereby approved.

Samuel D. Johnson
 U.S. Supervisor of Surveys

~~I certify that the foregoing transcript of the field notes of the above described surveys in~~
~~has been correctly copied from the original notes on file in this office.~~