

BOOK 3808

FIELD NOTES

OF THE RESURVEY OF

*Part of the East Boundary and
Part of the Subdivision Lines*

of

Township 11 South, Range 16 East

AND OF THE SURVEY OF

*Part (completion) of the South Boundary
Part (completion) of the West Boundary*

and

Part (completion) of the Subdivision Lines

of

Township 11 South, Range 16 East

Of the Gila and Salt River Base ^{2nd} Meridian,

In the State of *ARIZONA*

EXECUTED BY

Sidney E. Blout, U.S. Cadastral Engineer,

Benjamin J. Kinsey, U.S. Surveyor, and

Charles E. Hunter, U.S. Transitman.

*In the capacity of U. S. Surveyor S, under Special Instructions dated October 24, 1923,
issued by the United States Surveyor General to govern surveys included in Group
No. 125, Arizona, which were approved by the Commissioner of the General Land
Office, Nov. 3, 1923, and Assignment Instructions dated June 1, 1926
and June 7, 1927.*

Resurvey and Survey commenced June 27, 1926.

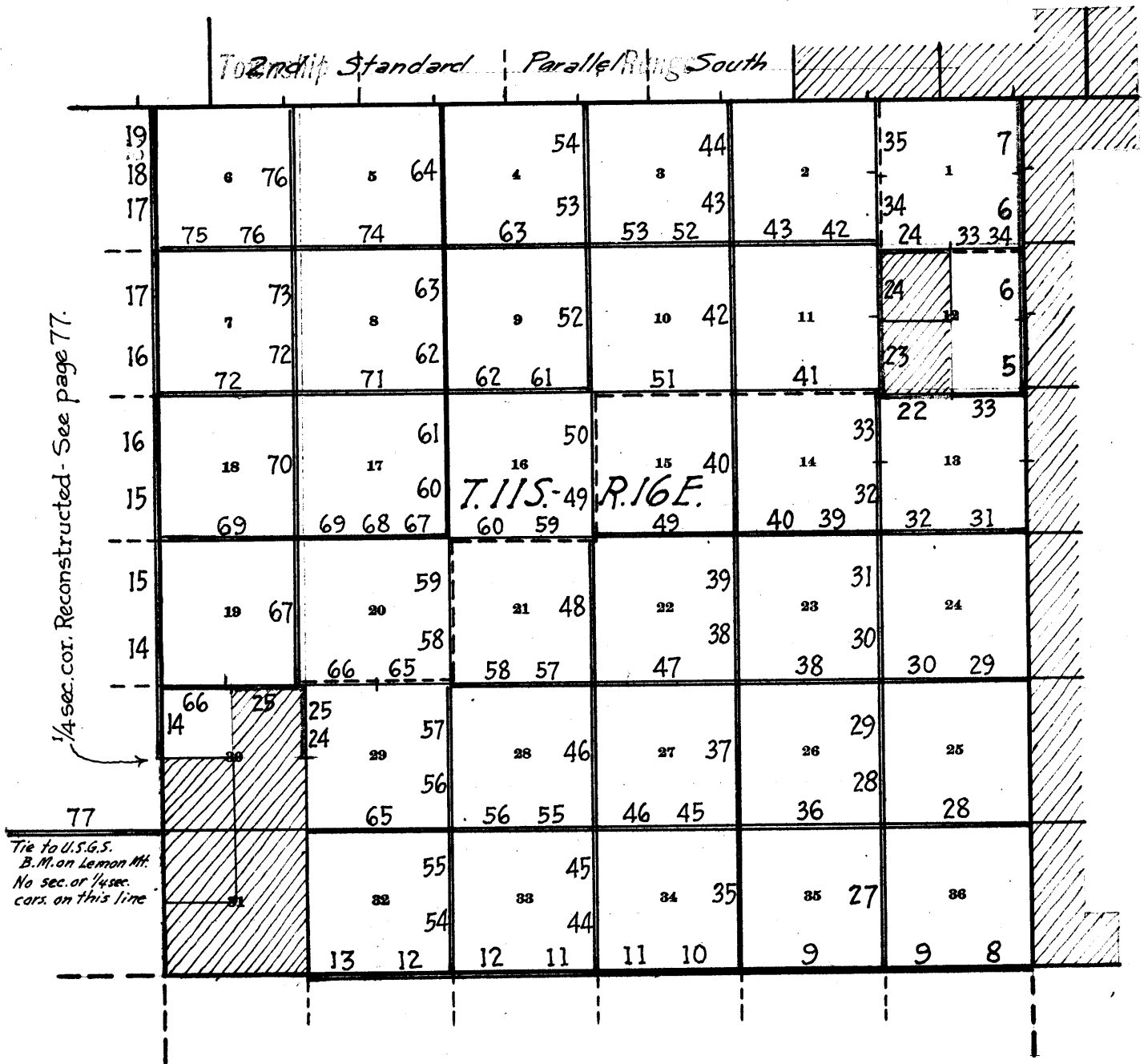
Resurvey and Survey completed July 21, 1927.

3808

3808

BOOK 3808

INDEX DIAGRAM.



- Surveyed under this group.
- Dependently resurveyed under this group.
- Independently resurveyed under this group.
- Accepted surveys, retracements or resurveys.
- Unsurveyed.
- Areas surveyed as per accepted plats on file.

Book "L"
 Group 125- Arizona
 Township 11 South, Range 16 East
 - DATE - DIAGRAM -
 1926-1927.

Resurveyed in 1919 by H.N. Raymond, U.S.C.E. under Group No. 81-
 2nd Standard Parallel South

Surv. in 1884
 by
 J.B. McLaughlin
 U.S.P.S.

Resurv. in 1904 by
 W.B. Alexander, U.S.S.

7-15-27	6	7-11-27	5	7-14-27	4	7-21-27	3	7-20-27	2	7-21-27	1	7-21-27
7-15-27		7-13-27		7-13	7-19	7-19		7-20-27		7-21-27		7-21-27
7-12-27	7	7-9-27	8	7-13-27	9	7-19-27	10	7-20-27	11	7-21-27	12	7-21-27
7-7-27		7-9	7-12	7-15	7-16-27	7-2-27		7-16-27		7-16-27		7-16-27
7-5-27	8	7-7-27	17	7-12-27	16	7-14-27	15	7-2-27	14	7-1-27	13	7-1-27
7-5-27		7-7	7-11	7-8-27	7-9-27	6-30-27		6-23-27		6-23-27		6-23-27
6-17-27	19	7-4-27	20	7-6-27	21	7-7-27	22	6-30-27	23	6-22-27	24	6-22-27
6-16	1927	7-5	7-5-27	6-28-27	6-29-27	6-29-27		6-22-27		6-20-27		6-20-27
6-18-27	30	6-28-27	29	6-27-27	28	6-25-27	27	6-21-27	26	6-20-27	25	6-20-27
6-18-27		6-28-27		6-29-27		6-24-27		6-18-27		6-17-27		6-17-27
6-18-27	31	6-27-27	32	6-24-27	33	6-29-26	34	6-30-26	35	6-30-26	36	6-30-26
6-18-27		1927	1926	1927	1926	6-23	6-28	6-28-26		6-27-26		6-27-26
6-18-27		6-30-27	6-27-27	6-23	6-28	6-28-26		6-27-26		6-27-26		6-27-26

6-18-27
 TIE TO U.S.P.S.
 B.M. on
 LEMON MT.

Surv. in 1904 by
 W.B. Alexander, U.S.S.

Surv. in 1904 by
 W.B. Alexander, U.S.S.

Surv. in 1904 by
 W.B. Alexander, U.S.S.

Surv. in 1904 by
 W.B. Alexander, U.S.S.

Group 103
 Campbell, U.S.S.
 Surv. in 1922 by
 Quintin

Surveyed by Sidney E. Blout, U.S. Cadastral Engineer, on dates shown thereon.

Surveyed by Benjamin J. Kinsey, U.S. Surveyor, on dates shown thereon.

Resurveyed by Benjamin J. Kinsey, U.S.S. on dates shown thereon.

Surveyed by Charles E. Hunter, U.S. Transitman, on dates shown thereon.

Resurveyed by Chas. E. Hunter, U.S.T., on dates shown thereon.

Accepted surveys, retracements or resurveys.

Resurveys and surveys herein described were executed on dates shown on diagram on page 1 hereof by Sidney E. Blout, U.S. Cadastral Engineer, Benjamin J. Kinsey, U.S. Surveyor and Charles E. Hunter, U.S. Transitman, using respectively Buff transits Nos. 16724 and 9940 and Young & Son transit No. 8478; the instruments are equipped with Smith solar attachments and otherwise conform to the standard specifications of the General Land Office. The instruments were approved by the Assistant Supervisor of Surveys, conditional upon satisfactory field tests.

PRELIMINARY FIELD TEST

of

Buff Transit No. 16724

by

Sidney E. Blout, U.S. Cadastral Engineer.

June, 8, 1926; near the center of sec. 16, T. 11 S., R. 16 E., latitude $32^{\circ}28\frac{1}{2}'N.$, and longitude $110^{\circ}43'W.$, examine the adjustments of the transit and find no errors; then to test the workings of the solar apparatus by comparing its indications with a true meridian established by observation on Polaris proceed as follows:

At 9h. 0m., p.m., app. t., set off $32^{\circ}28\frac{1}{2}'N.$ on the latitude arc, $22^{\circ}49\frac{1}{2}'N.$ on the decl. arc and determine a meridian with the solar and mark same by a tack set on top of a peg driven in the ground about 15 chs. N.

June, 9, 1926;

At 2h. 30.0m., a.m., l.m.t., observe Polaris at eastern elongation, marking the mean point in the line thus determined by a tack on top of a peg driven in the ground about 15 chs. N.

Azimuth of Polaris at eastern elongation = $1^{\circ}17'59''$

At 7h. 30m., a.m., app. t., lay off the azimuth of Polaris $1^{\circ}18'$ to the west and mark a point on top of the same peg which marks the solar meridian.

At 3h. 00m., p.m., app. t., set off $32^{\circ}28\frac{1}{2}'N.$ on the lat. arc, $22^{\circ}56\frac{1}{2}'N.$ on decl. arc and determine a meridian with the solar which agrees with the true meridian.

As all of the observations taken during the usual hours of solar work, agree within 1' of the true meridian, conclude that the adjustments of the instrument is satisfactory.

Unless otherwise specified all measurements are made with a Lufkin steel tape, 5 chs. in length, compared with a Lufkin standard and found correct.

The measurements are made on the slope, the vertical angle determined and the slope measurements properly reduced to horizontal distances.

PRELIMINARY FIELD TEST
 of
 Buff Transit No. 9940
 by
 Benjamin J. Kinsey, U.S. Surveyor.

June, 13, 1927; near the corner secs. 9, 10, 15 and 16, T. 11 S., R. 16 E., latitude $32^{\circ}29'N.$, and longitude $110^{\circ}42\frac{1}{2}'W.$, examine the adjustments of the transit and find no errors; then to test the workings of the solar attachment by comparing its indications with a true meridian determined by observation upon Polaris proceed as follows:

June, 14, 1927, at same station as above described, at 2h. 11m., a.m., l.m.t., observe Polaris at eastern elongation, making four observations, two each with the telescope in direct and reversed positions, and marking the mean point in the line thus determined by a tack set in a peg, driven in the ground about 5 chs. N.

Azimuth of Polaris at eastern elongation = $1^{\circ}17'37''$

At 9h. 00m., a.m., app.t., lay off the azimuth of Polaris $1^{\circ}17\frac{1}{2}'$ to the west and mark the meridian thus determined by a tack set in a peg driven in the ground about 5 chs. N. Then set off $32^{\circ}29' N.$, on the lat. arc, $23^{\circ}15' N.$, on the decl. arc and determine a meridian with the solar which is found to agree with the true meridian.

At 12h. 00m., app. noon, with the lat. arc unchanged, set observe the sun on the meridian; the resultant reading of the decl arc is $23^{\circ}15' N.$, which agrees with the computed declination of the sun.

At 3h. 00m., p.m., app.t., with lat. arc unchanged, set off $23^{\circ}15\frac{1}{2}' N.$, on the decl. arc and determine a meridian with the solar which agrees with the true meridian.

As all of the observations taken during the usual hours of solar work agree within $1'30''$ of the true meridian, conclude that the instrument is in satisfactory adjustment.

Unless otherwise specified, all measurements are made with a Lufkin steel tape, 5 chs. in length, compared with a Lufkin standard and found correct.

The measurements are made on the slope, the vertical angle determined and the slope measurements properly reduced to true horizontal distances.

PRELIMINARY FIELD TEST
of
Young & Son Transit No. 8478
by
Charles E. Hunter, U. S. Transitman.

June, 10, 1927; near the cor. secs. 9, 10, 15 and 16, T. 11 S., R. 16 E., latitude $32^{\circ}29'N.$, and longitude $110^{\circ}42\frac{1}{2}'W.$, examine the adjustments of the transit and find no errors; then to test the workings of the solar attachment by comparing its indications with a true meridian established by observation upon Polaris, proceed as follows:

June, 11, 1927, at same station, at 2h. 27m., a.m., l.m.t., observe Polaris at eastern elongation, making four observations, two each with the telescope in direct and reversed positions, and marking the mean point in the line thus determined by a tack set in a peg driven in the ground about 5 chs. N.

Azimuth of Polaris at eastern elongation = $1^{\circ}17'37''$

June, 11, 1927; lay off the azimuth of Polaris $1^{\circ}17\frac{1}{2}'$ to the west and mark the meridian thus determined by a tack in peg, driven in the ground about 5 chs. N.

At 9h. 00m., a.m., app. t., set off $32^{\circ}29'N.$, on the lat. arc, $23^{\circ}03\frac{1}{2}'N.$, on the decl. arc and determine a meridian with the solar which agrees with the true meridian.

At 3h. 00m., p.m., app. t., with lat. arc unchanged, set off $23^{\circ}04\frac{1}{2}'N.$, on the decl. arc and determine a meridian with the solar which agrees with the true meridian.

As all of the observations taken during the usual hours of solar work agree within $1'30''$ of the true meridian, conclude that the instrument is in satisfactory adjustment.

Unless otherwise specified all measurements are made with a Lufkin steel tape, 5 chs. in length, compared with a Lufkin standard and found correct.

The measurements are made on the slope, the vertical angle determined and the slope measurements properly reduced to horizontal distances.

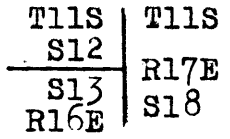
Resurvey of a part of the East Boundary, T.11S., R.16E.

Chains

The east bdy. of T.11 S., R.16 E., was surveyed in 1922, by Quintin Campbell, U.S.S., under group No.103, establishing all corner monuments thereon with common reference to areas on both sides of the line, except the cor. secs. 1 and 12, and the cor. secs. 6 and 7. The original cor. secs. 1, 6, 7 and 12, on this bdy. was established in 1904, by W.B.Alexander U.S.D.S., in connection with survey of part of the subdivision lines of T.11 S., R.16 E., but no part of the bdy. was surveyed at that time. The survey of the Tp. bdy. in 1922, placed the original cor. secs. 1, 6, 7 and 12, on same, and said cor. was reconstructed with a 2 in. iron post with brass cap and was altered to refer to secs. 1 and 12 only. The following notes describe a resurvey of the N. two miles of the E. bdy. of T.11 S., R.16 E., reestablishing the cor. secs. 12 and 13 at a point due east of the original $\frac{1}{4}$ sec. cor. of secs. 12 and 13, reestablishing the $\frac{1}{4}$ sec. cor. of sec. 12 at midpoint of E. bdy. of said sec., reestablishing the $\frac{1}{4}$ sec. cor. sec. 1 at 40.00 chs. N. from cor. secs. 1 and 12 and altering the cor. secs. 7, 12, 13 and 18, the $\frac{1}{4}$ sec. cor. of secs. 7 and 12 and the $\frac{1}{4}$ sec. cor. secs. 1 and 6 to refer to areas E. of line only.

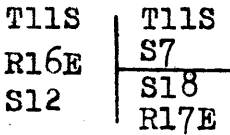
Topography omitted from these notes in view of the fact that original survey of this line is a group survey of recent execution and reference to the original notes will supply this data satisfactorily.

At a point on W. Bdy. of sec. 18, T.11 S., R.17 E., due east from the $\frac{1}{4}$ sec. cor. of secs. 12 and 13, T. 11 S., R.16 E., reestablish the cor. secs. 12 and 13 as follows:
Set an iron post, 3 ft. long, 2 ins. in diam., 24 ins. in the ground, for reestablished cor. of secs. 12 and 13 only, with brass cap mkd.



1927 from which,
a mesquite, 6 ins. in diam., bears N.41 $\frac{1}{2}$ °W., 209 lks. dist., mkd. T11S R16E S12 BT
a mesquite, 5 ins. in diam., bears S.68 $\frac{1}{2}$ °W., 46 lks. dist., mkd. T11S R16E S13 BT

0.59 Thence,
North, on a true line, on E. bdy. sec. 12.
Intersect the original cor. secs. 7, 12, 13 and 18, which is an iron post 2 ins. in diam., projecting 12 ins. above ground, firmly set, with brass cap properly mkd. and witnessed by a md. of stone W. of cor. No bearing trees.
Alter this corner monument to refer to secs. 7 and 18 only by changing marking on brass cap to read



1927

Resurvey of a part of the East Bdy. of T.11 S., R.16 E.

Chains

No suitable bearing trees available.
 Destroy the md. of stone to W. of cor.
 Raise a md. of stone 3 ft. base, 1½ ft. high E. of cor.

- 39.80 Continue line and measurement.
 (Midpoint of E. bdy. of sec. 12) Set an iron post 3 ft. long, 1 in. in diam., 14 ins. in the ground to bedrock, deposit a stone mkd. with a cross (X) at base of post, supported by a md. of stone for the reestablished ¼ sec. cor. sec. 12 only, with brass cap mkd.

¼ S12

1927

No suitable bearing trees available.

- 40.59 Intersect the original ¼ sec. cor. secs. 7 and 12, which is an iron post 1 in. in diam., projecting 12 ins. above ground, with brass cap properly mkd. and witnessed by two properly mkd. bearing trees, one each SE and SW of cor.

Alter this corner monument to refer to sec. 7 only, by changing marking on brass cap to read

¼ S7

1927

Destroy the marking on the SW bearing tree.
 No other suitable bearing tree available.
 Raise a md. of stone 3 ft. base, 1½ ft. high E. of cor.

- 79.60 Continue line and measurement.
 Intersect the reconstructed original cor. of secs. 1 and 12, which is an iron post, 2 ins. in diam., projecting 12 ins. above ground, with brass cap properly mkd. and witnessed by a md. of stone W. of cor. No bearing trees.

- 1.00 North, on a true line, on E. bdy. of sec. 1.
 Intersect the reestablished cor. secs. 6 and 7, which is an iron post 2 ins. in diam., projecting 12 ins. above ground, firmly set, with brass cap properly mkd. and witnessed by a md. of stone E. of cor.

- 40.00 Continue line and measurement.
 Set an iron post 3 ft. long, 1 in. in diam., 12 ins. in the ground to bedrock, deposit a stone mkd. with a cross (X) at base of post, supported by a md. of stone, for reestablished ¼ sec. cor. of sec. 12, with brass cap mkd.

¼ S1

1927

- 41.00 No suitable bearing trees available.
 Intersect the original ¼ sec. cor. secs. 1 and 6, which is an iron post 1 in. in diam., projecting 12 ins. above ground, firmly set, with brass cap properly mkd. and witnessed by two bearing trees, one each NE and NW of cor.

Resurvey of a part of the East Bdy. of T.14S., R.16 E.

Chains

Alter this corner monument to refer to sec. 6 only by changing marking on brass cap to read

1/4 S6

1927

Destroy marking on the NW bearing tree.

No other suitable bearing tree available.

Raise a md. of stone 3 ft. base, 1 1/2 ft. high E. of cor.

Continue line and measurement.

77.30

Intersect C. Co. of Is. 11 S., Rs. 16 & 17 E., on the 2nd Std. Par. 7 S., which is an iron post 3 ins. in diam., projecting 12 ins. above ground, firmly set, with brass cap properly mkd. and witnessed by md. of stone S. of cor.

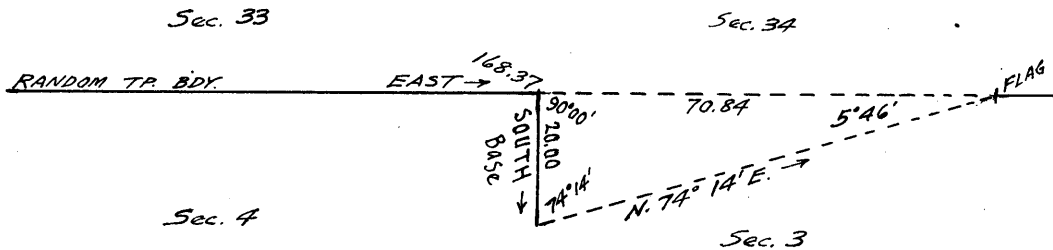
Survey of part (completion) of S. Bdy. of T.11 S., R.16 E

Chains

The west mile of the S. bdy. of T.11 S., R.16 E., was surveyed by W.B.Alexander, U.S.D.S., in 1904, and no retracement or resurvey is of record. The following notes describe the survey of the E. five miles of the line which completes the survey of this Tp. bdy.

168.37

From the cor. secs. 5, 6, 31 and 32, T.11 and 12 S., R.16 E., hereinafter described. East, on a random line, S. of T.11 S., R. 16 E. Discontinue chaining on random line at this point owing to precipitous slopes ahead. Obtain measurement of 70.84 chs. by triangulation as follows: Set flag ahead on random Tp. bdy. From 168.37 ch. station, measure a base S. 20.00 chs. From S. end of base, flag bears N.74°14'E.



Dist. by chaining : 168.37 chs.E.
" " triang. : 70.84 " "
Total dist. : 239.21 " "

239.21

Flag point of triangulation.

399.21

Continue line and measurement by chaining. Fall 25 lks. N. of the cor. Ts. 11 and 12 S., Rs. 16 and 17 E., hereinafter described. True course and distance of the East five miles of S bdy of T.11 S., R.16 E. are therefore, N.89°58'W., 399.21 chs.

The corner of Ts. 11 S., Rs. 16 and 17 E., is an iron post, 3 ins. in diam., projecting 10 ins. above ground, firmly set, with brass cap properly mkd., and witnessed by four properly mkd. oak bearing trees, one each NE, SE, SW and SE of cor.

Thence N.89°58'W., on a true line, bet. secs. 1 and 36. Over mountainous land, thru scattering timber and thick undergrowth.

8.50

Desc. 69 ft. over W. slope. Wash, 10 lks. wide, course N. Asc. 322 ft. over NE slope.

20.25

Spur, slopes N. Desc. 336 ft. over SW slope to

40.00

Set an iron post 3 ft. long, 1 in. in diam., 26 ins. in the ground for the 1/4 sec. cor. secs. 1 and 36, with brass cap mkd.

$$\frac{1}{4} \frac{S36}{S1}$$

1927 from which, an oak, 14 ins. in diam., bears N.82 3/4°W., 42 lks. dist., mkd. 1/4 S36 BT an oak, 8 ins. in diam., bears S.10 1/4°E., 29 lks. dist., mkd. 1/4 S1 BT

Survey of a part. (completion) of the S. Bay, of T.11 S., R.16 E.

Chains

45.70 Desc. 148 ft. over SW slope.
 Wash, 50 lks. wide, course NE.
 55.00 Asc. 199 ft. over SE slope.
 Spur, slopes NE.
 65.75 Desc. 71 ft. over NW slope.
 Wash, 30 lks. wide, course NE.
 80.00 Asc. 441 ft. over SE slope to
 Set an iron post 3 ft. long, 2 ins. in diam., 14 ins. in
 the ground to bedrock, supported by a md. of stone,
 with brass cap mkd.

T11S R16E
S35 S36
 S2 S1
 T12S

1927 from which,
 an oak, 10 ins. in diam., bears N.48 $\frac{1}{4}$ °E., 148 lks.
 dist., mkd. T11S R16E S36 BT
 an oak, 8 ins. in diam., bears S.47 $\frac{1}{4}$ °E., 48 lks.
 dist., mkd. T12S R16E S1 BT
 an oak, 16 ins. in diam., bears S.5°W., 60 lks.
 dist., mkd. T12S R16E S2 BT
 an oak, 6 ins. in diam., bears N.87 $\frac{1}{4}$ °W., 19 lks.
 dist., mkd. T11S R16E S35 BT

Land, mountainous.
 Soil, rocky 4th. rate.
 Timber, oak, juniper and yellow pine.
 Undergrowth, scruboak, manzanita, modronon and cacti.

N.89°58'W., on true line, bet. secs. 2 and 35.
 Over mountainous land, thru heavy timber and undergrowth.

4.00 Asc. 67 ft. over SE slope.
 Spur, slopes NE.
 10.00 Desc. gradual NW slope.
 Head of wash, course NE.
 21.60 Asc. 274 ft. over SE slope.
 Spur, slopes NE.
 40.00 Desc. 108 ft. over NW slope to
 Set an iron post 3 ft. long, 1 in. in diam., 26 ins. in
 the ground for the $\frac{1}{4}$ sec. cor. secs. 2 and 35, with
 brass cap mkd.

$\frac{1}{4}$ S35
 S2

1927 from which,
 an oak, 6 ins. in diam., bears N.42 $\frac{1}{2}$ °E., 12 lks.
 dist., mkd. $\frac{1}{4}$ S35 BT
 an oak, 6 ins. in diam., bears S.32W33° 6 lks.
 dist., mkd. $\frac{1}{4}$ S2 BT

55.00 Asc. 108 ft. over NW slope.
 57.00 Desc. 58 ft. over NE slope.
 Head of wash, course N.
 68.20 Asc. 66 ft. over NE slope.
 Desc. 8 ft. over NW slope.
 69.50 Head of wash, course N.
 Asc. 77 ft. over NE slope.
 79.60 Spur, slopes N.
 Desc. 15 ft. over NW slope to

Survey of a part of S. Bdy. (completion) Ref T. 11 S., R. 16 E.

Chains

80.00

Set an iron post 3 ft. long, 2 ins. in diam., 27 ins. in the ground for the cor. secs. 2, 3, 34 and 35, with brass cap mkd.

T11S R16E

S34 | S35

S3 | S2

T12S

1927

from which,

an oak, 8 ins. in diam., bears N.75°E., 28 lks. dist., mkd. T11S R16E S35 BT

an oak, 8 ins. in diam., bears S.63°E., 35 lks. dist., mkd. T12S R16E S2 BT

a madrono, 24 ins. in diam., bears S.36½°W., 52 lks. dist., mkd. T12S R16E S3 BT

an oak, 8 ins. in diam., bears N.46¼°W., 27 lks. dist., mkd. T11S R16E S34 BT

Land, mountainous.

Soil, rocky 4th. rate.

Timber, oak, juniper and yellow pine.

Undergrowth, scruboak, manzanita, modrono and cacti.

N.89°58'W., on true line, bet. secs. 3 and 34.

Over mountainous land, thru heavy timber and dense undergrowth.

Desc. 66 ft. over NW slope.

4.00 Wash, 15 lks. wide, course NE.

Asc. 323 ft. over SE slope.

25.00 Spur, slopes NE.

Desc. 192 ft. over NE slope.

29.25 Wash, 30 lks. wide, course NE.

Asc. 152 ft. over SE slope to

36.46 Set an iron post 3 ft. long, 1 in. in diam., 6 ins. in the ground to bedrock, supported by a md. of stone, for the witness cor. to the ¼ sec. cor. secs. 3 and 34, with brass cap mkd.

WC ¼ ——— S34
S3

1927

from which,

an alder, 6 ins. in diam., bears N.8½°W., 19 lks. dist., mkd. ¼ S34 WC BT

an oak, 14 ins. in diam., bears S.15½°E., 24 lks. dist., mkd. ¼ S3 WC BT

Discontinue chaining.

Measurement to 70.84 ch. station by triangulation is hereinbefore described on random Tp. Bdy.

40.00 True point for the ¼ sec. cor. secs. 3 and 34 falls in inaccessible position where it is impracticable to monument corner, therefore establish witness corner at 3.54 chs. S.89°58'E., as hereinbefore described.

Approximate topography.

Asc. 1590 ft. over precipitous slopes to spur.

44.00 Top of cliff, 75 ft. high, facing E.

70.84 A point 10 lks. S. of triangulation station hereinbefore described.

Survey of Part (completion) of the S. bdy. of T.11 S..R.16 E.

Chains

Continue line and measurement by chaining.
 Continue asc. of 150 ft. over S. slope.
 77.85 Ridge, bears NE and SW.
 Trail, bears NE and SW.
 Desc. gradually over broken NW slope to
 80.00 True point for cor. secs. 3, 4, 33 and 34 falls in inaccessible position on precipitous slope, where it is impracticable to monument the cor. therefore establish a witness cor. at 1.10 chs. N.89°58'W. as follows:
 Set an iron post 3 ft. long, 2 ins. in diam., 12 ins. in the ground to bedrock, supported by a md. of stone, for witness cor. to cor. of secs. 3, 4, 33 & 34, with brass cap mkd.,

T11S	R16E
S33	S34
WC	
S4	S3
T12S	

1927 from which,

- a fir, 8 ins. in diam., bears N.46°E., 12 lks. dist., mkd. T11S R16E S34 WCBT
- a fir, 8 ins. in diam., bears S.68°E., 41 lks. dist., mkd. T12S R16E S3 WCBT
- a fir, 6 ins. in diam., bears S.64°W., 5 lks. dist., mkd. T12S R16E S4 WCBT
- a fir, 6 ins. in diam., bears N.67°W., 3 lks. dist., mkd. T11S R16E S33 WCBT

Land, rough mountainous.
 Soil, rocky 4th. rate.
 Timber, oak, juniper, yellow pine and fir.
 Undergrowth, manzanita, scruboak, modrono, catclaw and cacti.

From true point for cor. of secs. 3, 4, 33 & 34, N.89°58'W., on true line, bet. secs. 4 and 33. Over mountainous land, thru heavy timber and undergrowth. Desc. 958 ft. over broken W. slope, to canyon bottom.
 1.10 Witness cor. to cor. of secs. 3, 4, 33 & 34, hereinbefore described.
 5.00 Top of cliff facing NW. Desc. 100 ft. to
 5.50 Foot of cliff.
 Desc. over loose rock thru dense growth of modrono brush.
 15.00 Leave modrono brush, enter heavy growth of scruboak and scattering manzanita.
 18.55 Trail, bears NE and SW.
 31.50 Wash, 10 lks. wide, in bottom of canyon, stream of water in same, 8 lks. wide, 6 ins. deep, course NW.
 Asc. 60 ft. over NE slope.
 33.50 Spur, slopes N.
 Desc. 66 ft. over NW slope to wash.
 33.80 Bend in trail, bears SE and SW.
 36.50 Same trail, bears NE and SW.
 38.90 Wash, 10 lks. wide, 1 ft. deep, course NE.
 Asc. 123 ft. over broken SE slope.
 39.20 Trail, bears N. and S.
 40.00 True point for $\frac{1}{4}$ sec. cor. secs. 4 and 33 falls in inaccessible position, where it is impracticable to monument same,
 41.15 Set an iron post 3 ft. long, 1 in. in diam., 6 ins. in the ground to bedrock, supported by a md. of stone, for the witness cor. to the $\frac{1}{4}$ sec. cor. secs. 4 and 33, with brass cap mkd.

$\frac{1}{4}$	S33
WC	
S4	

1927 from which,

Survey of a part (completion) of the S.Bdy. of T.11 S., R.16 E.

Chains

- an oak, 14 ins. in diam., bears N.52°W., 33 lks. dist., mkd. $\frac{1}{4}$ S33 WCBT
 an oak, 16 ins. in diam., bears S.68°W., 13 lks. dist., mkd. $\frac{1}{4}$ S4 WCBT
- 41.70 Asc. over vertical face of cliff, facing E. 20 ft. high.
 41.80 Top of cliff; continue asc. of 40 ft. over SE slope.
 41.50 Spur, slopes NE.
 45.90 Wash, 10 lks. wide, course NE.
 Asc. 305 ft. over rough broken SE slope to spur.
 50.00 Foot of cliff, 200 ft. high, facing E.
 51.00 Top of cliff, continue asc. over SE slope.
 51.90 Narrow, rocky spur, 30 lks. wide, slopes NE.
 Desc. 218 ft. over broken NW slope to wash.
 59.00 Butterfly Trail, bears NE and SW.
 62.00 Wash, in ravine bottom, 10 lks. wide, with stream of water, 6 lks. wide, 4 ins. deep, course N.
 A spring of good water, bears S. 25 lks. dist.
 Asc. 51 ft. over NE slope to spur.
 65.50 Band in Butterfly Trail, from SE to SW.
 Spur, slopes N.
 Desc. 21 ft. over SW slope, to wash.
 67.40 Butterfly Trail, bears N. and S.
 67.50 Wash, 20 lks. wide, course NE.
 A spring of good water bears S. 25 lks. dist.
 Asc. 272 ft. over E. slope to corner.
 69.50 Wash, 20 lks. wide, course NE.
 Asc. up same.
 79.00 Leave wash, from SW.
 Asc. SE slope to
 80.00 Set an iron post 3 ft. long, 2 ins. in diam., 16 ins. in the ground to bedrock, supported by a md. of stone, for the cor. secs. 4, 5, 32 and 33, with brass cap mkd.,
- | | |
|-----------|-----|
| T11S R16E | |
| S32 | S33 |
| ----- | |
| S5 | S4 |
| T12S | |
- 1927 from which,
 an oak, 16 ins. in diam., bears N.74°E., 58 lks. dist., mkd. T11S R16E S33 BT
 an oak, 8 ins. in diam., bears S.85 $\frac{1}{2}$ °E., 35 lks. dist., mkd. T12S R16E S4 BT
 a yellow pine, 36 ins. in diam., bears S.45°W., 102 lks. dist., mkd. T12S R16E S5 BT
 an oak, 10 ins. in diam., bears N.53°W., 44 lks. dist., mkd. T11S R16E S32 BT
- Land, mountainous.
 Soil, rocky 4th. rate.
 Timber, oak, yellow pine, fir, balsam and alder.
 Undergrowth, scruboak, manzanita, catclaw, modrono and cacti.
-
- N.89°58'W., on true line, bet. secs. 5 and 32.
 Over mountainous land, thru heavy timber and dense undergrowth.
 Asc. 337 ft. over SE slope.
 5.00 Spur, slopes N.
 Desc. 363 ft. over NW slope to wash.
 11.50 Butterfly Trail, bears NE and SW.
 17.50 Wash, 30 lks. wide, 2 ft. deep, course NW.
 Asc. 255 ft. over NE slope.

Survey of a part. (completion) of the S.Bdy. of T.11 S., R.16 E.

Chains	
24.50	Spur, slopes N.
30.10	Desc. 62 ft. over NW slope. Wash, 20 lks. wide, course NE.
40.00	Asc. 394 ft. over NE slope to Set an iron post 3 ft. long, 1 in. in diam., 26 ins. in the ground for the $\frac{1}{4}$ sec. cor. secs. 5 and 32, with brass cap mkd.
	$\frac{1}{2} \frac{S32}{S5}$
	<p style="text-align: center;">1927 from which,</p> <p>an oak, 12 ins. in diam., bears N. $43\frac{1}{2}^{\circ}$ W., 19 lks. dist., mkd. $\frac{1}{4}$ S32 BT a yellow pine, 8 ins. in diam., bears S. 45° E., 12 lks. dist., mkd. $\frac{1}{4}$ S5 BT</p>
40.20	Asc. gradual E. slope. Ridge, bears N. and S. (Divide). Fence, bears NW and SE.
48.90	Desc. 216 ft. over SW slope to wash. SE corner of Government corral.
49.13	From which,
49.80	USGS bench mark No. 7705 bears S. $67^{\circ}03'$ W., 4.73 chs.
51.70	SW corner of Government corral bears N. 2 lks. dist.
52.50	Butterfly Trail, bears NE and SW. Head of wash, course S.
54.30	Asc. along gradual SE slope of saddle. Soldier Camp Forest Ranger Sta. bears S. about 2 chs.
55.62	Telephone line, bears NW and SE.
56.20	Telephone line, bears NW and SE. Road, bears NW and SE at forks with road from SW. Divide, bears NW and NE.
58.10	Asc. 24 ft. over S. slope. Spur, slopes S.
59.20	Desc. 45 ft. over SW slope to wash. Cabin, bears S. about 2 chs. dist.
61.50	" " N. " 2 " "
62.20	" " S. " $3\frac{1}{2}$ " "
63.70	Road, bears NW and SE.
65.20	Cabin, bears S. about $2\frac{1}{2}$ chs. dist. S. edge of bend in same road from NE to NW.
67.70	Cabin, bears S. about $1\frac{1}{2}$ chs. dist.
70.20	" " " " $3\frac{1}{2}$ " "
70.60	Road, bears N. and S.
73.70	Wash, 20 lks. wide, course SE. Asc. 81 ft. over NE slope to cor.
75.65	Trail, bears NE and SW.
79.21	Intersect the corner of secs. 5, 6, 31 and 32 which is a stone 4 x 6 x 4 ins. above ground, firmly set and prop- erly mkd., and witnessed by four properly mkd. bearing trees, one each NE, NW, SE and SW of cor.
	<p>Land, mountainous and rolling. Soil, rocky 4th. rate. Timber, yellow pine, oak, fir, juniper and alder. Undergrowth, scruboak, manzanita, catclaw and cacti.</p>

Survey of a part. (completion) of West. Bdy. of T.11 S., R.16 E.

Chains

The South one and one-half miles of the W. Bdy. of T.11 S., R.16 E., was surveyed in 1904, by W.B.Alexander, U.S.D.S., and no retracements or resurveys of same is of record. The following notes describe a survey of the N. four and a half miles of the line which completes the survey of this Tp. Bdy.
The S $\frac{1}{2}$ of the W. Bdy. of sec. 30 was retraced and found to be in substantial agreement with record therefore said retracement is not described in these notes.

From the reconstructed $\frac{1}{4}$ sec. cor. secs. 25 and 30, hereinafter described.
Over rough mountainous land, thru heavy timber and dense undergrowth.

- 22.75 Desc. 74.5 ft. over N. slope.
- Wash, 20 lks. wide, course NW.
- Asc. 53 ft. over SW slope.
- 24.90 Spur, slopes NW.
- Desc. 65 ft. over N. slope.
- 25.30 Wash, 20 lks. wide, with stream of water 5 lks. wide, and 2 ins. deep, course NE.
- Asc. 20 ft. over SE slope.
- 28.00 Spur, slopes E.
- Desc. 55 ft. over NE slope.
- 29.80 Wash, 20 lks. wide, course E.
- Asc. 12 ft. over SE slope.
- 37.00 Spur, slopes E.
- Desc. 42 ft. over NE slope to
- 40.00 Set an iron post 3 ft. long, 2 ins. in diam., 10 ins. in the ground to bedrock, supported by a md. of stone, for the cor. secs. 19, 24, 25 and 30, with brass cap mkd.

T11S	
R15E	R16E
S24	S19
S25	S30

- 1927 from which,
- a juniper, 24 ins. in diam., bears N.3°E., 130 lks. dist., mkd. T11S R16E S19 BT
- an oak, 8 ins. in diam., bears S.7°E., 55 lks. dist., mkd. T11S R16E S30 BT
- an oak, 8 ins. in diam., bears S.19°W., 48 lks. dist., mkd. T11S R15E S25 BT
- an oak, 8 ins. in diam., bears N.74 $\frac{1}{2}$ °W., 20 lks. dist., mkd. T11S R15E S24 BT

Land, rough mtns.,
Soil, rocky 4th. rate.
Timber, oak, juniper, and yellow pine.
Undergrowth, scruboak, manzanita, catclaw and cacti.

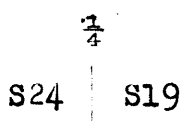
- North, on true line, bet. secs. 19 and 24.
- Over mountainous land, thru heavy timber and dense undergrowth.
- Asc. 41 ft. over NE slope.
- 8.00 Spur, slopes NE.
- Desc. 279 ft. over N. slope.
- 17.50 Wash, 20 lks. wide, course NE.
- Desc. 309 ft. over NE slope.

Survey of a part (completion) of the W.Bdy. of T.11 S.,R.16E.

Chains

35.50 Wash, in bottom of ravine, 20 lks. wide, course E.
A spring bears E. about 3 chs. dist.

40.00 Asc. 25 ft. over SE slope to
Set an iron post 3 ft. long, 1 in. in diam., 6 ins. in
the ground to bedrock, supported by a md. of stone,
for the 1/4 sec. cor. secs. 19 and 24, with brass cap mkd.



1927 from which,

an oak, 6 ins. in diam., bears S.69°E., 10 lks.
dist., mkd. 1/4 S19 BT
a modrono, 14 ins. in diam., bears S.22°W., 41 lks.
dist., mkd. 1/4 S24 BT

50.50 Asc. 10 ft. over SE slope.
Spur, slopes E.

54.60 Desc. 121 ft. over NE slope.
Wash, 20 lks. wide, 2 ft. deep, course NE.

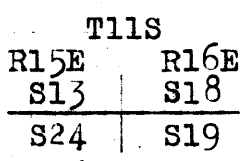
61.50 Asc. 114 ft. over SE slope.
Spur, slopes NE.

71.50 Desc. 164 ft. over NE slope.
Wash, near head, course NE.

74.50 Asc. 31 ft. over SE slope.
Spur, slopes NE.

79.80 Desc. 166 ft. over N. slope.
Head of wash, course E.

80.00 Asc. gradual SE slope to
Set an iron post 3 ft. long, 2 ins. in diam., 24 ins. in
the ground for the cor. secs. 13, 18, 19 and 24, with
brass cap mkd.



1927 from which,

an oak, 6 ins. in diam., bears N.62°E., 20 lks.
dist., mkd. T11S R16E S18 BT
an oak, 10 ins. in diam., bears S.41°E., 30 lks.
dist., mkd. T11S R16E S19 BT
a yellow pine, 14 ins. in diam., bears S.28°W., 29 lks.
dist., mkd. T11S R15E S24 BT
a modrono, 6 ins. in diam., bears N.57 1/2°W., 34 lks.
dist., mkd. T11S R15E S13 BT

Land: rough mountainous.
Soil, rocky 4th. rate.
Timber, oak, yellow pine, pinion and modrono.
Undergrowth, scruboak, manzanita, catclaw and cacti.

North, on a true line, bet. secs. 13 and 18.
Over rough mountainous land, thru heavy timber and dense
undergrowth.

3.00 Asc. 51 ft. over SE slope.
Spur, slopes E.
Desc. 301 ft. over NW slope.

Survey of a part (completion) of the W. Bdy. of T.11 S., R.16 E.

Chains

16.75 Wash, 50 lks. wide, 2 ft. deep, course NE.
 Asc. 71 ft. over SE slope.
 22.40 Spur, slopes E.
 Desc. 296 ft. over NE slope to
 40.00 Set an iron post 3 ft. long, 1 in. in diam., 12 ins. in
 the ground to bedrock, supported by a md. of stone, for
 the $\frac{1}{4}$ sec. cor. secs. 13 and 18, with brass cap mkd.

$\frac{1}{4}$

S13 | S18

1927 from which,
 an oak, 6 ins. in diam., bears S.45°E., 3 lks.
 dist., mkd. $\frac{1}{4}$ S18 BT
 an oak, 6 ins. in diam., bears S.65°W., 2 lks.
 dist., mkd. $\frac{1}{4}$ S13 BT

Desc. 81 ft. over NE slope.
 45.00 Wash, (center) 100 lks. wide, course NW. (This wash is
 in bottom of Canada Del Oro.)
 Asc. 232 ft. over rolling SW slope.
 66.65 Spur, slopes SW.
 Desc. 143 ft. over NW slope.
 71.35 Wash, 100 lks. wide, course W.
 Asc. 202 ft. over SW slope to
 80.00 Set an iron post 3 ft. long, 2 ins. in diam., 14 ins. in
 the ground to bedrock, supported by a md. of stone,
 for the cor. secs. 7, 12, 13 and 18, with brass cap
 mkd.

T11S
 R15E R16E
 S12 S7
 S13 | S18

1927 from which,
 an oak, 14 ins. in diam., bears N.30 $\frac{1}{2}$ °E., 56 lks.
 dist., mkd. T11S R16E S7 BT
 an oak, 14 ins. in diam., bears S.2°E., 68 lks.
 dist., mkd. T11S R16E S18 BT
 an oak, 4 ins. in diam., bears S.20 $\frac{1}{4}$ °W., 51 lks.
 dist., mkd. BT only.
 a juniper, 8 ins. in diam., bears N.41°W., 50 lks.
 dist., mkd. T11S R15E S12 BT

Land, mountainous.
 Soil, rocky 4th. rate.
 Timber, pinion, oak, juniper and yellow pine.
 Undergrowth, scruboak, manzanita, catclaw and cacti.

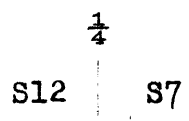
 North, on true line, bet. secs. 7 and 12.
 Over mountainous land, thru heavy timber and dense under-
 growth.

15.50 Asc. 336 ft. over SW slope.
 Spur, slopes W.
 Desc. 20 ft. over NW slope.
 16.70 Head of wash, course SW.
 Asc. 24 ft. over SE slope.
 20.20 Spur, slopes SW.
 Desc. 395 ft. over NW slope.
 30.00 Head of wash, course W.

Survey of a part(completion)of the West Bdy. of T.11 S.,R.16 E.

Chains

40.00 Asc. 73 ft. over SW slope.
Spur, slopes W.
Set an iron post 3 ft. long, 1 in. in diam., 4 ins. in the ground to bedrock, supported by a md. of stone, for the 1/4 sec. cor, secs. 7 and 12, with brass cap mkd.



1927 from which,
a juniper, 16 ins. in diam., bears N.40°E., 65 lks. dist., mkd. 1/4 S7 BT
a juniper, 24 ins. in diam., bears N.8°W., 113 lks. dist., mkd. 1/4 S12 BT

42.10 Thence, over level spur top.
Desc. 323 ft. over NW slope.
Flag on Rice Peak, 60 lks. S. of USGS BM No. 7584 bears N.30°40'E.

54.00 Head of wash, course NW.
Asc. 40 ft. over SW slope.

57.00 Spur, slopes NW.
Desc. 198 ft. over NW slope.

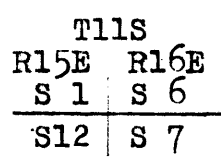
65.00 Wash, 100 lks. wide, 2 ft. deep, course NW.

Asc. 131 ft. over SW slope.

75.00 Spur, slopes NW.

Desc: 88 ft. over NE slope to

80.00 Set an iron post 3 ft. long, 2 ins. in diam., 24 ins. in the ground; for the cor. secs. 1, 6, 7 and 12, with brass cap mkd.



1927 from which,
an oak, 4 ins. in diam., bears N.82 1/2°E., 10 lks. dist., mkd. T11S R16E S6 BT
an oak, 4 ins. in diam., bears S.45°E., 17 lks. dist., mkd. T11S R16E S7 BT
an oak, 6 ins. in diam., bears S.10°W., 16 lks. dist., mkd. T11S R15E S12 BT
an oak, 6 ins. in diam., bears N.54°W., 20 lks. dist., mkd. T11S R15E S1 BT

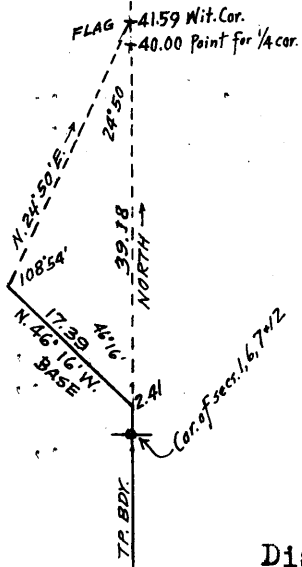
Land, mountainous.
Soil, rocky 4th. rate.
Timber, pinion, oak and juniper.
Undergrowth, scruboak, catclaw and cacti.

North, on true line, bet. secs. 1 and 6.
Over mountainous land, thru scattering timber and dense undergrowth.

2.41 Asc. 70 ft. over SW slope.
Spur, slopes W.
Discontinue chaining owing to cliffs and canyon ahead and triangulate as follows:

Survey of a part (completion) of the W. Bdy. of T.11 S., R.16 E.

Chains

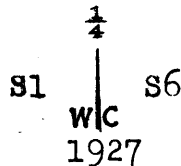


Set flag ahead on Tp. Bdy., vertical angle = + 10°. From 2.41 ch. station, measure a base N. 46° 16' W., 17.39 chs. From NW end of base, flag bears N. 24° 50' E. All bearings checked by direct bearings of solar and all angles checked by deflection.

Dist. by chaining = 2.41 chs. North.
Dist. by triang. = 39.18 " North. 41.59 " N.

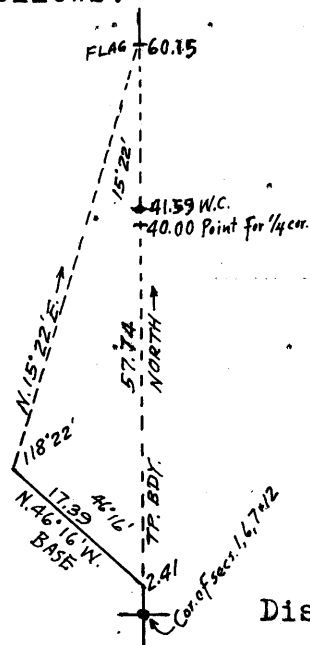
Dist. sec. cor. to flag = 41.59 chs. N.

- 30.00 (Approximate) Bottom of canyon, course SW, about 300 ft. below 2.41 ch. sta.
- 40.00 Point for the 1/4 sec. cor. secs. 1 and 6 falls in inaccessible position where it is impracticable to establish the corner, therefore establish witness cor. as follows; at point 1.59 chs. N.
- 41.59 Set an iron post 3 ft. long, 1 in. in diam., 16 ins. in the ground to bedrock, deposit a stone mkd. with a cross (X) at base of post, supported by a md. of stone, for the witness cor. to the 1/4 sec. cor. secs. 1 and 6, with brass cap mkd.



No suitable bearing trees available. The witness cor. is established at flag point of above described triang., about 350 ft. above bottom of canyon, on spur sloping W.

Chaining beyond this witness cor. is impracticable owing to precipitous sides of gulch, therefore triangulate as follows:



Set flag ahead on Tp. Bdy. Use base N. 46° 16' W., 17.39 chs. from 2.41 ch. sta. same as previous triang. From 2.41 ch. sta., to flag vertical angle is + 10° 26'. From NW end of base flag brs. N. 15° 22' E. All bearings checked by direct bearings of solar, and all angles checked by deflection.

Dist. by chaining = 2.41 chs. N.
Dist. by triang. = 57.74 " "
Dist. sec. cor. to flag = 60.15 " "

- 50.00 (Approximate) Bottom of gulch, course SW., about 350 ft. below Witness corner. Asc. precipitous, broken SW slope.

Survey of a part (completion) of the W.Bdy. of T.11 S., R.16 E.

Chains

60.15 Flag point of above described triangulation on broken spur, sloping W., about 700 ft. above gulch bottom. Continue line and measurement by chaining. Desc. 90 ft. over NW slope.

66.10 Wash, 20 lks. wide, 2 ft. deep, course NW. Asc. 21 ft. over SW slope.

69.00 Spur, slopes W. Desc. 97 ft. over NW slope to

77.08 Intersect the Second Standard Parallel South at 10.78 chs. E. of the Std. $\frac{1}{4}$ sec. cor. sec. 36, T.10 S., R.15 E., reestablished in 1919, under Gp. 181, which is an iron post, 1 in. in diam., projecting 12 ins. above ground, firmly set, properly mkd. on brass cap, & witnessed by one bearing tree, properly mkd., NE of cor. and a md. of stone N. of cor.

At intersection set a granite stone (no 3 in. iron post available.) 8 x 10 x 32 ins, 22 ins. in the ground, with md. of stone around same, mkd. 6 grooves on each of E, W, & S. faces, and CC on S. face, for closing cor. of T. 11 S., R. 15 & 16 E., from which, an oak, 8 ins. in diam., bears S. 30° E., 52 lks. dist., mkd. T11S R16E S6 CC BT
 an oak, 4 ins. in diam., bears S. 30 $\frac{1}{2}$ ° W., 51 lks. dist., mkd. BT only.

Land, rough mountainous.
 Soil, rocky 4th. rate.
 Timber, oak, juniper and pinion.
 Undergrowth, scruboak, mahogany, catclaw and cacti.

Boundaries of Township 11 South, Range 16 East

Latitudes, departures and closing errors.

Line designated.	True bearing.	Dist.	Latitudes.		Departures.	
			N.	S.	E.	W.
South Bdy.	N. 89° 58' W. West	399.21 78.16	.23			399.21 78.16
West Bdy.	North	477.08	477.08			
North Bdy. (2nd. Std. Parallel S.)	East	476.37			476.37	
East Bdy.	South	476.30		476.30		
Convergency					.46	
<u>Totals</u>			477.31	476.30	476.83	477.37
Error in lat.			476.30			476.83
Error in dep.			1.01			0.54

Resurvey of part of the Subdivision lines of T.11 S., R.16 E.

Chains

Part of the subdivision lines of this Tp. were surveyed in 1904 by W.B.Alexander U.S.D.S., and no retracement or resurvey of any part of same is of record. The following notes describe a dependent resurvey of the $W\frac{1}{2}$ of the line bet. secs. 1 and 12, the $W\frac{1}{2}$ of the line bet. secs. 12 and 13, the W. bdy. of sec. 12, the $N\frac{1}{2}$ of the line bet. secs. 29 and 30, and the $E\frac{1}{2}$ of N. Bdy. of sec. 30. The $S\frac{1}{2}$ of the line bet. secs. 29 and 30, and line bet. secs. 30 and 31 were retraced and found to be in substantial agreement with record; therefore said retracement description is omitted from these notes. An independent resurvey of other subdivision lines of this township is described in connection with notes describing the survey of part (completion) of the subdivision lines.

 Retracement for Resurvey.

From the $\frac{1}{4}$ sec. cor. secs. 12 and 13, hereinafter described.
 39.80 West, on a random line, bet. secs. 12 and 13 ($W\frac{1}{2}$).
 Fall 26 lks. N. of the original cor. secs. 11, 12, 13 and 14 hereinafter described.
 True course and distance of the $W\frac{1}{2}$ of line bet. secs. 12 and 13 are therefore, $N.89^{\circ}38'E.$, 39.80 chs.

Thence,
 39.98 $N.0^{\circ}1'W.$, on a random line, on the W. bdy. sec. 12.
 Fall 4 lks. E. of the original $\frac{1}{4}$ sec. cor. secs. 11 and 12.
 True course and distance of the $S\frac{1}{2}$ of the W. bdy. of sec. 11 and 12 are therefore, $N.0^{\circ}4'W.$, 39.98 chs.

Thence,
 39.98 $N.0^{\circ}1'W.$, on a random line, on the W. bdy. of sec. 12 ($N\frac{1}{2}$).
 Fall 2 lks. E. of the original cor. secs. 1, 2, 11 and 12 hereinafter described.
 True course and distance of the $N\frac{1}{2}$ of the W. bdy. of sec. 11 and 12 are therefore, $N.0^{\circ}2'W.$, 39.98 chs.

Thence,
 40.00 East, on a random line, bet. secs. 1 and 12, ($W\frac{1}{2}$).
 Intersect the original $\frac{1}{4}$ sec. cor. secs. 1 and 12, hereinafter described.
 True course and distance of the $W\frac{1}{2}$ of line, bet. secs. 1 and 12 are therefore, East, 40.00 chs.

From the original $\frac{1}{4}$ sec. cor. secs. 29 and 30, hereinafter described.
 40.00 $N.0^{\circ}3'W.$, on a random line, bet. secs. 29 and 30 ($N\frac{1}{2}$).
 Fall 4 lks. W. of the original cor. secs. 19, 20, 29 and 30 hereinafter described.
 True course and distance of $N\frac{1}{2}$ of line bet. secs. 29 and 30 are therefore, $N.0^{\circ}1'W.$, 40.00 chs.

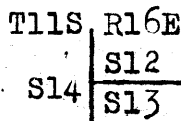
Chains

40.00

West, on a random line, bet. N. body of sec. 30 (E. 1/2)
Intersect the original 1/4 sec. cor. secs. 19 and 30, here-
inafter described.
True course and distance of the E 1/2 of N. body of sec. 30
are therefore, West, 40.00 chs..

RE-SURVEY.

The original cor. secs. 12, 13 and 14, T.11 S., R.16 E.
is a granite stone, 6 x 12 x 6 ins. above ground, firm-
ly set, properly mkd. and witnessed by four properly
mkd. bearing trees, one each, NE, SE, SW and NW of cor.
Alter this cor. to refer to secs. 12 and 13 only, as
follows: Alongside the original cor. stone set an
iron post 3 ft. long, 2 ins. in diam., 24 ins. in the
ground, for cor. of secs. 12 and 13 only, with
brass cap mkd.,

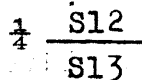


1927

Destroy marking on the SW and NW bearing trees.

Thence,
N. 89° 38' E., on true line, bet. secs. 12 and 13 (W. 1/2)
Over rolling land, thru scattering timber and dense under-
growth.

- 11.90 Asc. 90 ft. over NW slope.
- Ridge, bears NE and SW.
- 25.60 Desc. 209 ft. over E. slope.
- 29.10 Wash, 10 lks. wide, course SE.
- 31.50 Wash, 10 lks. wide, course S.
- 31.80 Asc. 20 ft. over SW slope.
- Spur, slopes S.
- 31.80 Desc. 20 ft. over SE slope.
- Same wash, course NE.
- Over level bottom.
- 39.60 Wash, 10 lks. wide, course NE.
- Asc. slight SW slope to
- 39.80 Intersect the original 1/4 sec. cor. secs. 12 and 13, which
is a stone 10 x 12 x 10 ins. above ground, properly mkd.
and witnessed by one bearing tree SE of cor.
Reconstruct this cor. as follows:
Alongside the cor. stone, set an iron post 3 ft. long,
1 in. in diam., 12 ins. in the ground, deposit a stone
mkd. with a cross (X) at base of post, supported by a
md. of stone, for the 1/4 sec. cor. secs. 12 and 13, with
brass cap mkd.



1927

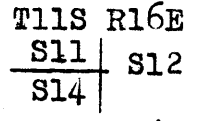
No other suitable bearing tree available.

Land, rolling.
Soil, rocky 4th. rate.
Timber, oak and mesquite.
Undergrowth, scruboak, catclaw and cacti.

Resurvey of a part of the Subdivision of T.11 S., R.16 E.

Chains

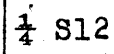
From the cor. secs. 12 and 13, hereinbefore described.
 N.0° 4' W., on true line, on W. bdy. sec. 12 (S. 1/2)
 Over rolling land, thru scattering timber and undergrowth.
 Desc. gradual N. slope to
 0.71 (80.00 chs. Northing from cor. secs. 13, 14, 23 and 24)
 Set an iron post 3 ft. long, 2 ins. in diam., 12 ins. in
 the ground to bedrock, supported by a md. of stone,
 for reestablished cor. secs. 11 and 14, with brass
 cap mkd.,



1927 from which,

an oak, 12 ins. in diam., bears S.51°W., 80 lks.
 dist., mkd. T11S R16E S14 BT
 an oak, 10 ins. in diam., bears N.27°W., 62 lks.
 dist., mkd. T11S R16E S11 BT

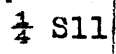
9.50 Desc. 20 ft. over N. slope.
 Wash, 10 lks. wide, course E.
 Asc. 57 ft. over SE slope.
 16.10 Ridge, bears E. and W.
 Desc. 57 ft. over N. slope.
 26.50 Wash, 10 lks. wide, course SE.
 Asc. 20 ft. over SE slope.
 28.00 Spur, slopes NE.
 Desc. gradual NW slope.
 34.20 Wash, 10 lks. wide, course NE.
 Asc. gradual SE slope.
 36.30 Spur, slopes E.
 Desc. 51 ft. over N. slope to
 39.98 Intersect the original 1/4 sec. cor. secs. 11 and 12, which
 is granite stone 5 x 8 x 8 ins. above ground, firmly
 set and properly mkd. and witnessed by two properly
 mkd. bearing trees, one each SE and SW of cor.
 Alter this cor. to refer to sec. 12 only as follows:
 Set an iron post 3 ft. long, 1 in. in diam., 14 ins. in
 the ground to bedrock, deposit a stone mkd. with a
 cross (X) at base of post, supported by a md. of stone
 for 1/4 sec. cor. of sec. 12 only, with brass cap, mkd.,
 brass cap mkd.



1927

Destroy marking on SW bearing tree.
 No other suitable bearing tree available.

Thence,
 N.0° 2' W., on true line, on W. bdy. of sec. 12 (N. 1/2)
 Over rolling land, thru scattering timber & undergrowth.
 Desc. gradual N. slope to
 40.73 (40.00 chs. Northing from cor. secs. 11 and 14).
 Set an iron post 3 ft. long, 1 in. in diam., 12 ins. in
 the ground to bedrock, deposit a stone mkd. with a
 cross (X) at base of post, supported by a md. of stone,
 for reestablished 1/4 sec. cor. sec. 11, with brass
 cap mkd.,



1927

No suitable bearing trees available.

Resurvey of a part of the Subdivision lines of T.11 S., R.16 E.

Chains

2.89 Desc. 132 ft. over NW slope, to wash.
 9.12 Wire fence, bears NW and SE.
 Wash, 40 lks. wide, course SE.
 Thence over rolling bottom land.
 13.52 Old road, bears NW and SE. Asc. 212 ft. over S. slope.
 17.12 Wash, (center) 110 lks. wide, course SE.
 34.47 Road from Oracle to Mt. Lemon bears NW and SE.
 39.98 Intersect the original cor. secs. 1, 2, 11 and 12, which
 is a quartz stone 6 x 8 x 6 ins. above ground, firmly
 set, properly mkd. and witnessed by md. stone W. of
 cor. No bearing trees.
 Alter this cor. to refer to secs. 1 and 12 only as fol-
 lows: alongside the original cor. stone, set an iron
 post 3 ft. long, 2 ins. in diam., 12 ins. in the ground
 to bedrock, deposit a mkd. (X) stone at base of post,
 for cor. of secs. 1 and 12 only, with brass cap mkd.,
 brass cap mkd.

T11S	R16E
S11	S1
	S12

1927

No bearing trees available.

Land, rolling.
 Soil, rocky 4th. rate.
 Timber, oak and mesquite.
 Undergrowth, scruboak, catclaw and cacti.

 In the following notes describing the resurvey of the
 W $\frac{1}{2}$ of line bet. secs. 1 and 12, reference to the
 original notes is made for measurements to topographic
 features.

From the cor. of secs. 1 and 12, hereinbefore described

40.00 East, on a true line, bet. secs. 1 and 12 (W $\frac{1}{2}$).
 Over rolling land, thru scattering undergrowth.
 Intersect the original $\frac{1}{4}$ sec. cor. secs. 1 and 12, which
 is a quartzite stone 5 x 7 x 8 ins. above ground,
 firmly set and properly mkd. and witnessed by a md.
 stone N. of cor.

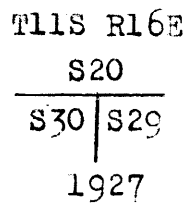
 The original $\frac{1}{4}$ sec. cor. secs. 29 and 30 is a granite
 stone 6 x 8 x 10 ins. above ground, firmly set and
 properly mkd., and witnessed by two properly mkd.
 bearing trees one each SE and NW of cor.

Thence,
 N.0° 1' W., on true line, bet. secs. 29 and 30 (N $\frac{1}{2}$).
 Over mountainous land, thru heavy timber and dense under-
 growth.
 2.40 Desc. 96 ft. over NE slope.
 Wash, 20 lks. wide, course E.
 Asc. 300 ft. over SE slope to spur.
 6.50 Road to Mt. Lemon bears NE and SW.
 10.50 Bend in same road, from NW to SW.
 15.00 Wire corral & spring on line, in wash, course SE.
 22.60 Same road, bears NE and SW.
 23.85 Same road, bears NE and SW.

Resurvey of Part of the Subdivision Lines of T.11 S., R.16 E.

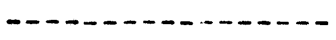
chains
 28.00 Spur, slopes SE.
 Desc. 37 ft. over NE. slope to
 40.00 Intersect the original cor. of secs. 19, 20, 29 and 30,
 which is a granite stone, 8 x 7 x 8 ins. above ground,
 properly mkd., firmly set, and witnessed by four
 properly mkd. bearing trees, one each, NE., SE., SW.
 and NW. of cor.

Reconstruct this cor. monument and alter its reference
 as follows:
 alongside old cor. stone, set an iron post, 3 ft. long,
 2 ins. in diam., 18 ins. in ground to bedrock, support-
 ed by a mound of stone, for cor. of secs. 29 and 30
 only, with brass cap mkd.,



obliterate the marking on the old NE. and NW. bearing
 trees and, in addition to the old SE. and SW. trees,
 establish two new bearing trees as follows:
 a modrono, 14 ins. in diam., bears S. 20° E., 71 lks.
 dist., mkd. T11S R16E S29 BT
 an oak, 10 ins. in diam., bears S. 29° W., 26 lks. dist.,
 mkd. T11S R16E S30 BT

Land, mountainous.
 Soil, rocky, 4th rate.
 Timber, yellow pine, fir, oak and juniper.
 Undergrowth, scrub oak, manzanita, catclaw and cacti.



From the cor. of secs. 29 and 30,
 West, on true line, on N. bdy. of sec. 30 (E. 1/2)
 Over mountainous land, thru dense timber & undergrowth.
 Asc. gradually over NE. slope to
 1.03 Intersect the subdivision line bet. secs. 19 and 20.
 Closing cor. of said secs. established at this point
 as hereinafter described.
 Asc. gradually over N. slope.
 5.00 Desc. 150 ft. over NW. slope.
 8.00 Head of wash, course N.
 Asc. 200 ft. over NE. slope.
 10.00 Spur, slopes N.
 Desc. 300 ft. over NW. slope.
 15.00 Head of wash, course NE.
 Asc. 700 ft. over SE. slope.
 27.00 High ridge, bears N. and S.
 Trail, bears N. and S. along top of this ridge.
 Desc. 550 ft. over NW. slope.
 39.50 Wash, 20 lks. wide, course NW.
 Asc. 30 ft. over NE. slope to
 40.00 Intersect the original 1/4 sec. cor. of secs. 19 and 30,
 which is a granite stone, 10 x 12 x 8 ins. above
 ground, mkd. 1/4 on N. face, firmly set, and witnessed
 by two bearing trees:
 a pine, 30 ins. diam., N. 23° E., 47 lks., mkd. 1/4 S 19 BT
 a fir, 36 ins. diam., S. 49° W., 36 lks. dist., mkd. 1/4 S 30 BT.

Reconstruct this cor. monument and alter its reference
 as follows:

Resurvey of Part of the Subdivision Lines of T.11 S., R.16 E.

chains

alongside old stone, set an iron post, 3 ft. long,
1 in. in diam., 26 ins. in the ground, for $\frac{1}{4}$ sec.
cor. of sec. 30 only, with brass cap mkd.,

$\frac{1}{4}$ S30

1927

obliterate the marking on the old NE. bearing tree
and in addition to the old SW. tree, establish one
new bearing tree as follows:

a yellow pine, 30 ins. in diam., bears S. $21\frac{1}{2}^{\circ}$ E.,
87 lks. dist., mkd., $\frac{1}{4}$ S30 BT

Land, mountainous.

Soil, rocky, 4th rate.

Timber, yellow pine, fir, juniper and oak.

Undergrowth, scrub oak, manzanita, catclaw and cacti.

Survey of part (completion) of the Subdivision of T.11 S., R.16 E.

Chains	<p>From the cor. secs. 1, 2, 35 and 36 on S. Bdy, hereinbefore described.</p> <p>N.0° 1'W., on true line, bet. secs. 35 and 36. Over mountainous land, thru scattering timber and dense undergrowth.</p> <p>Asc. 20 ft. over SE slope.</p> <p>2.30 Spur, slopes NE. Desc. 216 ft. over NW slope.</p> <p>9.10 Head of draw, course NW. Asc. 17 ft. over SW slope.</p> <p>11.20 Desc. 200 ft. over NW slope.</p> <p>19.65 Wash, 10 lks. wide, course NE. Asc. 145 ft. over SE slope.</p> <p>35.00 Spur, slopes NE. Desc. 115 ft. over NW slope, to</p> <p>40.00 Set an iron post 3 ft. long, 1 in. in diam., 16 ins. in the ground to bedrock, supported by a md. of stone, for the 1/4 sec. cor. secs. 35 and 36, with brass cap mkd.</p> <p style="text-align: center;">1/4</p> <p style="text-align: center;">S35 S36</p> <p style="text-align: center;">1927 from which,</p> <p>an juniper, 5 ins. in diam., bears S.13°E., 4 lks. dist., mkd. 1/4 S36 BT an oak, 5 ins. in diam., bears S.59°W., 7 lks. dist., mkd. 1/4 S35 BT.</p> <p>47.80 Desc. 250 ft. over NW slope. Wash, 30 lks. wide, with small stream of running water, course NE. Asc. 176 ft. over SE slope.</p> <p>59.00 Spur, slopes NE. Desc. 165 ft. over NW slope, to wash.</p> <p>69.00 Trail, bears E. and W.</p> <p>70.30 Bottom of Edgar Canyon, wash 20 lks. wide, course NE. Asc. 152 ft. over SE slope. to</p> <p>80.00 Set an iron post 3 ft. long, 2 ins. in diam., 20 ins. in the ground to bedrock, deposit a stone mkd. with a cross (X) at base of post, supported by a md. of stone, for the cor. secs. 25, 26, 35 and 36, with brass cap mkd.</p> <p style="text-align: center;">T11S R16E. S26 S25 ----- S35 S36</p> <p style="text-align: center;">1927 from which,</p> <p>an oak, 12 ins. in diam., bears N.33°E., 34 lks. dist., mkd. T11S R16E S25 BT an oak, 16 ins. in diam., bears S.16 1/2°E., 26 lks. dist., mkd. T11S R16E S36 BT No other bearing trees available.</p> <p>Land, mountainous. Soil, rocky 4th. rate. Timber, oak, juniper and pinion; sycamore along Edgar Canyon. Undergrowth, scruboak, manzanita, catclaw, yucca and cacti.</p> <p>-----</p> <p>40.00 S. 89° 58' E., on a random line, bet. secs. 25 and 36. Set temp. 1/4 sec. cor.</p> <p>80.08 Fall 5 lks. S. of the cor. secs. 25, 30, 31 and 36 on the E. Bdy. of Tp., which is an iron post 2 ins. in diam., projecting 30 ins. above ground and md. stone,</p>
--------	--

Survey of a part (completion) of the Subdivision lines of T. 11 S., R. 16 E

Chains

- 2.00 firmly set, with brass cap properly mkd. and witness-
 set ed by four properly mkd. bearing trees, one each NE,
 30.03 Full SE, SW and NW of corner. Secs. 25, 26, 35 and 36 on the
 E. edge of Tp.
 Thence,
 West, on true line, bet. secs. 25 and 36.
 Over mountainous land, thru scattering timber and dense
 undergrowth.
 Desc. 40 ft. over W. slope.
 1.30 Wash, 10 lks. wide, course NW.
 Asc. 40 ft. over E. slope.
 3.30 Spur, slopes N.
 Desc. 50 ft. over W. slope.
 5.50 Wash, 20 lks. wide, course N.
 Asc. 290 ft. over E. slope.
 24.60 Spur, slopes NE.
 Desc. 240 ft. over SW slope to wash.
 28.10 Corral, bears N. about 10 chs. dist.
 34.10 Trail, bears NE and SW.
 34.40 Wash, 20 lks. wide, course NE (in Edgar Canyon).
 Asc. 220 ft. over E. slope to
 40.04 Set an iron post 3 ft. long, 1 in. in diam., 10 ins. in
 the ground to bedrock, supported by a md. of stone,
 for the $\frac{1}{4}$ sec. cor. secs. 25 and 36, with brass cap mkd.

$\frac{1}{4}$ $\frac{S25}{S36}$

1927 from which,

- an oak, 14 ins. in diam., bears N. $35\frac{3}{4}^{\circ}$ E., 24 lks.
 dist., mkd. $\frac{1}{4}$ S25 BT
 an oak, 14 ins. in diam., bears S. 11° W., 36 lks.
 dist., mkd. $\frac{1}{4}$ S36 BT

The $\frac{1}{4}$ cor. falls on spur, sloping SE.

- Asc. gradually 150 ft. over SE slope, to spur.
 41.60 Mine shaft bears S. 2 chs. dist.
 57.10 Spur, slopes SE.
 Desc. 45 ft. over SW slope.
 68.60 Wash, 10 lks. wide, course SE.
 Asc. 92 ft. over NE slope.
 72.30 Spur, slopes SE.
 Desc. 15 ft. over SW slope.
 78.10 Wash, 10 lks. wide, course SE.
 Asc. 47 ft. over NE slope to
 80.08 The cor. secs. 25, 26, 35 and 36.

Land, mountainous.

Soil, rocky 4th. rate.

Timber, oak, juniper and sycamore (latter in Edgar Canyon.)

Undergrowth, manzanita, yucca and cacti.

- N. 0° 1' W., on true line, bet. secs. 25 and 26.
 Over mountainous land, thru scattering timber and dense
 undergrowth.
 Desc. gradually over NE slope.
 2.50 Wash, 10 lks. wide, course SE.
 Asc. 190 ft. over SW slope.
 9.00 Spur, slopes SE.
 Desc. 38 ft. over NE slope.
 12.50 Wash, 10 lks. wide, course SE.
 Asc. 170 ft. over SW slope.
 18.00 Spur, slopes SE.

Survey of part (completion) of Subdivision lines of T.11 S., R.16 E

Chains	
	Desc. 80 ft. over NE slope.
24.60	Wash, 10 lks. wide, course SE.
	Asc. 560 ft. over S. slope to
40.00	Set an iron post 3 ft. long, 1 in. in diam., 18 ins. in
	the ground to bedrock, deposit a stone mkd. with a
	cross (X) at base of post, supported by a md. of stone,
	for the 1/4 sec. cor. secs. 25 and 26, with brass cap
	mkd.
	<div style="text-align: center;"> $\frac{1}{4}$ S26 S25 1927 </div>
	No suitable bearing trees available.
48.10	Asc. 240 ft. over S. slope.
	Ridge, bears NE and SW.
60.00	Desc. 345 ft. over N. slope.
	Head of wash, course NE.
72.20	Desc. along E. slope 213 ft.
	Spur, slopes NE.
80.00	Desc. 235 ft. over N. slope to
	Set an iron post 3 ft. long, 2 ins. in diam., 15 ins. in
	the ground to bedrock, supported by a md. of stone,
	for the cor. secs. 23, 24, 25 and 26, with brass cap
	mkd.
	<div style="text-align: center;"> T11S R16E S23 S24 ----- S26 S25 1927 </div>
	<div style="text-align: right;">from which,</div> an oak, 12 ins. in diam., bears N.62°E., 65 lks.
	dist., mkd. T11S R16E S24 BT
	an oak, 9 ins. in diam., bears S.19 1/4°E., 45 lks.
	dist., mkd. T11S R16E S26 BT
	an oak, 12 ins. in diam., bears S.38°W., 41 lks.
	dist., mkd. T11S R16E S26 BT
	an oak, 12 ins. in diam., bears N.23°W., 41 lks.
	dist., mkd. T11S R16E S23 BT
	Land, mountainous.
	Soil, rocky 4th. rate.
	Timber, oak and juniper.
	Undergrowth, manzanita, yucca, bear grass and cacti.

40.00	East, on a random line, bet. secs. 24 and 25.
80.12	Set temp. 1/4 sec. cor.
	Fall. 2 lks. N. of the cor. secs. 19, 24, 25 and 30 on
	E. Bdy. of Tp., which is an iron post 2 ins. in diam.,
	projecting 20 ins. above ground and md. of stone, firmly
	set, with brass cap properly mkd. and witnessed by
	No bearing trees.
	Thence,
	N. 89°59'W., on true line, bet. secs. 24 and 25.
	Over mountainous land, thru scattering timber and under-
	growth.
10.50	Desc. 414 ft. over steep W. slope.
	Wash, 10 lks. wide, course NW.
18.80	Asc. 103 ft. over NE slope.
	Spur, slopes N.
28.60	Desc. 155 ft. over NW slope.
	Wash, 10 lks. wide, course N.
33.30	Asc. 295 ft. over NE slope to cor.
	Trail, bears NW and SE.

Survey of a part (completion) of the Subdivision lines of T11S R16E16W.

Chains

40.06 Set an iron post 3 ft. long, 1 in. in diam., 2 ins. in the ground to bedrock, supported by a md. of stone, for the $\frac{1}{4}$ sec. cor. secs. 24 and 25, with brass cap mkd.

$\frac{1}{4}$ $\frac{S24}{S25}$

1927

from which,

an oak, 6 ins. in diam., bears N. $53\frac{1}{2}^{\circ}$ E., 136 lks. dist., mkd. $\frac{1}{4}$ S24 BT

an oak, 6 ins. in diam., bears S. $31\frac{1}{2}^{\circ}$ E., 41 lks. dist., mkd. $\frac{1}{4}$ S25 BT

42.40 Asc. 60 ft. over E. slope.
Spur, slopes N.

Desc. 335 ft. over W. slope.

58.00 Wash, 10 lks. wide, course NW.

Asc. 50 ft. over NE slope.

61.60 Spur, slopes NW.

Desc. 85 ft. over NW slope to wash.

62.60 Trail, bears NW and SE.

65.60 Wash, 10 lks. wide, course NW.

Asc. 60 ft. over NE slope.

70.70 Spur, slopes NW.

Desc. 90 ft. over NW slope.

73.90 Wash, 10 lks. wide, course NW.

Asc. 90 ft. over NE slope.

79.00 Spur, slopes N.

Over level top to

80.12 The cor. secs. 23, 24, 25 and 26.

Land, mountainous.

Soil, rocky 4th. rate.

Timber, oak, and juniper.

Undergrowth, scruboak, manzanita, catclaw, yucca and cacti.

N. 0° 1' W., on true line, bet. secs. 23 and 24.

Over mountainous land, thru scattering timber and dense undergrowth.

Desc. 280 ft. over N. slope.

8.80 Wash, 10 lks. wide, course NW.

Asc. 20 ft. over SW slope.

10.35 Spur, slopes NW.

Desc. 165 ft. over NE slope.

14.80 Wash, 10 lks. wide, course NW.

Asc. 25 ft. along W. slope.

31.00 Spur, slopes NW.

Desc. 135 ft. over NE slope to

40.00 Set an iron post 3 ft. long, 1 in. in diam., on bedrock, supported by a md. of stone, for the $\frac{1}{4}$ sec. cor. secs. 23 and 24, with brass cap mkd.

$\frac{1}{4}$
S23 | S24

1927

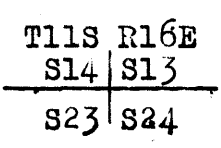
from which,

an oak, 12 ins. in diam., bears N. 89° E., 35 lks. dist., mkd. $\frac{1}{4}$ S24 BT

an oak, 5 ins. in diam., bears S. $62\frac{1}{2}^{\circ}$ W., 43 lks. dist., mkd. $\frac{1}{4}$ S23 BT

Survey of part (completion) of Subdivision lines of T.11 S., R.16 E

Chains	Desc. 305 ft. over N. slope..
46.90	Wash, 10 lks. wide, course NW.
	Asc. 25 ft. over SW slope.
52.50	Desc. 136 ft. over NW slope.
63.80	Wash, 15 lks. wide, course NE..
	Asc. 160 ft. over SE slope, to ridge.
65.30	Top of cliff, 30 ft. high, facing SE.
74.40	Top of ridge, near end, from SW.
	Desc. 190 ft. over N. slope.
79.40	Wash, 10 lks. wide, course NE.
	Asc. 45 ft. over SE slope to
80.00	Set an iron post 3 ft. long, 2 ins. in diam., 6 ins. in the ground to bedrock, deposit a stone mkd. with a cross (X) at base of post, supported by a md. of stone for the cor. secs. 13, 14, 23 and 24, with brass cap mkd.



1927

from which,

a mesquite, 9 ins. in diam., bears S.54°E., 49 lks. dist., mkd. T11S R16E S24 BT

a sycamore, 12 ins. in diam., bears S.15½°W., 118 lks. dist., mkd. T11S R16E S23 BT

a mesquite, 12 ins. in diam., bears N.82°W., 54 lks. dist., mkd. T11S R16E S14 BT

No other bearing tree available.

Land, mountainous.
 Soil, rocky 4th. rate.
 Timber, oak, juniper, mesquite and sycamore.
 Undergrowth, manzanita, scruboak, catclaw, yucca and cacti.

40.00	S.89°59'E., on a random line, bet. secs. 13 and 24. .
	Set temp. ¼ sec. cor.
79.94	Fall 7 lks. N. of the cor. secs. 13, 18, 19 and 24 on the E. Bdy. of Tp., which is an iron post 2 ins. in diam., projecting 12 ins. above ground, firmly set, with brass cap properly mkd., and witnessed by four properly mkd. bearing trees, one each NE, SE, SW and NW of cor.

Thence,
 N.89°56'W., on true line, bet. secs. 13 and 24.
 Over mountainous land, thru scattering timber and undergrowth.

3.60	Desc. 80 ft. over E. slope.
	Wash, 10 lks. wide, course N.
	Asc. 85 ft. over NE slope.
7.25	Spur, slopes NE.
	Desc. 30 ft. over NW slope.
10.25	Head of wash, course NE.
	Asc. 50 ft. over SE slope.
12.45	Spur, slopes NE.
	Desc. 70 ft. over NW slope.
15.80	Wash, 10 lks. wide, course N.
	Asc. 235 ft. over E. slope, to spur.
17.75	Trail, bears N. and S.
26.95	Spur, slopes N.
	Desc. 315 ft. over W. slope.
37.15	Wash, 10 lks. wide, course N.

Survey of part (completion) of Subdivision lines of T.11 S., R.16 E.

Chains	
39.97	Asc. 135 ft. over E. slope to Set an iron post 3 ft. long, 1 in. in diam., 15 ins. in the ground to bedrock, deposit a stone mkd. with a cross (X) at base of post, supported by a md. of stone, for the $\frac{1}{4}$ sec. cor. secs. 13 and 24, with brass cap mkd.
	$\frac{1}{4}$ S13. S24
	1927 from which, a willow, 12 ins. in diam., bears S.77°W., 10 lks. dist., mkd. $\frac{1}{4}$ S24 BT No other bearing tree available.
41.25	Asc. 50 ft. over E. slope.
	Spur, slopes NE.
66.95	Desc. 310 ft. over NW slope.
66.95	Wash, 10 lks. wide, in bottom of Alder Canyon, course NE.
68.95	Asc. 72 ft. gradually along S. slope to cor.
68.95	Forks of canyons, bears S. about 50 lks. One branch from SW and one from W.
79.94	The cor. secs. 13, 14, 23 and 24.
	Land, mountainous. Soil, rocky 4th. rate. Timber, oak, juniper, cottonwood, mesquite and willow. Undergrowth, scruboak, yuccas, catclaw and cacti.

	N.0° 1'W., on true line, on the E. bdy. of sec. 14. Over mountainous land, thru scattering timber and undergrowth.
10.50	Asc. 470 ft. over S. slope.
	Spur, slopes E.
17.40	Desc. 130 ft. over N. slope.
17.40	Wash, 30 lks. wide, course NE.
20.00	Asc. gradual SE slope.
	Spur, slopes NE.
25.30	Desc. gradual N. slope.
25.30	Wash, 10 lks. wide, course E.
29.00	Asc. 50 ft. over S. slope.
29.00	Spur, slopes E.
40.00	Desc. 105 ft. over NE slope to
40.00	Set an iron post 3 ft. long, 1 in. in diam., 8 ins. in the ground to bedrock, deposit a stone mkd. with a cross (X) at base of post, supported by a md. of stone, for the $\frac{1}{4}$ sec. cor. secs. 13 and 14, with brass cap mkd.
	$\frac{1}{4}$ S14 S13
	1927. No bearing trees available.
44.50	Desc. gradual N. slope.
44.50	Wash, 10 lks. wide, course E.
47.90	Asc. 30 ft. over S. slope.
47.90	Spur, slopes NE.
58.40	Desc. 140 ft. over NW slope.
58.40	Wash, 30 lks. wide, course E.
64.30	Asc. 114 ft. over SE slope.
64.30	Spur, slopes E.
69.50	Desc. 80 ft. over N. slope.
69.50	Wash, 10 lks. wide, course E.
	Asc. 69 ft. over S. slope.

Survey of part (completion)
and

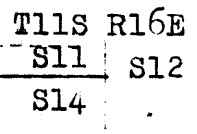
Independent resurvey of part of subdivision of T.11 S., R.16 E.

Chains

73.90 Old road, bears E. and W.
Spur, slopes E.
Desc. 40 ft. over N: slope to

79.29 Intersect the cor. secs. 12 and 13, hereinbefore described.
Thence,
N.0° 4' W., on true line, continuing measurement.

80.00 Set an iron post 3 ft. long, 2 ins. in diam., 12 ins. in
the ground to bedrock, supported by a md. of stone, for
the reestablished cor. secs. 11 and 14 only, with brass
cap mkd.



1927 from which,
an oak, 12 ins. in diam., bears S.51°W., 80 lks.
dist., mkd. T11S R16E S14 BT
an oak, 10 ins. in diam., bears N.27°W., 62 lks.
dist., mkd. T11S R16E S11 BT

Land, mountainous.
Soil, rocky 4th. rate.
Timber, oak, juniper and mesquite.
Undergrowth, scruboak, catclaw, yucca and cacti.

From the original $\frac{1}{4}$ sec. cor. secs. 12 and 13, herein-
before described.
East, on a true line, bet. secs. 12 and 13 (E. $\frac{1}{2}$)
Over rolling land, thru scattering timber and undergrowth.

4.00 Wash, 10 lks. wide, course E.
Continue down same on slight descent.

7.35 Leave wash, which turns S.
Asc. 42 ft. over SW slope.

12.15 Spur, slopes N.
Desc. 63 ft. over NE slope.

17.05 Wash, 10 lks. wide, course SE.
Asc. 21 ft. over SW slope.

19.00 Spur, slopes S.
Desc. 20 ft. over NE slope.

20.95 Wash, course SE.

34.00 Wash, course NE.

40.07 Intersect the cor. secs. 12 and 13 on E. Bdy. of Tp., here-
inbefore described.

Land, rolling.
Soil, rocky 4th. rate.
Timber, mesquite and oak.
Undergrowth, scruboak, catclaw and cacti.

Independent Resurvey.

From the $\frac{1}{4}$ sec. cor. secs. 1 and 12, hereinbefore described.
East, on true line, bet. secs. 1 and 12, (E $\frac{1}{2}$).
Over rolling land, thru scattering undergrowth.

Independent Resurvey
of

Part of the Subdivision lines of T. 11 S., R. 16 E.

Chains

8.00 Spur, slopes S.
12.00 Wash, 20 lks. wide, course SE.
16.35 Wash, 20 lks. wide, course SE.
40.00 Intersect the cor. secs. 1 and 12 on the E. Bdy. of Tp.,
hereinbefore described.

Land, rolling.
Soil, rocky 4th. rate.
Timber, none.
Undergrowth, scruboak, catclaw and cacti.

0.75 From the cor. secs. 1 and 12 only, hereinbefore described.
N.0° 1'W., on true line, on W. Bdy. sec. 1.
Over rolling land, thru scattered timber and undergrowth.
(A point 80.00 chs. in Northing from cor. secs. 12 and 14)
Set an iron post 3 ft. long, 2 ins. in diam., 14 ins. in
the ground to bedrock, deposit a stone mkd. with a
cross (X) at base of post, supported by a md. of stone,
for reestablished cor. of secs. 2 and 11, with brass cap mkd.

T11S R16E
S 2 | S1

S11

1927 No suitable BTs available.

Flag at USGS BM 8385 on Mt. Kellogg, Brs. S.15°55'W.
Lookout tower on Mt. Bigelow brs. S.20°W.
USGS BM 8384 on Mt. Kellogg Brs. S.15°55'W.

5.00 Asc. 33 ft. over S. slope.
South edge of level, stony bench, bears E. and W.
Over same.
11.20 Mt. Lemon Hgy., bears NW and SE.
30.80 N. edge of bench, bears E. and W.
Desc. 63 ft. over NE slope.
36.65 Wash, near head, course E.
Asc. 13 ft. over SE slope to
40.00 Intersect the original $\frac{1}{4}$ sec. cor. secs. 1 and 2, which
is a stone 8 x 12 x 8 ins. above ground, firmly set
in ground and md. of stone, properly mkd. and witnessed
by two properly mkd. bearing trees, one each NE and NW
of corner.

Reconstruct this cor. and alter same to refer to sec. 1
only as follows:

Alongside the original corner stone, set an iron post
3 ft. long, 1 in. in diam., 16 ins. in the ground to
bedrock, deposit a stone mkd. with a cross (X) at base
of post, supported by a md. of stone, for the $\frac{1}{4}$ sec.
cor. of sec. 1 only, with brass cap mkd.

$\frac{1}{4}$ S1

1927

Destroy marking on the NW bearing tree.
No other suitable bearing tree to E. of cor.

Continue line and measurement.

40.75 Asc. gradual SE slope to
(40.00 chs. Northing from cor. secs. 2 and 11.)
Set an iron post 3 ft. long, 1 in. in diam., 16 ins. in
the ground to bedrock, supported by a md. of stone,
for the reestablished $\frac{1}{4}$ sec. cor. sec. 2 only, with
brass cap mkd.

Independent Resurvey
and

BOOK 3808

Survey of part of the Subdivision lines of T.11 S., R.16 E.

Chains

1/4 S2

1927

from which,

an oak, 12 ins. in diam., bears N.85°W., 69 lks.
dist., mkd. 1/4 S2 BT
an oak, 12 ins. in diam., bears N.40°W., 103 lks.
dist., mkd. 1/4 S2 BT

49.05
61.20
69.90
77.22

Continue over level stony bench, bears E. and W.
Old road, bears E. and W.
Leave bench, bears E. and W.
Desc. 151 ft. over N. slope.
Wash, 20 lks. wide, course E.
Asc. 91 ft. over S. slope, to
Intersect the original closing cor. secs. 1 and 2, which
is a granite stone 8 x 10 x 11 ins. above ground, firmly
set, properly mkd. and witnessed by a mound of stone
S. of corner.

Land, rolling and level.
Soil, rocky 4th. rate.
Timber, oak and mesquite.
Undergrowth, scruboak, catclaw and cacti.

SURVEY

From the cor. secs. 2, 3, 34 and 35 on the S. Bdy. of Tp.,
hereinbefore described.
N.0° 1'W., on true line, bet. secs. 34 and 35.
Over mountainous land, thru scattering timber and under-
growth.

6.50
11.55
33.75
40.00

Desc. 150 ft. over NW slope.
Wash, 10 lks. wide, course NE.
Asc. 119 ft. over SE slope.
Spur, slopes NE.
Desc. 472 ft. over NW slope.
Bottom of Edgar Canyon, small stream of water 6 lks. wide,
4 ins. deep, flows NE., in rocky wash 30 lks. wide.
Asc. 121 ft. over SE slope to
Set an iron post 3 ft. long, 1 in. in diam., 6 ins. in
the ground to bedrock, supported by a md. of stone,
for the 1/4 sec. cor. secs. 34 and 35, with brass cap mkd.

1/4

S34 | S35

1927

from which,

an oak, 10 ins. in diam., bears N.52 1/2°E., 30 lks.
dist., mkd. 1/4 S35 BT
an oak, 20 ins. in diam., bears N.82°W., 47 lks.
dist., mkd. 1/4 S34 BT

80.00

Asc. 472 ft. over SE slope to
Set an iron post 3 ft. long, 2 ins. in diam., 6 ins. in
the ground to bedrock, supported by a mound of stone,
for the cor. secs. 26, 27, 34 and 35, with brass cap
mkd.

T11S R16E
S27 | S26

S34 | S35

1927

from which,

Survey of part (completion) of Subdivision of T.11 S., R.16 E.

Chains

an oak, 8 ins. in diam., bears N.12 $\frac{1}{2}$ °E., 32 lks.
dist., mkd. T11S R16E S26 BT
an oak, 6 ins. in diam., bears S.24 $\frac{1}{4}$ °E., 35 lks.
dist., mkd. T11S R16E S35 BT
an oak, 6 ins. in diam., bears S.80 $\frac{1}{4}$ °W., 15 lks.
dist., mkd. T11S R16E S34 BT
an oak, 8 ins. in diam., bears N.24 $\frac{1}{4}$ °W., 27 lks.
dist., mkd. T11S R16E S27 BT

Land, mountainous,
Soil, rocky 4th. rate.
Timber, oak, juniper, yellow pine and sycamore.
Undergrowth, scruboak, catclaw, manzanita and cacti.

40.00 S.89°58'E., on a random line, bet. secs. 26 and 35.
Set temp. $\frac{1}{4}$ sec. cor.
79.78 Fall 9 lks. S. of the cor. secs. 25, 26, 35 and 36.
Thence,
S.89°58'W., on true line, bet. secs. 26 and 35.
Over mountainous land, thru scattering timber and under-
growth.
11.35 Asc. 276 ft. over SE slope.
20.00 Desc. 180 ft. over SW slope.
Wash, 10 lks. wide, course S.
24.10 Asc. 106 ft. over SE slope.
Spur, slopes S.
25.10 Desc. 20 ft. over SW slope.
Wash, 10 lks. wide, course S.
38.30 Asc. 425 ft. over E. slope.
Spur, slopes S.
39.89 Desc. gradual SW slope to
Set an iron post 3 ft. long, 2 ins. in diam., 3 ins. in
the ground to bedrock, supported by a md. of stone,
for the $\frac{1}{4}$ sec. cor. secs. 26 and 35, with brass cap
mkd.

$\frac{1}{4}$ $\frac{S26}{S35}$

1927 from which,

an oak, 20 ins. in diam., bears S.63 $\frac{1}{2}$ °E., 72 lks.
dist., mkd. $\frac{1}{4}$ S35 BT
an oak, 10 ins. in diam., bears N.27 $\frac{1}{2}$ °W., 43 lks.
dist., mkd. $\frac{1}{4}$ S26 BT

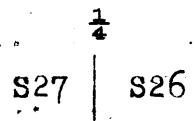
54.60 Desc. 175 ft. over SW slope.
Wash, 10 lks. wide, course SE.
63.00 Asc. 320 ft. over NE slope.
Spur, slopes S.
66.00 Desc. 32 ft. over SW slope.
Head of wash, course SE.
79.78 Asc. 333 ft. over SE slope to
The corner of sections 26, 27, 34 and 35.

Survey of part (completion) of Subdivisional Lines of T.11 S., R.16 E.

Chains

Land, mountainous.
Soil, rocky 4th. rate.
Timber, oak and juniper.
Undergrowth, scruboak, manzanita, yucca and cacti.

N.0° 1'W., on true line, bet. secs. 26 and 27.
Over mountainous land, thru scattering timber and dense undergrowth.
Asc. slightly over SE slope.
.20 Ridge, bears NE and SW.
Desc. 180 ft. over NW slope.
6.40 Head of wash, course W.
Asc. 150 ft. over SW slope.
15.00 Desc. 420 ft. over NW slope, to $\frac{1}{4}$ sec. cor.
37.00 Edge of top of cliff, faces NW.
Desc. 70 ft. over vertical wall.
40.00 True point for the $\frac{1}{4}$ sec. cor. falls on face of cliff. ~~Whereas it is impractical to monument same therefore~~ establish a witness cor. as hereinafter described.
41.00 Foot of cliff; continue desc. over NW slope to
42.37 Set an iron post 3 ft. long, 1 in. in diam., 16 ins. in the ground to bedrock, supported by a md. of stone for witness cor. to the $\frac{1}{4}$ sec. cor. secs. 26 and 27, with brass cap mkd.

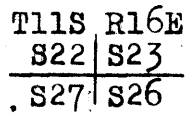


1927

from which,

an juniper, 24 ins. in diam., bears N.76 $\frac{3}{4}$ °E., 75 lks.
dist., mkd. WC $\frac{1}{4}$ S26 BT
an oak, 24 ins. in diam., bears S.19°W., 40 lks.
dist., mkd. WC $\frac{1}{4}$ S27 BT

56.60 Desc. 480 ft. over NW slope.
Wash, 10 lks. wide, course W.
Asc. 20 ft. over SW slope.
61.60 Desc. 350 ft. over NW slope.
78.00 Wash, 10 lks. wide, course NE.
Asc. 45 ft. over SE slope to
80.00 Set an iron post 3 ft. long, 2 ins. in diam., 15 ins. in the ground to bedrock, deposit a stone mkd. with a cross (X) at base of post, supported by a md. of stone, for the cor. secs. 22, 23, 26 and 27, with brass cap mkd.



1927

from which,

an oak, 7 ins. in diam., bears N.86 $\frac{1}{2}$ °E., 51 lks.
dist., mkd. T11S R16E S23 BT
an oak, 5 ins. in diam., bears S.69 $\frac{1}{2}$ °W., 38 lks.
dist., mkd. T11S R16E S26 BT
No other suitable bearing trees available.

Land, mountainous.
Soil, rocky 4th. rate.
Timber, oak, juniper, pine and modrono.
Undergrowth, scruboak, manzanita, and cacti.

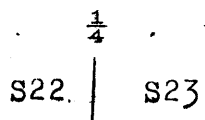
Chains

	N. 89° 58' E., on a random line, bet. secs. 23 and 26.
40.00	Set temp. $\frac{1}{4}$ sec. cor.
79.80	Fall 14 lks. N. of the cor. secs. 23, 24, 25 and 26.
	Thence,
	N. 89° 56' W., on true line, bet. secs. 23 and 26.
	Over mountainous land, thru scattering timber and dense undergrowth.
	Desc. 57 ft. over SW slope.
3.20	Wash, 10 lks. wide, course N.
	Asc. 153 ft. over NE slope.
10.50	Spur, slopes N.
	Desc. 156 ft. over SW slope.
18.25	Wash, 10 lks. wide, course NW.
	Asc. 74 ft. over NW slope.
23.30	Spur, slopes N.
	Desc. 516 ft. over steep W. slope to
39.90	Set an iron post 3 ft. long, 1 in. in diam., 12 ins. in the ground to bedrock, supported by a md. of stone, for the $\frac{1}{4}$ sec. cor. secs. 23 and 26, with brass cap mkd.
	$\frac{1}{4}$ $\frac{S23}{S26}$
	1927 from which,
	an oak, 12 ins. in diam., bears N. 11° E., 84 lks. dist., mkd. $\frac{1}{4}$ S23 BT
	an oak, 6 ins. in diam., bears S. 10 $\frac{1}{2}$ ° E., 44 lks. dist., mkd. $\frac{1}{4}$ S26 BT
	Desc. 40 ft. over W. slope, to wash.
42.30	Trail, bears N. and S.
46.80	Wash, 10 lks. wide, course NE.
	Asc. 177 ft. over E. slope.
48.00	Desc. 150 ft. over N. slope.
77.40	Wash, 10 lks. wide, course NE.
	Asc. 70 ft. over SE slope to
79.80	The cor. secs. 22, 23, 26 and 27.
	Land, mountainous.
	Soil, rocky 4th. rate.
	Timber, oak, juniper, pine and madrono.
	Undergrowth, scruboak, manzanita, catclaw and cacti.

	N. 0° 1' W., on true line, bet. secs. 22 and 23.
	Over mountainous land, thru scattering timber and undergrowth.
	Asc. 246 ft. over SE slope.
8.00	Ridge, bears MW and SE.
	Desc. 190 ft. over NW slope.
14.00	Head of wash, course NW.
	Asc. 10 ft. over SW slope.
17.30	Desc. 290 ft. along W. slope, to wash.
20.40	Trail, bears NW and SE.
29.00	Wash, 10 lks. wide, course NW.
	Asc. 15 ft. over SW slope.
30.00	Desc. 100 ft. over NW slope.
32.50	Wash, 10 lks. wide, course W.
	Asc. 110 ft. over W. slope to
40.00	Set an iron post 3 ft. long, 1 in. in diam., 6 ins. in the ground to bedrock, deposit a stone mkd. with a cross (X) at base of post, supported by a md. of stone, for the $\frac{1}{4}$ sec. cor. secs. 22 and 23, with brass cap mkd.

Survey of part (completion) of Subdivision lines of T.11 S., R.16 E.

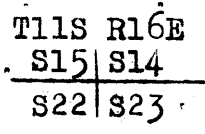
Chains



1927

No bearing trees available.

- 48.50 Desc. 150 ft. over NW slope.
- Wash, in bottom of Alder Canyon, 25 lks. wide, course NE.
- Asc. 600 ft. over SE slope.
- 65.00 Spur, slopes SE.
- Desc. 60 ft. over NE slope.
- 71.50 Wash, 10 lks. wide, course SE.
- Asc. 190 ft. over SW slope to
- 80.00 Set an iron post 3 ft. long, 2 ins. in diam., 12 ins. in the ground to bedrock, deposit a stone mkd. with a cross (X) at base of post, supported by a md. of stone, for cor. secs. 14, 15, 22 and 23, with brass cap mkd.

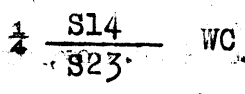


1927

No bearing trees available.

Land, mountainous.
 Soil, rocky 4th. rate.
 Timber, oak, juniper, sycamore and alder.
 Undergrowth, scruboak, manzanita, mtn. mahogany and cacti.

- 40.00 S. 89° 56' E., on a random line, bet. secs. 14 and 23.
- Set temp. $\frac{1}{4}$ sec. cor.
- 79.70 Fall 17 lks. S. of the cor. secs. 13, 14, 23 and 24.
- Thence,
- S. 89° 56' W., on true line, bet. secs. 14 and 23.
- Over mountainous land, thru scattering timber and undergrowth.
- Asc. 650 ft. along broken, S. slope.
- 36.70 Spur, slopes S.
- Desc. 90 ft. over SW slope.
- 39.85 Wash, 10 lks. wide, course SE.
- True point for the $\frac{1}{4}$ sec. cor. falls in position where it is impracticable to establish same, therefore set a witness cor. for same as hereinafter described.
- Asc. gradual NE slope to
- 40.05 Set an iron post 3 ft. long, 1 in. in diam., 8 ins. in the ground to bedrock, deposit a stone mkd. with a cross (X) at base of post, supported by a md. of stone, for witness cor. to the $\frac{1}{4}$ sec. cor. secs. 14 and 23, with brass cap mkd.



1927

No suitable bearing trees available.

- 49.20 Asc. 233 ft. over NE slope.
- Spur, slopes SE.
- Desc. 220 ft. over W. slope.
- 56.10 Wash, 10 lks. wide, course S.

Survey of part(completion) of Subdivision of T.11 S.,R.16 E.

Chains

- 59.70 Asc. 100 ft. over E. slope.
Spur, slopes S.
- 62.30 Desc. 70 ft. over W. slope.
Wash, 10 lks. wide, course S.
- 74.70 Asc. 370 ft. over E. slope.
Spur, slopes SE.
- 79.70 Desc. 102 ft. over SW slope to
The cor. secs. 14, 15, 22 and 23.

Land, mountainous.
Soil, rocky 4th. rate.
Timber, oak, juniper and mesquite.
Undergrowth, scruboak, catclaw, manzanita and cacti.

N.0° 1'W., on true line, bet. secs. 14 and 15.
Over mountainous land, thru scattering timber and dense undergrowth.

- 9.00 Asc. 170 ft. over S. slope.
Ridge, bears E. and W.
- 27.40 Desc. 130 ft. over NW slope.
Wash, 30 lks. wide, course NW.
- 32.00 Asc. 10 ft. over SW slope.
Spur, slopes NW.
- 40.00 Desc. 195 ft. over NE slope to
Set an iron post 3 ft. long, 1 in. in diam., 10 ins. in the ground to bedrock, supported by a md. of stone, for the 1/4 sec. cor. secs. 14 and 15, with brass cap mkd.

1/4

S15 | S14

1927 from which,
an oak, 5 ins. in diam., bears N.65°E., 60 lks. dist., mkd. 1/4 S14 BT
an oak, 6 ins. in diam., bears S.80 1/2°W., 24 lks. dist., mkd. 1/4 S15 BT

- 42.50 Desc. 70 ft. over NE slope.
Wash, 40 lks. wide, course E.
- 48.00 Asc. 62 ft. over S. slope.
Spur, slopes SE.
- 52.30 Desc. 40 ft. over NE slope, to wash.
Old road, bears E. and W.
- 58.00 Wash, 10 lks. wide, course E.
- 66.00 Asc. 46 ft. over S. slope.
Spur, slopes SE.
- 79.50 Desc. 130 ft. over N. slope.
Center of wash, 70 lks. wide, course E.
- 80.00 Asc. 20 ft. over S. slope to
Set an iron post 3 ft. long, .2 ins. in diam., 6 ins. in the ground, to bedrock, deposit a stone mkd. with a cross (X) at base of post, supported by a md. of stone, for reestablished cor. of secs. 10, 11, 14 and 15, with brass cap mkd.,

T11S R16E
S10 S11

S15 S14

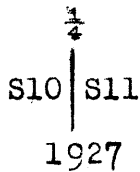
1927 from which,
an oak, 12 ins. in diam., bears S.4 1/2°E., 22 lks. dist., mkd. T11S R16E S14 BT
a cottonwood, 15 ins. in diam., bears S.31 1/2°W., 74 lks. dist., mkd. T11S R16E S15 BT

Survey of Part (completion) and
Independent Resurvey of Part of Subdivision Lines of T.11 S.,R.16 E.

chains	<p>No other bearing trees available. From this cor. the original cor.of same secs. bears S.51°W., 86 lks.dist.,which is a quartzite stone 6x8x6 ins.above ground,properly mkd.,firmly set,and witnessed by a md.of stone W. No bearing trees. Destroy all trace of the original cor.</p> <p>Land, mountainous. Soil, rocky, 4th rate. Timber, mesquite,juniper,cottonwood and hackberry. Undergrowth, catclaw,manzanita,yucca and cacti.</p> <p style="text-align: center;">----- Independent Resurvey. -----</p> <p>N.89°56'E., on random line,bet.secs.11 and 14. 40.00 Set temp. $\frac{1}{4}$ sec.cor. 79.80 Fall 16 lks. S. of reestablished cor.of secs.11 and 14. Thence, S.89°49'W.,on true line,bet.secs.11 and 14. Over rolling land,thru scattering timber and dense undergrowth. Asc. 60 ft.over SE. slope. 10.40 Spur, slopes NE. Desc. 60 ft.over NW. slope. 23.60 Wash, 10 lks.wide,course NE. Asc. 45 ft.over SE. slope. 28.50 Wire fence, bears NE. and SW. 28.80 Old road, bears NE. and SW. 36.00 Spur, slopes NE. Desc. 72 ft.over NW. slope to 39.53 Set an iron post, 3 ft.long, 1 in.in diam.,12 ins.in the ground to bedrock,supported by a mound of stone, for reestablished witness cor.to $\frac{1}{4}$ sec.cor. of secs.11 and 14,with brass cap mkd.,</p> <div style="text-align: center;"> $\begin{array}{c} S\ 11 \\ WC\ \frac{1}{4} \text{---} \\ S14 \end{array}$ <p>1927</p> <p style="text-align: right;">from which,</p> <p>an oak, 8 ins.in diam., bears N.67$\frac{3}{4}$°E., 45 lks.dist., mkd., WC $\frac{1}{4}$ S11 BT an oak, 14 ins.in diam.,bears S. 41°W.,130 lks.dist., mkd. WC $\frac{1}{4}$ S14 BT</p> </div> <p>Desc. gradually over NW. slope. 39.90 Reestablished true point for $\frac{1}{4}$ sec.cor.of secs.11 and 14 falls on E. edge of wash,where it is impracticable to monument the cor.,therefore reestablish witness cor. at 37 lks.N.89°49'E.,as described above. The original witness cor.bears S.22$\frac{1}{2}$°W.,58 lks.dist., which is a granite stone 6x12x8 ins.above ground, properly marked,firmly set and witnessed by two properly mkd. bearing trees. Obliterate marking on the stone and bearing trees. 40.00 Wash, 20 lks.wide,course NE. Asc. 150 ft.over SE. slope. 61.80 Spur, slopes NE. Desc. 130 ft.over NW. slope. 68.80 Wash, 40 lks.wide, course NE. Asc. 70 ft.over SE. slope to 79.80 Intersect the reestablished cor.of secs.10,11,14 and 15.</p> <p>Land, rolling. Soil, rocky, 4th rate. Timber, oak,juniper, and mesquite. Undergrowth, scrub oak,catclaw and cacti.</p> <p style="text-align: center;">-----</p>
--------	---

Survey of Part (completion) of Subdivision lines of T.11 S.,R.16 E.

chains
 N.0° 1'W., on true line, bet. secs. 10 and 11.
 Over rolling land, thru scattering timber and undergrowth
 Asc. 56 ft. over S. slope.
 3.00 Spur, slopes E.
 Desc. 23 ft. over NE. slope.
 6.10 Wash, 15 lks. wide, course S.70°E.
 Asc. 20 ft. over SW. slope.
 10.00 Spur, slopes E.
 Desc. 20 ft. over NE. slope.
 13.75 Wash, 10 lks. wide, course SE.
 Asc. 136 ft. over SW. slope.
 18.60 Mt. Lemon highway, bears NW. and SE.
 29.20 Ridge, bears E. and W.
 Desc. 188 ft. over N. slope to
 40.00 Set an iron post, 3 ft. long, 1 in. in diam., 12 ins. in
 the ground to bedrock, supported by a mound of stone,
 for $\frac{1}{4}$ sec. cor. of secs. 10 and 11, with brass cap mkd.,



from which,

an oak, 18 ins. in diam., bears S.59 $\frac{1}{2}$ °E., 16 lks.
 dist., mkd. $\frac{1}{4}$ S11 BT
 an oak, 18 ins. in diam., bears S.56°W., 55 lks.
 dist., mkd. $\frac{1}{4}$ S10 BT

47.10 Desc. 206 ft. over NW. slope.
 Wash, 20 lks. wide, course NE.
 Asc. 170 ft. over S. slope.
 55.40 Spur, slopes E.
 Desc. gradually over N. slope.
 58.40 Head of wash, course E.
 Asc. 25 ft. over SE. slope.
 61.60 Spur, slopes E.
 Desc. 118 ft. over N. slope.
 66.20 Wash, 10 lks. wide, course NE.
 Asc. gradually over E. slope to
 71.20 Wash, 10 lks. wide, course SE.
 Asc. 167 ft. over SW. slope to
 80.00 Set an iron post, 3 ft. long, 2 ins. in diam., 12 ins. in
 the ground to bedrock, deposit a stone marked with a
 cross (X) at base of post, and raise a mound of stone
 around post, for cor. of secs. 2, 3, 10 & 11, with brass cap
 mkd.,



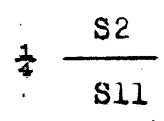
No bearing trees available.

Land, rolling.
 Soil, rocky, 4th rate.
 Timber, oak, juniper, mesquite and cottonwood.
 Undergrowth, scrub oak, catclaw and cacti.

40.00 N.89°49'E., on random line, bet. secs. 2 and 11.
 Set temp. $\frac{1}{4}$ sec. cor.
 79.90 Intersect the reestablished cor. of secs. 2 and 11,
 Thence,
 S.89°49'W., on true line, bet. secs. 2 and 11.
 Over rolling land, thru scattering timber & undergrowth.

Survey of Part(completion)of Subdivision lines of T.11 S.,R.16 E.

chains
 11.80 Desc. 175 ft. over SW. slope.
 Mt. Lemon highway, bears NW. and SE.
 14.15 Wash, 20 lks. wide, course SE.
 Asc. 225 ft. over E. slope.
 19.40 Mt. Lemon highway, bears NE. and SW.
 35.90 Spur, slopes S.
 Desc. 60 ft. over SW. slope.
 38.60 Wash, 10 lks. wide, course S.
 Asc. 58 ft. over steep E. slope to
 39.95 Set an iron post, 3 ft. long, 1 in. in diam., 26 ins. in
 the ground, for $\frac{1}{4}$ sec. cor. of secs. 2 and 11, with brass
 cap mkd.,



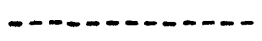
1927

from which,

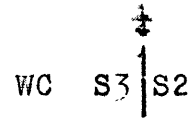
an oak, 14 ins. in diam., bears N. 82 $\frac{1}{2}$ ° E., 275 lks. dist.,
 mkd., $\frac{1}{4}$ S2 BT
 an oak, 18 ins. in diam., bears S. 78° E., 385 lks. dist.,
 mkd., $\frac{1}{4}$ S11 BT

Asc. 30 ft. over E. slope.
 41.60 Asc. gradually over S. slope.
 46.60 Spur, slopes SE.
 Desc. 113 ft. over SW. slope.
 55.65 Wash, 10 lks. wide, course SE.
 Asc. 370 ft. over NE. slope.
 63.40 Trail, bears N. and S.
 77.30 Spur, slopes SE.
 Desc. 66 ft. over SW. slope to
 79.90 Intersect the cor. of secs. 2, 3, 10 and 11.

Land, rolling.
 Soil, rocky, 4th rate.
 Timber, oak, mesquite and sycamore.
 Undergrowth, scrub oak, catclaw and cacti.



N. 0° 1' W., on true line, bet. secs. 2 and 3.
 Over rolling land, thru scattering timber & undergrowth.
 Asc. 110 ft. over SW. slope.
 5.00 Spur, slopes SE.
 Desc. 195 ft. over NE. slope.
 14.00 Wash, 10 lks. wide, course SE.
 Asc. 180 ft. over SW. slope.
 20.10 Spur, slopes E.
 Desc. 125 ft. over NE. slope.
 26.50 Wash, 10 lks. wide, course E.
 Asc. 140 ft. over S. slope.
 33.50 Spur, slopes E.
 Desc. 254 ft. over steep N. slope to point for $\frac{1}{4}$ sec. cor.
 35.00 Head of wash, course N.
 Desc. in wash to
 40.00 True point for $\frac{1}{4}$ sec. cor. falls in wash, where it is imprac-
 ticable to monument same, therefore at a point 25 lks.
 E. herefrom set an iron post, 3 ft. long, 1 in. in diam.,
 26 ins. in ground, for witness cor. to $\frac{1}{4}$ sec. cor. of secs.
 2 and 3, with brass cap mkd.,



1927

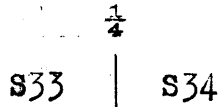
from which,

Survey of Part(completion)of Subdivision lines of T.11 S.,R.16 E.

chains	<p>an oak, 10 ins.in diam., bears N.54¹/₂°E., 94 lks. dist. mkd., WC ¹/₄ S2 BT</p> <p>an oak, 10 ins.in diam., bears N.10°W., 207 lks. dist.,mkd., WC ¹/₄ S3 BT</p> <p>Desc. 54 ft. in wash to</p> <p>42.90 Wash, 20 lks.wide, course E. Asc. 208 ft. over S. slope.</p> <p>56.20 Rim of bench, bears E. and W. Thence over level stony land on bench.</p> <p>58.37 Wire fence, bears N.60°W. and S.60°E.</p> <p>62.30 Leave bench at rim bearing E. and W. Desc. 145 ft. over NW. slope.</p> <p>68.50 Wash, 10 lks.wide, course NE. Asc. 60 ft. over SE. slope.</p> <p>75.50 Spur, slopes E. Desc. 15 ft. over N. slope to</p> <p>76.77 Intersect the 2nd Std. Parallel S. at 6.15 chs. East from reestablished std. ¹/₄ sec. cor. of sec. 34, T.10 S., R.16 E., which is an iron post, 1 in. in diam., projecting 10 ins. above ground, firmly set, properly mkd. on brass cap, and witnessed by two properly mkd. bearing trees, one each NE. and NW. of cor.</p> <p>At this point of intersection, set an iron post, 3 ft. long, 2 ins. in diam., 12 ins. in ground to bedrock, supported by a mound of stone, for closing cor. of secs. 2 and 3, with brass cap mkd.,</p> <div style="text-align: center;"> <p>T10S R16E</p> <p>S34</p> <hr style="width: 50px; margin: 0 auto;"/> <p>S3 S2</p> <p>T11S R16E</p> <p>C C</p> <p>1927</p> </div> <p style="text-align: right;">from which,</p> <p>an oak, 32 ins. in diam., bears S.27°E., 110 lks. dist., mkd. T11S R16E S2 CC BT</p> <p>an oak, 12 ins. in diam., bears S.54°W., 134 lks. dist., mkd., T11S R16E S3 CC BT</p> <p>Land, rolling and level. Soil, rocky, 4th rate. Timber, oak, mesquite and sycamore. Undergrowth, catclaw, scrub oak and cacti.</p> <p>-----</p> <p>From true point for cor. of secs. 3, 4, 33 & 34 on S. bdy. of Tp., witnessed 1.10 chs. N.89°58'W. as hereinbefore described, N.0° 2'W., on true line, bet. secs. 33 and 34. Over mountainous land, thru dense timber & undergrowth. Desc. 1000 ft. over broken NW. slope.</p> <p>2.00 Trail, bears NW. and SE.</p> <p>11.35 Same trail, bears NE. and SW.</p> <p>28.35 Wash, 30 lks.wide, course NE. Asc. 15 ft. over SE. slope.</p> <p>30.85 Spur, slopes NE. Desc. 28 ft. over N. slope.</p> <p>32.25 Wash, 25 lks.wide, course E. Asc. 30 ft. over SE. slope.</p> <p>35.45 Ridge, bears NE. and SW. Desc. 28 ft. over NW. slope.</p> <p>37.10 Head of wash, course NE. Asc. 15 ft. over SE. slope to</p> <p>40.00 Spur, slopes NE. Set an iron post, 3 ft. long, 1 in. in diam., 16 ins. in the ground to bedrock, supported in a mound of stone, for ¹/₄ sec. cor. of secs. 33 and 34, with brass cap mkd.,</p>
--------	--

Survey of part (completion) of Subdivisional Lines of T.11 S., R.16E.

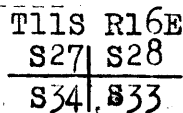
Chains



1927

from which,
 a yellow pine 8 ins. in diam., bears N. $26\frac{1}{2}^{\circ}$ E., 22 lks.
 dist., mkd. $\frac{1}{4}$ S34 BT
 an oak, 8 ins. in diam., bears S. $64\frac{1}{2}^{\circ}$ W., 29 lks.
 dist., mkd. $\frac{1}{4}$ S33 BT

- 53.90 Desc. 133 ft. over NE slope.
Wash, 20 lks. wide, 2 ft. deep, course NE.
- 61.60 Asc. 47 ft. over SE slope.
Spur, slopes NE.
- 66.60 Desc. gradually over NE slope.
Head of wash, course NE.
- 74.10 Asc. 27 ft. over SE slope.
Spur, slopes NE.
- 77.60 Desc. 18 ft. over NE slope.
Head of wash, course E.
- 80.00 Asc. 24 ft. over SE slope to
Set an iron post 3 ft. long, 2 ins. in diam., 24 ins. in
the ground to bedrock, supported by a md. of stone,
for the cor. secs. 27, 28, 33 and 34, with brass cap
mkd.



1927

from which,
 an oak, 12 ins. in diam. bears N. $28\frac{1}{2}^{\circ}$ E., 60 lks.
 dist., mkd. T11S R16E S28 BT
 an oak, 10 ins. in diam., bears S. $57\frac{1}{2}^{\circ}$ E., 26 lks.
 dist., mkd. T11S R16E S33 BT
 an oak, 9 ins. in diam., bears S. $47\frac{1}{2}^{\circ}$ W., 32 lks.
 dist., mkd. T11S R16E S34 BT
 an oak, 10 ins. in diam., bears N. $82\frac{1}{2}^{\circ}$ W., 55 lks.
 dist., mkd. T11S R16E S27 BT

Land, mountainous.
 Soil, rocky 4th. rate.
 Timber, oak, juniper, yellow pine, alder, maple and madr-
 ono.
 Undergrowth, manzanita, scruboak, catclaw and cacti.

- 40.00 S. $89^{\circ}58'E.$, on a random line, bet. secs. 27 and 34.
Set temp. $\frac{1}{4}$ sec. cor. se
- 80.20 Fall 26 lks. S. of the cor. secs. 26; 27, 34 and 35.
Thence
S. $89^{\circ}59'W.$, on true line, bet. secs. 27 and 34.
Over mountainous land, thru heavy timber and dense under-
growth.
- 15.50 Desc. 415 ft. over W. slope.
Wash, 15 lks. wide, course N.
- 30.60 Asc. 210 ft. over E. slope.
Spur, slopes NE.
- 38.60 Desc. 100 ft. over NW slope.
Wash, 10 lks. wide, course NE.
- 40.10 Asc. 35 ft. over SE slope, to
Set an iron post 3 ft. long, 1 in. in diam., 26 ins. in
the ground for the $\frac{1}{4}$ sec. cor. secs. 27 and 34, with
brass cap mkd.

Survey of part(completion) of Subdivision lines of T.11 S.,R.16 E.

Chains

$\frac{1}{4}$ $\frac{S27}{S34}$

1927 from which,
 a juniper, 6 ins. in diam., bears N.39 $\frac{1}{2}$ °W., 12 lks.
 dist., mkd. $\frac{1}{4}$ S27 BT
 a juniper, 6 ins. in diam., bears S.33°W., 9 lks.
 dist., mkd. $\frac{1}{4}$ S34 BT

48.35 Asc. 330 ft. over E. slope.
 Spur, slopes N.
 Desc. 130 ft. over W. slope.
 52.00 Head of wash, course NW.
 Thence along N. slope.
 57.90 Desc. 70 ft. over NW slope.
 68.00 Wash, 10 lks. wide, course NE.
 Asc. 365 ft. over SE slope to
 80.20 The cor. secs. 27, 28, 33 and 34:

Land, mountainous.
 Soil, rocky 4th. rate.
 Timber, oak, juniper, yellow pine, alder, maple and ma-
 drono.
 Undergrowth, manzanita, scruboak, catclaw and cacti.

N.0° 2'W., on true line, bet. secs. 27 and 28.
 Over mountainous land, thru scattering timber and heavy
 undergrowth.
 Asc. 43 ft. over SE slope.
 1.70 Spur, slopes E.
 Desc. 116 ft. over N. slope.
 5.00 Ridge, bears NE and SW.
 Desc. 330 ft. over NW slope.
 20.30 Wash, 10 lks. wide, course NW.
 Asc. 52 ft. over SW slope.
 27.00 Spur, slopes W.
 Desc. 300 ft. over NW slope to
 40.00 Set an iron post 3 ft. long, 1 in. in diam., 26 ins. in
 the ground to bedrock, supported by a md. of stone for
 the $\frac{1}{4}$ sec. cor. secs. 27 and 28, with brass cap mkd.

$\frac{1}{4}$
 S28 | S27

1927 from which,
 an oak, 9 ins. in diam., bears S.67 $\frac{1}{2}$ °E., 34 lks.
 dist., mkd. $\frac{1}{4}$ S27 BT
 an oak, 9 ins. in diam., bears S.54°W., 11 lks.
 dist., mkd. $\frac{1}{4}$ S28 BT

46.50 Desc. 115 ft. over NW slope.
 Spur, slopes NW.
 Desc. gradual NE slope, to wash.
 50.30 Wire fence, bears NW and SE.
 58.00 Wash, 10 lks. wide, course NW.
 Asc. 118 ft. over SW slope.
 59.80 Desc. 600 ft. over N. slope.
 76.00 Wash, 10 lks. wide, course NW.
 Asc. 25 ft. along SW slope to
 80.00 Set an iron post 3 ft. long, 2 ins. in diam., 24 ins. in
 the ground, for the cor. secs. 21, 22, 27 and 28, with

Survey of part (completion) of Subdivision lines of T.11 S., R.16 E.

Chains

brass cap mkd.

T11S R16E	
S21	S22

S28	S27

1927

from which,

- an oak, 14 ins. in diam., bears N.85 $\frac{1}{4}$ °E., 51 lks. dist., mkd. T11S R16E S22 BT
- an oak, 9 ins. in diam., bears S.39°E., 140 lks. dist., mkd. T11S R16E S27 BT
- an oak, 10 ins. in diam., bears S.36 $\frac{1}{2}$ °W., 110 lks. dist., mkd. T11S R16E S28 BT
- an oak, 8 ins. in diam., bears N.30 $\frac{1}{2}$ °W., 71 lks. dist., mkd. T11S R16E S21 BT

Land, mountainous.
 Soil, rocky 4th. rate.
 Timber, juniper, yellow pine, madrono and alder.
 Undergrowth, scruboak, manzanita, catclaw and cacti.

- 40.00 N.89°50'E., on a random line, bet. secs. 22 and 27. Set temp. $\frac{1}{4}$ sec. cor.
- 80.12 Fall 4 lks. N. of the cor. secs. 22, 23, 26 and 27. Thence, S.89°52'W., on true line, bet. secs. 22 and 27. Over mountainous land, thru scattering timber and dense undergrowth.
- 15.70 Asc. 450 ft. over SE slope. Ridge, bears NE and SW.
- 22.00 Desc. 80 ft. over NW slope. Wash, 10 lks. wide, course N.
- 27.10 Asc. 130 ft. over E. slope. Spur, slopes N.
- 31.50 Desc. 115 ft. over W. slope. Wash, 10 lks. wide, course N.
- 33.50 Asc. 47 ft. over E. slope. Spur, slopes N.
- 40.06 Desc. 73 ft. over W. slope to Set an iron post 3 ft. long, 1 in. in diam., 26 ins. in the ground, for the $\frac{1}{4}$ sec. cor. secs. 22 and 27, with brass cap mkd.

$\frac{1}{4}$	S22

	S27.

1927

from which,

- an oak, 16 ins. in diam., bears N.68 $\frac{1}{4}$ °E., 54 lks. dist., mkd. $\frac{1}{4}$ S22 BT
- an oak, 24 ins. in diam., bears S.20 $\frac{1}{2}$ °E., 96 lks. dist., mkd. $\frac{1}{4}$ S27 BT

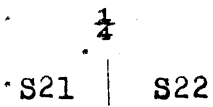
- 42.40 Asc. 70 ft. over E. slope. Spur, slopes N.
- 53.10 Desc. 175 ft. over NW slope. Wash, 10 lks. wide, course N.
- 54.80 Asc. 30 ft. over NE slope. Spur, slopes N.
- 66.40 Desc. 165 ft. over NW slope. Wash, 10 lks. wide, course N.
- 76.35 Asc. 115 ft. over NE slope. Spur, slopes N.
- 80.12 Desc. 134 ft. over W. slope to The cor. secs. 21, 22, 27 and 28.

Survey of part (completion) of Subdivision lines of T.11 S., R.16 E

Chains

Land, mountainous.
Soil, rocky 4th. rate.
Timber, oak, juniper and madrono.
Undergrowth, scruboak, manzanita, catclaw, yucca and cacti.

- 9:50 N.0° 2'W., on true line, bet. secs. 21 and 22.
Over mountainous land, thru scattering timber and dense undergrowth.
Desc. 270 ft. over broken NW slope:
Bottom of Alder Canyon, wash in same, 20 lks. wide, course NE (Intermittent streams of water in wash.)
- 15:09 Asc. 410 ft. over steep S. slope.
Spur, slopes SE
Intersect the S. side line (2-3) of the Baltimore Patented mining claim (Mineral Survey No. 3878) at 6.56 chs. S.79°12'W., from cor. No: 2 thereof.
Across patented ground.
Desc. 15 ft. over NE slope:
- 26:00 Wash, 10 lks. wide, course SE.
Asc. 470 ft. over steep S. slope to $\frac{1}{4}$ sec. cor.
- 33:57 Intersect the N. side line (E-4) of the Hill Bird Patented mining claim (Mineral Survey No. 3878) at 3.25 chs. S.79°12'W., of cor. No. 1 thereof.
- 40:00 Set an iron post 3 ft. long, 1 in. in diam., 26 ins. in the ground for the $\frac{1}{4}$ sec. cor. secs. 21 and 22, with brass cap mkd.



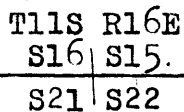
1927

from which,

an oak, 5 ins. in diam., bears S.38°E., 23 lks. dist., mkd. $\frac{1}{4}$ S22 BT

an oak, 12 ins. in diam., bears S:30°W., 68 lks. dist., mkd. $\frac{1}{4}$ S21 BT

- 42:75 Asc. 112 ft. over S. slope to ridge.
Intersect the N. side line (E-4) of the Hill Top patented mining claim, Mineral survey No.. 3890, at 16.67 chs. N.79°12'E., from cor. No. 4 thereof. Leave patented ground.
- 55:00 Ridge, bears NE and SW.
Desc. 260 ft. over N. slope to
- 80:00 Set an iron post 3 ft. long, 2 ins. in diam., 24 ins. in the ground for the cor. secs. 15, 16, 21 and 22, with brass cap mkd.



1927

from which,

an oak, 7 ins. in diam., bears N.14 $\frac{1}{2}$ °E., 27 lks. dist., mkd. T11S R16E S15 BT

an oak, 7 ins. in diam., bears S.66 $\frac{1}{2}$ °E., 47 lks. dist., mkd. T11S R16E S22 BT

an oak, 8 ins. in diam., bears S.28 $\frac{1}{2}$ °W., 35 lks. dist., mkd. T11S R16E S21 BT

an oak, 4 ins. in diam., bears N.71°W., 32 lks. dist., mkd. T11S R16E S16 BT

Survey of Part (completion) and
Independent Resurvey of Part of Subdivision lines of T.11 S., R.16 E.

Chains

The original cor. secs. 15, 16, 21 and 22, which is a quartzite stone 7 x 10 x 5 ins. above ground, firmly set, properly mkd. and witnessed by four oak bearing trees, properly mkd., bears S.83°E., 67 lks. dist. On top of this cor. stone chisel the letters WP and destroy markings on bearing trees.

Land, mountainous.
Soil, rocky 4th. rate.
Timber, oak, juniper, sycamore, alder and madrono.
Undergrowth, manzanita, scruboak, mahogany, yucca and cacti.

- 40.00 N.89°52'E., on a random line, bet. secs. 15 and 22.
- 80.24 Set temp. $\frac{1}{4}$ sec. cor.
- 80.24 Fall 7 lks. N. of the cor. secs. 14, 15, 22 and 23.
- Thence,
- S.89°55'W., on true line, bet. secs. 15 and 22.
- Over mountainous land, thru scattering timber and dense undergrowth.
- 3.25 Desc. 40 ft. over W. slope.
- 17.95 Wash, 10 lks. wide, course SE.
- 20.25 Asc. 210 ft. over E. slope.
- 22.30 Spur, slopes SE.
- 40.12 Desc. 14 ft. over SW slope.
- 40.12 Wash, near head, course SE.
- 40.12 Asc. 130 ft. over NE slope.
- 40.12 Ridge, bears NE and SW.
- 40.12 Asc. gradual NE slope to
- 40.12 Set an iron post 3 ft. long, 1 in. in diam., 12 ins. in the ground to bedrock, deposit a stone mkd. with a cross (X) at base of post, supported by a md. of stone for the $\frac{1}{4}$ sec. cor. secs. 15 and 22, with brass cap mkd.

$$\frac{1}{4} \frac{S15}{S22}$$

1927 from which,
an oak, 8 ins. in diam., bears S.24°E., 49 lks. dist., mkd. $\frac{1}{4}$ S22 BT
No other bearing tree available.

- 61.75 Desc. 240 ft. over NW slope.
- 61.75 Wash, 10 lks. wide, course N.
- 80.24 Asc. 460 ft. over NE slope to
- 80.24 The cor. secs. 15, 16, 21 and 22.

Land, mountainous.
Soil, rocky 4th. rate.
Timber, oak, juniper, sycamore and madrono.
Undergrowth, manzanita, scruboak, catclaw, yucca & cacti.

Independent Resurvey

- 21.50 N.0° 2'W., on true line, bet. secs. 15 and 16.
- 21.50 Over mountainous land, thru scattering timber and dense undergrowth.
- 21.50 Desc. 485 ft. over N. slope.
- 24.63 Wash, 20 lks. wide, course NE.
- 24.63 Asc. 240 ft. over SE slope to spur.
- 24.63 Intersect the south side line (2-3) of the Precious Metals, patented mining claim, Mineral Survey No. 3501, at 12.92 chs. N.89° 8'E., from cor. No.3 thereof.

Independent Resurvey of (Part) of Subdivision lines of T.11 S., R.16 E.

Chains

32.00 Across patented ground.
 Old road, bears NE and SW.
 33.80 Spur, slopes E.
 Desc. 155 ft. over N. slope.
 37.80 Mt. Lemon Hgy., bears NE and SW.
 38.40 Wash, 10 lks. wide, course NE.
 Asc. 74 ft. over SE slope to
 40.00 Set an iron post 3 ft. long, 1 in. in diam., 12 ins. in
 the ground to bedrock, supported by a md. of stone, for
 reestablished $\frac{1}{4}$ sec. cor. of secs. 15 and 16, with brass cap
 mkd.,

1/4
 S16 | S15

1927 from which,
 an oak, 14 ins. in diam., bears S.32°E., 37 lks.
 dist., mkd. $\frac{1}{4}$ S15 BT
 an oak, 6 ins. in diam., bears S.20 $\frac{1}{2}$ °W., 61 lks.
 dist., mkd. $\frac{1}{4}$ S16 BT

The original ~~1/4 sec. cor. of secs. 15 and 16~~, which is a
 granite stone 5 x 8 x 5 ins. above ground, firmly set
 and properly mkd., and witnessed by two properly mkd.
 oak bearing trees, one each NE and SW of cor.
 Destroy the markings on the bearing trees and chisel
 WP on top of the cor. stone.

42.73 Asc. 123 ft. over SE slope to spur.
 Intersect the N. side line (F-4) of the patented Quincy
 mining claim, Mineral survey No. 3501, at 6.15 chs.
 S.89° 8'W., from cor. No.1 thereof.

46.40 Leave patented ground.
 Mt. Lemon Hgy., bears NE and SW.
 48.00 Spur, slopes NE.
 Desc. 178 ft. over NW slope to wash.

48.50 Bend in same Hgy., from SE to SW.
 55.10 Wash, 20 lks. wide, course NE.
 Thence over rolling land.

63.70 Wash, 15 lks. wide, course E.
 70.00 Wash, 10 lks. wide, course E.
 Asc. 85 ft. over S. slope.

73.70 Spur, slopes E.
 Desc. 80 ft. over N. slope.
 78.35 Wash, 10 lks. wide, course E.

80.00 Asc. 15 ft. over S. slope to
 Set an iron post 3 ft. long, 2 ins. in diam., 12 ins. in
 the ground to bedrock, supported by a md. of stone, for
 reestablished cor. of secs. 9, 10, 15 and 16, with brass cap
 mkd.,

T11S R16E
 S9 | S10
 S16 | S15

1927 from which,
 an oak, 7 ins. in diam., bears N.75 $\frac{1}{4}$ °E., 53 lks.
 dist., mkd. T11S R16E S10 BT
 an oak, 6 ins. in diam., bears S.20°E., 18 lks.
 dist., mkd. T11S R16E S15 BT
 an oak, 6 ins. in diam., bears S.58 $\frac{1}{2}$ °W., 51 lks.
 dist., mkd. T11S R16E S16 BT
 an oak, 9 ins. in diam., bears N.72°W., 22 lks.
 dist., mkd. T11S R16E S9 BT

The original cor. secs. 9, 10, 15 and 16, which is a quartz-
 ite stone 7 x 12 x 10 ins. above ground, firmly set,
 properly mkd. and witnessed by four properly mkd. oak
 bearing trees, bears S.59 $\frac{1}{4}$ °E., 98 lks. dist. Destroy
 same.

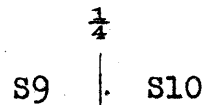
Independent Resurvey of Part of Subdivision lines of T.11 S., R.16 E.

Chains	<p>Land, mountainous and rolling. Soil, rocky 4th. rate. Timber, oak, juniper and sycamore. Undergrowth, scruboak, manzanita, catclaw and cacti.</p> <p>-----</p> <p>N. 89° 55' E., on a random line, bet. secs. 10 and 15. Set temp. $\frac{1}{4}$ sec. cor. 80.32 Fall 12 lks. N. of the cor. secs. 10, 11, 14 and 15. Thence, West, on a true line, bet. secs. 10 and 15. Over rolling land, thru scattering timber and dense under- growth. 13.30 Asc. 150 ft. over SE slope. Spur, slopes SE. 21.30 Desc. 14 ft. over SW slope. Wash, 10 lks. wide, course SE. 33.90 Asc. 130 ft. over NE slope. Spur, slopes SE. 40.16 Asc. gradually up same spur over E. slope to Set an iron post 3 ft. long, 1 in. in diam., 3 ins. in the ground, to bedrock, deposit a stone mkd. with a cross (X) at base of post, supported by a md. of stone, for reestablished $\frac{1}{4}$ sec. cor. of secs. 10 and 15, with brass cap mkd.,</p> $\frac{1}{4} \frac{S10}{S15}$ <p>1927 from which, an oak, 8 ins. in diam., bears N. 30° W., 74 lks. dist., mkd. $\frac{1}{4}$ S10 BT No other bearing tree available.</p> <p>The original $\frac{1}{4}$ sec. cor. secs. 10 and 15, which is granite stone 8 x 9 x 5 ins. above ground, firmly set, properly mkd. and witnessed by two properly mkd. oak bearing trees, one each NE and SE of cor., bears S. 43° E., 67 lks. dist. Destroy same.</p> <p>43.00 Asc. gradual E. slope. 50.65 Desc. 65 ft. over SW slope. Wash, 10 lks. wide, course SE. 55.50 Asc. 93 ft. over E. slope to spur. Spur, slopes SE. 62.30 Desc. 40 ft. over SW slope. Wash, 10 lks. wide, course S. 69.60 Asc. 52 ft. over SE slope. 77.20 Desc. 14 ft. over SW slope. Wash, 10 lks. wide, course SE. 80.32 Asc. 45 ft. over NE slope to The reestablished cor. of secs. 9, 10, 15 and 16.</p> <p>Land, rolling. Soil, rocky 4th. rate. Timber, oak, juniper and sycamore. Undergrowth, scruboak, manzanita, catclaw and cacti.</p>
--------	---

Survey of part (completion) of Subdivision lines of T.11 S., R.16 E.

Chains

N.0° 2'W., on true line, bet. secs. 9 and 10.
 Over rolling land, thru scattering timber and undergrowth.
 Asc. 25 ft. over gradual SE slope.
 12.60 Spur, slopes SE.
 Desc. 21 ft. over NE slope.
 14.10 Wash, 10 lks. wide, course SE.
 Asc. 205 ft. over SW slope.
 26.00 Ridge, bears E. and W.
 Desc. 85 ft. over N. slope.
 29.30 Wash, 10 lks. wide, course E.
 Asc. 70 ft. over SE slope.
 34.00 Spur, slopes E.
 Desc. 75 ft. over NE slope.
 39.40 Wash, 10 lks. wide, course SE.
 Asc. gradual S. slope to
 40.00 Set an iron post 3 ft. long, 1 in. in diam., 26 ins. in
 the ground for the $\frac{1}{4}$ sec. cor. secs. 9 and 10, with
 brass cap mkd.

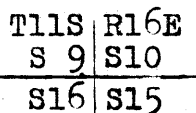


1927

from which,

an oak, 12 ins. in diam., bears S.39°E., 147 lks.
 dist., mkd. $\frac{1}{4}$ S10 BT
 an oak, 15 ins. in diam., bears N.25°W., 134 lks.
 dist., mkd. $\frac{1}{4}$ S9 BT

Asc. 362 ft. over S. slope.
 54.00 Ridge, bears E. and W.
 Desc. 460 ft. over steep N. slope.
 70.40 Wash, 20 lks. wide, course E.
 Asc. 125 ft. over SE slope.
 77.65 Spur, slopes E.
 Desc. 33 ft. over N. slope to
 80.00 Set an iron post 3 ft. long, 2 ins. in diam., 8 ins. in
 the ground to bedrock, supported by a md. of stone,
 for the cor. secs. 3, 4, 9 and 10 with brass cap mkd.



1927

from which,

an oak, 14 ins. in diam., bears N.5°E., 15 lks.
 dist., mkd. T11S R16E S10 BT
 an oak, 8 ins. in diam., bears S.22 $\frac{1}{2}$ °E., 56 lks.
 dist., mkd. T11S R16E S15 BT
 an oak, 14 ins. in diam., bears S.26°W., 95 lks.
 dist., mkd. T11S R16E S16 BT
 a juniper, 15 ins. in diam., bears N.37°W., 75 lks.
 dist., mkd. T11S R16E S9 BT

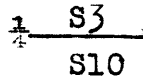
Land, rolling.
 Soil, rocky 4th. rate.
 Timber, oak, juniper and mesquite.
 Undergrowth, scruboak, catclaw and cacti.

 East, on a random line, bet. secs. 3 and 10.
 40.00 Set temp. $\frac{1}{4}$ sec. cor.
 80.24 Fall 7 lks. S. of the cor. secs. 2, 3, 10 and 11.
 Thence,
 S.89°57'W., on true line, bet. secs. 3 and 10.

Survey of part(completion) of Subdivision lines of T.11 S., R.16 E.

Chains

- 5.00 Desc. 90 ft. over SW slope.
Wash, 10 lks. wide, course SE.
- 28.75 Asc. 560 ft. over NE slope.
Spur, slopes SE.
- 33.45 Asc. 25 ft. over S. slope.
Ridge, bears NE and SW.
- 40.12 Desc. 50 ft. over N. slope to
Set an iron post 3 ft. long, 1 in. in diam., 26 ins. in
the ground for the $\frac{1}{4}$ sec. cor. secs. 3 and 10, with
brass cap mkd.

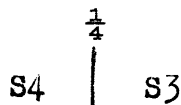


1927 from which,
an oak, 12 ins. in diam., bears N.42°E., 42 lks.
dist., mkd. $\frac{1}{4}$ S3 BT
an oak, 8 ins. in diam., bears S.75°E., 44 lks.
dist., mkd. $\frac{1}{4}$ S10 BT

- 52.25 Desc. 240 ft. over W. slope.
Wash, 10 lks. wide, course N.
- 56.00 Asc. 105 ft. over SE slope.
Spur, slopes NE.
- 60.85 Desc. 160 ft. over NW slope.
Wash, 10 lks. wide, course N.
- 63.25 Asc. 68 ft. over E. slope.
Spur, slopes NE.
- 74.15 Desc. 50 ft. over NW slope.
Wash, 20 lks. wide, course NE. (Stratton Canyon.)
- 75.00 Asc. 60 ft. over E. slope.
End of spur, slopes SE.
- 77.85 Desc. 20 ft. over SW slope.
Wash, 10 lks. wide, course SE.
- 80.24 Asc. 80 ft. over NE slope to
The cor. secs. 3, 4, 9 and 10.

Land, rolling.
Soil, rocky 4th. rate.
Timber, oak, juniper and mesquite.
Undergrowth, manzanita, catclaw, yucca and cacti.

- N.0° 2'W., on true line, bet. secs. 3 and 4.
Over rolling land, thru scattering timber and dense under-
growth.
- 1.20 Desc. 28 ft. over N. slope.
Wash, 10 lks. wide, course SE.
- 7.30 Asc. 200 ft. over SW slope.
Spur, slopes SE.
- 11.70 Desc. 20 ft. over NE slope.
- 23.50 Wash, 10 lks. wide, course SE.
Asc. 390 ft. over S. slope.
Spur, slopes N.
- 40.00 Desc. 472 ft. over N. slope to
Set an iron post 3 ft. long, 1 in. in diam., 26 ins. in
the ground for the $\frac{1}{4}$ sec. cor. secs. 3 and 4, with
brass cap mkd.



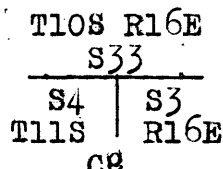
1927 from which,

Survey of part(completion) of Subdivision lines of T.11 S., R.16 E.

Chains

an oak, 9 ins. in diam., bears S.58°E., 18 lks.
dist., mkd. $\frac{1}{4}$ S13 BT
an oak, 12 ins. in diam., bears S.63°W., 45 lks.
dist., mkd. $\frac{1}{4}$ S10 BT

41.40 Desc. 50 ft. over N. slope.
Wash, 10 lks. wide, course E.
49.90 Asc. 150 ft. over S. slope, to ridge.
Wire fence, bears E. and W.
Over level, stony top of ridge.
52.00 Desc. 265 ft. over N. slope.
64.10 Wash, 10 lks. wide, course E.
Asc. 213 ft. over S. slope.
64.10 Spur, slopes E.
76.90 Desc. 50 ft. over N. slope to
Intersect the Second Std. Par. S., at a point 6.24 chs. E.
of reestablished std. $\frac{1}{4}$ sec. cor. sec. 33, which is an iron
post 1 in. in diam., projecting 12 ins. above ground,
firmly set, with brass cap properly mkd. and witnessed
by one oak bearing tree NW, and Md. stone N. of cor.
At intersection set an iron post 3 ft. long, 2 ins. in
diam., 12 ins. in the ground to bedrock, supported by
a md. of stone, for the closing cor. secs. 3 and 4,
with brass cap mkd.,



1927

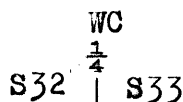
from which,

an oak, 12 ins. in diam., bears S.13°E., 59 lks.
dist., mkd. T11S R16E S3 CC BT
an oak, 16 ins. in diam., bears S.13°W., 85 lks.
dist., mkd. T11S R16E S4 CC BT

Land, rolling.
Soil, rocky 4th. rate.
Timber, oak, juniper and mesquite.
Undergrowth, manzanita, scruboak, catclaw and cacti.

From the cor. secs. 4, 5, 32 and 33, on S. Bdy. of Tp.,
hereinbefore described.
N.0° 2'W., on true line, bet. secs. 32 and 33.
Over rough, mountainous land, thru heavy timber and dense
undergrowth.

3.50 Asc. 43 ft. over SE slope.
Spur, slopes E.
12.60 Desc. 312 ft. over NE slope to wash.
Butterfly Trail, bears SE and W.
14.00 Head of wash, course E.
Asc. 222 ft. over broken SE slope.
28.00 Ridge, bears N.20°E. and S.20°W.
Desc. 242 ft. over broken NW slope to
38.50 Set an iron post 3 ft. long, 1 in. in diam., 14 ins. in
the ground to bedrock, supported by a md. of stone, for
witness corner to the $\frac{1}{4}$ sec. cor. secs. 32 and 33, with
brass cap mkd.



1927

from which,

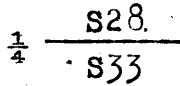
Survey of part(completion) of Subdivision lines of T.11 S.,R.16 E.

Chains	<p>an oak, 8 ins. in diam., bears N.28°E., 6 lks. dist., mkd. WC $\frac{1}{4}$ S33 BT</p> <p>an oak, 8 ins. in diam., bears S.87°W., 55 lks. dist., mkd. WC $\frac{1}{4}$ S32 BT</p> <p>Desc. 4 ft. over NW slope.</p> <p>38.70 Top of cliff, facing NW.</p> <p>Desc. 60 ft. over vertical wall.</p> <p>39.50 Foot of cliff. Continue desc. of 30 ft. over broken precipitous slope.</p> <p>40.00 True point for the $\frac{1}{4}$ sec. cor. secs. 32 and 33, falls on steep slope and slide rock, where it is impracticable to establish cor. monument, therefore set witness cor. as hereinbefore described.</p> <p>Desc. 699 ft. over broken, steep, NW slope to wash.</p> <p>49.00 Trail, bears E. and W.</p> <p>65.35 Head of wash, course NE.</p> <p>Continue desc. Of 428 ft. over E. slope.</p> <p>72.85 Wash, 20 lks. wide, course N.(from SW).</p> <p>Desc. 113 ft. down wash.</p> <p>75.60 Leave wash, to NE: asc. 40 ft. over SE slope to</p> <p>80.00 Set an iron post 3 ft. long, 2 ins. in diam.; 20 ins. in the ground to bedrock, supported by a md. of stone, for the cor. secs. 28, 29, 32 and 33; with brass cap mkd.</p> <div style="text-align: center;"> <table border="1"> <tr><td colspan="2">T11S R16E</td></tr> <tr><td>S29</td><td>S28</td></tr> <tr><td>S32</td><td>S33</td></tr> </table> </div> <p style="text-align: center;">1927</p> <p>from which,</p> <p>an oak, 12 ins. in diam., bears N.70°E., 30 lks. dist., mkd. T11S R16E S28 BT</p> <p>a juniper, 12 ins. in diam., bears S.48°E., 78 lks. dist., mkd. T11S R16E S33 BT</p> <p>an oak, 4 ins. in diam., bears S.10°W., 95 lks. dist., mkd. BT</p> <p>an oak, 8 ins. in diam., bears N.89°W., 95 lks. dist., mkd. T11S R16E S29 BT</p> <p>Land, mountainous. Soil, rocky 4th. rate. Timber, oak, juniper, yellow pine, and cedar. Undergrowth, manzanita, scruboak, catclaw and cacti.</p> <p style="text-align: center;">-----</p> <p>S.89°58'E., on a random line, bet. secs. 28 and 33.</p> <p>40.00 Set temp. $\frac{1}{4}$ sec. cor.</p> <p>80.00 Fall 12 lks. N. of the cor. secs. 27, 28, 33 and 34. Thence, N.89°53'W., on true line, bet. secs. 28 and 33. Over mountainous land, thru heavy timber and dense undergrowth:</p> <p>Asc. 57 ft. over SE slope.</p> <p>6.00 Ridge, bears NE and SW.</p> <p>Desc. 484 ft. over W. slope.</p> <p>23.55 Wash, 30 lks. wide, 2 ft. deep, course W. from NE. Down same.</p> <p>24.00 Wash, turns to SW at juncture with one from N.</p> <p>Asc. 30 ft. over SE slope.</p> <p>27.50 Spur, slopes SW. Desc. 156 ft. over NW slope.</p>	T11S R16E		S29	S28	S32	S33
T11S R16E							
S29	S28						
S32	S33						

Survey of part(completion) of Subdivision lines of T.11 S.,R.16 E.

Chains

31.10 Wash, 30 lks.. wide, from SE to W.
 Desc. over rocky bottom of same.
 32.10 Junction of wash with main wash, 60 lks. wide, course N.
 Asc. 264 ft. over E. slope to
 40.00 Set an iron post 3 ft. long, 1 in. in diam., 18 ins. in
 the ground to bedrock, supported by a md. of stone,
 for the $\frac{1}{4}$ sec. cor. secs. 28 and 33, with brass cap mkd.

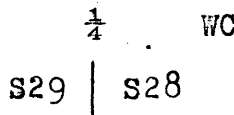


1927 from which,
 an oak, 10 ins. in diam., bears N.57°W., 32 lks.
 dist., mkd. $\frac{1}{4}$ S28 BT
 an oak, 10 ins. in diam., bears S.68°E., 40 lks.
 dist., mkd. $\frac{1}{4}$ S33 BT

58.00 Asc. 509 ft. over E. slope.
 Spur, slopes N.
 Desc. 265 ft. over NW slope.
 65.80 Wash, 30 lks. wide, course N.
 Asc. 21 ft. over NE slope.
 68.00 Spur, slopes N.
 Desc. 160 ft. over NW slope.
 76.60 Gulch, 40 lks. wide, course N.
 Asc. 91 ft. over NE slope to
 80.00 The cor. secs. 28, 29, 32 and 33.

Land, rough mountainous.
 Soil, rocky 4th. rate.
 Timber, oak, juniper, yellow pine, cedar and madrono.
 Undergrowth, scruboak, manzanita, catclaw and cacti.

N.0° 2'W., on true line, bet. secs. 28 and 29.
 Over mountainous land, thru heavy timber and dense under-
 growth. Desc. 387 ft. over N. slope.
 13.50 Wash, 40 lks. wide, in bottom of Alder Canyon, course NE.
 Asc. 450 ft. over SE slope.
 At a point 67 lks. S. 19 $\frac{1}{2}$ °W. from true point for $\frac{1}{4}$ sec. cor.
 Set an iron post 3 ft. long, 1 in. in diam., 4 ins. in
 the ground to bedrock, supported by a md. of stone,
 for witness cor. to the $\frac{1}{4}$ sec. cor. secs. 28 and 29,
 with brass cap mkd.



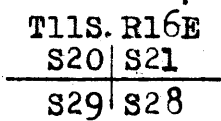
1927 from which,
 an oak, 5 ins. in diam., bears N.80°E., 41 lks.
 dist., mkd. WC $\frac{1}{4}$ S28 BT
 an oak, 7 ins. in diam., bears S.75°W., 117 lks.
 dist., mkd. WC $\frac{1}{4}$ S29 BT

40.00 Asc. 30 ft. over sloping face of ledge.
 True point for the $\frac{1}{4}$ sec. cor. secs. 28 and 29 falls on
 precipitous slope where it is impracticable to monu-
 ment the cor. therefore establish witness cor. at 67 lks.
 S. 19 $\frac{1}{2}$ °W. as described above.

Survey of part (completion) of Subdivision lines of T.11 S., R.16 E.

Chains

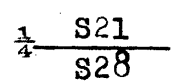
53.00 Asc. 340 ft. over SE slope.
 Spur, slopes E.
 69.50 Desc. 780 ft. over steep N. slope.
 Edge of cliff, facing NW on line.
 69.70 Desc. 50 ft. over nearly vertical face.
 Foot of cliff.
 75.50 Wash, 10 lks. wide, course NE.
 80.00 Asc. 56 ft. over SE slope to
 Set an iron post 3 ft. long, 2 ins. in diam., 24 ins. in
 the ground for the cor. secs. 20, 21, 28 and 29, with
 brass cap mkd.



1927 from which,
 an oak, 14 ins. in diam., bears N.25°E., 89 lks.
 dist., mkd. T11S R16E S21 BT
 an oak, 4 ins. in diam., bears S.29°E., 22 lks.
 dist., mkd. BT
 a juniper, 15 ins. in diam., bears S.23½°W., 74 lks.
 dist., mkd. T11S R16E S29 BT
 No other bearing tree available; raise a md. of stone
 3 ft. base and 1½ ft. high W. of cor.
 The original witness cor. to cor. secs. 20, 21, 28 and
 29, which is a granite stone 7 x 8 x 10 ins. above
 ground, firmly set, properly mkd. and witnessed by
 four properly mkd. bearing trees, bears N.23½°E., 191
 lks. dist. Destroy same.

Land, rough mountainous.
 Soil, rocky 4th. rate.
 Timber, oak, juniper, madrono, alder and yellow pine.
 Undergrowth, manzanita, scruboak, catclaw and cacti.

40.00 S.89°53'E., on a random line, bet. secs. 21 and 28.
 Set temp. ¼ sec. cor.
 80.04 Fall 12 lks. N. of cor. secs. 27, 28, 33 and 34.
 Thence,
 N.89°48'W., on true line, bet. secs. 21 and 28.
 Over mountainous land, thru heavy timber and dense under-
 growth.
 7.25 Desc. 200 ft. over steep, NW slope.
 Wash, 25 lks. wide, in bottom of Alder Canyon, course NE.
 30.00 Asc. 580 ft. over SE slope.
 Spur, slopes S.
 39.00 Desc. 60 ft. over SW slope.
 Wash, 10 lks. wide, course S.
 40.02 Asc. 15 ft. over E. slope to
 Set an iron post 3 ft. long, 1 in. in diam., 26 ins. in
 the ground for the ¼ sec. cor. secs. 21 and 28, with
 brass cap mkd.



1927 from which,
 an oak, 4 ins. in diam., bears N.58½°E., 39 lks.
 dist., mkd. ¼ S21 BT
 an oak, 12 ins. in diam., bears S.7°E., 13 lks.
 dist., mkd. ¼ S28 BT

Survey of Part (completion) and
Independent Resurvey of Part of Subdivision lines of T.11 S., R.16 E.

Chains	
44.60	Asc. 75 ft. over SE slope. Spur, slopes S. Desc. 45 ft. over SW slope.
48.75	Wash, 10 lks. wide, course S. Asc. 210 ft. over SE slope.
58.25	Spur, slopes S. Desc. 240 ft. over SW slope.
71.65	Wash, 15 lks. wide, course SE. Asc. 250 ft. over SE slope to
80.04	The cor. secs. 20, 21, 28 and 29.
	Land, mountainous. Soil, rocky 4th. rate. Timber, oak, juniper, sycamore and madrono. Undergrowth, oakbrush, manzanita, cacti and yucca.
	Independent Resurvey.
	N.0° 2'W., on true line, bet. secs. 20 and 21. Over mountainous land, thru heavy timber and dense undergrowth.
6.00	Asc. 160 ft. over S. slope. Spur, slopes E. Desc. 150 ft. over NE slope.
9.50	Wash, 10 lks. wide, course SE. Asc. 490 ft. over SW slope, to ridge.
34.02	From which, USMM No.1, which is a wooden post 4 ins. sq., projecting 10 ft. above ground, firmly set in md. of stone, marked USLM No.1 -1-1041 HGE bears E. 367 lks. dist.
37.00	Ridge, bears E. and W. Desc. 108 ft. over N. slope to $\frac{1}{4}$ sec. cor.
39.83	From which, The original $\frac{1}{4}$ sec. cor. secs. 20 and 21, which is a granite stone 8 x 10 x 8 ins. above ground, firmly set, properly mkd. and witnessed by two properly mkd. bearing trees, bears East 85 lks. dist. Chisel the letters WP on top of stone cor. and destroy marking on bearing trees.
40.00	Set an iron post 3 ft. long, 1 in. in diam., 18 ins. in the ground to bedrock, supported by a md. of stone, for reestablished $\frac{1}{4}$ sec. cor. of secs. 20 and 21, with brass cap mkd.
	$\frac{1}{4}$
	S20 S21
	1927
	from which, an oak, 8 ins. in diam., bears N. 39 $\frac{1}{2}$ ° E., 24 lks. dist., mkd. $\frac{1}{4}$ S21 BT an oak, 6 ins. in diam., bears N. 72° W., 62 lks. dist., mkd. $\frac{1}{4}$ S20 BT
55.10	Desc. 450 ft. over NW slope. Wash, 10 lks. wide, course NE. Asc. 65 ft. over SE slope.
57.35	Spur, slopes E. Desc. 75 ft. over NE slope to wash.
58.90	Intersect the S. end line (34) of "Copper Matte" pat. lode mining claim, Min. Surv. No. 3500 at 125 lks S 59° 16' W., of cor. No. 4 there of.
	Thence, across patented mineral land.

Independent Resurvey of
Survey of Part of the Subdivision Lines of T.11 S., R.16 E.

Chains

62.35 Desc. 50 ft. over S. slope.
Wash, 10 lks. wide, course E.
Asc. 45 ft. over S. slope.

64.55 Desc. 25 ft. over NE slope.

65.10 Wash, 10 lks. wide, course E.
Asc. 140 ft. over S. slope.

70.65 Spur, slopes E.
Desc. 80 ft. over NE slope.

74.70 Wash, 10 lks. wide, course E.
Asc. 70 ft. over S. slope to

80.00 Set an iron post 3 ft. long, 2 ins. in diam., 24 ins. in the ground for reestablished cor. of secs. 16, 17, 20th and 21, with brass cap mkd.,

T11S R16E	
S17	S16
S20	S21

1927 from which,
an oak, 7 ins. in diam., bears N.30 $\frac{1}{2}$ °E., 77 lks. dist., mkd. T11S R16E S16 BT
an oak, 8 ins. in diam., bears S.66 $\frac{1}{2}$ °E., 25 lks. dist., mkd. T11S R16E S21 BT
an oak, 8 ins. in diam., bears S.61 $\frac{1}{4}$ °W., 27 lks. dist., mkd. T11S R16E S20 BT
an oak, 10 ins. in diam., bears N.24 $\frac{3}{4}$ °W., 81 lks. dist., mkd. T11S R16E S17 BT
The original cor. of same secs. bears S.69°20'E., 11.22 chs. dist., which is a quartzite stone 8 x 9 x 6 ins. above ground, firmly set properly mkd. and witnessed by four properly mkd. bearing tree, one each NE, SE, SW and NW of cor. and md. of stone West of cor. Chisel the letters WP on top of stone cor. and destroy marking on trees.

Land, mountainous.
Soil, rocky 4th. rate.
Timber, oak, juniper, sycamore and madrono.
Undergrowth, scruboak, manzanita, mahogany and cacti.

40.00 S.89°48'E., on a random line, bet. secs. 16 and 21.
Set temp. $\frac{1}{4}$ sec. cor.

80.10 Fall 4 lks. N. of the cor. secs. 15, 16, 21 and 22.
Thence,
N.89°46'W., on true line, bet. secs. 16 and 21.
Over mountainous land, thru scattering timber and dense undergrowth.

18.10 Desc. 275 ft. over W. slope.
Wash, 10 lks. wide, course E.
Asc. 170 ft. over E. slope.

24.60 Spur, slopes N.
Desc. 95 ft. over NW slope.

35.60 Wash, 10 lks. wide, course NW.
Asc. 50 ft. over E. slope to

40.05 Set an iron post 3 ft. long, 1 in. in diam., 18 ins. in the ground to bedrock, supported by a md. of stone, for reestablished $\frac{1}{4}$ sec. cor. of secs. 16 and 21, with brass cap mkd.,

$\frac{1}{4}$	S16
	S21

1927 from which,

Independent Resurvey of Part and
Survey of part (completion) of Subdivision lines of T.11 S., R.16 E.

Chains

an oak, 8 ins. in diam., bears N.54°W., 78 lks.
dist., mkd. $\frac{1}{4}$ S16 BT

an oak, 8 ins. in diam., bears S.42°W., 9 lks.
dist., mkd. $\frac{1}{4}$ S21 BT

The original $\frac{1}{4}$ sec. cor. of same secs. bears
S. 81 $\frac{1}{2}$ ° E., 77 lks. dist., which is a quartzite site
stone 5 x 8 x 6 ins. above ground, firmly set, properly
mkd. and witnessed by two properly mkd. bearing trees,
one each NE and SW of cor. Chisel the letters WP on
top of stone cor. and destroy marking on bearing trees.
Corner bears S. 81 $\frac{1}{2}$ ° E., 77 lks. dist. from cor. sec. cor.

Desc. 7 ft. over gradual NW slope.

45.05 Wash, 10 lks. wide, course N.

Asc. 25 ft. along N. slope.

53.20 Wash, 10 lks. wide, course NE.

Asc. 480 ft. over SE slope to cor.

59.49 Intersect the S. side line (2-3) of the "Daily Tunnel Site"
pat. mining claim, mineral survey No. 3500, at 0.99 chs.
S. 59°16'W. of cor. No. 3 thereof.

Thence across patented mineral land.

80.10 The reestablished cor. of secs. 16, 17, 20 and 21.

Land, mountainous.

Soil, rocky 4th. rate.

Timber, oak, juniper, sycamore and alder.

Undergrowth, manzanita, scruboak, mountain mahogany, yucca
and cacti.

Survey.

N.0° 2'W., on true line, bet. secs. 16 and 17.

Over mountainous land, thru scattering timber and dense
undergrowth.

Asc. 295 ft. over SE slope, to ridge.

1.60 Mt. Lemon Hgy., bears NE and SW.

2.30 Telephone line, bears NE and SW.

8.70 Ridge, bears N.80°E., and S.80°W.

Desc. 190 ft. over N. slope to wash.

12.70 Old mill, bears E. about 4.20 chs. dist.

13.30 Wash, 20 lks. wide, course N.60°E.

Asc. 190 ft. over S. slope.

19.80 Spur, slopes NE.

Desc. 360 ft. over NW slope.

28.00 Wash, 10 lks. wide, course NE.

Over rolling land.

29.00 Old road, bears E. and W.

29.66 Old house foundation on line.

32.10 Wash, 10 lks. wide, course NE.

Small stream of running water in same.

Asc. 84 ft. over SE slope to spur.

33.34 Intersect the N. side line, (3-4) of the York pat. mining
claim, at 7.00 chs. S. 58°46'E., from cor. No. 3 thereof.
(Mineral Survey No. 3017).

Leave patented mineral land.

35.60 Spur, slopes NE.

Desc. 34 ft. over NW slope.

37.50 Wash, 10 lks. wide, course E.

Asc. 26 ft. over S. slope to

40.00 Set an iron post 3 ft. long, 1 in. in diam., 12 ins. in
the ground to bedrock, supported by a md. of stone, for
the $\frac{1}{4}$ sec. cor. secs. 16 and 17, with brass cap mkd.

$\frac{1}{4}$

S17

S16

1927

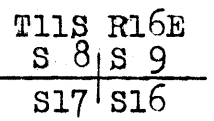
from which,

Survey of part (completion) of Subdivision lines of T.11 S., R.16 E.

Chains

an oak, 7 ins. in diam., bears S.67 1/2°E., 42 lks. dist., mkd. 1/4 S16 BT
an oak, 6 ins. in diam., bears S.86°W., 48 lks. dist., mkd. 1/4 S17 BT

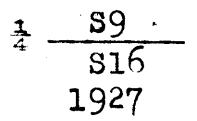
44.60 Asc. 27 ft. over SE slope, to draw. Trail, bears NE and SW.
47.00 Wash, 5 lks. wide, course SE.
49.90 Asc. 68 ft. over SW slope.
Spur, slopes SE.
51.25 Desc. 20 ft. over NE slope.
Wash, 10 lks. wide, course SE.
63.20 Asc. 395 ft. over S. slope.
Spur, slopes E.
68.30 Desc. 60 ft. over N. slope.
Ridge, bears NE and SW.
80.00 Desc. 360 ft. over steep NW slope to Set an iron post 3 ft. long, 2 ins. in diam., 24 ins. in the ground, for the cor. secs. 8, 9, 16 and 17, with brass cap mkd.



1927 from which,
an oak, 12 ins. in diam., bears N.74 1/2°E., 16 lks. dist., mkd. T11S R16E S9 BT
an oak, 7 ins. in diam., bears S.22 1/2°E., 45 lks. dist., mkd. T11S R16E S16 BT
a juniper, 14 ins. in diam., bears S.73 1/2°W., 27 lks. dist., mkd. T11S R16E S17 BT
a madrono, 5 ins. in diam., bears N.38°W., 26 lks. dist., mkd. T11S R16E S8 BT

Land, mountainous.
Soil, rocky 4th. rate.
Timber, oak, juniper, sycamore, madrono and pine.
Undergrowth, scruboak, manzanita, catclaw and catti.

40.00 S.89°46'E., on a random line, bet. secs. 9 and 16. Set temp. 1/4 sec. cor.
80.04 Fall 9 lks. S. of the cor. secs. 9, 10, 15 and 16. Thence, N.89°50'W, on true line, bet. secs. 9 and 16. Over mountainous land, thru scattering timber and dense undergrowth.
10.45 Asc. 140 ft. over S. slope. Wash, 10 lks. wide, course S.80°E.
13.65 Asc. 160 ft. over NE slope to spur. Trail, bears NW and SE.
15.00 Spur, slopes SE.
19.05 Desc. 15 ft. over S. slope. Head of wash, course SE.
30.00 Asc. 355 ft. over E. slope. Spur, slopes SE.
40.02 Asc. 27 ft. over S. slope to Set an iron post 3 ft. long, 1 in. in diam., 26 ins. in the ground for the 1/4 sec. cor. secs. 9 and 16, with brass cap mkd.



from which,

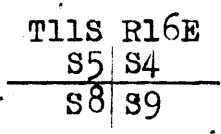
Survey of part (completion) of Subdivision lines of T.11 S., R.16 E.

Chains	
	<p>an oak, 20 ins. in diam., bears N.6°E., 46 lks. dist., mkd. $\frac{1}{4}$ S9 BT</p> <p>an oak, 9 ins. in diam., bears S.74°E., 98 lks. dist., mkd. $\frac{1}{4}$ S16 BT</p>
45.80	<p>Asc. 96 ft. over S. slope. Wash, 10 lks. wide, course SE.</p>
56.80	<p>Asc. 410 ft. over E. slope. Ridge, bears NE and SW. Thence along level N. slope.</p>
66.00	<p>Spur, slopes N. Desc. 290 ft. over NW slope to</p>
80.04	<p>The cor. secs. 8, 9, 16 and 17.</p> <p>Land, mountainous. Soil, rocky 4th. rate. Timber, oak, juniper, and madrono. Undergrowth, manzanita, scruboak, catclaw and cacti.</p> <p>-----</p> <p>N.0° 2'W.. on true line, bet. secs. 8 and 9. Over mountainous land, thru scattering timber and dense undergrowth. Desc. 160 ft. over NW slope.</p>
4.00	<p>Wash, 10 lks. wide, course NE. Over rolling land.</p>
7.80	<p>Wash, 10 lks. wide, course NE. Enter mtns. land. Asc. 50 ft. over gradual E. slope..</p>
26.10	<p>Spur, slopes E. Desc. 125 ft. over N. slope.</p>
35.05	<p>Wash, 10 lks. wide, course E. Asc. 70 ft. over S. slope.</p>
39.00	<p>Spur, slopes E. Desc. gradual N. slope to</p>
40.00	<p>Set an iron post $\frac{3}{4}$ ft. long, 1 in. in diam., 18 ins. in the ground to bedrock, supported by a md. of stone, for the $\frac{1}{4}$ sec. cor. secs. 8 and 9, with brass cap mkd.</p> <p style="text-align: center;">$\frac{1}{4}$</p> <p style="text-align: center;">S8 S9</p> <p style="text-align: center;">1927</p> <p>an oak, 8 ins. in diam., bears S.71°E., 14 lks. dist., mkd. $\frac{1}{4}$ S9 BT</p> <p>an oak, 6 ins. in diam., bears S.83$\frac{1}{2}$°W., 18 lks. dist., mkd. $\frac{1}{4}$ S8 BT</p>
41.20	<p>Desc. 39 ft. over N. slope. Wash, 10 lks. wide, course E.</p>
48.20	<p>Asc. 175 ft. over S. slope. Spur, slopes E.</p>
51.90	<p>Desc. 135 ft. over steep N. slope. Wash, 10 lks. wide, course E.</p>
57.15	<p>Asc. 145 ft. over S. slope. Spur, slopes E.</p>
60.40	<p>Desc. 47 ft. over N. slope. Wash, 10 lks. wide, course E.</p>
65.95	<p>Asc. 65 ft. over S. slope, to spur. Wire fence, bears NW and SE.</p>
69.15	<p>Spur, slopes E. Desc. 30 ft. over NE slope.</p>
70.85	<p>Wash, 10 lks. wide, course SE. Asc. 220 ft. over W. slope to spur.</p>

Survey of part (completion) of Subdivision lines of T.11 S., R.16 E

Chains

72.75 Wire fence, bears NW and SE.
 76.15 Rocky spur, slopes W.
 Desc. gradual NW slope to
 80.00 Set an iron post 3 ft. long, 2 ins. in diam., 18 ins. in the ground to bedrock, supported by a md. of stone, for the cor. secs. 4, 5, 8 and 9, with brass cap mkd.

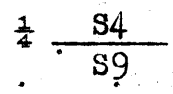


1927 from which,

a juniper, 24 ins. in diam., bears N.64 $\frac{1}{2}$ °E., 59 lks. dist., mkd. T11S R16E S4 BT
 an oak, 12 ins. in diam., bears S.7 $\frac{1}{2}$ °E., 15 lks. dist., mkd. T11S R16E S9 BT
 a juniper, 8 ins. in diam., bears S.15°W., 28 lks. dist., mkd. T11S R16E S8 BT
 an oak, 8 ins. in diam., bears N.3 $\frac{1}{2}$ °W., 39 lks. dist., mkd. T11S R16E S5 BT

Land, mountainous and rolling.
 Soil, rocky 4th. rate.
 Timber, oak, juniper, madrono and sycamore.
 Undergrowth, scruboak, manzanita, catclaw and cacti.

40.00 S.89°50'E., on random line, bet. secs. 4 and 9.
 Set temp. $\frac{1}{4}$ sec. cor.
 80.00 Intersect the cor. secs. 3, 4, 9 and 10.
 Thence,
 N.89°50'W., on true line, bet. secs. 4 and 9:
 Over rolling land, thru scattering timber and dense undergrowth.
 Asc. 498 ft. over broken SE slope.
 32.60 Desc. 25 ft. over SW slope to
 40.00 Set an iron post 3 ft. long, 1 in. in diam., 3 ins. in the ground to bedrock, supported by a md. of stone, for the $\frac{1}{4}$ sec. cor. secs. 4 and 9, with brass cap mkd.



1927 from which,

an oak, 12 ins. in diam., bears N.51 $\frac{1}{2}$ °W., 86 lks. dist., mkd. $\frac{1}{4}$ S4 BT
 an oak, 8 ins. in diam., bears South 90 lks. dist., mkd. $\frac{1}{4}$ S9 BT

44.35 Desc. 75 ft. over SW slope.
 Wash, 10 lks. wide, course S.
 Asc. 54 ft. over SE slope.
 46.60 Spur, slopes S.
 Desc. 10 ft. over SW slope.
 56.50 Wash, 10 lks. wide, course SE.
 Asc. 110 ft. over NE slope.
 61.00 Spur, slopes SE.
 Desc. 25 ft. over SW slope.
 63.45 Wash, 10 lks. wide, course SE.
 Asc. 270 ft. over NE slope.
 78.80 Spur, slopes NW and SE.
 Desc. 25 ft. over SW slope to
 80.00 The cor. secs. 4, 5, 8 and 9.

Survey of part (completion) of Subdivision lines of T.11 S., R.16 E.

Chains

Land, rolling.
Soil, rocky 4th. rate.
Timber, oak, juniper and madrono.
Undergrowth, scruboak, manzanita, catclaw and cacti.

N.0° 2' W., on true line, bet. secs. 4 and 5.
Over mountainous land, thru scattering timber and dense undergrowth.

Asc. 400 ft. over S. slope.

17.50 Spur, slopes SE.

Desc. 60 ft. over NE slope.

23.20 Wash, 20 lks. wide, course E.

Asc. 40 ft. over SE slope.

27.60 Spur, slopes E.

Desc. 208 ft. over NE slope, to

40.00 Set an iron post 3 ft. long, 2 in. in diam., 20 ins. in the ground to bedrock, supported by a md. of stone, for the $\frac{1}{4}$ sec. cor. secs. 4 and 5, with brass cap mkd.

↑
S5 | S4

1927

from which,

an oak, 8 ins. in diam., bears N.21°E., 17 lks. dist., mkd. $\frac{1}{4}$ S4 BT

an oak, 8 ins. in diam., bears N.76°W., 25 lks. dist., mkd. $\frac{1}{4}$ S5 BT

44.00 Desc. 52 ft. over NE slope.

Head of wash, course E.

Asc. 57 ft. over SE slope.

50.00 Spur, slopes E.

Desc. 22 ft. over NE slope.

57.50 Head of wash, course SE.

Asc. 88 ft. over SW slope.

59.10 Ridge, bears NE and SW.

Desc. 105 ft. over N. slope to wash.

59.33 Wire fence, bears NE and SW.

63.20 Wash, 50 lks. wide, course E.

Asc. 207 ft. over S^W slope to

76.56 Intersect the Second Std. Par. S., at 5.75 chs. East of reestablished $\frac{1}{4}$ sec. cor. sec. 32, T.10 S., R.16 E., which is an iron post 1 in. in diam., projecting 12 ins. above ground, with brass cap properly mkd. and witnessed by two properly mkd. bearing trees, one each NE and NW of cor.

At intersection, set an iron post 3 ft. long, 2 ins. in diam., 25 ins. in the ground for the closing cor. secs. 4 and 5, with brass cap mkd.,

T10S R16E
S32

S5 | S4
T11S | R16E
C C

1927

from which,

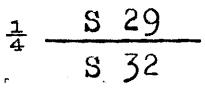
an oak, 14 ins. in diam., bears S.10°E., 26 lks. dist., mkd. T11S R16E S4 CCBT

an oak, 10 ins. in diam., bears S.34°W., 23 lks. dist., mkd. T11S R16E S5 CCBT

Land, mountainous.
Soil, rocky 4th. rate.
Timber, oak, juniper and madrono.
Undergrowth, scruboak, manzanita, catclaw and cacti.

Survey of Part (completion) and Independent Resurvey of Part of Subd. Lines of T.11 S., R.16 E.

Chains
 From cor. of secs. 29, 30, 31 and 32, hereinafter described.
 S. 89° 58' E., on a random line, bet. secs. 29 and 32.
 40.00 Set temp. $\frac{1}{4}$ sec. cor.
 79.21 Fall 7 lks. N. of the cor. secs. 28, 29, 32 and 33.
 Thence,
 N. 89° 55' W., on true line, bet. secs. 29 and 32.
 Over mountainous land, thru dense timber and undergrowth.
 Asc. 15 ft. over NE slope.
 0.50 Spur, slopes N.
 Desc. 75 ft. over NW slope.
 14.50 Wash, 50 lks. wide, course NE.
 Asc. 58 ft. over SE slope.
 15.30 Spur, slopes N.
 Desc. 52 ft. over NW slope.
 18.20 Wash, 40 lks. wide, course NE.
 Asc. 583 ft. over SE slope to
 40.00 Set an iron post 3 ft. long, 1 in. in diam., 8 ins. in the ground to bedrock, supported by a md. of stone for the $\frac{1}{4}$ sec. cor. secs. 29 and 32 with brass cap mkd.



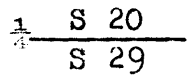
1927 from which,
 an oak, 8 ins. in diam., brs. N. 5° E., 72 lks.
 dist., mkd. $\frac{1}{4}$ S29 BT
 a madrono, 14 ins. in diam., brs. S. 25° E., 48 lks.
 dist., mkd. $\frac{1}{4}$ S32 BT

Asc. 733 ft. over E. slope to sec. cor.
 54.85 Trail, from Soldier Camp to Control road, brs. N-S.
 79.21 Intersect the original cor. of secs. 29, 30, 31 and 32, which is a granite stone 8 x 10 x 6 ins. above ground, firmly set, mkd. with one notch on S. and five notches on N. faces and witnessed by four properly mkd. bearing trees, one each NE, SE, SW and NW of cor.

Land, mountainous.
 Soil, rocky 4th. rate.
 Timber, oak, juniper, madrono and yellow pine.
 Undergrowth, oakbrush, manzanita, catclaw and cacti.

INDEPENDENT RESURVEY.

From the cor. of secs. 29 and 30, hereinbefore described.
 S. 89° 55' E., on a random line, bet. secs. 20 and 29.
 40.00 Set temp. $\frac{1}{4}$ sec. cor.
 78.97 Fall 12 lks. S. of the cor. of secs. 20, 21, 28 and 29.
 Thence,
 West, on true line, brs. S. 89° of sec. 20.
 Over mountainous land, thru heavy timber and dense undergrowth.
 Asc. 802 ft. over E. slope to $\frac{1}{4}$ sec. cor.
 38.00 Mt. Lemon Hgy., brs. NE-SW.
 40.00 Set an iron post 3 ft. long, 1 in. in diam., 26 ins. in the ground for the reestablished $\frac{1}{4}$ sec. cor. of secs. 20 and 29, with brass cap mkd.



1927 from which,
 an oak, 4 ins. in diam., brs. N. 10° E., 6 lks.
 dist., mkd. $\frac{1}{4}$ S20 BT
 an oak, 4 ins. in diam., brs. S. 12° E., 46 lks.
 dist., mkd. BT

Independent Resurvey of Part and
Survey of Part (completion) of Subd. Lines of T.11 S., R.16 E.

Chains

The original $\frac{1}{4}$ sec. cor. of secs. 20 and 29, brs. N. 82° E., 80 lks. dist., which is a quartz stone 8 x 9 x 5 ins. above ground, firmly set, properly mkd. and witnessed by two properly mkd. bearing trees, one each NW and SW of cor. Destroy this old cor.

78.97 Asc. 885 ft. over E. slope to
Intersect the cor. of secs. 29 and 30 only, hereinbefore described.

Continue line and measurement.

80.00 Intersect the subdivisional line bet. secs. 29 and 20, ~~only~~
~~Closing cor. of said secs. established as hereinafter~~
~~described.~~

Land, mountainous.

Soil, rocky 4th. rate. manzanita and yellow pine.

Timber, oak, juniper and yellow pine, catclaw and cacti.

Undergrowth, oakbrush, manzanita, catclaw and cacti.

SURVEY.

38.10 From the $\frac{1}{4}$ sec. cor. sec. 30 only, hereinbefore described.
West, on a random line, on N. Bdy. sec. 30 ($W\frac{1}{2}$).

Fall 10 lks. S. of the cor. secs. 19, 24, 25 and 30 on
W. Bdy. of Tp., hereinbefore described.

Thence,

S. $89^{\circ}51'$ E., on true line, on N. Bdy. sec. 30 ($W\frac{1}{2}$).

Over mountainous land, thru heavy timber and dense under-
growth.

Desc. 293 ft. over steep NE slope.

5.45 Wash, 30 lks. wide, with small stream of running water,
course NE.

Asc. 25 ft. over NW slope.

10.50 Spur, slopes NE.

Desc. 118 ft. over SE slope.

17.95 Wash, 30 lks. wide, with small stream of running water, in
bottom of canyon, course N.

Asc. 729 ft. over broken W. slope.

35.30 Spur, slopes NW.

Desc. 20 ft. over NE slope to

37.07 (40.00 chs. westing from closing cor. of secs. 19 and 20.)

Set an iron post 3 ft. long, 1 in. in diam., 26 ins. in
the ground, for the reestablished $\frac{1}{4}$ sec. cor.

of sec. 19 only, with brass cap mkd.

 $\frac{1}{4}$ S 19

1927

from which,

a yellow pine, 14 ins. in diam., brs. N. $86\frac{1}{2}^{\circ}$ E., 28 lks.
dist., mkd. $\frac{1}{4}$ S19 BT

a yellow pine, 12 ins. in diam., brs. N. $32\frac{1}{2}^{\circ}$ W., 130 lks.
dist., mkd. $\frac{1}{4}$ S19 BT

Thence,

East, on true line, continuing measurement.

38.10 Intersect the $\frac{1}{4}$ sec. cor. of sec. 30 hereinbefore descri-
bed.

Land, mountainous.

Soil, rocky 4th. rate.

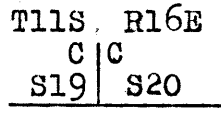
Timber, oak, juniper, madrono and yellow pine.

Undergrowth, oakbrush, manzanita, catclaw and cacti.

Survey of Part (completion) of Subd. Lines of T.11 S., R.16 E.

Chains

At a point 1.03 chs. West from cor. of secs. 20 and 29, (determined by base of triangulation of part of line bet. secs. 17 and 20 as hereinafter described) establish closing cor. of secs. 19 and 20 as follows: Set an iron post 3 ft. long, 2 ins. in diam., 20 ins. in the ground to bedrock, supported by a md. stone, for the closing cor. of secs. 19 and 20, with brass cap mkd.



S30
1927

from which,

a yellow pine, 30 ins. in diam., brs. N.70 1/2° E., 41 lks. dist., mkd. T11S R16E S20 CC BT

a yellow pine, 12 ins. in diam., brs. N.34 1/2° W., 37 lks. dist., mkd. T11S R16E S19 CC BT

Thence,

N.0° 3' W., on true line, bet. secs. 19 and 20.

Over mountainous land, thru heavy timber and dense undergrowth.

22.50 Desc. 437 ft. over NW slope.

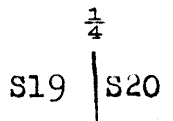
Head of wash, course NE.

32.00 Asc. 117 ft. over SE slope.

Spur, slopes NE.

40.10 Desc. 142 ft. over NW slope to

(Midpoint) set an iron post 3 ft. long, 1 in. in diam., 26 ins. in the ground, for the 1/4 sec. cor. secs. 19 and 20, with brass cap mkd.



1927

from which,

a yellow pine, 24 ins. in diam., brs. S.51 1/2° E., 68 lks. dist., mkd. 1/4 S20 BT

a madrono, 36 ins. in diam., brs. S.53 1/2° W., 28 lks. dist., mkd. 1/4 S19 BT

43.10 Desc. 49 ft. over N. slope.

Wash, 25 lks. wide, course NE.

48.38 Asc. 116 ft. over SE slope.

Spur, slopes E.

Intersect the S. end line, (1-2) of the "Bornite" pat. lode mining claim, Mineral Survey No. 3679 at 1.30 chs. N.82°16' W., of the S.E.C. cor. thereof.

Thence across pat. mineral land.

60.65 Desc. 61 ft. over NW slope.

Head of wash, course E.

63.42 Asc. 613 ft. over broken SE slope to sec. cor. point.

Trail, brs. E. and W.

80.20 True point for cor. secs. 17, 18, 19 and 20 falls on slide rock on precipitous slope where it is impracticable to monument the corner therefore establish witness corner at a point 2.00 chs., N.0° 3' W., as hereinafter described.

Land, mountainous.

Soil, rocky 4th. rate.

Timber, oak, juniper and yellow pine.

Undergrowth, scruboak, manzanita, catclaw and cacti.

From cor. of secs. 16, 17, 20 and 21, West, on true line on Sectional Correction line, bet. secs. 17 and 20.

Survey of Part (Completion) of Subd. Lines of T.11 S., R.16 E.

Chains

Over mountainous land, thru heavy timber and dense undergrowth.

Across patented mineral land.

Asc. 660 ft. over steep SE slope to spur.

1.00 Mt. Lemon Hgy., brs. NE and SW.

16.80 Spur, slopes NE.

Asc. 516 ft. over N. slope. to.

40.00 Set an iron on post 3 ft. long, 1 in. in diam., 3 ins. in the ground to bedrock, supported by a md. of stone, for the $\frac{1}{4}$ sec. cor. secs. 17 and 20, with brass cap mkd.

$\frac{1}{4}$ S 17
S 20

1927

from which,

a mountain mahogany, 5 ins. in diam., brs. N. 50° W., 101 lks. dist., mkd. $\frac{1}{4}$ S17 BT

a mountain mahogany, 5 ins. in diam., brs. S. 14 $\frac{1}{2}$ ° W., 22 lks. dist., mkd. $\frac{1}{4}$ S20 BT

Asc. 775 ft. over NE slope.

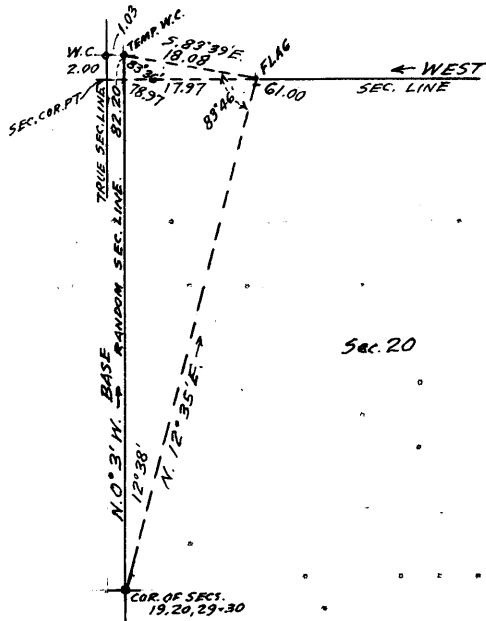
59.25 Rocky spur, slopes N.

Marble Peak, brs. South about 50 lks. dist., and 30 ft. above line point.

Over broken N. slope.

61.00 Ridge brs. on NW and SE station.

Beyond this point precipitous, broken slopes render chaining impracticable, therefore triangulate remainder of the measurement of this line as follows:



Set flag at this point. From cor. secs. 19, 20, 29 and 30, chain random sec. line bet. secs. 19 and 20 N. 0° 3' W., 82.20 chs., and Set temp. witness corner to cor. secs. 17, 18, 19 and 20. Use this random sec. line as a base for this triangulation. From cor. secs. 19, 20, 29 and 30, the flag brs. N. 12° 35' E., and from the temp. W.C. the flag brs. S. 83° 39' E., the Computed length of line of from temp. W.C. to flag = 18.08 chs. S. 83° 39' E., the lat. and dep. of which are 2.00 chs. S. and 17.97 chs. E., respectively.

Dist. chained on line bet. secs. 17 and 20: 61.00 chs. West.

Departure of line from Flag to temp. W.C.

to sec. cor. : 17.97 "

Westing to temp. W.C. : 78.97 "

The temp. witness cor. to sec. cor. is therefore 2.00 chs. North from 78.97 ch. station on sec. line bet. secs. 17 and 20, or 1.03 chs. E. from 2.00 ch. station on sec. line bet. secs. 17 and 18.

The true point for the cor. secs. 17, 18, 19 and 20 and the western extremity of the sec. line bet. secs. 17 and 20, falls on slide rock, where it is impracticable to set either cor. monument or W.C. thereto, therefore establish permanent W.C. at 1.03 chs. West from temp. W.C. or at 2.00 chs. N. 0° 3' W., from the sec. cor. point as hereinafter described.

The true length of sec. line bet. secs. 19 and 20 is therefore 82.20 chs. minus 2.00 chs. : 80.20 chs., N. 0° 3' W.

Survey of Part (Completion) of Subd. Lines of T.11 S., R.16 E.

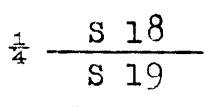
Chains

70.00 (Approximate) Wash, course SE; in bottom of ravine, about 250 ft. below 61.00 ch. station.
 80.00 Asc. about 250 ft. over broken, precipitous SE slope to True point for cor. of secs. 17, 18, 19 and 20, on steep slide rock on SE slope, where it is impracticable to monument the corner. W.C. established at 2.00 chs. N. 0° 3' W., as hereinafter described.

Land, mountainous.
 Soil, rocky 4th. rate.
 Timber, oak, juniper, madrono and yellow pine.
 Undergrowth, scruboak, manzanita, mahogany and cacti.

From true point for cor. of secs. 17, 18, 19 and 20. West, on true line, on Sectional Correction Line, bet. secs. 18 and 19. Over mountainous land, thru scattering timber and dense undergrowth.

Asc. 125 ft. over SE slope.
 2.45 Ridge, brs. N. and S.
 Desc. 496 ft. over NW slope to wash.
 7.00 Trail, brs. NE and SW.
 24.25 Wash, 20 lks. wide, course NW.
 Asc. 123 ft. over NE slope.
 31.20 Spur, slopes N.
 Desc. 292 ft. over NW slope.
 37.70 Wash, 10 lks. wide, course NW.
 Asc. 27 ft. over NE slope to
 40.00 Set an iron post 3 ft. long, 1 in. in diam., 26 ins. in the ground for the 1/4 sec. cor. secs. 18 and 19, with brass cap mkd.



1927 from which,
 a yellow pine, 30 ins. in diam., brs. N.28°E., 95 lks. dist., mkd. 1/4 S18 BT
 a yellow pine, 36 ins. in diam., brs. S.76°W., 39 lks. dist., mkd. 1/4 S19 BT

Asc. 42 ft. over NE slope.
 43.00 Spur, slopes NW.
 Desc. 657 ft. over SW slope.
 64.10 Wash, in bottom of canyon, 30 lks. wide, with small stream, of water, course N.20°W.
 Asc. 235 ft. over NE slope.
 74.40 Spur, slopes NE.
 Desc. 15 ft. over NW slope.
 76.65 Wash, 10 lks. wide, course NE.
 Asc. 15 ft. over SE slope to
 76.90 Intersect the West Bdy. of the Tp., Cor. of secs. 13, 18, 19 and 24, established at this point of intersection as hereinbefore described.

Land, mountainous.
 Soil, rocky 4th. rate.
 Timber, oak, juniper, madrono and yellow pine.
 Undergrowth, scruboak, manzanita, catclaw and cacti.

In the notes for above mile, no mention is made of intersection with the west boundary of Min. Sur. No. 3679 for the reason that after diligent search, no satisfactory evidence of cors. thereof was found.

Survey of Part (Completion) of Subd. lines of T.11 S., R.16 E.

Chains

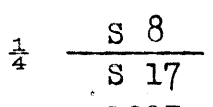
- From true point for cor. of secs. 17, 18, 19 and 20.
N.0° 3' W., on true line, bet. secs. 17 and 18.
Over mountainous land, thru heavy timber and dense undergrowth. Across patented mineral land.
Asc. 39 ft. over SE slope.
- 2.00 Ridge, bears E. and W.
Set an iron post 3 ft. long, 2 ins. in diam., 2 ins. in the ground to bedrock, deposit a stone mkd. with a cross (X) at base of post, supported by a md. stone, for the witness corner to corner of secs. 17, 18, 19 and 20, with brass cap mkd.
- | | |
|-------|------|
| T11S | R16E |
| S18 | S17 |
| <hr/> | |
| S19 | S20 |
| W | C |
| 1927 | |
- No suitable bearing trees available.
- Desc. 498 ft. over NE slope to wash.
- 14.10 Intersect the N. end line (3-4) of the Keeney patented mining claim, mineral survey No. 3679, at 1.60 chs., S. 82°16'E., from cor. No. 3 thereof.
Leave patented mineral land.
- 18.10 Wash, near head, course NE.
Asc. gradual SE slope.
- 27.80 Spur, slopes NE.
- Desc. 349 ft. over NW slope to wash.
- 36.80 Wash, 20 lks. wide, course NE.
Asc. 47 ft. over SE slope to
- 40.00 Set an iron post 3 ft. long, 1 in. in diam., 20 ins. in the ground to bedrock, supported by a md. stone, for the $\frac{1}{4}$ sec. cor. of secs. 17 and 18, with brass cap mkd.
- | | |
|---------------|-----|
| $\frac{1}{4}$ | |
| S18 | S17 |
| 1927 | |
- from which,
an oak, 8 ins. in diam., bears N.14°E., 42 lks. dist., mkd. $\frac{1}{4}$ S17 BT
an oak, 8 ins. in diam., bears S.68°W., 73 lks. dist., mkd. $\frac{1}{4}$ S18 BT
- Asc. 38 ft. over SE slope.
- 45.10 Spur, slopes NE.
- Desc. 249 ft. over NE slope to wash.
- 52.40 Trail, brs. E-W.
- 54.70 Wash, 50 lks. wide, course E.
Asc. 434 ft. over broken SE slope to cor.
- 78.00 Wire fence, brs. NE-SW.
- 80.00 Set an iron post 3 ft. long, 2 ins. in diam., 16 ins. in the ground to bedrock, deposit a stone mkd. with a cross (X) at base of post, supported by a md. of stone, for cor. of secs. 7, 8, 17 and 18, with brass cap mkd.
- | | |
|-------|------|
| T11S | R16E |
| S7 | S8 |
| <hr/> | |
| S18 | S17 |
- 1927
- No bearing trees available.
No mention is made of intersections with Min. Sur. No. 2871 because of lack of cors. thereof.
Land, mountainous.
Soil, rocky 4th. rate.
Timber, oak, juniper and yellow pine.
Undergrowth, oakbrush, manzanita, catclaw and cacti.

X

Survey of Part (completion) of Subd. Lines of T.11 S., R.16 E.

Chains

From cor. of secs. 7, 8, 17 and 18, East, on random line, bet. secs. 8 and 17.
 40.00 Set temp. $\frac{1}{4}$ sec. cor.
 79.74 Fall 37 lks. N. of the cor. secs. 8, 9, 16 and 17. Thence, N. $89^{\circ}44'W.$, on true line, bet. secs. 8 and 17. Over mountainous land, thru scattering timber and dense undergrowth.
 1.75 Desc. 190 ft. over NW slope to wash. Wash, 10 lks. wide, course SE.
 4.75 Asc. 30 ft. over E. slope. Spur, slopes NW.
 7.30 Desc. 45 ft. over SW slope. Wash, 10 lks. wide, course NE.
 39.87 Asc. 778 ft. over E. slope, to Set an iron post 3 ft. long, 1 in. in diam., 26 ins. in the ground for the $\frac{1}{4}$ sec. cor. secs. 8 and 17, with brass cap mkd.

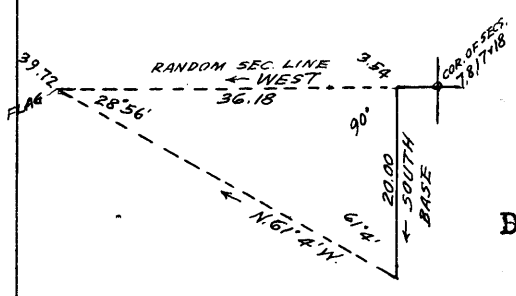


1927 from which,
 an oak, 14 ins. in diam., brs. N. $57\frac{1}{2}^{\circ}E.$, 46 lks. dist., mkd. $\frac{1}{4}$ S8nBT
 an oak, 10 ins. in diam., brs. S. $4^{\circ}W.$, 22 lks. dist., mkd. $\frac{1}{4}$ S17 BT

63.65 Asc. 405 ft. over broken NE slope. Spur, slopes SE.
 70.95 Desc. gradual SW slope. Head of wash, course SE.
 75.04 Asc. 159 ft. over SE slope to cor.
 79.74 Wire fence, brs. NE-SW. The cor. secs. 7, 8, 17 and 18.

Land, mountainous.
 Soil, rocky 4th. rate.
 Timber, oak, juniper and yellow pine.
 Undergrowth, oakbrush, manzanita, catclaw and cacti.

3.54 From cor. of secs. 7, 8, 17 and 18, West, on random line bet. secs. 7 and 18. Discontinue chaining at this point owing to precipitous slopes ahead. Triangulate as follows:



Measure base, S., 20.00 chs. Set flag ahead on random line. From S. end of base, flag brs. N. $61^{\circ}4'W.$ Vertical angle from N. end base to flag: -12° .

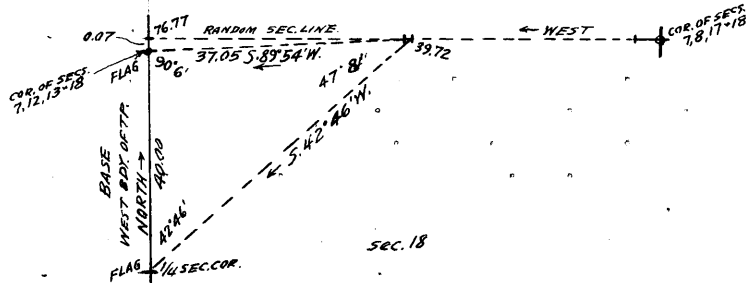
Dist. chained: 3.54 chs. W.
 " triang. : 36.18 " "
 " to flag : 39.72 " "

39.72 Flag point of above described triang. Continue line and measurement by chaining.
 40.00 Set temp. $\frac{1}{4}$ sec. cor. Discontinue chaining and triangulate again from 39.72 ch. station as follows:

Flag on objective sec. cor. is visible and brs. S. $89^{\circ}54'W.$ Vertical angle : -9° . Flag on $\frac{1}{4}$ sec. cor. 13-18 on W. Bdy. of Tp., is visible and brs. S. $42^{\circ}46'W.$ Use as base, N. of line bet. secs. 13-18, N. 40 chs.

Survey of Part (completion) of Subd. Lines of T.11 S., R.16 E.

Chains



Dist. by this triang.: 37.05 chs., S. 89° 54' W., the lat. and dep. of which are 7 lks. S., and 37.05 chs. W.
 Dist. by chaining and previous triang.: 39.72 chs.
 Dep. of this triang.: 37.05 "

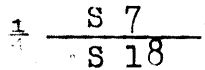
76.77 "

76.77 The lat. of above described triang. being 7 lks. S., the random line extended W., would therefore at Fall 7 lks. N. of the cor. of secs. 7, 12, 13 and 18 on W. Bdy. of Tp., hereinbefore described.

Thence, N. 89° 57' E., on true line, bet. secs. 7 and 18.

Over mountainous land, thru scattering timber and dense undergrowth. Measurement to 1/4 sec. cor. by triang. as hereinbefore described.

36.77 Asc. 400 ft. over broken SW slope to (40.00 chs. westing from cor. secs. 7, 8, 17 and 18.) Set an iron post 3 ft. long, 1 in. in diam., 12 ins. in the ground to bedrock, supported by a md. of stone, for the 1/4 sec. cor. secs. 7 and 18, with brass cap mkd.



1927

from which,

a juniper, 14 ins. in diam., brs. N. 72 1/2° E., 122 lks. dist., mkd. 1/4 S7 BT
 a juniper, 12 ins. in diam., brs. S. 29° W., 133 lks. dist., mkd. 1/4 S18 BT

37.05 Continue line and measurement by chaining. Spur, slopes SW. Triangulation point; continue line and measurement by another triang. as hereinbefore described.

Asc. 760 ft. over SW slope.

60.00 Trail, brs. N-S.

73.23 Ridge, brs. N-S. Triang. point hereinbefore described.

Continue line and measurement by chaining.

Desc. 123 ft. over E. slope to

76.77 The cor. of secs. 7, 8, 17 and 18.

Land, mountainous.

Soil, rocky 4th. rate.

Timber, oak, juniper and madrono.

Undergrowth, oakbrush, manzanita, catclaw and cacti.

N. 0° 3' W., on true line, bet. secs. 7 and 8.

Over mountainous land, thru scattering timber and dense undergrowth.

Asc. 292 ft. over SE slope.

7.50 Ridge, brs. N. and SW.

Wire fence, brs. NE-SW.

Asc. gradually up ridge.

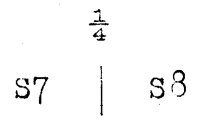
10.83 Same fence, brs. NW-SE.

11.41 Fall 64 lks. E. of U.S.L.M. No. 2871, which is a stone 20 x 20 x 16 ins. above ground, firmly set and mkd. with cross (X) USLM No. 2871, with md. of stone to N. about 3 ft. distant.

Survey of part (completion) of Subdivision lines of T.11 S., R.16 E.

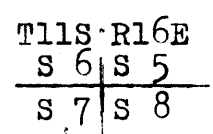
Chains

10.85 Peak on line, on ridge from S. to NW.
 Desc. 228 ft. over NE slope.
 27.00 Wash, 30 lks. wide, 2 ft. deep, course NE.
 Asc. 167 ft. over SE slope, to
 40.00 Set an iron post 3 ft. long, 1 in. in diam., 26 ins. in
 the ground, for the 1/4 sec. cor. secs. 7 and 8, with
 brass cap mkd.



1927 from which,
 an oak, 8 ins. in diam., bears N.84 1/2° W., 9 lks.
 dist., mkd. 1/4 S7 BT
 an oak, 8 ins. in diam., bears S.74 1/2° E., 26 lks.
 dist., mkd. 1/4 S8 BT

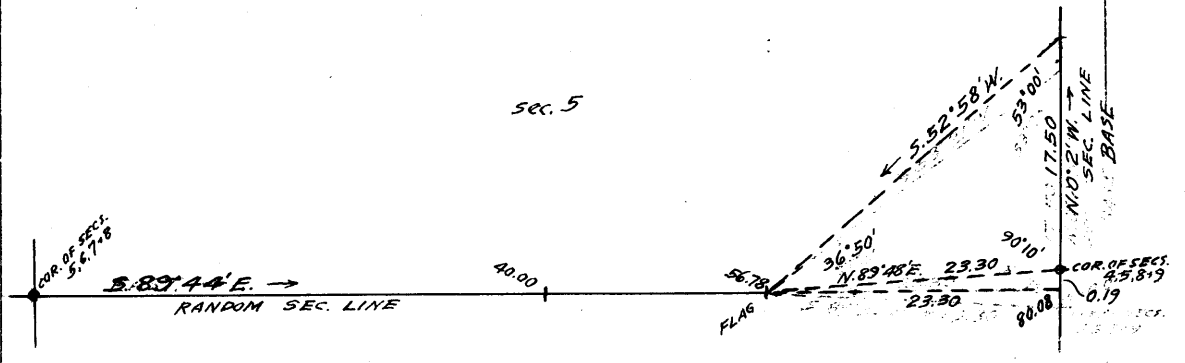
43.00 Asc. 71 ft. over SE slope.
 Ridge, bears E. and W.
 Desc. 531 ft. over broken NE slope.
 77.30 Head of wash, course E.
 Asc. 20 ft. over SE slope, to
 80.00 Set an iron post 3 ft. long, 2 ins. in diam., 14 ins. in
 the ground to bedrock, supported by a md. of stone;
 for the cor. secs. 5, 6, 7 and 8, with brass cap mkd.



1927 from which,
 an oak, 6 ins. in diam., bears N.30° E., 30 lks.
 dist., mkd. T11S R16E S5 BT
 an oak, 14 ins. in diam., bears S.58° E., 20 lks.
 dist., mkd. T11S R16E S8 BT
 an oak, 12 ins. in diam., bears S.34° W., 85 lks.
 dist., mkd. T11S R16E S7 BT
 an oak, 6 ins. in diam., bears N.46° W., 38 lks.
 dist., mkd. T11S R16E S6 BT

Land, rough mtns.
 Soil, rocky 4th. rate.
 Timber, oak, juniper and madrono.
 Undergrowth, scruboak, manzanita, catclaw and cacti.

40.00 S.89°44' E., on a random line, bet. secs. 5 and 8.
 Set temp. 1/4 sec. cor.
 56.78 Discontinue chaining on account of precipitous slopes; set
 flag for triangulation. The cor. secs. 4, 5, 8 and 9
 brs. N.89°48' E., vertical angle is - 23°.



sec. 8

Survey of part (completion) of Subdivision lines of T.11 S., R.16 E

Chains

From cor. secs. 4, 5, 8 and 9, measure base 17.50 chs. N.0° 2' W. From N. end of base flag bet. secs. 5 and 8 brs. S.52° 58' W.

Dist: by chaining : 56.78 chs.
" " triang. : 23.30 "
Totals : 80.08 "

Dist. by this triangulation : 23.30 chs., N.89° 48' E., the latitude and departure of which are 8 lks. N., and 23.30 chs. E.

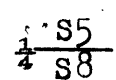
The latitude of above described triangulation being 8 lks. N. the random line would therefore at. ... therefore at Fall 19 lks. S. of the cor. secs. 4, 5, 8 and 9.

Thence, N.89° 52' W., on true line, bet. secs. 5 and 8. Over rough, mtns. land, thru scattering timber and dense undergrowth.

5.00 Desc. 145 ft. over SW slope. Wash, 30 lks. wide, course SE. (Approximate topography). Asc. 700 ft. over precipitous NE slope. 23.00 Foot of cliff, 200 ft. high, facing NE on line. Asc. vertical face of same.

23.38 Top of cliff; flag point for above described triang., on Rocky spur, sloping SE. From which point, USGS BM 8385 on Kellogg Mtn., bears S.14° 45' E. Lookout tower on Mt. Bigelow, bears S.12° E.

40.04 Desc. 200 ft. over SW slope, to Set an iron post 3 ft. long, 1 in. in diam., 6 ins. in the ground to bedrock, supported by a md. of stone, for the 1/4 sec. cor. secs. 5 and 8, with brass cap mkd.

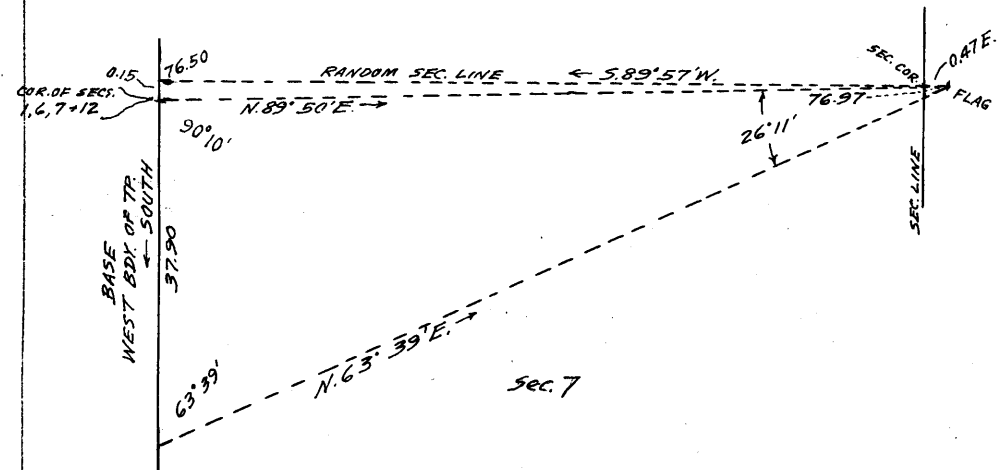


1927 from which, an oak, 12 ins. in diam., bears N.18 1/2° E., 18 lks. dist., mkd. 1/4 S5 BT. an oak, .10 ins. in diam., bears S.16° W., 51 lks. dist., mkd. 1/4 S8 BT

43.10 Desc. 36 ft. over SW slope. Wash, 50 lks. wide, course SE. Asc. 709 ft. over broken SE slope to 80.08 The cor. secs. 5, 6, 7 and 8.

Land, rough, mountainous. Soil, rocky 4th. rate. Timber, oak, juniper and yellow pine. Undergrowth, scruboak, manzanita, catclaw and cacti.

West, on a random line, bet. secs. 6 and 7. Chaining is impracticable owing to precipitous slopes, therefore triangulate measurement of entire line as follows:



Survey of part(completion) of Subdivision lines of T.11 S., R.16 E.

Chains

Set flag at a point 0.47 chs. E. of cor. secs. 5, 6, 7 and 8. From cor. secs. 1, 6, 7 and 12, on W. Bdy. of Tp., the flag bears N.89°50'E., with vertical angle of plus 12°. Measure a base from cor. secs. 1, 6, 7 and 12, South 37.90 chs. on W. Bdy. of Tp. From S. end of base the flag bears N.63°39'E.

Dist. by triang. : 76.97 chs., S.89°50'W. the lat. and dep. of which are 0.22 chs. S. and 76.97 chs. W.

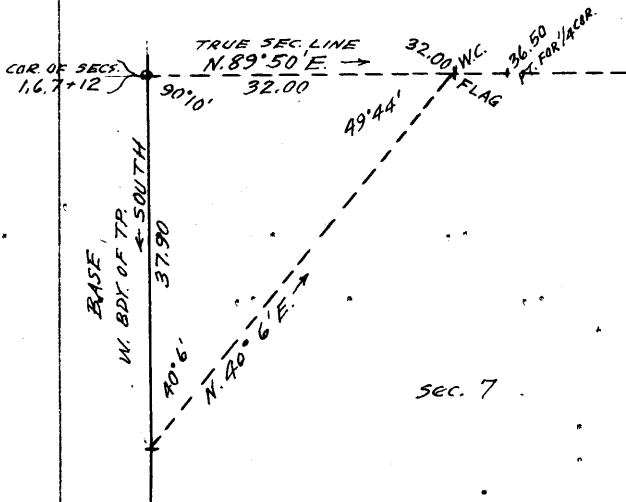
The flag being 0.47 chs. E. of sec. cor. the true length of random line is 76.97 chs. - 0.47 chs. : 76.50 chs. The random line S.89°57'W. bet. secs. 6 and 7, will therefore at

76.50 Fall 15 lks. N. of the cor. secs. 1, 6, 7 and 12, here-inbefore described.

Thence, N.89°50'E., on true line, bet. secs. 6 and 7. Over rough mountainous land, thru heavy timber and dense undergrowth.

Asc. about 800 ft. over rough, broken, SW slope to WC 1/4 sec. cor.

Chaining is impracticable therefore to locate a point for 1/4 sec. cor. or witness cor. thereto, triangulate as follows:



Set a flag ahead on true line, the vertical angle to which is plus 23°. Use the same base as used for the triang. of entire line, which is S. 37.90 chs. on W. Bdy. of Tp., from cor. secs. 1, 6, 7 and 12. From S. end of base flag bears N.40° 6'E. Dist. by this triang. : 32.00 chs. N.89°50'E.

32.00 Flag point of above described triangulation. Chaining being impracticable on sec. line either easterly or westerly from this point and the true point for the 1/4 sec. cor. being inaccessible, establish witness cor. at this point as follows:

Set an iron post 3 ft. long, 1 in. in diam., 18 ins. in the ground to bedrock, supported by a md. of stone, for witness cor. to 1/4 sec. cor. secs. 6 and 7, with brass cap mkd.

1/4 S6
S7 WC

1927 from which, an oak, 10 ins. in diam., bears N.53°E., 23 lks. dist., mkd. WC 1/4 S6 BT an oak, 10 ins. in diam., bears S.85°E., 22 lks. dist., mkd. WC 1/4 S7 BT

36.50 Corner falls on spur, slopes NW. Asc. about 600 ft. over NW slope to ridge. True point for 1/4 sec. cor. falls on precipitous slope where it is inaccessible, therefore establish witness cor. at 4.50 chs. S.89°50'W., as described above.

Survey of part (completion) of Subdivision lines of T.11 S., R.16 E.

Chains

70.00 Oracle Ridge, brs. N. 20° E. & S. 20° W.

Trail on same, bears N. and S.

Desc. gradual E. slope to

76.50 The cor. secs. 5, 6, 7 and 8.

Land, rough Mtns.

Soil, rocky 4th. rate.

Timber, oak, juniper and yellow pine.

Undergrowth, scruboak, manzanita, catclaw and cacti.

N. 0° 3' W., on true line, bet. secs. 5 and 6.

Over rough, mtns. land, thru scattering timber and dense undergrowth.

Asc. 236 ft. over SE slope to ridge.

7.00 Trail, bears NE and SW.

8.25 Oracle Ridge, brs. NE & SE.

From which,

Flag on USGS BM 7584 on Rice Peak, bears N. 13° 40' W.

Desc. 145 ft. over NW slope.

25.90 Wash, near head, course NW.

Asc. 199 ft. over SW slope to

40.00 Set an iron post 3 ft. long, 1 in. in diam., 26 ins. in the ground, for the $\frac{1}{4}$ sec. cor. secs. 5 and 6, with brass cap mkd. $\frac{1}{4}$

S6

S5

1927

from which,

a juniper, 20 ins. in diam., bears N. 42 $\frac{1}{2}$ ° E. 73 lks. dist., mkd. $\frac{1}{4}$ S5 BT

an oak, 4 ins. in diam., bears S. 79° W., 9 lks. dist., mkd. BT only.

Asc. 13 ft. over SW slope.

41.30 Ridge, bears NW and SE.

41.55 Trail, bears NW and SE.

Desc. 283 ft. over NE slope.

56.95 Wash, 30 lks. wide, course NE.

Asc. 106 ft. over SE slope.

71.00 Ridge, bears NE and SW.

Desc. 208 ft. over NE slope to

76.69 Intersect the Second Std. Par. N., at 5.46 chs. East, of the Std. $\frac{1}{4}$ sec. cor. sec. 31, which is an iron post 1 in. in diam., projecting 12 ins. above ground, firmly set, with brass cap properly mkd. and witnessed by one properly mkd. bearing tree NE and md. stone N. of cor. At intersection set an iron post 2 ins. in diam., 18 ins. in the ground to bedrock, supported by a md. of stone, for the closing cor. secs. 5 and 6, with brass cap mkd.

T10S R16E

S31

S6 | S5

T11SR16E

CC

1927

from which,

a juniper, 24 ins. in diam., bears S. 81° E., 59 lks. dist., mkd. T11S R16E S5 CC BT

on outcropping ledge, chisel a cross (X) B0 S6 which bears (to cross) S. 72° W. 28 lks. dist.

No other suitable bearing tree available.

Survey of part (completion) of Subdivision lines of T.11 S., R.16 E.

Chains

Land, mountainous.
Soil, rocky 4th. rate.
Timber, oak, juniper and yellow pine.
Undergrowth, scruboak, manzanita, catclaw and cacti.

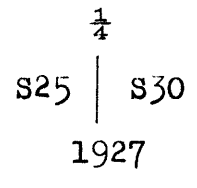
TIE TO USGS BM on MT. LEMON,
in
T.11 S., R.15 E.

117.87 From the original cor. secs. 25, 30, 31 and 36, T.11 S.,
Rs. 15 and 16 E.,
West, on true line, for tie purpose only.
From which point measure N.10°W., 5.66 chs. to USGS BM
No. 9150 which is a brass cap firmly set in ground and
cement, mkd.

Elevation
above sea
9150 feet
at the SE leg of Mt. Lemon
lookout tower.

Reconstruction of the 1/4 sec. cor.
of
Secs. 25 and 30, T.11 S., Rs. 15 & 16 E.

Alongside of the original 1/4 sec. cor., which is a quartz
stone, 15 x 10 x 6 ins. above ground, firmly set, prop-
erly mkd. and witnessed by two properly mkd. bearing
trees in good state of preservation, set an iron post
3 ft. long, 1 in. in diam., 16 ins. in the ground to
bedrock, supported by a md. of stone, for the 1/4 sec.
cor. secs. 25 and 30, with brass cap mkd.



USGS BM No. 4630
in
sec. 2,
T.11 S., R.16 E.

After diligent search no evidence of this BM located.

GENERAL DESCRIPTION
of
T.11 S., R.16 E.

The surface of this township is rolling and mountainous and ranges in elevation above sea level from 4600 ft. to 8000 ft., with the lower parts in the NE quarter.

The soil, except for small areas in the NE portion, where the soil permits raising small orchards, is of rocky 3rd. and 4th. rate.

The timber ranges from excellent fir and yellow pine to mesquite, madrono, cedar and juniper, with the more valuable wood found in the Southern portions of the township. Along the larger canyons is found a good growth of sycamore and cottonwood and small alder.

On all parts of the Tp., is found a thick growth of underbrush, especially in the higher elevations, chiefly manzanita, scruboak, catclaw and various forms of cacti life.

A few springs were found along the S. Bdy., south of line; wells of good water were found in secs. 12 and 15.

A few of the larger canyons contain streams of water. Except in sec. 12 where the Interocean Cattle Ranch is located no settlers were found, excepting mines being developed, the principal one being the Apache Camp in secs. 16 and 17.

Evidence of mineral is plentiful throughout the Tp., as this is an old established mining locality.

A summer camp, known as Soldier camp is located in sec. 32 to which a good road leads from the North, passing thru this Tp. The Butterfly trail constructed by the Forest Service closely follows the S. Bdy.

With the exception of secs. 1, 2, 11, 12, 13 and 14 all lands lie within the Coronado National Forest.

FINAL FIELD TEST
of
Buff Transit No. 16724,
by

Sidney E. Blout, U.S. Cadastral Engineer.

June, 27, 1926:

At same station as described on page 2 hereof, examine the adjustments of the transit and find no errors, then to test the workings of the solar apparatus by comparing its indications with the true meridian established on June, 9, 1926 described on page 2 also. proceed as follows:

At 9h.00m., a.m., app.t., set off $32^{\circ}28\frac{1}{2}'$ N., on the lat. arc; $23^{\circ}21'$ N., on the declination arc and determine a meridian with the solar which is found to agree with the true meridian.

At 12h.00m., app.noon, with the lat. arc unchanged, observe the sun on the meridian; the resultant reading of the decl. arc is $23^{\circ}20\frac{1}{2}'$ N., which agrees with the computed declination of the sun.

At 3h.00m., p.m., app.t., with lat. arc unchanged, set off $23^{\circ}20\frac{1}{2}'$ N., on the decl. arc and determine a meridian with the solar which is found to agree with the true meridian.

As all of the observations taken during the usual hours of solar work agree within 1' of the true meridian, conclude that the adjustments of the instrument have been maintained during the survey of the lines mentioned in the foregoing notes.

FINAL FIELD TEST
of
Buff Transit No. 9940
by

Benjamin J. Kinsey, U.S. Surveyor.

July, 21, 1927:

On same meridian described on page 3 hereof, examine the adjustments of the transit and find no errors; then to test the workings of the solar apparatus proceed as follows:

At 8h.00m., a.m., app.t., set off $32^{\circ}29'$ N., on the lat. arc; $20^{\circ}40'$ N., on the decl. arc and determine a meridian with the solar which is found to agree with the true meridian.

At 12h.00m., app.noon, with the lat. arc unchanged, observe the sun on the meridian; the resultant reading of the decl. arc is $20^{\circ}41\frac{1}{2}'$ N., which agrees with the computed declination of the sun.

At 3h.00m., p.m., with lat. arc unchanged, set off $20^{\circ}43'$ N., on the decl. arc and determine a meridian with the solar which is found to agree with the true meridian.

As all of the obsns. taken during the usual hours of solar work agree within 1' of the true meridian, conclude that the adjustments of the instrument have been maintained during the surveys described in the foregoing notes.

FINAL FIELD TEST
of
Young & Son Transit No. 8478
By
Charles E. Hunter, U.S. Transitman.

July, 17, 1928:

On same meridian described on page 4 hereof, examine the adjustments of the transit and find no errors; then to test the workings of the solar apparatus proceed as follows:

At 9h.00m., a.m., app.t., set off $32^{\circ}29'N.$, on the lat. arc; $21^{\circ}18\frac{1}{2}'N.$, on the decl. arc and determine a meridian with the solar which is found to agree with the true meridian.

At 3h.00m., p.m., app.t., with lat arc unchanged, set off $21^{\circ}16'N.$, on the decl. arc and determine a meridian with the solar which is found to agree with the true meridian.

As all of the obsns. taken during the usual hours of solar work agree within 1' of the true meridian, conclude that the adjustments of the instrument have been maintained during the surveys described in the foregoing notes.

BOOK 3808

4-680

FIELD ASSISTANTS.

TO

Sidney E. Blout, U.S. Cadastral Engineer

NAMES.	CAPACITY.
Sterling Murdock	1st Chainman
Clifford Hook	1st Chainman
Jack Woodbridge	2nd Chainman
F. M. Walton	Moundman
Lester J. Parker	Axman
Lewis C. Tisdale	Flagman

CERTIFICATE OF U.S. CADASTRAL ENGINEER

I, Sidney E. Blout U.S. Cadastral Engineer, hereby certify upon honor that, in pursuance of special instructions received from the U. S. Surveyor General, for Group 125, Arizona bearing date of the 24th day of October, 1923, I have well, faithfully, and truly in my own proper person, and in strict conformity with said instructions, the Manual of Surveying Instructions, and the laws of the United States, surveyed all those parts or portions of

the South Boundary

and

Subdivision Lines of

Township 11 South, Range 16 East of the Gila and Salt

River Base and Meridian, in the State of Arizona, which are represented in

the foregoing field notes ^{and by diagram on page 1 hereof} as having been executed by me, and under my direction; and that all the corners of said survey have been established and perpetuated in strict accordance with the Manual of Surveying Instructions, and the special written instructions of the U. S. Surveyor General, for Group 125, Arizona and in the specific manner described in the field notes, and that the foregoing are the original field notes of such survey.

Place: Phoenix, Arizona

Date: May 1, 1928.

Sidney E. Blout
U.S. Cadastral Engineer

~~APPROVAL.~~

~~OFFICE OF THE UNITED STATES SURVEYOR GENERAL,~~

~~19~~

~~The foregoing field notes of the survey of~~

~~executed by~~

~~under his special instructions dated~~ _____, 19____, ~~having been critically examined, and the necessary corrections and explanations made, the said field notes, and the surveys they describe, are hereby approved.~~

~~U. S. Surveyor General.~~

~~I certify that the foregoing transcript of the field notes of the above described surveys in~~

~~has been correctly copied from the original notes on file in this office.~~

~~U. S. Surveyor General.~~

225

4-680

FIELD ASSISTANTS.

TO

Charles E. Hunter, U.S. Transitman.

NAMES.	CAPACITY.
Leroy R. Hanson	1st Chainman
A. L. Bailey	2nd Chainman
John Deatsch	Flagman

CERTIFICATE OF UNITED STATES TRANSITMAN

I, Charles E. Hunter U.S. Transitman, hereby certify upon honor that, in pursuance of special instructions received from the U. S. Surveyor General, for Group No. 125, Arizona bearing date of the 24th day of October, 1923, I have well, faithfully, and truly in my own proper person, and in strict conformity with said instructions, the Manual of Surveying Instructions, and the laws of the United States, RESURVEYED all those parts or portions of

the Subdivision Lines

and SURVEYED all those parts or portions of

the Subdivision Lines

of

Township 11 South, Range 16 East of the Gila and Salt

River Base 3/4 Meridian, in the State of Arizona, which are represented in and by diagram on page 1 hereof

the foregoing field notes as having been executed by me, and under my direction; and that all the corners of said resurvey and survey have been established and perpetuated in strict accordance with the Manual of Surveying Instructions, and the special written instructions of the U. S. Surveyor General, for Group No. 125, Arizona and in the specific manner described in the field notes, and that the foregoing are the original field notes of such resurvey and survey.

Place: Safford, Arizona

Date: March 28, 1928.

Charles E. Hunter U.S. Transitman

APPROVAL

OFFICE OF THE UNITED STATES SURVEYOR GENERAL

19

The foregoing field notes of the survey of

executed by

under his special instructions dated, 10, having been critically examined, and the necessary corrections and explanations made, the said field notes, and the surveys they describe, are hereby approved.

U. S. Surveyor General

I certify that the foregoing transcript of the field notes of the above described surveys in

has been correctly copied from the original notes on file in this office.

U. S. Surveyor General

4-680

FIELD ASSISTANTS.

To
Benjamin J. Kinsey, U.S. Surveyor.

NAMES.	CAPACITY.
Earl Endicott	1st Chainman
Earl Childers	2nd Chainman
Lester Parker	Flagman
Kenneth Wright	Axman
McMillan Pollock	Moundman
Charles Decker	Axman

CERTIFICATE OF UNITED STATES SURVEYOR.

I, Benjamin J. Kinsey, U. S. Surveyor, hereby certify upon honor that, in pursuance of special instructions received from the U. S. Surveyor General, for Group No. 125, Arizona bearing date of the 24th day of October, 1923, I have well, faithfully, and truly in my own proper person, and in strict conformity with said instructions, the Manual of Surveying Instructions, and the laws of the United States, ~~surveyed~~ ^{RESURVEYED} all those parts or portions of the East boundary and Subdivision Lines and SURVEYED all those parts or portions of the South boundary, West Boundary and Subdivision Lines of Township 11 South, Range 16 East of the Gila and Salt River Base and Meridian, in the State of Arizona, which are represented in the foregoing field notes ^{and by diagram on page 1 hereof} as having been executed by me, and under my direction; and that all the corners of ^{said resurvey} ~~said~~ survey have been established and perpetuated in strict accordance with the Manual of Surveying Instructions, and the special written instructions of the U. S. Surveyor General, for Group No. 125, Arizona and in the specific manner described in the field notes, and that the foregoing are the original field notes of such ^{resurvey and survey.}

Place: Phoenix, Arizona.

Date: April, 2, 1928.

Benjamin J. Kinsey
U. S. Surveyor.

APPROVAL.

OFFICE OF THE U.S. SUPERVISOR OF SURVEYS,

Denver, Colo., May 4, 1928.

The foregoing field notes of the resurvey of Part of the East Bdy., and Part of the Subdivision Lines of Township 11 South, Range 16 East, and of the survey of Part (completion) of South Bdy., Part (completion) of West Bdy., and Part (completion) of the Subdivision Lines of Township 11 South, Range 16 East of the Gila and Salt River Base and Meridian, State of Arizona.

executed by Sidney E. Blout, U.S. Cadastral Engineer, Benjamin J. Kinsey, U.S. Surveyor, & Charles E. Hunter, U.S. Transitman. under the special instructions dated October 24, 1923, for Group 125, Arizona, having been critically examined, and the necessary corrections and explanations made, the said field notes, and the resurveys and surveys they describe, are hereby approved.

Monte A. Johnson
U. S. Supervisor of Surveys.

I certify that the foregoing transcript of the field notes of the above described surveys in _____, has been correctly copied from the original notes on file in this office.

U. S. Surveyor General