

Book "C"

3824

4-879

299

BOOK 3824

FIELD NOTES

BOOK 3824

OF THE RESURVEY OF

*Part of the Subdivision Lines of
Township 5 South, Range 9 West*

AND OF THE SURVEY OF

*the Oatman Family Grave Reservation
or Tract*

in

Section 11

of

Township 5 South, Range 9 West

Of the Gila and Salt River Base and Meridian,

In the State of

ARIZONA

EXECUTED BY

Sidney E. Blout, U.S. Cadastral Engineer

In the capacity of U. S. Surveyor, under Special Instructions dated Sept. 30, 1926, issued by the District Cadastral Engineer to govern surveys included in Group No. 144 Arizona, which were approved by the Commissioner of the General Land Office, October 29, 1926, and Assignment Instructions dated Nov. 15, 1926.

Resurvey and Survey commenced December 12, 1926.

Resurvey and Survey completed December 19, 1926.

3824

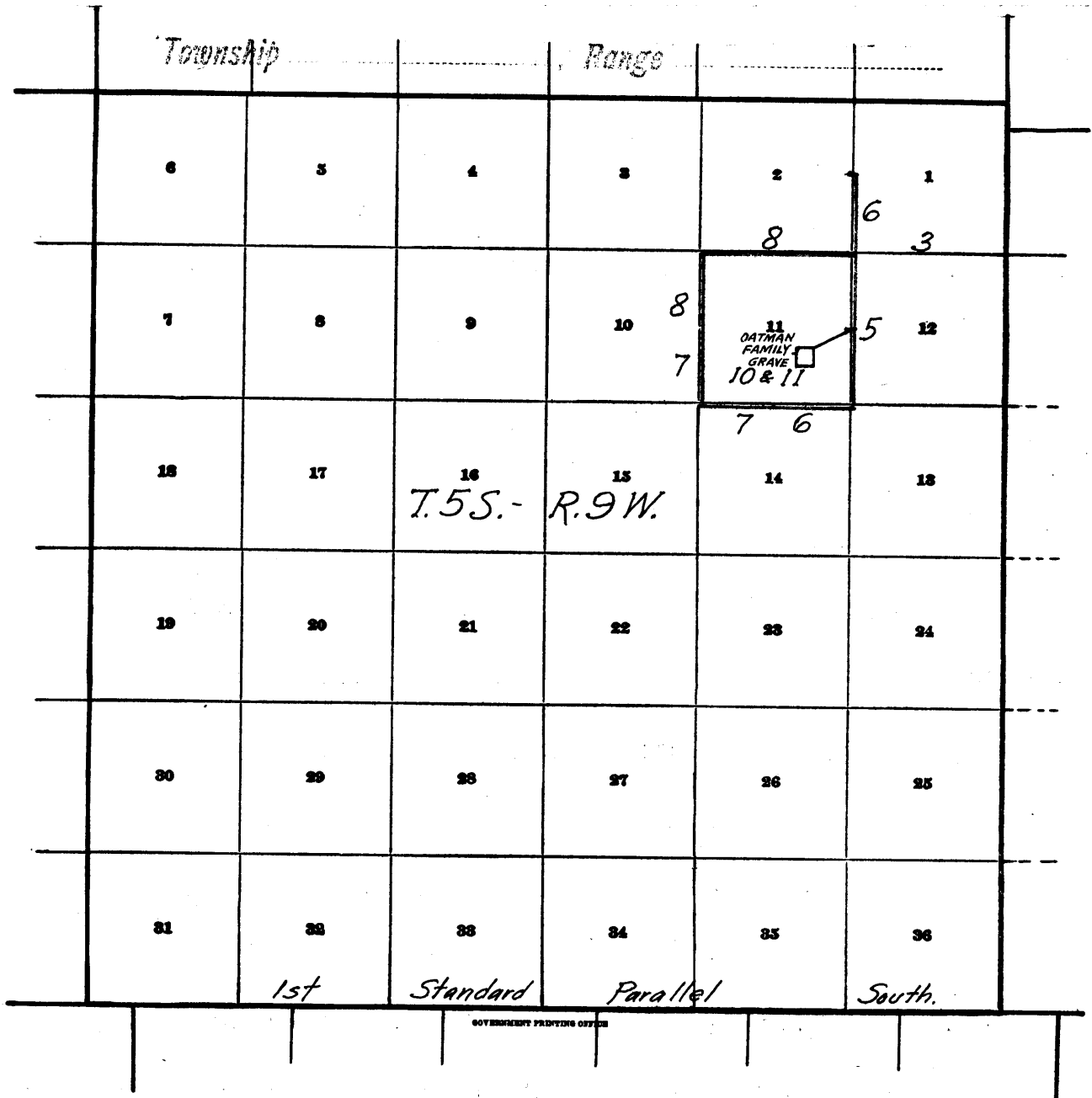
3824

1A

BOOK 3824

BOOK 3824

INDEX DIAGRAM.



————— Surveyed under this group.

————— Resurveyed under this group.

- - - - - Unserved, for Resurvey this group.

————— Accepted surveys, retracements or resurveys.

Unsurveyed.

Book "C"

Group 144 - Arizona

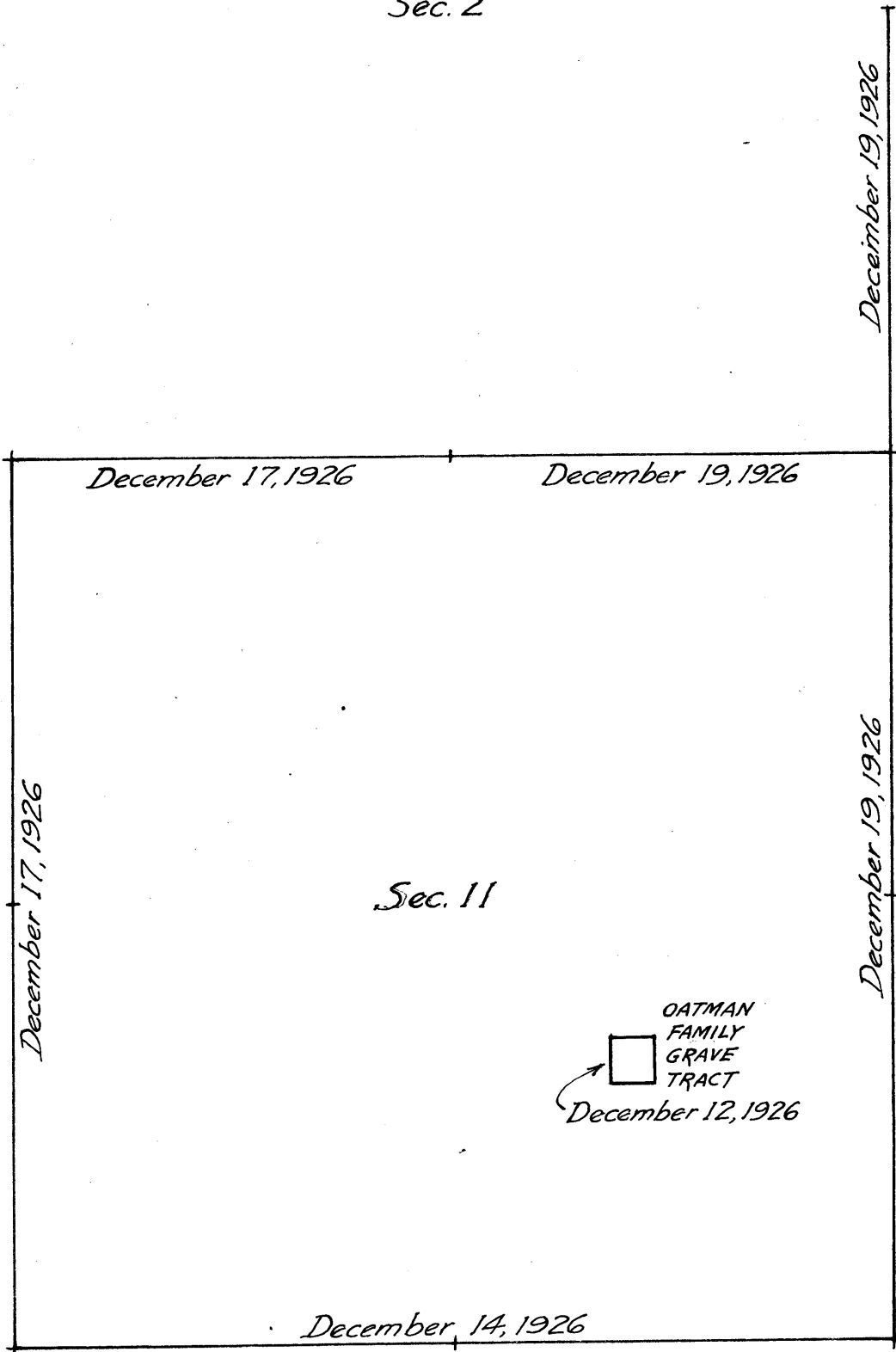
Township 5 South, Range 9 West

~DATE ~DIAGRAM~

1B

BOOK 3824

Sec. 2



— Surveyed by Sidney E. Blout, U.S.C.E. on dates shown thereon.

— Resurveyed by Sidney E. Blout, U.S.C.E. on dates shown thereon.

The resurveys and surveys hereinafter described were executed on dates shown on diagram on page 1 hereof by Sidney E. Blout, U.S. Cadastral Engineer, using a Buff solar transit No. 16724 with U-shaped standards, 4 $\frac{1}{2}$ in. horizontal circle, 4 in. vertical circle, and improved Smith solar attachment. Unless otherwise specified, all azimuth determinations are accomplished with the solar attachment, except the special observations on Polaris for meridian upon which to test the solar apparatus.

The instrument was examined, tested on the true meridian at Federal Building, Phoenix, Arizona, found correct and was approved by the District Cadastral Engineer for Arizona and California, November 15, 1926, conditional upon satisfactory field tests:

 PRELIMINARY FIELD TEST.

Examine the adjustments of the transit and find them correct, then, to test the solar apparatus by comparing its indications from observations made during a.m. and p.m. hours with a meridian established by Polaris observation, proceed as follows:

December 5, 1926, at a transit point, in town of Sedona, Arizona, in SW. $\frac{1}{4}$ of sec. 32, T. 6 S., R. 9 W., G. and S. R. Base and Meridian, latitude 32° 52' N., longitude 113° 12 $\frac{1}{2}$ ' W.,

At 2h. 0m., p.m., app. t., set off 32° 52' N. on the lat. arc, 22° 20' S. on the decl. arc and determine a meridian with the solar, from which the pilot lamp on pump at gasoline filling station bears N. 8° 20' E. about 8 chs. dist.

At same station, at 8h. 10.4m., p.m., app. t., by watch set by Western Union Telegraph clock to read correct local mean time, make an hour angle observation on Polaris east of the meridian, two each with the telescope in direct and reversed positions, reading the horizontal deflection angle from pilot lamp on pump at gasoline filling station about 8 chs. N. in the direction N.- W. to Polaris.

| | |
|-------------------------------------|-----------------|
| Watch time of observation | 8h. 10.4m. p.m. |
| Mean horizontal angle to pilot lamp | 8° 9.8' |
| Azimuth of Polaris at observation | 0° 10.3' E. |
| True bearing of pilot lamp | N. 8° 19.7' E. |

 December 6, 1926, at 8h. 0m., a.m., app. t., set off 32° 52' N. on the lat. arc, 22° 24' S. on the decl. arc, and determine a meridian with the solar, from which the pilot lamp at gasoline filling station about 8 chs. dist. bears N. 8° 21' E.

Both p.m. and a.m. bearings to the pilot lamp determined by the solar, agree within 1 $\frac{1}{2}$ ' with the true bearing to same determined by Polaris observation, therefore conclude that the adjustments of the solar are satisfactory.

 All measurements are made with a Lallie 5-ch. steel tape compared with Chesterman standard steel tape and found correct. Measurements are made on the slope, vertical angles determined with transit, and slope measurements properly reduced to true horizontal distances.

chains

Retracement for Resurvey.

From remains of original cor. of secs. 11, 12, 13 and 14 hereinafter described, North, on random line, bet. secs. 11 and 12, and bet. secs. 1 and 2 (S. 1/4).

- 40.00 Diligent search in this vicinity fails to reveal any trace of the original 1/4 sec. cor. of secs. 11 and 12.
76.11 Diligent search in this vicinity fails to reveal any trace of original witness cor. to cor. of secs. 1, 2, 11 and 12.
80.00 Diligent search in vicinity of 1.02 chs. N. of this point fails to reveal any trace of the other witness cor. to original cor. of secs. 1, 2, 11 and 12.
Thence, N. 0° 10' W., on random line, continuing measurement.
120.12 Fall 12 lks. E. of original 1/4 sec. cor. of secs. 1 and 2, hereinafter described.
Thence, S. 0° 7' E., on trial line, bet. secs. 1 and 2 (S. 1/4) and bet. secs. 11 and 12.
40.04 Set temp. cor. (A) of secs. 1, 2, 11 and 12.
80.08 Set temp. 1/4 sec. cor. of secs. 11 and 12.
120.12 Intersect remains of original cor. of secs. 11, 12, 13 & 14.

From original cor. of secs. 2, 3, 10 and 11, hereinafter described, S. 89° 48' E., on random line, bet. secs. 2 and 11, and bet. secs. 1 and 12.

- 40.05 Diligent search in this vicinity fails to reveal any trace of original 1/4 sec. cor. of secs. 2 and 11.
80.10 Diligent search in vicinity of points 1.02 chs. N. and 3.89 chs. S. of this point fail to reveal any trace of original witness cors. to cor. of secs. 1, 2, 11 and 12.
Thence, S. 89° 47' E., on random line, continuing measurement.
119.93 Diligent search in this vicinity fails to reveal any trace of original 1/4 sec. cor.
159.64 Intersect East bdy. of the Tp. at a point 14.03 chs. S. from the witness cor. to cor. of secs. 1, 6, 7 and 12, which is a 3 in. iron post, firmly set, properly marked on brass cap, projecting 12 ins. above ground. No accessories.
The original cor. of said secs. was established at the true point, but was later washed away by floods of the Gila River.
The witness cor. described above was established by J.F. Hesse, U.S.T. in 1910, at 16.00 chs. N. from the true point for sec. cor., the falling of the random line on the true sec. cor. point is therefore 1.97 chs. N. From true point for cor. of secs. 1, 6, 7 and 12, N. 80° 5' W., on trial line, bet. secs. 1 and 12, and bet. secs. 2 and 11.
79.63 Set temp. cor. of secs. 1, 2, 11 and 12 (B).
79.85 A point 2 lks. S. from temp. cor. (A) of same secs. set on the trial meridional sec. line as hereinbefore described.
119.64 Set temp. 1/4 sec. cor. of secs. 2 and 11.
159.66 Intersect original cor. of secs. 2, 3, 10 and 11.
The point for reestablishment of the cor. of secs. 1, 2, 11 and 12 as determined by double proportion on the two trial lines, is at 22 lks. E. from temp. cor. (A) and 2 lks. N. from temp. cor. (B) of said secs.
The true courses and lengths of the sec. lines resulting from said reestablished position of the cor. of secs. 1, 2, 11 and 12 are:
Line bet. secs. 11 and 12, N. 0° 3' E., 80.08 chs.
Line bet. secs. 1 and 12, N. 89° 4' W., 79.63 chs.
S. 1/4 of line bet. secs. 1 and 2, N. 0° 26' W., 40.04 chs.
Line bet. secs. 2 and 11, N. 89° 6' W., 80.03 chs.

4 Resurvey of Part of the Subdivision Lines of T. 5 S., R. 9 W.

chains

From remains of original cor. of secs. 11, 12, 13 and 14, hereinafter described,
 N. $89^{\circ}47'W.$, on random line, bet. secs. 11 and 14.
 40.09 Diligent search in this vicinity fails to reveal any trace of the original $\frac{1}{4}$ sec. cor. of secs. 11 and 14.
 Set temp. $\frac{1}{4}$ sec. cor. and continue line & measurement.
 79.78 Fall 51 lks. S. of original cor. of secs. 10, 11, 14 and 15, hereinafter described.
 True course and dist. of line bet. secs. 11 and 14 are therefore, N. $89^{\circ}25'W.$, 79.78 chs.

 From original cor. of secs. 10, 11, 14 and 15,
 North, on random line, bet. secs. 10 and 11 (S. $\frac{1}{2}$)
 40.19 Fall 5 lks. E. of original $\frac{1}{4}$ sec. cor. of secs. 10 and 11, hereinafter described.
 True course and dist. of S. $\frac{1}{2}$ of line bet. secs. 10 and 11 are therefore, N. $0^{\circ}4'W.$, 40.19 chs.

Thence,
 North, on random line, bet. secs. 10 and 11 (N. $\frac{1}{2}$)
 40.45 Fall 12 lks. E. of original cor. of secs. 2, 3, 10 and 11, hereinafter described.
 True course and dist. of N. $\frac{1}{2}$ of line bet. secs. 10 and 11 are therefore, N. $0^{\circ}10'W.$, 40.45 chs.

Resurvey of Part of the Subdivision Lines of T.5 S.,R.9 W.

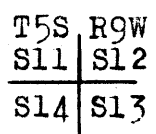
chains

The subdivision lines of T.5 S.,R.9 W. were surveyed by Theodore F.White,U.S.D.S. in 1876 and no retracement or resurvey of any part of same is of record.

The following notes describe a resurvey of the boundaries of section 11 and the S. 1/4 of line bet.secs.1 and 2 of said township.

The remains of the original cor.of secs.11,12,13 and 14 consists of a paloverde stake about 14 ins.long, greatly decayed,with marks almost obliterated,lying alongside a small mound of stone,in center of which is the decayed end of stake. From this point the stump of a mesquite 12 ins.in diam. bears N.30°E.,132 lks.dist., which agrees closely with the bearing and dist. of record to one of the original bearing trees. Find no trace of the other record bearing tree.

Reconstruct this cor.monument as follows: Remove the mound of stone,and decayed end of stake therein and in same place,set an iron post,3 ft.long,2 ins.in diam 26 ins.in ground,for cor.of secs.11,12,13 and 14, marked on brass cap,



1926

from which
A mesquite, 6 ins.in diam.,bears N.30 1/2°E.,171 lks. dist., marked T5S R9W S12 BT
A paloverde, 10 ins.in diam.,bears N.88 1/2°E., 355 lks.dist., marked T5S R9W S12 BT
No other bearing trees available.
Raise a mound of stone,2 ft.base,1 1/2 ft.high,W.of cor.

Thence,
N.0° 3'E.,on true line,bet.secs.11 and 12.
Over level sandy land, in Oatman Flat.
Enter scattering timber,bears NW. and SE.
Wash, 40 lks.wide,course N.80°W.
Old road from Yuma to Tucson,bears E. and W.
Set an iron post, 3 ft.long, 1 in.in diam.,26 ins.in the ground,for reestablished 1/4 sec.cor.of secs.11 and 12, marked on brass cap,

4.60
4.70
31.45
40.04



1926

from which,
A mesquite, 5 ins.in diam.,bears N.64°E.,114 lks.dist. marked 1/4 S12 BT
A mesquite, 18 ins.in diam.,bears S.12 1/4°W.,79 lks. dist., marked 1/4 S11 BT

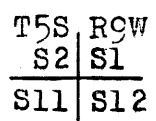
61.75

Continue over level sandy land in Oatman Flat.
Intersect left bank of the Gila River,6 ft.high,bearing N.70°E. and S.70°W.

Leave Oatman Flat and timber and enter low bottom land and undergrowth, subject to overflow from the Gila River.

80.08

Set an iron post, 3 ft.long, 3 ins.in diam., 26 ins.in ground,with blade of a garden hoe deposited at base, for reestablished cor.of secs.1,2,11 and 12, marked on brass cap,



1926

| | |
|--------|--|
| chains | No bearing trees available. |
| | Land, level. Soil, sandy, 1st and 2nd rate. Timber, mesquite, paloverde and catclaw. Undergrowth, arrowweed and water mote. ----- |
| 10.00 | N.0°26'W., on true line, bet. secs.1 and 2 (S.½) Over level sandy river bottom land, thru scattering undergrowth. Intersect left shore of the Gila River, bears N.80°E. and S.80°W. |
| 20.63 | Distance across river by triangulation, 10.63 chs. Intersect right bank of Gila River, 3 ft. high, bears E. and W. Thence over level sandy bottom land, thru dense undergrowth. |
| 36.00 | Leave low river bottom land Ascend 13 ft. to |
| 36.43 | Top of old river bank, bears N.80°W. and S.80°E. Thence over level bench land. |
| 40.04 | Intersect the original ¼ sec. cor. of secs.1 and 2, which is a mesquite post, 2 ins. square, projecting 14 ins. above ground, firmly set, marked ¼S on N. face and witnessed by one of the original bearing trees: A mesquite (dead) 12 ins. diam., N.33¼°W., 270 lks. dist. marked ¼S BT. Find no trace of the other record bearing tree. Reconstruct this cor. monument as follows: alongside the old wood post, set an iron post, 3 ft. long 1 in. in diam., 26 ins. in ground, with a stone marked with a cross (X) deposited at base, for ¼ sec. cor. of secs.1 and 2, marked on brass cap. |
| | ¼ S2 S1 1926 |
| | No live bearing trees available. |
| | Land, level. Soil, sandy loam, 1st and 2nd rate. Timber, none. Undergrowth, arrowweed and water mote. ----- |
| 3.70 | From cor. of secs.11, 12, 13 and 14, N.89°25'W., on true line, bet. secs.11 and 14. Over level sandy land, in Oatman Flat. West edge of Flat at foot of mesa. Leave Flat and enter stony land. |
| 8.00 | Ascend 82 ft. over NE. slope to East rim of mesa, bears NW. and SE. Thence over level land on mesa. |
| 22.50 | West rim of mesa, bears NW. and SE. Leave mesa. Descend 63 ft. over broken SW. slope. |
| 28.50 | Ravine, 6 lks. wide, course N.40°W. Ascend 92 ft. over NE. slope to |
| 38.00 | Point of mesa rim, bearing SE. and SW. Thence along rim. |
| 39.89 | Set an iron post, 3 ft. long, 1 in. in diam., in a crevice in surface rock, over a cross (X) on ledge, and raise a mound of stone, 3 ft. base, 2½ ft. high, around post, for reestablished ¼ sec. cor. of secs.11 and 14, marked on brass cap. |
| | S11 ¼ ——— S14 1926 |

Resurvey of Part of the Subdivision Lines of T.5 S., R.9 W.

chains No bearing trees available.

42.30 Descend 60 ft. over NW. slope.
Ravine, 5 lks. wide, course NE.

43.15 Ascend 65 ft. over SE. slope over malpais ledges.
Rim of mesa, bears NE. and SW.
Thence over rolling stony land on mesa, thru scattering undergrowth.

45.15 Old road, from Yuma to Tucson, bears NE. and SW.
79.78 Intersect the original cor. of secs. 10, 11, 14 and 15, which is a decayed paloverde post, 3 ft. long, 3 ins. square, marked TVS S on NE. face, RIXW on SW. face, 2 notches on E. edge and 4 notches on W. edge, set in a mound of stone. Find no trace of original bearing trees.
Reconstruct this cor. monument as follows:
remove the mound of stone and old post, and in same place reset old post 18 ins. in ground to bedrock, and alongside same set an iron post, 3 ft. long, 3 ins. in diam., 18 ins. in ground, deposit a stone marked with a cross (X) at base of post, and raise a mound of stone, 3 ft. base, 1 1/2 ft. high, around both posts, for cor. of secs. 10, 11, 14 and 15, marked on brass cap,

| | |
|-----|-----|
| T5S | R9W |
| S10 | S11 |
| S15 | S14 |

1926

from which,
A paloverde, 6 ins. diam., bears N. 7 1/4° E., 306 lks. dist., marked T5S R9W S11 BT
A paloverde, 5 ins. diam., bears S. 51 1/4° W., 173 lks. dist., marked T5S R9W S15 BT
No other bearing trees available.

Land, level and broken.
Soil, sandy and stony, 2nd and 3rd rate.
Timber, none.
Undergrowth, greasewood.

4.00 N. 0° 4' W., on true line, bet. secs. 10 and 11 (S. 1/2)
Over level stony land, on mesa, thru scattering undergrowth.
West edge of mesa, bears NE. and SW. Leave mesa.
Descend 57 ft. over NW. slope, across loose malpais rock.

6.10 Foot of mesa, bears NE. and SW.
Thence over gently rolling sandy bottom land of the Gila River.

40.19 Intersect the original 1/4 sec. cor. of secs. 10 and 11, which is a paloverde stake, projecting 12 ins. above ground, dimly marked 1/4 S on W. face, surrounded by a small mound of stone, and witnessed by one bearing tree:
a paloverde (dead) 5 ins. diam., West 11 1/3 lks. dist., marked 1/4 S BT.
Reconstruct this cor. monument as follows:
remove the mound of stone, and alongside the old stake, set an iron post, 3 ft. long, 1 in. in diam., 30 ins. in the ground, for 1/4 sec. cor. of secs. 10 and 11, marked on brass cap,

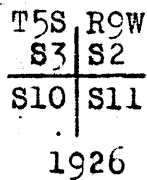
| | |
|-----|-----|
| 1/4 | |
| S10 | S11 |

1926

No live bearing trees available.
Raise a mound of stone, 2 ft. base, 1 1/2 ft. high, W. of cor.
Thence,
N. 0° 10' W., on true line, bet. secs. 10 and 11 (N. 1/2)
Over level sandy river bottom land thru dense undergrowth.

9.44 Intersect left shore of the Gila River, bearing N. 70° E.

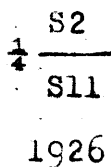
chains and S.70°W.
 24.00 Distance across river by triangulation, 14.56 chs. .
 Intersect right shore of Gila River, bears N.70°E. and
 S.70°W.
 Thence over level sandy bottom land, thru dense under-
 growth.
 27.75 Foot of mesa, bears NE. and SW. Leave bottom land.
 Ascend 80 ft. over SE. slope to
 30.50 South rim of mesa, bears NE. and SW.
 Thence over rolling stony land.
 37.00 Descend 20 ft. over NE. slope.
 38.90 Ravine, 6 lks. wide, course S.40°E.
 Ascend 15 ft. over SW. slope to
 40.45 Intersect original cor. of secs. 2, 3, 10 and 11, which is a
 paloverde post, 2 ins. diam., 2 ft. long, greatly weather
 worn, marks nearly obliterated, and loosely set in a
 mound of stone. No accessories.
 Reconstruct this cor. monument as follows:
 remove the mound of stone, and in same place reset old
 post 18 ins. in ground to bedrock, and alongside same
 set an iron post, 3 ft. long, 3 ins. in diam., 18 ins. in
 ground, deposit a stone marked with a cross (X) at base
 of post, and raise a mound of stone 3 ft. base, 1½ ft.
 high, around both posts, for cor. of secs. 2, 3, 10 and 11,
 marked on brass cap,



No bearing trees available.

Land, rolling, broken and level.
 Soil, sandy and stony, 2nd and 3rd rate.
 Timber, none.
 Undergrowth, greasewood and arrowweed.

S.89° 6'E., on true line, bet. secs. 2 and 11.
 Over rolling stony mesa land, thru scattering undergrowth.
 4.72 Ravine, 6 lks. wide, course SW. 15 ft. deep.
 22.52 Ravine, 8 lks. wide, 20 ft. deep, course S.60°W.
 27.50 Enter level land, bears NE. and SW.
 40.02 Set an iron post, 3 ft. long, 1 in. in diam., 28 ins. in the
 ground, for reestablished ¼ sec. cor. of secs. 2 and 11,
 marked on brass cap,



No bearing trees available.

Raise a mound of stone, 2 ft. base, 1½ ft. high, N. of cor.
 61.05 East rim of mesa, and top of bluff, 90 ft. high, bearing N.
 N.10°E. and S.10°W. facing E. Leave mesa.
 62.00 Foot of bluff and right bank of Gila River, 3 ft. high,
 bearing N.10°E. and S.10°W.
 Distance across Gila River by triangulation, 4.94 chs.
 66.94 Left shore of Gila River, bears N.10°E. and S.10°W.
 Thence over level sandy bottom land.
 80.03 Intersect the reestablished cor. of secs. 1, 2, 11 and 12.
 Land, level, rolling and broken.
 Soil, sandy and stony, 2nd and 3rd rate. No timber.
 Undergrowth, sagebrush and greasewood.

Boundaries of Section 11, T.5 S., R.9 W.
 Latitudes, departures and closing errors.

| Line designated | True bearing | Dist. | Latitudes | | Departures | |
|---------------------------|---------------|-------|-----------|-------|------------|-------|
| | | | N. | S. | E. | W. |
| South bdy. | N. 89° 25' W. | 79.78 | .81 | | | 79.78 |
| West bdy. | N. 0° 4' W. | 40.19 | 40.19 | | | .05 |
| | N. 0° 10' W. | 40.45 | 40.45 | | | .12 |
| North bdy. | S. 89° 6' E. | 80.03 | | 1.26 | 80.03 | |
| East bdy. | S. 0° 3' W. | 80.08 | | 80.08 | | .07 |
| Convergency | | | | | .01 | |
| Totals | | | .81.45 | 81.34 | 80.04 | 80.02 |
| | | | 81.34 | | 80.02 | |
| <u>Error in latitude</u> | | | 0.11 | | | |
| <u>Error in departure</u> | | | | | 0.02 | |

 GENERAL DESCRIPTION.

The land in section 11, T.5 S., R.9 W. consists of level bottom lands along the Gila River and rolling mesa lands adjacent thereto.

The soil ranges from 1st to 3rd rate in character.

The soil of the bottom land in the southwest quarter of the section, known as the "Oatman Flat" is a rich sandy loam, 1st and 2nd rate in character, capable of producing agricultural crops with the aid of irrigation, of which the land is susceptible from the waters of the Gila River or from wells sunk in the river bottom.

The soil of the mesa portions of the section comprising about one half the area of the section, is mostly of a stony clay loam formation in character, underlaid with malpais rock, supporting only a scant growth of desert vegetation, such as greasewood, sagebrush and cactae.

That portion of the "Oatman Flat" which lies within this section is timbered with a heavy growth of mesquite and catclaw timber, while over the mesa portions of the section is found a scattering growth of paloverde timber.

The section is watered by the Gila River, which flows in a southwesterly direction thru the northern part, and affords the principal source of drainage for the land.

There are no indications of valuable mineral deposits.

There are no settlers residing on the land at this time.

chains

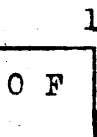
HISTORY.

The Oatman Family while enroute to California over the old road between Yuma and Tucson, Arizona, were overtaken on the brow of the mesa at the westerly end of a small flat on the south side of the Gila River, since known as the Oatman Flat, by a band of Tonto Apache Indians, who on March 19, 1851, massacred Royse Oatman, his wife, and two of his children. The remains of these unfortunate victims were later, in 1856, collected and carried back along the road off the mesa to a more suitable place in the "Flat" where they were interred alongside the old road in a single grave, which is marked at the present time by a cottonwood post, 6 ins. square, projecting 5 ft. above the ground, with three or four stones around its base.

SURVEY.

From the cottonwood post marking the OATMAN FAMILY GRAVE, the reestablished $\frac{1}{4}$ sec. cor. of secs. 11 and 12, T. 5 S., R. 9 W., G. & S. R. B. & M., Arizona, hereinbefore described, bears N. 57° 1' E., 26.10 chs. dist.

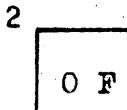
At a point 2.235 chs. N. 45° 00' E. from said cottonwood post,
set an iron post, 3 ft. long, 1 in. in diam., 27 ins. in the ground, for Cor. No. 1 (NE. Cor.) of the Oatman Family Grave Reservation, marked on brass cap,



1926

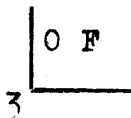
From this cor. the reestablished $\frac{1}{4}$ sec. cor. of secs. 11 and 12, T. 5 S., R. 9 W. bears N. 60° 00' E., 25.26 chs. dist.

3.162 From Cor. No. 1,
West, on true line, on North line (1-2) of Reservation.
Set an iron post, 3 ft. long, 1 in. in diam., 26 ins. in the ground, for Cor. No. 2 (NW. Cor.) of the Oatman Family Grave Reservation, marked on brass cap,



1926

3.162 Thence
South, on true line, on West line (2-3) of Reservation.
Set an iron post, 3 ft. long, 1 in. in diam., 26 ins. in the ground, for Cor. No. 3 (SW. Cor.) of the Oatman Family Grave Reservation, marked on brass cap,



1926

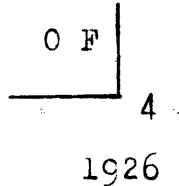
3.162 Thence
East, on true line, on South line (3-4) of Reservation.
Set an iron post, 3 ft. long, 1 in. in diam., 26 ins. in

Survey of the OATMAN FAMILY GRAVE RESERVATION or TRACT

11

chains

the ground, for Cor. No. 4 (SE. Cor.) of the Oatman Family Grave Reservation, marked on brass cap,



3.162

Thence,
North, on true line, on East line (4-1) of Reservation.
Intersect Cor. No. 1 (NE. Cor.) of Reservation, the place
of beginning, hereinbefore described.

Area of the Oatman Family Grave Reservation within the
boundary surveyed as described in the foregoing
notes is

One Acre.

Boundary of Oatman Family Grave Reservation.

latitudes, departures

FINAL TEST OF INSTRUMENT.

In order to avoid a delay in the field, to make the final test of the instrument used in the execution of the foregoing survey, return to headquarters at Phoenix, Arizona, and make tests as follows:

January 19, 1927; set up instrument on the meridian at the Federal Building at Phoenix, Arizona, latitude $33^{\circ}27'N.$, longitude $112^{\circ}5'W.$, and at 10h. Om., a.m. app. t., set off $33^{\circ}27'N.$ on the lat. arc, $20^{\circ}25'S.$ on the decl. arc, and determine a meridian with the solar, which falls $1\frac{1}{2}'$ E. of the true meridian.

At app. noon, with the lat. arc unchanged, observe the sun on the meridian, and obtain a reading of $20^{\circ}24'+S.$ on the decl. arc, which agrees closely with the computed declination of the sun.

At 3h. Om., p.m., app. t., with the lat. arc unchanged, set off $20^{\circ}22'S.$ on the decl. arc, and determine a meridian with the solar, which falls $\frac{1}{2}'$ W. of the true meridian.

As all of the observations with the solar come within $1\frac{1}{2}'$ of the true meridian, conclude that the instrument has remained in satisfactory adjustment throughout the surveys described in the foregoing field notes.

BOOK 3824

4-680

FIELD ASSISTANTS.
TO
Sidney E. Blout, U.S. Cadastral Engineer.

| NAMES. | CAPACITY. |
|-----------------------|----------------------|
| <i>Max Hume</i> | <i>1st Chainman</i> |
| <i>Robert C. Deal</i> | <i>2nd Chainman.</i> |
| | |
| | |
| | |
| | |
| | |
| | |
| | |
| | |
| | |
| | |
| | |
| | |
| | |
| | |
| | |
| | |
| | |
| | |
| | |
| | |
| | |
| | |
| | |
| | |

CERTIFICATE OF UNITED STATES SURVEYOR.

I, *Sidney E. Blout*, U.S. Cadastral Engineer, hereby certify upon honor that, in pursuance of special instructions received from the District Cadastral Engineer, for *Group 144, Arizona* bearing date of the *30th* day of *September*, 1926, I have well, faithfully, and truly in my own proper person, and in strict conformity with said instructions, the Manual of Surveying Instructions, and the laws of the United States, ~~resurveyed~~ ^{resurveyed} all those parts or portions of *the Subdivision Lines of Township 5 South, Range 9 West* and surveyed all those parts or portions of *the Oatman Family Grave Reservation or Tract* in Section 11 of *Township 5 South, Range 9 West* of the *Gila and Salt River Base and Meridian*, in the State of *Arizona*, which are represented in the foregoing field notes ^{and by diagram on page 1 hereof} as having been executed by me, and under my direction; and that all the corners of said ~~resurvey~~ ^{resurvey} and survey have been established and perpetuated in strict accordance with the Manual of Surveying Instructions, and the special written instructions of the District Cadastral Engineer, for *Group 144, Arizona* and in the specific manner described in the field notes, and that the foregoing are the original field notes of such ~~resurvey and survey~~ ^{resurvey and survey}.

Place: *Phoenix, Arizona.*

Date: *May 1, 1928.*

Sidney E. Blout
U.S. Cadastral Engineer

APPROVAL.

OFFICE OF THE U.S. SUPERVISOR OF SURVEYORS,

Denver, Colo., May 4, 1928

The foregoing field notes of the ~~resurvey~~ ^{resurvey} of *Part of the Subdivision Lines of Township 5 South, Range 9 West* and of the survey of *the Oatman Family Grave Reservation or Tract* in Section 11 of *Township 5 South, Range 9 West* of the *Gila and Salt River Base and Meridian, State of Arizona* executed by *Sidney E. Blout, U.S. Cadastral Engineer*

under his special instructions dated *September 30, 1926 for Group 144, Arizona*, having been critically examined, and the necessary corrections and explanations made, the said field notes, and the ~~resurveys~~ ^{resurveys} and surveys they describe, are hereby approved.

M. W. Johnson
U.S. Supervisor of Surveyors

~~I certify that the foregoing transcript of the field notes of the above described surveys in~~
~~has been correctly copied from the original notes on file in this office.~~