

1

BOOK 3850

# FIELD NOTES

OF THE RESURVEY OF

Part of the SOUTH boundary

Part of the EAST boundary

Part of the WEST boundary

Part of the NORTH boundary

and

Part of the SUBDIVISION lines

Township 15 North, Range 3 West

AND OF THE SURVEY OF

Part (completion) of the SOUTH boundary

and Part (completion) of the SUBDIVISION lines of

Township 15 North, Range 3 West

Of the Gila and Salt River Base and Meridian,

In the State of Arizona

## EXECUTED BY

Sidney E. Blout, U.S. Cadastral Engineer

and

Charles E. Hunter, U.S. Transitman

In the capacity of U. S. Surveyor 2, under Special Instructions dated May 25, 1926, issued by the District Cadastral Engineer to govern surveys included in Group No. 140 Arizona, which were approved by the Commissioner of the General Land Office, June 4, 1926, and Assignment Instructions dated July 1, 1927.

Resurvey and Survey commenced August 20, 1927

Resurvey and Survey completed September 30, 1927

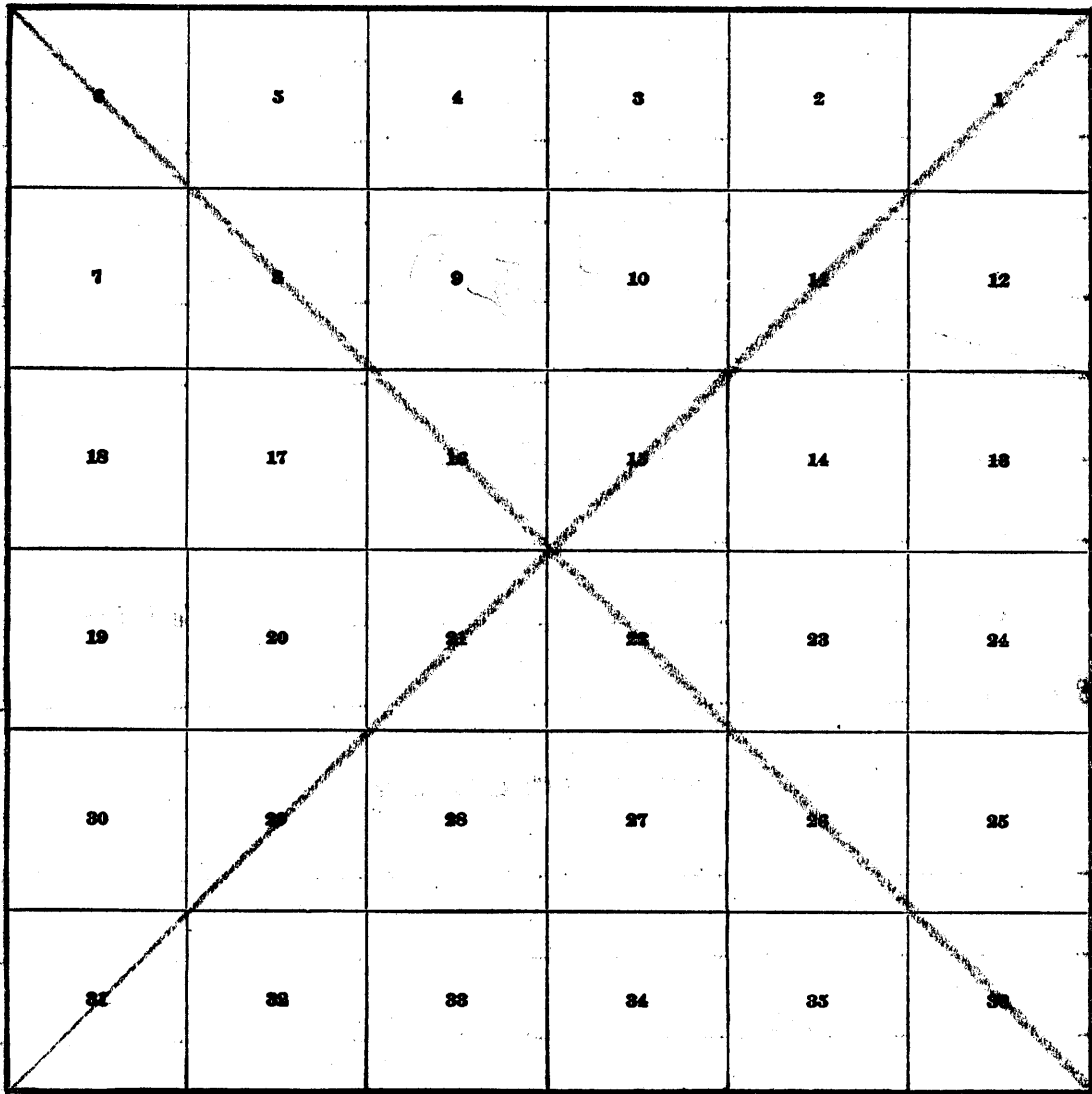
3850

3850

2

~~INDEX DIAGRAM.~~

~~Township~~, ~~Range~~

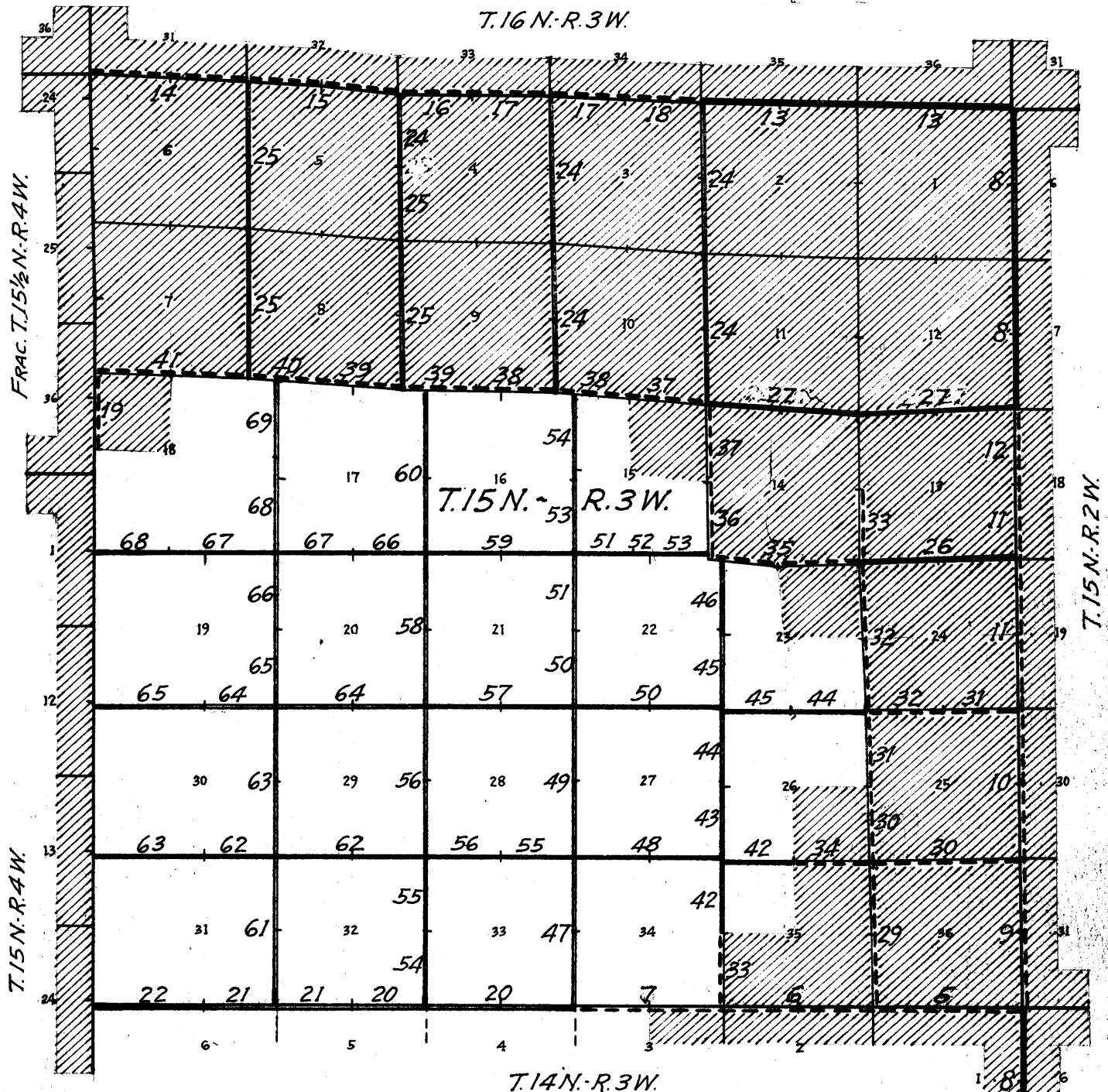







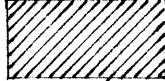
1A

Book "E"  
 Group 140 ~ Arizona  
 TOWNSHIP 15 NORTH, RANGE 3 WEST  
 ~ INDEX ~ DIAGRAM ~

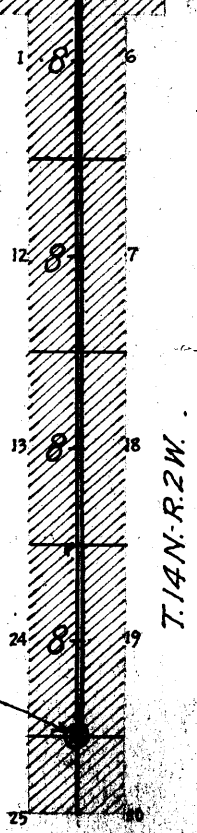
3850

BOOK 3850



-  Surveyed under this group.
-  Resurveyed under this group.
-  Random lines run under this group, in search for corners. No intermediate corners found on such lines.
-  Accepted surveys, retracements and resurveys.
-  Unsurveyed.
-  Areas surveyed as per accepted plats on file.

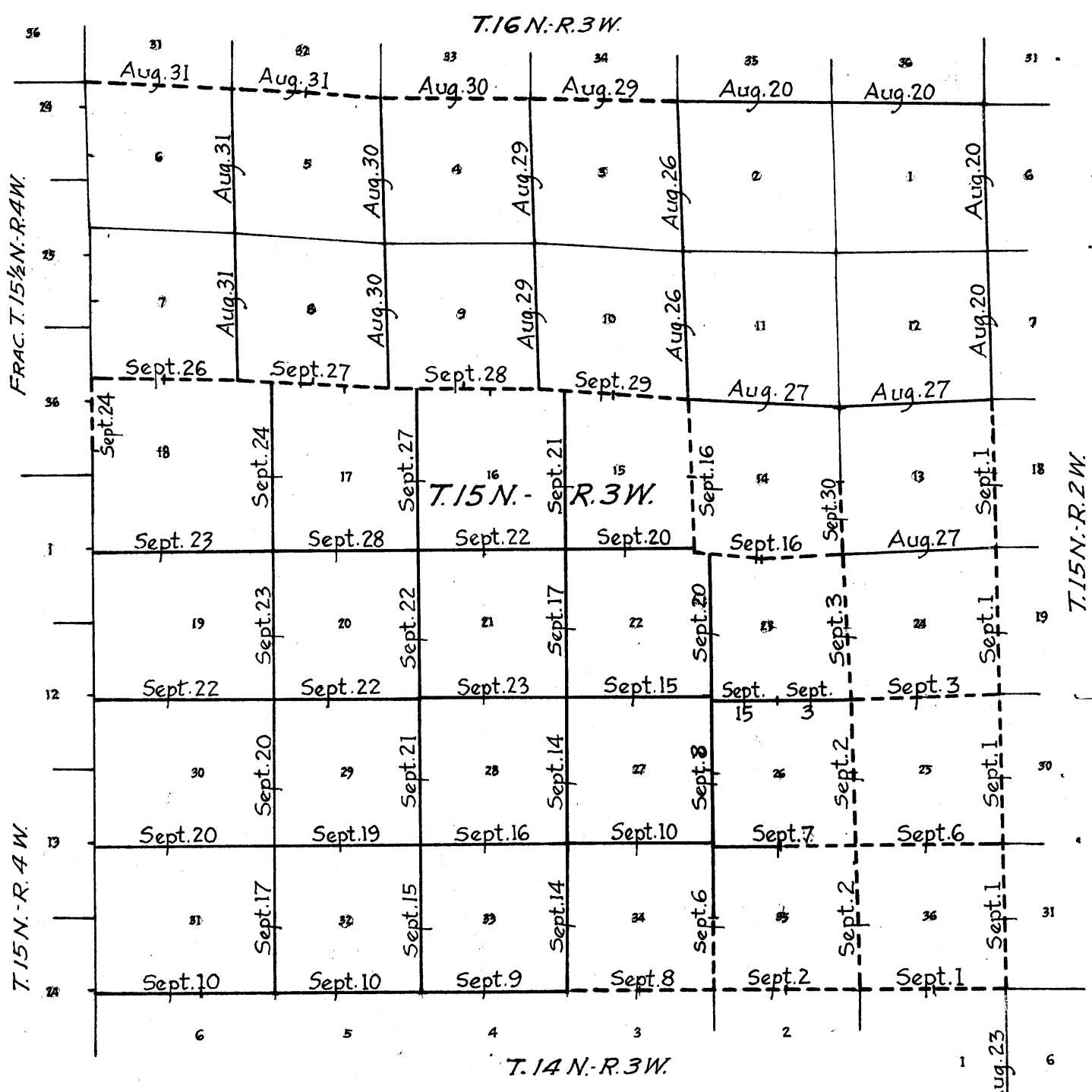
Corner Reconstructed  
 as described on  
 Page 8 hereof



2

Book "E"  
Group 140 - Arizona  
DATE - DIAGRAM  
1927

BOOK 3850



- Surveyed by Sidney E. Blout, U.S. Cadastral Engineer on dates shown thereon.
- - - - - Resurveyed by Sidney E. Blout, U.S. Cadastral Engineer on dates shown thereon.
- Random lines run by S.E. Blout, U.S.C.E. on dates shown thereon. Not classed as Retracement or Resurvey.
- Surveyed by Charles E. Hunter, U.S. Transitman on dates shown thereon.
- - - - - Resurveyed by Charles E. Hunter, U.S. Transitman on dates shown thereon.
- Random lines run by C.E. Hunter, U.S.T. on dates shown thereon. Not classed as Retracement or Resurvey.
- Accepted surveys, retracements and resurveys.

Corner Reconstructed  
Aug. 24

The resurveys and surveys, hereinafter described were executed on dates shown on diagram on page 2 hereof by Sidney E Blout, U.S. Cadastral Engineer, using a Buff "Rocky Mountain Favorite" solar transit No. 16724 with U-shaped standards,  $4\frac{1}{2}$  inch horizontal circle, 4 inch vertical circle, and improved Smith solar attachment. and Charles E Hunter, U.S. Transitman, using a Young & Sons solar transit No. 8478 with full vertical circle and Smith solar attachment.

The instruments were examined, tested on the true meridian at the Federal Building at Phoenix Arizona, found correct and were approved by the District Cadastral Engineer for Arizona and California, July 1, 1927, conditional upon satisfactory field tests. All azimuth determinations are accomplished with the solar attachments, except the special observations on Polaris and the sun upon which to test the solar apparatus as stated in the field notes.

August 18, 1927; Examine the adjustments of each transit and correct all errors; then to test the solar apparatus by comparing its indications, resulting from solar observations made during a.m., and p.m. hours with a meridian established by observations on Polaris; proceed with each instrument as follows;

August 18, 1927. At camp near the  $\frac{1}{4}$  sec. cor. of secs. 14 and 23, T. 15 N., R. 3 W., Gila and Salt River Base and Meridian Arizona, in latitude  $34^{\circ}40'17''$  N. and longitude  $112^{\circ}32'32''$  W., at  $9^h53.3^m$  p.m., l.m.t., observe Polaris at eastern elongation, making four observations, two each with the telescope in direct and reversed positions and mark the mean point in the line thus determined by a tally pin in stake driven firmly in the ground about 6 chs. N.

Azimuth Of Polaris at eastern elongation  $=1^{\circ}19'31''$

August 19, 1927. Lay off the azimuth of Polaris  $1^{\circ}19\frac{1}{2}''$  to the west and mark the true meridian thus determined by a tally pin driven in a stake set firmly in the ground about 6 chs. N.

TEST OF BUFF TRANSIT No. 16724

h m

August 19, 1927. At 9 00 a.m. app. time set off  $34^{\circ}40\frac{1}{2}'$  N. on the lat. arc,  $12^{\circ}58\frac{1}{2}'$  N. on the decl. arc and determine a meridian with the solar which agrees with the meridian established by the Polaris observation

At apparent noon with the lat. arc. unchanged, observe the sun on the meridian and obtain a reading of  $12^{\circ}56'$  N on the decl. arc which agrees with the computed declination of the sun.

h m

At 4 00 p.m. app. time with the lat. arc unchanged, set off  $12^{\circ}53'$  N. on the decl. arc and determine a meridian with the solar which falls 1' W. of the meridian established by the Polaris observations.

TEST OF YOUNG AND SONS TRANSIT NO. 8478

h m

August 19, 1927. At 9 00 a.m., app. time set off  $34^{\circ}40\frac{1}{2}'$  N. on the lat. arc,  $12^{\circ}58\frac{1}{2}'$  N. on the decl. arc and determine a meridian with the solar which falls 1' W. of the meridian established by the Polaris observation.

At the same station, at apparent noon, with the lat. arc unchanged, observe the sun on the meridian, the resulting reading of the decl. arc being  $12^{\circ}55\frac{1}{2}'N.$

At 3 h. 0m., p.m., app. time, with the lat. arc unchanged, set off  $12^{\circ}53\frac{1}{2}'N.$  on the decl. arc and determine a meridian with the solar, which falls 1' W. of the meridian established by Polaris observation.

As all of the observations made with both instruments during the usual hours of solar work come within  $1\frac{1}{2}'$  of the true meridian conclude that the adjustments of said instruments are satisfactory.

All measurements are made with Lufkin and Ballie steel tapes 5 chains in length, each compared with a Chesterman standard steel tape and found correct. The measurements are made on the slope, the vertical angles determined with clinometer, and the slope measurements properly reduced to true horizontal distances for entry in the field notes.

---

Resurvey of Part (E.half) of South Boundary of T.15 N., R.3 W.

chains

The east half of the South bdy. of T.15 N.,R.3 W. was surveyed in 1871 by S.W.Foreman,U.S.D.S.,establishing cor.monuments thereon with common reference to areas on both sides of the line.

The west half of this Tp. bdy. is unsurveyed. No retracement or resurvey of any part of the East half of this Tp. bdy. is of record.

The following notes describe a resurvey of all of said East half of South bdy. of T.15 N.,R.3 W.,reestablishing all cor.monuments thereon with their original common reference.

Retracement for Resurvey.

From the original cor. of Ts.14 and 15 N.,Rs.2 and 3 W., hereinafter described,

West, on random line, searching diligently at record intervals for the original cor.monuments

Fail to find any trace of any original cor.

240.00 Diligent search in this vicinity fails to reveal any trace of original cor.of secs.3,4,33 and 34, and as the original survey terminated at said sec.cor., discontinue retracement at this point.

The true course and dist. of E. half of S. bdy.of T.15 N., R.3 W. by resurvey will therefore be West,240.00 chs., and the cors.will be reestablished at 40.00 ch. intervals thereon,in order to reproduce the record.

Resurvey.

From original cor.of Ts.14 and 15 N.,Rs.2 and 3 W., hereinafter described,

West, on true line, bet. secs. 1 and 36.

2.00 Over level mesa, thru scattering timber and undergrowth. West edge of mesa,bears N. and S. Leave level and enter mountainous land,and dense undergrowth.

Descend 215 ft.over steep rocky W. slope.

15,00 Wash, 20 lks.wide, course N.10°E.

Ascend over broken stony SE. slope.

21.00 Top of granite ledge,20 ft.high,bears NE. and SW.

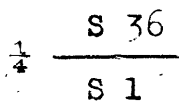
Descend over NW. slope.

25.00 Ravine, 15 lks.wide, course NE.

Ascend over steep SE. slope.

39.00 Shallow ravine, course SE.

40.00 Set an iron post, 3 ft.long, 1 in.in diam., 12 ins.in the ground to bedrock,for reestablished 1/4 sec.cor.of secs.1 and 36, supported in a mound of stone, marked on brass cap,



1927

from which,

A cedar,24 ins.in diam., bears N.77 1/2°W., 24 lks. dist., marked 1/4 S36 BT

A pinion,6 ins.in diam., bears S.16 1/4°W., 64 lks. dist., marked 1/4 S1 BT

51.70 Granite ledge,10 ft.high,bears N.and S.,on top of a spur sloping N.

Descend gradually over NW. slope to

57.20 Descend 95 ft.over steep W. slope.

62.20 Bottom of ravine,10 lks.wide,course N.

Ascend over steep E. slope.

66.90 Point of rocky spur,sloping N.

71.20 Spur, slopes NW.

Descend 85 ft.over steep rocky NW. slope.

73.70 Mint Creek, 30 lks.wide,course NE. containing a stream of clear water,10 lks.wide,4 ins.deep.

Ascend gradually over SE. slope to

## Resurvey of Part (E. half) of South boundary of T.15 N., R.3 W.

chains  
80.00

Set an iron post, 3 ft. long, 2 ins. in diam., 27 ins. in the ground, for reestablished cor. of secs. 1, 2, 35 and 36, marked on brass cap,

T15N R3W  
S35 | S36  
S2 | S1  
T14N  
1927

from which,

A walnut, 8 ins. in diam., bears N.  $26\frac{1}{2}^{\circ}$  E., 45 lks. dist., marked T15N R3W S36 BT

An ash, 16 ins. in diam., bears S.  $65\frac{1}{2}^{\circ}$  E., 45 lks. dist., marked T14N R3W S1 BT

An ash, 12 ins. in diam., bears S.  $41^{\circ}$  W., 90 lks. dist., marked T14N R3W S2 BT

An oak, 4 ins. in diam., bears N.  $20\frac{3}{4}^{\circ}$  W., 40 lks. dist., marked T15N R3W S35 BT

Land, level, broken and mountainous.

Soil, stony, 3rd and 4th rate.

Timber, oak, pinion, ash, cedar and walnut.

Undergrowth, scrub oak and manzanita.

West, on true line, bet. secs. 2 and 35.

Over rolling bottom land, in Mint Creek Canyon, thru scattering timber and undergrowth.

5.00 Leave rolling and enter mountainous land.

Ascend 298 ft. over steep SE. slope of Granite Mountain.

21.50 Granite spur, slopes S.

Descend 18 ft. over W. slope.

25.60 Bottom of small ravine, course SE., containing a small stream of seep water.

Ascend 70 ft. over SE. slope to

29.00 Bottom of small ravine, 18 ft. deep, course SE., containing a small stream of seep water.

Ascend 310 ft. over steep SE. slope to

40.00 Set an iron post, 3 ft. long, 1 in. in diam., 12 ins. in the ground to bedrock, supported in a mound of stone, for reestablished  $\frac{1}{4}$  sec. cor. of secs. 2 and 35, marked on brass cap,

S 35  
 $\frac{1}{4}$  ———  
S 2

1927

from which,

A pinion, 6 ins. in diam., bears N.  $75^{\circ}$  E., 28 lks. dist., marked  $\frac{1}{4}$  S35 BT

A pinion, 14 ins. in diam., bears S.  $55^{\circ}$  W., 11 lks. dist., marked  $\frac{1}{4}$  S2 BT

Ascend 331 ft. over steep SE. slope.

46.79 Granite spur, slopes S.

Descend 120 ft. over W. slope.

56.00 Bottom of ravine, 6 lks. wide, course SE., containing a small stream of seep water.

Ascend 400 ft. over steep E. slope.

66.68 Granite spur, slopes S.

Descend 160 ft. over W. slope.

79.50 Bottom of ravine, course SE.

Ascend 20 ft. over E. slope to

80.00 Set an iron post, 3 ft. long, 2 ins. in diam., over a cross (X) marked on surface of exposed granite ledge, and raise a mound of stone 5 ft. base, 3 ft. high around post, for reestablished cor. of secs. 2, 3, 34 and 35, marked on brass cap,



Resurvey of Part (E.half) of South boundary of T.15 N., R.3 W.

chains

T15N R3W	
S34	S35
S3	S2
T14N	
1927	

from which,  
 A pinion, 8 ins.in diam., bears S.26 $\frac{1}{2}$ °W., 78 lks.  
 dist., marked T14N R3W S3 BT  
 No other bearing trees available.  
 Raise a mound of stone, 2 ft.base, 1 $\frac{1}{2}$  ft.high, W.of cor.

Land, rolling and mountainous.  
 Soil, rocky, 4th rate.  
 Timber, oak and pinion.  
 Undergrowth, scrub oak, manzanita and mountain mahogany.

West, on true line, bet. secs. 3 and 34.  
 Over mountainous land, thru scattering timber and under-  
 growth.

- 5.00 Ascend 60 ft. over E. slope.  
Rocky spur, slopes SE.
- 7.50 Descend 42 ft. over SW. slope.  
Bottom of ravine, 150 lks. wide, course SE.
- 33.72 Ascend 400 ft. over NE. slope.  
Top of a granite peak on a spur sloping SE.
- 40.00 Descend 143 ft. over steep rocky SW. slope to  
Set an iron post, 3 ft. long, 1 in. in diam., 8 ins. in the  
ground to bedrock, deposit a stone marked with a cross  
(X) at base of post, and raise a mound of stone around  
post, for reestablished  $\frac{1}{4}$  sec. cor. of secs. 3 and 34,  
marked on brass cap,

S 34	
$\frac{1}{4}$	S 3
1927	

- 47.20 Descend 83 ft. over SW. slope.  
Wash, 10 lks. wide, course S.
- 54.12 Ascend 65 ft. over E. slope.  
Granite spur, slopes S.
- 64.70 Descend 90 ft. over W. slope to  
A point 100 lks. S. of base of perpendicular granite cliff  
300 ft. high, bearing NW. and E., facing SW.
- 80.00 Descend 450 ft. over steep broken SW. slope to  
Set an iron post, 3 ft. long, 2 ins. in diam., 12 ins. in  
ground to bedrock, deposit a stone marked with a cross  
(X) at base of post, and raise a mound of stone around  
post, for reestablished cor. of secs. 3, 4, 33 and 34,  
marked on brass cap,

T15N R3W	
S33	S34
S4	S3
T14 N	
1927	

No bearing trees available.

Land, mountainous.  
 Soil, rocky, 4th rate.  
 Timber, oak, pinion and pine.  
 Undergrowth, scrub oak, manzanita and mountain mahogany.

Resurvey of Part of the East boundary of Township 15 North, Range 3 West

chains

The East bdy. of T.15 N., R.3 W. was surveyed in 1871 by S.W. Foreman, U.S.D.S., establishing all cor. monuments thereon with common reference to areas both sides of the line.

No retracement or resurvey of any part of this Tp. bdy. is of record.

The following notes describe a resurvey of the south four miles of the E. bdy. of T.15 N., R.3 W.,

-----  
Retracement for Resurvey  
-----

The cor. of Ts. 15 & 16 N., Rs. 2 & 3 W., reconstructed in original position in 1913 by S.E. Blout, U.S.S. is an iron post, 3 ins. in diam., projecting 12 ins. above ground, firmly set alongside the original cor. stone, properly marked on brass cap, and witnessed by a mound of stone S. of cor. No bearing trees.

Thence,

South, on random line, in T.15 N., bet. Rs. 2 & 3 W., making diligent search at record intervals for the original cor. monuments.

Fail to find a trace of any old cor. on range line in T.15 N.

480.00 Search at this time in this vicinity fails to reveal any trace of original cor. of Ts. 14 & 15 N., Rs. 2 & 3 W., therefore, set temp. Tp. cor. and continue line and measurement in T.14 N.

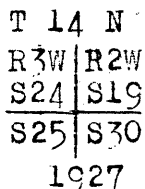
481.82 A point 9.93 chs. W. from original cor. of Ts. 14 & 15 N., Rs. 2 & 3 W., hereinafter described, which was discovered subsequent to the extension of the random line in T.14 N.

Fail to find any old cor. on the range line in T.14 N. until at

803.24 Fall 10.88 chs. W. from point of original location of the cor. of secs. 19, 24, 25 & 30, determined from the record tie to the original bearing tree for said cor., a dead oak, 10 ins. diam., marked T14N R3W S24 BT.

Having failed to find the original cor. of Ts. 14 & 15 N., Rs. 2 & 3 W. at the time this random line was run, the above described sec. cor. point was contemplated as a basis for reestablishment, by proportion, of the missing Tp. cor., therefore said sec. cor. was reconstructed as follows:

at a point 46 lks. North from original bearing tree, set an iron post, 3 ft. long, 2 ins. in diam., 26 ins. in the ground, for cor. of secs. 19, 24, 25 & 30, Ts. 14 N., Rs. 2 & 3 W., marked on brass cap,



from which,

A pine, 10 ins. in diam., bears N. 19° E., 60 lks. dist., marked T14N R2W S19 BT

A cedar, 4 ins. in diam., bears S. 27½° E., 30 lks. dist., marked T14N R2W S30 BT

A cedar, 6 ins. in diam., bears S. 38½° W., 114 lks. dist., marked T14N R3W S25 BT

A pine, 8 ins. in diam., bears N. 83½° W., 120 lks. dist., marked T14N R3W S24 BT

This sec. cor. was eliminated as a basis for reestablishment of the missing Tp. cor. by the subsequent finding of said Tp. cor. monument.

The location of the cor. of Ts. 14 & 15 N., Rs. 2 & 3 W., as noted on above described random line at 481.82 ch. station gives a true course for the E. bdy. of T.15 N., R.3 W. of N. 1° 11' W., and a true dist. of 481.92 chs., which, to maintain original proportion bet. cor. intervals

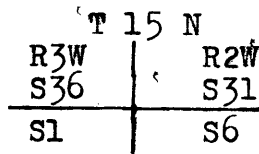
Resurvey of part of the East boundary of Township 15 North., Range 3 West.

Chains

gives twelve intervals of 40.16 chs. each, for the reestablishment of the missing cor.monuments on said township boundary.

RESURVEY.

The original cor.of Tps.14 and 15 N.,Rs.2 and 3 W.is a malapai stone 18x10x4 ins.lying in center of mound consisting of four stones,marked with 6 grooves on three of the faces;Reconstruct this cor.as follows;  
Set an iron post 3 ft. long,3 ins. in diam.27 ins. in the ground,in center of old stone mound,alongside of old corner stone, for cor.of Ts.14 and 15 N.,Rs.2 and 3 W.,marked on brass cap



T14N

1927

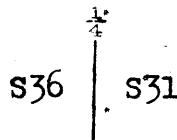
from which

- A pinion 5 ins. in diam.bears N11°E.72 lks. dist., marked T15N.,R2W.,S31 BT.
- A pinion 3 ins. in diam.bears S48°E.127 lks. dist., marked BT.only
- A pinion 5 ins. in diam. bears S35°W.105 lks. dist., marked T14N.,R3W.,S1 BT.
- A pinion 3 ins. in diam. bears N37°W.67 lks. dist., marked BT.only.

Thence

N 1°11'W.on true line bet. secs.31 and 36.  
Over rolling stony land on top of mesa,thru scattering timber and brush undergrowth.

- 10.00 Leave mesa land,bears NE. and SW.;Enter mountainous land Descend 250 ft. over steep rocky NW. slope.
- 40.16 (Proportional dist.) Set an iron post 3 ft. long,1 in. in diam.27 ins. in the ground for reestablished  $\frac{1}{2}$  sec. cor.,marked on brass cap



1927

No bearing trees within limits.

- 50.00 Raise a mound of stone 2 ft. base,1 $\frac{1}{2}$  ft. high W.of cor. Road bears NE. and SW.
- 50.40 Ravine 8 lks. wide course NE.  
Ascend 150 ft. over SE. slope
- 55.00 Top of spur bears E.;Old fortification bears W.6.00 chs.  
Descend 250 ft. over NW. slope.
- 67.00 Leave heavy undergrowth,bears E. and W.
- 75.00 Foot of steep descent.;Leave mountainous land bears E. and SW.  
Enter rolling stony land.
- 79.32 Wire fence bears E.and W;
- 79.82 Old road bears N60°E. and S70°W.
- 80.32 (Proportional dist.) Set an iron post 3 ft. long,2 ins. in diam.27 ins. in the ground for reestablished cor. of secs.25,30,31,and 36.marked on brass cap

## Resurvey of part of the East boundary of Township 15 North., Range 3 West.

Chains

T 15 N	
R3W	R2W
S25	S30
S36	S31

1927

Raise a mound of stone 2 ft. base,  $1\frac{1}{2}$  ft. high W. of cor.

Land, rolling and mountainous.  
Soil, stony 3 rd, and 4 th. rate.  
Timber, scattering oak and juniper.  
Undergrowth, oak brush.

N  $1^{\circ}11'W$ . on true line bet. secs. 25 and 30.

Over rolling stony land, thru scattering undergrowth.

31.32 A point from which an old frame house bears E. about 18.00 chs. dist.

38.02 Wire fence bears E. and W.

40.16 (Proportional dist.) Set an iron post 3 ft. long, 1 in. in diam. 27 ins. in the ground for reestablished  $\frac{1}{4}$  sec. cor., marked on brass cap

↑	
S25	S30

1927

Raise a mound of stone 2 ft. base,  $1\frac{1}{2}$  ft. high W. of cor.

45.32 Dry sand wash 30 lks. wide 4 ft. deep, course N  $20^{\circ}E$ .

50.00 Draw course N  $20^{\circ}W$ .

80.32 (Proportional dist.) Set an iron post 3 ft. long, 2 ins. in diam. 27 ins. in the ground for reestablished cor. of secs. 19, 24, 25, and 30. marked on brass cap

T 15 N	
R3W	R2W
S24	S19
S25	S30

1927

from which

An oak 30 ins. in diam. bears N  $20\frac{1}{2}^{\circ}E$ . 280 lks. dist., marked T15N., R2W., S19 BT.

A cedar 24 ins. in diam. bears S  $80^{\circ}W$ . 378 lks. dist., marked T15N., R3W., S25 BT.

An oak 12 ins. in diam. bears N  $6^{\circ}W$ . 160 lks. dist., marked T15N., R3W., S24 BT.

No other bearing trees within limits.

Raise a mound of stone 2 ft. base,  $1\frac{1}{2}$  ft. high W. of cor.

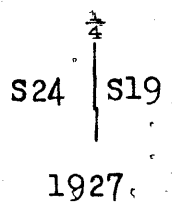
Land, rolling.  
Soil, gravelly and stony 2nd. and 3rd. rate.  
Timber, none.  
Undergrowth, scattering oak and greasewood brush

3850

Resurvey of part of the East boundary of Township 15 North., Range 3 West.

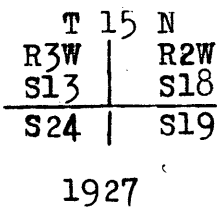
Chains

N 1°11'W. bet. secs.19 and 24.  
 Over rolling gravelly land.slopes SW.  
 3.00 Enter timber bears SE. and SW.  
 3.52 Road from Williamson Valley to Prescott Arizona, bears  
 NW. and SE.; Enter dense brush undergrowth bears E.&W.  
 31.12 Shallow draw course SW.  
 40.16 (Proportional dist.) Set an iron post 3 ft. long 1 in. in  
 diam.27 ins. in the ground for reestablished  $\frac{1}{4}$  sec.  
 cor., marked on brass cap



from which

A cedar 6 ins. in diam. bears N12 $\frac{1}{4}$ °E.113 lks. dist.,  
 marked  $\frac{1}{4}$  S19 BT.  
 An oak 20 ins. in diam. bears N88 $\frac{1}{2}$ °W.118 lks. dist.,  
 marked  $\frac{1}{4}$  S24 BT.  
 50.00 Top of low ridge bears NW. and SE.  
 70.32 Draw course NE.  
 Ascend slightly over SE.slope  
 80.32 (Proportional dist.) Set an iron post 3 ft. long, 2 ins.  
 in diam.27 ins. in the ground for reestablished  
 cor. of secs.13,18,19, and 24, marked on brass cap



from which

An oak 14 ins. in diam. bears S38°E.48 lks. dist.,  
 marked T15N.,R2W.,S19 BT.  
 An oak 18 ins. in diam. bears N13 $\frac{1}{4}$ °W.34 lks. dist.,  
 marked T15N.,R3W.,S13 BT.  
 No other bearing trees within limits.  
 Deposit a marked stone at base of post.

Land,rolling.  
 Soil,sandy and gravelly 3 rd. rate.  
 Timber,oak,and juniper.  
 Undergrowth,oak brush.

N 1°11'W. on true line bet. secs.13 and 18.  
 Over rolling gravelly land,thru scattering timber and  
 dense undergrowth.  
 4.12 Old road bears E. and W.  
 34.62 Old rod bears N80°W. and S80°E.  
 38.52 Draw course N80°E.  
 40.16 (Proportional dist.) Set an iron post 3 ft. long, 1 in.in  
 diam.27 ins. in the ground for reestablished  $\frac{1}{4}$  sec. cor  
 marked on brass cap

## Resurvey of part of the East boundary of Township 15 North., Range 3 West

Chains

$\frac{1}{4}$  .  
 S13 | S18  
 1927

from which

An oak 12 ins. in diam. bears  $S77\frac{1}{4}^{\circ}E.$  106 lks. dist.,  
 marked  $\frac{1}{4}$  S18 BT.

An oak 10 ins. in diam. bears  $S67\frac{1}{4}^{\circ}W.$  94 lks. dist.,  
 marked  $\frac{1}{4}$  S13 BT.

80.32 (Proportional dist.) Set an iron post 3 ft. long 2 ins. in  
 diam. 27 ins. in the ground for reestablished cor.  
 of secs. 7, 12, 13, and 18., marked on brass cap

T 15 N.  
 R3W | R2W  
 S12. | S7  
 S13 | S18

1927

from which

A pinion 10 ins. in diam. bears  $N72\frac{1}{2}^{\circ}W.$  196 lks. dist.,  
 marked T15N., R3W., S12 BT.

No other bearing trees within limits.

Deposit a marked stone at the base of post.

Land, rolling.

Soil, sandy and gravelly 3 rd. rate.

Timber scattering oak and juniper.

Undergrowth, oak brush.

No other corners on the east boundary of T.15 N.,  
 R.3 W. will be needed for control in the restoration  
 of the old corners on the subdivision lines ~~adjacent to~~  
 adjacent to the new work in T15N., R3W., therefore  
 discontinue the resurvey of the East boundary of  
 T15N., R3W. at the cor. of secs. 7, 12, 13, and 18.

Resurvey of part of the North boundary of Township 15 North., Range 3 West.

Chains

The North boundary of Township 15 North., Range 3 West was surveyed in 1871 by S.W. Foreman, U.S. Deputy Surveyor, and no retracement or resurvey of same is of record.

The following notes describe a resurvey of the west four miles of this township boundary.

This resurvey is made for the purpose of establishing the control subsequently used in the restoration of the old corners on the subdivision lines within the township, which are adjacent to the unsurveyed area.

RETRACEMENT FOR RESURVEY.

From the reconstructed cor. of Tps. 15 and 16 N., Rs. 2 and 3 W., hereinbefore described

167.81

West on a random line searching diligently at record intervals for the orig. cor. monuments.  
Fail to find trace of any old  $\frac{1}{4}$  sec. or sec. cor. until at Fall 201 lks. S. of the orig. cor. of secs. 2, 3, 34, and 35 hereinafter described.  
True course and dist. of east two miles of the N. bdry. of T15N., R3W. are therefore, S 89°19'E, 167.82 chs.

40.00

West on a random line, bet. secs. 3 and 34.  
Diligent search in this vicinity fails to reveal any trace of the orig.  $\frac{1}{4}$  sec. cor. of secs. 3 and 34. therefore, continue the random line and measurement and at

81.54

Fall 301 lks. S. of the orig. cor. of secs. 3, 4, 33, and 34; hereinafter described,  
True course and dist. of Tp. bdy. bet. secs. 3 and 34 are therefore, S. 87°53'E. 81.59 chs., which to maintain the orig. proportion bet. cor. intervals, gives two intervals of 40.79  $\frac{1}{2}$  chs. each for the reestablishment of the missing  $\frac{1}{4}$  sec. cor.

40.00

West on a random line bet. secs. 4 and 33.  
Diligent search in this vicinity fails to reveal any trace of the orig.  $\frac{1}{4}$  sec. cor. of secs. 4 and 33., therefore, continue the random line and measurement and at

82.08

Fall 43 lks. S. of the orig. cor. of secs. 4, 5, 32, and 33. hereinafter described.  
True course and dist. of Tp. bdy. bet. secs. 4 and 33 are therefore, S. 89°42'E. 82.08 chs., which to maintain the orig. proportion bet. cor. intervals, gives two intervals of 41.04 chs. each for the reestablishment of the missing  $\frac{1}{4}$  sec. cor.

40.54

West on a random line bet. secs. 5 and 32 (E.  $\frac{1}{4}$ )  
Fall 400 lks. S. of the orig.  $\frac{1}{4}$  sec. cor. of secs. 5 and 32 hereinafter described.  
True course and dist. of E.  $\frac{1}{4}$  of line bet. secs. 5 and 32 are therefore, S. 84°22'E. 40.74 chs.  
Thence

Resurvey of part of the North boundary of Township 15 North., Range 3 West.

Chains

West on a random line searching diligently at record intervals for the orig. cor. monuments.  
 Fail to find trace of any old cor. until at  
 120.22 Fall 472 lks. S. of the cor. of Ts. 15 and 16 N., R. 3 W., T. 16 N., R. 4 W., and Frac. T. 15 1/2 N., R. 4 W., hereinafter described.  
 True course and dist. of the west 1 1/2 miles of the N. bdry. of T. 15 N., R. 3 W. are, therefore S 87°45' E. 120.31 chs. which, to maintain the orig. proportion bet. cor. intervals, gives 40.61 chs. each for the W. 1/3 of line bet. secs. 5 and 32 and E. 1/3 of line bet. secs. 6 and 31, and one interval of 39.09 chs. for the W. 1/3 of line bet. secs. 6 and 31, for the reestablishment of the cor. of secs. 5, 6, 31, and 32 and the 1/4 sec. cor. of secs. 6 and 31.

RESURVEY

From the cor. of Ts. 15 and 16 N., R. 3 W., Frac. T. 15 1/2 N., R. 4 W. and T. 16 N., R. 4 W., which is an iron post 3 ins. in diam. projecting 9 ins. above ground firmly set alongside of old post cor., properly marked on brass cap, and witnessed with marked stone at the base.

S 87°45' E. on true line bet. secs. 6 and 31  
 Ascend 60 ft. over SW. slope over mountainous land, thru scattering timber and dense undergrowth.  
 8.20 Wire fence bears N. and S.  
 31.75 Top of spur bears NW.  
 Descend over NE. slope.  
 34.70 Ravine course N.  
 Ascend 24 ft. over W. slope.  
 39.09 (Proportional dist.) Top of spur bears N.; Set an iron post 3 ft. long 1 in. in diam. 27 ins. in the ground for reestablished 1/4 sec. cor. of secs. 6 and 31, marked on brass cap

S 6  
 1/4 S 31

1927

from which,

A juniper 6 ins. in diam. bears N21 1/2° E. 185 lks. dist., marked 1/4 S31 BT.  
 A juniper 4 ins. in diam. bears S46 1/2° E. 116 lks. dist., marked 1/4 S6 BT.  
 Descend 42 ft. over E. slope.  
 49.70 Ravine course NE.  
 Ascend over NW. slope.  
 52.70 Top of low spur bears N.  
 Descend over E. slope.  
 59.70 Sand wash 10 lks. wide course. NE.  
 62.40 Ravine course N. thence over rolling land.  
 78.70 Wire fence bears NE. and SW.  
 79.70 (Proportional dist.) Set an iron post 3 ft. long 2 ins. in diam. 27 ins. in the ground for reestablished cor. of secs. 5, 6, 31, and 32. marked on brass cap

T16N	R3W
S31	S32
S6	S5

T15N  
 1927



Resurvey of part of the North boundary of Township 15 North., Range 3 West.

Chains	<p>from which</p> <p>A cedar 6 ins. in diam. bears N8°E. 277 lks. dist., marked T16N., R3W., S32 BT.</p> <p>An oak 6 ins. in diam. bears S34°E. 388 lks. dist., marked T15N., R3W., S5 BT.</p> <p>A cedar 6 ins. in diam. bears S44½°W. 97 lks. dist., marked T15N., R3W., S6 BT.</p> <p>A cedar 6 ins. in diam. bears N33½°W. 293 lks. dist., marked T16N., R3W., S31 BT.</p> <p>Land, rolling and mountainous. Soil, gravelly and stony 3 rd. rate. Timber, scattering oak and cedar. Undergrowth, oak brush.</p>
	<p>S 87°45'E. on true line bet. secs. 5 and 32 (W½) Over stony hilly land, thru scattering timber and dense undergrowth. Descend about 10 ft. over SE. slope.</p> <p>0.21 Draw course NE. Ascend 60 ft. over NW. slope.</p> <p>9.11 Top of spur bears NE. Descend steep SE. slope 50 ft.</p> <p>17.11 Ravine course NE. Ascend over NW. slope.</p> <p>32.61 Draw course NE. Ascend 90 ft.</p> <p>40.61 (Proportional dist.) Intersect the orig. ¼ sec. cor. of secs. 5 and 32., which is a Schist stone 14x10x6 ins. loosely set in a mound of stone marked ¼ on N. face. This cor. being loosely set and poorly marked, reconstruct same as follows; Alongside of old cor. Set an iron post 3 ft. long 1 in. in diam. 27 ins. in the ground for reconstruction of ¼ sec. cor. of secs. 5 and 32., marked on brass cap</p> <div style="text-align: center;"> <math display="block">\frac{S \ 32.}{S \ 5}</math> </div> <p>1927</p> <p>No bearing trees within limits.; Raise a mound of stone 2 ft. base, 1½ ft. high N. of cor.</p> <p>Thence</p> <p>7.74 S 84°22'E. on true line bet. secs. 5 and 32 (E½) Top of low spur bears NE. Descend 50 ft. over SE. slope.</p> <p>14.24 Ravine course NE. Ascend 40 ft. over NW. slope.</p> <p>29.74 Top of spur bears SE. Descend 64 ft. over NE. slope to</p> <p>40.74 Intersect the orig. cor. of secs. 4, 5, 32, and 33. which is a white quartz stone 12x4x, 10 ins. above ground, loosely set in a mound of stone., marked with 4 grooves on E. and 2 grooves on W. faces. No cor accessories.; This cor. being poorly set and dimly marked, reconstruct same as follows; Alongside of the old stone cor. Set an iron post 3 ft. long 2 ins. in diam. 16 ins. in the ground to bedrock, supported in a mound of stone for reconstruction of cor. of secs. 4, 5, 32, and 33., marked on brass cap</p>

Resurvey of part of the North boundary of Township 15 North., Range 3 West.

Chains

T16N | R3W  
 S32 | S33

S5 | S4

T15N

1927

from which

A cedar 8 ins. in diam. bears N47 $\frac{1}{2}$ °E. 164 lks. dist.,  
 marked T16N., R3W., S33 BT.

A cedar 6 ins. in diam. bears N5 $\frac{1}{4}$ °W. 177 lks. dist.,  
 marked T16N., R3W., S32 BT.

No other bearing trees within limits.

Raise a mound of stone 2 ft. base, 1 $\frac{1}{2}$  ft. high W. of cor.

Land, hilly.

Soil, stony 3 rd. rate.

Timber, scattering oak, and cedar.

Undergrowth, oak brush.

S 89°42'E. on true line bet. sees. 4 and 33.

Descend 30 ft. over SE. slope over broken stony land,  
 thru scattering timber and undergrowth.

4.68 Wash course NE.

Ascend about 50 ft. over NW. slope.

8.84 Top of granite ledge bears N. and S.

Descend 50 ft. over E. slope.

9.38 Foot of descent in draw, course NW.

11.08 Mint Creek 40 lks. wide containing stream of clear water  
 10 lks. wide 4 ins. deep course NW.

13.08 Leave draw course NW.

Ascend over SW. slope

15.08 Top of spur bears S.

Descend over E. slope

16.48 Mint Creek 40 lks. wide containing stream of clear water  
 12 lks. wide 4 ins. deep course SW.

21.58 Mint Creek 50 lks. wide containing stream of clear water  
 10 lks. wide 4 ins. deep course NW.

30.58 Sand wash 20 lks. wide between banks 3 ft. high, course  
 SW.

Ascend 139 ft. over NW. slope.

33.58 Top of spur bears S.

Descend 50 ft. over E. slope.

41.04 (Proportional dist.) Set an iron post 3 ft. long 1 in. in  
 diam. 27 ins in the ground for reestablished  $\frac{1}{4}$  sec.  
 cor. marked on brass cap

S 33

S 4

1927

from which

A pinion 4 ins. in diam. bears N 18°E. 40 lks. dist.,  
 marked  $\frac{1}{4}$  S33 BT.

An oak 4 ins. in diam. bears S15°E. 62 lks. dist.,  
 marked  $\frac{1}{4}$  S4 BT.

Raise a mound of stone 2 ft. base, 1 $\frac{1}{2}$  ft. high N. of cor.  
 Continue line and measurement.

41.44 Sand wash course SW.

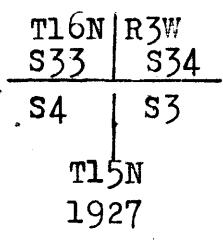
Ascend 69 ft. over NW. slope.

Resurvey of part of the North boundary of Township 15 North., Range 3 West.

Chains

- 48.08 Top of spur bears S.  
Descend 51 ft. over E. slope.
- 55.08 Wire fence bears N. and S.
- 57.08 Draw course SW.  
Ascend 186 ft. over NW. slope.
- 71.58 Sand wash 15 lks. wide with banks 2 ft. high course NW.
- 75.93 Head of ravine course NW.
- 82.08 Intersect the orig. cor. of secs. 3, 4, 33, and 34., which is a

Schist stone 14x12x4 ins. loosely set in a mound of stone dimly marked with 3 grooves on E. and W. faces.; No cor. accessories  
 This corner being in a dilapidated condition, reconstruct same as follows;  
 Alongside of the old corner, Set an iron post 3 ft. long, 2 ins. in diam. with marked stone at the base, 4 ins. in the ground to bedrock, supported in a mound of stone, for corner of secs. 3, 4, 33, and 34., marked on brass cap



from which

- A pinion 4 ins. in diam. bears N34 $\frac{1}{2}$ °E. 158 lks. dist., marked T16N., R3W., S34 BT.
  - A pinion 8 ins. in diam. bears S87 $\frac{1}{4}$ °E. 236 lks. dist., marked T15N., R3W., S3 BT.
  - A pinion 6 ins. in diam. bears N29 $\frac{1}{2}$ °W. 301 lks. dist., marked T16N., R3W., S33 BT.
- No other bearing trees within limits.

This corner is on the summit of spur, sloping S.

Land, hilly and broken.  
 Soil, stony 3 rd. and 4 th. rate.  
 Timber, scattering oak, cedar, and pinion.  
 Undergrowth, oak brush.

- S 87°53'E. on true line bet. secs. 3 and 34.  
Descend 109 ft. over E. slope over broken stony hilly land thru scattering timber and brush undergrowth.
- 11.54 Sand wash course S.  
Ascend 23 ft. over W. slope.
- 31.54 Top of spur bears S.  
Descend 32 ft. over E. slope.
- 33.09 Wire fence bears N. and S.
- 34.59 Dry ravine course S.  
Ascend 23 ft. over rolling land.
- 37.09 Sand wash 8 lks. wide 2 $\frac{1}{2}$  ft. deep course SW.  
Ascend 23 ft. over NW. slope.
- 40.79 (Proportional dist.) Set an iron post 3 ft. long, 1 in. in diam. 27 ins. in the ground for reestablished  $\frac{1}{4}$  sec. cor., marked on brass cap

## Resurvey of the North boundary of Township 15 North., Range 3 West.

Chains

$$\frac{S\ 34}{S\ 3}$$

1927

from which

- A cedar 6 ins. in diam. bears N82 $\frac{1}{2}$ °E. 82 lks. dist.,  
marked  $\frac{1}{4}$  S34 BT.
- A pinion 6 ins. in diam. bears S49 $\frac{1}{4}$ °W. 152 lks. dist.,  
marked  $\frac{1}{4}$  S3 BT.
- 41.79 Wash 10 lks. wide course SW.
- 47.59 Top of flat top spur bears SW.  
Descend over SE. slope.
- 50.59 Wash course SW.  
Ascend over NW. slope.
- 55.59 Top of spur bears SW.  
Descend over SE. slope.
- 58.19 Ravine course S.  
Ascend 30 ft. over W. slope.
- 64.59 Top of ascent on ridge bears NW. and SE. thence over  
rolling land on top of ridge.
- 69.59 Descend gradually 23 ft. over NE. slope. to
- 81.59 Intersect the orig. cor. of secs. 2, 3, 34, and 35., which  
is a white quartz stone 18x10x8 ins loosely set  
in small mound of stone., marked with 2 notches  
on E. and 4 notches on W. edges.; No cor. accessories  
This cor. being in a dilapidated condition, reconstruct  
same as follows;  
Alongside of the old cor. Set an iron post 3 ft. long, 2  
ins. in diam. 27 ins. in the ground for  
corner of secs. 2, 3, 34, and 35.,  
marked on brass cap

T16N	R3W.
S34	S35
S 3	S2

T15N

1927

from which

- A pinion 6 ins. in diam. bears N58°E. 62 lks. dist.,  
marked T16N., R3W., S35 BT.
- A pinion 6 ins. in diam. bears S80°E. 54 lks. dist.,  
marked T15N., R3W., S2 BT.
- A cedar 8 ins. in diam. bears S65 $\frac{1}{2}$ °W. 197 lks. dist.,  
marked T15N., R3W., S3 BT.
- A cedar 6 ins. in diam. bears N30 $\frac{1}{2}$ °W. 87 lks. dist.,  
marked T16N., R3W., S34 BT.

Land, broken, rolling, and hilly.  
Soil, stony 3 rd. and 4 th. rate.  
Timber, oak, cedar, and pinion.  
Undergrowth, oak brush.

Resurvey of part of the West boundary of Township 15 North., Range 3 West.

Chains The north three miles of the west boundary of Township 15 North., Range 3 West. were surveyed in 1871 by S.W. Foreman, U.S. Deputy Surveyor. In 1924 Sidney E. Blout, U.S. Cadastral Engineer, resurveyed the north two miles of this boundary under Group No. 128, reestablishing quarter-section and section corners referring to areas in fractional T15 $\frac{1}{2}$ N., R4W. only alternately at intervals of 40.00 chs. in northing counting from the south, reestablishing the cor. of secs. 7 and 18, T15 N., R. 3 W. at 40.00 chs. South of the original  $\frac{1}{4}$  sec. cor. of secs. 7 and 12., reconstructing said original quarter-section corner in same position appropriately altered to refer to quarters of section 7 only, and reestablishing missing original corners at proportional intervals between said original quarter-section corner and the cor. of T. 15 and 16 N., R. 3 W., T. 16 N., R. 4 W., and Frac. T. 15 $\frac{1}{2}$  N., R. 4 W.

The following notes describe the resurvey of the North half of the west boundary of sec. 18, T15N., R3W., on the E. bdy. of sec. 36, Frac. T. 15 $\frac{1}{2}$  N., R. 4 W.

RESURVEY

The east boundary of Frac. T. 15 $\frac{1}{2}$  N., R. 4 W. having been surveyed under a recent Group, no retracement before resurvey is necessary., therefore, At a point 40.00 chs. due south of the reestablished corner of secs. 7 and 18 on the W. bdy. of T15 N., R. 3 W., hereinafter described, Set an iron post 3 ft. long, 1 in. in diam. 27 ins. in the ground for reestablished  $\frac{1}{4}$  sec. cor. of sec. 18 only, marked on brass cap

$\frac{1}{4}$  S18

1927

from which

A walnut 8 ins. in diam. bears N13°E. 31 lks. dist., marked  $\frac{1}{4}$  S18 BT.

An oak 6 ins. in diam. bears S84°E., 31 lks. dist., marked  $\frac{1}{4}$  S18 BT.

Thence

North on true line on W. bdy. of sec. 18 (N $\frac{1}{2}$ )  
Over nearly level sandy land, thru. scattering timber and brush undergrowth.

3.50 Leave level sandy land bears E. and W. Enter rolling stony land.

Ascend 70 ft. over S. slope.

15.30 Top of gravelly ridge, bears E. and W.

Descend 40 ft. over NW. slope.

27.30 Intersect the  $\frac{1}{4}$  sec. cor. of sec. 36, Frac., T15 $\frac{1}{2}$ N., R. 4 W., which is an iron post 1 in. in diam. projecting 10 ins. above ground, firmly set and properly marked on brass cap.

40.00 Continue gradual descent along W. slope (Record dist.) Intersect the reestablished cor. of secs. 7 and 18. T15N., R3W., which is an iron post 2 ins. in diam. projecting 9 ins. above ground firmly set, and properly marked on brass cap.

Land, level and rolling.  
Soil, sandy and stony 2nd. and 3 rd. rate.  
Timber, scattering oak and walnut  
Undergrowth, oak brush.

Survey of Part (Completion) of

South Boundary of Township 15 North., Range 3 West.

Chains

From the reestablished cor. of secs. 3, 4, 33, and 34 on S. bdry. of T15N., R3W. hereinbefore described

West on true line bet. secs. 4 and 33  
 Descend 92 ft. over steep rocky SW. slope over mountainous land thru dense undergrowth.

5.00 Wash 15 lks. wide course SE.  
 Ascend over NE. slope.

12.00 Top of Divide in Pass bears NE. and SW.  
 Descend 30 ft. over NW. slope.

20.48 Wire fence bears NW. and SE. in head of ravine course NW.  
 Ascend 53 ft. over NE. slope.

28.00 Top of spur bears NW.  
 Descend 90 ft. over SW. slope.

34.20 Ravine course NW.  
 Ascend 29 ft. over NE. slope.

37.50 Top of spur bears N.  
 Descend 20 ft. over W. slope.

39.60 Wash course NW.  
 Ascend 50 ft. over NE. slope.

40.00 Set an iron post 3 ft. long, 1 in. in diam. 26 ins. in the ground for  $\frac{1}{4}$  sec. cor. marked on brass cap

$\frac{1}{4}$  S 33  
 S 4

1927

43.40 Raise a mound of stone 2 ft. base, 1 $\frac{1}{2}$  ft. high N. of cor.  
 Top of spur bears N.  
 Descend 96 ft. over W. slope.

46.60 Ravine course NW.  
 Ascend 200 ft. over NE. slope.

67.40 Top of spur bears NW.  
 Descend 115 ft. over SW. slope.

74.60 Head of wash course N.  
 Ascend over E. slope.

78.50 Top of spur bears NW.  
 Descend 30 ft. over SW. slope. to

80.00 Set an iron post 3 ft. long 2 ins. in diam. with marked stone at the base 4 ins. in the ground to bedrock supported in a mound of stone for cor. of secs. 4, 5, 32, and 33., marked on brass cap

T15N	R3W
S32	S33
S5	S4

T14N

1927

Land, rough mountainous.  
 Soil, stony 3 rd. and 4 th. rate.  
 Timber, none.  
 Undergrowth, oak brush.

11.70 West on true line bet. secs. 5 and 32.  
 Descend 270 ft. over SW. slope over stony mountainous land thru dense undergrowth and scattering timber.  
 Ravine 8 lks. wide, course NW.  
 Ascend 12 ft. over NE. slope.

Survey of part (Completion) of  
South Boundary of Township 15 North, Range 3 West.

- Chains
- 14.00 Descend 150 ft. over SW. slope.
  - 35.40 Sand wash 30 lks. wide, course NW.
  - 39.00 Same wash course SW.
  - 40.00 Set an iron post 3 ft. long, 1 in. in diam., 26 ins. in the ground for  $\frac{1}{4}$  sec. cor., marked on brass cap
- from which
- An oak 5 ins. in diam., bears N.  $26\frac{1}{2}^{\circ}$  W., 28 lks. dist., marked  $\frac{1}{4}$  S 32 B T.
  - A juniper 50 ins. in diam., bears N.  $83\frac{1}{2}^{\circ}$  W., 110 lks. dist., marked  $\frac{1}{4}$  S 32 B T.
- Along side of sand wash.
- 47.00 Leave wash course N.  $80^{\circ}$  W., thence over steep N. slope.
  - 59.30 Same sand wash 25 lks. wide, course SW. Ascend 60 ft. over SE. slope.
  - 67.00 Top of spur bears S. Descend 74 ft. over W. slope.
  - 73.40 Sand wash course S.
  - Ascend 83 ft. over E. slope.
  - 80.00 Top of spur bears S. Set an iron post 3 ft. long 2 ins. in diam. with marked stone at the base, 16 ins. in the ground to bedrock, supported in a mound of stone for cor. of secs. 5, 6, 31 and 32, marked on brass cap
- $$\begin{array}{r} T 15 N. R. 3 W. \\ S 31 \quad S 32 \\ S 31 \quad S 32 \\ \hline E 14 N. \\ 1927 \end{array}$$
- Land, rolling mountainous.  
Soil, stony, 3rd and 4th rate.  
Timber, scattering oak and juniper.  
Undergrowth, oak brush.
- 
- West on true line bet. secs. 6 and 31.  
Descend 110 ft. over SW. slope over rolling stony land, thru scattering timber and dense undergrowth.
- 8.00 Sand wash, 20 lks. wide, course NW.
  - Ascend 186 ft. over NE. slope.
  - 28.74 Top of spur bears N.
  - Descend 173 ft. over W. slope.
  - 40.00 Set an iron post 3 ft. long, 1 in. in diam., 27 ins. in the ground for  $\frac{1}{4}$  sec. cor., marked on brass cap
- $$\begin{array}{r} S 31 \\ \frac{1}{4} \frac{S 31}{S 6} \\ 1927 \end{array}$$
- No bearing trees within limits.
  - Raise a mound of stone 2 ft. base,  $1\frac{1}{2}$  ft. high N. of cor.
  - 47.20 Head of wash course SW.
  - Ascend over NE. slope.
  - 57.00 Top of low spur bears S.
  - Descend over W. slope.
  - 67.00 Wash course SW.

Survey of Part (Completion) of  
South Boundary of Township 15 North, Range 3 West.

Chains Ascend over SE. slope 65 ft.  
 76.00 Top of spur bears S.  
 Descend 129 ft. over W. slope.  
 94.90 Dry ravine course NW.  
 Ascend over NE. slope.  
 96.80 Top of low spur bears N.  
 99.31 Intersect East boundary of Township 15 North, Range 4  
 West 180 lks. S. of the  $\frac{1}{4}$  sec. cor. of sec. 24 which  
 is an iron post, 1 in. in diam., projecting 9 ins.  
 above ground, firmly set and properly mkd. on brass  
 cap. No accessories.  
 At point of intersection set an iron post 3 ft. long,  
 3 ins. in diam., 27 ins. in the ground for closing  
 corner of Ts. 14 and 15 N., R. 3 W., marked on brass  
 cap

T 15 N	T 15 N	
S 24	R 3 W	
R 4 W	S 31	
	S 6	C C
	T 14 N	

1927

from which  
 An oak 6 ins. in diam., bears N.  $15\frac{1}{2}^{\circ}$  E., 36 lks.  
 dist., marked T 15 N R 3 W S 31 C C B T.  
 A cross (X) on W. face of granite boulder 5 x 3 x 2  
 ft. above ground bears S.  $33\frac{1}{2}^{\circ}$  E., 56 lks. dist.  
 Land, rolling and hilly.  
 Soil, stony, 3rd rate.  
 Timber, scattering oak and juniper.  
 Undergrowth, oak brush.



1000 3850

Resurvey of Part of the Subdivision lines of T.15 N., R.3 W.

chains

The subdivision lines of the east range and north two tiers of secs., the S. and W. bdrs. of sec. 14, the E. 1/2 of line bet. secs. 26 and 35, and the S. 1/2 of line bet. secs. 34 and 35, all of T.15 N., R.3 W., were surveyed in 1872 by S.W. Foreman, U.S.D.S. and no retracement or resurvey of any part of said lines is of record.

The remainder of the subdivision lines of said Tp. are unsurveyed.

The following notes describe a resurvey of the south 3 1/2 miles of the first meridional sec. line, the west 4 miles of the fourth latitudinal sec. line, the S. and W. bdrs. of sec. 14, the E. 1/2 of line bet. secs. 26 & 35, and the S. 1/2 of line bet. secs. 34 & 35.

Retracement for Resurvey.

From ~~some~~ Random lines on record bearings. Search for corners at record distances.

First Meridional Section Line.

From reestablished cor. of secs. 1, 2, 35 and 36, on S. bdy. of Tp., hereinbefore described, North, on random line.

237.66 Fail to find a trace of any original 1/4 sec. or sec. cor. monument until at Fall 9.13 chs. E. of the point of original location of the cor. of secs. 13, 14, 23 and 24, determined as herein-after described.

The true course and dist. of the 1st Meridional Sec. line back to the cor. of secs. 1, 2, 35 and 36 on S. bdy. of Tp. is therefore, S. 2° 12' E., 237.84 chs., which, to maintain original proportion bet. cor. intervals thereon, gives six intervals of 39.64 chs. each for the reestablishment of missing cors.

40.18 From point of original location of the cor. of secs. 13, 14, 23 and 24, North, on random line, bet. secs. 13 and 14 (S. 1/2) Fall 46 lks. E. of point of original location of the 1/4 sec. cor. of secs. 13 and 14, determined as hereinafter described.

The true course and dist. of S. 1/2 of line bet. secs. 13 and 14 are therefore, N. 0° 39' W., 40.18 chs.

39.64 From point of original location of the cor. of secs. 13, 14, 23 and 24, S. 2° 12' E., on trial 1st Meridional Sec. line, bet. secs. 23 and 24.

79.28 Set temp. 1/4 sec. cor. Set temp. cor. (A) of secs. 23, 24, 25 and 26. Thence, S. 2° 12' E., on trial 1st Meridional Sec. line, bet. secs. 25 and 26.

39.64 Set temp. 1/4 sec. cor. 79.28 Set temp. cor. (A) of secs. 25, 26, 35 and 36. Thence, S. 2° 12' E., on trial 1st Meridional Sec. line, bet. secs. 35 and 36.

39.64 Set temp. 1/4 sec. cor. 79.28 Intersect the reestablished cor. of secs. 1, 2, 35 and 36, on the S. bdy. of the Tp., hereinbefore described.

## Resurvey of Part of the Subdivision lines of T.15 N., R.3 W.

chains

Second Meridianal Section Line.  
-----

From reestablished cor. of secs. 2, 3, 34 and 35 on the S. bdy. of the Tp., hereinbefore described, North, on random line, bet. secs. 34 and 35 (S.  $\frac{2}{3}$ )  
 40.00 Diligent search in this vicinity fails to reveal any trace of the original  $\frac{1}{4}$  sec. cor.  
 Set temp.  $\frac{1}{4}$  sec. cor.  
 The true course and dist. of S.  $\frac{1}{4}$  of line bet. secs. 34 and 35 for resurvey will therefore be, North, 40.00 chs.  
 -----

From the original cor. of secs. 2, 3, 34 and 35 on the N. bdy. of the Tp., hereinbefore described, S.  $0^{\circ} 4' E.$ , on random line, on the North half of the 2nd Meridianal Sec. line.

80.18 Diligent search in this vicinity fails to reveal any trace of the original cor. of secs. 2, 3, 10 and 11.

Thence,

South, on random line, continuing measurement.

245.84 Find no trace of any original cor. monument until at Fall 8.14 chs. West of the original cor. of secs. 14, 15, 22 and 23, hereinafter described.

The true course and dist. of a direct line back to the cor. of secs. 2, 3, 34 and 35 on the N. bdy. of the Tp. are therefore, N.  $1^{\circ} 55' W.$ , 245.98 chs., which to maintain original proportion bet. cor. intervals thereon, gives five intervals of 40.965 chs., and one interval (N.  $\frac{2}{3}$  bet. secs. 2 and 3) of 41.155 chs. for reestablishment of the missing cors.

From original cor. of secs. 14, 15, 22 and 23, N.  $1^{\circ} 55' W.$ , on trial 2nd Meridianal Sec. line, bet. secs. 14 and 15.

40.965 Set temp.  $\frac{1}{4}$  sec. cor.

81.93 Set temp. cor. (A) of secs. 10, 11, 14 and 15.

No cors. of the 2nd Meridianal Sec. line are to be reestablished N. of temp. cor. (A) at this time therefore discontinue trial line at said temp. sec. cor.  
 -----

Third Meridianal Section Line.  
-----

From the original cor. of secs. 3, 4, 33 and 34 on the N. bdy. of the Tp., hereinbefore described, South, on random line, on the north two miles of the 3rd meridianal sec. line.

Fail to find any trace of an original cor. monument on said line.

160.30 Diligent search in this vicinity fails to reveal any trace of the original cor. of secs. 9, 10, 15 and 16.

Set temp. cor. (A) of secs. 9 and 10 at this point.  
 -----

Fourth Meridianal Section Line.  
-----

From original cor. of secs. 4, 5, 32 and 33 on the N. bdy. of the Tp., hereinbefore described, S.  $0^{\circ} 8' E.$ , on random line, on the north two miles of the 4th meridianal sec. line.

## Resurvey of Part of the Subdivision lines of T.15 N., R.3 W.

chains  
80.25 Diligent search in this vicinity fails to reveal any trace of the original cor. of secs. 4, 5, 8 and 9.

Thence,

South, on random line, continuing measurement.

Fail to find any trace of an original cor. monument on the line.

160.25 Diligent search in this vicinity fails to reveal any trace of the original cor. of secs. 8, 9, 16 and 17.

Set temp. cor. (A) of secs. 8 and 9 at this point.

-----  
Fifth Meridional Section Line.  
-----

From reestablished cor. of secs. 5, 6, 31 and 32 on the N. bdy. of the Tp., hereinbefore described, S. 0° 4' E., on random line, on north two miles of the 5th meridional sec. line.

80.35 Diligent search in this vicinity fails to reveal any trace of the original cor. of secs. 5, 6, 7 and 8.

Thence,

South, on random line, continuing measurement.

Find no trace of any original cor. monument on the line.

160.35 Diligent search in this vicinity fails to reveal any trace of the original cor. of secs. 7, 8, 17 and 18.

Set temp. cor. (A) of secs. 7 and 8 at this point.

-----  
First Latitudinal Section Line.  
-----

From reestablished cor. of secs. 25, 30, 31 and 36 on the E. bdy. of the Tp., hereinbefore described, S. 89° 51' W., on random line, bet. secs. 25 and 36.

40.14 Diligent search in this vicinity fails to reveal any trace of the original  $\frac{1}{4}$  sec. cor.

Set temp.  $\frac{1}{4}$  sec. cor. and continue line and measurement.

80.28 Diligent search in this vicinity fails to reveal any trace of the original cor. of secs. 25, 26, 35 and 36.

Set temp. cor. (B) of said secs. at this point.

Thence,

West, on random line, bet. secs. 26 and 35 (E.  $\frac{1}{2}$ )

1.27 A point 84 lks. N. of temp. cor. (A) of secs. 25, 26, 35 and 36 set on the trial 1st meridional sec. line as hereinbefore described.

Continue line and measurement.

40.00 Diligent search in this vicinity fails to reveal any trace of the original  $\frac{1}{4}$  sec. cor.

Set temp.  $\frac{1}{4}$  sec. cor. of secs. 26 & 35 at this point.

The true point for reestablishment of the cor. of secs. 25, 26, 35 and 36 determined from temp. cors. (A) and (B) will therefore be at 1.27 chs. E. of temp. cor. (A) and 84 lks. S. of temp. cor. (B).

The true courses and dists. of the subdivision lines extending S., E. and W. from cor. of secs. 25, 26, 35 and 36 reestablished at point described above, will therefore be;

Line bet. secs. 35 & 36 - N. 1° 17' W., 79.24 chs.

Line bet. secs. 25 & 36 - S. 89° 15' W., 80.28 chs.

E.  $\frac{1}{2}$  bet. secs. 26 & 35 - West, 40.00 chs.

-----  
Second Latitudinal Section Line.  
-----

## Resurvey of Part of the Subdivision Lines of T.15 N., R.3 W.

chains

Second Latitudinal Section Line.  
-----

- From reestablished cor. of secs. 19, 24, 25 and 30 on the E. bdy. of the Tp., hereinbefore described,  
S. 89° 56' W., on random line, bet. secs. 24 and 25.
- 40.07 Diligent search in this vicinity fails to reveal any trace of the original  $\frac{1}{4}$  sec. cor.  
Set temp.  $\frac{1}{4}$  sec. cor. and continue line and measurement.
- 80.14 Diligent search in this vicinity fails to reveal any trace of the original cor. of secs. 23, 24, 25 and 26.  
Set temp. cor. (B) of said secs. at this point.  
Thence,  
West, on random line.
- 2.75 A point 198 lks. N. of temp. cor. (A) of secs. 23, 24, 25 and 26, set at proportional dist. on the 1st meridional sec. line as hereinbefore described.  
The true point for reestablishment of the cor. of secs. 23, 24, 25 and 26 determined from temp. cors. (A) and (B) will therefore be at 275 chs. E. of temp. cor. (A) and 198 chs. S. of temp. cor. (B) of said secs.  
The true courses and dists. of the subdivision lines extending S., E. and N. from cor. of secs. 23, 24, 25 and 26 reestablished at point described above will therefore be;
- Line bet. secs. 25 & 26 --- N. 1° 8' W., 79.24 chs.  
Line bet. secs. 24 & 25 --- S. 88° 31' W., 80.17 chs.  
Line bet. secs. 23 & 24 --- N. 4° 11' W., 79.43 chs.
- 

Third Latitudinal Section Line.  
-----

- From reestablished cor. of secs. 13, 18, 19 and 24 on the E. bdy. of the Tp., hereinbefore described,  
West, on random line, bet. secs. 13 and 24.
- 40.00 Diligent search in this vicinity fails to reveal any trace of the original  $\frac{1}{4}$  sec. cor.  
Continue line and measurement.
- 84.47 Fall 3.12 chs. N. of the point of original location of the cor. of secs. 13, 14, 23 and 24, determined as hereinafter described.  
The true course and dist. of line bet. secs. 13 and 24 are therefore, S. 87° 53' W., 84.53 chs.
- 
- From point of original location of the cor. of secs. 13, 14, 23 and 24,  
West, on random line, on the S. bdy. of sec. 14 (E.  $\frac{1}{2}$ )
- 43.95 Fall 2.32 chs. N. of point of original location of the  $\frac{1}{4}$  sec. cor., hereinafter described.  
The true course and dist. of E.  $\frac{1}{2}$  of S. bdy. of sec. 14 are therefore, S. 86° 59' W., 44.01 chs.  
Thence,  
West, on random line, on the S. bdy. of sec. 14 (W.  $\frac{1}{2}$ )
- 36.08 Fall 2.32 chs. S. of original cor. of secs. 14, 15, 22 and 23, hereinafter described.  
The true course and dist. of W.  $\frac{1}{2}$  of S. bdy. of sec. 14 are therefore, N. 86° 19' W., 36.15 chs.
- 

Fourth Latitudinal Section Line.  
-----

- From reestablished cor. of secs. 7 and 18 on the W. bdy. of the Tp., hereinbefore described,  
S. 89° 51' E., on random line, on S. bdy. of sec. 7.
- 38.65 Find no trace of original  $\frac{1}{4}$  sec. cor.

1950

Resurvey of Part of the Subdivision Lines of T.15 N., R.3 W.

chains  
78.65 Diligent search in this vicinity fails to reveal any trace of original cor. of secs. 7, 8, 17 and 18. Thence, East, on random line, on the east five miles of the 4th latitudinal sec. line, continuing measurement from the cor. of secs. 7 and 18 on W. bdy. of Tp. Find no trace of any original cor. monument on the line.

478.75 Diligent search in this vicinity fails to reveal any trace of original cor. of secs. 7, 12, 13 and 18. Continue line and measurement.

493.30 Fall 12.86 chs. N. of reestablished cor. of secs. 7, 12, 13 and 18 on E. bdy. of the Tp., hereinbefore described.

The true course and dist. of a direct line back to the cor. of secs. 7 and 18 on W. bdy. of the Tp. are therefore N. 88° 29' W., 493.47 chs., which, to maintain original proportion between cor. intervals thereon, gives 82.56 chs. for line bet. secs. 12 and 13, 81.07 chs. for the S. bdy. of sec. 7, and 82.46 chs. for each of the four other intervals.

-----

From reestablished cor. of secs. 7, 12, 13 and 18 on the E. bdy. of the Tp., hereinbefore described; N. 88° 29' W., on the east two miles of the trial 4th latitudinal sec. line.

165.02 Set temp. cor. (B) of secs. 10, 11, 14 and 15. Thence, West, on random line.

1.26 A point 5.90 chs. N. of temp. cor. (A) set at proportional dist. on the 2nd meridional sec. line as hereinbefore described.

The true point for reestablishment of the cor. of secs. 10, 11, 14 and 15 determined from temp. cors. (A) and (B) will therefore be at 1.26 chs. E. of temp. cor. (A) and 5.90 chs. S. from temp. cor. (B) of said secs.

The true course and dist. of the W. bdy. of sec. 14 to the cor. of secs. 10, 11, 14 and 15 reestablished at point described above will therefore be; N. 1° 2' W., 81.90 chs.

-----

From temp. cor. (B) of secs. 10, 11, 14 and 15, N. 88° 29' W., on trial 4th latitudinal sec. line, on S. bdy. of sec. 10.

41.23 Set temp. ¼ sec. cor. of secs. 10 and 15.

82.46 Set temp. cor. (B) of secs. 9, and 10. Thence, West, on random line.

5.85 A point 1.22 chs. N. of temp. cor. (A) of same secs. set at record bearing and dist. on the 3rd meridional sec. line as hereinbefore described.

The true point for reestablishment of the cor. of secs. 9 and 10 determined from temp. cors. (A) and (B) will therefore be at 5.85 chs. E. of temp. cor. (A) and 1.22 chs. S. of temp. cor. (B) of said secs.

The true course and dist. of the S. bdy. of sec. 10 to the cor. of secs. 9 and 10 reestablished at point described above, will therefore be; N. 85° 15' W., 82.71 chs.

-----

From temp. cor. (B) of secs. 9, and 10, N. 88° 29' W., on trial 4th latitudinal sec. line, on S. bdy. of sec. 9.

41.23 Set temp. ¼ sec. cor. of sec. 9.

82.46 Set temp. cor. (B) of secs. 8 and 9. Thence West, on random line.

5.31 A point 2.92 chs. N. of temp. cor. (A) of same secs. set at record bearings and dist. on the 4th meridional sec. line as hereinbefore described.

Resurvey of Part of the Subdivision lines of T.15 N.,R.3 W.

chains The true point for reestablishment of the cor.of secs. 8 and 9 determined from temp.cors.(A) and (B) will therefore be at 5.31 chs.E. of temp.cor.(A) and 2.92 chs.S. of temp.cor.(B) of said secs.  
The true course and dist.of S.bdy.of sec.9 resulting from such reestablishment of the cor.of secs.8 and 9 will therefore be; N.89°40'W., 82.43 chs.

-----  
From temp.cor.(B) of secs.8 and 9, N.88°29'W., on trial 4th latitudinal sec. line, on S. bdy. of sec.8.  
41.23 Set temp.  $\frac{1}{4}$  sec.cor.of sec.8.  
82.46 Set temp.cor.(B) of secs.7 and 8.  
Thence,  
West, on random line.  
4.15 A point 38 lks.S. of temp.cor.(A) of same secs. set at record bearings and dist.on the 5th meridional sec. line as hereinbefore described.  
The true point for reestablishment of the cor.of secs.7 and 8 will therefore be at 4.15 chs.E. of temp.cor.(A) and .38 lks.N. of temp.cor.(B) of said secs.  
The resulting true courses and dists.of the S.bdrs.of secs.7 and 8 are;  
S.bdy.of sec.7--S.88°45'E., 81.07 chs.  
S.bdy.of sec.8--N.86°11'W., 82.61 chs.

-----  
From the bearings and distances determined by the random and trial lines and temporary cors.set at proportional intervals, the following table is derived.

Boundaries of Part of Township 15 North, Range 3 West  
(Sections 15 to 23 incl., and Secs.26 to 35 incl.)

Latitudes, Departures and Closing Errors.

Line designated	True Course	Dist.	Latitudes		Departures	
			N.	S	E.	W.
South bdy.of Tp.	West	419.31				419.31
West bdy.of Tp.	North	334.50	334.50			
Subdivisional Boundary	S.88°45'E.	81.07		1.77	81.05	
	S.86°11'E.	82.61		5.50	82.43	
	S.89°40'E.	82.43		.48	82.43	
	S.85°15'E.	82.71		6.85	82.43	
	S.1° 2'E.	81.90		81.89	1.48	
	S.86°19'E.	36.15		2.32	36.08	
	N.86°59'E.	44.01	2.32		43.95	
	S. 4°11'E.	79.43		79.22	5.79	
	S. 1° 8'E.	79.24		79.22	1.57	
	S.1° 17'E.	79.24		79.22	1.77	
Convergency				.26		
Totals			336.82	336.73	418.98	419.31
			336.73			418.98
Error in latitude			0.09			
Error in departure					0.33	

Resurvey of Part of the Subdivision lines of Township 15 North., Range 3 West

Chains

From the reestablished cor. of secs. 1, 2, 35, and 36 on S. bdy. of Tp. hereinbefore described.

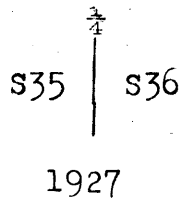
N 1°17' W., on true line, bet. secs. 35 and 36.  
Ascend 30 ft. over SE. slope over stony mountainous land thru scattering timber and dense undergrowth.

2.50 Top of spur bears E.  
Descend 20 ft. over N. slope.

5.50 Rocky ravine 6 lks. wide course E.  
Ascend 621 ft. over steep rocky SW. slope to

17.20 Top of SW. slope of granite spur bears SE., thence along steep W. slope.

39.62 (Proportional dist.) Set an iron post 3 ft. long 1 in. in diam. over cross (x) on ledge, supported in a mound of stone for reestablished  $\frac{1}{4}$  sec. cor., marked on brass cap



from which

A pinion 6 ins. in diam. bears N79 $\frac{1}{4}$ ° E. 10 lks. dist., marked  $\frac{1}{4}$  S36 BT.

A pinion 10 ins. in diam. bears N55 $\frac{1}{2}$ ° W. 79 lks. dist., marked  $\frac{1}{4}$  S35 BT.

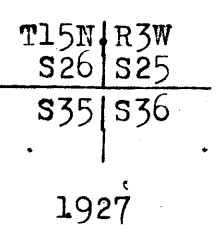
Continue abrupt ascent 500 ft. over SW. slope

57.80 Top of granite peak on ridge bears NE. and SW.  
Descend 843 ft. over abrupt rocky N. slope.

76.05 Ravine 10 lks. wide course N80° W.  
Ascend 39 ft. over SW. slope to

79.24 Intersect point for reestablishment of the cor. of secs. 25, 26, 35 and 36, which is 127 chs. due east of temp. cor. (A) of said secs. on 1st. Meridional Sec. line and 84 lks. due south of temp. cor. (B) of said secs. on the 1st. Latitudinal Sec. line.

At this point, Set an iron post 3 ft. long, 2 ins. in diam. 10 ins. in the ground supported in a mound of stone for reestablished cor. of secs. 25, 26, 35, and 36, marked on brass cap



from which.

A pinion 8 ins. in diam. bears N77 $\frac{1}{2}$ ° E. 93 lks. dist., marked T15N., R3W., S25 BT.

A pinion 12 ins. in diam. bears S29 $\frac{1}{2}$ ° E. 67 lks. dist., marked T15N., R3W., S36 BT.

A pinion 10 ins. in diam. bears S17 $\frac{1}{2}$ ° W. 48 lks. dist., marked T15N., R3W., S35 BT.

A pinion 6 ins. in diam. bears N64 $\frac{1}{4}$ ° W. 81 lks. dist., marked T15N., R3W., S26 BT.

Land, mountainous.  
Soil, stony 4 th. rate.  
Timber, juniper, oak, and pinion.  
Undergrowth, oak and manzanita brush.

## Resurvey of Part of the Subdivision lines of Township 15 North., Range 3 West

Chains	
	From the reestablished cor. of secs. 25, 30, 31, and 36 on E. bdy. of Tp. hereinbefore described.
	S 89°15'W. on true line bet. secs. 25 and 36.
	Over rolling stony land, thru scattering undergrowth.
3.00	Ascend 162 ft. over SE. slope.
23.00	Top of ascent on S. slope of hill
24.85	Ledge of malapai 10 ft. high bears NE. and SW. 2 chs. dist. Leave rolling land bears NE. and SE.; Enter stony mountainous land and scattering timber
	Descend 86 ft. over steep rocky NW. slope.
33.00	Ravine course NW.
	Ascend 12 ft. over NE. slope of granite ledge.
36.25	Top of spur bears N.
	Descend 50 ft. over steep rocky W. slope over granite boulders.
40.14	(Record dist.) Set an iron post 3 ft. long, 1 in. in diam. 8 ins. in the ground to bedrock, supported in a mound of stone for reestablished $\frac{1}{4}$ sec. cor. marked on brass cap

S 25  
—  
S 36

1927

from which

	A pinion 8 ins. in diam. bears N38°W. 47 lks. dist., marked $\frac{1}{4}$ S25 BT.
	A pinion 10 ins. in diam. bears S0 $\frac{1}{2}$ °W 113 lks. dist., marked $\frac{1}{4}$ S36 BT.
43.00	Mint Creek Wash 40 lks. wide containing stream of clear water 20 lks. wide 6 ins. deep, course N.
	Ascend 490 ft. over abrupt E. slope:
69.00	Top of granite spur bears N.
	Descend abrupt rocky W. slope 340 ft. to
80.28	The reestablished cor. of secs. 25, 26, 35, and 36.

Land, rolling and rough mountainous.  
Soil, stony 3 rd. and 4th. rate.  
Timber, scattering juniper, oak, and pinion.  
Undergrowth, manzanita and oak brush.

	N 1°8'W. on true line bet. secs. 25 and 26.
	Ascend 40 ft. over SW. slope over broken stony mountainous land, thru scattering timber and dense undergrowth.
3.75	Top of rocky spur bears NW.
	Descend 394 ft. over steep rocky NW. slope.
19.78	Rocky ravine 15 lks. wide, course NE.
21.00	West bank of ravine on spur bears NE.
	Descend 224 ft. over NW. slope. to
39.62	(Proportional dist.) Set an iron post 3 ft. long, 1 in. in diam. 16 ins. in the ground to bedrock, supported in a mound of stone for reestablished $\frac{1}{4}$ sec. cor., marked on brass cap

S26 | S25

1927

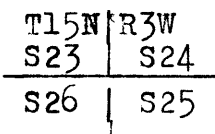
from which



Resurvey of Part of the Subdivision lines of Township 15 North., Range 3 West

Chains

A pinion 8 ins. in diam. bears S10°E. 77 lks. dist.,  
 marked  $\frac{1}{4}$  S25 BT.  
 A pinion 8 ins. in diam. bears N70 $\frac{1}{2}$ °W. 20 lks. dist.,  
 marked  $\frac{1}{4}$  S26 BT.  
 Ascend 7 ft. over granite ledge  
 40.25 Top of ledge bears E. and W.  
 Descend 111 ft. over N. slope over granite boulders.  
 65.74 Mint Creek Wash 100 lks. wide containing a stream of  
 clear water 15 lks. wide 4 ins. deep, course  
 N80°W.  
 Ascend 37 ft. over SW. slope  
 78.00 Top of slope, thence over rolling land.  
 79.24 Intersect point for reestablishment of cor. of secs. 23, 24, 25 and 26,  
 which is 12.75 chs. due east of temp. cor. (A) of  
 said secs. on 1st. Meridional Sec. line and 1.98  
 chs. due south of temp. cor. (B) of said secs. on  
 the 2nd. Latitudinal Sec. line.  
 At this point, Set an iron post 3 ft. long, 2 ins. in diam.  
 29 ins. in the ground for reestablished cor. of  
 secs. 23, 24, 25, and 26., marked on brass cap



1927

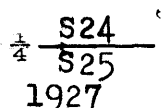
from which

A pinion 8 ins. in diam. bears N69 $\frac{1}{4}$ °E. 385 lks. dist.,  
 marked T15N., R3W., S24 BT.  
 A cedar 14 ins. in diam. bears S70°E. 306 lks. dist.,  
 marked T15N., R3W., S25 BT.  
 A pinion 12 ins. in diam. bears S87 $\frac{1}{2}$ °W. 190 lks. dist.,  
 marked T15N., R3W., S26 BT.  
 A cedar 8 ins. in diam. bears N56°W. 253 lks. dist.,  
 marked T15N., R3W., S23 BT.

Land, rough mountainous.  
 Soil, stony 3 rd. and 4 th. rate.  
 Timber, cedar, oak, and pinion.  
 Undergrowth, manzanita and oak brush.

From the reestablished cor. of secs. 19, 24, 25, and 30 on  
 E. bdry. of Tp. hereinbefore described

S 88°31'W. on true line bet. secs. 24 and 25.  
 Over rolling hilly land, thru scattering undergrowth.  
 6.25 Old road bears N30°W. and S30°E.  
 10.75 Wash 20 lks. wide 3 ft. deep course NW.  
 Ascend 23 ft. over NE. slope  
 15.80 Top of low ridge bears NW. and SE.  
 Descend gradually over NW. slope.  
 29.40 Bottom of draw course NE.  
 Ascend 32 ft. over E. slope.  
 40.08 (Proport. dist.) Set an iron post 3 ft. long, 1 in. in diam.  
 12 ins. in the ground to bedrock, supported in a  
 mound of stone for reestablished  $\frac{1}{4}$  sec. cor.,  
 marked on brass cap



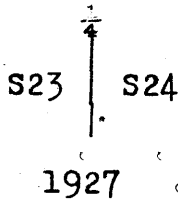
Resurvey of Part of the Subdivision lines of Township 15 North., Range 3 West

Chains	from which
	A cedar 30 ins. in diam. bears N28 $\frac{1}{2}$ °W. 204 lks. dist., marked $\frac{1}{4}$ S24 BT.
	A pinion 8 ins. in diam. bears S84 $\frac{1}{2}$ °E. 205 lks. dist., marked $\frac{1}{4}$ S25 BT.
44.50	Top of spur bears N.
	Descend over W. slope 10 ft.
45.85	Ravine course N.
	Ascend
49.65	Top of ridge bears N 8 chs. and S 6 chs. dist.
	Descend over W. slope.
51.95	Wash 10 lks. wide course N.
	Ascend 15 ft. over ledge
55.15	Top of ledge bears N. and S. thence over rolling land.
65.50	Top of spur bears N.
	Descend 47 ft. over W. slope to
80.17	The cor. of secs. 23, 24, 25, and 26:

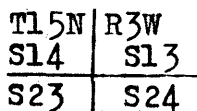
Land, rolling and hilly.  
 Soil, stony 3 rd. rate.  
 Timber, scattering cedar and pinion.  
 Undergrowth, oak and greasewood brush.

From the reestablished cor. of secs. 23, 24, 25, and 26

	N. 4° 11' W. on true line bet. secs. 23 and 24.
	Descend 46 ft. over NW. slope over rolling stony land, thru scattering timber and undergrowth.
19.99	Drain 23 ft. deep course W. ; Ascend
21.94	Wire fence bears W 100 lks. thence S10°W. and E.
24.25	Top of ascent. thence over nearly level land.
39.71	(Proportional dist.) Set an iron post 3 ft. long, 1 in. in diam. with marked stone at the base, 27 ins. in the ground for reestablished $\frac{1}{4}$ sec. cor. marked on brass cap



40.06	Wire fence bears E. and W.
67.81	Sand wash 15 lks. wide 1 ft. deep course N70°W.
79.43	Intersect the point of orig. location of cor. of secs. 13, 14, 23, and 24. pointed out on the ground by Carlos B Lee. This point is marked by several bricks said to have been placed here to perpetuate the position of the orig post cor.
	At the above described point, Set an iron post 3 ft. long 2 ins. in diam. with marked brick at the base, 27 ins. in the ground for cor. of secs. 13, 14, 23 and 24, marked on brass cap

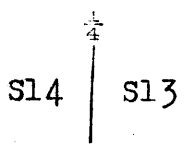


1927

Land, level and rolling.  
 Soil, sandy and stony 2 nd. and 3 rd. rate.  
 Timber, scattering oak, and juniper  
 Undergrowth, scattering oak brush.

Resurvey of Part of the Subdivision lines of Township 15 North., Range 3 West

Chains From the cor. of secs. 13, 14, 23 and 24, ...  
 N 0°39'W. on true line bet. secs. 13 and 14. (S $\frac{1}{2}$ )  
 Over level sandy land  
 10.50 Wire fence bears NW. and SE.  
 13.20 Highway from Prescott to Williamson Valley bears NW. and SE.  
 15.28 The foundation of old adobe "American Ranch" house bears W. 4.00 chs. dist.  
 East end of frame barn bears W. 4.00 chs. dist.  
 17.50 The SE. cor. of present "American Ranch" house bears W. 3.00 chs. dist.  
 19.80 A well and pump bears W. 150 lks. dist.  
 Leave level land bears E. and W.; Enter rolling gravelly land and scattering oak and juniper timber bears NW. and SE.  
 Ascend gradually over S. slope.  
 34.00 Enter oak brush undergrowth bears NW. and SE.  
 40.18 Intersect point of original location of  $\frac{1}{4}$  sec. cor. of secs. 13 and 14, determined from record bearing and dist. to orig. bearing tree.  
 Set an iron post 3 ft. long, 1 in. in diam. 27 ins. in the ground, for  $\frac{1}{4}$  sec. cor. of secs. 13 and 14, marked on brass cap



from which

A juniper stump 10 ins. in diam. marked BT. bears W. 98 lks. dist.  
 No bearing trees within limits.; Raise a mound of stone 2 ft. base, 1 $\frac{1}{2}$  ft. high W. of cor.  
 Land, level and rolling.  
 Soil, sandy and gravelly 2nd. and 3rd. rate.  
 Timber, scattering oak and juniper.  
 Undergrowth, oak brush.

From the reestablished cor. of secs. 2, 3, 34, and 35, on S. bdy of Tp., hereinbefore described.

North (Record course) on true line bet. secs. 34 and 35 (S $\frac{1}{2}$ )  
 Ascend steep SW. slope 700 ft. over rough stony mountainous land, thru scattering timber and dense undergrowth.  
 23.00 Top of spur bears SE.  
 Descend 50 ft. over NE. slope.  
 29.00 Head of ravine course SE.  
 Ascend 50 ft. over SE. slope  
 31.00 Top of same spur bears S10°W.  
 Descend 160 ft. over NW. slope.  
 35.00 Ravine course W.  
 Ascend 150 ft. over S. slope to  
 40.00 (Record dist.) Set an iron post 3 ft. long 2 ins. in diam. 27 ins. in the ground for reestablished  $\frac{1}{4}$  sec. cor. of secs. 34 and 35., marked on brass cap

## Resurvey of Part of the Subdivision lines of Township 15 North., Range 3 West

Chains

$\frac{1}{4}$   
 S34 | S35  
 $\frac{1}{4}$

1927

from which

- A pine 20 ins. in diam. bears N16°E. 96 lks. dist.,  
 marked  $\frac{1}{4}$  S35 BT.  
 A pine 6 ins. in diam. bears S34 $\frac{1}{4}$ °W. 14 lks. dist.,  
 marked  $\frac{1}{4}$  S34 BT.

Land, mountainous.  
 Soil, stony 4 th. rate.  
 Timber, scattering oak, juniper, and pine.  
 Undergrowth, oak and manzanita brush.

From the reestablished cor. of secs. 25, 26, 35, and 36  
 hereinbefore described.

West (Record course) on true line bet. secs. 26 and 35  
 (E $\frac{1}{2}$ )

Descend 180 ft. over rocky W. slope over mountainous  
 land thru scattering timber and dense under-  
 growth.

- 3.00 Ravine 10 lks. wide in bottom of canyon course N.  
 Ascend 560 ft. over E. slope.  
 29.00 Top of spur bears N.  
 Descend 340 ft. over W. face of cliffs.  
 33.00 Ravine 8 lks. wide in bottom of canyon, course N.  
 Ascend 450 ft. over E. slope  
 39.77 Top of rocky spur bears N., thence on top of spur.  
 40.00 (Record dist.) Set an iron post 3 ft. long, 1 in. in diam.  
 25 ins. in the ground for reestablished  $\frac{1}{4}$  sec. cor.  
 of secs. 26 and 35., marked on brass cap

$\frac{1}{4}$  S 26  
 S 35

1927

from which

- A pinion 14 ins. in diam. bears N30°E. 14 lks. dist.,  
 marked  $\frac{1}{4}$  S26 BT.  
 A pinion 8 ins. in diam. bears S27°W: 33 lks. dist.,  
 marked  $\frac{1}{4}$  S35 BT.

Land, mountainous.  
 Soil, stony 4 th. rate.  
 Timber, scattering oak, pine, and pinion.  
 Undergrowth, oak and manzanita brush.

Resurvey of Part of the Subdivision lines of Township 15 North., Range 3 West

Chains	
	From the cor. of secs. 13, 14, 23 and 24, hereinbefore described,
	S. 86° 59' W. on true line on S. bdry. of sec. 14 (E½)
3.90	Over level sandy land, thru scattering undergrowth.
13.00	Sand wash 20 lks. wide 1½ ft. deep, course NW.
14.80	Wire fence bears NW. 2.00 chs. and SE. about 20.00 chs. dist.
16.90	Wire fence bears NW. 2.00 chs. and SE.
	Ranch road bears NE. to main Highway and SW. to Carlos B Lee's house.
20.93	Enter fruit orchard bears NW. 2.00 chs. and SE. 3.00 chs. dist.
22.90	Leave orchard bears NW. and SE. 2.00 chs. dist.,
	Enter cultivated land bears NW. and SE.
31.00	Leave cultivated land bears NW. and SE.
	Enter meadow land.
40.30	Wire fence bears NW. and SE.
41.70	"Mint Wash 25 lks. wide with banks 4 ft. high contains stream of running water 5 lks. wide 3 ins. deep course N.
44.01	Intersect point of orig. location of ¼ sec. cor. of secs. 14 and 23, identified from testimony of Carlos B Lee, which is a small stake lying on the ground alongside of granite boulder projecting 12 ins. above ground. No marks discernable on stake.
	At the above point, Set an iron post 3 ft. long, 1 in. in diam. 27 ins. in the ground for ¼ sec. cor. of secs. 14 and 23, marked on brass cap
	$\frac{1}{4} \begin{matrix} S 14 \\ S 23 \end{matrix}$
	1927
	from which
	A willow 12 ins. in diam. bears N16¼° W. 127 lks. dist., marked ¼ S14 BT.
	A cedar 8 ins. in diam. bears S6¼° W. 259 lks. dist., marked ¼ S23 BT.
	Thence
	N 86° 19' W. on true line on S. bdry. of sec. 14 (W½)
	Over level meadow land.
2.14	Wire fence bears N30° W. and S30° E.
	Leave meadow land bears NW. and SE. and enter stony hilly land.
4.79	Dry wash 10 lks. wide course N.; Leave hilly land bears N. and S. Enter stony mountainous land.
	Ascend 140 ft. over NE. slope. thru scattering timber and undergrowth.
7.70	Top of granite ridge bears NE. and SW., thence along NW. slope.
26.85	Old stull road bears N80° E. and S80° W. in ravine course NE.
26.87	Point of intersection of subdivision line bet. secs. 22 and 23.; Closing cor. of said secs. established at this point as hereinafter described.
	Ascend 64 ft. over SE. slope.
34.35	Top of spur bears S.
	Descend 11 ft. over W. slope
36.15	Intersect the orig. cor. of secs. 14, 15, 22, and 23., which is a granite stone 18x12x10 ins. loosely set, marked with 2 grooves on E. and 3 grooves on S. faces. No cor. accessories.; Reconstruct, and alter the reference of this cor. as follows:
	Alongside of the old cor. Set an iron post 3 ft. long, 2 ins. in diam. 27 ins. in the ground for cor. of sec. 14. only (SW. cor.), marked on brass cap

## Resurvey of Part of the Subdivision lines of Township 15 North., Range 3 West

Chains

T15N	T15N
S22	R3W
	S14

R3W

1927

from which

- A pinion 6 ins. in diam. bears N 8°E.42 lks. dist.,  
marked T15N.,R3W.,S14 BT.  
A pinion 12 ins. in diam. bears N59½°E.74 lks. dist.,  
marked T15N.,R3W.,S14 BT.

Land, level, hilly, and mountainous.  
Soil, sandy and stony, 2nd., 3rd., and 4th. rate.  
Timber, juniper, oak, and pinion.  
Undergrowth, manzanita and oak brush.

From the cor. of sec. 14 only (SW. cor.),

N 1°02'W. on true line on W. bdry. of sec. 14.

Ascend 32 ft. over SW. slope over mountainous land, thru  
scattering timber and undergrowth.

2.38 Point of intersection of subdivision line bet. secs. 15 and  
22.; Closing cor. of said secs. established at this  
point as hereinafter described.

6.25 Top of granite boulder on top of spur bears W.  
Descend 118 ft. over N. slope

33.00 Foot of descent in S. edge of flat bears E. and W.; leave  
mountainous land and enter rolling land.

40.90 Shallow ravine course N. from SE. thence in ravine.

40.95 (Midway bet. NW. and SW. cors. of sec. 14) Set an iron post  
3 ft. long, 1 in. in diam. 29 ins. in the ground  
for reestablished  $\frac{1}{4}$  sec. cor. of secs. 14 and 15, marked  
on brass cap

S15	↑	S14
-----	---	-----

1927

from which

A pinion 8 ins. in diam. bears S83½°E.64 lks. dist.,  
marked  $\frac{1}{4}$  S14 BT.

A pinion 6 ins. in diam. bears S66°W.67 lks. dist.,  
marked  $\frac{1}{4}$  S15 BT.

42.95 Leave ravine course NW.

Ascend 31 ft. over S. slope over broken hilly land.

46.90 Top of rocky hill bears E and W. 1.00 ch. dist.

Descend 42 ft. over broken N. slope.

49.50 Foot of hill. Enter flat bears E. and W.

52.00 Leave flat bears E. and NW.

Ascend 29 ft. over W. slope of hill.

54.80 Top of hill bears E. and NW.

Descend 60 ft. over NE. slope.

58.50 Foot of descent in S. edge of flat, bears W 8.00 chs. dist.  
and SE.; Leave hilly stony land and enter sandy  
bottom land.

Resurvey of Part of the Subdivision lines of Township 15 North., Range 3 West

Chains

59.50 Wire fence bears E. and W.  
 Enter corn field. bears E. and W., extends E. about 3.00  
 chs. and W. about 4.00 chs. dist.

69.50 Leave corn field bears NE. and SW.

70.00 "Mint Wash" 60 lks. wide, with banks  $1\frac{1}{2}$  ft. high contains  
 stream of running water 20 lks. wide 6 ins. deep  
 course N from SE.

73.00 Leave "Mint Wash", course N30°E.  
 Ascend gradually over rolling SE. slope.

81.90 Intersect the point for reestablishment of the  
 cor. of secs. 10, 11, 14, and 15, which is 1.26  
 chs. due east of temp. cor. (A) of said secs. on 2nd.  
 Meridional Sec. line and 5.90 chs. due south of  
 temp. cor. (B) of said secs. on the 4th. Latitudinal  
 Sec. line.

At this point, Set an iron post 3 ft. long, 2 ins. in diam  
 27 ins. in the ground for reestablished cor. of  
 secs. 10, 11, 14, and 15., marked on brass cap

T15N	R3W
S10	S11
S15	S14

1927

from which

- An oak 3 ins. in diam. bears N19 $\frac{1}{2}$ °E. 33 lks. dist.,  
 marked T15N., R3W., S11 BT.
- An oak 4 ins. in diam. bears S84 $\frac{1}{2}$ °E. 40 lks. dist.,  
 marked T15N., R3W., S14 BT.
- An oak 5 ins. in diam. bears S10°W. 76 lks. dist.,  
 marked T15N., R3W., S15 BT.
- An oak 4 ins. in diam. bears N44°W. 49 lks. dist.,  
 marked T15N., R3W., S10 BT.

Land, level, hilly, and mountainous.  
 Soil, sandy and stony 2nd., 3rd. and 4th. rate  
 Timber, oak, juniper, and pinion.  
 Undergrowth, oak brush.

From the reestablished cor. of secs. 10, 11, 14, and 15.  
 Thence

25.50 N 85°15'W. on true line on S. bdry. of sec. 10.  
 Ascend E. slope over stony mountainous land, thru scatter-  
 ing timber and undergrowth.

38.00 Top of E. slope, thence over broken N. slope covered with  
 granite boulders.

41.35 Top of granite spur bears N.  
 Descend 70 ft. over W. slope.  
 (Midway bet. the SE. and SW. cors. of sec. 10) Set an iron  
 post 3 ft. long, 1 in. in diam. 27 ins. in the  
 ground for reestablished  $\frac{1}{4}$  sec. cor. of secs.  
 10 and 15., marked on brass cap

S 10
$\frac{1}{4}$ S 15

1927

from which

## Resurvey of Part of the Subdivision lines of Township 15 North., Range 3 West

Chains

A pinion 6 ins. in diam. bears  $N10\frac{1}{2}^{\circ}W$ . 20 lks. dist., marked  $\frac{1}{2}$  S10 BT.

A pinion 8 ins. in diam. bears  $S10\frac{1}{2}^{\circ}E$ . 54 lks. dist., marked  $\frac{1}{2}$  S15 BT.

43.93 Ravine containing stream of running water 4 lks. wide, course N.

Ascend 86 ft. over rocky E. slope.

54.53 Sand wash course E.

69.18 Point of intersection of subdivision line bet. secs. 15 and 16.; Closing cor. of said secs. established at this point as hereinafter described.

74.05 Old road to Skull Valley bears NE. and SW.

82.71 Intersect the point for reestablishment of the cor. of, 10, secs. 9 and 10, which is 5.85 chs. due east of temp. cor. (A). of said secs. on the 3rd. Meridional sec. line and 1.72 chs. due south of temp. cor. (B). of said secs. on the 4th. Latitudinal Sec. line.

At this point, Set an iron post 3 ft. long, 2 ins. in diam. 20 ins. in the ground to bedrock, supported in a mound of stone for reestablished cor. of secs. 9 and 10 only, marked on brass cap

T15N	R3W
S9	S10
S16	

1927

from which

A pinion 4 ins. in diam. bears  $N12\frac{1}{2}^{\circ}E$ . 52 lks. dist., marked T15N., R3W., S10 BT.

A pinion 4 ins. in diam. bears  $N22^{\circ}W$ . 19 lks. dist., marked T15N., R3W., S9 BT.

Land, broken and mountainous.  
Soil, stony 3 rd. and 4 th. rate.  
Timber, oak, cedar, and pinion.  
Undergrowth, oak brush.

From the reestablished cor. of secs. 9 and 10,

N  $89^{\circ}40'W$ . on true line on S. bdry. of sec. 9.

Ascend 254 ft. over E. slope over stony mountainous land, thru scattering timber and dense undergrowth.

22.43 Top of spur bears NE.

Descend 224 ft. over W. slope

26.56 (Midpoint in departure bet. NE. and NW. cors. of sec. 16) Set an iron post 3 ft. long, 1 in. in diam. with marked stone at the base, 12 ins. in the ground to bedrock, supported in a mound of stone for reestablished  $\frac{1}{2}$  sec. cor. of sec. 16 only, marked on brass cap

$\frac{1}{2}$ S 16	
--------------------	--

1927

40.73 Ravine course NW., thence over rolling land.

41.22 (Proportional dist.) Set an iron post 3 ft. long, 1 in. in diam. 18 ins. in the ground to bedrock, supported in a mound of stone for reestablished



Resurvey of Part of the Subdivision lines of Township 15 North., Range 3 West

Chains

1/4 sec. cor. of sec. 9 only., marked on brass cap

1/4 S 9

1927

from which

- A pinion 8 ins. in diam. bears N57 1/2° E. 95 lks. dist., marked 1/4 S9 BT.
  - A pinion 8 ins. in diam. bears N82° W. 139 lks. dist., marked 1/4 S9 BT.
  - 42.44 Sand wash 7 lks. wide course NW.
  - 47.50 Descend over SW. slope
  - 66.61 Point of intersection of subdivision line bet. secs. 16 and 17.; Closing cor. of said secs. established at this point as hereinafter described.
  - 66.94 Deep ravine 8 lks. wide course N60° W.
  - 67.42 Old mine bears NW. about 16.00 chs. dist.
  - 69.93 Rocky ravine 10 lks. wide 15 ft. deep, course N.
  - 74.83 Ravine 5 lks. wide 12 ft. deep, course NE. Ascend 75 ft. over SE. slope.
  - 79.43 Top of spur bears N. Descend over W. slope.
  - 82.43 Intersect the point for reestablishment of the cor. of of secs. 8 and 9, which is 5.31 chs. due east of temp. cor. (A) of said secs. on the 4th Meridional sec. line, and 2.92 chs. due south of temp. cor. (B) of said secs. on the 4th Latitudinal sec. line.
- At this point, Set an iron post 3 ft. long, 2 ins. in diam. 20 ins. in the ground for reestablished cor. of secs. 8 and 9 only, marked on brass cap

T15N	R3W
S8	S9
S 17	

1927

from which

- A juniper 6 ins. in diam. bears N14 1/2° E. 48 lks. dist.; marked T15N., R3W., S9 BT.
- A pinion 6 ins. in diam. bears N67 1/2° W. 60 lks. dist. marked T15N., R3W., S8 BT.

Land, mountainous.  
 Soil, stony 3 rd. and 4 th. rate.  
 Timber, scattering oak, juniper, and pinion.  
 Undergrowth, oak brush.

From the reestablished cor. of secs. 8 and 9.

- N. 86° 11' W. on true line on S. bdry. of sec. 8. Over rolling stony mountainous land, thru scattering timber and undergrowth.
- 0.60 Ravine 4 lks. wide course N.
- 5.60 Ravine 6 lks. wide 8 ft. deep, course NE.

## Resurvey of Part of the Subdivision lines of Township 15 North., Range 3 West

Chains  
24.31 Ascend 178 ft. over SE. slope  
(Midpoint in departure bet. NE. and NW. cors. of sec. 17)  
Set an iron post 3 ft. long, 1 in. in diam. 26 ins. in the  
ground for reestablished  $\frac{1}{4}$  sec. cor. of sec. 17  
only, marked on brass cap

$\frac{1}{4}$  S 17

1927

No bearing trees within limits.  
25.43 Raise a mound of stone 2 ft. base,  $1\frac{1}{2}$  ft. high S. of cor.  
Top of ridge bears NW. and S.  
Descend 85 ft. over SW. slope.

41.30 (Proportional dist.)

Set an iron post 3 ft. long, 1 in. in diam. 18 ins. in  
the ground to bedrock, supported in a mound of  
stone for reestablished  $\frac{1}{4}$  sec. cor. of sec. 8  
only, marked on brass cap

$\frac{1}{4}$  S 8

1927

from which

A juniper 8 ins. in diam. bears  $N79\frac{1}{2}^{\circ}W. 377$  lks. dist.,  
marked  $\frac{1}{4}$  S8 BT.

No other bearing trees within limits.

47.10 Raise a mound of stone 2 ft. base,  $1\frac{1}{2}$  ft. high N. of cor.  
Ravine course NW.

57.60 Ascend 30 ft.  
Top of spur bears N.

62.60 Descend 46 ft.

64.49 Wash course NW.

Point of intersection of subdivision line bet. secs. 17  
and 18.; Closing cor. of said secs. established  
at this point as hereinafter described.

68.60 Top of spur bears N.  
Descend over W. slope.

75.10 Wash course NW.

Ascend over NE. slope.

82.61 Intersect the point for reestablishment of the cor.  
of secs. 7 and 8, which is 4.15 chs. due  
east of the temp. cor. (A) of said secs. on  
the 15th meridional sec. line and 38 lks. due  
north of the temp. cor. (B) of said secs. on  
the 4th latitudinal sec. line.

At this point, Set an iron post 3 ft. long, 2 ins. in diam.  
18 ins. in the ground to bedrock, supported in  
a mound of stone for reestablished cor. of  
secs. 7 and 8 only, marked on brass cap

T15N | R3W  
S7 | S8

S18

1927

from which

ECOR 1056

Resurvey of Part of the Subdivision lines of Township 15 North., Range 3 West

Chains

A pinion 4 ins. in diam. bears  $N75\frac{1}{2}^{\circ}E.$  92 lks. dist.,  
marked T15N., R3W., S8 BT.

A juniper 8 ins. in diam. bears  $N43^{\circ}W.$  118 lks. dist.,  
marked T15N., R3W., S7 BT.

Land, mountainous.  
Soil, stony 3 rd. and 4 th. rate.  
Timber, scattering oak, juniper, and pinion.  
Undergrowth, oak brush.

From the reestablished cor. of secs. 7 and 18, T15N., R3W.  
on W. bdy of Tp. hereinbefore described.

S  $88^{\circ}45'E.$  on true line on S. bdy. of sec. 7.  
Ascend 22 ft. over SW. slope over rolling mountainous  
land, thru scatter timber and dense undergrowth

2.37 Top of spur bears NW., thence on N. slope.  
5.00 Descend 30 ft. over E. slope.  
12.00 Wash course N.  
Ascend 50 ft. over W. slope.  
16.00 Top of slope, thence along N. slope  
27.50 Wash in draw 6.00 chs. wide course NW.  
Ascend 50 ft.  
35.00 Top of ascent, thence along N. slope.  
39.84 (Proportional dist.) Set an iron post 3 ft. long, 1 in.  
in diam. 26 ins. in the ground for reestablished  
1/4 sec. cor. of secs. 7 and 18., marked on brass cap

$$\frac{S 7}{S 18}$$

1927

from which

A juniper 8 ins. in diam. bears  $N59\frac{1}{2}^{\circ}E.$  161 lks. dist.,  
marked 1/4 S7 BT.

A juniper 6 ins. in diam. bears  $S74\frac{3}{4}^{\circ}E.$  24 lks. dist.,  
marked 1/4 S18 BT.

50.00 Sand wash course NW.  
Ascend 32 ft. over SW. slope.  
57.00 Top of spur bears N.  
Descend 23 ft. over E. slope.  
64.00 Wash 10 lks. wide in draw 30.00 chs. wide, course NW.  
Ascend over NW. slope.  
74.00 Top of spur bears NW.  
Descend over SE. slope  
81.07 The reestablished cor. of secs. 7 and 8.

Land, mountainous.  
Soil, stony 3 rd. rate.  
Timber, scattering oak and juniper,  
Undergrowth, oak brush.

Survey of Part (Completion) of  
the Subdivision lines of Township 15 North., Range 3 West.

Chains

From the reestablished  $\frac{1}{4}$  sec. cor. of secs. 34 and 35,  
(40.00 chs. N. from cor. of secs. 2, 3, 34 and 35 on S.  
bdy. of Tp.) hereinbefore described,  
North on true line on E. bdy. of sec. 34 ( $N\frac{1}{2}$ ) side.  
Ascend 160 ft. over rocky S. slope over mountainous land,  
thru scattering timber and undergrowth.  
11.59 Summit of Granite Mountain ridge bears NW. and SE.  
Descend 824 ft. over abrupt rocky NE. slope.  
13.29 A point from which Triangulation station on highest  
point of mountain bears West 3.73 chs. dist.  
38.12 Top of perpendicular cliff 125 ft. high bears NE. and SW.  
39.00 Foot of cliff bears NE. and SW.  
39.32 Point of intersection of subdivision line bet. secs. 26  
and 35.; Cor. of said secs. established at this  
point as hereinafter described.  
40.00 Set an iron post 3 ft. long, 2 ins. in diam. 24 ins. in  
the ground for cor. of secs. 27 and 34 only, marked  
on brass cap

T15N	S26
S27	
S34	
R3W	

1927

from which

A pinion 10 ins. in diam. bears  $N71\frac{1}{2}^{\circ}W$ . 52 lks. dist.,  
marked T15N., R3W., S27 BT.  
A pinion 4 ins. in diam. bears  $S31\frac{1}{2}^{\circ}W$ . 59 lks. dist.,  
marked T15N., R3W., S34 BT.

This cor. is in edge of rocky ravine course N.

Land, rough mountainous.  
Soil, stony 4 th. rate.  
Timber, oak, cedar, pine, and pinion.  
Undergrowth, oak and manzanita brush.

From the reestablished  $\frac{1}{4}$  sec. cor. of secs. 26 and 35  
(40.00 chs. W. from cor. of secs. 25, 26, 35 and 36)  
hereinbefore described,  
West on true line bet. secs. 26 and 35 ( $W\frac{1}{2}$ ) side.  
Ascend 371 ft. over steep N. slope of Granite Mountain  
thru scattering timber and dense undergrowth.  
29.50 Top of rocky spur bears N.  
Descend over W. slope  
30.70 Ravine 40 ft. deep, course N.  
Ascend 65 ft. over E. slope.  
33.90 Top of spur bears NE., thence along steep NE. slope.  
36.70 Top of cliff bears NE. and SW.  
Descend 140 ft. over W. face of cliff.  
38.00 Foot of cliff, descend over NW. slope  
38.34 (70.34 chs. W. from cor. of secs. 25, 26, 35, and 36) Intersect  
E. bdy. of sec. 34. at 68 lks. S. of cor. of secs. 27 and 34.  
At point of intersection, Set an iron post 3 ft. long  
2 ins. in diam. 26 ins. in the ground for cor. of  
secs. 26 and 35 only, marked on brass cap

S34	T15N
	S26
	S35
	R3W

1927

Survey of Part ( Completion) of

the Subdivision lines of Township 15 North., Range 3 West.

Chains

from which

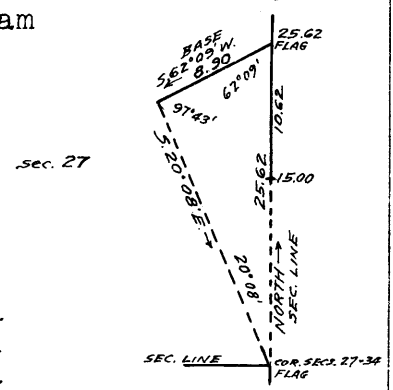
A Norway pine 24 ins. in diam. bears N60°E.180 lks.dist., marked T15N.,R3W.,S26 BT.  
 A pinion 6 ins. in diam. bears S16½°E.87 lks. dist., marked T15N.,R3W.,S35 BT.

Land, rough mountainous.  
 Soil, stony 4 th. rate.  
 Timber, oak, pinion, cedar, and pine.  
 Undergrowth, oak and manzanita brush.

From the cor. of secs.27 and 34.

North on true line on E.bdry. of sec.27.  
 Descend 870 ft. over rocky NE.slope over mountainous land thru.scattering timber and dense undergrowth. .  
 The precipitous character of the slope renders measurement by chaining impracticable, therefore, obtain measurement by Triangulation as described as follows and as shown on diagram

Set a flag ahead on line on point of spur.  
 Vertical angle to flag = -18°40'  
 From the flag measure a base S62°09'W. 8.90 chs. dist. From westerly end of base, a flag at the sec. cor. bears S20°08'E.



Dist. by triangulation = 25.62 chs. N.  
 Dist by return measure = 10.62 chs. S.  
 Dist. to ravine = 15.00 chs. N.

15.00 Ravine, 10 lks. wide in bottom of canyon, course N20°W. 720 ft. below sec. cor.  
 25.62 Ascend 150 ft. over SW. slope of spur  
 Triangulation station on point of spur, bears W. Continue line and measurement by chaining.  
 Descend 300 ft. over steep NW. slope. over granite boulders.  
 39.32 (40.00 chs. N. of cor. of secs. 26 and 35 ) Set an iron post 3 ft. long, 1 in. in diam. 24 ins. in the ground for ¼ sec. cor. of sec. 26 only., marked on brass cap

¼ S26

1927

from which

A pinion 10 ins. in diam. bears N44½°E.26 lks. dist., marked ¼ S26 BT.  
 A pinion 10 ins. in diam. bears S74°E.12 lks. dist., marked ¼ S26 BT.

40.00 Set an iron post 3 ft. long, 1 in. in diam. 3 ins. in the ground to bedrock, supported in a mound of stone for ¼ sec. cor. of sec. 27 only, marked on brass cap.

Survey of Part (Completion) of  
the Subdivision lines of Township 15 North., Range 3 West.

Chains													
	<table style="margin-left: auto; margin-right: auto;"> <tr> <td style="border-right: 1px solid black; padding-right: 5px;"> <math>\frac{1}{4}</math> S27                 </td> <td style="padding-left: 5px;"> </td> </tr> <tr> <td style="border-right: 1px solid black; padding-right: 5px;">1927</td> <td style="padding-left: 5px;"> </td> </tr> </table>	$\frac{1}{4}$ S27		1927									
$\frac{1}{4}$ S27													
1927													
	from which												
	A pinion 8 ins. in diam. bears N33 $\frac{1}{2}$ °W. 32 lks. dist., marked $\frac{1}{4}$ S27 BT.												
	A pinion 10 ins. in diam. bears S44 $\frac{1}{2}$ °W. 52 lks. dist., marked $\frac{1}{4}$ S27 BT.												
48.00	Ravine 12 lks. wide, course N30°E.												
67.42	Ravine 6 lks. wide 20 ft. deep, course, NE.												
70.17	Wash 20 lks. wide 3 ft. deep, course N80°E.												
78.46	Ascend over granite boulders 12 ft. to Point of intersection of subdivision line bet. secs. 23 and 26. Cor. of said secs. established at this point as hereinafter described.												
80.00	Set an iron post 3 ft. long, 2 ins. in diam. 2 ins. in the ground to bedrock, supported in a mound of stone for cor. of secs. 22 and 27 only, marked on brass cap												
	<table style="margin-left: auto; margin-right: auto;"> <tr> <td style="border-right: 1px solid black; padding-right: 5px;">T15N</td> <td style="padding-left: 5px;"> </td> <td></td> </tr> <tr> <td style="border-right: 1px solid black; padding-right: 5px;">S22</td> <td style="padding-left: 5px;"> </td> <td></td> </tr> <tr> <td style="border-right: 1px solid black; padding-right: 5px;">S27</td> <td style="padding-left: 5px;"> </td> <td>S23</td> </tr> <tr> <td style="border-right: 1px solid black; padding-right: 5px;">R3W</td> <td style="padding-left: 5px;"> </td> <td></td> </tr> </table>	T15N			S22			S27		S23	R3W		
T15N													
S22													
S27		S23											
R3W													
	1927												
	from which												
	A pinion 6 ins. in diam. bears N 40°W. 78 lks. dist., marked T15N., R3W., S22 BT.												
	A cedar 12 ins. in diam. bears S40°W. 82 lks. dist., marked T15N., R3W., S27 BT.												
	Land, mountainous. Soil, stony 4 th. rate. Timber, oak, cedar, pine, and pinion. Undergrowth, oak and manzanita. brush.												
	From the reestablished cor. of secs. 23, 24, 25, and 26 hereinbefore described,												
	West on true line bet. secs. 23 and 26. Over stony mountainous land, thru scattering timber and dense oak brush undergrowth.												
3.86	Wire fence bears N. and S.												
10.80	Descend 29 ft. over W. slope over granite boulders.												
17.00	"Mint Wash" 150 lks. wide containing stream of running water 25 lks. wide 6 ins. deep, course N20°E.												
	Ascend 38 ft. over NE. slope over granite ledges.												
20.15	Head of ravine, course N.												
22.15	Top of granite spur bears N. Descend 30 ft. over NW. slope.												
25.75	Ravine 6 lks. wide course N.												
32.65	Ravine course N60°E. Ascend 67 ft. over NE. slope.												
40.00	Set an iron post 3 ft. long, 1 in. in diam. 12 ins. in the ground to bedrock, supported in a mound of stone for $\frac{1}{4}$ sec. cor., marked on brass cap												

Survey of Part (Completion) of  
Subdivision lines of Township 15 North., Range 3 West.

Chains

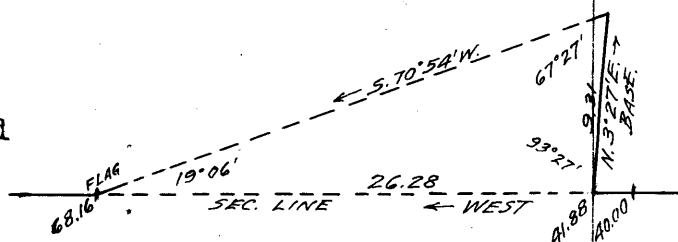
$\frac{1}{4} \frac{S 23}{S 26}$

1927

from which

A pinion 6 ins. in diam. bears  $N70\frac{1}{2}^{\circ}E.49$  lks. dist.,  
marked  $\frac{1}{4}$  S23 BT.  
A pinion 4 ins. in diam. bears  $S43\frac{1}{2}^{\circ}W.39$  lks. dist.,  
marked  $\frac{1}{4}$  S26 BT.

41.88 West edge of granite ledge. discontinue measurement by  
chaining and obtain measurement by triangulation  
as described as follows and as shown on diagram  
Set flag ahead on line  
on granite spur.; vertical  
angle to flag  $=+4^{\circ}$   
Measure a base  $N3^{\circ}27'E.$   
 $9.31$  chs. dist. from the end  
of which the flag bears  
 $S70^{\circ}54'W.$



Dist. on line-----41.88 chs. W.  
Dist. by triangulation 26.28 chs. W.  
Dist. - sec. cor. to flag =  $\frac{68.16}{}$  chs. W.

68.16 Triangulation station on top of granite spur bears N.  
Descend 33 ft. over W. slope.  
73.90 Wash course N.  
Ascend 13 ft. over E. slope over granite ledges.  
76.00 Top of ledge bears N. and S.  
Descend over broken W. slope. 6 ft. to  
76.70 Intersect E. bdy. of sec. 27, 154 lks. S. of the cor. of  
secs. 22 and 27  
At point of intersection, Set an iron post 3 ft. long,  
2 ins. in diam. 8 ins. in the ground to bedrock,  
supported in a mound of stone for cor. of secs.  
23 and 26 only, marked on brass cap

$\frac{S27}{T15N}$   
 $\frac{S23}{S26}$   
 $\frac{R3W}{}$

1927

from which

A pinion 10 ins. in diam. bears  $N37\frac{1}{2}^{\circ}E.36$  lks. dist.,  
marked T15N., R3W., S23 BT.  
A cedar 12 ins. in diam. bears  $S16^{\circ}E.81$  lks. dist.,  
marked T15N., R3W., S26 BT.

Land; broken mountainous:  
Soil, stony 3 rd. and 4th. rate:  
Timber, oak, cedar, and pinion.  
Undergrowth, oak and manzanita brush.

From the cor. of secs. 22 and 27  
North on true line on E. bdy. of sec. 22

Survey of Part (completion ) of  
the Subdivision lines of Township 15 North., Range 3 West

Chains

Over broken stony mountainous land, thru scattering timber and dense undergrowth.

2.60

Ascend 12 ft. over S. slope of ledge.

Top of ledge bears E. and W.

13.00

Descend 86 ft. over granite boulders.

Ravine 10 lks. wide, course N20°E.

37.02

Ascend 60 ft. over SE. slope.

(40.00 chs. S. of NW. cor. of sec. 23) Set an iron post 3 ft. long, 1 in. in diam. 27 ins. in the ground for  $\frac{1}{4}$  sec. cor. of sec. 23 only, marked on brass cap

$\frac{1}{4}$  S23

1927

from which

A pinion 10 ins. in diam. bears N70 $\frac{1}{2}$ °E. 88 lks. dist., marked  $\frac{1}{4}$  S23 BT.

A pinion 14 ins. in diam. bears S68 $\frac{1}{2}$ °E. 81 lks. dist., marked  $\frac{1}{4}$  S23 BT.

This cor. is on summit of low granite hill.

40.00

Descend 70 ft. over broken stony N. slope.

Set an iron post 3 ft. long, 1 in. in diam. 12 ins. in the ground to bedrock supported in a mound of stone for  $\frac{1}{4}$  sec. cor. of sec. 22 only., marked on brass cap

$\frac{1}{4}$  S22

1927

from which

A pinion 10 ins. in diam. bears N35 $\frac{1}{2}$ °W. 66 lks. dist., marked  $\frac{1}{4}$  S22 BT.

A pinion 8 ins. in diam. bears N79°W. 60 lks. dist., marked  $\frac{1}{4}$  S22 BT.

43.15

Ravine 8 lks. wide course E.

Ascend 44 ft. over S. slope.

50.90

Top of granite spur bears E.

Descend 48 ft. over N. slope.

52.10

Ravine course E.

Ascend 23 ft. over S. slope.

57.10

Top of spur bears E.

Descend 24 ft. over N. slope.

77.00

Old road bears NE. and SW. in draw, course NE.

77.02

Intersect the S. bdy. of sec. 14 9.28 chs. S86°19'E. of of SW. cor. of said sec., hereinbefore described.

At point of intersection, Set an iron post 3 ft. long, 2 ins. in diam. 4 ins. in the ground to bedrock, supported in a mound of stone for closing cor. of secs. 22 and 23., marked on brass cap

T15N R3W

S14

S22	S23
T15N	R3W

CC

1927



Survey of Part (Completion ) of  
the Subdivision lines of Township 15 North., Range 3 West

Chains

from which

A pinion 10 ins. in diam. bears S31°E. 73 lks. dist.,  
marked T15N., R3W., S23 CC BT.  
A pinion 10 ins. in diam. bears S89½°W. 36 lks. dist.,  
marked T15N., R3W., S22 CC BT.

Land, broken mountainous.  
Soil, stony 3rd. and 4th. rate.  
Timber, oak, cedar, and pinion  
Undergrowth, oak and manzanita brush.

From the cor. of secs. 3, 4, 33, and 34 on S. bdry of Tp.  
hereinbefore described

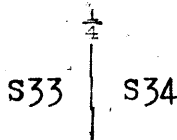
N 0°1'W. bet. secs. 33 and 34  
Ascend 400 ft. over rocky SW. slope over mountainous land  
thru scattering timber and dense undergrowth

15.00 Top of rocky spur bears SW.  
Descend 100 ft. over steep NW. slope.

23.00 Ravine course SW.

Ascend 550 ft. over SE. slope.

40.00 Set an iron post 3 ft. long, 1 in. in diam. with marked  
stone at the base 2 ft. in crevice bet. rocks,  
supported in a mound of stone for ¼ sec. cor.  
marked on brass cap



1927

from which

A pine 6 ins. in diam. bears N55½°W. 89 lks. dist.,  
marked ¼ S33 BT.

No other bearing trees within limits.

40.50 Summit of Granite Mountain ridge bears NW. and SE.  
Descend 690 ft. over rocky NE. slope.

59.00 Ravine 6 lks. wide course N20°E.

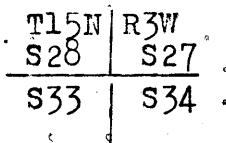
Ascend 30 ft. over SW. slope.

65.80 Ravine 10 lks. wide 30 ft. deep course NE.

71.50 Top of rocky spur bears NE.

Descend 80 ft. over NW. slope to

80.00 Set an iron post 3 ft. long, 2 ins. in diam. over cross (x)  
on granite ledge supported in a mound of stone  
for cor. of secs. 27, 28, 33 and 34, marked on  
brass cap



1927

from which

An oak 8 ins. in diam. bears N82½°E. 25 lks. dist.,  
marked T15N., R3W., S27 BT.

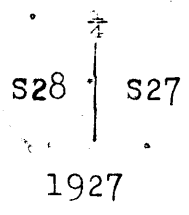
Survey of Part (Completion) of  
the Subdivision lines of Township 15 N., Range 3 W.

Chains	
	<p>A cedar 60 ins. in diam. bears <math>S30\frac{1}{2}^{\circ}E</math>. 36 lks. dist., marked T15N., R3W., S34 BT.</p> <p>A cedar 10 ins. in diam. bears <math>N32\frac{1}{4}^{\circ}W</math>. 55 lks. dist., marked T15N., R3W., S28 BT.</p> <p>An oak 8 ins. in diam. bears <math>S71\frac{1}{4}^{\circ}W</math>. 42 lks. dist., marked T15N., R3W., S33 BT.</p> <p>Land, mountainous. Soil, stony 4 th. rate. Timber, oak, cedar, and pinion. Undergrowth, oak and manzanita brush.</p>
40.00	East on a random line bet. secs. 27 and 34.
80.22	Set temp. sec. cor. Intersect N. and S. line 14 lks. S. of the cor. of secs. 27 and 34.
	Thence
	S $89^{\circ}54'W$ . on true line bet. secs. 27 and 34.
	Ascend E. slope 30 ft. over stony mountainous land, thru. scattering timber and undergrowth.
1.80	Top of rocky spur bears N.
	Descend 165 ft. over W. slope.
7.04	Ravine 5 lks. wide course N.
	Ascend 45 ft. over E. slope.
13.50	Top of spur bears N.
	Descend 126 ft. over W. slope.
15.60	Ravine course N.
	Ascend 134 ft. over E. slope.
23.60	Top of spur bears N.
	Descend 161 ft. over W. slope.
32.00	Ravine course N.
	Ascend 149 ft. over E. slope.
40.00	Top of rocky spur bears N.
40.11	Set an iron post 3 ft. long, 1 in. in diam. over cross (x) on exposed ledge, supported in a mound of stone for $\frac{1}{4}$ sec. cor. marked on brass cap
	$\frac{S\ 27}{\frac{1}{4}\ S\ 34}$
	1927
	from which
	A pinion 6 ins. in diam. bears North 164 lks. dist., marked $\frac{1}{4}$ S27 BT.
	A norway pine 9 ins. in diam. bears $S63\frac{1}{2}^{\circ}W$ . 40 lks. dist., marked $\frac{1}{4}$ S34 BT.
	Descend 177 ft. over W. slope.
49.02	Ravine course N.
	Ascend 50 ft. over E. slope.
53.00	Top of spur bears N.
	Descend 253 ft. over NW. slope.
70.20	Ravine 12 lks. wide in bottom of canyon, course $N30^{\circ}E$ .
	Ascend 227 ft. over rocky E. slope to
80.22	The cor. of secs. 27, 28, 33, and 34.
	Land mountainous. Soil, stony 4 th. rate. Timber, oak, juniper, pine, and pinion. Undergrowth, oak, and manzanita brush.

Survey of Part (Completion) of  
the Subdivision lines of Township 15 North., Range 3 West.

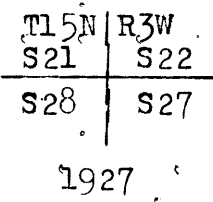
Chains

N 0°1'W. bet. secs. 27 and 28  
 Ascend 176 ft. over rocky SE. slope over mountainous land  
 thru. scattering timber and dense undergrowth.  
 10.25 Top of rocky spur bears N60°E.  
 Descend 115 ft. over rocky NW. slope.  
 16.50 Ravine course NE.  
 Ascend 20 ft. over SE. slope.  
 19.25 Top of spur bears NE.  
 Descend 301 ft. over NW. slope.  
 34.30 Ravine course NE. at foot of spur, thence over broken land.  
 39.60 Ravine 10 lks. wide 1 ft. deep course NE.  
 40.00 Set an iron post 3 ft. long, 1 in. in diam. 16 ins. in the  
 ground to bedrock, supported in a mound of stone  
 for 1/2 sec. cor., marked on brass cap



from which

A pinion 8 ins. in diam. bears S52°E. 79 lks. dist.,  
 marked 1/2 S27 BT.  
 A pinion 10 ins. in diam. bears S87 1/2°W. 21 lks. dist.,  
 marked 1/2 S28 BT.  
 41.50 S. edge of flat bears E. and W. 1.00 ch. dist.  
 52.00 Leave flat bears NW. and SE.  
 Ascend 115 ft. over SE. slope.  
 65.60 Top of rocky spur bears N60°E.  
 Descend 206 ft. over NW. slope to  
 80.00 Set an iron post 3 ft. long, 2 ins. in diam. 6 ins. in the  
 ground to bedrock, supported in a mound of  
 stone for cor. of secs. 21, 22, 27, and 28.,  
 marked on brass cap



from which

A pinion 14 ins. in diam. bears N26 1/2°E. 57 lks. dist.,  
 marked T15N., R3W., S22 BT.  
 A pinion 14 ins. in diam. bears S35°W. 52 lks. dist.,  
 marked T15N., R3W., S28 BT.  
 A pinion 14 ins. in diam. bears N50 1/2°W. 105 lks. dist.,  
 marked T15N., R3W., S21 BT.  
 No other bearing trees within limits.  
 Raise a mound of stone 2 ft. base, 1 1/2 ft. high W. of cor.  
  
 Land, mountainous.  
 Soil, stony 3 rd. and 4 th. rate.  
 Timber, oak, cedar, and pinion.  
 Undergrowth, oak and manzanita brush.

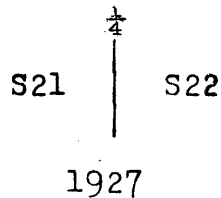
Survey of Part (Completion) of  
the Subdivision lines of Township 15 North., Range 3 West

Chains	
40.00 80.16	<p>N 89°54'E. on a random line bet. secs.22 and 27 Set temp. <math>\frac{1}{4}</math> sec. cor. Intersect N. and S. line 8 lks. S. of the cor. of secs. 22 and 27.</p>
6.50 9.50 13.80 14.40 15.47	<p>Thence S 89°51'W. on true line bet. secs.22 and 27. Descend W. slope over broken stony mountainous land, thru. scattering timber and heavy undergrowth. Wash course NE. Ascend 38 ft. over rocky E. slope of spur Top of granite spur bears NE. Descend 38 ft. over SW. slope. Ravine course NE. Ascend 41 ft. over SE. slope.</p>
17.70 18.85 37.65 40.08	<p>Old stall road bears NE. and SW. Ravine 10 lks. wide 4 ft. deep, course NE. Asc. 250 ft. Top of granite spur bears SE. Set an iron post 3 ft. long, 1 in. in diam. 6 ins. in the ground to bedrock, supported in a mound of stone for <math>\frac{1}{4}</math> sec. cor., marked on brass cap</p>
	<p style="text-align: center;"><math>\frac{1}{4}</math> <math>\frac{S\ 22}{S\ 27}</math></p>
	<p style="text-align: center;">1927</p>
	<p style="text-align: center;">from which</p> <p>A pinion 12 ins. in diam. bears N11°E. 18 lks. dist., marked <math>\frac{1}{4}</math> S22 BT. A pinion 10 ins. in diam. bears S38°W. 37 lks. dist., marked <math>\frac{1}{4}</math> S27 BT.</p>
43.30 54.50 79.00 80.16	<p>Top of granite spur bears SE. Descend 42 ft. over SW. slope. Ravine course S30°E. Ascend 288 ft. over NE. slope. Point of rocky spur slopes NE. Descend 13 ft. over NW. slope to The cor. of secs. 21, 22, 27, and 28</p>
	<p>Land, mountainous. Soil, stony 3 rd. and 4 th. rate. Timber, oak, cedar, and pinion. Undergrowth, oak and manzanita brush.</p> <p>N 0°01'W. bet. secs. 21 and 22. Descend 25 ft. over NW. slope over stony mountainous land, thru. scattering timber and undergrowth.</p>
1.20 5.00 10.08 17.30 35.45 38.00 40.00	<p>Ravine 8 lks. wide course NE. Ascend 10 ft. over SE. slope. Top of low spur bears NE. Descend 146 ft. over NE. slope. Ravine course SE. Ascend 65 ft. over SW. slope. Top of rocky spur bears E. Descend 290 ft. over rocky N. slope. Rocky ravine course NE. Ascend 11 ft. Descend 29 ft. over N. slope Set an iron post 3 ft. long, 1 in. in diam. 16 ins. in the ground to bedrock supported in a mound of stone for <math>\frac{1}{4}</math> sec. cor. marked on brass cap</p>

53

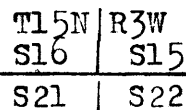
Survey of Part (Completion) of  
the Subdivision lines of Township 15 North., Range 3 West

Chains



from which

- A pinion 5 ins. in diam. bears  $N87\frac{1}{2}^{\circ}E$ . 52 lks. dist., marked  $\frac{1}{4}$  S22 BT.
- A cedar 30 ins. in diam. bears  $S85^{\circ}W$ . 51 lks. dist., marked  $\frac{1}{4}$  S21 BT.
- 55.60 Top of rocky spur bears  $N60^{\circ}E$ .  
Descend 49 ft. over NW. slope.
- 58.54 Ravine course E.  
Ascend 12 ft. over S. slope.
- 61.60 Top of spur bears E.  
Descend 20 ft. over N. slope.
- 64.04 Ravine 5 lks. wide course E.  
Ascend gradually 22 ft. over S. slope to
- 73.00 Foot of high granite peak  
Ascend 179 ft. over steep SW. slope to
- 80.00 Set an iron post 3 ft. long, 2 ins. in diam. 6 ins. in the ground to bedrock, supported in a mound of stone for cor. of secs. 15, 16, 21, and 22., marked on brass cap



1927

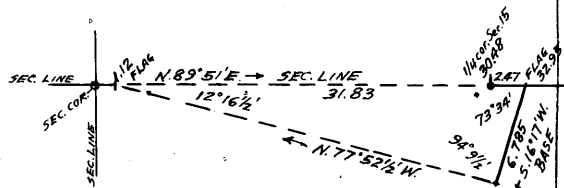
from which

- A pinion 12 ins. in diam. bears  $N38\frac{1}{2}^{\circ}E$ . 55 lks. dist., marked T15N., R3W., S15 BT.
- A pinion 3 ins. in diam. bears  $S41^{\circ}E$ . 47 lks. dist., marked T15N., R3W., S22 BT.
- A pinion 8 ins. in diam. bears  $S80\frac{1}{2}^{\circ}W$ . 74 lks. dist., marked T15N., R3W., S21 BT.
- A pinion 8 ins. in diam. bears  $N77^{\circ}W$ . 100 lks. dist., marked T15N., R3W., S16 BT.

Land, mountainous.  
Soil, stony 3 rd. and 4 th. rate.  
Timber, oak, cedar, juniper, and pinion.  
Undergrowth, oak and manzanita brush.

- N  $89^{\circ}51'E$ . on true line on S. bay. of Sec. 15.  
Ascend 25 ft. over steep rocky SW. slope over mountainous land, thru scattering timber and brush undergrowth
- 1.12 Point of cliff bears NE.; precipitous descent over SE. slope. Discontinue measurement by chaining and obtain measurement by triangulation as described as follows, and as shown on diagram.

Set flag on line on spur.  
vertical angle to flag =  $-11\frac{1}{2}^{\circ}$   
From flag, measure a base  
 $S16^{\circ}17'W$ . 6.78 $\frac{1}{2}$  chs. dist.  
From the S. end of base a  
flag at the 1.12 chain  
station bears  $N77^{\circ}52\frac{1}{2}'W$ .



Survey of Part (Completion ) of

the Subdivision lines of Township 15 North., Range 3 West

Chains

Dist. on line-----= 1.12 chs. N.89°51'E.  
 Dist. by triangulation-----31.83 chs. "  
 Dist. -sec. cor. to flag = 32.95 chs. "  
 Dist by return measurement-----= 2.47 chs. S.89°51'W.  
 Dist. -sec. cor. to ¼sec. cor. of sec.15 = 30.48 " N.89°51E.

15.48 (Approx. dist.) Foot of cliffs bears NE. and SW.  
 20.50 (Approx. dist.) Point of spur bears SE.  
 30.48 (40.00 chs. in westing from closing cor. of secs. 15 and 22)  
 Set an iron post 3 ft. long, 1 in. in diam. 27 ins. in  
 the ground for ¼ sec. cor. of sec. 15 only,  
 marked on brass cap

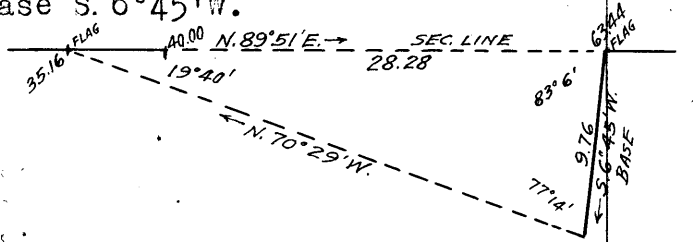
¼ S 15

1927

from which

A pinion 8 ins. in diam. bears N48½°W. 57 lks. dist.,  
 marked ¼ S15 BT.  
 A pinion 12 ins. in diam. bears N67½°W. 16 lks. dist.,  
 marked ¼ S15 BT.

30.98 Ravine 482 ft. below 1.12 chain station, course N.  
 Ascend 64 ft. over W. slope over granite ledges.  
 32.95 Triangulation station on spur bears NE.  
 Continue line and measurement by chaining to 40.00 ch. station.  
 Descend 34 ft. over E. slope to  
 35.16 Top of granite ledge 25 ft. high bears W. and S.  
 Obtain dist. across canyon by triangulation as follows;  
 Set flag on line on E. side of canyon  
 Vertical angle to flag = -5°  
 From the flag measure a base S. 6°45'W.  
 9.76 chs. dist. from the  
 S. end of base a flag at  
 the 35.16 chain station  
 bears N. 70°29'W.



Dist. on line-----= 35.16 chs. N.89°51'E.  
 Dist. by triangulation-----= 28.28 chs. "  
 Dist. -sec. cor. to flag on E. side of canyon = 63.44 chs. "

40.00 On steep E. slope, on W. side of canyon, 83 ft. below 35.16 ch. station.  
 Set an iron post 3 ft. long, 1 in. in diam. 10 ins. in  
 the ground to bedrock, supported in a mound of  
 stone for ¼ sec. cor. of sec. 22 only, marked on  
 brass cap

¼ S 22

1927

from which

An oak 5 ins. in diam. bears S47½°W. 86 lks. dist.,  
 marked ¼ S 22 BT.  
 A pinion 14 ins. in diam. bears S59°W. 29 lks. dist.,  
 marked ¼ S22 BT.

50.50 (Approx.) Bottom of canyon, course N. About 325 ft. below  
 the ¼ sec. cor. of sec. 22.

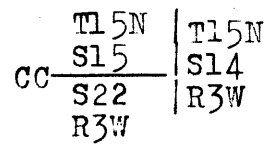
Ascend about 165 ft. over W. slope to  
 63.44 Triangulation station at top of steep ascent on E. side  
 of canyon, thence over broken stony land.

Survey of Part ( Completion ) of  
the Subdivision lines of Township 15 North., Range 3 West.

Chains

70.48

Intersect W.bdry. of sec.14 at a point 2.38 chs. N 1°2'W  
of the SW. cor. of said sec.hereinbefore descri-  
bed.  
At point of intersection, Set an iron post 3 ft. long, 2 ins.  
in diam. over cross (X) on ledge supported in a  
mound of stone for closing cor. of secs.15  
and 22., marked on brass cap



1927

from which

- A pinion 14 ins. in diam. bears N57½°W. 67 lks. dist.,  
marked T15N., R3 W., S15 CC BT.
- A pinion 6 ins. in diam. bears S13°W. 53 lks. dist.,  
marked T15N., R3W., S22 CC BT.

Land, mountainous.  
Soil, stony 3 rd. and 4 th. rate.  
Timber, oak, cedar, juniper, and pinion.  
Undergrowth, oak and manzanita brush.

7.50

From cor. of secs. 15, 16, 21 and 22,  
N 0°01'W. bet. secs. 15 and 16.  
Ascend 105 ft. over SW. slope over broken stony mountain-  
ous land, thru scattering timber, and undergrowth  
Top of ascent on W. slope of mountain about 3.00 chs.  
W. of high peak

16.50

Descend 118 ft. along W. slope  
Head of ravine course N80°W.  
Ascend 17 ft. over S. slope

23.70

Top of spur bears NW.  
Descend 557 ft. over rocky NE. slope.

35.37

Saddle in top of spur bears E. and W.

37.00

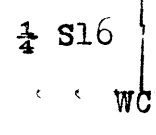
Descend over broken cliffs.

40.00

The point for ¼ sec. cor. of sec. 16 falls on face of cliff  
where it is impossible to establish a permanent  
cor., therefore, continue line and measurement  
and at

40.15

Foot of cliff, bears NW. and SE. Set an iron post 3 ft.  
long, 1 in. in diam. 6 ins. in the ground to  
bedrock, supported in a mound of stone for witness  
cor. to the ¼ sec. cor. of sec. 16., marked on brass  
cap



1927

from which

- A norway pine 14 ins. in diam. bears N32°W. 45 lks. dist.  
marked WC. ¼ S16 BT.
- An oak 18 ins. in diam. bears N45°W. 18 lks. dist.,  
marked WC ¼ S16 BT.

Survey of Part ( Completion ) of  
the Subdivision lines of Township 15 North., Range 3 West.

Chains  
45.37 Continue abrupt descent over cliffs and ledges.  
(40.00 chs. S10°1'E. from closing cor. of secs. 15 and 16.) Set an iron post 3 ft. long, 1 in. in diam. 8 ins. in the ground to bedrock, supported in a mound of stone for  $\frac{1}{4}$  sec. cor. of sec. 15 only, marked on brass cap

|  $\frac{1}{4}$  S15  
1927

from which

A pinion 6 ins. in diam. bears N63 $\frac{1}{2}$ °E. 95 lks. dist., marked  $\frac{1}{4}$  S15 BT.  
A pinion 12 ins. in diam. bears S88°E. 6 lks. dist., marked  $\frac{1}{4}$  S15 BT.

65.68 Ravine 10 lks. wide course E.  
Ascend 24 ft. over S. slope

73.10 Top of rocky spur bears SE.  
Descend 37 ft. over NE. slope over granite ledges.

79.70 Wash 6 lks. wide course E.  
Ascend gradually over rocky S. slope to

85.37 Intersect S. bdy. of sec. 10 at a point 13.53 chs. S85°15'E. of the reestablished cor. of secs. 9 and 10, hereinbefore described.  
At point of intersection, Set an iron post 3 ft. long, 2 ins. in diam. over cross (X) on ledge, supported in a mound of stone for closing cor. of secs. 15 and 16., marked on brass cap

T15N R3W  
S10  
S16 | S15  
T15N | R3W  
CC  
1927

from which

A pinion 10 ins. in diam. bears S63°E. 5 lks. dist., marked T15N., R3W., S15 CC BT.  
A pinion 10 ins. in diam. bears S14 $\frac{1}{2}$ °W. 141 lks. dist., marked T15N., R3W., S16 CC BT.

Land, mountainous.  
Soil, stony 4 th. rate.  
Timber, cedar, oak, and pinion.  
Undergrowth, oak and manzanita brush.

From the cor. of secs. 4, 5, 32, and 33 on S. bdy. of Tp. hereinbefore described.

N 0°01'W. bet. secs. 32 and 33.  
Ascend 20 ft. over rocky SW. slope over mountainous land, thru. scattering timber and brush undergrowth.

1.00 Top of rocky spur bears NW.  
Descend 146 ft. over steep NE. slope.

14.00 Wash course NW.  
Ascend 40 ft. over SW. slope.

18.00 Top of rocky spur bears NW.  
Descend 110 ft. over steep rocky NE. slope.

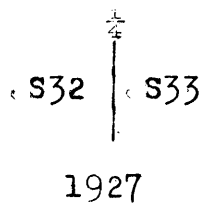


Survey of Part ( Completion ) of  
 the Subdivision lines of Township 15 North., Range 3 West.

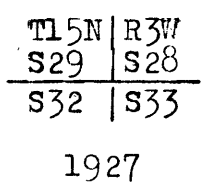
Book 8850

Chains

- 21.00 Ravine course NW.
- Ascend 117 ft. over steep SW. slope.
- 30.00 Top of spur bears W.
- Descend 90 ft. over N. slope.
- 32.90 Wire fence bears E. and W.
- 34.10 Ravine course W.
- Ascend 335 ft. over steep S. slope.
- 40.00 Set an iron post 3 ft. long, 1 in. in diam. with marked stone at the base, 4 ins. in the ground to bedrock supported in a mound of stone for  $\frac{1}{4}$  sec. cor., marked on brass cap



- No bearing trees within limits.
- 53.70 Ravine 5 lks. wide 15 ft. deep course SW.
- 59.00 Top of spur bears W.
- Descend 20 ft. over N. slope.
- 63.00 Ravine containing stream of running water 3 lks. wide, course SW.
- Ascend 451 ft. over SW. slope over cliffs.
- 80.00 Set an iron post 3 ft. long, 2 ins. in diam. with marked stone at the base, 4 ins. in the ground to bedrock, supported in a mound of stone for cor. of secs. 28, 29, 32, and 33. marked on brass cap



No bearing trees within limits.

Land, mountainous.  
 Soil, stony 3 rd. and 4 th. rate.  
 Timber, oak, and pinion.  
 Undergrowth, oak and manzanita brush.

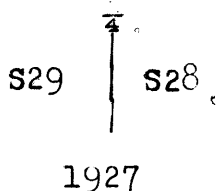
- East on a random line bet. secs. 28 and 33.
- 40.00 Set temp.  $\frac{1}{4}$  sec. cor.
- 80.00 Intersect N. and S. line 12 lks. S. of the cor. of secs. 27, 28, 33, and 34.
- Thence
- S 89°55' W. on true line bet. secs. 28 and 33.
- Ascend 500 ft. over precipitous rocky E. slope over mountainous land, thru scattering timber and dense undergrowth.
- 14.00 Top of precipitous ascent on cliffs bears N. and S.
- Ascend gradually 416 ft. over NE. slope thru heavy pine timber bears NE. and SW.
- 40.00 Set an iron post 3 ft. long, 1 in. in diam. 27 ins. in the ground for  $\frac{1}{4}$  sec. cor. marked on brass cap

Survey of Part ( Completion ) of  
the Subdivision lines of Township 15 North., Range 3 West.

Chains	$\frac{\pm S 28}{S 33}$
	1927
	from which
	A pine 24 ins. in diam. bears N17°E. 8 lks. dist., marked $\frac{\pm}{4}$ S28 BT.
	A pine 10 ins. in diam. bears S45°E. 86 lks. dist., marked $\frac{\pm}{4}$ S33 BT.
45.00	Summit of Granite Mountain ridge bears NW. and SE.
72.00	Descend 900 ft. over precipitous SW. slope over cliffs. Ravine 5 lks. wide containing stream of seep water course SW.
80.00	The cor. of secs. 28, 29, 32, and 33.

Land, mountainous.  
Soil, stony 4 th. rate.  
Timber, oak, cedar, pinion, and pine.  
Undergrowth, oak and manzanita brush.

	N 0°01'W. bet. secs. 28 and 29. Ascend 280 ft. over rocky SW. slope over rough broken- mountainous land, thru scattering timber and dense undergrowth.
15.00	Top of rocky spur bears NW. Descend 400 ft. over steep NE. slope.
19.00	Ravine course NW. Ascend 100 ft. over SW. slope.
27.00	Top of spur bears W. Descend 300 ft. over N. slope.
39.60	Head of rocky ravine course W. Ascend 103 ft. over S. slope.
40.00	Set an iron post 3 ft. long, 1 in. in diam. with marked stone at the base over cross (x) on exposed ledge supported in a mound of stone for $\frac{\pm}{4}$ sec. cor., marked on brass cap



from which

A pinion 8 ins. in diam. bears S39°E. 127 lks. dist.,  
marked  $\frac{\pm}{4}$  S28 BT.  
No other bearing trees within limits.

Note	From this point a spring bears W. 4.00 chs. dist.
49.00	Top of rocky spur bears W. Descend 182 ft. over N. slope.
59.00	Head of ravine course W. Ascend 145 ft. over S. slope.
69.20	Top of rocky spur bears W. descend 270 ft. over abrupt rocky N. slope to
80.00	Set an iron post 3 ft. long, 2 ins. in diam. with marked stone at the base, 6 ins. in the ground to bedrock, supported in a mound of stone for cor. of secs. 20, 21, 28, and 29. marked on brass cap

Survey of Part (Completion) of  
the Subdivision lines of Township 15 North., Range 3 West.

Block 8850

Chains

T15N | R3W  
S20 | S21  
S29 | S28

1927

from which

- A pinion 5 ins. in diam. bears N72 $\frac{1}{2}$ °E. 104 lks. dist., marked T15N., R3W., S21 BT.
- A pinion 10 ins. in diam. bears N38 $\frac{1}{2}$ °W. 118 lks. dist., marked T15N., R3W., S20 BT.
- No other bearing trees within limits.

Land, mountainous.  
Soil, stony 4 th. rate.  
Timber, oak, cedar, and pinion.  
Undergrowth, oak and manzanita brush.

- 40.00 N 89°55'E. on a random line bet. secs. 21 and 28.
- 80.02 Set temp.  $\frac{1}{4}$  sec. cor.
- Intersect N. and S. line 2 lks. S. of the cor. of secs. 21, 22, 27, and 28.
- Thence
- S 89°54'W. on true line bet. secs. 21 and 28
- Descend NW. slope 25 ft. over stony mountainous land thru. scattering timber and undergrowth.
- 1.19 Ravine course NE.
- Ascend 621 ft. over NE. slope over stony land.
- 18.10 Ascend steep E. slope
- 39.00 Top of spur bears NE.
- Descend 165 ft. over NW. slope.
- 40.01 Set an iron post 3 ft. long, 1 in. in diam. 14 ins. in the ground to bedrock, supported in a mound of stone for  $\frac{1}{4}$  sec. cor., marked on brass cap

$\frac{1}{4}$   $\frac{S 21}{S 28}$

1927

from which

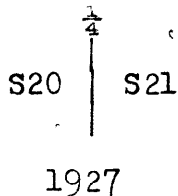
- A pinion 12 ins. in diam. bears N4°W. 38 lks. dist., marked  $\frac{1}{4}$  S21 BT.
- A pinion 6 ins. in diam. bears S4°E. 52 lks. dist., marked  $\frac{1}{4}$  S28 BT.
- 53.72 Rocky ravine course N10°E.
- Ascend 24 ft. over E. slope.
- 57.45 Top of ascent on spur bears NW. thence along top of spur.
- 63.90 West edge of spur. descend 546 ft. over precipitous SW. slope over cliffs.
- 78.20 Ravine 6 lks. wide course NW.
- Ascend 5 ft. over NE. slope to
- 80.02 The cor. of secs. 20, 21, 28, and 29.

Land, mountainous.  
Soil, stony 4 th. rate.  
Timber, scattering oak, cedar, and pinion.  
Undergrowth, oak and manzanita brush.

## Survey of Part (Completion) of

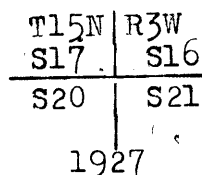
the Subdivision lines of Township 15 North., Range 3 West

Chains	
	N 0°01'W. bet. secs. 20 and 21. Descend 9 ft. over NE. slope over stony mountainous land thru dense undergrowth and scattering timber.
.65	Ravine course N70°W. Ascend over SW. slope
1.90	Top of low spur bears NW. Descend 65 ft. over NE. slope.
5.02	Ravine course N70°W. Ascend over SW. slope.
6.50	Top of low spur bears N70°W. Descend 83 ft. over NE. slope.
9.40	Ravine, course N70°W. Ascend 6 ft. over SW. slope.
12.50	Top of low spur bears N75°W. Descend 42 ft. over NE. slope.
15.70	Ravine course NW. Ascend 29 ft. over SW. slope.
20.00	Top of spur bears W. Descend over N. slope 61 ft.
24.00	Head of ravine course W. Ascend 58 ft. over S. slope.
26.70	Top of spur bears W. Descend 125 ft. over N. slope to
40.00	Set an iron post 3 ft. long, 1 in. in diam. 12 ins. in the ground to bedrock, supported in a mound of stone for $\frac{1}{4}$ sec. cor. marked on brass cap



from which

	A pinion 8 ins. in diam. bears N47 $\frac{1}{4}$ °E. 39 lks. dist., marked $\frac{1}{4}$ S21 BT.
	A pinion 10 ins. in diam. bears S70 $\frac{1}{4}$ °W. 52 lks. dist., marked $\frac{1}{4}$ S20 BT.
	Descend 34 ft. over steep NE. slope.
41.48	Rocky ravine course NW. Ascend about 15 ft. over SW. slope.
45.50	Top of spur bears NW. Descend over steep NE. slope 26 ft.
48.38	Ravine course W. Ascend 34 ft. over S. slope.
54.60	Top of spur bears W. Descend 11 ft. over N. slope.
55.70	Ravine course S80°W. Ascend 153 ft. over SW. slope
66.80	Old road to Skull Valley bears N80°E. and S80°W.
75.50	Top of spur bears SW.; thence over W. slope.
79.12	Intersect the S. end line (3-4) of the "BIG TWO" patented mining claim, Mineral Survey No. 3238 at a point 1.40 chs: S71°50'E. of cor. No. 4 thereof. Thence across patented mineral land.
80.00	Set an iron post 3 ft. long, 2 ins. in diam. with marked stone at the base 27 ins. in the ground for cor. of secs. 16, 17, 20, and 21., marked on brass cap



from which

Survey of Part ( Completion ) of  
the Subdivision lines of Township 15 North., Range 3 West

8850

Chains

A cedar 12 ins. in diam. bears N12 $\frac{1}{2}$ °E. 29 lks. dist.,  
marked T15N., R3W., S16 BT.  
No other bearing trees within limits.

Land, mountainous.  
Soil, stony, 3 rd. and 4 th. rate.  
Timber, scattering cedar, juniper, and oak.  
Undergrowth, oak brush.

- 40.00 N 89°54'E. on a random line bet. secs. 16 and 21.  
Set temp.  $\frac{1}{4}$  sec. cor.
- 80.18 Intersect N. and S. line 5 lks. N. of the cor. of secs.  
15, 16, 21, and 22.  
Thence  
S 89°56'W. on true line bet. secs. 16 and 21.  
Descend 235 ft. over rocky SW. slope over mountainous  
land, thru scattering timber and brush under-  
growth.
- 18.92 Ravine course N30°W.  
Ascend 18 ft. over NE. slope.
- 26.00 Top of rocky spur bears N.  
Descend 15 ft. over NW. slope.
- 29.00 Ravine 5 lks. wide course N30°E.  
Ascend 298 ft. over SE. slope
- 40.09 Set an iron post 3 ft. long, 1 in. in diam. 6 ins. in the  
ground to bedrock, supported in a mound of stone  
for  $\frac{1}{4}$  sec. cor. marked on brass cap

$\frac{1}{4}$  S 16  
S 21

1927

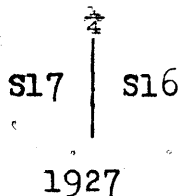
from which

- A cedar 8 ins. in diam. bears N13 $\frac{1}{2}$ °E. 55 lks. dist.  
marked  $\frac{1}{4}$  S16 BT.
- A pinion 5 ins. in diam. bears S25°E. 39 lks. dist.,  
marked  $\frac{1}{4}$  S21 BT.
- 43.00 Ravine 15 ft. below  $\frac{1}{4}$  sec. cor. course NE.  
Ascend steep E. slope.
- 49.75 Top of spur bears N20°E., Leave timber bears N. and S.  
Descend 284 ft. over rocky NW. slope.
- 64.55 Old road to Skull Valley bears N10°E. and S10°W.
- 64.80 Wash 5 lks. wide, course N20°E.  
Ascend 176 ft. over SE. slope
- 66.70 A point from which U.S.G.S. BM., Elev. 5540 bears South 4.70  
chs. dist.
- 71.79 Intersect the E. side line (2-3) of the "BIG TWO" patented  
mining claim, Mineral Survey No. 3238 at a point  
3.45 chs. N18°10'E. of cor. No. 3 thereof., Thence  
across patented mineral land.
- 76.50 Top of spur on quartz. ledge 15 ft. high bears SW.  
Descend 79 ft. over NW. slope to
- 80.18 The cor. of secs. 16, 17, 20, and 21.

Land, mountainous.  
Soil, stony 3 rd. and 4 th. rate.  
Timber, scattering, cedar, juniper, and oak.  
Undergrowth, oak brush.

Survey of part ( Completion ) of  
the Subdivision lines of Township 15 Noerth., Range 3 West.

Chains	
	N 0°01'W. on true line bet. secs. 16 and 17. Ascend 140 ft. over SW. slope over stony mountainous land, thru. dense undergrowth, across patented mineral land.
1.00	Head of ravine course SW.
3.66	Intersect the W. side line (1-4) of the "BIG TWO" patented mining claim, Mineral Survey No. 3238 at a point 4.32 chs. N18°10'E. of cor. No. 4 thereof.
12.00	Top of spur bears W.
	Descend 352 ft. over NW. slope
23.03	Intersect the S. end line (2-3) of the "BIG SIX" patented mining claim, Mineral Survey No. 3238 at a point 3.05 chs. S71°50'E. of cor. No. 3 thereof., Thence across patented mineral land.
30.16	Ravine 4 lks. wide 5 ft. deep, course W.
32.78	Intersect the W. side line (3-4) of the "BIG SIX" patented mining claim, Mineral Survey No. 3238 at a point 9.29 chs. N18°10'E. of cor. No. 3 thereof. Leave patented mineral land.
39.95	Rocky ravine 5 lks. wide course N80°W. Ascend 7 ft. over S. slope
40.00	Set an iron post 3 ft. long, 1 in. in diam. 2 ins. in the ground to bedrock, supported in a mound of stone for $\frac{1}{4}$ sec. cor. marked on brass cap



Deposit a marked stone at base of post.

From this cor. US.LM.No.3238 bears N50°06'E. 19.60 chs. dist.

53.00	Top of spur bears NW. Descend 118 ft. over broken NE. slope.
57.25	Ravine course NW. Ascend 55 ft. over broken stony SW. slope.
62.10	Top of spur bears NW. Descend 73 ft. over N. slope
63.70	Rocky gulch course W. Ascend 55 ft. over S. slope.
66.10	Point of spur bears E. slopes W. Descend 64 ft. over N. slope.
68.50	Rocky ravine course W. Ascend 23 ft. over S. slope.
72.60	Top of rocky spur bears W.; Enter scattering timber bears NW. and SE. Descend 26 ft. over N. slope
74.95	Gulch course W. Ascend 37 ft. over S. slope.
78.80	Rocky spur bears NW. Descend 87 ft. over NE. slope.
87.00	Ravine 15 lks. wide course NW.
87.16	Intersect the S. bdy. of sec. 9 at a point 15.82 chs. S89°40'E. of the reestablished cor. of secs. 8 and 9, hereinbefore described. At point of intersection, Set an iron post 3 ft. long, 2 ins. in diam. 27 ins. in the ground for closing cor. of secs. 16 and 17., marked on brass cap

T15N., R3W  
S 9

S17 | S16  
T15N | R3W  
CC

1927

from which

Survey of Part (Completion) of  
the Subdivision lines of Township 15 North., Range 3 West .

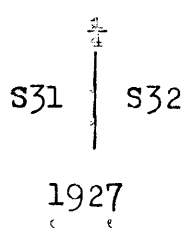
Chains

A cedar 10 ins. in diam. bears S25°E. 160 lks. dist.,  
marked T15N., R3W., S16 CC BT.  
A pinion 12 ins. in diam. bears S61°W. 120 lks. dist.,  
marked T15N., R3W., S17 CC BT.

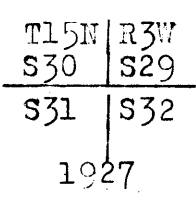
Land, broken mountainous.  
Soil, stony, 3 rd. and 4 th. rate.  
Timber, scattering oak, and pinion and cedar.  
Undergrowth, oak and manzanita brush.

From the cor. of secs. 5, 6, 31, and 32 on S. bdry. of Tp.  
hereinbefore described,

- 3.00 N 0°02' W. bet. secs. 31 and 32.
- Ascend 20 ft. over S. slope over stony hilly land,  
thru. heavy undergrowth.
- 17.00 Top of ridge bears E. and W.
- Descend 20 ft. over N. slope
- 28.00 Head of ravine course NW.
- Ascend 52 ft. over SW. slope.
- 40.00 Top of spur bears NW.
- Descend 114 ft. over NE. slope over stony land.
- Set an iron post 3 ft. long, 1 in. in diam. with marked  
stone at the base, 14 ins. in the ground to  
bedrock, supported in a mound of stone for 1/2 sec.  
cor., marked on brass cap



- 43.40 Wash course NE., thence over E. slope.
- 56.00 Wash course NE.
- Ascend over SE. slope.
- 62.35 Descend 92 ft. over rocky NE. slope.
- 71.00 Wash 30 lks. wide, course NW.
- Ascend over SW. slope.
- 75.00 Top of low spur bears NW. thence along W. slope.
- 78.50 Draw course NW.
- Ascend 17 ft. over SW. slope to
- 80.00 Set an iron post 3 ft. long, 2 ins. in diam. 27 ins. in  
the ground for cor. of secs. 29, 30, 31, and 32.  
marked on brass cap



Raise a mound of stone 2 ft. base, 1 1/2 ft. high W. of cor.

Land, hilly.  
Soil, stony 3 rd. rate.  
Timber, scattering scrub oak.  
Undergrowth, oak brush.

Survey of Part (Completion) of  
the Subdivision lines of Township 15 North., Range 3 West.

Chains	
	East on a random line bet. secs. 29 and 32
40.00	Set temp. $\frac{1}{4}$ sec. cor.
79.94	Intersect N. and S. line 16 lks. S. of the cor. of secs. 28, 29, 32, and 33.
	Thence
	S $89^{\circ}53'$ W. on true line bet. secs. 29 and 32.
	Descend 953 ft. over precipitous rocky SW. slope over mountainous land, thru. scattering timber and dense undergrowth.
39.97	Set an iron post 3 ft. long, 1 in. in diam. 18 ins. in the ground to bedrock, supported in a mound of stone for $\frac{1}{4}$ sec. cor. marked on brass cap
	$\frac{1}{4}$ S 29 $\frac{1}{4}$ S 32 1927
	from which
	An oak 6 ins. in diam. bears N $24\frac{1}{2}^{\circ}$ E. 32 lks. dist., marked $\frac{1}{4}$ S29 BT.
	An oak 6 ins. in diam. bears S $86^{\circ}$ W. 71 lks. dist., marked $\frac{1}{4}$ S32 BT.
51.54	Wash 40 lks. wide at foot of steep descent, course NW. Leave rough mountainous land, bears NW. and SE., Enter hilly land.
	Ascend 50 ft. over NE. slope.
54.31	Top of low spur bears N.
	Descend 33 ft. over W. slope.
61.30	Wash course N.
	Ascend 54 ft. over E. slope
75.34	Top of spur bears NW.
	Wire fence on spur bears NW. and SE.
	Descend 21 ft. over SW. slope to
79.94	The cor. of secs. 29, 30, 31, and 32.
	Land, hilly and mountainous. Soil, stony 3 rd. and 4 th. rate. Timber, scattering cedar, and oak. Undergrowth, oak brush.
	<hr/> West on true line bet. secs. 30 and 31 Descend 40 ft. over SW. slope over rolling mountainous land, thru. scattering timber and dense brush undergrowth.
4.00	Wash course NW.
	Ascend 40 ft. over NE. slope.
4.80	Top of low spur bears N.
	Descend over W. slope.
6.50	Ravine course N.
	Ascend 71 ft. over E. slope.
12.50	Top of spur bears N.
	Descend 75 ft. over W. slope
16.50	Ravine course NE.
	Ascend 167 ft. over SE. slope.
36.00	Top of spur bears NW. thence over rolling land on spur.
40.00	Set an iron post 3 ft. long, 1 in. in diam. with marked stone at the base, 8 ins. in the ground to bedrock, supported in a mound of stone for $\frac{1}{4}$ sec. cor. marked on brass cap
	$\frac{1}{4}$ S 30 $\frac{1}{4}$ S 31 1927

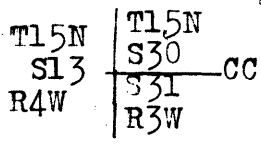


Survey of Part (Completion) of  
the Subdivision lines of Township 15 North., Range 3 West.

2850

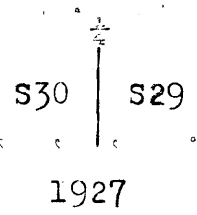
Chains

No bearing trees within limits.  
 41.70 Descend 88 ft. over SW. slope  
 51.60 Ravine course NW.  
 Ascend 29 ft. over NE. slope.  
 62.00 Descend 150 ft. over NW. slope.  
 80.00 Descend over rolling N. slope.  
 86.00 Leave stony land bears NE. and SW. Enter gravelly land.  
 99.23 Intersect E. bdry. of T15N., R4W. at a point 1.80 chs.  
 South of the  $\frac{1}{4}$  sec. cor. of sec. 13, which is an  
 iron post 1 in in diam. projecting 9 ins. above  
 firmly set, properly marked on brass cap and  
 witnessed by two bearing trees also properly  
 marked.  
 At point of intersection, Set an iron post 3 ft. long,  
 2 ins. in diam. 27 ins. in the ground for closing  
 cor. of secs. 30 and 31., marked on brass cap



No bearing trees within limits.  
 Raise a mound of stone 2 ft. base, 1 $\frac{1}{2}$  ft. high E. of cor.  
 Land. hilly.  
 Soil, gravelly and stony  $\frac{3}{4}$  rd. rate.  
 Timber, scattering oak and juniper.  
 Undergrowth, oak brush.

From cor. of secs. 29, 30, 31 and 32,  
 N 0°02'W. bet. secs. 29 and 30.  
 Ascend 15 ft. over SW. slope of spur over stony hilly  
 land, thru. oak and greasewood brush undergrowth.  
 3.70 Top of low spur bears NW.  
 Descend over NE. slope.  
 7.70 Head of ravine course NW.  
 Wire fence in ravine bears NW. and SE.  
 Ascend over SW. slope.  
 13.27 Top of spur bears NW.  
 Descend 109 ft. over NE. slope.  
 29.78 Sand wash 40 lks. wide course NW. thence over bottom land  
 35.00 Sand wash course SW.  
 40.00 Set an iron post 3 ft. long, 1 in. in diam. 27 ins. in  
 the ground for  $\frac{1}{4}$  sec. cor. marked on brass cap



Raise a mound of stone 2 ft. base, 1 $\frac{1}{2}$  ft. high W. of cor.  
 44.00 Leave bottom land bears NW. and SE. Enter hilly land.  
 Ascend 79 ft. over SW. slope.  
 57.00 Top of spur bears NW.  
 Descend 29 ft. over NE. slope.  
 65.00 Head of sand wash course NW.  
 Ascend 44 ft. over SW. slope.  
 76.00 Top of spur bears NW.  
 Descend 44 ft. over NE. slope to .  
 80.00 Set an iron post 3 ft. long, 2 ins. in diam. with marked  
 stone at the base 18 ins. in the ground to  
 bedrock, supported in a mound of stone for cor. of  
 secs. 19, 20, 29, and 30. marked on brass cap

Survey of Part (Completion) of  
the Subdivision lines of Township 15 North., Range 3 West

Chains

T15N	R3 W
S19	S20
S30	S29

1927

from which

A pinion 6 ins. in diam. bears  $S9\frac{1}{2}^{\circ}E.$  156 lks. dist.,  
marked T15N., R3W., S29 BT.  
No other bearing trees within limits.

Land, rolling and hilly.  
Soil, stony 3 rd. rate.  
Timber, none.  
Undergrowth, oak brush.

- 40.00 N  $89^{\circ}53'E.$  on a random line bet. secs. 20 and 29.
- 80.16 Set temp.  $\frac{1}{4}$  sec. cor.  
Intersect N. and S. line 25 lks. N. of the cor. of secs.  
20, 21, 28, and 29.
- Thence
- 13.46 N  $89^{\circ}56'W.$  on true line bet. secs. 20 and 29.  
Descend 322 ft. over NW. slope over stony mountainous  
land, thru dense oak brush undergrowth.
- 27.16 Point of spur bears NW.  
Descend steep SW. slope about 189 ft.
- 29.96 Rocky ravine 10 lks. wide course NW.  
Ascend 40 ft. over NE. slope.
- 40.08 Top of spur bears NW.  
Descend 140 ft. over SW. slope.  
Set an iron post 3 ft. long, 1 in. in diam. 27 ins. in  
the ground for  $\frac{1}{4}$  sec. cor., marked on brass cap

$\frac{1}{4}$ S 20
S 29

1927

from which

- 67.46 A pinion 12 ins. in diam. bears  $N29\frac{1}{2}^{\circ}W.$  80 lks. dist.,  
marked  $\frac{1}{4}$  S20 BT.
- 80.16 A pinion 4 ins. in diam. bears  $S64\frac{1}{2}^{\circ}E.$  115 lks. dist.,  
marked  $\frac{1}{4}$  S29 BT.
- Wash 30 lks. wide course NW.
- Ascend over NE. slope.
- The cor. of secs. 19, 20, 29, and 30

Land, rolling mountainous.  
Soil, stony 3 rd. rate.  
Timber, none  
Undergrowth; oak brush.

- 3.85 West on true line bet. secs. 19 and 30.  
Descend 50 ft. over NW. slope over stony hilly land  
thru dense undergrowth.  
Ravine course N.  
Ascend 108 ft. over E. slope.

Survey of Part (Completion ) of the Subdivision lines of Township 15 North., Range 3 West

Chains

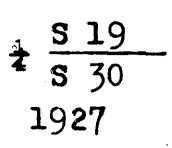
11.00 Top of spur bears NW.  
Descend 175 ft. over SW. slope.

25.00 Sand wash 140 lks. wide course NW.

25.60 Sand wash 60 lks. wide 2 ft. deep, course NW.  
Ascend 20 ft. over NE. slope.

29.00 Top of ascent, thence over rolling N. slope.

40.00 Set an iron post 3 ft. long, 1 in. in diam. with marked stone at the base, 12 ins. in the ground to bedrock, supported in a mound of stone for  $\frac{1}{4}$  sec. cor. marked on brass cap



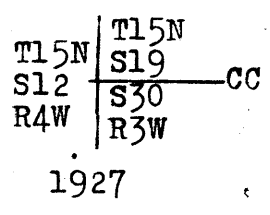
44.80 Draw course NW.

71.10 Draw course NW. Ascend over NE. slope.

78.60 Wire fence bears NW. and SE.

80.00 Top of low ridge bears NW. and SE.  
Descend gradually over SW. slope

99.18 Intersect the E. bdry. of T15N., R4W. at a point 1.68 chs. South of the  $\frac{1}{4}$  sec. cor. of sec. 12, which is an iron post 1 in. in diam. projecting 9 ins. above ground, firmly set, properly marked on brass cap, and witnessed by a mound of stone W.  
At point of intersection, Set an iron post 3 ft. long, 2 ins. in diam. 27 ins. in the ground for closing cor. of secs. 19 and 30., marked on brass cap



from which

A juniper 16 ins. in diam. bears N87 $\frac{1}{2}$ °E. 840 lks. dist., marked T15N., R3 W., S19 CC BT.  
No other bearing trees within limits.  
Deposit a marked stone at base of post.

Land, hilly.  
Soil, stony 3 rd. rate.  
Timber, none.  
Undergrowth, oak brush.

From cor. of secs. 19, 20, 29 and 30,  
N 0°02'W. bet. secs. 19 and 20  
Descend 52 ft. over N. slope over stony hilly land, thru dense undergrowth.

14.50 Ravine course W.  
Ascend over S. slope.

18.00 Top of spur bears NW.  
Descend gradually over NE. slope.

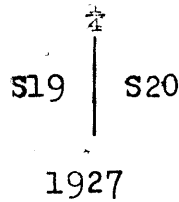
22.40 Ravine course NW.  
Ascend 125 ft. over SW. slope.

37.50 Top of spur bears NW.  
Descend 43 ft. over NE. slope. thru scattering timber bears NW. and SE.

40.00 Set an iron post 3 ft. long, 1 in. in diam. 18 ins. in the ground to bedrock, supported in a mound of stone for  $\frac{1}{4}$  sec. cor. marked on brass cap

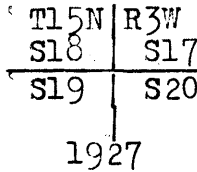
Survey of Part (Completion) of  
the Subdivision lines of Township 15 North., Range 3 West.

Chains



from which

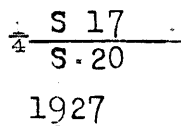
- A juniper 6 ins. in diam. bears S38 $\frac{1}{4}$ °E. 35 lks. dist., marked  $\frac{1}{4}$  S20 BT.
- A juniper 4 ins. in diam. bears N52 $\frac{1}{4}$ °W. 45 lks. dist., marked  $\frac{1}{4}$  S19 BT.
- 42.00 Old road to Skull Valley bears E. and W.
- 44.75 Ravine course SW., thence along same
- 55.00 Leave ravine comes from NE. Ascend 72 ft. over SE. slope.
- 75.00 Top of spur bears SW. Descend over NW. slope 10 ft. to
- 80.00 Set an iron post 3 ft. long, 2 ins. in diam. with marked stone at the base 18 ins. in the ground to bedrock, supported in a mound of stone for cor. of secs. 17, 18, 19, and 20. marked on brass cap



No bearing trees within limits.

Land, hilly.  
 Soil, stony 3 rd. rate.  
 Timber, scattering juniper.  
 Undergrowth, oak and greasewood brush.

- 40.00 S 89°56'E. on a random line bet. secs. 17 and 20. Set temp.  $\frac{1}{4}$  sec. cor.
- 80.14 Intersect N. and S. line 14 lks. S. of the cor. of secs. 16, 17, 20, and 21.  
 Thence  
 S 89°58'W. on true line bet. secs. 17 and 20.  
 Descend 365 ft. over SW. slope over stony hilly land thru dense oak brush undergrowth over patented mineral land.
- 1.20 Intersect the W. side line of the "BIG TWO" patented mining claim, Mineral Survey No. 3238 at a point 47 lks. N18°10'E. of cor. No. 4 thereof. Leave patented mineral land.
- 9.00 Point of spur bears SW.
- 12.35 Gulch course S80°W.
- 23.95 Ravine 5 lks. wide 15 ft. deep course NW.
- 29.15 Same ravine course SW.
- 36.10 Same ravine course NW. Ascend over NE. slope 20 ft.
- 40.07 Set an iron post 3 ft. long 1 in. in diam. 27 ins. in the ground for  $\frac{1}{4}$  sec. cor., marked on brass cap



from which

Survey of Part (Completion) of  
the Subdivision lines of Township 15 North., Range 3 West.

Chains	
	A cedar 12 ins. in diam. bears N78°W.172 lks. dist., marked $\frac{1}{4}$ S17 BT.
	A pinion 6 ins. in diam. bears S57 $\frac{1}{2}$ °E.140 lks. dist., marked $\frac{1}{4}$ S20 BT.
41.50	Ravine 4 lks. wide 8 ft. deep course N.
47.40	Ravine 4 lks. wide 10 ft. deep course N.
51.10	Top of spur bears N.
54.55	Ravine S80°W.
64.05	Ravine course NW.
67.89	Top of low spur bears NW.
69.55	Ravine 10 lks. wide at foot of descent, course N.
	Ascend 52 ft. over E. slope
75.60	Top of hill bears N. and S.
	Descend 51 ft. over W. slope.
79.50	Gulch course N.
	Ascend 19 ft. over E. slope. to
80.14	The cor. of secs. 17,18,19, and 20.
	Land, hilly.
	Soil, stony $\frac{3}{4}$ rd. and $\frac{1}{4}$ th. rate.
	Timber, none.
	Undergrowth, oak and greasewood brush.
<hr/>	
	West on true line bet. secs. 18 and 19.
	Ascend 26 ft. over NE. slope of spur over hilly land, thru, scattering timber and dense undergrowth.
2.26	Top of spur bears N.
	Descend 16 ft. over W. slope.
4.46	Sand wash course N.
	Ascend 56 ft. over E. slope.
10.00	Top of E. slope, thence over N. slope.
14.00	Top of spur bears NW.
	Descend 237 ft. over rocky SW. slope.
40.00	Set an iron post 3 ft. long, 1 in. in diam. 20 ins. in the ground to bedrock, supported in a mound of stone for $\frac{1}{4}$ sec. cor. of sec. 19 only., marked on brass cap
	<hr style="width: 10%; margin: auto;"/>
	$\frac{1}{4}$ S 19
	1927
	from which
	A juniper 12 ins. in diam. bears S5 $\frac{1}{2}$ °E.193 lks. dist., marked $\frac{1}{4}$ S19 BT.
	A juniper 5 ins. in diam. bears S25°W.166 lks. dist., marked $\frac{1}{4}$ S19 BT.
44.35	Sand wash 300 lks. wide 45 ft. below $\frac{1}{4}$ sec. cor. course NW.
	Ascend 111 ft. over NE. slope.
52.00	Top of spur bears N.
	Descend 108 ft. over W. slope.
56.00	Descend over NW. slope
59.22	Set an iron post 3 ft. long, 1 in. in diam. with marked stone at the base, 18 ins. in the ground to bedrock, supported in a mound of stone for $\frac{1}{4}$ sec. for. of sec. 18 only, marked on brass cap

Survey of Part (Completion) of  
the Subdivision lines of Township 15 North., Range 3 West

Chains

1/4 S 18

1927

from which

A juniper 5 ins. in diam. bears N34°E.157 lks. dist.,  
marked 1/4 S18 BT.

No other bearing trees within limits.

65.00

Ravine course N.

Ascend 89 ft. over E. slope.

75.50

Top of spur bears NW.

Descend 30 ft. over SW. slope.

88.66

Ravine course NW.

Ascend 20 ft. over broken N. slope.

94.70

Top of ascent on point of spur slopes NW.

Descend 62 ft. over SW. slope.

98.80

Sand wash 20 lks. wide course SW.

99.05

Intersect the E. bdy. of T15N., R4W. at a point 184 lks.  
South of the 1/4 sec. cor. of sec. 1, which is an  
iron post 1 in. in diam. projecting 9 ins. above  
ground, firmly set, and properly marked on brass  
cap.

At point of intersection, Set an iron post 3 ft. long, 2  
ins. in diam. 26 ins. in the ground for closing  
cor. of secs. 18 and 19., marked on brass cap

T15N	T15N	CC
S 1	S 18	
R4W	S 19	
	R3W	

1927

from which

An oak 4 ins. in diam. bears N60 1/4°E.250 lks. dist.,  
marked T15N., R3W., S18 CC BT.

A juniper 8 ins. in diam. bears S62 1/4°E.190 lks. dist.,  
marked T15N., R3W., S19 CC BT.

Land, hilly.

Soil, stony 3 rd. rate.

Timber, scattering oak and juniper.

Undergrowth, oak and greasewood brush.

From cor. of secs. 17, 18, 19 and 20,

N 0°02'W. on true line bet. secs. 17 and 18

Descend 123 ft. over NE. slope over stony hilly land, thru  
dense undergrowth.

21.00

Sand wash 15 lks. wide course NW.

Ascend 109 ft. over SW. slope

33.00

The slope changes from SW. to W.

39.00

Ravine 5 lks. wide 5 ft. deep, course W.

40.00

Set an iron post 3 ft. long, 1 in. in diam. with marked  
stone at the base 18 ins. in the ground to bedrock  
supported in a mound of stone for 1/4 sec. cor. of  
sec. 17 only., marked on brass cap

1/4	S 17
-----	------

1927

Survey of Part ( Completion) of  
the Subdivision lines of Township 15 North., Range 3 West

Chains

45.00  
51.62

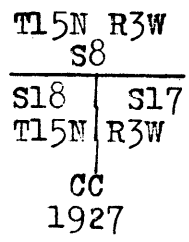
Ravine 4 lks. wide 5 ft. deep, course W.  
(40.00 chs. S.0°2'E. from closing cor. of secs.17 and 18) Set an  
iron post 3 ft. long, 1 in. in diam. 27 ins. in  
the ground for  $\frac{1}{4}$  sec. cor. of sec.18 only,  
marked on brass cap

$\frac{1}{4}$  S18

1927

53.00  
72.40  
75.00  
91.62

Raise a mound of stone 2 ft. base, 1 $\frac{1}{2}$  ft. high W. of cor.  
Sand wash 10 lks. wide 3 ft. deep course W.  
Sand wash 8 lks. wide course SW.  
Ascend 92 ft. over steep SE. slope.  
Top of spur bears W.  
Descend 92 ft. over N. slope.  
Intersect the S. bdry. of sec.8 at a point 18.12 chs.  
S86°11'E. of the reestablished cor. of secs.7 and  
8, hereinbefore described.  
AT point of intersection, Set an iron post 3 ft. long, 2 ins.  
in diam. 27 ins. in the ground for closing cor.  
of secs.17 and 18. marked on brass cap



from which

- A pinion 4 ins. in diam. bears S63 $\frac{1}{2}$ °E. 146 lks. dist.,  
marked T15N., R3W., S17 CC BT.
- A juniper 10 ins. in diam. bears S28°W. 92 lks. dist.,  
marked T15N., R3W., S18 CC BT.

Land, hilly.  
Soil, stony. 3 rd. rate.  
Timber, none.  
Undergrowth, oak and greasewood brush.

GENERAL DESCRIPTION

The southwestern portion of T.15 N., R.3 W. surveyed under  
this assignment embraces practically all of the  
rough mountainous area known as Granite Mountain,  
the elevation ranging from 6000 to 8000 ft. the  
greatest elevation being attained at the triangulation  
station on the summit of Granite peak in sec.34.  
The high mountain ridge of Granite Mountain divides the  
the drainage area about equally into north and south  
halves, the North half draining into the Mint Wash  
and the South half in a southwesterly direction into  
the Skull Valley Wash.

Survey of Part (Completion) of  
the Subdivision lines of Township 15 North., Range 3 West.

## Chains

The soil over the entire southwestern portion of the township with the exception of the north half of sec. 23 and a few small areas along Mint Wash in sec. 22 can all be classed as 3 rd. and 4 th. rate. Granite Mountain proper, comprises a mass of huge granite boulders and can nearly all be classed as 4 th. rate.

The township is poorly watered. A small stream flowing in Mint wash, a spring in sec. 29 and two springs in the SW.  $\frac{1}{4}$  of secs. 14 on Mint Wash furnish the only permanent water in this portion of the township.

From the lowest elevations in the township up to an elevation of 7000 ft. the township is timbered with a scattering growth of oak, juniper, and medium heavy growth of pinion timber. above 7000 ft. in elevation the predominating forest specie is pine, many of the trees being quite large.

The township has been pretty thoroughly prospected for precious metals with the result that gold, silver and some copper ore has been found in secs. 16 and 21.

There is one settler, Carlos B Lee, residing in the NE.  $\frac{1}{4}$  of sec. 23.

The old stull road in secs. 15, 16, and 21 and old road to Skull Valley thru. secs. 16, 21, 20, and 19 are the only roads into the southwestern part of the township, these roads through lack of maintenance are practically impassable.

The township although too rough for agricultural purposes produces a variety of nutritious grasses and other forage plants which adapt it to stock raising.

FINAL TEST

OF

Buff transit No. 16724

October 1, 1927. Set up instrument on the meridian established August 18, 1927, at camp near the  $\frac{1}{4}$  sec. cor. of secs. 14 and 23, T15N., R3W.; latitude  $34^{\circ}40'17''$ N and longitude  $112^{\circ}32'32''$ W. and at 9<sup>h</sup>00<sup>m</sup> a.m., app. time, set off  $34^{\circ}40\frac{1}{2}'$ N. on the lat. arc  $2^{\circ}57\frac{1}{2}'$ S. on the decl. arc and determine a meridian with the solar which falls  $1'30''$  W. of the true meridian.

At the same station at apparent noon with the lat. arc unchanged, observe the sun on the meridian and obtain a reading of  $3^{\circ}00\frac{1}{2}'$ S. on decl. arc which is a little lower than the computed decl. of the sun.

At 4<sup>h</sup>00<sup>m</sup> p.m., app. time with the lat arc unchange, set off  $3^{\circ}04'$ S. on the decl. arc and determine a meridian with the solar which falls  $0\frac{1}{2}'$  E. on true meridian established by the Polaris observation.

FINAL TEST

OF

Young and Sons Transit No. 8478

October 1, 1927; Set up instrument on the meridian at camp



BOOK 2000

near the  $\frac{1}{4}$  sec. cor. of secs. 14 and 23, T15N., R3W. Latitude  $34^{\circ}40'17''$ N., longitude  $112^{\circ}32'32''$ W. and at  $8^{h}00^{m}$ a.m., app. time set off  $34^{\circ}40\frac{1}{2}'$ N. on the lat. arc  $2^{\circ}56'$ S. on the decl. arc and determine a meridian with the solar which falls  $1'$ E. of the true meridian.

At apparent noon with the lat arc unchanged observe the sun on the meridian. The resulting reading of the decl. arc is  $3^{\circ}00\frac{1}{2}'$ S. which agrees with the computed declination of the sun.

At  $3^{h}00^{m}$  p.m., app. time with the lat. arc unchanged, set off  $3^{\circ}3'$ S. on the decl. arc and determine a meridian with the solar, which falls  $1'$ W. of the true meridian

As all the solar observations, taken with this instrument during the usual hours of solar work come within  $1'30''$  of the true meridian, conclude that the satisfactory adjustment of the instrument has been maintained throughout the survey.

BOOK 3450

STATE OF ARIZONA )  
County of Yavapai ) ss

*Carlos B Lee*

I \_\_\_\_\_, of lawful age  
depose and state; That I have resided in Sec. 23, T15N., R3W. of 1878  
the Gila and Salt River Base and Meridian, Arizona, since \_\_\_\_\_  
and do solemnly affirm that I have, at various times in the past,  
seen the  $\frac{1}{4}$  sec. cor. between secs. 14 and 23, T15N., R3W., which  
consisted of a stake about 2 ins. square driven in the ground,  
and which by reason of its age and resemblance to other Government  
stake corners which I have seen, I believe was the original  
Government corner, and that the position pointed out by me to  
United States Cadastral Engineer, Sidney E Blout, is to the best  
of my knowledge and belief, the exact position formerly occupied  
by said corner.

*Carlos B Lee*  
Affiant's Signature

Subscribed and sworn to before me this 3<sup>rd</sup> day of October  
A.D. 1927

*Sidney E Blout*  
U.S. Cadastral Engineer

EO 12812-2000

4-680  
(August, 1926)

**FIELD ASSISTANTS.**  
**TO**

**CHARLES E. HUNTER, U.S. Transitman**

NAMES.	CAPACITY.
James Shine	1st Chainman
A. L. Bailey	2nd Chainman
Vern Liebman	Flagman
A.D. Cathers	Moundman
A.W. Porter	Axman
E.W. Escher	Axman

CERTIFICATE OF UNITED STATES SURVEYOR.

BOOK 3860

I, Charles E. Hunter U.S. Transitman, hereby certify upon honor that, in pursuance of special instructions received from the District Cadastral Engineer, for Group 140 Arizona bearing date of the 25th day of May, 1926, I have well, faithfully, and truly in my own proper person, and in strict conformity with said instructions, the Manual of Surveying Instructions, and the laws of the United States, ~~resurveyed~~ all those parts or portions of the South, West and North boundaries and Subdivision Lines of Township 15 North, Range 3 West and surveyed all those parts or portions of the South boundary and Subdivision Lines of Township 15 North, Range 3 West of the Gila and Salt River Base and Meridian, in the State of Arizona, which are represented in the foregoing field notes <sup>and by diagram on page 2 hereof</sup> as having been executed by me, and under my direction; and that all the corners of said ~~resurvey~~ <sup>and survey</sup> have been established and perpetuated in strict accordance with the Manual of Surveying Instructions, and the special written instructions of the District Cadastral Engineer, for Group 140 Arizona and in the specific manner described in the field notes, and that the foregoing are the original field notes of such ~~resurvey~~ and survey.

Place: U.S. Transitman

Date: \_\_\_\_\_

~~APPROVAL~~

~~Office of U. S. Supervisor of Surveyors,~~

\_\_\_\_\_, 19

~~The foregoing field notes of the survey of~~

~~executed by~~ \_\_\_\_\_  
~~under his special instructions dated~~ \_\_\_\_\_, 19\_\_\_\_, ~~having been critically examined, and the necessary corrections and explanations made, the said field notes, and the surveys they describe, are hereby approved.~~

~~U. S. Supervisor of Surveys.~~

~~I certify that the foregoing transcript of the field notes of the above described surveys in~~ \_\_\_\_\_  
~~has been correctly copied from the original notes on file in this office.~~

~~U. S. Supervisor of Surveys.~~

4-680  
(August, 1926)

**FIELD ASSISTANTS.**  
TO  
**SIDNEY E. BLOUT U.S.Cadastral Engineer**

NAMES.	CAPACITY.
Thomas Tait	1st Chainman
L.A. Burgess	2nd Chainman
Dan McMurtrie	2nd Chainman
Charles Osborn	Flagman
Lloyd Minter	Flagman
Glenn Thomas	Moundman
Otis Eastman	Axman

76  
BOOK 3150

CERTIFICATE OF UNITED STATES SURVEYOR.

I, Sidney E. Blout U.S. Cadastral Engineer, hereby certify upon honor that, in pursuance of special instructions received from the District Cadastral Engineer, for Group 140 Arizona bearing date of the 25th day of May, 1926, I have well, faithfully, and truly, in my own proper person, and in strict conformity with said instructions, the Manual of Surveying Instructions, and the laws of the United States, ~~resurveyed~~ <sup>resurveyed</sup> all those parts or portions of the South and East boundaries and Subdivision Lines of Township 15 North, Range 3 West and surveyed all those parts or portions of the Subdivision Lines of Township 15 North, Range 3 West of the Gila and Salt River Base and Meridian, in the State of Arizona, which are represented in ~~the foregoing field notes~~ <sup>and by diagram on page 2 hereof</sup> ~~as having been executed by me, and under my direction; and that all the corners of said resurvey~~ ~~and survey have been established and perpetuated~~ in strict accordance with the Manual of Surveying Instructions, and the special written instructions of the District Cadastral Engineer, for Group 140 Arizona and in the specific manner described in the field notes, and that the foregoing are the original field notes of such ~~resurvey~~ <sup>resurvey</sup> and survey.

Place: Phoenix, Arizona.  
Date: September 27, 1928.

*Sidney E. Blout*  
U.S. Cadastral Engineer

APPROVAL.

OFFICE OF U. S. SUPERVISOR OF SURVEYS,  
Denver, Colo., November 8, 1929

The foregoing field notes of the ~~resurvey~~ <sup>resurvey</sup> of Part (E. half) of South boundary, Part (S. 4 m.) of East boundary, Part (W. of N. 2 Sec. 18) of West boundary Part (W. 4 m.) of North boundary, and Part of the Subdivision Lines all of Township 15 North, Range 3 West and of the survey of Part (completion) of South boundary, and Part (completion) of the Subdivision lines of Township 15 North, Range 3 West of the Gila and Salt River Base and Meridian, State of Arizona executed by Sidney E. Blout, U.S. Cadastral Engineer and Charles E. Hunter, U.S. Transitman under the special instructions dated May 25, 1926 for Group 140 Arizona, having been critically examined, and the necessary corrections and explanations made, the said field notes, and the ~~resurvey~~ <sup>resurveys</sup> ~~and surveys~~ they describe, are hereby approved.

*Charles E. Hunter*  
U. S. Supervisor of Surveys.

I certify that the foregoing transcript of the field notes of the above described surveys in \_\_\_\_\_, has been correctly copied from the original notes on file in this office.

U. S. Supervisor of Surveys.