

BOOK 3874

FIELD NOTES

OF THE SURVEY OF THE

Subdivision Lines of

Township 6 South, Range 18 East

Of the Gila and Salt River Base and Meridian,

In the State of Arizona

EXECUTED BY

William E. Hiester, U.S. Surveyor

and

Theodore Vander Meer, U.S. Transitman

In the capacity of U. S. Surveyors, ^{Supplemental} under Special Instructions dated September 27, 19 28, issued by the District Cadastral Engineer to govern surveys included in Group No. 141, Arizona, which were approved by the Commissioner of the General Land Office, November 13, 19 28, and Assignment Instructions dated Nov. 17, 19 28.

Survey commenced January 3, 1929.

Survey completed January 18, 19 29.

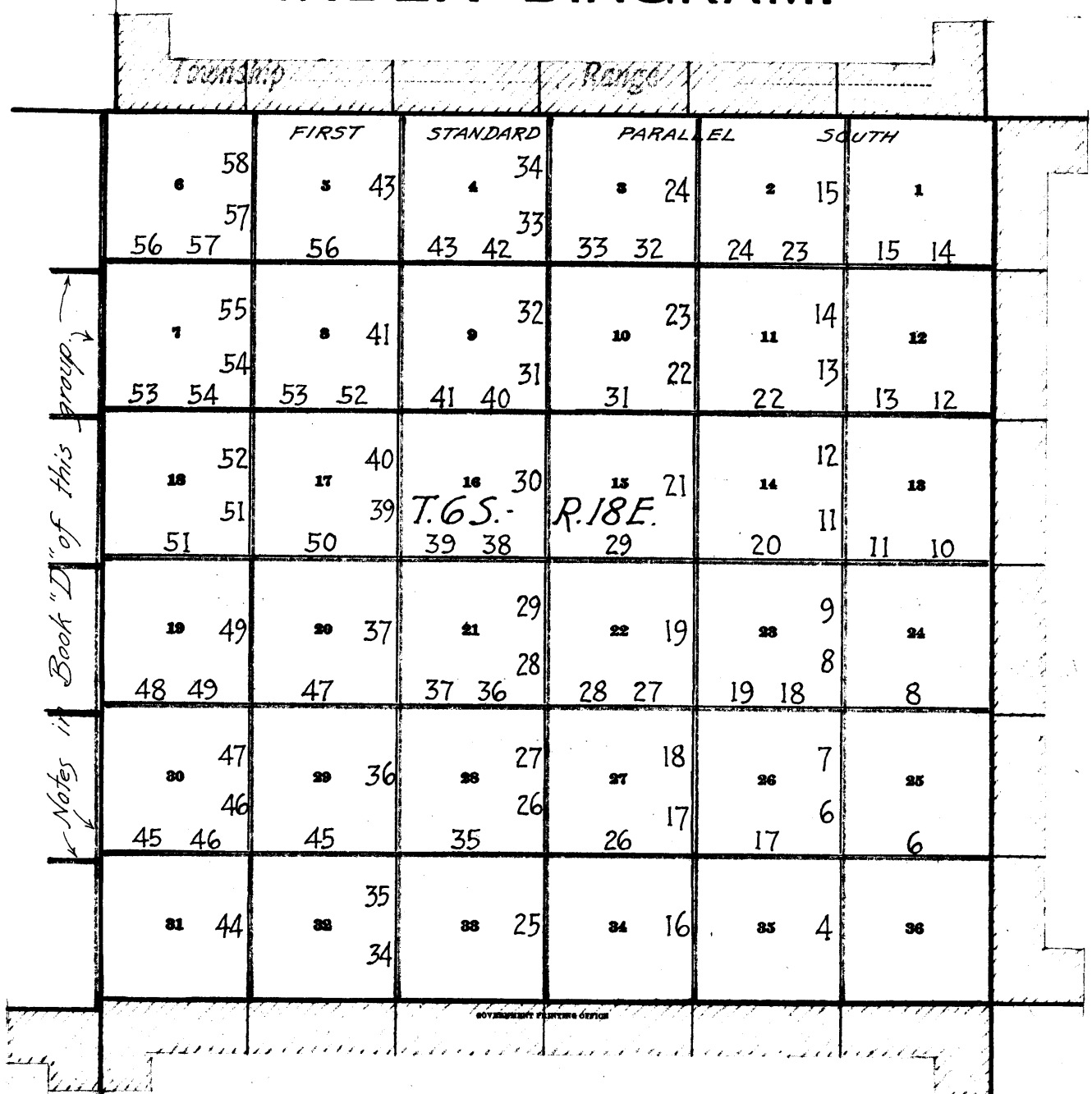
3874

3874

Book "E"
Group 141 Arizona

BOOK 3874

INDEX DIAGRAM.



————— Surveyed under this group.

————— Accepted surveys.

▨ Areas surveyed as per accepted plats on file.

Book "EM"

Group 141---Arizona

Township 6 South, Range 18 East

Date Diagram
1929

1st Standard Parallel South.
Surveyed in 1924

See Book "D" for dates of survey of this Tp. Bdy.

6 1-16	5 1-14	4 1-15	3 1-13	2 1-11	1 1-10
7 1-11	8 1-18	9 1-15	10 1-12	11 1-11	12 1-8
18 1-10	17 1-10	16 1-9	15 1-7	14 1-9	13 1-14
19 1-7	20 1-5	21 1-5	22 1-5	23 1-6	24 1-3
30 1-7	29 1-3	28 1-4	27 1-6	26 1-6	25 1-7
31 1-3	32 1-3	33 1-4	34 1-4	35 1-3	36 1-3

Surveyed in 1924

Surveyed in 1924

Surveyed by William E. Hiester, U.S. Surveyor on dates shown thereon in 1929.

Surveyed by Theodore Vander Meer, U.S. Transitman, on dates shown thereon in 1929.

Surveyed under this group. Notes and dates in other books.

Accepted surveys.

Surveys hereinafter described were executed on the dates shown on the diagram on page 1, hereof, by William E. Hiester, U.S. Surveyor, and Theodore Vander Meer, U.S. Transitman, using respectively, Buff & Buff solar transits Nos. 19423 and 9977, each equipped with full vertical circle and Smith solar attachment. Unless otherwise specified, all azimuth determinations were made with the solar attachments.

Examine the adjustments of the instruments and correct all errors; then, to test the solar apparatus by comparing their indications resulting from a.m. and p.m. solar observations with a meridian established by observations on Polaris, proceed as follows:

Dec. 30, 1928: At camp, which is situated near the center of sec. 13, T.6 S., R.17 E., Gila and Salt River Base and Meridian, Arizona, latitude $32^{\circ}54\frac{1}{2}'$ N., longitude $110^{\circ}33\frac{1}{2}'$ W., using instrument No. 9977, at $1^{\text{h}}00^{\text{m}}$ a.m., l.m.t., observe Polaris at western elongation, making four observations, two each with the telescope in direct and reversed positions, and mark the mean point on a stake about 6 chs. S.

At $7^{\text{h}}00^{\text{m}}$ a.m., lay off the azimuth of Polaris, $1^{\circ}16\frac{1}{2}'$ to the West (of South) and mark the meridian with a stake and small flag.

At $8^{\text{h}}00^{\text{m}}$ a.m., app.t., set off $32^{\circ}54\frac{1}{2}'$ N. on the lat. arcs and $23^{\circ}06'$ S. on the decl. arcs, and determine meridians with the solar attachments, which agree within 1' with the true meridian.

At apparent noon, with the lat. arcs unchanged, observe the sun on the meridian; the resulting reading on the decl. arcs is $23^{\circ}07\frac{1}{2}'$ S., which agrees with the computed decl. of the sun.

At $3^{\text{h}}00^{\text{m}}$ p.m., app.t., with the lat. arcs unchanged, set off $23^{\circ}06\frac{1}{2}'$ S. on the decl. arcs, and determine meridians with the solars, which agree within 1' with the true meridian.

We therefore conclude that the adjustments of the instruments are satisfactory.

Unless otherwise specified, all measurements are made with Lallie steel tapes, 5 chs. in length, compared with a Lufkin standard steel tape, 1 chain in length, and found correct. The measurements are made on the slope, the vertical angles determined with clinometer or transit, and the slope measurements properly reduced to true horizontal distances.

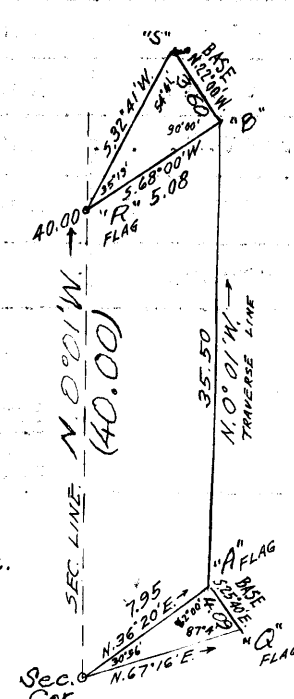
Boundaries of Township 6 South, Range 18 East
 Latitudes, Departures and Closing Errors

Line designated	True course	Dist- ance	Latitudes		Departures		
			N.	S.	E.	W.	
South Boundary	West	486.40				486.40	
West Boundary	North	473.36	473.36				
N. Bdy (1st. S. P. S.)	East	485.78			485.78		
East Boundary	South	473.94		473.94			
Convergency					.47		
<u>Totals</u>			473.36	473.94	486.25	486.40	
				473.36		486.25	
Error in latitude				0.58			
Error in departure						0.15	

Survey of Subdivision Lines of T.6 S., R.18 E.

Chains

From the cor. of secs. 1,2,35 and 36, on the S. bdy. of the Tp., which is an iron post, 2 ins. diam., projecting 8 ins. above a mound of stone, properly marked on brass cap, dated 1924, witnessed by four bearing marked trees. N.0°01'W., on true line, bet. secs. 35 and 36. Over mountainous land; through scattering timber and scattering undergrowth. To obtain measurement across broken cliffs on E. side of Parsons Canyon, triangulate and traverse as described as follows:
 Set a flag "A", N.36°20'E. and a flag "Q" N.67°16'E. on top of rim of canyon 350 ft. higher than sec. cor. From "A" flag "Q" bears S.25°40'E. 4.09 chs. dist. Longer base impracticable. Angles checked by repetition and bearings checked by direct readings of the solar. Dist. triangulated = 7.95 chs. N.36°20'E. From flag "A" run N.0°01'W., 35.50 chs. to point "B" over top of gently rolling mesa sloping N. and NW. Continue traverse by triangulation as follows: From "B" set a flag "R" S.68°00'W. on sec. line. Measure a base 3.60 chs. N.22°00'W. to point "S" From "S", flag "R" bears S.32°41'W. Angles and bearings properly checked. Dist. triangulated (B-R) = 5.08 chs. S.68°00'W. By computation flag "R" is 40.00 chs. N.0°01'W. from cor. of secs. 1,2,35 and 36.

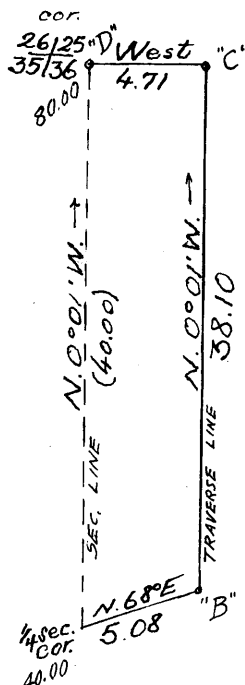


40.00 Triangulation flag "R", located about 2 chs. East of a bend of Parsons Creek, from SW. to NW. Rim of Parsons Canyon, irregular, bears about 3 chs. E. Set an iron post, 3 ft. long, 1 in. diam., 14 ins. in the ground to bedrock; deposit a stone, 4 x 3 x 2 ins., marked with cross (+) at base of post; raise a mound of stone, 4 ft. base, 1½ ft. high, around post, for ¼ sec. cor., with brass cap marked

¼
 S35 | S36
 1929

No suitable bearing trees.

To continue measurement across broken cliffs on E. side of Parsons Canyon traverse as described as follows:
 From point "B" of foregoing, which is 5.08 chs. N.68°E. from ¼ sec. cor., run N.0°01'W., 38.10 chs. to point "C"; thence West, 4.71 chs. to point "D", which by computation is 80.00 chs. N.0°01'W. from cor. of secs. 1,2,35 and 36.



80.00 Point "D". Set an iron post, 3 ft. long, 2 ins. diam., on cross (+) on exposed bedrock, supported by

Survey of Subdivision Lines of T.6 S., R.18 E.

Chains

a mound of stone, 5 ft. base, 3 ft. high, for cor. of secs. 25, 26, 35 and 36, with brass cap marked:

T6SR18E	
S26	S25
S35	S36
1929	

No suitable bearing trees.

Land: rough mountainous.

Soil: gravelly, adobe, 3rd and 4th rates.

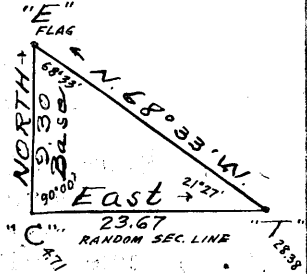
Timber: oak, cedar, pinon.

Undergrowth: palo verde, catclaw, mesquite, cactus, guyata grass, oak.

East, on random line, bet. secs. 25 and 36.

4.71 Traverse point "C" of line bet. secs. 35 and 36. To obtain measurement across rocky canyon forward, triangulate as described as follows:

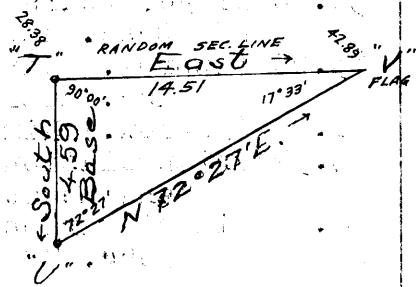
Measure a base North, 9.30 chs. dist., to flag "E". From a point "T", forward on line, flag "E" bears N.68°33'W. All angles checked by deflection and repetition and bearings checked by direct readings of the solar. Vertical angle "C" to "T" = +3°



Dist. triangulated = 23.67 chs. E.

28.38 Triangulation point "T". To obtain measurement across cliffs forward triangulate as described as follows:

Measure a base South 4.59 chs. to point "U" from which a flag "V" set forward on random sec. line bears N.72°27'E. All angles checked by repetition and all bearings checked by direct readings of the solar. Vertical angle "T" to "V" = -6°



Station of point "T" = 28.38 chs.

Triangulated (T-V) = 14.51 "

Station-flag "V" = 42.89 "

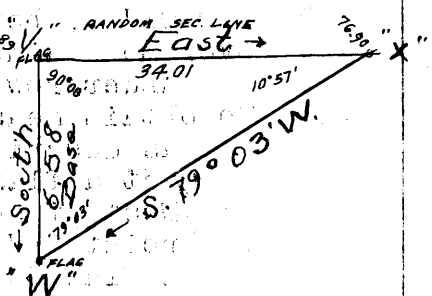
By return measurement 2.89 " W.

40.00 chs. E. to temp. 1/4 sec. cor.

40.00 Set temp. 1/4 sec. cor.

42.89 Triangulation flag "V". To obtain measurement across rocky canyon forward, triangulate as described as follows:

Measure a base 6.58 chs. South to flag "W". From a point "X", forward on line, flag "W" bears S.79°03'W. Longer base not obtainable. All angles checked by repetition and all bearings checked by direct readings of the solar. Vertical angle "V" to "X" = -2 1/2°



Dist. triangulated = 34.01 chs.

76.90 Triangulation point "X". Continue line and measurement by chaining.

80.10 Fall 28 lks. N. of the cor. of secs. 25, 30, 31 and 36, on E.

Survey of Subdivision Lines of T.6 S., R.18 E.

Chains bdy. of Tp.,
 which is an iron post, 2 ins. diam., projecting 10 ins. above a mound of stone, firmly set, properly marked on brass cap, dated 1924,
 Thence
 N. 89° 48' W., on true line, bet. secs. 25 and 36.
 Over mountainous land; through scattering undergrowth.
 Asc. 26 ft. over SE. slope.
 3.10 Spur, slopes S.
 Desc. 300 ft. over broken cliffs, face W.
 3.20 Triangulation point "X" bears 29 lks. N. Discontinue measurement by chaining; triangulate as described.
 22.00 (Approx.) Canyon, course NW.
 Asc. approximately 440 ft. over broken cliffs on general E. slope.
 37.24 (2.81 chs. S. 89° 48' E. of true point) Set an iron post, 3 ft. long, 1 in. diam., 6 ins. in the ground to bedrock, deposit a stone, marked with cross (+) at base of post, raise a mound of stone, 5 ft. base, 2½ ft. high, around post, for witness cor. to ¼ sec. cor., with brass cap marked

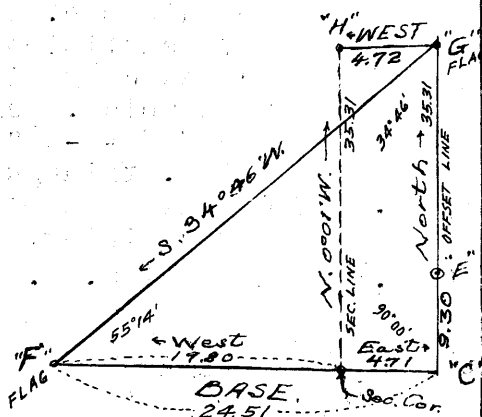
S25
 ¼ WC
 S36
 1929

No bearing trees available.

37.40 Spur, slopes NE.
 Desc. 86 ft. over N. slope.
 40.05 True point for ¼ sec. cor. falls on sloping bedrock.
 44.00 Ravine, course NE.
 Asc. 120 ft. over E. slope.
 51.80 Ridge, bears NW. and SE.
 Desc. approximately 380 ft. over broken W. slope.
 63.00 (Approx.) Canyon, course NW.
 Asc. approximately 300 ft. over NE. slope.
 71.00 (Approx.) Rim of canyon, bears N. and S. Over mesa.
 75.39 Triangulation point "C" bears 2 lks. N. Continue line and measurement by chaining.
 78.00 Rim of Parsons Canyon, irregular, bears NW. and SW.
 Desc. 70 ft. over NW. slope.
 80.10 The cor. of secs. 25; 26, 35 and 36.

Land: mountainous.
 Soil: rocky, adobe, 3rd rate.
 Timber: cedar, pinon, hackberry.
 Undergrowth: oak, mesquite, catclaw, ocotillo, cactus, creosote, palo verde, sage.

N. 0° 01' W., bet. secs. 25 and 26.
 Over mountainous land; through scattering timber and undergrowth.
 To obtain measurement across Parsons Canyon, triangulate as described as follows:
 Set a flag "E" 19.80 chs. West of sec. cor. From point "E" of foregoing set a flag "G" due North. From "G" flag "F" bears S. 34° 46' W. From "G" offset 4.72 chs. West to "H", on true line N. 0° 01' W. of sec. cor. Vertical angle sec. cor. to "H" is about -5°. All angles checked by repetition and



Survey of Subdivision Lines of T.6 S., R.20 E.

Chains

- all bearings checked by direct readings of the solar.
- Dist. triangulated ("C"- "G") = 35.31 chs.
- (On true line) Asc. approximately 40. ft. along W. slope.
- . 5.00 (Approx.) Rocky spur, slopes W..
- Desc. approximately 590 ft. over NW. slope.
- 18.00 (Approx.) Parsons Canyon, dry, course NE.
- Asc. approximately 400 ft. over rocky S. slope.
- 35.31 Point "H". From point "G" (4.72 chs. E.) a corral in
- Canyon bears N.57°E. about 14 chs. dist. and a cabin
- bears N.33½°E. about 19 chs. dist. Continue line and
- measurement by chaining.
- 35.40 Spur, slopes E.
- Desc. 70 ft. over NE. slope..
- 38.70 Head of short ravine, course NE.
- Asc. 10 ft. along E. slope.
- 40.00 Set an iron post, 3 ft. long, 1 in. diam., 6 ins. in the
- ground to bedrock, supported by a mound of stone, 5
- ft. base, 2 ft. high, for ¼ sec. cor., with brass cap
- marked

$\frac{1}{4}$
 S26 | S25
 1929

from which

- A cedar, 10 ins. diam., bears N.4½°E., 244 lks. dist.,
- marked ¼ S25 BT.
- A cedar, 10 ins. diam., bears S.48½°W., 211 lks. dist.,
- marked ¼ S26 BT.

Along broken E. slope of Parsons Canyon.

- 60.50 Ravine, course NE.
- Asc. 10 ft. over S. slope.
- 66.50 Toe of spur, slopes E.
- Desc. 142 ft. over NE. slope.
- 72.60 Ravine, course E.
- Asc. 58 ft. over SE. slope.
- 79.00 Spur, slopes E.
- Desc. 20 ft. over N. slope.
- 80.00 Set an iron post, 3 ft. long, 2 ins. diam., 12 ins. in the
- ground to bedrock; deposit a stone, marked with cross
- (+) at base of post; raise a mound of stone, 4 ft.
- base, 1½ ft. high, around post, for cor. of secs. 23,
- 24, 25 and 26, with brass cap marked

T6SR18E
 S23 | S24
 S26 | S25.
 1929

from which

- A cedar, 12 ins. diam., bears S.85°E., 45 lks. dist.,
- marked T6S R18E S25 BT.
- A cedar, 10 ins. diam., bears N.68°W., 28 lks. dist.,
- marked T6S R18 E S23 BT.
- No other suitable bearing trees.

Land: mountainous.

Soil: rocky, adobe, 3rd rate.

Timber: cedar, pinon, hackberry.

Undergrowth: oak, mesquite, catclaw, ocotillo, cactus, creosote, palo verde, guyata grass.



Survey of Subdivision Lines of T.6 S., R.18 E.

Chains

- S. 89°48'E., on random line, bet. secs. 24 and 25.
- 40.00 Set temp. $\frac{1}{4}$ sec. cor.
- 79.80 Fall 16 lks. S. of the cor. of 24 and 25, only, on the E. bdy. of the Tp., which is an iron post, 2 ins. diam., projecting 8 ins. above a mound of stone, firmly set, properly marked on brass cap, dated 1924, witnessed by bearing trees NW. and SW.
- Thence
- N. 89°55'W., on true line, bet. secs. 24 and 25.
- Over mountainous land; through scattering timber and undergrowth.
- Desc. 104 ft. over NW. slope.
- 4.60 Ravine, course NE.
Asc. 139 ft. over E. slope.
- 13.00 Ridge, divide, bears N. and SE.
Desc. 57 ft. over NW. slope.
- 17.50 Head of ravine, course NW.
Asc. 40 ft. over E. slope.
- 33.00 Spur, slopes, NW.
Desc. 179 ft. over broken cliffs.
- 38.20 Small ravine, course S.
Asc. 50 ft. over large boulder.
- 39.00 Top of same;
Desc. 60 ft. over W. side of same.
- 39.50 Base of boulder.
- 39.90 Set an iron post, 3 ft. long, 1 in. diam., 2 ins. in the ground to bedrock, deposit a stone, marked with cross (+) at base of post; raise a mound of stone, 5 ft. base, 2 $\frac{1}{2}$ ft. high, around post, for $\frac{1}{4}$ sec. cor., with brass cap marked
- S24
S25
1929
- No suitable bearing trees available.
- Desc. 325 ft. over rocky SW. slope.
- 54.20 Junction of Parsons Canyon, from SW., and large canyon from SE., course N.
Asc. 285 ft. over rocky E. slope.
- 63.70 Spur, slopes NE.
Desc. 172 ft. over rocky W. slope.
- 71.70 Ravine, course NE.
Asc. 192 ft. over rocky E. slope.
- 79.80 The cor. of secs. 23, 24, 25 and 26.
- Land: mountainous.
Soil: rocky, 4th rate.
Timber: scrub cedar and pinon.
Undergrowth: oak, mesquite, catclaw, ocotillo, cactus, creosote, palo verde, guyata grass.
-
- N. 0°01'W., bet. secs. 23 and 24.
- Over mountainous land; through scattering timber and moderate undergrowth.
- Desc. 130 ft. over NE. slope.
- 6.80 Ravine, course E.
Asc. 238 ft. over S. slope and cliffs, facing S.
- 17.50 Spur, slopes E.
Desc. 118 ft. over N. slope.
- 20.60 Ravine, course E.
Asc. 107 ft. over SE. slope.

Survey of Subdivision Lines of T.6 S., R.18 E.

BOOK 2874

Chains

- 24.80 Spur, slopes E.
Desc. 34 ft. over NE. slope.
- 30.75 Draw, course E.
Asc. 35 ft. over S. slope.
- 33.20 Spur, slopes E.
Desc. 96 ft. over NW. slope.
- 40.00 Set an iron post, 3 ft. long, 1 in. diam., 16 ins. in the ground, supported by a mound of stone, 4 ft. base, 1 1/2 ft. high, for 1/4 sec. cor., with brass cap marked



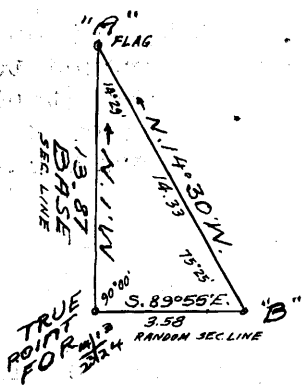
from which
 A mesquite, 4 ins. diam., bears N.26°E., 73 lks. dist., marked 1/4 S24 BT.
 A cedar, 7 ins. diam., bears S.87°W., 272 lks. dist., marked 1/4 S23 BT.

- Desc. 52 ft. along W. slope.
- 47.40 Ravine, course N.15°E.
Desc. 52 ft.
- 50.70 Same ravine, course N.20°W.
Desc. 66 ft.
- 53.40 Same ravine, with seep of water, course N.20°E.
Desc. 450 ft. over rocky N. slope.
- 71.20 Little-used road, bears E. and NW.
Over bottom land.
- 72.90 Aravaipa Creek, 30 lks. wide, 8 ins. deep, course NW.
- 74.10 Irrigation ditch, 2 ft. wide, 1 ft. deep, course NW.
Asc. 190 ft. over cliffs, face S.
- 77.60 Rocky point, projects W.
Desc. 60 ft. over NW. slope.
- 80.00 True point for cor. of secs: 13, 14, 23 and 24. Falls on broken sloping bedrock. Witness cor. established 2.00 chs. N.0°01'W. hereinafter described.

Land: mountainous.
 Soil: rocky, loam, 3rd rate.
 Timber: oak, cedar, pinon, hackberry, sycamore.
 Undergrowth: oak, mesquite, catclaw, ccotillo, cactus, creosote, palo verde, guyata grass, sage.

S.89°55'E., on random line, bet. secs. 13 and 24.

To obtain measurement across cliff forward, triangulate as described as follows:
 Measure a base 13.87 chs. N.0°01'W. to flag "A". From a point "B" forward on line, flag at "A" bears N.14°30'W. All angles checked by repetition and all bearings checked by direct readings of the solar. Vertical angle, from true point for sec. cor. to "B" = +5°. Dist. triangulated = 3.58 chs.

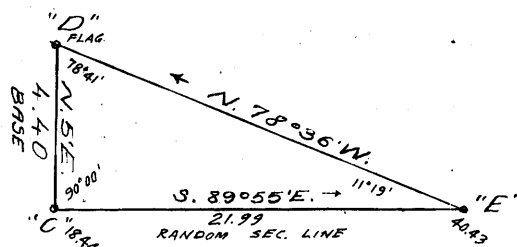


3.58 Triangulation point "B". Continue line and measurement by chaining.

18.44 To obtain measurement across bend of Aravaipa Creek Canyon, Triangulate as described as follows:

Chains

Designate this point "C"
and measure a base 4.40
chs. N.0°05'E. to flag
"D". From a point "E",
forward on line, flag
"D" bears N.78°36'W.



Longer base unobtainable.

All angles checked by
repetition and all bear-
ings checked by direct readings of the solar.

Vertical angle "C" to "E" = -3°

Dist. triangulated = 21.99 chs.

Station of "C" = 18.44 "

" " "E" = 40.43 "

Return measurement .43 " N.89°55'W.

40.00 chs. S.89°55'E. to temp. ¼ sec. cor.

40.00 Set temp. ¼ sec. cor.

40.43 Triangulation point "E". Continue line and measurement
by chaining.

80.00 Fall 19 lks. S. of the cor. of secs. 13 and 24, only, on
the E. bdy. of the Tp., which is an iron post, 2 ins.
diam., projecting 8 ins. above a mound of stone, firmly
set, properly marked on brass cap, dated 1924, witnessed
by one bearing tree SW. of cor.

Thence

S.89°57'W., on true line, bet. secs. 13 and 24.

Over mountainous land; through scattering timber and
undergrowth.

Asc. 144 ft. over E. slope.

1.40 Rocky spur, slopes S.

Desc. 60 ft. over SW. slope.

5.20 Small ravine, course S.

Asc. 50 ft. over E. slope.

8.70 Spur, slopes S.

Desc. 44 ft. over W. slope.

12.20 Ravine, course S.

Asc. 46 ft. over E. slope.

17.60 High spur, slopes S.

Desc. 100 ft. over W. slope.

21.80 Gulch, course SW.

Asc. 98 ft. over E. slope.

26.20 Spur, slopes SW.

Along S. slope.

32.75 Spur, slopes SW.

Desc. 200 ft. over W. slope.

36.40 Ravine, course S.

Asc. 50 ft. over E. slope.

39.57 Triangulation point "E" bears S., 9 lks. dist.

Spur, slopes S.

Desc. 25 ft. over W. slope.

40.00 Set an iron post, 3 ft. long, 1 in. diam., 4 ins. in the
ground to bedrock, deposit a stone, marked with cross
(+) at base of post; raise a mound of stone, 5 ft.
base, 2 ft. high, around post, for ¼ sec. cor., with
brass cap marked

1 S13

S24

1929

No bearing trees available.

Discontinue chaining.

Desc. approximately 200 ft. over cliffs, face SW.

42.50 (Approx.) Aravaipa Creek, 30 lks. wide, 8 ins. deep,
course NW.

Survey of Subdivision Lines of T.6 S., R.18 E.

Chains

- 47.00 (Approx.) Same Creek, course SW.
Asc. approximately 300 ft. over very broken SE. slope.
- 61.56 Triangulation point "C" bears 4 lks. S. Continue line
and measurement by chaining.
Along S. slope...
- 66.60 Spur, slopes SW.
Desc. 41 ft. along N. slope.
- 70.60 Change of slope;
Asc. 85 ft. along N. slope.
- 75.60 Spur, slopes N.
Desc. 15 ft. over NW. slope to
- 76.42 Triangulation point "B" bears 1 lk. S. Discontinue
chaining.
Desc. 310 ft. over cliff, faces W. on W. slope.
- 80.00 True point for cor. of secs. 13, 14, 23 and 24.

Land: mountainous.
Soil: rocky, 4th rate.
Timber: oak, cedar, pinon.
Undergrowth: oak, mesquite, catclaw, mahogany, cactus,
ocotillo, creosote, palo verde, sotol, etc.

From true point for cor. of secs. 13, 14, 23 and 24.
N. 0° 01' W., bet. secs. 13 and 14.

Over rough mountainous land; through scattering timber
and moderate undergrowth.

Desc. 25 ft. along W. slope.

- 2.00 Set an iron post, 3 ft. long, 2 ins. diam., 12 ins. in
the ground to bedrock; deposit a stone, marked with
cross (+) at base of post; raise a mound of stone, 4
ft. base, 1 1/2 ft. high, around post, for witness cor.
to cor. of secs. 13, 14, 23 and 24, with brass cap
marked

T6SR18E
S14 | S13

S23 | S24
W C
1929

from which

A cedar, 10 ins. diam., bears N. 62° E., 107 lks. dist.,
marked T6S R18E S13 WC BT.
No other suitable bearing trees.

Desc. 120 ft. over NW. slope.

- 9.70 Wash of Deer Creek, near mouth, dry, 130 lks. wide,
course W.

Asc. 17 ft. over bottom land.

- 10.70 Corral bears about 2 chs. E.
- 12.90 Adobe house bears about 3 chs. W.
- 14.90 Toe of spur, slopes SW.

Desc. 8 ft. along W. slope.

- 18.30 Wash, 25 lks. wide, in gulch, course S. 20° W.
Asc. 319 ft. along broken E. slope.

- 40.00 Set an iron post, 3 ft. long, 1 in. diam., on cross (+)
on bedrock, supported by a mound of stone, 5 ft. base
2 1/2 ft. high, for sec. cor., with brass cap marked

↑
S14 | S13

1929

No suitable bearing trees.

12

Survey of Subdivision Lines of T.6 S., R.18 E.

Chains

- Asc. 249 ft. along broken E. slope.
 55.00 Spur, slopes SE.
 Desc. 87 ft. over NE. slope.
 60.60 Ravine, course SE.
 Asc. 166 ft. over S. slope.
 79.00 Ridge, bears NE. and SW.
 Desc. slightly.
 80.00 Set an iron post, 3 ft. long, 2 ins. diam., 10 ins. in the ground; deposit a stone, marked with cross (+) at base of post; raise a mound of stone, 4 ft. base, 2 ft. high; around post, for cor. of secs. 11, 12, 13 and 14, with brass cap marked

T6S R18E
 S11 | S12
 S14 | S13
 1929

No bearing trees available.

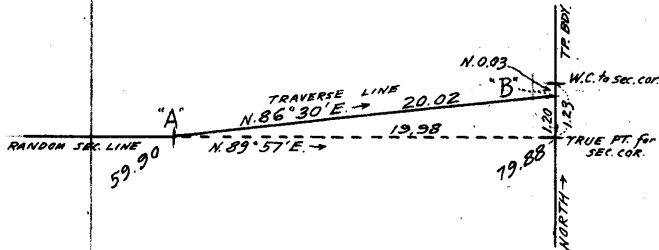
Land: mountainous.

Soil: adobe and limestone, 3rd rate.

Timber: cedar, hackberry, walnut, sycamore, cottonwood.

Undergrowth: oak, mahogany, catclaw, mesquite, cactus, sotol, bayonet, guyata grass, etc.

- 40.00 N. 89° 57' E., on random line, bet. secs. 12 and 13.
 Set temp. sec. cor.
 59.90 To avoid difficult breaks in small branch canyon of Deer Creek, traverse from 59.90 ch. station, designated "A" as follows:
 N. 86° 30' E., 20.02 chs. to point "B" on E. bdy. of Tp. Thence,
 North 0.03 chs. to witness cor. to cor. of secs. 12 and 13, only, on the E. bdy. of the Tp., an iron post, 2 ins. diam., projecting 8 ins. above a mound of stone, firmly set, properly marked on brass cap, dated 1924. (located 1.23 chs. North of true point).



- 79.88 Computed into terms of N. 89° 57' E., with continued dist., intersect the true point for cor. of secs. 12 and 13 on E. bdy. of Tp. True course and dist. of line bet. secs. 12 and 13 are, therefore: S. 89° 57' W., 79.88 chs.

From true point for cor. of secs. 12 and 13, only, S. 89° 57' W., on true line, bet. secs. 12 and 13. Over broken, mountainous land; through scattering timber and undergrowth.

To avoid breaks on true line retrace random traverse with true line, as follows:

- North 1.20 chs. to point "B", thence
 S. 86° 30' W. 20.02 chs. to point "A", by computation
 19.98 chs. S. 89° 57' W. of true sec. cor. point.
 19.98 Point "A", approximately 220 ft. above true sec. cor. point. Continue measurement on true line.
 20.40 Spur, slopes SE.
 Desc. 130 ft. over SW. slope.
 30.30 Gulch, course SW.
 Asc. 160 ft. over SE. slope.
 37.90 Spur, slopes SW.
 Desc. 36 ft. over W. slope.

Survey of Subdivision Lines of T.6 S., R.18 E.

Chains

39.94 Set an iron post, 3 ft. long, 1 in. diam., 16 ins. in the ground; deposit a stone, 4 x 4 x 3 ins., marked with cross (+) at base of post; raise a mound of stone, 4 ft. base, 1 1/2 ft. high, around post, for 1/4 sec. cor., with brass cap marked

S12
1/4
S13
1929

No bearing trees available.

Desc. 40 ft. over SW. slope.

43.40 Small ravine, course SW.
Asc. 94 ft. over SE. slope.

48.80 Spur, slopes SW.
Desc. 179 ft. over W. slope.

57.60 Gulch, course SW.
Asc. 145 ft. over SE. slope.

58.40 Small spur, slopes SE.
Desc. 29 ft. over SW. slope.

71.20 Head of ravine, course SE.
Asc. 78 ft. over SE. slope.

78.70 Ridge, bears NE. and SW.
Desc. 6 ft. along N. slope.

79.88 The cor. of secs. 11, 12, 13 and 14.

Land: mountainous.
Soil: adobe, limestone, 3rd rate.
Timber: cedar, pinon.
Undergrowth: oak, mesquite, catclaw, cactus, ocotillo, mahogany, guyata grass.

N.0°01'W., bet. secs. 11 and 12.
Over rolling land; through scattering undergrowth.
Desc. 72 ft. over NW. slope.

1.20 Trail, bears NE. and SW.

5.80 Wash, 10 lks. wide, course SW.
Asc. 57 ft. over SE. slope.

11.30 Toe of spur, slopes SW.
Desc. 120 ft. over NW. slope.

15.00 Wash, 30 lks. wide, course SW.

20.30 Same wash, course SE.

26.40 Same wash, course SW.
Asc. 57 ft. over S. slope.

39.90 Spur, slopes SE.

40.00 Set an iron post, 3 ft. long, 1 in. diam., 16 ins. in the ground to bedrock, deposit a stone, marked with cross (+) beside post; raise a mound of stone, 4 ft. base, 1 1/2 ft. high, around post, for 1/4 sec. cor., with brass cap marked

S11 | S12
1
1929

No bearing trees available.

Desc. 10 ft. along E. slope.

52.00 Small draw, course SE.
Asc. 250 ft. over general S. slope (to cor.)

57.70 Spur, slopes SE.

71.40 Same spur, slopes SW.

Chains											
78.00	Same spur, slopes SE.										
80.00	Set an iron post, 3 ft. long, 2 ins. diam., 10 ins. in the ground to bedrock; deposit a stone, marked with cross (+) beside post; raise a mound of stone, 4 ft. base, 2 ft. high, around post; for cor. of secs. 1, 2, 11 and 12, with brass cap marked										
	<table border="1"> <tbody> <tr> <td colspan="2">T6SR18E</td> </tr> <tr> <td>S2</td> <td>S1</td> </tr> <tr> <td colspan="2"><hr/></td> </tr> <tr> <td>S11</td> <td>S12</td> </tr> <tr> <td colspan="2">1929</td> </tr> </tbody> </table>	T6SR18E		S2	S1	<hr/>		S11	S12	1929	
T6SR18E											
S2	S1										
<hr/>											
S11	S12										
1929											
	No bearing trees available.										
	Land: rolling.										
	Soil: adobe loam; 2nd rate.										
	Timber: cedar.										
	Undergrowth: catclaw, ocotillo, creosote, cactus.										

	N. 89° 57' E., on random line; bet. secs. 1 and 12.										
40.00	Set temp. $\frac{1}{4}$ sec. cor.										
79.80	Fall 2 lks. N. of the cor. of secs. 1 and 12, only, on the E. bdy. of the Tp., which is an iron post, 2 ins. diam., projecting 9 ins. above ground, firmly set, properly marked on brass cap, dated 1924, witnessed by bearing trees SE. and SW.										
	Thence										
	S. 89° 58' W., on true line, bet. secs. 1 and 12.										
	Over rolling land; through scattering undergrowth.										
	Asc. 34 ft. over NE. slope.										
2.30	Change of slope; along W. slope.										
11.90	Toe of spur, slopes NW.										
	Desc. 148 ft. over W. slope.										
21.80	Wash, 30 lks. wide, in ravine, course SE.										
	Asc. 18 ft. over E. slope.										
32.30	Spur, slopes S.										
	Desc. 10 ft. over W. slope.										
39.30	Small draw, course SE.										
	Asc. slightly.										
39.90	Set an iron post, 3 ft. long, 1 in. diam., 16 ins. in the ground to bedrock, deposit a stone, 6 x 4 x 2 $\frac{1}{2}$ ins., marked with cross (+) at base of post; raise a mound of stone, 4 ft. base, 1 $\frac{1}{2}$ ft. high; around post, for $\frac{1}{4}$ sec. cor., with brass cap marked										
	<table border="1"> <tbody> <tr> <td colspan="2">S1</td> </tr> <tr> <td colspan="2"><hr/></td> </tr> <tr> <td colspan="2">S12</td> </tr> <tr> <td colspan="2">1929</td> </tr> </tbody> </table>	S1		<hr/>		S12		1929			
S1											
<hr/>											
S12											
1929											
	No bearing trees available.										
	Asc. E. slope.										
40.20	Spur, slopes SE.										
	Desc. 40 ft. over SW. slope.										
51.90	Wash, 10 lks. wide, course SE.										
	Asc. 135 ft. over SE. slope.										
58.60	Spur, slopes SE.										
	Desc. 54 ft. over SW. slope.										
63.20	Wash, 10 lks. wide, course S.										
	Asc. 65 ft. over E. slope.										
71.50	Toe of spur, slopes SE.										
	Desc. 63 ft. over SW. slope.										

Survey of Subdivision Lines of T.6 S., R.18 E.

Chains

76.30 Head of ravine, course SE.
Asc. 38 ft. over SE. slope.

79.80 The cor. of secs. 1, 2, 11 and 12.

Land: rolling.
Soil: adobe loam, limestone, 3rd rate.
Timber: cedar.
Undergrowth: mesquite, catclaw, cactus, ocotillo, creosote.

N.0°01'W., on true line, bet. secs. 1 and 2.
Over rolling land; through scattering undergrowth.
Asc. 16 ft. along E. slope.

2.80 Ridge, bears NE. and SW.
Desc. 126 ft. over SW. slope.

18.00 Wash, 40 lks. wide, course SW.
Asc. 103 ft. over SW. slope.

30.30 Toe of spur, slopes SW.
Desc. 118 ft. over NW. slope.

39.80 Small ravine, course W.

40.00 Set an iron post, 3 ft. long, 1 in. diam., 10 ins. in the ground; deposit a stone, marked with cross (+) beside post; raise a mound of stone, 4 ft. base, 2 ft. high, around post, for 1/4 sec. cor., with brass cap marked

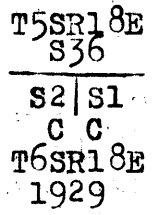


No bearing trees available.

Over rolling W. slope.

73.70 Intersect the 1st. Standard Par. S. at a point 4.23 chs. East of the Standard cor. of secs. 35 and 36, which is an iron post, 2 ins. diam., projecting 6 ins. above a mound of stone, firmly set, properly marked on brass cap, dated 1924.

At point of intersection,
Set an iron post, 3 ft. long, 2 ins. diam., 12 ins. in the ground to bedrock; deposit a stone, 6 x 4 x 4 ins., marked with cross (+) beside post; raise a mound of stone, 4 ft. base, 1 1/2 ft. high, around post, for closing cor. of secs. 1 and 2, with brass cap marked



No bearing trees available.

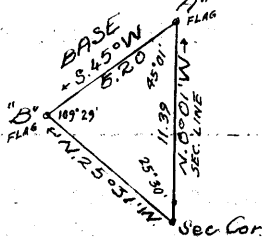
Land: rolling.
Soil: adobe, sandstone, limestone, conglomerate, 3rd rate.
Timber: none.
Undergrowth: cedar, catclaw, mesquite, hackberry, cactus, palo verde, guyata grass.

Survey of Subdivision Lines of T.6 S., R.18 E.

Chains

From the cor. of secs. 2, 3, 34 and 35, on the S. bdy. of the Tp., which is an iron post, 2 ins. diam., projecting 10 ins. above ground, firmly set; properly marked on brass cap, dated 1924, witnessed by four bearing trees. N.0°01'W., on true line, bet. secs. 34 and 35. Over mountainous land; through scattering timber and moderate undergrowth.

To obtain measurement across rugged canyon, triangulate as described as follows:



Set a flag "A" forward on line and measure a base therefrom S.45°00'W. 5.20 chs. to flag "B" which bears N.25°31'W. from cor. of secs. 2, 3, 34 and 35. Vertical angle cor. to "A" = +9° Vertical angle cor to canyon = -32° Dist. Triangulated = 11.39 chs.

- 5.00 Desc. approximately 130 ft. over N. slope. (Approx.) Canyon, course NE. Asc. approximately 250 ft. over SE. slope.
- 11.39 Triangulation flag "A". Continue line and measurement by chaining.
- 11.40 Rim of canyon, bears NE. and SW. Desc. 150 ft. over mesa; slopes N.
- 40.00 Set an iron post, 3 ft. long, 1 in. diam., 14 ins. in the ground; deposit a stone, marked with cross (+) at base of post; raise a mound of stone, 4 ft. base, 1½ ft. high, around post; for ¼ sec. cor., with brass cap marked

$\frac{1}{4}$
 S34 | S35
 1929

No bearing trees available.

Over mesa.

- 42.00 Rim of canyon, bears NW. and SE. Desc. 228 ft. over NE. slope.
- 48.60 Canyon, course NW. Asc. 210 ft. over SE. slope.
- 52.80 Rim of canyon, bears NW. and SE. Asc. 30 ft. over S. slope.
- 63.00 Spur, slopes E. Hill bears 5 chs. W. Desc. 159 ft. over NW. slope.
- 74.30 Ravine, course W. Asc. 151 ft. over SW. slope.
- 80.00 Set an iron post, 3 ft. long, 2 ins. diam., on cross (+) on bedrock; raise a mound of stone, 5 ft. base, 2½ ft. high, around post, for cor. of secs. 26, 27, 34 and 35, with brass cap marked

T6SR18E
 S27 | S26
 S34 | S35
 1929

No suitable bearing trees.

Land: mesa and mountainous.

Soil: adobe, 3rd rate.

Timber: cedar, pinon.

Undergrowth: oak, mahogany, catclaw, mesquite, cactus, guyata grass, greasewood.

Survey of Subdivision Lines of T.6 S., R.18 E.

Chains

East, on random line, bet. secs. 26 and 35.
 40.00 Set temp. $\frac{1}{4}$ sec. cor.
 80.00 Fall 12 lks. N. of the cor. of secs. 25, 26, 35 and 36.
 Thence
 N. $89^{\circ}55'$ W., on true line, bet. secs. 26 and 35.
 Over mountainous land; through scattering timber and
 medium undergrowth.
 Desc. 470 ft. over W. slope.
 11.00 Parsons Canyon, dry, course NE., from SE.
 Asc. 483 ft. over E. slope.
 19.80 Triangulation point "F" of line bet. secs. 25 and 26.
 Asc. 134 ft. over broken SE. slope.
 40.00 Set an iron post, 3 ft. long, 1 in. diam., on broken
 bedrock with rock, 6 x 6 x 4 ins., marked with cross
 (+) deposited at base, surrounded by a mound of stone,
 5 ft. base, $2\frac{1}{2}$ ft. high, for $\frac{1}{4}$ sec. cor., with brass
 cap marked

$\frac{1}{4}$ S26
 $\frac{1}{4}$ S35
 1929

No bearing trees available.

Along broken S. slope.
 72.00 Short spur, slopes S.
 Desc. 40 ft. over W. slope.
 80.00 The cor. of secs. 26, 27, 34 and 35.

Land: mountainous.
 Soil: adobe and loam, 3rd rate.
 Timber: pinon, cedar, oak; in canyon: sycamore, walnut.
 Undergrowth: oak, manzanita, mahogany, catclaw, cactus,
 mesquite, greasewood, guyata grass.

N. $0^{\circ}01'$ W., on true line, bet. secs. 26 and 27.
 Over rolling-mountainous land; through scattering timber
 and undergrowth.
 Asc. 10 ft. over S. slope.
 0.20 Rocky spur, slopes W.
 Desc. 53 ft. over N. slope.
 6.70 Short ravine, course W.
 Asc. 69 ft. over S. slope.
 9.60 Short spur, slopes W.
 Desc. 86 ft. over N. slope.
 12.60 Over broken W. slope.
 17.80 Rocky spur, slopes SW.
 Desc. 25 ft. over NW. slope.
 20.90 Short ravine, course SW.
 Asc. 41 ft. over S. slope.
 23.00 Rocky spur, slopes SW.
 Desc. 46 ft. over NW. slope.
 30.00 Short ravine, course NW.
 Asc. 46 ft. over S. slope.
 37.00 Saddle in spur, slopes W.
 Desc. slightly over NW. slope.
 40.00 Set an iron post, 3 ft. long, 1 in. diam., 6 ins. in the
 ground over cross (+) on bedrock, surrounded by a
 mound of stone, 5 ft. base, $2\frac{1}{2}$ ft. high, for $\frac{1}{4}$ sec.
 cor., with brass cap marked

Chains

S27 | S26
1929

No bearing trees available.

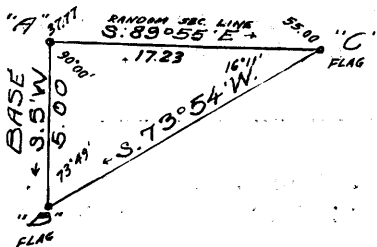
- 47.80 Desc. 23 ft. over NW. slope.
Short ravine, course NW.
- 61.00 Asc. 96 ft. over SW. slope.
Short ridge, bears NW. and SE., slopes SE.
Desc. 50 ft. along E. slope.
- 80.00 Set an iron post, 3 ft. long, 2 ins. diam., 12 ins. in the ground to bedrock; deposit a stone, marked with cross (+) at base of post; raise a mound of stone, 4 ft. base, 1½ ft. high, around post, for cor. of secs. 22, 23, 26 and 27, with brass cap marked

T6SR18E
S22 | S23
S27 | S26
1929

No bearing trees available.

Land: rolling-mountainous.
Soil: adobe, 2nd rate.
Timber: cedar, pinon.
Undergrowth: catclaw, oak, mesquite, cactus, ocotillo.

- 37.77 S. 89° 55' E., on random line, bet. secs. 23 and 26.
To obtain measurement across cliffs ahead, triangulate as described as follows:



Designate this point: "A". Measure a base 5.00 chs. S. 0° 05' W. to flag "B". Set a flag "C" forward on line, from which flag "B" bears S. 73° 54' W. Bearings checked by repetition of angles.
Vertical angle "A" to "C" = -3°
Dist. chained = 37.77 chs.
Dist. triangulated = 17.23 "
Station of "C" = 55.00 "

- 40.00 Continuing measurement forward from point "A",
Set temp. ¼ sec. cor. Discontinue chaining.
- 55.00 Triangulation flag "C". Continue line and measurement by chaining.
- 79.80 Fall 7 lks. S. of the cor. of secs. 23, 24, 25 and 26.
Thence N. 89° 58' W., on true line, bet. secs. 23 and 26.
Over mountainous land; through scattering timber and undergrowth.
Asc. 291 ft. over SE. slope.
- 17.50 Top of cliff, 40 ft. high, bears NE. and SW.
Over rolling table land.
- 24.80 Top of same cliff, faces SW. Triangulation flag "C" bears 5 lks. S. Discontinue chaining.
- 35.00 Same cliff, faces SE.
- 39.00 Point of hill, slopes S.
Desc. 15 ft. over SW. slope.
- 39.90 Set an iron post, 3 ft. long, 1 in. diam., 12 ins. in hole drilled into bedrock, supported by a mound of stone, 4 ft. base, 1½ ft. high, for ¼ sec. cor., with brass cap marked

Survey of Subdivision Lines of T.6 S., R.18 E.

chains

$\frac{1}{4}$ S23
 $\frac{1}{4}$ S26
1929

- No bearing trees available.
Continue line and measurement by chaining.
Desc. 58 ft. over gentle SW. slope.
- 42.03 Triangulation point "A". bears S. 33 lks. dist. by chaining.
- 65.50 Wash, 20 lks. wide, course NW.
Asc. 63 ft. over E. slope.
- 69.00 Rocky spur, slopes N.
Desc. 89 ft. over W. slope.
- 75.80 Short ravine, course NE.
Asc. 40 ft. over E. slope.
- 79.80 The cor. of secs. 22, 23, 26 and 27.

Land: rolling and mountainous.
Soil: adobe loam, 2nd rate.
Timber: cedar, pinon.
Undergrowth: catclaw, ocotillo, oak, mahogany.

- N. 0° 01' W., bet. secs. 22 and 23.
Over rolling land; through scattering timber and undergrowth.
Desc. 75 ft. over NE. slope.
- 9.20 Wash, 20 lks. wide, course NW.
Asc. 163 ft. over SW. slope.
 - 32.50 Ridge, bears NW. and SE.
Desc. 157 ft. over N. slope.

- 40.00 Set an iron post, 14 ins. in the ground to bedrock, supported by a mound of stone, 3 ft. base, 1 1/2 ft. high, for 1/4 sec. cor., with brass cap marked

S22 | S23
1929

from which
A cedar, 7 ins. diam., bears N. 84 1/2° E., 135 lks. dist., marked 1/4 S23 BT.
A cedar limb, 6 ins. diam., bears S. 7° W., 32 lks. dist., marked 1/4 S22 BT.

- Desc. 199 ft. over NE. slope.
- 69.70 Wash, 20 lks. wide, course NW.
Over rocky bottom land.
- 74.20 Wash, 30 lks. wide, course NE.
Asc. 12 ft. over rocky bottom land.
- 80.00 Set an iron post, 3 ft. long, 2 ins. diam., 14 ins. in the ground to bedrock; deposit a stone, marked with cross (+) beside post; raise a mound of stone, 5 ft. base, 1 1/2 ft. high, around post, for cor. of secs. 14, 15, 22 and 23, with brass cap marked

T6SR18E
S15 | S14
S22 | S23
1929

from which
A cedar, 6 ins. diam., bears N. 54° E., 69 lks. dist., marked T6S R18E S14 BT.

Survey of Subdivision Lines of T.6 S., R.18 E.

Chains

A cedar, 12 ins. diam., bears S. $53\frac{1}{2}^{\circ}$ E., 53 lks. dist., marked T6S R18E S23 BT.
 A cedar, 6 ins. diam., bears S. $32\frac{1}{2}^{\circ}$ W., 121 lks. dist., marked T6S R18E S22 BT.
 No trees NW. of cor.

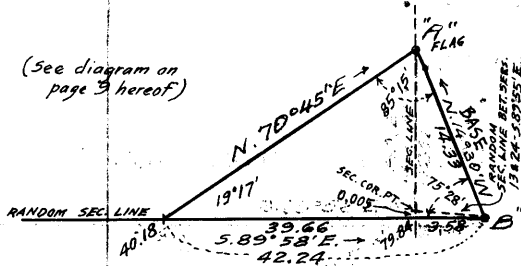
Land: rolling.
 Soil: adobe, loam, 3rd rate,
 Timber: cedar.
 Undergrowth: oak; mahogany, catclaw, cactus, ocotillo.

40.00 S. $89^{\circ}58'$ E., on random line, bet. secs. 14 and 23.

40.18 Set temp. $\frac{1}{4}$ sec. cor:

To obtain measurement across very rugged land forward, triangulate as described as follows:
 Bearing to point "B" of triang. bet. secs. 13 and 24 is S. $89^{\circ}58'$ E.; bearing to flag "A" of same triangulation is N. $70^{\circ}45'$ E. Bearings checked by repetition of angles.
 Dist. chained = 40.18 chs.
 By computation = 39.66 "
 Sec. cor. point. = 79.84 chs.

(See diagram on page 3 hereof)



79.84 BY computation $\frac{1}{4}$ lk. S. of the true point for cor. of secs. 13, 14, 23 and 24.

Thence

N. $89^{\circ}58'$ W., on true line, bet. secs. 14 and 23.

Over mountainous land; through scattering timber and moderate undergrowth.

Desc. 140 ft. over NW. slope.

- 3.80 Wire fence, bears N. and S.
- 4.10 Ditch, 2 lks. wide, 1 ft. deep, course NW.
- 4.80 Wire fence, bears NW. and SE.
- 5.00 Road, bears NW. and SE.
- 7.00 Aravaipa Creek, 30 lks. wide, 8 ins. deep, course N.
Discontinue chaining.
- 12.00 (Approx.) Top of cliff, faces E., 250 ft. above creek.
- 18.00 (Approx.) Spur, slopes N., 400 ft. above creek.
- 30.00 (Approx.) Creek, 4 lks. wide, course N., 300 ft. below spur.
- 33.00 (Approx.) Creek, 4 lks. wide, course N. Asc. 200 ft. over E. slope.
- 39.66 Triangulation point; continue measurement by chaining.

39.92 Set an iron post, 3 ft. long, 1 in. diam., 10 ins. in the ground to bedrock; deposit a stone, marked with cross (+) at base of post; raise a mound of stone, 4 ft. base, 2 ft. high, around post; for $\frac{1}{4}$ sec. cor., with brass cap marked.

S14
 $\frac{1}{4}$
 S23
 1929

from which

A cedar, 6 ins. diam., bears S. $56\frac{1}{2}^{\circ}$ E., 218 lks. dist., marked $\frac{1}{4}$ S23 BT.
 No other suitable trees.

Asc. 440 ft. over broken E. and SE. slopes and broken cliffs.

- 53.80 Spur, slopes rapidly SE.
Desc. 35 ft. along S. slope.
- 56.00 Wash, 20 lks. wide, course SE.
Asc. 75 ft. over NE. slope.
- 62.00 Spur, slopes NW.
Desc. 34 ft. over W. slope.
- 66.30 Same wash, 20 lks. wide, course NE.
Asc. 94 ft. over SE. slope.

Survey of Subdivision Lines of T.6 S., R.18 E.

Chains
79.84

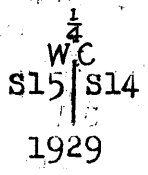
The cor. of secs. 14, 15, 22 and 23.

Land: mountainous.
Soil: rocky, 4th rate.
Timber: oak, pinon, cedar.
Undergrowth: oak, mahogany, catclaw, mesquite, cactus.

N.0°01'W., bet. secs. 14 and 15.
Over rolling land; through scattering timber and brush.
Asc. 63 ft. over SE. slope.

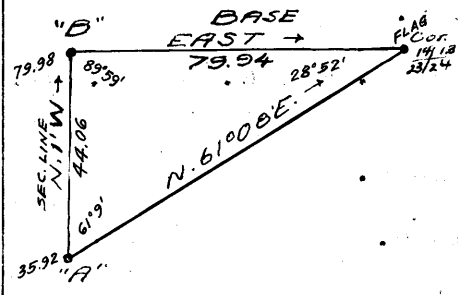
20.00 Low ridge, bears E. and W.
Over mesa land.

35.90 (4.10 chs. S.0°01'E. of true point) Set an iron post, 3 ft. long, 1 in. diam., 12 ins. in the ground; deposit a stone, marked with cross (+) at base of post; raise a mound of stone, 4 ft. base, 1½ ft. high, around post, for witness cor. to ¼ sec. cor., with brass cap marked



No suitable bearing trees.

35.92 To obtain measurement across Aravaipa Creek Canyon, triangulate as described as follows: Designate this point "A". Flag on cor. of secs. 13, 14, 23 and 24 bears N.61°08'E. From a point, "B", forward on line, the flag on cor. of secs. 13, 14, 23 and 24 bears East, 79.94 chs. dist. Vertical angle to spur intervening to N. is +2° Dist. triangulated = 44.06 chs.



Discontinue measurement by chaining.

36.00 S. rim of Aravaipa Canyon, 100 ft. high, faces N.
Desc. about 600 ft. over rugged N. slope. (to creek).

39.50 (Approx.) Short rocky point, projects NW.

40.00 True point for ¼ sec. cor., falls on face of cliff, slopes N.

48.60 Aravaipa Creek, 30 lks. wide, 8 ins. deep, course SW.
Asc. approximately 740 ft. over rugged S. slope.

76.50 Rocky spur, slopes SW.
Desc. 40 ft. over NW. slope.

79.98 Triangulation point "B". Continue measurement by chaining.

80.00 Set an iron post, 3 ft. long, 2 ins. diam., on exposed bedrock; deposit a stone, marked with cross (+) at base of post; raise a mound of stone, 6 ft. base, 2½ ft. high, around post, for cor. of secs. 10, 11, 14 and 15, with brass cap marked



No suitable bearing trees.

Land: rolling and mountainous.
Soil: rocky, loam, 3rd and 4th rates.
Timber: cedar, pinon; sycamore and walnut in canyon.
Undergrowth: oak, mahogany, catclaw, cactus, ocotillo.

Chains

- S.89°58'E., on random line, bet. secs. 11 and 14.
 40.00 Set temp. $\frac{1}{4}$ sec. cor.
 79.94 Fall 2 lks. S. of the cor. of secs. 11,12,13 and 14.
 Thence
 N.89°59'W., on true line, bet. secs. 11 and 14.
 Over mountainous land; through scattering timber and moderate undergrowth.
 Desc. 216 ft. over NW. slope.
 1.00 Trail, bears NE. and SW.
 7.30 Gulch, course SW.
 Desc. 24 ft.
 16.00 Same gulch, course NW.
 Asc. 43 ft. over NE. slope.
 21.70 Toe of spur, slopes N.
 Desc. 85 ft. over NW. slope.
 24.00 Same gulch, course SW.
 Desc. 52 ft. over SW. slope.
 39.97 Set an iron post, 3 ft. long, 1 in. diam., 6 ins. in the ground to bedrock; deposit a stone, 6 x 3 x 2 ins., marked with cross (+) at base of post; raise a mound of stone, 5 ft. base, 2 ft. high, around post, for $\frac{1}{4}$ sec. cor., with brass cap marked

$\frac{1}{4}$ S11
 $\frac{1}{4}$ S14
 1929

No suitable bearing trees.

- Asc. 174 ft. along broken S. slope. (to 61.90).
 54.50 Ravine, course S.
 61.90 Spur, slopes S.
 Desc. 47 ft. over SW. slope.
 70.20 Ravine, course S.
 Asc. 98 ft. over SE. slope.
 77.30 Spur, slopes SW.
 Desc. 50 ft. over NW. slope.
 79.94 The cor. of secs. 10,11,14 and 15.
 Land: mountainous.
 Soil: rocky, loam, adobe, 3rd rate.
 Timber: cedar, pinon.
 Undergrowth: oak, catclaw, mesquite, ocotillo, cactus, beargrass, sotol, etc.

- N.0°01'W., bet. secs. 10 and 11.
 Over mountainous land; through scattering timber and undergrowth.
 Desc. 95 ft. over NW. slope.
 5.10 Ravine, course SW.
 Asc. 220 ft. over SE. slope.
 18.00 Over flat-topped spur, slopes SW.
 27.00 Leave same; desc. 180 ft. over NW. slope.
 36.00 Gulch, course SW.
 Asc. 145 ft. over SE. slope.
 40.00 Set an iron post, 3 ft. long, 1 in. diam., on cross (+) on bedrock; supported by a mound of stone, 6 ft. base, 2 $\frac{1}{2}$ ft. high, for $\frac{1}{4}$ sec. cor., with brass cap marked

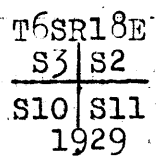
$\frac{1}{4}$
 S10 | S11
 1929

No suitable bearing trees.

Survey of Subdivision Lines of T.6 S., R.18 E.

Chains

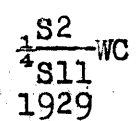
- Asc. 108 ft. over SE. slope.
- 44.00 Edge of flat-topped spur, slopes SW.
Asc. 86 ft. over same.
- 76.00 Edge of same spur, slopes SW.
Desc. 90 ft. over NW. slope.
- 80.00 Set an iron post, 3 ft. long, 2 ins. diam., 10 ins. in the ground; deposit a stone, marked with cross (+) at base of post; raise a mound of stone, 5 ft. base, 2 ft. high, around post, for cor. of secs. 2, 3, 10 and 11, with brass cap marked



No suitable bearing trees.

Land: mountainous.
Soil: rocky, adobe, loam, 3rd rate.
Timber: pinon, cedar.
Undergrowth: oak, mahogany, catclaw, mesquite, cactus, beargrass, sotol.

- S. 89° 59' E., on random line, bet. secs. 2 and 11.
- 40.00 Set temp. $\frac{1}{4}$ sec. cor.
- 79.92 Fall 9 lks. S. of the cor. of secs. 1, 2, 11 and 12.
Thence
- S. 89° 57' W., on true line, bet. secs. 2 and 11.
Over rolling-mountainous land; through scattering timber and undergrowth.
- Asc. 40 ft. over SE. slope.
- 4.40 Head of ravine, course SE.
- 8.70 Ridge, bears NE. and SW.
Desc. 200 ft. over NW. slope.
- 25.00 Wash, 30 lks. wide, course SW.
Along S. slope.
- 36.00 Toe of spur, slopes SW.
Desc. 25 ft. over SW. slope.
- 39.96 True point for $\frac{1}{4}$ sec. cor. falls in wash.
- 40.00 Same wash, 30 lks. wide, course NW.
Asc. 10 ft. over NE. slope.
- 40.36 (40 lks. S. 89° 57' W. of true point) Set an iron post, 3 ft. long, 1 in. diam., 18 ins. in the ground; deposit a stone, marked with cross (+) beside post; raise a mound of stone, 4 ft. base, 1 $\frac{1}{4}$ ft. high, around post, for witness cor. to $\frac{1}{4}$ sec. cor., with brass cap marked



No suitable bearing trees.

- 42.00 Toe of spur, slopes NW.
Desc. 20 ft. over W. slope.
- 44.00 Same wash, 30 lks. wide, course NW.
Asc. 15 ft.
- 47.00 Toe of spur, slopes S.
Desc. 20 ft.
- 48.40 Wash, 10 lks. wide, course S.
Along S. slope.
- 57.60 Wash, 10 lks. wide, course SW.
Asc. 109 ft. over broken E. slope.

Survey of Subdivision Lines of T.6 S., R.18 E.

Chains

75.90 Spur, slopes SW.
Desc. 92 ft. over NW. slope.

79.92 The cor. of secs. 2, 3, 10 and 11.

Land: rolling-mountainous.
Soil: adobe, loam, 2nd rate.
Timber: cedar, pinon.
Undergrowth: palo verde, catclaw, oak, mahogany, cactus,
guyata grass.

N.0°01'W., on true line, bet. secs. 2 and 3.
Over rolling land; through scattering timber and brush.
Desc. 10 ft. over NW. slope.

1.00 Along E. side, of wash, course S.

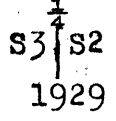
7.00 Same wash, 20 lks. wide, course S.20°W.
Asc. 140 ft. over SE. slope.

16.90 Spur, slopes SE.
Desc. 125 ft. over NE. slope.

21.20 Same wash, 15 lks. wide, course SE.
Asc. 90 ft. over SW. slope.

28.60 Spur, slopes SE.
Along E. slope.

40.00 Set an iron post, 3 ft. long, 1 in. diam., on cross (+)
on bedrock, supported by a mound of stone, 5 ft. base,
2 1/2 ft. high, for 1/4 sec. cor., with brass cap marked



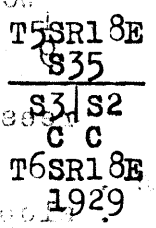
No suitable bearing trees.

Asc. 131 ft. over general S. slope.
55.60 Same spur, slopes SW.
Desc. 20 ft. along W. slope.

71.70 Same wash, 10 lks. wide, course SW.
Asc. 16 ft. over SE. slope.

73.60 Intersect the 1st St. Par., S., at a point 4.36 chs. East
of the standard cor. of secs. 34 and 35, which is an
iron post, 2 ins. diam., projecting 6 ins. above a
mound of stone, firmly set, properly marked on brass
cap, dated 1924, unwitnessed.

At point of intersection,
Set an iron post, 3 ft. long, 2 ins. diam., on cross (+)
on bedrock, supported by a mound of stone, 5 ft. base,
2 1/2 ft. high, for closing cor. of secs. 2 and 3, with
brass cap marked



No bearing trees available.

Land: rolling.
Soil: loam, 3rd rate.
Timber: cedar, pinon.
Undergrowth: oak, catclaw, palo verde, cactus.

Survey of Subdivision Lines of T.6 S., R.18 E.

Chains

The cor. of secs. 3, 4, 33 and 34, on the S. bdy. of the Tp., is an iron post, 2 ins. diam., projecting 8 ins. above a mound of stone, firmly set, properly marked on brass cap, dated 1924, witnessed by one bearing tree SE. of cor.

Thence

N.0°02'W., on true line, bet. secs. 33 and 34.

Over rolling land; through scattering timber and brush.

Asc. 90 ft. over SE. slope.

19.50 Spur, slopes SE.

Along E. side of ridge.

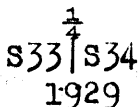
25.00 Spur, slopes NE.

Desc. 138 ft. over N. slope.

33.50 Head of ravine, course NE.

Asc. 30 ft. over SE. slope.

40.00 Set an iron post, 3 ft. long, 1 in. diam., 12 ins. in the ground; deposit a stone, marked with cross (+) at base of post and raise a mound of stone, 4 ft. base, 1 1/2 ft. high, around post, for 1/4 sec. cor., with brass cap marked



No bearing trees available.

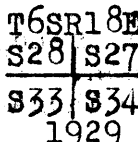
Over top of broad, flat spur, slopes NE.

46.00 Leave same; desc. 230 ft. over gradual NW. slope.

72.90 Winding wash, 10 lks. wide, general course NE.

Along gentle E. slope.

80.00 Set an iron post, 3 ft. long, 2 ins. diam., 30 ins. in the ground, for cor. of secs. 27, 28, 33 and 34, with brass cap marked



No bearing trees available. Raise a mound of stone, 4 ft. base, 2 1/2 ft. high, W. of cor.

Land: rolling.

Soil: sandy, 2nd rate.

Timber: scrub oak, cedar.

Undergrowth: catclaw, palo verde, cactus, sage, yucca, mahogany.

East, on random line, bet. secs. 27 and 34.

40.00 Set temp. 1/4 sec. cor.

58.15 To obtain measurement across Virgus Canyon, triangulate as described as follows:

Designate this point "A". Flag on cor. of secs. 26, 27, 34 and 35 bears S.89°42'E.

From "A" measure a base N.0°18'E., 5.00 chs. dist. to "B", from which flag on sec. cor. bears S.76°44'E.

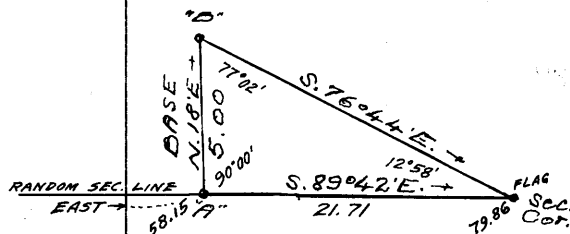
Vertical angle = +7°

Bearings checked by repetition of angles.

Dist. triangulated = 21.71 chs.

Computing into terms of true East, at

79.86 Fall 11 lks. N. of the cor. of secs. 26, 27, 34 and 35.



Chains

- Thence
N.89°55'W., on true line, bet. secs. 27 and 34.
Over mountainous land; through scattering timber and undergrowth.
Desc. about 490 ft. over SW. slope.
- 16.00 (Approx.) Virgus Canyon, dry, course NW.
Asc. about 180 ft. over E. slope.
- 21.71 Triangulation point "A" bears 8 lks. N. Continue measurement by chaining.
Asc. 90 ft. over broken SE. slope.
- 35.00 Short spur, slopes S.
Desc. 30 ft. over SW. slope.
- 39.93 Set an iron post, 3 ft. long, 1 in. diam., 12 ins. in ground to bedrock, supported by a mound of stone, 4 ft. base, 1½ ft. high, for ¼ sec. cor., with brass cap marked
- S27
¼
S34
1929
- from which
A cedar, 8 ins. diam., bears N.10°E., 203 lks. dist., marked ¼ S27 BT.
A cedar, 8 ins. diam., bears S.18½°E., 413 lks. dist., marked ¼ S34 BT.
- Asc. 102 ft. over SE. slope.
- 48.90 Rocky spur, slopes NE.
Desc. 90 ft. over broken NW. slope.
- 66.70 Small ravine, course NE.
Asc. 15 ft. over gentle E. slope.
- 79.86 The cor. of secs: 27, 28, 33 and 34.
- Land: mountainous.
Soil: rocky, adobe, sandy, 3rd rate.
Timber: cedar, pinon.
Undergrowth: oak, mahogany, catclaw, mesquite, cactus, palo verde.

- N.0°02'W., bet. secs. 27 and 28.
Over rolling land; through scattering timber and brush.
Along E. slope.
- 29.00 Dim trail, bears NW. and SE.
Desc. 55 ft. over gradual N. slope.
- 36.60 Wash, 25 lks. wide, in gulch, course NW.
Asc. 45 ft. over SW. slope.
- 40.00 True point for ¼ sec. cor. falls on sloping ledge, unsafe place for cor. monument.
- 40.70 (70 lks. N.0°02'W. of true point) Set an iron post, 3 ft. long, 1 in. diam., 18 ins. in the ground, supported by a mound of stone, 3 ft. base, 1½ ft. high, for witness cor. to ¼ sec. cor., with brass cap marked

1
S28 | S27
W C
1929

- from which
A scrub oak, 4 ins. diam., bears S.7½°E., 45 lks. dist., marked ¼ S27 WC BT.

Survey of Subdivision Lines of T.6 S., R.18 E.

Chains

- A cedar, 18 ins. diam., bears N.7¼W., 134 lks. dist., marked ¼ S28 WC BT.
- Asc. 49 ft. over gradual SW. slope.
- 54.50 Broad, flat spur, slopes NW.
- Desc. 188 ft. over NW. slope.
- 66.50 Wash, 30 lks. wide, course NE.
- Asc. 131 ft. over SE. slope.
- 78.00 Spur, slopes E.
- Desc. slightly over broken rocks.
- 80.00 Set an iron post, 3 ft. long, 2 ins. diam., 10 ins. in the ground to bedrock, supported by a mound of stone, 3½ ft. base, 2 ft. high, for cor. of secs. 21, 22, 27 and 28, with brass cap marked

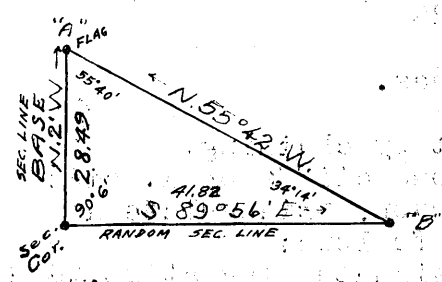
T6SR18E
 S21 | S22
 S28 | S27
 1929

from which

- A cedar, 8 ins. diam., bears N.10½°E., 128 lks. dist., marked T6S R18E S22 BT.
- A cedar, gnarly, 8 ins. diam., bears S.39½°E., 153 lks. dist., marked BT.
- A cedar, gnarly, 8 ins. diam., bears S.31°W., 43 lks. dist., marked BT.
- A cedar, 10 ins. diam., gnarly, bears N.72°W., 76 lks. dist., marked BT.

Land; rolling.
 Soil: rocky, sandy, 3rd rate.
 Timber: oak, cedar, pinon.
 Undergrowth: catclaw, yucca, cactus, sage, mahogany, oak.

S.89°56'E., on random line, bet. secs. 22 and 27.
 To obtain measurement across Virgus Canyon, triangulate as described as follows:
 Set a flag "A" 28.49 chs. N.0°02'W.
 From a point, "B", forward on line, flag "A" bears N.55°42'W.
 Bearings checked by repetition of angles.
 Dist. triangulated -----41.82 chs.
 By return measurement---- 1.82 "
 40.00 "



- 40.00 Set temp. ¼ sec. cor. Continue measurement by chaining.
- 41.82 Triangulation point "B".
- 80.10 Intersect the cor. of secs. 22, 23, 26 and 27.
- Thence
- N.89°56'W., on true line, bet. secs. 22 and 27.
- Over mountainous land; through scattering timber and undergrowth.
- Asc. 140 ft. over NW. slope.
- 4.80 Hill, bears NW. and SE.
- Desc. 244 ft. over W. slope.
- 20.50 Draw, course NW.
- Asc. 134 ft. over NE. slope.
- 30.50 Ridge, bears N. and S.
- Desc. 57 ft. over rocky W. slope.
- 38.28 Triangulation point "B".
- 40.05 Set an iron post, 3 ft. long, 1 in. diam., on cross (+) on bedrock, supported by a mound of stone, 5 ft. base.

Survey of Subdivision Lines of T.6 S., R.18 E.

Chains

2 1/2 ft. high, for 1/4 sec. cor., with brass cap marked

S22
1/4 S27
1929

No suitable bearing trees.

Discontinue measurement by chaining.

48.00 Desc. about 200 ft. over rugged SW. slope.
(Approx.) Virgus Canyon, dry, course NW.
Asc. about 170 ft. over broken NE. slope.

80.10 The cor. of secs. 21, 22, 27 and 28.

Land: mountainous.
Soil: rocky, loam, adobe, 3rd rate.
Timber: oak, pinon, cedar.
Undergrowth: catclaw, mahogany, cactus, mesquite, oak.

N.0°02'W., bet. secs. 21 and 22.

Over mountainous land; through scattering timber and moderate undergrowth.

Desc. 36 ft. over N. slope.

1.40 Ravine; course E.

Asc. 57 ft. over S. slope.

11.90 Spur, slopes NE.

Over broken bench land.

28.49 Leave same; desc. 392 ft. over cliffs, facing NE. Set flag.

36.80 Virgus Canyon, trace of water, course NW.

Asc. 40 ft. over spur, slopes S.

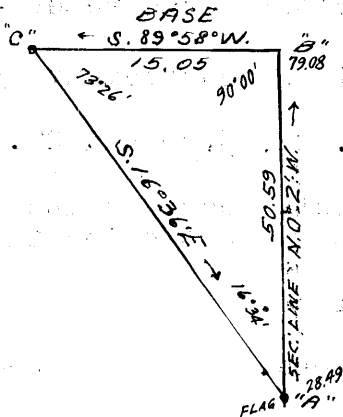
40.00 Set an iron post, 3 ft. long, 1 in. diam., on cross (+) on bedrock, supported by a mound of stone, 5 ft. base, 2 ft. high, for 1/4 sec. cor., with brass cap marked

S21 S22
1929

No suitable bearing trees.

Discontinue measurement by chaining.

To obtain measurement across cliffs on E. side of Virgus Canyon, triangulate as described as follows:



Designate flag at 28.49 chs. "A"
From a point "B", forward on line, measure a base 15.05 chs. S. 89° 58' W., to point "C". From "C", the flag "A" bears S. 16° 36' E.

All bearings checked by repetition of angles.

Vertical angle forward = +1°

Vertical angle back to ravine = -18°

Station of point "A" ---- 28.49 chs.

Dist. triangulated ----- 50.59 "

Station of point "B" ---- 79.06 "

Asc. about 150 ft. over SW. slope.

47.00 Top of cliff, 50 ft. high, faces SW.

Over flat top of spur, slopes N.

52.00 (Approx.) Top of cliff, 60 ft. high, faces N.

Desc. about 200 ft. over N. slope.

60.00 (Approx.) Short canyon, course W.

Asc. about 300 ft. over SW. slope.

Survey of Subdivision Lines of T.6 S., R.18 E.

Chains

79.08 Triangulation point "B". Continue measurement by chaining.
79.10 Ridge, bears NE. and N. 80° W.
Desc. 15 ft. over NW. slope.

80.00 Set an iron post, 3 ft. long, 2 ins. diam., 2 ins. in the ground; deposit a stone, marked with cross (+) at base of post and raise a mound of stone, 6 ft. base, 2 1/2 ft. high, around post, for cor. of secs. 15, 16, 21 and 22, with brass cap marked

T6SR18E
S16 | S15
S21 | S22
1929

from which
A cedar, 14 ins. diam., bears N. 18 1/4° W., 477 lks. dist., marked T6S R18E S16 BT.
No other suitable bearing trees available.

Land: mountainous.
Soil: adobe, loam, 3rd rate.
Timber: pinon, cedar.
Undergrowth: oak, mahogany, catclaw, mesquite, cactus, palo verde, sotol, etc.

40.00 S. 89° 56' E., on random line, bet. secs. 15 and 22.
Set temp. 1/4 sec. cor.
80.06 Fall 39 lks. S. of the cor. of secs. 14, 15, 22 and 23.
Thence
S. 89° 47' W., on true line, bet. secs. 15 and 22.
Over rolling-mountainous land; through scattering timber and undergrowth.
Asc. 320 ft. over SE. and E. slopes.

33.50 Ridge, bears N. and S.
Desc. 153 ft. over W. slope.

40.03 Set an iron post, 3 ft. long, 1 in. diam., 8 ins. in the ground to bedrock, supported by a mound of stone; 4 ft. base, 2 ft. high, for 1/4 sec. cor., with brass cap marked

S15
S22
1929

from which
A juniper, 14 ins. diam., bears S. 56 1/2° E., 269 lks. dist., marked 1/4 S22 BT.
A juniper, 6 ins. diam., bears N. 72° W., 290 lks. dist., marked 1/4 S15 BT.

40.50 Small draw, course NW.
Desc. 48 ft. over N. slope.

58.00 Draw, course NW.
Asc. 163 ft. over SE. slope.

78.50 Ridge, bears NE. and SW.
Desc. 21 ft. over NW. slope.

80.06 The cor. of secs. 15, 16, 21 and 22.

Land: rolling-mountainous.
Soil: adobe and loam, 3rd rate.
Timber: pinon, cedar, juniper.
Undergrowth: oak, mahogany, catclaw, mesquite, cactus, palo verde, sotol, greasewood.

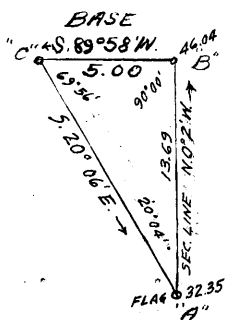
Survey of Subdivision lines of T.6 S., R.18 E.

Chains

N.0°02'W., bet. secs. 15 and 16.
Over rolling land; through scattering timber and brush.
Desc. 232 ft. over NW. slope.

20.80 Draw, course NW.
Asc. 41 ft. over SW. slope.

32.35 Rim of Aravaipa Canyon, bears E. and W.
To obtain measurement over cliffs, triangulate as described



as follows:
Set flag "A" at this point. "A". From a point on line in bottom of canyon, "B", measure a base 5.00 chs. S.89°58'W. to point "C". From "C" the flag "A" bears S.20°06'E. Bearings checked by repetition of angles. Vertical angle "A" to "B" = -41°
Dist. triangulated----- 13.69 chs.
Station of "A"----- 32.35 "
46.04 "
By return measurement-- 6.04 "

Desc. 350 ft. over cliffs, face N.

40.00 Set an iron post, 3 ft. long, 1 in. diam., 16 ins. in the ground; deposit a stone, 4 x 4 x 2½ ins. at base of post and raise a mound of stone, 4 ft. base, 1½ ft. high, around post, for ¼ sec. cor., with brass wap marked

1
S16 | S15
1929

from which

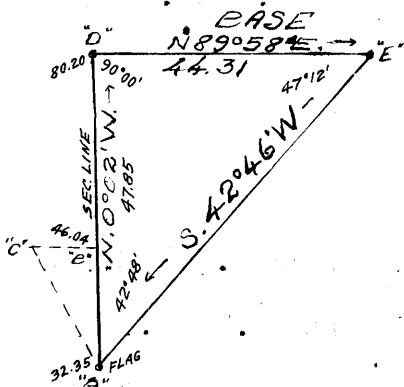
An ash, 7 ins. diam., bears N.1½°E., 503 lks. dist., marked ¼ S15 BT.

An ash, 10 ins. diam., bears N.2¼°W., 504 lks. dist., marked ¼ S16 BT.

Desc. 185 ft. over N. slope.

45.20 Aravaipa Creek, 30 lks. wide, 8 ins. deep, course NW.
Over bottom land.

46.04 Triangulation point "B". Discontinue measurement by chaining. To obtain measurement over cliffs forward, triangulate as described as follows:



From a point, "B", ahead on line, measure a base 44.31 chs. N.89°58'E. to point "E". From "E", the flag "A" (32.35 ch station) bears S.42°46'W. Bearings checked by repetition of angles. Vertical angle "A" to "D" = +3°
Dist. triangulated-----47.85 chs.
Station point "A"-----32.35 "
Station of point "D"--- 80.20 "
By return measurement-- .20 "

47.10 Trail, bears E. and W. Leave bottom land.
Asc. about 680 ft. over rugged S. slope.

66.00 Top of cliffs, face S.

79.80 Top of cliff, 30 ft. high, faces S.

80.00 Set an iron post, 3 ft. long, 2 ins. diam., on cross (+) on bedrock, supported by a mound of stone, 6 ft. base, 2½ ft. high, for cor. of secs. 9, 10, 15 and 16, with brass cap marked

T6SR18E
S9 | S10
S16 | S15
1929

LOOK UP

Survey of Subdivision Lines of T.6 S., R.18 E.

Chains

from which
 A cedar, 4 ins. diam., bears N.48½°E., 52 lks. dist.,
 marked BT.
 A cedar, 6 ins. diam., bears N.16°W., 156 lks. dist.,
 marked T6S R18E S9 BT.

Land: rolling and mountainous.
 Soil: adobe and loam, 3rd rate.
 Timber: pinon, cedar; sycamore, ash, oak in canyon.
 Undergrowth: oak, manzanita, mahogany, mesquite, catclaw,
 caetus, palo verde, greasewood.

- N.89°47'E., on random line, bet. secs. 10 and 15.
- 40.00 Set temp. ¼ sec. cor.
- 79.92 Intersect the cor. of secs. 10,11,14 and 15.
- Thence
- S.89°47'W., on true line, bet. secs. 10 and 15.
- Over mountainous land; through scattering timber and moderate undergrowth.
- Desc. 126 ft. over NW. slope.
- 9.10 Gulch, course SW.
- Asc. 29 ft. over SE. slope.
- 20.00 Spur, slopes SW.
- Desc. 473 ft. over NW. slope.
- 38.50 Creek, 3 lks. wide, in canyon, course SW.
- Asc. 54 ft. over SE. slope.
- 39.96 True point for ¼ sec. cor. falls on sloping, rubble-covered bedrock.
- At a point 1.25 chs N.82°42'W. of true point,
- Set an iron post, 3 ft. long, 1 in. diam., on cross (+) on bedrock, supported by a mound of stone, 5 ft. base, 2½ ft. high, for witness cor. to ¼ sec. cor., with brass cap marked

$\frac{1}{4}$ S10 WC
 S15
 1929

from which
 A cedar, 10 ins. diam., bears S.79½°W., 165 lks. dist.,
 marked ¼ S15 WC BT.
 A cedar, 8 ins. diam., bears N.78½°W., 310 lks. dist.,
 marked ¼ S10 WC BT.

- Along S. slope.
- 42.00 Small gulch, course SE.
- Asc. 305 ft. over E. slope.
- 52.00 Top of rimrock, 20 ft. high, bears N. and S.
- Asc. 325 ft. over bench land and E. slope.
- 73.00 Top of rimrock, 40 ft. high, bears N. and S.
- Over mesa.
- 79.92 The cor. of secs. 9,10,15 and 16.
- Land: mountainous.
- Soil: adobe, loam, 3rd rate.
- Timber: pinon, cedar, oak.
- Undergrowth: oak, mahogany, catclaw, cactus, palo verde, mesquite.

N.0°02'W., bet. secs. 9 and 10.
 Over mountainous land; through scattering timber and undergrowth.

Chains

- Over flat-topped spur.
 1.60 leave same; desc. 118 ft. over N. slope.
 8.10 Head of ravine, course W.
 Asc. 120 ft. over S. slope.
 18.00 Spur, slopes W.
 Desc. 261 ft. over N. slope.
 29.30 Head of draw, course SW. Over flat.
 29.40 Old pole corral bears about 5 chs. E.
 38.50 Leave flat; desc. 32 ft. over NW. slope.
 40.00 Set an iron post, 3 ft. long, 1 in. diam., 8 ins. in the
 ground, supported by a mound of stone, 4 ft. base, 2
 ft. high, for $\frac{1}{4}$ sec. cor., with brass cap marked
- $\frac{1}{4}$
 S9 | S10
 1929
- from which
 A cedar, 8 ins. diam., bears N.52°W., 68 lks. dist.,
 marked $\frac{1}{4}$ S9 BT.
 A cedar, 9 ins. diam., bears N.81°W., 312 lks. dist.,
 marked $\frac{1}{4}$ S9 BT.
- Desc. 114 ft. over NW. slope.
 49.70 Wash, 10 lks. wide, course W.
 Asc. 106 ft. over S. slope.
 57.00 Spur, slopes SW.
 Desc. 147 ft. over NW. slope.
 80.00 Set an iron post, 3 ft. long, 2 ins. diam., on cross (+)
 on bedrock, supported by a mound of stone, 5 ft. base,
 2 $\frac{1}{2}$ ft. high, for cor. of secs. 3, 4, 9 and 10, with
 brass cap marked
- T6SR18E
 S4 | S3
 S9 | S10
 1929
- No bearing trees available.
- Land: mountainous.
 Soil: adobe, loam, 3rd rate.
 Timber: cedar, pinon.
 Undergrowth: oak, mahogany, mesquite, catclaw, cactus,
 palo verde.
-
- N.89°47'E., on random line, bet. secs. 3 and 10.
 40.00 Set temp. $\frac{1}{4}$ sec. cor.
 80.00 Fall 2 lks. S. of the cor. of secs. 2, 3, 10 and 11.
 Thence
 S.89°46'W., on true line, bet. secs. 3 and 10.
 Over mountainous land; through scattering timber and
 undergrowth.
 Desc. 10 ft. over NW. slope.
 0.20 Wash, 30 lks. wide, course SW.
 Asc. 20 ft. over SE. slope.
 2.50 Toe of spur, slopes S.
 Desc. 12 ft. over SW. slope.
 4.00 Ravine, course SW.
 Asc. 196 ft. over SE. slope.
 20.80 Ridge, bears NE. and SW.
 Desc. 63 ft. over W. slope.
 29.00 Draw, course SW.
 Asc. 46 ft. over SE. slope.

Survey of Subdivision Lines of T.6 S., R.18 E.

Chains

- 35.00 Spur, slopes SW.
Desc. 48 ft. over NW. slope.
- 40.00 Set an iron post, 3 ft. long, 1 in. diam., 6 ins. in the ground to bedrock; deposit a stone, marked with cross (+) at base of post and raise a mound of stone, 5 ft. base, 2 ft. high, around post, for 1/4 sec. cor., with brass cap marked.
- S3
S10
1929
- No bearing trees available.
- 40.20 Head of draw, course SE.
Asc. 20 ft. over E. slope.
- 47.26 Wire fence, bears N. and S.
- 47.30 Ridge, bears N. and S.
Desc. 52 ft. over W. slope.
- 48.60 Draw, course SW.
Asc. 42 ft. over SE. slope.
- 51.50 Spur, slopes SW.
Desc. 69 ft. over NW. slope.
- 61.50 Ravine, course SW.
Asc. 37 ft. over SE. slope.
- 64.00 Spur, slopes SW.
Desc. 191 ft. over SW. slope.
- 72.50 Wash, 15 lks. wide, course WNW.
Asc. 10 ft. along N. slope.
- 80.00 The cor. of secs. 3, 4, 9 and 10.

Land: mountainous.
Soil: adobe, loam, 3rd rate.
Timber: cedar, pinon.
Undergrowth: oak, mahogany, catclaw, palo verde, cactus, mesquite.

N.0°02' W., on true line, bet. secs. 3 and 4.
Over mountainous land; through scattering timber and undergrowth.

- 0.40 Wash, 15 lks. wide, course SW.
Asc. 215 ft. over S. slope.
- 11.50 Spur, slopes SW.
Desc. 197 ft. over NW. slope.
- 22.70 Gulch, course SW.
Asc. 436 ft. over rugged S. slope.
- 35.00 Top of cliffs, face S.
Asc. gentle S. slope.
- 40.00 Set an iron post, 3 ft. long, 1 in. diam., 14 ins. in the ground; deposit a stone, marked with cross (+) at base of post and raise a mound of stone, 4 ft. base, 1 1/2 ft. high, around post, for 1/4 sec. cor., with brass cap marked.
- S4 | S3
1929
- No suitable bearing trees.
- Asc. 26 ft. over S. slope.
- 44.00 Ridge, bears NW. and SE.
Desc. 90 ft. over N. slope.

Survey of Subdivision lines of T.6 S., R.18 E.

Chains	
53.80	Head of ravine, course W. Asc. 40 ft. over SW. slope.
59.00	Spur, slopes W. Desc. 20 ft. over N. slope.
62.40	Wash, 20 lks. wide, course SW. Asc. 79 ft. over SW. slope.
73.84	Intersect the 1st. St. Par.S., at a point 4.35 chs. East of the standard cor. of secs. 33 and 34, which is an iron post, 2 ins. diam., projecting 8 ins. above a mound of stone, firmly set, properly marked on brass cap, dated 1924, and witnessed by two cedar bearing trees. At point of intersection, Set an iron post, 3 ft. long, 2 ins. diam., 12 ins. in the ground to bedrock; deposit a stone, 6 x 4 x 2 ins., marked with cross (+) beside post and raise a mound of stone, 4 ft. base, 1½ ft. high, around post, for closing cor. of secs. 3 and 4, with brass cap marked <div style="text-align: center;"> T5SR18E <u> S34</u> S4 S3 C C T6SR18E 1929 </div> No suitable bearing trees available. Land: mountainous. Soil: adobe, loam, limestone, 3rd rate. Timber: cedar, pinon. Undergrowth: oak, mahogany, mesquite, catclaw, cactus, palo verde.
	The cor. of secs. 4, 5, 32 and 33, on the S. bdy. of the Tp., is an iron post, 2 ins. diam., projecting 8 ins. above a mound of stone, firmly set, properly marked on brass cap, dated 1924, and witnessed by one pinon bearing tree. Thence N.0°02'W., bet. secs. 32 and 33. Over rolling-mountainous land; through scattering timber and undergrowth. Asc. 63 ft. over SW. slope.
11.00	Spur, slopes NW., course NW. Desc. 181 ft. over N. slope.
18.10	Wash, 25 lks. wide, course NW. Asc. 302 ft. over SW. slope.
36.00	Slope becomes gentler.
40.00	Set an iron post, 3 ft. long, 1 in. diam., 14 ins. in the ground; deposit a stone, marked with cross (+) at base of post and raise a mound of stone, 4 ft. base, 1½ ft. high, around post, for ¼ sec. cor., with brass cap marked <div style="text-align: center;"> $\frac{1}{4}$ S32 S33 1929 </div> No bearing trees available.
41.00	Spur, slopes NW. Over broad, flat ridge; bears NW. and SE.

Survey of Subdivision Lines of T.6 S., R.18 E.

Chains

- 50.00 Top of same, bears NW. and SE.
Desc. 303 ft. over NE. slope.
- 67.80 Wash, 25 lks. wide, course NW.
Asc. 213 ft. over SW. slope.
- 80.00 Set an iron post, 3 ft. long, 2 ins. diam., 8 ins. in the ground; deposit a stone, marked with cross (+) at base of post and raise a mound of stone, 5 ft. base, 2 ft. high, around post, for cor. of secs. 28, 29, 32 and 33, with brass cap marked.

T6SR18E
 S29|S28
 S32|S33
 1929

No bearing trees available.

Land: rolling and mountainous.
 Soil: sandy loam, adobe, 2nd rate.
 Timber: cedar.
 Undergrowth: oak, catclaw, cactus, sage, yucca, mesquite, mahogany:

-
- 40.00 East, on random line, bet. secs. 28 and 33.
Set temp. $\frac{1}{4}$ sec. cor.
 - 79.86 Fall 5 lks. N. of the cor. of secs. 27, 28, 33 and 34.
Thence
N. 89° 58' W., on true line, bet. secs. 28 and 33.
Over rolling-mountainous land; through scattering timber and undergrowth.
Asc. 195 ft. over gradual NE. slope.
 - 14.80 Spur, slopes N.
Desc. 160 ft. over NW. slope.
 - 24.50 Wash, 15 lks. wide, course NE.
Asc. 109 ft. over E. slope.
 - 33.70 Ridge, bears N. and SE.
Desc. 97 ft. over NW. slope.
 - 37.50 Head of ravine, course NW. Asc. 20 ft. over NE. slope.
 - 39.93 Set an iron post, 3 ft. long, 1 in. diam., 2 ins. in the ground; deposit a stone, marked with cross (+) at base of post and raise a mound of stone, 5 ft. base, 2 ft. high, around post, for $\frac{1}{4}$ sec. cor., with brass cap marked

$\frac{1}{4}$ S28
 S33
 1929

No bearing trees available.

- 44.40 Asc. 47 ft. over NE. slope.
Ridge, bears NW. and SE.
Desc. 90 ft. over SW. slope.
- 51.40 Shallow wash, 25 lks. wide, course NW.
Asc. 234 ft. over NE. slope.
- 70.00 Broad, flat ridge, bears NW. and SE.
Desc. 76 ft. over SW. slope.
- 79.86 The cor. of secs. 28, 29, 32 and 33.

Land: rolling mountainous.
 Soil: sandy, 2nd rate. Timber: cedar.
 Undergrowth: oak, mahogany, catclaw, cactus, sage.

Survey of Subdivision lines of T.6 S., R.18 E.

Chains

- N.0°02'W., bet. secs. 28 and 29.
Overrolling-mountainous land; through scattering timber and undergrowth.
Asc. 59 ft. over SW. slope.
- 6.30 Broad, flat ridge, bears NW. and SE.
Desc. 40 ft. over N. slope.
- 13.00 Head of wash, course NW.
Asc. 20 ft. along W. slope.
- 19.00 Ridge, bears NW. and SE.
Desc. 276 ft. over NW. slope.
- 40.00 Set an iron post, 3 ft. long, 1 in. diam., on cross (+) on bedrock, supported by a mound of stone, 5 ft. base, 2½ ft. high, for ¼ sec. cor., with brass cap marked
- $$\begin{array}{c} \frac{1}{4} \\ \hline S29 \mid S28 \\ \hline 1929 \end{array}$$
- from which
A mesquite, 5 ins. diam., bears N.78½°E., 119 lks. dist., marked ¼ S28 BT.
A cedar, 16 ins. diam., bears N.67°W., 384 lks. dist., marked ¼ S29 BT.
- Desc. 15 ft. over NE. slope.
- 41.50 Wash, 30 lks. wide, course NW.
Asc. 86 ft. over SW. slope.
- 54.40 Low ridge, bears NW. and SE.
Desc. 145 ft. over gradual NE. slope.
- 75.30 Wash, 30 lks. wide, course NW.
Asc. 17 ft. over gradual SE. slope.
- 80.00 Set an iron post, 3 ft. long, 2 ins. diam., 6 ins. in the ground; deposit a stone, marked with cross (+) at base of post and raise a mound of stone, 5 ft. base, 2 ft. high, around post, for cor. of secs. 20, 21, 28 and 29, with brass cap marked
- $$\begin{array}{c} T6SR18E \\ \hline S20 \mid S21 \\ \hline S29 \mid S28 \\ \hline 1929 \end{array}$$
- No bearing trees available.
- Land: rolling-mountainous.
Soil: sandy, 3rd rate.
Timber: cedar.
Undergrowth: mesquite, catclaw, cactus, mahogany, sage .
-
- S.89°58'E., on random line, bet. secs. 21 and 28.
- 40.00 Set temp. ¼ sec. cor.
- 79.90 Fall 4 lks. N. of the cor. of secs. 21, 22, 27 and 28.
Thence
N.89°56'W., on true line, bet. secs. 21 and 28.
Over rolling-mountainous land; through scattering timber and undergrowth.
Asc. 127 ft. over E. slope.
- 12.40 Ridge, bears N. and SW.
Desc. 163 ft. over SW. slope.
- 31.00 Wash, 15 lks. wide, course NW.
Asc. 123 ft. over NE. slope.
- 39.95 Set an iron post, 3 ft. long, 1 in. diam., 10 ins. in the ground; deposit a stone, marked with cross (+) at base

Survey of Subdivision Lines of T.6 S., R.18 E.

Chains

of post, and raise a mound of stone, 3 1/2 ft. base, 2 ft. high, around post, for 1/4 sec. cor., with brass cap marked

1/4 S21
1/4 S28
1929

No bearing trees available.

40.20 Asc. 10 ft. over NE. slope.

Ridge, bears N. and S.

Desc. 60 ft. over NW. slope.

44.50 Wash, 15 lks. wide, course N.

Asc. 158 ft. over SE. slope.

55.70 Spur, slopes NW.

Desc. 167 ft. over SW. slope.

65.50 Ravine, course NW.

Asc. 93 ft. over NE. slope.

71.00 Ridge, bears NW. and SE.

Desc. 150 ft. over SW. slope.

79.90 The cor. of secs. 20, 21, 28 and 29.

Land: rolling-mountainous.

Soil: sandy, adobe, 3rd rate.

Timber: cedar.

Undergrowth: oak, catclaw, cactus, mahogany, sage, mesquite.

N.0°02'W., bet. secs. 20 and 21.

Over rolling land; through scattering timber and brush.

Asc. 90 ft. over SW. slope.

9.80 Small spur, slopes W.

Desc. 52 ft. over NW. slope.

13.50 Ravine, course W.

Asc. 105 ft. over SW. slope.

19.70 Ridge, bears NW. and SE.

Desc. 95 ft. over N. slope.

24.40 Head of ravine, course NW.

Asc. 50 ft. over SW. slope.

32.20 Ridge, bears N. and SW.

Along top of same.

39.90 Same ridge, bears NW. and S.

40.00 Set an iron post, 3 ft. long, 1 in. diam., 6 ins. in the ground; deposit a stone, marked with cross (+) at base of post and raise a mound of stone; 5 ft. base, 2 ft. high, around post, for 1/4 sec. cor., with brass cap marked

1/4 S20 | S21
1929

from which

A cedar, 8 ins. diam., bears S.70 1/2°W., 118 lks. dist., marked 1/4 S20 BT.

No other suitable bearing trees.

Desc. 325 ft. over NE. slope.

61.30 Wash, 25 lks. wide, course NW.

Asc. 89 ft. over SW. slope.

74.00 Ridge, bears NW. and SE.

Along E. slope.

80.00 Set an iron post, 3 ft. long, 2 ins. diam., 8 ins. in the ground; deposit a stone, marked with cross (+) at base

Survey of Subdivision Lines of T.6 S., R.18 E.

Chains

of post and raise a mound of stone, 5 ft. base, 2 ft. high, around post, for cor. of secs. 16, 17, 20 and 21, with brass cap marked

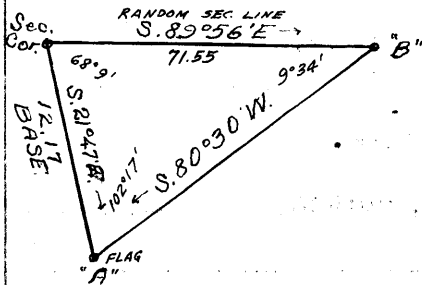
T6SR18E
S17|S16
S20|S21
1929

No bearing trees available.

Land: rolling-mountainous.
Soil: sandy, adobe, 3rd rate.
Timber: cedar.
Undergrowth: oak, mesquite, catclaw, mahogany, cactus, sage.

S. 89° 56' E., on random line, bet. secs. 16 and 21.

To obtain measurement across Virgus Canyon, triangulate as described as follows:



Measure a base 12.17 chs. S. 21° 47' E. to flag "A".
From a point "B", ahead on line, flag "A" bears S. 80° 30' W.
Longer base impracticable.
Bearings checked by repetition of angles.
Vertical angle cor. to "B" = +1°
Dist. triangulated = 71.55 chs.

- 40.00 Set temp. 1/4 sec. cor. Discontinue chaining.
- 71.55 Triangulation point "B". Measurement forward by chaining.
- 80.10 Fall 14 lks. S. of the cor. of secs. 15, 16, 21 and 22.
Thence
S. 89° 58' W., on true line, bet. secs. 16 and 21.
Over mountainous land; through scattering timber and undergrowth.
Asc. 25 ft. along N. slope.
- 8.50 Ridge, bears NW. and SE.
- 8.55 Triangulation point "B". bears 12 lks. S. Discontinue chaining.
Desc. about 400 ft. over general SW. slope.
- 25.00 (Estimated) Virgus Canyon, creek, 4 lks. wide, course NW.
Asc. about 300 ft. over NE. slope.
- 34.00 (Estimated) Rim of Canyon, 100 ft. high, faces NE.
Asc. 50 ft. over NE. slope.
- 40.05 True point for 1/4 sec. cor. falls on sloping bedrock.
Measurement forward by chaining.
- 40.32 (27 lks. S. 89° 58' W. of true point) Set an iron post, 3 ft. long, 1 in. diam., 30 ins. in the ground, for witness cor. to 1/4 sec. cor., with brass cap marked

1/4 S16 WC
1/4 S21
1929

from which

- A cedar, 6 ins. diam., bears S. 1° W., 232 lks. dist., marked 1/4 S21 WC BT.
- A pinon, 7 ins. diam., bears N. 47 1/2° W., 77 lks. dist., marked 1/4 S16 WC BT.

Over gentle NE. slope.

- 43.10 Spur, slopes NW.
Desc. 170 ft. over cliffs and W. slope.

Survey of Subdivision Lines of T.6 S., R.18 E.

Chains

61.10 Box canyon, 20 lks. wide at bottom, course N. Asc. 24 3/4 ft. over E. slope.

80.10 The cor. of secs. 16, 17, 20 and 21.

Land: mountainous. Soil: loam, adobe, 3rd rate. Timber: cedar, pinon. Undergrowth: oak, mahogany, mesquite, catclaw, cactus, palo verde.

N.0°02'W., bet. secs. 16 and 17.

Over mountainous land; through scattering timber and undergrowth.

Asc. 20 ft. over SE. slope.

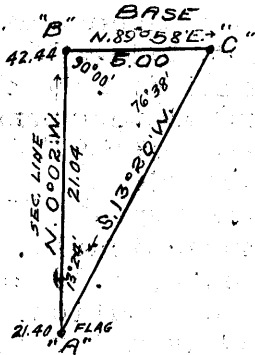
1.61 Small spur, slopes NE.

Set triangulation flag "D".

Desc. 97 ft. over N. slope.

13.00 Over bench land; slopes N.

21.40 To obtain measurement across Virgus Canyon, triangulate as described as follows:



Set flag "A" at this point. From a point "B", ahead on line, measure a base, 5.00 chs. N. 89° 58' E. to point "C", from which flag "A" bears S. 13° 20' W.

Vertical angle =	-1/2°
Station of point "A"-----	21.40 chs.
Dist. triangulated-----	21.04 "
Station of point "B"-----	42.44 "
By return measurement-----	2.44 "
1/4 sec. cor.-----	40.00 chs.

Desc. 60 ft. over N. slope.

25.10 Rim of canyon, 100 ft. high, bears NW. and SE. Discontinue chaining.

Desc. about 400 ft. over NE. slope.

30.00 (Approx.) Virgus Canyon, creek, 4 lks. wide, course NW. Asc. about 360 ft. over NE. slope.

27.40 (Approx.) Rim of canyon, 100 ft. high, bears E. and W. Along W. slope.

40.00 Set an iron post, 3 ft. long, 1 in. diam., on cross (+) on bedrock, supported by a mound of stone, 5 ft. base, 2 1/2 ft. high, for 1/4 sec. cor., with brass cap marked

1/4
S17 | S16
1929

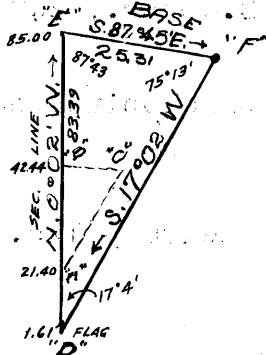
No suitable bearing trees available.

Continue line and measurement by chaining.

40.30 Short draw, course SW. Asc. 70 ft. over S. slope.

42.44 Triangulation point "B". Discontinue chaining.

To obtain measurement across Aravaipa Canyon, triangulate as described as follows:



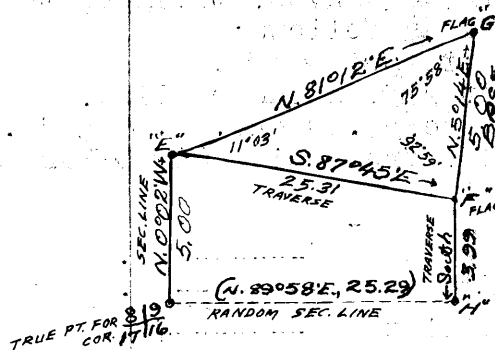
From a point "E", forward on line, triangulate a base 25.31 chs. S. 87° 45' E. to point "F" as hereinafter described. From point "F" the flag "D" bears S. 17° 02' W. Station of flag "D"---1.61 chs. Dist. triangulated---83.39 " Station of point "E"---85.00 " or 5.00 chs. N. 0° 02' W. from true point for cor. of secs. 8, 9, 16 & 17.

Chains
 47.00 (Approx.) Spur, slopes NW.
 Desc. about 70 ft. over gentle N. slope.
 57.50 (Approx.) Rim of canyon, 200 ft. high, faces N.
 Desc. about 700 ft. over cliff and N. slope.
 75.00 (Approx.) Aravaipa Creek, 30 lks. wide, 8 ins. deep,
 course W.
 Asc. about 300 ft. over cliffs, face S.
 80.00 True point for cor. of secs. 8, 9, 16 and 17 falls on face
 of cliff. Witness cor. established 5.00 chs. N.0°02'W.
 hereinafter described.

Land: mountainous.
 Soil: adobe, loam, 3rd rate.
 Timber: cedar, pinon; in canyon: sycamore, walnut, ash.
 Undergrowth: oak, mahogany, catclaw, mesquite, cactus, sage.

From true point for cor. of secs. 8, 9, 16 and 17.

To obtain measurement over high rims of Aravaipa Canyon, triangulate traverse as described as follows:



Set a flag "F" and measure a base N.5° 14' E. 5.00 chs. therefrom to flag "G" as described. From point "E" established 5.00 chs. N.0° 02' W. from sec. cor. point as hereinbefore described, the flags "F" and "G" bear S.87° 45' E. and N.5° 14' E., respectively. Triangulated measurement of "E-F" = 25.31 chs. Longer base impracticable. From "F" run South, 3.99 chs. to point "H", by computation, 25.29 chs. N.89° 58' E. from true point for cor. of secs. 8, 9, 16 and 17.

(N.89° 58' E. on random line; bet. secs. 9 and 16)
 25.29 Continue line, N.89° 58' E., and measurement by chaining.
 40.00 Set temp. 1/4 sec. cor.
 80.20 Fall 9 lks. S. of the cor. of secs. 9, 10, 15 and 16.
 Thence
 S.89° 54' W., on true line, bet. secs. 9 and 16.
 Over rolling land; through scattering timber and brush.
 Desc. 272 ft. over broken W. slope.
 28.20 Wash, 25 lks. wide, course SW.
 Over S. slope.

38.55 (1.55 chs. N.89° 54' E. of true point) Set an iron post, 3 ft. long, 1 in. diam., 18 ins. in the ground, supported by a mound of stone, 4 ft. base, 1 1/2 ft. high, for witness cor. to 1/4 sec. cor., with brass cap marked

WC 1/4 S9
 S16
 1929

from which
 A cedar, 12 ins. diam., bears S.14 1/2° E., 219 lks. dist., marked 1/4 S16 WC BT.
 A cedar, 10 ins. diam., bears S.48 1/2° W., 247 lks. dist., marked 1/4 S16 WC BT.

40.10 True point for 1/4 sec. cor. falls on sloping bedrock.
 Desc. 35 ft. over W. slope.
 46.80 Wash, 10 lks. wide, course SW.
 Asc. 25 ft. over SE. slope.
 54.91 Traverse point "H" of random line bears 3 lks. S.
 Discontinue chaining.

Survey of Subdivision Lines of T.6 S., R.18 E.

Chains

- Desc. about 70 ft. over W. slope.
- 60.00 (Approx.) Rim of canyon, 150 ft. high, faces NW.
- Desc. about 550 ft. over cliff and W. slope.
- 73.00 Bottom of canyon, seep of water, course SW.
- Asc. about 250 ft. over SE. slope.
- 79.00 (Approx.) Top of cliff, faces SE.
- 80.20 The true point for cor. of secs. 8,9,16 and 17.

Land: rolling and mountainous.
 Soil: adobe and loam, 3rd rate.
 Timber: cedar, pinon.
 Undergrowth: oak, greasewood, catclaw, mesquite, cactus,
 palo verde, sage, mahogany.

From true point for cor. of secs. 8,9,16 and 17.
 N.0°02'W., bet. secs. 8 and 9.

Over mountainous land; through scattering timber and undergrowth. Measurement by triangulation.

- Asc. about 300 ft. over SE. slope.
- 5.00 Triangulation point "E", hereinbefore described. (5.00 chs. N.0°02'W. of true point) Set an iron post, 3 ft. long, 2 ins. diam., 6 ins. in the ground to bedrock, deposit a stone, marked with cross (+) at base of post and raise a mound of stone, 5 ft. base, 2 ft. high, around post, for witness cor. to cor. of secs. 8,9,16 and 17, with brass cap marked

T6SR18E
 88|89
 17|16
 W G
 1929

No suitable bearing trees available.

Continue line and measurement by chaining.

- Asc. 80 ft. over SE. slope.
- 16.80 Over gently rolling land.
- 37.90 Fence, bears E. and W. Corral bears 7 chs. East.
- 40.00 True point for 1/4 sec. cor. falls on sloping bedrock.
- 40.20 (20 lks. N.0°02'W.) Set an iron post, 3 ft. long, 1 in. diam., 12 ins. in the ground to bedrock; deposit a stone, marked with cross (+) beside post and raise a mound of stone, 5 ft. base, 2 ft. high, around post, for witness cor. to 1/4 sec. cor., with brass cap marked

1
 88|89
 W G
 1929

No bearing trees available.

- 44.00 Trail, bears NE. and SW.
- 54.40 Wash, 15 lks. wide, course SW. Land becomes more rugged.
- Asc. 260 ft. over SE. slope.
- 74.90 Spur, slopes SE.
- Along broken E. slope.
- 79.70 Small spur, slopes NE.
- 80.00 Set an iron post, 3 ft. long, 2 ins. diam., 6 ins. in the ground to bedrock; deposit a stone, marked with cross (+), at base of post and raise a mound of stone, 5 ft. base, 2 ft. high, around post, for cor. of secs. 4,5.

Survey of Subdivision Lines of T.6 S., R.18 E.

Chains

8 and 9, with brass cap marked

$$\begin{array}{r} T6SR18E \\ \hline S5|S4 \\ \hline S8|S9 \\ 1929 \end{array}$$

from which

A cedar, 14 ins. diam., bears N.42 $\frac{1}{2}$ °E., 129 lks. dist., marked T6S R18E S4 BT.

A cedar, 8 ins. diam., bears N.80°W., 131 lks. dist., marked T6S R18E S5 BT.

Land: gently rolling and mountainous.

Soil: adobe and loam, 3rd rate.

Timber: cedar.

Undergrowth: oak, catclaw, sage, cactus, yucca, mesquite, greasewood, Mormon tea.

-
- N.89°54'E., on random line, bet. secs. 4 and 9.
40.00 Set temp. $\frac{1}{4}$ sec. cor.
80.22 Fall 19 lks. N. of the cor. of secs. 3,4,9 and 10.
Thence
N.89°58'W., on true line, bet. secs. 4 and 9.
Over mountainous land; through scattering timber and undergrowth.
Desc. 20 ft. over W. slope.
1.00 Wash, 15 lks. wide, course SW.
Along S. slope.
9.60 Point of spur, slopes S.
Desc. 80 ft. over SW. slope.
11.80 Same wash, course NW.
Desc. 30 ft. along bottom of same.
12.80 Same wash, course SW.
Asc. 86 ft. over SE. slope.
17.00 Spur, slopes SW.
Desc. 158 ft. over W. slope.
21.50 Wash, 25 lks. wide, course S. for 3 chs.; thence SW.
Asc. 205 ft. over E. slope.
24.50 Spur, slopes SE.
Along S. slope.
32.90 Spur, slopes S.
Desc. 101 ft. over SW. slope.
39.00 Wash, 15 lks. wide, course SE.
39.32 (79 lks. S.89°58'E. of true point) Set an iron post, 3 ft. long, 1 in. diam., 10 ins. in the ground to bedrock, deposit a stone, marked with cross (+), at base of post and raise a mound of stone, 5 ft. base, 2 ft. high, around post, for witness cor. to $\frac{1}{4}$ sec. cor., with brass cap marked
- $$\begin{array}{r} WC1 \frac{S4}{S9} \\ 1929 \end{array}$$
- No suitable bearing trees available.
- 40.11 True point for $\frac{1}{4}$ sec. cor. falls on sloping bedrock.
Asc. 80 ft. over E. slope.
43.60 Spur, slopes SE.
Desc. 66 ft. over SW. slope.
48.00 Wash, 10 lks. wide, course SW.
Asc. 257 ft. over NE. slope.

Survey of Subdivision Lines of T.6 S., R.18 E.

Chains

63.40 Ridge, bears NW. and SE.
 Desc. 133 ft. over SW. slope.

72.10 Wash, 10 lks. wide, course SE.
 Asc. 185 ft. over E. slope.

80.22 The cor. of secs. 4, 5, 8 and 9.

Land: mountainous.
 Soil: adobe, loam, 3rd rate.
 Timber: cedar, pinon.
 Undergrowth: oak, mesquite, catclaw, greasewood, cactus,
 palo verde, sage.

N.0°02'W., on true line, bet. secs. 4 and 5.
 Over mountainous land; through scattering timber and
 undergrowth.

Desc. 122 ft. over N. slope.

4.70 Ravine, course E.
 Asc. 118 ft. over S. slope.

12.00 Spur, slopes SE.
 Desc. 60 ft. over N. slope.

16.50 Gulch, course E.
 Asc. 15 ft. over SE. slope.

21.90 Trail, bears NE. and SW.
 Asc. 10 ft. over SE. slope.

23.50 Ridge, bears NE. and SW.
 Desc. 64 ft. over NW. slope.

27.00 Wash, 10 lks. wide, course SW.
 Asc. 57 ft. over SW. slope.

30.50 Small spur, slopes SW.
 Desc. 30 ft. over NW. slope.

35.20 Wash, 10 lks. wide, course SW.
 Asc. 30 ft. over S. slope.

37.80 Small spur, slopes SW.
 Along W. slope.

40.00 Set an iron post, 3 ft. long, 1 in. diam., 10 ins. in the
 ground to bedrock; deposit a stone, marked with cross
 (+) beside post and raise a mound of stone, 4 ft. base,
 2 ft. high, around post, for $\frac{1}{4}$ sec. cor., with brass
 cap marked

$\frac{1}{4}$
 S51S4
 1929

No bearing trees available.

Desc. 30 ft. along W. slope.

41.50 Wash, 10 lks. wide, course SW.
 Asc. 95 ft. over SE. slope.

46.70 Ridge, bears NE. and SW.
 Desc. 80 ft. over NW. slope.

50.10 Wash, 15 lks. wide, course W. for 5 chs., thence SW.
 Asc. 78 ft. over S. slope.

55.30 Spur, slopes W.
 Desc. 121 ft. over NW. slope.

60.50 Wash, 20 lks. wide, course SW.
 Asc. 167 ft. over SW. slope.

73.20 Ridge, bears E. and W. Trail, bears E. and W.

73.61 Intersect the 1st. St. Par., S., at a point 4.16 chs.
 East of the standard cor. of secs. 32 and 33, which
 is an iron post, 2 ins. diam., projecting 8 ins.
 above a mound of stone, firmly set, properly marked
 on brass cap, dated 1924, unwitnessed.
 At point of intersection,

Survey of Subdivision Lines of T.6 S., R.18 E.

Chains

Set an iron post, 3 ft. long, 2 ins. diam., 3 ins. in the ground to bedrock; deposit a stone, marked with cross (+), at base of post and raise a mound of stone, 5 ft. base, 2½ ft. high, around post, for closing cor. of secs. 4 and 5, with brass cap marked

T5SR18E

S33

S5|S4

C C

T6SR18E

1929

No bearing trees available.

Land: mountainous.

Soil: adobe loam, 3rd rate.

Timber: cedar.

Undergrowth: oak, mahogany, mesquite, catclaw, cactus, palo verde.

The cor. of secs. 5, 6, 31 and 32, on the S. bdy. of the Tp., is an iron post, 8 ins. diam., projecting 10 ins. above a mound of stone, firmly set, properly marked on brass cap, dated 1924, witnessed by one cedar bearing tree, SE. of cor.

Thence

N.0°03'W., bet. secs. 31 and 32.

Over rolling land; through scattering timber and undergrowth.

Asc. 52 ft. over S. slope.

22.00 Ridge, bears NW. and SE.

Desc. 153 ft. over gradual NE. slope.

39.40 Wash, dry, 15 lks. wide, course NW.

Asc. slightly along W. slope.

40.00 True point for ¼ sec. cor. falls on sloping bedrock.

40.20 (20 lks. N.0°02'W. of true point) Set an iron post, 3 ft. long, 1 in. diam., 10 ins. in the ground to bedrock; deposit a stone, marked with cross (+), beside post and raise a mound of stone, 4 ft. base, 2 ft. high, around post, for witness cor. to ¼ sec. cor., with brass cap marked

S31|S32

W C

1929

No bearing trees available.

Asc. 20 ft. along W. slope.

49.00 Spur, slopes NW.

Desc. 80 ft. over NW. slope.

56.20 Wash, 15 lks. wide, course NW.

Asc. 102 ft. over SW. slope.

65.00 Ridge, bears NW. and SE.

Over mountainous land.

Desc. 396 ft. over NE. slope.

80.00 Set an iron post, 3 ft. long, 2 ins. diam., 10 ins. in the ground; deposit a stone, marked with cross (+), at base of post and raise a mound of stone, 5 ft. base, 2 ft. high, around post, for cor. of secs. 29, 30, 31 and 32, with brass cap marked

Survey of Subdivision lines of T.6 S., R.18 E.

Chains

T6SR18E
S30|S29
S31|S32
1929

from which
A mesquite, 10 ins. diam., bears N.15 $\frac{1}{2}$ °E., 160 lks. dist., marked T6S R18E S29 BT.
A cedar, 8 ins. diam., bears N.55 $\frac{1}{2}$ °W., 136 lks. dist., marked T6S R18E S30 BT.
No other bearing trees available.

Land: rolling and mountainous.
Soil: adobe and loam, 3rd rate.
Timber: cedar, hackberry.
Undergrowth: oak, catclaw, mesquite, palo verde, cactus, sage.

- 40.00 East, on random line, bet. secs. 29 and 32. Set temp. $\frac{1}{4}$ sec. cor.
- 80.16 Fall 4 lks. N. of the cor. of secs. 28, 29, 32 and 33. Thence N.89°58'W., on true line, bet. secs. 29 and 32. Over mountainous land; through scattering timber and undergrowth. Desc. 265 ft. over SW. slope.
- 18.00 Wash, 25 lks. wide, in canyon, course NW. Asc. 213 ft. over NE. slope.
- 40.08 Set an iron post, 3 ft. long, 1 in. diam., 10 ins. in the ground; deposit a stone, marked with cross (+) beside post and raise a mound of stone, 5 ft. base, 2 ft. high, around post, for $\frac{1}{4}$ sec. cor., with brass cap marked

S29
S32
1929

No suitable bearing trees available.

- 41.00 Broad, flat ridge, bears NW. and SE. Desc. 192 ft. over gradual SW. slope.
- 67.30 Top of cliff, 25 ft. high, faces W. Desc. 207 ft. over broken SW. slope.
- 74.60 Canyon, water in pools, course NW. Asc. 50 ft. over NE. slope.
- 80.16 The cor. of secs. 29, 30, 31 and 32.

Land: mountainous.
Soil: adobe, sandy, 3rd rate.
Timber: oak, cedar, pinon.
Undergrowth: oak, catclaw, mesquite, palo verde, cactus, mahogany, sage.

- 40.00 West, on random line, bet. secs. 30 and 31. Set temp. $\frac{1}{4}$ sec. cor.
- 86.23 Fall 12 lks. S. of the cor. of secs. 30 and 31, only, on the W. bdy. of the Tp., established under this Group, described in Book "D". Thence S.89°55'E., on true line, bet. secs. 30 and 31.

Survey of Subdivision Lines of T.6 S., R. 18 E.

- Chains
- Over mountainous land; through moderate undergrowth.
Asc. 46 ft. over SW. slope.
- 2.90 Small spur, slopes S.
Desc. 30 ft. over SE. slope.
- 4.90 Ravine, course S.
Asc. 267 ft. over SW. slope.
- 27.00 Spur, slopes S.
Desc. 45 ft. over SE. slope.
- 31.40 Ravine, course S.
Asc. 224 ft. over SW. slope.

- 46.23 Set an iron post, 3 ft. long, 1 in. diam., 14 ins in the ground; deposit a stone, marked with cross (+), at base of post, and raise a mound of stone, 4 ft. base, 1½ ft. high, around post, for ¼ sec. cor., with brass cap marked

1 S30
S31
1929

- Asc. 42 ft. over SW. slope.
- 50.00 Slope changes; along S. slope.
- 63.10 Top of broad, flat ridge, bears NW. and SE.
Enter scattering timber, bears NW. and SE.
Desc. 208 ft. over NE. slope.

- 86.23 The cor. of secs. 29, 30, 31 and 32.

Land: mountainous.
Soil: adobe, sandy, 3rd rate.
Timber: cedar.
Undergrowth: oak, mahogany, mesquite, catclaw, cactus, palo verde, ocotillo, sage.

N.0°03'W., bet. secs. 29 and 30.
Over mountainous land; through scattering timber and undergrowth.

- Desc. 50 ft. over NE. slope.
- 1.20 Wash, 40 lks. wide, course NW.
Asc. 366 ft. over SW. slope.
- 26.00 Spur, slopes SW.
Along W. slope.
- 29.00 Ridge, bears NW. and SE.
Desc. 142 ft. over NE. slope.
- 40.00 True point for ¼ sec. cor. falls in small wash, course NE.
- 40.78 (78 lks. N.0°03'W. of true point) Set an iron post, 3 ft. long, 1 in. diam., 8 ins. in the ground; deposit a stone, marked with cross (+), at base of post and raise a mound of stone, 4½ ft. base, 2 ft. high, around post, for witness cor. to ¼ sec. cor., with brass cap marked

1
S30 | S29
W C
1929

from which
A cedar, 18 ins. diam., bears S.20°E., 187 lks. dist., marked ¼ S29 WC BT.
A cedar, 14 ins. diam., bears S.63½°W., 52 lks. dist., marked ¼ S30 WC BT.

Survey of Subdivision Lines of T.6 S., R.18 E.

- Chains
- 45.10 Desc. 70 ft. over NE. slope.
Wash, 10 lks. wide, course NW. Canyon, course NW.
Asc. 120 ft. over broken SW. slope.
- 55.00 Spur, slopes NW.
Desc. 100 ft. over N. slope.
- 65.00 Ravine, course NW.
Asc. 170 ft. over SW. slope.
- 79.00 Ridge, bears NW. and SE.
- 80.00 Set an iron post, 3 ft. long, 2 ins. diam., 14 ins. in the ground; deposit a stone, marked with cross (+), beside post and raise a mound of stone, 4 ft. base, 1 1/2 ft. high, around post; for cor. of secs. 19, 20, 29 and 30, with brass cap marked.

T6 S R18 E
 S19 | S20
 S30 | S29
 1929

No suitable bearing trees available.

Land: rolling mountainous.
 Soil: rocky, adobe, sandy, 3rd rate.
 Timber: cedar.
 Undergrowth: oak, mahogany, catclaw, mesquite, cactus, ocotillo, sage, palo verde.

- 40.00 S. 89° 58' E., on random line, bet. secs. 20 and 29.
Set temp. 1/4 sec. cor.
- 80.10 Fall 19 lks. S. of the cor. of secs. 20, 21, 28 and 29.
Thence
S. 89° 54' W., on true line, bet. secs. 20 and 29.
Over rolling land; through scattering timber and brush.
Desc. 25 ft. over gradual SW. slope.
- 2.60 Wash, 20 lks. wide, course NW.
Asc. 140 ft. over NE. slope.
- 20.00 Ridge, bears NW. and SE.
Desc. 145 ft. over SW. slope.
- 29.10 Wash, 40 lks. wide, course NW.
Asc. 145 ft. over NE. slope.
- 40.05 Set an iron post, 3 ft. long, 1 in. diam., 6 ins. in the ground; deposit a stone, marked with cross (+), beside post and raise a mound of stone, 5 ft. base, 2 ft. high, around post; for 1/4 sec. cor., with brass cap marked

S20
 S29
 1929

No bearing trees available.

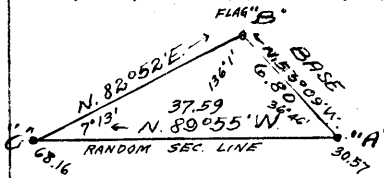
- 42.30 Asc. 15 ft. over NE. slope.
Ridge, bears NW. and SE.
Desc. 135 ft. over SW. slope.
- 53.30 Wash, 20 lks. wide, course NW.
Asc. 143 ft. over NW. slope.
- 68.40 Spur, slopes NW.
Desc. 110 ft. over W. slope.
- 74.80 Ravine, course NW.
Asc. 61 ft. over NE. slope.
- 80.10 The cor. of secs. 19, 20, 29 and 30.

Survey of Subdivision Lines of T.6 S., R.18 E.

Chains

Land: rolling.
Soil: rocky, sandy, adobe, 3rd rate.
Timber: cedar.
Undergrowth: oak, mahogany, catclaw, mesquite, cactus, palo verde, ocotillo, sage..

30.57 N. 89°55' W., on random line, bet. secs. 19 and 30. to obtain measurement across canyon forward, triangulate as described as follows:

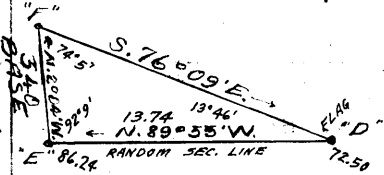


Designate this point "A". Measure a base 6.80 chs. N. 53°09' W. to flag "B". From a point, "C", forward on line, the flag "B" bears N. 82°52' E. Longer base impracticable. Bearings checked by deflection of angles. Vertical angle "A" to "C" = +2° Dist. triangulated = 37.59 chs.

40.00 Temp 1/4 sec. cor. not established, point being very difficult of access.

68.16 Triangulation point "C". Continue measurement by chaining.

72.50 Discontinue chaining. To obtain measurement across cliffs,



triangulate as described as follows: Designate this point "D" and set flag. From a point "E", ahead on line, 12 lks. South of the cor. of secs. 19 and 30, only, measure a base 3.40 chs. N. 2°04' W. to point "F". From "F", the flag "D" bears S. 76°09' E. Longer base impracticable. Vertical angle "D" to "E" = -15 1/4°. Distance triangulated = 13.74 chs.

86.24 Triangulation point "E". Fall 12 lks. S. of the cor. of secs. 19 and 30; only, on the W. bdy. of the Tp., established under this Group, described in Book "D".

Thence S. 89°50' E., on true line, bet. secs. 19 and 30. Over mountainous land; through scattering timber and undergrowth. Measurement by triangulation as described. Asc. 238 ft. over cliffs, face NW.

13.74 Triangulation point "D" bears 10 lks. S. Continue line and measurement by chaining. Top of cliffs, face NW. Asc. 42 ft. over W. slope.

18.08 Triangulation point "C" bears 9 lks. S. Discontinue measurement by chaining.

18.10 Small spur, slopes NW. Desc. about 150 ft. over broken NW. slope.

33.00 (Approx.) Gulch, course NW.

46.24 True point for 1/4 sec. cor. falls in area very difficult of access. There is no place within limits for witness corners where a corner can be securely established. At a point 6.30 chs. N. 62°42' E. of true point, Set an iron post, 3 ft. long, 1 in. diam., 26 ins. in the ground, for witness cor. to 1/4 sec. cor., with brass cap marked

1/4 S19
WC S30
1929

from which

- A cedar, 6 ins. diam., bears S. 78 1/2° E., 50 lks. dist., marked 1/4 S19 WC BT.
- A cedar, 6 ins. diam., bears N. 36° W., 13 lks. dist., marked 1/4 S19 WC BT.

Survey of Subdivision Lines of T.6 S., R.18 E.

Chains

- Over very broken cliffs.
- 50.00 (Approx.) Wash, 40 lks. wide, in canyon, course NW.
- 55.00 Top of rim of cliffs, 200 ft. high, bears NW. and SE., approximately 240 ft. above wash.
- 55.67 Triangulation point "A" bears 4 lks. S. Line and measurement by chaining.
- Asc. 200 ft. over broken SW. slope.
- 84.70 Ridge, bears NW. and SE.
- Desc. 20-ft. over NE. slope.
- 86.24 The cor. of secs. 19,20;29 and 30.

Land: mountainous.
 Soil: rocky, adobe, loam, 3rd rate.
 Timber: cedar, pinon,
 Undergrowth: oak, mahogany, mesquite, catclaw, cactus,
 sage, greasewood, ocotillo.

N.0°03'W., bet. secs. 19 and 20.
 Over rolling-mountainous land; through desert growth.

- Desc. 126 ft. over NE. slope.
- 13.50 Wash, 10 lks. wide, course NW.
- Desc. 35 ft. along W. slope.
- 19.30 Same wash, 10 lks. wide, course NE.
- Desc. 97 ft. over general N. slope.
- 39.15 (85 lks. S.0°03'E. of true point) Set an iron post, 3 ft. long, 1 in. diam., 14 ins. in the ground, supported by a mound of stone, 3 1/2 ft. base, 1 1/2 ft. high, for witness cor. to 1/4 sec. cor., with brass cap marked

1/4
 WC
 S19 | S20
 1929

from which
 A cedar, 12 ins. diam., bears S.74 1/2°E., 173 lks. dist., marked 1/4 S20 WC BT.
 A scrub oak, 6 ins. diam., bears S.87°W., 119 lks. dist., marked 1/4 S19 WC BT.

- 40.00 True point for 1/4 sec. cor: falls in wash.
- 40.20 Wash, 20 lks. wide, course NW. Gulch, course NW.
- Asc. 105 ft. over SW. slope.
- 47.20 Broad flat spur, slopes NW.
- Desc. 157 ft. over N. slope.
- 62.40 Wash, 35 lks. wide, course NW. Canyon, course NW.
- Asc. 30 ft. over SW. slope.
- 66.00 Over rolling mesa land.
- 80.00 Set an iron post, 3 ft. long, 2 ins. diam., 30 ins. in the ground, for cor. of secs. 17,18,19 and 20, with brass cap marked

T6SR18E
 S18 | S17
 S19 | S20
 1929

No bearing trees available. Dig pits, 18 x 18 x 12 ins., one each NE., SE., SW. and NW. of cor.

Chains

Land: rolling-mountainous.
 Soil: rocky, adobe, 3rd rate.
 Timber: cedar.
 Undergrowth: oak, mesquite, catclaw, cactus, mahogany,
 ocotillo, palo verde, sage.

- 40.00 N. 89° 54' E., on random line, bet. secs. 17 and 20.
Set temp. $\frac{1}{4}$ sec. cor.
- 80.10 Fall 4 lks. S. of the cor. of secs. 16, 17, 20 and 21.
Thence
S. 89° 52' W., on true line, bet. secs. 17 and 20.
Over rolling land; through scattering timber and brush.
Asc. 30 ft. over E. slope.
- 1.50 Ridge, bears NW. and S.
Desc. 70 ft. over W. slope.
- 6.00 Head of wash, course SW.
Along S. slope.
- 13.00 Small spur, slopes SW.
Desc. 40 ft. over SW. slope.
- 19.90 Cliff, 20 ft. high, bears NW. and SE.
Desc. 80 ft. over gradual SW. slope.
- 35:00 Wash, 25 lks. wide, course NW.
Asc. 48 ft. over NE. slope.
- 40.05 Set an iron post, 3 ft. long, 1 in. diam.; 6 ins. in the
ground to bedrock; deposit a stone, marked with cross
(+), at base of post and raise a mound of stone, 4 $\frac{1}{2}$
ft. base, 2 ft. high, around post, for $\frac{1}{4}$ sec. cor.,
with brass cap marked

S17
 $\frac{1}{4}$ S20
 1929

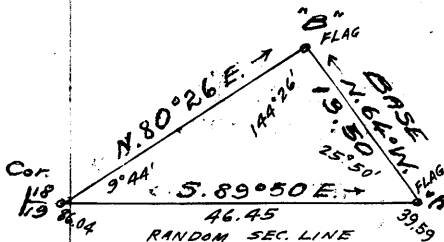
No bearing trees available.

- 43.50 Small rocky spur, slopes NW.
Desc. 50 ft. over W. slope.
- 47.10 Gulch, course NW.
Asc. 100 ft. over gradual NE. slope.
- 62.00 Spur, slopes NW.
Desc. 50 ft. over gradual NW. slope.
- 67.90 Wash, 15 lks. wide, course NW.
Asc. 250 ft. along N. slope.
- 80.10 The cor. of secs. 17, 18, 19 and 20.

Land: rolling.
 Soil: rocky, adobe, sandy, 3rd rate.
 Timber: cedar.
 Undergrowth: oak, mahogany, mesquite, catclaw, cactus,
 palo verde, sage.

- 39.59 N. 89° 50' W. on random line, bet. secs. 18 and 19.
Set temp. witness cor. for $\frac{1}{4}$ sec. cor.

To obtain measurement across rugged land forward,
 triangulate as described as follows:
 Designate this point "A", set flag and
 measure a base 13.50 chs. N. 64° 00' W.
 to flag "B". From the cor. of secs.
 18 and 19, only, flag "A" bears
 S: 89° 50' E. and flag "B" bears N. 80°
 26' E.



Vertical angle "A" to cor. = -8 $\frac{1}{2}$ °
 Dist. triangulated = 46.45 chs.

Survey of Subdivision Lines of T.6 S., R.18 E.

Chains
 86.04 Intersect the cor. of secs. 18 and 19, only, on the W. bdy. of the Tp., established under this Group, described in Book "D".
 Thence
 S.89°50'E., on true line, bet. secs. 18 and 19.
 Over mountainous land; through scattering timber and undergrowth;
 . Measurement by triangulation as described on random line.
 Asc. about 50 ft. along N. slope.
 20.00 (Approx.) Rocky spur, slopes NE.
 Desc. about 150 ft. over NE. slope.
 38.50 Canyon, course NW.
 - Asc. about 550 ft. over broken cliffs.
 46.04 True point for 1/4 sec. cor. falls on sloping ledge.
 46.45 (41 lks. S.89°50'E. of true point) Set an iron post, 3 ft. long, 1 in. diam., 20 ins. in the ground, supported by a mound of stone, 2 ft. base, 1 ft. high, for witness cor. to 1/4 sec. cor., with brass cap marked

S18
 WC 1/4 S19
 1929

from which
 A cedar, 6 ins. diam., bears N.51 1/4°E., 80 lks. dist., marked 1/4 S18 WC BT.
 A pinon, 10 ins. diam., bears N.70 1/4°W., 133 lks. dist., marked 1/4 S18 WC BT.

Over rolling land.
 Asc. 100 ft. over SW. slope.

86.04 The cor. of secs. 17, 18, 19 and 20.
 Land: rolling and mountainous.
 Soil: adobe and loam, 2nd rate.
 Timber: cedar, pinon.
 Undergrowth: oak, mahogany, catclaw, cactus, mesquite, acotillo, palo verde, sage.

N.0°03'W., bet. secs. 17 and 18.
 Over rolling land; through scattering timber and brush.
 Desc. 35 ft. over N. slope.
 5.50 Wash, 20 lks. wide, course NW.
 Asc. slightly over mesa land.
 17.00 Slope changes; desc. 153 ft. over N. slope.
 23.00 Wash, 30 lks. wide, in canyon, course NW.
 Asc. 142 ft. over steep S. slope.
 27.40 Rim of canyon; over rolling mesa land.
 40.00 True point for 1/4 sec. cor. falls in small wash, course NW.
 40.85 (85 lks. N.0°03'W. of true point) Set an iron post, 3 ft. long, 1 in. diam., 30 ins. in the ground; deposit a stone, marked with cross (+) beside post; for witness cor. to 1/4 sec. cor., with brass cap marked

1
 S18 | S17
 WC
 1929

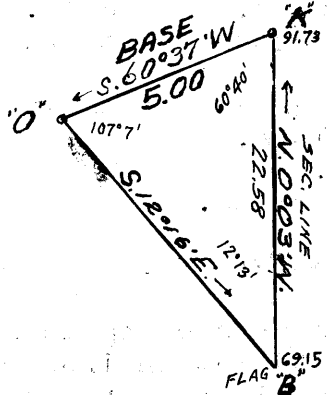
from which
 A cedar, 11 ins. diam., bears N.62°W., 45 lks. dist., marked 1/4 S18 WC BT.
 No other trees available. Raise a mound of stone, 3 ft. base, 2 ft. high, W. of cor.

Survey of Subdivision Lines of T.6 S., R.18 E.

Chains

61.30 Desc. 108 ft. over broken W. slope on W. edge of mesa. Wash, 15 lks. wide, in ravine, course NW.
Asc. 40 ft. along W. slope.

69.15 To obtain measurement over cliffs, triangulate as described as follows:

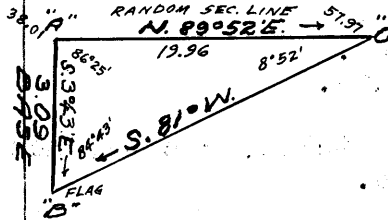


Designate this point "B" and set flag. From a point "K", forward on line, measure a base, 5.00 chs. S.60°37'W. to point "O", from which flag "B" bears S.12°16'E.
All bearings checked by deflection of angles.
Vertical angle "B" to "K" = -17 1/2°
Station of point "B"----69.15 chs.
Dist triangulated-----22.58 "
Station of point "K"----91.73 "
By return measurement---11.73 "

69.20 Cliff, 450 ft. high, faces NW.
Desc. about 700 ft. over cliff and N. slope.

80.00 True point for cor. of secs. 7, 8, 17 and 18, falls on sloping ledge, unsafe position for cor. Witness cor. established 70 lks. N.0°03'W. hereinafter described. Land: rolling and mountainous. Soil: adobe and loam, 2nd rate. Timber: cedar, pinon. Undergrowth: oak, mahogany, catclaw, mesquite, cactus, ocotillo, greasewood, palo verde.

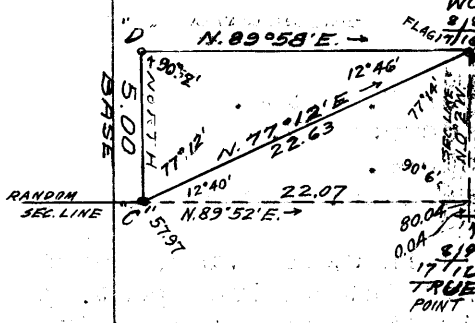
38.01 N.89°52'E., on random line, bet. secs. 8 and 17. To obtain measurement across cliffs, triangulate as described as follows:



Designate this point "A", from which measure a base S.3°43'E., 3.09 chs. to flag "B". From a point "C", ahead on line, flag "B" bears S.81°00'W. Bearings checked by repetition of angles.
Dist. triangulated = 19.96 chs.

40.00 Set temp. 1/4 sec. cor. Discontinue chaining.
57.97 Triangulation point "C".

To obtain measurement across cliffs forward, triangulate as described as follows:



The witness cor. to cor. of secs. 8, 9, 16 and 17 (5.00 chs. N.0°02'W.) bears N.77°12'E. Measure a base 5.00 chs. North to point "D", from which the witness cor. bears N.89°58'E. Bearings checked by repetition of angles.
Dist. triangulated = 22.63 chs. ("C" to witness cor.)
By computation, into terms of N.89°52'E.,

80.04 Fall 4 lks. N. of true point for cor. of secs. 8, 9, 16 & 17. Thence

S.89°54'W., on true line, bet. secs. 8 and 17. Over rough mountainous land; through scattering timber and moderate undergrowth. By traverse and triangulation as described above. Along very broken S. slope.

22.07 Triangulation point "C" bears 3 lks. N. Top of rim of cliffs, faces W. Desc. 600 ft. over cliffs and W. slope.

40.02 True point for 1/4 sec. cor. falls in rocky wash, course S.

Survey of Subdivision Lines of T.6 S., R.18 E.

Chains
42.03 (2.01 Chs, S. 89° 54' W. of true point) Set an iron post, 3 ft. long, 1 in. diam., 26 ins. in the ground, for witness cor. to 1/4 sec. cor., with brass cap marked

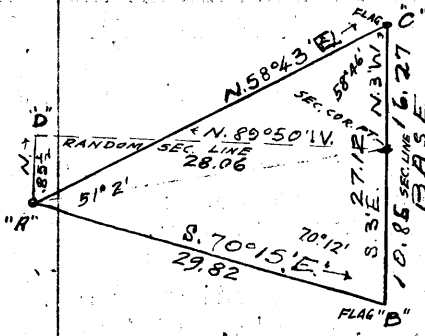
1/4 S8 WC
1/4 S17
1929

from which
A mesquite, 4 ins. diam., bears N. 68 1/2° E., 18 lks. dist., marked 1/4 S8 WC BT.
A mesquite, 12 ins. diam., bears S. 2° E., 63 lks. dist., marked 1/4 S17 WC BT.

48.00 Triangulation point "A" bears 2 lks. N. Desc. about 50 ft. along S. slope.
48.00 Aravaipa Creek, 25 lks. wide, 8 ins. deep, course N. Asc. about 200 ft. along rocky N. slope.
77.00 (Approx.) Rocky spur, slopes N. Desc. about 150 ft. over rocky NW. slope.
80.04 True point for cor. of secs. 7, 8, 17 and 18.

Land: mountainous.
Soil: adobe and loam, 3rd rate.
Timber: cedar, pinon, oak, ash, sycamore, walnut.
Undergrowth: oak, catclaw, mesquite, mahogany, cactus, palo verde, greasewood, ocotillo.

N. 89° 50' W., on random line, bet. secs. 7 and 18. To obtain measurement over cliffs triangulate as traversed as follows:

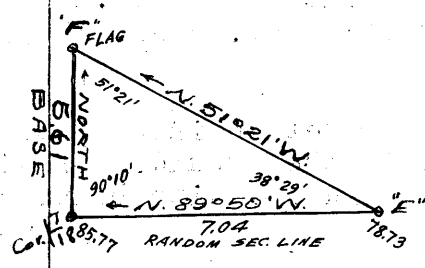


From a point "A", forward, a flag "B", 10.85 chs. S. 0° 03' E. from true point for cor. of secs. 7, 8, 17 and 18 bears S. 70° 15' E. and a flag "C", 16.27 chs. N. 0° 03' W. from same sec. cor. point bears N. 58° 43' E. Dist. triangulated (B-A) = 29.82 chs. N. 70° 15' W. Computed dist. (A-D) = 29.855 chs. From point "A", measure 85 1/2 lks. North to random line, at point "D".

28.06 Traverse point "D". Continue line and measurement by chaining.

40.00 Set temp. sec. cor.

78.73 To obtain measurement over cliff, triangulate as described as follows:



Designate this point: "E", from which the cor. of secs. 7 and 18, only, bears N. 89° 50' W. and a flag, "F", 5.61 chs. North of cor. bears N. 51° 21' W. Bearings checked by reading included angles. Distance triangulated--- 7.04 chs. Station of Point "E"--- 78.73 " Length of line----- 85.77 "

85.77 Intersect the cor. of secs. 7 and 18, on the W. bdy. of the Tp., established under this Group, described in Book "D".

Thence S. 89° 50' E., on true line, bet. secs. 7 and 18. Over mountainous land; through scattering timber and undergrowth. Desc. about 150 ft. over rocky E. slope.

5.30 Canyon, course SW. Asc. about 440 ft. over cliffs, facing W.

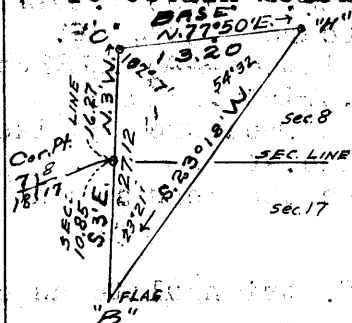
7.04 Triangulation point "E" on top of cliff, 350 ft. high, bears N. and S. Continue line and measurement by chaining.

- Chains
- 45.30 Over rolling mesa.
Wash, 30 lks. wide, course S.
- 45.77 Set an iron post, 3 ft. long, 1 in. diam., 30 ins. in the ground, for $\frac{1}{4}$ sec. cor., with brass cap marked
- $\frac{1}{4}$ S7
 $\frac{1}{4}$ S18
 1929
- No bearing trees available. Raise a mound of stone, 4 $\frac{1}{2}$ ft. base, 2 $\frac{1}{2}$ ft. high, N. of cor.
- 57.71 Traverse point "D" to Discontinue "C". Discontinue measurement by chaining.
- 58.70 (Approx.) Rim of cliffs, 450 ft. high, bears NE. and SW. Desc. about 760 ft. over SE. slope.
- 78.50 (Approx.) Wash, 40 lks. wide, in canyon, course S. Asc. about 150 ft. over steep W. slope.
- 81.00 (Approx.) Spur, slopes SW. Desc. about 150 ft. over steep SE. slope.
- 82.20 (Approx.) Aravaipa Creek, 35 lks. wide, 6 ins. deep, course SW. Asc. about 70 ft.
- 85.77 The true point for cor. of secs. 7, 8, 17 and 18.

Land: mountainous.
 Soil: rocky, loam, 3rd rate.
 Timber: pinon, cedar.
 Undergrowth: oak, mahogany, catclaw, mesquite, cactus, greasewood, ocotillo, palo verde.

From true point for cor. of secs. 7, 8, 17 and 18, N.0°03'W., bet. secs. 7 and 8. Over mountainous land; through scattering timber and undergrowth.

To obtain measurement over cliff forward, triangulate as described as follows:



From a point "C", forward on line, measure a base 13.20 chains N.77°50'E. to point "H", from which flag "B" (10.85 chs. S.0°03'E. of true point for cor. of secs. 7, 8, 17 and 18) bears S.23°18'W. Distance triangulated---27.12 chs. "B" South of cor.-----10.85 " Station of Point "C" 16.27 "

Using return measurement of line bet. secs. 17 and 18, for topography, Desc. 30 ft. over N. slope.

- 0.70 (30 lks. N.0°03'W. of true point) Set an iron post, 3 ft. long, 2 ins. diam., 28 ins. in the ground, for witness cor. to cor. of secs. 7, 8, 17 and 18, with brass cap marked

T6SR18E
 $\frac{1}{4}$ S7 | $\frac{1}{4}$ S8
 S18 | S17
 W C
 1929

from which
 An ash, 14 ins. diam., bears N.22°W., 45 lks. dist., marked T6S R18E S7 WC.BT.

Survey of Subdivision Lines of T.6 S., R.18 E.

Chains

An ash, 16 ins. diam., bears N. $64\frac{1}{2}^{\circ}$ W., 152 lks. dist., marked T6S R18E S7 WC BT.

No other trees available. Raise a mound of stone, 4 ft. base, 2 ft. high, W. of cor.

- 3.16 Aravaipa Creek, 35 lks. wide, 6 ins. deep, course SW.
Asc. 317 ft. over steep S. slope.
- 11.73 Triangulation point "K". Discontinue chaining.
- 12.10 Base of cliffs, face S.
- 15.20 Top of rim of cliffs, 430 ft. high, faces S.
- 16.27 Triangulation point "C". Line and measurement by chaining.
Over rolling land.
Desc. 62 ft. over NW. slope.
- 28.30 Wash, 10 lks. wide, course SW.
Asc. 60 ft. over S. slope.
- 35.00 Broad flat spur, slopes SW.
Desc. 34 ft. over N. slope.
- 40.00 Set an iron post, 3 ft. long, 1 in. diam., 8 ins. in the ground, supported by a mound of stone, $4\frac{1}{2}$ ft. base, 2 ft. high, for $\frac{1}{4}$ sec. cor., with brass cap marked

$\frac{1}{4}$
S7 | S8
1929

from which

A cedar, 20 ins. diam., bears East 118 lks. dist., marked $\frac{1}{4}$ S8 BT.

A cedar, 16 ins. diam., bears S. $39\frac{1}{2}^{\circ}$ E., 65 lks. dist., marked $\frac{1}{4}$ S8 BT.

- Desc. 82 ft. over N. slope.
- 46.40 Trail, bears E. and W.
Desc. 20 ft. over NW. slope.
- 52.00 Gulch, course SW.
Asc. 56 ft. over S. slope.
- 55.50 Small spur, slopes SW.
Desc. $7\frac{3}{4}$ ft. over NW. slope.
- 64.40 Wash, 30 lks. wide, course SW.
- 68.10 Wash, 15 lks. wide, course SE.
Asc. 91 ft. along W. slope.
- 80.00 Set an iron post, 3 ft. long, 2 ins. diam., 3 ins. in the ground to bedrock; deposit a stone, marked with cross (+) at base of post and raise a mound of stone, 6 ft. base, $2\frac{1}{2}$ ft. high; around post, for cor. of secs. 5, 6, 7 and 8, with brass cap marked

T6SR18E
S6 | S5

S7 | S8
1929

No bearing trees available.

Land: rolling and mountainous.

Soil: rocky and loam, 3rd rate.

Timber: cedar.

Undergrowth: oak, mahogany, catclaw, mesquite, cactus, palo verde, greasewood.

- 40.00 N. $89^{\circ} 54'$ E., on random line, bet. secs. 5 and 8.
Set temp. $\frac{1}{4}$ sec. cor.

Survey of Subdivision Lines of T.6 S., R.18 E.

Chains

- 80.14 Intersect the cor. of secs. 4, 5, 8 and 9.
Thence
S. 89° 54' W., on true line, bet. secs. 5 and 8.
Over rolling-mountainous land; through scattering timber
and undergrowth.
Asc. 20 ft. along N. slope.
6.40 Ridge, bears NW. and SE. Trail, bears NW. and SE.
Desc. 61 ft. over W. slope.
9.60 Head of wash, course SW.
Along S. slope.
13.00 Spur, slopes SW.
Desc. 150 ft. over W. slope.
23.00 Wash, 20 lks. wide, course S. Canyon, course S.
Asc. 155 ft. over E. slope.
29.50 Ridge, bears N. and S.
Desc. 94 ft. over W. slope.
37.90 Wash, 10 lks. wide, course SW.
Asc. W. slope.
40.07 Set an iron post, 3 ft. long, 1 in. diam., 12 ins. in the
ground; deposit a stone, marked with cross (+) beside
post and raise a mound of stone, 4 ft. base, 2 ft.
high, around post, for $\frac{1}{4}$ sec. cor., with brass cap
marked
- $$\begin{array}{r} \frac{1}{4} 85 \\ \frac{1}{4} 88 \\ \hline 1929 \end{array}$$
- No bearing trees available.
- Desc. 31 ft. over SW. slope.
41.70 Same wash, course NW.
Asc. 73 ft. over SE. slope. (to spur).
43.00 Same wash, course SW.
52.30 Spur, slopes SW.
Desc. 106 ft. over W. slope.
56.60 Head of draw, course SW.
Desc. 134 ft. over SW. slope.
71.70 Wash, 30 lks. wide, course SW.
Asc. 87 ft. over SE. slope.
75.60 Spur, slopes SW.
Desc. 43 ft. over W. slope.
- 80.14 The cor. of secs. 5, 6, 7 and 8.
Land: rolling-mountainous.
Soil: adobe and loam, 3rd rate.
Timber: cedar.
Undergrowth: oak, mesquite, catclaw, cactus.
-
- N. 89° 50' W., on random line, bet. secs. 6 and 7.
40.00 Set temp. $\frac{1}{4}$ sec. cor.
85.84 Intersect the cor. of secs. 6 and 7, only, on the W. bdy.
of the Tp., established under this Group, described
in Book "D".
Thence
S. 89° 50' E., on true line, bet. secs. 6 and 7.
Over mountainous land; through scattering timber and
undergrowth.
Desc. 80 ft. over E. slope.
1.00 Wash, 8 lks. wide, course SW.
Asc. 240 ft. over W. slope.
9.00 Spur, slopes SW.
Desc. 157 ft. over E. slope.

BOOK 2074

Survey of Subdivision Lines of T.6 S., R.18 E.

Chains

- 18.30 Wash, 15 lks. wide, course S.
Asc. 83 ft. over SW. slope.
- 23.80 Spur, slopes S.
Desc. 48 ft. over E. slope.
- 28.10 Trail, bears NE. and SW.
Desc. 20 ft. over SE. slope.
- 29.80 Wash, 25 lks. wide, course SW.
Asc. 70 ft. over W. slope.
- 42.50 Spur, slopes NW.
Along N. slope.
- 45.84 Set an iron post, 3 ft. long, 1 in. diam., 8 ins. in the ground, supported by a mound of stone, 4 ft. base, 2 ft. high, for $\frac{1}{4}$ sec. cor., with brass cap marked

$\frac{1}{4}$ S6
 $\frac{1}{4}$ S7
 1929

from which
 A mesquite, 5 ins. diam., bears S.37°E., 99 lks. dist., marked $\frac{1}{4}$ S6 BT.
 A cedar, 6 ins. diam., bears N.47 $\frac{3}{4}$ °W., 191 lks. dist., marked $\frac{1}{4}$ S7 BT.

- Asc. 16 ft. along N. slope.
- 50.80 Ridge; bears N. and SW.
Desc. 112 ft. over E. slope.
- 56.10 Head of ravine, course NE.
Desc. 87 ft. over NE. slope.
- 66.90 Wash, 15 lks. wide, course S.
Asc. 194 ft. over SW. slope.
- 77.60 Spur, slopes S.
Desc. 142 ft. over E. slope.
- 85.60 Wash, 10 lks. wide, course SW.
- 85.84 The cor. of secs. 5, 6, 7, and 8.

Land: mountainous.
 Soil: sandy, rocky, adobe, loam, 3rd rate.
 Timber: cedar.
 Undergrowth: oak, mesquite, catclaw, cactus.

N.0°03'W., on true line, bet. secs. 5 and 6.
 Over mountainous land; through scattering timber and undergrowth.

- Asc. 140 ft. over SW. slope.
- 6.90 Spur, slopes SE.
Asc. 79 ft. over SE. slope.
- 15.30 Spur, slopes SE.
Desc. 112 ft. over NE. slope.
- 19.70 Head of wash, course SE.
Asc. 97 ft. over SE. slope.
- 28.50 Ridge, bears NE. and SW.
Desc. 80 ft. along W. slope.
- 37.57 (2.43 chs. S.0°03'E. of true point.) Set an iron post, 3 ft. long, 1 in. diam., 10 ins. in the ground, supported by a mound of stone, 4 ft. base, 2 ft. high, for witness cor. to $\frac{1}{4}$ sec. cor., with brass cap marked

$\frac{1}{4}$
 W/C
 S6|S5
 1929

from which
 A hackberry, 4 ins. diam., bears N.42°E., 26 lks.

Survey of Subdivision Lines of T.6 S., R.18 E.

Chains

dist., marked $\frac{1}{4}$ S5 WC BT.
 A scrub oak, 6 ins. diam., bears N.23 $\frac{1}{4}$ °W., 32 lks.
 dist., marked $\frac{1}{4}$ S6 WC BT.

Desc. 20 ft. along W. slope.
 39.50 Wash, 20 lks. wide, course SW.
 40.00 True point for $\frac{1}{4}$ sec. cor. falls on face of cliff, 30 ft.
 high, faces S.
 Asc. 293 ft. over broken S. slope.
 50.70 Ridge, bears NE. and SW.
 Desc. 226 ft. over NW. slope.
 59.90 Wash, 15 lks. wide, course SW.
 Asc. 121 ft. over S. slope.
 69.10 Ridge, trail on top, bears NE. and SW.
 Desc. 60 ft. over NW. slope.
 73.00 Head of draw, course W. for 5 chs., thence NW.

73.55 Intersect the 1st. ST. Par., S. at a point 4.09 chs. East
 of the Standard cor. of secs. 31 and 32, which is an
 iron post, 2 ins. diam., projecting 8 ins. above
 ground, firmly set, properly marked on brass cap,
 dated 1924, unwitnessed.

At point of intersection,
 Set an iron post, 3 ft. long, 2 ins. diam., 6 ins. in
 the ground; deposit a stone, marked with cross (+) at
 base of post and raise a mound of stone, 5 ft. base,
 2 ft. high, around post, for closing cor. of secs. 5
 and 6, with brass cap marked

T5SR18E

S32

S6|S5

C C

T6S

1929

No bearing trees available.

Land: mountainous.

Soil: adobe and loam, 3rd rate.

Timber: cedar, pinon.

Undergrowth: oak, mesquite, catclaw, cactus.

The continued satisfactory adjustment of the solars
 during the survey of this township is indicated from
 tests described in Book "F".

GENERAL DESCRIPTION

Land is gently rolling except for canyons of Aravaipa
 Creek and its main branches.

Soil is everywhere shallow and rocky.

Timber is cedar and pinon with sycamore, walnut, ash and
 cottonwood in canyons.

Undergrowth is usual Southern Arizona growth of 3000 elev.

Grass grows well where soil is not too sparse.

A homesteader in sec. 14 and grazing camps in secs. 9 and
 34 are the only resident points.

No mineral was observed.

Water is sufficient for grazing purposes; with a fair
 permanent creek in Aravaipa Canyon.

BOOK 302

4-680
(August, 1926)

FIELD ASSISTANTS.
to

Theodore Vander Meer, U.S. Transitman

NAMES.	CAPACITY.
Owen B. Wright	1st. Chainman
John Boggs	2nd Chainman
Earl Endicott	Flagman
Sid G. Sheard	Moundman

CERTIFICATE OF UNITED STATES SURVEYOR.

I, Theodore Vander Meer, U.S. Transitman, hereby certify upon honor that, in pursuance of supplemental special instructions received from the District Cadastral Engineer, for Group 141, Arizona bearing date of the 27th day of September, 1928, I have well, faithfully, and truly in my own proper person, and in strict conformity with said instructions, the Manual of Surveying Instructions, and the laws of the United States, surveyed all those parts or portions of the Subdivision Lines of

Township 6 South, Range 18 East

of the Gila and Salt

River Base and Meridian, in the State of Arizona, which are represented in and by diagram on page 1, hereof the foregoing field notes as having been executed by me, and under my direction; and that all the corners of said survey have been established and perpetuated in strict accordance with the Manual of Surveying Instructions, and the special written instructions of the District Cadastral Engineer, for Group 141, Arizona and in the specific manner described in the field notes, and that the foregoing are the original field notes of such survey.

Theodore Vander Meer U.S. Transitman

Place: Phoenix, Arizona.

Date: May 15, 1929.

APPROVAL.

Office of U. S. Supervisor of Surveys,

, 19

The foregoing field notes of the survey of

executed by

under his special instructions dated, 19, having been critically examined, and the necessary corrections and explanations made, the said field notes, and the surveys they describe, are hereby approved.

U. S. Supervisor of Surveys.

I certify that the foregoing transcript of the field notes of the above-described surveys in

, has been correctly copied from the original notes on file in this office.

U. S. Supervisor of Surveys.

4-680

ED 111 11 1914

FIELD ASSISTANTS.
to

William E. Hiester, U.S. Surveyor

NAMES.	CAPACITY.
Fred G. Pender	First Chainman
Charles McDonald	Second Chainman
D.H. McKechnie	Moundman
Tom Sheard	Flagman

CERTIFICATE OF UNITED STATES SURVEYOR.

BOOK 8874

I, William E. Hiester, U. S. Surveyor, hereby certify upon honor that, in pursuance supplemental of special instructions received from the District Cadastral Engineer, for Group 141, Arizona bearing date of the 27th day of September, 1928, I have well, faithfully, and truly in my own proper person, and in strict conformity with said instructions, the Manual of Surveying Instructions, and the laws of the United States, surveyed all those parts or portions of

the Subdivision Lines of

Township 6 South, Range 18 East of the Gila and Salt River Base and Meridian, in the State of Arizona, which are represented in and by diagram on page 1 hereof the foregoing field notes as having been executed by me, and under my direction; and that all the corners of said survey have been established and perpetuated in strict accordance with the Manual of Surveying Instructions, and the special written instructions of the District Cadastral Engineer, for Group 141, Arizona and in the specific manner described in the field notes, and that the foregoing are the original field notes of such survey.

Place: San Francisco, Calif. Date: June 4, 1929.

William E. Hiester U. S. Surveyor.

APPROVAL.

OFFICE OF U.S. SUPERVISOR OF SURVEYS,

Denver, Colo., December 7, 1929.

The foregoing field notes of the survey of the Subdivision Lines of

Township 6 South, Range 18 East

of the Gila and Salt River Base and Meridian, in the State of Arizona

executed by William E. Hiester, U.S. Surveyor and Theodore Vander Meer, U.S. Transitman supplemental under special instructions dated September 27, 1928, for Group 141 Arizona, having been critically examined, and the necessary corrections and explanations made, the said field notes, and the surveys they describe, are hereby approved.

U.S. Supervisor of Surveys

I certify that the foregoing transcript of the field notes of the above described surveys in, has been correctly copied from the original notes on file in this office.