

FIELD NOTES

OF THE SURVEY OF THE

West Boundary

The North Boundary

and

The Subdivision Lines

of

TOWNSHIP 5 SOUTH, RANGE 20 EAST

Of the Gila and Salt River Base and Meridian,

In the State of ARIZONA

EXECUTED BY

William E. Hiester, U.S. Surveyor

and

Theodore Vander Meer, U.S. Transitman

In the capacity of U. S. Surveyors, under Special Instructions dated June 23, 1926, issued by the District Cadastral Engineer to govern surveys included in Group No. 141, Arizona, which were approved by the Commissioner of the General Land Office, July 13, 1926, and Assignment Instructions dated Nov. 17, 1928.

Survey commenced January 21, 1929.

Survey completed March 21, 1929.

3875

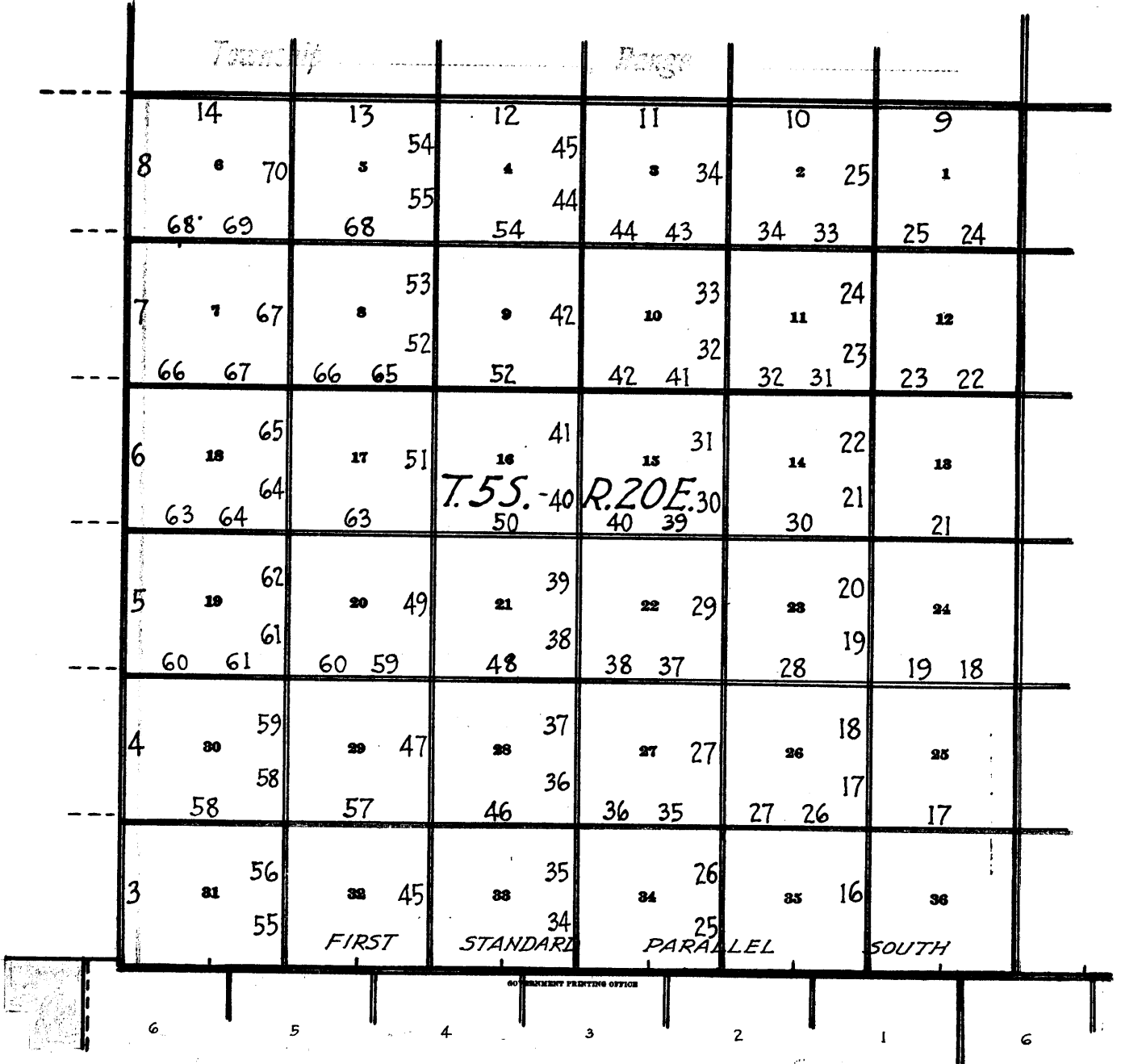
3875

142
1A

Book "F"
Group 141 Arizona

BOOK 3875

INDEX DIAGRAM.



- Surveyed under this group.
- Resurveyed under this group.
- Accepted surveys, retracements or resurveys.
- Unsurveyed.
- Areas surveyed as per accepted plats on file.

Book "F"
 Group 141, Arizona
 TOWNSHIP 5 SOUTH, RANGE 20 EAST
 Date Diagram
 1929

	2-6	3-6	3-6	3-5	3-5	3-2	3-2					
2-6	6	3-18	5	3-19	4	3-9	3	3-9	2	3-21	1	
1-28	7	3-18	3-19	3-16, 3-9	3-9	3-20	3-21	10	3-7	11	3-20	12
1-28	18	1-29	3-17	3-15	3-15	3-11	3-12	15	3-7	14	3-12	13
1-28	19	1-29	2-5	2-4, 2-2	3-2	3-6	3-12	20	3-2	23	3-5	24
1-21	30	1-21	1-26	1-30	1-31	3-4	3-14	27	1-30	26	3-1	25
1-21	31	1-21	1-23	1-29	1-31	2-1	2-1	34	1-31	35	2-1	36
			1st	Std.	Par.	S.						

Surveyed under this group. Notes & dates in Book "C"

Surveyed under this group. Notes & dates in Book "B"

SURVEYED by Wm.E.Hiester, U.S.Surveyor, on dates shown thereon in 1929.

SURVEYED by Theodore Vander Meer, U.S.Transitman, on dates shown thereon in 1929.

Surveys herein described were executed on dates shown on diagram on page 1, hereof, by William E. Hiester, U.S. Surveyor, and Theodore Vander Meer, U.S. Transitman, using respectively, Buff & Buff Transits Nos. 19423 and 9977. Both instruments are equipped with full vertical circles and improved Smith solar attachments. The horizontal limbs are provided with two double verniers placed opposite each other reading to single minutes of arc, which is also the least count of the verniers of the vertical circles and of the latitude and declination verniers of the solar attachments. Unless otherwise specified all azimuth determinations were accomplished with the solar attachments.

PRELIMINARY INSTRUMENT TEST

Jan. 26, 1929: examine the adjustments of the instruments and correct all errors; then, to test the solar apparatus by comparing its indications, resulting from observations made during a.m. and p.m. hours with a meridian established by observation on Polaris; proceed as follows:

At 11:07 p.m., l.m.t., at station near the $\frac{1}{4}$ sec. cor. of secs. 29 and 30, T. 5 S., R. 20 E., G. & S. R. B. & M., Arizona, lat. $32^{\circ}58'N.$, long. $110^{\circ}19\frac{1}{2}'W.$, observe Polaris at Western Elongation, making four observations, two each with the telescope in direct and reversed positions, and mark a point on the mean line on a stake driven firmly into the ground about 5 chs. Northerly.

Jan. 27: at 7:30 a.m., lay off the azimuth of Polaris, $1^{\circ}16\frac{1}{2}'$ to the East, and identify a point on a hill about $\frac{1}{4}$ mile S. $63^{\circ}27'E.$ to mark the true meridian.

Exact azimuth of Polaris at elongation = $1^{\circ}16'39''$.

At 9:00 a.m., app.t., set off $32^{\circ}58'N.$ on the lat. arcs, $18^{\circ}26'S.$ on the decl. arcs, and determine meridians with the solar attachments, which agree within $1\frac{1}{2}'$ with the true meridian.

At app. noon, with the lat. arcs unchanged, observe the sun on the meridian; the resultant readings of the decl. arcs are within $\frac{1}{2}'$ of $18^{\circ}24\frac{1}{2}'S.$, the computed declination of the sun.

At 3:00 p.m., app.t., with the lat. arcs unchanged, set off $18^{\circ}22'S.$ on the decl. arcs, and determine meridians with the solar attachments, which agree within $1\frac{1}{2}'$ with the true meridian.

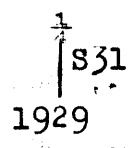
Since the solar apparatus by a.m. and p.m. observations define positions for meridians which agree within $1\frac{1}{2}'$ with the meridian established by observation on Polaris, conclude that the adjustments of the instruments are satisfactory.

All measurements are made with Lallie and Lufkin steel tapes, 5 chs. in length, compared with a Lufkin standard steel tape, 1 ch. in length, and found correct. The measurements are made on the slope, the vertical angles determined with clinometers, and the slope measurements properly reduced to true horizontal distances.

Survey of West Boundary of Township 5 South, Range 20 East

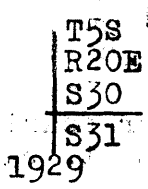
Chain

- From the Standard cor. of T. 5 S., R. 20 E. only, (SW. cor.) which is an iron post, 3 ins. in diam., established under this Group, described in Book "B", North, on true line, on W. bdy. of sec. 31. Over mountainous land; through scattering timber and undergrowth.
- Along E. slope.
- 0.73 Intersect the Standard cor. of T. 5 S., R. 19 E. only, (SE. cor.) which is an iron post, 3 ins. in diam., established in 1924, with reference altered under this Group described in Book "B" of this Group.
- Asc. 196 ft. over SE. slope.
- 24.00 Road, bears NE. to Aravaipa and SW. to Klondyke.
- Asc. 106 ft. over SE. slope.
- 29.90 Ridge, bears NW. and SE.
- Along E. slope.
- 35.20 Spur, slopes NE.
- Desc. 68 ft. over NE. slope.
- 40.00 Set an iron post, 3 ft. long, 1 in. in diam., 28 ins. in the ground, for $\frac{1}{4}$ sec. cor. of sec. 31, only, with brass cap mkd.



from which
 A cedar, 6 ins. diam., bears N. 88 $\frac{1}{2}$ ° E., 28 lks. dist., mkd. $\frac{1}{4}$ S31 BT.
 A cedar, 5 ins. diam., bears S. 25° E., 37 lks. dist., mkd. $\frac{1}{4}$ S31 BT.
 Raise a mound of stone, 5 ft. base, 2 $\frac{1}{2}$ ft. high, E. of cor.

- Desc. 197 ft. over broken NE. slope.
- 57.20 Trail, bears NW. and SE.
- Desc. 47 ft. over N. slope.
- 59.40 Wash, dry, 25 lks. wide, course SW. for 1 ch., then NW.
- Asc. 15 ft. over S. slope.
- 60.20 Road, bears SE. to Klondyke and NW.
- Asc. 167 ft. over SW. slope.
- 69.50 Spur, slopes NW.
- Desc. 63 ft. over NW. slope.
- 80.00 Set an iron post, 3 ft. long, 2 ins. diam., 30 ins. in the ground, for cor. of secs. 30 and 31, only, with brass cap mkd.



No trees suitable for bearing trees near. Raise a mound of stone, 5 ft. base, 2 $\frac{1}{2}$ ft. high, E. of cor.

Land: mountainous.
 Soil: rocky, sandy clay; 3rd rate.
 Timber: oak, scrub cedar, pinon, juniper.
 Undergrowth: sage, yucca, mahogany, cactus, catclaw, manzanite, mesquite, oak.

4

Survey of West Boundary of Township 5 South, Range 20 East

Chains

- North, on West bdy. of sec. 30.
Over rolling-mountainous land; through scattering timber
and scattering undergrowth.
Desc. slightly over NW. slope.
- 2.50 Wash, dry, 15 lks. wide, in ravine, course W.
Asc. 134 ft. over S. slope.
- 8.50 Power line, bears S. 51° W. to Aravaipa mine and N. 51° E.
Asc. 101 ft. over SW. slope.
- 18.60 Ridge, bears NE. and SW.
Asc. 95 ft. over SW. slope.
- 27.80 Spur, slopes W.
Desc. 30 ft. along W. slope.
- 32.30 Head of ravine, course W.
Asc. 108 ft. over SW. slope.
- 40.00 Set an iron post, 3 ft. long, 1 in. diam., 10 ins. in the
ground, supported by a mound of stone, 4 ft. base, 2 ft.
high, for $\frac{1}{4}$ sec. cor. of sec. 30, only, with brass cap
mkd.

↑
S30
1929

from which

A cedar, 4 ins. diam., bears S. 57 $\frac{1}{2}$ ° E., 87 lks. dist.,
mkd. $\frac{1}{4}$ S30 BT.

A cedar, 8 ins. diam., bears S. 44 $\frac{1}{2}$ ° E., 176 lks. dist.,
mkd. $\frac{1}{4}$ S30 BT.

(No trees suitable for bearing trees NE.)

- Asc. 15 ft. over SW. slope.
- 40.70 Spur, slopes SW:
- 45.00 Spur, slopes NW. for 3 chs., then W.
Desc. 326 ft. over steep N. slope.
- 55.30 Wash, dry, 30 lks. wide, in Williamson Canyon, course SW.
for 2 chs., then W.
- 55.60 Road, bears West to Aravaipa and NE.
- 55.70 Tent house bears East, 2.50 chs. dist.
Asc. 60 ft. over SW. slope.
- 63.40 Wash, dry, 10 lks. wide, course SW.
Asc. 266 ft. over S. slope.
- 80.00 Set an iron post, 3 ft. long, 2 ins. diam., 30 ins. in
the ground, for cor. of secs. 19 and 30, only, with
brass cap mkd.

T5S
R20E
|S19
|S30
1929

No trees suitable for bearing trees near. Raise a
mound of stone, 5 ft. base, 2 $\frac{1}{2}$ ft. high, E. of cor.

Land: rolling-mountainous.

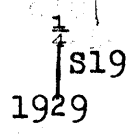
Soil: rocky, sandym 3rd rate.

Timber: oak, cedar, pinon.

Undergrowth: same and manzanita, mahogany, sage, cactus,
bayonet, ocatilla, catclaw, mesquite.

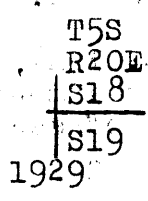
Survey of West Boundary of Township 5 South, Range 20 East

- Chains North, on W. bdy. of sec. 19. Over mountainous lands through scattering timber and moderate undergrowth.
- Asc. 40 ft. over S. slope.
- 2.80 Trail, bears NE. and W.
- Asc. 208 ft. over S. slope.
- 8.60 Gulch, course SE.
- Asc. 348 ft. over S. slope and cliffs, facing S.
- 15.00 Top of cliff, 180 ft. high, faces S.
- Asc. 156 ft. over S. slope.
- 24.34 Ridge, bears W. and SE. Conical peak bears 5 chs. W. Along E. slope. Enter dense undergrowth.
- 29.00 Ridge, divide, bears NE. and SW. Low pass bears 10 chs. NE.
- 29.96 Turnbull Peak bears N. 37° 57' E. SW. cor. goat shed bears N. 13° 18' E. Leave dense undergrowth.
- Desc. 246 ft. over NW. slope.
- 40.00 Set an iron post, 3 ft. long, 1 in. diam., 30 ins. in the ground, for 1/4 sec. cor. of sec. 19, only, with brass cap mkd.



- from which
- A pinon, 14 ins. diam., bears S. 74 1/4° E., 259 lks. dist., mkd. 1/4 S19 BT.
- A cedar, 24 ins. diam., bears S. 42 1/2° E., 64 lks. dist., mkd. 1/2 S19 BT.
- No trees suitable for bearing trees NE.

- Desc. 214 ft. over N. slope.
- 48.10 Ravine, dry, course NW.
- Asc. 51 ft. along W. slope.
- 55.00 Desc. 69 ft. along W. slope.
- Enter dense undergrowth, bears E. and W.
- 65.40 Spur, slopes NW.
- Desc. 362 ft. over NE. slope.
- 80.00 Set an iron post, 3 ft. long, 2 ins. diam., 18 ins. in the ground, for cor. of secs. 18 and 19, only, with brass cap mkd.



- from which
- A cedar, 6 ins. diam., bears S. 67° E., 238 lks. dist., mkd. T5S R20E S19 BT.
- A scrub oak, 4 ins. diam., bears S. 23° E., 108 lks. dist., mkd. BT.
- No other suitable trees near.

Land: mountainous.
 Soil: rocky, clay, 3rd rate.
 Timber: oak, pinon, cedar, juniper.
 Undergrowth: same, manzanita, mahogany, catclaw, cactus, bayonet, mesquite, ocatilla, dogwood, etc.

Survey of West Boundary of Township 5 South, Range 20 East

Chains

North, on W. bdy. of sec. 18.
Over rolling-mountainous land; through scattering timber
and dense undergrowth.

10.50 Desc. 88 ft. along E. slope.
Spur, slopes NE.

16.40 Desc. 136 ft. over N. slope.
Wash, dry, 20 lks. wide, course NW.

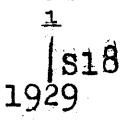
21.60 Asc. 65 ft. over SW. slope.
Spur, slopes NW.

23.60 Desc. 40 ft. over N. slope.
Wash, dry, 15 lks. wide, course NW.

24.60 Trail, bears NW. and SE.
Asc. 48 ft. over SW. slope.

28.50 Spur, slopes NW.
Desc. 169 ft. over N. slope.

40.00 Set an iron post, 3 ft. long, 1 in. diam., 20 ins. in the
ground, supported by a mound of stone, 2 ft. base, 1
ft. high, for $\frac{1}{4}$ sec. cor. of sec. 18, only, with brass
cap mkd.



from which
A pinon, 5 ins. diam., bears N. 82° E., 130 lks. dist.,
mkd. $\frac{1}{4}$ S18 BT.
A pinon, 4 ins. diam., bears S. 41 1/2° E., 60 lks. dist.,
mkd. BT.

42.60 Desc. 100 ft. over N. slope.
Gulch, course NW.

45.50 Asc. 30 ft. over SW. slope.
Spur, slopes SW.

47.70 Desc. 40 ft. over N. slope.
Trail, bears E. and SW.

47.80 Wire fence, bears E. and SW.

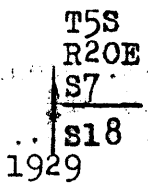
48.90 Dry wash of Deer Creek, 35 lks. wide, course SW.
Leave dense undergrowth.

65.00 Asc. 293 ft. over SE. slope.
Wire fence, bears NW. and SE.

70.30 Spur, slopes SW.
Asc. 81 ft. over SW. slope.

78.40 Spur, slopes W.
Desc. 30 ft. over NW. slope.

80.00 Set an iron post, 3 ft. long, 2 ins. diam., 14 ins. in the
ground, supported by a mound of stone, 4 ft. base, 20
ins. high, for cor. of secs. 7 and 18, only, with brass
cap mkd.



from which
A pinon, 4 ins. diam., bears N. 80° E., 104 lks. dist.,
mkd. BT.
A pinon, 4 ins. diam., bears S. 35 1/2° E., 96 lks. dist.,
mkd. BT.

Land: mountainous.
Soil: rocky, sandy, 3rd-rate. Timber: cedar, pinon, oak.
Undergrowth: same, manzanita, mahogany, beargrass, yucca,
cactus, mesquite, sage.

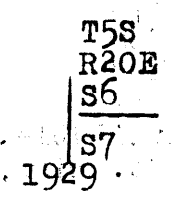
Survey of West Boundary of Township 5 South, Range 20 East

- Chains
- North, on West bdy. of sec. 7.
 - Over mountainous land; through scattering timber and undergrowth.
 - Desc. 98 ft. over NW. slope.
 - 4.10 A secondary road, winding, bears NE. and SW.
 - Desc. 15 ft.
 - 4.70 Wash, dry, 40 lks. wide, course SW.
 - Asc. 201 ft. over SE. slope.
 - 20.30 Spur, slopes E.
 - Desc. 40 ft. over gradual NE. slope.
 - 25.10 Wash, dry, 10 lks. wide, course SE.
 - Along E. slope.
 - 30.70 Wash, dry, 30 lks. wide, course E.
 - Asc. 160 ft. over SE. slope.
 - 40.00 Set an iron post, 3 ft. long, 1 in. diam., 14 ins. in the ground to bedrock; deposit a stone mkd. with cross (x) at base of post; raise a mound of stone, 4 1/2 ft. base, 20 ins. high, around post, for 1/2 sec. cor. of sec. 7, only, with brass cap mkd.



No trees suitable for bearing trees near.

- Asc. 17 ft. over SE. slope.
- 40.73 Spur, slopes SE.
- Well and pump bear N. 61 1/2° E., 7.50 chs. dist.
- Reservoir bears N. 72° E., 6.50 chs. dist.
- Desc. 25 ft. over broken NE. slope.
- 50.20 Wash, dry, 20 lks. wide, course E.
- Asc. 100 ft. over SE. slope.
- 64.80 Small spur, slopes SE.
- Desc. 54 ft. along E. slope.
- 73.50 Wash, dry, 10 lks. wide, course SE.
- Asc. 58 ft. over S. slope.
- 77.60 Low ridge, divide bet. Gila and Aravaipa drainage, bears E. and W.
- Desc. 60 ft. over N. slope.
- 80.00 Set an iron post, 3 ft. long, 2 ins. diam., 10 ins. in the ground, supported by a mound of stone, 4 ft. base, 2 ft. high, for cor. of secs. 6 and 7, only, with brass cap mkd.



- from which
- A cedar, 22 ins. diam., bears N. 45 3/4° E., 109 lks. dist., mkd. T5S R20E S6 BT.
- A pinon, 12 ins. diam., bears S. 82 1/2° E., 123 lks. dist., mkd. T5S T20E S7 BT.

Land: rolling and mountainous.
 Soil: rocky, sandy clay, 2nd rate.
 Timber: pinon, cedar, oak, juniper.
 Undergrowth: mahogany, manzanita, cactus, catclaw, yucca, laurel, dogwood, mesquite, bayonet, bear grass.

Survey of West Boundary of Township 5 South, Range 20 East

Chains	
	North, on W. bdy. of sec. 6. Over mountainous land; through scattering timber and undergrowth.
	Desc. 198 ft. over N. slope.
10.70	Wash, dry, 15 lks. wide, course NW. Enter dense undergrowth. Along gradual W. slope.
21.30	A secondary road, bears NW. and SE. Desc. 35 ft. over NW. slope.
27.40	Wash, dry, 30 lks. wide, course NW. Along W. slope.
31.40	Wash, dry, 20 lks. wide, course W. Asc. 54 ft. over gradual SW. slope.
40.00	Set an iron post, 3 ft. long, 1 in. diam., 28 ins. in the ground, for $\frac{1}{4}$ sec. cor. of sec. 6, only, with brass cap mkd.
	\uparrow S6 1929
	from which A cedar, 4 ins. diam., bears N.61 $\frac{1}{2}$ °E., 51 lks. dist., mkd. $\frac{1}{4}$ S6 BT. A pinon, 4 ins. diam., bears N.49°E., 195 lks. dist., mkd. $\frac{1}{4}$ S6 BT. No trees SE. of cor.
	Along W. slope.
41.50	Fence, bears NE. and SW.
43.90	Asc. 322 ft. over S. slope.
58.40	Spur, slopes SW. Desc. 90 ft. over N. slope.
62.90	Gulch, course SW. Asc. 512 ft. over steep S. slope.
77.50	Ridge, bears E. and SW. Desc. 15 ft. over NW. slope.
80.00	Set an iron post, 5 ft. long, 3 ins. diam., 30 ins. in the ground, for cor. of Ts. 4 and 5 S., Rs. 19 and 20 E., with brass cap mkd.
	T4S R19E R20E S36 S31 S1 S6 T5S 1929
	No bearing trees available. Raise a mound of stone, 5 ft. base, 3 $\frac{1}{2}$ ft. high, S. of cor.
	Land: mountainous. Soil: rocky, sandy, limestone, 3rd rate. Timber: oak, pinon, cedar, juniper. Undergrowth: same and yucca, mahogany, beargrass, sage, cactus, catclaw, laurel, bayonet, mesquite.

Survey of North Boundary of Township 5 South, Range 20 East

Chains

From the cor. of Ts. 4 and 5 S., Rs. 20 and 21 E.,
 as described, in Book "C" of this group,
 West, on random line, setting temp. $\frac{1}{4}$ sec. and sec. cors.
 at intervals of 40.00 and 80.00 chs. respectively,
 until at
 487.18 Fall 56 lks. N. of cor. of Ts. 4 and 5 S., Rs. 19 and 20
 E., hereinbefore described.
 True course and distance of the N. bdy. of T. 5 S., R. 20 E.
 are therefore, S. 89° 56' W., 487.18 chs.

The cor. of Ts. 4 and 5 S., Rs. 20 and 21 E. is an iron
 post, 3 ins. diam., established under this Group,
 described in Book "C".

Thence
 S. 89° 56' W., on true line, bet. secs. 1 and 36.
 Over mountainous land; through scattering timber and
 undergrowth.

- 4.00 Desc. 50 ft. along top of spur.
 Spur, slopes E. and SW.
 Desc. 212 ft. along N. slope.
- 10.70 Ravine, course NW.
 Desc. 167 ft. along N. slope.
- 23.10 Wash, dry, 140 lks. wide, course S. for 3 chs., thence SW.
 Asc. 251 ft. over SW: slope.
- 32.50 Spur, slopes SW.
 Desc. 232 ft. over SW: slope.
- 40.00 Set an iron post, 3 ft. long, 1 in. diam., 30 ins. in
 the ground, for $\frac{1}{4}$ sec. cor., with brass cap mkd.

S36
 4
 S1
 1929

No bearing trees available. Raise a mound of stone, 5
 ft. base, 2½ ft. high, N. of cor.

- 40.50 Desc. 50 ft. along S. slope.
 Ravine, course SW.
- 48.30 North Goodwin Creek, 6 lks. wide, in wash, 70 lks. wide,
 course SW.
 Asc. 559 ft. over E. slope.
- 70.00 Spur, slopes NE.
 Continue ascent 185 ft. over E. slope.
- 80.00 Set an iron post, 3 ft. long, 2 ins. diam., 10 ins. in the
 ground; deposit a stone, mkd. with cross (+) at base
 of post; raise a mound of stone, 4½ ft. base, 2 ft.
 high, around post, for cor. of secs. 1, 2, 35 and 36,
 with brass cap mkd.

T4SR20E
 S35 | S36
 S2 | S1
 T5S
 1929

No trees suitable for bearing trees.
 Turnbull Peak bears N. 3° 00' W.

Land: mountainous.
 Soil: rocky, sandy, granite, 3rd rate.
 Timber: oak, cedar, pinon, sycamore on creek.
 Undergrowth: catclaw, yucca, cactus, beargrass, sage,
 mahogany.

Survey of North Boundary of Township 5 South, Range 20 East

Chains

- S. 89° 56' W., on true line, bet. secs. 2 and 35.
Over mountainous land; through scattering timber and moderate undergrowth.
Asc. 109 ft. over NE. slope.
- 3.10 Ridge, bears NE. and SW.
Asc. 23 ft. along N. slope.
- 6.70 Spur, slopes N.
Desc. 170 ft. over NW. slope.
- 13.40 Creek, 3 lks. wide, course NE.
Asc. 124 ft. over SE. slope.
- 20.00 Small spur, slopes SE.
Along S. slope.
- 23.30 Wash, dry, 20 lks. wide, course SE.
Asc. 193 ft. over SE. slope.
- 40.00 Set an iron post, 3 ft. long, 1 in. diam., 20 ins. in the ground, supported by a mound of stone, 2 ft. base, 1 ft. high, for $\frac{1}{4}$ sec. cor., with brass cap mkd.

$\frac{1}{4}$ S35
 S2
 1929

- from which
- A white oak, 14 ins. diam., bears S. 66° E., 14 lks. dist., mkd. $\frac{1}{4}$ S2 BT.
- A white oak, 6 ins. diam., bears N. 73° W., 23 lks. dist., mkd. $\frac{1}{4}$ S35 BT.

- Asc. 20 ft. over SE. slope.
- 41.50 Base of rocky butte, 30 ft. high, bears N. and S.
Desc. 43 ft. over NW. slope.
- 46.70 Spring branch, 1 lk. wide, course SE.
Asc. 135 ft. over SE. slope.
- 55.20 Ravine, course SE.
Asc. 623 ft. over E. slope.
- 77.50 Spur, slopes SE,
Desc. 27 ft. over SW. slope:
- 80.00 Set an iron post, 3 ft. long, 2 ins. diam., 20 ins. in the ground, supported by a mound of stone, 3 ft. base, 1 ft. high, for cor. of secs. 2, 3, 34 and 35, with brass cap mkd.

T4SR20E
 S34 | S35
 S3 | S2
 T5S
 1929

- from which
- An alligator juniper, 7 ins. diam., bears N. 32 $\frac{1}{2}$ ° E., 53 lks. dist., mkd. T4S R20E S35 BT.
- A pinon, 4 ins. diam., bears S. 39° E., 110 lks. dist., mkd. T5S R20E S2 BT.
- An alligator juniper, 18 ins. diam., bears S. 9° W., 102 lks. dist., mkd. T5S R20E S3 BT.
- An alligator juniper, 20 ins. diam., bears N. 26 $\frac{1}{2}$ ° W., 114 lks. dist., mkd. T4S R20E S34 BT.

Land: mountainous:
 Soil: rocky, sandy, granite, 3rd rate.
 Timber: cedar, juniper, oak, pinon.
 Undergrowth: beargrass, yucca, mahogany, cactus, sage, manzanita, catclaw, mesquite, bayonet.

Survey of North Boundary of Township 5 South, Range 20 East

Chains

S. 89° 56' W., on true line, bet. secs. 3 and 34.
 Over mountainous land; through scattering timber and moderate undergrowth.
 Desc. 105 ft. over SW. slope.
 8.10 Creek, 2 lks. wide, course SE.
 Asc. 282 ft. over NE. slope.
 24.00 Ridge, bears NW. and SE.
 Desc. 101 ft. over SW. slope.
 40.00 Set an iron post, 3 ft. long, 1 in. diam., 9 ins. in the ground, supported by a mound of stone, 5 ft. base, 2 ft. high, for $\frac{1}{4}$ sec. cor., with brass cap mkd.

$\frac{1}{4}$ S34
 S3
 1929

from which
 An alligator juniper, 8 ins. diam., bears N. 75° E., 211 lks. dist., mkd. $\frac{1}{4}$ S34 BT.
 An oak, 6 ins. diam., bears S. 75 $\frac{1}{2}$ ° W., 201 lks. dist., mkd. $\frac{1}{4}$ S3 BT.

Along S. slope.
 42.70 Small spur, slopes SW.
 Desc. 268 ft. over SW. slope.
 52.80 Wash, dry, 15 lks. wide, course SE.
 Asc. 35 ft. over E. slope.
 57.60 Ridge, bears N. and SE.
 Desc. 212 ft. over W. slope.
 64.80 Creek, 2 lks. wide, course S.
 67.70 Wash, dry, 15 lks. wide, course SE.
 Asc. 139 ft. over NE. slope.
 79.00 Ridge, bears NW. and SE.
 Desc. 12 ft. over SW. slope.
 80.00 Set an iron post, 3 ft. long, 2 ins. diam., 14 ins. in the ground, supported by a mound of stone, 4 ft. base, 1 $\frac{1}{2}$ ft. high, for cor. of secs. 3, 4, 33 and 34, with brass cap mkd.

T4SR20E
 S33 | S34
 S4 | S3
 T5S
 1929

from which
 A cedar, 3 ins. diam., bears N. 4° E., 119 lks. dist., mkd. BT.
 A cedar, 14 ins. diam., bears S. 53 $\frac{1}{2}$ ° E., 198 lks. dist., mkd. T5S R20E S3 BT.
 A white oak, 7 ins. diam., bears S. 87° W., 131 lks. dist., mkd. T5S R20E S4 BT.
 A cedar, 12 ins. diam., bears N. 3 $\frac{1}{2}$ ° W., 185 lks. dist., mkd. T4S R20E S33 BT.

Land: mountainous.
 Soil: rocky, sandy, 3rd rate.
 Timber; cedar, oak, pinon, juniper.
 Undergrowth: mahogany, sage, cactus, catclaw, beargrass, manzanita, yucca, laurel, dogwood, mesquite, etc.

Survey of North Boundary of Township 5 South, Range 20 East

Chains
 S89°56'W., on true line, bet. secs. 4 and 33.
 Over mountainous land; through scattering timber and scattering undergrowth.
 Desc. 64 ft. over SW. slope.
 5.30 Creek, 2 lks. wide, course SE.
 Asc. 181 ft. over E. slope.
 14.70 Spur, slopes SE.
 Along S. slope.
 18.10 Spur, slopes S. for 3 chs.; thence SE.
 Desc. 109 ft. over SW. slope.
 23.50 Wash, dry, 15 lks. wide, course SE.
 Asc. 85 ft. over E. slope.
 28.00 Small spur, slopes SE.
 Desc. 33 ft. over SW. slope.
 33.60 Wash, dry, 15 lks. wide, course SE.
 Asc. 191 ft. over E. slope.
 39.00 Spur, slopes SE.
 Desc. 10 ft. over SW. slope.
 40.00 Set an iron post, 3 ft. long, 1 in. diam., 30 ins. in the ground, for $\frac{1}{4}$ sec. cor., with brass cap mkd.

$\frac{1}{4}$ S33
 S4
 1929

from which

A white oak, 10 ins. diam., bears S.47°E., 54 lks. dist., mkd. $\frac{1}{4}$ S4 BT.
 A white oak, 14 ins. diam., bears N.54 $\frac{1}{2}$ °W., 80 lks. dist., mkd. $\frac{1}{4}$ S33 BT.

Desc. 30 ft. over SW. slope.
 42.50 Ravine, course SE.
 Asc. 299 ft. over SE. slope.
 51.00 Head of ravine, course SE.
 Asc. 72 ft. over E. slope.
 52.90 Ridge, bears NW. and SE.
 Desc. 138 ft. over SW. slope.
 56.90 Ravine, course SW.
 Asc. 25 ft. over SE. slope.
 59.50 Small spur, slopes SW.
 Desc. 112 ft. over SW. slope.
 62.90 Ravine, course SW.
 Asc. 51 ft. over SE. slope.
 68.10 Spur, slopes SW.
 Desc. 124 ft. over W. slope.
 73.60 Creek, 2 lks. wide, course SW.
 Asc. 91 ft. over SE. slope.
 78.00 Small spur, slopes S.
 Desc. 25 ft. over SW. slope.
 80.00 Set an iron post, 3 ft. long, 2 ins. diam., 30 ins. in the ground, for cor. of secs. 4, 5, 32 and 33, with brass cap mkd.

T4SR20E
 S32|S33
 S5|S4
 T5S
 1929

from which

A white oak, 8 ins. diam., bears N.23 $\frac{1}{2}$ °E., 7 lks. dist., mkd. T4S R20E S33 BT.
 A white oak, 6 ins. diam., bears S.82 $\frac{1}{2}$ °E., 25 lks. dist., mkd. T5S R20E S4 BT.

Survey of North Boundary of Township 5 South, Range 20 East

Chains											
	A white oak, 8 ins. diam., bears S. 86 1/2° W., 45 lks. dist., mkd. T5S R20E S5 BT.										
	A white oak, 12 ins. diam., bears N. 53 1/2° W., 37 lks. dist., mkd. T4S R20E S32 BT.										
	Land: mountainous. Soil: rocky, loam, 2nd rate. Timber: oak, pinon, pine, cedar, juniper. Undergrowth: oak, mahogany, sage, cactus, catclaw, beargrass, manzanita, yucca, laurel, dogwood, mesquite.										

	S. 89° 56' W., on true line, bet. secs. 5 and 32. Over mountainous land; through scattering timber and dense undergrowth.										
	Desc. 25 ft. over SW. slope.										
3.00	Ravine, course SE.										
	Asc. 551 ft. over NE. slope.										
22.70	Ridge, bears SW. and NE.										
	Enter yellow pine timber, bears NE. and SW.										
	Desc. 145 ft. over NW. slope.										
29.60	Head of ravine, course NE.										
	Asc. 76 ft. over NE. slope.										
34.20	Ravine, course NE.										
	Asc. 76 ft. over NE. slope.										
37.00	Small spur, slopes NE.										
	Desc. 20 ft. over NW. slope.										
40.00	Set an iron post, 3 ft. long, 1 in. diam., 30 ins. in the ground, for 1/4 sec. cor., with brass cap mkd.										
	<table border="1"> <tr><td colspan="2">S32</td></tr> <tr><td colspan="2">1/4 S5</td></tr> <tr><td colspan="2">1929</td></tr> </table>	S32		1/4 S5		1929					
S32											
1/4 S5											
1929											
	from which										
	A yellow pine, 6 ins. diam., bears S. 89° W., 73 lks. dist., mkd. 1/4 S5 BT.										
	A black oak, 8 ins. diam., bears N. 54 1/2° W., 86 lks. dist., mkd. 1/4 S32 BT.										
40.25	Head of ravine, course NE.										
	Asc. 121 ft. over NE. slope.										
45.00	Spur, slopes NE.										
45.20	Fence, bears NW. and SE.										
	Asc. 123 ft. along N. slope.										
54.62	Top of ridge, bears NW. and SE.										
	Turnbull Peak bears N. 52° 29' E.										
	Leave yellow pine timber, bears NW. and SE.										
	Desc. 782 ft. over SW. slope.										
67.30	Fence, bears NE. and SW.										
78.00	Ravine, course NW.										
	Asc. 50 ft. along N. slope.										
80.00	Set an iron post, 3 ft. long, 2 ins. diam., 28 ins. in the ground, for cor. of secs. 5, 6, 31 and 32, with brass cap mkd.										
	<table border="1"> <tr><td colspan="2">T4SR20E</td></tr> <tr><td>S31</td><td>S32</td></tr> <tr><td>S6</td><td>S5</td></tr> <tr><td colspan="2">T5S</td></tr> <tr><td colspan="2">1929</td></tr> </table>	T4SR20E		S31	S32	S6	S5	T5S		1929	
T4SR20E											
S31	S32										
S6	S5										
T5S											
1929											
	from which										
	A white oak, 8 ins. diam., bears N. 25° E., 63 lks.										

Survey of North Boundary of Township 5 South, Range 20 East

Chains

dist., mkd. T4S R20E S32 BT.
 A locust, 4 ins. diam., bears S.20 $\frac{1}{2}$ °E., 56 lks. dist.,
 mkd. T5S R20E S5 BT.
 A black oak, 12 ins. diam., bears S.85°W., 56 lks.
 dist., mkd. T5S R20E S6 BT.
 A white oak, 3 ins. diam., bears N.48°W., 8 lks.
 dist., mkd. BT.

Land: mountainous.
 Soil: rocky, loam, 2nd rate.
 Timber: oak, cedar, pinon, locust, pine, juniper.
 Undergrowth: mahogany, manzanita, cactus, yucca, bear-
 grass, sage, catclaw, mesquite, laurel, bayonet.

S.89°56'W., on true line, bet. secs. 6 and 31.
 Over mountainous land; through dense timber and brush.
 Asc. 131 ft. along N. slope.
 8.80 Fence, bears NW. and SE.
 9.10 Ridge, bears NW. and SE.
 Enter scattering timber and undergrowth.
 Desc. 30 ft. along S. slope.
 13.30 Fence, bears NE. and SW.
 13.50 Head of ravine, course S.
 Asc. 54 ft. over SE. slope.
 20.50 Spur, slopes S.
 Desc. 336 ft. over SW. slope.
 25.40 Ravine, course SE.
 Asc. 229 ft. over E. slope.
 40.00 Set an iron post, 3 ft. long, 1 in. diam., 30 ins. in the
 ground, for $\frac{1}{4}$ sec. cor., with brass cap mkd.

1S31
 $\frac{1}{4}$ S6
 1929

from which
 A pinon, 6 ins. diam., bears N.21 $\frac{1}{2}$ °W., 89 lks. dist.,
 mkd. $\frac{1}{4}$ S31 BT.
 No other suitable trees near. Raise a mound of stone,
 3 ft. base, 1 $\frac{1}{2}$ ft. high, N. of cor.

Asc. 42 ft. over E. slope.
 41.58 Spur, from N., slopes SW.
 House bears S.19°W. Shed bears S.27 $\frac{1}{2}$ °W. SW. cor. corral
 bears S.28 $\frac{1}{2}$ °W.
 Desc. 360 ft. over SW. slope.
 52.60 Ravine, course SW.
 Asc. 221 ft. along S. slope.
 67.30 Ridge, bears NE. and SW. Desc. 450 ft. along N. slope.
 Through dense undergrowth.
 87.18 The cor. of Ts. 4 and 5 S., Rs. 19 and 20 E., hereinbe-
 fore described.

Land: mountainous.
 Soil: rocky loam, limestone, 3rd rate.
 Timber: oak, pinon, cedar, juniper, locust.
 Undergrowth: same and beargrass, catclaw, mesquite,
 manzanita, mahogany, ocatilla, bayonet, etc.

Boundaries of Township 5 South, Range 20 East
Latitudes, Departures and Closing Errors.

Line designated	True bearing	Distance	Latitudes		Departures	
			N.	S.	E.	W.
South Bdy. (1st Std. Par. South)	West	487.27				487.27
West Bdy.	North	480.00	480.00			
North Bdy.	N. 89° 56' E.	487.18	.56		487.18	
East Bdy.	South	480.00		480.00		
Convergency					.47	
TOTALS			480.56	480.00	487.65	487.27
			480.00		487.27	
Error in latitude---					0.56	
Error in departure					0.38	

Survey of Subdivision Lines of Township 5 South, Range 20 East

Chains	
	From the standard cor. of secs. 35 and 36, on the S. bdy. of the tp., established under this group, described in Book "B".
	N.0°01'W., bet. secs. 35 and 36.
	Over mountainous land; through scattering timber and scattering undergrowth.
3.50	Asc. 50 ft. over SW. slope. Ridge, bears NW. and SE.
13.80	Desc. 127 ft. along E. slope. Wash, dry, 15 lks. wide, course SE.
21.30	Asc. 139 ft. over SW. slope. Ridge, bears SW. and SE. Abandoned cabin bears 7 chs. West. Low pass bears 10 chs. SW.
21.50	Trail, bears W. and SE. Desc. 132 ft. over N. slope.
25.70	Wash, trace of water, 30 lks. wide, course NE. Asc. 107 ft. over S. slope.
31.20	Spur, slopes E. Desc. 62 ft. along E. slope.
40.00	Set an iron post, 3 ft. long, 1 in. diam., 18 ins. in the ground, for $\frac{1}{4}$ sec. cor., with brass cap mkd.
	$\frac{1}{4}$ S35 S36 1929
	from which A white oak, 10 ins. diam., bears S.42°E., 31 lks. dist., mkd. $\frac{1}{4}$ S36 BT. A black oak, 6 ins. diam., bears S.75 $\frac{1}{4}$ °W., 40 lks. dist., mkd. $\frac{1}{4}$ S35 BT Raise a mound of stone, 2 $\frac{1}{2}$ ft. base, 1 $\frac{1}{2}$ ft. high, around post.
43.10	Along E. slope. Wash, dry, 15 lks. wide, course SE. Asc. 434 ft. over SW. slope.
61.20	Top of broken, rocky ridge, bears N. and SE. Asc. 50 ft. along top of ridge.
80.00	Set an iron post, 3 ft. long, 2 ins. diam., 10 ins. in the ground, supported by a mound of stone, 5 ft. base, 2 ft. high, for cor. of secs. 25, 26, 35 and 36, with brass cap mkd.
	T5SR20E S26 S25 S35 S36 1929
	from which A cedar, 6 ins. diam., bears N.52°E., 44 lks. dist., mkd. T5S R20E S25 BT. A black oak, 18 ins. diam., bears S.36 $\frac{1}{4}$ °E., 145 lks. dist., mkd. T5S R20E S36 BT. A cedar, 14 ins. diam., bears S.26 $\frac{1}{4}$ °W., 125 lks. dist., mkd. T5S R20E S35 BT. A black oak, 7 ins. diam., bears N.9 $\frac{1}{2}$ °W., 78 lks. dist., mkd. T5S R20E S26 BT.
	Land: mountainous. Soil: rocky, sandy, granite, 3rd rate. Timber: pinon, cedar, oak. Undergrowth: mahogany, catclaw, yucca, manzanita, cactus, beargrass, laurel.

Survey of Subdivision Lines of T.5 S., R.20 E.

- Chains
- 40.00 East on a random line, bet. secs. 25 and 36.
- Set temp. $\frac{1}{4}$ sec. cor.
- 80.10 Fall 4 lks. N. of the cor. of secs. 25, 30, 31 and 36, on the E. bdy. of the Tp., established under this Group, described in Book "C".
- Thence
- N. $89^{\circ}58'$ W., on true line, bet. secs. 25 and 36.
- Over mountainous land; through scattering timber and scattering undergrowth.
- Desc. 245 ft. over SW. slope and cliffs facing SW.
- 25.40 Gulch, course S.
- Asc. 328 ft. over E. slope.
- 40.05 Set an iron post, 3 ft. long, 1 in. diam., on bedrock, supported by a mound of stone, 5 ft. base, $2\frac{1}{2}$ ft. high, for $\frac{1}{4}$ sec. cor., with brass cap mkd.

$\frac{1}{4}$ S25
 $\frac{1}{4}$ S36
 1929

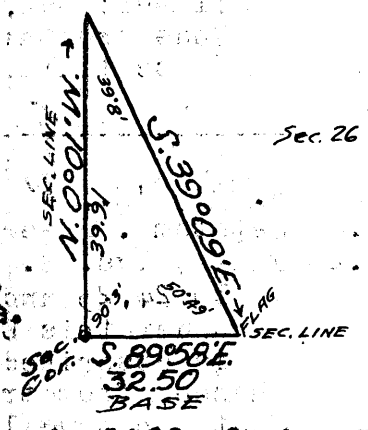
from which
 An alligator juniper bears N. 44° E., 128 lks. dist., mkd. $\frac{1}{4}$ S25 BT.
 A live oak, 6 ins. diam., bears S. 83° W., 92 lks. dist., mkd. $\frac{1}{4}$ S36 BT.

- Asc. 236 ft. over E. slope.
- 47.60 Rocky ridge, bears N. and S. Set triangulation flag.
- Desc. 174 ft. over broken W. slope.
- 60.10 Ravine, course S.
- Asc. 45 ft. over E. slope.
- 64.20 Spur, slopes S.
- Desc. 21 ft. along S. slope.
- 69.10 Draw, course SE.
- Asc. 289 ft. over SE. slope.
- 80.10 The cor. of secs. 25, 26, 35 and 36.

Land: mountainous.
 Soil: rocky, loam, 2nd and 3rd rate.
 Timber: oak, pinon, juniper, Borub cedar.
 Undergrowth: oak, catclaw, beargrass, dogwood, etc.

N. $0^{\circ}01'$ W., bet. secs. 25 and 26.
 Over mountainous land; through moderate timber and undergrowth.
 To obtain distance across rugged land forward triangulate as follows:

- From a point forward on line flag bet. secs. 25 and 36 - (32.50 chs. S. $89^{\circ}58'$ E) bears S. $39^{\circ}09'$ E. Vertical angle from point forward to sec. cor. is -11° ; to ravine -28° .
- All bearings checked by direct reading of the solar and all angles checked by deflection.
- Dist. triangulated = 39.91 chs.
- Asc. 150 ft. along broken E. slope.
- 12.00 (Approx.) Spur, slopes SE.
- Desc. 210 ft. over NE. slope.
- 22.00 (Approx.) Ravine, course SE.
- Asc. 560 ft. over rugged S. slope and cliffs facing S.
- 39.91 Triangulation point. Continue line and measurement by chaining.



Survey of Subdivision Lines of T. 5 S., R.20 E.

Chains

40.00 Set an iron post, 3 ft. long, 1 in. diam., 20 ins. in the ground, supported by a mound of stone, 2 ft. base, 1 ft. high, for $\frac{1}{4}$ sec. cor., with brass cap mkd.

$\frac{1}{4}$
 S26 | S25
 1929

from which

A pinon, 12 ins. diam., bears N.10°E., 27 lks. dist., mkd. $\frac{1}{4}$ S25 BT.

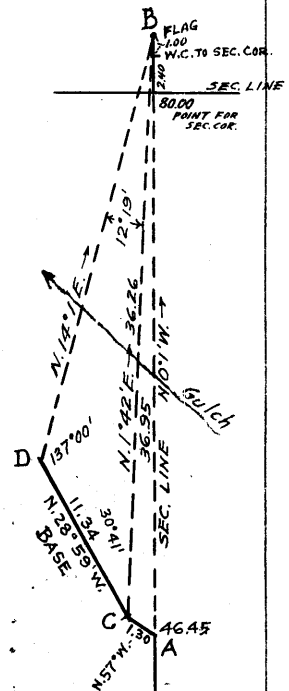
A pinon, 14 ins. diam., bears N.24 $\frac{1}{2}$ °W., 12 lks. dist., mkd. $\frac{1}{4}$ S26 BT.

41.10 Asc. 25 ft. over S. slope.
Sour, slopes SE.

46.20 Asc. 60 ft. along E. slope.

46.45 Ridge, bears NE. and SW.

To obtain measurement across high cliffs and dense undergrowth forward triangulate as described as follows:
Designate this point "A" and set a flag "B" forward on line. From point "A" run N.57°W. 1.30 chs. to point "C". From point "C" measure a base 11.34 chs. N.28°59'W. to point "D". Bearing from "C" to "B" is N.1°42'E.; from "D" to "B" is N.14°01'E. Longer base not obtainable. All bearings checked by direct reading of the solar and all angles checked by deflection. Vertical angle "A" to "B" is -8°; "A" to gulch is -16°. Distance by traverse and triangulation "A" to "B" is 36.95 chs. N.0°1'W.



62.00 Desc. approximately 280 ft. over N. slope.

Gulch, 10 lks. wide, course NW.

Desc. about 70 ft. along W. slope.

80.00 Located by return measurement of 3.40 chs. from triangulation point "B". True point for cor. of secs. 23, 24, 25 and 26 falls on shallow soil over steep sloping bedrock. Witness cor. established at a point 2.40 chs. N.0°01'W. of true point hereinafter described.

Land: mountainous.

Soil: rocky, loam, 3rd rate.

Timber: oak, pinon, cedar, juniper.

Undergrowth: oak, manzanita, mahogany, catclaw, yucca, ocatilla, beargrass, laurel, dogwood, etc.

40.00 S.89°58'E., on a random line, bet. secs. 24 and 25.
Set temp. $\frac{1}{4}$ sec. cor.

80.28 Fall 4 lks. S. of the the true point for cor. of secs. 19, 24, 25 and 30. Witness cor. established in 1928 under this group at a point 15 lks. S. of true point is described in Book "C".

Thence, from true point,

West, on true line, bet. secs. 24 and 25.

Over rough mountainous land; through heavy timber and moderate undergrowth.

Chains

- Asc. 1072 ft. over NE. slope.
- 32.20 Ridge, bears NE. and SW.
- Desc. 205 ft. over W. slope.
- 40.14 Set an iron post, 3 ft. long, 1 in. diam., 24 ins. in the ground, supported by a mound of stone, 2 ft. base, 1 ft. high, for 1/4 sec. cor., with brass cap mkd.

$\frac{1}{4}$ S24
 $\frac{1}{4}$ S25
 1929

from which
 An oak, 3 ins. diam., bears S. 77° E., 11 lks. dist., mkd. BT.
 A pinon, 6 ins. diam., bears N. 21° W., 42 lks. dist., mkd. 1/4 S24 BT.

- 52.10 Desc. 191 ft. over W. slope. Creek, 2 lks. wide, course NW.
- 56.90 Asc. 55 ft. over NE. slope. Spur, slopes N.
- 64.30 Desc. 116 ft. over NW. slope. Ravine, trace of water, course N.
- 77.50 Asc. 240 ft. over NE. slope. Rocky spur, slopes NW.
- 80.28 Desc. 140 ft. over W. slope.

Land: mountainous.
 Soil: rocky, loam, 3rd rate.
 Timber: oak, cedar, pinon, juniper.
 Undergrowth: oak, mahogany, manzanita, cactus, etc.

N. 0° 01' W., bet. secs. 23 and 24.
 Over mountainous land; through scattering timber and dense undergrowth.
 Along rocky W. slope.

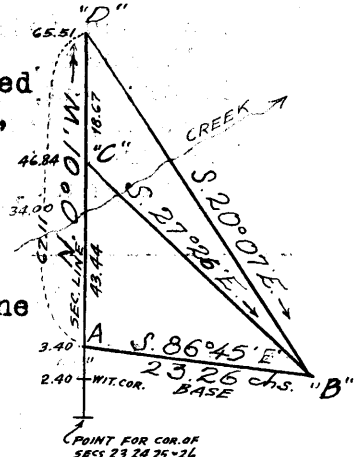
- 2.40 (2.40 chs. N. 0° 01' W. of true point for sec. cor.) Set an iron post, 3 ft. long, 2 ins. diam., 26 ins. in the ground, for witness cor. to cor. of secs. 23, 24, 25 and 26, with brass cap mkd.

T5SR20E
 S23 | S24
 S26 | S25
 W C
 1929

from which
 A pinon, 6 ins. diam., bears N. 30 1/2° W., 90 lks. dist., mkd. T5S R20E S23 WC BT.
 No other trees suitable for bearing trees near. Raise a mound of stone, 4 ft. base, 2 ft. high, W. of cor.

- 3.40 Along W. slope. Rocky spur, slopes N. To obtain measurement across rugged and brush-covered land forward, triangulate as described as follows:

Designate this point "A".
 Measure a base 23.26 chs. S. 86° 45' E. to point "B".
 From a point "C" forward on line point "B" bears S. 27° 26' E.
 From a point "D" forward on line "B" bears S. 20° 07' E.

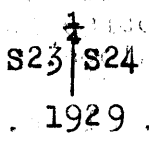


Survey of Subdivision Lines of T. 5 S., R.20 E.

Chains

All angles checked by deflection and all bearings checked by direct readings of the solar.
 Vertical angle "A" to creek = -20°; "A" to "B" -14½°;
 "A" to "D" = +1°; creek to "D" = +18°
 Dist. triangulated "A" to "C" = 43.44 chs. N.0°1'W.
 Station of point "A" ----- 3.40 " N.0°1'W.
 Station of point "C" ----- 46.84 " N.0°1'W.
 By return measurement 6.84 " S.0°1'E.
 ¼ sec. cor. established at ---- 40.00 " N.0°1'W.
 Dist. triangulated "A" to "D" ----- 62.11 chs. N.0°1'W.
 Station of point "D" ----- 65.51 chs. N.0°1'W.

34.00 Desc. approximately 710 ft. over rocky NE. slope.
 (Approx.) Creek, 10 lks. wide, course NE.
 38.00 Asc. approximately 70 ft. over SE. slope.
 40.00 Toe of spur, slopes SE. Along E. slope.
 Set an iron post, 3 ft. long, 1 in. diam., 26 ins. in the ground, for ¼ sec. cor., with brass cap mkd.



from which
 A live oak, 6 ins. diam., bears S.20½°E., 69 lks. dist., mkd. ¼ S24 BT.
 A live oak, 9 ins. diam., bears N.33°W., 31 lks. dist., mkd. ¼ S23 BT.

(Line and measurement forward by chaining)
 Desc. 15 ft. along E. slope.

45.20 Draw, course SE.
 Asc. 45 ft. over S. slope.
 46.84 Triangulation point "C". Discontinue chaining.
 Asc. approximately 650 ft. over cliffs facing SW.
 65.00 Rocky peak bears about 1.50 chs. E.
 Along W. slope.
 65.51 Triangulation point "D". Continue line and measurement by chaining.
 Desc. 670 ft. over rugged N. slope.
 80.00 Set an iron post, 3 ft. long, 2 ins. diam., 16 ins. in the ground to bedrock, deposit a stone, mkd. with cross (+) at base of post, raise a mound of stone, 4 ft. base, 1½ ft. high, around post, for cor. of secs. 13, 14, 23 and 24, with brass cap mkd.



from which
 An alligator juniper, 12 ins. diam., bears S.12°E., 197 lks. dist., mkd. T5S R20E S24 BT.
 An alligator juniper, 30 ins. diam., bears S.18½°W., 186 lks. dist., mkd. T5S R20E S23 BT.
 No suitable trees Northerly.

Land: mountainous.
 Soil: rocky, 3rd rate.
 Timber: oak, pinon, juniper, scrub cedar, sycamore, alder, hazel, pine
 Undergrowth: oak, manzanita, mahogany, willow, dogwood, beargrass, ocatilla, cactus, bayonet, cherry, etc.

Survey of Subdivision Lines of T.5 S., R.20 E.

Chains

- 40.00 East, on random line, bet. secs. 13 and 24.
- Set temp. $\frac{1}{4}$ sec. cor.
- 80.14 Fall 28 lks. N. of the cor. of secs. 13, 18, 19 and 24, on the E. bdy. of the Tp., established in 1928 under this Group, described in Book "C".
- Thence (from cor.)
- N. $89^{\circ}48'$ W., on true line, bet. secs. 13 and 24.
- Over mountainous land; through scattering timber and moderate undergrowth.
- Desc. 61 ft. along S. slope.
- 14.10 Short spur, slopes SE.
- Along S. slope.
- 18.00 Gulch, temporary creek, 10 lks. wide, course SE.
- Asc. 292 ft. over NE. slope.
- 36.10 Shallow ravine, course NE.
- 40.07 Set an iron post, 3 ft. long, 1 in. diam., 26 ins. in the ground, for $\frac{1}{4}$ sec. cor., with brass cap mkd.

$\frac{1}{4}$ S13
 $\frac{1}{4}$ S24
 1929

from which
 An alligator juniper, 4 ins. diam., bears N. 86° E., 98 lks. dist., mkd. BT.
 No other suitable trees near. Raise a mound of stone, 4 ft. base, 2 ft. high, N. of cor.

- Asc. 745 ft. over NE. slope.
- 61.70 Spur, slopes N.
- Enter dense undergrowth.
- Desc. 190 ft. over NW. slope.
- 74.90 Ravine, course N.
- Asc. 20 ft. along N. slope.
- 80.14 The cor. of secs. 13, 14, 23 and 24.
- Land: mountainous.
- Soil: rocky, loam, 2nd rate.
- Timber: oak, cedar, piñon, juniper.
- Undergrowth: oak, manzanita, mahogany, catclaw, cactus, beargrass, mesquite, bayonet, ocatilla, dogwood.

- N. $0^{\circ}01'$ W., bet. secs. 13 and 14.
- Over mountainous land; through scattering timber and moderate undergrowth.
- Desc. 60 ft. over N. slope.
- 2.50 Gulch, temporary creek, 6 lks. wide, course NE.
- Asc. 400 ft. over SE. slope.
- 32.00 Ridge, bears E. and W.
- Desc. 280 ft. over N. slope.
- 38.00 Ravine, course NE.
- Asc. 15 ft. over SE. slope.
- 40.00 Set an iron post, 3 ft. long, 1 in. diam., 27 ins. in the ground, for $\frac{1}{4}$ sec. cor., with brass cap mkd.

$\frac{1}{4}$
 S14 | S13
 1929

from which
 An alligator juniper, 7 ins. diam., bears S. 31° E., 174 lks. dist., mkd. $\frac{1}{4}$ S13 BT.

Survey of Subdivision Lines of T.5 S., R.20 E.

Chains

An alligator juniper, 10 ins. diam., bears S.21°W., 127 lks. dist., mkd. $\frac{1}{4}$ S14 BT.

44.00 Asc. 123 ft. over SE. slope.
Spur, slopes NE.
Desc. 850 ft. over broken NE. slope.

80.00 True point for cor. of secs. 11, 12, 13 and 14 falls on broken sloping bedrock of point projecting N. At a point 70 lks. East of true point;
Set an iron post, 3 ft. long, 2 ins. diam., 6 ins. in the ground to bedrock; deposit a stone, mkd. with cross (+) at base of post; raise a mound of stone, 5 ft. base, 2 ft. high, around post, for witness cor. to cor. of secs. 11, 12, 13 and 14, with brass cap mkd.

	F5SR20E	
	S11 S12	
WC	S14 S13	
	1929	

No suitable trees near.

Land: rough mountainous.

Soil: rocky loam, 2nd rate.

Timber: oak, pinon, juniper, cedar.

Undergrowth: oak, mahogany, manzanita, catclaw, cactus, beargrass, dogwood, etc.

40.00 From true point for cor. of secs. 11, 12, 13 and 14, S.89°48'E., on random line, bet. secs. 12 and 13.
Set triangulation flag and temp. $\frac{1}{4}$ sec. cor.
80.30 Fall 11 lks. S. of the true point for cor. of secs. 7, 12, 13 and 18, on the E. bdy. of the Tp. Witness cor. established in 1928 under this Group at a point 1.49 chs. North of true point described in Book "C".

Thence (from true point),

N.89°53'W., on true line, bet. secs. 12 and 13.

Over mountainous land; through scattering timber and scattering undergrowth.

Across wash of North Goodwin Creek.

0.30 Leave wash, course SW.
Asc. 510 ft. over NE. slope.
20.00 Spur, slopes NE.
Desc. 40 ft. along N. slope.
28.40 Ravine, temporary water, course NE.
Asc. 221 ft. over E. slope.
37.00 Spur, slopes NE.
Desc. 10 ft. over N. slope.

40.15 Set an iron post, 3 ft. long, 1 in. diam., 26 ins. in the ground, for $\frac{1}{4}$ sec. cor., with brass cap mkd.

	S12	
	S13	
	1929	

No bearing trees available. Raise a mound of stone, 3 ft. base, 2 ft. high, N. of cor.

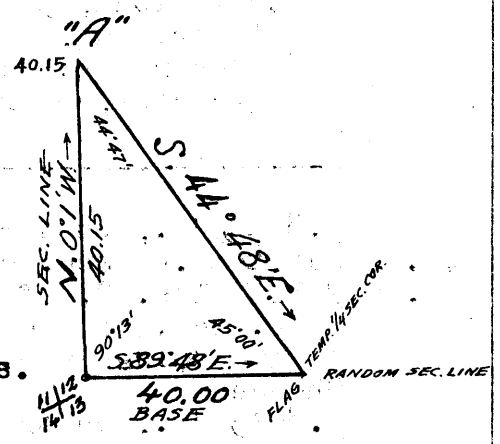
45.00 Desc. 47 ft. over N. slope.
Head of ravine, course NE.
62.50 Asc. 318 ft. over E. slope.
Spur, slopes N.
Desc. 195 ft. over NW. slope.

Survey of Subdivision Lines of T.5 S., R.20 E.

Chains
 66.00 Ravine, temporary water, 3 lks. wide, course N.
 Asc. 105 ft. over NE. slope.
 71.40 Spur, slopes N.
 Desc. 56 ft. over NW. slope.
 74.40 Ravine, course N.
 Asc. 83 ft. along N. slope.
 80.30 The true point for cor. of secs. 11, 12, 13 and 14.

Land: mountainous.
 Soil: rocky, loam, 3rd rate.
 Timber: oak, pinon, cedar, juniper.
 Undergrowth: oak, manzanita, mahogany, catclaw, mesquite,
 cactus, beargrass, bayonet, etc.

 From true point for cor. of secs. 11, 12, 13 and 14,
 N.0°01'W., bet. secs. 11 and 12.
 Over rough mountainous land; through scattering timber
 and moderate undergrowth.
 To obtain measurement across rugged canyon of Middle
 Goodwin Creek, triangulate as described as follows:
 From a point "A" forward
 on line the bearing to
 flag hereinbefore des-
 cribed at temp. 1/4 sec.
 cor. of secs. 12 and 13
 is S.44°48'E. All angles
 checked by deflection
 and all bearings checked
 by deflection. Vertical
 angle forward to "A" is
 0°; to Creek -26°+.
 Dist. triangulated = 40.15 chs.
 By return chaining - .85 "
 Station of W.C. ----- 39.30 "



Desc. approximately 500 ft. over N. slope.
 13.70 (Approx.) Middle Goodwin Creek, 15 lks. wide, course E.
 Asc. approximately 490 ft. over S. slope.
 24.00 (Approx.) Spur, slopes E.
 Desc. approximately 80 ft. over NE. slope.
 31.50 Trail, bears E. to Hinton's ranch and W. to Stanley Butte.
 34.70 Draw, course SE.
 Asc. 90 ft. over SE. slope.
 39.30 (70 lks. S.0°01'E. of true point for 1/4 sec. cor.) Set an
 iron, 3 ft. long, 1 in. diam., 26 ins. in the ground
 for witness cor. to 1/4 sec. cor., with brass cap mkd.

W.C.
 S11 | S12
 1929

from which
 A live oak, 6 ins. diam., bears S.10 1/2°E., 42 lks.
 dist., mkd. 1/4 S12 WC BT.
 A live oak, 8 ins. diam., bears S.7 1/2°W., 33 lks.
 dist., mkd. 1/4 S11 WC BT.

Measurement forward by chaining.
 Asc. 26 ft. over S. slope.
 40.00 Mark cross (+) on sloping edge of boulder for true point
 for 1/4 sec. cor.
 40.15 Triangulation point "A".
 Asc. 35 ft. over SE. slope.
 46.50 Spur, slopes SE.
 Desc. 59 ft. over N. slope.

Survey of Subdivision Lines of T.5 S., R.20 E.

Chains

- 59.00 Ravine, dry, course SE.
Asc. 145 ft. over SE. slope.
- 69.50 Draw, course SW.
Asc. 57 ft. over S. slope.
- 74.00 Spur, slopes SE.
Desc. 98 ft. over N. slope.
- 80.00 Set an iron post, 3 ft. long, 2 ins. diam., 26 ins. in the ground, for cor. of secs. 1, 2, 11 and 12, with brass cap mkd.

T5SR2OE	
S2	S1
S11	S12
1929	

No suitable bearing trees. Raise a mound of stone, 4 ft. base, 2 ft. high, W. of cor.

Land: mountainous.

Soil: loam, 3rd rate.

Timber: oak, pinon, cedar, juniper, alder.

Undergrowth: oak, manzanita, mahogany, catclaw, mesquite, cactus, beargrass.

- S. $89^{\circ}53'$ E., on a random line, bet. secs. 1 and 12.
- 40.00 Set temp. $\frac{1}{4}$ sec. cor.
- 79.86 Fall 7 lks. S. of the cor. of secs. 1, 6, 7 and 12, on the E. bdy. of the Tp., established in 1928 under this group, described in Book "C".
- Thence
- N. $89^{\circ}56'$ W., on true line, bet. secs. 1 and 12.
Over mountainous land; through scattering timber and undergrowth.
- Desc. 52 ft. along S. slope.
- 6.60 Head of ravine, course SW.
Asc. 123 ft. over E. slope.
- 14.20 Spur, slopes N.
Desc. 249 ft. over W. slope.
- 22.00 Goodwin wash, 100 lks. wide, with temporary water 10 lks. wide, course S.
Asc. 35 ft. over SE. slope.
- 24.30 Draw, course SE.
Asc. 330 ft. over NE. slope.
- 39.93 True point for $\frac{1}{2}$ sec. cor. falls on washed section of sloping bedrock.
- 40.20 (27 lks. N. $89^{\circ}56'$ W. of true point) Set an iron post, 3 ft. long, 1 in. diam., 27 ins. in the ground, for witness cor. to $\frac{1}{4}$ sec. cor., with brass cap mkd.

$\frac{1}{4}$ S1	WC
$\frac{1}{4}$ S12	
1929	

No bearing trees available. Raise a mound of stone, 3 ft. base, 2 ft. high, N. of cor.

- Asc. 188 ft. over E. slope.
- 44.60 Spur, slopes SE. (from SW.)
Desc. 58 ft. over W. slope.
- 51.00 Head of ravine, course SE.
Asc. 60 ft. over SE. slope.
- 55.00 Spur, slopes NE.
Desc. 46 ft. over NW. slope.

Survey of Subdivision Lines of T.5 S., R.20 E.

Chains
 67.30 Small ravine, course NE.
 Asc. 314 ft. over NE. slope.
 79.86 The cor. of secs. 1, 2, 11 and 12.
 Land: mountainous.
 Soil: loam, 3rd rate.
 Timber: oak, pinon, cedar.
 Undergrowth: oak, mahogany, cactus, catclaw, beargrass.

 N.0°01'W. on a random line, bet. secs. 1 and 2.
 40.00 Set temp. 1/4 sec. cor.
 79.67 Fall 6 lks. E. of the cor. of secs. 1, 2, 35 and 36, on the
 N. bdy. of the Tp., hereinbefore described.
 Thence
 S.0°04'E., on true line, bet. secs. 1 and 2.
 Over mountainous land; through scattering timber and
 undergrowth.
 Asc. 43 ft. over NE. slope.
 6.70 Spur, slopes E.
 Desc. 263 ft. over SE. slope.
 34.70 Draw, course SE.
 Asc. 20 ft. over NE. slope.
 38.90 Spur, slopes SE.
 Desc. 20 ft. over SW. slope.
 39.67 Set an iron post, 3 ft. long, 1 in. diam., 16 ins. in the
 ground, supported by a mound of stone, 3 ft. base, 1 1/2
 ft. high, for 1/4 sec. cor., with brass cap mkd.

S2 | S1
 1929

No bearing trees available. Raise a mound of stone, 3
 ft. base, 2 ft. high, W. of cor.
 Desc. 186 ft. over SW. slope.
 51.30 Ravine, with temporary water, 2 lks. wide, course SE.
 Over low spur, slopes E.
 53.40 Ravine, course E.
 Asc. 223 ft. over N. slope.
 66.70 Spur, slopes E.
 Desc. 34 ft. over SE. slope.
 75.50 Head of ravine, course E.
 Asc. 46 ft. over S. slope.
 79.67 The cor. of secs. 1, 2, 11 and 12.
 Land: mountainous.
 Soil: rocky, loam, 2nd rate.
 Timber: oak, cedar, pinon.
 Undergrowth: oak, mahogany, catclaw, mesquite, cactus,
 beargrass, etc.

 From the standard cor. of secs. 34 and 35, on the S. bdy.
 of the Tp., established in 1928 under this Group,
 described in Book "B".
 N.0°01'W., bet. secs. 34 and 35.
 Over mountainous land; through scattering timber and
 light undergrowth.
 Asc. 110 ft. along E. slope.
 5.70 Point of spur, slopes E.
 Desc. 40 ft. over NE. slope.

Survey of Subdivision Lines of T.5 S., R.20°E.

Chains	
8.50	Wash, dry, 40 lks. wide, in canyon, course SE. Asc. 822 ft. over SW. slope.
38.70	Ridge, bears NW. and SE. Desc. 15 ft. over NE. slope.
40.00	Set an iron post, 3 ft. long, 1 in. diam., 30 ins. in the ground, for $\frac{1}{4}$ sec. cor., with brass cap mkd.
	$\frac{1}{4}$ S34 S35 1929
	from which A cedar, 4 ins. diam., bears N. $82\frac{1}{4}^{\circ}$ E., 98 lks. dist., mkd. $\frac{1}{4}$ S35 BT. A cedar, 6 ins. diam., bears S. $87\frac{1}{2}^{\circ}$ W., 58 lks. dist., mkd. $\frac{1}{4}$ S34 BT.
47.40	Desc. 93 ft. over NE. slope. Ravine, course SE. Asc. 70 ft. over S. slope.
50.90	Small spur, slopes SE. Desc. 50 ft. along E. slope.
59.00	Wash, dry, 15 lks. wide, course SE. Asc. 290 ft. over SW. slope.
71.40	Ridge, bears NW. and SE. Enter dense undergrowth. Desc. 70 ft. along E. slope.
80.00	Set an iron post, 3 ft. long, 2 ins. diam., 30 ins. in the ground, for cor. of secs. 26, 27, 34 and 35, with brass cap mkd.
	T5SR20E S27 S26 S34 S35 1929
	from which An oak, 6 ins. diam., bears N. $51\frac{1}{4}^{\circ}$ E., 34 lks. dist., mkd. T5S R20E S26 BT. A manzanita, 6 ins. diam., bears S. $80\frac{1}{4}^{\circ}$ E., 15 lks. dist., mkd. T5S R20E S35 BT. An oak, 6 ins. diam., bears S. $57\frac{1}{4}^{\circ}$ W., 18 lks. dist., mkd. T5S R20E S34 BT. An oak, 4 ins. diam., bears N. $18\frac{1}{2}^{\circ}$ W., 25 lks. dist., mkd. BT.
	Land: mountainous. Soil: rocky, sandy, 3rd rate. Timber: oak, cedar, Undergrowth: manzanita, whitethorn, mahogany, laurel, catclaw, beargrass, cactus, yucca, mesquite.
40.00	East, on random line, bet. secs. 26 and 35. Set temp. $\frac{1}{4}$ sec. cor.
79.98	Fall 23 lks. N. of the cor. of secs. 25, 26, 35 and 36. Thence N. $89^{\circ}50'$ W., on true line, bet. secs. 26 and 35. Over mountainous land; through scattering timber and moderate undergrowth.
0.30	Ridge, bears N. and S. Asc. 80 ft. along S. slope.
10.00	Spur, slopes S. Desc. 239 ft. over W. slope.
23.40	Ravine, course S. Asc. 375 ft. over E. slope.

Survey of Subdivision Lines of T.5 S., R.20 E.

Chains

- 35.70 Ridge, bears NW. and SE.
Desc. 92 ft. over SW. slope.
- 39.99 Set an iron post, 3 ft. long, 1 in. diam., 20 ins. in the ground, for 1/4 sec. cor., with brass cap mkd.

S26
S35
1929

from which
An alligator juniper, 6 ins. diam., bears N.79°W., 73 lks. dist., mkd. 1/4 S26 BT.
An alligator juniper, 12 ins. diam., bears N.6°E., 227 lks. dist., mkd. 1/4 S26 BT.

- 45.80 Along S. slope.
Spur, slopes S.
Desc. 403 ft. over W. slope.
- 59.00 Creek, 10 lks. wide, 6 ins. deep, course SE.
Asc. 367 ft. over NE. slope.
- 59.50 Trail, bears NW. and SE.
Enter dense undergrowth, bears NW. and SE.
- 79.98 The cor. of secs. 26, 27, 34 and 35.

Land: mountainous.
Soil: rocky, loam, 3rd rate.
Timber: oak, juniper, pinon, cedar.
Undergrowth: oak, manzanita, mahogany, catclaw, cactus, laurel, mesquite, beargrass.

- N.0°01'W., bet. secs. 26 and 27.
Over mountainous land; through moderate timber and dense undergrowth.
- 15.80 Desc. 297 ft. over NE. slope.
Creek, 10 lks. wide, 6 ins. deep, course SE.
- 32.00 Asc. 474 ft. over S. slope.
Spur, slopes SE.
Desc. 170 ft. along E. slope.
- 40.00 Set an iron post, 3 ft. long, 1 in. diam., 26 ins. in the ground, for 1/4 sec. cor., with brass cap mkd.

S27 S26
1929

from which
A pinon, 12 ins. diam., bears N.84°E., 20 lks. dist., mkd. 1/4 S26 BT.
A pinon, 8 ins. diam., bears N.78°W., 44 lks. dist., mkd. 1/4 S27 BT.

- 41.50 Desc. 20 ft. over NE. slope.
Head of short ravine, course SE.
Asc. 34 ft. over SE. slope.
- 44.10 Ridge, bears E. and W., slopes E.
Enter scattering timber.
- 57.20 Desc. 199 ft. over N. slope.
Draw, course NE.
Over rolling land.
Asc. 12 ft. over S. slope.
- 66.00 Flat spur, slopes E.
Desc. 11 ft. over N. slope.
- 77.60 Gulch, course SE.
Asc. 45 ft. over S. slope.

Chains

80.00 Set an iron post, 3 ft. long, 2 ins. diam., 28 ins. in the ground, for cor. of secs. 22, 23, 26 and 27, with brass cap mkd.

T5SR20E	
S22	S23
S27	S26
1929	

fr om which

A pinon, 10 ins. diam., bears N.45°E., 51 lks. dist., mkd. T5S R20E S23 BT.

A juniper, 4 ins. diam., bears S. 80 $\frac{1}{2}$ °E., 184 lks. dist., mkd. BT.

A bull pine, 10 ins. diam., bears S.10 $\frac{1}{2}$ °W., 151 lks. dist., mkd. T5S R20E S27 BT.

A pinon, 3 ins. diam., bears N.85 $\frac{1}{2}$ °W., 41 lks. dist., mkd. BT.

Land: rolling and mountainous.

Soil: rocky, loam, granite, 3rd rate.

Timber: oak, pinon, cedar, juniper.

Undergrowth: oak, manzanita, mahogany, catclaw, mesquite, laurel, cactus, bayonet, etc.

40.00 S.89°50'E., on random line, bet. secs. 23 and 26. Set temp. $\frac{1}{4}$ sec. cor.

79.96 Fall 4 lks. N. of true point for cor. of secs. 23, 24, 25 and 26.

Thence

N.89°48'W., on true line, bet. secs. 23 and 26.

Over mountainous land; through scattering timber and dense undergrowth.

Desc. 300 ft. over W. slope.

7.00 Ravine, course NW.

Along N. slope.

17.00 Spur, slopes NW.

Desc. 120 ft. over W. slope.

25.00 Ravine, course NE.

Asc. 125 ft. over SE. slope.

39.98 Set an iron post, 3 ft. long, 1 in. diam., 27 ins. in the ground, for $\frac{1}{4}$ sec. cor., with brass cap mkd.

S23	
1	S26
1929	

from which

A live oak, 4 ins. diam., bears S.69°W., 17 lks. dist., mkd. BT.

A live oak, 4 ins. diam., bears N.9°W., 93 lks. dist., mkd. BT.

Asc. 34 ft. over SE. slope.

42.00 Spur, slopes NE.

Desc. 131 ft. over NW. slope.

51.00 Gulch, temporary creek, 10 lks. wide, course NE.

Asc. 213 ft. over SE. slope.

59.50 Spur, slopes S.

Desc. 43 ft. over SW. slope.

66.60 Short ravine, course S.

Asc. 112 ft. over E. slope.

70.00 Spur, slopes SE.

Desc. 40 ft. over SW. slope.

74.50 Small ravine, course S.

Asc. 25 ft. along S. slope.

79.96 The cor. of secs. 22, 23, 26 and 27.

Chains

Land: mountainous.
Soil: rocky, loam, 3rd rate.
Timber: oak, pinon, cedar, juniper.
Undergrowth: oak, catclaw, manzanita, mahogany, cactus.

N.0°01'W., bet. secs. 22 and 23.
Over mountainous land; through scattering timber and moderate undergrowth.

- Asc. 367 ft. over S. slope.
- 11.50 Rocky spur, slopes SE.
- Desc. 29 ft. over NE. slope.
- 18.80 Head of ravine, course SE.
- Asc. 107 ft. over SE. slope.
- 25.00 Spur, slopes E.
- Desc. 190 ft. over NE. and E. slopes, to $\frac{1}{4}$ sec. cor.
- 30.00 Head of ravine, course E.
- 40.00 Set an iron post, 3 ft. long, 1 in. diam., 26 ins. in the ground, for $\frac{1}{4}$ sec. cor., with brass cap mkd.

$\frac{1}{4}$
 S22 | S23
 1929

from which
A live oak, 8 ins. diam., bears S.62°E., 71 lks. dist., mkd. $\frac{1}{4}$ S23 BT.
An alligator juniper, 10 ins. diam., bears S.33 $\frac{1}{2}$ °W., 58 lks. dist., mkd. $\frac{1}{4}$ S22 BT.

- 40.40 Ravine, course SE.
- Asc. 174 ft. over S. slope.
- 48.20 Spur, slopes SE.
- Desc. 213 ft. over NE. slope.
- 60.00 Ravine, course NE.
- Asc. 157 ft. over SE. slope.
- 70.00 Spur, slopes SE.
- Desc. 198 ft. over NE. slope.
- 80.00 Set an iron post, 3 ft. long, 2 ins. diam., 27 ins. in the ground, for cor. of secs. 14, 15, 22 and 23, with brass cap mkd.

T5SR20E
 S15 | S14
 S22 | S23
 1929

from which
A pinon, 10 ins. diam., bears N. 7°E., 27 lks. dist., mkd. T5S R20E S14 BT.
A pinon, 8 ins. diam., bears S.26°E., 25 lks. dist., mkd. T5S R20E S23 BT.
A pinon, 8 ins. diam., bears S.17°W., 50 lks. dist., mkd. T5S R20E S22 BT.
A pinon, 8 ins. diam., bears N.1°W., 29 lks. dist., mkd. T5S R20E S15 BT.

Land: mountainous.
Soil: rocky, loam, 3rd rate.
Timber: oak, pinon, cedar, juniper.
Undergrowth: oak, laurel, manzanita, mahogany, cactus, cherry, catclaw, etc.

Chains	
	S. 89° 48' E., on random line, bet. secs. 14 and 23.
40.00	Set temp. $\frac{1}{4}$ sec. cor.
79.66	Fall 4 lks. S. of the cor. of secs. 13, 14, 23 and 24.
	Thence
	N. 89° 50' W., on true line, bet. secs. 14 and 23.
	Over mountainous land; through scattering timber and dense undergrowth.
	Along N. slope.
5.00	Creek, 10 lks. wide, 6 ins. deep, course NE.
	Asc. 160 ft. over SE. slope.
8.00	Point of spur, slopes S.
	Asc. 220 ft. over broken S. slope.
29.50	Spur, slopes S.
	Desc. 64 ft. over SW. slope.
36.50	Small ravine, course SE.
	Asc. 23 ft. over SE. slope.
38.80	Spur, slopes SE.
	Desc. slightly over W. slope.
39.83	Set an iron post, 3 ft. long, 1 in. diam., 18 ins. in crevice in bedrock, supported by a mound of stone, 3 ft. base, 1 ft. high, for $\frac{1}{4}$ sec. cor., with brass cap mkd.

$\frac{1}{4}$ S14
 $\frac{1}{4}$ S23
 1929

from which

A pinon, 8 ins. diam., bears S. 39° W., 34 lks. dist., mkd. $\frac{1}{4}$ S23 BT.

A pinon, 8 ins. diam., bears N. 22° W., 58 lks. dist., mkd. $\frac{1}{4}$ S14 BT.

	Desc. 20 ft. over SW. slope.
41.90	Small ravine, course SE.
	Asc. 220 ft. over E. slope.
52.30	Spur, slopes S.
	Desc. 76 ft. over SW. slope.
60.50	Draw, course SE.
	Asc. 340 ft. over broken E. slope.
79.66	The cor. of secs. 14, 15, 22 and 23.

Land: mountainous.

Soil: rocky, granite loam, 2nd rate.

Timber: oak, pinon, juniper, cedar.

Undergrowth: oak, manzanita, mahogany, catclaw, cactus, beargrass, laurel, dogwood, etc.

	N. 0° 01' W., bet. secs. 14 and 15.
	Over mountainous land; through scattering timber and moderate undergrowth.
	Desc. 36 ft. over NE. slope.
2.20	Head of ravine, course SE.
	Asc. 109 ft. over S. slope.
8.50	Ridge, bears NE. and SW.
	Desc. 898 ft. over broken NE. slope.
40.00	Set an iron post, 3 ft. long, 1 in. diam., 27 ins. in the ground, for $\frac{1}{4}$ sec. cor., with brass cap mkd.

$\frac{1}{4}$ S15 | $\frac{1}{4}$ S14
 1929

from which

Survey of Subdivision Lines of T.5 S., R.20 E.

- Chains
- A pinon, 6 ins. diam., bears N.72 $\frac{1}{2}$ °E., 30 lks. dist., mkd. $\frac{1}{4}$ S14 BT.
- An alligator juniper, 26 ins. diam., bears S.75°W., 52 lks. dist., mkd. $\frac{1}{4}$ S15 BT.
- Desc. 200 ft. over NE. slope.
- 50.60 Ravine, course NW.
- Asc. 30 ft. over SE. slope.
- 53.40 Rocky spur, slopes NW.
- Desc. 219 ft. over NE. slope.
- 61.50 Same ravine, course NE.
- Along E. slope.
- 65.00 Point of rocky spur, slopes E.
- Desc. 208 ft. over NE. slope.
- 80.00 Set an iron post, 3 ft. long, 2 ins. diam., 26 ins. in the ground, for cor. of secs. 10,11,14 and 15, with brass cap mkd.

T5S R20E
 S10 | S11

 S15 | S14
 1929

- from which
- A live oak, 5 ins. diam., bears N.40°E., 38 lks. dist., mkd. T5S R20E S11 BT.
- A live oak, 4 ins. diam., bears S.76°E., 24 lks. dist., mkd. BT.
- A live oak, 7 ins. diam., bears S.19 $\frac{1}{4}$ °W., 55 lks. dist., mkd. T5S R20E S15 BT.
- An alligator juniper, 14 ins. diam., bears N.29°W., 19 lks. dist., mkd. T5S R20E S10 BT.

Land: mountainous.
 Soil: rocky, granite, loam, 3rd rate.
 Timber: oak, pinon, juniper, cedar, pine.
 Undergrowth: oak, manzanita, mahogany, catclaw, cactus, mesquite, dogwood, laurel.

-
- S.89°50'E., on random line, bet. secs. 11 and 14.
 - 40.00 Set temp. $\frac{1}{4}$ sec. cor.
 - 79.92 Fall 4 lks. N. of true point for cor. of secs. 11,12,13&14. Thence
 - N.89°48'W., on true line, bet. secs. 11 and 14.
 - Over rough mountainous land; through scattering timber and moderate undergrowth.
 - Asc. 40 ft. over NE. slope.
 - 1.00 Rocky point, projects N. Desc. 90 ft. over NW. slope.
 - 5.00 Ravine, course N.
 - Asc. 58 ft. over NE. slope.
 - 7.50 Spur, slopes N.
 - Desc. 82 ft. over NW. slope.
 - 11.00 Canyon, temporary creek, 10 lks. wide, course NE.
 - Asc. 689 ft. over cliffs and E. slope.
 - 29.20 Spur, slopes NW.
 - Desc. 376 ft. over cliffs and W. slope.
 - 39.96 Set an iron post, 3 ft. long, 1 in. diam., 26 ins. in the ground, for $\frac{1}{4}$ sec. cor., with brass cap mkd.

S11
 S14
 1929

from which

Chains

- A live oak, 7 ins. diam., bears N. $42\frac{1}{2}^{\circ}$ E., 139 lks. dist., mkd. $\frac{1}{4}$ S11 BT.
- An alligator juniper, 14 ins. diam., bears S. $77\frac{1}{4}^{\circ}$ E., 146 lks. dist., mkd. $\frac{1}{4}$ S14 BT.
- 40.30 Dim trail, bears NW. and SE.
Desc. 25 ft. over NW. slope.
- 42.50 Ravine, course N.
Asc. 55 ft. over N. slope.
- 47.00 Spur, slopes N.
Desc. 15 ft. along N. slope.
- 50.00 Ravine, course N.
Asc. 205 ft. over NE. slope.
- 60.00 Spur, slopes NW.
Desc. 104 ft. along N. slope.
- 74.50 Draw, course N.
- 76.00 Low spur, slopes N.
- 79.30 Ravine, course NE.
Asc. 15 ft. over E. slope.
- 79.60 Over small flat, slopes NW.
- 79.92 The cor. of secs. 10, 11, 14 and 15.

Land: mountainous.

Soil: rocky, loam, 2nd and 3rd rates.

Timber: oak, pinon, cedar, juniper...

Undergrowth: oak, manzanita, mahogany, catclaw, cactus, beargrass, bayonet, dogwood, laurel.

N. $0^{\circ}01'$ W., bet. secs. 10 and 11.

Over mountainous land; through scattering timber and moderate undergrowth.

Desc. 39 ft. over NW. slope.

- 3.00 Middle Fork Goodwin Creek, 15 lks. wide, 6 ins. deep, course NE.

Asc. 175 ft. over broken SE. slope.

- 14.00 Spur, slopes E. Desc. 153 ft. over NE. slope.

- 27.00 Ravine, course SE.

Asc. 89 ft. over S. slope.

- 31.50 Spur, slopes SE.

Asc. 18 ft. along E. slope.

- 40.00 Set an iron post, 3 ft. long, 1 in. diam., 4 ins. in the ground, supported by a mound of stone, 5 ft. base, 2 $\frac{1}{2}$ ft. high, for $\frac{1}{4}$ sec. cor., with brass cap mkd.

S10 | S11

1929

from which

An alligator juniper, 10 ins. diam., bears N. $69\frac{1}{4}^{\circ}$ E., 254 lks. dist., mkd. $\frac{1}{4}$ S11 BT.

A live oak, 8 ins. diam., bears N. $86\frac{1}{4}^{\circ}$ E., 290 lks. dist., mkd. $\frac{1}{4}$ S11 BT.

Desc. 168 ft. over NE. slope.

- 55.60 W. edge of creek in Muskhog Canyon, from NE., course SE.

Asc. 64 ft. along E. slope.

- 62.00 Short spur, slopes E., 10 lks. wide, 6 ins. deep, course SE.

Desc. slightly along E. slope.

- 70.00 Muskhog Canyon, creek, 10 lks. wide, 6 ins. deep, course SE.

Asc. 58 ft. over SW. slope.

Survey of Subdivision Lines of T. 5 S., R. 20 E.

Chains

- 74.00 Spur, slopes SW.
Desc. 30 ft. over N. slope.
- 76.00 Ravine, course SW.
Asc. 53 ft. over SE. slope.
- 80.00 Set an iron post, 3 ft. long, 2 ins. diam., 4 ins. in the ground, supported by a mound of stone, 5 ft. base, 2 1/2 ft. high, for cor. of secs. 2, 3, 10 and 11, with brass cap mkd.

T5SR20E
S3 | S2

S10 | S11
1929

from which

- An alligator juniper, 30 ins. diam., bears N. 76 1/2° W., 40 lks. dist., mkd. T5S R20E S3 BT.
- A live oak, 7 ins. diam., bears N. 54° E., 30 lks. dist., mkd. T5S R20E S2 BT.
- A live oak, 12 ins. diam., bears S. 86 1/2° E., 127 lks. dist., mkd. T5S R20E S11 BT.
- A live oak, 4 ins. diam., bears S. 31 1/2° W., 134 lks. dist., mkd. BT.

Land: mountainous.
Soil: granite loam, 2nd rate.
Timber: oak, pinon, cedar, juniper.
Undergrowth: oak, manzanita, mahogany, cactus, catclaw, beargrass, bayonet.

- 40.00 S. 39° 48' E., on random line, bet. secs. 2 and 11.
Set temp. 1/4 sec. cor.
- 80.04 Fall 26 lks. S. of the cor. of secs. 1, 2, 11 and 12.
Thence
N. 89° 59' W., on true line, bet. secs. 2 and 11.
Over rough mountainous land; through scattering timber and moderate undergrowth.
Asc. 391 ft. over NE. slope.
- 11.00 Spur, slopes SE.
Desc. 82 ft. over SW. slope.
- 19.60 Ravine, course SE.
Asc. 724 ft. over NE. slope.
- 40.02 Set an iron post, 3 ft. long, 1 in. diam., 4 ins. in the ground to bedrock, supported by a mound of stone; for 1/4 sec. cor., with brass cap mkd.

S2
S11
1929

from which

- A pinon, 12 ins. diam., bears N. 82° E., 75 lks. dist., mkd. 1/4 S2 BT.
- An alligator juniper, 10 ins. diam., bears S. 14 1/2° E., 77 lks. dist., mkd. 1/4 S11 BT.

- Asc. 70 ft. over E. slope.
- 41.00 Ridge, bears SE. and NW.
- Desc. 681 ft. over general NW. slope, to cor.
- 48.50 Spur, slopes SW.
- 53.80 Wire fence, bears NE. and SW.
- 65.70 Wire fence, bears NW. and SE.

Chains	
65.80	Trail. bears NW. to Stanley Butte and SE. to Hinton's.
78.50	Ravine, course SW. Asc. 55 ft. over SE. slope.
80.04	The cor. of secs. 2, 3, 10 and 11. Land: mountainous. Soil: granite loam, 3rd rate. Timber: oak, cedar, pinon, juniper. Undergrowth: oak, manzanita, mahogany, catclaw, beargrass.

	N.0°04'W., on random line, bet. secs. 2 and 3.
40.00	Set temp. $\frac{1}{4}$ sec. cor.
80.01	Fall 33 lks. W. of the cor. of secs. 2, 3, 34 and 34, on the N. bdy. of the Tp., hereinbefore described. Thence S.0°10'W., on true line, bet. secs. 2 and 3. Over mountainous land; through scattering timber and moderate undergrowth. Desc. 105 ft. over S. slope.
7.50	Ravine, course SE. Asc. 288 ft. over NE. slope.
23.50	Ridge, bears NW. and SE. Desc. 548 ft. over S. slope.
40.01	Set an iron post, 3 ft. long, 1 in. diam., 16 ins. in the ground, for $\frac{1}{4}$ sec. cor., with brass cap mkd.
	$\begin{array}{c} \frac{1}{4} \\ \uparrow \\ S3 \mid S2 \\ \downarrow \\ 1929 \end{array}$
	from which A live oak, 10 ins. diam., bears N.18°E., 13 lks. dist., mkd. $\frac{1}{4}$ S2 BT. A live oak, 6 ins. diam., bears N.84 $\frac{1}{2}$ °W., 110 lks. dist., mkd. $\frac{1}{4}$ S3 BT.
46.90	Desc. 128 ft. over SW. slope. Ravine, course SW. Asc. 57 ft. over NW. slope.
55.00	Spur, slopes SW. Desc. 420 ft. over SE. slope.
80.01	The cor. of secs. 2, 3, 10 and 11. Land: mountainous. Soil: granite loam, 2nd rate. Timber: oak, pinon, cedar, juniper. Undergrowth: oak, manzanita, mahogany, catclaw, cactus, beargrass, bayonet.

	From the Standard cor. of secs. 33 and 34, on the S. bdy. of the Tp., established in 1928 under this Group, described in Book "B". N.0°02'W., bet. secs. 33 and 34. Over mountainous land; through scattering timber and scattering undergrowth. Desc. 74 ft. along W. slope.
7.40	Ravine, course SW. Asc. 362 ft. over SE. slope.

Survey of Subdivision Lines of T.5 S., R.20 E.

Chains

- 20.70 Spur, slopes SW.
Asc. 223 ft. over S. slope.
- 32.30 Spur, slopes SW.
Asc. 126 ft. over SW. slope.
- 40.00 Set an iron post, 3 ft. long, 1 in. diam., 30 ins. in the ground, for $\frac{1}{4}$ sec. cor., with brass cap mkd.

$\frac{1}{2}$
 S33 | S34
 1929

No bearing trees available. Raise a mound of stone, 5 ft. base, 2 $\frac{1}{2}$ ft. high, W. of cor.

- Asc. 558 ft. over broken SW. slope.
- 60.00 Enter dense undergrowth, bears NW. and SE.
- 62.70 Top of ridge, bears N.40°W. and S.40°E.
Desc. 133 ft. over NE. slope.
- 69.20 Head of ravine, course E.
Leave dense undergrowth, bears NW. and E.
Asc. 40 ft. along E. slope.
- 78.40 Ravine, course SE.
Asc. 50 ft. over S. slope.
- 80.00 Set an iron post, 3 ft. long, 2 ins. diam., 28 ins. in the ground, for cor. of secs. 27, 28, 33 and 34, with brass cap mkd.

T5SR20E
 S28 | S27
 S33 | S34
 1929

- from which
- a scrub oak, 6 ins. diam., bears N.35 $\frac{1}{2}$ °E., 86 lks. dist., mkd. T5S R20E S27 BT.
 - A scrub oak, 8 ins. diam., bears S.16 $\frac{1}{2}$ °E., 38 lks. dist., mkd. T5S R20E S34 BT.
 - A scrub oak, 6 ins. diam., bears S.5 $\frac{1}{2}$ °W., 41 lks. dist., mkd. T5S R20E S33 BT.
 - A scrub oak, 7 ins. diam., bears N.75 $\frac{1}{2}$ °W., 38 lks. dist., mkd. T5S R20E S28 BT.

Land: mountainous.
Soil: rocky, sandy, 2nd rate.
Timber: oak, cedar, pinon, juniper.
Undergrowth: mahogany, beargrass, yucca, sage, catclaw, manzanita, cactus.

-
- East, on random line, bet. secs. 27 and 34.
 - 40.00 Set temp. $\frac{1}{4}$ sec. cor.
 - 79.90 Fall 2 lks. S. of the cor. of secs. 26, 27, 34 and 35.
Thence
S.89°59'W., on true line, bet. secs. 27 and 34.
Over mountainous land; through scattering timber and dense undergrowth.
 - Asc. 250 ft. over NE. slope.
 - 12.90 Ridge, bears W. and SE.
Leave dense undergrowth.
Asc. 110 ft. on top of ridge.
 - 19.60 Ridges, bears NW., SE. and E.
Desc. 391 ft. over broken SW. slope.
 - 39.95 Set an iron post, 3 ft. long, 1 in. diam., 30 ins. in the ground, for $\frac{1}{4}$ sec. cor., with brass cap mkd.

Chains

$$\frac{1}{4}S27$$

$$\frac{1}{4}S34$$
 1929

from which

No bearing trees are available. Raise a mound of stone
5 ft. base, 2½ ft. high, N. of cor.

- 40.50 Desc. 30 ft. over SW. slope.
Wash, dry, 15 lks. wide, in canyon, course SE.
Enter dense undergrowth.
Asc. 150 ft. over E. slope.
- 45.20 Spur, slopes SE.
Desc. 109 ft. over SW. slope.
- 54.20 Wash, dry, 15 lks. wide, in canyon, course SE.
Asc. 260 ft. over E. slope.
- 63.80 Ridge, bears NW. and SE.
Leave dense undergrowth.
Desc. 50 ft. over SW. slope.
- 67.70 Head of ravine, course S.
Asc. 177 ft. over SE. slope.
- 73.40 Spur, slopes SE.
Desc. 50 ft. along S. slope.
- 79.90 The cor. of secs. 27, 28, 33 and 34.

Land: mountainous.

Soil: rocky, sandy, 2nd rate.

Timber: oak, pinon, cedar, juniper.

Undergrowth: oak, manzanita, mahogany, catclaw, cactus,
laurel, cherry, dogwood, beargrass.

N.0°02'W., bet. secs. 27 and 28.

Over mountainous land; through scattering timber and
undergrowth.

- 5.00 Asc. 176 ft. over S. slope.
Enter dense undergrowth, bears E. and W.
- 11.50 Asc. 158 ft. over S. slope.
Spur, from NE., slopes SE.
- 19.90 Asc. 181 ft. over SW. slope.
Same spur, slopes SE.
- 28.10 Asc. 58 ft. over top of spur.
Top of knoll on ridge, bears E. 2 chs. dist.; knoll is
highest point in Tp.
Along W. side of ridge.
- 33.00 Ridge, divide, bears NW. and SE.
Enter yellow pine timber.
Desc. 203 ft. over NE. slope.
- 40.00 Set an iron post, 3 ft. long, 1 in. diam., 30 ins. in the
ground, for 1 sec. cor., with brass cap mkd.

$$\frac{1}{4}S28$$

$$\frac{1}{4}S27$$
 1929

from which

- A cedar, 10 ins. diam., bears N.4½°E., 35 lks. dist.,
mkd. ¼ S27 BT.
- A cedar, 12 in. diam., bears N.9°W., 35 lks. dist.,
mkd. ¼ S28 BT.

- 50.10 Desc. 213 ft. over NE. slope.
Head of draw, course NE.
- 52.50 Asc. 50 ft. over SE. slope.
Small spur, slopes NE.

Chains

- 60.10 Desc. 230 ft. over N. slope.
Ravine, course NE.
Leave pine timber, bears W. and NE.
Three cabins bear about 12 chs. East.
- 72.30 Asc. 200 ft. over SE. slope.
Spur, slopes SE.
Along broken E. slope.
- 75.00 Head of ravine, course SE.
Trail, bears SE. and SW.
- 76.50 Ridge, bears E. and W.
Enter yellow pine timber, bears E. and W.
Along E. slope.
- 80.00 Set an iron post, 3 ft. long, 2 ins. diam., 10 ins. in the ground, supported by a mound of stone, 4½ ft. base, 2 ft. high, for cor. of secs. 21, 22, 27 and 28, with brass cap mkd.

T5S R20E
S21 | S22

S28 | S27
1929

- from which
- A white oak, 6 ins. diam., bears N. 87½° E., 40 lks. dist., mkd. T5S R20E S22 BT.
- A white oak, 7 ins. diam., bears S. 39° E., 43 lks. dist., mkd. T5S R20E S27 BT.
- A white oak, 12 ins. diam., bears S. 55½° W., 12 lks. dist., mkd. T5S R20E S28 BT.
- A white oak, 6 ins. diam., bears N. 57½° W., 53 lks. dist., mkd. T5S R20E S21 BT.

Land: mountainous.
Soil: rocky, sandy, 3rd rate.
Timber: oak, pinon, cedar, juniper, pine.
Undergrowth: oak, mahogany, manzanita, whitethorn, laurel, cactus, dogwood.

-
- N. 89° 59' E., on random line, bet. secs. 22 and 27.
 - 40.00 Set temp. ¼ sec. cor.
 - 80.10 Fall 4 lks. S. of the cor. of secs. 22, 23, 26 and 27.
Thence
S. 89° 57' W., on true line, bet. secs. 22 and 27.
Over mountainous land; through scattering timber and moderate undergrowth.
 - 2.00 Desc. 10 ft. along S. slope.
Gulch, course SE.
 - 17.00 Asc. 451 ft. over E. slope.
Ridge, bears NW. and SE.
 - 28.60 Desc. 264 ft. over W. slope.
Gulch, course S.
 - 53.00 Asc. 76 ft. over E. slope.
Spur, slopes SE.
 - 35.15 Desc. 16 ft. over W. slope.
Draw, course SE.
 - 39.30 Asc. 93 ft. over E. slope.
Spur, slopes SW.
Desc. 20 ft. over SW. slope.
 - 40.05 Set an iron post, 3 ft. long, 1 in. diam., 28 ins. in the ground, for ¼ sec. cor., with brass cap mkd.

Chains

1822
~~4827~~
 1929

from which
 A yellow pine, 18 ins. diam., bears S.15 $\frac{1}{2}$ °E., 200 lks. dist., mkd. $\frac{1}{4}$ S27 BT.
 An alligator juniper, 4 ins. diam., bears N.87 $\frac{1}{2}$ °E., 180 lks. dist., mkd. BT.
 Cabin bears S.59°57'W.

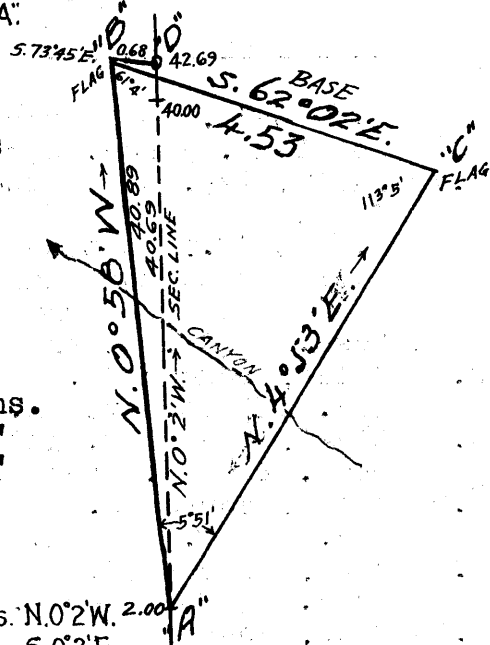
- 50.00 Desc. 180 ft. over SW. slope. Draw, course S.
- 66.10 Asc: 140 ft. over E. slope. Ridge, bears NE. and SW.
- 73.10 Desc. 48 ft. over NW. slope. Head of ravine, course NE.
- 80.10 Asc. 140 ft. over E. slope. The cor. of secs. 21, 22, 27 and 28.

Land: mountainous.
 Soil: granite loam, 3rd rate.
 Timber: oak, pinon, cedar, juniper, pine.
 Undergrowth: oak, manzanita, mahogany, laurel, cactus, beargrass, sage, catclaw.

N.0°02'W., bet. secs. 21 and 22.
 Over mountainous land; through scattering timber and dense undergrowth.
 Along E. slope.

- 2.00 To obtain measurement across cliffs and dense undergrowth ahead, triangulate as described as follows:

Designate this point "A"; from a point "B" ahead on bearing of N.0°58'W. measure a base S.62°02'E. 4.53 chs. to flag "C" which bears N.4°53'E. from "A".
 Base "B-C" double-chained and angle at station "A" checked by five repetitions. All bearings checked by direct readings of the solar. Longer base impracticable. Vertical angle "A" to "B" = -13°
 From point "B" measure 68 lks. S.73°45'E. to "D", which is N.0°02'W. of point "A".
 Station point "A" = 2.00 chs.
 Triangulated "A-B" 40.89 "
 42.89 "
 Southing "B"- "D" 0.29 "
 42.70 "
 Correction "A"- "B" 0.01 "
 Station "D" 42.69 chs. N.0°2'W. 2.00 "
 Return measurement 2.69 " S.0°2'E.



- 12.00 Desc. approximately 150 ft. along E. slope. (Approx.) Spur, slopes N.
- 22.00 Desc. approximately 650 ft. over top of spur. (Approx.) Trail, bears NW. and SE. Canyon, course NW. Asc. approximately 200 ft. along W. slope.
- 40.00 Set an iron post, 3 ft. long, 1 in. diam., 30 ins. in the ground, for $\frac{1}{4}$ sec. cor., with brass cap mkd.

Survey of Subdivision Lines of T.5 S., R.20 E.

Chains

S21 | S22
1929

from which
A black oak, 8 ins. diam., bears S.50°E., 50 lks. dist., mkd. 1/4 S22 BT.
A black oak, 6 ins. diam., bears S.23°W., 49 lks. dist., mkd. 1/4 S21 BT.

Continue line and measurement by chaining.

- Asc. 40 ft. along W. slope.
- 42.69 Triangulation and traverse station "D".
- 53.30 Spur, slopes W.
- Desc. 225 ft. along W. slope.
- 61.70 Ridge, bears NW. and SE.
- Desc. 50 ft. along E. slope.
- 74.00 Same ridge, bears NE. and SW.
- Along W. slope.
- 80.00 Set an iron post, 3 ft. long, 2 ins. diam., 28 ins. in the ground, for cor. of secs. 15, 16, 21 and 22, with brass cap mkd.

T5SR20E
S16 | S15
S21 | S22
1929

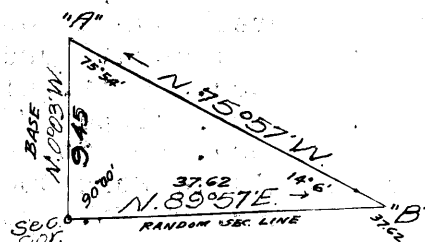
from which
A cedar, 6 ins. diam., bears S.75 1/2°E., 61 lks. dist., mkd. T5S R20E S22 BT.
A black oak, 4 ins. diam., bears S.10 1/2°E., 77 lks. dist., mkd. BT.
A white oak, 4 ins. diam., bears S.24°W., 104 lks. dist., mkd. BT.
No other suitable trees. Raise a mound of stone, 3 ft. base, 2 ft. high, W. of cor.

Land: mountainous.
Soil: rocky, granite loam, 2nd rate.
Timber: oak, cedar, pinon, pine, juniper.
Undergrowth: oak, manzanita, mahogany, yucca, cactus, laurel, catclaw, dogwood.

N. 89°57'E., on random line bet. secs. 15 and 22.

To avoid cliffs and dense undergrowth forward triangulate as described as follows:

From the sec. cor. measure a base 9.45 chs. N.0°03'W. to point "A". From a point "B" forward on line, point "A" bears N.75°57'W. All angles checked by deflection and all bearings checked by direct reading of the solar. Distance by triangulation = 37.62 chs.



- 37.62 Triangulation point "B". Line and measurement by chaining.
- 40.00 Set temp. 1/4 sec. cor.
- 79.90 Fall 19 lks. S. of the cor. of secs. 14, 15, 22 and 23. Thence S. 89°49'W., on true line, bet. secs. 15 and 22. Over mountainous land; through scattering timber and dense undergrowth.

- Chains
- 12.90 Asc. 47 ft. over NE. slope.
Ridge, bears NW. and SE.
Desc. 301 ft. over W. slope.
- 17.20 Ravine, course N.
Asc. 140 ft. over E. slope.
- 22.60 Spur, slopes NW.
Desc. 215 ft. over W. slope.
- 28.90 Small ravine, course NW.
Desc. 49 ft. along N. slope.
- 37.40 Ravine, course N.
Asc. 75 ft. over NE. slope.
- 39.95 Set an iron post, 3 ft. long, 1 in. diam., 28 ins. in the ground, for $\frac{1}{4}$ sec. cor., with brass cap mkd.

$\frac{1}{4}$ S15
 $\frac{1}{4}$ S22
1929

from which

- A pinon, 3 ins. diam., bears S.1°E., 55 lks. dist., mkd. BT.
- A manzanita, 6 ins. diam., bears N.52°W., 54 lks. dist., mkd. $\frac{1}{4}$ S15 BT.

- 42.28 Asc. 90 ft. over NE. slope.
Discontinue chaining. Measurement by triangulation.
High, rocky spur, slopes NW.
Desc. approximately 195 ft. over W. slope.
- 50.00 (Approx.) Head of ravine, course NW.
Asc. approximately 20 ft. over NE. slope.
- 53.00 (Approx.) Spur, slopes NW.
Desc. approximately 190 ft. over SW. slope.
- 65.00 (Approx.) Ravine, course N.
Asc. approximately 300 ft. over E. slope.
- 78.40 Spur, slopes N.
Desc. 15 ft. over W. slope.
- 79.90 The cor. of secs. 15, 16, 21 and 22.

Land: mountainous.
Soil: granite loam, 2nd rate.
Timber: oak, pinon, cedar, juniper.
Undergrowth: oak, manzanita, mahogany, catclaw, cactus, mesquite, beargrass, bayonet, etc.

- N.0°02'W., on true line, bet. secs. 15 and 16.
Over mountainous land; through scattering timber and moderate undergrowth.
Desc. 60 ft. along W. slope.
- 8.40 Spur, slopes NW.
Desc. 280 ft. over general N. slope.
- 24.10 Middle Fork Goodwin Creek, 10 lks. wide, course NE.
Asc. 67 ft. over S. slope.
- 28.30 Spur, slopes SE.
Desc. 14 ft. along E. slope.
- 31.10 Short ravine, course SE.
Asc. 160 ft. over SW. slope.
- 40.00 Set an iron post, 3 ft. long, 1 in. diam., 16 ins. in the ground, supported by a mound of stone, 3 ft. base, 1 $\frac{1}{2}$ ft. high, for $\frac{1}{4}$ sec. cor., with brass cap mkd.

$\frac{1}{4}$
S16 | S15
1929

Survey of Subdivision Lines of T.5 S., R.20 E.

Chains

- from which
- A live oak, 5 ins. diam., bears S.15 $\frac{1}{2}$ °E., 24 lks. dist., mkd. $\frac{1}{4}$ S15 BT.
- An alligator juniper, 10 ins. diam., bears S.41°W., 49 lks. dist., mkd. $\frac{1}{4}$ S16 BT.
- Asc. 8 ft. over gentle S. slope.
- 41.00 Spur, slopes SE.
- Desc. 73 ft. over NE. slope.
- 52.00 Draw, course SE.
- Asc. 109 ft. over SW. slope.
- 60.40 Spur, slopes SE.
- Desc. 169 ft. over NE. slope.
- 76.50 Wash, dry, 15 lks. wide, course E.
- Desc. 52 ft. along E. slope.
- 79.80 Wash, dry, 40 lks. wide, course SE.
- 80.00 Set an iron post, 3 ft. long, 2 ins. diam., 26 ins. in the ground, for cor. of secs. 9,10,15 and 16, with brass cap mkd.

T5SR20E
 S9 | S10

 S16 | S15
 1929

- from which
- An alligator juniper, 12 ins. diam., bears N.2 $\frac{1}{2}$ °E., 82 lks. dist., mkd. T5S R20E S10 BT.
- An alligator juniper, 14 ins. diam., bears S.40°E., 123 lks. dist., mkd. T5S R20E S15 BT.
- A live oak, 6 ins. diam., bears S.49°W., 76 lks. dist., mkd. T5S R20E S16 BT.
- An alligator juniper, 18 ins. diam., bears N.80°W., 122 lks. dist., mkd. T5S R20E S9 BT.
- Land: mountainous.
- Soil: loam, 2nd rate.
- Timber: oak, pinon, cedar, juniper, pine.
- Undergrowth: oak, manzanita, mahogany, catclaw, cactus, beargrass, bayonet, sage, mesquite.

- N.89°49'E., on random line, bet. secs. 10 and 15.
- 40.00 Set temp. $\frac{1}{4}$ sec. cor.
- 80.04 Fall 2 lks. N. of the cor. of secs. 10,11,14 and 15.
- Thence
- S.89°50'W., on true line, bet. secs. 10 and 15.
- Over mountainous land; through heavy timber and light undergrowth.
- Desc. 62 ft. over NW. slope.
- 2.30 Middle Fork Goodwin Creek, 10 lks. wide, 6 ins. deep, course NE.
- Asc. 17 ft.
- 6.50 Same creek, course SE.
- Asc. 20 ft.
- 11.50 Same creek, course NE.
- Asc. 250 ft. over SE. slope.
- 22.00 Spur, slopes S.
- Desc. 54 ft. over W. slope.
- 25.50 Ravine, course S.
- Asc. 170 ft. over SE. slope.
- 34.00 Spur, slopes SE.
- Desc. 94 ft. over SW. slope.

Chains

40.02 Set an iron post, 3 ft. long, 1 in. diam., 28 ins. in the ground, for $\frac{1}{4}$ sec. cor., with brass cap mkd.

$\frac{1}{4}$ S10
 $\frac{1}{4}$ S15
 1929

from which

An alligator juniper, 10 ins. diam., bears S.65 $\frac{1}{2}$ °E., 41 lks. dist., mkd. $\frac{1}{4}$ S15 BT.

A live oak, 6 ins. diam., bears N.56°W., 50 lks. dist., mkd. $\frac{1}{4}$ S10 BT.

41.50 Desc. 30 ft. over W. slope.
 Ravine, course SE.
 Asc. 515 ft. over general SE. slope (to 63.00)
 45.50 Spur, slopes SE.
 55.00 Small ravine, course SE.
 63.00 High spur, slopes SE.
 Desc. 357 ft. over SW. slope (to cor.)
 79.00 Draw, course SW.
 79.50 Toe of spru, slopes SW.

80.04 The cor. of secs. 9, 10, 15 and 16.

Land: mountainous.

Soil: rocky, loam, 2nd rate.

Timber: oak, pinon, cedar, juniper, pine, sycamore.

Undergrowth: oak, manzanita, mahogany, catclaw, mesquite, cactus, beargrass, sage.

N.0°02'W., bet. secs. 9 and 10.

Over mountainous land; through scattering timber and moderate undergrowth.

Asc. 610 ft. over SW. slope,

23.00 Head of Ravine, course SW.

35.00 Ridge, bears NW. and SE.

40.00 Set an iron post, 3 ft. long, 1 in. diam., 6 ins. in bed-rock, supported by a mound of stone, 5 ft. base, 2 ft. high, for $\frac{1}{4}$ sec. cor., with brass cap mkd.

$\frac{1}{4}$ S9
 $\frac{1}{4}$ S10
 1929

from which

A pinon, 7 ins. diam., bears S.73°E., 17 lks. dist., mkd. $\frac{1}{4}$ S10 BT.

A pinon, 6 ins. diam., bears N.2 $\frac{1}{2}$ °W., 35 lks. dist., mkd. $\frac{1}{4}$ S9 BT.

43.50 Asc. 65 ft. over SE. slope.
 Spur, slopes NE.
 52.10 Same spur, slopes NW.
 Desc. 698 ft. over NE. slope.
 71.06 Muskhog Canyon, creek, 10 lks. wide, 4 ins. deep, course NE.
 Asc. 46 ft. over SE. slope.
 74.00 Small spur, slopes SE.
 Desc. 12 ft. over NE. slope.
 76.00 Short draw, course SE.
 Asc. 43 ft. over SE. slope.
 80.00 Rocky spur, slopes SE.

Survey of Subdivision Lines of T.5 S., R.20 E.

Chains

80.00 Set an iron post, 3 ft. long, 2 ins. diam., 18 ins. in the ground to bedrock, supported by a mound of stone, 4 ft base, 1 ft. high, for cor. of secs. 3,4,9 and 10, with brass cap mkd.

T5SR20E
S4 | S3

S9 | S10
1929.

from which

An oak, 6 ins. diam., bears N.37°E., 23 lks. dist., mkd. T5S R20E S3 BT.

A pinon, 8 ins. diam., bears S.18°E., 96 lks. dist., mkd. T5S R20E S10 BT.

An oak, 10 ins. diam., bears S.72½°W., 87 lks. dist., mkd. T5S R20E S9 BT.

An oak, 10 ins. diam., bears N.39½°W., 143 lks. dist., mkd. T5S R20E S4 BT.

Land: mountainous.

Soil: rocky, loam, 3rd rate.

Timber: oak, pinon, cedar, juniper, pine.

Undergrowth: oak, manzanita, mahogany, laurel, cactus, dogwood, catclaw, beargrass, bayonet, sage.

40.00 N. 89°50'E., on random line, bet. secs. 3 and 10. Set temp. ¼ sec. cor.

80.34 Fall 9 lks. S. of the cor. of secs. 2,3,10 and 11. Thence

S. 89°46'W., on true line, bet. secs. 3 and 10.

Over mountainous land; through scattering timber and moderate undergrowth.

Asc. 25 ft. over SE. slope.

1.80 Spur, slopes S.

Desc. 40 ft. over SW. slope.

8.60 Trail, bears NW. and SE.

8.70 Draw, course S.

Asc. 41 ft. along S. slope.

12.30 Rocky point, slopes S.

Desc. 45 ft. over SW. slope.

13.10 Muskog Canyon, creek, 10 lks. wide, course SE.

Asc. 224 ft. over NE. slope.

15.05 Fence, bears NW. and SE.

20.35 Fence, bears NW. and SE.

25.00 Spur, slopes N.

Desc. 83 ft. over NW. slope.

28.50 Ravine, course N.

Asc. 132 ft. over NE. slope.

33.20 Spur, slopes N.

Desc. 108 ft. over W. slope.

37.60 Ravine, course N.

Asc. 30 ft. over NE. slope.

40.17 Set an iron post, 3 ft. long, 1 in. diam., 24 ins. in the ground, for ¼ sec. cor., with brass cap mkd.

S3

S10
1929

from which

A cedar, 5 ins. diam., bears S.12½°W., 112 lks. dist.; mkd. ¼ S10 BT.

A pinon, 8 ins. diam., bears N.31½°W., 80 lks. dist., mkd. ¼ S3 BT.

Survey of Subdivision Lines of T.5 S., R.20 E.

Chains	
	Desc. 20 ft. along N. slope.
43.60	Gulch, course NE.
	Asc. 267 ft. over E. slope.
52.80	Spur, slopes NE.
	Along N. slope.
55.30	Spur, slopes N.
	Desc. 250 ft. over NW. slope.
64.00	Wash, dry, 15 lks. wide, course N.
	Asc. 100 ft. over NE. slope.
71.70	Small spur, slopes NE.
	Desc. 44 ft. over NW. slope.
74.45	Trail, bears SW. to Stanley Butte and NE. to Hinton's.
	Small pole corral bears N., 1.00 ch. dist.
74.55	Muskhog Canyon, creek, 5 lks. wide, 6 ins. deep, course NE.
	Asc. 76 ft. over E. slope.
80.34	The cor. of secs. 3, 4, 9 and 10.
	Land: mountainous.
	Soil: loam, 2nd rate.
	Timber: oak, pinon, cedar, pine, juniper.
	Undergrowth: oak, manzanita, mahogany, laurel, catclaw, sage, mesquite, beargrass.
	N.0°10'E., on random line, bet. secs. 3 and 4.
40.00	Set temp. $\frac{1}{4}$ sec. cor.
80.00	Fall 25 lks. W. of the cor. of secs. 3, 4, 33 and 34, on the N. bdy. of the Tp., hereinbefore described.
	Thence
	S.0°21'W., on true line, bet. secs. 3 and 4.
	Over mountainous land; through scattering timber and dense undergrowth.
	Desc. 276 ft. over SW. slope.
23.50	Wash, dry, 50 lks. wide, course SE.
	Asc. 20 ft. over NE. slope.
24.20	Point of spur, slopes E.
	Desc. 20 ft. over S. slope.
24.50	Wash, dry, 15 lks. wide, course E.
	Asc. 52 ft. over NE. slope.
31.00	Small spur, slopes E.
	Desc. 30 ft. over SE. slope.
34.40	Ravine, course NE.
	Asc. 84 ft. over N. slope.
40.00	Small spur, slopes NE.
40.00	Set an iron post, 3 ft. long, 1 in. diam., 30 ins. in the ground, for $\frac{1}{4}$ sec. cor., with brass cap mkd.
	$\frac{1}{4}$ 34 S3 1929
	From which
	A white oak, 5 ins. diam., bears N.73 $\frac{1}{4}$ °E., 39 lks. dist., mkd. $\frac{1}{4}$ S3 BT
	A black oak, 4 ins. diam., bears N.86 $\frac{1}{2}$ °W., 95 lks. dist., mkd. $\frac{1}{4}$ S4 BT
	Asc. 90 ft. over NE. slope.
45.40	Head of ravine, course NE.
	Asc. 198 ft. over N. slope.
50.90	Ridge, bears E. and W.
	Leave dense, enter light undergrowth.
	Desc. 123 ft. over S. slope.

Survey of Subdivision Lines of T.5 S., R.20 E.

Chains
 54.70 Ravine, course SE.
 Along E. slope.
 60.30 Spur, slopes E.
 Desc. 190 ft. over S. slope.
 66.70 Ravine, course SE.
 Desc. 25 ft. along E. slope.
 68.00 Small spur, slopes SE.
 Desc. 230 ft. over SW. slope.
 76.30 Hinton Canyon, creek, 4 lks. wide, course SE.
 Asc. 80 ft. over N. slope.
 80.00 The cor. of secs. 3, 4, 9 and 10.

Land: mountainous.
 Soil: loam, 3rd rate.
 Timber: oak, pinon, cedar, juniper, pine.
 Undergrowth: oak, manzanita, mahogany, catclaw, cactus,
 mesquite, beargrass, bayonet, sage.

From the Standard cor. of secs. 32 and 33, on the S. bdy.
 of the Tp., established in 1928 under this Group,
 described in Book "B".
 N.0°02'W., on true line, bet. secs. 32 and 33.
 Over rolling land; through scattering timber and brush.
 Asc. 66 ft. over SE. slope.
 11.00 Spur, slopes SW.
 Desc. 55 ft. over N. slope.
 13.50 Head of draw, course W.
 Asc. 13 ft. over S. slope.
 18.50 Saddle in ridge, bears E. and W.
 Desc. 40 ft. over N. slope.
 21.60 Draw, course NW.
 Asc. 10 ft. over S. slope.
 24.60 Spur, slopes NW.
 Desc. 85 ft. over NE. slope.
 29.80 Copper Bar Gulch, course W.
 Asc. 102 ft. over S. slope.
 32.80 Low spur, slopes SW.
 Asc. 102 ft. over SW. slope. (to 40.00 chs.)
 35.25 Small draw, course SW.

40.00 Set an iron post, 3 ft. long, 1 in. diam., 18 ins. in the
 ground; deposit a stone, mkd. with cross (+) at base
 of post; raise a mound of stone, 3½ ft. base, 1½ ft.
 high, around post, for ¼ sec. cor., with brass cap mkd.



No bearing trees available.

40.10 Small spur, slopes SW.
 Asc. 40 ft. along W. slope.
 46.00 Draw, course SW.
 Asc. 328 ft. over S. slope.
 60.00 Ridge, bears E. and W.
 Over mountainous land.
 Desc. 153 ft. over N. slope.
 63.80 Gulch, course NW.
 Asc. 333 ft. over SW. slope.
 77.00 Spur, slopes W.
 Desc. 61 ft. over N. slope.

Survey of Subdivision Lines of T.5 S., R.20 E.

Chains

80.00 Set an iron post, 3 ft. long, 2 ins. in diam., 16 ins. in ledge matter; mark cross (+) on ledge beside; raise a mound of stone, 4 ft. base, $1\frac{1}{2}$ ft. high, around post, for cor. of secs. 28, 28, 32 and 33, with brass cap mkd.

T5SR20E.
 $\frac{S29}{S32} | \frac{S28}{S33}$
 1929

No suitable bearing trees available.

Land: rolling and mountainous.

Soil: rocky, loam, 3rd rate.

Timber: oak, pinon, cedar, juniper.

Undergrowth: oak, manzanita, mahogany, catclaw, cactus.

40.00 East, on random line, bet. secs. 28 and 33.
 Set temp. $\frac{1}{4}$ sec. cor.

80.02 Fall 9 lks. N. of the cor. of secs. 27, 28, 33 and 34.
 Thence

N. $89^{\circ}56'$ W., on true line, bet. secs. 28 and 33.

Over mountainous land; through scattering timber and undergrowth.

Along S. slope.

1.30 Ravine, course SE.

Enter dense undergrowth.

Asc. 270 ft. over E. slope.

9.50 Ridge, bears NW. and SE.

Desc. 246 ft. over SE. slope.

17.30 Head of canyon, course SW.

Desc. 69 ft. along S. slope.

23.70 Ridge, bears NE. and SW.

Desc. 267 ft. over W. slope.

30.90 Ravine, course SW.

Along S. slope.

38.50 Spur, slopes SW.

Desc. 37 ft. over W. slope.

40.01 Set an iron post, 3 ft. long, 1 in. diam., 30 ins. in the ground, for $\frac{1}{4}$ sec. cor., with brass cap mkd.

$\frac{S28}{S33}$
 1929

No bearing trees available. Raise a mound of stone, 5 ft. base, $2\frac{1}{2}$ ft. high, N. of cor.

58.10 Desc. 500 ft. over W. slope.

Wash, dry, 20 lks. wide, course SW.

Asc. 143 ft. over SE. slope.

68.00 Ridge, bears NE. and SW.

Desc. 198 ft. along N. slope.

80.02 The cor. of secs. 28, 29, 32 and 33.

Land: mountainous.

Soil: rocky, loam, 3rd rate.

Timber: oak, cedar, juniper, pinon, hackberry.

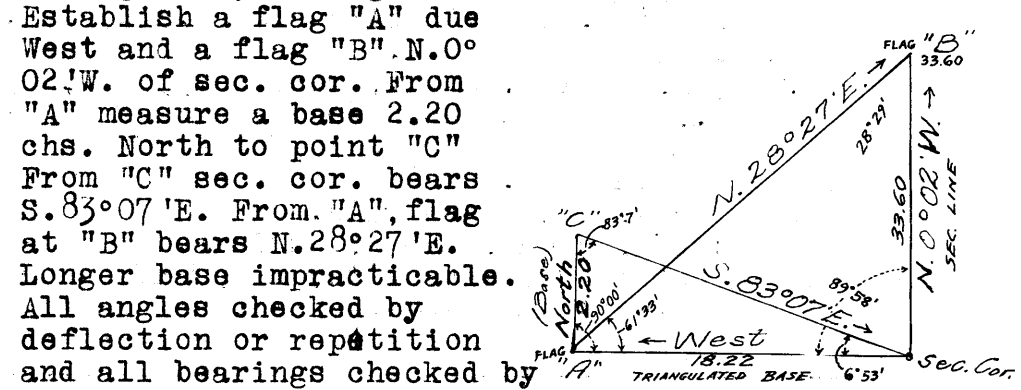
Undergrowth: oak, manzanita, mahogany, catclaw, mesquite, cactus, sage, beargrass.

Survey of Subdivision Lines of T.5 S., R.20 E.

Chains

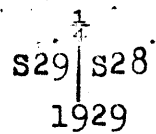
N.0°02'W., bet. secs. 28 and 29.
Over mountainous land; through scattering timber and moderate undergrowth.

To obtain measurement across cliffs and snow-covered undergrowth, triangulate as described as follows:



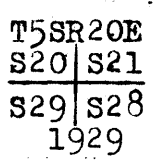
Establish a flag "A" due West and a flag "B" N.0°02'W. of sec. cor. From "A" measure a base 2.20 chs. North to point "C" From "C" sec. cor. bears S.83°07'E. From "A", flag at "B" bears N.28°27'E. Longer base impracticable. All angles checked by deflection or repetition and all bearings checked by direct reading of the solar. Dist. sec. cor. to "A" = 18.22+chs. Dist. triangulated N.0°02'W. = 33.60 chs.

- 11.00 Desc. approximately 310 ft. over NE. slope.
- (Approx.) Spur, slopes W.
- 17.00 Asc. approximately 110 ft. over S. slope.
- (Approx.) Spur, slopes W.
- 23.00 Desc. approximately 150 ft. over N. slope.
- (Approx.) Draw, course W.
- 25.00 Asc. approximately 20 ft. over S. slope.
- (Approx.) Toe of spur, slopes W.
- 26.10 Desc. approximately 10 ft. over NW. slope.
- (Approx.) Ravine, course SW.
- 33.50 Asc. approximately 205 ft. over S. slope.
- Spur, slopes SW.
- 33.60 Triangulation point "B". Continue measurement by chaining.
- Desc. 203 ft. over N. slope.
- 40.00 Set an iron post, 3 ft. long, 1 in. diam., 28 ins. in the ground, for 1/4 sec. cor., with brass cap mkd.



from which
An alligator juniper, 16 ins. diam., bears N.88°E., 25 lks. dist., mkd. 1/4 S28 BT.
An alligator juniper, 10 ins. diam., bears N.22°W., 41 lks. dist., mkd. 1/4 S29 BT.

- 40.30 Desc. 8 ft. over N. slope.
- Ravine, course NW.
- 42.40 Asc. 31 ft. over SW. slope.
- Point of spur, slopes W.
- 45.20 Desc. 51 ft. over N. slope.
- Gulch, course SW.
- 58.40 Asc. 488 ft. over S. slope.
- Spur, slopes SW.
- Asc. 60 ft. over broken W. slope.
- 80.00 Set an iron post, 3 ft. long, 2 ins. diam., 27 ins. in the ground, for cor. of secs. 20, 21, 28 and 29, with brass cap mkd.



Chains

from which
 a juniper, 14 ins. diam., bears N. $83\frac{1}{2}^{\circ}$ E., 91 lks. dist., mkd. T5S R20E S21 BT.
 An oak, 6 ins. diam., bears S. 1° E., 48 lks. dist., mkd. T5S R20E S28 BT.
 An oak, 7 ins. diam., bears S. 48° W., 23 lks. dist., mkd. T5S R20E S29 BT.
 A juniper, 10 ins. diam., bears N. $33\frac{1}{4}^{\circ}$ W., 132 lks. dist., mkd. T5S R20E S20 BT.

Land: mountainous.
 Soil: rocky, loam, 3rd rate.
 Timber: oak, cedar, pinon, juniper.
 Undergrowth: oak, manzanita, mahogany, catclaw, cactus, mesquite, beargrass, bayonet.

S. $89^{\circ}56'$ E., on random line, bet. secs. 21 and 28.
 40.00 Set temp. $\frac{1}{4}$ sec. cor.
 79.98 Intersect the cor. of secs. 21, 22, 27 and 28.
 Thence
 N. $89^{\circ}56'$ W., on true line, bet. secs. 21 and 28.
 Over mountainous land; through scattering timber and dense undergrowth.
 Asc. 70 ft. over E. slope.
 2.40 Cabin bears about 2 chs. S.
 3.00 Spur, slopes NW.
 Desc. 223 ft. over W. slope.
 13.00 Draw, course NW.
 Asc. 49 ft. over NE. slope.
 17.00 Spur, slopes NW.
 Desc. 228 ft. over W. slope.
 25.00 Head of ravine, course NW.
 Asc. 94 ft. over NE. slope.
 33.30 Change of slope; desc. 21 ft. along N. slope.
 39.99 Set an iron post, 3 ft. long, 1 in. diam., 28 ins. in the ground, for $\frac{1}{4}$ sec. cor., with brass cap mkd.

1S21
 S28
 1929

from which
 an oak, 6 ins. diam., bears N. 51° W., 12 lks. dist., mkd. $\frac{1}{4}$ S21 BT.
 An oak, 12 ins. diam., bears S. 52° W., 48 lks. dist., mkd. $\frac{1}{4}$ S28 BT.

asc. 172 ft. over NE. slope.
 42.60 Trail, bears NW. and SE.
 50.40 Ridge, bears W. and SE.
 Desc. 317 ft. along top of ridge.
 60.00 Same ridge, bears E. and NW.
 70.00 Spur, slopes SW.
 Desc. 384 ft. over W. slope.
 -79.98 The cor. of secs. 20, 21, 28 and 29.

Land: mountainous.
 Soil: rocky, loam, 2nd rate.
 Timber: oak, locust, pinon, cedar, juniper, pine.
 Undergrowth: locust, oak, manzanita, mahogany, catclaw, mahogany, beargrass, cactus.

Survey of Subdivision Lines of T.5 S., R.20 E.

- Chains
- N.0°02'W., bet. secs. 20 and 21.
 - Over mountainous land; through scattering timber and dense undergrowth.
 - Asc. 381 ft. over general S. slope.
 - 1.00 Head of ravine, course SW.
 - 3.60 Trail, bears NE. and SW.
 - 4.10 Another route of same trail, bears NE. and SW.
 - 12.30 Ridge, bears NW. and SE. Set triangulation flag.
 - Desc. 181 ft. over N. slope.
 - 17.20 Head of ravine, course NW.
 - Desc. 185 ft. over NE. slope.
 - 28.50 Same ravine, course NE.
 - Asc. 19 ft. over S. slope.
 - 34.00 Spur, slopes NE.
 - Along W. slope.
 - 40.00 Set an iron post, 3 ft. long, 1 in. diam., 28 ins. in the ground, for 1/4 sec. cor., with brass cap mkd.

$\frac{1}{4}$
 S20 | S21
 1929

from which
 A live oak, 5 ins. diam., bears S. 58 1/2° E., 54 lks. dist., mkd. 1/4 S21 BT.
 An alligator juniper, 10 ins. diam., bears N. 39° W., 38 lks. dist., mkd. 1/4 S20 BT.

- Along W. slope.
- 42.60 Spur, slopes NW.
- Desc. 323 ft. over NE. slope.
- 56.00 Ravine, course NW.
- Asc. 72 ft. over SW. slope.
- 61.40 Spur, slopes W.
- Desc. 160 ft. over N. slope.
- 69.60 Middle Goodwin Canyon, temporary creek, 8 lks. wide, 6 ins. deep; course NE.
- Asc. 61 ft. along broken E. slope.
- 79.50 Spur, slopes E.
- Along E. slope.
- 80.00 Set an iron post, 3 ft. long, 2 ins. diam., 27 ins. in the ground, for cor. of secs. 16, 17, 20 and 21, with brass cap mkd.

T5SR20E
 S17 | S16
 S20 | S21
 1929

from which
 A live oak, 4 ins. diam., bears N. 2 1/4° E., 58 lks. dist., mkd. BT.
 A live oak, 10 ins. diam., bears S. 5 1/2° E., 85 lks. dist., mkd. T5S R20E S21 BT.
 A live oak, 3 ins. diam., bears S. 47° W., 10 lks. dist., mkd. BT.
 A live oak, 3 ins. diam., bears N. 76° W., 21 lks. dist., mkd. BT.

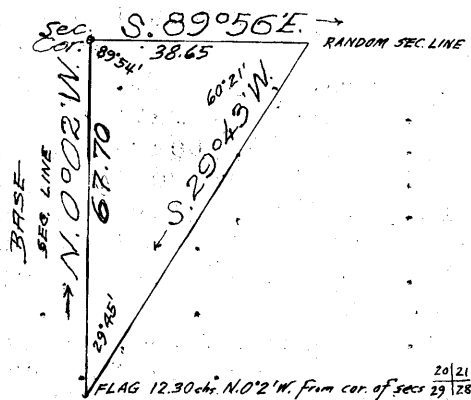
Land: mountainous.
 Soil: granite loam, 2nd rate.
 Timber: oak, pinch, juniper, cedar.
 Undergrowth: oak, manzanita, catclaw, mahogany, cactus, beargrass, bayonet, amole, dogwood.

Survey of Subdivision Lines of T.5 S., R.20 E.

Chains

S. 89°56'E., on random line, bet. secs. 16 and 21.

To obtain measurement across Middle Goodwin Canyon, triangulate as follows: From a point forward on line a flag 12.30 chs. N. 0°02'W. of the cor. of secs. 20, 21, 28 and 29 bears S. 29°43'W. Angles checked by deflection and bearings checked by direct readings of the solar.



Dist. triangulated = 38.65 chs.

38.65 Triangulation point. Continue measurement by chaining.

40.00 Set temp. 1/4 sec. cor.

80.24 Fall 12 lks. N. of the cor. of secs. 15, 16, 21 and 22. Thence

N. 89°51'W., on true line, bet. secs. 16 and 21.

Over mountainous land; through scattering timber and dense undergrowth.

Desc. 284 ft. over W. slope.

11.00 Wash, small seasonal stream, course NW.

12.20 Trail, bears NW. and SE.

Asc. 235 ft. over E. slope.

23.50 Ridge, bears NE. and SW.

Desc. 120 ft. over NW. slope.

36.00 Ravine, course N.

Asc. 125 ft. over NE. slope.

40.12 Set an iron post, 3 ft. long, 1 in. diam., 28 ins. in the ground, for 1/4 sec. cor., with brass cap mkd.

1/4 S16
1/4 S21.
1929

from which

A cedar, 12 ins. diam., bears S. 53 1/4° E., 29 lks. dist., mkd. 1/4 S21 BT.

A cedar, 10 ins. diam., bears S. 27° E., 99 lks. dist., mkd. 1/4 S21 BT.

Asc. 20 ft. over E. slope.

41.50 Spur, slopes NW.

41.59 Triangulation point. Measurement by triangulation; discontinue chaining.

Desc. approximately 240 ft. over NW. slope.

49.00 (Approx.) Ravine, course NW.

Desc. approximately 140 ft. over NW. slope.

55.00 (Approx.) Ravine, course NE.

Asc. approximately 50 ft. over NE. slope.

59.00 (Approx.) Spur, slopes NE.

Desc. approximately 170 ft. over NW. slope.

68.50 (Approx.) Middle Goodwin Canyon, seasonal stream, 6 lks. wide, 6 ins. deep, course NE.

Asc. 280 ft. over E. slope. (to cor.)

73.00 (Approx.) Ravine, course SE.

80.24 The cor. of secs. 16, 17, 20 and 21.

Land: mountainous.

Soil: loam, 2nd rate.

Timber: oak, pinon, cedar, juniper, pine.

Undergrowth: oak, manzanita, mahogany, catclaw, cactus.

Chains

- N.0°02'W., on true line, bet. secs. 16 and 17. Over mountainous land; through scattering timber and dense undergrowth.
- Along E. slope.
- 2.80 Small ravine, course SE.
Asc. 304 ft. over SE. slope.
- 13.40 Ridge, bears W. and NE.
Desc. 181 ft. over N. slope.
- 23.00 Ravine, course E.
Asc. 68 ft. over S. slope.
- 31.00 Ridge, bears E. and W.
Desc. 184 ft. over N. slope.
- 39.00 Ravine, course NE.
Asc. 30 ft. over S. slope.
- 40.00 Set an iron post, 3 ft. long, 1 in. diam., 28 ins. in the ground, for $\frac{1}{4}$ sec. cor., with brass cap mkd.

$\frac{1}{4}$
 S17 | S16
 1929

from which
 An alligator juniper, 48 ins. diam., bears S.27°E., 62 lks. dist., mkd. $\frac{1}{4}$ S16 BT.
 A live oak, 6 ins. diam., bears S.89°W., 30 lks. dist., mkd. $\frac{1}{4}$ S17 BT.

- Asc. 69 ft. over SE. slope.
- 45.50 Spur, slopes E.
Desc. 73 ft. over N. slope.
- 52.40 Ravine, course SE.
Asc. 225 ft. over SW. slope.
- 67.70 Spur, slopes SE.
Desc. 57 ft. over NE. slope.
- 79.00 Head of ravine, course SE.
Asc. 18 ft. over SW. slope.
- 80.00 Set an iron post, 3 ft. long, 2 in. diam., 16 ins. in the ground, supported by a mound of stone, 4 ft. base, 1 $\frac{1}{2}$ ft. high, for cor. of secs. 8, 9, 16 and 17, with brass cap mkd.

T5SR20E
 S8 | S9
 S17 | S16
 1929

from which
 A live oak, 6 ins. diam., bears N.16 $\frac{1}{2}$ °E., 17 lks. dist., mkd. T5S R20E S9 BT.
 A live oak, 8 ins. diam., bears S.62 $\frac{1}{2}$ °E., 230 lks. dist., mkd. T5S 20E S16 BT.
 A black oak, 8 ins. diam., bears S.15 $\frac{1}{2}$ °W., 132 lks. dist.; mkd. T5S R20E S17 BT.
 An alligator juniper, 6 ins. diam., bears N.62 $\frac{1}{2}$ °W.; 38 lks. dist., mkd. T5S R20E S8 BT.

Land: mountainous.
 Soil: rocky, loam, 2nd rate.
 Timber: oak, pinon, cedar, juniper.
 Undergrowth: oak, manzanita, mahogany, catclaw, cactus, mesquite, beargrass, bayonet.

Chains	
	S.89°51'E., on random line, bet. secs. 9 and 16.
40.00	Set temp. $\frac{1}{4}$ sec. cor.
80.02	Fall 2 lks. N. of the cor. of secs. 9,10,15 and 16.
	Thence
	N.89°50'W., on true line, bet. secs. 9 and 16.
	Over mountainous land; through scattering timber and dense undergrowth.
0.30	Wash, dry, 40 lks. wide, course SE. Asc. 136 ft. over SE. slope.
11.30	Ravine, course N.75°E. Asc. 462 ft. over SE. slope.
32.50	Spur, slopes S. Desc. 212 ft. over W. slope.
40.01	Set an iron post, 3 ft. long, 1 in. diam., 27 ins. in the ground, for $\frac{1}{4}$ sec. cor., with brass cap mkd.
	$\frac{1}{4}$ S9 $\frac{1}{4}$ S16 1929
	from which
	An alligator juniper, 9 ins. diam., bears N.1°E., 69 lks. dist., mkd. $\frac{1}{4}$ S9 BT.
	A live oak, 5 ins. diam., bears S.48 $\frac{1}{2}$ °W., 31 lks. dist., mkd. $\frac{1}{4}$ S16 BT.
40.10	Ravine, course S. Asc. 211 ft. over E. slope.
47.00	Spur, slopes S. Desc. 181 ft. over W. slope.
58.60	Ravine, course SW. Asc. 62 ft. over E. slope.
60.50	Toe of spur, slopes S. Desc. 32 ft. over SW. slope.
63.60	Ravine, course SE. Asc. 257 ft. over NE. slope.
74.00	Spur, slopes SE. Desc. 79 ft. over SW. slope.
80.02	The cor. of secs. 8,9,16 and 17.
	Land: mountainous. Soil: rocky, loam, 2nd rate. Timber: oak, cedar, pinon, juniper. Undergrowth: oak, manzanita, mahogany, catclaw, cactus, beargrass, dogwood, bayonet.
	N.0°02'W., bet. secs. 8 and 9.
	Over mountainous land; through scattering timber and moderate undergrowth.
	Asc. 55 ft. over SW. slope.
3.00	Ridge, bears SE. and SW. Desc. 309 ft. over general N. slope.
12.20	Ravine, course NW. Desc. 40 ft. over W. slope.
15.00	Spur, slopes NW. Desc. 70 ft. over N. slope.
19.00	Ravine, course NW. Asc. 105 ft. over SW. slope.
21.30	Spur, slopes NW. Desc. 38 ft. over N. slope.
24.50	Trail, bears NE. to Stanley Butte and SW.
25.60	Ravine, course W. Asc. 103 ft. over SW. slope.

Survey of Subdivision Lines of T. 5 S., R. 20 E.

- Chains
- 29.20 Wire fence, bears NE. and SW.
- 30.20 Spur, slopes SW.
Desc. 23 ft. along W. slope.
- 37.00 Short ravine, course SW.
Asc. 80 ft. over S. slope.
- 40.00 Set an iron post, 3 ft. long, 1 in. diam., 27 ins. in the ground, for 1/4 sec. cor., with brass cap mkd.

$\frac{1}{4}$
 s8 | s9
 1929

from which
 An alligator juniper, 30 ins. diam., bears S. 86° E., 15 lks. dist., mkd. 1/4 S9 BT.
 An alligator juniper, 10 ins. diam., bears N. 62 1/4° W., 81 lks. dist., mkd. 1/4 S8 BT.

- Asc. 324 ft. over SW. slope.
- 49.50 Ridge, bears NW. and SE. Enter dense undergrowth.
Desc. 181 ft. over NE. slope.
- 51.60 Wire fence, bears NW. and SE.
- 65.00 Head of ravine, course SE.
Asc. 355 ft. over S. slope.
- 77.00 Spur, slopes SE.
Desc. 72 ft. over NE. slope.
- 80.00 Set an iron post, 3 ft. long, 2 ins. diam., 27 ins. in the ground, for cor. of secs. 4, 5, 8 and 9, with brass cap mkd.

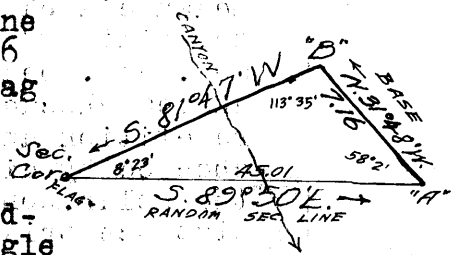
T5S R20E
 $\frac{1}{4}$
 s5 | s4
 s8 | s9
 1929

from which
 An alligator juniper, 12 ins. diam., bears N. 11 1/4° W., 70 lks. dist., mkd. T5S R20E S5 BT.
 No other suitable trees near. Raise a mound of stone, 3 ft. base, 2 ft. high, W. of cor.

Land: mountainous.
 Soil: rocky, granite loam, 2nd rate.
 Timber: oak, pinon, cedar, juniper.
 Undergrowth: oak, manzanita, mahogany, catclaw, cactus, beargrass, mesquite, dogwood.

S. 89° 50' E., on random line, bet. secs. 4 and 9.

To obtain measurement across canyon triangulate as described as follows:
 From a point "A" forward on line measure a base N. 31° 48' W., 7.16 chs. to point "B". From "B" flag at cor. of secs. 4, 5, 8 and 9 bears S. 81° 47' W. All angles checked by deflection and all bearings checked by direct readings of the solar. Vertical angle "A" to sec. cor. = -7°; to canyon -19°.



Distance triangulated = 45.01 chs. S. 89° 50' E.
 Return measurement = 5.01 " N. 89° 50' W.
 Temp. 1/4 sec. cor. at 40.00 " S. 89° 50' E.

Survey of Subdivision Lines of T.5 S., R.20 E.

Chains
 40.00 Set temp. $\frac{1}{4}$ sec. cor.
 45.01 Triangulation point "A". Continue measurement by chaining.
 79.86 Fall 46 lks. S. of the cor. of secs. 3, 4, 9 and 10.
 Thence
 S. $89^{\circ}50'$ W., on true line, bet. secs. 4 and 9.
 Over mountainous land; through scattering timber and
 undergrowth.
 Asc. 35 ft. over NE. slope.
 1.70 Spur, slopes S. 85° E.
 Desc. 50 ft. over SW. slope.
 5.40 Ravine, course SE.
 6.50 Trail, bears NW. and SE.
 Enter dense undergrowth.
 Asc. 250 ft. over SE. slope.
 14.70 Spur, slopes SE.
 Desc. 110 ft. over SW. slope.
 22.00 Ravine, course SE.
 Asc. 579 ft. over SE. slope.
 34.85 (Departure of) Triangulation point "A".
 34.86 High spur, slopes SE.
 Desc. 120 ft. over SW. slope.
 39.93 Set an iron post, 3 ft. long, 1 in. diam., 27 ins. in the
 ground, for $\frac{1}{4}$ sec. cor., with brass cap mkd.

$\frac{1}{4}$ S4
 $\frac{1}{4}$ S9
 1929

from which

A pinon, 5 ins. diam., bears N. 60° E., 44 lks. dist., mkd. $\frac{1}{4}$ S4 BT.
 A pinon, 5 ins. diam., bears S. $86\frac{1}{2}^{\circ}$ E., 55 lks. dist., mkd. $\frac{1}{4}$ S9 BT.

Discontinue measurement by chaining.

Desc. approximately 330 ft. over SW. slope.
 55.00 (Approx.) Wash, dry, in ravine, course SE.
 Asc. approximately 200 ft. over NE. slope.

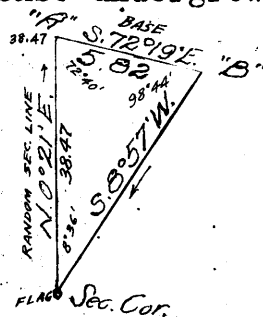
79.86 The cor. of secs. 4, 5, 8 and 9.

Land: mountainous.
 Soil: rocky, granite loam, 2nd rate.
 Timber: oak, pinon, cedar, juniper.
 Undergrowth: oak, manzanita, mahogany, catclaw, cactus,
 beargrass, dogwood, laurel, bayonet.

N. $0^{\circ}21'$ E., on random line, bet. secs. 4 and 5.

To obtain measurement across cliffs and dense undergrowth triangulate as described as follows:

From a point "A" forward on line measure a base 5.82 chs. S. $72^{\circ}19'$ E. to point "B". From "B" flag at sec. cor. bears S. $8^{\circ}57'$ W. All angles checked by deflection and repetition and all bearings checked by direct readings of the solar. Longer base impracticable. Distance triangulated = 38.47 chs.



38.47 Triangulation point "A". Continue measurement by chaining.
 40.00 Set temp. $\frac{1}{4}$ sec. cor.
 80.45 Fall 16 lks. E. of the cor. of secs. 4, 5, 32 and 33, on the
 N. bdy. of the Tp., hereinbefore described.
 Thence
 S. $0^{\circ}14'$ W., on true line, bet. secs. 4 and 5.

Chains

- Over mountainous land; through scattering timber and moderate undergrowth.
- Desc. 42 ft. over S. slope.
- 1.95 Ravine, course SE.
- Asc. 30 ft. over N. slope.
- 3.10 Spur, slopes SE.
- Desc. 35 ft. over S. slope.
- 4.40 Ravine, course SE.
- Asc. 85 ft. over NE. slope.
- 8.40 Spur, slopes E.
- Desc. 18 ft. along E. slope.
- 11.20 Ravine, course E.
- Asc. 261 ft. over N. slope.
- 19.30 Spur, slopes SE.
- Desc. 170 ft. over S. slope.
- 24.10 Head of ravine, course SE.
- Asc. 50 ft. over N. slope.
- 30.00 Spur, slopes SE.
- Desc. 135 ft. over S. slope.
- 38.50 Wire fence, bears NW. and SE.
- Spur, slopes SE.
- Desc. 50 ft. over S. slope.
- 40.45 Set an iron post, 3 ft. long, 1 in. diam., 27 ins. in the ground, for $\frac{1}{4}$ sec. cor., with brass cap mkd.

$\frac{1}{4}$
S5 | S4.
1929

from which

- An alligator juniper, 8 ins. diam., bears S.0°45'E., 157 lks. dist., mkd. $\frac{1}{4}$ S4 BT.
- An alligator juniper, 10 ins. diam., bears S.16°W., 170 lks. dist., mkd. $\frac{1}{4}$ S5 BT.

- Desc. approximately 60 ft. over S. slope.
- 41.98 Discontinue measurement by chaining; distance by triangulation.
- 43.30 (Approx.) Ravine, course SE.
- Asc. approximately 30 ft. over NE. slope.
- 45.00 (Approx.) Point of spur, slopes E.
- Along broken E. slope.
- Through dense undergrowth.
- 51.00 (Approx.) Ridge, bears E. and W.; slopes E.
- Desc. approximately 130 ft. over SE. slope.
- 69.50 (Approx.) Ravine, course SE.
- Asc. approximately 330 ft. over NE. slope.
- 75.00 (Approx.) Fence, bears NE. and SW.
- 80.45 The cor. of secs. 4, 5, 8 and 9.

Land: mountainous.
Soil: rocky, granite loam, 3rd rate.
Timber: oak, pinon, cedar, juniper.
Undergrowth: oak, manzanita, mahogany, catclaw, cactus, mesquite, locust, dogwood, bayonet.

From the Standard cor. of secs. 31 and 32, on the S. bdy. of the Tp., established in 1928 under this Group, described in Book "B", N.0°03'W., on true line, bet. secs. 31 and 32. Over mountainous land; through scattering timber and moderate undergrowth. Asc. 231 ft. over S. slope.

Survey of Subdivision Lines of T.5 S., R.20 E.

- Chains
 (0.00) Over patented land, Mineral Survey No. 2438.
 4.04 Intersect the N. side line (3-4) of the "SANDY" patented lode claim, Survey No. 2438, at a point 5.42 chs. S. 69° 49' E. of its cor. No. 4, which is a wooden post, 4 ins. square, projecting 3 ft. above a mound of stone, mkd. 4-S-2438.
 Leave patented mineral land.
 8.00 High spur, slopes W.
 Desc. 205 ft. over NW. slope.
 13.87 Approximate point for intersection of S. end line (1-6) of "ANNEX" patented lode claim. Fail to find cor. No. 1 of claim.
 16.90 Ravine, course W.
 Asc. 187 ft. over S. slope.
 26.70 Spur, slopes W.
 Desc. 402 ft. over NW. slope.
 31.30 House at Tule Springs bears S. 65° 50' W., about 25 chs. dist.
 36.34 Cor. No. 2 of "ANNEX" claim, identical with cor. No. 3 of "THE CLANSMAN" claim and cor. No. 4 of "SIDNEY" claim, which is a wood post, 4 ins. square by 4 ft. long, properly scribed, fallen from stone mound, bears W. 105 lks. dist. Investigation discloses cors. Nos. 3 and 4 of "ANNEX" claim to be missing, evidently destroyed in building of road.
 38.31 Intersect the W. side line (3-4) of the "SIDNEY" patented lode claim, Mineral Survey No. 2438, at a point 2.21 chs. N. 28° 5' E. of its cor. No. 4.
 Leave patented land.
 40.00 Set an iron post, 3 ft. long, 1 in. diam., 10 ins. in the ground; deposit a stone, mkd. with cross (+) at base of post; raise a mound of stone, 4 ft. base, 2 ft. high, around post, for $\frac{1}{4}$ sec. cor., with brass cap mkd.

$\frac{1}{4}$
 S31 | S32
 1929

No suitable bearing trees.

Desc. 90 ft. over N. slope.

- 41.80 Trail, bears NW. and SE.
 44.50 Junction Copper Bar Gulch, course W. with Tule Gulch, course SW., bears 150 lks. W.
 45.30 End of spur, slopes W.
 46.90 Tule Gulch, dry, course SW.
 Asc. 233 ft. over broken SE. slope.

- 80.00 Set an iron post, 3 ft. long, 2 ins. diam., 20 ins. in ground to bedrock, deposit a stone, mkd. with cross (+) at base of post; raise a mound of stone, 2 ft. base, 1 ft. high, around post, for cor. of secs. 29, 30, 31 and 32, with brass cap mkd.

T5SR20E
 S30 | S29
 S31 | S32
 1929

from which

A pinon, 6 ins. diam., bears N. 10° E., 144 lks. dist., mkd. T5S R20E S29 BT.

A cedar, 4 ins. diam., bears N. 63° W., 77 lks. dist., mkd. BT.

Land: mountainous.

Soil: loam, 2nd rate.

Chains

Timber: oak, pinon, cedar, juniper.
Undergrowth: oak, manzanita, catclaw, mahogany, cactus, beargrass, bayonet.

- East, on random line, bet. secs. 29 and 32.
- 40.00 Set temp. $\frac{1}{4}$ sec. cor.
 - 61.92 To avoid cliffs, triangulate as described on line bet. secs. 28 and 29. Discontinue chaining.
 - 80.14 Intersect the cor. of secs. 28, 29, 32 and 33.
Thence
West, on true line, bet. secs. 29 and 32.
Over rough mountainous land; through scattering timber and dense undergrowth.
Measurement by triangulation as described in notes of line bet. secs. 28 and 29.
 - 17.40 Desc. approximately 340 ft. over W. slope.
Canyon, course NW.
Asc. approximately 140 ft. over SE. slope.
 - 18.22 Triangulation point "A". Continue measurement by chaining.
 - 18.40 Spur, slopes NW.
Desc. 124 ft. over NW. slope.
 - 23.63 Intersect the E. side line, (2-3) of the "Copper Spar" patented lode claim, Mineral Survey No. 2438, at a point 4.59 chs. S.6°09'W. of its cor. No. 3, which is a wood post, 4 ins. square by 4 ft. long, set in a stone mound, properly marked. Over patented land.
 - 25.20 Ravine, course N.
Asc. 36 ft. over NE. slope.
 - 28.90 Spur, slopes NW.
Desc. 347 ft. over W. slope.
 - 40.07 Set an iron post, 3 ft. long, 1 in. diam., 27 ins. in the ground, for $\frac{1}{4}$ sec. cor., with brass cap mkd.
- $$\begin{array}{r} \frac{1}{4}S29 \\ \frac{1}{4}S32 \\ \hline 1929 \end{array}$$
- from which
- A pinon, 10 ins. diam., bears S.89 $\frac{1}{4}$ °W., 350 lks. dist., mkd. $\frac{1}{4}$ S32 BT.
 - A pinon, 14 ins. diam., bears N.88 $\frac{1}{4}$ °W., 370 lks. dist., mkd. $\frac{1}{4}$ S29 BT.
- 40.10 Ravine, course NW.
Asc. 11 ft. along N. slope.
 - 42.60 Spur, slopes steeply to N.
Desc. 153 ft. over NW. slope.
 - 49.17 Intersect the W. side line (3-4) of the "CLARA" patented lode claim, Mineral Survey No. 2438, at a point 14.06 chs. S.6°09'W. of its cor. No. 3, which is a post, 4 ins. square by 4 ft. long, properly mkd., set in a mound of stone.
Leave patented land.
 - 49.80 Tulie Gulch, wash, 20 lks. wide, course SW.
Asc. 153 ft. over SE. slope.
 - 61.60 Spur, slopes S.
Desc. 119 ft. over SW. slope.
 - 67.80 Ravine, course SW.
Asc. 20 ft. over E. slope.
 - 71.60 Point of spur, slopes SW.
Desc. 14 ft. over W. slope.
 - 72.70 Gulch, course SW.
Asc. 171 ft. over general E. slope.
 - 80.14 The cor. of secs. 29, 30, 31 and 32.

Chains	<p>Land: mountainous. Soil: rocky, loam, 3rd rate. Timber: oak, pinon, cedar, juniper. Undergrowth: oak, manzanita, mahogany, mesquite, catclaw, cactus, beargrass.</p>
40.00	West, on random line, bet. secs. 30 and 31.
87.31	Set temp. $\frac{1}{4}$ sec. cor.
87.31	Intersect the cor. of secs. 30 and 31, only, on the W. bdy. of the Tp., hereinbefore described.
	Thence
	East, on true line, bet. secs. 30 and 31.
	Over rolling mountainous land; through scattering timber and undergrowth.
	Asc. 87 ft. along N. slope.
12.20	Spur, slopes SW.
	Desc. 10 ft. along N. slope.
19.00	Short ravine, course SW.
	Asc. 169 ft. over W. slope.
23.64	U.S.M.M. No. 1 of Aravaipa Mining District, brs. N. 17° 51' W.
23.70	Spur, slopes S.
	Desc. 82 ft. along S. slope.
39.90	Ravine, course SW.
	Asc. 182 ft. over W. slope.
46.20	Spur, slopes S.
46.22	U.S.M.M. No. 1 of Aravaipa Mining District, brs. N. 46° 19' W.
	Desc. 20 ft. over E. slope.
47.31	Set an iron post, 3 ft. long, 1 in. diam., 22 ins. in the ground, supported by a mound of stone, for $\frac{1}{4}$ sec. cor., with brass cap mkd.
	<p style="text-align: center;">$\frac{1}{4}$ S30</p> <p style="text-align: center;">$\frac{1}{4}$ S31</p> <p style="text-align: center;">1929</p>
	from which
	A juniper, 7 ins. diam., bears S. 36 $\frac{1}{2}$ ° W., 152 lks. dist., mkd. $\frac{1}{4}$ S31 BT.
	A juniper, 5 ins. diam., bears N. 57 $\frac{1}{2}$ ° W., 88 lks. dist., mkd. $\frac{1}{4}$ S30 BT.
	Desc. 86 ft. over E. slope.
51.76	Road, bears SW. to Klondyke and NE.
62.16	Wash, dry, 16 lks. wide, course SW.
	Asc. 8 ft. over W. slope.
63.00	End of spur, slopes S.
63.40	Gulch, course SW.
	Asc. 148 ft. over NW. slope.
76.30	Ridge, bears N. and S.
	Desc. 45 ft. over NE. slope.
87.31	The cor. of secs. 29, 30, 31 and 32.
	Land: rolling-mountainous.
	Soil: loam, 2nd rate.
	Timber: oak, pinon, cedar, juniper.
	Undergrowth: oak, manzanita, mahogany, catclaw, mesquite, cactus.
	N. 0° 03' W., bet. secs. 29 and 30.
	Over rolling-mountainous land; through scattering timber and moderate undergrowth.
	Desc. 40 ft. over NE. slope.
2.70	Short ravine, course SE.
	Asc. 133 ft. over SE. slope.

Survey of Subdivision Lines of T.5 S., R.20 E.

Chains

- 17.20 Ridge, bears NE. and SW.
Desc. 29 ft. along W. slope.
- 26.00 Wash, dry, 20 lks. wide, course SW.
Asc. 154 ft. over SE. slope.
- 34.00 Road, bears NE. and SW.
- 40.00 Set an iron post, 3 ft. long, 1 in. diam., 6 ins. in the ground; deposit a stone, mkd. with cross (+) at base of post; raise a mound of stone, 5 ft. base, 2 ft. high, around post, for $\frac{1}{4}$ sec. cor., with brass cap mkd.

$\frac{1}{4}$
 S30 | S29
 1929

from which
 A juniper, 16 ins. diam., bears N.23°W., 192 lks. dist., mkd. $\frac{1}{4}$ S30 BT.
 Stove pipe of office building in Landsman's camp bears S.48°44'E. about 9.00 chs. dist.

- Asc. 42 ft. over S. slope.
- 42.30 Spur, slopes SE.
Desc. 137 ft. over NE. slope.
- 63.80 Gulch, wash, 20 lks. wide; course SE.
Asc. 268 ft. along W. slope. (to cor.)
- 64.50 Draw, 14 ft. deep, 5 lks. wide, course W.
- 80.00 Set an iron post, 3 ft. long, 2 ins. diam., 10 ins. in the ground to bedrock; deposit a stone, mkd. with cross (+) at base of post; raise a mound of stone, 4 ft. base, 1 $\frac{1}{2}$ ft. high, around post, for cor. of secs. 19, 20, 29 and 30, with brass cap mkd.

T5SR20E
S19 | S20
 S30 | S29
 1929

from which
 A juniper, 6 ins. diam., bears S.65°E., 39 lks. dist., mkd. T5S R20E S29 BT.
 Ore bins br. N.47 $\frac{1}{2}$ °W., about 15.00 chs. dist.
 No other bearing trees available.

Land: rolling-mountainous.
 Soil: loam, limestone, 2nd and 3rd rates.
 Timber: oak, pinon, juniper, cedar.
 Undergrowth: oak, manzanita, mahogany, dogwood, cactus, catclaw, mesquite.

-
- East, on random line, bet. secs. 20 and 29.
 - 40.00 Set temp. $\frac{1}{4}$ sec. cor.
 - 80.18 Fall 2 lks. S. of the cor. of secs. 20, 21, 28 and 29.
Thence
S.39°59'W., on true line, bet. secs. 20 and 29.
Over mountainous land; through scattering timber and undergrowth.
Asc. 40 ft. over SE. slope.
 - 1.30 Change of slope;
Desc. 96 ft. along S. slope.
 - 3.00 Trail, bears NE. and SW.
 - 10.30 Head of ravine, course S.
Asc. 121 ft. along S. slope.
 - 19.40 Spur, slopes S.
Desc. 76 ft. over SW. slope.

Chains	
21.50	Head of draw, course SW. Asc. 189 ft. over SE. slope.
36.00	Rocky peak bears N., 2.00 chs. dist. Spur, slopes S. Desc. 68 ft. over SW. slope.
40.09	Set an iron post, 3 ft. long, 1 in. diam., 10 ins. in the ground to bedrock; deposit a stone, mkd. with cross (+) at base of post; raise a mound of stone, 5 ft. base, 2 ft. high, around post, for $\frac{1}{4}$ sec. cor., with brass cap mkd.
	$\frac{1}{4}$ S20 $\frac{4}{4}$ S29 1929
	No bearing trees available.
45.00	Desc. 51 ft. over SW. slope. Ridge, bears NE. and SW. Desc. 412 ft. over SW. slope.
66.20	Head of ravine, course SW. Asc. 57 ft. over SE. slope.
72.00	Spur, slopes SW. Desc. 80 ft. along S. slope.
77.00	Spur, slopes NW. Desc. 55 ft. over SW. slope.
80.18	The cor. of secs. 19, 20, 29 and 30. Land: mountainous. Soil: loam, limestone, 3rd rate. Timber: oak, pinon, cedar. Undergrowth: oak, manzanita, mahogany, catclaw, cactus, catclaw, mesquite, dogwood.

40.00	West, on random line, bet. secs. 19 and 30. Set temp. $\frac{1}{4}$ sec. cor.
87.16	Intersect the cor. of secs. 19 and 30, only, on the W. bdy. of the Tp., hereinbefore described. Thence East, on true line, bet. secs. 19 and 30. Over mountainous land; through scattering timber and undergrowth. Desc. 15 ft. along S. slope.
1.20	Small draw, course S. Asc. 39 ft. along S. slope.
7.20	Spur, slopes S. Desc. 20 ft. along S. slope.
9.70	Small ravine, course S. Asc. 180 ft. over SW. slope.
17.90	High spur, slopes S. Desc. 318 ft. over SE. slope.
30.20	Williamson Canyon, wash, dry, 70 lks. wide, course SW. Asc. 37 ft. over W. slope.
31.20	Short spur, slopes SW. Along S. slope.
31.67	Intersect the W. side line (3-4) of the "HEAD CENTER" patented lode claim, Mineral Survey No. 1040, at a point 3.19 chs. N.15°24'W. of its cor. No. 4, identical with cor. No. 5 of "GRAND CENTRAL" claim, which cor. is a wood post, 4 ins. square by 4 ft. long, set in a mound of stone, mkd. 4-1040. Over patented mineral land.
34.30	Ravine, course SW. Asc. 366 ft. over W. slope.

8875

Survey of Subdivision Lines of T. 5 S., R. 20 E. 61

- 41.26 Chains Intersect the E. side line (7-8) of the "GRAND CENTRAL" patented lode claim at a point 91 lks. S. 9°10'E. of its cor. No. 8, identical with cor. No. 1 of the "HEAD CENTER" claim, which cor. is a wood post, 4 ins. square by 4 ft. long, mkd. 8-1040. Leave patented mineral land.
- 47.16 Set an iron post, 3 ft. long, 1 in. diam., 26 ins. in the ground, for 1/4 sec. cor., with brass cap mkd.
 - 1819
 - 1830
 - 1929

No bearing trees available. Raise a mound of stone, 3 ft. base, 2 ft. high, N. of cor.

Asc. 146 ft. over W. slope.
- 55.40 Ridge, bears NE. and SW. Desc. 20 ft. along S. slope.
- 62.25 Intersect the W. side line, (6-7) of the "IRONTON" patented lode claim, Mineral Survey No. 1042 at a point 14.76 chs. S. 8°04'E. of its cor. No. 6, which is a wood post, 4 ins. square by 4 ft. long, set in a mound of stone, mkd. 6-1042. Cor. No. 7 of the claim, identical with cor. No. 9 of the "IONIA" patented lode claim, bears S. 8°04'E., 7.48 chs. dist. From cor. No. 9 of the "IONIA" claim, cor. No. 12 of the "IONIA" claim bears S. 3°03'W., 8.89 chs. dist. Over patented mineral land.
- 67.74 Power line, bears S. 44°06'W. and N. 31°15'E.
- 68.50 Spur, slopes SE. Desc. 410 ft. over NE. slope.
- 79.93 Intersect the E. side line (2-3) of the "IRON CAP" patented lode claim, Mineral Survey No. 1042, at a point 13.56 chs. S. 7°48'E. of its cor. No. 3, which is a wood post, 4 ins. square by 4 ft. long, set in a mound of stone, mkd. 3-1042. Cor. No. 2 of claim bears S. 7°48'E., 8.63 chs. dist. Leave patented mineral land.
- 80.30 Gulch, wash, dry, 30 lks. wide, course S. Asc. 200 ft. over W. slope.
- 87.16 The cor. of secs. 19, 20, 29 and 30.
 - Land: mountainous.
 - Soil: rocky, adobe loam, 2nd rate.
 - Timber: oak, pinon, cedar, juniper.
 - Undergrowth: oak, manzanita, mahogany, catclaw, cactus, beargrass, mesquite.

-
- N. 0°03'W., bet. secs. 19 and 20. Over mountainous land; through scattering timber and dense undergrowth. Asc. 19 ft. along W. slope.
 - 1.80 Spur, slopes W. Desc. 202 ft. over NW. slope.
 - 8.00 Corral bears about 8 chs. East.
 - 8.70 Gulch, course W. Asc. 152 ft. over S. slope.
 - 14.50 Spur, slopes SE. Along E. slope.
 - 19.60 Head of draw, course SE. Asc. 274 ft. over S. slope.

Survey of Subdivision Lines of T.5 S., R.20 E.

Chains

- 30.50 Spur, slopes SE.
Asc. 45 ft. along E. slope.
- 35.20 Change of slope;
desc. 40 ft. over N. slope.
- 38.60 Draw, course SE.
- 39.80 Small draw, course SW.
Asc. 25 ft. over SE. slope.
- 40.00 Set an iron post, 3 ft. long, 1 in. diam., 12 ins. in the ground to bedrock; deposit a stone, mkd. with cross (+) at base of post, raise a mound of stone, 4 ft. base, 1 1/2 ft. high, around post, for 1/4 sec. cor., with brass cap mkd.

1/4
S19 | S20
1929

from which

A juniper, 4 ins. diam., bears S.19°E.; 58 lks. dist., mkd. 1/4 S20 BT.

No other trees suitable for bearing trees.

Asc. 140 ft. over S. slope.

- 48.00 Ridge, divide, bears NW. and SE.
Desc. 235 ft. over N. slope.
- 62.10 Ravine, course NE.
Asc. 54 ft. over SE. slope.
- 64.40 Spur, slopes NE:
Desc. 149 ft. along E. slope.
- 80.00 Set an iron post, 3 ft. long, 2 ins. diam., 26 ins. in the ground, for cor. of secs. 17, 18, 19 and 20, with brass cap mkd.

T5SR20E
S18 | S17
S19 | S20
1929

No suitable bearing trees. Raise a mound of stone, 3 ft. base, 2 ft. high, W. of cor.

Land: mountainous.

Soil: sandy and granite loam, 2nd rate.

Timber: oak, pinon, cedar.

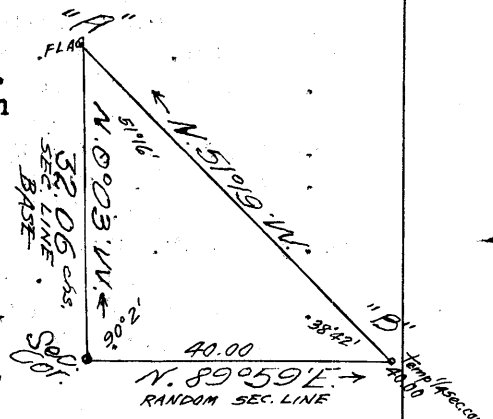
Undergrowth: oak, manzanita, mahogany, catclaw, cactus, beargrass, bayonet, sotol, cogotilla, etc.

N. 89°59'E., on random line, bet. secs. 17 and 20.

To obtain measurement across rocky canyon and dense undergrowth, triangulate as described as follows:

Measure a base 32.06 chs. N. 0°31'W. to point "A". From a point, "B", on line forward, point "A" bears N. 51°19'W. All angles checked by deflection and all bearings checked by direct readings of the solar. Vertical angle "B" to sec. cor. is -5°; "B" to canyon is -17 1/2°.

Distance triangulated = 40.00 chs.



BOOK 5375
63

Survey of Subdivision Lines of T.5 S., R.20 E.

Chains	Description
40.00	Triangulation point "B". Set temp. $\frac{1}{4}$ sec. cor. Continue measurement by chaining.
80.04	Fall 2 lks. S. of the cor. of secs. 16, 17, 20 and 21. Thence S. $89^{\circ}58'$ W., on true line, bet. secs. 17 and 20. Over mountainous land; through scattering timber and dense undergrowth. Asc. 110 ft. over E. slope.
5.20	Spur, slopes S. 80° E. Desc. 97 ft. along S. slope.
13.50	Ravine, course SE. Asc. 236 ft. over E. slope.
27.00	Ridge, divide, bears NE. and SW. Desc. 45 ft. over NW. slope.
31.20	Head of ravine, course NW. Asc. 23 ft. over NE. slope.
36.00	Spur, slopes N. Desc. 120 ft. over W. slope.
40.02	Set an iron post, 3 ft. long, 1 in. diam., 28 ins. in the ground, for $\frac{1}{4}$ sec. cor., with brass cap mkd. <div style="text-align: center;"> $\frac{1}{4}$S17 $\frac{1}{4}$S20 1929 </div> from which A black oak, 6 ins. diam., bears North, 104 lks. dist., mkd. $\frac{1}{4}$ S17 BT. A juniper, 30 ins. diam., bears N. 45° W., 560 lks. dist., mkd. $\frac{1}{4}$ S17 BT.
40.04	Triangulation point "B". Discontinue chaining. Desc. approximately 330 ft. over NW. slope.
55.00	(Approx.) Gulch, dry, course NW. Asc. approximately 100 ft. to spur slope to spur
70.00	(Approx.) Gulch, course N.
79.00	(Approx.) Spur, slopes NE. Thence along N. slope
80.04	The cor. of secs. 17, 18, 19 and 20. Land: mountainous. Soil: sandy, loam, 2nd rate. Timber: oak, pinon, cedar, juniper. Undergrowth: oak, manzanita, mahogany, dogwood, laurel, catclaw, mesquite, cactus, bayonet.
40.00	West, on random line, bet. secs. 18 and 19. Set temp. $\frac{1}{4}$ sec. cor.
86.84	Fall 3 lks. N. of the cor. of secs. 18 and 19, only, on W. bdy. of Tp., hereinbefore described. Thence N. $89^{\circ}59'$ E., on true line, bet. secs. 18 and 19. Over mountainous land; through scattering timber and dense undergrowth. Desc. 50 ft. over E. slope.
2.60	Ravine, course NE. Asc. 76 ft. over NW. slope.
6.80	Spur, slopes N. Desc. 65 ft. over NE. slope.
9.50	Ravine, course NW. Asc. 195 ft. over W. slope.
16.50	Goat corrals and shed bear about 11.00 chs. N.
16.60	Spur, slopes N. Desc. 46 ft. along N. slope.

Chains	
22.20	Ravine, course NE. Asc. 76 ft. over NW. slope.
26.80	Spur, slopes N. Desc. 38 ft. over NE. slope.
30.30	Ravine, course NW. Asc. 361 ft. over SW. slope.
43.30	High spur, slopes NW. Desc. 33 ft. along N. slope.
46.84	Set an iron post, 3 ft. long, 1 in. diam., 27 ins. in the ground, for $\frac{1}{4}$ sec. cor., with brass cap mkd. S18. S19 1929 No suitable bearing trees. Raised a mound of stone, 3 ft. base, 2 ft. high, N. of cor. Desc. 134 ft. over NE. slope.
55.40	Ravine, course N. Asc. 130 ft. over W. slope.
65.80	Spur, slopes NW. Desc. 45 ft. over NE. slope.
70.60	Ravine, course NE. Asc. 45 ft. over NW. slope.
73.80	Spur, slopes N. Desc. 40 ft. over NE. slope.
76.80	Ravine, course NW. Asc. 130 ft. over W. slope.
83.80	Spur, slopes NE. Desc. 35 ft. along N. slope.
86.84	The cor. of secs. 17, 18, 19 and 20. Land: mountainous. Soil: loam, 2nd rate. Timber: oak, cedar, pinon, juniper. Undergrowth: oak, manzanita, mahogany, catclaw, cactus, beargrass, dogwood, bayonet, guyata grass.

	N.0°03'W., bet. secs. 17 and 18. Over mountainous land; through scattering timber and moderate undergrowth. Desc. 136 ft. along E. slope.
9.80	Spur, slopes NE. Desc. 290 ft. over N. slope.
20.00	Gulch, course W. Asc. 20 ft. over S. slope.
21.10	Spur, slopes NW. Desc. 69 ft. over NE. slope.
24.80	Gulch, course NW. Asc. 189 ft. over S. slope.
32.06	Triangulation flag described bet. secs. 17 and 20.
32.20	Spur, slopes NW. Desc. 149 ft. over NE. slope.
38.00	Ravine, course NW. Asc. 6 ft. along W. slope.
40.00	Set an iron post, 3 ft. long, 12 ins. in the ground to bedrock; deposit a stone, mkd. with cross (+) at base of post; raise a mound of stone, 3½ ft. base, 1½ ft. high, around post, for $\frac{1}{4}$ sec. cor., with brass cap mkd.

Survey of Subdivision Lines of T.5 S., R.20.E.

Chains

1
S18 | S17
1929

- No bearing trees available.
- Desc. 31.fts along W. slope.
- 47.90 Spur, slopes NW.
Desc. 163 ft. over N. slope.
- 52.36 Ravine, course NW.
Asc. 160 ft. over SW. slope.
- 56.40 Spur, slopes NW.
Desc. 145 ft. over N. slope.
- 61.80 Gulch, wash, dry, 30 lks. wide, course W.
- 62.00 Corral bears E. 150 lks. dist.
Asc. 280 ft. over S. slope.
- 70.00 Spur, slopes SW.
Desc. 68 ft. over N. slope.
- 76.80 Draw, course SW.
Asc. 8 ft. over SE. slope.
- 78.50 End of spur, slopes W.
Desc. 6 ft. along W. slope.
- 79.80 Draw, course SW.
Asc. 6 ft. over SE. slope.
- 80.00 Set an iron post, 3 ft. long, 2 ins. diam., on exposed bedrock, supported by a mound of stone, 6 ft. base, 2 1/2 ft. high, for cor. of secs. 7, 8, 17 and 18, with brass cap mkd.

T5SR20E
S7 | S8
S18 | S17
1929

from which

- A pinon, 7 ins. diam., bears N.7 1/2°E., 83 lks. dist., mkd. T5S R20E S8 BT.
- An alligator juniper, 10 ins. diam., bears S.41 1/2°E., 69 lks. dist., mkd. T5S R20E S17 BT.
- A pinon, 5 ins. diam., bears S.73 1/2°W., 46 lks. dist., mkd. T5S R20E S18 BT.
- A pinon, 8 ins. diam., bears N.79 1/2°W., 92 lks. dist., mkd. T5S R20E S7 BT.

Land: mountainous.
 Soil: loam, 3rd rate.
 Timber: oak, pinon, cedar, juniper.
 Undergrowth: oak, manzanita, mesquite, mahogany, catclaw, cactus, beargrass.

-
- N.89°58'E., on random line, bet. secs. 8 and 17.
 - 40.00 Set temp. 1/4 sec. cor.
 - 80.00 Fall 12 lks. N. of the cor. of secs. 8, 9, 16 and 17.
Thence
 - N.89°57'W., on true line, bet. secs. 8 and 17.
Over mountainous land; through scattering timber and moderate undergrowth.
 - Desc. 8 ft. over SW. slope.
 - 0.40 Head of ravine, course SE.
Asc. 130 ft. over E. slope.
 - 4.18 Phillip's cabin bears N.33 1/2°W.
 - 4.20 Ridge, bears NE. and SW.
Desc. 487 ft. over W. slope.
 - 17.60 Gulch, course N.
Asc. 224 ft. over broken NE. slope.

Chains

- 34.75 Spur, slopes NW.
Desc. 178 ft. over NW. slope.
- 34.00 Phillip's cabin bears N. $21\frac{1}{2}^{\circ}$ E.
- 40.00 Set an iron post, 3 ft. long, 1 in. diam., 16 ins. in the ground to bedrock, supported by a mound of stone, 3 ft. base, $1\frac{1}{2}$ ft. high, for $\frac{1}{4}$ sec. cor., with brass cap mkd.

$\frac{1}{4}$ S8
 $\frac{1}{4}$ S17
1929

from which

- An alligator juniper, 6 ins. diam., bears N. $41\frac{1}{2}^{\circ}$ E.,
47 lks. dist., mkd. $\frac{1}{4}$ S8 BF.
- An alligator juniper, 10 ins. diam., bears S. $60\frac{1}{2}^{\circ}$ W.,
220 lks. dist., mkd. $\frac{1}{4}$ S17 BF.

- 40.10 Spur, slopes NW.
Desc. 235 ft. over SW. slope.
- 47.00 Ravine, course NW.
Asc. 64 ft. along N. slope.
- 56.50 Spur, slopes N.
Desc. 430 ft. over NW. slope.
- 79.60 Draw, course SW.
Along S. slope.
- 80.00 The cor. of secs. 7, 8, 17 and 18.
- Land: mountainous.
Soil: loam, 2nd rate,
Timber: oak, pinon, cedar, juniper.
Undergrowth: oak, manzanita, mahogany, mesquite,
catclaw, dogwood, beargrass, cactus.

- S. $89^{\circ}59'$ W., on random line, bet. secs. 7 and 18.
- 40.00 Set temp. $\frac{1}{4}$ sec. cor.
- 86.83 Fall 2 lks. S. of the cor. of secs. 7 and 18, only, on the W. bdy. of the Tp., hereinbefore described.
- Thence
East, on true line, bet. secs. 7 and 18.
Over mountainous land; through scattering timber and undergrowth.
Asc. 74 ft. over NW. slope.
- 7.70 Spur, slopes SW.
Desc. 63 ft. over SE. slope.
- 12.90 Head of ravine, course SW.
Asc. 62 ft. over W. slope.
- 16.50 Spur, slopes SW.
Desc. 185 ft. over SW. slope.
- 27.20 Wash, dry, 25 lks. wide, in canyon, course SW. Mouth of small wash from NE.
Asc. 206 ft. over broken NW. slope.
- 40.50 Head of ravine, course NW.
Asc. 132 ft. over W. slope.
- 46.83 Set an iron post, 3 ft. long, 1 in. diam., 22 ins. in the ground, supported by a mound of stone, 2 ft. base, 1 ft. high, for $\frac{1}{4}$ sec. cor., with brass cap mkd.

$\frac{1}{4}$ S7
 $\frac{1}{4}$ S18
1929

from which

Survey of Subdivision Lines of T.5 S., R.20 E.

- Chains
- A cedar, 6 ins. diam., bears S. 13°W., 78 lks. dist., mkd. $\frac{1}{4}$ S18 BT.
- A cedar, 8 ins. diam., bears N.27°W., 123 lks. dist., mkd. $\frac{1}{4}$ S7 BT.
- Asc. slightly over NW. slope.
- 47.30 Spur, slopes SW.
- Desc. 50 ft. along S. slope.
- 52.80 Head of ravine, course S.
- Asc. 41 ft. along S. slope.
- 57.30 Spur, slopes SW.
- Desc. 81 ft. over broken SE. slope.
- 79.50 Deer Creek Canyon, dry, course SW.
- Asc. 175 ft. over NW. slope.
- 84.50 Spur, slopes SW.
- Desc. 21 ft. over SE. slope.
- 86.83 The cor. of secs. 7, 8, 17 and 18.

Land: mountainous.
 Soil: rocky, adobe loam, 2nd rate.
 Timber: oak, pinon, cedar.
 Undergrowth: oak, manzanita, mahogany, catclaw, cactus, beargrass.

-
- N.0°03'W., bet. secs. 7 and 8.
 - Over mountainous land; through scattering timber and scattering undergrowth.
 - Asc. 85 ft. over SW. slope.
 - 3.40 Spur, slopes SW. Trail, bears NE. and SW.
 - Asc. 32 ft. along W. slope.
 - 7.80 Same trail, bears NW. and SE.
 - 10.00 Spur, slopes NW.
 - Desc. 145 ft. over N. slope.
 - 14.50 Same trail, bears NE. and SW.
 - 15.80 Deer Creek Canyon, dry, course SW.
 - Asc. 319 ft. over broken SE. slope.
 - 40.00 Set an iron post, 3 ft. long, 1 in. diam., 28 ins. in the ground, for $\frac{1}{4}$ sec. cor., with brass cap mkd.

$\frac{1}{4}$
 S7 | S8
 1929

No bearing trees available. Raise a mound of stone, 3 ft. base, 2 ft. high, W. of cor.

- Asc. 15 ft. over S. slope.
- 41.50 Spur, slopes SW.
- Asc. 203 ft. over SW. slope.
- 59.40 Spur, slopes SW.
- Desc. 115 ft. over N. slope.
- 68.20 Head of ravine, course SW.
- Asc. 51 ft. along W. slope.
- 72.00 Trail, bears NW. to Stanley Butte and SE.
- 74.00 Short spur, slopes W.
- Desc. 20 ft. along W. slope.
- 80.00 Set an iron post, 3 ft. long, 2 in. diam., 27 ins. in the ground, for cor. of secs. 5, 6, 7 and 8, with brass cap mkd.

T5SR20E
 S6 | S5
 S7 | S8
 1929

from which

Chains	
	<p>A live oak, 6 ins. diam., bears $S 54^{\circ} E.$, 90 lks. dist., mkd. T5S R20E S8 BT.</p> <p>Land: mountainous. Soil: loam, 2nd rate. Timber: oak, juniper, pinon. Undergrowth: oak, manzanita, mahogany, catclaw, cactus, beargrass, mesquite, bayonet.</p>

	<p>$S. 89^{\circ} 57' E.$; on random line, bet. secs. 5 and 8. 40.00 Set temp. $\frac{1}{4}$ sec. cor. 79.92 Fall 4 lks. S. of the cor. of secs. 4, 5, 8 and 9. Thence $N. 89^{\circ} 59' W.$, on true line, bet. secs. 5 and 8. Over mountainous land; through scattering timber and moderate undergrowth. Asc. 132 ft. over NE. slope. 3.00 Wire fence, bears NE. and SW. 7.80 Ridge, bears NW. and SE. Desc. 500 ft. over general W. slope. 27.00 Gulch, course SW. Asc. 25 ft. over E. slope. 29.50 Spur, slopes S. Along S. slope. 31.50 Small ravine, course SE. Asc. 200 ft. over E. slope. 39.96 Set an iron post, 3 ft. long, 1 in. diam., 26 ins. in the ground, for $\frac{1}{4}$ sec. cor., with brass cap mkd.</p>
	$\begin{array}{r} \frac{1}{4} S 5 \\ S 8 \\ 1929 \end{array}$
	<p>No trees suitable for bearing trees. Raise a mound of stone, 3 ft. base, 2 ft. high, N. of cor.</p> <p>40.00 Spur, slopes SE. Desc. 280 ft. over general SW. slope. 46.00 Spur, slopes SW. 55.00 Gulch, course SW. Asc. 220 ft. over SE. slope. 65.00 Spur, slopes S. Desc. 170 ft. over SW. slope. 70.00 Head of ravine, course S. Asc. 10 ft. along S. slope. 75.00 Spur, slopes $S. 10^{\circ} W.$ Desc. 125 ft. over W. slope. 79.92 The cor. of secs. 5, 6, 7 and 8.</p> <p>Land: mountainous. Soil: sandy, loam, 2nd rate. Timber: oak, cedar, pinon, juniper. Undergrowth: oak, manzanita, mahogany, catclaw, cactus, mesquite, beargrass, bayonet.</p>

	<p>West, on random line, bet. secs. 6 and 7. 40.00 Set temp. $\frac{1}{4}$ sec. cor. 87.02 Fall 2 lks. S. of the cor. of secs. 6 and 7, only, on the W. bdy. of the Tp., hereinbefore described. Thence $S. 89^{\circ} 59' E.$, on true line, bet. secs. 6 and 7.</p>

Survey of Subdivision Lines of T.5 S., R.20 E.

Chains	Over rolling-mountainous land; through scattering timber and undergrowth. Desc. 25 ft. along N. slope.
6.00	Head of ravine, course N. Trail, bears NE. and SW. Asc. 76 ft. over NW. slope.
10.00	Small spur, slopes NW. Desc. 76 ft. over NE. slope.
16.10	Ravine, course NW. Asc. 76 ft. over W. slope.
17.90	Road, little-used, winding, bears NW. and SE. Pass in ridge (E.-W.) bears 3 chs. S.
18.40	Trail, bears N. and S. Asc. 60 ft. over W. slope.
20.30	Dim road, bears SE. to SW.
20.50	Ridge, bears NE. and SW. Spring bears about 2 chs. SE. Asc. 45 ft. along S. side of top of ridge.
27.00	Same ridge, bears NW. and SE. Desc. 84 ft. along N. slope.
38.90	Ravine, course NW. Asc. 167 ft. over W. slope.
47.02	Set an iron post, 3 ft. long, 1 in. diam., on exposed bedrock, supported by a mound of stone, 6 ft. base, 2 1/2 ft. high, for 1/4 sec. cor., with brass cap mkd.
	$\begin{array}{r} 186 \\ 1 \\ \hline 187 \\ 1929 \end{array}$
	<p>from which</p> <p>A cedar, 14 ins. diam., bears S. 82 1/2° W., 252 lks. dist., mkd. 1/2 S7 BT.</p> <p>A cedar, 10 ins. diam., bears N. 80 1/2° W., 178 lks. dist., mkd. 1/2 S6 BT.</p>
49.50	Asc. 77 ft. over W. slope. Spur, slopes NW. Desc. 40 ft. along N. slope.
54.60	Point of spur, slopes SW. Along S. slope.
55.80	Same ravine, course SW. Enter dense undergrowth. Asc. 218 ft. over W. slope.
62.60	Trail, bears N. and S. Asc. 41 ft. over W. slope.
65.20	Ridge, divide, bears NE. and SW. Leave dense undergrowth. Desc. 120 ft. over SE. slope.
73.50	Head of gulch, course SE. Desc. 80 ft. along S. slope.
80.60	Wash, dry, 15 lks. wide, course SW. Asc. 51 ft. over SW. slope.
85.50	Small spur, slopes S. Desc. 25 ft. over SE. slope.
86.80	Ravine, course SW. Asc. 8 ft. over W. slope.
87.02	The cor. of secs. 5, 6, 7 and 8.

Land: rolling-mountainous.
 Soil: loam, 2nd rate.
 Timber: oak, pinon, cedar, juniper.
 Undergrowth: oak, manzanita, mahogany, mesquite, catclaw, dogwood, cactus, beargrass, bayonet.

Chains

- N.0°14'E., on random line, bet. secs. 5 and 6.
 40.00 Set temp. $\frac{1}{4}$ sec. cor.
 80.10 Fall 2 lks. E. of the Cor. of secs. 5, 6, 31 and 32, on the
 N. bdy. of the Tp., hereinbefore described.
 Thence
 S.0°13'W., on true line, bet. secs. 5 and 6.
 Over mountainous land; through scattering timber and
 moderate undergrowth.
 Asc. 220 ft. over NE. slope.
 3.50 Ridge, bears E. and W.
 Desc. 730 ft. over broken SW. slope.
 35.00 Wash, dry, 30 lks. wide, course SW.
 Trail in bottom bears NE. and SW.
 Asc. 30 ft. over NW. slope.
 36.50 Change of slope; along W. slope.
 40.10 Set an iron post, 3 ft. long, 1 in. diam., 20 ins. in the
 ground, supported by a mound of stone, for $\frac{1}{4}$ sec. cor.,
 with brass cap mkd.

$\frac{1}{4}$
 S6 | S5
 1929

from which

- A live oak, 10 ins. diam., bears N.54°E., 10 lks.
 dist., mkd. $\frac{1}{4}$ S5 BT.
 A live oak, 6 ins. diam., bears S.40°W., 38 lks.
 dist., mkd. $\frac{1}{4}$ S6 BT.

- Desc. 15 ft. over SW. slope.
 40.60 Small ravine, course W. Enter dense undergrowth.
 Asc. 171 ft. over N. slope.
 46.90 Spur, slopes W.
 Desc. 160 ft. over SW. slope.
 54.50 Ravine, course W.
 Asc. 359 ft. over N. slope.
 65.10 Ridge, divide, bears NE. and SW.
 Desc. 317 ft. over SW. slope. (to cor.)
 74.10 Head of ravine, course SW.
 Asc. 28 ft. over NW. slope.
 76.50 Short spur, slopes SW.
 78.90 Head of ravine, course SW.
 80.10 The cor. of secs. 5, 6, 7 and 8.

Land: mountainous.

Soil: sandy loam, 2nd rate.

Timber: oak, pinon, cedar, juniper.

Undergrowth: oak, manzanita, mahogany, mesquite, cactus,
 catclaw, dogwood, beargrass, bayonet.

FINAL INSTRUMENT TEST

The continued satisfactory adjustment of solar apparatus is indicated from tests described in beginning of Book "G" of this Group.

GENERAL DESCRIPTION

Township lies between elevations of 3,500 and 7,000 ft. over divide between Gila River and Aravaipa Creek. It is reached by road in the SW. cor. from Klondyke and in the NW. cor. from Stanley Butte. Its industries are mining and grazing, only. Water is plentiful in small springs. There are no permanent settlers.

RECEIVED 3875

4-680
(August, 1926)

FIELD ASSISTANTS.
to

Theodore Vander Meer, U. S. Transitman

NAMES.	CAPACITY.
Owen Wright	First Chainman
Earl Endicott	Second Chainman
Sid G. Sheard	Moundsman
Erwin E. Curtis	Axman
Mather Willis	Axman

72
BOOK 3875

CERTIFICATE OF UNITED STATES SURVEYOR.

I, Theodore Vander Meer, U.S. Transitman hereby certify upon honor that, in pursuance of special instructions received from the District Cadastral Engineer, for Group 141, Arizona bearing date of the 23rd day of June, 19 26, I have well, faithfully, and truly in my own proper person, and in strict conformity with said instructions, the Manual of Surveying Instructions, and the laws of the United States, surveyed all those parts or portions of

The Subdivision lines of

Township 5 South, Range 20 East of the Gila and Salt

River Base and Meridian, in the State of Arizona, which are represented in and by diagram on page 1, hereof the foregoing field notes as having been executed by me, and under my direction; and that all the corners of said survey have been established and perpetuated in strict accordance with the Manual of Surveying Instructions, and the special written instructions of the District Cadastral Engineer for Group 141, Arizona and in the specific manner described in the field notes, and that the foregoing are the original field notes of such survey.

Place: Phoenix, Arizona.
Date: April 27, 1929

Theodore Vander Meer
Theodore Vander Meer
U.S. Transitman.

~~APPROVAL:~~

~~OFFICE OF U. S. SUPERVISOR OF SURVEYS,~~

~~, 19~~

~~The foregoing field notes of the survey of~~

~~executed by~~

~~under his special instructions dated~~, ~~19~~, ~~having been critically examined, and the necessary corrections and explanations made, the said field notes, and the surveys they describe, are hereby approved.~~

~~U. S. Supervisor of Surveys.~~

~~I certify that the foregoing transcript of the field notes of the above described surveys in~~

~~has been correctly copied from the original notes on file in this office.~~

~~U. S. Supervisor of Surveys.~~

400 12 3875

4-680

FIELD ASSISTANTS.

to

William E. Hiester, U. S. Surveyor.

NAMES.	CAPACITY.
Fred W. Pender	1st Chainman
Charles Mc Donald	2nd Chainman
Tom Sheard	Flagman
D. H. Mc Kechnie	Moundsman

BOOK 3875

CERTIFICATE OF UNITED STATES SURVEYOR.

I, William E. Hiester, U. S. Surveyor, hereby certify upon honor that, in pursuance of special instructions received from the District Cadastral Engineer, for Group 141, Ariz., bearing date of the 23rd day of June, 19 26, I have well, faithfully, and truly in my own proper person, and in strict conformity with said instructions, the Manual of Surveying Instructions, and the laws of the United States, surveyed all those parts or portions of

the West Boundary,

the North Boundary and

the Subdivision lines of

Township 5 South, Range 20 East of the Gila and Salt

River Base and Meridian, in the State of Arizona, which are represented in

and by diagram on page one, hereof the foregoing field notes as having been executed by me, and under my direction; and that all the corners of said survey have been established and perpetuated in strict accordance with the Manual of Surveying Instructions, and the special written instructions of the District Cadastral Engineer, for Group 141, Ariz., and in the specific manner described in the field notes, and that the foregoing are the original field notes of such survey.

Place: San Francisco, Calif.

William E. Hiester U. S. Surveyor.

Date: June 4, 1929.

APPROVAL.

OFFICE OF THE U. S. Supervisor of Surveys,

Denver, Colorado, December 7, 1929

The foregoing field notes of the survey of the West Boundary, the North Boundary and all of the Subdivision Lines of

TOWNSHIP 5 SOUTH, RANGE 20 EAST,

of the Gila and Salt River Base and Meridian in the State of Arizona,

executed by W.E. Hiester, U.S. Surveyor, and T. Vander Meer, U.S. Transitman,

under special instructions dated June 23rd, 1926 for Group 141, Arizona, having been critically examined, and the necessary corrections and explanations made, the said field notes, and the surveys they describe, are hereby approved.

U. S. Supervisor of Surveys.

I certify that the foregoing transcript of the field notes of the above described surveys in has been correctly copied from the original notes on file in this office.