



(1A)

BOOK 4018

# INDEX DIAGRAM.

Township 38 NORTH, Range 3 WEST

6 50	51 5 50	37 4 36	25 8 24	17 2 16	9 1 8
7 48	48 8 47	35 9 34	24 10 23	16 11 15	7 12 6
18 46	46 17 44	33 16 31	22 15 22	14 14 14	6 18 5
19 43	44 20 42	30 21 29	21 22 20	13 23 12	4 24 3
20 41	41 29 39	29 28 27	19 27 18	11 26 10	2 25 2
21 31	38 32	26 28	18 24	9 25	1 26

N.E.S. 4150

Chains.

The survey was executed by Benjamin J. Kinsey, U. S. Surveyor, and Walter H. Good, U. S. Surveyor, For description and tests of instrumental equipment and for preliminary observations, see field notes of the survey of the bdy. of Tps. 37 and 38 N., R. 3 W., surveyed under this group.

I commence the subdivisional survey at the cor. of secs. 1, 2, 35, and 36, on the S. bdy. of the Tp., heretofore described.

N.0°08'E., bet. secs. 35 and 36.

Over rolling land, through scattered timber and undergrowth.

Descend 17 ft. over NE. slope.

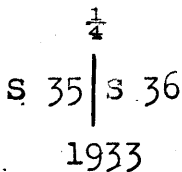
6.20 Wash, 5 lks. wide, course W.; asc. 14 ft. over S. slope.

13.00 Small spur, slopes E.; desc. 78 ft. over NE. slope.

22.57 Wash, 4 lks. wide, course NW.; asc. 36 ft. over SW. slope.

35.00 Spur, slopes NW.; desc. 28 ft. over NE. slope.

40.00 Set an iron post, 3 ft. long, 1 in. diam., 26 ins. in the ground, for  $\frac{1}{4}$  sec. cor. with brass cap mkd.



from which

A juniper, 8 ins. diam., bears N. 50 $\frac{3}{4}$ °E., 46 lks. dist., mkd.  $\frac{1}{4}$  S36 BT

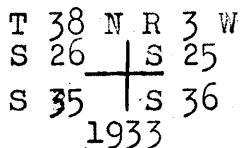
A pinyon, 14 ins. diam., bears N. 63 $\frac{1}{2}$ ° W., 272 lks. dist., mkd.  $\frac{1}{4}$  S35 BT

Descend 187 ft. over broken NE. slope.

56.33 Top of bluff, 90 ft. high, faces N.; desc. 770 ft. over N. slope.

78.00 Slide Wash, 30 lks. wide, course SW.; asc. 48 ft. over N. slope.

80.00 Set an iron post, 3 ft. long, 2 ins. diam., 18 ins. in the ground to bedrock, with a sandstone, 10x10x6 ins. mkd. X, deposited at the base, and in a mound of stone to top, for cor. of secs. 25, 26, 35, and 36, with brass cap mkd.



Land, rolling.  
Soil, rocky; 4th rate.  
Timber, scattered juniper and pinyon.  
Undergrowth, cacti, buck brush and sage brush.

Chains, S.89°54'E., on a random line bet. secs. 25 and 36.

40.00 Set temp.  $\frac{1}{4}$  sec. cor.

80.00 Intersect E. bdy. of Tp., at the cor. of secs. 25, 30, 31, and 36,

Thence

✓ N.89°54'W., on a true line bet. secs. 25 and 36.

Over rolling land, through scattered undergrowth.

26.30 Descend 187 ft. over SW. slope.

33.00 Wash, 10 lks. wide, course NW.

40.00 Set an iron post, 3 ft. long, 1 in. diam., 18 ins. in the ground to bedrock, with a sandstone, 8x8x4 ins. mkd. X, deposited at the base, and in a mound of stone to top, for  $\frac{1}{4}$  sec. cor. with brass cap mkd.

$$\frac{1}{4} \frac{S. 25}{S. 36}$$

1933

from which

A spring, bears N.80° E.

Descend 96 ft. along broken N. slope.

67.91 Little Spring, in wash, 10 lks. wide, bears S.16°15'E.

73.00 Same wash, 10 lks. wide, course NW.

76.00 Slide Wash, 30 lks. wide, course SW.; asc. 23 ft. over SE. slope.

80.00 The cor. of secs. 25, 26, 35, and 36. ✓

Land, rolling.

Soil, rocky; 4th rate.

Timber, none.

Undergrowth, cacti and sage brush.

N.0°08'E., bet. secs. 25 and 26.

Over mountainous land, through scattered timber and undergrowth.

Ascend over SE. slope.

20.90 Top of bluff, 90 ft. high, bears NE. and SW.; continue over rolling land.

22.35 Little Spring, bears S. 21°30' E.

Spring on N. side of canyon, bears S. 70°40' E.

26.00 Low spur, slopes SW.

32.00 Head of wash, 3 lks. wide, course W.

40.00 Set an iron post, 3 ft. long, 1 in. diam., 16 ins. in the ground to bedrock, with a limestone, 16x10x6 ins. mkd. X, deposited at the base, and in a mound of stone to top, for  $\frac{1}{4}$  sec. cor. with brass cap mkd.

SUBDIVISION OF T. 38 N., R. 3 W.

Chains.

$\frac{1}{4}$   
S 26 | S 25  
1933

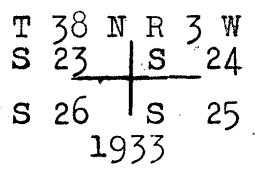
Descend 85 ft. over NE. slope.

44.58 Wash, 10 lks. wide, course NW.; asc. 118 ft. over SW. slope.

57.00 Spur, slopes W.; desc. 17 ft. over NW. slope.

72.30 Drain, 4 lks. wide, course NW.

80.00n Set an iron post, 3 ft. long, 2 ins. diam., 10 ins. in the ground to bedrock, with a limestone, 12x8x4 ins. mkd. X, deposited at the base, and in a mound of stone to top, for cor. of secs. 23, 24, 25, and 26, with brass cap mkd.



from which

A pinyon, 10 ins. diam., bears N. 34<sup>3</sup>° E., 256 lks. dist., mkd. T38N R3W S24 BT

A pinyon, 8 ins. diam., bears S. 13<sup>1</sup>° E., 162 lks. dist., mkd. T38N R3W S25 BT

Land, rolling and mountainous.  
Soils rocky; 4th rate.  
Timber scattered juniper and pinyon.  
Undergrowth, cacti and sage brush.

S. 89° 54' E., on a random line bet. secs. 24 and 25.

40.00 Set temp.  $\frac{1}{4}$  sec. cor.

80.04 Intersect E. bdy. of Tp., 2 lks. N. of the cor. of secs. 19, 24, 25, and 30.

Thence

N. 89° 53' W., on a true line bet. secs. 24 and 25.

Over mountainous land, through scattered timber and undergrowth.

Ascend 5 ft. over gradual NE. slope.

16.00 Spur, slopes NW.; desc. 50 ft. over SW. slope.

30.38 Wash, 10 lks. wide, course NW.; asc. 46 ft. over NE. slope.

40.02 Set an iron post, 3 ft. long, 1 in. diam., 4 ins. in the ground to bedrock, with a limestone, 10x6x4 ins. mkd. X, deposited at the base, and in a mound of stone to top, for  $\frac{1}{4}$  sec. cor. with brass cap mkd.

Chains.

$$\frac{1}{4} \frac{S 24}{S 25}$$
 1933

from which

A pinyon, 10 ins. diam., bears N.  $37\frac{1}{4}^\circ$  E., 114 lks. dist., mkd.  $\frac{1}{4}$  S24 BT

A pinyon, 10 ins. diam., bears S.  $40\frac{1}{4}^\circ$  W., 104 lks. dist., mkd.  $\frac{1}{4}$  S25 BT

41.30 Drain, 3 lks. wide, course NE.

50.00 Small spring in wash, 3 lks. wide, course NW.; asc. 18 ft. over SE. slope.

57.70 Spur, slopes NW.; desc. 52 ft.

80.04 The cor. of secs. 23, 24, 25, and 26.

Land, mountainous.

Soil, rocky; 4th rate.

Timber scattered juniper and pinyon.

Undergrowth, sage brush and cacti.

N.  $0^\circ 08'$  E., bet. secs. 23 and 24.

Over mountainous land. through scattered timber and undergrowth.

Descend 106 ft. over NW. slope.

7.38 Wash, 10 lks. wide, course W.; asc. 109 ft. over SW. slope.

15.40 Top of spur, slopes W.

23.00 Top of rimrocks, 80 ft. high, bears E. and W.; desc. 823 ft. over steep N. slope.

40.00 Set an iron post, 3 ft. long, 1 in. diam., 18 ins. in the ground to bedrock, with a limestone, 8x6x4 ins. mkd. X, deposited at the base, and in a mound of stone to top, for  $\frac{1}{4}$  sec. cor. with brass cap mkd.

$$\frac{1}{4}$$

$$S 23 | S 24$$

1933

Descend 250 ft. over steep N. slope.

47.55 Wash, 12 lks. wide, course NW.; asc. 29 ft. over SW. slope.

52.20 Spur, slopes W.; desc. 118 ft. over NW. slope.

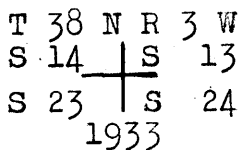
58.00 Rock wall, bears W. 2.50 chs. dist.

58.40 Trail, bears E. and W.

60.51 Wash, 30 lks. wide, course SW.

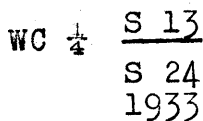
67.00 Rock spring in wash, bears E. 15.00 chs. dist.; asc. 200 ft. over bluffs.

Chains.  
 70.00 Top of bluffs, bears E. and W.  
 75.00 Rocky spur, slopes SW.  
 78.00 Top of bluffs, 200 ft. high, bears NE. and SW.  
 79.50 Base of bluffs.  
 80.00 Set an iron post, 3 ft. long, 2 ins. diam., 18 ins. in the ground to bedrock, with a limestone, 10x8x6 ins. mkd. X, deposited at the base, and in a mound of stone to top, for cor. of secs. 13, 14, 23, and 24, with brass cap mkd.



Land, mountainous.  
 Soil, rocky; 4th rate.  
 Timber, scattered juniper and pinyon.  
 Undergrowth, sage brush, buck brush and cacti.

S.89°53'E., on a random line bet. secs. 13 and 24.  
 40.00 Set temp.  $\frac{1}{4}$  sec. cor.  
 80.02 Intersect E. bdy. of Tp., 7 lks. S. of the cor. of secs. 13, 18, 19, and 24.  
 Thence  
 N.89°56'W., on a true line bet. secs. 13 and 24.  
 Over mountainous land, through scattered timber and undergrowth.  
 Ascend 40 ft. over NE. slope.  
 8.00 Top of ascent; continue over nearly level land.  
 34.00 Top of rimrocks, bears NE. and SW.  
 34.70 Set an iron post, 3 ft. long, 1 in. diam., 18 ins. in the ground to bedrock, with a limestone, 6x6x6 ins. mkd. X, deposited at the base, and in a mound of stone to top, for witness  $\frac{1}{4}$  sec. cor. with brass cap mkd.



from which

A pinyon, 14 ins. diam., bears S. 30 $\frac{1}{2}$ ° E., 48 lks. dist., mkd. WC  $\frac{1}{4}$  S24 BT

Descend 532 ft. over steep rocky W. slope.  
 40.01 True point for  $\frac{1}{4}$  sec. cor. falls on ledge.  
 50.00 Wash, 20 lks. wide, course SW.  
 64.00 Rocky spur, slopes SW.  
 80.02 The cor. of secs. 13, 14, 23, and 24.

## SUBDIVISION OF T. 38 N., R. 3 W.

Chains.	<p>Land, mountainous. Soil, rocky; 4th rate. Timber, scattered juniper and pinyon. Undergrowth, cacti and sage brush.</p>
	<p>N.0°08'E., bet. secs. 13 and 14.</p> <p>Over mountainous land, through scattered timber and undergrowth.</p> <p>Descend 200 ft. over NW. slope.</p>
21.45	Road, bears NE. and SW.
23.15	Snake wash, 50 lks. wide, course SW.; asc. 450 ft. over SE. slope.
40.00	True point for $\frac{1}{4}$ sec. cor. falls on ledge 100 ft. high, faces SE.
41.70	Set an iron post, 3 ft. long, 1 in. diam., 18 ins. in the ground to bedrock, with a limestone, 10x10x10 ins. mkd. X, deposited at the base, and in a mound of stone to top, for witness $\frac{1}{4}$ sec. cor. with brass cap mkd.
	$\frac{1}{4}$ $\begin{array}{c} \text{S } 14 \mid \text{S } 13 \\ \text{W } C \\ 1933 \end{array}$
	Ascend 464 ft. over broken SE. slope.
71.00	Top of rimrocks, bears NE. and SW.; continue over rolling land.
80.00	Set an iron post, 3 ft. long, 2 ins. diam., 18 ins. in the ground to bedrock, with a limestone, 12x6x2 ins. mkd. X, deposited at the base, and in a mound of stone to top, for cor. of secs. 11, 12, 13, and 14, with brass cap mkd.
	$\begin{array}{c} \text{T } 38 \text{ N } R \text{ } 3 \text{ W} \\ \text{S } 11 \mid \text{S } 12 \\ \text{S } 14 \mid \text{S } 13 \\ 1933 \end{array}$
	<p>Land, mountainous. Soil, rocky; 4th rate. Timber, scattered juniper and pinyon. Undergrowth, cacti and sage brush.</p>
	<p>S.89°56'E., on a random line bet. secs. 12 and 13.</p>
40.00	Set temp. $\frac{1}{4}$ sec. cor.
79.86	Intersect E. bdy. of Tp., at the cor. of secs. 7, 12, 13 and 18.
	Thence
	N.89°56'W., on a true line bet. secs. 12 and 13.
	Over mountainous land, through scattered timber and undergrowth.



Chains Descend 586 ft. over steep SW. slope.  
 18.00 Top of ledge 90 ft. high, bears NW. and SE.  
 30.00 Wash, 12 lks. wide, course NW.  
 36.00 Enter Snake Gulch, bears NE. and SW.  
 39.90 Road, bears NE. and SW.  
 39.93 Set an iron post, 3 ft. long, 1 in. diam., 26 ins. in the ground, for  $\frac{1}{4}$  sec. cor. with brass cap mkd.

$\frac{1}{4}$  S 12  
 S 13  
 1933

raise a mound of stone, 4 ft. base, 3 ft. high, N. of cor.

45.00 Snake Wash, 50 lks. wide, course SW.  
 47.00 Leave Snake Gulch, bears NE. and SW.; asc. 816 ft. over SE. slope.  
 52.00 Top of ledge, bears NE. and SW.  
 55.50 Wash, 15 lks. wide, course SE.  
 78.50 Top of small spur, slopes N.  
 79.86 The cor. of secs. 11, 12, 13, and 14.

Land, mountainous.  
 Soil, rocky; 4th rate.  
 Timber, none; undergrowth, cacti and sage brush.

N.0°08'E., bet. secs. 11 and 12.

Over mountainous land, through scattered undergrowth.  
 Descend 344 ft. over N. slope.

8.00 Wash, 15 lks. wide, course E.; asc. 367 ft. over broken SE. slope.  
 23.50 Continue along E. slope.  
 40.00 True point for  $\frac{1}{4}$  sec. cor. falls in wash, 20 lks. wide course SE.  
 40.30 Set an iron post, 3 ft. long, 1 in. diam., 12 ins. in the ground to bedrock, with a limestone, 6x6x4 ins. mkd. X, deposited at the base, and in a mound of stone to top, for witness  $\frac{1}{4}$  sec. cor. with brass cap mkd.

$\frac{1}{4}$   
 S 11 | S 12  
 W | C  
 1933

Ascend 61 ft. over SW. slope.

60.50 Spur ridge, bears NE. and SW.; continue over nearly level land.

## SUBDIVISION OF T. 38 N., R. 3 W.

Chains 77.30	Road, bears NE. and SW.
78.00	Drain, 3 lks. wide, course NW.
80.00	Set an iron post, 3 ft. long, 2 ins. diam., 26 ins. in the ground, for cor. of secs. 1, 2, 11, and 12, with brass cap mkd.
	T 38 N R 3 W S 2   S 1 S 11   S 12 1933
	18x18x12 ins. in each sec. 3 ft. dist. dig pits, Land, mountainous and rolling. Soil, rocky; 4th rate. Timber, none. Undergrowth, cacti and sage brush.
40.00	S. 89° 56' E., on a random line bet. secs. 1 and 12. Set temp. $\frac{1}{4}$ sec. cor.
80.18	Intersect E. bdy. of Tp., 5 lks. N. of the cor. of secs. 1, 6, 7, and 12, <del>as before described.</del> Thence N. 89° 54' W., on a true line bet. secs. 1 and 12. Over mountainous land, through scattered undergrowth. Ascend 113 ft. over SE. slope.
5.00	Spur, slopes S.; desc. 294 ft. over SW. slope.
22.54	Wash, 15 lks. wide, course SE.; asc. 339 ft. over SE. slope.
39.50	Top of ledge, 20 ft. high, bears NE. and SW.
40.09	Set an iron post, 3 ft. long, 1 in. diam., 6 ins. in the ground to bedrock, with a limestone, 6x6x4 ins. mkd. X, deposited at the base, and in a mound of stone to top, for $\frac{1}{4}$ sec. cor. with brass cap mkd.
	$\frac{1}{4}$ <u>S 1</u> S 12 1933
	Ascend 44 ft. over SE. slope.
44.00	Top of ascent; continue over level bench land.
52.70	Fence, bears NW. and SE.
77.60	Road, bears NE. and SW.
80.18	The cor. of secs. 1, 2, 11, and 12. Land, mountainous and level. Soil, sandy; 3rd rate and rocky; 4th rate. Timber, none. Undergrowth, buck brush, cacti and sage brush.

Chains N.0°08'E., on a random line bet. secs. 1 and 2.  
 40.00 Set temp.  $\frac{1}{4}$  sec. cor.  
 82.74 Intersect N. bdy. of the Tp., 21 lks. W. of the cor. of  
 secs. 1, 2, 35, and 36, which is an iron post, 3 ins.  
 diam., 14 ins. above ground, firmly set, mkd. and wit-  
 nessed as described in the official record.

Thence  
 S.0°17'W., on a true line bet. secs. 1 and 2.  
 Over level land, through scattered undergrowth.

19.73 Draw, 10 lks. wide, course NW.  
 42.74 Set an iron post, 3 ft. long, 1 in. diam., 16 ins. in  
 the ground to bedrock, with a limestone, 12x5x4 ins.  
 mkd. X, deposited at the base, and in a mound of stone  
 to top, for  $\frac{1}{4}$  sec. cor. with brass cap mkd.

$\frac{1}{4}$   
 S 2 | S 1  
 1933

62.34 Drain, 4 lks. wide, course W.  
 71.64 Fence, bears NE. and SW.  
 72.84 Drain, 3 lks. wide, course NW.  
 82.74 The cor. of secs. 1, 2, 11, and 12.  
 Land, level.  
 Soil, rocky; 4th rate.  
 Timber, none.  
 Undergrowth, sage brush, cacti and buck brush.

Thence from the cor. of secs. 2, 3, 34, and 35, on the S.  
 bdy. of the Tp., as before described.

N.0°08'E., bet. secs. 34 and 35.  
 Over mountainous land, through scattered timber and  
 undergrowth.  
 Descend 82 ft. over N. slope.  
 13.00 Wash, 5 lks. wide, course SW.; asc. 68 ft. over S.  
 slope.  
 20.00 Top of spur, slopes W.; desc. 96 ft. over NW. slope.  
 40.00 Set an iron post, 3 ft. long, 1 in. diam., 26 ins. in  
 the ground, for  $\frac{1}{4}$  sec. cor. with brass cap mkd.

$\frac{1}{4}$   
 S 34 | S 35  
 1933

raise a mound  
 of stone, 4 ft. base, 3 ft. high, W. of cor.

41.69 Top of ledge 90 ft. high, bears E. and W.; desc. 447 ft.

- Chains over steep N. slope.
- 71.19 Slide Wash, 50 lks. wide, course W.; asc. 30 ft. over S. slope.
- 71.25 Trail, bears E. and W.
- 80.00 Set an iron post, 3 ft. long, 2 ins. diam., 20 ins. in the ground to bedrock, with a limestone, 10x10x6 ins. mkd. X, deposited at the base, and in a mound of stone to top, for cor. of secs. 26, 27, 34, and 35, with brass cap mkd.

T 38 N R 3 W  
 S 27 | S 26  
 S 34 | S 35  
 1933

Land, mountainous.  
 Soil, rocky; 4th rate.  
 Timber, none;  
 Undergrowth, sage brush and cacti.

- 40.00 S. 89°54'E., on a random line bet. secs. 26 and 35.  
 Set temp.  $\frac{1}{4}$  sec. cor.
- 79.94 Intersect N. and S. line, 14 lks. N. of the cor. of secs. 25, 26, 35, and 36.  
 Thence  
 N. 89°48'W., on a true line bet. secs. 26 and 35.  
 Over mountainous land, through scattered timber and undergrowth.  
 Along broken S. slope.
- 39.97 Set an iron post, 3 ft. long, 1 in. diam., 18 ins. in the ground to bedrock, with a limestone, 10x8x6 ins. mkd. X, deposited at the base, and in a mound of stone to top, for  $\frac{1}{4}$  sec. cor. with brass cap mkd.

$\frac{1}{4}$  S 26  
 S 35  
 1933

- 41.00 Descend 246 ft. over broken S. slope.
- 48.75 Turn in wash, 10.00 chs. S.
- 79.94 The cor. of secs. 26, 27, 34, and 35.

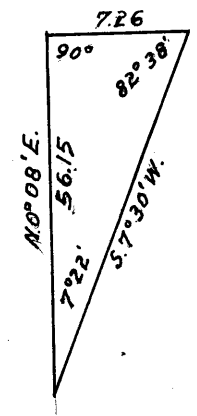
Land, mountainous.  
 Soil, rocky; 4th rate.  
 Timber, scattered juniper.  
 Undergrowth, cacti and sage brush.

SUBDIVISION OF T. 38 N., R. 3 W.

Chains N.0°08'E., bet. secs. 26 and 27.

This line passes over the precipitous north side of Slide Canyon. I therefore proceed to a point on line above canyon rim and deflecting 90° to the right, measure a base line 7.26 chs. in length. From east end of base, a flag placed at the 41.69 ch. point bet. secs. 34 and 35, bears S.7°30'W.

Dist. by triangulation = 56.15 chs.  
 41.69 + 56.15 = 97.84 "  
 97.84 - 80.00 = 17.84 "



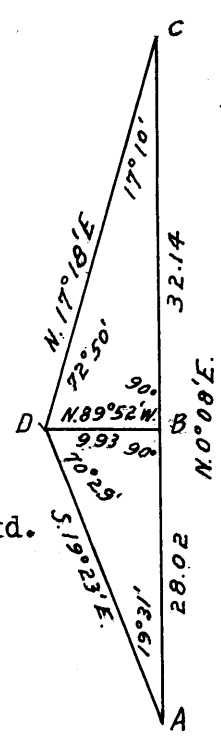
15.00 (Approx.) Ledge, 80 ft. high, bears E. and W.

17.85 Spur, slopes SW.

23.00 Top of inaccessible ledge, 40 ft. high, bears NE. & SW. As it is impossible to chain across Shinumo canyon on account of the precipitous ledges, I triangulate as follows: set flag A at the 17.85 ch. point; point B is taken on line down in the canyon, and flag C is set on line on N. side of canyon above ledge. From point B, D bears N.89°52'W., 9.93 chs. dist. The vertical angle from B to A is + 26° and from B to C is + 20 3/4°. From D, C bears N. 17° 18' E; from D, A bears S. 19° 23' E.

Dist. by direct meas. = 17.85 chs.  
 Dist. A- B 28.02 "  
 Dist. to point B 45.87 "  
 Dist. B- C 32.14 "  
 Dist. to flag C 78.01 "

By return measure from point B, S.0°08'W., 5.87 chs.



40.00 Set an iron post, 3 ft. long, 1 in. diam., 16 ins. in the ground to bed rock, with a limestone 14 x 14 x 8 ins. mkd. X deposited at base and in a mound of stone 4 ft. base to top, for 1/4 sec. cor. with brass cap mkd.

1/4  
 S 27 | S 26  
 1933

45.85 Desc. broken NW.slope. Point B. Thence by direct measure for topography.

50.00 Enter bottom of canyon.

54.00 Snake wash, 60 lks. wide, course SW.

55.50 Road, bears NE. and SW.

57.00 Leave bottom and asc. SE. slope. Discontinue direct measurement.

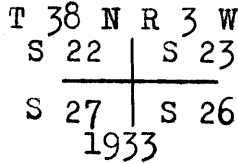
73.00 (Approx.) Top of inaccessible ledge, 100 ft. high, bears NE. and SW.

78.01 Point C. Thence by direct measure.

SUBDIVISION OF T. 38 N., R. 3 W.

Chains  
80.00

Set an iron post, 3 ft. long, 2 ins. diam., 18 ins. in the ground to bed rock, with a limestone 12 x 12 x 4 ins. mkd. X, deposited at base, and in a mound of stone to top, for cor. of secs. 22, 23, 26 and 27, with brass cap marked

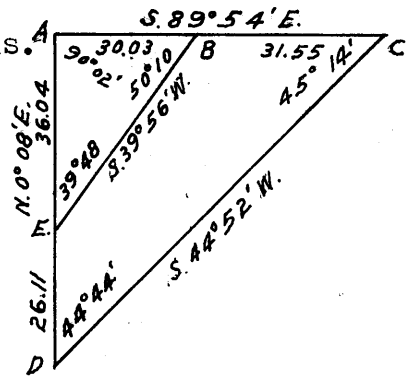


Land, mountainous.  
Soil, rocky, 4th. rate.  
Timber, none.  
Undergrowth, cacti and buck brush.

S. 89°54'E., on a random line bet. secs. 23 and 26, a flag set N. 89°54'W. from the cor. of secs. 23, 24, 25 and 26 being visible.

As this line passes over the precipitous ledges of Shinumo canyon, where it is impossible to chain, I proceed by triangulation. The cor. of secs. 22, 23, 26 and 27, is designated point A; flag B is set on line in canyon and flag C is on line above cliffs on E. side of canyon. Flag D is at the 17.85 ch. point bet. secs. 26 and 27 and flag E is at the 43.96 ch. point bet. secs. 26 and 27. The vertical angle from B to A is + 21°44'. The several angles were measured by deflection and the bearings checked by the solar. From B, E bears S. 39° 56' W.; from C, D bears S. 44° 52' W.

Dist. A- B by triang. = 30.03 chs.  
Dist. A- C " " = 61.58 "



- 30.03 Point B. Thence by chaining.
- 40.00 Set temp. 1/4 sec. cor. Discontinue direct measurement.
- 61.58 Point C. Thence by chaining.
- 79.90 Intersect the cor. of secs. 23, 24, 25 and 26.
- Thence
- N. 89°54'W., on a true line bet. secs. 23 and 26.
- Over mountainous land, through scattering timber and undergrowth. Desc. 84 ft. over NW. slope.
- 4.44 Wash, 5 lks. wide, course N. Asc. 100 ft. over NE. slope.
- 16.00 Small spur, slopes N.
- 17.60 E. rim of Shinumo canyon.
- 18.70 Ledge, 90 ft. high, bears NE. and SW. Desc. 960 ft. to
- 39.95 Set an iron post, 3 ft. long, 1 in. diam., 18 ins. in the ground to bed rock, with a limestone 6x6x6 ins. mkd. X, deposited at the base, and in a mound of stone to top, for 1/4 sec. cor. with brass cap marked

SUBDIVISION OF T. 38 N., R. 3 W.

BOOK 4018

Chains.

$$\frac{1}{4} \begin{array}{c} S 23 \\ S 26 \\ 1933 \end{array}$$

Continue descending.

- 50.00 Enter Snake Canyon, bears NE. and SW.
- 53.00 Center of Snake Wash, 50 lks. wide, course SW.
- 55.00 Leave Snake Canyon.; asc. 734 ft. over steep rocky SE. slope.
- 73.00 Top of ledge, 80 ft. high, bears NE. and SW.
- 79.90 The cor. of secs. 22, 23, 26, and 27.

Land, mountainous.  
 Soil, rocky; 4th rate.  
 Timber, none.  
 Undergrowth, cacti and buck brush.

N.0°08'E., bet. secs. 22 and 23.

Over mountainous land, through scattered undergrowth.

Ascend 446 ft. over steep SE. slope.

- 16.80 Top of rim rock, bears NE. and SW.; continue over level bench land.
- 40.00 Set an iron post, 3 ft. long, 1 in. diam., 16 ins. in the ground to bedrock, with a limestone 4x4x4 ins. mkd. X, deposited at the base, and in a mound of stone to top, for  $\frac{1}{4}$  sec. cor. with brass cap mkd.

$$\frac{1}{4} \begin{array}{c} S 22 | S 23 \\ 1933 \end{array}$$

- 68.30 Drain, 4 lks. wide, course W.
- 80.00 Set an iron post, 3 ft. long, 2 ins. diam., 8 ins. in the ground to bedrock, with a limestone 12x6x4 ins. mkd. X, deposited at the base, and in a mound of stone to top, for cor. of secs. 14, 15, 22, and 23, with brass cap mkd.

$$\begin{array}{c} T 38 N R 3 W \\ S 15 | S 14 \\ S 22 | S 23 \\ 1933 \end{array}$$

Land, rolling and mountainous.  
 Soil, rocky; 4th rate.  
 Timber, none.  
 Undergrowth, cacti and buck brush.

Chains.	S.89°54'E., on a random line bet. secs. 14 and 23.
40.00	Set temp. $\frac{1}{4}$ sec. cor.
79.88	Intersect N. and S. line. at the cor. of secs. 13,14,23, and 24.
	Thence
	N.89°54'W., on a true line bet. secs. 14 and 23.
	Over mountainous land, through scattered undergrowth.
	Descend 465 ft. over NW. slope.
19.88	Road, bears NE. and SW.
21.88	Center of Snake Wash, 50 lks. wide, course SW.; asc. 450 ft. over broken SE. slope.
38.29	Top of ledge, 80 ft. high, bears NE. and SW.
39.94	Set an iron post, 3 ft. long, 1 in. diam., 16 ins. in the ground to bedrock, with a limestone, 12x8x8 ins. mkd. X, deposited at the base, and in a mound of stone to top, for $\frac{1}{4}$ sec. cor. with brass cap mkd.
	$\frac{1}{4}$ <u>S 14</u>
	S 23
	1933
	Continue over nearly level land.
51.98	Drain, 3 lks. wide, course NW.
79.88	The cor. of secs. 14,15,22, and 23.
	Land, rolling and mountainous.
	Soil, rocky; 4th rate.
	Timber, none.
	Undergrowth scattered cacti and sage brush.
	N.0°08'E., bet. secs. 14 and 15.
	Over rolling land, through scattered undergrowth.
	Descend 55 ft. over NE. slope.
24.30	Wash, 8 lks. wide, course NW.
29.20	Road, bears NE. and SW.
33.00	Continue over nearly level land.
40.00	Set an iron post, 3 ft. long, 1 in. diam., 12 ins. in the ground to bedrock, with a limestone, 8x8x4 ins. mkd. X, deposited at the base, and in a mound of stone to top, for $\frac{1}{4}$ sec. cor. with brass cap mkd.
	$\frac{1}{4}$
	S 15   S 14
	1933
46.00	Wash, 8 lks. wide, course W.
53.20	Drain, 5 lks. wide, course W.



Chains.

55.70 Road, bears NE. and SW.

80.00 Set an iron post, 3 ft. long, 2 ins. diam., 26 ins. in the ground, for cor. of secs. 10,11,14, and 15, with brass cap mkd.

T 38	N R 3	W
S 10		S 11
S 15		S 14
1933		

raise a mound of stone, 4 ft. base, 3 ft. high, W. of cor.

Land, rolling.  
Soil, rocky; 4th rate.  
Timber, none.  
Undergrowth, cacti and buck brush.

S.89°54'E., on a random line bet. secs. 11 and 14.

40.00 Set temp. 4 sec. cor.

80.06 Intersect N. and S. line, 7 lks. N. of the cor. of secs. 11,12,13, and 14.

Thence

N.89°51'W., on a true line bet. secs. 11 and 14.

Over rolling land, through scattered undergrowth.

Ascend 55 ft. over broken NE. slope.

18.00 Small spur, slopes N.; desc. 64 ft. over NW. slope.

23.29 Wash, 10 lks. wide, course N.

40.03 Set an iron post, 3 ft. long, 1 in. diam., 26 ins. in the ground, for 1/4 sec. cor. with brass cap mkd.

S 11
1/4
S 14
1933

from which

A juniper, 14 ins. diam., bears S. 19° W., 121 lks. dist., mkd. 1/4 S14 BT

A juniper, 12 ins. diam., bears N. 83 3/4° W., 43 lks. dist., mkd. 1/4 S11 BT

42.00 Small wire corral, bears S. 2.00 chs. dist.; asc. 32 ft. over E. slope.

47.50 Spur ridge, bears N. and S.

55.80 Road, bears N. and S.

80.06 The cor. of secs. 10,11,14, and 15.

Land, rolling.  
Soil, rocky; 4th rate.  
Timber, scattered juniper.  
Undergrowth, cacti and buck brush.

## SUBDIVISION OF T. 38 N., R. 3 W.

Chains.	N.0°08'E., bet. secs. 10 and 11. Over rolling land, through scattered undergrowth.																
32.00	Drain, 5 lks. wide, course NW.																
40.00	Set an iron post, 3 ft. long, 1 in. diam., 26 ins. in the ground, for $\frac{1}{4}$ sec. cor. with brass cap mkd.																
	$\frac{1}{4}$ <table style="margin: auto;"> <tr> <td>S 10</td> <td> </td> <td>S 11</td> </tr> <tr> <td colspan="3" style="text-align: center;">1933</td> </tr> </table>	S 10		S 11	1933												
S 10		S 11															
1933																	
	raise a mound of stone, 4 ft. base, 3 ft. high, W. of cor.																
43.00	Small reservoir, bears W. about 15.00 chs. dist.																
51.00	Road, bears E. and W.																
80.00	Set an iron post, 3 ft. long, 2 ins. diam., 18 ins. in the ground to bedrock, with a limestone, 10x10x4 ins. mkd. X, deposited at the base, and in a mound of stone to top, for cor. of secs. 2, 3, 10, and 11, with brass cap mkd.																
	<table style="margin: auto;"> <tr> <td>T 38</td> <td>N</td> <td>R 3</td> <td>W</td> </tr> <tr> <td>S 3</td> <td> </td> <td>S 2</td> <td></td> </tr> <tr> <td>S 10</td> <td> </td> <td>S 11</td> <td></td> </tr> <tr> <td colspan="4" style="text-align: center;">1933</td> </tr> </table>	T 38	N	R 3	W	S 3		S 2		S 10		S 11		1933			
T 38	N	R 3	W														
S 3		S 2															
S 10		S 11															
1933																	
	Land, rolling. Soil, rocky; 4th rate. Timber, none. Undergrowth, cacti and buck brush.																
	S.89°51'E., on a random line bet. secs. 2 and 11.																
40.00	Set temp. $\frac{1}{4}$ sec. cor.																
79.90	Intersect N. and S. line, 7 lks. S. of the cor. of secs. 1, 2, 11, and 12.																
	Thence																
	N.89°54'W., on a true line bet. secs. 2 and 11.																
	Over rolling land, through scattered desert growth.																
1.20	Drain, 3 lks. wide, course NW.																
22.00	Drain, 5 lks. wide, course NW.																
34.00	Drain, 3 lks. wide, course N.																
35.66	Road, bears NE. and SW.																
39.95	Set an iron post, 3 ft. long, 1 in. diam., 12 ins. in the ground to bedrock, with a limestone, 8x8x6 ins. mkd. X, deposited at the base, and in a mound of stone to top, for $\frac{1}{4}$ sec. cor. with brass cap mkd.																
	$\frac{1}{4}$ <table style="margin: auto;"> <tr> <td>S 2</td> <td></td> </tr> <tr> <td>S 11</td> <td></td> </tr> <tr> <td colspan="2" style="text-align: center;">1933</td> </tr> </table>	S 2		S 11		1933											
S 2																	
S 11																	
1933																	

Chains.

50.00 Descend 34 ft. over SW. slope.

59.70 Wash, 5 lks. wide, course NW.

79.90 The cor. of secs. 2,3,10, and 11.

Land, rolling.  
Soil, rocky; 4th rate.  
Timber, none.  
Undergrowth, sage brush, buck brush and cacti.

N.0°17'E., on a random line bet. secs. 2 and 3.

40.00 Set temp. 1/4 sec. cor.

82.57 Intersect N. bdy. of the Tp., 24 lks. E. of the cor. of secs. 2,3,34 and 35, which is an iron post, 2 ins. diam., firmly set, marked and witnessed as described in the official record.

Thence

S.0°07'W., on a true line bet. secs. 2 and 3.

Over mountainous land, through scattered undergrowth.

Ascend 23 ft. over N. slope.

7.50 Top of spur, slopes W.; desc. 369 ft. over S. slope.

22.50 Continue over bluffs.

28.94 **Gunsight Wash**, 20 lks. wide, course W.; trail in same bears E. and W.; asc. 451 ft. over broken NE. slope.

39.00 Spur, slopes NW.

42.57 Set an iron post, 3 ft. long, 1 in. diam., 18 ins. in the ground to bedrock, with a limestone, 10x8x8 ins. mkd. X, deposited at the base, and in a mound of stone to top, for 1/4 sec. cor. with brass cap mkd.

1/4  
S 3 | S 2  
1933.

Descend 100 ft. over broken SW. slope.

65.64 Wash, 5 lks. wide, course NW.; asc. 101 ft. over NE. slope.

71.00 Top of ascent; continue over rolling land.

82.57 The cor. of secs. 2,3,10, and 11.

Land, rolling and mountainous.  
Soil, rocky; 4th rate.  
Timber, none.  
Undergrowth, scattered buck brush, desert holly and sage brush.

Chains.	Thence from the cor. of secs. 3, 4, 33, and 34. on the S. bdy. of the Tp.,
	N.0°07'E., bet. secs. 33 and 34.
	Over mountainous land, through scattered undergrowth.
	Descend 578 ft. over NW. slope.
22.70	Gully. 5 lks. wide, course NW.; continue descending.
40.00	Set an iron post, 3 ft. long, 1 in. diam., 26 ins. in the ground, for $\frac{1}{4}$ sec. cor. with brass cap mkd.
	$\frac{1}{4}$ S 33   S 34 1933
	raise a mound
	of stone, 4 ft. base, 3 ft. high, W. of cor.
44.70	Center of Snake Wash, 100 lks. wide, course SW.; road in same bears NE. and SW.; asc. 346 ft. over SE. slope.
80.00	Set an iron post, 3 ft. long, 2 ins. diam., 12 ins. in the ground to bedrock, with a limestone, 8x8x6 ins. mkd. X, deposited at the base, and in a mound of stone to top, for cor. of secs. 27, 28, 33, and 34, with brass cap mkd.
	T 38 N R 3 W S 28   S 27 S 33   S 34 1933
	Land, mountainous. Soil, rocky; 4th rate. Timber, none. Undergrowth, scattered cacti and sage brush.
	S.89°54'E., on a random line bet. secs. 27 and 34.
40.00	Set temp. $\frac{1}{4}$ sec. cor.
80.20	Intersect N. and S. line, 2 lks. N. of the cor. of secs. 26, 27, 34, and 35.
	Thence
	N.89°53'W., on a true line bet. secs. 27 and 34.
	Over mountainous land, through scattered undergrowth.
	Ascend 40 ft. along S. slope.
12.60	Top of ascent; desc. 118 ft. over broken SW. slope.
20.00	Wash, 20 lks. wide, course SW.; asc. 87 ft. over gradual SE. slope.
25.00	Spur, slopes SW.; desc. 182 ft. over NW. slope.
40.10	Set an iron post, 3 ft. long, 1 in. diam., 14 ins. in the ground to bedrock, with a limestone, 8x8x8 ins. mkd. X, deposited at the base, and in a mound of stone to top, for $\frac{1}{4}$ sec. cor. with brass cap mkd.

Chains

sec. S. 27  
1/4  
S 34

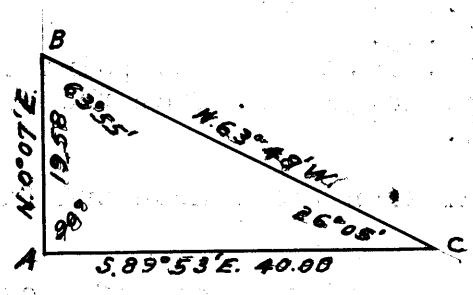
- 41.60 Trail, bears NW. and SE.; continue over rolling land.
- 43.90 Wash, 30 lks. wide, course NW.
- 49.00 Wash, 30 lks. wide, course NW.
- 56.00 Same wash, course W.
- 59.90 Road, bears NE. and SW.
- 64.30 Enter Snake wash, course SW.
- 65.00 Leave same. Asc. 287 ft. over steep SE. slope.
- 80.20 The cor. of secs. 27, 28, 33 and 34.

Land, rolling and mountainous.  
 Soil, rocky, 4th. rate.  
 Timber, none.  
 Undergrowth, sagebrush, grease brush and cacti.

N.0°07'E., bet. secs. 27 and 28.

Over mountainous land, through scattered undergrowth.

As this line passes over nearly perpendicular ledges where it is impossible to chain, I designate the cor. of secs. 27, 28, 33 and 34 as point A and set a flag B on line above ledges. Point C is taken S.89°53'E. 40.00 chs. dist. from point A. From point C, flag B bears N.63°48'W., the vertical angle being +2°30'.



The estimated topography is as follows:

- Asc. 400 ft. over broken SE. slope.
- 14.00 Foot of White ledge, bears E. and W. Asc. 300 ft. over ledge.
- 15.00 Top of White ledge. Asc. 100 ft. to
- 17.00 Foot of Castle ledge, bears E. and W. Asc. 200 ft. over ledge.
- 19.58 Top of Castle ledge, bears NE. and SW. Thence by chaining.
- 31.70 A ledge, 30 ft. high, bearing N. and S. bears E. 10 lks.
- 40.00 Set an iron post, 3 ft. long, 1 in. diam., 26 ins. in the ground for 1/4 sec. cor. with brass cap marked

1/4  
 S 28 | S 27  
 1933

raise a mound of stone  
 4 ft. base, 3 ft. high W. of cor.

Chains	Asc. 23 ft. over SE. slope.								
47.00	Small spur, slopes NE. Desc. 78 ft. over NW. slope.								
54.21	Drain, 3 lks. wide, course NE. Asc. 70 ft. over SE. slope.								
62.00	Spur ridge, slopes SW. Thence along top of spur over nearly level land.								
79.70	Road, bears NE. and SW.								
80.00	Set an iron post, 3 ft. long, 2 ins. diam., 12 ins. in the ground to bed rock, with a limestone, 12x10x4 ins. mkd. X, deposited at the base, and in a mound of stone to top, for cor. of secs. 21, 22, 27 and 28, with brass cap marked								
	<table border="1"> <tbody> <tr> <td colspan="2">T 38 N R 3 W</td> </tr> <tr> <td>S 21</td> <td>S 22</td> </tr> <tr> <td>S 28</td> <td>S 27</td> </tr> <tr> <td colspan="2">1933</td> </tr> </tbody> </table>	T 38 N R 3 W		S 21	S 22	S 28	S 27	1933	
T 38 N R 3 W									
S 21	S 22								
S 28	S 27								
1933									
	Land, rolling and mountainous.								
	Soil, rocky, 4th. rate.								
✓	Timber, none.								
	Undergrowth, cacti, sage brush and greasew brush.								
	S.89°53'E., on a random line bet. secs. 22 and 27.								
40.00	Set temp. $\frac{1}{4}$ sec. cor.								
65.92	The line in advance of this point passes over precipitous cliffs, where it is impossible to chain. Therefore run traverse above canyon rim as follows:								
	N. 64° E., 3.95 chs.								
	N.89°36'E., 5.68 "								
	N.18°30'E., 15.74 " to point on line bet. secs. 22 and 23, 16.70 chs. from the cor. of secs. 22, 23, 26 and 27.								
	By calculation the length and falling of random line are								
80.10	Fall 3 lks. S. of the cor. of secs. 22, 23, 26 and 27.								
	Thence								
✓	N.89°54'W., on a true line bet. secs. 22 and 27.								
	Over mountainous land, through scattered undergrowth.								
	Asc. 400 ft. over a series of ledges 10 ft. to 90 ft. high.								
14.00	Rim of Shinumo canyon, bears NE. and SW. Desc. 94 ft. over NW. slope.								
19.37	Drain, 3 lks. wide, course SW. Asc. 87 ft. over SE. slope.								
33.10	Spur, slopes SW. Desc. gentle NW. slope.								
40.05	Set an iron post, 3 ft. long, 1 in. diam., 12 ins. in the ground to bed rock, with a limestone 12x6x6 ins. mkd. X, deposited at the base, and in a mound of stone to top, for $\frac{1}{4}$ sec. cor. with brass cap marked								

SUBDIVISION OF T. 38 N., R. 3 W.

Chains.

NW 80 7	S 22
21 21 21	S 27
1933	

Descend 213 ft. over NW. slope.

52.10 Top of ledge, 30 ft. high, bears N. and S.

53.20 Wash, 10 lks. wide, course SW.; asc. 176 ft. over SE. slope.

54.60 Top of ledge, 30 ft. high, bears NE. and SW.; continue ascending.

80.10 The cor. of secs. 21, 22, 27 and 28.

Land, mountainous.  
Soil, rocky; 4th rate.  
Timber, none.  
Undergrowth, sage brush, buck brush and cacti.

N.0°07'E., bet. secs. 21 and 22.

Over broken mountainous land, through scattered undergrowth.

Ascend 11 ft. over S. slope.

6.00 Top of ascent; continue over rolling land.

16.00 Descend 196 ft. over NW. slope.

24.95 Wash, 3 lks. wide, course NE.; continue descending.

29.70 Low spur, slopes N.; continue over rolling land.

39.27 Set an iron post, 3 ft. long, 1 in. diam., 18 ins. in the ground to bedrock, with a limestone, 8x8x2 ins. mkd. X, deposited at the base, and in a mound of stone to top, for witness  $\frac{1}{4}$  sec. cor. with brass cap mkd.

WC
$\frac{1}{4}$
S 21   S 22
1933

40.00 True point for  $\frac{1}{4}$  sec. cor. falls in wash, 14 lks. wide, course NW.

Ascend 95 ft. over SW. slope.

58.00 Spur, slopes NW.; desc. 149 ft. over N. slope.

68.76 Wash, 10 lks. wide, course W.; asc. 116 ft. over S. slope.

80.00 Set an iron post, 3 ft. long, 2 ins. diam., 18 ins. in the ground to bedrock, with a limestone, 16x12x4 ins. mkd. X, deposited at the base, and in a mound of stone to top, for cor. of secs. 15, 16, 21, and 22, with brass cap mkd.

SUBDIVISION OF T. 38 N., R. 3 W.

Chains.

T 38 N R 3 W  
 S 16 | S 15  
 S 21 | S 22  
 1933

Land, rolling and mountainous.  
 Soil, rocky; 4th rate.  
 Timber, none.  
 Undergrowth, sage brush and cacti.

S.89°54'E., on a random line bet. secs. 15 and 22.

40.00 Set temp.  $\frac{1}{4}$  sec. cor.

80.00 Intersect N. and S. line, at the cor. of secs. 14, 15, 22, and 23.

Thence

N.89°54'W., on a true line bet. secs. 15 and 22.

Over nearly level land, through scattered undergrowth.

13.80 Road, bears NE. and SW.

25.00 Descend 23 ft. over SW. slope.

31.30 Draw, 5 lks. wide, course NW.

40.00 Set an iron post, 3 ft. long, 1 in. diam., 26 ins. in the ground, for  $\frac{1}{4}$  sec. cor. with brass cap mkd.

$\frac{1}{4}$  S 15  
 S 22  
 1933

of stone, 4 ft. base, 3 ft. high, N. of cor. raise a mound.

Ascend gradual NE. slope.

41.00 Low spur, slopes NW.; desc. 40 ft. over broken SW. slope.

80.00 The cor. of secs. 15, 16, 21, and 22.

Land, nearly level.  
 Soil, rocky; 4th rate.  
 Timber, none.  
 Undergrowth, sage brush and cacti.

N.0°07'E., bet. secs. 15 and 16.

Over mountainous land, through scattered undergrowth.

Ascend 32 ft. over SE. slope.

7.00 Spur, slopes SW.; desc. 115 ft. over N. slope.

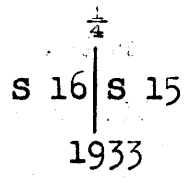
19.55 Wash, 15 lks. wide, course W.; asc. 151 ft. over S. slope.

33.00 Continue along W. slope.

40.00 Set an iron post, 3 ft. long, 1 in. diam., 26 ins. in the ground, for  $\frac{1}{4}$  sec. cor. with brass cap mkd.



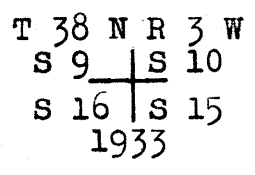
Chains.



raise a mound of stone, 4 ft. base, 3 ft. high, W. of cor.

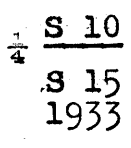
Continue along W. slope.

- 41.50 Drain, course W.
- 49.00 Descend 160 ft. over N. slope.
- 62.14 Wash, 10 lks. wide, course W.; asc. 105 ft. over S. slope.
- 70.50 Spur, slopes W.; desc. 49 ft. over N. slope.
- 75.93 Wash, 3 lks. wide, course W.; asc. 36 ft. over SW. slope.
- 80.00 Set an iron post, 3 ft. long, 2 ins. diam., 18 ins. in the ground to bedrock, with a limestone, 10x10x10 ins. mkd X, deposited at the base, and in a mound of stone to top, for cor. of secs. 9, 10, 15, and 16, with brass cap mkd.



Land, mountainous.  
 Soil, rocky; 4th rate.  
 Timber, none.  
 Undergrowth, sage brush, cacti and buck brush.

- 40.00 S. 89°54'E., on a random line bet. secs. 10 and 15. Set temp.  $\frac{1}{4}$  sec. cor.
- 79.98 Intersect N. and S. line, at the cor. of secs. 10, 11, 14, and 15.  
 Thence  
 N. 89°54'W., on a true line bet. secs. 10 and 15.  
 Over rolling land, through scattered undergrowth.
- 20.48 Road, bears NE. and SW.
- 22.18 Drain, 3 lks. wide, course NW.
- 39.99 Set an iron post, 3 ft. long, 1 in. diam., 18 ins. in the ground to bedrock, with a limestone, 8x8x6 ins. mkd. X, deposited at the base, and in a mound of stone to top, for  $\frac{1}{4}$  sec. cor. with brass cap mkd.
- 72.00 Descend 18 ft. over SW. slope.
- 79.98 The cor. of secs. 9, 10, 15, and 16.



Chains. Land, rolling.  
Soil, rocky; 4th rate.  
Timber, none.  
Undergrowth, cacti, sage brush and buck brush.

N.0°07'E., bet. secs. 9 and 10.

Over mountainous land, through scattered undergrowth.

Ascend 28 ft. over SW. slope.

5.74 Spur, slopes W.; desc. 226 ft. over N. slope.

16.46 Wash, 10 lks. wide, course W.; asc. 183 ft. over S. slope.

23.50 Spur, slopes W.; desc. 98 ft. over NW. slope,

29.10 Wash, 3 lks. wide, course SW.; asc. 98 ft. over SE, slope.

38.50 Spur, slopes W.; desc. 22 ft. over N. slope.

40.00 Set an iron post, 3 ft. long, 1 in. diam., on bedrock, with a limestone, 10x8x6 ins. mkd. X, deposited at the base, and in a mound of stone to top, for  $\frac{1}{4}$  sec. cor. with brass cap mkd.

$\frac{1}{4}$   
 S 9 | S 10  
 1933

Descend 194 ft. over N. slope.

45.00 Top of ledge, 80 ft. high, bears E. and W.

49.18 Wash, 10 lks. wide, course W.; asc. 353 ft. over ledges.

63.00 Top of ledge, 50 ft. high, ; continue over level land.

80.00 Set an iron post, 3 ft. long, 2 ins. diam., 16 ins. in the ground to bedrock, with a limestone, 6x6x3 ins. mkd. X, deposited at the base, and in a mound of stone to top, for cor. of secs. 3, 4, 9, and 10, with brass cap mkd.

T 38 N R 3 W  
 S 4 | S 3  
 S 9 | S 10  
 1933

Land, mountainous.  
Soil, rocky; 4th rate.  
Timber, none.  
Undergrowth, sage brush, cacti and buck brush.

S.89°54'E., on a random line bet. secs. 3 and 10.

40.00 Set temp.  $\frac{1}{4}$  sec. cor.

80.04 Intersect N. and S. line, 5 lks. S. of the cor. of secs. 2, 3, 10, and 11.

SUBDIVISION OF T. 38 N., R. 3 W.

BOOK 4018

Chains Thence

N.89°56'W., on a true line bet. secs. 3 and 10.  
Over rolling land, through scattered undergrowth.

21.20 Drain, 3 lks. wide, course NW.

39.90 Drain, 3 lks. wide, course NW.

40.02 Set an iron post, 3 ft. long, 1 in. diam., 20 ins. in the ground to bed rock, with a limestone 6x6x4 ins. mkd. X, deposited at the base, and in a mound of stone to top, for 1/4 sec. cor. with brass cap marked

S 3  
1/4 ----  
S 10  
1933

67.00 Desc. 71 ft. over W. slope.

71.92 Wash, 10 lks. wide, course NW.; asc. 96 ft. over NE. slope.

80.04 The cor. of secs. 3, 4, 9 and 10.

Land, rolling.  
Soil, rocky, 4th. rate.  
Timber, none.  
Undergrowth, sage brush, cacti and buck brush.

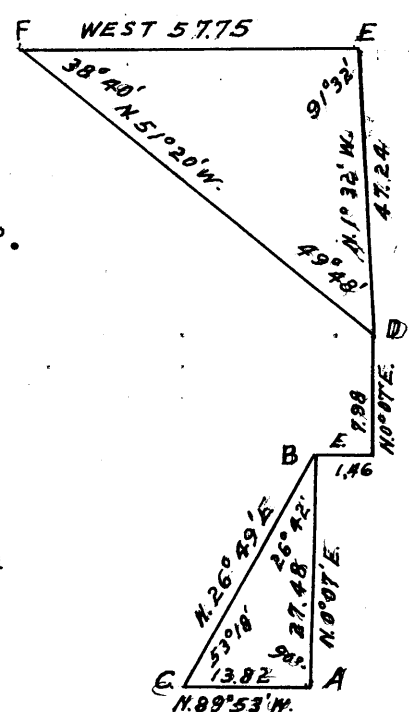
N.0°07'E., on a random line bet. secs. 3 and 4.

As this line passes over precipitous cliffs, where it is impracticable to chain, I make triangulations as follows: the cor. of secs. 3, 4, 9 and 10 is designated point A; set flag B on line ahead; measure a base N.89°53'W., 13.82 chs. dist. to point C. From C, the flag B, bears N.26°49'E. The vertical angle from A to B is -3°. All bearings checked by direct reading of the solar, all angles checked by deflection.

Dist. A to B = 27.48 chs.

27.48 Point B. Offset E. 1.46 chs.  
Thence N.0°07'E. by chaining.

35.46 Designate this point D. Flag E, at the W.C. which is 20 lks. E. of objective cor. bears N.1°32'W. Flag F bears N.51°20'W. From E flag F bears W. 57.75 chs. The vertical angle from D to E is -9°.



Dist. D to E = 47.24 chs.

From point D, traverse as follows:

N.45°00'W., 1.46 chs.  
N.0°07'E., 3.51 chs.  
West 0.43 chs. to point on random line.

40.00 Set temp. 1/4 sec. cor.

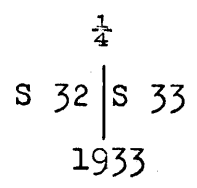
Chains	By calculation the result for random line is
82.68	Intersect N. bdy. of Tp., 10 lks. E. of point for cor. of secs. 3, 4, 33 and 34, described in the field notes of the portion of N. bdy. of Tp. surveyed under this group.
	Thence
✓	S.0°03'W., on a true line bet. secs. 3 and 4.
	Over mountainous land, through scattered undergrowth.
	Desc. steep S. slope. Topography estimated.
12.70	Gunsight wash, 30 lks. wide, course SW. Asc. broken NW. slope.
38.74	Gully, course NW.
42.68	Set an iron post, 3 ft. long, 1 in. diam., 18 ins. in the ground to bed rock, with a limestone mkd. X, deposited at base, and in a mound of stone to top for $\frac{1}{4}$ sec. cor. with brass cap marked
	$\frac{1}{4}$ S 4   S 3 1933
	Asc. 340 ft. over broken ledges, bearing NE. and SW.
55.20	Top of bluff, bears SE. and NW. Desc. 270 ft. over SW. slope.
67.70	Wash, 15 lks. wide, course NW. Asc. steep N. slope.
74.70	Top of ledge, 100 ft. high, bears E. and W.
82.68	The cor. of secs. 3, 4, 9 and 10.
	Land, mountainous. Soil, rocky, 4th. rate. Timber, none. Undergrowth, sage brush, cacti and holly.
	From the true point for cor. of secs. 4, 5, 32 and 33, on S. bdy. of Tp.,
	N.0°06'E., bet. secs. 32 and 33.
	Over rolling land, through scattered undergrowth; in Kanab wash.
7.80	Edge of Kanab wash, bears NE. and SW. Thence along E. slope.
13.34	Cor. No. 3 of Homestead Entry Survey No. 581, bears W. 1.74 chs. dist.; a limestone, 6x6x6 ins. above ground, mkd. and witnessed as described in the official record, Note: as no other corners of the Homestead Survey could be found, the intersections of the section line with the Homestead could not be given.
33.00	Edge of Kanab wash, bears SE. and NW. Enter wash.
36.00	Kanab creek, a running stream, 15 lks. wide, course SE.

SUBDIVISION OF T. 38 N., R. 3 W.

Book 401

Chains

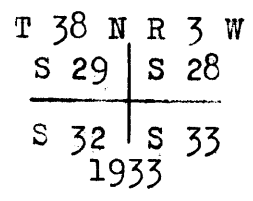
- 39.20 Leave Kanab wash, bearing SE. and NW.
- 40.00 Set an iron post, 3 ft. long, 1 in. diam., 26 ins. in the ground for  $\frac{1}{4}$  sec. cor. with brass cap marked



raise a mound of stone,  $3\frac{1}{2}$  ft. base,  $2\frac{1}{2}$  ft. high W. of cor.

Desc. slight NW. slope.

- 45.50 Enter Kanab wash, course SW.
- 51.00 Kanab creek, 15 lks. wide, course SW.
- 56.60 Leave wash, bearing NE. and SW. Asc. 34 ft.
- 66.90 Desc. 30 ft.
- 69.30 Enter Kanab wash, NW. and SE.
- 70.00 Kanab creek, 20 lks. wide, course SE.
- 76.70 Leave wash, NW. and SE.
- 80.00 Set an iron post, 3 ft. long, 2 ins. diam., 14 ins. in the ground to bed rock, with a stone marked X, deposited at the base, and in a mound of stone to top, for cor. of secs. 28, 29, 32 and 33, with brass cap mkd.

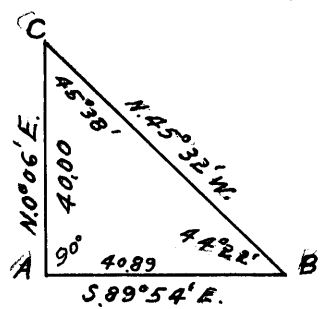


Land, mountainous.  
 Soil, rocky, 4th. rate.  
 Timber, none.  
 Undergrowth, sage brush and cacti.

S.  $89^{\circ}54'E.$ , on a random line bet. secs. 28 and 33.

This line passes over a series of precipitous cliffs over which it is impossible to chain.

I designate the cor. of secs. 28, 29, 32 and 33 as point A, and set flag B on random line on E. rim of Kanab canyon. Point C is taken N.  $0^{\circ}06'E.$ , 40.00 chs. dist. from point A. The vertical angle from A to B is  $+29^{\circ}$ . From B, C bears N.  $45^{\circ}32'W.$



Chains

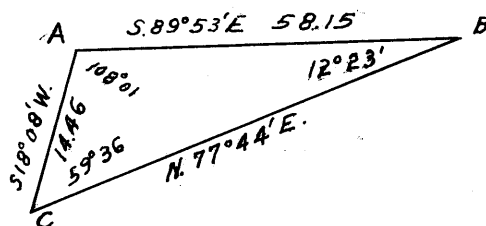
All angles by checked by deflection and all bearings checked by direct reading of the solar.

Dist. by triangulation = 40.89 chs.

40.89 Point B.

Thence by direct measurement.

62.07 Top of bluff, designate this point A ; flag B at the  $\frac{1}{4}$  sec. cor. of secs. 27 and 34, bears S.89°53'E. Measure a base S.18°08'W., 14.46 chs. to point C. From point C flag B, bears N.77°44'E. All angles checked by deflection, all bearings checked by direct reading of the solar.



Dist. on random line = 62.07 chs.  
Dist. by triangulation = 58.15 chs.

Total dist. = 120.22 chs.  
Dist. by return meas. 40.10  
80.12

The computed length and falling of random are,

80.12 Fall  $\frac{1}{2}$  lk. N. of the cor. of secs. 27, 28, 33 and 34.

Thence

N.89°54'W., on a true line bet. secs. 28 and 33.

Over mountainous land, through scattered undergrowth.

Asc. about 1000 ft. over precipitous cliffs.

18.03 W. rim of Shinumo canyon, bears NE. and SW.

Thence over nearly level land.

39.35 Set an iron post, 3 ft. long, 1 in. diam., 6 ins. in the ground to bed rock, with a lime stone, marked X, deposited at the base, and in a mound of stone, for witness  $\frac{1}{4}$  sec. cor. with brass cap marked

S 28  
W C  $\frac{1}{4}$  ----  
S 33  
1933

E. rim of Kanab canyon, bears N. and S.

Desc. 1500 ft. over a series of bluffs, 10 to 150 ft. high.

40.06 True point for  $\frac{1}{4}$  sec. cor. fall on face of bluff and is inaccessible.

80.12 The cor. of secs. 28, 29, 32 and 33.

Land, mountainous.

SUBDIVISION OF T. 38 N., R. 3 W.

Chains

Soil, rocky, 4th. rate.  
Timber, none.  
Undergrowth, holly, sage, and buck brush.

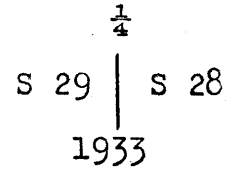
N.0°06'E., bet. secs. 28 and 29.

Over mountainous land.

Asc. 160 ft. over gradual SW. slope.

21.00 Spur, slopes W. Asc. 100 ft. along W. slope.

40.00 Set an iron post, 3 ft. long, 1 in. diam., 4 ins. in the ground to bed rock, with a stone marked X, deposited at the base, and in a mound of stone to top, for  $\frac{1}{4}$  sec. cor. with brass cap marked



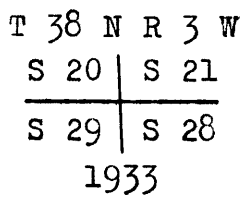
Asc. 116 ft. along broken W. slope.

51.00 Wash near head, course W.

Continue along W. slope.

63.50 Desc. 306 ft. over broken NW. slope.

80.00 Set an iron post, 3 ft. long, 2 ins. diam., 14 ins. in the ground to bed rock, with a stone, marked X, deposited at the base, and in a mound of stone to top, for cor. of secs. 20, 21, 28 and 29, with brass cap marked



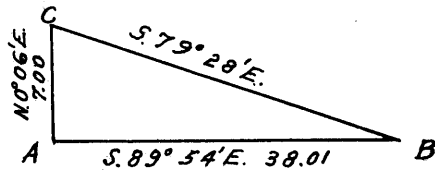
Land, mountainous.  
Soil, rocky, 4th. rate.  
Timber, none.  
Undergrowth, sagebrush and cacti.

S.89°54'E., on a random line bet. secs. 21 and 28.

This line passes over precipitous cliffs, where it is impossible to chain. I designate the initial cor. point A ; set flag B on random line on E. rim of canyon, the vertical angle to which is + 22°. From A, measure a base, N.0°06'E., 7.00 chs. to point C, from which flag B, bears S.79°28'E. All bearings checked by direct reading of the solar, all angles checked by deflection.

SUBDIVISION OF T. 38 N., R. 3 W.

Chains



Dist. by triangulation = 38.01 chs.

38.01 Thence by direct measurement.

40.00 Set temp.  $\frac{1}{4}$  sec. cor.

80.00 Intersect N. and S. line at the cor. of secs. 21, 22, 27, and 28.

Thence

N.89°54'W., on a true line bet. secs. 21 and 28.

Over mountainous land, through scattered undergrowth.

Asc. slight SE. slope.

2.00 Spur ridge, bears N. and S. Thence along S. slope.

21.00 Desc. 190 ft. over SW. slope.

32.72 Wash, 10 lks. wide, course NW. Asc. 78 ft. over NE. slope.

39.00 Top of ascent. Desc. W. slope.

40.00 Set an iron post, 3 ft. long, 1 in. diam., 18 ins. in the ground to bed rock, with a limestone, 18x14x4 ins. marked X, deposited at the base, and in a mound of stone to top, for  $\frac{1}{4}$  sec. cor. with brass cap marked

S 21  
-----  
 $\frac{1}{4}$   
S 28  
1933

41.99 Top of bluff, 300 ft. high, on E. rim of Kanab canyon, bears N. and S. Desc. 940 ft. over steep NW. slope.

80.00 The cor. of secs. 20, 21, 28 and 29.

Land, mountainous.  
Soil, rocky, 4th. rate.  
Timber, none.  
Undergrowth, sagebrush and cacti.

N.0°06'E., bet. secs. 20 and 21.

Over mountainous land, through scattered undergrowth.

4.70 Head of wash, course W.

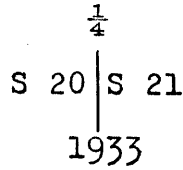
Asc. 60 ft. over S. slope.

6.00 Saddle, bears E. and W. Desc. 167 ft. over N. slope.



SUBDIVISION OF T. 38 N., R. 3 W.

- Chains
- 11.20 Wash, 20 lks. wide, course NW. Asc. 190 ft. over steep SW. slope.
- 22.20 Spur, slopes W. Desc. 120 ft. over rolling NW. slope.
- 40.00 Set an iron post, 3 ft. long, 1 in. diam., 20 ins. in the ground to bed rock, with a stone marked X, deposited at the base, and in a mound of stone to top, for  $\frac{1}{4}$  sec. cor. with brass cap marked



Continue descent 70 ft.

- 73.00 Wash, 1 ch. wide, course NW. Asc. 136 ft. over SW. slope.
- 77.80 Spur, slopes NW. Desc. 34 ft. over NE. slope.
- 80.00 The true point for cor. of secs. 16, 17, 20 and 21, falls on face of ledge, where cor. monument can not be established. Set W.C. 20 lks. northerly as hereinafter described.

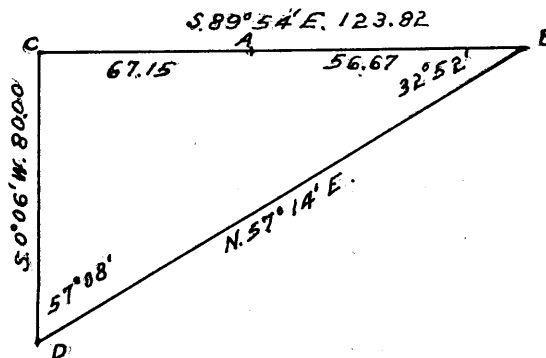
Land, mountainous.  
 Soil, rocky, 4th. rate.  
 Timber, none.  
 Undergrowth, cacti and sage brush.

From true point for cor.,

S. 89° 54' E., on a random line bet. secs. 16 and 21.

- 33.94 Set temp. W. cor.

In order to determine the distance over the precipitous slope ahead by triangulation, I designate the initial point for cor. as A; set flag B on random line on E. rim of canyon. The vertical angle from A. to B is +17°. Point C is taken N. 89° 54' W., 67.15 chs. from point A, this distance being obtained as shown in notes of line bet. secs. 17 and 20. Point D is taken S. 0° 06' W., 80.00 chs. from point C. From point D, flag B bears N. 57° 14' E. All bearings checked by direct reading of the solar and all angles checked by deflection.



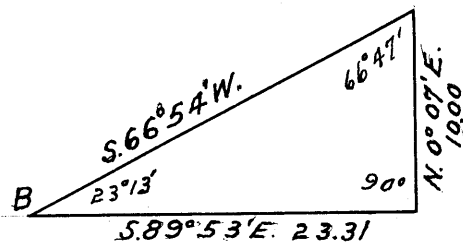
Dist. C to B by triangulation = 123.82 chs.  
 Dist. C to A = 67.15  
 Dist. A to B = 56.67

Chains

56.67

Point B.

More precipitous slopes on the remaining portion of line make another triangulation necessary. A flag on objective cor. bears S.89°53'E., from which cor. measure a base N.0°07'E., 10.00 chs. dist. to point from which flag B bears S.66°54'W. All bearings checked by direct reading of the solar and all angles checked by deflection.



Dist. on random line	=	56.67 chs.
Dist. by triangulation	=	$\frac{23.31}{\quad}$ "
Total dist.	=	79.98 "

The deflection of 1' in random line at point B, gives a computed falling as follows:

79.98 Intersect N. and S. line 1 lk. N. of the cor. of secs. 15, 16, 21 and 22.

Thence

N.89°54'W., on a true line bet. secs. 16 and 21.

Over mountainous land, through scattered undergrowth.

20.00 (Approx.) Gulch, 200 ft. deep, course SW.

23.31 Jagged spur, on E. rim of Kanab canyon, slopes S.

Desc. 550 ft. over precipitous SW. alope to W.C., the face of cliffs on rim being about 300 ft. in height.

39.99 True point for  $\frac{1}{4}$  sec. cor. falls on precipitous slope.

46.04 Set an iron post, 3 ft. long, 1 in. diam., 18 ins. in the ground to bed rock, with a lava stone 6x6x6 ins. deposited at the base, and in a mound of stone to top for witness  $\frac{1}{4}$  sec. cor. with brass cap marked

S 16  
WC  $\frac{1}{4}$  ----  
S 21  
1933

Continue descent 600 ft. over broken SW. slope.

79.98 The point for cor. of secs. 16, 17, 20 and 21.

Land, mountainous.

Soil, rocky, 4th. rate.

Timber, none.

Undergrowth, scattering cacti and sage brush.

SUBDIVISION OF T. 38 N., R. 3 W.

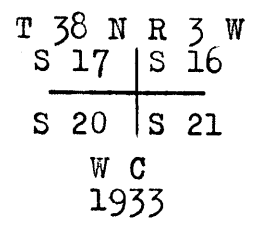
3000

Chains

From true point for cor. of secs. 16, 17, 20 and 21,  
N.0°06'E., bet. secs. 16 and 17.

Over mountainous land, through scattered undergrowth.

.20 Set an iron post, 3 ft. long, 2 ins. diam., 18 ins. in  
the ground to bed rock, with a lava stone, 10x4x4 ins.  
mkd. X, deposited at the base, and in a mound of stone  
to top, for witness cor. of secs. 16, 17, 20 and 21,  
with brass cap marked



Mark cross (X) and B O on face of ledge, 1 lk. S. of  
post.

Desc. 43 ft. over NE. slope.

6.30 Wash, 10 lks. wide, course NW.

20.60 Enter Kanab Wash.

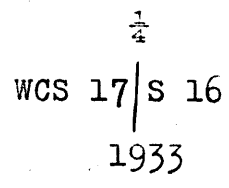
29.70 Kanab Creek, 20 lks. wide, course SW.

38.80 Same creek, course SE.

40.00 True point for  $\frac{1}{4}$  sec. cor. falls in wash.

East, 4.50 chs. dist.,

Set an iron post, 3 ft. long, 1 in. diam., 20 ins. in  
the ground to bed rock, with a stone mkd. X, deposited  
at the base and in a mound of stone to top, for wit-  
ness  $\frac{1}{4}$  sec. cor. with brass cap marked

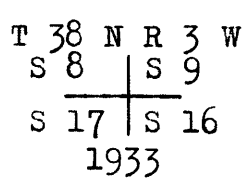


Continue up wash.

61.50 Kanab Creek, 10 lks. wide, course SW.

73.80 Leave Kanab Wash, bears S. and NE.

80.00 Set an iron post, 3 ft. long, 2 ins. diam., 26 ins. in  
the ground for cor. of secs. 8, 9, 16 and 17, with  
brass cap marked



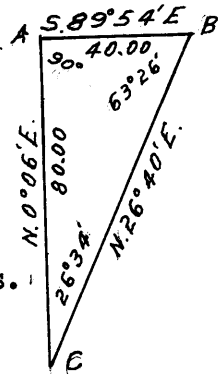
stone,  $3\frac{1}{2}$  ft. base,  $2\frac{1}{2}$  ft. high W. of cor. raise a mound of

Land, rolling and mountainous.  
Soil, rocky, 4th. rate.  
Undergrowth, sage and caeti.

## SUBDIVISION OF T. 38 N., R. 3 W.

Chains S.89°54'E., on a random line bet. secs. 9 and 16.

As this line passes over precipitous slopes where it is impossible to make direct measurement, I designate the initial cor. as point A and set flag B on random line on E. rim of canyon, the vertical angle to which is + 25°. From point C, which is at the true point for cor. of secs. 16, 17, 20 and 21, flag B bears N.26°40'E. All bearings checked by direct reading of the solar and all angles checked by deflection.



Dist. by triangulation = 40.00 chs.

40.00 Set temp.  $\frac{1}{4}$  sec. cor.

80.00 Intersect N. and S. line at the cor. of secs. 9, 10, 15, and 16.

Thence

N.89°54'W., on a true line bet. secs. 9 and 16.

Over mountainous land, through scattered undergrowth.

Desc. 160 ft. over SW. slope.

10.30 Wash, 5 lks. wide, course NW.

12.50 Toe of spur, slopes NW. Desc. 85 ft. over SW. slope.

17.80 Wash, 20 lks. wide, course NW. Asc. 150 ft. over NE. slope.

31.10 Drain, 3 lks. wide, course NE.

36.30 Top of ascent, spur slopes N. Desc. 20 ft. over NW. slope.

40.00 Set an iron post, 3 ft. long, 1 in. diam., 2 ins. in the ground to bed rock, with a limestone, marked X, deposited at the base and in a mound of stone to top, for  $\frac{1}{4}$  sec. cor. with brass cap marked

$\frac{1}{4}$  S 9  
----  
S 16  
1933

Cor. stands on E. rim of Kanab Canyon.

Desc. 1100 ft. over a series of ledges to Kanab Wash.

65.00 Foot of descent. Enter Kanab Wash, 20 ft. bank.

70.00 Kanab Creek, course S.

75.00 Asc. 20 ft. over W. bank of wash.

80.00 The cor. of secs. 8, 9, 16 and 17.

Land, mountainous.

Soil, rocky, 4th. rate.

Undergrowth, sage and cacti.

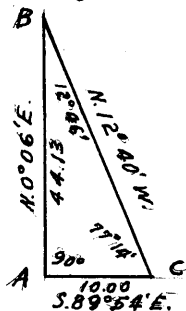
SUBDIVISION OF T. 38 N., R. 3 W.

BOOK 40

- Chains N.0°06'E., bet. secs. 8 and 9.
- Over rolling land, through scattering undergrowth.
- Asc. 30 ft. over S. slope.
- 6.00 Spur, slopes E. Desc. 34 ft. over N. slope.
- 6.80 Set temp. point.
- 13.90 Enter Kanab Wash, course SE.
- 19.10 Kanab Creek, 15 lks. wide, course SE.
- 20.70 Leave Kanab Wash.
- 28.80 Enter same, course SW.
- 34.00 Kanab Creek, course SW.
- 34.30 Leave wash, course SW. Asc. 166 ft. over SE. slope.
- 40.00 Set an iron post, 3 ft. long, 1 in. diam., 18 ins. in the ground to bed rock, with a stone marked X, deposited at the base, and in a mound of stone to top, for  $\frac{1}{4}$  sec. cor. with brass cap marked.

$\frac{1}{4}$   
 s 8 | s 9  
 1933

- 41.00 Foot of cliff, 300 ft. high, bears NE. and SW.
- Being unable to continue with direct measurement, I return to the 6.80 ch. point, which I designate A and set flag B on line above cliffs, the vertical angle to which is +13°. Measure a base S.89°54'E., 10.00 chs. dist. to point C, from which flag B bears N.12°40'W. All bearings checked by direct reading of the solar and all angles checked by deflection.



Dist. by direct measure = 6.80 chs.  
 Dist. by triangulation = 44.13 " ✓  
 50.93

- 44.00 (Approx.) Top of cliffs, bears NE. and SW. Asc. 200 ft. over SW. slope.
- 50.93 Point B, on spur, sloping SE. Thence along rolling E. slope.
- 63.60 Desc. 270 ft. over NE. slope.
- 71.40 Mouth of wash, course SE. Asc. S. slope.
- 73.00 Spur, slopes E. Desc. 100 ft. over N. slope.

## SUBDIVISION OF T. 38 N., R. 3 W.

Chains  
80.00

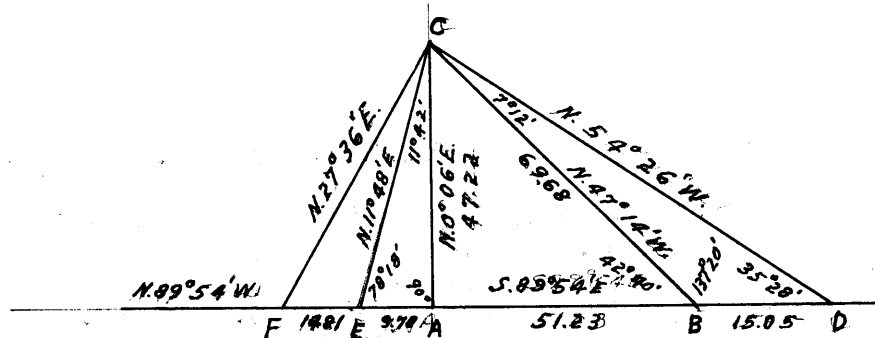
The true point for cor. of secs. 4, 5, 8 and 9, falls on face of ledge, where cor. monument can not be established. Set a W.C. N.0°01'E., 1.90 chs. dist. as hereinafter described.

Land, mountainous.  
Soil, rocky, 4th. rate.  
Timber, none.  
Undergrowth, sagebrush and cacti.

From point for cor.,

S.89°54'E., on a random line bet. secs. 4 and 9.

As this line passes over precipitous slopes where direct measurement can not be made, I designate the point for cor. of secs. 4, 5, 8 and 9 as A and set flag on random line at point B on E. side of canyon. The vertical angle is + 9°. Also set flag C at a point N.0°06'E, from point A. From point B, measure a base S.89°54'E., 15.05 chs. dist. to point D. The bearing of B-C is N.47°14'W. and of D-C is N.54°26'W. All angles checked by deflection and all bearings checked by direct reading of the solar. Also set flags E and F N.89°54' W. of point A. Dist. bet. E and F is 14.81 chs. From E, C bears N.11°48'E; from F, C bears N. 27°36'E.



By computation, the dist. A to B = 51.23 chs.  
A to E = 9.78 "

51.23 Point B on random line. Thence by direct measurement.

80.10 Intersect N. and S. line at the cor. of secs. 3, 4, 9 and 10.

Thence

N.89°54'W., on a true line bet. secs. 4 and 9.

Over nearly level land, through scattering undergrowth.

5.00 Desc. 370 ft. over SW. slope.

28.88 Thence by traverse:

S.75°00'W., 12.13 chs., at which point,

Set an iron post, 3 ft. long, 1 in. diam., 1 in. in the ground, on bed rock, with a lime stone marked X, deposited at the base, and in a mound of stone, for witness  $\frac{1}{4}$  sec. cor. with brass cap marked

SUBDIVISION OF T. 38 N., R. 3 W.

4018

Chains

W C  
S 4  
1/4 ---  
S. 9  
1933

From W.C., the computed bearing and distance to true point are N.9°49'E., 3.21 chs.

The topography on true line is estimated as follows:

- 29.00 Top of ledge, with face 100 ft. high, bears NE. and SW. Desc. about 800 ft. over broken W. slope to Kanab Wash.
- 30.00 Head of wash, course NW.
- 40.05 Point for 1/4 sec. cor. falls on cliff and is inaccessible.
- 70.00 Kanab Creek, 30 lks. wide, 2 ins. deep, course SW. Asc. 400 ft. over precipitous slopes.
- 80.10 The true point for cor. of secs. 4, 5, 8 and 9.  
Land, mountainous.  
Soil, rocky, 4th. rate.  
Timber, none.  
Undergrowth, sage brush, buck brush and holly.

From true point for cor. of secs. 4, 5, 8 and 9.

N.0°06'E., on a random line bet. secs. 4 and 5.

This line passes over precipitous slopes where direct measurement can not be made.

Using the triangulation hereinbefore described, on the line bet. secs. 4 and 9, the computed dist. to flag C on random line is 47.22 chs. ✓

- 47.22 Triangulation point. Thence by direct measurement.
- 82.50 Intersect the N. bdy. of Tp., 12 lks. E. of the cor. of secs. 4, 5, 32 and 33, which is an iron post, firmly set, marked and witnessed as described in the official record.  
Thence  
S.0°01'W., on a true line bet. secs. 4 and 5.  
Over rolling land, through scattering undergrowth.
- 12.00 Desc. slight S. slope.
- 29.70 Spur, slopes W. Desc. slight S. slope.
- 34.10 Head of shallow wash, course W.
- 35.28 N. rim of canyon, bears NE. and SW.

## SUBDIVISION OF T. 38 N., R. 3 W.

## Chains

42.17 Set an iron post, 3 ft. long, 1 in. diam., 2 ins. in the ground to bed rock, with a stone marked X, deposited at the base, and in a mound of stone to top, for witness  $\frac{1}{4}$  sec. cor. with brass cap marked

$\frac{1}{4}$   
S 5 | S 4  
W C  
1933

42.50 The true point for  $\frac{1}{4}$  sec. cor. falls on precipitous slope of Castle Ledge, where cor. can not be established.

Desc. 430 ft. over steep S. slope to

53.93 From this point, traverse as follows:

N.62°30'W., 6.83 chs.

N.82°10'W., 14.93 chs. to small spring of poor water in bottom of Water Canyon.

Discontinue direct measurement on true line, the estimated topography is as follows:

53.93 Desc. 100 ft. over steep S. slope.

56.93 Bottom of Water Canyon, course E. Asc. over broken slopes.

80.60 Set an iron post, 3 ft. long, 2 ins. diam., 18 ins. in the ground to bed rock, with a stone marked X, deposited at the base, and in a mound of stone to top, for witness cor. of secs. 4, 5, 8 and 9, with brass cap marked

T 38 N R 3 W  
S 5 | S 4  
-----  
S 8 | S 9  
W C  
1933

82.50 The true point for cor. of secs. 4, 5, 8 and 9.

Land, rolling and mountainous.

Soil, rocky, 4th. rate.

Timber, none.

Undergrowth, sage brush and cacti.

From the cor. of secs. 5, 6, 31 and 32 on S. bdy. of T., N.0°06'E., bet. secs. 31 and 32.

Over rolling land, sloping slightly to the west, through scattering undergrowth.

5.00 Reservoir, bears W. 3.00 chs. dist.

6.55 Reservoir fence, bears NE. and SW.

7.25 Same fence, bears SE. and NW.



SUBDIVISION OF T. 38 N., R. 3 W.

4-20-13 4013

Chains

12.40 Wash from reservoir, 10 lks. wide, course N. Thence along wash.

20.00 Leave wash, course NW.

40.00 Set an iron post, 3 ft. long, 1 in. diam., 10 ins. in the ground to bed rock, with a sandstone marked X, deposited at the base, and in a mound of stone to top, for  $\frac{1}{4}$  sec. cor. with brass cap marked

$\frac{1}{4}$

S 31 S 32

1933

40.20 Desc. 110 ft. over NW. slope.

48.97 Wash, 15 lks. wide, course N. from SW. Along wash.

60.94 Leave wash, course NE. Asc. 175 ft. over SE. slope.

65.56 Top of Castle Ledge, on rim of Kanab Canyon, bears SE. and NW.

Offset N.89°54'W., 5.47 chs. Thence N.0°06'E., on offset line.

71.00 Approximate dist. on true line, gulch, course NE. 240 ft. below rim.

80.00 Set back S.89°54'E., 49 lks. Set temp. point N.89°54'W. 4.98 chs. dist. from true point for cor. of secs. 29, 30, 31 and 32. A W.C. is established as hereinafter described on line bet. secs. 30 and 31. The true point for cor. falls on ledge, where cor. monument can not be established.

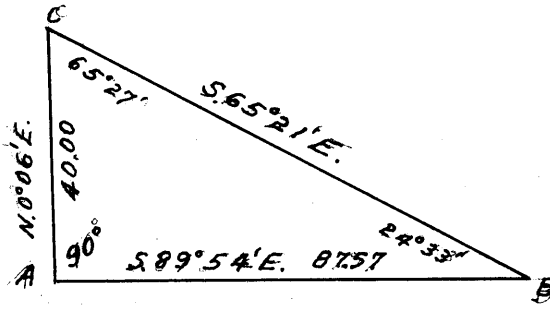
Land, rolling and mountainous.  
Soil, rocky, 4th. rate.  
Timber, none.  
Undergrowth, cacti and sage brush.

S.89°54'E., on a random line bet. secs. 29 and 32.

This line passes over the precipitous bluffs of Kanab Canyon, where it is impossible to make direct measurement, I therefore obtain the distance by triangulation. From a point N.89°54'W., 5.47 chs. from true point for cor. of secs. 29, 30, 31 and 32, a flag at the witness  $\frac{1}{4}$  sec. cor. bet. secs. 28 and 33, bears S.89°54'E. Point A in the diagram is taken N.89°54'W., 7.30 chs. from point for cor. of secs. 29, 30, 31 and 32; point B is taken at the objective cor.; point C is N.89°54'W. 7.30 from the true point for  $\frac{1}{4}$  sec. cor. of secs. 29 and 30. The distance from A to C is obtained from the offset line bet. secs. 29 and 30, hereinafter described. From C, a flag at B bears S.65°21'E. All bearings checked by direct reading of the solar and all angles checked by deflection.

SUBDIVISION OF T. 38 N., R. 3 W.

Chains



Dist. A to B by triangulation =  $\frac{87.57 \text{ chs.} + 7.30}{80.27}$

80.27 Intersect N. and S. line at the cor. of secs. 28, 29, 32 and 33.

Thence

N. 89° 54' W., on a true line bet. secs. 29 and 32, by direct measurement.

Over mountainous land, through scattering undergrowth

2.00 E. bank of Kanab Wash, 35 ft. high, bears SE. and NW.

12.50 Kanab Creek, 10 lks. wide, 6 ins. deep, course SE.

13.40 W. bank of Kanab Wash, 25 ft. high, bears SE. and NW.

16.00 Asc. 500 ft. over broken NE. slope.

33.50 Gully, 5 lks. wide, course NE. Continue ascent.

39.00 Set an iron post, 3 ft. long, 1 in. diam., 18 ins. in the ground to bed rock, with a limestone 6x6x3 ins. marked X, deposited at the base, and in a mound of stone to top, for witness  $\frac{1}{4}$  sec. cor. with brass cap marked

S 29  
WC  $\frac{1}{4}$  ----  
S 32  
1933

40.13 The true point for  $\frac{1}{4}$  sec. cor. falls in gully, course NE.

Discontinue direct measurement, topography approximate.

Asc. 300 ft. over steep NE. slope.

50.00 Point of spur, slopes N.

52.00 Desc. over ledges.

72.00 Gulch, course NE. Asc. 260 ft. over E. slope to

80.27 The true point for cor. of secs. 29, 30, 31 and 32.

Land, mountainous.

Soil, rocky, 4th. rate.

Timber, none.

Undergrowth, sage brush, cacti, and buck brush.

SUBDIVISION OF T. 38 N., R. 3 W.

BOOK 4013

Chains

N.89°54'W., on a random line bet. secs. 30 and 31.

Measurement obtained by offset, as described on line bet. secs. 31 and 32.

4.98 The temp. witness cor., hereinbefore described. Thence by direct measurement.

40.00 Set temp. 1/4 sec. cor.

79.42 Intersect W. bdy. of Tp., 9 lks. N. of the cor. of secs. 25, 30, 31 and 36.

Thence

S.89°58'E., on a true line bet. secs. 30 and 31.

Over rolling land, through scattering undergrowth.

39.42 Set an iron post, 3 ft. long, 1 in. diam., 20 ins. in the ground to bed rock, with a sand stone marked X, deposited at the base, and in a mound of stone to top, for 1/4 sec. cor. with brass cap marked

S 30  
1/4 ----  
S 31  
1933

41.02 Road, bears N. and S. Asc. slight W. slope.

51.40 Low ridge, bears N. and S. Desc. slight SE. slope.

64.55 Drain, 3 lks. wide, course NE.

74.44 Set an iron post, 3 ft. long, 2 ins. diam., over a cross X. marked on solid bed rock, and in a mound of stone to top, for witness cor. to the cor. of secs. 29, 30, 31 and 32, with brass cap marked

T 38 N R 3 W  
S 30 | S 29 WC  
S 31 | S 32  
1933

79.42 The true point for cor. of secs. 29, 30, 31 and 32.

Land. rolling and mountainous.  
Soil, rocky, 4th. rate.  
Timber, none.  
Undergrowth, sage brush and cacti,

N.0°06'E., bet. secs. 29 and 30.

This line passes over precipitous bluffs along the W. rim of Kanab Canyon, where it is impossible to make direct measurement.

Offset N.89°54'W., 10.12 chs. Thence

N.0°06'E., on offset line, in sec. 30.

Over rolling land.

17.27 Drain, 3 lks. wide, course SE. Asc. slight S. slope.

Chains  
40.00

From this point,

S.89°54'E., 2.80 rim of Kanab Canyon, brs. N. and S.  
Desc. 207 ft. over ledges.  
5.22 to a point which is N.89°54'W., 4.90  
chs. from true point for  $\frac{1}{4}$  sec. cor.

Set an iron post, 3 ft. long, 1 in. diam., 4 ins. in the  
ground to bed rock, with a lime stone marked X, depos-  
ited at the base, and in a mound of stone to top, for  
witness  $\frac{1}{4}$  sec. cor. with brass cap marked

$\frac{1}{4}$   
S 30 | S 29 WC  
1933

The true point falls on face of ledge and is inaccess-  
ible.

Continue on offset line, over slightly rolling land.

65.00 Drain, 3 lks. wide, course NW.

80.00 Set back S.89°54'E., 10.12 chs. to true line, *and*

Set an iron post, 3 ft. long, 2 ins. diam., 6 ins. in the  
ground to bed rock, with a limestone marked X, deposi-  
ted at the base, and in a mound of stone to top, for  
cor. of secs. 19, 20, 29 and 30, with brass cap marked

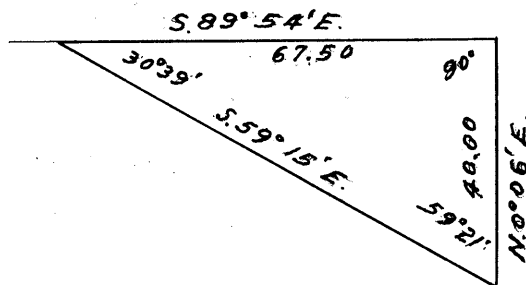
T 38 N R 3 W  
S 19 | S 20  
S 30 | S 29  
1933

Land, mountainous.  
Soil, rocky, 4th. rate.  
Timber, none.  
Undergrowth, sage and buck brush.

S.89°54'E., on a random line bet. secs. 20 and 29.

12.38 Impassable bluff prevents further direct measurement.

A flag on objective cor. bears S.89°54'E. A flag on the  
 $\frac{1}{4}$  sec. cor. of secs. 28 and 29, bears S.59°15'E. All  
bearings checked by direct reading of the solar, all  
angles checked by deflection.



Dist. on random line = 12.38 chs.  
Dist. by triangulation = 67.50 chs. ✓  
Total dist. = 79.88

Chains.  
79.88

Intersect N. and S. line, at the cor. of secs. 20, 21, 28, and 29.

Thence

N. 89° 54' W., on a true line bet. secs. 20 and 29.

Over mountainous land, through scattered undergrowth.

Descend 244 ft. over broken SW. slope.

32.94

Enter Kanab Wash, course S.

34.33

Kanab Creek, 15 lks. wide, course S.

36.80

Leave Kanab Wash, course S.; asc. 22 ft. over E. slope.

39.94

Set an iron post, 3 ft. long, 1 in. diam., 20 ins. in the ground to bedrock, with a sandstone, 8x8x4 ins. mkd. X, deposited at the base, and in a mound of stone to top, for 1/4 sec. cor. with brass cap mkd.

1/4 S 20  
S 29  
1933

Ascend 1085 ft. over bluffs.

61.88

Top of white ledge, 100 ft. high.

66.98

Top of Castle Ledge, 250 ft. high, on W. rim of Kanab Canyon, bears N. and S.

Continue over rolling land.

79.88

The cor. of secs. 19, 20, 29, and 30.

Land, mountainous and rolling.

Soil, rocky; 4th rate.

Timber, none.

Undergrowth, scattered caeti and sage brush.

N. 89° 58' W., on a random line bet. secs. 19 and 30.

40.00

Set temp. 1/4 sec. cor.

79.21

Intersect W. bdy. of the Twp., 5 lks. S. of the cor. of secs. 19, 24, 25, and 30, in before the land.

Thence

S. 89° 56' E., on a true line bet. secs. 19 and 30.

Over rolling land, through scattered undergrowth.

17.21

Drain, 10 lks. wide, course NE.

22.71

Road, bears NW. and SE.

29.21

Drain, 5 lks. wide, course NW.

39.21

Set an iron post, 3 ft. long, 1 in. diam., 26 ins. in the ground, for 1/4 sec. cor. with brass cap mkd.

1/4 S 19  
S 30  
1933

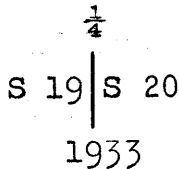
Chains. dig pits,  
 18x18x12 ins., E. and W. of post, 3 ft. dist.  
 40.61 Drain, 3 lks. wide, course NW.  
 69.01 Drain, 10 lks. wide, course NE.  
 79.21 The cor. of secs. 19, 20, 29, and 30.  
 Land, rolling.  
 Soil, rocky; 4th rate.  
 Timber, none.  
 Undergrowth, scattered cacti, sage brush and buck brush.

N. 0° 06' E., bet. secs. 19 and 20.

Over rolling land, through scattered undergrowth.

~~Wash, 10 lks. wide, course NE.~~

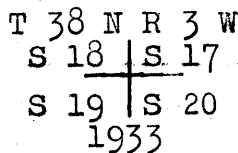
40.00 Set an iron post, 3 ft. long, 1 in. diam., 20 ins. in the ground to bedrock, with a sandstone, 8x6x6 ins. mkd. X, deposited at the base, and in a mound of stone to top, for  $\frac{1}{4}$  sec. cor. with brass cap mkd.



41.00 Drain, 3 lks. wide, course E.

55.00 Low spur, slopes E.

80.00 Set an iron post, 3 ft. long, 2 ins. diam., 16 ins. in the ground to bedrock, with a sandstone, 6x6x6 ins. mkd. X, deposited at the base, and in a mound of stone to top, for cor. of secs. 17, 18, 19 and 20, with brass cap mkd.



Land, rolling.  
 Soil, rocky; 4th rate.  
 Timber, none.  
 Undergrowth, scattered cacti, sage brush and buck brush.

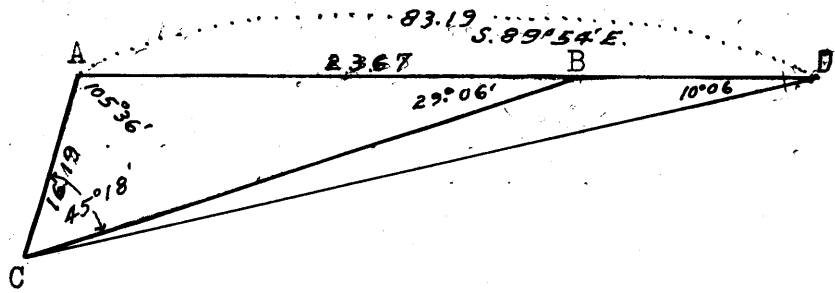
S. 89° 54' E., on a random line bet. secs. 17 and 20.

30.67 Set temp. point.

35.00 Set temp. point.

In order to determine the distance by triangulation over precipitous bluffs to Kanab Wash, impracticable to chain, I designate the 30.67 ch. point A, and set a flag B on random line in wash, flag C is taken southwesterly from point A, the distance from A to C is 16.19 chs. D is point at witness  $\frac{1}{4}$  sec. cor. of secs. 16 and 21.

Chains.



All angles by 3 repetitions, balanced to 180° as follows:

- At point A = 105°36'00"
- At point B = 29°06'00"
- At point C = 45°18'00"
- At point D = 10°06'00"

Distance by direct meas.	30.67	30.67
Distance by triangulation	<u>23.67</u>	<u>83.19</u>
	54.34	113.86
		<u>33.94</u>
		79.92

54.34

Point B.

79.92

Intersect N. and S. line at the true point for cor. of secs. 16, 17, 20, and 21.

Thence

N. 89°54' W., on a true line, bet. secs. 17 and 20.

Over mountainous land, through scattered undergrowth.

Descend 102 ft. over steep rocky W. slope.

25.58

Kanab Creek, 30 lks. wide, course SW.; asc. 944 ft. over bluffs, from 100 to 300 ft. high.

39.96

True point for 1/4 sec. cor. falls on E. face of bluff.

44.92

At a point 65 lks. South from true line., and S. 82°38' W. 5.00 chs. dist. from true point for cor.

Set an iron post, 3 ft. long, 1 in. diam., on solid rock, with a cross X, mkd. at the base, and in a mound of stone to top, for witness 1/4 sec. cor. with brass cap mkd.

1/4 S 17 WC  
 S 20  
 1933

from which

E. face of bluff, 3 ft. above ground, bears West, 20 lks. dist., mkd. X B O

Ascend 74 ft. over NE. slope.

49.92

Top of bluffs; W. rim of Kanab Gulch, bears NW. and SE.

Continue over rolling land.

76.92

Low spur, slopes N.

79.92

The cor. of secs. 17, 18, 19, and 20.

Land, mountainous and rolling.  
 Soil, rocky; 4th rate.  
 Timber, none.  
 Undergrowth, cacti and sage brush.

Chains.	N.89°56'W., on a random line bet. secs. 18 and 19.
40.00	Set temp. $\frac{1}{4}$ sec. cor.
79.14	Intersect W. bdy. of the Tp., 5 lks. N. of the cor. of secs, 13,18,19 and 24.
	Thence
	S.89°58'E., on a true line bet. secs. 18 and 19.
	Over rolling land, through scattered undergrowth.
10.64	Road, bears NW. and SE.
11.84	Wash, 10 lks. wide, course NW.; asc. 23 ft. over SW. slope.
19.00	Top of ascent.
39.14	Set an iron post, 3 ft. long, 1 in. diam., 18 ins. in the ground to bedrock, with a sandstone, 10x6x6 ins. mkd. X, deposited at the base, and in a mound of stone to top, for $\frac{1}{4}$ sec. cor. with brass cap mkd.
	$\frac{1}{4}$ S 18 S 19 1933
76.14	Drain, 3 lks. wide, course NE.
79.14	The cor. of secs. 17,18,19 and 20.
	Land, level and rolling. Soil, sandy; 3rd rate, and rocky; 4th rate. Timber, none. Undergrowth, cacti, holly brush and buck brush.
	N.0°06'E., bet. secs. 17 and 18.
	Over rolling land, through scattered undergrowth.
6.20	Drain, 5 lks. wide, course NE.
28.00	Low spur, slopes NE.
40.00	Set an iron post, 3 ft. long, 1 in. diam., 26 ins. in the ground for $\frac{1}{4}$ sec. cor. with brass cap mkd.
	$\frac{1}{4}$ S 18   S 17 1933
	raise a mound
	of stone, $3\frac{1}{2}$ ft. base, $2\frac{1}{2}$ ft. high, W. of cor.
80.00	Set an iron post, 3 ft. long, 2 ins. diam., 8 ins. in the ground to bedrock, with a limestone, 8x8x8 ins. mkd. X, deposited at the base, and in a mound of stone to top, for cor. of secs. 7,8,17, and 18, with brass cap mkd.



Chains.

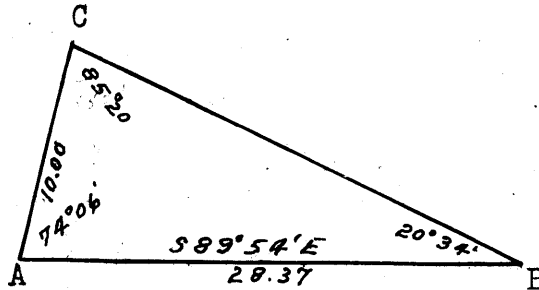
T 38 N R 3 W  
 S 7 | S 8  
 S 18 | S 17  
 1933

Land, rolling.  
 Soil, rocky; 4th rate.  
 Timber, none.  
 Undergrowth, sage brush and buck brush.

S. 89°54'E., on a random line bet. secs. 8 and 17.

40.00 Set temp. 1/4 sec. cor.

51.55 Top of precipitous bluff; In order to determine the distance over bluffs by triangulation, I designate the above point A, and set a flag B on random line below bluffs, vertical angle - 30 1/2°; point C is taken northerly from point A, the distance from A to C is 10.00 chs.



All angles by 3 repetitions, balanced to 180° as follows:

- At point A = 74°06'00"
- At point B = 20°34'00"
- At point C = 85°20'00"

Distance by direct meas.	51.55 chs.
Dist. by triangulation	<u>28.37</u> ✓
	79.92

79.92 Point B

79.92 Intersect N. and S. line, 14 lks. S. of the cor. of secs. 8, 9, 16, and 17.

Thence

West, on a true line bet. secs. 8 and 17.

Over mountainous land, through scattered undergrowth.

Ascend 1100 ft. over E. slope of bluffs from 100 to 300 ft. high.

28.45 Top of Castle Ledge,; W. rim of Kanab Canyon, bears N. and S.; continue over rolling land.

39.96 Set an iron post, 3 ft. long, 1 in. diam., 6 ins. in the ground to bedrock, with a limestone, 12x10x8 ins. mkd. X, deposited at the base, and in a mound of stone to top, for 1/4 sec. cor. with brass cap mkd.

1/4 S 8  
 S 17  
 1933

Chains.

60.70

Drain, 3 lks. wide, course NW.

79.92

The cor. of secs. 7, 8, 17, and 18.

Land, rolling and mountainous.

Soil, rocky; 4th rate.

Timber, none.

Undergrowth, scattered sage brush, cacti and buck brush.

N.89°58'W., on a random line bet. secs. 7 and 18.

40.00

Set temp.  $\frac{1}{4}$  sec. cor.

79.07

Intersect W. bdy. of the Tp., 5 lks. S. of the cor. of secs. 7, 12, 13, and 18.

Thence

S.89°56'E., on a true line bet. secs. 7 and 18.

Over rolling land, through scattered undergrowth.

21.07

Road, bears NW. and SE.

21.47

Wash, 10 lks. wide, course NE., also dam at lower end of reservoir, bears N. 50 lks. dist.

39.07

Set an iron post, 3 ft. long 1 in. diam., 18 ins. in the ground to bedrock, with a sandstone, 10x8x4 ins. mkd. X, deposited at the base, and in a mound of stone to top, for  $\frac{1}{4}$  sec. cor. with brass cap mkd.
$$\frac{1}{4} \frac{S 7}{S 18}$$
 1933

67.57

Drain, 3 lks. wide, course N.

79.07

The cor. of secs. 7, 8, 17, and 18.

Land, rolling.

Soil, rocky; 4th rate.

Timber, none.

Undergrowth, sage brush, buck brush and cacti.

N.0°06'E., bet. secs. 7 and 8.

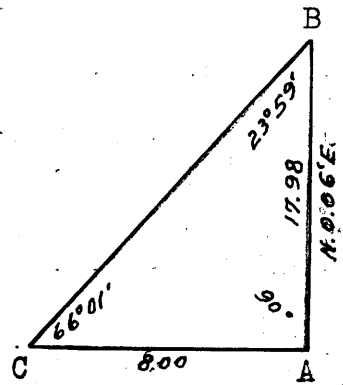
Over rolling land, through scattered undergrowth.

28.22

Top of bluff 100 ft. high, on S. rim of canyon, bears E. and W.

To make a triangulation over precipitous bluffs, impracticable to chain, I designate the above point A, and set a flag B on line on opposite side of canyon; flag C is taken westerly from flag A; the distance between A and C is 8.00 chs.

Chains.



All angles by 3 repetitions, balanced to 180° as follows:

- At point A = 90°00'00"
- At point B = 23°59'00"
- At point C = 66°01'00"

Distance by direct meas.	28.22 chs.
Distance by triangulation	<u>17.98</u> ✓
	46.20

Approximate topography to point B.

Descend 273 ft. over N, slope of bluffs.

36.00 Creek, 30 lks. wide, course E.; asc. 273 ft. over S. slope of bluffs.

40.00 True point for ¼ sec. cor. falls on S. face of bluff 200 ft. high.

42.77 Set an iron post, 3 ft. long, 1 in. diam., on solid rock, with a cross X, mkd. at the base, and in a mound of stone to top, for witness ¼ sec. cor. with brass cap mkd.

¼  
 S 7 | S 8  
 W | C  
 1933

46.20 Point B on N. rim of canyon, bears NE. and W.; asc. 23 ft. over gradual SE. slope.

64.00 Spur, slopes NW.; continue over rolling land.

80.00 Set an iron post, 3 ft. long, 2 ins. diam., 14 ins. in the ground to bedrock, with a sandstone, 10x10x10 ins. mkd. X, deposited at the base, and in a mound of stone top, for cor. of secs. 5, 6, 7, and 8, with brass cap mkd.

T 38 N R 3 W  
 S 6 | S 5  
 S 7 | S 8  
 1933

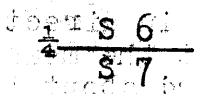
Land, rolling and mountainous.  
 Soil, rocky; 4th rate.  
 Timber, none.  
 Undergrowth, sage brush, buck brush and desert holly.

Chains.	East on a random line bet. secs. 5 and 8.
40.00	Set temp. $\frac{1}{4}$ sec. cor.
55.54	A point 10 lks. N. of triangulation point F, herein- before described bet. secs. 4 and 9.
80.13	Intersect N. and S. line, 14 lks. N. of the true point for cor. of secs. 4, 5, 8, and 9.
	Thence
	N.89°54'W., on a true line bet. secs. 5 and 8.
	Over mountainous land, through scattered undergrowth.
	Ascend 382 ft. over E. slope of bluffs.
9.87	Top of Castle Ledge, on E. rim of Kanab Gulch, bears N. and S,
	Continue over rolling land.; asc. 100. ft. over gradual E. slope.
38.72	Head of draw, course NE.; desc. 46 ft. over NW. slope.
40.07	Set an iron post, 3 ft. long, 1 in. diam., 16 ins. in the ground to bedrock, with a sandstone, 8x8x6 ins. mkd. X, deposited at the base, and in a mound of stone to top, for $\frac{1}{4}$ sec. cor. with brass cap mkd.
	$\frac{1}{4}$ $\frac{S 5}{S 8}$ 1933.
	Descend 34 ft. over NW. slope.
50.22	Spur, slopes NE.
56.22	Draw, course N.; asc. 46 ft. over E. slope.
61.22	Spur, slopes N.; desc. 52 ft. over W. slope.
75.22	Draw, course N.
80.13	The cor. of secs. 5, 6, 7, and 8.
	Land, rolling and mountainous. Soil, rocky; 4th rate. Timber, none. Undergrowth, holly, sage brush and cacti.
	N.89°56'W., on a random line bet. secs. 6 and 7.
40.00	Set temp. $\frac{1}{4}$ sec. cor.
78.98	Intersect W. bdy. of the Tp., at the cor. of secs. 1, 6, 7, and 12.
	Thence
	S.89°56'E., on a true line, bet. secs. 6 and 7.
	Over rolling land, through scattered undergrowth.

Chains

25.48 Drain, 5 lks. wide, course N.

38.98 Set an iron post; 3 ft. long, 1 in. diam., 14 ins. in the ground to bedrock, with a sandstone, 12x10x 8 ins. mkd. X, deposited at base, and in a mound of stone to top, for 1/4 sec. cor., with brass cap mkd.



1933

62.98 Drain, 3 lks. wide, course N.

78.98 The cor. of secs. 5, 6, 7, and 8.

Land, rolling.  
Soil, rocky 4th. rate.  
Timber, none.  
Undergrowth, sage brush and buck brush.

North, on a random line, bet. secs. 5 and 6.

40.00 Set temp. 1/4 sec. cor.

82.29 Intersect N. bdy. of the Tp., 16 lks. W. of the cor. of secs. 5, 6, 31 and 32, which is an iron post, 2 ins. diam., firmly set, mkd. and witnessed as described in the official record.

Thence,

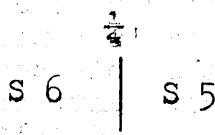
S.0° 07' W., on a true line, bet. secs. 5 and 6.

Over rolling land, through scattering undergrowth.

25.00 N. rim of Water Canyon, bears E. and W.; desc. 432 ft. over S. slope of bluffs, 250 feet high.

39.00 Center of Water Canyon, 50 lks. wide, course E. asc. 81 ft. over N. slope.

42.29 Set an iron post 3 ft. long, 1 in. diam., 14 ins. in the ground to bedrock, with a sandstone 12x10x8 ins. mkd. X, deposited at the base, and in a mound of stone to top, for 1/4 sec. cor., with brass cap mkd.



1933

Asc. 351 ft. over N. slope.

52.29 Top of S. rim of Water Canyon, bears E. and W.; continue over rolling land.

82.29 The cor. of secs. 5, 6, 7, and 8.

Land, rolling and mountainous.  
Soil, rocky 4th. rate.  
Timber, none.  
Undergrowth, scattered sage brush and buck brush.

## SUBDIVISION OF T. 38 N., R. 3 W.

Chains

## FINAL TEST OF SOLAR ATTACHMENT.

June, 13, 1933: In camp, near the cor. of secs. 15, 16, 21, and 22, T. 37 N., R. 1 W., in latitude  $36^{\circ} 36' N.$ , and longitude  $112^{\circ} 24' 18'' W.$ , at 2h. 16m., a.m., l.m.t., or 2h. 45m., 23s. a.m. by my watch which reads correct  $105^{\circ}$  meridian time as determined by radio, observe Polaris at eastern elongation, making two sights each with the telescope in direct and reversed positions, and place a tack at the mean point on a peg driven firmly in the ground about 10.00 chs. N. of station.

After sunrise, lay off the azimuth of Polaris  $1^{\circ} 19'$  to the west of the mean point in the line determined by the observation.

At 9h. 30m., a.m., app.t., set off  $36^{\circ} 36' N.$ , on the lat. arc;  $23^{\circ} 13\frac{1}{2}' N.$ , on the decl. arc, and orient the instrument with the solar; the line of sight agrees with the meridian established by Polaris observation.

At 3h. 30m., p.m., app.t. set off  $36^{\circ} 36' N.$ , on the lat. arc;  $23^{\circ} 14\frac{1}{2}' N.$  on the decl. arc; and repeat the test of the solar; the line of sight agrees with the meridian established by Polaris observation.

## GENERAL DESCRIPTION.

The land included in this survey is situated generally at the western end of the Buckskin Plateau, embracing portions of Kanab and **Shinumo Canyons** which join in the southern part of the township. The elevation above sea level ranges from 3500 ft. in the bottom of said canyons to 5000 ft on the adjacent tablelands. The drainage is chiefly to the South into the Kanab Wash, thence to the Colorado River some 18 miles south.

The soil on the tablelands is a sandy, stony 4th. rate; in the bottom of the larger canyons, a sandy, loam soil of 2nd. and 3rd. rate quality was found with a depth generally of several feet to bedrock.

The timber is scattering throughout the township, consisting of pinon and cedar with merchantable value only as firewood and fence posts.

The undergrowth is chiefly sage, cliff and buck brush and cacti in its various forms peculiar to these regions.

The water found consists of a shallow stream coursing along the bottom of Kanab Gulch, of poor quality and springs in secs. 8, 24, 25; and 36.

A poor road leads down Snake Gulch from the Ryan-Bright Angel Point highway on the western side of the Buckskin Range to Hatch's ranch in sec. 33, where the latter settler lives, the sole occupant of the Township.

Mr. Hatch has improvements consisting of houses, barns, fences, pipe lines and cultivated lands in secs. 33 and 34. Trails leading from Kanab wash up Water and Gunsight canyons to the upper tablelands were found. A trail from Snake Gulch to the upper rim was noted in sec. 12.

The land, besides the cultivated area in sec. 33 is fitted for and is being used as grazing land.



140  
5

BOOK 4018

7-180

CERTIFICATE OF UNITED STATES SURVEYOR

We, Walter H. Good and

Benjamin J. Kinsey, U. S. Surveyors, hereby certify upon honor that, in pursuance

of special instructions received from the District Cadastral Engineer for Arizona

bearing date of the 15th. day of October, 1932, we have well, faithfully, and truly

in our own proper person, and in strict conformity with said instructions, the Manual of Surveying Instructions, and the laws of the United States, surveyed ~~all the parcels~~ the subdivisional lines, completing the survey of Township 38 North, Range 3 West,

of the Gila and Salt River Meridian, in the State of Arizona, which are represented in

the foregoing field notes as having been executed by ~~me~~<sup>us</sup> and under ~~my~~<sup>our</sup> direction; and that all the corners of said survey have been established and perpetuated in strict accordance with the Manual of Surveying Instructions, and the special written instructions of the District Cadastral Engineer for Arizona

and in the specific manner described in the field notes, and that the foregoing are the original field notes of such survey.

*Benjamin J. Kinsey*  
U. S. Surveyor

*Walter H. Good*  
U. S. Surveyor.

Phoenix, Ariz.  
Oct. 2-1933.

Boise, Idaho,  
September 9, 1933.

APPROVAL

OFFICE OF U. S. SUPERVISOR OF SURVEYS,

Denver, Colorado, January 21, 1935.

The foregoing field notes of the survey of the subdivisional lines, completing the survey of Township 38 North, Range 3 West, of the Gila and Salt River Meridian, in the State of Arizona,

executed by Walter H. Good and Benjamin J. Kinsey, U. S. Surveyors,

under their special instructions dated October 15, 1932, having been critically examined, and the necessary corrections and explanations made, the said field notes, and the surveys they describe, are hereby approved.

*[Signature]*  
U. S. Supervisor of Surveys.

I certify that the foregoing transcript of the field notes of the above described surveys in \_\_\_\_\_, has been correctly copied from the original notes on file in this office.

U. S. Supervisor of Surveys.