

4-679
(April 1933)

BOOK 802

Book D

FIELD NOTES

OF THE SURVEY OF THE

South and West Boundaries and Subdivisional Lines

Township 2 North, Range 11 West,

Of the Gila and Salt River Meridian,

In the State of Arizona

EXECUTED BY

Francis E. Joy, U.S. Cadastral Engineer,

and

Robert H. Fischer, U.S. Transitman,

Under special instructions dated December 7, 1933, which provided

for the surveys included under Group No. 187, bearing the approval of the

Commissioner of the General Land Office under date of December 26, 1933,

and assignment instructions dated January 26, 1934.

Survey commenced February 1, 19 34

Survey completed February 26, 19 34

4035

4035

BOOK 4035

INDEX DIAGRAM.

Township 2 North, Range 11 West

11	6	54	5	43	4	35	3	27	2	19	1
	53		53		42		34		26		18
10	7	52	8	42	9	34	10	26	11	18	12
	52		51		41		33		25		17
10	18	30	17	40	16	32	15	24	14	16	13
	49		49		40		32		24		16
9	19	48	20	39	21	31	22	23	23	15	24
	47		47		38		30		22		14
8	30	45	29	37	28	29	27	22	26	13	25
	45		44		37		28		21		12
7	31		32		38		34		35		36
	6		6		5		4		3		2

T. 2 N., R. 11 W.

BOOK

Chains.

The survey of the south and west boundaries and the subdivisions of T. 2 N., R. 11 W. were executed with a Buff & Buff light mountain transit, Serial No. 16723, used by Francis E. Joy, and a Young & Sons transit, Serial No. 8545, used by Robert H. Fischer. The instruments were constructed in accordance with the standard specifications of the General Land Office. The horizontal circle of the Buff & Buff has a diameter of $4\frac{1}{2}$ ins., with two double opposite verniers reading to single minutes; the vertical circle has a diameter of 4 ins., with one double vernier reading to single minutes. The instrument is equipped with the Smith improved solar attachment; radius of the latitude arc $2\frac{1}{2}$ ins., and of the declination arc $3\frac{1}{2}$ ins., each with verniers reading to single minutes.

The horizontal circle of the Young & Sons has a diameter of $4\frac{3}{4}$ ins., with two opposite double verniers reading to single minutes; the vertical circle has a diameter of 5 ins., with one double vernier reading to single minutes.

The instruments were in good condition, and having been placed in satisfactory adjustment prior to beginning the survey, and tested and found free from appreciable error, were approved by the district cadastral engineer on January 26, 1934. All of the instrumental adjustments were examined before making the field tests hereinafter recorded.

The directions of all lines, with the Buff & Buff transit, were determined by the solar transit method, and the directions of all lines with the Young & Sons transit were determined by direct altitude observations on the sun and the transit method. The measurements were made with Lufkin steel tapes, 5 chains in length, graduated every link for the first 100 lks., and the remainder at intervals of 10 links. The tapes were tested by comparison with a Keuffel & Esser standard and found correct. The measurements were made on the slope, and the vertical angle of each interval was ascertained by a clinometer in good adjustment; the horizontal equivalents are entered in the field note record.

The data furnished with the special instructions gives the geographic position of the SE. cor. of the Tp., as follows: latitude $33^{\circ} 27' 46''$ N., and the longitude $113^{\circ} 20' 34''$ W.

January 31, 1934, at camp near the SE. cor. of sec. 9 with the Buff & Buff transit, at 5h 24m 30s p.m., l.m.t. or 6h 08m p.m. by my watch, which reads correct 105th meridian time, verified from a Western Union clock, I make an hour angle observation on Polaris west of the meridian, for latitude and azimuth, three each with the telescope in direct and reversed positions, reading the vertical angle, and reading the horizontal deflection angle from a V shaped notch on a rocky peak about 6 miles distant in the direction E-N-W to Polaris.

Mean horizontal angle, notch to Polaris	169° 41' 30" E-N-W
Azimuth of Polaris	9' 22" W.
True bearing to notch	N. 169° 32' 08" E. or S. 10° 27' 52" E.
Mean observed vertical angle	34° 34' 20"
Reduced latitude	33° 30' 46" N.

February 11, 1934, on the above described meridian, every hour from 8 to 11 a.m. and from 1 to 4 p.m., I make proper settings on the arcs of the solar attachment and ascertain that the resulting orientation of the instrument, when compared with the meridian established by Polaris observation, has a maximum error of less than $1' 30''$.

I repeat the tests of the arcs daily by noon observation, and verify the meridional indications at frequent intervals throughout the survey.

BOOK 4035

T. 2 N., R. 11 W.

Chains.	Observation	Mean	Apparent time, p.m.	Vertical Angle	Horizontal Angle
	February 1, 1934, at the cor. of Tps. 2 and 3 N., Rs. 11 and 12 W.; with Young & Sons transit, I make a series of three altitude observations upon the sun for azimuth, each with the telescope in direct and reversed positions, observing opposite limbs of the sun; the horizontal angles are measured from a flag set about 10.00 chs. distant in a northerly direction.				
	1st set	Mean	2h 37m 34s	26° 35' 30"	136° 35' 30"
	2nd set	Mean	2h 42m 34s	26° 02' 30"	135° 46' 00"
	3rd set	Mean	2h 47m 24s	25° 30' 30"	134° 58' 15"
	<p>By 1st observation flag bears N. 0° 03' 30" E. ✓ By 2nd observation flag bears N. 0° 02' 56" E. ✓ By 3rd observation flag bears N. 0° 00' 57" E. ✓ Mean true bearing of flag N. 0° 02' 28" E.</p> <p>Altitude observations upon the sun were made at frequent intervals to insure the accuracy of the transit lines throughout the survey.</p>				
	<p>The west boundary of T. 2 N., R. 10 W. and the south boundary of T. 3 N., R. 11 W. were surveyed by J. B. Wright, U. S. Surveyor, in 1914 and found to be in substantial agreement with the official record.</p>				
	SOUTH BOUNDARY OF T. 2 N., R. 11 W.				
	<p>Beginning at the cor. of tps. 1 and 2 N., Rs. 10 and 11 W., which is an iron post, 3 ins. diam., 8 ins. above ground, firmly set, marked and witnessed as described in the official record.</p> <p>West, bet. secs. 1 and 36.</p> <p>Over rolling land through scattering timber and undergrowth.</p>				
11.00	Wash, 50 lks. wide, course N. 70° E.				
25.00	Ascend 35 ft. over E. slope.				
28.00	Top of knoll, descend 25 ft. over W. slope.				
36.30	Foot of descent, ascend 25 ft. over E. slope to				
40.00	Set an iron post, 3 ft. long, 1 in. diam., 18 ins. in the ground to bedrock, and in a mound of stone to top, for $\frac{1}{4}$ sec. cor., with brass cap mkd.				
	$\frac{1}{4} \frac{S36}{S1}$				
	1934				
	Ascend 25 ft. over E. slope.				
41.10	Top of knoll, descend 25 ft. over W. slope.				
57.40	Wash, 50 lks. wide, 10 ft. deep, course N.				
60.50	Wash, 20 lks. wide, 8 ft. deep, course N. 60° E.				

SOUTH BOUNDARY OF T. 2 N., R. 11 W.

BOOK 4085

Chains.
70.20 Wash, 10 lks. wide, course N. 10° E.
75.80 Wash, 30 lks. wide, course N. 60° E.
80.00 Set an iron post, 3 ft. long, 2 ins. diam., 18 ins. in the ground to bedrock, and in a mound of stone to top, for cor. of secs: 1, 2, 35 and 36, with brass cap mkd.

T2N | R11W
S35 | S36
S2 | S1
TLN

1934

Land, rolling.
Soil, gravelly and rocky; 2nd and 3rd rates.
Timber, scattering palo verde and ironwood; undergrowth, greasewood and cacti.

West, bet. secs. 2 and 35.

Over rolling land, through scattering timber and undergrowth.

3.10 Dim road, bears N. and S.
8.60 Wash, 20 lks. wide, course N.
15.98 Set transit point for further reference and ascend 425 ft. over E. slope of Court House Rock.
34.20 Set an iron post, 3 ft. long, 1 in. diam., 18 ins. in the ground to bedrock, with a felsite rock, 5 x 4 x 3 ins., mkd. X, deposited at the base, and in a mound of stone, to top, for witness 1/4 sec. cor., with brass cap mkd.

W C
1/4 S35
4 S2

1934

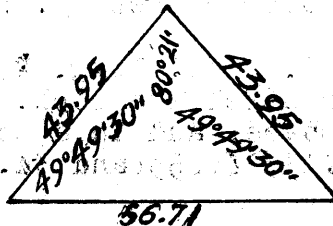
from which

A cross (X) marked on face of cliff or rim rock, bears West, 2 lks. dist.

40.00 The true point for the 1/4 sec. cor. falls at an inaccessible point on Court House Rock.

Court House Rock reaches an elevation of about 685 ft. above this point and is entirely surrounded by a rim rock about 200 ft. high. Therefore to pass the rock I return to the transit point at 15.98 chs. and proceed as follows: deflect an angle of 49° 49' 30" to the right and run 43.95 chs. to a point, thence deflect an angle of 80° 21' to the left and run 43.95 chs. to a point in line bet. secs. and 35.

All angles checked by repetitions.



Distance on line	15.98 chs.
Distance by triangulation	56.71 "
	72.69 "
Distance by return measurement	19.99 "

SOUTH BOUNDARY OF T. 2 N., R. 11 W.

Chains. 52.70	Foot of rim rock, descend 395 ft. over W. slope of Court House Rock.								
73.39	Wash, 50 lks. wide, 15 ft. deep, course N. 15° W.								
80.00	Set an iron post, 3 ft. long, 2 ins. diam., 32 ins. in the ground, for cor. of secs. 2, 3, 34 and 35, with brass cap mkd.								
	<table border="1" style="margin-left: auto; margin-right: auto;"> <tr> <td>T2N</td> <td>R11W</td> </tr> <tr> <td>S34</td> <td>S35</td> </tr> <tr> <td>S3</td> <td>S2</td> </tr> <tr> <td colspan="2" style="text-align: center;">T1N</td> </tr> </table> <p>1934</p>	T2N	R11W	S34	S35	S3	S2	T1N	
T2N	R11W								
S34	S35								
S3	S2								
T1N									
	raise a mound of stone, 3 ft. base, 2 ft. high, W. of cor.								
	Land, mountainous. Soil, rocky; 4th rate. Timber, palo verde and ironwood; undergrowth, greasewood and cacti.								
	West, bet. secs. 3 and 34. Over rough rolling hills, through scattering timber and undergrowth.								
.35	Road, bears N. and S.								
5.85	Wash, 10 lks. wide, course N.								
18.68	Wash, 20 lks. wide, 10 ft. deep, course N. 30° E.								
27.70	Ascend 140 ft. over SE. slope.								
36.50	Top of spur, slopes SE., thence along S. slope.								
40.00	Set an iron post, 3 ft. long, 1 in. diam., 10 ins. in the ground to bedrock, with a granite rock, 8 x 5 x 3 ins., mkd. X, deposited at the base, and in a mound of stone to top, for the 1/4 sec. cor., with brass cap mkd.								
	<table border="1" style="margin-left: auto; margin-right: auto;"> <tr> <td>1</td> <td>S34</td> </tr> <tr> <td>4</td> <td>S3</td> </tr> </table> <p>1934</p>	1	S34	4	S3				
1	S34								
4	S3								
42.70	Wash, 5 lks. wide, 6 ft. deep, course S. 30° E. Ascend 65 ft. over NE. slope.								
52.60	Spur slopes SE., descend 35 ft. over SW. slope to								
55.10	Head of wash, course S. Ascend 190 ft. over broken SE. slope.								
65.80	A rocky peak about 600 ft. above this point, bears N. about 8.00 chs. dist. Thence along S. slope.								
74.70	Descend 85 ft. over broken SW. slope to								
80.00	Set an iron post, 3 ft. long, 2 ins. diam., on flint like bedrock, with a felsite rock, 8 x 4 x 3 ins., mkd. X, deposited at base, and in a mound of stone to top, for cor. of secs. 3, 4, 33 and 34, with brass cap marked								

SOUTH BOUNDARY OF T. 2 N., R. 11 W.

BOOK 4085

Chains.

T2N	R11W
S33	S34
S4	S5
T1N	

1934

Land, rough and broken.
Soil, rocky; 3rd and 4th rates.
Timber, palo verde and ironwood; undergrowth, greasewood and cacti.

West, bet. secs. 4 and 33.

Over mountainous land through scattering timber and undergrowth. Descend 75 ft. over broken SW. slope.

- 6.60 Gulch, course SE., ascend 30 ft. over SE. slope.
8.00 Thence along S. slope.
15.30 Gulch, course SE., ascend 345 ft. over E. slope.
25.60 Rough and broken spur, slopes S. Descend 275 ft. over SW. slope.
31.00 Gulch, course S., ascend 125 ft. over SE. slope.
34.80 Thence along S. slope.
40.00 Set an iron post, 3 ft. long, 1 in. diam., on a flint like bedrock, with a felsite rock, 10 x 6 x 3 ins., mkd. X, deposited at the base, and in a mound of stone to top, for $\frac{1}{4}$ sec. cor., with brass cap mkd.

$\frac{1}{4}$	S33
	S4

1934

- 43.90 Spur, slopes S. 15° E., descend 285 ft. over SW. slope.
58.00 Gulch, course S. Thence along broken S. slope.
68.60 Descend 50 ft. over SW. slope to
74.30 Wash, 50 lks. wide, course S.
79.80 Head of wash, course S. 20° W.
80.00 Set an iron post, 3 ft. long, 2 ins. diam., 18 ins. in the ground to bedrock, and in a mound of stone to top, for cor. of secs. 4, 5, 32 and 33, with brass cap mkd.

T2N	R11W
S32	S33
S5	S4
T1N	

1934

Land, mountainous.
Soil, rocky; 4th rate.
Timber, ironwood and palo verde; undergrowth, greasewood and cacti.

SOUTH BOUNDARY OF T. 2 N., R. 11 W.

Chains.	West, bet. secs. 5 and 32. Over rough and broken S. slope through scattering timber and undergrowth.
14.20	Wash, 50 lks. wide, course S. Ascend 240 ft. over E. slope.
26.70	Junction of spurs, slope S. and S. 70° W., descend 200 ft. over NW. slope.
32.40	Head of gulch, course S. 80° W.
36.20	Same gulch, course N. 60° W. Ascend 50 ft. over NE. slope.
40.00	Set an iron post, 3 ft. long, 1 in. diam., 10 ins. in a crevice on rocky N. slope, and in a mound of stone to top, for $\frac{1}{4}$ sec. cor., with brass cap mkd. $\frac{1}{4} \frac{S32}{S5}$ 1934 from which A cross (X) on face of cliff, bears South, 3 lks. dist., mkd. XBO Thence along N. slope.
41.20	Descend 110 ft. over NW. slope.
43.70	Same gulch, course S. Ascend 125 ft. over SE. slope.
50.60	Rocky spur, slopes S. 80° W.
53.10	Head of gulch, course W., descend 125 ft. along gulch.
59.40	Leave gulch, course SW. Thence along S. slope.
63.50	Toe of spur, descend 35 ft. to
67.00	Wash, course S., ascend 95 ft. over SE. slope.
78.70	Toe of spur, slopes S., descend 25 ft. over SW. slope to
80.00	Set an iron post, 3 ft. long, 2 ins. diam., 14 ins. in the ground to bedrock, with a felsite rock, 6 x 4 x 3 ins., mkd. X, deposited at the base, and in a mound of stone to top, for cor. of secs. 5, 6, 31 and 32, with brass cap mkd. $\begin{array}{c c} T2N & R11W \\ \hline S31 & S32 \\ \hline S6 & S5 \\ \hline T1N & \end{array}$ 1934 Land, mountainous. Soil, rocky; 4th rate. Timber, palo verde and ironwood; undergrowth, greasewood and cacti.
	West, bet. secs. 6 and 31. Over rolling hilly land, through scattering timber and undergrowth. Descend 85 ft. over SW. slope.
10.40	Wash, 30 lks. wide, course NW., ascend gradually 65 ft. over NE. slope.

SOUTH BOUNDARY OF T. 2 N., R. 11 W.

BOOK 4035

Chains. 33.40	Top of broad spur, slopes NW., descend 85 ft. over W. slope.
40.00	Set an iron post, 3 ft. long, 1 in. diam., 18 ins. in the ground to bedrock, with a malpais rock, 6 x 4 x 2 ins., mkd. X., deposited at the base, and in a mound of stone to top, for $\frac{1}{4}$ sec. cor., with brass cap mkd. $\begin{array}{r} \frac{1}{4} \quad S31 \\ \hline S6 \end{array}$ 1934 Descend 40 ft. over W. slope.
47.20	Gulch, 30 lks. wide, 8 ft. deep, course N. 60° W.
54.10	Wash, course N. 60° W., ascend 35 ft. over NE. slope.
67.00	Top of broad spur, slopes NW., descend 40 ft. over W. slope.
79.35	Intersect N. and S. line at a point from which the cor. of Tps. 2 and 3 N., Rs. 11 and 12 W., hereinafter described, bears North, 479.83 chs. dist. Set an iron post, 3 ft. long, 3 ins. diam., 18 ins. in the ground to bedrock, with a felsite rock, 4 x 4 x 3 ins., mkd. X, deposited at the base, and in a mound of stone to top, for cor. of Tps. 1 and 2 N., Rs. 11 and 12 W., with brass cap mkd. $\begin{array}{c} T2N \\ R12W \mid R11W \\ S36 \mid S31 \\ \hline S1 \mid S6 \\ T1N \end{array}$ 1934 raise a mound of stone, 3 ft. base, 2 ft. high, S. of cor. Land, heavy rolling hills. Soil, gravelly and rocky; 3rd and 4th rates. Timber, palo verde and ironwood; undergrowth, greasewood and cacti.
WEST BOUNDARY OF T. 2 N., R. 11 W.	
From the cor. of Tps. 1 and 2 N., Rs. 11 and 12 W. North, on a true line bet. secs. 31 and 36. Over rolling land, through scattering timber and undergrowth.	
9.85	Wash, course NW.
12.35	Middle of wash, 4.50 chs. wide, 8 ft. deep, course S. 60. W.
16.95	Wash, 40 lks. wide, 4 ft. deep, course SW.
21.95	Wash, 20 lks. wide, course SW.
40.00	Set an iron post, 3 ft. long, 1 in. diam., 12 ins. in the ground to bedrock, with a felsite rock, 7 x 5 x 3 ins., mkd. X, deposited at the base, and in a mound of stone to top, for $\frac{1}{4}$ sec. cor., with brass cap mkd.

WEST BOUNDARY OF T. 2 N., R. 11 W.

Chains.

$$\begin{array}{c} \frac{1}{4} \\ S36 | S31 \\ 1934 \end{array}$$

- 49.35 Wash, 60 lks. wide, 4 ft. deep, course W. soon SW.
 53.35 Wash, 30 lks. wide, course S. 60° W.
 69.85 Wash, 50 lks. wide, 5 ft. deep, course SW.
 80.00 Set an iron post, 3 ft. long, 2 ins. diam., 26 ins. in the ground, for cor. of secs. 25, 30, 31 and 36, with brass cap mkd.

$$\begin{array}{c} T2N \\ R12W | R11W \\ S25 | S30 \\ \hline S36 | S31 \end{array}$$

1934

raise a mound
 of stone, 3 ft. base; 2 ft. high, W. of cor.

Land, rolling.

Soil; gravelly; 2nd rate.

Timber; palo verde and ironwood; undergrowth, greasewood and cacti.

North, on a true line bet. secs. 25 and 30.

Over rolling land, through scattering timber and undergrowth.

- 18.85 Ascend 215 ft. over SW. slope.
 28.35 Top of ascent near SW. end of short ridge, descend 215 ft. over N. slope to
 40.00 Set an iron post, 3 ft. long, 1 in. diam., 14 ins. in the ground to bedrock, with a felsite rock, 7 x 4 x 2 ins., mkd. X, deposited at the base, and in a mound of stone to top, for $\frac{1}{4}$ sec. cor., with brass cap mkd.

$$\begin{array}{c} \frac{1}{4} \\ S25 | S30 \\ 1934 \end{array}$$

Descend 15 ft. over N. slope to

- 42.55 Wash, 20 lks. wide, course W.
 53.45 Wash, 150 lks. wide, 4 ft. deep, course NW.
 58.65 Wash, 20 lks. wide, course NW.
 68.85 Wash, 30 lks. wide, course NW.
 71.15 Wash, 10 lks. wide, course W.
 77.85 Wash, 80 lks. wide, 4 ft. deep, course W.
 80.00 Set an iron post, 3 ft. long, 2 ins. diam., 27 ins. in the ground, for cor. of secs. 19, 24, 25 and 30, with brass cap mkd.

WEST BOUNDARY OF T. 2 N., R. 11 W.

BOOK 4035

Chains.	<p style="text-align: center;">T2N R12W R11W S24 S19 S25 S30</p> <p style="text-align: center;">1934</p> <p style="text-align: right;">raise a mound of stone, 3 ft. base, 2 ft. high, W. of cor.</p> <p>Land, rolling and hilly. Soil, gravelly and rocky; 2nd and 4th rates. Timber, palo verde, mesquite and ironwood; undergrowth, greasewood and cacti.</p>
	<p>North, on a true line bet. secs. 19 and 24.</p>
	<p>Over rolling land, through scattering timber and undergrowth.</p>
1.85	Ascend 405 ft. over SE. rough and broken slope.
23.45	Side hill gulch, course SE.
27.85	Top of saw toothed ridge, bears E. and SW., descend 340 ft. to
40.00	<p>Set an iron post, 3 ft. long, 1 in. diam., 12 ins. in the ground to bedrock, with a felsite rock, 6 x 6 x 2 ins., mkd. X, deposited at the base, and in a mound of stone to top, for $\frac{1}{4}$ sec. cor., with brass cap mkd.</p> <p style="text-align: center;">$\frac{1}{4}$ S24 S19 1934</p>
41.00	Gulch, course W. soon NW., ascend 360 ft. over rough and broken SW. slope.
52.48	Top of sharp rocky ridge, bears E. and W., descend 440 ft. over N. slope.
69.85	Wash, 200 lks. wide, 15 ft. deep, course W.. soon NW. Ascend 85 ft. over SW. slope.
78.45	Rocky spur, slopes SW., descend 30 ft. over NW. slope to
80.00	<p>Set an iron post, 3 ft. long, 2 ins. diam., on flinty bedrock, with a felsite rock, 7 x 5 x 3 ins., mkd. X, deposited at the base, and in a mound of stone to top, for cor. of secs. 13, 18, 19 and 24, with brass cap mkd.</p> <p style="text-align: center;">T2N R12W R11W S13 S18 S24 S19</p> <p style="text-align: center;">1934</p> <p>Land, mountainous. Soil, rocky; 4th rate. Timber, scattering palo verde and ironwood; undergrowth; greasewood and cacti.</p>

WEST BOUNDARY OF T. 2 N., R. 11 W.

Chains.	<p>North, on a true line bet. secs. 13 and 18.</p> <p>Over rough and broken mountainous land, through scattering timber and undergrowth; descend 30 ft. over NW.slope.</p> <p>1.65 Gulch, course W., ascend 87 ft. over SW. slope.</p> <p>6.75 Top of ridge, bears NW. and SE., descend 227 ft. over NE. slope.</p> <p>17.85 Wash, 30 lks. wide, 10 ft. deep, course N. 20° W.</p> <p>22.45 Wash, 25 lks. wide. 8 ft. deep, course N. 10° W. from SE.</p> <p>26.05 Enter wash, course N. from S. 20° W.</p> <p>31.05 Leave wash, course NE.</p> <p>40.00 Set an iron post, 3 ft. long, 1 in. diam., 27 ins. in the ground, for $\frac{1}{4}$ sec. cor., with brass cap mkd.</p> <div style="text-align: center;"> $\frac{1}{4}$ S13 S18 1934 </div> <p style="text-align: right;">raise a mound of stone, 3 ft. base, 2 ft. high, W. of cor.</p> <p>57.35 Wash, 30 lks. wide, course N. 5° W. from SW.</p> <p>65.55 Enter same wash, course N. from S. 10° W.</p> <p>70.05 Leave wash, course NE.</p> <p>75.85 Wash, 20 lks. wide, course N. 20° E.</p> <p>80.00 Set an iron post, 3 ft. long, 2 ins. diam., 27 ins. in the ground, for cor; of secs. 7, 12, 13 and 18, with brass cap mkd.</p> <div style="text-align: center;"> T2N R12W R11W S12 S7 S13 S18 1934 </div> <p style="text-align: right;">raise a mound of stone, 3 ft. base, 2 ft. high, W. of cor.</p> <p>Land, rolling and mountainous. Soil, gravelly and rocky; 3rd and 4th rates. Timber, palo verde and ironwood; undergrowth, greasewood and cacti.</p>
	<p>North, on a true line bet. secs. 7 and 12.</p> <p>Over rolling land, through scattering timber and undergrowth.</p> <p>5.15 Small wash, course NE.</p> <p>18.85 Wash, 20 lks. wide, course N. 30° E.</p> <p>40.00 Set an iron post, 3 ft. long, 1 in. diam., 27 ins. in the ground, for $\frac{1}{4}$ sec. cor., with brass cap mkd.</p>

WEST BOUNDARY OF T. 2 N., R. 11 W.

BOOK 4085

Chains.

$$\frac{1}{4}$$

S12	S7
-----	----

1934

raise a mound
of stone, 3 ft. base, 2 ft. high, W. of cor.

46.15 Wash, 20 lks. wide, 2 ft. deep, course N. 10° E.

49.55 Wash, 15 lks. wide, 2 ft. deep, course N. 15° E.

80.00 Set an iron post, 3 ft. long, 2 ins. diam., 27 ins. in the ground, for cor. of secs. 1, 6, 7 and 12, with brass cap mkd.

$$\begin{array}{c} \text{T2N} \\ \text{R12W} | \text{R11W} \\ \text{S1} | \text{S6} \\ \hline \text{S12} | \text{S7} \end{array}$$

1934

dig pits,
18 x 18 x 12 ins., in each sec. 3 ft. dist.

Land, rolling.

Soil, gravelly; 2nd rate.

Timber, ironwood and palo verde; undergrowth, greasewood.

North, on a true line bet. secs. 1 and 6.

Over gently rolling land, through scattering timber and undergrowth.

10.65 Wash, 10 lks. wide, course N. 20° E.

40.00 Set an iron post, 3 ft. long, 1 in. diam., 27 ins. in the ground, for $\frac{1}{4}$ sec. cor., with brass cap mkd.
$$\frac{1}{4}$$

S1	S6
----	----

1934

dig pits,
18 x 18 x 12 ins., N. and S. of post, 3 ft. dist.

79.83 The cor. of Tps. 2 and 3 N., Rs. 11 and 12 W., which is an iron post, 3 ins. diam., 10 ins. above ground, firmly set, marked and witnessed as described in the official record.

Land, gently rolling.

Soil, gravelly loam; 2nd rate.

Timber, ironwood; undergrowth, greasewood.

SUBDIVISION OF T. 2 N., R. 11 W.

Chains. From the cor. of secs. 1, 2, 35 and 36, on the S. Bdy. of the Tp.
 N. 0° 01' W., bet. secs. 35 and 36.
 Over rolling land, through scattering timber and undergrowth.

5.00 Wash, 10 lks. wide, course NE.
 8.30 Wash, 10 lks. wide, course NE.
 25.80 Wash, 30 lks. wide, 8 ft. deep, course NE.
 29.50 Top of rocky knoll, about 20 ft. high.
 38.90 Wash, 25 lks. wide, 5 ft. deep, course NE.
 40.00 Set an iron post, 3 ft. long, 1 in. diam., 27 ins. in the ground, for $\frac{1}{4}$ sec. cor., with brass cap mkd.

 $\frac{1}{4}$

S35 | S36

1934

18 x 18 x 12 ins., N. and S. of post, 3 ft. dist. dig pits.

50.40 Wash, 50 lks. wide, course NE.
 51.80 Wash, 30 lks. wide, course N. 80° E.
 57.60 Wash, 15 lks. wide, 8 ft. deep, course N. 75° E.
 75.50 Shallow wash, course N. 70° E.
 80.00 Set an iron post, 3 ft. long, 2 ins. diam., 27 ins. in the ground, for cor. of secs. 25, 26, 35 and 36, with brass cap mkd.

T2N | R11W

S26 | S25

S35 | S36

1934

of stone, 3 ft. base, 2 ft. high, W. of cor. raise a mound

Land, rolling.

Soil, gravelly and rocky; 3rd and 4th rates.

Timber, ironwood and palo verde; undergrowth, greasewood and cacti.

East, on a random line bet. secs. 25 and 36.

40.00 Set temp. $\frac{1}{4}$ sec. cor.
 80.00 Intersect N. and S. line, 2 lks. S. of the true point for cor. of secs. 25, 30, 31 and 36 on E. bdy. of the Tp., which is 30 lks. S. of the witness cor., an iron post, 3 ins. diam., 10 ins. above ground, firmly set, marked and witnessed as described in the official record.
 Thence from the true point for cor. of secs. 25, 30, 31 & 36
 S. 89° 59' W., on a true line bet. secs. 25 and 36
 .20 Leave wash, 20 lks. wide, course N. 60° E. Thence over rolling land through scattering timber and undergrowth.

SUBDIVISION OF T. 2 N., R. 11 W.

BOOK 4035

Chains. 7.80	Wash, 5 lks. wide, course N. 30° E.
12.50	Road, bears NW. and SE.
28.70	Wash, 40 lks. wide, course N. 30° E.
39.90	Shallow wash, 10 lks. wide, course N. 15° E.
40.00	Set an iron post, 3 ft. long, 1 in. diam., 27 ins. in the ground, for $\frac{1}{4}$ sec. cor., with brass cap mkd.
	$\frac{1}{4} \begin{array}{l} S25 \\ \hline S36 \end{array}$
	1934
	dig pits, 18 x 18 x 12 ins., E. and W. of post, 3 ft. dist.
44.50	Wash, 20 lks. wide, course NE.
64.40	Wash, 15 lks. wide, course N. 30° E.
72.40	Wash, 15 lks. wide, course N. 30° E.
80.00	The cor. of secs. 25, 26, 35 and 36.
	Land, rolling. Soil, rocky and gravelly; 3rd and 4th rates. Timber, ironwood and palo verde; undergrowth, greasewood and cacti.
	N. 0° 01' W., bet. secs. 25 and 26.
	Over rolling land, through scattering timber and undergrowth.
1.90	Enter a wash, 200 lks. wide, 6 ft. deep, course N. from SW.
7.90	Leave wash, course NE.
9.80	Wash, 100 lks. wide, 7 ft. deep, course NE.
13.80	Wash, 20 lks. wide, 8 ft. deep, course N. 75° E.
20.80	Wash, 10 lks. wide, 7 ft. deep, course S. 75° E.
24.70	Wash, 50 lks. wide, 20 ft. deep, course NE.
38.50	Wash, 10 lks. wide, 5 ft. deep, course NE.
40.00	Set an iron post, 3 ft. long, 1 in. diam., 27 ins. in the ground, for $\frac{1}{4}$ sec. cor., with brass cap mkd.
	$\frac{1}{4} \begin{array}{l} S26 \mid S25 \\ \hline \end{array}$
	1934
	raise a mound of stone, 3 ft. base, 2 ft. high, W. of cor.
	This cor. is on a point of land about 1.00 ch. W. of junction of washes.
40.75	Wash, 20 lks. wide, 15 ft. deep, course N. 75° E.
65.30	Wash, 100 lks. wide, course NE.
78.50	Wash, 15 lks. wide, course NE.

SUBDIVISION OF T. 2 N., R. 11 W.

Chains.

80.00

Set an iron post, 3 ft. long, 2 ins. diam., 27 ins. in the ground, for cor. of secs. 23, 24, 25 and 26, with brass cap mkd.

T2N	R11W
S23	S24
S26	S25

1934

from which

A palo verde, 12 ins. diam., bears N. 16° 30' E., 90 lks. dist., mkd. T2N R11W S24 BT

A palo verde 24 ins. diam., bears S. 64° 45' E., 163 lks. dist., mkd. T2N R11W S25 BT

A palo verde, 8 ins. diam., bears S. 7° 00' W., 148 lks. dist., mkd. T2N R11W S26 BT

An ironwood, 18 ins. diam., bears N. 44° 00' W., 178 lks. dist., mkd. T2N R11W S23 BT

Land, rolling.

Soil, rocky; 4th rate.

Timber, ironwood and palo verde; undergrowth, greasewood and cacti.

N. 89° 59' E., on a random line bet. secs. 24 and 25.

40.00

Set temp. $\frac{1}{4}$ sec. cor.

80.02

Intersect the cor. of secs. 19, 24, 25 and 30, on the E. bdy. of the Tp., which is an iron post, 3 ins. diam., 10 ins. above ground, firmly set, marked and witnessed as described in the official record.

Thence

S. 89° 59' W., on a true line bet. secs. 24 and 25.

Over rolling land, through scattering timber and undergrowth.

5.80

Wash, 15 lks. wide, course N.

17.60

Wash, 10 lks. wide, course N. 15° E.

23.40

Wash, 20 lks. wide, course N. 30° E.

29.10

Dim road, bears NE. and SW.

32.30

Wash, 40 lks. wide, course N. 15° E.

36.40

Wash, 15 lks. wide course N. 30° E.

40.01

Set an iron post, 3 ft. long, 1 in. diam., 27 ins. in the ground, for $\frac{1}{4}$ sec. cor., with brass cap mkd.

1	S24
4	S25

1934

from which

An ironwood, 10 ins. diam., bears N. 52° 00' E., 130 lks. dist., mkd. $\frac{1}{4}$ S24 BT

An iron wood, 6 ins. diam., bears S. 84° 30' W., 60 lks. dist., mkd. $\frac{1}{4}$ S25 BT

SUBDIVISION OF T. 2 N., R. 11 W.

BOOK 4035

Chains.	This cor. is on S. edge of a shallow wash, 5 lks. wide, course NE.
51.50	Local road, bears NW. and SE.
61.20	Wash, 100 lks. wide, course N. 60° E.
77.90	Wash, 15 lks. wide, course N. 30° E.
80.02	The cor. of secs. 23, 24, 25 and 26.
	Land, rolling. Soil, gravelly; 2nd and 3rd rates. Timber, ironwood and palo verde; undergrowth, greasewood and cacti.
	N. 0° 01' W., bet. secs. 23 and 24.
	Over rolling land, through scattering timber and undergrowth.
3.40	Wash, 60 lks. wide, course N. 15° E.
8.00	Junction of 3 washes, 150 lks. wide, course NE. from W. and SW.
15.00	Wash, 15 lks. wide, course N. 30° E.
24.90	Wash, 20 lks. wide, 6 ft. deep, course N. 15° E.
28.50	Wash, 20 lks. wide, 4 ft. deep, course N. 75° E.
36.70	Road, bears NW. and SE.
39.10	Wash, 15 lks. wide, course N. 60° E.
40.00	Set an iron post, 3 ft. long, 1 in. diam., 27 ins. in the ground, for $\frac{1}{4}$ sec. cor., with brass cap mkd.
	$\frac{1}{4}$ S23 S24 1934
	from which
	An ironwood, 9 ins., bears S. 55° 00' E., 110 lks. dist., mkd. $\frac{1}{4}$ S24 BT
	A palo verde, 10 ins. diam., bears N. 8° 15' W., 175 lks. dist., mkd. $\frac{1}{4}$ S23 BT
42.50	Wash, 30 lks. wide, course NE.
47.50	Enter wash, 200 lks. wide, from SE.
54.00	Leave wash, course NE.
57.80	Wash, 15 lks. wide, course N. 30° E.
75.20	Wash, 15 lks. wide, course N. 75° E.
80.00	Set an iron post, 3 ft. long, 2 ins. diam., 27 ins. in the ground, for cor. of secs. 13, 14, 23 and 24, with brass cap mkd.

SUBDIVISION OF T. 2 N., R. 11 W.

Chains.							
	<div style="text-align: center;"> <table border="1" style="margin: auto;"> <tr> <td>T2N</td> <td>R11W</td> </tr> <tr> <td>S14</td> <td>S13</td> </tr> <tr> <td>S23</td> <td>S24</td> </tr> </table> <p>1934</p> <p style="text-align: right;">dig pits,</p> <p>18 x 18 x 12 ins., in each sec., 3 ft. dist.</p> <p>Land, gently rolling. Soil, gravelly; 2nd rate. Timber, ironwood and palo verde; undergrowth, greasewood and cacti.</p> </div>	T2N	R11W	S14	S13	S23	S24
T2N	R11W						
S14	S13						
S23	S24						
	N. 89° 59' E., on a random line bet. secs. 13 and 24.						
40.00	Set temp. $\frac{1}{4}$ sec. cor.						
80.04	Intersect N. and S. line, 7 lks. S. of the cor. of secs. 13, 18, 19 and 24 on the E. bdy. of the Tp., which is an iron post, 3 ins. diam., 10 ins. above ground, firmly set, marked and witnessed as described in the official record.						
	Thence						
	S. 89° 56' W., on a true line bet. secs. 13 and 24.						
	Over gently rolling land through scattering timber and undergrowth.						
10.40	Wash, 20 lks. wide, course N. 30° E.						
35.30	Wash, 20 lks. wide, course N. 30° E.						
40.02	Set an iron post, 3 ft. long, 1 in. diam.; 27 ins. in the ground, for $\frac{1}{4}$ sec. cor., with brass cap mkd.						
	<table border="1" style="margin: auto;"> <tr> <td>$\frac{1}{4}$</td> <td>S13</td> </tr> <tr> <td>$\frac{1}{4}$</td> <td>S24</td> </tr> </table> <p>1934</p> <p style="text-align: right;">from which</p> <p>An ironwood, 7 ins. diam., bears N. 6° 00' W., 107 lks. dist., mkd. $\frac{1}{4}$ S13 BT</p> <p>An ironwood, 10 ins. diam., bears S. 36° 15' E., 358 lks. dist., mkd. $\frac{1}{4}$ S24 BT</p>	$\frac{1}{4}$	S13	$\frac{1}{4}$	S24		
$\frac{1}{4}$	S13						
$\frac{1}{4}$	S24						
42.40	Wash, 15 lks. wide, course N. 60° E.						
45.40	Wash, 15 lks. wide, course N. 30° E.						
71.80	Wash, 15 lks. wide, course N. 15° E.						
80.04	The cor. of secs. 13, 14, 23 and 24.						
	Land, gently rolling. Soil, gravelly; 2nd rate. Timber, ironwood and palo verde; undergrowth, greasewood and cacti.						
	N. 0° 01' W., bet. secs. 13 and 14.						
	Over rolling land, through scattering timber and undergrowth.						
13.80	Roads, bear N. 10° W., N. 75° E. and SW.						

SUBDIVISION OF T. 2 N., R. 11 W.

BOOK

Chains	set, marked and witnessed as described in the official record.
	George Count's house, bears N. 3°15'W.
	Thence
	S. 89° 52' W., on a true line bet. secs. 1 and 12.
	Over level land through mesquite and greasewood.
39.97	Set an iron post, 3 ft. long, 1 in. diam., 27 ins. in the ground, for $\frac{1}{4}$ sec. cor., with brass cap marked
	$\begin{array}{r} 1 \text{ S1} \\ 4 \text{ 312} \\ 1934 \end{array}$
	18 x 18 x 12 ins., E. and W. of post, 3 ft. dist. dig pits
	George Count's house bears N. 45° 20' E.
79.94	The cor. of secs. 1, 2, 11 and 12.
	Land, level.
	Soil, sandy and gravelly loam; 2nd rate.
	Timber, mesquite; undergrowth, same with greasewood.
	The $\frac{1}{2}$ of this mile follows the Centennial Wash, course S. 80° E. and without a definite water course.
	N. 0° 01' W., on a random line bet. secs. 1 and 2.
40.00	Set temp. $\frac{1}{4}$ sec. cor.
80.20	Intersect N. bdy. of the Tp., 5 lks. E. of the cor. of secs. 1, 2, 35 and 36, which is an iron post, 3 ins. diam., 6 ins. below the surface, with brass cap marked.
	1914 on S. rim T3N in N. T2N in S. R11W in W. S35 in NW. S36 in NE. S1 in SE. S2 in SW. quad.
	The corner is in the center of a highway, bearing E. and W., Phoenix to Salome. To further perpetuate this cor., at points N. 45° E., S. 45° E., S. 45° W. and N. 45° W., 71 lks. dist.
	Set iron posts, 3 ft. long, 2 ins. diam., 30 ins. in the ground, for witness cors. to cor. of secs. 1, 2, 35 and 36, with brass cap marked
	$\begin{array}{r} \text{W C} \\ \text{T3N} \text{ R11W} \\ \text{S35} \text{ S36} \\ \text{S2} \text{ S1} \\ \text{T2N} \\ 1934 \end{array}$
	Thence
	S. 0° 03' E., on a true line bet. secs. 1 and 2.
	Over level land, along a graded road. Cleared land extends E. about 20 chs. dist.
1.60	Wm. W. France's house, bears E. 2.00 chs. dist., and ruins of Mrs. Ida Watkins' house, bears W., 2.00 chs. dist.

SUBDIVISION OF T. 2 N., R. 11 W.

Chains	
40.10	Cleared land extends W. about 15.00 chs. dist.
40.20	Set an iron post, 3 ft. long, 1 in. diam., 40 ins. in the ground, for $\frac{1}{4}$ sec. cor., with brass cap marked.
	$\frac{1}{4}$ S2 S1 1934
	at points
	S. 45° E. and N. 45° W., 71 lks. dist.
	Set iron posts, 3 ft. long, 1 in. diam., 27 ins. in the ground, for witness $\frac{1}{4}$ sec. cors., with brass caps mkd.
	W C $\frac{1}{4}$ S2 S1 1934
41.80	Mrs. Abner Couger, nee Helen Jennings', house, bears W. 5.00 chs. dist. Cleared land extends E. 10 chs. dist.
42.20	Wm. F. Jennings' house, bears E., 5.00 chs. dist., and end of graded road, thence along local road.
64.20	S. edge of cleared land on W. side of line.
70.20	S. edge of cleared land on E. side of line.
80.20	The cor. of secs. 1, 2, 11 and 12.
	This cor. is in the Centennial Wash, a broad flat wash, some $\frac{1}{2}$ mile wide, without definite water channel, course S. 80° E.
	Land, level.
	Soil, sandy loam; 1st rate.
	Timber, mesquite; undergrowth, greasewood.
	From the cor. of secs. 2, 3, 34 and 35, on S. bdy. of Tp., N. 0° 01' W., bet. secs. 34 and 35.
	Over rolling land, through scattering timber and undergrowth.
1.00	Road, bears N. 20° E. and SW.
20.00	Top of low hill, bears E. and W.
32.00	Wash, 10 lks. wide, course N. 10° W.
40.00	True point for $\frac{1}{4}$ sec. cor. falls in wash, 100 lks. wide, course NE.
41.50	Set an iron post, 3 ft. long, 1 in. diam., 30 ins. in the ground, for witness $\frac{1}{4}$ sec. cor., with brass cap mkd.
	W C $\frac{1}{4}$ S34 S35 1934
	raise a mound
	of stone, 3 ft. base, 2 ft. high, W. of cor.

SUBDIVISION OF T. 2 N., R. 11 W.

BOOK 4035

Chains. 43.70	Wash, 10 lks. wide, 10 ft. deep, course E.
45.70	Wash, 80 lks. wide, 8 ft. deep, course E.
73.50	Wash, 30 lks. wide, 8 ft. deep, course N. 20° E.
80.00	True point for cor. of secs. 26, 27, 34 and 35, falls in wash, 30 lks. wide, 15 ft. deep, course N. 80° E.
	Land, rolling badly cut by washes. Soil, gravelly and rocky; 3rd and 4th rates. Timber, palo verde and ironwood; undergrowth, greasewood and cacti.
	East, on a random line bet. secs. 26 and 35.
40.00	Set temp. $\frac{1}{4}$ sec. cor.
80.00	Intersect N. and S. line, 16 lks. N. of the cor. of secs. 25, 26, 35 and 36.
	Thence
	N. 89° 53' W., on a true line bet. secs. 26 and 35.
	Over rolling badly eroded land, through scattering timber and undergrowth.
2.50	Wash, 130 lks. wide, 5 ft. deep, course N. 15° E.
15.00	Wash, 10 lks. wide, course NE.
36.10	Road, bears NE. and S. 15° W.
38.20	Wash, 60 lks. wide, 8 ft. deep, course N.
40.00	Set an iron post, 3 ft. long, 1 in. diam., 22 ins. in the ground to bedrock, and in a mound of stone to top, for $\frac{1}{4}$ sec. cor., with brass cap mkd.
	$\frac{1}{4} \begin{array}{l} S26 \\ S35 \end{array}$
	1934
	raise a mound
	of stone, 3 ft. base, 2 ft. high, N. of cor.
52.80	Road, bears N. and S. 30° E.
53.50	Wash, 30 lks. wide, 8 ft. deep, course NE.
69.70	Bend of wash, 30 lks. wide, 15 ft. deep, course NE. from NW.
76.00	Enter same wash, course NE. from W.
80.00	The true point for cor. of secs. 26, 27, 34 and 35.
	Land, rolling and badly cut with washes. soil, gravelly; 3rd rate. Timber, ironwood and palo verde; undergrowth, greasewood and cacti.

SUBDIVISION OF T. 2 N., R. 11 W.

Chains.	From the true point for cor. of secs. 26, 27, 34 and 35. N. 0° 01' W., bet. secs. 26 and 27.				
1.00	Set an iron post, 3 ft. long, 2 ins. diam., 27 ins. in the ground, for witness cor to cor. of secs. 26, 27, 34 and 35, with brass cap mkd. <table style="margin-left: auto; margin-right: auto; border-collapse: collapse;"> <tr><td style="text-align: center;">W C</td></tr> <tr><td style="text-align: center;">T2N R11W</td></tr> <tr><td style="text-align: center;">S27 S26</td></tr> <tr><td style="text-align: center;">S34 S35</td></tr> </table> 1934 raise a mound of stone, 3 ft. base, 2 ft. high, W. of cor. Thence over rolling land through scattering timber and undergrowth.	W C	T2N R11W	S27 S26	S34 S35
W C					
T2N R11W					
S27 S26					
S34 S35					
19.50	Wash, 20 lks. wide, 8 ft. deep, course NE.				
23.40	Dim road, bears E. and W.				
40.00	Set an iron post, 3 ft. long, 1 in. diam., 27 ins. in the ground, for $\frac{1}{4}$ sec. cor., with brass cap mkd. <table style="margin-left: auto; margin-right: auto; border-collapse: collapse;"> <tr><td style="text-align: center;">$\frac{1}{4}$</td></tr> <tr><td style="text-align: center;">S27 S26</td></tr> </table> 1934 raise a mound of stone, 3 ft. base, 2 ft. high, W. of cor.	$\frac{1}{4}$	S27 S26		
$\frac{1}{4}$					
S27 S26					
79.50	Enter series of shallow washes, course N. 80° E.				
80.00	Set an iron post, 3 ft. long, 2 ins. diam., 27 ins. in the ground, for cor. of secs. 22, 23, 26 and 27, with brass cap mkd. <table style="margin-left: auto; margin-right: auto; border-collapse: collapse;"> <tr><td style="text-align: center;">T2N R11W</td></tr> <tr><td style="text-align: center;">S22 S23</td></tr> <tr><td style="text-align: center;">S27 S26</td></tr> </table> 1934 from which An ironwood, 12 ins. diam., bears N. 55° 15' E., 125 lks. dist., mkd. T2N R11W S23 BT An ironwood, 12 ins. diam., bears S. 30° 30' E., 82 lks. dist., mkd. T2N R11W S26 BT A palo verde, 18 ins. diam., bears N. 73° 15' W., 151 lks. dist., mkd. T2N R11W S22 BT. No other suitable trees available; raise a mound of stone, 3 ft. base, 2 ft. high, W. of cor. Land, rolling badly cut by washes. Soil, gravelly and stony; 3rd rate. Timber, ironwood and palo verde; undergrowth, greasewood and cacti.	T2N R11W	S22 S23	S27 S26	
T2N R11W					
S22 S23					
S27 S26					
40.00	S. 89° 53' E., on a random line bet. secs. 23 and 26. Set temp. $\frac{1}{4}$ sec. cor.				
79.90	Intersect N. and S. line, 7 lks. N. of the cor. of secs.				

SUBDIVISION OF T. 2 N., R. 11 W.

BOOK 4035

Chains.	23, 24, 25 and 26.
	Thence
	N. 89° 50' W., on a true line bet. secs. 23 and 26.
	Over rolling land badly cut by washes, through scattering timber and undergrowth.
9.90	Wash, 50 lks. wide, course NE.
35.00	Road, bears N. 20° E: and S. 20° W.
38.40	Wash, 15 lks. wide, course N. 20° W.
39.95	Set an iron post, 3 ft. long, 1 in. diam., 30 ins. in the ground, for 1/4 sec. cor., with brass cap mkd.
	$\frac{1}{4} \begin{array}{l} S23 \\ S26 \end{array}$
	1934
	raise a mound
	of stone, 3 ft. base, 2 ft. high, N. of cor.
40.40	Wash, 20 lks. wide, course N.
50.10	Wash, 20 lks. wide, course NE.
54.40	Wash, 30 lks. wide, course NE.
75.40	Enter a series of small washes, course N. 80° E.
79.90	The cor. of secs. 22, 23, 26 and 27.
	Land, rolling.
	Soil, gravelly; 3rd rate.
	Timber, ironwood and palo verde; undergrowth; greasewood and cacti.
	N. 0° 01' W., bet. secs. 22 and 23.
	Over gently rolling land and across shallow washes; through timber and dense undergrowth
1.00	Leave shallow washes, course N. 80° E.
40.00	Set an iron post, 3 ft. long, 1 in. diam., 27 ins. in the ground, for 1/4 sec. cor., with brass cap mkd.
	$\frac{1}{4} \begin{array}{l} S22 \\ S23 \end{array}$
	1934
	raise a mound
	of stone, 3 ft. base, 2 ft. high, W. of cor.
42.50	Wash, 30 lks. wide, course NE.
60.00	Road, bears N. 80° E: and S. 70° W.
80.00	Set an iron post, 3 ft. long, 2 ins. diam., 27 ins. in the ground, for cor. of secs. 14, 15, 22 and 23, with brass cap mkd.

SUBDIVISION OF T. 2 N., R. 11 W.

Chains.

T2N	R11W
S15	S14
S22	S23

1934

raise a mound
of stone, 3 ft. base, 2 ft. high, W. of cor.

Land, gently rolling.

Soil, gravelly; 2nd rate.

Timber, ironwood and palo verde; undergrowth, greasewood and cacti.

S. 89° 50' E., on a random line bet. secs. 14 and 23.

40.00 Set temp. $\frac{1}{4}$ sec. cor.

79.88 Intersect N. and S. line, 4 lks. N. of the cor. of secs. 13, 14, 23 and 24.

Thence

N. 89° 48' W., on a true line bet. secs. 14 and 23.

Over gently rolling land, cut by numerous small washes, and through scattering timber and undergrowth.

1.40 Road, bears N. and SW.

14.60 Wash, 20 lks. wide, course NE.

24.70 Road, bears NE. and SW.

39.94 Set an iron post, 3 ft. long, 1 in. diam., 27 ins. in the ground, for $\frac{1}{4}$ sec. cor., with brass cap mkd.

$\frac{1}{4}$	S14
	S23

1934

raise a mound
of stone, 3 ft. base, 2 ft. high, N. of cor.

40.10 Wash, 5 lks. wide, course N. 60° E.

66.30 Wash, 10 lks. wide, course NE.

79.88 The cor. of secs. 14, 15, 22 and 23.

Land, gently rolling.

Soil, gravelly; 2nd rate.

Timber, ironwood and palo verde; undergrowth, greasewood and cacti.

N. 0° 01' W., bet. secs. 14 and 15.

Over nearly level land, through scattering timber and undergrowth.

20.00 Wash, 30 lks. wide; course NE.

29.80 Wash, 30 lks. wide; course NE.

39.80 Small wash, course NE.

40.00 Set an iron post, 3 ft. long, 1 in. diam., 27 ins. in the ground, for $\frac{1}{4}$ sec. cor., with brass cap mkd.

SUBDIVISION OF T. 2 N., R. 11 W.

BOOK 4035

Chains.	
	$\begin{array}{c} \frac{1}{4} \\ \hline \text{S15} \text{S14} \\ \hline 1934 \end{array}$ <p>raise a mound of stone, 3 ft. base, 2 ft. high, W. of cor.</p> <p>Thence across numerous small washes spreading out with a general course of NE.</p>
80.00	<p>Set an iron post, 3 ft. long, 2 ins. diam., 28 ins. in the ground, for cor. of secs. 10, 11, 14 and 15, with brass cap mkd.</p> $\begin{array}{c} \text{T2N} \text{R11W} \\ \hline \text{S10} \text{S11} \\ \hline \text{S15} \text{S14} \\ \hline 1934 \end{array}$ <p>18 x 18 x 12 ins., in each sec., 3 ft. dist. dig pits</p> <p>Land, nearly level. Soil, gravelly; 2nd rate. Timber, ironwood and palo verde; undergrowth, greasewood and cacti.</p>
40.00	<p>S. 89° 48' E., on a random line bet. secs. 11 and 14.</p> <p>Set temp. $\frac{1}{4}$ sec. cor.</p>
79.96	<p>Intersect N. and S. line, 7 lks. N. of the cor. of secs. 11, 12, 13 and 14.</p> <p>Thence</p> <p>N. 89° 45' W., on a true line bet. secs. 11 and 14.</p> <p>Over gently rolling land, through scattering timber and undergrowth.</p>
11.45	<p>Road, bears NW. and SE.</p>
16.05	<p>Road, bears NE. and SW.</p>
39.98	<p>Set an iron post, 3 ft. long, 1 in. diam., 27 ins. in the ground, for $\frac{1}{4}$ sec. cor., with brass cap mkd.</p> $\begin{array}{c} \frac{1}{4} \text{S11} \\ \hline \text{S14} \\ \hline 1934 \end{array}$ <p>18 x 18 x 12 ins., E. and W. of post, 3 ft. dist. dig pits,</p>
72.05	<p>Road, bears N. 30° E. and S. 10° W.</p>
79.96	<p>The cor. of secs. 10, 11, 14 and 15.</p> <p>Land, gently rolling. Soil, gravelly; 2nd rate. Timber, ironwood and palo verde; undergrowth; greasewood, mesquite and cacti.</p>

SUBDIVISION OF T. 2 N., R. 11 W.

Chains.	N. 0° 01' W., bet. secs. 10 and 11. Over nearly level land, through scattering timber and undergrowth.
17.00	Wash, 30 lks. wide, course E.
40.00	Set an iron post, 3 ft. long, 1 in. diam., 27 ins. in the ground, for $\frac{1}{4}$ sec. cor., with brass cap mkd. $\begin{array}{c} \frac{1}{4} \\ \hline \text{S10} \text{S11} \\ \hline 1934 \end{array}$
	18 x 18 x 12 ins., N. and S. of post, 3 ft. dist. dig pits.
60.20	Road, bears NW. and SE.
65.00	Same road, bears NE. and SW.
75.00	Road, bears N. 5° E. and S. 10° W.
80.00	Set an iron post, 3 ft. long, 2 ins. diam., 27 ins. in the ground, for cor. of secs. 2, 3, 10 and 11, with brass cap mkd. $\begin{array}{c} \text{T2N} \text{R11W} \\ \hline \text{S3} \text{S2} \\ \hline \text{S10} \text{S11} \\ \hline 1934 \end{array}$
	18 x 18 x 12 ins., in each sec., 3 ft. dist. dig pits.
	Land, gently rolling. Soil, sandy loam; 1st rate. Timber, ironwood and palo verde; undergrowth, greasewood.
	S. 89° 45' E., on a random line bet. secs. 2 and 11.
40.00	Set temp. $\frac{1}{4}$ sec. cor.
80.10	Intersect N. and S. line, 9 lks. S. of the cor. of secs. 1, 2, 11 and 12. Thence
	N. 89° 49' W., on a true line bet. secs. 2 and 11. Over nearly level land along the S. side of Centennial wash and through scattering timber and undergrowth.
39.90	Road, bears NW. and SE. Leave Centennial Wash.
40.05	Set an iron post, 3 ft. long, 1 in. diam., 27 ins. in the ground, for $\frac{1}{4}$ sec. cor., with brass cap mkd. $\begin{array}{c} \frac{1}{4} \text{ S2} \\ \hline \text{S11} \\ \hline 1934 \end{array}$
	18 x 18 x 12 ins., E and W. of post, 3 ft. dist. dig pits.
80.00	Road, bears N. and S.
80.10	The cor. of secs. 2, 3, 10 and 11. Land, nearly level. Soil, sandy loam; 1st rate. Timber, mesquite; undergrowth, greasewood.

SUBDIVISION OF T. 2 N., R. 11 W.

BOOK 4035

Chains. N. 0° 03' W., on a random line bet. secs. 2 and 3.
 40.00 Set temp. 1/4 sec. cor.
 80.04 Intersect the N. bdy. of the Tp., 2 lks. W. of the cor. of secs. 2, 3, 34 and 35, which is an iron post, 3 ins. diam., 12 ins. above ground, firmly set, marked and witnessed as described in the official record.
 Thence
 S. 0° 02' E., on a true line bet. secs. 2 and 3.
 Over nearly level land through scattering timber and undergrowth, and across Centennial Wash, course S. 80° E., and along E. side of road.
 40.04 Set an iron post, 3 ft. long, 1 in. diam., 27 ins. in the ground, for 1/4 sec. cor., with brass cap mkd.

$$\begin{array}{c} \frac{1}{4} \\ | \\ S3 | S2 \\ | \\ 1934 \end{array}$$
 dig pits,
 18 x 18 x 12 ins., N. and S. of post, 3 ft. dist.
 40.30 Leave Centennial Wash and enter scattered undergrowth, bears N. 80° W. and S. 80° E.
 79.70 Road, bears N. 10° W. and S. 5° E.
 80.04 The cor. of secs. 2, 3, 10 and 11.
 Land, nearly level.
 Soil, sandy loam; 1st rate.
 Timber, ironwood and palo verde; undergrowth, greasewood and mesquite.

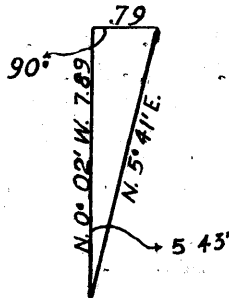
From the cor. of secs. 3, 4, 33 and 34 on the S. bdy. of the Tp.

N. 0° 02' W., bet. secs. 33 and 34.

Over mountainous land.

.04 The character of this vicinity prohibits offsets or a satisfactory base for triangulation over bluffs. Therefore I proceed as follows: the vertical angle to a tally pin in line is 42 1/2°. Also from this point deflect an angle to the right of 5° 43' or N. 5° 41' E. and mark a point at right angle to line and opposite tally pin. 79 lks. dist.

All angles and measurements checked by repetitions.



Distance on line
 Distance by triangulation

.04 chs.
 7.89 "
 7.93 "

7.93 Triangulation point 350 ft. above cor. Thence ascend 105 ft. over S. slope on bedrock.

SUBDIVISION OF T. 2 N., R. 11 W.

Chains. 12.08	Top of spur, bears E. and W., descend 36 ft. across cove to
15.85	Ledge of rock along top of main ridge, bears W. and S. 75° E. Descend 419 ft. over NE. slope.
29.50	Foot of descent, ascend 226 ft. over S. slope.
39.20	Top of spur, slopes E., thence along E. slope.
40.00	Set an iron post, 3 ft. long, 1 in. diam., 12 ins. in the ground to bedrock, with a quartz rock, 8 x 6 x 2 ins., mkd. X, deposited at the base, and in a mound of stone to top, for $\frac{1}{4}$ sec. cor., with brass cap mkd.
	$\frac{1}{4}$ S33 S34 1934
40.50	Descend 271 ft. over NE. slope.
49.70	Bottom of gulch, course E., ascend 247 ft. over S. slope.
64.90	A spur ridge, bears E. and W., descend 283 ft. over N. slope.
78.00	Wash, 20 lks. wide, course N. 70° E., ascend 41 ft. to
79.50	Set an iron post, 3 ft. long, 2 ins. diam., 22 ins. in the ground, for witness cor. to cor. of secs. 27, 28, 33 and 34, with brass cap mkd.
	W C T2N R11W S28 S27 S33 S34 1934
	raise a mound of stone, 3 ft. base, 2 ft. high, W. of cor.
80.00	The true point for cor. of secs. 27, 28, 33 and 34 falls on face of rock ledge, 20 ft. high, bears E. and W.
	Land, mountainous. Soil, rocky; 4th rate. Timber, scattering palo verde and ironwood on N. half mile; undergrowth, scattering greasewood and cacti.
	East, on a random line bet. secs. 27 and 34.
40.00	Set temp. $\frac{1}{4}$ sec. cor.
80.02	Intersect N. and S. line, 14 lks. S. of the true point for cor. of secs. 26, 27, 34 and 35.
	Thence from true point for cor.
	S. 89° 54' W., on a true line bet. secs. 27 and 34.
	Along wash, course E.
2.00	Leave wash, from SW.
24.30	Wash, 30 lks. wide, course NE.
26.40	Ascend 123 ft. over NE. slope of spur.

SUBDIVISION OF T. 2 N., R. 11 W.

BOOK 4085

Chains. 38.00	Top of spur and descend 45 ft. over W. slope to
40.01	Set an iron post, 3 ft. long, 1 in. diam., 12 ins. in the ground to bedrock, with a granite rock, 8 x 5 x 4 ins., mkd. X, deposited at the base, and in a mound of stone to top, for $\frac{1}{4}$ sec. cor., with brass cap mkd.
	$\frac{1}{4} \begin{array}{l} S27 \\ S34 \end{array}$
	1934
	Descend 34 ft. over W. slope.
45.50	Wash, 10 lks. wide, 10 ft. deep, course S. from NE.
56.40	Wash, 10 lks. wide, 10 ft. deep, course SE. Thence ascend gradually along S. side of spur.
69.25	Wash, 20 lks. wide, 10 ft. deep, course SE.
71.65	Same wawh, course NE.
80.02	The true point for cor. of secs. 27, 28, 33 and 34.
	Land, rolling foothills. Soil, rocky; 4th rate. Timber, scattering ironwood and palo verde; undergrowth, greaewood and cacti.
	From the true point for cor. of secs. 27, 28, 33 and 34. N. 0° 02' W., bet. secs. 27 and 28. Over mountainous land through scattering timber and undergrowth; ascend 40 ft. over S. slope.
5.25	Top of spur, slopes E., descend 247 ft. over NE. slope.
20.75	Wash, 20 lks. wide, course N. 70° E., ascend 55 ft. over SE. slope.
26.90	Top of spur, slopes E., descend 79 ft. over NE. slope.
32.79	Wash, 5 lks. wide, course S. 75° E.
33.70	Saddle in rocky spur, slopes E., descend 48 ft. over N. slope.
35.63	Wash, 20 lks. wide, 10 ft. deep, course N. 75° E., ascend 15 ft. over S. slope to
40.00	Set an iron post, 3 ft. long, 1 in. diam., 8 ins. in the ground to bedrock, and in a mound of stone to top, for $\frac{1}{4}$ sec. cor., with brass cap mkd.
	$\frac{1}{4} \begin{array}{l} S28 \\ S27 \end{array}$
	1934
	from which
	An ironwood, 5 ins. diam., bears S. 12° 15' E., 44 lks. dist., mkd. $\frac{1}{4}$ S27 BT
	A palo verde, 6 ins. diam., bears N. 70° 15' W., 93 lks. dist., mkd. $\frac{1}{4}$ S28 BT

SUBDIVISION OF T. 2 N., R. 11 W.

Chains.							
40.10	Wash, 5 lks. wide, course E.						
57.20	Wash, 10 lks. wide, 5 ft. deep, course N. 60° E.						
59.80 ¹	Wash, 10 lks. wide, 7 ft. deep, course NE.						
64.10	Wash, 15 lks. wide, 12 ft. deep, course N. 60° E.						
69.70	Wash, 10 lks. wide, 6 ft. deep, course N. 60° E.						
80.00	Set an iron post, 3 ft. long, 2 ins. diam., 27 ins. in the ground, for cor. of secs. 21, 22, 27 and 28, with brass cap mkd.						
	<table border="1"> <tbody> <tr> <td>T2N</td> <td>R11W</td> </tr> <tr> <td>S21</td> <td>S22</td> </tr> <tr> <td>S28</td> <td>S27</td> </tr> </tbody> </table>	T2N	R11W	S21	S22	S28	S27
T2N	R11W						
S21	S22						
S28	S27						
	1934						
	from which						
	An ironwood, 7 ins. diam., bears N. 52° 00' E., 125 lks. dist., mkd. T2N R11W S22 BT						
	An ironwood, 11 ins. diam., bears S. 64° 30' E., 226 lks. dist., mkd. BT. Shape of stump prevents other marks.						
	An iron wood, 6 ins. diam., bears S. 81° 30' W., 75 lks. dist., mkd. T2N R11W S28 BT						
	A palo verde, 12 ins. diam., bears N. 52° 00' W., 296 lks. dist., mkd. T2N R11W S21 BT						
	Land, $S\frac{1}{2}$ mountainous, $N\frac{1}{2}$ rolling. Soil, gravelly and rocky; 3rd and 4th rates. Timber, ironwood and palo verde; undergrowth, greasewood and cacti.						
	N. 89° 54' E., on a random line bet. secs. 22 and 27.						
40.00	Set temp. $\frac{1}{4}$ sec. cor.						
80.06	Intersect N. and S. line; 2 lks. S. of the cor. of secs. 22, 23, 26 and 27.						
	Thence						
	S. 89° 53' W., on a true line bet. secs. 22 and 27.						
	Over nearly level land, through scattering timber and undergrowth. Across shallow washes, course NE.						
2.10	Leave washes.						
10.30	Wash, 50 lks. wide, course N. 15° E. Thence over rolling land.						
17.50	Wash, 15 lks. wide, 6 ft. deep, course N. 15° E.						
22.90	Wash, 5 lks. wide, 10 ft. deep, course NE.						
28.50	Dim road, bears NW. and SE.						
35.60	Wash, 30 lks. wide, course N. 30° E.						
40.03	Set an iron post, 3 ft. long, 1 in. diam., 18 ins. in the ground to bedrock, and in a mound of stone to top, for $\frac{1}{4}$ sec. cor., with brass cap mkd.						

SUBDIVISION OF T. 2 N., R. 11 W.

BOOK 4035

Chains.	
	$\frac{1}{4} \begin{array}{l} S22 \\ S27 \end{array}$
	1934
	from which
	An ironwood, 10 ins. diam., bears N. 64° 30' W., 135 lks. dist., mkd. $\frac{1}{4}$ S22.BT
	A palo verde, 8 ins. diam., bears S. 11° 30' W., 163 lks. dist., mkd. $\frac{1}{4}$ S27.BT
46.20	Wash, 10 lks. wide, course NE.
56.10	Wash, 30 lks. wide, 12 ft. deep, course NE.
58.40	Enter wash, 50 lks. wide, course N. 30° E.
62.40	Rocky knoll, bears S. 5.00 chs. dist.
64.60	Leave wash, course E. from SW.
74.20	Wash, 30 lks. wide, course NE.
80.06	The cor. of secs. 21, 22, 27 and 28.
	Land, rolling. Soil, gravelly and stony; 3rd rate. Timber, ironwood and palo verde; undergrowth, greasewood and cacti.
	N. 0° 02' W., bet. secs. 21 and 22.
	Over rolling land, through scattering timber and undergrowth.
3.80	Wash, 15 lks. wide, course NE.
13.50	Wash, 20 lks. wide, course N. 30° E.
33.10	Mineral location monument, bears W. 20 lks. dist.
35.60	Wash, 10 lks. wide, course NE.
37.10	Wash, 20 lks. wide, course N. 30° E.
40.00	Set an iron post, 3 ft. long, 1 in. diam., 27 ins. in the ground, for $\frac{1}{4}$ sec. cor., with brass cap mkd.
	$\frac{1}{4} \begin{array}{l} S21 \\ S22 \end{array}$
	1934
	raise a mound of stone, 3 ft. base, 2 ft. high, W. of cor.
53.40	Wash, 15 lks. wide, course NE.
72.60	Wash, 20 lks. wide, course N. 15° E.
80.00	Set an iron post, 3 ft. long, 2 ins. diam., 27 ins. in the ground, for cor. of secs. 15, 16, 21 and 22, with brass cap mkd.

SUBDIVISION OF T. 2 N., R. 11 W.

Chains.	<table border="1"> <tr> <td>T2N</td> <td>R11W</td> </tr> <tr> <td>S16</td> <td>S15</td> </tr> <tr> <td>S21</td> <td>S22</td> </tr> </table>	T2N	R11W	S16	S15	S21	S22
T2N	R11W						
S16	S15						
S21	S22						
	1934						
	from which						
	An ironwood, 28 ins. diam., bears N. 78° 15' E., 477 lks. dist., mkd. T2N R11W S15 BT						
	An ironwood, 10 ins. diam., bears S. 49° 45' E., 194 lks. dist., mkd. T2N R11W S22 BT						
	A palo verde, 6 ins. diam., bears S. 78° 00' W., 247 lks. dist., mkd. BT only.						
	A palo verde, 10 ins. diam., bears N. 67° 30' W., 320 lks. dist., mkd. T2N R11W S16 BT						
	Land, rolling. Soil, gravelly and rocky; 3rd rate. Timber, ironwood and palo verde; undergrowth, greasewood and cacti.						
	N. 89° 53' E., on a random line bet. secs. 15 and 22.						
40.00	Set temp. $\frac{1}{4}$ sec. cor.						
80.00	Intersect the cor. of secs. 14, 15, 22 and 23.						
	Thence						
	S. 89° 53' W., on a true line bet. secs. 15 and 22.						
	Over rolling land, through scattering timber and undergrowth.						
18.50	Wash, 2.00 chs. wide, course N. 30° E.						
29.50	Wash, 20 lks. wide, course NE.						
40.00	Set an iron post, 3 ft. long, 1 in. diam., 24 ins. in the ground, for $\frac{1}{4}$ sec. cor., with brass cap mkd.						
	<table border="1"> <tr> <td>$\frac{1}{4}$</td> <td>S15</td> </tr> <tr> <td></td> <td>S22</td> </tr> </table>	$\frac{1}{4}$	S15		S22		
$\frac{1}{4}$	S15						
	S22						
	1934						
	from which						
	An ironwood, 14 ins. diam., bears S. 69° 30' E., 68 lks. dist., mkd. $\frac{1}{4}$ S22 BT.						
	No other suitable trees; raise a mound of stone, 3 ft. base, 2 ft. high, N. of cor.						
63.00	Wash, 25 lks. wide, 10 ft. deep, course N. 30° E.						
64.95	Wash, 20 lks. wide, course N. 75° E.						
71.50	Wash, 15 lks. wide, course N. 15° E.						
76.80	Wash, 20 lks. wide, course N. 15° E.						
79.38	Road, bears NW. and SE.						
80.00	The cor. of secs. 15, 16, 21 and 22.						
	Land, rolling.						

SUBDIVISION OF T. 2 N.; R. 11 W.

BOOK 4035

Chains.	Soil, rocky; 3rd rate. Timber, ironwood and palo verde; undergrowth; greasewood and cacti.
	N. 0° 02' W., bet. secs. 15 and 16. Over rolling land, through scattering timber and undergrowth.
1.30	Road, bears NW. and SE.
40.00	Set an iron post, 3 ft. long, 1 in. diam., 27 ins. in the ground, for $\frac{1}{4}$ sec. cor., with brass cap mkd.
	$\begin{array}{c} \frac{1}{4} \\ \hline S16 S15 \\ \hline 1934 \end{array}$ <p style="text-align: right;">raise a mound of stone, 3 ft. base, 2 ft. high, W. of cor.</p>
44.40	Wash, 25 lks. wide, course N. 30° E.
80.00	Set an iron post, 3 ft. long, 2 ins. diam., 27 ins. in the ground, for cor. of secs. 9, 10, 15 and 16, with brass cap mkd.
	$\begin{array}{c} T2N R11W \\ \hline S9 S10 \\ \hline S16 S15 \\ \hline 1934 \end{array}$ <p style="text-align: right;">raise a mound of stone, 3 ft. base, 2 ft. high, W. of cor.</p> <p>Land, rolling. Soil, gravelly and stony; 2nd and 3rd rates. Timber, ironwood and palo verde; undergrowth, greasewood and cacti.</p>
	N. 89° 53' E., on a random line bet. secs. 10 and 15.
40.00	Set temp. $\frac{1}{4}$ sec. cor.
80.00	Intersect N. and S. line, 4 lks. S. of the cor. of secs. 10, 11, 14 and 15.
	Thence
	S. 89° 51' W., on a true line bet. secs. 10 and 15.
	Over gently rolling land, through scattering timber and undergrowth.
4.10	Wash, 15 lks. wide, course NE.
12.70	Wash, 20 lks. wide, course N. 30° E.
36.20	Wash, 80 lks. wide, course N. 30° E.
40.00	Set an iron post, 3 ft. long, 1 in. diam., 27 ins. in the ground, for $\frac{1}{4}$ sec. cor., with brass cap mkd.
	$\begin{array}{c} 1 S10 \\ \hline 4 S15 \\ \hline 1934 \end{array}$ <p style="text-align: right;">from which</p>

SUBDIVISION OF T. 2 N., R. 11 W.

Chains.	An ironwood, 24 ins. diam., bears S. 51° 30' E., 147 lks. dist., mkd. $\frac{1}{4}$ S15 BT
	No other suitable trees; dig pits, 18 x 18 x 12 ins., E. and W. of post, 3 ft. dist.
52.00	Wash, 10 lks. wide, course NE.
68.80	Wash, 25 lks. wide, course N. 15° E.
74.60	Wash, 15 lks. wide, course N. 30° E.
80.00.	The cor. of secs. 9, 10, 15 and 16.
	Land, gently rolling. Soil, gravelly; 2nd and 3rd rates. Timber, scattering ironwood and palo verde; undergrowth, greasewood and cacti.
	N. 0° 02' W., bet. secs. 9 and 10.
	Over gently rolling land through scattering timber and undergrowth.
15.80	Wash, 20 lks. wide, course N. 30° E.
40.00	Set an iron post, 3 ft. long, 1 in. diam., 27 ins. in the ground, for $\frac{1}{4}$ sec. cor., with brass cap mkd.
	$\frac{1}{4}$ S9 S10 1934
	of stone, 3 ft. base, 2 ft. high, W. of cor. raise a mound
73.50	Road, bears NE. and SW.
80.00	Set an iron post, 3 ft. long, 2 ins. diam., 27 ins. in the ground, for cor. of secs. 3, 4, 9 and 10, with brass cap mkd.
	T2N R11W S4 S3 — S9 S10 1934
	18 x 18 x 12 ins., in each sec., 3 ft. dist. dig pits,
	Land, gently rolling. Soil, gravelly; 2nd rate. Timber, scattering ironwood and palo verde; undergrowth, greasewood.
	N. 89° 51' E., on a random line bet. secs. 3 and 10.
40.00	Set temp. $\frac{1}{4}$ sec. cor.
80.02	Intersect N. and S. line, 9 lks. N. of the cor. of secs. 2, 3, 10 and 11.
	Thence
	S. 89° 55' W., on a true line bet. secs. 3 and 10.
	Over gently rolling land through scattering timber and dense undergrowth.

SUBDIVISION OF T. 2 N., R. 11 W.

Chains

40.01

Set an iron post, 3 ft. long, 1 in. diam., 28 ins. in the ground, for $\frac{1}{4}$ sec. cor., with brass cap marked

$$\frac{1}{4} \frac{S3}{S10}$$

1934

18 x 18 x 12 ins., E. and W. of post, 3 ft. dist. dig pits

77.00

Road, bears N. 15° E. and S. 15° W.

80.02

The cor. of secs. 3, 4, 9 and 10.

Land, gently rolling.

Soil, gravelly; 1st and 2nd rates.

Timber, scattering ironwood, mesquite and palo verde; undergrowth, greasewood.

N. 0° 02' W., on a random line bet. secs. 3 and 4.

40.00

Set temp. $\frac{1}{4}$ sec. cor.

80.16

Intersect the cor. of secs. 3, 4, 33 and 34, on the N. bdy. of the Tp., which is an iron post, 3 ins. diam., 10 ins. above ground, firmly set, marked and witnessed as described in the official record.

Thence

S. 0° 02' E., on a true line bet. secs. 3 and 4.

Over nearly level land through scattering timber and dense undergrowth.

5.15

Leave dense undergrowth, bears E. and W.

15.15

Enter dense undergrowth of greasewood and mesquite along Centennial Wash, no definite water course, course E.

25.15

Leave dense undergrowth and enter scattering greasewood, bears E. and W.

40.16

Set an iron post, 3 ft. long, 1 in. diam., 28 ins. in the ground, for $\frac{1}{4}$ sec. cor., with brass cap mkd.

$$\frac{1}{4}$$

$$S4 | S3$$

1934

18 x 18 x 12 ins., N. and S. of post, 3 ft. dist. dig pits

80.16

The cor. of secs. 3, 4, 9 and 10.

Land, nearly level.

Soil; sandy loam; 1st rate.

Timber, mesquite, palo verde and ironwood; undergrowth, greasewood and mesquite.

From the cor. of secs. 4, 5, 32 and 33 on the S. bdy. of the Tp.

N. 0° 02' W., bet. secs. 32 and 33.

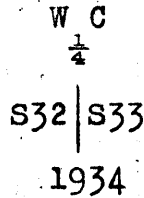
Over barren mountainous land; ascend 323 ft. over SW. slope.

25.45

Ledge on top of spur, slopes SE., desc. 151 ft. over NW.

SUBDIVISION OF T. 2 N., R. 11 W.

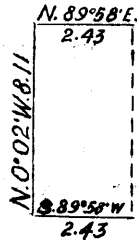
Chains slope.
 30.65 Foot of slope, ascend 160 ft. over SW. slope to
 40.00 True point for $\frac{1}{4}$ sec. cor. falls on face of cliff, 50 ft. high, bears NW. and SE., about 10.00 chs. long.
 41.08 Set an iron post, 3 ft. long, 1 in. diam., over a cross (X) marked on bedrock, and in a mound of stone to top, for witness $\frac{1}{4}$ sec. cor., with brass cap mkd.



Ascend 530 ft. over SW. slope.
 59.70 Top of bluff on spur, slopes S. 60° W., descend 30 ft. over N. slope.
 64.50 Bottom of slope, ascend 12 ft. over SW. slope.
 65.00 Descend 198 ft. over N. slope.
 73.95 Foot of descent, ascend 80 ft. over SW. slope.
 75.00 Set temp. point for further reference.
 78.40 Main ridge of the Eagle Tail Mountains, bears NW. and S. 60° E.

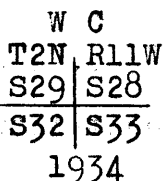
To pass ledges and bluffs I return to the temp. point at 75.00 chs. and offset as follows:

S. 89° 58' W., 2.43 chs.
 N. 0° 02' W., 8.11 chs. At 5.00 chs. set temp. point.
 N. 89° 58' E., 2.43 chs., to a point in line.



Distance on line	75.00 chs.
Distance by offset	8.11 "
	<hr/>
	83.11 "
Distance by return measurement	3.11 "
	<hr/>
	80.00 "

80.00 The true point for cor. of secs. 28, 29, 32 and 33, falls in crumbling ledges, unsafe place for cor.
 At a point N. 0° 32' E., 3.11 chs. dist., on a rock spur sloping E.,
 Set an iron post, 3 ft. long, 2 ins. diam., over a cross (X) cut in bedrock, and in a mound of stone to top, for witness cor. to cor. of secs. 28, 29, 32 and 33, with brass cap marked



SUBDIVISION OF T. 2 N., R. 11 W.

Chains	
	<p>Land, mountainous. Soil, rocky; 4th rate. No timber or undergrowth.</p> <hr/> <p>From the true point for the cor. of secs. 28, 29, 32 and 33.</p> <p>East, on a random line bet. secs. 28 and 33.</p>
40.00	Set temp. $\frac{1}{4}$ sec. cor.
79.94	Intersect N. and S. line, 4 lks. N. of the true point for cor. of secs. 27, 28, 33 and 34.
	<p>Thence from true point for cor.</p> <p>N. 89° 58' W., on a true line bet. secs. 28 and 33.</p> <p>Over mountainous land; ascend 136 ft. over SE. slope.</p>
9.50	Top of spur in saddle, slopes NE. Thence along broken N. slope.
15.94	Descend 74 ft. over NW. slope.
20.80	Wash, 40 lks. wide, 30 ft. deep, course N. 30° E.
28.90	Wash, 80 lks. wide, 10 ft. deep, course N. 15° E.; ascend 238 ft. over E. slope to
39.97	Set an iron post, 3 ft. long, 1 in. diam., 12 ins. in the ground to bedrock, with a granite stone, 12 x 8 x 4 ins. mkd. X, deposited at base, and in a mound of stone to top, for $\frac{1}{4}$ sec. cor., with brass cap marked
	$\frac{1}{4} \frac{S28}{S33}$ <p>1934</p>
	Thence ascend 353 ft. over E. slope.
47.65	Top of long spur, bears N. and S.; thence over broken N. slope.
72.00	Top of rock ledge, 150 ft. high, slopes N.
75.00	Head of gulch, course N.; ascend 200 ft. over rough and broken E. slope to
79.94	The true point for the cor. of secs. 28, 29, 32 and 33.
	<p>Land, mountainous. Soil, rocky; 4th rate. No timber.</p> <hr/> <p>From the true point for the cor. of secs. 28, 29, 32 and 33.</p> <p>N. 0° 02' W., bet. secs. 28 and 29.</p> <p>Over mountainous land; ascend 100 ft. over bluffs and cliffs to</p>
3.11	Spur, slopes E.; the witness cor. of secs. 28, 29, 32 and

SUBDIVISION OF T. 2 N., R. 3 W.

Chains	33, hereinbefore described, bears E., 30 lks. dist. Descend 510 ft. over very rough and broken land on E. slope of the main ridge of the Eagle ^V Mountains. Tail
30.65	Spur, at base of bluff, 400 ft. high, slopes E. A hole in rock, bears E., 25 lks. dist. Descend 210 ft. over NE. slope to
40.00	Set an iron post, 3 ft. long, 1 in. diam., 24 ins. in the ground to bedrock, for $\frac{1}{4}$ sec. cor., with brass cap mkd. $\frac{1}{4}$ S29 S28 1934 raise a mound of stone, 3 ft. base, 2 ft. high, W. of cor. Descend 286 ft. over NE. slope.
54.60	Top of spur, slopes N. 60° E.; descend 134 ft. over NW. slope.
62.70	Wash, 50 lks. wide, 15 ft. deep, course NE.; thence over heavy rolling land, through scattering timber and undergrowth.
67.00	Wash, 20 lks. wide, 10 ft. deep, course N. 75° E.
69.70	Wash, 10 lks. wide, 15 ft. deep, course N. 75° E.
70.90	Wash, 15 lks. wide, 12 ft. deep, course N. 75° E.
75.30	Wash, 20 lks. wide, course E.
80.00	Set an iron post, 3 ft. long, 2 ins. diam., 27 ins. in the ground, for cor. of secs. 20, 21, 28, and 29, with brass cap marked T2N R11W S20 S21 S29 S28 1934 raise a mound of stone, 3 ft. base, 2 ft. high, W. of cor. Land, mountainous. Soil, rocky; 4th rate. Timber, ironwood; undergrowth, greasewood and buckbrush.
40.00	S. 89° 58' E., on a random line bet. secs. 21 and 28. Set temp. $\frac{1}{4}$ sec. cor.
79.90	Intersect N. and S. line, 4 lks. N. of the cor. of secs. 21, 22, 27 and 28. Thence N. 89° 56' W., on a true line bet. secs. 21 and 28. Over rolling land, through scattering timber and undergrowth.

SUBDIVISION OF T. 2 N., R. 11 W.

BOOK 4035

Chains. .50	Wash, 10 lks. wide, course N. 20° E.
21.60	Wash, 80 lks. wide, course NE.
39.95	Set an iron post, 3 ft. long, 1 in. diam., 24 ins. in the ground to bedrock, for $\frac{1}{4}$ sec. cor., with brass cap mkd.
	$\frac{1}{4} \begin{array}{l} S21 \\ S28 \end{array}$
	1934
	raise a mound of stone, 3 ft. base, 2 ft. high, N. of cor.
54.20	Wash, 100 lks. wide, course N. 30° E.
79.90	The cor. of secs. 20, 21, 28 and 29.
	Land, rolling. Soil, rocky; 3rd rate. Timber, ironwood and palo verde; undergrowth; greasewood and cacti.
	N. 0° 02' W., bet. secs. 20 and 21. Over rolling land, through scattering timber and undergrowth.
.15	Wash, 2.00 chs. wide, 20 ft. deep, course N. 30° E., ascend 49 ft. over SE. slope.
15.35	Top of ascent, descend 179 ft. over NE. slope to
39.90	Wash, 25 lks. wide, 8 ft. deep, course NE.
40.00	True point for $\frac{1}{4}$ sec. cor. falls in edge of wash.
40.10	Set an iron post, 3 ft. long, 1 in. diam.; 27 ins. in the ground, for witness $\frac{1}{4}$ sec. cor., with brass cap mkd.
	$\begin{array}{c} W C \\ \frac{1}{4} \\ S20 \mid S21 \\ 1934 \end{array}$
	raise a mound of stone, 3 ft. base, 2 ft. high, W. of cor.
57.50	Enter wash, 20 lks. wide, course N. from SW.
60.50	Leave wash, course N. 60° E.
80.00	Set an iron post, 3 ft. long, 2 ins. diam., 18 ins. in the ground to bedrock, and in a mound of stone to top; for cor. of secs. 16, 17, 20 and 21, with brass cap mkd.
	$\begin{array}{c} T2N \mid R11W \\ S17 \mid S16 \\ S20 \mid S21 \\ 1934 \end{array}$
	raise a mound of stone, 3 ft. base, 2 ft. high, W. of cor.
	Land, rolling. Soil, rocky; 3rd rate. Timber, ironwood and palo verde; undergrowth; greasewood and cacti.

SUBDIVISION OF T. 2 N., R. 11 W.

Chains.	S. 89° 56' E., on a random line bet. secs. 16 and 21.
40.00	Set temp. $\frac{1}{4}$ sec. cor.
79.96	Intersect the cor. of secs. 15, 16, 21 and 22.
	Thence
	N. 89° 56' W., on a true line bet. secs. 16 and 21.
	Over rolling land, through scattering timber and undergrowth.
4.85	Wash, 20 lks. wide, course N. 15° W.
25.95	Wash, 10 lks. wide, course N. 15° E.
30.95	Wash, 25 lks. wide, course N. 30° E.
39.45	Wash, 30 lks. wide, course N. 15° E.
39.98	Set an iron post, 3 ft. long, 1 in. diam., 22 ins. in the ground to bedrock, and in a mound of stone to top, for $\frac{1}{4}$ sec. cor., with brass cap mkd.
	$\frac{1}{4} \begin{array}{l} S16 \\ S21 \end{array}$
	1934
	raise a mound
	of stone, 3 ft. base, 2 ft. high, N. of cor.
53.90	Wash, 30 lks. wide, course NE.
66.20	Wash, 15 lks. wide, course NE.
79.96	The cor. of secs. 16, 17, 20 and 21.
	Land, rolling.
	Soil, gravelly and rocky; 3rd rate.
	Timber, ironwood and palo verde; undergrowth, greasewood and cacti.
	N. 0° 02' W., bet. secs. 16 and 17.
	Over rolling land, through scattering timber and undergrowth
10.30	Wash, 30 lks. wide, course NE.
28.20	Wash, 25 lks. wide, course N. 75° E.
33.00	Wash, 20 lks. wide, course N. 30° E.
40.00	Set an iron post, 3 ft. long, 1 in. diam., 24 ins. in the ground, for $\frac{1}{4}$ sec. cor., with brass cap mkd.
	$\frac{1}{4} \begin{array}{l} S17 \\ S16 \end{array}$
	1934
	dig pits,
	18 x 18 x 12 ins., N. and S. of post, 3 ft. dist.
44.00	Enter wash, 15 lks. wide, course N. from SW.
63.00	Leave wash, course N. 30° E.
67.50	Wash, 20 lks. wide, course N. 30° E.

SUBDIVISION OF T. 2 N., R. 11 W.

BOOK 4035

Chains. 78.00	Wash, 10 lks. wide, course NE.						
80.00	Set an iron post, 3 ft. long, 2 ins. diam., 20 ins. in the ground to bedrock, and in a mound of stone to top, for cor. of secs. 8, 9, 16 and 17, with brass cap mkd.						
	<table border="1" style="margin-left: auto; margin-right: auto;"> <tr> <td>T2N</td> <td>R11W</td> </tr> <tr> <td>S8</td> <td>S9</td> </tr> <tr> <td>S17</td> <td>S16</td> </tr> </table>	T2N	R11W	S8	S9	S17	S16
T2N	R11W						
S8	S9						
S17	S16						
	1934						
	raise a mound of stone, 3 ft. base, 2 ft. high, W. of cor.						
	Land, rolling. Soil, gravelly and stony; 2nd and 3rd rates. Timber, ironwood and palo verde; undergrowth, greasewood and cacti.						
	S. 89° 56' E., on a random line bet. secs. 9 and 16.						
40.00	Set temp. $\frac{1}{4}$ sec. cor.						
79.94	Intersect N. and S. line, 9 lks. N. of the cor. of secs. 9, 10, 15 and 16.						
	Thence						
	N. 89° 52' W., on a true line bet. secs. 9 and 16.						
	Over rolling land, through scattering timber and undergrowth						
7.50	Wash, 10 lks. wide, course N. 15° E.						
10.00	Wash, 10 lks. wide, course N. 75° E.						
17.60	Road; bears N. and S.						
19.00	Wash, 25 lks. wide, course N. 15° E.						
28.60	Road, bears NW. and SE.						
33.00	Wash, 20 lks. wide, course N. 30° E.						
39.97	Set an iron post, 3 ft. long, 1 in. diam., 27 ins. in the ground, for $\frac{1}{4}$ sec. cor., with brass cap mkd.						
	<table border="1" style="margin-left: auto; margin-right: auto;"> <tr> <td>$\frac{1}{4}$</td> <td>S9</td> </tr> <tr> <td></td> <td>S16</td> </tr> </table>	$\frac{1}{4}$	S9		S16		
$\frac{1}{4}$	S9						
	S16						
	1934						
	18 x 18 x 12 ins., E. and W. of post, 3 ft. dist. dig pits.						
56.00	Wash, 15 lks. wide, course N. 15° E.						
70.50	Wash, 30 lks. wide, 6 ft. deep, course N. 15° E.						
76.50	Wash, 15 lks. wide, 5 ft. deep, course N. 30° E.						
79.94	The cor. of secs. 8, 9, 16 and 17.						
	Land, gently rolling. Soil, gravelly; 2nd and 3rd rates. Timber, ironwood and palo verde; undergrowth, greasewood.						

SUBDIVISION OF T. 2 N., R. 11 W.

Chains.	N. 0° 02' W., bet. secs. 8 and 9.
	Over gently rolling land, through scattering timber and undergrowth.
23.50	Wash, 10 lks. wide, course NE.
40.00	Set an iron post, 3 ft. long, 1 in. diam., 27 ins. in the ground, for $\frac{1}{4}$ sec. cor., with brass cap mkd.
	$\frac{1}{4}$ S8 S9 1934
	dig pits, 18 x 18 x 12 ins., N. and S. of post, 3 ft. dist.
40.80	Shallow wash, course NE.
61.40	Road, bears NE. and SW.
78.20	Wash, 5 lks. wide, course NE.
80.00	Set an iron post, 3 ft. long, 2 ins. diam., 27 ins. in the ground, for cor. of secs. 4, 5, 8 and 9, with brass cap mkd.
	T2N R11W S5 S4 S8 S9 1934
	dig pits, 18 x 18 x 12 ins., in each sec. 3 ft. dist.
	Land, gently rolling. Soil, gravelly; 2nd rate. Timber, ironwood; undergrowth, greasewood.
	S. 89° 52' E., on a random line bet. secs. 4 and 9.
40.00	Set temp. $\frac{1}{4}$ sec. cor.
79.96	Intersect N. and S. line, 9 lks. N. of the cor. of secs. 3, 4, 9 and 10.
	Thence
	N. 89° 48' W., on a true line bet. secs. 4 and 9.
	Over rolling land through scattering timber and undergrowth.
35.00	Base of hill at NW. end; extends SE. about 15.00 chs., and about 250 ft. high.
39.98	True point for cor. falls in wash, 20 lks. wide, course NE.
40.12	Set an iron post, 3 ft. long, 1 in. diam., 27 ins. in the ground, for witness $\frac{1}{4}$ sec. cor., with brass cap mkd.
	W C 1 S4 4 S9 1934
	raise a mound of stone, 3 ft. base, 2 ft. high, N. of cor.

SUBDIVISION OF T. 2 N., R. 11 W.

BOOK 4035

Chains.	
79.00	Wash, 5 lks. wide, course NE.
79.96	The cor. of secs. 4, 5, 8 and 9. Land, rolling. Soil, gravelly; 2nd rate. Timber, mesquite; undergrowth, greasewood.
	N. 0° 02' W., on a random line bet. secs. 4 and 5.
40.00	Set temp. $\frac{1}{4}$ sec. cor.
79.93	Intersect the N. bdy. of the Tp., 4 lks. E. of the cor. of secs. 4, 5, 32 and 33, which is an iron post, 3 ins. diam., set, mkd. and witnessed as described in the official record. Thence S. 0° 04' E., on a true line bet. secs. 4 and 5. Over level land through dense mesquite thicket along the Centennial Wash, course E.
12.50	Leave wash and thicket, bears E. and W.
39.93	Set an iron post, 3 ft. long, 1 in. diam., 27 ins. in the ground, for $\frac{1}{4}$ sec. cor., with brass cap mkd. $\frac{1}{4}$ S5 S4 1934 18 x 18 x 12 ins., N. and S. of post, 3 ft. dist. dig pits.
75.00	Wash, 10 lks. wide, course N. 30° E.
79.93	The cor. of secs. 4, 5, 8 and 9. Land, nearly level. Soil, sandy loam; 1st rate. No timber. Undergrowth, greasewood and mesquite.
	From the cor. of secs. 5, 6, 31 and 32 on the S. bdy. of the Tp. N. 0° 03' W., bet. secs. 31 and 32. Over mountainous land, through scattering timber and undergrowth; ascend 50 ft. over SW. slope.
2.00	Top of spur, slopes S. 5° E., thence ascend 155 ft. along E. side of spur.
16.00	Ridge, bears S. 80° E. and W., descend 185 ft. over N. slope.
25.70	Wash, course S. 60° E., ascend 55 ft. over S. slope.
30.00	Low ridge, bears NW. and SE., descend 95 ft. over NE. slope.
37.10	Wash, course N. 30° W., thence across a narrow valley.
40.00	Set an iron post, 3 ft. long, 1 in. diam., 27 ins. in the ground, for $\frac{1}{4}$ sec. cor., with brass cap mkd.

SUBDIVISION OF T. 2 N., R. 11 W.

Chains.	
	$\frac{1}{4}$ S31 S32 1934
	raise a mound of stone, 3 ft. base, 2 ft. high, W. of cor.
50.50	Wash, 60 lks. wide, 6 ft. deep, course W., leave valley and ascend 55 ft. over S. slope.
56.80	Top of spur, slopes W., descend 25 ft. over N. slope.
62.40	Wash, 30 lks. wide, course W. soon SW., ascend 280 ft. over S. slope.
80.00	True point for cor. of secs. 29, 30, 31 and 32 falls on face of ledge at which point I mark a cross (X). Land, mountainous. Soil, rocky; 4th rate. Timber, palo verde; undergrowth, greasewood and cacti.
	From the true point for cor. of secs. 29, 30, 31 and 32. East, on a random line bet. secs. 29 and 32.
40.00	Set temp. $\frac{1}{4}$ sec. cor.
77.73	Intersect N. and S. line, 5 lks. N. of a point set on off-set line, 2.43 chs. W. of the point for cor. of secs. 28, 29, 32 and 33.
80.16	Intersect N. and S. line, 5 lks. N. of the true point for cor. of secs. 28, 29, 32 and 33. Thence from the true point for cor. N. 89° 58' W., on a true line bet. secs. 29 and 32. Over mountainous land; ascend over broken E. slope 125ft.
2.40	Top of Eagle Tail Mountains, bears N. 10° W. and SE., descend 210 ft. over broken NW. slope.
15.15	Thence along rough N. slope.
21.45	Ascend 45 ft. over NE. slope.
26.45	Saw-tooth spur, bears N. 60° W and SE., descend 305 ft. over W. slope.
40.08	Set an iron post, 3 ft. long, 1 in. diam., 9 ins. in the ground to bedrock, with a felsite rock, 5 x 4 x 2 ins., mkd. X, deposited at the base, and in a mound of stone to top, for $\frac{1}{4}$ sec. cor., with brass cap mkd.
	$\frac{1}{4}$ S29 S32 1934
40.75	Gully, course S. from NE.
42.25	Low saddle in spur, bears NE. and SW., descend 54 ft. over W. slope.
47.05	Head of gulch, course NW., ascend 285 ft. over rough NE. slope.

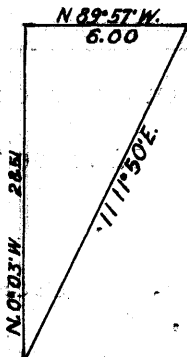
SUBDIVISION OF T. 2 N., R. 11 W.

BOOK 4035

Chains. 69.45	Top of saw-tooth ridge, bears NW. and SE., descend 295 ft. over SW. slope.
80.16	The true point for cor. of secs. 29, 30, 31 and 32. Land, mountainous. Soil, rocky; 4th rate. Timber, a few palo verde; undergrowth, greasewood and cacti.
	From the true point for cor. of secs. 29, 30, 31 and 32. West, on a random line bet. secs. 30 and 31.
40.00	Set temp. $\frac{1}{4}$ sec. cor.
79.35	Intersect the cor. of secs. 25, 30, 31 and 36 on the W. bdy. of the Tp. Thence East, on a true line bet. secs. 30 and 31. Over rolling land through scattering timber and under growth
8.75	Wash, 30 lks. wide, 8 ft. deep, course S. 15° W.
39.35	Set an iron post, 3 ft. long, 1 in. diam., 14 ins. in the ground to bedrock, with a felsite rock, 7 x 5 x 2 ins., mkd. X, deposited at the base, and in a mound of stone to top, for $\frac{1}{4}$ sec. cor., with brass cap mkd. $\frac{1}{4} \begin{array}{l} S30 \\ S31 \end{array}$ 1934
43.35	Wash, 10 lks. wide, 6 ft. deep, Course S. soon SW., ascend 245 ft. over SW. slope.
73.05	Spur, slopes S., descend 45 ft. over E. slope.
74.65	Bottom of slope, ascend 105 ft. over SW. slope to
79.35	The true point for cor. of secs. 29, 30, 31 and 32. Land, rolling and mountainous. Soil, gravelly and rocky; 3rd and 4th rates. Timber, palo verde; undergrowth, greasewood and cacti.
	From the true point for cor. of secs. 29, 30, 31 and 32. N. 0° 03' W., bet. secs. 29 and 30. Over mountainous land.
.08	Set an iron post, 3 ft. long, 2 ins. diam., on bedrock, with a felsite rock, 7 x 6 x 2 ins., mkd. X, deposited at the base, and in a mound of stone to top, for witness cor. to cor. of secs. 29, 30, 31 and 32, with brass cap mkd. $\begin{array}{c} W C \\ T2N R11W \\ S30 S29 \\ S31 S32 \end{array}$ 1934

SUBDIVISION OF T. 2 N., R. 11 W.

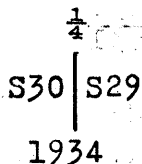
Chains. Ascend 390 ft. over steep S. slope.
 9.80 Top of sharp ridge, bears NW. and SE., descend 30 ft. to
 10.51 To determine the distance over cliffs and bluffs; the vertical angle to a flag in line is $-15^{\circ} 30'$; an auxiliary flag bears N. $11^{\circ} 50'$ E.; from flag in line the auxiliary flag, bears N. $89^{\circ} 57'$ E., 6.00 chs. dist. All angles measured by deflection and checked by repetitions.



Distance on line	10.51 chs.
Distance by triangulation	28.51 " ✓
	39.02 " "
Distance by return measurement	1.62 " "
	<u>37.40 " "</u>

37.40 Wash, 30 lks. wide, in bottom of canyon, course W., 555 ft. below triangulation point. Ascend 40 ft. over S. slope to

40.00 Set an iron post, 3 ft. long, 1 in. diam., on bedrock, with a felsite rock, 5 x 4 x 2 ins., mkd. X, deposited at the base, and in a mound of stone to top, for $\frac{1}{4}$ sec. cor., with brass cap mkd.



Ascend 255 ft. over S. slope.

51.20 Top of long rocky spur, slopes W., descend 80 ft. over NW. slope.

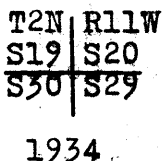
58.20 Gulch, course SW. soon W., ascend 125 ft. over SW. slope.

63.60 Top of bluff on rough spur, slopes W., descend 90 ft. over N. slope.

67.40 Bottom of narrow canyon, course SW., ascend 310 ft. over SE. slope.

76.80 Thence over SW. slope to

80.00 Set an iron post, 3 ft. long, 2 ins. diam., on bedrock, with a felsite rock, 5 x 4 x 2 ins., mkd. X, deposited at the base, and in a mound of stone to top, for cor. of secs. 19, 20, 29 and 30, with brass cap mkd.



Land, mountainous.
 Soil, rocky; 4th rate.
 Timber, scattering palo verde and oak; undergrowth, grease wood and oak brush.

SUBDIVISION OF T. 2 N., R. 11 W.

BOOK 4035

Chains.	
	S. 89° 58' E., on a random line bet. secs. 20 and 29.
40.00	Set temp. $\frac{1}{4}$ sec. cor.
79.92	Intersect N. and S. line, 4 lks. S. of the cor. of secs. 20, 21, 28 and 29.
	Thence
	West, on a true line bet. secs. 20 and 29.
	Over mountainous land, through scattering timber and undergrowth.
2.00	Wash. 2.00 chs. wide, course NE., ascend 990 ft. over rough and broken E. slope.
35.60	Bluff, about 100 ft. high, bears N. and S., and a spur extends NE. Continue ascend over SE. slope.
38.40	Top of ascent, thence along S. slope to
39.96	Set an iron post, 3 ft. long, 1 in. diam., on bedrock, with a felsite rock, 4 x 3 x 3 ins., mkd. X, deposited at the base, and in a mound of stone to top, for $\frac{1}{4}$ sec. cor., with brass cap mkd.
	$\frac{1}{4} \begin{array}{l} S20 \\ S29 \end{array}$
	1934
	A spur slopes N. 60° W., descend 170 ft. over NW. slope.
55.90	Head of narrow canyon, course N., ascend 250 ft. over general NE. slope.
69.30	Top of the Eagle Tail Mountains, bears NW. and SE., descend 175 ft. over SW. slope.
79.92	The cor. of secs. 19, 20, 29 and 30.
	Land, mountainous. Soil, rocky; 4th rate. Timber, palo verde; undergrowth; greasewood and cacti.
	West, on a random line bet. secs. 19 and 30.
40.00	Set temp. $\frac{1}{4}$ sec. cor.
79.39	Intersect the W. bdy. of the Tp., 26 lks. S. of the cor. of secs. 19, 24, 25 and 30.
	Thence
	S. 89° 49' E., on a true line bet. secs. 19 and 30.
	Over heavy rolling land, through scattering timber and undergrowth.
3.00	Wash. 60 lks. wide, 4 ft. deep, course SW., soon W.
19.20	Base of spur, slopes SW.
24.20	Wash, course SW., ascend 120 ft. over SW. slope.
39.30	Toe of spur, slopes SW., thence along S. slope.
39.39	Set an iron post, 3 ft. long, 1 in. diam., on bedrock.

SUBDIVISION OF T. 2 N., R. 11 W.

Chains.	with a felsite rock, 8 x 5 x 3 ins., mkd. X, deposited at the base, and in a mound of stone to top, for $\frac{1}{4}$ sec. cor., with brass cap mkd.
	$\frac{1}{4} \begin{array}{l} S19 \\ S30 \end{array}$
	1934
41.60	Ascend 155 ft. over broken SW. slope.
55.60	Rocky spur, slopes S., descend 55 ft. over SE. slope.
57.20	Gulch, course SW., ascend 135 ft. over W. slope.
61.50	Rocky spur, slopes S. 75° W., thence along S. slope.
67.20	Ascend 345 ft. over SW. slope to
79.39	The cor. of secs. 19, 20, 29 and 30.
	Land, rolling and mountainous. Soil, gravelly and rocky; 2nd and 4th rates. Timber, palo verde and ironwood; undergrowth, greasewood and cacti.
	N. 0° 03' W., bet. secs. 19 and 20.
	Over mountainous land through scattering timber and undergrowth; ascend 225 ft. over SW. slope.
9.50	Top of the Eagle Tail Mountains, bears NW. and SE., descend 625 ft. over broken NE. slope.
32.80	Bottom of gulch, course E., ascend 165 ft. over SE. slope.
36.80	Spur, slopes E., descend 40 ft. over N. slope.
38.50	Bottom of gulch, course E., ascend 40 ft. over SE. slope to
40.00	Set an iron post, 3 ft. long, 1 in. diam., on bedrock, with a felsite rock, 4 x 3 x 2 ins., mkd. X, deposited at the base, and in a mound of stone, to top, for $\frac{1}{4}$ sec. cor., with brass cap mkd.
	$\frac{1}{4}$ $S19 S20$
	1934
	Ascend 115 ft. over SE. slope.
43.00	Sharp rocky spur, slopes S. 80° E., descend 285 ft. over NE. slope.
49.50	Foot of bluff, 150 ft. high, bears E. and W., ascend 40 ft. over S. slope.
51.90	Descend 415 ft. over broken NE. slope.
69.60	Thence along E. slope.
74.60	Ascend 15 ft. over S. slope.
75.60	Descend 100 ft. over NE. slope to
80.00	Set an iron post, 3 ft. long, 2 ins. diam., 27 ins. in the

SUBDIVISION OF T. 2 N., R. 11 W.

BOOK 4035

Chains.	<p>ground, for cor. of secs. 17, 18, 19 and 20, with brass cap mkd.</p> <table border="1" style="margin-left: auto; margin-right: auto;"> <tr> <td>T2N</td> <td>R11W</td> </tr> <tr> <td>S18</td> <td>S17</td> </tr> <tr> <td>S19</td> <td>S20</td> </tr> </table> <p style="text-align: center;">1934</p> <p style="text-align: right;">raise a mound</p> <p>of stone, 3 ft. base, 2 ft. high, W. of cor.</p> <p>Land, mountainous. Soil, rocky; 4th rate. Timber, palo verde; undergrowth, greasewood and cacti.</p>	T2N	R11W	S18	S17	S19	S20
T2N	R11W						
S18	S17						
S19	S20						
	<p>East, on a random line bet. secs. 17 and 20.</p> <p>40.00 Set temp. $\frac{1}{4}$ sec. cor.</p> <p>79.90 Intersect N. and S. line, 16 lks. S. of the cor. of secs. 16, 17, 20 and 21.</p> <p>Thence</p> <p>S. $89^{\circ} 53'$ W., on a true line bet. secs. 17 and 20.</p> <p>Over rolling land, through scattering timber and undergrowth.</p> <p>7.90 Wash, 20 lks. wide, course N. 15° E.</p> <p>25.00 Wash, 15 lks. wide, 8 ft. deep, course N. 30° E.</p> <p>36.20 Wash, 100 lks. wide, 12 ft. deep, course N. 30° E.</p> <p>39.95 Set an iron post, 3 ft. long, 1 in. diam., 18 ins. in the ground to bedrock, and in a mound of stone to top, for $\frac{1}{4}$ sec. cor., with brass cap mkd.</p> <table border="1" style="margin-left: auto; margin-right: auto;"> <tr> <td>1</td> <td>S17</td> </tr> <tr> <td>4</td> <td>S20</td> </tr> </table> <p style="text-align: center;">1934</p> <p style="text-align: right;">raise a mound</p> <p>of stone, 3 ft. base, 2 ft. high, N. of cor.</p> <p>Ascend 172 ft. over NE. slope and along N. side of spur.</p> <p>65.77 Top of ascent, spurs, slope S. 75° E. and N., descend 52 ft. over W. slope.</p> <p>69.25 Head of wash, course N., ascend 32 ft. over NE. slope.</p> <p>76.50 Spur, slopes NW., descend 30 ft. to</p> <p>79.90 The cor. of secs. 17, 18, 19 and 20.</p> <p>Land, rolling and rough. Soil, rocky; 3rd rate. Timber, ironwood and palo verde; undergrowth, greasewood and cacti.</p>	1	S17	4	S20		
1	S17						
4	S20						
	<p>N. $89^{\circ} 49'$ W., on a random line bet. secs. 18 and 19.</p> <p>40.00 Set temp. $\frac{1}{4}$ sec. cor.</p> <p>79.36 Intersect the W. bdy. of the Tp., 16 lks. S. of the cor. of secs. 13, 18, 19 and 24.</p> <p>Thence</p>						

Chains.	
	S. 89° 42' E., on a true line bet. secs. 18 and 19. Over mountainous land, through scattering timber and undergrowth; ascend 110 ft. over NW. slope.
4.60	Rocky spur, slopes NW., descend 275 ft. over NE. slope.
13.70	Draw, drains NW., ascend 505 ft. over NW. slope.
33.30	Sharp rocky spur, slopes NW., descend 100 ft. over broken NE. slope to
39.36	Set an iron post, 3 ft. long, 1 in. diam., on bedrock, with a felsite rock, 4 x 4 x 2 ins., mkd. X, deposited at the base, and in a mound of stone to top, for $\frac{1}{4}$ sec. cor., with brass cap mkd. <div style="text-align: center;"> $\frac{1}{4}$ S18 $\frac{1}{4}$ S19 1934 </div> Ascend 20 ft. over W. slope.
40.80	Thence along N. slope.
43.90	Descend 375 ft. over broken NE. slope.
62.10	Bottom of gulch, course N. 15° E., ascend 85 ft. over NW. slope.
69.40	Thence along N. slope.
73.20	Descend 70 ft. over rough NE. slope to
79.36	The cor. of secs. 17, 18, 19 and 20. Land, mountainous. Soil, 4th rate; rocky. Timber, palo verde and ironwood; undergrowth, greasewood and cacti.
	N. 0° 03' W., bet. secs. 17 and 18. Over mountainous land, through scattering timber and undergrowth; descend 25 ft. over NE. slope.
1.50	Head of a wash, course N. 70° W., ascend 50 ft. over SW. slope.
8.00	Rocky spur, slopes NW., descend 210 ft. over broken NE. slope.
32.40	Wash, 50 lks. wide, 10 ft. deep, course NE., leave mountainous land and enter rolling land.
40.00	Set an iron post, 3 ft. long, 1 in. diam., 14 ins. in the ground to bedrock, with a felsite rock, 4 x 4 x 2 ins., mkd. X, deposited at the base, and in a mound of stone to top, for $\frac{1}{4}$ sec. cor., with brass cap mkd. <div style="text-align: center;"> $\frac{1}{4}$ S18 S17 1934 </div>
67.50	Wash, 50 lks. wide, 6 ft. deep, course N. 20° E.

SUBDIVISION OF T. 2 N., R. 11 W.

BOOK 4035

Chains. 80.00	<p>Set an iron post, 3 ft. long, 2 ins. diam., 27 ins. in the ground, for cor. of secs. 7, 8, 17 and 18, with brass cap mkd.</p> <table border="1" style="margin-left: auto; margin-right: auto;"> <tr> <td>T2N</td> <td>R11W</td> </tr> <tr> <td>S7</td> <td>S8</td> </tr> <tr> <td>S18</td> <td>S17</td> </tr> </table> <p style="text-align: center;">1934</p> <p style="text-align: right;">raise a mound of stone, 3 ft. base, 2 ft. high, W. of cor.</p> <p>Land, rolling and mountainous. Soil, gravelly and rocky; 2nd and 4th rates. Timber, palo verde and ironwood; undergrowth, greasewood and cacti.</p>	T2N	R11W	S7	S8	S18	S17
T2N	R11W						
S7	S8						
S18	S17						
40.00	<p>N. 89° 53' E., on a random line bet. secs. 8 and 17. Set temp. $\frac{1}{4}$ sec. cor.</p>						
79.88	<p>Intersect N. and S. line, 14 lks. S. of the cor. of secs. 8, 9, 16 and 17. Thence S. 89° 47' W., on a true line bet. secs. 8 and 17. Over heavy rolling land, through scattering timber and undergrowth; Ascend 88 ft. over E. slope.</p>						
7.60	<p>Top of knoll on low ridge, bears N. and S., descend 63 ft. over W. slope.</p>						
12.60	<p>Foot of descent, bears N. and S.</p>						
21.30	<p>Wash, 30 lks. wide, course N. 15° W.</p>						
24.70	<p>Wood road, bears NE. and SW.</p>						
29.00	<p>Wash, 15 lks. wide, course N.</p>						
39.00	<p>Wash, 10 lks. wide, course N. 15° W.</p>						
39.94	<p>Set an iron post, 3 ft. long, 1 in. diam., 27 ins. in the ground, for $\frac{1}{4}$ sec. cor., with brass cap mkd.</p> <table border="1" style="margin-left: auto; margin-right: auto;"> <tr> <td>$\frac{1}{4}$</td> <td>S8</td> </tr> <tr> <td></td> <td>S17</td> </tr> </table> <p style="text-align: center;">1934</p> <p style="text-align: right;">raise a mound of stone, 3 ft. base, 2 ft. high, N. of cor.</p>	$\frac{1}{4}$	S8		S17		
$\frac{1}{4}$	S8						
	S17						
48.30	<p>Wash, 15 lks. wide, 4 ft. deep, course N. 15° E.</p>						
64.50	<p>Wash, 10 lks. wide, course N. 15° W. ^W</p>						
71.50	<p>Wash, 40 lks. wide, 6 ft. deep, course N.</p>						
78.60	<p>Channel of same wash, 25 lks. wide, course N. 30° W.</p>						
79.88	<p>The cor. of secs. 7, 8, 17 and 18. Land, rolling. Soil, gravelly and rocky; 3rd and 4th rates. Timber, ironwood and palo verde; undergrowth, greasewood and cacti.</p>						

SUBDIVISION OF T. 2 N., R. 11 W.

Chains.

- N. 89° 42' W., on a random line bet. secs. 7 and 18.
 40.00 Set temp. $\frac{1}{4}$ sec. cor.
 79.20 Intersect the W. bdy. of the Tp., 12 lks. N. of the cor. of secs. 7, 12, 13 and 18.
 Thence
 S. 89° 47' E., on a true line bet. secs. 7 and 18.
 Over rolling land, through scattering timber and undergrowth.
 2.90 Wash, 20 lks. wide, 6 ft. deep, course N. 30° E.
 18.40 Wash, 20 lks. wide, course N.
 39.20 Set an iron post, 3 ft. long, 1 in. diam., 27 ins. in the ground, for $\frac{1}{4}$ sec. cor., with brass cap mkd.

$$\frac{1}{4} \begin{array}{l} S7 \\ S18 \end{array}$$

1934

- 18 x 18 x 12 ins., E. and W. of post, 3 ft. dist. dig pits,
 43.90 Wash, 20 lks. wide, 4 ft. deep, course N. 30° E.
 60.60 Wash, 25 lks. wide, 8 ft. deep, course NE.
 66.40 Wash, 15 lks. wide, 5 ft. deep, course N. 30° E.
 79.20 The cor. of secs. 7, 8, 17 and 18.
 Land, rolling.
 Soil, gravelly and stony; 3rd rate.
 Timber, ironwood and palo verde; undergrowth, greasewood and cacti.

N. 0° 03' W., bet. secs. 7 and 8.

- Over rolling land, through scattering timber and undergrowth.
 5.00 Shallow wash, course N. 15° W.
 17.60 Same wash, course NE.
 40.00 Set an iron post, 3 ft. long, 1 in. diam., 27 ins. in the ground, for $\frac{1}{4}$ sec. cor., with brass cap mkd.

$$\frac{1}{4} \begin{array}{l} S7 \\ S8 \end{array}$$

 1934
 18 x 18 x 12 ins., N. and S. of post, 3 ft. dist. dig pits.
 45.20 Shallow wash, course NE.
 80.00 Set an iron post, 3 ft. long, 2 ins. diam., 27 ins. in the ground, for cor. of secs. 5, 6, 7 and 8, with brass cap mkd.

SUBDIVISION OF T. 2 N., R. 11 W.

BOOK 4035

Chains.							
	<div style="text-align: center;"> <table border="1"> <tr><td>T2N</td><td>R11W</td></tr> <tr><td>S6</td><td>S5</td></tr> <tr><td>S7</td><td>S8</td></tr> </table> </div> <p style="text-align: center;">1934</p> <p style="text-align: right;">dig pits,</p> <p>18 x 18 x 12 ins., in each sec., 3 ft. dist.</p> <p>Land, gently rolling. Soil, gravelly loam; 2nd rate. Timber, palo verde and ironwood; undergrowth, greasewood.</p>	T2N	R11W	S6	S5	S7	S8
T2N	R11W						
S6	S5						
S7	S8						
	<p>N. 89° 47' E., on a random line bet. secs. 5 and 8.</p>						
40.00	Set temp. $\frac{1}{4}$ sec. cor.						
79.88	Intersect N. and S. line, 9 lks. S. of the cor. of secs. 4, 5, 8 and 9.						
	Thence						
	S. 89° 43' W., on a true line bet. secs. 5 and 8.						
	Over nearly level land, through scattering timber and undergrowth.						
7.00	Shallow wash, 10 lks. wide, course NE.						
38.40	Wash, 15 lks. wide, course N. 15° E.						
39.94	Set an iron post, 3 ft. long, 1 in. diam., 27 ins. in the ground, for $\frac{1}{4}$ sec. cor., with brass cap mkd.						
	<table border="1"> <tr><td>1</td><td>S5</td></tr> <tr><td>4</td><td>S8</td></tr> </table>	1	S5	4	S8		
1	S5						
4	S8						
	1934						
	dig pits,						
	18 x 18 x 12 ins., E. and W. of post, 3 ft. dist.						
42.50	Wash, 10 lks. wide, course N. 30° E.						
54.00	Wash, 15 lks. wide, course N. 15° E.						
63.50	Wash, 15 lks. wide, course N. 15° W.						
77.40	Wash, 15 lks. wide, course N. 15° E.						
79.88	The cor. of secs. 5, 6, 7 and 8.						
	Land, level. Soil, gravelly loam; 2nd rate. Timber, palo verde; undergrowth, greasewood.						
	N. 89° 47' W., on a random line bet. secs. 6 and 7.						
40.00	Set temp. $\frac{1}{4}$ sec. cor.						
79.13	Intersect the W. bdy. of the Tp., 9 lks. S. of the cor. of secs. 1, 6, 7 and 12.						
	Thence						
	S. 89° 43' E., on a true line bet. secs. 6 and 7.						
	Over gently rolling land, through scattering timber and undergrowth.						

SUBDIVISION OF T. 2 N., R. 11 W.

Chains.	
15.40	Wash, 10 lks. wide, course N. 15° W.
19.10	Rocky knoll, bears S. about 5.00 chs. dist.
30.10	Wash, 20 lks. wide, course N. 30° E.
39.13	Set an iron post, 3 ft. long, 1 in. diam., 27 ins. in the ground, for $\frac{1}{4}$ sec. cor., with brass cap mkd.
	$\begin{array}{c} 1 \text{ S6} \\ 4 \text{ S7} \end{array}$
	1934
	dig pits.
	18 x 18 x 12 ins., E. and W. of post, 3 ft. dist.
66.90	Wash, 15 lks. wide, course N. 30° E.
72.30	Wash, 10 lks. wide, course N. 20° E.
79.13	The cor. of secs. 5, 6, 7 and 8.
	Land, gently rolling. Soil, gravelly; 2nd rate. Timber, ironwood and palo verde; Undergrowth, greasewood and cacti.
	N. 0° 04' W., on a random line bet. secs. 5 and 6.
40.00	Set temp. $\frac{1}{4}$ sec. cor.
80.27	Intersect the N. bdy. of the Tp., 7 lks. E. of the cor. of secs. 5, 6, 31 and 32, which is an iron post, 3 ins. diam., 12 ins. above ground, firmly set, marked and witnessed as described in the official record.
	Thence
	S. 0° 07' E., on a true line bet. secs. 5 and 6.
	Over nearly level land, through scattering timber and undergrowth.
40.27	Set an iron post, 3 ft. long, 1 in. diam., 27 ins. in the ground, for $\frac{1}{4}$ sec. cor., with brass cap mkd.
	$\frac{1}{4}$
	$\begin{array}{c} \text{S6} \text{S5} \\ 1934 \end{array}$
	dig pits.
	18 x 18 x 12 ins., N. and S. of post, 3 ft. dist.
75.30	Shallow wash, course NE.
80.27	The cor. of secs. 5, 6, 7 and 8.
	Land, nearly level. Soil, gravel loam; 2nd rate. Timber, ironwood and palo verde; undergrowth, greasewood and mesquite.

SUBDIVISION OF T. 2 N., R. 11 W.

408b

Chains

FINAL TEST OF SOLAR ATTACHMENT

February 26, on the camp meridian at 10h 00m a.m., app.t., I set off $33^{\circ} 31'$ N. on the lat. arc; $8^{\circ} 46'$ S. on the decl. arc; and orient the instrument with the solar; the line of sight agrees with the meridian established by Polaris observation.

At 2h 00m p.m., app.t., I set off $33^{\circ} 31'$ N. on the lat. arc; $8^{\circ} 42'$ S. on the decl. arc; and repeat the test with the solar; the line of sight agrees with the meridian established by Polaris observation.

February 26, 1934.

GENERAL DESCRIPTION

The Eagle Tail Mountains, very rough and broken, with numerous cliffs, bluffs and saw-toothed spurs extending therefrom, cross the south-west portion of the township. The drainage from the slopes is deep and rapidly descends to the plains where it spreads and becomes indefinite.

The Centennial Wash, draining an immense area, enters the township in section 5 and leaves in section 12. This wash is approximately one-half mile wide without a definite water course, but marked definitely by a dense mesquite thicket.

The major portion of the north tier of sections and sections 10, 11, and 12 are nearly level providing a very good agricultural soil. The soil of the remainder of the township is either barren rock or gravelly covered with the usual desert growth.

Slight indications of mineral and some prospectors work was observed in the south-west quarter of section 22 and the north-west quarter of section 27.

Four settlers are making their homes in sections 1 and 2 and have made rather extensive improvements in the way of homes and cleared land. However, being without irrigation apparently no crops have been raised. These settlers are also without domestic water, having to haul water from a well in the next township north. It is estimated that water could be obtained at depths ranging from 350 to 400 feet.

A water hole in a bed-rock basin was observed in approximately the north-east corner of the south-west quarter of section 29. No springs or running water was found within the area.

4-680
(August, 1926)

FIELD ASSISTANTS.

NAMES.	CAPACITY.
T. H. Burris	Chainman.
Wallace Reid	Chainman.
Jack Sheley	Chainman.
Otho Thornton	Chainman.
John Midzor	Flagman.
W. H. Sheldon	Flagman.
Arthur A. Kidd	Axman.
Olliver H. Miller	Axman.
A. H. Hargrave	Axman.
Walter C. Smith	Axman.
E. A. Robart	Moundman.
Stanley E. Wood	Moundman.
J. I. Meskimons	Moundman.

186
57
BOOK 4035

CERTIFICATE OF UNITED STATES SURVEYOR

We, Francis E. Joy, U.S. Cadastral Engineer, and Robert H. Fischer, U.S. Transitman, hereby certify upon honor that, in pursuance

of special instructions received from the District Cadastral Engineer for Arizona

bearing date of the 7th day of December, 1933, we have well, faithfully, and truly

in our own proper persons and in strict conformity with said instructions, the Manual of Surveying Instructions, and the laws of the United States, surveyed ~~the~~ the south and west boundaries and subdivisional lines of

Township 2 North, Range 11 West,

of the Gila and Salt

River Meridian, in the State of Arizona, which are represented in

the foregoing field notes as having been executed by us, and under our direction; and that all the corners of said survey have been established and perpetuated in strict accordance with the Manual of Surveying Instruc-

tions, and the special written instructions of the District Cadastral Engineer for Arizona

and in the specific manner described in the field notes, and that the foregoing are the original field notes of such survey.

Robert H Fischer
U.S. Transitman,
Phoenix, Arizona,
April 7, 1934.

APPROVAL

Francis E Joy
U.S. Cadastral Engineer
September 21, 1934,
Glendale, California.

OFFICE OF U. S. SUPERVISOR OF SURVEYS,

Denver, Colorado, February 23, 1935.

The foregoing field notes of the survey of the south and west boundaries and subdivisional lines of Township 2 North, Range 11 West, of the Gila and Salt River Meridian, Arizona,

executed by Francis E. Joy, U.S. Cadastral Engineer, and Robert H. Fischer, U.S. Transitman,

under ~~his~~ special instructions dated December 7, 1933, having been critically examined, and the necessary corrections and explanations made, the said field notes, and the surveys they describe, are hereby approved.

Wm H. Dorman
U. S. Supervisor of Surveys.

I certify that the foregoing transcript of the field notes of the above-described surveys in _____, has been correctly copied from the original notes on file in this office.

U. S. Supervisor of Surveys.