

4210

4-579
(April 1933)

UNITED STATES
DEPARTMENT OF THE INTERIOR
GENERAL LAND OFFICE

ECOL 4210

FIELD NOTES

Public Land Survey Monuments Connected to U. S. Coast & Geodetic Survey

First Order Triangulation.

4210

Of the _____ Meridian,

In the State of _____ Arizona.

EXECUTED BY

Everett H. Kimmell, U. S. Surveyor.

4210

1931

Under special instructions dated _____, 19____, which provided
for the surveys included under Group No. _____, bearing the approval of the
Commissioner of the General Land Office under date of _____
and assignment instructions dated _____, 19____

Survey commenced _____, 19____

Survey completed _____, 19____

INDEX DIAGRAM.

Township -----, *Range* -----

6	5	4	3	2	1
7	8	9	10	11	12
18	17	16	15	14	13
19	20	21	22	23	24
30	29	28	27	26	25
31	32	33	34	35	36

GEOGRAPHIC POSITION OF PUBLIC LAND SURVEY MONUMENT

G.L.O. No. 3, Arizona.

BOOK 4210

(No. 11, New Mex.)

Tp. .. Rg. .. Mer.

State Arizona-New Mexico. County Apache-Catron.

Location and description of public land survey monument:

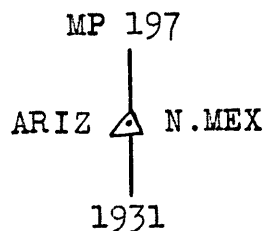
Original monument:

A granite stone, 20x14x8 ins., marked "197" on the north, "NM" on the east, "ARIZ" on the west, and "WL" on the south, firmly set in the ground and a mound of stone, witnessed by two piñon bearing trees.

Mile Post 197, on the Arizona-New Mexico Boundary.

New monument:

A regulation U.S. General Land Office brass tablet, set in a concrete post, 14 ins. square at top, 20 ins. square at base, 34 ins. long, 28 ins. in the ground, on bed-rock, marked:



The original stone was set alongside the new monument.

Latitude: 34° 08' 48.98"

Longitude: 109° 02' 46.34"

Elevation:

Remarks relative to above values:

1927 - N. A. Datum.

Directions for finding the public land survey monument:

From Springerville, Ariz., follow highway 70 east for 15.4 miles to the State Line; continue east for 0.3 miles; turn right and follow road SE. for about 0.3 miles; go through gate just north of windmill and follow old road E. and S. for 1.15 miles to top of mesa and S. edge of timber; turn right and drive SW., cross-country, along top of ridge for 0.5 miles, then swing to the right and drive nearly due west for 0.8 miles to the corner, which is about 68 yds. east of a N. & S. fence, and 100 yds. N. of timber.

Description of reference (or auxiliary) public land survey monuments:

No. 1

A regulation U.S. General Land Office brass tablet, set in a concrete monument, 12 ins. square at top, 18 ins. square at base, 34 ins. long, 28 ins. in the ground, on bed-rock, marked "REFERENCE No. 1, 1931" and arrow pointing toward the station.

Bears: N. $89^{\circ} 36\frac{1}{2}'$ E., (computed)

Distance: meters, 90.63 ft., 1.3732 chs. (computed)

No. 2 A regulation U.S. General Land Office brass tablet, set in a concrete post, 12 ins. square at top, 18 ins. square at base, 30 ins. long, 24 ins. in the ground, on bed-rock, marked "REFERENCE No. 2, 1931" and arrow pointing toward the station.

Bears: S. $76^{\circ} 30'$ W., (computed)

Distance: meters, 82.49 ft., 1.2498 chs. (computed)

No. 3 (Eccentric Station)

A regulation U.S. General Land Office brass tablet, set in a concrete post, 14 ins. square at top, 20 ins. square at base, 36 ins. long, 24 ins. in the ground, on bed-rock, marked "REFERENCE No. 3, 1931" and arrow pointing toward the station.

Bears: N. $32^{\circ} 35' 39''$ W., (Back bearing: S. $32^{\circ} 35' 43''$ E.)

Distance: 320.964 meters, 1053.03 ft., 15.9550 chs.

Latitude: $34^{\circ} 08' 57.757''$ Longitude: $109^{\circ} 02' 53.084''$

Name of cadastral engineer who reconstructed the public land survey monument, and of engineer who cooperated in making the geodetic connection, and remarks relative to when the work was performed:

Everett H. Kimmell, U.S. Surveyor.

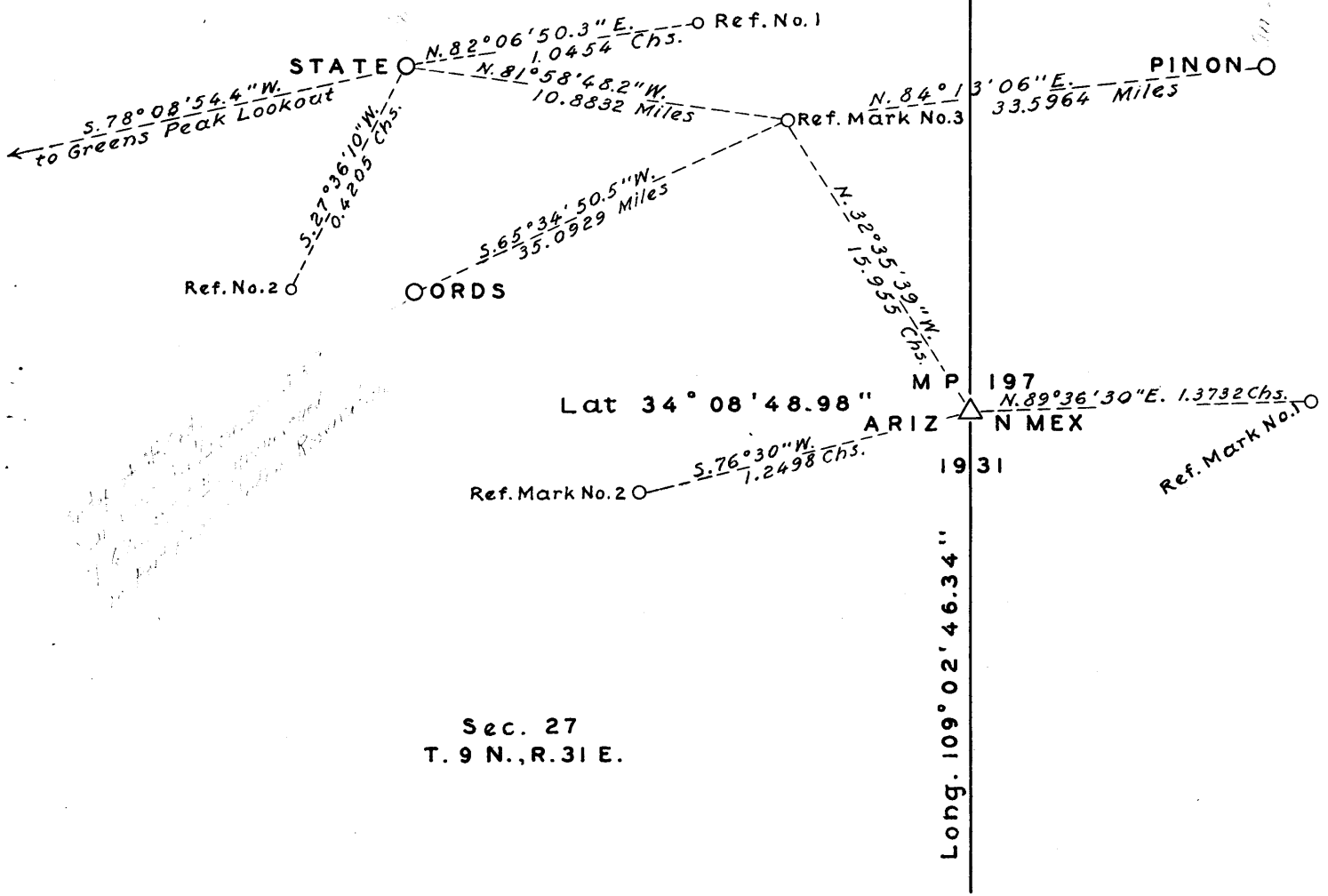
Station monumented in November, 1931.

Connections made by L. C. Johnson, U. S. C. & G. S., 1934.

In accordance with the provisions of the Act of Congress, July 15, 1890, Chapter 2116, Department of the Interior, Bureau of Land Management.

ARIZONA

NEW MEXICO



Sec. 27
T. 9 N., R. 31 E.

Handwritten notes:
The boundary line between Arizona and New Mexico is shown as a dashed line. The points STATE, COORDS, PINON, and M P 197 are marked with circles. The line from STATE to COORDS is labeled S. 27° 36' 10" W. 0.4209 Chs. The line from COORDS to Ref. Mark No. 3 is labeled S. 65° 34' 50.5" W. 35.0929 Miles. The line from Ref. Mark No. 3 to PINON is labeled N. 84° 13' 06" E. 33.5964 Miles. The line from Ref. Mark No. 3 to M P 197 is labeled N. 32° 35' 39" W. 15.955 Chs. The line from M P 197 to Ref. Mark No. 2 is labeled S. 76° 30" W. 1.2498 Chs. The line from Ref. Mark No. 2 to Ref. Mark No. 10 is labeled S. 76° 30" W. 1.2498 Chs. The line from Ref. Mark No. 10 to M P 197 is labeled N. 89° 36' 30" E. 1.3732 Chs. The line from STATE to Ref. No. 1 is labeled N. 82° 06' 50.3" E. 1.0454 Chs. The line from STATE to Ref. Mark No. 3 is labeled N. 81° 58' 48.2" W. 10.8832 Miles. The line from STATE to Greens Peak Lookout is labeled S. 78° 08' 54.4" W. to Greens Peak Lookout.

Tp. , Rg.

State Arizona - New Mexico County Apache - Catron

GEOGRAPHIC POSITION OF PUBLIC LAND SURVEY MONUMENT:

Monument: G.L.O. Cor. No. 3.Mile Post 197, on the Arizona - New Mexico Boundary.A brass tablet set in concrete.Latitude: 34° 08' 48.98"Longitude: 109° 02' 46.34"

Elevation:

Remarks relative to above values: 1927 - N.A.Datum. (No check on this position)

From Reference Mark No. 3:

C. & G. S. Station,	State,	bears	N. 81° 58' 48.2" W.,	870.65	chs.
"	"	Pinon,	" N. 84° 13' 06.0" E.,	2687.71	"
"	"	Ords,	" S. 65° 34' 50.5" W.,	2807.43	"
Mile Post 197,		"	S. 32° 35' 43" E.,	15.9550	"

GOVERNMENT PRINTING OFFICE

, Rg.

State Arizona - New MexicoCounty Apache - Catron

GEOGRAPHIC POSITION OF PUBLIC LAND SURVEY MONUMENT:

Monument: G.L.O. Cor. No. 3.Mile Post 197, on the Arizona - New Mexico Boundary.A brass tablet set in concrete.Latitude: 34° 08' 48.98"Longitude: 109° 02' 46.34"

Elevation:

Remarks relative to above values: 1927 - N.A.Datum. (No check on this position)

From Reference Mark No. 3:

C. & G. S. Station,	State,	bears	N. 81° 58' 48.2" W.,	870.65	chs.
"	"	Pinon,	" N. 84° 13' 06.0" E.,	2687.71	"
"	"	Ords,	" S. 65° 34' 50.5" W.,	2807.43	"
Mile Post 197,		"	S. 32° 35' 43" E.,	15.9550	"

GOVERNMENT PRINTING OFFICE

LOCATION AND DESCRIPTION OF COMPANION CONTROL MONUMENT:

BOOK 4210

Station: STATE.

Publication:

Pp:

Monument: A U.S. Coast and Geodetic Survey brass tablet, cemented in a drill hole in a lava boulder in place, 80x50x20 ins. above ground, marked "STATE 1931".

Latitude: 34° 10' 16.547"

Longitude: 109° 14' 10.262"

Elevation:

Remarks relative to above values:

1927 - N. A. Datum.

Directions for finding:

On a low, prominent butte, the most northerly of a small group of hills, capped with malpais, about $4\frac{1}{2}$ miles northeast of Springerville, Arizona. From Springerville follow highway 70 east for about 4.3 miles; from here trucks can be driven cross-country almost to the station, which is about $\frac{1}{2}$ mile to the north.

Description of reference (or auxiliary) control monuments:

No. 1

~~No reference marks established.~~

Established in 1934.

Bears: N. 82° 06' 50.3" E.,

Distance: 21.030 meters, 69.00 ft., 1.0454 chs.

No. 2

Bears: S. 27° 36' 10.0" W.,

Distance: 8.460 meters, 27.76 ft., 0.4205 chs.

Greens Peak Lookout bears S. 78° 08' 54.4" W.

CONNECTION FROM PUBLIC LAND SURVEY MONUMENT TO:

Companion Control Station: State.

Forward azimuth:	98° 01' 11.8"	=	N. 81° 58' 48.2" W.	(Bearing)
Back azimuth:	277° 54' 51.6"	=	S. 82° 05' 08.4" E.	"
Length of line: log Meters:	4.243 404	=	17514.8	Meters
" Feet:		=	57463	Feet
" Chains:		=	870.65	Chains
" Miles:		=	10.8832	Miles

Second Control Station: Pinon.

Latitude:	34° 11' 49.540"	Longitude:	108° 27' 52.070"	
Forward azimuth:	264° 13' 06.0"	=	N. 84° 13' 06.0" E. (Bearing)	
Back azimuth:	84° 32' 46.1"	=	S. 84° 32' 46.1" W. "	
Length of line: log Meters:	4.732 943	=	54068.3	Meters
" Feet:		=	177389	Feet
" Chains:		=	2687.71	Chains
" Miles:		=	33.5964	Miles

Third Control Station: Ords.

Latitude:	33° 56' 15.437"	Longitude:	109° 36' 15.463"	
Forward azimuth:	65° 34' 50.5"	=	S. 65° 34' 50.5" W. (Bearing)	
Back azimuth:	245° 16' 09.5"	=	N. 65° 16' 09.5" E. "	
Length of line: log Meters:	4.751 869	=	56476.7	Meters
" Feet:		=	185291	Feet
" Chains:		=	2807.43	Chains
" Miles:		=	35.0929	Miles

Remarks relative to above values:

1927 - N. A. Datum.

CONVERSION FACTORS:

1 Meter = 3.280 833 Feet
log = 0.515 9842

1 Meter = 0.049 7096 Chains
log = 8.696 4403

1 Meter = 0.000 62137 Miles
log = 6.793 3503

1 Chain = 66 Feet
log = 1.819 5439

GEOGRAPHIC POSITION OF PUBLIC LAND SURVEY MONUMENT

G.L.O. No. 2, Arizona.

Tps. 13 N .. Rgs. 26 & 27E .. Gila & Salt River Prin. Mer.

State Arizona County Apache.

Location and description of public land survey monument:

Original monument:

A properly marked granite stone, 6x5x3 ins.,
in a small mound of stone.The Standard Corner of secs. 31 and 36, Ts. 13 N., Rs. 26 and
27 E., Gila and Salt River Principal Meridian; on the 3rd
Standard Parallel North.New monument: A regulation U.S. General Land Office brass tablet,
set in a concrete post, 14 ins. square at top, 20 ins. square
at base, 38 ins. long, 32 ins. in the ground, marked:

SC	
T13N	
R26E	R27E
S36	S31

1931

Latitude: 34° 28' 48.53"

Longitude: 109° 31' 25.84"

Elevation:

Remarks relative to above values:

1927 - N. A. Datum.

No check on this position.

Directions for finding the public land survey monument:

From the Conoco filling station in the west side of St. Johns, Arizona, follow highway 70 west for 9.8 miles to a cattle guard; turn left and drive cross-country around west side of low round hill, then southeast, then south along fence to corner, about 0.7 miles from the highway, and about 350 yds. north of top of ridge.

Description of reference (or auxiliary) public land survey monuments:

No. 1

A regulation U.S. General Land Office brass tablet, set in a concrete monument, 12 ins. square at top, 18 ins. square at base, 36 ins. long, 30 ins. in the ground, marked "REFERENCE No. 1, 1931" and arrow pointing toward the station.

approx. N. 5° E., 170 yds. dist.

Bears:

Distance: meters, ft., chs.

No. 2

A regulation U.S. General Land Office brass tablet, set in a concrete post, 14 ins. square at top, 20 ins. square at base, 34 ins. long, 28 ins. in the ground, marked "REFERENCE No. 2, 1931" and arrow pointing toward the station.

This mark is located on top of the ridge, and served as and Eccentric Station in making the connections to control stations.

Latitude: 34° 28' 47.819" Longitude: 109° 31' 10.540"

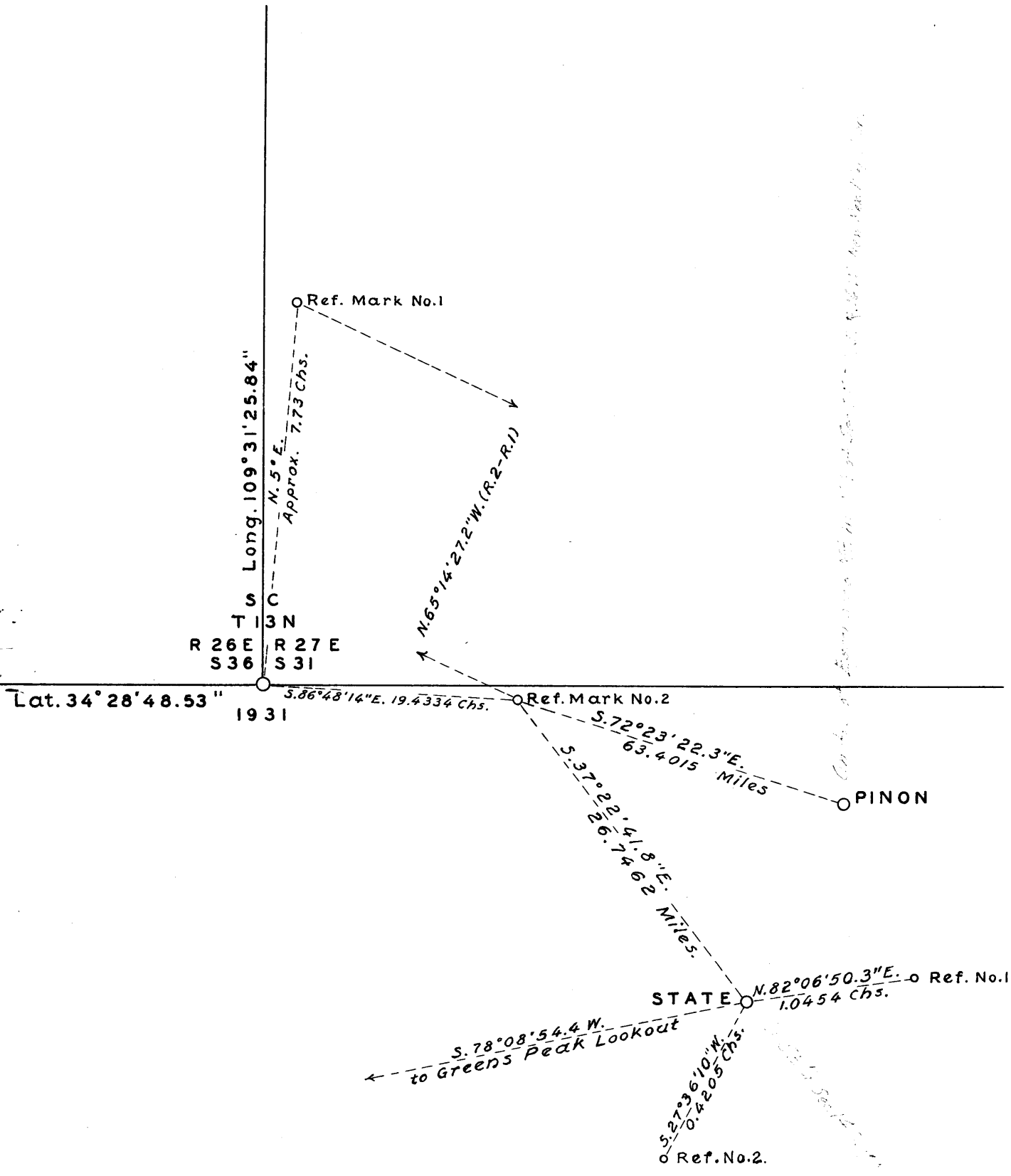
Bears: S. 86° 48' 14" E.,

Distance: 390.938 meters, 1282.60 ft., 19.4334 chs.

Name of cadastral engineer who reconstructed the public land survey monument, and of engineer who cooperated in making the geodetic connection, and remarks relative to when the work was performed:

Everett H. Kimmell, U.S. Surveyor.
Station monumented in November, 1931.

Connections made by L. C. Johnson, U. S. C. & G. S., 1934.



12

Tps. 13 N Rgs. 26 & 27 E

Gila & Salt River Prin.

State Arizona

County

Apache

GEOGRAPHIC POSITION OF PUBLIC LAND SURVEY MONUMENT:

Monument: G.L.O. Cor. No. 2.
The Std. Cor. of secs. 31 and 36.
A brass tablet set in concrete.

Latitude: 34° 28' 48.53"
Longitude: 109° 31' 25.84"
Elevation:

Remarks relative to above values: 1927 - N.A.Datum. (No check on this position.)

From Reference Mark No. 2:

C. & G. S. Station, State, bears S. 37° 22' 41.8" E., 2139.70 chs.
Pinon (1919) " S. 72° 23' 22.3" E., 5072.12 "
G. L. O. Cor. No. 3, " N. 86° 48' 05" W., 19.4334 "

12A

13 N Rgs. 26 & 27 E

Gila & Salt River Prin.

Arizona

County

Apache

APHIC POSITION OF PUBLIC LAND SURVEY MONUMENT:

ment: G.L.O. Cor. No. 2.
The Std. Cor. of secs. 31 and 36.
A brass tablet set in concrete.

BOOK 4210

Latitude: 34° 28' 48.53"
Longitude: 109° 31' 25.84"
Elevation:

Remarks relative to above values: 1927 - N.A.Datum. (No check on this position.)

From Reference Mark No. 2:

C. & G. S. Station, State, bears S. 37° 22' 41.8" E., 2139.70 chs.
Pinon (1919) " S. 72° 23' 22.3" E., 5072.12 "
G. L. O. Cor. No. 3, " N. 86° 48' 05" W., 19.4334 "

LOCATION AND DESCRIPTION OF COMPANION CONTROL MONUMENT:

BOOK 4210

Station: STATE.

Publication:

Pp:

Monument: A U.S. Coast and Geodetic Survey brass tablet, cemented in a drill hole in a lava boulder in place, 80x50x20 ins. above ground, marked "STATE 1931".

Latitude: 34° 10' 16.547"

Longitude: 109° 14' 10.262"

Elevation:

Remarks relative to above values:

1927 - N. A. Datum.

Directions for finding:

On a low, prominent butte, the most northerly of a small group of hills, capped with malpais, about $4\frac{1}{2}$ miles northeast of Springerville, Arizona. From Springerville follow highway 70 east for about 4.3 miles; from here trucks can be driven cross-country almost to the station, which is about $\frac{1}{2}$ mile to the north.

Description of reference (or auxiliary) control monuments:

No. 1

Established in 1934.

Bears: N. 82° 06' 50.3" E.,

Distance: 21.030 meters, 69.00 ft., 1.0454 chs.

No. 2

Bears: S. 27° 36' 10.0" W.,

Distance: 8.460 meters, 27.76 ft., 0.4205 chs.

Greens Peak Lookout bears S. 78° 08' 54.4" W.

CONNECTION FROM PUBLIC LAND SURVEY MONUMENT TO:

Companion Control Station: State.

Forward azimuth:	322° 37' 18.2"	=	S. 37° 22' 41.8" E.	(Bearing)
Back azimuth:	142° 46' 53.5"	=	N. 37° 13' 06.5" W.	"
Length of line: log Meters:	4.633 912	=	43043.9	Meters
" Feet:		=	141220	Feet
" Chains:		=	2139.70	Chains
" Miles:		=	26.7462	Miles

Second Control Station: Pinon.

Latitude:	34° 11' 49.540"	Longitude:	108° 27' 52.070"	
Forward azimuth:	287° 36' 37.7"	=	S. 72° 23' 22.3" E. (Bearing)	
Back azimuth:	108° 12' 20.4"	=	N. 71° 47' 39.6" W. "	
Length of line: log Meters:	5.008 749	=	102035.0	Meters
" Feet:		=	334760	Feet
" Chains:		=	5072.12	Chains
" Miles:		=	63.4015	Miles

~~Third Control Station: G.L.O. Cor. No. 3.~~

Latitude:		Longitude:		
Forward azimuth:	93° 11' 55"	=	N. 86° 48' 05" W. (Bearing)	
Back azimuth:	273° 11' 46"	=	S. 86° 48' 14" E. "	
Length of line: log Meters:	2.592 108	=	390.938	Meters
" Feet:		=	1282.60	Feet
" Chains:		=	19.4334	Chains
" Miles:		=		Miles

Reference Mark No. 1 bears N. 65° 14' 27.2" W.

Remarks relative to above values:

1927 - N. A. Datum.

CONVERSION FACTORS:

1 Meter = 3.280 833 Feet
log = 0.515 9842

1 Meter = 0.049 7096 Chains
log = 8.696 4403

1 Meter = 0.000 62137 Miles
log = 6.793 3503

1 Chain = 66 Feet
log = 1.819 5439

4210

GEOGRAPHIC POSITION OF PUBLIC LAND SURVEY MONUMENT
(Station FOURCORNERS)
G.L.O. No. 1, Ariz.
(No.16, Colo.) (No.9, Utah) (No.1, N.M.)

Tp. Rg. Mer.
State Ariz.-Utah-N.Mex.-Colo. County Apache-San Juan-San Juan-Montezuma.

Location and description of public land survey monument:

Original monument:

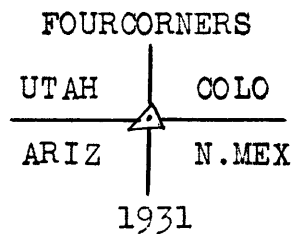
A limestone, 53x13x6 ins., broken in four pieces, with the lower end still firmly set in the ground, marked "COL" on the northeast, "N.Mex" on the southeast, "Arizona" on the southwest, and "Utah" on the northwest; surrounded by a large mound of stone. The original stone deposit was also found, beneath this monument; a hard sandstone, 8x6x5 ins., marked "37°NL 32°WL" and "1875".

This is the monument set by Chandler Robbins, U.S. Astronomer and Surveyor, for the Initial Monument of the Arizona - New Mexico Boundary, in 1875.

The Corner common to the four States: New Mexico, Arizona, Utah and Colorado.

New monument:

A regulation U.S. General Land Office brass tablet, set in a concrete monument, 14 ins. square at top, 28 ins. square at base, 56 ins. long, 38 ins. in the ground, marked:



A similarly marked tablet was set in concrete, for sub-surface mark, 40 ins. below surface of ground.

Latitude: 36° 59' 56.30"

Longitude: 109° 02' 40.24"

Elevation:

Remarks relative to above values:

1927 - N. A. Datum.

No check on this position.

Directions for finding the public land survey monument:

From Shiprock Indian Agency, go south for 0.6 miles on Highway 666; turn right and follow Rattlesnake Oil Field Road for 6.3 miles; take right fork for 16.0 miles to trading post; continue on main road for 7.8 miles; turn right and go 0.45 miles; take right fork for 2.8 miles; take left fork for 0.35 miles; take left fork and continue straight ahead for 0.5 miles; take left fork for 1.6 miles; take left fork for 1.7 miles; take left fork for 0.4 miles; then left fork for 0.1 miles to the corner.

Description of reference (or auxiliary) public land survey monuments:

- No. 1 A regulation U.S. General Land Office brass tablet, set in a concrete post, 12 ins. square at top, 18 ins. square at base, 34 ins. long, 32 ins. in the ground, marked "REFERENCE No. 1, 1931" and arrow pointing toward the corner.

Easterly.

Bears:

Distance: 22.870 meters, 75.03 ft., 1.1369 chs.

- No. 2

A regulation U.S. General Land Office brass tablet, set in a concrete post, 12 ins. square at top, 18 ins. square at base, 34 ins. long, 30 ins. in the ground, marked "REFERENCE No. 2, 1931" and arrow pointing toward the corner.

Westerly.

Bears:

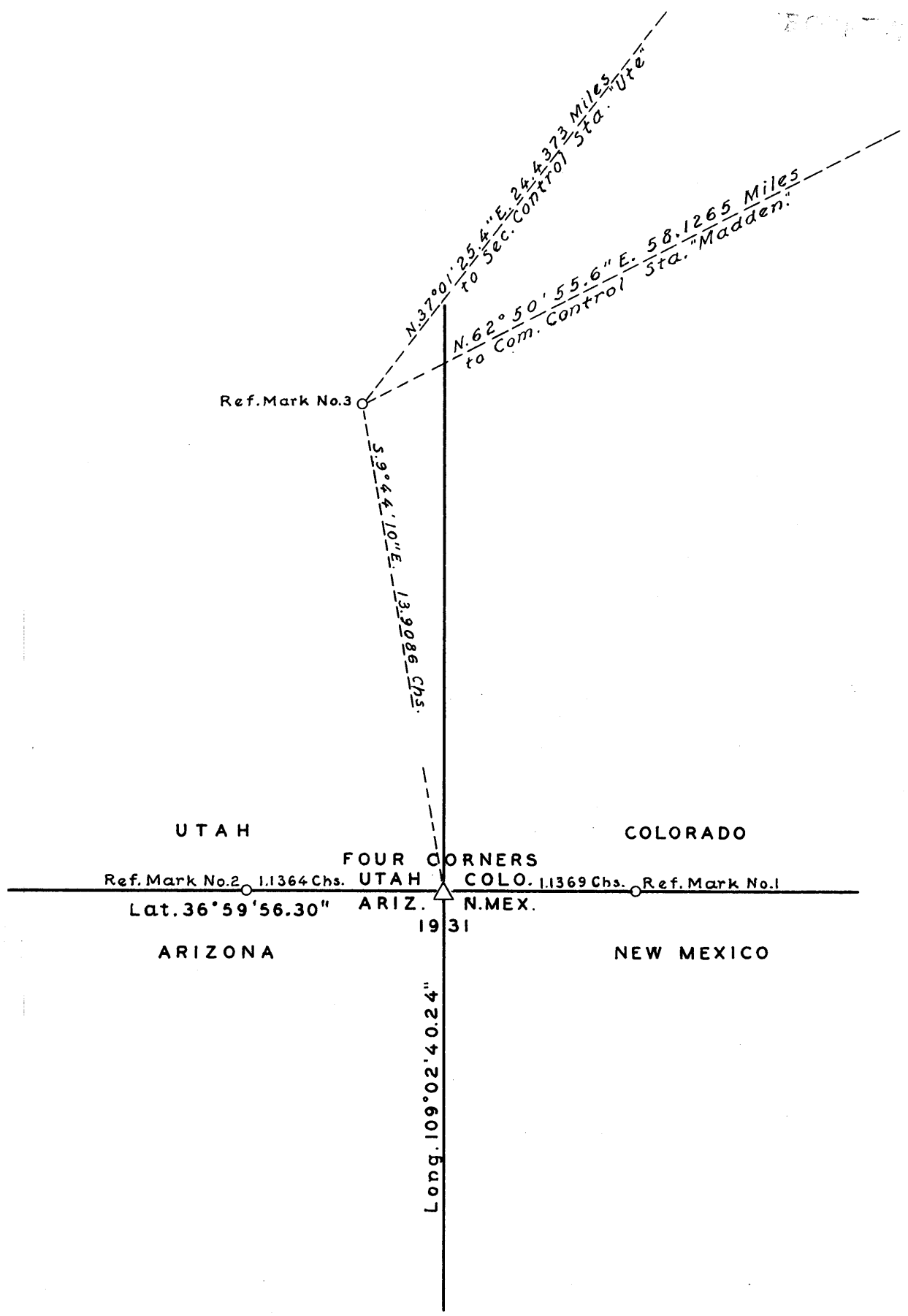
Distance: 22.860 meters, 75.00 ft., 1.1364 chs.

Name of cadastral engineer who reconstructed the public land survey monument, and of engineer who cooperated in making the geodetic connection, and remarks relative to when the work was performed:

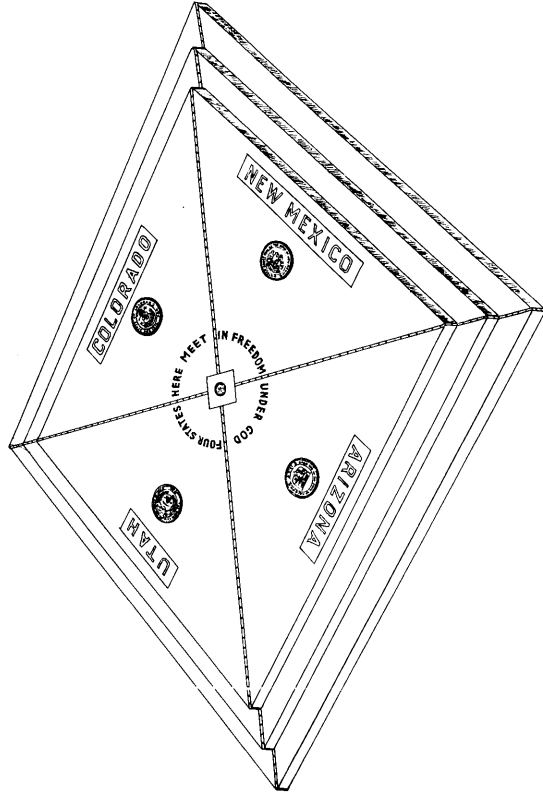
Everett H. Kimmell, U.S. Surveyor.
Station monumented October 23, 1931.

Connections made by E. B. Latham, U. S. C. & G. S., 1934.

8007-100

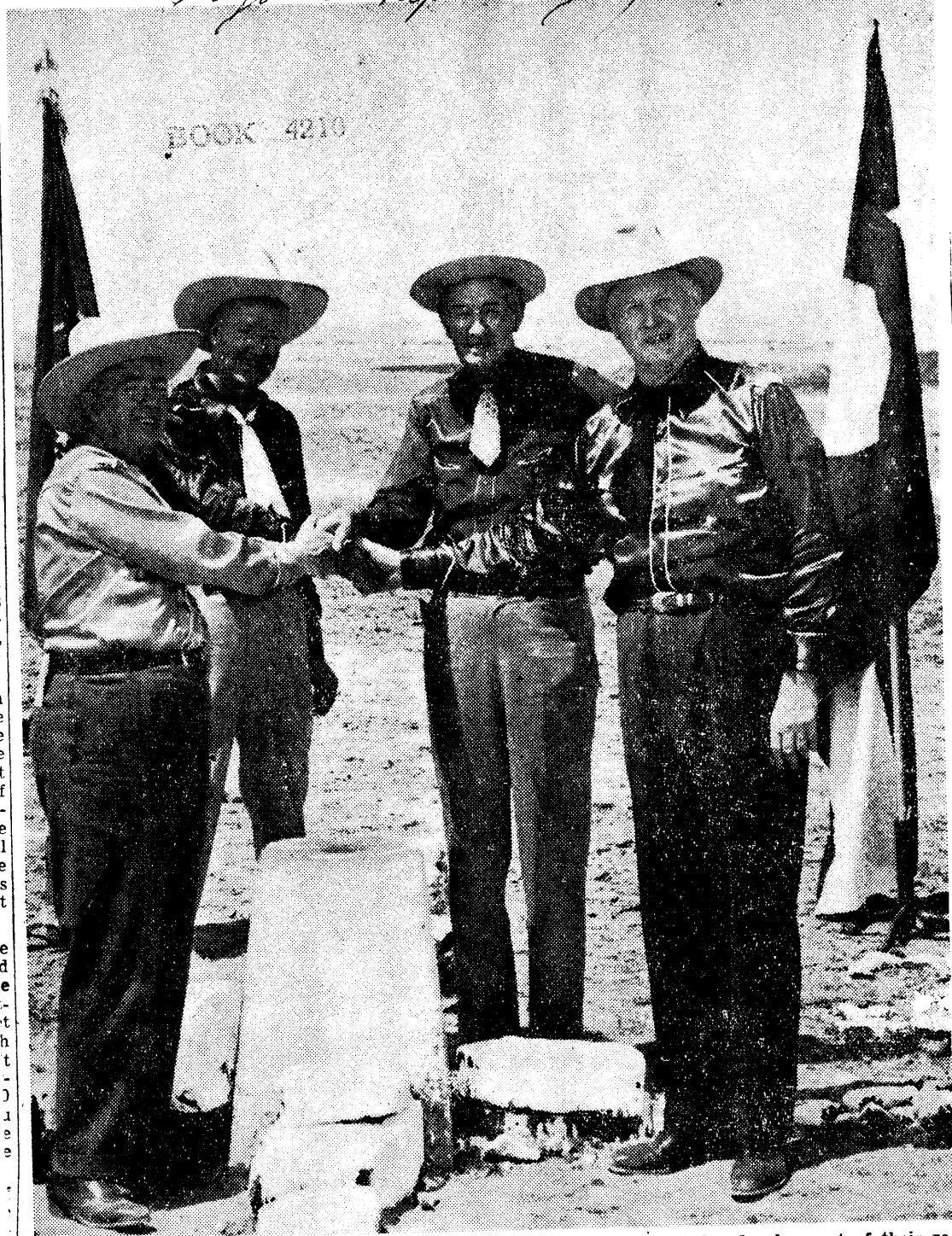


1737



State Executives Meet At Monument

Arizona Republic July 19, 1949



Governors of Arizona, Utah, Colorado and New Mexico join hands to pledge development of their resources. Left to right are Dan E. Garvey, J. Bracken Lee of Utah, W. Lee Knous of Colorado, and Thomas J. Mabry of New Mexico. Each governor stood beside his state flag on the soil of his own state, the Four Corners monument between them. (Republic Staff Photo by Ralph Camping)

Garvey To Fly To Four-State Corner Meet

Old Stone Marker At Phoenix Museum Recalls Early Survey

(Picture, Page 8)

GOVERNOR GARVEY'S trip to the "only point where four states meet" Monday calls attention to the original cornerstone, now reposing in the state library museum.

It was recovered from its resting place in 1932, when a bronze marker was erected by the U. S. Indian Service to identify the unusual site. According to Vic Housholder, long active in the Phoenix chapter, American Association of Civil Engineers, the Works Progress Administration sent a surveying party to the site in 1932 to arrange for the erection of the new marker.

ALL THE GROUP could find was a pile of stones of no significance. This was not according to the records of the Public Lands Survey, which employed a surveyor in 1875 to mark the western boundary of New Mexico. His report stated:

"At this point I place the initial monument, which consists of a shaft of hard sand stone seven feet long, 12 inches wide and six inches thick; set three feet in the ground and marked on the Northeast, Colorado; 37 degrees North

(Continued On Page 8, Col. 2)

Garvey To Fly To Four-State Corner Meet

(Continued From Page One)

Latitude; on the Southeast, New Mexico, 32 degrees West Longitude; on the Southwest, Arizona; on the Northwest, Utah—1875. I also deposited a hard sandstone 6 by 4½ by 4 inches, marked 37 N L, 32 W L. 1875. Chandler Robbins, U. S. surveyor and astronomer."

Moving the pile of rocks and digging down about one-half foot, the party discovered the small stone. Thus, having verified the former survey, the permanent marker was erected.

BUT WHAT became of the big sandstone marker? No one has been able to explain its absence. Did the Indians, resenting encroachment on their land by the symbols of the White Man, destroy or hide it? Did Robbins intend the sandstone shaft should be erected, but never get around to it? No one has the answer, according to Housholder.

Dave Rogers, St. Johns, Apache county agricultural agent, was in the group that located the cornerstone. Since the surveyors tossed it aside, he asked if he could keep it. Being told so, he took it to Tucson, when he was stationed there for the University of Arizona agricultural extension service and a few years later presented it to the state for safekeeping.

Visitors may see this interesting stone at the state library museum room, where there are numerous other historical items of old Arizona, Governor Garvey said he was not going to take the stone with him—there might be a demand by the other three governors for their share of it.

He plans to leave by National Guard plane at 7 a. m. Monday to participate in a meeting with the governors of Utah, Colorado, and New Mexico and will be accompanied by Ben Avery of The Arizona Republic, Howard Pyle of Radio Station KTAR, and Jack Williams of Radio Station KOY. A luncheon will be served by the Durango, Colo., Chamber of Commerce.

The ceremonies, in which each of the governors will make a brief speech, will mark the first meeting in history of chief executives of the four states at the point of convergence of their states' boundaries.

Four State Cornerstone Is Museum Piece



Cornerstones usually are found in buildings of size and distinction; but here is a "four corner" stone that was one of the most unusual markers in the United States. From 1875 until 1932 it lay at an inaccessible point that marked the joining of Colorado, New Mexico, Arizona, and Utah state lines. There is no other such geographical distinction in the nation. The surveyor's marks indicate 37 degrees, North Latitude; 32 degrees West Longitude from Washington. On top the date 1875, is cut. The stone now is exhibited at the state library museum.—(Republic Staff Photo)

Arizona Republic July 18 1932

1931-1934

Mer. 18

Tp. . . Rg. . .

State Arizona - N.M. - Colo. - Utah County Apache - San Juan - Montezuma - San Juan

GEOGRAPHIC POSITION OF PUBLIC LAND SURVEY MONUMENT:

Triangulation Station "Fourcorners"

Monument: G.L.C. Cor. No. 1. (No. 1 N.M.) (No. 16 Colo.) (No. 9 Utah)
 The Cor. common to the four States, Ariz. - New Mex. - Colo. - Utah.
 A brass tablet set in a concrete monument.

Latitude: 36° 59' 56.30"

Longitude: 109° 02' 40.24"

Elevation:

Remarks relative to above values: 1927 - N.A.Datum. (No check on this position)

From Reference Mark No. 3:

C. & G. S. Station,	Madden,	bears	N. 62° 50' 55.6" E.,	4650.12	chs.
"	"	"	N. 37° 01' 25.4" E.,	1954.98	"
Station "Fourcorners",		"	S. 9° 44' 10" E.,	13.9086	"

GOVERNMENT PRINTING OFFICE

1931-1934

Mer. 18

. . . Rg. . .

Arizona - N.M. - Colo. - Utah County Apache - San Juan - Montezuma - San Juan

GEOGRAPHIC POSITION OF PUBLIC LAND SURVEY MONUMENT:

Triangulation Station "Fourcorners"

Monument: G.L.C. Cor. No. 1. (No. 1 N.M.) (No. 16 Colo.) (No. 9 Utah)
 The Cor. common to the four States, Ariz. - New Mex. - Colo. - Utah.
 A brass tablet set in a concrete monument.

Latitude: 36° 59' 56.30"

Longitude: 109° 02' 40.24"

Elevation:

Remarks relative to above values: 1927 - N.A.Datum. (No check on this position)

From Reference Mark No. 3:

C. & G. S. Station,	Madden,	bears	N. 62° 50' 55.6" E.,	4650.12	chs.
"	"	"	N. 37° 01' 25.4" E.,	1954.98	"
Station "Fourcorners",		"	S. 9° 44' 10" E.,	13.9086	"

GOVERNMENT PRINTING OFFICE

LOCATION AND DESCRIPTION OF COMPANION CONTROL MONUMENT:

Station: Eccentric Station to Station FOURCORNERS.

Publication:

BOOK 4210

Pp:

Monument:

A regulation U.S. General Land Office brass tablet, set in a concrete monument, 14 ins. square at top, 20 ins. square at base, 40 ins. long, 34 ins. in the ground, marked: "REFERENCE No. 3, 1931" and arrow pointing toward the corner.

Latitude: 37° 00' 05.244"

Longitude: 109° 02' 42.158"

Elevation:

Remarks relative to above values:

1927 - N. A. Datum.

Directions for finding:

See directions to G.L.O. No. 1.

Description of reference (or auxiliary) control monuments:

No. 1

Bears:

Distance: meters, ft., chs.

No. 2

Bears:

Distance: meters, ft., chs.

Reference Mark No. 3 (Fourcorners Eccentric)

CONNECTION FROM PUBLIC LAND SURVEY MONUMENT TO:

Companion Control Station: Madden.

Forward azimuth:	242° 50' 55.6"	=	N. 62° 50' 55.6" E.	(Bearing)
Back azimuth:	63° 25' 00.9"	=	S. 63° 25' 00.9" W.	"
Length of line: log Meters:	4.971 024	=	93545.7	Meters
" Feet:		=	306908	Feet
" Chains:		=	4650.12	Chains
" Miles:		=	58.1265	Miles

Second Control Station: Ute.

Latitude:	37° 17' 02.714"	Longitude:	108° 46' 40.828"	
Forward azimuth:	217° 01' 25.4"	=	N. 37° 01' 25.4" E. (Bearing)	
Back azimuth:	37° 11' 05.8"	=	S. 37° 11' 05.8" W. "	
Length of line: log Meters:	4.594 703	=	39328.1	Meters
" Feet:		=	129029	Feet
" Chains:		=	1954.98	Chains
" Miles:		=	24.4373	Miles

~~Third Control Station: Fourcorners (G.L.O. Cor. No. 1)~~

Latitude:		Longitude:		
Forward azimuth:	350° 15' 50"	=	S. 9° 44' 10" E. (Bearing)	
Back azimuth:	170° 15' 51"	=	N. 9° 44' 09" W. "	
Length of line: log Meters:	2.446 845	=	279.798	Meters
" Feet:		=	917.97	Feet
" Chains:		=	13.9086	Chains
" Miles:		=		Miles

Remarks relative to above values:

1927 - N. A. Datum.

CONVERSION FACTORS:

1 Meter = 3.280 833 Feet	1 Meter = 0.049 7096 Chains
log = 0.515 9842	log = 8.696 4403
1 Meter = 0.000 62137 Miles	1 Chain = 66 Feet
log = 6.793 3503	log = 1.819 5439