

UNITED STATES
DEPARTMENT OF THE INTERIOR
GENERAL LAND OFFICE

DOC: 4278

4278

FIELD NOTES

OF THE

Resurvey of the Ninth Standard Parallel North, through a Portion
of Range 14 West, and Survey of the Subdivisional Lines of
Township 37 North, Range 14 West,

Of the Gila and Salt River Meridian,

In the State of Arizona

EXECUTED BY

Claude F. Warner, Transitman,
and
Frank Moteh, Public Land Surveyor,
General Land Office.

Under special instructions dated July 15, 1937, 19, which provided
for the surveys included under Group No. 212, bearing the approval of the
Commissioner of the General Land Office under date of July 18, 1939
and assignment instructions dated September 12, 1939.

Survey commenced October 16, 1939.

Survey completed October 30, 1939.

1A

BOOK 4278

INDEX DIAGRAM.

Township 37 North, Range 14 West

6	56 5	44 4	35 3	25 2	17 1
56	55	43	34	24	16
7	54 8	42 9	33 10	23 11	15 12
53	52	41	32	23	13
18	51 17	40 16	31 15	22 14	12 18
51	50	39	30	21	11
19	49 20	38 21	29 22	20 23	10 24
48	47	38	28	20	8
30	47 29	37 28	28 27	19 26	7 25
46	45	36	27	18	6
31	44 32	35 33	26 34	18 35	5 36
					4

6-151

— Lines run by Warner.

— Lines run by Motok.

The surveys herein described were executed by Claude F. Warner, Transitman, and Frank Moteh, Public Land Surveyor, using respectively, Buff and Buff transit No. 9984, and Young and Sons transit No. 8526. Each of these instruments is equipped with an improved Smith solar attachment and otherwise conforms to the standard specifications of the General Land Office. The instruments were examined by the District Cadastral Engineer for California and Arizona prior to the beginning of the surveys of this group, and were approved conditional upon satisfactory results of field tests of same.

The azimuths of all of the lines of survey herein described were determined either by Polaris observation or with the solar attachments.

All measurements were made with Dietzgen steel tapes, 5 chains in length, graduated every link for the first 100 links, and the remainder at intervals of 10 links. The tapes were tested by comparison with a Lufkin standard tape and found to be correct. All of the measurements were made on the slope, the vertical angle of each interval determined with a clinometer in good adjustment, and the horizontal equivalents entered in the field notes.

PRELIMINARY FIELD TESTS OF INSTRUMENTS.

Buff and Buff transit No. 9984
 Claude F. Warner, Transitman.

October 12, 1939; at camp near the center of sec. 34, T. 38 N., R. 14 W., G. and S. R. Meridian, Arizona, latitude 36° 39' N., longitude 113° 47½' W., examine the adjustments of Buff and Buff transit N. 9984 and find no errors; then, to test the solar apparatus of same by comparing its indications with a true meridian established by Polaris observation, proceed as follows:

at 6h.20.1m., a.m., l.m.t. observe Polaris at western elongation, making six observations, three each with the telescope in direct and reversed positions, and mark the mean point in the line thus determined by a nail in a stake driven firmly in the ground about 6 chs. North.

Azimuth of Polaris at western elongation: 1° 16' 30".

At 8 a.m. lay off the azimuth of Polaris 1° 16½' to the east, and mark the meridian thus determined by a sight on top of spur about 12 chs. N.

At 9h.00m., a.m., app.t., set off 36° 39' N. on the lat. arc; 7° 12½' S. on the decl. arc; and determine a meridian with the solar, which agrees with the true meridian.

At app. noon, with the lat. arc unchanged; observe the sun on the meridian, and obtain a reading of 7° 15½' S. on the decl. arc, which agrees with the computed declination of the sun.

At 3h.00m., p.m., app.t., with the lat. arc unchanged; set off 7° 18' S. on the decl. arc; and determine a meridian with the solar, which agrees with the true meridian.

As all solar observations made during the usual hours of solar work come within 1'30" of the true meridian, conclude that this instrument is in satisfactory adjustment.

BOOK 4278

2.

T. 37 N., R. 14 W.

Young and Sons transit No. 8526
Frank Moteh, Public Land Surveyor.

October 12, 1939; at same station as above and using same true meridian, test the solar apparatus of Young and Sons transit No. 8526 as follows:

At 9h.00m., a.m., app.t.; set off $36^{\circ} 39' N.$ on the lat. arc; $7^{\circ} 12\frac{1}{2}' S.$ on the decl. arc; and determine a meridian with the solar, which agrees with the true meridian.

At app. noon, with the lat. arc unchanged; observe the sun on the meridian and obtain a reading of $7^{\circ} 15\frac{1}{2}' S.$ on the decl. arc, which agrees with the computed declination of the sun.

At 3h.00m., p.m., app.t., with the lat. arc unchanged; set off $7^{\circ} 18' S.$ on the decl. arc and determine a meridian with the solar, which agrees with the true meridian.

As all solar observations made during the usual hours of solar work come within $1'30''$ of the true meridian, conclude that the instrument is in satisfactory adjustment.

Resurvey of Ninth Standard Parallel North thru Part of R. 14 W.

3.

The Ninth Standard Parallel North was surveyed through R. 14 W. by Dupree R. Averill, U. S. Surveyor, in 1929 under instructions for Group 158. No retracement or resurvey of the Ninth Standard Parallel through R. 14 W. is of record. The following notes describe a dependent resurvey of the W. one-half mile of the S. bdy. of sec. 36 and the E. one-half mile of the S. bdy. of sec. 35, establishing a witness standard cor. of secs. 35 and 36. The original standard cor. of secs. 35 and 36 was washed out, and the true point for the restoration of the std. cor. of said secs. fell in wash, necessitating establishment of witness cor. of said secs..

Retracement for Resurvey

From the standard $\frac{1}{4}$ sec. cor. of sec. 35.

East, on random line, along S. bdy. of E. one-half of sec. 35.

40.00 Set temp. std. cor. of secs. 35 and 36. Continue line and measurement along S. bdy. of W. one-half of sec. 36.

79.86 Intersect std. $\frac{1}{4}$ sec. cor. of sec. 36. True course of W. $\frac{1}{2}$ of sec. 36 and E. $\frac{1}{2}$ of sec. 35 is, therefore, West, and the proportionate dist. for each of these said $\frac{1}{2}$ miles is 39.93 chs.

Resurvey

From the standard $\frac{1}{4}$ sec. cor. of sec. 36, which is an iron post, 1 in. in diam., set marked, and witnessed, as described in the official record.

Thence,

West, on true line, along S. bdy. of sec. 36 (W. $\frac{1}{2}$ mile).

Over mountainous land, thru very scattering timber and dense undergrowth.

Desc. 172 ft. over W. slope to

16.40 Top of sloping sandstone ledge, faces W., brs. N. and S. Desc. 222 ft. over rocky broken SW. slope to

39.40 Center of wash, 140 lks. wide, in deep canyon, course S. 10° E. Along bottom of wash to

39.93 (Proportionate dist.) True point for reestablishment of std. cor. of secs. 35 and 36. Impracticable to set cor. at this point, therefore, establish witness cor. of said secs. 1.00 chs. West, as hereinafter described.

Land, mountainous.

Soil, rocky sandstone; 4th rate.

Timber, juniper and pinyon. Scattering joshua trees.

Undergrowth, blackbrush, sagebrush, and cacti. Fair grass.

West, on true line, along S. bdy. of sec. 35 (E. $\frac{1}{2}$ mile).

Over mountainous land, thru scattering undergrowth.

Asc. 6 ft. over E. slope to

Resurvey of Ninth Standard Parallel North Thru Part of R. 14 W.

4.

Chains	
1.00	Set an iron post, 3 ft. long, 2 ins. in diam., 28 ins. in the ground, for witness standard cor. of secs. 35 and 36, with brass cap marked
	<p style="text-align: center;">T37N R14W S35 S36 ----- WC 1939</p>
	from which
	A juniper, 24 ins. diam., bears N. 12½° E., 534 lks. dist., marked WC T37N R14W SC BT.
	No other bearing tree available.
	of stone, 2½ ft. base, 2 ft. high, N. of cor. raise a mound
	Asc. 1036 ft. over E. slope. Over series of low sandstone ledges facing E. to
14.30	Leave sandstone ledges, enter malpais slide rock, brs. N. and S.
32.70	Top of ridge, brs. N. and S. Desc. 267 ft. over W. slope to
39.93	Intersect the standard ¼ sec. cor. of sec. 35, which is an iron post, 1 in. in diam., set, marked, and witnessed as described in the official record.
	Land, mountainous.
	Soil, rocky sandstone and malpais; 4th rate.
	Timber, few juniper and pinyon in canyon. Few joshua trees.
	Undergrowth, blackbrush, sagebrush, and cacti. Poor grass.

Survey: Subdivision Lines: T. 37 N., R. 14 W.

5.

Chains	
	Commence the survey of the subdivision lines of T. 37 N., R. 14 W. at the true point for the standard cor. of secs. 35 and 36, on the S. bdy. of the Tp. Witness standard cor. of said secs. established 1.00 ch. West of this point as hereinbefore described.
	Thence,
	N. 0° 01' W., bet. secs. 35 and 36.
	Over canyon bottom, thru scattering timber and dense undergrowth.
	Asc. 10 ft. up canyon wash to
4.00	Leave canyon wash, 140 lks. wide, course S. 10° E., from N. 30° W. Asc. 19 ft. along canyon bottom to
13.40	Same wash, course S. 30° W. Continue along bottom of canyon. Asc. 23 ft. to
22.60	Same wash, course S. 30° E. Asc. 11 ft. along bottom of canyon to
32.80	Leave canyon bottom and base of sandstone ledges, facing SW., brs. S. 10° E. and N. 10° W. Asc. 145 ft. over rocky SW. slope over series of sandstone ledges to
40.00	Set an iron post, 3 ft. long, 1 in. in diam., on sandstone bedrock, and in a mound of stone to top, for $\frac{1}{4}$ sec. cor., with brass cap marked
	$\frac{1}{4}$
	S35 S36
	1939
	from which
	A pinyon, 5 ins. diam., bears N. 6 $\frac{1}{4}$ ° E., 291 lks. dist., marked $\frac{1}{4}$ S36 BT.
	A pinyon, 10 ins. diam., bears S. 6° W., 110 lks. dist., marked $\frac{1}{4}$ S35 BT.
	Asc. 24 ft. over sandstone ledge, sloping SW. to
43.40	Top of sandstone ledges, facing SW., brs. SE. and W. Top of rock spur, slopes W. Desc. slightly over N. slope to
44.00	Top of sandstone ledge, faces N., brs. E. and W. Desc. 40 ft. over broken NW. slope to
49.10	Wash, 20 lks. wide, course SW. Asc. 33 ft. over S. slope to
52.40	Top of rocky spur, slopes W. Desc. 18 ft. over NW. slope to
60.50	Gully, course S. 70° W. Asc. rocky SW. slope 69 ft. to
67.70	Point of rocky spur, slopes W. Desc. 17 ft. over NW. slope to
76.90	Wash, 20 lks. wide, course S. 70° W. Asc. 38 ft. over broken SW. slope to
80.00	Set an iron post, 3 ft. long, 2 ins. in diam., on sandstone bedrock, and in a mound of stone to top, for cor. of secs. 25, 26, 35, and 36, with brass cap marked

6. Survey: Subdivision Lines: T. 37 N., R. 14 W.

Chains

T37N R14W
 S26 | S25
 S35 | S36
 1939

from which

A pinyon, 10 ins. diam., bears N. $44\frac{1}{4}^{\circ}$ E., 195 lks. dist., marked T37N R14W S25 BT.

A pinyon, 7 ins. diam., bears S. $32\frac{1}{2}^{\circ}$ E., 84 lks. dist., marked T37N R14W S36 BT.

A pinyon, 14 ins. diam., bears S. 12° W., 231 lks. dist., marked T37N R14W S35 BT.

A pinyon, 12 ins. diam., bears N. $2\frac{3}{4}^{\circ}$ W., 152 lks. dist., marked T37N R14W S26 BT.

Land, bottom and mountainous.

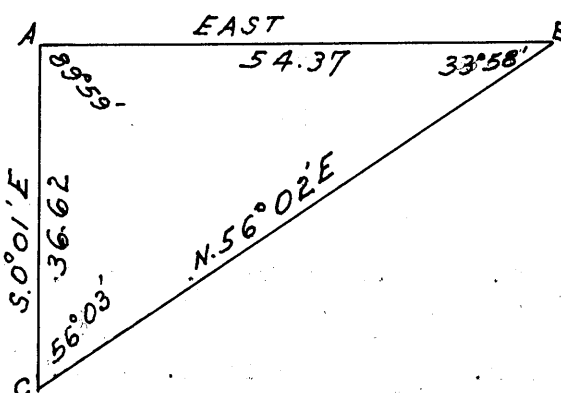
Soil, sandy and rocky; 3rd and 4th rates.

Timber, juniper and pinyon. Scattering joshua trees.

Undergrowth, blackbrush, Spanish dagger, and cacti. Good grass.

East, on a random line, bet. secs. 25 and 36.

40.00 Set temp. $\frac{1}{4}$ sec. cor. Discontinue chaining at this point, owing to precipitous ascent and cliffs ahead, and triangulate as follows:



Designate the cor. of secs. 25, 26, 35, and 36 as point "A" and set flag "B" ahead on random line, the vert. angle to which is $+21\frac{3}{4}^{\circ}$.

Designate a point on sec. line S. $0^{\circ} 01' E.$, 36.62 chs. dist. from "A" as point "C", from which flag "B" bears N. $56^{\circ} 02' E.$

Included angles of triangle "A-B-C" are $89^{\circ} 59'$, $33^{\circ} 58'$, and $56^{\circ} 03'$, the sum of which is $180^{\circ} 00'$.

Triangulated dist. "A" to "B" = 54.37 chs. East.
 Total dist. to "B" = 54.37 chs. East.

54.37 Triangulation point "B". Resume chaining and continue line and measurement.

79.90 Intersect the E. bdy. of Tp. 3 lks. S. of the cor. of secs. 25, 30, 31, and 36, which is an iron post, 2 ins. in diam., projecting 4 ins. above ground, marked, and witnessed as described in the official record.

Thence,

S. $89^{\circ} 59' W.$, on true line, bet. secs. 25 and 36.

Over mountainous land, thru scattering timber and undergrowth.

Desc. 60 ft. over NW. slope to

4.00 Ravine, 10 lks. wide, course N. Asc. 198 ft. over E. slope to

Survey: Subdivision Lines: T. 37 N., R. 14 W.

7.

Chains	
11.40	Top of spur, slopes NE. Desc. 62 ft. over NW. slope to
18.20	Ravine, 5 lks. wide, heads approx. 7 chs. SW., course NE. Asc. 159 ft. over E, slope to
25.53	Top of ridge, brs. N. and S., approx. 6 chs., thence SE. Discontinue chaining at this point. Measurement by triangulation hereinbefore described. Desc. 148 ft. over steep, rocky W. slope to
28.60	(Approx.) Top of cliff (Grand Wash Upper Rim) 190 ft. sheer, faces SW., brs. S. 22° E. and N. 22° W. Desc. 725 ft. over precipitous broken W. slope.
32.00	(Approx.) Base of cliffs, brs. S. 22° E. and N. 22° W.
39.95	Set an iron post, 3 ft. long, 1 in. in diam., 14 ins. in the ground to solid rock, and in a mound of stone to top, for $\frac{1}{4}$ sec. cor., with brass cap marked
	$\begin{array}{r} .S25 \\ \frac{1}{4} \text{---} \\ S36 \\ 1939 \end{array}$
	from which
	A pinyon, 12 ins. diam., bears S. 75 $\frac{3}{4}$ ° W., 333 lks. dist., marked $\frac{1}{4}$ S36 BT.
	No other bearing tree available.
	Resume chaining and continue line and measurement. Desc. 114 ft. over W. slope to
43.50	Gulch, course SW. Along rolling S. slope. Desc. 30 ft. to
50.20	Top of spur, slopes SW. Desc. 194 ft. over W. slope to
56.40	Head of drain, course N. 70° W. Along N. slope to
66.40	Top of spur, slopes SW., from S. 70° E. Desc. 180 ft. over rocky NW. slope to
75.60	Same drain, course SW. Desc. 41 ft. over broken SW. slope to
79.90	The cor. of secs. 25, 26, 35, and 36.
	Land, mountainous and broken. Soil, rocky; 3rd and 4th rates. Timber, pinyon and juniper. Scattering joshua trees. Undergrowth, blackbrush, Spanish dagger, cliff rose, and cacti. Fair to poor grass.
	N. 0° 01' W., bet. secs. 25 and 26.
	Over mountainous and rolling land, thru scattering timber and undergrowth.
	Asc. 34 ft. over SW. slope to
4.20	Top of spur, slopes W. Desc. 40 ft. over NW. slope to
5.65	Wash, 10 lks. wide, course S. 70° W. Along gradual W. slope to
6.80	Wash, 20 lks. wide, course S. 70° W. Asc. 138 ft. over SW. slope to
18.00	Top of spur, slopes W. Desc. 77 ft. over NW. slope to

8. Survey: Subdivision Lines: T. 37 N., R. 14 W.

Chains	
24.30	Gully, course W. Along gradual W. slope to
27.70	Wash, 10 lks. wide, course S. 70° W. Asc. 129 ft. over SW. slope to
36.00	Top of spur, slopes W. Desc. 67 ft. over NW. slope to
39.75	Gully, course W. Asc. 13 ft. over SW. slope to
40.00	Set an iron post, 3 ft. long, 1 in. in diam., 14 ins. in the ground to solid rock, and in a mound of stone to top, for ¼ sec. cor., with brass cap marked

¼
S26|S25
1939

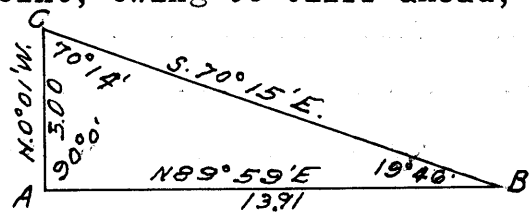
from which

- A pinyon, 12 ins. diam., bears N. 65¼° E., 95 lks. dist., marked ¼ S25 BT.
- A pinyon, 10 ins. diam., bears S. 10° W., 11 lks. dist., marked ¼ S26 BT.

	Continue over SW. slope. Asc. 6 ft. to
40.80	Top of low spur, slopes S. 70° W. Desc. 121 ft. over gradual rolling NW. slope to
72.50	Left bank of canyon wash, 4 ft. high, course S. 20° W. Asc. 5 ft. up bottom of gravel wash to
80.00	True point for the cor. of secs. 23, 24, 25, and 26 falls in gravel wash. Impracticable to set cor. at this point. Therefore, establish witness cor. of said secs. N.0°01'W. 5.00 chs. dist. from this point.

Land, mountainous and rolling.
Soil, rocky and gravelly; 3rd and 4th rates.
Timber, pinyon and juniper. Scattering joshua trees.
Undergrowth, blackbrush, Spanish dagger, sagebrush, and cacti. Fair grass.

	N. 89° 59' E., on a random line, bet. secs. 24 and 25.
40.00	Set temp. ¼ sec. cor.
40.97	Triangulation point "A". Discontinue chaining at this point, owing to cliff ahead, and triangulate as follows:



Designate 40.97 ch. station as point "A" and set flag "B" ahead on random line, the vert. angle to which is +33°38'.

From "A" chain a base N. 0° 01' W., 5.00 chs. to point "C" from which flag "B" bears S. 70° 15' E.

Included angles of triangle "A-B-C" are 90° 00', 19° 46', and 70° 14', the sum of which is 180° 00'.

Chained dist. on random line to point "A"	= 40.97 chs. N. 89° 59' E.
Triang. dist. "A" to "B"	= 13.91 chs. N. 89° 59' E.
Total dist. to "B"	<u>54.88</u> chs. N. 89° 59' E.

Survey: Subdivision Lines: T. 37 N., R. 14 W.

9.

Chains	
54.88	Triangulation point "B". Resume chaining and continue line and measurement.
79.88	Intersect the E. bdy. of Tp. 5 lks. N. of the cor. of secs. 19, 24, 25, and 30, which is an iron post, 2 ins. in diam., set, marked, and witnessed as described in the official record.
	Thence, N. 89° 59' W., on true line, bet. secs. 24 and 25. Over mountainous land, thru scattering timber and undergrowth. Desc. 56 ft. over SW. slope to
4.50	Head of draw, course S. Along S. slope to
7.50	Top of spur, slopes SW. Desc. 421 ft. over steep NW. slope to
25.00	Top of cliff (Grand Wash Upper Rim) 165 ft. sheer, faces W., brs. N. 30° W. and S. 15° W., approx. 7 chs., thence SE. Discontinue chaining at this point. Measurement by triangulation hereinbefore described. Desc. 610 ft. over rocky precipitous W. slope and SW. slope.
37.00	(Approx.) Base of precipitous descent, brs. SE. and NW. Desc. over SW. slope to
38.91	Resume chaining and continue line and measurement. Desc. 15 ft. over SW. slope to
39.94	Set an iron post, 3 ft. long, 1 in. in diam., 25 ins. in the ground, and in a small mound of stone to top, for $\frac{1}{4}$ sec. cor., with brass cap marked
	$\begin{array}{r} \frac{1}{4} \text{ S24} \\ \hline \frac{1}{4} \text{ S25} \\ \hline 1939 \end{array}$
	from which
	A juniper, 5 ins. diam., bears N. 17° E., 104 lks. dist., marked $\frac{1}{4}$ S24 BT.
	A juniper, 10 ins. diam., bears S. 32 $\frac{1}{2}$ ° E., 22 lks. dist., marked $\frac{1}{4}$ S25 BT.
	Desc. 42 ft. over SW. slope to
41.30	Rocky wash, 100 lks. wide, course N. 70° W. Asc. 46 ft. over NE. slope to
48.90	Point of spur, slopes N. Desc. 190 ft. over NW. slope to
67.90	Slope changes to NE. Asc. 12 ft. to
72.90	Point of spur, slopes NW. Desc. 76 ft. over W. slope to
78.30	Left bank of canyon wash, 3 ft. high, course S. 20° W. Wash enters canyon wash from N. 60° E., approx. 1 ch. N. Over gravel bottom of wash to
79.88	The true point for the cor. of secs. 23, 24, 25, and 26. Land, mountainous and broken. Soil, rocky; 4th rate. Timber, pinyon and juniper. Few joshua trees (W. $\frac{1}{2}$ mile).

Survey: Subdivision Lines: T. 37 N., R. 14 W.

10.

Chains

Undergrowth, blackbrush, Spanish dagger, cliff rose, and cacti. Fair to poor grass.

N. 0° 01' W., bet. secs. 23 and 24.

Over bottom of canyon, through low scattering undergrowth.

Asc. 10 ft. up bottom of gravel wash to

3.10 Right bank of canyon wash, 3 ft. high, brs. N. 20° E. and S. 20° W. Asc. 7 ft. over canyon bottom strewn with malpais boulders to

5.00 Set an iron post, 3 ft. long, 2 ins. in diam., 25 ins. in the ground, and in a small mound of stone to top, for witness cor. of secs. 23, 24, 25, and 26, with brass cap marked

T37N R14W

S23 | S24

S26 | S25

WC

1939

from which

A point, 2½ ft. above ground, on N. face of malpais boulder, 7x4x3½ ft. above ground, bears S. 18¾° W., 38 lks. dist., marked B0+.

Continue over canyon bottom strewn with malpais boulders. Asc. 19 ft. to

10.00 Leave bottom and enter mountainous land, brs. N. 20° E. and S. 20° W. Right bank of canyon wash, bearing NE. and S., bears E., 30 lks. dist. Asc. 446 ft. over SE. slope. Over malpais rock to

40.00 Set an iron post, 3 ft. long, 1 in. in diam., 18 ins. in the ground to cross (+) on bedrock, and in a mound of stone to top, for ¼ sec. cor., with brass cap marked

¼

S23 | S24

1939

Asc. 307 ft. over rocky, broken SE. slope to

52.60 Top of broken limestone cliff, 60 ft. high, brs. N. 10° E. and S. 40° W., faces SE. Continue over SE. slope. Asc. 37 ft. Enter scattering timber, brs. NE. and SW.

56.00 Top of spur, slopes S. 60° E. Desc. 33 ft. over NE. slope to

59.38 Triangulation point "A". Continue over NE. slope. Desc. 47 ft. Continue line and measurement by chaining to

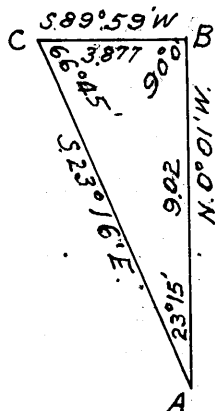
61.50 Top of same cliff, 175 ft. sheer, faces NE., bears S. 60° E. and N. 60° W., approx. 2 chs., thence W., approx. 4 chs. thence NW. Discontinue chaining at this point and triangulate across box canyon as follows:

Designate 59.38 ch. station as point "A" and set flag "B" ahead on line, the vert. angle to which is -5½°.

From "B" chain a base S. 89° 59' W., 3.877 chs. and set

Survey: Subdivision Lines: T. 37 N., R. 14 W.

Chains



point "C", from which flag "A" bears S. 23° 16' E.

Included angles of the triangle "A-B-C" are 23° 15', 90° 00', and 66° 45', the sum of which is 180° 00'.

Chained dist. on line
 to point "A" = 59.38 chs. N. 0° 01' W.
 Triang. dist.
 "A" to "B" = 9.02 chs. N. 0° 01' W.
 Total dist. to "B" = 68.40 chs. N. 0° 01' W.

From 61.50 ch. station descend 210 ft. over precipitous NE. slope over cliff and slide rock to

- 65.10 (Approx.) Wash, 10 lks. wide, in box canyon, course S. 60° E. Asc. 180 ft. over precipitous S. slope over slide rock and cliff to
- 67.30 Top of same cliff, 160 ft. sheer, faces S.; brs. E. and W. Resume chaining and continue line and measurement. Asc. 20 ft. over SE. slope to
- 68.40 Triang. point "B". Asc. 53 ft. over SE. slope to
- 71.60 Sidehill draw, course S. 10° E. Asc. 232 ft. over rocky SW. slope to
- 80.00 Set an iron post, 3 ft. long, 2 ins. in diam., 12 ins. in the ground to bedrock, and in a mound of stone to top, for the cor. of secs. 13, 14, 23, and 24, with brass cap marked

T37N R14W
 S14 | S13
 S23 | S24
 1939

from which

- A juniper, 5 ins. diam., bears N. 2¼° E., 114 lks. dist., marked T37N R14W S13 BT.
- A juniper, 6 ins. diam., bears S. 69¼° E., 194 lks. dist., marked T37N R14W S24 BT.
- A juniper, 5 ins. diam., bears N. 55° W., 202 lks. dist., marked T37N R14W S14 BT.
- No SW. bearing tree available.

Land, bottom to rough mountainous.
 Soil, rocky, malpais, sandstone, and limestone; 4th rate.
 Timber, juniper.
 Undergrowth, blackbrush, Spanish dagger, and cacti. Fair to poor grass.

- 40.00 S. 89° 59' E., on a random line, bet. secs. 13 and 24. Set temp. ¼ sec. cor.
- 79.90 Intersect E. bdy. of Tp. 2 lks. S. of the cor. of secs. 13, 18, 19, and 24, which is an iron post, 2 ins. in diam., set, marked, and witnessed as described in the official record.

Thence,

Survey: Subdivision Lines: T. 37 N., R. 14 W.

12.

Chains	
	West, on true line, bet. secs. 13 and 24.
	Over rough mountainous land, thru scattering timber and undergrowth.
	Desc. 316 ft. over steep, rocky SW. slope to
9.23	Canyon wash, 90 lks. wide, course S. 20° E., from NW., approx. 4 chs., thence from N. 42° E. A spring bears S. 16° 53' E., 18.00 chs. dist. A rock cabin bears S. 7¼° E., 17.60 chs. dist. Over nearly level bottom of canyon to
11.80	Leave bottom of canyon, brs. S. 20° E. and N. 20° W. Asc. 124 ft. over rocky broken E. slope.
13.70	Base of broken ledge, brs. N. and S. 20° W.
14.60	Top of broken sandstone ledge, 80 ft. high, faces E., brs. S. 20° W. and N., approx. 7 chs., thence NE. Asc. 766 ft. over steep rocky NE. slope to
36.40	Top of spur, slopes SE. Desc. 45 ft. over SW. slope to
39.95	Set an iron post, 3 ft. long, 1 in. in diam., on limestone bedrock, and in a mound of stone to top, for ¼ sec. cor. with brass cap marked
	$\frac{1}{4} \frac{S13}{S24}$ 1939
	from which
	A juniper, 5 ins. diam., bears S. 37½° E., 46 lks. dist., marked ¼ S24 BT.
	A juniper, 5 ins. diam., bears N. 6¾° W., 59 lks. dist., marked ¼ S13 BT.
	Continue over SW. slope. Desc. 96 ft. to
46.50	Ravine, heads approx. 4 chs. N. 30° W., course S. 30° E. Asc. 161 ft. over steep rocky SE. slope to
52.10	Top of spur, slopes S. Desc. 331 ft. over steep rocky SW. slope to
68.90	Gully, course S. 20° E. Along S. slope to
71.30	Ravine, 10 lks. wide, course SE. Asc. 259 ft. over steep, rocky SE. slope to
77.50	Top of spur, slopes S. 15° E. Desc. 14 ft. over SW. slope
79.90	The cor. of secs. 13, 14, 23, and 24.
	Land, rough mountainous. Soil, rocky, sandstone and limestone; 4th rate. Timber, juniper. Few joshua trees. Undergrowth, blackbrush, Spanish dagger, cliff rose, and cacti. Fair to poor grass.
	N. 0° 01' W., bet. secs. 13 and 14.
	Over mountainous land, thru scattering timber and undergrowth.
	Asc. 142 ft. over steep, rocky SW. slope to

Survey: Subdivision Lines: T. 37 N., R. 14 W.

13.

Chains	
4.50	Top of spur, slopes S. 20° E. Asc. 97 ft. over SE. slope to
10.00	Top of ridge, brs. E. and S. 70° W. Leave scattering and enter moderate timber, brs. E. and S. 70° W. Desc. 320 ft. over NE. slope to
40.00	Set an iron post, 3 ft. long, 1 in. in diam., on limestone bedrock, and in a mound of stone to top, for $\frac{1}{4}$ sec. cor. with brass cap marked
	$\frac{1}{4}$
	S14 S13
	1939
	from which
	A juniper, 5 ins. diam., bears N. 55 $\frac{1}{2}$ ° E., 88 lks. dist., marked $\frac{1}{4}$ S13 BT.
	A juniper, 5 ins. diam., bears N. 61° W., 21 lks. dist., marked $\frac{1}{4}$ S14 BT.
	Continue over NE. slope. Desc. 61 ft. to
43.20	Ravine, 10 lks. wide, course NW., from S. 20° E. Asc. 48 ft. over SW. slope to
49.00	Top of spur, slopes N. 30° E., from S. 30° E. Desc. 151 ft. over NW. slope to
69.40	Ravine, course W., approx. 1 ch., to ravine from S. 20° W. to NW. Asc. 56 ft. over SW. slope to
78.00	Top of spur, slopes N. 20° W. Desc. 12 ft. over NE. slope.
80.00	Set an iron post, 3 ft. long, 2 ins. diam., 16 ins. in the ground to bedrock, and in a mound of stone to top, for the cor. of secs. 11, 12, 13, and 14, with brass cap marked
	T37N R14W
	S11 S12
	S14 S13
	1939
	from which
	A juniper, 7 ins. diam., bears N. 45 $\frac{1}{2}$ ° E., 75 lks. dist., marked T37N R14W S12 BT.
	A juniper, 7 ins. diam., bears S. 80 $\frac{1}{4}$ ° E., 71 lks. dist., marked T37N R14W S13 BT.
	A juniper, 6 ins. diam., bears S. 21 $\frac{1}{4}$ ° W., 148 lks. dist., marked T37N R14W S14 BT.
	A juniper, 8 ins. diam., bears N. 4 $\frac{3}{4}$ ° W., 238 lks. dist., marked T37N R14W S11 BT.
	Land, mountainous. Soil, rocky; 3rd and 4th rates. Timber, juniper. Undergrowth, blackbrush, Spanish dagger, cliff rose, and cacti. Good grass.
	East, on random line, bet. secs. 12 and 13.
40.00	Set temp. $\frac{1}{4}$ sec. cor.

Survey: Subdivision Lines: T. 37 N., R. 14 W.

14.

Chains	
79.98	Intersect E. bdy. of Tp. 5 lks. N. of the cor. of secs. 7, 12, 13, and 18, which is an iron post, 2 ins. in diam., set, marked, and witnessed as described in the official record.
	Thence,
	N. 89° 58' W., on true line, bet. secs. 12 and 13.
	Over mountainous and rolling land, thru moderate timber and undergrowth.
	Asc. 258 ft. over top of spur, sloping E., to
16.50	Head of short spur, sloping E. Top of flat spur, slopes N. Desc. 6 ft. over slight NW. slope to
23.80	Wash, 5 lks. wide, course N. 15° W. Asc. 14 ft. over slight NE. slope to
30.00	Top of short spur, slopes N. Desc. 22 ft. over NW. slope to
32.50	Slope changes to N. Along gradual N. slope to
36.00	Top of ridge, brs. S. 20° E. and N. 20° W. Desc. 32 ft. over W. slope to
39.99	Set an iron post, 3 ft. long, 1 in. in diam., 12 ins. in the ground to solid rock, and in a mound of stone to top, for $\frac{1}{4}$ sec. cor., with brass cap marked
	$\frac{1}{4} \frac{S12}{S13}$ 1939
	from which
	A juniper, 5 ins. diam., bears S. 34 $\frac{1}{2}$ ° W., 27 lks. dist., marked $\frac{1}{4}$ S13 BT.
	A juniper, 14 ins. diam., bears N. 40° W., 119 lks. dist., marked $\frac{1}{4}$ S12 BT.
	Continue over W. slope. Desc. 15 ft. to
41.30	Wash, 5 lks. wide, course NW. Asc. 23 ft. over gently rolling NE. slope to
51.00	Top of short spur, slopes N. Desc. 39 ft. over gradual NW. slope to
56.20	Wash, 5 lks. wide, course N. Along N. slope. Asc. 14 ft. to
64.00	Wash, 5 lks. wide, course NE. Asc. 63 ft. over E. slope to
73.00	Top of spurs, sloping N. and NE., from SW. Desc. 79 ft. over W. slope to
78.60	Ravine; heads approx. 2 chs. S., course N. Asc. 22 ft. over NE. slope to
79.98	The cor. of secs. 11, 12, 13, and 14.
	Land, mountainous and rolling. Soil, rocky; 3rd and 4th rates. Timber, juniper. Undergrowth, blackbrush, Spanish dagger, cliff rose, and cacti. Good grass.

Survey: Subdivision Lines: T. 37 N., R. 14 W.

15.

Chains	
	N. 0° 01' W., bet. secs. 11 and 12.
	Over rolling and mountainous land, thru moderate timber and undergrowth.
	Desc. 110 ft. over rolling NE. slope to
15.40	Ravine, 5 lks. wide, course N. 10° W. Along W. slope. Desc. 14 ft. to
18.74	Same ravine, course NE., approx. 6 chs., thence N. Asc. 57 ft. over SE. slope to
23.50	Top of short spur, slopes E. Desc. 75 ft. over NE. slope to
31.30	Drain, course E. Asc. 15 ft. over SE. slope to
35.00	Top of short spur, slopes E., approx. 6 chs. Desc. 77 ft. over NE. slope to
40.00	Set an iron post, 3 ft. long, 1 in. in diam., on bedrock, and in a mound of stone to top, for $\frac{1}{4}$ sec. cor., with brass cap marked
	$\frac{1}{4}$
	S11 S12
	1939
	from which
	A juniper, 5 ins. diam., bears S. 86 $\frac{1}{2}$ ° E., 30 lks. dist., marked $\frac{1}{4}$ S12 BT.
	A juniper, 8 ins. diam., bears S. 63° W., 42 lks. dist., marked $\frac{1}{4}$ S11 BT.
	Continue over NE. slope. Desc. 63 ft. to
45.50	Ravine, 10 lks. wide, course NW. Asc. 26 ft. over SW. slope.
48.30	Top of spur, slopes N. 80° W. Desc. 59 ft. over N. slope to
51.80	Ravine, course S. 70° W. Asc. 102 ft. over S. slope to
57.60	Top of spur, slopes W. Desc. 127 ft. over N. slope to
63.00	Ravine, 10 lks. wide, course W. Asc. 207 ft. over S. slope to
76.00	Top of ridge, brs. E. and W. Head of spur, slopes N. Desc. 10 ft. along top of spur to
80.00	Set an iron post, 3 ft. long, 2 ins. in diam., 18 ins. in the ground to solid rock, and in a mound of stone to top, for the cor. of secs. 1, 2, 11, and 12, with brass cap marked
	T37N R14W
	S2 S1
	S11 S12
	1939
	from which
	A juniper, 7 ins. diam., bears N. 67 $\frac{3}{4}$ ° E., 206 lks. dist., marked T37N R14W S1 BT.
	A juniper, 6 ins. diam., bears S. 43° E., 48 lks. dist., marked T37N R14W S12 BT.

16. Survey: Subdivision Lines: T. 37 N., R. 14 W.

Chains	
	<p>A juniper, 5 ins. diam., bears S. 22° W., 59 lks. dist., marked T37N R14W S11 BT.</p> <p>A juniper, 10 ins. diam., bears N. 51¼° W., 79 lks. dist., marked T37N R14W S2 BT.</p> <p>Land, rolling and mountainous. Soil, rocky; 3rd and 4th rates. Timber, juniper. Undergrowth, blackbrush, cliff rose, Spanish dagger, and cacti. Good grass.</p>
	S. 89° 58' E., on a random line, bet. secs. 1 and 12.
40.00	Set temp. ¼ sec. cor.
79.98	Intersect E. bdy. of Tp. 14 lks. S. of the cor. of secs. 1, 6, 7, and 12, which is an iron post, 2 ins. in diam., set, marked, and witnessed as described in the official record.
	Thence,
	S. 89° 56' W., on true line, bet. secs. 1 and 12.
	Over rolling and mountainous land, thru moderate timber and undergrowth.
	Asc. 20 ft. over NE. slope to
5.30	Flat top of spur, slopes N. 30° W. Desc. 66 ft. over W. slope to
20.50	Ravine, course N., from S. 20° E. Asc. 78 ft. over E. slope to
26.50	Top of spur, slopes N. 20° W. Desc. 183 ft. over SW. slope to
39.99	Set an iron post, 3 ft. long, 1 in. in diam., 28 ins. in the ground, for ¼ sec. cor., with brass cap marked
	$\frac{S1}{\frac{1}{4} S12}$ 1939
	from which
	A juniper, 6 ins. diam., bears N. 21° E., 26 lks. dist., marked ¼ S1 BT.
	A juniper, 6 ins. diam., bears S. 33¼° W., 54 lks. dist., marked ¼ S12 BT.
	Continue over SW. slope. Desc. 6 ft. to
40.20	Ravine, 6 lks. wide, course NW. Asc. 53 ft. over NE. slope to
46.00	Top of short spur, slopes N. 20° W., approx. 10 chs. Desc. 65 ft. over W. slope to
49.10	Ravine, 7 lks. wide, course N., heads approx. 7 chs. S. 10° W. Asc. 112 ft. over NE. slope to
56.00	Top of spur, slopes N. 20° W. Desc. 113 ft. over W. slope to
67.40	Ravine, 5 lks. wide, heads approx. 10 chs. S. 30° E.,

Survey: Subdivision Lines: T. 37 N., R. 14 W.

17.

Chains	course N. 30° W. Asc. 72 ft. over E. slope to
76.00	Slope changes to slight NE. slope. Asc. 2 ft. to
79.98	The cor. of secs. 1, 2, 11, and 12.
	Land, rolling and mountainous. Soil, rocky and rocky clay; 3rd and 4th rates. Timber, juniper. Undergrowth, blackbrush, Spanish dagger, cliff rose, and cacti. Good grass.
	N. 0° 01' W., on a random line, bet. secs. 1 and 2.
40.00	Set temp. $\frac{1}{4}$ sec. cor.
80.04	Intersect N. bdy. of Tp. 10 lks. E. of the cor. of secs. 1, 2, 35, and 36, which is an iron post, 2 ins. in diam., set, marked, and witnessed as described in the official record.
	Thence,
	S. 0° 05' E., on true line, bet. secs. 1 and 2.
	Over rolling and mountainous land, thru moderate timber and undergrowth.
	Desc. 3 ft. over SW. slope to
1.00	Ravine, 10 lks. wide, course NW. Asc. 221 ft. over NE. slope to
12.00	Top of short spur, slopes E. Desc. 19 ft. over SE. slope to
17.00	Slope changes to NE. Asc. 48 ft. to
20.20	Top of spur, slopes NW. Along broken W. slope. Asc. 68 ft. to
40.04	Set an iron post, $\frac{3}{4}$ ft. long, 1 in. in diam., 28 ins. in the ground, for $\frac{1}{4}$ sec. cor., with brass cap marked
	$\frac{1}{4}$
	S2 S1
	1939
	from which
	A juniper, 7 ins. diam., bears S. 11° E., 236 lks. dist., marked $\frac{1}{4}$ S1 BT.
	A juniper, 7 ins. diam., bears N. 83 $\frac{3}{4}$ ° W., 154 lks. dist.; marked $\frac{1}{4}$ S2 BT.
	Continue along broken W. slope. Asc. 53 ft. to
48.50	Slope changes to SW. Desc. 28 ft. to
55.70	Ravine, 6 lks. wide, course N: 30° W. Asc. 214 ft. over NE. slope to
76.50	Top of spur, slopes N. 30° W.; from S. Asc. 15 ft. along top of spur to
80.04	The cor. of secs. 1, 2, 11, and 12.
	Land, rolling and mountainous.

18. Survey: Subdivision Lines: T. 37 N., R. 14 W.

Chains	
	Soil, rocky; 3rd and 4th rates. Timber, juniper. Undergrowth, blackbrush, Spanish dagger, cliff rose, and cacti. Good grass.
	From the standard cor. of secs. 34 and 35, on the S. bdy. of the Tp., (9th Std. Par. N.) which is an iron post, 2 ins. in diam., set, marked, and witnessed as described in the official record.
	Thence,
	N. 0° 01' W., bet. secs. 34 and 35.
	Over mountainous land, thru dense undergrowth.
	Along broken W. slope to
2.60	Gully, course W. Continue along broken W. slope. Asc. 149 ft. to
40.00	Set an iron post, 3 ft. long, 1 in. in diam., 14 ins. in the ground over cross (+) on bedrock, and in a mound of stone to top, for $\frac{1}{4}$ sec. cor., with brass cap marked
	$\frac{1}{4}$
	S34 S35
	1939
	Continue along broken W. slope to
40.50	Short gully, course SW. Asc. 113 ft. over broken SW. slope to
53.00	Top of short spur, slopes W. Desc. 253 ft. over broken NW. slope to
74.00	Slope changes to W. Along W. slope to
80.00	Set an iron post, 3 ft. long, 2 ins. in diam., 16 ins. in the ground over cross (+) on bedrock, and in a mound of stone to top, for the cor. of secs. 26, 27, 34, and 35, with brass cap marked
	T37N R14W
	S27 S26
	S34 S35
	1939
	Land, mountainous. Soil, rocky clay; 4th rate. (Malpais rock.) No timber. Scattering joshua trees. Undergrowth, blackbrush, sagebrush, Spanish dagger, and cacti. Fair to poor grass.
	East, on a random line, bet. secs. 26 and 35.
40.00	Set temp. $\frac{1}{4}$ sec. cor.
79.94	Intersect N. and S. line 5 lks. N. of the cor. of secs. 25, 26, 35, and 36.
	Thence,
	N. 89° 58' W., on true line, bet. secs. 26 and 35.

Survey: Subdivision Lines: T. 37 N., R. 14 W.

BOOK 4270

19.

Chains	
	Over mountainous land, thru scattering timber and undergrowth.
	Desc. 122 ft. over SW. slope to
17.70	Canyon wash, 100 lks. wide, course S. Leave scattering timber, brs. N. and S. Asc. 402 ft. over SE. slope to
39.70	Gully, course SE. Asc. gradually over E. slope to
39.97	Set an iron post, 3 ft. long, 1 in. in diam., 10 ins. in the ground over cross (+) on bedrock, and in a mound of stone to top, for $\frac{1}{4}$ sec. cor., with brass cap marked
	$\begin{array}{r} S26 \\ \hline \frac{1}{4} \\ S35 \\ 1939 \end{array}$
	Continue over E. slope. Asc. 130 ft. to
47.90	Top of high ridge, brs. N. and S. Desc. 830 ft. over steep, rocky W. slope to
79.94	The cor. of secs. 26, 27, 34, and 35.
	Land, mountainous. Soil, rocky (malpais) clay; 4th rate. Timber, pinyon and juniper. Few joshua trees. Undergrowth, blackbrush, sagebrush, Spanish dagger, and cacti. Fair to poor grass.
	N. 0° 01' W., bet. secs. 26 and 27.
	Over mountainous land, thru dense undergrowth.
	Along W. slope. Asc. 45 ft. to
37.80	Gulch, course SW. Asc. 30 ft. over SW. slope to
40.00	Set an iron post, 3 ft. long, 1 in. in diam., 4 ins. in the ground over cross (+) on bedrock, and in a mound of stone to top, for $\frac{1}{4}$ sec. cor., with brass cap marked
	$\begin{array}{r} \frac{1}{4} \\ S27 S26 \\ 1939 \end{array}$
	Continue over SW. slope. Asc. 287 ft. to
70.00	Top of spur, slopes SW. Along W. slope to
80.00	Set an iron post, 3 ft. long, 2 ins. in diam., 14 ins. in the ground over cross (+) on bedrock, and in a mound of stone to top, for the cor. of secs. 22, 23, 26, and 27, with brass cap marked
	$\begin{array}{r} T37N R14W \\ S22 S23 \\ \hline S27 S26 \\ 1939 \end{array}$
	Land, mountainous. Soil, rocky clay; 4th rate. No timber. Scattering joshua trees. Undergrowth, blackbrush, sagebrush, Spanish dagger, and cacti. Fair to poor grass.

20. Survey: Subdivision Lines: T. 37 N., R. 14 W.

Chains	
	S. 89° 58' E., on a random line, bet. secs. 23 and 26.
40.00	Set temp. $\frac{1}{4}$ sec. cor.
79.90	Intersect N. and S. line 3 lks. N. of the true point for the cor. of secs. 23, 24, 25, and 26. Witness cor. of secs. established N. 0° 01' W., 5.00 chs. dist., from true point, as hereinbefore described.
	Thence,
	N. 89° 57' W. on true line, bet. secs. 23 and 26.
	Over bottom of gravel wash to
1.10	Right bank of canyon wash, brs. N. 20° E. and S. 20° W. Enter mountainous land and dense undergrowth, same bearing. Asc. 614 ft. over rocky SE. slope to
34.90	Top of high ridge, brs. N. and S. Desc. 74 ft. over SW. slope to
39.95	Set an iron post, 3 ft. long, 1 in. in diam., 10 ins. in the ground over cross (+) on bedrock, and in a mound of stone to top, for $\frac{1}{4}$ sec. cor., with brass cap marked
	$\begin{array}{r} \frac{1}{4} \text{ S23} \\ \hline \frac{1}{4} \text{ S26} \\ 1939 \end{array}$
	Continue over rocky SW. slope. Desc. 241 ft. to
56.90	Slope changes to W. Desc. 337 ft. to
79.90	The cor. of secs. 22, 23, 26, and 27.
	Land, mountainous. Soil, rocky; 4th rate. No timber. Few joshua trees. Undergrowth, blackbrush, cliff rose, Spanish dagger, and cacti. Fair to poor grass.
	N. 0° 01' W., bet. secs. 22 and 23.
	Over mountainous land, thru scattering undergrowth.
	Along W. slope to
4.00	Slope changes to NW. Desc. 148 ft. to
21.50	Gulch, course NW., approx. 5 chs., thence SW. Along W. slope to
26.40	Gully, course S. 70° W. Asc. 141 ft. over SW. slope to
40.00	Set an iron post, 3 ft. long, 1 in. in diam., 28 ins. in the ground, for $\frac{1}{4}$ sec. cor., with brass cap marked
	$\begin{array}{r} \frac{1}{4} \\ \hline \text{S22} \text{S23} \\ 1939 \end{array}$
	of stone, 3 ft. base, 2 ft. high, W. of cor. raise a mound
	Continue over SW. slope. Asc. 142 ft. to

Survey: Subdivision Lines: T. 37 N., R. 14 W.

21.

Chains	
48.60	Top of short spur, slopes W. Desc. 60 ft. over NW. slope to
52.50	Slope changes to broken W. slope. Asc. 71 ft. to
62.30	Gully, course W. Continue along broken W. slope. Asc. 15 ft. to
71.60	Gully, course W. Asc. 62 ft. over SW. slope to
78.50	Top of short spur, slopes W. Desc. 18 ft. over NW. slope to
80.00	Set an iron post, 3 ft. long, 2 ins. in diam., 14 ins. in the ground over cross (+) on bedrock, and in a mound of stone to top, for the cor. of secs. 14, 15, 22, and 23, with brass cap marked
	T37N R14W S15 S14 S22 S23 1939
	Land, mountainous. Soil, rocky; 4th rate. No timber. Scattering joshua trees. Undergrowth, blackbrush, Spanish dagger, cliff rose, and cacti. Fair to poor grass.
	S. 89° 57' E., on a random line, bet. secs. 14 and 23.
40.00	Set temp. $\frac{1}{4}$ sec. cor.
79.94	Intersect N. and S. line $\frac{3}{4}$ lks. N. of the cor. of secs. 13, 14, 23, and 24.
	Thence,
	N. 89° 56' W., on true line, bet. secs. 14 and 23.
	Over mountainous land, thru scattering timber and undergrowth.
	Desc. gradually over SW. slope to
3.10	Slope changes to rocky, broken SE. slope. Asc. 240 ft. to
11.20	Top of malpais rim, 100 ft. high, faces SE., brs. NE. and SW. Top of flat ridge, brs. NE. and SW. Over flat top of ridge to
29.90	Leave top of flat ridge and scattering timber, brs. N. 65° E. and S. 65° W., approx. 7 chs., thence S. Desc. 35 ft. over NW. slope to
38.70	Top of same malpais rim (broken) faces NW., brs. NE. and SW. Desc. 34 ft. over NW. slope to
39.70	Top of spur, slopes N. 60° W. Desc. gradually over W. slope to
39.97	Set an iron post, 3 ft. long, 1 in. in diam., 4 ins. in the ground over cross(+) on bedrock, and in a mound of stone to top, for $\frac{1}{4}$ sec. cor., with brass cap marked
	S14 $\frac{1}{4}$ S23 1939
	Desc. 923 ft. over steep, rocky W. slope to

Survey: Subdivision Lines: T. 37 N., R. 14 W.

22.

Chains 64.10 69.90 79.94	<p>Gully, course NW. Desc. 151 ft. over NW. slope to</p> <p>Gulch, course NW. Desc. 76 ft. over NW. slope to</p> <p>The cor. of secs. 14, 15, 22, and 23.</p> <p>Land, mountainous and rough. Soil, rocky; 4th rate. Timber, juniper and pinyon. Few joshua trees. Undergrowth, blackbrush, sagebrush, Spanish dagger, cliff rose, and cacti. Poor grass.</p>
	<p>N. 0° 01' W., bet. secs. 14 and 15.</p> <p>Over mountainous land, thru scattering undergrowth.</p> <p>Desc. 212 ft. over NW. slope to</p>
5.00 7.00 25.00 36.90 40.00	<p>Gulch, course W. Asc. 70 ft. over SW. slope to</p> <p>Top of short spur, slopes W. Enter scattering timber, brs. E. and W. Desc. 129 ft. over NW. slope to</p> <p>Gulch, course SW. Asc. 162 ft. over S. slope to</p> <p>Top of spur, slopes W. Desc. 26 ft. over N. slope to</p> <p>Set an iron post, 3 ft. long, 1 in. in diam., 10 ins. in the ground to bedrock, and in a mound of stone to top, for $\frac{1}{4}$ sec. cor., with brass cap marked</p>
	<p style="text-align: center;">$\frac{1}{4}$</p> <p style="text-align: center;">S15 S14</p> <p style="text-align: center;">1939</p> <p style="text-align: right;">from which</p> <p>A juniper, 5 ins. diam., bears N. 44$\frac{3}{4}$° E., 160 lks. dist., marked $\frac{1}{4}$ S14 BT.</p> <p>A juniper, 24 ins. diam., bears S. 42$\frac{1}{2}$° W., 24 lks. dist., marked $\frac{1}{4}$ S15 BT.</p>
	<p>Continue over N. slope. Desc. 132 ft. to</p>
46.50 80.00	<p>Ravine, course W. Asc. 273 ft. over SW. slope to</p> <p>Set an iron post, 3 ft. long, 2 ins. in diam., 28 ins. in the ground, for the cor. of secs. 10, 11, 14, and 15, with brass cap marked</p>
	<p style="text-align: center;">T37N R14W</p> <p style="text-align: center;">S10 S11</p> <p style="text-align: center;">S15 S14</p> <p style="text-align: center;">1939</p> <p>No bearing trees available.</p> <p style="text-align: right;">raise a mound of stone, 3 ft. base, 2 ft. high, W. of cor.</p> <p>Land, mountainous. Soil, rocky; 4th rate. Timber, juniper. Scattering joshua trees. Undergrowth, blackbrush, sagebrush, Spanish dagger, and cacti. Fair grass.</p>

Survey: Subdivision Lines: T. 37 N., R. 14 W.

23.

BOOK 4278

Chains	
	S. 89° 56' E., on a random line, bet. secs. 11 and 14.
40.00	Set temp. $\frac{1}{4}$ sec. cor.
80.02	Intersect N. and S. line $\frac{3}{4}$ lks. S. of the cor. of secs. 11, 12, 13, and 14.
	Thence,
	N. 89° 57' W., on true line, bet. secs. 11 and 14.
	Over mountainous land, thru moderate timber and undergrowth.
	Asc. slightly over NE. slope to
0.70	Top of spur, slopes N. 20° W. Desc. 48 ft. over W. slope to
8.60	Wash, course NW. Asc. 168 ft. over NE. slope to
23.30	Top of short spur, slopes N. Desc. 150 ft. over NW. slope.
32.00	Short wash, course N. 30° E. Asc. 45 ft. over NE. slope to
36.00	Top of spur, slopes NW. Desc. 89 ft. over SW. slope to
40.01	Enter scattering timber and leave moderate timber, brs. N. and S. Set an iron post, 3 ft. long, 1 in. in diam., 2 ins. in the ground to bedrock, and in a mound of stone to top, for $\frac{1}{4}$ sec. cor., with brass cap marked
	$\frac{\frac{1}{4} \text{ S11}}{\frac{1}{4} \text{ S14}}$ 1939
	from which
	A juniper, 5 ins. diam., bears S. 38 $\frac{1}{4}$ ° E., 98 lks. dist., marked $\frac{1}{4}$ S14 BT.
	A juniper, 8 ins. diam., bears N. 81° W., 232 lks. dist., marked $\frac{1}{4}$ S11 BT.
	Continue over SW. slope. Desc. 52 ft. to
42.30	Gully, course N. 80° W. Desc. 229 ft. over NW. slope to
60.50	Ravine, course S. 30° W. Along S. slope to
65.44	Top of cliff, 75 ft. high, faces W., brs. N. and S. Desc. 279 ft. over broken SW. slope over cliff and slide rock to
80.02	The cor. of secs. 10, 11, 14, and 15.
	Land, mountainous. Soil, rocky; 4th rate. Timber, juniper and pinyon. Undergrowth, blackbrush, sagebrush, Spanish dagger, cliff rose, and cacti. Fair to poor grass.
	N. 0° 01' W., bet. secs. 10 and 11.
	Over rough mountainous land, thru scattering timber and undergrowth.
	Asc. 343 ft. over rocky, precipitous SW. slope to
11.50	Top of short spur, slopes W. Desc. 66 ft. over NW. slope to

Survey: Subdivision Lines: T. 37 N., R. 14 W.

24.

Chains	
16.00	Gulch, course W. Asc. 74 ft. over SW. slope to
21.20	Top of short spur, slopes W. Desc. 86 ft. over NW. slope to
25.00	Gulch, course W. Asc. 97 ft. over SW. slope to
32.20	Top of short spur, slopes W. Desc. 40 ft. over NW. slope to
34.40	Head of gulch, course W. Asc. 45 ft. over SW. slope to
37.50	Top of short spur, slopes W. Desc. 67 ft. over NW. slope to
40.00	Set an iron post, 3 ft. long, 1 in. in diam., 16 ins. in the ground over cross (+) on bedrock, and in a mound of stone to top, for $\frac{1}{4}$ sec. cor., with brass cap marked
	$\frac{1}{4}$
	S10 S11
	1939
	No bearing trees available.
	Continue over NW. slope. Desc. 145 ft. to
44.50	Small canyon, course W. Asc. 208 ft. over S. slope to
53.20	Top of short spur, slopes W. Desc. 284 ft. over N. slope to
63.60	Left rim of box canyon, 100 ft. high, faces N., brs. E. and W. Desc. 100 ft. over bluff to
64.50	Bottom of canyon, course W. Asc. 100 ft. over bluff to
65.40	Right rim of box canyon, 100 ft. high, faces S., brs. E. and W. Asc. 279 ft. over S. slope to
79.00	Top of short spur, slopes SW. Desc. 26 ft. over NW. slope to
80.00	Set an iron post, 3 ft. long, 2 ins. in diam., 14 ins. in the ground over cross (+) on bedrock, and in a mound of stone to top, for the cor. of secs. 2, 3, 10, and 11, with brass cap marked
	T37N R14W
	S3 S2
	S10 S11
	1939
	No bearing trees available.
	Land, rough mountainous.
	Soil, rocky; 4th rate.
	Timber, juniper. Scattering joshua trees.
	Undergrowth, blackbrush, sagebrush, Spanish dagger, and cacti. Poor grass.
	S. 89° 57' E., on a random line, bet. secs. 2 and 11.
40.00	Set temp. $\frac{1}{4}$ sec. cor.
80.16	Intersect N. and S. line 19 lks. S. of the cor. of secs. 1, 2, 11, and 12.
	Thence,

Survey: Subdivision Lines: T. 37 N., R. 14 W.

25.

Chains	
	S. 89° 55' W., on true line, bet. secs. 2 and 11. Over mountainous land, thru moderate timber and undergrowth. Desc. 29 ft. over gradual NW. slope to
7.00	Slope changes to gradual NE. Asc. 12 ft. to
11.90	Top of ridge, brs. SE. and NW. Enter scattering timber, brs. SE. and NW. Desc. 226 ft. over W. slope to
24.20	Head of gulch, course SW. Asc. 80 ft. over SE. slope to
31.20	Top of short spur, slopes S. 20° W. Desc. 193 ft. over SW. slope to
40.08	Set an iron post, 3 ft. long, 1 in. in diam., 2 ins. in the ground to bedrock, and in a mound of stone to top, for $\frac{1}{4}$ sec. cor., with brass cap marked
	$\frac{1}{4} \frac{S2}{S11}$ 1939
	from which
	A juniper, 6 ins. diam., bears S. 40 $\frac{1}{2}$ ° W., 109 lks. dist., marked $\frac{1}{4}$ S11 BT.
	A juniper, 6 ins. diam., bears N. 76° W., 85 lks. dist., marked $\frac{1}{4}$ S2 BT.
	Continue over SW. slope. Desc. 115 ft. to
48.50	Small canyon, course NW. Asc. 35 ft. over NE. slope to
54.20	Point of spur, slopes N. Desc. 53 ft. over NW. slope to
58.00	Same canyon, course SW. Asc. 308 ft. over SE. slope to
74.80	Top of spur, slopes SW. Desc. 72 ft. over NW. slope to
80.16	The cor. of secs. 2, 3, 10, and 11. Land, mountainous. Soil, rocky clay; 4th rate. Timber, juniper and pinyon. Undergrowth, blackbrush, sagebrush, Spanish dagger, cliff rose, and cacti. Fair grass.
	N. 0° 05' W., on a random line, bet. secs. 2 and 3.
40.00	Set temp. $\frac{1}{4}$ sec. cor.
80.17	Intersect N. bdy. of Tp. 16 lks. W. of the cor. of secs. 2, 3, 34, and 35, which is an iron post, 2 ins. in diam., set, marked, and witnessed as described in the official record.
	Thence,
	S. 0° 02' W., on true line, bet. secs. 2 and 3.
	Over rolling and mountainous land, thru scattering timber and dense undergrowth.
	Asc. 46 ft. over gradual NW. slope.
1.30	Ungraded road, brs. N. 41° E. and S. 41° W.

Survey: Subdivision Lines: T. 37 N., R. 14 W.

26.

Chains	
18.00	Gully, course W. Asc. 253 ft. over NW. slope to
33.20	Top of short spur, slopes S. 60° W. Desc. 117 ft. over SW. slope to
36.70	Short draw, course S. 60° W. Asc. 86 ft. over NW. slope to
40.17	Set an iron post, 3 ft. long, 1 in. in diam., 8 ins. in the ground over cross (+) on bedrock, and in a mound of stone to top, for $\frac{1}{4}$ sec. cor., with brass cap marked
	$\frac{1}{4}$
	S3 S2
	1939
	No bearing trees available.
	Continue over NW. slope. Asc. 30 ft. to
41.70	Top of short spur, slopes W. Desc. 195 ft. over SW. slope to
51.70	Small short canyon, course W. Asc. 404 ft. over N. slope to
65.20	Top of short spur, slopes N. 60° W. Desc. 93 ft. over SW. slope to
74.10	Short gulch, course W. Asc. 40 ft. over NW. slope to
75.40	Top of short spur, slopes W. Desc. 14 ft. over SW. slope to
76.70	Short draw, course W. Asc. 110 ft. over NW. slope to
80.17	The cor. of secs. 2, 3, 10, and 11.
	Land, rolling and mountainous. Soil, rocky clay; 4th rate. Timber, juniper and pinyon. Scattering joshua trees. Undergrowth, blackbrush, sagebrush, Spanish dagger, and cacti. Fair grass.
	From the standard cor. of secs. 33 and 34, on the S. bdy. of the Tp., (9th Std. Par. N.) which is an iron post, 2 ins. in diam., set, marked, and witnessed as described in the official record.
	Thence,
	N. 0° 02' W., bet. secs. 33 and 34.
	Over rolling land, thru moderate undergrowth.
	Asc. 5 ft. over slight SE. slope to
4.00	Top of spur, slopes E. Desc. 122 ft. over NE. slope to
28.70	Wash, 10 lks. wide, course E. Asc. 49 ft. over S. slope to
35.00	Top of short spur, slopes S. 60° E. Desc. 17 ft. over NE. slope to
40.00	Set an iron post, 3 ft. long, 1 in. in diam., 14 ins. in the ground over cross (+) on bedrock, and in a mound of stone to top, for $\frac{1}{4}$ sec. cor., with brass cap marked

Survey: Subdivision Lines: T. 37 N., R. 14 W.

Chains

$\frac{1}{4}$

S33|S34

1939

Continue over NE. slope. Desc. 11 ft. to

41.10 Wash, 15 lks. wide, course SE. Asc. 393 ft. over S. slope to

80.00 Set an iron post, 3 ft. long, 2 ins. in diam., 17 ins. in the ground over cross (+) on bedrock, and in a mound of stone to top, for the cor. of secs. 27, 28, 33, and 34, with brass cap marked

T37N R14W

S28|S27

S33|S34

1939

Land, rolling and heavy rolling.
Soil, malpais rock and clay; 3rd and 4th rates.
No timber. Scattering joshua trees.
Undergrowth, blackbrush, greasewood, Spanish dagger, and cacti. Good grass.

East, on a random line, bet. secs. 27 and 34.

40.00 Set temp. $\frac{1}{4}$ sec. cor.

79.98 Intersect N. and S. line 3 lks. S. of the cor. of secs. 26, 27, 34, and 35.

Thence,

S. 89° 59' W., on true line, bet. secs. 27 and 34.

Over rolling land, thru moderate undergrowth.

Desc. 73 ft. over W. slope to

8.20 Grand Wash, 40 lks. wide, course S. Asc. 42 ft. over SE. slope.

11.80 Ungraded road, brs. N. 11° E. and S. 6° W.

16.00 Wash, 10 lks. wide, course S. 80° E., from N. 60° W.. Asc. 123 ft. over E. slope to

27.00 Slope changes to SE. Asc. 84 ft. to

39.99 Point of spur, from N. 20° W.
Set an iron post, 3 ft. long, 1 in. in diam., 8 ins. in the ground over cross (+) on bedrock, and in a mound of stone to top, for $\frac{1}{4}$ sec. cor., with brass cap marked

$\frac{1}{4}$ S27

S34

1939

Desc. 11 ft. over SW. slope to

43.30 Draw, course S. 70° E. Asc. 84 ft. over NE. slope to

50.00 Slope changes to N. Asc. 29 ft. to

28.

Survey: Subdivision Lines: T. 37 N., R. 14 W.

Chains	
55.00	Draw, heads approx. 6 chs. SW., course NE. Asc. 204 ft. over E. slope to
72.00	Top of ridge, brs. SE. and NW. Along S. slope. Asc. 18 ft. to
79.98	The cor. of secs. 27, 28, 33, and 34. Land, rolling. Soil, rocky malpais; 3rd and 4th rates. No timber. Scattering joshua trees. Undergrowth, blackbrush and Spanish dagger. Fair grass.
	N. 0° 02' W., bet. secs. 27 and 28. Over rolling land, thru low undergrowth and scattering joshua trees. Asc. 23 ft. over gradual S. slope to
13.00	Flat top of ridge, brs. S. 30° E. and N. 30° W. Along gently rolling E. slope. Asc. 22 ft. to
25.00	Slope changes to NE. Desc. 41 ft. to
31.85	Draw, course S. 70° E. Asc. 54 ft. over S. slope to
39.00	Top of spur, slopes S. 80° E. Desc. slightly over N. slope to
40.00	Set an iron post, 3 ft. long, 1 in. in diam., 16 ins. in the ground over cross (+) on bedrock, and in a mound of stone to top, for $\frac{1}{4}$ sec. cor., with brass cap marked $\frac{1}{4}$ S28 S27 1939
	Continue over N. slope. Desc. 79 ft. to
48.10	Draw, course N. 80° E. Asc. 187 ft. over SE. slope to
68.00	Top of flat spur, slopes S. 80° E. Desc. 38 ft. over NE. slope to
76.55	Draw, course S. 80° E. Asc. 34 ft. over S. slope to
80.00	Set an iron post, 3 ft. long, 2 ins. in diam., 6 ins. in the ground over cross (+) on bedrock, and in a mound of stone to top, for the cor. of secs. 21, 22, 27, and 28, with brass cap marked T37N R14W S21 S22 S28 S27 1939
	Land, rolling. Soil, rocky malpais clay; 3rd and 4th rates. No timber. Scattering joshua trees. Undergrowth, blackbrush, Spanish dagger, and cacti. Good grass.
	N. 89° 59' E., on a random line, bet. secs. 22 and 27.

Survey: Subdivision Lines: T. 37 N., R. 14 W.

29.

Chains	
40.00	Set temp. $\frac{1}{4}$ sec. cor.
79.92	Intersect N. and S. line 6 lks. N. of the cor. of secs. 22, 23, 26, and 27.
	Thence,
	N. $89^{\circ} 58'$ W., on true line, bet. secs. 22 and 27.
	Over mountainous and rolling land, thru low undergrowth and scattering joshua trees.
	Desc. 419 ft. over W. slope to
34.20	Grand Wash, 80 lks. wide, course S. 15° E. Asc. 75 ft. over E. slope.
35.30	Ungraded road, brs. S. 15° E. and N. 15° W.
38.10	Slope changes to NW. Desc. 11 ft. to
39.96	Small short drain, course N. 30° E. Set an iron post, 3 ft. long, 1 in. in diam., 12 ins. in the ground over cross (+) on bedrock, and in a mound of stone to top, for $\frac{1}{4}$ sec. cor., with brass cap marked
	$\frac{1}{4} \frac{S22}{S27}$ 1939
	Asc. 611 ft. over E. slope to
70.60	Top of spur, slopes SE. Along S. slope. Asc. 5 ft. to
79.92	The cor. of secs. 21, 22, 27, and 28.
	Land, mountainous and rolling. Soil, rocky malpais; 3rd and 4th rates. No timber. Scattering joshua trees. Undergrowth, blackbrush, Spanish dagger, and cacti. Good grass.
	N. $0^{\circ} 02'$ W., bet. secs. 21 and 22.
	Over rolling land, thru low undergrowth and scattering joshua trees.
	Asc. 55 ft. over S. slope to
14.00	Top of spur, slopes SE. Desc. 22 ft. over NE. slope to
19.65	Draw, course E. Asc. 36 ft. over S. slope to.
25.80	Top of spur, slopes S. 70° E. Desc. 52 ft. over NE. slope to
35.70	Ravine, course S. 80° E. Enter very scattering timber, brs. N. and W. Asc. 55 ft. over S. slope to
40.00	Set an iron post, 3 ft. long, 1 in. in diam., 10 ins. in the ground to bedrock, and in a mound of stone to top, for $\frac{1}{4}$ sec. cor., with brass cap marked
	$\frac{1}{4}$ S21 S22 1939

30.

Survey: Subdivision Lines: T. 37 N., R. 14 W.

Chains					
	<p style="text-align: right;">from which</p> <p>A juniper, 7 ins. diam., bears N. $76\frac{1}{2}^{\circ}$ W., 168 lks. dist., marked $\frac{1}{4}$ S21 BT.</p> <p>No East bearing tree available.</p> <p>Continue over S. slope. Asc. 29 ft.</p>				
41.00	Leave very scattering timber, brs. S. and SW.				
45.00	Top of spur, slopes S. 70° E. Along E. slope. Desc. 18 ft. to				
66.00	Top of spur, slopes N. 70° E.. Desc. 59 ft. over N. slope to				
73.40	Draw, course N. 70° E. Asc. 47 ft. over SE. slope. Enter scattering timber, brs. E. and W.				
80.00	<p>Top of spur, slopes N. 80° E.</p> <p>Set an iron post, 3 ft. long, 2 ins. in diam., 10 ins. in the ground to bedrock, and in a mound of stone to top, for the cor. of secs. 15, 16, 21, and 22, with brass cap marked</p> <div style="text-align: center;"> <p>T37N R14W.</p> <table style="margin: auto;"> <tr> <td style="border-right: 1px solid black; padding: 0 5px;">S16</td> <td style="padding: 0 5px;">S15</td> </tr> <tr> <td style="border-right: 1px solid black; padding: 0 5px;">S21</td> <td style="padding: 0 5px;">S22</td> </tr> </table> <p>1939</p> </div> <p style="text-align: right;">from which</p> <p>A juniper, 10 ins. diam., bears N. 62° E., 316 lks. dist., marked T37N R14W S15 BT.</p> <p>No other bearing trees available.</p> <p>Land, rolling. Soil, rocky; 3rd and 4th rates. Timber, juniper. Scattering joshua trees. Undergrowth, blackbrush, Spanish dagger, and cacti. Good grass.</p>	S16	S15	S21	S22
S16	S15				
S21	S22				
40.00	S. $89^{\circ} 58'$ E., on a random line, bet. secs. 15 and 22. Set temp. $\frac{1}{4}$ sec. cor.				
79.94	Intersect N. and S. line 2 lks. S. of the cor. of secs. 14, 15, 22, and 23.				
	Thence,				
	N. $89^{\circ} 59'$ W., on true line, bet. secs. 15 and 22.				
	Over mountainous and rolling land, thru moderate undergrowth.				
	Desc. 484 ft. over NW. slope to				
29.10	Grand Wash, 100 lks. wide, course S. Ungraded road, brs. S. 12° E. and N. 12° W. Asc. 147 ft. over E. slope to				
39.97	Set an iron post, 3 ft. long, 1 in. in diam., 28 ins. in the ground, for $\frac{1}{4}$ sec. cor., with brass cap marked				
	<div style="text-align: center;"> <p>S15</p> <table style="margin: auto;"> <tr> <td style="border-right: 1px solid black; padding: 0 5px;">$\frac{1}{4}$</td> <td style="padding: 0 5px;">S22</td> </tr> </table> <p>1939</p> </div> <p style="text-align: right;">raise a mound</p>	$\frac{1}{4}$	S22		
$\frac{1}{4}$	S22				

Survey: Subdivision Lines: T. 37 N., R. 14 W.

31.

Chains

of stone, 3 ft. base, 2 ft. high, N. of cor.

Asc. 493 ft. over SE. slope.

52.00 Enter scattering timber, brs. N. and S.

79.94 The cor. of secs. 15, 16, 21, and 22.

Land, mountainous and rolling.

Soil, rocky; 3rd and 4th rates.

Timber, juniper.

Undergrowth, blackbrush, Spanish dagger, and cacti.

Good grass.

N. 0° 02' W., bet. secs. 15 and 16.

Over rolling land, thru scattering timber and low moderate undergrowth.

Desc. 6 ft. over slight NE. slope to

5.00 Slope changes to gradual E. slope. Asc. slightly to

10.00 Top of spur, slopes N. 60° E. Desc. 98 ft. over N. slope to

20.05 Wash, 10 lks. wide, course E. Asc. 121 ft. over SE. slope to

40.00 Set an iron post, 3 ft. long, 1 in. in diam., 27 ins. in the ground, for $\frac{1}{4}$ sec. cor., with brass cap marked $\frac{1}{4}$

S16|S15

1939.

from which

A juniper, 7 ins. diam., bears N. 18° E., 249 lks. dist., marked $\frac{1}{4}$ S15 BT.A juniper limb, 7 ins. diam., bears N. 49° W., 91 lks. dist., marked $\frac{1}{4}$ S16 BT.

Continue over SE. slope. Asc. 34 ft. to

50.00 Top of spur, slopes N. 70° E. Desc. 5 ft. over NW. slope to

51.00 Top of malpais rim, faces N., brs. N. 80° E. and S. 80° W. Desc. 564 ft. over steep, rocky NW. slope.

70.00 Leave scattering and enter moderate timber, brs. E. and W.

76.45 Wash, 30 lks. wide, course N. 80° E. Along gradual E. slope. Asc. 10 ft. to

80.00 Set an iron post, 3 ft. long, 2 ins. in diam., 28 ins. in the ground, for the cor. of secs. 9, 10, 15, and 16, with brass cap marked.

T37N R14W

S9|S10

S16|S15

1939

from which

A juniper, 10 ins. diam., bears N. 23° E., 36 lks.

Survey: Subdivision Lines: T. 37 N., R. 14 W.

32.

Chains	
	<p>dist., marked T37N R14W S10 BT.</p> <p>A juniper, 7 ins. diam., bears S. 5° E., 14 lks. dist., marked T37N R14W S15 BT.</p> <p>A juniper, 6 ins. diam., bears S. 36° W., 18 lks. dist., marked T37N R14W S16 BT.</p> <p>A juniper, 12 ins. diam., bears N. 56° W., 103 lks. dist., marked T37N R14W S9 BT.</p> <p>Land, rolling and mountainous. Soil, rocky; 3rd and 4th rates. Timber, juniper. Undergrowth, blackbrush, Spanish dagger, and cacti. Good grass.</p>
	<p>S. 89° 59' E., on a random line, bet. secs. 10 and 15.</p>
40.00	Set temp. $\frac{1}{4}$ sec. cor.
79.88	Intersect the cor. of secs. 10, 11, 14, and 15.
	Thence,
	N. 89° 59' W., on true line, bet. secs. 10 and 15.
	Over mountainous and rolling land, thru scattering timber and moderate undergrowth.
	Desc. 285 ft. over SW. slope to
15.80	Rocky ravine, course SW., from N. Asc. 36 ft. over SE. slope to
17.70	Top of low spur, slopes SW. Desc. 113 ft. over W. slope to
26.60	Wash, 15 lks. wide, course SW. Desc. 41 ft. over SW. slope.
33.70	Ungraded road, brs. S. 12° E. and N. 12° W.
39.94	Set an iron post, 3 ft. long, 1 in. in diam., 27 ins. in the ground, for $\frac{1}{4}$ sec. cor., with brass cap marked
	$\begin{array}{r} \frac{1}{4} \text{ S10} \\ \frac{1}{4} \text{ S15} \\ \hline 1939 \end{array}$
	from which
	A juniper, 5 ins. diam., bears N. 33 $\frac{1}{4}$ ° E., 353 lks. dist., marked $\frac{1}{4}$ S10 BT.
	A juniper, 6 ins. diam., bears S. 22 $\frac{1}{4}$ ° E., 248 lks. dist., marked $\frac{1}{4}$ S15 BT.
	Continue over SW. slope. Desc. 15 ft. to
43.15	Left bank of Grand Wash, 4 ft. high, brs. N. and S. Over gravel bottom of Grand Wash, course S.
46.70	Right bank of Grand Wash, 4 ft. high, brs. N. and S. Over nearly level bottom land to
48.50	Wash, 20 lks. wide, course S. 30° E. Enter moderate and leave scattering timber, brs. N. and S. Asc. 57 ft. over gradual E. slope to
63.30	Slope changes to NW. Desc. 10 ft. over slight NW. slope to

Survey: Subdivision Lines: T. 37 N., R. 14 W.

33.

Chains	
73.60	Wash, 25 lks. wide, course N. 60° E. Asc. 16 ft. over gradual E. slope to
79.88	The cor. of secs. 9, 10, 15, and 16. Land, mountainous and rolling. Soil, rocky and gravelly; 4th and 3rd rates. Timber, juniper. Undergrowth, blackbrush, Spanish dagger, and cacti. Good grass.
	N. 0° 02' W., bet. secs. 9 and 10. Over rolling land, thru moderate timber and low moderate undergrowth. Along gradual E. slope. Desc. 4 ft. to
3.80	Wash, 5 lks. wide, course E. Continue along gradual E. slope. Asc. 8 ft.
4.82	South side of barb wire corral, brs. E., approx. 3 chs. and W., approx. 0.50 chs.
8.10	North fence of same corral, brs. E., approx. 3 chs. and W., approx. 0.50 chs.
9.80	Rocky wash, 20 lks. wide, course S. 70° E. Continue along gradual E. slope. Asc. 6 ft. to
14.30	Rocky wash, 20 lks. wide, course E. Continue along gradual E. slope.
25.00	Leave moderate and enter scattering timber, brs. E. and W.
25.80	Wash, 15 lks. wide, course E. Asc. 61 ft. over S. slope to
35.00	Top of low spur, slopes S. 70° E. Desc. 31 ft. over NE. slope to
40.00	Set an iron post, 3 ft. long, 1 in. in diam., 27 ins. in the ground, for $\frac{1}{4}$ sec. cor., with brass cap marked $\frac{1}{4}$ S9 S10 1939 from which A juniper, 7 ins. diam., bears N. 42 $\frac{1}{2}$ ° E., 144 lks. dist., marked $\frac{1}{4}$ S10 BT. A juniper, 8 ins. diam., bears S. 32 $\frac{1}{4}$ ° W., 130 lks. dist., marked $\frac{1}{4}$ S9 BT. Continue over NE. slope. Desc. 7 ft. to
41.90	Wash, 15 lks. wide, course S. 80° E. Asc. 88 ft. over S. slope to
51.00	Top of low spur, slopes E. Desc. 34 ft. over NE. slope to
56.60	Draw, course S. 60° E. Asc. 67 ft. over gradual SE. slope to
68.00	Leave rolling and enter mountainous land, brs. NE. and SW. Asc. 256 ft. over rocky SE. slope to

34. Survey: Subdivision Lines: T. 37 N., R. 14 W.

Chains 80.00	<p>Set an iron post, 3 ft. long, 2 ins. diam., 14 ins. in the ground to solid rock, and in a mound of stone to top, for the cor. of secs. 3, 4, 9, and 10, with brass cap marked</p> <p style="text-align: center;">T37N R14W S4 S3 S9 S10 1939</p> <p style="text-align: right;">from which</p> <p>A pinyon, 14 ins. diam., bears N. $34\frac{1}{2}^{\circ}$ E., 253 lks. dist., marked T37N R14W S3 BT.</p> <p>A pinyon, 6 ins. diam., bears S. $18\frac{3}{4}^{\circ}$ E., 46 lks. dist., marked T37N R14W S10 BT.</p> <p>A pinyon, 10 ins. diam., bears S. 9° W., 303 lks. dist., marked T37N R14W S9 BT.</p> <p>A pinyon, 8 ins. diam., bears N. $33\frac{1}{4}^{\circ}$ W., 255 lks. dist., marked T37N R14W S4 BT.</p> <p>Land, rolling and mountainous. Soil, gravelly and rocky; 2nd, 3rd, and 4th rates. Timber, juniper and pinyon. Undergrowth, blackbrush, Spanish dagger, and cacti. Good grass.</p>
40.00	<p>S. $89^{\circ} 59'$ E., on a random line, bet. secs. 3 and 10. Set temp. $\frac{1}{4}$ sec. cor.</p>
79.82	<p>Intersect N. and S. line 18 lks. N. of the cor. of secs. 2, 3, 10, and 11. Thence, N. $89^{\circ} 51'$ W., on true line, bet. secs. 3 and 10. Over mountainous land, thru very scattering timber and low dense undergrowth. Desc. 485 ft. over steep NW. slope to</p>
20.00	<p>Leave mountainous and enter rolling land, brs. N. and S. Leave very scattering timber, brs. N. and S. Desc. 109 ft. over W. slope.</p>
26.00	<p>Ungraded road, brs. N. 3° E. and S. 3° W.</p>
39.91	<p>Set an iron post, 3 ft. long, 1 in. in diam., 27 ins. in the ground, for $\frac{1}{4}$ sec. cor., with brass cap marked</p> <p style="text-align: center;">$\frac{1}{4}$ S3 S10 1939</p> <p style="text-align: right;">raise a mound of stone, $2\frac{1}{2}$ ft. base, 2 ft. high, N. of cor.</p> <p>Continue over W. slope. Desc. 43 ft. to</p>
47.70	<p>Left bank of Grand Wash, 4 ft. high, brs. N. and SW. Over gravel bottom of Grand Wash, course S. 30° W.</p>
52.60	<p>Right bank of Grand Wash, 4 ft. high, brs. N. 20° E. and S. 20° W. Asc. 6 ft. over gradual SE. slope to</p>

Survey: Subdivision Lines: T. 37 N., R. 14 W.

35.

Chains	
60.00	Leave rolling and enter mountainous land, brs. NE. and SW. Enter scattering timber, brs. NE. and SW. Asc. 386 ft. over steep, rocky SE. slope to
79.82	The cor. of secs. 3, 4, 9, and 10. Land, mountainous and rolling. Soil, rocky and gravelly; 4th and 3rd rates. Timber, pinyon and juniper. Undergrowth, blackbrush, Spanish dagger, and cacti. Good grass.
	N. 0° 02' E., on a random line, bet. secs. 3 and 4.
40.00	Set temp. $\frac{1}{4}$ sec. cor.
80.04	Intersect N. bdy. of Tp. 30 lks. E. of the cor. of secs. 3, 4, 33, and 34, which is an iron post, 2 ins. in diam., set, marked, and witnessed as described in the official record. Thence, S. 0° 11' E., on true line, bet. secs. 3 and 4. Over mountainous land, thru moderate timber and undergrowth. Desc. 264 ft. over S. slope to
7.30	Ravine, 20 lks. wide, course S. 60° E. Asc. 68 ft. over NE. slope to
25.00	Top of spur, slopes E. Desc. 210 ft. over S. slope to
40.04	Set an iron post, 3 ft. long, 1 in. in diam., 25 ins. in the ground, and in a small mound of stone to top, for $\frac{1}{4}$ sec. cor., with brass cap marked $\frac{1}{4}$ S4 S3 1939 from which A juniper, 14 ins. diam., bears S. 11 $\frac{1}{2}$ ° E., 181 lks. dist., marked $\frac{1}{4}$ S3 BT. A juniper, 6 ins. diam., bears S. 13 $\frac{1}{4}$ ° W., 189 lks. dist., marked $\frac{1}{4}$ S4 BT. Continue over S. slope. Desc. 28 ft. to
41.60	Wash, 10 lks. wide, course E., approx. 5 chs., thence S. 60° E. Asc. 208 ft. over broken NE. slope to
73.00	Top of spur, slopes E. Desc. 95 ft. over SE. slope to
80.04	The cor. of secs. 3, 4, 9, and 10. Land, mountainous. Soil, rocky; 3rd and 4th rates. Timber, juniper and pinyon. Undergrowth, blackbrush, Spanish dagger, oakbrush, and cacti. Good grass.
	From the standard cor. of secs. 32 and 33, on the S. bdy. of the Tp., (9th Std. Par. N.) which is an iron post,

Survey: Subdivision Lines: T. 37 N., R. 14 W.

36.

Chains	
	2 ins. in diam., set, marked, and witnessed as described in the official record.
	Thence,
	N. 0° 03' W., bet. secs. 32 and 33.
	Over rolling land, thru moderate undergrowth.
	Desc. 70 ft. over NW. slope to
7.00	Gulch, course SW. Asc. 143 ft. over SE. slope to
26.00	Top of flat ridge, brs. N. 60° E. and S. 60° W. Over flat top of ridge to
30.00	Leave top of ridge, brs. N. 60° E. and S. 60° W. Along rolling W. slope. Asc. 17 ft. to
40.00	Set an iron post, 3 ft. long, 1 in. in diam., 14 ins. in the ground over cross (+) on bedrock, and in a mound of stone to top, for $\frac{1}{4}$ sec. cor., with brass cap marked
	$\frac{1}{4}$
	S32 S33
	1939
	Continue along rolling W. slope. Desc. gradually to
53.80	Gulch, course SW. Asc. 188 ft. over S. slope to
80.00	Set an iron post, 3 ft. long, 2 ins. in diam., 18 ins. in the ground to bedrock, and in a mound of stone to top, for the cor. of secs. 28, 29, 32, and 33, with brass cap marked
	T37N R14W
	S29 S28
	S32 S33
	1939
	raise a mound
	of stone, 3 ft. base, 2 ft. high, W. of cor.
	Land, rolling.
	Soil, rocky clay; 4th rate.
	No timber. Scattering joshua trees.
	Undergrowth, blackbrush, sagebrush, cliff rose, Spanish dagger, and cacti. Fair grass.
	East, on a random line, bet. secs. 28 and 33.
40.00	Set temp. $\frac{1}{4}$ sec. cor.
80.24	Intersect N. and S. line 4 lks. S. of the cor. of secs. 27, 28, 33, and 34.
	Thence,
	S. 89° 58' W., on true line, bet. secs. 28 and 33.
	Over rolling land, thru moderate undergrowth.
	Along S. slope to
5.20	Slope changes to SW. Desc. 120 ft. to

Survey: Subdivision Lines: T. 37 N., R. 14 W.

37.

Chains

15.20 Gulch, course S. 20° E. Asc. 202 ft. over slightly broken SE. slope to

40.12 Set an iron post, 3 ft. long, 1 in. in diam., 14 ins. in the ground over cross (+) on bedrock, and in a mound of stone to top, for $\frac{1}{4}$ sec. cor., with brass cap marked
$$\begin{array}{r} \frac{1}{4} \text{ S28} \\ \hline \text{S33} \\ 1939 \end{array}$$

Continue over SE. slope. Asc. 24 ft. to

48.30 Top of flat ridge, brs. NE. and SW. Desc. 35 ft. over W. slope to

58.30 Gulch, course SW. Asc. 63 ft. over SE. slope to

70.00 Slope changes to S. Along S. slope to

80.24 The cor. of secs. 28, 29, 32, and 33.

Land, rolling.

Soil, rocky; 4th rate.

No timber. Scattering joshua trees.

Undergrowth, blackbrush, sagebrush, Spanish dagger, cliff rose, and cacti. Fair grass.

N. 0° 03' W., bet. secs. 28 and 29.

Over rolling land, thru moderate undergrowth.

Asc. 35 ft. over gradual S. slope to

5.00 Top of flat spur, slopes SW. Enter scattering timber, brs. NE. and SW. Along W. slope. Asc. 25 ft. to

23.10 Draw, near head, course SW. Asc. 33 ft. over SW. slope to

40.00 Set an iron post, 3 ft. long, 1 in. in diam., 18 ins. in the ground over cross (+) on bedrock, and in a mound of stone to top, for $\frac{1}{4}$ sec. cor., with brass cap marked
$$\begin{array}{r} \frac{1}{4} \\ \text{S29|S28} \\ 1939 \end{array}$$

No bearing trees available.

Continue over gradual SW. slope. Asc. 46 ft. to

48.00 Top of flat spur, slopes S. 70° W. Desc. 34 ft. over NW. slope to

65.10 Gulch, course SW. Along W. slope. Asc. 28 ft. to

80.00 Set an iron post, 3 ft. long, 2 ins. in diam., 12 ins. in the ground to bedrock, and in a mound of stone to top, for the cor. of secs. 20, 21, 28, and 29, with brass cap marked

$$\begin{array}{r} \text{T37N R14W} \\ \text{S20|S21} \\ \hline \text{S29|S28} \\ 1939 \end{array}$$

from which

Survey: Subdivision Lines: T. 37 N., R. 14 W.

38.

Chains

A juniper, 6 ins. diam., bears N. $14\frac{1}{4}^{\circ}$ E., 264 lks. dist., marked T37N R14W S21 BT.

A juniper, 5 ins. diam., bears S. 84° W., 370 lks. dist., marked T37N R14W S29 BT.

A juniper, 6 ins. diam., bears N. 47° W., 505 lks. dist., marked T37N R14W S20 BT.

No SE. bearing tree available.

Land, rolling.

Soil, rocky; 4th rate.

Timber, juniper and pinyon. Scattering joshua trees.

Undergrowth, blackbrush, sagebrush, Spanish dagger, cliff rose, and cacti. Fair grass.

N. $89^{\circ} 58'$ E., on a random line, bet. secs. 21 and 28.

40.00 Set temp. $\frac{1}{4}$ sec. cor.

80.28 Intersect N. and S. line 2 lks. S. of the cor. of secs. 21, 22, 27, and 28.

Thence,

S. $89^{\circ} 57'$ W., on true line, bet. secs. 21 and 28.

Over rolling land, thru low undergrowth.

Along S. slope. Asc. 33 ft. to

8.00 Slope changes to SW. Desc. 10 ft. to

10.90 Draw, course S. 60° E. Asc. 74 ft. over E. slope to

27.00 Top of flat ridge, brs. S. 20° E. and N. 20° W. Over flat top of ridge to

33.00 Leave top of ridge, brs. S. 20° E. and N. 20° W. Desc. 10 ft. over SW. slope to

40.14 Set an iron post, 3 ft. long, 1 in. in diam., 8 ins. in the ground over cross (+) on bedrock, and in a mound of stone to top, for $\frac{1}{4}$ sec. cor., with brass cap marked

S21
 $\frac{1}{4}$ S28
1939

Continue over gradual SW. slope. Desc. 6 ft. to

43.20 Draw, course SE. Asc. 35 ft. over E. slope to

52.30 Top of low ridge, brs. N. and S. Enter scattering timber, brs. N. and S. Desc. 35 ft. over gradual W. slope to

80.28 The cor. of secs. 20, 21, 28, and 29.

Land, rolling.

Soil, rocky; 3rd and 4th rates.

Timber, juniper. Scattering joshua trees.

Undergrowth, blackbrush, Spanish dagger, sagebrush, and cacti. Good grass.

N. $0^{\circ} 03'$ W., bet. secs. 20 and 21.

Survey: Subdivision Lines: T. 37 N., R. 14 W.

1278
39.

Chains

Over rolling land, thru scattering timber and dense undergrowth.

Along gradual W. slope to

11.20 Draw, course SW. Asc. 52 ft. over S. slope to

20.00 Top of flat spur, slopes SW. Along gradual W. slope to

31.60 Draw, course SW. Asc. 23 ft. over gradual SE. slope to

40.00 Set an iron post, 3 ft. long, 1 in. in diam., 2 ins. in the ground to bedrock, and in a mound of stone to top, for $\frac{1}{4}$ sec. cor., with brass cap marked

$\frac{1}{4}$

S20|S21

1939

from which

A juniper, 5 ins. diam., bears S. $3\frac{1}{2}^{\circ}$ E., 122 lks. dist., marked $\frac{1}{4}$ S21 BT.

A juniper, 5 ins. diam., bears N. 71° W., 317 lks. dist., marked $\frac{1}{4}$ S20 BT.

Continue over gradual SE. slope. Asc. 50 ft. to

64.00 Top of flat spur, slopes SW. Along gradual W. slope to

72.00 Head of draw, course SW. Asc. 23 ft. over gradual SW. slope to

80.00 Set an iron post, 3 ft. long, 2 ins. in diam., 18 ins. in the ground to bedrock, and in a mound of stone to top, for the cor. of secs. 16, 17, 20, and 21, with brass cap marked

T37N R14W

S17|S16

S20|S21

1939

from which

A juniper, 10 ins. diam., bears N. $41\frac{1}{4}^{\circ}$ E., 116 lks. dist., marked T37N R14W S16 BT.

A juniper, 7 ins. diam., bears S. $74\frac{3}{4}^{\circ}$ E., 247 lks. dist., marked T37N R14W S21 BT.

No other bearing trees available.

Land, rolling.

Soil, rocky; 4th rate.

Timber, juniper. Scattering joshua trees.

Undergrowth, blackbrush, Spanish dagger, sagebrush, and cacti. Fair grass.

N. $89^{\circ} 57'$ E., on a random line, bet. secs. 16 and 21.

40.00 Set temp. $\frac{1}{4}$ sec. cor.

80.24 Intersect N. and S. line 2 lks. S. of the cor. of secs. 15, 16, 21, and 22.

Thence,

Survey: Subdivision Lines: T. 37 N., R. 14 W.

40.

Chains	
	S. 89° 56' W., on true line, bet. secs. 16 and 21. Over rolling land, thru scattering timber and low moderate undergrowth. Asc. 75 ft. over NE. slope to
15.00	Top of spur, slopes S. 80° E. Asc. 66 ft. over SE. slope to
33.00	Head of draw, course S. 70° E. Asc. 60 ft. over E. slope to
40.12	Set an iron post, 3 ft. long, 1 in. in diam., 12 ins. in the ground to bedrock, and in a mound of stone to top, for $\frac{1}{4}$ sec. cor., with brass cap marked
	$\begin{array}{r} S16 \\ \frac{1}{4} S21 \\ \hline 1939 \end{array}$
	from which
	A juniper, 8 ins. diam., bears S. 19 $\frac{3}{4}$ ° E., 134 lks. dist., marked $\frac{1}{4}$ S21 BT.
	A juniper, 10 ins. diam., bears N. 70 $\frac{1}{2}$ ° W., 38 lks. dist., marked $\frac{1}{4}$ S16 BT.
	Continue over E. slope. Asc. 38 ft. to
45.00	Top of flat ridge, brs. S. 20° E. and N. 20° W. Over flat top of ridge to
50.50	Leave top of ridge, brs. S. 20° E. and N. 20° W. Desc. 76 ft. over W. slope to
58.05	Wash, 5 lks. wide, course S. Asc. 25 ft. over gently rolling E. slope to
70.00	Top of low flat ridge, brs. N. 20° E. and S. 20° W. Desc. 12 ft. over slight SW. slope to
80.24	The cor. of secs. 16, 17, 20, and 21. Land, rolling. Soil, rocky; 3rd and 4th rates. Timber, juniper. Undergrowth, blackbrush, Spanish dagger, and cacti. Good grass.
	N. 0° 03' W., bet. secs. 16 and 17. Over rolling land, thru scattering timber and undergrowth. Asc. slightly over SW. slope to
6.00	Head of draw, course W. Asc. 68 ft. over gradual SW. slope to
23.00	Top of flat ridge, brs. SE. and NW. Over flat top of ridge to
26.00	Leave top of ridge, brs. SE. and NW. Along gradual E. slope. Asc. 22 ft. to
40.00	Set an iron post, 3 ft. long, 1 in. in diam., 12 ins. in the ground over cross (+) on bedrock, and in a mound of stone to top, for $\frac{1}{4}$ sec. cor., with brass cap marked

Survey: Subdivision Lines: T. 37 N., R. 14 W.

41.

Chains	
	$\frac{1}{4}$ S17 S16 1939 No bearing trees available. Continue along gradual E. slope to
41.65	Top of malpais rim, 50 ft. high, faces NE., brs. SE. and NW. Leave rolling land and scattering timber; enter mountainous land and moderate timber, brs. SE. and NW. Desc. 516 ft. over rocky, broken NE. slope to
77.00	Slope changes to E. Along E. slope to
80.00	Set an iron post, 3 ft. long, 2 ins. in diam., 12 ins. in the ground to solid rock, and in a mound of stone to top, for the cor. of secs. 8, 9, 16 and 17, with brass cap marked
	T37N R14W S8 S9 S17 S16 1939
	from which
	A juniper, 16 ins. diam., bears N. $52\frac{3}{4}^{\circ}$ E., 59 lks. dist., marked T37N R14W S9 BT.
	A juniper, 12 ins. diam., bears S. $34\frac{1}{2}^{\circ}$ E., 69 lks. dist., marked T37N R14W S16 BT.
	A juniper, 16 ins. diam., bears S. $25\frac{1}{4}^{\circ}$ W., 101 lks. dist., marked T37N R14W S17 BT.
	A juniper, 9 ins. diam., bears N. 34° W., 49 lks. dist., marked T37N R14W S8 BT.
	Land, rolling and mountainous. Soil, rocky; 4th rate. Timber, juniper and pinyon. Undergrowth, blackbrush, sagebrush, cliff rose, scrub oak, Spanish dagger, and cacti. Fair grass.
	N. $89^{\circ} 56'$ E., on a random line, bet. secs. 9 and 16.
40.00	Set temp. $\frac{1}{4}$ sec. cor.
80.26	Intersect N. and S. line 9 lks. N. of the cor. of secs. 9, 10, 15, and 16.
	Thence, West, on true line, bet. secs. 9 and 16. Over rolling land, thru moderate timber and low scattering undergrowth. Asc. 105 ft. over E. slope to
25.00	Slope changes to SE. Asc. 85 ft. to
40.13	Set an iron post, 3 ft. long, 1 in. in diam., 18 ins. in the ground to solid rock, and in a mound of stone to top, for $\frac{1}{4}$ sec. cor., with brass cap marked

Survey: Subdivision Lines: T. 37 N., R. 14 W.

42.

Chains	
	$\frac{1}{4} \frac{S9}{S16}$ 1939
	from which
	A juniper, 6 ins. diam., bears S. $80\frac{1}{2}^{\circ}$ E., 118 lks. dist., marked $\frac{1}{4}$ S16 BT.
	A juniper, 6 ins. diam., bears N. $74\frac{1}{2}^{\circ}$ W., 100 lks. dist., marked $\frac{1}{4}$ S9 BT.
	Along S. slope. Desc. 6 ft. to
52.00	Slope changes to SW. Desc. 56 ft. to
58.70	Wash, 20 lks. wide, course S. 70° E. Asc. 118 ft. over E. slope to
80.26	The cor. of secs. 8, 9, 16, and 17.
	Land, rolling. Soil, rocky; 3rd and 4th rates. Timber, juniper. Few joshua trees. Undergrowth, blackbrush, cliff rose, Spanish dagger, and cacti. Fair grass.
	N. $0^{\circ} 03'$ W., bet. secs. 8 and 9.
	Over mountainous land, thru moderate timber and undergrowth.
	Along E. slope to
10.00	Slope changes to SE. Asc. 43 ft. to
21.20	Point of spur, slopes N. 70° E. Desc. 35 ft. over NE. slope to
27.50	Rocky gulch, course E. Asc. 178 ft. over SE. slope to
40.00	Set an iron post, 3 ft. long, 1 in. in diam., 28 ins. in the ground, for $\frac{1}{4}$ sec. cor., with brass cap marked
	$\frac{1}{4}$ $S8 S9$ 1939
	No bearing trees available.
	raise a mound
	of stone, 3 ft. base, $2\frac{1}{2}$ ft. high, W. of cor.
	Continue over SE. slope. Asc. 656 ft. to
68.50	Top of malpais rim, faces SE., brs. NE. and SW. Asc. 63 ft. over gradual SE. slope to
76.00	Top of flat spur, slopes SW. Along W. slope to
80.00	Set an iron post, 3 ft. long, 2 ins. in diam., 18 ins. in the ground to bedrock, and in a mound of stone to top, for the cor. of secs. 4, 5, 8, and 9, with brass cap marked
	T37N R14W $\frac{S5 S4}{S8 S9}$ 1939

Survey: Subdivision Lines: T. 37 N., R. 14 W.

43.

Chains

from which

A juniper, 7 ins. diam., bears N. 40° E., 40 lks. dist., marked T37N R14W S4 BT.

A juniper, 7 ins. diam., bears S. 44 $\frac{1}{4}$ ° E., 24 lks. dist., marked T37N R14W S9 BT.

A juniper, 12 ins. diam., bears S. 15 $\frac{1}{4}$ ° W., 58 lks. dist., marked T37N R14W S8 BT.

A juniper, 8 ins. diam., bears N. 57 $\frac{3}{4}$ ° W., 163 lks. dist., marked T37N R14W S5 BT.

Land, mountainous and rolling.

Soil, rocky; 4th rate.

Timber, juniper and pinyon.

Undergrowth, blackbrush, sagebrush, Spanish dagger, cliff rose, and cacti. Fair grass.

East, on a random line, bet. secs. 4 and 9.

40.00 Set temp. $\frac{1}{4}$ sec. cor.

80.28 Intersect the cor. of secs. 3, 4, 9, and 10.

Thence,

West, on true line, bet. secs. 4 and 9.

Over mountainous land, thru scattering timber and moderate undergrowth.

Asc. 193 ft. over broken SE. slope to

13.60 Slope changes to steep, broken S. slope. Desc. 13 ft. to

37.30 Draw, heads approx. 7 chs. NW., course SE. Asc. 137 ft. over E. slope to

40.14 Set an iron post, 3 ft. long, 1 in. in diam., 16 ins. in the ground to solid rock, and in a mound of stone to top, for $\frac{1}{4}$ sec. cor., with brass cap marked

$$\frac{\frac{1}{4} S4}{S9}$$

1939

from which

A pinyon, 7 ins. diam., bears S. 85 $\frac{1}{2}$ ° W., 221 lks. dist., marked $\frac{1}{4}$ S9 BT.

A pinyon, 26 ins. diam., bears N. 51 $\frac{1}{4}$ ° W., 122 lks. dist., marked $\frac{1}{4}$ S4 BT.

Asc. 300 ft. over precipitous, rocky E. slope to

46.10 Top of malpais rim, 50 ft. high, faces E., brs. N. and S. Asc. 100 ft. over E. slope to

53.30 Top of spur, slopes SE. Desc. gradually over SW. slope to

55.50 Top of same rim, faces SW., brs. SE. and N. 70° W. Along rocky, broken S. slope to

67.70 Top of same rim, faces SE., brs. N. 70° E. and SW. Leave mountainous land and scattering timber; enter rolling land and moderate timber, brs. SW. and N. 70° E. Asc.

Survey: Subdivision Lines: T. 37 N., R. 14 W.

44.

Chains	<p>23 ft. over gradual SE. slope to</p> <p>76.80 Top of spur, slopes SW. Desc. gradually over W. slope to</p> <p>80.28 The cor. of secs. 4, 5, 8, and 9.</p> <p>Land, mountainous and rolling. Soil, rocky; 4th rate. Timber, juniper and pinyon. Undergrowth, blackbrush, Spanish dagger, cliff rose, and cacti. Fair grass and poor grass.</p>
	<p>N. 0° 11' W., on random line, bet. secs. 4 and 5.</p> <p>40.00 Set temp. $\frac{1}{4}$ sec. cor.</p> <p>80.04 Intersect N. bdy. of Tp. 23 lks. W. of the cor. of secs. 4, 5, 32, and 33, which is an iron post, 2 ins. in diam. set, marked, and witnessed as described in the official record.</p>
	<p>Thence,</p> <p>S. 0° 01' E., on true line, bet. secs. 4 and 5.</p> <p>Over rolling land, thru scattering timber and dense undergrowth.</p>
	<p>Desc. 130 ft. over SW. slope to</p> <p>35.80 Drain, course SW. Asc. 31 ft. over NW. slope to</p>
	<p>40.04 Set an iron post, 3 ft. long, 1 in. in diam., 27 ins. in the ground, for $\frac{1}{4}$ sec. cor., with brass cap marked</p> <p style="text-align: center;">$\frac{1}{4}$</p> <p style="text-align: center;">S5 S4</p> <p style="text-align: center;">1939</p> <p style="text-align: right;">from which</p>
	<p>A juniper, 6 ins. diam., bears N. 44$\frac{3}{4}$° E., 63 lks. dist., marked $\frac{1}{4}$ S4 BT.</p>
	<p>A juniper limb, 8 ins. diam., bears S. 64$\frac{1}{4}$° W., 58 lks. dist., marked $\frac{1}{4}$ S5 BT.</p>
	<p>Asc. gradually over NW. slope. Enter moderate timber, brs, E. and W.</p>
	<p>41.00 Top of flat ridge, brs. N. 70° E. and S. 70° W. Desc. 165 ft. over slightly broken SW. slope to</p>
	<p>73.00 Gulch, course SW. Along W. slope. Asc. 20 ft. to</p>
	<p>80.04 The cor. of secs. 4, 5, 8, and 9.</p> <p>Land, rolling. Soil, rocky; 4th rate. Timber, juniper and pinyon. Undergrowth, sagebrush, blackbrush, cliff rose, Spanish dagger, and cacti. Fair grass.</p>
	<p>From the standard cor. of secs. 31 and 32, on the S. bdy. of the Tp., (9th Std. Par. N.) which is an iron post, 2 ins. in diam., set, marked, and witnessed as described in the official record.</p>

Survey: Subdivision Lines: T. 37 N., R. 14 W.

45.

Chains

Thence,
 N. 0° 03' W., bet. secs. 31 and 32.
 Over rolling land, thru dense undergrowth.
 Asc. 23 ft. over top of low, short spur, sloping S. to
 10.00 Head of short spur, slopes S. Top of long, broken spur,
 slopes S. 30° W. Along W. slope to
 25.00 Slope changes to gradual SW. Asc. 69 ft. to
 40.00 Set an iron post, 3 ft. long, 1 in. in diam., 14 ins. in
 the ground over cross (+) on bedrock, and in a mound of
 stone to top, for $\frac{1}{4}$ sec. cor., with brass cap marked

$$\frac{1}{4}$$

 S31|S32
 1939
 Continue over rolling gradual SW. slope. Asc. 87 ft. to
 80.00 Set an iron post, 3 ft. long, 2 ins. in diam., 4 ins. in
 the ground over cross (+) on bedrock, and in a mound of
 stone to top, for the cor. of secs. 29, 30, 31, and 32,
 with brass cap marked

$$\begin{array}{c} \text{T37N R14W} \\ \hline \text{S30|S29} \\ \hline \text{S31|S32} \\ 1939 \end{array}$$

 Land, rolling.
 Soil, rocky; 4th rate.
 No timber. Scattering joshua trees.
 Undergrowth, blackbrush, sagebrush, cliff rose, Spanish
 dagger, and cacti. Fair grass.

East, on a random line, bet. secs. 29 and 32.
 40.00 Set temp. $\frac{1}{4}$ sec. cor.
 79.90 Intersect the cor. of secs. 28, 29, 32, and 33.
 Thence,
 West, on true line, bet. secs. 29 and 32.
 Over rolling land, thru dense undergrowth.
 Along S. slope to
 5.00 Top of flat spur, slopes S. 20° W. Desc. 100 ft. over
 SW. slope to
 31.20 Gulch, course S. 20° W. Asc. 30 ft. over E. slope to
 39.95 Set an iron post, 3 ft. long, 1 in. in diam., 10 ins. in
 the ground over cross (+) on bedrock, and in a mound of
 stone to top, for $\frac{1}{4}$ sec. cor., with brass cap marked

$$\frac{1}{4} \begin{array}{c} \text{S29} \\ \hline \text{S32} \\ 1939 \end{array}$$

Survey: Subdivision Lines: T. 37 N., R. 14 W.

46.

Chains	
	Continue over E. slope. Asc. gradually to
41.20	Top of low spur, slopes S. Desc. 90 ft. over SW. slope to
55.40	Gulch, course S. Asc. 70 ft. over SE. slope to
59.30	Top of short spur, slopes S. Desc. 20 ft. over SW. slope to
62.80	Draw, course S. Asc. 61 ft. over SE. slope to
72.50	Top of spur, slopes S. Desc. 48 ft. over gradual SW. slope to
79.90	The cor. of secs. 29, 30, 31, and 32. Land, rolling. Soil, rocky clay; 3rd and 4th rates. No timber. Scattering joshua trees. Undergrowth, blackbrush, sagebrush, Spanish dagger, and cacti. Fair grass.
	West, on random line, bet. secs. 30 and 31.
40.00	Set temp. $\frac{1}{4}$ sec. cor.
79.96	Intersect W. bdy. of Tp. 3 lks. S. of the cor. of secs. 25, 30, 31 and 36, which is an iron post, 2 ins. in diam., set, marked, and witnessed as described in the official record.
	Thence, S. 89° 59' E., on true line, bet. secs. 30 and 31. Over nearly level top of ridge, thru dense undergrowth.
3.00	Leave nearly level top of ridge and enter mountainous land, brs. N. and S. Desc. 121 ft. over SE. slope to
10.60	Small canyon, course S. Asc. 106 ft. over SW. slope to
20.00	Top of spur, slopes S. Desc. 20 ft. over SE. slope to
28.00	Top of canyon rim, 10 ft. high, faces SE., brs. N. 20° E. and S. 20° W. Desc. 192 ft. over rocky, broken SE. slope to
35.70	Small canyon, course S. 20° W. Asc. 88 ft. over W. slope to
39.96	Set an iron post, 3 ft. long, 1 in. in diam., 17 ins. in the ground, and in a mound of stone to top, for $\frac{1}{4}$ sec. cor., with brass cap marked $\begin{array}{r} S30 \\ \frac{1}{4} \\ \hline S31 \\ 1939 \end{array}$ raise a mound of stone, 3 ft. base, 2 ft. high, N. of cor.
	Continue over rocky W. slope. Asc. 58 ft. to
43.50	Top of canyon rim, 15 ft. high, faces NW., brs. NE. and SW. Enter rolling land, brs. NE. and SW. Asc. 77 ft. over W. slope to
60.00	Top of flat spur, slopes S. 20° W. Desc. 44 ft. over SE. slope to
78.40	Draw, course S. 30° W. Asc. 20 ft. over SW. slope to

Survey: Subdivision Lines: T. 37 N., R. 14 W.

Chains
79.96

The cor. of secs. 29, 30, 31, and 32.

Land, mountainous and rolling.
Soil, rocky; 4th rate.
No timber. Scattering joshua trees.
Undergrowth, blackbrush, sagebrush, Spanish dagger, cliff
rose, and cacti. Fair grass.

N. 0° 03' W., bet. secs. 29 and 30.

Over rolling land, thru dense undergrowth.

Asc. slightly over SW. slope to

1.80 Draw, near head, course SW. Asc. 178 ft. over S. slope to

40.00 Set an iron post, 3 ft. long, 1 in. in diam., 16 ins. in
the ground over cross (+) on bedrock, and in a mound of
stone to top, for 1/4 sec. cor., with brass cap marked

1/4
S30|S29
1939

Continue over S. slope. Asc. 23 ft. to

46.50 Top of flat spur, slopes S. 25° W. Desc. 19 ft. over
NW. slope to

53.50 Top of broken canyon rim, faces NW., brs. N. 20° E. and
S. 20° W. Desc. 53 ft. over broken NW. slope to

64.20 Small canyon, course SW. Asc. 109 ft. over broken SE.
slope to

68.80 Top of broken canyon rim, faces SE., brs. NE. and SW.
Asc. 52 ft. over SE. slope to

80.00 Set an iron post, 3 ft. long, 2 ins. in diam., 14 ins. in
the ground over cross (+) on bedrock, and in a mound of
stone to top, for the cor. of secs. 19, 20, 29, and 30,
with brass cap marked

T37N R14W
S19|S20
S30|S29
1939

Land, rolling and slightly broken.
Soil; rocky; 4th rate.
No timber. Scattering joshua trees.
Undergrowth, blackbrush, sagebrush, Spanish dagger, cliff
rose, and cacti. Fair grass.

East, on a random line, bet. secs. 20 and 29.

40.00 Set temp. 1/4 sec. cor.

79.90 Intersect N. and S. line 9 lks. N. of the cor. of secs.
20, 21, 28, and 29.

Thence,

N. 89° 56' W., on true line, bet. secs. 20 and 29.

48.

Survey: Subdivision Lines: T. 37 N., R. 14 W.

Chains	
	Over rolling land, thru scattering timber and dense undergrowth.
	Desc. 35 ft. over W. slope to
4.90	Gulch, course S. Asc. 24 ft. over E. slope to
12.00	Top of flat spur, slopes S. Desc. 20 ft. over slightly broken SW. slope to
28.80	Gulch, course S. Asc. 35 ft. over SE. slope to
38.40	Top of flat spur, slopes S. 20° W. Desc. slightly over W. slope to
39.95	Set an iron post, 3 ft. long, 1 in. in diam., 14 ins. in the ground over cross (+) on bedrock, and in a mound of stone to top, for $\frac{1}{4}$ sec. cor., with brass cap marked
	$\begin{array}{r} \frac{1}{4} \text{ S20} \\ \hline \text{S29} \\ 1939 \end{array}$
	from which
	A juniper, 8 ins. diam., bears S. 38° E., 262 lks. dist., marked $\frac{1}{4}$ S29 BT.
	No other bearing tree available.
	Continue over W. slope. Desc. 50 ft. to
46.30	Gulch, course S., approx. 6 chs., thence W. Asc. 61 ft. over SE. slope to
55.00	Top of short spur, slopes S. Desc. 146 ft. over SW. slope.
63.50	Same gulch, course NW. Asc. 25 ft. over NE. slope to
66.20	Point of spur, slopes N. Desc. 40 ft. over NW. slope to
69.50	Same gulch, course SW. Leave scattering timber, brs. SE. and NW. Asc. 123 ft. over SE. slope to
79.90	The cor. of secs. 19, 20, 29, and 30.
	Land, rolling and slightly broken. Soil, rocky; 4th rate. Timber, juniper. Scattering joshua trees. Undergrowth, blackbrush, sagebrush, Spanish dagger, cliff rose, and cacti. Fair grass.
	N. 89° 59' W., on a random line, bet. secs. 19 and 30.
40.00	Set temp. $\frac{1}{4}$ sec. cor.
79.86	Intersect W. bdy. of Tp. 7 lks. S. of the cor. of secs. 19, 24, 25, and 30, which is an iron post, 2 ins. in diam., set, marked, and witnessed as described in the official record.
	Thence,
	S. 89° 56' E., on true line, bet. secs. 19 and 30.
	Over rolling land, thru dense undergrowth.
	Desc. 42 ft. over SE. slope to

Survey: Subdivision Lines: T. 37 N., R. 14 W.

49.

Chains	
6.20	Top of canyon rim, 50 ft. high, faces SE., brs. NE. and SW. Desc. 116 ft. over rocky, broken SE. slope to
19.90	Small canyon, course SW. Asc. 126 ft. over rocky, broken NW. slope to
29.30	Top of canyon rim, 20 ft. high, faces NW., brs. NE. and SW. Over top of flat ridge, sloping gradually SW.
39.86	Set an iron post, 3 ft. long, 1 in. in diam., 15 ins. in the ground over cross (+) on bedrock, and in a mound of stone to top, for $\frac{1}{4}$ sec. cor., with brass cap marked
	$\begin{array}{r} S19 \\ \frac{1}{4} \\ \hline S30 \\ 1939 \end{array}$
	Continue over rolling top of flat ridge, sloping gradually SW. Asc. 35 ft. to
60.00	Leave top of flat ridge, brs. NE. and SW. Along gradual S. slope to
65.00	Slope changes to gradual SW. Asc. 17 ft. to
78.90	Top of spur, slopes S. 30° W., from N. 20° W. Desc. slightly over SE. slope to
79.86	The cor. of secs. 19, 20, 29, and 30.
	Land, rolling and slightly broken. Soil, rocky and rocky clay; 4th rate. No timber. Scattering joshua trees. Undergrowth, blackbrush, sagebrush, Spanish dagger, cliff rose, and cacti. Fair grass.
	N. 0° 03' W., bet. secs. 19 and 20. Over rolling land, thru dense undergrowth. Asc. 149 ft. over SE. slope.
10.00	Enter scattering timber, brs. SE. and NW.
21:10	Top of rocky knoll, 100 ft. high, brs. NE. and NW., in ridge, bearing NE. and SW. Along flat top of knoll to
22.60	Leave top of knoll, brs. E. and W. Desc. 131 ft. over N. slope to
31.80	Gulch, course SW. Asc. 15 ft. over gradual S. slope to
40.00	Set an iron post, 3 ft. long, 1 in. in diam., 28 ins. in the ground, for $\frac{1}{4}$ sec. cor., with brass cap marked
	$\begin{array}{r} \frac{1}{4} \\ \hline S19 S20 \\ 1939 \end{array}$
	from which
	A juniper, 8 ins. diam., bears S. 45 $\frac{3}{4}$ ° E., 186 lks. dist., marked $\frac{1}{4}$ S20 BT.
	A juniper, 6 ins. diam., bears N. 44 $\frac{1}{2}$ ° W., 36 lks. dist., marked $\frac{1}{4}$ S19 BT.

50. Survey: Subdivision Lines: T. 37 N., R. 14 W.

Chains	
	Continue over gradual S. slope. Asc. 12 ft. to
45.00	Top of low spur, slopes S. 20° W. Asc. 137 ft. over SW. slope to.
80.00	Flat top of same spur, slopes S. 25° E., from N. Set an iron post, 3 ft. long, 2 ins. in diam., 14 ins. in the ground over cross (+) on bedrock, and in a mound of stone to top, for the cor. of secs. 17, 18, 19, and 20, with brass cap marked
	T37N R14W S18 S17 S19 S20 1939
	No bearing trees available.
	Land, rolling. Soil, rocky; 4th rate. Timber, juniper. Scattering joshua trees. Undergrowth, blackbrush, sagebrush, Spanish dagger, and cacti. Fair grass.
	S. 89° 56' E., on a random line, bet. secs. 17 and 20.
40.00	Set temp. $\frac{1}{4}$ sec. cor.
79.98	Intersect N. and S. line 4 lks. S. of the cor. of secs. 16, 17, 20, and 21.
	Thence,
	N. 89° 58' W., on true line, bet. secs. 17 and 20.
	Over rolling land, thru scattering timber and undergrowth.
	Desc. slightly over SW. slope to
27.00	Draw, course S. Asc. 25 ft. over gradual SE. slope to
39.50	Top of flat ridge, sloping gradually S., brs. N. and S. Over top of ridge to
39.99	Set an iron post, 3 ft. long, 1 in. in diam., 24 ins. in the ground, and in a small mound of stone to top, for $\frac{1}{4}$ sec. cor., with brass cap marked
	$\frac{1}{4}$ <u>S17</u> S20 1939
	from which
	A juniper, 5 ins. diam., bears S. 60 $\frac{1}{4}$ ° W., 124 lks. dist., marked $\frac{1}{4}$ S20 BT.
	A juniper, 5 ins. diam., bears N. 58 $\frac{1}{4}$ ° W., 64 lks. dist., marked $\frac{1}{4}$ S17 BT.
	Continue along rolling top of ridge, sloping S.
58.00	Leave top of ridge, brs. N. and S. Desc. 41 ft. over W. slope to
62.10	Gulch, course SW. Asc. 83 ft. over SE. slope to
79.98	The cor. of secs. 17, 18, 19, and 20.

Survey: Subdivision Lines: T. 37 N., R. 14 W.

51.

Chains	
	Land, rolling. Soil, rocky; 4th rate. Timber, juniper. Scattering joshua trees. Undergrowth, blackbrush, sagebrush, Spanish dagger, and cacti. Fair grass.
	N. 89° 56' W., on a random line, bet. secs. 18 and 19.
40.00	Set temp. $\frac{1}{4}$ sec. cor.
79.74	Intersect W. bdy. of Tp. 7 lks. S. of the cor. of secs. 13, 18, 19, and 24, which is an iron post, 2 ins. in diam., set, marked, and witnessed as described in the official record.
	Thence,
	S. 89° 53' E., on true line, bet. secs. 18 and 19.
	Over rolling land, thru very scattering timber and scattering undergrowth.
	Asc. 15 ft. over NW. slope to
6.20	Top of flat spur, slopes SW. Desc. 85 ft. over SE. slope to
17.30	Gulch, course S. 20° W. Asc. 69 ft. over NW. slope to
26.70	Top of spur, slopes SW. Desc. 25 ft. over SE. slope to
35.00	Slope changes to SW. Asc. 40 ft. to
39.74	Set an iron post, 3 ft. long, 1 in. in diam., 16 ins. in the ground over cross (+) on bedrock, and in a mound of stone to top, for $\frac{1}{4}$ sec. cor., with brass cap marked
	$\begin{array}{r} S18 \\ \frac{1}{4} \\ \hline S19 \\ 1939 \end{array}$
	No bearing trees available.
	Continue over SW. slope. Asc. 15 ft. to
53.00	Slope changes to gradual W. slope. Asc. slightly to
58.70	Top of flat spur, slopes SW. Desc. 112 ft. over SE. slope to
69.70	Gulch, course S. Asc. 100 ft. over SW. slope to
79.74	The cor. of secs. 17, 18, 19, and 20.
	Land, rolling. Soil, rocky; 4th rate. Timber, juniper. Scattering joshua trees. Undergrowth, blackbrush, sagebrush, Spanish dagger, cliff rose, and cacti. Fair grass.
	N. 0° 03' W., bet. secs. 17 and 18.
	Over rolling land, thru very scattering timber and scattering undergrowth.
	Asc. 46 ft. over top of spur, sloping S.
18.00	Leave top of spur, slopes S., from NE. Desc. 40 ft. over

52.

Survey: Subdivision Lines: T. 37 N., R. 14 W.

Chains	
	NW. slope to
28.70	Draw, course SW. Asc. 130 ft. over SE. slope to
40.00	Set an iron post, 3 ft. long, 1 in. in diam., 14 ins. in the ground over cross (+) on bedrock, and in a mound of stone to top, for $\frac{1}{4}$ sec. cor., with brass cap marked
	$\frac{1}{4}$
	S18 S17
	1939
	No bearing trees available.
	Continue over SE. slope. Asc. 29 ft. to
44.00	Top of spur, slopes SW. Along W. slope. Desc. 23 ft. to
54.00	Head of draw, course SW. Asc. 126 ft. over S. slope to
70.00	Top of broad spur, slopes S. 25° E. Asc. 57 ft. over SE. slope to
80.00	Set an iron post, 3 ft. long, 2 ins. in diam., 7 ins. in the ground over cross (+) on bedrock, and in a mound of stone to top, for the cor. of secs. 7, 8, 17, and 18, with brass cap marked
	T37N R14W
	S7 S8
	S18 S17
	1939
	No bearing trees available.
	Land, rolling.
	Soil, rocky; 4th rate.
	Timber, juniper. Scattering joshua trees.
	Undergrowth, blackbrush, sagebrush, Spanish dagger, cliff rose, and cacti. Fair grass.
	S. 89° 58' E., on a random line, bet. secs. 8 and 17.
40.00	Set temp. $\frac{1}{4}$ sec. cor.
80.04	Intersect N. and S. line 21 lks. S. of the cor. of secs. 8, 9, 16, and 17.
	Thence,
	S. 89° 53' W., on true line, bet. secs. 8 and 17.
	Over mountainous land, thru moderate timber and dense undergrowth.
	Asc. 631 ft. over rocky, broken E. slope to
23.00	Top of malpais rim, 30 ft. high, faces NE., brs. SE. and NW. Asc. 92 ft. over E. slope to
35.00	Top of ridge, brs. SE. and NW. Leave moderate and enter very scattering timber, brs. SE. and NW. Leave mountainous and enter rolling land, same bearing. Along S. slope to
40.02	Set an iron post, 3 ft. long, 1 in. in diam., 12 ins. in

Survey: Subdivision Lines: T. 37 N., R. 14 W.

53.

Chains

the ground over cross (+) on bedrock, and in a mound of stone to top, for $\frac{1}{4}$ sec. cor., with brass cap marked

$$\begin{array}{r} S8 \\ \frac{1}{4} \\ \hline S17 \\ 1939 \end{array}$$

No bearing trees available.

Along S. slope to

- 42.00 Slope changes to SE. Asc. 52 ft. to
 53.00 Top of flat spur, slopes S. Desc. 30 ft. over SW. slope to
 66.00 Head of draw, course S. Asc. 35 ft. over SE. slope to
 80.04 The cor. of secs. 7, 8, 17, and 18.

Land, mountainous and rolling.

Soil, rocky; 4th rate.

Timber, juniper and pinyon. Scattering joshua trees.

Undergrowth, blackbrush, sagebrush, Spanish dagger, cliff rose, scrub oak, and cacti. Fair grass.

N. $89^{\circ} 53'$ W., on a random line, bet. secs. 7 and 18.

- 40.00 Set temp. $\frac{1}{4}$ sec. cor.
 79.58 Intersect W. bdy. of Tp. 5 lks. N. of the cor. of secs. 7, 12, 13, and 18, which is an iron post, 2 ins. in diam., set, marked, and witnessed as described in the official record.
- Thence,
 S. $89^{\circ} 55'$ E., on true line, bet. secs. 7 and 18.
 Over rolling land, thru scattering timber and undergrowth.
 Asc. 56 ft. over NW. slope to
- 14.60 Top of broad short spur, slopes N. Desc. 55 ft. over NE. slope to
 28.10 Gulch, course NW. Leave timber, brs. N. and S. Asc. 83 ft. over NW. slope to
 39.58 Set an iron post, 3 ft. long, 1 in. in diam., 12 ins. in the ground over cross (+) on bedrock, and in a mound of stone to top, for $\frac{1}{4}$ sec. cor., with brass cap marked

$$\begin{array}{r} S7 \\ \frac{1}{4} \\ \hline S18 \\ 1939 \end{array}$$

Continue over gradual NW. slope to

- 53.10 Top of flat ridge, brs. NE. and SW. Enter moderate timber, brs. SE. and NW. Along S. slope to
 64.60 Slope changes to gradual SW. slope. Asc. 25 ft.
 74.60 Leave moderate timber and enter very scattering timber, brs. NE. and SW.
 77.60 Top of long spur, slopes S. 20° W. Desc. slightly over

Survey: Subdivision Lines: T. 37 N., R. 14 W.

54.

Chains	
79.58	<p>SE. slope to</p> <p>The cor. of secs. 7, 8, 17, and 18.</p> <p>Land, rolling. Soil, rocky; 4th rate. Timber, juniper and pinyon. Scattering joshua trees. Undergrowth, sagebrush, blackbrush, Spanish dagger, cliff rose, and cacti. Fair grass.</p>
4.70	<p>N. 0° 03' W., bet. secs. 7 and 8.</p> <p>Over rolling land, thru very scattering timber and scattering undergrowth.</p> <p>Asc. gradually over SE. slope to</p> <p>Top of flat ridge, brs. NE. and W. Enter moderate timber, brs. E. and W. Desc. 20 ft. over NW. slope to</p>
15.00	Head of draw, course W. Asc. 46 ft. over SW. slope to
25.50	Top of spur, slopes W. Desc. 35 ft. over NW. slope to
32.50	Draw, near head, course W. Asc. 36 ft. over SW. slope to
40.00	<p>Set an iron post, 3 ft. long, 1 in. in diam., 18 ins. in the ground to solid rock, and in a mound of stone to top, for $\frac{1}{4}$ sec. cor., with brass cap marked</p> <p style="text-align: center;">$\frac{1}{4}$</p> <p style="text-align: center;">S7 S8</p> <p style="text-align: center;">1939</p> <p style="text-align: right;">from which</p> <p>A juniper, .7 ins. diam., bears N. 82$\frac{1}{4}$° E., 38 lks. dist., marked $\frac{1}{4}$ S8 BT.</p> <p>A juniper, 10 ins. diam., bears N. 86° W., 59 lks. dist., marked $\frac{1}{4}$ S7 BT.</p>
44.00	<p>Continue over SW. slope. Asc. slightly to</p> <p>Top of spur, slopes W. Desc. 83 ft. over gradual NW. slope to</p>
69.60	Gulch, course W. Asc. 58 ft. over SW. slope to
75.50	Top of short spur, slopes W. Desc. 31 ft. over NW. slope to
80.00	<p>Set an iron post, 3 ft. long, 2 ins. in diam., 12 ins. in the ground to bedrock, and in a mound of stone to top, for the cor. of secs. 5, 6, 7, and 8, with brass cap marked</p> <p style="text-align: center;">T37N R14W</p> <p style="text-align: center;">S6 S5</p> <p style="text-align: center;">S7 S8</p> <p style="text-align: center;">1939</p> <p style="text-align: right;">from which</p> <p>A juniper, 10 ins. diam., bears N. 9$\frac{1}{2}$° E., 30 lks. dist., marked T37N R14W S5 BT.</p> <p>A juniper, 8 ins. diam., bears S. 67$\frac{1}{2}$° E., 55 lks.</p>

Survey: Subdivision Lines: T. 37 N., R. 14 W.

Chains

dist., marked T37N R14W S8 BT.

A juniper, 12 ins. diam., bears S. 33° W., 68 lks. dist., marked T37N R14W S7 BT.

A juniper, 6 ins. diam., bears N. 65½° W., 56 lks. dist., marked T37N R14W S6 BT.

Land, rolling.

Soil, rocky; 4th rate.

Timber, juniper and pinyon.

Undergrowth, sagebrush, blackbrush, Spanish dagger, cliff rose, and cacti. Fair grass.

N. 89° 53' E., on a random line, bet. secs. 5 and 8.

40.00 Set temp. ¼ sec. cor.

79.96 Intersect N. and S. line 4 lks. N. of the cor. of secs. 4, 5, 8, and 9.

Thence,

S. 89° 55' W., on true line, bet. secs. 5 and 8.

Over rolling land, thru moderate timber and undergrowth.

Desc. 50 ft. over W. slope to

8.00 Drain, course S. 20° W. Along slightly broken S. slope. Asc. 20 ft. to

35.00 Top of flat ridge, brs. NE. and SW. Desc. gradually over NW. slope to

39.98 Set an iron post, 3 ft. long, 1 in. in diam., 18 ins. in the ground to bedrock, and in a mound of stone to top, for ¼ sec. cor., with brass cap marked

½ S5
— S8
1939

from which

A juniper, 10 ins. diam., bears S. 59° W., 36 lks. dist., marked ¼ S8 BT.

A juniper, 6 ins. diam., bears N. 9° W., 68 lks. dist., marked ¼ S5 BT.

Continue over NW. slope. Desc. 45 ft. to

47.50 Gulch, course S. 60° W. Along S. slope to

52.50 Point of spur, slopes SW. Desc. 23 ft. over W. slope to

54.80 Gulch, course SW. Asc. 27 ft. over SE. slope to

71.00 Top of spur, slopes SW. Desc. 58 ft. over NW. slope to

79.96 The cor. of secs. 5, 6, 7, and 8.

Land, rolling.

Soil, rocky; 4th rate.

Timber, juniper and pinyon.

Undergrowth, blackbrush, sagebrush, Spanish dagger, cliff rose, and cacti. Fair grass.

Survey: Subdivision Lines: T. 37 N., R. 14 W.

56.

Chains	N. 89° 55' W., on a random line, bet. secs. 6 and 7.
40.00	Set temp. $\frac{1}{4}$ sec. cor.
79.54	Intersect W. bdy. of Tp. at the cor. of secs. 1, 6, 7, and 12, which is an iron post, 2 ins. in diam., set, marked, and witnessed as described in the official record.
	Thence,
	S. 89° 55' E., on true line, bet. secs. 6 and 7.
	Over rolling land, thru moderate timber and dense undergrowth.
	Asc. 33 ft. over gradual NW. slope to
7.50	Top of flat spur, slopes SW. Along S. slope. Desc. slightly to
19.00	Draw, course SW. Asc. 25 ft. over gradual NW. slope to
29.50	Top of flat spur, slopes SW. Along rolling S. slope. Desc. slightly to
39.54	Set an iron post, 3 ft. long, 1 in. in diam., 24 ins. in the ground, and in a small mound of stone to top, for $\frac{1}{4}$ sec. cor., with brass cap marked.
	$\frac{1}{4} \frac{S6}{S7}$ 1939
	from which
	A juniper, 8 ins. diam., bears S. 77° W., 58 lks. dist., marked $\frac{1}{4}$ S7 BT.
	A juniper, 8 ins. diam., bears N. 39 $\frac{3}{4}$ ° W., 64 lks. dist., marked $\frac{1}{4}$ S6 BT.
	Continue along rolling S. slope to
56.20	Gulch, course SW. Asc. 65 ft. over NW. slope to
67.50	Top of flat spur, slopes SW. Desc. 50 ft. over SE. slope to
79.49	Gulch, course SW. Asc. slightly over NW. slope to
79.54	The cor. of secs. 5, 6, 7, and 8.
	Land, rolling. Soil, rocky; 4th rate. Timber, juniper and pinyon. Undergrowth, sagebrush, blackbrush, Spanish dagger, scrub oak, and cacti. Fair grass.
	N. 0° 01' W., on a random line, bet. secs. 5 and 6.
40.00	Set temp. $\frac{1}{4}$ sec. cor.
80.06	Intersect N. bdy. of Tp. 2 lks. E. of the cor. of secs. 5, 6, 31, and 32, which is an iron post, 2 ins. in diam., set, marked, and witnessed as described in the official record.
	Thence,

Survey: Subdivision Lines: T. 37 N., R. 14 W.

57.

Chains

- S. 0° 02' E., on true line, bet. secs. 5 and 6.
Over rolling land, thru moderate timber and undergrowth.
Desc. slightly over SW. slope to
- 1.10 Draw, course SW. Asc. 15 ft. over gradual NW. slope to
- 10.10 Top of flat spur, slopes W. Desc. 93 ft. over SW. slope to
- 22.70 Gulch, course S. 60° W. Asc. 30 ft. over gradual NW. slope to
- 40.06 Top of flat spur, slopes S. 60° W.
Set an iron post, 3 ft. long, 1 in. in diam., 14 ins. in the ground to bedrock, and in a mound of stone to top, for $\frac{1}{4}$ sec. cor., with brass cap marked
- $\frac{1}{4}$
S6|S5
1939
- from which
- A juniper, 6 ins. diam., bears S. 4° E., 107 lks. dist., marked $\frac{1}{4}$ S5 BT.
- A juniper, 4 ins. diam., bears N. 49° W., 64 lks. dist., marked $\frac{1}{4}$ S6 BT.
- Desc. 80 ft. over gradual SW. slope to
- 65.10 Top of flat spur, slopes S. 30° W. Desc. 115 ft. over SE. slope to
- 80.01 Gulch, course SW. Asc. slightly over NW. slope to
- 80.06 The cor. of secs. 5, 6, 7, and 8.
- Land, rolling.
Soil, rocky; 4th rate.
Timber, juniper and pinyon.
Undergrowth, sagebrush, blackbrush, scrub oak, Spanish dagger, cliff rose, and cacti. Fair grass.

GENERAL DESCRIPTION.

T. 37 N., R. 14 W. varies from rough, broken mountainous land to rolling land. The southeastern portion, where the Grand Wash Upper Rim appears, is the roughest part of the township. The Grand Wash Upper Rim appears in this township generally as a sheer bluff, 150 to 190 ft. high, but it breaks down to a broken rim near the center of the NW $\frac{1}{4}$ of the SE $\frac{1}{4}$ of sec. 24. The western one-third and the northeast portion of the township consists of rolling land. The elevation varies from approximately 3200 to 4500 ft. above sea level. The soil is generally rocky and rocky clay. Malpais rock is to be found throughout the township, except in the east tier of secs., which is largely sandstone and limestone.

The principal drainage through the township is Grand Wash, which contains no permanent water, but has a heavy flow during the rainy seasons. It enters the township west of the cor. of secs. 2, 3, 34, and 35 on the north boundary, draining southerly and leaving the township on the south boundary of sec. 34. The only permanent water in the township is found in two small springs not far from the east boundary. One slightly developed spring is

located in the $SE\frac{1}{4}$ of the $NE\frac{1}{4}$ of sec. 25. The other spring is to be found in the $NE\frac{1}{4}$ of the $NE\frac{1}{4}$ of sec. 24. The water from this spring was piped to a small rock cabin located about 3 chs. west. The spring developments and the cabin were near ruin at the time of survey.

The southern half of the township contains practically no timber. The northern half, except near Grand Wash, has a scattering to moderate growth of juniper and pinyon. A scattering growth of joshua trees is to be found over most of the southern half of the township. A considerable number of the joshua trees in the southwest quarter of the township have been destroyed by fire. A scattering to dense growth of low blackbrush is in evidence in nearly the entire township. Other undergrowth to be found includes sagebrush, Spanish dagger, cliff rose, scrub oak, and cacti. The only road in this township is a fairly dim unimproved road in Grand Wash canyon. A fair growth of native grasses covers a large portion of the township where bands of sheep and goats graze most of the year.

No mineral development was in evidence in the township at the time of survey, and no settlers were residing in this area.

The approximate mean magnetic variation is 16° E.

FINAL FIELD TESTS OF INSTRUMENTS.

Buff and Buff transit No. 9984
Claude F. Warner, Transitman.

October 31, 1939; at camp near the center of sec. 34, T. 38 N., R. 14 W., G. and S. R. Meridian, Arizona, latitude $36^{\circ} 39'$ N., longitude $113^{\circ} 47\frac{1}{4}'$ W., to test the solar apparatus of Buff and Buff transit No. 9984 by comparing its indications with the true meridian established at this station on October 12, 1939, by Claude F. Warner, Transitman, by Polaris observation, as herebefore described, proceed as follows:

at 9h.00m., a.m., app.t., set off $36^{\circ} 39'$ N. on the lat. arc; $13^{\circ} 56'$ S. on the decl. arc; and determine a meridian with the solar, which agrees with the true meridian.

at app. noon, with the lat. arc unchanged; observe the sun on the meridian, and obtain a reading of $13^{\circ} 59'$ S. on the decl. arc, which agrees with the computed declination of the sun.

at 3h.00m., p.m., app.t., with the lat. arc unchanged; set off $14^{\circ} 01'$ S. on the decl. arc; and determine a meridian with the solar, which agrees with the true meridian.

As all of the solar observations made during the usual hours of solar work come within $1'30''$ of the true meridian, conclude that this instrument is in satisfactory adjustment on this date and has remained in such condition throughout the surveys executed with same, which are described in the foregoing field notes.

Young and Sons transit No. 8526
Frank Motoh, Public Land Surveyor.

October 31, 1939; at same station as above, and using same true meridian, test the solar apparatus of Young and Sons transit No. 8526 as follows:

at 9h.00m., a.m., app.t., set off $36^{\circ} 39'$ N. on the lat.

arc; $13^{\circ} 56'$ S. on the decl. arc; and determine a meridian with the solar, which agrees with the true meridian.

at app. noon, with the lat. arc unchanged; observe the sun on the meridian, and obtain a reading of $13^{\circ} 59'$ S. on the decl. arc, which agrees with the computed declination of the sun.

at 3h.00m., p.m., app.t., with the lat. arc unchanged; set off $14^{\circ} 01'$ S. on the decl. arc; and determine a meridian with the solar, which agrees with the true meridian.

As all of the solar observations made during the usual hours of solar work come within $1'30''$ of the true meridian, conclude that this instrument is in satisfactory adjustment on this date and has remained in such condition throughout the surveys executed with same, which are described in the foregoing field notes.

BOOK 4278

CERTIFICATE OF SURVEYOR

I, Frank Motech, Public Land Surveyor, General Land Office, HEREBY CERTIFY upon honor that, in pursuance of special instructions bearing date of the 15th day of July, 1937, received from the district cadastral engineer for Arizona, with assignment instructions dated Sept. 12, 1939, I have surveyed resurveyed a portion of the 9th Standard Parallel North, through a portion of Range 14 West, and surveyed the subdivisional lines of Township 37 North, Range 14 West,

Gila and Salt River Meridian, in the State of Arizona, which are represented in the foregoing field notes as having been executed by me and under my direction; and that said survey has been made in strict conformity with said instructions, the Manual of Instructions for the Survey of the Public Lands of the United States, and in the specific manner described in the foregoing field notes.

Phoenix, Ariz April 2, 1940

Frank Motech Public Land Surveyor, General Land Office

CERTIFICATE OF APPROVAL

OFFICE OF SUPERVISOR OF SURVEYS,

19

The foregoing field notes of the survey of

executed by under special instructions dated instructions dated having been critically examined, and the necessary corrections made prior to their certification by the engineer, the said field notes, and the survey therein described, are hereby approved.

Supervisor of Surveys.

CERTIFICATE OF TRANSCRIPT

I CERTIFY that the foregoing transcript of the field notes of the above-described surveys in is a true copy of the original field notes on file in the public survey office.

Supervisor of Surveys.

COCK 435

4-680
(Revised May 1934)

UNITED STATES
DEPARTMENT OF THE INTERIOR
GENERAL LAND OFFICE

FIELD ASSISTANTS

NAMES	CAPACITY
Benjamin J. Mollette	Principal Assistant
Roy M. Clifton	Chainman
Frank Doner, Jr.	Axeman
Van N. Kilgore	Axeman
Jack Williams	Flagman
Larry N. Stewart	Moundsman

BOOK 4218

CERTIFICATE OF SURVEYOR

I, Claude F. Warner, Transitman, / General Land Office, HEREBY CERTIFY upon honor that, in pursuance of special instructions bearing date of the 15th day of July, 1937, received from the district cadastral engineer for Arizona, with assignment instructions dated Sept. 12, 1939, I have surveyed the subdivisional lines of Township 37 North, Range 14 West, and resurveyed the Ninth Standard Parallel North, through a portion of Range 14 West,

of the Gila and Salt River Meridian, in the State of Arizona, which are represented in the foregoing field notes as having been executed by me and under my direction; and that said and resurvey survey has been made in strict conformity with said instructions, the Manual of Instructions for the Survey of the Public Lands of the United States, and in the specific manner described in the foregoing field notes.

Phoenix, Arizona. April 2, 1940.

Claude F. Warner Transitman, General Land Office.

CERTIFICATE OF APPROVAL

OFFICE OF SUPERVISOR OF SURVEYS, Denver, Colorado, Feb. 1, 1944.

The foregoing field notes of the survey of resurvey of the Ninth Standard Parallel North, through a portion of Range 14 West, and survey of the subdivisional lines of Township 37 North, Range 14 West, of the Gila and Salt River Meridian, in the State of Arizona,

executed by Claude F. Warner, Transitman and Frank Moteh, Public Land Surveyor, General Land Office, under special instructions dated July 15, 1937, and assignment instructions dated September 12, 1939, having been critically examined, and the necessary corrections made prior to their certification by the engineer, the said field notes, and the survey and resurvey therein described, are hereby approved.

Signature of Supervisor of Surveys.

CERTIFICATE OF TRANSCRIPT

I certify that the foregoing transcript of the field notes of the above described surveys in T. 37 N., R. 14 W., G. & SRM., ARIZ., is a true copy of the original field notes on file in the public survey office.

Supervisor of Surveys.