

UNITED STATES
DEPARTMENT OF THE INTERIOR
GENERAL LAND OFFICE

Book I

FIELD NOTES

BOOK 4331

OF THE

SURVEY OF THE WEST BOUNDARY

AND

SUBDIVISIONAL LINES OF

TOWNSHIP 8 NORTH, RANGE 11 WEST

4331

Of the GILA AND SALT RIVER Meridian,

In the State of ARIZONA

EXECUTED BY

RAYMOND F. MOSS

PUBLIC LAND SURVEYOR

GENERAL LAND OFFICE

Under special instructions dated July 13, 1939, which provided for the surveys included under Group No. 228, Arizona, bearing the approval of the Commissioner of the General Land Office under date of August 23, 1939 and assignment instructions dated November 22, 1939

Survey commenced April 22, 1940

Survey completed May 29, 1940

4331

BOOK 4331

INDEX DIAGRAM.

Township 8 N., Range 11 W.

6	52	52	39	39	30	30	22	22	14	14	
5	6	51	5	38	4	29	3	21	2	13	1
	50		49		37		28		20		12
4	7	49	8	36	9	27	10	20	11	11	12
	48		47		36		27		19		11
3	18	46	17	35	16	26	15	18	14	10	18
	45		45		34		25		18		9
2	19	44	20	33	21	25	22	17	23	8	24
	43		42		32		24		16		8
2	30	42	29	32	28	23	27	16	26	7	25
	41		40		31		23		15		6
1	31	40	32	31	33	22	34	14	35	6	36

Township 8-North, Range 11 West

Chains

The surveys herein described were executed with Gurley solar transit No. 371537. For description and test of instrument and establishment of meridian, see the field notes of a portion of the west boundary and a portion of the subdivision of T. 8 N., R. 10 W., surveyed under this group.

The directions of the lines were determined by the solar transit method. The measurements were made with a Lallie steel tape, 5 chs. in length, graduated every link for the first 100 links and the remainder at intervals of 10 links. The tape was tested by comparison with a Lufkin standard steel tape and found correct. The measurements were made on the slope and the vertical angles ascertained with a clinometer in good adjustment; the horizontal equivalents are entered in the field note record.

West Boundary of T. 8 N., R. 11 W.

From cor. of Ts. 7 and 8 N., Rs. 11 and 12 W., as evidenced by an iron post, 3 ins. diam., set, marked and witnessed as described in the official record.

North bet. secs. 31 and 36.

Over mountainous land, through scattering timber and undergrowth.

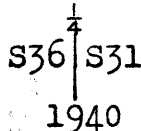
Asc. 58 ft. over SE. slope.

13.40 Ravine, course SE.; asc. 205 ft. over S. slope.

25.50 Spur, slopes E.; desc. 57 ft. over N. slope.

31.50 Ravine, course S.70°E.; desc. 14 ft. along E. slope.

40.00 Set an iron post, 3 ft. long, 1 in. diam., 13 ins. in the ground, over + marked on bedrock, and in a mound of stone to top, at 1/4 sec. cor., with brass cap marked



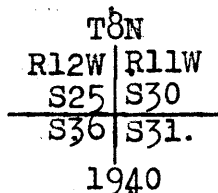
Desc. 23 ft. along E. slope.

42.00 Ravine, course SE.; asc. 413 ft. over SE. slope.

70.00 Spur, slopes SW.; continue asc. of 233 ft. along a W. slope.

80.00 Short spur, slopes S.80°W.

Set an iron post, 3 ft. long, 2 ins. diam., 8 ins. in the ground, over + marked on bedrock, and in a mound of stone to top, at cor. of secs. 25, 30, 31 and 36, with brass cap marked



West Boundary of T. 8 N., R. 11 W.

Chains	<p>Land, mountainous. Soil, rocky, 4th rate. Timber, palo verde and ironwood; undergrowth, greasewood, ocotillo, cactus and sage.</p> <hr/> <p>North, bet. secs. 25 and 30.</p> <p>Over mountainous land, through scattering timber and undergrowth.</p> <p>Asc. 12 ft. along W. slope.</p> <p>8.90 Head of ravine, course SW.; asc. 270 ft. over SE. slope.</p> <p>17.30 Spur, slopes SW.; along W. slope.</p> <hr/> <p>21.20 Spur, slopes W.; desc. 191 ft. over NW. slope.</p> <p>37.90 Ravine, course S.60°W.; asc. 58 ft. over SW. slope.</p> <p>40.00 Set an iron post, 3 ft. long, 1 in. diam., 12 ins. in the ground, over + marked on bedrock, and in a mound of stone to top, at $\frac{1}{4}$ sec. cor., with brass cap marked</p> <div style="text-align: center;"> <p>S25 S30 1940</p> </div> <p>Asc. 142 ft. over SW. slope.</p> <p>47.10 Spur, slopes SW., 5 chs. to point; desc. 8 ft. along a W. slope.</p> <p>61.60 Ravine, course SW.; asc. 519 ft. over S. slope.</p> <p>77.70 Short spur, slopes E.; desc. 13 ft. over NE. slope.</p> <p>80.00 Set an iron post, 3 ft. long, 2 ins. diam., 28 ins. in the ground, at cor. of secs. 19, 24, 25 and 30, with brass cap marked</p> <div style="text-align: center;"> <p>T8N R12W R11W S24 S19 S25 S30 1940</p> </div> <p>raise a mound of stone, 3 ft. base, 2 ft. high, W. of cor.</p> <p>Land, mountainous. Soil, rocky, 4th rate. Timber, palo verde and ironwood; undergrowth, greasewood, cactus, sage and ocotillo.</p> <hr/> <p>North, bet. secs. 19 and 24.</p> <p>Over mountainous land, through scattering undergrowth.</p> <p>Desc. 54 ft. over NE. slope.</p> <p>3.10 Ravine, course SE.; asc. 414 ft. over S. slope.</p> <p>16.10 Spur, slopes S.30°E.; desc. 7 ft. along E. slope.</p>
--------	---

West Boundary of T. 8 N., R. 11 W.

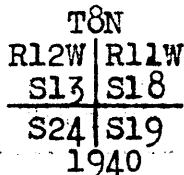
Chains

- 19.10 Ridge, bears NE. and S.60°W.; desc. 133 ft. over N. slope.
- 27.60 Draw, at head of ravine, course SW.; desc. 94 ft. along W. slope.
- 32.30 Spur, slopes NW.; desc. 153 ft. over N. slope.
- 40.00 Set an iron post, 3 ft. long, 1 in. diam., 8 ins. in the ground, over + marked on bedrock; and in a mound of stone to top, at ¼ sec. cor., with brass cap marked



Desc. 27 ft. over NW. slope.

- 42.50 Ravine, course NE.; asc. 95 ft. over SE. slope.
- 53.70 Spur, slopes N.15°E.; desc. 58 ft. along a W. slope.
- 59.60 Same spur, slopes NW.; desc. 397 ft. over NE. slope.
- 78.80 Spur, slopes NE.; desc. 40 ft. over N. slope.
- 80.00 Set an iron post, 3 ft. long, 2 ins. diam., 8 ins. in the ground, over + marked on bedrock, and in a mound of stone to top, at cor. of secs. 13,18,19 and 24, with brass cap marked



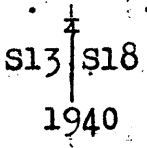
Land, mountainous.
Soil, rocky, 4th rate.
Timber, none; undergrowth, greasewood, cactus, cats claw and sage.

North, bet. secs. 13 and 18.

Over mountainous land, through scattering undergrowth.

Desc. 260 ft. over N. slope.

- 6.80 Ravine, 50 lks. wide, course NW. Continue desc. of 134 ft. along W. slope.
- 18.45 Ravine, 40 lks. wide, course SW.; joins main ravine about 1 ch. SW., thence courses N.50°W. Asc. 229 ft. over SW. slope.
- 30.00 Top of spur, slopes SW.; desc. 75 ft. over N. slope.
- 35.30 Ravine, course SW.; asc. 40 ft. over S. slope.
- 40.00 Set an iron post, 3 ft. long, 1 in. diam., 10 ins. in the ground, over + marked on bedrock, and in a mound of stone to top, at ¼ sec. cor., with brass cap marked



West Boundary of T. 8 N., R. 11 W.

Chains											
	Corner is set on spur, slopes W.										
	Desc. 154 ft. over NW. slope.										
48.35	Ravine, 15 lks. wide, course W.; asc. 24 ft. over S. slope.										
50.45	Spur, slopes NW.; desc. 200 ft. over N. slope.										
55.81	Ravine, 20 lks. wide, course NW.; desc. 160 ft. to foot of spur, thence asc. 87 ft. over SW. slope.										
61.99	Spur, slopes NW.; desc. 40 ft. over N. slope.										
70.00	Ravine, course NW.; asc. 48 ft. over SW. slope.										
71.60	Spur, slopes N.75°W.; desc. 108 ft. over NE. slope.										
73.60	Ravine, course NW.; asc. 28 ft. over SW. slope.										
78.60	Spur, slopes N.60°W.; desc. 73 ft. over NW. slope.										
80.00	Set an iron post, 3 ft. long, 2 ins. diam., 14 ins. in the ground, over + marked on bedrock, and in a mound of stone to top, at cor. of secs. 7, 12, 13 and 18, with brass cap marked										
	<table border="1"> <tr><td colspan="2">T8N</td></tr> <tr><td>R12W</td><td>R11W</td></tr> <tr><td>S12</td><td>S7</td></tr> <tr><td>S13</td><td>S18</td></tr> <tr><td colspan="2">1940</td></tr> </table>	T8N		R12W	R11W	S12	S7	S13	S18	1940	
T8N											
R12W	R11W										
S12	S7										
S13	S18										
1940											
	Land, mountainous. Soil, rocky, 4th rate. Timber, none; undergrowth, greasewood, cactus and sage.										
	----- North, bet. secs. 7 and 12. Over mountainous land, through scattering undergrowth. Desc. 260 ft. over NW. slope.										
11.45	Enter ravine, course N. from SE. Along bed of ravine.										
12.85	Leave ravine, course N.60°W.										
16.70	Begin desc. of 247 ft. over general NW. slope.										
34.58	Ravine, 1 ch. wide, course W.; asc. 12 ft. over S. slope.										
38.07	Spur, slopes W.; desc. 30 ft. over N. slope.										
40.00	Set an iron post, 3 ft. long, 1 in. diam., 6 ins. in the ground, over + marked on bedrock, and in a mound of stone to top, at 1/4 sec. cor., with brass cap marked										
	<table border="1"> <tr><td colspan="2">1/4</td></tr> <tr><td>S12</td><td>S7</td></tr> <tr><td colspan="2">1940</td></tr> </table>	1/4		S12	S7	1940					
1/4											
S12	S7										
1940											
	Desc. 13 ft. over N. slope.										
41.60	Ravine, course W.; asc. 140 ft. over S. slope.										
48.20	Spur, slopes N.70°W.; desc. 348 ft. over NW. slope.										
65.10	Ravine, 40 lks. wide, course NW.; desc. 63 ft. over NW. slope.										

West Boundary of T. 8 N., R. 11 W.

Chains	
70.00	Asc. 61 ft. over SW. slope.
78.60	Spur, slopes NW.; desc. 24 ft. over NE. slope.
80.00	Set an iron post, 3 ft. long, 2 ins. diam., 14 ins. in the ground, over + marked on bedrock, and in a mound of stone to top, at cor. of secs. 1, 6, 7 and 12, with brass cap marked.
<p>T8N R12W R11W S1 S6 ----- S12 S7 1940</p>	
<p>Land, mountainous. Soil, rocky, 4th rate. Timber, none; undergrowth, greasewood, cactus, cats claw and ocotillo.</p>	
<p>North, bet. secs. 1 and 6.</p>	
<p>Over mountainous land, through scattering undergrowth.</p>	
<p>Desc. 114 ft. over NW. slope.</p>	
7.80	Head of ravine, course NW.
9.85	Spur, slopes N.30°W.; desc. 130 ft. over NE. slope.
21.25	Ravine, 25 lks. wide, course NW.
25.75	Spur, slopes NW.; desc. 45 ft. over NE. slope.
29.65	Ravine, course N.35°W.; asc. 66 ft. over SW. slope.
36.65	Spur, slopes N.70°W.; desc. 71 ft. over N. slope.
40.00	Set an iron post, 3 ft. long, 1 in. diam., 14 ins. in the ground, over + marked on bedrock, and in a mound of stone to top, at 1/4 sec. cor., with brass cap marked.
<p>† S1 S6 1940</p>	
<p>Desc. 40 ft. over a broken NW. slope.</p>	
53.00	Ravine, 30 lks. wide, course N.45°W. Asc. gradual SW. slope.
60.00	Desc. 30 ft. over gradual NW. slope.
66.08	Intersect the Second Standard Parallel North.
<p>Set an iron post, 3 ft. long, 3 ins. diam., 14 ins. in the ground, over + marked on bedrock, and in a mound of stone to top, at closing cor. of Ts. 8 N., Rs. 11 and 12 W., with brass cap marked.</p>	
<p>T9N R12W S36 ----- S1 S6 R12W R11W T8N C C 1940</p>	

West Boundary of T. 8 N., R. 11 W.

Chains

raise a mound
of stone, 3 ft. base, 3 ft. high, S. of cor.

From point of intersection, the standard cor. of Ts. 9 N.,
Rs. 11 and 12 W., as evidenced by an iron post, 3 ins.
diam., set, marked and witnessed as described in the
official record, bears N.89°56'E., 12.77 chs. distant;
the standard $\frac{1}{4}$ sec. cor. of sec. 36, T. 9 N., R. 12 W.,
which is evidenced by an iron post, 1 in. diam., set,
marked and witnessed as described in the official record,
bears S.89°56'W., 27.45 chs. distant.

Land, mountainous.

Soil, rocky, 4th rate.

Timber, none; undergrowth, greasewood, cactus, cats claw
and sage.

SUBDIVISION OF T. 8 N., R. 11 W.

From cor. of secs. 1,2,35 and 36, on S. bdy. of Tp., as
evidenced by an iron post, 2 ins. diam., set, marked and
witnessed as described in the official record.

N.0°01'W., bet. secs. 35 and 36.

Over rolling land, through scattering timber and under-
growth.

40.00 Set an iron post, 3 ft. long, 1 in. diam., 28 ins. in the
ground, at $\frac{1}{4}$ sec. cor., with brass cap marked

$\frac{1}{4}$
 S35 | S36
 1940

raise a mound
of stone, 3 ft. base, 2 ft. high, W. of cor.

48.50 Wash, 20 lks. wide, course S.60°E.

55.50 Wash, 10 lks. wide, course S.50°E., from N.

61.40 Leave wash, from NW.

80.00 Set an iron post, 3 ft. long, 2 ins. diam., 28 ins. in the
ground, at cor. of secs. 25,26,35 and 36, with brass cap
marked

T8N R11W
 S26 | S25
 S35 | S36
 1940

raise a mound
of stone, 2 ft. base, 2 ft. high, W. of cor.

Land, rolling.

Soil, rocky, 4th rate.

Timber, palo verde and ironwood; undergrowth, greasewood,
cactus, ocotillo and sage.

N.89°59'E., on a random line bet. secs. 25 and 36.

40.00 Set temp. $\frac{1}{4}$ sec. cor.

80.06 Intersect E. bdy. of Tp., 7 lks. N. of cor. of secs. 25,

Subdivision of T. 8 N., R. 11 W.

Chains

30, 31 and 36, as evidenced by an iron post, 2 ins. diam., set, marked and witnessed as described in the official record.

Thence

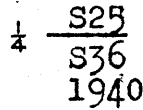
N.89°58'W., on true line bet. secs. 25 and 36.

Over rolling land, through scattering timber and heavy undergrowth.

12.75 Road, bears N.20°W. and S.20°E.

30.05 Wash, 20 lks. wide, course S.

40.03 Set an iron post, 3 ft. long, 1 in. diam., 28 ins. in the ground, at $\frac{1}{4}$ sec. cor., with brass cap marked



raise a mound of stone, 3 ft. base, 2 $\frac{1}{2}$ ft. high, N. of cor.

56.45 Wash, 20 lks. wide, course S.30°E.

65.35 Wash, 70 lks. wide, course SE.

80.06 Cor. of secs. 25, 26, 35 and 36.

Land, rolling.

Soil, rocky, 4th rate.

Timber, palo verde and ironwood; undergrowth, greasewood, cactus, ocotillo and sage.

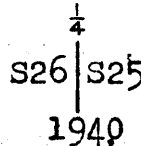
N.0°01'W., bet. secs. 25 and 26.

Over rolling land, through scattering timber and undergrowth.

18.20 Wash, 10 lks. wide, course S.20°E.

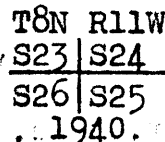
22.70 Wash, 25 lks. wide, course SE.

40.00 Set an iron post, 3 ft. long, 1 in. diam., 18 ins. in the ground, over + marked on bedrock, and in a mound of stone to top, at $\frac{1}{4}$ sec. cor., with brass cap marked



44.20 Wash, 20 lks. wide, course SE.; asc. 92 ft. over S. slope.

80.00 Set an iron post, 3 ft. long, 2 ins. diam., 28 ins. in the ground, at cor. of secs. 23, 24, 25 and 26, with brass cap marked



raise a mound of stone, 3 ft. base, 2 $\frac{1}{2}$ ft. high, W. of cor.

Land, rolling.

Soil, rocky, 4th rate.

Subdivision of T. 8 N., R. 11 W.

Chains	Timber, palo verde and ironwood; undergrowth, greasewood, cactus, cats claw and ocotillo.
	----- S.89°58'E., on a random line bet. secs. 24 and 25.
40.00	Set temp. $\frac{1}{4}$ sec. cor.
80.04	Intersect the E. bdy. of Tp. at cor. of secs. 19, 24, 25 and 30, as evidenced by an iron post, 2 ins. diam., set, marked and witnessed as described in the official record.
	Thence
	N.89°58'W., on true line bet. secs. 24 and 25.
	Over rolling land, through scattering timber and undergrowth.
8.25	Wash, 15 lks. wide, course S.
12.55	Wash, 20 lks. wide, course S.30°E.
19.55	Wash, 8 lks. wide, course S..
27.55	Wash, 15 lks. wide, course SE.
40.02	Set an iron post, 3 ft. long, 1 in. diam., 28 ins. in the ground, at $\frac{1}{4}$ sec. cor., with brass cap marked
	$\frac{1}{4}$ $\frac{S24}{S25}$ 1940
	raise a mound
	of stone, 3 ft. base, 2 $\frac{1}{2}$ ft. high, N. of cor.
49.95	Road, bears N.15°W. and S.15°E.
53.75	Drain, course S.20°E.
62.65	Wash, 10 lks. wide, course S.15°E.
66.35	Wash, 15 lks. wide, course SE.
80.04	The cor. of secs. 23, 24, 25 and 26.
	Land, rolling. Soil, rocky, 4th rate. Timber, palo verde and ironwood; undergrowth, greasewood, cactus, cats claw and ocotillo.
	----- N.0°01'W., bet. secs. 23 and 24.
	Over rolling land, through scattering timber and undergrowth.
	Asc. 68 ft. over S. slope.
40.00	Set an iron post, 3 ft. long, 1 in. diam., 20 ins. in the ground to bedrock, and in a mound of stone to top, at $\frac{1}{4}$ sec. cor., with brass cap marked
	$\frac{1}{4}$ S23 S24 1940
	raise a mound
	of stone, 3 ft. base, 2 $\frac{1}{2}$ ft. high, W. of cor.
	Asc. 46 ft. over rolling slopes.
46.90	Road, bears NW. and SE.

Subdivision of T. 8 N., R. 11 W.

1940 409

Chains

- 50.90 Road, bears N.30°W. and S.30°E.
- 69.20 Wash, 20 lks. wide, course SE.; asc. 65 ft. over SW. slope.
- 79.50 Set an iron post, 3 ft. long, 2 ins. diam., 28 ins. in the ground, for witness cor. of secs. 13, 14, 23 and 24, with brass cap marked

W	C
T8N	R11W
S14	S13
S23	S24
1940	

raise a mound of stone, 3 ft. base, 2½ ft. high, W. of cor.
- 80.00 The cor. of secs. 13, 14, 23 and 24, falls in ravine, 15 ft. deep, course S.60°E., where it is impracticable to monument the cor.

Land, rolling.
 Soil, rocky, 4th rate.
 Timber, ironwood and palo verde; undergrowth, greasewood, cactus, cats claw, ocotillo and sage.

S.89°58'E., on a random line bet. secs. 13 and 24.
- 40.00 Set temp. ¼ sec. cor.
- 80.02 Intersect E. bdy. of Tp., at 2 lks. S. of cor. of secs. 13, 18, 19 and 24, as evidenced by an iron post, 2 ins. diam., set, marked and witnessed as described in the official record.

Thence
 N.89°59'W., on true line bet. secs. 13 and 24.
 Over rolling land, through scattering timber and undergrowth.
- 6.10 Wash, 10 lks. wide, course S.
- 23.10 Wash, 10 lks. wide, course S.
- 28.90 Wash, 15 lks. wide, course SE.
- 34.70 Deep wash, 20 lks. wide, course S.10°E.; asc. 71 ft. over E. slope.
- 40.01 Set an iron post, 3 ft. long, 1 in. diam., 12 ins. in the ground, over + marked on bedrock, and in a mound of stone to top, at ¼ sec. cor., with brass cap marked

¼	S13
	S24
1940	

Asc. 86 ft. over E. slope.
- 45.80 Spur, slopes S., approximately 10 chs. to point; desc. 121 ft. over W. slope.
- 56.70 Ravine, near head, course S.30°E.; asc. 85 ft. over E. slope.

Subdivision of T. 8 N., R. 11 W.

Chains

62.00 Spur, slopes S.10°E.; desc. 65 ft. over W. slope.

66.20 Head of a ravine, course S.; asc. 20 ft. over rolling land.

80.02 Cor. of secs. 13, 14, 23 and 24.

Land, rolling.

Soil, rocky, 4th rate.

Timber, palo verde and ironwood; undergrowth, greasewood, cactus, cats claw, ocotillo and sage.

N.0°01'W., bet. secs. 13 and 14.

Over rolling land, through scattering timber and undergrowth.

Asc. 34 ft. over S. slope.

10.90 Ravine, course SE.; asc. 273 ft. over S. slope. Enter mountainous land.

22.70 Spur, slopes SW., approx. 15 chs. to point; asc. 104 ft. over SW. slope.

29.10 Spur, slopes S.30°E. from N.; desc. 34 ft. along top of spur.

34.10 Saddle in spur, S. from N.15°E.; asc. 36 ft. along W. slope.

40.00 Set an iron post, 3 ft. long, 1 in. diam., 8 ins. in the ground, over + marked on bedrock, and in a mound of stone to top, at $\frac{1}{4}$ sec. cor., with brass cap marked

$\frac{1}{4}$
 S14 | S13
 1940

Asc. 46 ft. along a W. slope.

45.00 Saddle in spur, slopes S.15°E.; asc. 162 ft. along E. slope.

56.50 Head of ravine, course S, 60°E.; asc. 521 ft. over S. slope.

68.40 Spur, slopes SW.; asc. 85 ft. over W. slope.

76.30 Spur, slopes S.10°E. from N.; desc. 12 ft. along top of spur.

80.00 Set an iron post, 3 ft. long, 2 ins. diam., 10 ins. in the ground, over + marked on bedrock, and in a mound of stone to top, at cor. of secs. 11, 12, 13 and 14, with brass cap marked

T8N R11W
 S11 | S12
 S14 | S13
 1940

This cor. is located on top of spur, slopes S. from NE.

Land, rolling and mountainous.

Soil, rocky, 4th rate.

Timber, palo verde and ironwood; undergrowth, greasewood, cactus, cats claw and ocotillo.

Subdivision of T. 8 N., R. 11 W.

4331

Chains	
	S.89°59'E., on a random line bet. secs. 12 and 13.
40.00	Set temp. $\frac{1}{4}$ sec. cor.
80.02	Intersect the E. bdy. of Tp. 9 lks. S. of cor. of secs. 7, 12, 13 and 18, as evidenced by an iron post, 2 ins. diam., set, marked and witnessed as described in the field notes of a portion of the W. bdy. of T. 8 N., R. 10 W., surveyed under this group.
	Thence
	S.89°57'W., on true line bet. secs. 12 and 13.
	Over mountainous land, through scattering timber and undergrowth.
	Desc. 179 ft. over SW. slope.
10.90	Ravine, course S.30°E.; asc. 54 ft. over broken land.
17.60	Wash, 20 lks. wide, course SE.; asc. 252 ft. over E. slope.
32.00	Spur, slopes S.; desc. 25 ft. along broken S. slope.
39.90	Ravine, course S.
40.01	Set an iron post, 3 ft. long, 1 in. diam., 14 ins. in the ground, over + marked on bedrock, and in a mound of stone to top, at $\frac{1}{4}$ sec. cor., with brass cap marked
	$\frac{1}{4} \frac{S12}{S13}$ 1940
	Asc. 29 ft. over E. slope.
40.90	Spur, slopes S.; desc. 117 ft. over W. slope.
46.40	Ravine, course S.; asc. 496 ft. over SE. slope.
60.80	Spur, slopes S.30°E.; desc. 13 ft. along S. slope.
70.40	Near head of ravine, course S.; asc. 71 ft. over E. slope.
73.10	Spur, slopes S.; desc. 36 ft. over W. slope.
75.60	Head of ravine, course S.; asc. 48 ft. over E. slope.
80.02	Cor. of secs. 11, 12, 13 and 14.
	Land, mountainous. Soil, rocky, 4th rate. Timber, palo verde and ironwood; undergrowth, greasewood, cactus, cats claw and sage.
	N.0°01'W., bet. secs. 11 and 12.
	Over mountainous land, through scattering undergrowth.
	Precipitous ascent over cliff ahead renders chaining impracticable, therefore triangulate measurement of true line to top of ledge as follows:
	Designate cor. of secs. 11, 12, 13 and 14 as triang. point "A".

Subdivision of T. 8 N., R. 11 W.

Chains

Set flag "B" ahead on true line, vertical angle to which, from "A" is $+14^{\circ}30'$.

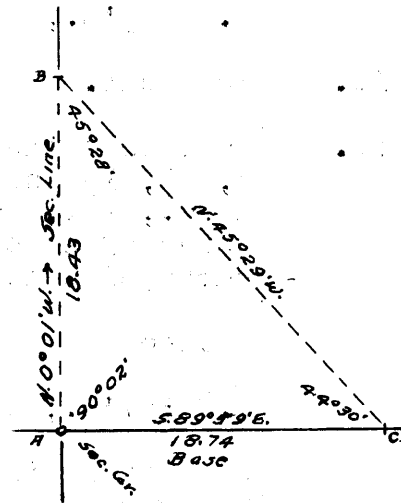
As a base, measure $S.89^{\circ}59'E.$, 18.74 chs. to triang. point "C".

Flag "B" bears $N.45^{\circ}29'W.$, from triang. point "C".

Included angles of triangle A-B-C are $90^{\circ}02'$, $45^{\circ}28'$, and $44^{\circ}30'$; the sum of which is $180^{\circ}00'$.

Triangulated dist. A-B on true line is 18.43 chs.

Desc. 110 ft. over NW. slope.



6.50 (Approximate) head of ravine, course W.; asc. 325 ft. over precipitous SW. slope, to base of cliff.

18.00 Foot of vertical wall, bears E. and W.; asc. 100 ft. over same.

18.43 Top of cliff and triangulation point "B".

Resume measurement by chaining.

Asc. 48 ft. over a S. slope.

19.70 Rocky spur, slopes $S.80^{\circ}W.$; asc. 41 ft. along a W. slope.

25.90 Rocky spur, slopes W.; desc. 211 ft. over a NW. slope.

40.00 Set an iron post, 3 ft. long, 1 in. diam., 6 ins. in the ground, over + marked on bedrock, and in a mound of stone to top, at $\frac{1}{4}$ sec. cor., with brass cap marked

$\frac{1}{4}$
 S11 | S12
 1940

Desc. 12 ft. over NW. slope.

47.50 Ravine, course SW.; asc. 979 ft. over SE. slope.

80.00 Set an iron post, 3 ft. long, 2 ins. diam., 20 ins. in the ground to bedrock, and in a mound of stone to top, at cor. of secs. 1, 2, 11 and 12, with brass cap marked

T8N R11W
 S2 | S1
 S11 | S12
 1940

raise a mound
of stone, 3 ft. base, $2\frac{1}{2}$ ft. high, W. of cor.

Land, mountainous.

Soil, rocky, 4th rate.

Timber, palo verde and ironwood; undergrowth, greasewood, cactus, cats claw, ocotillo and sage.

N. $89^{\circ}57'E.$, on a random line bet. secs. 1 and 12.

40.00 Set temp. $\frac{1}{4}$ sec. cor.

Subdivision of T. 8 N., R. 11 W.

Chains	
80.08	Intersect E. bdy. of Tp., 15 lks. N. of cor. of secs. 1, 6, 7 and 12, as evidenced by an iron post, 2 ins. diam., set, marked and witnessed as described in the field notes of a portion of W. bdy. of T. 8 N., R. 10 W., surveyed under this group.
	Thence
	N. 89° 57' W., on true line bet. secs. 1 and 12.
	Over mountainous land, through scattering undergrowth.
	Asc. 147 ft. along S. slope.
10.30	Ravine, course SE.; asc. 236 ft. over NE. slope.
18.10	Spur, slopes S. 20° E.; desc. 234 ft. over SW. slope.
30.00	Ravine, course S.; asc. 200 ft. over SE. slope.
40.04	Set an iron post, 3 ft. long, 1 in. diam., 14 ins. in the ground, over + marked on bedrock, and in a mound of stone to top, at $\frac{1}{4}$ sec. cor., with brass cap marked
	$\frac{1}{4} \begin{array}{c} S 1 \\ S 12 \\ 1940 \end{array}$
	Asc. 180 ft. over SE. slope.
45.40	Ravine, near head, course SE.; asc. 252 ft. over NE. slope.
51.20	Spur, slopes SE.; asc. 115 ft. over SE. slope.
53.70	Spur, slopes SW.; desc. 352 ft. over SW. slope.
76.60	Ravine, course S.; asc. 94 ft. over SE. slope.
80.08	Cor., of secs. 1, 2, 11 and 12.
	Land, mountainous. Soil, rocky, 4th rate. Timber, palo verde, ironwood and mesquite; undergrowth, greasewood, cactus, ocotillo and sage.
	N. 0° 01' W., on true line bet. secs. 1 and 2.
	Over mountainous land, through scattering undergrowth.
	Asc. 46 ft. over SE. slope.
4.10	Head of ravine, course SE.; asc. 28 ft. over S. slope.
5.40	Ridge, bears E. and W.; desc. 19 ft. over N. slope.
8.60	Head of draw, course NE.; desc. 45 ft. over E. slope.
20.90	Head of ravine, course E.; asc. 65 ft. over S. slope.
25.30	Short spur, slopes E.; desc. 165 ft. over N. slope.
31.30	Head of ravine, course E.; desc. 6 ft. along E. slope.
40.00	Set an iron post, 3 ft. long, 1 in. diam., 10 ins. in the ground, over + marked on bedrock, and in a mound of stone to top, at $\frac{1}{4}$ sec. cor. with brass cap marked

Subdivision of T. 8 N., R. 11 W.

Chains

$$\frac{1}{4}$$

S2		S1
1940		

41.50 Short spur, slopes E.; desc. 411 ft. over NE. slope.

65.61 Intersect Second Standard Parallel North.

Set an iron post, 3 ft. long, 2 ins. diam., 14 ins. in the ground, over + marked on bedrock, and in a mound of stone to top, at closing cor. of secs. 1 and 2, with brass cap marked

T9N R11W		
S35		
S2		S1
T8N		R11W
C C		
1940		

From point of intersection; the standard cor. of secs. 35 and 36, T. 9 N., R. 11 W., as evidenced by an iron post, 3 ins. diam., set, marked and witnessed as described in the official record, bears S.89°50'E., 14.35 chs. dist.

From the same point, the standard $\frac{1}{4}$ sec. cor. of sec. 35, T. 9 N., R. 11 W., as evidenced by an iron post, 3 ft. long, 1 in. diam., set, marked and witnessed as described in the official record, bears N.89°50'W., 25.94 chs. dist.

Land, mountainous.

Soil, rocky, 4th rate.

Timber, palo verde and ironwood; undergrowth, greasewood, cactus, cats claw, ocotillo and sage.

At midpoint on the N. bdy. of sec. 1

Set an iron post, 3 ft. long, 1 in. diam., 12 ins. in the ground, over + marked on bedrock and in a mound of stone to top, at $\frac{1}{4}$ sec. cor. of sec. 1, with brass cap marked

$\frac{1}{4}$		S1
1940		

From this corner, the standard $\frac{1}{4}$ sec. cor. of sec. 36, T. 9 N., R. 11 W., as evidenced by an iron post, 1 in. diam., set, marked and witnessed as described in the official record, bears N.89°47'E., 14.48 chs. dist.

From same corner, the standard cor. of secs. 35 and 36, T. 9 N., R. 11 W., bears S.89°47'W., 25.70 chs. dist.

From cor. of secs. 2, 3, 34 and 35, on S. bdy. of Tp., as evidenced by an iron post, 2 ins. diam., set, marked and witnessed as described in the official record.

N.0°01'W., bet. secs. 34 and 35.

Over rolling land, through scattering timber and undergrowth.

27.90 Wash, .15 lks. wide, course S.30°E.

38.60 Wash, 10 lks. wide, course S.20°E.

Subdivision of T. 8 N., R. 11 W.

BOOK 4331

Chains

40.00

Set an iron post, 3 ft. long, 1 in. diam., 28 ins. in the ground, at $\frac{1}{4}$ sec. cor., with brass cap marked
$$\begin{array}{c} \frac{1}{4} \\ S34 | S35. \end{array}$$

1940

raise a mound
of stone, 3 ft. base, 2 $\frac{1}{2}$ ft. high, W. of cor.

80.00

Set an iron post, 3 ft. long, 2 ins. diam., 28 ins. in the ground, at cor. of secs. 26, 27, 34 and 35, with brass cap marked

$$\begin{array}{c} T8N R11W \\ S27 | S26 \\ \hline S34 | S35 \end{array}$$

1940

from which

An ironwood, 6 ins. diam., bears N.59°E., 62 lks. dist., marked T 8 N R 11 W S 26 B T.

An ironwood, 10 ins. diam., bears S.37°E., 84 lks. dist., marked T 8 N R 11 W S 35 B T.

An ironwood, 8 ins. diam., bears S.40°W., 185 lks. dist., marked T 8 N R 11 W S 34 B T.

An ironwood, 8 ins. diam., bears N.67 $\frac{1}{2}$ °W., 93 lks. dist., marked T 8 N R 11 W S 27 B T.

Land, mountainous.

Soil, rocky, 4th rate.

Timber, palo verde and ironwood; undergrowth, greasewood, cactus, cats claw, ocotillo and sage.

N.89°59'E., on a random line bet. secs. 26 and 35.

40.00

Set temp. $\frac{1}{4}$ sec. cor.

80.08

Intersect N. and S. line at 11 lks. S. of cor. of secs. 25, 26, 35 and 36.

Thence

S.89°54'W., on true line bet. secs. 26 and 35.

Over rolling land, through scattering timber and undergrowth.

6.70

Wash, 8 lks. wide, course SE.

22.20

Wash, 10 lks. wide, course S.

23.60

Wash, 15 lks. wide, course S.20°E.

37.40

Wash, 20 lks. wide, course S.20°E.

40.04

Set an iron post, 3 ft. long, 1 in. diam., 28 ins. in the ground, at $\frac{1}{4}$ sec. cor., with brass cap marked
$$\begin{array}{c} \frac{1}{4} \\ S26 \\ \hline S35. \\ 1940 \end{array}$$

raise a mound.
of stone, 3 ft. base, 2 $\frac{1}{2}$ ft. high, N. of cor.

Subdivision of T. 8 N., R. 11 W.

Chains	
60.20	Wash, 30 lks. wide, course S.15°E.
71.60	Wash, 10 lks. wide, course S.50°E.
80.08	Cor. of secs. 26, 27, 34 and 35. Land, rolling. Soil, rocky, 4th rate. Timber, palo verde, ironwood and mesquite; undergrowth, greasewood, cactus, cats claw, ocotillo and sage.
	----- N.0°01'W., bet. secs. 26 and 27. Over rolling land, through scattering timber and undergrowth. Asc. 48 ft. over S. slope.
40.00	Set an iron post, 3 ft. long, 1 in. diam., 18 ins. in the ground, over + marked on bedrock, and in a mound of stone to top, at $\frac{1}{4}$ sec. cor., with brass cap marked <div style="text-align: center;"> $\frac{1}{4}$ S27 S26 .1940 </div>
49.30	Wash, 20 lks. wide, course SE.; asc. 70 ft. over SW. slope.
80.00	Set an iron post, 3 ft. long, 2 ins. diam., 20 ins. in the ground to bedrock, and in a mound of stone to top, at cor. of secs. 22, 23, 26 and 27, with brass cap marked <div style="text-align: center;"> T8N R11W S22 S23 S27 S26 1940 </div> <p style="text-align: right;">raise a mound of stone, 3 ft. base, 2$\frac{1}{2}$ ft. high, W. of cor.</p>
	Land, rolling. Soil, rocky, 4th rate. Timber, palo verde and ironwood; undergrowth, greasewood, cactus, ocotillo, cats claw and sage.
	----- N.89°54'E., on a random line bet. secs. 23 and 26.
40.00	Set temp. $\frac{1}{4}$ sec. cor.
80.06	Intersect N. and S. line 2 lks. N. of cor. of secs. 23, 24, 25 and 26. Thence S.89°55'W., on true line bet. secs. 23 and 26. Over rolling land, through scattering timber and undergrowth.
15.15	Deep wash, 30 lks. wide, course S.20°E.
21.05	Wash, 10 lks. wide, course S.
40.03	Set an iron post, 3 ft. long, 1 in. diam., 14 ins. in the ground, over + marked on bedrock, and in a mound of stone

Subdivision of T. 8 N., R. 11 W.

BOOK 4331

Chains

to top, at $\frac{1}{4}$ sec. cor., with brass cap marked

$\frac{1}{4}$ $\frac{S23}{S26}$
1940

50.05 Center of wash in canyon, 5 chs. wide, course S.; asc. 17 ft. over E. slope.

80.06 The cor. of secs. 22, 23, 26 and 27.

Land, rolling.
Soil, rocky, 4th rate.
Timber, palo verde and ironwood; undergrowth, greasewood, cactus, cats claw, ocotillo and sage.

N.0°01'W., bet. secs. 22 and 23.

Over rolling land, through scattering timber and undergrowth.

36.10 Wash in ravine, 15 lks. wide, course SE.; asc. 35 ft. over SW. slope.

40.00 Set an iron post, 3 ft. long, 1 in. diam., 28 ins. in the ground, at $\frac{1}{4}$ sec. cor., with brass cap marked

$\frac{1}{4}$
S22 | S23
1940

raise a mound
of stone, 3 ft. base, 2 $\frac{1}{2}$ ft. high, W. of cor.

Leave rolling, enter mountainous land, bears NW. and SE.
Asc. 59 ft. along a W. slope.

49.00 Foot of steep ascent; asc. 100 ft. over SE. slope.

56.80 Short spur, slopes S.60°W.; desc. 14 ft. over NW. slope.

58.60 Head of ravine, course SW.; asc. 257 ft. over S. slope.

69.20 Short spur, slopes S.75°W.; along W. slope.

71.20 Head of ravine, course S.70°W.; asc. 109 ft. over S. slope.

76.00 Short spur, slopes W.; desc. 28 ft. along W. slope.

80.00 Set an iron post, 3 ft. long, 2 ins. diam., 20 ins. in the ground to bedrock, and in a mound of stone to top, at cor. of secs. 14, 15, 22 and 23, with brass cap marked

T8N R11W
S15 | S14
S22 | S23
1940

raise a mound
of stone, 4 ft. base, 2 $\frac{1}{2}$ ft. high, W. of cor.

Land, rolling on S. $\frac{1}{2}$, mountainous on N. $\frac{1}{2}$.
Soil, rocky, 4th rate.
Timber, palo verde and ironwood; undergrowth, greasewood, cactus, cats claw, ocotillo and sage.

Subdivision of T. 8 N., R. 11 W.

Chains	N.89°55'E., on a random line bet. secs. 14 and 23.
40.00	Set temp. $\frac{1}{4}$ sec. cor.
80.08	The cor. of secs. 13, 14, 23 and 24.
	Thence
	S.89°55'W., on true line bet. secs. 14 and 23.
	Over mountainous land, through scattering timber and undergrowth.
	Asc. 32 ft.
13.20	Wash, 30 lks. wide, 20 ft. deep, course S.15°E.
22.10	From this point, an old sheet iron cabin, bears S. 2 chs. dist.
31.00	Wash, 20 lks. wide, course S.
35.60	Wash, 30 lks. wide, course SE.; asc. 25 ft. over NE. slope.
40.04	Set an iron post, 3 ft. long, 1 in. diam., 16 ins. in the ground, over + marked on bedrock, and in a mound of stone to top, at $\frac{1}{4}$ sec. cor. with brass cap marked
	$\frac{1}{4}$ $\frac{S14}{S23}$ 1940
	Enter mountainous land, bears NW. and SE.
	Asc. 247 ft. over NE. slope.
58.80	Spur, slopes SE.; asc. 211 ft. along a S. slope.
74.50	Spur, slopes S.; desc. 211 ft. over W. slope.
80.08	Cor. of secs. 14, 15, 22 and 23.
	Land, rolling on E. $\frac{1}{2}$, mountainous on W. $\frac{1}{2}$. Soil, rocky, 4th rate. Timber, ironwood and palo verde; undergrowth, greasewood, cactus, cats claw, sage and ocotillo.

	N.0°01'W., bet. secs. 14 and 15.
	Over rolling land, through scattering timber and undergrowth.
	Asc. 81 ft. over SW. slope.
7.90	Saddle in spur, slopes S.10°E.; desc. 137 ft. over NE. slope.
15.60	Ravine, near head, course S.50°E.; asc. 237 ft. over S. slope.
27.20	Spur, slopes S.70°E.; desc. 92 ft. over NE. slope.
32.40	Head of ravine, course S.60°E.; desc. 20 ft. over broken land.
40.00	Set an iron post, 3 ft. long, 1 in. diam., 4 ins. in the ground, over + marked on bedrock, and in a mound of stone

Subdivision of T. 8 N., R. 11 W.

4331

Chains	<p>to top, at $\frac{1}{4}$ sec. cor., with brass cap marked</p> <p style="text-align: center;"> $\frac{1}{4}$ S15 S14 1940 </p> <p>40.50 Old road, bears N.60°W. and S.60°E.</p> <p>41.40 Ravine, course S.60°E. Over broken land.</p> <p>44.20 Ravine, course S.60°E.; asc. 48 ft. over broken E. slope.</p> <p>52.50 Ravine, course S.60°E.; asc. 341 ft. over S. slope.</p> <p>69.10 Spur, slopes SE.; asc. 11 ft. along E. slope.</p> <p>80.00 Set an iron post, 3 ft. long, 2 ins. diam., 10 ins. in the ground, over + marked on bedrock, and in a mound of stone to top, at cor. of secs. 10, 11, 14 and 15, with brass cap marked</p> <p style="text-align: center;"> T8N R11W S10 S11 S15 S14. 1940 </p> <p>Land, mountainous, Soil, rocky, 4th rate. Timber, palo verde and ironwood; undergrowth, greasewood, ironwood, cats claw and cactus.</p> <hr/> <p>N.89°55'E., on a random line bet. secs. 11 and 14.</p> <p>40.00 Set temp. $\frac{1}{4}$ sec. cor.</p> <p>80.02 Intersect N. and S. line, 5 lks. S. of cor. of secs. 11, 12, 13 and 14.</p> <p>Thence</p> <p>S.89°53'W., on true line bet. secs. 11 and 14.</p> <p>Over mountainous land, through scattering timber and undergrowth.</p> <p>Desc. 533 ft. over W. slope.</p> <p>23.80 Ravine, course S.15°W.; asc. 44 ft. over E. slope.</p> <p>27.00 Spur, slopes S., about 5 chs. S. to end; old cabin bears S. about 3 chs. dist.; desc. 48 ft. over W. slope.</p> <p>32.20 Ravine, course S.15°E.; asc. 187 ft. over E. slope.</p> <p>40.01 Set an iron post, 3 ft. long, 1 in. diam., 8 ins. in the ground, over + marked on bedrock, and in a mound of stone to top, at $\frac{1}{4}$ sec. cor., with brass cap marked</p> <p style="text-align: center;"> $\frac{1}{4}$ <u>S11</u> S14 1940 </p> <p>Asc. 19 ft. over E. slope.</p> <p>41.70 Rocky spur, slopes S.; desc. 75 ft. over W. slope.</p> <p>46.80 Head of ravine, course S.; asc. 103 ft. over E. slope.</p>
--------	---

Subdivision of T. 8 N., R. 11 W.

Chains	
49.10	Spur, slopes S.; desc. 150 ft. over W. slope.
58.70	Ravine, course S.; asc. 109 ft. over E. slope.
66.40	Short spur, slopes S.10°E. about 10 chs. to point; desc. 49 ft. over W. slope.
72.90	Ravine, course S:30°E.; asc. 159 ft. over E. slope.
80.02	Cor. of secs. 10, 11, 14 and 15.
	Land, mountainous. Soil, rocky, 4th rate. Timber, palo verde and ironwood; undergrowth, greasewood, cactus, cats claw, ocotillo and sage.
	N.0°01'W., bet. secs. 10 and 11.
	Over mountainous land, through scattering timber and undergrowth.
	Desc. 23 ft. along an E. slope.
8.20	Ravine, course SE.; asc. 1079 ft. over precipitous S. slope.
40.00	Set an iron post, 3 ft. long; 1 in. diam., 14 ins. in the ground, over + marked on bedrock, and in a mound of stone to top, at $\frac{1}{4}$ sec. cor., with brass cap marked
	$\frac{1}{4}$ S10 S11 1940
	Asc. 195 ft. over S. slope.
47.80	Bend in ridge, bears N.80°W. and N.30°E. Desc. 51 ft. along a W. slope.
56.80	Head of ravine, course W.; asc. 59 ft. over S. slope.
61.00	Spur, slopes W.; desc. 404 ft. over N. slope.
76.20	Ravine, near head, course NW.; along W. slope.
80.00	Set an iron post, 3 ft. long, 2 ins. diam., 10 ins. in the ground, over + marked on bedrock, and in a mound of stone to top, at cor. of secs. 2, 3; 10 and 11, with brass cap marked
	T8N R11W S3 S2 S10 S11 1940
	Land, mountainous. Soil, rocky, 4th rate. Timber, palo verde and ironwood; undergrowth, greasewood, cactus, cats claw, ocotillo and sage.
	N.89°53'E., on a random line bet. secs. 2 and 11.
40.00	Set temp. $\frac{1}{4}$ sec. cor.
80.10	Intersect N. and S. line at 2 lks. S. of the cor. of secs. 1, 2, 11 and 12.

Subdivision of T. 8 N., R. 11 W.

Chains

Thence

S.89°52'W., on true line bet. secs. 2 and 11.

Over rolling land, through scattering timber and undergrowth.

Desc. 33 ft. over W. slope.

3.50 Head of ravine, course SE.; asc. 20 ft. over SE. slope.

7.30 Spur, slopes S.20°E.; asc. 24 ft. along a S. slope.

29.80 Ridge, bears N.15°E. and S.30°W.; desc. 80 ft. over SW. slope.

40.05 Set an iron post, 3 ft. long, 1 in. diam., 12 ins. in the ground, over + marked on bedrock, and in a mound of stone to top, at $\frac{1}{4}$ sec. cor., with brass cap marked
$$\frac{1}{4} \frac{S 2}{S 11}$$
 1940

Desc. 51 ft. over SW. slope.

45.70 Head of ravine, course NW.; asc. 76 ft. over NE. slope.

63.00 Spur, slopes NW.; desc. 495 ft. over SW. slope.

80.10 Cor. of secs. 2, 3, 10 and 11.

Land, mountainous.

Soil, rocky, 4th rate.

Timber, palo verde and ironwood; undergrowth, greasewood, cactus, cats claw, ocotillo and sage.

N.0°01'W., on true line bet. secs. 2 and 3.

Over mountainous land, through scattering timber and undergrowth.

Asc. 121 ft. over SW. slope.

4.70 Spur, slopes W.; desc. 233 ft. over NW. slope.

15.80 Ravine, course W.; asc. 48 ft. over SW. slope.

22.70 Spur, slopes N.80°W.; desc. 140 ft. over N. slope.

27.70 Ravine, course N.60°W.; asc. 125 ft. over S. slope.

33.50 Spur, slopes NW.; along west slope, on ascent of 25 ft.

40.00 Set an iron post, 3 ft. long, 1 in. diam., 14 ins. in the ground, over + marked on bedrock, and in a mound of stone to top, at $\frac{1}{4}$ sec. cor., with brass cap marked
$$\frac{1}{4} \frac{S 3}{S 2}$$
 1940

Asc. 17 ft. along a W. slope.

40.70 Spur, slopes N.30°W.; desc. 227 ft. over N. slope.

56.40 Spring, in wash, bears west about 7.80 chs. dist.

58.60 Ravine, course W.; asc. 81 ft. over S. slope.

Subdivision of T. 8 N., R. 11 W.

Chains

65.67

Intersect the Second Standard Parallel North.

Set an iron post, 3 ft. long, 2 ins. diam., 14 ins. in the ground, over + marked on bedrock, and in a mound of stone to top, at closing cor. of secs. 2 and 3, with brass cap marked

T9N R11W
S34
S3 | S2
T8N R11W
C C
1940

From point of intersection, the standard corner of secs. 34 and 35, T. 9 N., R. 11 W., as evidenced by an iron post, 3 ins. diam., set, marked and witnessed as described in the official record, bears N.89°57'E., 14.20 chs. dist.

From the same point, the standard 1/4 sec. cor. of sec. 34, T. 9 N., R. 11 W., as evidenced by an iron post, 1 in. diam., set, marked and witnessed as described in the official record, bears S.89°57'W., 25.81 chs. dist.

Land, mountainous.

Soil, rocky, 4th rate.

Timber, palo verde and ironwood; undergrowth, greasewood, cactus, cats claw, ocotillo and sage.

At midpoint on the N. bdy. of sec. 2

Set an iron post, 3 ft. long, 1 in. diam., 14 ins. in the ground, over + marked on bedrock, and in a mound of stone to top, at 1/4 sec. cor. of sec. 2, with brass cap marked

1/4 S 2
1940

From this corner, the standard 1/4 sec. cor. of sec. 35, T. 9 N., R. 11 W., bears N.89°59'E., 14.06 chs. dist.

From same corner, the standard cor. of secs. 34 and 35, T. 9 N., R. 11 W., bears S.89°59'W., 25.80 chs. dist.

From the cor. of secs. 3, 4, 33 and 34, on S. bdy. of Tp., as evidenced by an iron post, 3 ins. diam., set, marked and witnessed as described in the official record.

N.0°02'W., bet. secs. 33 and 34.

Over rolling land, through scattering timber and undergrowth.

Asc. 48 ft. over S. slope.

40.00

Set an iron post, 3 ft. long, 1 in. diam., 28 ins. in the ground, at 1/4 sec. cor., with brass cap marked

1/4
S33 | S34
1940

raise a mound of stone, 3 ft. base, 2 1/2 ft. high, W. of cor.

Subdivision of T. 8 N., R. 11 W.

Chains

- Asc. 75 ft. over S. slope.
- 80.00 Set an iron post, 3 ft. long, 2 ins. diam., 12 ins. in the ground, over + marked on bedrock, and in a mound of stone to top, at cor. of secs. 27, 28, 33 and 34, with brass cap marked
- T8N R11W
 $\frac{S28}{S33} | \frac{S27}{S34}$
 1940
- Land, rolling.
 Soil, rocky, 4th rate.
 Timber, palo verde and ironwood; undergrowth, greasewood, cactus, cats claw and ocotillo.
-
- N.89°59'E., on a random line bet. secs. 27 and 34.
- 40.00 Set temp. $\frac{1}{4}$ sec. cor.
- 79.94 Intersect N. and S. line, at 12 lks. S. of cor. of secs. 26, 27, 34 and 35.
- Thence
- S.89°54'W., on true line bet. secs, 27 and 34.
- Over rolling land, through scattering timber and undergrowth.
- 10.15 Wash, 40 lks. wide, course S.
- 39.97 Set an iron post, 3 ft. long, 1 in. diam., 28 ins. in the ground, at $\frac{1}{4}$ sec. cor., with brass cap marked
- $\frac{1}{4} \frac{S27}{S34}$
 1940
- raise a mound
- of stone, 3 ft. base, 2 $\frac{1}{2}$ ft. high, N. of cor.
- 44.45 Ravine, 15 ft. deep, course S.
- 47.45 Ravine, 20 ft. deep, course S.
- 54.85 Wash, 15 lks. wide, course S.20°E.
- 61.05 Wash, 15 lks. wide, course S.30°E.
- 79.94 The cor. of secs. 27, 28, 33 and 34.
- Land, rolling.
 Soil, rocky, 4th rate.
 Timber, palo verde and ironwood; undergrowth, greasewood, cactus, cats claw, ocotillo and sage.
-
- N.0°02'W., bet. secs. 27 and 28.
- Over rolling land, through scattering timber and undergrowth.
- Asc. 60 ft. over S. slope.
- 40.00 Set an iron post, 3 ft. long, 1 in. diam., 18 ins. in the ground to bedrock, and in a mound of stone to top, at $\frac{1}{4}$ sec. cor., with brass cap marked

Subdivision of T. 8 N., R. 11 W.

Chains	
	$\begin{array}{c} \frac{1}{4} \\ \text{S28} \text{S27} \\ 1940 \end{array}$ <p>from which</p> <p>An ironwood, 6 ins. diam., bears S. E., 111 lks. dist., marked $\frac{1}{4}$ S 27 B T.</p> <p>An ironwood, 10 ins. diam., bears N. W., 180 lks. dist., marked $\frac{1}{4}$ S 28 B T.</p> <p>Asc. 19 ft. over S. slope.</p>
64.50	Ravine, course SE.; asc. 90 ft. over SW, slope.
72.90	Spur, slopes NW., approx. 10 chs. to point; desc. 40 ft. over NE. slope.
77.80	Small drain, course S.60°E.; asc. 12 ft. over SW. slope.
80.00	Set an iron post, 3 ft. long, 2 ins. diam., 10 ins. in the ground, over + marked on bedrock, and in a mound of stone to top, at cor. of secs. 21, 22, 27 and 28, with brass cap marked
	$\begin{array}{c} \text{T8N R11W} \\ \text{S21} \text{S22} \\ \text{S28} \text{S27} \\ 1940 \end{array}$ <p>Land, rolling. Soil, rocky, 4th rate. Timber, palo verde and ironwood; undergrowth, greasewood, cactus, cats claw, ocotillo and sage.</p> <p>-----</p> <p>N.89°54'E., on a random line bet. secs. 22 and 27.</p>
40.00	Set temp. $\frac{1}{4}$ sec. cor.
79.92	The cor. of secs. 22, 23, 26 and 27.
	Thence
	S.89°54'W., on true line bet. secs. 22 and 27.
	Over rolling land, through scattering timber and undergrowth.
13.10	Wash, 30 lks. wide, in canyon 3 chs. wide, course S.30°E.; asc. 81 ft. over a general E. slope.
39.96	Set an iron post, 3 ft. long, 1 in. diam., 28 ins. in the ground, at $\frac{1}{4}$ sec. cor., with brass cap marked
	$\begin{array}{c} \frac{1}{4} \\ \text{S22} \\ \text{S27} \\ 1940 \end{array}$ <p>raise a mound of stone, 3 ft. base, 2½ ft. high, N. of cor.</p>
76.40	Wash, 40 lks. wide, in canyon, course S.30°E.
79.92	Cor. of secs. 21, 22, 27 and 28.
	Land, rolling. Soil, rocky, 4th rate. Timber, palo verde and ironwood; undergrowth, greasewood, cactus, cats claw, ocotillo and sage.

Subdivision of T. 8 N., R. 11 W.

S. 11 W. 1034

Chains	N. 0°02' W., bet. secs. 21 and 22.
	Over rolling land, through scattering timber and undergrowth.
	Descend 27 ft. over NE. slope.
3.00	Wash, 40 lks. wide, in bottom of canyon, 3 chs. wide, course SE.
	Asc. 182 ft. over rolling S. slope.
40.00	Set an iron post, 3 ft. long, 1 in. diam., 12 ins. in the ground, over + marked on bedrock, and in a mound of stone to top, at $\frac{1}{4}$ sec. cor., with brass cap marked
	$\frac{1}{4}$ S21 S22 1940
	Asc. 75 ft. over rolling S. slope.
55.00	Head of ravine, course SE.; asc. 184 ft. over S. slope, entering mountainous land which bears E. and W.
69.20	Spur, slopes S.75°W.; desc. 14 ft. over NW. slope.
80.00	Set an iron post, 3 ft. long, 2 ins. diam., 20 ins. in the ground to bedrock, and in a mound of stone to top, at cor. of secs. 15, 16, 21 and 22, with brass cap marked
	T8N R11W S16 S15 S21 S22 1940
	raise a mound of stone, 3 ft. base, 2½ ft. high, W. of cor.
	Land, rolling, S. 55 chs.; mountainous, N. 25 chs. Soil, rocky, 4th rate. Timber, palo verde and ironwood; undergrowth, greasewood, cactus, ocotillo, cats claw and sage.

	N.89°54'E., on a random line bet. secs. 15 and 22.
40.00	Set temp. $\frac{1}{4}$ sec. cor.
79.94	Intersect N. and S. line at 5 lks. S. of cor. of secs. 14, 15, 22 and 23.
	Thence
	S.89°52'W., on true line bet. secs. 15 and 22.
	Over mountainous ^{with lot} land, through scattering timber and undergrowth.
	Desc. 200 ft. over W. slope.
12.05	Ravine, course S.15°W.; asc. 45 ft. over rolling E. slope.
31.85	Ravine, course S.
39.97	Set an iron post, 3 ft. long, 1 in. diam., 12 ins. in the ground, over + marked on bedrock, and in a mound of stone to top, at $\frac{1}{4}$ sec. cor., with brass cap marked

Subdivision of T. 8 N., R. 11 W.

Chains

$$\frac{1}{4} \begin{array}{r} S15 \\ S22 \\ 1940 \end{array}$$

Asc. 586 ft. over E. slope.

58.45 Spur, slopes S.; desc. 27 ft. over W. slope.

64.85 Spur, slopes SW.; desc. 400 ft. over W. slope.

79.94 The cor. of secs. 15, 16, 21 and 22.

Land, mountainous.

Soil, rocky, 4th rate.

Timber, palo verde and ironwood; undergrowth, greasewood, cactus, cats claw, ocotillo and sahuaro.

N.0°02'W., bet. secs. 15 and 16.

Over mountainous land, through scattering timber and undergrowth.

Asc. 482 ft. over S. slope.

1.80 Wash, 15 lks. wide, course S.15°W.

27.30 Spur, slopes SE.; desc. 6 ft. along an E. slope.

40.00 Set an iron post, 3 ft. long, 1 in. diam., 16 ins. in the ground, over + marked on bedrock, and in a mound of stone to top, at $\frac{1}{4}$ sec. cor., with brass cap marked
$$\frac{1}{4} \begin{array}{r} S16 | S15 \\ 1940 \end{array}$$

Asc. 7 ft. along E. slope.

43.10 Ravine, course SE.; asc. 243 ft. over S. slope.

48.60 Spur, slopes SE.; asc. 172 ft. along E. slope.

59.50 Ravine, course S.10°E.; asc. 666 ft. over S. slope.

78.00 Ridge, bears N.75°E. and S.75°W.; desc. 70 ft. over precipitous NW. slope.

79.50 Set an iron post, 3 ft. long; 2 ins. diam., 14 ins. in the ground, over + marked on bedrock, and in a mound of stone to top, for witness cor. of secs. 9, 10, 15 and 16, with brass cap marked

$$\begin{array}{r} W C \\ T8N | R11W \\ S9 | S10 \\ \hline S16 | S15 \\ 1940 \end{array}$$

80.00 True point for cor. falls on steep slope where it is impracticable to monument the cor.

Land, mountainous.

Soil, rocky, 4th rate.

Timber, ironwood and palo verde; undergrowth, greasewood, ocotillo, sage, scrub oak and palo verde.

Subdivision of T. 8 N., R. 11 W.

BOOK 4381

Chains	N.89°52'E., on a random line bet. secs. 10 and 15.
40.00	Set temp. $\frac{1}{4}$ sec. cor.
79.96	Intersect N. and S. line at 4 lks. S. of cor. of secs. 10, 11, 14 and 15.
	Thence
	S.89°50'W., on true line bet. secs. 10 and 15.
	Over mountainous land, through scattering timber and undergrowth.
	Asc. 238 ft. over E. slope.
8.75	Thence along S. slope on asc. of 156 ft.
23.85	Spur, slopes S.; desc. 162 ft. over SW. slope.
34.35	Ravine, course SE.; asc. 219 ft. over E. slope.
39.98	Set an iron post, 3 ft. long, 1 in. diam., 8 ins. in the ground, over + marked on bedrock, and in a mound of stone to top, at $\frac{1}{4}$ sec. cor., with brass cap marked
	$\frac{1}{4}$ $\frac{S10}{S15}$ 1940
	From this corner, a spring, bears S.12°12'W., 10.85 chs. dist.
	Asc. 171 ft. over E. slope.
46.25	Spur, slopes SE.; desc. 46 ft. over SW. slope.
48.65	Ravine, course S.15°E.; asc. 303 ft. over SE. slope.
60.55	Short spur, slopes S.15°E.; desc. 26 ft. over W. slope.
66.25	Head of ravine, course S.; asc. 432 ft. over SE. slope.
75.75	Ridge, bears NE. and SW.; desc. 176 ft. over NW. slope.
79.96	The cor. of secs. 9, 10, 15 and 16.
	Land, mountainous. Soil, rocky, 4th rate. Timber, ironwood and palo verde; undergrowth, cactus, ocotillo, greasewood and sage.

	N.0°02'W.; bet. secs. 9 and 10.
	Over mountainous land, through scattering timber and undergrowth.
	Desc. 62 ft. over rugged NW. slope.
2.75	Head of ravine, 10 lks. wide, course NW. Continue descent of 134 ft. over NW. slope.
9.27	Head of ravine, course N.70°W.; asc. 91 ft. over SW. slope.
12.90	Spur, slopes N.45°W.
13.40	Top of cliff, bears NW. and SE.; desc. 50 ft. over vertical walls, to foot and continue desc. of 319 ft. over N. slope.

Subdivision of T. 8 N., R. 11 W.

Chains	
20.05	Head of ravine, course N.10°W. Continue descent of 268 ft. along a W. slope.
29.17	Spur, slopes N.20°W.
31.70	Ravine, 40 lks. wide, course N.60°W.; asc. 181 ft. over rolling SW. slope.
40.00	Set an iron post, 3 ft. long, 1 in. diam., 14 ins. in the ground, over + marked on bedrock, and in a mound of stone to top, at $\frac{1}{4}$ sec. cor., with brass cap marked <div style="text-align: center;"> $\frac{1}{4}$ S9 S10 1940 </div>
	Asc. 19 ft. over SW. slope.
41.80	Spur, slopes N.45°W.; desc. 267 ft. over steep NE. slope.
49.20	Ravine, 30 lks. wide, course N.65°W.; asc. 82 ft. over SW. slope.
53.20	Perpendicular cliff 45 ft. high, bears NW. and SE. From foot of cliff continue desc. of 129 ft. over NE. slope.
56.00	Ravine, 25 lks. wide, course W.; asc. 153 ft. over SW. slope.
64.50	Spur, slopes N.40°W.; desc. 370 ft. over E. slope.
76.70	A ravine from SE. courses N., 30 lks. E. of line.
80.00	Set an iron post, 3 ft. long, 2 ins. diam., 14 ins. in the ground, over + marked on bedrock, and in a mound of stone to top, for cor. of secs. 3, 4, 9 and 10, with brass cap marked <div style="text-align: center;"> T8N R11W S4 S3 S9 S10 1940 </div>
	Land, mountainous. Soil, rocky, 4th rate. Timber, ironwood and palo verde; undergrowth, greasewood, cactus, ocotillo, cats claw and sahuaro.
	N.89°50'E., on a random line bet. secs. 3 and 10.
40.00	Set temp. $\frac{1}{4}$ sec. cor.
79.94	Intersect N. and S. line at 2 lks. S. of cor. of secs. 2, 3, 10 and 11. Thence S.89°49'W., on true line bet. secs. 3 and 10. Over mountainous land, through scattering timber and undergrowth. Desc. 93 ft. over W. slope.
3.30	Ravine, course NW.; asc. 13 ft. over NE. slope.

Subdivision of T. 8 N., R. 11 W.

Chains	
6.35	Point of short spur, slopes N.20°W.; desc. 64 ft. over W. slope.
9.50	Ravine, course N.; asc. 136 ft. over NE. slope.
17.60	Spur, slopes N.70°W.; desc. 440 ft. over precipitous W. slope.
35.95	Ravine, course N.30°W.; asc. 49 ft. over NE. slope.
36.48	Small spring in bottom of ravine, bears S.10½°E., 3.94 chs. dist.
39.42	Spur, slopes NW.; desc. 19 ft. over SW. slope.
39.97	Set an iron post, 3 ft. long, 1 in. diam., 14 ins. in the ground, over + marked on bedrock, and in a mound of stone to top, at ¼ sec. cor., with brass cap marked
	$\frac{1}{4} \cdot \frac{S3}{S10}$ 1940
	Continue desc. of 67 ft. over precipitous SW. slope.
41.85	Ravine, course N.; asc. 101 ft. over NE. slope.
59.10	Spur, slopes N.20°W.; desc. 133 ft. over W. slope.
62.10	Head of ravine, course N.30°W.; asc. 17 ft. over NE. slope.
67.55	Spur; slopes N.30°W.; desc. 354 ft. over SW. slope.
79.55	Ravine, course NW.; asc. 16 ft. over NE. slope.
79.94	The cor. of secs. 3, 4, 9 and 10.
	Land, mountainous. Soil, rocky, 4th rate. Timber, palo verde and ironwood; undergrowth, greasewood, cactus, cats claw, sage, ocotillo and sahuaro.

	N.0°02'W., on true line bet. secs. 3 and 4.
	Over mountainous land, through scattering timber and undergrowth.
	Desc. 41 ft. over NE. slope.
1.20	Ravine, course N.35°W.; asc. 3 ft. over SW. slope.
8.35	Spur, slopes N.40°W.; desc. 181 ft. over NE. slope.
17.20	Wash, 1 ch. wide, course N.80°W.; asc. 28 ft. over S. slope.
21.20	Spur, slopes S.60°W.; desc. 14 ft. over N. slope.
22.65	Ravine, course S.60°W.; asc. 312 ft. over S. slope.
32.00	Spur, slopes SE.
40.00	Set an iron post, 3 ft. long, 1 in. diam., 16 ins. in the ground, over + marked on bedrock, and in a mound of stone to top, at ¼ sec. cor., with brass cap marked

Subdivision of T. 8 N., R. 11 W.

Chains

$$\begin{array}{c} \frac{1}{4} \\ \hline S4 | S3 \end{array}$$

1940.

Asc. 75 ft. over SE. slope.

43.90 Spur, slopes S.60°W.; desc. 33 ft. over broken NW. slope.

48.70 Head of ravine, course N.70°W.; asc. 67 ft. along a W. slope.

59.70 Spur, slopes N.35°W.; desc. 261 ft. over N. slope.

65.55 Ravine, 15 lks. wide, course N.65°W.; asc. 18 ft. over SW. slope.

66.12 Intersect Second Standard Parallel North.

Set an iron post, 3 ft. long, 2 ins. diam., over + marked on solid surface rock, and in a mound of stone to top, at closing cor. of secs. 3 and 4, with brass cap marked

$$\begin{array}{c} T9N R11W \\ \hline S33 \end{array}$$

S33

$$\begin{array}{c} S4 | S3 \\ \hline T8N | R11W \end{array}$$

T8N | R11W

C C

1940

From point of intersection, the true point for standard cor. of secs. 33 and 34, T. 9 N., R. 11 W., which is witnessed by a witness corner, S.89°53'W., 10 lks. dist., as evidenced by an iron post, 3 ins. diam., set, marked and witnessed as described in the official record, bears N.89°53'E., 14.26 chs. dist.

From same point, the standard $\frac{1}{4}$ sec. cor., of sec. 33, T. 9 N., R. 11 W., as evidenced by an iron post, 1 in. diam., set, marked and witnessed as described in the official record, bears S.89°53'W., 26.07 chs. dist.

Land, mountainous.

Soil, rocky, 4th rate.

Timber, palo verde and ironwood; undergrowth, greasewood, cactus, cats claw and ocotillo.

At midpoint on the N. bdy. of sec. 3

Set an iron post, 3 ft. long, 1 in. diam.; 8 ins. in the ground, over + marked on bedrock, and in a mound of stone to top, at $\frac{1}{4}$ sec. cor. of sec. 3, with brass cap marked

$$\begin{array}{c} \frac{1}{4} S3 \end{array}$$

1940

From this corner, the standard $\frac{1}{4}$ sec. cor. of sec. 34, T. 9 N., R. 11 W., bears S.89°53' E., 14.13 chs. dist.

From same corner, the standard corner of secs. 33 and 34, T. 9 N., R. 11 W., bears N.89°53'W., 25.68 chs. dist.

Subdivision of T. 8 N., R. 11 W.

Chains	
	From cor. of secs. 4, 5, 32 and 33, on S. bdy. of Tp., as evidenced by an iron post, 2 ins. diam., set, marked and witnessed as described in the official record.
	N.0°02'W., bet. secs. 32 and 33.
	Over rolling land, through scattering timber and undergrowth.
3.40	Wash, 10 lks. wide, course SE.; asc. 19 ft. over rolling land.
19.00	Top of ascent; desc: 4 ft. over a NE. slope.
20.40	Wash, 10 lks. wide, course S:30°E.; asc: 28 ft. over general S. slope.
40.00	Set an iron post, 3 ft. long, 1 in. diam., 16 ins. in the ground, over + marked on bedrock; and in a mound of stone to top, at $\frac{1}{4}$ sec. cor., with brass cap marked
	$\begin{array}{c} \frac{1}{4} \\ \hline S32 S33 \\ \hline 1940 \end{array}$
	Desc. gradual NE. slope.
56.90	Wash, 15 lks. wide, course S.60°E.; asc. 13 ft.
64.00	Top of ascent; desc. 11 ft. over NE. slope.
65.20	Wash, 30 lks. wide, course S.20°E.; asc. 31 ft. over a SW. slope.
74.00	Top of ascent; desc. 43 ft. over a NE. slope.
77.80	Ravine, course SE.; asc. 55 ft. over S. slope.
80.00	Set an iron post, 3 ft. long, 2 ins. diam., 28 ins. in the ground, at cor. of secs. 28, 29, 32 and 33, with brass cap marked
	$\begin{array}{c} T8N R11W \\ \hline S29 S28 \\ \hline S32 S33 \\ \hline 1940 \end{array}$
	raise a mound of stone, 3 ft. base, 2 $\frac{1}{2}$ ft. high, W. of cor.
	Land; rolling. Soil, rocky and sandy, 3rd rate. Timber, palo verde and ironwood; undergrowth, greasewood, cactus, ocotillo, cats claw and sahuaro.
	N.89°59'E., on a random line bet. secs. 28 and 33.
40.00	Set temp. $\frac{1}{4}$ sec. cor.
79.94	Intersect N. and S. line at 2 lks. N. of cor. of secs. 27, 28, 33 and 34.
	Thence
	West, on true line bet. secs. 28 and 33.
	Over rolling land, through scattering timber and undergrowth.

Subdivision of T. 8 N., R. 11 W.

Chains

18.75 Wash; 60 lks. wide, course S.; asc. 50 ft. over E. slope.

39.97 Set an iron post, 3 ft. long, 1 in. diam., 14 ins. in the ground, over + marked on bedrock, and in a mound of stone to top, at $\frac{1}{4}$ sec. cor., with brass cap marked

$$\frac{1}{4} \begin{array}{r} S28 \\ S33 \\ 1940 \end{array}$$

Desc. 31 ft. over W. slope.

64.25 Ravine, course S.; asc. 50 ft. along a S. slope.

79.94 The cor. of secs. 28, 29, 32 and 33.

Land, rolling.

Soil, rocky and sandy, 3rd rate.

Timber, palo verde, ironwood and mesquite; undergrowth, greasewood, cactus, cats claw, sage, ocotillo and sahuaro.

N.0°02'W., bet. secs. 28 and 29.

Over mountainous land, through scattering timber and undergrowth.

Ascend 298 ft. over a S. slope.

12.80 Spur, slopes S.15°E.; desc: 159 ft. along an E. slope.

29.30 Ravine; course SE.; asc. 268 ft. over SW. slope.

40.00 Set an iron post, 3 ft. long, 1 in. diam., 12 ins. in the ground, over + marked on bedrock, and in a mound of stone to top, at $\frac{1}{4}$ sec. cor., with brass cap marked

$$\frac{1}{4} \begin{array}{r} S29 | S28 \\ 1940 \end{array}$$

Asc. 29 ft. over SW. slope.

41.40 Rocky spur, slopes SE.; desc. 208 ft. over NE. slope.

55.50 Ravine, course S.60°E.; asc. 116 ft. over a S. slope.

80.00 Set an iron post, 3 ft. long, 2 ins. diam., 28 ins. in the ground, at cor. of secs. 20, 21, 28 and 29, with brass cap marked

$$\begin{array}{r} T8N R11W \\ S20 | S21 \\ S29 | S28 \\ 1940 \end{array}$$

of stone, 3 ft. base, 2 $\frac{1}{2}$ ft. high, W. of cor. raise a mound.

Land, mountainous.

Soil, rocky, 3rd and 4th rate.

Timber, palo verde, ironwood and mesquite; undergrowth, greasewood, cactus, cats claw and ocotillo.

Subdivision of T. 8 N., R. 11 W.

Chains	<p>East, on a random line bet. secs. 21 and 28.</p> <p>40.00 Set temp. $\frac{1}{4}$ sec. cor.</p> <p>79.92 The cor. of secs. 21, 22, 27 and 28.</p> <p>Thence</p> <p>West, on true line bet. secs. 21 and 28.</p> <p>Over mountainous land, through scattering timber and undergrowth.</p> <p>Asc. 85 ft. over E. slope.</p> <p>11.50 Top of hill; desc. 47 ft. over W. slope.</p> <p>37.90 Small ravine, course S.80°E.; asc. 11 ft. over a NE. slope.</p> <p>39.96 Set an iron post, 3 ft. long, 1 in. diam., 28 ins. in the ground, at $\frac{1}{4}$ sec. cor., with brass cap marked</p> <div style="text-align: center;"> $\begin{array}{r} \frac{1}{4} \text{ S } 21 \\ \hline \text{S } 28 \\ .1940 \end{array}$ </div> <p style="text-align: right;">raise a mound</p> <p style="text-align: center;">of stone, 3 ft. base, 2$\frac{1}{2}$ ft. high, N. of cor.</p> <p>Desc. 44 ft. over SW. slope.</p> <p>49.90 Wash, 30 lks. wide, course SE.; asc. 184 ft. over NE. slope.</p> <p>70.00 Along a S. slope.</p> <p>79.92 The cor. of secs. 20, 21, 28 and 29.</p> <p>Land, mountainous. Soil, rocky, 3rd rate. Timber, palo verde, ironwood and mesquite; undergrowth, greasewood, cactus, cats claw and ocotillo.</p> <hr style="border-top: 1px dashed black;"/> <p>N. 0°02'W., bet. secs. 20 and 21.</p> <p>Over rolling land, through scattering timber and undergrowth.</p> <p>Asc. 62 ft. over a S. slope.</p> <p>13.00 Top of ascent, bears NW. and SE.; desc. 57 ft. over a NE. slope.</p> <p>18.20 Wash, 30 lks. wide, course S.60°E., in canyon 40 ft. deep; asc. 519 ft. over a SW. slope.</p> <p>33.10 Rocky peak, bears E., 1.70 chs. dist., about 40 ft. above line point.</p> <p>35.10 Spur, slopes SE.; from N.; desc. 46 ft. along top of same.</p> <p>40.00 Set an iron post, 3 ft. long, 1 in. diam., 14 ins. in the ground, over + marked on bedrock, and in a mound of stone to top, at $\frac{1}{4}$ sec. cor., with brass cap marked</p> <div style="text-align: center;"> $\begin{array}{r} \frac{1}{4} \\ \hline \text{S } 20 \text{ } \text{S } 21 \\ 1940 \end{array}$ </div>
--------	--

ECCOK 2881

Subdivision of T. 8 N., R. 11 W.

Chains

This corner is located on top of a spur, slopes S. from N.75°W.

A saddle in this spur, bears N.75°W., .10 chs. dist.

Desc. 276 ft. over NE. slope.

53.00 Wash, .20 lks. wide, course S.60°E.; asc. 114 ft. over S. slope.

69.10 Ravine, 25 ft. deep, course SE.; asc. 167 ft. over SW. slope.

80.00 Set an iron post, 3 ft. long, 2 ins. diam., 8 ins. in the ground, over + marked on bedrock, and in a mound of stone to top, at cor. of secs. 16, 17, 20 and 21, with brass cap marked.

T8N R11W

S17 | S16

S20 | S21

1940

Land, mountainous.

Soil, rocky, 4th rate.

Timber, none; undergrowth, greasewood, sage and cats claw.

East, on a random line bet. secs. 16 and 21.

40.00 Set temp. $\frac{1}{4}$ sec. cor.

79.92 The cor. of secs. 15, 16, 21 and 22.

Thence

West, on true line bet. secs. 16 and 21.

Over mountainous land, through scattering timber and undergrowth.

Desc. slightly over W. slope.

0.20 Wash, 15 lks. wide, course S.30°W.

7.30 Wash, 15 lks. wide, course S.; asc. 129 ft. over a SE. slope.

19.60 Spur, slopes S.; asc. 43 ft. along S. slope.

27.10 Spur, slopes S.20°W.; continue ascent of 32 ft. along a S. slope.

37.50 Spur, slopes S.; desc. 36 ft. over W. slope.

39.96 Set an iron post, 3 ft. long, 1 in. diam., 14 ins. in the ground, over + marked on bedrock, and in a mound of stone to top, at $\frac{1}{4}$ sec. cor., with brass cap marked

$\frac{1}{4}$ S16

S21

1940

Desc. 105 ft. over W. slope.

46.90 Ravine, course S.; asc. 46 ft. over E. slope.

56.90 Top of ascent; desc. 17 ft. over a W. slope.

Subdivision of T. 8 N., R. 11 W.

Chains	
58.60	Ravine, course S.; asc. 65 ft. over E. slope.
70.40	Ravine, course SE.; asc. 107 ft. over NE. slope.
78.40	Spur, slopes SE.; desc. 11 ft. over SW. slope.
79.92	The cor. of secs. 16, 17, 20 and 21.
	Land, mountainous, Soil, rocky, 3rd and 4th rate. Timber, palo verde and ironwood; undergrowth, greasewood, cactus, cats claw, ocotillo and sahuaro.

	N.0°02'W., bet. secs. 16 and 17.
	Over mountainous land, through scattering timber and undergrowth.
	Asc. 62 ft. over SW. slope.
3.90	Spur, slopes SE.; thence along E. slope, on ascent of 83 ft.
11.30	Ravine, course S.10°E.; asc. 765 ft. over precipitous S. slope.
29.00	Slope changes to SW.; continue asc. of 427 ft.
38.80	Rocky spur, slopes S.20°E.; continue along top.
40.00	Set an iron post, 3 ft. long, 1 in. diam., 14 ins. in the ground, over + marked on bedrock, and in a mound of stone to top, at $\frac{1}{4}$ sec. cor., with brass cap marked
	$\frac{1}{4}$ S17 S16 1940
	Asc. 59 ft. over SE. slope.
47.20	Main ridge, bears N.50°E. and S.50°W.; desc. 569 ft. over NW. slope.
53.33	Head of ravine, course N.15°W.; continue on descent.
70.05	Spur, slopes N.15°W.; desc. 277 ft. over NE. slope.
80.00	Set an iron post, 3 ft. long, 2 ins. diam., 16 ins. in the ground, over + marked on bedrock, and in a mound of stone to top, at cor. of secs. 8, 9, 16 and 17, with brass cap marked
	T8N R11W S8 S9 ----- S17 S16 1940
	Land, mountainous. Soil, rocky, 4th rate. Timber, palo verde and ironwood; undergrowth, greasewood, cactus, cats claw, ocotillo and sahuaro.

Chains	East, on a random line bet. secs. 9 and 16.
40.00	Set temp. $\frac{1}{4}$ sec. cor.
79.90	Intersect N. and S. line 9 lks. S. of true point for cor. of secs. 9, 10, 15 and 16.
	Thence
	S.89°56'W., on true line bet. secs. 9 and 16.
	Over mountainous land, through scattering timber and undergrowth.
	Desc. 265 ft. along a N. slope.
8.60	Spur, slopes N.20°W.
11.50	Head of ravine, course N.20°W.; asc. 151 ft. over NE. slope.
17.90	Spur, slopes N.15°W.; desc. 279 ft. over W. slope.
27.30	Head of ravine, course N.10°W.; asc. 130-ft. over NE. slope.
35.40	Spur, slopes N.40°W.; desc. 186 ft. over SW. slope.
39.95	Set an iron post, 3 ft. long, 1 in. diam., 12 ins. in the ground, over + marked on bedrock, and in a mound of stone to top, at $\frac{1}{4}$ sec. cor., with brass cap marked
	$\frac{1}{4}$ $\frac{S9}{S16}$ 1940
	Desc. 170 ft. along a N. slope.
44.50	Small spur, slopes N.45°W.
48.80	Ravine, course N.10°W.; asc. 97 ft. over NE. slope.
52.50	Spur, slopes N.30°E.; desc. 83 ft. over NW. slope.
56.00	Ravine, course N.30°E.; asc. 216 ft. over NE. slope.
63.20	Spur, slopes N.; desc. 277 ft. over W. slope.
75.30	Ravine, course N.60°W.
79.90	Cor. of secs. 8, 9, 16 and 17.
	Land, mountainous. Soil, rocky, 4th rate. Timber, palo verde and ironwood; undergrowth, greasewood, cactus, cats claw, ocotillo and sahuaro.

	N.0°02'W., bet. secs. 8 and 9.
	Over mountainous land, through scattering timber and undergrowth.
	Desc. 126 ft. over N. end of spur.
3.30	Ravine, 25 lks. wide, course N.30°W.; asc. 48 ft. over a SW. slope.
10.70	Desc. 239 feet along a W. slope.

Subdivision of T. 8 N., R. 11 W.

BOOK 4583

Chains

- 28.50 Ravine, 10 lks. wide, course N.30°W.; asc. 48 ft. over SW. slope.
- 30.00 Spur, slopes N.45°W.; desc. 146 ft. over brushy NW. slope.
- 40.00 Set an iron post, 3 ft. long, 1 in. diam., 16 ins. in the ground, over + marked on bedrock, and in a mound of stone to top, at $\frac{1}{4}$ sec. cor., with brass cap marked
- $\frac{1}{4}$
 S8 | S9
 1940
- 42.45 Ravine, 50 lks. wide, course N.50°E.; asc. 252 ft. over SE. slope.
- 52.20 Spur, slopes N.80°E.; desc. 182 ft. over NW. slope.
- 58.95 Head of ravine, course N.35°W.
- 63.82 Spur, slopes N.40°W.; desc. 367 ft. over rocky NE. slope.
- 79.50 Set an iron post, 3 ft. long, 2 ins. diam., 6 ins. in the ground, over + marked on bedrock, and in a mound of stone to top, for witness cor. of secs. 4, 5, 8 and 9, with brass cap marked
- W C
 T8N | R11W
 S5 | S4
 S8 | S9
 1940
- 80.00 True point for cor. of secs. 4, 5, 8 and 9, falls on edge of a ravine, course N.60°E., an unsuitable place to monument the cor.
- Land, mountainous.
 Soil, rocky, 4th rate.
 Timber, palo verde and ironwood; undergrowth, greasewood, cactus, cats claw, ocotillo and sahuaro.
-
- N.89°56'E., on a random line bet. secs. 4 and 9.
- 40.00 Set temp. $\frac{1}{4}$ sec. cor.
- 79.90 The cor. of secs. 3, 4, 9 and 10.
- Thence
- S.89°56'W., on a true line bet. secs. 4 and 9.
- Over mountainous land, through scattering timber and undergrowth.
- Asc. 134 ft. over NE. slope.
- 7.20 Spur, slopes NW.; desc. 272 ft. over SW. slope.
- 23.40 Wash, 20 lks. wide, course N.20°W. Continue on descent of 44 ft. over NW. slope.
- 31.90 Ravine, course N.20°W.; asc. 150 ft. over NE. slope.
- 38.20 Rocky knoll on spur slopes N.30°W.; desc. 37 ft. over W. slope.

Subdivision of T. 8 N., R. 11 W.

Chains	
39.95	<p>Set an iron post, 3 ft. long, 1 in. diam., 14 ins. in the ground, over + marked on bedrock, and in a mound of stone to top, at $\frac{1}{4}$ sec. cor., with brass cap marked</p> <p style="text-align: center;">$\frac{54}{89}$ 1940</p>
	<p>Desc. 159 ft. over NW. slope.</p>
49.70	<p>Wash, 20 lks. wide, course N.30°W.; desc. 37 ft. over point of spur from S.</p>
59.40	<p>Wash, 30 lks. wide, course N.20°E.; asc. 203 ft. over SE. slope.</p>
67.70	<p>Spur, slopes N.30°E.; desc. 203 ft. over NW. slope.</p>
75.40	<p>Ravine, course N.; asc. 20 ft. over NE. slope.</p>
79.90	<p>The true point for cor. of secs. 4, 5, 8 and 9.</p> <p>Land, mountainous. Soil, rocky, 4th rate. Timber, palo verde and ironwood; undergrowth, greasewood, cactus, cats claw, ocotillo and sahuaro!</p>
	<p>-----</p> <p>From true point for cor. of secs. 4, 5, 8 and 9. N.0°02'W., on true line bet. secs. 4 and 5. Over mountainous land, through scattering timber and undergrowth.</p>
	<p>Asc. 199 ft. over S. slope..</p>
7.40	<p>Bluff, 20 ft. high, on line.</p>
9.18	<p>Spur, slopes S.60°E.; desc. 113 ft. over rough NE. slope.</p>
16.60	<p>Ravine, 8 lks. wide, course E.</p>
19.05	<p>Ravine, 10 lks. wide, course S.75°E.; asc. 111 ft. over SE. slope.</p>
23.98	<p>Spur, slopes E. From which bearings to property of John M. Hargus are as follows:</p> <p style="padding-left: 40px;">SE. corner of shed, bears N.14°41'E.. SW. corner of shed, bears N.12°37'E. A well, bears N.32°35'E.</p>
	<p>Desc. 224 ft. over NE. slope.</p>
33.15	<p>Ravine, 10 lks. wide, course N.70°E.; asc. 17 ft. over SE. slope.</p>
37.56	<p>Spur, slopes E.; desc. 18 ft. to</p>
40.00	<p>Set an iron post, 3 ft. long, 1 in. diam., 6 ins. in the ground, over + marked on bedrock, and in a mound of stone to top, at $\frac{1}{4}$ sec. cor., with brass cap marked</p> <p style="text-align: center;">$\frac{55}{54}$ 1940</p>

Subdivision of T. 8 N., R. 11 W.

BOOK 433

Chains

Desc. 185 ft. over NE. slope, to ravine.

54.83

From which bearings to property of John M. Hargus, first noted on page 43, follows:

SE. cor. of goat shed, bears N.80°26'E.

SW. cor. of goat shed, bears N.84°15'E.

Well, bears N.89°05'E.

These buildings are within a barbed wire enclosure containing approx. 20 acres.

58.10

Ravine, 15 lks. wide, course E.; asc. 157 ft. over SE. slope.

63.33

Fence, bears N.70°W. and S.70°E.

64.70

Spur, slopes NE.; desc. along a gradual W. slope.

66.22

Intersect Second Standard Parallel North.

Set an iron post, 3 ft. long, 2 ins. diam., 16 ins. in the ground, over + marked on bedrock, and in a mound of stone to top, at closing cor. of secs. 4 and 5, with brass cap marked.

T9N R11W
 S32
 S5 | S4
 T8N R11W
 C C
 1940

From point of intersection, the standard corner of secs. 32 and 33, T. 9 N., R. 11 W., as evidenced by an iron post, 3 ins. diam., set, marked and witnessed as described in the official record, bears N.89°54'E., 13.80 chs. dist.

From same point, the standard $\frac{1}{4}$ sec. cor. of sec. 32, T. 9 N., R. 11 W., as evidenced by an iron post, 1 in. diam., set, marked and witnessed as described in the official record, bears S.89°54'W., 26.14 chs. dist.

Land, mountainous.

Soil, rocky, 4th rate.

Timber, palo verde and ironwood; undergrowth, greasewood, cactus, cats claw, ocotillo and sahuaro.

The true point for $\frac{1}{4}$ sec. cor. of sec. 4, which is midpoint on the N. bdy. of said section, falls at a place unsuitable to monument the corner.

At a point on the N. bdy. of sec. 4, 40.40 chs. in departure from the closing corner of secs. 4 and 5 and 50 links, N.89°59'E. from the true point for the $\frac{1}{4}$ sec. cor. of sec. 4.

Set an iron post, 3 ft. long, 1 in. diam., 28 ins. in the ground, for witness $\frac{1}{4}$ sec. cor. of sec. 4, with brass cap marked

WC $\frac{1}{4}$ S4
 1940

raise a mound
 of stone, 4 ft. base, 3 ft. high, S. of cor.

BOOK 4881

Subdivision of T. 8 N., R. 11 W.

Chains

From the true point for $\frac{1}{4}$ sec. cor. of sec. 4, the standard $\frac{1}{4}$ sec. cor. of sec. 33, T. 9 N., R. 11 W., bears N.89°59'E., 13.83 chs. dist.

From the same point, the standard corner of secs. 32 and 33, T. 9 N., R. 11 W., bears S.89°59'W., 26.10 chs. dist.

 From cor. of secs. 5, 6, 31 and 32, on S. bdy. of Tp., as evidenced by an iron post, 2 ins. diam., set, marked and witnessed as described in the official record.

N.0°03'W., bet. secs. 31 and 32..

Over rolling land, through scattering timber and heavy undergrowth.

19.20 Wash, 20 lks. wide, course S.60°E.

26.00 Small ravine, course S.70°E.; asc. 193 ft. over SW. slope, entering mountainous land which bears NW. and SE.

40.00 Set an iron post, 3 ft. long, 1 in. diam., 14 ins. in the ground, over + marked on bedrock, and in a mound of stone to top, at $\frac{1}{4}$ sec. cor., with brass cap marked

$\frac{1}{4}$
 S31 | S32
 1940

Asc. 286 ft. over SW. slope.

53.40 Saddle in spur, slopes S.30°E.; desc. 151 ft. over NE. slope.

61.70 Ravine, near head; course S.60°E.; asc. 123 ft. over S. slope.

64.60 Trail, bears S.80°E. and N.60°W. to abandoned mine, approx. 15 chs. W.

68.30 Spur, slopes E., ends about 8 chs. E.; desc. 182 ft. over a N. slope.

79.10 Wash, 30 lks. wide, course S.70°E.; asc. 13 ft. over broken SW. slope.

80.00 Set an iron post, 3 ft. long, 2 ins. diam., 28 ins. in the ground, at cor. of secs. 29, 30, 31 and 32, with brass cap marked

T8N R11W
 S30 | S29
 S31 | S32
 1940

Land, mountainous.
 Soil, rocky, 4th rate.
 Timber, palo verde, ironwood and mesquite; undergrowth, greasewood, cactus, cats claw, ocotillo and sahuaro.

 N.89°59'E., on a random line bet. secs. 29 and 32.

40.00 Set temp. $\frac{1}{4}$ sec. cor.

79.90 Intersect N. and S. line at 7 lks. S. of cor. of secs. 28, 29, 32 and 33.

Subdivision of T. 8 N., R. 11 W.

BOOK 40

Chains	
	Thence
	S.89°56'W., on true line bet. secs. 29 and 32.
	Over rolling land, through scattering timber and undergrowth.
	Desc. 29 ft. over SW. slope.
1.80	Ravine, course S.10°E.; asc. 35 ft. over E. slope.
13.00	Wash, 15 lks. wide, course S.15°E.; asc. 68 ft. over E. slope.
29.90	Ravine, course S.60°E.; asc. 65 ft. over NE. slope.
39.95	Set an iron post, 3 ft. long, 1 in. diam., 8 ins. in the ground, over + marked on bedrock, and in a mound of stone to top, at ¼ sec. cor., with brass cap marked
	$\frac{1}{4} \frac{S29}{S32}$ 1940
	Desc. 17 ft. over SW. slope.
41.90	Ravine, course SE.; asc. 63 ft. over NE. slope.
55.10	Wash, 15 lks. wide, course S.; asc. 26 ft. along a S. slope.
68.60	Ravine, course S.; asc. 62 ft. along a S. slope.
77.40	Ravine, course S.
79.40	Ravine, course SE.
79.90	The cor. of secs. 29, 30, 31 and 32.
	Land, rolling. Soil, rocky, 4th rate. Timber, palo verde, ironwood and mesquite; undergrowth, greasewood, cactus, cats claw, ocotillo and sahuaro.

	S.89°59'W. on a random line bet. secs. 30 and 31.
40.00	Set temp. ¼ sec. cor.
76.81	Intersect W. bdy. of Tp. 5 lks. N. of cor. of secs. 25, 30, 31 and 36.
	Thence
	N.89°57'E., on true line bet. secs. 30 and 31.
	Over mountainous land, through scattering timber and undergrowth.
	Ascend 160 ft. over a precipitous W. slope.
4.80	Rocky spur, slopes SW. Along S. slope.
10.80	Spur, slopes S.; desc. 184 ft. over SE. slope.
16.60	Ravine, course S.20°E.; asc. 115 ft. over SW. slope.
27.70	Spur, slopes S.15°E.; desc. 270 ft. over E. slope.

Subdivision of T. 8 N., R. 11 W.

Chains	
36.81	Set an iron post, 3 ft. long, 1 in. diam., 6 ins. in the ground, over + marked on bedrock, and in a mound of stone to top, at $\frac{1}{4}$ sec. cor., with brass cap marked
	$\frac{1}{4}$ $\frac{S30}{S31}$ 1940
	Desc. 223 ft. over E. slope.
51.80	Ravine, course N.80°E.; desc. 144 ft. along a N. slope.
65.10	Wash, 15 lks. wide, course S.80°E.
76.81	The cor. of secs. 29, 30, 31 and 32.
	Land, mountainous. Soil, rocky, 4th rate. Timber, palo verde, ironwood and mesquite; undergrowth, greasewood, cactus, cats claw, ocotillo and sahuaro.
	----- N.0°03'W., bet. secs. 29 and 30.
	Over mountainous land, through scattering timber and undergrowth.
0.50	Ravine, course SE.; asc. 300 ft. over S. slope.
34.30	Ravine, course S.15°E.; asc. 70 ft. over S. slope.
40.00	Set an iron post, 3 ft. long, 1 in. diam., 8 ins. in the ground, over + marked on bedrock, and in a mound of stone to top, at $\frac{1}{4}$ sec. cor., with brass cap marked
	$\frac{1}{4}$ S30 S29 1940
	Asc. 270 ft. over S. slope.
59.90	Ravine, course SE.; asc. 645 ft. over rough SW. slope.
78.70	Short rocky spur, slopes SE.; asc. 27 ft. over SE. slope.
80.00	Set an iron post, 3 ft. long, 2 ins. diam., 10 ins. in the ground, over + marked on bedrock, and in a mound of stone to top, at cor. of secs. 19, 20, 29 and 30, with brass cap marked
	T8N R11W <u>S19 S20</u> S30 S29 1940
	Land, mountainous. Soil, rocky, 4th rate. Timber, palo verde, ironwood and mesquite; undergrowth, greasewood, cactus, cats claw, ocotillo and sahuaro.
	----- N.89°56'E., on a random line bet. secs. 20 and 29.
40.00	Set temp. $\frac{1}{4}$ sec. cor.
79.92	The cor. of secs. 20, 21, 28 and 29.
	Thence

Subdivision of T. 8 N., R. 11 W.

BOOK 4581

Chains	
	S.89°56'W., on true line bet: secs. 20 and 29.
	Over mountainous land, through scattering timber and undergrowth.
	Asc. 178 ft. along a rolling S. slope.
28.20	Ravine, course S.30°E.; asc. 224 ft. over rough E. slope.
39.96	Set an iron post, 3 ft. long, 1 in. diam., 12 ins. in the ground, over + marked on bedrock, and in a mound of stone to top, at ¼ sec. cor., with brass cap marked
	¼ $\frac{S20}{S29}$ 1940
	Asc. 470 ft. over E. slope.
53.50	Spur, slopes S.60°E.; along S. slope.
58.50	Head of ravine, course SE.; asc. 322 ft. over E. slope.
65.60	Rocky spur, slopes S.; desc. 57 ft. over SW. slope.
75.60	Ravine, course S.20°E.; asc. 108 ft. over NE. slope.
79.92	The cor. of secs. 19, 20, 29 and 30.
	Land, mountainous. Soil, rocky, 4th rate. Timber, palo verde, ironwood and mesquite; undergrowth, greasewood, cactus, cats claw, ocotillo and sahuaro.
	S.89°57'W., on a random line bet. secs. 19 and 30.
40.00	Set temp. ¼ sec. cor.
76.66	The cor. of secs. 19, 24, 25 and 30, on the W. bdy. of Tp.
	Thence
	N.89°57'E., on true line bet. secs. 19 and 30.
	Over mountainous land, through scattering timber and undergrowth.
	Desc. 176 ft. over NE. slope.
5.25	Ravine, course SE.; asc. 54 ft. over SW. slope.
6.45	Point of spur, from N.30°W.; desc. 5 ft. over NE. slope.
9.05	Ravine, course SW.; asc. 55 ft. over NW. slope.
12.35	Spur, slopes SW.; desc. 72 ft. over SE. slope.
20.25	Ravine, course S.60°W.; asc. 382 ft. over NW. slope.
36.66	Set an iron post, 3 ft. long, 1 in. diam., 16 ins. in the ground, over + marked on bedrock, and in a mound of stone to top, at ¼ sec. cor., with brass cap marked
	¼ $\frac{S19}{S30}$ 1940

Subdivision of T. 8 N., R. 11 W.

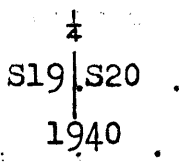
- Chains Asc. 58 ft. over NW. slope.
- 39.85 Saddle in ridge, bears SW. and NE.; desc. 284 ft. over SE. slope.
- 53.00 Head of ravine, course S.; desc. 264 ft. over SW. slope.
- 75.36 Spur, slopes S.10°E.; desc. 47 ft. over SE. slope.
- 76.66 The cor. of secs. 19, 20, 29 and 30.

Land, mountainous.
 Soil, rocky, 4th rate.
 Timber, palo verde, ironwood and mesquite; undergrowth,
 greasewood, cactus, cats claw, ocotillo and sahuaro.

N.0°03'W., bet. secs. 19 and 20.

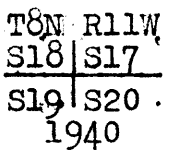
Over mountainous land, through scattering timber and undergrowth:

- Asc. 280 ft. over SE. slope.
- 8.50 Spur; slopes E.; desc. 628 ft. over N. slope.
- 24.80 Ravine, course N.70°E.; asc. 216 ft. over S. slope.
- 31.90 Spur, slopes S.60°E.; desc. 73 ft. over NE. slope.
- 35.90 Ravine, course SE.; asc. 171 ft. over S. slope.
- 40.00 Set an iron post, 3 ft. long, 1 in. diam., 14 ins. in the ground, over + marked on bedrock, and in a mound of stone to top, at $\frac{1}{4}$ sec. cor., with brass cap marked



Asc. 120 ft. over S. slope.

- 45.90 Spur, slopes SE.; asc. 46 ft. along an E. slope.
- 52.30 Ravine, course SE.; asc. 272 ft. over SW. slope.
- 59.90 Spur, slopes SE.; along E. slope.
- 62.00 Head of ravine, course SE.; asc. 114 ft. over S. slope.
- 68.40 Spur, slopes E.; desc. 224 ft. over N. slope.
- 76.05 Head of ravine, course NE.; asc. gradual SE. slope.
- 80.00 Set an iron post, 3 ft. long, 2 ins. diam., 14 ins. in the ground, over + marked on bedrock, and in a mound of stone to top, at cor. of secs. 17, 18, 19 and 20, with brass cap marked



Land, mountainous.
 Soil, rocky, 4th rate.
 Timber, palo verde, ironwood, and mesquite; undergrowth,
 greasewood, cactus, cats claw, ocotillo and sahuaro.

Subdivision of T. 8 N., R. 11 W.

4331

Chains	
40.00	N. 89° 56' E., on a random line bet. secs. 17 and 20.
80.12	Set temp. $\frac{1}{4}$ sec. cor.
	The cor. of secs. 16, 17, 20 and 21.
	Thence
	S. 89° 56' W., on true line bet. secs. 17 and 20.
	Over mountainous land, through scattering timber and undergrowth:
	Along S. slope.
2.40	Ravine, course S.; asc. 189 ft. over SE. slope.
16.10	Spur, slopes S. 20° E.; desc. 55 ft. along S. slope.
23.30	Ravine, course S. 30° E.; asc. 131 ft. over E. slope.
28.20	Spur, slopes S. 20° E.; desc. 70 ft. over SW. slope.
36.80	Ravine, course S. 60° E.; asc. 140 ft. over rough NE. slope.
40.06	True point for $\frac{1}{4}$ sec. cor. falls on precipitous slope where it is impracticable to monument the cor.
40.56	Set an iron post, 3 ft. long, 1 in. diam., 14 ins. in the ground, over + marked on bedrock, and in a mound of stone to top, for witness $\frac{1}{4}$ sec. cor., with brass cap marked
	$\frac{1}{4} \frac{S17}{S20} WC$ 1940
	Asc. 736 ft. over NE. slope.
69.65	Short spur, slopes NE.; desc. gradual NW. slope.
77.50	Ravine, course NE.; asc. 55 ft. over SE. slope.
80.12	The cor. of secs. 17, 18, 19 and 20.
	Land, mountainous. Soil, rocky, 4th rate: Timber, palo verde, ironwood and mesquite; undergrowth, greasewood, cactus, cats claw, ocotillo and sahuaro.
	S. 89° 57' W., on a random line bet. secs. 18 and 19.
40.00	Set temp. $\frac{1}{4}$ sec. cor.
76.51	Intersect W. bdy. of Tp. 10 lks. S. of cor. of secs. 13, 18, 19 and 24.
	Thence
	S. 89° 59' E., on true line bet. secs. 18 and 19.
	Over mountainous land, through scattering timber and undergrowth.
	Asc. 5 ft. over W. slope.
0.75	Spur, slopes N.; desc. 94 ft. over E. slope.

Subdivision of T. 8 N., R. 11 W.

Chains

- 3.05 Ravine, course N.; asc. 158 ft. over NW. slope.
- 13.10 Spur, slopes N.; desc. 6 ft. over NE. slope.
- 16.80 Ravine, course NW.; asc. 570 ft. over W. slope to spur.
- 26.10 Bluff, 35 ft. high, bears NW. and SE.
- 34.85 Spur, slopes SW.; desc. 8 ft. along a S. slope.
- 36.51 Set an iron post, 3 ft. long, 1 in. diam., 8 ins. in the ground, over + marked on bedrock, and in a mound of stone to top, at 1/4 sec. cor., with brass cap marked

1/4 . S18
 S19
 1940

Asc. 42 ft. over W. slope.

- 42.60 Head of ravine, course S.; asc. 80 ft. over SW. slope.
- 52.35 Spur, slopes NW.; desc. 45 ft. over NE. slope.
- 55.85 Ravine, course NE.; asc. 185 ft. over W. slope.
- 67.10 Ridge, bears N. and S.; desc. 216 ft. over SE. slope.
- 76.51 The cor. of secs. 17, 18, 19 and 20.

Land, mountainous.
 Soil, rocky, 4th rate.
 Timber, palo verde, ironwood and mesquite; undergrowth,
 greasewood, cactus, cats claw, ocotillo and sahuaro.

N.0°03'W., bet. secs. 17 and 18.

Over mountainous land, through scattering timber and undergrowth.

Asc. 49 ft. over SE. slope.

- 12.10 Spur, slopes E.; desc. 103 ft. over NE. slope.
- 18.40 Head of ravine, course S.70°E.; asc. 136 ft. over SE. slope.
- 26.70 Ridge, bears N.60°E. and SW.; desc. 34 ft. over N. slope.
- 28.60 Spur, slopes N.30°W.; desc. 342 ft. over NE. slope.
- 39.50 Ravine, course NW.; asc. 25 ft. over SW. slope.
- 40.00 True point for 1/4 sec. cor. falls on bank of ravine where it is impracticable to monument the corner.
- 40.50 Set an iron post, 3 ft. long, 1 in. diam., 12 ins. in the ground, over + marked on bedrock, and in a mound of stone to top, for witness 1/4 sec. cor., with brass cap marked

1/4
 S18 | S17
 W C
 1940

Subdivision of T. 8 N., R. 11 W.

BOOK 4001

Chains	Asc. 13 ft. over SW. slope.
41.60	Spur, slopes N.40°W.; desc. 93 ft. over NE. slope.
45.30	Ravine, course N.80°W.; asc. 13 ft. over SW. slope.
48.40	Spur, slopes N.45°W.; desc. 112 ft. over rocky N. slope.
52.50	Ravine, 25 lks. wide, course W.; asc. 98 ft. over S. slope.
55.90	Spur, slopes N.45°W.; desc. 88 ft. over N. slope.
58.83	Ravine, course NW.; desc. 346 ft. over NW. slope.
71.15	Ravine, 50 lks. wide, course S.70°W.; asc. 82 ft. over SW. slope.
78.10	Spur, slopes W.; desc. 71 ft. over N. slope.
80.00	Set an iron post, 3 ft. long, 2 ins. diam., 16 ins. in the ground, over + marked on bedrock, and in a mound of stone to top, at cor. of secs. 7, 8, 17 and 18, with brass cap marked

T8N R11W
 S7 | S8

 S18 | S17
 1940

Land, mountainous.
 Soil, rocky, 4th rate.
 Timber, palo verde, ironwood and mesquite; undergrowth, greasewood, cactus, cats claw, ocotillo and sahuaro.

N.89°56'E.; on a random line bet, secs. 8 and 17.

40.00	Set temp. 1/4 sec. cor.
79.94	Intersect N. and S. line at 18 lks. N. of the cor. of secs. 8, 9, 16 and 17.
	Thence
	N.89°56'W., on true line bet. secs. 8 and 17.
	Over mountainous land, through scattering timber and undergrowth.
	Desc. 82 ft. along a N. slope.
4.15	Ravine, course N.40°E.; asc. 285 ft. over NE. slope.
13.65	Spur, slopes N.; desc. 295 ft. over NW. slope.
23.00	Ravine, course N.; asc. 186 ft. over NE. slope.
37.00	Point of spur, from S.20°W.; desc. 34 ft. over NW. slope.
39.20	Ravine, course NE.; asc. 62 ft. over E. slope.
39.97	Set an iron post, 3 ft. long, 1 in. diam., 28 ins. in the ground, at 1/4 sec. cor., with brass cap marked

1/4 S8
 S17

 1940

Subdivision of T. 8 N., R. 11 W.

Chains	
	<p style="text-align: right;">. raise a mound of stone, 3 ft. base, 2½ ft. high, N. of cor.</p> <p>Asc. 102 ft. over E. slope.</p>
42.90	Spur, slopes NE. Continue ascent of 44 ft. over NE. slope.
46.00	Spur, slopes N.; desc. 106 ft. over NW. slope.
58.95	Ravine, course N.20°E.; asc. 182 ft. over NE. slope.
66.55	Ridge, bears N.20°W. from S.20°E.; desc. 440 ft. over a broken NW. slope.
79.94	The cor. of secs. 7, 8, 17 and 18.
	<p>Land, mountainous. Soil, rocky, 4th rate. Timber, palo verde, ironwood and mesquite; undergrowth, greasewood, cactus, cats claw, ocotillo and sahuaro.</p> <p>-----</p>
	N.89°59'W., on a random line bet. secs. 7 and 18.
40.00	Set temp. ¼ sec. cor.
76.47	Intersect W. bdy. of Tp. at 12 lks. N. of the cor. of secs. 7, 12, 13 and 18.
	Thence
	N.89°56'E., on true line bet. secs. 7 and 18.
	Asc. 129 ft. over NW. slope.
4.90	Spur, slopes N.20°W.; desc. 76 ft. over NE. slope.
14.50	Ravine, course N.30°W.; asc. 242 ft. over NW. slope.
21.30	Spur, slopes NW.; desc. 234 ft. over NE. slope.
30.80	Ravine, course N.30°W.; asc. 60 ft. over NW. slope.
34.24	Spur, slopes NW.; desc. 36 ft. over NE. slope.
36.47	Set an iron post, 3 ft. long, 1 in. diam., 8 ins. in the ground, over + marked on bedrock, and in a mound of stone to top, at ¼ sec. cor., with brass cap marked
	$\frac{1}{4} \frac{S7}{S18}$ <p>1940</p>
	Desc. 2 ft. over NE. slope.
36.60	Ravine, course NW.; asc. 88 ft. over NW. slope.
40.05	Spur, slopes NW.; desc. 122 ft. over NE. slope.
50.25	Ravine, course NW.; asc. 146 ft. over SW. slope.
58.65	Spur, slopes N.80°W.; asc. 312 ft. over NW. slope.
76.47	The cor. of secs. 7, 8, 17 and 18.
	<p>Land, mountainous. Soil, rocky, 4th rate. Timber, palo verde, ironwood and mesquite; undergrowth, greasewood, cactus, cats claw and palo cristo..</p>

Subdivision of T. 8 N., R. 11 W.

BOOK 4331

Chains

N.0°03'W., bet. secs. 7 and 8.

Over mountainous land, through scattering palo cristo.

Desc. 96 ft. over precipitous NW. slope.

1.85

Ravine, 30 lks. wide, course W.; asc. 444 ft. over precipitous SW. slope.

17.35

Ridge, bears N.50°W. and S.50°E.; desc. 234 ft. over N. slope.

31.70

Ravine, 10 lks. wide, course N.45°W.; asc. 96 ft. over SW. slope.

35.00

Spur, slopes N.70°W.; desc. 63 ft. along a W. slope.

40.00

Set an iron post, 3 ft. long, 1 in. diam., 14 ins. in the ground, over + marked on bedrock, and in a mound of stone to top, at 1/4 sec. cor., with brass cap marked

1/4
S7 | S8
1940

Asc. 97 ft. over SW. slope.

45.80

Spur, slopes N.60°W.; desc. 297 ft. over precipitous NE. slope.

52.75

Head of ravine, course N.35°W.; desc. 261 ft., along a rough W. slope.

57.25

Head of ravine, course W.; asc. 61 ft. along a rugged W. slope.

65.20

Precipice, 35 ft. high, on S. edge of spur, slopes N.30°W.; desc. 308 ft. over NE. slope.

80.00

Set an iron post, 3 ft. long, 2 ins. diam., 14 ins. in the ground, over + marked on bedrock, and in a mound of stone to top, at cor. of secs. 5, 6, 7 and 8, with brass cap marked

T8N R11W
S6 | S5
S7 | S8
1940

of stone, 3 ft. base, 2 1/2 ft. high, W. of cor. raise a mound

Land, mountainous.

Soil, rocky, 4th rate.

Timber, none; undergrowth, greasewood, cactus, cats claw, ocotillo and sahuaro.

S.89°56'E., on a random line bet. secs. 5 and 8.

40.00

Set temp. 1/4 sec. cor.

79.98

Intersect N. and S. line at 5 lks. S. of true point for cor. of secs. 4, 5, 8 and 9.

Thence

N.89°58'W., on true line bet. secs. 5 and 8.

Subdivision of T. 8 N., R. 11 W.

Chains	
	Over mountainous land, through scattering timber and undergrowth.
1.00	Wash, 30 lks. wide, course N.60°E.; asc. 401 ft. over precipitous SE. slope.
15.20	Spur, slopes S.30°E.; desc. 29 ft. along S. slope.
26.20	Head of ravine, course S.60°E.; asc. 253 ft. over E. slope.
34.80	Ridge, bears NE. and SW.; desc. 85 ft. over NW. slope.
39.50	Low spur, slopes N.60°W.; desc. 17 ft. over W. slope.
39.99	Set an iron post, 3 ft. long, 1 in. diam., 14 ins. in the ground, over + marked on bedrock, and in a mound of stone to top, at $\frac{1}{4}$ sec. cor., with brass cap marked
	$\frac{1}{4} \frac{S5}{S8}$ 1940
	Desc. 138 ft. over W. slope.
43.75	Head of ravine, course NW.; desc. 38 ft. over NW. slope.
46.90	Point of low spur from SE.; desc. 117 ft. over NW. slope.
51.10	Ravine, course N.; asc. 79 ft. over NE. slope.
55.70	Spur, slopes N.20°W.; desc. 143 ft. over NW. slope.
60.20	Ravine, course N.10°W.; asc. 49 ft. over NE. slope.
63.20	Spur, slopes N.20°W.; desc. 70 ft. over NW. slope.
67.40	Ravine, course N.; asc. 38 ft. over NE. slope.
69.80	Point of spur from S.; desc. 17 ft. over NW. slope.
72.20	Ravine, course N.30°E.; asc. 117 ft. over NE. slope.
79.98	The cor. of secs. 5, 6, 7 and 8.
	Land, mountainous. Soil, rocky, 4th rate. Timber, none; undergrowth, greasewood, cactus, cats claw, ocotillo and sahuaro.

	S.89°56'W., on a random line bet. secs. 6 and 7.
40.00	Set temp. $\frac{1}{4}$ sec. cor.
76.56	Intersect W. bdy. of Tp. at 9 lks. S. of the cor. of secs. 1, 6, 7 and 12,
	Thence
	East, on a true line bet. secs. 6 and 7.
	Over rolling land, through scattering undergrowth.
	Ascend 144 ft. over a NW. slope.
7.20	Short spur, slopes NW.; desc. 66 ft. over NE. slope.
16.10	Ravine, course N.60°W.; asc. 214 ft. over SW. slope.

Subdivision of T. 8 N., R. 11 W.

OOK 4331

Chains	
22.50	Spur, slopes N.60°W.; desc. 113 ft. over NE. slope.
36.40	Ravine, course N.60°W.; asc. 11 ft. over SW. slope.
36.56	Set an iron post, 3 ft. long, 1 in. diam., 6 ins. in the ground, over + marked on bedrock, and in a mound of stone to top, at $\frac{1}{4}$ sec. cor., with brass cap marked
	$\frac{1}{4} \begin{array}{r} S6 \\ S7 \\ 1940 \end{array}$
	Asc. 161 ft. over SW. slope.
44.10	Spur, slopes NW.; desc: 71 ft. over NE. slope.
53.20	Ravine, course N.10°W.; asc. 81 ft. over W. slope.
56.10	Spur, slopes NW.; desc. 72 ft. over NE. slope.
59.30	Ravine, course N.20°W.; asc. 353 ft. over broken NW. slope.
74.30	Spur, slopes N.30°W.; desc: 16 ft. over NE. slope.
76.56	The cor. of secs. 5, 6, 7 and 8.
	Land, mountainous. Soil, rocky, 4th rate. Timber, none; undergrowth, greasewood, cactus, cats claw, ocotillo and sahuaro.

	N.0°03'W., on true line bet. secs. 5 and 6.
	Over mountainous land, through scattering undergrowth.
	Desc. 542 ft: over NE. slope.
7.50	Head of ravine, course N.55°E.
26.20	Ravine, 50 lks. wide, course N.30°W.; asc. 60 ft. over rugged SW. slope.
38.20	Spur, slopes N:15°W.; desc. 20 ft. over NE. slope.
40.00	Set an iron post, 3 ft. long, 1 in. diam., 8 ins. in the ground, over + marked on bedrock, and in a mound of stone to top, at $\frac{1}{4}$ sec. cor., with brass cap marked
	$\frac{1}{4} \begin{array}{r} S6 S5 \\ 1940 \end{array}$
	Desc. 146 ft. over NE. slope.
46.50	Ravine, 40 lks. wide, course N.45°W.; asc. 172 ft. over SW. slope.
65.00	Spur, slopes N.65°W.; desc. 41 ft. over precipitous N. slope.
66.07	Intersect the Second Standard Parallel North.
	Set an iron post, 3 ft. long, 2 ins. diam., 16 ins. in the ground, over + marked on bedrock, and in a mound of stone to top, at closing cor. of secs. 5 and 6, with brass cap marked

Subdivision of T. 8 N., R. 11 W.

Chains

T9N R11W

S31

S6 | S5

T8N. R11W.

C C

1940

From point of intersection, the standard corner of secs. 31 and 32, T. 9 N., R. 11 W., as evidenced by an iron post, 3 ins. diam., set, marked and witnessed as described in the official record, bears N.89°57'E., 13.81 chs. dist.

From same point, the standard $\frac{1}{4}$ sec. cor. of sec. 31, T. 9 N., R. 11 W., as evidenced by an iron post, 1 in. diam., set, marked and witnessed as described in the official record, bears S.89°57' W., 26.28 chs. dist..

Land, mountainous.

Soil, rocky, 4th rate.

Timber, none; undergrowth, greasewood, cactus, cats claw, ocotillo and sahuaro.

At midpoint on the N. bdy. of sec. 5

Set an iron post, 3 ft. long, 1 in. diam., 28 ins. in the ground, at $\frac{1}{4}$ cor. of sec. 5, with brass cap marked

 $\frac{1}{4}$ S 5

1940

raise a mound
of stone, 3 ft. base, 2 $\frac{1}{2}$ ft. high, S. of cor.

From this corner, the standard $\frac{1}{4}$ sec. cor. of sec. 32, T. 9 N., R. 11 W., bears S.89°56'E., 13.86 chs. dist.

From same corner, the standard cor. of secs. 31 and 32, T. 9 N., R. 11 W., bears N.89°56'W., 26.19 chs. dist.

At a point on the N. bdy. of sec. 6, 40.00 chs. in departure from the closing corner of secs. 5 and 6,

Set an iron post, 3 ft. long, 1 in. diam., 28 ins. in the ground, at $\frac{1}{4}$ sec. cor. of sec. 6, with brass cap marked

 $\frac{1}{4}$ S 6

1940

raise a mound
of stone, 3 ft. base, 2 $\frac{1}{2}$ ft. high, S. of cor.

From this corner, the standard $\frac{1}{4}$ sec. cor. of sec. 31, T. 9 N., R. 11 W., bears N.89°59'E., 13.72 chs. dist.

From same corner, the standard corner of Ts. 9 N., Rs. 11 and 12 W., bears S.89°59'W., 23.67 chs. dist.

FINAL TEST OF SOLAR ATTACHMENT
=====

The data furnished with the special instructions gives the geographic position of camp in the NW $\frac{1}{4}$ NW $\frac{1}{4}$, Sec. 4, T. 8 N.; R. 11 W., G. & S.R.M. as follows: latitude 34°04'N., longitude 113° 25' W.

May 28, 1940, at the same station, with Gurley solar transit No. 371537, at 6h 34m., p.m., l.m.t., or 7h 07.7m

Vegetation south of the main ridge of the mountains consists chiefly of greasewood, palo verde, palo cristo, mesquite, cactus and cats claw. In this area a medium growth of timber grows along the canyon and wash bottoms. Predominating species are palo verde, ironwood, mesquite, sahuaro and cats claw.

Secs. 4, 5 and 6, north of the Harcuvar ridge, bear timber and undergrowth similar to the area above described, the balance of the north slope is almost entirely covered with oak brush.

A good growth of native grasses is found throughout the entire Tp. The lands seem well adapted to stock grazing and appear to be fully utilized for that purpose at the present time.

The water resources vary from year to year. In nearly all of the principal canyons, seeps furnish some water following seasons of normal precipitation. Three springs known to flow during the driest years are located in secs. 3, 10 and 15.

There are no settlers living in the Tp. A goat rancher living in the Tp. immediately to the N. has erected a goat shed, stable, two corrals, and enclosed about 20 acres of land in a barb wire fence. All of these improvements are located in the NW $\frac{1}{4}$ of sec. 4. He has also developed a well and equipped it with a hand pump. Except for two long abandoned board shelters in secs. 14 and 23, no other improvements have been made in the Tp. By reason of its rocky nature and arid condition, no attempts have been made to cultivate any land in the Tp.

Three poor ungraded roads enter the Tp., the longest of which runs through secs. 36, 25, 24, 23 and 14. The other two roads enter secs. 4 and 32 and penetrate the secs. but a short distance in either instance.

A considerable number of readings over all parts of the Tp. gives a value of 15° 15' E. for mean magnetic declination.

UNITED STATES
DEPARTMENT OF THE INTERIOR
GENERAL LAND OFFICE

FIELD ASSISTANTS

NAMES	CAPACITY
Leroy Lewis	Principal Assistant
Clifford Cline	Principal Assistant
Amos R. Roten	Chainman
Roy Mashburn	Flagman
Clifford Jones	Moundsman
Lavern Palmer	Axeman
William A. Peace	Axeman
W. James Stamper	Axeman

CERTIFICATE OF SURVEYOR

I, Raymond F. Moss, Assistant Cadastral Engineer, HEREBY CERTIFY upon honor that, in pursuance of special instructions bearing date of the 13th day of July, 1939 received from the district cadastral engineer for Arizona, with assignment instructions dated November 22, 1939, I have surveyed the West Boundary and Subdivisional Lines of Township 8 North, Range 11 West

of the Gila and Salt River Meridian, in the State of Arizona, which are represented in the foregoing field notes as having been executed by me and under my direction; and that said survey has been made in strict conformity with said instructions, the Manual of Instructions for the Survey of the Public Lands of the United States, and in the specific manner described in the foregoing field notes.

Glendale, California
May 23, 1945.

Raymond F. Moss, (deceased)
By John R. W. [Signature]
District Cadastral Engineer.

CERTIFICATE OF APPROVAL

OFFICE OF SUPERVISOR OF SURVEYS,
Denver, Colorado, July 13, 1945.

The foregoing field notes of the survey of the West Boundary and Subdivisional Lines of Township 8 North, Range 11 West of the Gila and Salt River Meridian in the State of Arizona

executed by Raymond F. Moss, Public Land Surveyor, General Land Office, under special instructions dated July 13, 1939, and assignment instructions dated November 22, 1939, having been critically examined, and the necessary corrections made prior to their certification by the engineer, the said field notes, and the survey therein described, are hereby approved.

[Signature]
Supervisor of Surveys.

CERTIFICATE OF TRANSCRIPT

~~I certify that the foregoing transcript of the field notes of the above-described surveys in~~
~~is a true copy of the original field notes on file in the public survey office.~~

Supervisor of Surveys.