

UNITED STATES  
DEPARTMENT OF THE INTERIOR  
GENERAL LAND OFFICE  
BUREAU OF LAND MANAGEMENT

BOOK 4372

# FIELD NOTES

of the

Dependent Resurvey of the Section Boundaries

and the

Limited

Subdivision of Sections 11 and 15,

Township 7 North, Range 5 West.

Of the Gila and Salt River Meridian,

In the State of Arizona

EXECUTED BY

Ty White, Cadastral Engineer,

Bureau of Land Management,

Under special instructions dated July 14, 1948, which provided for the surveys included under Group No. 257, bearing the approval of the Director, Bureau of Land Management.

~~Continued by the General Land Office~~ under date of August 2, 1948,

and assignment instructions dated October 19, 1948.

Survey commenced October 28, 1948

Survey completed December 6, 1948



BOOK 4372

# INDEX DIAGRAM.

Township \_\_\_\_\_, Range \_\_\_\_\_

6	5	4	3	2	1
7	8	9	10	11 ✓	12
18	17	16	15 ✓	14	13
19	20	21	22	23	24
30	29	28	27	26	25
31	32	33	34	35	36

207 710  
BENNETT

*CR*  
*BR*

November 13, 1982

Bureau of Land Management  
Federal Building  
First Avenue at VanBuren St.  
Phoenix, Arizona

Gentlemen,

In the course of some road grading done at my direction a brass cap near the corner of Vulture Mine Road and Steinway Drive near here was hit by a grader blade and slightly displaced.

In that surveys in the area had been made using that and other brass caps as reference points, I engaged the services of a local registered civil engineer and land surveyor to reset the cap and to reference it to adjacent points.

A copy of the sealed map showing the brass cap and two reference points is attached for your information.

Also, I have poured concrete around the cap, and since it is below ground-level trust that it will not be further disturbed.

Yours truly,

*E. Curtis Arnett*

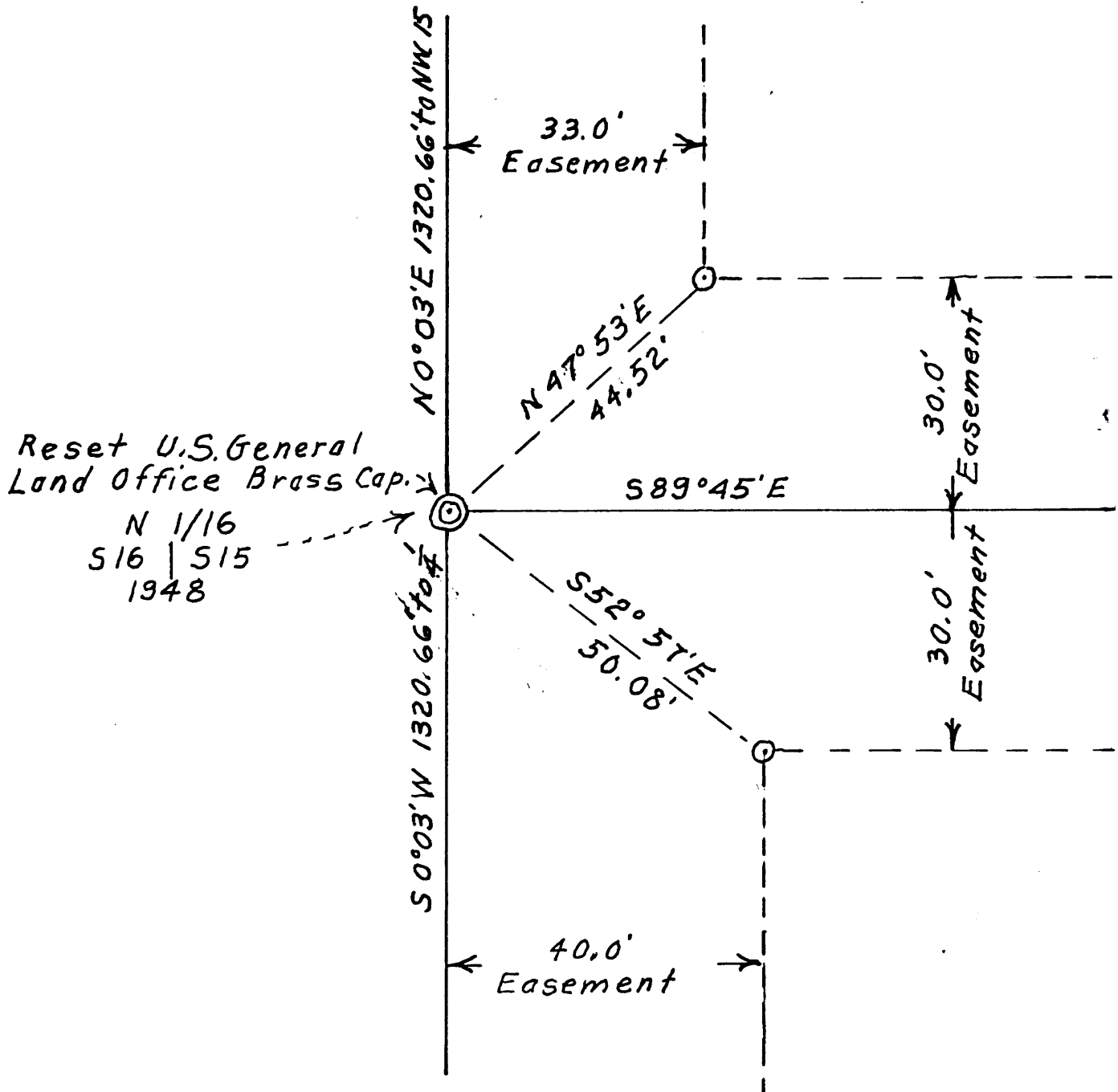
Copy: MKP

RECEIVED  
B. L. M. AZ STATE OFFICE  
NOV 18 1982  
07:45 A. M.  
PHOENIX, ARIZONA

NORTH  $\frac{1}{16}$  SECTION 15, TOWNSHIP 7 NORTH,  
RANGE 5 WEST, G. & S. R. B. and M.

MARICOPA, COUNTY, ARIZONA

NOVEMBER 9, 1982



NOTES

⊙ Denotes steel pin and Aluminum Cap #4529 Arizona.  
Original linch pipe straightened and reset over  $\frac{1}{2}$  inch steel rod and checked with Northwest corner and West  $\frac{1}{4}$  corner of Section 15.

CERTIFICATE

I certify that I, MILFORD KENNETH PETERSON, Registered Land Surveyor, did on November 5th, 1982 reset U.S. G.L.O. Brass cap, North  $\frac{1}{16}$  corner Section 15, Township 7 North, Range 5 West, G. & S. R. B. and M., as shown hereon.

RECEIVED  
B. L. M. AZ STATE OFFICE

NOV 18 1982

07:45 A. M.  
PHOENIX, ARIZONA

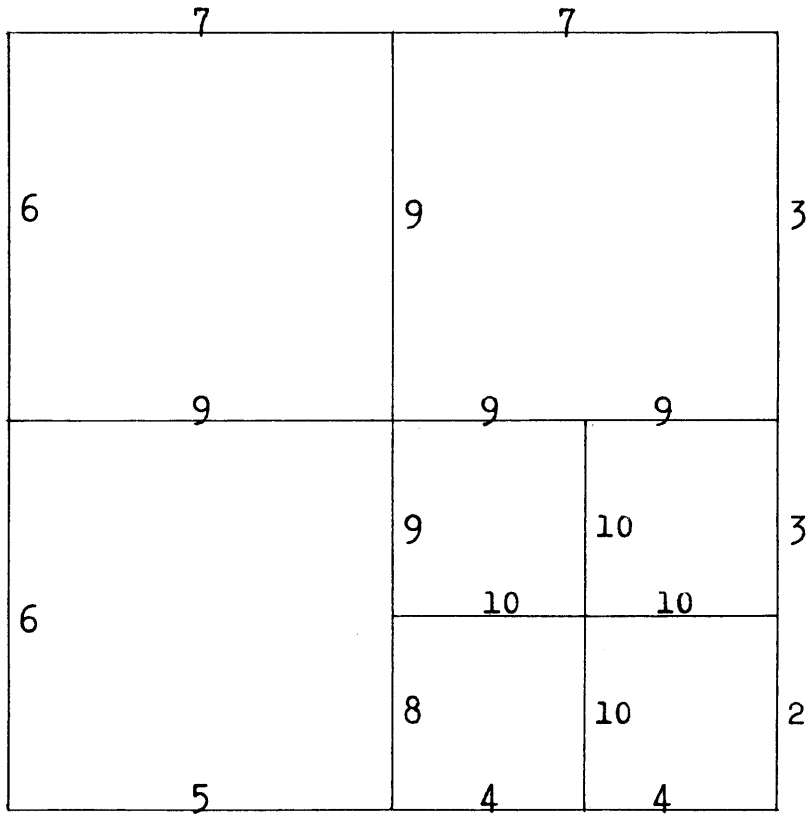
Milford Kenneth Peterson



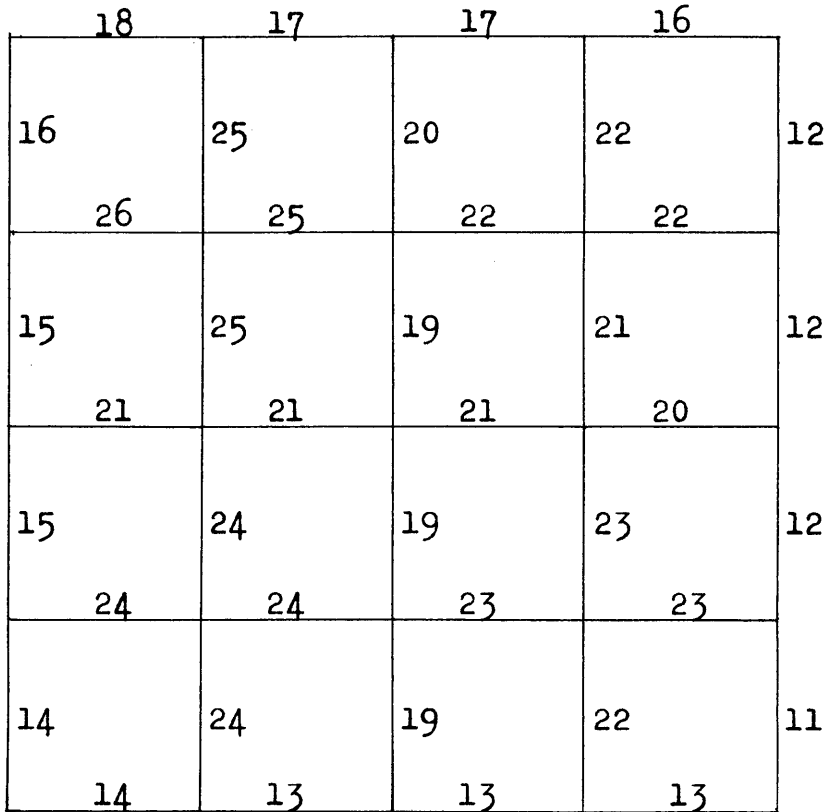
44  
1A

INDEX DIAGRAM

Section 11, Township 7 North, Range 5 West.



Section 15, Township 7 North, Range 5 West.



T. 7 N., R. 5 W.

FORM 1072

All of the boundaries of T. 7 N., R. 5 W. with the exception of the south boundary of sections 35 and 36, and all of the subdivisional lines except between sections 35 and 36, were surveyed by S. W. Foreman, Deputy Surveyor, in 1871 and 1872. This survey is represented upon the plat approved March 20, 1872. The north boundary of the township was resurveyed by J. F. Hesse, Deputy Surveyor, in 1909. The south five miles of the east boundary were resurveyed by Hans Voight, Transitman in 1916. The west boundary was resurveyed by Wm H. Thorn, Surveyor, in 1922. Surveys and resurveys along the south boundary and around sections 35 and 36, were made by R. F. Moss, Public Land Surveyor, in 1940, and are shown on the plat approved July 13, 1945. The following field notes are those of the dependent resurvey or reestablishment of the boundaries and the survey of the subdivision-of-section lines of sections 11 and 15.

The survey was initiated to accommodate applications under the Small Tract Act of June 1, 1938. The  $\frac{1}{4}$  section corners on the east and south boundaries of section 15, and the corner of sections 14, 15, 22 and 23 were not found and were reestablished at their proportionate positions, based upon the original record. All other corners were reestablishments or perpetuations by local engineers, from which extensive local surveys have been initiated, and were accepted as the best remaining evidence of the original corners.

Preliminary to the resurvey the lines of the original survey are retraced and diligent search is made for all corners and other calls of the record. Identified corners are monumented in their original positions, lost corners are reestablished and remonumented at proportionate positions based upon the original record. The retracement data are thoroughly verified and only the true line field notes are given herein.

The survey was executed with a light mountain solar transit made by Buff and Buff, serial No. 16724, constructed in accordance with the standard instrumental specifications of the Bureau of Land Management. The instrument was in good condition and having been placed in satisfactory adjustment prior to the beginning of the survey, was tested and found free from appreciable error.

The direction of the lines was determined by solar transit method and carried forward by transit line, subsequently verified by hour angle observation of Polaris. The measurements were made with a narrow steel tape, 5 chains in length, graduated to tenths of a link for the first 10 links, every link for the remainder of the first 100 links and the balance at intervals of 10 links. The tape was tested by comparison with a 1 chain standard steel tape and found correct. The measurements were made on the slope and the vertical angle of each interval was ascertained by a clinometer in good adjustment; the horizontal equivalents only are entered in this field note record.

The geographic position of the  $\frac{1}{4}$  sec. cor. of secs. 15 and 16, T. 7 N., R. 5 W., G. & S. R. Mer., Arizona as determined from data given with the special instructions is latitude  $33^{\circ} 56' 52''$  N., and longitude  $112^{\circ} 46' 23''$  W.

October 27, 1948, at camp near the  $\frac{1}{4}$  sec. cor. of secs. 15 and 16, elevation approximately 2,000 ft., at 4h 57m 24s p.m., l.m.t., I make an hour angle observation of Polaris east of the meridian for azimuth and latitude, making four observations, two each with the telescope in direct and reversed positions, observing simultaneously the vertical angle to Polaris and the horizontal angle from a well defined point on the skyline approximately 18 miles N., E. to Polaris. My watch reads correct Mountain Standard Time as checked by radio time signals.

Mean watch time of observation	5h 28m 30s
Watch fast of l.m.t.	0h 31m 06s
Mean horizontal deflection angle	1° 09' 30"
Azimuth of Polaris	1° 10' 00"
True bearing of reference point	N. 0° 00' 30" E.
Mean observed vertical angle	33° 50' 54.5"
Reduced latitude	33° 56' 44.0" N.

October 31, 1948, at the  $\frac{1}{4}$  sec. cor. of secs. 10 and 11 T. 7. N., R. 5 W., G. & S. R. Mer., Arizona, in latitude  $33^{\circ} 57' 44''$  N., and longitude  $112^{\circ} 45' 18''$  W., as determined from data given with the special instructions, at 5h 01m 36s. p.m., l.m.t., I make an hour angle observation of Polaris east of the meridian for azimuth, making four observations, two each with the telescope in direct and reversed positions, reading the deflection angle from the east edge of a fence post approximately 1 mile N., E. to Polaris. My watch reads correct Mountain Standard Time, as checked by radio time signals.

Mean watch time of observation	5h 32m 30s
Watch fast of l.m.t.	0h 30m 54s
Mean horizontal deflection angle	1° 33' 15"
Azimuth of Polaris	1° 10' 30"
True bearing of reference point	N. 0° 22' 45" W.

October 29, 1948, every 30 m. from 7 to 10:30 a.m. and from 1:30 to 4 p.m., I make the proper settings on the arcs of the solar attachment and ascertain that the resulting orientation of the instrument when compared with the meridian established by Polaris observation on October 27, 1948, has a maximum error of less than  $1' 30''$ .

The observed magnetic declination is  $14^{\circ} 30' E.$

Dependent Resurvey of the Boundaries of Section 11,  
T. 7 N., R. 5 W.

Reestablishment of the Survey Executed by  
S. W. Foreman, Deputy Surveyor, in 1871 and 1872.

The cor. of secs. 11, 12, 13 and 14 is monumented with an iron pipe,  $1\frac{1}{2}$  ins. diam., firmly set in the ground and supported by a mound of stone, 3 ft. base,  $1\frac{1}{2}$  ft. high,

At the corner point

Set an iron post, 3 ft. long, 2 ins. diam., 28 ins. in the ground, with brass cap mkd.

T 7 N R 5 W

S 11 | S 12

S 14 | S 15

1948

raise a mound of stone,  $2\frac{1}{2}$  ft. base,  $1\frac{1}{2}$  ft. high, W. of cor. and bury the iron pipe alongside the iron post.

Thence

N.  $0^{\circ} 08' E.$ , bet. secs. 11 and 12.

Along the E. side of a cemetery; over rolling land; desc. over N. slope.

Dependent Resurvey of the Boundaries of Section 11,  
T. 7 N., R. 5 W.

Chains	
2.80	Wash, 15 lks. wide, 2 ft. deep, course E.; asc. S. slope.
11.30	Road, bears NE. and SW.; top of spur, slopes NE.; desc. 65 ft. over NW. slope.
18.50	Wash, 25 lks. wide, 2 ft. deep, course N. 30° E.
19.00	Road, bears NE. and SW.
20.243	Point for the S 1/16 sec. cor. of secs. 11 and 12, which coincides with a local corner, monumented with an iron pipe, 1 in. diam., firmly set in the ground.
	At the corner point
	Set an iron post, 3 ft. long, 1 in. diam., 28 ins. in the ground, with brass cap mkd.
	S 1/16
	S 11   S 12
	1948
	raise a mound of stone, 2 ft. base, 1½ ft. high, W. of cor. and bury the iron pipe alongside the iron post.
	Corner is located at the corner of fences which extend N. and W.
22.75	Ascend 18 ft. over S. slope of a knoll.
26.75	Top of knoll; desc. 23 ft. over N. slope; thence along the E. side of a road.
40.486	The ¼ sec. cor. of secs. 11 and 12, monumented with an iron rod, 5/8 ins. diam., set 20 ins. below the surface of the ground.
	At the corner point
	Set a porphyry stone, 14x12x8 ins., over the iron rod, and 6 ins. below the surface of the ground, mkd. X on top.
	from which
	An iron post, 3 ft. long, 1 in. diam., set 28 ins. in the ground for a reference monument, bears S. 45° W., 108 lks. dist., with brass cap mkd. ¼ S 11 R M 1948 and an arrow pointing to the corner.
	An iron post, 3 ft. long, 1 in. diam., set 28 ins. in the ground for a reference monument, bears N. 45° W., 108 lks. dist., with brass cap mkd. ¼ S 11 R M 1948 and an arrow pointing to the corner.
	Corner is located on the E. side of a road which bears N. and S.
	N. 0° 49' W., beginning new measurement.
	Along the E. side of a road.
10.00	Begin gradual ascent over SE. slope.
12.97	Center of U. S. Highway No. 60, bears about N. 73° W. and S. 73° E.
15.00	Along the E. side of a row of trees.
19.45	Center of a street on a curve, concave to the NW.
30.55	Ridge, bears N. 40° E. and S. 40° W.; desc. 52 ft. over NW. slope.



Dependent Resurvey of the Boundaries of Section 11,  
T. 7 N., R. 5 W.

Chains													
34.00	Thence over level land.												
39.10	A point near the intersection of the center lines of Jefferson Street from the SE. and a street from the SW. in the town of Wickenburg.												
39.491	The cor. of secs. 1, 2, 11 and 12, monumented with a granite stone, 6x6 ins., 3 ins. above ground, firmly set, mkd. X on top.												
	from which												
	An iron post, 3 ft. long, 1 in. diam., set 28 ins. in the ground for a reference monument, bears N. 45° E., 70.7 lks. dist., with brass cap mkd. T 7 N R 5 W S 1 R M 1948, and an arrow pointing to the corner.												
	An iron post, 3 ft. long, 1 in. diam., set 28 ins. in the ground for a reference monument, bears N. 45° W., 70.7 lks. dist., with brass cap mkd. T 7 N R 5 W S 2 R M 1948, and an arrow pointing to the corner.												
	A mesquite, 10 ins. diam., bears S. 66 $\frac{3}{4}$ ° E., 104 lks. dist., mkd. B T.												
	The NW. corner of a house, bears S. 13° 50' E., 217 lks. dist. Corner is located under a fence which extends E. and W.												
	Land, rolling. Soil, gravelly. Timber, S. 18 chs., sparse mesquite and palo verde.												
-----													
	From the cor. of secs. 11, 12, 13 and 14.												
	S. 89° 49' W., bet. secs. 11 and 14.												
	Over rolling land, through scattering timber; desc. 13 ft. over NW. slope.												
5.45	Wash, 15 lks. wide, 2 ft. deep, course N.; asc. 30 ft. over E. slope.												
6.70	Spur, slopes N.; desc. 31 ft. over a W. slope.												
9.05	Road, bears NW. and SE.												
16.15	Wash, 20 lks. wide, 1 ft. deep, course N.; asc. 38 ft. over NE. slope.												
20.07	Point for the E 1/16 sec. cor. of secs. 11 and 14.												
	Set an iron post, 3 ft. long, 1 in. diam., 20 ins. in the ground to bedrock, and in a mound of stone to top, with brass cap mkd.												
	<table style="margin-left: auto; margin-right: auto;"> <tr><td></td><td>S 11</td><td></td></tr> <tr><td>E 1/16</td><td>—</td><td></td></tr> <tr><td></td><td>S 14</td><td></td></tr> <tr><td></td><td>1948</td><td></td></tr> </table>		S 11		E 1/16	—			S 14			1948	
	S 11												
E 1/16	—												
	S 14												
	1948												
	raise a mound of stone, 2 ft. base, 2 ft. high, N. of cor.												
22.15	Spur, slopes N.; desc. 34 ft. over a NW. slope.												
30.105	Point for the WE 1/64 sec. cor. of secs. 11 and 14.												
	Set a wooden stake, 2x2 ins. sq., 2 ft. long, 18 ins. in the ground; mkd. 1/64 on N. face.												

Dependent Resurvey of the Boundaries of Section 11,  
T. 7 N., R. 5 W.

Chains	
32.65	Wash, 20 lks. wide, 1½ ft. deep, course N.; asc. 65 ft. over SE. slope.
35.65	Road, bears N. 40° E. and S. 40° W.; top of spur, slopes N. 40° E.; desc. 20 ft. over a NW. slope.
40.14	The ¼ sec. cor. of secs. 11 and 14, monumented with an iron pipe, 1 in. diam., firmly set, supported by a mound of stone, 2 ft. base, 1 ft. high.  At the cor. point  Set an iron post, 3 ft. long, 1 in. diam., 28 ins. in the ground, with brass cap mkd.  <div style="text-align: center;"> <math display="block">\begin{array}{r} S\ 11 \\ \hline \frac{1}{4} \\ S\ 14 \\ 1948 \end{array}</math> </div> raise a mound of stone, 2½ ft. base, 2 ft. high, N. of cor. Along the center line of Vista Drive. Descend 13 ft. over a NW. slope.
42.10	Wash, 20 lks. wide, 2 ft. deep, course N. 10° E.; asc. 45 ft. over SE. slope.
57.00	Spur, slopes N. 20° E.; desc. 17 ft. over W. slope.
65.05	Wash, 10 lks. wide, 1 ft. deep, course N. 20° E.; asc. 17 ft. over E. slope.
68.30	Spur, slopes N. 20° E.; desc. 11 ft. over a W. slope.
75.00	Drain, course N.; asc. 16 ft. over E. slope.
77.00	Spur, slopes N.; desc. 11 ft. over W. slope.
79.60	Drain, course N. 20° E.; asc. gradual E. slope.
80.30	The cor. of secs. 10, 11, 14 and 15, monumented with an iron pipe, 1 in. diam., firmly set, supported by a mound of stone, 2 ft. base, 8 ins. high.  At the corner point  Set a lava stone, 16x16x8 ins., 12 ins. below the surface of the ground, marked X on top  from which  <div style="margin-left: 40px;">           An iron post, 1 in. diam., set 28 ins. in the ground for a reference monument, bears N. 45° E., 70.7 lks. dist., mkd. T 7 N R 5 W S 11 R M 1948 and an arrow pointing to the corner.             An iron post, 1 in. diam., set 28 ins. in the ground for a reference monument, bears S. 45° W., 70.7 lks. dist., mkd. T 7 N R 5 W S 15 R M 1948 and an arrow pointing to the corner.             Reset the iron pipe over the X mkd. on lava stone.         </div> Land, rolling. Soil, gravelly and rocky. Timber, scattering palo verde and mesquite; undergrowth, greasewood.

Dependent Resurvey of the Boundaries of Section 11,  
T. 7 N., R. 5 W.

Chains	<p>N. 0° 02' W., bet. secs. 10 and 11.</p> <p>Over rolling land, through scattering timber and undergrowth. Along the center line of Ocotilla Drive. Ascend gradual SE. slope.</p> <p>0.45 Wire fence, bears E. and W.</p> <p>4.45 Low spur, slopes NE.; desc. 14 ft. over a N. slope.</p> <p>12.15 Wash, 15 lks. wide, 1 ft. deep, course NE.; asc. 15 ft. over SE. slope.</p> <p>20.06 The intersection of Ocotilla Drive and Palo Verde Drive; top of spur, slopes NE.; desc. 18 ft. over N. slope.</p> <p>29.60 Enter wash, 10 lks. wide, course N. from S. 20° W.</p> <p>31.40 Leave wash, course N. 30° E.</p> <p>40.122 The <math>\frac{1}{4}</math> sec. cor. of secs. 10 and 11, which is monumented with an iron pipe, 2 ins. diam., set flush with the ground.</p> <p>At the corner point</p> <p>Set an iron post, 3 ft. long, 1 in. diam., 36 ins. in the ground, with brass cap mkd.</p> <div style="text-align: center;"> <math>\frac{1}{4}</math>  S 10   S 11  1948 </div> <p>from which</p> <p>An iron post, 1 in. diam., set 28 ins. in the ground for a reference monument, bears N. 45° E., 70.7 lks. dist., with brass cap mkd. <math>\frac{1}{4}</math> S 11 R M 1948 and an arrow pointing to the corner.</p> <p>An iron post, 1 in. diam., set 28 ins. in the ground for a reference monument, bears S. 45° W., 70.7 lks. dist., with brass cap mkd. <math>\frac{1}{4}</math> S 10 R M 1948 and an arrow pointing to the corner.</p> <p>Bury the iron pipe alongside the iron post.</p> <p>N. 0° 01' W., beginning new measurement.</p> <p>2.90 Wire fence, bears NE. and SW.</p> <p>3.70 Center of U. S. Highway No. 60, bears about N. 71° E. and S. 71° W.</p> <p>4.50 Wire fence, bears NE. and SW.</p> <p>10.55 Descend over a cut bank, 25 ft. high, faces N.</p> <p>15.30 Wash, 25 lks. wide, 1½ ft. deep, course SE.</p> <p>19.00 Ascend a cut bank, 19 ft. high, faces S.</p> <p>35.00 Descend 18 ft. over NW. slope.</p> <p>40.189 The cor. of secs. 2, 3, 10 and 11, monumented with an iron pipe, <math>\frac{1}{2}</math> in. diam., set in a concrete cylinder, 8 in. diam., 10 ins. long, at cor. of fences, bearing E. and N.</p>
--------	---

Dependent Resurvey of the Boundaries of Section 11,  
T. 7 N., R. 5 W.

BOO

## Chains

At the corner point.

Set an iron post, 3 ft. long, 2 ins. diam., 28 ins. in the ground, with brass cap mkd.

T 7 N R 5 W  
S 3 | S 2  
S 10 | S 11  
1948

from which

An iron post, 3 ft. long, 1 in. diam., set 28 ins. in the ground for a reference monument, bears S. 45° E., 64.3 lks. dist., with brass cap mkd. T 7 N R 5 W S 11 R M 1948 and an arrow pointing to the corner.

An iron post, 3 ft. long, 1 in. diam., set 28 ins. in the ground for a reference monument, bears N. 45° W., 64.3 lks. dist., with brass cap mkd. T 7 N R 5 W S 3 R M 1948 and an arrow pointing to the corner.

Land, rolling.

Soil, gravelly loam.

Timber, palo verde and mesquite; undergrowth, greasewood.

S. 89° 57' E., bet. secs. 2 and 11.

Over rolling land, through scattering timber and undergrowth; along a fence line.

Ascend 18 ft. over W. slope.

2.40 Top of a broad spur, slopes N. 40° E.

16.40 Old road, bears NE. and SW.

19.989 A fence corner, from which fences extend N. and W.

39.987 The  $\frac{1}{4}$  sec. cor. of secs. 2 and 11, monumented with an iron pipe,  $\frac{1}{2}$  in. diam., set in a concrete cylinder, 8 ins. diam., 10 ins. long, at corner of fences bearing N. and W.

At the corner point

Set the iron pipe, seated in the concrete cylinder, over an X marked on bedrock, 16 ins. below the surface of the ground.

from which

An iron post, 3 ft. long, 1 in. diam., set 28 ins. in the ground for a reference monument, bears N. 45° E., 64.3 lks. dist., with brass cap mkd.  $\frac{1}{4}$  S 2 R M 1948 and an arrow pointing to the corner.

An iron post, 3 ft. long, 1 in. diam., set 28 ins. in the ground for a reference monument, bears S. 45° W., 64.3 lks. dist., with brass cap mkd.  $\frac{1}{4}$  S 11 R M 1948 and an arrow pointing to the corner.

S. 89° 54' E., beginning new measurement.

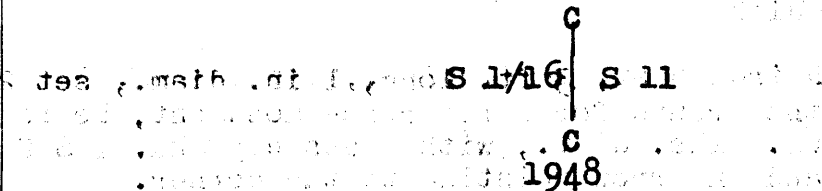
Descend 43 ft. along a S. slope.

Dependent Resurvey of the Boundaries of Section 11,  
T. 7 N., R. 5 W.

Chains 10.80	Small drain, course S. 40° E.; asc. 14 ft. over a SW. slope.
12.75	Spur, slopes S.; desc. 34 ft. over E. slope.
17.75	Small drain, course S. 20° E.; asc. 8 ft. over W. slope.
18.75	Point of a spur, slopes S.; desc. 16 ft. over E. slope.
19.91	Thence along a fence line.
22.60	Foot of descent; thence over nearly level land.
31.42	Road, bears NW. and SE.
39.882	The cor. of secs. 1, 2, 11 and 12. Land, W. 57 chs., rolling; remainder, nearly level. Soil, W. 57 chs., gravelly; remainder, heavy loam. Timber, palo verde and mesquite; undergrowth, greasewood.

-----  
Subdivision of Section 11, T. 7 N., R. 5 W.  
-----

	From the sec. cor. of secs. 11 and 14. N. 0° 10' W., on the N. and S. center line of sec. 11. Along the center line of Mesquite Drive. Descend 17 ft. over N. slope.
3.00	Wash, 30 lks. wide, 2 ft. deep, course E.; asc. 26 ft. over S. slope.
6.80	Spur, slopes E.; desc. 33 ft. over N. slope.
9.10	Wash, 10 lks. wide, 1 ft. deep, course N. 60° E.; asc. 42 ft. over S. slope.
10.075	Point for the CSS 1/64 sec. cor. of sec. 11. Set a wooden stake, 2 ins. sq., 2 ft. long, 18 ins. in the ground, mkd. 1/64 on W face.
12.30	Spur, slopes N. 60° E.; desc. 46 ft. over NW. slope.
20.15	Point for the CS 1/16 sec. cor. of sec. 11. Set an iron post, 3 ft. long, 1 in. diam., 28 ins. in the ground, with brass cap mkd.



from which

An iron post, 3 ft. long, 1 in. diam., set 28 ins. in the ground for a reference monument, bears N. 45° E., 64.3 lks. dist., with brass cap mkd. C S 1/16 S 11 R M 1948 and an arrow pointing to the corner.

An iron post, 3 ft. long, 1 in. diam., set 28 ins. in the ground for a reference monument, bears S. 45° W., 64.3 lks. dist., with brass cap mkd. CS 1/16 S 11 R M 1948 and an arrow pointing to the corner.

## Subdivision of Section 11, T. 7 N., R. 5 W.

BOOK 432

Chains 30.40 38.90 40.30	<p>Spur, slopes N. <math>60^{\circ}</math> E.; desc. 40 ft. over NW. slope.</p> <p>Wash, 20 lks. wide, 1 ft. deep, course N. <math>30^{\circ}</math> E.</p> <p>Point for the C <math>\frac{1}{4}</math> sec. cor. of sec. 11, at the intersection of the N-S and E-W center lines of the section, which coincides with a local corner, monumented with an iron pipe, 1 in. diam., firmly set, protruding 1 ft. above ground.</p> <p>At the corner point</p> <p>Set an iron post, 3 ft. long, 1 in. diam., 28 ins. in the ground, with brass cap mkd.</p> <p style="text-align: center;">C <math>\frac{1}{4}</math> S 11 1948</p> <p>from which</p> <p style="padding-left: 40px;">An iron post, 3 ft. long, 1 in. diam., set 28 ins. in the ground for a reference monument, bears N. <math>45^{\circ}</math> E., 64.3 lks. dist., with brass cap mkd. C <math>\frac{1}{4}</math> S 11 R M 1948 and an arrow pointing to the corner.</p> <p style="padding-left: 40px;">An iron post, 3 ft. long, 1 in. diam., set 28 ins. in the ground for a reference monument, bears S. <math>45^{\circ}</math> W., 64.3 lks. dist., with brass cap mkd. C <math>\frac{1}{4}</math> S 11 R M 1948 and an arrow pointing to the corner.</p> <p style="padding-left: 40px;">Bury the iron pipe alongside the iron post.</p> <hr/> <p>From the C <math>\frac{1}{4}</math> sec. cor. of sec. 11, the <math>\frac{1}{4}</math> sec. cor. of secs. 2 and 11, bears N. <math>0^{\circ} 10'</math> W., 39.844 chs. dist.</p> <p>From the same point, the <math>\frac{1}{4}</math> sec. cor. of secs. 10 and 11, bears S. <math>89^{\circ} 34'</math> W., 40.088 chs. dist.</p> <hr/> <p>From the C <math>\frac{1}{4}</math> sec. cor. of sec. 11.</p> <p>N. <math>89^{\circ} 34'</math> E., on the E. and W. center line of sec. 11.</p> <p>0.55 Wash, 15 lks. wide, 1 ft. deep, course N. <math>20^{\circ}</math> E.</p> <p>9.80 Ascend 48 ft. over NW. slope.</p> <p>13.00 Spur, slopes N. <math>40^{\circ}</math> E.; desc. 46 ft. over SE. slope.</p> <p>20.182 Point for the CE <math>\frac{1}{16}</math> sec. cor. of sec. 11.</p> <p>Set an iron post, 3 ft. long, 1 in. diam., 28 ins. in the ground, with brass cap mkd.</p> <p style="text-align: center;">E <math>\frac{1}{16}</math> C ——— C S 11 1948</p> <p>raise a mound of stone, 3 ft. base, 2 ft. high, N. of cor.</p> <p>21.55 Wash, 10 lks. wide, 6 ins. deep, course N. <math>20^{\circ}</math> E.; asc. 35 ft. over NW. slope.</p> <p>26.50 Spur, slopes N. <math>30^{\circ}</math> E.; desc. 23 ft. over SE. slope.</p> <p>40.364 The <math>\frac{1}{4}</math> sec. cor. of secs. 11 and 12.</p> <hr/>
-----------------------------------	---

Chains	
	From the E 1/16 sec. cor. of secs. 11 and 14.
	NORTH, on the N. and S. center line of the SE 1/4 of sec. 11.
1.20	Wash, 20 lks. wide, 2 ft. deep, course E.; asc. 30 ft. over S. slope.
2.50	Road, bears E. and W.
10.099	Point for the CS SE 1/64 sec. cor. of sec. 11.
	Set a wooden stake, 2 ins. sq., 2 ft. long, 18 ins. in the ground, mkd. 1/64 on W. face.
18.00	Spur, slopes E.; desc. 16 ft. over N. slope.
20.198	Point for the SE 1/16 sec. cor. of sec. 11, at the intersection of the N-S and E-W center lines of the SE 1/4 of the section.
	Set an iron post, 3 ft. long, 1 in. diam., 28 ins. in the ground, with brass cap mkd.
	S E 1/16 S 11 1948
	from which
	An iron post, 3 ft. long, 1 in. diam., set 28 ins. in the ground for a reference monument, bears N. 45° E., 64.3 lks. dist., with brass cap mkd. S E 1/16 S 11 R M 1948 and an arrow pointing to the corner.
	An iron post, 3 ft. long, 1 in. diam., set 28 ins. in the ground for a reference monument, bears S. 45° W., 64.3 lks. dist., with brass cap mkd. SE 1/16 S 11 R M 1948 and an arrow pointing to the corner.
	-----
	From the SE 1/16 sec. cor. of sec. 11, the S 1/16 sec. cor. of secs. 11 and 12, bears N. 89° 43' E., 20.12 chs. dist.
	From the same point, the C E 1/16 sec. cor. of sec. 11, bears NORTH, 20.189 chs. dist.
	-----
	From the SE 1/16 sec. cor. of sec. 11.
	S. 89° 43' W., on the E. and W. center line of the SE 1/4 of sec. 11.
	Descend 34 ft. over W. slope.
6.60	Wash, 10 lks. wide, 3 ft. deep, course NE.; asc. 34 ft. over E. slope.
10.061	Point for the C W SE 1/64 sec. cor. of sec. 11.
	Set a wooden stake, 2 ins. sq., 2 ft. long, 18 ins. in the ground, mkd. 1/64 on N. face.
12.10	Spur, slopes N. 20° E.; desc. 17 ft. over NW. slope.
20.122	The C S 1/16 sec. cor. of sec. 11.
	-----

Dependent Resurvey of the Boundaries of Section 15,  
T. 7 N., R. 5 W.

BOOK 4372

## Chains

Reestablishment of the Survey Executed by  
S. W. Foreman, Deputy Surveyor, in 1871 and 1872.

At the point for the cor. of secs. 14, 15, 22 and 23,  
determined by the method of double proportional measure-  
ment.

Set an iron post, 3 ft. long, 2 ins. diam., 16 ins. in the  
ground to bedrock, and in a mound of stone to top, with  
brass cap mkd.

T 7 N R 5 W

S 15 | S 14

S 22 | S 23

1948

bury a stone marked X alongside the iron post.

From the cor. of secs. 14, 15, 22 and 23, the cor. of  
secs. 26, 27, 34 and 35, bears S.  $0^{\circ} 42' W.$ , 159.68 chs.  
dist. and is monumented with an iron post, 2 ins. diam.,  
firmly set, marked and witnessed as described in the  
official record.

From the same point, the cor. of secs. 13, 18, 19 and 24  
on the E. bdy. of the Tp., bears S.  $89^{\circ} 55' E.$ , 157.01  
chs. dist. and is monumented with a limestone, 8x6 ins.  
6 ins. above ground, firmly set, marked 3 notches on N.  
and S. edges, witnessed by a scattered mound of stone W.  
of cor. Rebuild the mound of stone, 3 ft. base, 2 ft,  
high, W. of cor.

From the cor. of secs. 14, 15, 22 and 23.

N.  $0^{\circ} 35' E.$ , bet. secs. 14 and 15.

Over rolling land, through scattering timber and under-  
growth.

0.50 Enter wash, 15 lks. wide,  $1\frac{1}{2}$  ft. deep, course N. from  
S.  $20^{\circ} E.$

1.85 Leave wash, course N.  $20^{\circ} E.$ ; asc. 57 ft. over S. slope.

9.98 Point for the S S  $\frac{1}{64}$  sec. cor. of secs. 14 and 15.

Set a wooden stake, 2 ins. sq., 2 ft. long, 16 ins. in the  
ground, mkd.  $\frac{1}{64}$  on W. face.

10.54 Spur, slopes E.; desc. 68 ft. over N. slope.

19.96 Point for the S  $\frac{1}{16}$  sec. cor. of secs. 14 and 15.

Set an iron post, 3 ft. long, 1 in. diam., 28 ins. in the  
ground, with brass cap mkd.

S  $\frac{1}{16}$ 

S 15 | S 14

1948

raise a mound of stone, 3 ft. base,  $2\frac{1}{2}$  ft. high, W. of  
cor.



Dependent Resurvey of the Boundaries of Section 15,  
T. 7 N., R. 5 W.

Chains	
25.90	Wash, 50 lks. wide, 2 ft. deep, course E.; asc. 48 ft. over S. slope.
29.94	Point for the NS 1/64 sec. cor. of secs. 14 and 15. Set a wooden stake, 2 ins. sq., 2 ft. long, 16 ins. in the ground, mkd. 1/64 on W. face.
32.00	Spur, slopes N. 70° E.; desc. 41 ft. over N. slope.
36.15	Wash, 10 lks. wide, 1 ft. deep, course E.; asc. 64 ft. over S. slope.
39.92	Point for the 1/4 sec. cor. of secs. 14 and 15, at proportionate distance; there is no remaining evidence of the original corner.  Set an iron post, 3 ft. long, 1 in. diam., 28 ins. in the ground, with brass cap mkd.
	1/4 S 15   S 14 1948
	raise a mound of stone, 3 ft. base, 2 1/2 ft. high, W. of cor.
43.30	Spur, slopes N. 60° E.; desc. 85 ft. over N. slope.
49.90	Point for the SN 1/64 sec. cor. of secs. 14 and 15. Set a wooden stake, 2 ins. sq., 2 ft. long, 16 ins. in the ground, mkd. 1/64 on W. face.
59.88	Point for the N 1/16 sec. cor. of secs. 14 and 15.  Set an iron post, 3 ft. long, 1 in. diam., 28 ins. in the ground, with brass cap mkd.
	N 1/16 S 15   S 14 1948
	raise a mound of stone, 3 ft. base, 2 ft. high, W. of cor.
62.14	Wash, 25 lks. wide, 2 ft. deep, course E.; asc. 23 ft. over S. slope.
69.86	Point for the N N 1/64 sec. cor. of secs. 14 and 15. Set a wooden stake, 2 ins. sq., 2 ft. long, 16 ins. in the ground, mkd. 1/64 on W. face.
74.95	Spur, slopes N. 30° E.; desc. 23 ft. over N. slope.
78.55	Wash, 10 lks. wide, 1 ft. deep, course N. 40° E.
79.84	The cor. of secs. 10, 11, 14 and 15,  Land, rolling. Soil, gravelly. Timber, palo verde and mesquite; undergrowth, greasewood.

Dependent Resurvey of the Boundaries of Section 15,  
T. 7 N., R. 5 W.

BOOK 4372

Chains	From the cor. of secs. 14, 15, 22 and 23. N. 89° 51' W., bet. secs. 15 and 22. Over rolling land, through scattering timber and undergrowth. Ascend 40 ft. over SE. slope.
7.10	Spur, slopes N. 10° W.; desc. 97 ft. over W. slope.
9.87	Point for the E E 1/64 sec. cor. of secs. 15 and 22. Set a wooden stake, 2 ins. sq., 2 ft. long, 16 ins. in the ground, mkd. 1/64 on N. face.
13.95	Deep ravine, course N. 30° W.; asc. 47 ft. over SE. slope.
15.20	Spur, slopes N. 40° E.; desc. 31 ft. over NW. slope.
17.75	Wash, 20 lks. wide, 2 ft. deep, course N. 40° E.; asc. 75 ft. over SE. slope.
19.74	Point for the E 1/16 sec. cor. of secs. 15 and 22. Set an iron post, 3 ft. long, 1 in. diam., 10 ins. in the ground to bedrock, and in a mound of stone, 6 ft. base, 2 ft. high, with brass cap mkd. $\begin{array}{r} \text{S } 15 \\ \text{E } 1/16 \text{ ---} \\ \text{S } 22 \\ 1948 \end{array}$ <p>Bury a stone, mkd. X alongside the iron post.</p>
28.00	Ridge, bears N. and S.; desc. gradually along a S. slope.
29.61	Point for the WE 1/64 sec. cor. of secs. 15 and 22. Set a wooden stake, 2 ins. sq., 2 ft. long, 16 ins. in the ground, mkd. 1/64 on N. face.
39.48	Point for the 1/4 sec. cor. of secs. 15 and 22, at proportionate distance; there is no remaining evidence of the original corner. Set an iron post, 3 ft. long, 1 in. diam., over an X mkd. on solid surface rock and in a mound of stone, 6 ft. base, 2 1/2 ft. high, with brass cap mkd. $\begin{array}{r} \text{S } 15 \\ \frac{1}{4} \text{ ---} \\ \text{S } 22 \\ 1948 \end{array}$ <p>Descend 30 ft. over W. slope.</p>
42.00	Enter small flat, subject to overflow from a wash, bears N. and S.
49.35	Point for the EW 1/64 sec. cor. of secs. 15 and 22. Set a wooden stake, 2 ins. sq., 2 ft. long, 18 ins. in the ground, mkd. 1/64 on N. face. from which A cat's-claw, 4 ins. diam., bears N. 27° W., 59 lks. dist., mkd. B T. A mesquite, 4 ins. diam., bears S. 52° E., 38 lks. dist., mkd. B T.

Dependent Resurvey of the Boundaries of Section 15,  
T. 7. N., R. 5 W.

Chains	
49.60	Wash, 20 lks. wide, course N. 30° E.; leave flat, bears N. 30° E. and S. 30° W.; asc. 20 ft. over E. slope.
54.60	Spur, slopes N. 40° E.; desc. 34 ft. over W. slope.
55.30	Wash, 10 lks. wide, 1½ ft. deep, course N. 40° E.; asc. 50 ft. over E. slope.
57.90	Spur, slopes S.; desc. 25 ft. over W. slope.
59.22	Point for the W. 1/16 sec. cor. of secs. 15 and 22. Set an iron post, 3 ft. long, 1 in. diam., 16 ins. in the ground to bedrock, and in a mound of stone, 6 ft. base, 16 ins. high, with brass cap mkd.
	$\begin{array}{r} \text{S } 15 \\ \text{W } 1/16 \text{ ---} \\ \text{S } 22 \\ 1948 \end{array}$
	Bury a stone mkd. X alongside the iron post.
59.45	Recross wash, 10 lks. wide, 1½ ft. deep, course S. 20° E.; asc. 53 ft. over E. slope.
67.00	Spur, slopes N. 20° W.; desc. 33 ft. over W. slope.
69.09	Point for the W W 1/64 sec. cor. of secs. 15 and 22. Set a wooden stake, 2 ins. sq., 2 ft. long, 8 ins. in the ground to bedrock and in a mound of stone to top, mkd. 1/64 on N. face.
74.20	Wash, 15 lks. wide, 1 ft. deep, course N.
75.40	Road, bears NE. and SW.
78.96	The cor. of secs. 15, 16, 21 and 22, monumented with an iron pipe, ½ in. diam., firmly set; protruding 6 ins. above ground. At the corner point Set an iron post, 3 ft. long, 1 in. diam., 28 ins. in the ground, with brass cap mkd.
	$\begin{array}{r} \text{T } 7 \text{ N } \text{R } 5 \text{ W} \\ \text{S } 16   \text{S } 15 \\ \text{S } 21   \text{S } 22 \\ 1948 \end{array}$
	raise a mound of stone, 3 ft. base, 2½ ft. high, W. of cor. and bury the iron pipe alongside the iron post.
	Land, rolling. Soil, gravelly loam. Timber, palo verde, mesquite and cat's-claw; undergrowth, greasewood.
	-----
	N. 0° 03' E., bet. secs. 15 and 16. Over rolling land, through scattering timber and undergrowth; along a wire fence; asc, gradual S. slope.
4.00	Spur, slopes E.; desc. 20 ft. over N. slope.

Dependent Resurvey of the Boundaries of Section 15,  
T. 7 N., R. 5 W.

BOOK 4372

Chains	
10.005	Point for the S S 1/64 sec. cor. of secs. 15 and 16. Set a wooden stake, 2 ins. sq., 2 ft. long, 16 ins. in the ground, mkd. 1/64 on W. face.
10.17	Wash, 10 lks. wide, 1 ft. deep, course N. 80° E.; asc. 29 ft. over S. slope.
16.85	Spur, slopes N. 60° E.; desc. 38 ft. over N. slope.
20.01	Point for the S 1/16 sec. cor. of secs. 15 and 16. Set an iron post, 3 ft. long, 1 in. diam., 28 ins. in the ground, with brass cap mkd.  S 1/16 S 16   S 15 1948 raise a mound of stone, 3 ft. base, 2 ft. high, W. of cor.
27.00	Foot of slope, thence across small flat.
30.015	Point for the NS 1/64 sec. cor. of secs. 15 and 16. Set a wooden stake, 2 ins. sq., 2 ft. long, 16 ins. in the ground, mkd. 1/64 on W. face.
33.00	Wash, 25 lks. wide, 2 ft. deep, course E.
35.00	Leave flat, bears E. and W.; asc. 23 ft. over S. slope.
40.02	The 1/4 sec. cor. of secs. 15 and 16, monumented with an iron pipe, 3/4 in. diam., firmly set, protruding 14 ins. above ground. At the corner point Set an iron post, 3 ft. long, 1 in. diam., 26 ins. in the ground, with brass cap mkd.  1/4 S 16   S 15 1948 raise a mound of stone, 3 ft. base, 2 ft. high, W. of cor. and bury the iron pipe alongside the iron post.
43.00	Spur, slopes S. 80° E.; desc. 40 ft. over N. slope.
50.025	Point for the SN. 1/64 sec. cor. of secs. 15 and 16. Set a wooden stake, 2 ins. sq., 2 ft. long, 16 ins. in the ground, mkd. 1/64 on W. face.
57.95	Road, bears NW. and SE.
58.85	Wash, 10 lks. wide, 1 ft. deep, course N. 50° E.; asc. 28 ft. over S. slope.
60.03	Point for the N 1/16 sec. cor. of secs. 15 and 16. Set an iron post, 3 ft. long, 1 in. diam., 24 ins. in the ground to bedrock, and in a mound of stone to top, with brass cap mkd.

Dependent Resurvey of the Boundaries of Section 15,  
T. 7.N., R. 5 W.

Chains

N 1/16  
S 16 | S 15  
1948

raise a mound of stone, 2 1/2 ft. base; 2 ft. high, W. of cor.

65.85 Spur, slopes N. 30° E.; desc. 17 ft. over NW. slope.

70.035 Point for the N N 1/64 sec. cor. of secs. 15 and 16.

Set a wooden stake, 2 ins. sq., 2 ft. long, 14 ins. in the ground to bedrock and in a mound of stone to top, mkd. 1/64 on W. face.

73.85 Graded road, bears N. 20° E. to Wickenburg and S. 20° W. to the Vulture Mine.

75.50 Power line, bears N. 10° E. and S. 10° W.

80.04 The cor. of secs. 9, 10, 15 and 16, monumented with an iron pipe, 3/4 in. diam., firmly set, protruding 4 ins. above ground:

At the corner point

Set an iron post, 3 ft. long, 2 ins. diam., 26 ins. in the ground, with brass cap mkd.

T 7 N R 5 W  
S 9 | S 10  
S 16 | S 15  
1948

raise a mound of stone, 3 ft. base, 2 1/2 ft. high, SW. of cor. and bury the iron pipe alongside the iron post.

Corner is located 2 lks. E. of a fence corner, from which fences extend N. and W.

Land, rolling:  
Soil, gravelly loam.  
Timber, palo verde and mesquite; undergrowth, greasewood.

-----  
From the cor. of secs. 10, 11, 14 and 15.

N. 89° 43' W., bet. secs. 10 and 15.

Over rolling land, through scattering timber and undergrowth.

Ascend 28 ft. over E. slope.

8.90 Spur, slopes N. 30° E.; desc. 31 ft. over W. slope.

9.964 Point for the E E 1/64 sec. cor. of secs. 10 and 15.

Set a wooden stake, 2 ins. sq., 2 ft. long, 18 ins. in the ground, mkd. 1/64 on N. face.

from which

A local corner, bears S. 45° E., 1.3 lks. dist., mkd. by an iron pipe, 1/2 in. diam., firmly set.

13.27 Wash, 10 lks. wide, 1 ft. deep, course N. 30° E.; asc. 21 ft. over E. slope.

Dependent Resurvey of the Boundaries of Section 15,  
T. 7 N., R. 5 W.

BOOK 4372

- Chains  
18.60 Spur, slopes N., desc. 35 ft. over W. slope.
- 19.928 Point for the E 1/16 sec. cor. of secs. 10 and 15.  
Set an iron post, 3 ft. long, 1 in. diam., 20 ins. in the ground, to bedrock and in a mound of stone to top, with brass cap mkd.
- $$\begin{array}{c} \text{S } 10 \\ \text{E } 1/16 \text{ ---} \\ \text{S } 15 \\ 1948 \end{array}$$
- from which
- An iron post, 3 ft. long, 1 in. diam., set 24 ins. in the ground for a reference monument, bears N. 45° E., 70.7 lks. dist., with brass cap mkd. E 1/16 S 10 R M 1948 and an arrow pointing to the corner.
- An iron post, 3 ft. long, 1 in. diam., set 24 ins. in the ground for a reference monument, bears S. 45° W., 70.7 lks. dist., with brass cap mkd. E 1/16 S 15 R M 1948 and an arrow pointing to the corner.
- A local corner, bears N. 3.4 lks. dist., mkd. by an iron pipe, 3/4 in. diam., firmly set, protruding 14 ins. above ground.
- 23.40 Wash, 15 lks. wide, 1 1/2 ft. deep, course N. 30° E.; asc. 46 ft. over E. slope.
- 29.892 Point for the WE 1/64 sec. cor. of secs. 10 and 15.  
Set a wooden stake, 2 ins. sq., 2 ft. long, 18 ins. in the ground, mkd. 1/64 on N. face.
- from which
- A local corner, bears N., 0.4 lk. dist., mkd. by an iron pipe, 1 in. diam., firmly set, protruding 4 ins. above ground.
- 39.856 The 1/4 sec. cor. of secs. 10 and 15, monumented with an iron pipe, 1 in. diam., firmly set, protruding 2 ins. above ground.
- At the corner point
- Set a granite stone, 12x10x10 ins., 1 ft. below the surface of the ground, mkd. X on top.
- from which
- An iron post, 3 ft. long, 1 in. diam., set 28 ins. in the ground for a reference monument, bears N. 45° E., 70.7 lks. dist., with brass cap mkd. 1/4 S 10 R M 1948 and an arrow pointing to the corner.
- An iron post, 3 ft. long, 1 in. diam., set 28 ins. in the ground for a reference monument, bears S. 45° W., 70.7 lks. dist., with brass cap mkd. 1/4 S 15 R M 1948 and an arrow pointing to the corner.
- Reset the iron pipe over the X marked on top of the granite stone.
- 
- N. 89° 41' W., beginning new measurement.

Dependent Resurvey of the Boundaries of Section 15,  
T. 7 N., R. 5 W.

- Chains
- 5.80 Spur, slopes N. 40° E.; desc. 30 ft. over W. slope.
- 9.966 Point for the NW 1/64 sec. cor. of secs. 10 and 15, which coincides with a local corner, mkd. by iron pipe, 1/2 in. diam., firmly set, protruding 2 ins. above ground.
- Set a wooden stake, 2 ins. sq., 2 ft. long, 18 ins. in the ground, mkd. 1/64 on N. face. bury the iron pipe along side the wooden stake.
- 10.50 Wash, 10 lks. wide, 2 ft. deep, course N. 20° E.
- 19.932 Point for the W 1/16 sec. cor. of secs. 10 and 15.
- Set an iron post, 3 ft. long, 1 in. diam., 15 ins. in the ground to bedrock, and in a mound of stone to top, with brass cap mkd.
- W 1/16

S 10

S 15

1948
- from which
- A local corner, bears N. 20° E., 0.5 lk. dist., mkd. by an iron pipe, 1 in. diam., firmly set, protruding 1 ft. above ground.
- 21.00 Ascend 11 ft. over E. slope.
- 26.10 Spur, slopes N.; desc. 26 ft. over W. slope.
- 29.60 Old road, bears N. to Wickenburg and S. to Vulture Mine.
- 29.80 Wash, 10 lks. wide, 1 ft. deep, course N. 30° E.
- 29.898 Point for the W W 1/64 sec. cor. of secs. 10 and 15.
- Set a wooden stake, 2 ins. sq., 2 ft. long, 18 ins. in the ground, mkd. 1/64 on N. face.
- from which
- A mesquite, 3 ins. diam., bears N. 40° E., 69.3 lks. dist., mkd. B T.
- A palo verde, 3 ins. diam., bears N. 34 3/4° W., 49.6 lks. dist., mkd. B T.
- A local corner, bears N. 45° E., 0.8 lk. dist., mkd. by an iron pipe, 3/4 in. diam., firmly set, protruding 4 ins. above ground.
- Ascend 29 ft. along the S. slope of a knoll.
- 37.10 Graded road, bears N. 10° E. to Wickenburg and S. 10° W., to Vulture Mine.
- 37.18 Power line, bears N. 10° E. and S. 10° W.
- 39.864 The cor. of secs. 9, 10, 15 and 16.
- Land, rolling.  
Soil, gravelly loam.  
Timber, palo verde and mesquite; undergrowth, greasewood.

## Subdivision of Section 15, T. 7 N., R. 5 W.

BOOK 4272

## Chains

- From the  $\frac{1}{4}$  sec. cor. of secs. 15 and 22.
- N.  $0^{\circ} 19'$  E., on the N. and S. center line of sec. 15.
- Over rolling land, through scattering timber and undergrowth.
- Ascend 17 ft. over SW. slope.
- 1.60 Spur, slopes NW.; desc. 54 ft. over N. slope.
- 8.30 Wash, 60 lks. wide, 2 ft. deep, course N.  $30^{\circ}$  E.; asc. 79 ft. over S. slope.
- 9.99 Point for the C S S  $\frac{1}{64}$  sec. cor. of sec. 15.
- Set a wooden stake, 2 ins. sq., 2 ft. long, 16 ins. in the ground, mkd.  $\frac{1}{64}$  on W. face.
- 19.98 Point for the C S  $\frac{1}{16}$  sec. cor. of sec. 15.
- Set an iron post, 3 ft. long, 1 in. diam., 16 ins. in the ground to bedrock, and in a mound of stone to top, with brass cap mkd.
- C

S  $\frac{1}{16}$  | S 15

C

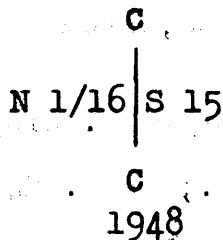
1948
- Bury a stone mkd. X alongside the iron post,
- 25.55 Spur, slopes N.  $30^{\circ}$  E.; desc. 41 ft. over NW. slope.
- 29.97 Point for the C NS  $\frac{1}{64}$  sec. cor. of sec. 15.
- Set a wooden stake, 2 ins. sq., 2 ft. long, 16 ins. in the ground, mkd.  $\frac{1}{64}$  on W. face.
- 39.96 Point for the C  $\frac{1}{4}$  sec. cor. of sec. 15, at intersection with the E. - W. center line.
- Set an iron post, 3 ft. long, 1 in. diam., 16 ins. in the ground to bedrock, and in a mound of stone to top, with brass cap mkd.
- C  $\frac{1}{4}$  S 15

1948
- Bury a stone marked X alongside the iron post.
- Descend 25 ft. over NW. slope.
- 42.10 Wash, 30 lks. wide, 1 ft. deep; course N.  $70^{\circ}$  E.; asc. 52 ft. over S. slope.
- 49.40 Spur, slopes N.  $60^{\circ}$  E.; desc. 42 ft. over a N. slope.
- 49.95 Point for the C SN  $\frac{1}{64}$  sec. cor. of sec. 15.
- Set a wooden stake, 2 ins. sq., 2 ft. long, 16 ins. in the ground, mkd.  $\frac{1}{64}$  on W. face.
- 59.94 Point for the C N  $\frac{1}{16}$  sec. cor. of sec. 15.



Chains

Set an iron post, 3 ft. long, 1 in. diam., 8 ins. in the ground to bedrock, and in a mound of stone to top, with brass cap mkd.



Bury a limestone, 8x8x4 ins. mkd. X along side the iron post.

68.70 Wash, 10 lks. wide, 1 ft. deep, course S. 40° E.; asc. 16 ft. over a S. slope.

69.93 Point for the C N N 1/64 sec. cor. of sec. 15.

Set a wooden stake, 2 ins. sq., 2 ft. long, 16 ins. in the ground, mkd. 1/64 on W. face.

73.30 Spur, slopes N. 30° E.; desc. 16 ft. over a N. slope.

79.92 The 1/4 sec. cor. of secs. 10 and 15.

-----  
From the 1/4 sec. cor. of secs. 14 and 15.

N. 89° 47' W., on the E. and W. center line of sec. 15.

Over rolling land, through scattering timber and undergrowth.

9.92 Point for the C E E 1/64 sec. cor. of sec. 15.

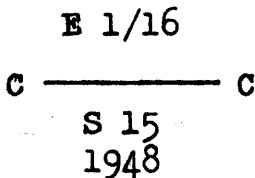
Set a wooden stake, 2 ins. sq., 2 ft. long, 16 ins. in the ground, mkd. 1/64 on N. face,

Ascend 15 ft. over E. slope.

13.35 Spur, slopes N.; desc. 26 ft. over W. slope.

19.84 Point for the C E 1/16 sec. cor. of sec. 15.

Set an iron post, 3 ft. long, 1 in. diam., 16 ins. in the ground to bedrock, and in a mound of stone to top, with brass cap mkd.



Bury a sandstone, 10x8x4 ins., mkd. X alongside the iron post.

20.40 Spur, slopes N. 30° E.; desc. 38 ft. over W. slope.

25.20 Small drain, course N. 20° E.; asc. 13 ft. along N. slope.

29.76 Point for the C W E 1/64 sec. cor. of sec. 15.

Set a wooden stake, 2 ins. sq., 2 ft. long, 16 ins. in the ground, marked 1/64 on N. face.

## Subdivision of Section 15, T. 7 N., R. 5 W.

BOOK 4372

## Chains

- 39.10 Spur, slopes N. 10° E.; desc. 38 ft. over W. slope.
- 39.68 The center  $\frac{1}{4}$  sec. cor. of sec. 15.
- 41.30 Wash, 20 lks. wide, course N.20° E.; asc. 32 ft. over E. slope.
- 44.60 Low spur, slopes S.; desc. 11 ft. over W. slope.
- 48.10 Recross wash, 20 lks. wide, course S. 40° E.
- 49.59 Point for the C E  $\frac{1}{64}$  sec. cor. of sec. 15.  
Set a wooden stake, 2 ins. sq., 2 ft. long, 16 ins. in the ground,  $\frac{1}{64}$  on N. face.  
from which  
A mesquite, 6 ins. diam., bears S. 64 $\frac{1}{4}$ ° E., 62 lks. dist., mkd.  $\frac{1}{64}$  B T.  
A mesquite, 6 ins. diam., bears S. 49 $\frac{3}{4}$ ° W., 62 lks. dist., mkd.  $\frac{1}{64}$  B T.
- 51.50 Recross wash, 20 lks. wide, course N. 40° E.; ascend gradually along the S. slope of a broad topped spur.
- 59.50 Point for the C W  $\frac{1}{16}$  sec. cor. of sec. 15.  
Set an iron post, 3 ft. long, 1 in. diam., 28 ins. in the ground, with brass cap mkd.
- C  $\frac{W \frac{1}{16}}{S \frac{15}{1948}}$  C
- raise a mound of stone, 2 $\frac{1}{2}$  ft. base, 2 ft. high, N. of cor.
- 69.41 Point for the C W W  $\frac{1}{64}$  sec. cor. of sec. 15.  
Set a wooden stake; 2 ins. sq., 2 ft. long, 16 ins. in the ground, mkd.  $\frac{1}{64}$  on N. face.
- 79.32 The  $\frac{1}{4}$  sec. cor. of secs. 15 and 16.

-----  
Subdivision of the NE  $\frac{1}{4}$  of Section 15, T. 7 N., R. 5 W.  
-----

- From the C E  $\frac{1}{16}$  sec. cor. of sec. 15.  
N. 0° 27' E., on the N. and S. center line of the NE  $\frac{1}{4}$  of sec. 15.  
Descend 46 ft. over NE. slope.
- 9.98 Point for the C S NE  $\frac{1}{64}$  sec. cor. of sec. 15.  
Set a wooden stake, 2 ins. sq., 2 ft. long, 16 ins. in the ground, mkd.  $\frac{1}{64}$  on W. face.
- 10.80 Wash, 30 lks. wide, 2 ft. deep, course E.; asc. 102 ft. over SE. slope.
- 19.96 Point for the NE  $\frac{1}{16}$  sec. cor. of sec. 15, at the intersection with the E. - W. center line.

Chains	
	Set an iron post, 3 ft. long, 1 in. diam., 18 ins. in the ground to bedrock, and in a mound of stone to top, with brass cap mkd.
	NE $\frac{1}{16}$ S 15 1948
	Bury a lava stone, 8x8x4 ins. mkd. X alongside the iron post.
28.00	Spur, slopes N. 70° E.; desc. 87 ft. over N. slope.
29.95	Point for the C N NE $\frac{1}{64}$ sec. cor. of sec. 15. Set a wooden stake, 2 ins. sq., 2 ft. long, 16 ins. in the ground, mkd. $\frac{1}{64}$ on W. face.
39.94	The E $\frac{1}{16}$ sec. cor. of secs. 10 and 15.
-----	
	From the N $\frac{1}{16}$ sec. cor. of secs. 14 and 15. N. 89° 44' W., on the E. and W. center line of the NE $\frac{1}{4}$ of sec. 15. Ascend 28 ft. over E. slope.
9.95	Point for the C E NE $\frac{1}{64}$ sec. cor. of sec. 15.
15.00	Spur, slopes N.; desc. over W. slope.
17.60	Wash, 25 lks. wide, 2 ft. deep, course N. 40° E.; asc. 105 ft. over E. slope.
19.90	The NE $\frac{1}{16}$ sec. cor. of sec. 15.
29.85	Point for the C W NE $\frac{1}{64}$ sec. cor. of sec. 15. Set a wooden stake, 2 ins. sq., 2 ft. long, 16 ins. in the ground, mkd. $\frac{1}{64}$ on N. face.
33.90	Spur, slopes S. 30° E.; desc. 40 ft. over W. slope.
39.80	The C N $\frac{1}{16}$ sec. cor. of sec. 15.
-----	
	Subdivision of the SE $\frac{1}{4}$ of Section 15, T. 7 N., R. 5 W.
-----	
	From the E $\frac{1}{16}$ sec. cor. of secs. 15 and 22. N. 0° 27' E., on the N. and S. center line of the SE $\frac{1}{4}$ of sec. 15. Descend 60 ft. along the E. slope of a spur.
9.99	Point for the C S SE $\frac{1}{64}$ sec. cor. of sec. 15. Set a wooden stake, 2 ins. sq., 2 ft. long, 16 ins. in the ground, mkd. $\frac{1}{64}$ on W. face.
10.80	Wash, 10 lks. wide, 1 ft. deep, course E.; asc. 39 ft. over a.S. slope.
14.80	Top of ascent, bears E. and W.; desc. 80 ft. over a steep N. slope.
16.50	Enter washland, bears E. and W., drainage E.

Subdivision of the SE  $\frac{1}{4}$  of Section 15, T. 7 N., R. 5 W.

BOOK 4872

Chains 19.98	<p>Point for the SE <math>\frac{1}{16}</math> sec. cor. of sec. 15, at the intersection with the E.- W. center line.</p> <p>Set an iron post, 3 ft. long, 1 in. diam., 28 ins. in the ground, with brass cap mkd.</p> <p style="text-align: center;">SE <math>\frac{1}{16}</math> S 15 1948</p> <p>from which</p> <p>A palo verde, 4 ins. diam., bears N <math>66\frac{1}{2}^{\circ}</math> E., 104 lks. dist., mkd. SE <math>\frac{1}{16}</math> S 15 B T.</p> <p>A catsclaw, 4 ins. diam., bears S. <math>22\frac{1}{2}^{\circ}</math> E., 38 lks. dist., mkd. B T.</p> <p>A mesquite, 8 ins. diam., bears S. <math>18^{\circ}</math> W., 68 lks. dist., mkd. SE <math>\frac{1}{16}</math> S 15 B T.</p> <p>A palo verde, 8 ins. diam., bears N. <math>24\frac{3}{4}^{\circ}</math> W., 123 lks. dist., mkd. SE <math>\frac{1}{16}</math> S 15 B T.</p>
20.50	Leave washland, bears E. and W.; asc. 108 ft. over S. slope.
29.96	<p>Point for the C N SE <math>\frac{1}{64}</math> sec. cor. of sec. 15.</p> <p>Set a wooden stake, 2 ins. sq., 2 ft. long, 16 ins. in the ground, mkd. <math>\frac{1}{64}</math>.</p>
37.90	Spur, slopes E.; desc. 25 ft. along E. slope.
39.94	The C E $\frac{1}{16}$ sec. cor. of sec. 15.
-----	
<p>From the S <math>\frac{1}{16}</math> sec. cor. of secs. 14 and 15.</p> <p>N. <math>89^{\circ} 48'</math> W., on the E. and W. center line of the SE <math>\frac{1}{4}</math> of sec. 15.</p>	
7.75	Center of bottom of canyon, 2 chs. wide, drains N.
9.89	<p>Point for the C E SE <math>\frac{1}{64}</math> sec. cor. of sec. 15.</p> <p>Set a wooden stake, 2 ins. sq., 2 ft. long, 16 ins. in the ground, mkd. <math>\frac{1}{64}</math> on N. face.</p>
11.50	Spur, slopes N.; desc. 35 ft. over steep W. slope.
12.75	Wash, 50 lks. wide, course N. $30^{\circ}$ E.; thence across low point of a spur, slopes S. and enter washland, bears N. $40^{\circ}$ W. and S. $40^{\circ}$ E.
19.78	The SE $\frac{1}{16}$ sec. cor. of sec. 15.
29.67	<p>Point for the C W SE <math>\frac{1}{64}</math> sec. cor. of sec. 15.</p> <p>Set a wooden stake, 2 ins. sq., 2 ft. long, 16 ins. in the ground, mkd. <math>\frac{1}{64}</math> on N. face.</p>
31.10	Wash, 50 lks. wide, 1 ft. deep, course N. $20^{\circ}$ E.; asc. 53 ft. over SE. slope.
39.56	The C S $\frac{1}{16}$ sec. cor. of sec. 15.
-----	

Subdivision of the SW.  $\frac{1}{4}$  of Section 15, T. 7 N., R. 5 W.

Chains	
	From the W $\frac{1}{16}$ sec. cor. of secs. 15 and 22.
	N. $0^{\circ} 12'$ E., on the N. and S. center line of the SW $\frac{1}{4}$ of sec. 15.
	Ascend 48 ft. over S. slope.
2.60	Spur, slopes N. $60^{\circ}$ E.; desc. 48 ft. over N. slope.
9.30	Small drain, course N. $30^{\circ}$ E.; asc. 18 ft. over S. slope.
10.00	Point for the C S SW $\frac{1}{64}$ sec. cor. of sec. 15.
	Set a wooden stake, 2 ins. sq., 2 ft. long, 16 ins. in the ground, mkd. $\frac{1}{64}$ on W. face.
13.20	Spur, slopes N. $70^{\circ}$ E.; desc. 31 ft. over N. slope.
18.30	Wash, 20 lks. wide, 1 ft. deep, course E.; asc. 29 ft. over S. slope.
20.00	Point for the SW $\frac{1}{16}$ sec. cor. of sec. 15, at the intersection with the E.-W. center line.
	Set an iron post, 3 ft. long, 1 in. diam., 26 ins. in the ground, with brass cap mkd.
	SW $\frac{1}{16}$ S 15.
	1948
	raise a mound of stone, 3 ft. base, $2\frac{1}{2}$ ft. high, W. of cor.
26.40	Spur, slopes N. $60^{\circ}$ E., desc. 48 ft. over N. slope.
30.00	Point for the C N SW $\frac{1}{64}$ sec. cor. of sec. 15.
	Set a wooden stake, 2 ins. sq., 2 ft. long, 16 ins. in the ground, mkd. $\frac{1}{64}$ on W. face.
35.30	Wash, 25 lks. wide, 1 ft. deep, course N. $40^{\circ}$ E.; asc. gradual SE. slope.
40.00	The C W $\frac{1}{16}$ sec. cor. of sec. 15;
	-----
	From the C S $\frac{1}{16}$ sec. cor. of sec. 15.
	N. $89^{\circ} 49'$ W., on the E. and W. center line of the SW $\frac{1}{4}$ of sec. 15.
	Ascend 64 ft. over SE. slope.
4.00	Spur, slopes N. $20^{\circ}$ E.; desc. 64 ft. along a N. slope,
9.88	Point for the C E SW $\frac{1}{64}$ sec. cor. of sec. 15.
	Set a wooden stake, 2 ins. sq., 2 ft. long, 16 ins. in the ground, mkd. $\frac{1}{64}$ on N. face.
16.85	Wash, 20 lks. wide, 1 ft. deep, course N. $30^{\circ}$ E.; asc. 51 ft. along a S. slope.
19.76	The SW $\frac{1}{16}$ sec. cor. of sec. 15.
29.64	Point for the C W SW $\frac{1}{64}$ sec. cor. of sec. 15.

Subdivision of the SW  $\frac{1}{4}$  of Section 15, T. 7 N., R. 5 W.

BOOK 4572

Chains	Set a wooden stake, 2 ins. sq., 2 ft. long, 16 ins. in the ground, mkd. 1/64 on N. face.
34.55	Spur, slopes N. 30° E.; desc. 11 ft. along N. slope.
35.95	Old road, bears NE. and SW.
39.52	The S 1/16 sec. cor. of secs. 15 and 16.
-----	
Subdivision of the NW $\frac{1}{4}$ of Section 15, T. 7 N., R. 5 W.	
-----	
From the C W 1/16 sec. cor. of sec. 15.	
N. 0° 09' E., on the N. and S. center line of the NW $\frac{1}{4}$ of sec. 15.	
Ascend 24 ft. over S. slope.	
7.00	Spur, slopes E.; desc. 13 ft. over N. slope.
9.99	Point for the C S NW 1/64 sec. cor. of sec. 15.
Set a wooden stake, 2 ins. sq., 2 ft. long, 18 ins. in the ground, mkd. 1/64 on W. face.	
17.50	Wash, 10 lks. wide, 2 ft. deep, course E.; asc. 27 ft. over S. slope.
19.98	Point for the NW 1/16 sec. cor. of sec. 15, at the intersection with the E. - W. centerline.
Set an iron post, 3 ft. long, 1 in. diam., 20 ins. in the ground to bedrock, and in a mound of stone to top, with brass cap mkd.	
NW 1/16 S 15	
1948	
raise a mound of stone, 2 ft. base, 2 ft. high, W. of cor.	
21.00	Spur, slopes E.; desc. 40 ft. over N. slope.
29.97	Point for the C N NW 1/64 sec. cor. of sec. 15.
Set a wooden stake, 2 ins. sq., 2 ft. long, 14 ins. in the ground, mkd. 1/64 on W. face.	
39.96	The W 1/16 sec. cor. of secs. 10 and 15.
-----	
From the C N 1/16 sec. cor. of sec. 15.	
N. 89° 45' W., on the E. and W. center line of the NW $\frac{1}{4}$ of sec. 15.	
Descend 15 ft. over W. slope.	
8.80	Small drain, course NE.; asc. 13 ft. over SE. slope.
9.94	Point for the C E NW 1/64 sec. cor. of sec. 15.
Set a wooden stake, 2 ins. sq., 2 ft. long, 14 ins. in the ground, mkd. 1/64 on N. face.	

Subdivision of the NW 1/4 of Section 15, T. 7 N., R. 5 W.

Chains

13.00 Spur, slopes N. 10° E.; desc. 13 ft. over W. slope.

19.75 Wash, 15 lks. wide, 1 ft. deep, course N. 10° E.; asc. 34 ft. over E. slope.

19.88 The NW 1/16 sec. cor. of sec. 15.

20.75 Spur, slopes N. 30° E.; desc. 23 ft. over W. slope.

29.82 Point for the C W NW 1/64 sec. cor. of sec. 15.

Set a wooden stake, 2 ins. sq., 2 ft. long, 16 ins. in the ground, mkd. 1/64 on N. face.

33.35 Old road, bears NE. and SW.

36.35 Old road, bears NE. and SW.

37.65 Wash, 20 lks. wide, 1 ft. deep, course N. 30° E.

39.76 The N 1/16 sec. cor. of secs. 15 and 16.

-----  
Test of Solar Orientation  
-----

December 5: At camp near the 1/4 sec. cor. of secs. 15 and 16, at 8:00 a.m., app. t., I set off 33° 57' N., on the lat. arc; 22° 21' S., on the decl. arc; and orient the instrument with the solar; the line of sight agrees with the meridian established by Polaris observation.

At 4:00 p.m., app. t., I set off 33° 57' N., on the lat. arc; 22° 23' 30" S., on the decl. arc and repeat the test of the solar; the line of sight agrees with the meridian established by Polaris observation.

December 5, 1948.  
-----

27 71

4-680  
(August 1947)

BOOK 1122

UNITED STATES  
DEPARTMENT OF THE INTERIOR  
BUREAU OF LAND MANAGEMENT

FIELD ASSISTANTS

NAMES	CAPACITY
John G. Coverdale	Survey Aid, SP-3.
Robert D. Stevens	" " SP-3.
Norman S. Trumpower	" " SP-2.
Jim R. Butler	" " SP-2.
Johnny A. Girvin	" " SP-2.
George Lyons, Jr.	" " SP-2.
James B. Gunter	" " SP-2.



72  
28

CERTIFICATE OF CADASTRAL ENGINEER

I, Ty White, Cadastral Engineer, HEREBY CERTIFY upon honor that, in pursuance of special instructions bearing date of the 14th day of July, 1948 I have ~~surveyed~~ resurveyed the section boundaries and surveyed subdivision-of-section lines of Sections 11 and 15, Township 7 North, Range 5 West.

of the G. and S. R. Meridian, in the State of Arizona, which are represented in the foregoing field notes as having been executed by me and under my direction; and that said survey has been made in strict conformity with said instructions, the Manual of Instructions for the Survey of the Public Lands of the United States, and in the specific manner described in the foregoing field notes.

Phoenix, Arizona,  
July 15, 1949.

*Ty White*  
Cadastral Engineer.

CERTIFICATE OF APPROVAL

BUREAU OF LAND MANAGEMENT,  
Washington, D. C., MAY 9 1950, 19

The foregoing field notes of the ~~survey of~~ resurvey of the section boundaries and survey of the subdivision-of-section lines of sections 11 and 15, Township 7 North, Range 5 West

executed by Ty White, Cadastral Engineer, Bureau of Land Management having been critically examined and found correct, are hereby approved.

*Earl G. Harrington*  
Chief, Branch of Engineering and Construction,  
Chief, Division of Cadastral Engineering

~~CERTIFICATE OF TRANSCRIPT~~

~~I certify that the foregoing transcript of the field notes of the above described survey is a true and correct copy of the original field notes.~~

~~Chief, Branch of Engineering and Construction.~~