

BOOK 4860

Form 9180-6
(April 1965)
(formerly 4-679)

UNITED STATES
DEPARTMENT OF THE INTERIOR
BUREAU OF LAND MANAGEMENT

FIELD NOTES

of

REMONUMENTATION

of

FORT APACHE INDIAN RESERVATION BOUNDARY

in

TOWNSHIPS 6 and 7 NORTH, RANGE 26 EAST

TOWNSHIP 7 NORTH, RANGE 27 EAST

Of the Gila and Salt River Meridian,

In the State of Arizona.

EXECUTED BY

Howard H. Thomas, Cadastral Surveyor

Under special instructions dated June 17, 1968, which provided for the surveys
included under Group Number 501, approved June 17, 1968,
and assignment instructions dated June 26, 1968.

Survey commenced July 1, 1968

Survey completed September 12, 1968

BOOK 4860
INDEX DIAGRAM

Township _____, Range _____,

6	5	4	3	2	1
7	8	9	10	11	12
18	17	16	15	14	13
19	20	21	22	23	24
30	29	28	27	26	25
31	32	33	34	35	36

INDEX TO SECTION CORNER MONUMENTS

Tp. 6 N. R. 26 E. Mer. G&SR

6	5	4	3	2	1
7	8	9	10	11	12
18	17	16	15	14	13
19	20	21	22	23	24
30	29	28	27	26	25
31	32	33	34	35	36

AP59
2 AP48

FORT APACHE INDIAN RESERVATION

Corner	Page
Angle Point 48	1
" " 49	1
" " 53	2
" " 54	2
Mile Corner 8	2
Angle Point 57	3
" " 58	3
" " 59	3

Tp. 7 N. R. 26 E. Mer. G&SR

6	5	4	3	2	1
7	8	9	10	11	12
18	17	16	15	14	13
19	20	21	22	23	24
30	29	28	27	26	25
31	32	33	34	35	36

AP67
36
AP60

FORT APACHE INDIAN RESERVATION

Corner	Page
Angle Point 60	4
" " 61	4
" " 62	4
" " 63	5
Mile Corner 8½	5
Angle Point 64	5
" " 65	6
" " 67	6

Tp. 7 N. R. 27 E. Mer. G&SR

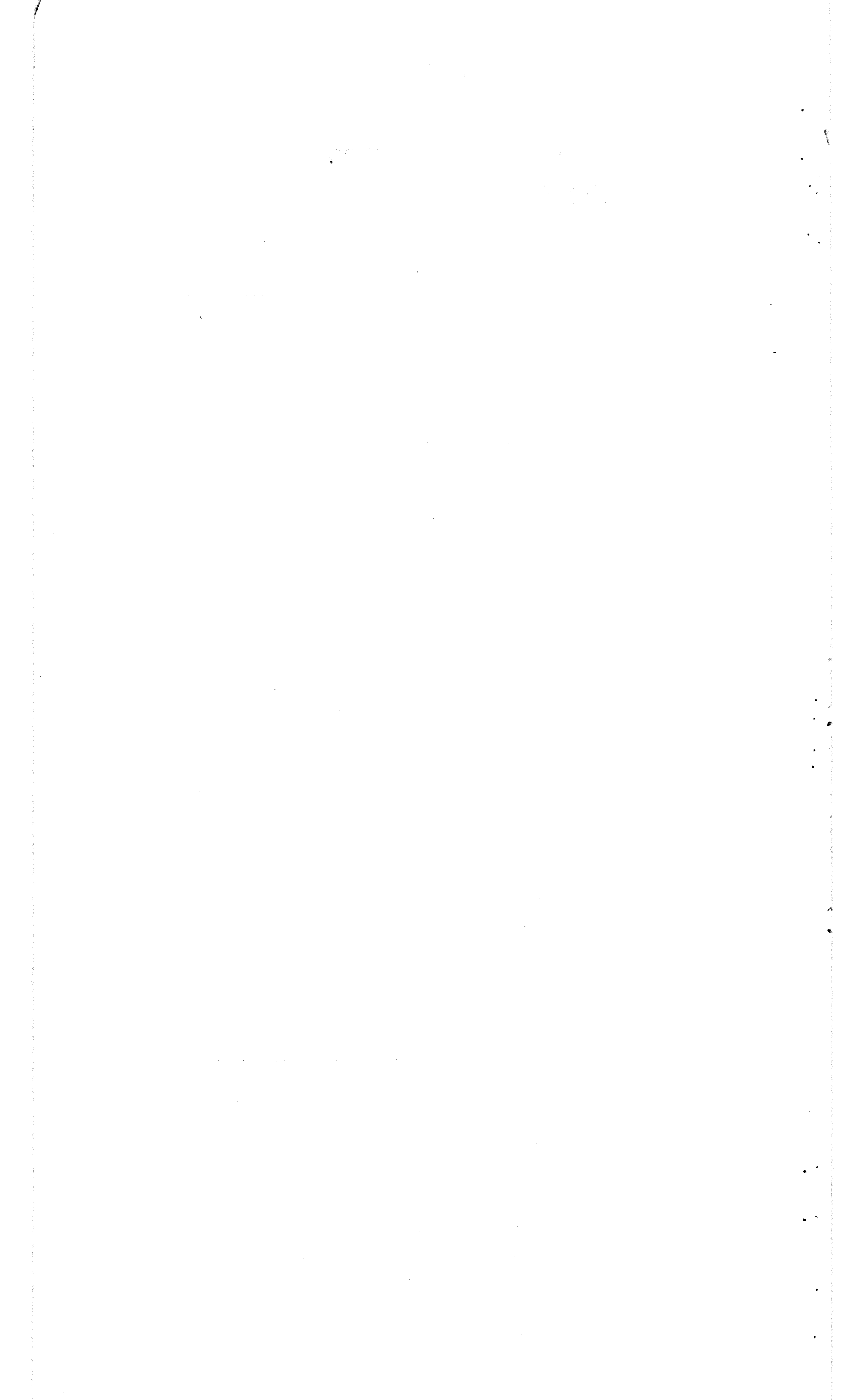
6	5	4	3	2	1
7	8	9	10	11	12
18	17	16	15	14	13
19	20	21	22	23	24
30	29	28	27	26	25
31	32	33	34	35	36

12½M
17 AP99 16
12M (AP98)

AP80
AP78

FORT APACHE INDIAN RESERVATION

Corner	Page
Angle Point 78	7
" " 80	7
Mile Corner 12 (AP98)	7
Angle Point 99	8
Mile Corner 12½	8



Township 6 North, Range 26 East
 Township 7 North, Range 26 East
 Township 7 North, Range 27 East
 Gila and Salt River Meridian, Arizona

CHAINS

The following field notes are those of remonumentation of cadastral survey corners by agreement with the U. S. Forest Service. The detailed cooperative agreement was approved by the Director, Bureau of Land Management, by memorandum (5.04b) dated October 16, 1958.

The approval of the Special Instructions on June 17, 1968 gave authority to proceed with the remonumentation in accordance with the Director's Order No. 541, dated April 21, 1961.

Unless described, each corner was monumented with a standard iron post, 30 inches long, 2½ inches in diameter, flanged at the base, with a brass cap riveted to the top.

The assistants furnished by the Forest Service remonumented the original corner positions after verification. An open sight compass was used to obtain the bearings and a standard steel tape was used to measure the distances to corner accessories.

Township 6 North, Range 26 East, G&SR M., Arizona

The Fort Apache Indian Reservation Boundary was resurveyed in 1906 by J. B. Wright.

Remonumentation, T. 6 N., R. 26 E., G&SR M., Arizona

Angle point 48, monumented by a dead spruce tree, 20 ins. diam., mkd. APNBWMIR 48 on NW. face and BMFR on SE. face, with small blaze above mkd. 8 IMIR, from which new accessories

An iron post, set 24 ins. in the ground, in a collar of stone, for a reference monument, bears S. 44° E., 30.3 lks. dist., with brass cap mkd. T6N R26E S1 AP48 RM 20 FT 1968 and an arrow pointing to the true cor.

A spruce, 14 ins. diam., bears S. 73° W., 44½ lks. dist., mkd. AP48 FAIR BT.

Angle point 49, monumented by a dead spruce tree, 18 ins. diam., mkd. APNBWMIR 49 on NW. face and BMFR on SE. face, from which new accessories

An iron post, set 26 ins. in the ground, in a collar of stone, for a reference monument, bears North 25.8 lks. dist., brass cap mkd. T6N R26E AP49 RM 17 FT FAIR 1968 and an arrow pointing to the true cor.

A spruce, 10 ins. diam., bears S. 47° E., 29 lks. dist., mkd. AP49 BT.

Angle point is on a steep NE. slope.

Remonumentation, Fort Apache Indian Reservation Bdy.,
T. 6 N , R. 26 E.

CHAINS

Angle point 53, monumented by a dead spruce snag,
23 ins. diam., mkd. NB WMIR above APNBWMIR 53 on NW.
face and BMFR on SE. face, from which new accessories

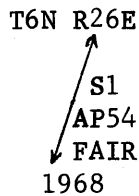
A spruce, 18 ins. diam., bears S. 14° E., 21 lks.
dist., mkd. AP53 BT.

An iron post, set 26 ins. in the ground, for a
reference monument, bears N. 8° W., 24.2 lks.
dist., brass cap mkd. T6N R26E AP53 RM 16 FT
FAIR 1968 and an arrow pointing to the true cor.

Angle point 54, monumented by a stump hole, with a
dead and fallen spruce tree, 10 ins. diam., alongside,
mkd. NBWMIR 54 on one face and an overgrown blaze on
the other face.

At the cor. point

Set the iron post, 22 ins. in the ground, brass cap mkd.



from which

A spruce, 5 ins. diam., bears S. 64° E., 33 lks.
dist., mkd. AP54 BT.

A spruce, 12 ins. diam., bears S. 75° W., 28 lks.
dist., mkd. AP54 FAIR BT.

The 8 mile cor., monumented by a malpais stone, 26 x 12 x
5 ins., set 11 ins. in the ground, mkd. BMFR on E. face
and NBWMIR 8M on W. face, with mound of stone to the W.
From the cor., the remains of the orig. bearing trees

An aspen, 16 ins. diam., bears N. 9½° E., 32 lks.
dist., mkd. with blaze, partly overgrown, and
faint scribe marks.

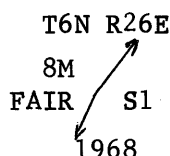
A dead spruce, 6 ins. diam., bears N. 65° E., 27
lks. dist., mkd. with an overgrown blaze.
(Note: record dist. 37 lks.).

A dead spruce, 15 ins. diam., bears S. 25½° E.,
10 lks. dist., mkd. NBWMIR 8M BT.

An aspen, 15 ins. diam., bears N. 26½° W., 21 lks.
dist., mkd. with an overgrown blaze.

At the cor. point

Set the iron post, 24 ins. in the ground, in a collar
of stone, brass cap mkd.



from which

Remonumentation, Fort Apache Indian Reservation Bdy.,
T. 6 N., R. 26 E.

CHAINS

A spruce, 13 ins. diam., bears N. 27° W., 32 lks. dist., mkd. 8M FAIR BT.

Rebuild the mound of stone W. of the iron post.

Bury the orig. cor. stone alongside the iron post.

Cor. is about 120 lks. W. of a ridge, bearing N. and S.

Angle point 57, monumented by a dead spruce, 15 ins. diam., mkd. MIR 57 on W. face and with an overgrown blaze on E. face, from which new accessories

An iron post, set 26 ins. in the ground, in a collar of stone, for a reference monument, bears N. 59° E., 25.8 lks. dist., brass cap mkd. T6N R26E S1 AP57 RM 17 FT FAIR 1968 and an arrow pointing to the true cor.

A spruce, 12 ins. diam., bears N. 50° W., 25 lks. dist., mkd. AP57 FAIR BT.

Angle point is 90 lks. W. of a ridge, bearing N. and S.

Angle point 58, monumented by an aspen tree, 12 ins. diam., mkd. BMFR on S. face and an overgrown blaze on NW. face, from which new accessories

An iron post, set 18 ins. in the ground, in a collar of stone, for a reference monument, bears S. 27° W., 15.2 lks. dist., brass cap mkd. T6N R26E AP58 S1 RM 10 FT FAIR 1968 and an arrow pointing to the true cor.

A spruce, 10 ins. diam., bears N. 74° W., 31 lks. dist., mkd. AP58 FAIR BT.

Angle point is on top of a ridge, bearing N. and S.

Angle point 59, monumented by a dead spruce tree, 14 ins. diam., mkd. BMFR on E. face and APNBWIR 59 on W. face, from which new accessories

An iron post, set 22 ins. in the ground, in a collar of stone, for a reference monument, bears N. 75° E., 25.8 lks. dist., brass cap mkd. T6N R26E S1 RM 17 FT AP59 1968 and an arrow pointing to the true cor.

A spruce, 15 ins. diam., bears N. 85° W., 16 lks. dist., mkd. AP59 FAIR BT.

Angle point is on top of a ridge, bearing N. and S.

Remonumentation, Fort Apache Indian Reservation Bdy.,
T. 7 N., R. 26 E.

CHAINS

Township 7 North, Range 26 East, G&SR M., Arizona

The Fort Apache Indian Reservation Boundary was resurveyed in 1906 by J. B. Wright and a portion was resurveyed in 1935 by Theo Vander Meer.

Remonumentation, T. 7 N., R. 26 E., G&SR M., Arizona

Angle point 60, monumented by an aspen tree, 12 ins. diam., mkd. with a blaze, partly overgrown, and scribe marks R60 on W. face, and with an overgrown blaze on E. face, from which new accessories

An iron post, set 12 ins. in the ground, mound of stone to top, for a reference monument, bears N. 74° E., 22.7 lks. dist., brass cap mkd. T7N R26E S36 RM 15 FT AP60 1968 and an arrow pointing to the true cor.

A spruce, 8 ins. diam., bears N. 29° W., 31 lks. dist., mkd. AP60 FAIR BT.

Angle point is on top of a ridge, bearing N. and S.

Angle point 61, monumented by an aspen, 10 ins. diam., mkd. with overgrown blazes on E. and W. faces. I cut open blaze on W. face and find faint scribe marks. From the cor., new accessories

A spruce, 12 ins. diam., bears S. 83½° E., 47 lks. dist., mkd. AP61 BT.

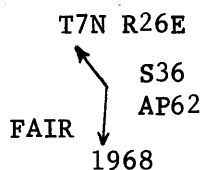
An iron post, set 14 ins. in the ground, mound of stone to top, for a reference monument, bears N. 70° W., 16.7 lks., brass cap mkd. T7N R26E AP61 FAIR RM 11 FT 1968 and an arrow pointing to the true cor.

Angle point is on top of a ridge, bearing N. and S.

Angle point 62, monumented by a spruce stump, 22 ins. diam., mkd. BMFR on E. face and with faint scribe marks on W. face.

At the cor. point

Set the iron post, 20 ins. in the ground, in a collar of stone, brass cap mkd.



from which

A fir, 15 ins. diam., bears S. 86° E., 26 lks. dist., mkd. AP62 BT.

A fir, 7 ins. diam., bears N. 72° W., 31 lks. dist., mkd. AP62 FAIR BT.

Remonumentation, Fort Apache Indian Reservation Bdy.,
T. 7 N., R. 26 E.

CHAINS

Deposit the orig. cor. stump alongside the iron post.

Angle point is on top of a ridge, bearing N. and S.

Angle point 63, monumented by a dead spruce tree, 20 ins. diam., mkd. BMFR on E. face and APNBWMIR 63 on W. face, from which new accessories

An iron post, set 20 ins. in the ground, in a collar of stone, for a reference monument, bears N. 14° E., 34.8 lks. dist., brass cap mkd. T7N R26E S36 AP63 RM 23 FT 1968 and an arrow pointing to the true cor.

A spruce, 8 ins. diam., bears S. 85° E., 29 lks. dist., mkd. AP63 BT.

Angle point is on top of a ridge, bearing N. and S.

The 8½ mile cor., monumented by a malpais stone, 16 x 14 x 3 ins., set 8 ins. in the ground, mkd. NBWMIR 8½M on W. face, with mound of stone to the E. From the cor., the remains of the remaining orig. bearing trees

A stump hole, with a dead and fallen spruce tree, 8 ins. diam., alongside, bears N. 50° E., 33 lks. dist., mkd. NBWMIR 8½M BT.

A spruce, 12 ins. diam., bears S. 10° E., 28 lks. dist., mkd. 8½ BT. (Note: record bearing and dist., N. 10° E., 27 lks.).

A stump hole, with a dead and fallen spruce tree, 10 ins. diam., alongside, bears N. 23° W., 28 lks. dist., mkd. NBWMIR 8½M BT.

At the cor. point

Set the iron post, 8 ins. in the ground, mound of stone to top, brass cap mkd.

T7N R26E
↑
S36
FAIR ↓ 8½M
1968

from which

Angle point 64 bears N. 2½° E., 47 lks. dist.

Bury the orig. cor. stone alongside the iron post.

Cor. is about 1½ chs. E. of a track road, bearing N. and S.

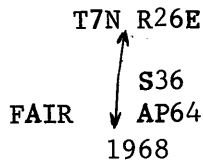
Angle point 64, monumented by a stump hole, with a dead and fallen spruce tree, 8 ins. diam., alongside, mkd. APNBWMIR 64 on one face and BMFR on the other face.

At the cor. point

Set the iron post, 8 ins. in the ground, with mound of stone to top, brass cap mkd.

Remonumentation, Fort Apache Indian Reservation Bdy.,
T. 7 N., R. 26 E.

CHAINS



from which

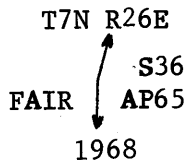
The $8\frac{1}{2}$ mile cor. bears S. $2\frac{1}{2}^\circ$ W., 47 lks. dist.

Angle point is on a ridge, bearing N. and S.

Angle point 65, monumented by a dead spruce snag, 14 ins. diam., mkd. APNBWMIR 65 on W. face and BMFR on E. face.

At the cor. point

Set the iron post, 24 ins. in the ground, in a collar of stone, brass cap mkd.



from which

A spruce, 9 ins. diam., bears S. $47\frac{1}{2}^\circ$ W., 17 lks. dist., mkd. AP65 FAIR BT.

A spruce, 11 ins. diam., bears N. 19° W., 14 lks. dist., mkd. AP65 FAIR BT.

Deposit the orig. cor. stump alongside the iron post.

Angle point is about 3 chs. E. of a track road, bearing N. and S.

Angle point 67, monumented by a dead spruce snag, 18 ins. diam., mkd. APNBWMIR 65 on N. face and BMFR on S. face, from which a new accessory

An iron post, set 22 ins. in the ground, in a collar of stone, for a reference monument, bears S. 83° E., 30.3 lks. dist., brass cap mkd. T7N R26E S36 AP67 RM 20 FT 1968 and an arrow pointing to the true cor.

From the angle point, the closing corner of secs. 31 and 36, T. 7 N., Rs. 26 and 27 E., which is an iron post, 2 ins. diam., projecting 6 ins. above ground, with brass cap mkd. and witnessed as described in the official record of the 1940 resurvey of T. 7 N., R. 27 E., bears N. $37^\circ 40'$ E., 125 lks. dist.

Angle point is 65 lks. S. of a fence, bearing irregularly NE. and SW.

Remonumentation, Fort Apache Indian Reservation Bdy.,
T. 7 N., R. 27 E.

CHAINS

Township 7 North, Range 27 East, G&SR M., Arizona

The Fort Apache Indian Reservation Boundary was resurveyed in 1906 by J. B. Wright and retraced in 1940 by White-Warner-Motoh.

Remonumentation, T. 7 N., R. 27 E., G&SR M., Arizona

Angle point 78, monumented by an aspen stump, 11 ins. diam., mkd. BMFR on N. face, with log alongside, mkd. APNBWMIR 78 on S. face, from which new accessories

A spruce, 12 ins. diam., bears N. $25\frac{1}{2}^{\circ}$ E., 37 lks. dist., mkd. AP78 BT.

An iron post, set 23 ins. in the ground, for a reference monument, bears N. 44° W., 18.2 lks. dist., brass cap mkd. T7N R27E AP78 RM 12 FT FAIR 1968 and an arrow pointing to the true cor.

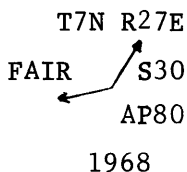
Angle point is 15 lks. E. of a fence, bearing irregularly NE. and SW.

Angle point 80, monumented by a stump hole, with pieces of rotten wood with faint blaze mks. alongside, verified by record course and distance from the remaining orig. bearing tree

A spruce, 12 ins. diam., bears N. 16° W., 13 lks. dist., mkd. with blaze, partly overgrown, and scribe marks BT

At the cor. point

Set the iron post, 22 ins. in the ground, in a collar of stone, brass cap mkd.



from which

A fir, 13 ins. diam., bears S. 81° E., 18 lks. dist., mkd. AP80 BT.

Angle point is 10 lks. E. of a fence bearing irregularly NE. and SW.

The 12 mile cor. and angle point 98, monumented by a mound of stone, verified by record course and dist. from the remains of the orig. bearing trees

A spruce, 17 ins. diam., bears N. 62° E., 30 lks. dist., mkd. with a blaze, partly overgrown, and scribe marks B M BT. (Note: record bearing N. 70° E.).

A pine, 30 ins. diam., bears S. 5° W., 22 lks. dist., mkd. with faint scribe marks.

Remonumentation, Fort Apache Indian Reservation Bdy.,
T. 7 N., R. 27 E.

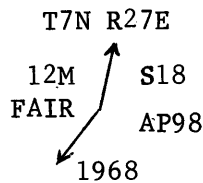
CHAINS

A fir stump, 25 ins. diam., with log alongside,
bears N. 60° W., 54 lks. dist., stump mkd. NBWMIR
12M BT.

A stump hole, with a dead and fallen pine tree, 40
ins. diam., alongside, bears N. 14° W., 40 lks.
dist., mkd. NBWMIR 12M BT.

At the cor. point

Set the iron post, 24 ins. in the ground, in a collar of
stone, brass cap mkd.



from which

A spruce, 8 ins. diam., bears N. 47° W., 43 lks.
dist., mkd. 12M FAIR BT.

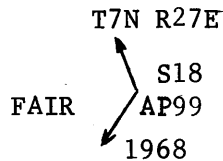
Raise a mound of stone E. of the iron post.

Cor. is 5 lks. E. of a fence bearing irregularly NE. and
SW.

Angle point 99, monumented by a malpais stone, 17 x 14 x
9 ins., set in a mound of stone, mkd. NBWMIR on S. face.

At the cor. point

Set the iron post, 20 ins. in the ground, in a collar of
stone, brass cap mkd.



Raise a mound of stone W. of the iron post.

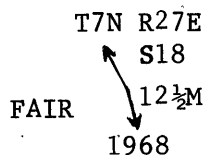
Bury the orig. cor. stone alongside the iron post.

Angle point is 170 lks. W. of new Big Lake Road and 3
lks. W. of fence bearing irregularly N. and S.

The 12½ mile corner, monumented by a malpais stone, 12 x
12 x 8 ins., set 6 ins. in the ground, mkd. WM R on W.
face, with mound of stone to the NE.

At the cor. point

Set the iron post, 22 ins. in the ground, in a collar
of stone, brass cap mkd.



Bury the orig. cor. stone alongside the iron post.

Remonumentation, Fort Apache Indian Reservation Bdy.,
T. 7 N., R. 27 E.

CHAINS

Cor. is in an open flat, 13 lks. W. of a fence bearing irregularly N. and S.

General Statement

The official record was found to be in error for some of the bearings and distances given for the bearing trees. A few of the trees were misnamed as to specie. A ring growth count was made on several trees which proved they were marked at the time of the original survey.

Where the original corner monument appeared to be undisturbed, it was accepted as the true point for the corner.

BOOK 4860

CERTIFICATE OF SURVEY

I, Howard H. Thomas, HEREBY CERTIFY upon honor that, in pursuance of special instructions bearing date of the 17th day of June, 1968, I have remonumented a portion of the cadastral survey corners of the Fort Apache Indian Reservation Boundary in Townships 6 and 7 North, Range 26 East, and Township 7 North, Range 27 East,

of the Gila and Salt River Meridian, in the State of Arizona, which are represented in the foregoing field notes as having been executed by me and under my direction; and that said survey has been made in strict conformity with said special instructions, the Manual of Instructions for the Survey of the Public Lands of the United States, and in specific manner described in the foregoing field notes.

April 14, 1969
(Date)

Howard H. Thomas
(Cadastral Surveyor)

(Date)

(Cadastral Surveyor)

CERTIFICATE OF APPROVAL

SUBMITTED FOR APPROVAL
Date JUL 30 1969

BUREAU OF LAND MANAGEMENT,
Washington, D. C.

The foregoing field notes of the remonumentation of a portion of the cadastral survey corners of the Fort Apache Indian Reservation Boundary in Townships 6 and 7 North, Range 26 East, and Township 7 North, Range 27 East, all of the Gila and Salt River Meridian, Arizona,

executed by Howard H. Thomas, Cadastral Surveyor, having been critically examined and found correct, are hereby approved.

JUN 3 1970
(Date)

Clark I. Humm
(Chief, Division of Engineering, Cadastral Survey)

CERTIFICATE OF TRANSCRIPT

~~I CERTIFY That the foregoing transcript of the field notes of the above-described surveys in is a true copy of the original field notes.~~

~~(Date)~~

~~(Chief, Division of Engineering)~~