

R 5169

Form 9600-9
(December 1979)
(formerly 9180-6)

UNITED STATES
DEPARTMENT OF THE INTERIOR
BUREAU OF LAND MANAGEMENT

ORIGINAL

B 0 0 K 5 1 6 9

FIELD NOTES

OF THE

DEPENDENT RESURVEY OF A PORTION OF THE FOURTH STANDARD PARALLEL NORTH

ON THE SOUTH BOUNDARY OF TOWNSHIP 17 NORTH, RANGE 5 EAST,

AND

THE DEPENDENT RESURVEY OF A PORTION OF THE SUBDIVISIONAL LINES,

WITH THE SURVEY OF SUBDIVISIONS

AND

METES-AND-BOUNDS SURVEYS IN SECTION 11,

TOWNSHIP 16 NORTH, RANGE 5 EAST,

Of the GILA AND SALT RIVER Meridian,

In the State of ARIZONA

EXECUTED BY

John P. Bennett III, Supervisory Cadastral Surveyor, and

Dennis K. McKay, Cadastral Surveyor,

Under special instructions dated October 26, 19 81, approved October 26, 1981,

, which provided for the surveys included under U.S. Survey/Group
Number 626, and assignment instructions dated October 26, 19 81
and October 28, 1981.

Survey commenced October 26, 19 81

Survey completed December 2, 19 81

INDEX DIAGRAM

Township 16 NORTH, Range 5 EAST

6	5	4	3	2	1
			Sec. 35 4	Sec. 36 3	
7	8	9	10 10	11	6 12
18	17	16	15	8 14	5 13
19	20	21	22	23	24
30	29	28	27	26	25
31	32	33	34	35	36

Subdivision of Sec. 11 - - - P. 12

Metes-and-Bounds Surveys in Sec. 11 - - - P. 22

T. 16 N., R. 5 E., Gila and Salt River Meridian, Arizona

CHAINS

The following field notes are those of the dependent resurvey of a portion of the Fourth Parallel North on the south boundary of Township 17 North, Range 5 East, and the dependent resurvey of a portion of the subdivisional lines with the survey of subdivisions and metes-and-bounds surveys in section 11, Township 16 North, Range 5 East, Gila and Salt River Meridian, Arizona.

The Fourth Standard Parallel North through Range 5 East was surveyed by J. B. McLaughlin in 1883, retraced by John C. Smith in 1885, by Ridgley C. Powers in 1886, by James B. Girand and Park W. Latimer in 1902, and resurveyed by Leslie H. Godwin and Donald E. Harding in 1956. The south boundary of section 36, Township 17 North, Range 5 East, was retraced by W. Oscar Secor in 1904. The subdivision lines were surveyed by James B. Girand and Park W. Latimer in 1902. Certain corners in the township were remonumented by Boyd S. Owens in 1964.

The survey was executed in accordance with the specifications as set forth in the Manual of Surveying Instructions, 1973, and the Special Instructions for Group No. 626, Arizona, dated October 26, 1981.

The directions of lines were determined from U.S. Geological Survey triangulation station "HOUSE," and refer to the true meridian. Distances were measured with a Zeiss SM-4 electronic instrument.

Before restoring the corners, all necessary lines of the original survey were retraced and diligent search was made for any evidence of the original monuments and other calls of the official record. Identified corners were remonumented in their original positions; lost corners were restored and monumented at proportionate positions, based on the original record. The retracement data were thoroughly verified and only the true line field notes are given herein.

The geographic position of the southeast corner of section 11 as determined from a tie made to U.S. Geological Survey triangulation station "HOUSE," located in the NE1/4 of sec. 19, Township 16 North, Range 5 East, is:

Latitude $34^{\circ}47'24.55''$ N Longitude $111^{\circ}46'47.77''$ W

The mean magnetic declination is $14^{\circ}30'$ East.

Dependent Resurvey of a Portion of the 4th Stan. Par. N,
S Bdy. T. 17 N., R. 5 E.,
Gila and Salt River Mer., Arizona
(Restoring the 1956 resurvey by Leslie H. Godwin and
Donald E. Harding)

Beginning at the stan. cor. of Tps. 17 N., Rs. 5 and 6 E., monumented with an iron post, $2\frac{1}{2}$ ins. diam., projecting 6 ins. above a mound of stone, 4 ft. base, 2 ft. high, with brass cap mkd.

Dependent Resurvey of a Portion of the 4th Stan. Par. N,
S Bdy. T. 17 N., R. 5 E., Gila and Salt River, Mer., Arizona

CHAINS

SC
T17N
R5E | R6E
S36 | S31
1956

N. 89°33' W., on the S bdy. of sec. 36.

Over mountainous land, through medium timber.

11.54 Point for the closing cor. of secs. 11 and 12, T. 16 N.,
R. 5 E., hereinafter described.

31.46 Point for the E 1/16 sec. cor. of sec. 11, T. 16 N.,
R. 5 E., hereinafter described.

40.62 The stan. 1/4 sec. cor. of sec. 36, monumented with an
iron post, 2½ ins. diam., set in a mound of stone, 4 ft.
base, 10 ins. high, to top, with brass cap mkd.

SC
T17N R5E
1/4 S 36
1956

from which the bearing tree mkd. in 1902.

A juniper, 8 ins. diam., bears N. 34° E., 47 lks.
dist., faintly mkd. 1/4 S36 SC BT.

from which the remains of the original bearing tree mkd.
in 1883

A pinyon pine stump, 3½ ft. high, 8 ins. diam.,
bears S. 40° W., 14 lks. dist. mkd. with a rotted
blaze. (Record, 12 lks.)

Cor. is located on a gentle west slope, 90 lks. east of a
wash, drains southerly.

S. 89°25' W., beginning new measurement.

Over rolling land.

10.76 Point for the 1/4 sec. cor. of sec. 11, T. 16 N.,
R. 5 E., hereinafter described.

25.68 Point for Cor. No. 1, Lot 10, sec. 11, T. 16 N., R. 5 E.,
hereinafter described.

30.68 Point for the W 1/16 sec. cor. of sec. 11, T. 16 N.,
R. 5 E., hereinafter described.

40.07 The stan. cor. of secs. 35 and 36, monumented with an
iron post, 2½ ins. diam., projecting 6 ins. above the
ground, in a scattered mound of stone, with brass cap
mkd.

SC
T17N R5E
S35 | S36
1956

Dependent Resurvey of a Portion of the 4th Stan. Par. N,
S Bdy. T. 17 N., R. 5 E., Gila and Salt River, Mer., Arizona

CHAINS		
	<p>from which</p> <p>A power pole, bears S. 54° W., 9½ lks. dist., lines extend N and S. 60° W.</p>	
	<p>N. 89°57' W., on the S bdy. of sec. 35.</p> <p>Over nearly level land, through scattering timber.</p>	
10.53	Point for the closing cor. of secs. 10 and 11, T. 16 N., R. 5 E., hereinafter described.	
39.17	The 1956 reference monument for the stan. 1/4 sec. cor. of sec. 35, hereinafter described.	
39.94	<p>The stan. 1/4 sec. cor. of sec. 35 is determined at record bearing and distance from the 1956 reference monument</p> <p>A brass tablet, 3½ ins. diam., loosely set in concrete at the base of concrete fence post, bears S. 89°57' E., 77 lks. dist., mkd. RM SC T17N R5E 1/4 S35 1956 and an arrow pointing to the cor. point. This monument is located in a wood plank fence, bears N. 38° E. and S. 38° W.</p> <p>At the cor. point</p> <p>Set an iron post, 28 ins. long, 2½ ins. diam., 18 ins. below ground with brass cap mkd.</p> <p style="text-align: center;">SC T17N R5E <u>1/4 S35</u> 1981</p> <p>Cor. of fences bears S. 40¾° E., 52 lks. dist.; a wood plank fence extends N. 38° E. and a wire cable fence extends N. 52° W.</p> <p>The cor. is located in a corral.</p>	
	<p style="text-align: center;">Dependent Resurvey of a Portion of the Subdivisional Lines, T. 16 N., R. 5 E., Gila and Salt River Mer., Arizona (Restoring the survey executed by James B. Girard and Park W. Latimer, in 1902)</p>	
	<p>From the cor. of secs. 13, 14, 23, 24, monumented with an iron post, 2½ ins. diam., projecting 12 ins. above ground, with brass cap mkd. as described in the official record of the 1964 remonumented notes.</p> <p>from which the remains of an original bearing tree</p> <p>A juniper stump, 24 ins. diam., bears S. 57½° E., 104 lks. dist, no marks visible.</p>	

Dependent Resurvey of a Portion of the Subdivisional Lines,
T. 16 N., R. 5 E., Gila and Salt River Mer., Arizona

CHAINS		
	<p>Cor. is located at a cor. of fences extending N and W.</p>	
	<p>N. 0°09' W., bet. secs. 13 and 14.</p>	
	<p>Over gently rolling land.</p>	
40.04	<p>Point for the 1/4 sec. cor. of secs. 13 and 14, at proportionate distance, falls in a golf course; there is no remaining evidence of the original cor., not monumented.</p>	
79.68	<p>The witness cor. of secs. 11, 12, 13 and 14, monumented with an iron post, 2½ ins. diam., projecting 6 ins. above ground, with brass cap mkd.</p>	
	<div style="text-align: center;"> <p>T16N R5E WC ↑ S11 S12 S14 S13 1964</p> </div>	
	<p>from which original bearing trees</p>	
	<p>A juniper limb, 10 ins. diam., bears S. 89° E., 95 lks. dist. mkd. T16N R5E S13 BT WC.</p>	
	<p>A juniper, 22 ins. diam., bears S. 74½° W., 105 lks. dist., with a partially healed blaze mkd. 16N R5E S14 BT WC.</p>	
	<p>from which the bearing tree mkd. in 1964</p>	
	<p>A juniper limb, 8 ins. diam., bears N. 51° W., 12.5 lks. dist., mkd. T16N R5E WC S11 BT.</p>	
	<p>A mound of stone, 3 ft. base, 1 ft. high, is W of the cor.</p>	
	<p>Cor. is located 2 chs. N of an asphalt surfaced road, bears S. 70° E. and N. 70° W., curving southerly.</p>	
80.08	<p>True point for the cor. of secs. 11, 12, 13 and 14, at record dist. from the witness cor., falls in a wash, 30 lks. wide, 5 ft. deep, draining southwesterly, where it is impractical to establish a permanent monument.</p>	
	<p>N. 0°07' E., bet. secs. 11 and 12.</p>	
	<p>Ascend over steep rugged sandstone, through scattered undergrowth.</p>	
5.10	<p>E edge of a ridge which projects westerly.</p>	
19.52	<p>Point for the S 1/16 sec. cor. of secs. 11 and 12, falls on exposed sandstone bedrock.</p>	
	<p>Set an aluminum post, 15 ins. long, 1 in. diam., in a drill hole, 5 ins. deep, with aluminum cap mkd.</p>	
	<div style="text-align: center;"> <p>T16N R5E S 1/16 S11 S12 1981</p> </div>	

Dependent Resurvey of a Portion of the Subdivisional Lines
T. 16 N., R. 5 E., Gila and Salt River Mer., Arizona

	CHAINS		
		<p>from which</p> <p>A juniper limb, 20 ins. diam., bears N. 70° E., 23 lks. dist., mkd. S 1/16 S12 BT.</p> <p>The marks X B0, on the E face and near the top of a sandstone boulder, 8 x 3 x 5 ft. above ground, bears N. 64° W., 54.6 lks. dist.</p> <p>Raise a mound of stone, 3 ft. base, 2 ft. high, N of the cor. (impractical to W).</p> <p>Cor. is located on a steep southern slope, 2 lks. N of the top of a cliff face, bears E and W.</p>	
	22.00	Ridge, bears S. 55° E. and N. 55° W.	
	39.04	<p>The 1/4 sec. cor. of secs. 11 and 12, monumented with a sandstone, 20 x 12 x 8 ins., firmly set 10 ins. in the ground, and in a mound of stone, 2 1/2 ft. base, to top, mkd. 1/4 on W face.</p> <p>from which an original bearing tree</p> <p>A juniper limb, 10 ins. diam., bears N. 75° W., 15 lks. dist., mkd. 1/4 S11 BT.</p> <p>At the cor. point</p> <p>Set an aluminum post, 28 ins. long, 1 in. diam., 2 ins. in the ground to solid rock and in a mound of stone, 5 ft. base, to top, with aluminum cap mkd.</p> <p style="text-align: center;">T16N R5E 1/4 S11 S12 1981</p> <p>from which new bearing trees</p> <p>A juniper, 8 ins. diam., bears S. 40 3/4° E., 70 lks. dist., mkd. 1/4 S12 BT.</p> <p>A juniper, 16 ins. diam., bears S. 66° W., 54 lks dist., mkd. 1/4 S11 BT.</p> <p>Deposit the mkd. stone alongside the aluminum post in the mound.</p> <p style="text-align: center;">_____</p> <p>N 0°40' W., beginning new measurement.</p> <p>Over broken and rugged sandstone terrain, through medium timber.</p>	
	20.67	<p>Point for the N 1/16 sec. cor. of secs. 11 and 12, falls on exposed sandstone bedrock.</p> <p>Set an aluminum post, 15 ins. long, 1 in. diam., in a drill hole, 2 ins. deep, and in a mound of stone, 4 ft. base, to top, with aluminum cap mkd.</p> <p style="text-align: center;">T16N R5E N 1/16 S11 S12 1981</p>	

Dependent Resurvey of a Portion of the Subdivisional Lines
T. 16 N., R. 5 E., Gila and Salt River Mer., Arizona

CHAINS

from which

A juniper, 4 ins. diam., bears N. 85° E., 27 lks. dist., mkd. X BT at the base.

The marks X B0, 1 ft. above ground on an exposed sandstone wall, bears S. 39° W., 23.4 lks. dist.

35.60 Intersect the S bdy. of sec. 36, T. 17 N., R. 5 E.

Point for the closing cor. of secs. 11 and 12, on the Fourth Standard Parallel North, at proportionate dist.; there is no remaining evidence of the original cor.

Set an aluminum post, 28 ins. long, 1 in. diam., 22 ins. in the ground, and in a mound of stone, 3 ft. base, to top, with aluminum cap mkd.

T17N	R5E
S36	
S11	S12
T16N	R5E
CC	
1981	

from which

The marks X B0, in a pocket at the base of a sandstone cliff, bears S. 44° E., 10.2 lks. dist.

The marks X B0, 3 ft. above ground and on the N face of a sandstone cliff, bears S. 25° W., 11.5 lks. dist.

From this point the stan. cor. of Tps. 17 N., Rs. 5 and 6 E., bears S. 89°33' E., 11.54 chs. dist., heretofore described.

From the true pt. for the cor. of secs. 11, 12, 13 and 14.

S. 89°49' W., bet. secs. 11 and 14.

Over rolling land, through medium timber.

19.97 Point for the E 1/16 sec. cor. of secs. 11 and 14.

Set an aluminum post, 28 ins. long, 1 in. diam., 22 ins. in the ground, and in a mound of stone, 2 ft. base, to top, with with aluminum cap mkd.

T16N	R5E
S11	
E 1/16	S14
1981	

from which

The marks X B0, at the base of the S face of a sandstone cliff, bears N. 44° W., 10 lks. dist.

From this point local monuments of unknown origin, a re-bar 5/8 in. diam., projecting 1 in. above ground, bears S. 69° W., 2.2 lks dist., and a re-bar, 5/8 in. diam., projecting 2 ins. above ground, bears N. 62° W., 2.4 lks. dist.

Dependent Resurvey of a Portion of the Subdivisional Lines,
T. 16 N., R. 5 E., Gila and Salt River Mer., Arizona

CHAINS		
39.94	<p>The 1/4 sec. cor. of secs. 11 and 14, monumented with an iron post, 2½ ins. diam., set in a mound of stone, 5 ft. base, 2 ft. high, to top, with brass cap mkd. as described in the official record of the 1964 remonumentation notes.</p> <p>from which a bearing tree mkd. in 1964</p> <p>A juniper, 20 ins. diam., bears N. 12° E., 13 lks. dist., mkd. 1/4 S11 BT.</p> <p>from which an original bearing tree</p> <p>A juniper limb, 10 ins. diam., bears S. 43½° E., 68 lks. dist., mkd. 1/4 S14 BT. (Record, S. 45¾° E.)</p> <p>Cor. falls on a NE slope, S. 45° E., 2.4 lks. dist. from a fence corner; fences extend N. 24° E. and W.</p> <hr/> <p>S. 89°59' W., beginning new measurement.</p> <p>Over sandstone knolls, through scattering timber.</p>	
20.01	<p>Point for the W 1/16 sec. cor. of secs. 11 and 14, falls on solid sandstone on the S wall of a wash.</p> <p>Set an aluminum tablet, 3 1/4 ins. diam., 3½ in. stem, in a drill hole, secured with a concrete base, 5 ins. diam. with top mkd.</p> <p style="text-align: center;">T16N R5E W 1/16 <u>S11</u> S14 1981</p> <p>Cor. is located under a fence line extending E and W, 8 ft. above the bottom of a wash, 50 lks. wide, 12 ft. deep, drains N. 55° E.</p> <p>Ascend SE sandstone slope.</p>	
40.02	<p>The cor. of secs. 10, 11, 14 and 15, monumented with an iron post, 2½ ins. diam., set in a mound of stone, 4 ft. base, 22 ins. high, to top, with brass cap mkd. as described in the official record of the 1964 remonumentation notes.</p> <p>from which the original bearing trees</p> <p>A pinyon pine, 8 ins. diam., bears N. 70¾° E., 191 lks. dist. mkd. with faint scribe marks.</p> <p>A juniper limb, 6 ins. diam., bears S. 36½° E., 26 lks. dist., mkd. T16N R5E S14 BT.</p> <p>A pinyon pine, 8 ins. diam., bears S. 18° W., 49 lks. dist., mkd. with a healed blaze (1964 record, S. 24° W., 48 lks.)</p> <p>From the cor. U.S. Geological Survey triangulation station "HOUSE," bears S. 67°19'57" W., 274.19 chs. dist., monumented with a standard brass tablet, 3½ ins. diam., set in a concrete base, 6 ins. diam., on bedrock, mkd. Y 1930 5127 VA. The published geographic position is:</p>	

Dependent Resurvey of a Portion of the Subdivisional Lines,
T. 16 N., R. 5 E., Gila and Salt River Mer., Arizona

CHAINS		
	<p>Latitude 34°46'15.433" N Longitude 111°51'11.186" W</p> <p>Cor. is located on the N bank of a small wash draining SE.</p>	
	<p>N. 0°02' W., bet. secs. 10 and 11.</p>	
	<p>Over rolling land, through medium timber.</p>	
20.04	<p>Point for the S 1/16 sec. cor. of secs. 10 and 11.</p>	
	<p>Set an aluminum post, 28 ins. long, 1 in. diam., 22 ins. in the ground, and in a mound of stone, 3 ft. base, to top, with aluminum cap mkd.</p>	
	<p style="text-align: center;">T16N R5E S 1/16 S10 S11 1981</p>	
	<p>from which</p>	
	<p>A juniper, 12 ins. diam., bears N. 82° E., 48.5 lks. dist., mkd. S/16 S11 BT.</p>	
	<p>A juniper, 12 ins. diam., bears N. 43° W., 45 lks. dist., mkd. S/16 S10 BT.</p>	
	<p>Cor. is located 50 lks. south of a wash, 30 lks. wide, drains NE.</p>	
40.08	<p>The 1/4 sec. cor. of secs. 10 and 11, monumented with an iron post, 2½ ins. diam., set in a mound of stone, 3 ft. base, 5 ins. high, to top, with brass cap mkd. as described in the the official record of the 1964 remonumentation notes.</p>	
	<p>from which an original bearing tree</p>	
	<p>A pinyon pine, 10 ins. diam., bears N. 24¾° E., 126 lks. dist., mkd. with a partially healed blaze and illegible scribe marks.</p>	
	<p>from which a bearing tree mkd. in 1964.</p>	
	<p>A juniper, 10 ins. diam., bears N. 16½° W., 73.5 lks. dist., mkd. T16N R5E 1/4 S10 BT.</p>	
	<p>Cor. is located on a gentle NE slope.</p>	
	<p style="text-align: center;">-----</p>	
	<p>N. 0°04' W., beginning new measurement</p>	
19.99	<p>Point for the N 1/16 sec. cor. of secs. 10 and 11.</p>	
	<p>Set an aluminum post, 28 ins. long, 1 in. diam., 5 ins. in the ground to solid rock, and in a mound of stone, 4 ft. base, to top, with aluminum cap mkd.</p>	
	<p style="text-align: center;">T16N R5E N 1/16 S10 S11 1981</p>	

Dependent Resurvey of a Portion of the Subdivisional Lines
T. 16 N., R. 5 E., Gila and Salt River Mer., Arizona

	CHAINS														
		<p>from which</p> <p>A pinyon pine, 6 ins. diam., bears N. 41° E., . 38.5 lks. dist., mkd. N 1/16 S11 BT.</p> <p>A pinyon pine, 6 ins. diam., bears N. 54° W., 32 lks. dist., mkd. N 1/16 S10 BT.</p> <p>Cor. is located on a NE slope.</p>													
	32.02	<p>Point for Cor. No. 4, Lot 11, sec. 11.</p> <p>Set an aluminum post, 28 ins. long, 1 in. diam., 23 ins. in the ground, and in a mound of stone, 1½ ft. base, to top, with aluminum cap mkd.</p> <div style="text-align: center;"> <table border="0"> <tr><td></td><td> </td><td>Lot</td></tr> <tr><td></td><td> </td><td>4 11</td></tr> <tr><td>S10</td><td>—</td><td>S11</td></tr> <tr><td></td><td> </td><td>1981</td></tr> </table> </div>			Lot			4 11	S10	—	S11			1981	
		Lot													
		4 11													
S10	—	S11													
		1981													
	34.51	<p>Cor. is located in a split rail fence extending N and S, and 40 lks. N of a graded gravel road, bears S. 50° E. and N. 50° W.</p> <p>The closing cor. of secs. 10 and 11 monumented with an iron post, 2½ ins. diam., projecting 5 ins. above ground, with brass cap mkd. as described in the official record of the 1964 remonumentation notes.</p> <p>Add the marks AM 1981 to the brass cap and reset the iron post 4 ins. below ground.</p>													
	34.52	<p>Intersect the S bdy. of sec. 35, T. 17 N., R. 5 E.</p> <p>Point for the closing cor. of secs. 10 and 11, on the Fourth Standard Parallel North, marked with an open end pipe, of unknown origin, 1 in. diam., projecting 4 ins. above ground.</p> <p>Set an aluminum post, 28 ins. long, 1 in. diam., 22 ins. in the ground, with aluminum cap mkd.</p> <div style="text-align: center;"> <table border="0"> <tr><td>T17N</td><td>R5E</td></tr> <tr><td colspan="2">S35</td></tr> <tr><td>S10</td><td>S11</td></tr> <tr><td>T16N</td><td>R5E</td></tr> <tr><td colspan="2">CC</td></tr> <tr><td colspan="2">1981</td></tr> </table> </div> <p>from which</p> <p>A juniper, 6 ins. diam., bears S. 83° E., 49.5 lks. dist., mkd. T16N R5E S11 CC BT.</p> <p>Reset the open end pipe alongside the aluminum post.</p> <p>Cor. is located 41 lks. east of the center of a gravel road, 46 lks. wide, bears S. 30° E. and N. 30° W.</p>	T17N	R5E	S35		S10	S11	T16N	R5E	CC		1981		
T17N	R5E														
S35															
S10	S11														
T16N	R5E														
CC															
1981															

Dependent Resurvey of a Portion of the Subdivisional Lines
T. 16 N., R. 5 E., Gila and Salt River Mer., Arizona

CHAINS		
	<p>From this point the stan. cor. of secs. 35 and 36, T. 17 N., R. 5 E. bears S. 89°57' E., 10.53 chs. dist, heretofore described.</p>	
	<p style="text-align: center;">Subdivision of Section 11, T. 16 N., R. 5 E., Gila and Salt River, Mer., Arizona</p>	
19.81	<p>From the 1/4 sec. cor. of secs. 11 and 14. N. 0°11' W., on the N and S center line of sec. 11. Point for the center S 1/16 sec. cor. of sec. 11.</p>	
	<p>Set an aluminum post, 28 ins. long, 1 in. diam., 22 ins. in the ground, and in a mound of stone, 3 ft. base, to top, with aluminum cap mkd.</p>	
	<p style="text-align: center;">T16N R5E C S1/16 S11 C 1981</p>	
	<p>from which A juniper, 20 ins. diam., bears S. 62° E., 72 lks. dist., mkd. CS 1/16 S11 BT. The marks X B0, 5 ft. above ground, on the S face of a sandstone ledge, bears N. 4° W., 68 lks. dist.</p>	
34.67	<p>Point for the center N-N-S 1/256 sec. cor. of sec. 11. Set an aluminum post, 28 ins. long, 1 in. diam., 23 ins. in the ground, and in a mound of stone, 3 ft. base, to top, with aluminum cap mkd.</p>	
	<p style="text-align: center;">S11 C-N-N-S 1/256 1981</p>	
	<p>from which A juniper, 16 ins. diam., bears S. 8° W., 43 lks. dist., mkd. C-N-N-S 1/256 S11 BT. A juniper, 4 ins. diam., bears S. 78° W., 18 lks. dist., mkd. X BT.</p>	
	<p>Cor. is located 23 lks. S of a wash, drains westerly. From this point an open end pipe, 2 ins. diam., projecting 2 ft. above ground, in a mound of stone, 2 ft. base, 6 ins. high, bears N. 87° E., 17.3 lks. dist., with another open end pipe, 1 1/4 in. diam., projecting 4 ins. above ground, set alongside. These monuments of unknown origin are not utilized in the course of this survey.</p>	
39.62	<p>Point for the center 1/4 sec. cor., at intersection with the E and W center line of sec. 11.</p>	

Subdivision of Section 11,
T. 16 N., R. 5 E., Gila and Salt River Mer., Arizona

CHAINS		
	<p>Set an aluminum post, 28 ins. long, 1 in. diam., 22 ins. in the ground, and in a mound of stone, 2 ft. base, to top, with aluminum cap mkd</p> <p style="text-align: center;">T16N R5E C 1/4 S11 1981</p> <p>Cor. is located 24 lks. S of a paved road, bears E and W.</p> <p>From this point an open end pipe, 2½ ins. diam., projecting 18 ins. above ground, bears N. 83° E., 20.3 lks. dist. This monument of unknown origin is not utilized in the course this survey.</p>	
60.07	<p>Point for the center N 1/16 sec. cor. of sec. 11, is located in a residential lot prepared for development where it is impractical to set a monument.</p>	
70.29	<p>Point for the center N-N 1/64 sec. cor. of sec. 11.</p> <p>Set an aluminum post, 28 ins. long, 1 in. diam., 5 ins. in the ground to bedrock, and in a mound of stone, 4 ft. base, to top, with aluminum cap mkd.</p> <p style="text-align: center;">C N-N 1/64 S11 C 1981</p> <p>from which</p> <p style="padding-left: 40px;">A juniper, 6 ins. diam., bears N. 28° E., 34.5 lks. dist., mkd. C-N-N 1/64 S11 BT.</p> <p style="padding-left: 40px;">A juniper, 6 ins. diam., bears S. 42° E., 10.5 lks. dist., mkd. X BT at the base.</p> <p>Cor. is located 70 lks. N of a barb wire fence extending E and W, and 90 lks. N of the center of a paved road, bears E and W.</p>	
74.88	<p>Intersect the of sec. 36, T. 17 N., R. 5 E. (Fourth Standard Parallel North).</p> <p>Point for the 1/4 sec. cor. of sec. 11, is at midpoint on the N bdy. of sec. 11.</p> <p>Set an aluminum post, 28 ins. long, 1 in. diam., 19 ins. in the ground, and in a mound of stone, 3 ft. base, to top, with aluminum cap mkd.</p> <p style="text-align: center;">T17N R5E 1/4 S11 T16N R5E 1981</p> <p>from which</p> <p style="padding-left: 40px;">The marks X BO, on top of a sandstone outcrop, 4 x 2 x 1 ft. high, bears N. 26° E., 30.5 lks. dist.</p> <p style="padding-left: 40px;">A juniper, 12 ins. diam., bears S. 48° W., 208 lks. dist., mkd. 1/4 S11 BT.</p>	

Subdivision of Section 11,
T. 16 N., R. 5 E., Gila and Salt River Mer., Arizona

CHAINS	
	<p>From this point the stan. 1/4 sec. cor. of sec. 36, T. 17 N., R. 5 E., bears N. 89°25' E., 10.76 chs. dist., heretofore described.</p>
	<p>From the 1/4 sec. cor. of secs. 11 and 12. N. 89°21' W., on the E and W center line of sec. 11.</p>
20.08	<p>Point for the center E 1/16 sec. cor. of sec. 11, falls on sandstone bedrock.</p>
	<p>Set an aluminum tablet 3 1/4 in. diam., 3 1/2 in. stem, in a drill hole in the sandstone, with top mkd.</p>
	<p style="text-align: center;">T16N R5E E 1/16 C—————C S11 1981</p>
	<p>from which</p>
	<p style="padding-left: 40px;">The marks X B0, 3 ft. above ground and on the NW face of a sandstone ledge, bears N. 74° E., 13.3 lks. dist.</p>
	<p>Raise a mound of stone, 3 ft. base, 18 ins. high, S of the cor. (impractical to N).</p>
	<p>From this point the chiseled marks X 1/16, bears N. 85° E., 6.6 lks. dist. These marks of unknown origin are not utilized in the course of this survey.</p>
30.12	<p>Point for the center W-E 1/64 sec. cor. of sec. 11.</p>
	<p>Set an aluminum post, 28 ins. long, 1 in. diam., 14 ins. in the ground to solid rock, and in a mound of stone, 3 ft. base, to top, with aluminum cap mkd.</p>
	<p style="text-align: center;">W-E 1/64 C—————C S11 1981</p>
40.16	<p>The center 1/4 sec. cor. of sec. 11.</p>
60.12	<p>Point for the center W 1/16 sec. cor. of sec. 11, falls in a paved road.</p>
	<p>Set a railroad spike flush with pavement, mkd.</p>
	<p style="text-align: center;">W 1/16 C—————C S11 1981</p>
	<p>from which</p>
	<p style="padding-left: 40px;">An aluminum post, 28 ins. long, 3/4 in. diam., set 24 ins. in the ground, for a reference monument, bears N. 32 1/4° E., 63.9 lks. dist, with aluminum cap mkd. C-W 1/16 S11 RM 42.2 FT. 1981 and an arrow pointing to the cor.</p>

Subdivision of Section 11,
T. 16 N., R. 5 E., Gila and Salt River Mer., Arizona

CHAINS		
	<p>An aluminum post, 28 ins. long, $\frac{3}{4}$ in. diam., set 24 ins. in the ground, for a reference monument, bears S. $57\frac{1}{4}^{\circ}$ E., 51.6 lks. dist., with aluminum cap mkd. C-W 1/16 S11 RM 34.1 FT. 1981 and an arrow pointing to the cor.</p> <p>Cor. is located S. 50° E., 22 lks. dist. from the intersection of roads, extending E, S and N. 10° W.</p> <p>70.10 Point for the center W-W 1/64 sec. cor. of sec. 11.</p> <p>Set an aluminum post, 28 ins. long, 1 in. diam., 5 ins. in the ground to solid rock, and in a mound of stone, 4 ft. base, to top, with aluminum cap mkd.</p> <p style="text-align: center;">W-W 1/64 C-----C S11 1981</p> <p>from which</p> <p>A juniper, 18 ins. diam., bears N. 67° W., 79 lks. dist., mkd. C-W-W 1/64 S11 BT.</p> <p>A pinyon pine, 4 ins. diam., bears N. 18° W., 72 lks. dist., mkd. X BT at the base.</p> <p>From this point an iron pipe, 2 ins. diam., projecting 8 ins. above ground, bears N. 79° E., 6.3 lks. dist. This pipe of unknown origin is not utilized in the course of this survey.</p>	
80.08	<p>The 1/4 sec. cor. of secs. 10 and 11.</p> <hr/> <p style="text-align: center;">NE 1/4 of Section 11</p> <hr/> <p>From the center E 1/16 sec. cor. of sec. 11.</p> <p>N. $0^{\circ}26'$ W., on the N and S center line of the NE 1/4 of sec. 11.</p> <p>20.56 Point for the NE 1/16 sec. cor., at intersection with the E and W center line of the NE 1/4 of sec. 11, falls on sandstone bedrock.</p> <p>Set an aluminum post, 20 ins. long, 1 in. diam., 6 ins. into a drill hole, and in a mound of stone, 3 ft. base, to top, with aluminum cap mkd.</p> <p style="text-align: center;">T16N R5E NE 1/16 S11 1981</p> <p>from which</p> <p>The marks X B0, 1 ft. above ground on the N face of a sandstone ledge, bears N. 60° E., 2.7 lks. dist.</p> <p>The marks X B0, on the W face of same ledge, bears S. 33° W., 3.7 lks. dist.</p>	

Subdivision of Section 11,
T. 16 N., R. 5 E., Gila and Salt River Mer., Arizona

CHAINS		
30.91	<p>Point for the center N-NE 1/64 sec. cor. of sec. 11, falls on sandstone bedrock.</p> <p>Set an aluminum post, 15 ins. long, 1 in. diam., 2 ins. into a drill hole, and in a mound of stone, 4 ft. base, to top, with aluminum cap mkd.</p> <p style="text-align: center;">S11 C-N-NE 1/64 1981</p> <p>from which</p> <p style="padding-left: 40px;">A pinyon pine, 7 ins. diam., bears S. 43° E., 36 lks. dist., mkd. C-N-NE 1/64 S11 BT.</p> <p>From this point an open end iron pipe, 2 ins. diam., projecting 2 ft. above ground bears S. 27°35' E., 97.2 lks. dist. This monument of unknown origin is not utilized in the course of this survey.</p>	
35.54	<p>Intersect S bdy. of sec. 36, T. 17 N., R. 5 E. (Fourth Standard Parallel North).</p> <p>Point for the E 1/16 sec. cor. of sec. 11, at proportionate dist., on the N bdy. of sec. 11.</p> <p>Set an aluminum post, 28 ins. long, 1 in. diam., 20 ins. in the ground, and in a mound of stone, 3 ft. base, to top, with aluminum cap mkd.</p> <p style="text-align: center;">T17N R5E E 1/16 S11 T16N R5E 1981</p> <p>from which</p> <p style="padding-left: 40px;">A juniper, 15 ins. diam., bears S. 39° W., 39 lks. dist., mkd. E 1/16 S11 BT.</p> <p>From this point the stan. 1/4 sec. cor. of sec. 36, T. 17 N., R. 5 E., bears N. 89°33' W., 9.16 chs. dist., heretofore described.</p> <hr style="width: 20%; margin: 10px auto;"/> <p>From the N 1/16 sec. cor. of secs. 11 and 12.</p> <p>N. 89°40' W., on the E and W center line of the NE 1/4 of sec. 11.</p>	
19.99	<p>The NE 1/16 sec. cor. of sec. 11.</p>	
39.98	<p>The point for the center N 1/16 sec. cor. of sec. 11.</p> <hr style="width: 20%; margin: 10px auto;"/> <p>From the center N-NE 1/64 sec. cor. of sec. 11.</p> <p>S. 89°58' W., on the E and W center line of the NW 1/4 of the NE 1/4 of sec. 11.</p>	
19.95	<p>The center N-N 1/64 sec. cor. of sec. 11.</p> <hr style="width: 20%; margin: 10px auto;"/>	

Subdivision of Section 11,
T. 16 N., R. 5 E., Gila and Salt River Mer., Arizona

CHAINS		
	<p>SE 1/4 of Section 11</p> <hr/> <p>From the E 1/16 sec. cor. of secs. 11 and 14.</p> <p>N. 0°02' W., on the N and S center line of the SE 1/4 of sec. 11.</p>	
19.66	<p>Point for the SE 1/16 sec. cor., at intersection with the E and W center line of the SE 1/4 of sec. 11.</p> <p>Set an aluminum post, 28 ins. long, 1 in. diam., 8 ins. in the ground to solid rock, and in a mound of stone, 4 ft. base, to top, with aluminum cap mkd.</p> <p style="text-align: center;">T16N R5E SE 1/16 S11 1981</p> <p>from which</p> <p style="padding-left: 40px;">The marks X B0, in the middle of the N face of a sandstone ledge, 25 ft. long, 7 ft. high, bears S. 37° E., 19.8 lks. dist.</p> <p style="padding-left: 40px;">A pinyon pine, 10 ins. diam., bears S. 70° W., 17 lks. dist., mkd. SE 1/16 S11 BT.</p>	
39.33	<p>The center E 1/16 sec. cor. of sec. 11</p> <hr/> <p>From the S 1/16 sec. cor. of secs. 11 and 12.</p> <p>N. 89°45' W., on the E and W center line of the SE 1/4 of sec. 11.</p>	
20.02	<p>The SE 1/16 sec. cor. of sec. 11.</p>	
40.05	<p>The center S 1/16 sec. cor. of sec. 11.</p> <hr/> <p>From the center W-E 1/64 sec. cor. of sec. 11.</p> <p>S. 0°07' E., on the N and S center line of the NW 1/4 of the SE 1/4 of sec. 11.</p>	
4.935	<p>Point for the center N-NW-SE 1/256 sec. cor. of sec. 11.</p> <p>Set an aluminum post, 28 ins. long, 1 in. diam., 16 ins. in the ground, and in a mound of stone, 3 ft. base, to top, with aluminum cap mkd.</p> <p style="text-align: center;">S11 C-N-NW-SE 1/256 1981</p> <p>from which</p> <p style="padding-left: 40px;">A juniper, 20 ins. diam., bears S. 54° E., 35 lks. lks. dist., mkd C-N-NW-SE 1/256 S11 BT.</p>	

Subdivision of Section 11,
T. 16 N., R. 5 E., Gila and Salt River Mer., Arizona

CHAINS		
	<p>From this point a re-bar 3/8 in. diam., projecting 4 ins. above ground, in a scattered mound of stone, bears N. 88° E., 24.2 lks. dist. This monument of unknown origin is not utilized in the course of this survey.</p>	
	<p>N. 89°27' W., on the E and W center line of the NW 1/4 of the NW 1/4 of the SE 1/4 of sec. 11.</p>	
10.035	<p>The center N-N-S 1/256 sec. cor. of sec. 11.</p>	
	<p style="text-align: center;">SW 1/4 of Section 11</p>	
	<p>From the W 1/16 sec. cor. of secs. 11 and 14.</p>	
	<p>N. 0°07' W., on the N and S center line of the SW 1/4 of sec. 11.</p>	
19.92	<p>Point for the SW 1/16 sec. cor., at intersection with the E and W center line of the SW 1/4 of sec. 11, falls in a wash, 25 lks. wide, 6 ft. deep, drains northerly, where it is impractical to set a permanent monument.</p>	
	<p>from which</p>	
	<p>An aluminum post, 28 ins. long, 1 in. diam., set 21 ins. in the ground, for a reference monument, bears N. 40° E., 43.9 lks. dist., with aluminum cap mkd. SW 1/16 S11 RM 29 FT. 1981 and an arrow pointing to the cor.</p>	
	<p>An aluminum post, 28 ins. long, 1 in. diam., set 22 ins. in the ground, for a reference monument, bears S. 36° E., 44.7 lks. dist., with aluminum cap mkd. SW 1/6 S11 RM 29.5 FT. 1981 and an arrow pointing to the cor.</p>	
34.86	<p>Point for the center N-N-SW 1/256 sec. cor. of sec. 11.</p> <p>Set an aluminum post, 28 ins. long, 1 in. diam., 23 ins. in the ground, and in a mound of stone, 1 ft. base, to top, with aluminum cap mkd.</p>	
	<p style="text-align: center;">S11 C-N-N-SW 1/256 1981</p>	
	<p>Cor. is 27 lks. W of the center line of Verde Valley Road, paved, bears northerly and southerly.</p>	
39.84	<p>The center W 1/16 sec. cor. of sec. 11.</p> <p>From the center S 1/16 sec. cor. of sec. 11.</p> <p>N. 89°41' W., on the E and W center line of the SW 1/4 of sec. 11.</p>	

Subdivision of Section 11,
T. 16 N., R. 5 E., Gila and Salt River Mer., Arizona

CHAINS		
19.98	The point for the SW 1/16 sec. cor. of sec. 11.	
20.95	Paved road, bears N and S.	
39.96	The S 1/16 sec. cor. of secs. 10 and 11.	
	<hr/> From the center N-N-S 1/256 sec. cor. of sec. 11.	
	N. 89°26' W., on the E and W center line of the N $\frac{1}{2}$ of the NE 1/4 of the SW 1/4 of sec. 11.	
19.96	The center N-N-SW 1/256 sec. cor. of sec. 11.	
	<hr/> N. 89°26' W., on the E and W center line of the NE 1/4 of the NW 1/4 of the SW 1/4 of sec. 11.	
9.982	Point for the center N-NW-SW 1/256 sec. cor. of sec. 11.	
	Set an aluminum post, 28 ins. long, 1 in. diam., 23 ins. in the ground, and in a mound of stone, 2 ft. base, to top, with aluminum cap mkd.	
	S11	
	C-N-NW-SW	
	1/256	
	1981	
	from which	
	A juniper, 8 ins. diam., bears S. 42° W., 64 lks. dist., mkd. X BT at the base.	
	A juniper, 4 ins. diam., bears N. 2° W., 7 lks. dist., mkd. C-N-NW-SW 1/256 S11 BT.	
	From this point a re-bar, 3/8 in. diam., projecting 4 ins. above ground, bears S. 88° E., 5 lks. dist. This monument of unknown origin is not utilized in the course of this survey.	
	<hr/> N. 0°04' W., on the N and S center line of the NW 1/4 of the SW 1/4 of sec. 11.	
4.995	The center W-W 1/64 sec. cor. of sec. 11.	
	<hr/> NW 1/4 of Section 11 <hr/>	
	From the center W 1/16 sec. cor. of sec. 11.	
	N. 0°07' W., on the N and S center line of the NW 1/4 of sec. 11.	
20.23	Point for the NW 1/16 sec. cor., at intersection with the E and W center line of the NW 1/4 of sec. 11.	
	Set an aluminum post, 28 ins. long, 1 in. diam., 22 ins. in the ground, and in a mound of stone, 3 ft. base, to top, with aluminum cap mkd.	

Subdivision of Section 11,
T. 16 N., R. 5 E., Gila and Salt River Mer., Arizona

CHAINS

NW 1/16 S11
1981

from which

A juniper, 10 ins. diam., bears N. 18° W., 89 lks. dist., mkd. NW 1/16 S11 BT.

From this point, an open end pipe, 2 ins. diam., projecting 2 ft. above ground with another open end pipe, 1 in. diam., projecting 5 ins. above ground set alongside, located at a cor. of fences extending N and W, bears S. 34½° E., 27 lks. dist. These monuments of unknown origin are not utilized in the course of this survey.

30.30 Point for the center N-NW 1/64 sec. cor. of sec. 11.

Set an aluminum post, 28 ins. long, 1 in. diam., 22 ins. in the ground, and in a mound of stone, 2½ ft. base, to top, with aluminum cap mkd.

S11
C-N-NW
1/64
1981

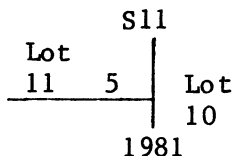
from which

A juniper, 14 ins. diam., bears N. 14° E., 92 lks. dist., mkd. C-N-NW 1/64 S11 BT.

From this point, an open end pipe, 2 ins. diam., located at cor. of fences extending E and S, bears S. 28 1/4° E., 36.8 lks. dist. This monument of unknown origin is not utilized in the course of this survey.

32.34 Point for Cor. No. 5, Lot 11, sec. 11.

Set an aluminum post, 28 ins. long, 1 in. diam., 23 ins. in the ground, and in a mound of stone, 3 ft. base, to top, with aluminum cap mkd.



from which

A juniper, 4 ins. diam., bears S. 40° E., 12 lks. dist., mkd. X BT at the base.

Cor. is located 12 lks. S of a wash, 12 lks. wide, 6 ft. deep, drains westerly.

34.84 Intersect the S bdy. of sec. 36, T. 17 N., R. 5 E. (Fourth Standard Parallel North).

Point for the W 1/16 sec. cor. of sec. 11, at proportionate dist., on the N bdy. of sec. 11.

Set an aluminum post, 28 ins. long, 1 in. diam., 21 ins. in the ground, and in a mound of stone, 2½ ft. base, to top, with aluminum cap mkd.

Subdivision of Section 11,
T. 16 N., R. 5 E., Gila and Salt River Mer., Arizona

CHAINS		
	<p style="text-align: center;">T17N R5E W 1/16 S11 T16N R5E 1981</p> <p>from which</p> <p>A juniper, 6 ins. diam., bears S. 34° E., 118.5 lks. dist., mkd X BT at the base.</p> <p>A juniper, 10 ins. diam., bears S. 25° W., 110 lks. dist., mkd. W 1/16 S11 BT.</p> <p>Cor. is located in an abandoned fence, bears E and W.</p> <p>From this point the stan. cor. of secs. 35 and 36, T. 17 N. R. 5 E., bears S. 89°25' W., 9.39 chs. dist., heretofore described.</p> <hr style="width: 20%; margin: 10px auto;"/> <p>From the point for the center N 1/16 sec. cor. of sec. 11.</p> <p>West, on the E and W center line of the NW 1/4 of sec. 11.</p>	
19.93	The NW 1/16 sec. cor. of sec. 11.	
29.90	<p>Point for the center W-NW 1/16 sec. cor. of sec. 11.</p> <p>Set an aluminum post, 28 ins. long, 1 in. diam., 22 ins. in the ground, and in a mound of stone, 3 ft. base, to top, with aluminum cap, mkd.</p> <p style="text-align: center;">S11 C-W-NW 1/64 1981</p> <p>from which</p> <p>A juniper, 10 ins. diam., bears N. 41° E., 48.5 lks. dist., mkd. X BT at the base.</p> <p>A juniper, 28 ins. diam., bears S. 83° W., 64 lks. dist., mkd. C-W-NW 1/64 S11 BT.</p> <p>From this point an open end pipe, 2 ins. diam., projecting 2 ft. above ground, bears N. 80° W., 8.4 lks. dist. This monument of unknown origin is not utilized in the course of this survey</p>	
39.87	The N 1/16 sec. cor. of secs. 10 and 11.	
14.92	<p>From the center N-N 1/64 sec. cor. of sec. 11.</p> <p>S. 89°33' W., on the E and W center line of the NE 1/4 of the NW 1/4 of sec. 11.</p> <p>Point for Cor. No. 4, Lot 10, sec. 11, 5.00 chs. in easting from the center N-NW 1/64 sec. cor. of sec. 11.</p> <p>Set an aluminum post, 28 ins. long, 1 in. diam., 22 ins. in the ground, and in a mound of stone, 2½ ft. base, to top, with aluminum cap mkd.</p>	

Subdivision of Section 11,
T. 16 N., R. 5 E., Gila and Salt River Mer., Arizona

CHAINS

Lot 10	
4	
S11	
1981	

from which

A juniper, 10 ins. diam., bears N. 73° E., 30 lks.
dist., mkd. X BT at the base.

Cor. is located 40.5 lks. N of a fence line, bears E and W.

19.92 The center N-NW 1/64 sec. cor. of sec. 11.

From the center W-W 1/64 sec. cor. of sec. 11.

N. 0°06' W., on the N and S center line of the SW 1/4 of
the NW 1/4 of sec. 11.

20.11 The center W-NW 1/64 sec. cor. of sec. 11.

Metes-and-Bounds Surveys in Section 11,
T. 16 N., R. 5 E., Gila and Salt River Mer., Arizona

Lot 10 of Section 11

Beginning at the point for Cor. No. 1, Lot 10, sec. 11,
on the N bdy. of the Tp., 5.00 chs. in easting from the W
1/16 sec. cor. of sec. 11.

Set an aluminum post, 28 ins. long, 1 in. diam., 24 ins.
in the ground, and in a mound of stone, 3 ft. base, to
top, with aluminum cap mkd.

T17N	R5E
1	
LOT 10	
S11	
T16N R5E	
1981	

from which

A juniper, 8 ins. diam., bears S. 25° E., 11 lks.
dist., mkd. X BT at the base.

Cor. is in an abandoned fence, bears E and W.

S. 89°25' W., on line 1-2, Lot 10, sec. 11, identical
with the N bdy. of sec. 11.

5.00 The W 1/16 sec. cor. of sec. 11, identical with Cor. No.
2, Lot 10, and Cor. No. 1, Lot 11, both of sec. 11,
heretofore described.

S. 0°07' E., on line 2-3, Lot 10, sec. 11, identical with
the N and S center line of the NW 1/4 of sec. 11.

2.50 Cor. No. 5, Lot 11, sec. 11, heretofore described.

Metes-and-Bounds Surveys in Section 11,
T. 16 N., R. 5 E., Gila and Salt River Mer., Arizona

CHAINS	
4.54	<p>The center N-NW 1/64 sec. cor. of sec. 11, identical with Cor. No. 3, Lot 10, sec. 11, heretofore described.</p> <hr/> <p>N. 89°33' E., on line 3-4, Lot 10, sec. 11 identical with the E and W center line of the NE 1/4 of the NW 1/4 of sec. 11.</p>
5.00	<p>Cor. No. 4, Lot 10, sec. 11, heretofore described.</p> <hr/> <p>N. 0°07' W., on line 4-1, Lot 10, sec. 11.</p>
4.55	<p>Cor. No. 1, Lot 10, sec. 11, and the place of beginning.</p> <hr/> <p style="text-align: center;">Lot 11 of Section 11</p> <hr/> <p>Beginning at Cor. No. 1, Lot 11, sec. 11, identical with Cor. 2, Lot 10, sec. 11 and with the W 1/16 sec. cor. of sec. 11, on the N bdy. of the Tp.</p> <p>S. 89°25' W., on line 1-2, Lot 11, sec. 11, identical with the N bdy. of sec. 11.</p>
9.39	<p>The stan. cor. of secs. 35 and 36, T. 17 N., R. 5 E., identical with Cor. No. 2, Lot 11, sec. 11, heretofore described.</p> <hr/> <p>N. 89°57' W., on line 2-3, Lot 11, sec. 11, identical with the N bdy. of sec. 11.</p>
10.53	<p>The closing cor. of secs. 10 and 11, identical with Cor. No. 3, Lot 11, sec. 11, heretofore described.</p> <hr/> <p>S. 0°04' E., on line 3-4, Lot 11, sec. 11, identical with the line bet. secs. 10 and 11.</p>
2.50	<p>Cor. No. 4, Lot 11, sec. 11, heretofore described.</p> <hr/> <p>N. 89°46' E., on line 4-5, Lot 11, sec. 11.</p>
19.92	<p>Cor. No. 5, Lot 11, sec. 11, heretofore described.</p> <hr/> <p>N. 0°07' W., on line 5-1, Lot 11, sec. 11, identical with a portion of line 2-3, Lot 10, sec. 11, and the N and S center line of the NW 1/4 of sec. 11.</p>
2.50	<p>Cor. No. 1, Lot 11, sec. 11, and the place of beginning.</p> <hr/> <p style="text-align: center;">GENERAL DESCRIPTION</p> <p>The land encompassed in this survey is located about a mile and a half Northwest of Oak Creek, Arizona. The elevation ranges from about 4,070 to 4,920 ft. above mean sea level.</p>

T. 16 N., R. 5 E., Gila and Salt River Mer., Arizona

CHAINS

The soil is sandy with a great amount of exposed sandstone formations, occurring mostly in the west, south and east edges of the section. Juniper and pinyon pine are scattered throughout the section. The central portion of this section is under residential development.

Access is by way of private roads, and Fort Valley Road, identical with Forest Service Road No. 2165A.

CERTIFICATE OF SURVEY

(X) (We), John P. Bennett III, Supervisory Cadastral Surveyor, and , HEREBY
Dennis K. McKay, Cadastral Surveyor,

CERTIFY upon honor that, in pursuance of special instructions bearing date of the 26th day

of October , 19 81 , (X)(We) have dependently resurveyed a portion of
the Fourth Standard Parallel North on the south boundary of Township 17
North, Range 5 East, and dependently resurveyed a portion of the
subdivisional lines and performed subdivision and metes-and-bounds
surveys in section 11, Township 16 North, Range 5 East,

of the Gila and Salt River Meridian, in the State of Arizona , which
are represented in the foregoing field notes as having been executed by (XX), (us) and under (XX)
(our) direction; and that said survey has been made in strict conformity with said special instruc-
tions, the Manual of Instructions for the Survey of the Public Lands of the United States, and in
specific manner described in the foregoing field notes.

April 19, 1982
(Date)

Dennis K. McKay
(Cadastral Surveyor)

April 19, 1982
(Date)

John P. Bennett III
Supervisory (Cadastral Surveyor)

CERTIFICATE OF APPROVAL

BUREAU OF LAND MANAGEMENT
~~XXXXXXXXXXXX~~
Phoenix, Arizona

The foregoing field notes of the dependent resurvey of a portion of the Fourth
Standard Parallel North on the south boundary of T. 17 N., R. 5 E., the
dependent resurvey of a portion of the subdivisional lines, and the
subdivision and metes-and-bounds surveys in section 11, T. 16 N., R. 5 E.,
Gila and Salt River Meridian, Arizona,

executed by John P. Bennett III, Supervisory Cadastral Surveyor, and
Dennis K. McKay, Cadastral Surveyor,
having been critically examined and found correct, are hereby approved.

April 20, 1982
(Date)

James P. Kelley
~~(Chief Cadastral Survey Examination and Approval Staff)~~
(Chief Cadastral Surveyor of Arizona)

~~CERTIFICATE OF TRANSCRIPT~~

~~I CERTIFY That the foregoing transcript of the field notes of the above-described surveys in
, is a true copy of the original field notes.~~

~~(Date)~~

~~(Chief, Cadastral Survey Examination and Approval Staff)~~