

Form 9600-9  
(December 1979)  
(formerly 9180-6)

UNITED STATES  
DEPARTMENT OF THE INTERIOR  
BUREAU OF LAND MANAGEMENT

FIELD NOTES

ORIGINAL

OF THE

DEPENDENT RESURVEY OF A PORTION OF THE SUBDIVISIONAL LINES

AND

A PORTION OF THE MEANDERS OF THE LEFT BANK OF THE COLORADO RIVER

AND

THE SURVEY OF SUBDIVISIONS AND METES-AND-BOUNDS SURVEYS

IN SECTION 15

TOWNSHIP 3 NORTH, RANGE 22 WEST

Of the GILA AND SALT RIVER Meridian,

In the State of ARIZONA

EXECUTED BY

PAUL L. REEVES SUPERVISORY CADASTRAL SURVEYOR

HARRY K. SMITH SUPERVISORY CADASTRAL SURVEYOR

Under special instructions dated NOVEMBER 12, 19 80, approved NOVEMBER 14, 1980,

AND SUPPLEMENTAL SPECIAL INSTRUCTIONS DATED DECEMBER 12, 1980, APPROVED

DECEMBER 12, 1980, which provided for the surveys included under ~~XXX Survey~~ Group  
Number 621, and assignment instructions dated DECEMBER 12, 1980.

Survey commenced DECEMBER 16, 19 80

Survey completed JANUARY 22, 19 81

# INDEX DIAGRAM

Township 3 NORTH, Range 22 WEST

6	5	4	3	2	1
7	8	9	10	11	12
18	17	16	7 5 15 1 3	14	13
19	20	21	22	23	24
30	29	28	27	26	25
31	32	33	34	35	36

Subdivision of Section 15.....pp.8-10  
 Metes-and-Bounds Surveys, Section 15.....pp.10-13

T. 3 N., R. 22 W., Gila and Salt River Mer., Arizona

## CHAINS

The boundaries, subdivisional lines and meander lines were surveyed by William B. Kimmel in 1916 and 1917. Mineral Survey No. 2370 Ehrenberg No's 1, 2, 3, 4, 5, 6, 7 and 8 Placer Claims (1 claim) was surveyed by William H. Elliot in 1906 and amended by him in 1914. A portion of the south boundary and subdivisional lines were re-surveyed and accretion lands were surveyed by William W. Glen, Floyd H. Brooks and Leonard W. Murphy in 1961. Certain corners were remonumented by Paul G. Bauer in 1965.

The following field notes are those of a dependent re-survey of a portion of the subdivisional lines and a portion of the meanders of the left bank of the Colorado River, and the survey of subdivisions and metes-and-bounds surveys in section 15 of Township 3 North, Range 22 West, Gila and Salt River Meridian, Arizona.

The survey was executed in accordance with the specifications set forth in the Manual of Surveying Instructions, 1973, and the Special Instructions for Group No. 621, Arizona, dated November 12, 1980, and Supplemental Special Instructions dated December 12, 1980.

The directions of lines were determined from U.S.G.S. triangulation station "Ehrenberg" and refer to the true meridian. Distances were measured with a Hewlett-Packard 3820A Total Station.

Preliminary to the resurvey the lines of previous surveys were retraced and search was made for all corners and other calls of the record. Identified corners were remonumented in their original positions; lost corners were restored and monumented at proportionate positions based on the official records. The retracement data were thoroughly verified and only the true line field notes are given herein.

The geographic position of the southeast corner of section 15, as determined from a tie to U.S.G.S. triangulation station "Ehrenberg", located in sec. 13, T. 3 N., R. 22 W., is as follows:

Latitude: 33°35'41.527" N. Longitude: 114°30'36.266" W.

The mean magnetic declination is 14°30' E.

Dependent Resurvey  
of a Portion of the Subdivisional Lines  
T. 3 N., R. 22 W., Gila and Salt River Mer., Arizona

(Restoring the 1961 dependent resurvey by Floyd A. Brooks, William W. Glenn and Leonard W. Murphy)

Beginning at the cor. of secs. 14, 15, 22 and 23, monumented with an iron post, 2 ins. diam., projecting 9 ins. above the ground, in a mound of stone, 2 ft. base, to top, with brass cap mkd.

T3N	R22W
S15	S14
S22	S23
1916	

Dependent Resurvey of a Portion of the Subdivisional Lines, T. 3 N., R. 22 W., Gila & Salt River Mer., Arizona

CHAINS

From this point, U.S.G.S. triangulation station "EHRENBERG," bears N. 63°27'16" E., 104.23 chs. dist., monumented with a brass tablet, 3 ins. diam., seated in a rock 20 x 16 x 3 ins. above the ground, mkd. EHRENBURG BM. The geographic position as established by U.S.G.S. is:

Latitude 33°36'11.94195" N., Longitude 114°29'23.53516" W.

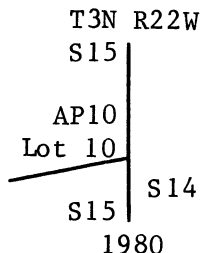
N. 0°06' W., bet. secs. 14 and 15.

Over rolling land, through scattered creosote.

29.63

Intersect the north boundary of the El Paso Natural Gas right-of-way which bears N. 81°18'30" E. and S. 81°18'30" W. Point for Angle Point No. 10 of Lot 10, sec. 15.

Set an iron post, 28 ins. long, 2½ ins. diam., 24 ins. in the ground, with brass cap mkd.

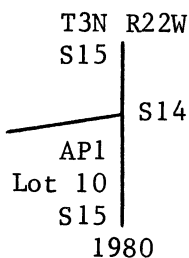


Set a fiberglass post, 6 ft. long, 2 ft. in the ground, alongside the cor.

39.52

Intersect the S right-of-way of Interstate Highway No. 10, on a curve. Point for Angle Point No. 1 of Lot 10, sec. 15.

Set an iron post, 28 ins. long, 2½ ins. diam., 24 ins. in the ground, with brass cap mkd.



Set a fiberglass post, 6 ft. long, 2 ft. in the ground, alongside the cor.

From this point an Arizona Highway Department brass tablet, 3 ins. diam., set in a concrete cylinder projecting 5 ins. above ground, mkd. 200 ELEV. 2+50 STA. 1949, bears N. 80°54'26" E., 8.157 chs. dist., on the chord of a circular curve to the left of 0°29'29", the distance along the curve being 8.158 chs. and the radius of said curve is 11,659.16 ft.

40.00

The 1/4 sec. cor. of secs. 14 and 15, monumented with a badly corroded iron post, 1 in. diam., projecting 20 ins. above the ground, with brass cap mkd.

Dependent Resurvey of a Portion of the Subdivisional  
Lines, T. 3 N., R. 22 W., Gila & Salt River Mer., Arizona

CHAINS		
	<p style="text-align: center;">1/4 S15 S14 1916</p> <p>At the cor. point</p> <p>Set an iron post, 28 ins. long, 2½ ins. diam., 20 ins. in the ground, over the inverted original cor., with brass cap mkd.</p> <p style="text-align: center;">T3N R22W 1/4 S15 S14 1980</p> <p>There is a metal post alongside the cor.</p> <p>Cor. is located 47 lks. S of a frontage road, asphalt surface, bears N. 80° E. and S. 80° W.</p> <hr style="width: 20%; margin: 10px auto;"/> <p>N. 0°01' E., beginning new measurement.</p>	
5.64	<p>Intersect the N right-of-way of Interstate Highway No. 10 on a curve, as shown on the Ehrenberg-Phoenix Highway, Ehrenberg East, Yuma County plat, hard copy No. 7334M-1, surveyed by Carl E. Davis in 5-72.</p> <p>From this point the calculated point for P.O.C. 43+99.95, bears S. 85°30'06" W., 20.346 chs. dist., along the chord of a circular curve to the right described as follows:</p> <p>L=20.358 chs.    R=11,259.16 ft.    D=0°30'32"</p>	
20.00	<p>Point for the N 1/16 sec. cor. of secs. 14 and 15, at proportionate dist., falls in a gravel pit. There is no remaining evidence of the original cor., not monumented.</p>	
40.00	<p>The cor. of secs. 10, 11, 14 and 15, monumented with an iron post, 2 ins. diam., flush with ground, with brass cap mkd.</p> <p style="text-align: center;">T3N R22W S10 S11 S15 S14 1916</p>	
	<p>From the cor. of secs. 14, 15, 22 and 23.</p> <p>N. 89°58' W., bet. secs. 15 and 22.</p> <p>Over rolling land, through medium creosote.</p>	
39.97	<p>Point for the 1/4 sec. cor. of secs. 15 and 22, at proportionate dist.; there is no remaining evidence of the original cor.</p> <p>Set an iron post, 28 ins. long, 2½ ins. diam., 24 ins. in the ground, with brass cap mkd.</p> <p style="text-align: center;">T3N R22W 1/4 S15 4 S22 1980</p>	

Dependent Resurvey of a Portion of the Subdivisional Lines, T. 3 N., R. 22 W., Gila & Salt River Mer., Arizona

CHAINS	<p>Set a fiberglass post, 6 ft. long, 2 ft. in the ground, alongside the cor.</p> <hr style="width: 20%; margin: 10px auto;"/> <p>S. 89°58' W., beginning new measurement.</p>
29.12	<p>Point for the witness point of secs. 15 and 22, at proportionate dist. A rusty iron post 1 in. diam., 25 ins. long was found lying on the ground nearby with brass cap mkd.</p> <div style="text-align: center; margin: 10px 0;"> <p>S15              WP <u>69.10 CS</u>              S22              1916</p> </div> <p>Destroyed the monument. No monument was set at this point.</p>
31.50	<p>Center of a N and S graded gravel road, 39 lks. wide.</p>
31.745	<p>Point for Angle Point No. 4 of Lot 15, sec. 15, identical with Angle Point No. 1 of sec. 22.</p> <p>Set an iron post, 28 ins. long, 2½ ins. diam., 6 ins. below surface of a road, with brass cap mkd.</p> <div style="text-align: center; margin: 10px 0;"> <p>T3N R22W              S15              AP4              AP1              S22              1981</p> </div> <p>Thence along the N edge of a graded gravel road, 32 lks. wide.</p>
40.02	<p>The cor. of secs. 15, 16, 21 and 22, identical with Angle Point 5, Lot 15, sec. 15, monumented with an iron post, 2 ins. diam., 15 ins. below surface of a road, with brass cap mkd.</p> <div style="text-align: center; margin: 10px 0;"> <p>T3N R22W              S16 S15              S21 S22              1917</p> </div> <p>The remains of a 4 x 4 in. wooden post were found below the ground alongside the cor.</p> <p>This monument was not found during the 1961 dependent resurvey. There is no remaining evidence of the monument that was set in the 1961 resurvey.</p> <p>From the cor., a local cor., monumented with a 1 in. iron pipe with a nail in top, set flush with the surface of the road, bears N. 69°52' W., 4 lks. dist. (1961 Record S. 85°22' W., 3.7 lks. dist.)</p> <p>Cor. is located 15 lks. N of center of an E and W graded gravel road, 32 lks. wide, and 14 lks. S of an E and W fence line.</p> <hr style="width: 50%; margin: 10px auto;"/>

Dependent Resurvey of a Portion of the Subdivisional Lines, T. 3 N., R. 22 W., Gila & Salt River Mer., Arizona

CHAINS	
	<p>N. 0°08' W., bet. secs. 15 and 16.</p> <p>Over cultivated land.</p>
18.40	<p>Track road along N side of cultivated land, road bears S. 60° E. curving S, and N. 60° W.</p> <p>Thence over gently rolling land.</p>
18.89	<p>Point for Angle Point No. 1 of Lot 15, sec. 15.</p> <p>Set an iron post, 28 ins. long, 2½ ins. diam., 22 ins. in the ground, with brass cap mkd.</p> <div style="text-align: center;"> <p>T3N R22W S16   S15   AP1 1981</p> </div> <p>Set a fiberglass post, 6 ft. long, 2 ft. in the ground, alongside the cor.</p>
19.99	<p>The S 1/16 sec. cor. of secs. 15 and 16, monumented with an iron post, 2½ ins. diam., projecting 8 ins. above the ground, with brass cap mkd.</p> <div style="text-align: center;"> <p>T3N R22W S 1/16 S16   S15 1961</p> </div> <p>Set a fiberglass post, 6 ft. long, 2 ft. in the ground, alongside the cor.</p> <hr style="width: 20%; margin: 10px auto;"/> <p>N. 0°08' W., beginning new measurement.</p>
.69	<p>The witness point of secs. 15 and 16, monumented with an iron post, 1 in. diam., projecting 8 ins. above the ground, with brass cap mkd.</p> <div style="text-align: center;"> <p>S16   S15 20.70CS   W P 1916</p> </div> <p>Set a fiberglass post, 6 ft. long, 2 ft. in the ground, alongside the cor.</p> <hr style="width: 20%; margin: 10px auto;"/> <p>N. 0°08' W., beginning new measurement.</p>
12.00	<p>El Paso Natural Gas pipe line, bears S. 77° E. and N. 77° W.</p>
15.995	<p>Intersect line 1-2, Amended M.S. No. 2370, Ehrenberg No's. 1, 2, 3, 4, 5, 6, 7 and 8 Placer Claims (1 claim), marked with a re-bar of unknown origin, ¾ in diam., projecting 3 ins. above ground.</p>

Dependent Resurvey of a Portion of the Subdivisional Lines, T. 3 N., R. 22 W., Gila & Salt River Mer., Arizona

CHAINS

From the re-bar, a concrete post set by the El Paso Gas Company, 4 ins. sq., and projecting 4 ft. above the ground, bears N. 63°03' W., 6.47 chs. dist. This monument has been recognized by local residents and surveyors for many years as a point on line 1-2 of Amended M.S. No. 2370, Ehrenberg Claim, and is accepted as the best available evidence of line 1-2 of the claim.

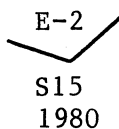
From this same re-bar, a concrete post set by the El Pas Gas Company, 4 ins. sq., and projecting 4 ft. above the ground, bears N. 63°03' W., 9.09 chs. dist. This monument has been recognized by local residents and surveyors for many years as a point on line 1-2 of Amended M.S. No. 2370, Ehrenberg Claim and is accepted as the best available evidence of line 1-2 of the claim.

From this same re-bar, Cor. No. 2, Amended M.S. No. 2370, Ehrenberg Claim, bears S. 63°03' E., 22.37 chs. dist., monumented with a wooden post, 4 x 8 ins., 2½ ft. long, rotted off at ground level with the rotted portion extending 18 ins. under ground. The top portion of the post is mkd. 2 and has a copper tag attached mkd. 8303. A mound of stone around the post was found about 12 ins. under the ground.

At the cor. point for Cor. No. 2.

Drive a galvanized pipe, 34 ins. long, ¾ in. diam., 52 ins. in the ground and over the pipe, set an iron post, 28 ins. long, 2½ ins. diam., 26 ins. in the ground with brass cap mkd.

MS 2370



from Cor. No. 2

An open end pipe, 1½ ins. diam., filled with concrete, projecting 18 ins. above a concrete base, with a copper tag seated in the top mkd. REE 8303, bears N. 54°38' E., 15.9 lks. dist.

An open end pipe, 1½ ins. diam., filled with concrete, projecting 10 ins. above a concrete base, bears N. 63°03' W., 15.6 lks. dist.

Deposit the remains of the wooden post alongside the cor.

Set a fiberglass post, 6 ft. long, 2 ft. in the ground, N of the cor.

NOTE:

The point for the witness cor. to Cor. No. 1 of this claim fell in an overflow area that had been leveled by bulldozers and the cor. was not recovered.

Thence over patented land, topography omitted.



Dependent Resurvey of a Portion of the Subdivisional  
Lines, T. 3 N., R. 22 W., Gila & Salt River Mer., Arizona

CHAINS		
19.27	<p>The 1/4 sec. cor. of secs. 15 and 16, monumented with an iron post, 2½ ins. diam., projecting 12 ins. above a concrete base, with brass cap mkd.</p> <p style="text-align: center;">T3N R22W 1/4 S16 S15 1961</p> <p>Set a fiberglass post, 6 ft. long, 2 ft. in the ground, alongside the cor.</p> <p>from which</p> <p style="padding-left: 40px;">A local cor., bears N. 66° E., 4.4 lks. dist., monumented with an open end pipe, 1 in. diam., filled with concrete, projecting 16 ins. above the ground, with a copper tag seated in the top, mkd. LS 2993.</p> <p>From the 1/4 sec. cor., U.S.L.M. No. 2370, bears N. 73°35' W., 5.225 chs. dist., monumented with an open end pipe, 28 ins. long, 1½ ins. diam., with a copper tag seated in the top, mkd. RE 2242. (1961 Record N. 74°17' W., 5.25 chs. dist.)</p> <p>At the cor. point</p> <p>Set an iron post, 28 ins. long, 2½ ins. diam., 24 ins. in the ground, with brass cap mkd.</p> <p style="text-align: center;">USLM 2370 + 1980</p> <p>Reset the open end pipe, alongside the cor.</p> <p>Set a fiberglass post, 6 ft. long, 2 ft. in the ground, alongside the cor.</p> <hr style="width: 20%; margin: 10px auto;"/> <p>N. 0°08' W., on a projection of the S½ mile bet. secs. 15 and 16, beginning new measurement.</p>	
20.72	Point for the 1961 witness point of secs. 15 and 16, at record dist.; there is no remaining evidence of the cor., not remonumented.	
21.00	Left bank of the Colorado River, 10 ft. high, bears NE and SW.	
21.90	Point for the 1916-1917 meander cor. of secs. 15 and 16, at record dist., falls in the Colorado River.	
	<p>From the cor. of secs. 10, 11, 14 and 15.</p> <p>West, bet. secs. 10 and 15.</p> <p>Over washed area, through scattered undergrowth.</p>	
20.01	The E 1/16 sec. cor. of secs. 10 and 15, monumented with an iron post, 2½ ins. diam., projecting 1 in. above the ground, with brass cap mkd.	

Dependent Resurvey of a Portion of the Subdivisional Lines, T. 3 N., R. 22 W., Gila & Salt River Mer., Arizona

CHAINS

T3N R22W  
E 1/16  $\frac{S10}{S15}$   
1961

N. 89°59' W., beginning new measurement.

19.52

The meander cor. of secs. 10 and 15, monumented with an iron post, 2½ ins. diam., 12 ins. below the ground in a hollow concrete cylinder 10 ins. diam., flush with ground, with brass cap mkd.

T3N  
MC  $\frac{S10}{S15}$   
R22W  
1961

A 4 x 4 in. wooden post, projecting 3 ft. above the ground is W of the cor.

Set a fiberglass post, 6 ft. long, 2 ft. in the ground, alongside the cor.

Dependent Resurvey of a Portion of the Meanders of the Left Bank of the Colorado River, T. 3 N., R. 22 W., Gila and Salt River Mer., Arizona

(Retracing the 1916-1917 survey by William B. Kimmel)

From the meander cor. of secs. 10 and 15, heretofore described.

Thence downstream with the adjusted record meanders of the left bank of the Colorado River through sec. 15.

S. 67°57' W., 20.08 chs. At 58 lks. on this course intersect the N and S center line of sec. 15.

S. 64°11' W., 24.40 chs. At end of course, point for the meander cor. of secs. 15 and 16, heretofore described.

Subdivision of Section 15, T. 3 N., R. 22 W., Gila and Salt River Mer., Arizona

From the 1/4 sec. cor. of secs. 15 and 22.

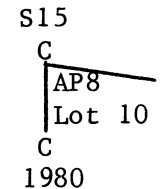
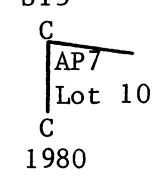
N. 0°05' W., on the N and S center line of sec. 15.

Over rolling land, through scattered creosote.

29.99

Intersect the north boundary of the El Paso Natural Gas right-of-way which bears S. 85°16'30" E. and N. 85°16'30" W. Point for Angle Point No. 8 of Lot 10, sec. 15.

Subdivision of Section 15,  
T. 3 N., R. 22 W., Gila and Salt River Mer., Arizona

CHAINS		
	<p>Set an iron post, 28 ins. long, 2½ ins. diam., 24 ins. in the ground, with brass cap mkd.</p> <div style="text-align: center;">  </div> <p>Set a fiberglass post, 6 ft. long, 2 ft. in the ground, alongside the cor.</p>	
33.940	<p>Intersect the S right-of-way line of Interstate Highway No. 10 which bears S. 67°49'30" E. and N. 67°49'30" W. Point for Angle Point No. 7 of Lot 10, sec. 15.</p> <p>Set an iron post, 28 ins. long, 2½ ins. diam., 22 ins. in the ground, with brass cap mkd.</p> <div style="text-align: center;">  </div> <p>Set a fiberglass post, 6 ft. long, 2 ft. in the ground, alongside the cor.</p> <p>Cor. is located in a right-of-way fence.</p> <p>From this point an aluminum tablet, 3 ins. diam., on line 2-3 of Amended M.S. No. 2370, Ehrenberg, No's 1, 2, 3, 4, 5, 6, 7, and 8 (1 claim), set in concrete flush with the ground, bears N. 67°49'30" W., 6.633 chs. dist., mkd. ELEV 356.97 1977. An angle iron set alongside is mkd. 27+35.87.</p>	
40.795	<p>Intersect line 2-3, Amended M.S. No. 2370, Ehrenberg No's. 1, 2, 3, 4, 5, 6, 7 and 8 (1 claim), at a point from which Cor. No. 2, bears S. 54°38' W., 24.68 chs. dist., heretofore described.</p> <p>From this point Cor. No. 3 of the same claim, bears N. 54°38' E., 11.265 chs. dist., monumented with an open end pipe, 1½ ins. diam., filled with concrete projecting 14 ins. above ground with a copper tag seated in the top mkd. 2242. This position has been recognized by local surveyors and the Arizona State Highway Department as the cor. for many years and is accepted as the best available evidence of the original cor. position, not remonumented.</p>	
48.830	<p>Intersect the N right-of-way line of Interstate Highway No. 10 which bears N. 80°04' E. and S. 80°04' W.</p> <p>From this point an unmarked aluminum tablet, 3 ins. diam., set in concrete flush with the ground, bears N. 80°04' E., 2.28 chs. dist. An angle iron set alongside is mkd. 31+96.67.</p> <p>From this same point an unmarked aluminum tablet, 3 ins. diam., set in concrete flush with the ground, bears S. 80°04' W., 5.29 chs. dist. An angle iron set alongside is mkd. 26+99.91.</p>	
53.565	<p>Intersect line 3-4, Amended M.S. No. 2370, Ehrenberg No's. 1, 2, 3, 4, 5, 6, 7 and 8 (1 claim), at a point from which Cor. No. 3, bears S. 55°49' E., 11.13 chs. dist., heretofore described.</p>	

Subdivision of Section 15,  
T. 3 N., R. 22 W., Gila and Salt River Mer., Arizona

CHAINS		
	<p>From this same point, Cor. No. 4 of the same claim, bears N. 55°49' W., 14.03 chs. dist., monumented with an open end pipe, 1 in. diam., buried 3 ins. under ground. This position has been used by local residents and surveyors as the cor. for many years and is accepted as the best available evidence of the original cor. position, not remonumented.</p>	
79.785	<p>Intersect the adjusted record meander line of the left bank of the Colorado River in sec. 15, bears N. 67°57' E. and S. 67°57' W.</p> <p>From this point the meander cor. of secs. 10 and 15, bears N. 67°57' E., 58 lks. dist., heretofore described.</p>	
	<p>Metes-and-Bounds Surveys, Sec. 15, T. 3 N., R. 22 W., Gila and Salt River Mer., Arizona</p>	
	<p>Lot 10, Sec. 15</p>	
	<p>From Angle Point No. 1 of Lot 10, on the line bet. secs. 14 and 15, heretofore described.</p> <p>Thence on line 1-2, Lot 10, sec. 15, along a 0°29'29" circular curve to the right, having a radius of 11,659.16 ft., on the S right-of-way of Interstate Highway No. 10, the chord of said arc bearing S. 84°12'08" W., 12.158 chs. dist.</p>	
12.161	<p>Angle Point No. 2 of Lot 10, sec. 15, monumented with an aluminum tablet, 3 ins. diam., set in concrete, flush with the ground, mkd. Elev. 314.47 1977, with an angle iron set alongside mkd. 49+09.00.</p> <p>Set a fiberglass post, 6 ft. long, 2 ft. in the ground, alongside the cor.</p>	
	<p>S. 0°26'45" W., on line 2-3, Lot 10, sec. 15.</p>	
.373	<p>Angle Point No. 3 of Lot 10, sec. 15, monumented with an aluminum tablet, 3 ins. diam., set in concrete, flush with the ground, mkd. A.D.O.T. Elev. 314.76 1977, with an angle iron set alongside mkd. 49+09.00.</p> <p>Set a fiberglass post, 6 ft. long, 2 ft. in the ground, alongside the cor.</p>	
	<p>Thence on Line 3-4, Lot 10, sec. 15, along a 0°29'25" circular curve to the right, having a radius of 11,683.78 ft., on the S right-of-way of Interstate No. 10, the chord of said arc bearing S. 87°06'15" W., 7.780 chs. dist.</p>	
7.781	<p>Angle Point No. 4 of Lot 10, sec. 15, monumented with an aluminum tablet, 3 ins. diam., set in concrete, flush with the ground, mkd. Elev. 320.50 1977, with an angle iron set alongside mkd. 44+08.</p> <p>Set a fiberglass post, 6 ft. long, 2 ft. in the ground, alongside the cor.</p>	

Metes-and-Bounds Surveys, Section 15,  
T. 3 N., R. 22 W., Gila and Salt River Mer., Arizona

CHAINS		
	S. 73°37' W., on line 4-5, Lot 10, sec. 15.	
15.015	Angle Point No. 5 of Lot 10, sec. 15, monumented with an aluminum tablet, 3 ins. diam., set in concrete, flush with the ground, mkd. Elev. 360.40 1977, with an angle iron set alongside mkd. HWY R. of W.  Set a fiberglass post, 6 ft. long, 2 ft. in the ground, alongside the cor.	
	S. 82°29'45" W., on line 5-6, Lot 10, sec. 15.	
3.092	Angle Point No. 6 of Lot 10, sec. 15, monumented with an aluminum tablet, 3 ins. diam., set in concrete, flush with the ground, mkd. Elev. 361.99 1977, with an angle iron set alongside mkd. 38+08.4.  Set a fiberglass post, 6 ft. long, 2 ft. in the ground, alongside the cor.	
	N. 67°49'30" W., on line 6-7, Lot 10, sec. 15.	
2.825	Intersect Angle Point No. 7 of Lot 10, on the N and S center line of sec. 15, heretofore described.	
	S. 0°05' E., on line 7-8, Lot 10, sec. 15, identical with the N and S center line of sec. 15.	
3.950	Angle Point No. 8 of Lot 10, sec. 15, on the N boundary of the El Paso Natural Gas right-of-way, heretofore described.	
	S. 85°16'30" E., on line 8-9, Lot 10, sec. 15, identical with the N boundary of the El Paso Natural Gas right-of-way.	
27.645	Point for Angle Point No. 9 of Lot 10, sec. 15.  Set an iron post, 28 ins. long, 2½ ins. diam., 24 ins. in the ground, with brass cap mkd.  <div style="text-align: center;">           S15            AP9            Lot 10            1980         </div>	
	Set a fiberglass post, 6 ft. long, 2 ft. in the ground, alongside the cor.	
	N. 81°18'30" E., on line 9-10, Lot 10, sec. 15, identical with the N boundary of the El Paso Natural Gas right-of-way.	
12.570	Angle Point No. 10 of Lot 10, at intersection with the line bet. secs. 14 and 15, heretofore described.  N. 0°06' W., on line 10-1, Lot 10, sec. 15, identical with the line bet. secs. 14 and 15.	

Metes-and-Bounds Surveys, Section 15,  
T. 3 N., R. 22 W., Gila and Salt River Mer., Arizona

CHAINS 9.890	<p>Angle Point No. 1 of Lot 10, sec. 15 and point of beginning.</p> <hr/> <p style="text-align: center;">Lot 15, Section 15</p> <hr style="width: 20%; margin: auto;"/> <p>From Angle Point No. 1 of Lot 15, sec. 15, on the line bet. secs. 15 and 16, heretofore described.</p> <p>S. 54°43' E., on line 1-2, Lot 15, sec. 15.</p>
5.340	<p>Point for Angle Point No. 2 of Lot 15, sec. 15.</p> <p>Drive a steel fence post, 6 ft. long, 7 ft. in the ground and set an iron post, 28 ins. long, 2½ ins. diam., 22 ins. in the ground over the fence post, with brass cap mkd.</p> <div style="text-align: center; margin: 10px 0;"> <p>T3N R22W AP2 \ S15 1981</p> </div> <p>Set a fiberglass post, 6 ft. long, 2 ft. in the ground, alongside the cor.</p> <p>From this point a fence cor. bears N. 75° W., 8 lks. dist.; fences extend S and N. 60° W.</p> <hr style="width: 20%; margin: auto;"/> <p>S. 12°01' E., on line 2-3, Lot 15, sec. 15.</p>
6.630	<p>Point for Angle Point No. 3, of Lot 15, sec. 15.</p> <p>Set an iron post, 28 ins. long, 2½ ins. diam., 22 ins. in the ground, with brass cap mkd.</p> <div style="text-align: center; margin: 10px 0;"> <p>T3N R22W AP3 \ S15 1981</p> </div> <p>Set a fiberglass post, 6 ft. long, 2 ft. in the ground, alongside the cor.</p> <p>Cor. is located 1 lk. S of an E and W fence line.</p> <hr style="width: 20%; margin: auto;"/> <p>S. 15°28' E., on line 3-4, Lot 15, sec. 15.</p>
9.665	<p>Angle Point No. 4 of Lot 15, sec. 15, identical with Angle Point No. 1 of sec. 22, at intersection with the line bet. secs. 15 and 22, heretofore described.</p> <hr style="width: 20%; margin: auto;"/> <p>S. 89°58' W., on line 4-5 of Lot 15, sec. 15, identical with the line bet. secs. 15 and 22.</p>
8.275	<p>The cor. of secs. 15, 16, 21 and 22, identical with Angle Point No. 5 of Lot 15, sec. 15, heretofore described.</p> <hr style="width: 20%; margin: auto;"/>

Metes-and-Bounds Surveys, Section 15  
T. 3 N., R. 22 W., Gila & Salt River Mer., Arizona

	CHAINS	
		<p>N. 0°08' W., on line 5-1 of Lot 15, sec. 15, identical with the line bet. secs. 15 and 16.</p>
	18.890	<p>Angle Point No. 1 of Lot 15, sec. 15 and point of beginning.</p>
		<p style="text-align: center;">GENERAL DESCRIPTION</p> <p>The town of Ehrenberg is located in sec. 15. The elevation ranges from about 270 to 400 feet above sea level.</p> <p>The soil consists of a sandy loam. Vegetation consists of salt cedar along the Colorado River with creosote, mesquite, ironwood, palo verde and cactus in the remainder of the section.</p> <p>Interstate Highway No. 10 and El Paso Natural Gas lines cross section 15 in an east-west direction.</p>





CERTIFICATE OF SURVEY

~~XX~~ (We), Harry K. Smith and Paul L. Reeves, Supervisory Cadastral , HEREBY  
 Surveyors  
 CERTIFY upon honor that, in pursuance of special instructions bearing date of the 12th day  
 of November , 1980 , ~~XXXXXX~~ and Supplemental Special Instructions  
 dated December 12, 1980, (we) have dependently resurveyed a portion of the  
 subdivisional lines, a portion of the meanders of the left bank of the  
 Colorado River, and surveyed the subdivision and metes-and-bounds surveys  
 in section 15, Township 3 North, Range 22 West,

of the Gila and Salt River Meridian, in the State of Arizona , which  
 are represented in the foregoing field notes as having been executed by ~~XXXX~~ (us) and under ~~XXXX~~  
 (our) direction; and that said survey has been made in strict conformity with said special instruc-  
 tions, the Manual of Instructions for the Survey of the Public Lands of the United States, and in  
 specific manner described in the foregoing field notes.

July 20, 1982  
 (Date)

*Harry K. Smith*  
 Supervisory (Cadastral Surveyor)

July 20, 1982  
 (Date)

*Paul L. Reeves*  
 Supervisory (Cadastral Surveyor)

CERTIFICATE OF APPROVAL

BUREAU OF LAND MANAGEMENT  
~~XXXXXX~~  
 Phoenix, Arizona

The foregoing field notes of the dependent resurvey of a portion of the subdivis-  
 ional lines and a portion of the meanders of the left bank of the Colorado  
 River, and the survey of subdivision and metes-and-bounds surveys in  
 section 15, Township 3 North, Range 22 West, Gila and Salt River Meridian,  
 Arizona,

executed by Harry K. Smith and Paul L. Reeves, Supervisory Cadastral Surveyors  
 having been critically examined and found correct, are hereby approved.

July 20, 1982  
 (Date)

*James P. Kelley*  
~~XXXXXX Cadastral Survey Examination and Approval Staff~~  
 Chief Cadastral Surveyor of Arizona

~~CERTIFICATE OF TRANSCRIPT~~

I CERTIFY That the foregoing transcript of the field notes of the above-described surveys in  
 \_\_\_\_\_ is a true copy of the original field notes.

\_\_\_\_\_  
 (Date)

\_\_\_\_\_  
 (Chief, Cadastral Survey Examination and Approval Staff)