

ORIGINAL

**UNITED STATES  
DEPARTMENT OF THE INTERIOR  
BUREAU OF LAND MANAGEMENT**

FIELD NOTES OF THE DEPENDENT RESURVEY

OF A PORTION OF THE FOURTH STANDARD PARALLEL NORTH (SOUTH BOUNDARY),  
A PORTION OF THE SUBDIVISIONAL LINES, AND THE MEANDERS OF THE LEFT BANK  
OF THE ABANDONED CHANNEL OF THE COLORADO RIVER THROUGH SECTIONS 20 AND 32.

THE SURVEY OF DIVISION OF ACCRETION LINES,

THE TRAVERSE OF A PRORTION OF THE LEFT BANK OF THE ABANDONED CHANNEL

OF THE COLORADO RIVER THROUGH SECTIONS 19 AND 29,

AND A PORTION OF THE SUBDIVISION OF SECTION 20,

THE SURVEY OF THE FIXED AND LIMITING BOUNDARY OF THE LEFT BANK OF THE

ABANDONED CHANNEL OF THE COLORADO RIVER THROUGH SECTION 31,

THE SUBDIVISION OF SECTION 28, THE METES-AND-BOUNDS SURVEY

IN THE NE 1/4 OF SECTION 28, AND

THE SURVEY OF THE NORTH AND SOUTH BOUNDARIES OF THE EASEMENT FOR THE  
TOPOCK INLET CANAL, ADJACENT TO THE ACCRETIONS IN SECTIONS 19, 20 AND 29.

TOWNSHIP 17 NORTH, RANGE 21 WEST,

OF THE GILA AND SALT RIVER MERIDIAN,

IN THE STATE OF ARIZONA

**EXECUTED BY**

**Gordon R. Bubel, Cadastral Surveyor**

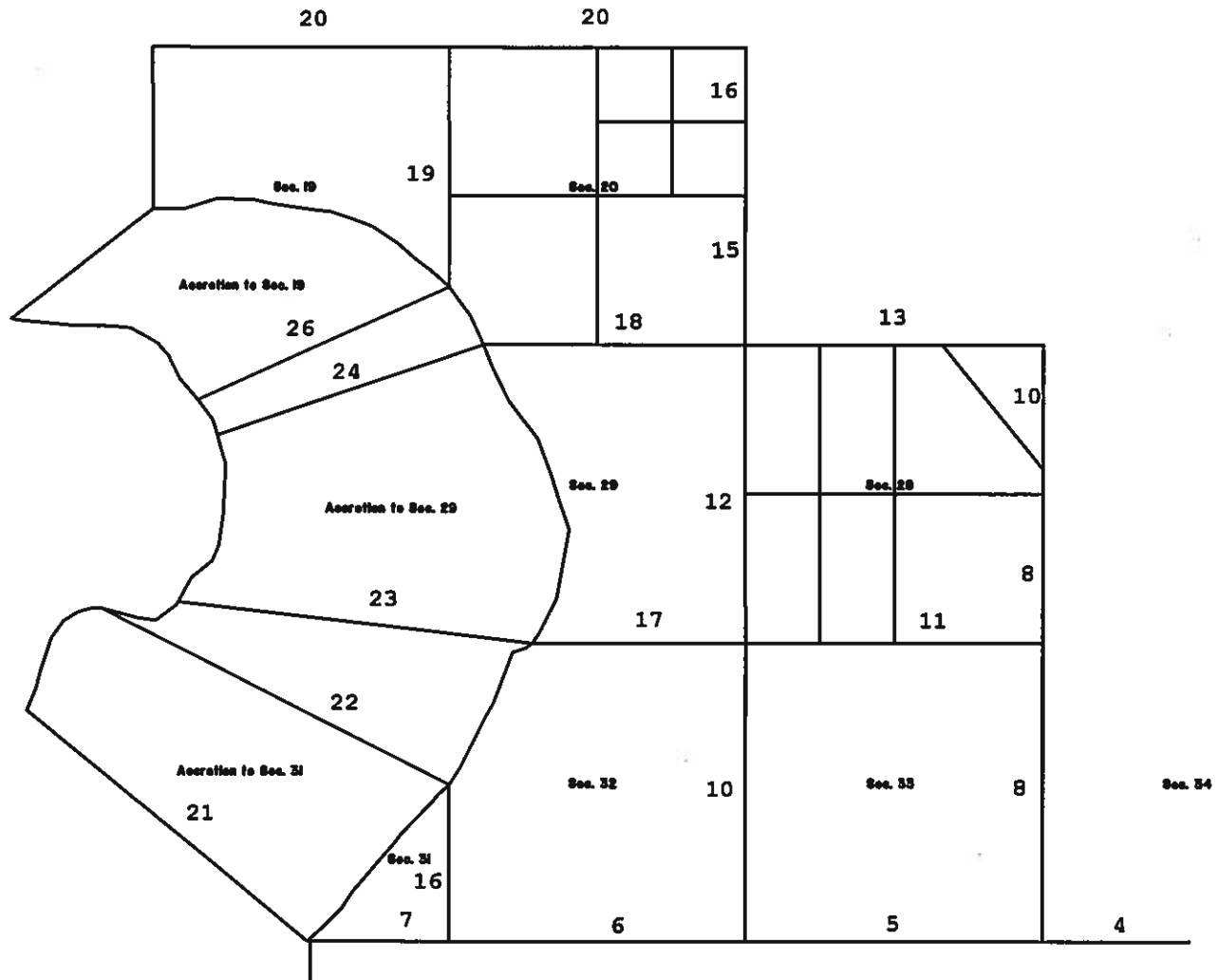
Under Special Instructions dated April 28, 2016, approved April 28, 2016,  
which provided for the surveys included under Group No. 1154, and assignment  
instructions dated April 28, 2016

**Survey commenced May 17, 2016**

**Survey completed September 27, 2016**

**INDEX DIAGRAM**

**TOWNSHIP 17 NORTH RANGE 21 WEST  
GILA AND SALT RIVER MERIDIAN, ARIZONA**



Dependent Resurvey of the Traverse and Meanders of the Left Bank of the abandoned channel of the Colorado River in secs. 19, 20, 29 and 32.....Pages 27-31

Subdivision of the NE 1/4 of the NE 1/4, Sec. 20.....Pages 31-32

Survey of the Fixed and Limiting Boundary of the Left Bank of the Abandoned Channel of the Colorado River, through section 31.....Pages 32-33

Subdivision of Section 28.....Pages 33-35

Metes-and-Bounds Survey of the North Bdy. of the Topock Inlet Canal Easement, adjacent to and within Secs. 19 and 20.....Pages 35-39

Metes-and-Bounds Survey of the South Bdy. of the Topock Inlet Canal Easement, adjacent to secs. 19 and 20, and within secs. 28 and 29.....Pages 40-43

## T. 17 N., R. 21 W., Gila and Salt River Meridian, Arizona

## CHAINS

The following field notes describe the dependent resurvey of a portion of the Fourth Standard Parallel North (south boundary), a portion of the subdivisional lines, and the meanders of the left bank of the abandoned channel of the Colorado River through sections 20 and 32. The survey of division of accretion lines, the survey of a traverse of a portion of the left bank of the abandoned channel of the Colorado River through sections 19 and 29, and a portion of the subdivision of section 20, the survey of the fixed and limiting boundary of the left bank of the abandoned channel of the Colorado River through section 31, the subdivision of section 28, the metes-and-bounds survey in the Northeast 1/4 of section 28, and the survey of the north and south boundaries of the easement of the Topock Inlet Cannel adjacent to the accretions in sections 19 and 20, Township 17 North, Range 21 West, Gila and Salt River Meridian, Arizona.

In 1905 John J. Fisher surveyed the Fourth Standard Parallel North (south boundary), through the township, the subdivisional lines and the meanders of the left bank of the Colorado River.

In 1960-62 Robert C. Yundt and Donald A. Cannon resurveyed a portion of the Fourth Standard Parallel North (south boundary), portions of the subdivisional lines and reestablished the 1905 meander corners. In the time between the Fisher and the Yundt/Cannon surveys the Colorado River migrated west by the process of accretion, the division of accretion lines within the township were established in the Yundt/Cannon 1960-62 survey. In the early 1950's the Colorado River was channelized and rerouted resulting in an avulsive action. The Yundt/Cannon survey established the left bank of the Colorado River adjacent to the accretions in secs. 19, 20, 29 and 32, prior to the avulsion.

In 1980 Paul L. Reeves, resurveyed a portion of the west boundary, a portion of the subdivisional lines and subdivided section 16.

In 1989 Stephen J. Malloy resurveyed a portion of the 4th Standard Parallel North (south boundary), a portion of the subdivisional lines and executed a metes-and-bounds survey in sections 21 and 27.

In 1993 Clyde J. King resurveyed a portion of the 4th Standard Parallel North (south boundary), the division of accretion line between section 1, township 16 north, range 22 west, (identical with a portion of the north boundary) and section 31, township 17 north, range 21 west (identical with a portion of the south boundary).

The survey was executed in accordance with the specifications as set forth in the Manual of Instructions for the Survey of the Public Lands of the United States, 2009, and the Special Instructions dated April 28, 2016, for Group Number 1154, Arizona.

## T. 17 N., R. 21 W., Gila and Salt River Meridian, Arizona

## CHAINS

The true meridian direction and length of all lines were determined by real time kinematic global positioning system observations using Trimble Navigation R8 model receivers.

Preliminary to the resurvey, the lines of the prior surveys were retraced and search was made for all corners and other calls of record. Lost corners were reestablished and remonumented at proportionate positions based on the official record. The retracement data were thoroughly verified and only the true line field notes are given herein.

Geodetic control was derived from Global Positioning System (GPS) static observations post processed by National Geodetic Survey, Online Positioning User Service (OPUS), utilizing Continuously Operating Reference Stations (CORS) NLVA LAUGHLIN CORS ARP, AZYC YUCCA CORS ARP and AZLH LAKE HAVASU CITY CORS ARP.

The NAD 83(2011)(EPOCH:2010.0000), geographic position of the Standard 1/4 section corner of section 34, on the south boundary of Township 17 North, Range 21 West, Gila and Salt River Meridian is as follows:

Latitude: 34°48'28.964" N.                      Longitude: 114°30'02.510" W.

The NAD 83(2011)(EPOCH:2010.0000), geographic position of the section corner of sections 13, 18, 19 and 24, Townships 17 North, Ranges 21 and 22 West, Gila and Salt River Meridian, is as follows:

Latitude: 34°51'05.785" N.                      Longitude: 114°33'12.941" W.

The mean magnetic declination is 11 1/2° E.

---

**Dependent Resurvey of a  
Portion of the Fourth Standard Parallel North(South Boundary),  
T. 17 N., R. 21 W., Gila and Salt River Meridian, Arizona**

---

Restoring the resurvey executed by  
Stephen J. Malloy in 1989.

---

Beginning at the standard 1/4 sec. cor. of sec. 34, monumented with an iron post, 2 1/2 ins. diam., firmly set, flush with the ground, in a scattered mound of stone, with brass cap mkd. T17N R21W SC 1/4 S34 1960. A steel fence post is set alongside and W. of cor.

Rebuild the mound of stone, 3 ft. base, 1 1/2 ft. high, N. of cor., add the marks 2016 to the brass cap.

S. 89°59' W., on the S. bdy. of sec. 34.

Dependent Resurvey of a  
Portion of the Fourth Standard Parallel North (South Boundary),  
T. 17 N., R. 21 W., Gila and Salt River Meridian, Arizona

CHAINS	
	Over rolling land, through creosote.
1.65	Center of pavement, Mohave County Hwy. 1, (formerly State Route 95) 25 ft. wide, bears N. 8° E. and S. 8° W.  Note: As per resolution 92-06-A-45, recorded on 7-20-95, in Book 2081, p. 280, Mohave County Recorder's Office. Arizona Dept. of Transportation abandoned State Route 95 to Mohave County, who renamed it Mohave County Hwy. 1.
2.10	Westerly shoulder of Mohave County Hwy. 1, descend into Topock Marsh.
40.06	Point for the standard cor. of secs. 33 and 34, at proportionate dist.; falls within the waters of Topock Marsh, impracticable to establish a permanent monument.  S. 89°59' W., on the S. bdy. of sec. 33.  Through Topock Marsh, within Havasu National Wildlife Refuge, (hereinafter abbreviated HNWR).
40.06	Point for the standard 1/4 sec. cor. of sec. 33, at proportionate dist.; falls within the waters of Topock Marsh, impracticable to establish a permanent monument.
75.38	Intersect a steel head gate, identical with the E. terminus of fire break canal, the N. end bears N., 16 lks. dist., S. end bears S., 92 lks. dist., leave marsh lands.
76.10	Dike road, 20 ft. wide, bears N. 35° E. and S. 35° W.
80.12	The standard cor. of secs. 32 and 33, monumented with a stainless steel post, 2 1/2 ins. diam., located 48 ins. below the surface of graded irrigation canal access road, leaning over 12 ins. to the S., with remnants of steel fence post alongside.  At the base of the stainless steel post.  Set an aluminum drive rod, 36 ins. long, 3/4 in. diam., 18 ins. below the surface, with aluminum cap mkd.
	SC T 17 N R 21 W S 32   S 33 ----- 2016
	Deposit a magnet, in a white plastic case, at the base of the aluminum drive rod.

Dependent Resurvey of a  
Portion of the Fourth Standard Parallel North (South Boundary),  
T. 17 N., R. 21 W., Gila and Salt River Meridian, Arizona

CHAINS	
	<p>from which</p> <p style="padding-left: 40px;">An X chiseled on the top lip of a concrete irrigation canal, bears S. 39° E., 22 lks. dist.</p> <p style="padding-left: 40px;">An X chiseled on the top lip of a concrete irrigation canal, bears S. 41 3/4° W., 23 lks. dist.</p> <p>Cor. is located beneath the N. side canal access road, graded, 18 ft. wide, extends E. and W, and 11 ft. N. of N. edge of canal, (concrete lined, 29 ft. wide at top, extends E. and W.)</p> <hr/> <p>S. 89°59' W., on the S. bdy. of sec. 32.</p> <p>In and along, N. side canal access road, on the line between the Fort Mohave Indian Reservation, (hereinafter abbreviated FMIR) to the N. and HNWR to the S.</p>
40.06	<p>The standard 1/4 sec. cor. of sec. 32, monumented with the 1989 memorial magnet, contained in a white plastic case, found undisturbed 27 ins. below the surface, corroborated by pieces of vitrified clay (remnants of the monument established in the 1960-62 resurvey).</p> <p>At the corner point, atop the magnet</p> <p>Set a stainless steel post, 28 ins. long, 2 1/2 ins. diam., 24 ins. in the ground, in a collar of stone, with brass cap mkd.</p> <p style="text-align: center;">SC T 17 N R 21 W 1/4 S 32</p> <hr style="width: 10%; margin: auto;"/> <p style="text-align: center;">2016</p> <p>Set a steel guard post alongside and N. of the cor.</p> <p>Cor. is located on the N. edge of the N. canal access road, 20 ft. N. of the N. edge of canal.</p> <hr/> <p style="text-align: center;">Restoring the resurvey executed by Robert C. Yundt and Donald A. Cannon in 1960-62.</p> <hr/> <p>S. 89°59' W., on the S. bdy. of sec. 32.</p>
40.07	<p>The standard cor. of secs. 31 and 32, monumented with the rusted remains of an iron post and broken pieces of a vitrified clay pipe (remnants of the monument established in the 1960-62 resurvey).</p>

Dependent Resurvey of a  
Portion of the Fourth Standard Parallel North (South Boundary),  
T. 17 N., R. 21 W., Gila and Salt River Meridian, Arizona

## CHAINS

At the corner point

Set a stainless steel post, 28 ins. long, 2 1/2 ins. diam., 24 ins. in the ground, with brass cap mkd.

SC  
T 17 N R 21 W  
S 31 | S 32

2016

Deposit a magnet, in a white plastic case, at the base of the stainless steel post, set a steel guard stake 1 lk. S. of the cor.

Cor. is located 11 ft. S. of a downed barbed wire fence, extends E. and W., and 60 ft. N. of the N. edge of canal.

---

Restoring the resurvey executed by  
Clyde J. King in 1992.

---

S. 89°59' W., on the S. bdy. of sec. 31.

Between a downed barbed wire fence, and canal access road, on the line between the HNWR to the S. and the Bureau of Reclamation administrative lands, (hereinafter abbreviated BOR) to the N.

37.31 The closing cor. of secs. 1 and 6, Tp. 16 N., Rs. 21 and 22 W., monumented with a stainless steel post, 28 ins. long, 2 1/2 ins. diam., loosely set, leaning 15 ins. off center, with brass cap mkd. T17N R21W S31 S1 S6 R22W R21W T16N 1992.

At the corner point

Excavate the stainless steel pipe, and reset 22 ins. in the ground over 1992 memorial magnet (contained in a white plastic case, found undisturbed 27 ins. below the surface). Add the marks 2016 to the brass cap.

Cor. is located in a downed barb wire fence, bears E. and W., and 39 ft. N. of N. edge of canal.

38.16 The meander cor. of sec. 31, at the left bank of the Colorado River in 1905, reestablished in the 1960-62 resurvey, and designated a witness point. Made common to the meander cor. of secs. 1, T. 16 N., R. 22 W. in the 1992 resurvey. Monumented with an iron post, 28 ins. long, 2 1/2 ins. diam., encased in concrete, enclosed in a 8 ins. diam., vitrified clay pipe, found loosely set, 16 ins. above ground, with brass cap mkd. WP T17N R21W S31 S1 T16N R22W 1992 1961.

Dependent Resurvey of a  
Portion of the Fourth Standard Parallel North (South Boundary),  
T. 17 N., R. 21 W., Gila and Salt River Meridian, Arizona

CHAINS	
	<p>At the corner point</p> <p>Excavate the iron post, and reset 22 ins. in the ground, over 1992 memorial magnet (contained in a white plastic case, found undisturbed 22 ins. below the surface). Add the marks 2016 to the brass cap.</p> <p>Cor. is located on the S. side of a downed barbed wire fence, and 40 ft. N. of the N. edge of canal.</p> <hr/> <p style="text-align: center;">Dependent Resurvey of a Portion of the Subdivisional Lines, T. 17 N., R. 22 W., Gila and Salt River Meridian, Arizona</p> <hr/> <p style="text-align: center;">Restoring the resurvey executed by Stephen J. Malloy in 1989.</p> <hr/> <p>From the point for the standard cor. of secs. 33 and 34, hereinbefore described.</p> <p>N. 0°05' E., bet. secs. 33 and 34.</p> <p>Through Topock Marsh, within HNWR.</p>
40.055	Point for the 1/4 sec. cor. of sec. 33 and 34, at proportionate dist.; falls within the waters of Topock Marsh, impracticable to establish a permanent monument.
80.11	<p>Point for the cor. of secs. 27, 28, 33 and 34, at proportionate dist.; falls within the waters of Topock Marsh, impracticable to establish a permanent monument.</p> <p>From this point, AP 1, of the 1989 metes-and-bounds survey in sec. 27, on the line bet. secs. 27 and 34, bears S. 89°40' E., 23.56 chs. dist., monumented with a stainless steel post, 2 1/2 ins. diam., firmly set, projecting 3 ins. above ground, with brass cap mkd. T17N R21W AP1 S27 S34 1989.</p> <p>Cor. is located on the E. right-of-way line of Mohave County Highway 1, 20 ft. above the road surface at the top of a cut bank. A steel fence post is located 1 lk. NE of cor.</p> <hr/> <p>N. 0°07' E., bet. secs. 27 and 28.</p> <p>Across Topock Marsh, within HNWR.</p>
40.05	Point for the 1/4 sec. cor. of secs. 27 and 28, at proportionate dist., there is no remaining evidence of the orig. cor., cor. falls within Topock Marsh, where a permanent monument would be impracticable.



Dependent Resurvey of a Portion of the Subdivisional Lines,  
T. 17 N., R. 21 W., Gila and Salt River Meridian, Arizona

CHAINS	
	<p>There is no remaining evidence of the 1989 witness cor. to the 1/4 sec. cor. of secs. 27 and 28, established N. 53°03' E., 1.35 chs. dist., from the proportionate position.</p>
43.385	<p>Point selected for a witness point.</p>
	<p>Set a stainless steel post, 28 ins. long, 2 1/2 ins. diam., 21 ins. in the ground, seated in concrete, in a collar of stone, with brass cap mkd.</p>
	<p style="text-align: center;">WP T 17 N R 21 W S 28   S 27</p>
	<p style="text-align: center;">2016</p>
	<p>Deposit a magnet, in a white plastic case, at the base of the stainless steel post, set a steel fence post alongside and W. of the cor.</p>
	<p>Cor. is located on the westerly shoulder of Mohave County Hwy. 1.</p>
44.62	<p>Middle of pavement, Mohave County Hwy. 1, 25 ft. wide, bears S. 22° E. and N. 22° W.</p>
46.58	<p>AP 6, of the 1989 metes-and-bounds survey in sec. 27, monumented with a stainless steel post, 2 1/2 ins. diam., firmly set, projecting 3 ins. above ground, with brass cap mkd.</p>
	<p style="text-align: center;">T 17 N R 21 W  S 28   S 27 AP 6 1989</p>
	<p>This corner is identical with an angle point of a metes-and-bounds survey in the NE 1/4 of sec. 28, identifying a parcel of land reserved to the FMIR in compliance with Executive Order 8647, dated 1-22-41. The metes-and-bounds survey is hereinafter described</p>
	<p>Alter the brass cap to read</p>
	<p style="text-align: center;">T 17 N R 21 W  S 28   S 27 AP 6 2016 1989</p>
	<p>Cor. is located on the E. right-of-way line of Mohave County Highway 1. A steel fence post is located 1 lk. WSW of cor.</p>

Dependent Resurvey of a Portion of the Subdivisional Lines,  
T. 17 N., R. 21 W., Gila and Salt River Meridian, Arizona

CHAINS	
	N. 0°05' E., beginning new measurement.
	On the E. bdy. of FMIR.
0.30	Power line, bears S. 24° E. and N. 24° W.
33.53	The cor. of secs. 21, 22, 27 and 28, monumented with an iron post, 2 1/2 ins. diam., firmly set, projecting 9 ins. above ground, in a mound of stone, 2 ft. base, to top, with brass cap mkd. T17N R21W S21 S22 S28 S27 1960. Add the marks 2016 to the brass cap.
	A steel fence post is located 6 lks. E. of the cor.
	<hr/> Restoring the resurvey executed by Donald A. Cannon and Robert C. Yundt in 1960-62 <hr/>
	From the standard cor. of secs. 32 and 33, on the S. bdy. of the Tp., hereinbefore described.
	N. 0°01' E., bet. secs. 32 and 33, bet. FMIR to the W., and HNWR to the E.
	Over nearly level bottom lands, through 2015 burned area, with regrowth of salt cedar.
40.055	Point for the 1/4 sec. cor. of secs. 32 and 33, at proportionate dist., there is no remaining evidence of the orig. cor.
	Set a stainless steel post, 28 ins. long, 2 1/2 ins. diam., 23 ins. in the ground, with brass cap mkd.
	T 17 N R 21 W 1/4 S 32   S 33  2016
	Deposit a magnet, in a white plastic case, at the base of the stainless steel post.
	Cor. is located 7 lks. E. of a rusted barbed wire fence, extends N. and S.
	The 1960-62 resurvey reported this cor. position in the backwaters of Lake Havasu, inaccessible.
80.11	The cor. of secs. 28, 29, 32 and 33, monumented with an iron post, 2 1/2 ins. diam., encased in concrete, enclosed in a 8 ins. diam., vitrified clay pipe, firmly set, projecting 12 ins. above ground, with brass cap mkd. T17N R21W S29 S28 S32 S31 1961. Add the marks 2016 to the brass cap.

Dependent Resurvey of a Portion of the Subdivisional Lines,  
T. 17 N., R. 21 W., Gila and Salt River Meridian, Arizona

CHAINS	
	<p>Cor. is located 5 lks. W. of a fence cor., with rusted barbed wire fences extending E. and S.</p>
	<hr/> <p style="text-align: center;">Restoring the resurvey executed by and Stephen J. Malloy in 1989.</p> <hr/>
	<p>From the point for the cor. of secs. 27, 28, 33 and 34.</p>
	<p>S. 89°59' W., bet. secs. 28 and 33.</p>
	<p>Across Topock Marsh, within HNWR.</p>
25.00	<p>HNWR, service road, graveled, 25 ft. wide, bears S. 7° E. and N. 7° W., thence over 2015 burned area, with regrowth of salt cedar.</p>
40.10	<p>The 1/4 sec. cor. of secs. 28 and 33, monumented with a stainless steel post, 2 1/2 ins. diam., firmly set, projecting 4 ins. above ground, with brass cap mkd. T17N R21W 1/4 S28 S33 1989. Add the marks 2016 to the brass cap.</p>
	<p>A steel fence post was found lying loose nearby, reset alongside and N. of cor.</p>
	<hr/>
	<p>West, beginning new measurement.</p>
20.05	<p>Point for the W. 1/16 sec. cor. of secs. 28 and 33.</p>
	<p>Set a stainless steel post, 28 ins. long, 2 1/2 ins. diam., 22 ins. in the ground, with brass cap mkd.</p>
	<p style="text-align: center;">T 17 N R 22 W S 28 W 1/16 ——— S 33</p>
	<p style="text-align: center;">2016</p>
	<p>Deposit a magnet, in a white plastic case, at the base of the stainless steel post, set a steel guard stake alongside and N. of cor.</p>
	<p>thence, on the line bet. FMIR to the N. and HNWR to the S.</p>
40.10	<p>The cor. of secs. 28, 29, 32 and 33.</p>
	<hr/> <p style="text-align: center;">Restoring the resurvey executed by Robert C. Yundt and Donald A. Cannon in 1960-62.</p> <hr/>

Dependent Resurvey of a Portion of the Subdivisional Lines,  
T. 17 N., R. 21 W., Gila and Salt River Meridian, Arizona

CHAINS	
	N. 0°12' W., bet. secs. 28 and 29, with FMIR to the E., and BOR to the W.
	Over nearly level bottom lands, through 2015 burned area, with regrowth of salt cedar.
2.90	Middle of abandoned earthen canal, 40 ft. wide, 8 ft. deep, course S. 55° E.
40.09	The 1/4 sec. cor. of secs. 28 and 29, monumented with an iron post, 2 1/2 ins. diam., encased in concrete, enclosed in an 8 ins. diam., vitrified clay pipe, firmly set, projecting 12 ins. above ground, with brass cap mkd. T17N R21W 1/4 S29 S28 1961. Add the marks 2016 to the brass cap.
	Set a steel fence post, alongside and W. of the cor.
	N. 0°12' W., beginning new measurement.
37.00	Intersect the remnants of a downed and buried barbed wire fence, extends E. and W.
37.06	Intersect the S. bdy. of the Topock Inlet Canal easement (hereinafter abbreviated TIC), in compliance with BOR drawings 423-306-1246 thru 423-306-1249, dated 7-18-66 and 7-22-66.
	The boundary at this point extends N. 89°59' W., parallel, with the line bet. secs. 20 and 29, hereinafter described, and S. 89°57' E., parallel with the line bet. secs. 21 and 28, hereinafter described.
38.00	S. bank of the TIC, earthen, 6 ft. above water, extends E. and W.
38.95	N. bank of the TIC, earthen, 6 ft. above water, extends E. and W.
40.09	The cor. of secs. 20, 21, 28 and 29, monumented with an iron post, 2 1/2 ins. diam., encased in concrete, enclosed in an 8 ins. diam., vitrified clay pipe, firmly set, 3 ins. below the surface, with brass cap mkd. T17N R21W S20 S21 S29 S28 1961. Add the marks 2016 to the brass cap.
	from which
	The NW of 4, concrete bollards, protecting a diesel fuel tank bears S. 49°06' E., 64 lks. dist. Tank is 11 x 5.75 x 4.5 ft. high.
	The NW cor. of metal housing, enclosing a diesel pump bears S. 22°48' E., 1.385 chs. dist. Pump is atop a metal platform, 15.5 ft. x 9.75 ft., 6 ft. above water of TIC.

Dependent Resurvey of a Portion of the Subdivisional Lines,  
T. 17 N., R. 21 W., Gila and Salt River Meridian, Arizona

CHAINS	
	<p>A brass disk, 4 ins. diam., set in a drill hole, flush, with the top, N. end of a 10 in. wide., concrete abutment, bears S. 46°06' W., 1.645 chs. dist. Disk is stamped U.S. DEPARTMENT OF INTERIOR BUREAU OF RECLAMATION B.M.</p> <p>Cor. is located, at the S. end of a dilapidated barbed wire fence, extend N. and W., and 42 ft. W. of a graded road, extends N.</p> <p>Set a steel fence post, alongside the cor.</p> <hr/> <p style="text-align: center;">Restoring the resurvey executed by Stephen J. Malloy in 1989.</p> <hr/> <p>From the cor. of secs. 21, 22, 27 and 28.</p> <p>N. 89°58' W., bet. secs. 21 and 28.</p> <p>Over rolling land, through creosote, on the N. bdy. of a parcel of land reserved to the FMIR, in compliance with Executive Order 8647, dated 1-22-1941.</p>
12.11	<p>AP 1, of the 1989 metes-and-bounds survey in sec. 27, monumented with a stainless steel post, 2 1/2 ins. diam., firmly set, projecting 1 in. above ground, with brass cap mkd. T17N R21W AP1 S21 S28 1989. Add the marks 2016 to the brass cap.</p> <p>Cor. is located on the E. right-of-way line of Mohave County Highway 1. A steel fence post is located 3 lk. WNW of cor.</p> <hr/> <p>N. 89°58' W., beginning new measurement.</p>
0.30	Power line, bears S. 20° E. and N. 20° W.
0.80	Middle of pavement, Mohave County Hwy. 1, 25 ft. wide, bears S. 20° E. and N. 20° W.
15.09	<p>Point for an angle point of a metes-and-bounds survey in the NE 1/4 of sec. 28, identifying a parcel of land reserved to the FMIR in compliance with Executive Order 8647, dated 1-22-1941.</p> <p>Set a stainless steel post, 28 ins. long, 2 1/2 ins. diam., 20 ins. in the ground, in a mound of stone, 2 1/2 ft. base, to top, with brass cap mkd.</p>
	<p style="text-align: center;">T 17 N R 21 W S 21 <hr/>S 28 AP  2016</p>

Dependent Resurvey of a Portion of the Subdivisional Lines,  
T. 17 N., R. 21 W., Gila and Salt River Meridian, Arizona

CHAINS	
	<p>Deposit a magnet, in a white plastic case, at the base of the stainless steel post.</p>
	<p>Cor. is located on the N. side of a barbed wire fence, extends E. and W.</p>
	<p>Continuing measurement, within HNWR.</p>
24.86	<p>From this point, the cor. of fences, enclosing parking area of HNWR, bears N., 27 lks. dist., barbed wire fences extend S. 85° W. and N. 20° W.</p>
27.35	<p>Northeast end of concrete boat ramp, extends S. 63° W., to Topock Marsh.</p>
28.19	<p>The 1/4 sec. cor. of secs. 21 and 28, monumented with the 1989 memorial magnet, enclosed in a white plastic case, found undisturbed 28 ins. below the surface.</p>
	<p>At the corner point</p>
	<p>Set a stainless steel post, 28 ins. long, 2 1/2 ins. diam., 20 ins. in the ground, in a mound of stone, 2 1/2 ft. base, to top, with brass cap mkd.</p>
	<p style="text-align: center;">T 17 N R 21 W S 21 1/4 ——— S 28  2016</p>
	<p>Cor. is located on the S. edge of a road, atop dike. Earthen dike is 33 ft. wide, 9 ft. high, extends N. 85° E. and S. 85° W.</p>
	<p>N. 89°57' W., beginning new measurement.</p>
	<p>Within HNWR, in and along earthen dike.</p>
3.60	<p>N. edge of dike, descend into bottom lands, through 2015 burned area, with regrowth of salt cedar.</p>
14.41	<p>From this point, the E. terminus of TIC easement, at the middle of abandoned bridge, bears N. 1.55 chs. dist. Bridge is 45 ft. long, 16 ft. wide, extends N. and S.</p>
	<p>Continuing, identical with the N. bdy. of the TIC easement, as per BOR drawings 423-306-1246 thru 423-306-1249, dated 7-18-66 and 7-22-66.</p>
20.16	<p>Point for the W. 1/16 sec. cor. of secs. 21 and 28.</p>

Dependent Resurvey of a Portion of the Subdivisional Lines,  
T. 17 N., R. 21 W., Gila and Salt River Meridian, Arizona

CHAINS	
	<p>Set a stainless steel post, 28 ins. long, 2 1/2 ins. diam., 26 ins. in the ground, seated in concrete, with brass cap mkd.</p>
	<p style="text-align: center;">T 17 N R 21 W S 21 W 1/16 ——— S 28</p>
	<p style="text-align: center;">2016</p>
	<p>Deposit a magnet, in a white plastic case, at the base of the stainless steel post, set a steel fence post alongside and N. of cor.</p>
	<p>Cor. is located 25. lks. S. of a graded road, bears S. 70° E. and W.</p>
	<p>Continuing measurement, on the line bet. FMIR to the N. and HNWR to the S., identical with the N. bdy. of the TIC easement.</p>
22.25	<p>From this point, the intersection of graded roads, bears N., 28 lks. dist., roads extend N., S. 70° E. and N. 70° W.</p>
40.31	<p>The cor. of secs. 20, 21, 28 and 29.</p>
<hr/> <p>Restoring the resurvey executed by Paul L. Reeves in 1980.</p> <hr/>	
	<p>N. 0°12' E., bet. secs. 20 and 21, FMIR to the W., and HNWR to the E.</p>
	<p>In and along, dilapidated barbed wire fence, through 2015 burned area, with regrowth of salt cedar.</p>
40.03	<p>The 1/4 sec. cor. of secs. 20 and 21, monumented with an iron post, 2 1/2 ins. diam., firmly set, projecting 16 ins. above ground, encased in a concrete cylinder, enclosed in a 8 ins. diam., vitrified clay pipe. Portions of the clay pipe have broken off, brass cap is marked T17N R21W 1/4 S20 S21 1961. Add the marks 2016 to the brass cap.</p>
	<p>Cor. is located on the W. side of a barbed wire fence, 39 lks. W. of a graded and graveled road, and 81 lks. W. of a concrete lined irrigation ditch, all extend N. and S. Irrigation ditch is 11.5 ft. wide at top, 4 ft. deep.</p>
<hr/> <p>N. 0°08' E., beginning new measurement.</p>	

Dependent Resurvey of a Portion of the Subdivisional Lines,  
T. 17 N., R. 21 W., Gila and Salt River Meridian, Arizona

CHAINS	
19.945	<p>The N. 1/16 sec. cor. of secs. 20 and 21, monumented with an iron post, 2 1/2 ins. diam., firmly set, projecting 1 in. above ground, with brass cap mkd. T17N R21W N 1/16 S20 S21 1980. Add the marks 2016 to the brass cap.</p> <p>Cor. is located 2 lks. W. of a dilapidated barbed wire fence.</p> <p>From this cor., the cor. of broken down, barbed wire fences, extending S. and W., bears N. 15° E., 7 lks. dist.</p> <p>Set a steel fence post, alongside and W. of the cor.</p> <hr/> <p>N. 0°08' E., beginning new measurement.</p> <p>Across fallow agricultural fields, through HNWR</p>
11.82	S. side of cement lined irrigation canal, extends E and W.
12.00	N. side of same cement lined irrigation canal.
12.10	Graded road, 12 ft. wide, bears E. and W.
12.30	Track road, at S. edge of marsh, both extend E. and W.
16.90	N. edge of marsh, extends E. and W.
19.945	<p>The cor. of secs. 16, 17, 20 and 21, monumented with an iron post, 2 1/2 ins. diam., firmly set, projecting 6 ins. above ground, encased in a concrete cylinder, enclosed in a 8 ins. diam., vitrified clay pipe. Portions of the clay pipe have broken off, brass cap is marked T17N R21W S17 S16 S20 S21 1961.</p> <p>Add the marks 2016 to the brass cap, set a steel fence post alongside and W. of cor.</p> <p>From this cor., the cor. of barbed wire fences, extending N. and E., bears S. 30° W., 8 lks. dist.</p> <hr/> <p style="text-align: center;">Restoring the resurvey executed by Robert C. Yundt and Donald A. Cannon in 1960-62.</p> <hr/> <p>From the standard cor. of secs. 31 and 32, on the S. bdy. of the Tp., hereinbefore described.</p> <p>N. 0°05' W., bet. secs. 31 and 32, FMIR to the E., and BOR to the W.</p> <p>Over nearly level bottom lands, through 2015 burned area, with regrowth of salt cedar.</p>



Dependent Resurvey of a Portion of the Subdivisional Lines,  
T. 17 N., R. 21 W., Gila and Salt River Meridian, Arizona

CHAINS	
3.57	From this point, a 2 1/2 ins. diam., brass disk, set in a 4 ins. diam., concrete collar, encased in busted clay pipe, bears W. 1.26 chs. dist. Brass disk is stamped LIMBAUGH ENGINEERING AND AERIAL SURVEY 1195-8 1963.
39.98	The 1/4 sec. cor. of secs. 31 and 32, monumented with an iron post, 2 1/2 ins. diam., encased in concrete, enclosed in a 8 ins. diam., vitrified clay pipe, firmly set, projecting 5 ins. above ground, with brass cap mkd. T17N R21W 1/4 S31 S32 1962. Add the marks 2016 to the brass cap.
	<hr/> <p>N. 0°16' W., beginning new measurement.</p>
2.13	The meander cor. of secs. 31 and 32, at the left bank of the Colorado River in 1905, reestablished in the 1960-62 resurvey, and designated a witness point. Monumented with an iron post, 2 1/2 ins. diam., encased in concrete, enclosed in a 8 ins. diam., vitrified clay pipe, projecting 16 ins. above ground, with brass cap mkd. WP S31 S32 T17N R21W 1962. Add the marks 2016 to the brass cap.
	<hr/> <p>From the cor. of secs. 28, 29, 32 and 33.</p> <p>S. 89°59' W., bet. secs. 29 and 32, BOR to the N., and FMIR to the S.</p> <p>Over nearly level bottom lands, through 2015 burned area, with regrowth of salt cedar.</p>
39.96	The 1/4 sec. cor. of secs. 29 and 32, monumented with an iron post, 2 1/2 ins. diam., firmly set in concrete, projecting 5 ins. above ground, with brass cap mkd. T17N R21W 1/4 S29 S32 1960. Add the marks 2016 to the brass cap.
	<hr/> <p>Cor. is located 40 lks. S. of a downed barbed wire fence, extends E. and W.</p>
17.75	The meander cor. of secs. 29 and 32, at the left bank of the Colorado River in 1905, reestablished in the 1960-62 resurvey, and designated a witness point. Monumented with an iron post, 28 ins. long, 2 1/2 ins. diam., set in concrete, projecting 1 ins. above ground, with brass cap mkd. T17N MC WP S29 S32 R21W 1960. Add the marks 2016 to the brass cap.
	<hr/> <p>Cor. is located in a trail road, bears irregularly E. and W, 40 lks. S. of a downed barbed wire fence extending E. and W.</p> <hr/>

Dependent Resurvey of a Portion of the Subdivisional Lines,  
T. 17 N., R. 21 W., Gila and Salt River Meridian, Arizona

CHAINS	
	<p style="text-align: center;">Restoring the resurvey executed by Paul L. Reeves in 1980.</p> <hr/>
	<p>From the cor. of secs. 20, 21, 28 and 29.</p>
	<p>N. 89°59' W., bet. secs. 20 and 29, FMIR to the N., and BOR to the S., identical with the N. bdy. of the TIC easement, as per BOR drawings 423-306-1246 thru 423-306-1249, dated 7-18-66 and 7-22-66.</p>
	<p>Over nearly level bottom lands, through 2015 burned area, with regrowth of salt cedar and arrow weed, on the N. side of a battered barbed wire fence. Fence is existent in places, downed in places and absent in places.</p>
30.52	<p>From this point, the first standing fence post, bears S. 1 ft. dist.</p>
40.01	<p>The 1/4 sec. cor. of secs. 20 and 29, monumented with an iron post, 2 1/2 ins. diam., firmly set, projecting 4 in. above ground, with brass cap mkd. T17N R21W 1/4 S20 S29 1980. Add the marks 2016 to the brass cap.</p> <p>Cor. is located 1 1/2 ft. N. of a battered barbed wire fence, extends E. and W.</p>
	<p>From this cor., the middle of TIC bears S., 1.60 chs. dist. The TIC at this point is 60 ft. wide, 12 ft. deep.</p> <hr/>
	<p>S. 89°59' W., beginning new measurement.</p>
30.67	<p>The meander cor. of secs. 20 and 29, at the left bank of the Colorado River in 1905, reestablished in the 1960-62 resurvey, and designated a witness point. Monumented with an iron post, 2 1/2 ins. diam., set in concrete, projecting 4 ins. above ground, with brass cap mkd. T17N R21W WP MC S20 S29 1960. Add the marks 2016 to the brass cap.</p> <p>Cor. is located 1 1/2 ft. N. of a battered barbed wire fence, extends E. and S. 70° W.</p> <hr/>
	<p>From the cor. of secs. 17, 18, 19 and 20, monumented with an iron post, 2 1/2 ins. diam., firmly set, 3 ins. below the surface, with brass cap mkd. T17N R21W S18 S17 S19 S20 1961. Add the marks 2016 to the brass cap.</p>
	<p>Set a steel fence post, alongside and W. of cor.</p>
	<p>From this cor., the W. terminus of a woven wire fence, bears N. 47°24' E., 50 lks. dist., fence extends S. 86° E.</p>

Dependent Resurvey of a Portion of the Subdivisional Lines,  
T. 17 N., R. 21 W., Gila and Salt River Meridian, Arizona

CHAINS	<p>S. 0°07' E., bet. secs. 19 and 20, BOR to the W., and FMIR to the E.</p> <p>In and along, dilapidated barbed wire fence, through 2015 burned area, with regrowth of salt cedar and arrow weed.</p> <p>39.99 The 1/4 sec. cor. of secs. 19 and 20, monumented with an iron post, 2 1/2 ins. diam., set in concrete, projecting 4 ins. above ground, with brass cap mkd. T17N R21W 1/4 S19 S20 1960. Add the marks 2016 to the brass cap.</p> <p>Cor. is located, 3 lks. E. of a downed barbed wire fence, and 15 lks. E. of a track road, both extend N. and S.</p> <p>Note: The 1980 Reeves survey, resurveyed the N. 1/2 mile bet. secs. 19 and 20 only.</p> <hr/> <p style="text-align: center;">Restoring the resurvey executed by Robert C. Yundt and Donald A. Cannon in 1960-62.</p> <hr/> <p>From the 1/4 sec. cor. of secs. 19 and 20.</p> <p>S. 0°05' E., bet. secs. 19 and 20, BOR to the W., and FMIR to the E.</p> <p>In and along, dilapidated barbed wire fence, through 2015 burned area, with regrowth of salt cedar and arrow weed.</p> <p>24.43 The meander cor. of secs. 19 and 20, at the left bank of the Colorado River in 1905, reestablished in the 1960-62 resurvey, and designated a witness point. Monumented with an iron post, 28 ins. long, 2 1/2 ins. diam., loosely set, projecting 20 ins. above ground, with brass cap mkd. T17N R21W S19 S20 WP 1960. Add the marks 2016 to the brass cap.</p> <p>At the corner point.</p> <p>Reset the iron post, atop rusted flakes of iron and broken chunks of concrete, 24 ins. in the ground, encircle with broken concrete building blocks. Set a steel fence post alongside and ESE of the cor.</p> <p>Cor. is located 2 lks. W. of a downed barbed wire fence.</p> <hr/> <p style="text-align: center;">Restoring the resurvey executed by Paul L. Reeves in 1980.</p> <hr/> <p>From the cor. of secs. 16, 17, 20 and 21.</p>
--------	--

Dependent Resurvey of a Portion of the Subdivisional Lines,  
T. 17 N., R. 21 W., Gila and Salt River Meridian, Arizona

CHAINS	
	<p>N. 89°55' W. bet. secs. 17 and 20, within HNWR.</p>
	<p>Over bottomlands, through dense brush and marsh lands.</p>
0.30	<p>Graded and graveled road, 16 ft. wide, bears N. and S.</p>
19.70	<p>Graded and graveled road, 12 ft. wide, bears N. and S.</p>
19.95	<p>A dilapidated barbed wire fence, bears N. and S.</p>
20.165	<p>The E. 1/16 sec. cor. of secs. 17 and 20, monumented with an iron post, 2 1/2 ins. diam., firmly set in concrete, flush with the surface, with brass cap mkd. T17N R21W E 1/16 S17 S20 1980.</p> <p>Add the marks 2016 to the brass cap, set a steel guard post alongside and N. of the cor.</p> <hr/>
	<p>N. 89°58' W., beginning new measurement.</p> <p>In and along a downed barbed wire fence, through 2015 burned area, with regrowth of salt cedar and arrow weed, state land to the N., FMIR to the S.</p>
20.165	<p>The 1/4 sec. cor. of secs. 17 and 20, monumented with an iron post, 2 1/2 ins. diam., firmly set, projecting 16 ins. above ground, encased in a concrete cylinder enclosed in a 8 ins. diam. vitrified clay pipe. Portions of the clay pipe have broken off. Brass cap is marked T17N R21W 1/4 S17 S20 1961. Add the marks 2016 to the brass cap.</p> <hr/>
	<p>S. 89°59' W., beginning new measurement, patented lands to the N., FMIR to the S.</p>
40.01	<p>The cor. of secs. 17, 18, 19 and 20.</p> <hr/>
	<p>S. 89°59' W., bet. secs. 18 and 19, FMIR to the N. and BOR to the S.</p> <p>Within Plantation Road, graded and graveled, 28 ft. wide, bears E. and W.</p>
40.00	<p>The 1/4 sec. cor. of secs. 18 and 19, monumented with an iron post, 2 1/2 ins. diam., firmly set, 30 ins. below the surface, with brass cap mkd. T17N R21W 1/4 S18 S19 1980.</p> <p>from which</p>

Dependent Resurvey of a Portion of the Subdivisional Lines,  
T. 17 N., R. 21 W., Gila and Salt River Meridian, Arizona

CHAINS

A stainless steel post, 28 ins. long, 2 1/2 ins. diam., set 27 ins. in the ground for a reference monument, bears N. 45°00' E., 66.0 ft. dist. with brass cap mkd. RM T17N R21W 66.0 FT TO COR. S18 2016 and an arrow pointing to the cor. Deposit a magnet, in a white plastic case, at the base of the stainless steel post. Set a steel guard post, alongside and N. of cor.

A stainless steel post, 28 ins. long, 2 1/2 ins. diam., set 25 ins. in the ground for a reference monument, bears N. 45°00' W., 66.0 ft. dist. with brass cap mkd. RM T17N R21W 66.0 FT TO COR. S18 2016 and an arrow pointing to the cor. Deposit a magnet, in a white plastic case, at the base of the stainless steel post. Set a steel guard post, alongside and N. of cor.

Cor. is located on the N. shoulder of Plantation Road.

N. 89°57' W., beginning new measurement.

39.97

The cor. of secs. 13, 18, 19 and 24, on the W. bdy. of the Tp., as described in the dependent resurvey of a portion of the E. bdy. of T. 17 N., R. 22 W., executed concurrently under this same group.

Dependent Resurvey of the Division of Accretion Lines,  
T. 17 N., R. 21 W., Gila and Salt River Meridian, Arizona

Restoring the resurvey executed by  
Clyde J. King, in 1992

From the meander cor. of sec. 31, identical with the meander cor. of sec. 1, T. 16 N., R. 22 W., hereinbefore described.

N. 50°38' W., on the division of accretion line, identical with a portion of the S. bdy. of the Tp.

Over nearly level land, through 2015 burned area, with regrowth of salt cedar and arrow weed, through BOR lands.

30.00

A witness point, monumented with a stainless steel post, 2 1/2 ins. diam., firmly set, projecting 1 in. above ground, with brass cap mkd. T17N R21W S31 T16N R22W S1 1992.

N. 50°39' W., beginning new measurement.

Dependent Resurvey of the Division of Accretion Lines,  
T. 17 N., R. 21 W., Gila and Salt River Meridian, Arizona

CHAINS	
30.00	<p>A witness point, monumented with a stainless steel post, 2 1/2 ins. diam., firmly set, projecting 4 in. above ground, with brass cap mkd. WP T17N R21W S31 S1 T16N R22W 1992.</p> <hr/> <p>N. 50°39' W., beginning new measurement.</p>
37.76	<p>The left bank of the abandoned channel of the Colorado River, as established in the 1960-62 survey. Monumented with an iron post, 2 1/2 ins. diam., encased in concrete, enclosed in a 8 ins. diam., vitrified clay pipe, firmly set, projecting 8 ins. above ground, with brass cap mkd. WP T17N R21W MC S31 T16N R22W S1 1992 1962.</p> <hr/> <p style="text-align: center;">Restoring the survey executed by Robert C. Yundt and Donald A. Cannon in 1960-62</p> <hr/> <p>From the witness point on the line between secs. 31 and 32, hereinbefore described.</p> <p>N. 63°15' W., on the extension of the line bet. secs. 31 and 32, FMIR to the NNE, BOR to the SSW.</p> <p>Over nearly level accretion land, through 2015 burned area, with regrowth of salt cedar and arrow weed.</p>
34.96	<p>Point for a witness point.</p> <p>Set a stainless steel post, 28 ins. long, 2 1/2 ins. diam., 22 ins. in the ground, with brass cap mkd.</p> <div style="text-align: center;"> <p>WP</p> <p>T 17N R 21 W</p> <p style="margin-left: 100px;">S32</p> <p style="margin-left: 50px;">S31</p> <hr style="width: 50%; margin: 0 auto;"/> <p>2016</p> </div> <p>Deposit a magnet, in a white plastic case, at the base of the stainless steel post.</p>
69.92	<p>Point for a witness point.</p> <p>Set a stainless steel post, 28 ins. long, 2 1/2 ins. diam., 22 ins. in the ground, with brass cap mkd.</p> <div style="text-align: center;"> <p>WP</p> <p>T 17N R 21 W</p> <p style="margin-left: 100px;">S32</p> <p style="margin-left: 50px;">S31</p> <hr style="width: 50%; margin: 0 auto;"/> <p>2016</p> </div>

Dependent Resurvey of the Division of Accretion Lines,  
T. 17 N., R. 21 W., Gila and Salt River Meridian, Arizona

CHAINS	
	<p>Deposit a magnet, in a white plastic case, at the base of the stainless steel post.</p>
104.88	<p>The left bank of the abandoned channel of the Colorado River, as established as in the 1960-62 survey. Monumented with an iron post, 28 ins. long, 2 1/2 ins. diam., encased in concrete, enclosed in a 8 ins. diam., vitrified clay pipe, loosely set, projecting 20 ins. above ground, with brass cap mkd. T17N R21W MC S31 S32 1962. Add the marks 2016 to the brass cap.</p> <p>At the corner point.</p> <p>Reset the iron post, atop rusted flakes of iron and broken pieces of the clay pipe, 21 ins. in the ground.</p> <p>Cor. is located 15 lks. S. of a track road, extends S. 75°E. and N. 75° W.</p>
	<hr/> <p>From the witness point on the line between secs. 29 and 32, hereinbefore described.</p> <p>N. 83°26' W., on the extension of the line bet. secs. 29 and 32, BOR to the N., FMIR to the S.</p> <p>Over nearly level accretion land, through 2015 burned area, with regrowth of salt cedar and arrow weed.</p>
30.06	<p>Point for a witness point.</p> <p>Set a stainless steel post, 28 ins. long, 2 1/2 ins. diam., 24 ins. in the ground, with brass cap mkd.</p> <div style="text-align: center;"> <p>WP</p> <p>T 17N R 21 W</p> <p>    S29</p> <p>    S32</p> <p>    2016</p> </div>
60.12	<p>Deposit a magnet, in a white plastic case, at the base of the stainless steel post.</p> <p>Point for a witness point.</p> <p>Set a stainless steel post, 28 ins. long, 2 1/2 ins. diam., 24 ins. in the ground, with brass cap mkd.</p>

Dependent Resurvey of the Division of Accretion Lines,  
T. 17 N., R. 21 W., Gila and Salt River Meridian, Arizona

CHAINS	
	<p style="text-align: center;">WP T 17N R 21 W S29 S32 2016</p>
	<p>Deposit a magnet, in a white plastic case, at the base of the stainless steel post.</p>
90.18	<p>A weathered redwood post, 4 ins. square, firmly set, projecting 7 ins. above ground, no marks visible.</p> <p>This monument, was established in the 1960-62 survey, designated Angle Point No. 2, Parcel 5, perpetuating a point created in a grant deed, conveying secs. 19 and 29, including the accretions thereof, from the Cotton Land Co., to the United States (in the interest of the BOR). Recorded in the Mohave County Recorder's Office in Deed Book No. 73, Pages 209-214.</p>
96.40	<p>The left bank of the abandoned channel of the Colorado River, as established as in the 1960-62 survey. Monumented with an iron post, 28 ins. long, 2 1/2 ins. diam., encased in concrete, enclosed in a 8 ins. diam., vitrified clay pipe, lying loose, with brass cap mkd. T17N R21W MC S29 S32 1962. Add the marks 2016 to the brass cap.</p> <p>At the corner point</p> <p>Reset the iron post, 22 ins. in the ground, over remnants of surveyors ribbon.</p> <p>Encircle the iron post, with a discarded automobile tire, found nearby.</p> <hr/> <p>From the witness point on the line between secs. 20 and 29, hereinbefore described.</p> <p>S. 71°16' W., on the extension of the line bet. secs. 20 and 29, FMIR to the NNE, BOR to the SSW.</p> <p>Identical with the N. bdy. of the TIC easement, as per BOR drawings 423-306-1246 thru 423-306-1249, dated 7-18-66 and 7-22-66.</p> <p>Over nearly level accretion land, through 2015 burned area, with regrowth of salt cedar and arrow weed, on the northerly side of a battered barbed wire fence.</p>
9.50	<p>Bladed road, bears N. and bears S., for 75 lks. to intersection, with track road extending N. 70° E. and S. 70° W.</p>
30.00	<p>Point for a witness point.</p>



Dependent Resurvey of the Division of Accretion Lines,  
T. 17 N., R. 21 W., Gila and Salt River Meridian, Arizona

CHAINS	
	<p>Set a stainless steel post, 28 ins. long, 2 1/2 ins. diam., 26 ins. in the ground, with brass cap mkd.</p> <div style="text-align: center;"> <p>WP T 17N R 21 W S20 / S29 2016</p> </div> <p>Deposit a magnet, in a white plastic case, at the base of the stainless steel post, set a steel guard post, alongside and WSW of the cor.</p> <p>Cor. is located, 1.2 ft. Northerly of a battered barbed wire fence, extends N. 70° E. and S. 70° W.</p>
64.45	<p>Point for Angle Point No. 1, Parcel No. 5, at proportionate dist., there is no remaining evidence of the 1960-62 redwood post. Not remonumented.</p> <p>This monument was established in the 1960-62 survey, perpetuating a point created in a grant deed, conveying secs. 19 and 29, including the accretions thereof, from the Cotton Land Co., to the United States (in the interest of the BOR). Recorded in the Mohave County Recorder's Office in Deed Book No. 73, Pages 209-214.</p>
74.925	<p>Point for an angle point, at intersection with the metes-and-bounds survey of the N. boundary of the of the TIC easement.</p> <p>Set a stainless steel post, 28 ins. long, 2 1/2 ins. diam., 26 ins. in the ground, anchored in a 2 1/2 gallon plastic bucket, half filled with concrete, with brass cap mkd.</p> <div style="text-align: center;"> <p>T17N R21W S20 / AP S29 TIC 2016</p> </div> <p>Deposit a magnet, in a white plastic case, beneath the plastic bucket.</p> <p>The metes-and-bounds survey of the N. bdy. of the TIC easement is hereinafter described.</p>
74.94	<p>Intersect a dilapidated barbed wire fence, bears N. 35° W. and S. 35° E., for 1.5 lks. dist., thence N. 70° E.</p>

Dependent Resurvey of the Division of Accretion Lines,  
T. 17 N., R. 21 W., Gila and Salt River Meridian, Arizona

CHAINS	
75.97	<p>The left bank of the abandoned channel of the Colorado River, as established in the 1960-62 survey. Monumented with an iron post, 2 1/2 ins. diam., encased in concrete enclosed in an 8 ins. diam. vitrified clay pipe, set 18 ins. below the surface. Brass cap mkd. T17N R21W MC S20 S29 1962.</p> <p>Set a steel guard post alongside and ESE of the cor.</p> <p>Cor. is located 3 lks. ESE, of the edge of the left bank of TIC.</p> <hr/> <p>From the witness point on the line between secs. 19 and 20, hereinbefore described.</p> <p>S. 65°54' W., on the extension of the line bet. secs. 19 and 20, BOR to the NNW., FMIR to the SSE.</p> <p>Over nearly level accretion land, through 2015 burned area, with regrowth of salt cedar and arrow weed.</p>
30.00	<p>Point for a witness point.</p> <p>Set a stainless steel post, 28 ins. long, 2 1/2 ins. diam., 26 ins. in the ground, with brass cap mkd.</p> <div style="text-align: center;"> <p>WP</p> <p>T 17N R 21 W</p> <p>S19 / S20</p> <p>2016</p> </div> <p>Deposit a magnet, in a white plastic case, at the base of the stainless steel post, set a steel guard post, alongside and WSW of the cor.</p>
62.65	<p>A charred and weathered redwood post, 4 ins. square, firmly set, projecting 38 ins. above ground, encircled with a collar of stone, no marks visible.</p> <p>This monument was established in the 1960-62 survey, perpetuating a point created in a grant deed, conveying secs. 19 and 29 including the accretions thereof, from the Cotton Land Co., to the United States (in the interest of the BOR). Recorded in the Mohave County Recorder's Office in Deed Book No. 73, Pages 209-214.</p> <hr/> <p>S. 65°56' W., beginning new measurement.</p>
11.78	<p>Intersect the metes-and-bounds survey of the N. bdy. of the TIC easement, hereinafter described.</p>

Dependent Resurvey of the Division of Accretion Lines,  
T. 17 N., R. 21 W., Gila and Salt River Meridian, Arizona

CHAINS

- 11.795 Intersect a dilapidated barbed wire fence, bears N. 35° W. and S. 35° E.
- 11.825 The left bank of the abandoned channel of the Colorado River, as established as in the 1960-62 survey. Monumented with an iron post, 2 1/2 ins. diam., encased in concrete enclosed in an 8 ins. diam. vitrified clay pipe, set 14 ins. below the surface. Brass cap mkd. T17N R21W MC S19 S20 1962. Set a steel guard post, alongside and SSE of cor. Add the marks 2016 to the brass cap.

---

Dependent Resurvey of the Traverse and Meanders of the  
Left Bank of the abandoned channel of the Colorado River  
in secs. 19, 20, 29 and 32,  
T. 17 N., R. 21 W., Gila and Salt River Meridian, Arizona

---

Restoring the survey executed by  
Robert C. Yundt and Donald A. Cannon in 1960-62

---

Preliminary statement: Sections 19 and 29 and the accretions thereof, are acquired lands, conveyed to the United States, via a grant deed, executed March 18, 1952. Filed in the Mohave County Recorder's Office, on May 1, 1952, in book 73 of deeds, pages 209-214. Sections 19 and 29 were originally conveyed under the plat approved June 29, 1906. Once divested by the U.S., the acreages and lots returned are not subject to amendment. The grant deed identifies the accretions as parcel 4 (sec. 19) and parcel 5 (sec. 29).

The 1960-62 survey, conducted an informative traverse of the left bank of the abandoned channel of the Colorado River in sections 19 and 29, no new lots or acreages were returned. This survey adjusts the 1960-62 record traverse in secs. 19 and 29.

Sections 20 and 32, and the accretions thereof, are additions to the FMIR, authorized by an Executive Order, dated February 2, 1911. In these sections, the 1960-62 survey, meandered the left bank of the abandoned channel of the Colorado River, new lots and acreages were returned. This survey adjusts the record meanders in sections 20 and 32.

Due to natural and man-made factors, the left bank is not as described in the 1960-62 survey, in some locations a low bank is identifiable, in other locations a distinct bank is absent.

---

In Section 19

---

Dependent Resurvey of the Traverse and Meanders of the  
Left Bank of the abandoned channel of the Colorado River  
in secs. 19, 20, 29 and 32,  
T. 17 N., R. 21 W., Gila and Salt River Meridian, Arizona

CHAINS	
	<p>From the meander cor. of secs. 19 and 24, T. 17 N., Rs. 21 and 22 W., as described in the dependent resurvey of the E. bdy. of T. 17 N., R. 22 W., executed concurrently under this same group.</p>
	<p>Thence, downstream with the adjusted traverse, identical with the rec. traverse, of the left bank of the abandoned channel of the Colorado River in sec. 19.</p>
	<p>S. 70°50' E., on the 1960-62 abandoned left bank of the Colorado River.</p>
	<p>Within the easement for the TIC, granted from the State of AZ., to the BOR. Memorialized with Contract No. 14-06-300-2674, notarized on 6/10/1965. The bounds of the easement are hereinafter described.</p>
1.33	<p>Adjusted traverse point, not monumented.</p> <hr/>
	<p>S. 84°35' E., on the 1960-62 abandoned left bank of the Colorado River.</p>
5.79	<p>From this point, the midpoint of an earthen dam over TIC, bears S., 49 lks. dist. Dam is 48 ft. long, 20 ft. wide, extends N. 10° E. and S. 10° W.</p>
6.96	<p>From this point, the midpoint of an iron catwalk over TIC, bears S., 34 lks. dist. Catwalk is 53 ft. long, 4 ft. wide, extends N. 5° E. and S. 5° W., an iron water control gate within the TIC is adjacent to the catwalk.</p>
15.75	<p>Adjusted traverse point, not monumented.</p> <hr/>
	<p>S. 89°05' E., on the 1960-62 abandoned left bank of the Colorado River.</p>
7.59	<p>Intersect a battered barbed wire fence, extends S. 76° E. and N. 76° W.</p>
7.655	<p>Intersect the metes-and-bounds survey of the N. bdy. of the TIC, bears S. 75°52' E. and N. 75°52' W., hereinafter described.</p>
10.10	<p>Adjusted traverse point, not monumented.</p> <hr/>
	<p>S. 84°35' E., on the 1960-62 abandoned left bank of the Colorado River.</p>
5.17	<p>Adjusted traverse point, not monumented.</p> <hr/>

Dependent Resurvey of the Traverse and Meanders of the  
Left Bank of the abandoned channel of the Colorado River  
in secs. 19, 20, 29 and 32,  
T. 17 N., R. 21 W., Gila and Salt River Meridian, Arizona

CHAINS	
	S. 60°35' E., on the 1960-62 abandoned left bank of the Colorado River.
8.10	Adjusted traverse point, not monumented. <hr/>
	S. 40°52' E., on the 1960-62 abandoned left bank of the Colorado River.
0.65	Intersect the metes-and-bounds survey of the N. bdy. of the TIC, bears S. 65°52' E. and N. 65°52' W., hereinafter described.
0.685	Intersect a battered barbed wire fence, extends S. 66° E. and N. 66° W.
2.40	Intersect a battered barbed wire fence, extends S. 34° E. and N. 34° W.
2.535	Intersect the metes-and-bounds survey of the N. bdy. of the TIC, bears S. 34°26' E. and N. 34°26' W., hereinafter described.
4.46	Adjusted traverse point, not monumented. <hr/>
	S. 26°07' E., on the 1960-62 abandoned left bank of the Colorado River.
1.49	Intersect the metes-and-bounds survey of the N. bdy. of the TIC, bears S. 34°26' E. and N. 34°26' W., hereinafter described.
1.595	Intersect a battered barbed wire fence, extends S. 34° E. and N. 34° W.
6.87	Adjusted traverse point, not monumented. <hr/>
	S. 40°07' E., on the 1960-62 abandoned left bank of the Colorado River.
7.41	The meander cor. of secs. 19 and 20, hereinbefore described. <hr/>
	In Section 20 <hr/>
	Continuing from the meander cor. of secs. 19 and 20, downstream with the adjusted meanders, in sec. 20.
	S. 40°05' E. on the 1960-62 abandoned left bank of the Colorado River.
0.305	Intersect a battered barbed wire fence, extends S. 34° E. and N. 34° W.

**Dependent Resurvey of the Traverse and Meanders of the  
Left Bank of the abandoned channel of the Colorado River  
in secs. 19, 20, 29 and 32,  
T. 17 N., R. 21 W., Gila and Salt River Meridian, Arizona**

CHAINS	
0.46	Intersect the metes-and-bounds survey of the N. bdy. of the TIC, bears S. 34°26' E. and N. 34°26' W., hereinafter described.
0.59	Adjusted meander point, not monumented. <hr style="width: 20%; margin: 10px auto;"/>
	S. 36°50' E., on the 1960-62 abandoned left bank of the Colorado River.
6.39	Adjusted meander point, not monumented. <hr style="width: 20%; margin: 10px auto;"/>
	S. 16°18' E. on the 1960-62 abandoned left bank of the Colorado River.
0.90	Intersect the metes-and-bounds survey of the N. bdy. of the TIC, bears S. 34°26' E. and N. 34°26' W., hereinafter described.
0.95	Intersect a battered barbed wire fence, extends S. 34° E. and N. 34° W.
4.13	The meander cor. of secs. 20 and 29, hereinbefore described. <hr style="width: 20%; margin: 10px auto;"/>
	In Section 29 <hr style="width: 20%; margin: 10px auto;"/>
	Continuing from the meander cor. of secs. 20 and 29, downstream with the adjusted meanders, in sec. 29.  S. 16°19' E. on the 1960-62 abandoned left bank of the Colorado River, descending into TIC.
0.90	Middle of TIC at bottom, in curve, 18 ft. wide, 15 ft. deep, tangents bears N. 70° E., curving slightly north and S. 70° W., curving heavily north.
3.015	Intersect a battered barbed wire fence, extends N. 71° E. and S. 71° W., for 1.11 chs. to intersection with barbed wire fence extending N. 34° W.
3.03	Intersect the metes-and-bounds survey of the S. bdy. of the TIC, bears N. 71°16' E. and S. 71°16' W., hereinafter described.
8.19	Adjusted traverse point, not monumented. <hr style="width: 20%; margin: 10px auto;"/>
	S. 2°57' W., on the 1960-62 abandoned left bank of the Colorado River.
13.40	Adjusted traverse point, not monumented. <hr style="width: 20%; margin: 10px auto;"/>



Subdivision of the NE 1/4 of the NE 1/4, Sec. 20,  
T. 17 N., R. 21 W., Gila and Salt River Meridian, Arizona

CHAINS	
	Immediately S. of a battered barbed wire fence, extending W., along the southerly edge of a fallow agricultural field.
20.13	The NE 1/16 sec. cor. of sec. 20, monumented with an iron post, 2 1/2 ins. diam., firmly set, 2 ins. below the surface, with brass cap mkd. T17N R22W NE 1/16 S20 1980. Add the marks 2016 to the brass cap.  From this cor., the intersection of tattered fences extending N. and E. bears N. 70° E., 20 lks. dist.
	<hr/> <p>N. 0°02' E. on the N. and S. center line of the NE 1/4 of sec. 20, HNWR to the E., FMIR to the W.</p>
	Immediately W. of a tattered barbed wire fence, extending N. along the westerly edge of a fallow agricultural field.
19.97	The E. 1/16 sec. cor. of secs. 17 and 20, hereinbefore described.
	<hr/> <p style="text-align: center;"><b>Survey of the Fixed and Limiting Boundary of the Left Bank of the Abandoned Channel of the Colorado River, through section 31, T. 17 N., R. 21 W., Gila and Salt River Meridian, Arizona</b></p> <hr/>
	Preliminary statement: Sections 31 and the accretions thereof, are acquired lands, conveyed to the United States, via a grant deed, executed on June 5, 1942. Filed in the Mohave County Recorder's Office, on June 23, 1942, in book 55 of deeds, pages 460-462.
	The abandoned left channel of the Colorado River, through section 31, is well defined by a bank, fluctuating from 10 to 15 ft. high. A slough within the abandoned bed is immediately north of the informative traverse, a track road is south.
	From the meander cor. on the division of accretion line bet. secs. 31 and 32, established in the 1960-62 survey, hereinbefore described.
	Thence downstream
	N. 86°13' W., 2.19 chs.
	S. 75°12' W., 4.39 chs.
	S. 58°31' W., 4.30 chs.
	S. 37°02' W., 5.57 chs.
	S. 18°12' W., 9.87 chs.
	S. 13°24' W., 4.42 chs.



**Survey of the Fixed and Limiting Boundary of the Left Bank of  
the Abandoned Channel of the Colorado River, through section 31,  
T. 17 N., R. 21 W., Gila and Salt River Meridian, Arizona**

CHAINS	
	<p>S. 22°17' W., 6.47 chs. The meander cor. of sec. 31, identical with the meander cor. of sec. 1, T. 16 N., R. 22 W., hereinbefore described.</p> <hr/> <p align="center"><b>Subdivision of Section 28, T. 17 N., R. 21 W., Gila and Salt River Meridian, Arizona</b></p> <hr/> <p>From the 1/4 sec. cor. of secs. 28 and 33, hereinbefore described.</p> <p>N. 0°03' W. on the N. and S. center line of sec. 28, within HNWR.</p> <p>Over nearly level overflow land, through 2015 burned area, with regrowth of salt cedar and arrow weed.</p>
40.08	Point for the center 1/4 sec. cor. of sec. 28, at intersection with the E. and W. center line of sec. 28, not monumented.
51.10	Middle of HNWR, service access road, 22 ft. wide, graded and graveled, extends S. 35° E. and N. 35° W.
52.40	Enter Topock Marsh, extends S. 35° E. and N. 35° W.
79.40	Edge of water, Topock Marsh, at base of earthen dike, extends N. 85° E. and S. 85° W.
80.15	The 1/4 sec. cor. of secs. 21 and 28, hereinbefore described.
	<hr/> <p>From the point for the 1/4 sec. cor. of secs. 27 and 28, hereinbefore described.</p> <p>N. 89°59' W. on the E. and W. center line of sec. 28.</p> <p>Across Topock Marsh, within HNWR.</p>
35.20	Edge of water, leave aquatic vegetation, enter 2015 burned area, with regrowth of salt cedar.
36.75	Middle of HNWR, service access road, 22 ft. wide, graded and graveled, extends S. 5° E. and N. 5° W.
40.21	The point for the center 1/4 sec. cor. of sec. 28.
60.31	Point for the center W. 1/16 sec. cor. of sec. 28.
	<p>Set a stainless steel post, 28 ins. long, 2 1/2 ins. diam., 24 ins. in the ground, with brass cap mkd.</p>

Subdivision of Section 28  
T. 17 N., R. 21 W., Gila and Salt River Meridian, Arizona

CHAINS	
	T 17 N R 22 W W 1/16 C ——— C S 28  2016
	Deposit a magnet, in a white plastic case, at the base of the stainless steel post, set a steel guard post, alongside and N. of cor.
	Continuing measurement, across FMIR.
80.41	The 1/4 sec. cor. of secs. 28 and 29, hereinbefore described.  <hr style="width: 50%; margin: auto;"/> SW 1/4 Section 28.  <hr style="width: 50%; margin: auto;"/> From the W. 1/16 sec. cor. of secs. 28 and 33, hereinbefore described.  N. 0°07' W. on the N. and S. center line of the SW 1/4 of sec. 28.  Over nearly level over flow land, through 2015 burned area, with regrowth of salt cedar and arrow weed, HNWR to the E., FMIR to the W.
40.08	The center W. 1/16 sec. cor. of sec. 28.  <hr style="width: 50%; margin: auto;"/> NW 1/4 Section 28.  <hr style="width: 50%; margin: auto;"/> From the center W. 1/16 sec. cor. of secs. 28.  N. 0°07' W. on the N. and S. center line of the NW 1/4 of sec. 28.  Over nearly level over flow land, through 2015 burned area, with regrowth of salt cedar and arrow weed, HNWR to the E., FMIR to the W.
37.05	Intersect the metes-and-bounds survey of the S. bdy. of the TIC, bears S. 89°57' W. and N. 89°57' W., hereinafter described.
38.02	S. bank Topock Inlet Canal, extends E. and W.
39.07	N. bank Topock Inlet Canal, extends E. and W.
39.25	Elevated road, 20 ft. wide, bears E. and W.
40.08	The W. 1/16 sec. cor. of secs. 21 and 28, hereinbefore described.  <hr style="width: 50%; margin: auto;"/>

**Metes-and-Bounds Survey in the NE 1/4 of Section 28,  
T. 17 N., R. 21 W., Gila and Salt River Meridian, Arizona**

**CHAINS**

The following metes-and-bounds survey, identifies a parcel of land reserved to the FMIR in compliance with Executive Order 8647, dated 1-22-1941.

From the angle point, on the line bet. secs. 21 and 28, hereinbefore described.

S. 38°59' E. on the westerly bdy. of the parcel reserved to the FMIR.

In and along right bank of wash, drains N. 40° W.

40.10 Center of pavement, Mohave County Hwy. 1, 25 ft. wide, bears S. 22° E. and N. 22° W.

43.16 AP 6, of the 1989 metes-and-bounds survey in sec. 27, identical with the most southerly cor., of the parcel land reserved to FMIR, on the line bet. secs. 27 and 28, hereinbefore described.

---

**Metes-and-Bounds Survey of the North Bdy. of the Topock  
Inlet Canal Easement adjacent to and within Secs. 19, and 20,  
T. 17 N., R. 21 W., Gila and Salt River Meridian, Arizona**

---

Preliminary statement: The following metes-and-bounds survey is derived from U.S Bureau of Reclamation drawings 423-306-1246 thru 423-306-1249, dated 7-18-1966 and 7-22-1966. Under contract no. 14-06-300-1674, an easement from the State of Arizona was granted to the U.S. Bureau of Reclamation. The contract allowed for the construction, maintenance and appurtenances necessary for the Topock Inlet Canal, within the bed of the abandoned channel of the Colorado River, adjacent to the accretion to sections 19, 20 and 29, T. 17 N., R. 21 W.

In compliance with the above stated drawings, the metes-and-bounds survey thus executed is located 1 ft. northerly of a barbed wire fence.

---


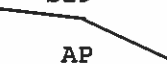
From the point at the intersection of the accretion line bet. sec. 24, T. 17 N., R. 22 W. and sec. 19, T. 17 N., R. 21 W., with the northerly boundary of the TIC.

Point is located N. 52°06' E., 8 lks. dist., from the meander cor. of secs. 19 and 24, T. 17 N., Rs. 21 and 22 W., on the W. bdy. of the Tp.

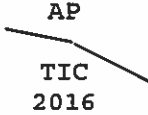
Meander cor. is described in the field notes of T. 17 N., R. 22 W., executed concurrently under this same group.

N. 66°49' E. on the northerly bdy. of the TIC, within the accreted lands of sec. 19, through remnants of a barbed wire fence.

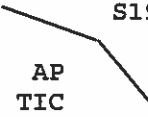
Metes-and-Bounds Survey of the North Bdy. of the Topock  
Inlet Canal Easement adjacent to and within Secs. 19, and 20,  
T. 17 N., R. 21 W., Gila and Salt River Meridian, Arizona

CHAINS	
1.27	<p>Point for an angle point</p> <p>Set a stainless steel post, 28 ins. long, 2 1/2 ins. diam., 24 ins. in the ground, encircled with a collar of stone, with brass cap mkd.</p> <div style="text-align: center;"> <p>T 17N R 21 W</p> <p>S19</p>  <p>AP</p> <p>TIC</p> <p>2016</p> </div> <p>Deposit a magnet, in a white plastic case, at the base of the stainless steel post.</p> <p>Cor. is located 50 lks. N. of TIC access road, graded, bears N. 70° E. and S. 70° W.</p> <p>Barbed wire fence has been removed and/or buried at this location.</p> <hr style="width: 20%; margin: 10px auto;"/> <p>S. 84°55' E. on the northerly bdy. of the TIC, within the accreted lands of sec. 19.</p>
1.83	<p>From this point, the westerly end of a barbed wire fence, bears S. 5° W., 1.0 ft. dist., fence extends S. 85° E.</p>
20.26	<p>Point for an angle point.</p> <p>Set a stainless steel post, 28 ins. long, 2 1/2 ins. diam., 22 ins. in the ground, anchored in a 2 1/2 gallon plastic bucket, half filled with concrete, with brass cap mkd.</p> <div style="text-align: center;"> <p>T 17N R 21 W</p> <p>S19</p>  <p>AP</p> <p>TIC</p> <p>2016</p> </div> <p>Deposit a magnet, in a white plastic case, beneath the plastic bucket.</p> <p>Cor. is located N. 9 1/2° E., 1.0 ft. dist., from a fence cor., with barbed wire fences extending S. 76° E. and N. 85° W.</p> <hr style="width: 20%; margin: 10px auto;"/> <p>S. 75°52' E. on the northerly bdy. of the TIC, within the accreted lands of sec. 19.</p>

Metes-and-Bounds Survey of the North Bdy. of the Topock  
Inlet Canal Easement adjacent to and within Secs. 19, and 20,  
T. 17 N., R. 21 W., Gila and Salt River Meridian, Arizona

CHAINS	
3.265	<p>Intersect the resurvey of the abandoned left bank of the Colorado River, hereinbefore described.</p> <p>From this point, a traverse point on the left bank of the abandoned channel of the Colorado River, bears S. 89°05' E., 2.445 chs. dist., hereinbefore described.</p> <p>From this same point, a traverse point on the left bank of the abandoned channel of the Colorado River, bears N. 89°05' W., 7.655 chs. dist., hereinbefore described.</p> <p>Thence within abandoned channel of the Colorado River.</p>
12.51	<p>Point for an angle point.</p> <p>Set a stainless steel post, 28 ins. long, 2 1/2 ins. diam., 22 ins. in the ground, anchored in a 2 1/2 gallon plastic bucket, half filled with concrete, with brass cap mkd.</p> <div style="text-align: center;">  <p>AP</p> <p>TIC 2016</p> </div> <p>Deposit a magnet, in a white plastic case, beneath the plastic bucket.</p> <p>Cor. is located N. 19° E., 1.0 ft. dist., from a fence cor., with barbed wire fences extending S. 66° E. and N. 76° W.</p> <hr style="width: 20%; margin: 10px auto;"/> <p>S. 65°52' E., on the northerly bdy. of the TIC, within the abandoned channel of the Colorado River.</p>
6.685	<p>Intersect the resurvey of the abandoned left bank of the Colorado River, hereinbefore described.</p> <p>From this point, a traverse point on the left bank of the abandoned channel of the Colorado River, bears S. 40°52' E., 3.81 chs. dist., hereinbefore described.</p> <p>From this same point, a traverse point on the left bank of the abandoned channel of the Colorado River, bears N. 40°52' W., 0.65 chs. dist., hereinbefore described.</p> <p>Thence within the accreted lands of sec. 19.</p>
7.09	<p>Point for an angle point.</p> <p>Set a stainless steel post, 28 ins. long, 2 1/2 ins. diam., 25 ins. in the ground, anchored in a 2 1/2 gallon plastic bucket, half filled with concrete, with brass cap mkd.</p>

Metes-and-Bounds Survey of the North Bdy. of the Topock  
Inlet Canal Easement adjacent to and within Secs. 19, and 20,  
T. 17 N., R. 21 W., Gila and Salt River Meridian, Arizona

CHAINS	
	<div style="text-align: center;"> <p>T 17N R 21 W S19</p>  <p>AP TIC</p> <p>2016</p> </div>
	<p>Deposit a magnet, in a white plastic case, beneath the plastic bucket.</p> <p>Cor. is located N. 40° E., 1.0 ft. dist., from a fence cor., with barbed wire fences extending S. 34° E. and N. 66° W.</p> <hr style="width: 20%; margin: 10px auto;"/> <p>S. 34°26' E., on the northerly bdy., of the TIC easement.</p> <p>Within the accreted lands of sec. 19.</p>
1.53	<p>Intersect the resurvey of the abandoned left bank of the Colorado River, hereinbefore described.</p> <p>From this point, a traverse point on the left bank of the abandoned channel of the Colorado River, bears S. 40°52' E., 1.925 chs. dist., hereinbefore described.</p> <p>From this same point, a traverse point on the left bank of the abandoned channel of the Colorado River, bears N. 40°52' W., 2.535 chs. dist., hereinbefore described.</p> <p>Thence within abandoned channel of the Colorado River.</p>
4.915	<p>Intersect the resurvey of the abandoned left bank of the Colorado River, hereinbefore described.</p> <p>From this point, a traverse point on the left bank of the abandoned channel of the Colorado River, bears S. 26°07' E., 5.38 chs. dist., hereinbefore described.</p> <p>From this same point, a traverse point on the left bank of the abandoned channel of the Colorado River, bears N. 26°07' W., 1.49 chs. dist., hereinbefore described.</p> <p>Thence within the accreted lands of sec. 19.</p>
17.62	<p>Intersect the division of accretion line bet. secs. 19 and 20 at a point from which the meander cor. on the left bank of the abandoned channel of the Colorado River as established in the 1960-62 survey bears S. 65°56' W., 4.5 lks. dist., hereinbefore described.</p> <p>Continuing measurement within accreted lands of sec. 20.</p>

**Metes-and-Bounds Survey of the North Bdy. of the Topock  
Inlet Canal Easement adjacent to and within Secs. 19, and 20,  
T. 17 N., R. 21 W., Gila and Salt River Meridian, Arizona**

CHAINS	
18.065	<p>Intersect the resurvey of the abandoned left bank of the Colorado River, hereinbefore described.</p> <p>From this point, a traverse point on the left bank of the abandoned channel of the Colorado River, bears S. 40°07' E., 13 lks. dist., hereinbefore described.</p> <p>From this same point, the meander cor. bet. secs. 19 and 20, on the left bank of the abandoned channel of the Colorado River as established in the 1960-62 survey bears N. 40°07' W., 46 lks. dist., hereinbefore described.</p> <p>Thence within abandoned channel of the Colorado River.</p>
25.44	<p>Intersect the resurvey of the abandoned left bank of the Colorado River, hereinbefore described.</p> <p>From this point, the meander cor. bet. secs. 20 and 29, on the left bank of the abandoned channel of the Colorado River as established in the 1960-62 survey bears S. 16°19' E., 3.23 chs. dist., hereinbefore described.</p> <p>From this same point, a traverse point on the left bank of the abandoned channel of the Colorado River, bears N. 16°19' W., 90 lks. dist., hereinbefore described.</p> <p>Thence within the accreted lands of sec. 20.</p>
28.79	<p>The angle point on the division of accretion line bet. secs. 20 and 29 hereinbefore described, and end of easement granted via contract no. 14-06-300-1674 from the state of Az. to the BOR.</p> <p>From this point, the meander cor. bet. secs. 20 and 29, on the left bank of the abandoned channel of the Colorado River as established in the 1960-62 survey bears S. 71°15' W., 1.045 chs. dist., hereinbefore described.</p> <hr style="width: 20%; margin: 10px auto;"/> <p>The remainder of the northerly bdy. of the TIC, is identical with a portion of the division of accretion line bet. secs. 20 and 29, the line bet. secs. 20 and 29 and a portion of the line bet. secs. 21 and 28, all hereinbefore described.</p> <hr style="width: 20%; margin: 10px auto;"/>

Metes-and-Bounds Survey of the South Bdy. of the Topock Inlet  
Canal Easement, adjacent to secs. 19 and 20 and within secs. 28 and 29,  
T. 17 N., R. 21 W., Gila and Salt River Meridian, Arizona

CHAINS	
	<p>Preliminary statement: The following metes-and-bounds survey is derived from U.S. Bureau of Reclamation drawings 423-306-1246 thru 423-306-1249, dated 7-18-1966 and 7-22-1966. Under contract no. 14-06-300-1674, an easement from the State of Arizona was granted to the Bureau of Reclamation. The contract allows for the construction, maintenance and appurtenances necessary for the Topock Inlet Canal, within the bed of the abandoned channel of the Colorado River, adjacent to the accretions to sections 19, 20 and 29, T. 17 N., R. 21 W.</p> <p>In compliance with the above stated drawings, the metes-and-bounds survey thus executed is located 1.0 ft. southerly of a barbed wire fence.</p> <hr/> <p>From the intersection of the medial line of the abandoned channel of the Colorado River, with a point 1 ft. SSE of a barbed wire fence.</p> <p>Thence N. 64°26' E., on the southerly bdy., of the TIC.</p> <p>Within the abandoned bed of the Colorado River, adjacent to the accreted lands of sec. 19.</p> <p>From this point, the meander cor. of secs. 19 and 24, Tp. 17 N., Rs. 21 and 22 W., bears N. 26°18' E., 6.28 chs. dist.</p> <p>The medial line of the abandoned channel of the Colorado River is described in the field notes of T. 9 N. R. 23 E., San Bernardino Meridian, executed concurrently under this same group.</p> <p>The meander cor. of secs. 19 and 24, Tp. 17 N., Rs. 21 and 22 W., is described in the field notes of Tp. 17 N., R. 22 W., executed concurrently under this same group.</p>
7.365	<p>Point for an angle point, not monumented.</p> <p>Point is located S. 10 1/2° E., 1.0 ft. dist., from a fence cor., with downed barbed wire fences extending S. 85° E. and S. 64° W.</p> <hr/> <p>S. 84°55' E. within the abandoned bed of the Colorado River</p> <p>1 ft. southerly and parallel with a downed and or buried, barbed wire fence.</p>
6.80	<p>From this point, an undamaged steel fence post, bears N. 5° E., 1 ft. dist., fence continues easterly mostly intact.</p>
10.06	<p>Point for an angle point, not monumented.</p>



Metes-and-Bounds Survey of the South Bdy. of the Topock Inlet  
Canal Easement, adjacent to secs. 19 and 20 and within secs. 28 and 29,  
T. 17 N., R. 21 W., Gila and Salt River Meridian, Arizona

CHAINS	
	<p>Point is located S. 6 1/2° W., 1.0 ft. dist., from a fence cor., with barbed wire fences extending S. 82° E. and N. 85° W.</p> <hr/> <p>S. 82°26' E. within the abandoned bed of the Colorado River. 1 ft. southerly and parallel with a barbed wire fence.</p>
7.45	<p>Point for an angle point, not monumented.</p> <p>Point is located S. 11° W., 1.0 ft. dist., from a fence cor., with barbed wire fences extending S. 76° E. and N. 82° W.</p> <hr/> <p>S. 75°51' E. within the abandoned bed of the Colorado River. 1 ft. SSW and parallel with a barbed wire fence.</p>
11.71	<p>Point for an angle point, not monumented.</p> <p>Point is located S. 22° W., 1.0 ft. dist., from a fence cor., with barbed wire fences extending S. 60° E. and N. 76° W.</p> <hr/> <p>S. 60°16' E. within the abandoned bed of the Colorado River. 1 ft. SSW from and parallel with a barbed wire fence.</p>
7.12	<p>Point for an angle point, not monumented.</p> <p>Point is located S. 43° W., 1.0 ft. dist., from a fence cor., with barbed wire fences extending S. 34° E. and N. 60° W.</p> <hr/> <p>S. 34°22' E. within the abandoned bed of the Colorado River. 1 ft. SW and parallel with a barbed wire fence.</p>
28.88	<p>Point for an angle point, not monumented.</p> <p>Point is located S. 18 1/2° W., 1.3 ft. dist., from a fence cor., with barbed wire fences extending N. 71° E. and N. 34° W.</p> <hr/> <p>N. 71°16' E. within the abandoned bed of the Colorado River. 1 ft. SSE and parallel with a barbed wire fence.</p>
1.125	<p>Intersect the resurvey of the abandoned left bank of the Colorado River, hereinbefore described.</p> <p>End of easement granted via contract no. 14-06-300-1674 from the State of Arizona to the BOR.</p>

Metes-and-Bounds Survey of the South Bdy. of the Topock Inlet  
Canal Easement, adjacent to secs. 19 and 20 and within secs. 28 and 29,  
T. 17 N., R. 21 W., Gila and Salt River Meridian, Arizona

CHAINS	
	<p>From this point, the meander cor. bet. secs. 20 and 29, on the left bank of the abandoned channel of the Colorado River as established in the 1960-62 survey, bears N. 16°19' W., 3.03 chs. dist., hereinbefore described.</p> <p>From this same point, a traverse point on the left bank of the abandoned channel of the Colorado River, bears S. 16°19' E., 5.16 chs. dist., hereinbefore described.</p> <p>Continuing measurement, within the accreted lands of sec. 29, across BOR lands.</p> <p>Parallel and 200 ft. SSE from the division of accretion line bet. secs. 20 and 29. 1 ft. SSE from a battered barbed wire fence.</p>
76.72	<p>Point for an angle point, not monumented.</p> <p>Point is located S. 1.2 ft. dist., from a downed fence cor., with battered barbed wire fences extending E. and S. 71° W.</p> <p>From this point, the meander cor. of secs. 20 and 29, at the left bank of the Colorado River in 1905, reestablished in the 1960-62 resurvey, and designated a witness point, bears N. 9°21' W., 3.07 chs. dist., hereinbefore described.</p> <hr/> <p>N. 89°59' E., within sec. 29, across BOR lands.</p> <p>Parallel and 200 ft. S. from the line bet. secs. 20 and 29, 1 ft. S. of a battered barbed wire fence.</p>
30.185	<p>Point for an angle point, at intersection with the N. and S. center line of sec. 29, not monumented.</p> <p>From this point, the 1/4 sec. cor. of secs. 20 and 29, bears N. 0°14' W., 3.03 chs. dist., hereinbefore described.</p> <p>From this same point, the 1/4 sec. cor. of secs. 29 and 32, bears S. 0°14' E., 77.18 chs. dist., hereinbefore described.</p> <hr/> <p>S. 89°59' E., within sec. 29, across BOR lands.</p> <p>Parallel and 200 ft. S. from the line bet. secs. 20 and 29, 1 ft. S. of a battered barbed wire fence.</p>
12.02	<p>Easterly from this point, the barbed wire fence is buried and or absent.</p>
38.66	<p>From this point, the midpoint of a concrete bridge over the TIC, bears N., 1.45 chs. dist. Bridge, with attached iron control gates, is 20.5 ft. wide, 60 ft. long, extends N. and S.</p>

Metes-and-Bounds Survey of the South Bdy. of the Topock Inlet  
Canal Easement, adjacent to secs. 19 and 20 and within secs. 28 and 29,  
T. 17 N., R. 21 W., Gila and Salt River Meridian, Arizona

CHAINS	
40.02	<p>Point for an angle point, at intersection with the line bet. secs. 28 and 29, not monumented.</p> <p>From this point, the cor. of secs. 20, 21, 28 and 29, bears N. 0°12' W., 3.03 chs. dist., hereinbefore described.</p> <p>From this same point, the 1/4 sec. cor. of secs. 29 and 29, bears S. 0°12' E., 37.06 chs. dist., hereinbefore described.</p> <hr/> <p>S. 89°57' E., beginning new measurement, within sec. 28, across FMIR lands.</p> <p>Parallel with and 200 ft. S. from the line bet. secs. 21 and 28.</p>
20.15	<p>Intersect the N. and S. center line of NW 1/4 of sec. 28.</p> <p>From this point, the W. 1/16 sec. cor. of secs. 21 and 28, bears N. 0°07' W., 3.03 chs. dist., hereinbefore described.</p> <p>From this same point, the center W. 1/16 sec. cor. of secs. 28, bears S. 0°07' E., 37.05 chs. dist., hereinbefore described.</p> <hr/> <p>S. 89°57' E., beginning new measurement, within sec. 28, across HNWR lands.</p> <p>Parallel and 200 ft. S. from the line bet. secs. 21 and 28.</p>
2.57	<p>From this point, the midpoint of an earthen dike over the TIC, bears N., 1.55 chs. dist. Dike, with attached iron control gates, is 24 ft. wide, 50 ft. long, extends N. and S.</p>
5.74	<p>From this point, the E. terminus of TIC, at the middle of abandoned bridge, bears N. 1.48 chs. dist. Bridge is 45 ft. long, 16 ft. wide, extends N. and S.</p> <hr/>

## T. 17 N., R. 21 W., Gila and Salt River Meridian, Arizona

CHAINS

## GENERAL DESCRIPTION

---

The land embraced in this survey and resurvey is located in Mohave County, Arizona, about 3 miles east of the City of Needles, California. Access is provided by Mohave County Highway 1, county roads and HNWR service roads.

The majority of the area surveyed is considered sandy bottomlands, with dense stands of salt cedar and arrow weed. A small portion of uplands, out of the river floodplain is located in NE 1/4 of section 28.

The primary use of the land is a wild life refuge, and the conveyance of water via the Topock Inlet Canal to agriculture fields. Firebreak Canal, operational in 2011, is adjacent and S. of the south boundary of the township.

The mean magnetic declination of  $11\ 1/2^\circ$  E. was derived from the National Oceanic and Atmospheric Administration magnetic field calculator, utilizing the World Magnetic Model 2015 for the dates of survey.

---



## CERTIFICATE OF SURVEY

I, Gordon R. Bubel, Cadastral Surveyor, HEREBY CERTIFY upon honor, that in pursuance of special instructions bearing date of the 28th day of April, 2016, I have dependently resurveyed a portion of the Fourth Standard Parallel North (south boundary), a portion of the subdivisional lines, and the meanders of the left bank of the abandoned channel of the Colorado River through sections 20 and 32. The survey of division of accretion lines, the traverse of a portion of the left bank of the abandoned channel of the Colorado River through sections 19 and 29, a portion of the subdivision of section 20, the survey of the fixed and limiting boundary of the left bank of the abandoned channel of the Colorado River through section 31, the subdivision of section 28, the metes-and-bounds survey in the Northeast 1/4 of section 28, and the survey of the north and south boundaries of the easement of the Topock Inlet Cannel adjacent to the accretions in sections 19 and 20, Township 17 North, Range 21 West, of the Gila and Salt River Meridian, in the State of Arizona, which are represented in the foregoing field notes as having been executed by me and under my direction. Said survey has been made in strict conformity with said special instructions, the Manual of Instructions for the Survey of the Public Lands of the United States, 2009, and in specific manner described in the foregoing field notes.

JULY 28, 2017

(Date)



(Cadastral Surveyor)

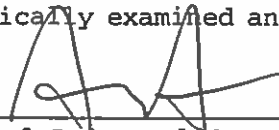
## CERTIFICATE OF APPROVAL

BUREAU OF LAND MANAGEMENT  
Phoenix, Arizona

The foregoing field notes of the dependent resurvey of a portion of the Fourth Standard Parallel North (south boundary), a portion of the subdivisional lines, and the meanders of the left bank of the abandoned channel of the Colorado River through sections 20 and 32. The survey of division of accretion lines, the survey of a traverse of a portion of the left bank of the abandoned channel of the Colorado River through sections 19 and 29, a portion of the subdivision of section 20, the survey of the fixed and limiting boundary of the left bank of the abandoned channel of the Colorado River through section 31, the subdivision of section 28, the metes-and-bounds survey in the Northeast 1/4 of section 28, and the survey of the north and south boundaries of the easement of the Topock Inlet Cannel adjacent to the accretions in sections 19 and 20, Township 17 North, Range 21 West, Gila and Salt River Meridian, Arizona, executed by Gordon R. Bubel, Cadastral Surveyor, having been critically examined and found correct, are hereby approved.

8/2/2017

(Date)



(Chief Cadastral Surveyor of Arizona)

~~CERTIFICATE OF TRANSCRIPT~~

~~I CERTIFY That the foregoing transcript of the field notes of the above described surveys in Township 17 North, Range 22 West, Gila and Salt River Meridian, Arizona, is a true copy of the original field notes.~~

~~(Date)~~

~~(Chief Cadastral Surveyor of Arizona)~~