

ORIGINAL

**UNITED STATES
DEPARTMENT OF THE INTERIOR
BUREAU OF LAND MANAGEMENT**

FIELD NOTES

OF

THE DEPENDENT RESURVEY OF A PORTION OF THE NORTH BOUNDARY,

A PORTION OF THE SUBDIVISIONAL LINES

AND PORTIONS OF MINERAL SURVEY NUMBER 2131,

THE SUBDIVISION OF SECTION 4,

AND

THE SURVEY OF THE METES-AND-BOUNDS DESCRIPTIONS

OF LOTS 9 AND 10 IN SECTION 4

TOWNSHIP 3 NORTH, RANGE 18 WEST,

OF THE GILA AND SALT RIVER MERIDIAN,

IN THE STATE OF ARIZONA.

EXECUTED BY

Gordon R. Bubel, Cadastral Surveyor

Under Special Instructions dated June 14, 2017, approved June 14, 2017, and Supplemental Special Instructions dated July 25, 2017, approved July 25, 2017, which provided for the surveys included under Group No. 1174, and assignment instructions dated June 14, 2017.

Survey commenced June 28, 2017

Survey completed August 2, 2017

INDEX DIAGRAM

TOWNSHIP 3 NORTH RANGE 18 EAST
GILA AND SALT RIVER MERIDIAN, ARIZONA

6	5	4 4 7 10	6 3	2	1
7	8	9	10	11	12
18	17	16	15	14	13
19	20	21	22	23	24
30	29	28	27	26	25
31	32	33	34	35	36

Dependent Resurvey of Portions of M.S. 2131.Pages 11-19
Subdivision of Sec. 4.Pages 20-30

T. 3 N., R. 18 W., Gila and Salt River Meridian, Arizona

CHAINS

The following field notes describe the dependent resurvey of a portion of the north boundary, a portion of the subdivisional lines, and portions of Mineral Survey Number 2131, the subdivision of section 4, and the survey of the metes-and-bounds descriptions of lots 9 and 10, section 4, Township 3 North, Range 18 West, Gila and Salt River Meridian, Arizona.

The history pertaining to this survey and resurvey is as follows:

Mineral Survey Number 2131, was executed by William H. Elliott, U.S. Deputy Mineral Surveyor in 1905, and patented on September 20, 1907 (Book MS 2131). Woodbury Abbey, U.S. Surveyor, and U.S. Transitmen, Roy J. Gill and Hans D. Voight, surveyed the north boundary in 1915 (Book 3042). The subdivisional lines were surveyed by Woodbury Abbey, U.S. Surveyor, and Roy J. Gill, U.S. Transitman, in 1915 (Book 3047). Serial Patent, AZAR 0006498 was issued for lots 6 and 8, section 4, on August 3, 1956. Serial Patent, AZAR 0026232 was issued for lot 7, section 4, on May 25, 1961. Serial Patent AZAR 0032106 was issued for the S 1/2 of the S 1/2 of the NE 1/4, section 4, the NE 1/4 of the NW 1/4 of the SE 1/4, section 4 and the N 1/2 of the NE 1/4 of the SE 1/4, section 4, on June 16, 1964. Three surveys in sections 3 and/or 4, are filed within the records of the La Paz County Recorder's Office, and are hereinafter referenced. Two surveys of unknown origin were discovered.

The survey was executed in accordance with the specifications as set forth in the Manual of Instructions for the Survey of the Public Lands of the United States, 2009, the Special Instructions dated June 14, 2017 and the Supplemental Special Instructions dated June 25, 2017, for Group Number 1174, Arizona.

The true meridian direction and length of all lines were determined by real time kinematic global positioning system observations using Trimble Navigation R8 model receivers.

Preliminary to the resurvey, the lines of the prior surveys were retraced and search was made for all corners and other calls of record. Identified corners were remonumented in their original positions. Lost corners were reestablished and remonumented at proportionate positions based on the official record. The retracement data were thoroughly verified and only the true line field notes are given herein.

Geodetic control was derived from Global Navigation Satellite System (GNSS) static observations post processed by Trimble Corporation.

The NAD83-2011, horizontal position of the corner of sections 3, 4, 9 and 10, is as follows:

Latitude: 33°37'26.860" N. Longitude: 114°06'47.363" W.

T. 3 N., R. 18 W., Gila and Salt River Meridian, Arizona

CHAINS	<p>The NAD83-2011, horizontal position of the corner of sections 4, 5, 32 and 33, on the north boundary of the township, is as follows:</p> <p>Latitude: 33°38'19.033" N. Longitude: 114°07'49.826" W.</p> <p>The mean magnetic declination is 11° E.</p> <hr/> <p style="text-align: center;">Dependent Resurvey of a Portion of the North Boundary, T. 3 N., R. 18 W., Gila and Salt River Meridian, Arizona</p> <hr/> <p style="text-align: center;">Restoring the survey executed by Woodbury Abbey, U.S. Surveyor, and Roy J. Gill and Hans D. Voight, U.S. Transitmen, in 1915</p> <hr/> <p>Beginning at the cor. of secs. 4, 5, 32 and 33, on the N. bdy. of the Tp., monumented with an iron post, 3 ins. diam., firmly set, projecting 10 ins. above ground, with brass cap mkd., T4N R18W S32 S33 S5 S4 T3N 1915. Add the marks 2017 to the brass cap.</p> <p>A mound of stone, 4 ft. base, 2 ft. high, with three, 2 ins. sq. wood mining claim posts set within, is alongside and S. of the cor.</p> <p>N. 89°36' E., bet. secs. 4 and 33, on the N. bdy. of the Tp.</p> <p>Over rolling land, through palo verde, ironwood and saguaro timber, with creosote and Cholla Cactus undergrowth.</p> <p>40.07 The 1/4 sec. cor. of secs. 4 and 32, monumented with an iron post, 1 in. diam., firmly set, projecting 13 ins. above ground, in a mound of stone, 3 ft. base to top, with brass cap mkd. 1/4 S33 S4 1915. Add the marks T4N R18W T3N 2017 to the brass cap.</p> <p>Set alongside the cor. are three, 2 1/2 ins. diam. PVC pipes, one 4 ins. sq. wood post and one, 2 ins. sq. wood post.</p> <hr/> <p>S. 89°33' E., beginning new measurement.</p> <p>5.85 Graded road, 20 ft. wide, bears S. 35° E. and N. 35° W.</p> <p>20.02 The E. 1/16 sec. cor. of secs. 4 and 33, monumented with a rebar, 5/8 in. diam., firmly set, projecting 6 ins. above ground, accepted as a careful and faithful establishment of the cor. position. The preponderance of evidence, indicate this cor. was established by L.A. Cornejo, deceased Arizona Registered Professional Engineer (Mining) in 1982, as per a land survey, attached to La Paz County reception No. 2009-00922, at page 3 of 3.</p> <p>At the corner point</p>
--------	--

Dependent Resurvey of a Portion of the North Boundary,
T. 3 N., R. 18 W., Gila and Salt River Meridian, Arizona

CHAINS

Attach a brass cap, 2 ins. diam., to the rebar, mkd.

T 4 N R 18 W

S 33

E 1/16 _____

S 4

T 3 N

2017

A wood mining claim post, 2 ins. sq., set in the center of a mound of stone, 2 1/2 ft. base, 1 1/2 ft. high, bears W., 4.5 lks. dist.

S. 89°33' E., beginning new measurement.

10.00

The E-E 1/64 sec. cor. of secs. 4 and 33, identical with cor. No. 2 of the metes-and-bounds survey of lot 9, sec. 4, (hereinafter described), monumented with a rebar, 5/8 in. diam., firmly set, projecting 4 ins. above ground, in a mound of stone, 2 1/2 ft. base, 1 1/2 ft. high, accepted as a careful and faithful establishment of the cor. position. The preponderance of evidence indicates this cor. was established by L.A. Cornejo, deceased Arizona Registered Professional Engineer (Mining), in 1982, as per a land survey attached to the La Paz County Recorder's Office, reception No. 2009-00922, at page 3 of 3.

At the corner point

Attach a brass cap, 2 ins. diam., 1 3/4 ins. stem, to the rebar, mkd.

T 4 N R 18 W

S 33

E-E 1/64

S 4

T 3 N

2017

Two wood mining claim posts, 2 ins. sq., are set alongside the cor.

From this cor. point, a rebar 1/2 in. diam., firmly set, projecting 3 ins. above ground, with attached 1 in. diam., plastic cap, mkd. TIERRA RLS 31598, bears E., 0.7 lks. dist. This rebar was established by Kim A. Hyde, Arizona RLS No. 31598, in 2007, as per a "Result of Survey" recorded with the La Paz County Recorder's Office, reception No. 2007-2584. Cor. position was established in conflict with the above monument, and is not utilized in the course of this resurvey.

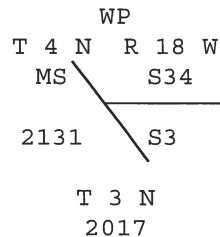
Dependent Resurvey of a Portion of the North Boundary,
T. 3 N., R. 18 W., Gila and Salt River Meridian, Arizona

<p>CHAINS</p> <p>3.50</p> <p>10.02</p> <p>10.53</p>	<p>S. 89°33' E., beginning new measurement, bet. secs. 4 and 33, on the N. bdy. of the Tp., identical with line 2-1, lot 9, sec. 4.</p> <p>Point for corner No. 1, of the metes-and-bounds survey of lot 9, sec. 4, at intersection with line 2-3, of Camiola No. 2 lode, Mineral Survey No., 2131 (hereinafter abbreviated M.S. No. 2131).</p> <p>Set a rebar, 24 ins. long, 5/8 in. diam., 20 ins. in the ground, attach a brass cap, 2 ins. diam., mkd.</p> <div style="text-align: center;"> <p>T 4 N R 18 W</p> <p>S 33</p> <hr style="width: 100px; margin: 0 auto;"/> <p>S 4 C1 / MS</p> <p>LOT 9 2131</p> <p>2017</p> </div> <p>From this cor. point, cor. No. 2, Camiola lode, M.S. No. 2131, identical with cor. No. 3, Camiola No. 2 lode, M.S. No. 2131, bears N. 32°41' E., 0.09 chs. dist., hereinafter described.</p> <p>From this same cor. point, the north west end center of Camiola No. 2 lode, M.S. No. 2131, bears S. 32°41' W., 4.45 chs. dist., hereinafter described.</p> <p>Continuing measurement on a blank line, across Camiola lode and Camiola No. 2 lode, both of M.S. No. 2131.</p> <p>The cor. of secs. 3, 4, 33 and 34, monumented with an iron post, 3 ins. diam., firmly set, projecting 18 ins. above ground, in a mound of stone, 2 1/2 ft. base, 1 ft. high, with brass cap mkd. T4N R18W S33 S34 S4 S3 T3N 1915. Add the marks 2017 to the brass cap.</p> <p>Two, 2 ins. sq. wood mining claim posts are set alongside the cor.</p> <p>A PVC pipe, 2 1/2 ins. diam., set in the center of a mound of stone, 3 ft. base, 2 ft. high, bears W., 7 lks. dist.</p> <hr style="width: 100%; margin: 10px 0;"/> <p>S. 89°58' E., bet. secs. 3 and 34.</p> <p>On a blank line, across Camiola lode and Camiola No. 2 lode, both of M.S. No. 2131.</p> <p>Ascending, over the foothills of Plomosa Mountains.</p> <p>Point for a witness point, at intersection with line 3-4, of Camiola lode, M.S. No., 2131.</p>
---	--

**Dependent Resurvey of a Portion of the North Boundary,
T. 3 N., R. 18 W., Gila and Salt River Meridian, Arizona**

CHAINS

Set a rebar, 24 ins. long, 5/8 in. diam., 20 ins. in the ground, encircled with a collar of stone, attach a brass cap, 2 ins. diam., mkd.



From this cor. point, cor. No. 4, Camiola lode, M.S. No. 2131, bears S. 57°15' E., 9.87 chs. dist., hereinafter described.

From this same cor. point, cor. No. 3, Camiola lode, M.S. No. 2131, bears N. 57°15' W., 14.36 chs. dist., hereinafter described.

40.07

The 1/4 sec. cor. of secs. 3 and 34, monumented with an iron post, 1 in. diam., firmly set, projecting 18 ins. above ground, in a mound of stone, 3 ft. base, 1 ft. high, with brass cap mkd. 1/4 S33 S3 1915. Add the marks T4N R18W T3N 2017 to the brass cap.

A PVC pipe, 60 ins. long, 1 1/2 in. diam., was found lying loose. Reset pipe within the mound of stone.

Cor. is located 10 ft. S. of a sharp ridge, extends SE and NW.

**Dependent Resurvey of a Portion of the Subdivisional Lines,
T. 3 N., R. 18 W., Gila and Salt River Meridian, Arizona**

Restoring the survey executed by Woodbury Abbey,
U.S. Surveyor, and Roy J. Gill, U.S. Transitman, in 1915

From the cor. of secs. 3, 4, 9 and 10, monumented with an iron post, 1 in. diam., firmly set, projecting 24 ins. above ground, in a mound of stone, 4 ft. base, 1 1/2 ft. high, with brass cap mkd. T3N R18W S4 S3 S9 S10 1915. Add the marks 2017 to the brass cap.

N. 0°04' E., bet. secs. 3 and 4.

Across the westerly foothills of the Plomosa Mountains.

19.97

Point for the S. 1/16 sec. cor. of secs. 3 and 4, not monumented.

29.955

Point for N-S 1/64 sec. cor. of secs. 3 and 4.

Dependent Resurvey of a Portion of the Subdivisional Lines,
T. 3 N., R. 18 W., Gila and Salt River Meridian, Arizona

CHAINS	
	<p>Set a rebar, 24 ins. long, 5/8 in. diam., 20 ins. in the ground, attach a brass cap, mkd.:</p> <p style="text-align: center;">T 3 N R 18 W N-S 1/64 S 4 S 3 2017</p> <p>A fallen mound of stone, 5 ft. base, 1 ft. high is immediately W. of the cor., rebuild to 4 ft. base, 2 ft. high.</p> <p>Cor. is located 35 lks. W. of a graveled road, bears S. 20° E., curving E. and N. 20° W., curving E.</p> <p>From this cor. point, a 2 ins. sq., wood mining claim post, set in a mound of stone, 2 ft. base, 1 1/2 ft. high, bears N. 30° E., 2.5 lks. dist.</p>
39.94	<p>Point accepted for the 1/4 sec. cor. of secs. 3 and 4, monumented with an iron pipe, 1 in. diam., firmly set, projecting 14 ins. above ground, in a mound of stone, 3 ft. base, to top. An attached 2 ins. diam. brass cap is mkd. incorrectly USMS 4806 T4N R18W 1/4 HI 4 3.</p> <p>Note: A Bureau of Land Management attachment to its official records, entitled "MISSING MINERAL SURVEYS NOTES & PLATS", dated February 1, 1986, references USMS 4806 as missing.</p> <p>Several mining claim posts and notices are scattered around the cor.</p> <p>From this cor. point, a fence corner bears N. 4.5 lks. dist., with dilapidated barbed wire fences extending N. and E.</p> <hr style="width: 20%; margin: 10px auto;"/> <p>N. 0°03' E., beginning new measurement.</p> <p>Over foothills of Plomosa Mountains.</p>
5.05	<p>Graded road, 8 ft. wide, bears S. 85° E. and N. 85° W.</p>
10.00	<p>The S-N 1/64 sec. cor. of secs. 3 and 4, monumented with a rebar, 5/8 in. diam., firmly set, projecting 7 ins. above ground, in a mound of stone, 4 ft. base, 3 ft. high, accepted as a careful and faithful establishment of the cor. position. The preponderance of evidence, indicates this cor. was established by L.A. Cornejo, deceased Arizona Registered Professional Engineer (Mining) in 1982, as per a land survey attached to the La Paz County Recorder's Office, reception No. 2009-00922, at page 3 of 3.</p>

Dependent Resurvey of a Portion of the Subdivisional Lines,
T. 3 N., R. 18 W., Gila and Salt River Meridian, Arizona

CHAINS	
	<p>At the corner point</p> <p>Attach a brass cap, 2 ins. diam., to the rebar, mkd.</p> <p style="text-align: center;">T 3 N R 18 W S-N 1/64 S 4 S 3 2017</p> <p>A wood post, 4 ins. sq., and a PVC pipe, 2 ins. diam., are set within the mound of stone.</p> <p>From this cor. point, a wood post, 4 ins. sq., set in a mound of stone, 2 1/2 ft. base, 1 1/2 ft. high, bears W., 6 lks. dist.</p> <hr style="width: 20%; margin: 10px auto;"/> <p>N. 0°05' E., beginning new measurement.</p>
9.98	<p>The N. 1/16 sec. cor. of secs. 3 and 4, monumented with an iron post, 1 in. diam., firmly set, projecting 20 ins. above ground, with attached brass cap, 2 ins. diam., mkd. 2 HS USMS 4806. This is accepted as a true and faithful establishment of the cor. position.</p> <p>A Bureau of Land Management attachment to its official records, entitled "MISSING MINERAL SURVEYS NOTES & PLATS", dated February 1, 1986, references USMS 4806 as missing.</p> <p>From this cor. point, a rebar, 1/2 in. diam., firmly set, projecting 4 ins. above ground, bears N., 2.5 lks. dist., unknown origin.</p> <hr style="width: 20%; margin: 10px auto;"/> <p>N. 0°04' E., beginning new measurement.</p>
5.12	<p>Point for corner No. 1, of the metes-and-bounds survey of lot 10, sec. 4, at intersection with line 1-2, of Camiola No. 2 lode, M.S. No. 2131. Monumented with a rebar, 24 ins. long, 5/8 in. diam., firmly set, with the top 5 ins. bent over to the S. Accepted as a careful and faithful establishment of the cor. position. The preponderance of evidence indicates this cor. was established by L.A. Cornejo, deceased Arizona Registered Professional Engineer (Mining) in 1982, as per a land survey attached to the La Paz County Recorder's Office, reception No. 2009-00922, at page 3 of 3.</p> <p>Excavate the 5/8 diam. rebar, and replace with a rebar, 24 ins. long, 5/8 in. diam., set 20 ins. in the ground, with brass cap, 2 ins. diam., mkd.</p>

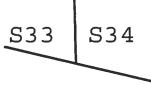
Dependent Resurvey of a Portion of the Subdivisional Lines,
T. 3 N., R. 18 W., Gila and Salt River Meridian, Arizona

CHAINS	
	<div style="text-align: center;"> <p>T 3 N R 18 W MS C1 2131 S4 S3 2017</p> </div> <p>Bury the rebar, 5/8 in. diam., alongside.</p> <p>From this cor. point, cor. No. 1, Camiola No. 2 lode, M.S. No. 2131, bears S. 57°18' E., 10.71 chs. dist., hereinafter described.</p> <p>From this same cor. point, cor. No. 2, Camiola No. 2 lode, M.S. No. 2131, bears N. 57°20' W., 13.52 chs. dist., hereinafter described.</p> <hr/> <p>N. 0°02' E., beginning new measurement.</p> <p>On a blank line , across Camiola lode and Camiola No. 2 lode, both of M.S. No. 2131.</p> <p>14.84 The cor. of secs. 3, 4, 33 and 34, on the N. bdy. of the Tp., hereinbefore described.</p> <hr/> <p>From the cor. of secs. 3, 4, 9 and 10.</p> <p>N. 89°59' W., bet. secs. 4 and 9.</p> <p>Descending over westerly foothills of the Plomosa Mountains.</p> <p>20.07 Point for the E. 1/16 sec. cor. of secs. 4 and 9, not monumented.</p> <p>40.14 The 1/4 sec. cor. of secs. 4 and 9, monumented with an iron post, 1 in. diam., firmly set, projecting 24 ins. above ground, in a mound of stone, 3 1/2 ft. base, 1 1/2 ft. high, with brass cap mkd. 1/4 S4 S9 1915. Add the marks T3N R18W 2017 to the brass cap.</p> <p>An accessory mound of stone, 3 ft. base, 1 1/2 ft. high, is alongside and N. of the cor.</p> <p>A PVC pipe, 60 ins. long, 2 1/2 ins. diam., set over a rebar, 5/8 in. diam., bears S. 75° E., 4 lks. dist.</p> <hr/> <p>N. 89°59' W., beginning new measurement.</p> <p>40.05 The cor. of secs. 4, 5, 8 and 9, monumented with an iron post, 2 in. diam., firmly set, projecting 18 ins. above ground, in a mound of stone, 3 ft. base to top, with brass cap mkd. T3N R18W S5 S4 S8 S9 1915. Add the marks 2017 to the brass cap.</p>

**Dependent Resurvey of a Portion of the Subdivisional Lines,
T. 3 N., R. 18 W., Gila and Salt River Meridian, Arizona**

CHAINS	
	<p>An accessory mound of stone, 4 ft. base, 2 1/2 ft. high, is alongside and N. of the cor. Two mining claim posts, 2 ins. sq., are set within this mound of stone.</p> <hr/> <p>N. 0°05' E., bet. secs. 4 and 5</p> <p>Over rolling land.</p>
40.00	<p>The 1/4 sec. cor. of secs. 4 and 5, monumented with an iron post, 1 in. diam., firmly set, projecting 12 ins. above ground, in a mound of stone, 3 ft. base to top, with brass cap mkd. 1/4 S5 S4 1915. Add the marks T3N R18W 2017 to the brass cap.</p> <hr/> <p>N. 0°08' E., beginning new measurement.</p>
39.89	<p>The cor. of secs. 4, 5, 32 and 33, on the N. bdy. of the Tp., hereinbefore described.</p> <hr/> <p align="center">Dependent Resurvey of Portions of Mineral Survey Number 2131, Tps. 3 and 4 N., R. 18 W., Gila and Salt River Meridian, Arizona</p> <hr/> <p align="center">Restoring the survey executed by William H. Elliott, in 1905</p> <hr/> <p>Beginning at the witness point on the line bet. secs. 3 and 34, at intersection with line 3-4, Camiola lode, M.S. No. 2131, hereinbefore described.</p> <p>N. 57°15' W., on a portion of line 4-3, Camiola lode, M.S. No. 2131.</p> <p>Within sec. 34, T. 4 N., R. 18 W.</p> <p>Over the foothills of the Plomosa Mountains.</p>
1.76	<p>A rebar, 1/2 in. diam., firmly set, projecting 3 ins. above ground, with attached 1 in., plastic cap mkd. TIERRA RLS 31598.</p> <p>Cor. was established by Kim A. Hyde, Arizona R.L.S. No. 31598 in 2007, as described in a "Result of Survey", recorded in the La Paz County Recorder's Office, reception No. 2007-2584.</p> <p>From this cor. point, a wood post, 4 ins. sq., firmly set, projecting 36 ins. above ground, beard N. 57° W., 6 lks. dist.</p>
8.06	<p>A rebar, 1/2 in. diam., firmly set, projecting 3 ins. above ground, with attached 1 in., plastic cap mkd. TIERRA RLS 31598.</p>

Dependent Resurvey of Portions of Mineral Survey Number 2131,
Tps. 3 and 4 N., R. 18 W., Gila and Salt River Meridian, Arizona

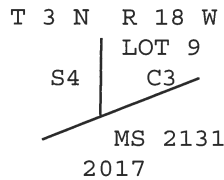
CHAINS	<p>Cor. was established by Kim A. Hyde, Arizona R.L.S. No. 31598 in 2007, as part of a "Result of Survey", recorded in the La Paz County Recorder's Office, reception No. 2007-2584.</p> <p>From this cor. point, a 4 ins. sq., wood post, firmly set, projecting 36 ins. above ground, beard N. 57° W., 2 lks. dist.</p> <p>12.52 Point for a witness point, at intersection with the line bet. secs. 33 and 34, T. 4 N., R. 18 W.</p> <p>Set a rebar, 24 ins. long, 5/8 in. diam., 20 ins. in the ground, with attached brass cap, 2 ins. diam., mkd.</p> <div style="text-align: center;"> <p>T 4 N R 18 W</p>  <p>MS 2131 2017</p> </div> <p>From this witness point, the 1/4 sec. cor. of secs. 33 and 34, T. 4 N., R. 18 W., bears N. 0°04' E., 33.31 chs. dist., monumented with an iron post, 1 in. diam., firmly set, projecting 24 ins. above ground, with brass cap mkd. 1/4 S33 S34 2015. Add the marks T4N R18W 2015 to the brass cap.</p> <p>Witness point is located on the westerly side of a mound of stone, 6 ft. base, 3 ft. wide, 2 ft. high. A PVC, 2 in. diam., is set in the center of the mound, a wood post, 4 ins. sq., is set on the easterly side of the mound.</p> <p>From this same witness point, the cor. of secs. 3, 4, 33 and 34, on the N. bdy. of T. 3 N., R. 18 W., bears S. 0°04' W., 6.77 chs. dist., hereinbefore described.</p> <p>Continuing measurement within sec. 33, T. 4 N., R. 18 W.</p> <p>14.36 Cor. no. 3, Camiola lode, M.S. No. 2131, monumented with a quartzite outcropping, 3 x 2 x 1 1/2 ft. high. Marked 2131 C3 on the E. face and + on the W. face.</p> <p>From this cor., a mound of stone, 4 ft. base, 3 ft. high, bears S. 60° E., 6 lks. dist. An aluminum pipe, 4 in. diam., 144 ins. long, set over a steel fence post, bears S. 60° E., 11 lks. dist.</p> <hr style="width: 20%; margin: 10px auto;"/> <p>S. 32°48' W., on line 3-2, Camiola lode, M.S. No. 2131.</p> <p>Within sec. 33, T. 4 N., R. 18 W., in and along a barbed wire fence, portions which are intact and portions which are down.</p>
--------	--

Dependent Resurvey of Portions of Mineral Survey Number 2131,
Tps. 3 and 4 N., R. 18 W., Gila and Salt River Meridian, Arizona

CHAINS	
4.56	<p>The northwesterly end center point, Camiola lode, M.S. No. 2131, monumented with a fallen mound of stone, 4 ft. base, 1 ft. high. Rebuild to 3 ft. base, 2 ft. high.</p> <hr/> <p>S. 32°48' W., beginning new measurement.</p>
2.65	<p>Graded road, 20 ft. wide, bears S. 30° E. and N. 30° W.</p>
4.53	<p>Cor. no. 2, Camiola lode, identical with cor. no. 3, Camiola No. 2 lode, both of M.S. No. 2131. Monumented with a quartzite stone, 7 x 5 ins., projecting 7 ins. above ground, firmly set, marked C2 3 on the SW face and 2131 C2 on the NE face.</p> <p>A mound of stone, 3 ft. base, 4 ft. high, bears ESE, 4.5 lks. dist.</p> <hr/> <p>S. 32°41' W., on line 3-2, Camiola No. 2 lode, M.S. No. 2131.</p> <p>Within sec. 33, T. 4 N., R. 18 W., in and along a barbed wire fence, portions which are intact and portions which are down.</p>
0.09	<p>Corner No. 1, of the metes-and-bounds survey of lot 9, sec. 4, at intersection with the line bet. sec. 4, T. 3 N. R. 18 W. and sec. 33, T. 4 N., R. 18 W., hereinbefore described.</p> <p>Continuing measurement within sec. 4, T. 3 N., R. 18 W., identical with a portion of line 1-3, of the metes-and-bounds survey of lot 9, sec. 4.</p>
4.54	<p>The northwesterly end center point, Camiola No. 2 lode, M.S. No. 2131, monumented with a mound of stone, 2 1/2 ft. base, 1 ft. high.</p> <p>Located on ridge line bears E. and W.</p> <hr/> <p>S. 32°41' W., beginning new measurement.</p>
1.70	<p>Leave native topography, enter bladed area, edge extends S. 30° E. and N. 30° W.</p>
2.05	<p>Point for corner No. 3, of the metes-and-bounds survey of lot 9, sec. 4, at intersection with the N. and S. center line of the NE 1/4 of the NE 1/4 of sec. 4.</p> <p>Set a rebar, 24 ins. long, 5/8 in. diam., 20 ins. in the ground, with attached brass cap, 2 ins. diam., mkd.</p>

Dependent Resurvey of Portions of Mineral Survey Number 2131,
Tps. 3 and 4 N., R. 18 W., Gila and Salt River Meridian, Arizona

CHAINS



Cor. is located on a manmade bench, on a N. facing slope of a foothill.

From this cor. point, the E-E 1/64 sec. cor. of secs. 4 and 33, identical with cor. No. 2 of the metes-and-bounds survey of lot 9, sec. 4, bears N. 0°04' E., 5.495 chs. dist., hereinbefore described.

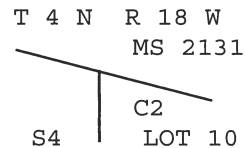
From this same cor. point, cor. no. 2 of Camiola No. 2 lode, M.S. No. 2131, bears S. 32°41' W., 2.53 chs. dist., monumented with a granite stone, 8 x 8 ins., projecting 8 ins. above ground, firmly set, marked 2131 C2 2 on the N. face and X on the top face.

S. 0°04' W., on a blank line, identical with the projection of the N. and S. center line of the NE 1/4 of the NE 1/4, sec. 4, thru a portion of Camiola No. 2 lode, M.S. No. 2131.

3.00

Point for corner No. 2, of the metes-and-bounds survey of lot 10, sec. 4, at intersection with line 2-1, Camiola No. 2 lode, M.S. No. 2131.

Set a rebar, 24 ins. long, 5/8 in. diam., 22 ins. in the ground, with attached brass cap, 2 ins. diam., mkd.



2017

Cor. is located within a mined rock pile, 8 lks. N. of the edge, bears irregularly SE and NW.

From this cor. point, cor. no. 2 of Camiola No. 2 lode, M.S. No. 2131, bears N. 57°20' W., 1.62 chs. dist., hereinbefore described.

S. 57°20' E., on a portion of line 2-1, Camiola No. 2 lode, M.S. No. 2131, identical with line 2-1, of the metes-and-bounds survey of lot 10, sec. 4.

Within a mined rock pile.

Dependent Resurvey of Portions of Mineral Survey Number 2131,
Tps. 3 and 4 N., R. 18 W., Gila and Salt River Meridian, Arizona

CHAINS	
0.55	Exit mined rock pile, edge bears ESE and WNW.
3.30	Enter debris piles on federal interest land, consisting of mining timbers, iron rails and prefabricated steel building panels.
3.86	From this point, the northerly end of an iron gate, bears S. 32°40' W., 77 lks. dist., gate extends S. 24° E., 18.0 ft. dist.
5.45	Exit debris piles on federal interest lands, irregularly shaped, occupying approximately 0.09 acres.
11.90	Corner No. 1, of the metes-and-bounds survey of lot 10, sec. 4, at intersection with the line bet. secs. 3 and 4, hereinbefore described.
	<hr style="width: 20%; margin: 0 auto;"/> S. 57°16' E., beginning new measurement, within sec. 3.
4.535	Intersect line 1-2 Saxe 2 lode, M.S. No. 2131, monumented with a rebar, 1/2 in. diam., firmly set, projecting 1 in. above ground, with attached plastic cap, 1 in. diam., mkd. TIERRA RLS 31598. This monument was established by Kim A. Hyde, Arizona R.L.S. No. 31598 in 2007, as part of a "Result of Survey", recorded in the La Paz County Recorder's Office, reception No. 2007-2584. Accepted as a careful and faithful establishment of the cor. position
	At the corner point
	Excavate the rebar, 18 ins. long, and replace with a rebar, 24 ins. long, 5/8 in. diam., set 22 ins. in the ground, with attached brass cap,, 2 ins. diam., mkd.
	<div style="text-align: center;"> <p>T 3 N R 18 W</p> <p>2017</p> </div>
	Bury the 1/2 in. diam. rebar alongside the cor.
	From this cor. point, cor. no. 2 of Saxe lode, M.S. No. 2131, bears N. 11°13' W., 0.54 chs. dist. Monumented with a quartzite stone, 15 x 8 x 8 ins., mkd. 2131 on the N. face and + on the top face, loosely set, in the center of a mound of stone, 4 ft. base, 2 ft. high.

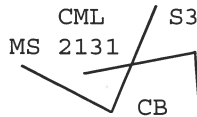
Dependent Resurvey of Portions of Mineral Survey Number 2131,
Tps. 3 and 4 N., R. 18 W., Gila and Salt River Meridian, Arizona

CHAINS	<p>From this same cor. point, cor. No. 1, Camiola No. 2 lode, M.S. No. 2131, bears S. 57°20' E., 6.18 chs. dist. Monumented with a granite stone, 20 x 5 ins., firmly set, projecting 15 ins. above ground, mkd. 2131 C2 1 on the NE face and a X on the top face. With a mound of stone alongside and NNE of the cor.</p>
	<p style="text-align: center;">_____</p> <p>S. 11°13' E., on a portion of line 2-1, Saxe lode, M.S. NO. 2131.</p>
22.16	<p>Point for cor. No. 1, Saxe lode, M.S. No. 2131, on the projection of the bearing from cor. No. 4 Saxe lode through the south end center of Saxe lode. At a dist. from the south end center Saxe lode, identical with the dist. bet. cor. No. 4 Saxe lode and the south end center Saxe lode (4.54 chs.). Corroborated by a mound of stone, 3 ft. base, 2 ft. high, alongside and ENE of the cor.</p> <p>Set a rebar, 24 ins. long, 5/8 in. diam., 18 ins. in the ground, encircled with a collar of stone, with attached brass cap, 2 ins. diam., mkd.</p>
	<p style="text-align: center;"> T 3 N R 18 W MS 2131 SAXE C1 S3 2017 </p>
	<p>From this cor. point, a rebar 1/2 in. diam., firmly set, projecting 4 ins. above ground, in a mound of stone, 2 1/2 ft. base, 1 ft. high, bears S., 8.5 lks. dist., with a plastic cap, 1 inch. diam., mkd. TIERRA RLS 31598 lying loose nearby, a PVC pipe, 60 ins. long, 2 1/2 in. diam., is set within the mound. This monument was established by Kim A. Hyde, Arizona R.L.S. No. 31598 in 2007, as part of a "Result of Survey", recorded in the La Paz County Recorder's Office, reception No. 2007-2584. Because the original south end center of Saxe lode, M.S. No. 2131, was not utilized, this position was deemed incorrect and is not employed in the course of this resurvey.</p>
	<p>From this same cor. point, the as the 1/4 sec. cor. of secs. 3 and 4, bears S. 83°37' W., 8.21 chs. dist., hereinbefore described.</p>
	<p style="text-align: center;">_____</p> <p>N. 79°04' E., on line 1-4, Saxe lode, M.S. No. 2131.</p>
4.54	<p>The south end center point, Saxe lode, M.S. No. 2131, monumented with a mound of stone, 4 ft. base, 2 ft. high.</p>
	<p style="text-align: center;">_____</p> <p>N. 79°04' E., beginning new measurement.</p>

Dependent Resurvey of Portions of Mineral Survey Number 2131,
Tps. 3 and 4 N., R. 18 W., Gila and Salt River Meridian, Arizona

CHAINS	
4.54	<p>Cor. No. 4, Saxe lode, M.S. No. 2131, monumented with a quartzite stone, 8 x 7 ins., projecting 9 ins. above ground, firmly set, marked 2131 S4 on the N face and + on the top face.</p> <p>Two wood mining claim posts, 2 ins. sq., set in the center of a mound of stone, 4 ft. base, 3 ft. high, are alongside and E. of the cor.</p> <p>A PVC pipe, 120 ins. long, 2 1/2 ins. diam., set over a steel fence post, bears NE, 3 lks. dist.</p> <hr/> <p>N. 11°10' W., on a portion of line 4-3, Saxe lode, M.S. No. 2131.</p>
3.14	<p>Cor. No. 1, Chrystal Butte lode, M.S. No. 2131, reestablished by Kim A. Hyde, Arizona R.L.S. No. 31598 in 2007, as part of a "Result of Survey", recorded in the La Paz County Recorder's Office, reception No. 2007-2584. Monumented with a rebar, 1/2 in. diam., firmly set, projecting 10 ins. above ground, in a mound of stone, 3 ft. base, to top, with affixed plastic cap, mkd. TIERRA RLS 31598. Accepted as a careful and faithful reestablishment of the cor. position.</p> <p>At the corner point</p> <p>Excavate the rebar, 18 ins. long and replace with a rebar, 24 ins. long, 5/8 in. diam., set 14 ins. in the ground, in a mound of stone, 3 ft. base, to top, with attached brass cap,, 2 ins. diam., mkd.</p> <div data-bbox="808 1192 1024 1367" style="text-align: center;"> <p>T 3 N R 18 W</p> <p>MS 2131</p> <p>C.B.</p> <p>S3 C1</p> <p>2017</p> </div> <p>From this same cor. point, cor. No. 3, Saxe lode, M.S. No. 2131, bears N. 11°10' W., 19.64 chs. dist., monumented with a quartzite stone, 17 x 10 ins., projecting 6 ins. above ground, mkd 2131 S. 3 on the S. face and a + on the top face, supported by three rebar, 1/2 in. diam., driven in bedrock. With a mound of stone, 3 ft. base, 3 ft. high, alongside and S. of the mkd. stone.</p> <hr/> <p>N. 75°03' E., on line 1-4, Chrystal Butte lode, M.S. No. 2131.</p>
4.51	<p>The south end center point, Chrystal Butte lode, M.S. No. 2131, monumented with a fallen mound of stone, 6 ft. base, 1 ft. high. Rebuild to 4 ft. base, 2 1/2 ft. high.</p> <hr/> <p>N. 75°37' E., beginning new measurement.</p>

Dependent Resurvey of Portions of Mineral Survey Number 2131,
Tps. 3 and 4 N., R. 18 W., Gila and Salt River Meridian, Arizona

CHAINS	
4.54	<p>Cor. No. 4, Chrystal Butte lode, M.S. No. 2131, monumented with a quartzite stone, 8 x 5 ins., firmly set, projecting 13 ins. above ground, mkd. 2131 on the S. face. A mound of stone, 3 1/2 ft. base, 2 ft. high, is alongside and N. of the cor.</p> <hr/> <p>N. 11°09' W., on line 4-3, Chrystal Butte lode, M.S. No. 2131.</p> <p>Ascending over S. facing slopes.</p>
14.90	<p>Graded mining road, 12 ft. wide, bears N. 55° E., curving northerly and S. 55° W.</p>
20.70	<p>Same graded road, bears S. 55° E., curving southerly and N. 55° W.</p>
22.78	<p>Cor. No. 3, Chrystal Butte lode, M.S. No. 2131, monumented with a quartzite outcropping, 7 ft. x 6 ft. x 4 ft. high, mkd. 2131 + CB3 on an exposed, 36 x 16 x 12 ins. ledge. A mound of stone, 3 ft. base, 2 ft. high bears W., 6 lks. dist.</p> <p>Cor. is located on a sharp ridge top, bears S. 25° E. and N. 25° W.</p> <hr/> <p>S. 75°22' W., on a portion of line 3-2, Chrystal Butte lode, M.S. No. 2131.</p> <p>Descending, over S. and W. facing slopes.</p>
4.53	<p>North end center point, Chrystal Butte lode, M.S. No. 2131, determined at proportionate dist., there is no remaining evidence of the orig. cor. Not monumented.</p>
5.83	<p>Intersect line 4-1 Camiola lode, M.S. No. 2131, monumented with a rebar, 1/2 in. diam., firmly set, projecting 2 ins. above ground, with attached plastic cap, 1 in. diam., mkd. TIERRA RLS. This monument was established by Kim A. Hyde, Arizona R.L.S. No. 31598 in 2007, as part of a "Result of Survey", recorded in the La Paz County Recorder's Office, reception No. 2007-2584. Accepted as a careful and faithful establishment of the cor. position</p> <p>At the corner point</p> <p>Excavate the rebar, 18 ins. long and replace with a rebar, 24 ins. long, 5/8 in. diam., set 20 ins. in the ground, with attached brass cap, 2 ins. diam., mkd.</p> <div data-bbox="763 1669 1023 1879" style="text-align: center;"> <p>T 3 N R 18 W</p> <p>CML S3</p> <p>MS 2131</p>  <p>CB</p> <p>MS2131</p> <p>2017</p> </div>

Dependent Resurvey of Portions of Mineral Survey Number 2131,
Tps. 3 and 4 N., R. 18 W., Gila and Salt River Meridian, Arizona

CHAINS	
	Bury the 1/2 in. diam. rebar alongside the cor.
	Cor. is located on a steep SW facing slope.
	<p>From this cor. point, the calculated position for cor. No. 1, Camiola lode, M.S. No. 2131, identical with cor. No. 4, Camiola No. 2 lode, M.S. No. 2131, bears S. 32°48' W., 2.30 chs. dist., not monumented. Position was calculated at proportionate dist., based on information contained in a "Result of survey", executed by Kim A. Hyde, Arizona R.L.S. No. 31598 in 2007, recorded in the La Paz County Recorder's Office, reception No. 2007-2584. There is no remaining evidence of the orig. cor.</p>
	<p>From this same cor. point, the calculated position for cor. No. 2, Chrystal Butte lode, M.S. No. 2131, bears S. 75°22' W., 3.23 chs. dist., not monumented. Position was calculated at bearing-bearing intersection, based on information contained in a "Result of survey", executed by Kim A. Hyde, Arizona R.L.S. No. 31598 in 2007, recorded in the La Paz County Recorder's Office, reception No. 2007-2584. There is no remaining evidence of the orig. cor.</p>
	<hr/>
	N. 32°56' E., on a portion of line 1-4, Camiola lode, M.S. No. 2131.
2.26	Point for southeast end center, Camiola lode, M.S. No. 2131, determined at proportionate dist., there is no remaining evidence of the orig. cor. Not monumented.
2.75	Graded road, 12 ft. wide, bears S. 85° E., curving southerly and N. 85° W.
6.82	<p>Cor. no. 4, Camiola lode, M.S. No. 2131, monumented with a quartzite outcropping, 12 ins. high, 8 ins. wide, mkd. 2131 C4, on an exposed NE face.</p> <p>A mound of stone, 4 ft. base, 2 ft. high is alongside and S. of the cor.</p> <p>A wood post, 4 ins. sq., set in a mound of stone, 4 ft. base, 3 ft. high, bears N. 10° W., 5 lks. dist.</p>
	<hr/>
	N. 57°15' W., on a portion of line 4-1, Camiola lode, M.S. No. 2131.
9.87	The witness point at intersection with the line bet. secs. 3 and 34, on the N. bdy. of the Tp.
	<hr/>

Subdivision of Section 4,
T. 3 N., R. 18 W., Gila and Salt River Meridian, Arizona

CHAINS	
	<p>From the 1/4 sec. cor. of secs. 4 and 9.</p> <p>N. 0°08' E., on the N. and S. center line of sec. 4.</p> <p>Over the rolling foothills of the Plomosa Mountains.</p>
19.985	Point for the center S. 1/16 sec. cor. of sec. 4, not monumented.
29.975	Point for the C-N-S 1/64 sec. cor. of sec. 4, not monumented.
39.97	<p>The center 1/4 sec. cor. of sec. 4, at intersection with the E. and W. center line, occupied with a rebar, 18 ins. long, 1/2 in. diam., firmly set 16 ins. in the ground, with attached brass wafer, mkd. RLS 21080.</p> <p>Set a stainless steel post, 28 ins. long, 2 1/2 ins. diam., 22 ins. in the ground, encircled with a collar of stone, with brass cap mkd.</p> <p style="text-align: center;">T 3 N R 18 W C 1/4 S 4</p> <p style="text-align: center;">2017</p> <p>Deposit a magnet, in a white plastic case, at the base of the stainless steel post. Bury the rebar, alongside the stainless steel post.</p> <p>A PVC pipe, 2 1/2 ins. diam., set over a steel fence post, is alongside and W. of cor.</p> <p>The brass wafer was attached, to the found rebar, by Robert J. Pecha, Arizona R.L.S., No. 21080, in 1999, as per "Amended Results of Survey", recorded in the La Paz County Recorder's Office, reception No. 1999-4874.</p> <hr style="width: 30%; margin: 10px auto;"/> <p>N. 0°07' E., beginning new measurement</p> <p>In and along a barbed wire fence.</p>
10.05	<p>The C-S-N 1/64 sec. cor. of sec. 4, monumented with a rebar, 1/2 in. diam., firmly set, projecting 2 ins. above ground, witnessed by a steel fence post set alongside, origin unknown. Accepted as a careful and faithful establishment of the cor. position.</p> <p>Excavate the 1/2 diam. rebar, and replace with a rebar, 24 ins. long, 5/8 in. diam., set 23 ins. in the ground, with attached brass cap,, 2 ins. diam., mkd.</p>

Subdivision of Section 4,
T. 3 N., R. 18 W., Gila and Salt River Meridian, Arizona

CHAINS	
	T 3 N R 18 W C S-N S 4 C 1/64 2017
	<p>Bury the rebar, 18 ins. long, alongside the cor.</p> <p>From this cor. point, a fence cor. bears S. 15° E., 4 lks. dist., with barbed wire fences extending S. and E.</p> <p>From this same cor. point, a rebar 1/2 in. diam., firmly set, projecting 1 ins. above ground, with attached brass wafer, mkd. RLS 21080, bears N., 2 lks. dist. This rebar was established by Robert J. Pecha, Arizona RLS No. 21080, in 1999, as per a "Amended Results of Survey", recorded with the La Paz County Recorder's Office, reception No. 1999-4874. Established in conflict with the accepted monument, and is not utilized in the course of this survey.</p> <hr style="width: 20%; margin: 10px auto;"/> <p>N. 0°08' E., beginning new measurement.</p>
10.08	<p>Point for the C-N 1/16 sec. cor. of sec. 4.</p> <p>Set a rebar, 24 ins. long, 5/8 in. diam., 22 ins. in the ground, encircled with a collar of stone, with attached brass cap, 2 ins. diam., mkd.</p>
	T 3 N R 18 W C N 1/16 S 4 C 2017
	<p>From this cor. point, a rebar, 5/8 in. diam., firmly set, projecting 5 ins. above ground, bears S., 12 lks. dist. The preponderance of evidence indicates this rebar was established by L.A. Cornejo, deceased Arizona Registered Professional Engineer (Mining) in 1982, as per a land survey attached to the La Paz County Recorder's Office, reception No. 2009-00922, at page 3 of 3. The point for the center N. 1/16 sec. cor. of sec. 4 was determined by the official plat of the survey of T. 3 N., R. 18 W., approved Dec. 24, 1917. This rebar is not in compliance with the official plat, and is not utilized in the course of this survey.</p>
20.16	<p>Point for the C-N-N 1/64 sec. cor. of sec. 4, not monumented.</p>

Subdivision of Section 4,
T. 3 N., R. 18 W., Gila and Salt River Meridian, Arizona

CHAINS	
	<p>From this point, a rebar 5/8 in. diam., firmly set, projecting 5 ins. above ground, bears S., 20 lks. dist. The preponderance of evidence indicates this cor. was established by L.A. Cornejo, deceased Arizona Registered Professional Engineer (Mining) in 1982, as per a land survey, attached to the La Paz County Recorder's Office, reception No. 2009-00922, at page 3 of 3. The point for the center N-N 1/64 sec. cor. of sec. 4, was determined by the official Supplemental Plat of sec. 4, T. 3 N., R. 18 W., accepted on February 21, 1956. This rebar is not in compliance with the Supplemental Plat, and is not utilized in the course of this survey.</p> <p>From this same point, a rebar 1/2 in. diam., firmly set, projecting 7 ins. above ground, bears N. 37°25' W., 10.5 lks. dist., origin unknown.</p>
30.16	<p>The 1/4 sec. cor. of secs. 4 and 33, on the N. bdy. of the Tp.</p> <hr/> <p>From the 1/4 sec. cor. of secs. 3 and 4.</p> <p>N. 89°56' W., on the E. and W. center line of sec. 4.</p> <p>Across patented lands, within an active mining operation.</p>
13.26	<p>A rebar 1/2 in. diam., firmly set, projecting 1 ins. above ground, with attached brass wafer, mkd. RLS 21080. This rebar was established by Robert J. Pecha, Arizona RLS No. 21080, in 1999, as per a "Amended Results of Survey", recorded with the La Paz County Recorder's Office, reception No. 1999-4874.</p>
20.045	<p>Point for the C-E 1/16 sec. cor. of sec. 4, not monumented.</p>
30.07	<p>The C-W-E 1/64 sec. cor. of sec. 4, established by Robert J. Pecha, Arizona R.L.S. No. 21080, in 1999, as per a "Amended Results of Survey", recorded with the La Paz County Recorder's Office, reception No. 1999-4874. Monumented with a rebar, 1/2 in. diam., firmly set, projecting 2 ins. above the ground, with attached brass wafer, mkd. RLS 21080. Accepted as a careful and faithful establishment of the cor. position.</p> <p>At the corner point</p> <p>Excavate the rebar, 18 ins. long, and replace with a rebar, 24 ins. long, 5/8 in. diam., set 22 ins. in the ground, encircled with a collar of stone, with attached brass cap, 2 ins. diam., mkd.</p> <p style="text-align: center;">T 3 N R 18 W W-E 1/64 C — C S 4 2017</p>

Subdivision of Section 4,
T. 3 N., R. 18 W., Gila and Salt River Meridian, Arizona

CHAINS	<p>Bury the rebar, 1/2 diam., alongside the cor.</p> <hr/> <p>N. 89°57' W., beginning new measurement.</p> <p>Exit patented lands.</p>
10.025	The center 1/4 sec. cor. of sec. 4.
50.105	The 1/4 sec. cor. of secs. 4 and 5.
	<hr/> <p>NE 1/4</p> <hr/>
	<p>From the point for the C-E 1/16 sec. cor. of sec. 4.</p> <p>N. 0°06' E., on the N. and S. center line of the NE 1/4 of sec. 4.</p> <p>Across patented lands, within an active mining operation.</p>
10.02	<p>The C-S-NE 1/64 sec. cor. of sec. 4, monumented with a rebar, 18 ins. long, 1/2 in. diam., firmly set, 16 ins. in the ground, witnessed by a steel fence post set alongside, origin unknown. Accepted as a careful and faithful establishment of the cor. position.</p> <p>Excavate the rebar, and replace with a rebar, 24 ins. long, 5/8 in. diam., set 20 ins. in the ground, with attached brass cap,, 2 ins. diam., mkd.</p> <p style="text-align: center;">T 3 N R 18 W S 4 C-S-NE 1/64 2017</p> <p>Bury the 1/2 diam., rebar alongside the cor.</p> <p>Cor. is located, 15 lks. N. of a graded road, 10 ft. wide, bears E. and W.</p> <p>From this cor., a rebar 1/2 in. diam., firmly set, projecting 2 ins. above ground, with attached brass wafer, mkd. RLS 21080, bears N., 2 lks. dist. This rebar was established by Robert J. Pecha, Arizona RLS No. 21080, in 1999, as per a "Amended Results of Survey", recorded with the La Paz County Recorder's Office, reception No. 1999-4874. Cor. position was established in conflict with above monument, and is not utilized in the course of this resurvey.</p> <hr/>

Subdivision of Section 4,
T. 3 N., R. 18 W., Gila and Salt River Meridian, Arizona

CHAINS	
	N. 0°06' E., beginning new measurement.
	Exit patented lands.
10.03	Point for the NE 1/16 sec. cor. of sec. 4, at intersection with the E. and W. center line of the NE 1/4, sec. 4. Set a railroad spike, 6 ins. long, 5/8 in. sq., 6 ins. in the ground, on the northwesterly shoulder of a graded road, 12 ft. wide, bears N. 55° E. and S. 55° W. from which A rebar, 24 ins. long, 5/8 ins. diam., set 22 ins. in the ground for a reference monument, bears N. 0°06' E., 15.0 ft. dist., with attached brass cap, 2 ins. diam., mkd. RM 15.0 FT. TO COR. NE 1/16 S4 2017, and an arrow pointing to the cor. A rebar, 24 ins. long, 5/8 ins. diam., set 21 ins. in the ground for a reference monument, bears N. 89°42' W., 19.0 ft. dist., with attached brass cap, 2 ins. diam., mkd. RM 19.0 FT. TO COR. NE 1/16 S4 2017, and an arrow pointing to the cor. Continuing measurement across patented lands.
19.99	A rebar, 5/8 in. diam., firmly set, projecting 5 ins. above ground. The preponderance of evidence indicates this cor. was established by L.A. Cornejo, deceased Arizona Registered Professional Engineer (Mining) in 1982, as per a land survey, attached to the La Paz County Recorder's Office, reception No. 2009-00922, at page 3 of 3.
30.06	The E. 1/16 sec. cor. of secs. 4 and 33, on the N. bdy. of the Tp. ----- From the N. 1/16 sec. cor. of secs. 3 and 4. N. 89°47' W., on the E. and W. center line of the NE 1/4 of sec. 4.
9.45	Graded road, 12 ft. wide, bears S. 30° E. and N. 30° W.
10.02	The C-E-NE 1/64 sec. cor. of secs. 4 and 33, monumented with a rebar, 5/8 in. diam., firmly set, projecting 4 ins. above ground, in a mound of stone, 2 1/2 ft. base, 1 1/2 ft. high, accepted as a careful and faithful establishment of the cor. position. The preponderance of evidence, indicates this cor. was established by L.A. Cornejo, deceased Arizona Registered Professional Engineer (Mining) in 1982, as per a land survey attached to the La Paz County Recorder's Office, reception No. 2009-00922, at page 3 of 3.

Subdivision of Section 4,
T. 3 N., R. 18 W., Gila and Salt River Meridian, Arizona

CHAINS	
	<p>At the corner point</p> <p>Attach a brass cap, 2 ins. diam., to the 5/8 in. diam. rebar, with brass cap mkd.</p> <p style="text-align: center;">T 3 N R 18 W S 4 C-E-NE 1/64</p> <p style="text-align: center;">2017</p> <p>A PVC pipe, 2 1/2 ins. diam., set in the center of a mound of stone, 3 ft. base, 1 1/2 ft. high, is set alongside the cor.</p> <p>Cor. is located 1 ch. S. of a graded road, 12 ft. wide, bears S. 30° E. and N. 30° W.</p> <hr style="width: 20%; margin: 10px auto;"/> <p>N. 89°42' W., beginning new measurement.</p>
10.015	The NE 1/16 sec. cor.
15.90	Graded road, 20 ft. wide, bears S. 30° E. and N. 30° W.
30.05	The C-N 1/16 sec. cor. of sec. 4.
	<hr style="width: 60%; margin: 10px auto;"/> <p>From the C-E-NE 1/64 sec. cor. of sec. 4</p> <p>N. 0°04' E., on the N. and S. center line of the NE 1/4 of the NE 1/4, sec. 4, identical with line 3-2, of the metes-and-bounds survey of lot 10, sec. 4.</p> <p>Active mining area to the W.</p>
1.00	Graded road, 20 ft. wide, bears S. 30° E. and N. 30° W.
8.76	Intersect a barbed wire fence, enveloped in orange plastic safety fencing, bears N. 14° E. and S. 14° W.
	<p>Barbed wire fence continues on the following courses.</p> <p style="padding-left: 40px;">N. 14° E., 13.5 lks. dist., thence N. 6° E., 39 lks. dist., thence N. 4° W., 32 lks. dist., thence N. 49° W., 6.5 lks. dist., to the intersection with the N. and S. center line of the NE 1/4 of the NE 1/4 of sec. 4., area of concern approx. 190 sq. ft.</p> <p>The barbed wire fence varies from 6 to 10 ft. E. of the E. lip of a mining pit. Pit is approximately 60 ft. diam., with a maximum depth of approximately 20 ft.</p>

Subdivision of Section 4,
T. 3 N., R. 18 W., Gila and Salt River Meridian, Arizona

CHAINS	
9.64	Same barbed wire fence, bears S. 49° E. and N. 49° W.
11.51	Cor. no. 2, of lot 10, at intersection with line 1-2, Camiola No. 2 lode, M.S. No. 2131. Continuing measurement on a blank line, across Camiola No. 2 lode, M.S. No. 2131.
14.51	Cor. no. 3, of lot 9, at intersection with line 2-3, Camiola No. 2 lode, M.S. No. 2131. Continuing measurement, identical with line 3-2, of the metes-and-bounds survey of lot 9, sec. 4.
20.005	The E-E 1/64 sec. cor. of secs. 4 and 33, on the N. bdy. of the Tp., identical with cor. no. 2 of the metes-and-bounds survey of lot 9, sec. 4. _____ From the S-N 1/64 sec. cor. of secs. 3 and 4. N. 89°54' W., on the E. and W. center line of the SE 1/4 of the NE 1/4 of sec. 4. Active mining area to the S.
13.26	From this point, a rebar, 1/2 in. diam., firmly set, projecting 1 ins. above ground, with attached brass wafer, mkd. RLS 21080, bears N., 1 lk. dist. Established by Robert J. Pecha, Arizona RLS No. 21080, in 1999, as per a "Amended Results of Survey", recorded with the La Paz County Recorder's Office, reception No. 1999-4874.
20.04	The C-S-NE 1/64 sec. cor., sec. 4. _____ From the C-S-NE 1/64 sec. cor., sec. 4. N. 89°51' W., on the E. and W. center line of the SW 1/4 of the NE 1/4 of sec. 4. Active mining area to the S.
20.04	The C-S-N 1/64 sec. cor., sec. 4. _____ <p style="text-align: center;">SE 1/4</p> _____ From the point for the E 1/16 sec. cor. of secs. 4 and 9 N. 0°06' E., on the N. and S. center line of the SE 1/4 of sec. 4.

Subdivision of Section 4,
T. 3 N., R. 18 W., Gila and Salt River Meridian, Arizona

CHAINS	
	Over the foothills of the Palomas Mountains.
19.98	Point for the SE 1/16 sec. cor. of sec. 4, at intersection with the E. and W. center line of the SE 1/4 of sec. 4, not monumented.
29.97	The C-N-SE 1/64 sec. cor. of sec. 4, established by Robert J. Pecha, Arizona R.L.S. No. 21080, in 1999, as per a "Amended Results of Survey", recorded with the La Paz County Recorder's Office, reception No. 1999-4874. Monumented with a rebar, 1/2 in. diam., firmly set, projecting 4 ins. above the ground, with attached brass wafer, mkd. RLS 21080. Accepted as a careful and faithful establishment of the cor. position.
	At the corner point
	Excavate the rebar, 18 ins. long, and replace with a rebar, 24 ins. long, 5/8 in. diam., set 20 ins. in the ground, with attached brass cap, 2 ins. diam., mkd.
	T 3 N R 18 W S 4 C-N-SE 1/64 2017
	Bury the 1/2 diam. rebar alongside the cor.
	A PVC pipe, 48 ins. long, 2 1/2 ins. diam., set over a steel fence post, bears SE, 1 lk. dist., with a mining claim wood post, 4 ins. square, set alongside the PVC pipe.

	N. 0°06' E., beginning new measurement.
	Across patented lands.
9.99	Point for the C-E 1/16 sec. cor. of sec. 4.

	From the point for the S. 1/16 sec. cor. of secs. 3 and 4.
	N. 89°58' W., on the E. and W. center line of the SE 1/4 of sec. 4.
20.06	Point for the SE 1/16 sec. cor.
30.09	Point for the C-W-SE 1/64 sec. cor. of sec. 4, not monumented.
40.12	Point for the C-S 1/16 sec. cor. of sec. 4.

	From the N-S 1/64 sec. cor. of secs. 3 and 4.

Subdivision of Section 4,
T. 3 N., R. 18 W., Gila and Salt River Meridian, Arizona

CHAINS	<p>N. 89°57' W., on the E. and W. center line of the NE 1/4 of the SE 1/4 of sec. 4.</p> <p>Active mining area to the N.</p>
20.05	<p>The C-N-SE 1/64 sec. cor. of sec. 4.</p> <hr/> <p>From the point for the C-W-SE 1/64 sec. cor. of sec. 4.</p> <p>N. 0°06' E., on the N. and S. center line of the NW 1/4 of the SE 1/4 of sec. 4.</p>
9.99	<p>The NW-SE 1/64 sec. cor. of sec. 4, established by Robert J. Pecha, Arizona R.L.S. No. 21080, in 1999, as per a "Amended Results of Survey", recorded with the La Paz County Recorder's Office, reception No. 1999-4874. Monumented with a rebar, 1/2 in. diam., firmly set, projecting 3 ins. above the ground, with attached brass wafer, mkd. RLS 21080. Accepted as a careful and faithful establishment of the cor. position.</p> <p>At the corner point</p> <p>Excavate the rebar, 18 ins. long, and replace with a rebar, 24 ins. long, 5/8 in. diam., set 20 ins. in the ground, encircled with a collar of stone, with attached brass cap, 2 ins. diam., mkd.</p> <p style="text-align: center;">T 3 N R 18 W S 4 NW-SE 1/64 2017</p> <p>Bury the 1/2 diam., rebar alongside the cor.</p> <p>Two PVC pipes, 2 1/2 ins. diam., set over steel fence posts, and a wood mining claim post, 2 ins. square, are set alongside the cor.</p> <hr/> <p>N. 0°08' E., beginning new measurement.</p> <p>Active mining area to the E.</p>
2.80	<p>Graded road, 10 ft. wide, bears N. 70° E. and S. 70° W.</p>
9.99	<p>The C-W-E 1/64 sec. cor. of sec. 4.</p> <hr/> <p>From the C-N-SE 1/64 sec. cor. of sec. 4.</p> <p>N. 89°57' W., on the E. and W. center line of the NW 1/4 of the SE 1/4 of sec. 4.</p>

Subdivision of Section 4,
T. 3 N., R. 18 W., Gila and Salt River Meridian, Arizona

CHAINS	<p>Active mining area to the N.</p>
10.025	The NW-SE 1/64 sec. cor.
20.05	Point for the C-N-S 1/64 sec. cor. of sec. 4.
<hr/> <p>Metes-and-Bounds Description of Lots 9 & 10, in Section 4, T. 3 N., R. 18 W., Gila and Salt River Meridian, Arizona</p> <hr/>	
<p>Preliminary Statement: Lot 1, sec. 4, was created by the plat of T. 3 N., R. 18 W., approved on Dec. 24, 1917. The supplemental plat of section 4, T. 3 N., R. 18 W., accepted on February 21, 1956, divided/eliminated lot 1, sec. 4, and created lots 5 and 6. The location of a portion of Camiola No. 2 lode, M.S. No. 2131, (patent date 9-20-1907) on the supplemental plat is depicted as being within lot 5. In fact, a portion of Camiola No. 2 lode, M.S. No. 2131, is within lot 5 and lot 6. The genesis of this error is the length of the side lines of the Camiola lodes, being plus or minus 1600 ft. in length. The statutory and record lengths of these lines are 1500 ft.</p> <p>The N. and S. center line of the NE 1/4 of the NE 1/4 of sec. 4, identical with the line between lots 5 and 6, intersects the southerly side line and the northerly end line of Camiola No. 2 lode, M.S. No. 2131, bifurcating lot 5. This survey creates lots 9 and 10, and extinguishes lot 5. On August 3, 1956, lot 6, was patented. The portion of patented Camiola No. 2 lode, M.S. No. 2131 within lot 6 was not excluded from the patent. The monuments referenced in this metes-and-bounds survey have hereinbefore been described.</p>	
<hr/> <p>Lot 9, Sec. 4</p> <hr/>	
<p>Beginning at corner No. 1, lot 9, located at the intersection of the line bet. secs. 4 and 33, (on the N. bdy. of the Tp.), with line 2-3, Camiola No. 2 lode, M.S. NO. 2131.</p> <p>N. 89°33' W., on line 1-2, lot 9, identical with a portion of the line bet. secs. 4 and 33.</p>	
3.50	Cor. No. 2, lot 9, identical with the E-E 1/64 sec. cor. of secs. 4 and 33.
<hr/> <p>S. 0°04' W., on line 2-3, lot 9, identical with a portion of the N. and S. center line of the NE 1/4 of the NE 1/4, sec. 4.</p>	

**Metes-and-Bounds Description of Lots 9 & 10, in Section 4,
T. 3 N., R. 18 W., Gila and Salt River Meridian, Arizona**

CHAINS	
5.495	Cor. No. 3, lot 9, at intersection with line 1-2, Camiola No. 2 lode, M.S. No. 2131. <hr/>
	N. 32°41' E., on line 3-4, identical with a portion of line 2-1, Camiola No. 2 lode, M.S. No. 2131.
6.59	Cor. No. 1, lot 9, on the line bet. secs. 4 and 33, the point of beginning. <hr/>
	Lot 10, Sec. 4 <hr/>
	Beginning at corner No. 1, lot 10, located at the intersection of the line bet. secs. 3 and 4, with line 1-2, Camiola No. 2 lode, M.S. No. 2131.
	N. 57°20' W., on line 1-2, lot 10, identical with a portion of line 1-2, Camiola No. 2 lode, M.S. No. 2131.
11.90	Cor. No. 2, lot 10, at intersection with the N. and S. center line of the NE 1/4 of the NE 1/4, sec. 4. <hr/>
	S. 0°04' W., on line 2-3, lot 10, identical with a portion of the N. and S. center line of the NE 1/4 of the NE 1/4, sec. 4.
11.51	Cor. No. 3, identical with the C-E-NE 1/64 sec. cor. of sec. 4. <hr/>
	S. 89°47' E., on line 3-4, lot 10, identical with a portion of the E. and W. center line of the NE 1/4 of sec. 4.
10.02	Cor. No. 1, lot 10, on the line bet. secs. 3 and 4, the point of beginning. <hr/>

T. 3 N., R. 18 W., Gila and Salt River Meridian, Arizona

CHAINS

GENERAL DESCRIPTION

The area surveyed is located approximately 6 mile ESE of the town of Quartzite Arizona, adjacent and within the westerly foothills of the Plomosa Mountains. Timber consists of palo verde, saguaro and ironwood, with undergrowth of creosote and Cholla Cactus. The elevation varies from approximately 1300 ft. to 1600 ft. above sea level.

Access is provided by U.S. Interstate Highway No. 10, Dome Rock Road and Mitchell Mine Rd.

The primary use of the land is the extraction of minerals, with active mining operations in sections 3 and 4. Dozens of mining claims have been staked.

The mean magnetic declination of 11° E. was derived from National Oceanic and Atmospheric Administration, on line Magnetic Field Calculator program, utilizing the World Magnetic Model 2014-2019 for the dates of the survey.

CERTIFICATE OF SURVEY

I, Gordon R. Bubel, Cadastral Surveyor, HEREBY CERTIFY upon honor, that in pursuance of special instructions bearing date of the 14th day of June, 2017, and the supplemental special instructions bearing date 25th day of June 2017. I have dependently resurveyed a portion of the north boundary, a portion of the subdivisional lines and a portion of Mineral Survey Number 2131, subdivided section 4, and surveyed the metes-and-bounds descriptions of Lots 9 and 10, section 4, in Township 3 North, Range 18 West, of the Gila and Salt River Meridian, in the State of Arizona. Represented in the foregoing field notes as having been executed by me and under my direction. Said survey has been made in strict conformity with said special instructions, the Manual of Instructions for the Survey of the Public Lands of the United States, 2009, and in specific manner described in the foregoing field notes.

JULY 20, 2018
(Date)

Gordon R. Bubel
(Cadastral Surveyor)

CERTIFICATE OF APPROVAL

BUREAU OF LAND MANAGEMENT
Phoenix, Arizona

The foregoing field notes of the dependent resurvey of a portion of the north boundary, a portion of the subdivisional lines, and a portion of Mineral Survey Number 2131, the subdivision of section 4, and the survey of the metes-and-bounds descriptions of Lots 9 and 10, sec. 4 in T. 3 N., R. 18 W., Gila and Salt River Meridian, in the State of Arizona, executed by Gordon R. Bubel, Cadastral Surveyor, having been critically examined and found correct, are hereby approved.

7/26/2018
(Date)

[Signature]
(Chief Cadastral Surveyor of Arizona)

~~CERTIFICATE OF TRANSCRIPT~~

~~I CERTIFY that the foregoing transcript of the field notes of the above described surveys in T. 3 N., R. 18 W., Gila and Salt River Meridian, in the state of Arizona, is a true copy of the original field notes.~~

~~_____
(Date)~~

~~_____
(Chief Cadastral Surveyor of Arizona)~~