

ORIGINAL

**UNITED STATES
DEPARTMENT OF THE INTERIOR
BUREAU OF LAND MANAGEMENT**

FIELD NOTES
OF THE
DEPENDENT RESURVEY OF
A PORTION OF THE SUBDIVISIONAL LINES,
THE SUBDIVISION OF SECTION 8,
AND
METES-AND-BOUNDS SURVEYS IN SECTION 8,
TOWNSHIP 18 NORTH, RANGE 24 EAST,
OF THE GILA AND SALT RIVER MERIDIAN,
IN THE STATE OF ARIZONA.

EXECUTED BY

Blas J. Urena, Cadastral Surveyor

Under Special Instructions dated January 31, 2019, approved January 31, 2019, which provided for the surveys included under Group No. 1191, and assignment instructions dated February 4, 2019.

Survey commenced March 18, 2019

Survey completed April 18, 2019

INDEX DIAGRAM

TOWNSHIP 18 NORTH RANGE 24 EAST
 GILA & SALT RIVER MERIDIAN, ARIZONA

6	5 16	4	3	2	1
7	10 8 5	7 9	10	11	12
18	17	16	15	14	13
19	20	21	22	23	24
30	29	28	27	26	25
31	32	33	34	35	36

Subdivision of Section 8 Pages 16-36
 Metes-and-Bounds Surveys in Section 8 Pages 36-43

T. 18 N., R. 24 E., Gila and Salt River Meridian, Arizona

CHAINS

The following field notes describe the dependent resurvey of a portion of the subdivisional lines, the subdivision of section 8, and metes-and-bounds surveys in section 8, Township 18 North, Range 24 East, Gila and Salt River Meridian, Arizona.

The history of surveys pertaining to this survey is as follows:

Henry Meyrick, United States Deputy Surveyor, surveyed the exteriors and subdivisional lines of Township 18 North, Range 24 East, in 1882, (Book 0288).

Benjamin J. Kinsey, United States Surveyor and Cadastral Engineer, resurveyed part of East and North boundaries and part of the subdivisional lines of Township 18 North, Range 24 East, and surveyed the quarter section lines of sections 4 and 10 of Township 18 North, Range 24 East, in 1938, (Book 4199).

The United States of America, Petrified Forest National Park, reacquired land in 2011, according to Special Warranty Deed 2011-004610, official records of Apache County, dated 09-08-2011, some of which are in section 8, Township 18 North, Range 24 East. The Special Warranty Deed excludes Tract #2, Adamana Station. An extensive and diligent research for the description of said Tract #2, Adamana Station, in 3 different County Recorder's Offices, Apache, Navajo, and Yavapai revealed no evidence of the particulars of this deed exclusion, and it has therefore not been addressed in the conduct of this survey. This research is detailed in a Memorandum to the Group No. 1191, dated April 10, 2019.

The survey was executed in accordance with the specifications as set forth in the Manual of Surveying Instructions, 2009, and the Special Instructions dated January 31, 2019, for Group Number 1191, Arizona.

The true meridian direction and length of all lines were determined by static or real time kinematic Global Navigation Satellite System observations using Trimble Navigation R10 model receivers.

Preliminary to the resurvey, the lines of the prior surveys were retraced and search was made for all corners and other calls of record. Identified corners were remonumented in their original positions. Lost corners were reestablished and remonumented at proportionate positions based on the official record. The retracement data were thoroughly verified and only the true line field notes are given herein.

T. 18 N., R. 24 E., Gila and Salt River Meridian, Arizona

CHAINS

Geodetic control was derived from Global Navigation Satellite System (GNSS) static observations post processed by National Geodetic Survey, Online Positioning User Service (OPUS, Continuously Operating Reference Stations (CORS) DL6010 AZSV VALLEY CORS ARP, AF9512 PIE1 PIETOWN CPRS ARP, AND DL1882 AZFL NAU FLASTAFF CORS ARP. The NAD 83(2011) (EPOCH: 2010.0000), geographic position of the section corner of sections 8, 9, 16, and 17, Township 18 North, Range 24 East, is as follows:

Latitude: 34°58'05.339" N. Longitude: 109°48'27.488" W.

The NAD 83(2011)(EPOCH:2010.0000), geographic position of the Witness Point on the section line of sections 7 and 8 at intersection with the southerly right-of-way line of the Atchison, Topeka and Santa Fe Railroad Company in Township 18 North, Range 24 East, is as follows:

Latitude: 34°58'35.109" N. Longitude: 109°49'31.548" W.

The mean magnetic declination is 9 3/4° E.

**Dependent Resurvey of a portion of the Subdivisional Lines,
T. 18 S., R. 24 E., Gila and Salt River Meridian, Arizona**

Restoring the survey executed by
Henry Meyrick, in 1882,
and the dependent resurvey executed by
Benjamin J. Kinsey, in 1938

Beginning at the cor. of secs. 8, 9, 16, and 17, reestablished by Kenneth K. Isaacson, Retired, Arizona R.L.S. No. 15928, in 2009, according to Book 19 of Land Surveys, Page 158 (1 of 2), on file at Apache County Recorder's Office, monumented with a rebar, 18 ins. long, 5/8 in. diam., firmly set, 1 in. below the surface of the ground, with an aluminum cap, 2 ins. diam., stamped "ISAACSON ENGINEERING LS 15928", mkd.

$$\begin{array}{r} 8 \ | \ 9 \\ \hline 17 \ | \ 16 \end{array}$$

This is accepted as a careful and faithful reestablishment of the 1938 corner position.

Witnessed by a lath, alongside of cor.

At the corner point

Set a stainless steel post, 28 ins. long, 2 1/2 ins. diam., 24 ins. in the ground, underpinned with the rebar with the aluminum cap, 38 in the ground, with brass cap mkd.

Dependent Resurvey of a portion of the Subdivisional Lines,
T. 18 N., R. 24 E., Gila and Salt River Meridian, Arizona

CHAINS

T 18 N	R 24 E
S 8	S 9
S 17	S 16

2019

Deposit a magnet, in a white plastic case, at the base of the stainless steel post.

Reset the lath, E., and set a 4 ft. lath, S. of cor.

The cor. is located alongside a barbed wire fence, 4 strand, extending S. 0°25' E. and N. 0°25' W.

S. 88°13' W., bet. secs. 8 and 17.

Over gently rolling terrain.

- 6.73 From this point, a steel "T" post with a sign, marked "Pettrified Forest National Park", bears North, 11 lks. dist.
- 29.87 From this point, a wood post with barbed wire, bears South, 51 lks. dist.
- 31.05 From this point, a wood post with barbed wire, bears South, 40 lks. dist.
- 41.38 The 1/4 sec. cor. of secs. 8 and 17, reestablished by Kenneth K. Isaacson, Retired, Arizona R.L.S. No. 15928, in 2009, according to Book 19 of Land Surveys, Page 158 (1 of 2), on file at Apache County Recorder's Office, monumented with a rebar, 18 ins. long, 5/8 in. diam., firmly set, projecting 4 ins. above ground, with an aluminum cap, 2 ins. diam., stamped "ISAACSON ENGINEERING LS 15928", mkd.

$$\frac{7}{17}$$

This is accepted as a careful and faithful reestablishment of the original corner.

At the corner point

Set a stainless steel post, 28 ins. long, 2 1/2 ins. diam., 26 ins. in the ground, underpinned with the rebar with the aluminum cap, 43 in the ground, with brass cap mkd.

Dependent Resurvey of a portion of the Subdivisional Lines,
T. 18 N., R. 24 E., Gila and Salt River Meridian, Arizona

CHAINS	
	<p style="text-align: center;">T 18 N R 24 E S 8 1/4 ——— S 17</p> <p style="text-align: center;">2019</p> <p>Deposit a magnet, in a white plastic case, at the base of the stainless steel post.</p> <p>Set a 4 ft. lath, nearby.</p> <hr style="width: 20%; margin: 10px auto;"/> <p>S. 88°13' W., beginning new measurement.</p>
16.46	From this point, a wood post, bears North, 1.46 chs. dist., with down barbed wire, extending N. 86°15' W.
19.04	From this point, a wood post, bears North, 1.71 chs. dist., with down barbed wire, extending S. 86°15' E.
19.26	From this point, a wood post, bears North, 1.48 chs. dist., with down barbed wire, extending S. 0°04' W.
19.27	From this point, a wood post, bears North, 65 lks. dist., with down barbed wire, extending N. 0°04' E. and S. 0°04' W.
20.69	Point for the W. 1/16 sec. cor. of secs. 8 and 17.
	<p>Set a stainless steel post, 28 ins. long, 2 1/2 ins. diam., 26 ins. in the ground, with brass cap mkd.</p> <p style="text-align: center;">T 18 N R 24 E S 8 W 1/16 ——— S 17</p> <p style="text-align: center;">2019</p> <p>Deposit a magnet, in a white plastic case, at the base of the stainless steel post.</p> <p>Set a 4 ft. lath, nearby.</p>
41.38	The cor. of secs. 7, 8, 17, and 18, reestablished by Kenneth K. Isaacson, Retired, Arizona R.L.S. No. 15928, in 2009, according to Book 19 of Land Surveys, Page 158 (1 of 2), on file at Apache County Recorder's Office, monumented with a rebar, 24 ins. long, 5/8 in. diam., firmly set, projecting 1 in. above ground, with an aluminum cap, 2 ins. diam., stamped "ISAACSON ENGINEERING LS 15928", mkd.

Dependent Resurvey of a portion of the Subdivisional Lines,
T. 18 N., R. 24 E., Gila and Salt River Meridian, Arizona

CHAINS

7		8
18		17

This is accepted as a careful and faithful reestablishment of the 1938 corner position.

The 1938 bearing trees, fence corners and the bench mark, were not found.

At the corner point

Set a stainless steel post, 28 ins. long, 2 1/2 ins. diam., 24 ins. in the ground, with brass cap mkd.

T 18 N	R 24 E	
S 7		S 8
S 18		S 17

2019

Deposit a magnet, in a white plastic case, at the base of the stainless steel post.

Bury the rebar with aluminum cap, horizontally, on the S. side of the stainless steel post.

Set a 4 ft. lath, nearby.

N. 0°24' E., bet. secs. 8 and 9.

Over gently rolling terrain, along a barbed wire fence, 4 strand.

39.84 Point for the 1/4 sec. cor. of secs. 8 and 9, at proportionate dist., by the method of irregular boundary adjustment, utilizing 2009 Isaacson's record, Book 19 of Land Surveys, Page 158 (1 of 2), on file at Apache County Recorder's Office.

Found the 1938 monument disturbed, loose and on the surface of ground, alongside the barbed wire fence, an iron post, 36 ins. long, 1 in. diam., filled with concrete, with brass cap mkd.

1/4		9
S 8		S 9

PENN

1882
1938

Reset the 1938 iron post, 32 ins. in the ground, with brass cap re-marked to read

Dependent Resurvey of a portion of the Subdivisional Lines,
T. 18 N., R. 24 E., Gila and Salt River Meridian, Arizona

CHAINS

T 18 N R 24 E

1/4

S 8 | S 9

2019

1882

1938

Deposit a magnet, in a white plastic case, at the base of the iron post.

Set a 4 ft. lath, nearby.

The cor. is located alongside the barbed wire fence.

From this cor., a fence corner on the same fence, bears N. $11^{\circ}29'$ E., 2 lks. dist., barbed wire, 4 strand, with fences extending N. $0^{\circ}16'$ E., N. $74^{\circ}17'$ E. and S. $0^{\circ}57'$ W.

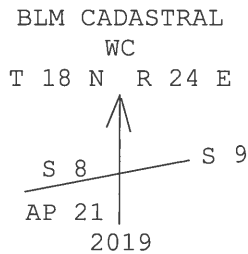
N. $0^{\circ}35'$ E., beginning new measurement.

19.82 Point for the N. 1/16 sec. cor. of secs. 8 and 9. Not monumented.

28.85 Graded road, 24 ft. wide, bears S. 89° E. and S. 89° E.

32.01 The point selected for the witness cor. to AP 21 of the metes-and-bounds survey of sec. 8, at intersection with the southerly right-of-way of the Atchison, Topeka and Santa Fe Railroad Co.

Set a rebar, 24 ins. long, 5/8 in. diam., 24 ins. in the ground, with brass cap, 2 ins. diam., 1 1/4 ins. stem, mkd.



Set a 4 ft. lath, nearby.

32.04 True point for AP 21 of the metes-and-bounds survey in sec. 8, at intersection with the southerly right-of-way of the Atchison, Topeka and Santa Fe Railroad Co., falls on the concrete footing of a fence corner on the same fence and the southerly right-of-way fence of the Atchison, Topeka and Santa Fe Railroad Co., where is impracticable to establish a permanent monument.

Dependent Resurvey of a portion of the Subdivisional Lines,
T. 18 N., R. 24 E., Gila and Salt River Meridian, Arizona

CHAINS

The right-of-way of the Atchison, Topeka and Santa Fe Railroad Co., is 200.00 ft. wide.

From this true point for AP 21, an aluminum cap, 3 3/4 ins. diam., cemented in concrete head wall, 12 ft. x 8 ins, bears S. 26°47' W., 3.81 chs. dist., mkd. "U.S. DEPARTMENT OF INTERIOR GEOLOGICAL SURVEY ELEV. FT. ABOVE + SEA 21 JDC 1976".

From this same true point for AP 21, the fence corner, bears S. 54°29' W., 1 lk. dist., barbed wire, 4 strand, with fences extending N. 71°24' E., S. 0°20' W. and S. 72°09' W.

33.68 Center line of the west bound main track of Atchison, Topeka and Santa Fe Railroad Co., bears N. 72°06' E. and S. 72°06' W.

33.90 Center line of the east bound main track of Atchison, Topeka and Santa Fe Railroad Co., bears N. 72°09' E. and S. 72°09' W.

35.24 A local monument, at intersection with the northerly right-of-way of the Atchison, Topeka and Santa Fe Railroad Co., established by Kenneth K. Isaacson, Retired, Arizona R.L.S. No. 15928, in 2009, according to Book 19 of Land Surveys, Page 159, on file at Apache County Recorder's Office, monumented with a rebar, 5/8 in. diam., firmly set, projecting 6 ins. above ground, with yellow plastic cap, 1 1/4 ins. diam., mkd.

ISAACSON ENG

15928

From this local monument, a fence corner on the northerly right-of-way fence of the Atchison, Topeka and Santa Fe Railroad Co., bears N. 59°41' E., 19 lks. dist., barbed wire, 5 strand, with fences extending N. 70°28' E., S. 71°26' W. and N. 14°23' W.

From this same local monument, another fence corner on the northerly right-of-way fence of the Atchison, Topeka and Santa Fe Railroad Co., bears N. 67°42' E., 73 lks. dist., barbed wire, 5 strand, with fences extending N. 74°56' E., S. 70°28' W. and N. 12°39' W.

39.65 The cor. of secs. 4, 5, 8, and 9, monumented with an iron post, 2 ins. diam., firmly set, projecting 4 ins. above ground, with brass cap, mkd.

T 18 N	R 24 E	
S 5	S 4	PFNM
S 8	S 9	

1882
1938

Dependent Resurvey of a portion of the Subdivisional Lines,
T. 18 N., R. 24 E., Gila and Salt River Meridian, Arizona

CHAINS

Add the marks 2019 to the brass cap.

The cor. is located alongside a barbed wire fence, 5 strand, bears S. 0°13' E. and N. 0°13' W.

From this cor., a fence corner, bears S. 10°36' W., 2 lks. dist., barbed wire, 5 strand, with fences extending S. 1°10' E., N. 65°58' W. and N. 0°13' W.

From this same cor., another fence corner on the same fence, bears N. 86°38' W., 6 lks. dist., with fences extending S. 65°58' E. and S. 88°02' W.

N. 2°29' E., bet. secs. 7 and 8.

Over nearly level terrain.

19.62 Point for the S. 1/16 sec. cor. of secs. 7 and 8. Not monumented.

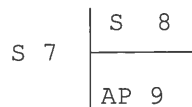
22.94 Barbed wire fence, 2 strand, extending N. 82°45' E. and S. 82°45' W.

22.95 From this point, a fence corner on the same fence, bears East, 5 lks. dist., with fences extending N. 84°03' E., S. 82°45' W. and N. 5°34' W.

38.11 Point for AP 9 the metes-and-bounds survey in sec. 8.

Set a stainless steel post, 28 ins. long, 2 1/2 ins. diam., 24 ins. in the ground, with brass cap mkd.

T 18 N R 24 E



2019

Deposit a magnet, in a white plastic case, at the base of the stainless steel post.

Set a 4 ft. lath, nearby.

39.245 Point for the 1/4 sec. cor. of secs. 7 and 8, determined utilizing "The Right of Way and Track Map, The Atchison, Topeka and Santa Fe Railway, Operated by The Atchison, Topeka and Santa Fe Ry. Co., Coast Lines, Albuquerque Division: Arizona, Station 11795+71.8 to Station 12006+91.8, dated June 30 1915, last Rev. Oct. 1950, Sheet No. 15, V-1-15", there is no remaining evidence of the original corner.

Dependent Resurvey of a portion of the Subdivisional Lines,
T. 18 N., R. 24 E., Gila and Salt River Meridian, Arizona

CHAINS

Set a stainless steel post, 28 ins. long, 2 1/2 ins. diam., 26 ins. in the ground, with brass cap mkd.

T 18 N R 24 E
1/4
S 7 | S 8

2019

Deposit a magnet, in a white plastic case, at the base of the stainless steel post.

Set a 4 ft. lath, nearby.

From this cor. point, the center line of the Atchison, Topeka and Santa Fe Railroad Co. right-of-way, bears North, 10.51 chs. dist.

From this same cor. point, the center W. 1/16 sec. cor. of sec. 8, bears N. 89°14' E., 20.01 chs. dist., hereinafter described.

From this same cor. point, a rebar, 5/8 ins. diam., firmly set, projecting 5 ins. above ground, with an aluminum cap, bears N. 10°08' W., 1.76 chs. dist., established by Kenneth K. Isaacson, Retired, Arizona R.L.S. No. 15928, in 2009, according to Book 19 of Land Surveys, Page 158 (1 of 2), on file at Apache County Recorder's Office, the aluminum cap, 2 ins. diam., stamped "ISAACSON ENGINEERING LS 15928", mkd.

1/4

S 7 . | S 8

Note: Kenneth K. Isaacson commenced his record survey of sec. 8, before 2009, and officially recorded at Apache County Recorder's Office, in 2009.

Found and accepted by Gerald K. Wood, Arizona R.L.S. No. 22290, in 2008, who states: "SURVEYOR NOTE: This survey is dependent on a re-survey completed by Isaacson and Assoc. The West line of section 8 originally seems to have been in another position. I'm basing this solely on the calls of the deeds for this property and the position of the South Right-of-way of the Rail Road. The west 1/4 corner seems to be +/- 120 feet North of the original position but we did not find anything to substantiate this claim.", according to Book 18 of Land Surveys, Page 121, on file at Apache County Recorder's Office.

Gerald K. Wood, surveyed properties on the SW1/4 of the NW1/4 of sec. 8, South of the southerly right-of-way of the Atchison, Topeka and Santa Fe Railroad Co.

Dependent Resurvey of a portion of the Subdivisional Lines,
T. 18 N., R. 24 E., Gila and Salt River Meridian, Arizona

CHAINS

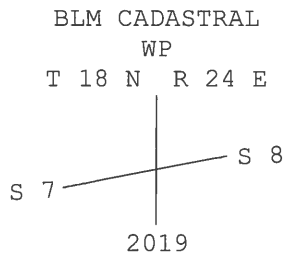
The Right of Way and Track Map, The Atchison, Topeka and Santa Fe Railway, Operated by The Atchison, Topeka and Santa Fe Ry. Co., Coast Lines, Albuquerque Division: Arizona, Station 11795+71.8 to Station 12006+91.8, dated June 30 1915, last Rev. Oct. 1950, Sheet No. 15, V-1-15, the monuments recovered, and lines of occupation, are evidence that substantiate Wood's claim, therefore this corner is not utilized in the course of this resurvey.

N. 1°27' E., beginning new measurement.

8.97 The southerly right-of-way fence of the Atchison, Topeka and Santa Fe Railroad Co., barbed wire, 5 strand, extending N. 72°01' E. and S. 72°01' W.

8.99 Point for the witness point on the section line of secs. 7 and 8 at intersection with the southerly right-of-way of the Atchison, Topeka and Santa Fe Railroad Co.

Set a rebar, 24 ins. long, 5/8 in. diam., 22 ins. in the ground, with brass cap, 2 ins. diam., 1 1/4 ins. stem, mkd.



Set a 4 ft. lath, nearby.

The right-of-way of the Atchison, Topeka and Santa Fe Railroad Co., is 200.00 ft. wide.

From this witness point, a local monument, on the southerly right-of-way of the Atchison, Topeka and Santa Fe Railroad Co., bears N. 72°06' E., 1.95 chs. dist., established by Gerald K. Wood, Arizona R.L.S. No. 22290, in 2008, according to Book 18 of Land Surveys, Page 121, on file at Apache County Recorder's Office, monumented with a rebar, 1/2 in. diam., firmly set, 1 in. below the surface of the ground, with yellow plastic cap, 1 in. diam., mkd.

NORTHERN
SURVEYS

PLS 22290

Witnessed by a lath, nearby.

Dependent Resurvey of a portion of the Subdivisional Lines,
T. 18 N., R. 24 E., Gila and Salt River Meridian, Arizona

CHAINS

From this local monument, the southerly right-of-way fence of the Atchison, Topeka and Santa Fe Railroad Co., bears South, 1 lk. dist., barbed wire, 5 strand, extending N. 72°01' E. and S. 72°01' W.

From this same witness point, a local monument, on the Southerly right-of-way of the Atchison, Topeka and Santa Fe Railroad Co., bears S. 72°06' W., 31 lks. dist., established by Gerald K. Wood, Arizona R.L.S. No. 22290, in 2008, according to Book 18 of Land Surveys, Page 121, on file at Apache County Recorder's Office, monumented with a rebar, 1/2 in. diam., firmly set, projecting 1 in. above ground, with yellow plastic cap, 1 in. diam., mkd.

NORTHERN
SURVEYS

PLS 22290

Witnessed by a lath, nearby.

This local monument was intended to be on the sec. line bet. secs. 7 and 8, at intersection with the southerly right-of-way of the Atchison, Topeka and Santa Fe Railroad Co., and was determined utilizing Isaacson's 1/4 sec. cor. of secs. 7 and 8, and is not utilized in this course of the resurvey.

From this local monument, the southerly right-of-way fence of the Atchison, Topeka and Santa Fe Railroad Co., bears South, 2 lks. dist., barbed wire, 5 strand, extending N. 72°01' E. and S. 72°01' W.

From this same witness point, the Southerly right-of-way fence of the Atchison, Topeka and Santa Fe Railroad Co., bears South, 1 lk. dist., barbed wire, 5 strand, extending N. 72°01' E. and S. 72°01' W.

- 10.61 Center line of the west bound main track of Atchison, Topeka and Santa Fe Railroad Co., bears N. 72°06' E. and S. 72°06' W.
- 10.91 Center line of the east bound main track of Atchison, Topeka and Santa Fe Railroad Co., bears N. 72°09' E. and S. 72°09' W.
- 12.20 Intersect the northerly right-of-way of the Atchison, Topeka and Santa Fe Railroad Co. Not monumented.

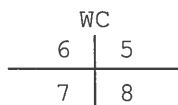
Dependent Resurvey of a portion of the Subdivisional Lines,
T. 18 N., R. 24 E., Gila and Salt River Meridian, Arizona

CHAINS	
	<p>From this point of intersection, a local monument, at intersection with the northerly right-of-way of the Atchison, Topeka and Santa Fe Railroad Co., and intended to be on the N. and S. center line of the NW 1/4 of sec. 8, bears N. 72°07' E., 21.29 chs. dist., established by Kenneth K. Isaacson, Retired, Arizona R.L.S. No. 15928, in 2009, according to Book 19 of Land Surveys, Page 158 (2 of 2), on file at Apache County Recorder's Office, monumented with a rebar, 5/8 in. diam., firmly set, 2 ins. below the surface of ground, with a portion of a yellow plastic cap, mkd. "EN". Note: Book 19 of Land Surveys, Page 158 (2 of 2) shows an open circle at this position which is annotated as "calculated, not set." However the monument recovered is consistent with monuments set by Isaacson and it is determined that it was set during the course of the survey.</p>
	<p>From this same point of intersection, a local monument, on the northerly right-of-way of the Atchison, Topeka and Santa Fe Railroad Co., bears S. 72°07' W., 28 lks. dist., established by Kenneth K. Isaacson, Retired, Arizona R.L.S. No. 15928, in 2009, according to Book 19 of Land Surveys, Page 158 (2 of 2), on file at Apache County Recorder's Office, monumented with a rebar, 5/8 in. diam., firmly set, 4 ins. below the surface of ground, with a yellow plastic cap, 1 in. diam., unreadable.</p>
	<p>This local monument was intended to be on the sec. line bet. secs. 7 and 8, at intersection with the northerly right-of-way of the Atchison, Topeka and Santa Fe Railroad Co., and was determined utilizing Isaacson's 1/4 sec. cor. of secs. 7 and 8, and is not utilized in the course of this resurvey.</p>
15.30	<p>From this point, a fence corner, bears West, 19 lks. dist., chain link, 6 ft. high, with 3 strand of barbed wire on top, extending N. 1°36' E. and S. 72°10' W.</p>
21.34	<p>Point for the N. 1/16 sec. cor. of secs. 7 and 8. Not monumented.</p>
42.69	<p>The true point for the cor. of secs. 5, 6, 7, and 8, determined by Kenneth K. Isaacson, Retired, Arizona R.L.S. No. 15928, in 2009, according to Book 19 of Land Surveys, Page 158 (2 of 2), on file at Apache County Recorder's Office, not monumented in 2009, the cor. falls in a graded road, on a three way intersection, 24 ft. wide, bears N. 0°04' E., N. 89°47' E. and S. 0°04' W.</p> <p>Gerald K. Wood, Arizona R.L.S. No. 22290, accepted this position, in 2008, according to Book 18 of Land Surveys, Page 121, on file at Apache County Recorder's Office.</p>
	<p>This position has been recognized as the corner by the local surveying community and is accepted as the best available evidence of the original corner position.</p>

Dependent Resurvey of a portion of the Subdivisional Lines,
T. 18 N., R. 24 E., Gila and Salt River Meridian, Arizona

CHAINS

From this true point, the point selected by Isaacson, for a witness cor. to the cor. of secs. 5, 6, 7, and 8, bears S. 89°52' W., 31.8 lks. (21.00 ft.) dist., monumented with a rebar, 5/8 in. diam., firmly set, 5 ins. below the surface of the ground, with an aluminum cap, 2 ins. diam., stamped "ISAACSON ENGINEERING LS 15928", mkd.



Witnessed by a 4 ft. lath, East, and two steel "T" post, North and West of cor.

From this same true point, a local monument, bears S. 89°52' W., 19.42 chs. dist., established by Kenneth K. Isaacson, Retired, Arizona R.L.S. No. 15928, in 2009, according to Book 19 of Land Surveys, Page 158 (2 of 2), on file at Apache County Recorder's Office, monumented with a rebar, 5/8 in. diam., firmly set, projecting 4 ins. above ground, with an aluminum cap, 2 ins. diam., stamped "ISAACSON ENGINEERING LS 15928", mkd.

E 1/16

From the cor. of secs. 4, 5, 8 and 9.

S. 89°52' W., bet. secs. 5 and 8.

Over gently rolling terrain.

20.16

The E. 1/16 sec. cor. of secs. 5 and 8, established by Kenneth K. Isaacson, Retired, Arizona R.L.S. No. 15928, in 2009, according to Book 19 of Land Surveys, Page 158 (2 of 2), on file at Apache County Recorder's Office, monumented with a rebar, 5/8 in. diam., firmly set, flush with the surface of the ground, with a yellow plastic cap, 1 in. diam., mkd.

ISAACSON ENG

15928

This is accepted as a careful and faithful determination of corner point.

From this cor., a rebar of unknown origin, 5/8 in. diam., firmly set, projecting 2 ins. above ground, bears S. 14°17' E., 65 lks. dist., is not utilized during the course of this resurvey.

**Dependent Resurvey of a portion of the Subdivisional Lines,
T. 18 N., R. 24 E., Gila and Salt River Meridian, Arizona**

CHAINS

S. 89°52' W., beginning new measurement.

Over a graded road, 24 ft. wide.

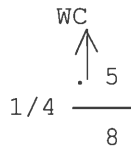
20.16

The true point for the 1/4 sec. cor. of secs. 5 and 8, determined by Kenneth K. Isaacson, Retired, Arizona R.L.S. No. 15928, in 2009, according to Book 19 of Land Surveys, Page 158 (2 of 2), on file at Apache County Recorder's Office, not monumented in 2009, the cor. falls in a graded road, 24 ft. wide, bears N. 89°54' E. and S. 89°54' W.

Gerald K. Wood, Arizona R.L.S. No. 22290, accepted this position, in 2008, according to Book 18 of Land Surveys, Page 121, on file at Apache County Recorder's Office.

This position has been recognized as the corner by the local surveying community and is accepted as a careful and faithful determination of the position of the original corner.

From this true point, the point selected by Isaacson, for a witness cor. to the 1/4 sec. cor. of secs. 5 and 8, bears S. 1°14' W., 37.9 lks. (25.00 ft.) dist., monumented with a rebar, 5/8 in. diam., firmly set, projecting 3 ins. above ground, with an aluminum cap, 2 ins. diam., stamped "ISAACSON ENGINEERING LS 15928", mkd.



From this witness cor., a fence, bears South, 3 lks. dist., chain link, 6 ft. high, with 3 strand of barbed wire on top, bears N. 89°54' E. and S. 89°54' W.

S. 89°52' W., beginning new measurement.

Continuing over the graded road.

20.155

Point for the W. 1/16 sec. cor. of secs. 5 and 8. Not monumented.

40.31

The true point for the cor. of secs. 5, 6, 7, and 8.

**Subdivision of Section 8,
T. 18 N., R. 24 E., Gila and Salt River Meridian, Arizona**

From the 1/4 sec. cor. of secs. 8 and 17.

N. 1°14' E., on the N. and S. center line of sec. 8.

Subdivision of Section 8,
T. 18 N., R. 24 E., Gila and Salt River Meridian, Arizona

CHAINS	<p>Over gently rolling terrain.</p>
20.20	<p>Point for the center S. 1/16 sec. cor. of sec. 8.</p> <p>Set a stainless steel post, 28 ins. long, 2 1/2 ins. diam., 26 ins. in the ground, with brass cap mkd.</p> <div style="text-align: center; margin: 10px 0;"> <p>T 18 N R 24 E</p> <p style="margin-left: 100px;">C</p> <p>S 1/16 S 8</p> <p style="margin-left: 100px;">C</p> </div> <p style="text-align: center; margin: 10px 0;">2019</p> <p>Deposit a magnet, in a white plastic case, at the base of the stainless steel post.</p> <p>Set a 4 ft. lath, nearby.</p>
38.63	<p>Down barbed wire fence, extending N. 89°15' E., and S. 89°15' W.</p>
40.40	<p>The center 1/4 sec. cor. of sec. 8, established by Kenneth K. Isaacson, Retired, Arizona R.L.S. No. 15928, in 2009, according to Book 19 of Land Surveys, Page 158 (1 of 2), on file at Apache County Recorder's Office, monumented with a rebar, 18 ins. long, 5/8 in. diam., loosely set, projecting 4 ins. above ground, with an aluminum cap, 2 ins. diam., stamped "ISAACSON ENGINEERING LS 15928", mkd.</p> <div style="text-align: center; margin: 10px 0;"> <p>C</p> <p>1.</p> <p>/4</p> </div> <p>Found and accepted by Gerald K. Wood, Arizona R.L.S. No. 22290, in 2008, according to Book 18 of Land Surveys, Page 121, on file at Apache County Recorder's Office.</p> <p>This position has been recognized as the corner by the local surveying community and is accepted as a careful and faithful establishment of the corner point.</p> <p>At the corner point</p> <p>Set a stainless steel post, 28 ins. long, 2 1/2 ins. diam., 26 ins. in the ground, underpinned with the rebar and aluminum cap, 48 ins. in the ground, with brass cap mkd.</p> <div style="text-align: center; margin: 10px 0;"> <p>T 18 N R 24 E</p> <p style="margin-left: 100px;">C 1/4 S 8</p> </div> <p style="text-align: center; margin: 10px 0;">2019</p>

Subdivision of Section 8,
T. 18 N., R. 24 E., Gila and Salt River Meridian, Arizona

CHAINS

Deposit a magnet, in a white plastic case, at the base of the stainless steel post.

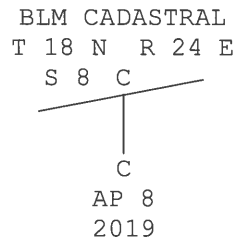
Set a 4 ft. lath, nearby.

N. 1°14' E., beginning new measurement.

19.22 Apache County Road No. 7156, 24 ft. wide, bears N. 78° E. and S. 78° W.

19.66 Point for AP 8 of the metes-and-bounds survey in sec. 8, at intersection with the southerly right-of-way of the Atchison, Topeka and Santa Fe Railroad Co.

Set a rebar, 24 ins. long, 5/8 in. diam., 24 ins. in the ground, with brass cap, 2 ins. diam., 1 1/4 ins. stem, mkd.



Set a 4 ft. lath, nearby.

The cor. is located alongside the southerly right-of-way fence of the Atchison, Topeka and Santa Fe Railroad Co., barbed wire, 5 strand, extending N. 72°05' E. and S. 72°05' W.

From this cor., the true point for AP 21 of the metes-and-bounds survey in sec. 8, on the sec. line bet. secs. 8 and 9, at intersection with the southerly right-of-way of the Atchison, Topeka and Santa Fe Railroad Co., bears N. 72°07' E., 42.74 chs. dist.

From this same cor., a local monument, on the southerly right-of-way of the Atchison, Topeka and Santa Fe Railroad Co., bears S. 72°07' W., 24.25 chs. dist., established by Gerald K. Wood, Arizona R.L.S. No. 22290, in 2008, according to Book 18 of Land Surveys, Page 121, on file at Apache County Recorder's Office, monumented with a rebar, 1/2 in. diam., firmly set, projecting 1 in. above ground, with yellow plastic cap, 1 in. diam., mkd.

NORTHERN
SURVEYS

PLS 22290

Witnessed by a lath, nearby.

**Subdivision of Section 8,
T. 18 N., R. 24 E., Gila and Salt River Meridian, Arizona**

CHAINS	
	<p>This local monument is located alongside the southerly right-of-way fence of the Atchison, Topeka and Santa Fe Railroad Co., barbed wire, 5 strand, extending N. 72°13' E. and S. 72°13' W.</p>
20.15	<p>Point for the center N. 1/16 sec. cor. of sec. 18. Not Monumented.</p> <p>Falls within right-of-way of the of Atchison, Topeka and Santa Fe Railroad Co.</p>
21.29	<p>Center line of the west bound main track of Atchison, Topeka and Santa Fe Railroad Co., bears N. 72°06' E. and S. 72°06' W.</p>
21.55	<p>Center line of the east bound main track of Atchison, Topeka and Santa Fe Railroad Co., bears N. 72°09' E. and S. 72°09' W.</p>
22.87	<p>Intersect the northerly right-of-way of the Atchison, Topeka and Santa Fe Railroad Co. Not monumented.</p> <p>From this point of intersection, the local monument, on the sec. line bet. secs. 8 and 9, at intersection with the northerly right-of-way of the Atchison, Topeka and Santa Fe Railroad Co., bears N. 72°07' E., 42.70 chs. dist., established by Kenneth K. Isaacson, Retired, Arizona R.L.S. No. 15928, in 2009, according to Book 19 of Land Surveys, Page 159 on file at Apache County Recorder's Office.</p> <p>From this same point of intersection, a local monument, at intersection with the northerly right-of-way of the Atchison, Topeka and Santa Fe Railroad Co., and intended to be on the E. and W. center line of the NW 1/4 of sec. 8, bears S. 72°07' W., 9.14 chs. dist., established by Kenneth K. Isaacson, Retired, Arizona R.L.S. No. 15928, in 2009, according to Book 19 of Land Surveys, Page 158 (2 of 2), on file at Apache County Recorder's Office, monumented with a rebar, 5/8 in. diam., firmly set, projecting 7 ins. above ground, with a yellow plastic cap, 1 1/4 ins. diam., mkd.</p> <p style="text-align: center;">ISAACSON ENG</p> <p style="text-align: center;">.</p> <p style="text-align: center;">15928</p> <p>Note: Book 19 of Land Surveys, Page 158 (2 of 2) shows an open circle at this position which is annotated as "calculated, not set." However the monument recovered is consistent with monuments set by Isaacson and it is determined that it was set during the course of the survey.</p> <p>From this local monument, a chain link fence, bears North, 32 lks. dist., 6 ft. high, with 3 strand of barbed wire on top, extending N. 72°38' E. and S. 72.°38' W.</p>

Subdivision of Section 8,
T. 18 N., R. 24 E., Gila and Salt River Meridian, Arizona

CHAINS	
	From this same local monument, a terminus of the northerly right-of-way fence of the Atchison, Topeka and Santa Fe Railroad Co., bears S. 72°39' W., 1.61 chs. dist., woven wire, with 2 strand of barbed wire on top, extending N. 71°51' E.
22.89	The northerly right-of-way fence of the Atchison, Topeka and Santa Fe Railroad Co., woven wire, with 2 strand of barbed wire on top, extending N. 72°16' E. and S. 72°16' W.
23.18	Chain link fence, 6 ft. high, with 3 strand of barbed wire on top, extending N. 71°17' E. and S. 71°17' W.
39.92	The point selected by Isaacson, for a witness cor. to the 1/4 sec. cor. of secs. 5 and 8.
40.30	The true point for the 1/4 sec. cor. of secs. 5 and 8.
	<hr/>
	From the 1/4 sec. cor. of secs. 8 and 9.
	S. 88°58' W., on the E. and W. center line of sec. 8.
	Over gently rolling terrain.
20.39	Point for the center E. 1/16 sec. cor. of sec. 8. Not Monumented.
20.73	From this point, a down barbed wire fence, bears South, 2.10 chs. dist., extending S. 2°58' W.
21.89	From this point, a down barbed wire fence, bears South, 2.14 chs. dist., extending N. 82°16' W.
22.39	From this point, same down barbed wire fence, bears South, 2.06 chs. dist., extending S. 82°16' E. and S. 89°30' W.
25.00	From this point, same down barbed wire fence, bears South, 2.04 chs. dist., extending S. 89°30' E. and N. 89°56' W.
30.03	From this point, same down barbed wire fence, bears South, 1.94 chs. dist., extending S. 89°56' E. and S. 89°53' W.
34.96	From this point, same down barbed wire fence, bears South, 1.86 chs. dist., extending N. 89°53' E. and S. 89°53' W.
40.35	From this point, same down barbed wire fence, bears South, 1.77 chs. dist., extending N. 89°53' E. and S. 89°15' W.
40.78	The center 1/4 sec. cor. of sec. 8.
	<hr/>
	S. 83°52' W., beginning new measurement.

Subdivision of Section 8,
T. 18 N., R. 24 E., Gila and Salt River Meridian, Arizona

CHAINS	
3.18	From this point, same down barbed wire fence, bears South, 1.47 chs. dist., extending N. 89°15' E. and N. 89°44' W.
7.14	From this point, same down barbed wire fence, bears South, 1.03 chs. dist., extending N. 89°44' E. and S. 89°56' W.
10.62	From this point, the terminus of the down barbed wire fence, bears South, 1.03 chs. dist., extending N. 89°56' E.
20.64	<p>The center W. 1/16 sec. cor. of sec. 8, established by persons unknown, monumented with an iron bolt, 3/4 in. diam., with the top 1 1/4 ins. sq., firmly set, 9 ins. below the surface of ground, alongside the NE corner of the railroad tie fence that is shown on the Right of Way and Track Map, The Atchison, Topeka and Santa Fe Railway, Operated by The Atchison, Topeka and Santa Fe Ry. Co., Coast Lines, Albuquerque Division: Arizona, Station 11795+71.8 to Station 12006+91.8, dated June 30 1915, last Rev. Oct. 1950, Sheet No. 15, V-1-15.</p> <p>This position has been long recognized as the corner by adjoining landowners, and other interested parties, and is harmoniously related to all the deeds of record in the SW1/4 of the NW1/4 South of the southerly right-of-way of the Atchison, Topeka and Santa Fe Railroad Co., and the NW1/4 of the SW1/4, and is accepted as a careful and faithful establishment of the corner point.</p> <p>At the corner point</p> <p>Set a stainless steel post, 28 ins. long, 2 1/2 ins. diam., 23 ins. in the ground, with brass cap mkd.</p> <div style="text-align: center;"> <p>T 18 N R 24 E</p> <p>W 1/16</p> <p>— C — C</p> <p>S 8</p> <p>2019</p> </div> <p>Deposit a magnet, in a white plastic case, at the base of the stainless steel post.</p> <p>Set a 4 ft. lath, nearby.</p> <p>From this cor., the fence corner, bears S. 57°32' W., 0.5 lk. dist., railroad tie, with barbed wire, 3 strand, extending S. 0°50' W., S. 89°31' W., 4 strand, extending N. 1°50' W.</p> <p>From this same cor., another fence corner on the same fence, bears S. 1°18' W., 1.15 chs. dist., railroad tie, extending S. 89°52' E. and S. 1°03' W., and with barbed wire, 3 strand, extending N. 0°50' E.</p>

**Subdivision of Section 8,
T. 18 N., R. 24 E., Gila and Salt River Meridian, Arizona**

CHAINS

From this same cor., another fence corner on the same fence, bears N. 3°21' W., 37 lks. dist., down barbed wire, extending S. 89°54' E., barbed wire, 4 strand, extending S. 1°50' E., railroad tie, extending N. 88°40' W., and down barbed wire, extending N. 0°43' W.

From this same cor., a local monument, bears N. 9°58' W., 1.86 chs. dist., established by Gerald K. Wood, Arizona R.L.S. No. 22290, in 2008, according to Book 18 of Land Surveys, Page 121, on file at Apache County Recorder's Office, monumented with a rebar, 1/2 in. diam., firmly set, projecting 5 ins. above ground, with yellow plastic cap, 1 in. diam., mkd.

NORTHERN
SURVEYS

PLS 22290

This local monument was intended to be the E. and W. center line of sec. 8, and was determined utilizing Isaacson's 1/4 sec. cor. of secs. 7 and 8, hereinbefore described, which was rejected in the conduct of this survey, and is therefore not utilized in the course of this resurvey.

S. 89°14' W., beginning new measurement.

Alongside a railroad tie fence.

6.83

AP 12 of the metes-and-bounds survey in sec. 8, established by persons unknown, monumented with an iron bolt, 3/4 in. diam., with the top 1 1/4 ins. sq., firmly set, 7 ins. below the surface of ground, at the prolongation of fence lines, bearing S. 89°14' W. and N. 1°04' E., the same railroad tie fence that is show in the Right of Way and Track Map, The Atchison, Topeka and Santa Fe Railway, Operated by The Atchison, Topeka and Santa Fe Ry. Co., Coast Lines, Albuquerque Division: Arizona, Station 11795+71.8 to Station 12006+91.8, dated June 30 1915, last Rev. Oct. 1950, Sheet No. 15, V-1-15.

This position has been long recognized as the corner by adjoining landowners, and other interested parties, and is harmoniously related to all the deeds of record on the SW1/4 of the NW1/4 South of the Southerly right-of-way of the Atchison, Topeka and Santa Fe Railroad Co., and the NW1/4 of the SW1/4, and is accepted as a careful and faithful establishment of the corner point.

Lower the iron bolt, 15 ins. below the surface of the ground.

At the corner point

Set a stainless steel post, 28 ins. long, 2 1/2 ins. diam., 26 ins. in the ground, directly over the iron bolt, with brass cap mkd.

Subdivision of Section 8,
T. 18 N., R. 24 E., Gila and Salt River Meridian, Arizona

CHAINS

T 18 N R 24 E
S 8

C ——— C
AP 12 |

2019

Deposit a magnet, in a white plastic case, at the base of the stainless steel post.

Set a 4 ft. lath, nearby.

S. 89°14' W., beginning new measurement.

11.06 Point for AP 11 of the metes-and-bounds survey in sec. 8.

Set a stainless steel post, 28 ins. long, 2 1/2 ins. diam., 24 ins. in the ground, with brass cap mkd.

T 18 N R 24 E
S 8

C ——— C
AP 11 |

2019

Deposit a magnet, in a white plastic case, at the base of the stainless steel post.

Set a 4 ft. lath, nearby.

From this cor., a rebar of unknown origin, 5/8 in. diam., firmly set, projecting 5 ins., bears S. 64°37' W., 34 lks. dist., is not utilized during the course of this resurvey.

From this same cor., a rebar, 1/2 in. diam., firmly set, projecting 2 ins. above ground, and without a cap, bears N. 10°02' W., 1.77 chs. dist., established by Gerald K. Wood, Arizona R.L.S. No. 22290, in 2008, according to Book 18 of Land Surveys, Page 121, on file at Apache County Recorder's Office.

This position was determined utilizing Isaacson's 1/4 sec. cor. of secs. 7 and 8, hereinbefore described, which was rejected in the conduct of this survey, and is therefore not utilized in the course of the resurvey.

12.60 Graded road, 24 ft. wide, bears N. 1° E. and S. 1° W.

13.18 The 1/4 sec. cor. of secs. 7 and 8.

Subdivision of Section 8,
T. 18 N., R. 24 E., Gila and Salt River Meridian, Arizona

CHAINS	NE 1/4
	<hr style="width: 20%; margin: auto;"/>
	From the center E. 1/16 sec. cor. of sec. 8.
	N. 0°54' E., on the N. and S. center line of the NE 1/4 of sec. 8.
	Over gently rolling terrain.
0.47	From this point, a portion of a wood post, bears West, 63 lks. dist., firmly set, projecting approximately 6 ins. above ground.
4.22	From this point, a portion of a wood post, bears West, 79 lks. dist., firmly set, projecting approximately 6 ins. above ground.
5.24	From this point, a portion of a wood post, bears West, 87 lks. dist., firmly set, projecting approximately 6 ins. above ground.
7.03	From this point, a portion of a wood post, bears West, 88 lks. dist., firmly set, projecting approximately 6 ins. above ground.
12.05	From this point, a portion of a wood post, bears West, 1.07 chs. dist., firmly set, projecting approximately 6 ins. above ground.
13.56	From this point, a portion of a wood post, bears West, 1.12 chs. dist., firmly set, projecting approximately 6 ins. above ground.
14.43	From this point, a portion of a wood post, bears West, 1.16 chs. dist., firmly set, projecting approximately 6 ins. above ground.
19.99	Point for the NE 1/16 sec. cor. of sec. 8, at intersection with the E. and W. center line of the NE 1/4.
	Set a stainless steel post, 28 ins. long, 2 1/2 ins. diam., 24 ins. in the ground, with brass cap mkd.
	T 18 N R 24 E
	NE 1/16 S 8
	2019
	Deposit a magnet, in a white plastic case, at the base of the stainless steel post.
	Set a 4 ft. lath, nearby.
	From this cor., an iron pin of unknown origin, 1/2 in. diam., firmly set, projecting 12 ins. above ground, bears S. 34°27' W., 2.35 chs. dist., is not utilized in the course of this resurvey.

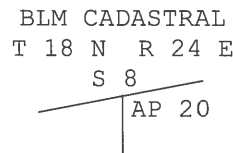
Subdivision of Section 8,
T. 18 N., R. 24 E., Gila and Salt River Meridian, Arizona

CHAINS

25.16 Apache County Road No. 7156, 24 ft. wide, bears N. 78° E. and S. 78° W.

25.86 Point for AP 20 of the metes-and-bounds survey in sec. 8, at intersection with the southerly right-of-way of the Atchison, Topeka and Santa Fe Railroad Co.

Set a rebar, 60 ins. long, 5/8 in. diam., 54 ins. in the ground, with brass cap, 2 ins. diam., 1 1/4 ins. stem, mkd.



2019

Set a 4 ft. lath, nearby.

From this cor., the true point for AP 21 of the metes-and-bounds survey in sec. 8, on the sec. line bet. secs. 8 and 9, at intersection with the southerly right-of-way of the Atchison, Topeka and Santa Fe Railroad Co., bears N. 72°07' E., 21.33 chs. dist.

From this same cor., AP 8 of the metes-and-bounds survey in sec. 8, on the N. and S. center line of sec. 8, at intersection with the southerly right-of-way of the Atchison, Topeka and Santa Fe Railroad Co., bears S. 72°07' W., 21.41 chs. dist.

From this same cor., a fence corner on the southerly right-of-way fence of the Atchison, Topeka and Santa Fe Railroad Co., bears N. 72°08' E., 1.73 chs. dist., barbed wire, 5 strand, with fences extending N. 72°54' E., S. 15°58' E. and S. 72°01' W.

From this same cor., another fence corner on the southerly right-of-way fence of the Atchison, Topeka and Santa Fe Railroad Co., bears N. 72°14' E., 5.59 chs. dist., barbed wire, 5 strand, with fences extending N. 71°56' E., S. 14°51' E. and S. 72°11' W.

From this same cor., a terminus of the southerly right-of-way fence of the Atchison, Topeka and Santa Fe Railroad Co., bears N. 72°15' E., 3.06 chs. dist., barbed wire, 5 strand, extending N. 72°11' E.

From this same cor., another fence corner on the southerly right-of-way fence of the Atchison, Topeka and Santa Fe Railroad Co., bears N. 72°21' E., 2.46 chs. dist., barbed wire, 5 strand, with fences extending S. 33°12' E. and S. 72°54' W.

**Subdivision of Section 8,
T. 18 N., R. 24 E., Gila and Salt River Meridian, Arizona**

CHAINS	
	<p>From this same cor., a fence corner, bears N. 80°05' E., 2.87 chs. dist., barbed wire, 5 strand, with fences extending S. 67°39' E., S. 27°43' W.</p> <p>From this same cor., another fence corner, bears N. 80°57' E., 2.83 chs. dist., barbed wire, 5 strand, with fences extending N. 27°43' E. and S. 72°10' W.</p> <p>From this same cor., another fence corner, bears N. 81°42' E., 2.61 chs. dist., barbed wire, 5 strand, with fences extending N. 72°10' E. and N. 43°12' W.</p> <p>From this same cor., another fence corner, bears N. 86°04' E., 5.68 chs. dist., barbed wire, 5 strand, with fences extending S. 77°40' W. and N. 14°51' W.</p> <p>From this same cor., another fence corner, bears N. 88°19' E., 1.78 chs. dist., barbed wire, 5 strand, with fences extending N. 73°10' E., 75 lks. dist., to the terminus, and N. 14°58' W.</p> <p>From this same cor., another fence corner, bears N. 89°44' E., 3.98 chs. dist., barbed wire, 5 strand, with fences extending N. 77°40' E. and N. 67°39' W.</p> <p>From this same cor., an aluminum rod, 3 ft. long, 3/4 ins. diam., flush with the surface of the ground, bears S. 75°40' E., 2.95 chs. dist.</p> <p>From this same cor., the southerly right-of-way fence of the Atchison, Topeka and Santa Fe Railroad Co., bears South, 1 lk. dist., barbed wire, 5 strand, extending N. 72°01' E. and S. 72°01' W.</p>
27.50	Center line of the west bound main track of Atchison, Topeka and Santa Fe Railroad Co., bears N. 72°06' E. and S. 72°06' W.
27.72	Center line of the east bound main track of Atchison, Topeka and Santa Fe Railroad Co., bears N. 72°09' E. and S. 72°09' W.
29.06	Intersect the northerly right-of-way of the Atchison, Topeka and Santa Fe Railroad Co. Not monumented.
	<p>Kenneth K. Isaacson, Retired, Arizona R.L.S. No. 15928, established a local monument at this location, in 2009, according to Books 19 of Land Surveys, Page 158 (2 of 2), and Page 159, on file at Apache County Recorder's Office, a diligent search revealed no evidence of his monument.</p>

**Subdivision of Section 8,
T. 18 N., R. 24 E., Gila and Salt River Meridian, Arizona**

CHAINS

From this point of intersection, the local monument, on the sec. line bet. secs. 8 and 9, at intersection with the northerly right-of-way of the Atchison, Topeka and Santa Fe Railroad Co., bears N. 72°07' E., 21.31 chs. dist., established by Kenneth K. Isaacson, Retired, Arizona R.L.S. No. 15928, in 2009, according to Book 19 of Land Surveys, Page 159 on file at Apache County Recorder's Office.

From this same point of intersection, a terminus of the northerly right-of-way fence of the Atchison, Topeka and Santa Fe Railroad Co., bears N. 72°32' E., 1.84 chs. dist., woven wire, with 3 strand of barbed wire on top, extending N. 71°05' E.

From this same point of intersection, the local monument, at intersection with the northerly right-of-way of the Atchison, Topeka and Santa Fe Railroad Co., and intended to be on the E. and W. center line of the NW 1/4 of sec. 8, bears S. 72°07' W., 30.53 chs. dist., established by Kenneth K. Isaacson, Retired, Arizona R.L.S. No. 15928, in 2009, according to Book 19 of Land Surveys, Page 158 (2 of 2), on file at Apache County Recorder's Office.

39.98 The E. 1/16 sec. cor. of secs. 5 and 8.

From the N. 1/16 sec. cor. of secs. 8 and 9.

S. 89°25' W., on the E. and W. center line of the NE 1/4 of sec. 8.

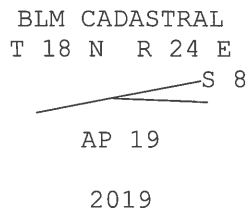
Over nearly level terrain.

20.27 The NE 1/16 sec. cor. of sec. 8.

37.57 Apache County Road No. 7156, 24 ft. wide, bears N. 78° E. and S. 78° W.

38.97 Point for AP 19 of the metes-and-bounds survey in sec. 8, at intersection with the southerly right-of-way of the Atchison, Topeka and Santa Fe Railroad Co.

Set a rebar, 24 ins. long, 5/8 in. diam., 24 ins. in the ground, with brass cap, 2 ins. diam., 1 1/4 ins. stem, mkd.



Set a 4 ft. lath, nearby.

**Subdivision of Section 8,
T. 18 N., R. 24 E., Gila and Salt River Meridian, Arizona**

CHAINS	
	<p>The cor. is located alongside the southerly right-of-way fence of the Atchison, Topeka and Santa Fe Railroad Co., barbed wire, 5 strand, extending N. 72°03' E. and S. 72°03' W.</p> <p>From this cor., AP 20 of the metes-and-bounds survey in sec. 8, on the N. and S. center line of the NE 1/4 of sec. 8, at intersection with the southerly right-of-way of the Atchison, Topeka and Santa Fe Railroad Co., bears N. 72°07' E., 19.75 chs. dist.</p> <p>From this same cor., AP 8 of the metes-and-bounds survey in sec. 8, on the N. and S. center line of sec. 8, at intersection with the southerly right-of-way of the Atchison, Topeka and Santa Fe Railroad Co., bears S. 72°07' W., 1.66 chs. dist.</p>
40.54	<p>The center N. 1/16 sec. cor. of sec. 8.</p> <hr/> <p style="text-align: center;">SW 1/4</p> <hr/> <p>From the W. 1/16 sec. cor. of secs. 8 and 17.</p> <p>N. 1°45' E., on the N. and S. center line of the SW 1/4 of sec. 8.</p> <p>Over nearly level terrain.</p>
19.91	<p>Point for the SW 1/16 sec. cor. of sec. 8.</p> <p>Set a stainless steel post, 28 ins. long, 2 1/2 ins. diam., 26 ins. in the ground, with brass cap mkd.</p> <p style="text-align: center;">T 18 N R 24 E</p> <p style="text-align: center;">SW 1/16 S 8</p> <p style="text-align: center;">2019</p> <p>Deposit a magnet, in a white plastic case, at the base of the stainless steel post.</p> <p>Set a 4 ft. lath, nearby.</p>
23.67	<p>AP 14 of the metes-and-bounds survey in sec. 8, established by persons unknown, monumented with an iron bolt, 3/4 in. diam., with the top 1 1/4 ins. sq., firmly set, bent to NW, at the SE corner of the railroad tie fence that is show in the Right of Way and Track Map, The Atchison, Topeka and Santa Fe Railway, Operated by The Atchison, Topeka and Santa Fe Ry. Co., Coast Lines, Albuquerque Division: Arizona, Station 11795+71.8 to Station 12006+91.8, dated June 30 1915, last Rev. Oct. 1950, Sheet No. 15, V-1-15.</p>

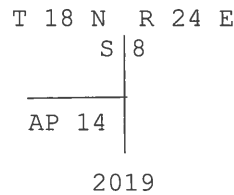
Subdivision of Section 8,
T. 18 N., R. 24 E., Gila and Salt River Meridian, Arizona

CHAINS

This position has been long recognized as the corner by adjoining landowners, and other interested parties, and is harmoniously related to all the deeds of record in the NW1/4 of the SW1/4, and is accepted as a careful and faithful determination of the corner point.

At the corner point

Set a stainless steel post, 28 ins. long, 2 1/2 ins. diam., 24 ins. in the ground, with brass cap mkd.



Deposit a magnet, in a white plastic case, at the base of the stainless steel post.

Bury the iron bolt, 36 ins. long, horizontally, alongside the stainless steel post.

Set a 4 ft. lath, nearby.

From this cor., an iron pin of unknown origin, firmly set, projecting 4 ins. above ground, bears S. 11°49' E., 72 lks. dist., is not utilized in the course of this resurvey.

From this same cor., the fence corner, bears N. 58°28' W., 2 lks. dist., railroad tie, with barbed wire, 3 strand, extending N. 4°19' E., S. 88°46' W.

From this same cor. an angle point on the same fence, bears S. 89°14' W., 1.17 chs. dist., railroad tie, with barbed wire, 3 strand, extending N. 88°46' E. and S. 89°13' W.

From this same cor. another angle point on the same fence, bears N. 0°01' W., 21 lks. dist., railroad tie, with barbed wire, 3 strand, extending N. 1°20' E. and 2 strand, extending S. 4°19' W.

N. 1°09' E., beginning new measurement.

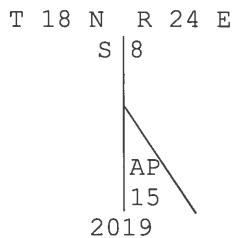
In or alongside the same fence, railroad tie, with barbed wire.

1.01 Point for AP 15 of the metes-and-bounds survey in sec. 8.

Set a stainless steel post, 28 ins. long, 2 1/2 ins. diam., 24 ins. in the ground, with brass cap mkd.

Subdivision of Section 8,
T. 18 N., R. 24 E., Gila and Salt River Meridian, Arizona

CHAINS



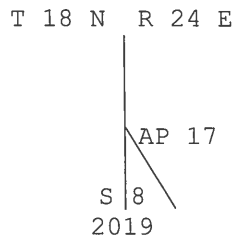
Deposit a magnet, in a white plastic case, at the base of the stainless steel post.

Set a 4 ft. lath, nearby.

The cor. is located alongside the same fence, railroad tie, with barbed wire, 2 strand.

1.75 Point for AP 17 of the metes-and-bounds survey in sec. 8.

Set a stainless steel post, 28 ins. long, 2 1/2 ins. diam., 24 ins. in the ground, with brass cap mkd.



Deposit a magnet, in a white plastic case, at the base of the stainless steel post.

Set a 4 ft. lath, nearby.

The cor. is located alongside the same fence, railroad tie, with barbed wire, 2 strand.

15.17 The center W. 1/16 sec. cor. of sec. 8.

From the center S. 1/16 sec. cor. of sec. 8.

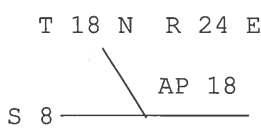
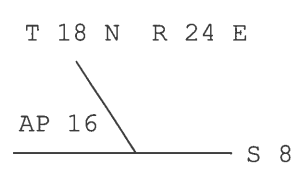
S. 87°22' W., on the E. and W. center line of the SW 1/4 of sec. 8.

Over nearly level terrain.

18.07 Point for AP 18 of the metes-and-bounds survey in sec. 8.

Set a stainless steel post, 28 ins. long, 2 1/2 ins. diam., 25 ins. in the ground, with brass cap mkd.

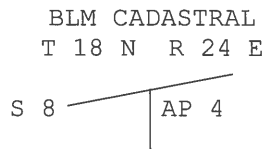
Subdivision of Section 8,
T. 18 N., R. 24 E., Gila and Salt River Meridian, Arizona

CHAINS	
	 <p style="text-align: center;">2019</p>
	<p>Deposit a magnet, in a white plastic case, at the base of the stainless steel post.</p> <p>Set a 4 ft. lath, nearby.</p>
18.39	<p>Point for AP 16 of the metes-and-bounds survey in sec. 8.</p> <p>Set a stainless steel post, 28 ins. long, 2 1/2 ins. diam., 24 ins. in the ground, with brass cap mkd.</p>
	 <p style="text-align: center;">2019</p>
	<p>Deposit a magnet, in a white plastic case, at the base of the stainless steel post.</p> <p>Set a 4 ft. lath, nearby.</p>
20.53	The SW 1/16 sec. cor. of sec. cor. 8.
40.99	The S. 1/16 sec. cor. of secs. 7 and 8.
	<hr style="width: 100%;"/> <p style="text-align: center;">NW 1/4</p> <hr style="width: 100%;"/>
	<p>From the center W. 1/16 sec. cor. of sec. 8.</p> <p>N. 1°44' E., on the N. and S. center line of the NW 1/4 of sec. 8.</p> <p>Over nearly level terrain.</p>
1.79	From this point, a down barbed wire fence, bears West, 9 lks. dist., extending S. 0°43' E. and N. 0°40' W.
6.24	From this point, the same down barbed wire fence, bears West, 28 lks. dist., extending S. 0°40' E. and N. 1°00' W.
11.03	Point for AP 4 of the metes-and-bounds survey in sec. 8.

Subdivision of Section 8,
T. 18 N., R. 24 E., Gila and Salt River Meridian, Arizona

CHAINS

Set a rebar, 24 ins. long, 5/8 in. diam., 20 ins. in the ground, with brass cap, 2 ins. diam., 1 1/4 ins. stem, mkd.



2019

Set a 4 ft. lath, nearby.

From this cor., a down fence, bears North, 3 lks. dist., woven wire, extending N. 80° E. and S. 80° W.

From this same cor., AP 5 of the metes-and-bounds survey in sec. 8, bears N. 79°01' E., 83 lks. dist., hereinafter described.

From this same cor., a local monument, established by persons unknown, monumented with a rebar, 5/8 in diam., firmly set, bent to NW, bears S. 79°01' W., 1.29 chs. dist., found and accepted by Gerald K. Wood, Arizona R.L.S. No. 22290, in 2008, according to Book 18 of Land Surveys, Page 121, on file at Apache County Recorder's Office.

From this local monument, a fence corner, bears N. 35°23' W., 2 lks. dist., with a down woven wire fence, extending N. 74°21' E., barbed wire, 3 strand, with fences extending S. 89°02' W. and N. 12°58' W.

From this same cor., a local monument, bears S. 85°35' W., 65 lks. dist., established by Gerald K. Wood, Arizona R.L.S. No. 22290, in 2008, according to Book 18 of Land Surveys, Page 121, on file at Apache County Recorder's Office, monumented with a rebar, 1/2 in. diam., firmly set, flush with the surface of the ground, with yellow plastic cap, 1 in. diam., mkd.


NORTHERN
SURVEYS

PLS 22290

This local monument was intended to be on the line bet. the local monument, established by persons unknown that Wood found and accepted, and AP 5 of the metes-and-bounds survey in sec. 8, and is not utilized in the course of the resurvey.

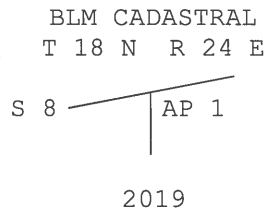
This local monument is located alongside a down woven wire fence, extending N. 74°21' E. and S. 74°21' W.

Subdivision of Section 8,
T. 18 N., R. 24 E., Gila and Salt River Meridian, Arizona

CHAINS	
	<p>From this same cor., a fence corner, bears S. 89°00' W., 51 lks. dist., with down woven wire fence, extending N. 84°42' E. and down barbed wire fence, extending S. 1°19' E.</p>
14.26	<p>An open ended iron pipe, origin unknown, 3/4 in. diam., firmly set, projecting 8 ins. above ground, is not utilized during the course of this resurvey.</p>
14.29	<p>Point for AP 2 of the metes-and-bounds survey in sec. 8.</p> <p>Set a rebar, 24 ins. long, 5/8 in. diam., 24 ins. in the ground, with brass cap, 2 ins. diam., 1 1/4 ins. stem, mkd.</p> <div style="text-align: center;"> <p>BLM CADASTRAL T 18 N R 24 E</p>  <p>2019</p> </div> <p>Set a 4 ft. lath, nearby.</p> <p>This cor. is located alongside a fence, wood post, extending N. 72°06' E. and wood post, with woven wire, extending S. 72°06' W.</p> <p>From this cor., AP 3 of the metes-and-bounds survey in sec. 8, bears N. 72°15' E., 3.59 chs. dist., hereinafter described.</p> <p>From this same cor., a local monument, established by persons unknown, monumented with a rebar, 5/8 in diam., firmly set, 6 ins. below the surface of ground, bears S. 72°15' W., 2.40 chs. dist., found and accepted by Gerald K. Wood, Arizona R.L.S. No. 22290, in 2008, according to Book 18 of Land Surveys, Page 121, on file at Apache County Recorder's Office.</p> <p>From this local monument, a fence corner, bears S. 4°7' W., 2 lks. dist., with a down barbed wire fence, extending N. 72°06' E., barbed wire, 3 strand, with fences extending S. 19°31' E. and S. 72°54' W.</p>
14.78	<p>Apache County Road No. 7156, 24 ft. wide, bears N. 74° E. and S. 74° W.</p>
15.26	<p>Point for AP 1 of the metes-and-bounds survey in sec. 8, at intersection with the southerly right-of-way of the Atchison, Topeka and Santa Fe Railroad Co.</p> <p>Set a rebar, 24 ins. long, 5/8 in. diam., 21 ins. in the ground, with brass cap, 2 ins. diam., 1 1/4 ins. stem, mkd.</p>

Subdivision of Section 8,
T. 18 N., R. 24 E., Gila and Salt River Meridian, Arizona

CHAINS



Set a 4 ft. lath, nearby.

From this cor., AP 8 of the metes-and-bounds survey in sec. 8, on the N. and S. center line of sec. 8, at intersection with the Southerly right-of-way of the Atchison, Topeka and Santa Fe Railroad Co., bears N. 72°07' E., 21.52 chs. dist.

From this same cor., the southerly right-of-way fence of the Atchison, Topeka and Santa Fe Railroad Co., bears South, 1 lk. dist., barbed wire, 5 strand, extending N. 72°24' E. and S. 72°24' W.

From this same cor., a local monument, on the southerly right-of-way of the Atchison, Topeka and Santa Fe Railroad Co., established by Gerald K. Wood, Arizona R.L.S. No. 22290, in 2008, according to Book 18 of Land Surveys, Page 121, on file at Apache County Recorder's Office bears S. 72°07' W., 2.73 chs. dist.

16.88 Center line of the west bound main track of Atchison, Topeka and Santa Fe Railroad Co., bears N. 72°06' E. and S. 72°06' W.

17.19 Center line of the east bound main track of Atchison, Topeka and Santa Fe Railroad Co., bears N. 72°09' E. and S. 72°09' W.

18.48 Intersect the northerly right-of-way of the Atchison, Topeka and Santa Fe Railroad Co. Not monumented.

From this point of intersection, the local monument, on the northerly right-of-way of the Atchison, Topeka and Santa Fe Railroad Co., and intended to be on the N. and S. center line of the NW1/4 of sec. 8., bears N. 72°07' E., 0.9 lk. dist., established by Kenneth K. Isaacson, Retired, Arizona R.L.S. No. 15928, in 2009, according to Book 19 of Land Surveys, Page 158 (2 of 2), on file at Apache County Recorder's Office.

From this same point of intersection, the local monument, on the northerly right-of-way of the Atchison, Topeka and Santa Fe Railroad Co., and intended to be on the sec. line bet. secs. 7 and 8, bears S. 72°07' W., 21.56 chs. dist., established by Kenneth K. Isaacson, Retired, Arizona R.L.S. No. 15928, in 2009, according to Book 19 of Land Surveys, Page 158 (2 of 2), on file at Apache County Recorder's Office.

Subdivision of Section 8,
T. 18 N., R. 24 E., Gila and Salt River Meridian, Arizona

CHAINS	
22.15	<p>The NW 1/16 sec. cor. of sec. 8, established by Kenneth K. Isaacson, Retired, Arizona R.L.S. No. 15928, in 2009, according to Book 19 of Land Surveys, Page 158 (2 of 2), on file at Apache County Recorder's Office, monumented with a rebar, 1/2 in. diam., firmly set, flush with the surface of the ground, with portion of a yellow cap, mkd.</p> <p style="text-align: center;">ISA</p> <p style="text-align: center;">159</p> <p>This is accepted as a careful and faithful establishment of the corner point. Note: Book 19 of Land Surveys, Page 158 (2 of 2) shows an open circle at this position which is annotated as "calculated, not set." However, the monument recovered is consistent with monuments set by Isaacson and it is determined that it was set during the course of the survey.</p> <p>Witnessed by a 60D nail, alongside, and bent to E.</p> <p>The cor., is located on a graded road, 24 ft. wide, bears N. 70° E. and S. 70° W.</p> <hr style="width: 20%; margin: 10px auto;"/> <p>N. 1°35' E., beginning new measurement.</p>
20.32	<p>The W. 1/16 sec. cor. of secs. 5 and 8.</p> <hr style="width: 80%; margin: 10px auto;"/> <p>From the center N. 1/16 sec. cor. of sec. 8.</p> <p>S. 89°25' W., on the E. and W. center line of the NW 1/4 of sec. 8.</p> <p>Within the right-of-way of the Atchison, Topeka and Santa Fe Railroad Co.</p>
3.61	Center line of the west bound main track of Atchison, Topeka and Santa Fe Railroad Co., bears N. 72°06' E. and S. 72°06' W.
4.47	Center line of the east bound main track of Atchison, Topeka and Santa Fe Railroad Co., bears N. 72°09' E. and S. 72°09' W.
8.62	Intersect the northerly right-of-way of the Atchison, Topeka and Santa Fe Railroad Co. Not monumented.

**Subdivision of Section 8,
T. 18 N., R. 24 E., Gila and Salt River Meridian, Arizona**

CHAINS

From this point of intersection, the local monument, on the sec. line bet. secs. 8 and 9, at intersection with the northerly right-of-way of the Atchison, Topeka and Santa Fe Railroad Co., bears N. 72°07' E., 51.82 chs. dist., established by Kenneth K. Isaacson, Retired, Arizona R.L.S. No. 15928, in 2009, according to Book 19 of Land Surveys, Page 159 on file at Apache County Recorder's Office.

From this same point of intersection, the local monument, on the northerly right-of-way of the Atchison, Topeka and Santa Fe Railroad Co., and intended to be on the E. and W. center line of the NW1/4 of sec. 8, bears S. 72°07' W., 1.6 lks. dist., established by Kenneth K. Isaacson, Retired, Arizona R.L.S. No. 15928, in 2009, according to Book 19 of Land Surveys, Page 158 (2 of 2), on file at Apache County Recorder's Office.

20.29 The NW 1/16 sec. cor. of sec. 8.

S. 86°57' W., beginning new measurement.

20.16 The N. 1/16 sec. cor. of secs. 7 and 8.

**Metes-and-Bounds Survey in Section 8,
T. 18 N., R. 24 E., Gila and Salt River Meridian, Arizona**

From AP 1, sec. 8, on the N. and S. center line of the NW 1/4 of sec. 8, at intersection with the southerly right-of-way of the Atchison, Topeka and Santa Fe Railroad Co., hereinbefore described.

N. 72°07' E., on line 1-8, within the SE1/4 of the NW1/4 of sec. 8, and along the southerly right-of-way of the Atchison, Topeka and Santa Fe Railroad Co.

In or alongside the southerly right-of-way fence of the Atchison, Topeka and Santa Fe Railroad Co., barbed wire, 5 strand.

2.04 From this point, a fence corner on the southerly right-of-way fence of the Atchison, Topeka and Santa Fe Railroad Co., bears South, 2 lks. dist., remains of and old fence, railroad tie, with down barbed wire, extending N. 72°11' E., barbed wire, 5 strand, extending S. 18°12' E. and S. 72°49' W.

2.11 From this point, another fence corner on the same southerly right-of-way fence of the Atchison, Topeka and Santa Fe Railroad Co., bears South, 25 lks. dist., barbed wire, 5 strand, extending N. 71°50' E. and N. 18°12' W.

**Metes-and-Bounds Survey in Section 8,
T. 8 S., R. 16 E., Gila and Salt River Meridian, Arizona**

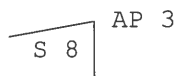
CHAINS	
4.24	From this point, another fence corner on the southerly right-of-way fence of the Atchison, Topeka and Santa Fe Railroad Co., bears South, 3 lks. dist., barbed wire, 5 strand, extending N. 71°52' E. and S. 11°58' E., remaining of and old fence, railroad tie, with down barbed wire, extending S. 72°11' W.
4.29	From this point another fence corner on the same southerly right-of-way fence of the Atchison, Topeka and Santa Fe Railroad Co., bears South 25 lks. dist., barbed wire, 5 strand, extending S. 71°50' W. and N. 11°58' W.
	Memorandum: The two most northerly of the above described fence corners are in the general area where the E.E. Coal Shed and E.E. Depot was located, and within the 200 ft. right-of-way, according to Adamana, Station Plat, the Atchison, Topeka and Santa Fe Railway, operated by The Atchison, Topeka and Santa Fe Railway Co., Coast Lines, Albuquerque Division, Arizona, Station 11769+00 to Station 11823+00, Office of Chief Engineer, Los Angeles, California, C.E.C.L. NO. 221-11466, dated Aug. 12 1944.
21.52	AP 8, sec. 8, on the N. and S. center line of sec. 8, at intersection with the southerly right-of-way of the Atchison, Topeka and Santa Fe Railroad Co., hereinbefore described.
	From AP 2, sec. 8, on the N. and S. center line of the NW 1/4 of sec. 8, hereinbefore described.
	N. 72°15' E., on line 2-3, within the SE1/4 of the NW1/4 of sec. 8.
	In or alongside a wood post fence, with woven wire in some places others the wood post only.
0.70	From this point, an iron pin of unknown origin, 3/4 in. diam., firmly set, projecting 1 in. above ground, bears North, 1 lk. dist., is not utilized during the course of this resurvey.
	From this iron pin, the fence, bears South, 1 lk. dist., wood post, without wires, extending N. 72°15' E. and S. 72°15' W.
3.59	AP 3, sec. 8, established by persons unknown, monumented with a rebar, 24 ins. long, 5/8 in. diam., firmly set, projecting 4 ins. above ground, found and accepted by Gerald K. Wood, Arizona R.L.S. No. 22290, in 2008, according to Book 18 of Land Surveys, Page 121, on file at Apache County Recorder's Office.
	This position has been long recognized as the corner by the local surveying community, adjoining landowners, and other interested parties, and is accepted as a careful and faithful establishment of the corner point.
	At the corner point

**Metes-and-Bounds Survey in Section 8,
T. 8 S., R. 16 E., Gila and Salt River Meridian, Arizona**

CHAINS

Set a stainless steel post, 28 ins. long, 2 1/2 ins. diam., 24 ins. in the ground, with brass cap mkd.

T 18 N R 24 E



2019

Deposit a magnet, in a white plastic case, at the base of the stainless steel post.

Deposit rebar inside the stainless steel post.

Set a 4 ft. lath, nearby.

The cor. is located alongside a fence corner on the same fence, down barbed wire, extending N. 71°08' E., barbed wire, 6 strand, extending S. 1°14' W. and woven wire, 5 ft. high, extending S. 73°39' W.

From AP 4, sec. 8, on the N. and S. center line of the NW 1/4 of sec. 8, at intersection with AP 5 of the metes-and-bounds survey in sec. 8, and the local monument that was found and accepted by b Gerald K. Wood, Arizona R.L.S. No. 22290, in 2008, according to Book 18 of Land Surveys, Page 121, on file at Apache County Recorder's Office. Hereinbefore described.

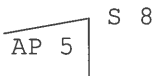
N. 79°01' E., on line 4-5, within the SE1/4 of the NW1/4 of sec. 8.

0.83

Point for AP 5, sec. 8, at proportionate dist., by the method of grant boundary adjustment, utilizing Special Warranty Deed, reception # 2011-004610, "EXHIBIT A Description of Property (Page 1 of 4)", on filed at Apache County Recorder's Office.

Set a rebar, 24 ins. long, 5/8 in. diam., 21 ins. in the ground, with brass cap, 2 ins. diam., 1 1/4 ins. stem, mkd.

BLM CADASTRAL
T 18 N R 24 E



2019

Set a 4 ft. lath, nearby.

S. 2°26' W., on line 5-6, within the SE1/4 of the NW1/4 of sec. 8.

**Metes-and-Bounds Survey in Section 8,
T. 8 S., R. 16 E., Gila and Salt River Meridian, Arizona**

CHAINS

5.62

AP 6, sec. 8, established by persons unknown, monumented with an iron pin, 32 ins. long, 1 in. diam., firmly set, projecting 4 ins. above ground, witnessed by a rebar, 20 ins. long, 5/8 in. diam., firmly set, 1 in. below the surface of the ground, alongside the iron pin.

The iron pin is called for in the Quit Claim Deed, recorded July 25, 1963, in Docket No. 61, Page 28; the Special Warranty Deed and Quitclaim Deed, recorded September 26, 1994, in Book (Docket) 763, Pages 212 - 230 (Page 217); the Warranty Gift Deed, dated March 20, 1997, and recorded April 21, 1997, in Book (Docket) 857, Pages 140 - 141; the Special Warranty Deed and Quitclaim Deed, recorded December 15, 1998, in Book (Docket) 922, Pages 230 - 240 (Page 233); the Special Warranty Deed, recorded August 26, 2002, in reception # 2002-06767, Page 4 of 7; the Special Warranty Deed, recorded October 3, 2002, in reception # 2002-07649, Page 4 of 8; the Joint Venture Agreement, recorded April 26, 2005, in reception # 2005-003556, Page 4 of 13; the Deed of Trust and Assignment of Rents, recorded May 25, 2005, in reception # 2005-004858, Page 14 of 19; and the Warranty Deed, recorded December 1, 2014, in reception # 2014-005789, Page 1 of 2, all on file at Apache County Recorder's Office.

This position has been long recognized as the corner by adjoining landowners, and other interested parties, and is accepted as a careful and faithful determination of the corner point.

At the corner point

Set a stainless steel post, 28 ins. long, 2 1/2 ins. diam., 25 ins. in the ground, underpinned with the iron pin, 38 ins. in the ground, with brass cap mkd.

T 18 N R 24 E

AP 6 S 8

2019

Deposit a magnet, in a white plastic case, at the base of the stainless steel post.

Bury the rebar, horizontally, alongside the stainless steel post.

Set a 4 ft. lath, nearby.

S. 88°49' E., on line 6-7, within the SE1/4 of the NW1/4 of sec. 8.

Metes-and-Bounds Survey in Section 8,
T. 8 S., R. 16 E., Gila and Salt River Meridian, Arizona

CHAINS			
2.73	<p>AP 7, sec. 8, established by persons unknown, monumented with a rebar, 24 ins. long, 5/8 in. diam., firmly set, projecting 2 ins. above ground, with a rebar, 18 ins. long, 5/8 in. diam., bury horizontally, on the E. side of cor.</p> <p>This is accepted as a careful and faithful determination of the corner point.</p> <p>At the corner point</p> <p>Set a stainless steel post, 28 ins. long, 2 1/2 ins. diam., 25 ins. in the ground, underpinned with the rebar, 24 ins. long, 42 ins. in the ground, with brass cap mkd.</p> <div style="text-align: center;"> <p>T 18 N R 24 E</p> <table style="margin: auto; border-collapse: collapse;"> <tr> <td style="border-right: 1px solid black; padding: 0 5px;">S 8</td> <td style="padding: 0 5px;">AP 7</td> </tr> </table> <p>2019</p> </div> <p>Deposit a magnet, in a white plastic case, at the base of the stainless steel post.</p> <p>Deposit the rebar, 18 ins. long, inside the stainless steel post.</p> <p>Set a 4 ft. lath, nearby.</p> <hr style="width: 30%; margin: 10px auto;"/> <p>N. 1°11' E., on line 7-3, within the SE1/4 of the NW1/4 of sec. 8.</p>	S 8	AP 7
S 8	AP 7		
9.86	<p>AP 3, sec. 8.</p> <hr style="width: 80%; margin: 10px auto;"/> <p>From AP 9, sec. 8, on the sec. line bet. secs. 7 and 8, hereinbefore described.</p> <p>N. 89°14' E., on line 9-10, within the NW1/4 of the SW1/4 of sec. 8.</p>		
0.63	<p>Graded road, 24 ft. wide, bears N. 1° E. and S. 1° W.</p>		
2.12	<p>Point for AP 10, sec. 8.</p> <p>Set a stainless steel post, 28 ins. long, 2 1/2 ins. diam., 24 ins. in the ground, with brass cap mkd.</p>		

Metes-and-Bounds Survey in Section 8,
T. 8 S., R. 16 E., Gila and Salt River Meridian, Arizona

CHAINS

T 18 N R 24 E



2019

Deposit a magnet, in a white plastic case, at the base of the stainless steel post.

Set a 4 ft. lath, nearby.

N. 2°29' E., on line 10-11, within the NW1/4 of the SW1/4 of sec. 8.

1.14 AP 11, sec. 8, on the E. and W. center line of sec. 8, hereinbefore described.

From AP 12, sec. 8, on the E. and W. center line of sec. 8, hereinbefore described.

S. 1°04' W., on line 12-13, within the NW1/4 of the SW1/4 of sec. 8.

Alongside a railroad tie fence.

15.18 AP 13, sec. 8, established by persons unknown, monumented with an iron bolt, 3/4 in. diam., with the top 1 1/4 ins. sq., firmly set, projecting 6 ins. above ground.

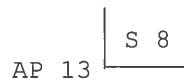
This position has been long recognized as the corner by adjoining landowners, and other interested parties, and is accepted as a careful and faithful determination of the corner point.

Lower the iron bolt, 10 ins. below the surface of the ground.

At the corner point

Set a stainless steel post, 28 ins. long, 2 1/2 ins. diam., 26 ins. in the ground, directly over the iron bolt, with brass cap mkd.

T 18 N R 24 E



2019

Deposit a magnet, in a white plastic case, at the base of the stainless steel post.

**Metes-and-Bounds Survey in Section 8,
T. 8 S., R. 16 E., Gila and Salt River Meridian, Arizona**

CHAINS	
	<p>Set a 4 ft. lath, nearby.</p> <p>From this cor., an angle point on the same fence, bears N. 2°40' E., 19 lks. dist., railroad tie, with down barbed wire, extending S. 69°34' E., steel "T" post, with down barbed wire, extending S. 82°35' W. and railroad tie, with down barbed wire, extending N. 0°51' E.</p> <p>From this same cor., an angle point on the same fence, bears N. 88°46' E., 49 lks. dist., railroad tie, with down barbed wire, extending N. 89°13' E. and N. 69°34' W.</p> <p>From this same cor., an open ended iron pipe of unknown origin, firmly set, projecting 6 ins. above ground, bears S. 14°42' E., 53 lks. dist., is not utilized during the course of this resurvey.</p> <hr/> <p>N. 89°12' E., on line 13-14, within the NW1/4 of the SW1/4 of sec. 8.</p> <p>Alongside the same railroad tie fence.</p>
6.81	<p>AP 14, sec. 8, on the N. and S. center line of the SW 1/4 of sec. 8, hereinbefore described.</p> <hr/> <p>From AP 15, sec. 8, on the N. and S. center line of the SW 1/4 of sec. 8, hereinbefore described.</p> <p>S. 23°11' E., on line 15-16, within the NE1/4 of the SW1/4 of sec. 8.</p>
5.08	<p>AP 16, sec. 8, on the E. and W. center line of the SW 1/4 of sec. 8, hereinbefore described.</p> <hr/> <p>From AP 17, sec. 8, on the N. and S. center line of the SW 1/4 of sec. 8, hereinbefore described.</p> <p>S. 23°11' E., on line 17-18, within the NE1/4 of the SW1/4 of sec. 8.</p>
5.87	<p>AP 18, sec. 8, on the E. and W. center line of the SW 1/4 of sec. 8, hereinbefore described.</p> <hr/> <p>From AP 8, sec. 8, on the N. and S. center line of sec. 8, at intersection with the southerly right-of-way of the Atchison, Topeka and Santa Fe Railroad Co.</p> <p>N. 72°07' E., on line 8-19, along the southerly right-of-way of the Atchison, Topeka and Santa Fe Railroad Co., and within the SW1/4 of the NE1/4 of sec. 8.</p>

**Metes-and-Bounds Survey in Section 8,
T. 8 S., R. 16 E., Gila and Salt River Meridian, Arizona**

CHAINS	
1.66	<p>In or alongside the southerly right-of-way fence of the Atchison, Topeka and Santa Fe Railroad Co., barbed wire, 5 strand.</p> <p>AP 19, sec. 8, on the E. and W. center line of the NE 1/4 of sec. 8, at intersection with the southerly right-of-way of the Atchison, Topeka and Santa Fe Railroad Co, hereinbefore described.</p> <hr/> <p>From AP 20, sec. 8, on the N. and S. center line of the NE 1/4 of sec. 8, at intersection with the southerly right-of-way of the Atchison, Topeka and Santa Fe Railroad Co, hereinbefore described.</p> <p>N. 72°07' E., on line 20-21, along the southerly right-of-way of the Atchison, Topeka and Santa Fe Railroad Co., and within the NE1/4 of the NE1/4 of sec. 8.</p> <p>In or alongside the southerly right-of-way fence of the Atchison, Topeka and Santa Fe Railroad Co., barbed wire, 5 strand.</p>
21.33	<p>The true point for AP 21 of the metes-and-bounds survey in sec. 8, on the sec. line bet. secs. 8 and 9, at intersection with the southerly right-of-way of the Atchison, Topeka and Santa Fe Railroad Co.</p> <hr/> <p style="text-align: center;">GENERAL DESCRIPTION</p> <hr/> <p>The lines surveyed and resurveyed within T. 18 N., R. 24 E. are located approximately S. 20° W., 6.5 miles from the visitor center of the Petrified Forest National Park, located at exit # 311 of U.S. Highway 40, in Arizona.</p> <p>Access is provided by U.S. Highway 40, by the way of exit # 303, Adamana Road, and Apache County Road No. 7156. The mean elevation is approximately 5300 feet above sea level.</p> <p>The mean magnetic declination of 9 3/4° E. was derived from the United States Geological Survey computer program GEOMAG, utilizing the World Magnetic Model for Epoch 2015 for the dates of survey.</p> <hr/>

CERTIFICATE OF SURVEY

I, Blas J. Urena, Cadastral Surveyor, HEREBY CERTIFY upon honor, that in pursuance of special instructions bearing date of the 31st day of January, 2019, I have dependently resurveyed a portion of the subdivisional lines, subdivided section 8, and performed a metes-and-bounds surveys in section 8, T. 18 N., R. 24 E., of the Gila and Salt River Meridian, in the State of Arizona, which are represented in the foregoing field notes as having been executed by me and under my direction. Said survey has been made in strict conformity with said special instructions, the Manual of Surveying Instructions, (2009), and in specific manner described in the foregoing field notes.

9/06/2019
(Date)

Blas J. Urena
(Cadastral Surveyor)

CERTIFICATE OF APPROVAL

BUREAU OF LAND MANAGEMENT
Phoenix, Arizona

The foregoing field notes of the dependent resurvey of a portion of the subdivisional lines, the subdivision of section 8, and metes-and-bounds surveys in section 8, T. 18 N., R. 24 E., Gila and Salt River Meridian, in the State of Arizona, executed by Blas J. Urena, Cadastral Surveyor, having been critically examined and found correct, are hereby approved.

9/12/2019
(Date)

[Signature]
(Chief Cadastral Surveyor of Arizona)

~~CERTIFICATE OF TRANSCRIPT~~

~~I CERTIFY That the foregoing transcript of the field notes of the above described surveys in T. 18 N., R. 24 E., Gila and Salt River Meridian, Arizona, is a true copy of the original field notes.~~

~~_____
(Date)~~

~~_____
(Chief Cadastral Surveyor of Arizona)~~