

MS. G. N. 00110

LOTS NO. 37 A. and B.

Field Notes

of the survey of the

Continental  
Mining and Mill-site claims.

Situate in Globe, mining district,

County of Pinal and in Sec. 20, Tp. 14  
22 1N

Range 14 R, of the Gila and Salt River Meridian,  
17 E.

ARIZONA.

Claimed by Seth Marshall, Jr.

Survey executed by A. G. Pundleton, D. S.,

Under instructions dated July 10, 1878,

Survey commenced September 24, 1878,

Survey completed September 25, 1878.

PRELIMINARY OATHS FOR SURVEYS OF MINING CLAIMS AND MILL-SITES.



WE, G. R. Morse and Frank Tarbell  
do solemnly swear that we will faithfully execute the duties of Chain Carriers; that we will level the chain upon uneven ground, and plumb the tally pins, whether by sticking or dropping the same; that we will report the true distance to all notable objects, and the true length of all lines that we assist in measuring, to the best of our skill and ability.

Frank Tarbell  
George R Morse

SWORN AND SUBSCRIBED before me this 19<sup>th</sup>  
day of September 1878

G. A. Smasey  
Notary Public



I, A. G. Bendleton  
do solemnly swear that I will well and truly perform the duties of U.S. Deputy  
Surveyor according to instructions given me, and to the best of my skill and ability.

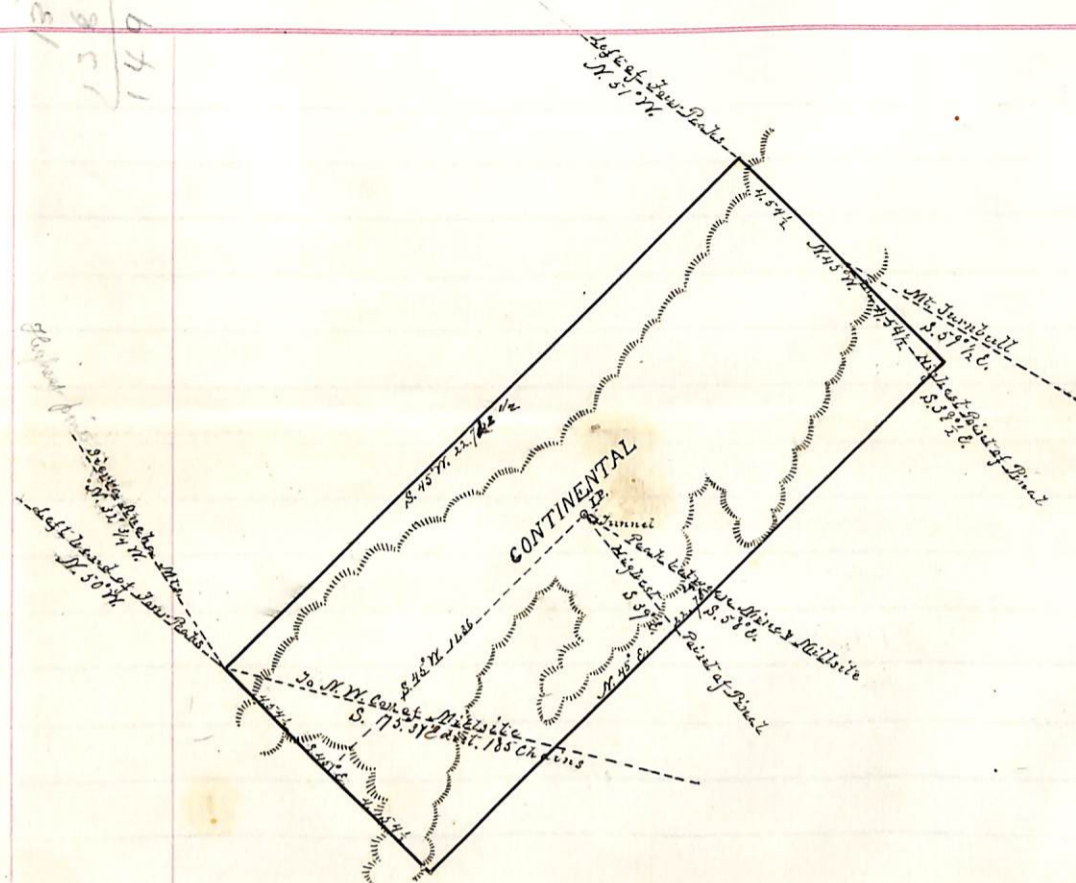
A. G. Bendleton

SWORN AND SUBSCRIBED before me this 19<sup>th</sup>  
day of September 1878

G. A. Smasey  
Notary Public



22.725  
66  
136350  
138350  
1499.850



73  
66  
438  
22.73  
66  
13638  
13638  
150.018

Field Notes of the Continental Mine  
Surveyed September 25, 1878

Beginning at the Initial Point situated in a mass of black cappings about 30 feet high and just East of a still larger mass about 50 feet high the point being marked by a monument of stones about three feet high.

Thence  $S. 45^{\circ} W. 11.36$  Chains to a monument of stones about three feet high being the South West end of the claim.  $var. 13^{\circ} 20' E.$  as det. by observation of Pelais.

Thence  $S. 45^{\circ} E. 4.54 \frac{1}{2}$  Chains to a monument of stones about three feet high situated on the east slope of the hill marked "C. I." being the South East corner of claim.

Thence along the slope of the hill  $N. 45^{\circ} E. 22.72 \frac{1}{2}$  Chains to a monument of stones three feet high situated on the east slope of the hill about one third of the way up and marked "C. II." being the North East corner of the claim.

Thence up the hill  $N. 45^{\circ} W. 4.54 \frac{1}{2}$  chains to a monument of stones about three feet high not marked being the N. East end of the claim.

Thence  $N. 45^{\circ} W. 4.54 \frac{1}{2}$  chains over the hill to a monument of stones three feet high situated on the top of a steep bluff and marked "C. III." being the North West corner of the claim.

Thence  $S. 45^{\circ} W. 22.72 \frac{1}{2}$  Chains along the N. West slope of the hill to a monument of stones about

four feet high marked "C. 14" and U.S. M. M. being the <sup>South</sup> Western corner of the claim.

Thence S. 45° E. <sup>var 13° 20' E.</sup> 4.54 1/2 chains to the second monument mentioned being the South West end monument of the claim

From the Initial Point to the mouth of the tunnel is S. 45° E. 0.30 chains. To Peak between Mine and Mill site S. 58° E. Highest point of Pinalo S. 39° E

From the North East end monument Int. Tunnel bears S. 59 1/2° E. The highest point of the Pinalo S. 38 1/2° E

From the <sup>east</sup> Northern corner left hand one of the Four Peaks bears N. 51° W.

From the <sup>south</sup> Western corner the highest point of the Sierra Ancha mountains bears N. 32° 3/4 W. The left hand one of the Four Peaks bears N. 50° W. The N. W. corner of the Mill site bears S. 75° 57' East 185.00 chains.

The work consists of a tunnel 2 1/2 feet long in solid rock and an open cut at its mouth 24 feet square beginning at 0 and 7 feet deep at the back and is worth to the best of my knowledge and belief \$700.00.

The claim stands on a high hill about 3 miles East of Pinto Creek and 5 miles North West of the King trail it is in a very rough country of lime and Granite formation

The variation of the needle is 13° 20' East of South as determined by observation of Polaris

The lines are run on true bearings  
The ore is principally Copper carrying some Silver

The <sup>South</sup> Western corner was taken as the Mineral monument and is four feet high and marked "C. 14" and U.S. M. M.

IV

A. G. Rendleton  
U.S. Dept Surveyor

Area of claim = 20.66 aces,

FINAL OATHS FOR SURVEYS OF MINING CLAIMS AND MILL-SITES.

A list of the names of individuals employed to assist in running, measuring, or marking the lines and corners described in the foregoing field-notes of the survey of Continental Mine

located in Globe mining district  
Pinal County, Arizona, showing the respective capacities in which they acted.

G. R. Morse Chainman.  
Frank J. Tappell Chainman.  
Axeman.  
Flagman.

We hereby certify that we assisted A. G. Bredellton  
U. S. Deputy surveyor, in surveying the Continental Mine  
claimed by Seth Marshall Jr.  
located in the Globe mining district, Pinal County, and in Township No. \_\_\_\_\_ Range No. \_\_\_\_\_ of the Gila and Salt River base and meridian, Arizona, and that said Survey has been in all respects, to the best of our knowledge and belief, well and faithfully executed, and the boundary monuments planted according to the instructions furnished by the Surveyor-General.

Frank J. Tappell Chainman.  
George R. Morse Chainman.  
Axeman.  
Flagman.

SWORN to and subscribed before me this 18 day  
of October 1878

G. A. Smasey  
Notary Public

I, A. G. Bredellton U. S. Deputy Surveyor do solemnly swear that, in pursuance of instructions from John Wasson, U. S. Surveyor-General for Arizona, bearing date the 10 day of July 1878 I have well, faithfully and truly, in my own proper person, and in strict conformity with the instructions furnished by the Surveyor-General and the laws of the United States, surveyed all those portions of The Continental Mine  
claimed by Seth Marshall Jr.  
located in the Globe mining district, Pinal County, and in Township No. \_\_\_\_\_ Range No. \_\_\_\_\_ of the Gila and Salt River base and meridian, Arizona, as are represented in the foregoing field-notes as having been surveyed under my directions; and I do further solemnly swear that all the corners of said surveys have been established and perpetuated in strict accordance with the instructions furnished me, and that the foregoing are the true and original field-notes of such surveys.

A. G. Bredellton  
Deputy Surveyor.

SWORN to and subscribed before me this 18th day  
of October 1878

G. A. Smasey  
Notary Public

AFFIDAVIT OF FIVE HUNDRED DOLLARS IMPROVEMENTS.

WE, George R. Morse and Frank Tarbell  
of lawful age, being first duly sworn according to law, depose and say that we are acquainted with  
the Continental  
\_\_\_\_\_ mining claim, situate in the Globe  
\_\_\_\_\_ Mining District, Pinal County, Arizona  
Territory, for which Seth Marshall Jr.  
has made application for survey prior to application for patent under the provisions of the Act of  
Congress approved May 10, 1872, and that the labor done and improvements made thereon by the  
applicant and his grantors exceed Five Hundred Dollars in value, and further that we are not  
personally interested in said mine.

Frank Tarbell  
George R. Morse

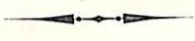
TERRITORY OF ARIZONA,  
County of Pinal } ss.

SWORN AND SUBSCRIBED before me this 18<sup>th</sup>  
day of October 1878

P. A. Smalley  
Notary Public



PRELIMINARY OATHS FOR SURVEYS OF MINING CLAIMS AND MILL-SITES.



WE, G. R. Monse and Frank Tarbell  
do solemnly swear that we will faithfully execute the duties of Chain Carriers; that we will level the chain upon uneven ground, and plumb the tally pins, whether by sticking or dropping the same; that we will report the true distance to all notable objects, and the true length of all lines that we assist in measuring, to the best of our skill and ability.

Frank Tarbell  
George R. Monse

SWORN AND SUBSCRIBED before me this 19<sup>th</sup>  
day of September 1878

G. A. Searcy  
Notary Public



I, A. G. Benditt  
do solemnly swear that I will well and truly perform the duties of U.S. Dept.  
Surveyor according to instructions given me, and to the best of my skill and ability.

A. G. Benditt

SWORN AND SUBSCRIBED before me this 19<sup>th</sup>  
day of September 1878

G. A. Searcy  
Notary Public

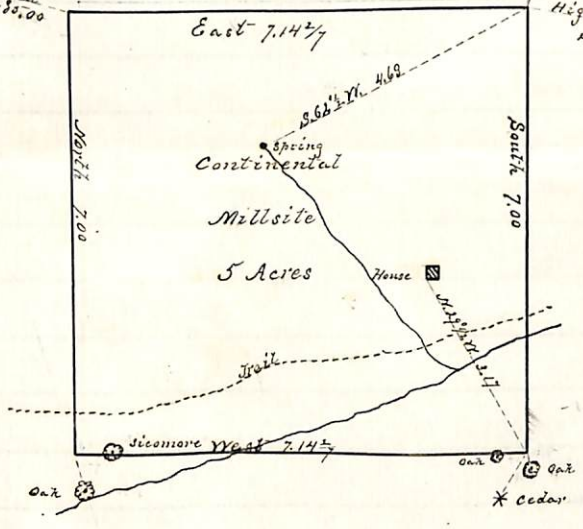




To West cor. of Mine & U.S. Mineral  
Monument N. 75° 57' W. 185.00

Highest Pt. of Range  
N. 12° E.

Highest Pt. toward the Tanks  
S. 90 1/2° E.



Field Notes of the Continental  
Millsite Surveyed Sept. 24, 1878

Beginning at the North East corner the point  
being marked by a monument of stones three feet high  
situated on a flat about three miles north west  
of the "Bloody Tanks" and about two miles south  
of "Lost Gulch".

\* Thence South <sup>var 13 1/2° 26' E.</sup> 7.00 chains crossing the creek  
at 5.20 chains to a monument of stones three feet  
high situated in a lot of brush, being S. E. corner.

P Thence West <sup>var 3° 20' E.</sup> 7.1477 chains to a monument  
of stones three feet high situated in the bottom  
about one chain north of the creek, for S. W. corner.

(over No. 1.) Thence North <sup>var 30° 20' E.</sup> 7.00 chains to a monument of  
stones three feet high situated on a small  
(over No. 2.) hill. for North West corner.

Thence East <sup>var 130° 20' E.</sup> 7.1477 chains to the place  
of beginning.

From the North East corner the highest point  
toward the Tanks bears S. 80 1/2° E. The highest point  
toward "Lost Gulch" N. 12° E. Spring brs. S. 62 1/2° W., 4.63 chs.

P From the South East corner to Oak tree 14 in  
in diameter marked with a blaze on the North  
side S. 11° E. 0.25 chains. To Cedar tree 40 inches in  
diameter blazed on the North East side S. 31° W. 0.85  
chains. To an Oak tree 30 inches in diameter blazed  
on the East side S. 83° W. 0.45 chains. To the S. W.  
corner of the Mine S. 11° W. 3.17 chains

My (over No. 1.)

From the S.W. corner to Sycamore tree  
40 inches in diameter N. 86° E. 0.60 the tree being  
blazed on the West side. To Oak 18 inches in  
diameter blazed on the North side S. 16° E. 0.57 chains

over No. 2

From the North West corner to S. Western  
corner of Mine and U.S. Mineral Monument  
N. 75° 37' W. 185.00 chains.

The U.S. Mineral Monument is the S. Western  
corner monument of the Continental Mine and  
consists of a mound of stone four feet high  
marked "U.S. M. M." and "C. IV"

The magnetic variation as determined by obser-  
vation of Polaris is 13° 20' East of North

The lines are run on true bearings

A. G. Bennett

U.S. Dept. Surveyor.

In the transcript the notes were so  
arranged as to have the descrip-  
tion of each corner followed by  
the different bearings taken from  
it, as is indicated by the above  
contained references.

John D. Powell,  
Chief Clerk.

FINAL OATHS FOR SURVEYS OF MINING CLAIMS AND MILL-SITES.

A list of the names of individuals employed to assist in running, measuring, or marking the lines and corners described in the foregoing field-notes of the survey of the Continental Mill-

site  
located in the Globe mining district  
Pinal County, Arizona, showing the respective capacities in which they acted.

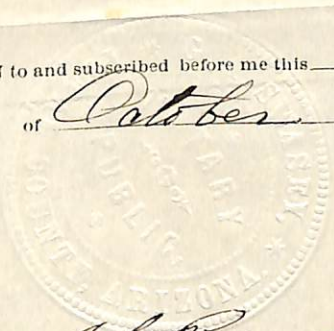
G. R. Morse Chainman.  
Frank Tarbell Chainman.  
Axeman.  
Flagman.

We hereby certify that we assisted A. G. Pendleton  
U. S. Deputy surveyor, in surveying the Continental Mill-site

claimed by Seth Marshall Jr.  
located in the Globe mining  
district, Pinal County, and in Township No. \_\_\_\_\_ Range No. \_\_\_\_\_  
of the Gila and Salt River base and meridian, Arizona, and that said Survey has been in all respects, to the best of our knowledge and belief, well and faithfully executed, and the boundary monuments planted according to the instructions furnished by the Surveyor-General.

Frank Tarbell Chainman.  
George R. Morse Chainman.  
Axeman.  
Flagman.

SWORN to and subscribed before me this 18th day  
of October 1878



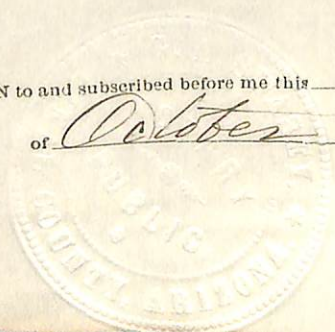
G. A. Smasey  
Notary Public

I, A. G. Pendleton U. S. Deputy Surveyor do solemnly swear that, in pursuance of instructions from John Wasson, U. S. Surveyor-General for Arizona, bearing date the 10 day of July 1878 I have well, faithfully and truly, in my own proper person, and in strict conformity with the instructions furnished by the Surveyor-General and the laws of the United States, surveyed all those portions of the Continental

Mill-site  
claimed by Seth Marshall Jr.  
located in the Globe mining  
district, Pinal County, and in Township No. \_\_\_\_\_ Range No. \_\_\_\_\_  
of the Gila and Salt River base and meridian, Arizona, as are represented in the foregoing field-notes as having been surveyed under my directions; and I do further solemnly swear that all the corners of said surveys have been established and perpetuated in strict accordance with the instructions furnished me, and that the foregoing are the true and original field-notes of such surveys.

A. G. Pendleton  
Deputy Surveyor.

SWORN to and subscribed before me this 18th day  
of October 1878



G. A. Smasey  
Notary Public

Territory of Arizona }  
 County of Pinal } S.S.

G. R. Morse and Frank Tarbell of said county and Territory, being first duly sworn, each for himself deposes and says: That he is well acquainted with the Continental Millsite situated in Globe mining district, County of Pinal and Territory of Arizona, claimed by Seth Marshall Jr. applicant for United States patent therefor; that he is well acquainted with the character of said described land, and with each and every legal subdivision thereof, having frequently passed over the same; that his knowledge of said land is such as to enable him to testify understandingly with regard thereto that there is not to his knowledge, within the limits thereof, any vein or lode of quartz or other rock in place, bearing gold, silver, cinnabar, lead, tin, or copper, or any deposit of coal; that there is not within the limits of said land, in his knowledge, any placer, cement, gravel or other valuable mineral deposits; that no portion of said land is claimed for mining purposes under the local customs or rules of miners, or otherwise; that no portion

(over)

of said land is worked for minerals during any part of the year by any person or persons; that said land is essentially non-mineral land, and that he has no interest whatever in said Continental Millsite

Frank Tarbell  
George R. Morse.

Subscribed and sworn to before me this 18<sup>th</sup> day of October A. D. 1878 and I hereby certify that the foregoing affidavit was read to the said G. R. Morse and Frank Tarbell previous to their names being subscribed thereto; and that deponent is a respectable person to whom affidavit full faith and credit should be given.

G. A. Sprague  
Notary Public



## Continental (Relocated)

## Notice of Relocated

Notice is hereby given that the undersigned having complied with the requirements of the Mining Act of Congress approved May 10, 1872 and the local customs laws and regulations has relocated fifteen hundred (1500) linear feet on the Continental Lode or Ledge. We the undersigned having located this claim at Florence on the 18<sup>th</sup> day of October 1876 now make a new location covering the same ground and under the same name "Continental". This we do to more fully comply with the Mining Act of May 10 1872. The description of the above claim is as follows, commencing at a monument on the ledge situated in the center of the claim on which this notice is posted and which stands on the East side of a high hill, three miles East of Pinto Creek and five miles north of the trail that runs from the Silver King mine and Globe City. Thence S. W. from monument 750 ft. to a monument of stone, Thence S. E. 300 ft. to mon-

monument of stone, Thence N. E. 1500 feet  
 to monument of stone, Thence N. W.  
 600 feet to monument of stone. Thence  
 S. W. 1500 feet to monument of stone  
 Thence S. E. 300 feet to the monument  
 in the south end line. The above  
 location containing 20.66 Acres and  
 to be known as the Continental Lode  
 and claim. Globe City Pinal County  
 Arizona August 1<sup>st</sup> 1877

Locators

Chas. Hayes

C. Holt Chapman

This notice filed for record  
 Aug. 1<sup>st</sup> 1877 at 2 o'clock P.M.

Geo. Scott

Dist. Recorder

I certify that this is a true and correct  
 copy of the notice of location as recorded  
 on pages 135 & 136 Book 3 Mining Records  
 of Globe District

A. G. Bendleton

Dist. Recorder

Local Laws or Regulations of Globe  
District Arizona

Section 1: That each claim located in this district shall be recorded in the district records within thirty days after the date of location, and any failure to comply with this rule shall be considered an abandonment, and the claim subject to location as though it had never been located.

Section 2: There shall be upon each claim recorded in the district, the amount of twenty-five dollars in labor expended during the first three months after the date of location.

Section 3: Any failure to comply with the above rule, shall be deemed an abandonment of the claim.

Section 4: All claims located in this district prior to this date, shall be recorded <sup>in the dist. records</sup> within sixty days from date of the passage of these laws.

Section 5: Each notice of location presented for record, shall bear the signature of one or more witnesses to the location.

Section 6: There shall be notices posted in three conspicuous places



in the district, five days previous to the calling of any and all subsequent meetings of the miners of this district, and five mine owners in the district may call such meeting.

Section 7: In all miners' meetings hereafter held in the district, fifteen mine owners in the district shall be considered a quorum to transact business, and a two-thirds vote of all mine owners present at any meeting, shall be required to alter, abolish or make new laws for this district.

Section 8: On the 25 day of November of each year, there shall be a meeting of the miners of this district held for the purpose of electing a recorder and for such other business as may be brought before it.

Section 9: The recorder shall be elected to serve the term of one year.

Section 10: It shall be the duty of the recorder to keep the books and papers of his office within this district.

Section 11: The recorder shall be entitled to a fee of one dollar for recording each claim and one dollar for each certificate furnished.

Section 12: It shall be the duty of the recorder to appoint a deputy to act in his stead during his absence from the district.

I certify that this is a true and correct copy of the local laws of Globe Mining Dist Arizona

A. G. Pennington  
Dist. Recorder

The U. S. Surveyor General's Office  
Tucson, Arizona, Nov. 2, 1878.

The foregoing field-notes of the Survey of the Centennial Mining and Mill-Site claims, situated in the Globe Mining district, Pinal County, Arizona, claimed by Seth Marshall, Jr., Survey executed by A. G. Pendleton, D. S., under instructions from this office having been critically examined and the necessary corrections and alterations made, the said field-notes and the Survey they describe are hereby approved.

John Mason  
Surveyor General.