

MS - G N
0
0
1
6
4

LOT NO. 44

Field Notes

of the survey of the

Empire
Mining Claim

Situate in Cochise Mountains mining district,

County of Pima and in Sec. _____, Tp. 16 S,

Range 6 E, of the Gila and Salt River Meridian,

ARIZONA.

Claimed by Charles C. Capeland

Survey executed by Salon M. Allis D. S.,

Under instructions dated April 3, 1880

Survey commenced April 8, 1880

Survey completed April 8, 1880

PRELIMINARY OATHS FOR SURVEYS OF MINING CLAIMS AND MILL SITES.

WE Thomas Brady and Joseph Ough

do solemnly swear that we will faithfully execute the duties of Chain Carriers; that we will level the chain upon uneven ground, and plumb the tally pins, whether by sticking or dropping the same; that we will report the true distance to all notable objects, and the true lengths of all lines that we assist in measuring, to the best of our skill and ability.

Thos Brady
Joseph Ough

SWORN AND SUBSCRIBED before me this 7th
day of April 1880

Solon M. Allen
Notary Public Pima Co. A.T.

I, Jesus Coronado Flagman

do solemnly swear that I will well and truly perform the duties of laborer
according to instructions given me, and
to the best of my skill and ability.

his x mark
Jesus Coronado

SWORN AND SUBSCRIBED before me this 17th
day of April 1880

Solon M. Allen
Notary Public Pima Co. A.T.

Field Notes of Survey

of the Emperor Mining Claim,
Comstock Mountains
Ping County
A. T.

Surveyed April 8, 1880
under instruction from
Surveyor General Warren dated Apr 3^d, 1880

Commenced by establishing a
U.S. Mineral Monument at summit
of a steep high hill called the Cabrega Hill -
I first set or drove an iron gad 8 inches
long into a cleft of the rock and set up
a piece of scantling eight feet high 4x2
inches. Marked U.S. Mineral Monument
No 3. and built a Monument of
stone four feet high and four feet in
diameter -

From which

Bear 130°45' E by Obs on Polaris
Peaches Peak near mine of same name
bears N 71°55' W.

The middle one of 3 peaks close together bears
N 35°45' W

Sharp peak of a high Mt bears N 2°25' W

U.S. Monument No 2 summit of
Mc Cormick's Dome bears N 43°18' E
dist about one and a half miles -

The Sharp peak of ditto Range bears N 46°38' E
N. West peak of Babaguerora Mts
bears - S 83°08' E.

Babaguerora Peak bears - S 39° E.

Solon M. Allen

Field Notes of Surrey

Chs of Emperor Mine
Constable Mountain Pines Co. A.T.

Emperor No 1

Commenced at initial Monument where notice of location was placed where I set up a post 2x2 inches squared 3 feet long marked and built a monument of stones 2 1/2 ft from which

Var 13°45'E by obs on Polaris
U.S. Monument No 2 on Mc Cormicks Dome bears - N 38°53'E and dist about 1 1/2 miles -
Thence I ran

Var 13°45'E

11.26 Along center line of claim towards North End Center Monument - N 22°45'W
To said monument where I set up a post 2x2 inches squared 3 ft high marked Emperor No 2 and built a monument of stones 2 1/2 feet high from which U.S. Mineral Monument No 3 bears S 25°15'W Dist 14.90 Chains -
This Monument is on a prominent ridge sloping rapidly to the North
Thence I ran along North End boundary of claim

Var 13°45'E

4.00 N 67°15'E To bottom of Steep Ravine
4.54 1/2 To the N.E. cor of claim where I set a post 2x2 inches squared 3 feet long and marked Emperor No 3 and built a monument of stones from which a large Rock flat on top bears N 3°45'E Dist 1.32 chains - This rock is at junction of two prominent and Steep Ravines - running N -
Thence I ran

Var 13°45'E

5.65 Along East Side boundary of claim S 22°45'E to a point opp old shaft on center line or lode -
7.60 To a pt opp a second old shaft on lode
10.10 " " " third " " "
10.50 " Ravine crossing line from the South

Field Notes of Survey of

ch
Emperor Mine (continued).

- 11.30 To pt off North end of old cut on cut line
This cut 70 Links in length and 12 feet
deep at South End running into a steep side
hill.
- 12.90 To a pt off fourth old shaft
14.90 " " North End of a long cut
one chain in length also on center line
- 17.42 To pt off new shaft 43 feet deep
cut 4.74¹/₂ chs from side line -
This shaft dips S.W. 56°30'
- 22.72¹/₂ To S.E. Cor of Claim when I set up
a post 2x2 inches square 4 ft long
Marked Emperor No 4 and built
a monument of stones 2¹/₂ ft high
This being also the N.E. Cor of the
Dutchman mine owned by Ches. A. Spring Jr
Thence
Iran Var 13°45' E
- 4.54¹/₂ Along South End boundary of claim
S 67°15' W to South End Cut Monument
This being also the initial Monument
of the Dutchman Claim, Lot No. 45.
Here I set up a post 2x2 inches
square 4 ft long Marked Emperor No 5
and built a monument of stones 2¹/₂ feet
high from which U.S. Mineral Monument
No 3 bears N 63°15' W Dist 16.94 Chains -
Thence I ran
Var 13°45' E
- 1.34 Along South End boundary S 67°15' W
To trail at bottom of steep Ravine -
Sloping rapidly South.
- 4.54¹/₂ To S.W. Cor of Claim when I set up a
post 2x2 inches 4 ft long Marked
Emperor No 6 and built a Monument
of Stone 2¹/₂ feet high from which U.S.
Mineral Monument No 3 bears
N 50°45' W Dist 14.40 Chains -
Thence I ran
Var 13°45' E

6

Field Notes of Survey of

chs

Emperor Mine (continued)

Along the west boundary of claim
and on side of steep hill sloping
East and North

22.72 1/2 N 23° 45' W to N.W. Corner of claim
where I set up a post 2x2 inches squared
4 ft high marked Emperor No. 7 - and
built a monument of stones 2 1/2 feet high.
This post and monument is in the bottom of
steep Ravine running N.E.

Thence I ran

Var 13° 45' E

4.54 1/2 N 67° 15' E Along North End boundary
of claim to monument No. 2 at north
end center as before described -

This claim contains 20.66 Acres -
and is bounded on the South by the Dutchman claim
General Description

This claim lies on the North and East
Slope of a High Steep hill or Ridge
called Cabaza Hill - in Comstock
Mountain - Pima Co. A.T.
about 4 miles South ^{west} of the Indian Village
of Comstock -

The work performed by the
Claimant consists of one shaft
43 ft deep about 6x4 ft dipping
S.W. at an angle of 56° 30' ~~degrees~~
The old work consists of 3 shafts and
2 cuts or drifts

The work on new shaft
by Claimant has cost over (\$500.00)
five hundred dollars -

Solon M. Allis
Deputy Surveyor -

FINAL OATHS FOR SURVEYS OF MINING CLAIMS & MILL-SITES.

A LIST of the names of individuals employed to assist in running, measuring, or marking the lines and corners described in the foregoing field-notes of the survey of The Emperor Mining Claim located in Comotabi Mountains Mining District, Pima County, Arizona, showing the respective capacities in which they acted.

Thomas Brady Chainman.
Joseph Ough Chainman.
Jesus Coronado Flagman.

WE hereby certify that we assisted Solon M. Allis U. S. Deputy Surveyor, in surveying The Emperor Mine claimed by Charles C. Copeland located in Comotabi Mountains Mining District, Pima County, and in Township No. — Range No. — of the Gila and Salt River base and meridian, Arizona, and that said Survey has been in all respects, to the best of our knowledge and belief, well and faithfully executed, and the boundary monuments planted according to the instructions furnished by the Surveyor General.

Thos Brady Chainman.
Joseph Ough Chainman.
Jesus Coronado Flagman.

SWORN TO AND SUBSCRIBED before me this 8th day of April 1880

Solon M. Allis
Notary Public, Pima Co. A.T.

I, Solon M. Allis U. S. Deputy Surveyor do solemnly swear that, in pursuance of instructions from John Wasson, U. S. Surveyor-General for Arizona, bearing date the 3rd day of April 1880, I have well, faithfully and truly, in my own proper person, and in strict conformity with the instructions furnished by the Surveyor-General and the laws of the United States, surveyed all those portions of The Emperor Mine

claimed by Charles C. Copeland located in Comotabi Mts Mining District, Pima County, and in Township No. — Range No. — of the Gila and Salt River base and meridian, Arizona, as are represented in the foregoing field-notes as having been surveyed under my directions; and I do further solemnly swear that all the corners of said surveys have been established and perpetuated in strict accordance with the instructions furnished me, and that the foregoing are the true and original field-notes of such surveys.

Solon M. Allis Deputy Surveyor.

SWORN TO AND SUBSCRIBED before me this 16th day of April 1880

John Wasson
U.S. Surveyor General
for Arizona.



AFFIDAVIT OF FIVE HUNDRED DOLLARS IMPROVEMENTS.

WE, *Samuel Lewis* and *Joseph M Kinley*
of lawful age, being first duly sworn according to law, depose and say that we are acquainted with
the *Emperor Mine*
mining claim, situate in *Sonotabi Mountains*
Mining District, *Pima* - County, Arizona
Territory, for which *Charles Copeland* and
has made application for survey prior to application for patent under the provisions of the Act of
Congress approved May 10, 1872, and that the labor done and improvements made thereon by the
applicant and his grantor's exceed Five Hundred Dollars in value, and further that we are not
personally interested in said mine.

S. C. Lewis
Joseph M. Kinley

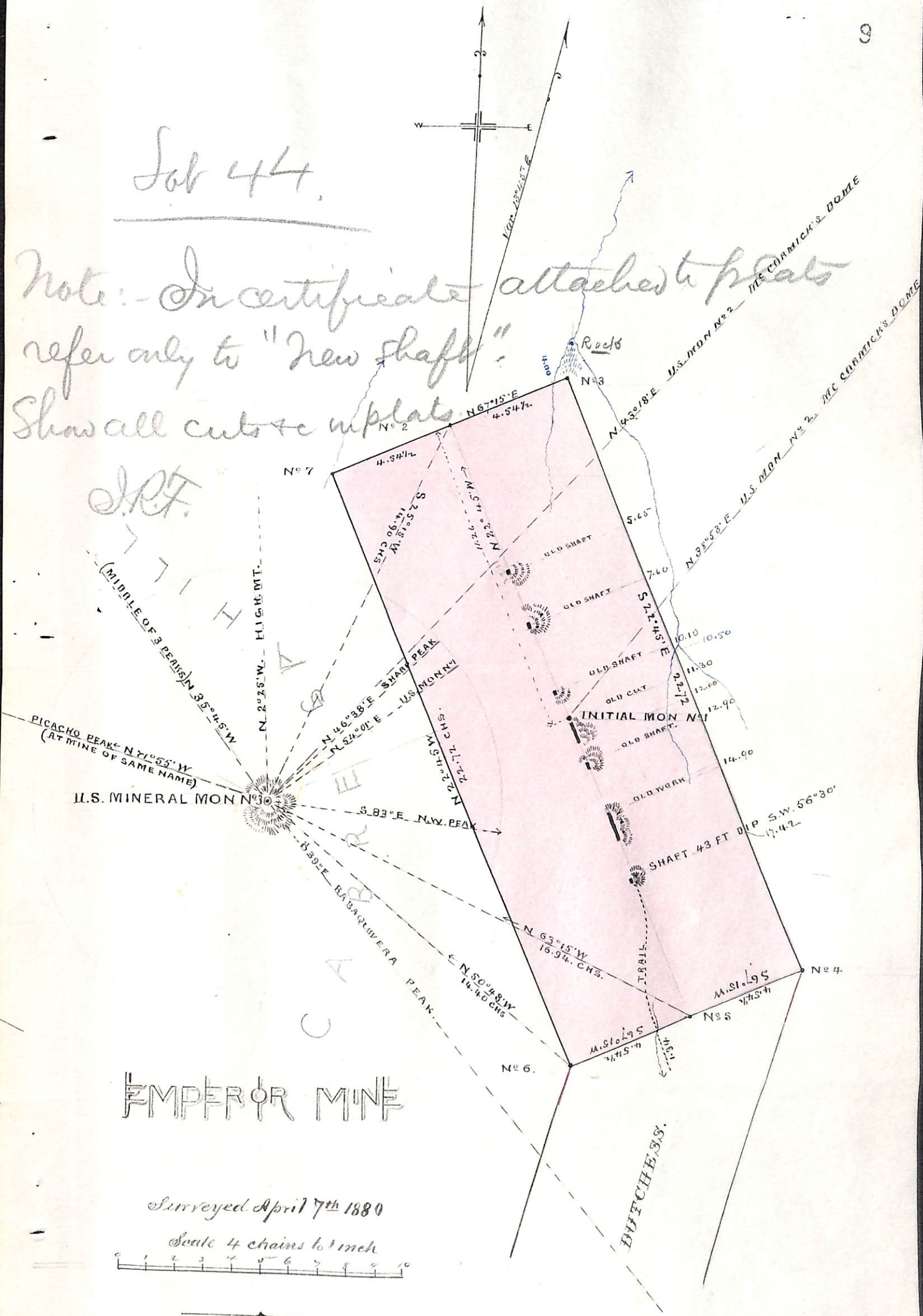
TERRITORY OF ARIZONA, }
County of *Pima* } ss.

SWORN AND SUBSCRIBED before me this *eight*
day of *April* 1880.

Solon M. Allis
Notary Public Pima Co
A. J.

Job 44.

Note: - In certificate attached to plat refer only to "New shaft".
Show all cuts &c in plat.



EMPEROR MINE

Surveyed April 7th 1880

Scale 4 chains to 1 inch



"Emperor"

10

Place of location, Notice is hereby given the undersigned has this day located and claimed 1500 feet along this lead lode or vein of mineral bearing quartz claiming all dips & purs and angles 750 feet off together with three hundred feet on each side of the middle of said claim which is situated about one mile from N. S. Mineral monument No 2 on McCormick Dome which bears from the initial monument at center of claim North $25^{\circ} 08'$ East this claim being located 750 ft each side of said monument more particularly described as follows. Commencing at this initial monument where notice is posted running 750 ft North 36° West to a monument of stone at center of North end of claim thence East by 300 ft to a monument of stone thence $S 36^{\circ} E$ 1500 ft to a monument

11

of stones. Thence westerly 600
ft to a monument of stones
thence 36° west 1500 feet
to a monument of stones
thence 300 ft easterly to
monument middle of
north end of claim. This
claim is located under
Mining Act of Congress app-
roved May 10th 1872 and
is situated in Comobabi
mountains about 65 miles
S.W. of Tucson and shall
be known as the Emperor
Mine. Dated on the ground
November 24 1879.

C. C. Copeland
Filed and recorded at request
of C. C. Copeland Nov 28th A.D.
1879 at 2 P.M.

Sidney W. Carpenter County Recorder
by B. W. Kernemann Deputy
Territory of Arizona }
County of Pima } ss.

Sidney W. Carpenter
County Recorder and for
the County of Pima do here-
by certify that the above
and foregoing is a full

true and correct copy of
what purports to be the
original location notice
of the Emperor Mune as
appears of record now in
my office in Book C.

pages 442. In Witness Whereof
I have hereunto set my
hand and affixed my
official seal. this 2nd
day of April A.D. 1880
S. Carpenter
County Recorder

U. S. Surveyor General's Office
Tucson, Arizona, April 27, 1880.

The foregoing field notes of
the Survey of the Emperor
Mining Claim, situated in
the Catalina Mountains,
Pima County, Arizona; claim-
ed by Chas. C. Capeland,
Survey executed by John M.
Allis, U. S., under instructions
from this office, having been
critically examined and the
necessary corrections and
alterations made, the said
field notes and the survey
they describe are hereby ap-
proved.

John Mason,
Surveyor General.