

MS -

0

0

2

8

2



LOT NO. 37

Survey No. 282.  
Field Notes

of the survey of the

Yuba

Mining Claim

Greaterville

Situate in \_\_\_\_\_ mining district,

County of Pima and in Sec. 26, Tp 19S

Range 15E, of the Gila and Salt River Meridian.

Arizona.

Claimed by E. B. Blanchard et al.

Survey executed by John H. Sturz D. S.

Under instructions dated Oct. 26<sup>th</sup> 188/

Survey commenced Oct. 28<sup>th</sup> 188/

Survey completed Oct. 29<sup>th</sup> 188/



# PRELIMINARY OATHS

FOR SURVEYS OF MINING CLAIMS AND MILL SITES.

WE, E. B. Blanchard and Frank B. Williams  
do solemnly swear that we will faithfully execute the duties of Chain Carriers; that we will level the chain upon uneven ground, and plumb the tally pins, whether by sticking or dropping the same; that we will report the true distance to all notable objects, and the true length of all lines that we assist in measuring, to the best of our skill and ability.

E. B. Blanchard  
Frank B. Williams

SWORN to and subscribed before me, this 28<sup>th</sup> day  
of October, 1881.

P. J. Bayne  
Justice of the Peace Precinct No. 3,  
Greenville.

I, Geo. Richardson,  
do solemnly swear that I will well and truly perform the duties of flagman  
according to instructions given me,  
and to the best of my skill and ability.

George Richardson

SWORN to and subscribed before me this 28<sup>th</sup> day  
of October, 1881.

P. J. Bayne  
Justice of the Peace Precinct No. 3,  
Greenville



Survey  
 of the  
 "Yuba" Mining claim, situated  
 in the Greterville M<sup>y</sup>. Distr, Santa  
 Rita M<sup>ts</sup> Pima Co. A. T.  
 surveyed Oct 28 & 29 1881 by  
 J. H. Sturz  
 Dep. M<sup>t</sup>. Surveyor



Rita Mounts Pima Co. A.T.

Location of a U. S. Min. Monument (96°1) in Greaterville Distr. Santa

Being under instructions from the Sur<sup>or</sup> Genl. of Arizona, bearing date Oct 26<sup>th</sup> 1881 to survey the "Yuba" Min. Claim, in Greaterville Distr. Santa Rita Mounts Pima Co, A. T., and finding no corner of any U. S. Survey within legal distances to connect <sup>with</sup> it, I proceed to erect a U. S. Mineral Monument. as follows:

I go to the top of Quebec hill, at the head of Hughes gulch, a prominent hill about 2 miles S W from Greaterville, and on which the Quebec Min. Claim is located.

On the top of this hill I plant a mesquit post 8 feet long 5" x 5", marked: U S M M G D N 1 - one end <sup>is</sup> 2 feet in rocky ground, and build around it a mound of rocks 5 feet diam. at base and 3 1/2 feet high.

From this monument, Variation by Polaris being 12° 37' East

Baboquivari Peak bears N 88° W

Mount Baldy Peak, Sta. Rita's bears S 43 1/4° W

and two bearing trees

1<sup>st</sup> a black oak, 12 inch diam - bears:

S 58 1/2° W 12 1/2 feet

2<sup>d</sup>. a black oak, 12 in. diam, bears:

S 1/2° E 8 feet.

I mark both trees B.T. U.S. M M G D N 1.

Initial Monument <sup>YIM</sup> of the "Yuba" claim bears

N 64° W 1179 feet.

J. H. Sturz  
Dep. Mt. Sur<sup>or</sup>



# Survey of the "Yuba" mining claim

Being under instructions from the Sur<sup>r</sup>: G<sup>l</sup>. of Arizona, bearing date Oct 26<sup>th</sup> 1881, to survey the "Yuba" Mining claim, in Gresterville Distr. Santa Rita Mts. Pima Co, A. F. said claim being claimed by W. A. Wood, E. B. Blanchard, Henry Sheldon, M. E. Spooner, M. S. Coe, V. E. Robinson, Robinson Bros & Geo. Richardson, I proceed to the Initial Monument, where notice of location is posted.

Here, Oct 28<sup>th</sup>, 1881, I plant a mesquit post, 4 feet long, 4" x 4", marked YIM, one foot in rocky ground, and surround it with a mound of rock 2½ feet high.

From here I take following bearings:

Variation by Polaris 12° 34' E

To U. S. M. M. G D N 1

S 64° E, 1179 feet

and to two bearing trees

1<sup>st</sup> black oak <sup>14 in. diam.</sup> S 20½° W 52 <sup>8</sup>/<sub>10</sub> feet

2<sup>d</sup>. white oak, 18 in diam. N 29½° W 21 feet

I mark both BTYIM.

From this Initial Mont YIM I run:

N 42° E

258 feet to the Southeast corner monument of this claim, where I plant a mesquit post, 4 feet long, 4" x 4", marked YSE, one foot in the ground and surround it by a mound of rock 2 feet high.

Thence

N 36½° W

1361 feet to the Northeast corner mont. of this claim, where I plant a mesquit post, 4 feet long 4" x 4", marked YNE, one foot in the ground and surround it with a mound of rock 2½ feet high.

Thence

S 51¼° W

148 feet - cross a gulch

300 feet to North center monument of this claim where I plant a mesquit post, 4' long



4"x4" marked YNC, one foot in rocky ground and surround it by a mound of rock 2 feet high.

Stake here bearings to two bearing trees  
1<sup>st</sup> White Oak, 18 in. diam, bears:

N 85 3/4° W 52.70 feet

2<sup>d</sup>. Black Oak, 15 in. diam, bears:

N 49 1/2° E 38 2/10 feet. <sup>I mark both:</sup> BTYNC

Thence I run

S 51 1/4° W

300 feet to Northwest corner monument of this claim, where I plant a mesquit post 4 feet long 4"x4", marked YNW, 1 1/2 feet in the ground and surround it by a rocky mound 2 feet high.

Thence I run

S 38 3/4° E

1398 feet to Southwest corner mont. of this claim, where I plant a mesquit post 4 feet long 4"x4" marked YSW, 1 1/2 feet in the ground and surround it by a rocky mound 2 feet high.

Thence I run

N 51 1/4° E

300 feet to the Initial Monument YIM - closing thus the survey.

The Area thus contained is ~~of~~

18 45/100 Acres.

To locate the workings of this claim I start from mont. YIM and run

N 38 3/4° W - 470 feet to a point - thence

Center of Main shaft (5'x6") 90' deep - bears S 53° W 112 ft.

Center of a cut, 14'x15', 10' deep bears

N 83° W 100 feet.

Improvements.

The Improvements on the Yuba claim consist in aforesaid workings, to wit:



7 5.

The Main Shaft, 5'x6' 90 feet deep, and from it a drift of 14 feet length; 4'x6' - 2<sup>d</sup> a open cut. 14'x15' 10' deep - and I hereby certify that said work does exceed the value of 500 \$ - and that it was executed by the applicants.

#### General Description.

The Yuba claim is situated on the Eastern slope of the Santa Rita Mts, about 2 miles South of Greentown, and about 2000 feet from the Quebec mountain at the Head of Hughes Gulch, which carries a little water near Greentown; it is bounded towards the North by the "Hallidie" claim, towards the ~~South~~<sup>West</sup> by the "Fagus" towards the South by the "Jumping - Jack", and towards the East by unknown ground.

The ledge is in porphyry and runs about NW, and dips about 45° SW. Its matrix is quartz, its ore, of variable width consists of polybasite, containing considerable silver. The ledge is several feet wide. Some 15 to 20 tons of ore are on the dump.

The surrounding country contains much black & white oak, & juniper. Water is scarce in summer.

Fresno Nov. 1<sup>st</sup>.

J. D. Sturz  
Dep. Mt. Surv.



FINAL OATHS FOR SURVEYS OF MINING CLAIMS & MILL SITES.

A LIST of the names of individuals employed to assist in running, measuring, or marking the lines and corners described in the foregoing field-notes of the survey of the "Yuba" Mining claim located in the Greaterville Mining District, Pima County, Arizona, showing the respective capacities in which they acted.

- E. B. Blanchard Chainman.
Frank O. Williams Chainman.
Axeman.
Geo. Richardson Flagman.

WE hereby certify that we assisted John H. Sturz U. S. Deputy Surveyor, in surveying the "Yuba" claim mining claim claimed by W. A. Wood, E. B. Blanchard, H. Sheldon, M. E. Spooner, M. S. Coe, V. E. Robinson located in Greaterville Mining District, Pima County, and in Township No. Range No. of the Gila and Salt River base and meridian, Arizona, and that said Survey has been in all respects, to the best of our knowledge and belief, well and faithfully executed, and the boundary monuments planted according to the instructions furnished by the Surveyor General.

- E. B. Blanchard Chainman.
Frank O. Williams Chainman.
Axeman.
George Richardson Flagman.

SWORN TO AND SUBSCRIBED before me this 29th day of October 1881

P. Payne Justice of the Peace Precinct No. 8, Greaterville

I, John H. Sturz U. S. Deputy Surveyor, do solemnly swear that, in pursuance of instructions from the U. S. Surveyor-General for Arizona, bearing date the 26th day of October 1881, I have well, faithfully and truly, in my own proper person, and in strict conformity with the instructions furnished by the Surveyor-General and the laws of the United States, surveyed all those portions of the "Yuba" Mining claim

claimed by W. A. Wood, E. B. Blanchard, H. Sheldon, M. E. Spooner, M. S. Coe, V. E. Robinson located in Greaterville Mining District, Pima County, Arizona, as are represented in the foregoing field-notes as having been surveyed under my directions; and I do further solemnly swear that all the corners of said surveys have been established and perpetuated in strict accordance with the instructions furnished me, and that the foregoing are the true and original field notes of such surveys.

John H. Sturz Deputy Surveyor.

SWORN TO AND SUBSCRIBED before me this 29th day of October 1881

P. Payne Justice of the Peace Precinct No. 8, Greaterville



"Yuba"

Notice. By virtue of an Act of Congress passed May 10<sup>th</sup> 1872 and in accordance with the laws of the Territory of Arizona and of Smith District in Yuma County A. T. we the undersigned do hereby

claim 1500 feet on the mineral bearing beds with all dip, strike, angles and variations together with 300 feet on each side for mining purposes said claim to be known as the "Yuba", bounded as follows:

Commencing at the discovery shaft and running west 300 feet to a stone monument, then 750 feet south to a stone monument, then east 300 feet to monument on lake, then east 300 feet to monument then 1500 feet north to the end

of claim then 600 feet west to monument of stone then 750 south to monument, then 600 feet east to discovery shaft. David Crocker John Long

Filed for record Feb. 2<sup>nd</sup> 1876. Recorded Feb. 13. 1876. R. H. Chate Recorder By Geo. W. Jones Dept. Filed and Recorded at request of David Crocker March 6<sup>th</sup> A. D. 1876 at a court of etc.

J. W. Carpenter

Recorder.

Recorded in Book B. Records of Mines, Page 419.



This amendment to the location of the "Yuba" mine in Greaterville District formerly known as the "Smith" mining district, Pima Co. Arizona Territory is made to more fully describe said claim in compliance with the laws of the United States

The "Yuba Mine" was located Feby 2<sup>d</sup> 1876. by Filed and recorded on records of mining locations at Tucson March 6<sup>th</sup> 1876 at 9 o'clock A.M. and is situated at the head of Hughs's Gulch about two miles West from Greaterville at the base of the North West slope of the Quebec mountain and about one and one half miles South east of "Castle Dome" mountain. The trail leading from Greaterville to Tucson crosses the South East end of claim. It is bounded on the S.E. end by the "Jumping Jack" claim and on the S.W. side by the Tagus mine.

This amendment made this 21<sup>st</sup> day of October 1881.

E B Blanchard  
Agent.



AFFIDAVIT OF FIVE HUNDRED DOLLARS IMPROVEMENTS.

We, Frank O. Williams and F. P. Bistland  
of lawful age, being first duly sworn according to law, depose and say that we are acquainted with the

"Yuba" mining claim, situate in Greaterville  
Mining District, Pima County, Arizona

Territory, for which W. A. Wood, H. Sheldon, and M. L. Coe, V. E. Robinson, Robinson Bros  
E. B. Blanchard, M. E. Spomer and Geo. Richardson  
have made application for survey prior to application for patent under the provisions of the Act of  
Congress approved May 10, 1872, and that the labor done and improvements made thereon by the appli-  
cants and ~~grantor~~ exceed Five Hundred Dollars in value, and further that we are not per-  
sonally interested in said mine.

F. O. Williams  
F. P. Bistland

TERRITORY OF ARIZONA,  
County of Pima  
Greaterville

SS.

SWORN AND SUBSCRIBED before me, this 29<sup>th</sup>  
day of October 1881.

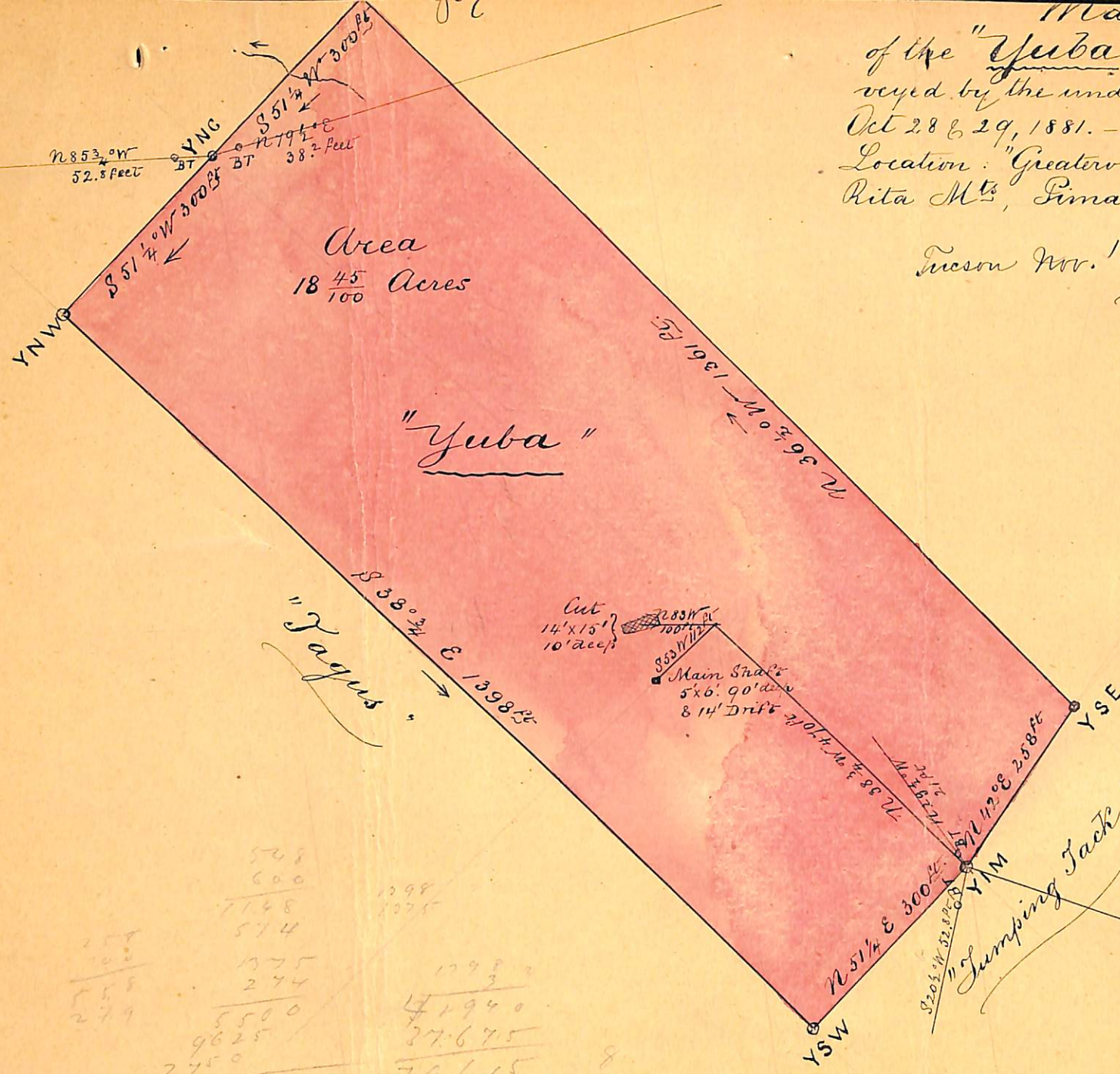
Abner Justice to Peace  
Precinct No. 3



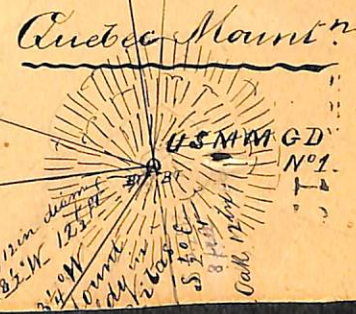
Map  
of the "Yuba" Mining claim, as sur-  
veyed by the undersigned Dep. Mt. Surv.  
Oct 28 & 29, 1881.  
Location: "Greaterville Mining Distr, Santa  
Rita M<sup>ts</sup>, Pima Co, A. T.

Tucson Nov. 1<sup>st</sup> 1881

J. H. Sturz



True North  
Magnetic North



508	1298
600	1375
7148	
514	
1375	1298
274	41940
5500	37675
9625	79615
2750	43520
346750	36055
	32848

20 Scale

J. H. Sturz et al



## U. S. Surveyor General's Office.

Tucson, Arizona, November 4<sup>th</sup> 1881

The foregoing field notes of the survey of the "Yuba"  
 Mining Claim situate in  
 the Greaterville Mining District, Pima  
 County, Arizona, claimed by E. B. Blanchard  
 et al.  
 survey executed by John H. Sturzy Deputy  
 Surveyor, under instructions from this office, having been critically examined  
 and the necessary corrections and alterations made, the said field notes and  
 the survey they describe are hereby approved.

John Masson.

Surveyor General.



UNITED STATES DEPARTMENT OF THE INTERIOR 9605 (956)  
BUREAU OF LAND MANAGEMENT M.S. 282  
ARIZONA STATE OFFICE

---

NOTICE OF CANCELLATION OF MINERAL SURVEY

The Yuba lode, Mineral Survey No. 282, located in sections 23 and 26, Township 19 South, Range 15 East, Gila and Salt River Meridian, Arizona, is hereby canceled.


This claim has not been filed with the Arizona State Office, Bureau of Land Management, in accordance with Section 314, 90 STAT. 2769, (43 U.S.C. 1744).

This cancellation was necessitated to clear the record.

The Mineral Survey Plat should be noted as follows:

"Yuba lode, M.S. 282 was canceled July 12, 2012, by memo 9605 (956) M.S. 526, which is now a part of the original field notes."

July 12, 2012  
Date

  
\_\_\_\_\_  
Chief Cadastral Surveyor of Arizona