

MS.

0

0

4

3

9

LOT NO. 37

Survey No 439

Field Notes

of the survey of the

Copper Mountain Lode

Mining Claim

Situate in Agua Fria mining district,

County of Yavapai and in Sec. 17, Tp 12 N

Range 2 E, of the Gila and Salt River Meridian.

Arizona.

Claimed by The Copper Mountain Mining Company

Survey executed by C. B. Foster U.S. D. S.

Under instructions dated October 10th 1882

Survey commenced December 15th 1882

Survey completed December 16th 1882

PRELIMINARY OATHS

FOR SURVEYS OF MINING CLAIMS AND MILL SITES.

WE, Charles A Flynn and D W Flynn

do solemnly swear that we will faithfully execute the duties of Chain Carriers: that we will level the chain upon uneven ground, and plumb the tally pins, whether by sticking or dropping the same; that we will report the true distance to all notable objects, and the true length of all lines that we assist in measuring, to the best of our skill and ability.

Charles A Flynn
D W Flynn

SWORN to and subscribed before me, this 16th day
of December 1882

C. P. Foster
Deputy Clerk District Court
3rd Judicial District
Arizona

I, J D Olnstead

do solemnly swear that I will well and truly perform the duties of Axeman
according to instructions given me,
and to the best of my skill and ability.

J. D. Olnstead

SWORN to and subscribed before me this 16th day
of December, 1882

C. P. Foster
Deputy Clerk District Court
3rd Judicial District
Arizona

Report of the establishment of
 U.S. Mineral Monument No 1.
 Aqua Fria Mining District
 Yavapai County Arizona

At the South point of a rocky
 butte situated at the S.E. end of
 a narrow ridge on the South
 bank of Aqua Fria Creek, I
 mark a volcanic boulder 6 ft square
 by 4 ft thick. U S M M No 1 A
 F M D and on it side build a
 mound of stone 5 ft square at
 the base and 5 ft high.

From this marked boulder Aqua
 Fria Creek form Confluence
 with Copper Mountain Gulch
 $S 21^{\circ} 10' W$. 1230 feet distant.

The highest Summit of
 Copper Mountain a familiar
 land mark in this Section bears
 $S 48^{\circ} 35' W$.

Monument No 2 at S.E. Cor of
 Copper Mountain Lode Mining
 Claim and Monument No 1
 at N.E. Cor of 1st South extension
 of Copper Mountain Lode Mining
 Claim bears

$S 53^{\circ} 25' W$ 4380 feet distant

There are several locations
 of Copper bearing lodes and
 a few locations of silver
 bearing lodes in the vicinity
 of this Mineral Monument.

December 16th 1882

L. P. Foster
 U.S. Deputy Surveyor
 Mineral Lands

4

Field Notes
of the Survey of the
Copper Mountain Lode Mining Claim
Situate in

Agua Fria Mining District
Yavapai County
Arizona

Claimed by the
Copper Mountain Mining Company
~~M. J. Faust,~~
Agent.

Surveyed by
L. P. Foster
Deputy Surveyor
at Mineral Sands

Under instructions from the U. S.
Surveyor General dated Oct 10th 1882

Survey Commenced Dec 16th 1882
" Completed " 16th 1882

Field Notes of the Survey of the Copper Mountain

Sode Mining Claim Agua Fria Mining District
Yavapai County Arizona

Feet Begin at Center of large cut
where was placed original location
Notice for this Claim and the 1st
South Extension, Copper Mountain
Sode Mining Claim. Said Cut
is 48 ft long by 18 ft wide
with an average depth of 15
feet. Thence

N 6° 30' W

along vein and middle of claim
Va 14° 10' East

as per observation of Polaris

24 North end of Cut

27 Middle of shaft 44 feet deep
by 6 x 4 ft

90 Shaft 53 feet deep by 6 x 4 ft
1500 to Monument at Center of N
end of claim where I set 2/3
in the ground a slate stone 16 x
8 x 4 ins marked C and on W side
build mound of stone 2 1/2 ft high

Thence
N 83° 30' E

along N End of claim

Va 14° 10' East

300 to N E Cor of claim where I
set 3/4 in the ground a granite
stone 24 x 8 x 6 ins marked CM No 1
and on S. E. side build mound of stone
2 1/2 ft high from marked cor stone

A Cedar 10 ins dia bears N 12° E 25 ft dist

" " 12 " " " S 70° W 42 " "

both trees blazed and marked CM No 1 B.T.

Thence
S 6° 30' E

along E side boundary of claim

Va 14° 10' East

1500 To S E Cor of claim where I set 2/3

Field Notes of the Survey of the Copper Mountain

Lode Mining Claim, Agua Fria Mining District
Yavapai County, Arizona

Sub

in the ground a slate stone 18x18x8
ins. marked on N face CM No 2
and on N side build mound of stone
2 1/2 feet high.

From this Cor to the U.S. Mineral
Monument No 1 Agua Fria Mining
District bears N 53° 25' E
4380 feet distant.

Thence
S 83° 30' W

Along S end of claim
Va 14° 10' East

291 E side of cut described above

309 W side of same

600 to N W Cor of claim where cut
2/3 in the ground a granite stone
18x14x4 ins marked on N face
CM No 3 and on W side build
mound of stone 3 ft high

Thence
N 6° 30' W

Along W side boundary of claim
Va 14° 10' East

1500 to N W Cor of claim where a
slate rock projects 12 ins above
the surface by 10x4 ins which
I mark CM No 4 and on N
side build mound of stone 3 ft
high

Thence
N 83° 30' E

Along N end of claim
Va 14° 10' East

300 to Center Monument and place of
beginning on out boundaries of
claim, containing 20 ⁶⁶/₁₀₀ Acres

3

7

Field Notes of the Survey of the Copper Mountain

Lode Mining Claim Aqueduct Mining District
Yavapai County Arizona

General Description and Statement

This Claim Contains a large vein of Copper ore of high grade which runs along through the middle of the Claim as located and surveyed.

The labor and improvements performed on the Claim by the Applicants or their grantors consists of 2 shafts and a Cut amounting in value to more than five hundred dollars

December 16th 1882

C. B. Foster
Deputy Surveyor
U. S. Mineral Lands

FINAL OATHS FOR SURVEYS OF MINING CLAIMS & MILL SITES.

A LIST of names of individuals employed to assist in running, measuring, or marking the lines and corners described in the foregoing field-notes of the survey of the Copper Mountain Lode Mining Claim located in Aqua Fria Mining district, Yavapai County, Arizona, showing the respective capacities in which they acted.

Charles A. Flynn Chairman.
D. W. Flynn Chairman.
J. S. Olmstead Axeman.
Flagman.

WE hereby certify that we assisted C. P. Foster U. S. Deputy Surveyor, in surveying the Copper Mountain Lode Mining Claim claimed by The Copper Mountain Mining Company located in Aqua Fria Mining District, Yavapai County, Arizona, and that said Survey has been in all respects to the best of our knowledge and belief, well and faithfully executed, and the boundary monuments planted according to the instructions furnished by the Surveyor General.

Charles A. Flynn Chairman.
D. W. Flynn Chairman.
J. S. Olmstead Axeman.
Flagman.

SWORN TO AND SUBSCRIBED before me this 16th day of December 1882

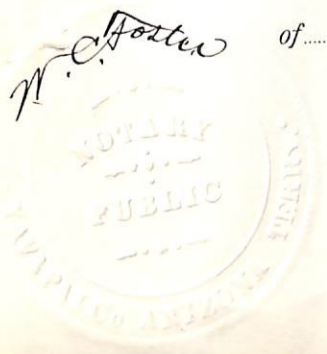
C. P. Foster
Deputy Clerk District Court
3rd Judicial District
Arizona

I, C. P. Foster U. S. Deputy Surveyor, do solemnly swear that, in pursuance of instructions from the U. S. Surveyor-General for Arizona, bearing date the 10th day of October 1882, I have well, faithfully and truly, in my own proper person, and in strict conformity with the instructions furnished by the Surveyor-General and the laws of the United States, surveyed all those portions of the Copper Mountain Lode Mining Claim claimed by The Copper Mountain Mining Company located in Aqua Fria Mining District, Yavapai County, Arizona, as are represented in the foregoing field-notes as having been surveyed under my directions; and I do further solemnly swear that all the corners of said surveys have been established and perpetuated in strict accordance with the instructions furnished me, and that the foregoing are the true and original field notes of such surveys.

C. P. Foster Deputy Surveyor.

SWORN TO AND SUBSCRIBED before me this 21st day of December 1882

W. C. Foster
Notary Public



AFFIDAVIT OF FIVE HUNDRED DOLLARS IMPROVEMENTS.

We, *J. S. Ormstead* and *D. W. Flynn*
 of lawful age, being first duly sworn according to law, depose and say that we are acquainted with the
Copper Mountain Lode
 mining claim, situated in *Agua Fria*
 Mining District, *Yavapai* County, Arizona
 Territory, for which *the Copper Mountain Mining Company*
has made application for survey prior to application for patent under the provisions of the Act of
 Congress approved May 10, 1872, and that the labor done and improvements made thereon by the appli-
 cant and its grantor *s* exceed Five Hundred Dollars in value, and further that we are not per-
 sonally interested in said mine.

J. S. Ormstead
D. W. Flynn

TERRITORY OF ARIZONA,

County of *Yavapai* } SS.

SWORN to and subscribed before me, this *18th* day

of *December* 188*2*

C. P. Foster
 Deputy Clerk District Court
 3^d Judicial District
 Arizona

Copper Mountain Lode.

Notice of Location
of the "Copper Mountain" Lode, or claim,
containing precious metals, and located
as a lode mine.

This claim commences at this monu-
-ment and Notice and running in a
North Easterly direction fifteen hundred
{1500} feet to a monument of stones
and embracing three hundred {300} feet
on each side as lateral lands
in accordance with the provisions
of an Act of Congress, approved May,
10th 1872, entitled "An Act to promote
the development of the Mining Resources
of the United States."

This claim may be more generally
described as situated on the "Lower
Agua Fria River, in Yavapai County,
Arizona Territory, and shall be known
as the "Copper Mountain Lode."

Dated on the ground May 4th A.D. 1875.
T. W. Boggs.

Received and filed for record May 6th
1875, at 9.30 o'clock, A.M. at request
of T. W. Boggs, and duly recorded in
Book C. 3. of Mines, folio 228.

Records of Yavapai County, Arizona.

William Wilkerson

County Recorder

By Will. H. Foster. Dep.

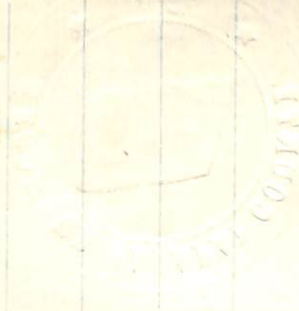
Territory of Arizona }
 County of Yavapai } 35.

I, William Wilkerson
 County Recorder of Yavapai County,
 in the Territory of Arizona, and
 Custodian of records thereof, do hereby
 certify the above and foregoing to be a
 full, true and correct transcript of
 the Location Notice of the Copper
 Mountain Lode, situated on Lower
 Agua Fria River, County and Territory
 aforesaid, and located May 4th A.D.
 1875 by J. W. Boggs, as the same
 appears of record in Book No. 3 of
 Mines, folio 228, now in my office.

In Witness Whereof, I have
 hereunto set my hand and
 affixed my official seal
 at Prescott Arizona this
 7th day of October, A.D. 1882.

William Wilkerson
 County Recorder
 By D. S. Bechtel
 Deputy

Certified copy of
Looper Mountain
Road



SEP 20 1891

7

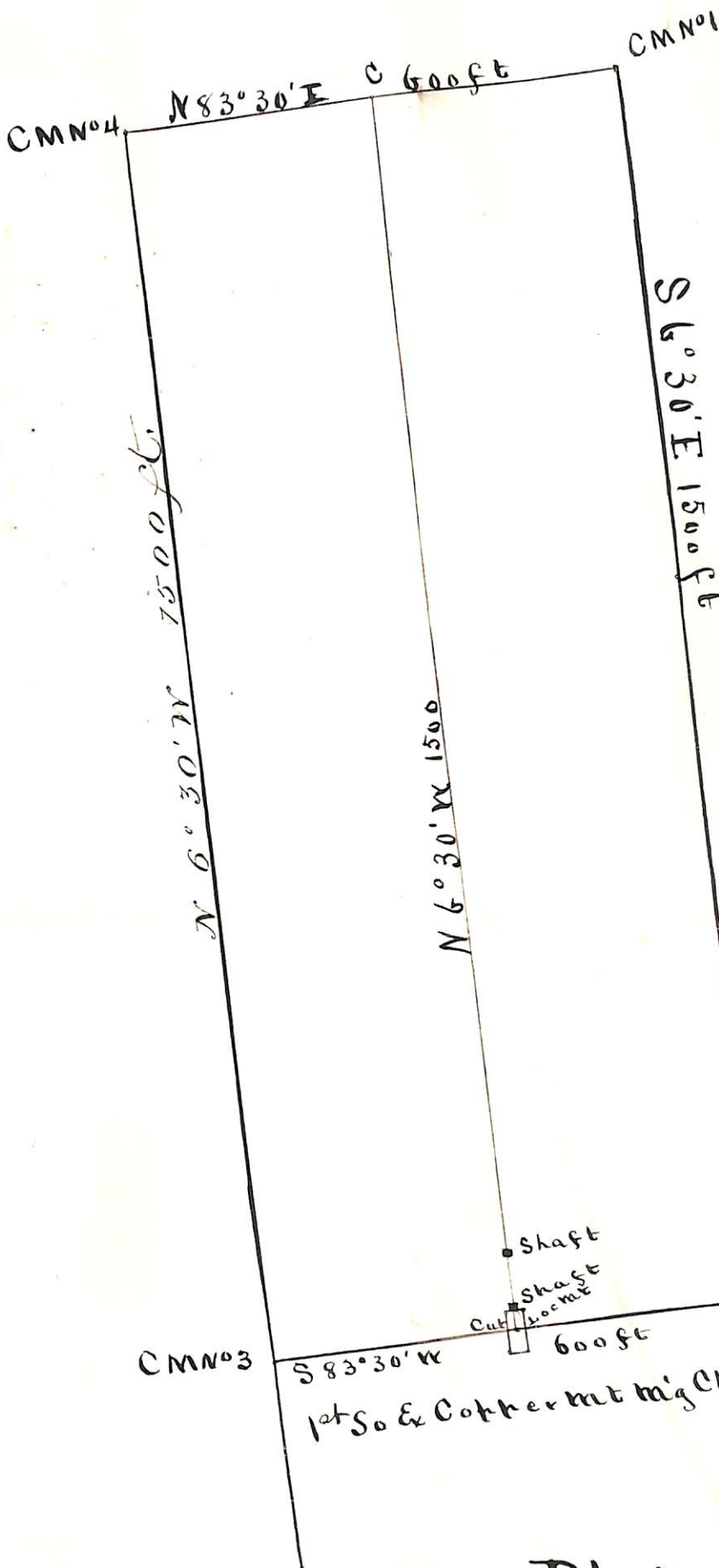
U. S. Surveyor General's Office,

Tucson, Arizona, *Jan'y. 10th* 1883

The foregoing field notes of the survey of the *Copper Mountain*
Lode Mining Claim situate in
 the *Agua Fria* Mining District,
 County, Arizona, claimed by *The Copper Mountain*
Mining Company
 survey executed by *C. B. Foster* Deputy
 Surveyor, under instructions from this office, having been critically examined
 and the necessary corrections and alterations made, the said field notes and
 the survey they describe are hereby approved.

J. M. Roberts

Surveyor General.



Plat
of
Copper Mountain Mining Claim
Agua Fria Mining Dist

Yavapai Co AZ

Surveyed by
C B Foster D S

Dec 16 1882

Va 14° 10' E

Scale 200 ft to 1 in