

MS.

0

0

4

8

3



LOT NO. 39

Survey No 483

Field Notes

of the survey of the

Copper Nugget

Mining Claim

Situate in Copper Basin mining district,

County of Yavapai and in Sec. \_\_\_\_\_, Tp. 13 N.

Range 3 W, of the Gila and Salt River Meridian.

Arizona.

Claimed by The Copper Basin Copper Company

Survey executed by F. S. Ingalls U. S. D. S.

Under instructions dated December 13 1882

Survey commenced December 21 1882

Survey completed December 21 1882



# PRELIMINARY OATHS

FOR SURVEYS OF MINING CLAIMS AND MILL SITES.

WE, Cornelius Davis and Wm Randall

do solemnly swear that we will faithfully execute the duties of Chain Carriers: that we will level the chain upon uneven ground, and plumb the tally pins, whether by stickiny or dropping the same; that we will report the true distance to all notable objects, and the true length of all lines that we assist in measuring, to the best of our skill and ability.

Cornelius Davis  
William Randall

SWORN to and subscribed before me, this 19<sup>th</sup> day  
of December, 1882

JH Carpenter  
Notary Public

I, Isaac A Bradshaw

do solemnly swear that I will well and truly perform the duties of Flag man  
according to instructions given me,  
and to the best of my skill and ability.

Isaac A Bradshaw

SWORN to and subscribed before me this 19<sup>th</sup> day  
of December, 1882

JH Carpenter  
Notary Public





Field notes of the survey of the  
Copper Nugget mining claim,  
situated in Copper Basin Mining  
District, Yavapai County, Arizona.  
Claimed by the Copper Basin  
Copper Company.

Surveyed under instructions re-  
ceived from J. W. Robbins, U. S.  
Surveyor General of date, Dec. 12<sup>th</sup> 1882.  
Survey commenced, December 21<sup>st</sup> 1882.  
Survey completed, December 21<sup>st</sup> 1882.

Initial point monument of location  
situated on the middle of outcrop-  
pings of vein on top of Copper Nug-  
get hill in the centre of claim,  
and bearing notice of location.  
Direction of vein from this monu-  
ment S. 9° W. magnetic variation  
as obtained by direct observation  
on the sun with Burt's Solar Transit  
14° 20' East.

Beginning at the initial monument  
a juniper post, 4x4 inches, 5 ft  
long, set 1½ ft in ground and built  
around by stone mound, 3 ft at  
base and 1½ ft high, in centre  
of claim on top of Copper Nugget  
hill, marked with gouge, C. N. N<sup>o</sup> 1  
from which a shaft 4x6 ft, 40 ft  
deep, bears, N. 71½° W, 92 ft distant  
and shaft 4x6 ft, 15 ft deep, bears  
N 9° E, 60 ft distant, and run  
thence as follows,  
S. 9° W.

Variation 14° 20' East

750 ft to centre monument on southerly  
end of claim, a pine post, 5x5  
inches, 4 ft long, set 1½ ft in ground  
and built around by earth and  
stone mound, 3 ft at base and  
1½ ft high, marked with gouge  
C. N. N<sup>o</sup> 2, from which a juniper



tree, 16 inches in diameter, marked with gouge, Co. N. No 2, B.T. bears, S 83° E. 25 ft distant. thence,  
 N 81° W.

Variation 14° 20' East.

87 ft intersect northerly side line of the Blue Jay mining claim at a point N 52° W. 132 ft from the north easterly corner of said claim

300 ft to the south westerly corner of claim, a juniper post, 4 x 4 inches, 4 ft long, set 1 1/2 ft in ground and built around by stone mound, 3 ft at base and 1 1/2 ft high, marked with gouge Co. N. No 3, no bearings obtainable, thence.  
 N. 9° E.

Variation 14° 20' East.

118 ft intersect northerly side line of the Blue Jay mining claim at a point, N 52° W. 375 ft from the north easterly corner of said claim

1100 ft to centre of ravine, 20 ft wide running south west

1500 ft to the north westerly corner of claim, a juniper post 5 x 5 inches, 4 ft long, set 1 1/2 ft in ground and built around by stone mound, 3 ft at base and 1 1/2 ft high, marked with gouge, Co. N. No 4, from which United States mineral monument No 1, Copper Basin Mining District, bears S 87 1/4° W. 509 ft distant, thence.  
 S 81° E.

Variation 14° 20' East.

65 ft to centre of ravine, 20 ft wide running south west.



300 ft to centre monument on northerly end of claim, a pine post, 4x4 inches, 4 ft long, set 1 1/2 ft in ground, and built around by stone mound, 3 ft at base and 1 1/2 ft high, marked with gouge, C. N. No 5, No bearings obtainable.

600 ft to north easterly corner of claim, a pine post, 4x4 inches 5 ft long, set 2 ft in ground and built around by stone mound 3 ft at base and 1 1/2 ft high marked with gouge, C. N. No 6 and from which the east face of a tunnel running west, bears S, 17 1/2° W, 595 ft distant, thence - S, 9° W.

Variation 14° 20' East.

1050 ft to centre of Copper Basin Wash 50 ft wide, running south west.

1500 ft to the south easterly corner of claim, a pine post, 4x4 inches 5 ft long, set 2 ft in ground, and built around by stone mound, 3 ft at base and 2 ft high, marked with gouge C. N. No 7, No bearings obtainable, thence.

N 81° W.

Variation 14° 20' East.

155 ft to centre of Copper Basin Wash 50 ft wide, running south west.

300 ft to centre monument at southerly end of claim, thence - N 9° E.

Variation 14° 20' East.

750 ft to the place of beginning.  
 Total area - 20 66/100 acres.  
 Less area in conflict with the Blue Jay Mining claim not claimed, - 58/100 acres.



Leaving net area, 20. <sup>8</sup>/<sub>100</sub> acres.

The improvements made on this claim by the claimant and his grantors, consist of a shaft 4x6 ft, 40 ft deep, a shaft on the vein 4x6 ft, 15 ft deep and a tunnel on east side of claim running west to connect with shaft, now in 15 ft.

They represent in the aggregate an expenditure of \$ 1,000.<sup>00</sup>

This claim is situated in Copper Basin Mining District about 10 miles westerly from Prescott. Copper on the claim is found in a true vein between walls of granite.

The claim is covered with oak, juniper and pine timber.

F. D. Ingalls  
U.S. Deputy Mineral Surveyor



FINAL OATHS FOR SURVEYS OF MINING CLAIMS & MILL SITES.

A LIST of names of individuals employed to assist in running, measuring, or marking the lines and corners described in the foregoing field-notes of the survey of the Copper Nugget Mining Claim located in Copper Basin Mining district, Yavapai County, Arizona, showing the respective capacities in which they acted.

- Cornelius Davis Chainman.
William Randall Chainman.
Axeman.
Isaac A Bradshaw Flagman.

WE hereby certify that we assisted F D Ingalls U. S. Deputy Surveyor, in surveying the Copper Nugget Mining Claim claimed by The Copper Basin Copper Company located in Copper Basin Mining District, Yavapai County, and in township No. Range No. of the Gila and Salt River base and meridian, Arizona, and that said Survey has been in all respects, to the best of our knowledge and belief, well and faithfully executed, and the boundary monuments planted according to the instructions furnished by the Surveyor General.

- Cornelius Davis Chainman.
William Randall Chainman.
Axeman.
Isaac A Bradshaw Flagman.

SWORN TO AND SUBSCRIBED before me this 29th day of December 1882

J H Carpenter Notary Public

I, F D Ingalls U. S. Deputy Surveyor, do solemnly swear that, in pursuance of instructions from the U. S. Surveyor-General for Arizona, bearing date the 12th day of December 1882, I have well, faithfully and truly, in my own proper person, and in strict conformity with the instructions furnished by the Surveyor-General and the laws of the United States, surveyed all those portions of the Copper Nugget Mining Claim claimed by The Copper Basin Copper Company located in Copper Basin Mining District, Yavapai County, Arizona, as are represented in the foregoing field-notes as having been surveyed under my directions; and I do further solemnly swear that all the corners of said surveys have been established and perpetuated in strict accordance with the instructions furnished me, and that the foregoing are the true and original field notes of such surveys.

F D Ingalls Deputy Surveyor.

SWORN TO AND SUBSCRIBED before me this 14th day of March 1883

J H Carpenter Notary Public





AFFIDAVIT OF FIVE HUNDRED DOLLARS IMPROVEMENTS.

We, E. P. Holiday and William Randall

of lawful age, being first duly sworn according to law, depose and say that we are acquainted with the

"Copper Nugget" mining claim, situated in Copper Basin

Mining District, Yavapai County, Arizona Territory, for which The Copper Basin & Copper Company

has made application for survey prior to application for patent under the provisions of the Act of Congress approved May 10, 1872, and that the labor done and improvements made thereon by the applicant and its grantor exceed Five Hundred Dollars in value, and further that we are not personally interested in said mine.

E. P. Holiday  
Wm Randall

TERRITORY OF ARIZONA,  
County of Yavapai } SS.

SWORN to and subscribed before me, this 31<sup>st</sup> day  
of January 1883.

J. Weald  
Notary Public



Copper Nugget

Location Notice

Of the Copper Nugget claims or ledge containing Copper and Gold and located as such.

The undersigned claims for mining purposes Fifteen hundred (1500) feet in length, along the ledge or vein, and three hundred (300) feet in width on each side of the middle of the vein at the surface, together with all the dips, spurs and angles and all valuable mineral deposits contained therein, and all Timbers growing within the limits of said claim and all waters and water privileges thereon or appurtenant thereto under and according to the provisions of an Act of Congress approved May 10th 1872. entitled "an Act to promote the development of the Mining Resources of the United States.

This claim commences, at this notice which is posted in a conspicuous place in the center of the claim on top of the hill, running seven hundred and fifty (750) feet North and seven hundred and fifty (750) feet South.

Three stone monuments are placed at each end of the claim marking the claim.

This claim commences about 200 yards north of where the old Skull Valley trail crosses the main wash of Copper Basin and an old blacksmiths forge stands in the mouth of a small ravine, coming in from the west into the main creek. This claim shall be known as the Copper Nugget claim

Located and dated on the ground this 1st



day of March 1881. in the County of Yavapai  
and Territory of Arizona

Witness

J. A. Bradshaw

10

C. C. Beau

Recorded at request of C. C. Beau, April 23<sup>d</sup>  
1881 at 12.50.0'clock P.M. in Book L. H. of Mines,  
Records of Yavapai County Arizona at pages  
237-238

William Wilkerson

County Recorder

By A. H. Carter

Deputy



Territory of Arizona }  
 County of Yavapai } S.S.

I, William Wilkerson, County Recorder of Yavapai County in the Territory of Arizona, and Custodian of Records thereof do hereby certify the above and foregoing to be a full, true and correct copy of the Location Notice of The "Copper Nugget" Mining Claim in Copper Basin Mining District of said County and Territory, located the first & 12<sup>th</sup> day of March 1881 by J. A. Bradshaw; as the same appears of record in Book L. 11 of Mines, pages 237-238, now in my office

In witness whereof I have hereunto set my hand and affixed my official seal at Prescott Arizona this 29<sup>th</sup> day of November A.D. 1882.

William Wilkerson  
 County Recorder  
 By D. J. Bechtel  
 Deputy



Location Notice

— of the —

"Copper Nugget" Mining Claim

Certified Copy.



# PLAT

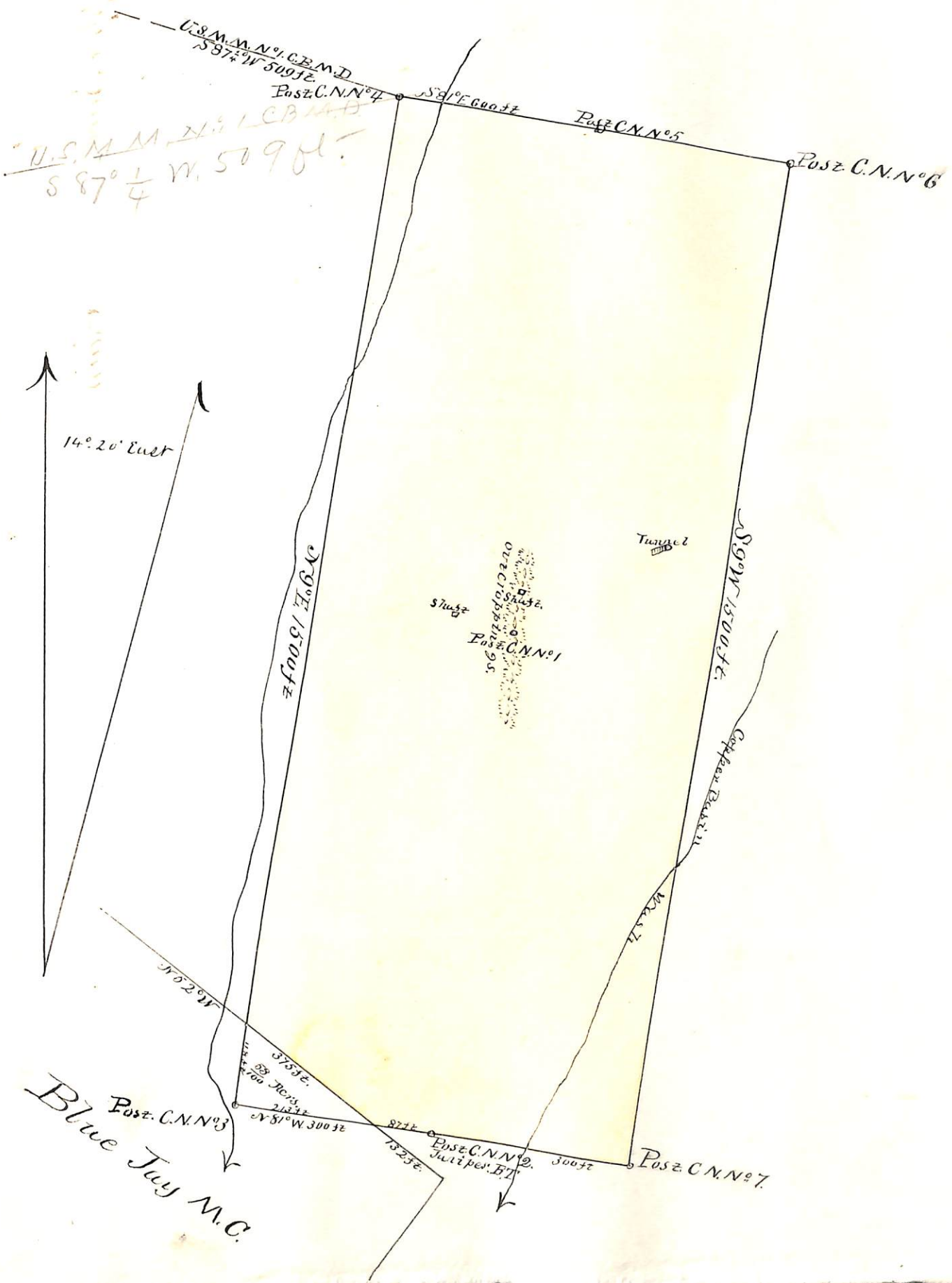
12

OF THE

## COPPER NUGGET MINING CLAIM

Situated in Copper Basin Mining District, Garapari Co. A. T.  
 Claimed by the Copper Basin Copper Company.  
 Surveyed under instructions received from J. W. Robbins  
 U.S. Surv. Genl. of Date December 12<sup>th</sup> 1882.  
 Surveyed by E. P. Ingalls.  
 U.S. Dept. Mineral Surveyor  
 File 21<sup>st</sup> 1882.

Lot 39  
 Survey 483





U. S. Surveyor General's Office.

Tucson, Arizona, May 7<sup>th</sup> 1883

The foregoing field notes of the survey of the Copper Nugget  
 Mining Claim situate in  
 the Copper Basin Mining District, Yavapai  
 County, Arizona, claimed by The Copper Basin Copper  
Company  
 survey executed by L. S. Ingalls Deputy  
 Surveyor, under instructions from this office, having been critically examined  
 and the necessary corrections and alterations made, the said field notes and  
 the survey they describe are hereby approved.

J. W. Robinson  
 Surveyor General.