

**M
S
-**

0

0

7

7

6

LOT NO. 38.....

SURVEY NO. 776.....

Field Notes

of the survey of the

Delaware

Mining Claim

Situate in Green Valley Mining district

County of Yavapai and in Sec. —, Tp. 10 N

Range — 11 E, of the Gila and Salt River Meridian.

ARIZONA.

Claimed by H. H. Logan

Survey executed by T. W. Hine D. S.

Under instructions dated July 1st 1886

Survey commenced July 9th 1886

Survey completed July 10th 1886

PRELIMINARY OATHS,

FOR SURVEYS OF MINING CLAIMS AND MILL-SITES.

We, Patrick Curline and Joseph Traver

do solemnly swear that we will faithfully execute the duties of Chain Carriers; that we will level the chain upon uneven ground, and plumb the tally pins, whether by sticking or dropping the same; that we will report the true distance to all notable objects, and the true lengths of all lines that we assist in measuring, to the best of our skill and ability.

Patrick Curline

Joseph Traver

SWORN to and subscribed before me, this 5th day

of July 1886

Jerry Millay
Notary Public

I, Joseph Traver

do solemnly swear that I will well and truly perform the duties of Flagman

according to instructions given me,

to the best of my skill and ability.

Joseph Traver

SWORN to and subscribed before me, this 5th day

of July 1886

Jerry Millay
Notary Public

Part

Field Notes
 of the Survey of the Delevan
 Mining Claims in the
 Green Valley Mining District
 Garapaí County Arizona.
 Claimed by Herbert H. Royce
 Surveyed by Thomas McBee
 U.S. Deputy Mineral Surveyor
 under instructions from the
 Surveyor General of date of
 July 12th 1886.
 Survey Commenced July 9th 1886
 .. Completed .. 10th 1886

Description of Survey.

Beginning at the initial
 monument mentioned in the
 location notice and marking
 or being on the South side line.
 When I set a granite 34x10x
 8 ins 1 ft. in the ground and
 built alongside a monument
 of stones
 Stone marked D No 1

Thence S 78° 41' E
 Var 13° 57' E

1700

To loc. now when I set a
 granite stone 27x12x8 ins 1 1/2 ft
 in the ground and built
 alongside a monument of
 stones.

Stone marked D No 2

Thence N 11° 19' E
 Var 13° 57' E

600

To loc. now. when I set a
 granite 23x9x7 ins 1 ft in
 the ground and built alongside
 a monument of stones.

Stone marked D No 3

Thence N 78° 41' W
 Var 13° 57' E

Foot

1500 To loc mon. when I set a
 Granite Post 24 X 10 X 8 ins 1 ft
 in the ground and built
 alongside a monument of
 stones
 Stone marked D No 4

Thence S 11° 19' W
 Var 13° 57' E

600 To loc mon when I set a
 granite 23 X 9 X 7 ins 1 ft in the
 ground and built along side
 a monument of stones
 Stone Marked D No 5
 U.S. Min Mon No 2 G. &
 Bears. S 85° 0' W dist 37 ft.

Thence S 78° 41' E
 Var 13° 57' E

300 To Mon. spot D No 1 place
 of beginning

Area

Total Net Area of claim 20.66 Acres

Location

This claim is located on
 unsurveyed land on the side
 of a dry gulch that flows
 into Rye Creek about 5 miles
 South East of the Excursion
 Mine. and on the South side
 of the trail leading from the
 Excursion Mine to the
 Or Bow Mine

Improvements

Made upon this ~~mine~~ claim
by claimants or grantors
consists of a discovery shaft
6x8x50 feet deep. $N 12^{\circ} 14' E$ 301 ft
from S No 1

A shaft - 4x6x80 feet deep
with a drift - 5x7x50 ft long
 $N 2^{\circ} 58' W$ 298 ft from S No 1

A shaft - 4x6x25 ft deep
 $N 4^{\circ} 33' W$ 313 ft from S No 1

And I hereby certify that the
value of said improvements
exceeds the sum of five hundred
dollars.

There have been no improvements
made by other parties upon this
claim.

Instruments used a Gurley
Solar Transit and steel
chain

Var and courses taken by
the use of the solar apparatus.

Thomas White

U.S. Deputy Mineral Surveyor.

Phoenix AZ Aug 10-1886

FINAL OATHS FOR SURVEYS OF MINING CLAIMS AND MILL SITES.

A LIST of names of individuals employed to assist in running, measuring or marking the lines and corners described in the foregoing field-notes of the survey of The DeLewan Mining Claim located in Green Valley Mining District, Yavapai County, Arizona, showing the respective capacities in which they acted

- Patrick Burlin Chairman.
- Joseph Traver Chainman.
- Joseph Traver Axeman.
- Joseph Traver Flagman.

WE hereby certify that we assisted Thomas White U. S. Deputy Surveyor, in surveying The DeLewan Mining Claim claimed by Herbert Hagan located in Green Valley Mining District, Yavapai County, and in Township No. _____ Range No. _____ of the Gila and Salt River base and meridian, Arizona, and that said survey has been in all respects, to the best of my knowledge and belief, well and faithfully executed, and the boundary monuments planted according to the instructions furnished by the Surveyor-General.

- Patrick Burlin Chainman.
- Joseph Traver Chainman.
- Joseph Traver Axeman.
- Joseph Traver Flagman.

SWORN TO AND SUBSCRIBED before me this 10th day of August 1886

Jerry Millay
Notary Public

I, Thomas White U. S. Deputy Surveyor, do solemnly swear that, in pursuance of instructions from the U. S. Surveyor General for Arizona, bearing date the First day of July 1886, I have well, faithfully and truly, in my own proper person, and in strict conformity with the instructions furnished by the Surveyor-General and the laws of the United States, surveyed all those portions of the DeLewan Mining Claim claimed by Herbert Hagan located in Green Valley Mining District, Yavapai County, Arizona, as are represented in the foregoing field-notes as having been surveyed under my instructions; and I do further solemnly swear that all the corners of said surveys have been established and perpetuated in strict accordance with the instructions furnished me, and that the foregoing are the true and original field-notes of such surveys.

Thomas White Deputy Surveyor.

SWORN TO AND SUBSCRIBED before me this twelfth day of August 1886

Jerry Millay
Notary Public



AFFIDAVIT OF FIVE HUNDRED DOLLARS IMPROVEMENTS.

We, *William O. Stefan* and *Samuel Hill*
of lawful age, being first duly sworn according to law, depose and say that we are acquainted with the
Delavan
mining claim, situated in *Green Valley*
Mining District, *Yavapai* County, Arizona
Territory, for which *Herbert H. Ryan* and
he.....made application for survey prior to application for patent under the provisions of the Act of
Congress approved May 10, 1872, and that the labor done and improvements made thereon by the appli-
cant.....and his grantor *S* exceed Five Hundred Dollars in value, and further that we are not per-
sonally interested in said mine.

William O. Stefan
Samuel Hill

TERRITORY OF ARIZONA,
County of *Maricopa* } SS.

SWORN to and subscribed before me, this *10th* day

of *August* 188*6*

Jerry Millay
Notary Public

thence in a North Westerly direction parallel with the ledge Fifteen Hundred (1500) feet to Monument of Stone at N. W. Corner of Claim; thence in a Southern direction at right angles, across the ledge Six Hundred (600) feet to Monument, of Stone on South side line, and S. W. Corner of Claim; thence along South side line in a South easterly direction Three Hundred (300) feet to place of beginning

This ledge may be more generally described as situated on a branch of Wild Rye Creek, and East of Flat Top Mountain, one and one half miles, and South west of St John and Seibens House, one and one half miles.

Location in Green Valley Mining District Yavapai County Arizona.

Located on the Third - 3rd - day of February A.D. 1883, and shall be known as the Delaware mine.

Wm O. St John Locator

Filed and recorded at request of Wm O. St John, February 12th A.D. 1883, at 3:35 O'clock P.M. in Book 16 of Mines, pages 426-427, Records of Yavapai County Arizona -

H. H. Carter
County Recorder

Delaware,

Notice of Location.

The undersigned has this day Located Fifteen Hundred (1500) feet of this Vein or lode bearing precious Metals, with all dips, Spurs ^{and} angles, and variations, with Surface ground Three Hundred (300) feet on each side of the Centre of Vein, with all deposits Contained therein and all Timber growing within the limits of said Claim, and all water and water privileges thereon or appurtenant thereto, under and according to the provisions of the United States Mining Laws under which it is located -

This Claim Commences at this Monument and Notice, placed upon the ledge, and runs Three Hundred (300) feet in a North Westerly direction and Twelve Hundred (1200) feet in a South easterly direction along the ledge -

The Exterior boundaries are as follows: Commencing at a Monument of Stone on South boundary line, distant Three Hundred (300) feet in a Southerly direction from Discovery Monument; thence in a South easterly direction parallel with the ledge Twelve Hundred (1200) feet to Monument of Stone at S.E. Corner of Claim; thence in a North easterly direction at right angles across the ledge Six Hundred (600) feet to a Monument of Stone, at N.E. Corner of Claim;

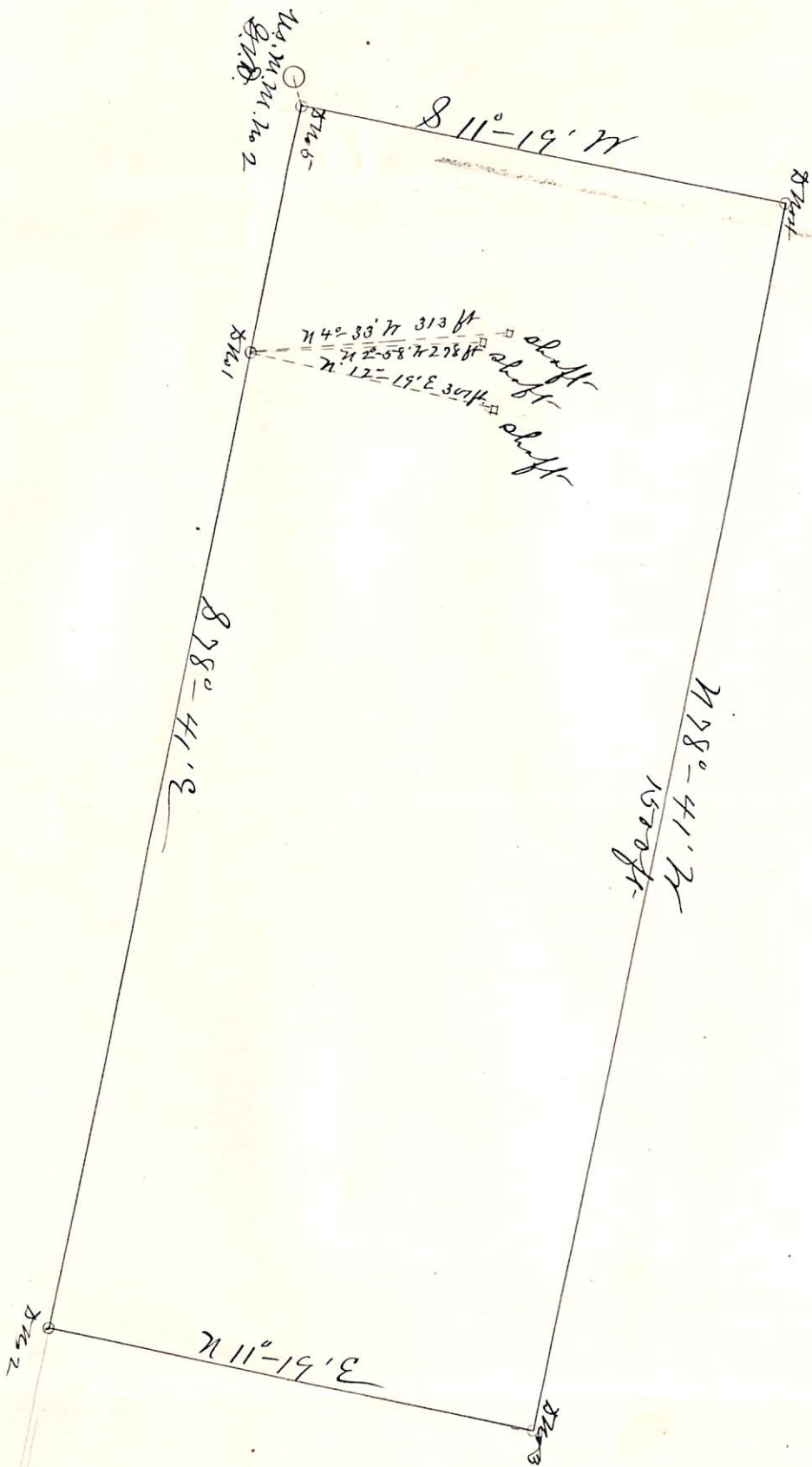
Territory of Arizona }
 County of Yavapai } S.S.

I, William Wilkenson, County Recorder in and for said County and Custodian of the records thereof, do hereby Certify the above and foregoing to be a full, true and correct copy of the record of Mineral Location known and recorded as the "Delaware" Claim, as the same appears of record in Book 16. of Mines. at pages 426 + 427. Records of said County now in my office -

In witness whereof I have hereunto set my hand and affixed my official seal on this 29th day of May A.D. 1886.

William Wilkenson
 County Recorder

Stearns Mining Claim
Lot No 3



Thomas White
No. 1. Sept. Min. Survey

Scale 1 inch = 100 ft

U. S. Surveyor-General's Office.

Tucson, Arizona, August 31st 1886.

The foregoing Field Notes of the survey of the Delaware
 mining claim
 situate in the Green Valley mining district, Yavapai
 County, Arizona, claimed by Herbert H. Logan.

survey executed by Thomas W. Hine Deputy
 Surveyor, under instructions from this office, having been critically
 examined and the necessary corrections and alterations made, the said
 Field Notes and the survey they describe are hereby approved.

John A. S. S.
 Surveyor General.

Notes of the Establishment of U. S. Mineral Monument No. 2
Green Valley Mining District, ^{Gila}~~Yavapai~~ County, Arizona

The monument consists of a mound of stones, 6 x 6 x 6 ft. high on top of the cropping of a granite ledge, that projects two feet out of the ground and is marked U.S. M.M. No. 2 G.V.D. for United States Mineral Monument No. 2, Green Valley District. The monument sets on a ridge on the south side of the trail leading from the Ox Bow Mining Claim to the Excursion Mining Claim and south of a wash flowing into Rye Creek.

These bearings were taken on prominent peaks, viz.:

Bearing A - N. 53° 0' W.

Bearing B - N. 63° 20' W.

Bearing C - S. 70° 0' W., North Peak.

No other bearings available.

A meridian was established by setting an oak post, 4 x 4 ins. and 4 ft. long, 1 ft. in the ground and surrounding same by a mound of stones - post sits 200 ft. north and is marked M.

It is impracticable to connect this with U.S.M.M. No. 1 G.V.D. as the distance exceeds 4 miles and the country is very rough and broken.

Monument established July 9, 1886.

Thomas W. Hine
U.S. Deputy Mineral Surveyor

August 10, 1886
Phoenix, Arizona

Probably in Sec. 36, T. 10 N., R. 9 E., unsurveyed.

See U.S.G.S. Quadrangle "Payson" (P-22)

| | | | | | | | |
|----------|---------------|---------------|------------|------------------------------|----------------|------------------|--|
| GCDB No. | <u>990002</u> | MS or HES No. | <u>776</u> | Tract or Survey No. & Corner | <u>USMM #2</u> | Survey Date | <u>4/26/2011</u> |
| Section | <u>30</u> | Township | <u>10N</u> | Range | <u>10E</u> | Meridian: | <u>Gila & Salt River Base & Meridian</u> |
| County | <u>Gila</u> | State | <u>AZ</u> | Ranger District: | <u>Payson</u> | National Forest: | <u>Tonto</u> |

| | | | | | |
|--------------------------------|---------------------------|-------|-----------------------|---------------|---------------------|
| Plane Coordinate Position Data | | Zone: | <u>AZ East</u> | Code: | <u>0201</u> |
| NAD 83 | N: <u>1158951.909</u> ift | E: | <u>335117.892</u> ift | NAVD 88 ELEV: | <u>4490.201</u> ift |
| Precisions: | H: <u>0.042</u> ift | V: | <u>0.141</u> ift | | |

| | | | |
|---------------|------------------------------|--------------------|---------------------|
| Geodetic Data | | Geoid: | <u>09</u> |
| Latitude | N: <u>34° 10' 47.10707"</u> | Ellipsoidal Height | <u>4405.052</u> ift |
| Longitude | W: <u>111° 22' 23.29129"</u> | | |

Coordinates obtained from GPS observations processed through OPUS-RS

Monument Description:

Record:
2'x3'x2' Granite Boulder above ground marked USMM N IV

Found:
3.5' x 3.5' x2.8' Granite stone marked USMM No2 GVD.

Accessories:

Record:

1) Mound on SSW side.

Found:

1) Found

2) NW corner of house brs N81°15'E, 97'.

2) Gone

3)

3) MAG nail in the top of SW fence corner post brs N28°E, 92.4'.

4)

4) A Blazed 28" diameter Juniper tree bears S70°W, 92.3'.

Photo Ident. No. 990002

Description USMM #2



Photo Ident. No. 990002

Description USMM #2



Photo Ident. No. 990002

Description USMM #2



Photo Ident. No. 990002

Description USMM #2



| | | | | | | | |
|----------|---------------|---------------|------------|------------------------------|--------------------------------|------------------|--|
| GCDB No. | <u>903040</u> | MS or HES No. | <u>776</u> | Tract or Survey No. & Corner | <u>MS776 Delaware Corner 5</u> | Survey Date | <u>4/26/2011</u> |
| Section | <u>30</u> | Township | <u>10N</u> | Range | <u>10E</u> | Meridian: | <u>Gila & Salt River Base & Meridian</u> |
| County | <u>Gila</u> | State | <u>AZ</u> | Ranger District: | <u>Payson</u> | National Forest: | <u>Tonto</u> |

| | | | | | |
|--------------------------------|---------------------------|-------|-----------------------|---------------|---------------------|
| Plane Coordinate Position Data | | Zone: | <u>AZ East</u> | Code: | <u>0201</u> |
| NAD 83 | N: <u>1158954.601</u> ift | E: | <u>335154.825</u> ift | NAVD 88 ELEV: | <u>4487.796</u> ift |
| Precisions: | H: <u>0.007</u> ift | V: | <u>0.014</u> ift | | |

| | | | |
|---------------|------------------------------|--------------------|---------------------|
| Goedetic Data | | Geoid: | <u>09</u> |
| Latitude | N: <u>34° 10' 47.13802"</u> | Ellipsoidal Height | <u>4402.648</u> ift |
| Longitude | W: <u>111° 22' 22.85213"</u> | | |

Coordinates obtained from GPS observations processed through OPUS-RS

Monument Description:

Record:
A Granite stone 23"x 9"x 7" set 1 foot in the ground, marked D No5, alongside a mound of stones..

Found:
1 1/2" Plastic Cap marked TLG&ASSOC LS14169

Accessories:

Record:

- 1) Monument of stones
- 2) US Mineral Monument No2 Brs S85°0'W, 37 ft.
- 3)
- 4)

Found:

- 1) Found
- 2) Found
- 3) A blazed 28"Dia Juniper 580°E 56.9'
- 4) Mag Nail in top of SW Fence corner post bears N15°E 69.5'

Photo Ident. No. 903040

Description MS776 Delaware Corner 5



Photo Ident. No. 903040

Description MS776 Delaware Corner 5



Photo Ident. No. 903040

Description MS776 Delaware Corner 5



Photo Ident. No. 903040

Description MS776 Delaware Corner 5



Photo Ident. No. 903040

Description MS776 Delaware Corner 5



Photo Ident. No. 903040

Description MS776 Delaware Corner 5



| | | | | | | | |
|----------|---------------|---------------|------------|------------------------------|--------------------------------|------------------|---------------------------------------|
| GCDB No. | <u>903010</u> | MS or HES No. | <u>776</u> | Tract or Survey No. & Corner | <u>MS776 Delaware Corner 4</u> | Survey Date | <u>4/26/2011</u> |
| Section | <u>30</u> | Township | <u>10N</u> | Range | <u>10E</u> | Meridian: | <u>Gila & Salt River Meridian</u> |
| County | <u>Gila</u> | State | <u>AZ</u> | Ranger District: | <u>Payson</u> | National Forest: | <u>Tonto</u> |

| | | | | | |
|--------------------------------|---------------------------|-------|-----------------------|---------------|---------------------|
| Plane Coordinate Position Data | | Zone: | <u>AZ East</u> | Code: | <u>0201</u> |
| NAD 83 | N: <u>1159540.588</u> ift | E: | <u>335266.191</u> ift | NAVD 88 ELEV: | <u>4473.558</u> ift |
| Precisions: | H: <u>0.007</u> ift | V: | <u>0.010</u> ift | | |

| | | | |
|---------------|------------------------------|--------------------|-----------------|
| Geodetic Data | | Geoid: | <u>09</u> |
| Latitude | N: <u>34° 10' 52.94694"</u> | Ellipsoidal Height | <u>4388.444</u> |
| Longitude | W: <u>111° 22' 21.60925"</u> | | |

Coordinates obtained from GPS observations processed through OPUS-RS

Monument Description:

Record:

A Granite post 24x10x8" set 1 foot in the ground, marked D No4 alongside a mound of stones

Found:

Found as recorded

Accessories:

Record:

1) Monument of stones

2)

3)

4)

Found:

1) Found

2) Blazed 18"diameter juniper brs S10°W 9'

3) Blazed 10"Diameter pine brs N58°W 37'

4)

Photo Ident. No. 903010

Description MS776 Delaware Corner 4



Photo Ident. No. 903010

Description MS776 Delaware Corner 4



Photo Ident. No. 903010

Description MS776 Delaware Corner 4



Photo Ident. No. 903010

Description MS776 Delaware Corner 4

