

**M  
S  
-**

**0**

**1**

**2**

**4**

**0**



(4-683.)

Mineral Survey No. ~~1840 A.B.~~

Lot No. ....

*Gila*

Land District.

FIELD NOTES

OF THE SURVEY OF THE MINING CLAIM OF

*H. Rechoyner*  
of *Globe, Gila Co. Arizona*

KNOWN AS THE

*Rebekah Mine & Millsite*  
*Globe*

Mining District,

*Gila*

County,

*Arizona*

Section

Township

*IV*

Range

*13 E*

Surveyed under instructions dated *March 20*, 1897,

by *Albert F. Waters*,

U. S. Deputy Mineral Surveyor

Claim located *Oct 1st & Dec 6 respectively*, 1897<sup>90</sup>.

Survey commenced *April 24<sup>th</sup>*, 1897.

Survey completed *August 18<sup>th</sup>*, 1897.

o 6-160

*Address of owner, claimant -*  
*Globe, Arizona.*



# PRELIMINARY OATHS OF ASSISTANTS IN SURVEY OF MINING CLAIM.

WE, Albert A. Herbert and Howard H. Brew,  
do solemnly swear that we will well and faithfully execute the duties of chain carriers;  
that we will level the chain upon even and uneven ground and plumb the tally-pins,  
either by sticking or dropping the same; that we will report the true distance to all  
notable objects, and the true length of all lines that we assist in measuring, to the best  
of our skill and ability, and in accordance with instructions given us, in the survey of  
the Mining Claim of H. Gschogner,  
Rebekah Mine and millsite, known as the  
situate in Gila Globe mining district,  
County, Arizona,  
in Section \_\_\_\_\_, Township No. \_\_\_\_\_, Range No. \_\_\_\_\_.

Albert A. Herbert, Chainman.  
Howard H. Brew, Chainman.

Subscribed and sworn to by the above-named persons before  
me this 22 day of April, 1897.

J. M. Allison  
Co. Recorder

I, William D. Claypool, do solemnly swear that I will well and  
truly perform the duties of axeman, in the establishment of corners and other duties,  
according to instructions given me and to the best of my skill and ability, in the survey  
of the Mining Claim of H. Gschogner,  
known as the Rebekah mine and millsite  
more fully described in the preceding affidavit.

William D. Claypool, Axeman.

Subscribed and sworn to by the said William D. Claypool  
before me this 22 day of April, 1897.

J. M. Allison  
Co. Recorder

I, \_\_\_\_\_, do solemnly swear that I will  
well and truly perform the duties of flagman, in the establishment of corners and other  
duties, according to instructions given me and to the best of my skill and ability, in the  
survey of the Mining Claim of \_\_\_\_\_  
known as the \_\_\_\_\_,  
more fully described in the preceding affidavit.

\_\_\_\_\_, Flagman.

Subscribed and sworn to by the said \_\_\_\_\_  
before me this \_\_\_\_\_ day of \_\_\_\_\_,  
18 \_\_\_\_\_.



# Survey 1240-A. Rebekah Mine.

Feet

From a monument of stone, the easterly end center of claim, I measured 300 ft toward the S.E. location monument where I established Cor. No. 1, a pine post 5" in diameter, 4 ft long, set 1 ft in the ground and branded 1240-A. No. 1. About its base a pile of stones 2 1/2' high

A monument of stones, the S.E. location monument bears S 25° W 42.8 feet

The largest boulder near, a split block of diorite rock, 2 ft high and nearly 3 ft square on top, cut on top face B.R.X. 1240-A. 1. <sup>to 200</sup>  
S 67° 50' W 132.45 ft

Center of the Discovery shaft bears N 23° 56' W 466.6 ft

The Junction of two <sup>4</sup> creek beds <sup>to the</sup> southward bears S 26° 32' W 155 ft  
U.S. Min. Mon. No. 5, <sup>4</sup> bears S 30° 47' W 6841 ft. It is a monument of stone 4 ft high built on the S.E. crest of Blue Bird Hill

At its westerly base a large stone is cut U.S. m.m. No. 5.

At 8 P.M. April 24, 1897 I took an observation on Polaris in strict conformity with the instructions laid down in the Manual of Surveying Instructions of the U.S. Land Office. A line previously established by the solar attachment was found to be in error .09 ft easterly in 200 ft of line or 1" 30" of arc proving the solar practically correct. The lines from cor. No. 1. to Cors No 2 & 4 were turned off from this true North line established by observation on Polaris

Thence N 65° W

Va 13° 30' E

- 275 To a ravine running westerly, width 4 ft
  - 395 " " " " " " " 4 ft
  - 680 " " " " S. Westerly " 30 ft
  - 1375 .. the crest of a hog back running S.W. & N.E.
  - 1450 .. a ravine running S. Westerly, width 6 ft
  - 1500 To Corner No. 2. a cedar post 4" in diameter and 4 ft long sunk 1 ft. in the ground with a monument of stones about it 2 1/2 ft high, Post is branded 1240-A. No. 2.
- East Peak of Pinal Mountain bears S 1° 20' W  
Apache Peak bears N 53° E  
Location monument bears 530 ft N 67° W.

Thence N 25° E

Var. 13° 20' E

- 300 To Westerly end center where a ravine crosses southerly. dry water course is 2' wide. No monument was set.



1240-A.

- 600 To Cor. No. 3. which is a cedar post 4' long 4" diam., branded 1240 A. No. 3. set 1 ft in the ground and surrounded by a pile of stones 2 1/2' high.  
Location corner bears N 66° W 166.2'  
The only giant cactus on the hillside bears S 56° 57' E 62 ft  
Eastern Peak of the Pinals bears S 1° 34' W  
Apache Peak bears N 53° 30' E  
A shaft 50' deep 4x6 dipping at about 70° North Westerly bears S 24° 30' E  
165 ft. From it an open cut 75 ft long 6' wide and 1' to 12' deep runs N 54° E  
Thence S 65° E  
Va 13° 30' E
- 250 To a ravine running southerly with water course dry 4' wide
- 325 " crest of a hog back running S.W.
- 805 " a ravine running southerly, dry water course 6' wide
- 1045 " " " " S.W. " " " 40' "
- 1500 " Cor. No. 4. Identical with location corner. A cedar post 4' long 4" diam. branded 1240.A. No. 4. set 1 ft in ground and around its base a pile of stone 2 1/2' high  
Westerly and highest peak of Pinals bears S 5° W  
A high peak about 2 miles away bears S 23° E  
Thence S 25° W  
Va 13° 20' E
- 170 To a ravine running westerly, dry water course 2' wide
- 300 " " monument of stones 2' high in which location notice is placed
- 350 " " shallow wash and contact between diorite and granite
- 500 " " ravine running westerly, dry water course 2' wide
- 515 " " " " " " " 5' "
- 600 " place of beginning at Cor. No. 1.

The improvements being in a group hid from the corners by mesquit brush and rolling ground I deflected a line from the true north point set by Polaris, N 23° 56' W 441.9 feet and set a stake 2" x 2" in monument of stone 1' high for a transit hub, from which  
 A caved shaft - No. 2 - said to be 35' deep 4x6 bears N 30° 13' W 120'  
 " " " - No. 3 - " " " 210' " 6x8' bears N 45° 5' W 165'  
 A shaft - No. 4 - dipping steeply to the west without ladders and 4x6' bears N 49° 24' W. 525'. It is said to be 50' deep.



1240. A

This survey is not identical with its location which embraces an area of much greater size. There are no claims held adjacent to the Rebekah mining claim

Area 20.65 Acres  
Location.

This claim is located about six miles N 110° W from the town of Globe, Gila Co. Arizona. Approx Township 2 N 15 E. Gila & Salt River base and meridian and is on unsurveyed land

Improvements.

I certify that the value of the labor and improvements upon this claim, placed thereon by the claimant and his grantors, is not less than five hundred dollars, and that said improvements consist of:

- No. 1. The discovery shaft of the Rebekah lode, the center of which bears N 23° 56' W 466.6 from cor. No. 1. It is to the best of my knowledge 115' deep vertical, 4' x 6' in section, with a drift at bottom 4' x 7' running north westerly 40' thence westerly 55'. The shaft is full of water to 30' of top so that I could not measure it. Value \$ 1050.00
  - No. 2. a shaft caved in, without ladders and vertical 35' deep 4' x 6' which bears N. 30° 15' W. 120' from transit but point established from Cor. #1. N. 23° 56' W. 441.9 ft. Value \$ 175.00
  - No. 3. a shaft with a very large dump sides caved at the top and without ladders vertical and 5' x 8' said to be 210' deep with a slope at depth of 50' running easterly 75' and 10' wide and at depth of 100' & 210' two drifts 4' x 7' running easterly 75' & 125' respectively bears from transit but point described above N. 45° 05' W. 165'. Value \$ 2250.00
  - No. 4. a shaft 50' deep with an inclined opening connecting near its bottom and breaking through about 30' N. Easterly from the shaft. Value \$ 250.00
  - No. 5. Shaft ~~cut described from Cor. No. 3.~~ (4x6) on N. 49° 24' W. 525' from transit but point described above. Value \$ 250.00
- Total \$ 4975.00

True bearing and distance to shaft.

Bears from transit but point described above

cut from foot point

4' open cut - 70' long 6' wide from 170' deep shaft N. 54° 40' E. 124' 30' C. 165' from corner # 5.

The surface of this claim is rolling and treeless with a few musquit & other bushes. The vein is blind except where it outcrops at the creek bed near the discovery shaft. The surface is mainly granite, diorite and quartzite rock in place.

From Cor. 1. 1240. A to Cor. 1. 1240. B. is

S 8° 06' E 30788 ft  
survey was made with Gurley light mountain transit & solar attachment, and measured with 300' & 33' steel tapes.



Survey 1240 A. & B.

Notes of Meander Line from Corner No. 1. of mine to Cor No. 1. of Millsite

Feet	Starting at Cor No. 1. of Rehekah Mine, thence
1278.0	S 88° 14' W To a transit hub set on a hog back, thence
156.7	S 55° 26' W To " " " " in a rocky side knob of the hill, thence
2011.4	S 38° 35' W " " " " on the side hill to the west and a little above the dry creek bed about 60 ft, thence
919.8	S 22° 45' W to a transit hub on the hog back across the creek bed, Thence
3388.4	S 25° 44' E To a monument of stone 4 ft high built on S.E. crest of Blue Bird Hill, large stone at West base carved U.S.M.M. No. 3. Thence
602.0	S 82° 35' W to a pine post 4 in square and 4 ft high set in a monument of stone and carved B.B.S.W. Thence
1451.6	S 64° 50' W To a transit hub on the crest of a small peak, thence
3457.0	S 13° 53' W " " " " " " " " " " " " thence
3937.0	S 9° 12' W " " " " " " a small ridge at west base of Old Dominion hills, thence
1246.5	S 7° 13' W To a transit hub in sand wash of Pinal Creek, thence
761.1	S 52° 42' E " " " " at road side where it crosses a little ridge at big quartzite dyke west of Old Dominion Mine, thence
1013.2	S 52° 10' E to transit hub in sand wash 60 ft. out from base of the point of the hill across from Old Dominion mine. Thence
2250.0	S 5° 9' W to transit hub on ridge that road crosses below R. Stead's ranch house, thence
1844.7	S 37° 22' E To transit hub in Pinal Creek wash, thence,
368.7	S 18° 30' E " " " " on point where road turns Eastward just below R. Stead's ranch house, thence
2764.9	S 36° 8' E To a transit hub in the Pinal Sand wash, thence
2524.5	S 29° 8' E " " " " " " " " " " " " " "
2428.1	S 41° 27' E " a cedar stake in monument of stone unmarked, thence
410.7	S 23° E " a white post 6 in square and 18 in high, thence
908.0	S 10° 54' E " " transit hub in Pinal creek, thence
1319.6	S 26° 37' E " " " " in road in front of W. William's store, thence
305.8	S 11° 47' W " " " " center of road which leaves the main road to go to Old Dominion smelter, thence
648.1	S 58° 33' E To cor. No. 1 of Rehekah Millsite, Survey No. 1240 B.

Blue Bird Hill



# Rebekah Millsite Survey No. 1240-B.

I started at Cor No. 1. of the original location survey of Record executed by the then county surveyor Alexander G. Rendleton Dec. 6. 1890 and transmitted to me by the Hon. Surveyor General for Arizona. The monument at Cor. No. 4. had been recently destroyed in grading a road by persons unknown and the stones so scattered as to make its exact location uncertain. I therefore relocated it N. 49° W. 459' <sup>from cor #1,</sup> in strict conformity with location survey. Cors. No. 2. & 3. are within the high water banks of Pinal Creek and have been destroyed by floods of water from the mountains. Both of these corners were relocated in conformity with the location survey. I enclose affidavits by Supt Edward H. Cook of the United Globe Mines and Mr James R. Watson long a resident near the millsite which show that the corners reestablished by me are in their correct positions. I therefore certify that the following survey is in strict conformity with its location. Location survey had a closing error of about 9' which makes one of my lines slightly different.

Beginning at Cor. No. 1. a cedar post 4' long 5" diam sunk 1' in the ground and about its base a mound of stones 2' high. Post is branded 1240-B-No. 1. Whence N.E. Cor of Globe Townsite, marked by a sq. post 6'x6', 3' high, bears S 86° 23' E 1643.9'

The S.E. Cor of a house, No 6, bears N 55° 35' W 272.4'  
 " " " " " " " " No. 1. " " S 80° 4' W 234.6'

### Thence

S 37° W. Va 13° 20' W E

- 390.5 Bed of Pinal Creek 120' wide flowing N.W.
- 450.5 Cor No. 2. a piece of 12" T rail 3' long, stamped 1240-B-No 2 driven entirely into the ground and over it a cedar post similarly branded, 4' long, 4" diam with mound of stone 2' high at its base. Whence

The easterly of two sycamore trees about 12" diam standing in the present low water creek bed and carved B.T. x 1240-B ~~No~~ II bears S 10° E 105'

A large sycamore tree 3' diam. upon which a suspension foot bridge is hung, carved B.T. x 1240-B. II, bears N 45° 40' W 150.2'

### Thence

N 39° W. Va 13° 20' E

- 200 To low water bed of Pinal creek, within whose high water bed the line continues its entire length.
- 492 S.W. Cor of 1 story board house 15'x16', its longer sides bear N 20° W. S.W. cor is 2' within the line <sup>No. 8.</sup>



- <sup>20</sup>  
 520 To county road running North & South  
 558 To cor. No. 3. a piece of 12<sup>x</sup> 7 rail stamped 1240-B-No. 3.  
 3' long and driven entirely into the ground. The corner  
 being just west of the wheel track of the county road and  
 in a place used by the big freight teams as a camping  
 place, I considered it unfit to erect a monument whence  
 a witness cor. a cedar post 4' long and 5" diam. set in a  
 monument of stone 2' high and branded 1240-B-No. 3. W.C.  
 bears 48.2' N 50° 28' E  
 From true corner a sycamore tree 14" diam, burned at base  
 and carved <sup>(B.J.X 1240-B-III bears)</sup> N 57° 07' W 82.7'  
 A double sycamore each tree 12" diam, carved B.J.X, 1240, B,  
 III bears N 25° 28' W. 65'  
 From true Cor. Thence  
 N 30° 28' E. Va 13° 30' E  
 3.0 The county road running road S  
 48.2 To witness corner, also high water bank of Pinal creek  
 57.0 a board one story house used ~~by~~ as a saloon. line  
 strikes it 7.7 ft from N.W. cor. Building 24x16, <sup>(bears 57° W from N.W. cor)</sup> longest sides  
 105.0 Intersects a line of the Gardner Millsite, older location but  
 unpatented, <sup>claimant unknown</sup> bearing S 86° 50' E 61' to its S.E. Cor.  
 257.8 Intersects a line of Gardner Millsite bearing S 30° 8' W 114.4'  
 to same S.E. Cor  
 348 To a road which soon spreads out into indistinct branches running S 28° E 130'  
 358 To Cor. No. 4. a cedar post 5" diam. 4' long branded  
 1420-B-No. 4. sunk 1' in ground with mound of stone 2'  
 high at its base and beside it a 12<sup>x</sup> 7 rail similarly  
 stamped driven entirely in the ground  
 The N.W. Cor. of a house <sup>No. 10</sup> bears 68.7' S 41° 40' E  
 The N.E. Cor. of a house <sup>No. 11</sup> bears 66.5' N 47° 38' W  
 69' Thence  
 S 49° E Va 13° 20' E  
 67 To westerly end of a house partly within line, line strikes  
 9 feet from S.W. cor. sides bear S 57° E longest  
 way, house 1 story 22x12'  
 459' To Cor. No. 1. the place of beginning



## Fences, Houses, etc on Rebekah Millsite

Starting at Corner No. 1. and running toward Cor. 4.  
 $\uparrow 49^{\circ} W$

- 63.6 To a wire fence corner  
 202.2 To where a wire fence part of enclosure No. 6. of plat crosses inside the millsite

Now from corner just noted, the wire fence runs  $S 47^{\circ} 30' W$  333 ft. at  $90'$  a fence starts to the right which I will call "point No. 1." of enclosure No. 1. at 305.8' another fence starts to the right  $N 11^{\circ} 42' W$  182.6' <sup>to point #2</sup> to a corner <sup>on same course</sup> at 72' a fence of wire starts running  $N 78^{\circ} E$  126' to a corner which I will call point No. 3 of enclosure No. 1. From <sup>point No. 2</sup> corner noted above a wire fence continues  $N 78^{\circ} 18' E$  135.2' to a corner <sup>on point No. 4</sup> <sup>from this hereinbefore mentioned</sup> corner <sup>point No. 4</sup> wire fence runs  $S 13^{\circ} E$  107.5' to "point No. 3" <sup>and the</sup> <sup>hereinbefore mentioned</sup> main fence continues <sup>from point No. 4.</sup>  $S 47^{\circ} 3' E$  91.4' to point No. 1. Within this enclosure is a house <sup>No. 1.</sup> 26' x 34' standing lengthwise  $N 10^{\circ} W$ . whose S.E. corner bears  $S 80^{\circ} 4' W$  from Cor. No. 1. of this survey. 234.6 ft.  <sup>$S 47^{\circ} 30' W$</sup>

At 333' along the fence first mentioned in this paragraph is a corner with fence (wire) running  $S 42^{\circ} E$  127' <sup>graph</sup> where it crosses the millsite line.

1-4

Again starting at side line where wire fence crosses as noted 202.2' from Cor. No. 1. The fence runs thence  $S 42^{\circ} 7' W$  65' to a corner of enclosure No. 6. thence  $N 52^{\circ} 55' W$  100.5' to a corner, thence  $N 26^{\circ} 58' W$  43.8' thence  $N 48^{\circ} 15' E$  56' to where the fence crosses the millsite line. Within this enclosure is a house <sup>No. 6.</sup> 20' x 12' standing longest way  $N 45^{\circ} W$ . Its S.W. cor. bears from Cor No. 1.  $N 55^{\circ} 35' W$  272.4'

- 12.0' Starting at Cor. No. 4. running toward No. 3.  $S 50^{\circ} 28' W$  to where a wire fence crosses the line, thence along this fence  $S 28^{\circ} E$  118' to a cor. thence  $S 58^{\circ} 32' W$  48.9' thence  $N 31^{\circ} 20' W$  55.4' thence  $N 70^{\circ} 52' W$  36.8' thence  $N 1^{\circ} 36' E$  35' to where the fence again crosses the millsite line. Within this enclosure No. 5. were two tents at time of survey

Starting at S.E. Cor. of Gardner Millsite which is located in preceding notes and is identical with S.W. Cor. of a  $\frac{1}{2}$  stone and brush enclosure No. 4. thence along this brush fence  $S 83^{\circ} 25' E$  96.2' to its S.E. Cor thence  $N 15^{\circ} 55' E$  78.7' to N.E. cor. thence  $N 74^{\circ} W$  66.3' to the fence & line of the Gardner Millsite. From S.E. Cor of Enclosure No. 4. the S.E. Cor



1240.B.

of an adobe house, No. 4. 12' x 15' one story bears N 43° 50' W 28'; its longest side bears N 18° E. 8' south of this is another board house 12' x 12', 1 story, sides bearing the same.

A board house <sup>No. 3.</sup> used as tool house for the Rebekah mine bears S 34° 30' W 154.5' to its N.E. cor. It is 18' x 12' with longer sides running S 26° E

N.E. Cor. of 1 story board house No. 7. bears S 46° 57' W 55'. It is 12' x 24' its longest sides bearing S 18° W and was built since this survey was started April 26. 1897.

The N.E. Cor. of enclosure No. 3. bears S 29° 40' W 97'

The N.W. " " " " No. 2. " " S 11° 50' W 90.2'

Starting at N.W. Cor of wire fence enclosure No. 2. thence S 71° 26' E 81.7', thence S 13° 18' E 88.5', thence S 70° 37' W 33.8', thence N 73° 10' W 52.2' thence N 8° 38' W 108', to starting point

Starting at N.E. Cor enclosure No. 3. thence along wire fence S 3° 26' E 83.2', thence N 78° 27' W 51.4', thence N 41° 32' W 70.9' thence N 74° 34' E to a wire fence, starting there and running N 5° E 105' to a point near

44.5

S.E. Cor of Gardner millsite: 36.3' along this fence <sup>last mentioned</sup> another starts running N 84° 24' W 110' to its end. Thence from point No. 1 of enclosure No. 3.

97.2

<sup>continues 52.7' to</sup> to N.E. corner, place of beginning

Total Area 4.66 acres

Less Gardner millsite in conflict 0.06 leaves  
Net Area 4.6 Acres.

Great Republic millsite held by H. Gschweguer joins line 1-2 of this survey. Calatts and other squatter claims join it at various uncertain points.

Rebekah millsite is located in Globe Mining district Gila Co. Arizona approximately in Township <sup>R. 1. N. 15 E</sup> Gila and Salt River Base & Meridian on unsurveyed public land. For the most part the surface is level and is covered with soil and boulders

This survey was made with a Gurley light Mountain Transit with Burt solar attachment, <sup>the courses were determined by direct solar observations</sup> and the measurements were made with steel tapes 300' & 33' long

Albert L. Waters.

U.S. Dep. Min Surveyor.

August 18<sup>th</sup> 1897. Globe. Arizona



In re Survey #1240-B, REBEKAH MILLSITE.

Territory of Arizona,

County of Gila,- ss.

James <sup>R.</sup> Watson and Edward H. Cook, each being duly sworn, each for himself and not one for the other, deposes and says: I am a resident and citizen of Globe, Gila County, Arizona Territory; I am acquainted with the Rebekah Millsite, claimed by H. Zschoegner and with Corners Numbers 2, 3 and 4 thereof as originally placed upon said Millsite by said claimant; that within my knowledge the monuments of stone marking said corners were respectively placed upon said Millsite and so remained for a great length of time thereafter; that Corners 2 and 3 as described in the original location notice of said Millsite were situated in the bed of Pinal Creek and were destroyed by floods of water running down said Creek at sundry times: that Corner No. 4 was destroyed by dirt excavated from a slight side hill in the construction of a wagon road which <sup>approached</sup> ~~crosses~~ said Millsite at Corner No. 4.; that to the best of affiants knowledge and belief the Monuments now established in the Mineral Survey of said Millsite No. 1240- B, as marking said Corners Nos. 2, 3 and 4 as shown by the Plat of said Survey and the Notice of Location of said Millsite, are identical with the location of the original monuments as aforesaid.

Subscribed and sworn to before me this  
18<sup>th</sup> day of September, A.D. 1897.

*J. R. Watson*  
*James*  
*Edward H. Cook*

*J. M. Allison*  
*Co. Recorder, Gila Co. Ariz.*

*By Chas. Martin Deputy*



# FINAL OATHS FOR SURVEYS. 12

## LIST OF NAMES.

A list of the names of the individuals employed by Albert L. Waters  
 United States Deputy Mineral Surveyor, to assist in running, measuring, and marking the lines  
 corners and boundaries described in the foregoing field notes of the survey of the mining claim  
 of H. Gschogner  
 known as the Rebekah Mine and millsite  
 and showing the respective capacities in which they acted.

- Albert A. Herbert, Chairman.
- Howard H. Bru, Chairman.
- William D. Claypool, Axman.
- ....., Flagman.

## FINAL OATHS OF ASSISTANTS.

We, Albert A. Herbert, Howard H. Bru  
 and William D. Claypool do solemnly swear that we assisted Albert  
L. Waters, United States Deputy Mineral Surveyor, in marking the corners and  
 surveying the boundaries of the mining claim of H. Gschogner  
 known as the Rebekah  
Mine and millsite, represented

in the foregoing field notes as having been surveyed by said deputy mineral surveyor and under  
 his direction; and that said survey has been in all respects, to the best of our knowledge and  
 belief, faithfully and correctly executed, and the corner and boundary monuments established  
 according to law and the instructions, furnished by the United States Surveyor-General for  
the District of Arizona.

- Albert A. Herbert, Chairman.
- Howard H. Bru, Chairman.
- William D. Claypool, Axman.
- ....., Flagman.

Subscribed and sworn  
 to by the above-named  
 persons before me this  
8<sup>th</sup> day of August, 1897  
J. M. Allison, Co. Rec.  
by Chas. Martin, Deputy.

Subscribed and sworn to by the above-named persons before me  
 this 8<sup>th</sup> day of May, 1894  
J. M. Allison  
Co. Recorder  
Gila Co. Ariz.



(4-686.)

FINAL OATH OF U. S. DEPUTY MINERAL SURVEYOR.

I, Albert L. Waters, U. S. Deputy Mineral Surveyor, do solemnly swear that, in pursuance of instructions received from the United States Surveyor General for the District of Arizona, dated March 20, 1897, I have, in strict conformity to the laws of the United States, the official regulations and instructions thereunder, and the instructions of said Surveyor General, faithfully and correctly executed the survey of the Mining Claim of A. Schoegner, known as the Rebekah Mine and Millsite, situate in Globe Mining District, Gila County, \_\_\_\_\_, in Section \_\_\_\_\_, Township No. \_\_\_\_\_, Range No. \_\_\_\_\_, and designated as Survey No. 1240 A-B, as represented in the foregoing field notes, which accurately show the boundaries of said mining claim as distinctly marked by monuments on the ground, and described in the attached copy of the location certificate, which was received by me from the Surveyor General with said instructions, and that all the corners of said survey have been established and perpetuated in strict accordance with the law, official regulations and instructions thereunder; and I do further solemnly swear that the foregoing are the true and original field notes of said survey and my report therein, and that the labor expended and improvements made upon said mining claim by claimant or his grantors are as therein fully stated, and that the character, extent, location and itemized value thereof are specified therein with particularity and full detail, and that no portion of said labor or improvements so credited to this claim has been included in the estimate of expenditures upon any other claim.

Albert L. Waters  
U. S. Deputy Mineral Surveyor.

Subscribed and sworn to by the said Albert L. Waters  
U. S. Deputy Mineral Surveyor, before me County Recorder  
Gila Co. Ariz. this 15th  
day of August, 1897.

G. M. Allison  
Co-Recorder, Gila Co., Ariz.,  
by Chas. Hartung Deputy





# Affidavit of Five Hundred Dollars Improvements.

We W. H. Woodson and Fred. F. Childers

of lawful age, being first duly sworn according to law, depose and say: that we are acquainted

with the Rebekah mining claim, situated in

Globe Mining district, Gila County,

Arizona Territory, for which H. Gschaefer

has made application for survey prior to application for patent under the provisions of the Act of Congress, approved May 10, 1872; and that the labor done and improvements made thereon by the applicant and grantor exceed Five Hundred Dollars in value, and further that we are not personally interested in said mine.

W. H. Woodson

Fred F. Childers

TERRITORY OF ARIZONA,  
County of Gila } ss.

SWORN to and subscribed before me, this

25<sup>th</sup> day of May 1897

J. M. Allison  
Co. Recorder Gila Co. A.T.



TERRITORY OF ARIZONA, }  
 County of Gila } ss.

Edward H. Cook and W. H. Woodson of said  
 County and Territory, being first duly sworn, each for himself and  
 not one for the other, deposes and says: that he is well acquainted  
 with the land of the Rebekah  
 mill-site claim, situated in Globe  
Mining District, Gila and Salt River Meridian, in the County  
 of Gila and Territory of Arizona, Claimed by

H. Zschornner  
 applicant for United States patent therefor; that he is well ac-  
 quainted with the character of said described land included within the  
 boundary lines as officially surveyed by Albert L. Waters  
 United States Deputy Mineral Surveyor, having frequently passed over  
 the same; that his knowledge of such land is such as to enable him to  
 testify understandingly with regard thereto; that there is not to his  
 knowledge, within the limits thereof, any vein or lode of quartz or  
 other rock in place bearing gold, silver, cinnabar, lead, tin or cop-  
 per, or any deposit of coal; that there is not within limits of said  
 land, within his knowledge, any placer, cement, gravel or other val-  
 uable mineral deposit; that no portion of said land is claimed under  
 the local customs or rules of miners or otherwise, except that some  
 portions thereof are enclosed and occupied with buildings which are  
 used as dwellings; that no portion of said land is worked for miner-  
 als during any part of the year by any person or persons; that said  
 land is essentially non-mineral land, and that there is within the  
 boundaries of said claim improvements, to-wit: \_\_\_\_\_

and that he has no interest whatever in said described mill-site claim.

Edward H. Cook  
W. H. Woodson

Subscribed and sworn to before me this 18<sup>th</sup> day  
 of August A. D. 1897, and I hereby  
 certify that the foregoing affidavit was read to  
 the said Edward H. Cook  
 and W. H. Woodson previous to their  
 names being subscribed thereto, and deponents are  
 reputable persons to whose affidavits full faith  
 and credit should be given.

G. M. Allison Recorder  
Chas. S. Hart Deputy Recorder



# POOR QUALITY

**The following pages are scanned at the best possible quality setting. The original pages are of poor quality and this is the best possible reproduction.**



LOCATION NOTICE.

NOTICE IS HEREBY GIVEN, that the undersigned, in compliance with the requirements of the Mining Act of Congress, approved May 10th, 1872, and all Acts amendatory thereof, have this day located and claim 1500 linear feet along the course of this lead, lode or vein of mineral bearing quartz, and 300 feet in width on each side of the middle of said lead, lode or vein, situated in the Globe Mining District, County of Gila, Arizona, and more particularly described as follows, to-wit:

COMMENCING at this monument of stones, being the center of the East end of the claim, and upon which this notice is posted; thence East of North 300 feet to a monument of stones; thence north of west 1500 feet to a monument of stones; thence west of south 300 feet to a monument of stones, being the center of the west end of claim, thence west of south 300 feet to a monument of stones; thence south of east 1500 feet to a monument of stones; thence east of north 300 feet to the place of beginning.

This claim takes in ~~xxx~~ nearly all of what was formerly known as the Mexican Silver mine, and lies about 9 miles northerly from Globe City- 1 1/2 miles south of Nugget Mill and 1/2 mile N. E. of Cox & Coplin mine, and shall be known as the REBEKAH SILVER Mine.

Located Oct 1st, 1890.

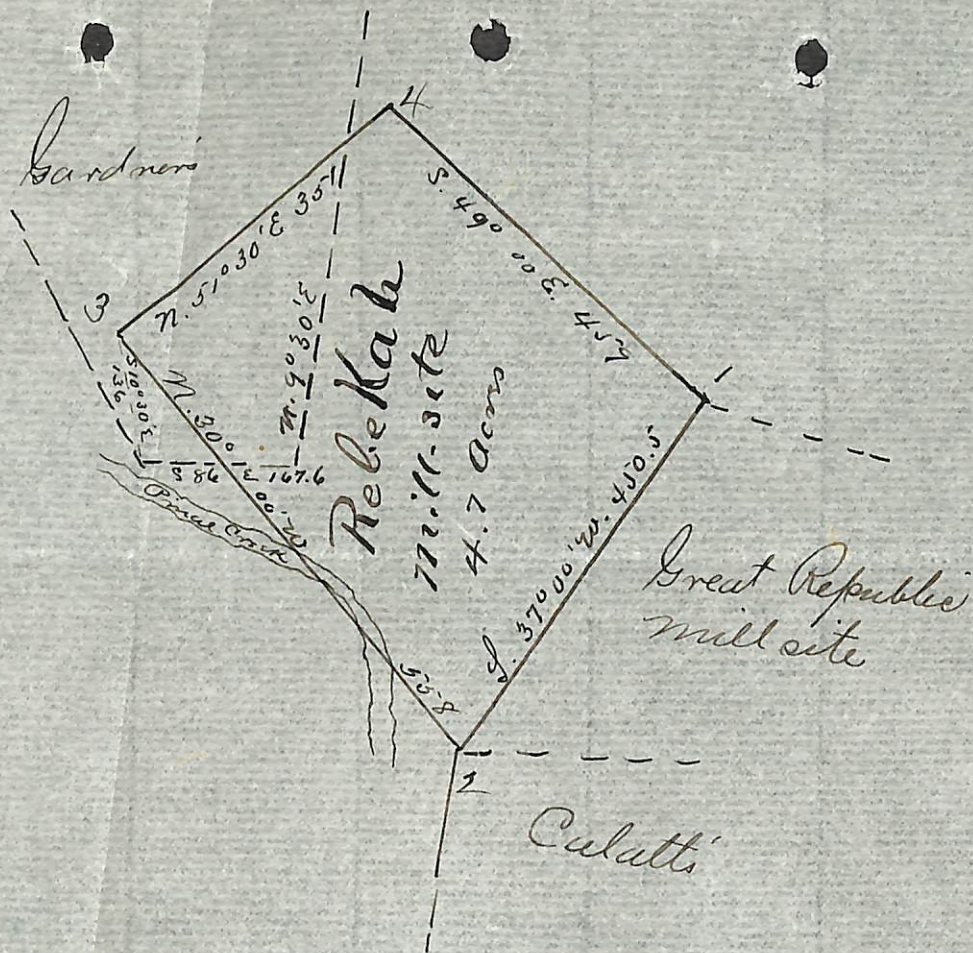
Witness: John Epley  
Barney Rice.

Locator:  
H. ZSCHOEGNER

Filed and recorded at request of H. Zschoegner, at 5 o'clock, P. M., Nov. 3rd, 1890.

[The surveyor being out of town, I run the above lines as near correct as I could with a pocket compass. H. Zschoegner.]





NOTICE of LOCATION.

NOTICE IS HEREBY GIVEN That the undersigned has this day located and claims 4.7 acres of non-mineral land as a mill-site in connection with the REBECKAH mine, situated, bounded and described as follows, to-wit:

BEGINNING at a monument upon which this notice is posted being also the initial point of the Great Republic Mill-site, said monument being situated on the point of a hill about  $\frac{1}{2}$  mile north of the town of Globe and about 450 feet east of Pinal Creek. Thence S. 37° 00' W. 450.5 feet along the side of the Great Republic Mill-site to a monument at the N. W. corner of Calatt's fence. Thence N. 39° 00' W. 558 feet to a monument on the West side of the road and East side of Pinal Creek from whence the S. W. corner of Gardner's mill-site bears S. 10° 30' E. 136 feet. Thence N. 51° 30' E. 351 feet to a monument. Thence S. 49° 00' E. 459 feet to the place of beginning. Containing 4.7 acres. Lines run on true bearings. Var. 13° 30' E. Globe District, Gila County, Arizona, Dec. 6, 1890.

Witnesses: John Cochran

H. ZSCHÖEGNER,

A. G. Pendleton.

locator.

Filed and recorded at request of A. G. Pendleton, at 11 o'clock A. M., Dec. 20", 1890.

Book 3, Records of Mines. . . . . pages 519 - 20.



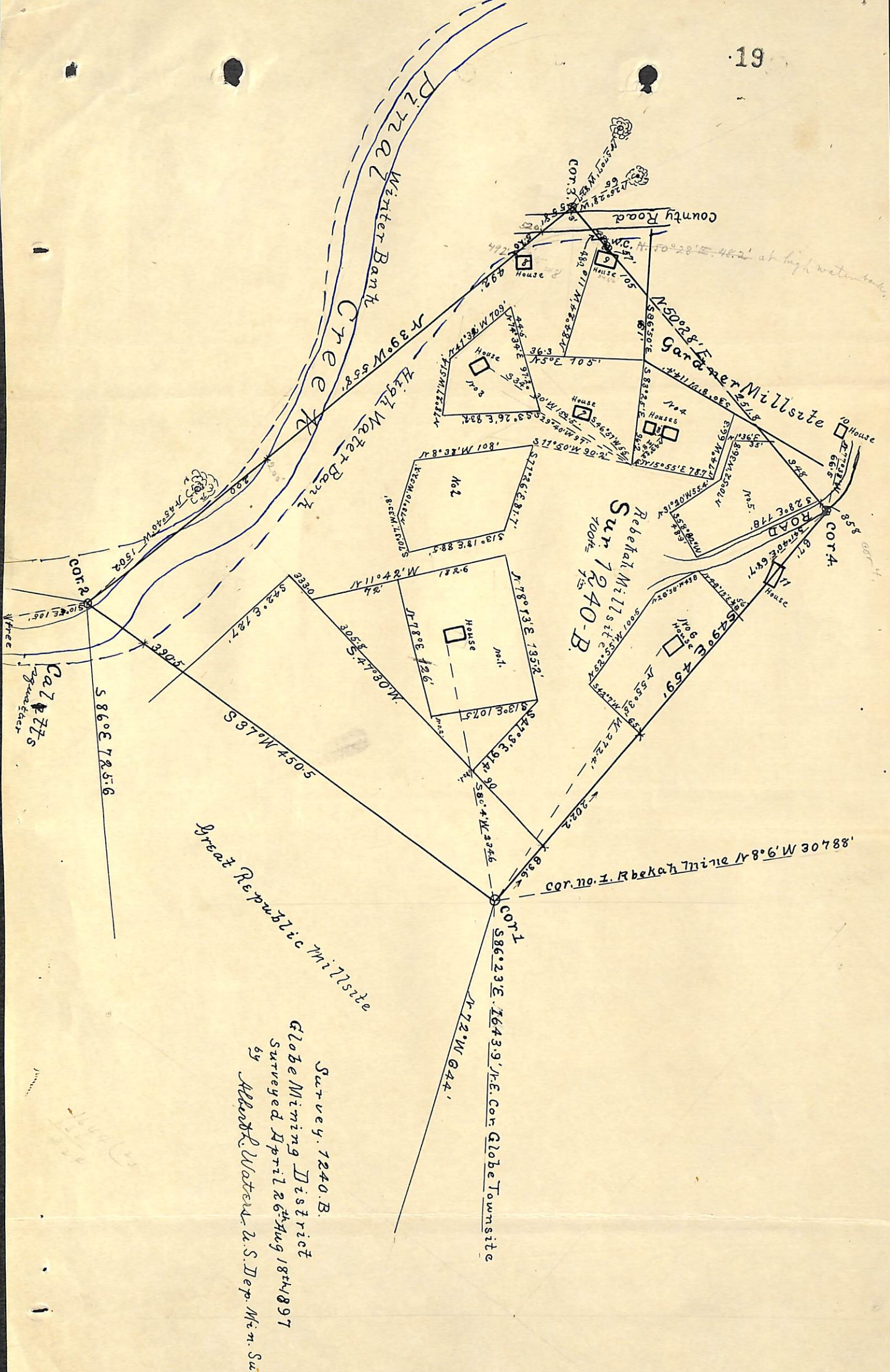
Territory of Arizona, ]  
County of Gila. ]

I, G. M. Allison, County Recorder in and for said Gila County, Arizona, do hereby certify That the foregoing two pages of type-written matter contain a full, true and correct ~~xxxxxxx~~ copies of the location notices of the Rebekah Mine, and the Rebekah Millsite, as the same appear of record in my office, in Book 3, of Records of Mines, at pages 509 and 519, respectively, together with a plat of the said Rebekah Mill-site, that I have compared the same and that the same are a correct transcript of the said location notices and of the whole thereof.

GIVEN under my hand and seal of office, this the 27th day of August, A. D., 1896.

*G. M. Allison*  
County Recorder, Gila Co., A. T.





Great Republic Mill site

Survey 1240.B.  
 Globe Mining District  
 Surveyed April 26th Aug 18th 1897  
 by Albert W. Waters U.S. Dep. Min. Sur.

Cal  
 Ptz  
 agwater

Rebekah Mill site  
 Sun 1240-B  
 100ft

Cor. no. 1. Rebekah Mine N 8° 6' W 307.88'

COR 1  
 S 86° 23' E 1643.9' J.R.E. Cor Globe Townsite  
 N 72° W 644'

N 50° 28' E 1111.8' J.R.E. Cor Globe Townsite  
 Garder Mill site

COR 4  
 S 28° E 178'

S 64° 30' E 459'  
 House No. 6

House No. 2  
 S 59° 26' E 832'

House No. 1  
 S 13° 18' E 885'

House No. 1  
 N 17° 06' E 1352'

COR 3  
 S 58° 47' W 1010'

House No. 5  
 S 86° 30' E 671'

House No. 4  
 S 81° 21' E 912'

House No. 3  
 S 82° 21' E 912'

House No. 7  
 S 47° 40' E 671'

House No. 8  
 S 47° 40' E 671'

House No. 9  
 S 47° 40' E 671'

House No. 10  
 S 47° 40' E 671'

Pina Z Winter Bank  
 Cree  
 High Water Bank  
 N 39° W 558'

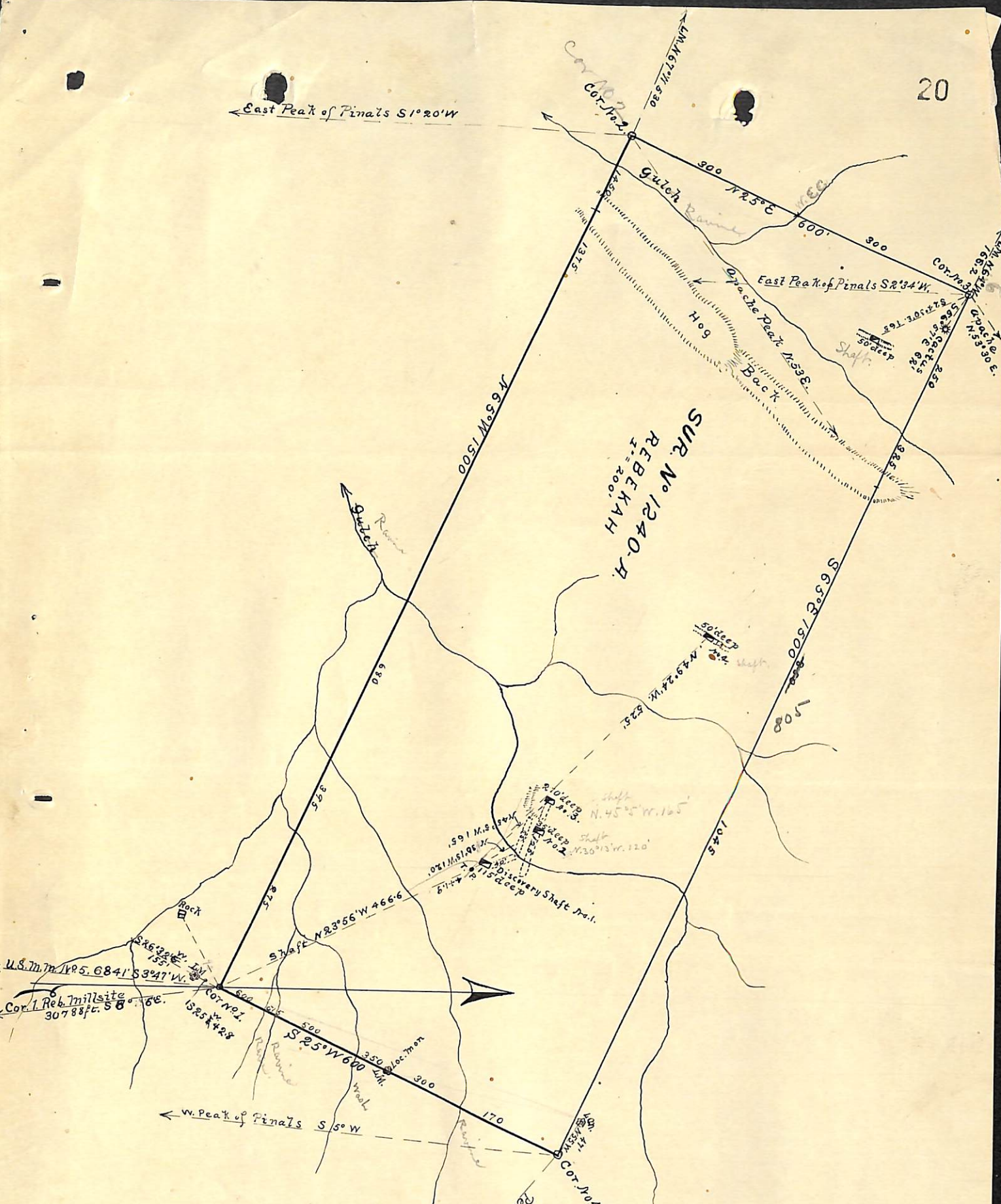
COR 2  
 S 90° E 105'  
 S 86° E 725.6'

County Road

at high water bank



← East Peak of Pinal's S1°20'W



← W. Peak of Pinal's S 5° W

Survey No. 1240-A

Globe Mining District  
 Surveyed April 30, 1897  
 by Albert J. Watson, U.S. Dep. Min. Sur.



(4-687.)

# Surveyor General's Certificate of Approval of Field Notes and Survey of Mining Claim.

Department of the Interior,

Office of U. S. Surveyor General,

Tucson, Arizona,

November 19<sup>th</sup>, 1897.

I, U. S. Surveyor General for District of Arizona,

do hereby certify that the foregoing and hereto attached Field Notes and Return of the Survey of the Mining Claim of H. Geckhoefer,

\_\_\_\_\_ known as the

Rebekah Mine and Millsite

situate in Globe mining district,

Gila County, Arizona,

in Section \_\_\_\_\_, Township No. \_\_\_\_\_, Range No. unsurveyed.

\_\_\_\_\_ designated as Survey No. 1240 A & B

executed by Albert L. Waters, U. S. Deputy Mineral

Surveyor, April 24 - Aug 16, 1897, under my instructions dated

March 20, 1897, have been critically examined and the

necessary corrections and explanations made, and the said Field Notes and Return, and

the Survey they describe, are hereby approved. A true copy of the copy of the location

certificate, filed by the applicant for survey is included in the field notes.

George Christ

U. S. Surveyor General for Arizona



UNITED STATES DEPARTMENT OF THE INTERIOR 9605 (952)  
BUREAU OF LAND MANAGEMENT M.S. 1240A&B  
ARIZONA STATE OFFICE

---

NOTICE OF CANCELLATION OF MINERAL SURVEY

The Rebekah lode and mill site, Mineral Survey No. 1240 A&B, located in sections 23 and 26, Township 1 North, Range 15 East, Gila and Salt River Meridian, Arizona, are hereby canceled.


These claims have not been filed with the Arizona State Office, Bureau of Land Management, in accordance with Section 314, 90 STAT. 2769, (43 U.S.C. 1744).

This cancellation was necessitated to clear the record.

The Mineral Survey Plat should be noted as follows:

"Rebekah lode and mill site, M.S. 1240 A&B were canceled March 30, 1999, by memo 9605 (952) M.S. 1240, which is now a part of the original field notes."

March 30, 1999  
Date

  
Chief Cadastral Surveyor of Arizona