

**M
S
-**

0

1

2

7

5

(4-683.)

Mineral Survey No. 1275

Lot No. _____

Gila

Land District.

FIELD NOTES

OF THE SURVEY OF THE MINING CLAIMS

The King of Arizona Mining & Milling Company

KNOWN AS THE

Last Hope, King of Arizona Homestake & mucho Buena lodes

King of Arizona

Mining District,

Yuma

County,

Arizona

Section (unsurveyed), Township 2 South, Range 17 W, 9 + S R 4 mer

Surveyed under instructions dated Dec. 17th, 1897,

by Wm. H. Elliott,

U. S. Deputy Mineral Surveyor.

Claim located February 15th, 1897.

Survey commenced Dec. 27th, 1897.

Survey completed Dec. 31st, 1897.

o 6-160

Address, King of Arizona Mining & Milling Co.,

Esq Randolph,

President, etc.

Yuma, Arizona

Feet.

Survey No. 1275.

Last Hope Lode.

Beginning at Corner No. 1. Identical with the S.E. corner of the location.

A rock in place, 6 x 4 x 2 ft. above the general surface, chiseled (x) at exact corner point, and 1, L.H. 1275, with mound of stone, 3 ft. base and 3 feet high alongside. Whence,

A cross (x) and B.R. 1-1275 L.H., chiseled on a rock in place, 9 x 6 x 4 ft. above the ground, bears N. $24^{\circ}07'$ E., 20 feet.

A Palo Verde tree, 6 ins. diameter, scribed B.T. 1-1275, L.H., bears S. $23^{\circ}51'$ E., 17.9 feet.

U. S. L. M. No. 1257, bears S. $25^{\circ}51'$ E., 1476.7 feet.

Thence N. $84^{\circ}27'$ W.

Descending a nearly perpendicular bluff.

20. Bottom of bluff and gradual descent.
 225. Bottom and ascend.
 625. Abrupt descent to
 750. Corner No. 2, the south side center and identical with the location.

It being impossible to set a stone or post in the ground or to do any marking on the surface, I place a porphyry stone 30 x 10 x 6 inches, chiseled 2-1275 L.H., 16 inches in ~~the~~ mound of stone, and built a mound of stone 3 feet base and 3 feet high, alongside.

No bearing objects available.

Thence N. $84^{\circ}27'$ W.

Descending.

975. Wash 6 feet wide, course S.W.; thence ascend over very rough ground along the south slope of a ridge.
 1371. Top of ridge bears Northerly and Southwesterly and descend.
 1500. Corner No. 3. Identical with the south west corner of the location.

Feet.

2.

A rock in place 8 x 6 x 3 feet above the general surface, chiseled cross (x) at corner point and 3-1275 L.H., with mound of stone alongside.

No bearings available.

Thence N. $24^{\circ}07'E$.

Along the west slope of a hill.

150. Wash, 4 feet wide, course West.

300. Corner No. 4, being the west end center and identical with the location.

A porphyry stone 30 x 12 x 6 ins., set 16 ins. in the ground, chiseled 4-1275 L.H. with mound of stone 3 feet base and 3 feet high, alongside.

No bearings available.

Thence N. $24^{\circ}07'E$.

Ascend.

350. Top of slight ridge, bears E. & W., and descend.

600. Corner No. 5. Identical with the Northwest corner of the location.

A porphyry stone 30 x 12 x 6 ins., set 16 ins. in the ground, chiseled with a cross (x) at corner point and 5-1275 L.H., with mound of stone 3 feet base and 3 1/2 ft high alongside.

No bearings available.

Thence S. $84^{\circ}27'E$.

Descend.

160. Wash, 2 ft. wide, course N.W.

512. Top of ridge, bears N. & S. and descend.

705. Wash, 2 ft. wide, course N.

750. Corner No. 6, being the North side center and identical with the location.

A porphyry stone 28 x 6 x 6 ins., set 12 ins. in the ground, chiseled 6-1275 L.H., with mound of stone 3 ft. base, and 3 feet high, alongside.

No bearings available.

Thence S. $84^{\circ}27'E$.

- Feet. S.
- 777. Top of slow ridge, N. & S., and descend.
- 888. Wash, 6 feet wide, course N. and ascend.
- 1172. Top of ridge, bears N. & S., and descend.
- 1460. Wash, 6 ft. wide, course N.
- 1500. Corner No. 7. Identical with the N.E. corner of location.
 A porphyry stone, 28 x 6 x 6 ins., set 14 ins. in the ground, chiseled with cross (x) at corner point and 7-1275 L.H., with mound of stone 3 feet base, and 3 ft. high, 3 feet SW of cor.
 No bearings available.
 Thence S. 24° 07' W.
 Ascend.
- 290. Foot of nearly perpendicular bluff, 50 feet high.
- 295. Top of bluff.
- 300. Corner No. 8, being the east end center and identical with the location.
 A porphyry stone 32 x 10 x 8 inches, set 16 ins. in the ground, chiseled 8-1275 L.H. with mound of stone 3 feet base and 3 1/2 feet high, two feet west of the corner.
 No bearings available.
 Thence S. 24° 07' W.
 Descending slightly.
- 350. Bottom and ascend.
- 580. Top of ridge, bears easterly and westerly.
- 600. To Corner No. 1, and place of beginning, survey of exterior boundaries.

 Variation at all corners 18° 50' East.

King of Arizona lode.

Beginning at corner No. 1, and identical with the S.E. corner of the location.

- Feet. 4.
- A porphyry stone 28 x 6 x 6 ins., set 14 ins. in the ground, chiseled with cross (x) at corner point and 1 K.A. 1275, with mound of stone, 3 feet high, 3 feet base, alongside. Whence, U. S. L. M. No. 1257, bears S. 43°38' W., 1006.7 feet.
- No other bearings available.
- Thence N. 65°53' W.
- Descend.
186. Wash, 4 feet wide, course N.E. Ascend.
676. Top of ridge, bears N. & S. and descend.
- 732.65 Corner No. 2, being the south side center and identical with the location.
- A porphyry stone 28 x 10 x 8 inches, set 14 ins. in the ground, chiseled 2 K.A. 1275, and built a mound of stone 3 feet base and 3 feet high, alongside.
- No bearings available.
- Thence N. 65°53' W.
- Descending.
843. Wash, 3 feet wide, course N. and ascend.
1186. Top of ridge, bears N. & S. thence along south slope of ridge near top of same.
- 1465.3 Corner No. 3. Identical with the S.W. corner of the location, and also with corner No. 1, of the Last Hope mining claim, of this survey.
- A rock in place 6 x 4 x 2 feet above the general surface, chiseled with cross (x) at corner point and 3 K.S. 1275.
- Whence,
- A cross (x) and B.R. 3 K.S. 1275 chiseled on a rock in place, 2 x 6 x 4 feet above the ground, bears N. 24°07' E., 20 feet.
- A palo verde tree 6 inches in diameter, scribed B.T. 3 K.S. 1275 bears S. 23°51' E., 172 feet.

Feet.

5.

Thence N. 24° 07' E.

Ascend.

20. Top of ridge, bears east and west.

Descend.

250. Bottom and ascend.

300. Corner No. 4, being the west end center and identical with the location, and also with corner No. 8, the east end center of the Last Hope lode, of this survey

A porphyry stone 32 x 10 x 8 inches, set 16 ins. in the ground, chiseled 4 K.A. 1275, with mound of stone 3 feet base, and 3 1/2 feet high, two feet east of the corner.

No bearings available.

Thence N. 24° 07' E.

Ascend.

305. Top of nearly perpendicular bluff, 50 feet high.

Descend.

310. Bottom of bluff, and descend.

600. Corner No. 5. Identical with the N.W. corner of the location, and corner No. 7 of the Last Hope lode, of this survey.

A porphyry stone 28 x 6 x 6 inches, set 14 ins. in the ground, chiseled with cross (x) at corner point and 5 K.A., 1275, with mound of stone 3 feet base, and 3 1/2 feet high, 3 feet S.E. of corner.

No bearings available.

Thence S. 65° 53' E.

Ascend.

320. Top of ridge, bears N. & S., and descend.

623. Wash, 5 feet wide, course N.

732.65 Corner No. 6, being the North side center and

Feet.

6.

identical with the location.

A porphyry stone 28 x 6 x 6 inches, set 14 ins. in the ground, chiseled 6 K.A. 1275, with mound of stone 3 feet base and 3 feet high, alongside.

No bearings available.

Thence S. 65°53'E.

Ascend.

783. Top of ridge, bears N. & S. and descend.
1020. Wash, 5 feet wide, course N.
Ascend.
1215. Top of ridge, bears N. & S., and descend.
1380. Wash, 10 feet wide, course North.
Ascend.
- 1465.2 Corner No. 7. Identical with the N.E. corner of the location.
A porphyry stone 24 x 8 x 6 ins., set 12 ins. in the ground, with cross (x) chiseled at corner point, and 7 K.A. 1275, with mound of stone 3 feet base, and 3 feet high, alongside.
No bearings available.
Thence S. 24°07'W.
Ascend.
112. Top of ridge, bears E. & W., and descend.
300. Corner No. 8, being the east end center and identical with the location.
A porphyry stone 28 x 8 x 6 ins., set 14 ins. in the ground, chiseled 8 K.A. 1275, with mound of stone 3 feet base, and 3 feet high, 2 feet north of the corner.
No bearings available.
Thence S. 24°07'W.
Descend.
315. Wash, 8 feet wide, course E., and ascend.
600. Corner No. 1, and place of beginning.

Variation at all corners 19°50' East.

Feet.

7.

Homestake lode.

Beginning at Corner No. 1. Identical with the S.W. corner of the location.

A porphyry stone 24 x 10 x 8 ins., set 14 ins. in the ground, chiseled with cross (x) at corner point and 1, H. 1275, with mound of stone 3 feet base, and 3 feet high, alongside.

U. S. L. M. No. 1257 bears S. 43°41' W., 1015.7 ft. Corner No. 1 of King of Arizona lode, this survey, bears S. 55°50' W., 9.6 ft. distant.

No other bearings available.

Thence S. 78°34' E.

Ascend.

20. Top of ridge, bears N. & S., and descend.

433. Road bears N.W. & S.E.

470. Wash, 15 feet wide, course S.E.

687.05 Corner No. 2, being the south side center of the claim and identical with the location.

A rock in place 6 x 4 x 2 feet above the general surface, chiseled with cross (x) at corner point and 2 H., 1275 with mound of stone 3 feet base, and 3 1/2 feet high, alongside.

No bearings available.

Thence S. 78°34' E.

Ascend.

975. Top of ridge, bears N.W. & S.E.

1374.1 Corner No. 3, being the S.E. corner of the claim,

A rock in place, 8 x 6 x 4 feet above the general surface, chiseled with cross (x) at corner point and 3 H., 1275, and built a mound of stone 3 feet base, and 3 feet high, alongside.

Original location monument bears S. 78°34' E., 32 feet.

No bearings available.

Thence N. 12°28' E.

Feet.	8.
	Descend.
275.5	Corner No. 4, being the east end center of the claim. A porphyry stone 28 x 8 x 6 ins., set 14 ins. in the ground, chiseled 4, H., 1275, and built a mound of stone 3 feet base, and 3 feet high, alongside. The original location monument bears S. $77^{\circ}32'$ E. 29 feet. Thence N. $12^{\circ}28'$ E.
	Descend.
439.	Wash, 6 feet wide, course E. and ascend.
577.4	Corner No. 5, being the N.E. corner of the claim, and identical with the location. A rock in place 6 x 4 x 2 feet above the general surface, chiseled with cross (x) at corner point and 5, H., 1275, and built a mound of stone 3 feet base and 3 feet high, alongside. No bearings available. Thence N. $78^{\circ}50'$ W.
	Ascend gradually.
200.	Wash, 3 feet wide, course S.E.
525.	Wash, 3 feet wide, course S.E.
687.05	Corner No. 6, being the north side center and identical with the location. A porphyry stone 26 x 10 x 6 ins., set 12 ins. in the ground, chiseled 6, H., 1275, and built a mound of stone 3 feet base, and 3 feet high, alongside. No bearings available. Thence N. $78^{\circ}50'$ W.
	Ascending.
925.	Top of ridge, bears N. & S., Descend.
1100.	Wash, 3 feet wide, course N. Ascend.

Feet.	9.
1160.	Top of ridge, bears N. & S., and descend.
1215.	Wash, 8 feet wide, course N.
1240.	Top of ridge, bears N. and S. Descend.
1260.8	Intersect line 7-8 of the King of Arizona mining claim of this survey, at S. $24^{\circ}07'W.$, 7.4 feet from corner No. 7.
1365.	Wash, 8 feet wide, course N.
1374.1	Corner No. 7, being the N.W. corner of the claim. The original location monument bears N. $78^{\circ}24'W.$ 17 feet.
	A rock in place 7 x 5 x 3 feet above the general surface, chiseled with cross (x) at corner point and 7, H., 1275, and built a mound of stone 3 feet base, and 3 feet high, alongside.
	A palo verde tree 5 ins. diameter, scribed B.T. 7, H., 1275, bears N. $23^{\circ}12'E.$, 24.4 feet.
	Thence S. $12^{\circ}28'W.$
	Ascend.
131.	Top of ridge, bears E. & W. Descend.
271.	Corner No. 8, being the west end center of the claim, and identical with the location.
	A porphyry stone 28 x 8 x 8 ins., set 14 ins. in the ground, chiseled 8, H., 1275, and built a mound of stone 3 feet base, and 3 feet high, alongside.
	No bearings available.
	Thence S. $12^{\circ}28'W.$
	Descending.
331.	Wash, 8 feet wide, course E.
	Ascend.
545.	Intersect line 1-8 of the King of Arizona mining claim of this survey at S. $24^{\circ}07'W.$, 266.5 feet from corner No. 8.

Feet.

10.

571.

Corner No. 1, and place of beginning.

 Variation at all corners $13^{\circ}50'E$.

Mucho Bueno lode.

Beginning at corner No. 1, being the N.W. corner of the claim and identical with the location.

A porphyry stone 26 x 6 x 6 ins., set 12 ins. in the ground, chiseled with cross (x) at corner point and 1, M.B., 1275.

U. S. L. M. No. 1257, bears S. $62^{\circ}49'W$., 1038.1 feet.

No other bearings available.

Thence N. $56^{\circ}10'E$.

Descending.

258.

Road bears N.W. & S.E.

290.

Wash, 15 feet wide, course S.E.

297.6

Intersect line 1-2 of the Homestake mining claim of this survey at S. $78^{\circ}34'E$., 477.7 feet from corner No. 1.

300.

Corner No. 2, being the *North* end center of the claim and identical with the location.

A large rock in place, 15 x 8 x 4 feet above the general surface, chiseled 2, M.B. 1275, and built a mound of stone 3 feet base, and 3 feet high alongside.

No bearings available.

305.

Ascend.

345.

Road, N.W. & S.E.

600.

Corner No. 3, being the N.E. corner of the claim, and identical with the location.

Feet.	11.
	<p>A rock in place 6 x 4 x 3 feet above the general surface, chiseled with cross (x) at corner point and 3, M.B., 1875, and built a mound of stone 3 feet base, and 3 feet high, alongside.</p> <p>No bearings available.</p> <p>Thence S. 88°50'E.</p>
	<p>Along side hill and over rocky points sloping to S.W.</p>
305.2	<p>Intersect line 2-3 of the Homestake mining claim, of this survey, at N. 78°34'W., 466.5 feet from S.E. corner No. 3.</p>
750.	<p>Corner No. 4, being the <i>East</i> side center of the claim and identical with the location.</p> <p>A porphyry stone 26 x 6 x 6 ins., set 12 ins. in the ground, chiseled 4, M.B., 1875, and built a mound of stone 3 feet base and 3 feet high, alongside. No bearings available.</p>
1500.	<p>Corner No. 5, being the S.E. corner of the claim and identical with the location.</p> <p>A porphyry stone 26 x 6 x 6 ins., set 12 ins. in the ground, chiseled with cross (x) at corner point and 5, M.B., 1875, and built a mound of stone 3 feet base and 3 feet high, alongside.</p> <p>No bearings available.</p> <p>Thence S. 58°10'W.</p>
	<p>Descend.</p>
81.	<p>Road and wash, 15 feet wide, course east and west.</p>
110.	<p>Top of a low mesa.</p>
216.	<p>Wash, 6 feet wide, course East.</p>
300.	<p>Corner No. 6, being the south end center of the claim and identical with the location.</p> <p>A porphyry stone 26 x 6 x 6 ins., set 14 ins. in the ground, chiseled 6, M.B., 1875, and built</p>

Feet.

12.

a mound of stone 3 feet high, 3 feet base alongside.

No bearings available.

Descending.

345. Wash, 2 ft. wide, course East.

Ascend.

600. Corner No. 7, being the south *west* corner of the claim, and identical with the location.

A porphyry stone 26 x 6 x 6 ins., set 14 ins. in the ground chiseled with cross (x) at corner point and 7, M.B., 1275, and built a mound of stone 3 feet base, 3 feet high, alongside.

No bearings available.

Thence N. $33^{\circ}50'W$.

Along side hill sloping N.

200. Descend gradually.

365. Descend abruptly.

386. Wash, 11 ft. wide, course N.

397. Ascend.

590. Top of ridge, bears N. & S.,

Along side hill.

735. Descend.

750. Corner No. 8, being the *west* side center and identical with the location.

A porphyry stone 26 x 6 x 6 ins., set 14 ins. in the ground, chiseled 8, M.B., 1275, and built a mound of stone 3 feet base, 3 feet high, alongside.

No bearings available.

Thence N. $33^{\circ}50'W$.

Descending.

955. Wash, 12 feet wide, course N.E.

967. Ascend abruptly.

Feet. 13.

1125. Top of rocky bluff, bears N.E. & S.W.
Descend rapidly.

1435. Wash, 6 feet wide, course N.E.

1441. Ascend.

1500. Corner No. 1, the place of beginning.

Variation at all corners 13°50' East.

AREA.

Total & net area, Last Hope lode,		19.58	acres.
Total & net area, King of Arizona lode,		20.18	"
Total area, Homestake lode,	18.19		"
Less conflict with the King of Arizona lode,	0.71		"
Less conflict with the Mucho Bueno lode,	<u>1.08</u>	<u>1.77</u>	"
Net area of Homestake lode,	16.42	16.42	"
Total & net area, Mucho Bueno lode,		<u>20.66</u>	"
Total net area of claim,		76.84	acres.

LOCATION.

These claims are located on unsurveyed land on the highest spur of the S- H- Mountains, approximately in T. 2 S., R. 17 W., Gila and Salt River Base and Meridian, Arizona; about 36 miles W. by E. from Tacna, or about 36 miles N. by W. from Mammoth, or about 36 miles N.W.N. from Texas Hill, in the King of Arizona Mining District, in about the center of Yuma County, Arizona.

14.

EXPENDITURE OF FIVE HUNDRED DOLLARS.

I certify that the value of the labor and improvements upon this claim, placed thereon by the claimant and its grantors, is not less than five hundred dollars, and that said improvements consist of -

Last Hope lode,

No. 1. Discovery shaft, 6 x 4 x 10 feet deep, which bears from corner No. 8, N. 58°W., 84.8 feet.

Value, \$75.00

This shaft is not exactly on the center line as the ledge deviates here in a small half circle from its general course.

King of Arizona lode.

No. 1. Discovery shaft 6 x 4 x 10 feet deep, which bears from corner No. 8, N. 65°53'W., 467.2 feet.

Value, \$75.00

No. 2. A tunnel 7 x 4 x 52 feet long, course N. 55°W., the mouth of which bears from corner No. 8, N. 54°58'W., 88 feet.

Value, \$540.00

No. 3. A shaft 10 x 6 x 12 feet deep, which bears from corner No. 8, N. 63°14'W, 166.1 feet.

Value, \$250.00

Homestake lode.

No. 1. Discovery shaft 6 x 4 x 12 feet deep, which bears from corner No. 8, S. 77°32'E., 221 feet distant.

Value, 100.00

No. 2. A shaft 6 x 4 x 100 feet deep, which

15.

bears from corner No. 8, S. $47^{\circ}50'$ E., 151.9 feet.

Value, \$1200.00

No. 3. A tunnel 7 x 4 x 18 feet long, course N. 24° E., the mouth of which bears from corner No. 8, S. $53^{\circ}50'$ E., 193.4 feet.

Value, \$190.00

No. 4. A tunnel 7 x 4 feet, 100 feet long, course N. $0^{\circ}28'$ E., the mouth of which bears from 600 foot point on line 1-2, N. $47^{\circ}50'$ W., 161.4 feet.

Value, \$1050.00

Mucho Bueno lode.

No. 1. Discovery tunnel 7 x 4 x 12 feet long, course S. 30° E., the mouth of which bears from corner No. 2, S. 30° E., 5 feet.

Value, \$120.00

Other improvements.

An ore bin which bears from 438 foot point on line 1-2 of the Homestake lode, N. $12^{\circ}50'$ W., 52 ft.

Value, \$150.00

A car track from shaft No. 2, on Homestake lode, to ore bin, about 200 feet long.

Value, \$200.00

The surface embraced by these four claims ascends very rapidly toward the west and as Corner No. 1 of the Last Hope lode and Corner No. 3 of the King of Arizona lode are located on the highest point of a mountain range the workings on the Homestake lode are so constructed as in course of time, with on plant of machinery to also develop most advantageously and economically the Last Hope mining claim.

Tunnel No. 4 on the Homestake lode, described and included in the estimate of expenditures is constructed to develop the Homestake and also the Mucho Bueno mining claim and must be credited

16.

with 60 feet to the latter.

INSTRUMENT.

The survey was made with a Stackpole & Brother's transit No. 1269. The courses were deflected from the true meridian as determined by direct solar observations. The distances were measured with a 50 foot and 500 Foot steel tape.

Wm. H. Elliott

U. S. Deputy Mineral Surveyor.
Yuma, Arizona, January 12th, 1898.

U. S. LOCATION MONUMENT NO. 1257.
 King of Arizona Mining District,
 Yuma County, Arizona.

As within the prescribed limits of two miles from the location of Mineral Survey No. 1257, in the King of Arizona Mining District, Yuma County, Arizona, there are no corners of the public survey and no U. S. Location Monuments, I proceed to establish the U. S. Location Monument No. 1257.

On the highest spur of the "S - H - " mountains, on which the Homestake claim of this survey, is situated, and which overlooks the valley between the "S - H - " mountains and Castle Dome mountains, I set a porphyry stone 36 x 20 x 10 ins., 18 inches in the ground, and built a conical mound of stone, 6 feet base and 4 feet high, alongside. The exact point of connection is indicated on the top of the monument by a x chiseled thereon, and on the south side are the letters "U. S. L. M. No. 1257", K. of A. M. D., plainly chiseled upon the stone.

An iron-wood tree 6 ins. diameter, blazed and scribed with (x) cross at the exact point of connection and B.T., U. S. L. M. No. 1257, bears N. 83°17' W., 10.2 feet.

No other bearing trees or rocks available.

Texas Hill bears S. 30°09' E.

The highest point of the Mohawk Mountain range bears S. 20°15' E.

Castle Dome Peak bears S. 36°35' W.

Wm. H. Elliott.

U. S. Deputy Mineral Surveyor.

Yuma, Arizona.

Dec. 27, 1897.

FINAL OATHS FOR SURVEYS.

LIST OF NAMES.

A list of the names of the individuals employed by W. H. Elliott United States Deputy Mineral Surveyor, to assist in running, measuring, and marking the lines corners and boundaries described in the foregoing field notes of the survey of the mining claims of The King of Arizona Mining & Milling Company known as the Last Hope, King of Arizona, Homestake & Muchos Buenos and showing the respective capacities in which they acted.

John Guerra, Chairman.
J. H. Cummings, Assman.
Flagman.

FINAL OATHS OF ASSISTANTS.

We, John Guerra and J. H. Cummings, do solemnly swear that we assisted W. H. Elliott, United States Deputy Mineral Surveyor, in marking the corners and surveying the boundaries of the mining claims of The King of Arizona Mining & Milling Company, known as the Last Hope King of Arizona, Homestake & Muchos Buenos, represented in the foregoing field notes as having been surveyed by said deputy mineral surveyor and under his direction; and that said survey has been in all respects, to the best of our knowledge and belief, faithfully and correctly executed, and the corner and boundary monuments established according to law and the instructions furnished by the United States Surveyor-General for Arizona.

John Guerra, Chairman.
J. H. Cummings, Assman.
Flagman.

Subscribed and sworn to by the above-named persons before me this 31st day of December, 1897

J. W. Carpenter
Notary Public
Commission expires Nov 27. 98



(4-686.)

FINAL OATH OF U. S. DEPUTY MINERAL SURVEYOR.

I, William H. Elliott, U. S. Deputy Mineral Surveyor, do solemnly swear that, in pursuance of instructions received from the United States Surveyor General for Arizona, dated December 17th, 1897, I have, in strict conformity to the laws of the United States, the official regulations and instructions thereunder, and the instructions of said Surveyor General, faithfully and correctly executed the survey of the Mining Claims of King of Arizona Mining & Milling Company, known as the Lost Hope, King of Arizona, Homestake & Mucha Bueno, situate in King of Arizona Mining District, Yuma County, Arizona, in Section _____, Township No. _____, Range No. _____, and designated as Survey No. 1275, as represented in the foregoing field notes, which accurately show the boundaries of said mining claim as distinctly marked by monuments on the ground, and described in the attached copy of the location certificate, which was received by me from the Surveyor General with said instructions, and that all the corners of said survey have been established and perpetuated in strict accordance with the law, official regulations and instructions thereunder; and I do further solemnly swear that the foregoing are the true and original field notes of said survey and my report therein, and that the labor expended and improvements made upon said mining claims by claimant or its grantors are as therein fully stated, and that the character, extent, location and itemized value thereof are specified therein with particularity and full detail, and that no portion of said labor or improvements so credited to this claim has been included in the estimate of expenditures upon any other claim.

William H. Elliott
U. S. Deputy Mineral Surveyor.

Subscribed and sworn to by the said William H. Elliott:
U. S. Deputy Mineral Surveyor, before me J. H. Carpenter Notary Public
this fifth
day of January, 1898.

J. H. Carpenter
Notary Public
Commission expires Nov 27/98

Affidavit of Five Hundred Dollars Improvements.

We John M. Spence and Sam Cox

of lawful age, being first duly sworn according to law, depose and say: that we are acquainted with the East Hope, King of Arizona, Homestake & Much Bene mining claim situated in King of Arizona Mining district, Yuma County, Arizona Territory, for which The King of Arizona Mining & Milling Company

has made application for survey prior to application for patent under the provisions of the Act of Congress, approved May 10, 1872; and that the labor done and improvements made thereon by the applicant and its grantor exceed Five Hundred Dollars in value, and further that we are not personally interested in said mine.

John M. Spence
Sam Cox

TERRITORY OF ARIZONA,
County of Yuma } ss.

SWORN to and subscribed before me, this

5th day of January 1898

W. Crispin
Notary Public
Commission expires Nov 27/98

A.A.F.

Notice of Mining Location.

QUARTZ CLAIM.

To All Whom It May Concern:

This mining claim, the name of which is the Sancho Buena Mining Claim, situate on lands belonging to the United States of America, and in which there are valuable mineral deposits, was entered upon and located for the purpose of exploration and purchase by L. E. Eichelberger & H. B. Gleason

the undersigned, on the 15th day of February 1897.

The length of this claim is 1500 feet, and we claim 1500 feet in a south easterly direction and 600 feet in a south easterly direction from

the center of the discovery shaft, at which this notice is posted, lengthwise of the claim, together with 600 feet in width of the surface grounds, on each side of the center of said claim. The general course of the lode deposit and premises is from the north west to the south east

The claim is situated and located in the King of Arizona Mining District, in Yuma County, in the Territory of Arizona, about 15 miles in a easterly direction from House Tanks and about 12 miles east of Castle Dome Range.

The surface boundaries of the claim are marked upon the ground as follows: Beginning at south west side line of House Stake Mine

at a point in a south easterly direction 1500 feet from the discovery shaft (at which this notice is posted), being in the center of the north west end line of said claim; thence 300 feet to a monument of stone, being the west corner of said claim; thence 750 feet to a monument of stone at the center of the south west side line of said claim; thence 750 feet to a monument of stone being at the south corner of said claim; thence 300 feet to a monument of stone at the center of the south east end of said claim; thence 300 feet to a monument of stone, being at the east corner of said claim; thence 750 feet to a monument of stone being at the center of the north east side line of said claim; thence 750 feet to a monument of stone at the north corner of said claim; thence 300 feet to the place of beginning.

All done under the provisions of Chapter Six, of Title XXXII, of the Revised Statutes of the United States, and of an Act of the General Assembly of Arizona, entitled "An Act Concerning Mines," approved March 20th, 1895.

Dated and posted on the ground this 15th day of February, 1897.

Attest
Frank Yuma
L. E. Eichelberger
Henry B. Gleason

Recorded at request of H. B. Gleason, at 10 A. M.,
April 13, 1897.
C. P. Horn, County Recorder.
By J. T. Mahoney, Deputy

An Act Concerning Mines.

Be it Enacted by the Legislative Assembly of the Territory of Arizona:

SECTION 1. Every notice of location of a mining claim shall contain: First, the name of the locator; second, the name of the locator; third, the date of location; fourth, the number of feet in length of said claim and the number of feet claimed on each side of the center of the discovery shaft, lengthwise of the claim; fifth, the general course of the lode deposit or premises located; sixth, the locality of the claim with reference to some natural object, or permanent monument, as will identify the claim.

SEC. 2. All mining locations heretofore located, the certificate of location of which shall not contain: First, the name of the lode, or premises; second, the name of the locator, or locators; third, the date of location; fourth, the number of feet in length of said claim and the number of feet claimed on each side of the center of the discovery shaft, lengthwise of the claim; fifth, the general course of the lode, or premises, as near as may be; sixth, the locality of the claim with reference to some natural object, or permanent monument, as will identify the claim, shall be void.

SEC. 3. Before filing such location certificate in this County Recorder, the discoverer shall locate his claim by: First, sinking a discovery shaft upon the premises so claimed, to a depth of at least ten feet from the lowest part of the rim of the shaft, and deeper if necessary, until there is shown by such work a lode of mineral in place; second, by posting at the point of discovery, on the surface, a plain sign or notice substantially conforming to the location certificate; third, by marking such claim or premises on the ground, so that its boundaries can be readily traced.

SEC. 4. Such surface boundaries shall be marked by **EIGHT**, at least **THREE FEET HIGH**, to-wit: One at each corner of said claim, and one at the center of each end and one at the center of the top and bottom.

SEC. 5. Any open-cut, cross-cut, adit or tunnel which shall be made as above provided for, as a part of the location of a mining claim, and which shall be equal in amount of work to a shaft ten feet deep and four feet wide by the surface, and which shall cut a lode or mineral in place at the depth of ten feet from the surface, shall be equivalent as a discovery work to a shaft sunk to the surface.

SEC. 6. The discoverer shall have ninety days from the date of discovering the lode and the posting of the notice thereon, to perform said discovery work thereon.

SEC. 7. If at any time the locator of any mining claim heretofore or hereafter located, or his assigns, shall learn that his original certificate was defective, or that he is subject to location, or in case the original certificate was made prior to the passage of this law, and he shall be desirous of changing his surface boundaries, or of taking any additional ground, which is his assigns, he shall file an amended certificate of location subject to the provisions of this Act, regarding the making of new locations.

SEC. 8. The amount of assessment, or representation, work or improvements to be done or made during each year, after the completion of the location as heretofore provided, and the time within which the same shall be done, shall be as provided by the laws of the United States.

SEC. 9. Within three months after the completion of the location, the person on whose behalf such work or improvements were done, or made, shall file with the County Recorder of the county wherein such claim is situated an affidavit in substance as follows:

TERRITORY OF ARIZONA, }
County, { ss.

and resides at being duly sworn deposes and says that he is a citizen of the United States, and more than 21 years of age, as a mining claim or lode, situated in County, Arizona Territory, and is personally acquainted with the location of the mining claim and premises located and known to the locator, and that the same were made and performed upon said premises, and who did said work and improvements, and said work so done upon said premises is described as follows, to-wit: (Here describe the work done.)

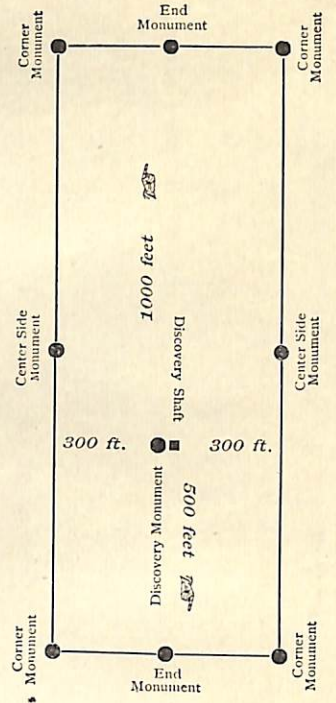
Subscribed and sworn to before me, this day of 189.....
[SEAL] Notary Public.

SEC. 10. Such affidavit when so recorded shall be prima facie evidence of the performance of such labor or the making of such improvements, and said original affidavit after it has been recorded, or a certified copy of record of same, shall be received as evidence in any suit by all the Courts of this Territory.

SEC. 11. The relocation of forfeited or abandoned lode claims shall only be made by sinking a new discovery shaft, and the new boundaries in the same manner and to same extent as is required in making a new location; or the relocater may sink the original discovery shaft ten feet deep from the center of commencement of such relocation, and shall erect new or make the old monuments the same as originally required. In either case a new location monument shall be erected, and the location certificate shall be filed in full in this office.

SEC. 12. All Acts in conflict with this Act are hereby repealed.

SEC. 13. All Acts in conflict with this Act are hereby repealed.



This diagram is to give locator a general idea of plan of location under the new law. The Discovery Shaft can be in the center of claim or any distance from either end desired. In the diagram it is placed 500 feet from one end and 1000 feet from the other. Commence description of claim at a center end monument, giving its distance and direction from center of Discovery Shaft; thence bound the claim in either direction. In description be careful to state locality of claim with reference to some natural object, or permanent monument, as will identify the claim.

Notice of Location. QUARTZ CLAIM.

Dated 189.....

Filed and recorded at request of

..... A. D. 189.....

at M.

Book

Pages

County Recorder.

Deputy Recorder.

County Recorder.

WITNESS my hand and official seal the day and year first above written.

I, County Recorder in and for the County and Territory aforesaid, do hereby certify that the within instrument was filed for record at o'clock, M., on this day of 189....., and duly recorded in Book No. of Records of County, Arizona, at pages.....

TERRITORY OF ARIZONA, }
County of } ss.

A.A.S.

Notice of Mining Location.

QUARTZ CLAIM.

To All Whom It May Concern:

This mining claim, the name of which is the King of Arizona Mining Claim, situate on lands belonging to the United States of America, and in which there are valuable mineral deposits, was entered upon and located for the purpose of exploration and purchase by C. Eichelberger and Henry B. Gleason the undersigned, on the 15th day of Feb. 1897.

The length of this claim is 1500 feet, and We claim 1500 feet in a Eastuly and Westuly direction and 300 feet in a Eastuly and Westuly direction from the center of the discovery shaft, at which this notice is posted, lengthwise of the claim, together with 300 feet in width of the surface grounds, on each side of the center of said claim. The general course of the lode deposit and premises is from the Eastuly to the Westuly.

The claim is situated and located in the King of Arizona Mining District, in Yuma County, in the Territory of Arizona, about 15 miles Eastuly in a from Horse Tank about 10 miles Northuly direction from Castle Dome Range and about 10 miles Westuly from Penglassus Camp.

The surface boundaries of the claim are marked upon the ground as follows: Beginning at this Eastuly end line center adjoining the Home Stake Min. Claim at its westuly end line center at a point in a East direction 300 feet from the discovery shaft (at which this notice is posted), being in the center of the East end line of said claim; thence 300 feet to a monument being the north east corner of said claim; thence 750 feet to a monument at the center of the north side line of said claim; thence 750 feet to a monument being at the north west corner of said claim; thence 300 feet to a monument at the center of the West end of said claim; thence 300 feet to a monument, being at the South west corner of said claim; thence 750 feet to a monument being at the center of the South side line of said claim; thence 750 feet to a monument at the South east corner of said claim; thence 300 feet to the place of beginning.

All done under the provisions of Chapter Six, of Title XXXII, of the Revised Statutes of the United States, and of an Act of the General Assembly of Arizona, entitled "An Act Concerning Mines," approved March 20th, 1895.

Dated and posted on the ground this 15th day of Feb. 1897.

C. Eichelberger Locator
Henry B. Gleason

Recorded at request of H. B. Gleason 2.30 P.M. April 30, 1897.
C. P. Gorin
County Recorder

An Act Concerning Mines.

Be it Enacted by the Legislative Assembly of the Territory of Arizona:

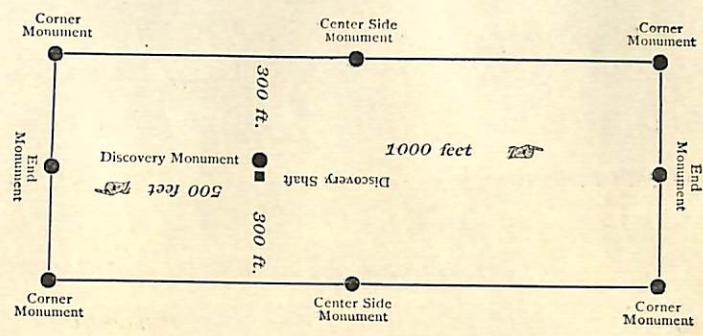
- SECTION 1.** Every notice of location of a mining claim shall contain: First, the name of the claim located; second, the name of the locator; third, the date of the location; fourth, the number of feet in length of said claim and the number of feet claimed on each side of the center of the discovery shaft, lengthwise of the claim; fifth, the general course of the lode deposit of premises located; sixth, the locality of the claim with reference to some natural object, or permanent monument, as will identify the claim.
- SEC. 2.** All mining locations hereafter located, the certificate of location of which shall not contain: First, the name of the lode, or premises; second, the name of the locator, or locators; third, the date of location; fourth, the number of feet in length of said claim and the number of feet claimed on each side of the center of the discovery shaft, lengthwise of the claim; fifth, the general course of the lode, or premises, as near as may be; sixth, the locality of the claim with reference to some natural object, or permanent monument, as will identify the claim, shall be void.
- SEC. 3.** Before filing such location certificate with the County Recorder of the proper County, the discoverer shall locate his claim by: First, sinking a discovery shaft upon the premises so claimed, to a depth of at least ten feet from the lowest part of the rim of such shaft at the surface, and deeper if necessary, until there is shown by such work a lode deposit of mineral in place; second, by posting at the point of discovery, on the surface, a plain sign or notice substantially conforming to the location certificate; third, by marking such claim or premises on the ground, so that its boundaries can be readily traced.
- Such surface boundaries shall be marked by **EIGHT** substantial **POSTS**, projecting at least **THREE FEET ABOVE THE SURFACE OF THE GROUND**, or by substantial **STONE MONUMENTS**, at least **THREE FEET HIGH**, to-wit: One at each corner of said claim, and one at the center of each end and side line thereof.
- SEC. 5.** Any open-cut, cross-cut, adit or tunnel which shall be made as above provided for, as a part of the location of a mining claim, and which shall be equal in amount of work to a shaft ten feet deep and four feet wide by six feet long, and which shall cut a lode or mineral in place at the depth of ten feet from the surface, shall be equivalent, as a discovery work, to a shaft sunk from the surface.
- SEC. 6.** The discoverer shall have ninety days from the date of discovering the lode and the posting of the notice thereon, to perform said discovery work thereon.
- SEC. 7.** If at any time the locator of any mining claim heretofore or hereafter located, or his assigns, shall learn that his original certificate was defective, or that the requirements of the law had not been complied with before filing, or shall be desirous of changing his surface boundaries, or of taking in any additional ground which is subject to location, or in case the original certificate was made prior to the passage of this law, and he shall be desirous of securing the benefits of this Act, such locator, or his assigns, may file an amended certificate of location subject to the provisions of this Act, regarding the making of new locations.
- SEC. 8.** The amount of assessment, or representation, work or improvements to be done or made during each year, after the completion of the location as heretofore provided, and the time for doing the same, shall be as provided by the laws of the United States.
- SEC. 9.** Within three months after the expiration of the period of time fixed for the performance of annual labor or the making of improvements upon any mining claim or premises, the person on whose behalf such work or improvement was made, or some person for him, knowing the facts, may make and record in the office of the County Recorder of the county wherein such claim is situate an affidavit in substance as follows:

TERRITORY OF ARIZONA, } ss.
County, }
 and resides at being duly sworn deposes and says, that he is a citizen of the United States, and more than 21 years of age, as County, Arizona Territory, and is personally acquainted with the mining claim and premises located and known notice of location of which premises is recorded in the office of the County Recorder of said county, in Book of Records of Mines, at page; that between the day of A. D. 189....., and the day of of Records of Mines, at page; that dollars worth of work and improvements were done and performed upon said premises or lode, not including the location work of said claim. In either case a new location monument shall be erected, and the location certificate shall state if the whole or any part of the new location is located as abandoned property.
 owners of said premises for the purpose of complying with the law of the United States pertaining to assessments or annual work, and (here name the miners or men who worked upon the claim in doing the work) were the men employed by said owner and who labored upon said premises, and who did said work and improvements, and said work so done upon said premises is described as follows, to-wit: (Here describe the work done.)

Subscribed and sworn to before me this day of 189..... (Signature.)

- [SEAL] Notary Public.
- SEC. 10.** Such affidavit when so recorded shall be *prima facie* evidence of the performance of such labor or the making of such improvements, and said original affidavit after it has been recorded, or a certified copy of record of same, shall be received as evidence accordingly by all the Courts of this Territory.
- SEC. 11.** The relocation of forfeited or abandoned lode claims shall only be made by sinking a new discovery shaft and fixing new boundaries in the same manner and to same extent as is required in making a new location; or the relocater may sink the original discovery shaft ten feet deeper than it was at date of commencement of such relocation, and shall erect new or make the old monuments the same as originally required. In either case a new location monument shall be erected, and the location certificate shall state if the whole or any part of the new location is located as abandoned property.
- SEC. 12.** This Act shall take effect and be in force from and after July 1st, 1895.
- SEC. 13.** All Acts and parts of Acts in conflict with this Act are hereby repealed.

This diagram is to give locator a general idea of plan of location under the new law. The Discovery Shaft can be in the center of claim or any distance from either end desired. In the diagram it is placed 500 feet from one end, and 1000 feet from the other. Commence description of claim at a center end monument, giving its distance and direction from center of Discovery Shaft; thence bound the claim in either direction. In description be careful to state locality of claim with reference to some natural object, or permanent monument, as will identify the claim.



Notice of Location.
QUARTZ CLAIM.

Dated 189.....

Filed and recorded at request of

A. D. 189.....

at M.
 Book
 Pages
 By Deputy Recorder.
 County Recorder.

TERRITORY OF ARIZONA, } ss.
 County of

I, County Recorder in and for the County and Territory aforesaid, do hereby certify that the within instrument was filed for record at o'clock, M., on this day of 189....., and duly recorded in Book No. of Records of County, Arizona, at pages

WITNESS my hand and official seal the day and year first above written.
 County Recorder.

Notice of Mining Location.

QUARTZ CLAIM.

To All Whom It May Concern:

This mining claim, the name of which is the East Hope Mining Claim, situate on lands belonging to the United States of America, and in which there are valuable mineral deposits, was entered upon and located for the purpose of exploration and purchase by C. E. Eichelberger and Henry B. Gleason the undersigned, on the 15th day of Feb. 1897.

The length of this claim is 1500 feet, and the claim 1500 feet in a East and West direction and 300 feet in a East and West direction from the center of the discovery shaft, at which this notice is posted, lengthwise of the claim, together with 300 feet in width of the surface grounds, on each side of the center of said claim. The general course of the lode deposit and premises is from the East to the West.

The claim is situated and located in the King of Arizona Mining District, in Yuma County, in the Territory of Arizona, about 15 miles East from House Rock and 10 miles North from Castle Dome Range and about 10 miles West from Engassers Camp.

The surface boundaries of the claim are marked upon the ground as follows: Beginning at this East End line center adjoining the King of Arizona Mine claim at the West End line center at a point in a East direction 750 feet from the discovery shaft (at which this notice is posted), being in the center of the east end line of said claim; thence 300 feet to a monument being the North East corner of said claim; thence 750 feet to a monument at the center of the North side line of said claim; thence 750 feet to a monument being at the North West corner of said claim; thence 300 feet to a monument at the center of the west end of said claim; thence 300 feet to a monument being at the south west corner of said claim; thence 750 feet to a monument being at the center of the south side line of said claim; thence 750 feet to a monument at the south east corner of said claim; thence 300 feet to the place of beginning.

All done under the provisions of Chapter Six, of Title XXXII, of the Revised Statutes of the United States, and of an Act of the General Assembly of Arizona, entitled "An Act Concerning Mines," approved March 20th, 1895.

Dated and posted on the ground this 15th day of Feb. 1897.

C. E. Eichelberger
Henry B. Gleason

Recorded at request of H. B. Gleason, 2.30 P.M., April 30, 1897.

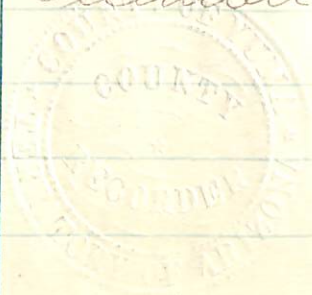
C. P. Brown
County Recorder

Territory of Arizona } p.
County of Yuma } p.

I, L. P. Gorin, County Recorder in and for the County of Yuma, Territory of Arizona, do hereby certify that the annexed and foregoing instruments are full, true and correct copies of the Location Notices, as appear in my office, as follows, viz:

- "Homestake" Book "H" of Mines, Page 321
- "Mucho Bueno" " " " " " 368.
- "King of Arizona" " " " " " 397.
- "Last Hope" " " " " " 396.

Records of Yuma County, Arizona.
In Witness Whereof, I have hereunto set my hand and affixed my seal of office, this 10th day of December, A. D. 1897.



L. P. Gorin,
County Recorder

Notice of Mining Location.

26

QUARTZ CLAIM.

To All Whom It May Concern:

This mining claim, the name of which is the Homestake Mining Claim, situate on lands belonging to the United States of America, and in which there are valuable mineral deposits, was entered upon and located for the purpose of exploration and purchase by Edward Eichelberger + Henry B. Gleason the undersigned, on the 15th day of February, 1897.

The length of this claim is 1500 hundred feet, and we claim 1350 feet in a Eastuly direction and 150 feet in a Westuly direction from the center of the discovery shaft, at which this notice is posted, lengthwise of the claim; together with 300 feet in width of the surface grounds, on each side of the center of said claim. The general course of the lode deposit and premises is from the West to the East.

The claim is situated and located in the King of Arizona Mining District, in Yuma County, in the Territory of Arizona, about 15 in a Eastuly direction from Castle dome, 10 miles west of Eugasters, 30 miles north of Gila river.

The surface boundaries of the claim are marked upon the ground as follows: Beginning at Central monument and running at

at a point in a westuly direction 150 feet from the discovery shaft (at which this notice is posted), being in the center of the west end line of said claim; thence 300 feet to a monument of Stone No. 1, being the North west corner of said claim; thence 750 feet to a monument No. 3 at the center of the North side line of said claim; thence 750 feet to a monument being at the North east corner of said claim; thence 300 feet to a monument No 5 at the center of the east end of said claim; thence 300 feet to a monument No 6, being at the South east corner of said claim; thence 750 feet to a Monument No. 7 being at the center of the South side line of said claim; thence 750 feet to a monument No. 8 at the South west corner of said claim; thence 300 feet to the place of beginning.

All done under the provisions of Chapter Six, of Title XXXII, of the Revised Statutes of the United States, and of an Act of the General Assembly of Arizona, entitled "An Act Concerning Mines," approved March 20th, 1895.

Dated and posted on the ground this 15th day of February 1897.

Attest Frank Yuma. Edward Eichelberger
Henry B. Gleason

Recorded at request of H. B. Gleason, Yuma, March 29, 1897.

C. P. Brown,
County Recorder

An Act Concerning Mines.

Be it Enacted by the Legislative Assembly of the Territory of Arizona:

SECTION 1. Every notice of location of a mining claim shall contain: First, the name of the claim located; second, the name of the locator; third, the date of location; fourth, the number of feet in length of said claim and the number of feet claimed on each side of the center of the discovery shaft, lengthwise of the claim; fifth, the general course of the lode deposit of premises located; sixth, the locality of the claim with reference to some natural object, or permanent monument, as will identify the claim.

SEC. 2. All mining locations hereafter located, the certificate of location of which shall not contain: First, the name of the lode, or premises; second, the name of the locator, or locators; third, the date of location; fourth, the number of feet in length of said claim and the number of feet claimed on each side of the center of the discovery shaft, lengthwise of the claim; fifth, the general course of the lode, or premises, as near as may be; sixth, the locality of the claim with reference to some natural object, or permanent monument, as will identify the claim, shall be void.

SEC. 3. Before filing such location certificate with the County Recorder of the proper County, the discoverer shall locate his claim by: First, sinking a discovery shaft upon the premises so claimed, to a depth of at least ten feet from the lowest part of the rim of such shaft at the surface, and deeper if necessary, until there is shown by such work a lode deposit of mineral in place; second, by posting at the point of discovery, on the surface, a plain sign or notice substantially conforming to the location certificate; third, by marking such claim or premises on the ground, so that its boundaries can be readily traced.

Such surface boundaries shall be marked by **EIGHT** substantial **POSTS**, projecting at least **THREE FEET ABOVE THE SURFACE OF THE GROUND**, or by substantial **STONE MONUMENTS**, at least **THREE FEET HIGH**, to-wit: One at each corner of said claim, and one at the center of each end and side line thereof.

SEC. 4. Any open-cut, cross-cut, adit or tunnel which shall be made as above provided for, as a part of the location of a mining claim, and which shall be equal in amount of work to a shaft ten feet deep and four feet wide by six feet long, and which shall cut a lode or mineral in place at the depth of ten feet from the surface, shall be equivalent, as a discovery work, to a shaft sunk from the surface.

SEC. 5. The discoverer shall have ninety days from the date of discovering the lode and the posting of the notice thereon, to perform said discovery work thereon.

SEC. 6. If at any time the locator of any mining claim heretofore or hereafter located, or his assigns, shall learn that his original certificate was defective, or that the subject to location, or in case the original certificate was made prior to the passage of this law, and he shall be desirous of securing the benefits of this Act, such locator, or his assigns, may file an amended certificate of location subject to the provisions of this Act, regarding the making of new locations.

SEC. 7. The amount of assessment, or representation, work or improvements to be done or made during each year, after the completion of the location as heretofore provided, and the time for doing the same, shall be as provided by the laws of the United States.

SEC. 8. Within three months after the expiration of the period of time fixed for the performance of annual labor or the making of improvements upon any mining claim or premises, the person on whose behalf such work or improvement was made, or some person for him, knowing the facts, may make and record in the office of the County Recorder of the county wherein such claim is situate an affidavit in substance as follows:

TERRITORY OF ARIZONA,
County, } ss.
being duly sworn deposes and says, that he is a citizen of the United States, and more than 21 years of age, and resides at.....in.....County, Arizona Territory, and is personally acquainted with the mining claim and premises located and known as.....mining claim or lode, situate in.....Mining District, County of.....Arizona Territory, and between the.....day of.....A. D. 189....., and the.....day of.....of Records of Mines, at page.....; that notice of location of which premises is recorded in the office of the County Recorder of said county, in Book.....at least.....dollars worth of work and improvements were done and performed upon said premises or lode, not including the location work of said claim. Such work and improvements were made by and at the expense of.....owners of said premises for the purpose of complying with the law of the United States pertaining to assessments or annual work, and (here name the miners or men who worked upon the claim in doing the work) were the men employed by said owner and who labored upon said premises, and who did said work and improvements, and said work so done upon said premises is described as follows, to-wit: (Here describe the work done.)

Subscribed and sworn to before me.....this.....day of.....189..... (Signature.)

[SEAL] Notary Public.

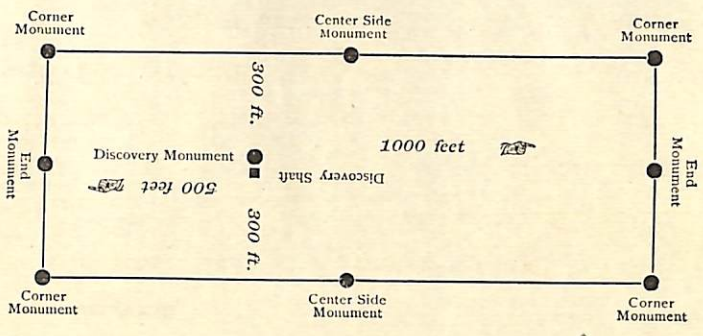
SEC. 10. Such affidavit when so recorded shall be *prima facie* evidence of the performance of such labor or the making of such improvements, and said original affidavit after it has been recorded, or a certified copy of record of same, shall be received as evidence accordingly by all the Courts of this Territory.

SEC. 11. The relocation of forfeited or abandoned lode claims shall only be made by sinking a new discovery shaft and fixing new boundaries in the same manner and to same extent as is required in making a new location; or the relocater may sink the original discovery shaft and fixing new boundaries in the same manner such relocation, and shall erect new or make the old monuments the same as originally required. In either case a new location monument shall be erected, and the location certificate shall state if the whole or any part of the new location is located as abandoned property.

SEC. 12. This Act shall take effect and be in force from and after July 1st, 1895.

SEC. 13. All Acts and parts of Acts in conflict with this Act are hereby repealed.

This diagram is to give locator a general idea of plan of location under the new law. The Discovery Shaft can be in the center of claim or any distance from either end desired. In the diagram it is placed 500 feet from one end and 1000 feet from the other. Commence description of claim at a center end monument, giving its distance and direction from center of Discovery Shaft; thence bound the claim in either direction. In description be careful to state locality of claim with reference to some natural object, or permanent monument, as will identify the claim.



Notice of Location. QUARTZ CLAIM.

Dated 189.....

Filed and recorded at request of

A. D. 189.....

at N.

Book

Pages

County Recorder.

Deputy Recorder.

By

TERRITORY OF ARIZONA, } ss.
 County of.....

I,.....County Recorder in and for the County and Territory aforesaid, do hereby certify that the within instrument was filed for record at.....o'clock,.....M., on this.....day of.....189....., and duly recorded in Book No.....of.....Records of.....County, Arizona, at pages.....

WITNESS my hand and official seal the day and year first above written.

.....County Recorder.

(4-687.)

Surveyor General's Certificate of Approval of Field Notes and Survey of Mining Claim.

Department of the Interior,

Office of U. S. Surveyor General,

Tucson, Arizona

January 20th, 1898.

I, U. S. Surveyor General for District of Arizona,

do hereby certify that the foregoing and hereto attached Field Notes and Return of the

Survey of the Mining Claim of The King of Arizona Mining & Milling Company per Epes Randolph Priest

_____ , known as the

Last Hope, King of Arizona, Homestake & mucho Buena Vista

situate in King of Arizona mining district,

Yuma County, Arizona,

~~approx~~ in Section ~~unsurveyed~~, Township No. 2 S, Range No. 17 W. 9 & 10 Secs

_____, designated as Survey No. 1275

executed by William H. Elliott, U. S. Deputy Mineral

Surveyor, ~~Dec 27-31st~~, 1897, under my instructions dated

Dec 17th, 1897, have been critically examined and the

necessary corrections and explanations made, and the said Field Notes and Return, and

the Survey they describe, are hereby approved. A true copy of the copy of the location

certificates filed by the applicant for survey is included in the field notes.

George Christ

U. S. Surveyor General for Arizona

PRELIMINARY OATHS OF ASSISTANTS IN SURVEY OF MINING CLAIM.

I, ¹ ~~We~~ *John F. Guerra* and _____, do solemnly swear that ~~we~~ ² we will well and faithfully execute the duties of chain carrier; that ~~we~~ ² we will level the chain upon even and uneven ground and plumb the tally-pins, either by sticking or dropping the same; that ~~we~~ ² we will report the true distance to all notable objects, and the true length of all lines that ~~we~~ ² we assist in measuring, to the best of ~~our~~ ² skill and ability, and in accordance with instructions given ~~us~~ ² us, in the survey of the Mining Claim of *The King of Arizona Mining & Milling Company*, known as the *Least Hope, King of Arizona, Homestake & Mucho Bueno* situate in *King of Arizona* mining district, *Yuma* County, *Arizona* in Section _____, Township No. _____, Range No. _____.

John F. Guerra, Chainman.
_____, Chainman.

Subscribed and sworn to by the above-named persons before me this 27th day of December, 1897.

J. H. Carpenter, Notary Public.
Commission expires Dec 27, 1898

I, *J. H. Cummings*, do solemnly swear that I will well and truly perform the duties of axeman in the establishment of corners and other duties, according to instructions given me and to the best of my skill and ability, in the survey of the Mining Claim of *The King of Arizona Mining & Milling Co.* known as the *Least Hope, King of Arizona, Homestake & Mucho Bueno* more fully described in the preceding affidavit.

J. H. Cummings, Axeman.

Subscribed and sworn to by the said _____ before me this 27th day of December, 1897.

J. H. Carpenter, Notary Public.
Commission expires Dec 27, 1898

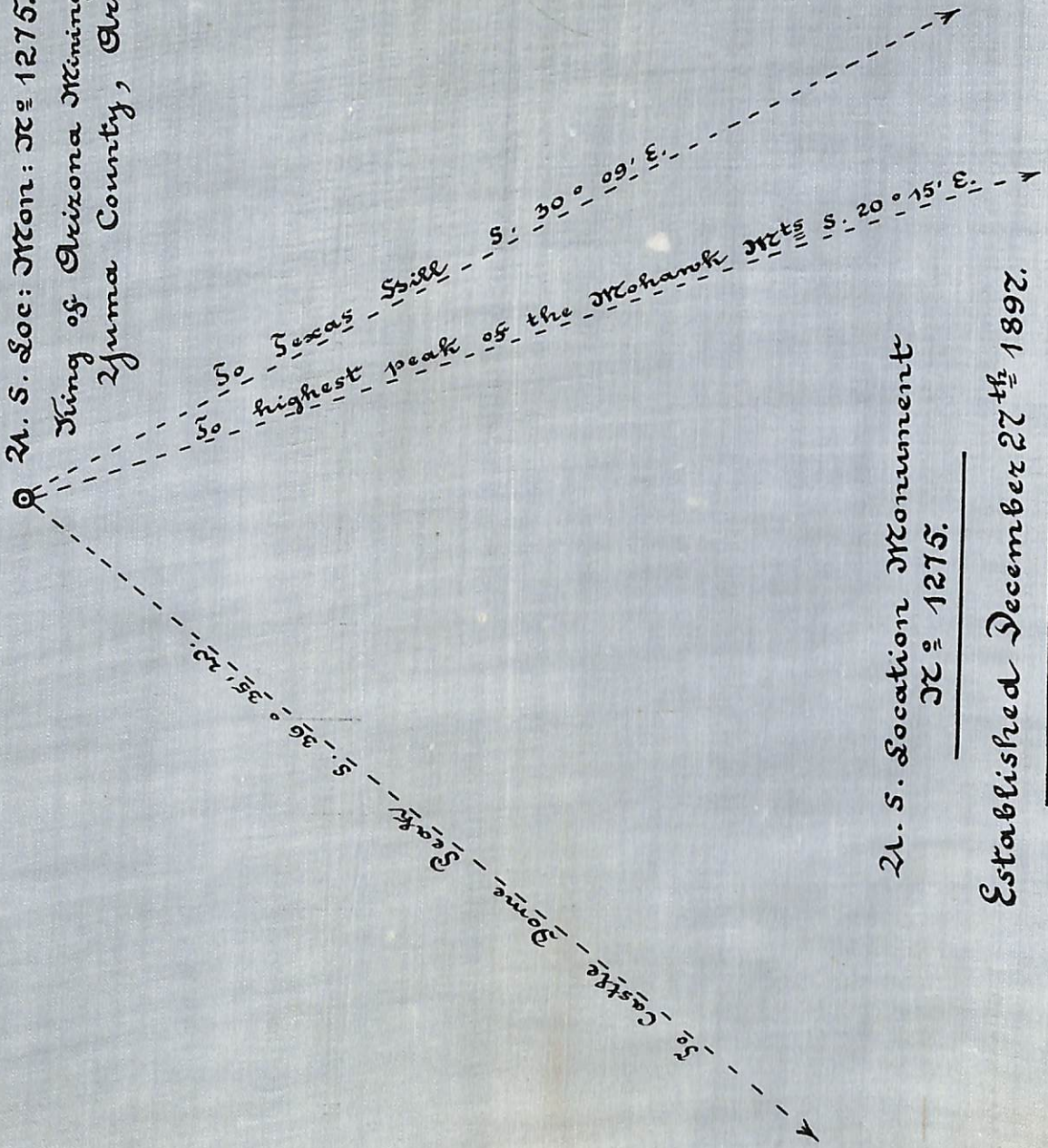
I, _____, do solemnly swear that I will well and truly perform the duties of flagman, in the establishment of corners and other duties, according to instructions given me and to the best of my skill and ability, in the survey of the Mining Claim of _____ known as the _____, more fully described in the preceding affidavit.

_____, Flagman.

Subscribed and sworn to by the said _____ before me this _____ day of _____, 18 _____.

U. S. Loc: Mon: 1275.

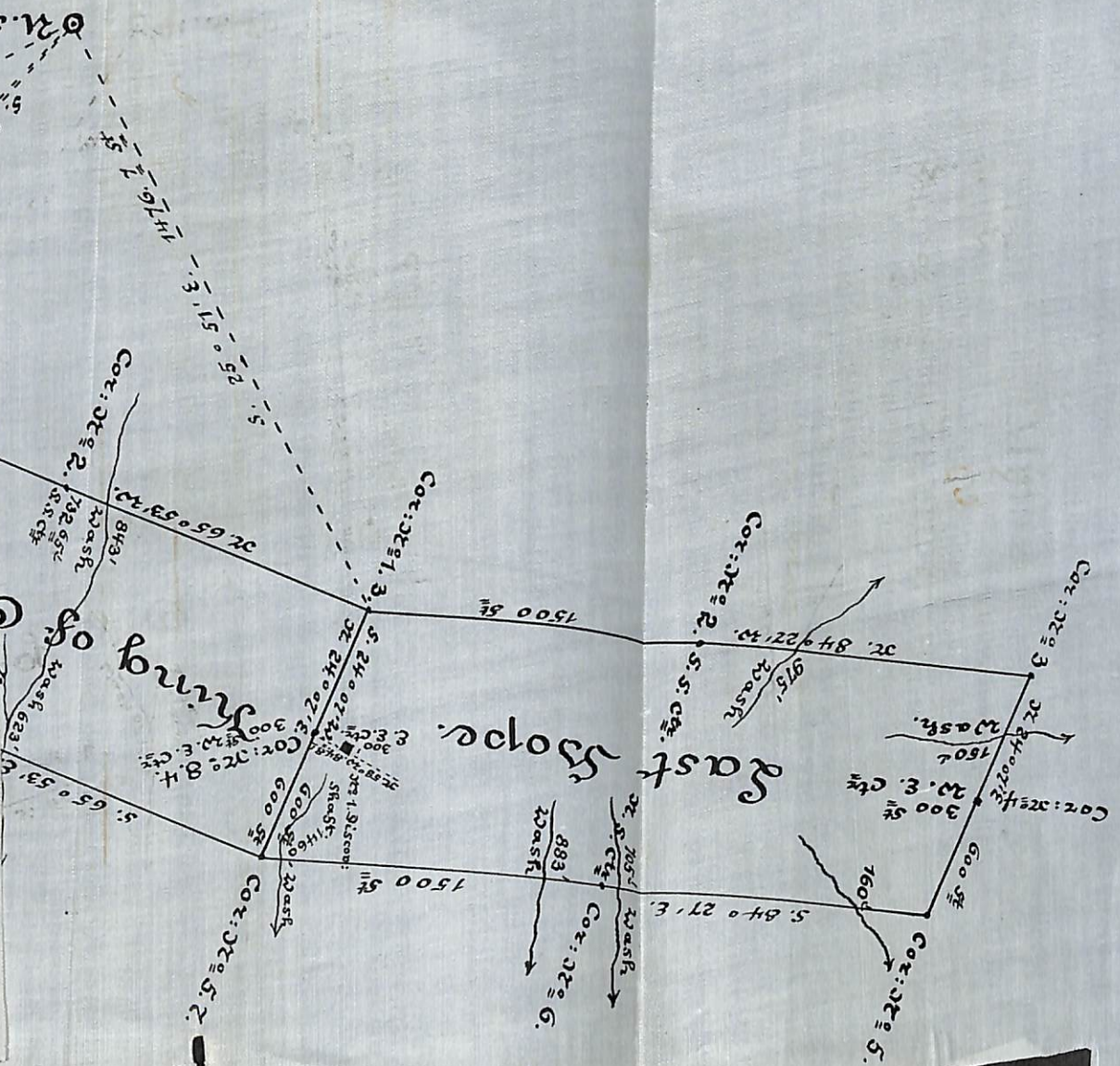
King of Arizona Mining District.
Yuma County, Arizona.



U. S. Location Monument
1275.

Established December 27th 1892.

by Wm. S. Elliott
U. S. Dep: Min: Surveyor.

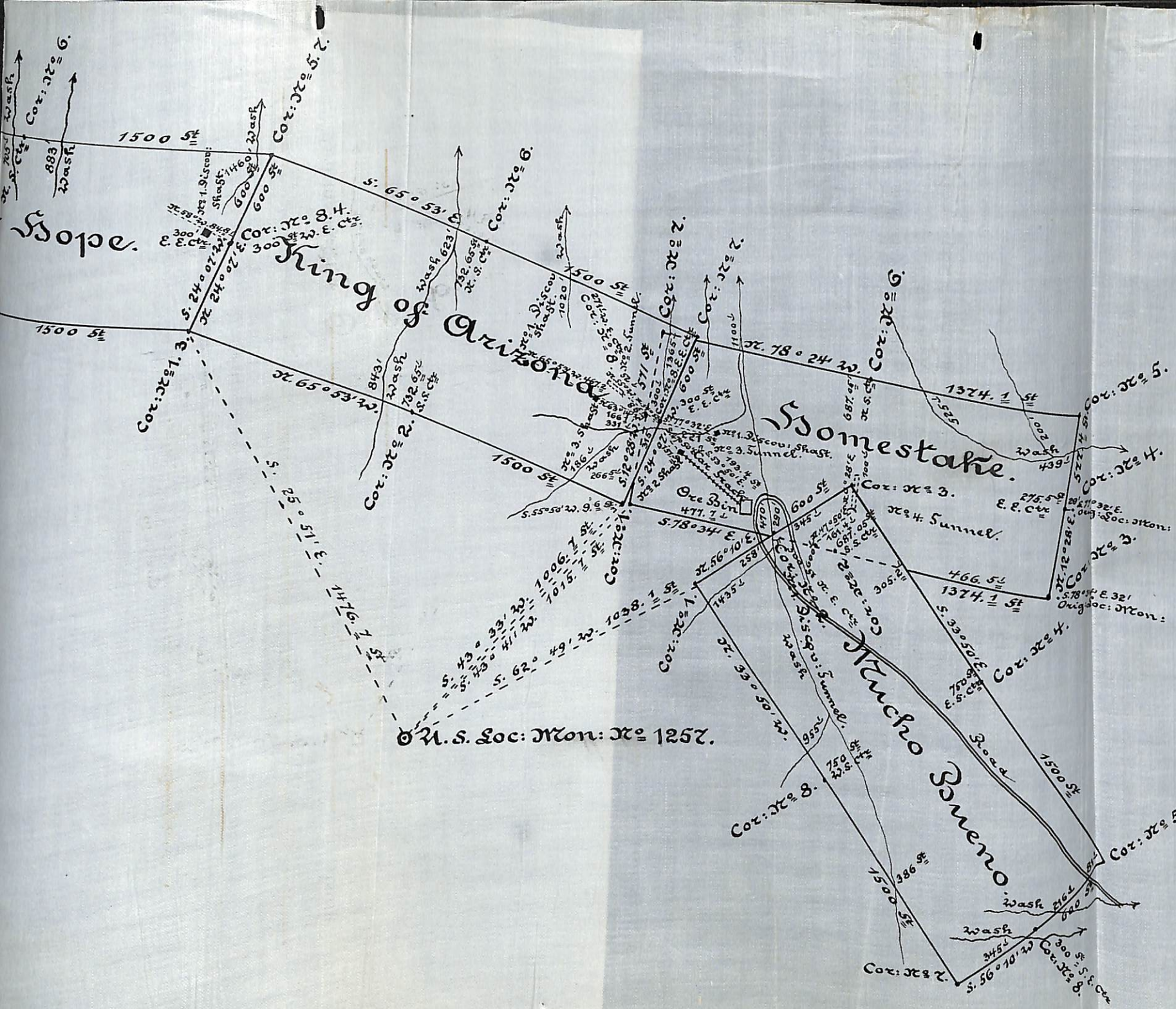


Handwritten notes in the upper left quadrant:

2554 = 2000000
 3081 # 16 - 35 = 3000
 110003 = 2.0000
 2000000 = 2.0000
 1852

Faint background text and markings:

Plat No. 1032
 1852
 2554 = 2000000
 3081 # 16 - 35 = 3000
 110003 = 2.0000
 2000000 = 2.0000
 1852



Survey 1275
 Gila Land District.
 Surveyed Dec^r 27 - 31st 1897.
 by Wm. S. Elliott
 U.S. Dep: Min: Surveyor.