

**M  
S  
-**

**0**

**1**

**3**

**8**

**7**



1387  
Oct 14/99 rec'd  
Rec'd Jan 9

Platted  
E.M.G.  
Jan 6/1900

(4-683.)

Mineral Survey No. 1387

Lot No. ....

Gila

Land District.

FIELD NOTES

OF THE SURVEY OF THE MINING CLAIM OF

Thomas Higgins of  
Bisbee Arizona

KNOWN AS THE

Yorkima, Alhacen, Contact, Joudan, Back Bone, Webster, Black Prince, Twilight  
and Aurora, situated in Warren Mining District,

Cochise

County, Arizona (Unsurveyed)

~~Section~~ Approx

Township 23S, Range 24E

Surveyed under instructions dated July 10, 1899

by James D. Trotter  
U. S. Deputy Mineral Surveyor.

Claim located 6/85, 1/191, 1/191, 1/190, 1/190, 1/188, Aug 2/80,  
June 15/80, Sept 1/80

Survey commenced July 14<sup>th</sup>, 1899

Survey completed July 28<sup>th</sup>, 1899

Claimants Address  
Bisbee, Arizona



# PRELIMINARY OATHS OF ASSISTANTS IN SURVEY OF MINING CLAIM.

WE, Geo C Clark and John A Garcia,

do solemnly swear that we will well and faithfully execute the duties of chain carriers; that we will level the chain upon even and uneven ground and plumb the tally-pins, either by sticking or dropping the same; that we will report the true distance to all notable objects, and the true length of all lines that we assist in measuring, to the best of our skill and ability, and in accordance with instructions given us, in the survey of

the Mining Claim of Shoo Higgins, known as the

Yakima, Al Hassen, Contact, Vaudan, Rock Bone, Webster,, known as the Block Prince Twilight and Aurora

situate in Warren mining district,

Cochise County, Arizona

in Section 4, Township No. 4, Range No. 1

John A Garcia, Chainman.

Geo. C. Clark, Chainman.

Subscribed and sworn to by the above-named persons before me this \_\_\_\_\_ day of \_\_\_\_\_, 18 \_\_\_\_\_

I, \_\_\_\_\_, do solemnly swear that I will well and truly perform the duties of axeman, in the establishment of corners and other duties, according to instructions given me and to the best of my skill and ability, in the survey of the Mining Claim of \_\_\_\_\_

known as the \_\_\_\_\_, more fully described in the preceding affidavit.

\_\_\_\_\_, Axeman.

Subscribed and sworn to by the said \_\_\_\_\_ before me this \_\_\_\_\_ day of \_\_\_\_\_, 18 \_\_\_\_\_

I, \_\_\_\_\_, do solemnly swear that I will well and truly perform the duties of flagman, in the establishment of corners and other duties, according to instructions given me and to the best of my skill and ability, in the survey of the Mining Claim of \_\_\_\_\_

known as the \_\_\_\_\_, more fully described in the preceding affidavit.

\_\_\_\_\_, Flagman.

Subscribed and sworn to by the said John A Garcia and Geo. C. Clark before me this 12<sup>th</sup> day of

July A.D., 1899.

J. K. Williams  
Notary Public

(My Commission expires Dec 15-1901.)





## YAKIMA CLAIM

FEET

Beginning at corner No 1, S.E. cor  
 identical with S.E. corner of locat-  
 ion  $\frac{1}{2}$  S  $68^{\circ}49' E$  118 feet from cor.  
 No 4 of the Soudan Claim of this  
 survey  $\frac{1}{2}$  identical with corner  
 No 3 of the Black Prince Claim of  
 this group.

A pine post 4 feet long, 4 ins. square  
 set 18 ins. in the ground, with  
 mound of stones + earth, scribed  
 1/1387/Y.L. whence

U.S. Mineral Monument No 4 bears  
 S.  $89^{\circ}58' E$  6380 ft.  $\frac{1}{2}$  a rock in place  $3\frac{1}{2}$  ft  
 high  $2 \times 3\frac{1}{2}$  ft, chiseled x 1/DR/1387 bears S  $28^{\circ} E$  34 ft

Thence  $N 77^{\circ}58' E$

$Ta 12^{\circ}00' E$

750.

To monument

Being the E. side centre of claim  
 $\frac{1}{2}$  identical with monument <sup>at W side</sup> centre  
 Black Prince, of this survey

A pine post 4 ft long, 4 ins square,  
 set 12 ins. in the ground  $\frac{1}{2}$  surround-  
 ed by mound of stones  $\frac{1}{2}$  earth,  
 scribed 1387/Y.L.

Same bearing

$Ta 12^{\circ}00' E$

1500

To corner No 2, the N.E. cor  
 identical with a corner of the  
 location  $\frac{1}{2}$  with corner No 4 of the  
 Black Prince claim

A pine post 4 feet long, 4 ins. square,  
 set 1 ft in ground, surrounded by  
 mound of stones + earth, scribed

2/1387/Y.L. whence a rock in place  
 $1 \times 3$  ft 17 inches above ground, bears S  $16^{\circ} W$  98 ft chiseled  $\frac{1}{2}$  DR/2/1387

Thence  $N 68^{\circ}49' W$ .

$Ta 12^{\circ}00' E$

300

To monument

Being N. end centre of location <sup>and</sup>  
 identical with corner No 6 of the  
 Twilight claim of this survey



FEET

A pine post 4 ft long, set 12 ins  
in the ground being 4 ins. square  
and surrounded by a mound of  
stones & earth, scribed 1387/YL  
whence the discovery ~~of~~ bears  
S 27° 58' W 20 feet -

Same bearing

N 12° 00' E

600 To corner N° 3 N.W. cor  
Identical with a corner of the  
location

A pine post 4 feet long, 4 ins. square,  
set 12 ins. in ground, surrounded  
by a mound of stones & earth,  
scribed 3/1387/YL whence a rock in place  
5x7 ft, 4 ft above ground, chiseled BRX/3/1387/bears N 2° 3' W 230.4 ft  
Thence S 27° 58' W

N 12° 00' E

750 To monument

Being N. side centre of claim  
A pine post 4 feet long, 4 ins square,  
set 12 ins. in ground, scribed 1387/YL

Same bearing

N 12° 00' E

1500 To corner N° 4 S.W. cor

Identical with a corner of the  
location S 68° 49' E 98 feet from  
corner N° 4 of the Contact Claim  
of this survey

A pine post 4 ft long, 4 ins square,  
set 12 ins. in the ground, sur-  
rounded by a mound of stones  
& earth, scribed 4/1387/YL whence a

s. pine stump 14 ins. diam. blazed & scribed XBR/4/1387/bears N 47° 11' E 28 ft  
Thence S 68° 49' E

N 12° 00' E

192 To mens centre of contact claim of this group  
300 To monument

Being the S. end centre of location  
A pine post 4 ft long, 4 ins square, set 12 ins. in  
ground surrounded by mound of stones, scribed 1387/YL



FEET

Same bearing:  $\approx 12^\circ E$   
 482 To Cor no 1, contact + no 4 London claims of this group.  
 600. To corner no 1, the point of beginning.

ST	BEAR	LENG	LAT	DEP	DMD	DOUBL AREA	AREA (Acres)
1-2	N27°58'E	1500.00	+1324.80	+703.40	+703.40	+931864.32	20.51
2-3	N68°49'W	600.00	+216.80	-559.40	+847.40	+183716.32	
3-4	S27°58'W	1500.00	-1324.80	-703.40	-415.40	+550321.92	
4-1	S68°49'E	600.00	-216.80	+559.40	-559.40	+121272.92	
						+1787175.48	

The ledge on this claim extends  
 S. 27°58' W. 1200 ft. from discovery  
 through tunnel no. 10

mine

9: 8

8

0

4



# TYLIGHT GROUP

AL HASSAN CLAIM.

FEET →

Beginning at cor N<sup>o</sup> 1, the S. E. cor  
Identical with a cor. of location  
of north cor N<sup>o</sup> 5 of the Webster, a  
claim of this group

A pine post 4" x 4" x 4' set 18 ins in  
the ground, surrounded by a  
mound of earth & stones

Scribed H.H.L. 11/1387 whence

U.S. Mineral Monument N<sup>o</sup> 4 bears

S 66° 30' E 5025 feet and a rock in place

28" x 34" x 2' chisel x B.R. 1387 bears N 11° 1' E 108. ft

Fence N 10° 56' E

N 12° 0' E

280 To monument, identical with location mon.

Being centre of E. end of claim

A pine post 4 ft long 4 ins. square  
set 12 ins. in the ground, surrounded

by a mound of earth & stones,

scribed H.H.L. 1387, whence

discovery tunnel bears N 68° 4' W

160 ft -

## Same Bearing

N 12° 0' E

560 To cor N<sup>o</sup> 2, the N. E. cor

Identical with a corner of location

of north corner N<sup>o</sup> 1 of the Wedge

Claim, Survey N<sup>o</sup> 1243

A pine post 4 ft long 4 ins sq. set  
18 ins in ground, surrounded by

a mound of earth & stones,

scribed H.H.L. 12/1387, whence

A pine stump marked x B.S. 12/1387

bears S 30° 11' W 87.9 feet.

Fence N 62° 25' W.

N 12° 0' E

182.4 To monument N<sup>o</sup> 3, a corner

Identical with the

cor N<sup>o</sup> 4 of the Wedge Claim

Survey N<sup>o</sup> 1243, of north cor N<sup>o</sup> 1

of the Aurora, a claim of this group



FEET

A pine post 4 ins. square, 3 feet out of ground, surrounded by a mound of earth & stakes, &cribed H.H.L./3/1387 whence a rock in place 2 ft above ground, & 2 1/2 ft sq, chiseled x B.R./1/1387 bears N 21° 3' W 197. ft

Bearing N 65° 3' W

300  
600

To S end center Aurora claim of this group  
To monument No 4  
Identical

with Cor No 5 of the Aurora, a claim of this survey & with Cor No 1 of the Mamie, Survey No 1082

A pine post 4 ft long, 4 ins sq. set 12 ins in the ground, surrounded by a mound of earth & stakes, &cribed H.H.L./4/1387/ whence a rock in place bears N 40° E 21 ft. & is chiseled x B.R./4/1387/ the said rock being 12 ins above ground & of oval shape.

Bearing N 44° 37' W  
W 12° 0' E

536.25

To corner No 5 the N. W. cor  
Identical with a corner of location of S. end line 1-4 of the Mamie Survey No 1082

A pine post 4 ft long, 4 ins sq, set 18 ins. in ground, surrounded by mound of earth & stakes, &cribed H.H.L./5/1387 whence a rock in place, chiseled x B.R./5/1387, 2 ft above the ground & 18 x 20 ins bears S 33° 55' E 81.6 ft. & cor No 4 of the Mamie claim Surv. No 1082 bears N 44° 37' W 63.75 ft

Bearing S 26° 05' W  
W 12° 0' E

300

To monument No 6 Identical with location monument for center  
A pine post 4 ins sq, 4 ft long set 15 ins in ground, surrounded



FEET

by a mound of earth <sup>and</sup> staves  
 & scribed 6/1387/H.H.L. whence a  
 high peak bears N 27° 7' <sup>orig. location</sup>  
 monument for us wear bears S 27° 14' W 590 feet, a pine post  
 4 ins. sq. 4 ft high, in mound of stones scribed W.C. 7/1387. No  
 other bearing monuments available  
 Thence S 10° 56' 1/2  
 T<sub>W</sub> 12° 0' E

300

To corner no 7  
 Identical with a corner of the  
 location

A pine post 4 ft long, 4 ins. sq.  
 set 12 ins. in ground, surrounded  
 by a mound of earth <sup>and</sup> staves,  
 scribed 7/1387/H.H.L. whence

A pine post 3 1/2 ft long 4 ins. sq.  
 set 12 ins. in the ground, scribed  
 B.M. 7/1387 bears S 40° 45' E 16 ft <sup>orig. location</sup>  
 monument for this corner bears S 42° 49' W 3136 feet  
 a pine post 4 ft high, in mound of stones scribed W.C. 7/1387. No  
 other bearing monuments available  
 Thence S 40° 45' E  
 T<sub>W</sub> 12° 0' E

455.8

To monument no 8  
 Identical with the N.E. corner of the surveyed

Contention claim <sup>and</sup> earth car no 6 of the  
 Webster, a claim of this survey  
 a pine post 4 ins. sq. 4 ft long set  
 12 ins. in the ground, surrounded  
 by a mound of earth <sup>and</sup> staves,  
 scribed 8/1387/H.H.L. whence

A rock in place 18 ins x 2 ft <sup>and</sup>  
 15 ins above ground, chiseled  
 x B.R. 8/1387/ bears S 83° 17' 1/2 92 ft.

Thence S. 68° 4' E  
 T<sub>W</sub> 12° 0' E

924.1 To corner no 1 the place of beginning

- NOTE -

Monuments no 3-4-8 are original location  
 monuments but are not mentioned in the  
 location notice

From monument <sup>at 6 end</sup> ~~center~~ a shaft 4' x 8' x 80'  
 bears N 65° 13' W 595 ft <sup>and</sup> a shaft

4' x 6' x 35' bears N 65° 12' W 620 feet  
 these shafts were not placed on claim by present owner or Grantor.



7

9

ST	BEAR	LENG	LONG	LAT	D. M. D.	DOUBLE AREA	AREA ACRES
1-3	N10° 56' E	560.00	+ 106.21	+ 549.80	+ 106.21	+ 58394.26	
3-4	N62° 25' W	182.40	- 161.66	+ 84.40	+ 50.76	+ 4284.14	
4-5	N65° 3' W	600.00	- 544.00	+ 253.00	- 645.40	- 163412.70	
5-6	N44° 37' W	536.25	- 376.60	+ 381.70	- 1575.50	- 601368.30	17.87
6-7	S26° 55' W	300.00	- 135.80	- 267.50	- 2087.90	+ 508513.25	
7-8	S10° 56' W	300.00	- 56.90	- 294.60	- 2280.60	+ 671864.76	
8-9	S40° 40' E	455.80	+ 311.55	- 361.60	- 2025.90	+ 732583.52	
9-1	S68° 4' E	924.10	+ 857.20	- 345.20	- 857.20	+ 295905.14	
						1556764.32	

Mineral bearing ledge passes through center of claim  
 Strike N 68° 4' W 920 ft from E end center, then N 41° 53' W traceable about 200 ft from this point, average thickness 2 1/2 ft



## CONTACT CLAIM

FEET

Beginning at corner N° 1 the N. E. Cor  
Identical with a corner of location  
and N 68° 49' W 118 ft from cor. N° 1  
of the Yakima Claim of this  
group.

A pine post 4 feet long, 4 ins. sq.  
set 1 1/2 ins. in ground, surrounded  
by a mound of earth & stakes,  
scribed 1/1387/C. L. whence  
U. S. Mineral Monument N° 4 bears  
S 89° 45' E 6488 feet. & a rock in place  
6 x 8 ft 3 1/2 ft high, chiseled x 1/BR/1387 bears S 29° E 39 ft  
Thence S 31° 36' W

Ta 12° 00' E

715 To monument

Being the E. side center of Claim  
& identical with monument <sup>at inside</sup> center  
of the Soudan claim of this  
survey

A pine post 4 ft long set 1 1/2 ins.  
in the ground, 4 ins. square, sur-  
rounded by a mound of earth  
& stakes, scribed 1387/C. L.

Same Bearing

Ta 12° 00' E

1430 To corner N° 2 the S. E. Cor

Identical with a corner of the  
location & fourth cor. N° 5 of the  
Soudan Claim

A pine post 4 ft long, 4 ins. sq.  
set 1 1/2 ins. in the ground, sur-  
rounded by a mound of earth  
& stakes, scribed 2/1387/C. L.

whence a high peak bears N 70° 13' W. see Soudan N° 3

Thence N 68° 49' W

Ta 12° 00' E

290 To monument

Being the S. end. center of location

A pine post 4 ft long, 4 ins. square  
set 1 1/2 ins. in ground, surrounded by a  
mound of earth & stakes, scribed 1387/C. L.



FEET

Same Bearing

70 12° 00' E

580. To corner No 3, the S. W. cor  
Identical with a corner of location  
A pine post 4 ft long, 4 ins. sq.  
set 12 ins. in ground, surrounded  
by a mound of earth <sup>and</sup> stones,  
scribed 3/1387/C. L. whence a stone in  
place 2x3x1 ft <sup>chiseled</sup> BR 3/1387 bears S 17° W 97.1 ft  
Thence N 31° 36' E

70 12° 00' E

715 To monument  
Being the N. side centre of the  
Claim  
A pine post 4 ft long, 4 ins. square  
set 12 ins. in the ground, surround-  
ed by a mound of earth <sup>and</sup> stones  
scribed 1387/C. L.

1400 Same bearing to centre of wash, 40 ft  
wide, 15 ft deep. course N 60° W  
Same bearing

1430 To corner No 4 The N. W. Cor  
Identical with a corner of the  
location <sup>and</sup> bearing N 68° 49' W  
98 feet from corner No 4 of the  
Yakima Claim of this group  
A pine post 4 ft long, 4 ins. sq.  
set 12 ins. in the ground, sur-  
rounded by a mound of earth  
<sup>and</sup> stones, scribed 4/1387/C. L. whence  
a limestone ledge chiseled 4 ft up 4X/1387/BR bears N 85° W 101 ft  
Thence S 68° 49' E

70 12° 00' E

98  
290 To corner No 4 Yakima claim of this survey  
To monument  
Being the N. end centre of location  
<sup>and</sup> N 68° 49' W 408 feet from monument  
No 1 of the Yakima claim  
A pine post 4 ft long, 4 ins.  
square, set 14 inches in the  
ground, surrounded by a  
mound of earth <sup>and</sup> stones scribed  
1387/C. L. whence (S 31° 36' N)  
Discovery shaft bears S 31° 36' W 90 feet.



398

580

Same Bearing  
To find centre Yakima, a claim of this group  
W 12° 00'

To corner No. 1, the point of  
beginning.

ST	BEAR	LENG	LAT	DEP	D.M.D	DOUBLE AREA	AREA ACRES
1-2	S 31° 36' W	1430.00	-1217.90	-749.30	-749.30 +	912572.47	18.75
2-3	N 68° 49' W	580.00	+209.58	-540.80	-2039.40 -	427417.45	
3-4	N 31° 36' E	1430.00	+1217.90	+749.30	-1830.90 -	2229853.11	
4-1	S 68° 49' E	580.00	-209.58	+540.80	-540.80 +	113340.86	
						1631357.23	

Presumably the same ledge  
outcropping on Yakima claim  
of this group, can also be  
traced 1400 feet through centre  
of this claim. Strike S 31° 36' W  
from Shaft No. 1, average  
thickness 2 1/2 ft -



SOUDAN CLAIM.

FEET

Beginning at corner N° 1, the N. E. cor  
 Identical with a corner of location  
 with corner N° 5 of the Back-  
 Base, a claim of this group and  
 with corner N° 2 of the Black  
 Prince, a claim of this survey  
 A pine post 4 ft. long, 4 ins. sq. set  
 18 ins. in ground, surrounded by a  
 mound of stones & earth, scribed  
 1/1387/S.L. whence  
 U. S. Mineral Monument N° 4 bears  
 N 88° 24' E 5920 feet ~~to~~ rock in  
 place, 18x26x30 ins chiseled x 5/13 R/1387 bears N 83° E 21 ft  
 Thence S 31° 36' W  
 W 12° 00' E

715 To monument

Being the E. side centre of Claim  
 A pine post 4 ft long, 4 ins. square  
 set 12 ins. in ground, surrounded  
 by a mound of earth & stones,  
 scribed 1387/S.L.

1430 Same bearing

W 12° 00' E

To corner N° 2 the S. E. cor  
 Identical with a cor of location,  
 A pine post 4 ft long, 4 ins. square,  
 set 14 ins. in ground, surrounded  
 by a mound of earth & stones,  
 scribed 2/1387/S.L. whence  
 shaft N° 1 bears N 65° W 300.7 feet whence  
 a rock in place 2 ft sq. chiseled x B R 2/1387 bears N 40° W 18 ft  
 Thence N 68° 49' W

W 12° 00' E

300 To monument

Being the S. end centre of location  
 A pine post 4 ft long, 4 ins square  
 set over stone in place, chiseled x at  
 exact centre of claim, surrounded by  
 mound of stones, scribed 1387/S.L  
 whence shaft No 1 bears N 31° 36' E. 20 ft



FEET

Same bearing  
To 12000 E.

600 To corner no 3 The S. N. cor  
Identical with a corner of location  
with Cor no 2 of the Contact claim  
of this group.

A pine post 4 ft long, 4 ins sq,  
set 12 ins. in ground, surrounded  
by a mound of stones & earth,  
scribed 3/1387/S.L. where a high peak  
bears N70°13'W <sup>1/2</sup> of a pointed rock 3x4x4 ft chiseled  
x 3/BR/1387 bears S18°58'W 91.3 ft

Thence N 31°36'E  
To 12000 E

715 To monument  
Being the N. side center of claim  
& identical with monument <sup>at E side</sup> center of  
the contact claim-

A pine post 4 ft long, 4 ins. square,  
set 14 ins. in the ground, surrounded  
by a mound of stones & earth,  
scribed 1387/S.L.

Same bearing  
To 12000 E

1430 To corner no 4 the N. N. cor  
Identical with a corner of location  
with corner no 1 of the Contact claim  
& bearing N68°49'18 ft from cor  
no 1 of the Yakima claim of this  
survey

A pine post 6 ins. sq, 4 ft long  
set 12 ins. in the ground, surrounded  
by mound of stones & earth,  
scribed 4/387/S.L.

To bearing monuments in Contact cor no 1  
Thence S 68°49'E

To 12000 E

118  
300 To corner no 3 Black Prince & Cor no 1 Yakima, claims of this survey  
To monument

Being the N. end center of location  
on Saddle 2-3 Black Prince

A pine post 4 ft long, 4 ins sq. set 12 ins in  
ground surrounded by mound of earth & stones



FEET

Same bearing  
90/2°00 E

600 To cor. No. 1, the place of beginning -

ST	BEAR	LENG	LAT	DEP	D.M.D.	Double Area	Area Acres
1-2	S 31° 36' Y	1430.00	- 1217.90	+ 749.30	- 749.30	+ 912572.47	<u>19.37</u>
2-3	N 68° 49' Y	600.00	+ 216.80	- 559.50	- 3058.10	- 446196.08	
3-4	N 31° 36' E	1430.00	+ 1217.90	+ 749.30	- 1868.30	- 2275402.57	
4-1	S 68° 49' E	600.00	- 216.80	+ 559.50	- 559.50	+ 121355.50	
						1687670.63	

Ledge average thickness 2 ft. length 1400, strike N 31° 36' E from Disc shaft No. 1 passes through center of claim, is probably a continuation of the ledge on the Black Prince claim of this survey



BACK-BONE CLAIM.

FEET

Beginning at corner N<sup>o</sup> 1, the N.E. Cor.  
Identical with the N.E. corner of  
the location and with corner  
N<sup>o</sup> 1 of the Twilight Claim of this  
group and with corner N<sup>o</sup> 5 of the  
Hendricks. Lat N<sup>o</sup> 40

A pine post 4 feet long, 4 ins. sq.  
set 18 ins. in the ground, surrounded  
by a mound of stone & earth  
scribed 1/1387/B.B.L. whence  
U.S. Mineral Monument N<sup>o</sup> 4 bears  
S 78° 40' E 4835 feet <sup>to</sup> a rock in place  
18x8x10 ins. chiseled x 1387 bears N 87° 21' 64 7.8 ft

Thence S 30° 35' W  
To 12° 00' E

244.4 To corner N<sup>o</sup> 2

Identical with corner N<sup>o</sup> 6 Golden  
Gate Claim Lat N<sup>o</sup> 61

A pine post 4 ft long, 4 ins. square  
set 12 inches in the ground  
scribed 2/1387/B.B.L. whence a stone in  
place 3x4 ft 12 ins high chiseled x 1387 bears S 46° E / 153.2 ft

Thence S 35° 22' W  
To 12° 00' E

302.6 To corner N<sup>o</sup> 3

Identical with corner N<sup>o</sup> 5 Sunrise  
Claim, Lat N<sup>o</sup> 73 Survey N<sup>o</sup> 958

A pine post 4 feet long, 4 ins. sq.  
set 15 inches in the ground, sur-  
rounded by a mound of stone  
& earth, scribed 3/1387/B.B.L.

whence a high rock 7 ft up chiseled x BR/3/1387 bears S 80° E 87 ft -  
no other bearings available

Thence S 21° 41' W  
To 12° 00' E

954.9 To corner N<sup>o</sup> 4

Identical with a corner of the  
location

A pine post 4 ft long, 4 ins. square,  
set 12 ins. in ground, surrounded  
by a mound of stone & earth,  
scribed 4/1387/B.B.L. whence a peak

bears S 73° 12' W <sup>to</sup> an oval stone 2x3 ft 14 in. high  
chiseled x 4/1387 bears N 11° E 33.3 ft -



FEET

Bearing  $126^{\circ} 8' 49'' W$   
Va  $12^{\circ} 0' 0'' E$

300 To monument  
Being south end center of location  
A pine post 4 feet long, 4 ins. sq.  
set 14 ins. in ground, surrounded  
by a mound of stones  $\frac{E}{\text{south}}$   
scribed 1387/B.B.L

Same Bearing  
Va  $12^{\circ} 0' 0'' E$

600 To corner No 5 The S. W. Cor  
Identical with a corner of location  
 $\frac{E}{\text{south}}$  with corner No 1 Oaudan Claim  
of this survey  $\frac{E}{\text{south}}$  with corner  
No 2 of Black Prince Claim of this  
group.  
A pine post 4 feet long, 4 ins. sq.  
set 18 ins. in ground, surrounded  
by a mound of stones, scribed 5/1387/BBL  
where U.S. Min. Mon. No 4 bears  $78^{\circ} 24' E$  5920 ft and a  
rock in place  $18 \times 26 \times 30$  ins. chiseled  $5/1387$  bears  $83^{\circ} 6' 21'' E$   
Bearing  $127^{\circ} 08' E$

Va  $12^{\circ} 00' E$

750. To monument  
Being N. side center of claim  $\frac{E}{\text{south}}$   
identical with monument <sup>at E. side</sup> <sub>center of the</sub>  
Black Prince, claim of this group  
A pine post 4 ft long, 4 ins. sq.  
set 18 ins. in the ground, surrounded  
by a mound of stones, scribed  
1387/B.B.L

Same bearing

1500 To corner No 6 The N. W. Cor  
Identical with a corner of the location  
 $\frac{E}{\text{south}}$  with corner No 1 Black Prince  
 $\frac{E}{\text{south}}$  on S. side line 6-1 Twilight  
claim of this group.  
A pine post 4 ft. long, 4 ins. square  
set 12 ins. in ground, surrounded  
by a mound of stones  $\frac{E}{\text{south}}$ ,  
scribed 6/1387/B.B.L where U.S.  
min. mon. No 4 bears  $57^{\circ} 45' E$  5345 ft and a  
rock in place  $2 \times 3 \times 1 \frac{1}{2}$  chiseled  $1/3 R/1387$  bears  $52^{\circ} 11' 63'' E$



FEET

Thence S 68° 49' E  
T<sub>W</sub> 12° 00' E

272.65 To monument  
Being N. end center of location  
of an S. side line 1 - East Twilight  
claim of this group.  
A pine post 4 ft. long 4 ins. sq. set  
12 ins in ground, surrounded by  
a mound of stones + earth, scribed  
1387/B.B.L. where  
Discovery shaft bears S 27° 58' W.  
80 feet

Samuel Bearing

T<sub>W</sub> 12° 00' E

545.30 To corner No. 1, the place of beginning

St	Bear	Len <sub>g</sub>	Lat.	Dep	D.M.D	Double Area	Area ACRES
1-2	S 30° 35' W	244.40	- 210.40	- 124.30	- 124.30	+ 26152.72	
2-3	S 35° 22' W	302.60	- 246.76	- 175.15	- 423.75	+ 104564.55	
3-4	S 21° 41' W	954.90	- 887.34	- 352.95	- 957.85	+ 844614.58	18.45
4-5	N 68° 49' W	600.00	+ 216.80	- 559.40	- 1864.20	- 2404758.56	
5-6	N 27° 58' E	1500.00	+ 1324.80	+ 703.40	- 1720.20	- 2278920.96	
6-1	S 68° 49' E	545.30	- 197.10	+ 508.40	- 508.40	+ 100205.64	
						1607542.03	

Ledge, averaging 3 1/2 ft in thickness  
length 1400 ft, strike S 27° 58' W  
from shaft No. 1, passes through  
the center of this claim



WEBSTER CLAIM.

FEET

Beginning at cor N° 1, the S. E. cor  
Identical with a corner of the  
location

Being on the N. side line  
of Kendrick's Claim Lot N° 45  
A pine post 6 ins. sq. 5 ft long,  
set 10 ins. in ground surrounded  
by mound of earth & staves

scribed 1/1387/Y.L. where U. S  
mineral monument N° 4 bears S 69° 27' E 45.85 ft and a rock  
in place 3 ft sq 2 1/2 ft high chiseled X 1 BR 1387 bears N 71° E  
36 ft.

Thence N 24° 37' E

To 12° 00' E

122.

To monument N° 2 <sup>on S. side line</sup>  
<sup>Copper King, Lot N° 53</sup>

A pine post 4 ft long, 4 ins. sq.  
set 18 ins in the ground, with  
mound of earth & staves

scribed 2/1387/Y.L.

Identical with a monument  
of the location where a limestone  
outcrop chiseled X BR 1387 bears S 14° 17' W. 27.5 ft

Thence N 87° 30' W

To 12° 00' E

105.

To cor N° 3

Identical with a cor of location  
with Copper King <sup>S.W. cor.</sup> monument  
Lot N° 53 - No survey  
N° marked on same -

A pine post 4 ins. square,  
3 ft above ground, surrounded  
with a mound of earth &  
staves, scribed 3/1387/Y.L.

where a high peak bears N 8° 31' W and a rock in place  
3x3x3 ft chiseled X 3 BR 1387 bears N 3° 40' E 12.9 ft -

Thence N 1° 00' W

To 12° 00' E

245

To monument N° 4, the N. E. Cor  
Identical with a monument of  
the location on N. End line

Copper King Claim Lot N° 53  
A pine post 4 ins square, 4 ft  
long, set 12 ins in ground

scribed 4/1387/Y.L. & surrounded  
by mound of earth & staves

where a stone in place 3x1x2 ft chiseled X BR 1387 bears 13° S E. 187 ft

B.R.



Thence  $N 74^{\circ} 5' W$ .

$NW 12000' E$

255

To monument  $N^{\circ} 5$

Identical with the location monument ~~for~~ corner  $N^{\circ} 1$  - Al Hassan claim of this survey, scribed 5/1387/YL. For further description of this monument see Al Hassan  $N^{\circ} 1$

Thence  $N 68^{\circ} 4' W$ .

$NW 12000' E$

924.1

To cor  $N^{\circ} 6$  the  $N. W.$  cor

Identical with a location monument + with Al Hassan  $N^{\circ} 8$  <sup>claim of this group</sup> which see for description, scribed 6/1387/YL

This corner is also identical with <sup>the NE.</sup> corner of location of the surveyed "Contention" lots.

Thence  $S 24^{\circ} 37' W$

$NW 12000' E$

282.2

To monument at  $W. E.$  centre

Identical with a monument of location

A pine post 4 ft long, 4 ins  $\varnothing$ , set 1 ft in the ground, surrounded by a mound of earth & stones, scribed 7/1387/YL. whence

Discovery shaft bears  $S 68^{\circ} 49' E$  100 feet, whence

Tunnel mouth bears  $S 55^{\circ} 48' E$  430 feet -

5644

Same Bearing

$NW 12000' E$

To corner  $N^{\circ} 7$ . (on  $E. S. line$  "Contention", ~~unsurveyed~~)

Identical with a corner of location + with cor  $N^{\circ} 3$  Twilight claim of this group, which see for description, scribed 7/1387/YL



Feet

467.00 Thence S 68° 49' E  
Val 12° 00' E  
To south side centre monument  
Identical with monument <sup>n side</sup> centre  
of the Twilight Claim of this group  
which see for description, and  
scribed SOUTH S. CENTRE / 1387 / Y.L.

934.1 Tame Bearing  
Val 12° 00' E.  
To corner No 8  
Identical with a corner of location  
and with monument No 2 Twilight  
Claim, which see for description,  
and with Hendricks No 3 Lot  
No 45, scribed 8 / 1387 / Y.L.

~~vertical to ...~~  
~~Thence ...~~  
Val 12° 00' E

530 To corner No 1, the place of  
beginning, whence  
U. S. Mineral Monument No 4 bears  
S 69° 27' E 4585 feet -

ST	BEAR	LENG	LAT	DEP	D.M.D	Double Area	AREA ACRES
1-2	N 24° 37' E	122.00	+ 110.90	+ 5984	+ 5084	+ 5638.16	
2-3	N 87° 30' W	105.00	+ 4.60	- 104.80	- 3.12	- 14.35	
3-4	N 1° 00' W	245.00	+ 244.90	- 4.26	- 112.18	- 27472.88	
4-5	N 74° 5' W	255.00	+ 69.90	- 245.20	- 361.64	- 25278.64	15.72
5-6	N 68° 4' W	924.10	+ 345.20	- 857.20	- 1464.04	- 505386.60	
6-7	S 24° 37' W	564.40	- 513.00	- 230.00	- 2556.24	+ 1311351.12	
7-8	S 68° 49' E	934.10	- 337.30	+ 870.90	- 1920.34	+ 647730.68	
8-1	N 81° 35' E	530.00	+ 74.7	+ 524.72	- 524.72	+ 39196.58	
						1367370.91	

Mineral Bearing ledge, average thickness  
as shown by outcrop here & there, 2 ft  
length 1200 ft, strike S 68° 27' E from  
shaft No 1



## BLACK PRINCE

FEET

Beginning at corner No. 1 the N.E. corner  
 identical with a corner of location  
 and with corner No. 6 of the Back Bone,  
 a claim of this group and lying on  
 the south side line 6-1 of the  
 Twilight claim of this survey  
 A pine post 4 ft long, 4 ins. sq.  
 set 12 ins. in ground, surrounded  
 by a mound of stones and earth,  
 scribed 1/1387/B.P.L. whence  
 U.S. Mineral Monument No. 4 bears  
 $S 77^{\circ} 45' E$  534.5 feet -  $\frac{1}{2}$  dia. rock in  
 place  $2 \times 3 \times 1$  ft chisel  $\times 1/8$  R/1387 bears  $S 21^{\circ} 4.63' W$   
 Thence  $S 27^{\circ} 58' W$

$\frac{1}{2}$  dia 12° 00' E

750

To monument

Being the E. side centre of claim  
 and identical with monument <sup>at wide</sup> centre  
 of the Back Bone claim -  
 A pine post 4 ft long, 6 ins. sq.  
 set 18 ins. in ground, surrounded  
 by a mound of stones and earth,  
 scribed 1387/B.P.L.

Same bearing

$\frac{1}{2}$  dia 12° 00' E

1500

To corner No. 2

Identical with a corner of location  
 and with corner No. 1 of the Back Bone  
 and corner No. 5 of the Back Bone, claims  
 of this survey.

A pine post 4 ft long, 4 ins. sq. set  
 18 ins. in ground, surrounded by a  
 mound of earth and stones, scribed  
 2/1387/B.P.L. whence

U.S. Mineral Monument No. 4 bears  
 $N 88^{\circ} 24' E$  5920 feet. See Back Bone nos

Thence  $N 68^{\circ} 49' W$

$\frac{1}{2}$  dia 12° 00' E

241

To monument

Being S. end centre of location  
 and from which monument <sup>at mound</sup> centre of the



FEET

Sandaw bears N 68° 49' 1/2 59 feet  
A pine post 4 ft long, 4 ins. square,  
set 18 ins. in the ground, surrounded  
by a mound of earth & stones,  
scribed 1387/B.P.L

Same bearing

To 12° 00' E.

482 To corner No 3 the S. W. cor  
Identical with a cor. of location  
& from which corner No 4 of the  
Sandaw bears N 68° 49' 1/2 118 feet  
& identical with corner No 1 of the  
Yakima claim of this group -  
A pine post 4 ft long, 4 ins square,  
set 18 ins. in the ground, surrounded  
by a mound of stones & earth,  
scribed 3/1387/B.P.L whence  
U.S. Mineral Monument No 4 bears  
S 89° 58' E 6380 feet - Bearing monument  
given under Yakima No 1

Thence N 27° 58' E

To 12° 00'

750 To monument  
Being N. side center of Claim  
& identical with monument <sup>at E side</sup> <sub>center of</sub>  
the Yakima claim of this group  
A pine post 4 ft long, 4 ins square,  
set 12 ins in the ground, surrounded  
by a mound of earth & stones scribed  
1387/B.P.L

Same bearing

To 12° 00' E

1500 To corner No 4  
Identical with a corner of the  
location & with corner No 2 of the  
Yakima  
A pine post 4 ft long, 4 ins square,  
set 12 ins in the ground, surrounded  
by a mound of earth & stones,  
scribed 1/1387/B.P.L Seen No 2 Yakima



FEET

241 Thence  $S 68^{\circ} 49' E$   
 $N 12^{\circ} 00' E$   
 To monument  
 Being the N. end center of location  
 and on S. side line 6 - Twilight  
 claim of this group  
 A fine post 4 feet long, 4 ins. square,  
 set 12 ins in ground, surrounded  
 by mound of stone & earth,  $22 \frac{1}{2}$   
 scribed 1387 / D. P. L. whence  
 N. Discovery shaft bears  $S 12^{\circ} 45' E$  89.7 feet.  
 Same bearing  
 $N 12^{\circ} 00' E$   
 482 To corner No. 1, the place of beginning

St	Bear	Len	Lat.	Dep	D.M.D	Double Area	Area Acres
1-2	$S 27^{\circ} 08' N$	1500.00	- 1324.80	- 703.40	- 703.40	+ 931864.32	<u>16.48</u>
2-3	$N 68^{\circ} 49' N$	482.00	+ 174.20	- 449.40	- 1856.20	- 323350.10	
3-4	$N 27^{\circ} 08' E$	1500.00	+ 1324.80	+ 703.40	- 1602.20	- 2122594.60	
4-1	$S 68^{\circ} 49' E$	482.00	- 174.20	+ 449.40	+ 449.40	+ 78285.50	
						1435794.88	

3 ft ledge of Iron + Copper rock  
 passes through center of this  
 claim, striking  $S 27^{\circ} 08' W$   
 1450 ft from Disc. Shaft  
 No. 1



TYLIGHT CLAIM.

FEET

Beginning at corner n<sup>o</sup> 1, the S. E. cor  
 Identical with a cor. of location  
 and with cor n<sup>o</sup> 1 of the Back Bone,  
 a claim of this group, and with  
 cor. n<sup>o</sup> V Hendricks Claim Lot No. 45  
 A pine post 4 ft long, 4 ins sq.  
 set 18 ins in the ground, sur-  
 rounded by a mound of earth  
 and stones, scribed 1/1387/T.L.  
 whence U. S. mineral Monument,  
 n<sup>o</sup> 4 bears S 78° 40' E 4835 feet-  
<sup>up a rock in place 10 ins high 24 x 40 inches</sup>  
 thence x 1/3 R/1387 bears S 87° W 13.3 ft.  
 Thence N 8° 15' W

N 12° 00' E

300 To monument, the S. end. center  
 Identical with a monument of  
 the location - and with Monu. No IV Hendrick. Lot No 45  
 A pine post 4 ft long, 4 ins sq.  
 set 14 ins in the ground, sur-  
 rounded by a mound of earth  
 and stones scribed 1887/T.L.

Thence N 8° 15' W

N 12° 00' E

600 To corner n<sup>o</sup> 2, the N. E. cor  
 Identical with a corner of the  
 location and with corner n<sup>o</sup> 8  
 of the Webster, a claim of this  
 survey and with cor n<sup>o</sup> III Hendricks  
 Claim Lot no 45  
 A pine post 4 ft long, 4 ins sq.  
 set 18 ins in ground, surrounded  
 by a mound of earth and stones,  
 scribed 2/1387/T.L. whence a rock in place  
 3 x 7 x 1 ft chiseled x B.R. 1387/Bears due E 87.6 ft

Thence N 68° 49' W.

N 12° 00' E

467.05 To monument  
 Being the N. side center of line  
 2-3 and identical with S. side  
 7-8 line center monument of the  
 Webster, a claim of this group



FEET

A pine post set 12 ins in the ground, surrounded by a mound of earth & stones, being 4 ft. long, 4 ins square, scribed 1/1387/T.L.

934.1

Same bearing

To corner n<sup>o</sup> 5 on East line of "Contention" lot  
A pine post 4 ft long, 4 ins square, set 12 ins. in the ground, surrounded by a mound of earth & stones, scribed 3/1387/T.L.

Identical with a corner n<sup>o</sup> 7 of the Webster claim of this survey, whence the original N. W. corner of location bears N. 68° 49' W. 392.2 feet, a pine post 4 ft long, 4 ins sq. set 2 ft in ground scribed W.C./1/3/1387/T.L. No other bearings monuments available

Identical with

200

To corner n<sup>o</sup> 4

Identical with SE cor of location of "Contention" lot

A pine post 4 ft long, 4 ins square, set 18 ins. in ground, surrounded by a mound of stones & earth, scribed 4/1387/T.L. whence

Discovery Tunnel bears S 59° 5' E 415 feet  
A rock in place 18 ins high 2-3 ft base Chiseled x 4/BR/1387 bears N 23° W 87 ft  
Thence N 54° 36' W

W 12° 00' E

3232

To corner n<sup>o</sup> 5 along line of "Contention lot"

A pine post 4 ft long, 4 ins sq. set 14 ins. in ground, surrounded by mound of earth & stones, scribed 5/1387/T.L. whence

original N. W. cor bears N 8° 15' W. 1382 ft. scribed on side facing this corner W.C./1/5/1387/T.L. A rock in place 10 ins high 16 x 30 inches, chiseled x 5/BR/1387 bears N 83° W 98.1 ft  
Thence S 8° 15' E

W 12° 00' E

161.8

To N. end center of location with which it is identical



FEET

A pine post 4 ft. long, 4 ins. sq. set 14 ins in the ground, surrounded by a mound of earth & stones, scribed NESTE. CENTRE/1387/T.L.

461.8 Same bearing  
To corner No 6, the S.W. corner 1.4810  
Identical with a corner of location with monument <sup>at end</sup> centre, Yakima claim of this group  
A pine post 4 ft long, 4 ins sq. set 12 ins in ground, surrounded by a mound of stones & earth scribed 6/1387/T.L. whence tunnel No 1 bears S 27° 58' 20" E 20 ft bring on Yakima claim and a rock in place 18 1/2 x 2 1/2 ins, chiseled X 6 DR 1387 bears S 1° 40' W 13 1/2 FT.  
Thence S 68° 49' 6"

300 - - - - - To cor No 2 Yakima claim of this group  
541 - - - - - To N. end CENTRE BLACK PRINCE claim of this group, same bearing

663.60 To Monument same bearing  
Being centre of S. side of claim  
A pine post 4 ft long, 4 ins sq. set 12 ins in the ground, surrounded by a mound of stones & earth, scribed 1387/T.L.

1327.3 Same bearing  
To corner No 1, the place of beginning.

Area of Twilight Claim = 14.64 Acres  
Area in conflict with the Contention, unsurveyed claim = 0.00 "  
Net Area Twilight Claim = 14.64

Variation of meridian N 12° E throughout

Mineral bearing ledge 3 ft thick, is traceable by outcrop here + there through centre of claim, Strike S 68° 49' E 650 ft + in opposite direction 600 ft from mouth of tunnel No 1



# AREA OF TWILIGHT CLAIM

ST	BEAR	LENG	LAT	DEP	D.M. D	DOUBLE AREA	AREA ACRES
1-3	N8°15'W	600.00	+ 593.80	+ 86.10	- 86.10	- 51126.18	15.92
3-6 <sup>a</sup>	N68°49'W	1327.30	+ 479.60	- 1237.60	- 1409.80	- 676040.08	
6 <sup>a</sup> -8	S8°15'E	600.00	- 593.80	+ 86.10	- 266.30	+ 1520899.94	
8-1	S68°49'E	1327.30	- 479.60	+ 1237.60	- 1237.60	+ 593352.96	
						1387086.64	

No AREA IN CONFLICT WITH UNSURVEYED "CONTENTION" -  
 Total Area Twilight 15.92 Acres.

~~This table should be eliminated~~

<del>5-6<sup>a</sup></del>	<del>N68°49'W</del>	<del>393.30</del>	<del>+ 148.10</del>	<del>- 366.60</del>	<del>= 366.60</del>	<del>= 31093.86</del>	<del>7.28</del>
<del>6<sup>a</sup>-7</del>	<del>S8°15'E</del>	<del>138.00</del>	<del>= 136.70</del>	<del>+ 79.80</del>	<del>= 773.40</del>	<del>+ 97521.78</del>	
<del>7-6</del>	<del>S54°36'E</del>	<del>323.20</del>	<del>- 187.20</del>	<del>+ 263.50</del>	<del>= 430.10</del>	<del>+ 80514.72</del>	
<del>6-5</del>	<del>N24°37'E</del>	<del>200.00</del>	<del>+ 181.80</del>	<del>+ 83.30</del>	<del>= 83.30</del>	<del>= 12743.94</del>	
						<del>111798.70</del>	

~~Area Claimed 14.64 Acres~~



# TYLIGHT GROUP

## AURORA CLAIM

FEET

Beginning at cor n<sup>o</sup> 1th S. E. cor  
Identical with a corner of location  
with cor n<sup>o</sup> 4 of the Wedge  
Claim, Survey n<sup>o</sup> 1243

A pine post 4 ins. sq. 4 ft long  
set 12 ins in ground, surrounded by  
a mound of earth & stakes, scribed  
1/1387/H. L. whence

U. S. Mineral Monument n<sup>o</sup> 4 bears S 54° 58' E  
5375 feet & cor n<sup>o</sup> 1 of the Wedge  
claim bears S 62° 20' E 182.4 ft  
up a rock in place 3x4 ft 14 ins out of ground  
chiseled x 1/BR/1387 bears S 21° 4' E 59.8 feet -  
Thence N 27° 4' E

395. To center of stage road running N 70° 5' E  
543.8 To a pine post 4 ins sq. 3 ft long  
surrounded by mound of stakes,  
scribed 3/YMC/1243 being the  
N. W. cor of the Wedge Claim

613.5 Same bearing

To monument

Being the point of intersection of  
the N side line of the Malvinia Claim  
Survey n<sup>o</sup> 959 amended; with the  
Aurora Claim at S 10° 33' W 75.33 ft from N. W. cor Malvinia

A pine post 4 ins sq 4 ft long, set  
12 ins in the ground, surrounded  
by mound of earth & stakes, scribed  
2/1387/H. L. whence

A rock in place of oval shape, 2 ft  
above ground chiseled 2x BR/1387 bears  
S 18° 29' W 65.5 ft

692.2 Same bearing

To the intersection with the north  
end line of the Malvinia Claim  
Survey n<sup>o</sup> 959 amended.

A pine post 4 ins sq set 18 ins in the ground,  
4 ft long with mound of stones, scribed  
H/INTERSECTION/1387 whence the N. W. cor



FEET

of the Malvinas bears  $N 78^{\circ} 12' W 22.2 ft$

1330

Same bearing  
To cor no 2 The N.E. Cor identical with loc. cor  
A pine post 4" x 4" x 3 1/2' set 12 ins in  
ground surrounded by mound  
of earth  $\frac{E}{S}$  stakes, scribed 2/1387/AL  
whence the S.W. cor of a 1 story, 3 room  
house bears  $N 27^{\circ} 11' W 480.1 ft$  and a  
painted rock in place 18 ins high 3 x 3 ft base chiseled  
x 2/BR/1387 bears  $N 11^{\circ} 39' E 16.4 ft$

Thence  $N 61^{\circ} 10' W$   
 $N 12^{\circ} 0' E$

287.4

To cor no 3 identical with location mon.  
A pine post 4 ins sq, 3 1/2 ft long,  
set 1 ft in ground, surrounded  
by mound of stones, scribed 4/1387/AL  
whence a rock in place 12 ins sq  
14 ins above ground, chiseled  
x 4BR/1387 bears  $N 87^{\circ} 55' E 16 ft.$

Thence  $N 65^{\circ} 3' W$   
 $N 12^{\circ} 0' E$

300

To corner no 4  
A pine post 4 ins sq, 3 1/2 ft long,  
surrounded by a mound of stones  
scribed 5/1387/AL.  
Identical with a cor. of location  
 $\frac{E}{S}$  with cor no 2, Mamie claim, 000  
survey no 1082 whence  
a rock in place 3 x 6 ft 2 ft above  
ground, chiseled x BR/4/1387 bears  
 $S 3^{\circ} 55' E 16.4 ft.$

Thence  $S 27^{\circ} 36' W$   
 $N 12^{\circ} E$

675

To monument  
A pine post 4" x 4" x 3 1/2' set 12 ins in  
ground, surrounded by mound of  
earth  $\frac{E}{S}$  stakes, scribed 1387/AL  
being the center of N. side line  $\frac{E}{S}$   
and  
an E. side line of the Mamie no 1085 -



FEET

9900 Same bearing to center of Stage Road running N.  $\frac{1}{2}$  S. E  
 1350 To car no. 5, same bearing, The S. N. corner identical with a corner of location  $\frac{1}{2}$  with monument no. 4 of the Al Hassan claim of this group  $\frac{1}{2}$  with car no. 1 of the Mamie claim survey no. 1082  
 A pine post 4" x 4" 3 ft above ground surrounded by mound of stones Scribed  $57^{\circ} 31' 8''$  / 17 L. where the shortest line to a stage road bears N  $27^{\circ} 36'$  E 430 ft  $\frac{1}{2}$  a stake in place 18 ins above ground 2 ft x 3 ft scribed x B. R. /  $57^{\circ} 13' 87$  bears N  $27^{\circ} 5'$  E 56 ft - 5'

Thence S  $65^{\circ} 3'$  E  
 Va 12' 0" E

300 To monument, identical with location being center of bend line  
 A pine post 4" x 4" 3 1/2 ft long, surrounded by a mound of earth  $\frac{1}{2}$  stones, scribed  $1387^{\circ}$  / 17 L. where discovery tunnel bears N  $27^{\circ} 4'$  E 420 ft -

600 Same bearing  
 To car no. 1 the place of beginning.

- Note -

The conflict with the Molvina no. 959, the points of intersection with which are shown on plat & in preceding notes, is not claimed by the Molvina, leaving none to be taken from the Aurora

Variation of needle N  $2^{\circ}$  E throughout



## - AREA OF AURORA -

ST	BEAR	LENG	LAT	DEP	D.M.D.	DOUBLE AREA	AREA ACRES
1/2	N 27° 4' E	1330.00	+1184.30	+ 605.10	+ 605.10	716619.90	18.31
2/3	N 61° 10' W	278.40	+ 138.60	- 257.70	+ 958.50	132848.10	
3/4	N 65° 3' W	300.00	+126.50	- 272.00	+ 434.80	55002.20	
4/5	S 27° 36' W	1350.00	-1196.30	- 625.40	- 462.60	553408.38	
5/1	S 65° 3' E	600.00	-253.10	+ 544.00	- 544.00	137686.40	
						1595554.98	

Area in conflict not claimed by MOLVINA N<sup>o</sup> 959 Amended

Station	Bear	Lang	Lat	Dep	D.M.D.	D.A	A.A
A to A/Interctn	N 27° 4' E	78.07	+ 69.57	+ 35.52	+ 35.52	+ 2468.99	.019
A/Interctn to M.C.	N 78° 13' W	22.20	+ 4.54	- 21.73	+ 49.31	+ 223.87	
Melv. Cor to A	S 10° 33' W	75.33	- 74.05	- 13.79	+ 13.79	- 1021.15	
						1671.71	

NET AREA AURORA 18.31 ACRES.

A mineral bearing ledge  
outcrops on this claim 30  
ft N 27° 30' E from S end center  
and continues with this strike  
920 from Tunnel N<sup>o</sup> 1 mouth  
and in opposite direction 390 ft  
from same point  
average width of ledge 3 ft



AREAS.

	Acres
Net Area Yakima Claim	20.51
" " Al Hassau "	17.87
" " Contact "	18.75
" " Sandau "	19.37
" " Back Base "	18.45
" " Webster "	15.72
" " Black Buice "	16.48
" " Aurora "	18.31
Total " Twilight "	146.4 acres
Area in conflict with unsw. } Caution Claim }	0.00
Net Area Twilight Claim	14.64
Net Area Twilight Group.	160.10

Improvements

Expenditure of 500.00

Value

I certify that the value of the labor & improvements upon each of these claims, placed thereon by the claimant & his grantors, is not less than \$500.00 & that said improvements consist of:-

On the Aurora:

- No 1 The discovery tunnel the mouth of which bears N 27° 4' E 420 ft from monument <sup>at S end</sup> center of that claim, said tunnel being 100 ft long 6x4 ft in cross section, course N 25° E \$ 1000.00
- No 2 A shaft 50 ft deep, 6x4 ft cross section, bears N 27° 4' E from S end center of this claim & at a distance of 205 ft therefrom 500.00

On the Al Hassau

- No 1 From E end center a tunnel 60 ft long 6x4 ft in cross section bears N 62° 10' W. the mouth of which is at a distance of 182 ft from <sup>East end center</sup> said ~~center~~, course of tunnel S 10° 48' W. being tunnel No 2. 600.00
- No 2 A tunnel bearing from monument at E end center of claim, N 68° 4' W. 160 ft 6x4 ft 20 ft long, course S 31° 3' W 200.00  
Said tunnel being tunnel No 1
- No 3 A shaft 4x9x80 ft bears from E end center N 69° W 760 ft 800.00
- No 4 A shaft 4x6x30 " " " " " " " " N 73° 11' W 590. 300



Expenditure of \$5000 (continued)

- Value -

On the Webster

n<sup>o</sup> 1 A shaft 4x6 ft  $\approx$  10 ft deep bears S 68° 49' E 100 ft from monument at the end center of claim, being shaft No 1 and Dis. Shaft. \$100.00

n<sup>o</sup> 2 And from the same monument the mouth of a tunnel 538 ft long, 6x4 ft cross section, bears S 55° 48' E, 430 ft course of tunnel S 5° 40' W value \$380.00  
An undivided 1/2 interest in this tunnel has been credited to the Yakima, Black Prince, Sandau, Back-Bone  $\approx$  contact claims of this survey, leaving to the Webster. \$2690.00

On the Twilight Claim

n<sup>o</sup> 1 A tunnel the mouth of which bears S 59° 58' E 415 ft from corner No 4 of this claim, course S 10° 16' W + which is 419 ft long, 4x6 ft in cross section, Value \$4190.00  
An undivided 1/2 interest in this tunnel has been credited to the Yakima, Black Prince, Back Bone, Sandau & Contact claims of this group. This is No 1 and Discovery Tunnel. Leaving to the Twilight Claim \$2095.00

On the Back Bone Claim

n<sup>o</sup> 1 A shaft 10 ft deep, 4x6 ft cross section bears S 27° 58' W 80 ft from monument at the end center of claim (No 1) 100.00

n<sup>o</sup> 2 An undivided 1/10 interest in a tunnel for the description of which see Webster Claim of this group 538.00

n<sup>o</sup> 3 An undivided 1/10 interest in a tunnel for the description of which see Twilight claim of this group. 419.00

On the Black Prince Claim

n<sup>o</sup> 1 A shaft 4x6 ft, 10 ft deep bears S 12° 45' E 89.7 ft from the end center of claim. 100.00

n<sup>o</sup> 2 An undivided 1/10 interest in the



# Total Improvements

Aurora	\$1500.00
Al Hassan	1900.00
Webster	2790.00
Twilight	2095.00
Back Bone	1057.00
Black Prince	1057.00
Yakima	1307.00
Saudan	1257.00
Quartz	1057.00
Total	\$14020.00

## - Adjoining Claims -

This group is bounded or touched  
 On the North by the  
 Bessemer Claim, Owners Gold Rock & Copper  
 (unsurveyed) Quartz Mining Co

Mamie Claim Survey No 1082  
 Owner: Martin O'Hare

On the East by the  
 Hedge Claim Survey No 1243  
 Owner: Copper Queen <sup>consolidated</sup> Mining Co

- Melvina Suro No 954: Owner: " " " "
- Copper King Lot No 53: " " " "
- Hudricks " " 45: " " " "
- Golden Gate " " 61: " " " "
- Sunrise " " 73: " " " "

On the South  
 no adjoining claims

On the West  
 Unsurveyed Caution Claim  
 Owner: Martin O'Hare  
 no other adjoining claims



Expenditure of \$500.00 (contd)

Value

	tunnel described on the Webster Claim	\$ 538.00
n°3	An undivided 1/10 interest in the tunnel as described on the Twilight Claim of this group	\$ 419.00
	<u>On the Yakima Claim</u>	
n°1	Tunnel n°1 the mouth of which bears S 27° 58' W. from monument at New centre of claim + at a distance of 20 ft - Length 20 ft, 4x6 ft in cross section, course S 20° 5' W	\$ 200.00
n°2	Tunnel n°2 the mouth of which bears S 41° 40' W 110 ft from monument at New centre of claim, course S 18° 31' W. 4x6 ft 15 ft long	\$ 150.00
n°3	An undivided 1/10 interest in tunnel on Webster which see for description	\$ 538.00
n°4	An undivided 1/10 interest in tunnel on Twilight claim of this group which see for description	\$ 419.00
	<u>On the Soudan Claim</u>	
n°1	A shaft 4x6, 60 ft deep bearing from monument at S end centre of claim N 31° 36' E 20 ft, being shaft n°1	\$ 100.00
n°2	A shaft of same dimensions bearing as n°1 + 15 ft from same, being shaft n°2	\$ 100.00
n°3	A shaft of same dimensions as n°1 + having the same bearing from monument at S end centre being 18 ft from shaft n°2: n°3	\$ 100.00
n°4	An undivided 1/10 interest in a tunnel previously described on the Webster	\$ 538.00
n°5	An undivided 1/10 interest in a tunnel as described on the Twilight Claim	\$ 419.00
	<u>On the Contact Claim</u>	
n°1	A shaft bearing S 31° 36' W from monument at New centre claim, 4x6 ft 10 ft deep + distant 90 ft - An undivided 1/10 interest in tunnel as described on Webster Claim	100.00
n°2	An undivided 1/10 interest in tunnel as described on Webster Claim	\$ 538.00
n°3	An undivided 1/10 interest in tunnel as described on Twilight claim of this group	\$ 419.00

10ft see page 2.



The surface of this group, ascends rapidly from the entrance of the tunnels mentioned on the Webster & Twilight Claims; The tunnel on the Webster is 300 ft above the Copper Queen shaft in which mine the dip of the ore bodies is towards this group, & the same conditions exist regarding the tunnel on the Twilight which lies 200 ft higher up, thus these tunnels may cut the ore bodies affording the best & most economical system of working this group.

The general course of ledges & dykes on these claims is N 60° E & S 70° W. But are much confused & hard to trace on surface.

Location

This group of Claims is located in the Warren Mining district, Cochise County, Territory of Arizona - approximately Township 23 S, Range 24 E

Instrument

This survey was made with a Keller & Brightly transit - The courses were deflected from the true meridian as obtained by direct Polar observations, the distances were measured with a 300 foot steel tape & all meridians checked by observations on the pole star -

James F. Trotter

U.S. Deputy M. Surveyor.

Survey commenced July 14<sup>th</sup> 1899 Completed July 28<sup>th</sup> 1899  
 Pinal Co. Arizona. July 29<sup>th</sup> 1899



# FINAL OATHS FOR SURVEYS.

## LIST OF NAMES.

A list of the names of the individuals employed by James J. Zetter  
 United States Deputy Mineral Surveyor, to assist in running, measuring, and marking the lines  
 corners and boundaries described in the foregoing field notes of the survey of the mining claim  
 of Thos Higgins  
 known as the Yakima, Alhassen, Contact, Doudon, Back Bone, Webster,  
Block Prime, Twilight and Aurora,  
 and showing the respective capacities in which they acted.

- Geo C. Clark ..... Chainman.
- John H. Garcia ..... Chainman.
- ..... Azman.
- ..... Flagman.

## FINAL OATHS OF ASSISTANTS.

We John H. Garcia  
 and George C. Clark ..... do solemnly swear that we assisted James J. Zetter  
 ..... United States Deputy Mineral Surveyor, in marking the corners and  
 surveying the boundaries of the mining claim of Thos Higgins  
known as the Yakima, Alhassen, Contact, Doudon,  
Back Bone, Webster, Block Prime,  
Twilight and Aurora, ..... represented  
 in the foregoing field notes as having been surveyed by said deputy mineral surveyor and under  
 his direction; and that said survey has been in all respects, to the best of our knowledge and  
 belief, faithfully and correctly executed, and the corner and boundary monuments established  
 according to law and the instructions furnished by the United States Surveyor-General for

Arizona

- John H. Garcia ..... Chainman.
- Geo. C. Clark ..... Chainman.
- ..... Azman
- ..... Flagman.

Subscribed and sworn to by the above-named persons before me  
 this 29<sup>th</sup> day of July 29<sup>th</sup>, 1899

J. A. Williams

Notary Public

(My Commission expires Dec 15-1901.)





(4-686.)

FINAL OATH OF U. S. DEPUTY MINERAL SURVEYOR

I, James F. Trotter, U. S. Deputy Mineral Surveyor, do solemnly swear that in pursuance of instructions received from the United States Surveyor General for Arizona, dated July 10, 1899, I have, in strict conformity to the laws of the United States, the official regulations and instructions thereunder, and the instructions of said Surveyor General, faithfully and correctly executed the survey of the Mining Claim of Shos Huggins, known as the Yakimo, Al Hussein, Contact, Dandan, Book Box, Webster, Black Prince, Twilight, and Aurora, situate in Warren Mining District, Cochise County, Arizona, in Section 23S, Township No. 23E, Range No. 1387, and designated as Survey No. 1387, as represented in the foregoing field notes, which accurately show the boundaries of said mining claim as distinctly marked by monuments on the ground, and described in the attached copy of the location certificate, which was received by me from the Surveyor General with said instructions, and that all the corners of said survey have been established and perpetuated in strict accordance with the law, official regulations and instructions thereunder; and I do further solemnly swear that the foregoing are the true and original field notes of said survey and my report therein, and that the labor expended and improvements made upon said mining claim by claimant or his grantors are as therein fully stated, and that the character, extent, location and itemized value thereof are specified therein with particularity and full detail, and that no portion of said labor or improvements so credited to this <sup>see</sup> claim <sup>s</sup> has been included in the estimate of expenditures upon any other claim, \$

James F. Trotter  
U. S. Deputy Mineral Surveyor.

Subscribed and sworn to by the said James F. Trotter  
U. S. Deputy Mineral Surveyor, before me S. K. Williams  
A Notary Public this 29th  
day of July A. D., 1899.

S. K. Williams  
Notary Public

(My Commission expires Dec 15, 1901.)



Affidavit of Five Hundred Dollars Improvements.

We, Wm Curry, and Brae Cox

of lawful age, being first duly sworn according to law, depose and say: that we are acquainted with the Yakimo, Contact, Back Bone, Buck Prince, Al Hassan, Daudan, Webster, Twilight, & Aurora mining claim, situate in Warren Mining district, Cochise County,

Arizona Territory, for which Thos Higgins of Bisbee Arizona

has made application for survey prior to application for patent under the provisions of the Act of Congress, approved May 10, 1872; and that the labor done and improvements made thereon by the applicant and his grantor exceed Forty Five Hundred Dollars in value, (that is, exceeds \$500.00 in value, for each claim) and further that we are not personally interested in said mine.

Wm Curry  
Brae Cox

TERRITORY OF ARIZONA,  
County of Cochise } ss:

Sworn to and subscribed before me, this 24<sup>th</sup> day of July, 1899

J. K. Williams  
Notary Public

(My Commission expires Dec 15-1901)



# LOCATION NOTICE

NOTICE IS HEREBY GIVEN, that the undersigned, in compliance with the requirements of the Mining Act of Congress, approved May 10th, 1872, have this day located and claim 7500 hundred linear feet along the course of this lead, lode or vein of mineral bearing quartz, and three hundred feet in width, on each side of the middle of said lead, lode or vein, situate in the Warrens Mining District, County of Cochise Arizona, and more particularly described as follows, to-wit.

COMMENCING at this monument of stones, being the center of the North end of claim, and upon which this notice is posted.  
 thence West 300 feet to a monument of stones;  
 thence South 1500 feet to a monument of stones;  
 thence East 300 feet to a monument of stones;  
 being the center of the South end of claim; thence  
East 300 feet to a monument of stones; thence  
North 1500 feet to a monument of stones; thence  
West 300 feet to the place of beginning.

THIS CLAIM situated S.W. of Besheer about half a mile it joins the Black on the West side the West side line of the B. Pounce being the East side line of the Yalumba St. James the South side line of the Twilight mine and it runs at right angles with the same

and shall be known as the Yalumba Mine  
 Located January 6<sup>th</sup> 1885

Thos Higgins



Yockama

Recorder's Office,

TOMBSTONE, Cochise Co., A. T.

~~noted~~  
Filed and recorded at request of

Thos Higgins

June 12. A. D. 1885.

at 10 - a

Book 11 Reef mines

Pages 73.

at Jones

County Recorder.

By B. Abrams  
Deputy.



# NOTICE OF LOCATION.

NOTICE IS HEREBY GIVEN That the undersigned, in compliance with the requirements of the Mining Act of Congress, approved May 10th, 1872, has this day located and claim fifteen hundred linear feet along the course of this lead, lode or vein of mineral-bearing quartz, and three hundred feet in width on each side of the middle of said lead, lode or vein, situate in the Warren Mining District, County of Cochise Arizona, and more particularly described as follows, to wit:

Commencing at this monument of stones, being the center of the east end of the claim, and upon which this notice is posted; thence South 300ft feet to a monument of stones; thence West 1500 feet to a monument of stones; thence north 300 feet to a monument of stones, being the center of the West end of claim; thence north 300 feet to a monument of stones; thence east 1500 feet to a monument of stones; thence South 300 feet to place of beginning.

*THIS CLAIM is a relocation of the Hoboken mining claim, its east centre and initial monument is about 300ft. West of the North West corner of the Copper King a patented claim, its north east corner is about 300ft South of the Catholic Church, Near the centre of the claim is an 80ft double Compartment Shaft and another single Compartment of about 35ft*

and shall be known as the Al Hassan Mine.

LOCATED January 1<sup>st</sup> 1891

Thos Higgin's



a

Al Hassen

42

Recorder's Office,

TOMBSTONE, Cochise Co., A. T.

~~matter~~  
Filed and recorded at request of

Thos. Higgins

February 26<sup>th</sup> A. D. 1891

at 1 P. M.

Book 12 Record of Deeds

Pages 325

W. F. Bradley

County Recorder.



# NOTICE OF LOCATION.

NOTICE IS HEREBY GIVEN That the undersigned, in compliance with the requirements of the Mining Act of Congress, approved May 10th, 1872, has this day located and claim *fifteen* hundred linear feet along the course of this lead, lode or vein of mineral-bearing quartz, *and three hundred* feet in width on each side of the middle of said lead, lode or vein, situate in the *Warren* Mining District, County of *Cochise* Arizona, and more particularly described as follows, to wit:

Commencing at this monument of stones, being the center of the *north* end of the claim, and upon which this notice is posted; thence *West 300* feet to a monument of stones; thence *South 1500* feet to a monument of stones; thence *east 300* feet to a monument of stones, being the center of the *South* end of claim; thence *east 300* feet to a monument of stones; thence *north 1500* feet to a monument of stones; thence *West 300* feet to place of beginning.

*THIS CLAIM is the first northern extension of the Yakima Mining claim and bounded on the east by the Louisa Mining claim. It is situated at the head of the gulch which empties into Mule pass at Otter's house about half a mile north of the claim, its southern end extends across the ridge which slopes into the valley south of the Mule mountains and shall be known as the* Contact *Mine.*

LOCATED *January 1st* 18 *71*

*Shos Higgins*



c  
Contact

43

Recorder's Office,

TOMBSTONE, Cochise Co., A. T.

Filed and recorded at request of

Thos Higgins.

February 26<sup>th</sup> A. D. 18 91

at — 1 — P. M.

Book 12 Record of Mines.

Pages 325 —

W. F. Bradley.

County Recorder



NOTICE OF LOCATION.



NOTICE IS HEREBY GIVEN that the undersigned, in compliance with the requirements of the Mining Act of Congress, approved May 10, 1872, has this day located and claim fifteen hundred linear feet along the course of this lead, lode or vein of mineral bearing quartz, and three feet in width on each side of the middle of said lead, lode or vein, situate in the Warren Mining District, County of Cochise, Arizona, and more particularly described as follows, to-wit:

COMMENCING at this monument of stones, being the center of the North end of the claim, and upon which this notice is posted; thence west 300 feet to a monument of stone; thence South 1500 feet to a monument of stone; thence East 300 feet to a monument of stones, being the center of the South end of claim; thence East 300 feet to a monument of stones; thence North 1500 feet to a monument of stones; thence west 300 feet to the place of beginning.

THIS CLAIM is the first Southern extension of the Black Pine Mining Claim. its center extends along the back bore of the hill which extends south from the Twilight to the white tail deer. Its south end terminates at the head on the old Dam gulch

AND SHALL BE KNOWN AS THE Soudan Mine.

LOCATED January 1st 1890

Witness  
Frank Merrill

Thos. Higgins.



Recorder's Office

Tombstone Cochise Co. A.T.,  
Filed & recorded at request of  
Thos Higgins

Feb 25 A.D. 1890, at 3:20 PM

Book 12 Record of mines  
Page 155 —

W. Bradley  
Co. Recorder

1890

300

1890

1890

1890



## NOTICE OF LOCATION.

--o--

NOTICE IS HEREBY GIVEN that the undersigned, in compliance with the requirements of the Mining Act of Congress, approved May 10, 1872, has this day located and claim Fifteen hundred linear feet along the course of this lead, lode or vein of mineral bearing quartz, <sup>and</sup> Three feet in width on each side of the middle of said lead, lode or vein, situate in the Warren Mining District, County of Cochise, Arizona, and more particularly described as follows, to-wit:

COMMENCING at this monument of stones, being the center of

the North end of the claim, and upon which this notice is posted; thence west 300 feet to a monument of stone; thence South 1500 feet to a monument of stone; thence East 300 feet to a monument of stones, being the center of the South end of claim; thence East 300 feet to a monument of stones; thence North 1500 feet to a monument of stones; thence west 300 feet to the place of beginning.

THIS CLAIM is bounded on the north by the Twilight on the east by the Hendricks <sup>and Sun Rise</sup> ~~and~~ and on the west by the Black Prince mining claims, its north end is about 1700 feet ~~from~~ <sup>from</sup> the Copper Queen. (a patented claim)

AND SHALL BE KNOWN AS THE Back Bone Mine.

LOCATED January 1<sup>st</sup> 1890

Thos. Higgins.

Locator



Recorder's office - Tombstone & Cochise Co, Arizona

Filed & recorded at request of Thos Higgins.

Feb 25 - H.D., 1890 at 3:20 P.M.

Book 12 Record of mines, Page 156.

W J Bradley, County Recorder

*[Faint mirrored text from reverse side of the page]*

1890

1890

1890

1890

1890



## LOCATION NOTICE.

Notice is hereby given that the undersigned in compliance with the requirements of the Mining Act of Congress approved May 10th., 1872, has this day located and claimed Fifteen hundred feet along the course of this lead, lode or vein of mineral bearing quartz and Three hundred feet on each side of the middle of said lead, lode or vein situated in Warren Mining District, Cochise County Arizona, and more particularly described as follows, to-wit:

COMMENCING at this monument of stones being the center of the West end of claim, thence South 300ft to a monument of stones thence East 1500ft along the North side line of the Twilight to its intersection with the West end line of the Hendricks thence North along the end line of the Hendricks to its N.W. corner monument thence East along its <sup>North</sup> side line to a monument of stones thence North about 100 ft to the South side line of the Copper King Mining Claim thence West along the South side of the Copper King to its South West corner thence North along its West end line to a monument of stones being the N.E. corner of this claim and six hundred feet North from the Hendricks North side line Thence West 1300 ft thirteen hundred feet along the south end line of the Melviney and South side line of the Copperopolis Mining Claims to a monument of stones thence south 300 ft to place of beginning.

This claim is bounded on the North by the Copperopolis and Melviney Mining claims on the South by the Twilight and Hendricks on the East by the Copper King on the West by the Ohio Mining claims. It embraces all the vacant ground lying between the above named claims terminating in the south east corner in the shape of a wedge dividing the Hendricks and Copper King mining claims. It is situated on the North side of the limestone mountain west of Bisbee about 1500ft.

And shall be known as the Webster Mining Claim.  
Located January 1st., 1888.

Locator,

THOS. HIGGINS.

Filed and recorded at the request of Thos. Higgins, February 24<sup>th</sup>  
A.D. 1888, at 4 P.M.'

W.F. Bradley,

County Recorder.



## LOCATION NOTICE.

Notice is hereby given that the undersigned in compliance with the requirements of the Mining Act of Congress, approved May 10<sup>th</sup> 1872, have this day located and claim 1500 linear feet along the course of this lead, lode or vein of mineral bearing quartz and three hundred feet in width on each side of the middle of said lead or lode situated in the Mule Mountains, Warren Dist County of Pima Arizona Territory and more particularly described as follows to wit: Commencing at this monument of stones being the center of the South East end of the claim, and upon which this notice is posted, thence running 300 feet to the South West corner to a monument of stones thence running 1500 ft North West to a monument of stone, thence running 300 ft North Easterly direction to a monument of stone, being the center of North West end of said claim, thence running 300 feet in a North Easterly direction to a monument of stone, thence 1500 ft in a South Easterly direction to a monument of stone, thence 300 ft in a South Westerly direction to a place of beginning.

This claim shall be known as the Twilight Mine and is situated in Mule Mountains Pima Co. A.T. This claim is situated South West one half mile of the Town of Bisby or the Copper Queen mine Located, June 15<sup>th</sup> 1880.

B.P.Standefer.

J.W.Williams.

Thomas Higgins.

Filed and recorded at the request of B.P.Standefer, July 19<sup>th</sup> A.D. 1880 at 8 A.M.

S.W.Carpenter,

County Recorder.

By F.W.Hatch,

Deputy.



BLACK PRINCE MINE.  
L-O-C-A-T-I-O-N--N-O-T-I-C-E.

Notice is hereby given that the undersigned in compliance with the requirements of the Mining Act of Congress approved May 10th, 1872, has this day located and claim fifteen hundred linear feet along the course of this lead lode or vein of mineral bearing quartz and three hundred feet in width on each side of the middle of said lead lode or vein situate in the Mule Mts. Warren Mining District County of Pima Arizona and more particularly described as follows to wit: Commencing at this monument of stones being the center of the N.E. end of claim and upon which this notice is posted; thence North West 300 feet to a monument of stones thence South West 1500 feet to a monument of stones thence S. East 300 feet to a monument of stones being the center of S. West end of claim, thence South East 300 feet to a monument of stones thence North East 1500 feet to a monument of stones thence North West 300 feet to place of beginning This claim is situated on the South slope of the east of the divide in Mule Pass Mule Mts. West of the Smelter about and Jacus the twelfth mine on the East side, and shall be known as the Black Prince Mine, located August 2nd 1880.

Witness,  
George Hertz.

Locators, THOS. HIGGINS.  
J. WALKER WILLIAMS.

Filed and recorded at the request of Thomas Higgins Sept 24,  
A.D. 1880 at 8 A.M.

S.W. Carpenter

County Recorder.

By W.S. Read

Deputy.



the requirements of themining  
with ~~xxx~~ Act of Congress approved May 10th 1872, do this day lo-  
cate and claim fifteen hundred(1500' linear feet along the course  
of this lead, lode or vein of mineral bearing quartz, and three  
hundred feet on each side of the middle of said lead, lode or  
vein, situated in Mule Mountains Warren Mining District Pima  
County Arizona.

And more particularly described as follows to wit:

Commencing at this monument of stones, being the center of the  
Southerly end of claim upon which this notice is posted, thence  
easterly 300 feet to a monument of stones: thence northerly  
1500 feet to a monument of stones; thence westerly 300 feet to a  
monument of stones, being the center of the northerly end of  
claim, Thence Westerly 300 feet to a monument of stones; thence  
southerly 1500 feet to a monument of stones, thence easterly to  
the place of beginning.

This claim is situated on the western slope of Mule Moun-  
tains west of Ballard and Martin's Smelter one half mile in Mule  
pass. It adjoins the Melvina on the west side, and runs parallel  
therewith, extending 750 feet on each of the pass.

Located September ~~20th~~ 1880

Thomas Higgins.

And shall be known as the Aurora Mine.) Francis Donnelly.

Witness Walke Williams.

Recorded in Book 6, page 784, Transcribed Records.

Filed and recorded at the request of J. B. Allen, Nov 22, A D 1880  
at 10-30 A M.

S. W. Carpenter.

County Recorder.



Territory of Arizona, ;  
County of Cochise. ;ss.  
:



I, Frank Hare, County Recorder in and for said County, do hereby certify that the annexed instruments, to wit: "Yakima", "Al Hassan", "Contact", "Souden", "Back Bone", "Webster", "Twilight", "Black Prince", & "Aurora" Mines or Mining Claims are true and correct copies which now appear of record.

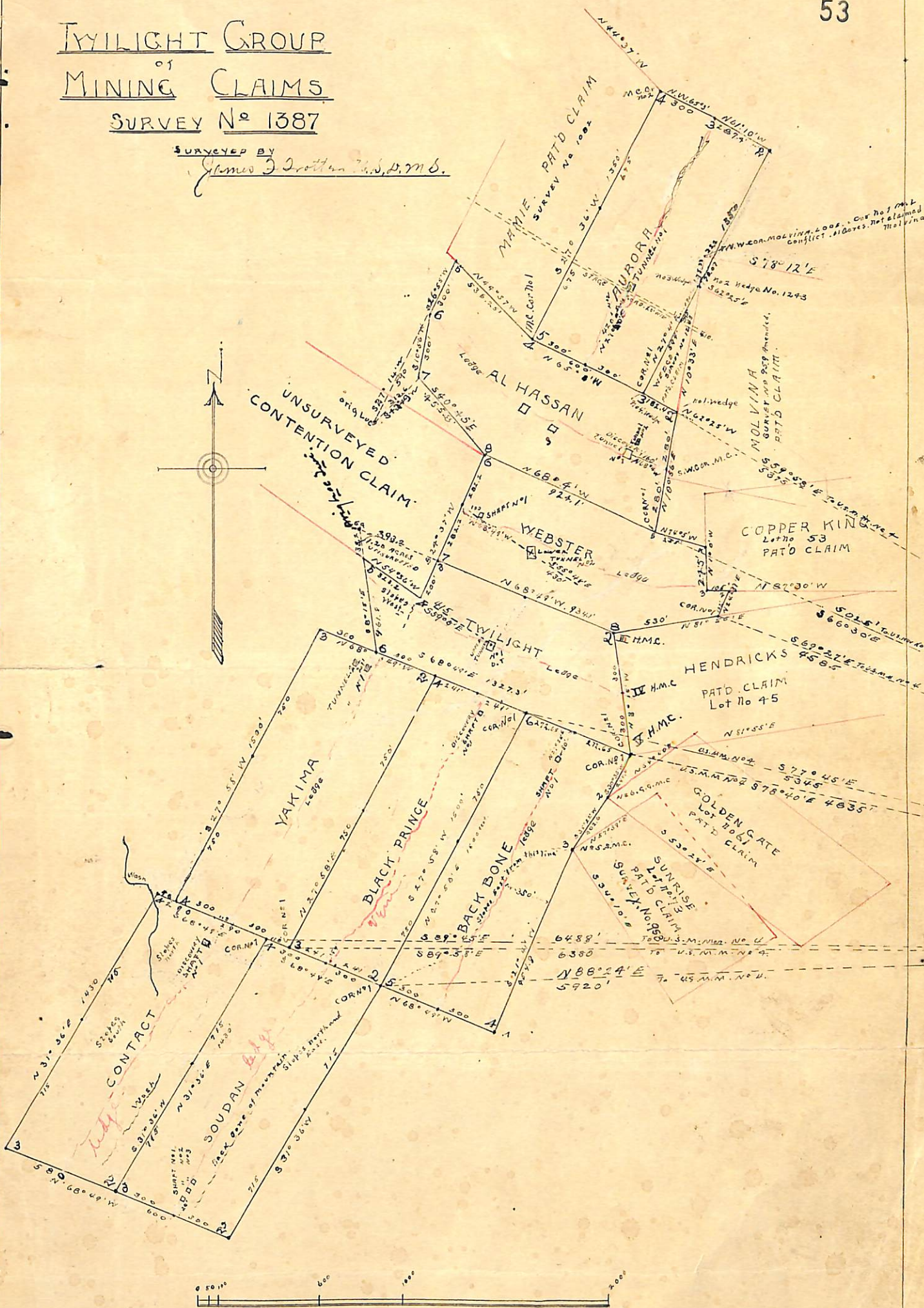
Witness my hand and Official Seal, this  
28th. day of June, A.D. 1899.

*Frank Hare*  
County Recorder.



# Twilight Group of Mining Claims SURVEY No 1387

SURVEYED BY  
James J. Scotten U.S. G.M.S.



Survey commenced July 14 1899  
Survey completed July 28 1899



(4-687.)

# Surveyor General's Certificate of Approval of Field Notes and Survey of Mining Claim.

Department of the Interior,

Office of U. S. Surveyor General,

Tucson, Arizona,

January 13", 1900.

I, U. S. Surveyor General for District of Arizona,

do hereby certify that the foregoing and hereto attached Field Notes and Return of the

Survey of the Mining Claim of Thomas Higgins, known as the

Yakima, Al Hassan, Contact, Louden, Back Bone,

Webster, Black Prince, Twilight, & Aurora. ~~known as the~~

situate in Warren mining district,

Cochise County, Arizona,

in Section —, Township No. —, Range No. —

—, designated as Survey No. 1387

executed by James F. Trotter, U. S. Deputy Mineral

Surveyor, July 14-28", 1899, under my instructions dated

July 10", 1899, have been critically examined and the

necessary corrections and explanations made, and the said Field Notes and Return, and

the Survey they describe, are hereby approved. A true copy of the copy of the location

certificate filed by the applicant for survey is included in the field notes.

George Christ

U. S. Surveyor General for Arizona.



## MINERAL SURVEY NO. 1387

Claims	M & B Des. Page No.	Imps. Page No.	Loc. Notices Page No.
Aurora	27	31	9
Al Hassan	4	31	2
Black Prince	20	32	8
Back Bone	14	32	5
Contact	8	33	3
Soudan	11	33	4
Twilight	23	32	7
Webster	17	32	6
Yakima	1	33	1