

**MS -**

**0**

**1**

**4**

**3**

**5**



Recd. Feb. 14, 1900  
Recd. Mar. 28, 1900  
Recd. Mar. 30, 1900

(4-683.)

Mineral Survey No. 1435

Lot No. \_\_\_\_\_

Gila Land District.

FIELD NOTES

OF THE SURVEY OF THE MINING CLAIM OF

The American Wolfram Company

KNOWN AS THE

Immense, Immense No. 1, Immense No. 2, Grand, Grand No. 1  
Grand No. 2, and Miguel, & Miguel No. 1 Mining Claims  
Pima County, Arizona Territory; in  
Sections 25-26, Township 20 S., Range 9 E.

Surveyed under instructions dated Dec. 30<sup>th</sup>, 1899,

by Lorenzo D. Chilson  
U. S. Deputy Mineral Surveyor.

Claims located Jan. 1<sup>st</sup>, 1899

Survey commenced January 4<sup>th</sup> 1900, 18  

Survey completed January 10<sup>th</sup> 1900, 18  

o 6-160

Address of claimants,

Herford & Hazard, Atty's,

Tucson, Ariz



# PRELIMINARY OATHS OF ASSISTANTS IN SURVEY OF MINING CLAIM.

WE, A. Villaseca and St. Esquades, do solemnly swear that we will well and faithfully execute the duties of chain carriers; that we will level the chain upon even and uneven ground and plumb the tally-pins, either by sticking or dropping the same; that we will report the true distance to all notable objects, and the true length of all lines that we assist in measuring, to the best of our skill and ability, and in accordance with instructions given us, in the survey of the Mining Claim of the American Wolfram Company

*Nugget, Nugget No 1,*

, known as the

Immense, Immense No 1-Immense No 2; Grand, Grand No 1, Grand No 2 Mining Claims-situate in The Aravaia mining district,

Pima County, Arizona Territory in Sections, 25-26, Township No. 20 S., Range No. 9 - E.

*Witness to mark.*  
A. Villaseca, Chainman.  
St. Esquades, Chainman.  
*Witness to mark.*  
I. D. Chillson

Subscribed and sworn to by the above-named persons before me this 4<sup>th</sup> day of January, 181900

I. D. Chillson  
Notary Public

I, Raphael Trujero, do solemnly swear that I will well and truly perform the duties of axeman, in the establishment of corners and other duties, according to instructions given me and to the best of my skill and ability, in the survey of the Mining Claim of The American Wolfram Company Grand No 1, Grand No 2; and the Nugget & Nugget No 1 known as the Immense, Immense No 1, Immense No 2; Grand, more fully described in the preceding affidavit.

*mining claims;*

Raphael Trujero, Axeman.

Subscribed and sworn to by the said Raphael Trujero before me this 4<sup>th</sup> day of January, 181900.

I. D. Chillson  
Notary Public

I, Raphael Trujero, do solemnly swear that I will well and truly perform the duties of flagman, in the establishment of corners and other duties, according to instructions given me and to the best of my skill and ability, in the survey of the Mining Claim of The American Wolfram Company; Immense, Immense No 1, Immense No 2; Grand, Grand No 1, Grand No 2, known as the and the Nugget & Nugget *mining claims* more fully described in the preceding affidavit.

Rafael Trujero, Flagman.

Subscribed and sworn to by the said Raphael Trujero before me this 4<sup>th</sup> day of January-1900, 181900.

I. D. Chillson Notary Public  
My Commission expires March 15<sup>th</sup> 1902.



# Survey 1435

## Innominense Manning's Cañon

Feet

Beginning at Cor. No. 1

Identical with the location.

A granite stone 2.6" x 12" x 8"<sup>ins</sup> chiseled  
+ C. N. 1 1435, set one foot in the  
ground and build monument of stones  
4ft base, 3ft high along side. Whence,  
The S. W. Cor. of Sec. 24 - T. 20 S. - R. 9 E.  
G. & S. R. B. & M. bears N. 6° 21' W.  
1627.4 dist.; no bearings available.

Thence N. 12° 15' E.

V<sup>is</sup> 12° 27' E.

- 230 Center of dry channel 20ft wide, 10ft deep, in deep rocky Cañon; corr, N. 25° E.
- 440 Crest of rocky ridge; corr, N. 20° E.
- 750 A granite rock in place, marked I. C. S. L. C. with man, at stones along side.
- 850 Forks of road from mines to mill site. Corr; upper road to mine, S. 1° 30' E. Corr, of lower road to mines S. 37° E.
- ~~1007.5~~ A granite stone marked P. I. with man, at stones along side.
- 1039 Road from mines to mill site; Corr, to mill site N. 65° W. To mine, S. 50° E.
- 1390 Center of arroyo 40ft wide, 20ft deep; corr, N. 28° E.
- 1500 To Cor. No. 2.  
Identical with the location.  
A granite stone 2.0" x 10" x 6"<sup>ins</sup> chiseled  
+ C. N. 2 - 1435 set one foot in the  
ground and build monument of stones  
4ft base, 3ft high along side. No bearings  
available.  
Thence S. 17° 45' E.  
V<sup>is</sup> 12° 26' 30" E.
- 300 A granite stone marked I. C. E. C. with man, at stones along side.
- 600 To Cor. No. 3.  
Identical with the location.



Survey 1435 continued

Feet A granite stone 20" x 12" x 4" chiseled + C. 3-1435 set one foot in the ground and build monument of stones 4" base 3ft high along side. No bearings available

Thence S. 72° 15' W.  
V<sup>s</sup> 12° 26' 30" E.

24 Center of road from mines to mill site; corr. to mill site N. 37° W. to mine S. 32° E.

750 A granite rock in place, marked I.C. S. I.C. with man, of stones along side.

1100 Crest of rocky ridge; corr. N. 20° E.

1500 To Car, No. 4.

Identical with the location.

A granite stone 36" x 12" x 12" chiseled + C. No. 4-1435 set 18" in the ground and build monument of stones 4" base, 3ft high along side. No bearings available.

Thence N. 17° 45' W.  
V<sup>s</sup> 12° 27' E.

300 A granite stone marked I.C. E.C. with man, of stones along side.

Whence;

The Discovery shaft 7' x 5' x 10' deep, bears N. 72° 15' E. - 2.06ft dist.

400 Center of dry channel 30ft wide, 10ft deep, corr. N. 81° E. in deep, and rocky canon.

600 To Car, No. 1.

The place of beginning.

Immense Mine "Clavina"  
No. 1

"Beginning" at Car, No. 1  
Identical with the location, and with Car, No. 1 of the Immense Mine this Survey. I chiseled stone 4-1435 on S.W. face.

Whence, The S.W. Car, at Sec. 24 T. 20 S. R. 9 E. - C. G. S. R. B. & M. bears N. 6° 21' W. - 1627ft dist.



Survey 1435 continued

3

Feet  
 Thence S. 17°45' E.  
 V<sup>2</sup> 12° 27' E.  
 200 Center of dry channel 30<sup>ft</sup> wide, 10<sup>ft</sup> deep,  
 corr, N. 81° E.  
 300 A granite stone marked I. No. 1 C. E. C.  
 with man, of stones along side. Whence,  
 the Discovery Shaft 7x5x10<sup>ft</sup> deep, bears  
 S. 78°15' W. - 106<sup>ft</sup> dist.  
 600 To Cor, No. 2.  
 Identical with the location, and  
 with Cor. No. 4 of the Immense Claim  
 this Survey. 1 chiseled stone - 2-1435 on N.W. face

Thence S. 78°15' W.  
 V<sup>2</sup> 12° 27' E.

371 Intersect Sec. Line bet, Secs. 25-26-T. 20-S. R. 9-E.  
 S. 2.261<sup>ft</sup> 75' from S.W. cor, Sec, 24.  
 750 A granite stone marked I. No. 1 C. - S.  
 with W. C. With man, of stones along  
 side, bears S. 34°45' E. - 3<sup>ft</sup> dist.  
 800 Center of arroyo 30<sup>ft</sup> wide, 12<sup>ft</sup> deep;  
 corr, N. 60°30' E.  
 984 A granite rock in place marked  
 G. C. 2 P. I. with man, of stones along  
 side.

1500 To Cor, No. 3.  
 Identical with the location.  
 A granite stone 30x12x10<sup>in</sup> chiseled +  
 C. 3 1435<sub>on N.E. face</sub> set 15<sup>in</sup> in the ground and  
 build monument of stones 4<sup>ft</sup> base, 3<sup>ft</sup>  
 high along side. No bearings available.

Thence N. 17°45' W.  
 V<sup>2</sup> 12° 27' 30" E.

300 A Quartzite stone marked I. No. 1;  
 surrounded with man, of stones.  
 600 To Cor, No. 4.  
 Identical with the location.  
 A granite stone 30x12x2<sup>in</sup> chiseled  
 + C. 4-1435<sub>on N.E. face</sub> set 16<sup>in</sup> in the ground  
 and build monument of stones 4<sup>ft</sup> base,



# Survey 1435 continued

3<sup>ft</sup> high along side. No bearings available.  
 Thence N. 78° 15' E.  
 V<sup>s</sup> 12° 27' 30" E.  
 400 Crest of rocky ridge; Cour, N.  
 750 Location monument;  
 1319<sup>ft</sup>.6 Intersect Sec. line bet, Secs, 25 26 - T. 20 S. R. 9 E.  
 S. 1654<sup>ft</sup>.4 from Cor. of Secs,  $\frac{23}{26} \frac{24}{25}$   
 1500 To Cor. N<sup>o</sup> 1.  
 The place of beginning.

## Immense Mining Claim N<sup>o</sup> 2

**Beginning** at Cor. N<sup>o</sup> 1 -  
 Identical with the location, and  
 with Cor. N<sup>o</sup> 4 of the Immense Mining  
 Claim N<sup>o</sup> 1 this Survey. Chisled sta. 1-1435 on S.W. face  
 The S.W. Cor. Sec. 24 - T. 20 S. - R. 9 E. - C.  
 U.S. R. B.M. - bears N. 33° 35' E. - 2,320<sup>ft</sup>.9  
 dist.

Thence S. 17° 45' E.  
 V<sup>s</sup> 12° 27' 30" E.

300 A Quartzite stone marked I. No 2 - E.  
 C. surrounded with man, of stones. Whence  
 The Discovery shaft, 7x5x10<sup>ft</sup> deep, bears  
 N. 22° W. - 2,14<sup>ft</sup> dist.  
 600 To Cor. N<sup>o</sup> 2 -  
 Identical with the location and with  
 Cor. N<sup>o</sup> 3 of the Immense Claim N<sup>o</sup> 1 -  
 this Survey. Stone chisled 2-1435 on N.W. face  
 Thence N. 72° W.  
 V<sup>s</sup> 12° 27' 30" E.  
 670 Center of arroyo 50<sup>ft</sup> wide, 20<sup>ft</sup> deep;  
 Cour, N. 41° W.  
 750 A Quartzite stone marked I. No. 2. C.  
 S. In C. with man, of stones along side.  
 840 Arroyo 30<sup>ft</sup> wide, 12<sup>ft</sup> deep; Cour, N. 30° E.  
 1465 Center of arroyo 50<sup>ft</sup> wide, 20<sup>ft</sup> deep;  
 Cour, N. 42° E.  
 1500 To Cor. N<sup>o</sup> 3.  
 Identical with the location.



# Survey 1435 continued

5

Feet A Syenite stone 20" x 12" x 4" chiseled + C. 3-1435 set one foot in the ground and build monument of stones 4<sup>th</sup> base, 3<sup>ft</sup> high along side.

A syenitic rock 5' x 4' x 4<sup>ft</sup> in place, chiseled + B.R. <sup>3-1435</sup> bears S. 68° W. - 7<sup>ft</sup>. 3

Thence N. 17° 45' W.  
V<sup>s</sup> 12° 27' 30" E.

300 A Quartzite stone marked 1. N. 2, C. with man, of stones along side.

345 Center of arroyo 15<sup>ft</sup> wide, 6<sup>ft</sup> deep, Cour, E.

600 To Cor, No 4.

Identical with the location.

A syenitic stone 20" x 12" x 4" chiseled C. 4-1435 set one foot in the ground and build monument of stones 4<sup>th</sup> base, 3<sup>ft</sup> high along side. No bearings available.

Thence S. 72° E.  
V<sup>s</sup> 12° 27' E.

620 Center of arroyo; Cour, N. 32° 30' E.

700 Center of arroyo 40<sup>ft</sup> wide; Cour, N.

750 A granite stone marked 1. N. 2. S. T. C. with man, of stones along side.

1500 To Cor, No 1

The place of beginning

A mining location - Immense No 3 - adjoins this Immense No 2 claim, on the west, and a mining location - Grand No 3 - adjoins the Immense No 1 & 2 - on the northerly side line.

Also, there is a location - Whale claim - adjoins the Immense claim - on the N. E. Cor.



# Survey 1435 continued

6

Feet **Grand Mining Claim**  
Beginning at Cor. No. 1.

Identical with the location. A granite stone  $30'' \times 16'' \times 14''$  chiseled + C. N. 1-1435, set  $15''$  in the ground and build monument of stones  $4''$  base,  $3''$  high along side. Whence  
The S. W. Cor. Sec. 24-T. 20 S. R. 9 E. Ch. 4 S. R. B. V. M. bears N.  $19^{\circ}45'W.$  -  $3810.49$

No bearings available

Thence S.  $70^{\circ}E.$

V<sup>s</sup>  $12^{\circ}27'E.$

187 Upper road from mines to mill site; cour, N.  $14^{\circ}30'E.$  & S.  $15^{\circ}45'W.$  to mines.

400 A granite stone marked G. C. S. L. C. with man, of stones along side.

415 Lower road from mines to mill site. Cour, N.  $49^{\circ}E.$  & S.  $47^{\circ}W.$  to mines.

700 Small arroyo; Cour, N.  $62^{\circ}E.$  -  $8''$  wide.

800 To Cor. No. 2.

Identical with the location.

A granite stone  $36'' \times 10'' \times 8''$  chiseled + C. 2 1435 set  $16''$  in the ground and build monument of stones  $4''$  base,  $3''$  high along side. No bearings available.

Thence S.  $20^{\circ}W.$

V<sup>s</sup>  $12^{\circ}27'30''E.$

200 Center of arroyo  $40''$  wide,  $2.0''$  deep; Cour, N.  $63^{\circ}E.$

300 A granite stone marked G. C. E. C. with man, of stones along side.

600 To Cor. No. 3.

Identical with the location.

A granite stone  $30'' \times 10'' \times 4''$  chiseled + C. 3 1435. set  $16''$  in the ground, and build monument of stones  $4''$  base,  $3''$  high along side.

A mesquite tree  $14''$  dia, marked B. T. 3-1435 bears N.  $24^{\circ}30'E.$  -  $36''$  dist.



# Survey 1435 continued

Reel Thence  $N. 70^{\circ} W.$   
 $V. 12^{\circ} 27' 30'' E.$

190 Deep Cañon; corr,  $N. 64^{\circ} E.$  - 15<sup>ft</sup> wide.

400 A granite stone marked G. C. S. L. C.  
 With man, of stones along side.

800 To Cor, No 4.  
 Identical with the location.  
 A granite stone 18" x 12" x 8" chiseled &  
 G. C. 1435, <sup>on N. E. face</sup> set one foot in the ground  
 and build monument of stones 4<sup>ft</sup>  
 base, 3<sup>ft</sup> high along side. No bearings available.

Thence  $N. 20^{\circ} E.$   
 $V. 12^{\circ} 27' E.$

300 A granite stone marked G. C. E. C.  
 With man, of stones along side.

~~Thence, the discovery shaft 7' x 5' x 12'~~  
~~ft deep, bears  $S. 70^{\circ} W. - 169$  ft.~~

600 To Cor, No 1;  
 The place of beginning.

## Grand Mining Claim No 1

Beginning at Cor, No 1.  
 Identical with the location and  
 with Cor, No 1 of the Grand Mining  
 Claim this Survey. Stone chiseled 1-1435 on N.W. face.  
 The S. W. Cor, Sec, 24-47, 20 S. R. 9 T.  
 G. T. R. B. & M. bears  $N. 19^{\circ} 45' W. - 38101.9$  dist.

Thence  $S. 20^{\circ} W.$   
 $V. 12^{\circ} 27' E.$

300 A granite stone marked G. No-1-B. B. C. with man, of stone along side.

600 To Cor, No 2.  
 Identical with the location and  
 with Cor, No 4 of the Grand Mining  
 Claim this Survey. Stone chiseled 2-1435 on N.W. face.

Thence  $N. 70^{\circ} W.$   
 $V. 12^{\circ} 27' E.$

350 Crest of ridge 150<sup>ft</sup> high. Corr,  $N. 33^{\circ} E.$

600 Center of Cañon; corr,  $N. 40^{\circ} E.$  - 50<sup>ft</sup> wide.



# Survey 1435 continued 8

- 750 A granite stone marked  $\text{C. N. 1-S.}$  with man, of stones along side.
- 1160<sup>3</sup> Intersect Sec. Line bet. Secs. 25-26 T. 20 S. R. 9 E. S. 3755<sup>1</sup>.1 From S.W. Cor. of above said Sec. 24.
- 1500 To Cor. N<sup>o</sup> 3.  
 Identical with the location.  
 A granite stone 20" x 10" x 8"<sup>3/4</sup> chiseled +  $\text{C. 3-1435}$ , <sup>on N.E. face</sup> set one foot in the ground and build monument of stones 4 ft. base, 3 ft. high along side. N. bearings available.  
 Thence N. 20° E.  
 V<sup>o</sup> 12° 27' E.
- 300 A granite stone marked  $\text{C. N. 1-}$   $\text{I.C.}$  surrounded with man, of stones; Whence;  
 The Discovery Shaft 4 x 5 x 10<sup>ft</sup> deep, bears S. 70° E. 514<sup>ft</sup> dist. .
- 600 To Cor. N<sup>o</sup> 4.  
 Identical with the location.  
 A granite stone 24" x 10" x 7"<sup>3/4</sup> chiseled +  $\text{C. 4-1435}$ , <sup>on S.E. face</sup> set one foot in the ground and build monument of stones 4<sup>ft</sup> base, 3<sup>ft</sup> high along side. No bearings available.  
 Thence S. 70° E.  
 V<sup>o</sup> 12° 27' E.
- 109.9<sup>ft</sup> Intersect Sec. Line bet. Secs. 25-26 T. 20 S. R. 9 E. S. 3116<sup>1</sup>.6 from the S.W. Cor. of the aforesaid Sec. 24.
- 750 A granite stone marked  $\text{C. N. 1-S. I.C.}$  with man, of stones along side.
- 1060 Center of deep Cañon; Cour. N. 40° E. 20<sup>ft</sup> wide.
- 1500 To Cor. N<sup>o</sup> 1;  
 The place of beginning.

From points of intersection with section line above referred to; distances to  $\frac{1}{4}$  cor. are not given; because no  $\frac{1}{4}$  cor. can be found on said section line.



# Survey 1435 continued

9

## Feet Grand Mining Claim No 2

Beginning at Cor, No 1:  
Identical with the location  
and with Cor, No 4 of the Grand  
Mining Claim No 1 This Survey. Whence,

The S. W. Cor, of Sec, 24 T. 20 S. R. 9 E.  
G. W. S. R. B. M. bears N. 2° 16' W. 3075<sup>ft.</sup> 75

An open cut 2,4<sup>ft.</sup> x 7<sup>ft.</sup> with shaft  
8' x 6' x 16<sup>ft.</sup> deep, bears S. 83° 30' W. - 180<sup>ft.</sup> dist, o  
stone chiseled. 1-1435 - on S. W. face.

Thence S. 20° W.

V<sup>o</sup> 12° 27' E.

300 A granite stone marked G. No 2. E.  
G. surrounded with man, of stones.

600 To Cor, No 2.

Identical with the location, and  
with Cor, No 3 of the Grand Mining  
Claim No 1 of this Survey. Stone chiseled  
2, 1435 on N. W. face.

Thence N. 34° 45' W.

V<sup>o</sup> 12° 27' E.

734 Center of arroyo 2,0<sup>ft.</sup> wide, 8<sup>ft.</sup> deep, Cor,  
N. 41° E.

750 A granite stone marked G. C. N. 2 S. In  
G. with man, of stones along side.

1403 Intersect line 2-3 of the Immense Mining  
Claim No 2. This Survey; N. 72° W. - 2,5<sup>ft.</sup> 3  
from Cor, No 2 of said Claim.

1500 To Cor, No 3;

Identical with the location.

A granite stone 2,0<sup>ft.</sup> x 10<sup>ft.</sup> x 8<sup>ft.</sup> chiseled +  
3-1435<sup>on N. E. face</sup> set one foot in the ground  
and build monument of stones 4<sup>ft.</sup> base,  
3<sup>ft.</sup> high along side. No bearings available.

Thence N. 20° E.

V<sup>o</sup> 12° 27' 30" E.

78:5<sup>ft.</sup> Intersect line 3-4 of Immense Claim  
No 1 This Survey - N. 77° 45' W. - 169<sup>ft.</sup> 5  
from Cor, No 3 of said Claim.



# Survey 1435 Continued

10

Reel

- 300 A Granite stone marked G. N. 2. E. C. With man, of stones along side; Whence The Discovery Shaft  $7 \times 6 \times 12$  ft deep, bears S.  $34^{\circ} 45'$  E. - 110 ft dist.
- 581.5 Intersect line 4-1 of the Immense Mining Claim No. 1 This Survey N.  $78^{\circ} 15'$  E. - 311 ft from Cor. No. 4 of said Claim
- 600 To Cor. No. 4:  
Identical with the location.  
A granite rock in place,  $6 \times 6 \times 4$  ft above ground, chiseled + - 4-1435 on S.E. face and build monument of stones 3 ft high on top of said rock. No bearings available.  
Thence S.  $34^{\circ} 45'$  E.  
V.  $12^{\circ} 27' 30''$  E.
- 18 Intersect line 4-1 of the Immense Mining Claim No. 1 This Survey, N.  $78^{\circ} 15'$  E. - 328 ft. 5 from Cor. No. 4 of said Claim.
- 665.3 Intersect line 2-3 of the Immense Mining Claim No. 1 N.  $78^{\circ} 15'$  E. 516 ft from Cor. No. 3 of said Claim
- 747 Center of arroyo 10 ft wide, 8 ft deep, corr. N.  $35^{\circ}$  E.
- 753 A granite stone marked G. N. 2. S. J. C. - W. C. - With man, of stones along side.
- 1500 To Cor. No. 1:  
The place of beginning.

## Waggard-Manning Claims

Beginning at Cor. No. 1: - 1435

Identical with the location, and with Cor. No. 1 of the Grand, and the Grand No. 1 Mining Claims - This Survey Stone chiseled 1-1435 on N.E. face.

The S. W. Cor. of Sec. 24 - T. 2.0 S. R. 9 E. - G. & S. - R. B. & M. - bears N.  $19^{\circ} 45'$  W. - 3810 ft. 9 dist.



# Survey 1435 continued 11

- Feet
- Thence N.  $20^{\circ}$  E.  
V<sup>s</sup>  $12^{\circ}$   $27'$  E.
- 300 A granite stone marked N. C. - E. C. with mon. of stones along side: whence, The Discovery Shaft  $6' \times 4' \times 10'$  deep, bears S.  $70^{\circ}$  E. - 128 ft. dist.
- 430 Center of arroyo - deep Cañon -  $50'$  wide,  $30'$  deep; course, N.  $81^{\circ}$  E.
- 600 To Cor. No. 2.  
Identical with the location.  
A granite stone  $24'' \times 12'' \times 4''$  chiseled +  
2 - 1435 set  $14''$  in the ground, and build monument of stones  $4'$  base,  $3'$  high along side. No bearings available.
- Thence S.  $70^{\circ}$  E.  
V<sup>s</sup>  $12^{\circ}$   $27'$  E.
- 285 Road from mines to mill site: course, N.  $73^{\circ} 30'$  E. & S.  $70^{\circ}$  W. to mines.
- 330 Left rim of arroyo  $25'$  deep.
- 645 Center of arroyo  $30'$  wide,  $20'$  deep; course, N.  $63^{\circ}$  E.
- 750 A granite stone marked N. C. - S. T. C. with mon. of stones along side.
- 835 Center of dry wash  $25'$  wide,  $20'$  deep; course, N.  $12^{\circ} 30'$  W.
- 1500 To Cor. No. 3:  
Identical with the location.  
A granite stone  $24'' \times 18'' \times 6''$  chiseled +  
3 - 1435 set one foot in the ground and build monument of stones  $4'$  base,  $3'$  high along side. whence,  
A mesquite tree  $16''$  dia, marked B. T. - 3-1435 bears N.  $2^{\circ}$  E. - 139 ft. dist.
- Thence S.  $20^{\circ}$  W.  
V<sup>s</sup>  $12^{\circ}$   $26'$   $30''$  E.
- Ascending steep mountain side.
- 300 A granite stone marked N. C. - E. C. with mon. of stones along side.
- 600 To Cor. No. 4.



# Survey 1435 continued 12

- Feet Identical with the location.  
 A granite stone  $36'' \times 24'' \times 16''$  chiseled  
 + 1-1435 set  $18''$  in the ground  
 and build monument of stones  $4''$   
 base,  $3''$  high along side. No bearings available.
- Thence N.  $70^\circ$  W.  
 V<sup>s</sup>  $12^\circ 26' 30''$  E.
- 320 Crest of ridge; corr, N.  $15^\circ 30'$  W.  
 650 Center of dry wash  $25''$  wide;  $30$  ft  
 deep; corr, N.  $12^\circ 30'$  E.  
 700 Cor. N<sup>o</sup> 2 of Grand Mining Claim.  
 750 A granite stone marked N. & S. I. C.  
 with man, at stones along side.  
 800 Small arroyo, corr, N.  $62^\circ$  E.  $7''$  wide.  
 1085 Lower road from mines to mill site. N.  $43^\circ$  E.  
 1100 A granite stone marked A. C. S. I. C. for N. side Center  
 Grand Claim this Survey.  
 1313 Upper road from mines to mill site. N.  $14^\circ 30'$  E.  
 1500 To Cor. N<sup>o</sup> 1.  
 The place of beginning.

## Nugget Mining Claim No 1

Beginning at Cor. N<sup>o</sup> 1.  
 Identical with the location and  
 with Cor. N<sup>o</sup> 1; of the Nugget; the  
 Grand; and the Grand N<sup>o</sup> 1 Mining  
 Claims this Survey. Whence,  
 The S. W. Cor. of Sec, 24-T. 20 S. R. 9  
 E. - A. C. S. R. B. B. M. bears N.  $19^\circ 45'$  W.  
 $3810''$ . Dist, Stone chiseled 1435 on N.W. face.

Thence N.  $70^\circ$  W.  
 V<sup>s</sup>  $12^\circ 27'$  E.

- 440 Center of deep Cañon; corr, N.  $40^\circ$  E.  $50''$  wide  
 750 A granite stone marked N. No 1 S. I. C.  
 with man, at stones along side.  
 1390.  $7''$  Intersect Sec, line bet, Secs, 25-26 T. 20 S. R. 9 E.  
 $53116''$ . Dist, from S. W. Cor, Sec, 24.  
 1500 To Cor. N<sup>o</sup> 2.



## Survey 1435 continued

13

Feet Identical with the location and  
with Cor, No 4 of the Grand Mining  
Claim No 1; and with Cor, No 1 of  
the Grand Mining No 2 - this Survey.  
Stone chiseled 2-1435 - on N. E. face.

Thence N.  $20^{\circ}$  E.

V<sup>s</sup>  $12^{\circ}$  27' E.

300 A granite rock in place  $50' \times 30' \times 20'$   
above ground, sloping to the west, mark-  
ed + N. No-1 E. C. with man, of stones  
at upper side of said marks.

325.3<sup>ft</sup> Intersect See, Line bet. Secs, 25-26 T. 20 S. R. 9 E.  
S. 2780<sup>ft</sup>.75 from the S.W. Cor, of Sec, 24.

600 To Cor, No 3.

Identical with the location  
A granite stone  $30'' \times 24'' \times 16''$  chiseled  
+ 3-1435 set  $18''$  in the ground  
and build monument of stones 4<sup>ft</sup>  
base, 3<sup>ft</sup> high along side. No bearings  
available.

Thence S.  $70^{\circ}$  E.

V<sup>s</sup>  $12^{\circ}$  27' E.

400 Top of main mountain in this vicinity.

750 A granite stone marked N. No-1 S. L. C.  
with man, of stones along side.

1500 To Cor, No 4.

Identical with the location, and  
with Cor, No 2 of the Nugget Claim  
this Survey stone chiseled 4-1435 on S.W. face.

Thence S.  $20^{\circ}$  W.

V<sup>s</sup>  $12^{\circ}$  27' E.

170 Center of channel  $50'$  wide,  $30'$  deep,  
cours, N.  $81^{\circ}$  E. in deep canon.

300 A granite stone marked N. N. 1 E.  
C. with man, of stones along side. Whence,  
The Discovery Shaft  $7' \times 5' \times 10'$  deep, bears  
N.  $70^{\circ}$  W. -  $592'$  dist.

600 To Cor, No 1.

The place of beginning.



Survey 1435 continued

14

Area

Immense Mining Claim

Total Area = - - = 20,663-A.

Immense Mining Claim No 1

Total Area = - - = 20,549 - A.

Immense Mining Claim No 2

Total Area = - - = 16,768 - A.

Grand Mining Claim

Total Area = - - = 11,026 - A.

Grand Mining Claim No 1

Total Area = - - = 20,670 - A.

~~Grand Mining Claim No 2~~

~~Total Area = - - = 16,869 - A.~~

~~Area in conflict with~~

~~Immense Mining Claim No 1 = 4,048 - A.~~

~~Immense Mining Claim No 2 = 113 - A.~~

Total Area of Grand Mining

Claim No 2 = - - = 16,869 A.

Less Area in conflict with

Immense Mining Claim No 1

this Survey = 4,048 - A.

Immense Mining Claim No 2 = 113 - A.

Net area Grand Mining

Claim No 2 = - - = 12,708 - A.

~~Total area in conflict = 4,161 - A.~~



Survey 1833 continued 13<sup>o</sup>

No.

Area

Wagon-wheel-Mining Claim

Total area - - - = 20.661-A.

Total net area - - - = 20.661-A.

Wagon-wheel-Mining Claim No 1

Total area - - - = 20.661-A.

Total net area - - - = 20.661-A.

Locations

This claim is located in the S.W. 1/4 and the N.W. 1/4 of Sec. 25 and the S.E. 1/4 and the N.E. 1/4 of Sec. 26 T. 20 S. R. 9 E. G.S. R. B.S.M. Arizona Mining District Pima County, Territory of Arizona, and consists of several adjoining locations.

Expenditure of five hundred dollars for each location

I certify that the value of the labour and improvements upon this claim, placed thereon by the claimants and their grantors, is not less than five hundred dollars for each location or mining claim for which Patent is herein applied for; and that said improvements consist of:

First

Locations

- 1 From westerly end center monument: N. 72° 15' E. - 206 ft - Discovery shaft - 7' x 5' x 10 ft deep; - Value - - - \$ 100.00
- 2 From westerly end center monument: N. 72° 15' E. - 629 ft; mouth of open cut; 29 ft wide at top; 21 ft deep, 15 ft wide at



# Survey 1435 continued

16

- N<sup>o</sup> 2 the bottom, extends S. 72° 15' W. - 60 feet;  
Value - - - - - = \$733.00
- 3 From mouth of said open cut, an  
ore chute 3 ft wide, 2.0<sup>in</sup> deep, and 300  
feet in length, made of sawed lumber,  
and lined with N<sup>o</sup> 12 sheet iron; extends  
N. 52° E. at angle of incline down-  
ward - 2.1° 10'; Value - - - = \$1,000.00
- 4 At head of said ore chute, and under  
same, an open cut 7 ft wide, 6 ft 6<sup>in</sup>  
deep; extends S. 56° E. 47 feet; Value - \$180.00
- 5 From westerly end center monument,  
N. 72° 15' E. - 635 ft, West of an open cut,  
12 feet wide, 16 feet deep, extends N. 72°  
15' E. - 37 feet; Value - - - = \$230.00
- 6 From westerly end center monument,  
N. 72° 15' E. - 836 feet, mouth of an open cut,  
30 feet wide, 14 feet deep, extends S. 72° 15' W.  
31 feet, to gate to Tunnel. Value = \$485.00
- 7 From above mentioned gate: the main  
tunnel; 6 feet wide at bottom, 6 ft 6<sup>in</sup>  
high, and 5 feet wide at top; extends  
N. 81° 30' W. - 55 feet; thence S. 67° 30' W. - 20 ft. 5"  
thence, S. 66° 30' W. - 30 ft. 5" total length  
106 ft.; Value - - - - - \$1,060.00
- 8 Wagon road, including turnround, built  
exclusively for working the Immense  
Trade; - Value - - - - - \$130.00
- Total expenditures in development work  
on the Immense Trade - - - - -  
= \$4,118.00

The open cut referred to as improvement No 6  
and the Tunnel referred to as improvement No 7 on  
the Immense



## Survey 1435 continued

17

No. 1. crediting in value the sum of \$ 1,545.00 are both accredited, share and share alike, to Immense No. 1; and Immense No. 2 Mining Claims, this survey.

## Second:

## Immense Mining Claim No. 1

- 1 From easterly end center monument; S. 78° 15' W. - 106 feet; Discovery Shaft 7x5x10ft. deep, Value = \$ 100.00
- 2 <sup>nos 6 & 7</sup> Plotment in open cut and tunnel, situate on Immense Mining Claim; and ~~more particularly described in articles No. 6 & 7 descriptive expenditures on said claim.~~ Value = \$ 777.50

Total expenditures in development work for the Immense Mining Claim No. 1 = \$ 877.50

## Third:

## Immense Mining Claim No. 2

- 1 From easterly end center monument N. 72° W. 214 feet, Discovery Shaft 7x5x10ft. deep Value = \$ 100.00
- 2 <sup>nos. 6 & 7</sup> Plotment in open cut and tunnel, situate on Immense Mining Claim, and ~~more particularly described in articles No. 6 & 7 descriptive expenditures on said claim.~~ Value = \$ 777.50

Total expenditures in development work for the Immense Mining Claim No. 2 = \$ 877.50

The said tunnel on the Immense Mining Claim, herein referred to; is so located as will thoroughly develop the said Immense No. 1, and the Immense No. 2, Mining Claims; the mineral lode or vein being continuous lengthwise, through the three said mining claims.



## Survey 1435 continued

18

No.

## Fourth

## Grand Mining Claim

Measurements on the center line, beginning at the westerly end center monument; Thence

1 S. 70° E. - 2.64 f<sup>t</sup>

To mouth of Discovery open cut, which is 30 feet wide at mouth, extends N. 70° W. 85 feet; 16 feet wide at the bottom, 20 feet wide at the top and is 27 feet deep: - Value - \$1100.00

2 N. 70° W. 81 feet from mouth of said open cut, No. 1 is a working shaft 8' x 6' x 25' deep; Value - \$375.00

3 N. 70° W. 85 feet on center line, from mouth of said open cut, <sup>No. 1</sup> Entrance to main Tunnel; 6' wide at bottom, 6' 6" high; 5' wide at top; bears N. 73° W. - 42. f<sup>t</sup>; Thence S. 73° 30' W. - 2.2 f<sup>t</sup>; Thence N. 73° W. - 2.0 f<sup>t</sup>; total length of tunnel = 84 f<sup>t</sup>; Value - \$1,008.00

4 Wagon road built for working the Grand, Grand Nos 1 & 2 locations - Value - \$200.00

Total expenditures in development work on the Grand Mining Claim, the sum of - \$2,783.00

The Tunnel referred to as improvement No. 3, and one half of the said open cut referred to as improvement No. 1

amount in value to the sum of \$1558.00 are both accredited share and share alike, to the Grand ~~mining claim~~ No. 1, and the Grand ~~mining claim~~ No. 2 Mining Claims.



# Survey 1435 Continued

19

V<sup>o</sup>F<sup>o</sup> 11th

## Grand Mining Claim No. 1

1 From center monument at westerly end of Claim; S. 70° E. 514 feet, Discovery Shaft; 7' x 5' x 10 f<sup>t</sup> deep; Value \$ 100.00

2 Aditment in open cut, and tunnel, situate on the Grand Mining Claim, and more particularly described in articles 1 & 3 descriptive expenditures on said Claim; Value \$ 779.00

Total expenditures on Grand Mining Claim No. 1 \$ 879.00

F<sup>o</sup> 12th

## Grand Mining Claim No. 2

1 From center monument at westerly end of Claim; S. 34° 45' W. 110 feet, the Discovery Shaft 7' x 6' x 12 f<sup>t</sup> deep; Value \$ 100.00

2 From Cor. No. 1 S. 83° 30' W. - 180 feet; an open cut 24 f<sup>t</sup> x 7 f<sup>t</sup> x 12 feet deep at breast; with a Shaft 7' x 6' x 16 f<sup>t</sup> deep in center of said cut; Value \$ 250.00

3 Aditment, in open cut and tunnel situate on the Grand Mining Claim; and more particularly described in articles 1 & 3 descriptive expenditures on said Claim; Value \$ 779.00

Total expenditures in development work on the Grand Mining Claim No. 2 - \$ 1,129.00

The said tunnel on the Grand Mining Claim, herein referred to, is so located as will thoroughly develop the said Grand



Survey 1435 continued

2, 0

No Mining Claims No 1; and the Grand Mining Claim No 2; the mineral lode or vein, being continuous lengthwise through the three said mining Claims.

Seventh

Nugget Mining Claims

- 1 From center monument westerly end of the Claims S. 70° E. - 12.8 feet. Discovery shaft 6' x 4' x 10' deep; Value \$100.00
- 2 From said center monument; S. 39° E. - 130 feet, a shaft 7' x 5' x 12' deep; Value \$150.00
- 3 From aforesaid center monument, S. 87° E. - 475 ft. mouth at open cut 8 feet wide, 14 ft. deep at breast; extends S. 87° W. 45 ft. to mouth of Tunnel; Value = \$158.00
- 4 Said tunnel is 6 feet wide at bottom, 6' 6" high, 5 feet wide at top, and extends S. 77° 30' W. 150 ft.; Value = \$1,500.00
- 5 At end of said tunnel; a drift 5 feet wide, 6' 6" high, extends N. 12° 30' E. 21 feet; Value \$210.00
- 6 Wagon road built for the development of said mine; Value = \$100.00

Total expenditures in development work on the Nugget Mining Claims. = \$2,218.00

The open cut referred to as improvement No 3 - and the tunnel referred to as improvement No 4 - this page in the aggregating \$1658.00; one half viz: \$829.00 is credited to Nugget Mining No 1 this survey



## Survey 1435 continued

21

No.

Eig<sup>th</sup> list

## Margaret Mining Claim No. 1

- 1 From center monument easterly end of Claim; N. 70° W. 592 ft Discovery shaft, 7' x 5' x 10 ft deep; Value - = \$100.00
- 2 From said center monument; S. 27° 30' W. 115 ft, a working shaft, 8' x 6 ft 40 feet deep; Value - = \$480.00
- 3 Abolment in open cut, and tunnel situated on Margaret Mining Claim, and more particularly described <sup>as improvements</sup> in articles 3-4 descriptive expenditures on said Claim; Value - = \$829.00

Total expenditures in development work for the Margaret Mining Claim No. 1; Value - = \$1,409.00

The said tunnel on the Margaret Mining Claim hereinbefore referred to, is so located, as will thoroughly develop the said Margaret Mining Claim No. 1; the fact, a mineral vein being continuous lengthwise of the two claims.

The surface embraced in this Survey, lies on the northern slope of the Guijas mountains; is rough and broken; deep canyons, and maintains 400 ft to 1000 feet high.

General formation grey Granite. The mineral veins are true fissure veins; large, continuous and well defined; showing heavy cappings at intervals, entire length of each <sup>center of</sup> location.

A mining location adjoins the Immense No. 2 Claim on the West; also, one on the north, as herein before referred to. The Whole Claim adjoins the Immense Claim on the North & East.



# Survey 1435 continued

22

## Other Improvements

The applicants hereto, have entered at the local Land Office - Tucson - the S. E. 1/4 at the S. W. 1/4 of Sec. 24 T. 20 S. R. 9 E. - Co. 10 S. R. B. S. M. on which the Mill Site - herein before referred to - is situated, besides other large and costly improvements, including, buildings, wells, canals etc.

## Instrument used -

This Survey was made with a large sine, Gurley - Engineers Transit - Solar attachment. The courses were deflected from the true meridian, as determined by direct solar and Polaris observations. The distances were measured with a 100 foot Steel tape.

## Magnetic Variation

was determined by Astronomical observations on Polaris; and the Sun, at a point on the S. W. Cor. Sec. 24 T. 20 S. R. 9 E. - Co. 10 S. R. B. S. M. on Dec. 10<sup>th</sup> 1899.

L. D. Hillson

U. S. Deputy Mil. S'vr

Tucson

Feb. 14<sup>th</sup> 1900



# FINAL OATHS FOR SURVEYS.

## LIST OF NAMES.

A list of the names of the individuals employed by L. D. Chillson

United States Deputy Mineral Surveyor, to assist in running, measuring, and marking the lines corners and boundaries described in the foregoing field notes of the survey of the mining claim of The American Wolfram Company

known as the Immense, Immense No. 1, Immense No. 2; Grand, Grand No. 1, Grand No. 2; and the Nugget, & Nugget No. 1; and showing the respective capacities in which they acted.

A. Vildusea — — — — —, Chairman.  
S. Esnades — — — — —, Chairman.  
Raphael Trujco — — — — —, Axman.  
H — — — — —, Flagman.

## FINAL OATHS OF ASSISTANTS.

We, A. Vildusea, S. Esnades, R. Trujco  
 and R. Trujco do solemnly swear that we assisted L. D. Chillson

United States Deputy Mineral Surveyor, in marking the corners and surveying the boundaries of the mining claim of The American Wolfram

Company; known as the Immense, Immense No. 1, Immense No. 2; Grand, Grand No. 1, Grand No. 2; and the Nugget, & Nugget No. 1 <sup>known as the</sup> mining Claims — — — — — represented

in the foregoing field notes as having been surveyed by said deputy mineral surveyor and under his direction; and that said survey has been in all respects, to the best of our knowledge and belief, faithfully and correctly executed, and the corner and boundary monuments established according to law and the instructions furnished by the United States Surveyor-General for

Said Survey.

Witness to mark  
A. Bradford  
L. D. Chillson

his - mark

A. Vildusea — — — — —, Chairman.  
S. Esnades — — — — —, Chairman.  
Rafael Trujco — — — — —, Axman.  
H — — — — —, Flagman.

Subscribed and sworn to by the above-named persons before me

this tenth day of January, 1900

L. D. Chillson

Notary Public

My Commission Expires March 15<sup>th</sup> 1902



(4-686.)

FINAL OATH OF U. S. DEPUTY MINERAL SURVEYOR

I, Lorenzo D. Hillson, U. S. Deputy Mineral Surveyor, do solemnly swear that, in pursuance of instructions received from the United States Surveyor General for the District of Arizona, dated Dec, 30<sup>th</sup> 1899, I have, in strict conformity to the laws of the United States, the official regulations and instructions thereunder, and the instructions of said Surveyor General, faithfully and correctly executed the survey of the Mining Claim of the American Wolfram Company, known as the Grand, Grand N<sup>o</sup> 1; Grand N<sup>o</sup> 2; the Immense, Immense N<sup>o</sup> 1; Immense N<sup>o</sup> 2; the Niagara and situate in Niagara N<sup>o</sup> 1 Mining Claim, situated in <sup>Arizona</sup> Mining District, Pima County, in Sections                      Township No. 20 S, Range No. 9 E - G. & S. R. B. & M. and designated as Survey No. 1435, as represented in the foregoing field notes, which accurately show the boundaries of said mining claim as distinctly marked by monuments on the ground, and described in the attached copy of the location certificate, which was received by me from the Surveyor General with said instructions, and that all the corners of said survey have been established and perpetuated in strict accordance with the law, official regulations and instructions thereunder; and I do further solemnly swear that the foregoing are the true and original field notes of said survey and my report therein, and that the labor expended and improvements made upon said mining claim by claimant or their grantors are as therein fully stated, and that the character, extent, location and itemized value thereof are specified therein with particularity and full detail, and that no portion of said labor or improvements so credited to this claim has been included in the estimate of expenditures upon any other claim.

Lorenzo D. Hillson  
U. S. Deputy Mineral Surveyor.

Subscribed and sworn to by the said Lorenzo D. Hillson  
U. S. Deputy Mineral Surveyor, before me a Notary Public  
in and for Pima County, Arizona, this 15<sup>th</sup>  
day of February, 1900,

William G. Power  
Notary Public, Pima Co, Ariz.  
My Commission Expires Aug. 15<sup>th</sup> 1902



Affidavit of Five Hundred Dollars Improvements.

We, Manuel Carrillo, and Carlos Morales

of lawful age, being first duly sworn according to law, depose and say: that we are acquainted with the Immense, Grand and Nugget Lode mining claims, situate in Aravaaca Mining district, Pima County, Arizona Territory, for which The American Wolfram Company, by their manager H. S. Bradford has made application for survey prior to application for patent under the provisions of the Act of Congress, approved May 10, 1872; and that the labor done and improvements made thereon by the applicants and their grantors exceed four thousand (Five Hundred) Dollars in value, and further that we are not personally interested in said mines.

Manuel Carrillo

Carlos Morales

TERRITORY OF ARIZONA, } ss:
County of Pima

Sworn to and subscribed before me, this 14th day of January 1900

J. D. Killson
Notary Public
My Commission Expires March 15th 1902



## IMMENSE MINING CLAIM.

NOTICE OF LOCATION. QUARTZ CLAIM. To All Whom it May Concern: We claim for mining purposes 600 feet <sup>wide</sup> and 1500 feet long in the form of a parallelogram; monuments of stones at each corner, at the center of each end and center of each side line. This notice is placed in a monument at the discovery at the South-westerly end of claim. General direction North-easterly. Situated in Ari- vaca Mining District, Pima County, Arizona, about one-half mile Southerly from Ruiz ranch, on the Northerly slope of the Guijas Mountains. The North-westerly end crops the Easterly end of the Whale mine on the Whale lode. Discovery shaft fifty feet from the discovery, and shall be known as the Immense Mine. Located January 1st, 1899.

Charles Bent.

A. B. Sampson.

Filed and recorded at request of Charles Bent March 4th, 1899, at 11 A.M.

Chas. A. Shibell,

County Recorder.

Territory of Arizona )  
 County of Pima. )  
 -ss

I, Chas. A. Shibell, County Recorder of Pima County, Territory of Arizona, do hereby certify that the foregoing is a full, true and correct copy of the Location Notice of the Immense Mining Claim, as the same now appears of record in my office in Book GG, at page 122, et. seq. of Records of Mines.

WITNESS My hand and seal of office this 30th day of December, A.D. 1899.

*Chas. A. Shibell*

County Recorder.





## IMMENSE NO. 1 MINING CLAIM.

NOTICE OF LOCATION. QUARTZ CLAIM. To All Whom it May Concern: We claim for mining purposes 600 feet wide and 1500 feet long, in the form of a parallelogram, monuments of stones at each corner, at the center of each end and center of each side line.

This notice is placed in a monument at the discovery at the ~~South-~~  
*North* westerly end of claim. General direction South-westerly. Situated in Arivaca Mining District, Pima County, Arizona, about one-half mile Southerly from Ruiz Ranch, on the Northerly slope of the Guijas Mountains, and is the South-westerly extension of the Immense Mine. Discovery shaft one hundred feet from the discovery and shall be known as the Immense No. 1 Mine. Located January 1st, 1899.

Charles Bent

A. B. Sampson.

Filed and recorded at request of Charles Bent March 4, 1899, at 11 A.M.

Chas. A. Shibell,

County Recorder.

Territory of Arizona )  
-ss  
County of Pima. )

I, Chas. A. Shibell, County Recorder of Pima County, Territory of Arizona, do hereby certify that the foregoing is a full, true and correct copy of the Location Notice of the Immense No. 1 Mining Claim, as the same now appears of record in my office in Book GG, at page 123, of Records of Mines.

WITNESS my hand and seal of office this 30th day of December, A.D. 1899.

*Chas. A. Shibell*

County Recorder.





IMMENSE NO. 2 MINING CLAIM.

NOTICE OF LOCATION. QUARTZ CLAIM. To All Whom it May Concern: We claim for mining purposes 600 feet wide and 1500 feet long in the form of a parallelogram; monuments of stones at each corner, at the center of each end and center of each side line. This notice is placed in a monument at the discovery at the North Easterly end of claim. General direction South-westerly. Situated in Arivaca Mining District, Pima County, Arizona, about three-fourths of a mile Southerly from Ruiz Ranch, on the Northerly slope of the Guijas Mountains and is the South-westerly extension of the Immense No. 1 Mine about 100 feet Westerly from a shaft on the Summit - Discovery shaft one hundred feet from the South-westerly end of claim, and shall be known as the Immense No. 2 Mine. Located January 1st, 1899.

Charles Bent.

A. B. Sampson.

Filed and recorded at request of Charles Bent March 4, 1899, at 11 A.M.

Chas. A. Shibell.

County Recorder.

Territory of Arizona )  
-ss  
County of Pima. )

I, Chas. A. Shibell, County Recorder of Pima County, Territory of Arizona, do hereby certify that the foregoing is a full, true and correct copy of the Location Notice of the Immense No. 2 Mining Claim, as the same now appears of record in my office in Book GG, at page 123, of Records of Mines.

WITNESS My hand and seal of office this 30th day of December, A.D. 1899.

*Chas. A. Shibell*

County Recorder.





## GRAND MINING CLAIM

NOTICE OF LOCATION. QUARTZ CLAIM. To All Whom it may Concern: We claim for mining purposes 600 feet wide and 800 feet long, in the form of a parallelogram, monuments of stones, at each corner, at the center of each end and center of each side line. This notice is placed at the discovery at the Westerly end of claim. General direction Easterly. Situated in Arivaca Mining District, Pima County, Arizona, about three-fourths of a mile South-easterly from Ruiz Ranch on Guijas Creek, on the Northerly slope of the Guijas Mountains, about fifty-five miles Southerly from Tucson, and lies South-easterly from the Whale Lode and the Immense Mine on the Immense Lode discovery shaft one hundred feet from the discovery, and shall be known as the Grand Mine. Located January 1<sup>st</sup> 1899.

Charles Bent.

A. B. Sampson.

Filed and recorded at request of Charles Bent Mch. 4, A. D. 1899, at 11 A. M.

Chas. A. Shibell,

County Recorder.

Territory of Arizona )  
 County of Pima. )  
 -ss

I, Chas. A. Shibell, County Recorder of Pima County, Territory of Arizona, do hereby certify that the foregoing is a full, true and correct copy of the Location Notice of the Grand Mining Claim, as the same now appears of record in my office in Book GG, at page 119, of Records of Mines.

Witness my hand and seal of office this 30th day of December, A. D. 1899.



*Chas. A. Shibell*

County Recorder.



## GRAND NO.1 MINING CLAIM.

NOTICE OF LOCATION. QUARTZ CLAIM. To All Whom it May Concern: We claim for mining purposes 600 feet wide and 1500 feet long in the form of a parallelogram, Monuments of stones at each corner, at the center of each end and center of each side line. This notice is placed in a Monument at the discovery at the Easterly end of claim. General direction Westerly. Situated in Arivaca Mining District, Pima County, Arizona, about three-fourths of a mile South-easterly from Ruis Ranch- on the Northerly slope of the Guijas Mountains, and is the Westerly extension of the Grand Mine on the Grand lode. Discovery shaft fourteen hundred feet from the discovery and shall be known as the Grand No. 1 Mine. Located January 1st, 1899.

Charles Bent.

A.B.Sampson.

Filed and recorded request Chas.Bent Mch.4, 1899, at 11 A.M.

Chas. A. Shibell,

County Recorder.

Territory of Arizona )  
 County of Pima. )  
 -SS

I, Chas. A. Shibell, County Recorder of Pima County, Territory of Arizona, do hereby certify that the foregoing is a full, true and correct copy of the Location Notice of the Grand No. 1 Mining Claim, as the same now appears of record in my office in Book GG, at page 119, of Records of Mines.

WITNESS My hand and seal of office this 30th day of  
 December, A.D.1899.

*Chas. A. Shibell*  
 County Recorder.





NOTICE OF LOCATION. QUARTZ CLAIM. To All Whom it May Concern: We claim for mining purposes 600 feet wide and 1500 feet long, in the form of a parallelogram, monuments of stones at each corner, at the center of each end and center of each side line. This notice is placed in a monument at the discovery at the Easterly end of claim. General direction Westerly. Situated in Arivaca Mining District, Pima County, Arizona, about three-fourths of a mile Southerly from Ruiz ranch, on the Northerly slope of the Guijas Mountains, and is the Westerly extension of the Grand No. 1 Mine on the Grand lode. Discovery shaft Two Hundred feet from the Westerly end of claim, and shall be known as the Grand No. 2 Mine. Located January 1st, 1899.

Charles Bent.

A. B. Sampson.

Filed and recorded at request of Chas. Bent Mch. 4th, 1899, at 11 A.M.

Chas. A. Shibell,

County Recorder.

Territory of Arizona )  
 ) -ss  
 County of Pima. )

I, Chas. A. Shibell, County Recorder of Pima County, Territory of Arizona, do hereby certify that the foregoing is a full, true and correct copy of the Location Notice of the Grand No. 2 Mining Claim, as the same now appears of record in my office in Book GG, at page 119, et. seq., of Records of Mines.

WITNESS My hand and seal of office this 30th day of December, A.D. 1899.

*Chas. A. Shibell*  
 County Recorder.





NUGGET MINING CLAIM.

NOTICE OF LOCATION: QUARTZ CLAIM. To All Whom it May Concern: We claim for mining purposes, 600 feet wide and 1500 feet long in the form of a parallelogram; monuments of stones at each corner, at the center of each end and center of each side line. This notice is placed in a monument at the discovery Westerly end of claim, General direction Easterly. Situated in Arivaca Mining District, Pima County, Arizona, about three-fourths of a mile South-easterly from Ruiz Ranch, on the Northerly slope of the Guijas Mountains, Northerly and partly adjoining the Grand Mine on the Grand Lode. Discovery shaft one hundred feet from the discovery, and shall be known as the Nugget Mine. Located January 1st, 1899.

Charles Bent.

A. B. Sampson.

Filed and recorded at request of Charles Bent March 4, 1899, at 11 A.M.

Chas. A. Shibell,

County Recorder.

Territory of Arizona )  
 County of Pima. )  
 -SS

I, Chas. A. Shibell, County Recorder of Pima County, Territory of Arizona, do hereby certify that the foregoing is a full, true and correct copy of the Location Notice of the Nugget Mining Claim, as the same now appears of record in my office in Book GG, at page 124, of Records of Mines.

WITNESS My hand and seal of office this 30th day of December, A.D. 1899.

*Chas. A. Shibell*  
 County Recorder.





NUGGET NO. 1 MINING CLAIM.

NOTICE OF LOCATION. QUARTZ CLAIM. To All Whom it May Concern: We claim for mining purposes 600 feet wide and 1500 feet long in the form of a parallelogram, monuments of stones at each corner, at the center of each end and center of each side line. This notice is placed in a monument at the discovery at the Easterly end of claim. General direction Westerly. Situated in Arivaca Mining District, Pima County, Arizona, about three-fourths of a mile South-easterly Ruiz Ranch on the Northerly slope of the Guijas Mountains, Northerly and partly adjoining the Grand and the Grand No. 1 on the Grand lode, and is the Westerly extension of the Nugget Mine. Discovery shaft six hundred feet from the discovery, and shall be known as the Nugget No. 1 Mine. Located January 1st, 1899.

Charles Bent.

A. B. Sampson.

Filed and recorded at request of Charles Bent March 4, 1899, at 11 A.M.

Chas. A. Shibell,

County Recorder.

Territory of Arizona )  
 County of Pima. )  
 -ss

I, Chas. A. Shibell, County Recorder of Pima County, Territory of Arizona, do hereby certify that the foregoing is a full, true and correct copy of the Location Notice of the Nugget No. 1 Mining Claim, as the same now appears of record in my office in Book GG, at page 124, of Records of Mines.

WITNESS My hand and seal of office this 30th day of December, A.D. 1899.

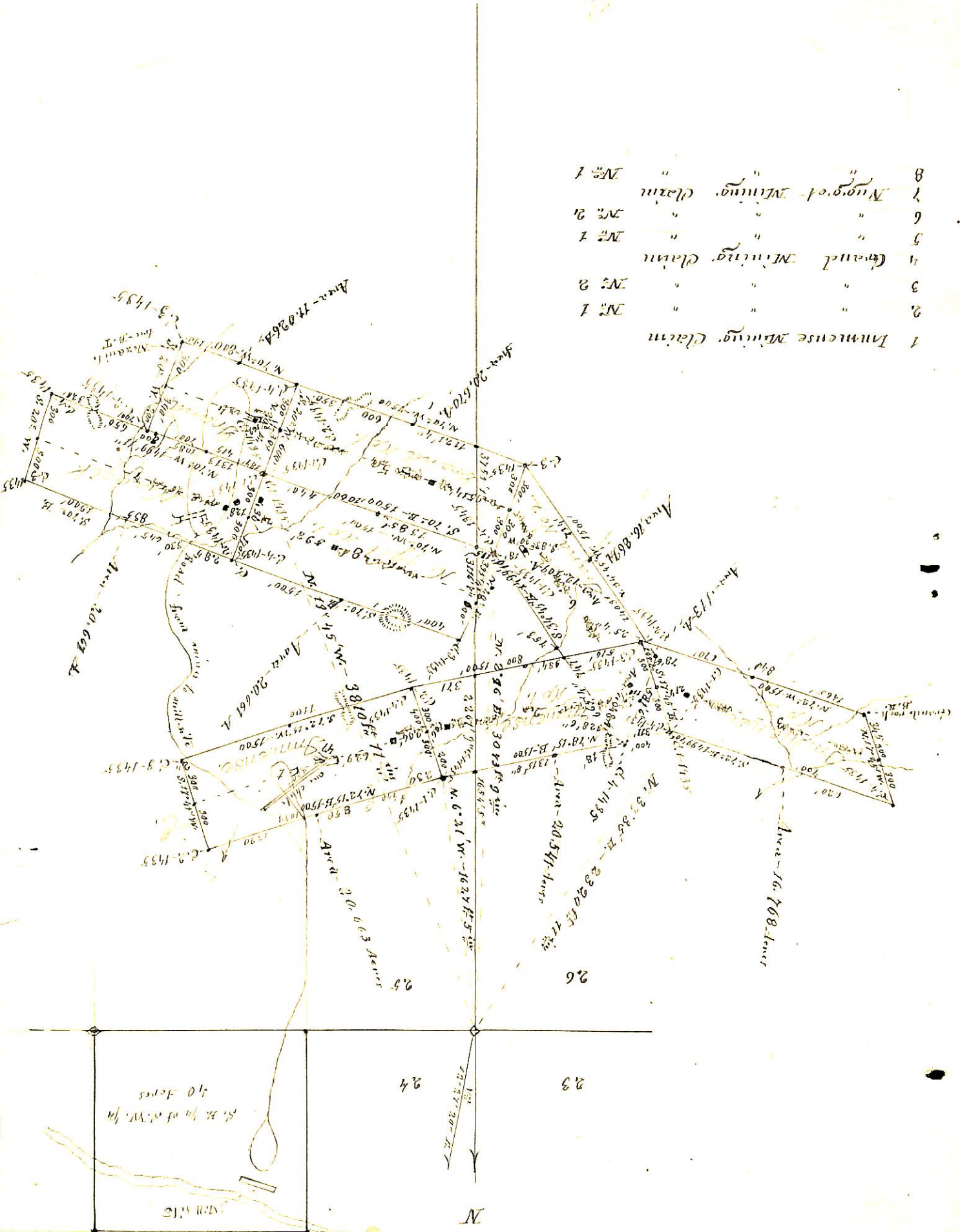
*Chas. A. Shibell*

County Recorder.





- |   |                        |      |   |   |   |
|---|------------------------|------|---|---|---|
| 1 | Inniscree Mining Claim | No 1 | " | " | 2 |
| 2 | "                      | No 2 | " | " | 3 |
| 3 | "                      | No 1 | " | " | 4 |
| 4 | Grand Mining Claim     | No 2 | " | " | 5 |
| 5 | "                      | No 1 | " | " | 6 |
| 6 | "                      | No 2 | " | " | 7 |
| 7 | Nugget Mining Claim    | No 1 | " | " | 8 |
| 8 | "                      | No 2 | " | " |   |





(4-687.)

# Surveyor General's Certificate of Approval of Field Notes and Survey of Mining Claim.

Department of the Interior,

Office of U. S. Surveyor General,

Tucson Arizona

May 9th, 1900

I, U. S. Surveyor General for

Arizona

do hereby certify that the foregoing and hereto attached Field Notes and Return of the

Survey of the Mining Claim of the American Wolfram Com-

pany, known as the Immense, Immense No. 1, Immense No. 2, Grand, Grand No. 1, Grand No. 2, Nugget and Nugget No. 1 mining claims

situate in Arivaca mining district,

Pima

County,

Arizona

in Sections 25 & 26, Township No. 20 S, Range No. 9 E

designated as Survey No. 1435

executed by Lorenzo D. Chillson, U. S. Deputy Mineral

Surveyor, January 4-10, 1900, under my instructions dated

December 30, 1899, have been critically examined and the

necessary corrections and explanations made, and the said Field Notes and Return, and

the Survey they describe, are hereby approved. A true copy of the copy of the location

certificate filed by the applicant for survey is included in the field notes.

George Christ

U. S. Surveyor General for Arizona