

MS .

0

1

5

4

9

MINERAL SURVEY NO. 1549

Claims	M & B Desc.	Improvements	Loc. Notices
Alex Thompson	7	19	3 5 6 7 8 1 2 4 8
Contest	15	19	
Dora	13	19	
Grand View	11	19	
Home Run	4	18	
Nil Desperandum	1	18	
Schwartzman	8	19	
Thomas	3	18	

Recd May 24. 1901
Sept. 2 - 1901

(4-683.)

Mineral Survey No. 1549

Lot No.

Prescott

Land District.

FIELD NOTES

OF THE SURVEY OF THE MINING CLAIM OF

James O'Connell

KNOWN AS THE

Nil Desperandum, Thomas, Home Run, Alex Thompson, Schmitzman, Grand View,
Jona and Centis, Hassayampa Mining District,

Yavapai County, Arizona

Section ²⁵⁻⁵⁰~~34-32~~ 31 & 36, Township 13 North, Range 1 & 2 W

Surveyed under instructions dated March 29th, 1901,

by J. J. Fisher
U. S. Deputy Mineral Surveyor

Claim located 18 .

Survey commenced April 22nd, 1901.

Survey completed April 26th, 1901.

Address

Ross & O'Sullivan
Attys for Claimant
Prescott
Arizona

PRELIMINARY OATHS OF ASSISTANTS IN SURVEY OF MINING CLAIM.

WE, E. H. Draper and John O'Connell,
do solemnly swear that we will well and faithfully execute the duties of chain carriers;
that we will level the chain upon even and uneven ground and plumb the tally-pins,
either by sticking or dropping the same; that we will report the true distance to all
notable objects, and the true length of all lines that we assist in measuring, to the best
of our skill and ability, and in accordance with instructions given us, in the survey of
the Mining Claim of James O'Connell
Known as the Stil-Desperandum, Thomas, Home Run, Alex Thompson, ~~known as the~~
Schwartzman, Grand View, Dora and Centest
situate in Hesseleyumpsee mining district,
County, _____,
in Section _____, Township No. _____, Range No. _____.

E. H. Draper, Chainman.
John O'Connell, Chainman.

Subscribed and sworn to by the above-named persons before
me this 22nd day of April, 1901.

J. J. Fisher
Notary Public.

I, John O'Connell, do solemnly swear that I will well and
truly perform the duties of axeman, in the establishment of corners and other duties,
according to instructions given me and to the best of my skill and ability, in the survey
of the Mining Claim of James O'Connell, ~~known as the~~
Stil-Desperandum, Thomas, Home Run, Alex Thompson, Schwartzman
~~known as the~~ Grand View, Dora and Centest
more fully described in the preceding affidavit.

John O'Connell, Axeman.

Subscribed and sworn to by the said John O'Connell
before me this 22nd day of
April, 1901.

J. J. Fisher
Notary Public.

I, E. H. Draper, do solemnly swear that I will
well and truly perform the duties of flagman, in the establishment of corners and other
duties, according to instructions given me and to the best of my skill and ability, in the
survey of the Mining Claim of James O'Connell ~~known as the~~
Stil-Desperandum, Thomas, Home Run, Alex Thompson, Schwartzman
~~known as the~~ Grand View, Dora and Centest,
more fully described in the preceding affidavit.

E. H. Draper, Flagman.

Subscribed and sworn to by the said E. H. Draper
before me this 22nd day of
April, 1901.

J. J. Fisher
Notary Public.

My commission expires
May 19 1904

SURVEY NO.1549.

NIL DESPERANDUM LODE.

FEET

Beginning at Cor. No. 1, the N.W. cor. of the Claim, which is also cor No. 2 of the Home Run Lode, and cor. No. 4 of the Dora Lode of this Survey.

A granite stone 6 x 8 x 24 inches, set 1 ft. in the ground alongside built a mon. of stones 3 x 3 ft. Stone marked N.D.No.1-1549. Also H.R.No.2-1549 and D.No.4-1549.

A cross on an oak tree 10 ins. in diam. marked B.T.N.D.No.1-1549, brs.N.89° 5' W. 10.4 ft.

A cross on an oak tree 8 ins. in diam. marked B.T. H.R.No.2-1549, brs. N.6° 40' E. 20.4 ft.

Cor.to Secs. 25 , 26, 35 and 36 T.13 N.R.2 W.brs. N,85° 14' W. 3865.2 ft.

Cor. identical with cor. of location.

Thence S. 13° E.

Var. 14° E.

750 To W.side mon.

1500 To Cor.No.2 identical with cor.of location.

A granite stone 8 x 10 x 24 ins., set 1 ft. in ground alongside a mon. of stones 3 x 3 ft. Stone marked N,D.No.2-1549.

A cross on a granite rock in place marked B.R.N.D. No.2-1549, brs.N.79° 55' E. 11.6 ft.

A cross on a granite rock in place marked B.R.N.D. No.2-1549, brs. S. 45° 30' E. 23.3 ft.

Thence S.89° E.

Var. 14° E.

300 To S.C.E. of claim and vein.

A porphyry stone 6 x 8 x 24 ins. set 1 ft. in ground, stone marked S.C.E.N.D.No.1549.

SURVEY No. 1549.

FEET

600 to Cor. No.3, which is also Cor. No. 2 of the Thomas Lode of this Survey, identical with cor of location.

A granite stone 6 x 10 x 30 ins. set 1 ft. in ground, alongside a mon. of stones 3 x 3 ft. Stone marked N.D.No.3-1549, also T.No.2-1549.

A cross on a granite rock in place marked B.R.N.D No.3-1549, brs. N. 61° W. 33.5 ft.

A cross on a granite rock in place marked B.R.T. No.2-1549, brs. N.48° 45' E. 54.7 ft.

Thence N.13° W.

Var. 14° E.

750 To E.S.Mon.

1500 To cor. No. 4, which is also cor. No..1 of the Thomas Lode of this Survey, identical with cor. of location.

A porphyry stone 8 x 10 x 24 ins. set 1 ft. in ground alongside a mon. of stones 3 x 3 ft. Stone marked N.D.No.4-1549, also T.No.1-1549.

A cross on a granite rock in place marked B.R.N.D No.4-1549, brs. S.2° 50' E. 86 ft.

A cross on a granite rock in place marked B.R.T. No.1-1549 brs. S. 28° 51' E. 94 ft.

Thence N.89° W.

Var. 14° E.

90 To cor. No.3 Home Run Lode, and Cor. No. 2 Alex Thompson Lode

300 To N.C.E.

A porphyry stone 10 x 10 x 20 ins. set 8 ins. in the ground, alongside a mon. of stones 3 x 3 ft. Stone marked N.C.E.N.D.No.1549.

SURVEY No.1549.

Feet

600 To Cor. No.1, the place of beginning survey of exterior boundaries.

* * * *

THOMAS LODE.

Beginning at cor. No.1, identical with the N.W.cor. of location, cor. described above.

Cor. to Secs. 25,26,35 and 36 T.13 N.R.2 W. brs. N.85° 44' W. 4457.9 ft.

Thence S.13° E.

Var. 14° E.

750 To W.S.Mon.

1500 To cor. No. 2, identical with Cor. of location. Cor. described above.

Thence S.89° E.

Var.14° E.

40 To S.C.E..

A slate stone 3 x 8 x 24 ins. set 1 ft. in ground alongside built a mon. of stones 3 x 3 ft. Stone marked S.C.E.T.No.1549.

140 To Cor. No.3, identical with corner of location.

A granite stone 6 x 8 x 24 ins. set 1 ft. in ground alongside a mon. of stones 3 x 3 ft. Stone marked T.No.3-1549.

No bearings available.

SURVEY NO.1549

Feet

Thence N.1° 18' E.

Var.14° E.

750 To E.S.Mon.

1455.8 To Cor. No.4, identical with N.E.Cor. of location, which is also cor.No. 3 of the Alex Thompson Lode and cor. No. 2 of the Schwartzman Lode.

A porphyry stone 8 x 8 x 30 ins. set 1 ft. in ground alongside a mon. of stones 3 x 3 ft. Stone marked T.No.4-1549, also A.T.No.3-1549, and S.No.2-1549.

A cross on a porphyry rock in place marked B.R.T. No.4-1549, brs. S. 17° 30' W.11.9 ft.

A cross on a porphyry rock in place marked B.R.A. T.No.3-1549, brs. S.62° 10' W. 28.2 ft.

Thence N.89° W.

Var.14° E.

300 To N.C.E., which is also the S.C.E. of the Alex Thompson Lode of this Survey.

A porphyry stone 6 x 10 x 24 ins. set 1 ft. in ground alongside a mon. of stones 3 x 3 ft. Stone marked N.C.E.T.No.1549, also S.C.E.A.T.No.1549.

510 To cor.No.1 the place of beginning survey of exterior boundaries.

* * * *

HOME RUN LODE.

Beginning at Cor. No.1, the N.W.Cor. of the claim identical with the location, which is also cor. No.4 of the Contest Lode of this Survey.

A slate stone 2 x 10 x 30 ins. set 1 ft in ground alongside a mon. of stones 3 x 3 ft. Stone marked H.R.No.1-1549, also C.No.4-1549.

A cross on an oka tree 12 ins. in diam. marked B.T.H.R. No.1-1549, brs. N.46° 25' E.9.8 ft.

SURVEY NO.1549.

Feet	Cor. to Secs. 25,26, 35 and 36 T.13 N.R.2.W.brs. S. 76° 34' W. 4457.5 ft.
	Thence S.19° 56' W. Var.14° E.
285	To cor.No.5 Contest Lode, and Cor.No.5 Dora Lode of this Survey.
750	To W.S.Mon.
1093.2	To intersect line bet. Secs. 25 and 36, T.13 N.R.2 W. <i>S 89° 53'</i> at W.1315 ft. from cor. to Secs.25,30, 31 and 36. <i>N 89° 53'</i> and E. 1325 ft. from Quarter Sec. cor. bet. Secs. 25 and 36.
1443.2	To cor.No.2, which is also Cor. No.1 Nil Depperandum and Cor.No.4 Dora Lode of this Survey, cor. described above.
	Thence S.89° E. Var.14° E.
178	To S.C.E. and vein. A porphyry stone 4 x 8 x 24 ins. set 1 ft. in ground stone marked S.C.E.H.R.No.1549, alongside a mon. of stones 3 x 3 ft.
510	To cor.No. 3which is also cor.No 2 Alex Thompson Lode of this Survey. A porphyry stone 8 x 8 x 24 ins. set 1 ft. in ground alongside a mon. of stones 3 x 3 ft. Stone marked H.R.No.3-1549, also A.T.No.2-1549.
	A cross on a porphyry rock in place marked B.R.A. T.No.2-1549, brs. S. 6° 43' E.25.5 ft. bearings No other bearings available.

SURVEY NO.1549

Feet	Thence N.25° 30' E.
	Var.14° E.
385	To intersect Sec. line at ^{S 89° 53'} W.760 ft. from cor.to Secs. 25, 30,31 and 36 and ^{N 89° 53'} E.1880 ft. from Quar. Sec. cor. bet. Secs. 25 and 36 T.13 N.R.2.W.
750	To E.S.Mon.
1500	To cor. No.4, which is also cor.No.1 Alex Thompson Lode of this Survey, identical with cor. of location.
	A porphyry stone 5 x 8 x 24 ins. set 1 ft. in ground alongside a mon. of stones 3 x 3 ft. Stone marked H.R.No.4-1549, also A.T.No.1-1549.
	A cross on a pine tree 12 ins. in diam. marked B.T.H.R.No.4-1549, brs. S.13°5' W.26.3 ft.
	A cross on a pine tree 12 ins. in diam. marked B.T.A.T.No.1-1549, brs.N.42° 3' E. 12.1 ft.
	Thence N.89° W.
	Var.14° E.
332	to N.C.E.which is also cor. No.4 of the Grand View Lode of this Survey.
	A porphyry stone 5 x 10 x 30 ins. set 1 ft. in ground alongside a mon. of stones 3 x 3 ft. Stone marked N.C.E.H.R. No.1549. Also G.V.No.4-1549.
	A cross on a porphyry rock in place marked B.R.G.V.No.4-1549, brs. N. 18° 25' E. 15.9 ft.
	A cross on a porphyry rock in place, marked N.C.E.H.R.B.R.No.1549, brs.S.46° 52" W. 18.5 ft.
664	To cor.No.1 the place of beginning survey of exterior boundaries.

SURVEY NO. 1549.

Feet

ALEX THOMPSON LODE.

Beginning at cor. No.1 the N.W.cor. of the claim, identical with cor. of location, which is also cor. No. 4 of the Home Run Lode of this Survey, cor. described above.

Cor. to Secs. 25,26,35 and 36 T.13 N.R.2 W. brs. S.78° 26' W. 5106.4 ft.

Thence S.25° 30' W.

Var.14° E.

750 To W.S.Mon.

1115 To intersect Sec. line bet. Secs. 25 and 36 at ^{S 89° 53'} W.760 ft. from cor. to Secs. 25,30.31 and 36 T.13 N.R.2.W. and ^{N 89° 53'} E.1880 ft. from Quar. Sec. cor. bet. Secs. 25 and 36.

1500 To cor. No.2, which is also cor. No. 3 of the Home Run Lode of this Survey, cor. described above.

Thence S.89° E.

Var.14° E.

90 To cor. No. 4 Nil Desperandum Lode, and cor. No.1 Thomas Lode of this Survey.

300 To S.C.E. which is also the N.C.E. of the Thomas Lode of this Survey, mon. described above.

600 To cor. No. 3 which is also cor. No. 2 Schwartzman Lode and cor. No. 4 of Thomas Lode of this Survey, cor. described above.

SURVEY NO.1549

Feet Thence N.13° 17' E.
 Var.14° E.
 365 To intersect Sec. line at ^{S 89° 53'} W.235 ft. from cor. to Secs
 25,30, 31 36, and ^{N 89° 53'} E.2405 ft. from Quar. Sec. cor. bet
 Secs. 25 and 36.

750 To E.S.Mon.

1397 To cor. No.4, which is also cor. No.1 of Schwartzman Lode of this Survey, identical with cor. of location.

A porphyr stone 5 x 10 x 24 ins.set 1 ft. in ground alongside a mon. of stones 3 x 3 ft. Stone marked A.T.No.4-1549, and also S.No.1-1549'

A cross on an oak tree 8 ins. in diam. marked B.T A.T.No.4-1549, brs. S. 2° 52' W. 32.2 ft.

A cross on a pine tree 12 ins. in diam. marked B.T.S.No.1-1549, brs. S. 55° 20' E.17.5 ft.

Thence N.89° W.

Var.14° E.

270 To vein. and monument.

275 To cor. No.1, the place,of beginning survey of exterior boundaries.

* * * *

SCHWARTZMAN LODE.

Beginning at cor. No.1, which is also Cor. No. 4 of the Alex Thompson Lode of this Survey, identical with the N.W. cor. of the location, cor. described above.

~~Cor. to Secs, 25, 26, 35 and 36. T. 13 R. 2 W.
 B. 190 4' 20, 55 15.2 ft.~~

Thence S.13° 17' W.

Var.14° E.

647 To W.S.Mon.

1032 To intersect Sec. line at ^{S 89° 53'} W.235 ft. from cor. to Secs.
 25,30,31 36, T.13 N.R.2 W., and ^{N 89° 53'} E.2405 ft. from Quar.

SURVEY NO.1549

Feet
1397 Sec. Cor. bet. Secs. 25 and 36.
To cor. No. 2, which is also cor. No. 3 Alex Thompson Lode and cor. No 4 of the Thomas Lode of this Survey. Cor. described above.

Thence S.89° E.

Var.14 ° E.

300 To cor. No. 3, which is also the S.C.E. of claim.

A granite stone 6 x 12 x 24 ins. set 1 ft. in the ground alongside a mon. of stones 3 x 3 ft. Stone marked S.No.3-1549.

A cross on an oak tree 15 ins in diam. marked B.T.S.No.3-1549, brs. N.61° 40' E. 35 ft.

Original S.E.Cor. of location brs. S. 89° E.300 ft.

Thence N.74° 45' E.

Var.14° E.

20 To intersect range line bet. Secs. 31 and 36 at S. 355 ft. from cor. to Secs. 25,30,31, 36 T.13 N.R.^{1/4} 2 W. and N. 2285 ft. from Quar. Sec. cor. on range line bet. Secs. 36, and 31. T.13 N.R. 1 and 2 W.

300 To cor. No. 4.

A porphyry stone 8 x 24 ins. set 1 ft. in ground alongside a mon. of stones 3 x 3 ft. stone marked S.No. 4-1549.

A cross on an oak tree 8 ins in diam. marked B.T. S.No.4-1549, brs. S.53° 45' W. 13.7 ft.

A cross on a pine tree 6 ins. in diam. marked B.T. S.No.4-1549, brs. N. 55° 53' E. 24.7 ft.

Thence N.13° 48' E.

Var.14° E.

295 To intersect Sec. line bet. Secs. 30 and 31, at

SURVEY NO. 1549

- Feet
2089° 47'
 1313.8 E. 340 ft. from cor. to Secs. 25, 30, 31, 36. T. 13 N
 R. 1 and 2 W. and *289° 47' - 1294 ft from Cor of Secs
 30 and 31 T 13 R 2 W*
 To cor. No. 5, identical with N.E. Cor. of location.
- A granite stone 6 x 12 x 24 ins. set 1 ft. in ground alongside a mon. of stones 3 x 3 ft. Stone marked S.No.5-1549.
- A cross on a pine tree 12 ins. in diam. marked B.T.S.No.5-1549 brs. N. 45° 25' W. 27.4 ft.
- A cross on an oak tree 10 in in diam. marked B.T. S.No.5-1549, brs. S. 0° 5' E. 46 ft.
- Thence N. 89° W.
 Var. 14 E.
- 282 To N.C.E. and vein.
- A porphyry stone 4 x 8 x 24 ins. set 1 ft. in ground alongside a mon. of stones 3 x 3 ft. Stone marked N.C.E.S.No.1549.
- 577 To intersect range line bet. Secs. 25 and 30 T.13 N. R. 1 and 2 W. at N. 995 ft. from cor. to Secs. 25, 30, 31, 36, and S. 1695 ft. from Quar. Sec. cor. on range line bet. Secs. 25 and 30.
- 582 To cor. No. 1, the place of beginning survey of exterior boundaries.
- Cor. to Secs. 25, 26, 35 and 36 T.13 N. R. 2 W. brs. S. 79° 4' W. *73.2* ~~53~~ ft.

*

SURVEY NO.1549.

Feet

GRAND VIEW LODGE.

Beginning at cor. No.1, the S.W.cor. of claim, identical with location.

A porphyry stone 6 x 8 x 24 ins. set 1 ft. in ground alongside a mon. of stones 3 x 3 ft. Stone marked G.V.No.1-1549.

No brs. available.

Cor. to Secs. 25,26, 35 and 36, T.13 N.R.2 W.brs. S.76° 25' W. 4412.6 ft.

Thence N.28° 18' E.

Var.14° E.

74.4 to intersect line 3-4 of Contest Lode at N.6° 16' W.
84.1 ft. from cor. No.4 Contest Lode of this Survey
750 To W.S.Mon.
1536.1 To cor. No. 2, identical with N.W.Cor. of location.

A porphyry stone 6 x 8 x 24 ins. set 1 ft. in ground alongside a mon of stones 3 x 3 ft. Stone marked G.V.No.2-1549.

A cross on an oak tree 6 ins. in diam. marked B.T G.V.No.2-1549, brs. S.76° 15' W. 16.6 ft.

A cross on a juniper tree 40 ins. in diam. marked B.T.G.V.No.2-1549, brs. S.81° 5' E.18.3 ft.

Thence S.89° E.

Var.14° E.

155 To N.C.E.and vein.

A porphyry stone 6 x 8 x 24 ins. set 1 ft. in ground alongside a mon. of stones 3 x 3 ft. Stone marked N.C.E.G.V.No.1549.

280 To intersect range line bet. Secs. 25 and 30, range 1 and 2 W, at N.2360 ft. from cor. to Secs.25,30,31,36

SURVEY NO. 1549

Feet T.13 N.R. 1 and 2 W.
 297 To cor. No. 3; original location cor. brs. S.89° E. 128 ft.

A porphyry stone 6 x 10 x 24 ins. set 1 ft. in ground, alongside built a mon. of stones 3 x 3 ft. Stone marked G.V.No.3-1549.

A cross on a pine tree 8 ins in diam. marked B.T. G.V No.3-1549, brs. S. 76° 10' E. 26.2 ft.

A cross on an oak tree 6 ins. in diam. marked B.T.G.V.No.3-1549, brs. S.36° 35' E. 36 ft.

Thence S. 25° 30' W.

Var. 14° E.

760 To intersect west side line of Minnie Lode unsurveyed, at N.40° E.590 ft. from S.W.cor.

1340.9 To intersect the S.E.line of Minnie Lode, at S.60° 45' E. 148 ft. from S.W.cor.

1500 To cor. No. 4, which is also the N.C.E.of Home Run Lode of this Survey. Cor. described above.

Thence N.89° W.

Var.14° E.

194 To S.C.E. and vein.

A porphyry stone 6 x 10 x 24 ins. set 1 ft. in ground alongside a mon. of stones 3 x 3 ft. Stone marked S.C.E.G.V.No.1549.

332.
 379.5 To cor. No.1, the place of beginning survey of exterior boundaries.
Cor. 1-H. Home Run - Contest lode, resp. - this survey -

-13-
SURVEY NO. 1549.

Feet

DORA LODE.

Beginning at Cor. No. 1, the N.W. cor. of claim, which is also cor. No. 1 of the Contest Lode of this Survey. Original location mon. brs. S. 78° 45' W. 40 ft.

A porphyry stone 5 x 12 x 24 ins. set 1 ft. in ground, alongside a mon. of stones 3 x 3 ft. Stone marked D.No. 1-1549, also C.No. 1-1549.

A cross on an oak tree 12 ins. in diam. marked B.T.C.No. 1-1549, brs. S. 87° 13' W. 67.3 ft.

A cross on an oak tree 8 ins. in diam. marked B.T.D.No. 1-1549, brs. S. 71° 9' W. 88.1 ft.

Cor. to Secs. 25, 26, 35 and 36, T. 13 N. R. 2 W. brs. S. 79° 52' W. 3808.7 ft.

Thence S. 12° 43' W.

Var. 14° E.

670 To intersect line bet. Secs. 25 and ^{S 89° 53'} 36 at W. 1680 ft. from cor. to Secs. 25, 30, 31, 36 T. 13 N. R. ^{1 and 2} ~~1 and 2~~ W. and ^{N 89° 53'} 960 ft. E. of Quar. Sec. cor. bet. Secs. 25 and 36. T. 13 N. R. 2 W.

1388 To cor. No. 2, original location cor. brs. S. 78° 45' W. 58 ft.

A porphyry stone 5 x 10 x 24 ins. set 1 ft. in ground alongside a mon. of stones 3 x 3 ft. Stone marked D.No. 2-1549.

A cross on an oak tree 8 ins. in diam. marked B.T. D.No. 2-1549 brs. N. 28° 45' E. 55.2 ft.

A cross on an oak tree 8 ins. in diam. marked B.T. D.No. 2-1549, brs. N. 20° 16' W. 43.3 ft.

SURVEY NO.1549.

Feet Thence N.78° 45' E.
Var.14° E.

242 To S.C.E.Mon., identical with location.
A slate stone 6 x 6 x 20 ins. set 8 ins. in ground alongside a mon. of stones 3 x 3 ft. Stone marked S.C.E.D.No.1549.

477 To cor. No. 3, identical with cor. of location.
A porphyry stone 8 x 8 x 24 ins. set 1 ft. in ground alongside a mon. of stones 3 x 3 ft. Stone marked D.No.3-1549.
A cross on an oak tree 10 ins. in diam. marked B.T.D.No.3-1549 hrs. S.24° W. 18 ft.

Thence N.13° W.
Var.14° E.

287 To cor. No. 4, identical with Cor. of location, which is also cor. No..1 Nil Desperandum and Cor. No. 2 Home Run, cor. described above.

Thence, N.19° 56' E.
Var.14° E.

350 To intersect line bet. Secs. 25 and 36 at ^{S 89° 53'} 13:15 ft. W. of cor. to Secs. 25, 30, 31, 36 T.13 N.R.1 and 2 W. and ^{N 89° 53'} 1325 ft. E. of Quar. Sec. cor. bet Secs. 25 and 36 T. 13 N.R.2 W.

1158.2 To cor. No. 5, identical with cor. of location, which is also cor. No. 5 of Contest Lode of this Survey.
A porphyry stone 6 x 10 x 24 ins. set 1 ft, in ground alongside a mon. of stones 3 x 3 ft. Stone marked D.No.5-1549, also C.No.5-1549.
A cross on a pine tree 10 ins. in diam. marked B.T.C.No.5-1549 hrs.N.4° 6' W. 23.5 ft.
A cross on a pine tree 30 ins. in diam. marked B.T D.No.5-1549, hrs. N. 83° 3' W. 42.9 ft.

SURVEY NO.1549.

Feet
 Thence S.78° 45' W.
 Var.14° E.

200 To N.C.E.and vein.
 A porphyry stone 8 x 8x 24 ins. set 1ft. in ground
 alongside built a mon. of stones 3 x 3 ft. Stone
 marked N.C.E.D.No.1549. Also S.C.E.C.No.1549.

500 To cor. No. 1, the place of beginning survey of exter-
 ior boundaries.

* * * *

CONTEST LODGE.

Beginning at cor. No.1, the S.W. cor. of claim,
 which is also cor. No. 1 of the Dora Lode of this Survey.
 Cor. described above.

Cor.to Secs. 25,26, 35 and 36 T.13 N.R.2 W.brs.S.
 79° 52' W. 3808.7 ft.

Thence N.1° 35' W.
 Var.14° E.

1077.9 To cor. No. 2. Original location mon. brs. N.1° 35' W.
 250 ft.

A slate stone 4 x 12 x 24 ins. set 1 ft. in ground
 alongside a mon. of stones 3 x 3 ft. Stone marked
 C No.2-1549.

A cross on a juniper tree 10 ins. in diam. marked
 B.T.C.No.2--1549, brs.N.25° 55' E. 58.6 ft.

A cross on an oak tree 8 ins in diam. marked B.T.
 C.No.2-1549, brs. S.64° 55' W. 40.9 ft.

Thence N. 78° 45' E.
 Var.14° E.

300 To N.C.E.and vein.
 A granite stone 6 x 8 x 24 ins. set 1 ft. in the
 ground alonside a mon. of stones 3 x 3 ft.

SURVEY NO.1549.

Feet Stone marked N.C.E.C.No.1549.
 538 To cor. No. 3, identical with cor. of location .
 A porphyry stone 6 x 9 x 24 ins. set 1 ft. in ground
 alongside a mon. of stones. Stone marked C.No.3-1549.
 A cross on an oak tree 6 ins. in diam. marked B.T.C.
 No.3-1549, brs. S.87° E. 28.3 ft.
 A cross on an oak tree 6 ins in diam, marked B.T.C.
 No.3-1549, brs. S.82° 10' W. 43.3 ft.

Thence S.6° 16' E.

Var.14° E.

737.8 To intersect W.S.line of Grand View Lode of this Survey
at N.28° 18' E. 74.4 ft. from cor. No.1.

821.9 To cor. No. 4 which is also cor. No. 1 of the Home Run
Lode of this Survey. Cor. described above.

Thence S.19° 56' W.

Var.14° E.

285 To cor. No.5 which is also cor. No. 5 Dora Lode of
this Survey. Cor. described above.

Thence S.78° 45' W.

Var.14° E.

200 To S.C.E. which is also N.C.E. of Dora Lode of this
Survey, mon. described above.

500 To cor. No. 1, place of beginning survey of exterior
boundaries.

SURVEY NO.1549.

Feet

AREA.

NIL DESPERANDUM LODE		20.087 Acres	
THOMAS	"	10.862	"
HOME RUN	"	18.395	"
ALEX THOMPSON	"	13.676	"
SCHWARTZMAN	"	17.774	"
DORA	"	12.255	"
CONTEST	" Total area	13.848 A.	
Less conflict with Grand View Lode of this Survey			
		<u>.043 A.</u>	
	Net Area	13.805	"
GRAND VIEW LOBE Total Area 10.600 A.			
Less conflict with Minnie Lode, unsurveyed,			
		<u>1.002 A.</u>	
	Net Area	9.598	"
Total Area Lode Claim		116.452	"

* * * *

LOCATION AND BOUNDARIES.

This claim is located in the N.E.Quarter of Sec.36 and S.E.Quarter of Sec. 25, T.13 N.R.2.W. and the N.W. Quarter of Sec. 31, and the S.W.Quarter of Sec. 30 T.13 N.R.1 W. unsurveyed. Hassayampa Mining District, Yavapai County, Arizona Territory, and is bounded on the North by the Gold Trail, Stull and Minnie Lode Claims, unsurveyed; on the E. by Newark unsurveyed; on the S. by the Empress, unsurveyed; on the W. by the New Years Test and Alma lode claims, unsurveyed.

* * * *

VEINS.

Nil Desperandum vein extends from the S.C.E.mon. N.13° W . 1500 ft. to the N.C.E.Mon.

Thomas Vein extends from the S.C.E.Mon. in a N.W. course 1470 ft. to the N.C.E.Mon.

Home Run Vein, extends from the S.C.E.Mon. N.25° 30' E. 1500 ft. to the N.C.E.Mon.

Feet Alex Thompson Vein, extends in a N.E.direction
1400 ft. to the N.C.E.Mon.

SCHWARTZMAN Vein, extends from the S.C.E.Mon. N.
13° 17' E. 1397 ft. to N.C.E.Mon.

Grand View Vein, extends from the S.C.E.Mon. in a
N.E.course 1500 ft. to the N.C.E.Mon.

Dora Vein, extends from the S.C.E.Mon. in a N.E.
course 1420 ft. to the N.C.E.Mon.

Contest Vein, extends from the S.C.E.Mon. N.1° 35'
W.1077.9 ft. to the N.C.E.

* * * *

EXPENDITURE OF FIVE HUNDRED DOLLARS.

I certify that the value of the labor and improve-
ments upon this claim, placed thereon by the claimant
and ~~his~~ grantors, is not less than Five Hundred Dol-
lars, and that said improvements consist of ;

Nil Desperandum Lode.

Discovery cut No.1 which brs from the S.C.E.Mon.
N.13° W.350 ft. Cut 4 x 18 x 10 fg. face.

Value \$100.00

Thomas Lode.

Discovery shaft No.1, which brs. from Cor. No. 4
S.18° 50' W. 680 ft. Shaft 4 x 6, 10 ft. deep

Value \$100.00

Home Run Lode.

Discovery shaft No.1 which brs. from the S.C.E.Mon.
N.25° 30' E.730 ft. Shaft 4 x 7 in the clear,tig-
bered; 260 ft. deep.

At 100 ft. level run N. 4 x 6 ft. 135 ft. in length,
and S. 4 x 6 ft.90 ft. At 200 ft. level run N.
4 x 6, 60 ft. and S. 4 x 6, 50 ft.

Value \$17,850.00

Shaft No.2, which brs. from the S.C.E.Mon. N.
25° 30' E. 1290 ft. Shaft 4 x 6 ft. 50 feet deep.

Value \$500.00

Shaft No.3 which brs. from S.C.E.Mon. N. 25° 30' E.
1040 ft. Shaft 4 x 6 ft. 55 ft. deep.

SURVEY NO.1549.

Value \$550.00

Shaft No. 4 which brs. from the S.C.E.Mon. N. 25° 30' E. 485 ft. Shaft 4 x 6 ft. 50 ft. deep.

Value \$500.00

Shaft No. 5 which brs. from S.C.E.Mon.N.25° 30' E. 180 ft.. Shaft 4 x 6 ft. 10 ft. deep.

Value \$100.00

Alex Thompson Lode.

Discovery shaft No. 1 which brs. from Cor. No. 4 S.33° 6' W. 810 ft. Shaft 4 x 6 ft. 10 ft. deep.

Value \$100.00

Schwartzman Lode.

Discovery shaft No. 1, which brs. from Cor.No. 4 N.13° 6' W. 600 ft. Shaft 4 x 6 ft. 35 ft. deep.

Value \$350.00

Tunnel No. 2 which brs. from Cor. No. 4 N.24° 42' W. 485 ft.

Tunbl 4 x 6 ft. 40 ft. long.

Value \$400.00

Grand View Lode

Discovery shaft No.1 which brs. from cor. No.2 S. 19° 56' W. 860 ft . Shaft 4 x 6 , 10 ft. deep.

Value \$100.00

Dora Lode.

Discovery tunnel No. 1 which brs. from Cor.No. 5 S. 45° 32' W. 380 ft. Tunnel 4 x 6 ft., course S.W. 100 ft.

Value \$1,000.00

Shaft No. 2 at S.C.E.of claim. Shaft 4 x 6 ft. 10 ft. deep.

Value \$ \$100.00

Contest Lode

Discovery shaft No.1 which brs. from Cor. No.3 S. 43° 9' W. 325 ft. Shaft 4 x 6, 10 ft. deep.

Value \$100.00

Shaft No. 2 which brs. from Cor. No. 3 S. 16° 13'W. 730 ft. Shaft 4 x6 ft. 80 ft. deep.

Value \$800.00

-19-
SURVEY NO. 1549.

Tunnel No. 3, which brs. from cor. No. 5 N.
68° 12' W. 215 ft. Tunnel 4 x 6 ft. course N.1° 35' W
150 ft.

Value \$1500.00

Note. \$400.00 worth of improvements of the Home Run
Mine, is to be credited to the Nil Desperandum Lode.

\$400.00 worth of improvements on the Home Run Lode
is to be credited to the Thomas Lode.

\$400.00 worth of improvements on the Home Run Lode
is to be credited to the Alex Thompson Lode, and

\$400.00 worth of improvements on the Home Run Lode
is to be credited to the Grand View.

* * * *

INSTRUMENT.

This survey was made with a Gurley Solar Transit.
The courses were deflected from the true meridian as
determined by solar observations. The distances were
measured with a 100 ft. steel chain.

Note. The disagreements between the field notes
and the location certificates is owing to errors in
the latter.

Prescott, Arizona

May 21, 1901.

J. J. Fisher

U.S. Dep. Min. Surveyor.

FINAL OATHS FOR SURVEYS.

LIST OF NAMES.

A list of the names of the individuals employed by J. J. Fisher
 United States Deputy Mineral Surveyor, to assist in running, measuring, and marking the lines
 corners and boundaries described in the foregoing field notes of the survey of the mining claim
 of James O'Connell
 known as the Mt. Desperandum, Thomas, Home Run, Alex Thompson, Schwulzmau, Grand View Dora and Lented
 and showing the respective capacities in which they acted.

- E. H. Draper, Chairman.
- John O'Connell, Chairman.
- John O'Connell, Axman.
- E. H. Draper, Flagman.

FINAL OATHS OF ASSISTANTS.

We, E. H. Draper
 and John O'Connell, do solemnly swear that we assisted J. J. Fisher
Fisher, United States Deputy Mineral Surveyor, in marking the corners and
 surveying the boundaries of the mining claim of James O'Connell
 known as Mt. Desperandum, Thomas, Home Run, Alex Thompson, Schwulzmau,
Grand View Dora and Lented, known as the

....., represented
 in the foregoing field notes as having been surveyed by said deputy mineral surveyor and under
 his direction; and that said survey has been in all respects, to the best of our knowledge and
 belief, faithfully and correctly executed, and the corner and boundary monuments established
 according to law and the instructions furnished by the United States Surveyor-General for
Oregon.

- E. H. Draper, Chairman.
- John O'Connell, Chairman.
- John O'Connell, Axman.
- E. H. Draper, Flagman.

My commission expires

May 19 1901 subscribed and sworn to by the above-named persons before me

this 26th day of April, 1901

J. J. Fisher
 Notary Public.

(4-686.)

FINAL OATH OF U. S. DEPUTY MINERAL SURVEYOR

I, J. J. Fisher, U. S. Deputy Mineral Surveyor, do solemnly swear that, in pursuance of instructions received from the United States Surveyor General for Arizona, dated March 29-1901, I have, in strict conformity to the laws of the

United States, the official regulations and instructions thereunder, and the instructions of said Surveyor General, faithfully and correctly executed the survey of the Mining Claim of James O'Connell known as the Nil-Desperandum, Thomas, Home Run, Alex Thompson, Schwaartzman, known as the Grand View, Dora & Contest

situate in Hassayampa Mining District, Yavapai County, Arizona, in Section 25, 30, 31 & 36, Township No. 13 N., Range No. 1 and 2 West

and designated as Survey No. 1549, as represented in the foregoing field notes, which accurately show the boundaries of said mining claim as distinctly marked by monuments on the ground, and described in the attached copy of the location certificate, which was received by me from the Surveyor General with said instructions, and that all the corners of said survey have been established and perpetuated in strict accordance with the law, official regulations and instructions thereunder; and I do further solemnly swear that the foregoing are the true and original field notes of said survey and my report therein, and that the labor expended and improvements made upon said mining claim by claimant or his grantors are as therein fully stated, and that the character, extent, location and itemized value thereof are specified therein with particularity and full detail, and that no portion of said labor or improvements so credited to this claim has been included in the estimate of expenditures upon any other claim.

J. J. Fisher
U. S. Deputy Mineral Surveyor.

Subscribed and sworn to by the said J. J. Fisher
U. S. Deputy Mineral Surveyor, before me Allen Hill
a notary Public this 22
day of May 1901 at Prescott Ariz
my commission expires June 23, 1903
Allen Hill

Notary Public

Affidavit of Five Hundred Dollars Improvements.

We Ed Draper and John O'Connell

of lawful age, ^{being first duly sworn} according to law, depose and say: that we are acquainted with the ^{East Fork of the} Yavapai ^{Thomas} mine ^{Home Run} and linter ^{Alb Thompson} gold and linter ^{Schwarzman} mine ^{Grand Wash} claim, situated in Yavapai Mining district, Yavapai County, Arizona Territory, for which James O'Connell

has made application for survey prior to application for patent under the provisions of the Act of Congress, approved May 10, 1872; and that the labor done and improvements made thereon by the applicant and his grantor exceed Five Hundred Dollars in value, ^{for each claim} and further that we are not personally interested in said mine.

Ed Draper
John O'Connell

TERRITORY OF ARIZONA,
County of Yavapai

} ss.

SWORN to and subscribed before me, this 26th day of April 1901

J. J. Fisher
Notary Public

My commission expires
May 19, 1904

AMENDED

Notice of Mining Location.

LODE CLAIM.

To All Whom It May Concern:

This mining claim, the name of which is the Nil-Desperandum Mining Claim, situate on lands belonging to the United States of America, and in which there are valuable mineral deposits, was entered upon and located for the purpose of exploration and purchase by James O'Connell

the undersigned, on the 20th day of March 1901
The length of this claim is 1500 feet,

and 350 claim 350 feet
in a Southwesterly direction, and 1150
feet in a Northwesterly direction from

the center of the discovery shaft, at which this notice is posted, lengthwise of the claim, together with 300 feet in width of the surface grounds, on each side of the center of said claim. The general course of the lode deposit and premises is from the South to the North

The claim is situated and located in the Assayampa Mining District, in Yavapai County, in the Territory of Arizona, about seven miles in a South Easterly direction from Prescott, on to head of Brown Creek

The surface boundaries of the claim are marked upon the ground as follows: Beginning at

at a point in a Southwesterly direction 350 feet from the discovery shaft (at which this notice is posted), being in the center of the South-end line of said claim; thence S 89° E 300 feet to a mon., being the S. E. corner of said claim; thence N 13° W 750 feet to a mon. at the center of the East side line of said claim; thence N 13° W 750 feet to a mon. being at the N. E. corner of said claim; thence N 89° W 300 feet to a mon. at the center of the North-end of said claim; thence N 89° W 300 feet to a mon. corner of said claim; thence S 13° E 750 feet to a mon. being at the center of the West side line of said claim; thence S 13° E 750 feet to a mon. at the S. W. corner of said claim; thence S 89° E 300 feet to the place of beginning.

All done under the provisions of Chapter Six, of Title XXXII, of the Revised Statutes of the United States, and of an Act of the General Assembly of Arizona, entitled "An Act Concerning Mines," approved March 20th, 1895, and amended March 2d, 1899.

This is an Amended Location Notice of the Nil-Desperandum Mining Claim, located by James O'Connell

January on the 1st day of 1898, and recorded in Book 50 of Records of Mines, at page 73, in the office of the County Recorder of the aforesaid County of Yavapai to which reference is hereby made, and this Amended Location Notice is made and posted to correct errors in the description in the said original Location Notice.

Dated and posted on the ground this 20th day of March 1901

James O'Connell

TERRITORY OF ARIZONA, }
County of..... } ss.

I,..... County Recorder in and for the County and Territory aforesaid, do hereby certify that the within instrument was filed for record at..... o'clock,..... M., on this..... day of..... 189..... and duly recorded in Book No..... of..... Records of..... County, Arizona, at pages.....

WITNESS my hand and official seal the day and year first above written

County Recorder

*Rechecked
1947
April - Disperated.
Compared.*

AMENDED
Notice of Location.

LODE CLAIM.

James O'Connell

Nassayampa

Dated March 20th 1901

Filed and recorded at request of

D. Monahan
March 20th A. D. 1901.
at 2 o'clock P. M.

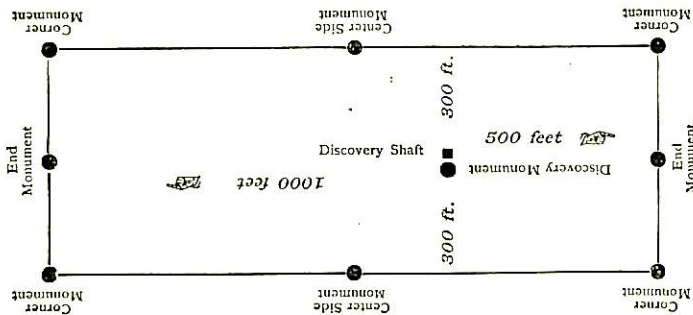
Book 55 of Mines

Pages 527-528
RECORDS OF YAVAPI COUNTY, ARIZONA.

J. J. Furber
County Recorder.

By J. G. Williams
Deputy-Recorder.

THE H. M. MCNEIL CO., PRINTERS, PHOENIX, ARIZ.



This diagram is to give locator a general idea of plan of location under the new law. The Discovery Shaft can be in the center of claim or any distance from either end desired. In the diagram it is placed 500 feet from one end and 1000 feet from the other. Commence description of claim at a center end monument, giving its distance and direction from center of Discovery Shaft; thence bound the claim in either direction. In description be careful to state locality of claim with reference to some natural object, or permanent monument, as will identify the claim.

• "NIL-DESPERANDUM".

NOTICE OF MINING LOCATION.
Quartz Claim.

To all whom it may concern:

This mining claim, the name of which is the Nil-Desperandum Mining Claim, situate on lands belonging to the United States of America, and in which there are valuable mineral deposits, was entered upon and located for the purpose of exploration and purchase by Peter Mackin and James O'Connell, the undersigned on the First day of January 1898.

The length of this claim is Fifteen hundred feet, and the claim runs seven hundred and fifty feet in a northerly direction and seven hundred and fifty feet in a southerly direction from the center of the discovery shaft, at which this notice is posted, lengthwise of the claim, together with three hundred feet in width of the surface grounds, on each side of the center of said claim. The general course of the lode deposit and premises is from the North West to the South East.

The claim is situated and located in the Hassayampa Mining District, in Yavapai County, in the Territory of Arizona, about seven miles in a southerly direction from the City of Prescott and about a mile in a westerly direction from the Leland & Stanford Camp, adjoining Key Stone mine on the West side.

The surface boundaries of the claim are marked upon the ground as follows: Beginning at a point in a Northerly direction seven hundred & fifty feet from the discovery shaft (at which this notice is posted), being in the center of the North end line of said claim; thence Westerly three hundred feet to a monument of stone, being the North West corner of said claim; thence at right angles 750 feet to a monument of stone at the center of the West side line of said claim; thence 750 feet to a monument of stone being at the South West corner of said claim; thence at right angles 300 feet to a monument of stone at the center of the South end of said claim; thence 300 feet to a monument of stone, being at the South East corner of said claim; thence at right angles 750 feet to a monument of stones being at the center of the East side line of said claim; thence 750 feet to a monument of stone at the North East corner of said claim; thence at right angles 300 feet to the place of beginning.

All done under the provisions of Chapter Six, of Title XXXII, of the Revised Statutes of the United States, and of an Act of the General Assembly of Arizona, entitled "An Act Concerning Mines", approved March 20th, 1895.

Dated and posted on the ground this First day of January, 1898.

Peter Mackin.
James O'Connell.

Filed and recorded at request of Peter Mackin M'ch 21st A.D. 1898, at 10:45 o'clock a.m. in Book 50 of Mines, page 73, Records of Yavapai County, Arizona.

(Seal) W.I. Johnson,
County Recorder.

By E.C. Averyt,
Deputy Recorder.

TERRITORY OF ARIZONA,)
COUNTY OF YAVAPAI.) SS:

I, P.J. FARLEY, County Recorder in and for Yavapai County, in the Territory of Arizona, and custodian of the records thereof, do hereby certify that I have compared the above and foregoing with, and the same is a full, true and correct copy of the Notice of location of the "Nil-Desperandum" Mining Claim, as the same appears of record in Book 50 of Mines, page 73, records of Yavapai County, Arizona.

In Witness Whereof, I have hereunto set my hand and affixed my Official Seal, this 26th day of March 1901.



P. J. Farley
County Recorder.

AMENDED

Notice of Mining Location.

LODE CLAIM.

To All Whom It May Concern:

This mining claim, the name of which is the Home Run Mining Claim, situate on lands belonging to the United States of America, and in which there are valuable mineral deposits, was entered upon and located for the purpose of exploration and purchase by James O'Connell

the undersigned, on the 20th day of March 1901

The length of this claim is 1500 feet, and 730 feet

in a Southerly direction, and 770 feet in a Northerly direction from

the center of the discovery shaft, at which this notice is posted, lengthwise of the claim, together with 300 feet in width of the surface grounds, on each

side of the center of said claim. The general course of the lode deposit and premises is from the South to the North

The claim is situated and located in the Hassayampa Mining District, in Yavapai County, in the Territory of Arizona, about 7 miles

in a South Easterly direction from Prescott, on the head of Groom Creek

The surface boundaries of the claim are marked upon the ground as follows: Beginning at

at a point in a Northerly direction 730 feet from the discovery shaft (at which this notice is posted), being in the center of the South end line of said claim; thence S 89° E 332 feet to a mon.

, being the N. E. corner of said claim; thence N 25° 30' E 750 feet to a mon. at the center of the East side line of said claim; thence N 25° 30' E 750

feet to a mon. being at the N. E. corner of said claim; thence N 89° W 332 feet to a mon.

at the center of the North end of said claim; thence N 89° W 332 feet to a mon., being at the N. W.

corner of said claim; thence S 20° 41' W 750 feet to a mon. being at the center of the West side line of said claim;

thence S 20° 41' W 700 feet to a mon. at the S. W. corner of said claim; thence S 89° E 178

feet to the place of beginning.

All done under the provisions of Chapter Six, of Title XXXII, of the Revised Statutes of the United States, and of an Act of the General Assembly of Arizona, entitled "An Act Concerning Mines," approved March 20th, 1895, and amended March 2d, 1899

This is an Amended Location Notice of the Home Run Mining Claim, located by Jerry O'Neil

on the 30th day of March 1898, and recorded in Book 49 of Records of Mines, at

page 113, in the office of the County Recorder of the aforesaid County of Yavapai to which reference is hereby made, and this Amended Location Notice is made and posted to

correct errors in the description in the said original Location Notice. Dated and posted on the ground this 20th day of March 1901

James O'Connell

TERRITORY OF ARIZONA,
County of..... } ss.

I..... County Recorder in and for the County and Territory aforesaid, do hereby certify that the within instrument was filed for record at..... o'clock..... M., on this..... day of..... 189..... and duly recorded in Book No..... of..... Records of..... County, Arizona, at pages.....

WITNESS my hand and official seal the day and year first above written

County Recorder

Indexed. 29787
"Home Run"

AMENDED
Notice of Location.

LODE CLAIM.

James O'Connell

Massayampa

Dated *March 20* 1901

Filed and recorded at request of

D. Mormahan
March 20 A. D. 1901

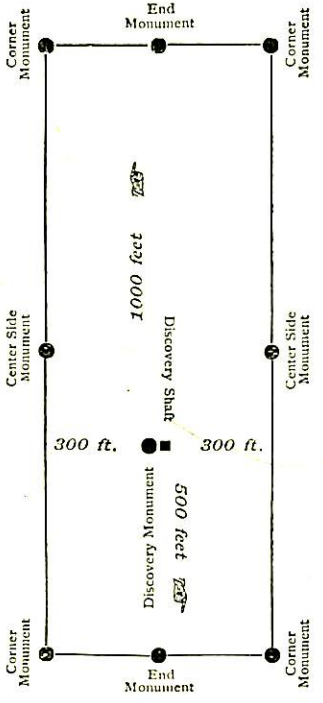
at *10 o'clock P. M.*

Book *55 of Mines,*

Pages *560-561* RECORDS OF YAVAPAT COUNTY, ARIZONA.

J. G. Gantley
County Recorder.

By *J. J. Gibbons*
Deputy Recorder.



This diagram is to give locator a general idea of plan of location under the new law. The Discovery Shaft can be in the center of claim or any distance from either end desired. In the diagram it is placed 500 feet from one end and 1000 feet from the other. Commence description of claim at a center end monument, giving its distance and direction from center of Discovery Shaft; thence bound the claim in either direction. In description be careful to state locality of claim with reference to some natural object, or permanent monument, as will identify the claim.

NOTICE OF LOCATION.

Know all men by these presents:

That I, the undersigned, have this day located Fifteen Hundred (1500) linear feet of this vein or lode, bearing precious metals, with all dips, spurs, angles and variations, with surface ground Three Hundred (300) feet on each side of the center of vein, with all mineral Deposits contained therein, and all Timber growing within the limits of said claim, and all Water and Water privileges thereon or appurtenant thereto, under and according to the provisions of the United States Mining Laws, under which it is located.

This claim commences at this Monument and Notice placed upon the ledge, and runs 750 feet in a Northerly direction and 750 feet in a Southerly direction along the ledge from discovery shaft.

The exterior boundaries are as follows, viz:

Commencing at a Monument of Stone on West boundary line, distant Three Hundred (300) feet in a Westerly direction from Discovery Monument; thence in a Northerly direction parallel with the ledge 750 feet to Monument of Stone at N.W. corner of claim; thence in a Easterly direction at right angles across the ledge Six Hundred (600) feet to Monument of Stone at N.E. corner of claim; thence Southerly direction parallel with the ledge Fifteen Hundred (1500) feet to Monument of Stone at S.E. corner of claim; thence at right angles across the ledge in a Westerly direction Six Hundred (600) feet to Monument of Stone at S.W. corner of claim; thence in a Northerly direction parallel with the ledge 750 feet to Monument on West boundary and place of beginning.

This ledge may be more generally described as situated adjacent to the Groom Creek Road in Yavapai County, and was formerly known as the "Denmark" mining claim of the Valentine Group, but was forfeited by non-compliance with the assessment work clause of the United States Mining Laws in the year 1897. It adjoins the Nil-Desperandum on the South end and lies about 7 miles in a Southerly direction from the City of Prescott. In addition to the above described monuments on exterior boundary lines, there are also a monument of stone on centre of North end line, a monument of stone on centre of south end line and a monument of stone on centre of East side line, in Hassayampa Mining District, Yavapai County, Arizona Territory, and shall be known as the Home Run Mining Claim.

Dated on the ground this 30th day of March 1898.

Jery O'Neil.

Witness: P.J. Fitzgerald.

Recorded at request of Jerry O'Neil, June 18th A.D. 1898, at 4:40 o'clock p.m. in Book 49 of Mines, page 113, Records of Yavapai County, Arizona.

(Seal) W.I. Johnson, County Recorder.

By E.C. Averyt, Deputy.

TERRITORY OF ARIZONA,)
COUNTY OF YAVAPAI.) SS:

I, P.J. FARLEY, County Recorder in and for Yavapai County, in the Territory of Arizona, and custodian of the records thereof, do hereby certify that I have compared the above and foregoing with, and the same is a full, true and correct copy of the Notice of Location of the "Home Run" mining claim, as the same appears of record in Book 49 of Mines, page 113, records of Yavapai County, Arizona.

In Witness Whereof, I have hereunto set my hand and affixed my Official Seal, this 26th day of March, 1901.

P. J. Farley
County Recorder.



AMENDED

Notice of Mining Location.

LODE CLAIM.

To All Whom It May Concern:

This mining claim, the name of which is the Alex Thompson Mining Claim, situate on lands belonging to the United States of America, and in which there are valuable mineral deposits, was entered upon and located for the purpose of exploration and purchase by James O'Connell

the undersigned, on the 20th day of March 1901

The length of this claim is 1500 feet, and 1 claim feet in a direction, and feet in a direction from

the center of the discovery shaft, at which this notice is posted, lengthwise of the claim, together with 300 feet in width of the surface grounds, on each side of the center of said claim. The general course of the lode deposit and premises is from the South to the North

The claim is situated and located in the Hassayampa Mining District, in Yavapai County, in the Territory of Arizona, about 7 miles in a South-Easterly direction from Prescott, on the head of Brown Creek

The surface boundaries of the claim are marked upon the ground as follows: Beginning at at a point in a direction feet from

the discovery shaft (at which this notice is posted), being in the center of the North-South end line of said claim; thence S 89° E 300 feet to a mon., being the N.E. corner of said claim; thence N 13° 17' E 750 feet to a mon. at the center of the East side line of said claim; thence N 13° 17' E 647 feet to a mon. being at the N.E. corner of said claim; thence N 89° W 270 feet to a mon. at the center of the North end of said claim; thence N 89° W 5 feet to a mon. being at the N.W. corner of said claim; thence S 25° 30' W 750 feet to a mon. being at the center of the West side line of said claim; thence S 25° 30' W 750 feet to a mon. at the S.W. corner of said claim; thence S 89° E 300 feet to the place of beginning.

All done under the provisions of Chapter Six, of Title XXXII, of the Revised Statutes of the United States, and of an Act of the General Assembly of Arizona, entitled "An Act Concerning Mines," approved March 20th, 1895, and amended March 2d, 1899.

This is an Amended Location Notice of the Alex Thompson Mining Claim, located by Jerry O'Connell on the 20th day of March 1898, and recorded in Book 49 of Records of Mines, at page 111, in the office of the County Recorder of the aforesaid County of Yavapai to which reference is hereby made, and this Amended Location Notice is made and posted to correct errors in the description in the said original Location Notice.

Dated and posted on the ground this 20th day of March 1901 James O'Connell

I,..... County Recorder in and for the County and Territory aforesaid, do hereby certify that the within instrument was filed for record at..... o'clock..... M., on this..... day of..... 189..... and duly recorded in Book No..... of..... Records of..... County, Arizona, at pages.....

WITNESS my hand and official seal the day and year first above written

County Recorder

Indexed, indexed
 19497
 Alex Thompson

AMENDED
 Notice of Location.
 LODE CLAIM.

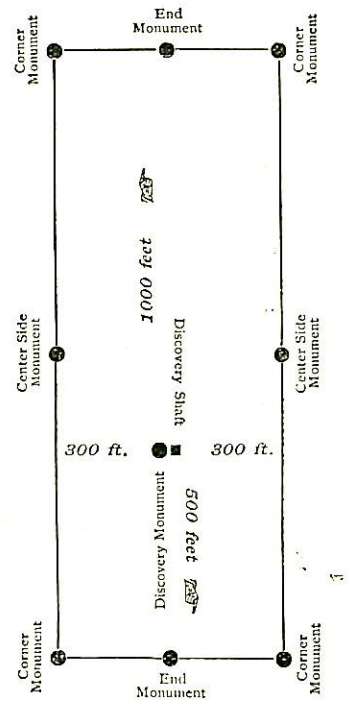
James O'Connell

Stassayampa

Dated March 20th 1901

Filed and recorded at request of
 D. Moynahan
 March 20th A. D. 1901
 at 2 o'clock P. M.
 Book 55 of Mines
 Pages 562, 563.

RECORDS OF YAVAPAI COUNTY, ARIZONA
 J. Farley
 County Recorder.
 By G. Gibbons
 Deputy Recorder.



This diagram is to give locator a general idea of plan of location under the new law. The Discovery Shaft can be in the center of claim or any distance from either end desired. In the diagram it is placed 500 feet from one end and 1000 feet from the other. Commence description of claim at a center end monument, giving its distance and direction from center of Discovery Shaft; thence bound the claim in either direction. In description be careful to state locality of claim with reference to some natural object, or permanent monument, as will identify the claim.

(7)

"ALEX THOMPSON".

NOTICE OF LOCATION.

Know all men by these presents:

That I, the undersigned, have this day located Fifteen Hundred (1500) linear feet of this vein or lode, bearing precious metals, with all dips, spurs, angles and variations, with surface ground Three Hundred (300) feet on each side of the center of vein, with all Mineral Deposits contained therein, and all Timber growing within the limits of said claim, and all Water and Water privileges thereon or appurtenant thereto, under and according to the provisions of the United States Mining Laws, under which it is Located.

This claim commences at this Monument and Notice placed upon the ledge, and runs 750 feet in a Northerly direction *and 750 feet in a southerly direction* along the ledge, from discovery shaft.

The Exterior boundaries are as follows, viz:

Commencing at a Monument of Stone on West boundary line, distant Three Hundred (300) feet in a Westerly direction from Discovery Monument; thence in a Northerly direction parallel with the ledge ----- feet to Monument of Stone at N.W. corner of claim; thence in a Easterly direction at right angles across the ledge Six Hundred (600) feet to Monument of Stone at N.E. corner of claim; thence in a Southerly direction parallel with the ledge Fifteen Hundred (1500) feet to Monument of Stone at S.E. corner of claim; thence at right angles across the ledge in a Westerly direction Six Hundred (600) feet to Monument of Stone at S.W. corner of claim; thence in a Northerly direction parallel with the ledge 750 feet to Monument on West boundary and place of beginning.

This ledge may be more generally described as situated about 7 miles in a Southerly direction from the City of Prescott, and adjoins the "Snipe" Mining Claim on the East side, and about 200 feet in an easterly direction from the "Nil-desperandum" mining claim.

This claim was formerly known as the "John Curtin" mining claim of the Valentine group, but was forfeited in 1897 by non-compliance with the assessment work clause of the United States mining laws. In addition to the above described monuments there are also placed on the exterior boundary lines a monument of stone on centre of north end line, a monument of stone on center of south end line and a monument of stone on center of east side line. In Hassayampa Mining District, Yavapai County, Arizona Territory, and shall be known as the Alex Thompson Mining Claim.

Dated on the ground this 30th day of March 1898.

Jery O'Neil.

Witness: P.J. Fitzgerald.

Recorded at request of Jerry O'Neil, June 18" A.D. 1898, at 4:40 o'clock p.m. in Book 49 of Mines, page 111, records of Yavapai County, Arizona.

(Seal) W.I. Johnson, County Recorder.

By E.C. Averyt, Deputy.

TERRITORY OF ARIZONA,)
COUNTY OF YAVAPAI.) SS:

I, P.J. FARLEY, County Recorder in and for Yavapai County, Arizona Territory, and custodian of the records thereof, do hereby certify that I have compared the above and foregoing with, and the same is a full, true and correct copy of the Notice of location of the "Alex Thompson" Mining Claim, as the same appears of record in Book 49 of Mines, page 111, records of Yavapai County, Arizona.

In Witness Whereof, I have hereunto set my hand and affixed my Official Seal, this 26th day of March, 1901.



P. J. Farley
County Recorder.

AMENDED

Notice of Mining Location.

LODE CLAIM.

To All Whom It May Concern:

This mining claim, the name of which is the Schwartzman Mining Claim, situate on lands belonging to the United States of America, and in which there are valuable mineral deposits, was entered upon and located for the purpose of exploration and purchase by S. S. Moynahan

the undersigned, on the 20th day of March 1901

The length of this claim is 1500 feet, and 700 feet in a Northwesterly direction, and 800 feet in a Southerly direction from the center of the discovery shaft, at which this notice is posted, lengthwise of the claim, together with 300 feet in width of the surface grounds, on each side of the center of said claim. The general course of the lode deposit and premises is from the South- to the West-

The claim is situated and located in the Hassayampa Mining District, in Jurupui County, in the Territory of Arizona, about 7 miles in a South-Easterly direction from Prescott, on the head of Brown Creek

The surface boundaries of the claim are marked upon the ground as follows: Beginning at

at a point in a Northwesterly direction 700 feet from the discovery shaft (at which this notice is posted), being in the center of the West end line of said claim; thence N 89° W 282 feet to a Mon., being the N.W. corner of said claim; thence S 13° 17' W 646.7 feet to a Mon. at the center of the West side line of said claim; thence S 13° 17' W 750 feet to a Mon. being at the S.W. corner of said claim; thence S 89° E 300 feet to a Mon. at the center of the South end of said claim; thence S 89° E 300 feet to a Mon. being at the S.E. corner of said claim; thence N 8° 31' E 750 feet to a Mon. being at the center of the East side line of said claim; thence N 8° 31' E 627 feet to a Mon. at the N.E. corner of said claim; thence N 89° W 201 feet to the place of beginning.

All done under the provisions of Chapter Six, of Title XXXII, of the Revised Statutes of the United States, and of an Act of the General Assembly of Arizona, entitled "An Act Concerning Mines," approved March 20th, 1895, and amended March 2d, 1899.

This is an Amended Location Notice of the Schwartzman Mining Claim, located by Nick Slumberger on the 1st day of January 1899, and recorded in Book 49 of Records of Mines, at page 245, in the office of the County Recorder of the aforesaid County of to which reference is hereby made, and this Amended Location Notice is made and posted to correct errors in the description in the said original Location Notice.

Dated and posted on the ground this 20th day of March 1901

S. S. Moynahan

TERRITORY OF ARIZONA,
County of..... } ss.

I,..... County Recorder in and for the County and

Territory aforesaid, do hereby certify that the within instrument was filed for record at..... o'clock..... M.,

on this..... day of..... 189..... and duly recorded in Book No.....

of..... Records of..... County, Arizona, at pages.....

County Recorder

index *29817* *indexed* *Comptroller*
"Schwartzman"

AMENDED
Notice of Location.

LODE CLAIM.

D. Moynahan

Assayampa

Dated *March 20* 1901

Filed and recorded at request of

D. Moynahan
March 20 A. D. 1901

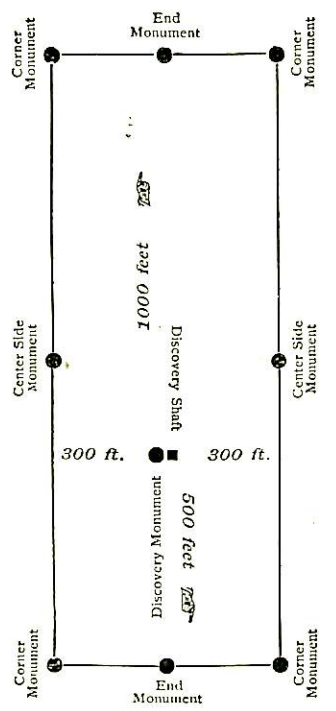
at *2 o'clock* P. M.

Book *55 of Mines*

Pages *565 - 566*

P. J. Farley
County Recorder.

By *T. J. Gibbons*
Deputy Recorder.



This diagram is to give locator a general idea of plan of location under the new law. The Discovery Shaft can be in the center of claim or any distance from either end desired. In the diagram it is placed 500 feet from one end and 1000 feet from the other. Commence description of claim at a center end monument, giving its distance and direction from center of Discovery Shaft; thence bound the claim in either direction. In description be careful to state locality of claim with reference to some natural object, or permanent monument, as will identify the claim.

SWATZMANN.

NOTICE OF LOCATION.

Know all men by these presents:

That, the undersigned, have this day located Fifteen Hundred(1500)linear feet of this vein or lode, bearing precious metals, with all dips, spurs, angles and variations, with surface ground Three Hundred(300)feet on each side of the center of vein, with all mineral Deposits contained therein, and all Timber growing within the limits of said claim, and all Water and Water privileges thereon or appurtenant thereto, under and according to the provisions of the United States Mining Laws, under which it is located.

This claim commences at this Monument and Notice placed upon the ledge, and runs 250 feet in a Northerly direction and 1250 feet in a Southerly direction along the ledge from discovery shaft.

The exterior boundaries are as follows, viz:

Commencing at a Monument of Stone on West boundary line, distant Three Hundred(300)feet in a Westerly direction from Discovery Monument; thence in a Northerly direction parallel with the ledge 250 feet to Monument of Stone at N.W. corner of claim; thence in a Easterly direction at right angles across the ledge Six Hundred(600) feet to Monument of Stone at N.E. corner of claim; thence, Southerly direction parallel with the ledge Fifteen Hundred(1500)feet to Monument of Stone at S.E. corner of claim; thence at right angles across the ledge in a Westerly direction Six Hundred(600)feet to Monument of Stone at S.W. corner of claim; thence in a Northerly direction parallel with the ledge 1250feet to Monument on West boundary and place of beginning.

This ledge may be more generally described as situated at the head of Groom Creek it is bounded on the East by the Nevada, one of Kelly's patented claims & on the West by the John Curtain. It was formerly known as the Snipe in Hassayampa Mining District, Yavapai County, Arizona Territory, and shall be known as the Swatzmann Mining Claim.

Dated on the ground this 1st day of January 1899.

Nick Slumberger.

Witness: Vincent E. Frost.

Recorded at request of W.E. Enos, March 29th A.D. 1899, at 10:37 o'clock a.m., in Book 49 of Mines, page 245, Records of Yavapai County, Arizona.

(Seal) W.I. Johnson,
County Recorder.

By P.J. Farley,
Deputy.

TERRITORY OF ARIZONA,)
COUNTY OF YAVAPAI.)SS:

I, P.J. FARLEY, County Recorder in and for Yavapai County, in the Territory of Arizona, and custodian of the records thereof, do hereby certify that I have compared the above and foregoing with, and the same is a full, true and correct copy of the Notice of Location of the "Swatzmann" mining claim, as the same appears of record in Book 49 of Mines, page 245, records of Yavapai County, Arizona.

In Witness Whereof, I have hereunto set my hand and affixed my Official Seal, this 26 th day of March 1901.



P. J. Farley
County Recorder.

"DORA".

NOTICE OF MINING LOCATION.
Lode Claim.

To All Whom it may concern:

This Mining Claim, the name of which is the Dora gold Mine Mining Claim, situate on lands belonging to the United States of America, and in which there are valuable mineral deposits, was entered upon and located for the purpose of exploration and purchase by Charles Elliott, the undersigned, on the 10 day of February 1900.

The length of this claim is fifteen hundred feet, and I claim 750 in a southerly direction 750 feet, in a northerly direction and-----feet in a southerly direction from the center of the discovery shaft, at which this notice is posted, lengthwise of the claim, together with three hundred (300) feet in width of the surface grounds, on each side of the center of said claim. The general course of the lode deposit and premises is from the northerly to the southerly.

The claim is situated and located in the Hassayampia Mining District, in Yavapai County, in the Territory of Arizona, about 7 miles from Prescott in a southerly direction from is the sook Extension of the Burmister Mine on Groom Creek.

The surface boundaries of the claim are marked upon the ground as follows: Beginning at a monument of stones at notice at a point in a northerly direction 750 feet from the discovery shaft (at which this notice is posted), being in the center of the north end line of said claim; thence easterly 300 feet to a monument of stones being the northeast corner of said claim; thence southerly 750 feet to a monument at the center of the east side line of said claim; thence southerly 750 feet to a monument of stones being at the southeast corner of said claim; thence westerly 300 feet to a monument of stones at the center of the south end of said claim; thence westerly 300 feet to a monument of stones, being at the southeast corner of said claim; thence northerly 750 feet to a monument of stones being at the center of the west side line of said claim; thence northerly 750 feet to a monument of stones at the northwest corner of said claim; thence easterly 300 feet to the place of beginning.

All done under the provisions of Chapter Six, of Title XXXII, of the Revised Statutes of the United States, and of an Act of the General Assembly of Arizona, entitled "An Act Concerning Mines", approved March 20th, 1895, and amended March 2d, 1899.

Dated and posted on the ground this 10 day of February 1900.

Lacato: Charles Elliott.

Witness: E.L. Molford.

Recorded at request of Chas. Elliott, Feby. 21" A.D. 1900, at 12:40 o'clock, P.M., Book 53 of Mines, Page 262, Records of Yavapai County, Arizona.

(Seal)

W.I. Johnson,

County Recorder.

By P.J. Farley,

Deputy Recorder.

TERRITORY OF ARIZONA,
COUNTY OF YAVAPAI.)SS:

I, P.J. FARLEY, County Recorder in and for Yavapai County, Arizona, and custodian of the records thereof, do hereby certify that I have compared the above and foregoing with, and the same is a full, true and correct copy of the Notice of Location of the Dora Mining Claim, as the same appears of record in Book 53 of Mines, page 262, records of Yavapai County, Arizona.

In Witness Whereof, I have hereunto set my hand and affixed my Official Seal, this 27" day of March 1900.

P. J. Farley
County Recorder.



39
 TERRITORY OF ARIZONA,
 County of..... } ss.

I,..... County Recorder in and for the County and
 Territory aforesaid, do hereby certify that the within instrument was filed for record at..... o'clock..... M.,
 on this..... day of..... 189..... and duly recorded in Book No.....
 of..... Records of..... County, Arizona, at pages.....

WITNESS my hand and official seal the day and year first above written

County Recorder

Amended
 { 1916 }
 "Dora"
 Compared.

AMENDED
 Notice of Location.
 LOPE CLAIM.

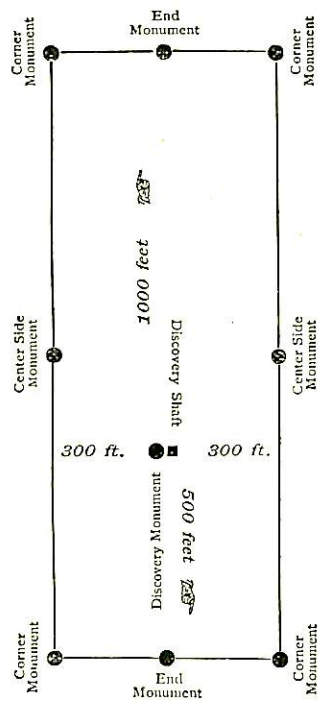
D. Moynahan
 Trustee for
 Home Owners Min. Syndicate
 Massayampa

Dated March 20th 1901

Filed and recorded at request of
 D. Moynahan
 - March 20th A. D. 1901
 at 2 o'clock P. M.
 Book 55 of Mines
 Pages 556-558

P. J. Farley
 County Recorder.
 By G. S. Colwell
 Deputy Recorder.

THE H. H. MCNEIL CO., PRINTERS, PHOENIX, ARIZ.



This diagram is to give locator a general idea of plan of location under the new law. The Discovery Shaft can be in the center of claim or any distance from either end desired. In the diagram it is placed 500 feet from one end and 1000 feet from the other. Commence description of claim at a center end monument, giving its distance and direction from center of Discovery Shaft; thence bound the claim in either direction. In description be careful to state locality of claim with reference to some natural object, or permanent monument, as will identify the claim.

W
 - 7 Fisher
 City

AMENDED

Notice of Mining Location.

LODE CLAIM.

To All Whom It May Concern:

This mining claim, the name of which is the Dora Mining Claim, situate on lands belonging to the United States of America, and in which there are valuable mineral deposits, was entered upon and located for the purpose of exploration and purchase by D. Magnahan trustee for Home Run Mining Syndicate

the undersigned, on the 20th day of March 1901

The length of this claim is 1500 feet, and 1 claim 200 feet in a North direction, and 1300 feet in a South direction from the center of the discovery shaft, at which this notice is posted, lengthwise of the claim, together with 300 feet in width of the surface grounds, on each side of the center of said claim. The general course of the lode deposit and premises is from the South to the North

The claim is situated and located in the Assay Camp Mining District, in Yavapai County, in the Territory of Arizona, about 7 miles in a South direction from Prescott, on the head of Groom Creek

The surface boundaries of the claim are marked upon the ground as follows: Beginning at

at a point in a North direction 200 feet from the discovery shaft (at which this notice is posted), being in the center of the North end line of said claim; thence S 81° W 300 feet to a mon., being the N.W. corner of said claim; thence S 14° 4' W 750 feet to a mon. at the center of the West side line of said claim; thence S 14° 4' W 659 feet to a mon. being at the S.W. corner of said claim; thence N 81° E 300 feet to a mon. at the center of the South end of said claim; thence N 81° E 235 feet to a mon., being at the S.E. corner of said claim; thence N 13° W 285 feet to a mon. being at the center of the East side line of said claim; thence N 20° 41' E 1090 feet to a mon. at the N.E. corner of said claim; thence S 81° W 240 feet to the place of beginning.

All done under the provisions of Chapter Six, of Title XXXII, of the Revised Statutes of the United States, and of an Act of the General Assembly of Arizona, entitled "An Act Concerning Mines," approved March 20th, 1895, and amended March 2d, 1899.

This is an Amended Location Notice of the Dora Mining Claim, located by Charles Elliott

on the 10th day of February 1900, and recorded in Book 53 of Records of Mines, at page 262, in the office of the County Recorder of the aforesaid County of Yavapai to which reference is hereby made, and this Amended Location Notice is made and posted to correct errors in the description in the said original Location Notice.

Dated and posted on the ground this 20th day of March 1901

D Magnahan
Trustee for
Home Run Mining Syndicate

"DORA".

NOTICE OF MINING LOCATION.
Lode Claim.

To All Whom it may concern:

This Mining Claim, the name of which is the Dora gold Mine Mining Claim, situate on lands belonging to the United States of America, and in which there are valuable mineral deposits, was entered upon and located for the purpose of exploration and purchase by Charles Elliott, the undersigned, on the 10 day of February 1900.

The length of this claim is fifteen hundred feet, and I claim 750 in a southerly direction 750 feet, in a northerly direction and-----feet in a southerly direction from the center of the discovery shaft, at which this notice is posted, lengthwise of the claim, together with three hundred (300) feet in width of the surface grounds, on each side of the center of said claim. The general course of the lode deposit and premises is from the northerly to the southerly.

The claim is situated and located in the Hassayampia Mining District, in Yavapai County, in the Territory of Arizona, about 7 miles from Prescott in a southerly direction from is the sook Extension of the Burmister Mine on Groom Creek.

The surface boundaries of the claim are marked upon the ground as follows: Beginning at a monument of stones at notice at a point in a northerly direction 750 feet from the discovery shaft (at which this notice is posted), being in the center of the north end line of said claim; thence easterly 300 feet to a monument of stones being the northeast corner of said claim; thence southerly 750 feet to a monument at the center of the east side line of said claim; thence southerly 750 feet to a monument of stones being at the southeast corner of said claim; thence westerly 300 feet to a monument of stones at the center of the south end of said claim; thence westerly 300 feet to a monument of stones, being at the southeast corner of said claim; thence northerly 750 feet to a monument of stones being at the center of the west side line of said claim; thence northerly 750 feet to a monument of stones at the northwest corner of said claim; thence easterly 300 feet to the place of beginning.

All done under the provisions of Chapter Six, of Title XXXII, of the Revised Statutes of the United States, and of an Act of the General Assembly of Arizona, entitled "An Act Concerning Mines", approved March 20th, 1895, and amended March 2d, 1899.

Dated and posted on the ground this 10 day of February 1900.

Lucato: Charles Elliott.

Witness: E.L. Molford.

Recorded at request of Chas. Elliott, Feby. 21" A.D. 1900, at 12:40 o'clock, P.M., Book 53 of Mines, Page 262, Records of Yavapai County, Arizona.

(Seal)

W.I. Johnson,
County Recorder.

By P.J. Farley,
Deputy Recorder.

TERRITORY OF ARIZONA,)
COUNTY OF YAVAPAI.)SS:

I, P.J. FARLEY, County Recorder in and for Yavapai County, Arizona, and custodian of the records thereof, do hereby certify that I have compared the above and foregoing with, and the same is a full, true and correct copy of the Notice of Location of the Dora Mining Claim, as the same appears of record in Book 53 of Mines, page 262, records of Yavapai County, Arizona.

In Witness Whereof, I have hereunto set my hand and affixed my Official Seal, this 27" day of March 1900.

P. J. Farley
County Recorder.



NOTICE OF LOCATION.

KNOW ALL MEN BY THESE PRESENTS:

That....2....., the undersigned, have this day located fifteen hundred (1500) linear feet of this vein or lode, bearing precious metals, with all dips, spurs, angles and variations, with surface ground three hundred (300) feet on each side of the center of vein, with all mineral deposits contained therein, and all timber growing within the limits of said claim, and all water and water privileges thereon or appurtenant thereto, under and according to the provisions of the United States Mining Laws, under which it is located.

This claim commences at this Monument and Notice placed upon the ledge, and runs.....750 feet in a northerly direction and.....750.....feet in a southerly direction along the ledge, from discovery shaft.

The exterior boundaries are as follows, viz: Commencing at a monument of stone on west boundary line, distant three hundred (300) feet in a westerly direction from discovery monument; thence in a northerly direction parallel with the ledge.....750.....feet to monument of stone at N. W. corner of claim; thence in an easterly direction at right angles across the ledge six hundred (600) feet to monument of stone at N. E. corner of claim; thence in a southerly direction parallel with the ledge fifteen hundred (1500) feet to monument of stone at S. E. corner of claim; thence at right angles across the ledge, in a westerly direction six hundred (600) feet to monument of stone at S. W. corner of claim; thence in a northerly direction parallel with the ledge.....750..... feet to monument on west boundary and place of beginning.

This ledge may be more generally described as situated.....*in the Hassayampa mining district, Yavapai county, Arizona Territory, located as abandoned property located about seven miles in a southerly direction from the town of Prescott in said county, and about one mile in a westerly direction from Spruce mountain in said above named mining district.*

in.....*the Hassayampa*.....Mining District, Yavapai County, Arizona Territory, and shall be known as the.....*Coult*.....Mining Claim.

Dated on the ground this.....30.....day of.....*March 4th 1900*.....

H. L. Sweney

The Contest
Mining Claim,
N. L. Sweeney.

Index. 2876 compared.

"Contest"
N. L. Sweeney.
Massachusetts
March 30, 1900

RECORDS OF MINE DEPARTMENT
REQUEST OF
J. J. Boltz
March 14th, 1901
At 12⁰⁰ o'clock. mine
In Book 54 of Mines
Page# 115
Records of Vazquez County, Arizona
P. J. Garber
By J. J. Garber

42

115-1

Amended Notice of Mining Location.

LODE CLAIM.

To All Whom It May Concern:

This mining claim, the name of which is the Grand View
Mining Claim, situate on lands belonging to the United States of America, and in which there
are valuable mineral deposits, was entered upon and located for the purpose of exploration and
purchase by D. Moynahan

(Locator must insert either "a citizen of the United States," or, "who has declared his intention to become a citizen of the United States.")
the undersigned, on the 20th day of March 1901

The length of this claim is 1500 feet,
and I claim 600 feet
in a Southerly direction, and 900
feet in a Westerly direction from
the center of the discovery shaft, at which this notice is posted, lengthwise of the claim, together
with 300 feet in width of the surface grounds, on each
side of the center of said claim. The general course of the lode deposit and premises is from the
South to the North

The claim is situated and located in the Assayumpsee Mining District, in
Yavapai County, in the Territory of Arizona, about 7 miles
in a South Easterly direction from Prescott, on the head of
Green Creek. This is an Amended location notice of the Grand View,
located by D. Moynahan, Dec. 19th 1900 and recorded in Book 57 of
Mines at Page 257, County Records of Yavapai County.

The surface boundaries of the claim are marked upon the ground as follows: Beginning at

at a point in a Southerly direction 600 feet from
the discovery shaft (at which this notice is posted), being in the center of the South-
end line of said claim; thence S 89° E 300 feet to a mon.
being the S. E. corner of said claim; thence
N. 22° 18' E 750 feet to a mon. at the center of
the East side line of said claim; thence N 22° 18' E 1500
feet to a mon., being at the N. E. corner of said
claim; thence N 89° W 240 feet to a mon.
at the center of the North end of said claim; thence N 89° W 185
feet to a mon., being at the N. W.
corner of said claim; thence S 28° 26' W 750 feet to a mon.
being at the center of the West side line of said claim;
thence S 28° 26' W 820 feet to a mon. at
the S. W. corner of said claim; thence S 89° E 300
feet to the place of beginning.

All done under the provisions of Chapter Six, of Title XXXII., of the Revised Statutes of
the United States, and of an Act of the General Assembly of Arizona, entitled "An Act Concern-
ing Mines," approved March 20th, 1895, and amended March 2d, 1899.

Dated and posted on the ground this 20th day of March 1901
D. Moynahan

County of..... } ss

I,....., County Recorder in and for the County and Territory aforesaid, do hereby certify that the within instrument was filed for record at.....o'clock,..... M., on this.....day of.....190., and duly recorded in Book No..... of.....Records of.....County, Arizona, at pages.....

WITNESS my hand and official seal the day and year first above written.

County Recorder.

Grand Grand
Company

Amended
Notice of Location.

LODE CLAIM.

D. M. Mynahan

Assayampa

Dated *March 20* 1901

Filed and recorded at request of

D. M. Mynahan

March 20 A. D. 1901

at *2 o'clock P. M.*

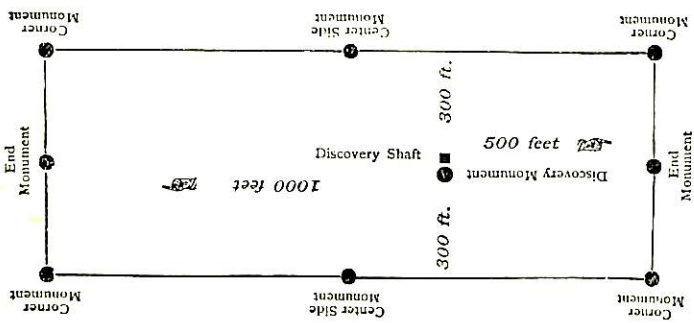
Book *57 of Mines*,

Pages *291*

F. J. Gardner
County Recorder.

J. J. Johnston
Deputy-Recorder.

THE H. MC NEIL CO., PRINTERS, PHOENIX, ARIZONA.



This diagram is to give locator a general idea of plan of location under the new law. The Discovery Shaft can be in the center of claim or any distance from either end desired. In the diagram it is placed 500 feet from one end and 1000 feet from the other. Commence description of claim at a center end monument, giving its distance and direction from center of Discovery Shaft; thence bound the claim in either direction. In description be careful to state locality of claim with reference to some natural object, or permanent monument, as will identify the claim.

(5)

Notice of Mining Location.

LODE CLAIM.

To All Whom It May Concern:

This mining claim, the name of which is the Grand View Mining Claim, situate on lands belonging to the United States of America, and in which there are valuable mineral deposits, was entered upon and located for the purpose of exploration and purchase by Daniel Moynahan

a Citizen of the United States
(Locator must insert either "a citizen of the United States," or, "who has declared his intention to become a citizen of the United States.")

the undersigned, on the 19th day of December 1900.

The length of this claim is Fifteen hundred feet, and I claim Five hundred feet in a Southerly direction, and One thousand

feet in a Northerly direction from the center of the discovery shaft, at which this notice is posted, lengthwise of the claim, together with Three hundred feet in width of the surface grounds, on each

side of the center of said claim. The general course of the lode deposit and premises is from ~~the~~ a Northerly to ~~the~~ a Southerly direction.

The claim is situated and located in the Gassayampa Mining District, in Yavapai County, in the Territory of Arizona, about Seven Miles in a Southerly direction from Prescott City and adjoins the

Honor Run Mine on the north end, and is bounded on the East by the Minnie Claim and on the West by the Stull Claim and covers all vacant ground between the above mentioned Claims

The surface boundaries of the claim are marked upon the ground as follows: Beginning at

Monument of Stone
at a point in a Northerly direction 1000 feet from the discovery shaft (at which this notice is posted), being in the center of the north end line of said claim; thence at right angles 300 feet to a Monument of Stone, being the North East corner of said claim; thence at right angles 750 feet to a Monument of Stone at the center of the East side line of said claim; thence 750 feet to a Monument of Stone, being at the South East corner of said claim; thence at right angles 300 feet to a Monument of Stone at the center of the South end of said claim; thence 300 feet to a Monument of Stone, being at the South West corner of said claim; thence at right angles 750 feet to a Monument of Stone being at the center of the West side line of said claim; thence 750 feet to a Monument of Stone at the North West corner of said claim; thence at right angles 300 feet to the place of beginning.

All done under the provisions of Chapter Six, of Title XXXII., of the Revised Statutes of the United States, and of an Act of the General Assembly of Arizona, entitled "An Act Concerning Mines," approved March 20th, 1895, and amended March 2d, 1899.

Dated and posted on the ground this 19th day of December 1900.

Witness James O'Connell

D. Moynahan

I, _____, County Recorder in and for the County and Territory aforesaid, do hereby certify that the within instrument was filed for record at _____ o'clock, _____ M., on this _____ day of _____, 190..., and duly recorded in Book No. _____ of _____ Records of _____ County, Arizona, at pages _____.

WITNESS my hand and official seal the day and year first above written.

County Recorder.

Indexed
Grand View
Compared
-916-

Notice of Location.

LODE CLAIM.

D. Moynahan

Assayanna

Dated Dec. 19th 1900

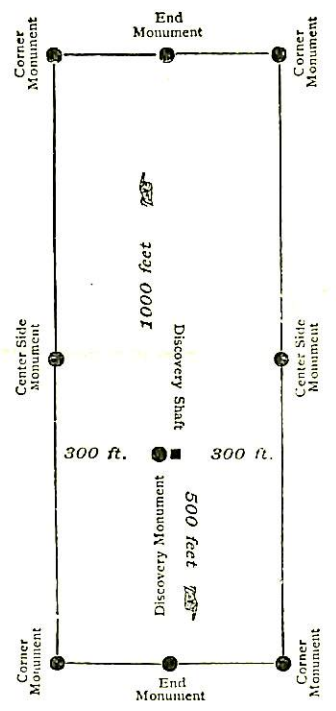
Filed and recorded at request of
D. Moynahan
March 18th A. D. 1901

at 9 o'clock a. m.
Book 57 of Mines

Pages 257-
RECORDS OF YAVAPAI COUNTY, ARIZONA.

J. J. Farley
County Recorder.

By J. J. Gibbons
Deputy Recorder.



This diagram is to give locator a general idea of plan of location under the new law. The Discovery Shaft can be in the center of claim or any distance from either end desired. In the diagram it is placed 500 feet from one end and 1000 feet from the other. Commence description of claim at a center end monument, giving its distance and direction from center of Discovery Shaft; thence bound the claim in either direction. In description be careful to state locality of claim with reference to some natural object, or permanent monument, as will identify the claim.

city
(on Brown creek)

AMENDED

Notice of Mining Location.

LODE CLAIM.

To All Whom It May Concern:

This mining claim, the name of which is the Thomas Mining Claim, situate on lands belonging to the United States of America, and in which there are valuable mineral deposits, was entered upon and located for the purpose of exploration and purchase by S. Moynahan

the undersigned, on the 20th day of March 1901

The length of this claim is 1500 feet, and 1 claim 660 feet

in a Northwesterly direction, and 840 feet in a Southerly direction from

the center of the discovery shaft, at which this notice is posted, lengthwise of the claim, together with 900 feet in width of the surface grounds, on each

side of the center of said claim. The general course of the lode deposit and premises is from the South to the North

The claim is situated and located in the Hassayampa Mining District, in Yavapai County, in the Territory of Arizona, about 7 miles in a South-easterly direction from Prescott, on the head of Brown Creek

The surface boundaries of the claim are marked upon the ground as follows: Beginning at

at a point in a Northwesterly direction 660 feet from the discovery shaft (at which this notice is posted), being in the center of the North-

end line of said claim; thence N 89° W 210 feet to a mon., being the N.W. corner of said claim; thence

S 13° E 750 feet to a mon. at the center of the East side line of said claim; thence S 13° E 750 feet to a mon. being at the S.W. corner of said

claim; thence S 89° E 40 feet to a mon. at the center of the South- end of said claim; thence S 89° E 100 feet to a mon.

being at the S. E. corner of said claim; thence N 5° 13' E 750 feet to a mon. being at the center of the East side line of said claim;

thence N 5° 13' E 711.5 feet to a mon. at the N. E. corner of said claim; thence N 89° W 300 feet to the place of beginning.

All done under the provisions of Chapter Six, of Title XXXII, of the Revised Statutes of the United States, and of an Act of the General Assembly of Arizona, entitled "An Act Concerning Mines," approved March 20th, 1895, and amended March 2d, 1899.

This is an Amended Location Notice of the Thomas Inclusion Mining Claim, located by S. Moynahan

on the 29th day of January 1901, and recorded in Book 57 of Records of Mines, at page 202, in the office of the County Recorder of the aforesaid County of Yavapai

to which reference is hereby made, and this Amended Location Notice is made and posted to correct errors in the description in the said original Location Notice.

Dated and posted on the ground this 20th day of March 1901

S. Moynahan

148
 TERRITORY OF ARIZONA, }
 County of..... } ss.

I,..... County Recorder in and for the County and Territory aforesaid, do hereby certify that the within instrument was filed for record at..... o'clock..... M., on this..... day of..... 189....., and duly recorded in Book No..... of..... Records of..... County, Arizona, at pages.....

WITNESS my hand and official seal the day and year first above written

County Recorder

AMENDED
 Notice of Location.
 LODE CLAIM.

D. Myrnanhan

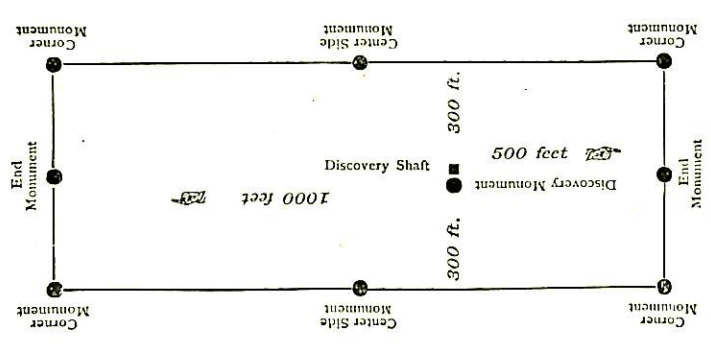
Naasayampal

Dated March 20th. 1901

Filed and recorded at request of
 D. Myrnanhan
 March 20th A. D. 1901
 at 2 o'clock P. M.
 Book 55 of Mines
 Pages 263, 264

RECORDS OF MARICOPA COUNTY, ARIZO
 J. J. Gardner
 County Recorder.
 By J. J. Gibbons
 Deputy Recorder.

THE H. M. MCNEIL CO., PRINTERS, PHOENIX, ARIZ.



This diagram is to give locator a general idea of plan of location under the new law. The Discovery Shaft can be in the center of claim or any distance from either end desired. In the diagram it is placed 500 feet from one end and 1000 feet from the other. Commence description of claim at a center end monument, giving its distance and direction from center of Discovery Shaft; thence bound the claim in either direction. In description be careful to state locality of claim with reference to some natural object, or permanent monument, as will identify the claim.

Indep. Compt. Co.
 29805
 "Thomas"

(9)

"THOMAS FRACTION."

NOTICE OF MINING LOCATION.
Lode Claim.

To all whom it may concern:

This Mining Claim, the name of which is the "Thomas Fraction" Mining Claim, situate on lands belonging to the United States of America, and in which there are valuable mineral deposits, was entered upon and located for the purpose of exploration and purchase by D. Moynahan, a citizen of the United States, the undersigned, on the 29th day of January, 1901.

The length of this claim is Fifteen Hundred (1500) feet, and I claim 500 feet in a northerly direction and 1,000 feet in a Southerly direction from the center of the discovery shaft, at which this notice is posted, lengthwise of the claim, together with three hundred (300) feet in width of the surface grounds, on each side of the center of said claim. The general course of the lode deposit and premises is from the Northerly to the Southerly.

The claim is situated and located in the Hassayampa Mining District, in Yavapai County, in the Territory of Arizona, about eight miles in a Southerly direction from Prescott and embraces all the ground between the Nil Desperandum Snipe Alex Thomson and Newark.

The surface boundaries of the claim are marked upon the ground as follows: Beginning at a monument of stones at a point in a Northerly direction 500 feet from the discovery shaft (at which this notice is posted), being in the center of the North end line of said claim; thence Easterly 300 feet to a monument of stones being the Northeast corner of said claim; thence Southerly 750 feet to a monument at the center of the East side line of said claim; thence Southerly 750 feet to a monument of stones being at the South East corner of said claim; thence Westerly 300 feet to a monument of stones at the center of the South end of said claim; thence Westerly 300 feet to a monument of stones, being at the South West corner of said claim; thence northerly 750 feet to a monument of stones being at the center of the West side line of said claim; thence Northerly 750 feet to a monument of stone at the Northwest corner of said claim; thence Easterly 300 feet to the place of beginning.

All done under the provisions of Chapter Six, of Title XXXII, of the Revised Statutes of the United States, and of an Act of the General Assembly of Arizona, entitled "An Act Concerning Mines", approved March 20th, 1895, and amended March 26, 1899.

Dated and posted on the ground this 29 day of January 1901.
D. Moynahan.

Witness:

John O'Connell.

Filed and recorded at request of D. Moynahan, March 1st A.D. 1901, at 11:10 o'clock a.m., Book 57 of Mines, page 202, Records of Yavapai County, Arizona.

(Seal) P.J. Farley,
County Recorder.

By F.J. Gibbons,
Deputy Recorder.

TERRITORY OF ARIZONA,)
COUNTY OF YAVAPAI.) SS:

I, P.J. FARLEY, County Recorder in and for Yavapai County, Arizona Territory, and custodian of the records thereof, do hereby certify that I have compared the above and foregoing with and the same is a full, true and correct copy of the Notice of Location of the "Thomas Fraction" Mining Claim, as the same appears of record in Book 57 of Mines, page 202, records of Yavapai County, Arizona.

In Witness Whereof, I have hereunto set my hand and affixed my Official Seal, this 26th day of March, 1901.



P. J. Farley

PRESCOTT, ARIZONA, Nov. 6th, 1902.

U. S. Surveyor General,
Phoenix Arizona.

Sir:-

I received your letter of Oct, 31st. in reference to a discrepancy between Mr. Mader's sur. #1636 and my sur. #1549. I make a practice of filing away all my notes and computations and I immediately looked up this matter and found that my assistant in transcribing my notes and computing course and distance of a traverse line run from cor. secs. 25. 26. 35 & 36 T. 13 N. R. 2 W. to cor. No. 1, Alex Thompson, Sur. #1549, read a course N. 54° 28' E. 86ft. whereas in my notes it is N. 54° 28' E. 886 ft.

I went out and run the traverse line again on Nov. 3rd, 1902. making it practically the same.

The true course and distance from cor. No. 1, of each of the claims in Sur. #1549 to sec. cor. 25. 26. 35 & 36 T. 13 N. R. 2 W. is:-

Alex Thompson lode S. 75° 20' W. 5809ft.
Home Run lode S. 73° 20' W. 5168.9 ft.
Grand View lode S. 73° 11' W. 5126.8 ft.
Schwartzman lode S. 76° 2' W. 6073.9 ft.
Contest & Dora lodes S. 75° 39' W. 4507 ft.
Nil Desperandum lode S. 88° 23' W. 4456.9 ft.
Thomas lode S. 88° 42' W. 5078.4 ft.

J. J. Fisher
U. S. Dep. Min. Surveyor.

Subscribed and sworn to before me this day of 1902

My commission expires July 7, 1903.

Thomas C. Job
Notary Public.

NOV 10 1902

51

PRESCOTT, ARIZONA,

Nov 6, 1902

U. S. Surveyor General
Phoenix Ariz;

Sir;

The Country is very rough and mountainous
covered with brush and timber. between Survey
#1549 and the Sec. Cor. of Secs 25, 26, 35 & 36 T13N R2E
In running my traverse line on Nov 3rd 1902
I tied to Cor. N^o 3, -1636. L. G. and made the
Course and distance from said corner S 80° 7' W 2796.78
to Sec. Corner, which checks very closely with Mr. Maden's
Survey. I have no excuse to offer for the mistake
in Courses and distances of Sur. #1549, except
that my assistant made the mistake of 800 feet
in one course and I failed to discover it.
I always examine his work but it is not
easy to always discover mistakes.

Very respectfully

J. J. Fisher

(4-687.)

Surveyor General's Certificate of Approval of Field Notes and Survey of Mining Claim.

Department of the Interior,

Office of U. S. Surveyor General,

Tucson, Arizona

September 30th, 1901.

I, U. S. Surveyor General for *Dist. of Arizona*,

do hereby certify that the foregoing and hereto attached Field Notes and Return of the

Survey of the Mining Claim of *James O'Connell*

Known as the Nil Suprandum, Thomas, Home Run,

Blue Thompson, Schwartzman, known as the

Grand View, Dora and Contest.

situate in *Kassayampa* mining district,

Yavapai County, *Arizona*,

in Section *25-30-31 + 36*, Township No. *13 N.*, Range No. *1st and 2nd West*

....., designated as Survey No. *1549*

executed by *J. J. Fisher*, U. S. Deputy Mineral

Surveyor, *April 22-26, 1901*, ~~18~~, under my instructions dated

March 29, 1901, ~~18~~, have been critically examined and the

necessary corrections and explanations made, and the said Field Notes and Return, and

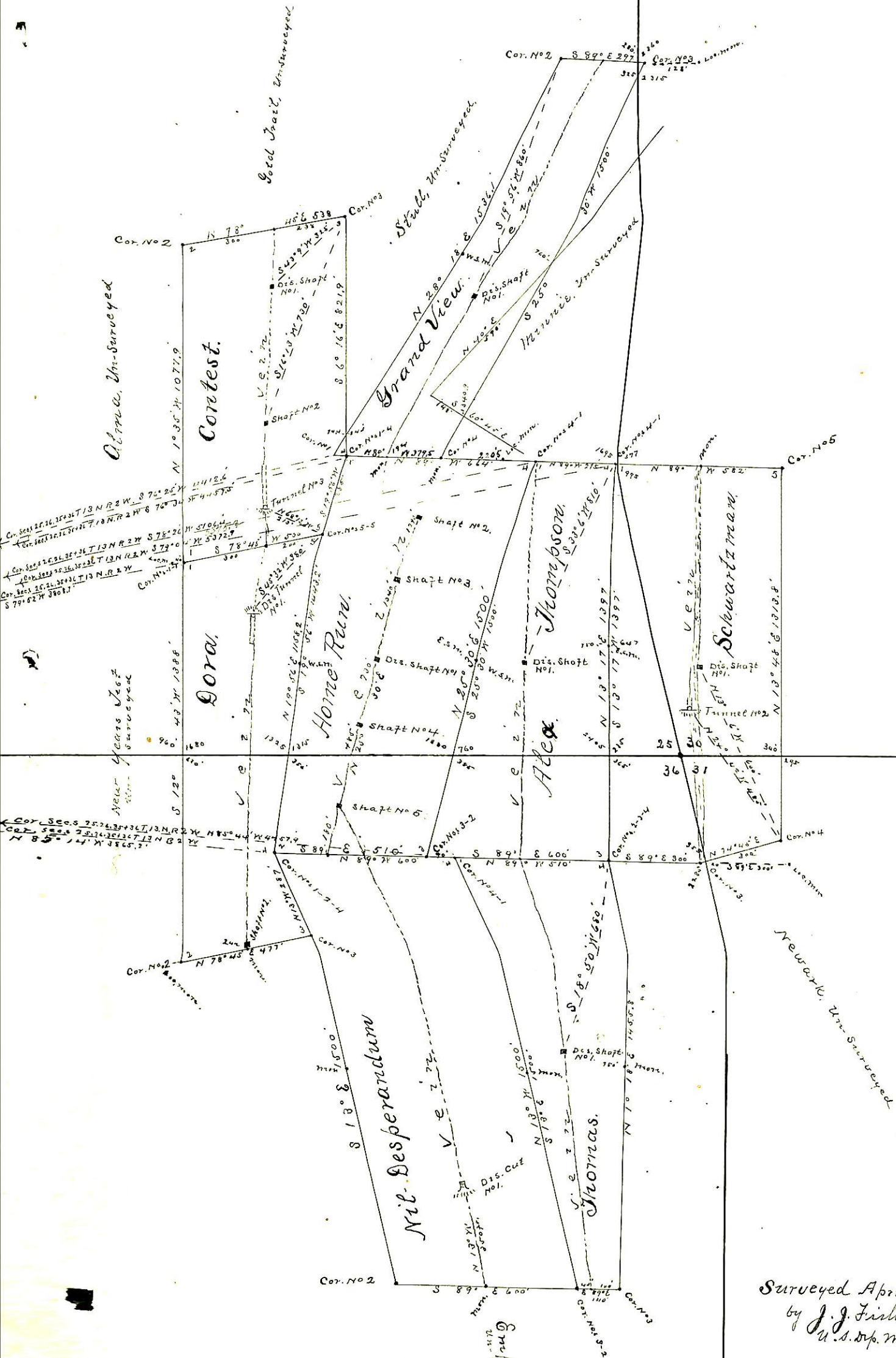
the Survey they describe, are hereby approved. A true copy of the copy of the location

certificate filed by the applicant for survey is included in the field notes.

George Christ

U. S. Surveyor General for *Arizona*

Survey No 1549.
Prescott Land District.



See corrective plat herewith

Compress. Un-surveyed.

Surveyed April 22-26-1901
by J. J. Fisher
U.S. Dep. Min. Surveyor.

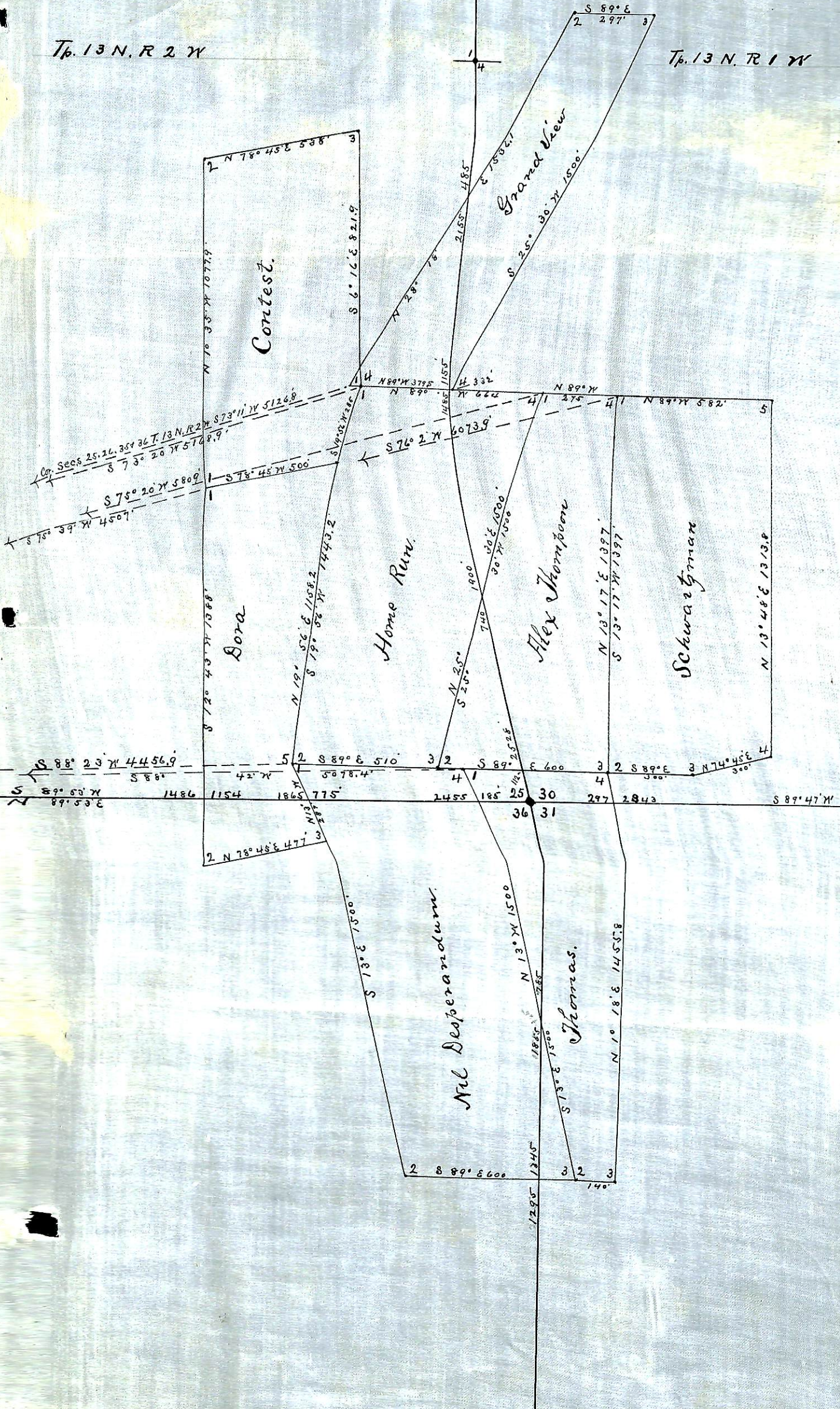
POOR QUALITY

The following pages are scanned at the best possible quality setting. The original pages are of poor quality and this is the best possible reproduction.

Survey No 1549
Prescott Land District

Tp. 13 N. R 2 W

Tp. 13 N. R 1 W



UNITED STATES DEPARTMENT OF THE INTERIOR 9605 (956)
BUREAU OF LAND MANAGEMENT M.S. 1549
ARIZONA STATE OFFICE

NOTICE OF CANCELLATION OF MINERAL SURVEY

The Nil Desperandum, Thomas, Home Run, Alex Thompson, Schwartzman, Grand View, Dora and Contest lodes, Mineral Survey No. 1549, located in sections 30 and 31, Township 13 North, Range 1 West and sections 25 and 36, Township 13 North, Range 2 West, Gila and Salt River Meridian, Arizona, are hereby canceled.

These claims have not been filed with the Arizona State Office, Bureau of Land Management, in accordance with Section 314, 90 STAT. 2769, (43 U.S.C. 1744).

This cancellation was necessitated to clear the record.

The Mineral Survey Plat should be noted as follows:

"Nil Desperandum, Thomas, Home Run, Alex Thompson, Schwartzman, Grand View, Dora and Contest lodes, M.S. 1549, were canceled June 30, 2008, by memo 9605 (956) M.S. 1549, which is now a part of the original field notes."

June 30, 2008
Date

Stephen K. Hansen
Chief Cadastral Surveyor of Arizona