

MS

0

1

5

7

0

Rec'd June 27

U. S. L. M., 1570

75 notes
4 add'l cont. L. M.

(4-683.)

Mineral Survey No. 1570

Lot No.

Prescott

Land District.

FIELD NOTES

OF THE SURVEY OF THE MINING CLAIM OF

B. C. Reddon

KNOWN AS THE

White Spur Challenge, Mountain Star, Mayoria No. 1, Mayoria No. 2, & Maygie.

Hassayampum

Mining District,

Yavapai

County,

Arizona

Section approx Township 12 North, Range 3 West. (uncorrelated).

Surveyed under instructions dated May 27th, 1901,

by J. J. Fisher

U. S. Deputy Mineral Surveyor

Claim located See loc. notices 1

Survey commenced June 17th, 1901

Survey completed June 20th, 1901

6-160

Address.

Ed. Brock
agent for claimants
Prescott
Arizona

PRELIMINARY OATHS OF ASSISTANTS IN SURVEY OF MINING CLAIM.

WE, E. H. Drafer and W. H. Ferguson, do solemnly swear that we will well and faithfully execute the duties of chain carriers; that we will level the chain upon even and uneven ground and plumb the tally-pins, either by sticking or dropping the same; that we will report the true distance to all notable objects, and the true length of all lines that we assist in measuring, to the best of our skill and ability, and in accordance with instructions given us, in the survey of the Mining Claim of B. C. Reddon

....., known as the White Spar, Challenge Mountain Star, Maggie, Majorie No. 1, & Majorie No. 2 situate in Hessaryanpis mining district, Jurupie County, Oregon in Section, Township No., Range No.

E. H. Drafer....., Chainman.
W. H. Ferguson....., Chainman.

Subscribed and sworn to by the above-named persons before me this 17th day of June, 1891.

J. J. Fisher
Notary Public

I, W. H. Ferguson, do solemnly swear that I will well and truly perform the duties of axeman, in the establishment of corners and other duties, according to instructions given me and to the best of my skill and ability, in the survey of the Mining Claim of B. C. Reddon

known as the Maggie, Majorie No. 1 & Majorie No. 2 White Spar, Challenge Mountain Star, more fully described in the preceding affidavit.

W. H. Ferguson....., Axeman.

Subscribed and sworn to by the said W. H. Ferguson before me this 17th day of June, 1891.

My commission expires
May 19 1904

J. J. Fisher
Notary Public

I, E. H. Drafer, do solemnly swear that I will well and truly perform the duties of flagman, in the establishment of corners and other duties, according to instructions given me and to the best of my skill and ability, in the survey of the Mining Claim of B. C. Reddon

known as the White Spar, Challenge Mountain Star Maggie, Majorie No. 1 & Majorie No. 2 more fully described in the preceding affidavit.

E. H. Drafer....., Flagman.

Subscribed and sworn to by the said E. H. Drafer before me this 17th day of June, 1891.

My commission expires
May 19 1904

J. J. Fisher
Notary Public

SURVEY NO.1570.

Feet

WHITE SPAR LODGE.

Beginning at cor. No. 1, the N.W.Cor. of location identical with same, which is also cor. No. 2 of Challenge Lode of this Survey.

A porphyry stone 12 x 12 x 24 ins. set 1 ft. in ground, alongside a mon. of stones 3 x 3 ft. Stone marked W.S.No.1-1570 and C.No.2-1570

A X on a porphyry rock in place marked B.R.W.S.No.1-1570 brs. N.58° 15' E. 140 ft. No other brs. available.

U.S.M.M. No.1570 H.D. brs.N.31° 49' W. 1472.9 ft.

Thence S. 15° 18' E

Var.14 ° E.

1256

To cor. No.2, identical with S.W.Cor. of location.

A porphyry stone 8 x 12 x 36 ins. marked W.S.No.2-1570, alongside a mon. of stones 3 x 3 ft. No brs. available.

Thence N.76° 30' E.

Var.14° E.

300

To S.C.E. identical with S.C.E.of location.

A porphyry stone 6 x 8 x 24 ins. set 1 ft. in ground alongside a mon of stones 3 x 3 ft. Stone marked S.C.E.W.S.No.1570.

600

To cor. No.3 , original cor. destroyed.

A porphyry stone 8 x 12 x 24 ins. set 1 ft. in ground alongside a mon. of stones 3 x 3 ft. Stone marked W.S.No.3-1570.

A X on a porphyry rock in place marked B.R.W.S.No.3-1570 brs. S. 44° 30' W. 30.7 ft.

A X on a porphyry rock in place marked B.R.W.S.No.3-1570 brs. N. 25° 50' W. 30.2 ft.

SURVEY NO.1570.

Feet

Thence N.15° 18' W.

Var.14° E.

1233 To S.C.E.of the Maggie Lode of this Survey.

1256 To cor. No. 4, which is also cor. No. 3 of the Challenge Lode of this Survey, identical with cor. of location.

Cut a X on a porphyry rockin place , marked W.S.No.4-1570 and C.No.3-1570. Alongside built a mon. of stones 3 x 3 ft.
No brs. available.

Thence S.76° 30' W.

Var.14° E.

22.4 To,intersect line 1-4 of the Maggie Lode of this Survey at N.58° 45' W. 32.6 ft. from the S.C.E.of the Maggie Lode.

300 To N.C.E.which is also the S.C.E.of Challenge Lode of this Survey, identical with location .

A porphyry stone 6 x 10 x 28 ins. set 1 ft. in ground alogside a mon of stones 3 x 3 ft. Stone marked N.C.E.W.S.No.1570, and S.C.E.C.No.1570.

600 To cor. No.1, the place of beginning survey of exterior boundaries.

* * * *

CHALLENGE LODE.

Beginning at cor. No. 1, the N.W.cor. of location identical with same.

A porphyry stone 10 x 10 x 24 ins. set 1 ft. in ground alongside a mon. of stones 3 x 3 ft. Stone marked C.No.1-1570.

A X on a porphyry roc in place marked B.R.C.No.1-1570, brs. N.32° E.24.8 ft.

A X on a porphyry rock in place marked B.R.C.No.1-1570, brs. S.29.25 E. 50.5 ft.

-3-
SURVEY NO. 1570.

| | |
|--------|---|
| Feet | U.S.L.M. No. 1570 H.D.brs.S.60° 35' W. 352 ft. |
| | Thence S.18° 15' E. |
| | Var.14° E. |
| 1500 | To cor. No. 2, which is also cor. No. 1 of the White Spar Lode of this Survey. Cor. described above. |
| | Thence N.76° 30'E. |
| | Var.14° E. |
| 300 | To S.C.E. which is also N.C.E. of White Spar Lode of this Survey. Mon. described above. |
| 577.6 | To intersect line 1-4 Maggie Lode of this Survey, at N.58° 45' W. 32.6 ft. from S.C.E. of the Maggie. |
| 600 | To cor. No. 3, which is also cor. No. 4 of the White Spar Lode of this Survey, cor. described above. |
| | Thence N.18° 15' W. |
| | Var.14° E. |
| 372.6 | To intersect line 1-2 of the Maggie Lode, this Survey at N. 31° 15' E. 257.8 ft. from cor. No.1 Maggie. |
| 1240.5 | To intersect line 1-2 of the Mountain Star Lode of this Survey at N.42° 15' W. 145.1 ft. from cor. No. 2. |
| 1500 | To cor. No. 4, identical with N.E. Cor. of location. A porphyry stone 8 x 10 x 24 ins. set 1 ft. in ground alongside a mon. of stones 3 x 3 ft. Stone marked C.No.4-1570. |
| | A X on a porphyry rock in place marked B.R.C.No.4 1570, brs. N.62° 55' W. 55 ft. |
| | A X on a porphyry rock in place marked B.R.C.No.4-1570, brs. S. 81° 41' W. 55 ft. |

SURVEY NO.1570.

Feet

Thence S.76° 30' W.

Var.14° E.

Mountain Star

120.3 To intersect line 1-2 of the ~~Marjorie~~ lode of this Survey at N.42° 15' W. 440 ft from cor. No. 2.

300 To N.C.E. identical with N.C.E. of location.

A porphyrysstone 6 x 12 x 24 ins set 1 ft. in ground alongside a mon. of stone 3 x 3 ft. Stone marked N.C.E.C.No.1570.

600 To cor. No. 1, the place of beginning survey of exterior boundaries.

* * * *

MOUNTAIN STAR LODE.

Beginning at cor. No. 1, the N.W. Cor. of location identical with same.

A granite stone 8 x 10 x 24 ins. set 1 ft. in ground, alongside a mon. of stones 3 x 3 ft. Stone marked M.S.No.1-1570.

A X on a granite rock in place marked B.R.M.S.No. 1-1570 hrs. N.61° 45' W. 5.8 ft.

A X on a granite rock in place marked B.R.M.S.No. 1-1570 hrs. S.58° E.42'5 ft.

U.S.L.M.No.1570 H.D. hrs.S.3° 14' W. 1070.9 ft.

Thence S. 42° 15' E.

Var.14° E.

74 To cor. No. 4, Marjorie ^{No. 1} lode of this Survey.

414 To E.C.E. of the Marjorie ^{No. 1} lode of this Survey.

754 To cor. No. 1, Marjorie ^{No. 1} lode of this Survey.

1060 To intersect line 1-4 of the Challenge Lode of this Survey at S.76° 30' W. 120.3 ft. from cor. No. 4.

1354.9 To intersect line 3-4 of the Challenge Lode this Survey, at S.18° 15' E. 259.5 ft. from cor. No. 4.

1500 To cor. No.2, identical with S.W.Cor. of location.

A porphyry stone 8 x 8 x 24 ins. set 1 ft. in ground alongside a mon. of stones 3 x 3 ft. Stone marked

Feet

M.S.No.2-1570. No hrs. available.

Thence N.47° 45' E.

Var. 14° E.

300 To S.C.E., identical with S.C.E. of location.
 A porphyry stone 6 x 6 x 24 ins. set 1 ft. in ground
 alongside a mon. of stones 3 x 3 ft. Stone marked
 S.C.E.M.S.No.1570.

600 To cor. No. 3, identical with S.E.Cor. of location.
 A porphyry stone 6 x 12 x 24 ins. set 1 ft. in
 ground alongside a mon. of stones 3 x 3 ft. Stone
 marked M.S.No.3-1570.

A cross on a porphyry rock in place marked B.R.M.
 S.No.3-1570, hrs. N.47° 45' E. 25 ft.

Thence N.42° 15' W.

Var.14° E.

1500 To, cor. No. 4,, identical with N.E.Cor. of location.
 A porphyry stone 4 x 12 x 24 ins. set 1 ft. in
 ground alongside a mon. of stones 3 x 3 ft. Stone
 marked M.S.No.4-1570.

A cross on a porphyry rock in place marked B.R.M.S
 No.4-1570 hrs. N. 47° 45' E. 21 ft.

Thence S.47° 45' W.

Var.14° E.

300 To N.C.E. identical with N.C.E. of location.
 A porphyry stone 4 x 10 x 24 ins. set 1 ft. in
 ground alongside a mon. of stones 3 x 3 ft. Stone
 marked N.C.E.M.S.No.1570.

600 To cor. No.1, the place of beginning survey of ex-
 terior boundaries.

SURVEY NO.1570.

Feet

MARJORIE NO.1.LODE.

Beginning at cor. No. 1, the S.E.Cor. of location, identical with same.

A porphyry stone 4 x 8 x 24 ins. set 1 ft. in ground, alongside a mon. of stones 3 x 3 ft. Stone marked M.No.1, 1-1570. No brs. available.

U.S.L.M.No.1570 H.D.brs. S.47° 58' W. 763.2 ft.

Thence S.77° W.

Var.14° E.

750 To S.S.Mon.a mon. of stones 2 1/2 x 3 ft.

1500 To cor. No. 2, which is also cor. No.1 of the Marjorie No. 2 Lode, identical with the cor. of location.

A granite stone 8 x 8 x 36 ins. set 1 ft. in ground alongside a mon. of stones 3 x 3 ft. Stone marked M.No.1, 2-1570 and M.No.2, 1-1570 .

A X on a granite rock in place marked B.R.M.No.2, 1-1570 brs. S. 12° 32' W. 42 ft. No other brs.available.

Thence N.42° 15' W.

Var.14° E.

340 is To W.C.E. which is also the E.C.E. of the Marjorie No. 2 Lode of this Survey, identical with location.

A granite stone 6 x 12 x 24 ins. set 1 ft. in ground alongside a mon. of stones 3 x 3 ft. Stone marked W.C.E.M.No.1, 1570. And E.C.E.M.No.2, 1570.

680 To cor. No. 3, which is also cor. No. 4 of the Marjorie No. 2 Lode of this Survey, identical with cor. of location.

A granite stone 6 x 15 x 24 ins. set 1 ft. in ground alongside a mon. of stones 3 x 3 ft. Stone marked M.No.1,3-1570, and M.No.2,4-1570.

SURVEY NO. 1570.

Feet

A X on a granite rock in place marked B.R.M.No.1,
3-1570 brs. S.82° 30' E. 8.2 ft.

A X on a granite rock in place marked B.R.M.No.2,
4-1570 brs.N. 6° 10' W. 8.4 ft.

Thence N.77° E.

Var.14° E.

750 To N.S.Mon., a mon, of stones 2 x 2 ft.

1500 To cor. No. 4, identical with the N.E.Cor. of lo-
cation.

A porphyry stone 6 x 6 x 24 ins. set 1 ft. in
ground alongside a mon. of stones 3 x 3 ft. Stone
marked M. No. 1, 4-1570.

A X on a granite rock in place marked B.R.M.No.1,
4-1570, brs. N. 22° 57' W. 35 ft. No other brs
available.

Thence S.42° 15' E.

Var.14° E.

340 To E.C.E.Mon., identical with E.C.E.of location.

A porphyry stone 8 x 14 x 24 ins. set 1 ft. in
ground alongside a mon. of stones 3 x 3 ft. Stone
marked E.C.E.M.No.1,1570.

680 To cor. No. 1, the place of beginning survey of ex-
terior boundaries.

* * * *

MARJORIE NO.2 LODE.

Beginning at cor. No. 1, the S.E.Cor. of location.
Which is also cor. No. 2 of the Marjorie No.1 Lode of
this Survey, cor. described above.

U.S.L.M.No.1570 H.D., brs. S. 79° E.912 ft.

SURVEY No.1570.

| | |
|------|---|
| Feet | Thence S.79° 41' W. Var.14° E. |
| 750 | To S.S.Mon., a mon. of stones 2 x 2 1/2 ft. |
| 1500 | To cor. No. 2, identical with S.W.Cor. of location. A granite stone 6 x 15 x 24 ins. set 1 ft. in ground alongside a mon. of stones 3 x 3 ft. Stone marked M.No. 2, 2-1570. A X on a granite rock in place, marked B.R.M.No. 2, 2-1570, brs. N.70° 45' W. 45.3 ft. No other brs. available. |
| | Thence N. 42° 15' W Var.14° E. |
| 340 | To W.C.E., identical with W.C.E.of location. A granite stone 6 x 8 x 24 ins. set 1 ft. in ground alongside a mon. of stones 3 x 3 ft. Stone marked W.C.E.M.No.2, 1570. |
| 680 | To cor. No. 3, identical with the N.W.Cor. of location. A granite stone 6 x 12 x 24 ins. set 1 ft. in ground alongside a mon.of stones 3 x 3 ft. Stone marked M.No.2,3-1570. No brs. available. |
| | Thence N.79° 41' E. Var.14° E. |
| 750 | To N .S.Mon., a mon. of stones 2 x 2 ft. |
| 1500 | To cor. No. 4, which is also cor. No. 3 of the Marjorie No.1 Lode of this Survey Cor. described above. |

SURVEY NO. 1570.

Feet

Thence S.42° 15' E.

Var.14° E.

340 To E.C.E.Mon. which is also the W.C.E.of the Marjorie No. 1 Lode of this Survey, mon. described above.

680 To cor. No. 1, the place of beginning survey of exterior boundaries.

* * * *

MAGGIE LODGE.

Beginning at cor. No. 1, the S.W.Cor. of location, identical with same.

A porphyry stone 4 x 6 x 24 ins. set 1 ft. in ground alongside a mon. of stones 3 x 3 ft. Stone marked M.No.1-1570. No brs. available.

U.S.L.M.No.1570 H.D. brs. N. 48° 36' W. 1475.9 ft.

Thence N.31° 15' E.

Var.14° E.

257.8 To intersect line 3-4 of the Challenge Lode of this Survey at N.18° 15' W. 372.6 ft. from cor No. 3 Challenge.

745 To N.S.Mon., a mon of stones 2 1/2 x 2 ft..

1385 To cor. No.2, identical with the N.W.Cor. of location.

A porphyry stone 10 x 12 x 24 ins. set 1 ft. in ground alongside a mon. of stones 3 x 3 ft. Stone marked M.No.2-1570. No brs. available.

Thence S.58° 45' E.

Var.14° E.

300 To N.C.E.Mon. identical with N.C.E.of location.

A porphyry stone 8 x 10 x 24 ins. set 1ft. in ground alongside a mon. of stones 3 x 3 ft.

-10*

SURVEY NO.1570.

Feet

Stone marked N.C.E.M.No.1570.

600

To cor. No. 3, identical with N.E.Cor. of location
A porphyry stone 8 x 8 x 24 ins. set 1 ft. in ground
alongside a mon. of stones 3 x 3 ft. Stone marked
M.No.3-1570.

A X on a porphyry rock in place marked B.R.M.No.
3-1570 brs. N.20° 10' W. 81 ft.

A X on a porphyry rock in place marked B.R.M.No.
3-1570, brs. N.54° 3' E. 60 ft.

Thence S.31° 15' W.

Var.14° E.

640

To S.S.Mon.

1385

To Co.r No. 4 identical with the S.E.Cor. of loca-
tion.

A porphyry stone 8x 8 x 24 ins set 1 ft. in ground
alongside built a mon. of stones 3 x 3 ft. Stone
marked M.No. 4-1570. No brs. available.

Thence N.58° 45' W.

Var. 14° E.

300

To S.C.E. at intersection of line 3-4, of the White
Spar Lode of this Survey at S.15° 18' E. 23 ft. from
Cor. No. 4.

Cut a cross on a porphyry rock in place, for center
point, and marked S.C.E.M.No.1570 alongside a mon. of
stones 3 x 3 ft.

332.6

To intersect line 1-4 of the White Spar Lode of this
Survey at S.76° 30' W. 22.4 ft. from cor. No. 4.

600

To cor. No. 1, the place of beginning survey of ex-
terior boundaries.

SURVEY NO. 1570.

Feet

A R E A .

WHITE SPAR LOPE:

Net Area 17.291 Acres ✓

CHALLENGE LOPE:

Net Area 20.589 " ✓

MOUNTAIN STAR LOPE:

Gross Area 20.660 Acres ✓

Less area in conflict with
Challenge Lode of this Sur. .352 " ✓

Net Area 20.302 " ✓

MARJORIE NO. 1 LOPE:

Net Area 20.429 " ✓

MARJORIE NO. 2 LOPE:

Net Area 19.870 " ✓

MAGGIE LOPE:

Gross Area 19.076 " ✓

Less area in conflict
Challenge Lode of this
Survey .882 ✓With White Spar Lope
of this Survey .006 .882 " ✓Net Area 18.188 " ✓Total Area Lode Claim 116.669 " ✓

* * * *

LOCATION.

This claim is located on unsurveyed land approximately in Tp. 12 N. R. 3 W. in the Hassayampa Mining District, Yavapai County, Arizona Territory, and is bounded on all sides by Government land, there being no adjacent claims.

* * * *

VEINS.

WHITE SPAR VEIN:

Extends from the N.C.E. Mon. in a S.E. course 1256 ft. to S.C.E. Mon.

CHALLENGE VEIN:

Extends from the S.C.E. Mon. in a N.W. course 1500 ft. to the N.C.E.

MOUNTAIN STAR VEIN:

Extends from the discovery cut No. 1 in a S.E. direction 750 ft. and in a N.W. direction 750 ft. to the center ends of claim.

MARJORIE NO.1 VEIN:

Extends from the discovery shaft No. 1 in an E. direction 143 ft. and in a W. direction 1357 ft. to the center ends of claim.

MARJORIE NO.2 VEIN:

Extends from the discovery shaft No. 1, in a W. direction 325 ft. and in an E. direction 1175 ft. to the center ends of claim.

MAGGIE VEIN:

Extends from discovery shaft No. 1 in a S.W. direction 745 ft. and in a N.E. direction 640 ft. to the center ends of claim.

* * * *

EXPENDITURE OF FIVE HUNDRED DOLLARS.

I certify that the value of the labor and improvements upon this claim placed thereon by the claimant and his grantors, is not less than Five Hundred Dollars for each location and that said improvements consist of:

WHITESPAR LODGE:

Discovery Tunnel No. 1, which hrs. from the S.C.E. Mon. N. 13° 30' W. 1065 ft. Course of tunnel N. 18° W.. Tunnel 4 x 6 ft. 200 ft. long.

Value \$2000.00

Tunnel No. 2, which hrs. from S.C.E. Mon. N. 14° 23' W. 1158 ft. Course N. 18° W. Size 4 x 6 ft., 170 ft. long.

Value \$1700.00

Tunnel No. 3, which hrs. from S.C.E. Mon. N. 12° 57' W. 1173 ft. Course N. 18° W. Size 4 x 6 ft. 50 ft. long.

Value \$ 500.00

SURVEY NO.1570.

CHALLENGE LODE:

Discovery Shaft No. 1, which brs. from S.C.E.Mon.
N.18° 15' W. 70 ft. Size, 4 x 6 ft., 150 ft. deep.

Value \$1500.00

Shaft No. 2, which brs. from S.C.E.Mon. N.33° 43'
E. 156 ft. Shaft 4 x 6 ft. 50 ft. deep.

Value \$500.00

Cut No.3, which brs. from the S.C.E.Mon. N.18° 15'
W. 440 ft. Size 4 x 20 ft. 15 ft. face.

Value \$150.00

Shaft No. 4, which brs. from S.C.E.Mon. N.18° 15'
W. 645 ft. Shaft 8 x 20 ft., 20 ft. deep.

Value \$200.00

MOUNTAIN STAR LODE:

Discovery Cut No. 1, which brs. from the S.C.E.Mon.
N. 42° 15' W. 750 feet. Cut 12 x 12 , 10 ft. face.

Value \$150.00

Shaft No. 2, which brs. from S.C.E.Mon. N. 42° 15'
W. 775 ft. Shaft 4 x 6 ft., 110 ft. deep

Value \$1100.00

Cross Cut Tunnel No. 3, on Marjorie Vein, which brs.
from S.C.E.Mon. N.48° 30' W. 976 ft. Course of tunnel
N.77° E. Size 4 x 6 ft., 150 ft. long.

Value \$1500.00

MARJORIE NO.1 LODE:

Discovery Shaft No. 1, which brs. from the E.C.E.Mon
S.77° W. 143 ft. Shaft 4 x 6 ft. 10 ft deep.

Value \$100.00

Shaft No. 2 which brs. from the E.C.Mon. S.77° W.
296 ft. Shaft 6 x 8 ft., 10 ft. deep.

Value \$150.00

Cut No. 3, which brs. from the E.C.E.Mon. S.77°
W. 338 ft. Cut 5 x 12 ft. 10 ft. face .

Value \$100.00

Cut No. 4, which brs. from the E.C.E.Mon. S.77° W.
380 ft. Cut 10 x 12 ft. 12 ft. face.

Value \$200.00

-14-

SURVEY No. 1570.

Cut No. 5, which brs. from the E.C.E. Mon. S. 77° W.
503 ft. Cut 4 x 15 ft. 8 ft. face.,

Value \$75.00

MARJORIE NO. 2 LODE:

Discovery Shaft No. 1, which brs. from the W.C.E. Mon
N. 79° 41' E, 325 ft. Shaft 4 x 6 ft., 10 ft. deep.

Value \$100.00

Four Hundred Dollars worth of improvements of the
No. 3 Tunnel of the Mountain Star Lode of this Survey
is to be credited to the Marjorie No. 2 Lode.

THE MAGGIE LODE:

Discovery Shaft No. 1, which brs. from the S.C.E. Mon
N. 31° 15' E. 745 ft. Shaft 4 x 6 ft., 30 ft. deep.

Value \$300.00

Cross Cut Tunnel No. 2, which brs. from cor. No. 3
S. 40° 56' W. 747 ft. Course of tunnel, N. 58° W.
Size 4 x 6 ft., 175 ft. long.

Value \$1750.00

House on Challenge Lode brs. N. 13° 11' E. 109 ft.
from the S.C.E. of the Challenge Lode. House 18 x 30 ft.

* * * *

INSTRUMENT.

This Survey was made with a Gurley Light Mountain
Transit. The courses were deflected from the true
meridian as determined by a solar and polaris obser-
vations. The distances were measured with a 50 ft.
steel tape and a 100 ft. steel chain.

Prescott, Arizona,

June 25, 1901

J. J. Fisher

U.S. Dep. Mineral Surveyor.

Survey No. 1570.

U. S. Location Monument No. 1570, H. D.

There being no cor. of the public surveys, or U. S. location mon. within two miles of this survey, I erected a mon. on a high point visible from all directions and so located as to be permanent.

Cut a cross (x) on a granite boulder in place 2x3 ft. 2 feet above ground and U. S. L. M. No. 1570 H. D. along side built a mon. of stones 4x4 ft. 6 ft. high.

A x on a granite rock in place, marked B. R. U. S. L. M. No. 1570 H. D. brs. N. 20° 35' E. 46.5ft.

A x on a granite rock in place, marked B. R. U. S. L. M. No. 1570 H. D. brs. N. 15° 53' W. 54.1 ft.

Oro Fino brs. S. 35° E. about 1.5 miles.

Jersey P. O. brs. East about 3 miles.

Walnut Grove brs. S. W. about 5 miles.

Copper Basin brs. North about 4 miles.

Prescott brs N. E. about 15 miles.

Prescott Ariz.

June 25th, 1901.


U. S. Dep. Min. Surveyor.

FINAL OATHS FOR SURVEYS.

LIST OF NAMES.

A list of the names of the individuals employed by J. J. Fisher
 United States Deputy Mineral Surveyor, to assist in running, measuring, and marking the lines
 corners and boundaries described in the foregoing field notes of the survey of the mining claim
 of B. C. Reelton
 known as the White Spar, Challenge, Mountain Star, Maggie ^{majority No. 1 & majority No. 2}
 and showing the respective capacities in which they acted.

- E. H. Draper , Chairman.
- W. H. Ferguson , Chairman.
- W. H. Ferguson , Axman.
- E. H. Draper , Flagman.

FINAL OATHS OF ASSISTANTS.

We, E. H. Draper
 and W. H. Ferguson , do solemnly swear that we assisted J. J. Fisher
Fisher , United States Deputy Mineral Surveyor, in marking the corners and
 surveying the boundaries of the mining claim of B. C. Reelton

known as the White Spar
Challenge, Mountain Star, Maggie ^{majority No. 1 & majority No. 2}, represented
 in the foregoing field notes as having been surveyed by said deputy mineral surveyor and under
 his direction; and that said survey has been in all respects, to the best of our knowledge and
 belief, faithfully and correctly executed, and the corner and boundary monuments established
 according to law and the instructions furnished by the United States Surveyor-General for
Arizona

- E. H. Draper , Chairman.
- W. H. Ferguson , Chairman.
- W. H. Ferguson , Axman .
- E. H. Draper , Flagman.

Subscribed and sworn to by the above-named persons before me
 on this 20th day of June, 1901

J. J. Fisher
 Notary Public.

FINAL OATH OF U. S. DEPUTY MINERAL SURVEYOR

I, J. J. Fisher, U. S. Deputy Mineral Surveyor, do solemnly swear that, in pursuance of instructions received from the United States Surveyor General for Arizona, dated May 29th 1901, I have, in strict conformity to the laws of the United States, the official regulations and instructions thereunder, and the instructions of said Surveyor General, faithfully and correctly executed the survey of the Mining Claim of B. C. Reddy known as the White Spar. Challenge, known as the Mountain Star, Mayoria No. 1, Mayoria No. 2 & Maggie, situate in Hassayampa Mining District, Yavapai County, Arizona, in Section _____, Township No. _____, Range No. _____, and designated as Survey No. 1570, as represented in the foregoing field notes, which accurately show the boundaries of said mining claim as distinctly marked by monuments on the ground, and described in the attached copy of the location certificate, which was received by me from the Surveyor General with said instructions, and that all the corners of said survey have been established and perpetuated in strict accordance with the law, official regulations and instructions thereunder; and I do further solemnly swear that the foregoing are the true and original field notes of said survey and my report therein, and that the labor expended and improvements made upon said mining claim by claimant or his grantors are as therein fully stated, and that the character, extent, location and itemized value thereof are specified therein with particularity and full detail, and that no portion of said labor or improvements so credited to this claim has been included in the estimate of expenditures upon any other claim.

J. J. Fisher
U. S. Deputy Mineral Surveyor.

Subscribed and sworn to by the said J. J. Fisher
U. S. Deputy Mineral Surveyor, before me a Notary Public in
and for Yavapai County, A. T. this 25th
day of June 1901.

Ziba O. Brown
Notary Public



Affidavit of Five Hundred Dollars Improvements.

We, E. H. Draper, and W. H. Ferguson

of lawful age, being first duly sworn according to law, depose and say: That we are acquainted with the White Spar Challenge Mountain Star Maggie Mayoria N^o 1 & Mayoria N^o 2 mining claim, situate in Assayampa Mining District, Yavapai County, Arizona Territory, for which B. C. Reddon

has made application for survey prior to application for patent under the provisions of the Act of Congress, approved May 10, 1872; and that the labor done and improvements made thereon by the applicant and his grantor exceed Five Hundred Dollars in value, for each claim and further, that we are not personally interested in said mine.

E. H. Draper

W. H. Ferguson

TERRITORY OF ARIZONA,

County of Yavapai

} ss:

Sworn to and subscribed before me, this 20th

day of June, 1901.

J. J. Fisher
Notary Public

Jan. 1870

WHITE SPAR.

NOTICE OF LOCATION

Of the White Spar mine, ledge or claim containing Fifteen hundred(1500)feet and located as a gold and silver mine.

The undersigned claim for mining purposes fifteen hundred (1500)feet of this Quartz Ledge in length along the ledge or vein, and three hundred(300)feet on each side of the middle of the vein at the surface;together with all the dips,spurs,and angles,and all valuable mineral deposits contained therein,and all Timber growing within the limits of said claim,and all water and water privileges thereon or appurtenant thereto,under and according to the provisions of an Act of Congress approved May 10" 1872,entitled "An Act to promote the development of the mining Resources of the United States".

This claim commences at this notice which is posted in a conspicuous place on the centre of the ledge,or lode,thence at right angles to said ledge three hundred(300)feet in a westerly course to a monument of stone;thence in a southerly direction parallel with said ledge seven hundred and fifty(750)feet to a monument of stone, thence in an easterly direction at right angles to said last mentioned line Six hundred(600)feet to a stone monument;thence Northerly parallel with said ledge fifteen hundred(1500)feet to a stone monument;thence westerly at right angles to said last mentioned line Six hundred(600)feet to a monument of stone,thence Southerly Seven hundred and fifty(750)feet to the first mentioned monument.

Situated in Hassayampa Mining District,Yavapai County,Arizona Territory and shall be known as the White Spar mine Ledge or Claim.

Dated on the ground this 28" day of May 1880.

Joseph Whitehouse B.A.Mussey

G.J.Wickler Jonathan Rees.

Recorded at request of Jonathan Rees June 4th 1880 at 8 o'clock a.m.in Book I.9 of Mines,Records of Yavapai County,Arizona, at pages 330-331.

William Wilkerson,
County Recorder.

①

CHALLENGE.

NOTICE OF LOCATION.

Know all men by these presents:

That we the undersigned, have this day located fifteen hundred(1500)linear feet of this vein or lode, bearing precious metals, with all dips, spurs, angles and variations, with surface ground Three Hundred(300)feet on each side of the centre of vein, with all mineral deposits contained therein, and all timber growing within the limits of said claim, and all water and water privileges thereon or appurtenant thereto, under and according to the provisions of the mining laws of the United States, under which it is located.

This claim commences at this monument and notice placed upon the ledge, and runs fifteen hundred(1500)feet in a Northerly direction along the ledge.

The Exterior boundaries are as follows, viz:

Commencing at this monument and notice, and running Three Hundred(300)feet in an Easterly direction to monument at S.E. corner of claim; thence in a Northerly direction parallel with the ledge fifteen hundred(1500)feet to monument at N.E. corner of claim; thence in a Westerly direction at right angles across the ledge Six Hundred (600)feet to monument at N.W. corner of claim; thence parallel with the lode in a Southerly direction fifteen hundred(1500)feet to monument at S.W. corner of claim; thence at right angles across the ledge in an easterly direction Three hundred(300)feet to monument upon the ledge and place of beginning.

This ledge may be more generally described as situated (18) Eighteen miles from the town of Prescott, (100) one hundred yards from the trail running to Walnut Grove to Prescott (1-1/2) one mile & half from Oro fino Camp (1) one mile North of West of Furgison mine 1/4 one fourth of a mile from White Spar Cabin and joins the Spar Mine on the North line in Hassayampa Mining District Yavapai County, Arizona Territory, and shall be known as the Challenge Mining Claim.

Dated on the ground this 24" day of May 1886.

George J. Wickler

Joseph Whitehouse

Recorded at the request of George J. Wickler, June 3d A.D. 1886, at 9 o'clock a.m. in Book 22 of Mining Records, pages 230 & 231, Records of Yavapai County, Arizona.

William Wilkerson,
County Recorder.

MOUNTAIN STAR.

NOTICE OF LOCATION.

Know all men by these presents:

That we the undersigned have this day located Fifteen Hundred(1500)linear feet of this vein or lode bearing precious metals, with all dips, spurs, angles and variations with surface ground three Hundred(300)feet on each side of the centre of vein, with all mineral Deposits contained therein and all timber growing within the limits of said claim, and all water and water privileges thereon or appurtenant thereto, under and according to the provisions of the United States Mining Laws under which it is located.

This claim commences at this monument and notice placed upon the ledge and runs seven hundred and fifty(750)feet in a Easterly direction and Seven Hundred and fifty(750)feet in a Westerly direction along the ledge.

The Exterior boundaries are as follows, viz:-

Commencing at a monument of stone on North boundary line, distant three hundred(300)feet in a Northerly direction from Discovery monument, thence in a Westerly direction parallel with the ledge seven hundred & fifty(750)feet to monument of stone at N.W. corner of claim; thence in an Southerly direction at right angles across the ledge Six Hundred(600)feet to monument of stone at S.W. corner of claim; thence in a Northerly direction parallel with the ledge Fifteen Hundred(1500)feet to monument of stone at S.E. corner of claim; thence at right angles across the ledge in a Northerly direction Six Hundred(600)feet to monument of stone at N.E. corner of claim; thence in a westerly direction parallel with the ledge Seven Hundred & fifty(750)feet to monument on Northerly boundary and place of beginning.

This ledge may be more generally described as situated about Eight hundred yards Northerly direction from the White Spar mining claim, and west end of claim about two hundred feet East of the Walnut Grove trail, and about 1-1/2 miles from the Oro Fina Camp, in Hassayampa Mining District, Yavapai County, Arizona Territory, and shall be known as the Mountain Star Mining Claim.

Dated on the ground, this 16th day of August 1886.

S.G. Snapp

George J. Wickler

Joseph Whitehouse

Recorded at the Request of S.G. Snapp, September 25th A.D. 1886, at 10 minutes past 11 o'clock a.m. in Book 22 of Mining Records, pages 491 & 492, Records of Yavapai County, Arizona.

William Wilkerson,
County Recorder.

MAGGIE.

NOTICE OF MINING LOCATION.
Quartz Claim.

To all whom it may concern:

This mining claim, the name of which is the Maggie Mining Claim, situate on lands belonging to the United States of America, and in which there are valuable mineral deposits, was entered upon and located for the purpose of exploration and purchase by Maggie French and David Weikal, the undersigned, on the 14 day of July, 1898.

The length of this claim is 1500 feet and we claim 750 feet in a North easterly direction and 750 feet in a South Westerly direction from the center of the discovery shaft, at which this notice is posted, lengthwise of the claim, together with 300 feet in width of the surface grounds, on each side of the center of said claim. The general course of the lode deposit and premises is from the North East to the South West.

The claim is situated and located in the Hassayampi Mining District, in Yavapai County, in the Territory of Arizona, and the South west corner is adjacent the east side line of the White Spar mine in same district owned by Wickler and Snapp. Located as abandoned property, name and boundary lines unknown.

The surface boundaries of the claim are marked upon the ground as follows: Beginning at the North center end stone monument at a point in a Northeasterly direction 750 feet from the discovery shaft (at which this notice is posted), being in the center of the North end line of said claim; thence West 300 feet to a stone monument, being the North West corner of said claim; thence South 750 feet to a stone monument at the center of the West side line of said claim; thence South 750 feet to a stone monument being at the South West corner of said claim; thence east 300 feet to a stone monument at the center of the South end of said claim; thence East 300 feet to a stone monument, being at the South East corner of said claim; thence North 750 feet to a stone monument being at the center of the east side line of said claim; thence North 750 feet to a stone monument at the North East corner of said claim; thence West 300 feet to the place of beginning.

All done under the provisions of Chapter Six, of Title XXXII, of the Revised Statutes of the United States, and of an Act of the General Assembly of Arizona, entitled "An Act Concerning Mines", approved March 20th, 1895.

Dated and posted on the ground this 14 day of July 1898.

Maggie French and
David Weikal by
their agent T.J. Boltz.

Witness:
George Wickler.

Filed and recorded at request of T.J. Boltz, Sept 2nd A.D. 1898, at 10:55 o'clock a.m. Book 50 of Mines, Page 244, Records of Yavapai County, Arizona.

(Seal) W.I. Johnson,
County Recorder.
E.C. Averyt,
Deputy Recorder.

4

MARJORIE NUMBER ONE.

NOTICE OF MINING LOCATION.

Quartz Claim.

TO ALL WHOM IT MAY CONCERN: This mining claim, the name of which is the Marjorie Number One Mining Claim, situate on lands belonging to the United States of America, and in which there are valuable mineral deposits, was entered upon and located for the purpose of exploration and purchase by The Co-operative Investment and Developing Gold and Silver Mining Company of Arizona, the undersigned, on the 6th day of April, 1899.

The length of this claim is 1500 feet and it claims 150 feet in an easterly direction and 1350 feet in a westerly direction from the center of the discovery shaft, at which this notice is posted, lengthwise of the claim, together with 300 feet in width of the surface grounds, on each side of the center of said claim. The general course of the lode deposit and premises is from the East to the West.

The claim is situated and located in the Hassayampa Mining District, in Yavapai County, in the Territory of Arizona and is the second west extension of the Mountain Star Mine located as abandoned property.

The surface boundaries of the claim are marked upon the ground as follows: Beginning at stone monument at a point in an easterly direction 150 feet from the discovery shaft (at which this notice is posted), being in the center of the east end line of said claim;

thence north 300 feet to a stone monument being the North East corner of said claim; thence west 750 feet to a stone monument at the center of the North side line of said claim; thence west 750 feet to a stone monument being at the north west corner of said claim; thence south 300 feet to a stone monument at the center of the west end of said claim; thence south 300 feet to a stone monument being at the South west corner of said claim; thence East 750 feet to a stone monument being at the center of the south side line of said claim; thence East 750 feet to a stone monument at the South East corner of said claim; thence north 300 feet to the place of beginning.

All done under the provisions of Chapter Six, of Title XXXII of the Revised Statutes of the United States and of an Act of the General Assembly of Arizona, entitled "An Act Concerning Mines", approved March 20, 1895.

Dated and posted on the ground this 6 day of April, 1899.

Witness,

George Wickler,

W.G.Grimmer,

The Co-operative Investment and Developing Gold and Silver Mining Company of Arizona, by Frank M. Thomas, Vice-President of said Company.

Filed and recorded at request of T.J.Boltz, May 25th, A.D.1899, at 12:30 o'clock P.M. in Book 52 of Mines, page 93, Records of Yavapai County, Arizona.

W.I.Johnson,
County Recorder.

(Seal)

By P.J.Farley, Deputy Recorder.



(4-687.)

Surveyor General's Certificate of Approval of Field Notes and Survey of Mining Claim.

Department of the Interior,

Office of U. S. Surveyor General,

Tucson, Arizona

Sept. 10th, 1901, 18th

I, U. S. Surveyor General for

Dist. of Arizona

do hereby certify that the foregoing and hereto attached Field Notes and Return of the Survey of the Mining Claim of

B. C. Reddon

known as the
White Spar, Challenge, Mountain Star,
Maggie, Marjorie No. 1 and Marjorie No. 2
situate in Hassayampa mining district,

Yavapai County, Arizona

in Section approx, Township No. 2 N., Range No. 3 W. (unsurveyed)

designated as Survey No. 1570

executed by J. J. Fisher, U. S. Deputy Mineral

Surveyor, June 17-20th 1901, 18th, under my instructions dated

May 27th 1901, 18th, have been critically examined and the

necessary corrections and explanations made, and the said Field Notes and Return, and

the Survey they describe, are hereby approved. A true copy of the copy of the location

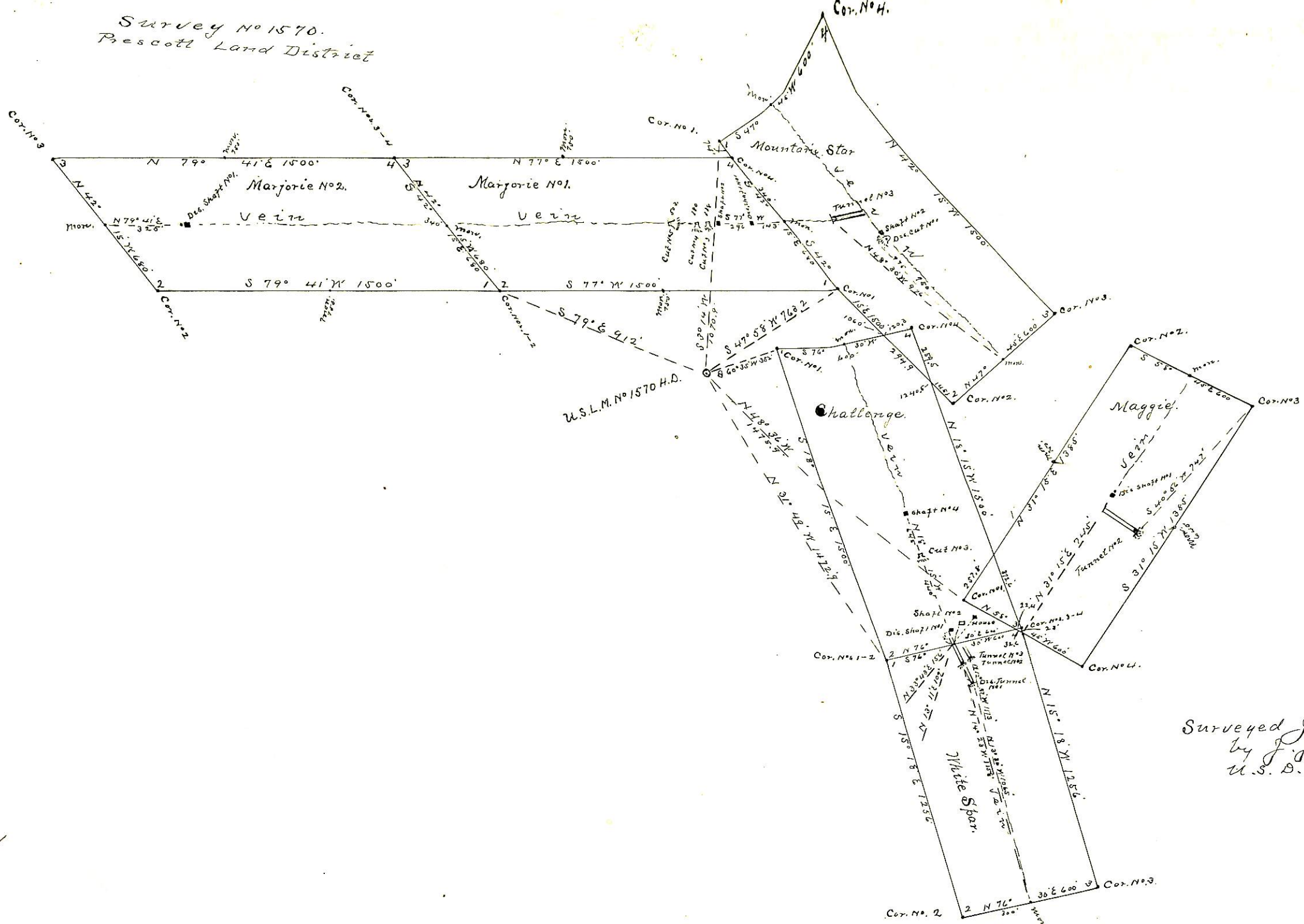
certificate filed by the applicant for survey is included in the field notes.

George Christ

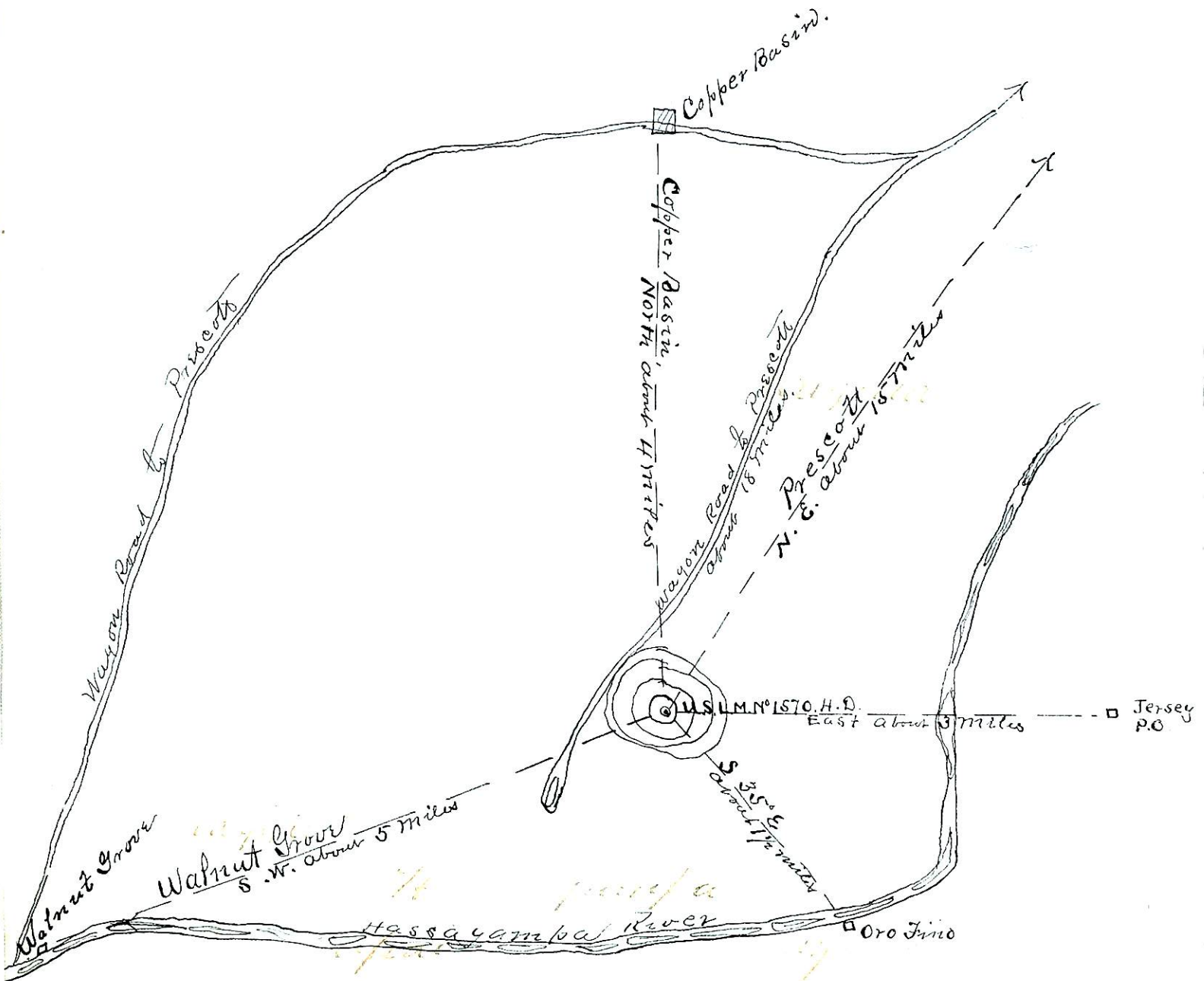
U. S. Surveyor General for

Arizona

Survey No 1570.
Prescott Land District



Surveyed June 17-20 1901
by J. J. Fisher
U.S. D.M. Surveyor.
Scale 500' to 17700'



Handwritten notes at the bottom of the page, possibly "The ... like ..."