

M
S
.

0

1

6

8

0

(4-683.)

Mineral Survey No. 1000

Lot No.

PRESCOTT Land District.

FIELD NOTES

OF THE SURVEY OF THE MINING CLAIM OF

J. H. West and G. A. Badell.

KNOWN AS THE

LELAND CONSOLIDATED LODE

SAN FRANCISCO Mining District,

MOHAVE County, ARIZONA

Section , Township 10 N., Range 20 W. 3. and 4. N. W. of public surveys extended.

Surveyed under instructions dated June 12th, 1902.

by H. E. Wheeler,
U. S. Deputy Mineral Surveyor.

Claim located June 12th, 1902.

Survey commenced June 21st, 1902.

Survey completed June 22th, 1902.

6-160

Address of Claimant,

Room 7, German American Bank Bldg.,

Los Angeles,

Cal.

SURVEY NO. 1680.

FEET

J. B. LANE LODE.

Beginning at Cor. No. 1. *identical with 1 of Ora Fino, 2 of Boston & 4 of Leland Lodes.*

A pine post 3-1/2 ft. long, 4 ins. square, in mound of stone;

Scribed J. B. L. 1--1680.

Whence U. S. L. M. No. 1679, bears N. 85° 14' W. 669.6 ft.

---THENCE N. 58° 35' W.---

1500 To Cor. No. 2. *Identical with Cor. no. 2 of Leland & 4 of Leland no 2.*

A pine post 3-1/2 ft. long, 4 ins. square, in mound of stone;

Scribed J. B. L. 2--1680.

---THENCE N. 23° 40' E.---

300 To westerly end center.

A pine post 3-1/2 ft. long, 4 ins. square, in mound of stone;

Scribed J. B. L. W.-E. C.--1680.

600 To Cor. No. 3.

A pine post 3-1/2 ft. long, 4 ins. square, in mound of stone;

Scribed J. B. L. 3--1680.

---THENCE S. 58° 35' E.---

1500 To Cor. No. 4. *Identical with Cor. No. 2, Ora Fino*

A pine post 3-1/2 ft. long, 4 ins. square, in mound of stone;

Scribed J. B. L. 4--1680.

---THENCE S. 23° 40' W.---

300 To easterly end center and ~~discovery point~~. *Identical with W. E. C. Ora Fino*
whence lode line bears N. 58° 35' W. 1500 ft.

A pine post 3-1/2 ft. long, 4 ins. square, in mound of stone;

Scribed J. B. L. E. E. C.--1680.

600 To Cor. No. 1, the place of beginning.

Containing 20.47 Acres.

O R A F I N O L O D E .

Beginning at Cor. No. 1. *identical with cor. 1. J.B. Lane, 2 of Boston & 4 of Leland.*

A pine post 3-1/2 ft. long, 4 ins. square, in mound of stone;

Scribed O. F. 1--1680.

Whence U. S. L. M. No. 1679, bears N. 85° 14' W. 669.6 ft.

---THENCE N. 23° 40' E.---

300 To westerly end center ~~and discovery point~~. *Identical with E.E.C. J.B. Lane. Whence lode line bears S. 58° 35' E. 1500 ft.*

A pine post 3-1/2 ft. long, 4 ins. square, in mound of stone;

Scribed O. F. W. E. C.--1680.

600 To Cor. No. 2. *identical with 2 of the J.B. Lane*

A pine post 3-1/2 ft. long, 4 ins. square, in mound of stone;

Scribed O. F. 2--1680.

---THENCE S. 58° 35' E.---

1500 To Cor. No. 3.

A pine post 3-1/2 ft. long, 4 ins. square, in mound of stone;

Scribed O. F. 3--1680.

---THENCE S. 23° 40' W.---

300 To easterly end center.

A pine post 3-1/2 ft. long, 4 ins. square, in mound of stone;

Scribed O. F. W. E. C.--1680.

600 To Cor. No. 4. *identical with 2 of the Water and 3 of Boston lodes.*

A pine post 3-1/2 ft. long, 4 ins. square, in mound of stone;

Scribed O. F. 4--1680.

---THENCE N. 58° 35' W.---

1500 To Cor. No. 1, the place of beginning.

Containing 20.47 Acres.

REPORT

WATER LODE.

Beginning at Cor. No. 1. *Identical with Cor. no. 4 Boston, Release and 2 of whaleback.*

A pine post 3-1/2 ft. long, 4 ins. square, in mound of stone;
Scribed W. 1--1680.

Whence U. S. L. M. No. 1679, bears N. 50° 54' W. 2100.1 ft.
---THENCE N. 25° 40' E.---

300 To westerly end center ~~and discrepancy point~~. *Identical with E.E.C., Boston
Whence lode line bears S. 58° 35' E. 819.3 ft.*

A pine post 3-1/2 ft. long, 4 ins. square, in mound of stone;
Scribed W. W. E. C.--1680.

600 To Cor. No. 2. *identical with cor. 3 Boston and 4 Old Firmo lodes.*

A pine post 3-1/2 ft. long, 4 ins. square, in mound of stone;
Scribed W. 2--1680.

---THENCE S. 56° 55' E.---

919.5 To Cor. No. 3.

A pine post 3-1/2 ft. long, 4 ins. square, in mound of stone;
Scribed W. 3--1680.

Whence a post at S. W. Cor. of May Dickson Lode, scribed
M. D. 3--1639, bears N. 76° 1' E. 809.6 ft.

---THENCE S. 25° 40' W.---

300 To easterly end center.

A pine post 3-1/2 ft. long, 4 ins. square, in mound of stone;
Scribed W. E. E. C.--1680.

Whence Boundary Cone Peak bears S. 5° 50' E. about 13500 ft.

403 To Cor. No. 4.

A pine post 3-1/2 ft. long, 4 ins. square, in mound of stone;
Scribed W. 4--1680.

---THENCE N. 72° 25' W. ---

33.7 Cor. No. 4, Release Lode, this survey.

916.3 To Cor No. 1, the place of beginning.

Containing 9.55 Acres.

PENTB O S T O N L O D E .

Beginning at Cor. No. 1. *identical with cor nos of Leland, Mitchell and Whaleback lodges.*
A pine post 3-1/2 ft. long, 4 ins. square, in mound of stone;

Scribed B. 1--1680.

Whence U. S. L. M. No. 1679, bears N. 35° 11' W. 740.3 ft.

---THENCE N. 23° 40' E. ---

500

To westerly end center *and discovery point* ~~and discovery point~~ *Identical with E.E.C. Leland*
whence lode line bears S. 58° 35' E. 1500 ft.

A pine post 3-1/2 ft. long, 4 ins. square, in mound of stone;

Scribed B. W. M. C.--1680.

600

To Cor. No. 2. *Identical with Cor. No. 4 Leland, and 1 of Ora Fins & J.B. Lane.*

A pine post 3-1/2 ft. long, 4 ins. square, in mound of stone;

Scribed B. 2--1680.

---THENCE S. 58° 55' E. ---

1500

To Cor. No. 3. *Identical with Cor. No. 4 Ora Fins and 2 of Waters.*

A pine post 3-1/2 ft. long, 4 ins. square, in mound of stone;

Scribed B. 3--1680.

---THENCE S. 25° 40' W. ---

500

To easterly end center. *Identical with W.E.C. Waters.*

A pine post 3-1/2 ft. long, 4 ins. square, in mound of stone;

Scribed B. E. E. C.--1680.

600

To Cor. No. 4. *Identical with Cor. No. 3 Release, 1 of Waters and 2 of Whaleback*

A pine post 3-1/2 ft. long, 4 ins. square, in mound of stone;

Scribed B. 4--1680.

---THENCE N. 58° 55' W. ---

1500

To Cor. No. 1, the place of beginning.

Containing 20.47 Acres.

L E L A N D L O D G E.

Beginning at Cor. No. 1. *Identical with Cor. No. 1, Boston, Whalback & Mitchell*

A pine post 3-1/2 ft. long, 4 ins. square, in mound of stone;
Scribed L. 1--1680.

Whence, U. S. L. M. No. 1679, bears N. 35° 11' W. 740.3 ft.

---THENCE N. 58° 35' W.---

1500

To Cor. No. 2. *identical with cor. no. 4 of Mitchell, Cor. 1 Leland No 2*

A pine post 3-1/2 ft. long, 4 ins. square, in mound of stone;
Scribed L. 2--1680.

---THENCE N. 25° 40' E.---

300

To westerly end center. *Identical with E. E. C. Leland No. 2*

A pine post 3-1/2 ft. long, 4 ins. square, in mound of stone;
Scribed L. W. E. C. --1680.

600

To Cor. No. 3. *Identical with Cor. No. 4 Leland No. 2, and 2 of J.B. Lane.*

A pine post 3-1/2 ft. long, 4 ins. square, in mound of stone;
Scribed L. 3--1680.

---THENCE S. 50° 35' E.---

1500

To Cor. No. 4. *Identical with Cor. No. 1 J.B. Lane & Prater's and 2 of Boston*

A pine post 3-1/2 ft. long, 4 ins. square, in mound of stone;
Scribed L. 4--1680.

---THENCE S. 25° 40' W.---

300

To easterly end center ~~and discovery point~~. *Identical with W. C. Boston
Whence lode line bears N. 58° 35' W. 1500 ft.*

A pine post 3-1/2 ft. long, 4 ins. square, in mound of stone;
Scribed L. E. E. C.--1680.

600

To Cor. No. 1, the place of beginning.

Containing 20.47 Acres.

FEETL E L A N D N O. 2 L O D E.

Beginning at Cor. No. 1. *Identical with Cor. No. 2 Leland and 4 Mitchell*

A pine post 3-1/2 ft. long, 4 ins. square, in mound of stone;
Scribed No. 2. L. 1--1680.

Whence U. S. L. M. No. 1679, bears S. 78° 16' W. 371.7 ft.

---WHENCE N. 82° 50' W.---

1500 To Cor. No. 2.

This corner falling on the west slope of a steep rocky bluff it was
impractical to set same, therefore set witness Cor. for same.

---WHENCE N. 25° 40' E.---

45 Witness Corner to Cor. No. 2.

A pine post 3-1/2 ft. long, 4 ins. square, in mound of stone;
Scribed No. 2. L. 2--1680, W. C.

300 To westerly end center.

A pine post 3-1/2 ft. long, 4 ins. square, in mound of stone;
Scribed No. 2. L. W. H. C.--1680.

595 Witness Cor. to Cor. No. 3.

A pine post 3-1/2 ft. long, 4 ins. square, in mound of stone;
Scribed No. 2. L. 3--1680, W. C.

This W. C. is on the top of a perpendicular ledge 3 ft. wide.

The true corner falls on the N. side of this bluff and is impossi-
ble to set in its true position.

600 To Cor. No. 3.

---WHENCE S. 82° 30' E.---

1500 To Cor. No. 4. *Identical with Cor. No. 3 Leland and # of J. B. Lane*

A pine post 3-1/2 ft. long, 4 ins. square, in mound of stone;
Scribed No. 2. L. 4--1680.

FRET

---THENCE S. 23° 40' W.---

300

To easterly end center and discovery point. *Identical with W.E.C. Leland
Whence lode line bears N. 82° 30' W. 1500 ft.*
A pine post 3-1/2 ft. long, 4 ins. square, in mound of stone;
Scribed No. 2. L. E. W. C.--1680.

600

To Cor. No. 1, the place of beginning.

Containing 19.84 Acres.

M I T C H E L L L O D E.

Beginning at Cor. No. 1. *Identical with Cor. 1 of Leland, Boston & Whaleback*

A pine post 3-1/2 ft. long, 4 ins. square, in mound of stone;
Scribed M. 1--1680.

Whence U. S. L. M. No. 1679, bears N. 35° 11' W. 740.3 ft.

---THENCE S. 23° 40' W.---

300

To easterly end center and ~~discovery~~ point. *Identical with W.E.C. Whaleback
Whence lode line bears N. 58° 35' W. 1500 ft.*
A pine post 3-1/2 ft. long, 4 ins. square, in mound of stone;
Scribed M. W. N. C.--1680.

600

To Cor. No. 2. *Identical with Cor. No. 5 Whaleback*

A pine post 3-1/2 ft. long, 4 ins. square, in mound of stone;
Scribed M. 2--1680.

---THENCE N. 52° 55' W.---

1500

To Cor. No. 3.

A pine post 3-1/2 ft. long, 4 ins. square, in mound of stone;
Scribed M. 3--1680.

---THENCE N. 23° 40' E.---

300

To westerly end center.

A pine post 3-1/2 ft. long, 4 ins. square, in mound of stone;
Scribed M. W. U. C.--1680.

600

To Cor. No. 4. *Identical with Cor. No. 2 Leland and Cor. No. 1 of Leland No. 2*

A pine post 3-1/2 ft. long, 4 ins. square, in mound of stone;
Scribed M. 4--1680.

FEET

---THENCE S. 53° 35' E.---

1500 To Cor. No. 1, the place of beginning.

Containing 20.47 Acres.

W H A L E B A C K L O D E .

Beginning at Cor. No. 1. *Identical with Cor. No. 1, Leland, Boston & Mitchell*

A pine post 3-1/2 ft. long, 4 ins. square, in mound of stone;
Scribed W. 1--1630.

Whence U. S. L. M. No. 1679, bears N. 35° 11' W. 740.3 ft.

---THENCE S. 53° 35' E.---

1500 To Cor. No. 2. *Identical with Cor. No. 4 Boston, 1 water & 3 Release*

A pine post 3-1/2 ft. long, 4 ins. square, in mound of stone;
Scribed W. 2--1630.

---THENCE S. 25° 40' W.---

232.6 To easterly and center.

A pine post 3-1/2 ft. long, 4 ins. square, in mound of stone;
Scribed W. E. E. C.--1630. Whence ^{lode line and} discovery point bears N. 66° 30' W. 435.4 ft.

272.6 To Cor. No. 3. *Identical with Cor. No. 2 Release*

A pine post 3-1/2 ft. long, 4 ins. square, in mound of stone;
Scribed W. 3--1630.

---THENCE N. 84° 40' W.---

737.8 To Cor. No. 4. *Identical with Cor. No. 1 Release*

A pine post 3-1/2 ft. long, 4 ins. square, in mound of stone;
Scribed W. 4--1630.

---THENCE N. 53° 35' W.---

793.2 To Cor. No. 5. *Identical with Cor. No. 2 Mitchell*

A pine post 3-1/2 ft. long, 4 ins. square, in mound of stone;
Scribed W. 5--1630.

PREF

---THENCE N. 23° 40' E.---

300

To westerly and center. *Identical with E. E. C. Mitchell*

A pine post 3-1/2 ft. long, 4 ins. square, in mound of stone;

Scribed W. W. E. C.--1680. ^{lode line and} Whence discovery point bears S. 53°
35' E. 1000 ft. *Whence lode line S. 66° 20' E. 495.4 ft.*

600

To Cor. No. 1, the place of beginning.

Containing 17.84 Acres.RELEASE LODE.Beginning at Cor. No. 1. *Identical with Cor. No. 4 Whaleback*

A pine post 3-1/2 ft. long, 4 ins. square, in mound of stone;

Scribed R. 1--1680.

Whence U. S. L. M. No. 1679, bears N. 23° 49' W. 1789.7 ft.

---THENCE S. 34° 40' E.---

737.0

To Cor. No. 2. *Identical with Cor. No. 3 Whaleback*

A pine post 3-1/2 ft. long, 4 ins. square, in mound of stone;

Scribed R. 2--1680.

---THENCE N. 23° 40' E.---

40

Easterly and center of Whaleback Lode, this survey.

272.6

To Cor. No. 3. *Identical with Cor. No. 2 Whaleback, 4 Bents & 1 Water*

A pine post 3-1/2 ft. long, 4 ins. square, in mound of stone;

Scribed R. 3--1680.

---THENCE S. 72° 25' E.---

727.6

To Cor. No. 4.

A pine post 3-1/2 ft. long, 4 ins. square, in mound of stone;

Scribed R. 4--1680. *whence cor. No 4 of the Water lode of this survey bears S. 72° 20' E. 88.2 ft.*

---THENCE S. 25° 40' W.---

150

To easterly and center.

A pine post 3-1/2 ft. long, 4 ins. square, in mound of stone;

Scribed R. E. W. C.--1680.

FIRST

450 To Cor. No. 5.

A pine post 3-1/2 ft. long, 4 ins. square, in mound of stone;
Scribed R. 5--1680.

---THENCE N. 84° 40' W.---

1500 To Cor. No. 6.

A pine post 3-1/2 ft. long, 4 ins. square, in mound of stone;
Scribed R. 6--1680. Whence Cor. No. 1, Vivian Lode, M. S. No.
1679, bears S. 24° 1' E. 938.4 ft.

---THENCE N. 25° 40' E.---

300

To westerly end center and discovery point. *Whence lode line bears
S. 84° 40' E. 1500 ft.*

A pine post 3-1/2 ft. long, 4 ins. square, in mound of stone;
Scribed R. W. E. C.--1680.

340

To Cor. No. 1, the place of beginning.

Containing 14.22 Acres. Total Area, 165.27 Acres.

NOTE.

All corners of this survey are identical with the respective corners of the locations.

Variation of the needle 14° E.

A substantial mound of stones of 4 ft. base, and filled with earth and gravel, surrounds each post on this survey.

No bearings are available.

LOCATION.

This claim is located in T. 19 N. R. 20 W., 6 and S. R. M. public surveys extended. *San Francisco Mining District, Mohave County, Arizona.*

EXPENDITURE OF FIVE HUNDRED DOLLARS.

I certify that the value of the labor and improvements upon this claim, placed thereon by the claimants and their grantors, is not less than five hundred dollars for each location, and that said

improvements consist of:

On the J. B. LANE Lode.

- 1 ^{Rise} Shaft 35 ft. deep, which bears from East end center,
N. 53° W. 160 ft. Value, \$250

On the ORA FINO Lode.

- 1 ^{Rise} Shaft 10 ft. deep, which bears from east end center,
N. 55-1/2° W. 256 ft. Value, \$100
- 2 A cut, 13 ft. long, 12 ft. deep at face, course west
from mouth to face.
Face bears from east end center, N. 57-1/4° W. 642 ft. Value, \$150
- 3 A shaft, 10 ft. deep, which bears from east end center,
N. 58-1/4° W. 708 ft. Value, \$100

On the WATER Lode.

- 1 ^{Rise} Shaft, 40 ft. deep, which bears from east end center,
N. 44-1/4° W. 235 ft. Value, \$400

On the LELAND Lode.

- 1 ^{Rise} Tunnel, 455 ft. long, course westerly, the portal
of which bears from east end center, S. 40-1/4° W. 50 ft.
Value, \$4700
- 2 A tunnel 132 ft. long, course westerly, the portal of
which bears from east end center, N. 63-1/4° W. 130 ft. Value, \$1400
- 3 A tunnel, 60 ft. long, course easterly, the portal of
which bears from west end center, S. 20° E. 115 ft. Value, \$700

On the MITCHELL Lode.

- 1 ^{Rise} Shaft, 60 ft deep, which bears from east end center,
N. 52-1/4° W. 62 ft. Value, \$600

On the WHALEBACK Lode.

- 1 ^{Rise} cut, 10 ft. deep at face, course west from face to
mouth. Face bears from Cor. No. 4, N. 34-1/4 E. 260 ft. Value, \$50
- 2 A shaft, 10 ft. deep, which bears from Cor. No. 4,
N. 13° W. 305 ft. Value, \$100

which bears $N. 30^{\circ} 08' W$, 307 ft. from Cor. No. 4.

- 3 A cut, 55 ft. long, 3 ft. deep, begins 12 ft. west of ~~No. 2~~ shaft and runs west, Value, \$250
- 4 A shaft, 10 ft. deep, which bears from east end center, N. $10^{\circ} W$. 70 ft. Value, \$100

On the RELEASE Lode.

- 1 ~~Disc~~ cut, 20 ft. long, 10 ft. deep at face, course west from mouth to face. The face of which bears from Cor. No. 2, S. $2-1/4^{\circ} W$. 150 ft. Value, \$100
- 2 A shaft, 40 ft. deep, which bears from Cor. No. 1, S. $42-1/4^{\circ} E$. 59 ft. Value, \$400

Total Value, \$9400-----

X

DESCRIPTION.

The summit of Leland Mountain, upon which is located U. S. L.M. No. 1679 is situated in the center of the Leland Lode, said summit being 685 ft. higher than Cor. No. 1, of Release Lode. Leland Mt. descends rapidly in all directions. Three parallel ledges pass through this Mt. in an easterly and westerly direction. From the workings on the Leland Lode, the entire claim will be most economically and profitably developed.

INSTRUMENT.

This survey was made with a Lietz Transit, No. 450, in good adjustment. The courses were deflected from the true meridian as determined by Solar observations made with a Saegmueller Attachment and checked by observation on Polaris.

The distances were measured with 100 ft. and 500 ft. steel tapes. All measurements closed and checked within the limit of error allowed by the Manual of Instructions.

H. K. Wheeler

U. S. Deputy Mineral Surveyor.

Conditions of development on Claim for the economical working of the claim.

The physical and topographical conditions are such that the present tunnel now being driven on the "Leland" location will benefit and economically and profitably develop the entire claim for the following reasons.

The "Leland" ledge outcrops for the entire length of the Water, Boston, Leland ^{and} Leland No. 2 locations; the Orations ledge outcrops through the entire length of the Ore Fine Location + JB Lane location, a spur of the ledge running diagonally + crossing the "Leland" ledge; The "Mitchell" and "Whaleback" ledge outcrops throughout the entire length of the locations, + the "Release" ledge crosses the Whaleback ledge. The summit of the Mountain is in the center of the Leland location. By continuing the tunnels on the Leland location and crosscutting to right and left it will develop all the veins on the entire claim, by one system of workings.

\$9400 has been expended in this development and credit of \$500 is due each location contained in the claim.

Development on each separate location would be wasteful + would not show to advantage the size and amount of ore.

AK Wheeler

W. S. Deputy Mineral Surveyor.

(This was copied, in the transcript, just before)
"Description"

FINAL OATHS FOR SURVEYS.

LIST OF NAMES.

A list of the names of the individuals employed by HARRY K. WHEELER
 United States Deputy Mineral Surveyor, to assist in running, measuring, and marking the lines
 corners and boundaries described in the foregoing field notes of the survey of the mining claim
 of J. H. WEST and S. A. BEDELL
 known as the LELAND CONSOLIDATED LODE
 and showing the respective capacities in which they acted.

William Scannell, Chainman.
W. E. Ewing, Chainman.
 _____, Axman.
 _____, Flagman.

FINAL OATHS OF ASSISTANTS.

We, William Scannell
 and W. E. Ewing, do solemnly swear that we assisted
HARRY K. WHEELER, United States Deputy Mineral Surveyor, in marking the corners and
 surveying the boundaries of the mining claim of J. H. WEST and S. A. BEDELL
 _____, known as the
LELAND CONSOLIDATED LODE, represented
 in the foregoing field notes as having been surveyed by said deputy mineral surveyor and under
 his direction; and that said survey has been in all respects, to the best of our knowledge and
 belief, faithfully and correctly executed, and the corner and boundary monuments established
 according to law and the instructions furnished by the United States Surveyor-General for
ARIZONA.

William Scannell, Chainman.
W. E. Ewing, Chainman.
 _____, Axman.
 _____, Flagman.

Subscribed and sworn to by the above-named persons before me

this 29th day of June, 1902.

My Commission Expires
 on the 24th day of Dec. 1905-

C. J. Campston
 Notary Public.

(4-686.)

FINAL OATH OF U. S. DEPUTY MINERAL SURVEYOR

I, HARRY K. WHEELER, U. S. Deputy Mineral Surveyor, do solemnly swear that, in pursuance of instructions received from the United States Surveyor General for ARIZONA, dated June 16 - 1902, I have, in strict conformity to the laws of the United States, the official regulations and instructions thereunder, and the instructions of said Surveyor General, faithfully and correctly executed the survey of the Mining Claim of J. H. WEST and S. R. BEDELL, known as the LELAND CONSOLIDATED LODE, situate in SAN FRANCISCO Mining District, Mohave County, ARIZONA, in Section —, Township No. 19 N., Range No. 20 W. 6th U.S.P.M. of Public Surveys Extended and designated as Survey No. 1680, as represented in the foregoing field notes, which accurately show the boundaries of said mining claim as distinctly marked by monuments on the ground, and described in the attached copy of the location certificate, which was received by me from the Surveyor General with said instructions, and that all the corners of said survey have been established and perpetuated in strict accordance with the law, official regulations and instructions thereunder; and I do further solemnly swear that the foregoing are the true and original field notes of said survey and my report therein, and that the labor expended and improvements made upon said mining claim by claimants or their grantors are as therein fully stated, and that the character, extent, location and itemized value thereof are specified therein with particularity and full detail, and that no portion of said labor or improvements so credited to this claim has been included in the estimate of expenditures upon any other claim.

Harry K. Wheeler
U. S. Deputy Mineral Surveyor.

Subscribed and sworn to by the said HARRY K. WHEELER
U. S. Deputy Mineral Surveyor, before me

this 29th
day of June 1902,

G. J. Compton
Notary Public

My Commission Expires
on the 24th day of Dec. 1905

AFFIDAVIT OF EXPENDITURES UPON MINING CLAIMS.

We, *William Scannell* and *W. Ewing*

being severally sworn, on oath, depose and say: That we are citizens of the United States, and of
the ~~State of California~~ *Territory of Arizona*; that we are well acquainted with the situation and character of the

Mining Claim known as the *LELAND CONSOLIDATED LODE* Mine,

claimed by *J. H. West and S. A. Bedell*, located in *San Francisco* Mining

District, in *Mohave* County, ~~California~~ *Territory of Arizona* Township No. *19 N.*

Range No. *20 W.*, *Gila and Salt River* Base and Meridian surveyed

by *HARRY K. WHEELER*, U. S. Deputy Mineral Surveyor, in the month

of *June*, 1902; that the same is a *LODE* claim, containing *Gold*

; that we have no financial interest in said Mining claim; that we are conversant

with the working of Mining Claims, and that to the best of our knowledge and belief the

amount expended on said Mining Claim in labor and improvements by the said claimants or

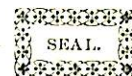
their grantors, is not less than *Four Thousand, Five Hundred* dollars.

Said improvements consist of *Tunnels and Shafts*

William Scannell



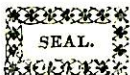
W. Ewing



Subscribed and sworn to before me this *29th* day of

June, 1902

C. J. Compton
Notary Public



15259b500-7-1900

My Commission Expires
on the 24th day of Dec. 1905

AMENDED LOCATION CERTIFICATE.

WHALEBACK.

TERRITORY of ARIZONA |
 | ss:
COUNTY of MOHAVE |

KNOW ALL MEN BY THESE PRESENTS, That J. H. West and S. A. Bedell, the undersigned, have this 14th day of May, 1902, amended, located and claimed, and by these presents do amend, locate and claim, by right of discovery and amended location, in compliance with the mining acts of Congress, approved May 10, 1872, and all subsequent acts, and with local customs, laws and regulations 1495.4 linear feet and horizontal measurement, on the Whaleback lode, vein, ledge or deposit, along the vein thereof, with all its dips, angles and variations, as allowed by law, together with 300 or less feet on each side of the middle of said vein at the surface, so far as can be determined from present developments, and all veins, lodes, ledges or deposits, and surface ground within the lines of said claim 1000 feet running N. 58° 35' W from discovery post and 495.4 feet running S. 66° 20' E. from discovery post; said discovery post being situate upon said lode, vein, ledge or deposit, and within the lines of said claim in San Francisco mining district, County of Mohave, and Territory of Arizona, described by metes and bounds as follows, to wit:

Beginning at Corner No. 1, identical with Corners No. 1 of the Mitchell, Leland and Boston locations, thence S. 58° 35' E. 1500 feet to Cor. No. 2, identical with Cor. No. 4 of the Boston location, Cor. No. 1 of the Water location and Cor. No. 3 of the Release location, thence S. 25° 40' W. 272.6 feet to Cor. No. 3, identical with Cor. No. 2 of the Release location, thence N. 84° 40' W. 737.8 feet to Cor. No.

TERRITORY OF ARIZONA, }
 County of Mohave. } ss.

I, Jno. P. Feeny, Recorder of Mohave
 County, Territory of Arizona, do hereby certify that I have compared the foregoing copy
 of Amended location certificate of the Whaleback Mining Claim,
 and of the endorsement thereupon with the original records of the same on file in this office
 and that the same are correct transcripts therefrom and of the whole of said original records.

WITNESS my hand and the seal of said office this

Sixth day of June, 1902

Jno P. Feeny
 Recorder of Mohave County.



4, identical with Cor. No. 1, of the Release location, thence N. 58° 55' W. 793.2 feet to Cor. No. 5, identical with Cor. No. 2 of the Mitchell location, thence N. 23° 40' E. 600 feet to Cor. No. 1 the place of beginning. This being the same lode originally located on the 21st day of March, 1896, and recorded on the 20th day of May, 1896, in Book M, Page 449, in the office of the Recorder of Mohave County, Territory of Arizona. This claim is located on Leland Mountain and 2-1/2 miles N. of Boundary Cone Mt. peak. This further and amended certificate of location is made without waiver of any previously acquired rights, but for the purpose of correcting any errors in the original location, description or record.

Date of amended location, May 14th, 1902.

..... J. H. WEST, (SEAL)

..... S. A. BEDELL, (SEAL)

WITNESSES: *Thomas Devine*

AMENDED LOCATION CERTIFICATE

WHALFBACK MINING CLAIM.

Filed and Recorded at request of

Thomas Ewing

June 4th A. D., 1882

at 30 minutes past 4 o'clock

P. M., in Book 9 page 4

379 of Mining

Records of Mohave County, Arizona Terr-

tory

~~Approved~~ Geo. P. Senn
County Register.

AMENDED LOCATION CERTIFICATE.WATER.

TERRITORY of ARIZONA |
 COUNTY of MOHAVE | ss:

KNOW ALL MEN BY THESE PRESENTS, That J. H. West and S. A. Bedell, the undersigned, have this 14th day of May, 1902, amended, located and claimed, and by these presents do amend, locate and claim, by right of discovery and amended location, in compliance with the mining acts of Congress, approved May 10, 1872, and all subsequent acts, and with local customs, laws and regulations 819.3 linear feet and horizontal measurement, on the Water lode, vein, ledge or deposit, along the vein thereof, with all its dips, angles and variations, as allowed by law, together with 300 or less feet on each side of the middle of said vein at the surface, so far as can be determined from present developments, and all veins, lodes, ledges or deposits, and surface ground within the lines of said claim 819.3 feet running S. 58° 35' E. from discovery post; said discovery post being situate upon said lode, vein, ledge or deposit, and within the lines of said claim in San Francisco mining district, County of Mohave, and Territory of Arizona, described by metes and bounds as follows, to wit:

Beginning at Corner No. 1, identical with Cor. No. 3 of the Release location, with Cor. No. 2 of the Whaleback location and Cor. No. 4 of the Boston location, thence N. 23° 40' E. 600 feet to Cor. No. 2, identical with Cor. No. 3 of the Boston location and Cor. No. 4 of the Ora Fino location, thence S. 58° 35' E. 819.3 feet to Cor. No. 3, thence S. 23° 40' W. 403 feet to Cor. No. 4, thence N. 72° 25' W. 816.3 feet to Cor. No. 1 the place of beginning. This being the same lode originally located on the 12th day of December, 1901, and recorded on the 30th day of December, 1901, in Book P, Page

TERRITORY OF ARIZONA, }
County of Mohave. } ss.

I, Jno. P. Feeny, Recorder of Mohave
County, Territory of Arizona, do hereby certify that I have compared the foregoing copy
of Amended location certificate of the Water Mining Claim,
and of the endorsement thereupon with the original records of the same on file in this office
and that the same are correct transcripts therefrom and of the whole of said original records.



WITNESS my hand and the seal of said office this
Sixth day of June, 1902.

Jno P. Feeny
Recorder of Mohave County.

255 and 256 of mining records, in the office of the Recorder of Mohave County, Territory of Arizona. This claim is located on Leland Mountain and 2-1/2 miles N. of Boundary Cone Mt. peak. This further and amended certificate of location is made without waiver of any previously acquired rights, but for the purpose of correcting any errors in the original location, description or record.

Date of amended location, May 14th, 1902.

..... J. H. WEST, (SEAL)

..... S. A. BEDELL, (SEAL)

ATTEST: *Monroe E. Sweeney*

MINER BOND

AMENDED LOCATION CERTIFICATE
WATER MINING CLAIM.

Filed and Recorded at request of

Thomas Swiney

June 4th A. D., 1902

at 30 minutes past 4 o'clock

P. M., in Book P page 1

382 of Mining

Records of Mohave County, Arizona Terr.

Per:

John P. Perry

County Clerk.

*Records
true*

AMENDED LOCATION CERTIFICATE.J. B. LANE.

TERRITORY OF ARIZONA |
 COUNTY OF MOHAVE | ss:

KNOW ALL MEN BY THESE PRESENTS, That J. H. West and S. A. Bedell, the undersigned, have this 14th day of May, 1902, amended, located and claimed, and by these presents do amend, locate and claim, by right of discovery and amended location, in compliance with the mining acts of Congress, approved May 10, 1872, and all subsequent acts, and with local customs, laws and regulations 1500 linear feet and horizontal measurement, on the J. B. Lane lode, vein, ledge or deposit, along the vein thereof, with all its dips, angles and variations, as allowed by law, together with 300 or less feet on each side of the middle of said vein at the surface, so far as can be determined from present developments, and all veins, lodes, ledges or deposits, and surface ground within the lines of said claim 1500 feet running N. 58° 35' W. from discovery post; said discovery post being situate upon said lode, vein, ledge or deposit, and within the lines of said claim in San Francisco mining district, County of Mohave, and Territory of Arizona, described by metes and bounds as follows, to wit:

Beginning at Corner No. 1, identical with Cor. No. 1 of the Ora Fino location, Cor. N. 2 of the Boston location and Cor. No. 4 of the Leland location, thence N. 58° 35' W. 1500 feet to Cor. No. 2, identical with Cor. No. 3 of the Leland location and Cor. No. 4 of the Leland No. 2 location, thence N. 23° 40' E. 600 feet to Cor. No. 3, thence S. 58° 35' E. 1500 feet to Cor. No. 4, identical with Cor. No. 2 of the Ora Fino location, thence S. 23° 40' W. 600 feet to Cor. No. 1, the place of beginning. This being the same lode originally located on the 25th day of March, 1896, and recorded on the 20th day of May, 1896, in Book M, Page 447, in the

TERRITORY OF ARIZONA, }
 County of Mohave. } ss.

I, Jno. P. Feeny, Recorder of Mohave
 County, Territory of Arizona, do hereby certify that I have compared the foregoing copy
of Amended location certificate of the J. B. Lane Mining Claim,
 and of the endorsement thereupon with the original records of the same on file in this office
 and that the same are correct transcripts therefrom and of the whole of said original records.

WITNESS my hand and the seal of said office this

Sixth day of June, 1902.

Jno. P. Feeny
 Recorder of Mohave County



office of the Recorder of Mohave County, Territory of Arizona.
This claim is located on Leland mountain and 2-1/2 miles N.
of Boundary Cone Mt. peak. This further and amended certifi-
cate of location is made without waiver of any previously ac-
quired rights, but for the purpose of correcting any errors
in the original location, description, or record.

Date of amended location, May 14th, 1902.

..... J. H. WEST, (SEAL)

..... S. A. BEDELL, (SEAL)

ATTEST: *Thomas C. Bering*

AMENDED LOCATION CERTIFICATE

J. B. LANE MINING CLAIM.

Filed and Recorded at request of

Thomas Cowan

June 4th A. D., 1902

at 30 minutes past 4 o'clock

A. M., in Book P page 4

374 of Mining

Records of Mohave County, Arizona Terr-

itory.

Geo. P. Perry
County Recorder.

Geo. P. Perry
Recd

AMENDED LOCATION CERTIFICATE.ORA FINO.

TERRITORY of ARIZONA |
 COUNTY of MOHAVE | ss:
 |

KNOW ALL MEN BY THESE PRESENTS; That J. H. West and S. A. Bedell, the undersigned, have this 14th day of May, 1902, amended, located and claimed, and by these presents do amend, locate and claim, by right of discovery and amended location, in compliance with the mining acts of Congress, approved May 10, 1872, and all subsequent acts, and with local customs, laws and regulations 1500 linear feet and horizontal measurement, on the Ora Fino lode, vein, ledge or deposit, along the vein thereof, with all its dips, angles and variations, as allowed by law, together with 300 or less feet on each side of the middle of said vein at the surface, so far as can be determined from present developments, and all veins, lodes, ledges or deposits, and surface ground within the lines of said claim 1500 feet running S. $58^{\circ} 35'$ E. from discovery post; said discovery post being situate upon said lode, vein, ledge or deposit, and within the lines of said claim in San Francisco mining district, County of Mohave, and Territory of Arizona, described by metes and bounds as follows, to wit:

Beginning at Corner No. 1, identical with Cor. No. 1 of the J. B. Lane location, Cor. No. 4 of the Leland location and Cor. No. 2 of the Boston location, thence N. $23^{\circ} 40'$ E. 600 feet to Cor. No. 2, identical with Cor. No. 4 of the J. B. Lane location, thence S. $58^{\circ} 35'$ E. 1500 feet to Cor. No. 3, thence S. $23^{\circ} 40'$ W. 600 feet to Cor. No. 4, identical with Cor. No. 2 of the Water location and Cor. No. 3 of the Boston location, thence N. $58^{\circ} 35'$ W. 1500 feet to Cor. No. 1 the place of beginning. This being the same lode originally located on the 23rd day of March, 1896, and recorded on the 20th

TERRITORY OF ARIZONA, }
 County of Mohave. } ss.

I, Jno. P. Feeny, Recorder of Mohave
 County, Territory of Arizona, do hereby certify that I have compared the foregoing copy
of Amended location certificate of the Ora Fino Mining Claim,
 and of the endorsement thereupon with the original records of the same on file in this office
 and that the same are correct transcripts therefrom and of the whole of said original records.

WITNESS my hand and the seal of said office this

Sixth day of June, 1902.

Jno. P. Feeny
 Recorder of Mohave County.



day of May, 1896, in Book M, Page 452, in the office of the Recorder of Mohave County, Territory of Arizona. This claim is located on Leland Mountain and 2-1/2 miles N. of Boundary Cone Mt. peak. This further and amended certificate of location is made without waiver of any previously acquired rights, but for the purpose of correcting any errors in the original location, description, or record.

Date of amended location, May 14th, 1902.

.....J. H. WEST.....(SEAL)

.....S. A. BEDELL.....(SEAL)

ATTEST: *Thomas C. Caring*

AMENDED LOCATION CERTIFICATE
ORA PINO MINING CLAIM.

Filed and Recorded at request of

Thomas Long

June 4th A. D. 1902

at 30 minutes past 4 o'clock

P. M., in Book Q pages

381 of Mining

Records of Mohave County, Arizona

top.

locally
true

Geo. P. Ferry

County Recorder

AMENDED LOCATION CERTIFICATE.BOSTON. ✓

TERRITORY of ARIZONA |
 COUNTY OF MOHAVE | SS:

KNOW ALL MEN BY THESE PRESENTS, That J. H. West and S. A. Badall, the undersigned, have this 14th day of May, 1902, amended, located and claimed, and by these presents do amend, locate and claim, by right of discovery and amended location, in compliance with the mining acts of Congress, approved May 10, 1872, and all subsequent acts, and with local customs, laws and regulations 1500 linear feet and horizontal measurement, on the Boston lode, vein, ledge or deposit, along the vein thereof, with all its dips, angles and variations, as allowed by law, together with 300 or less feet on each side of the middle of said vein at the surface, so far as can be determined from present developments, and all veins, lodes, ledges or deposits, and surface ground within the lines of said claim 1500 feet running S. 53° 35' E. from discovery post; said discovery post being situate upon said lode, vein, ledge or deposit, and within the lines of said claim in San Francisco mining district, County of Mohave, and Territory of Arizona, described by metes and bounds as follows, to wit:

Beginning at Corner No. 1, identical with Corners No. 1 of the Whaleback, Mitchell and Leland locations, thence N. 23° 40' E. 600 feet to Cor. No. 2, identical with Cor. No. 4 of the Leland location and Corners No. 1 of the J. B. Lane and Ora Fino locations, thence S. 53° 35' E. 1500 feet to Cor. No. 3, identical with Cor. No. 4 of the Ora Fino and Cor. No. 2 of the Water location, thence S. 23° 40' W. 600 feet to Cor. No. 4, identical with Cor. No. 1 of the Water location, Cor. No. 3 of the Release location and Cor. No. 2 of the Whaleback loca-

TERRITORY OF ARIZONA, }
County of Mohave. } ss.

I, Jno. P. Feeny, Recorder of Mohave
County, Territory of Arizona, do hereby certify that I have compared the foregoing copy
of Amended location certificate of the Boston Mining Claim,
and of the endorsement thereupon with the original records of the same on file in this office
and that the same are correct transcripts therefrom and of the whole of said original records.

WITNESS my hand and the seal of said office this
Sixth day of June, 1902.

Jno. P. Feeny
Recorder of Mohave County



tion, thence N. 58° 35' W. 1500 feet to Cor. No. 1, the place of beginning. This being the same lode originally located on the 27th day of March, 1896, and recorded on the 20th day of May, 1896, in Book M, Page 451, in the office of the Recorder of Mohave County, Territory of Arizona. This claim is located on Ieland mountain and 2-1/2 miles W. of Boundary Cons Mt. peak. This further and amended certificate of location is made without waiver of any previously acquired rights, but for the purpose of correcting any errors in the original location, description or record.

Date of amended location, May 14th, 1902.

..... J. H. WEST..... (SEAL)

..... S. A. BEDELL..... (SEAL)

ATTEST: *Morris Ewing*

LINEN BOND

AMENDED LOCATION CERTIFICATE

BOSTON MINING CLAIM.

Filed and Recorded at request of

Thomas Ewing

June 4th A. D. 1902

at 30 minutes past 4 o'clock

A. M., in Book P page —

380 of Mining

Records of Mohave County, Arizona Terri-

tory.

John P. Stearns

County Recorder.

AMENDED LOCATION CERTIFICATE.LELAND. ✓

TERRITORY of ARIZONA |
 COUNTY of MOHAVE | ss:

KNOW ALL MEN BY THESE PRESENTS, That J. H. West and S. A. Bedell, the undersigned, have this 14th day of May, 1902, amended, located and claimed, and by these presents do amend, locate and claim, by right of discovery and amended location, in compliance with the mining acts of Congress, approved May 10, 1872, and all subsequent acts, and with local customs, laws and regulations 1500 linear feet and horizontal measurement, on the Leland lode, vein, ledge or deposit, along the vein thereof, with all its dips, angles and variations, as allowed by law, together with 300 or less feet on each side of the middle of said vein at the surface, so far as can be determined from present developments, and all veins, lodes, ledges or deposits, and surface ground within the lines of said claim 1500 feet running N. 58° 35' W. from discovery post; said discovery post being situate upon said lode, vein, ledge or deposit, and within the lines of said claim in San Francisco mining district, County of Mohave, and Territory of Arizona, described by metes and bounds as follows, to wit:

Beginning at Corner No. 1, identical with Corners No. 1 of the Boston, Whaleback and Mitchell locations, thence N. 58° 35' W. 1500 feet to Cor. No. 2, identical with Cor. No. 4 of the Mitchell location and Cor. No. 1 of the Leland No. 2 location, thence N. 23° 40' E. 600 feet to Cor. No. 3, identical with Cor. No. 4 of the Leland No. 2 location and Cor. No. 2 of the J. B. Lane location, thence S. 58° 35' E. 1500 feet to Cor. No. 4, identical with Cor. No. 2 of the Boston location and with Corners No. 1 of the J. B. Lane and Ora Fino locations,

TERRITORY OF ARIZONA, }
County of Mohave. } ss.

I, Jno. P. Feeny, Recorder of Mohave County, Territory of Arizona, do hereby certify that I have compared the foregoing copy of Amended location certificate of the Leland Mining Claim, and of the endorsement thereupon with the original records of the same on file in this office and that the same are correct transcripts therefrom and of the whole of said original records.

WITNESS my hand and the seal of said office this Sixth day of June, 1902.

Jno P. Feeny
Recorder of Mohave County.



thence S. 23° 40' W. 600 feet to Cor. No. 1, the place of beginning. This being the same lode originally located on the 25th day of April, 1897, and recorded on the 24th day of May 1897, in Book N, Page 22, in the office of the Recorder of Mohave County, Territory of Arizona. This claim is located on Leland Mountain and 2-1/2 miles N. of Boundary Cone Mt. peak. This further and amended certificate of location is made without waiver of any previously acquired rights, but for the purpose of correcting any errors in the original location, description or record.

Date of amended location, May 14th, 1902.

.....J. H. WEST.....(SEAL)

.....S. A. BEDELL.....(SEAL)

ATTEST: *Alma Lewis*

MINER'S BOND

AMENDED LOCATION CERTIFICATE

LELAND MINING CLAIM.

Filed and Recorded at request of

Thomas Goring

June 4th A. D., 1902

at 30 minutes past 4 o'clock

P. M., in Book P pages 373

and 374 of Mining

Records of Mohave County, Arizona Territory.

deposited
Geo C Ferris
County Recorder.

AMENDED LOCATION CERTIFICATE.

LELAND NO. 2.

TERRITORY of ARIZONA |
 COUNTY of MOHAVE | SS:

KNOW ALL MEN BY THESE PRESENTS, That J. H. West and S. A. Bedell, the undersigned, have this 14th day of May, 1902, amended, located, and claimed, and by these presents do amend, locate and claim, by right of discovery and amended location, in compliance with the mining acts of Congress, approved May 10, 1872, and all subsequent acts, and with local customs, laws and regulations 1500 linear feet and horizontal measurement, on the Leland No. 2 lode, vein, ledge or deposit, along the vein thereof, with all its dips, angles, and variations, as allowed by law, together with 300 or less feet on each side of the middle of said vein at the surface, so far as can be determined from present developments, and all veins, lodes, ledges or deposits, and surface ground within the lines of said claim 1500 feet running N. 82°30'W. from discovery post; said discovery post being situate upon said lode, vein, ledge or deposit, and within the lines of said claim in San Francisco mining district, County of Mohave, and Territory of Arizona, described by metes and bounds as follows, to wit:

Beginning at Corner No. 1, identical with Cor. No. 2 of the Leland location and with Cor. No. 4 of the Mitchell location, thence N. 82° 30' W. 1500 feet to Cor. No. 2, thence N. 23° 40' E. 600 feet to Cor. No. 3, thence S. 82° 30' E. 1500 feet to Cor. No. 4, identical with Cor. No. 3 of the Leland location and Cor. No. 2 of the J. B. Lane location, thence S. 23° 40' W. 600 feet to Cor. No. 1, the place of beginning. This being the same lode originally located on the 1st day of January, 1901, and recorded on the 30th day of March, 1901, in Book P, Page 174 of mine records, in the office of the Recorder of Mohave County, Territory of Arizona.

TERRITORY OF ARIZONA, }
County of Mohave. } ss.

I, Jno. P. Feeny, Recorder of Mohave County, Territory of Arizona, do hereby certify that I have compared the foregoing copy of Amended location certificate of the Leland No. 2 Mining Claim, and of the endorsement thereupon with the original records of the same on file in this office and that the same are correct transcripts therefrom and of the whole of said original records.

WITNESS my hand and the seal of said office this Sixth day of June, 1902.

Jno P Feeny
Recorder of Mohave County.



This claim is located on Leland mountain and 2-1/2 miles N. of Boundary Cone Mt. peak. This further and amended certificate of location is made without waiver of any previously acquired rights, but for the purpose of correcting any errors in the original location, description, or record.

Date of amended location, May 14th, 1902.

..... J. H. WEST, (SEAL)

..... S. A. BEDELL, (SEAL)

ATTEST

Thomas Living

AMENDED LOCATION CERTIFICATE
LELAND NO. 2 MINING CLAIM.

Filed and Recorded at request of

Thomas Goring

June 4th A. D. 1902

at 30 minutes past 4 o'clock

P. M., in Book D, page8

375 of Minings

Records of Mohave County, Arizona Terri-

tory.

Wm. P. Ferry
County Recorder.

AMENDED LOCATION CERTIFICATERELEASE. ✓

TERRITORY of ARIZONA }
 COUNTY of MOHAVE } SE:

KNOW ALL MEN BY THESE PRESENTS, That J. H. West and S. A. Bedell, the undersigned, have this 14th day of May, 1902, amended, located and claimed, and by these presents do amend, locate and claim, by right of discovery and amended location, in compliance with the mining acts of Congress, approved May 10, 1872, and all subsequent acts, and with local customs, laws and regulations 1500 linear feet and horizontal measurement, on the Release lode, vein, ledge or deposit, along the vein thereof, with all its dips, angles and variations, as allowed by law, together with 300 or less feet on each side of the middle of said vein at the surface, so far as can be determined from present developments, and all veins, lodes, ledges or deposits, and surface ground within the lines of said claim 1500 feet running S. 84° 40' E. from discovery post; said discovery post being situate upon said lode, vein, ledge or deposit, and within the lines of said claim in San Francisco mining district, County of Mohave, and Territory of Arizona, described by notes and bounds as follows, to wit:

Beginning at Corner No. 1, identical with Cor. No. 4 of the Whaleback location, thence S. 84° 40' E. 737.8 to Cor. No. 2, identical with Cor. No. 3 of the Whaleback location, thence N. 23° 40' E. 272.6 feet to Cor. No. 3, identical with Cor. No. 2 of the Whaleback location, Cor. No. 4 of the Boston location and Cor. No. 1 of the Water location, thence S. 72° 25' E. 727.6 feet to Cor. No. 4, thence S. 23° 40' W. 450 feet to Cor. No. 5, thence N. 84° 40' W. 1500 feet to Cor. No. 6, thence N. 23° 40' E. 340 feet to Cor. No. 1 the place of be-

TERRITORY OF ARIZONA, }
 County of Mohave. } ss.

I, Jno. P. Feeny....., Recorder of Mohave
 County, Territory of Arizona, do hereby certify that I have compared the foregoing copy
 of Amended location certificate of the Release Mining Claim,
 and of the endorsement thereupon with the original records of the same on file in this office
 and that the same are correct transcripts therefrom and of the whole of said original records.

WITNESS my hand and the seal of said office this

..... Sixth..... day of June,..... 1902..

.....
 Jno. P. Feeny
 Recorder of Mohave County.



ginning. This being the same lode originally located on the 19th day of March 1896, and recorded on the 20th day of May, 1896, in Book M, Page 448, in the office of the Recorder of Mohave County, Territory of Arizona. This claim is located on Leland Mountain and 2-1/2 miles N. of Boundary Cone Mt. peak. This further and amended certificate of location is made without waiver of any previously acquired rights, but for the purpose of correcting any errors in the original location, description or record.

Date of amended location, May 14th, 1902.

..... J. H. WEST, (SEAL)

..... S. A. BEDELL, (SEAL)

ATTEST *Thomas Lewis*

MINING BOND

AMENDED LOCATION CERTIFICATE

RELEASE MINING CLAIM.

Filed and Recorded at request of

Thomas George

June 4th A. D. 1902

at *30* minutes past *4* o'clock

P. M., in Book *Q*, page *1*

378 of *Mining*

Records of Mohave County, Arizona Terr.

Copy.

Secretary *Geo P Henry*

County Recorder.

AMENDED LOCATION CERTIFICATE.

MITCHELL.

TERRITORY of ARIZONA |
 COUNTY OF MOHAVE | ss:

KNOW ALL MEN BY THESE PRESENTS, That J. H. West and S. A. Bedell, the undersigned, have this 14th day of May, 1902, amended, located and claimed, and by these presents do amend, locate and claim, by right of discovery and amended location, in compliance with the mining acts of Congress, approved May 10, 1872, and all subsequent acts, and with local customs, laws and regulations 1500 linear feet and horizontal measurement, on the Mitchell lode, vein, ledge or deposit, along the vein thereof, with all its dips, angles and variations, as allowed by law, together with 300 or less feet on each side of the middle of said vein at the surface, so far as can be determined from present developments, and all veins, lodes, ledges or deposits, and surface ground within the lines of said claim 1500 feet running N. 58° 35' W. from discovery post; said discovery post being situate upon said lode, vein, ledge or deposit, and within the lines of said claim in San Francisco mining district, County of Mohave, and Territory of Arizona, described by metes and bounds as follows, to wit:

Beginning at Corner No. 1, identical with Corners No. 1 of the Leland, Boston and Whaleback locations, thence S. 23° 40' W. 600 feet to Cor. No. 2, identical with Cor. No. 5 of the Whaleback location, thence N. 58° 35' W. 1500 feet to Cor. No. 3, thence N. 23° 40' E. 600 feet to Cor. No. 4, identical with Cor. No. 1 of the Leland No. 2 location and Cor. No. 2 of the Leland location, thence S. 58° 35' E. 1500 feet to Cor. No. 1, the place of beginning. This being the same lode originally located on the 25th day of April, 1897, and

TERRITORY OF ARIZONA, }
 County of Mohave. } ss.

I, Jno. P. Feeny, Recorder of Mohave County, Territory of Arizona, do hereby certify that I have compared the foregoing copy of Amended location certificate of the Mitchell Mining Claim, and of the endorsement thereupon with the original records of the same on file in this office and that the same are correct transcripts therefrom and of the whole of said original records.

WITNESS my hand and the seal of said office this

Sixth day of June 1902

Jno P Feeny
 Recorder of Mohave County.



recorded on the 24th day of May, 1897, in Book N, Page 21, in the office of the Recorder of Mohave County, Territory of Arizona. This claim is located on Leland Mountain and 2-1/2 miles N. of Boundary Cone Mt. peak. This further and amended certificate of location is made without waiver of any previously acquired rights, but for the purpose of correcting any errors in the original location, description or record.

Date of amended location, May 14th, 1902.

.....J. H. WEST,.....(SEAL)

.....S. A. BELL,.....(SEAL)

Thomas Gwinn
ATTEST:.....

MINING BOARD

MINING BOARD

ATTENDED LOCATION CERTIFICATEMITCHELL MINING CLAIM.

Filed and Recorded at request of

Thomas GeringJune 4th A. D., 1902at 30 minutes past 4 o'clockP. M., in Book P, page 376 of Mining

Records of Mohave County, Arizona Terr.

Geo. P. Terry
 County Recorder.

1071.
 Geo. P. Terry
 Recorder

(4-687.)

Surveyor General's Certificate of Approval of Field Notes and Survey of Mining Claim.

Department of the Interior,

Office of U. S. Surveyor General,

Phoenix, Arizona

Oct. 17th, 181902.

I, U. S. Surveyor General for the District of Arizona, do hereby certify that the foregoing and hereto attached Field Notes and Return of the Survey of the Mining Claim of J. A. West & S. A. Bidell

....., known as the

Leland Consolidated Lode

situate in San Francisco mining district,

Mohave County, Arizona,

in Section, Township No. 19 N., Range No. 20 W. E. S. 12 M.

....., designated as Survey No. 1680 of public survey extended

executed by A. H. Wheeler, U. S. Deputy Mineral

Surveyor, June 21st to 28th 1902, 18....., under my instructions dated

June 16th 1902, 18....., have been critically examined and the

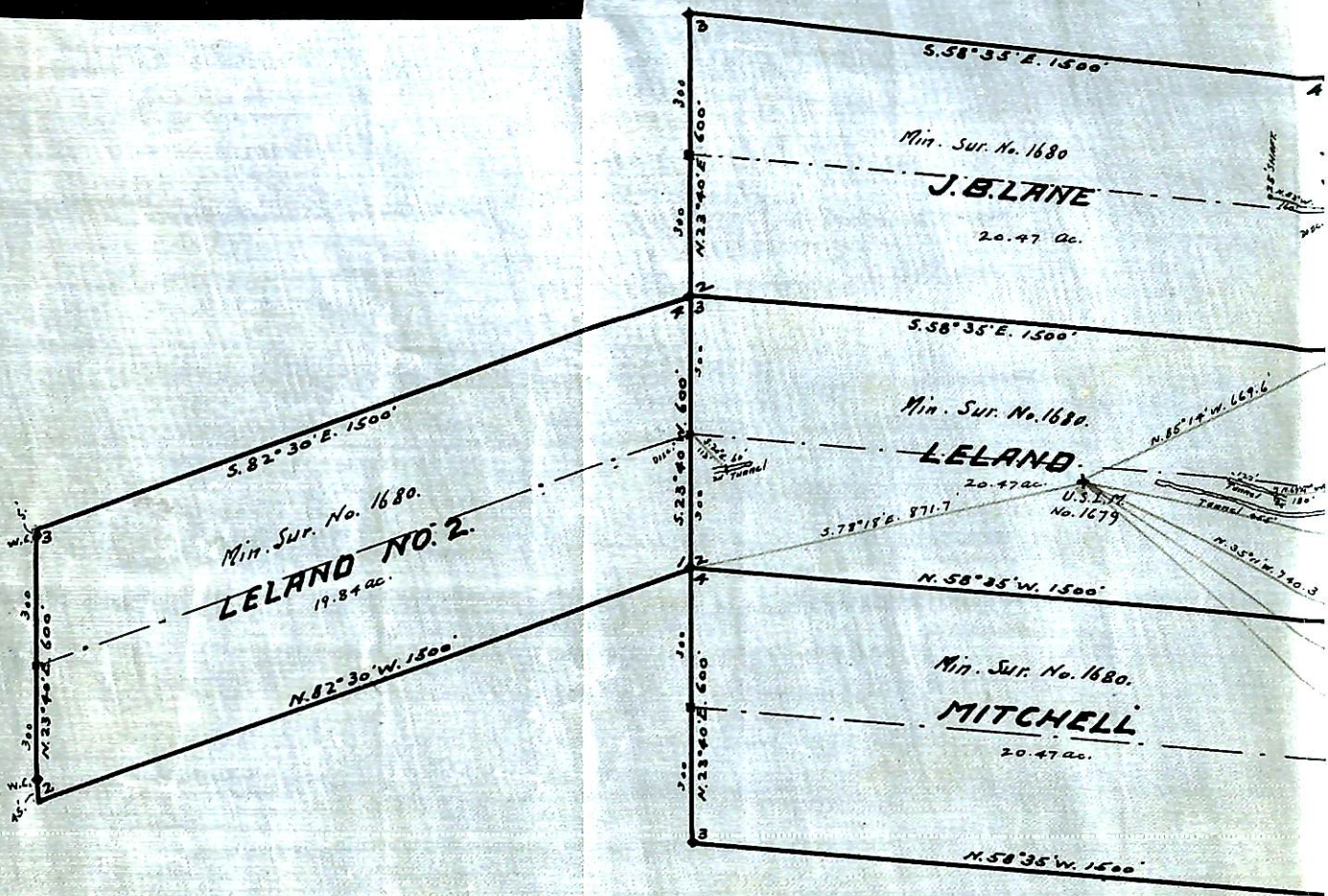
necessary corrections and explanations made, and the said Field Notes and Return, and

the Survey they describe, are hereby approved. A true copy of the copy of the location

certificate filed by the applicant for survey is included in the field notes.

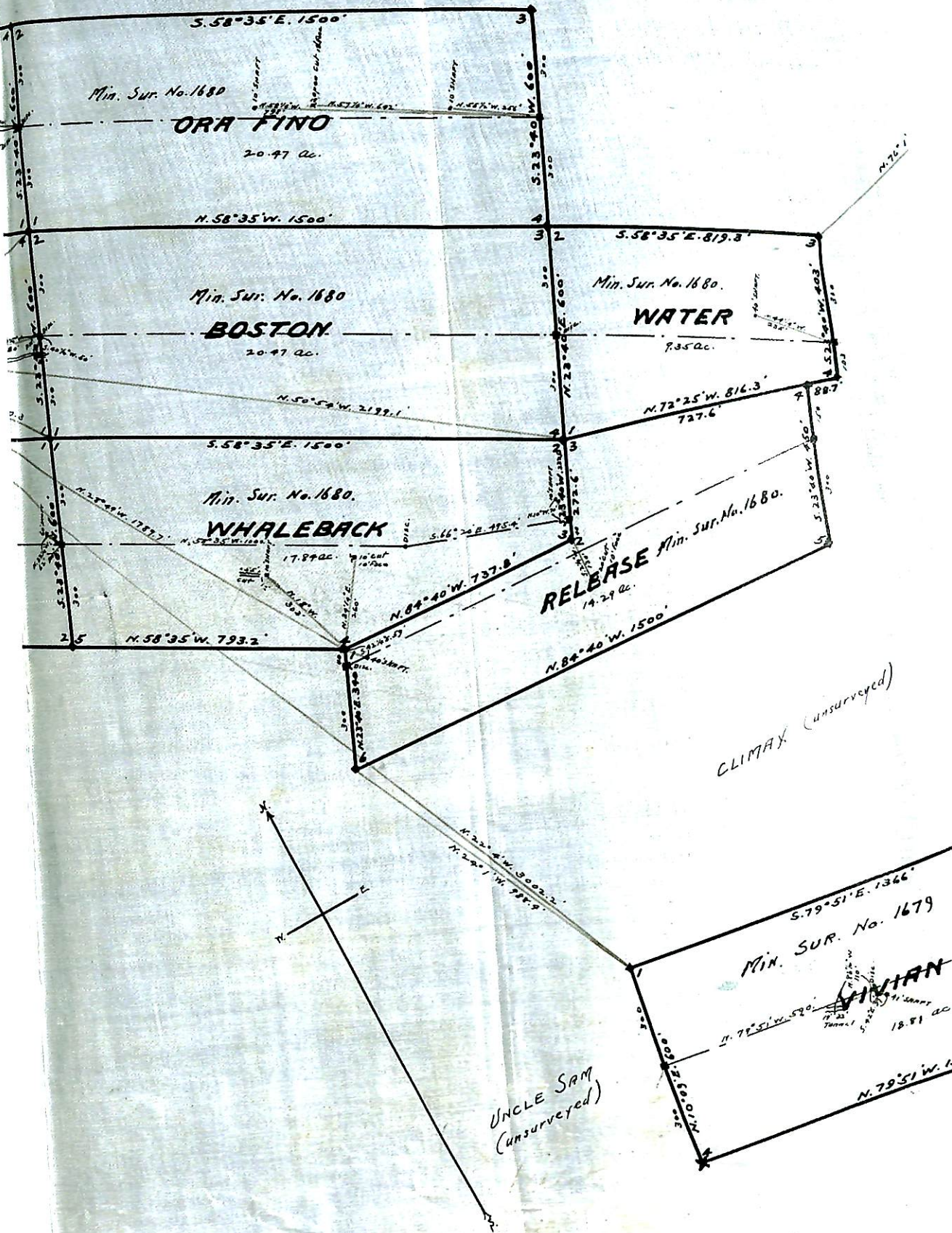
Hugh H. Price

U. S. Surveyor General for Arizona



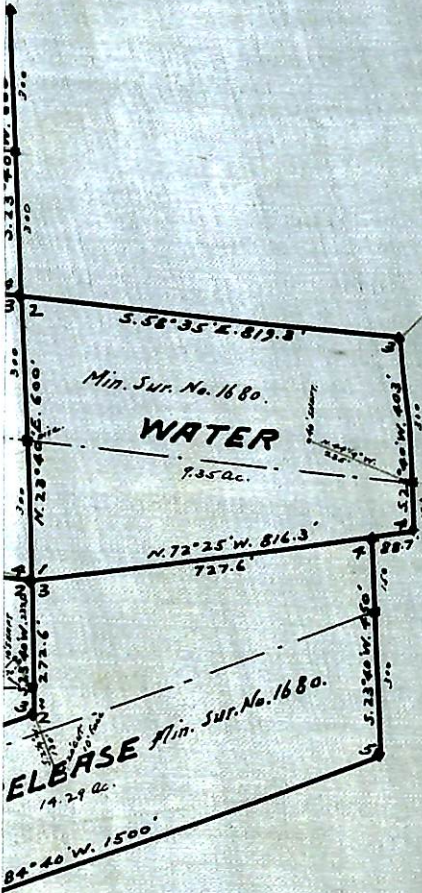
MAP
 OF
LELAND GROUP
 OF MINES
 MOHAVE COUNTY ARIZ.
 MINERAL SURVEY No. 1680
 Surveyed June 1902 by
 H. K. Wheeler.
 U.S. Deputy Mineral Surveyor.

LELAND GROUP, 9 locations Contains 163.69 Acres.
 VIVIAN 1 " " 18.81 "
 Total 182.50 "



Cor. 3. MAY Dickson Ledge.

809.6

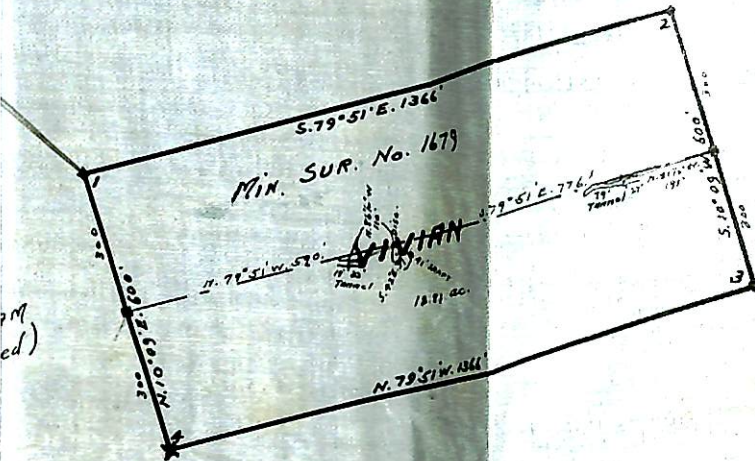


BEN DORIN (unsurveyed)

ALLIANCE (unsurveyed)

CLIMAX (unsurveyed)

ACELSIOR (unsurveyed)



ed)