

**MS**

**0**

**1**

**6**

**9**

**4**

(4--683.)

Mineral Survey No. 1694

Lot No. \_\_\_\_\_

Inscott

Land District.

FIELD NOTES

OF THE SURVEY OF THE MINING CLAIM OF

Isaac T Stoddard

KNOWN AS THE

Copper River, Binghamton Copper, Chama, Sycamore, Otsele and  
Geneseeville, Agua Fria Mining District,

Javaqui County, Arizona

Section \_\_\_\_\_, Township 13 N, Range 2 E

Surveyed under instructions dated July 28<sup>th</sup>, 1902

by J. J. Fisher  
U. S. Deputy Mineral Surveyor.

Claim located See Tr. Certificate

Survey commenced July 30, 1902

Survey completed July 31, 1902

6-100

Address.

Isaac T Stoddard  
Phoenix  
Arizona

# PRELIMINARY OATHS OF ASSISTANTS IN SURVEY OF MINING CLAIM.

WE, E. H. Draper and R. M. Brazle,  
do solemnly swear that we will well and faithfully execute the duties of chain carriers;  
that we will level the chain upon even and uneven ground and plumb the tally-pins,  
either by sticking or dropping the same; that we will report the true distance to all  
notable objects, and the true length of all lines that we assist in measuring, to the best  
of our skill and ability, and in accordance with instructions given us, in the survey of  
the Mining Claim of Isaac J. Woodard

known as the Copper Run, Binghamton, <sup>Copper</sup> Cheuango, Susquehanna, Otselec & Genegantslett  
situate in Agua Fria mining district,  
Yavapai County, Arizona  
in Section \_\_\_\_\_, Township No. \_\_\_\_\_, Range No. \_\_\_\_\_

E. H. Draper, Chainman.  
R. M. Brazle, Chainman.

Subscribed and sworn to by the above-named persons before  
my commission expires May 19, 1904 me this 30<sup>th</sup> day of July, 1902

I, R. M. Brazle, do solemnly swear that I will well and  
truly perform the duties of axeman, in the establishment of corners and other duties,  
according to instructions given me and to the best of my skill and ability, in the survey  
of the Mining Claim of Isaac J. Woodard  
known as the Copper Run, Binghamton, <sup>Copper</sup> Cheuango  
~~known as the~~ Susquehanna, Otselec & Genegantslett  
more fully described in the preceding affidavit.

R. M. Brazle, Axeman.

Subscribed and sworn to by the said R. M. Brazle  
before me this 30<sup>th</sup> day of July, 1902  
My commission expires May 19, 1904

I, E. H. Draper, do solemnly swear that I will  
well and truly perform the duties of flagman, in the establishment of corners and other  
duties, according to instructions given me and to the best of my skill and ability, in the  
survey of the Mining Claim of Isaac J. Woodard  
known as the Copper Run, Binghamton, <sup>Copper</sup> Cheuango  
~~known as the~~ Susquehanna, Otselec & Genegantslett,  
more fully described in the preceding affidavit.

E. H. Draper, Flagman.

Subscribed and sworn to by the said E. H. Draper  
before me this 30<sup>th</sup> day of July, 1902  
My commission expires May 19, 1904



J. J. Fisher  
Notary Public

## COPPER RUIN LODE

Feet

Beginning at cor.No.1, the M.W.Cor.of location, identical with same.

A slate stone 5 x 12 x 24 ins. set 1 ft. in ground alongside a mon. of stones 3 x 3 ft. Stone marked C.R.No.1-1694.

A + on a slate rock in place marked B.R.C.R.No.1-1694 brs.N.61° 47' W. 29.9 ft.

U.S.L.M.No.1694 A.F.D. brs.S.41° 47' E. 841 ft.

Thence S.13° 37' E.

Var.14° E.

750

To W.S.Mon.

1439

To cor.No.2 which is also cor.No.1 of the Binghamton Lode of this Survey, identical with cor.of location.

A slate stone 4 x 15 x 24 ins. set 1 ft. in ground alongside a mon. of stones 3 x 3 ft. Stone marked C.R.No.2-1694, also B.No.1-1694.

A + on a slate reef marked B.R.C.R.No.2-1694, brs. N.27° 15' W. 26.1 ft.

A + on a slate reef marked B.R.B.No.1-1694, brs. S.72° E. 21.2 ft.

Thence N.71° 45' E.

Var.14° E.

300

To S.C.E. which is also the N.C.E. of the Binghamton Lode of this survey.

A slate stone 3 x 10 x 24 ins. set 1 ft. in ground alongside a mon. of stones 3 x 3 ft. Stone marked S.C.E. C.R.No.1694. Also N.C.E.B.No.1694.

600

To cor.No.3, which is also cor.No. 4 of the Binghamton Lode of this Survey. Identical with cor.of location.

COPPER RUIN LODE.

Feet

A slate stone 3 x 10 x 30 ins. set 1 ft. in ground and surrounded by mon. of stones. Stone marked C.R. No.3-1694 and B.No.4-1694. No brs.available.

Thence N.13° 37' W.  
Var.14° E.

750

To E.S.Mon.

1439

To cor.No.4, identical with the N.E.Cor.of location.

A slate stone 4 x 10 x 24 ins. set 1 ft. in ground alongside a mon. of stones 3 x 3 ft. Stone marked C.R.No.4-1694, No brs. available.

Thence S.71° 45' W.  
Var.14° E.

300

To N.C.E. A slate stone 4 x 12 x 24 ins. set 1 ft. in ground alongside a mon. of stones 3 x 3 ft. Stone marked N.C.E.C.R.No.1694.

600

To cor.No.1, the place of beginning survey of exterior boundaries.

\* \* \* \*

*Copper*  
BINGHAMTON <sup>^</sup>LODE.

Beginning at cor.No.1, the N.W.Cor.of location, which is also cor.No. 2, Copper Ruin Lode of this Survey, cor.described above.

U.S.L.M.No.1694 A.F.D. brs.N.16° 2' E.802.6 ft.

Thence S.16° 34' E.  
Var.14° E.

750

To W.S.Mon.

1462

To cor.No.2, which is also cor.No.1 of the Chenango Lode of this Survey, identical with cor.of location.

A slate stone 4 x 15 x 24 ins. set 1 ft. in ground alongside a mon. of stones 3 x 3 ft. Stone marked B.No.2-1694. Also C.No.1-1694. No brs.available.

SURVEY NO.1694.

Feet

Thence N.71° 45' E.

Var.14° E.

300

To S.C.E. which is also the N.C.E. of the Chenango Lode of this Survey.

A slate stone 4 x 10 x 60 ins. set 1 ft. in ground and surrounded by mon. of stones . Stone marked S.C.E.B.No. 1694 and N.C.E.C.No.1694.

600

To cor.No.3, which is also cor.No.6 of the Chenango Lode of this Survey, identical with cor.of location.

A slate stone 4 x 8 x 24 ins. set 1 ft. in ground and surrounded by mon. of stones. Stone marked B. No.3-1694, and C.No.6-1694.

A + on a slate reef marked B.R. B.No.3-1694, brs. N.70° 45' W. 6.5 ft

A + on a slate reef marked B.R.C.No.6-1694, brs.S 32° 30' W. 16.8 ft.

Thence N.16° 34' W.

Var.14° E.

750

To E.S.Mon.

1462

To cor.No. 4 which is also cor.No. 3 of the Copper Ruin of this Survey Cor.described above.

Thence S 71° 45' W.

Var.14° E.

300

To N.C.E. which is also the S.C.E. of the Copper Ruin Lode of this Survey. Mon described above.

600

To cor.No.1, the place of beginning survey of exterior boundaries.

\* \* \* \*

CHENANGO LODE

Beginning at cor.No.1, which is also cor.No.2 of the Binghamton Lode of this Survey. Cor.described above.

U.S.L.M.No.1694 brs.N.5° 8' W.2181.5 ft.

SURVEY NO.1694.

Feet

Thence S.23° E.

Var.14° E.

520

To cor.No 2, identical with W.S.Mon.

A slate stone 4 x 12 x 24 ins set 1 ft. in ground alongside a mn. of stones 3 x 3 ft. Stone marked C.No.2-1694.

A + on a slate rock in place, marked B.R.C.No.2-1694, brs.N.74° 20'E. 100 ft.

Thence S.4° E.

Var.14° E.

980

To cor.No 3, which is also Cor .No.1 Susquehanna Lode of this Survey. Identical with cor. of location.

A slate stone 4 x 12 x 24 ins . set 1 ft. in ground alongside a mon. of stones 3 x 3 ft. Stone marked C.No.3-1694, and S.No.1-1694.

A + on a slate reef marked B.R.C.No.3-1694 brs. N.25° 22' E. 16.3 ft.

A + on a slate reef marked B.R.S.No.1-1694 brs.S.32° 40' E. 40.7 ft.

Thence N.71° 45' E.

Var.14° E.

300

To S.C.E. which is also the N.C.E. of the Susquehanna lode of this Survey. Identical with location.

A slate stone 3 x 12 x 24 ins. set 1 ft. in ground alongside a mon. of stones 3 x 3 ft. Stone marked S.C.E.C.No.1694, and N.C.E.S.No.1694.

600

To cor.No.4, which is also cor.No. 4 of the Susquehanna Lode of this Survey. Identical with cor. of location.

A slate stone 4 x 12 x 24 ins. set 1 ft. in ground alongside a mon. of stones 3 x 3 ft. Stone marked C No4-1694, and S.No.4-1694. No brs. available.

SURVEY NO.1694.

Feet	<p style="text-align: center;">Thence N.4° W. Var.14° E.</p>
980	<p>To cor.No.5, identical with the E.S.Mon. A slate stone 3 x 10 x 24 ins. set 1 ft. in ground alongside a mon of stones 3 x 3 ft. Stone marked C.No.5-1694. No brs. available.</p>
520	<p style="text-align: center;">Thence W.23° W. Var.14° E.</p> <p>To cor.No.6, which is also cor.No. 3 of the Bing hamton Lode of this Survey. Cor.described above.</p>
300	<p style="text-align: center;">Thence S.71° 45' W. Var.14° E.</p> <p>To N.C.E.which is also the S.C.E. of the Bingham- ton lode of this survey. Mon. described above .</p>
600	<p>To cor.No.1, the place of beginning survey of ex- terior boundaries.</p> <p style="text-align: center;">* * * *</p> <p style="text-align: center;"><u>SUSQUEHANNA LODE.</u></p> <p>Beginning at cor.No.1, the N.W.Cor.of location which is also cor.No. 3 of the Chenango Lode of this Survey. Cor.described above.</p> <p style="text-align: center;">U.S.L.M.No.1694 brs.N.7° 20' W.3658.9 ft.</p>
770	<p style="text-align: center;">Thence S.5° 30' W. Var.14° E.</p> <p>To cor.No.2, which is also cor.No.4 of the Otselic of this survey. Identical with cor.of location. A slate stone 5 x 15 x 24 ins. set 1 ft. in ground alongside a mon. of stones 3 x 3 ft. Stone marked SNo.2-1694. and O.No.4-1694. No brs. available.</p>



Feet

Thence N.71° 45' E.

Var.14° E.

300

To So.C.E. which is also the N.C.E.of the Otselic lode of this Survey. Identical with location.

A slate stone 3 x 12 x 24 ins. set 1 ft. in ground surrounded by mon. of stones . Stone marked S.C.E.S.No.1694, and N.C.E.O.No.1694.

600

To cor.No 3, which is also cor.No.1 Otselic and cor.No.1 of the Gen~~negantslett~~ lodes of this survey.

A slate stone 4 x 12 x 24 ins. set 1 ft. in ground alongside a mon. of stones 3 x 3 ft. Stone marked S.No.3-1694, O.No.1-1694, and G.No.1-1694.

A + on a slate reef marked B.R.O.No.1-1694, brs. S.62° 30'W.31ft. No other brs. available .

Thence N. 5° 30' E.

Var.14° E.

770

To cor.no.4, which is also cor.No.4 of the Chenango lode of this Survey. Cor. described above.

Thence S.71° 45' W.

Var.14 ° E.

300

To N.C.E. which is also the S.C.E. of the Chenango lode of this Survey Mon. described above.

600

To cor.No.1 the place of beginning survey or exterior boundaries.

\* \* \* \*

OTSELIC LODE.

Beginning at cor.No.1, the N.E.Cor.of location which is also cor.No.1 of the Gen~~negantslett~~ and cor No.3 of the Susquehanna lodes of this Survey Cor. described above.

U.S.L.M.No. ~~7~~-1694 brs.N.12° 53' W.  
4316.2 ft.

Feet	
	Thence S.2° 45' E. Var.14° E.
750	To E.S.Mon.
800	To N.bank of Agua Fria River.
880	To S.bank Agua Fria River. Course S.E.
1500	To cor.No.2, which is also cor.No. 2 of the Genie- ganslett Lode of this Survey. Identical with cor.of location. A slate stone 5 x 12 x 24 ins. set 1 ft. in ground alongside a mon. of stones 3 x 3 ft. Stone marked O No. 2-1694 and G.No.2-1694. No brs.avail- able.
	Thence S.71° 45' W. Var.14° E.
300	To S.C.E. Identical with S.C.E of location. A slate stone 6 x 10 x 30 ins. set 1 ft. in ground and surrounded by mon. of stones. Stone marked S.C. E.O.No.1694 .
600	To cor.No3, identical with S.W.Cor.of location. A slate stone 3 x 10 x 24 ins. set 1 ft. in ground alongside a mon. of stones 3 x 3 ft. Stone marked O.No.3-1694. No brs. available .
	Thence N.2° 45' W. Var.14° E.
750	To W.S.Mon.
970	To S.bank Agua Fria River.
1050	To N.bank Agua Fria River.
1500	To cor.No.4 which is also cor.No. 2 of the Sus- quehanna Lode of this Survey. Cor.described above.

Feet

Thence N.71° 45' E.

Var.14° E.

300

To N.C.E. which is also the S.C.E. of the Susquehanna lode of this Survey. Mon. described above.

600

To cor.No.1, the place of beginning survey of exterior boundaries.

\* \* \* \*

GENEGANTSLETT LODE

Beginning at cor.No.1, the N.W.Cor.of location which is also cor.No.1 of the Otselic and cor.No.3 of Susquehanna lodes of this Survey. Cor.described above.

U.S.L.M.No.1694 brs. N.12° 53' W. 4316.2 ft.

Thence S.2° 45' E.

Var.14° E.

750

To W.S.Mon.

800

To Agua Fria River.

880

To S.bank Agua Fria River.

1500

To cor.No.2, which is also cor.No. 2 of the Otselic lode of this Survey. Cor.described above.

Thence N.71° 45' E.

Var.14° E.

300

To S.C.E. Identical with S.C.E. of location.

A porphyry stone 6 x 16 x 24 ins. set 1 ft. in ground and surrounded by mon. of stones. Stone marked S.C.E.G.No.1694.

600

To cor.No.3, identical with S.E.Cor.of location.

A slate stone 7 x 18 x 24 ins. set 1 ft. in ground alongside a mon. of stones 3 x 3 ft. Stone marked G.No.3-1694. No brs. available.

Feet

Thence N. 8° 1' W.  
Var. 14° E.

200 To S. bank Agua Fria River.

280 To N. bank Agua Fria River .

1468.7 To cor. No. 4; original cor. of location brs. N.  
71° 45' E. 140 ft.

A slate stone 6 x 16 x 24 ins. set 1 ft. in ground  
and surrounded by a mon. of stones. Stone marked  
G. No. 4-1694. No brs. available.

Thence S. 71° 45' W.  
Var. 14° E.

160 To N.C.E. Identical with N.C.E. of location.

A slate stone 5 x 10 x 24 ins. set 1 ft. in ground  
surrounded by a mon. of stones. Stone marked N.C.E  
G. No. 1694.

460 To cor. No. 1, the place of beginning survey of ex-  
terior boundaries.

\* \* \* \*

LOCATION.

This claim is located on unsurveyed land approx-  
imately in Tp. 12 N. R. 2 E. G. & S. R. Meridian, in  
Agua Fria Mining District, Yavapai County, Arizona  
Territory and is bounded on the E. by the Rio Fria  
Lode, unsurveyed, and on all other sides by U.S. land.

\* \* \* \*

AREA.

Copper Ruin	19.756 Acres
Binghamton <i>Copper</i>	20.129 "
Chenango	20.221 "
Susquehanna	9.708 "
Otselic	19.908 "
Genegantslett	<u>17.587</u> "
Total Area Lode Claim	107.309 "

VEINS.

Copper Ruin, extends N.13° 37' W. 260 ft. and S.13° 37' E. 1179 ft. from the discovery shaft.

Binghamton <sup>Copper</sup> extends <sup>Southeasterly</sup> S.1406 ft. and <sup>Northwesterly</sup> (northerly) 56 ft. from the discovery shaft.

Chenango Lode, extends N. 23 ° W. 520 ft. and S. 4° E. 980 ft. From the initial monument.

Susquenna vein extends N. 5° 30' E. 150 ft. and S. 5° 30' W. 620 ft. from the discovery shaft.

Otselic vein , extends S.2° 45' E. 665 ft. and N. 2° 45' W. 835 ft from the discovery tunnel.

Genegantslett , extends S.2° 45' E.100 ft. and N.2° 45' W. 1400 ft. from the discovery shaft.

\* \* \* \*

EXPENDITURE OF FIVE HUNDRED DOLLARS.

I certify that the value of the labor and improvements upon this claim, placed thereon by the claimant and his grantors is not less than Five Hundred Dollars and that said improvements consist of :

COPPER RUIN LODE:

Discovery Shaft No.1, which brs.. from the N.C.E.Mon. S.13° 37' E. 260 ft. Shaft 4 x 6 ft. 12 ft. deep .

Value \$100.00

Shaft No. 2, which brs. from cor.No.1, S.55° 50' E.400 ft. Shaft 4 x 6 ft. 15 ft. deep.

Value \$150.00

Shaft No. 3, at S.C.E.of claim Shaft 4 x 6 ft. 35 ft. deep.

Value \$350.00

<sup>Copper</sup> BINGHAMTON LODE:

Discovery shaft No.1, which brs. from the S.C.E.N.15° 33' W. 1406 ft. Shaft 4 x 6 ft. 140 ft. deep. Connecting with crosscut tunnel No.2.

Value \$1400.00

Tunnel No. 2, which brs. from S.C.E.Mon. N<sup>of</sup>. 25° 50' W. 1240 ft. Tunnel 4 x 6 ft. 300 ft. long. Course N.32° 45' E.

Value \$3000.00

## SURVEY NO. 1694.

Shaft No. 3, which brs. from the S.C.E. mon. N.  
46° W. 175 ft. Shaft 4 x 6 ft. 190 ft. deep.  
Value \$1900.00

Tunnel No. 4 which brs. from the S.C.E. Mon. N. 4°  
51' W. 228 ft. Tunnel 4 x 6 ft. 80 ft. long  
Course N.W.  
Value \$800.00

## CHENANGO LODE:

Discovery Shaft No. 1, which brs. from the  
S.C.E. Mon. N. 4° W. 900 ft. Shaft 4 x 6 ft. 10 ft.  
deep.

Value \$100.00

There is to be credited to the Chenango Lode, \$400  
worth of the improvements in Tunnel No. 4 of the  
Binghamton Lode.

## SUSQUEHANNA LODE:

Discovery Shaft No. 1, which brs. from the  
N.C.E. Mon. S. 5° 30' W. 150 ft. Shaft 4 x 6 ft.  
10 ft. deep.

Value \$100.00

There is to be accredited to the <sup>be</sup> ~~the~~ Susquehanna, \$400  
worth of the improvements in Tunnel No. 4 of the  
Binghamton Lode.

## OTSELIC LODE:

Discovery Tunnel No. 1, which brs. from the S.C.E  
Mon. N. 2° 45' W. 665 ft. Tunnel 4 x 6 ft. 20 ft.  
long.

Value \$200.00

Tunnel No. 2, which brs. from the S.C.E. Mon.  
N. 17° E. 700 ft. Tunnel 4 x 6 ft. 10 ft. long.

Value \$100.00

There is to be credited to the Otselic Lode \$200  
worth of the improvements in Shaft No. 3 of the Bing-  
hamton Lode.

~~There is to be credited to the Otselic Lode \$200~~

SURVEY NO. 1694.

GENEGANTSLETT LODE:

Discovery shaft No. 1, which brs. from the S.C.E. Mon. N. 2° 45' W. 100 ft. Shaft 4 x 6 ft. 10 ft. deep.

Value \$100.00

There is to be credited to the Genegantslett Lode \$400 worth of the improvements in Shaft No. 3 of the Binghamton Lode.

\* \* \* \*

INSTRUMENT.

This survey was made with a Gurley Light Mountain Solar Transit. The courses were deflected from the true meridian as determined by direct solar observation. The distances were measured with a 75 ft. steel tape.

Prescott, Arizona,  
August 6, 1902.

  
U.S.D.M.S.

Note: The disagreement between the field notes and the location certificates of this survey, with regard to the position of the discovery point, is due to errors in the location certificate.

U.S.L.M.NO.1694.

There being no corner of the public survey or U.S.L.M. within two miles of this survey, I erected a United States location monument on a high point within the boundaries of Copper Ruin Lode of Survey No.1694.

Cut a + on a quartzite rock in place, marked U.S.L.M.No.1694 A.F.D. Alongside built a mon. of stones 4 x 4 ft. 5 ft. high. Whence a + on a slate reef marked B.R.U.S.L.M.No.1694 A.F.D., brs. N.66° 50' W.23.5 ft.

A + on a slate reef marked B.R.U.S.L.M.No.1694 A.F.D. brs. N.14° W. 33.2 ft.

Agua Fria River brs. S.about one mile. Mon. on South Mountain brs.S.13° E. about 3 miles. Copper Mountain brs. S.11° E. about two miles and a half. Copper Mountain smelter and postoffice br. south 30° E.about two and three fourths miles. Mayer on the P.& E.R.R.br.s.S.29° W. about 5 miles. This mon. is located on unsurveyed land approximately in Tp.12 N.R.1 E. G.& S.R.Meridian., in the Agua Fria Mining District, Yavapai County, Arizona Territory .

Prescott, Arizona,  
Aug.6, 1902.

*J. J. Fisher*  
U.S.D.M.S.

*See also  
12025*



# FINAL OATHS FOR SURVEYS.

## LIST OF NAMES.

A list of the names of the individuals employed by J. J. Fisher  
 United States Deputy Mineral Surveyor, to assist in running, measuring, and marking the lines  
 corners and boundaries described in the foregoing field notes of the survey of the mining claim  
 of Isaac T. Stoddard  
 known as the Copper River, Brighamton, <sup>Copper</sup>Chenango, Susquehanna, Otselic & Genesee  
 and showing the respective capacities in which they acted.

- E. A. Drafer , Chainman.
- R. M. Brazle , Chainman.
- R. M. Brazle , Axman.
- E. A. Drafer , Flagman.

## FINAL OATHS OF ASSISTANTS.

We E. A. Drafer  
 and R. M. Brazle do solemnly swear that we assisted J. J. Fisher  
Fisher, United States Deputy Mineral Surveyor, in marking the corners and  
 surveying the boundaries of the mining claim of Isaac T. Stoddard

Chenango, Susquehanna, Otselic & Genesee, known as the Copper River, Brighamton <sup>Copper</sup>  
Chenango, Susquehanna, Otselic & Genesee, represented  
 in the foregoing field notes as having been surveyed by said deputy mineral surveyor and under  
 his direction; and that said survey has been in all respects, to the best of our knowledge and  
 belief, faithfully and correctly executed, and the corner and boundary monuments established  
 according to law and the instructions furnished by the United States Surveyor-General for  
Oregon

- E. A. Drafer , Chainman.
- R. M. Brazle , Chainman.
- R. M. Brazle , Axman .
- E. A. Drafer , Flagman.

My commission expires  
 May 19, 1904

Subscribed and sworn to by the above-named persons before me  
 this 31<sup>st</sup> day of July, 1902

J. J. Fisher  
 Notary Public

FINAL OATH OF U. S. DEPUTY MINERAL SURVEYOR

I, J. J. Fisher, U. S. Deputy Mineral Surveyor, do solemnly swear that, in pursuance of instructions received from the United States Surveyor General for Arizona, dated July 28<sup>th</sup> 1902, I have, in strict conformity to the laws of the United States, the official regulations and instructions thereunder, and the instructions of said Surveyor General, faithfully and correctly executed the survey of the Mining Claim of Isaac T. Bloodard known as the, Copper Ruin, Benhamton Copper, Chenaugo, known as the Susquehanna, Otrelie + Geneyantslett, situate in Agua Fria Mining District, Yavapai County, Arizona, in Section \_\_\_\_\_, Township No. \_\_\_\_\_, Range No. \_\_\_\_\_ and designated as Survey No. 1694, as represented in the foregoing field notes, which accurately show the boundaries of said mining claim as distinctly marked by monuments on the ground, and described in the attached copy of the location certificate, which was received by me from the Surveyor General with said instructions, and that all the corners of said survey have been established and perpetuated in strict accordance with the law, official regulations and instructions thereunder; and I do further solemnly swear that the foregoing are the true and original field notes of said survey and my report therein, and that the labor expended and improvements made upon said mining claim by claimant or his grantors are as therein fully stated, and that the character, extent, location and itemized value thereof are specified therein with particularity and full detail, and that no portion of said labor or improvements so credited to this claim has been included in the estimate of expenditures upon any other claim.

J. J. Fisher  
U. S. Deputy Mineral Surveyor.

Subscribed and sworn to by the said J. J. Fisher  
U. S. Deputy Mineral Surveyor, before me Thomas C. Job a Notary Public  
in and for Yavapai County Arizona this 11<sup>th</sup>  
day of August 1902. My Commission Expires July 7, 1903  
Thomas C. Job  
Notary Public

## Affidavit of Five Hundred Dollars Improvements.

We, E. H. Drapee, and R. M. Brazle

of lawful age, being first duly sworn according to law, depose and say: that we are acquainted with the Copper River, Binghamton & Chenango, Esquehanna Otselic & Senecalets mining claim, situated in Agave Free Mining district, Yavapai County, Arizona Territory, for which Isaac T. Stradand

has made application for survey prior to application for patent under the provisions of the Act of Congress, approved May 10, 1872; and that the labor done and improvements made thereon by the applicant and his grantor exceed Five Hundred Dollars in value, and further that we are not personally interested in said mine.

E. H. Drapee

R. M. Brazle

TERRITORY OF ARIZONA,  
County of Yavapai } ss:

Sworn to and subscribed before me, this 31<sup>st</sup>

day of July, 1892

J. J. Fisher  
Notary Public

My commission expires  
May 19, 1904

# Notice of Mining Location.

19

QUARTZ CLAIM.

To All Whom It May Concern:

This mining claim, the name of which is the "Copper Ruin"  
Mining Claim, situate on lands belonging to the United States of America, and in which there  
are valuable mineral deposits, was entered upon and located for the purpose of exploration and  
purchase by Isaac J. Stoddard

the undersigned, on the First day of January 1898.

The length of this claim is Three hundred feet,  
and Seven hundred and forty feet  
in a Westerly direction and Two hundred  
and fifty feet in a Southerly direction from  
the center of the discovery shaft, at which this notice is posted, lengthwise of the claim, together  
with Three hundred feet in width of the surface grounds, on each  
side of the center of said claim. The general course of the lode deposit and premises is from the  
North to the South.

The claim is situated and located in the Agua Fria Mining District, in  
Yavapai County, in the Territory of Arizona, about One and 1/4 miles  
in a Westerly direction from the ranch of James Fernal and  
adjoins the "Perry-Kentmore Copper" Mining Claim on the north end thereof.  
The whole of this claim is located as abandoned property.

The surface boundaries of the claim are marked upon the ground as follows: Beginning at  
a monument of stone

at a point in a Southerly direction Two hundred and fifty feet from  
the discovery shaft (at which this notice is posted), being in the center of the South  
end line of said claim; thence Easterly three hundred feet to a monument  
being the S. E. corner of said claim; thence  
Seven hundred and fifty feet to a monument at the center of  
the East side line of said claim; thence Seven hundred and fifty  
feet to a monument being at the N. E. corner of said  
claim; thence Westerly three hundred feet to a monument  
at the center of the North end of said claim; thence Three hundred  
feet to a monument, being at the N. W.  
corner of said claim; thence Seven hundred and fifty feet to a monument  
being at the center of the West side line of said claim;  
thence Seven hundred and fifty feet to a monument at  
the N. W. corner of said claim; thence Three hundred  
feet to the place of beginning.

All done under the provisions of Chapter Six, of Title XXXII, of the Revised Statutes of the  
United States, and of an Act of the General Assembly of Arizona, entitled "An Act Concerning  
Mines," approved March 20th, 1895.

Dated and posted on the ground this First day of January 1898.

Isaac J. Stoddard

TERRITORY OF ARIZONA,

County of.....

ss.

I, ..... County Recorder in and for the County and Territory aforesaid, do hereby certify that the within instrument was filed for record at ..... o'clock, ..... M., on this ..... day of ..... 189....., and duly recorded in Book No..... of ..... Records of ..... County, Arizona, at pages.....

WITNESS my hand and official seal the day and year first above written.

..... County Recorder.

Notice of Location.

QUARTZ CLAIM.

*insured*  
*Copper Mountain District*

"Copper River"

*State of Colorado*

Dated *January 1st* 189*8*

Filed and recorded at request of

*J. A. Stoddard*

*April 2<sup>nd</sup>* A. D. 189*8*

at *9:30 o'clock* M.

Book *50 of Mines*

Pages *111*

*W. P. Johnson*  
County Recorder.

*W. P. Johnson*  
Deputy Recorder.

*R*

# Notice of Mining Location.

## QUARTZ CLAIM.

To All Whom It May Concern:

This mining claim, the name of which is the "Rough Linton Coffee" Mining Claim, situate on lands belonging to the United States of America, and in which there are valuable mineral deposits, was entered upon and located for the purpose of exploration and purchase by Isaac J. Stoddard

the undersigned, on the First day of January 1898.

The length of this claim is Fifteen hundred feet, and I claim One hundred and sixty six feet in a northerly direction and Thirteen hundred and thirty four feet in a southerly direction from the center of the discovery shaft, at which this notice is posted, lengthwise of the claim, together with Three hundred (300) feet in width of the surface grounds, on each side of the center of said claim. The general course of the lode deposit and premises is from the north to the south

The claim is situated and located in the Agua Fria Mining District, in Yavapai County, in the Territory of Arizona, about one mile in a northerly direction from the ranch of James Neal and adjoins the "Coffee Bean" Mining Claim on the south end thereof. The whole of this claim is located as a boundary property.

The surface boundaries of the claim are marked upon the ground as follows: Beginning at a monument of stone

at a point in a northerly direction One hundred and sixty six feet from the discovery shaft (at which this notice is posted), being in the center of the north end line of said claim; thence <sup>westerly</sup> Three hundred feet to a monument, being the N. W. corner of said claim; thence Seven hundred and fifty feet to a monument at the center of the west side line of said claim; thence Seven hundred and fifty feet to a monument being at the S. W. corner of said claim; thence Three hundred feet to a monument at the center of the south end of said claim; thence Three hundred feet to a monument, being at the S. E. corner of said claim; thence Seven hundred and fifty feet to a monument being at the center of the east side line of said claim; thence Seven hundred and fifty feet to a monument at the N. E. corner of said claim; thence Three hundred feet to the place of beginning.

All done under the provisions of Chapter Six, of Title XXXII, of the Revised Statutes of the United States, and of an Act of the General Assembly of Arizona, entitled "An Act Concerning Mines," approved March 20th, 1895.

Dated and posted on the ground this First day of January 1898.

Isaac J. Stoddard

22

TERRITORY OF ARIZONA, }  
County of..... } ss.

I,..... County Recorder in and for the County and  
Territory aforesaid, do hereby certify that the within instrument was filed for record at.....o'clock,.....M.,  
on this.....day of.....189....., and duly recorded in Book No.....  
of.....Records of.....County, Arizona, at pages.....

WITNESS my hand and official seal the day and year first above written.

.....  
County Recorder.

# Notice of Mining Location.

## LODE CLAIM.

To All Whom It May Concern:

This mining claim, the name of which is the "Cheungo" Mining Claim, situate on lands belonging to the United States of America, and in which there are valuable mineral deposits, was entered upon and located for the purpose of exploration and purchase by Isaac Stoddard.

the undersigned, on the 29<sup>th</sup> day of June 1899  
 The length of this claim is Fifteen hundred feet,  
 and claim Six hundred feet  
 in a northerly direction, and nine  
 hundred feet in a southerly direction from  
 the center of the discovery shaft, at which this notice is posted, lengthwise of the claim, together  
 with three hundred feet in width of the surface grounds, on each  
 side of the center of said claim. The general course of the lode deposit and premises is from the  
 north to the south

The claim is situated and located in the Agua Fria Mining District, in  
 Yavapai County, in the Territory of Arizona, about one-half mile  
 in a northerly direction from the Agua Fria River  
 and adjoins the Binghamton Copper mining claim and on  
 the southerly end thereof.

The surface boundaries of the claim are marked upon the ground as follows: Beginning at  
 a monument of stone

at a point in a northerly direction six hundred feet from  
 the discovery shaft (at which this notice is posted), being in the center of the north  
 end line of said claim; thence three hundred feet to a monument  
 being the N. E. corner of said claim; thence  
 seven hundred and fifty feet to a monument at the center of  
 the East side line of said claim; thence seven hundred and fifty  
 feet to a monument being at the S. E. corner of said  
 claim; thence three hundred feet to a monument  
 at the center of the South end of said claim; thence three hundred  
 feet to a monument being at the S. W.  
 corner of said claim; thence seven hundred and fifty feet to a monument  
 being at the center of the West side line of said claim;  
 thence seven hundred and fifty feet to a monument at  
 the N. W. corner of said claim; thence three hundred  
 feet to the place of beginning.

All done under the provisions of Chapter Six, of Title XXXII, of the Revised Statutes of  
 the United States, and of an Act of the General Assembly of Arizona, entitled "An Act Concern-  
 ing Mines," approved March 20th, 1895, and amended March 2d, 1899.

Dated and posted on the ground this 29<sup>th</sup> day of June 1899

Isaac Stoddard



TERRITORY OF ARIZONA, }  
County of..... } ss.

I,..... County Recorder in and for the County and Territory aforesaid, do hereby certify that the within instrument was filed for record at..... o'clock,..... M., on this..... day of..... 189....., and duly recorded in Book No..... of..... Records of..... County, Arizona, at pages.....

WITNESS my hand and official seal the day and year first above written.

County Recorder

Notice of Location.

LODE CLAIM.

Isaac T. Stoddard.

Dated June 29 1899

Filed and recorded at request of

D. G. Stoddard  
Apr 13 A. D. 1899

at 9 o'clock A. M.

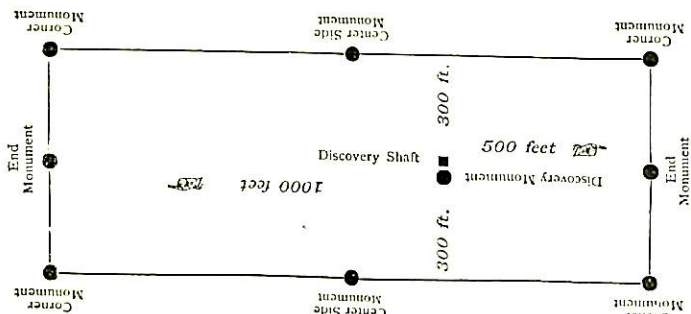
Book 52 of Mines

Pages 55-57

RECORDS OF YAVAPAI COUNTY, ARIZONA.

E. D. Johnson  
County Recorder.

By E. D. Johnson  
Deputy Recorder.



This diagram is to give locator a general idea of plan of location under the new law. The Discovery Shaft can be in the center of claim or any distance from either end desired. In the diagram it is placed 500 feet from one end and 1000 feet from the other. Commence description of claim at a center end monument, giving its distance and direction from center of Discovery Shaft; thence bound the claim in either direction. In description be careful to state locality of claim with reference to some natural object, or permanent monument, as will identify the claim.

1834  
Watered District  
Aqua Viva District  
"Chumango"

Between End Monuments—Northerly and Southerly.

# Notice of Mining Location.

## LODE CLAIM.

TO ALL WHOM IT MAY CONCERN:

This mining claim, the name of which is the "Susquehanna" Mining Claim, situate on lands belonging to the United States of America, and in which there are valuable mineral deposits, was entered upon and located for the purpose of exploration and purchase by Isaac J. Stoddard, a citizen of the United States,

the undersigned on the 8 day of October, 1901

The length of this claim is Ten hundred feet,  
and I claim One hundred and fifty feet,

in a northerly direction, and Eight hundred and fifty feet  
in a southerly direction from the center of the discovery shaft, at which this notice is posted, lengthwise of the claim, together with three hundred (300) feet in width of the surface grounds, on each side of the center of said vein. The general course of the lode deposit and premises is from the northerly to the southerly.

The claim is situated and located in the Agua Fria Mining District, in Yavapai County, in the Territory of Arizona, about one-fourth mile in  
in a northerly direction from the Agua Fria river and  
adjoins the "Chehango" Mining Claim on the southerly end thereof and  
the Otatic Mining Claim on the northerly end thereof.

The surface boundaries of the claim are marked upon the ground as follows: Beginning at a monument of stones at a point in a northerly direction, One hundred & fifty feet from the discovery shaft (at which this notice is posted), being in the center of the north end line of said claim; thence easterly 300 feet to a monument of stones, being the northeast corner of said claim; thence southerly 1600 feet to a monument of stones, being at the southeast corner of said claim; thence westerly 300 feet to a monument of stones at the center of the south end of said claim; thence westerly 300 feet to a monument of stones, being at the southwest corner of said claim; thence northerly 1600 feet to a monument of stones, being at the northwest corner of said claim; thence easterly 300 feet to the place of beginning.

All done under the provisions of Chapter Six, of Title XXXII, of the Revised Statutes of the United States, and of an Act of the General Assembly of Arizona, entitled "An Act Concerning Mines," approved March 20th, 1895, and amended March 2nd, 1899, and March 16, 1901.

Dated and posted on the ground this Eighth (8) day of October 1901

Witness: N. L. Stoddard

Isaac J. Stoddard

*Indyge* *00/8 ed*  
*Compared.* *Indyge*  
 "Sanguinaria"  
 Dan J. Stoddard

Agua Fria

Oct 8, 1901

RECORDED AT REQUEST OF

M. R. Stoddard

Jan. 4<sup>th</sup> A.M. 1902

At 11<sup>th</sup> o'clock. P. M.

In Book *60 of Mines,*

Pages *375*

Records of Yavapai County, Arizona.

*P. J. Farley*  
County Clerk

By *D. J. Sullivan*  
Attorney

# Notice of Mining Location.

27

QUARTZ CLAIM.

To All Whom It May Concern:

This mining claim, the name of which is the "Atselic" Mining Claim, situate on lands belonging to the United States of America, and in which there are valuable mineral deposits, was entered upon and located for the purpose of exploration and purchase by Isaac J. Stoddard

the undersigned, on the Second day of November 1898.

The length of this claim is Fifteen hundred (1,500) feet, and I claim Seven hundred and fifty (750) feet in a northerly direction and Seven hundred and fifty (750) feet in a southerly direction from the center of the discovery shaft, at which this notice is posted, lengthwise of the claim, together with three hundred feet in width of the surface grounds, on each side of the center of said claim, and together with all the water and wood on said premises. The general course of the lode deposit and premises is from the north to the south

The claim is situated and located in the Agua Fria Mining District, in Yavapai County, in the Territory of Arizona, about two miles in a north-westerly direction from the Stoddard Smelter, about three thousand feet southerly from the "Bingham" mine, on the Agua Fria river and about 900 feet easterly from the ranch of James Neal. The whole of this claim is located as abandoned property.

The surface boundaries of the claim are marked upon the ground as follows: Beginning at a post

at a point in a north-westerly direction Seven hundred and seventy five feet from the discovery shaft (at which this notice is posted), being in the center of the north end line of said claim; thence three hundred feet to a post, being the North-East corner of said claim; thence Seven hundred and fifty feet to a monument of stone at the center of the East side line of said claim; thence Seven hundred and fifty feet to a monument being at the South-East corner of said claim; thence three hundred feet to a monument at the center of the South end of said claim; thence three hundred feet to a monument, being at the South-west corner of said claim; thence Seven hundred and fifty feet to a monument being at the center of the west side line of said claim; thence Seven hundred and fifty feet to a post at the North-west corner of said claim; thence three hundred feet to the place of beginning.

All done under the provisions of Chapter Six, of Title XXXII, of the Revised Statutes of the United States, and of an Act of the General Assembly of Arizona, entitled "An Act Concerning Mines," approved March 20th, 1895.

Dated and posted on the ground this 2<sup>nd</sup> day of November 1898.

Witness:

Robt. Brazle

Isaac J. Stoddard  
Locator

TERRITORY OF ARIZONA, }  
County of..... } ss.

I,..... County Recorder in and for the County and Territory aforesaid, do hereby certify that the within instrument was filed for record at..... o'clock,..... M., on this..... day of..... 189....., and duly recorded in Book No..... of..... Records of..... County, Arizona, at pages.....

WITNESS my hand and official seal the day and year first above written.

.....  
County Recorder.

*indexed.*  
"Otselic"

Notice of Location.

QUARTZ CLAIM.

Isaac T. Stoddard.

*Alameda*

Dated November 2nd 1898.

Filed and recorded at request of

*I. T. Stoddard*

Jan 14" A. D. 1899-

*J. G. Colwell* a. M.

Book 50 of Mines

Pages 374

RECORDS YAVAPAI COUNTY, ARIZONA.

*J. G. Colwell*  
County Recorder.

By *E. L. ...*  
Deputy Recorder.

# Notice of Mining Location.

## LODE CLAIM.

To All Whom It May Concern:

This Mining claim, the name of which is the Leona and Seth Mining Claim, situate on lands belonging to the United States of America, and in which there are valuable mineral deposits, was entered upon and located for the purpose of exploration and purchase by Salix Mowal

the undersigned, on the 1<sup>st</sup> day of January 1900.

The length of this claim is Seven hundred feet, and claim Seven hundred feet in a westerly direction, and Three hundred (300) feet in a southerly direction from the center of the discovery shaft, at which this notice is posted, lengthwise of the claim, together with Three hundred feet in width of the surface grounds, on each side of the center of said claim. The general course of the lode deposit and premises is from the North to the South.

The claim is situated and located in the Agua Fria Mining District, in Yavapai County, in the Territory of Arizona, about one and one-half miles in a westerly direction from the Copper Mountain Mines and adjoins the Public Mining Claim on the eastern side thereof and the Rio Fria Mining Claim on the western side thereof. The surface boundaries of the claim are marked upon the ground as follows: Beginning at

a monument at a point in a southerly direction Seven hundred feet from the discovery shaft (at which this notice is posted), being in the center of the North end line of said claim; thence Three hundred feet to a monument, being the N.E. corner of said claim; thence Seven hundred and fifty feet to a monument at the center of the East side line of said claim; thence Seven hundred and fifty feet to a monument, being at the S.E. corner of said claim; thence Three hundred feet to a monument at the center of the South end of said claim; thence Three hundred feet to a monument, being at the S.W. corner of said claim; thence Seven hundred and fifty feet to a monument at the center of the West side line of said claim; thence Seven hundred and fifty feet to a monument at the N.W. corner of said claim; thence Three hundred feet to the place of beginning.

All done under the provisions of Chapter Six, of Title XXXII, of the Revised Statutes of the United States, and of an Act of the General Assembly of Arizona, entitled "An Act Concerning Mines," approved March 20th, 1895, and amended March 2d, 1899.

Dated and posted on the ground this 1<sup>st</sup> day of January 1900.

Witness:  
J. T. Spodman  
Juan B. Fuentes.

Salix Mowal

TERRITORY OF ARIZONA, }  
County of..... } ss.

I,..... County Recorder in and for the County and Territory aforesaid, do hereby certify that the within instrument was filed for record at.....o'clock,.....M., on this.....day of.....1 ....., and duly recorded in Book No..... of.....Records of.....County, Arizona, at pages.....

WITNESS my hand and official seal the day and year first above written.

County Recorder

14 12 7  
Genevieve's left

Notice of Location.

LODE CLAIM.

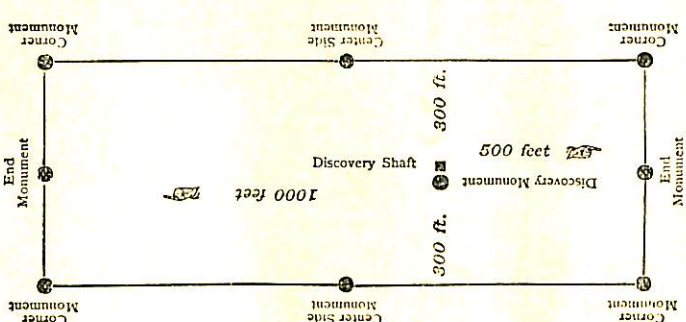
*Julius Mansel*  
*Quana Brad*  
Dated *Quana* 1900.

Filed and recorded at request of

*Julius Mansel*  
*March 31*  
at *840 Alverda* M.  
Book *53 of Mines*  
Pages *170-171*  
By *W. D. Johnson* County Recorder.  
Deputy Recorder.

THE H. H. MC NEIL CO., PRINTERS PHOENIX, ARIZONA.

*W. D. Johnson*



This diagram is to give locator a general idea of plan of location under the new law. The Discovery Shaft can be in the center of claim or any distance from either end desired. In the diagram it is placed 500 feet from one end and 1000 feet from the other. Commence description of claim at a center end monument, giving its distance and direction from center of Discovery Shaft; thence bound the claim in either direction. In description be careful to state locality of claim with reference to some natural object, or permanent monument, as will identify the claim.

(4-687.)

# Surveyor General's Certificate of Approval of Field Notes and Survey of Mining Claim.

Department of the Interior,

Office of U. S. Surveyor General,

Phoenix, Arizona

October 10, 1902, 18

I, U. S. Surveyor General for Arizona,

do hereby certify that the foregoing and hereto attached Field Notes and Return of the Survey of the Mining Claim of Isaac T. Stoddard, known as the Copper Ruin, Binghamton Copper, Chenango, Susquehanna, Otselie, and Gengantslett

~~XXXXXXXXXX~~  
~~known as the~~

situate in Aqua Fria mining district,

Yavapai County, Arizona

in Section \_\_\_\_\_, Township No. \_\_\_\_\_, Range No. \_\_\_\_\_

\_\_\_\_\_, designated as Survey No. 1694

executed by J. J. Fisher, U. S. Deputy Mineral

Surveyor, July 30, and July 31st, 1902, & under my instructions dated

July, 28th, 1902, ~~18~~, have been critically examined and the

necessary corrections and explanations made, and the said Field Notes and Return, and

the Survey they describe, are hereby approved. A true copy of the copy of the location

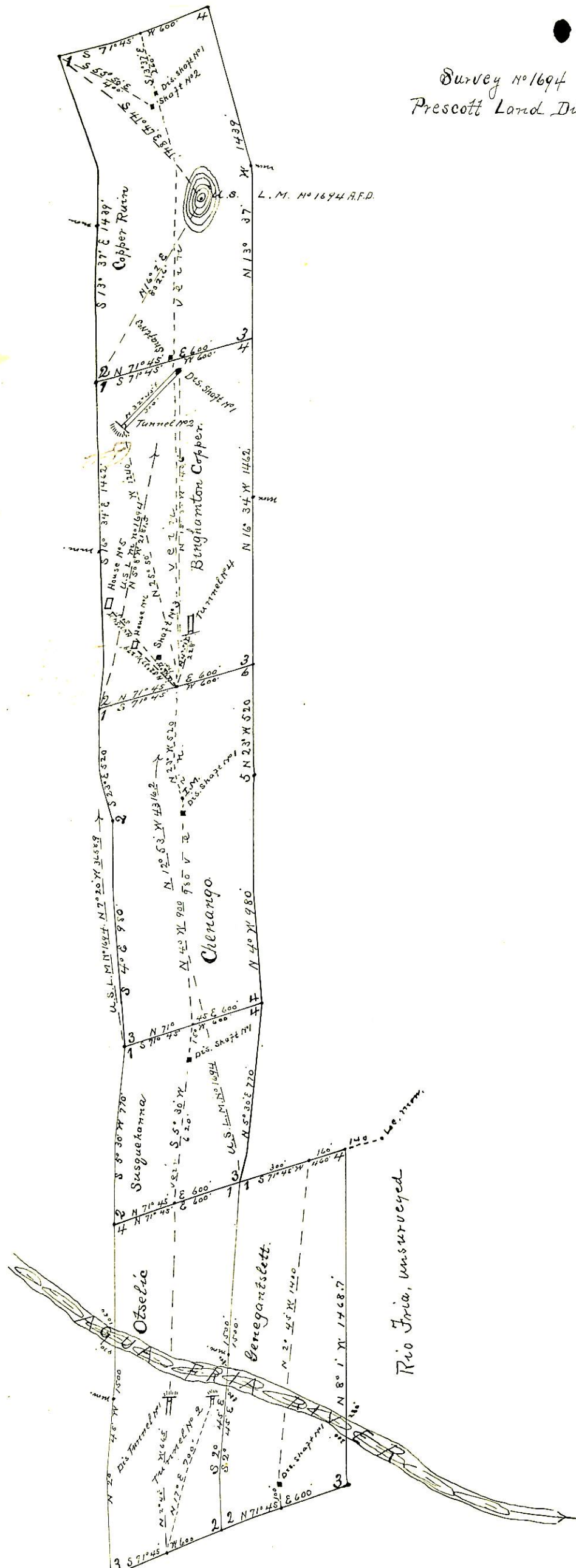
certificate filed by the applicant for survey is included in the field notes.



U. S. Surveyor General for Arizona

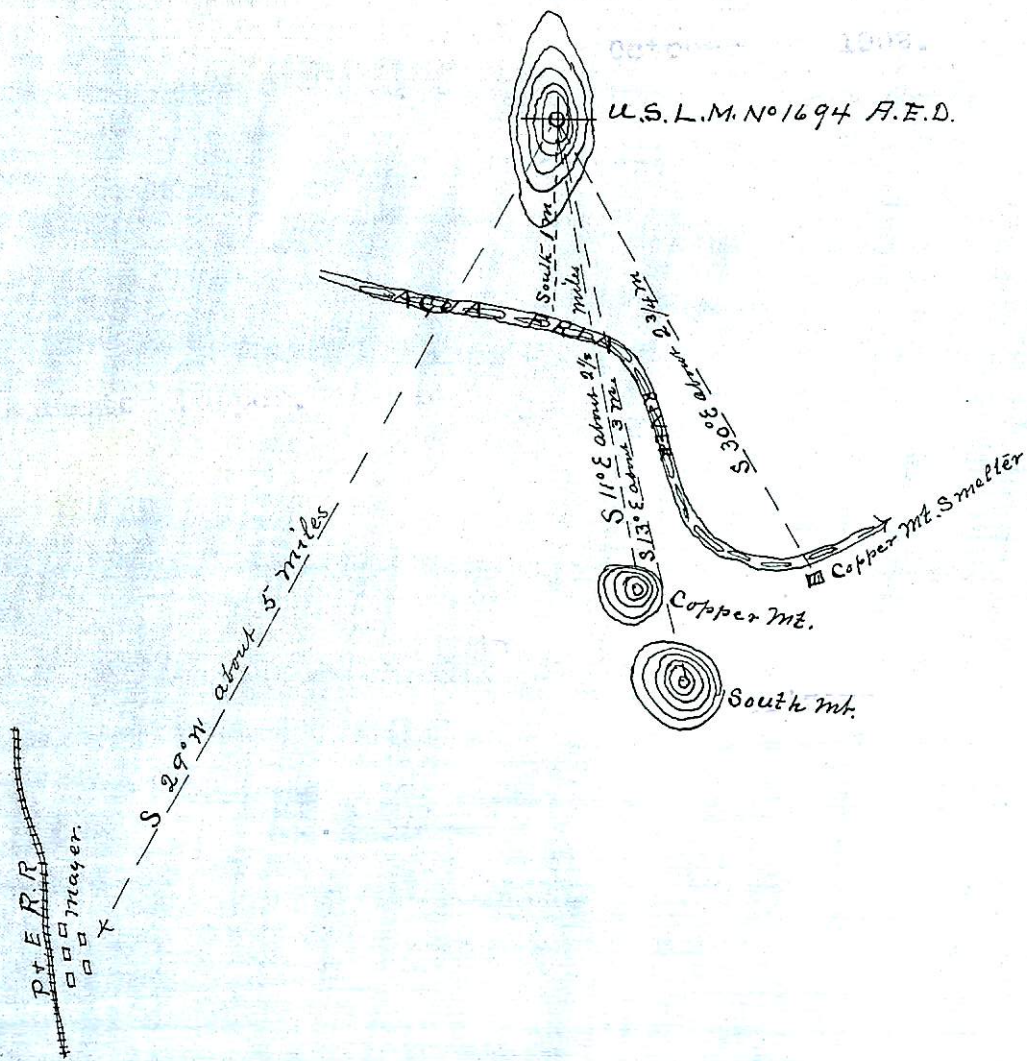


Survey No 1694  
Prescott Land District.



Surveyed July 30-31-1902  
by J. J. Fisher  
U.S. G.M.S.

Rio Jria, unsurveyed



U.S. L. M. no 1694 A.F.D.  
 Erected July 31<sup>st</sup> 1904  
 by J. J. Fisher  
 U.S. S.M.S.