

M  
S  
-

0

1

8

0

5

1893  
Related

Corrected by Ross & Co  
Notes as found copies

(4-683.)

Mineral Survey No. 1805 *A & B*

Lot No. \_\_\_\_\_

*Prescott*

Land District.

### FIELD NOTES

OF THE SURVEY OF THE MINING CLAIM OF

MONMOUTH MINING AND

DEVELOPMENT CO.

KNOWN AS THE

BURRO AND TELEGRAPH CONSOLIDATED

BURRO AND TELEGRAPH <sup>BURRO AND MILLSITES</sup> GREENWOOD Mining District,

MOHAVE County, ARIZONA

Section \_\_\_\_\_, Township \_\_\_\_\_, Range \_\_\_\_\_

Surveyed under instructions dated MAY 17<sup>th</sup>, 1903

by Peter M. Cardell,  
U. S. Deputy Mineral Surveyor

Claim located BURRO, JAN 14<sup>th</sup> 1886 TELEGRAPH, NOV 28<sup>th</sup> 1878

BURRO AND TELEGRAPH MILL SITES APRIL 15<sup>th</sup> 1903  
Survey commenced JUNE 4<sup>th</sup>, 1903

Survey completed JUNE 7<sup>th</sup>, 1903

ADDRESS OF ATTORNEY ROSS<sup>H</sup> BLAKLEY<sup>E</sup>  
KINGMAN A.T.

# PRELIMINARY OATHS OF ASSISTANTS IN SURVEY OF MINING CLAIM.

*I Clarence Dunbar*

do solemnly swear that ~~we~~ <sup>I</sup> will well and faithfully execute the duties of chain carriers; that ~~we~~ <sup>I</sup> will level the chain upon even and uneven ground and plumb the tally-pins, either by sticking or dropping the same; that ~~we~~ <sup>I</sup> will report the true distance to all notable objects, and the true length of all lines that ~~we~~ <sup>I</sup> assist in measuring, to the best of our skill and ability, and in accordance with instructions

given ~~us~~ <sup>me</sup> in the survey of the Mining Claim of *Mormouth Mining and Development Company*

known as the *Burno, Telegraph and Burno ~~and~~ Telegraph mill sites* *Greenwood* mining district

situate in *Mohave* County, *Arizona*

in Section \_\_\_\_\_, Township No. \_\_\_\_\_, Range No. \_\_\_\_\_

*Clarence Dunbar*, Chainman.

\_\_\_\_\_, Chainman.

Subscribed and sworn to by the above-named persons before me this

*29th* day of *May*, 190*3*

*Ross W. Blakely*  
Clerk District Court

I, *James W. Guinn*, do solemnly swear that I will well and truly perform the duties of axman, in the establishment of corners and other duties, according to instructions given me and to the best of my skill and ability, in the survey of the Mining Claim of *Mormouth Mining and Development Company*,

known as the *Burno, Telegraph, and Burno and Telegraph mill sites*, more fully described in the preceding affidavit.

*James W. Guinn*, Axman.

Subscribed and sworn to by the said *James W. Guinn*,

before me this *29th* day of

*May*, 190*3*  
*Ross W. Blakely*  
Clerk District Court

I, \_\_\_\_\_, do solemnly swear that I will well and truly perform the duties of flagman, in the establishment of corners and other duties, according to instructions given me and to the best of my skill and ability, in the survey of the Mining Claim of

known as the \_\_\_\_\_ more fully described in the preceding affidavit.

\_\_\_\_\_, Flagman.

Subscribed and sworn to by the said \_\_\_\_\_

before me this \_\_\_\_\_ day of

\_\_\_\_\_, 190\_\_\_\_

## SURVEY No. 1805 A.

Feet.

## BURRO LODE.

Beginning at Corner No.1

A porphyry rock in place, showing 6 ins. above the general surface, with mound of stone 3ft. base, 2 1/2 ft. high, chiseled cross (x) at corner point and  $\overline{1805}^1$  A, whence

A cross (x) and B.R.  $\overline{1805}^1$  A, chiseled 1 1/2 ft. above the ground on a porphyry rock, bears N 40° 58' W. 22.8 ft and a cross (x) and B.R.  $\overline{1805}^1$  A, chiseled 2 1/2 ft above the ground on a porphyry rock bears S 15° 20' E 18.81 ft., U. S. L. M. No. 1805, Greenwood Mining District, bears N 43° 40' E 175.7 ft.

Thence S 53° 50' W  
Va. 14° 21' E

346.5 Intersect lode line, whence discovery bears N 6° 08' W 430 ft.

693 To Corner No.2.

A granite stone 8x12x16 ins., set 10 inc. in the ground with mound of stone, 3ft. base, 2 1/2 ft. high, chiseled  $\overline{1805}^2$  A, cross (x) for corner point, whence  
A cross (x) and B.R.  $\overline{1805}^2$  A, chiseled 4ft above the ground on a granite rock, bears S 18° 21' 30" E 98.75 ft. No other objects available.

Thence N 6° 08' W  
Va. 14° 19' E

570.54 To Corner No.3.

A point of a granite cliff, showing 4ft. above the general surface, with monument of stone, 3ft. base, 2 1/2 ft. high, chiseled cross (x) at corner point, and  $\overline{1805}^3$  A, whence

A cross (x) and B.R.  $\overline{1805}^3$  A, chiseled 3 ft. above the general surface, bears S 69° 28' E 15.52 ft, and a cross (x) and B.R.  $\overline{1805}^3$  A, chiseled 2ft. above the general surface, bears S 47° 06' W 16.15 ft.

Feet.	Thence N 43° 58' W Va. 14° 6' E
112	Burro Creek, 40ft wide, flows S 80° W
220	Roadcourse N 70° W
645	Roadcourse N 5° E
710	Warm Spring Creek, 10 ins. wide, flows S 10° W
930.3	<p>To Corner No.4.</p> <p>A sandstone 4x16x24 ins, set in the ground 8 ins. with mound of stone 3ft. base, 2 1/2 ft. high, chiseled <sup>4</sup>1805 A, cross (x) at corner point, whence, A cross (x) and B.R. <sup>4</sup>1805 A, chiseled 1 1/2 ft. above the ground, on a granite rock, bears N 69° 32' E 15.68 ft, and a cross (x) and B.R. <sup>4</sup>1805 A, chiseled 3 ft. above the ground, on a granite rock, bears S 15° 21' E 34.62 ft.</p> <hr/>
	Thence N 53° 50' E Va. 14° 37' E.
415.5	Road, Course North.
605.6	<p>To Corner No.5.</p> <p>A porphyry rock in place, 4 ft. above the general surface, with mound of stone, 3ft. base, 2 1/2 ft. high chiseled cross (x) at corner point, and <sup>5</sup>1805 A, whence A cross (x) and B.R. <sup>5</sup>1805 A, chiseled 5ft. above the ground on a porphyry rock, bears N 2° 22' E 11.9 ft, and a cross (x) and B.R. <sup>5</sup>1805 A, chiseled 3 ft. above the ground on a granite rock, bears S 32° 50' W 13.7 ft.</p> <hr/>
	Thence S 43° 58' E Va. 14° 30' E
947.7	Burro Creek, 40ft. wide, flows West,
1053.7	<p>To Corner No. 6.</p> <p>A porphyry stone 18x20x30 ins. set 8 ins. in the ground with mound of stone, 3ft. base, 2 1/2 ft. high, chiseled cross(X) at corner point, and <sup>6</sup>1805 A, whence A cross (x) and B.R. <sup>2-6</sup>1805 A &amp; B, chiseled 4ft. above</p>

the ground, on a porphyry rock, bears S  $64^{\circ} 49'$  W 44.85 ft, and a cross (x) and B.R.  $\overline{1805}^{2-6}$  A & B, chiseled 2 1/2 ft. above the ground, on a porphyry rock, bears S  $2^{\circ} 33'$  E 39.9 ft.

---

Thence S  $6^{\circ} 08'$  E  
Va. 14 18' E

117 Road, course West.  
429.3 To Corner No.1. The place of beginning.

---

TELEGRAPH LODGE.

Beginning at Corner No. 1.  
On line I-2 Burro of this Survey, at S  $53^{\circ} 50'$  W 27.18 ft. from Corner No.1.  
A porphyry stone 8x12x16 ins. set 4 ins. to bed rock, with mound of stone, 3ft. base, 2 1/2 ft. high, chiseled  $\overline{1805}^I$  A, cross (x) at corner point, whence  
A cross (x) and B. R.  $\overline{1805}^I$  A, chiseled 2 1/2 ft. above the ground, on a porphyry rock, bears N  $12^{\circ} 18'$  E 34.25 ft, and a cross (x) and B.R.  $\overline{1805}^I$  A, chiseled 2 1/2 ft. above the ground, on a porphyry rock, bears S  $66^{\circ} 14'$  W 34.55 ft. U. S. L. M. No.1805, Greenwood Mining District, bears N  $44^{\circ} 58' 40''$  E 202.51 ft.

---

Thence S  $16^{\circ} 08'$  E  
Va. 14 21' E

1317.73 To Corner No.2.

A sandstone 4x16x20 ins. set 8 ins. in the ground, with mound of stone 3ft. base, 2 1/2 ft. high, chiseled cross (x) at corner point, and  $\overline{1805}^2$  A, whence  
A cross (x) and B. R.  $\overline{1805}^2$  A, chiseled 3 ft. above the general surface, on a sandstone cliff, bears S  $52^{\circ} 08'$  E 15.35 ft, and a cross (x) and B.R.  $\overline{1805}^2$  A, chiseled 5 ft. above the ground, on a porphyry reef, bears N  $19^{\circ}$

Feet. 04' W 60.49 ft.

---

Thence S  $53^{\circ} 50'$  W  
Va. 14' 13' E

319.32 Intersect lode line, whence discovery bears N  $16^{\circ} 08'$  W 1132.73 ft. North end of lode line bears N  $16^{\circ} 08'$  W 1317.73 ft.

638.64 To Corner No. 3.

A granite stone 7x14x24 ins, set 3 ins. to bed rock, with mound of stone, 3ft base, 2  $\frac{1}{2}$  ft high, chiseled cross (x) at corner point, and  $\overline{1805}^3$  A, whence A cross (x) and B. R.  $\overline{1805}^3$  A, chiseled 3ft. above the ground, on a granite cliff, bears N  $54^{\circ} 20'$  E 25.95 ft, and a cross (x) and B.R.  $\overline{1805}^3$  A, chiseled 8ft above the ground, on a granite cliff, bears S  $57^{\circ} 22'$  W 23.7 ft.

---

Thence N  $16^{\circ} 08'$  W  
Va. 14' 41' E

1317.73 To Corner No. 4.

On line 2-I Burro of this Survey, at N  $53^{\circ} 50'$  E from corner No. 2

A granite stone, 10x12x18 ins, set 10 ins. in the ground, with mound of stone, 3ft base, 2  $\frac{1}{2}$  ft high chiseled cross(x) at corner point, and  $\overline{1805}^4$  A, whence a cross (x)  $\overline{1805}^4$  A, 4ft above the ground, on a granite rock, bears S  $3^{\circ} 55'$  E 103.35 ft. No other objects available.

---

Thence N  $53^{\circ} 50'$  E  
Va. 14' 19' E

Along line 2-I Burro of this Survey.

319.32 Intersect lode line, whence discovery bears S  $16^{\circ} 08'$  E 185 ft. South end of lode bears S  $16^{\circ} 08'$  E 1317.73 ft.

Feet

638.64 To Corner No.1, The place of beginning.

---

 AREA.

Area Burro Lode	20.549 Acres
Area Telegraph Lode	18.150 Acres

---

SURVEY No. 1805 B.

BURRO MILLSITE.

Beginning at Corner No.1.

On line I-2 Telegraph of this Survey, at S 16° 08' E  
135.8 ft from corner No.1.A porphyry stone 10x12x20 ins, set 8 ins. to bed rock,  
with mound of stone 3ft base, 2 1/2 ft high, chiseled  
cross (x) at corner point, and <sup>I</sup>1805 B, whenceA cross (x) and B. R. <sup>I</sup>1805 B, chiseled 2 ft above the  
ground, on a granite rock, bears S 64° 49' E 38.32 ft  
and a cross (x) and B. R. <sup>I</sup>1805 B, chiseled 1 1/2 ft  
above the ground, on a granite rock, bears S 60° W  
40.32 ft.U. S. L. M. No.1805, Greenwood Mining District, bears  
N 21° 05' 45'' E 293.31ft.

---

 Thence N 6° 08' W  
Va. 14 21' E
147.4 Corner No.1 Burro, <sup>load</sup> of this Survey, thence along line  
I-6 Burro, of this Survey

576.7 To Corner No.2.

Identical with Corner No.6 Burro of this Survey,

A porphyry stone, 18x20x30 ins, set 8 ins. in the ground



Feet

chiseled cross (x) at corner point, and  $\overline{1805}^2$  B.

---

Thence S  $59^{\circ}$  19' E

Va.  $14^{\circ}$  18' E

471.9 To Corner No.3.

A cement bed rock 8ft above the bed of Burro Creek, with mound of stone, 3ft base, 2 1/2 ft high, chiseled a cross (x) at corner point, and  $\overline{1805}^3$  B, whence A cross (x) and B. R.  $\overline{1805}^3$  B, chiseled 4 ft above the surface on a cement cliff, bears S  $3^{\circ}$  47' W 41.19 ft and a cross (x) and B.R.  $\overline{1805}^3$  B, chiseled 5ft above the general surface, on a cement cliff, bears S  $51^{\circ}$  58' E 64.9ft.

---

Thence S  $6^{\circ}$  08' E

Va.  $14^{\circ}$  12' E

576.7 To Corner No.4.

A sandstone 10x12x24 ins, set 6 ins to bed rock, with mound of stone 3ft base, 2 1/2 ft high, chiseled cross (x) at corner point, and  $\overline{1805}^4$  B, with mound of stone 3ft base, 2 1/2 ft high, whence A cross (x) and B.R.  $\overline{1805}^4$  B, chiseled 2ft above the ground, on a sandstone cliff, bears N  $57^{\circ}$  53' W 15.8 ft, and a cross (x) and B.R.  $\overline{1805}^4$  B, chiseled 3ft above the ground on a sandstone cliff, bears N  $64^{\circ}$  09' E 18.6 ft.

---

Thence N  $59^{\circ}$  19' W

Va.  $14^{\circ}$  20' E

471.9 To Corner No.1. The place of beginning.

---

Containing 5 Acres.

---

Feet

## TELEGRAPH MILLSITE.

Beginning at Corner No.1.

A granite stone 8x10x14 ins. set 8 ins. in the ground, with mound of stone, 3ft base, 2 1/2 ft high, chiseled cross (x) at corner point, and  $\overline{I}$  1805 B, whence

A cross (x) and B. R.  $\overline{I}$  1805 B, chiseled 2 ft above the ground, on a granite rock, bears N 88° 39' W 45.2 ft and a cross (x) and B. R.  $\overline{I}$  1805 B, chiseled 2 1/2 ft above the ground on a granite rock, bears N 20° 26' E 32.76 ft.

U. S. L. M. No.1805, Greenwood Mining District, bears N 54° 50' E 835.8ft. Corner 4 Telegraph lode of this Survey bears S 32° 19' E 45.68ft.

---

Thence S 11° 44' E

Va. 14° 19' E

50.06 Intersect line 2-I Burro lode of this Survey, at N 53° 50' E 9.54 ft from corner No.2.

874.5 To Corner No.2.

A granite rock 4x12x14 ins. set 6ins. in decomposed granite bed rock, with mound of stone, 3ft base, 2 1/2 ft high, chiseled cross (x) at corner point, and  $\overline{2}$  1805B whence

A cross (x) B.R.  $\overline{2}$  1805 B, chiseled 2 1/2 ft above the general surface on a granite rock, bears N 17° 31' W 15.4ft. No other objects available.

Corner 3 Telegraph lode of this Survey, bears S 25° 24' E 496.1 ft.

---

Thence S 83° 15' W

Va. 14° 35' E

326 To Corner No.3.

Feet

A granite stone 10x14x18 ins, set 10 inches in the ground with mound of stone, 3ft base, 2 1/2 ft high, chiseled cross (x) at corner point  $\overline{T805}^3$  B, whence

A cross (x) and B.R.  $\overline{T805}^3$  B, chiseled 2 1/2 ft above the ground, on a granite cliff, bears  $S69^{\circ} 13' E$  15ft, and a cross (x) and B.R.  $\overline{T805}^3$  B, chiseled 2 ft above the ground on a granite cliff, bears  $S 47^{\circ} 38' W$  5.25ft.

---

Thence  $N 1^{\circ} 46' W$   
Va.  $14^{\circ} 30' E$

874.5 To Corner No.4.

A rock in place, 2x4x1 ft above the general surface, with mound of stone, 3ft base, 2 1/2 ft high, chiseled cross (x) at corner point, and  $\overline{T805}^4$  B, whence

A cross (x) and B.R.  $\overline{T805}^4$  B, chiseled 2 1/2 ft above the ground on a granite cliff, bears  $S 46^{\circ} 53' E$ , 26.94 ft, and a cross (x) and B.R.  $\overline{T805}^4$  B, chiseled 2ft above the ground on a granite rock, bears  $N 24^{\circ} 34' E$  20.55 ft.

---

Thence  $N 83^{\circ} 15' E$   
Va.  $14^{\circ} 16' E$

170.63 Intersect line 2-3 Burro of this Survey, at  $N 6^{\circ} 08' W$  54.56 ft from Corner No.2.

174 To Corner No.1. The place of beginning.

---

Total Area Telegraph Millsite	5.000 Acres
Less Area in conflict with Burro lede	.007 "
Net Area Of Telegraph Millsite	4.993 "

---

## EXPENDITURE OF FIVE HUNDRED DOLLARS.

I certify that the value of the labor and improvements upon this claim, placed thereon by the claimant and <sup>its</sup> granters, is not less than five hundred dollars, and that said improvements consist of:

The discovery tunnel of the Burro, the mouth of which bears from corner No.6 Burro S 53° 56' W 346.18 ft, running S 20° 15' E 72 ft to forks of tunnel, one running East 15.5ft, and one running S 15° W 34.8 ft, all in rock. Value \$1834.50

Tunnel No.2, the mouth of which bears from Corner No.6 Burro S 41° 46' W 376.4ft, running S 22° E 40 ft, in rock. Value \$600

Tunnel No.3, the mouth of which bears from Corner No.1 Burro N 86° 40' W 210 ft, running N 65° W 61ft, in rock. Value \$915

Tunnel No.4, the mouth of which bears from Corner No.1 Telegraph S 56° 30' W 270 ft, running S 42° 04' W 44ft in earth and rock. Value \$400

Tunnel No.2, the mouth of which bears from Corner No.1 Telegraph, S 38° 48' W 315 ft, running S 52° 04' W 31.6 ft in rock. Value \$474

The discovery cut of the Telegraph lode, the center of which bears from Corner No.4 Telegraph N 88° 07' E 309.43.ft, running East 25ft, 10ft face, in rock. Value \$120

The surface embraced by this claim ascends rapidly from Burro Creek towards the South end of Telegraph lode, and ascends gradually from Burro Creek towards the North end of Burro lode.

-----  
This Survey is identical with the respective locations.

## INSTRUMENT.

This Survey was made with a Buff & Berger No. 2 Transit.  
The courses were deflected from the true meridian as  
determined by observation on Polaris. The distances  
were measured with a 50ft and a 500ft steel tapes.

## Location.

This claim is located in  
Mohave County, in the  
Greenwood Mining District,  
arising on unsurveyed land

## Ledges.

Telegraph Lode: - The course  
of ledge on this claim is  
from the S. E. C. S.  $16^{\circ} 08' 20''$  1317.73 ft.  
Burrow: The course of ledge on  
this claim is from S. E. C. N.  $6^{\circ} 08' 20''$   
499.92 ft and N.  $43^{\circ} 58' 20''$  992. ft  
from said point.

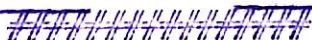
Signed, Peter McCordell  
U. S. Deputy Surveyor

OCT 13 1903

DESCRIPTION OF U.S.L.M.No.1805.

Greenwood Mining District, Mohave County, A.T.

This monument is a hole drilled 8 inches deep and a 16 inch hickory hammer handle inserted in it, with ~~max~~nail in end for Transit Point, on top of Burro Peak; chiseled on N.W.face, U.S.L.M.No.1805; whence, a cross (X) and B.R. U.S.L.M.No.1805, chiseled 4 ft. above the general surface on a granite rock bears S.25° 59' W. 72.61 ft. and a cross (X) and B.R. U.S.L.M.No.1805, chiseled 5 ft. above the general surface on a granite cliff bears S.64° 28' E. 1027 ft. The junction of Warm ~~Sp~~ Spring Creek with Burro Creek bears N. 85° 20' W. 950 ft. The nearest U.S. Public Land Survey is about ~~xxxxxxx~~ 10 miles to the North.



Territory of Arizona, }  
County of Mohave. } ss.  
-----

Peter McCardell, being duly sworn, deposes and says; That he is a citizen of the United States and more than twenty-one years of age, and that the foregoing is a correct and true description, as shown by his original field notes of survey.

Peter McCardell  
U.S. Dep. Mineral Surveyor

Subscribed and sworn to before me this 12th day of October, 1903.

Robert H. Blesley  
Clerk District Court.

# FINAL OATHS FOR SURVEYS.

## LIST OF NAMES.

A list of the names of the individuals employed by Peter McCardell  
 United States Deputy Mineral Surveyor, to assist in running, measuring, and marking the lines  
 corners and boundaries described in the foregoing field notes of the survey of the mining claim  
 of Monmouth Mining and Development Co.  
 known as the \_\_\_\_\_  
 and showing the respective capacities in which they acted.

Clarence Dunbar, Chairman.  
 \_\_\_\_\_, Chairman.  
James W. Guinn, Axman.  
 \_\_\_\_\_, Flagman.

## FINAL OATHS OF ASSISTANTS.

We, Clarence Dunbar  
 and James W. Guinn, do solemnly swear that we assisted Peter  
McCardell, United States Deputy Mineral Surveyor, in marking the corners and  
 surveying the boundaries of the mining claim of Monmouth Mining  
and Development Company  
 \_\_\_\_\_, known as the Burro, Tele-  
graph and Burro and Telegraph Mill sites, represented  
 in the foregoing field notes as having been surveyed by said deputy mineral surveyor and under  
 his direction; and that said survey has been in all respects, to the best of our knowledge and  
 belief, faithfully and correctly executed, and the corner and boundary monuments established  
 according to law and the instructions furnished by the United States Surveyor-General for  
Arizona

Clarence Dunbar, Chairman.  
 \_\_\_\_\_, Chairman.  
James W. Guinn, Axman  
 \_\_\_\_\_, Flagman.

Subscribed and sworn to by the above-named persons before me  
 this 11<sup>th</sup> day of June, 1908

Geo. A. Blakely  
 Clerk District Court

(4-686.)

## FINAL OATH OF U. S. DEPUTY MINERAL SURVEYOR

I, Peter McCardell, U. S. Deputy Mineral Surveyor, do solemnly swear that, in pursuance of instructions received from the United States Surveyor General for Arizona, dated May 17<sup>th</sup> 1903, I have, in strict conformity to the laws of the United States, the official regulations and instructions thereunder, and the instructions of said Surveyor General, faithfully and correctly executed the survey of the Mining Claim of The Monmouth Mining and Development Co known as the Burro and Telegraph lode and Burro and Telegraph Mill sites Greenwood Mining District, situate in Mohave County, Arizona, in Section \_\_\_\_\_, Township No. \_\_\_\_\_, Range No. \_\_\_\_\_, and designated as Survey No. 1805, as represented in the foregoing field notes, which accurately show the boundaries of said mining claim as distinctly marked by monuments on the ground, and described in the attached copy of the location certificate, which was received by me from the Surveyor General with said instructions, and that all the corners of said survey have been established and perpetuated in strict accordance with the law, official regulations and instructions thereunder; and I do further solemnly swear that the foregoing are the true and original field notes of said survey and my report therein, and that the labor expended and improvements made upon said mining claim by claimant or its grantors are as therein fully stated, and that the character, extent, location and itemized value thereof are specified therein with particularity and full detail, and that no portion of said labor or improvements so credited to this claim has been included in the estimate of expenditures upon any other claim.

Peter McCardell

U. S. Deputy Mineral Surveyor.

Subscribed and sworn to by the said

Peter McCardell

U. S. Deputy Mineral Surveyor, before me

a Clerk District Court, at Kingman, Arizona this 18<sup>th</sup> day of June, 1903Robert H. Blakely  
Clerk District Court



Affidavit of Five Hundred Dollars Improvements.

We, Clarence Dunbar, and James W. Guinn  
of lawful age, being first duly sworn according to law, depose and say: That we  
are acquainted with the Burro and Telegraph mining claim,  
situate in Greenwood Mining district, Mohave County,  
Arizona Territory, for which Monmouth Mining  
and Development Company  
has made application for survey prior to application for patent under the provisions  
of the Act of Congress, approved May 10, 1872; and that the labor done and improve-  
ments made thereon by the applicant and its grantors exceed Five Hundred  
Dollars in value, and further that we are not personally interested in said mine.

Clarence Dunbar

James W. Guinn

TERRITORY OF ARIZONA,  
County of Mohave } ss:

Sworn to and subscribed before me, this 11<sup>th</sup>

day of June, 1903



Robert A. Blakely  
Notary Public

TERRITORY OF ARIZONA, }  
County of Mohave. } ss.

I, Jno. P. Feeny, Recorder of Mohave  
County, Territory of Arizona, do hereby certify that I have compared the foregoing copy  
of the Location Notice of the "BURRO" Mining Claim,  
and of the endorsement thereupon with the original records of the same on file in this office  
and that the same are correct transcripts therefrom and of the whole of said original records.

WITNESS my hand and the seal of said office this  
10th day of April, 1903.

Jno P Feeny  
Recorder of Mohave County.



BURRO

AUBREY

Notice of Location. Know all men by these presents: That we the undersigned, have this day located fifteen hundred (1500) linear feet of this vein or lode, bearing precious metals, with all dips, spurs, angles and variations with surface ground three hundred (300) feet on each side of the centre of vein, with all mineral deposits contained therein, and all timber growing within the limits of said claim, and all water and water privileges thereon or appurtenant thereto, under and according to the provisions of the Mining laws of the United States, under which it is located.

This claim commences at this monument and notice placed upon the ledge and runs fifteen hundred (1500) feet in a Southerly direction along the ledge.

The exterior boundaries are as follows, viz:

Commencing at this monument and notice, and running three hundred (300) feet in an easterly direction to monument of stone at N. E. corner of claim; thence in a Southerly direction parallel with the ledge fifteen hundred (1500) feet to monument at S. E. corner of claim; thence at right angles across the ledge in a Westerly direction, six hundred (600) feet to monument at S. W. corner of claim; thence parallel with the lode in a northerly direction fifteen hundred (1500) feet to monument at N. W. corner of claim; thence at right angles across the ledge in an easterly direction Three hundred (300) feet to monument upon the ledge and place of beginning.

This ledge may be more generally described as situated on Bourro Creek about six (6) miles up said Creek from its junction with the Sandy this monument and notice is situated about one hundred (100) feet from the Warm Spring that comes out of the Burro ledge in Aubrey Mining District Mojava County Arrizona Territory, and shall be known as the Burro Mining Claim.

Dated on the Ground, this first day of January 1886.

Henry Bowman

N. P. Pierce

John Ries

C. C. Wilson

Witness  
Francis Boyland

Recorded at the request of N. P. Pierce Feby 16 A.D. 1886 at 12 M:

H. Bucksbaum  
County Recorder.

Book "I" )  
Page 388-9)

TERRITORY OF ARIZONA, }  
County of Mohave. } ss.

I, Jno. P. Feeny, Recorder of Mohave  
County, Territory of Arizona, do hereby certify that I have compared the foregoing copy  
of the Location Notice of the "TELEGRAPH" Mining Claim,  
and of the endorsement thereupon with the original records of the same on file in this office  
and that the same are correct transcripts therefrom and of the whole of said original records.

WITNESS my hand and the seal of said office this

10th day of April, 1903.

Jno. P. Feeny  
Recorder of Mohave County.



TELEGRAPHBURRO

## NOTICE.

We the undersigned have this day relocated this lode or ledge known as the Arizona Comstock mine, located Nov 27th 1874 and forfeited Nov 27th 1878.

We claim fifteen hundred feet commencing at a monument on the ledge about fifty feet northwest of the Smith and Musick Tunnel running northwest two hundred feet to a monument, thence 300 feet south west to monument thence 1500 feet south east to monument, thence 600 northeast to monument, thence 1500 feet northwest to monument, thence 300 feet south west to centre of ledge, then commencing at location monument and running 1300 feet southeast along the ledge to stone monument, this ledge is located on Burro Creek about 400 feet east of a high bluff in Mohave Co. A. T. and shall be known as the Telegraph mine

Located Nov. 28th 1878.

By J. A. Smith &

J. A. Musick.

Recorded at the request of James A. Smith, December 3d A. D. 1878, at 11 A.M.

Caldwell Wright

County Recorder.

Book "D" )  
Page 416-7 )

TERRITORY OF ARIZONA, }  
County of Mohave. } ss.

I, Jno. P. Feeny, Recorder of Mohave  
County, Territory of Arizona, do hereby certify that I have compared the foregoing copy  
of the BURRO MILL-SITE CLAIM AND WATER RIGHT,  
and of the endorsement thereupon with the original records of the same on file in this office  
and that the same are correct transcripts therefrom and of the whole of said original records.

WITNESS my hand and the seal of said office this

8th day of May, 1903

Jno. P. Feeny  
Recorder of Mohave County.



LOCATION NOTICE

of

THE BURRO MILL-SITE CLAIM AND WATER RIGHT.

Know All Men By These Presents, That the Monmouth Mining & Development Co. the undersigned, have this day located a Mill-Site for the purpose of erecting suitable works for reducing the ores of the Burro Mining Claim, situated in Greenwood Mining District, Mohave County, Arizona Territory. The exterior boundaries of said Mill-Site Claim, are as follows, viz.:

Beginning at the S. W. Cor. where a location monument is established and this notice posted, whence the junction of Warm Spring Creek with Burro Creek bears N. 21° 33' W. 1007 ft. Thence N. 6° 14' W. 576.7 ft. to the N. W. Cor. ; Thence S. 59° 25' E. 471.7 ft. to the N. E. Cor.; thence S. 6° 14' E. 576.7 ft. to the S. E. Cor. Thence N. 59° 25' W. 471.7 ft. to the S. W. Cor. the place of beginning. Magnetic Va. N.14°30' E.

Dated on the ground, this 15th day of April 1903

Monmouth Mining and Development Co.

Witness:

P. McCardell.

By J.P.Wallace, Manager.

Filed and recorded at request of J.P.Wallace, May 7th, 1903, at 2 o'clock P.M. Book No.1 Mill-Sites and Water Rights, pages 437 and 438.

Jno. P. Feeny,  
County Recorder.

TERRITORY OF ARIZONA, }  
County of Mohave. } ss.

I, Jno. P. Feeny, Recorder of Mohave  
County, Territory of Arizona, do hereby certify that I have compared the foregoing copy  
of The TELEGRAPH MILL-SITE CLAIM AND WATER RIGHT, \_\_\_\_\_  
and of the endorsement thereupon with the original records of the same on file in this office  
and that the same are correct transcripts therefrom and of the whole of said original records.

WITNESS my hand and the seal of said office this  
8th day of May 1903.

Jno P Feeny  
Recorder of Mohave County.





LOCATION NOTICE

of

THE TELEGRAPH MILL-SITE CLAIM AND WATER RIGHT.

Know All Men By These Presents, That the Monmouth Mining & Development Co. the undersigned, have this day located a Mill-Site for the purpose of erecting suitable works for reducing the ores of the Telegraph Mining Claim, situated in Greenwood Mining District, Mohave County, Arizona Territory. The exterior boundaries of said Mill-Site Claim, are as follows, viz.:

Beginning at the N.E.Cor. of the claim, where a location monument is established and this notice posted, where the junction of Warm Spring Creek with Burro Creek bears N. 31°10' W. 689 ft.; Thence S. 11°46' E. 874.5 ft. to the S. E. Cor.; Thence S. 83°10' W. 326 ft. to the S. W. Cor.; Thence N.1°48'W. 874.5 ft. to the N.W.Cor.; Thence N.83°10'E. 174 ft. to the N.E.Cor. the place of beginning. Magnetic Va. N.14°30' E.

Dated on the ground, this 15th day of April 1903

Monmouth Mining and Development Co.

Witness:

P. McCardell.

By J.P.Wallace, Manager.

Filed and recorded at request of J.P.Wallace, May 7th, 1903 at 2 o'clock P.M. Book No.1 Mill-Sites & Water Rights, pages 438 and 439.

Jno. P. Feeny,  
County Recorder.

4-687.

SURVEYOR-GENERAL'S CERTIFICATE OF APPROVAL OF FIELD  
NOTES AND SURVEY OF MINING CLAIM.

**Department of the Interior.**

*Office of U. S. Surveyor-General,*

Phoenix, Arizona.

*Oct. 21<sup>st</sup>*, 1903

I, U. S. Surveyor-General for Arizona

do hereby certify that the foregoing and hereto attached Field Notes and Return of the Survey of the  
Mining Claim of Monmouth Mining and Development Co.

....., known as the  
Burro and Telegraph Lodes and Burro<sup>and</sup> Telegraph Millsites.

situate in Greenwood ..... mining district,

Mohave County, Arizona

in Section unnamed Township No.         , Range No.         

....., designated as Survey No. 1805

executed by Peter McCardell, U. S. Deputy Mineral

Surveyor, June 4-7th, 1903, under my instructions dated

May 14th, 1903, have been critically examined and the necessary cor-

rections and explanations made, and the said Field Notes and Return, and the Survey they describe,

are hereby approved. A true copy of the copy of the location certificate filed by the applicant for

survey is included in the field notes.

*Frank A. Leggett*

U. S. Surveyor-General for Arizona

MAR. 29 1905

*Monmouth Mining and Development Company  
Burro and Telegraph and Burro Mill  
claims*

Kingman, Ariz., Mar. 28th, 1905.

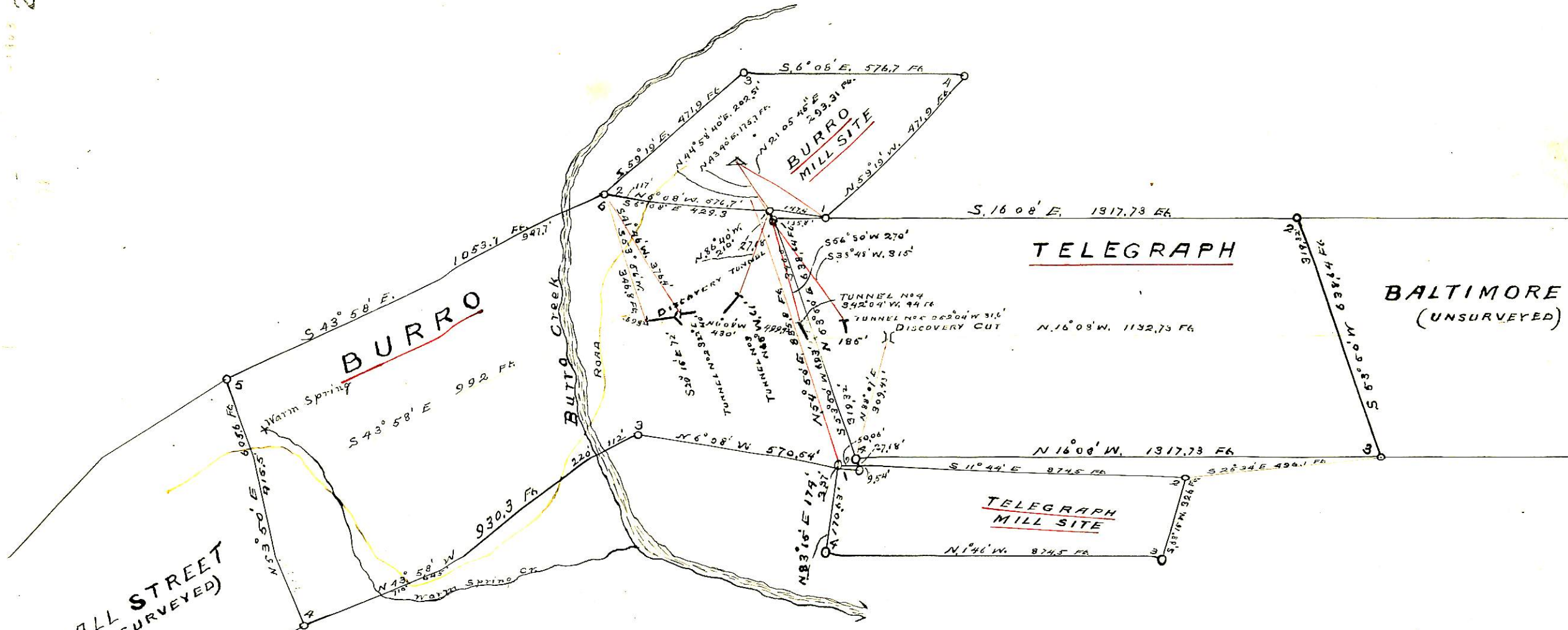
Mr. Frank S. Ingalls,  
U. S. Survey General,  
Phoenix, Arizona.

Dear Sir:-

Mineral Entry No. 595, made February 17th, 1904, by the Monmouth Mining and Development Company for the Burro and Telegraph Lode Claims, and the Burro and Telegraph Millsite, embraced in mineral survey No. 1805 A. and B. are approximately located in township 13 N. R. 11 W. on unsurveyed lands of the U.S., and is located about 10 miles East of the Town of Signal, Mohave County, Arizona.

Yours truly,

Peter McCardell



WALL STREET  
(UNSURVEYED)

BALTIMORE  
(UNSURVEYED)

SCALE 300 FT = ONE INCH  
 Magnetic Va.  $14^{\circ} 12'$  To  $14^{\circ} 37'$  E.  
 SURVEYED JUNE 4<sup>th</sup> - 7<sup>th</sup> 1903  
 BY Peter M<sup>c</sup>Cartell U.S. DEP. MINERAL SURVEYOR  
 KINGMAN, A.T.