

MS

0

1

9

9

5

OCT 18 1904

(4-683.)

Mineral Survey No. 1995

Lot No. _____

Prescott Land District.

FIELD NOTES

OF THE SURVEY OF THE MINING CLAIM OF

Gold & Copper Consolidated Mining & Milling
Company

John D. Rockefeller
C. P. Huntington
Wells Fargo KNOWN AS THE
Big Boy & Walker President, John & Leuk
Massachusetts Mining District,

Yavapai County, Arizona
Section _____, Township 12 N, Range 1 W

Surveyed under instructions dated Oct 11th, 1904

by William H. Merritt

U. S. Deputy Mineral Surveyor.
Claim located June 1st 1897 by John & Leuk
Oct 28th 1897
July 1st 1897
July 6th 1897
May 13th 1894
April 18th 1901
Survey commenced October 12th, 1904
Survey completed October 15th, 1904

o 6-160

Address of Claimant
Herdon & Norris, Atty's
Prescott Arizona

PRELIMINARY OATHS OF ASSISTANTS IN SURVEY OF MINING CLAIM.

WE, Fritz Vortlander and R. A. Merritt,
do solemnly swear that we will well and faithfully execute the duties of chain carriers;
that we will level the chain upon even and uneven ground and plumb the tally-pins,
either by sticking or dropping the same; that we will report the true distance to all
notable objects, and the true length of all lines that we assist in measuring, to the best
of our skill and ability, and in accordance with instructions given us, in the survey of
the Mining Claim of Gold & Copper Consolidated
Mining & Milling Company, known as the
situate in J. D. Rockaford, C. P. Hummer, Wells, Beaver, Yellow & Clark, Big Bug, Walker
Yavapai County, County,
in Section _____, Township No. 12 N, Range No. 1 W.

Fritz Vortlander, Chainman.

R. A. Merritt, Chainman.

Subscribed and sworn to by the above-named persons before me this 12th day of October 1904.

My Commission Expires July 15th 1905

W. H. Merritt
Notary Public

I, _____, do solemnly swear that I will well and truly perform the duties of axeman, in the establishment of corners and other duties, according to instructions given me and to the best of my skill and ability, in the survey of the Mining Claim of _____

known as the _____,
more fully described in the preceding affidavit.

_____, Axeman.

Subscribed and sworn to by the said _____
before me this _____ day of _____, 18 _____.

I, _____, do solemnly swear that I will well and truly perform the duties of flagman, in the establishment of corners and other duties, according to instructions given me and to the best of my skill and ability, in the survey of the Mining Claim of _____

known as the _____,
more fully described in the preceding affidavit.

_____, Flagman.

Subscribed and sworn to by the said _____
before me this _____ day of _____, 18 _____.

SURVEY NO.1995 J.D.Rockefeller.lode

Feet Beginning at Cor.No.1
 Identical with the N.W.Cor. of the loc.
 A Granite stone 6X8X24 ins.set 12 ins in the ground,with mound of stones, chiseled R-I-1995 Whence:
 Cor.to.sect.4-5-32-33 T.12-13 N.R.1.W.brs.N 15°.47'E
 7025.1 feet.
 A X-B-R-R-I-1995 chiseled on rock in place brs N55°.10'W
 5.8 feet.
 A X-B-R-R-1-1995 chiseled on rock in place brs.S 10° 00'E
 12.5 feet.
 Location Cor.a monument of stones 3 ft.base and 3.5 ft.high.

Thence S 8°.17'W
 Va. 14°.E

348.5 Intersect line 4-1 Wells Fargo lode of this Sur.at N 68°26'W
 55.58 ft.from Cor.No.4

1119.14 Intersect line 4-1 Flow lode of this Sur.at N 68°.26'W
 104 ft.from cor.No.4.

1482.2 Intersect line 3-4 Flow lode of this Sur.at S 24°.54'W
 353.95 ft.from Cor.No.4

1500 To Cor.No.2.
 Identical with the Cor.of the location and with Cor.No.1 of C.P.Huntington lode of this Sur.
 A Granite stone 6X14X24 ins set 14 ins in the ground with mound of stones, chiseled R-2.H-1-1995.Whence:
 A X-B-R-R-2.H-1-1995.chiseled on rock in place brs.N 19°.27'W 13.4 ft.
 No other bearings available.
 Location Cor.a monument of stones 3 ft. base and 3 ft.high.

Thence S 81°.43'E
 Va. 14°.E

300 S.E.C.

363.85 Intersect line 1-2 Club lode of this Sur.at N 45°.53'E
 23.88 feet from Cor.No.2

600 To Cor.No.3.
 Identical with the loc.and with Cor.No.4 C.P.Huntington lode of this Sur.
 A Granite stone 4X10X24 ins.set 12 ins.in the ground,with mound of stones, chiseled R-3.H-4-1995.whence:
 A Pine tree 12 ins.diam.scribed X-B-T-R-3.H-4-1995 brs N 78°.00'W 3.5 feet.
 A X-B-R-R-3.H-4-1995 chiseled on rock in place brs. S 6°.45'E 21.4 feet.
 Location Cor.a monument of stones 3.5^{ft} base and 3.5 ft.high.

Thence N 8°.17'E
 Va.14°.E

306.67 Intersect line 1-2 Club lode of this Sur.at N 45°.53'E
 410.95 ft from Cor.No.2

995.62 Intersect line 2-3 Sur.No.1604 Alturas lode at N 64°.45'W.
 176.36 ft.from Cor.No.3 *A Granite stone chiseled A.3.-1604 with mound of stones and*

1500 To Cor.No.4.
 Identical with the Cor.of loc.
 A Line stone 7X7X24 ins set 14 ins.in the ground,with mound of stones, chiseled R-4-1995.Whence:
 A X-B-R-R-4-1995 chiseled on rock in place brs.N 15°.30'E
 7.4 ft.No other bearings available.
 Location Cor.a monument of stones 3 ft.base and 3 ft.high

Thence N 81°.43'W
 Va.14°.E

300 N.E.C.

301.35 Intersect line 1-2 Sur.No.1604 Alturas lode at N 13°00'E
 403.71 ft.from Cor.No.3 A Granite stone chiseled 2-A-1604 with mound of stones.

600 To Cor.No.1 the place of beginning.

S. 64° 45' E. 349.64 ft. from Cor. No. 2.

Survey No.1995 C.P.Huntington Lode.

Beginning at Cor.No.1
Identical with the N.W.Cor.of.loc.and with cor.No.2 ^{N.D.},
Rockefeller lode of this Sur.hereinbefore described.Whence:
Cor.to secs.4-5-32-33 T.12-13.N.R.1.W.brs.N 14°.29'E
8515.1 feet.

Thence S 8°.17'W
Va.14°.E

762.35 1500 Intersect line 3-4 President lode of this Sur.at S 2°.15'E
25153 ft.from Cor.No.4
To Cor.No.2.

Identical with the Cor.of loc.
A Granite stone 3X10X24 ins.set 13 ins in the ground,with
mound of stones chiseled,H-2-1995:Whence:
A Pine Tree 16 ins.diam.scribed X-B-T-H-2-1995 Brs.
S 78°.15'W 29.1 feet.
A X-B-R-H-2-1995 chiseled on rock in place brs.S 50°.20'E
14.5 feet.
Location Cor.A mounament of stones 3.5 ft.base and 3.ft.high.

Thence S 81°.43'E
Va.14°.E

137.16 300 600 Intersect line 3-4-President lode of this Sur.at N 2°.15'W
634.15 ft.from Cor.No.3

S.E.C.
To Cor.No.3
Identical with the Cor.of loc.
A Granite stone 8X10X24 ins.set 12 ins.in the ground,with.
mound of stones,chiseled H-3-1995.Whence:
A Pine tree 16 ins.diam.scribed X-B-T-H-3-1995 brs.S 50°30E
21.5 feet. X
A Pine tree 15ins.diam.scribed B-T-H-3-1995 brs.N 19°'10'W
40.7 feet.
Location Cor.a monument of stones 2.5 ft.base 3 ft.high.

Thence N 8°.17'E
Va.14°.E

1288.02 1500 Intersect line 2-3 Club lode of this Sur.at S 44°.07'E
316.42 ft.from Cor.No.2

To Cor.No.4
Identical with loc.and with Cor.No.3 J.D.Rockefeller lode
of this Sur.hereinbefore described.

Thence N 81°.43'W
Va 14°.E

236.17 300 600 Intersect line 1-2 Club lode of this Sur.at N 45°53'E
23.88 feet from Cor.No.2

N.E.C.
To Cor.No.1 the place of beginning.

Club lode.

Beginning at Cor.No.1.
Identical with the N.W.Cor.of the location.
A Granite stone 6X10X30 ins.set 16 ins.in the ground,with
mound of stones,chiseled 1-C-1995.Whence:
Cor.to secs.4-5-32-33 T.12-13.N.R.1.W.brs.N 7°.24'E 7595.8 ft.
An Oak tree 10 ins.diam.scribed X-B-T-C-1-1995.brs.
S 54°.00'W 9.9 feet.
An Oak tree 7 ins.diam.scribed X-B-T-C-1-1995 brs.
S 46°.30'E 33.4 feet.
Location Cor.A monument of stones 3 ft.base and 3.5 ft.high

Thence S 45°.53'W
Va. 14°.E

714.05 Intersect line 3-4 J.D.Rockefeller.lode of this Sur.at
N 8°.17'E 306.67 ft.from Cor.No.3

Club lode.

1098.12 Intersect line 2-3 J.D.Rockefeller lode of this Sur.at.
N 81°.43'W 236.17 feet from Cor.No.3
1122. To Cor.No.2.

Identical with the Cor.of loc.
A Granite stone 6X8X25 ins.set.13 ins.in the ground,with
mound of stones, chiseled C-2-1995. Whence:
A Pine tree 16 ins.diam, scribed X-B-T-C-2-1995 brs.
S 42°.10'W 13.7 feet.
No other bearings available. ft. ft.
Location Cor.a mound of stones 3.5 base-3.5 high.

Thence S 44°.07'E
Va. 14°.E

350. S.W.C.
316.42 Intersect line 3-4-of C.P.Huntington lode of this sur.at
S 8°.17'W 211.98 ft. from Cor.No.4

445. To Cor.No.3.
Identical with the loc.
A Granite stone 6X8X24 ins.set 12 ins.in the ground,with
mound of stones chiseled, C-3-1995. Whence:
A Pine tree 16 ins.diam, scribed X-B-T-C-3-1995 brs.
South 15.2 feet.
An Oak tree 14 ins.diam scribed X-B-T-C-3-1995 brs.
N 8°.30'E 19.5 feet.
Location Cor, a monument of stones 3.5 base, 3.ft.high.

Thence N 49°.05'E
Va. 14°.E

1163.78 To Cor.No.4.
Identical with cor.of loc.
A X-C-4-1995 chiseled on Granite rock in place, showing
2X4X2 ft. Whence:
A Pine tree 9 ins.diam, scribed X-B-T-C-4-1995 brs.
N 24°.30'E 20.feet.
A Pine tree 14 ins.diam, scribed X-B-T-C-4-1995 brs.
S 31°.40'E 32.1 feet.
Location Cor. a monument of stones 3 ft. base and 3 ft high.

Thence N 44°.07'W
Va. 14°.E

260 To Cor.No.5.
Identical with cor.of loc.
A Granite stone 6X10X24 ins.set 12 ins.in the ground,with
mound of stones, chiseled, C-5-1995. Whence:
A X-B-R-C-5-1995, chiseled on rock in place brs.S 3°.30'W
4.3 feet.
A X-B-R-C-5-1995 chiseled on rock in place brs.S 71°.40'W
16.5 ft. Location Cor. a monument of stones, 3 ft. base 3 ft high.

*Whence Cor No. 3 Golden Summit lode and Cor. No. 2, Sun
Rise lode, Sur. No. 1604, Crs. N. 47°.07'W. 165.98 ft*

Thence N 53°.13'W
Va. 14°.E

253.1 To Cor.No.1 the place of beginning.

Wells Fargo lode

Beginning at Cor.No.1.
Identical with the N.W.Cor.of loc.
A Granite stone 6X8X24 ins.set 12 ins.in the ground,with
mound of stones, chiseled W-1-1995 Whence:
Cor.to secs.4-5-32-33 T.13-13.N.R.1.W.brs.N 17°.19'E
7348.3 feet.
A X-B-R-W-1-1995 chiseled on rock in place brs.S 4°.15'W
17.8 feet.
A Pine tree 20 ins.diam, scribed X-B-T-W-1-1995 brs.
S 69°.30'E 34.9 ft.
Location Cor. a monument of stones 3.5 base 3 ft. high.

Wells Fargo lode.

750 To Cor.No.2.
 Identical with the Cor.of loc.
 A Granite stone 4X12X24 ins.set 12 ins.in the ground,with mound of stones, chiseled W-2-1995. Whence: *Cor N: 3 Sur N: 1841*
 No bearings available. *Gold Queen Lode N^o 2 Brs N 15° 19' E 324.7 ft*
 Location Cor. a monument of stones 3.5 base 3 ft. high. *a granite stone 8x8x8 in chiseled G Q N^o 2 3-1841 with mound of stones.*

Thence S 21° .34' W
 Va. 14° .E

300 S.E.C.
 421.5 To Cor.No.3.at intersection of line 1-2 J.D.Rockefeller lode of this Sur. at N 8° .17' E 380.86 ft.from Cor.No.2. *and*
 A X-W-3-1995 chiseled on Granite rock in place 2X2X1 ft. a *S 8° 17' W 119.14 ft. from cor. no. 1.*
 above the ground. Whence:
 A Pine tree 16 ins.diam.scribed X-B-T-W-3-1995 brs.
 N 60° .00' E 3.9 feet.
 No other bearings available.
 Location Cor. a monument of stones 3 ft. base 3 ft. high.

Thence S 68° .26' E
 Va. 14° .E

759.8 To Cor.No.4.
 Identical with the Cor.of loc.
 A Granite stone 4X10X24 ins.set 12 ins.in the ground,with mound of stones, chiseled W-4-1995. Whence:
 A Spruce tree 16 ins.diam.chiseled X-B-T-W-4-1995 brs.
 S 77° .20' E 4.3 feet.
 No other bearings available.
 Location Cor. a monument of stones 2.5 ft. base 3 ft. high.

Thence N 12° .22' E.
 Va. 14° .E

55.53 Intersect line 1-2 J.D.Rockefeller lode of this Sur. at
 300 To Cor.No.1 the place of beginning.
 S 8° .17' W 348.5 ft. from cor.No.1

Thence N 68° .26' W
 Va. 14° .E

Flow lode.

Beginning at Cor.No.1.
 Identical with the N.W.Cor.of the loc.
 A Granite stone 3X8X24 ins.set 12 ins.in the ground,with mound of stones, chiseled F-1-1995. Whence:
 Cor. to secs. 4-5-32-33. T. 12-13-N-R-1-W. brs. N 18° .15' E
 8092.4 feet.
 A Pine tree 10 ins.diam.scribed X-B-T-F-1-1995 brs.
 N 2° .45' W 13.1 ft.
 A Spruce tree 12 ins.diam.scribed X-B-T-F-1-1995 brs!
 N 75° .50' E 22.8 ft.
 Location Cor. a monument of stones 3.5 base-3 ft. high

1500 To Cor.No.2.
 Identical with the Cor.of loc.
 A Granite stone 4X10X24 ins.set 12 ins.in the ground,with mound of stones, chiseled F-2-1995. Whence:
 A X-B-R-F-2-1995 chiseled on rock in place 2 ft. above the ground brs. S 15° .00' E 25.ft.
 A Pine tree 10 ins.diam.scribed X-B-T-F-2-1995 brs.
 N 60° .30' E 25 feet.
 Location Cor. a mound of stones 2.5 base 3 ft. high.

Thence S 24° .54' W
 Va. 14° .E

Flow Lode.

Thence S 68°26'E
Va.14°E

300 S.E.C.
363.55 Intersect line 1-2 President lode of this Sur.at.
S 2°.15'E 200.33 ft from Cor.No.1
600 To Cor.No.3
Identical with the Cor.of loc.
A Granite stone 8X8X24 ins.set 12 ins.in the ground with,
mound of stones, chiseled F-3-1995.Whence:
A X-B-R-F-3-1995 chiseled on granite rock in place brs.
S 41°.40'W 5.9'feet.
A Spruce tree 24 ins.diam.scribed X-B-T-F-3-1995 brs.
N 49°.25'W 20.7 feet.
Location Cor.a monument of stones 3 ft.base 3 ft. high.

Thence N 24°.54'E
Va.14°E

332.49 Intersect line 4-1 President lode of this Sur.at.
S 87°.45'W 231.88 feet from cor.No.4
1146.05 Intersect line 1-2 J.D.Rockefeller lode of this Sur.at
N 8°.17'E 17.8 feet. *from Cor No.2*
1500 To Cor.No.4
Identical with the Cor.of the loc.
A Granite stone 6X6X24 ins.set 12 ins. in the ground, with
mound of stones, chiseled F-4-1995.Whence:
A X-B-R-F-4-1995 chiseled on granite rock in place brs,
S 52°.20'E 10.5 feet.
A X-B-R-F-4-1995 chiseled on granite rock in place brs!
N 42°.40'E 8.7 feet.
Location Cor.a monument of stones 3.5 ft.base 3 ft.high

Thence N 68°.26'W
Va.14°E

104 Cor.No.3 Wells Fargo lode of this Sur.at intersection of
line 1-2 J.D.Rockefeller lode of this Sur.at N 8°.17'E
380.86 feet from Cor.No.2
300 N.S.C.
525.5 Cor.No.2 Wells Fargo lode of this Sur.
600 To Cor.No.1 the place of beginning.

President Lode.

Beginning at Cor.No.1.
Identical with the N.W.Cor.of the loc.
A Granite stone 6X10X30 ins.set 18 ins.in the ground, with
mound of stones, chiseled P-1-1995.Whence:
Cor.to secs.4-5-32-33.T.12-13.N.R.1.W. brs.
N17°.31'E 9416.feet
A Pine tree 10 ins.diam.scribed X-B-T-P-1-1995.brs.
S 65°.00'E 13.8 ft.
A Spruce tree 14 ins,diam.scribed X-B-T-P-1-1995
brs.S 15°.00'W 13.feet.
Location Cor a monument of stones 3 ft.base 3 ft.high.

Thence S 2°.15'E
Va.14°E

200.33 Intersect line 2-3 Flow lode of this Sur. at.N 68°.26'W
236.45 ft.from Cor.No.3
1410. To Cor.No.2.
Identical with the Cor.of the loc.
A Granite stone 6X12X24 ins.set 12 ins.in the ground with
mound of stones, chiseled P-2-1995.Whence:
An Oak tree 11 ins.diam,scribed X-B-T-P-2-1995 brs.
S 22°.00'W 33.3 feet.
A Pine tree 12 ins.diam.scribed X-B-T-P-2-1995 brs.
S 52°.00'W 17.2 feet.
Location Cor.a monument of stones 3.5 ft.high 3 ft.base.

Thence N 87°.45'E
Va.14°E

(5)

President Lode.

300 S.E.C.
600 To Cor.No.3.
Identical with the Cor.of the loc.
A Granite stone 8X10X26 ins.set 13 ins.in the ground with mound of stones, chiseled, P-3-1995. Whence:
A Pine tree 22 ins.diam.scribed X-B-T-P-3-1995 brs.
S 41°.00'W 29.3 ft.
A X-B-R-P-3-1995 chiseled on rock in place brs.N 30°.30'W 11.7 feet,
Location cor.a monument of stones 3 ft.base 3.5 ft.high.

Thence N 2°.15'W
Va.14°E

634.15 Intersect line 2-3 C.P.Huntington lode of this Sur.at.
S 81°43'E 137.16 ft.from Cor.No.2.

1384.47 Intersect line 1-2 C.P.Huntington lode of this Sur. at.
N 8°.17'E 737.65 ft.from Cor.No.2

1410 To Cor.No.4.
Identical with the Cor.of the loc.
A Granite stone 10X12X24 ins.set 12 ins.in the ground, with mound of stones, chiseled, P-4-1995. Whence:
An Oak tree 7 ins.diam.scribed X-B-T-P-4-1995 brs.
S 45°.50'E 30.7 feet.
A Pine tree 7 ins.diam.scribed X-B-T-P-4-1995 brs.
N 35°.45'E 11.7 feet.
Location Cor.a mound of stones 2.5 ft.base 3 ft.high.

Thence S 87°.45'W
Va.14°E

231.88 Intersect line 3-4-Flow lode of this Sur. at N 24°54'E
332.49 ft.from Cor.No.3
To Cor.No.1 the place of beginning.

AREA.

J.D.Rockefeller.lode
Total area.....20.661.....Acres.
Conflict with Wells Fargo lode of this Sur.
not excluded..... 0.478 acres.
Conflict with Flow lode of this sur.of this
sur.not excluded.....0.422 acres
Conflict with Club lode of this sur.
not excluded..... 0.831 acres.
Conflict with Sur.No.1804 Alturas lode excluded 3.326 acres
Total net area J.D.Rockefeller lode..... 17.335 "

C.P.Huntington lode
Total and net area 20.661 "
Conflict with President lode of this sur.
not excluded.. 1.223 acres. 1.161
Conflict with Club lode of this sur.
not excluded.....0.661 acres.

Club lode.
Total area... ..12.621 acres.
Less area in conflict with J.D.Rockefeller lode
of this sur.....0.831 acres.
Less area in conflict with C.P.Huntington lode
of this sur.....0.661 acres.
Total net area Club lode.....11.129 "

Wells Fargo lode
Total area.....6.211 acres.
Less area in conflict with J.D.Rockefeller
lode of this sur.0.478 acres..
Net area Wells Fargo lode.....5.733 "

Flow Lode
Total area..20.626 acres

Sur.1995

Area in conflict with President lode of this sur,
 not excluded.....1.747^v acres.
 Less area in conflict with J.D.Rockefeller.lode.of
 this sur.....0.422^v acres.
 Total net area Flow lode..... 20.204^f acres

President Lode.
 Total area 19.422^v acres
 Less area in conflict with Flow lode of this
 sur. 1.747^v acres.
 Less area in conflict with C.P.Huntington lode
 of this sur....1.161^v acres 1161 16,514
 Total net area of President lode.....16.514^v "
 Total net area of lode claim..... 91.576^v acres.

LOCATION.

This claim is located on unsurveyed land in Twp.12 N.R.
 1 W. ~~Hesperompa~~ mining district, Yavapai County, Arizona.
Big Bug by Walker

ADJOINING CLAIMS.

This claim is bounded on the North by Sur.No.1604
 Alturas lode and U.S.land, and on the East, South and
 West by U.S.land.

Ledges.

- Ledge on J.D.Rockefeller lode brs.N 8.17'E 1500 ft.from
S.E.C.
- " " C.P.Huntington lode brs. S 8°.17'W 1500 ft.
from N.E.C.
- " " Club lode brsN 45°.53'E 1162 ft.from S.E.C.
- " " Wells Fargo lode brs.N 27°.34'E from S.E.C.750 ft.
- " " Flow lode brs. S 24°.54'W 1500 from N.E.C.
- " " President lode, brs.N 2°.15'W 1410 ft.from S.E.C.

EXPENDITURE OF FIVE HUNDRED DOLLARS.

I certify that the value of the labor and improvements
 upon this claim, placed thereon by the claimants and
 their grantors, is not less than five hundred dollars
 for each and every lode, and that said improvements
 consist of:

- J.D.Rockefeller Lode.
 No.1 dis.shaft which brs. N 8°.17'E 750 ft.from S.E.C.
 4X8X800 ft.deep timbered Value\$16000.00
- C.P.Huntington Lode.
 No.1 dis.shaft which brs.S 8°.17'W 345 ft.from N.E.C.
 4X8X170 ft.deep timbered Value \$3400.00
- Club Lode.
 No.1 dis.shaft which brs.N 45°.53'E 738 ft.from S.E.C.
 4X6X15 ft value.\$150.00
 No.2 Tunnel which brs.N 28°.10'E 603 ft.from Cor.No.3
 5X7X50 ft.long, course N 65°.E ...value ... \$400.00
- Wells Fargo Lode.
 No.1 dis.shaft which brs.N 76°.30'E 397 ft.from Cor.
 No.2.4X6X20 ft.deep ...value\$200.00
 No.2 shaft which brs.S 88°.00'E 310 ft. from Cor.No.2
 4X6X 12 ft.deep value .. \$100.00
 No. 3 Tunnel which brs.N 22°.30'E 340 ft.from Cor.No.2
 5X7X50 ft.long, course N 46°.30'E ...value.\$400.00

- Flow Lode.
 No.1 dis.shaft which brs.S 24°.54'W 343 ft.from N.E.C.
 4X6X12 ft.....value\$100.00
 No.2 shaft which brs.S 66°.10'W 300 ft.from Cor.No.4
 4X6X40 ft.deep value\$400.00

Survey No. 1995

Shaft No. 3 which brs. S 48°.10' W 510 ft. from Cor. No. 4
 4X6X110 ft. deep timbered value \$1980.00
 No. 4 shaft which brs. S 21°.15' W from Cor. No. 1 695 ft.
 4X6X40 ft. deep .. value..... \$480.00

President Lode.

No. 1 dis. shaft which brs. S 2°.15' E 645 ft. from N.E.C.
 4X6X50 ft. deep timbered \$600.00
 No. 3 Tunnel which brs. S 42°.30' W 406 ft. from Cor. No. 4
 5X7X400 ft. long timbered course, S 2°.00' E value \$4800.00

INSTRUMENT.

This survey was made with a Gurley Light Mountain Solar
 Transit. The courses were deflected from the true me-
 ridian as determined by direct solar observations. The
 distances were measured with 100-ft. and 500ft. steel
 tapes.

Note.- The tie line to Sur. No. 1604 Alturas lode is in
 error.

..... *William A. Merrill*
 U.S. Deputy Mineral Surveyor.

FINAL OATHS FOR SURVEYS.

LIST OF NAMES.

A list of the names of the individuals employed by *William H. Merrill*
 United States Deputy Mineral Surveyor, to assist in running, measuring, and marking the lines
 corners and boundaries described in the foregoing field notes of the survey of the mining claim
 of *Gold & Copper Consolidated Mining & Milling Company*
 known as the *J. D. Rockefeller*
C. P. Huntington, Wells Fargo, President, Silver & Club
 and showing the respective capacities in which they acted.

Fritz Veithaler, Chairman.
R. A. Merritt, Chairman.
 _____, Assn.
 _____, Flagman.

FINAL OATHS OF ASSISTANTS.

We, *Fritz Veithaler*
 and *R. A. Merritt*, do solemnly swear that we assisted *William H. Merrill*
 United States Deputy Mineral Surveyor, in marking the corners and
 surveying the boundaries of the mining claim of *Gold & Copper Consolidated*
Mining & Milling Company
 known as the *J. D. Rockefeller*
C. P. Huntington, Wells Fargo, President, Silver & Club, represented
 in the foregoing field notes as having been surveyed by said deputy mineral surveyor and under
 his direction; and that said survey has been in all respects, to the best of our knowledge and
 belief, faithfully and correctly executed, and the corner and boundary monuments established
 according to law and the instructions furnished by the United States Surveyor-General for
Arizona.

Fritz Veithaler, Chairman.
R. A. Merritt, Chairman.
 _____, Assn.
 _____, Flagman.

Subscribed and sworn to by the above-named persons before me

this *17th* day of *October* 1904.

My Commission Expires
July 15th 1905

W. H. Merrill
 Notary Public

(4-686.)

FINAL OATH OF U. S. DEPUTY MINERAL SURVEYOR

I, W. H. Merritt, U. S. Deputy Mineral Surveyor, do solemnly swear that, in pursuance of instructions received from the United States Surveyor General for Arizona, dated October 11th 1904, I have, in strict conformity to the laws of the United States, the official regulations and instructions thereunder, and the instructions of said Surveyor General, faithfully and correctly executed the survey of the Mining Claim of Gold & Copper Consolidated Mining and Smelting Company, known as the John D. Rockefeller, C. P. Harrington, Wells Fargo, President, Gold and Silver, situate in Maricopa Mining District, Yavapai County, Arizona, in Section 12 N, Township No. 12 N, Range No. 1 W and designated as Survey No. 1995, as represented in the foregoing field notes, which accurately show the boundaries of said mining claim as distinctly marked by monuments on the ground, and described in the attached copy of the location certificate, which was received by me from the Surveyor General with said instructions, and that all the corners of said survey have been established and perpetuated in strict accordance with the law, official regulations and instructions thereunder; and I do further solemnly swear that the foregoing are the true and original field notes of said survey and my report therein, and that the labor expended and improvements made upon said mining claim by claimant or them grantors are as therein fully stated, and that the character, extent, location and itemized value thereof are specified therein with particularity and full detail, and that no portion of said labor or improvements so credited to this claim has been included in the estimate of expenditures upon any other claim.

William H. Merritt
U. S. Deputy Mineral Surveyor.

Subscribed and sworn to by the said William H. Merritt
U. S. Deputy Mineral Surveyor, before me a Notary Public in
and for Yavapai County, Arizona this 17th
day of October 1904.

Ziba O. Brown
Notary Public

my Commission
Expires Nov. 1-1905.

Affidavit of Five Hundred Dollars Improvements.

We, W. N. Cook, and Fritz Vierthaler

of lawful age, being first duly sworn according to law, depose and say: that we are acquainted with the ¹⁰ Rockwell ^{CP} Hunter ^{Walls} Prospect ^{Flour & Club} mining claim, situate in Big Spring ^{Walker} ~~Washington~~ Mining district, Yavapai County, Arizona Territory, for which Gold & Copper Consolidated Mining and Milling Company have made application for survey prior to application for patent under the provisions of the Act of Congress, approved May 10, 1872; and that the labor done and improvements made thereon by the applicant and ~~the~~ grantor exceed Five Hundred Dollars in value, ^{for each claim} and further that we are not personally interested in said mine.

W. N. Cook

Fritz Vierthaler

TERRITORY OF ARIZONA,

County of Yavapai

} ss:

Sworn to and subscribed before me, this 17th day of October, 1904, 189

W. F. Merritt
Notary Public

My Comm. exp. July 15th 1905

"John D. Rockefeller"

Notice of Location.

Know All Men By These Presents: That I the undersigned have this day located Fifteen Hundred (1500) linear feet of this vein, or lode, bearing precious metals, with all dips, spurs, angles and variations, with surface ground three hundred (300) feet on each side of the center of vein, with all mineral deposits contained therein, and all timber growing within the limits of said claim, and all water and water privileges thereon or appurtenant thereto, under and according to the provisions of the United States Mining Laws, under which it is located.

This claim commences at this monument and notice placed upon the ledge, and runs 750 feet in a Northerly direction and 750 feet in a Southerly direction along the ledge, from discovery shaft.

The exterior boundaries are as follows, viz:

Commencing at a monument of stone on West boundary line, distant three hundred (300) feet in a westerly direction from discovery monument; thence in a northerly direction parallel with the ledge 750 feet to monument of stone at N.W. corner of claim; thence in an easterly direction at right angles across the ledge six hundred (300) feet to monument of stone at N.E. corner of claim; thence in a southerly direction parallel with the ledge fifteen hundred (1500) feet to monument of stone at S.E. corner of claim; thence at right angles across the ledge in a westerly direction six hundred (300) feet to monument of stone at S.W. corner of claim; thence in a northerly direction parallel with the ledge 750 feet to monument on west boundary and place of beginning.

This ledge may be more generally described as situated about one mile Southwest of the Bullion Mine and a bat one quarter of mile South of the Phoenix Mine and is about one mile and half mile Southeast of Clarks Mill on Lynx Creek, this claim is on the top of the divide about three hundred 300 yards Southeast of the Kitty Mine, in Big Bug and Walker Mining District, Yavapai County, Arizona Territory; and shall be known as the John D. Rockefeller Mining Claim.

Dated on the ground this first day of January at 5 A.M. 1897.
Locicator M.D.C. Putman.

Recorded at request of Jos. P. Dillon, March 19th A.D. 1897, at 10.15 o'clock A.M., in Book 43 of Mines, page 447, Records of Yavapai County, Arizona.

(Seal)

W.I. Johnson
County Recorder.

By P.J. Farley
Deputy.

"C.P.Huntington"

Notice of Location.

Know All Men By These Presents: That I the undersigned have this day located Fifteen Hundred (1500) linear feet of this vein or lode, bearing precious metals, with all dips, spurs, angles and variations, with surface ground Three Hundred (300) feet on each side of vein, with all mineral deposits contained therein, and all timber growing within the limits of said claim, and all water and water privileges thereon or appurtenant thereto, under and according to the provisions of the United States Mining Laws, under which it is located.

This claim commences at this monument and notice placed upon the ledge, and runs 300 feet in a Northerly direction and 1200 hundred feet in a Southerly direction along the ledge from discovery shaft.

The exterior boundaries are as follows, viz:

Commencing at a monument of stone on west boundary line, distant three hundred (300) feet in a westerly direction from discovery monument; thence in a northerly direction parallel with the ledge 300 feet to monument of stone at N.W. corner of claim; thence in an easterly direction at right angles across the ledge six hundred (600) feet to monument of stone at N.E. corner of claim; thence in a southerly direction parallel with the ledge fifteen hundred (1500) feet to monument of stone at S.E. corner of claim; thence at right angles across the ledge in a westerly direction six hundred (600) feet to monument of stone at S.W. corner of claim; thence in a northerly direction parallel with the ledge 1200 feet to monument on west boundary and place of beginning.

This ledge may be more generally described as situated in Big Bug Mining District, and is the South Extension of the Middleton Mine and joins the John D. Rockefeller on the North and runs in to the side of the President Mine at the side center on the East side being the South end of claim and runs parallel with the Flow Mine on the East side of the Flow Mine, in Big Bug Mining District, Yavapai County, Arizona Territory; and shall be known as the C.P. Huntington Mining Claim.

Dated on the ground this 28 day of October 1897.

M.D.C. Putman.

Recorded at request of M.D.C. Putman, Jan'y 17th A.D. 1898, at 2.27 o'clock P.M., in Book 43 of Mines, page 338, Records of Yavapai County, Arizona.

(Seal)

W.I. Johnson

County Recorder.

By E.C. Averyt

Deputy.

"President"

Notice of Location.

Know All Men By These Presents: That I the undersigned, have this day located Fifteen Hundred (1500) linear feet of this vein or lode, bearing precious metals, with all dips, spurs, angles and variations, with surface ground three hundred (300) feet on each side of the center of vein, with all mineral deposits contained therein, and all timber growing within the limits of said claim, and all water and water privileges thereon or appurtenant thereto, under and according to the provisions of the United States Mining Laws, under which it is located.

This claim commences at this monument and notice placed upon the ledge, and runs 750 feet in a northerly direction and 750 feet in a southerly direction along the ledge.

The exterior boundaries are as follows, viz:

Commencing at a monument of stone on west boundary line, distant three hundred (300) feet in a westerly direction from discovery monument; thence in a northerly direction parallel with the ledge 750 feet to monument of stone at N.W. corner of claim; thence in an easterly direction at right angles across the ledge six hundred (600) feet to monument of stone at N.E. corner of claim; thence in a southerly direction parallel with the ledge fifteen hundred (1500) feet to monument of stone at S.E. corner of claim; thence at right angles across the ledge in a westerly direction six hundred (300) feet to monument of stone at S.W. corner of claim; thence in a northerly direction parallel with the ledge 750 feet to monument on west boundary and place of beginning.

This ledge may be more generally described as situated about one mile and half $1\frac{1}{2}$ miles south of the Gold Summit Mine and about three miles southwest of Pratts Mill and joins the Flow on the Northwest corner and joins the Hudson on the North, in Walker and Big Bug Mining District, Yavapai County, Arizona Territory; and shall be known as the President Mining Claim.

Dated on the ground this 6th day of July 1894.

Marion De C Putman

Witness

George W. Oakman.

Recorded at request of G.W. Oakman Aug. 18th A.D. 1894, at 10.53 o'clock A.M., in Book 39 of Mines, pages 284, Records of Yavapai County, Arizona.

(L.S.)

Alex. O. Brodie

County Recorder

By _____

Deputy

"Flow"

Notice of Location.

Know All Men By These Presents: That we the undersigned, have this day located Fifteen Hundred (1500) linear feet of this vein or lode, bearing precious metals, with all dips, spurs, angles and variations, with surface ground three hundred (300) feet on each side of the center of vein, with all mineral deposits contained therein, and all timber growing within the limits of said claim, and all water and water privileges thereon or appurtenant thereto, under and according to the provisions of the United States Mining Laws, under which it is located.

This claim commences at this monument and notice placed upon the ledge, and runs 750 feet in a Northerly direction and 750 feet in a Southerly direction along the ledge.

The exterior boundaries are as follows, viz:

Commencing at a monument of stone on west boundary line, distant three hundred (300) feet in a westerly direction from discovery monument; thence in a northerly direction parallel with the ledge 750 feet to monument of stone at N.W. corner of claim; thence in an easterly direction at right angles across the ledge six hundred (600) feet to monument of stone at N.E. corner of claim; thence in a southerly direction parallel with the ledge fifteen hundred (1500) feet to monument of stone at S.E. corner of claim; thence at right angles across the ledge in a westerly direction six hundred (600) feet to monument of stone at S.W. corner of claim; thence in a northerly direction parallel with the ledge 750 feet to monument on west boundary and place of beginning.

This ledge may be more generally described as situated about $\frac{1}{2}$ mile from the Gold Summit Mine and about one and half from Lynx Creek and about $1\frac{3}{4}$ miles west of Big Bug Creek & about $1\frac{1}{2}$ miles north of Mt. Union and about 2 miles in an easterly direction from Senator Mine in Walker Mining District, Yavapai County, Arizona Territory, and shall be known as the Flow Mining Claim

Dated on the ground this 13th day of May 1894.

Marion De C. Putman 5\5
 Arthur Lane 1\5
 M.A. McLeod 1\5

Recorded at request of M.D.C. Putman June 29th A.D. 1894, at 4.40 o'clock P.M., in Book 39 of Mines, pages 250, Records of Yavapai County, Arizona.

(L.S.)

Alex. O. Brodie
 County Recorder.

By _____
 Deputy.

TERRITORY OF ARIZONA, |
 County of Yavapai. | ss.

I, P. J. Farley, County Recorder in and for the County of Yavapai, Territory of Arizona and custodian of the records thereof do hereby certify that I have compared the within and foregoing with, and the same is a full, true and correct copy of the Notice of Location of each of the following described mining claims as the same appears from the records of my office as follows ,
 to-wit:-

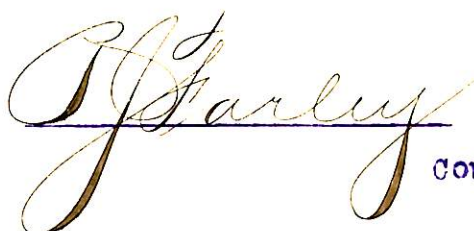
"John D. Rockefeller" Mining Claim, notice of location whereof is of record in Book 43 of Mines, page 447, Records of Yavapai County, Arizona;


"C. P. Huntington" Mining Claim, notice of location whereof is of record in Book 43 of Mines, page 638, records aforesaid;

"President" Mining Claim, notice of location whereof is of record in Book 39 of Mines, page 284, records aforesaid;

"Flow" Mining Claim, notice of location whereof is of record in Book 39 of Mines, page 250, records aforesaid.

IN WITNESS WHEREOF, I have hereunto set my hand and affixed my official seal this 8th day of October A. D. 1904.


 County Recorder.

BY 
 Deputy

Notice of Mining Location.

LODE CLAIM.

To All Whom It May Concern:

This mining claim, the name of which is the Club
Mining Claim, situate on lands belonging to the United States of America, and in which there
are valuable mineral deposits, was entered upon and located for the purpose of exploration and
purchase by M. D. C. Putman

(Locator must insert either "a citizen of the United States," or, "who has declared his intention to become a citizen of the United States.")

the undersigned, on the 18 day of April 1901

The length of this claim is 1500 feet,
and 2 claim 750 feet
in a northerly direction, and 750
feet in a southerly direction from
the center of the discovery shaft, at which this notice is posted, lengthwise of the claim, together
with 300 feet in width of the surface grounds, on each
side of the center of said claim. The general course of the lode deposit and premises is from the
west to the south

The claim is situated and located in the Big Basin Mining District, in
Yavapai County, in the Territory of Arizona, about 700 feet
in a west direction from the discovery shaft

The surface boundaries of the claim are marked upon the ground as follows: Beginning at
the discovery shaft in the center
at a point in a west direction 750 feet from
the discovery shaft (at which this notice is posted), being in the center of the claim
end line of said claim; thence 90° feet to a corner
750, being the NE corner of said claim; thence
750 feet to a corner at the center of
the west side line of said claim; thence 750
feet to a corner, being at the NE corner of said
claim; thence 300 feet to a corner
at the center of the west end of said claim; thence 300
feet to a corner, being at the NE
corner of said claim; thence 750 feet to a corner;
750 being at the center of the west side line of said claim;
thence 750 feet to a corner at
the NE corner of said claim; thence 300
feet to the place of beginning.

All done under the provisions of Chapter Six, of Title XXXII., of the Revised Statutes of
the United States, and of an Act of the General Assembly of Arizona, entitled "An Act Concern-
ing Mines," approved March 20th, 1895, and amended March 2d, 1899.

Dated and posted on the ground this 18 day of April 1901

M. D. C. Putman

TERRITORY OF ARIZONA, } ss
County of.....

I,....., County Recorder in and for the County and Territory aforesaid, do hereby certify that the within instrument was filed for record at.....o'clock,..... M., on this.....day of.....190..., and duly recorded in Book No..... of.....Records of.....County, Arizona, at pages.....

WITNESS my hand and official seal the day and year first above written.

..... County Recorder.

Notice of Location.

LODE CLAIM.

M. C. Sutherland

Big Bug

Dated *April 15* 1901

Filed and recorded at request of

M. C. Sutherland

May 17 A. D. 1901

at *10:36 Celestia R. A. M.*

Book *37 of Mines*

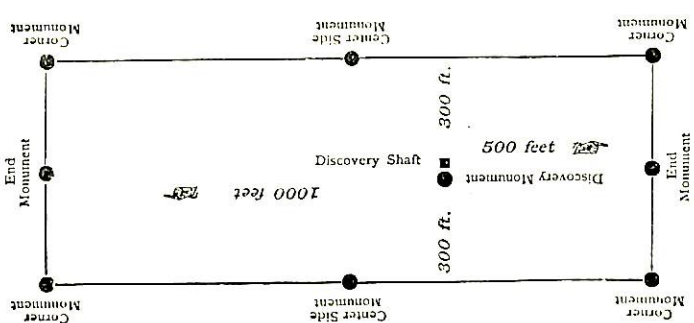
Pages *1641*

RECORDS OF YAVAPAI COUNTY, ARIZONA

P. J. Farley County Recorder.

L. J. Sutherland Deputy Recorder.

THE H. W. WELLS CO., PRINTERS, PHOENIX, ARIZONA.



This diagram is to give locator a general idea of plan of location under the new law. The Discovery Shaft can be in the center of claim or any distance from either end desired. In the diagram it is placed 500 feet from one end and 1000 feet from the other. Commence description of claim at a center end monument, giving its distance and direction from center of Discovery Shaft; thence bound the claim in either direction. In description be careful to state locality of claim with reference to some natural object, or permanent monument, as will identify the claim.

Indicated by 1886

\$100 pp. Mather

Notice of Mining Location.

LODE CLAIM.

To All Whom It May Concern:

This mining claim, the name of which is the Wells Fargo Mining Claim, situate on lands belonging to the United States of America, and in which there are valuable mineral deposits, was entered upon and located for the purpose of exploration and purchase by M. D. C. Putman

(Locator must insert either "a citizen of the United States," or, "who has declared his intention to become a citizen of the United States.")

the undersigned, on the 1 at 11 ^{minutes} ~~hour~~ day of January 1901

The length of this claim is 1500 feet, and 1 claim 300 feet in a southerly direction, and 1200 feet in a Northerly direction from the center of the discovery shaft, at which this notice is posted, lengthwise of the claim, together with 300 feet in width of the surface grounds, on each side of the center of said claim. The general course of the lode deposit and premises is from the North to the South

The claim is situated and located in the Walker Mining District, in Yavapai County, in the Territory of Arizona, about 450 feet in a Westerly direction from the Rockefeller Discovery shaft and is the south extension of the Kitty Mine and joins the flow on the south and runs parallel on the west of the Rockefeller mine

The surface boundaries of the claim are marked upon the ground as follows: Beginning at the south end center of claim

at a point in a southerly direction 300 feet from the discovery shaft (at which this notice is posted), being in the center of the south end line of said claim; thence 300 feet to a monument of stone and Post, being the south West. 2. W. corner of said claim; thence 750 feet to a monument of stone and Post at the center of the West side line of said claim; thence 750 feet to a monument of stone and Post being at the North West. N. W. corner of said claim; thence 300 feet to a monument of stone and Post at the center of the North end of said claim; thence 300 feet to a monument of stone and Post being at the North East. N. E. corner of said claim; thence 750 feet to a monument of stone and Post being at the center of the East E. side line of said claim; thence 750 feet to a monument of stone and Post at the south east corner of said claim; thence 300 feet to the place of beginning.

All done under the provisions of Chapter Six, of Title XXXII., of the Revised Statutes of the United States, and of an Act of the General Assembly of Arizona, entitled "An Act Concerning Mines," approved March 20th, 1895, and amended March 2d, 1899.

Dated and posted on the ground this 1 day of January 1901

} Locator M. D. C. Putman

Witness L. C. Carrel

TERRITORY OF ARIZONA, } ss.
County of.....

I,....., County Recorder in and for the County and Territory aforesaid, do hereby certify that the within instrument was filed for record at.....o'clock,..... M., on this.....day of.....190..., and duly recorded in Book No..... of.....Records of.....County, Arizona, at pages.....

WITNESS my hand and official seal the day and year first above written.

.....
County Recorder.

indexed
395-
W.D. C. [unclear]

Notice of Location.

LODE CLAIM.

W.D. C. [unclear]

Phalmer

Dated *Jan 1* 190*1*

Filed and recorded at request of

Wm French

Jan 28 A. D. 190*1*

at *9 o'clock A. M.*

Book *57 of Mines*

Pages *92-93*

RECORDS OF **YAVAPAI COUNTY, ARIZONA**

J. J. Gibbons

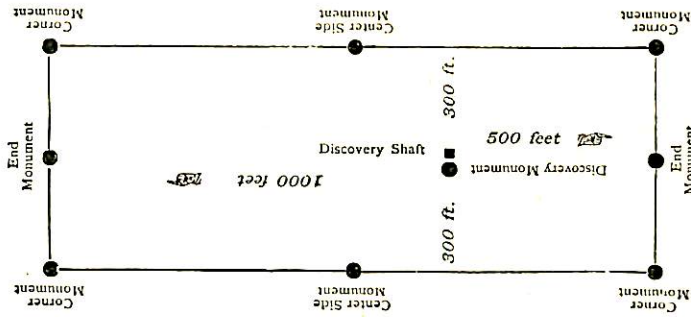
County Recorder.

By *J. J. Gibbons*
Deputy Recorder.

THE H. H. McNEIL CO., PRINTERS, PHOENIX, ARIZONA.

\$5.80 m. D. E. Pullman

W. D. C. [unclear]



This diagram is to give locator a general idea of plan of location under the new law. The Discovery Shaft can be in the center of claim or any distance from either end desired. In the diagram it is placed 500 feet from one end and 1000 feet from the other. Commence description of claim at a center end monument, giving its distance and direction from center of Discovery Shaft; thence bound the claim in either direction. In description be careful to state locality of claim with reference to some natural object, or permanent monument, as will identify the claim.

4-687.

SURVEYOR-GENERAL'S CERTIFICATE OF APPROVAL OF FIELD NOTES AND SURVEY OF MINING CLAIM.

Department of the Interior,

Office of U. S. Surveyor-General,

Phoenix, Arizona.

Nov. 14th, 1904

I, U. S. Surveyor-General for District of Arizona

do hereby certify that the foregoing and hereto attached Field Notes and Return of the Survey of the Mining Claim of Gold & Copper Consolidated Mining & Milling Company.

John D. Rockefeller, C.P. Huntington, Wells Fargo, President, Flow & Club,

situate in Big Bug and Walker Mining District,

Yavapai County, Arizona

in Section, Township No. 12 N, Range No. 1 W

, designated as Survey No. 1995

executed by William H. Merritt, U. S. Deputy Mineral

Surveyor, October 12th, 15th, 1904, under my instructions dated

October 11th, 1904, have been critically examined and the necessary cor-

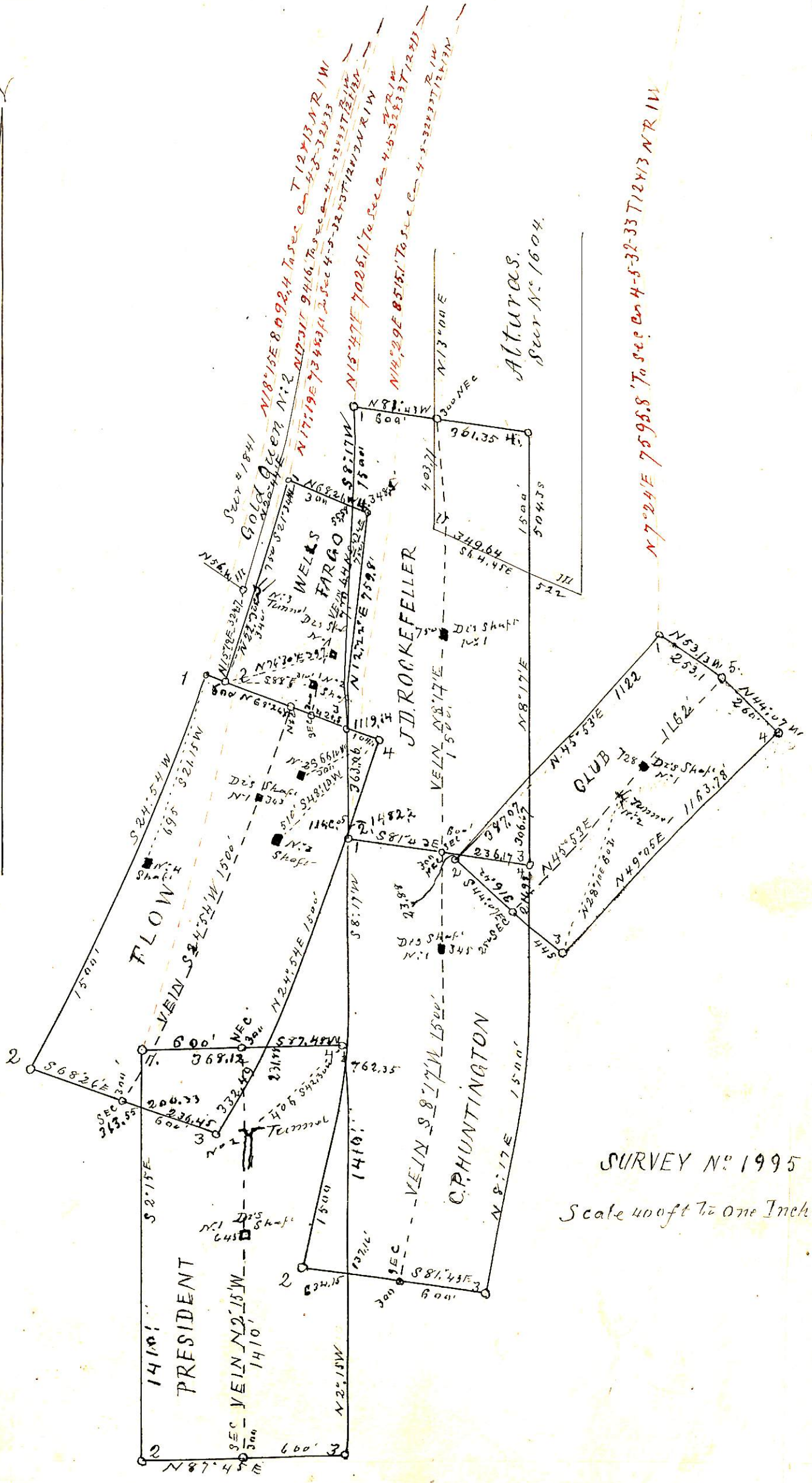
rections and explanations made, and the said Field Notes and Return, and the Survey they describe,

are hereby approved. A true copy of the copy of the location certificate filed by the applicant for

survey is included in the field notes.

Frank A. Leggett

U. S. Surveyor-General for Arizona



Alturas.
Sec. N. 1604.

N 7° 04' E 759.8' To sec. on 4-5-32 T124/3 NR 111

SURVEY N. 1995

Scale 400 ft to one Inch