

MS.

0

2

0

1

0

In November 2005,
when the files were moved into the new filing system the

X FIELD NOTES

were found missing.

The attached

is a print

from the microfiche

JUN 23 1905

(4-683.)

Mineral Survey No. 2010

Lot No.

Gila Land District.

FIELD NOTES

OF THE SURVEY OF THE MINING CLAIM OF

Martin O'Hare

KNOWN AS THE

Quartzite Strip
Situate in Warren Mining District.

Cochise County, Arizona

Section 4, Township 23 S, Range 24 E 4th S. B. 4th

Surveyed under instructions dated Dec 21st, 1904

by Franklin W. Smith
U. S. Deputy Mineral Surveyor

Claim located See notices . 1

Survey commenced April 15th . 1905

Survey completed April 16th . 1905

Post Office address of claimant:—
Bisbee, Cochise County
Arizona

Quartzite Strip
Survey No. 210

1

Feet

Beginning at Cor.No.1, the SE cor, identical with location.

A pine post 4 ft long 4 ins sq set 1 ft in the ground in a mound of stones and scribed 1-201⁰/_A Q S., whence a pine post of same dimensions and scribed B. P. 1-2010 brs. N. 20° W. 25 ft., and a second pine post of same dimensions and scribing brs. N. 24° 45' E. 25 ft., no other bearing comments available and U S M M No.1 Warren Mining District, brs. S.80°56' E. 3958.01 ft,

Thence N. 24° 45' E

- 113.0 to the intersection of a side of a Silica Quarry,
- 169.0 same bearing to the intersection of a one story frame house facing NE at 22.0 ft from the SW cor.,
- 286.0 same bearing to the intersection of a one story frame house facing SE at 12.0 ft from the SW cor.,
- 490.0 same bearing to the intersection of a 1½ story frame house facing SE at 12.4 ft from the SW cor.,
- 576.8 same bearing to the intersection of line 1-4 Mamie lode, Survey No.1082 at S. 44° 39' E. 43.2 ft. from Cor.No4,
- 590.0 same bearing to the intersection of a one story frame house facing SE. at 16.0 ft from the SW cor.,
- 639.0 same bearing to the intersection of a one story frame house facing SE at 14.5 ft from the SW cor.,
- 728.0 same bearing to the intersection of the S side of Dry Wash running NW
- 740.0 same bearing to the intersection of N side of Dry Wash
- 802.0 same bearing to the intersection of a one story frame house facing SW 21.0 ft from the SW cor.,
- 1039.0 same bearing to the intersection of a one story frame house facing SW 22.0 ft from the SW cor.,
- 1403.6 same bearing to Cor.No.2, the NE cor. identical with location and situated on line 3-2 Mamie lode, Survey No. 1082,

TRANSCRIBED COPY OF
ORIGINAL FIELD NOTES

Quartzite Strip
Survey No. 210

2

1

Feet

Beginning at Cor.No.1, the SE cor, identical with location,

A pine post 4 ft long 4 ins sq set 1 ft in the ground in a mound of stones and scribed 1-201⁰/_A Q S L., whence a pine post of same dimensions and scribed B. P. 1-2010 brs. N. 57° 20' W. 25 ft. — and a second pine post of same dimensions and scribing brs. N. 24° 45' E. 25 ft., no other bearing monuments available and U S M M No.1 Warren Mining District, brs. S.80°56'E. 2958.01 ft,

Thence N. 24° 45' E

113.0 to the intersection of a side of a Silica Quarry,

169.0 same bearing to the intersection of a one story frame house facing NE at 22.0 ft from the SW cor.,

286.0 same bearing to the intersection of a one story frame house facing SE at 15.0 ft from the SW cor.,

490.0 same bearing to the intersection of a 1/2 story frame house facing NE at 13.5 ft. from the SW cor.,

576.0 same bearing to the intersection of line 1-4 Mamie lode, Survey No.1082 at S. 44° 39' E. 43.2 ft. from Cor.No4.,

590.0 same bearing to the intersection of a one story frame house facing SE. at 16.0 ft from the SW cor.,

639.0 same bearing to the intersection of a one story frame house facing SE at 14.5 ft from the SW cor.,

768.0 same bearing to the intersection of the S side of Dry Wash running NW

790.0 same bearing to the intersection of N. side of Dry Wash

903.0 same bearing to the intersection of a one story frame house facing ^{SV} 21.0 ft from the SW cor.,

1039.0 same bearing to the intersection of a one story frame house 18.0 ft from the SW cor.,

1403.6 same bearing to Cor.No.2, the NE cor. identical with location and situated on line 3-4 Mamie lode, Survey No. 1082,

Quartzite Strip (con)

3
Feet

A pine post 4 ft long 4 ins sq set 1 ft in the ground in a mound of stones and scribed 2-2010 Q S L., whence a pine post of same dimensions and scribed B.P. 2-2010 brs S. 24° 45' W. 25 ft and a second pine post of same dimensions and scribed brs. N. 57° 20' E. 25 ft, and Cor. No. 4 Mamie ~~to the NW cor. of~~ 1082 brs. S. 27° 36' W. 812.6 ft., no bearing arguments available,

~~Bearing N. 57° 20' E.~~

100.0 to original location for N E C.,

192.4 same bearing to Cor. No3 the NW cor identical with location

A pine post 4 ft long 4 in s sq set 1 ft in the ground in a mound of stones and scribed 3-2010 Q S L whence a pine post of same dimensions and scribed B. P. 3-2010 brs S. 57° 20' E. 25 ft., and a second pine post of same dimensions and scribing brs. S. 25° 00' 30" W 25 ft no bearing arguments available,

~~Bearing N. 57° 20' E.~~

73.5 to the SW cor of a one story frame house facing SW, distance to SE cor being 10 ft.

130.0 same bearing to intersection of one story frame house at the NE cor., distance to N^W cor being 18 ft.,

382.0 same bearing to the intersection of a one story frame house facing SW at the SE cor., distance to SW cor being 10 ft

615.0 same bearing to the intersection of a one story frame house facing S at 20 ft from the NW cor.,

610.0 same bearing to the intersection of N side of Dry Wash running NW

670.0 same bearing to the intersection of S side line of Dry Wash,

686.5 same bearing to the intersection of a one story frame house facing NE at 19.0 ft from the NE cor.,

1084.0 same bearing to the intersection of a one story frame house facing NE at 10 ft from the NE cor.,

TRANSCRIBED COPY OF

Quartzite Strip (con)

Feet

1402.7 same bearing to Cor.No.4, the SW cor identical with location,

A pine post 4 ft long 4 ins sq set 1 ft in the ground in a mound of stones and scribed 4-2010 Q S L whence a pine post of same dimensions and scribed B.P. 4-2010 brs N. ~~50° 30' W.~~ ~~50° 30' W.~~ second pine post of same dimensions and scribed ~~57° 20' E.~~ 57° 20' E. 25 ft, no bearing monuments available

Thence S. 57° 20' E.

73.0 to the intersection of a side of the Silica Quarry,

99.0 same bearing to original location for S E C.,

199.0 same bearing to Cor.No.1 the place of beginning.

Ledge.

The presumed course of the vein on this claim is from N&E C location S. 24° 45' W. 1403.6 ft.,

Total area Quartzite Strip 6.246 ac

Less area in conflict with Mamie lode, Survey No.1082, 0.384

Net area Quartzite Strip 5.862 ac.

IMPROVEMENTS.

I hereby certify that the value of the labor and improvements on this claim placed thereon by the claimant or his grantors is not less than \$500 and that said improvements consist of:

No.1 Discovery shaft 5x10 1/2 x 14 1/2 ft brs from Cor.No.2S. 69° W. 194.0 ft., Value 150.00

No.2 Shaft 4x8x11 ft brs from same point S.66° 40' W. 206.0 ft., Value 100.00

No.3 (From bottom of shaft No.2 1 tunnel 4 1/2 x 5 1/2 x 10 1/2 course NW and another tunnel 4 1/2 x 5 1/2 x 10 ft. course NE has been run. Value of both 150.00

No.4 Open Cut 4 x 10.5 x 54 ft, course N. 41° E and 40 ft from mouth of cut a tunnel has been driven off at right angles, dimensions 4x5x16.5, Value 200.00

Total improvements Quartzite Strip \$600.0

TRANSCRIBED COPY OF
ORIGINAL FIELD NOTES

Quartzite Strip (con)

2

3

Feet

A pine post 4 ft long 4 ins sq set 1 ft in the ground in a mound of stones and scribed 2-2010 Q S L., whence a pine post of same dimensions and scribed B.P. 2-2010 brs S. $24^{\circ} 45' W.$ 25 ft and a second pine post of same dimensions and scribing brs N. $57^{\circ} 20' W.$ 25 ft, and cor. No. 4 Mamie Lodge, Survey No. 1082 brs S. $27^{\circ} 36' W.$ 812.6 ft., no bearings monuments available,

Thence N. $57^{\circ} 20' W.$

100.0 to original location for N.E.C.,

192.4 same bearing to Cor. No 3 the NW cor identical with location

A pine post 4 ft long 4 in s sq set 1 ft in the ground in a mound of stones and scribed 3-2010 Q S L whence a pine post of same dimensions and scribed B. P. 3-2010 brs S. $57^{\circ} 20' E.$ 25 ft., and a second pine post of same dimensions and scribing brs S. $25^{\circ} 00' 30'' W$ 25 ft no bearing monuments available.

Thence S. $25^{\circ} 00' 30'' W.$

73.5 to the SW cor of a one story frame house facing SW, distance to SE cor being 10 ft.

130.0 same bearing to intersection of one story frame house at the NE cor., distance to ^WN cor being 18 ft.,

388.0 same bearing to the intersection of a one story frame house facing SW at the SE cor., distance to SW cor being 10 ft

615.0 same bearing to the intersection of a one story frame house facing S at 20 ft from the NW cor.,

650.0 same bearing to the intersection of N side of Dry Wash running NW

670.0 same bearing to the intersection of S side line of Dry Wash,

686.5 same bearing to the intersection of a one story frame house facing NE at 19.0 ft from the NE cor.,

1084.0 same bearing to the intersection of a one story frame house facing NE at 10 ft from the NE cor.,

TRANS
ORIGI

TRANSCRIBED COPY OF ORIGINAL FIELD NOTES

Quartzite Strip (con)

Feet

ground in
ence a
2-2010
of name
, and
36' W.

th location
ground
ence a
2-2010
1 pine post
30" W

SW, dis-
house
frame
cor being 10 ft
fratohouse
ry Wash
of Dry
frame
frame

1402.7 same bearing to Cor.No.4, the SW cor identical with lo-
cation,
A pine post 4 ft long 4 ins sq set 1 ft in the ground in
a mound of stones and scribed 4-2016 Q 3 L whence a
pine post of same dimensions and scribed S.P. 4-2010
brs N. 25° 00' 30" E. 25 ft. and a second pine post of
same dimensions and scribing brs S 57° 20' E. 25 ft.,
no bearing monuments available.

Thence S. 57° 20' E.

73.0 to the intersection of a side of the Silica Quarry,
99.0 same bearing to original location for S E C.,
199.0 same bearing to Cor.No.1 the place of beginning.

Ledge.

The presumed course of the vein on this claim is
from N&E C location S. 24° 45' W. 1403.6 ft.,

A R E A

Total area Quartzite Strip. 6.246 ac

Less area in conflict with Mamie lode,
Survey No. 1082, 0.384

Net area Quartzite Strip 5.862 ac

IMPROVEMENTS.

I hereby certify that the value of the labor and
improvements on this claim placed thereon by the claimant
or his grantors is not less than \$500 and that said
improvements consist of:

- No.1 Discovery shaft 5x10½x14½ ft brs from Cor.No.2S. 69° W.
194.0 ft., Value 150.00
- No.2 Shaft 4x6x11 ft brs from same point S.66° 40' W.
206.0 ft., Value 100.00
- No.3 (From bottom of shaft No.2 1 tunnel 4½x5½x10½
course NW and another tunnel 4½x5½x10 ft. course
NE has been run. Value of both 150.00
Center of mouth of shaft brs from Cor No. 2 - S. 57° 12' W 257 ft.
- No.4 Open Cut 4 x 10.5 x 54 ft. course N. 41° E and
40 ft from mouth of cut a tunnel has been driven off at
as indicated on map
right angles, dimensions 4x5x16.5, Value 200.00

Total improvements Quartzite Strip \$600.00

Other improvements.

- No.1 One story frame house facing SW brs from Cor.No.2
Quartzite Strip S. 39° 52' W. 128.0 ft., to NW cor
- No.2 The SE cor of a one story frame house facing SW brs from
same point N 89° 01' W. 113.0 ft.,
- No.3 The NE cor of a ~~one story~~ frame house facing ~~SW~~ brs from same
point N. 72° 41' W. 143.0 ft.,
- No.6 The NE cor of a one story frame house facing NE brs from
same point S. 71° 29' W. 224.0 ft.,
- No.8 The NE cor of a one story frame house facing SW brs from
same point S. 62° 21' W. 270 ft., Value
- No.9 The NW cor of a barn facing SW brs from same point S.
55° 26' W. 360.0 ft.,
- No.10 The NE cor of a one story frame house facing SW brs from
same point S. 49° 37' W. 398 ft., Val
- No.11 The SE cor of a one story frame house facing NE brs from
same point S. 40° 40' W. 448.0 ft.,
- No.12 The NE cor of a one story frame house facing SW brs from
same point S. 36° 6' W. 485.0 ft.,
- No.13 The NE cor of a one story frame house facing SE brs from
same point S. 31° 22' W. 492.0 ft.,
- No.14 The SE cor of a one story frame house facing SW brs from
Cor.No.4 Mamie loc. Survey No.1082 N. 25° 05' E. 478.0 ft
- No.15 The SW cor of a barn facing W brs from same point N
17° E. 262.0 ft., Value,
- No.16 The SE cor of a shed facing S brs from same point N. 12°
21' E. 290 ft.,
- No.17 The SE cor of a one story frame house facing S brs. from
same point N. 5° 12' E. 295 ft.,
- No.18 The SW cor of a one story frame house facing S brs from
same point N. 03° 51' W. 230.0 ft.,
- No.20 The SE cor of a one story frame house facing NE brs from
same point N. 07° 16' E. 150 ft.,

TRANSCRIBED RECORD

Quartzite Strip (Con)

- No.21 The SE cor of a one story frame house facing NE brs from same point N. 8° 15' W. 150 ft.,
- No.22 The SW cor of a one story frame house facing NE brs from same point N. 17° 56' W. 170 ft.,
- No.26 The SE cor of a one story framehouse facing S brs from same point S. 44° 40' W. 260 ft.,
- No.28 The NE cor of a 1½ story frame house facing NE brs from point which is S. 32° 05' W. 61.3 ft from Cor.No.4 Mamie lode, Survey No.1082, N. 67° 28' W. 94.0 ft.,
- No.29 The NW cor of barn facing NW brs from same point S. 70° 32' W. 127.0 ft.,
- No.31 The SE cor of a one story frame house facing NE brs from same point S. 44° 20' W. 205.0 ft.,
- No.32 The NW cor of a one story framehouse facing NE brs from same point S. 39° 28' W. 126 ft.,
- No.33 The NW cor of a one story frame house facing W brs from same point S. 17° W. 106.0 ft.,
- No.34 The NE cor of a two story frame house facing NE brs from same point S. 43° 4' W. 265 ft.,
- No.35 The NW cor of a one story frame house facing SE brs from same point S. 24° 20' W. 260 ft.,
- No.36 The NE cor of a one story frame house facing NE brs from same point S. 35° 54' W. 320 ft.,
- No.37 The NE cor of a one story frame house facing NE brs from same point S. 34° 1-6' W. 370 ft.,
- No.38 The NE cor of a one story frame house facing NE brs from same point S. 30° 33' W. 450.0 ft.,
- No.39 The NW cor of a one story frame house facing NE brs from same point S. 48° 45' W. 350 ft.,
- No.40 The SE cor of a one story frame hous facing NE brs from Cor.No.1 of this survey N.10° 22' E. 170 ft.,
- No.41 The NE cor of a ^{one} story frame house facing NE brs from same point N. 0° 24' E. 144.0 ft.,
- No.44 The SE cor of a one story frame house facing SE brs from same point N. 23° 57' E. 398.0 ft.,

cor
 from
 same
 from
 from
 S.
 from
 from
 from
 from
 478.0 ft
 N
 12°
 from
 from
 from

TRANSCRIBED COPY OF
ORIGINAL FIELD NOTES

5

QUARTZITE STRIP (CON)

4

TRANSC
ORIGINA

Other Improvements.

- | | |
|-------|--|
| No.1 | One story frame hous-facing SW brs from Cor.No.2
Quartzite Strip S. 39° 52' W. 128.0 ft.,brng to NW cor |
| No.2 | The SE cor of a one story frame house facing SW brs from
same point N 89° 01' W. 113.0 ft., |
| No.3 | The NE cor of a one frame house facing SW brs from same
point N. 72° 49' W. 145.0 ft. |
| No.6 | The NE cor of a one story frame house facing NE brs from
same point S. 71° 29' W. 224.0 ft., |
| No.8 | The NE cor of a one story frame house facing SW brs from
same point S. 62° 21' W. 270 ft., Value |
| No.9 | The NW cor of a barn facing SW brs from same point S.
55° 26' W. 360.0 ft., |
| No.10 | The NE cor of a one story frame house facing SW brs from
same point S. 49° 37' W. 398 ft., Val |
| No.11 | The SE cor of a one story frame house facing NE brs from
same point S. 40° 40' W. 448.0 ft., |
| No.12 | The NE cor of a one story frame house facing SW brs from
same point S. 36° 6' W. 485.0 ft., |
| No.13 | The NE cor of a one story frame house facing SE brs from
same point S. 31° 22' W. 492.0 ft., |
| No.14 | The SE cor of a one story frame house facing SW brs from
Cor.No.4 Mamie lode, Survey No.1082 N. 25° 05' E. 478.0 ft |
| No.15 | The SW cor of a barn facing W brs from same point N
17° E. 262.0 ft., Value, |
| No.16 | The SE cor of a shed facing S brs from same point N. 12°
21' E. 290 ft., |
| No.17 | The SE cor of a one story framehouse facing SE brs. from
same point N. 5° 12' E. 295 ft., |
| No.18 | The SW cor of a one story frame house facing S brs from
same point N. 03° 51' W. 230.0 ft., |
| No.20 | The SE cor of a one story frame house facing NE brs from
same point N. 07° 16' E. 150 ft., |

TRANSCRIBED COPY OF
ORIGINAL FIELD NOTES

Quartzite Strip (con)

6

5

- No.21 The SE cor of a one story frame house facing NE brs from same point N. 8° 15' W. 150 ft.,
- No.22 The SW cor of a one story frame house facing NE brs from same point N. 17° 56' W. 170 ft.,
- No.26 The SE cor of a one story framehouse facing S brs from same point S. 44° 40' W. 250 ft.,
- No.28 The NE cor of a 1½ story frame house facing NE brs from a point which is S. 32° 05' W. 61.3 ft from Cor.No.4 Mamie lode, Survey No.1082, N. 67° 28' W. 94.0 ft.,
- No.29 The NW cor of barn facing NW brs from same point S. 70° 32' W. 127.0 ft.,
- No.31 The SE cor of a one story frame house facing NE brs from same point S. 44° 20' W. 205.0 ft.,
- No.32 The NW cor of a one story framehouse facing NE brs from same point S. 39° 28' W. 126 ft.,
- No.33 The NW cor of a one story frame house facing W. brs from same point S. 17° W. 106.0 ft.,
- No.34 The NE cor of a two story frame house facing NE brs from same point S. 43° 4' W. 265 ft.,
- No.35 The NW cor of a one story frame house facing SE brs from same point S. 24° 20' W. 280 ft.,
- No.36 The NE cor of a one story frame house facing NE brs from same point S. 35° 54' W. 320 ft.,
- No.37 The NE cor of a one story frame house facing NE brs from same point S. 34° 1-8' W. 370 ft.,
- No.38 The NE cor of a one story frame house facing NE brs from same point S. 30° 33' W. 450.0 ft.,
- No.39 The NW cor of a one story frame house facing NE brs from same point S. 48° 45' W. 350 ft.,
- No.40 The SE cor of a one story frame hous facing NE brs from Cor.No.1 of this survey N. 10° 22' E. 170 ft.,
- No.41 The NE cor of a ^{one} story frame house facing NE brs from same point N. 0° 24' E. 144.0 ft.,
- No.44 The SE cor of a one story frame house facing SE brs from same point N. 23° 57' E. 348.0 ft.,

No.46 The SE cor of a one story frame house facing SE brn from
Cor No 2 of this survey
~~same point~~ S. 25° 40' W. 452 ft., Value,

Note Houses No.42,43,27,25, 24, 45, and 47 are situated
on line 1-2 of this survey and houses number 4, 5, 48
18, 23, 30 are situated on line 3-4 of this survey.

ADJOINING CLAIMS.

South,)
West,) Claims and claimants unknown.
North)
East, Mamie lode, Survey No.1082, owned by applicant herein.

LOCATION.

This claim is located about 1/2 mi in a W direction
from the Copper Queen Store, in the City of Bisbee, Cochise
County, Arizona, in the Warren Mining District, on un-
surveyed lands, approximately in Tp 23 S R 24 E G & S R
B & M.

INSTRUMENT.

This survey was made with a C. L. Berger & Sons No.
1 C. transit; the courses were deflected from the true
meridian as determined by solar observation checked by an
observation on Polaris, the distances were measured with
a 300 ft steel tape; Magnetic variation 12° 30' E.

Franklin W. Smith

U.S. Deputy Mineral Surveyor.

Dated at Bisbee, Arizona,

April 20 1905

Note Any discrepancies between the courses and dis-
tances of this survey and those of the Mamie lode, Survey
No.1082 are due to errors in the latter.

6

from

ated

48

in.

tion

Cochise

un-

8 R

as No.

me

by an

with

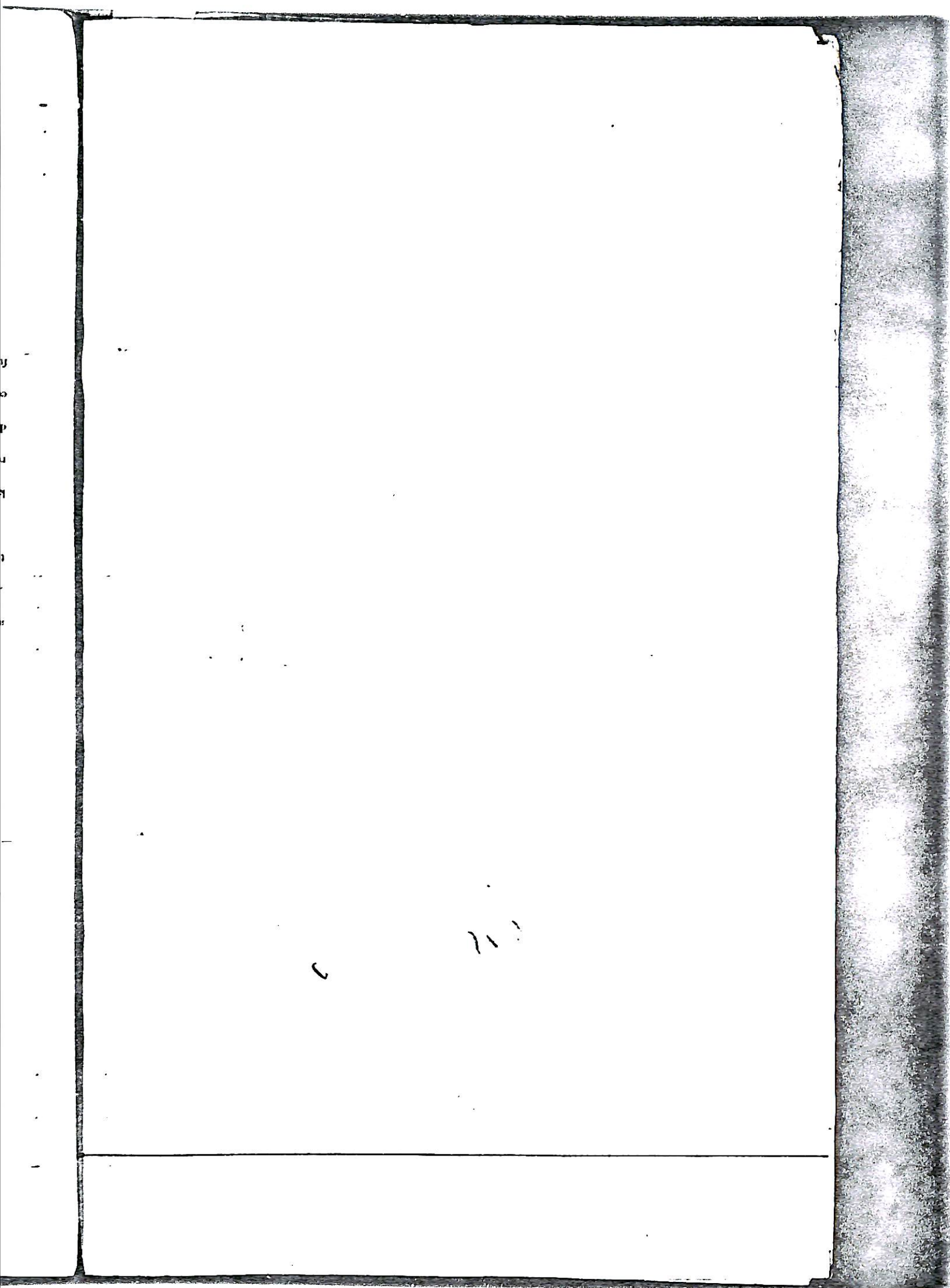
Survey

This survey calls for the same ground as was surveyed by James F. Trotter, U. S. Deputy Mineral Surveyor under instructions from your office, dated June 20, 1890, and the old survey was designated as Mineral Survey No. 1380.

The claimant informs me that the ground in this survey is the same as that embraced in Mineral Survey No. 1380. The claimant further informs me that corrs. No. 1, 2, 3, and 4 of this survey are identical with corrs. No. 1, 4, 3 and 2 respectively, of Survey No. 1380. This fact, I could not verify, myself, as the posts were very much weathered and the scribing almost completely effaced. I have no reason to doubt that the old posts found on the ground are the corners of Survey No. 1380, especially as no monuments of any description could be found elsewhere in the vicinity.

These old posts were destroyed and replaced by new ones, scribed and witnessed as reported in my field notes of this survey.

Any discrepancies between the courses and distances of Mineral Survey No. 1380 and those of Mineral Survey No. 1380 are due to errors in the latter survey.



FINAL OATHS FOR SURVEYS.

LIST OF NAMES.

A list of the names of the individuals employed by Franklin W. Smith,
 United States Deputy Mineral Surveyor, to assist in running, measuring, and marking the lines, corners, and
 boundaries described in the foregoing field notes of the survey of the mining claim of
Martin O'Hare
 known as the Quartzite Strip
 and showing the respective capacities in which they acted.

R. A. Ziesemer Chainman.
L. E. Curry Chainman.
 Axman.
 Flagman.

FINAL OATHS OF ASSISTANTS.

We, R. A. Ziesemer
 and L. E. Curry, do solemnly swear that we assisted Franklin
W. Smith, United States Deputy Mineral Surveyor, in marking the corners and surveying
 the boundaries of the mining claim of Martin O'Hare

known as the Quartzite Strip
 represented in the foregoing field notes as having been surveyed by said deputy mineral surveyor and under his
 direction; and that said survey has been in all respects, to the best of our knowledge and belief, faithfully and
 correctly executed, and the corner and boundary monuments established according to law and the instructions
 furnished by the United States Surveyor-General for Arizona

R. A. Ziesemer Chainman.
L. E. Curry Chainman.
 Axman.
 Flagman.

Subscribed and sworn to by the above-named persons before me this 30th
 day of April, 1902

.....

(4-686.)

FINAL OATH OF U. S. DEPUTY MINERAL SURVEYOR

I, Franklin W. Smith, U. S. Deputy Mineral Surveyor, do solemnly swear that, in pursuance of instructions received from the United States Surveyor General for Arizona, dated December 21st 1904, I have, in strict conformity to the laws of the United States, the official regulations and instructions thereunder, and the instructions of said Surveyor General, faithfully and correctly executed the survey of the Mining Claim of Martin O'Hare

known as the Quartzite Strip situate in Yuma Mining District, Cochise County, Arizona, in Section Approx., Township No. 23 S., Range No. 24 E. S. R. B. & W. and designated as Survey No. 2010 as represented

in the foregoing field notes, which accurately show the boundaries of said mining claim as distinctly marked by monuments on the ground, and described in the attached copy of the location certificate, which was received by me from the Surveyor General with said instructions, and that all the corners of said survey have been established and perpetuated in strict accordance with the law, official regulations and instructions thereunder; and I do further solemnly swear that the foregoing are the true and original field notes of said survey and my report therein, and that the labor expended and improvements made upon said mining claim by claimant or his grantors are as therein fully stated, and that the character, extent, location and itemized value thereof are specified therein with particularity and full detail, and that no portion of said labor or improvements so credited to this claim has been included in the estimate of expenditures upon any other claim.

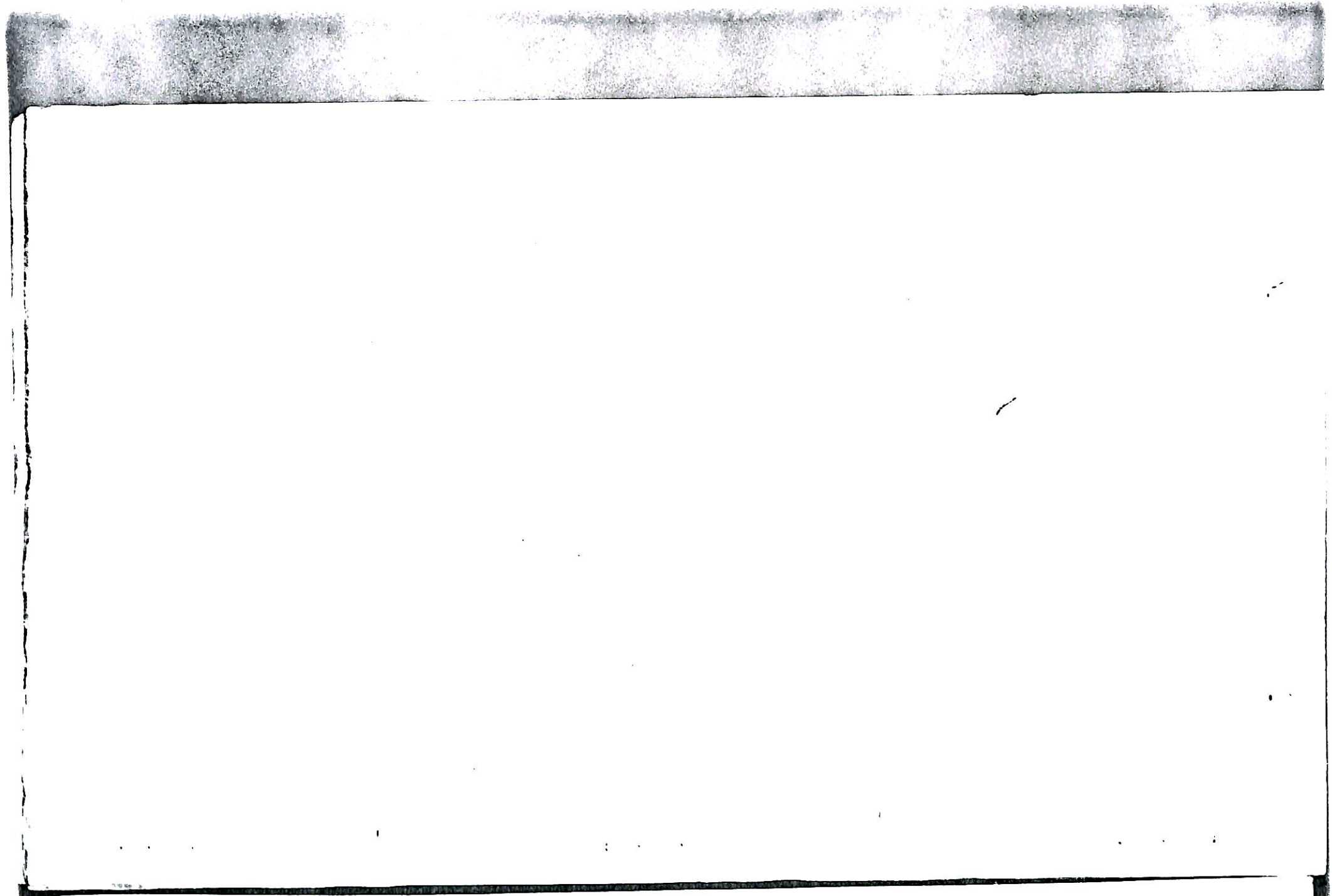
Franklin W. Smith
U. S. Deputy Mineral Surveyor.

Subscribed and sworn to by the said Franklin W. Smith
U. S. Deputy Mineral Surveyor, before me
this 20th
day of April 1905

Cora E. Smith

• 1-44

NOTARY PUBLIC
CORA E. SMITH
YUMA, ARIZONA



COPIES

in no

appri

ha

mt

of L

Affidavit of Five Hundred Dollars Improvements.

We, *J. A. Zimmerman* and *N. E. Curry*

of lawful age, being first duly sworn according to law, depose and say: That we are acquainted with the *Quartzite Strip* mining claim, situate in *Warren* mining district, *Cochise* County, Arizona Territory, for which

Martin O'Hara

has made application for survey prior to application for patent under the provisions of the Act of Congress approved May 10, 1872; and that the labor done and improvements made thereon by the applicant... and *his* grantor... exceed five hundred dollars in value, and further that we are not personally interested in said mine.

J. A. Zimmerman
N. E. Curry

TERRITORY OF ARIZONA,
COUNTY OF *Cochise* } xx:

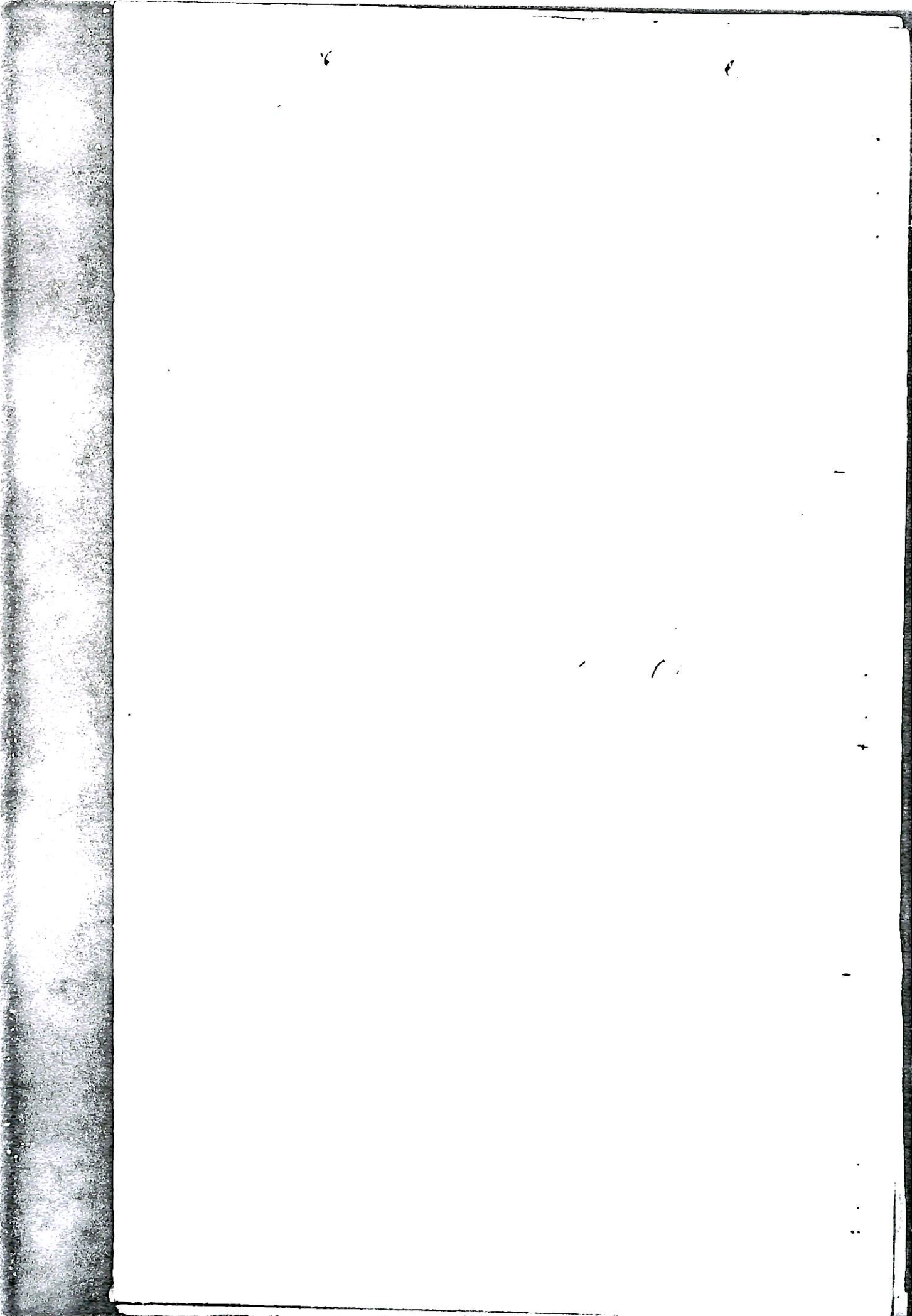
Sworn to and subscribed before me this *20th* day

[SEAL.]

of *U. P. ...* 190*3*

11706-403-2-01

Cooper Ed Smith
NOTARY PUBLIC
County of Cochise, Arizona,
My Commission Expires March 21, 1903.



th
ha
of
to
po
so
10
of
co
st
fo
re
Cr
bo
vo
Qu
Fi
at
Te
Co
an
Mi
co

LOCATION NOTICE.

Notice is hereby given that the undersigned, in compliance with the requirements of the Mining Act of Congress, approved May 10, 1872, have this day located and claim 1576 hundred linear feet along the course of this lead, lode or vein of silver-bearing quartz, ... situated in the Warren Mining District, County of Cochise, Arizona and more particularly described as follows, to-wit:

Commencing at this monument of stones, being the center of the south end of claim, and upon which this notice is posted; thence east 100 feet to a monument of stones; thence north 1500 feet to a monument of stones; thence west 100 feet to a monument of stones; being the center of the north end of claim; thence west 100 feet to a monument of stones; thence south 1500 feet to a monument of stones; thence east 100 feet to place of beginning.

This claim is crossed near its center by the stage road west of Bisbee about 1200 ft. It comprises that vacant piece of land between Crawford's two story frame house and Tribolet's slaughter pen. It is bounded on the east by the Mamie and Al Hassen Mining Claims, on the westerly the Vineyard Mining Claims, and shall be known as the Quartzite Strip Mine. Located Mar. 24th, 1893.

Martin O'Hare

Filed and recorded at the request of Martin O'Hare March 27th A.D. 1893. at 1 P.M. Book 12 Records of Mines Page 601.

Territory of Arizona)
County of Cochise) SS

I, Frank Hare County Recorder in and for the County and Territory aforesaid, do hereby certify that the foregoing, the Mining Location of the Quartzite Mining Claim, is a full, true and correct copy as the same appears of record in my said office.
Witness my hand and official seal this 7th day of March A. D. 1900.

Frank Hare
County Recorder
By *D. M. Bullick*
Deputy.

Lauren's notes
multiple steps

4-688.

U. S. SURVEYOR-GENERAL'S FINAL CERTIFICATE ON FIELD NOTES.

Department of the Interior,
OFFICE OF U. S. SURVEYOR-GENERAL.

Phoenix, Arizona.

Aug 15 . 1905

I, U. S. Surveyor-General for the District of Arizona,

do hereby certify that the foregoing transcript of the Field Notes, return and approval of the survey of the mining claim of Martin O'Hare

known as the Quartzite Strip

situate in

Mining District, Cochise County, Arizona.

in Section 22, Township No. 33 S., Range No. 24 E. W. 11, and designated as Survey No. 2219, has been correctly copied from the originals on file in this office; that said Field Notes furnish such an accurate description of said mining claim as will, if incorporated into a patent, serve fully to identify the premises, and that such reference is made therein to natural objects or permanent monuments as will perpetuate and fix the locus thereof.

And I further certify that five hundred dollars' worth of labor has been expended or improvements made upon said mining claim by claimant or grantors, and that said improvements consist of 2 shafts, 3 tunnels and 1 cut, total value \$600.00.

and that no portion of said labor or improvements has been included in the estimate of expenditures upon any other claim.

I further certify that the plat thereof, filed in the U. S. Land Office at Tucson, Arizona, is correct and in conformity with the foregoing Field Notes.

(Signed) Frank S. Ingalls,

United States Surveyor-General for Arizona.

4-687.

**SURVEYOR-GENERAL'S CERTIFICATE OF APPROVAL OF FIELD
NOTES AND SURVEY OF MINING CLAIM.**

Department of the Interior,

Office of U. S. Surveyor-General,

PHOENIX, ARIZONA.

..... *Aug 14*, 1905.

I, U. S. Surveyor-General for..... THE DISTRICT OF ARIZONA.....

do hereby certify that the foregoing and hereto attached Field Notes and Return of the Survey of the
Mining Claim of..... *Walter D. Jones*

....., known as the
.....
..... Quartzite Strip

situate in..... *Warren*, Mining District,
..... *Cochise*, County, ARIZONA.

In Section *44*....., Township No. *33 S.*....., Range No. *14 E.*.....
....., designated as Survey No. *2210*.....

executed by..... *Franklin W. Smith*, U. S. Deputy Mineral
Surveyor, *April 15th - 16th 1905*, 190..., under my instructions dated
..... *Dec. 31st 1904*, 190..., have been critically examined and the necessary cor-
rections and explanations made, and the said Field Notes and Return, and the Survey they describe,
are hereby approved. A true copy of the copy of the location certificate filed by the applicant.. for
survey is included in the field notes.

Frank J. Sigall

U. S. Surveyor-General for .. ARIZONA.

Oversized

Plat

Shaft 4 x 6 x 8 ft deep brs from same point N 66° 30' W
208.8 ft.

Shaft 4 x 6 x 10 ft deep brs from same point N 66° 30' W
218.1 ft.

Open cut 4 x 10 x 15 ft long with tunnel in face 4 x 6 x
6 ft long, both brg S 34° 30' W, the mouth of open cut
brs from Cor No 3 S 43° 58' E 30.1 ft.

A frame building 22.4 x 36.3 ft, long side brg S 57° 30'
E, the southwest corner of which brs from a point on line
3-4 S 66° 30' E 732.0 ft from Cor No 3, S 22° 30' W 8.0
ft.

A frame building 35.0 x 42.5 ft, long side brg S 68° E,
the north east corner of which brs from a point on line
3-4 S 66° 30' E 1046.0 ft from Cor No 3, N 88° 44' W
264.3 ft.

A frame building 26.0 x 30.0 ft, long side brg N 33° E,
the northeast corner of which brs from same point S 37°
36' W 73.8 ft.

A frame building 25 x 30 ft, long side brg N 31° W, the
northeast corner of which brs from same point S 52° 11' E
103.9 ft.

A frame building 24.5 x 30 ft, long side brg N 31° W, the
northeast corner of which brs from same point S 25° 18' E
84.0 ft.

A frame building 24 x 29 ft, long side brg N 46° 30' W,
the northwest corner of which brs from same point S 8°
56' E 128.1 ft.

A frame building 12 x 21 ft, long side brg N 53° 30' E,
the northeast corner of which brs from same point, S 22°
50' E 168.7 ft.

A frame building 28 x 38 ft, long side brg N 39° E, the
northwest corner of which brs from same point S 1° 21' W
166.5 ft.

A frame building 24 x 24.5 ft, long side of which brs N
50° E, the northeast corner of building brs from same
point S 7° 07' E 197.4 ft.

A frame building 27 x 46 ft., long side brg N 32° W, the
southwest corner of which brs from a point on line 1-2
N 66° 30' E 696.2 ft from Cor No 2, N 41° 19' E 189.2 ft.

A frame building 25 x 45 ft, long side brg N 56° 30' W
the southwest corner of which brs from same point N 49°
18' E 303.4 ft.

A frame building 27 x 37 ft, long side brg N 56° 30' W,
the southeast corner of which brs from same point N 46°
08' E 352.0 ft.

A frame building 27 x 36 ft., long side brg N 56° 30' W,
the southeast corner of which brs from same point N 44°
25' E 399.2 ft.

A frame building 29 x 39 ft, long side brg N 56° 30' W
the southwest corner of which brs from same point N 54°
55' E 320.6 ft.

A frame building 33 x 36 ft., long side brg N 33° 30' E,
the southwest corner of which brs from same point N 52°
07' E 364.4 ft.

N 66° 30' W

N 66° 30' W

face 4 x 6 x
open cut

rg 8 57° 30'
point on line
° 30' W 8.0

rg 8 68° E,
point on line
8° 44' W

rg 8 33° E,
point 8 37°

N 31° W, the
at 8 52° 11' E

N 31° W, the
at 8 25° 18' E

N 46° 30' W,
point 8 8°

53° 30' E,
point, 8 22°

39° E, the
at 8 1° 21' W

which brs 8
from same

N 32° W, the
n line 1-2
E 189.2 ft.

56° 30' W
point 8 49°

56° 30' W,
point 8 46°

N 56° 30' W,
point 8 44°

56° 30' W
point 8 54°

N 33° 30' E,
point 8 52°

A frame building 29 x 38 ft., long side brg N 56° 30' W
the southwest corner of which brs from same point N 49°
43' E 415.0 ft.

ADJOINING CLAIMS.

- North. Bisbee Townsite.
- East. Survey No 1387 Al Hassan lode and Webster lode.
- South. Survey No 1670 Contention, Survey No 2133 Morning Star lodes.
- West. Survey No 2133 Morning Star, Survey No 2674 Morning Star No 2 lodes.

LOCATION.

This claim is located in the Warren Mining District,
Cochise County, Arizona, in Section 8, Tp 23 S., R 24 E.,
G & S R B & M.

INSTRUMENT.

This survey was made with a C L Berger & Sons No 1 Light
Mountain transit. The courses were deflected from the
true meridian as determined by a Solar observation. The
distances were measured with a 300 and 100 foot steel
tapes. Magnetic variation 12° 30' East at all corners.

REPORT.

The tie has been made to U S Mineral Monument No 4 in
preference to U S Mineral Monument No 1, as U S Mineral
Monument No 1 is on top of a large rock that has moved
over 5 feet in the past year, and soon will fall over
as it is being undermined by the waters of a creek.

1/4 Cor between Secs 8 and 17, Tp 23 S., R 24 E., is an
iron pipe with copper cap inscribed 1/4 - Sec 8 - Sec 17.

Sur No 1387 Al Hassan lode.
Corner No 6 is an iron pin.
Cor No 7 is a wooden stake.
Cor No 8 is a monument of rocks, post missing.

Sur No 1387 Webster lode.
Cors No 6 and 7 are monuments of rock, posts missing.

Sur No 1670 Contention lode.
Cors No 1 and 4 are monuments of rocks, posts miss-
ing.
Cor No 2 is a pine post, properly set and scribed.

Sur No 2133 Morning Star.
Cors No 1, 2 and 7 are wooden stakes.
Cor No 6 is a monument of rocks, post missing.

Sur No 2010 Quartzite Strip lode.
Cors No 1 and 4 are iron pins.
Cors No 2 and 3 are monument of rocks, post missing.

Sur No 2674 Morning Star No 2 lode.
Cor No 4 is an iron pin.
Cor No 1 is a wooden stake.
Cors No 2 and 3 are monuments of rocks, posts miss-
ing.

Bisbee Townsite Survey.
Corner No 3 is a wooden stake.
Cor No 5 is a granite rock 15 x 12 x 10 ins above
ground, chiseled B T S No 4 and P L