

**MS**

**0**

**2**

**0**

**6**

**5**

JUN 26 1905  
JUL 1 - 1905

(4-683.)

Mineral Survey No. 2065

Lot No. ....

Prescott Land District.

### FIELD NOTES

OF THE SURVEY OF THE MINING CLAIM OF

D. J. O'Shea

KNOWN AS THE

Mary Ellen, Clark, East Gold Reef and Midgen  
Verde Mining District,

Yavapai County, Arizona  
Section approx 24, Township 15-N-, Range 2-E-unsurveyed

Surveyed under instructions dated May 9, 1905,  
by A. B. Mader  
U. S. Deputy Mineral Surveyor

Claim located See notices, 1  
Survey commenced May 12<sup>th</sup> 1905, 1  
Survey completed May 13<sup>th</sup> 1905, 1

D. J. O'Shea claimant  
Jerome, Ariz.

Ties OK  
Ledges OK  
Areas OK

THE MIDGEN LODGE.

feet Beginning at Cor. No.1  
 Identical with the corner of the location  
 A red sandstone 5 x 10 x 22 ins. set 12 ins. in the ground and chiseled 1 M 2065 and raised a mon. of stones 2 ft. base x 2 1/2 ft. high alongside, whence,  
 The U. S. Mineral Monument No.2, Verde Mining District,  
 hrs N. 25° 8' W. 1570.4 ft.

An Ash tree 7 ins. in dia. scribed B T 1 M 2065 hrs  
 N. 41° 36' E. 29 ft.

An Oak tree 8 ins. in dia. scribed B T 1 M 2065 hrs  
 S. 5° 47' W. 50.3 ft.

Thence S. 81° 54' E.

29.59 Cor. 5 of the Bear claim, Survey No. 1222 A. <sup>rounded</sup> Equator

*Mining Company Claimant and interest line 2-3 of the Copper Chief lode, Sur. No. 950, at a point N 8° 55' E, 88.6' from Cor. No. 2.*

A limestone 9 x 12 x 12 ins. above the ground chiseled  
 5 1222 A.B. with a mon. of stones alongside.

80 Cross Silver Creek 15 ft, wide <sup>Course</sup> ~~is~~ S.E. and <sup>bro.</sup> N.W.

1500 To Cor. No.2

Identical with the corner of the location.  
 a cross on a solid ledge of diorite in the center of the  
 bed of Silver Creek and chiseled 2 M 2065.

No mon. of stones erected as it would not be permanent.

On the S.E. face of ~~the~~ <sup>a</sup> ledge of diorite at the edge of  
 the Creek 4 ft. x 4 ft. projecting out of the bank 2 ft.

I chiseled a cross and B R. 2 M 2065 which hrs N. 38° 46'  
 W. 7.3 ft. from Cor, No.2.

No other bearings available.

Silver Creek bears west, course is east and is 15 ft.  
 wide.

Thence S. 8° 55' W.

300 To the East center end

Identical with the location

A mon. of stones 2 ft. base x 2 1/2 ft. high.

600 To Cor, No.3.

Identical with the corner of the location and with Cor.

## MIDGEN LODGE.

feet No. 2 of the East Gold Reef lode of this Survey.

A diorite stone 10 x 10 x 30 ins. set 6 ins. in the ground to bed rock and surrounded by a monument of stones 2 ft. base x 3 ft. high and chiseled the corner stone 3 M 2065.

No bearings available.

Thence N. 81° 54' W.

380 Cross gulch 2 ft. wide, course S. 75° E. hrs N. 75° W.

1500 To Cor. No. 4

Identical with corner of the location and with Cor. No. 1 of the East Gold Reef lode of this Survey.

A porphyry stone 5 x 8 x 24 ins. set 12 ins. in the ground and chiseled 4 M 2065, and raised a mon. of stones 2 ft. base x 2½ ft. high alongside.

No bearings available.

Thence N. 8° 55' E.

122 Cor. 2- 3 of the Clark and Mary Ellen lodes respectively of this Survey.

A porphyry stone

300 To the West Center End

Identical with the location and with the East Center End of the Mary Ellen lode of this Survey.

A mon. of stones 2 ft. base x 2½ ft. high

.506.91 Intersect line - 1 - 2, of the Copper Chief lode,

Survey No. 950, Copper Chief Mining Co. claimant,

at a point S. 89° 29' W. 30 ft. from Cor. No. 2, which is a limestone chiseled 2 C C.

600 To the place of beginning.

The variation at all the corners is 13° 45' E.

This claim is located in the Verde Mining District, Yavapai County, Arizona, on unsurveyed land, in what would approximately be, if surveyed, Sec. 24, Tp. 15 N., R. 2 E., G. & S. R. M.

The Midgen claim is bounded on the north by the Bear lode, Survey No. 1222 A, on the east by the Mchawk

MIDGEN LODE.

Lode, unsurveyed, A. Hendeq and John Duke, Claimants.  
on the south by East Gold Reef lode of this Survey; on  
the W. by the Clark and Mary Ellen lodes of this Survey;  
and the Copper Chief lode, Survey No. 950.

The course and length of the ledge on the Midgen Lode is  
from the disc. mon. at the West Center End S. 81° 54' E.  
1500 ft. to the East Center End.

Gross area Midgen lode.....	20.659	on
Conflict with Copper Chief lode	0.062	20.599 acres
Net area Midgen lode	20.597	acres

EAST GOLD REEF LODE

Beginning at Cor. No.1

Identical with corner of the location and with Cor. No.4  
of the Midgen lode of this Survey

A porphyry stone chiseled 1 E G R 2065 whence the U.S.M.M.  
No.2, Verde Mag. Dis. brs N. 15° 54½' W. 2094.75 ft.  
No bearings available

Thence S. 81° 54' E.

1120 \* Cross gulch 2 ft. wide, course S. 75° E. brs N. 75° W.  
1500 To Cor. No.2

Identical with corner of the location and with Cor. No.3  
of the Midgen lode of this Survey.

A diorite stone chiseled 2 E G R 2065  
No bearings available.

Thence S. 8° 55' W.

35 Cross gulch 5 ft. wide, course E. brs. W.  
300 To the East Center End

Identical with the location

A mon. of stones 2 ft. base x 2½ ft. high

600 To Cor. No.3.

Identical with the corner of the location

A diorite stone 6 x 14 x 20 ins. set 12 ins. in the  
ground and chiseled 3 E G R 2065, and raised a mon. of  
stones 2 ft. base x 2½ ft. high alongside.

No bearings available.

SURVEY NO. 2065.

EAST GOLD REEF LODE.

feet Thence N. 81° 54' W.  
 460 Cross gulch 2 ft. wide, course N. 20' E. brs S. 20° W.  
 1500 To Cor. No.4  
 Identical with corner of the location  
 A porphyry stone 6 x 6 x 32 ins. set 8 ins. in the ground  
 to bed rock, chiseled 4 E G R. 2065, and raised a mon.  
 of stones 2 ft. base x 2½ ft. high alongside.  
 No bearings available.

Thence N. 8° 55' E.  
 177 Cor. No.3 of the Clark lode of this Survey.

A schist stone  
 300 To the West Center End  
 Identical with the location  
 A mon. of stones 2 ft. base x 2½ ft. high.

449.5 East Center End of the Clark lode  
 A mon. of stones

600 To the place of beginning. 28.077  
 The variation at all the corners is 13° 45' E.

This claim is located in the Verde Mining District,  
 Yavapai County, Arizona, on unsurveyed land, in what  
 would approximately be, if surveyed, Sec. 24, Tp. 15 N.  
 R. 2 E., G. & S. R. M.

Adjoining Claims.

On the north the Midgen lode of this Survey, on the  
 east the Mohawk lode, unsurveyed, Hendeg and Duke  
 claimants; on the south an unknown claim, and the  
 Saddleback lode, unsurveyed, E. Hurley claimant;  
 on the west the Saddleback lode and the Clark lode of  
 this Survey.

The Ledge.

The course and length of the ledge on the East  
 Gold Reef lode is from the discovery monument at the  
 West Center End S. 81° 54' E. 1500 ft. to the East  
 Center End.

Area East Gold Reef.....20.654 acres

SURVEY NO. 2065  
-MARY ELLEN LODE.

- feet Beginning at Cor. No. 1 ...  
The corner of the location brs No. 82° 52' W. 20 ft.  
and is a mon. of stone 2 ft. base x 3 ft. high.
- A sandstone 4 x 12 x 24 ins. set 12 ins. in the ground  
and chiseled 1 M E 2065 and raised a mon. of stone  
2 ft. base x 2 1/2 ft. high alongside, whence U. S. Mineral  
Monument No. 2, Verde Mining District, brs N. 30° 35' E.  
1608.14 ft. *Cor. No. 4, Toughnut and Wonderful lodes, Surv. No. 1163 bears S 82° 52' E, 180', whence Cor. 3 of the Wonderful bears S 82° 52' E, 615.12'.  
No other bearings available.*
- Thence S. 88° 34' 40" E.  
185.08 Intersect line 1 - 8 and 1 - 4 of the Toughnut and  
Wonderful lodes, respectively, Survey No. 1163, Copper  
Chief Mining Company claimant, at a point N. 19° 52' E.  
18.88 ft. from Cor. 8 - 4, which is a sandstone 4 x 14  
x 14 ins. above the ground, scribed T 1163, whence  
a 12 ins. juniper brs S. 28° 35' W. 40 ft., scribed B T
- 770.86 Intersect line 1 - 4 of the West Copper Chief lode,  
Survey No. 1222 *Amended*, Copper Chief Mining Company claimant,  
at a point N. 7° 18' E. 70.3 feet from Cor. No. 4.  
which is a cross on a diorite ledge in place 3' x 4' x  
12 ins. out of the ground, chiseled 4 C-C 1222 A, with  
a mon. 3 ft. base x 3 ft. alongside.
- 817.56 Intersect line 2 - 3 of the Wonderful lode, Survey No.  
1163, at a point <sup>h</sup> 19° 52' E. 83.41 ft. from Cor. No. 3,  
which is a porphyry stone 4 x 12 x 16 ins. out of the  
ground, chiseled 3 1163 and surrounded by a mon. of  
stone *3*
- 1060.49 Intersect line 5 - 6 of the Copper Chief lode, Survey  
No. 950, Copper Chief Mining Company claimant, at a point  
N. 6° 56' E. 107.09 ft. from Cor. No. 6, which is an  
oak stake 3 ins. square by 5 ft. out of the ground, scrib-  
ed C C No. 6, surrounded by a mon. of stones 2 ft. base  
x 2 ft. high.
- 1312.29 Intersect line 2 - 3 of the West Copper Chief lode,  
Survey No. 1222 *Amended*, Copper Chief Mining Company claimant,

SURVEY NO. 2065.

MARY ELLEN LODGE.

feet at a point N. 8° 9' E. 124.07 ft. from Cor. No. 3, which is a diorite stone 10 x 10 x 15 ins. out of the ground.

chiseled W C C on the N.W. and No. 3 1222 A on the N. E. face, with a mon. 4 ft. base and 4 1/2 ft. high to the north.

1485 To Cor. No. 2 a diorite stone 10 x 10 x 15 ins. out of the ground. Identical with the corner of the location and with Cor. No. 1

of the Midget lode of this Survey, at the corner of the location. A red sandstone chiseled 2 M E 2065 and raised a mon. of

stones 2 ft. base x 2 1/2 ft. high alongside. Thence S. 88° 55' W. 20 ft. to the intersection of line 2-1-6 of the Copper Chief lode at a

point N. 89° 29' E. 422.9' from Cor. 6, whence N 6° 56' E, 8' intersect line 3-4 of the West Copper Chief lode, Surv. No. 1222 Amended, at a point N 82° 52' W, 248' from Cor. No. 3 and S 82° 52' E, 288.5' from Cor. No. 4.

300 To the East Center End of the Midget lode - a diorite stone 10 x 10 x 15 ins. out of the ground. Identical with the location and with the West Center

End of the Midget lode - a diorite stone 10 x 10 x 15 ins. out of the ground. A mon. of stone 4 ft. base and 4 1/2 ft. high to the north.

478 To Cor. No. 3 a diorite stone 10 x 10 x 15 ins. out of the ground. Identical with corner of the location and with Cor. No. 2 of the Clark Lode of this Survey.

A porphyry stone 6 x 10 x 24 ins. set 12 ins. in the ground and chiseled 3 M E 2065 and raised a mon. of

stones 2 ft. base x 2 1/2 ft. high alongside. No bearings available. Thence N. 70° 41' W. 20 ft.

1496.92 To Cor. No. 4 a diorite stone 10 x 10 x 15 ins. out of the ground. The corner of the location is N. 70° 41' W. 20 ft.

A sandstone 5 x 14 x 28 ins. set 12 ins. in the ground and chiseled 4 M E 2065 with a mon. 2' base x 2 1/2' high alongside. No bearings available. Thence N. 8° 55' E.

1498 To the place of beginning. The variation at all the corners is 13° 45' E.

This claim is located in the Verde Mining District, Yavapai County, Arizona, on unsurveyed land, in what

would approximately be, if surveyed, Sec. 24, Tp. 15 N., R. 2 E., G. & S. R M.

Line 2-3 of the West Copper Chief lode, Surv. No. 1222 amended, intersects line 6-1 of the Copper Chief lode, Surv. No. 950, at a point, which is N 8° 9' E, 25.37 ft. from Cor. 3 of the West Copper Chief and not 25' as called for in the original survey, which is in error. The point of intersection is also N 89° 29' E, 250.68' from Cor. 6 of the West Copper Chief lode.



SURVEY NO. 2065.

MARY ELLEN LOBE.

feet at a point N. 8° 9' E. 124.07 ft. from Cor. No. 3, which is a diorite stone 10 x 10 x 15 ins. out of the ground. chiseled W C C on the N.W. and No. 3-1222 A on the N. E. face, with a mon. 4 ft. base and 4 1/2 ft. high to the north.

1485 To Cor. No. 2. Identical with the corner of the location and with Cor. No. 1 of the Midget lode of this Survey.

A red sandstone chiseled 2 M E 2065 and raised a mon.

Thence S. 88° 55' W. to No. 3

93.09 Intersect line 2-1-6 of the Copper Chief lode at a

point N. 89° 29' E, 422.9' from Cor. 6, whence N 6° 56' E, 8' intersect line 3-4 of the West Copper Chief lode, Surv. No. 1222 amended, at a point N 82° 52' W, 248' from Cor. No. 3 and S 82° 52' E, 288.5' from Cor. No. 4.

300 To the East Center End of the lode.

Identical with the location and with the West Center

End of the Midget lode.

A mon. of stone 4 ft. base and 4 ft. high above the line.

478 To Cor. No. 3.

Identical with corner of the location and with Cor.

No. 2 of the Clark Lode of this Survey.

A porphyry stone 6 x 10 x 24 ins. set 12 ins. in the

ground and chiseled 3 M E 2065 and raised a mon. of

stones 2 ft. base x 2 1/2 ft. high alongside.

No bearings available.

Thence N. 70° 41' W.

1496.92 To Cor. No. 4.

The corner of the location is N. 70° 41' W. 20 ft.

A sandstone 5 x 14 x 28 ins. set 12 ins. in the ground and chiseled 4 M E 2065 with a mon. 2' base x 2 1/2' high alongside. No bearings available.

Thence N. 8° 55' E.

1498 To the place of beginning.

The variation at all the corners is 13° 45' E.

This claim is located in the Verde Mining District,

Yavapai County, Arizona, on unsurveyed land, in what

would approximately be, if surveyed, Sec. 24, Tp. 15 N.,

R. 2 E., G. & S. R M.

Line 2-3 of the West Copper Chief lode, Surv. No. 1222 amended, intersects line 6-1 of the Copper Chief lode, Surv. No. 950, at a point which is N 8° 9' E, 25.37 ft. from Cor. 3 of the West Copper Chief and not 25' as called for in the original survey, which is in error. The point of intersection is also N 89° 29' E, 250.68' from Cor. 6 of the West Copper Chief lode.

feet

Adjoining Claims.

On the north the Toughnut and Wonderful lodes, Survey No. 1163, the West Copper Chief lode, Survey No. 1222 Amended and the Copper Chief lode, Survey No. 950, the Copper Chief Mining Company, claimants; on the east the Midgen lode of this Survey; on the south the Clark lode of this Survey; on the west the Goodnough lode, unsurveyed, E. Hurley, claimant.

Ledge.

The course and length of the ledge of the Mary Ellen lode is from the discovery mon. at the East Center End N. 76° 57' W. 1476.15 ft. to Cor. No. 1.

Areas.

Gross Area Mary Ellen lode	8.314 acres
<i>Less</i> Conflict with Toughnut lode	0.038 ✓
Conflict with Wonderful lode	0.705 ✓
Conflict with West Copper Chief	0.493 ✓
Conflict with Copper Chief	0.965 ✓
Conflict with West Copper Chief	0.055 ✓
<u>Net Area Mary Ellen</u>	<u>6.053 acres</u>

CLARK LODE.

Beginning at Cor. No. 1

Corner of the location hrs N. 70° 41' W. 20 ft.

Identical with Cor. No. 4 of the Mary Ellen lode.

A sandstone chiseled 1 C 2065 and raised a mon. of stone alongside. *US Min Mon No 2 Verd. Mining Dist. br. N 30° 22' E. 1621.1 ft.*

No bearings available.

Thence S. 70° 41' E.

1496.92 To Cor. No. 2

Identical with corner of the location and with Cor. No. 3 of the Mary Ellen lode.

A porphyry stone chiseled 2 C 2065 with a mon. of stones alongside.

Thence S. 8° 55' W.

122 Cor. 4 - 1 of the Midgen and East Gold Reef lodes of this Survey.

SURVEY NO. 2065.

CLARK LODE.

feet

272.5 To the East Center End.

Identical with the location

A mon. of stones 2 ft. base x 2 1/2 ft. high.

422 The West Center End the East Gold Reef Lode

545 To Cor. No.3

Identical with the corner of the location

A schist stone 10 x 14 x 18 ins. set 12 ins. in the ground and chiseled 3 C 2065 and raised a mon. of stones 2 ft. base x 2 1/2 ft. high around the corner.

No bearings available.

Thence N. 72° 46' W.

750 To the side center

Identical with the location

A mon. of stone 1 1/2 ft. base x 2 ft. high

1488 To Cor. No.4:

The corner of the location is N. 72° 46' W. 20 ft.

A sandstone 5 x 7 x 22 ins. long set 12 ins. in the ground and chiseled 4 C 2065, and raised a mon. of stone 2 ft. base x 2 1/2 ft. high alongside.

A cross on a red sandstone in place 4 ft. x 4 1/2 ft. x 18 ins. above the ground, chiseled B R 4 C 2065, brs N. 70° 41' W. 20 ft.

No other bearings available.

Thence N. 8° 55' E.

300 To the West Center End

The west center end of the location is N. 70° 41' W. 20 ft. and is a mon. of stones 2 ft. base x 2 1/2 ft. high.

600 To the place of beginning.

The variation at all the corners is 13° 45' E.

This claim is located in the Verde Mining District, Yavapai County, Arizona, on unsurveyed land, on what would approximately be, if surveyed, Sec. 24, Tp. 15 N. R. 3 E., G. & S. R. M.

SURVEY NO. 2065.

CLARK LODE.

Adjoining Claims.

On the north the Mary Ellen lode of this Survey; on the east the Midgen and the East Gold Reef lodes of this Survey; on the south the Saddleback, Review, Sunbeam, and Goodnough lodes, unsurveyed, E. Hurley claimant; on the west the Goodnough lode, E. Hurley claimant.

Ledge.

The course and length of the ledge on the Clark lode is from the discovery monument S. 70° 41' E. 750 ft. to the East Center End and from the discovery monument N. 70° 41' W. 746.92 ft. to the West Center End.

Areas.

Area of Clark lode ..... 19.35/ acres

EXPENDITURE OF FIVE HUNDRED DOLLARS PER CLAIM.

value of

I certify that the labor and improvements upon these claims, placed thereon by the claimant, or his grantors, is not less than Five Hundred Dollars per claim, and that the same consist of:

- Midgen Lode.
- Discovery Tunnel No. 1, 4 x 6 x 50 ft. long, bearing N. 75° W. with an approach cut 4 x 20 x 10 ft. face, the center of the mouth of which bears S. 1° 45' E. 211 ft. from Cor. No. 1.
- Tunnel No. 2, 4 x 6 x 75 ft. long, bearing S. 79° W. with an approach cut 4 x 20 x 12 ft. face, the center of the mouth of which bears S. 23° 25' E. 125 ft. from Cor. No. 1.
- Tunnel No. 3, 4 x 6 x 80 ft. long, bearing S. 62° W. with a shaft at the mouth 4 x 6 x 12 ft. deep and an approach cut 4 x 40 x 10 ft. face, the center of the mouth of which bears N. 85° 35' E. 313 ft. from Cor. No. 4.

Value \$850.00

EXPENDITURE OF FIVE HUNDRED DOLLARS PER CLAIM.

Total value \$1000.00

Assign \$200 of the value of this tunnel to the East Gold Reef lode because this lode is developed by this tunnel, and the work in the same was intended to apply to the East Gold Reef lode. Net value \$800.00

Shaft No. 4, 4 x 6 x 15 ft. deep, with a drift 4 x 6 x 10 ft. to the south at the bottom of the shaft, the center of which bears N. 71° 40' W. 582 ft. from Cor. No. 3.

Value \$200.00

East Gold Reef lode.

Discovery cut and tunnel No. 1, which is a tunnel 4 x 6 x 30 ft. long and an approach cut 4 x 18 x 10 ft. face, the center of the mouth of which bears S. 64° 45' W.

820 ft. from Cor. No. 3, Value \$300.00

Assign to the East Gold Reef lode as stated above,

\$200 of the value of Tunnel No. 3 of the Midgen lode

Value \$200.00

Mary Ellen lode.

Discovery tunnel No. 1, 4 x 6 x 20 ft. long, bearing N. 78° W. and an approach cut 4 x 12 x 8 ft. face, the center of the mouth of which bears N. 13° 54' W. 287 ft. from

Cor. No. 3. Value \$300.00

Shaft No. 2, 4 x 6 x 10 ft. deep, bears N. 109° 40' W.

345 ft. from Cor. No. 3. Value \$100.00

Tunnel No. 3, 4 x 6 x 30 ft. long, bearing S. 60° W.

with an approach cut 4 x 18 x 10 ft. face, the center of the mouth of which bears N. 55° W. 67 ft. from Cor. No. 3.

Value \$400.00

Clark lode.

Discovery shaft No. 1, a shaft 4 x 6 x 12 ft. deep, bears

S. 21° 25' W. 128 ft. from Cor. No. 2. Value \$100.00

Tunnel No. 2, 4 x 6 x 100 ft. long, bearing N. 78° W.

with a shaft 6 x 8 x 50 ft. deep, 20 ft. from the face

## EXPENDITURE OF FIVE HUNDRED DOLLARS PAR CLAIM.

of the tunnel, and an approach cut 4 x 15 x 10 ft. face  
the center of the mouth of which bears S. 54° 45' W. 86 ft.  
from Cor. No. 2.

Value \$1600.00

*Total Value* \$5450.00

This survey was made with a Gurley Light Mountain  
Transit with a solar attachment. The courses were de-  
flected from true north as determined by solar observa-  
tion. The distances were measured with a steel tape.

*A. B. Madron*  
U. S. Dep. Min. Surveyor

# FINAL OATHS FOR SURVEYS.

## LIST OF NAMES.

A list of the names of the individuals employed by A. B. Mader  
 United States Deputy Mineral Surveyor, to assist in running, measuring, and marking the lines  
 corners and boundaries described in the foregoing field notes of the survey of the mining claim  
 of D. J. O'Shea  
 known as the Mary Ellen, Midgen, East Gold Reef and Clark  
 and showing the respective capacities in which they acted.

James Patterson, Chairman.  
 \_\_\_\_\_, Chairman.  
 \_\_\_\_\_, Axman.  
 \_\_\_\_\_, Flagman.

## FINAL OATHS OF ASSISTANTS.

James Patterson  
 and \_\_\_\_\_, do solemnly swear that ~~we~~ <sup>2</sup> assisted A. B.  
Mader, United States Deputy Mineral Surveyor, in marking the corners and  
 surveying the boundaries of the mining claim of D. J. O'Shea

known as the Mary Ellen  
Midgen, East Gold Reef and Clark, represented  
 in the foregoing field notes as having been surveyed by said deputy mineral surveyor and under  
 his direction; and that said survey has been in all respects, to the best of ~~my~~ <sup>my</sup> knowledge and  
 belief, faithfully and correctly executed, and the corner and boundary monuments established  
 according to law and the instructions furnished by the United States Surveyor-General for  
Arizona.

James Patterson, Chairman.  
 \_\_\_\_\_, Chairman.  
 \_\_\_\_\_, Axman .  
 \_\_\_\_\_, Flagman.

Subscribed and sworn to by the above-named persons before me  
 this 15th day of May, 1905.

[Signature]  
 Notary Public.

Jerome, Arizona.



(4-686.)

## FINAL OATH OF U. S. DEPUTY MINERAL SURVEYOR

I, A. B. Mader, U. S. Deputy Mineral Surveyor, do solemnly swear that, in pursuance of instructions received from the United States Surveyor General for Arizona, dated May 9<sup>th</sup> 1905, I have, in strict conformity to the laws of the United States, the official regulations and instructions thereunder, and the instructions of said Surveyor General, faithfully and correctly executed the survey of the Mining Claim of D. J. O'Shea, known as the Mary Ellen, Clark, East Gold Reef and Widgen, situate in Verde Mining District, Yavapai County, Arizona, in Section approx 24, Township No. 15<sup>th</sup> N., Range No. 2 E. unsurveyed and designated as Survey No. 2065, as represented in the foregoing field notes, which accurately show the boundaries of said mining claim as distinctly marked by monuments on the ground, and described in the attached copy of the location certificate, which was received by me from the Surveyor General with said instructions, and that all the corners of said survey have been established and perpetuated in strict accordance with the law, official regulations and instructions thereunder; and I do further solemnly swear that the foregoing are the true and original field notes of said survey and my report therein, and that the labor expended and improvements made upon said mining claim by claimant or his grantors are as therein fully stated, and that the character, extent, location and itemized value thereof are specified therein with particularity and full detail, and that no portion of said labor or improvements so credited to this claim has been included in the estimate of expenditures upon any other claim.

A. B. Mader

U. S. Deputy Mineral Surveyor.

Subscribed and sworn to by the said A. B. MaderU. S. Deputy Mineral Surveyor, before me Emma Churchthis 23<sup>rd</sup>day of June 1905Emma ChurchNotary Public

c 3-154

My commission expires  
Sept. 11, 1905.



Affidavit of Five Hundred Dollars Improvements.

We, James Patterson and John W. Boyd

of lawful age, being first duly sworn according to law, depose and say: That we are acquainted with the  
"Mary Ellen", "Midgen", "East Gold Reef" <sup>and "Clark"</sup> mining claims situate in Verde  
mining district, Yavapai County, Arizona Territory, for which W. J.  
O'Shea

has made application for survey prior to application for patent under the provisions of the Act of Congress  
approved May 10, 1872; and that the labor done and improvements made thereon by the applicant and  
his grantor exceeds five hundred dollars in value, <sup>per claim,</sup> and further that we are not personally interested  
in said mine.

James Patterson  
John W. Boyd

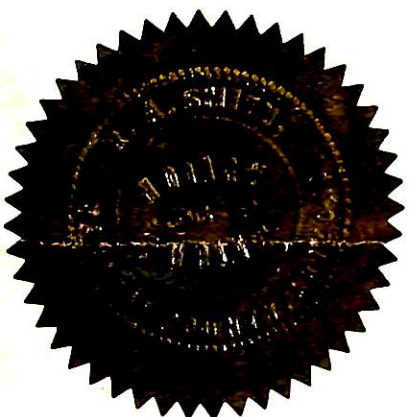
TERRITORY OF ARIZONA,  
COUNTY OF Yavapai } ss:

Sworn to and subscribed before me this 15th day

of May, 1905

[Signature]  
Notary Public

Jerome, Arizona.



My Commission Expires June 22, 1907.

CLARK.

NOTICE OF LOCATION.

Know all men by these presents:

That I, the undersigned, have this day located fifteen hundred linear feet of this vein or lode, bearing precious metals, with all dips, spurs, angles and variations, with surface ground three hundred feet on each side of the center vein, with all mineral deposits contained therein, and all timber growing within the limits of said claim, and all water and water privileges thereon or appurtenant thereto, under and according to the provisions of the United States Mining Laws, under which it is located.

This claim commences at this monument and notice placed upon the ledge, and runs 750 feet in a northerly direction and 750 feet in a southerly direction along the ledge.

The exterior boundaries are as follows, viz:

Commencing at a monument of stone on west boundary line, distant three hundred (300) feet in a westerly direction from discovery monument; thence in a northerly direction parallel with the ledge 750 feet to monument of stone at N. W. corner of claim; thence in an easterly direction at right angles across the ledge six hundred (600) feet to monument of stone at N. E. corner of claim; thence in a southerly direction parallel with the ledge fifteen hundred (1500) feet to monument of stone at S. E. corner of claim; thence at right angles across the ledge in a westerly direction six hundred (600) feet to monument of stone at S. W. corner of claim; thence in a northerly direction parallel with the ledge 750 feet to monument on west boundary and place of beginning.

This ledge may be more generally described as situated about 2000 feet southest from V. S. mineral monument No. 3 in Verde Mining District, Yavapai County, Arizona Territory, and shall be known as the Clark Mining Claim.

Dated on the ground this second day of November, 1894.

James Patterson.

Witnessed by

J. T. Allen.

Recorded at request of John Duke Nov. 30<sup>th</sup> A. D. 1894, at 1:47 o'clock P. M., in Book 59 of Mines, page 348, Records of Yavapai County, Arizona.

(Seal)

Alex O. Brodie,  
County Recorder.

By F. A. Tritle Jr.  
Deputy.

"MIDGEN".

NOTICE OF LOCATION.

KNOW ALL MEN BY THESE PRESENTS:

That I the undersigned have this day located fifteen hundred (1500) linear feet of this vein or lode bearing precious metals with all dips, spurs, angles and variations with surface ground three hundred (300) feet on each side of the center of vein with all mineral deposits contained therein and all timber growing within the limits of said claim and all water and water privileges thereon or appurtenant thereto under and according to the provisions of the Mining Laws of the United States under which it is located.

This claim commences at this monument and notice placed upon the ledge and runs fifteen hundred (1500) feet in a easterly direction along the ledge.

The exterior boundaries are as follows, viz:

Commencing at this monument and notice and running three hundred (300) feet in an northwest direction to monument of stone at N. W. corner of claim; thence in a easterly direction parallel with the ledge fifteen hundred (1500) feet to monument at N. E. corner of claim; thence at right angles across the ledge in a southerly direction six hundred (600) feet to monument at S. E. corner of claim; thence parallel with the lode in a westerly direction fifteen hundred (1500) feet to monument at S. W. corner of claim; thence at right angles across the ledge in an northerly direction three hundred (300) feet to monument upon the ledge and place of beginning.

This ledge may be more generally described as situated the bear on the north, the rabbit on the south, the Copper Chief northwest, the Gold reef southwest, a house built on the premises ten by twenty. In Verde Mining District Yavapai County, Arizona Territory and shall be known as the Madgen Mining Claim.

Dated on the ground this first day of January, 1896.

James Patterson.

Witness: F. E. Wagner.

H. M. Abbott.

Recorded at request of James Patterson March 9<sup>th</sup> A. D. 1896 at 9:25 o'clock A. M., in Book 44 of Mines, Pages 11-12, Records of Yavapai County, Arizona.

(Seal)

F. A. Trittle,

By H. R. Trittle,  
Deputy.

County Recorder.

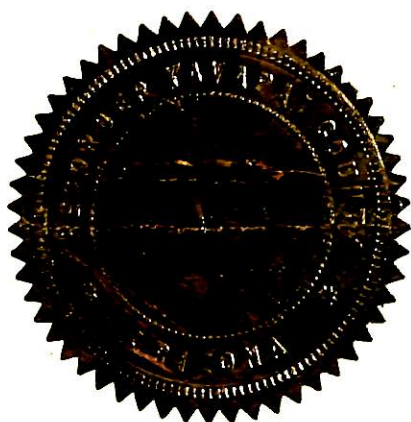
TERRITORY OF ARIZONA, )  
 County of Yavapai. ) ss.

I, ROLAND MOSHER, County Recorder in and for the County of Yavapai, in the Territory of Arizona, and custodian of the records thereof, do hereby certify that I have compared the above and foregoing with, and the same contains a full, true and correct copy of the notice of location of each of the following described mining claims, as the same appear from the original records in my office, viz:-

CLARK mining claim, notice of location whereof is of record in Book 39 of Mines, page 343, records of Yavapai County, Arizona;

(or "Hidgen")  
 HEDGEN mining claim, notice of location whereof is of record in Book 44 of Mines, pages 11 and 12, records of Yavapai County, Arizona.

IN WITNESS WHEREOF, I have hereunto set my hand and affixed my official seal, this 5th day of Mar, A. D. 1908.



*Roland Mosher*  
 County Recorder.

AMENDED

# Notice of Mining Location

LODE CLAIM

To All Whom it May Concern:

"East Gold Reef"

This Mining Claim, the name of which is the Mining Claim, situate on lands belonging to the United States of America, and in which there are valuable mineral deposits, was entered upon and located for the purposes of exploration and purchase by

James Patterson  
a citizen of the U.S.

(Locator must insert either "a citizen of the United States," or, "who has declared his intention to become a citizen of the United States.")

the undersigned, on the 1<sup>st</sup> day of January 1901 1898

The length of this claim is 1500 feet,  
and 5 claim 1500 feet,  
in an easterly direction and

300 feet in a monument direction from the center of the discovery shaft, at which this notice is posted, lengthwise of the claim, together with 300 feet in width of the surface grounds, on each side of the center of said claim.

The general course of the lode deposit and premises is from the easterly to the westerly

The claim is situated and located in the Verde Mining District, in Yavapai County, in the Territory of Arizona, about 600 feet in a southerly direction from James Patterson's House

The surface boundaries of the claim are marked upon the ground as follows: Beginning at a monument of stones

at a point in a monument direction feet from the discovery shaft (at which this notice is posted), being in the center of the westerly end line of said claim; thence southerly 300 feet to a mon. of stones, being the south west corner of said claim; thence easterly 1500 feet to a mon. of stones, being at the south east corner of said claim; thence northerly 300 feet to a mon. of stones at the center of the easterly end of said claim; thence northerly 300 feet to a mon. of stone, being at the north east corner of said claim; thence westerly 1500 feet to a mon. of stone at the north west corner of said claim; thence southerly 300 feet to the place of beginning.

All done under the provisions of Chapter Six, of Title XXXII, of the Revised Statutes of the United States, and of an Act of the General Assembly of Arizona, entitled "An Act to Revise and Codify the Laws of the Territory of Arizona," approved March 16, 1901.

This is an Amended Location Notice of the East Gold Reef Mining Claim, located by James Patterson a citizen of the U.S. on the 1<sup>st</sup> day of January 1898, and recorded in Book 50 of Record of Mines, at page 30, in the office of the County Recorder of the aforesaid County of Yavapai to which reference is hereby made, and this amended Location Notice is made and posted to correct errors in the description in the said original Location Notice.

Dated and posted on the ground this 5<sup>th</sup> day of May 1901

Samuel Shea

TERRITORY OF ARIZONA,  
County of..... } ss.

I....., County Recorder in and for the County and Territory aforesaid, do hereby certify that the within instrument was filed for record at..... o'clock,..... M., on this..... day of..... 190..., and duly recorded in Book No..... of..... Records of..... County, Arizona, at pages.....

WITNESS my hand and official seal the day and year first above written.

County Recorder.

AMENDED

Notice of Location.

LODE CLAIM.

East Gold Reef

James J. O'Shea  
Verde List.

Dated May 5 1905

Filed and Recorded at request of

J. J. O'Shea  
May 6 A. D. 1905

at 10:45 o'clock A.M.

Book 70 of Mines

Pages 540-591

RECORDS OF YAVAPAI COUNTY, ARIZONA.

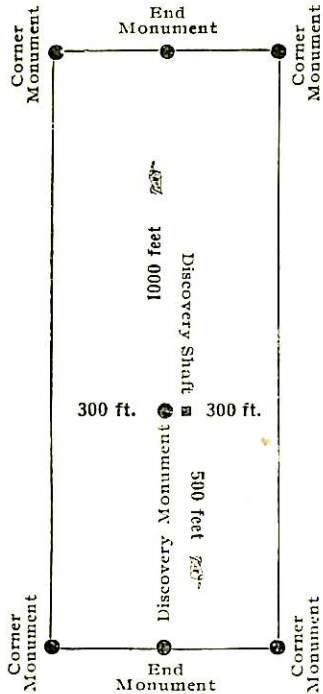
Roland Mosher  
County Recorder.

By P. J. Neenan  
Deputy Recorder.

Amended.

Indexed & Compaed.

1505



This diagram is to give locator a general idea of plan of location under the new law. The Discovery Shaft can be in the center of claim or any distance from either end desired. In the diagram it is placed 500 feet from one end and 1000 feet from the other. Commence description of claim at a center end monument, giving its distance and direction from center of Discovery Shaft; thence bound the claim in either direction. In description be careful to state locality of claim with reference to some natural object, or permanent monument, as will identify the claim.

AMENDED  
Notice of Mining Location  
LODE CLAIM

To All Whom it May Concern:

This Mining Claim, the name of which is the Mary Ellen  
Mining Claim, situate on lands belonging to the United States of America, and in which there  
are valuable mineral deposits, was entered upon and located for the purposes of exploration and  
purchase by John W. Boyd

a citizen of the U. S.  
(Locator must insert either "a citizen of the United States," or, "who has declared his intention to become a citizen of the United States.")

the undersigned, on the 2<sup>nd</sup> day of January 1903

The length of this claim is 1500 feet,  
and 1 claim 1500 feet,  
in a westerly direction ~~and~~

~~the center of the discovery~~ <sup>feet in a monument</sup> ~~at~~ <sup>which</sup> this notice is posted, lengthwise of the claim, together  
with 300 feet in width of the surface grounds, on each  
side of the center of said claim. The general course of the lode deposit and premises is from the

westerly to the easterly

The claim is situated and located in the Verde Mining District, in  
Yavapai County, in the Territory of Arizona, about 1700 feet  
in a southerly direction from U. S. Mineral Monument No. 2

and has been known as the Gold Reef and lies  
south of the Copper Chief claim -

The surface boundaries of the claim are marked upon the ground as follows: Beginning at  
a monument of stones

at ~~a point in a~~ <sup>monument</sup> ~~direction~~ <sup>feet from</sup>  
the discovery ~~at~~ (at which this notice is posted), being in the center of the east  
end line of said claim; thence southerly 300 feet to a mon. of  
stone, being the southeast corner of said claim; thence  
westerly 1500 feet to a mon. of stone, being at the  
south west corner of said claim; thence notherly 300 feet  
to a mon. of stone at the center of the west end of said claim;  
thence notherly 300 feet to a mon. of stone, being at the  
north west corner of said claim; thence easterly 1500  
feet to a mon. of stone at the north east corner of said claim;  
thence southerly 300 feet to the place of beginning.

All done under the provisions of Chapter Six, of Title XXXII, of the Revised Statutes of  
the United States, and of an Act of the General Assembly of Arizona, entitled "An Act to  
Revise and Codify the Laws of the Territory of Arizona," approved March 16, 1901.

This is an Amended Location Notice of the Mary Ellen  
Mining Claim, located by John W. Boyd  
a citizen of the U. S. on the 2<sup>nd</sup> day of  
January 1903, and recorded in Book 67 of Record of Mines, at  
page 324, in the office of the County Recorder of the aforesaid County of Yavapai  
to which reference is hereby made, and this amended Location Notice is made and posted to  
correct errors in the description in the said original Location Notice.

Dated and posted on the ground this 5<sup>th</sup> day of May 1905

Samuel J. Oshea

TERRITORY OF ARIZONA,  
County of..... } ss.

I,....., County Recorder in and for the County and Territory aforesaid, do hereby certify that the within instrument was filed for record at..... o'clock,..... M., on this..... day of..... 190... and duly recorded in Book No..... of..... Records of..... County, Arizona, at pages.....

WITNESS my hand and official seal the day and year first above written.

County Recorder.

*Indexed*  
*Indexed*  
*1899*  
*Completed*

AMENDED  
**Notice of Location.**

LODE CLAIM.

*Mary Ellen (wid)*

*Daniel J. O'Shea*  
*Verde Dist*

Dated *May 5* 190*5*

Filed and Recorded at request of

*D J O'Shea*

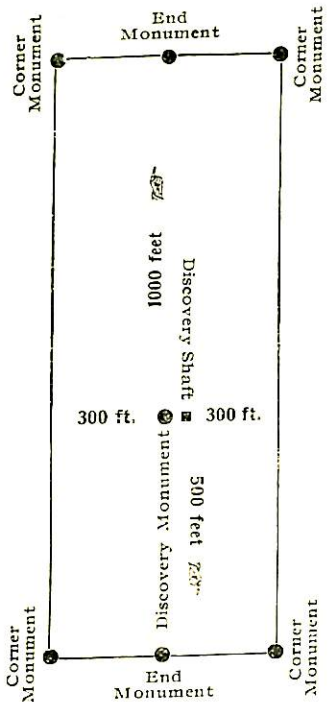
*May 6* A. D. 190*5*  
at *10:45 o'clock A.M.*

Book *40 of Mines*

Pages *591-593*

RECORDS OF YAVAPAI COUNTY, ARIZONA.  
*Roland Moberg*  
County Recorder.

By *F J Keane*  
Deputy Recorder.



This diagram is to give locator a general idea of plan of location under the new law. The Discovery Shaft can be in the center of claim or any distance from either end desired. In the diagram it is placed 500 feet from one end and 1000 feet from the other. Commence description of claim at a center end monument, giving its distance and direction from center of Discovery Shaft; thence bound the claim in either direction. In description be careful to state locality of claim with reference to some natural object, or permanent monument, as will identify the claim.



4-688.

## U. S. SURVEYOR-GENERAL'S FINAL CERTIFICATE ON FIELD NOTES.

## Department of the Interior,

OFFICE OF U. S. SURVEYOR-GENERAL,

Phoenix, Arizona.

July 26, 1905

I, U. S. Surveyor-General for the district of Arizona.

do hereby certify that the foregoing transcript of the Field Notes, return and approval of the survey of the mining claim of D. J. O'Shea,

known as the Mary Ellen, Clark, East Gold Reef and Midgen.

situate in Verde,

Mining District, Yavapai County, Arizona.

in Section approx. 34, Township No. 15 N., Range No. 2 E. unsurveyed, and

designated as Survey No. 2065, has been correctly copied from the originals on file in this office; that said Field Notes furnish such an accurate description of said mining claim as will, if incorporated into a patent, serve fully to identify the premises, and that such reference is made therein to natural objects or permanent monuments as will perpetuate and fix the locus thereof.

And I further certify that five hundred dollars' worth of labor has been expended or improvements made upon said mining claim by claimant or his grantors, and that said improvements consist of, <sup>or for each of</sup> 4 shafts, 7 tunnels, 7 cuts and 1 drift, total value \$5450.00

and that no portion of said labor or improvements has been included in the estimate of expenditures upon any other claim.

I further certify that the plat thereof, filed in the U. S. Land Office at Tucson, Arizona.

is correct and in conformity with the foregoing Field Notes.

( Signed ) Frank S. Ingalls,

United States Surveyor-General for Arizona.

4-687.

SURVEYOR-GENERAL'S CERTIFICATE OF APPROVAL OF FIELD NOTES AND SURVEY OF MINING CLAIM.

Department of the Interior,

Office of U. S. Surveyor-General,

Phoenix, Arizona.

July 26, 1905

I, U. S. Surveyor-General for the district of Arizona.

do hereby certify that the foregoing and hereto attached Field Notes and Return of the Survey of the Mining Claim of D. J. O'Shea.

known as the Mary Ellen, Clark, East Gold Reef and Midgen.

situate in Verde Mining District, Yavapai County, Arizona.

approx. in Section 24, Township No. 15 N., Range No. 2 E. unsurveyed, designated as Survey No. 2065

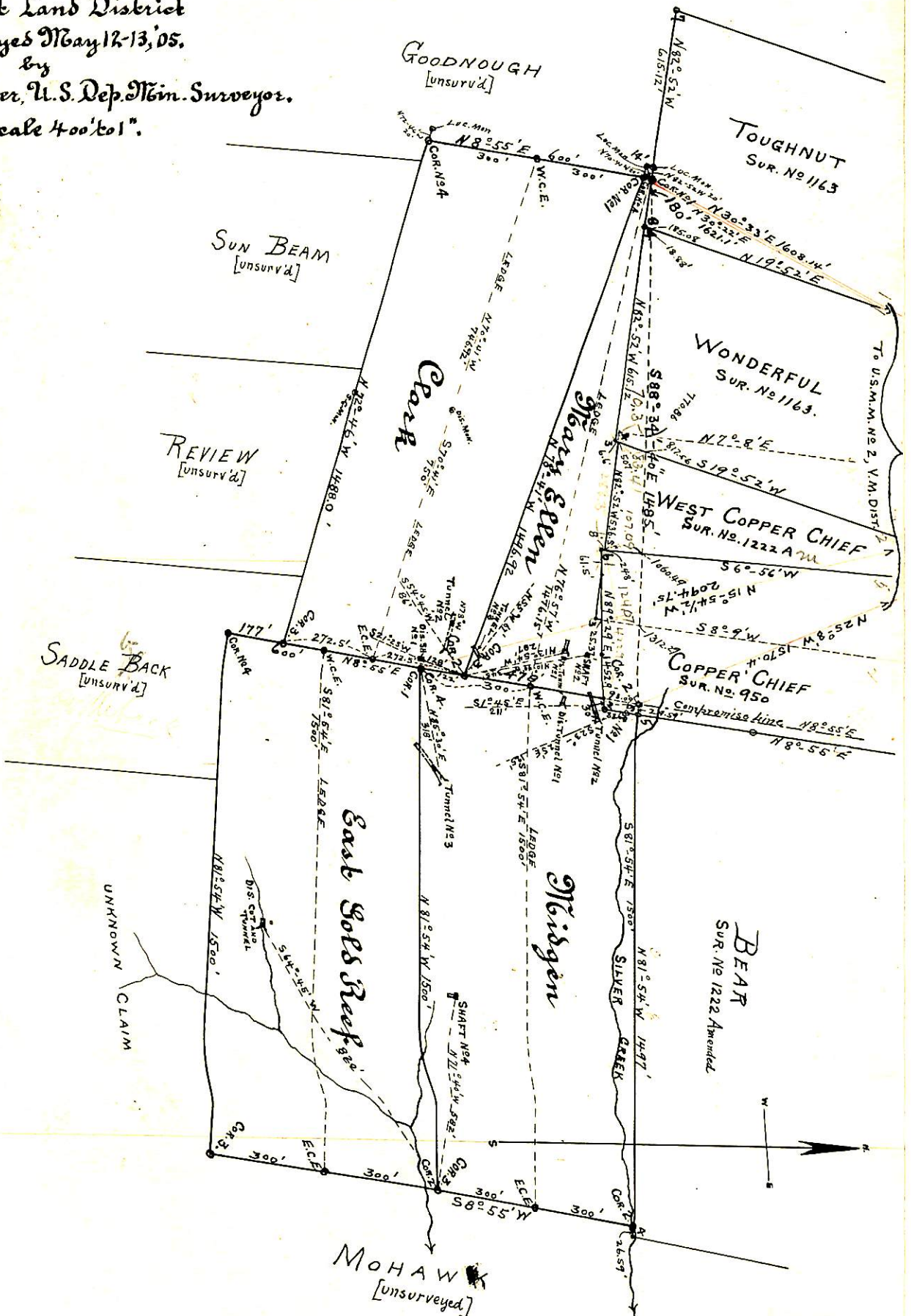
executed by A. B. Mader, U. S. Deputy Mineral Surveyor, May 12th to 13th 1905.

May 9th 1905, 1905, have been critically examined and the necessary corrections and explanations made, and the said Field Notes and Return, and the Survey they describe, are hereby approved. A true copy of the copy of the location certificate filed by the applicant. for survey is included in the field notes.

Frank A. Ingalls

U. S. Surveyor-General for Arizona.

Survey No. 2065  
Prescott Land District  
Surveyed May 12-13, '05.  
by  
A. B. Wader, U. S. Dep. Min. Surveyor.  
Scale 400' to 1".



P 5 50