

**MS**  
-

**0**

**2**

**4**

**1**

**2**

(4-683.)

Mineral Survey No. 2412

Lot No.

Arizona Land District.

### FIELD NOTES

OF THE SURVEY OF THE MINING CLAIM OF

J. H. Johnson

KNOWN AS THE

VENECENT, SQUAW, POMP, APACHA, GRAYEAGLE and SUNFLOWER

Warren Mining District,

Cochise County, Arizona

Section Approx., Township 23 S., Range 24 E., C.S.R.B. & M.

Surveyed under instructions dated April 16th, 1907.

by Franklin W. Smith,  
U. S. Deputy Mineral Surveyor

Claim located	See Location Notices	1
Survey commenced	April 22nd,	1 1907
Survey completed	April 25th,	1 1907

o 6-100

Post office address of Claimant,  
John H. Johnson, Lowell, Arizona.

OK

## GRAYFAGLE FT AL LODES

Fett

## GRAYFAGLE

Beginning at Cor. No. 1, the N. E. Cor., identical with location and with Cor. No. 4, Abbis May lode, Survey No. 2413, a pine post 4 ft. long, 4 in. sq., set 18 in. in the ground in a mound of stones and scribed 1-2412 G L, whence a pine post of same dimensions and scribed B P 1-2412 hrs. N. 85° 11' W., 50.0 ft., and a second pine post of same dimensions and scribing hrs. S. 11° 2' W., 50.0 ft., no bearing monuments available, and the S. W. Cor. Sec. 18, Twp. 23 S., R. 25 E., G. & G. R. E. S. M. hrs. S. 37° 34' 30" E., 3489.3 ft.

Thence S. 11° 2' W.

300.0 along line 3-4 Abbis May lode, Survey No. 2413 to original location for F.E.C.

300.0 same bearing, to Cor. No. 2, the S. E. Cor., identical with location and with Cors. No. 1, 3 and 4 respectively of Sunflower lode of this survey and Abbis May and Mayflower lodes, Survey No. 2413, a pine post 4 ft. long, 4 in. sq., set 18 in. in the ground in a mound of stones and scribed 2-2412 G L, whence a pine post of same dimensions and scribed B P 1-2-2412 hrs. N. 11° 2' E., 50.0 ft. and a second pine post of same dimensions and scribing hrs. S. 11° 2' W., 50.0 ft., no bearing monuments available.

Thence N. 85° 11' W.

1500.0 along line 4-1 Sunflower lode of this survey to Cor. No. 3, the S. W. Cor., identical with location and with Cor. No. 4 and the E. E. C. of Sunflower and Pomp lodes of this survey, a pine post 4 ft. long, 4 in. sq., set 18 in. in the ground in a mound of stones and scribed 3-2412 G L, whence a pine post of same dimensions and scribed B P 3-4-2412 hrs. N. 11° 2' W., 50.0 ft. and a second pine post of same dimensions and scribing hrs. S. 11° 2' E., 50.0 ft., no bearing monuments available.

Feet

Thence N. 11° 2' E.

300.0 to original location for W.F.C., being identical with Cor. No. 1, Pomp lode of this survey.

600.0 same bearing, to Cor. No. 4, the N. W. Cor., identical with location, a pine post 4 ft. long, 4 in. sq., set 18 in. in the ground in a mound of stones and scribed 4-2412 S L, whence a pine post of same dimensions and scribed B P 4-2412 hrs. S. 11° 2' W., 50.0 ft., and a second pine post of same dimensions and scribing hrs. S. 83° 11' E., 50.0 ft., no bearing monuments available.

Thence S. 83° 11' E.

1500.0 to Cor. No. 1, the place of beginning.

LUDGE

The presumed course of the vein on this claim is from the W. F.C. location S., 83° 11' E., 1500.0 ft.

----- SUNFLOWER LODE -----

Beginning at Cor. No. 1, the N. E. Cor., identical with location and with Cors. No. 2, 3 and 4, respectively of Grayeagle lode of this survey, Abbie Hay, and Mayflower lodes, Survey No. 2413, a pine post 4 ft. long, 4 in. sq., set 18 in. in the ground in a mound of stones and scribed 1-2412 S L, whence a pine post of same dimensions and scribed B P 1-2-2412, hrs. N. 11° 2' E., 50.0 ft., and a second pine post of same dimensions and scribing hrs. S. 11° 2' W., 50.0 ft., no bearing monuments available, and the N. W. Cor. Sec. 13, Tp. 23 S., R. 25 E., T. & S. R. B. & M., hrs. N. 83° 0' 45" E., 3623.0 ft.

Thence S. 11° 2' W.

300.0 along line 2-4 Mayflower lode, Survey No. 2413, to original location for F.E.C.

600.0 same bearing, to Cor. No. 2, the S. E. Cor., identical with location and with Cor. No. 3, the N. E. and N. W. Cors., respectively, of Mayflower lode, Survey No. 2413

Feet

Anna and Holla lodes, unsurveyed, a pine post 4 ft. long, 4 in. sq., set 18 in. in the ground in a mound of stones and scribed 2-2412 S L, whence a pine post of same dimensions and scribed B P 2-2412 hrs. N. 11° 2' E., 50.0 ft., and a second pine post of same dimensions and scribing hrs. N. 83° 11' W., 50.0 ft., no bearing monuments available.

Bearing N. 83° 11' W.

1500.0 to Cor. No. 2, the S. W. Cor., identical with location and with the F.W.C. and the N. W. Cor., respectively, of Apache lode of this survey and Anna lode, unsurveyed, a pine post 4 ft. long, 4 in. sq., set 18 in. in the ground in a mound of stones and scribed 3-2412 S L, whence a pine post of same dimensions and scribed B P 3-2412 hrs. S. 83° 11' E., 50.0 ft., and a second pine post of same dimensions and scribing hrs. N. 11° 2' E., 50.0 ft., no bearing monuments available.

Bearing N. 11° 2' E.

300.0 to original location Cor. W.F.C., being identical with Cor. No. 1 and 2, respectively, of Apache and Perry lodes of this survey.

300.0 on bearing, to Cor. No. 4, the N. E. Cor., identical with location and with Cor. No. 3, and the F.W.C. location, respectively, of Grayeale and Perry lodes of this survey, a pine post etc., and scribed 4-2412 S L,

Bearing S. 83° 11' E.

1500.0 to Cor. No. 1, the place of beginning.

INDEX

The proposed course of the vein on this claim is from the W.F.C. location S. 83° 11' E., 1500.0 ft.

----- APACHE LORE -----

Beginning at Cor. No. 1, the N. E. Cor., identical with location and with Cor. No. 2, and the W.F.C. location, respectively, of Perry and Sunflower lodes, of this

Feet

survey, a pine post 4 ft. long, 4 in. sq., set 18 in. in the ground in a mound of stones and scribed 1-2412 A L, whence a pine post of same dimensions and scribed B P 1-2-2412 hrs. N. 11° 2' E., 50.0 ft. and a second pine post of same dimensions and scribing hrs. S. 11° 2' W., 50.0 ft., no bearing monuments available, and the N. W. Cor. Sec. 13, Tp. 27 S., R. 25 E., G. & S. R. E. & M., hrs. N. 83° 49' E., 5178.0 ft.,

Thence S. 11° 2' W.

300.0 to original location for T.T.C. claim identical with Cor. No. 3 and the N. W. Cor. respectively, of Sun-flower lode of this survey and Anna lode, unsurveyed,

600.0 same bearing, to Cor. No. 2, the S. E. Cor., identical with location and with the S. W. Cor. of Anna lode, unsurveyed and situated on the north side line of Black Ben lode, unsurveyed, a pine post 4 ft. long, 4 in. sq., set 18 in. in the ground in a mound of stones and scribed 2-2412 A L, whence a pine post of same dimensions and scribed B P, 2-2412 hrs. N. 11° 2' E., 50.0 ft. and a second pine post of same dimensions and scribing hrs. N. 78° 20' W., 50.0 ft., no bearing monuments available.

Thence N. 78° 20' W.

1031.5 to the N. W. Cor. and a corner, respectively, of Black Ben and Sunshine lodes, unsurveyed.

1240.8 same bearing, to the S. E. and a corner, respectively, of Neglected and Sunshine lodes, unsurveyed,

1500.0 same bearing, to Cor. No. 3, the S. W. Cor. identical with location, a pine post 4 ft. long, 4 in. sq., set 18 in. in the ground in a mound of stones and scribed 3-2412 A L, whence a pine post of same dimensions and scribed B P 3-2412 hrs. S. 78° 20' E., 50.0 ft., and a second pine post of same dimensions and scribing hrs. N. 11° 2' E., 50.0 ft., no bearing monuments available.

Thence <sup>N</sup> 11° 2' E.

133.2 to Cor. No. 2 and a corner, respectively, of Squaw lode

300.0  
 450.0  
 600.0  
 1500.0  
 300.0  
 600.0

of this survey, and Neglected lode, unsurveyed,  
 same bearing, to original location for W.F.C.  
 same bearing, to E. F. C. location Squaw lode of  
 this survey.  
 same bearing to Cor. No. 4, the N. W. Cor., identical  
 with location and with Cor. No. 3, Pomp lode of this  
 survey, and situated on line 1-2 Squaw lode of this  
 survey, a pine post 4 ft. long, 4 in. sq., set 18 in.  
 in the ground in a mound of stones and scribed 4-3412  
 A B, whence a pine post of same dimensions and scribed  
 P P 3-4-3412 hrs. S. 11° 2' W., 50.0 ft., and a  
 second pine post of same dimensions and scribing hrs.  
 W. 11° 2' W., 50.0 ft., no bearing monuments avail-  
 able.

Thence S. 78° 20' E.

to Cor. No. 1, the place of beginning.

LUNDS

The presumed course of the vein on this claim is from the W.F.C. location S. 78° 20' E., 1500.0 ft.

POMP LODGE

Beginning at Cor. No. 1, the N. E. Cor., ident-  
 ical with location and with the W.F.C. location of  
 Crayeagle lode of this survey, a pine post 4 ft.  
 long, 4 in. sq., set 18 in. in the ground in a mound  
 of stones and scribed 1-3412 P B, whence a pine post  
 of same dimensions and scribed P P 1-3412 hrs. S.  
 11° 2' W., 50.0 ft., and a second pine post of same  
 dimensions and scribing hrs. N. 78° 20' W., 50.0 ft.,  
 no bearing monuments available, and the N. W. Cor.  
 Sec. 18, T. 23 S., R. 23 E., G. & S. E. B. & H.  
 hrs. S. 10° 36' 45" E., 5033.1 ft.

Thence S. 11° 2' W.

to original location for E.F.C., being identical  
 with Cor. No. 3 and 4, respectively of Crayeagle  
 and Sunflower lodes of this survey.

same bearing to Cor. No. 2, the S. E. Cor., identical

with location and with Cor. No. 1 on the W.E.C. location, respectively, of Apache and Sunflower lodes of this survey, a pine post, etc. and scribed 2-2412 P L.

Thence N. 78° 20' W.

1500.0 to Cor. No. 3, the S. W. Cor., identical with location and with Cor. No. 4, Apache lode of this survey, and situated on line 1-2 Squaw lode of this survey, a pine post, etc. and scribed 3-2412 P L.

Thence N. 11° 2' E.

142.8 to Cors. No. 1 and 2, respectively, of Squaw and Vincent lodes of this survey.

300.0 same bearing, to original location for W.E.C.

447.6 same bearing, to E.E.C. location Vincent lode of this survey.

600.0 same bearing, to Cor. No. 4, the S. W. Cor., identical with location and situated on line 3-2 Vincent lode of this survey, a pine post 4 ft. long, 4 in. sq., set 18 in. in the ground in a mound of stones and scribed 4-2412 P L, whence a pine post of same dimensions and scribed P P 4-2412 hrs. S. 11° 2' W. 50.0 ft., and a second pine post of same dimensions and scribing hrs. S. 78° 20' E., 50.0 ft., no bearing monuments available.

Thence S. 78° 20' E.

1500.0 to Cor. No. 1, the place of beginning.

LEDGE

The presumed course of the vein on this claim is from the W.E.C. location S. 78° 20' E., 1500.0 ft.

----- SQUAW LODGE -----

Beginning at Cor. No. 1, the N. E. Cor., identical with location and with Cor. No. 2, Vincent lode of this survey and situated on line 3-4 Pomp lode of this survey, a pine post 4 ft. long, 4 in. sq., set 18 in. in the ground in a mound of stones and scribed



Feet	
	<p>1-2412 S L, whence a pine post of same dimensions and scribed B P 1-2-2412 brs. N. <math>11^{\circ} 2' E.</math>, 50.0 ft., and a second pine post of same dimensions and scribing brs. S. <math>11^{\circ} 2' W.</math>, 50.0 ft., no bearing monuments available, and the N. W. Cor. Sec. 18, Tp. 23 S., R. 25 E., T. &amp; S. R. B. &amp; W. brs. N. <math>29^{\circ} 0' 30'' E.</math>, 6590.5 ft.</p> <p style="text-align: center;">Thence S. <math>11^{\circ} 2' W.</math></p>
142.8	to Cors. No. 3 and 4 respectively, of Poup and Apache lode of this survey.
304.8	same bearing, to original location for F.W.C.
442.8	same bearing, to W.E.C. location Apache lode of this survey.
609.6	<p>same bearing to Cor. No. 2, the S. E. Cor., identical with location and with a corner of the Neglected lode, unsurveyed and situated on line 3-4 Apache lode of this survey, a pine post 4 ft. long, 4 in. sq., set 18 in. in the ground in a mound of stones and scribed 2-2412 S L, whence a pine post of same dimensions and scribed B P, 2-2412 brs. S. <math>11^{\circ} 2' W.</math>, 62.8 ft., and a second pine post of same dimensions and scribing brs. N. <math>68^{\circ} 46' W.</math>, 50.0 ft., no bearing monuments available.</p> <p style="text-align: center;">Thence N. <math>68^{\circ} 46' W.</math></p>
1500.0	<p>to Cor. No. 3, the S. W. Cor., identical with location a pine post 4 ft. long, 4 in. sq., set 18 in. in the ground in a mound of stones and scribed 3-2412 S L; whence a pine post of same dimensions and scribed B P 3-2412 brs. S. <math>68^{\circ} 46' E.</math>, 50.0 ft., and a second pine post of same dimensions and scribing brs. N. <math>11^{\circ} 2' E.</math>, 50.0 ft., no bearing monuments available.</p> <p style="text-align: center;">Thence N. <math>11^{\circ} 2' E.</math></p>
704.8	to original location for W.E.C.
609.6	<p>same bearing, to Cor. No. 4, the N. W. Cor., identical with location and with Cor. No. 3, Vincent lode of this survey, a pine post 4 ft. long, 4 in. sq., set 18 in. in the ground and scribed 4-2412 S L, whence a pine post of</p>

Feet

same dimensions and scribed B P 3-4-2412 brs. S.  $11^{\circ} 2'$  W., 50.0 ft., and a second pine post of same dimensions and scribing brs. N.  $11^{\circ} 2'$  E. 50.0 ft., no bearing monuments available,

Thence S.  $68^{\circ} 46'$  E.

1500.0 to Cor. No. 1, the place of beginning.

## LEDGE

The presumed course of the veir on this claim is from the W.E.C. location S.  $68^{\circ} 46'$  E., 1500.0 ft.

--- VINCENT LODGE ---

Beginning at Cor. No. 1, the N. E. Cor., identical with location, a pine post 4 ft. long, 4 in. dia., set 18 in. in the ground in a mound of stones and scribed 1-2412 V L, thence a pine post of same dimensions and scribed B P 1-2412 brs. N.  $68^{\circ} 46'$  W., 50.0 ft., and a second pine post of same dimensions and scribing brs. S.  $11^{\circ} 2'$  W., 50.0 ft., no bearing monuments available, and the N. W. Cor. Sec. 18, Tp. 27 S., R. 35 E., T. & R. E. P. & T. brs. S.  $85^{\circ} 43' 30''$  E., 6490.9 ft.

Thence S.  $11^{\circ} 2'$  W.

152.4 to Cor. No. 4 Pomp lode of this survey.

304.8 same bearing to original location for E.E.C.

452.4 same bearing, to W.E.C. location Pomp lode of this survey.

609.2 same bearing, to Cor. No. 2, the S. E. Cor., identical with location and with Cor. No. 1, Spaw lode of this survey and situated on line 3-4 Pomp lode of this survey, a pine post, etc., and scribed 2-2412 V L,

Thence N.  $68^{\circ} 46'$  W.

1500.0 to Cor. No. 3, the S. W. Cor., identical with location and with Cor. No. 4 Spaw lode of this survey, a pine post, etc., and scribed 3-2412 V L,

Thence N.  $11^{\circ} 2'$  E.

304.8 to original location for W.E.C.

Feet

609.6 same bearing, to Cor. No. 4, the N. W. Cor., identical with location a pine post 4 ft. long, 4 in. sq., set 18 in. in the ground in a mound of stones and scribed 4-2412 V L, whence a pine post of same dimensions and scribed D.P. 4-2412 hrs. S. 11° 2' W., 50.0 ft., and a second pine post of same dimensions and scribing hrs. S. 68° 46' E., 50.0 ft., no bearing monuments available.

Thence S. 68° 46' E.

1500.0 to Cor. No. 1, the place of beginning.

LEDGE.

The proposed course of the vein on this claim is from the W.F.C. location S. 68° 46' E., 1500.0 ft.

AREAS

Total and net area of Vincent lode	20.660 A.
Total and net area of Squaw lode,	20.660 A.
Total and net area of Pomp lode,	20.660 A.
Total and net area of Apache lode,	20.660 A.
Total and net area of Grayeagle lode,	20.605 A.
Total and net area of Sunflower lode,	20.605 A.
Total and net area of Group,	123.850 A.

IMPROVEMENTS

I hereby certify that the value of the labor and improvements on this group, placed thereon by the claimant or his grantors is not less than \$500. for each location thereof and that said improvements are as follows:

GRAYEAGLE

No. 1	Discovery tunnel, 4 x 6 x 40 ft. long, hrs. S. 83° E. the mouth of which hrs. from W.F.C. location, S. 8° 11' E., 700.0 ft.	Value, \$400.00
No. 2	Open cut, 5 x 10 x 15 ft., the mouth of which hrs. from Cor. No. 4, S. 50° 30' E., 705.0 ft.	Value, \$100.00
	Total Improvements on Claim,	\$500.00

Feet

## SUNFLOWER

No. 1 Discovery tunnel, 4 x 6, 40 ft. long, brg. N. 83°  
W., the mouth of which brgs. from F.W.C. location N. 83°  
11' W., 700.0 ft., Value, \$400.00

No. 2 Open cut, 5 x 10 x 15 ft., the mouth of which brgs.  
from Cor. No. 2 N. 63° 56' W., 590.0 ft.

Value, \$100.00

Total Improvements on Claim, \$500.00

## APACHA

No. 1 Discovery cut, 5 x 10 x 15 ft., on ledge, the mouth  
of which brgs. from W.E.C. location S. 78° 30' W., 100.0  
ft. Value, \$200.00

No. 2 Tunnel, 4 x 3 x 70 ft. long, brg. S. 3° W., the  
mouth of which brgs. from Cor. No. 4 S. 73° 45' E., 455.0  
ft. Value, \$700.00

Total Improvements on Claim, \$900.00

## POMP

No. 1 Discovery tunnel, 4 x 3 x 70 ft. long, brg. S. 30°  
E., the mouth of which brgs. from Cor. No. 4, S. 51° 30'  
E., 380.0 ft. Value, \$700.00

No. 2 Open cut, 5 x 10 x 15 ft., the mouth of which brgs.  
from Cor. No. 3, N. 31° 50' E., 180.0 ft.

Value, \$100.00

Total Improvements on Claim, \$800.00

## SQUAW

No. 1 Discovery tunnel, 4 x 3 x 50 ft. long, brg. N. 75°  
E., the mouth of which brgs. from W.F.C. location S. 64°  
E., 540.0 ft. Value, \$500.00

No. 2 Tunnel, 4 x 3 x 10 ft. long brg. N. 2° W., the mouth  
of which brgs. from Cor. No. 1, S. 58° W., 150.0 ft.

Value, \$100.00

Total Improvements on Claim, \$600.00

## VENICENT

No. 1 Discovery tunnel, 4 x 3 x 50 ft. long brg. N. 69°  
E., the mouth of which brgs. from W.F.C. location S. 62°

No. 2      46' E., 570.0 ft.      Value,      \$500.00  
 Open cut, 5 x 10 x 15 ft., the north of which has.  
 from Cor. No. 3 N. 67° 32' E., 740.0 ft.

Value,      \$100.00

Total Improvements on Claim,      \$600.00

TOTAL IMPROVEMENTS ON GROUP, \$5800.00

ADJOINING CLAIMS

North      Unsurveyed claims, claims and claimants unknown.

East      Abbie May and Mayflower lode, Survey No. 2415,  
 owned by the applicant herein.

South      Neglected, Sunshine, Black Pen and Anna lodes, un-  
 surveyed, owned by T. A. Brotherton

West      Unserved claims, claims and claimants unknown.

LOCATION

This survey is situated and located approximately  
 in T<sub>23</sub> N., R. 34 E., S. 6 & 3. T. E. <sup>unsurveyed</sup> about five  
 miles in an easterly direction from the City of Bisbee,  
 in the Warren Mining District, Cochise County, Territory  
 of Arizona.

INSTRUMENT

This survey was made with a G. L. Berger & Son No. 1  
 of Transit; the courses were deflected from the true mer-  
 idian as determined by a solar observation checked by  
 an observation on Polaris; the distances were measured  
 with a 300-ft. steel tape. Magnetic variation, 12° 30'  
 E. at all corners.

*Franklin Smith*

U. S. Deputy Mineral Surveyor.

Dated at Bisbee, Arizona,

April 29, 1907.

# FINAL OATHS FOR SURVEYS.

## LIST OF NAMES.

A list of the names of the individuals employed by Franklin W. Smith

United States Deputy Mineral Surveyor, to assist in running, measuring, and marking the lines, corners, and boundaries described in the foregoing field notes of the survey of the mining claim of

John H. Johnson  
known as the Vencent, Squaw, Pomp, Apache, Grayeagle and Sunflower

and showing the respective capacities in which they acted.

H. A. Shipman, *Chairman.*

D. E. Curry, *Chainman.*

....., *Arman.*

....., *Flagman.*

## FINAL OATHS OF ASSISTANTS.

We, H. A. Shipman

and D. E. Curry, do solemnly swear that we assisted Franklin W. Smith

....., United States Deputy Mineral Surveyor, in marking the corners and surveying

the boundaries of the mining claim of

John H. Johnson

known as the Vencent, Squaw, Pomp, Apache, Grayeagle and Sunflower

represented in the foregoing field notes as having been surveyed by said deputy mineral surveyor and under his

direction; and that said survey has been in all respects, to the best of our knowledge and belief, faithfully and

correctly executed, and the corner and boundary monuments established according to law and the instructions

furnished by the United States Surveyor-General for Arizona

H. A. Shipman, *Chairman.*

D. E. Curry, *Chainman.*

....., *Arman.*

....., *Flagman.*

Subscribed and sworn to by the above-named persons before me this first

day of May, 1907.

B. J. Reynolds  
Notary Public in and for the County  
of Cochise, Territory of Arizona.  
My Commission expires Oct. 20th, 1909

(4-686.)

FINAL OATH OF U. S. DEPUTY MINERAL SURVEYOR

I, Franklin W. Smith, U. S. Deputy Mineral Surveyor, do solemnly swear that, in pursuance of instructions received from the United States Surveyor General for Arizona, dated April 16th, 1907, I have, in strict conformity to the laws of the United States, the official regulations and instructions thereunder, and the instructions of said Surveyor General, faithfully and correctly executed the survey of the Mining Claim of John H. Johnson, known as the Vencent, Squaw, Pomp, Apache, Grayeagle and Sunflower, situate in Warren Mining District; Cochise County, Arizona, in Section Approx., Township No. 27 S., Range No. 24 E., S. & S.R.D. & U. unswayed, and designated as Survey No. 2412, as represented in the foregoing field notes, which accurately show the boundaries of said mining claim as distinctly marked by monuments on the ground, and described in the attached copy of the location certificate, which was received by me from the Surveyor General with said instructions, and that all the corners of said survey have been established and perpetuated in strict accordance with the law, official regulations and instructions thereunder; and I do further solemnly swear that the foregoing are the true and original field notes of said survey and my report therein, and that the labor expended and improvements made upon said mining claim by claimant or his grantors are as therein fully stated, and that the character, extent, location and itemized value thereof are specified therein with particularity and full detail, and that no portion of said labor or improvements so credited to this claim has been included in the estimate of expenditures upon any other claim.

*Franklin W. Smith*  
 U. S. Deputy Mineral Surveyor.

Subscribed and sworn to by the said Franklin W. Smith,  
 U. S. Deputy Mineral Surveyor, before me G. I. McReynolds  
 a Notary Public this first  
 day of May, 1907,

*G. I. McReynolds*  
 Notary Public in and for the County  
 of Cochise, Territory of Arizona.  
 My Commission expires Oct. 20th, 1909

# Affidavit of Five Hundred Dollars Improvements.

We, D. E. Gurry and H. A. Shipman

of lawful age, being first duly sworn according to law, depose and say: That we are acquainted with the  
Vencent, Squaw, Pomp, Apache, Grayeagle and  
Sunflower mining claim, situate in Warren

mining district, Cochise County, Arizona Territory, for which

J. M. Johnson

has made application for survey prior to application for patent under the provisions of the Act of Congress  
approved May 10, 1872; and that the labor done and improvements made thereon by the applicant and  
for each location thereof  
his grantor exceed five hundred dollars in value, and further that we are not personally interested  
in said mine.

*D. E. Gurry*  
*H. A. Shipman*

TERRITORY OF ARIZONA,

COUNTY OF Cochise } ss:

Sworn to and subscribed before me this first day

[SEAL.]

of May, 1907

*E. J. Reynolds*

Notary Public in and for the County  
of Cochise, Territory of Arizona.  
My Commission expires Oct. 20th, 1909



AMENDED  
Notice of Mining Location  
LODE CLAIM

To All Whom It May Concern:

This Mining Claim, the name of which is the Vencent  
Mining Claim, situate on lands belonging to the United States of America, and in which there  
are valuable mineral deposits, was entered upon and located for the purpose of exploration and  
purchase by John M. Johnson

A citizen of the United States  
(Locator must insert either "a citizen of the United States," or, "who has declared his intention to become a citizen of the United States.")

the undersigned, on the 28th day of December 1906

The length of this claim is 1500.0 feet,  
and I claim 570.0 feet,  
in a Northwesterly direction and 930.0  
feet in a Southeasterly direction from  
the center of the discovery shaft, at which this notice is posted, lengthwise of the claim, together  
with 300 feet in width of the surface grounds, on each  
side of the center of said claim. The general course of the lode deposit and premises is from the  
Northwest to the Southeast

The claim is situated and located in the Warren Mining District, in  
Cochise County, in the Territory of Arizona, about one-half mile  
in a Northerly direction from the shaft of the American-  
Saginaw Development Co. and is bounded on the south by the Squaw  
lode; on the east by the Pomp lode.

The surface boundaries of the claim are marked upon the ground as follows: Beginning at  
a monument

at a point in a Southeasterly direction 930 feet from  
the discovery shaft (at which this notice is posted,) being in the center of the S. E.  
end line of said claim; thence Southwesterly, 300 feet to a post and monument  
, being the S. E. corner of said claim; thence  
Northwesterly, 1500 feet to a post and monument, being at the  
Southwest corner of said claim; thence Northeasterly, 300 feet  
to a post and monument at the center of the N. W. end of said claim;  
thence Northeasterly, 300 feet to a post and monument, being at the  
N. W. corner of said claim; thence Southeasterly, 1500.0  
feet to a post and monument at the N. E. corner of said claim;  
thence Southwesterly, 300 feet to the place of beginning.

All done under the provisions of Chapter Six, of Title XXXII, of the Revised Statutes of  
the United States, and of an Act of the General Assembly of Arizona, entitled "An Act to Revise  
and Codify the Laws of the Territory of Arizona," approved March 16, 1901.

This is an Amended Location Notice of the Vencent  
Mining Claim, located by John M. Johnson, W. E. Davis and A. McKenzie  
on the 12th day of  
October 1906, and recorded in Book 22 of Records of Mines, at  
page 561 in the office of the County Recorder of the aforesaid County of Cochise  
to which reference is hereby made, and this amended Location Notice is made and posted to  
correct errors in the description in the said original Location Notice.

Dated and posted on the ground this 28th day of December 1906

Witness [Signature] John M. Johnson

17

TERRITORY OF ARIZONA,

County of COCHISE ss.

I, Edmund, County Recorder in and for the County and

Territory aforesaid, do hereby certify that the within instrument was filed for record at 1 o'clock, 10 M.,

on this JAN 22 1907 day of 1907, and duly recorded in Book No. 35

of COCHISE Records of COCHISE County, Arizona, at pages 13

WITNESS my hand and official seal the day and year first above written.

Edmund  
County Recorder.

COMPARED.

No 605

AMENDED  
Notice of Location.

LODE CLAIM.

Concent

Dated 1907

Filed and Recorded at Request of

Edmund

JAN 22 1907 A. D. 190

at 1 o'clock, 10 M.

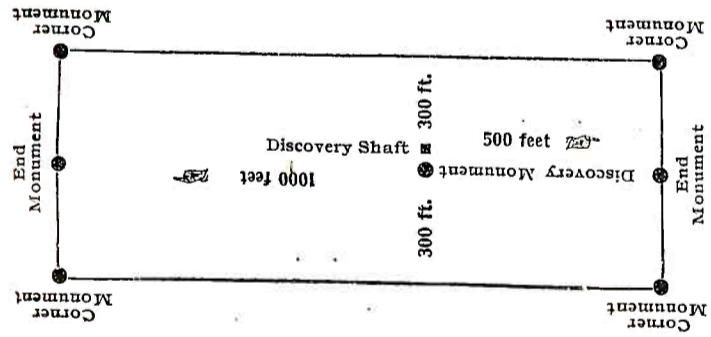
Book 35 Recorded by Mule

Pages 13

Edmund  
County Recorder.

By \_\_\_\_\_  
Deputy Recorder.

BISBEE, ARIZ.



This diagram is to give locator a general idea of plan of location under the new law. The Discovery Shaft can be in the center of claim or any distance from either end desired. In the diagram it is placed 500 feet from one end and 1000 feet from the other. Commence description of claim at a center end monument, giving its distance and direction from center of Discovery Shaft; thence bound the claim in either direction. In description be careful to state locality of claim with reference to some natural object, or permanent monument, as will identify the claim.

AMENDED  
**Notice of Mining Location**  
 LODE CLAIM

To All Whom It May Concern:

This Mining Claim, the name of which is the Apache  
 Mining Claim, situate on lands belonging to the United States of America, and in which there  
 are valuable mineral deposits, was entered upon and located for the purpose of exploration and  
 purchase by John M. Johnson

A citizen of the United States,  
 (Locator must insert either "a citizen of the United States," or, "who has declared his intention to become a citizen of the United States.")

the undersigned, on the 28th day of December 1906

The length of this claim is 1500.0 feet,  
 and I claim 100.0 feet,  
 in a Westerly direction and  
1400.0 feet in an Easterly direction from  
 the center of the discovery shaft, at which this notice is posted, lengthwise of the claim, together  
 with 300.0 feet in width of the surface grounds, on each  
 side of the center of said claim. The general course of the lode deposit and premises is from the  
West to the East

The claim is situated and located in the Warren Mining District, in  
Cochise County, in the Territory of Arizona, about one-half mile  
 in a Northeasterly direction from the shaft of the American-  
Saginaw Development Co. and is bounded on the North by the Pomp lode  
 on the East by the Sunflower and Anna lodes; on the South by the  
Black Ben, Sunshine and Neglected lodes and on the West by the Neg-  
lected and Squaw lodes.

The surface boundaries of the claim are marked upon the ground as follows: Beginning at  
 a monument

at a point in a Westerly direction 100 feet from  
 the discovery shaft (at which this notice is posted,) being in the center of the West  
 end line of said claim; thence Northerly, 300 feet to a post and  
monument, being the N. W. corner of said claim; thence  
Easterly, 1500 feet to a post and monument, being at the  
N. E. corner of said claim; thence Southerly, 300 feet  
 to a post and monument at the center of the East end of said claim;  
 thence Southerly, 300.0 feet to a post and monument, being at the  
S. E. corner of said claim; thence Westerly, 1500  
 feet to a post and monument at the S. W. corner of said claim;  
 thence Northerly, 300.0 feet to the place of beginning.

All done under the provisions of Chapter Six, of Title XXXII, of the Revised Statutes of  
 the United States, and of an Act of the General Assembly of Arizona, entitled "An Act to Revise  
 and Codify the Laws of the Territory of Arizona," approved March 16, 1901.

This is an Amended Location Notice of the Apache  
 Mining Claim, located by John M. Johnson, W. E. Davis, and A. McKenzie  
 on the 12th day of  
October 1906, and recorded in Book 22 of Records of Mines, at  
 page 555, in the office of the County Recorder of the aforesaid County of Cochise  
 to which reference is hereby made, and this amended Location Notice is made and posted to  
 correct errors in the description in the said original Location Notice.

Dated and posted on the ground this 28th day of December 1906

Witness:

[Signature]

John M. Johnson

TERRITORY OF ARIZONA,

County of.....

ss.

I, *Chas. M. Donald*, County Recorder in and for the County, and

Territory aforesaid, do hereby certify that the within instrument was filed for record at.....*1* o'clock,.....*8* M.,

on this.....*JAN 23 1907* day of.....190..., and duly recorded in Book No.....*38*

of.....*16* Records of.....*16* County, Arizona, at pages.....

WITNESS my hand and official seal the day and year first above written

*Chas. M. Donald*  
County Recorder.

PREPARED  
No 602

AMENDED  
Notice of Location.  
LODE CLAIM.

*Apache*

Dated.....190.....

Filed and Recorded at Request of

*R. A. Jensen*

at.....*1* O..... A. D. 190.....

..... M.

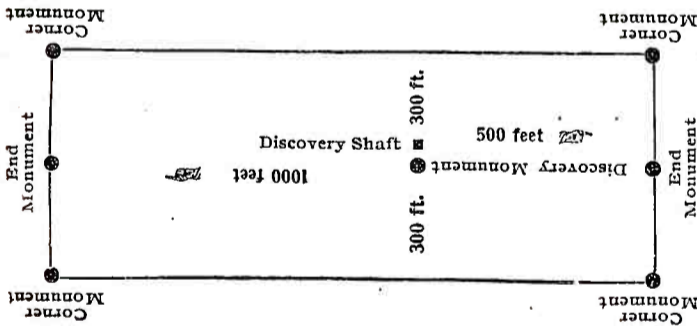
Book *38* Recording *mine*

Pages.....*16*

*Chas. M. Donald*  
County Recorder.

By.....  
Deputy Recorder.

BISBEE, ARIZ.



This diagram is to give locator a general idea of plan of location under the new law. The Discovery Shaft can be in the center of claim or any distance from either end desired. In the diagram it is placed 500 feet from one end and 1000 feet from the other. Commence description of claim at a center end monument, giving its distance and direction from center of Discovery Shaft; thence bound the claim in either direction. In description be careful to state locality of claim with reference to some natural object, or permanent monument, as will identify the claim.

# Notice of Mining Location

## LODE CLAIM

To All Whom It May Concern:

This Mining Claim, the name of which is the Sunflower Mining Claim, situate on lands belonging to the United States of America, and in which there are valuable mineral deposits, was entered upon and located for the purposes of exploration and purchase by John M. Johnson

a citizen of the United States  
(Locator must insert either "a citizen of the United States," or, "who has declared his intention to become a citizen of the United States.")

the undersigned, on the 8th. day of December 1906

The length of this claim is 1500 feet,  
and I claim 700 feet,  
in a Westerly direction and  
800 feet in an Easterly direction from  
the center of the discovery shaft, at which this notice is posted, lengthwise of the claim, together  
with 300 feet in width of the surface grounds, on each  
side of the center of said claim. The general course of the lode deposit and premises is from the  
West to the East

The claim is situated and located in the Warren Mining District, in  
Cochise County, in the Territory of Arizona, about one half mile  
in a Northeasterly direction from the shaft of the American-  
Saginaw Development Co. and is bounded on the North by the Grayscale  
lode; on the East by the May Flower lode; on the South by the Anna  
lode; and on the West by the Pomp and Apache lodes.

The surface boundaries of the claim are marked upon the ground as follows: Beginning at  
a monument

at a point in a Westerly direction 700 feet from  
the discovery shaft (at which this notice is posted), being in the center of the West  
end line of said claim; thence Northerly, 300 feet to a Post and  
monument, being the N. W. corner of said claim; thence  
Easterly, 1500 feet to a post and monument, being at the  
N. E. corner of said claim; thence Southerly, 300 feet  
to a post and monument at the center of the East end of said claim;  
thence Southerly, 300 feet to a post and monument, being at the  
S. E. corner of said claim; thence Westerly, 1500  
feet to a post and monument at the S. W. corner of said claim;  
thence Northerly, 300 feet to the place of beginning.

All done under the provisions of Chapter Six, of Title XXXII, of the Revised Statutes of  
the United States, and of an Act of the General Assembly of Arizona, entitled "An Act to  
Revise and Codify the Laws of the Territory of Arizona," approved March 16, 1901.

Dated and posted on the ground this 8th. day of December 1906

Witness:

Shipman

John M. Johnson

TERRITORY OF ARIZONA,

County of COCHISE ss

I, Ed McDonald, County Recorder in and for the County, and

Territory aforesaid, do hereby certify that the within instrument was filed for record at 1 o'clock, 6 M.,

on this JAN 22 1907 day of 1907, and duly recorded in Book No. 38

of MINING Records of COCHISE County, Arizona, at pages 23

WITNESS my hand and official seal the day and year first above written.

Ed McDonald  
County Recorder.

COMPARE

No 5-95

### Notice of Location

#### LODE CLAIM

Imp flower

Dated 1907

Filed and Recorded at request of

R. A. Guinn

JAN 22 1907 A. D. 1907

at 1 30 M.

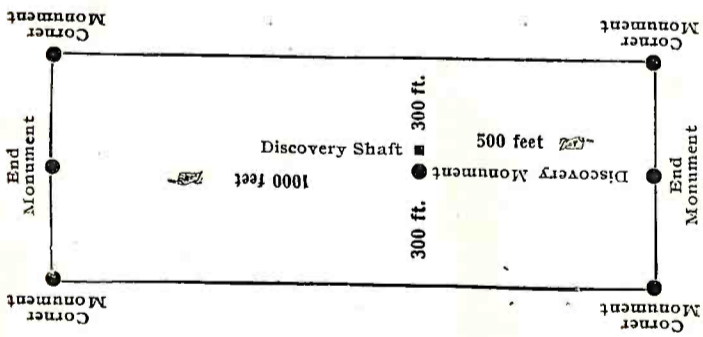
Book 38 Record by Miner

Pages 23

Ed McDonald  
County Recorder.

By Ed McDonald  
Deputy Recorder.

BISBEE, ARIZ.



This diagram is to give locator a general idea of plan of location under the new law. The Discovery Shaft can be in the center of claim or any distance from either end desired. In the diagram it is placed 500 feet from one end and 1000 feet from the other. Commence description of claim at a center end monument, giving its distance and direction from center of Discovery Shaft; thence bound the claim in either direction. In description be careful to state locality of claim with reference to some natural object, or permanent monument, as will identify the claim.

AMENDED  
**Notice of Mining Location**  
LODE CLAIM

To All Whom It May Concern:

This Mining Claim, the name of which is the Pomp  
Mining Claim, situate on lands belonging to the United States of America, and in which there  
are valuable mineral deposits, was entered upon and located for the purpose of exploration and  
purchase by John M. Johnson

a citizen of the United States  
(Locator must insert either "a citizen of the United States," or, "who has declared his intention to become a citizen of the United States.")

the undersigned, on the 28th day of December 1906

The length of this claim is 1500.0 feet,  
and I claim 600.0 feet,  
in a Westerly direction and - - - -  
900.0 feet in a Easterly direction from  
the center of the discovery shaft, at which this notice is posted, lengthwise of the claim, together  
with 300.0 feet in width of the surface grounds, on each  
side of the center of said claim. The general course of the lode deposit and premises is from the  
West to the East

The claim is situated and located in the Warren Mining District, in  
Cochise County, in the Territory of Arizona, about one-half mile  
in a Northeasterly direction from the shaft of the American-  
Saginaw Development Co., and is bounded on the East by Grayeagle  
and Sunflower lodes and on the south by the Apache lode; on the  
West by the Vencent and Squaw lodes.

The surface boundaries of the claim are marked upon the ground as follows: Beginning at  
a monument

at a point in a Westerly direction 600.0 feet from  
the discovery shaft (at which this notice is posted,) being in the center of the West  
end line of said claim; thence Northerly, 300 feet to a post and  
Monument, being the N. W. corner of said claim; thence  
Easterly, 1500.0 feet to a post and monument, being at the  
N. E. corner of said claim; thence Southerly, 300.0 feet  
to a post and monument at the center of the East end of said claim;  
thence Southerly, 300 feet to a post and monument, being at the  
Southeast corner of said claim; thence Westerly, 1500  
feet to a post and monument at the S. W. corner of said claim;  
thence Northerly, 300 feet to the place of beginning.

All done under the provisions of Chapter Six, of Title XXXII, of the Revised Statutes of  
the United States, and of an Act of the General Assembly of Arizona, entitled "An Act to Revise  
and Codify the Laws of the Territory of Arizona," approved March 16, 1901.

This is an Amended Location Notice of the Pomp  
Mining Claim, located by John M. Johnson, W. E. Davis and A. McKenzie  
on the 12th day of  
October 1906, and recorded in Book 22 of Records of Mines, at  
page 563, in the office of the County Recorder of the aforesaid County of Cochise  
to which reference is hereby made, and this amended Location Notice is made and posted to  
correct errors in the description in the said original Location Notice.

Dated and posted on the ground this 28th day of December 1906  
Witness: J. Shepman John M. Johnson

TERRITORY OF ARIZONA,

County of COCHISE ss.

I, *Chas. M. Bennett*, County Recorder in and for the County and

Territory aforesaid, do hereby certify that the within instrument was filed for record at 1 o'clock, P. M.,

on this JAN. 22 1907 day of 1907, and duly recorded in Book No. 38

of COCHISE County, Arizona, at pages 15

WITNESS my hand and official seal the day and year first above written.

*Chas. M. Bennett*  
County Recorder.

COMPAREL

No. 603

AMENDED  
Notice of Location.

LODE CLAIM.

*P. mp.*

Dated 1907

Filed and Recorded at Request of

*R. J. Greenman*

JAN 25 1907 A. D. 1907

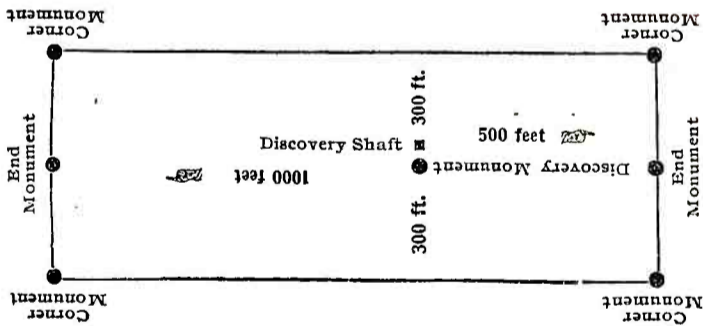
at 1 o'clock P. M.

Book 38 Record Page 15

Pages *Chas. M. Bennett*  
County Recorder.

By Deputy Recorder.

BISBEE, ARIZ.



This diagram is to give locator a general idea of plan of location under the new law. The Discovery Shaft can be in the center of claim or any distance from either end desired. In the diagram it is placed 500 feet from one end and 1000 feet from the other. Commence description of claim at a center end monument, giving its distance and direction from center of Discovery Shaft; thence bound the claim in either direction. In description be careful to state locality of claim with reference to some natural object, or permanent monument, as will identify the claim.



# Notice of Mining Location

## LODE CLAIM

### To All Whom It May Concern:

This Mining Claim, the name of which is the Grayeagle  
Mining Claim, situate on lands belonging to the United States of America, and in which there  
are valuable mineral deposits, was entered upon and located for the purposes of exploration and  
purchase by John M. Johnson

a citizen of the United States  
(Locator must insert either "a citizen of the United States," or, "who has declared his intention to become a citizen of the United States.")

the undersigned, on the 8th. day of December 1906

The length of this claim is 1500 feet,  
and I claim 700 feet,

in a Westerly direction and  
800 feet in a Easterly direction from

the center of the discovery shaft, at which this notice is posted, lengthwise of the claim, together  
with 300 feet in width of the surface grounds, on each  
side of the center of said claim. The general course of the lode deposit and premises is from the  
West to the East

The claim is situated and located in the Warren Mining District, in  
Cochise County, in the Territory of Arizona, about a half mile  
in a Northeasterly direction from the shaft of the American-  
Saginaw Development Co. and is bounded on the East by the Abbie May  
lode; on the South by the Sunflower lode and on the West by the Pomp  
lode.

The surface boundaries of the claim are marked upon the ground as follows: Beginning at  
a monument

at a point in a Westerly direction 700 feet from  
the discovery shaft (at which this notice is posted), being in the center of the West  
end line of said claim; thence Northerly, 300 feet to a post and  
monument, being the Northwest corner of said claim; thence  
Easterly, 1500 feet to a post and monument, being at the  
N. E. corner of said claim; thence Southerly, 300 feet  
to a post and monument at the center of the East end of said claim;  
thence Southerly, 300 feet to a post and monument, being at the  
Scutheast. corner of said claim; thence Westerly, 1500  
feet to a post and monument at the S. W. corner of said claim;  
thence Northerly, 300 feet to the place of beginning.

All done under the provisions of Chapter Six, of Title XXXII, of the Revised Statutes of  
the United States, and of an Act of the General Assembly of Arizona, entitled "An Act to  
Revise and Codify the Laws of the Territory of Arizona," approved March 16, 1901.

Dated and posted on the ground this 8th. day of December 1906

Witness: [Signature]

John M. Johnson

TERRITORY OF ARIZONA,  
County of..... COCHISE } SS

I, ..... *Edmund* ..... County Recorder in and for the County and Territory aforesaid, do hereby certify that the within instrument was filed for record at ..... o'clock, ..... M., on this ..... day of *JAN 22 1907* 190..., and duly recorded in Book No. *38* of ..... *WINING* Records of ..... *COCHISE* County, Arizona, at pages ..... *24*

WITNESS my hand and official seal the day and year first above written.

..... *Edmund* .....  
County Recorder.

COMPARED

*No 594*

Notice of Location

LODE CLAIM

*Gray Eagle*

Dated ..... 190...

Filed and Recorded at request of

*R. D. Seaman*

*JAN 22 1907* A. D. 190...

at *1* o'clock, ..... M.

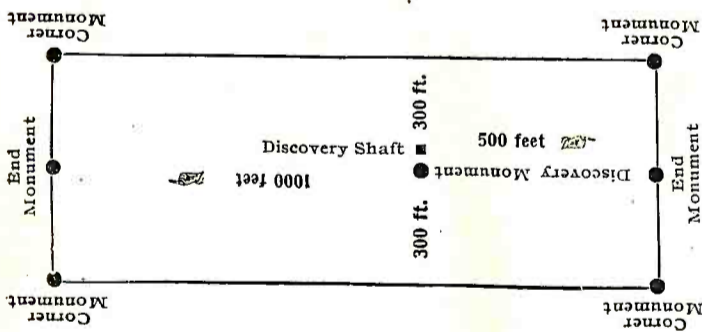
Book *38* Record of Mines

Pages *24*

*Edmund*  
County Recorder.

By .....  
Deputy Recorder.

BISBEE, ARIZ.



This diagram is to give locator a general idea of plan of location under the new law. The Discovery Shaft can be in the center of claim or any distance from either end desired. In the diagram it is placed 500 feet from one end and 1000 feet from the other. Commence description of claim at a center end monument, giving its distance and direction from center of Discovery Shaft; thence bound the claim in either direction. In description be careful to state locality of claim with reference to some natural object, or permanent monument, as will identify the claim.

AMENDED  
**Notice of Mining Location**  
LODE CLAIM

To All Whom It May Concern:

This Mining Claim, the name of which is the Squaw  
Mining Claim, situate on lands belonging to the United States of America, and in which there  
are valuable mineral deposits, was entered upon and located for the purpose of exploration and  
purchase by John M. Johnson

a citizen of the United States  
(Locator must insert either "a citizen of the United States," or, "who has declared his intention to become a citizen of the United States.")

the undersigned, on the 28th day of December 1906

The length of this claim is 1500.0 feet,  
and I claim 520.0 feet,  
in a Northwesterly direction and 980.0  
feet in a Southeasterly direction from  
the center of the discovery shaft, at which this notice is posted, lengthwise of the claim, together  
with 300 feet in width of the surface grounds, on each  
side of the center of said claim. The general course of the lode deposit and premises is from the  
Northwest to the Southeast

The claim is situated and located in the Warren Mining District, in  
Cochise County, in the Territory of Arizona, about one-half mile  
in a Northerly direction from the shaft of the American-  
Saginaw Development Co. and is bounded on the North by the Vencent  
lode; on the East by the Pomp lode and Apache lode and on the  
South by the Neglected and Ohio lodes.

The surface boundaries of the claim are marked upon the ground as follows: Beginning at  
a monument

at a point in a Northwesterly direction 520 feet from  
the discovery shaft (at which this notice is posted,) being in the center of the N. W.  
end line of said claim; thence Northeasterly, 300 feet to a post and monument  
being the N. W. corner of said claim; thence  
Southeasterly, 1500 feet to a post and monument being at the  
N. E. corner of said claim; thence Southwesterly, 300 feet  
to a post and monument at the center of the S. E. end of said claim;  
thence Southwesterly, 300 feet to a post and monument being at the  
Southeast corner of said claim; thence Northwesterly, 1500  
feet to a post and monument at the S. W. corner of said claim;  
thence Northeasterly, 300 feet to the place of beginning.

All done under the provisions of Chapter Six, of Title XXXII, of the Revised Statutes of  
the United States, and of an Act of the General Assembly of Arizona, entitled "An Act to Revise  
and Codify the Laws of the Territory of Arizona," approved March 16, 1901.

This is an Amended Location Notice of the Squaw  
Mining Claim, located by John M. Johnson, W. E. Davis, and A. McKenzie  
on the 12th day of  
October 1902, and recorded in Book 22 of Records of Mines, at  
page 562, in the office of the County Recorder of the aforesaid County of Cochise  
to which reference is hereby made, and this amended Location Notice is made and posted to  
correct errors in the description in the said original Location Notice.

Dated and posted on the ground this 28th day of December 1906

Witness [Signature] John M. Johnson

TERRITORY OF ARIZONA,

County of.....

ss.

I, *Ed W. Arnold*, County Recorder in and for the County and Territory aforesaid, do hereby certify that the within instrument was filed for record at.....o'clock,.....M., on this.....day of.....190..., and duly recorded in Book No..... of.....Records of.....County, Arizona, at pages.....

of.....Records of.....County, Arizona, at pages.....

WITNESS my hand and official seal the day and year first above written

*Ed W. Arnold*  
County Recorder.

COMPARED

*7/16/07*

AMENDED  
Notice of Location.

LODE CLAIM.

*Squaw.*

Dated.....190.....

Filed and Recorded at Request of

*R. A. Jensen*

A. D. 190.....

at.....M.

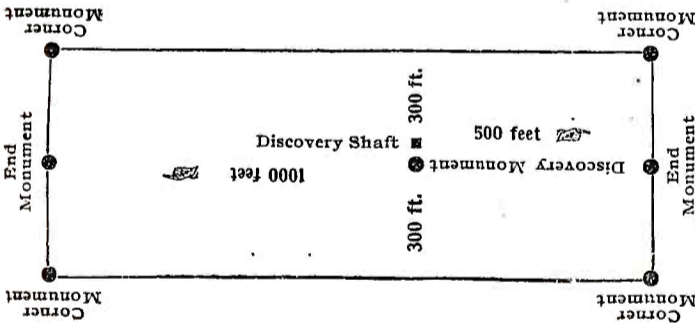
Book *38 Record of Mines*

Pages *14*

*Ed W. Arnold*  
County Recorder.

By.....Deputy Recorder.

BISBEE, ARIZ.



This diagram is to give locator a general idea of plan of location under the new law. The Discovery Shaft can be in the center of claim or any distance from either end desired. In the diagram it is placed 500 feet from one end and 1000 feet from the other. Commence description of claim at a center end monument, giving its distance and direction from center of Discovery Shaft; thence bound the claim in either direction. In description be careful to state locality of claim with reference to some natural object, or permanent monument, as will identify the claim.

4-688.

U. S. SURVEYOR-GENERAL'S FINAL CERTIFICATE ON FIELD NOTES.

Department of the Interior,

OFFICE OF U. S. SURVEYOR-GENERAL,

Phoenix, Arizona

July 29, 1907

I, U. S. Surveyor-General for District of Arizona

do hereby certify that the foregoing transcript of the Field Notes, return and approval of the survey of the mining claim of

J. M. Johnson

known as the Vincent, Squaw, Pomp, Apache, Grayeagle and Sunflower

situate in Warren

Mining District, Coconise County, Arizona

in Section APPROX., Township No. 23 S., Range No. 24 E., Unsur., and

designated as Survey No. 2412, has been correctly copied from the originals on file in

this office; that said Field Notes furnish such an accurate description of said mining claim as will, if incorporated into a patent, serve fully to identify the premises, and that such reference is made therein to natural objects or permanent monuments as will perpetuate and fix the locus thereof.

And I further certify that five hundred dollars' worth of labor has been expended or improvements made upon each of said mining claim by claimant or his grantors, and that said improvements consist of 7 tunnels, 5 cuts, valued at \$3800.

and that no portion of said labor or improvements has been included in the estimate of expenditures upon any other claim.

I further certify that the plat thereof, filed in the U. S. Land Office at Phoenix, Arizona is correct and in conformity with the foregoing Field Notes.

Frank S. Ingalls

United States Surveyor-General for Arizona

4-687.

SURVEYOR-GENERAL'S CERTIFICATE OF APPROVAL OF FIELD  
NOTES AND SURVEY OF MINING CLAIM.

**Department of the Interior,**

*Office of U. S. Surveyor-General,*

.....  
Phoenix, Arizona,.....

.....  
July 29, 1907

I, U. S. Surveyor-General for..... District of Arizona.....

do hereby certify that the foregoing and hereto attached Field Notes and Return of the Survey of the  
Mining Claim of.....

.....  
J. M. Johnson.....

....., known as the

.....  
Vencent, Squaw, Pomp, Apache, Grayeagle and Sunflower.....

situate in..... Warren..... Mining District,

.....  
Cochise..... County,..... Arizona.....

in Section APPROX....., Township No..... 23 S....., Range No. 24 E., Unsur. .

....., designated as Survey No..... 2412.....

executed by..... Franklin W. Smith....., U. S. Deputy Mineral

Surveyor,..... April 22-April 25....., 1907, under my instructions dated

..... April 26....., 1907, have been critically examined and the necessary cor-

rections and explanations made, and the said Field Notes and Return, and the Survey they describe,

are hereby approved. A true copy of the copy of the location certificate filed by the applicant.. for

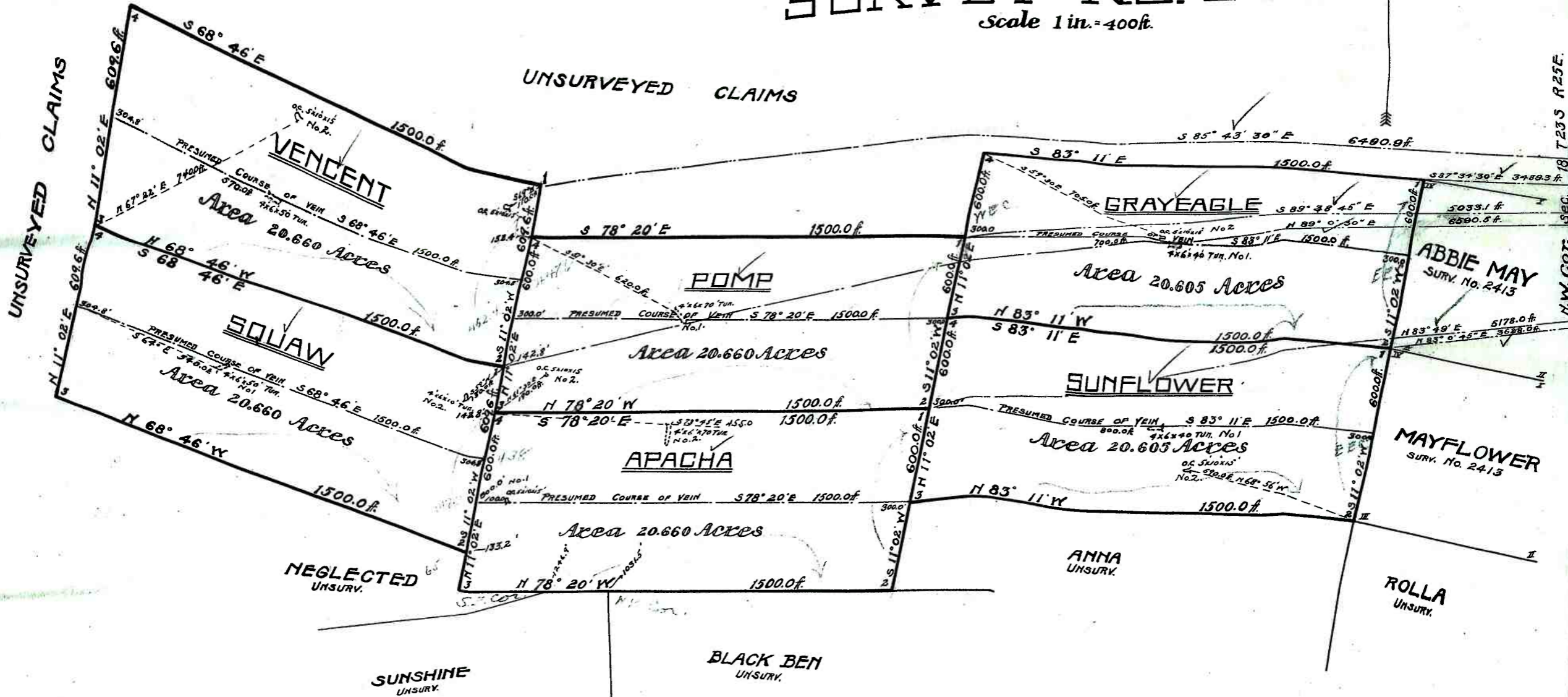
survey is included in the field notes.

*Frank A. Ingalls*

U. S. Surveyor-General for..... Arizona.....

# SURVEY NO. 2412.

Scale 1 in. = 400 ft.



Approximately  
**T. 23 S., R. 24 E.**  
Unsurveyed

Total and net area group 123.850 Acres.

N.W. Cor. SEC. 18 T. 23 S. R. 25 E.

