

MS.

0

2

5

2

3

1
100-2500
100-2500

4-683.

MINERAL SURVEY No. 2523.

LOT No.

Arizona Land District.

FIELD NOTES

OF THE SURVEY OF THE MINING CLAIM OF

READY MONEY GOLD COMPANY

Robertson and Coleman, Attorneys

KNOWN AS THE

St. Elmo, Francis H., Commercial, Commercial Addition, Chicago, San Carlos,
Tranmere, Evelyn, Nuggitt Lodes and Tranmere, Oro Blanco, Arizona Mint
Placers. King of Arizona Mining District,

YUMA County, Arizona.

Section approximately, Township 2 S., Range 17 W. Unsur.

Surveyed under instructions dated March 27th, 19 08.

by *Robert L. Morton*
U. S. Mineral surveyor.

Claim located See location notices, 19

Survey commenced April 3rd, 19 08.

Survey completed April 6th, 19 08.

8-822

*Robertson and Coleman, Attys.,
Yuma,
Arizona.*

SURVEY 2523.

Feet.

ST. ELLMO LODE.

Beginning at Cor.No.1, identical with Cor.No.3, Oro Blanco Placer, this survey, a porphyry stone, 10X15X26 ins. set 13 ins. in ground, chiseled 2523-S.E.1-O.B.3, with a mound of stone 3 ft. base, 3 ft. high, alongside.

U.S.L.M. No.1257, bears S.3°16'W. 3539.5 ft:
No other bearings available.

Thence N.5°51'E.

- 455.5 Cor.No.2, Oro Blanco Placer, this survey, ^{and intersect west end line Lost lode, uns.} from which the N.W. Cor. of the "Lost" Lode Claim, unsurveyed, owned by Modesti & Moretti, bears N.7°W. 142.5 ft.
- 601.6 Cor.No. 1, Evelyn Lode, this survey, ^{and intersect north side line Lost lode, uns.} from which the N.W. Cor. of the "Lost" Lode Claim, unsurveyed, bears S.83°W. 32.5 ft
- 842. Wash, 30 ft. wide, course W.
- 975. Wash, 20 ft. wide, course W.
- 1030. Foot of slope. Ascend.
- 1500. Cor.No.2, identical with Cor.No.1, Commercial Lode, this survey, a porphyry stone, 14X18X30 ins. set 15 Ins. in the ground, chiseled 2523-S.E.2-Co.1, with mound of stone, 3 ft. base, 3 ft. high, alongside, from which Cor.No.1, Evelyn Lode, this survey, bears S.5°51'W. 898.40ft., and Cor.No.4, Evelyn Lode, this survey, bears N.0°39'W. 604. ft.

Thence S.89°21'W.

- 41:06 Intersect line 4-1 Evelyn Lode, this survey, from which Cor.No.1, Evelyn Lode, this survey, bears S.3°14'W. 894.60 ft. and Cor.No.4, Evelyn Lode, this survey, bears N.3°14'E. 605.40 ft.
- 125. Top of ridge. Along same.
- 300. N.End Center of claim, identical with S.End Center of the Commercial Lode, this survey, a quartz ledge in place, the point marked 2523-S.E.-N.E.C.-Co.S.E.C., with mound of stone 3 ft. base, 3 ft. high alongside. No bearings available. Descend.
- 600. Cor.No.3, identical with Cor.No.4, Commercial Lode, this survey, a porphyry stone, 9X16X26 ins. set 13 Ins. in ground chiseled 2523-S.E.3-Co.4., with mound of stone 3 ft. base 3 ft. high alongside, from which Cor.No.2, Nuggitt Lode, this survey, bears N.5°51'E. 600. ft.

Thence S.5°51'W.

- Ascend.
- 78. Top of ridge, E. & W. Descend.
- 520. Foot of slope.
- 725. Wash, 50 ft. wide, course W.
- 900. Cor.No.2, of San Carlos Lode, this survey.
- 1200. E.End Center, San Carlos Lode, this survey.
- 1500. Cor.No.4, identical with Cor.No.1, San Carlos Lode and Cor.No.4, Oro Blanco Placer, both of this survey, a porphyry stone, 8X10X24 ins. set 12 ins. in ground, chiseled 2523-S.E.4-S.C.1- O.B.4, with mound of stone 3 ft. base, 3 ft. high, alongside. No bearings available.

Thence N89°21'E.

- 300. S.End Center of claim, a quartz stone, 10X14X26 ins. set 13 ins. in ground, chiseled 2523-S.E. S.E.C., with mound of stone, 3 ft. base 3 ft. high, alongside. No bearings available.
- 600. Cor.No.1, the place of beginning.
All corners identical with corners of location.
Variation at all corners 14° East.

FRANCIS H. LODE.

Feet.

Beginning at Cor.No.1, identical with Cor.No.4, Muggitt Lode, this survey, a porphyry stone, 8X12X24 ins. set 12 ins. in ground, chiseled 2523-F.H.1-N.4, with mound of stone, 3 ft. base, 3 ft. high, alongside. U.S.L.M. No.1257, bears S.12°03'E. 4384.3 ft. No other bearings available.

Thence N.5°51'E.

- 148. Wash 50 ft. wide, course W.
- 306. Foot of slope. Ascend.
- 732. Top of ridge, E. & W. Descend.
- 855. Foot of slope.
- 1500. Cor.No.2, identical with Cor.No.3, Muggitt Lode, this survey, a porphyry stone 12X14X26 ins. set 13 ins. in ground, chiseled 2523-F.H. 2- N.3, with mound of stone 3 ft. base 3 ft. high, alongside. No bearings available.

Thence N.74°09'W.

- 294.90 N. End Center of claim, on bank of wash, a porphyry stone 12X14X28 ins. set 14 ins. in ground, chiseled 2523-F.H. -N.E. C. with mound of stone, 3 ft. base, 3 ft. high, alongside. No bearings available. Wash 30 ft. wide, course S.W.
- 589.8 Cor.No.3, identical with Cor.No.2, Arizona Mint Placer, this survey, a porphyry stone, 12X14X24 ins. set 12 ins. in ground, chiseled 2523-F.H.3, A.M.2, with mound of stone 3 ft. base, 3 ft. high, alongside. No bearings available.

Thence S.5°51'W.

- 450. Wash 30 ft. wide, course S.W.
- 650. Foot of slope. Ascend.
- 750. Top of ridge. Descend.
- 980. Foot of slope.
- 1015. Wagon road, N.W. & S.E.
- 1500. Cor.No.4, identical with Cor.No.1, Arizona Mint Placer, this survey, a porphyry stone, 16X16X24 ins. set 12 ins. in ground, chiseled 2523-F.H.4-A.M.1, with mound of stone 3 ft. base, 3 ft. high, alongside. No bearings available.

Thence S.74°09'E.

- 294.9 S. End Center of claim, a porphyry stone, 10X12X28 ins. set 14 ins. in ground, chiseled 2523-F.H. S.E.C., with mound of stone, 3 ft. base, 3 ft. high, alongside. No bearings available.
- 344.9 Wagon road, N.W. & S.E.
- 364.9 Wash, 50 ft. wide, course S.W.
- 589.8 Cor.No.1, the place of beginning.
All corners identical with corners of location.
Variation at all corners 14° East.

COMMERCIAL LODE.

Beginning at Cor.No.1, identical with Cor.No.2, St. Elmo Lode, this survey. Cor. described above. U.S.L.M. No.1257, bears S.4°02'W. 5038.5 ft. No other bearings available.

Thence N.0°39'W.

- Ascend.
- 70. Top of ridge. N.E. & S.W.
- 604. Cor.No.4, Evelyn Lode, this survey.
- 700. Foot of slope.
- 870. Wash 20 ft. wide, course W.
- 1500. Cor.No.2, identical with Cor.No.1, Commercial Addition Lode, this survey, a porphyry stone, 6X10X24 ins. set 12 ins. in ground, chiseled 2523-Co.2-C.A.1, with mound of stone 3 ft. base, 3 ft. high, alongside. No bearings available.

COMMERCIAL LODE. Cont.

Feet.

Thence S. 89° 21' W.

- 90. Wash 20 ft. wide, course S.W.
- 300. N. End Center of claim, identical with S. End Center of Commercial Addition Lode, this survey, a porphyry stone 14X10X26 ins. set 13 ins. in ground, chiseled 2523-Co. N.E. C.-C.A. S.E.C., with mound of stone 3 ft. base, 3 ft. high alongside. No bearings available.
- 600. Cor. No. 3, identical with Cor. No. 4, Commercial Addition, Lode, this survey, a porphyry stone, 9X13X24 ins. set 12 ins in ground, chiseled 2523-Co. 3-C.A. 4-with mound of stone 3 ft. base, 3 ft. high, alongside. No bearings available.

Thence S. 0° 39' E.

- 130. Wash, 30 ft. wide, course W.
- 690. Wash, 40 ft. wide, course W.
- 883.74 Intersect line 2-3 Nuggitt Lode, this survey, from which Cor. No. 2, Nuggitt Lode, this survey, bears S. 74° 09' E. 70.84 ft.
- 1165. Foot of slope. Ascend.
- 1500. Cor. No. 4, identical with Cor. No. 3, St. Elmo Lode, Cor. described above, and on line 1-2 Nuggitt Lode, this survey, from which Cor. No. 2, Nuggitt Lode, this survey, bears N 5° 51' E. 600. ft.

Thence N. 89° 21' E.

- 300. S. End Center of claim, identical with N. End Center of St. Elmo Lode, this survey. Corner described above. No bearings available.
- 475. Descend.
- 600. Cor. No. 1, the place of beginning.
All corners identical with corners of location.
Variation at all corners 14° East.

COMMERCIAL ADDITION LODE.

Beginning at Cor. No. 1, identical with Cor. No. 2, Commercial Lode, this survey. Cor. described above. U.S.L.M. No. 1257 bears S. 2° 57' W. 6534.6 ft. No other bearings available.

Thence N. 0° 39' W.

- 110. Wash, 20 ft. wide, course S.W.
- 890. Foot of slope. Ascend.
- 1450. Top of ridge, N.E. & S.W.
- 1500. Cor. No. 2, identical with Cor. No. 1, Chicago Lode, this survey a porphyry stone, 10X10X24 ins. set 12 ins. in ground, chiseled 2523-C.A. 2, Ch. 1, with mound of stone 3 ft. base, 3 ft. high, alongside. No bearings available.

Thence S. 89° 21' W.

- 300. N. End Center of claim, identical with S. End Center of Chicago Lode, this survey, a porphyry stone 10X10X24 ins. set 12 ins. in ground, chiseled 2523-C.A. N.E.C.-Ch. S.E.C. with mound of stone 3 ft. base, 3 ft. high alongside. No bearings available.
- 350. Foot of slope.
- 600. Cor. No. 3, identical with Cor. No. 4, Chicago Lode, this survey a porphyry stone 10X14X28 ins. set 14 ins. in ground, chiseled 2523-C.A. 3- Ch. 4, with mound of stone, 3 ft. base 3 ft. high, alongside. No bearings available.

Thence S. 0° 39' E.

- 800. Foot of slope. Ascend.
- 1055. Top of ridge, S.W. & N.E. Descend.

COMMERCIAL ADDITION LODE. CONT.

Feet.
 1310. Foot of slope.
 1500. Cor.No.4, identical with Cor.No.3, Commercial Lode, this survey. Cor. described above. No bearings available.

Thence N. 89° 21' E.

300. S. End Center of claim, identical with the N. End Center of Commercial Lode, this survey. Cor. described above. No bearings available.

510. Wash, 20 ft. wide, course S.W.

600. Cor.No.1, the place of beginning.

All corners identical with corners of location.
 Variation at all corners 14° East.

CHICAGO LODE.

Beginning at Cor.No.1, identical with Cor.No.2, Commercial Addition Lode, this survey. Cor. described above. U.S.L.M. No.1257, bears S. 2° 17' W. 8032.1 ft. No other bearings available.

Thence N. 0° 39' W.

725. Along ridge. Descend.
 810. Foot of slope.
 1500. Cor.No.2, a porphyry stone 10X15X26 ins. set 13 ins. in ground, chiseled 2523-Ch.2-with mound of stone 3 ft. base 3 ft. high, alongside. No bearings available.

Thence S. 89° 21' W.

300. N. End Center of claim, a porphyry stone, 8X14X24 ins. set 12 ins. in ground, chiseled 2523-Ch. N.E.C., with mound of stone 3 ft. base, 3 ft. high, alongside. On bank of wash, 30 ft. wide, course W. No bearings available.

600. Cor.No.3, a porphyry stone 7X15X24 ins. set 12 ins. in the ground, chiseled 2523-Ch.3, with mound of stone, 3 ft. base 3 ft. high, alongside. No bearings available.

Thence S. 0° 39' E.

75. Wash 30 ft. wide, course W.
 1500. Cor.No.4, identical with Cor.No.3, Commercial Addition Lode, this survey. Cor. described above. No bearings available.

Thence N. 89° 21' E.

250. Foot of slope.
 300. S. End ~~Center~~ Center of claim, identical with N. End Center of Commercial Addition Lode, this survey. Cor. described above. Ascend.

600. Cor.No.1, the place of beginning.
 All corners identical with corners of location.
 Variation at all corners 14° East.

SAN CARLOS LODE.

Beginning at Cor.No.1, identical with Cor.No.4, St. Elmo Lode, and Cor.No.4, Oro Blanco Placer, both of this survey. Cor. described above. U.S.L.M. No.1257, bears S. 6° 27' E. 3549.5 ft. No other bearings available.

Thence N. 5° 51' E.

300. E. End Center of claim, a porphyry stone 10X12X28 ins. set 14 ins. in ground, chiseled 2523-S.C. BEC., with mound of stone 3 ft. base, 3 ft. high, alongside. No bearings available.

600. Cor.No.2, identical with Cor.No.1, Nuggitt Lode, this survey, a porphyry stone, 10X12X30 ins. set 15 ins. in ground,

SAN CARLOS LODE. Cont.

- Pect. chiseled, 2523-S.C.2-N.1, with mound of stone, 3 ft. base, 3 ft. high, alongside. No bearings available.
- Thence N.74°09'W.
- 300. S. End Center of Nuggitt Lode, this survey.
- 600. Cor. No. 4, Nuggitt Lode this survey, Cor. No. 1, Francis H. Lode, this survey.
- 825. Wash, 50 ft. wide. Course SW.
- 845. Wagon road. N.W. & S.E.
- 894.9 S. End Center, Francis H. Lode, this survey.
- 1189.8 Cor. No. 4, Francis H. Lode, this survey, and Cor. No. 1, Arizona Mint Placer, this survey.
- 1500. Cor. No. 3, a porphyry stone, 12X16X26 ins. set 13 ins. in the ground, chiseled 2523-S.C.3, with mound of stone 3 ft. base 3 ft. high, alongside. No bearings available.

Thence S.5°51'W.

- 300. W. End Center of Claim, a porphyry stone 8X10X24 ins. set 12 ins. in ground, chiseled 2523-S.C. WEC. with mound of stone 3 ft. base, 3 ft. high, alongside. No bearings available.
- 435. Wash, 50 ft. wide, course S.W.
- 600. Cor. No. 4, a porphyry stone, 12X14X26 ins. set 13 ins. in the ground, chiseled 2523-S.C.4, with mound of stone 3 ft. base 3 ft. high, alongside. No bearings available.

Thence S.74°09'E.

- 240. Cor. No. 3, Trammere Placer, this survey.
- 900. Cor. No. 2, Trammere Placer and Cor. No. 5, Oro Blanco Placer this Survey.
- 1237. Wagon road, N.W. & S.E.
- 1500. Cor. No. 1, the place of beginning.

All corners identical with corners of location.
Variation at all corners 14° East.

TRAMMERE LODE.

Beginning at Cor. No. 1, a porphyry stone, 8X12X24 ins. set 12 ins. in ground, chiseled 2523-T.L.1, with mound of stone 3 ft. base, 3 ft. high, alongside. U.S.L.M. No. 1257, bears S.24°18'E. 2709.1 ft. No other bearings available.

Thence N.21°09'E.

- 250. Descend.
- 300. E. End Center of claim, a porphyry stone, 6X13X24 ins. set 12 ins. in ground, chiseled 2523-T.L. ERC., with mound of stone 3 ft. base, 3 ft. high, alongside. No bearings available.
- 600. Cor. No. 2, a porphyry stone, 8X10X24 ins. set 12 ins. in the ground, chiseled 2523-T.L.2, with mound of stone 3 ft. base, 3 ft. high, alongside. No bearings available.

Thence N.68°51'W.

- 225.33 Intersect line 6-1 Oro Blanco Placer, this survey, from which Cor. No. 6, Oro Blanco Placer, this survey, bears N.83° 22'W. 31.8 ft.
- 256.83 Intersect line 1-2 Trammere Placer, this survey, from which Cor. No. 6, Oro Blanco Placer, this survey, bears S.15° 51'W. 8. ft. *and line 5-6 Oro Blanco Placer*
- 919.67 Intersect line 3-4 Trammere Placer, this survey.
- 1500. Cor. No. 3, a porphyry stone 6X8X24 ins. set 12 ins. in the ground, chiseled 2523-T.L.3, with mound of stone 3 ft. base, 3 ft. high, alongside. No bearings available.

TRANMERE LODE. Cont.

Feet.

Thence S. 21° 09' W.

- 300. W. End Center of claim, a porphyry stone, 16X16X28 ins. set 14 ins. in ground, chiseled 2523-T.L.WEC., with mound of stone 3 ft. base, 3 ft. high, alongside. No bearings available.
- 600. Cor. No. 4, a porphyry stone 8X16X26 ins. set 13 ins. in the ground, chiseled 2523-T.L. 4, with mound of stone 3 ft. base 3 ft. high, alongside. No bearings available.

Thence S. 68° 51' E.

- 635.99 Intersect line 3-4 Trammere Placer, this survey, from which Cor. No. 4, Trammere Placer, this survey, bears S. 15° 51' W. 186.65 ft. Foot of slope. Ascend.
- 1298.83 Intersect line 1-2 Trammere Placer, this survey, from which Cor. No. 1, Trammere Placer, this survey, bears S. 15° 51' W. 125.42 ft.
- 1450. Top of ridge, N. & S.
- 1500. Cor. No. 1, the place of beginning.

All corners identical with corners of location. Variation at all corners 14° East.

EVELYN LODE.

Beginning at Cor. No. 1, on line 1-2 St. Elmo Lode, this survey, a porphyry stone 10X16X30 ins. set 15 ins. in the ground, chiseled 2523-E. 1, with mound of stone 3 ft. base, 3 ft. high, alongside. U.S.L.M. No. 1257, bears S. 3° 38' W. 4140.6 ft. Cor. No. 2, St. Elmo Lode, this survey, bears N. 5° 51' E. 898.40 ft.

Thence N. 83° 00' E.

- 112. Wash 20 ft. wide, course S.
- 300. S. End Center of claim, a porphyry stone, 10X12X26 ins. set 13 ins. in ground, chiseled 2523-E. SEC., with mound of stone 3 ft. base, 3 ft. high, alongside. No bearings available.
- 600. Cor. No. 2, a porphyry stone 10X14X24 ins. set 12 ins. in the ground, chiseled 2523-E. 3, with mound of stone 3 ft. base, 3 ft. high, alongside. No bearings available.

Thence N. 3° 14' E.

- 255. Wash 20 ft. wide, course S.W.
- 490. Foot of slope. Ascend.
- 1012. Top of ridge E. & W.
- 1500. Cor. No. 3, a schist stone 5X18X26 ins. set 13 ins. in ground chiseled 2523-E. 3, with mound of stone 3 ft. base, 3 ft. high, alongside. On the bank of a wash, course W. No other bearings available.

Thence S. 83° 00' W.

- 300. N. End Center of claim, a porphyry stone, 5X8X24 ins. set 12 ins. in ground, chiseled 2523-E. -NEC., with mound of stone, 3 ft. base, 3 ft. high, alongside. No bearings available.
- 600. Cor. No. 4, on line 1-2 Commercial Lode, this survey, a porphyry stone, 8X10X25 ins. set 13 ins. in ground chiseled 2523-E. 4, with mound of stone, 3 ft. base, 3 ft. high, alongside., from which Cor. No. 1 Commercial Lode, this survey, bears S. 0° 39' E. 604. ft. No other bearings available.

Thence S. 3° 14' W.

- 605.4 Intersect line 2-3 St. Elmo Lode, ^{and line 1-4 Commercial lode} this survey, from which Cor. No. 2, St. Elmo Lode, ^{and Cor. No. 1 Commercial} this survey, bears N 89° 21' E. 41.06 ft. Descend.
- 1090. Foot of slope.
- 1135. Wash, 20 ft. wide, course W.
- 1278. Wash, 30 ft. wide, course W.
- 1500. Cor. No. 1, the place of beginning.

All corners identical with corners of location. Variation at all corners. 14° East.

NUGGITT LODE.

Feet.

Beginning at Cor.No.1, on line 3-4 St.Elmo Lode, and identical with Cor.No.2, San Carlos Lode, this survey. Cor.described above. U.S.L.M. No.1257, bears S.4°41'E. 4137.7 ft. No other bearings available.

Thence N.5°51'E.

- 175. Wash, 50 ft. wide, course W.
- 380. Foot of slope. Ascend.
- 822. Top of ridge E. & W.
- 900. Intersect Cor.No.3, St. Elmo Lode and Cor.No.4, Commercial Lode, both of this survey.
- 1245. Foot of slope.
- 1500. Cor.No.2, a porphyry stone, 8X10X24 ins. set 12 ins. in the ground, chiseled 2523-N.2, with mound of stone 3 ft. base, 3 ft. high, alongside. No bearings available.

Thence N.74°09'W.

- 70.84 Intersect line 3-4 Commercial Lode, this survey, from which Cor.No.4, Commercial Lode, this survey, bears S.0°39'E. 616.26 ft.
- 300. N.End Center of claim, a porphyry stone 10X14X25 ins. set 13 ins. in ground, chiseled 2523-N. NEC., with mound of stone 3 ft. base, 3 ft. high, alongside. No bearings available.
- 600. Cor.No.3, identical with Cor.No.3, Francis H. Lode, this survey. Cor. described above. No bearings available.

Thence S.5°51'W.

- 615. Foot of slope. Ascend.
- 768. Top of ridge, E. & W. Descend.
- 1194. Foot of slope.
- 1352. Wash 50 ft. wide, course W.
- 1500. Cor.No.4, identical with Cor.No.1, Francis H. Lode, this survey. Cor. described above. No bearings available.

Thence S.74°09'E.

- 300. S.End Center of claim, on line 2-3 San Carlos Lode, this survey, a porphyry stone, 8X12X24 ins. set 12 ins. in the ground, chiseled 2523-N. SEC., with mound of stone, 3 ft. base, 3 ft. high, alongside. No bearings available.
- 600. Cor.No.1, the place of beginning.
All corners identical with corners of location.
Variation at all corners 14° East.

AREAS.

	Acres.	Acres.
Total area St.Elmo Lode-----	20.528	
Less conflict "Lost" Lode, unsurv.	.053	
Total net area St.Elmo Lode-----	20.475	20.475
" " " Francis H. Lode-----		20.000
" " " area Commercial Lode-----	20.661	
Less conflict Nuggitt Lode-----	.480	
Total net area Commercial Lode	20.181	20.181
" " " Chicago Lode-----		20.661
" " " Commercial Addition Lode-----		20.661
" " " San Carlos Lode-----		20.347
" " " Tranmere Lode -----		20.661
" " " area Evelyn Lode-----	20.332	
Less conflict St.Elmo Lode-----	.421	
" " " Commercial "	.284	
	<u>.705</u>	<u>.705</u>
Total net area Evelyn Lode-----	19.627	19.627
" " " Nuggitt "		20.347
Total net area Lode Claims-----		<u>182.96</u>

9

TRAMMERE PLACER.

Feet.

Beginning at Cor.No.1,a porphyry stone,8X12X24 ins.set 12 ins.in ground,chiseled 2523 T.P.1,with mound of stone 3 ft.base,3 ft.high,alongside.U.S.L.M. No.1257,bears S.28°54'E. 2765.5 ft. No other bearings available.

Thence N.15°51'E.

- 125.42 Intersect line 4-1 Trammere Lode,this survey,whence Cor.1 bears 68°51'E,20617ft.
- 720. Intersect Cor.No.6,Oro Blanco Placer,this survey.
- 728. Intersect line 2-3 Trammere Lode,this survey,whence Cor.2 bears S.68°51'E,256.83ft.
- 1155. Wash 50 ft.wide,course W.

1320. Cor.No.2,on line 4-1 San Carlos Lode,this survey,identical with Cor.No.5,Oro Blanco Placer,this survey,a porphyry stone 16X10X25 ins.set 13 ins.in ground,chiseled 2523-T.P.2-O.B.5,with mound of stone 3 ft.base,3 ft. high,alongside. No bearings available.

Thence N.74°09'W.

- 660. On line 4-1 San Carlos Lode,this survey.
- Cor.No.3,a porphyry stone,8X10X25 ins.set 13 ins.in the ground,chiseled 2523-T.P.3,with mound of stone 3 ft. base,3 ft.high,alongside. No bearings available.

Thence S.15°51'W.

- 475. Wash 50 ft.wide,course W.
- 530.77 Intersect line 2-3 Trammere Lode,this survey,whence Cor.2 bears S.68°51'E,919.67ft.
- 1133.35 Intersect line 4-1 Trammere Lode,this survey,whence Cor.1 bears S.68°51'E,864.01ft.
- 1320. Cor.No.4,a porphyry stone 8X10X25 ins.set 12 ins.in the ground,chiseled 2523-T.P.4,with mound of stone 3 ft. base,3 ft.high,alongside.No bearings available.

Thence S.74°09'E.

- 660. Cor.No.1,the place of beginning.
- All corners identical with corners of location.
- Variation at all corners 14° East.

ORO BLANCO PLACER.

Beginning at Cor.No.1,a red porphyry stone,10X12X26 ins.set 13 ins.in ground,chiseled 2523-O.B.1,with mound of stone 3 ft.base,3 ft.high,alongside.U.S.L.M. No.1257,bears S.7°19'W. 2961.4 ft.No other bearings available.

Thence N.7°00'W.

- 20. Wagon road,N.W.& S.E.
- 170. Wash 50 ft.wide,course W.
- 890. Wash 30 ft.wide,course S.W.
- 1057.5 Cor.No.2,on line 2-2 St.Elmo Lode,this survey,a porphyry stone,8X10X24 ins.set 12 ins.in ground,chiseled 2523-O.B.2,with mound of stone 3 ft.base,3 ft.high,alongside. No bearings available.

Thence S.5°51'W.

- 455.5 Cor.No.3,identical with Cor.No.1,St.Elmo Lode,this survey.Cor. described above. No other bearings available.

Thence S.89°21'W.

- 300. On line 4-1 St.Elmo Lode,this survey.
- S.End Center of St.Elmo Lode,this survey.
- 600. Cor.No.4,identical with Cor.No.4,St.Elmo Lode,this survey. Cor.described above.

ORO BLANCO PLACER. Cont.

Feet.

Thence N.74°09'W.

- 275. Wagon road, N.W. & S.E.
- 600. Cor.No.5, on line 4-1 San Carlos Lode, identical with Cor. No.2, Trammere Placer, this survey. Cor. described above. No bearings available.

Thence S.15°51'W.

- 165. Wash 50 ft. wide, course W.
- 592. Intersect line 1-2 Trammere lode, this survey, whence Cor.2 lvs. S.68°51'E. 256.83 ft.
- 600. Cor.No.6, a porphyry stone 16X10X25 ins. set 13 ins. in ground, chiseled 2523-O.B.6, with mound of stone, 3 ft. base, 3 ft. high: alongside. No bearings available.

Thence S.85°22'E.

- 31-8 Cont. line 2-3 Trammere lode, this survey, whence Cor.2 lvs. S.68°51'E. 225.33 ft.
 - 480. Wash 30 ft. wide, course N.
 - 765. Wash 30 ft. wide, course N.E.
 - 965. Wash 25 ft. wide, course N.W.
 - 1526.6 Cor.NO.1, the place of beginning.
- Variation at all corners 14° East.

ARIZONA MINT PLACER.

Beginning at Cor.No.1, identical with Cor.No.4, Francis H. Lode, this survey, on line 2-3 San Carlos Lode, this survey. Cor. described above. U.S.L.M. No.1257, bears S.18°25'E. 4689 ft. No other bearings available.

Thence N.5°51'E.

- 485. Wagon road N.W. & S.E.
- 520. Foot of slope. Ascend.
- 750. Top of ridge, E. & W. Descend.
- 850. Foot of slope.
- 1050. Wash 30 ft. wide, course S.W.
- 1500. Cor.No.2, identical with Cor.No.3, Francis H. Lode, this survey. Cor. described above. No bearings available.

Thence N.74°09'W.

- 75. Wagon road N. & S.
- 589.75 Cor.No.3, a porphyry stone, 8X10X26 ins. set 15 ins. in the ground, chiseled 2523-A.M.3, with mound of stone, 3 ft. base, 3 ft. high, alongside. No bearings available.

Thence S.5°51'W.

- 1365. Wash 50 ft. wide, course S.W.
- 1500. Cor.No.4, a porphyry stone 14X16X30 ins. set 15 ins. in ground, chiseled, 2523-A.M.4, with mound of stone 3 ft. base, 3 ft. high, alongside. No bearings available.

Thence S.74°09'E.

- 279.55 Cor.No.3, San Carlos Lode, this survey.
 - Along line 2-3 San Carlos Lode this survey.
 - 589.75 Cor.No.1, the place of beginning.
- All corners identical with corners of location.
Variation at all corners 14° East.

AREAS.

	ACRES.
Total area Trammere Placer-----	20.000
Less conflict Trammere Lode-----	9.1300
Total net area Trammere Placer---	10.870-----10.870
Total area Oro Blanco Placer-----	18.178
Less conflict Trammere Lode-----	.003
Total net area Oro Blanco Placer---	18.175-----18.175
Total net area Arizona Mint Placer-----	20.000
Total net area Placer Claims-----	49.045

LODE LINES.

The ledges on the several claims are located as follows:
St. Elmo Lode: -Beginning at the S. End Center monument,
 thence N. 5° 51' E. 760 ft. Discovery shaft: 1500 ft. N.E.C.
Francis H. Lode: -Beginning at S. End Center monument,
 thence N. 5° 51' E. 800 ft. Discovery shaft-1500 ft. N.E.C.
Commercial Lode: -Beginning at S. End Center monument,
 thence N. 0° 39' W. 210 ft. Discovery shaft-1500 ft. N.E.C.
Commercial Addition Lode: Beginning at S.E.C. monument,
 thence N. 0° 39' W. 600 ft. Discovery shaft-1500 ft. N.E.C.
Chicago Lode: -Beginning at S. End Center monument,
 thence N. 0° 39' W. 50 ft. Discovery shaft-1500 ft. N.E.C.
San Carlos Lode: -Beginning at E. End Center monument,
 thence N. 74° 09' W. 760 ft. Discovery shaft-1500 ft. W.E.C.
Trammere Lode: -Beginning at E. End Center monument,
 thence N. 68° 51' W. 750 ft. Discovery shaft-1500 ft. W.E.C.
Evelyn Lode: -Beginning at S. End Center monument,
 thence N. 3° 14' E. 900 ft. discovery shaft-1500 ft. N.E.C.
Nuggitt Lode: -Beginning at S. End Center monument,
 thence N. 5° 51' E. 960 ft. Discovery shaft-1500 ft. N.E.C.

LOCATION.

These claims are located on unsurveyed Government land, approximately in Twp. 2 S. Range 17 W. G. & S.R. B. & M., about one mile East from Kofa; about 40 miles N.W. from Mohawk Summit, a station on the Southern Pacific Railroad, in the King of Arizona Mining District, in about the center of Yuma County, Arizona.

ADJOINING CLAIMS.

The Evelyn Lode is joined on the East by the West end lines of the Tip Top and the Tip Top 2, -Lode claims, unsurveyed, owners unknown; and on the South by the "Lost" Lode, unsurveyed, owned by Modesti and Moretti.
 The Chicago Lode is joined on the N.W. by "North Star No 6 Placer" unsurveyed, owned by Felix Mayhew et. al.
 The Oro Blanco Placer is joined on the East by the "Lost" and "Beveridge" Lodes, unsurveyed, owned by Modesti and Moretti, and on the South by the "Laura" Lode, unsurveyed, owned by R. L. Morton.
 The Trammere Lode and the Trammere Placer are joined on the South, by the "San Juan", "Perfecto" and "La Hija de Arnizote" Lode claims, unsurveyed, owned by Frank Amivisca et. al.
 The St. Elmo Lode conflicts with the "Lost" Lode, claim unsurveyed, owned by Modesti and Moretti.
 No other known adjoining claims.
 All adjoining claims are unsurveyed.

EXPENDITURES.

I certify that the value of the labor and improvements upon these claims, placed thereon by the claimants and their grantors, is not less than five hundred dollars a claim, and that said improvements are as follows:

ST. ELMO LODE.

No.1, discovery shaft, bears N.15°32'W. 780 ft.	
From Cor.No.1, 4X6X62 ft. deep. -----	Value---\$ 775.00
No.2, shaft, bears N.18°30'W. 735 ft.	
From Cor.No.1, 4X6X20ft. deep. -----	" 200.
No.3, shaft, bears N.14°10'W. 870 ft.	
From Cor.No.1, 4X6X20ft. deep. -----	" 200.
No.4, tunnel, face of which bears N.8°20'W. 1225 ft. from Cor.No.1, 4X6X95ft. long, at 45 ft., a raise from top 4X6X20ft. ---	Value--- 1150.
No.5, shaft from floor of tunnel, 4X6X80 ft. deep. -----	" 1600.
No.6, shaft, bears N.6°15'W. 1445 ft.	
From Cor.No.1, 4X6X10ft. deep. -----	" 100.
No.7, shaft, bears N.54°32'W. 540 ft.	
From Cor.No.1, 4X6X10 ft. deep. -----	" 100.
No.8, shaft, bears N.17°24'W. 1495 ft.	
From Cor.No.1, 4X6X10 ft. deep. -----	" \$ 100.
Total value of work on St. Elmo Lode -----	\$4225.00
Less credits to other claims -----	1466.67
Net value of work on St. Elmo Lode. -----	2758.33
Credit from Oro Blanco Placer -----	300.00
Total value of improvements, St. Elmo Lode. -----	\$3058.33

FRANCIS H. LODE.

No.1, discovery shaft, bears N.12°45'W. 910 ft.	
From Cor.No.1, 4X6X10ft. deep. -----	Value---\$ 100.00
No.2, shaft, bears N.4°20'W. 1475 ft.	
From Cor.No.1, 4X6X10ft. deep. -----	" 100.
Credit from St. Elmo Lode -----	133.33
" " Oro Blanco Placer -----	\$ 300.
Total value improvements Francis H. Lode -----	\$ 633.33

COMMERCIAL LODE.

No.1, discovery shaft, bears N.53°45'W. 365 ft.	
From Cor.No.1, 4X6X65ft. deep. -----	Value---\$ 825.00
No.2, shaft, bears N.35°40'W. 480 ft.	
From Cor.No.1, 4X12X10ft. deep. -----	" 150.
No.3, shaft, bears S.5°W. 585 ft.	
From M.E.C. , 4X6X10ft. deep. -----	" 100.
No.4, open cut, bears N.30°34'W. 525 ft.	
From Cor.No.1, 4X6X10ft. long. -----	" 100.
Credit from St. Elmo Lode. -----	133.33
" " Oro Blanco Placer. -----	300.
Total value improvements Comercial Lode, -----	\$1608.33

COMMERCIAL ADDITION LODE.

No.1, discovery shaft, bears N.28°25'W. 675 ft.	
From Cor.No.1, 4X6X10ft. deep -----	Value---\$ 100.00
No.2, open cut, bears N.24°15'W. 780 ft.	
From Cor.No.1, 4X10X25 ft. long -----	" 125.
No.3, shaft, bears N.22°50'W. 825 ft.	
From Cor.No.1, 4X6X25ft. deep. -----	" 250.
No.4, shaft, bears N.17°36'W. 1080 ft.	
From Cor.No.1, 4X6X10ft. deep: -----	" 100.
No.5, shaft, bears N.15°04'W. 1175 ft.	
From Cor.No.1, 4X6X10ft. deep. -----	" 100.
No.6, shaft, bears N.15°W. 1265 ft.	
From Cor.No.1, 4X6X10ft. deep. -----	" 100.
No.7, shaft, bears N.14°12'W. 1410 ft.	
From Cor.No.1, 4X6X10ft. deep. -----	" 100.
Credit from St. Elmo Lode. -----	133.33
" " Oro Blanco Placer -----	300.
Total value improvements Commercial Add. Lode --	\$1308.33

EXPENDITURES Cont.

CHICAGO LODE.

No.1, discovery shaft, bears N.85°46'W. 310 ft.
 From Cor.No.1, 4X6X10ft. deep; -----Value----\$ 150.00
 with open cut, 4X4X20ft. long.
 Credit from St. Elmo Lode. ----- 133.33
 " " Oro Blanco Placer----- 300.
 Total value improvements Chicago Lode.-----\$ 583.33

SAN CARLOS LODE.

No.1, discovery shaft, bears S.83°40'W. 780 ft.
 From Cor.No.2, 4X6X10ft. deep.-----Value----\$ 100.00
 Credit from St. Elmo Lode.----- 133.33
 " " Oro Blanco Placer----- 300.00
 Total value improvements San Carlos Lode----- \$533.33

TRANMERE LODE.

No.1, discovery shaft, bears S.89°32'W. 815 ft.
 From Cor.No.2, 4X6X10ft. deep-----Value----\$ 100.00
 No.2, open cut, bears S.85°51'W. 708 ft.
 From Cor.No.2, 6X8X10ft. long " / 100.00
 Credit from St. Elmo Lode----- 133.33
 " " Oro Blanco Placer----- 300.00
 Total value improvements Trammere Lode----- \$633.33

EVELYN LODE.

No.1, discovery cut, bears S.26°E. 630 ft.
 From Cor.No.4, 4X18X10ft: long-----Value----\$ 100.00
 Credit from St. Elmo Lode----- 133.33
 " " Oro Blanco Placer----- 300.00
 Total value improvements Evelyn Lode----- \$533.33

NUGGITT LODE.

No.1, discovery shaft, bears N.11°W. 1040 ft.
 From Cor.No.1, 4X6X10ft. deep-----Value----\$ 100.00
 No.2, shaft, bears N.7°W. 300 ft.
 From Cor.No.1, 4X6X10ft. deep----- " -----100.00
 Credit from St. Elmo Lode----- 133.33
 " " Oro Blanco Placer----- 300.00
 Total value improvements Nuggitt Lode ----- \$633.33

Value of improvements St. Elmo Lode.-----\$3058.33
 " " " Francis H. Lode----- 633.33
 " " " Commercial " ----- 1608.33
 " " " Com. Addition " ----- 1308.33
 " " " Chicago " ----- 583.33
 " " " San Carlos " ----- 533.33
 " " " Trammere " ----- 633.33
 " " " Evelyn " ----- 533.33
 " " " Nuggitt " ----- 633.33
 Total value improvements Lode Claims ----- \$9525.00

TRANMERE PLACER.

No.1, shaft, bears S.35°E. 332 ft.
 from Cor.No.3, 4X6X10ft: deep-----Value----\$ 100.00
 Credit from St. Elmo Lode----- 133.33
 " " Oro Blanco Placer----- 300.00
 Total value improvements Trammere Placer----- \$533.33

ARIZONA MINT PLACER.

No.1, shaft, bears N.47°W. 135 ft.
 from Cor.No.1, 10X6X10ft. deep-----Value ----\$ 100.00
 Credit from St. Elmo Lode----- 133.33
 " " Oro Blanco Placer ----- 300.00
 Total value improvements Arizona Mint Placer \$533.33

ORO BLANCO PLACER.

No.1,Discovery shaft,bears W. 50 ft. from a point 300 ft.northerly on line 1-2,from Cor.No.1, 4X6X10 ft.in rock.	Value-----	\$ 100.00
No.2,shaft,bears N.13°25'W. 65 ft. from Cor.No.1. 4X6X20 ft.deep.	Value-----	200.
No.3,shaft,bears N.17°18'W. 85 Ft.from Cor.No.1. 4X6X20 ft.deep.	Value-----	200.
No.4,shaft,bears N.25°W. 45 ft. from Cor.No.1. 4X6X20 ft.deep.	Value-----	200.
No.5,shaft,bears N:26°25'W. from Cor.No.1,170 ft. 4X6X20 ft.deep.	Value-----	200.
No.6,shaft,bears N.28°15'W. 135 ft.from Cor.No.1. 4X6X20 ft.deep.	Value-----	200.
No.7,shaft,bears N30°30'W.65 ft.from Cor.No.1. 4X6X20 ft. deep.	Value-----	200.
No.8,shaft,bears N.35°W. 94 ft.from Cor.No.1. 4X6X20 ft. deep.	Value-----	200.
No.9,shaft,bears N.35°15'W.15 ft.from Cor.No.1. 4X6X20 ft.deep.	Value-----	200.
No.10,shaft,bears N.38°20'W. 165 ft.from Cor.No.1 4X6X20 ft.deep.	Value-----	200.
No.11,shaft,bears N.46°10'W.145 ft.from Cor.No.1. 4X6X20 ft.deep.	Value-----	200.
No.12,shaft,bears N.50°15'W. 75 ft.from Cor.No.1. 4X6X20 ft. deep.	Value-----	200.
No.13,shaft,bears N.50°30'W.115 ft.from Cor.No.1. 4X6X20 ft. deep.	Value-----	200.
No.14,shaft,bears N. 50°40'W.160 ft.from Cor.No.1 4X6X20 ft.deep.	Value-----	200.
No.15,shaft,bears N.57°15'W. 140 ft.from Cor.No.1. 4X6X20 ft. deep.	Value-----	200.
No.16,shaft,bears N.62°W. 60 ft.from Cor.No.1. 4X6X20 ft. deep.	Value-----	200.
No.17,shaft,bears N.68°55'W. 105 ft.from Cor.No.1. 4X6X20 ft. deep.	Value-----	200.
No.18,shaft,bears N34°50'W. 175 ft.from Cor.No.1. 4X6X10 ft. deep.	Value-----	100.
No.19,shaft,bears N.38°35'W. 210 ft.from Cor.No.1. 4X6X10 ft.deep.	Value-----	100.
No.20,shaft,bears N.69°25'W. 140 ft. from Cor.No.1. 4X6X40 ft.deep.	Value-----	400.
Value of work done on Oro Blanco Placer-----		\$3900.
Less credits to other claims-----		3300.
Net value of work on Oro Blanco Placer-----		600.
Credit from St.Elmo Lode Claim-----		133.33
Total Value <u>Improvements</u> Oro Blanco Placer-----		\$733.33
Value of improvements Trammere Placer-----		\$533.33
" " " Arizona Mint Placer-----		533.33
" " " Oro Blanco Placer-----		733.33
Total Value improvements Placer Claims-----		1800.00

COMMON IMPROVEMENTS.

The 16,20ft.shafts and the 40 ft.shaft on the Oro Blanco Placer,are connected in the bottom,by tunneling and form a catch basin for collecting the shallow surface water in the wash in which they are located.

This water is used for camp purposes.On this account these works,amounting to \$3600. are claimed as common improvements to the whole group;also the 80 ft.shaft (No.5.)sunk from the floor of Tunnel (No.4.),on the St. Elmo Lode Claim,was sunk for the purpose of developing a water supply for the whole group,as well as to open up the ledge. Although the work as yet,has not developed water,it is confidently expected that water will be found as the shaft is sunk to greater depth on the ledge. On this account this 80 ft.shaft,amounting in value to \$1600. is claimed as an improvement common to the whole group. These common improvements are accordingly distributed equally among the twelve claims as shown in the preceeding statement of expenditures.

OTHER IMPROVEMENTS.

There has been done \$1000. worth of placer work, on the St. Elmo Lode Claim.

On the Nuggitt Lode Claim, an assay office, bears N. 57° 30' W. 75 ft. from Cor. No. 1, and is 14X16 ft. in size.

A tent house, 14X38 ft. bears W. 50 ft. from No. 2 shaft. On the San Carlos Lode Claim, a row of tent houses runs N. & S., the most Northerly one bearing S. 83° W. 75 ft. from Cor. No. 2. 4 in number, and averaging 16X20 ft. in size. All belonging to claimants.

INSTRUMENT.

This survey was made with a Kueffel and Esser Transit, No. 7745. The courses were deflected from the true meridian as determined by observation on Polaris, checked by Solar observations. The distances were measured with a 100 ft. steel tape. On the morning of April 4th, 1908, at 5:17 A. M. Pacific Time, I set transit over Cor. No. 1, St. Elmo Lode, this survey, and observed Polaris. Turned angle to left of 1° 22' establishing true Meridian; the course of line 1-2 St. Elmo Lode, being N. 5° 51' E.

NOTE: The disagreement between these field notes and the location notice of the Oro Blanco Placer is due to errors in the latter, the ground covered being the same.

U. S. L. M. No. 1257.

Location Monument No. 1257, is within the prescribed distance of two miles, and is located on a high peak of the S. H. mountains. It consists of a porphyry stone showing 18 ins. above ground, an X chiseled on top and on the S. side, the letters U. S. L. M. No. 1257, K. of A. M. D., with a mound of stone 6 ft. base and 4 ft. high, alongside.

4-694.

Title Page to Report under Paragraph 62, Mining Circular, Approved June 24, 1899.

REPORT

Under paragraph 62, General Mining Circular, approved June 24, 1899, upon the Placer Mining Claims

known as the Tranmere, Oro Blanco and
Arizona Mint.

..... claimed by
Ready Money Gold Company.

situate in King of Arizona Mining District,
Yuma County, Arizona, embracing

49.045 Acres

in Sec. Approximately, Town.. 2 S. Range... 17 W. G.A.R.P.M.

Examination made April 6th, 1908

By Robert L. Winton
U. S. Deputy Mineral Surveyor.

SURVEY No. 2523.

REPORT on TRANMERE PLACER, ORO BLANCO PLACER and ARIZONA MINT PLACER.

- a. The soil embraced in that part of the Trammere Placer situate north of line 3-4 Trammere Lode Claim, consists of decomposed granite, gravel and sand; not supporting any growth of vegetation, and containing no known mineral bearing veins. The remainder of the claim is intersected by several quartz veins extending easterly and westerly, across the claim. These ledges are claimed by the applicant and are said to be valuable.
- The soil embraced in the Oro Blanco Placer, is decomposed granite, gravel and sand, except at the center of the east end of the claim, where a quartz ledge, crops out, beginning at a point on line 1-2 of the claim 300 ft. from Cor. No. 1, and extending about 100 ft. in a westerly direction when it disappears under the gravel and cannot be traced farther. This ledge has a shaft 4X6X10 ft. deep on it, made by the applicants. It is not known whether the ledge contains values or not. No vegetation.
- The Arizona Mint is all placer ground consisting of gravel and sand, except a point of a schist hill 300 ft. wide which extends across line 1-2 of this claim about 100 ft. onto the claim. No vegetation.
- b. There are no running streams on these claims. A wash, averaging 35 ft. in width, with its various branches runs across the Oro Blanco Placer lengthwise about the center, also crossing the northern part of the Trammere Placer. A wash, 30 ft. wide, course S.W. crosses the Arizona Mint diagonally from N.E. to S.W.
- c. The workings on these claims consist of, a shaft on Trammere Placer, which bears S. 35° E. 332 ft. from Cor. No. 3 4X6X15 ft. deep, in rock and gravel. A shaft on Arizona Mint Placer, bears N. 47° W. 135 ft. from Cor. No. 1, 10X6X10 ft. deep, in hard gravel. Placer workings on the Oro Blanco Placer are continuous from Cor. No. 1, N. 47° W. to about the center of claim, consisting of 16 holes, each 4X6X20 ft. deep, 1 hole 4X6X40 ft. deep, 2 holes each 4X6X10 ft. deep, all in gravel. A shaft which bears W. 50 ft. from a point 300 ft. N. on line 1-2, from Cor. No. 1.
- d. The nearest Post Office is Kofa, a mining camp, of about 250 population, located 1 mile south of claims. The nearest railroad station is Mohawk Summit, on the S. P. R.R. about 45 miles S.E. from claims.
- e. Aside from the adjoining claims of this survey, the King of Arizona Claims, patented, are situate about 1 mile South.
- f. These claims can all be developed and worked by the development of water on Oro Blanco Placer and it is the intention of the claimants to do so.
- g. There are no other mines, salt licks, salt springs, or Mill seats, upon these claims.

OFFICE OF UNITED STATES SURVEYOR GENERAL.

Phoenix, Arizona. March 18, 1910.


Amendment to the field notes of Mineral Survey No.2523 to describe and exclude certain conflicting areas from the Chicago and Tranmere lodes, and the Tranmere Placer, said amendment being required by Dept. letter "N" dated March 7, 1910, and described in the application to purchase of the Ready Money Gold Company, claimant, dated July 17, 1909, as follows:

Beginning at corner No.3 of the Chicago Lode Mining claim Survey No.2523 and running thence N. $89^{\circ} 31'$ E. 352.31 ft to the East line of the North Star No.6 Placer claim; thence S. $4^{\circ} 35'$ E. 748.40 ft to the S.E.corner of the North Star No.6 Placer claim; thence S. $85^{\circ} 25'$ W. 404.60 ft. to a point on line 3-4 of said Chicago lode mining claim; thence N. $0^{\circ} 39'$ W. 774.40 ft. to the place of beginning containing 6.607 acres.

Beginning at Corner No.1 of the Tranmere lode claim Survey No.2523 and running thence N. $31^{\circ} 09'$ E. 344.00 ft.; thence N. $65^{\circ} 53'$ W. 180 ft.; thence S. $24^{\circ} 07'$ W. 353.75 ft; thence S. $68^{\circ} 51'$ E. 198.0 ft, containing 1.513 acres.

Beginning at corner No.4 of the Tranmere Placer claim, Survey No.2523, thence S. $74^{\circ} 09'$ E. 644.97 ft; thence N. $24^{\circ} 07'$ E. 104.50 ft; thence N. $15^{\circ} 01'$ E. 22.02 ft.; thence N. $68^{\circ} 51'$ W. 662.84 ft.; Thence S. $15^{\circ} 51'$ W. 186.65 ft., to the place of beginning; also, Beginning at Corner No.1 of the Tranmere Placer claim, Survey No.2523, thence N. $15^{\circ} 51'$ E. 103.40 ft.; thence S. $24^{\circ} 07'$ W. 104.5 ft.; thence S. $74^{\circ} 09'$ E. 15.03 ft., to the place of beginning, containing 2.364 acres.

I hereby certify that the foregoing field notes of amendment to Mineral Survey No. 2523 for the description of certain areas in conflict with the Chicago and Tranmere lodes, and the Tranmere Placer are correct and in accordance with application to purchase of the Ready Money Gold Company, claimant, dated July 17, 1909, and that said amendment has been correctly platted upon the plat of said survey No. 2523 in green ink.


U. S. Surveyor General.

CERTIFICATE OF U. S. SURVEYOR GENERAL
as to
EXPENDITURE REPORTED AFTER RETURN OF SURVEY OF
MINING CLAIM.

I, U. S. Surveyor General for the District of Arizona, do hereby certify that in addition to the improvements reported at the time of survey upon the mining claims of the Ready Money Gold Company, known as the St. Elmo, Francis H., Commercial, Commercial Addition, Chicago, San Carlos, Tramere, Evelyn, Nuggitt lodes and Tramere, Oro Blanco, Arizona Mint placers, situated in the King of Arizona Mining District, Yuma County, approximately in T. 2 S., R. 17 W., unsurveyed, the following improvements have been made by the claimant or its grantors:

On the Evelyn lode, 11 shafts, 1 cut and 7 drifts, value \$2580.00.

On the Commercial lode, an additional 16 feet in the discovery shaft, value \$80.00.

On the St. Elmo lode, 1 drift, 1 cut and 1 shaft, value \$70.00.

On the Nuggitt lode, 5 shafts, 3 drifts and 1 cut, value \$870.00.

On the San Carlos lode, 3 shafts and 2 cuts, value \$220.00.

On the Francis H. lode, 1 cut, value \$15.00.

On the Tramere lode, 5 cuts and 1 shaft, value \$265.00.

On the Oro Blanco Placer, 3 cuts, 4 shafts and 1 drift, value \$955.00.

On the Tramere Placer, an additional 12 feet in the discovery shaft, value \$140.00, the total value of said additional improvements being \$5100.

I further certify that no portion of said labor or improvements has been included in the estimate of expenditures upon any other claim.

A copy of the report of William H. Elliott, U. S. Mineral Surveyor, dated May 17, 1910, is hereto attached.

Office of U. S. Surveyor-General,
Phoenix, Arizona,
November 22, 1910.

Frank D. Sigalla
U. S. Surveyor General
for Arizona.

Additional notes of improvements on the St. Elmo and other 21
 claims in Yuma County, Ariz. Survey No. 2523.

Evelyn lode.

A shaft which bears from cor. No. 1 N. 5° 30' E. 300 ft. and is 6x4ft by 25ft. deep, at the bottom of which are 2 drifts, one running E. 10ft. and the other running W. 10ft.	Value \$350.00
A shaft which bears from cor. No. 1 N. 9° 30' E. 310ft. and is 6x4ft. by 15ft. deep, at the bottom of which is a drift running S. 44° W. 18ft.	Value \$250.00
A shaft which bears from cor. No. 1 N. 9° 30' E. 280ft. and is 6x4ft. by 20ft. deep at the bottom of which is a drift running S. 45° W. 18ft	Value \$300.00
A shaft which bears from cor. No. 1 N. 15° E. 275ft. and is 6x4ft by 17ft. deep at the bottom of which is a drift running S. 45° E. 75ft.	Value \$450.00
A shaft which bears from cor. No. 1 N. 16° E. 280ft. and 6x4ft by 17ft deep	Value \$150.00
A shaft which bears from cor. No. 1 N. 18° 30' E. 290ft and is 6x4ft. by 20ft deep	Value \$200.00
A shaft which bears from cor. No. 1 N. 19° 15' E. 300ft. and is 6x4ft. by 16ft. deep at the bottom of which is a drift running S. 40° E. 15ft.	Value \$200.00
A shaft which bears from cor. No. 1 N. 35° E. 330ft. and is 6x4ft. by 18ft. deep	Value \$160.00
A shaft which bears from cor. No. 1 N. 33° E. 350ft. and is 6x4ft. by 24ft. deep	Value \$200.00
A shaft which bears from cor. No. 1 N. 11° 20' E. 320ft. and is 6x4ft. by 7ft. deep	Value \$ 60.00
A shaft which bears from cor. No. 2 N. 1° E. 250ft and is 6x4ft by 15ft. deep at the bottom of which is a drift running S. 45° E. 10ft.	Value \$200.00
A cut which bears from S. end center N. 1° E. 260ft. and is 4x10ft. by 6ft deep	Value \$ 60.00
Total value of extra work on Evelyn lode	\$2580.00

Commercial Lode

Dis. shaft is now 6x4ft. by 81ft. deep, being 16 ft. additional,
 Additional value \$ 80.00

St. Elmo Lode

In shaft No. 5 at 40ft. is a drift 4 by 6ft by 15ft. long running S. 6° W.	Value \$200.00
A cut which bears from cor. No. 1 N. 87° W. 200 ft. and is 2ft. wide 1ft. deep and 45ft long course of cut N. 2° W.	Value \$ 40.00
A shaft which bears from cor. No. 1 N. 13° W. 60ft. 5x4ft. by 5ft. deep	Value \$ 30.00
Total value of extra work on St. Elmo lode	\$ 70.00

Nuggitt Lode

A shaft which bears from cor. No. 1 N. 4° 30' W. 105ft. and is 6x4ft. by 9ft. deep	Value \$ 80.00
A shaft which bears from cor. No. 1 N. 4° 30' W. 126ft. and is 6x4ft. by 12ft. deep	Value \$120.00
A shaft which bears from cor. No. 1 N. 4° 30' W. 145ft. and is 6x4ft. by 8ft. deep at the bottom of which is a drift running S. 4° 30' E. 40ft.	Value \$375.00
A shaft which bears from cor. No. 1 N. 18° W. 145ft. and is 6x4ft. by 10ft. deep	Value \$ 80.00
A shaft which bears from cor. No. 1 N. 51° 30' W. 175ft. and is 6x4ft. by 10ft. deep at the bottom of which are 2 drifts, one S. 70° W. 10ft. and the other S. 51° E. 10ft.	Value \$200.00
A cut 2x3ft. by 4ft. deep which bears from cor. No. 1 N. 40° 30' E. 820ft.	Value \$ 15.00
Total value extra work on Nuggitt lode	\$870.00

San Carlos Lode

A shaft which bears from cor. No. 2 N. 83° W. 160. ft. and is now partly filled but was 6x4ft by 10ft. deep Value \$ 50.00

A shaft which bears from cor. No. 2 N. 77° W. 320ft. was 6x4ft. by 10ft. deep but is now partly filled	Value \$ 50.00
A shaft which bears from cor. No. 2 S. 77° W. 780ft. and is 6x4ft. by 6ft. deep	Value \$ 40.00
A cut which bears from the S. end center of the Francis H lode, this survey, S. 38° E. 120ft. 10x4ft. by 6ft. long <small>(Being on line 2-3 San Carlos lode, 894.9 ft from Cor. No. 2)</small>	Value \$ 50.00
A cut which bears from the S. end center of the Francis H lode, this survey, S. 16° E. 300ft. and is 2ft. wide 1ft. deep and 30ft. long course of cut S. 11° E.	Value \$ 30.00
Total value of extra work on San Carlos lode	\$220.00

Francis H Lode

A cut which bears from cor. No. 4 N. 17° 30' E, 885ft. and is 2x3ft. by 4ft. deep	Value \$ 15.00
--	----------------

Tranmere Lode

A cut which bears from the Dis. shaft N. 13° W. 110ft. and is 6x4ft. with a 10ft. face	Value \$ 40.00
A cut which bears from the Dis. shaft N. 33° W. 225ft. and is 4ft. wide 6ft. long and 10ft. face	Value \$ 40.00
A cut which bears from the Dis. shaft S. 7° W. 15ft. and is 5x3ft. by 6ft. deep	Value \$ 40.00
A cut which bears from Dis. shaft S. 53° E. 240ft. and is 6x4ft. by 1½ft. deep	Value \$ 10.00
A shaft which bears from Dis. shaft S. 8° E. 300ft. and is 6x4ft. by 8ft. deep	Value \$ 75.00
A cut which bears from cor. No. 1 N. 63° 45' W. 430ft. and is 4ft. wide 10ft. long and 6ft. deep	Value \$ 60.00
Total value of extra work on Tranmere lode	\$265.00

Oro Blanco Placer

A cut which bears from cor. No. 3 S. 42° W. 150ft. and is 2ft. wide 1½ft. deep and 20ft. long course S. 12° E. at the end of which is a shaft 6x4ft. by 7ft. deep	Value \$ 60.00
A cut which bears from Cor. No. 1 N. 28° W. 220ft. and is 6ft. wide 15ft. long and 6ft. deep course N. 28° W.	Value \$125.00
A cut which bears from cor. No. 1 N. 35° W. 250ft. and is 6ft. wide 10ft. long and 7ft. face course N. 28° W.	Value \$ 80.00
A shaft which bears from cor. No. 1 N. 15° 30' W. 850ft. and is 6x4ft. by 15ft. deep	Value \$110.00
A shaft which bears from cor. No. 1 N. 16° W. 865ft. and is 6x4ft. by 15ft. deep at the bottom of which is a drift running S. 10° 30' E. 17ft.	Value \$180.00
A shaft which bears from the S. end center of St. Elmo lode, this survey, S. 4° W. 400ft. and is 6x4ft. by 40ft. deep <small>(Being on line 3-4 Oro Blanco Placer 300 ft. from Cor. No. 3)</small>	Value \$400.00
Total value of extra work on Oro Blanco placer	\$955.00

Tranmere Placer

Dis. shaft is now 6x4ft. by 22ft. deep.	Additional value \$140.00
---	---------------------------

There are many other small cuts distributed over the property, but they are too small to put a valuation on. The above notes were taken May 9-10 1910.

William H. Elliott
U.S. Mineral Surveyor

Sworn and subscribed to before me, J. L. Redondo, a Notary Public in and for the County of Yuma, Territory of Arizona, by W. H. Elliott, this 17th day of May 1910

J. L. Redondo
Notary Public

My commission expires *Nov 28 1912*

4-696.

CORROBORATIVE AFFIDAVIT UNDER PARAGRAPH 60, GENERAL MINING CIRCULAR.

APPROVED JULY 26, 1901.

Territory of Arizona }
COUNTY OF Yuma } ss:

A. C. Byrnes and J. H. Morton.

being first duly sworn, severally depose and say that he is personally and well acquainted with the placer-mining claim of

Ready Money Gold Company known as the Trammere, Orto

Blanco, and Arizona Mint situate in King of Arizona Mining District,

Yuma County, Arizona, embracing 79 ⁰⁴⁵/₁₀₀₀ Acres

Approximately, in Township No. 2 South Range No. 17 west 5th R B & M

and also with the character of all the land included in said claim, and has been so acquainted for one year last past; that his knowledge of said claim and land is derived from personal observation

and is such as to enable him to testify understandingly with regard thereto; that he has carefully read the foregoing report of Robert L. Morton, U. S. Deputy Mineral Surveyor, and that to his own personal knowledge said report is in all respects true and accurate.

A. C. Byrnes
J. H. Morton.

Subscribed and sworn to by the above-named persons before me this 2nd day of June, 1901

Fred H. Ingraham
Notary Public

My Commission expires 3/24/1909.

4116b3m6-02

FINAL OATHS FOR SURVEYS.

LIST OF NAMES.

A list of the names of the individuals employed by Robert L. Morton,

United States Deputy Mineral Surveyor, to assist in running, measuring, and marking the lines, corners, and boundaries described in the foregoing field notes of the survey of the mining claim of.....

Ready Money Gold Company,

known as the St. Elmo, Francisco, Commercial, Commercial Addition, Chicago, Dan Carlos, Trammere, Evelyn, and Nuggitt Lodes, and Trammere, Oro Blanco & Arizona Mint Placers, and showing the respective capacities in which they acted.

A. L. Modie, Chainman.

P. N. Quintana, Chainman.

....., Axman.

....., Flagman.

FINAL OATHS OF ASSISTANTS.

We, A. L. Modie

and P. N. Quintana, do solemnly swear that we assisted Robert

L. Morton, United States Deputy Mineral Surveyor, in marking the corners and surveying

the boundaries of the mining claim of Ready Money Gold Company

known as the St. Elmo, Francisco, Commercial, Commercial Addition, Chicago, Dan Carlos, Trammere, Evelyn and Nuggitt Lodes, and Trammere, Oro Blanco & Arizona Mint Placers, represented in the foregoing field notes as having been surveyed by said deputy mineral surveyor and under his

direction; and that said survey has been in all respects, to the best of our knowledge and belief, faithfully and correctly executed, and the corner and boundary monuments established according to law and the instructions furnished by the United States Surveyor-General for Arizona.

A. L. Modie, Chainman.

P. N. Quintana, Chainman.

....., Axman.

....., Flagman.

Subscribed and sworn to by the above-named persons before me this, 2nd

day of June, 1908

My Commission expires 3/24/1909

17287b5m13-05

Frederick Ingraham
Notary Public

FINAL OATH OF U. S. DEPUTY MINERAL SURVEYOR

I, Robert L. Morton, U. S. Deputy Mineral Surveyor, do solemnly swear that, in pursuance of instructions received from the United States Surveyor General for Arizona, dated March 27, 1908, I have, in strict conformity to the laws of the United States, the official regulations and instructions thereunder, and the instructions of said Surveyor General, faithfully and correctly executed the survey of the Mining Claim of Ready Money Gold Company known as the St. Elmo, Frank, Commercial, Commercial Addition, Chicago, San Carlos, Trammere, Evelyn, Juggitt, Lodes and Trammere situate in King of Arizona Mining District, Yuma County, Arizona, in Section Approx., Township No. 2 S., Range No. 17 W. Unsur. and designated as Survey No. 2523, as represented in the foregoing field notes, which accurately show the boundaries of said mining claim, as distinctly marked by monuments on the ground, and described in the attached copy of the location certificate, which was received by me from the Surveyor General with said instructions, and that all the corners of said survey have been established and perpetuated in strict accordance with the law, official regulations and instructions thereunder; and I do further solemnly swear that the foregoing are the true and original field notes of said survey and my report therein, and that the labor expended and improvements made upon said mining claim by claimant or its grantors are as therein fully stated, and that the character, extent, location and itemized value thereof are specified therein with particularity and full detail, and that no portion of said labor or improvements so credited to this claim has been included in the estimate of expenditures upon any other claim.

Robert L. Morton
U. S. Deputy Mineral Surveyor.

Subscribed and sworn to by the said Robert L. Morton
U. S. Deputy Mineral Surveyor, before me Fred L. Ingraham, a
Notary Public this 2nd
day of June, 1908.

My Commission
expired 3/24/1909.

Fred L. Ingraham
Notary Public

Affidavit of Five Hundred Dollars Improvements.

We, A. C. Byrnes, and J. H. Morton

of lawful age, being first duly sworn according to law, depose and say: That we are acquainted with the St. Elmo, Francis H., Commercial, Commercial Addition, Chicago, San Carlos, Trammere, Coyle, Inggitt ^{lode} mining claim, and Trammere, Croblanc and Arizona Mint Place situate in King of Arizona Mining district, Yuma County,

Arizona Territory, for which Ready Money Gold Company by Robertson & Coleman, Attys.

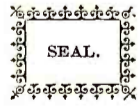
has made application for survey prior to application for patent under the provisions of the act of Congress, approved May 10, 1872; and that the labor done and improvements made thereon by the applicant and its grantors exceed Five Hundred Dollars in value for each claim and further that we are not personally interested in said mine.

A. C. Byrnes
J. H. Morton

TERRITORY OF ARIZONA, }
County of Yuma } ss:

Sworn to and subscribed before me, this 2nd

day of June, 1908



Fred L. Suprohan
Notary Public.

My Commission expires 3/24/1909.
14396b100-8-04

Notice of Mining Location

Lode Claim

To All Whom It May Concern:

This Mining Claim, the name of which is the St Elmo Mining Claim, situate on lands belonging to the United States of America, and in which there are valuable mineral deposits, was entered upon and located for the purposes of exploration and purchase by Felix Mayhew & Geo. W. Norton Citizens of the United States the undersigned, on the 29th day of January 1904

The length of this claim is 1500 feet, and we claim seven hundred & fifty feet, in a North direction and 750 feet in a South direction from the center of the discovery shaft, at which this notice is posted, lengthwise of the claim, together with 300 feet in width of the surface grounds, on each side of the center of said claim. The general course of the lode deposit and premises is from the South to the North

The claim is situated and located in the King of Arizona Mining District, in Yuma County, in the Territory of Arizona, about 2500 feet in a North Westerly direction from Center Monument on East end of Homestake Mine and joins the St Charles claim on its south End

The surface boundaries of the claim are marked upon the ground as follows: Beginning at the center of the North End, at a point in a North direction 750 feet from the discovery shaft (at which this notice is posted), being in the center of the North end line of said claim; thence 300 feet to a Monument, being the North East corner of said claim; thence 1500 feet to a Monument, being at the South East corner of said claim; thence 300 feet to a Monument at the center of the South end of said claim; thence 300 feet to a Monument, being at the South West corner of said claim; thence 1500 feet to a Monument at the North West corner of said claim; thence 300 feet to the place of beginning.

All done under the provisions of Chapter Six, of Title XXXII, of the Revised Statutes of the United States, and of an Act of the General Assembly of Arizona, entitled "An Act to Revise and Codify the Laws of the Territory of Arizona", approved March 16, 1901.

Dated and posted on the ground this 29 day of January 1904

Felix Mayhew
Geo. W. Norton

Filed and recorded at request of Geo. W. Norton May 11, 1904 at 9 A.M.

L. E. Cronin
Deputy

C. P. Cronin
County Recorder

Recorded in Book "Q" of Mines, page 249

Territory of Arizona,)
)SS.
County of Yuma.)

I, J. M. Polhamus County Recorder in and for the County of Yuma, Territory of Arizona, do hereby certify the within and foregoing to be a full, true and correct copy of the notice of location of the "St Elmo" Mining Claim, filed for record May 11, 1904, at 9 A. M. as the same appears of record in my office in Book "Q" of Mines, at page 249.


In Witness Whereof, I have hereunto set my hand and affixed my official seal this _____ day of Feb. A. D. 1908.


County Recorder.

Territory of Arizona,)
)SS.
County of Yuma.)

I, J. M. Polhamus County Recorder in and for the County of Yuma, territory of Arizona, do hereby certify the within and foregoing to be a full, true and correct copy of the notice of location of the "Frances H.," Mining claim filed for record June, 4, 1907, at 1:40 P.M. as the same appears of record in my office in Book "W" of Mines, at page 263.

In Witness Whereof, I have hereunto set my hand
and affixed my official seal this ____ day of
February A. D. 1908.



County Recorder.

Notice of Mining Location

Lode Claim

To All Whom It May Concern:

This Mining Claim, the name of which is the Francis H. Mining Claim, situate on lands belonging to the United States of America, and in which there are valuable mineral deposits, was entered upon and located for the purposes of exploration and purchase by The Ready Money Gold Company a corporation the undersigned, on the 3rd day of June 1907

The length of this claim is 1500 feet, and we claim 750 feet, in a North easterly direction and 750 feet in a Southwesterly direction from the center of the discovery shaft, at which this notice is posted, lengthwise of the claim, together with 394.9 feet in width of the surface grounds, on each side of the center of said claim. The general course of the lode deposit and premises is from the Southwest to North east to the North East

The claim is situated and located in the King of Arizona Mining District, in Yuma County, in the Territory of Arizona, about one mile in a North westerly direction from the mill and shaft at the King of Arizona mine at Kofa and joins the Nuggitt Mining Claim

The surface boundaries of the claim are marked upon the ground as follows: Beginning at a monument of stone at a point in a south westerly direction 750 feet from the discovery shaft (at which this notice is posted), being in the center of the South west end line of said claim; thence S. 74° 9' E. 394.9 feet to a Monument of stone, being the southeast corner of said claim; thence N. 5° 51' E. 1500 feet to a Monument of stone, being at the Northeast corner of said claim; thence N. 74° 9' W. 394.9 feet to a monument of stone at the center of the Northeast end of said claim; thence N. 74° 9' E. 394.9 feet to a Monument of stone, being at the North west corner of said claim; thence S. 5° 51' W. 1500 feet to a Monument of stone at the South west corner of said claim; thence S. 74° 9' E. 394.9 feet to the place of beginning.

All done under the provisions of Chapter Six, of Title XXXII, of the Revised Statutes of the United States, and of an Act of the General Assembly of Arizona, entitled "An Act to Revise and Codify the Laws of the Territory of Arizona," approved March 16, 1901.

Dated and posted on the ground this 3rd day of June 1907

The Ready Money Gold Company

By C. F. Hall, President

Filed and recorded at request of P. T. Robertson, June 4, 1907, at 1:40 P.M.

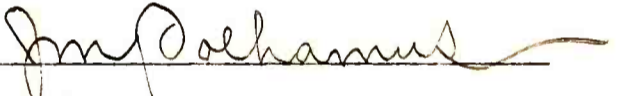
J. M. Polhamus
County Recorder

Recorded in Book "W" of Mines, page 263

Territory of Arizona,)
 County of Yuma.)SS.

I, J. M. Polhamus County Recorder in and for the County of Yuma, Territory of Arizona, do hereby certify the within and foregoing to be a full, true and correct copy of the Amended location notice of the "Commercial" Mining claim, filed for record Jan. 17, 1907, at 10:30 A. M. as the same appears of record in my office in Book "V" of Mines at page 159.

In Witness Whereof, I have hereunto set my hand and affixed my official seal this ____ day of February
 A. D. 1908.


 County Recorder.

Notice of Mining Location

Lode Claim

To All Whom It May Concern:

This Mining Claim, the name of which is the Commercial Mining Claim, situate on lands belonging to the United States of America, and in which there are valuable mineral deposits, was entered upon and located for the purposes of exploration and purchase by C. F. Hall a citizen of the United States the undersigned, on the 12th day of January 1907

The length of this claim is 1500 feet, and I claim 250 feet, in a Southerly direction and 1250 feet in a Northerly direction from the center of the discovery shaft, at which this notice is posted, lengthwise of the claim, together with 300 feet in width of the surface grounds, on each side of the center of said claim. The general course of the lode deposit and premises is from the South to the North

The claim is situated and located in the King of Arizona Mining District, in Yuma County, in the Territory of Arizona, about 1 1/2 in a Northerly direction from King of Arizona Mill and adjoins the St Elmo Mining claim on the North

The surface boundaries of the claim are marked upon the ground as follows: Beginning at a Monument of stone at a point in a Southerly direction 250 feet from the discovery shaft (at which this notice is posted), being in the center of the South end line of said claim; thence Easterly 300 feet to a Monument of stone, being the Southeast corner of said claim; thence Northerly 500 feet to a Monument of stone, being at the Northeast corner of said claim; thence Westerly 300 feet to a Monument of stone at the center of the North end of said claim; thence Westerly 300 feet to a Monument of stone, being at the Northeast corner of said claim; thence Southerly 1500 feet to a Monument at the Southwest corner of said claim; thence Easterly 300 feet to the place of beginning.

All done under the provisions of Chapter Six, of Title XXXII, of the Revised Statutes of the United States, and of an Act of the General Assembly of Arizona, entitled "An Act to Revise and Codify the Laws of the Territory of Arizona," approved March 16, 1901.

This is an Amended Location Notice of the Commercial Mining Claim located by C. F. Hall on the 22nd day of January 1906 and this amended Location Notice is made and posted to correct errors in the description in the said original Location Notice.

Dated and posted on the ground this 12th day of January 1907

C. F. Hall

Filed and recorded at request of P. T. Robertson Jan. 17, 1907 at 10:30 A. M.

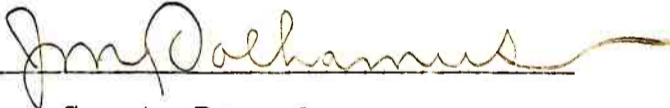
J. M. Polhamus
County Recorder

Recorded in Book "V" of Mines, at page 159

Territory of Arizona,)
)SS.
County of Yuma.)

I, J. M. Polhamus County Recorder in and for the County of Yuma, Territory of Arizona, do hereby certify the within and foregoing to be a full, true and correct copy of the Amended notice of location of the "Commercial Addition" Mining Claim, filed for record Jan. 17, 1907 at 10:30 A. M. as the same appears of record in my office in Book "V" of mines at page 157.

In Witness Whereof, I have hereunto set my hand and affixed my official seal this _____ day of February, A.D. 1908



County Recorder.

Notice of Mining Location

Lode Claim

To All Whom It May Concern:

This Mining Claim, the name of which is the Commercial Addition Mining Claim, situate on lands belonging to the United States of America, and in which there are valuable mineral deposits, was entered upon and located for the purposes of exploration and purchase by C. F. Hall a citizen of the United States the undersigned, on the 12th day of January 1907

The length of this claim is 1400 feet, and I claim 300 feet, in a Southerly direction and 1100 feet in a Northerly direction from the center of the discovery shaft, at which this notice is posted, lengthwise of the claim, together with 300 feet in width of the surface grounds, on each side of the center of said claim. The general course of the lode deposit and premises is from the South to the North

The claim is situated and located in the King of Arizona Mining District, in Yuma County, in the Territory of Arizona, about 1½ miles in a Northerly direction from King of Arizona Mill and adjoins the Commercial Mining claim on the North

The surface boundaries of the claim are marked upon the ground as follows: Beginning at Monument of stone at a point in a Southerly direction 300 feet from the discovery shaft (at which this notice is posted), being in the center of the South end line of said claim; thence Easterly 300 feet to a Monument of stone, being the Southeast corner of said claim; thence Northerly 1400 feet to a Monument of stone, being at the Northeast corner of said claim; thence Westerly 300 feet to a Monument of stone at the center of the North end of said claim; thence Westerly 300 feet to a Monument of stone, being at the Northwest corner of said claim; thence Southerly 1400 feet to a Monument of stone at the Southwest corner of said claim; thence Easterly 300 feet to the place of beginning.

All done under the provisions of Chapter Six, of Title XXXII, of the Revised Statutes of the United States, and of an Act of the General Assembly of Arizona, entitled "An Act to Revise and Codify the Laws of the Territory of Arizona," approved March 16, 1901.

This is an amended Location Notice of the Commercial Addition Mining Claim, located by C. F. Hall on the 22nd day of January 1906 and this amended Location Notice is made and posted to correct errors in the description in said original Notice.

Dated and posted on the ground this 12 day of January 1907

C. F. Hall

Filed and recorded at request of P. T. Robertson Jan. 17, 1907 at 10:30

A. M.

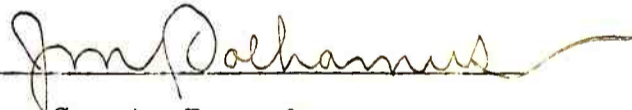
J. M. Pelhamus
County Recorder

Recorded in Book "V" of Mines, page 157

Territory of Arizona,)
)SS.
County of Yuma.)

I, J. M. Polhamus County Recorder in and for the County of Yuma, Territory of Arizona, do hereby certify the within and foregoing to be a full, true and correct copy of the Amended notice of location of the "Chicago" Mining claim, filed for record Jan. 17, 1907, at 10:30 A. M. as the same appears of record in my office in Book "V" of Mines at page 161.

In Witness Whereof, I have hereunto set my hand and affixed my official seal this ____ day of February, A. D. 1908.


County Recorder.

Notice of Mining Location

Lode Claim

To All Whom It May Concern:

This Mining Claim, the name of which is the Chicago Mining Claim, situate on lands belonging to the United States of America, and in which there are valuable mineral deposits, was entered upon and located for the purposes of exploration and purchase by C. F. Hall a citizen of the United States the undersigned, on the 12 day of January 1907

The length of this claim is 1500 feet, and I claim 10 feet, in a Southerly direction and 1490 feet in a Northerly direction from the center of the discovery shaft, at which this notice is posted, lengthwise of the claim, together with 300 feet in width of the surface grounds, on each side of the center of said claim. The general course of the lode deposit and premises is from the South to the North

The claim is situated and located in the King of Arizona Mining District, in Yuma County, in the Territory of Arizona, about $1\frac{3}{4}$ miles in a Northerly direction from King of Arizona Mill and adjoins the Commercial Addition mining claim on the North

The surface boundaries of the claim are marked upon the ground as follows: Beginning at Monument of stone at a point in a Southerly direction 10 feet from the discovery shaft (at which this notice is posted), being in the center of the South end line of said claim; thence Easterly 300 feet to a Monument of stone, being the Southeast corner of said claim; thence Northerly 1500 feet to a Monument of stone, being at the Northeast corner of said claim; thence Westerly 300 feet to a Monument of stone at the center of the North end of said claim; thence Westerly 300 feet to a Monument of stone, being at the Northwest corner of said claim; thence Southerly 1500 feet to a Monument of stone at the Southwest corner of said claim; thence Easterly 300 feet to the place of beginning.

All done under the provisions of Chapter Six, of Title XXXII, of the Revised Statutes of the United States, and of an Act of the General Assembly of Arizona, entitled "An Act to Revise and Codify the Laws of the Territory of Arizona," approved March 16, 1901.

This is an Amended Location Notice of Chicago Mining Claim located by C. F. Hall, on the 22nd day of January 1906, and this amended Location Notice is made and posted to correct errors in the description in the said original Location Notice

Dated and posted on the ground this 12th day of January 1907

C. F. Hall

Filed and recorded at request of P. T. Robertson Jan. 17, 1907 at 10:30 A.M.

J. M. Polhamus
County Recorder

Recorded in Book "V" of Mines, page 161

Territory of Arizona,)
County of Yuma.)SS.

I, J. M. Polhamus County Recorder in and for the County of Yuma, territory of Arizona, do hereby certify the within and foregoing to be a full, true and correct copy of the notice of location of the "San Carlos" Mining claim filed for record June 4, 1907, at 1:40 P.M. as the same appears of record in my office in Book "W" of Mines at page 262.

In Witness Whereof, I have hereunto set my hand and affixed my official seal this ___ day of February A. D. 1908.


County Recorder.

Notice of Mining Location

Lode Claim

To All Whom It May Concern:

This Mining Claim, the name of which is the San Carlos Mining Claim situate on lands belonging to the United States of America, and in which there are valuable mineral deposits, was entered upon and located for the purposes of exploration and purchase by The Ready Money Gold Company a corporation the undersigned, on the 26th day of March 1907

The length of this claim is 1500 feet, and we claim 750 feet, in an easterly direction and 750 feet in a westerly direction from the center of the discovery shaft, at which this notice is posted, lengthwise of the claim, together with 300 feet in width of the surface grounds, on each side of the center of said claim. The general course of the lode deposit and premises is from the East to the West

The claim is situated and located in the King of Arizona Mining District, in Yuma County, in the Territory of Arizona, about $\frac{1}{2}$ of a mile in a northwesterly direction from Mill and shaft at the King of Arizona mines at Kefa and joins the St Elmo mining claim on the west

The surface boundaries of the claim are marked upon the ground as follows: Beginning at Monument of stones at a point in an easterly direction 750 feet from the discovery shaft (at which this notice is posted), being in the center of the East end line of said claim; thence N. $5^{\circ} 51'$ E 300 feet to a Monument of stone, being the Northeast corner of said claim; thence N. $74^{\circ} 9'$ W 1500 feet to a Monument of stone, being at the north west corner of said claim; thence S $5^{\circ} 51'$ W 300 feet to a monument of stone at the center of the west end of said claim; thence S $5^{\circ} 51'$ W 300 feet to a monument of stone, being at the south west corner of said claim; thence S $74^{\circ} 9'$ E 1500 feet to a monument of stone at the South east corner of said claim; thence N. $5^{\circ} 51'$ E 300 feet to the place of beginning.

All done under the provisions of Chapter Six, of Title XXXII, of the Revised Statutes of the United States, and of an Act of the General Assembly of the Arizona, entitled "An Act to Revise and Codify the Laws of the Territory of Arizona," approved March 16, 1901.

Dated and posted on the ground this 26th day of March 1907.

The Ready Money Gold Company

By C. F. Hall, President

Filed and recorded at request of E. T. Robertson, June 4, 1907 at 1:40 P. M.

J. H. Pelhamus
County Recorder

Recorded Book "W" of Mines, page 262

Territory of Arizona,)
 County of Yuma.) SS.

I, J. M. Polhamus County Recorder in and for the County of Yuma, Territory of Arizona, do hereby certify the within and foregoing to be a full, true and correct copy of the notice of location of the "Traumere" or Tranmere" Mining claim, filed for record June 4, 1907 at 1:40 P.M. as the same appears of record in my office in Book "W" of Mines, at page 261.

In Witness Whereof, I have hereunto set my hand
 and affixed my official seal this ___ day of
 February, A. D. 1908.



 County Recorder.

Notice of Mining Location

Lode Claim

To All Whom It May Concern:

This Mining Claim, the name of which is the Traymore Mining Claim, situate on lands belonging to the United States of America, and in which there are valuable mineral deposits, was entered upon and located for the purposes of exploration and purchase by The Ready Money Gold Company, a corporation the undersigned, on the 18th day of March 1907

The length of this claim is 1500 feet, and we claim 750 feet, in an easterly direction and 750 feet in a westerly direction from the center of the discovery shaft, at which this notice is posted, lengthwise of the claim, together with 300 feet in width of the surface grounds, on each side of the center of said claim. The general course of the lode deposit and premises is from the East to the West

The claim is situated and located in the King of Arizona Mining District, in Yuma County, in the Territory of Arizona, about $\frac{1}{2}$ of a mile in a North westerly direction from the mill and shaft of the King of Arizona mines at Kofa and about 1000 feet North of the Last Hope mining claim

The surface boundaries of the claim are marked upon the ground as follows: Beginning at a monument of stone at a point in an easterly direction 750 feet from the discovery shaft (at which this notice is posted), being the center of the East end line of said claim; thence North 300 feet to a Monument of stone, being the North east corner of said claim; thence west 1500 feet to a Monument of stone, being at the North west corner of said claim; thence South 300 feet to a monument of stone at the center of the west end of said claim; thence South 300 feet to a Monument of stone, being at the South west corner of said claim; thence East 1500 feet to a monument of stone at the South east corner of said claim; thence North 300 feet to the place of beginning.

The whole of this claim is located as forfeited and abandoned property

All done under the provisions of Chapter Six, of Title XXXII, of the Revised Statutes of the United States, and of an Act of the General Assembly of Arizona, entitled "An Act to Revise and Codify the Laws of the Territory of Arizona," approved March 16, 1901.

Dated and posted on the ground this 18th day of March 1907

The Ready Money Gold Company
By C. F. Hall, President

Filed and recorded at request of F. T. Robertson June 4th 1907 at
1:40 P.M.

J. M. Polhamus
County Recorder

Recorded in Book "W" of Mines, page 261

AMENDED Notice of Mining Location

LODE CLAIM

To All Whom It May Concern:

This Mining Claim, the name of which is the Evilyn Mining Claim, situate on lands belonging to the United States of America, and in which there are valuable mineral deposits, was entered upon and located for the purposes of exploration and purchase by The Ready Money Gold Co.

(Locator must insert either "a citizen of the United States," or, "who has declared his intention to become a citizen of the United States.")

the undersigned, on the 6th day of March 1908.

The length of this claim is 1500 feet, and 1 claim 600 feet, in a northerly direction and

900 feet in a southerly direction from the center of the discovery shaft, at which this notice is posted, lengthwise of the claim, together with 300 feet in width of the surface grounds, on each side of the center of said claim. The general course of the lode deposit and premises is from the

North to the South.

The claim is situated and located in the King of Arizona Mining District, in Yuma County, in the Territory of Arizona, about one mile in a northerly direction from Go fa.

The surface boundaries of the claim are marked upon the ground as follows: Beginning at

at a point in a northerly direction 600 feet from the discovery shaft (at which this notice is posted), being in the center of the north end line of said claim; thence westerly 300 feet to a monument, being the north west corner of said claim; thence southerly 1500 feet to a monument, being at the south west corner of said claim; thence easterly 300 feet to a monument at the center of the south end of said claim; thence easterly 300 feet to a monument, being at the south east corner of said claim; thence northerly 1500 feet to a monument at the north east corner of said claim; thence westerly 300 feet to the place of beginning.

All done under the provisions of Chapter Six, of Title XXXII, of the Revised Statutes of the United States, and of an Act of the General Assembly of Arizona, entitled "An Act to Revise and Codify the Laws of the Territory of Arizona," approved March 16, 1901.

This is an Amended Location Notice of the Evilyn Mining Claim, located by Felix Mayhew on the 29th day of march 1904, and recorded in Book 2 of Records of Mines, at page 216 in the office of the County Recorder of the aforesaid County of Yuma to which reference is hereby made, and this Amended Location Notice is made and posted to correct errors in the description in the said original Location Notice.

Dated and posted on the ground this 6th day of March 1908.

Ready Money Gold Company
C. F. Hall, President.

TERRITORY OF ARIZONA,
 County of..... } ss.

I,....., County Recorder in and for the County and Territory aforesaid, do hereby certify that the within instrument was filed for record at..... o'clock,..... M., on this..... day of..... 190..., and duly recorded in Book No..... of..... Records of..... County, Arizona, at pages.....

WITNESS my hand and official seal the day and year first above written.

.....
 County Recorder.

AMENDED
Notice of Location.
 LOPE CLAIM.

Dated..... 190.....

Filed and Recorded at request of

.....
 A. D. 190.....

at..... M.

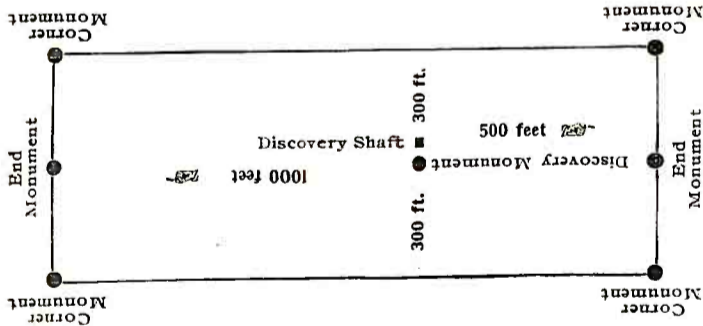
Book.....

Pages.....

.....
 County Recorder.

By.....
 Deputy Recorder.

.....
 The H. H. McNeil Co., Printers, Phoenix



This diagram is to give locator a general idea of plan of location under the new law. The Discovery Shaft can be in the center of claim or any distance from either end desired. In the diagram it is placed 500 feet from one end and 1000 feet from the other. Commence description of claim at a center end monument, giving its distance and direction from center of Discovery Shaft; thence bound the claim in either direction. In description be careful to state locality of claim with reference to some natural object, or permanent monument, as will identify the claim,

Territory of Arizona,)
)SS.
County of Yuma.)

I, J. M. Polhamus County Recorder in and for the County of Yuma, Territory of Arizona, do hereby certify the within and foregoing to be a full, true and correct copy of the notice of location of the "Nuggitt" Mining Claim, filed for record May 11, 1904, at 9 A. M. as the same appears of record in my office in Book "Q" of Mines, at page 247.

In Witness Whereof, I have hereunto set my hand and affixed my official seal this _____ day of Feb.

A. D. 1908.


County Recorder

Notice of Mining Location

Quartz Claim

To All Whom It May Concern:

This Mining Claim, the name of which is the Nuggitt Mining Claim, situate on lands belonging to the United States of America, and in which there are valuable mineral deposits, was entered upon and located for the purposes of exploration and purchase by Felix Mayhew the undersigned, on the 29 day of Janu 1904

The length of this claim is 1500 feet, and I claim 500 feet, in a Northerly direction and 1000 feet in a Southerly direction from the center of the discovery shaft, at which this notice is posted, lengthwise of the claim, together with 600 feet in width of the surface grounds, on each side of the center of said claim. The general course of the lode deposit and premises is from the North to the Southerly

The claim is situated and located in the Kofa Mining District, in Yuma County, in the Territory of Arizona, about 1 mile in a Northerly direction from King of Ariz. Mine

The surface boundaries of the claim are marked upon the ground as follows: Beginning at This Monument running 500 ft in a Northly at a point in a Northerly direction 500 feet from the discovery shaft (at which this notice is posted), being in the center of the North end line of said claim; thence 300 feet to a Monument, being the N.E. corner of said claim; thence 1500 feet to a monument, being at the S.E. corner of said claim; thence 300 feet to a Monument at the center of the S end of said claim; thence 300 feet to a Monument, being at the S.W. corner of said claim; thence 1500 feet to a Monument at the N.W. corner of said claim; thence 300 feet to the place of beginning.

All done under the provisions of Chapter Six, of Title XXXII, of the Revised Statuts of the United States, and of an Act of the General Assembly of Arizona, entitled "An Act to Revise and Codify the Laws of the Territory of Arizona," approved March 16, 1901.

Dated and posted on the ground this 29 day of Janu 1904

Felix Mayhew

H. Gilbert

Filed and recorded at request of Coc. W. Norton May 11, 1904, at 9 A.M.

L. E. Cronin
Deputy


C. P. Cronin
County Recorder

Recorded in Book "Q" of Mines, page 247

Territory of Arizona,)
)SS.
County of Yuma.)

I, J. M. Polhamus County Recorder in and for the County of Yuma, Territory of Arizona, do hereby certify the within and foregoing to be a full, true and correct copy of the notice of location of the "Tranmere Placer" Mining claim filed for record June 4, 1907 at 1:40 P. M. as the same appears of record in my office in Book "U" of Mines at page 535.

In Witness Whereof, I have hereunto set my hand
and affixed my official seal this ____ day of
February A. D. 1908.



County Recorder.

Notice of Mining Location

Placer Claim

To All Whom It May Concern:

This Placer Mining Claim the name of which is the Trammere Placer mining claim, situate on lands belonging to the United States of America, and being a form of valuable mineral deposit other than in veins or lodes of quartz or other rock in place, was entered upon and located for the purposes of exploration and purchase by The Ready Money Gold Company a corporation, the undersigned, on the 12th day of March 1907.

We claim 20 acres thereof, and have marked the same on the ground as follows; Beginning at the North East corner at a Monument of stone (post, stone, or other monument) where this notice is posted; thence N. $74^{\circ} 9'$ W. 660 feet to a monument of stone, thence S. $15^{\circ} 51'$ W. 1320 feet to a monument of stone, thence S. $74^{\circ} 9'$ E. 660 feet to a monument of stone, thence N. $15^{\circ} 51'$ E 1320 feet to the place of beginning, containing 20 acres, all in the King of Arizona Mining District, in the County of Yuma in the Territory of Arizona about $\frac{1}{2}$ of a mile in a North westerly direction from the mill and shaft of the King of Arizona mines at Kefa and joins the Ore Blanco Placer mining claim on the West. All done under the provisions of Chapter Six, of Title XXXII, of the Revised Statutes of the United States, and of an Act of the General Assembly of Arizona, entitled "An Act to Revise and Codify the Laws of the Territory of Arizona," approved March 16th 1901.

Dated and posted on the ground this 12th day of March 1907.

The Ready Money Gold Company

By C. F. Hall, President

Filed and recorded at request of P. T. Robertson, June 4th 1907, at
1:40 P.M.


J. M. Polhamus
County Recorder

Recorded in Book "U" of Mines, page 535

Territory of Arizona,)
County of Yuma.) SS.

I, J. M. Polhemus, County Recorder in and for the County of Yuma, Territory of Arizona, do hereby certify the within and foregoing to be a full, true and correct copy of the "Oro Blanco" Mining Claim, filed for record Aug. 14, 1903, at 9 A. M. and as the same appears of record in my office in Book "P" of Mines, at pages 4 -5 thereof.

In Witness Whereof, I have hereunto set my hand and affixed my official seal this _____ day of February, A.D. 1908.



County Recorder.

Notice of Location

Placer Claim.

Notice is hereby given that in compliance with an Act of Congress, approved May 10th 1872, and the Act amendatory thereof and supplementary thereto, the undersigned have this day located and claim Twenty acres of surface, placer ground.

Said claim commencing at a monument of stone at center of S. E. end line of claim, and running 300 feet in a N. Easterly direction to a monument of stone at the east corner of claim; thence in a Northwesterly direction 1500 feet to a monument of stone at North corner of claim, thence in a Southwesterly direction 600 feet to a monument of stone at west corner of claim, thence in a Southeasterly direction 1500 feet to a monument of stone at South corner of claim, thence in a direction -- feet to a monument of stone at - of claim; thence in a Northeasterly direction 300 feet to a monument of stone and place of beginning.

This claim may be more generally described as situated one mile North of the King of Arizona mine in the King of Arizona Mining District, Yuma County, Territory of Arizona and shall be known as the "Oro Blanco" Claim.

Dated on the ground this 28th day of May 1903

Teodoro Bustamante Locator

Witness:

Arturo Martinez
Ramon Castelum

Recorded at request of L. W. Alexander at 9 A. M. Aug. 14, 1903

By W. J. Riley
Deputy

C. P. Cronin
County Recorder

Recorded Book "P" of Mines, page 4-5

Territory of Arizona,)
)SS.
County of Yuma.)

I, J. M. Polhamus County Recorder in and for the County of Yuma, Territory of Arizona, do hereby certify the within and foregoing to be a full, true and correct copy of the notice of location of the "Arizona Mint" Mining Claim, filed for record May 11, 1904 at 9 A. M. as the same appears of record in my office in Book "Q" of Mines, at page 245 thereof.

In Witness Whereof, I have hereunto set my hand and affixed my official seal this ____ day of February
A. D. 1908.


County Recorder.

Notice of Mining Location

Placer Claim

To All Whom It May Concern:

This Mining Claim, the name of which is the Arizona Mint Mining Claim, situate on lands belonging to the United States of America, and in which there are valuable mineral deposits, was entered upon and located for the purposes of exploration and purchase by Felix Mayhew by the undersigned, on the 29th day of January 1904

The length of this claim is 1500 feet, and I claim 750 feet in a Southerly direction and 750 feet in a Northerly direction from the center of the discovery shaft, at which this notice is posted, lengthwise of the claim, together with 300 feet in width of the surface grounds, on each side of the center of said claim. The general course of the Placer deposit and premises is from the Southerly & Northerly to the Northerly

The claim is situated and located in the King of Arizona Mining District, in Yuma County, in the Territory of Arizona, about one & one half miles in a Northerly direction from Kofa

The surface boundaries of the claim are marked upon the ground as follows; Beginning at this center Monument, commencing at a point in a Southerly direction 750 feet from the discovery shaft (at which this notice is posted), being in the center of the center end line of said claim; thence 300 feet to a Monument, being the S.W. corner of said claim; thence 1500 feet to a monument, being at the N.W. corner of said claim; thence 300 feet to a Monument at the center of the N. end of said claim; thence 300 feet to a Monument, being at the N.E. corner of said claim; thence 1500 feet to a Monument at the S.E. corner of said claim; thence 300 feet to the place of beginning.

All done under the provisions of Chapter Six, of Title XXXII, of the Revised Statutes of the United States, and of an Act of the General Assembly of Arizona, entitled "An Act to ~~Exatify~~ Revise and Codify the Laws of the Territory of Arizona," approved March 16, 1901.

Dated and posted on the ground this 29 day of January 1904

Felix Mayhew

Wit. C. P. Hall

Filed and recorded at request of Geo. W. Norton May 11th 1904 at 9 A.M.

Lillian E. Cronin
Deputy

C. P. Cronin
County Recorder

Recorded in Book "Q" of Mines, page 245

Ariz. Mint

(4-688.)

U. S. SURVEYOR GENERAL'S FINAL CERTIFICATE ON
FIELD NOTES.

DEPARTMENT OF THE INTERIOR,

OFFICE OF U. S. SURVEYOR GENERAL,

Phoenix, Arizona,

September 22, 1908.

I, U. S. Surveyor General for District of Arizona,
do hereby certify that the foregoing transcript of the Field Notes, return and approval
of the Survey of the mining claim of

Ready Money Gold Company

known as the St. Elmo, Francis H., Commercial, Commercial
Addition, Chicago, San Carlos, Tranmere, Evelyn, Nugget Lodes, and
Tranmere, Oro Blanco and , situate in King of Arizona
Arizona Mint placers
Mining District, Yuma County,

Arizona, in Section Approx., Township No. 2 S.,
Range No. 17 W., Unsur., and designated as Survey
No. 2523, has been correctly copied from the originals on
file in this office; that said Field Notes furnish such an accurate description of said
mining claim as will, if incorporated into a patent, serve fully to identify the premises,
and that such reference is made therein to natural objects or permanent monuments as
will perpetuate and fix the *locus* thereof.

And I further certify that five hundred dollars' worth of labor has been expended
or improvements made upon ^{or for each of} said mining claim^s by claimant or its grantors, and
that said improvements consist of 40 shafts, 5 cuts, 1 tunnel and 1
raise, total value \$11,325. Shaft No. 5 on the St. Elmo lode,
total value \$1600, and shafts Nos. 2 to 17 inclusive, and 20,
on the Oro Blanco placer, total value \$3600, being common im-
provements for the benefit of all the claims of this survey, a
1/12 interest therein, valued at \$133.33 and \$300, respectively,
is properly credited to each of the claims of this survey.

and that no portion of said labor or improvements has been included in the estimate of
expenditures upon any other claim.

I further certify that the plat thereof, filed in the U. S. Land Office at Phoenix,
Arizona is correct and in conformity with the foregoing Field Notes.

Frank S. Ingalls,

United States Surveyor General for Arizona.

4-687.

SURVEYOR-GENERAL'S CERTIFICATE OF APPROVAL OF FIELD NOTES AND SURVEY OF MINING CLAIM.

Department of the Interior,

Office of U. S. Surveyor-General,

Phoenix, Arizona,

September 22, 1908.

I, U. S. Surveyor-General for District of Arizona

do hereby certify that the foregoing and hereto attached Field Notes and Return of the Survey of the

Mining Claim of Ready Money Gold Company

known as the St. Elmo, Francis H., Commercial, Commercial Addition,

Chicago, San Carlos, Tramere, Evelyn, Nuggitt lodes, and

Tramere, Oro Blanco and Arizona Mint placers

situate in King of Arizona Mining District,

Yuma County, Arizona

in Section Approx., Township No. 2 S., Range No. 17 W., Unsur.

, designated as Survey No. 2523

executed by Robert L. Morton, U. S. Deputy Mineral

Surveyor, April 3-6, 1908, under my instructions dated

March 27, 1908, have been critically examined and the necessary

corrections and explanations made, and the said Field Notes and Return, and the Survey they describe,

are hereby approved. A true copy of the copy of the location certificate filed by the applicant for

survey is included in the field notes.

Frank S. Ingalls

U. S. Surveyor-General for Arizona.

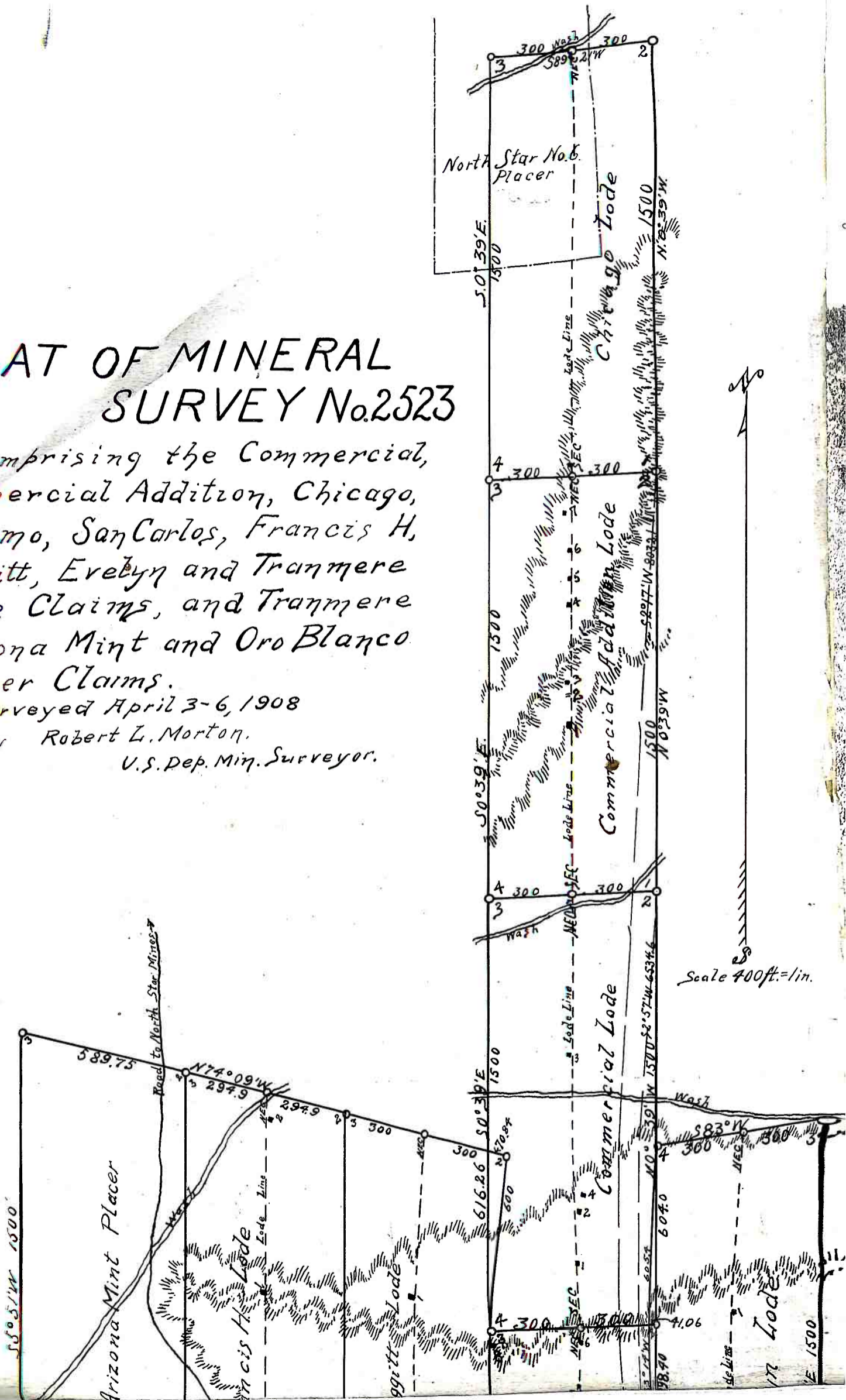
PLAT OF MINERAL SURVEY No. 2523

Comprising the Commercial, Commercial Addition, Chicago, St. Elmo, San Carlos, Francis H. Nuggitt, Evelyng and Trammere Lode Claims, and Trammere Arizona Mint and Oro Blanco Placer Claims.

Surveyed April 3-6, 1908

By Robert L. Morton.

U.S. Dep. Min. Surveyor.



large
map