

4-683.

MINERAL SURVEY No. 2846

LOT No.

Arizona Land District.

FIELD NOTES

OF THE SURVEY OF THE MINING CLAIM OF

The Cicero Smith Mining Co.

KNOWN AS THE
Hazlewood No. 1, Hazlewood No. 2, Hazlewood No. 3, Hazlewood No. 4,
Hazlewood Number Five, Hazlewood No. 6, Hazlewood No. 7,
Hazlewood No. 8, Hazlewood No. 9, Hazlewood No. 10

Lewis Mining District,
Cochise County, Arizona

Section 13, Township 13 S, Range 25 E and
" 18 " 13 S " 26 E unsurveyed
Surveyed under instructions dated August 9, 1910

by Johna Rockfellow
U. S. Mineral Surveyor.

Location
Claim located See Notes, 19
Survey commenced Aug 15, 1910
Survey completed Aug 25, 1910

6-322

Address: Anson Hazlewood, Mgr.,
Willcox, - Arizona.

HAZLEWOOD NO. 1 LODE.

Beginning at corner No. 1, the S.W. corner of location, a granite stone exposing 12 x 4 ins., 12 ins. high, chiseled H 1, witnessed by a monument of stone alongside. Add to chiseling 1-2846.

Whence:

X BR 1-2846 chiseled on face of a porphyry reef, brs. S 64°22'E, 15.7 ft.

X BR 1-2846 chiseled on porphyry rock 12x8x4 ins. brs. E 40°14'E, 17.8 ft.

The corner of sections 13-24 on the east boundary of Tp 13 S, R 25 E brs. S 44°13'E, 449.8 ft. A porphyry rock exposing 8x4x7 ins. chiseled 3 notches on north and 3 notches on S edges and witnessed by a stone monument on the west.

Feet. Thence N 43°53'W. Va. 13°50'E.

150. Center of gulch 12 ft. wide, course northeasterly.

300. W. Center end a stone monument.

600. To corner No. 2, identical with corner No. 3 of Hazlewood No. 2 lode of this survey, a cross (x) and H 1 H 2 chiseled on quartz outcrop, witnessed by a monument alongside. Add to chiseling 2-3-2846.

Thence N 51°29'E. Va. 14°15'E.

215. Center of gulch 6 ft. wide, course S.E.

242.5 Center of camp road.

921.11 Intersect E. boundary section 13 at N 0°23'W, 1328.47

ft. from S.E. corner of section, and S 0°23'E, 1291.33 ft.

1499.8 from 1/4 section corner on E. boundary section 13. A porphyry rock exposing 14x6x10 ins. chiseled 1/4 on W. side & witnessed by a monument on the W. To corner No. 3 identical with corner No. 2 Hazlewood No. 2

lode of this survey, a cross (x) chiseled on a porphyry rock exposing 10x6x12 ins. and H 1 H 2, witnessed by a monument alongside. Add to chiseling 3-2-2846.

Whence:

X BR 3-2-2846 chiseled on a porphyry face 30 X 14 ins. brs. N 31°57'E, 11.5 ft.

X BR 3-2-2846 chiseled on a porphyry face 12x8 ins.

Feet.

brs. S 6°25'W, 21.2 ft.

Thence S 43°53'E. Va. 13°45'E.

300. E. center end a monument of stone.

395 Center of camp road brs. N.E. & S.W.

430 Center of gulch 15 ft. wide, course N.E.

600. To corner No. 4, a cross (x) chiseled on a slate rock exposing 15x3x15 ins. and H 1, witnessed by a monument of stone alongside. Add to chiseling 4-2846.

Whence:

X BR 1-2846 chiseled on a porphyry face 15x15 ins. brs. N 62°35'W, 26.35 ft.

X BR 1-2846 chiseled on the face of a porphyry rock exposing 15x2x12 ins. brs. N 80°33'E, 7.4 ft.

Thence S 51°29'W. Va. 13°10'E.

1193.78 Intersect E. boundary section 13 at N 0°23'W, 569.02 ft.

from corner sections 13-18-19-24, Tp. 13 S, Rs 25 and 26 E. and S. 0°23'E., 2050.78 ft. from $\frac{1}{4}$ Cor. on E. boundary of Sec. 13.

1499.8 To corner No. 1, the place of beginning.

HAZLEWOOD NO. 2 LODE.

Beginning at corner No. 1, the N.E. corner of location identical with corner No. 2 Hazlewood No. 3 lode of this survey, a cross (x) chiseled on a porphyry rock exposing 12x10x12 ins. also H 2 H 3, and witnessed by a monument alongside. To chiseling add 1-2-2846.

Whence:

X BR 1-2-2846 chiseled on porphyry outcrop 30x24x20 ins. brs. N 26°30'W, 27.6 ft.

X BR 1-2-2846 chiseled on porphyry outcrop 24x24 ins. brs. S 25°10'W, 11.5 ft.

The $\frac{1}{4}$ section corner between sections 13-18, Tps. 13 S, Rs 25°26'E, brs. N 5°14'W, 500.6 ft.

Thence S 43°53'E. Va. 12°55'E.

300. E. center end a stone monument.

600. To corner No. 2 identical with corner No. 3 Hazlewood No. 1 lode of this survey and previously described.

Thence S 51°29'W. VA. 13°45'E.

Feet.

578.69 Intersect E. boundary section 13 at N. 0°23'W, 1328.47 ft.

from corner sections 13-18-19-24, Tps. 13 S, Rs 25 and 26 E and S 0°23'E, 1291.33 ft. from the ^{COF} $\frac{1}{4}$ section between sections 13-18;

1499.8 To corner No. 3, identical with corner No. 2 of Hazlewood No. 1 lode, this survey, previously described.

Thence N 43°53'W, Va. 14°15'E.

300. West center end a stone monument

600. To corner No. 4, identical with corner No. 3, Hazlewood No. 3 lode of this survey, a cross (x) chiseled on a porphyry rock 18x10x10 ins. and H 2 H 3, witnessed by a stone monument alongside. Add to chiseling 4-3-2846.

Whence :

X BR 4-3-2846 chiseled on face of porphyry reef 5 ft. high, brs. S 84°12'W, 26.6 ft.

X BR 4-3-2846 chiseled on a porphyry rock 14x12x8 ins. brs. N 4°04'E, 12.7 ft.

Thence N 51°29'E, Va. 14°0'E.

42. Center of camp road brs. N.W. & S.E.

80. Center of camp road brs. Northerly and Southerly.

1446.19 Intersect E. boundary of section 13 at N 0°23'W, 2087.92 ft. from corner sections 13-18-19-24, Tps 13 S, Rs 25 and 26 E, and S 0°23'E, ~~1446.19~~ 531.88 ft. from $\frac{1}{4}$ corner between sections 13& 18.

1499.8 To corner No. 1, the place of beginning.

HAZLEWOOD NO. 3 LODE.

Beginning at corner No. 1, the N.E. corner of location identical with corner No. 1 of Hazlewood Number

Five lode of this Survey, a cross (x) chiseled on a porphyry rock exposing 9x6x10 ins. and H 3 H 5, witnessed by a monument alongside. Add to chiseling 1-1-2846.

Whence:

X BR 1-1-2846 chiseled on a porphyry face 24x12 ins. S 63°35'E, 19.6 ft.

X BR 1-1-2846 chiseled on a porphyry face 15 x 10 ins. brs. S 65°54'W, 28.3 ft.

- Feet. The $\frac{1}{4}$ section corner between sections 13-18, Tps 13S, Rs 25 and 26 E brs. N 79°53'E, 376.1 ft.
- Thence S 43°53'E. Va. 13°30'E.
300. East center end a stone monument.
- 538.74 Intersect the E. boundary of sec. 13 at N 0°23'W, 2165.46 ft. from the corner of sections 13-18-19-24 Tps 13 S, Rs 25 and 26 E and S 0°23'E, 454.34 ft. from the $\frac{1}{4}$ corner between sections 13 and 18.
600. To corner No. 2, identical with corner No. 1 of Hazlewood No. 2 lode of this survey and previously described
- Thence S 51°29'W. Va. 12°55'E.
- 53.61 Intersect the E boundary of section 13 at N 0°23'W, 2087.92 ft. *from the cor. of secs. 13-18-19-24, Tps 13S, Rs 25-26 E* and S 0°23'E, 531.88 ft. from the $\frac{1}{4}$ corner between sections 13 and 18.
- 1499.8 To corner No. 3, identical with corner No. 4 Hazlewood No. 3 lode of this survey, previously described.
- Thence N 43°53'W. Va 14°00'E.
- 204.3 S.E. Cor. (No. 1) Hazlewood No. 4 lode of this survey also N.E. corner Birdwell No. 1 lode unsurveyed.
300. West center end a monument of stone
- 537.3 East center end monument of Hazlewood No. 4 lode.
600. To corner No. 4, identical with corner No. 2, Hazlewood Number Five lode of this survey.
- A cross (x) chiseled on granite bedrock exposing 8x5x2 ins. and H 3 H 5 on face of an adjacent rock witnessed by a monument alongside. Add to chiseling 4-2-2846.
- Whence:
- X BR 4-2-2846 chiseled on the face of a granite reef brs. N 69°53'W, 11.1 ft.
- Thence N 51°29'E. Va. 13°35'E.
- 1499.8 To corner No. 1, the place of beginning.
- HAZLEWOOD NUMBER FIVE.
- Beginning at Cor. No. 1, the S. E. corner of location, and identical with corner No. 1, Hazlewood No. 3 lode of this survey, previously described.
- Whence the $\frac{1}{4}$ corner between Secs. 13-18, Tps. 13 S.,

Hazlewood lodes.

-5-

- Feet. Rs 25 and 26 E, brs. N 79°53'E, 376.1 ft.
 Thence S 51°29'W. Va. 13°30'E.
- 1499.8 To corner No. 2, identical with ~~xxxx~~ corner No. 4
 Hazlewood No. 3 lode of this survey previously described.
 Thence N 43°53'W. Va. 13°35'E.
- 270.3 Corner No. 4 (N.E. Cor.) of Hazlewood No. 4 lode of this
 survey and S.E. Cor. Birdwell No. 7 lode unsurveyed.
300. West center end a monument of stone.
600. To corner No. 3, identical with corner No. 2 Hazlewood
 No. 6 lode of this survey, a cross (x) chiseled on a
 porphyry rock in place 22x2x10 ins. and H 5 H 6,
 witnessed by a monument alongside. Add to chiseling
 322-2846.
 Thence N 51°29'E. Va. 13°25'E.
- 1499.8 To corner No. 4, identical with corner No. 1 Hazlewood
 No. 6 lode of this survey, a cross (x) chiseled on a
 porphyry rock exposing 10x12x8 ins. and H 5 H 6, witnessed
 by a monument alongside. Add to chiseling 4-1-2846.
- Whence:
 X BR 4-1-2846 chiseled on a face of porphyry outcrop
 72x24 ins. brs. N 32°42'E, 8.2 ft.
 X BR 4-1-2846 chiseled on a face of schist outcrop
 14x12 ins. brs. N 69°26'W, 20.7 ft.
 Thence S 43°53'E. Va. 13°20'E.
- 127.3 W. center end Hazlewood No. 10 lode of this survey.
300. E. center end, a stone monument.
384. Center of gulch 8 ft. wide, course E.N.E.
- 427.3 Corner No. 1 (S.W. Cor.) Hazlewood No. 10 lode of this survey.
600. To corner No. 1, the place of beginning.

HAZLEWOOD NO. 6 LODE.

Beginning at corner No. 1 the S.E. corner of location,
 identical with corner No. 4 Hazlewood Number Five lode
 of this survey previously described.

Whence:

between
 The $\frac{1}{4}$ corner sections 13-18, Tps. 13 S, Rs 25 and 26 E,
 brs. S 65°01'E, 867.3 ft.

Thence S 51°29'W. Va. 13°20'E.

Feet.

1499.8 To corner No. 2, identical with corner No. 3, Hazlewood Number Five lode, previously described.

Thence N $43^{\circ}53'W$. Va. $13^{\circ}25'E$.

3.3 Stone monument E. center end Birdwell No. 7 lode, unsurveyed.

300. W. center end a monument of stone.

336.3 N.E. corner Birdwell No. 7 lode unsurveyed, and S.E. Cor. Birdwell No. 9 lode, unsurveyed.

600. To Cor. No. 3, identical with corner No. 2 Hazelwood No. 7 lode of this survey, a cross (x) chiseled on a porphyry rock exposing $16 \times 8 \times 12$ ins. and H 5 H 7, witnessed by a monument alongside. add to chiseling 3-2-2846.

Whence:

X BR 3-2-2846 chiseled on a porphyry face 12×10 ins. brs. N $44^{\circ}50'E$, 12.1 ft.

X BR 3-2-2846 chiseled on a porphyry rock $30 \times 16 \times 10$ ins. brs. S $13^{\circ}23'W$, 19.7 ft.

Thence N $51^{\circ}29'E$. Va. $13^{\circ}35'E$.

1499.8 To corner No. 4, identical with Cor. NO. 1, Hazelwood No. 7 lode of this survey, a cross (x) chiseled on a porphyry rock exposing $10 \times 10 \times 12$ ins. and H 6 H 7, witnessed by a monument alongside. add to chiseling 4-1-2846.

Whence:

X BR 4-1-2846 chiseled on a porphyry rock $10 \times 6 \times 24$ ins. brs. S $24^{\circ}00'E$, 8.5 ft.

X BR 4-1-2846 chiseled on a porphyry face 12×6 ins. brs. N $80^{\circ}31'W$, 28.2 ft.

Thence S $43^{\circ}53'E$. Va. $13^{\circ}00'E$.

300. E. center end, a stone monument.

427.3 Corner No. 2 (N.W. Cor.) of Hazelwood No. 10 lode of this survey.

600. To corner No. 1 the place of beginning.

HAZELWOOD NO. 7 LODE.

Beginning at corner No. 1, S. E. corner of location identical with corner No. 4 Hazlewood No. 6 lode of this survey previously described.

Hazlewood lodes.

-7-

- Feet. Whence:
- The $\frac{1}{4}$ corner between sections 13-18, Tps 13 S, Rs 25 and 26 E, brs. S 56°24'E, 1443.3 ft.
- Thence S 51°29'W. Va. 13°00'E.
- 1499.8 To corner No. 2, identical with corner No. 3, Hazlewood No. 6 lode previously described.
- Thence N 43°53'W. Va. 13°35'E.
- 69.3 E. center end Birdwell No. 9 lode a stone monument.
300. W. center end a stone monument.
- 402.3 N.E. corner Birdwell No. 9 and S.E. corner Birdwell No. 11 lodes, *unsurveyed*
600. To corner No. 3, identical with Cor. No. 2, Hazlewood No. 8 lode of this survey, a cross (x) chiseled on a porphyry rock exposing 12x8x16 ins. and H 7 H 8, witnessed by a monument alongside. Add to chiseling 3-2-2846.
- Whence:
- X BR 3-2-2846 chiseled on a granite rock 18x14x12 ins. brs. N 0°51'E, 17.1 ft.
- X BR 3-2-2846 chiseled on a granite face triangular 18x10 ins. brs. S 80°37'W, 13.7 ft.
- Thence N 51°31'E. Va. 13°25'E.
- 1499.8 To corner No. 4, identical with corner No. 1 Hazlewood No. 8 lode of this survey, a cross (x) chiseled on a porphyry rock exposing 10x7x7 ins. and H 7 H 8, witnessed by a monument alongside. Add to chiseling 4-1-2846.
- Whence:
- X BR 4-1-2846 chiseled on a porphyry face 16x12 ins. brs. S 33°11'E, 11.25 ft.
- X BR 4-1-2846 chiseled on a porphyry rock 14x10x6 ins. brs. N 69°12'E, 12.65 .
- Thence S 43°53'E. Va. 13°30'E.
- 299.2 E. center end, a stone monument.
- 599.2 To corner No. 1, the place of beginning.

HAZELWOOD NO. 8 LODE.

Beginning at Cor. No. 1, the S.E. corner of location

Hazlewood lodes.

-8-

Feet.

identical with corner No. 4 Hazelwood No. 7 lode, previously described.

Whence:

The $\frac{1}{4}$ corner between sections 13-18, Tps 13 S, Rs 25 and 26 E, brs. S 52°44'E, 2032.35 ft.

Thence S 51°31'W. Va. 13°30'E.

1499.8 To corner No. 2, identical with corner No. 3, Hazelwood No. 7 lode of this survey, previously described.

Thence N 43°53'W. Va. 13°25'E.

135.3 E. center end of Birdwell No. 11 lode, unsurveyed.

300. W. center end, a stone monument.

468.3 N.E. corner Birdwell No. 11 lode and S.E. corner Birdwell No. 13 lode, both unsurveyed.

600. To corner No. 3, identical with Cor. No. 2, Hazelwood No. 9 lode of this survey. A cross (x) chiseled on a granite rock 20x14x10 ins. and H 8 H 9, witnessed by a monument alongside. Add to chiseling 3-2-2846.

Whence:

X BR 3-2-2846 chiseled on a triangular granite rock 14x14x9 ins. brs. S 54°26'E, 14.45 ft.

X BR 3-2-2846 chiseled on a granite face 24x16 ins. brs. S 19°30'W, 17.05 ft.

Thence N 51°34'E. Va. 13°35'E.

1499.9 To corner No. 4 identical with corner No. 1, Hazelwood No. 9 lode of this survey, a cross (x) chiseled on a granite rock 18x7x10 ins. and H 8 H 9, witnessed by a monument alongside, Add to chiseling 4-1-2846.

Whence:

X BR 4-1-2846 chiseled on a granite rock 18x18x10 ins. brs. S 20°09'E, 11.2 ft.

X BR 4-1-2846 chiseled on a granite rock 24x18x10 ins. brs. S 43°45'W, 21.1 ft.

Thence S 43°53'E, Va. 13°15'E.

298.5 E. center end a stone monument.

598.5 To corner No. 1 the place of beginning.

Hazlewood lodes.

-9-

Feet.

HAZELWOOD NO. 9 LODGE.

Beginning at corner No. 1, the S.E. corner of location, identical with Cor. No. 4, Hazelwood No. 8 lode of this survey, previously described.

Whence:

The $\frac{1}{4}$ corner between sections 13-18, Tps 13 S, Rs 25 and 26 E, brs. S 50°43'E, 2625.4 ft.

Thence S 51°34'W. Va. 13°15'E.

1499.9 To corner No. 2, identical with corner No. 3 Hazelwood No. 8 lode of this survey, previously described.

Thence N 43°53'W. Va. 13°35'E.

195.0 Raise a stone monument $3\frac{1}{2}$ ft. base 3 ft. high for W. center end.

201.3 E. center end Birdwell No. 13 lode, 'unsurveyed.'

300. E. center end of location a stone monument.

495.0 To corner No. 3. Set a granite stone 15x9 ins. 24 ins. long, 12 ins. in ground, chiseled a cross (x) at exact point and H 9 3-2846. Raise a monument of stone alongside

Whence:

Corner of location a stone chiseled X H9, witnessed by a monument alongside, brs. N 43°53'W, 105.0 ft.

X BR 3-2846 chiseled on a granite rock 30x12x10 ins. brs. S 61°55'E, X 6.05 ft.

X BR 3-2846 chiseled on a granite rock 30x18x10 ins. brs. S 26°30'W, 7.25 ft.

Thence N 51°34'E, Va. 13°35'E.

1499.9 To corner No. 4. Set a granite stone 24x22x8 ins. on its side 6 ins. in the ground to bedrock, chiseled X at exact point and H 9 4-2846 and witnessed by a monument alongside.

Whence:

Corner of location a granite rock chiseled X H9, witnessed by a monument alongside, brs. N 43°53'W, 105.0 ft.

X BR 4-2846 chiseled on a granite rock 30x24x6 ins. brs. N 83°48'E, 9.6 ft.

X BR 4-2846 chiseled on a granite rock 10x8x2 ins. brs. S 4°21'E, 15.2 ft.

Hazlewood lodes.

-10-

- Feet. Thence S 43°53'E. Va. 13°15'E.
195. Monument of location, for E. center end.
300. Point for E. center end monument. Raise a mound of stone 4 ft. base, 3 ft. high.
- 495.0 To corner No. 1, the place of beginning.

HAZELWOOD NO. 10 LODE.

Beginning at corner No. 1, the S.W. corner of location on the line 1-4 of Hazlewood ~~No. 5~~ ^{Number Five} lode of this survey, a cross (x) chiseled on a porphyry rock exposing 12x3x8 ins. and H 10, witnessed by a monument alongside. Add to chiseling 1-2846.

Whence:

The $\frac{1}{4}$ corner between sections 13-18, Tps 13S, Rs 25 and 26 E, brs. S 83°12'E, 493.4 ft.

X BR 1-2846 chiseled on a porphyry face 48x36 ins. brs. S 20°56'W, 9.6 ft.

X BR 1-2846 chiseled on a porphyry face 24x18 ins. brs. S 56°01'E, 4.1 ft.

Corners Nos. 1 Hazlewood No. 3 and 1 Hazlewood Number Five lodes of this survey, brs. S 43°53'E, 172.7 ft.

Thence N 43°53'W, Va. 13°05'E.

- 1273 E. center end Hazlewood ~~No. 5~~ ^{Number Five} lode of this survey.
300. W. center end, a stone monument.
- 427.3 Corners No. 4, Hazlewood ~~No. 5~~ ^{Number Five} lode and 1, Hazlewood No. 6 lode, both of this survey.
600. To corner No. 2, a cross (x) chiseled on a porphyry rock exposing 8x5x12 ins., also H 10, witnessed by a monument alongside. Add to chiseling 2-2846.

Whence:

X BR 2-2846 chiseled on porphyry rock 8x16x2 ins. brs. N 87°25'W, 58.4 ft.

No other bearings available.

Thence N 51°33'E. Va. 12°45'E.

- 1147.73 Intersect line between sections 13-18, Tps 13 S, Rs 25 and 26 E, at N 0°20'W, 1204.56 ft. from $\frac{1}{4}$ section

Hazlewood lodes.

-11-

Feet.

- corner and S $0^{\circ}20'E$, 3904.04 ft. from the $\frac{1}{4}$ corner between sections 7-12, same township and ranges, which is a redwood stake $1\frac{1}{2} \times 1\frac{1}{2}$ ins. standing 10 ins. above ground scribed $\frac{1}{4}$ S on west side.
- 1499.5 To corner No. 3, a cross (x) chiseled on a porphyry rock exposing $10 \times 8 \times 12$ ins. and H 10, witnessed by a monument alongside. Add to chiseling 3-2846. X
- Whence:
- X BR 3-2846 chiseled on a porphyry face 30×18 ins. brs. S $12^{\circ}47'E$, 8.15 ft.
- X BR 3-2846 chiseled on a porphyry face 30×8 ins. brs. S $87^{\circ}28'E$, 7.3 ft.
- Thence S $43^{\circ}53'E$. Va. $13^{\circ}30'E$.
300. E. center end, a stone monument.
600. To corner No. 4, a cross (x) chiseled on a porphyry rock, exposing $12 \times 4 \times 8$ ins. and H 10, witnessed by a monument alongside. Add to chiseling 4-2846.
- Whence:
- X BR 4-2846 chiseled on a porphyry face 30×12 ins. brs. N $20^{\circ}41'W$, 20.0 ft.
- X BR 4-2846 chiseled on a porphyry face 36×18 ins. brs. S $25^{\circ}24'W$, 16.7 ft.
- Thence S $51^{\circ}33'W$, . Va. $13^{\circ}30'E$.
- 877.21 Intersect line between sections 13-18, Tps 13 S, Rs 25 and 26 E at N $0^{\circ}20'W$, 445.38 ft. from $\frac{1}{4}$ section corner and S $0^{\circ}20'E$, 4663.22 ft. from the $\frac{1}{4}$ cor. between 1300. Gulch 10 ft. wide, course easterly. secs. 7-12 same Tps and Rs.
- 1499.5 To corner No. 1, the place of beginning.

HAZLEWOOD NO. 4 LODE.

Beginning at corner No. 1, the S.E. corner of location and on line 3-4 Hazlewood No. 3 lode of this survey, a cross (x) chiseled on a porphyry rock, exposing $4 \times 4 \times 13$ ins. and H 4, also B 1, witnessed by a monument alongside. Add to scribing 1-2846. This corner is identical with N.E. corner of Birdwell No. 1 lode, unsurveyed.

Hazlewood lodes.

-12-

- Feet. Whence:
- X BR 1-2846 chiseled on a porphyry rock 24x18x5 ins. brs. S 32°12'W, 12.5 ft.
- X BR 1-2846 chiseled on a porphyry rock 48x12x14 ins. brs. N 74°06'W, 12.8 ft.
- The $\frac{1}{4}$ corner between sections 15-18, Tps 13 S, Rs 25-26 E, brs. N 44°39'E, 1806.5 ft.
Thence S 71°55'W, Va. 13°35'E.
313. N. center end Birdwell No. 1 lode, unsurveyed.
646. N.W. & N.E. Cor. Birdwell No. 1 & Birdwell No. 2 lodes, respectively.
979. N. center end Birdwell No. 2 lode, unsurveyed.
1312. N.W. Cor. Birdwell No. 2 lode, unsurveyed.
- 1498.5 To corner No. 2, a cross (x) chiseled on porphyry rock exposing 6x4x12 ins. H 4 B 6 it being with S.E. corner Birdwell No. 6 lode, unsurveyed, witnessed by a monument alongside. Add to scribing 2-2846.
- Whence:
- X BR 2-2846 chiseled on schist outcrop face 12x7 ins. brs. S 67°27'W, 6.2 ft.
- X BR 2-2846 chiseled on porphyry face 30x11 ins. brs. N 21°41'W, 12.15 ft.
- Thence N 45°53'W, Va. 13°15'E.
333. W. center end a stone monument.
666. To corner No. 3, a cross (x) chiseled on porphyry rock exposing 8x4x10 ins. H 4 B 6 B 7 B 8 it being identical with N.E. corner Birdwell No. 6 lode, S.E. Cor. Birdwell No. 8 lode, S.W. corner Birdwell No. 7 lode, all unsurveyed, witnessed by a monument alongside. Add to chiseling 3-2846.
- Whence:
- X BR 3-2846 chiseled on porphyry rock 12x10x4 ins. brs. S 56°24'E, 15.3 ft.
- X BR 3-2846 chiseled on porphyry rock 8x6x6 ins. brs. S 13°40'E, 11.0 ft.
- Thence N 71°55'E. Va. 13°15'E.
- 1498.5 To corner No. 4, a cross (x) chiseled on granite rock exposing 14x7x10 ins. H 4 B 7 it being identical with S.E. corner Birdwell No. 7 lode unsurveyed, witnessed by a monument alongside. Add to chiseling 4-2846.
- Whence:
- X BR 4-2846 chiseled on granite rock 36x20x12 ins.

- Feet.
- brs. S 45°35'E, 14.75 ft.
- X BR 4-2846 chiseled on granite 30x20 ins. brs. S 57° 30'W, 16.4 ft.
- Thence S 43°53'E. Va. 13°30'E.
- 270.3 Corners Nos. 2 Hazlewood No. ^{Number} Five lode, 4 Hazlewood No. 3 lode, both of this survey.
333. E. center end a stone monument.
- 570.3 W. center end Hazlewood No. 3 lode of this survey.
666. To corner No. 1 the place of beginning.

This survey is identical with location with the exception of the two center end monuments and corners Nos. 3 and 4 of Hazlewood No. 9 lode as fully described in above notes.

AREAS.

Acres.

Hazlewood No. 1 lode,	20.569 ✓
xx xx xxxx xxxxxx xxxxxx xxxxxx xxxxxx xxxxxx	
Hazlewood No. 2 lode,	20.569 ✓
Hazlewood No. 3 lode,	20.569 ✓
Hazlewood Number Five Lode,	20.569 ✓
Hazlewood No. 6 lode,	20.569 ✓
Hazlewood No. 7 lode,	20.553 ✓
Hazlewood No. 8 lode,	20.541 ✓
Hazlewood No. 9 lode,	16.967 ✓
Hazlewood No. 10 lode,	20.566 ✓
Hazlewood No. 4 lode,	20.627 ✓

LOCATION.

This claim is located in the Texas Mining District, Cochise County, Arizona, in Sec. 13, TP 13S, R 25E, and in sec. 16, Tp 13 S, R 26 E, unsurveyed.

The presumed course of the lode or veins on the claims of this survey are as follows:-

Hazlewood No. 1. From W. center end to E. center end N 51°29'E, 1499.8 ft.

Hazlewood No. 2. From W. center end to E. center end N 51°29'E, 1499.8 ft.

Hazlewood No. 3. From W. center end to E. center end

TFeet.

N 51°29'E, 1499.8 ft.
 Hazlewood Number Five From W. center end to E. center end
 N 51°29'E, 1499.8 ft.
 Hazlewood No. 6. From W. center end to east center end
 N 51°29'E, 1499.8 ft.
 Hazlewood No. 7, from W. center end to east center end
 N 51°29'E, 1499.8 ft.
 Hazlewood No. 8. From W. center end to E. center end
 N 51°31'E, 1499.8 ft.
 Hazlewood No. 9. From W. center end to E. center end
 N 51°34'E, 1499.9 ft.
 Hazlewood No. 10. From W. center end to E. center end
 N 51°33'E, 1499.5 ft.
 Hazlewood No. 4. From W. center end to E. center end
 N 71°55'E, 1498.5 ft.

ADJOINING CLAIMS.

~~On the North. Unknown claim, unsurveyed, claimant unknown.~~
 On the East. Unknown lode, unsurveyed. Claimant unknown.
 On the West. Birdwell Nos. 1-2-6-7-9-11-13 lodes, unsurveyed. Queen of Arizona Mining Company, claimant.
 On the South. Unknown lode, unsurveyed. Claimant unknown.

EXPENDITURE OF FIVE HUNDRED DOLLARS.

I certify that the value of labor and improvements made upon, or for the benefit of, each of the locations embraced in said mining claim by claimants or their grantors, is not less than five hundred dollars for each location, and said improvements consist of:-

- Hazlewood No. 1 lode.
- No. 1) From W. center end, Discovery shaft, center of which hrs. N 51°29'E, 330 ft. Shaft 6 ft. by 5 ft.- 24 ft. deep. Value at \$10. per ft..... \$240.
- No. 2) Center of shaft hrs. N 40°33'E, 927 ft. Shaft 4x6 ft- 8 ft. deep, caved,. Value,..... \$80.

Note: An undivided to interest in shaft No.2 on the Hazlewood No.3 lode is credited to this lode, Value \$463.50

Hazlewood lodes.

-15-

Feet. Hazlewood No. 2 lode.
 From W. center end.
 No. 1) Discovery cut, the southerly edge of which at mouth
 brs. N 51°29'E, 178. ft. Course of cut N 20°E, 14 ft.
 4 ft. wide, 10 ft. face. Value,..... \$100.
 No. 2) Center of shaft brs. N 31°45'E, 464 ft. Shaft 6 x
 4 ft., 10 ft. deep, thence N.easterly a cut 8x6 ft. to
 6 ft. face. Value of shaft, \$100. Value of cut \$75.
 Total value of improvements No. 2,..... \$175.
 No. 3) From corner No. 4.
 Incline shaft brs. N 61°49'E, 489.8 ft. Shaft 6x4 ft.
 40 ft. deep. Value at \$10.00 per ft.,..... \$400.
 From E. center end.
 No. 4) Center of shaft brs. S. 62°20'W, 475 ft.
 Shaft 6x4 ft. 20 ft. deep. Thence northeasterly a
 cut irregular 20 ft. average width 5 ft. average
 depth 5 ft. Value of shaft at \$10. per ft. \$200.
 Value of cut, \$150.
 Total value shaft and cut, \$350.
 No. 5) Center of shaft brs. S 58°08'W, 540 ft. Shaft
 7x5x15 ft. deep. Value,..... \$150.
 No. 6) Center of shaft brs. S 56°35'W, 442 ft. Shaft
 6x4 ft. 6 ft. deep. Value,..... \$40.
 No. 7) Center of a shaft brs. S 5°40'E, 259 ft. Shaft
 6x4 ft. 8 ft. deep. Thence a cut or open stope
 westerly 16 ft., 4 ft. wide, 2 to 8 ft. deep.
 Value of shaft,..... \$65.
 Value of cut,..... \$50.
 Total value shaft and cut,..... \$115.
 Note: An undivided 1/2 interest in shaft No. 2 on the Hazlewood No. 3 lode is credited to this lode. Value \$463.50
 Hazlewood No. 3 lode.
 From W. center end.
 No. 1) Discovery cut point in center of which brs. N 51°
 29'E, 158 ft. Course cut N.W. and S.E. Distance S.E.
 to mouth 24 ft. N.W. ~~cut~~ to face 6 ft. Thence
 tunnel same course 76 ft. to face. Thence tunnel
 easterly 45 ft. to face. Tunnel 6½x4½ ft.

Feet.

Value of cut,.....\$100.

Value 121 ft. of tunnel at \$10. per ft.

\$1210.

Total value cut and tunnel,..... \$1310.

From corner No. 3.

No. 2) Center of main shaft brs. N 31°45'E, 169.8 ft.

Shaft timbered, 6½x4 ft. in the clear 202.5 ft. deep.

At 80 ft. is a station and drifts. Northeasterly 25 ft. Northwesterly 59 ft. Southeasterly 5 ft.

At 200 ft. is a station and drift northeasterly 10 ft.

Value of shaft and timbering at \$18 per ft. \$3645.

Value of 99 ft. drifting at \$10. per ft. \$990.

Total value shaft and drifting,..... \$46355

Value of an undivided 1/8 interest credited to this lode, \$463.50

From corner No. 3.

No. 3) Mouth of cut and tunnel brs. N 21°05'E, 170 ft.

course of cut and tunnel N 62°45'E, distance to portal

5 ft. thence tunnel 52 ft. Value of cut, \$50.

Value of tunnel at \$10. per ft. \$520.

Total value cut and tunnel,..... \$570.

From corner No. 4

No. 4) Center of shaft brs. N 84°52'E, 409.7 ft. Shaft

7½x6 ft. 8 ft. deep. Value,..... \$100.

Hazlewood Number Five.

From W. center end.

No. 1) Discovery shaft brs. N 51°29'E, 83 ft. Shaft 4x6 ft.

10 ft. deep. Value,..... \$100.

From corner No. 3.

No. 2) Point over center of face of cut brs. N 88°13'E,

519 ft. course S.W. 10 ft. 4½ ft. wide to 8 ft. face,

Value,..... \$75.

Note: An undivided 1/8 interest in shaft No. 2 on the Hazlewood No. 3 lode is credited to this lode, Value, \$463.50
Hazlewood No. 6 lode.

From W. center end.

No. 1) S.E. corner discovery shaft brs. N 51°29'E, 60 ft.

Shaft 6x4 ft. and 10 ft. deep. Value,..... \$100.

Note: An undivided 1/8 interest in shaft No. 2 on the Hazlewood No. 3 lode is credited to this lode, Value, \$463.50
Hazlewood No. 7 lode. From W. center end,

No. 1) Center discovery shaft brs. N. 51°29'E. 28 ft., shaft 6 x 4 ft., 10 ft. deep, Value, \$100.

Feet.

Note: An undivided 1/10 interest in shaft No. 2 on the Hazlewood No. 3 lode is credited to this lode. Value \$463.50
 Hazelwood No. 8 lode.

From W, center end.

No. 1) Discovery shaft hrs. N 51°31'E, 62 ft. Shaft

6x4 ft. at top. 5x3 ft. at bottom, and 9 1/2 ft. deep.

Caved. Value, \$80.

Note: An undivided 1/10 interest in shaft No. 2 on the Hazlewood No. 3 lode is credited to this lode, Value \$463.50

Hazelwood No. 9 lode.

From W. center end.

No. 1) Center of discovery shaft bears N. 51°34'E, 347.0 ft.

Shaft 6x4 ft. 9 1/2 ft. deep, caved, Value, \$95.

Note: An undivided 1/10 interest in shaft No. 2 on the Hazlewood No. 3 lode is credited to this lode, Value \$463.50

Hazelwood No. 10 lode.

From W. center end.

No. 1) Face discovery cut hrs. N 51°33'E, 628 ft. Course

of cut N.E. 13 ft. 6 ft. wide to 8 ft. face. Value, \$85.

Note: An undivided 1/10 interest in shaft No. 2 on the Hazlewood No. 3 lode is credited to this lode, Value \$463.50

Hazlewood No. 4 lode.

From E. center end.

No. 1) S.W. corner discovery shaft hrs. S 71°55'W, 384 ft.

Shaft 4x6 ft. 10 ft. deep. Value, \$100.

No. 2) Center of foot wall inclined shaft hrs. S 59°32'W,

352 ft. Shaft 4x6 ft. 9 ft. deep. Dips S.W. Value, ... \$85.

Note: An undivided 1/10 interest in shaft No. 2 on the Hazlewood No. 3 lode is credited to this lode, Value \$463.50

Note: The claimants state that at the present, work on the group is concentrated at the main shaft situate at on the Hazlewood No. 3 lode which is being sunk and drifts run for the purpose of developing the groupe as a unit. The shaft is a perpendicular working shaft not sunk on a vein, is timbered in a workmanlike manner and the work is prosecuted by means of power drills with day and night shifts of men. The situation is well chosen for this purpose as the ground rises rapidly at the west, north, and east slopes but slightly to the southward.

Hence I consider that this shaft as common improvement to the ten locations and assign one tenth of its value, \$463.50 to each.

Total value of work performed \$2965.

HUST

Hazlewood lodes.

-18-

Feet.

OTHER IMPROVEMENTS.

Hazlewood No. 2.

From corner No. 3.

(1) S.W. corner wood and iron building used as cook house brs. N 40°12'E, 194.5 ft.

(2) N.W. corner wood and iron building used as bunk house brs. N 42°07'E, 198.9 ft.

From W. center end. used as

(3) N.W. corner frame building 14x14 ft. used as office, brs. N 84°02'E, 178.8 ft.

Hazlewood No. 3.

From corner No. 3.

(1) N.W. corner blacksmith shop, frame building covered with galvanized iron, 12x16 ft. brs. N 37°29'E, 170.6 ft.

(2) S.E. corner engine house, same material as above, 16x34 ft. brs. N 21°47'E, 124.6 ft. Contains Fairbanks-Morse gasoline hoisting engine and air compressor for machine drills.

INSTRUMENT.

This survey was made with a Young & Sons Mountain Transit No. 6855, provided with Smith solar attachment. The courses were deflected from true meridians as obtained by direct solar observations. The measurements were made with 500 and 50 ft. steel tapes.

Any discrepancies between this survey and notices of location are due to errors in the latter.

Tombstone, Arizona.

October 4, 1910.



U.S. Mineral Surveyor.

FINAL OATHS FOR SURVEYS.

LIST OF NAMES.

A list of the names of the individuals employed by

John A. Rockwell

United States ~~Deputy~~ Mineral Surveyor, to assist in running, measuring, and marking the lines, corners, and

boundaries described in the foregoing field notes of the survey of the mining claim of *The Cicero Smith Mining Co*

Hazlewood No 1, Hazlewood No 2, Hazlewood No 3, Hazlewood No 4, Hazlewood Number Five, Hazlewood No 6, Hazlewood No 7, Hazlewood No 8, Hazlewood No 9 and Hazlewood No 10

and showing the respective capacities in which they acted.

L. D. Ware, Chairman.

E. R. Wash, Chairman.

A. A. Benedict, Chairman

....., Flagman.

FINAL OATHS OF ASSISTANTS.

We,

and *John A. Rockwell*, do solemnly swear that we assisted

John A. Rockwell, United States ~~Deputy~~ Mineral Surveyor, in marking the corners and surveying

the boundaries of the mining claim of *The Cicero Smith Mining Co*
Hazlewood No 1, Hazlewood No 2, Hazlewood No 3, Hazlewood No 4, Hazlewood Number Five, Hazlewood No 6, Hazlewood No 7, Hazlewood No 8, Hazlewood No 9 and Hazlewood No 10
known as the

represented in the foregoing field notes as having been surveyed by said ~~deputy~~ mineral surveyor and under his direction; and that said survey has been in all respects, to the best of our knowledge and belief, faithfully and correctly executed, and the corner and boundary monuments established according to law and the instructions furnished by the United States Surveyor-General for *Arizona*

L. D. Ware, Chairman.

E. R. Wash, Chairman.

A. A. Benedict, Chairman

....., Flagman.

Subscribed and sworn to by the above-named persons before me this *5th*

day of *October*, 19*12*.

My Commission expires *Samuel L. Rockwell*
Oct 15 1912 Notary Public

FINAL OATH OF U. S. ~~DEPUTY~~ MINERAL SURVEYOR

I, John A. Rockefeller, U. S. ~~Deputy~~ Mineral Surveyor, do solemnly swear that, in pursuance of instructions received from the United States Surveyor General for Arizona, dated Aug 9 1910, I have, in strict conformity to the laws of the United States, the official regulations and instructions thereunder, and the instructions of said Surveyor General, faithfully and correctly executed the survey of the Mining Claim of The Cicero Smith Mining Co

Hazelwood No 1 Hazelwood No 2 Hazelwood No 3 Hazelwood No 4 Hazelwood No 5 Hazelwood No 6 Hazelwood No 7 Hazelwood No 8 Hazelwood No 9 and Hazelwood No 10, known as the Hazelwood Mine, situated in Levi Mining District,

Cochise County, Arizona, in Section

13, Township No. 12 S, Range No. 25 E and 18 and designated as "Survey" No. 2846, as represented

in the foregoing field notes, which accurately show the boundaries of said mining claim as distinctly marked by monuments on the ground, and described in the attached copy of the location certificate, which was received by me from the Surveyor General with said instructions, and that all the corners of said survey have been established and perpetuated in strict accordance with the law, official regulations and instructions thereunder; and I do further solemnly swear that the foregoing are the true and original field notes of said survey and my report therein, and that the labor expended and improvements made upon said mining claim by claimant or its grantors are as therein fully stated, and that the character, extent, location and itemized value thereof are specified therein with particularity and full detail, and that no portion of said labor or improvements so credited to this claim has been included in the estimate of expenditures upon any other claim.

John A. Rockefeller
U. S. ~~Deputy~~ Mineral Surveyor.

Subscribed and sworn to by the said John A. Rockefeller
U. S. ~~Deputy~~ Mineral Surveyor, before me Samuel L. Rockefeller
this 5th
day of October 1910

My commission expires ³⁻¹⁵⁴ Oct 15 1912

Samuel L. Rockefeller
Notary Public

Notice of Mining Location

LODE CLAIM

To All Whom It May Concern:

This Mining Claim, the name of which is the Hazlewood No 1 Mining Claim, situate on lands belonging to the United States of America, and in which there are valuable mineral deposits, was entered upon and located for the purposes of exploration and purchase by Chas. Anson & G. W. Hazlewood and J. R. Hill

citizens of the United States
(Locator must insert either "a citizen of the United States," or, "who has declared his intention to become a citizen of the United States.")

the undersigned, on the 16th day of July 1908.

The length of this claim is Fifteen Hundred Feet feet,
and this claim is two hundred and twenty-six feet,
in a south-westerly direction and Twelve Hundred

seventy-four feet in a North-easterly direction from
the center of the discovery shaft, at which this notice is posted, lengthwise of the claim, together
with Three Hundred feet in width of the surface grounds, on each
side of the center of said claim. The general course of the lode deposit and premises is from the

North-easterly XXX to the South-westerly
The claim is situated and located in the Tevis Mining District, in
Cochise County, in the Territory of Arizona, about three miles
in a Southerly direction from the Southern Pacific Railroad,

and is about six miles from Willcox, on the Burnt House Canon
and lie on the north-west spur of the Dos Cabezas Mountains.

The surface boundaries of the claim are marked upon the ground as follows: Beginning at
a monument of stones

at a point in a southerly direction about 260 feet from
the discovery shaft (at which this notice is posted), being in the center of the south-west
end line of said claim; thence three hundred feet to a monument
of stones, being the south-east corner of said claim; thence
fifteen hundred feet to a monument of stones, being at the
north-east corner of said claim; thence three hundred feet
to a monument of stones at the center of the northeast end of said claim;
thence three hundred X feet to a monument of stones, being at the
north-west corner of said claim; thence fifteen hundred
feet to a monument of stones at the south-west corner of said claim;
thence three hundred feet to the place of beginning.

All done under the provisions of Chapter Six, of Title XXXII, of the Revised Statutes of
the United States, and of an Act of the General Assembly of Arizona, entitled "An Act to
Revise and Codify the Laws of the Territory of Arizona," approved March 16, 1901.

Dated and posted on the ground this 16th day of July 1908

Charley Hazlewood
Anson Hazlewood
G. W. Hazlewood
J. R. Hill

TERRITORY OF ARIZONA, }
County of..... COCHISE } ss

I, *P. J. McDonald*, County Recorder in and for the County and Territory aforesaid, do hereby certify that the within instrument was filed for record at..... o'clock,..... M., on this..... day of..... *JUL 17 1908* 190..., and duly recorded in Book No..... *42* of..... *MINING* Records of..... *COCHISE* County, Arizona, at pages..... *182*

WITNESS my hand and official seal the day and year first above written.

..... *P. J. McDonald*
County Recorder.

3334

AUG 2-1910
COMPALED

Notice of Location

LODE CLAIM

Dated..... 190.....

Filed and Recorded at request of

Norton Morgan Commercial Co.

JUL 17 1908 A. D. 190.....

at..... *9* M.

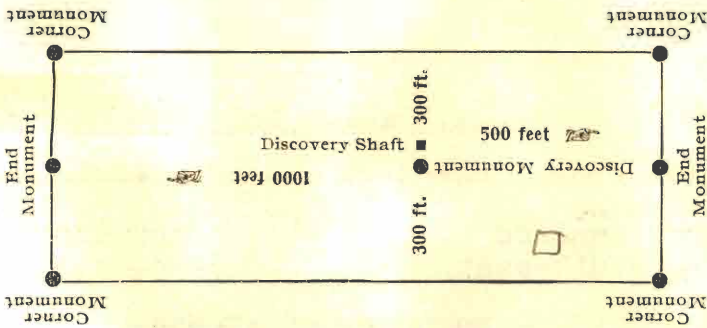
Book *No 42* Record of *Miners*

Pages *182*

..... *P. J. McDonald*
County Recorder.

By.....
Deputy Recorder.

WILCOX, ARIZ.



This diagram is to give locator a general idea of plan of location under the new law. The Discovery Shaft can be in the center of claim or any distance from either end desired. In the diagram it is placed 500 feet from one end and 1000 feet from the other. Commence description of claim at a center end monument, giving its distance and direction from center of Discovery Shaft; thence bound the claim in either direction. In description be careful to state locality of claim with reference to some natural object, or permanent monument, as will identify the claim.

Notice of Mining Location

LODE CLAIM

To All Whom It May Concern:

This Mining Claim, the name of which is the Hazlewood No. 2.
Mining Claim, situate on lands belonging to the United States of America, and in which there are valuable mineral deposits, was entered upon and located for the purposes of exploration and purchase by Charles Anson & G. W. Hazlewood and J. R. Hill
citizens of the United States.

(Locator must insert either "a citizen of the United States," or, "who has declared his intention to become a citizen of the United States.")

the undersigned, on the 16th day of July 1908.

The length of this claim is fifteen hundred feet,
and this claim is about seven hundred fifty feet,
in a northeasterly direction and about seven
hundred fifty feet in a south-westerly direction from
the center of the discovery shaft, at which this notice is posted, lengthwise of the claim, together
with three hundred feet in width of the surface grounds, on each
side of the center of said claim. The general course of the lode deposit and premises is from the
northeasterly to the southwesterly

The claim is situated and located in the Tevis Mining District, in
Cochise County, in the Territory of Arizona, about three miles
in a southerly direction from Southern Pacific Railroad
and about 6 miles from Wilcox, in Burnt House Canon, and lies
on the north-west spur of the Dos Cabezas Mountains,
and parallel to Hazlewood No. 1.

The surface boundaries of the claim are marked upon the ground as follows: Beginning at

a monument of stones
at a point in a southwesterly direction about seven hundred fifty feet from
the discovery shaft (at which this notice is posted), being in the center of the southwest
end line of said claim; thence three hundred feet to a monument
of stones, being the southeast corner of said claim; thence
fifteen hundred feet to a monument of stones, being at the
northeast corner of said claim; thence three hundred feet
to a monument of stones at the center of the northeast end of said claim;
thence three hundred feet to a monument of stones, being at the
northwest corner of said claim; thence fifteen hundred
feet to a monument of stones at the south-west corner of said claim;
thence three hundred feet to the place of beginning.

All done under the provisions of Chapter Six, of Title XXXII, of the Revised Statutes on
the United States, and of an Act of the General Assembly of Arizona, entitled "An Act to
Revise and Codify the Laws of the Territory of Arizona," approved March 16, 1901.

Dated and posted on the ground this 16th day of July 1908,

Charles Hazlewood
Anson Hazlewood
G. W. Hazlewood
J. R. Hill

County of COCHISE } ss

I, R. McDonald, County Recorder in and for the County and Territory aforesaid, do hereby certify that the within instrument was filed for record at 9 o'clock, A. M., on this JUL 17 1908, 190, and duly recorded in Book No. H 2 of MINING Records of COCHISE County, Arizona, at pages 183

WITNESS my hand and official seal the day and year first above written.

R. McDonald County Recorder.

LB 3335 AUG 2-1910

COMPARED

Notice of Location

LODE CLAIM

Dated 190

Filed and Recorded at request of

Norton-Morgan Commercial Co

JUL 17 1908 A. D. 190

at 9 A. M.

Book No. H 2 Record of Mines

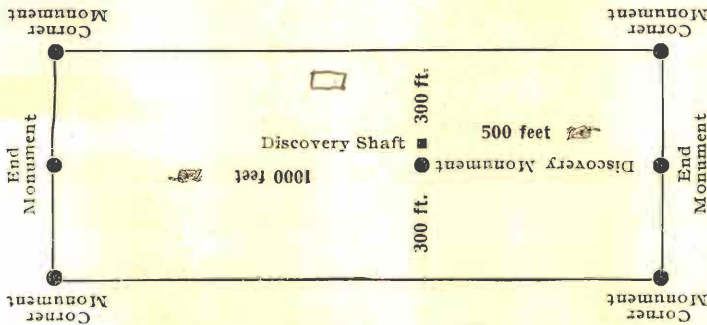
Pages 182

R. McDonald

County Recorder.

Deputy Recorder.

WILCOX, ARIZ



This diagram is to give locator a general idea of plan of location under the new law. The Discovery Shaft can be in the center of claim or any distance from either end desired. In the diagram it is placed 500 feet from one end and 1000 feet from the other. Commence description of claim at a center end monument, giving its distance and direction from center of Discovery Shaft; thence bound the claim in either direction. In description be careful to state locality of claim with reference to some natural object, or permanent monument, as will identify the claim.

Notice of Mining Location

LODE CLAIM

To All Whom It May Concern:

This Mining Claim, the name of which is the Hazlewood No. 3 Mining Claim, situate on lands belonging to the United States of America, and in which there are valuable mineral deposits, was entered upon and located for the purposes of exploration and purchase by Charles Anson, G. W. Hazlewood and J. R. Hill

citizens of the United States
(Locator must insert either "a citizen of the United States," or, "who has declared his intention to become a citizen of the United States.")

the undersigned, on the 16th day of July 1908.

The length of this claim is fifteen hundred feet, and this claim is about one hundred and fifty feet, in a south-westerly direction and thirteen hundred and fifty feet in a northeasterly direction from the center of the discovery shaft, at which this notice is posted, lengthwise of the claim, together with three hundred feet in width of the surface grounds, on each side of the center of said claim. The general course of the lode deposit and premises is from the north east to the south-west.

The claim is situated and located in the Tevis Mining District, in Cochise County, in the Territory of Arizona, about three miles in a southernly direction from the S. P. Railroad and about six miles from Willcox, and lies on the north-west spur of the Dos Cabezas Mountains, and parallel to the

Hazlewood No. 2., in Burnt House Canon.
The surface boundaries of the claim are marked upon the ground as follows: Beginning at

a monument of stones

at a point in a south-westerly direction about one hundred fifty feet from the discovery shaft (at which this notice is posted), being in the center of the south-west end line of said claim; thence three hundred feet to a monument of stones, being the south-east corner of said claim; thence fifteen hundred feet to a monument of stones, being at the north-east corner of said claim; thence three hundred feet to a monument of stones at the center of the north-east end of said claim; thence three hundred feet to a monument of stones, being at the north-west corner of said claim; thence fifteen hundred feet to a monument of stones at the south-west corner of said claim; thence three hundred feet to the place of beginning.

All done under the provisions of Chapter Six, of Title XXXII, of the Revised Statutes of the United States, and of an Act of the General Assembly of Arizona, entitled "An Act to Revise and Codify the Laws of the Territory of Arizona," approved March 16, 1901.

Dated and posted on the ground this 16th day of July 1908

Charles Hazlewood
Anson Hazlewood
G. W. Hazlewood
J. R. Hill

TERRITORY OF ARIZONA,
County of..... COCHISE } ss

I, Edmond, County Recorder in and for the County and Territory aforesaid, do hereby certify that the within instrument was filed for record at o'clock, M., on this day of JUL 17 1908 190., and duly recorded in Book No. H 2 of MINING Records of COCHISE County, Arizona, at pages 184

WITNESS my hand and official seal the day and year first above written.

Edmond
County Recorder.

LA 3336
AUG 2-1910

COMPARED

Notice of Location

LODE CLAIM

Dated 190.

Filed and Recorded at request of

Norton-Morgan Commercial Co.

JUL 17 1908 A. D. 190

at M.

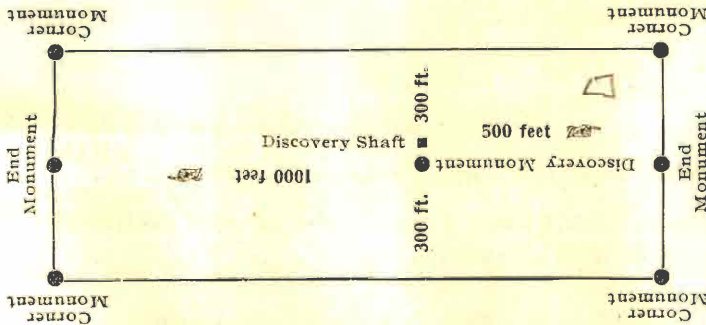
Book No. H-2 - Bend of Mills

Pages 184

Edmond
County Recorder.

By Deputy Recorder.

WILCOX, ARIZ



This diagram is to give locator a general idea of plan of location under the new law. The Discovery Shaft can be in the center of claim or any distance from either end desired. In the diagram it is placed 500 feet from one end and 1000 feet from the other. Commence description of claim at a center end monument, giving its distance and direction from center of Discovery Shaft; thence bound the claim in either direction. In description be careful to state locality of claim with reference to some natural object, or permanent monument, as will identify the claim.

Notice of Mining Location

LODE CLAIM

To All Whom It May Concern:

This Mining Claim, the name of which is the Hazlewood No. 4 Mining Claim, situate on lands belonging to the United States of America, and in which there are valuable mineral deposits, was entered upon and located for the purposes of exploration and purchase by Charles Anson & G. W. Hazlewood and J. R. Hill citizens of the United States.

(Locator must insert either "a citizen of the United States," or, "who has declared his intention to become a citizen of the United States.")

the undersigned, on the 16th day of July 1908
The length of this claim is fifteen hundred & 7 feet,
and this claim is about three hundred feet,
in a easterly ~~XXXXXXXX~~ direction and twelve hundred
feet in a westerly direction from
the center of the discovery shaft, at which this notice is posted, lengthwise of the claim, together
with three hundred feet in width of the surface grounds, on each
side of the center of said claim. The general course of the lode deposit and premises is from the
east to the west

The claim is situated and located in the Tevis Mining District, in
Cochise County, in the Territory of Arizona, about three miles
in a southerly direction from S. P. Railroad
and about six miles from Willcox on the north-west spur of
the Dos Cabezas Mountains, in Burnt House Canon, and runs
parallel to the south-west end of Hazlewood No. 3.

The surface boundaries of the claim are marked upon the ground as follows: Beginning at
Monument of stones

at a point in a easterly direction about 300 feet from
the discovery shaft (at which this notice is posted), being in the center of the east
end line of said claim; thence three hundred feet to a monument of stones
north-east, being the corner of said claim; thence
fifteen hundred feet to a monument of stones, being at the
north-west corner of said claim; thence three hundred feet
to a monument of stones at the center of the west end of said claim;
thence three hundred feet to a monument of stones, being at the
south-west corner of said claim; thence fifteen hundred
feet to a monument of stones at the south-east corner of said claim;
thence three hundred feet to the place of beginning.

All done under the provisions of Chapter Six, of Title XXXII, of the Revised Statutes of the United States, and of an Act of the General Assembly of Arizona, entitled "An Act to Revise and Codify the Laws of the Territory of Arizona," approved March 16, 1901.

Dated and posted on the ground this 16th day of July 1908

Charles Hazlewood
Anson Hazlewood
G. W. Hazlewood
J. R. Hill

TERRITORY OF ARIZONA,
County of..... COCHISE } ss

I,..... *C. M. McDonald*....., County Recorder in and for the County and Territory aforesaid, do hereby certify that the within instrument was filed for record at..... o'clock,..... M., on this..... day of..... JUL 17 1908..... 190....., and duly recorded in Book No..... # 2 of..... MINING..... Records of..... COCHISE..... County, Arizona, at pages..... 185.....

WITNESS my hand and official seal the day and year first above written.

..... *C. M. McDonald*.....
County Recorder.

AUG 2-1910

3327

COMPARED

Notice of Location

LODE CLAIM

Dated..... 190.....

Filed and Recorded at request of

Norton-Morgan Commercial Co.

JUL 17 1908
A. D. 190.....

at..... M.

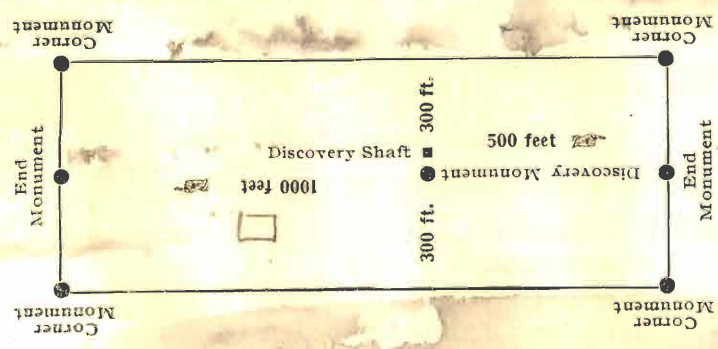
Book No. 47 Record of Mines

Pages 185

..... *C. M. McDonald*.....
County Recorder.

By.....
Deputy Recorder.

WILCOX, ARIZ.



This diagram is to give locator a general idea of plan of location under the new law. The Discovery Shaft can be in the center of claim or any distance from either end desired. In the diagram it is placed 500 feet from one end and 1000 feet from the other. Commence description of claim at a center end monument, giving its distance and direction from center of Discovery Shaft; thence bound the claim in either direction. In description be careful to state locality of claim with reference to some natural object, or permanent monument, as will identify the claim.

Notice of Mining Location

LODE CLAIM

To All Whom It May Concern:

This Mining Claim, the name of which is the Hazlewood Number Five Mining Claim, situate on lands belonging to the United States of America, and in which there are valuable mineral deposits, was entered upon and located for the purposes of exploration and purchase by Charley Anson G. W. Hazlewood & J. R. Hill Citizens of the United States

(Locator must insert either "a citizen of the United States," or, "who has declared his intention to become a citizen of the United States.")

the undersigned, on the 18th day of July 1908

The length of this claim is 1500 feet, and the claim is about one hundred feet, in a South West direction and about 1400 feet in a North & Eastern direction from the center of the discovery shaft, at which this notice is posted, lengthwise of the claim, together with 300 feet in width of the surface grounds, on each side of the center of said claim. The general course of the lode deposit and premises is from the East to the West

The claim is situated and located in the Levis Mining District, in Coconino County, in the Territory of Arizona, about three miles

in a Southwardly direction from the S. P. Rail Road and about six miles from Wilcox on the North West spur of the Poo Cabezas

Mountains in Burnett House Corner and Parallel to the West of Hazlewood No. 3 Number Three

The surface boundaries of the claim are marked upon the ground as follows: Beginning at

a monument of stone about one hundred feet

at a point in a Southwardly direction about one hundred feet from the discovery shaft (at which this notice is posted), being in the center of the

end line of said claim; thence (300) three hundred feet to a monument of stone, being the South East corner of said claim; thence

fifteen hundred feet to a monument, being at the North East corner of said claim; thence in a Southwardly direction

feet to a monument at the center of the North End of said claim; thence three hundred feet to a monument, being at the

North West corner of said claim; thence in a Southwardly direction fifteen feet to a monument at the South West corner of said claim;

thence three hundred feet to the place of beginning.

All done under the provisions of Chapter Six, of Title XXXII, of the Revised Statutes of the United States, and of an Act of the General Assembly of Arizona, entitled "An Act to Revise and Codify the Laws of the Territory of Arizona," approved March 16, 1901.

Dated and posted on the ground this 28 day of July 1908

Charley Hazlewood
Anson Hazlewood
G. W. Hazlewood
J. R. Hill

TERRITORY OF ARIZONA,
County of..... COCHISE } ss

I, *Edmond* County Recorder in and for the County and Territory aforesaid, do hereby certify that the within instrument was filed for record at o'clock, M., on this day of JUL 31 1908 190..., and duly recorded in Book No. 42 of MINING Records of COCHISE County, Arizona, at pages 211

WITNESS my hand and official seal the day and year first above written.

..... *Edmond* County Recorder.

90 95/5
AUG 2- 1910

COMPARATIVE

Notice of Location

LODE CLAIM

5000 each

Dated 190.....

Filed and Recorded at request of
Union Hazelwood

JUL 31 1908 A. D. 190.....

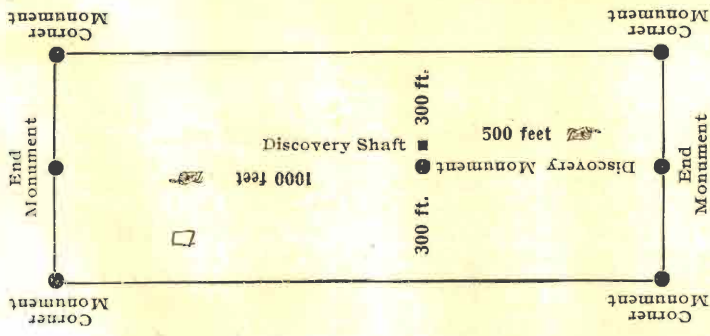
at 9 M.

Book 42 Record Mines

Pages 211

By *Edmond* County Recorder.
..... Deputy Recorder.

Ed Mineral Wells Texas



This diagram is to give locator a general idea of plan of location under the new law. The Discovery Shaft can be in the center of claim or any distance from either end desired. In the diagram it is placed 500 feet from one end and 1000 feet from the other. Commence description of claim at a center end monument, giving its distance and direction from center of Discovery Shaft; thence bound the claim in either direction. In description be careful to state locality of claim with reference to some natural object, or permanent monument, as will identify the claim.

Notice of Mining Location

LODE CLAIM

AUG-2-1910

To All Whom It May Concern:

This Mining Claim, the name of which is the Hazlewood No. 6 Mining Claim, situate on lands belonging to the United States of America, and in which there are valuable mineral deposits, was entered upon and located for the purposes of exploration and purchase by Chas. Hazelwood, Ansen Hazelwood, G. W. Hazelwood, J. R. Hill, and Cicero Smith. Citizens of the U. S.

(Locator must insert either "a citizen of the United States," or, "who has declared his intention to become a citizen of the United States.")

the undersigned, on the 1st day of December 1908

The length of this claim is 1500 feet, and We claim 62 feet, in a Southwesterly direction and 1438 feet in a Northeasterly direction from

the center of the discovery shaft, at which this notice is posted, lengthwise of the claim, together with 300 feet in width of the surface grounds, on each side of the center of said claim. The general course of the lode deposit and premises is from the Southwest to the Northeast N. 51° 29' E.

The claim is situated and located in the Tevis Mining District, in Cochise County, in the Territory of Arizona, about 2 miles in a Southerly direction from The S. P. Railroad on the north end of the Dos Cabezas Mountains from the N. W. Corner the Semaphore pole at Glade Station S.P.R.R., bears N. 8° 51' W. 12049 ft.

The surface boundaries of the claim are marked upon the ground as follows: Beginning at

A monument

at a point in a Southwesterly direction 62 feet from the discovery shaft (at which this notice is posted), being in the center of the West end line of said claim; thence N. 43° 53' W. 300 feet to a Stone marked with a cross (X) witnessed by a monument alongside being the N. W. corner of said claim; thence N 51° 29' E 1500 feet to a stone marked with a cross witnessed by a monument alongside, being at the N. E. corner of said claim; thence S 43° 53' E 300 feet to a monument at the center of the East end of said claim; thence Same course 300 feet to a Stone marked with a cross, witnessed by a monument alongside, being at the S. E. corner of said claim; thence S 51° 29' W 1500 feet to a Stone marked with a cross at the S. W. corner of said claim; thence N 43° 53' W. 300 feet to the place of beginning.

All done under the provisions of Chapter Six, of Title XXXII, of the Revised Statutes on the United States, and of an Act of the General Assembly of Arizona, entitled "An Act to Revise and Codify the Laws of the Territory of Arizona," approved March 16, 1901.

Dated and posted on the ground this 1st day of December 1908.

Chas. Hazelwood
Anson Hazelwood
G. W. Hazelwood
J. R. Hill
Cicero Smith

Filed and recorded at request of Anson Hazelwood, Jan. 19, 1909, at 9: A. M. in Book 43 Record of Mines, at Page 42.

Notice of Mining Location

AUG 2- 1910

LODE CLAIM

To All Whom It May Concern:

This Mining Claim, the name of which is the Hazelwood No. 7
 Mining Claim, situate on lands belonging to the United States of America, and in which there
 are valuable mineral deposits, was entered upon and located for the purposes of exploration and
 purchase by Chas. Hazelwood, Ansen Hazelwood, G. W. Hazelwood, J. R. Hill, and Cicero Smith
Citizens of the U. S.
 (Locator must insert either "a citizen of the United States," or, "who has declared his intention to become a citizen of the United States.")

the undersigned, on the 1st day of December 1908

The length of this claim is 1500 feet,
 and We claim 29 feet,
 in a Southwesterly direction and 1471
 feet in a Northeasterly direction from
 the center of the discovery shaft, at which this notice is posted, lengthwise of the claim, together
 with 300 feet in width of the surface grounds, on each
 side of the center of said claim. The general course of the lode deposit and premises is from the
Southwest to the Northeast N 51° 29' E

The claim is situated and located in the Tevis Mining District, in
Cochise County, in the Territory of Arizona, about 2 miles
 in a Southerly direction from S. P. Railroad on the North end
 of the Dos Cabezas Mountains. From the S. W. Corner the Semaphore
 pole at Glade Station S. P. R. R. bears N 8° 51' W 12049 ft.

The surface boundaries of the claim are marked upon the ground as follows: Beginning at
A Monument

at a point in a Southwesterly direction 29 feet from
 the discovery shaft (at which this notice is posted), being in the center of the West
 end line of said claim; thence cross (X) witnessed by a monument alongside
N 43° 53' W 300 feet to a Stone marked with a
N. W. corner of said claim; thence
N 51° 29' E 1500 feet to a Stone marked with a cross being at the
N. E. corner of said claim; thence S 43° 53' E 300 feet
 to a Monument at the center of the East end of said claim;
 thence Same Course 300 feet to a Stone marked with a, being at the
S. E. corner of said claim; thence S 51° 29' W 1500
witnessed by a monument alongside
feet to a Stone marked with a cross at the S. W. corner of said claim;
 thence N 43° 53' W 300 feet to the place of beginning.

All done under the provisions of Chapter Six, of Title XXXII, of the Revised Statutes of
 the United States, and of an Act of the General Assembly of Arizona, entitled "An Act to
 Revise and Codify the Laws of the Territory of Arizona," approved March 16, 1901.

Dated and posted on the ground this 1st day of December 1908.

Chas. Hazelwood
Ansen Hazelwood
G W Hazelwood
J R Hill
Cicero Smith

Filed and recorded at request of Ansen Hazelwood, Jan. 19, 1909, at
 9: A. M. in Book 43 Records of Mines, at Page 43

Notice of Mining Location

AUG 2-1910

LODE CLAIM

To All Whom It May Concern:

This Mining Claim, the name of which is the Hazelwood No. 8 Mining Claim, situate on lands belonging to the United States of America, and in which there are valuable mineral deposits, was entered upon and located for the purposes of exploration and purchase by Chas. Hazelwood, Ansen Hazelwood, G. W. Hazelwood, J. R. Hill, and Cicero Smith Citizens of the U. S.
(Locator must insert either "a citizen of the United States," or, "who has declared his intention to become a citizen of the United States.")

the undersigned, on the 1st day of December 1908

The length of this claim is 1500 feet, and We claim 60 feet, in a Southwesterly direction and 1440 feet in a Northeasterly direction from the center of the discovery shaft, at which this notice is posted, lengthwise of the claim, together with 300 feet in width of the surface grounds, on each side of the center of said claim. The general course of the lode deposit and premises is from the Southwest to the Northeast N 51° 29' E

The claim is situated and located in the Tevis Mining District, in Cochise County, in the Territory of Arizona, about 1 3/4 Miles in a Southerly direction from the S. P. Railroad on the North end of Dos Cabezas Mts. From the N. W. Corner the Semaphore Pole at Glade Station, S. P. R. R. bears N 5° 17' W 11087 ft.

The surface boundaries of the claim are marked upon the ground as follows: Beginning at A Monument

at a point in a Southwesterly direction 60 feet from the discovery shaft (at which this notice is posted), being in the center of the West end line of said claim; thence N 43° 53' W 300 feet to a Stone marked with a cross (X) witnessed by being the N. W. corner of said claim; thence N 51° 29' E 1500 feet to a Stone marked with a cross witnessed by a monument alongside at the N. E. corner of said claim; thence S 43° 53' E. 300 feet to a Monument at the center of the East end of said claim; thence Same Course 300 feet to a Stone marked with a, being at the S. E. corner of said claim; thence S 51° 29' W 1500 feet to a stone marked with a cross at the S. W. corner of said claim; thence N 43° 53' W 300 feet to the place of beginning.

All done under the provisions of Chapter Six, of Title XXXII, of the Revised Statutes of the United States, and of an Act of the General Assembly of Arizona, entitled "An Act to Revise and Codify the Laws of the Territory of Arizona," approved March 16, 1901.

Dated and posted on the ground this 1st day of December 1908.

Chas. Hazelwood
Ansen Hazelwood
G. W. Hazelwood
J. R. Hill
Cicero Smith

Filed and recorded at request of Ansen Hazelwood, Jan. 19, 1909, at 9: A. M., in Book 43, Record of Mines, at Page 44.

Notice of Mining Location

LODE CLAIM

AUG 2-1910

To All Whom It May Concern:

This Mining Claim, the name of which is the Hazelwood No. 9 Mining Claim, situate on lands belonging to the United States of America, and in which there are valuable mineral deposits, was entered upon and located for the purposes of exploration and purchase by Chas. Hazelwood, Ansen Hazelwood, G. W. Hazelwood, J. R. Hill, Cicero Smith. Citizens of the U. S.

(Locator must insert either "a citizen of the United States," or, "who has declared his intention to become a citizen of the United States.")

the undersigned, on the 1st day of December 1908

The length of this claim is 1500 feet, and We claim 357 feet, in a Southwesterly direction and 1143 feet in a Northeasterly direction from the center of the discovery shaft, at which this notice is posted, lengthwise of the claim, together with 300 feet in width of the surface grounds, on each side of the center of said claim.

The general course of the lode deposit and premises is from the Southwest to the Northeast N 51° 29' E

The claim is situated and located in the Tevis Mining District, in Cochise County, in the Territory of Arizona, about 1 3/4 Mile in a Southerly direction from S. P. Railroad on the North end of the Dos Cabezas Mountains, From the S. W. Corner the Semophore pole at Glade Station on the S. P. R. E. bears N 5° 17' W 11087 ft.

The surface boundaries of the claim are marked upon the ground as follows: Beginning at

A Monument

at a point in a Southwesterly direction 357 feet from the discovery shaft (at which this notice is posted), being in the center of the West end line of said claim; thence N 43° 53' W 300 feet to a Stone marked with a cross (X) witnessed, being the N. W. corner of said claim; thence N 51° 29' E 1500 feet to a Stone marked with a cross, being at the N. E. corner of said claim; thence S 43° 53' E 300 feet to a Monument at the center of the East end of said claim; thence Same Course 300 feet to a Stone marked with a cross, being at the S. E. corner of said claim; thence S 51° 39' E 1500 feet to a stone marked with a cross at the S. W. corner of said claim; thence N 43° 53' W. 300 feet to the place of beginning.

All done under the provisions of Chapter Six, of Title XXXII, of the Revised Statutes of the United States, and of an Act of the General Assembly of Arizona, entitled "An Act to Revise and Codify the Laws of the Territory of Arizona," approved March 16, 1901.

Dated and posted on the ground this 1st day of December 1908

Chas. Hazelwood
Ansen Hazelwood
G. W. Hazelwood
J. R. Hill
Cicero Smith

Filed and recorded at request of Ansen Hazelwood, Jan. 19, 1909, at 9: A. M., in Book 43 Record of Mines, at Page 45.

TERRITORY OF ARIZONA)
) SS.
 COUNTY OF COCHISE)

I, C. A. McDonald, County Recorder in and for the County of Cochise, and Territory of Arizona, do hereby certify that I have compared the annexed and foregoing copy with the original Location Notice of the Hazelwood No. 9, filed for record in my office on the 19 day of January, 1909, and recorded in Book 43 of Mining Locations, at pages 45, and that the same is a full, true and correct copy of said original and of the whole thereof.

Given under my hand and official seal, this the 20th day of July, A. D. 1910.

C. A. McDonald
 County Recorder.

Notice of Mining Location

AUG 2-1910

LODE CLAIM

To All Whom It May Concern:

This Mining Claim, the name of which is the Hazelwood No. 10 Mining Claim, situate on lands belonging to the United States of America, and in which there are valuable mineral deposits, was entered upon and located for the purposes of exploration and purchase by Cicero Smith Mining Company
Anson Hazelwood General Manager

(Locator must insert either "a citizen of the United States," or, "who has declared his intention to become a citizen of the United States.")

the undersigned, on the 3d day of February 1909

The length of this claim is 1500 feet,
and We claim 726 feet,
in a southwesterly direction and 774
feet in a Northeasterly direction from

the center of the discovery shaft, at which this notice is posted, lengthwise of the claim, together with 300 feet in width of the surface grounds, on each side of the center of said claim. The general course of the lode deposit and premises is ~~from the~~
N. 51° 33' E. from W. Center End to the East Center End

The claim is situated and located in the Tevis Mining District, in Cochise County, in the Territory of Arizona, about 7 miles
in an E. N. Easterly direction from the town of Willcox approximately
in Sec. 13, Tp. 13, S. R. 25 E. From the N. W. Corner the Semaphore Pole at Glade Station on the S.P.R.R. bears N. 16° 28' W. 11720 Ft.

The surface boundaries of the claim are marked upon the ground as follows: Beginning at
A monument of stones on the East end line of the Hazelwood No. 5 claim.

at a point in a South Westerly direction 726 feet from
the discovery shaft (at which this notice is posted), being in the center of the West
end line of said claim; thence N 43° 53' W 300 feet to a stone marked with a
monument of stone
cross witnessed by a, being the N. W. corner of said claim; thence
N. 51° 33' E. 1500 feet to a stone marked by a cross, being at the
N. E. corner of said claim; thence S. 43° 53' E. 300 feet
to a Monument of Stone at the center of the East end of said claim;
thence Same course 300 feet to a stone marked by a, being at the
S. E. corner of said claim; thence S 51° 33' W. 1500
witnessed by a monument of stone
feet to a stone marked with a cross at the ===== corner of said claim;
thence N. 43° 53' W 300 feet to the place of beginning.

All done under the provisions of Chapter Six, of Title XXXII, of the Revised Statutes of the United States, and of an Act of the General Assembly of Arizona, entitled "An Act to Revise and Codify the Laws of the Territory of Arizona," approved March 16, 1901.

Dated and posted on the ground this 3d. day of February 1909

Cicero Smith Mining Co.
by Anson Hazelwood,
General Manager

Filed and recorded at request of J. A. Rockfellow, May, 4, 1909, at
10:45 A. M., in Book 44 Record of Mines, at Page 395.

TERRITORY OF ARIZONA)
) SS.
 COUNTY OF COCHISE)

I, C. A. McDonald, County Recorder in and for the County of Cochise, and Territory of Arizona, do hereby certify that I have compared the annexed and foregoing copy with the original Location Notice of the Hazelwood No. 10, filed for record in my office on the 4th day of May, 1909, and recorded in Book 44 of Mining Locations, at pages 395, and that the same is a full, true and correct copy of said original and of the whole thereof.

Given under my hand and official seal, this the 29th day of July, A. D. 1910.

C. A. McDonald
 County Recorder.

U. S. SURVEYOR-GENERAL'S FINAL CERTIFICATE ON FIELD NOTES.

Department of the Interior,

OFFICE OF U. S. SURVEYOR-GENERAL,

Phoenix, Arizona,

February 28, 1911.

I, U. S. Surveyor-General for Arizona,

do hereby certify that the foregoing transcript of the Field Notes, return and approval of the survey of the mining claim of

The Cicero Smith Mining Co.,

HAZLEWOOD NO. 1, HAZLEWOOD NO. 2, HAZLEWOOD NO. 3, HAZLEWOOD NO. 4, known as the HAZLEWOOD NUMBER FIVE, HAZLEWOOD NO. 6, HAZELWOOD NO. 7, HAZELWOOD NO. 8, HAZELWOOD NO. 9, HAZELWOOD NO. 10, situate in Tevis,

Mining District, Cochise County, Arizona,

in Section 13 18, Township No. 13 S., Range No. 25 E., and 26 E., unsurveyed,

designated as Survey No. 2846, has been correctly copied from the originals on file in this office; that said Field Notes furnish such an accurate description of said mining claim as will, if incorporated into a patent, serve fully to identify the premises, and that such reference is made therein to natural objects or permanent monuments as will perpetuate and fix the locus thereof.

And I further certify that five hundred dollars' worth of labor has been expended or improvements made upon said mining claim by claimant or its grantors, and that said improvements consist of 17 shafts, 8 cuts, 2 tunnels and 99 ft. of drifts, total value \$9085.00. Improvement No. 2 on the Hazlewood No. 3 lode being a common improvement for the benefit and development of this entire group of claims, an undivided 1/10 interest therein, \$463.50, is properly credited to each of the ten claims in this survey.

and that no portion of said labor or improvements has been included in the estimate of expenditures upon any other claim.

I further certify that the plat thereof, filed in the U. S. Land Office at Phoenix, Arizona,

is correct and in conformity with the foregoing Field Notes.

Frank S. Ingalls,

United States Surveyor-General for Arizona.

SURVEYOR-GENERAL'S CERTIFICATE OF APPROVAL OF FIELD
NOTES AND SURVEY OF MINING CLAIM.

Department of the Interior,

OFFICE OF U. S. SURVEYOR-GENERAL,

Phoenix, Arizona.

February 28, 1911.

I, U. S. Surveyor-General for Arizona,

do hereby certify that the foregoing and hereto attached Field Notes and Return of the Survey of the
Mining Claim of

The Cicero Smith Mining Co.,

known as the
HAZLEWOOD NO. 1, HAZLEWOOD NO. 2, HAZLEWOOD NO. 3, HAZLEWOOD NO. 4, HAZLE-
WOOD NUMBER FIVE, HAZLEWOOD NO. 6, HAZELWOOD NO. 7, HAZELWOOD NO. 8,
HAZELWOOD NO. 9, HAZELWOOD NO. 10,

situate in Tevis mining district,

Cochise County, Arizona,

in Section 13, Township No. 13 S., Range No. 25 E. and
" 18 " " 13 S. " " 26 E., unsurveyed,
designated as Survey No. 2846,

executed by John A. Rockfellow, United States Mineral

Surveyor, August 15 - 25, 1910, ~~1908~~, under my instructions dated

August 9, 1910, ~~1908~~, have been critically examined and the necessary cor-

rections and explanations made, and the said Field Notes and Return, and the Survey they describe,

are hereby approved. A true copy of the copy of the location certificate filed by the applicant for

survey is included in the field notes.



U. S. Surveyor-General for Arizona.