

AUG 14 1911

4-683.

OCT 12 1911

MINERAL SURVEY No. 2954

LOT No.

Arizona Land District.

FIELD NOTES

OF THE SURVEY OF THE MINING CLAIM OF

DAVID CONNOR

KNOWN AS THE

Triangle, Last Chance, Indiana, Prosperity, Axtel Golden West

Verde Mining District,

Yavapai County, Arizona within Prescott Nat'l

Section approx. sec. 2 Township 15 N., Range 2 E. unsurveyed Forest

Surveyed under instructions dated June, 5, 1911

by *J. William Waara*
U. S. Mineral Surveyor.

Claim located See location notices, 19 11

Survey commenced June 6, 19 11

Survey completed June. 16, 19 11

6-922

Address:

Robt. E. Morrison, Atty.,

Prescott Arizona

1-12-11 P. 4-11-11

Survey No. 2934.

TRIANGLE

Beginning at Cor. No. 1 on line 3-4 Columbian Lode Sur. No. 1365 also on line 3-4 Prosperity Lode of this Survey, a diorite stone 6-12-26 inches long set 12 inches in the ground with a substantial mound of stone alongside; chiseled T-1-2934 on N.W. face with cross on top for exact corner point, from which point

U.S.L.M. No. 1365 V.D. brs. S. 13°-13'E. 2756.03 ft.

A cross on rock in place being Cor. No. 4 to Columbian Lode Sur. No. 1365 Brs. S. 57°-15'W. 30.85 ft.

A rock in place Chiseled B+R T-1-2934 brs. S. 86°-43'W. 32.6 ft.

Thence N. 39°-42'W.

131.14 A mound of stone being the center of the southwest end line of this lode

133.04 Cor. No. 1 Last Chance Lode of this survey,

361.14 To Cor. No. 2

A diorite stone 6-12-27 inches long set 12 inches in the ground with a substantial mound of stone alongside; chiseled T-2-2934 on N.E. face with cross on top for exact corner point from which.

A porphyry stone in place 5-4-3 ft. exposed and chiseled B.+R. T-2-2934 brs. N. 39°-42'W. 2.08 ft.

A diorite rock in place 3-1-2 ft. exposed and chiseled B.+R. T-2-2934 brs. S. 39°-42'E. 3.60 ft.

Thence N. 57°-15'E.

784.00 Cross road course N.E. to S.W.

1294.47 To Cor. No. 3, identical with Cor. 4 Last Chance Lode of this survey, a diorite stone 6-14-28 inches long set 12 inches in the ground with a substantial mound of stone

- alongside; chiseled L.C.-4 on S.W. face and T-3-2934 on S.E. face with cross on top for exact corner point, from which point,
- A diorite stone in place 3-1. $\frac{1}{2}$ -1 $\frac{1}{2}$ ft exposed chiseled B.+R.T-3-2934 brs. N.20°-10'E. 11.35 ft.
- A diorite rock in place 5-3-2 ft. exposed brs. S.81-19'W. 43;62 ft.
- On line 1-2 Reservation lode, Sur. No. 1365, at S. 19°25'E. 133.3 ft. from Cor. No. 2.
Thence S.39°-42'E'
- 38.00 Cross wash flows northeasterly
- 230.00 A mound of stone being the center of the northeast end line of this lode.
- 361.14 To cor.No.4,
- A porphyry stone 6-12-28 inches long set 12 inches in the ground with a substantial mound of stone alongside chiseled T.-4-2934 on N.W. face with cross on top for exact corner point from which point
- A rock in place 2-3-2 ft. exposed chiseled B.+R. T-4-2934 brs. N.64°-39'W. 13.89 ft..
- A rock in place 1-1-1 ft. exposed chiseled B.+R T-4-2934 brs. S°56°-29'W. 46.87 ft.
- Thence S.57°-15'W.
lode,
- 85.61 Cor. No.3 Columbian, Sur. No.1365 a stone properly marked as per field notes.
- Continuing on same course along line -3-4 Columbian Lode
- 128.66 Intersect line 1-2 Reservation lode Sur.No.1365, S.19°-25'E.501.72 ft. from Cor.No.2 Reservation lode, a stone properly set and marked as per field notes
- 360.0 Cross road course Nte North to South
- 1294.47 To place of beginning.
- All corners are identical with their respective locations.
- Variation at all corners 15°00'E.

LAST CHANCE

Beginning at Cor.No.1 on line 3-4 Prosperity Lode of this survey, adiorite stone 6-12-24 inches long set 12 inches in the ground with a substantial mound of stone alongside; chiseled L.C.-1-2934 on N.W.face with cross on top for exact corner point, from which point

U.S.L.M.No.1365 V.D. brs. S.14-23'E.2875.73 ft.

A rock in place 2-3-2 ft. exposed and chiseled B.+R. L.C.-1-2934 brs. N.49-34'W. 53.34 ft.

A rock in place 5-3-3 ft. exposed and chiseled B.+R. L.C.-1-2934 brs.S.5-12'W. 34.32 ft. Variation 15°00'E. Thence N.39-42'W.

228.10 Cor.No.2 Triangle Lode previously described

300.45 A mound of stone being the south end line of this lode

600.90 To Cor.No.2

A diorite stone 12-4-26 inches long set 12 inches in the ground with a substantial mound of stone alongside chiseled L.C.-2-2934 on east face with cross on top for exact corner point from which point

A rock in place 5-5-3 ft exposed brs chiseled B.+R L.C.-2-2934 brs. S.46-08'W. 48.98 ft.

A rock in place 4-2-4 ft exposed chiseled B.+R. L.C.-2-2934 brs. N.33-28'W. 23.76 ft. Variation 14-30'E. Thence N.47-07'E.

1259.90 intersect line 1-2 Monmont lode, Sur No.1375 N.33-56'W.

169.35 ft. from Cor/No.1 a stone properly marked as per field notes

1286.94 To Cor.No.3

A porphyry stone 4-12-26 inches long set 12 inches in the ground with a substantial mound of stone alongside chiseled L.C.-3-2934 on south face with cross on top for exact corner point from which point point,

B+R

A rock in place 2-2-5 ft. exposed chiseled, L C-3-2934
 brs. S.34-19'E. 13.10 ft.

A rock in place 2-1-2 ft exposed chiseled B.+R.
 L C-3-2934 brs. N.80-50'W. 13.10 ft. Variation 15-15'E.
 Thence S.39-42'E.

161.98 Cross line 4-1 Monmont Lode Sur No. 1375 N.39-59'E. 44.74 ft.
 from Cor. No.1

300.45 A mound of stone being the north end center of this lode.

465.0 Cross road course N.E. to S.W.

600.90 To Cor.No.4 Last Chance Lode. being on line 1-2

Reservation lode Sur No. 1365 S.19-25'E. 133.30 ft. from Cor.
 No. 2.

This corner is identical with Cor.No.3 Triangle
 Lode previously described

Thence S.47-07'W.

70. Cross gulch course SW to N.E.

540.0 Cross road course W.to E.

847. Cross same gulch course SW to NE

1286.94 To cor.No.1 the place of beginning

All corners are identical with their respective
 locations.

PROSPERITY LODE

Beginning at Cor.No.1 a porphyry stone 6-12-28 inches
 long set 12 inches in the ground with a substantial mound
 of stone alongside, chiseled P-1-2934 on N.face with cross
 on top for exact corner point, from which point,
 U.S.L.M.No.1365 V.D. brs.S.22-04'E.2078.53 ft.

A rock in place 3-1-1/2 ft exposed and chiseled B.+R.
 P-1-2934 brs. S.76-37'W. 17.58 ft.

A rock in place 4-4-3 ft exposed and chiseled B.+R.
 P-1-2934 brs.N.00-30'E. 29.68 ft. Variation 14-30'E.
 Thence N.39-42'W.

15.00 Cross small wash flows northeasterly

886.80 intersect line 1-2 Indiana lode of this survey S.65-36'W.
 308.52 ft from Cor.No.1

1448.45 To cor.No.2 Prosperity Lode

A porphyry stone 6-12-26 inches long set 12 inches in the ground with a substantial mound of stone alongside chiseled P-2-2934 on East face with cross on top for exact corner point, from which point,

A rock in place 2-2-1 1/2 ft. exposed brs and chiseled B.- R.P-2-2934 brs. N.1-33'W.25.3 ft.

No more bearings available. Variation 15-00'E.

Thence N.40-33'E.

89.45 intersect line 4-1 Indiana lode of this survey N.57-21'W. 690.74 ft from cor.No.1

304.40 A mound of stone being the center of the northwest end line of this lode.

608.80 To cor.No.3

A porphyry stone 7-8-26 inches long set 12 inches in the ground with a substantial mound of stone alongside chiseled P-3-2934 On the south face with cross on top for exact corner point from which point

A rock in place 4-5-3 ft exposed and chiseled P-3-B.-R.P-3-2934 brs. S.12-22'E. 74.86 ft.

No more bearings available. Variation 15-00'E.

Thence S.39-42'E.

317.00 cross small wash flows northeasterly.

331.89 Cor.No.2 Last Chance Lode previously described

632.34 Southwest center end Last Chance Lode.

704.69 Cor.No.2 Triangle Lode previously described

932.79 Cor.No.1 Last Chance Lode previously described

934.69 South center end Triangle Lode.

1065.35 Cor.No.1 Triangle Lode previously described.

also intersect line 3-4 ^{lode, Sur.No.1365} Columbian lode N.57-15'E 30.85 ft. from cor.No.4

1382.68 intersect line 2-3 Bellyue Lode, Sur. No.1365 N.77-04'E.

441.83 ft. from cor. No.2 and 113.21 ft. from its intersection with line 4-1 Columbian Lode Sur. No.1365

1448.45 To Cor.No.4 Prosperity Lode.

A phesy- porphyry stone 5-15-26 inches long set 12

inches in the ground with a substantial mound of stone alongside; chiseled P-4-2934 On West face with cross on top for exact cor. point. from which point

A rock in place 2-3-2 ft. exposed chiseled B.-R. P-4-2934 brs. S.44°-52'W. 55.00 ft.

No more bearings available. Variation 14-30'E.

Thence S.40°-33'W.

137.61 Intersect line 4-1 Columbian Lode Sur. No.1365 at S.25-15'E. 422.65 ft. from Cor.No.4 and 143.80 ft. from its intersection with line 2-3 Bellvue Lode Sur. No.1365

304.40 A mound of stone being the center of S.E. end line

481.16 Intersect line 1-2 Bellvue Lode Sur. No.1365 S.26-44'E.

354.21 ft. from cor.No.2

593.80 Cross small wash flows northeasterly

608.80 To Cor. No.1 the place of beginning

All corners are identical with their respective locations.

INDIANA LODE

Beginning at Cor.No.1 a diorite stone 4-10-30 inches long set 15 inches in the ground with a substantial mound of stone alongside; chiseled I-1-2934 On west face with cross on top for exact corner point from which point

U.S.L.M.No.1365 V.D. brs. S.21°-18'E.2936.47 ft.

A rock in place 4-3-2 ft. exposed , chiseled B.-R.

I-1-2934. brs, N.57°-03'W. 17.19 ft.

A rock in place 1-2-5 ft. exposed , chiseled B.-R.

I-1-2934 brs, N.7°-38'E 7.82 ft. Variation 14°-30'E.

Thence S.65°-36'W.

308.52 Intersect line 1-2 Prosperity Lode ^{this sur.} S.39-42'E.561.65 ft. from Cor. No.2

367.6. A mound of stone being the center of the east end line of this lode

529.20 Intersect line 4-1 BackBone Lode / ^{Str.No.2205 /} S.24-32'E. 255.36 ft from Cor.No.4

648.00 Cross United Verde rife Line.

735.20 To Cor.No.2

A sand stone 4-12-26 inches long set 12 inches in the ground with a substantial mound of stone alongside, chiseled I-2-2934 On north face with cross on top for exact corner point, from which point

A rock in place 3-4-1 ft exposed chiseled B.+R.I-2-2934 brs. N.21-43'E. 19-40 ft.

A rock in place 4-4'-surface exposed, chiseled B.+R. I-2-2934 brs. S.33-57'W. 33.25 ft. Variation 15°00'E.

Thence N.57-21'W.

154.57 Intersect line 4-1 Golden West Lode S.41-01'W.148.55 ft. from Cor. No.4.

323.30 Intersect line 3-4 Back Bone Lode *Sur.No*2205 S.68-00'W.

381.53 ft. from Cor. No.4

1055.0 Cross United Verde Pipe line

1406.42 To Cor.No.3., identical with Cor.No.3,103 Lode. *Sur.No*1413

A stone 4-16-24 inches long set 12 inches in the ground with a substantial mound of stone alongside, Chiseled I-3-2934 On east face and 103-3-1413 on west face with cross on top for exact corner point, from which point,

A rock in place 2-2-1 ft. exposed, and chiseled B.-R.-I-3-2934 and 103-3-1413 brs.S.22-31'E. 46.39 ft.

No more bearings available. Variation 15-00'E

Thence N.65-36'E.

69.14 intersect line 3-4 Golden West Lode N.61-29'W. 1239.04 ft. from Cor.No.4

367.6 A mound of stone being the center of the West end line of this lode.

735.20 To Cor. No.4.

A porphyry stone 6-12-30 inches long set 12 inches in the ground with a substantial mound of stone alongside chiseled I-4-2934 on south face with cross on top for exact corner point, from which point,

A rock in place (a large outcrop) 20-20-10 ft high

chiseled B.+R.I-4-2934 brs. N.66°-52'W. 24.65 ft.

A rock in place 10-3ft. surface exposed, chiseled
B.+R.I-4-2934 brs. S.50°-13'W. 7.80 ft. Variation 14°-45'E

Thence S.57°-21'E.

715.68 intersect line 2-3 Prosperity Lode of this survey,

N.40-38'E. 89.45 ft. from Cor.No.2

1406.42 To Cor.No.1 the place of beginning

All corners are identical with their respective
locations.

GOLDEN WEST LODE

Beginning at Cor.No.1 a limestone rock 4-10-24 inches
long set 12 inches in the ground with a substantial mound
of stone alongside, chiseled G.W.-1-2934 On north face
with cross on top for exact corner point, from which point

A flat rock in place 2-4-.5 ft. exposed brs chiseled B.+R
G.W.-1-2934, brs. N.81°-31'E. 17.85 ft.

A rock in place 2-4-.5 ft. exposed br chiseled B.+R.
G.W.-1-2934. brs. S.6°-27'E. 56.75 ft.

U.S.L.M.No.1365 V.D. brs.S.44°-50'E.3067.10ft. Variation 15°00'E.

Thence N.61°-29'W.

428.47 Intersect line 4-1 Axtel lode ^{of this survey} S.21-30'W.130.10 ft from Cor
Cor.No.4

443.70 intersect line 3-4 Back Bone Lode. *Sec.No.2205* N.68°-00'E.
494.69 ft. from Cor.No.3.

1055.0 cross United Verde Pipe Line

1468.34 To Cor.No.2

A porphyry stone 6-12-27 inches long set 12 inches
in the ground with a substantial mound of stone alongside
chiseled G.W.-2-2934 On east face with cross on top for
exact cor. point, from which point

A large outcrop chiseled B.+R G.W.-2-2934 brs.
S.30-26'E. 23.51 ft.

A rock in place 3-2-.5 ft. exposed chiseled B.+R.

- G.W.-2-2934 brs. S.41°-01'W. 5.80 ft. Variation 15°00'E;
Thence N.41-01'E.
- 18.59 intersect line 3-4 Juniper Lode. Sur.No.1566 N.45°-59'W.
19.96 ft. from Cor. No.3
- 147.05 intersect line 3-4 Axtel Lode of this survey N.60°-39'W.
993.24 from Cor. No.4
- 300.00 a mound of stone being the center of the West end line
of this lode.
- 600.00 To cor.No.3 Golden West Lode. identical with Cor. No. 2
Juniper Lode ~~Survey~~ No.1566 from which Cor.No,3 Juniper^{lode} Brs.
S.39°-03'W. 582.77 ft.
- A porphyry stone 6-8-24 inches long set 12 inches in
the ground with a substantial mound of stone alongside
chiseled G.W.-3-2934 on south face and J-2-1566 on North
face with cross on top for exact cor. point from which
point, there are no other bearings available. Variation
14°-45'E. this corner is on line 3-4 103 Lode Sur.No.1413
at N.45°-06'W. 195.55 ft. from Cor. No.3
Thence S.61°-29'E.
- 210.67 intersect line 2-3 ,103 Lode. ~~Sur.~~ No.1413 N.51°-09'E.
59.76 ft. from Cor.No.3
- 229.30 intersect line 3-4 Indiana Lode of this survey N.65°-36'E
69.14 ft. from Cor. No.3
- 785.00 Cross United Verde Pipe line.
- 1355.00 Cross United Verde pipe line
- 1377.36 intersect line 3-4 Back Bone Lode/^{Sur.No.2205/}S.68°-00'W.209.44 ft.
from Cor. No.4 and 1253.95 ft from Cor. No.3
- 1468.34 To Cor. No.4 Golden West Lode.
A sandstone 6-8-24 inches long set 12 inches in the
ground with a substantial mound of stone alongside
chiseled G.W.-4-2934 On west face with cross on top for
exact corner point, from which point,
A rock in place 2-1-1 ft. exposed and chiseled B.P.R.
G.W.-4-2934 brs. S.56°-32'W. 18.84 ft.
No more bearings available . Variation 15°-00'E.

Thence S.41°-01'W.

- 65.00 Cross United Verde Pipe Line
 148.55 Intersect line 2-3 Indiana Lode. S.57°-21'E. 1251.85 ft.
 from Cor. No.3
 300.00 A mound of stone being the center of the east end line
 of this lode
 600.00 To cor. No. 1 the place of beginning

All corners are identical with their respective
 locations.

AXTEL 1875.

Beginning at Cor.No.1 a porphyry stone 6-10-32 inches
 long set 12 inches in the ground with a substantial
 mound of stone alongside , chiseled A-1-2934 on north face
 with cross on top for exact corner point, from which point

A rock in place 3-3-3 ft exposed and chiseled B.+R.

A-1-2934, brs. S.35°-21' W. 37.71 ft.

A rock in place 2-3-2 ft. exposed and chiseled B.+R.

A-1-2934 ,brs, N.21°-30'E. 30.25 ft.

U.S.L.M.No.1365 brs. S.54°-23'E. 3335.14 ft. Variation 15°30'E.

Thence N.60°-39'W.

- 280.24 intersect line 2-1 West ^{End} Lode being identical with line
 2-3 Back Bone Lode both of Sur.No.2205 S.24°-32'E. 133.86 ft.
 from Cor. NO.2 West End Lode identical with Cor. No.3
 Back Bone lode.
 451.47 intersect line 3-2 West End Lode S.68°-00'W.101.03 ft.from
 cor. No.2
 1500.00 To cor.No.2

A porphyry stone 4-10-28 inches long set 12 inches
 in the ground with a substantial mound of stone alongside
 and chiseled A-2-2934 On east face with cross on top for
 exact cor. point, from which point,

A rock in place 1-2-1 ft. exposed brs chiseled B.+R.

A-2-2934 brs. S.24°-21'E. 9.5 ft.

A rock in place 3-2-2 ft. exposed chiseled B.-R.
A-2-2934 brs. N.10°-19'W. 21.61 ft. Var. 14-30'E.

Thence N.21°-30'E.

- 59.05 Cor.No.3 Socrates identical with Cor. No.2 Sigsbee^{lode} both
of Sur. No. 1566. a stone properly marked as per field notes.
273.00 Cross wash course Northwesterly.
287.99 Southcenter end of Socrates Lode, Sur.No.1566,
300.00 a mound of stone being the center of the northwest end
line of this lode
600.00 To cor.No.3 identical with Cor.No.2 Socrates
Sur.No.1566,
lode, a porphyry stone 6-8-24 inches long set 12 inches
in the ground with or chiseled A-3-2934 on Southeast face
and S-2-1566 on Northwest face, with cross on top for
exact corner point. being on line 3-4 Juniper Lode Sur.No.
1566, N.45-59'W. 496.97 ft. from Cor. No.3, from which pt.
A rock in place 4-3-3 ft. exposed chiseled B.-R
A-3-2934 brs, S.13-12'W. 31.37 ft.
A rock in place 3-2-1 ft. exposed and chiseled
B.-R A-3-2934, brs. S.26°-17'E. 21.36 ft. Var.14-30'E
Thence S.60°-39'E.
506.76 intersect line 2-3 Golden West Lode, this survey,
N.41°-01'E.147.05 ft.
from Cor. No.2
522.47 intersect line 2-3 Juniper lode Sur.No.1566 N.39°-03'E.
132.77 ft from Cor. No.3
825.00 Cross United Verde Pipe line
1500.00 To cor. No.4 Axtel Lode
A sandstone 5-12-26 inches long set 12 inches in the
ground with a substantial mound of rock alongside, and
chiseled A-4-2934 on west face with cross on top for exact
corner point, from which point,
A rock in place 6-4-1 ft. exposed and chiseled B.-R
A-4-2934, brs. N.68°-30'E. 6.58 ft
A rock in place 4-2-2 ft. exposed and chiseled
B.-R. A-4-2934 brs. N.45°-32'W. 12.34 ft. Variation 14-30'E
Thence S.21°-30'W.

- 113.90 intersect line 3-4 Back Bone lode ^{Sur.No. 2205,} N.68-00'E.515.56 ft.
 from Cor. No.3
 130.10 intersect line 1-2 Golden West Lode, S.61-29'E. 1040.02
 ft. from cor. No.2
 300.00 A mound of stone being the center of the Southeast end
 line of this lode
 577.4 Cross United Verde Pipe line
 600.0 To Cor. No.1 the place of beginning

All corners are identical with their respective locations:

AREA

	Acres	Acres
Total area Triangle Lode -----		10.655

Area in conflict with-

Last Chance Lode, this survey -----	3.364
-------------------------------------	-------

Reservation Lode, Sur. No. 1365 -----	.529
---------------------------------------	------

Total Area Last Chance Lode -----	17.725
-----------------------------------	--------

Area in conflict with

Monmont Lode Sur. No. 1375 -----	.133
----------------------------------	------

Total area Prosperity Lode -----	19.951
----------------------------------	--------

Area in conflict with:

Common conflict with

Bellvue Lodes Sur. No. 1365 -----	.283
-----------------------------------	------

Columbian Lode Sur. No. 1365 -----	0.743
------------------------------------	-------

Bellvue L ^o de Sur. No. 1365 -----	2.108
---	-------

Total area Indiana Lode -----	19.918
-------------------------------	--------

Area in conflict with

Prosperity Lode, this survey -----	2.620
------------------------------------	-------

Back Bone Lode Sur. No. 2205 -----	1.758
------------------------------------	-------

Total Area Golden West Lode -----	19.746
-----------------------------------	--------

Area in conflict with

	Acres	Acres
Indiana Lode-----	2.900 x	
Back Bone Lode, Sur. No. 2205-----	5.596	
Common conflict with Indiana Lode Sur. No. 2934 and Back Bone Lode Sur. No. 2205-----		
Juniper Lode Sur. No. 1566-----	1.331	
103 Lode Sur. No. 1413-----	1.331	
Total area Axtel Lode -----	20.467	\$ 100.00
Area in conflict with Golden West Lode		
Golden West Lode-----	181.1	\$ 100.00
Common conflict with Juniper Lode Sur. No. 1566 and Golden West Lode of this survey-----		
	.053	\$ 100.00
Common conflict with Back Bone Lode Sur. No. 2205 and Golden West Lode of this survey-----		
	.003	\$ 100.00
Juniper Lode Sur. No. 1566-----	.785 x	
West End Lode Sur. No. 2205-----	.155 x	
Back Bone Lode Sur. No. 2205-----	2.340 x	

LOCATION

This survey is located within the Prescott National Forest in approximately Sec. 2 T. 15 N. R. 2 E. G. & S. R. B. & M. unsurveyed; in the Verde Mining District Yavapai County Arizona.

VALUATION

EXPENDITURE OF FIVE HUNDRED DOLLARS. \$ 500.00

I hereby certify that the value of the labor and improvements made upon, and for the benefit of each of the locations embraced in said mining claims by the claimant or its grantors is not less than five hundred dollars and that said improvements consist of:

TRIANGLE LODE

No. 1 The discovery cut of the Triangle lode, the face being

the discovery point, is on the lode line, which point brs. N.25-42'E. 240.0 ft. from Cor.No.1, 4-15-10 ft. face

Value, -\$ 100.00

No.2 A tunnel, the mouth of which brs. S.64-36'W. 1079.0 ft from Cor. No.4, running S.63-20'W. 25.0 ft. thence S.21-40'W.13.4 ft. thence S.34-25'E. 18.8 ft. to face of tunnel, 4-6-57.2 ft. long

Value \$ 550.00

To be credited to this lode is an undivided one sixth interest in the No. 7 tunnel of the Last Chance Lode. Value \$ 333.00

LAST CHANCE

No.1 The discovery cut Last chance lode, being on the lode line, the face of which brs. S.82-56'E. 376.0 ft. from Cor. No.2, 4-25-10 ft face. Value \$ 200.00

No.2 A shaft which brs S.86-35'E. 396.3 ft. from Cor. No.2, 5-7-40ft.deep. Value \$ 450.00

No.3 An open cut, the mouth of which brs.N.6-50'E. 461.0 ft from Cor.No.1., 4-18-10 ft face. Value \$ 100.00

No.4 A shaft which brs from Cor.No.4 S.86-58'W. 466.0 ft., 4-6-10ft. deep. value \$ 100.00

No.5 A shaft which brs. from Cor.No.4 S.83-56'W. 447.0 ft., 4-6-10 ft.deep. Value \$ 100.00

No.6 A shaft which brs from Cor. No.4 N.71-44'W. 285.0 ft., 4-6-10ft. deep. Value \$ 100.00

No.7 A tunnel the mouth of which brs. N.44-55'E. 448.0 ft from Cor. No.1, 4-6ft. running N.76-49'W. 76.4 ft. thence S.59-11'W. 55.3 ft. thence S.30-00'W. 72.3 ft. to face of tunnel. To be credited to this lode is an equal undivided one sixth interest in this No. 7 tunnel as set forth

under heading "Common improvements,"

Value \$333.00

No.8 Tunnel(caved) which brs. N.40°-46'E.778.0 ft. from Cor. No.1, 4-6 running approximately N.72°-50'W. 90.0 at the mouth, and bearing to the south closer to the face

To be credited to this claim is an equal undivided one fifth interest in this No.8 tunnel, as set forth under heading "Common Improvements"

Value \$180.00

No.9 A tunnel, the mouth of which, brs. from/Cor. No.4 brs. S.61-36'W. 220.0 ,4-6 running N.51°-30'W. 14.0 ft. thence N.12°00'W.11.0 ft to face.

Value \$250.00

No.10.A shaft which brs. N.21°-36'W.212.0 ft from Cor. No.1, 4-6-10 ft. deep

Value \$100.00

No.11 A shaft which brs. N.2°-02'E.198.0 ft from Cor. No.1, 4-6-10 ft. deep.

Value \$100.00

PROSPERITY

No.1 The discovery shaft,(caved) of Prosperity Lode, being on the lode line, from which Cor. No.2 brs. N.64°-21'W 703.0 ft. 4-6-10 ft. deep

Value \$100.00

No.2 A shaft from which Cor.No.2 brs.N.65°-15'W.690.0 ft.,4-6-30 ft. deep

Value \$300.00

No.3 A tunnel (caved) from which Cor.No.2 brs. N.71°-57'W. 558.0 ft. 4-6 running S.29°-20'E. 45 ft.

Value \$450.00

No.4 A cut from which Cor.No.2 brs. N.85°-15'W. 534.0 ft. 4-6-10.ft.

Value \$100.00

No.5 An open cut from mouth of which cor.No.1 brs. S.17°-16'E!782.0 ft. 5-10-8 ft face

Value \$100.00

No.6 A tunnel and open cut from mouth of which Cor.

No.1 brs.S.10-15'E 654.0 ft. Cut 4-6-10 ft. tunnel 10 ft. course S.64°20'W.

Value . . . \$175.00

No.7 Tunnel (caved) from mouth of which Cor.No.1 brs.S.7-26'E.520.0 ft. 4-6 running S.20°00'W. 25.0 ft.

Value \$250.00

To be credited to this claim is an equal undivided one sixth interest in No.7 Tunnel Last Chance Lode.

Value \$333.00

To be credited to this Claim is an equal undivided one fifth interest in No.8 Tunnel Last Chance Lode.

Value \$180.00

INDIANA

No.1 The discovery cut Indiana Lodebeing on the lode line from the face of which Cor.No.2/S.51-10'W.325.0 ft. 4-20-6 ft face running S.24-10'W.

Value \$150.00

No.2 A shaft from which Cor. No.2 brs.S.48°-25'W. 320.0 ft. 4-6-10ft.deep.

Value \$100.00

No.3 A shaft from which Cor. No.2 brs. S.46°-02'W. 317.0.ft. 10-10-7 ft deep.

Value \$200.00

No.4 An open cut from mouth of which Cor. NO.2 brs. S.1°-57'E.421.0 ft. 4-20-10 ft face running N.25°00'W.

Value \$100.00

To be credited to this claim is an equal undivided one sixth interest in No.7 Tunnel, Last Chance Lode

Value \$333.00

To be credited to this claim is an equal undivided one fifth interest in No.8 Tunnel, Last Chance Lode.

Value \$180.00

GOLDEN WEST

No.1 The discovery shaft Golden West Lode, being on the lode line, from which Cor. No.1 brs. S.32°-47'E.601.0 ft. 4-6-10 ft deep(caved).

Value \$100.00

No.2 A shaft from which Cor.No.1 brs.S.39°46'E.797.0 ft. 4-6-10 ft deep(caved).

Value \$100.00

To be credited to this claim is an equal undivided one sixth interest in No.7 Tunnel,LastChance Lode.

Value \$333.00

To be credited to this claim is an equal undivided one fifth interest in No.8 Tunnel Last Chance Lode.

Value \$180.00

AXTEL

No.1 The discovery cut Axtel Lode,being on the lode line,from face of which Cor.No.4 brs. N.61°34'E.355.0 ft . 5-20-10 ft. face running N.21-00'E.

Value \$175.00

To be credited to this claim is an equal undivided one sixth interest in No.7 Tunnel,Last Chance Lode.

Value \$333.00

To be credited to this claim is an equal undivided one fifth interest in No.8 Tunnel,Last Chance Lode.

Value \$180.00

COMMON IMPROVEMENTS.

Tunnel No.7 Last Chance Lode was run as a deep level tunnel for the development of the entire group of claims. It is located in the bottom of a gulch in an advantageous position for the handling of ores with relation to the road below. It was planned to run this tunnel so as to cross out all ledges exposed on the surfaces of the Axtel Golden West,Indiana,Prosperity,and Last Chance lodes and at the same time tap ore bodies of the Triangle Lode at its south end. The tunnel level is about one thousand feet lower than the Cor.No.1 Golden West Lode,(the highest point of this group) and about nine hundred feet lower

than the discovery shaft and cut respectively of the Golden West and Axtel lodes. The only way these claims can be worked to advantage is by deep level tunnels, as the ruggedness of the country would not permit of any other method that would ^{give} the same economic results. I consider Tunnel No.7 to be an improvement of such character as to redound to the benefit of all the claims embraced in this group.

Total Value	\$2000.00
One sixth equal undivided interest	
Value	\$ 333.00

Tunnel No.8 Last Chance Lode is still at a lower level than Tunnel No.7 just mentioned and has the same mining conditions and advantages for development of the group as the above mentioned tunnel, with the additional depth in its favor for deeper development of the claims. Its position and course cannot be taken to develop the Triangle lode as said claim is across the gulch, and the position of the tunnel where it is nearest the Triangle lode, would not permit of economic development at that depth. I consider this tunnel to be an improvement of such character as to redound to the benefit of the Axtel Golden West, Indiana, Prosperity and Last Chance Lodes embraced in this survey, and have proportioned the value accordingly.

Total value	\$900.00
One fifth equal undivided interest	
Value	\$180.00

OTHER IMPROVEMENTS

None.

ADJOINING CLAIMS

Patented Claims.

Socrates Sur.No.1566	owned by Venture Hill Mng. Co.
Sigsbee " " " "	" " " " " "
Juniper " " " "	" " " " " "
103 " " 1413	" " " " " "

These claims join this survey on the northwest.

Columbian Sur, No. 1365 -- All owned by the United
 Bellvue " " " " Verde Junior Copper Co.
 Reservation " " "

These claims join this survey on the east.

Monmont Sur. No. 1375 owned by the Mescal Copper Co.
Unsurveyed claims, names of claims and claimants unknown.
 Unknown " " Smith, claimant.
 These claim join this survey on the north.

Back Bone Sur. No. 2305 -- owned by the Black Hills
 West End " " " " Copper Co.
Unsurveyed claims, names of claims and claimants unknown.
 These claims join this survey on the South.

~~There are no adjoining conflicting claims on the north and southwest of this survey and owing to the precipitous country and the fact that the nearest claims were unsurveyed, it was impossible to determine the relative position of these claims so that same could have placed on the preliminary plat.~~

ADJNE

VEINS.

As near as can be determined from present develop-
ments, the presumed course of the veins on the lodes
of this survey are as follows:

TRIANGLE:- N. 57°15'E., 1076.47 ft. and S. 57°15'W.,
218. ft. from the discovery.

LAST CHANCE:- N. 47°07'E., 1023.94 ft. and S. 47°07'W.,
263 ft. from the discovery.

PROSPERITY:- S. 39° 42' E., 750 ft. and N. 39° 42' W.,
698.45 ft. from the discovery.

INDIANA:- S. 57° 21' E., 97 ft. and N. 57° 21' W.,
1309.42 ft. from the discovery.

GOLDEN WEST:- S. 61° 29' E., 581.3 ft. and N. 61° 29' W.,
887.04 ft. from the discovery.

AXTEL:- S. 60° 39' E., 200.6 ft. and N. 60° 39' W.,
1299.4 ft. from the discovery.

These veins were discovered on the north
side of the lode and are of the same
character as the veins of the Golden West
lode. They are all of the same
character and are all of the same
character.

These veins were discovered on the north
side of the lode and are of the same
character as the veins of the Golden West
lode. They are all of the same
character and are all of the same
character.

These veins were discovered on the north
side of the lode and are of the same
character as the veins of the Golden West
lode. They are all of the same
character and are all of the same
character.

These veins were discovered on the north
side of the lode and are of the same
character as the veins of the Golden West
lode. They are all of the same
character and are all of the same
character.

These veins were discovered on the north
side of the lode and are of the same
character as the veins of the Golden West
lode. They are all of the same
character and are all of the same
character.

VEINS

INSTRUMENT

This survey was made with a Leitz Light Mountain transit-theodolite No.13 . The courses were deflected from the true meridian as determined by direct solar observation and checked by use of the solar attachment. The distances were measured with 150-ft. and 300-ft. tapes.

REPORT

U.S.L.M.No.1365 V.D. is a flat stone in place 3-3-.5 ft.exposed and chiseled + U S L M = 1365-V D with a conical mound of stone 5 ft. high and 5 ft. base. Survey. 1365.

All corners are stones properly set and marked with number of the corner and survey as approved.

I find line 1-4 Reservation to be N.19°-26'W.1161.90 ft. instead of N.19°-45'W.1215.0 ft. Also. said line intersects line 3-4 Columbian Lode S.57°-15'W.43.05 ft.from Cor.No.3 and 501.72 ft from Cor.No.2 Reservation, instead of S.57°-15'W 87.0 ft. and 529.0 ft. from Cor. No.2 Reservation

I find line 3-4 Columbian Lode to be S.57°-15'W. 1238.71 ft. instead of 1319.0 ft.

I find line 2-3 Bellvue to be N.77°-04'E 516.28 ft. instead of N.76°-15'E. 600.0 ft.

I find the tie of Reservation to U.S.L.M.No.1365 to be S.11°-58'W. 2750.99 ft. instead of S.13°-04'W.2843.3 ft.

I find line 2-3 Bellvue to intersect line 4-1 Columbian S.25°-15'E.278.85 ft. from Cor.No.4 instead of 294.6 ft. at a point 329.62 ft. from Cor.No.2 of Bellvue instead of 361.8 ft. from Cor. No.2.

Survey No. 1375

I find line East center end Monmont to Cor. No.1 to be S.39°-59'W. 298.58 ft. instead of S.40°-15'W.300.0 ft.

Survey No. 2205

I find line 3-4 Back Bone lode to be N.68°-00'E. 1463.39 ft.

feet instead of N.68°-51'E. 1489.7 ft.

I find the tie of Back Bone Sur.No.2205 to U.S.L.M. No.1365 to be S.32°-31'E. 2613.67 ft. instead of S.32°-12'E. 2671.8 ft.

Survey No.1413

I find line 3-4, 103 Lode to intersect Cor.2 Juniper Lode Lode N.45°-06'W.195.55 ft from Cor. No.3 instead of N.45°-00'W.

Survey No.1566

I find line 2-3 Juniper lode to be S.39°-03'W.582.77 ft. instead of S.39°-15'W. 600.0 ft.

I find line from Cor.3 Juniper lode to Cor.No.2 Socrates lode to be N.45°-59'W. 516.93 instead of N.45°-00'W 521.0 ft.

I find line 2-3 Socrates lode to be S.21°-30'W.540.95 ft. instead of S.22°-00'W. 530.0 ft. and distance from Cor.2 to S.C.E. 312.0 instead of 300.0ft.

These discrepancies are due to errors in the returns of the prior surveys.

The discrepancies found existing between the claims as marked by location monuments and as described in the 1 location notices are due to errors in the location notices

An error of 44 minutes was made in making out the amended location notices, by applying a correction of 22 minutes in the wrong direction to the assumed course or meridian of the preliminary survey.

J. William Waara
U. S. Mineral Surveyor

FINAL OATHS FOR SURVEYS.

LIST OF NAMES.

A list of the names of the individuals employed by J. William Waara

United States ~~Deputy~~ Mineral Surveyor, to assist in running, measuring, and marking the lines, corners, and

boundaries described in the foregoing field notes of the survey of the mining claim of David Connor

known as the Triangle, Last Chance, Prosperity, Indiana, Axtel, Golden West

and showing the respective capacities in which they acted.

H. E. Armitage, Chainman.

Chainman.

Arman.

Flagman.

FINAL OATHS OF ASSISTANTS.

We, I, H. E. Armitage

and _____, do solemnly swear that we assisted J. William

Waara, United States ~~Deputy~~ Mineral Surveyor, in marking the corners and surveying

the boundaries of the mining claim of David Connor

known as the Triangle, Last Chance, Prosperity, Indiana, Axtel Golden West

represented in the foregoing field notes as having been surveyed by said deputy mineral surveyor and under his

direction; and that said survey has been in all respects, to the best of ~~my~~ knowledge and belief, faithfully and

correctly executed, and the corner and boundary monuments established according to law and the instructions

furnished by the United States Surveyor-General for Arizona

H. E. Armitage, Chainman.

Chainman.

Arman.

Flagman.

Subscribed and sworn to by the above-named persons before me this 2nd

day of July, 1901.

[Signature]
Notary Public

FINAL OATH OF U. S. MINERAL SURVEYOR.

I, J. William Waara, U. S. Mineral Surveyor,
do solemnly swear that, in pursuance of instructions received from the United States
Surveyor General for Arizona, dated
June, 5, 1911, I have, in strict conformity to the laws of the
United States, the official regulations and instructions thereunder, and the instructions
of said Surveyor General, faithfully and correctly executed the survey of the Mining
Claim of David Connor
, known as the
Triangle, Last Chance Prosperity, Indiana, Axtel Golden West,
situate in Verde Mining District,
Yavapai County, Arizona, in Section
approx. Sec. 2 Township No. 15 N. Range No. 2 E. Unsurveyed,
and designated as Survey No. 2934, as represented
in the foregoing field notes, which accurately show the boundaries of said mining claim
as distinctly marked by monuments on the ground, and described in the attached copy
of the location certificate, which was received by me from the Surveyor General with
said instructions, and that all the corners of said survey have been established and per-
petuated in strict accordance with the law, official regulations and instructions there-
under; and I do further solemnly swear that the foregoing are the true and original
field notes of said survey and my report therein, and that the labor expended and
improvements made upon said mining claim by claimant or his grantors
are as therein fully stated, and that the character, extent, location, and itemized value
thereof are specified therein with particularity and full detail, and that no portion of
said labor or improvements so credited to this claim has been included in the estimate
of expenditures upon any other claim.

J. William Waara
U. S. Mineral Surveyor.

Subscribed and sworn to by the said J. William Waara
U. S. Mineral Surveyor, before me Henry J. Andrews, a
Notary Public this 24th
day of July 1911, 1911

Henry J. Andrews.
Notary Public

My commission expires May 24, 1915

Notice of Mining Location

LODE CLAIM

JUN 5- 1911

To All Whom It May Concern:

This Mining Claim, the name of which is the TRIANGLE Mining Claim, situate on lands belonging to the United States of America, and in which there are valuable mineral deposits, was entered upon and located for the purposes of exploration and purchase by David Connor

a citizen of the United States
(Locator must insert either "a citizen of the United States," or, "who has declared his intention to become a citizen of the United States.")

the undersigned, on the 11th. day of May, 1911. 19

The length of this claim is 1294.47 feet,
and I claim 218 feet,
in a southwesterly direction and
1076.47 feet in a northeasterly direction from
the center of the discovery shaft, at which this notice is posted, lengthwise of the claim, together
with 300.0 feet in width of the surface grounds, on each
side of the center of said claim. The general course of the lode deposit and premises is from the
northeast to the southwest.

The claim is situated and located in the Verde Mining District, in
Yavapai County, in the Territory of Arizona, about 2 miles
in a southeasterly direction from Jerome Arizona and joins
Columbia. M.S. 1365 on the northwest.

The surface boundaries of the claim are marked upon the ground as follows: Beginning at

at a point in a direction S. 57°-59' W. 218.0 feet from
the discovery shaft (at which this notice is posted), being in the center of the Southwest
end line of said claim; thence N. 38°-58' W. 230.0 feet to a monument of
stone, being the southwest corner of said claim; thence
N. 57°-59' E. 1294.47 feet to a monument of stone, being at the
northwest corner of said claim; thence S. 38°-58' E. 230.0 feet
to a monument of stone at the center of the northeast end of said claim;
thence S. 38°-58' E. 131.14 feet to a monument of stone, being at the
northeast corner of said claim; thence S. 57°-59' W. 1294.47
feet to a monument of stone at the southeast corner of said claim;
thence N. 38°-58' W. 131.14 feet to the place of beginning.

All done under the provisions of Chapter Six, of Title XXXII, of the Revised Statutes of the United States, and of an Act of the General Assembly of Arizona, entitled "An Act to Revise and Codify the Laws of the Territory of Arizona," approved March 16, 1901.

Dated and posted on the ground this 3 day of June 1911. 19

Witness

H. E. Armitage

David Connor

Excerpts from the Mining Laws of the Territory of Arizona.

Title XLVII of the Revised Statutes of 1901, and Amendments Thereto.

Sec. 2. Such location shall be made by erecting at or contiguous to the point of discovery a conspicuous monument of stones not less than three feet in height, or an upright post, securely fixed, projecting at least four feet above the ground, in which monument of stones or on which post there shall be posted a location notice which shall be signed by the name or names of the locator or locators.

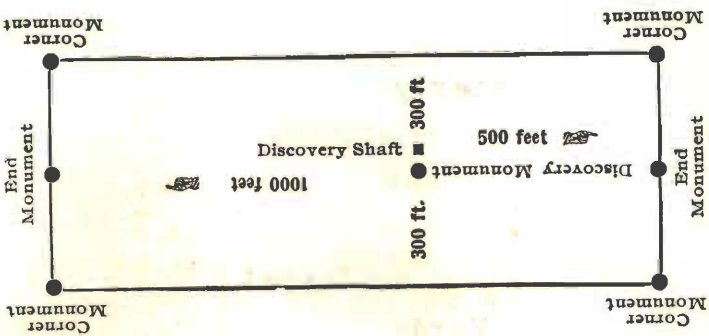
Sec. 4. From the time of the location of a mining claim, as above specified, the locator shall be allowed ninety days within which to do or cause to be done the following things: * * * * *

2. To sink a discovery shaft in the claim to a depth of at least eight feet from the lowest part of the rim of the shaft at the surface, and deeper, if necessary, until there is disclosed in said shaft mineral in place.

Sec. 6. Such surface boundaries shall be marked by six substantial posts projecting at least four feet above the surface of the ground, or by substantial stone monuments at least three feet high, to-wit: One at each corner of said claim and one at the center of each end-line thereof.

Sec. 8. Location notices may be amended at any time and the monuments changed to correspond with the amended location; Provided, That no change shall be made that will interfere with the rights of others.

will identify the claim. monument or permanent monument, or claim with reference to locality of discovery. In description of claim in either direction. Discovery monument giving its direction from center of claim at a distance of 1000 feet from the center of claim or any other monument placed thereon can be in the new law. The Discovery Shaft location under the new law. The Discovery Shaft location under the new law.



Notice of Location
LODE CLAIM

Dated..... 19.....

Filed and Recorded at request of
J. W. Waara,

June 3, A. D. 1911,

at 1:35 o'clock P. M.,

Book 89 of Mines,

Pages 683
Records of YAVAPAI COUNTY, ARIZONA.

(Seal) T. C. Bradbury,
County Recorder.

By.....
Deputy Recorder.

TERRITORY OF ARIZONA, }
County of } ss.

I,, County Recorder in and for the County and Territory aforesaid, do hereby certify that the within instrument was filed for record at o'clock M., on this day of, 19....., and duly recorded in Book No. of County, Arizona, at pages of Witness my hand and official seal the day and year first above written.

..... County Recorder.

AMENDED
Notice of Mining Location
LODE CLAIM

To All Whom It May Concern:

This Mining Claim, the name of which is the LAST CHANCE
Mining Claim, situate on lands belonging to the United States of America, and in which there are val-
uable mineral deposits, was entered upon and located for the purposes of exploration and purchase by
Chas Rutledge, and Elmer MC.Farlen

(Locator must insert either "a citizen of the United States," or, "who has declared his intention to become a citizen of the United States.")
the undersigned, on the 26th, day of December, 1896 -19-

The length of this claim is 1286.94 feet,
and I claim 263.0 feet,
in a southwesterly direction and 1023.9 feet in a northeasterly direction from
the center of the discovery shaft, at which this notice is posted, lengthwise of the claim, together with
300.0 feet in width of the surface grounds, on each
side of the center of said claim. The general course of the lode deposit and premises is from the
northeast to the southwest

The claim is situated and located in the Verde Mining District, in
Yavapai County, in the Territory of Arizona, about 2 miles
in a southeasterly direction from Jerome Arizona and joins
the Prosperity mining claim on the Northeast

The surface boundaries of the claim are marked upon the ground as follows: Begining at

~~at a point in a~~ direction N.47°-51'E.1023.9 feet from
the discovery shaft (at which this notice is posted,) being in the center of the north
end line of said claim; thence N.38°-58'W.300.45 feet to a monument of
stone, being the northwest corner of said claim; thence
S.47°-51'W.1286.94 feet to a monument of stone, being at the
southwest corner of said claim; thence S.38°-58'E.300.45 feet
to a monument of stone at the center of the south end of said claim;
thence S.38°-58'E.300.45 feet to a monument of stone, being at the
southeast corner of said claim; thence N.47°-51'E.1286.94
feet to a monument of stone at the northeast corner of said claim;
thence N.38°-58'W.300.45 feet to the place of the begining.

All done under the provisions of Chapter Six, of Title XXXII, of the Revised Statutes of the
United States, and of an Act of the General Assembly of Arizona, entitled "An Act to Revise and
Codify the Laws of the Territory of Arizona," approved March 16, 1901.

This is an Amended Location Notice of the LAST CHANCE
Mining Claim, located by Chas Rutledge, and Elmer McFarlen
on the 26th day of
December 1896 -19-, and recorded in Book 44 of Records of Mines, at
page 77, in the office of the County Recorder of the aforesaid County of Yavapai
to which reference is hereby made, and this amended Location Notice is made and posted to correct
errors in the description in the said original Location Notice.

Dated and posted on the ground this 3 day of June 1911 -19-

Witness

H.E.Armitage

David Connor

County of _____ } ss.

I, _____, County Recorder in and for the County and Territory aforesaid, do hereby certify that the within instrument was filed for record at _____ o'clock, _____ M, on this _____ day of _____ 191____, and duly recorded in Book No. _____ of _____ Records of _____ County, Arizona, at pages _____

WITNESS my hand and official seal the day and year first above written.

County Recorder.

AMENDED
Notice of Location.
LODE CLAIM.

Dated _____, 191____

Filed and Recorded at request of

J. W. Waara,

June 3, A. D. 1911,

at **1:35 o'clock** P.M.

Book **86 of Mines**

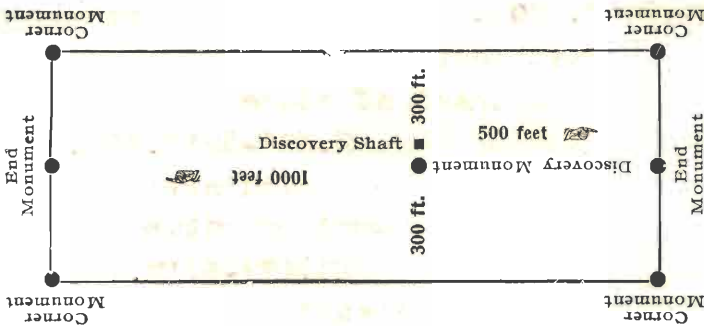
RECORDS OF YAVAPAI COUNTY, ARIZONA.

Pages **237**

(Seal) **J. C. Bradbury,**
County Recorder.

By _____
Deputy Recorder.

The McNeil Co., Phoenix, Arizona



This diagram is to give locator a general idea of plan of location under the new law. The Discovery Shaft can be in the center of claim or any distance from either end desired. In the diagram it is placed 500 feet from one end and 1000 feet from the other. Commence description of claim at a center end monument, giving its distance and direction from center of Discovery Shaft; thence bound the claim in either direction. In description be careful to state locality of claim with reference to some natural object, or permanent monument, as will identify the claim.

AMENDED
Notice of Mining Location
LODE CLAIM

To All Whom It May Concern:

This Mining Claim, the name of which is the PROSPERITY
Mining Claim, situate on lands belonging to the United States of America, and in which there are val-
uable mineral deposits, was entered upon and located for the purposes of exploration and purchase by
Jean Allison, and Chas Rutledge
both citizens of the United States

(Locator must insert either "a citizen of the United States," or, "who has declared his intention to become a citizen of the United States.")
~~the undersigned~~, on the 7th. day of March, 1895. 19

The length of this claim is 1500.0 feet,
and I. claim 750.0 feet,
in a southerly direction and
750.0 feet in a northerly direction from
the center of the discovery shaft, at which this notice is posted, lengthwise of the claim, together with
300.0 feet in width of the surface grounds, on each
side of the center of said claim. The general course of the lode deposit and premises is from the
northwest to the southeast

The claim is situated and located in the Verde Mining District, in
Yavapai County, in the Territory of Arizona, about 2½ miles
in a southerly direction from Jerome Arizona, and joins
Columbia. M.S. 1365 on the Southwest and Indiana on the east

The surface boundaries of the claim are marked upon the ground as follows: Begining at

~~at a point in a~~ direction S. 38°-58' E. 750.0 feet from
the discovery shaft (at which this notice is posted,) being in the center of the southeast
end line of said claim; thence N. 41°-17' E. 304.4 feet to a monument of
stone, being the northeast corner of said claim; thence
N. 38°-59' W. 1500.0 feet to a monument of stone, being at the
northwest corner of said claim; thence S. 41°-17' W. 304.4 feet
to a monument of stone at the center of the northwest end of said claim;
thence S. 41°-17' W. 304.4 feet to a monument of stone, being at the
southwest corner of said claim; thence S. 38°-58' E. 1500.0
feet to a monument of stone at the southeast corner of said claim;
thence N. 41°-17' E. 304.4 feet to the place of the begining.

All done under the provisions of Chapter Six, of Title XXXII, of the Revised Statutes of the
United States, and of an Act of the General Assembly of Arizona, entitled "An Act to Revise and
Codify the Laws of the Territory of Arizona," approved March 16, 1901.

This is an Amended Location Notice of the PROSPERITY
Mining Claim, located by Jean Allison and Chas., Rutledge
on the 7th. day of
March, 1895. 19, and recorded in Book 41 of Records of Mines, at
page 445., in the office of the County Recorder of the aforesaid County of Yavapai
to which reference is hereby made, and this amended Location Notice is made and posted to correct
errors in the description in the said original Location Notice.

Dated and posted on the ground this 3 day of June, 1911 19

Witness

H. E. Armitage

David Connor

County of } ss.

I, County Recorder in and for the County and Territory aforesaid, do hereby certify that the within instrument was filed for record at o'clock, M, on this day of 191..., and duly recorded in Book No. of Records of County, Arizona, at pages

WITNESS my hand and official seal the day and year first above written.

County Recorder.

AMENDED Notice of Location. LODE CLAIM.

Dated , 191.....

Filed and Recorded at request of

J. W. Waara.

June 3, A. D. 1911,

at 1:35 o'clock P. M.,

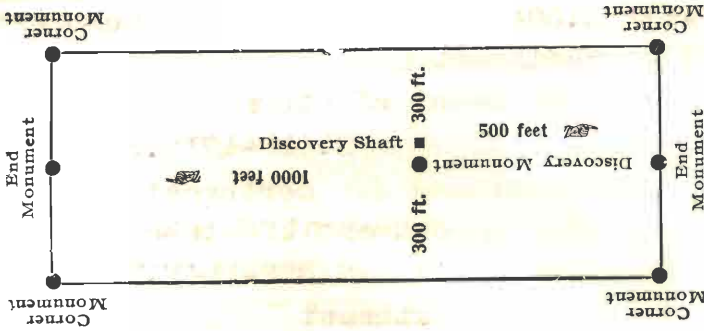
Book 86 of Mines, RECORDS OF YAVAPAI COUNTY, ARIZONA

Pages 236.

(Seal) J. C. Bradbury, County Recorder.

By Deputy Recorder.

The McNeil Co., Phoenix, Arizona



This diagram is to give locator a general idea of plan of location under the new law. The Discovery Shaft can be in the center of claim or any distance from either end desired. In the diagram it is placed 500 feet from one end and 1000 feet from the other. Commence description of claim at a center end monument, giving its distance and direction from center of Discovery Shaft; thence bound the claim in either direction. In description be careful to state locality of claim with reference to some natural object, or permanent monument, as will identify the claim.

AMENDED

Notice of Mining Location

LODE CLAIM

To All Whom It May Concern:

This Mining Claim, the name of which is the AXTEL Mining Claim, situate on lands belonging to the United States of America, and in which there are valuable mineral deposits, was entered upon and located for the purposes of exploration and purchase by J.F.Mullin, A.Von Schrittz, E.J.Parkinson and F.A.Grumont

all citizens of the United States
(Locator must insert either "a citizen of the United States," or, "who has declared his intention to become a citizen of the United States.")
~~the undersigned~~, on the 10th. day of July, 1899. 19

The length of this claim is 1495.8 feet,
and I claim 1295.2 feet,
in a northwesterly direction and 200.6 feet in a southeasterly direction from
the center of the discovery shaft, at which this notice is posted, lengthwise of the claim, together with
300.0 feet in width of the surface grounds, on each
side of the center of said claim. The general course of the lode deposit and premises is from the
Northwest to the Southeast

The claim is situated and located in the Verde Mining District, in
Yavapai County, in the Territory of Arizona, about 2 1/4 miles
in a Southerly direction from Jerome Arizona,
being the south extension of the Socrates. patented mine

The surface boundaries of the claim are marked upon the ground as follows: Beginning at
~~at a point in a~~ point ~~direction~~ S.60°-39'E.200.6 feet from
the discovery shaft (at which this notice is posted,) being in the center of the Southeast
end line of said claim; thence N.22°-14' E. 300.0 feet to a monument of
stone, being the northeast corner of said claim; thence
N.60°-39'W.1495.8 feet to a monument of stone, being at the
Northwest corner of said claim; thence S.22°-14'W.300.0 feet
to a monument of stone at the center of the northwest end of said claim;
thence S.22°-14'W.300.0 feet to a monument of stone, being at the
Southwest corner of said claim; thence S.60°-39' E.1495.8
feet to a monument of stone at the southeast corner of said claim;
thence N.22°-14' E. 300.0 feet to the place of the beginning.

All done under the provisions of Chapter Six, of Title XXXII, of the Revised Statutes of the United States, and of an Act of the General Assembly of Arizona, entitled "An Act to Revise and Codify the Laws of the Territory of Arizona," approved March 16, 1901.

This is an Amended Location Notice of the AXTEL Mining Claim, located by J.F.Mullin, A.Von Schrittz, E.J.Parkinson and F.A.Grumont on the 10th. day of July, 1899. 19, and recorded in Book 52 of Records of Mines, at page 426, in the office of the County Recorder of the aforesaid County of Yavapai to which reference is hereby made, and this amended Location Notice is made and posted to correct errors in the description in the said original Location Notice.

Dated and posted on the ground this 3. day of June, 1911. 19

Witness David Connor
H.E.Armitage

TERRITORY OF ARIZONA }
County of } ss.

I, _____, County Recorder in and for the County and Territory aforesaid, do hereby certify that the within instrument was filed for record at _____ o'clock, _____ M, on this _____ day of _____ 191____, and duly recorded in Book No. _____ of _____ Records of _____ County, Arizona, at pages _____

WITNESS my hand and official seal the day and year first above written.

AMENDED
Notice of Location.
LODE CLAIM.

Dated _____, 191____

Filed and Recorded at request of

J. W. Waara,

June 3, A. D. 1911,

at 1:35 o'clock P. M.,

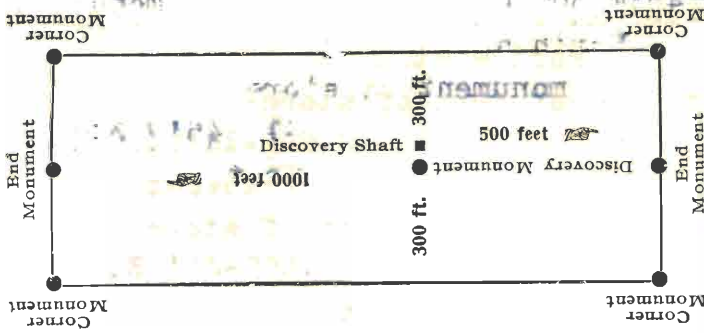
Book 86 of Mines,

Pages 274 **AVAPAT COUNTY, ARIZONA**

(Seal) **J. C. Bradbury,**
County Recorder.

By _____
Deputy Recorder.

The McNeil Co., Phoenix, Arizona



This diagram is to give locator a general idea of plan of location under the new law. The Discovery Shaft can be in the center of claim or any distance from either end desired. In the diagram it is placed 500 feet from one end and 1000 feet from the other. Commence description of claim at a center end monument, giving its distance and direction from center of Discovery Shaft; thence bound the claim in either direction. In description be careful to state locality of claim with reference to some natural object, or permanent monument, as will identify the claim.

County Recorder.
A. Von Borklin, F. A. Gammage and F. L. Parkinson
all citizens of the United States
July 1899

AMENDED

Notice of Mining Location

LODE CLAIM

To All Whom It May Concern:

This Mining Claim, the name of which is the GOLDEN WEST Mining Claim, situate on lands belonging to the United States of America, and in which there are valuable mineral deposits, was entered upon and located for the purposes of exploration and purchase by J. F. Mullin, A. Von Schrittz, F. A. Grumond and E. J. Parkinson all citizens of the United States

(Locator must insert either "a citizen of the United States," or, "who has declared his intention to become a citizen of the United States.") the undersigned, on the 10th day of July, 1899.

The length of this claim is 1463.73 feet, and I claim 782.43 feet, in a northwesterly direction and 581.3 feet in a Southeasterly direction from the center of the discovery shaft, at which this notice is posted, lengthwise of the claim, together with 300.0 feet in width of the surface grounds, on each side of the center of said claim.

The general course of the lode deposit and premises is from the Northwest to the Southeast

The claim is situated and located in the Verde Mining District, in Yavapai County, in the Territory of Arizona, about 2 miles in a southerly direction from Jerome Arizona, being the south extension of the Juniper and side lines the Axtel on the north

The surface boundaries of the claim are marked upon the ground as follows: Begining at

at a point in a ~~direction~~ S. 61°-30' E. 581.3 feet from the discovery shaft (at which this notice is posted,) being in the center of the East end line of said claim; thence N. 41°-45' E. 300.0 feet to a monument of stone, being the Northeast corner of said claim; thence N. 61°-30' W. 1463.73 feet to a monument of stone, being at the northwest corner of said claim; thence S. 41°-45' W. 300.0 feet to a monument of stone at the center of the west end of said claim; thence S. 41°-45' W. 300.0 feet to a monument of stone, being at the southwest corner of said claim; thence S. 61°-30' E. 1463.73 feet to a monument of stone at the southeast corner of said claim; thence N. 41°-45' E. 300.0 feet to the place of the beginning.

All done under the provisions of Chapter Six, of Title XXXII, of the Revised Statutes of the United States, and of an Act of the General Assembly of Arizona, entitled "An Act to Revise and Codify the Laws of the Territory of Arizona," approved March 16, 1901.

This is an Amended Location Notice of the GOLDEN WEST Mining Claim, located by J. F. Mullin, A. Von Schrittz, F. A. Grumond and E. J. Parkinson on the 10th day of July, 1899, and recorded in Book 52 of Records of Mines, at page 428, in the office of the County Recorder of the aforesaid County of Yavapai to which reference is hereby made, and this amended Location Notice is made and posted to correct errors in the description in the said original Location Notice.

Dated and posted on the ground this 3 day of June, 1911.

Witness

H. E. Armitage

David Connor

County of _____ } ss.

I, _____, County Recorder in and for the County and Territory aforesaid, do hereby certify that the within instrument was filed for record at _____ o'clock, _____ M, on this _____ day of _____ 191____, and duly recorded in Book No. _____ of _____ Records of _____ County, Arizona, at pages _____

WITNESS my hand and official seal the day and year first above written.

County Recorder.

AMENDED
Notice of Location.
LODE CLAIM.

Dated _____, 191____

Filed and Recorded at request of

J. W. Waara,

June 3, A. D. 191____

at **1:35 o'clock** **P. M.,**

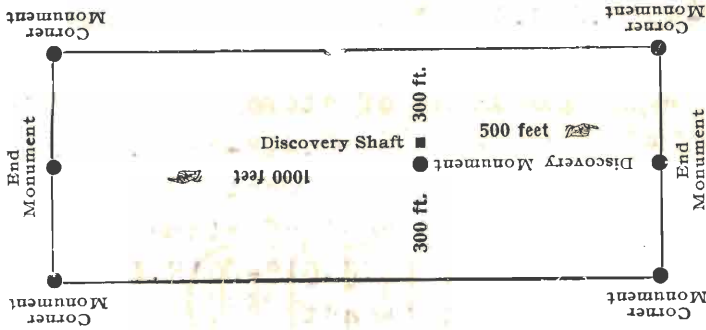
Book **86** of **Mines** COUNTY, ARIZONA.

Page **238.**

(Seal) J. C. Bradbury,
County Recorder.

By _____ Deputy Recorder.

The McNeil Co., Phoenix, Arizona



This diagram is to give locator a general idea of plan of location under the new law. The Discovery Shaft can be in the center of claim or any distance from either end desired. In the diagram it is placed 500 feet from one end and 1000 feet from the other. Commence description of claim at a center end monument, giving its distance and direction from center of Discovery Shaft; thence bound the claim in either direction. In description be careful to state locality of claim with reference to some natural object, or permanent monument, as will identify the claim.

TERRITORY OF ARIZONA,)
 County of Yavapai.) ss.

I, J.C. Bradbury, County Recorder in and for the aforesaid County of Yavapai, and Custodian of the Records of such office, do hereby certify that I have compared the foregoing with, and that the same are true and correct copies, as the same appear of record in my said office, of the following notices of location of the therein named mining claims, situate in the Verde Mining District, Yavapai County, Arizona, viz:

TRIANGLE, the original notice of location whereof is of record in Book 89 of Mines, page 683, Records of Yavapai County, Arizona.

AXTEL, the amended notice of location whereof is of record in Book 86 of Mines, page 234, said records.

INDIANA, the amended notice of location whereof is of record in Book 86 of Mines, page 235, said records.

PROSPERITY, the amended notice of location whereof is of record in Book 86 of Mines, page 236, said records;

LAST CHANCE, the amended notice of location whereof is of record in Book 86 of Mines, page 237, said records.

GOLDEN WEST, the amended notice of location whereof is of record in Book 86 of Mines, page 238, said records.

IN WITNESS WHEREOF, I have hereunto set my hand and affixed my official seal, this 3d day of June, A.D.1911.



J. C. Bradbury
 County Recorder.

U. S. SURVEYOR-GENERAL'S FINAL CERTIFICATE ON FIELD NOTES.

Department of the Interior,

OFFICE OF U. S. SURVEYOR-GENERAL,

Phoenix, Arizona,

November 25, 1911.

I, U. S. Surveyor-General for Arizona,

do hereby certify that the foregoing transcript of the Field Notes, return and approval of the survey of the mining claim of

David Connor,

known as the TRIANGLE, LAST CHANCE, PROSPERITY, INDIANA, AXTEL, GOLDEN WEST, situate in Verde

Mining District, Yavapai County, Arizona, approximately

in Section 2, Township No. 15 N., Range No. 2 E., unsurveyed, and

designated as Survey No. 2934, has been correctly copied from the originals on file in

this office; that said Field Notes furnish such an accurate description of said mining claim as will, if incorporated into a patent, serve fully to identify the premises, and that such reference is made therein to natural objects or permanent monuments as will perpetuate and fix the locus thereof.

And I further certify that five hundred dollars' worth of labor has been expended or improvements made upon said mining claim by claimant or his grantors, and that said improvements consist of 2 cuts, 7 tunnels and 12 shafts, total value \$7450.00

Tunnel No. 7 on the Last Chance lode, value \$2000.00, is a common improvement for the benefit and development of this entire group of claims, and an undivided 1/6 interest therein, value \$333.00, is properly credited to each of the claims in this survey.

Tunnel No. 8 on the Last Chance lode being of benefit to all of the claims in this survey except the Triangle lode, an undivided one-fifth interest therein, value \$180, is properly credited to each of the claims in this group except the Triangle lode.

and that no portion of said labor or improvements has been included in the estimate of expenditures upon any other claim.

I further certify that the plat thereof, filed in the U. S. Land Office at Phoenix,

Arizona, is correct and in conformity with the foregoing Field Notes.

Frank S. Ingalls,

United States Surveyor-General for Arizona.

4-687.

SURVEYOR-GENERAL'S CERTIFICATE OF APPROVAL OF FIELD NOTES AND SURVEY OF MINING CLAIM.

Department of the Interior.

Office of U. S. Surveyor-General,

Phoenix, Arizona,

November 25, 1911.

I, U. S. Surveyor-General for Arizona,

do hereby certify that the foregoing and hereto attached Field Notes and Return of the Survey of the Mining Claim of

David Connor,

, known as the

TRIANGLE, LAST CHANCE, PROSPERITY, INDIANA, AXTEL, GOLDEN WEST,

situate in Verde mining district,

Yavapai County, Arizona, approximately

in Section 2, Township No. 15 N., Range No. 2 E., unsurveyed

, designated as Survey No. 2934,

executed by J. William Waara, U. S. Deputy Mineral

Surveyor, June 6 - 16, 1911, under my instructions dated

June 5, 1911, have been critically examined and the necessary cor-

rections and explanations made, and the said Field Notes and Return, and the Survey they describe,

are hereby approved. A true copy of the copy of the location certificate filed by the applicant for

survey is included in the field notes.

Frank S. Lygass

U. S. Surveyor-General for Arizona.