

*Platted*

DEL 4-1911

(4-683.)

Mineral Survey No. 2954

Lot No. ....

Arizona Land District.

FIELD NOTES

OF THE SURVEY OF THE MINING CLAIM OF

Arizona Copper Shipping  
Miner Company.

KNOWN AS THE

North Star Shelly No. 1, Shelly No. 2, Monroe,  
Emmett, Holbrook, Quartz, South Star  
Cochise Mining District,

Cochise County, Arizona

Sections 23, 24, Township 16 S., Range 22 E

Surveyed under instructions dated Sept 29, 1911.

by John A. Rockefeller  
U. S. Deputy Mineral Surveyor

Claim located See Notices, 1

Survey commenced Oct 25, 1911.

Survey completed Nov 2, 1911.

6-103

Address of Claimants Secretary  
W. G. Gilmore  
Ford Street Ariz.

C. F. Elliott,  
El Paso, Texas.

SURVEY No. 2954.

NORTH STAR

Feet

Beginning at Cor. No. 1, the N. W. Cor. of loca-  
tion, a pine post 4 ins. sq., 3 ft. above ground, in  
mound of stone, scribed N. W. C - N. S, add 1-2954,

Whence

The corner of Secs. 13, 14, 23, 24, Tp. 16  
S., R. 22 E., bears N. 14° 07' W. 681.4 ft.  
on

X B.. R. 1-2954 chiseled a granite rock 14 X 10 X  
4 ins.. above ground bears N. 17° 25' W., 15.2 ft.

X B. R. (not space for more) chiseled on granite  
outcrop, bears S. 83° 07' W. 25.05 ft.

Thence S. 78° 58' E. Var. 13° 15' E.

1222.7

To Cor. No. 2, a pine post, 4 ins. sq., 3 ft.  
above ground, in a mound of stone scribed N E C - N S  
add 2-2954,

Whence

X B. R. 2-2954, chiseled on lime stone bed  
rock exposing 30 X 8 ins., bears N. 1° 30' W. 16.05 ft.

X B. R. (not space for more) chiseled on lime stone  
outcrop 12 X 10 X 3 ins. bears S. 88° 10' W. 32.8 ft.

Cor. No. 2, Santa Monica lode,

A post scribed 2-2843 A S M bears N. 0° 31' E.  
52.7 ft.

Thence S. 0° 08' E. Var. 13° 15' E.

305.4

E. Center End, a pine post 4 ins. sq., 3 ft. above  
ground, in a mound of earth and stone, scribed E C E -  
N S, add 2954

610.5

To Cor. No. 3, identical with Cor. No. 3 Shady No. 1  
lode of this survey, a pine post 4 ins. sq., 3 ft. above  
ground, in a mound of stone S E C - N S N E C-S No. 1

	<p>add 3-3-2954.</p> <p>Whence</p> <p>A double stone monument bears S. 52° 40' W. 245 ft.</p> <p>No rock or tree bearings available.</p> <p>Thence N. 78° 59' W. Var. 13° 15' W.</p>
1222.7	<p>To Cor. No. 4, identical with Cor. No. 2, Shelby No. 1 lode of this survey, a pine post 4 ins. sq., 4 1/2 ft. above ground, in a mound of stone, scribed S W C - N S N W C - S. No. 1, add 4- - 2-2954.</p> <p>Whence</p> <p>X B R 4 - 2 - 2954 chiseled on a limestone 24 X 10 X 1 inches bears N. 27° 31' W. 13.2 ft.</p> <p>X B R 2 - 2954 chiseled on a limestone 24 X 18 X 3 ins. bears S. 67° 45' W. 40.85 ft.</p> <p>Thence N. 0° 08' W. Var. 13° 15' E.</p>
136.7	E. Center end Monroe lode of this survey
305.5	W. center end, a pine post 4 ins. sq, 3 ft. above ground, in a mound of stone, scribed W C E - N S.
436.9	Cor. No. 1 Monroe lode of this survey
611.0	To Cor. No. 1, the place of beginning.
	The survey of this lode is identical with location.
	<p>_____</p> <p>SHELBY NO. 1</p>
	<p>Beginning at Cor. No. 1, set a limestone 10 X 8 ins., 24 ins. long, 12 ins. in the ground, chiseled X at exact point and add 1-2954 S 1, witnessed by a monument of stone.</p> <p>Whence</p> <p>X B R 1-2954 chiseled on limestone bed rock bears S. 30° 11' W. 41.9 ft.</p>

Feet                    The corner of location, a pine post 4 ins. sq.,  
3 1/2 ft. above ground in a mound of stone, scribed  
S W C - S 1 bears S. 0° 08' E. 10.0 ft.

                         A post scribed N W C - P 1-2843 A. P. bears S. 4°  
30' E. 10.55 ft.

                         The 1/4 corner between Secs. 23 & 24, Tp. 16 S.  
R. 22 E. bears S. 11° 56' W., 792.0 ft.

                         Thence N. 0° 08' W. Var. 13° 15' E.

305.4                    W. center end, raise a mound of stone 3 ft. base  
3 ft. high,

                         Whence

                         The W. center end of location, a pine post  
in a mound of stone scribed W C E - S1, bears S. 0°  
08' E. 10.0 ft.

437.6                    Cor. No. 2 Monroe lode and No. 4 Shelby No. 2 lode  
of this survey

600.8                    To Cor. No. 2, identical with location, and with Cor.  
No. 4 North Star lode of this survey, and previously  
described.

                         Thence S. 78° 59' E. Var. 13° 15' E.

1222.7                    To Cor. No. 3, identical with location, and with Cor.  
No. 3 North Star lode of this survey, and previously  
described.

                         Thence S. 0° 08' E. Var. 13° 15' E.

295.5                    E. Center End, set pine post 4 X 3 ins., 3 1/2 ft.  
long, 1 foot in ground to hardpan, in a mound of stones  
scribed E C E - S1. 2954

                         Whence

                         E. C. End of location, a post in a mound of  
stones scribed E C E - S1, bears S. 0° 08' E. 10.00 ft.

600.9                    To Cor. No. 4, set a limestone 10 X 8, 24 ins. long,



12 ins. in the ground, chisel a cross (X) at exact point, and 4-2954 Sl, witnessed by a monument of stone.

Whence

X B. R. 4-2954 chiseled on limestone bed rock, 30 X 20 ins., bears S.  $14^{\circ} 01'$  W. 27.1 ft.

X B. R. (not space for more) chiseled on limestone outcrop 12 X 10 X 3 ins., bears S.  $23^{\circ} 15'$  E.

31.0 ft.

Cor. No. 4 Pasadena lode on line 2-3, Santa Monica lode, both of Sur. No. 2843 A.

A post scribed 4-2843 A P NEC-P bears S.  $0^{\circ} 08'$  E. 10.4 ft.

Corner of location, a post 4 ins. sq., 3 1/2 ft. above ground, in a mound of stone, scribed S E C - Sl, bears S  $0^{\circ} 08'$  E. 10.0 ft.

Thence N.  $78^{\circ} 59'$  W. Var.  $13^{\circ} 15'$  E.

1222.7 To Cor. No. 1, the place of beginning.

#### MONROE

Beginning at Cor. No. 1, the N. E. Corner of location, a pine post 4 ins. sq., 3 ft. above ground in in a mound of stone, scribed N E C - M, add 1-2954.

Whence

The Cor. of Secs. 13-14-23-24, Tp. 16 S., R. 22 E., bears N.  $11^{\circ} 17'$  W. 851.35 ft.

Cor. No. 1, North Star lode of this survey, bears N.  $0^{\circ} 08'$  W. 174.1 ft.

Thence S.  $0^{\circ} 08'$  E. Var.  $13^{\circ} 15'$  E.

131.4 W. Center End North Star lode of this survey

300.2 E. Center End, a pine post 4 ins. sq., 2 1/2 ft. high, in a mound of stone, scribed E C E - M, add 2954.

Feet

436.9 Cor. No. 4, North Star lode of this survey

600.1 To Cor. No. 2, identical with Cor. No. 4 Shelby No. 2 lode of this survey, a pine post 4 ins. sq., 3 ft. high, in a mound of stone, <sup>Scribed</sup> S E C - M and N E C - S No. 2, add 2 - 4 - 2954,

Whence

X B R 2 - 4 - 2954, chiseled on limestone bed-rock, 24 X 24 ins., bears S. 25° 15' W. 23.3 ft.

X B R 2-4-2954, chiseled on limestone bed-rock, 24 X 16 ins., bears N. 8° 10' W., 11.65 ft.

Thence N. 85° 40' W. Var. 13° 15' E.

165.44 Intersect line between Secs. 23-24, Tp. 16 S., R. 22 E., at S. 0° 07' E., 1422.52 ft. from Cor. Secs. 13-14-23-24 and N. 0° 07' W. 1224.98 ft. from 1/4 section corner.

300.9 N. Center End, Shelby No. 2 lode of this survey

600.6 Cor. No. 3 Shelby No. 2 lode, and No. 4 Emmett lode of this survey.

900.6 N. Center End Emmett lode of this survey.

1200.3 Cor. No. 3 Emmett lode, and No. 4 Holbrook lode of this survey.

1500 To Cor. No. 3, identical with N. C. E. Holbrook lode of this survey, a pine post 4 ins. sq., 3 ft. above ground, in a mound of stone, scribed S W C - M, and N C E - H, add 3-2954,

Whence

X B R 3-2954, chiseled on a granite rock 24 X 8 ins., 10 ins. high, bears S. 66° 07' W. 77.2 ft.

No other bearings available.

Thence N. 0° 08' W. Var. 13° 25' E.

300 W. Center End, a pine post 4 ins. sq., 3 ft. above ground, in a mound of stone, scribed W C E - M, add 2954.

Feet	To Cor. No. 4, a pine post, 4 ins. sq., 3 ft. above ground, in a mound of stone, scribed N W C - M, add 4-2954
599.7	Whence X B R 4-2954, chiseled on a granite rock 4 1/2 X 4 ft., 14 ins. above ground, bears N. 13° 44' W., 49.2 ft. X B R 4-2954, chiseled on a granite rock 12 X 6 ft., 2 ft. high, bears N. 80° 47' W., 59.05 ft. Thence S. 85° 41' E. Var. 13° 20' E.
1334.63	Intersect line between Secs 23-24, Tp. 16 S. R. 22 E., at S. 0° 07' E. 822.45 ft., and N. 0° 07' W. 1825.05 ft. from the 1/4 sec. corner. <i>From Cor. Secs. 13-14-23 &amp; 24</i>
1500.	To Cor. No. 1. the place of beginning. The survey of this lode is identical with location.
	SHELBY NO. 2 LODE
	Beginning at Cor. No. 1, the S. E. Cor. of location, identical with corner No. 1 South Star lode of this survey, a pine post 4 ins. sq., 3 ft. above ground, in a mound of stone, scribed S E C - S2, and N E C - S S add 1-1-2954. Whence X B R 1-1-2954, chiseled on limestone bed-rock exposing 36 X 12 ins., bears S. 62° 30' W. 26.7 ft. X B R 1-1-2954 chiseled on limestone outcrop, 24 X 24 X 2 ins., bears N. 41° 05' W., 10.2 ft. The 1/4 corner between Secs. 23-24, Tp. 16 S. R. 22 E., bears N. 30° 02' W. 332.1 ft.

Feet

Thence N. 85° 40' W. Var. 13° 20' E.

166.7

Intersect line between Secs. 23-24, Tp. 16 S., R. 22 E., at South 274.9 ft. from 1/4 sec corner, and north 2373.4 ft. from corner Secs. 23-24-25-26.

300.2

S. Center End, a pine post 4 ins. <sup>square</sup> diam, 2 1/2 ft. above ground, in a mound of stone scribed S C E - S2, add 2954

599.9

To Cor. No. 2, identical with Cor. No. 1, <sup>Emmett</sup> ~~Emmett~~ lode of this survey, a pine post 4 ins. sq., 3 ft. above ground, in a mound of stone, scribed S W C - S2. S E C - E, add 2-1-2954

Whence

X B R 2-1-2954 chiseled on limestone bed-rock, 40 X 12 ins., bears N. 21° 13' E. 15.0 ft.

X B R 2-1-2954, chiseled on a limestone reef, bears S. 13° 40' W. 36.9 ft.

Thence N. 0° 10' W. Var. 13° 15' E.

1500

To Cor. No. 3, identical with Cor. No. 4 Emmett lode of this survey, a pine post 4 ins. sq., 3 ft. above ground in a mound of stone, scribed N W C - S2 N E C - E add 3-4-2954.

Whence

X B R 3-4-2954, chiseled on a limestone 14 X 10 ins., 8 ins. high, bears N. 44° 57' E. 10.45 ft.

X B R 3-4-2954, chiseled on a limestone reef, bears S. 28° 20' W. 10.8 ft.

Thence S. 85° 40' E. Var. 13° 30' E.

299.7

N. Center End, a pine post 4 ins. sq., 2 1/2 ft. above ground, in a mound of stone, scribed N C E - S2.

435.16

Intersect line between Secs. 23-24, Tp. 16 S., R. 22 E., at S. 0° 07' E., 1422.52 ft. from corner Secs. 13-14-23-24, and N. 0° 07' W. 1224.98 ft. from 1/4 sec.



Feet	
	corner.
600.6	To Cor. No. 4, identical with Cor. No. 2, Monroe lode of this survey, previously described.
	Thence S. 0° 08' E. Var. 13° 15' E.
132.2	W. center end, Shelby No. 1 lode of this survey.
437.6	Cor. No. 1, Shelby No. 1 lode of this survey
753.4	Point whence W. center end Pasadena lode survey
	No. 2843A bears N. 89° 52' E, 0.4 ft. <i>a post in a mound of stone scribed WCE-P</i>
1058.9	Point whence Cor. No. 2 Pasadena lode identical with Cor. No. 3, Monterey lode, both of Survey No. 2843 A,
	<i>bears N. 89° 52' E. 0.4 ft. a post in a mound of stone scribed SWC-P 2-2843 A P, NWC-M-3-2843 A-M.</i>
1500	To Cor. No. 1 the place of beginning.
	The survey of this lode is identical with location.
	EMMETT
	Beginning at Cor. No. 1, identical with Cor. No.
	2, Shelby No. 2 lode previously described.
	Whence
	The 1/4 Cor. between Secs. 23-24, Tp. 16 S.,
	R. 22 E., bears N. 60° 43' E., 495.13 ft.
	Thence N. 85° 40' W. Var. 13° 15' E.
299.8	S. center end, a pine post 4 ins. sq., 3 ft. above
	ground, in a mound of stone, scribed S C E - E, add
	2954.
600.1	To Cor. No. 2, identical with Cor. No. 1, Hole-
	brock lode of this survey, a pine post 4 ins. sq., 3
	ft. above ground, in a mound of stone, scribed S W C -
	E S E C - H, add 2-1-2954
	Whence
	X B R 2-1-2954, chiseled on a quartz rock,
	20 X 10 ins., 4 ins. above ground, bears S. 69° 30'
	W., 42.0 ft.
	No other bearings available.
	Thence S. 0° 08' E. Var. 13° 15' E.

Feet

No other bearings available.

Thence N. 0° 09' W. Var. 13° 15' E.

1500

To Cor. No. 3, identical with Cor. No. 4, Holebrock lode of this survey, a pine post 4 ins. sq., 3 ft. above ground, in a mound of stone, scribed N W C - E. N E C - H, add 3-4-2954

Whence

X B R 3-4-2954, chiseled on granite bed-rock, bears S. 56° 51' E. 42.6 ft.

X B R 3-4-2954, chiseled on a granite rock, 30 X 16 X 12 ins., bears N. 62° 40' E. 91.8 ft.

Thence S 85° 40' E. Var. 13° 15' E.

299.7

N. center end, a pine post 4 ins. sq., 3 ft. above ground, in a mound of stone scribed N C E - E add 2954

599.7

To Cor. No. 4, identical with Cor. No. 3 Shelby No. 2 lode of this survey previously described.

Thence S. 0° 10' E. Var. 13° 15' E.

1500

To Cor. No. 1, the place of beginning.

The survey of this lode is identical with location.

HOLEBROCK

Beginning at Cor. No. 1, identical with Cor. No. 2 Emmett lode of this survey, previously described.

Whence,

The 1/4 Sec. corner between Secs. 23-24, Tp. 16 S., R. 22 E., bears N. 79° 11' E. 1048.9 ft.

Thence N. 85° 40' W. Var. 13° 15' E.

300

S. center end identical with Cor. No. 4 South Star lode of this survey, a pine post 4 ins. sq., 3 ft. above

## Feet

ground, in a mound of stone, scribed S C E - H,  
and N W C - S.S., add 2954, and 4-2954

Whence

X B R 4-2954 chiseled on a quartz rock, 20 X 12  
X 6 ins., bears S. 89° 56' E. 51.8 ft.

No other bearings available.

474.0

Center of road bears N. W. and S. E.

599.7

To Cor. No. 2, identical with Cor. No. 1 Quartz  
lode of this survey, a pine post 4 ins. sq., 3 ft. above  
ground, in a mound of stone, scribed S W C - H S E C-Q  
add 2-1-2954.

Whence

X B R (not space for more), chiseled on a  
quartz rock, 7 X 4 ins., 1 inch above ground, bears S 21°  
55' W. 73.8 ft.

No other bearings available.

Thence N. 0° 09' W. Var. 14° 40' E.

90

Center of road bears N. W. & S. E.

1500

To Cor. No. 3, identical with Cor. No. 4 Quartz  
lode of this survey, a pine post 4 ins. sq., 3 ft.  
above ground, in a mound of stone, scribed N W C - H  
N E C - Q, add 3-4-2954

Whence

X B R 3-4-2954, chiseled on a granite rock  
18 X 6 X 4 ins., bears S. 19° 10' W. 8.8 ft..

No other bearings available.

Thence S 85° 40' E. Var. 13° 25' E.

300

N. center end, identical with Cor. No. 3 Monroe  
lode of this survey, previously described.

599.7

To Cor. No. 4, identical with Cor. No. 3 Emmett  
lode of this survey, previously described.

Thence S. 0° 09' E. Var. 13° 15' E.

Feet  
1500

To Cor. No. 1, the place of beginning.  
The survey of this lode is identical with location.

QUARTZ LODE

Beginning at Cor. No. 1, identical with Cor. No. 2 Holebrock lode of this survey, previously described,

Whence

The 1/4 sec. Cor. between Secs. 23 & 24, Tp. 16 S., R. 22 E., bears N. 84° 41' E., 1635.4 ft.

611.3

Thence N. 85° 40' W. Var. 14° 40' E.

299.9

S. center end, a pine post 4 ins. sq., 3 ft. above ground, in a mound of stone, scribed S C E - Q add 2954

590.9

To Cor. No. 2, a pine post 4 ins. sq., 3 ft. above ground, in a mound <sup>of stone</sup> scribed S W C - Q, add 2-2954

Whence

X B R 2-2954 chiseled on limestone bed rock, 48 X 24 ins., bears N. 28° 16' E. 46.05 ft.

X B R 2-2954, chiseled on limestone bed-rock 24 X 12 ins., bears S. 26° 15' W. 55.85 ft.

Thence N. 0° 27' 30" W. Var. 13° 15' E.

1500.66

To Cor. No. 3, a pine post 4 ins. sq. 3 ft. above ground, <sup>in a mound of stone</sup> scribed N W C - Q add 3-2954

Whence

512.0

X B R 3-2954, chiseled on a granite face 54 X 48 ins., bears S. 0° 45' E. 3.45 ft.

X B R 3-2954, chiseled on granite bed-rock, bears N. 6° 44' E. 17.55 ft.

1291.6

Thence S. 85° 40' E. Var. 13° 25' E.

229

Wagon road bears N. and S.



Feet

299.3

N. center end, a pine post 4 ins. sq., 3 ft. above ground, in a mound of stone, scribed N E - Q add 2954

599.0

To Cor. No. 4, identical with Cor. No. 3, Holebrock lode of this survey, previously described, Thence S.  $0^{\circ} 09' E$ . Var.  $13^{\circ} 25' E$ .

1410.8

Center of wagon road bears N. W. & S. E.

1500

To Cor. No. 1, the place of beginning.

The survey of this lode is identical with location.

## SOUTH STAR

Beginning at Cor. No. 1, identical with location and with Cor. No. 1 of Shelby No. 2 lode of this survey, previously described.  $\frac{1}{4}$  Cor. bet. Secs. 23 & 24 brs. N.  $30^{\circ} 02' W$ ., 332.10 ft.

Thence S.  $0^{\circ} 08' E$  Va  $13^{\circ} 20' E$

251.3

Post in a mound of stone placed for E. center end.

300

Original point for E. center end, set pine post 4 ins. sq., 4 ft. long, 10 ins. in ground to hard-pan, in a mound of stone, scribed E C E - S S 2954.

(Note: A preliminary survey of this lode was made by Mr. E. R. Wash, C. E., and the point above described at S.  $0^{\circ} 08' E$ ., 300 ft., was marked for a center end monument. By some error on the part of an assistant the monument was built on a line point at S.  $0^{\circ} 08' E$ . 251.3 ft. Hence I have placed the center end monument at the proper point.)

555.6

To Cor. No. 2, identical with location, a pine post 4 ins. sq., 3 ft. above ground, in a mound of stone,

Feet

scribed S E C - S S add 2-2954

Whence

A monument of stone bears N. 89° 00' W.

39.5 ft.

Cor. No. 2

~~Sum N 928 437~~

The S. W. corner Monterey lode, a post in a mound of stone, scribed S W C - M 2-2843AM, bears S. 0° 06' E. 503.3 ft.

Whence

X B R 2-2954, chiseled on limestone bed-rock 40 X 20 ins., bears N. 4° 40' W. 13.3 ft.

X B R 2-2954, chiseled on limestone bed-rock 18 X 18 ins., bears S. 60° 35' E. 3.7 ft.

Thence N. 87° 20' 30" W. Var. 13° 20' E.

*Intersect line bet. Secs. 23 & 24, at 3.8354 ft. from 1/4 Cor. & N. 1512.9 ft. from Cor. to Secs. R32425x26*

168  
1136

Center of road bears N. W. & S. E.

1497.2

To Cor. No. 3, identical with location, a pine post 4 ins. sq., 3 ft. above ground, in a mound of stone, scribed S W C - SS add 3-2954

Whence

X B R 3-2954, chiseled on a quartz rock, 10 X 16 ins., 3 ins. above ground, bears N. 40° 55' W. 21.8 ft.

X B R 3-2954, chiseled on a limestone rock, 24 X 9 X 2 ins., bears N. 77° 40' E. 19.0 ft.

Thence N. 0° 08' W. Var. 13° 15' E.

299.6

W. center end, identical with location, a pine post 4 ins. sq., 3 ft. above ground, in a mound of stone, scribed W C E - S S add 2954.

1136

385

Center of road bears N. W. & S. E.

599.9

To Cor. No. 4, identical with location, and with S. Center end Holebrock lode of this survey, previously described.

Thence S. 85° 40' E. Var. 13° 15' E.

300

Cor. No. 1 Holebrock and No. 2 Emmett lodes

of this survey.

Feet

of this survey.

600.3

S. center end, Emmett lode of this survey.

900.1

Cor. No. 1, Emmett and No. 2 Shelby No. 2 lodes of this survey

1199.8

S. center end Shelby No. 2 lode of this survey

1333.3

Intersect line between Secs. 23 & 24, S. 27 & 29 T. from 1/4 cor. 7-11-2373.4 ft. from Cor. Secs. 23, 24, 25 & 26

1500

To Cor. No. 1, the place of beginning.

AREA

Acres

North Star lode

16.818

Shelby No. 1 lode

16.547

Monroe lode

20.595

Shelby No. 2 lode

20.607

Emmett lode

20.594

Holebrock lode

20.588

Quartz lode

20.425

South Star lode

19.828

LOCATION.

This claim is located in Cochise Mining District, Cochise County, Arizona, in Secs. 23-24, Tp. 16 S., R. 22 E., G. & S. R. Meridian.

Veins

The presumed courses of the veins are as follows:

NORTH STAR

From W. center end to E. center end S 78° 58' E. 1222.7 ft.

SHELBY NO. 1 LODE

From W. center end to E. center end S 78° 58' E.

1222.7 ft.

Feet

SHELBY NO. 1

From W. center end to E. center end S. 78° 59' E.  
1222.7 ft.

MONROE

From E. center end to W. center end N. 85° 41' W. 1500 ft.

SHELBY NO. 2

From S. center end to N. center end N. 0° 10' W. 1500 ft.

EMMETT

From S. center end to N. center end N. 0° 10' W. 1500 ft.

HOLEBROCK

From S. center end to N. center end N. 0° 08' W. 1500 ft.

QUARTZ

From S. center end to N. center end N. 0° 08' W. 1500 ft.

SOUTH STAR

From W. center end to E. center end S. 85° 40' E. 1500 ft.

ADJOINING CLAIMS.

On the East -

Santa Monica lode, Pasadena lode and Monterey lode, Survey No. 2843A. Thomas Higgins, claimant.

On the South -

Unknown lode, unsurveyed. Claimant unknown.

EXPENDITURE OF \$500.00

I certify that the value of labor and improvements made upon or for the benefit of each of the locations embraced in said mining claim, by the claimants, or their grantors, is as follows:

ON THE NORTH STAR

N° 1. Discovery shaft, the center of which bears from E. center end N. 78° 58' W. 53.7 ft.



Shaft 6 X 4 ft., 6 1/2 ft. deep, caved once  
deeper Value \$30.00

From Cor. No. 3

No 2) A shaft which bears N. 61° 22' W. 333  
ft. Shaft 6 X 4 ft., 8 1/2 ft. deep  
Value \$60.00

No 3) A shaft which bears N. 77° 20' W. 535  
ft. Shaft 6 X 5 ft., 6 ft. deep  
Value \$40.

From Point on Lode Line -

at S. 78° 58' E. 154.5 ft. from W. C. E.

No 4) A shaft which bears S. 51° 23' E. 406.5  
ft. Shaft 6 X 4 ft., 14 ft. deep  
Value \$140.

No 5) A shaft which bears S. 77° 30' W. 143  
ft. 7 X 5 ft., 4 ft. deep (caved)  
Value \$20.

No 6) A shaft which bears N. 84° 45' E. 137  
ft. Shaft 6 X 4 ft., 7 feet deep (partly  
filled, once deeper)  
Value \$60.

Note: 1/3 of improvement No. 2 Shelby No. 1  
lode credited to this lode, \$340

ON THE SHELBY NO:1

No 1) Discovery shaft, the center of the south  
side of which bears from W. center end S.  
78° 59' E. 262 ft.  
Shaft 6 X 4 1/2 ft., 7 ft. deep (partly  
filled, once deeper).

Value \$50

From W. center end

N<sup>o</sup> 2) A shaft which bears N. 62° 30' E. 71.5 ft.  
 Shaft 6 X 6 ft., 85 ft. deep:  
 Shaft incline pitch N. easterly; is not protected at top, and too dangerous to explore:  
 Said to have drifts at bottom extending N. westerly, southeasterly and north easterly.

Value at \$12 per foot. 85 ft. \$1020 37 120

Note:

The mouth of shaft No. 2 is on a height of ground which slopes gently eastward, rapidly southward, is comparatively level northward and westward, and about the north end of the Emmett and Holebrock becomes an east and west ridge. The shaft is sunk on a body of high grade ore which can not be traced far on the surface, but which appears to be a "chimney" or "blowout" extending Northward and Westward. At date of survey it was not practicable to descend, owing to loose ground and lack of timbers, (the shaft was measured by dropping a rock tied to a steel tape) but I was told that a drift had been extended in this direction and that it was presumed that the ore body would extend into the Monroe and probably the North Star lodes. It might be true also of the Shelby No. 2 lode but developments have not been sufficient to determine the exact strike and extent of the ore. As no work or apparent extent of the ore body was toward the Emmett and Holebrock, the work seemed to apply to the Shelby No. 1, North Star and Monroe lodes,

N<sup>o</sup> 4) A shaft which bears from Cor. No. 3 S. 88° 20' W. 347 ft. Shaft 6 X 5 ft., 18 ft. deep

Value at \$10 per foot 180

From E. center end:

N<sup>o</sup> 5) A shaft which bears S. 42° 45' W. 205.5 ft.

Shaft 6 X 4 ft., 8 ft. deep.

Value \$24.00

N<sup>o</sup> 6) A shaft which bears S. 70° 30' W. 166 ft.

Shaft 6 X 4 ft., 8 ft. deep

Value 32.00

N<sup>o</sup> 7) A shaft which bears S. 82° 05' W. 749 ft.

Shaft 6 X 4 ft., 8 ft. deep Value

\$24.00

ON THE MONROE

N<sup>o</sup> 1) Discovery shaft, the center of which bears from E. center end N. 85° 41' W., 170 ft. Shaft 6 X 4 ft., 7 1/2 ft. deep, caved; once deeper

Value \$60.00

N<sup>o</sup> 2) Shaft, the center of southerly side of which bears from Cor. No. 2 N. 85° 40' W. 78 ft. Shaft 6 x 4 ft., 9 1/2 ft. deep.

Value \$75.00

Note: 1/3 of improvement No. 2 Shelby No. 1 lode credited to this lode \$340.00

ON THE SHELBY NO. 2 LODE:

From South Center End:

N<sup>o</sup> 1) Discovery shaft, the center of W. side of which bears N. 0° 10' W. 157 ft. Shaft 6 X 6 ft., 6 ft. deep (once deeper)

Value \$40.00

N<sup>o</sup> 2) A shaft incline, the center of foot wall of which bears N. 17° 06' W. 145 ft. Shaft 7 X 5 ft., 76 ft. deep.

Value at \$12 per foot \$912.00

From Cor. No. 2:

N<sup>o</sup> 3) A shaft, the center of which bears N. 4° 50' E. 378 ft. Shaft 6 X 5 ft., 515 ft. deep. From top, shaft timbered 15 ft., also from top to level of surface ground, whence shaft begins, 3 1/2 ft.

Value of 48 ft. shaft at \$10 foot \$480

Value 15 ft. timbering 45.-

Total value shaft and timbering \$525.00

N<sup>o</sup> 4) A shaft, the center of which bears N. 1° 00' E. 384 ft.. Shaft 8 X 6 ft., 11 ft. deep.

Value \$130.00

From point at lode line at N. 0° 10' W.  
947.4 ft. from S. C. E.

N<sup>o</sup> 5) A shaft, the center of which bears S. 50° 50'  
W. 267.5 ft. Shaft 6 X 4 ft., 12 ft. deep  
Value \$100.00

N<sup>o</sup> 6) A shaft the center of which bears S. 81° 00'  
W. 293 ft. Shaft 6 X 4 ft., 6 ft. deep  
Value \$35.00

From a point on line 4-1 at S. 0° 08'  
E 132.2 ft. from Cor. No. 4.

N<sup>o</sup> 7) A shaft the center of which bears N. 13° 40'  
W. 72.5 ft. Shaft 6 X 4 1/2 ft., 25 ft. deep  
Value at \$10 per foot \$250.00

From point on line 4-1 at S. 0° 08' E.  
753.4 ft. from Cor. No. 4.

N<sup>o</sup> 8) A shaft the center of which bears N. 79° 47' W. 325.4  
ft. Shaft 6 X 4 ft., 9 ft. deep  
Value \$80.00

N<sup>o</sup> 9) A shaft the center of which bears S. 35° 45'  
W. 346.5 ft. Shaft 4 X 2 ft., 2 ft. deep.  
Value \$5.00

From a point on line 4-1 at S. 0° 08' E.  
1222.2 ft. from Cor. No. 4

N<sup>o</sup> 10) A shaft the center of which bears N. 38° 38'  
W. 98 ft. Shaft 6 X 4 ft., 7 ft. deep  
Value \$50.00

ON THE EMMETT

N<sup>o</sup> 11) Discovery shaft the center of which bears from  
S. center end N. 0° 10' W. 208.5 ft. Shaft  
6 X 4 ft., 7 ft. deep (caved, once deeper)  
Value \$40.00



From Cor. No. 3

- N<sup>o</sup> 2) A shaft the center of which bears S. 21° 23' E. 269 ft. Shaft 6 X 5 ft., 13 ft. deep
- Value \$120.00

From S. center end

- N<sup>o</sup> 3) A shaft the center of which bears N. 39° 35' E. 224.5 ft. Shaft 6 X 4 ft., 8 ft. deep
- Value \$70.00

- N<sup>o</sup> 4) A shaft (incline), the center of foot wall of which bears N. 84° 15' E. 130 ft. Shaft 6 X 4 ft., 45 ft. deep, with drift from bottom, pitch northerly

Value 45 ft. at \$10. per foot \$450.00

#### ON THE HOLEBROOK

- N<sup>o</sup> 1) Discovery shaft the center of E. side of which bears N. 0° 08' W. 167 ft. <sup>from S. C. E.</sup> Shaft 6 X 4 ft., 7 ft. deep (partly filled)
- Value \$50.00

From Cor. No. 2

- N<sup>o</sup> 2) A shaft the center of which bears N. 41° 00' E. 25.00ft. Shaft 6 X 4 ft., now 4 ft. deep, caved
- Value \$25.00

- N<sup>o</sup> 3) A shaft, the center of which bears N. 1° 40' E. 569 ft. Shaft 6 X 4 ft., 6 1/2 ft. deep (caved)
- Value \$50.00

From N. center end

- N<sup>o</sup> 4) A shaft, the center of which bears S. 39° 46' E. 426 ft. Shaft 5 X 4 ft., 7 ft. deep (caved)
- Value \$40.00

From Cor. No. 1

- N<sup>o</sup> 5) A shaft (incline) the center of footwall of

which bears N. 20° 36' W. 327 ft. Shaft 6 X 4 ft., 30 ft. deep, incline to N. W.

Value at \$10. per foot \$300.00

From S. center end

No 6) A shaft the center of which bears N. 53° 40' E. 104 ft. Shaft 6 1/2 X 4 1/2 ft., 7 ft. deep

Value \$50.00

ON THE QUARTZ LODE:

No 1) Discovery consists of a monument of stone, containing notice of location, which bears from S. center end N. 0° 08' W. 242.6 ft.

From point on Lode Line at S. 0° 08' E, 666.6 ft. from N. center end.

No 2) A shaft, the center of which bears S. 37° 15' E. 348.5 ft. Shaft 6 X 4 ft., 5 ft. deep

Value \$40.00

No 3) A shaft, the center of which bears S. 59° 15' E. 127.5 ft. Shaft 8 X 5 ft., 8 1/2 ft. deep (partly filled)

Value \$75.00

ON THE SOUTH STAR

No 1) Discovery shaft, the center of which bears from W. C. E., S. 85° 40' E. 321.5 ft. Shaft 6 X 5 ft., 7 1/2 ft. deep

Value \$50.00

No 2) A shaft, the center of which bears S. 57° 15' E. 600.3 ft. from Cor. No. 4.

W. 226 ft. Shaft 5 X 4 ft., 7 ft. deep

Value \$40.00

From point on line 4-1 at S. 85° 40'

E. 900.1 ft. from Cor. No. 4

No 3) A shaft, the center of which bears S. 61° 00'

E. 203 ft. Shaft 6 X 4 ft., 6 ft. deep

Value \$40.00

#### OTHER IMPROVEMENTS.

##### SHELBY NO. 1

A From E. center end, a shaft which bears S. 71° 20' W., 197 ft., Shaft 6 X 4 ft., 4 ft. deep, caved, once much deeper.

##### SHELBY NO. 2

From point on lode line at N. 0° 10' W. 947.4 ft.  
*From S.C.E.*

A A shaft which bears S. 68° 30' W. 258.5 ft. Shaft 6 X 4 ft., 10 ft. deep

From point on line 4-1 at S 0° 08' E. 753.4 ft.  
*from Cor. No 4*

B A shaft which bears S. 55° 40' W. 277 ft. Shaft 6 X 4 ft., 8 ft. deep

From point on line 4-1 at S 0° 08' E. 1222.2 ft.  
*from Cor. No 4*

C A shaft which bears S. 62° 00' W. 52 ft. Shaft 6 X 5 ft., 20 ft. deep

##### ON THE EMMETT ROAD

A From Cor. No. 3, a shaft, which bears S. 1°

47' E. 277 ft. Shaft 5 X 5 ft.; now 5 ft. deep;  
once deeper; caved.

From Cor. No. 2

- B A shaft which bears N. 51' 00' E. 165.5 ft.  
Shaft 6 X 4 ft., 54 ft. deep

ON THE HOLEBROCK

From Cor. No. 2

- A A shaft which bears N. 13° 30' E. 89 ft.  
Shaft caved; filled nearly up to the top.

Claimants of all these improvements unknown.

*Report*

The Cor. of Sections 13-~~14~~-23-24, Tp. 16 S.,  
R. 22 E., is a quartz rock 10 X 8 X 8 ins. above  
ground, marked with 3 notches on the south, and  
1 notch on the east edges, and witnessed by a  
monument of stone on the west.

The 1/4 Cor. between Secs. 23-24, Tp. 16 S., R.  
22 E. is a limestone exposing 10 X 10 X 10 ins.,  
chiseled 1/4 on west, and witnessed by a monument  
on west.

The Cor. of Secs. 23-24-25-26 is a limestone 8 X 5  
ins., 15 ins. above ground, in a mound of stone,  
marked with two notches on south and one notch on  
east edges.

*Instrument*

This survey was made with a Young & Sons Mountain  
transit, provided with Smith solar attachment. The  
courses were deflected from true meridian, as obtained,  
by direct solar observation.

The measurements were made with 50 ft. and 500 ft. steel tapes.

Any discrepancies between this survey and notices of location are due to errors in the latter.

Tombstone, Ariz.,

Nov. 25, 1911.

*John A. Rockfellow*  
U. S. Mineral Surveyor.



JOHN A. ROCKFELLOW, A. M.  
CIVIL ENGINEER  
UNITED STATES MINERAL SURVEYOR

26  
FEB 5-1912

TOMBSTONE, ARIZONA Feb. 1 1912.

Hon. Frank S. Ingalls,  
U.S. Surveyor General,  
Phoenix Arizona,

Sir:

On Jan. 16th you wrote me that the platting on Survey No. 2954 had been completed but you were waiting for a valid discovery on Quartz lode.

On January 31st I visited the ground: a shaft has been sunk at discovery as follows,

From South Center End, center of shaft bears N.0° 08'W. 238 feet  
shaft 6x4 feet 19.5 feet deep.

Value at \$10 per foot \$195.00

Other work has been performed and is now going on, but as there is not yet sufficient on the Quartz and South Star lodes for me to make the Five Hundred Dollar affidavit I will leave further supplementary report till later.

Very respectfully

*John A. Rockfellow*  
U. S. Mineral Sur.

# FINAL OATHS FOR SURVEYS.

## LIST OF NAMES. *John A. Rockefeller*

A list of the names of the individuals employed by *C. C. Tiltson*

United States Mineral Surveyor, to assist in running, measuring, and marking the lines, corners, and boundaries described in the foregoing field notes of the survey of the mining claim of \_\_\_\_\_

*Arizona Copper Shipping Mines Company*

known as the *North Star, Shuby No 1, Shuby No 2, Mouse, Emmett, Halbrook, Quartz, South Star* and showing the respective capacities in which they acted.

*C. C. Tiltson* \_\_\_\_\_, Chainman.

*Asa Walker* \_\_\_\_\_, Chainman.

\_\_\_\_\_, Axman.

\_\_\_\_\_, Flagman.

## FINAL OATHS OF ASSISTANTS.

We, *C. C. Tiltson*

and *Asa Walker* \_\_\_\_\_, do solemnly swear that we assisted *John A. Rockefeller*

\_\_\_\_\_, United States Mineral Surveyor, in marking the corners and surveying

the boundaries of the mining claim of *Arizona Copper*

*Shipping Mines Company*

known as the *North Star, Shuby No 1, Shuby No 2, Mouse, Emmett, Halbrook, Quartz, South Star*

represented in the foregoing field notes as having been surveyed by said mineral surveyor and under his

direction; and that said survey has been in all respects, to the best of our knowledge and belief, faithfully

and correctly executed, and the corner and boundary monuments established according to law and the instruc-

tions furnished by the United States Surveyor-General for *Arizona*

*C. C. Tiltson* \_\_\_\_\_, Chainman.

*Asa Walker* \_\_\_\_\_, Chainman.

\_\_\_\_\_, Axman.

\_\_\_\_\_, Flagman.

Subscribed and sworn to by the above-named persons before me this *7th*

day of *November* \_\_\_\_\_, 19*11*

*R. C. Osborn*  
Notary Public

*My Commission expires  
March 15<sup>th</sup> 1913*

FINAL OATH OF U. S. DEPUTY MINERAL SURVEYOR

I, John A. Rockefeller, U. S. Deputy Mineral Surveyor, do solemnly swear that, in pursuance of instructions received from the United States Surveyor General for Arizona, dated Sept 29 1911, I have, in strict conformity to the laws of the United States, the official regulations and instructions thereunder, and the instructions of said Surveyor General, faithfully and correctly executed the survey of the Mining Claim of Arizona Copper Shipping Mines Company, known as the North Star Shelby No. 1, Shelby No. 2, Monroe, Emmett, Holbrook Quartz, South Star, leachise Mining District, Coconino County, Arizona, in Section 23-24, Township No. 16 S, Range No. R 2 E, and designated as Survey No. 2954, as represented in the foregoing field notes, which accurately show the boundaries of said mining claim as distinctly marked by monuments on the ground, and described in the attached copy of the location certificate, which was received by me from the Surveyor General with said instructions, and that all the corners of said survey have been established and perpetuated in strict accordance with the law, official regulations and instructions thereunder; and I do further solemnly swear that the foregoing are the true and original field notes of said survey and my report therein, and that the labor expended and improvements made upon said mining claim by claimant or its grantors are as therein fully stated, and that the character, extent, location and itemized value thereof are specified therein with particularity and full detail, and that no portion of said labor or improvements so credited to this claim has been included in the estimate of expenditures upon any other claim.

John A. Rockefeller  
U. S. Deputy Mineral Surveyor.

Subscribed and sworn to by the said John A. Rockefeller  
U. S. Deputy Mineral Surveyor, before me Flora A. Rockefeller  
this 26  
day of November, 1911.

Flora A. Rockefeller  
Notary Public

My commission expires April 26, 1914  
o 3-154



AMENDED

# Notice of Mining Location

LODE CLAIM

To All Whom It May Concern:

This Mining Claim, the name of which is the North Star Mining Claim, situate on lands belonging to the United States of America, and in which there are valuable mineral deposits, was entered upon and located for the purposes of exploration and purchase by J. B. Neal, H. Shilliam, F. S. Webster

(Locator must insert either "a citizen of the United States," or, "who has declared his intention to become a citizen of the United States.")

the undersigned, on the 1st day of January 1902

The length of this claim is 1222 feet, and NE claim 46.9 feet, in a S. 78° 57' E direction and 1175.1 feet in a N 78° 57' W direction from

the center of the discovery shaft, at which this notice is posted, lengthwise of the claim, together with 300 feet in width of the surface grounds, on each side of the center of said claim. The general course of the lode deposit and premises is ~~from the~~ N 78° 57' W to the

The claim is situated and located in the Cochise Mining District, in Cochise County, in the Territory of Arizona, about 1 mile in a North Westerly direction from Dragon Station; also from the North West Cor.; the Cor. Secs 13-14-23-24 Tp. 16 S - R 22 E br. N 14° 04' W 681.3

The surface boundaries of the claim are marked upon the ground as follows: Beginning at a 4"x4" post in a mound of stone

at a point in a S 78° 57' E direction 46.9 feet from the discovery shaft (at which this notice is posted), being in the center of the East end line of said claim; thence South 0° 04' E 305.5 feet to a 4"x4" post in a mound stone, being the South East corner of said claim; thence N 78° 57' W 1222 feet to a 4"x4" post in mound stone, being at the South West corner of said claim; thence N 0° 04' W 305.5 feet to a 4"x4" post in a mound stone at the center of the West end of said claim; thence Same course 305.5 feet to a 4"x4" post in mound stone, being at the North West corner of said claim; thence S 78° 57' E 1222 feet to a 4"x4" post in mound stone at the North East corner of said claim; thence S 0° 04' E 305.5 feet to the place of beginning.

All done under the provisions of Chapter Six, of Title XXXII, of the Revised Statutes of the United States, and of an Act of the General Assembly of Arizona, entitled "An Act to Revise and Codify the Laws of the Territory of Arizona," approved March 16, 1901.

This is an Amended Location Notice of the North Star Mining Claim, located by J. B. Neal, H. Shilliam, F. S. Webster

on the 1st day of January 1902, and recorded in Book 20 of Records of Mines, at page 138, in the office of the County Recorder of the aforesaid County of Cochise to which reference is hereby made, and this Amended Location Notice is made and posted to correct errors in the description in the said original Location Notice.

Dated and posted on the ground this 21 day of May 19010  
Arizona Copper Shipping Mines Co  
J B Neal agent.  
Present Owner



TERRITORY OF ARIZONA,

County of COCHISE ss.

I, Cam Edmond

County Recorder in and for the County and Territory aforesaid, do hereby certify that the within instrument was filed for record at 2:00 o'clock P M., on this JUN 2 - 1910 day of JUN 2 - 1910 1900, and duly recorded in Book No. 46 of MINING Records of COCHISE County, Arizona, at pages 349

WITNESS my hand and official seal the day and year first above written.

Cam Edmond  
County Recorder.

COMPARED

SEP 23 1911

2666

AMENDED

# Notice of Location.

LODE CLAIM.

North Star

Dated          190        

Filed and Recorded at request of

Arizona Copper Shipping  
Miners Co

JUN 2 - 1910 A. D. 190        

at 2:00 P M.

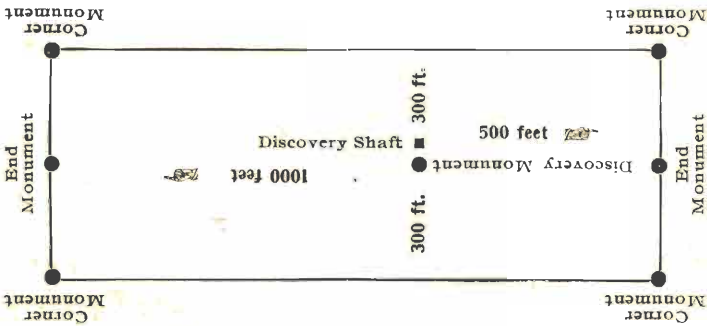
Book 46

Pages 349

Cam Edmond  
County Recorder.

By           
Deputy Recorder.

The H. H. McNeil Co., Printers, Phoenix



This diagram is to give locator a general idea of plan of location under the new law. The Discovery Shaft can be in the center of claim or any distance from either end desired. In the diagram it is placed 500 feet from one end and 1000 feet from the other. Commence description of claim at a center end monument, giving its distance and direction from center of Discovery Shaft; thence bound the claim in either direction. In description be careful to state locality of claim with reference to some natural object, or permanent monument, as will identify the claim.



AMENDED  
Notice of Mining Location

LODE CLAIM

To All Whom It May Concern:

This Mining Claim, the name of which is the Shelby No. 1  
Mining Claim, situate on lands belonging to the United States of America, and in which there  
are valuable mineral deposits, was entered upon and located for the purposes of exploration and  
purchase by J. B. Neal

a citizen of the United States  
(Locator must insert either "a citizen of the United States," or, "who has declared his intention to become a citizen of the United States.")

the undersigned, on the 26 day of March 1907

The length of this claim is 1222 feet,  
and one claim 258.8 feet,  
in a N 78° 57' W direction and 963.2  
feet in a S 78° 57' E direction from

the center of the discovery shaft, at which this notice is posted, lengthwise of the claim, together  
with 300 feet in width of the surface grounds, on each  
side of the center of said claim. The general course of the lode deposit and premises is ~~from the~~  
N 78° 57' W to the

The claim is situated and located in the Cochise Mining District, in  
Cochise County, in the Territory of Arizona, about 1 mile  
in a North West direction from Dragoon Station  
also from the north west cor., the cor sees  
13-14-23-24 Sp 16 S R R R E bears approximately N 6° 57' W  
1285 ft.

The surface boundaries of the claim are marked upon the ground as follows: Beginning at  
a 4x4 post in a mound of stones

at a point in a N 78° 57' W direction 258.8 feet from  
the discovery shaft (at which this notice is posted), being in the center of the West  
end line of said claim; thence N 0° 04' W 305.5 feet to a 4x4 post in a  
mound of stones, being the North West corner of said claim; thence  
S 78° 57' E 1222 feet to a 4x4 post in a mound of stones, being at the  
North East corner of said claim; thence S 0° 07' E 305.5 feet  
to a 4x4 post in a mound of stones at the center of the East end of said claim;  
thence Same Course 305.5 feet to a 4x4 post in mid stone, being at the  
South East corner of said claim; thence N 78° 57' W 1222  
feet to a 4x4 post in mid stone at the South West corner of said claim;  
thence N 0° 04' W 305.5 feet to the place of beginning.

All done under the provisions of Chapter Six, of Title XXXII, of the Revised Statutes of  
the United States, and of an Act of the General Assembly of Arizona, entitled "An Act to Revise  
and Codify the Laws of the Territory of Arizona," approved March 16, 1901.

This is an Amended Location Notice of the Shelby No. 1  
Mining Claim, located by J. B. Neal

on the 26th day of  
March 1907, and recorded in Book 39 of Records of Mines, at

page 197, in the office of the County Recorder of the aforesaid County of Cochise  
to which reference is hereby made, and this Amended Location Notice is made and posted to  
correct errors in the description in the said original Location Notice.

Dated and posted on the ground this 26 day of March 1907

Arizona Copper Shipping  
Mines Company,  
By J. B. Neal agent



TERRITORY OF ARIZONA,  
County of COCHISE } ss.

I, Cam Donald, County Recorder in and for the County and Territory aforesaid, do hereby certify that the within instrument was filed for record at 2:00 o'clock, 4.6 M., on this JUN 2 - 1910 day of JUN 2 - 1910 190., and duly recorded in Book No. 352 of MINING Records of COCHISE County, Arizona, at pages 352

WITNESS my hand and official seal the day and year first above written.

Cam Donald  
County Recorder.

SEP. 29 1911

2669

AMENDED  
**Notice of Location.**

LODE CLAIM.

Shelby No 1

Dated 1910

Filed and Recorded at request of

Arizona Copper Shippings  
Miner Co.

JUN 2 - 1910 A. D. 190

at 2:00 P. M.

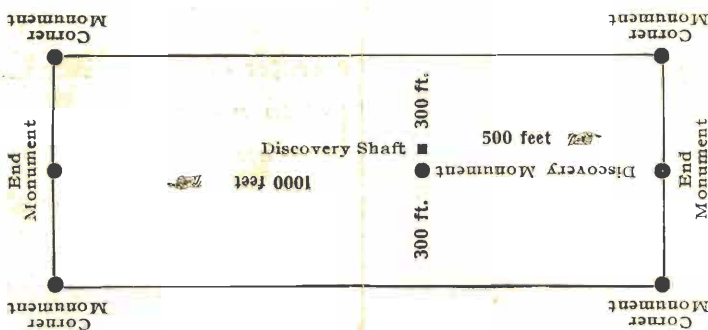
Book 352

Pages 352

Cam Donald  
County Recorder.

By Cam Donald  
Deputy Recorder.

The H. H. McNeil Co., Printers, Phoenix



This diagram is to give locator a general idea of plan of location under the new law. The Discovery Shaft can be in the center of claim or any distance from either end desired. In the diagram it is placed 500 feet from one end and 1000 feet from the other. Commence description of claim at a center end monument, giving its distance and direction from center of Discovery Shaft; thence bound the claim in either direction. In description be careful to state locality of claim with reference to some natural object, or permanent monument, as will identify the claim.



# Notice of Mining Location

## LODE CLAIM

To All Whom It May Concern:

This Mining Claim, the name of which is the Shelby No. 2 Mining Claim, situate on lands belonging to the United States of America, and in which there are valuable mineral deposits, was entered upon and located for the purposes of exploration and purchase by J. B. Neal

A Citizen of the United States  
(Locator must insert either "a citizen of the United States," or, "who has declared his intention to become a citizen of the United States.")

the undersigned, on the 26<sup>th</sup> day of March 1907

The length of this claim is 1500 feet, and 9 claim claims 770 feet,

in a Southerly direction and 730 feet in a Northerly direction from

the center of the discovery shaft, at which this notice is posted, lengthwise of the claim, together with 300 feet in width of the surface grounds, on each

side of the center of said claim. The general course of the lode deposit and premises is from the Northerly to the Southerly

The claim is situated and located in the Cochise Mining District, in Cochise County, in the Territory of Arizona, about 1 1/2 Miles in a Westerly direction from Dragoon Station of the S.P. Railroad

The surface boundaries of the claim are marked upon the ground as follows: Beginning at a Monument of Stone

at a point in a Southerly direction 770 feet from

the discovery shaft (at which this notice is posted), being in the center of the Southerly end line of said claim; thence 300 feet to a Monument

of Stone, being the S.E. corner of said claim; thence 1500 feet to a Monument of Stone, being at the

N.E. corner of said claim; thence 300 feet to a Monument of Stone at the center of the Northerly end of said claim;

thence 300 feet to a Monument of Stone, being at the N.W. corner of said claim; thence 1500 feet to a Monument of Stone at the S.W. corner of said claim;

thence 300 feet to the place of beginning.

All done under the provisions of Chapter Six, of Title XXXII, of the Revised Statutes of the United States, and of an Act of the General Assembly of Arizona, entitled "An Act to Revise and Codify the Laws of the Territory of Arizona," approved March 16, 1901.

Dated and posted on the ground this 26<sup>th</sup> day of March 1907

These premises are located in whole as abandoned property of the Dixie Mining Co.

J. B. Neal

COMPARED No 2954

SEP 29 1911

# Notice of Location

## LODE CLAIM

*Shelby No 2*  
*J B Steel*

Dated *March 26* 190*7*

Filed and Recorded at request of  
*J B Steel*

*MAY 6 1907* A. D. 190*7*

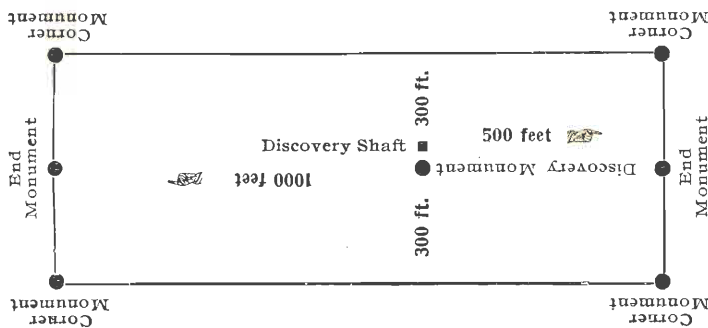
at *Phoenix* M.

Book *319 Record of Mines*

Pages *198*

*W M Arnold*  
County Recorder.

By *W M Arnold*  
Deputy Recorder.



This diagram is to give locator a general idea of plan of location under the new law. The Discovery Shaft can be in the center of claim or any distance from either end desired. In the diagram it is placed 500 feet from one end and 1000 feet from the other. Commence description of claim at a center end monument, giving its distance and direction from center of Discovery Shaft; thence bound the claim in either direction. In description be careful to state locality of claim with reference to some natural object, or permanent monument, as will identify the claim.

34 TERRITORY OF ARIZONA, } ss.  
County of *COCHISE*

I, *W M Arnold*, County Recorder in and for the County and Territory aforesaid, do hereby certify that the within instrument was filed for record at *9* o'clock, *9* M., on this *MAY 6 1907* day of *MAY* 190*7*, and duly recorded in Book No. *319* of *MINE* Records of *COCHISE* County, Arizona, at pages *198*

WITNESS my hand and official seal the day and year first above written.

*W M Arnold*  
County Recorder.



# Notice of Mining Location

## LODE CLAIM

To All Whom it May Concern :

This Mining Claim, the name of which is the Mouroc

Mining Claim, situate on lands belonging to the United States of America, and in which there are valuable mineral deposits, was entered upon and located for the purposes of exploration and purchase by

Arizona Copper Shipping Mines Company  
By J. B. Neal Agent

(Locator must insert either "a citizen of the United States," or "who has declared his intention to become a citizen of the United States")  
the undersigned, on the 12<sup>th</sup> day of March 1900.

The length of this claim is 1500 feet,  
and NE claim 163.9 feet

in a S. 85° 39' E direction and 1336.1  
feet in a N 85° 39' W direction from

the center of the discovery shaft, at which this notice is posted, lengthwise of the claim, together with  
300 feet in width of the surface grounds, on each side of the center of said

claim. The general course of the lode deposit and premises is from the N 85° 39' W  
to the

The claim is situated and located in the Cochise Mining District, in  
Cochise County, in the Territory of Arizona, about 1 1/2 miles

in a Westerly direction from Dragon Station

Also its South side line is formed by the North  
end lines of Shelby No. 2, Cornell, and East's Holbrook;  
and its East end is formed by parts of the West  
ends of the Shelby No. 2 and North Star Lodes.

The surface boundaries of the claim are marked upon the ground as follows: Beginning at

a 4" x 4" post in a mound of stone  
scribed E. C. E. M

at a point in a S 85° 39' E direction 163.9 feet from  
the discovery shaft (at which this notice is posted) being in the center of the East

end line of said claim; thence N 0° 08' W 300 feet to a 4" x 4" post in  
a mound of stone being the North East corner of said claim; thence

N 85° 39' W 1500 feet to a 4" x 4" post in a mound of stone being at the  
North West corner of said claim; thence S 0° 08' E 300 feet

to a 4" x 4" post in mid stone at the center of the West end of said claim  
thence Same course 300 feet to a 4" x 4" post in mid stone being at the

South West corner of said claim; thence S 85° 39' E  
1500 feet to a 4" x 4" post in mid stone at the

South East corner of said claim; thence N 0° 08' W 300  
feet to the place of beginning.

All done under the provisions of Chapter Six; of Title XXXII, of the Revised Statutes of the United States, and of an Act of the General Assembly of Arizona, entitled "An Act to Revise and Codify the Laws of the Territory of Arizona," approved March 16, 1901.

Dated and posted on the ground this 14<sup>th</sup> day of March 1900.

E. R. Nash, witness

J. B. Neal, Agent.



An Act to Codify and Revise the Laws of the Territory of Arizona

SECTIONS I-II.-INC. LOCATION OF CLAIMS

Be it enacted by the Legislative Assembly of the Territory of Arizona:

SECTION 1. On the discovery of mineral in places on the public domain of the United States, the same may be located as a mineral claim by the discoverer for himself, for himself and others, or for others.

SECTION 2. Such location shall be made by erecting at or contiguous to the point of discovery, a conspicuous monument of stones not less than three (3) feet in height, or an upright post securely fixed, projecting at least four (4) feet above the ground, in which monument of stones or on which post, there shall be posted a location notice, which shall be signed by the name or names of the locator or locators. The location notice must contain: First, the name of the claim located; second, the name or names of the locators; third, the date of the location; fourth, the length and width of the claim in feet and the distance in feet from the point of discovery to each end of the claim; fifth, the general course of the claim; sixth, the locality of the claim with reference to some natural object or permanent monument whereby the claim can be identified.

SECTION 3. Until each and all of the above specified things shall have been done no right thereto shall be acquired.

SECTION 4. From the time of the location of a mining claim as above specified, the locator shall be allowed ninety (90) days within which to do or cause to be done, the following things: First, to cause to be recorded in the office of the County Recorder of the county in which the claim is situated, a copy of the location notice; second, to sink a discovery shaft in the claim to the depth of at least ten (10) feet from the lowest part of the rim of the shaft at the surface, and deeper if necessary until there is discovered in said shaft mineral in place; third, to monument the claim on the ground so that its boundaries can be readily traced.

SECTION 5. The failure to do all the things enumerated in this section in the time and space specified shall be construed into an abandoning of the claim, and all right thereto of the discoverer and locator shall be forfeited.

SECTION 6. Such surface boundaries shall be marked by six (6) substantial posts projecting at least four (4) feet above the surface of the ground, or by substantial stone monuments at least three (3) feet high, to-wit: One at each corner of said claim, and one at the center of each end line thereof.

SECTION 7. Any open-cut, adit or tunnel which shall be made as above provided for as a part of the location of a lode mineral claim, and which shall be equal in amount of work to a shaft ten (10) feet deep and four (4) feet wide by six (6) feet long, and which shall cut the lode or mineral in place at a depth of ten (10) feet from the surface, shall be equivalent as a discovery work to a shaft sunk from the surface.

SECTION 8. Location notice may be amended at any time, and the monument changed to correspond with the amended location; provided, that no change shall be made that will interfere with the rights of others.

SECTION 9. The amount of assessment or representation work or improvements to be done or made during each year, after the completion of the location as heretofore provided, and the time for doing the same shall be as provided by the laws of the United States.

SECTION 10. Within three (3) months after the expiration of the period of the time fixed for the performance of annual labor, or the making of such improvements upon any mining claim, the person on whose behalf such work or improvements was made, or some person for him knowing the facts, may make a record in the office of the County Recorder of the county wherein such claim is situated, an affidavit in substance as follows:

TERRITORY OF ARIZONA.

... being duly sworn deposes and says that he is a citizen of the United States and more than twenty (20) years of age, resides at ... County, Arizona, Territory, and is personally acquainted with the mining claim known as ... Mining District, Arizona, Territory, the location notice of which is recorded in the office of the County Recorder of said County, in book ... of Records of Mines, at page ...

That between the ... day of ... A. D. ... and the ... day of ... A. D. ... at least ... dollars worth of work and improvements were done and performed upon said claim, including the location work of said claim. Such work and improvements were made by and at the expense of ... owners of said claim, for the purpose of complying with the laws of the United States, pertaining to assessments of annual work, and (here name the owners of men who worked upon the claim in doing the work) were the men employed by said owner, and who labored upon said claim, did said work and improvements, the same being as follows, to-wit: (Here describe the work done).

Subscribed and sworn to before me, this ... day of ... A. D. ...

My commission as Notary Public expires on the ... day of ... A. D. ... Notary Public.

SECTION 11. Such affidavit, when so recorded, shall be prima facie evidence of the performance of such labor or the making of such improvements, and said original affidavit, after it has been recorded, or a certified copy of record of same, or the record of same, shall be received as evidence accordingly by the courts of the Territory. The relocation of forfeited or abandoned lode claims shall only be made by sinking a new discovery shaft and fixing the boundary in the same manner and to the same extent as is required in making an original location; or the locator may sink the original discovery shaft ten (10) feet deeper than it was at the commencement of such location, and shall erect new, or make the old monuments the same as originally required. In either case a new location monument shall be erected, and the location notice shall state if the whole or any part of the new location is located as abandoned property, else it shall be void.



The above diagram is to give the locator a general idea of the plan of location under new law. Your discovery shaft may be in the center of claim, or any distance from either end you desire. In the diagram we have placed it 500 feet from one end and 1000 feet from the other. In description, be careful to state locality of claim with reference to some natural object, or permanent monument, so as to identify the claim.

TERRITORY OF ARIZONA,

County of ... COCHISE ... County Recorder in and for the County and Territory aforesaid; do hereby certify that the within instrument was filed for record at 2:00 P. O'clock

M. on this ... day of JUN 2 - 1910 ... and duly recorded in Book No. ... of ... Records of ... County, Arizona, at pages ...

WITNESS my hand and official seal the day and year first above written.

... County Recorder.

Notice of Location. LODE CLAIM. Filed and Recorded at request of ... JUN 2 - 1910 2:00 P.M. ... DEPUTY RECORDER.

2667 COMPARED SEP 29 1911



AMENDED

# Notice of Mining Location

LODE CLAIM

To All Whom It May Concern:

This Mining Claim, the name of which is the Emmett Mining Claim, situate on lands belonging to the United States of America, and in which there are valuable mineral deposits, was entered upon and located for the purposes of exploration and purchase by J. B. Neal, H. Shilliam, F. S. Webster

(Locator must insert either "a citizen of the United States," or, "who has declared his intention to become a citizen of the United States.")

the undersigned, on the 1<sup>st</sup> day of January, 1902

The length of this claim is 1500 feet, and 1<sup>1/2</sup> claim 2113 feet,

in a S0°04'E direction and 1289 feet in a N0°04'W direction from

the center of the discovery shaft, at which this notice is posted, lengthwise of the claim, together with 300 feet in width of the surface grounds, on each side of the center of said claim. The general course of the lode deposit and premises is ~~from the~~ N0°04'W to the ~~\_\_\_\_\_~~

The claim is situated and located in the Cochise Mining District, in Cochise County, in the Territory of Arizona, about 1 mile

in a North West direction from Drapoon Station also from the South East corner, the Cor. Secs. 13-14-23-24 Twp. 16S-R-22E bears approximately N 7°20'E 3220 feet.

The surface boundaries of the claim are marked upon the ground as follows: Beginning at

a 4" x 4" post in a mound of stone

at a point in a N0°04'W direction 1289 feet from the discovery shaft (at which this notice is posted), being in the center of the North end line of said claim; thence S 85°39'E 300 feet to a 4" x 4" post in a mound of stone, being the North East corner of said claim; thence S0°04'E 1500 feet to a 4" x 4" post in a mound of stone, being at the South East corner of said claim; thence N 85°39'W 300 feet to a 4" x 4" post in a mound of stone at the center of the South end of said claim; thence Same course 300 feet to a 4" x 4" post in a mound of stone, being at the South West corner of said claim; thence N0°04'W 1500 feet to a 4" x 4" post in a mound of stone at the North West corner of said claim; thence S 85°39'E 300 feet to the place of beginning.

All done under the provisions of Chapter Six, of Title XXXII, of the Revised Statutes of the United States, and of an Act of the General Assembly of Arizona, entitled "An Act to Revise and Codify the Laws of the Territory of Arizona," approved March 16, 1901.

This is an Amended Location Notice of the Emmett Mining Claim, located by J. B. Neal, H. Shilliam, F. S. Webster

on the 1<sup>st</sup> day of January, 1902, and recorded in Book 20 of Records of Mines, at page 137, in the office of the County Recorder of the aforesaid County of Cochise to which reference is hereby made, and this Amended Location Notice is made and posted to correct errors in the description in the said original Location Notice.

Dated and posted on the ground this 21 day of May, 1902

Arizona Copper Shipping Mines Co.  
J. B. Neal agent.  
Present Owner



TERRITORY OF ARIZONA,

County of COCHISE ss.

I, *C. McDonald*, County Recorder in and for the County and

Territory aforesaid, do hereby certify that the within instrument was filed for record at 2:00 o'clock, P. M.,

on this JUN 2 - 1910 day of 190..., and duly recorded in Book No. 46

of MINING Records of COCHISE County, Arizona, at pages 347

WITNESS my hand and official seal the day and year first above written.

*C. McDonald*  
County Recorder.

295 Y COMPAN... SEP 23 1911  
2664

AMENDED  
Notice of Location.

LODE CLAIM.  
*Connett*

Dated 190

Filed and Recorded at request of

*Arizona Copper Shipping  
Mines Co*

JUN 2 - 1910 A. D. 190

at 2:00 P. M.

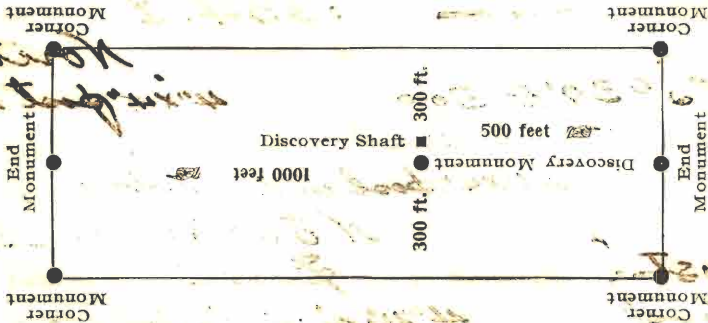
Book *46*

Pages *347*

By *C. McDonald*  
County Recorder.

Deputy Recorder.

The H. H. McNeil Co., Printers, Phoenix



This diagram is to give locator a general idea of plan of location under the new law. The Discovery Shaft can be in the center of claim or any distance from either end desired. In the diagram it is placed 500 feet from one end and 1000 feet from the other. Confirm the description of claim at a center and monument, giving its distance and direction from center of Discovery Shaft; thence bound the claim in either direction. In description, be careful to state locality of claim with reference to some natural object, or permanent monument, as will identify the claim.

2664



AMENDED

# Notice of Mining Location

LODE CLAIM

To All Whom It May Concern:

This Mining Claim, the name of which is the Holebrook Mining Claim, situate on lands belonging to the United States of America, and in which there are valuable mineral deposits, was entered upon and located for the purposes of exploration and purchase by J. B. Neal, H. Shilliam, F. S. Webster

(Locator must insert either "a citizen of the United States," or, "who has declared his intention to become a citizen of the United States.")

the undersigned, on the 1<sup>st</sup> day of January 1902

The length of this claim is 1500 feet, and NE claim 165.6 feet,

in a S 0° 04' E direction and 1334.4 feet in a N 0° 04' W direction from

the center of the discovery shaft, at which this notice is posted, lengthwise of the claim, together with 300 feet in width of the surface grounds, on each side of the center of said claim. The general course of the lode deposit and premises is from the N 0° 04' W to the

The claim is situated and located in the Cochise Mining District, in Cochise County, in the Territory of Arizona, about 1 mile

in a North Westery direction from Dragon Station also from the North West Cor. of the con. of sec. 13-14-23-24 Tp. 16 S. R. 22 E bears N 45° 16' E 12270 feet

The surface boundaries of the claim are marked upon the ground as follows: Beginning at 4" x 4" post in a mound of stone

at a point in a N 0° 04' W 1334.4 direction 1334.4 feet from the discovery shaft (at which this notice is posted), being in the center of the North end line of said claim; thence S 85° 39' E 300 feet to a 4" x 4" post in a mound of stone, being the North East corner of said claim; thence S 0° 04' E 1500 feet to a 4" x 4" post in a mound of stone, being at the South East corner of said claim; thence N 85° 39' W 300 feet to a 4" x 4" post in a mound of stone at the center of the South end of said claim; thence Same course 300 feet to a 4" x 4" post in a mound of stone, being at the South West corner of said claim; thence N 0° 04' W 1500 feet to a 4" x 4" post in a mound of stone at the North West corner of said claim; thence S 85° 39' E 300 feet to the place of beginning.

All done under the provisions of Chapter Six, of Title XXXII, of the Revised Statutes of the United States, and of an Act of the General Assembly of Arizona, entitled "An Act to Revise and Codify the Laws of the Territory of Arizona," approved March 16, 1901.

This is an Amended Location Notice of the Holebrook Mining Claim, located by J. B. Neal, H. Shilliam, F. S. Webster

on the 1<sup>st</sup> day of January 1902, and recorded in Book 20 of Records of Mines, at page 136 in the office of the County Recorder of the aforesaid County of Cochise to which reference is hereby made, and this Amended Location Notice is made and posted to correct errors in the description in the said original Location Notice.

Dated and posted on the ground this 21 day of May 1902

Arizona Copper Shipping Co.  
J. B. Neal Agent  
Present Owners



TERRITORY OF ARIZONA,

County of COCHISE

ss.

I, *Cam Donald*, County Recorder in and for the County and Territory aforesaid, do hereby certify that the within instrument was filed for record at 2:00 o'clock, P.M., on this day of JUN 2 - 1910 190..., and duly recorded in Book No. 46 348 of MINING Records of COCHISE County, Arizona, at pages 46 348

WITNESS my hand and official seal the day and year first above written.

*Cam Donald*  
County Recorder.

COMPARED

SER 23 1911

2665

AMENDED  
Notice of Location.  
LODE CLAIM.

*W. H. Lebeck*

Dated 190

Filed and Recorded at request of

*Argonia Copper Shipping  
Mines Co*

JUN 2 - 1910. D. 190

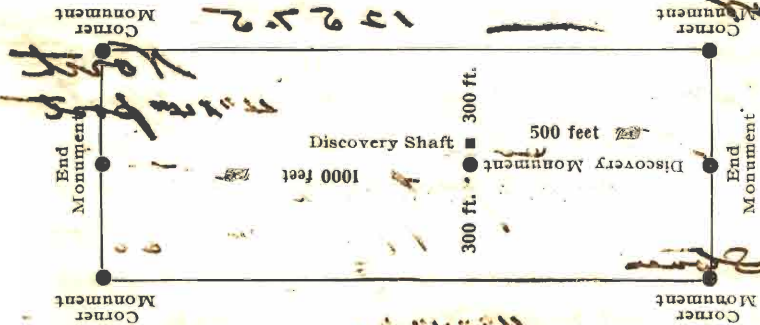
2:00 P.M.

*Book 46 348*

*Cam Donald*  
County Recorder.

Deputy Recorder.

The H. H. McNeil Co., Printers, Phoenix



This diagram is to give locator a general idea of plan of location under the new law. The Discovery Shaft can be in the center of claim or any distance from either end desired. In the diagram it is placed 500 feet from one end and 1000 feet from the other. Contained description of claim as a center and monument, giving its size and direction from center of Discovery Shaft; thence bound the claim in either direction. In description be careful to state locality of claim with reference to some natural object or permanent monument, as will identify the claim.



AMENDED

# Notice of Mining Location

LODE CLAIM

To All Whom It May Concern:

This Mining Claim, the name of which is Quartz Mining Claim, situate on lands belonging to the United States of America, and in which there are valuable mineral deposits, was entered upon and located for the purposes of exploration and purchase by J. B. Neal, H. Shilligan, F. S. Webster

(Locator must insert either "a citizen of the United States," or, "who has declared his intention to become a citizen of the United States.")

~~the undersigned~~, on the 1<sup>st</sup> day of February 1902

The length of this claim is 1500 feet, and W claim 242.5 feet,

in a S0004'E direction and 1257.5 feet in a N0004'W direction from

the center of the discovery shaft, at which this notice is posted, lengthwise of the claim, together with 300 feet in width of the surface grounds, on each

side of the center of said claim. The general course of the lode deposit and premises is ~~from the~~ N0004'W to the

The claim is situated and located in the Cochise Mining District, in Cochise County, in the Territory of Arizona, about 1 mile

in a North Westerly direction from Dragon Station

Also from the North East cor, the cor. of sec. 12-14-23-24, bears approximately N45°16'E 2270 feet.

The surface boundaries of the claim are marked upon the ground as follows: Beginning at

a 4"x4" post in a mound of stone

at a point in a N0004'W direction 1257.5 feet from the discovery shaft (at which this notice is posted), being in the center of the North

end line of said claim; thence S85°39'E feet to a 4"x4" post in a mound stone, being the North East corner of said claim; thence

S0004'E 1500 feet to a 4"x4" post in a mound stone, being at the South East corner of said claim; thence N85°39'W 300 feet

to a 4"x4" post in a mound stone at the center of the South end of said claim; thence Same course 300 feet to a 4"x4" post in a mound stone being at the

South West corner of said claim; thence N0004'W 1500 feet to a 4"x4" post in mound stone at the North West corner of said claim; thence S85°39'E 300 feet to the place of beginning.

All done under the provisions of Chapter Six, of Title XXXII, of the Revised Statutes of the United States, and of an Act of the General Assembly of Arizona, entitled "An Act to Revise and Codify the Laws of the Territory of Arizona," approved March 16, 1901.

This is an Amended Location Notice of the Quartz Mining Claim, located by J. B. Neal, H. Shilligan, F. S. Webster

on the 1<sup>st</sup> day of February 1902, and recorded in Book 20 of Records of Mines, at

page 135, in the office of the County Recorder of the aforesaid County of Cochise to which reference is hereby made, and this Amended Location Notice is made and posted to correct errors in the description in the said original Location Notice.

Dated and posted on the ground this 21 day of May 1900

Arizona Copper Shipping Mines Co.  
J. B. Neal Agent  
Present owner



42

TERRITORY OF ARIZONA,  
County of.....COCHISE..... } ss.

I, Cam Donald, County Recorder in and for the County and Territory aforesaid, do hereby certify that the within instrument was filed for record at 2:00 o'clock, P M., on this JUN 2 - 1910 day of JUN 2 - 1910 190..., and duly recorded in Book No. 46 of MINING Records of COCHISE County, Arizona, at pages 351

WITNESS my hand and official seal the day and year first above written.

Cam Donald  
County Recorder.

COMPARED

SEP 23 1911

2668

AMENDED  
**Notice of Location.**

LODE CLAIM.

Quartz

Dated     190

Filed and Recorded at request of

Virginia Copper Shoppings  
Maricopa

JUN 2 - 1910 A. D. 1910

at     o'clock P M.

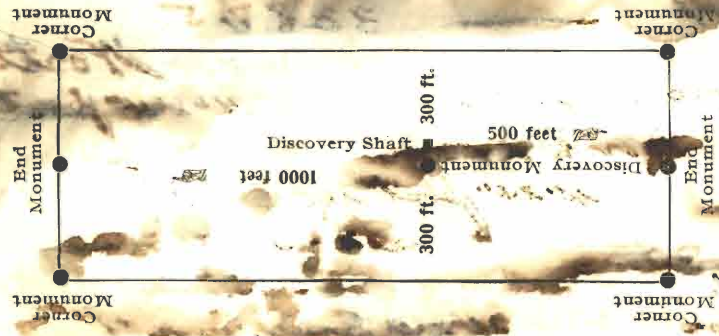
Book 46

Pages 351

Cam Donald  
County Recorder.

Deputy Recorder.

The H. H. McNeil Co., Printers, Phoenix



This diagram is to give locators a general idea of plan of location under the new law. The Discovery Shaft can be in the center of claim or any distance from either end desired. In the diagram it is placed 500 feet from one end and 1000 feet from the other. Commence description of claim at a center end monument, giving its distance and direction, from center of Discovery Shaft, thence bound the claim in either direction. In description be careful to state locality of claim with reference to some natural object, or permanent monument, as will identify the claim.



AMENDED

# Notice of Mining Location

LODE CLAIM

To All Whom It May Concern:

This Mining Claim, the name of which is the South Star Mining Claim, situate on lands belonging to the United States of America, and in which there are valuable mineral deposits, was entered upon and located for the purposes of exploration and purchase by J. B. Neal, H. Shilliam, F. S. Webster

(Locator must insert either "a citizen of the United States," or, "who has declared his intention to become a citizen of the United States.")

~~the undersigned~~, on the 1<sup>st</sup> day of February 1902

The length of this claim is 1500 feet, and we claim 326.4 feet,

in a N 85° 39' W direction and 1173.6 feet in a S 85° 39' E direction from

the center of the discovery shaft, at which this notice is posted, lengthwise of the claim, together with 300 feet in width of the surface grounds, on each side of the center of said claim. The general course of the lode deposit and premises is from the

N 85° 39' W to the

The claim is situated and located in the Cochise Mining District, in Cochise County, in the Territory of Arizona, about 1 mile

in a North West direction from from Dragon Point Also from the North East cor. of sec. 13-14-23-24 Tp. 16 S-R-22 E bears approximately N 3° 05' W 3240 feet

The surface boundaries of the claim are marked upon the ground as follows: Beginning at

a 4" x 4" post in a mound of stone

at a point N 85° 39' W direction 326.4 feet from the discovery shaft (at which this notice is posted), being in the center of the West end line of said claim; thence N 0° 04' W 300 feet to a 4" x 4" post in a mound of stone being the North West corner of said claim; thence S 85° 39' E 1500 feet to a 4" x 4" post in a mound of stone, being at the North East corner of said claim; thence S 0° 04' E 300 feet to a 4" x 4" post in a mound of stone at the center of the East end of said claim; thence Same course 300 feet to a 4" x 4" post in a mound of stone being at the South East corner of said claim; thence N 85° 39' W 1500 feet to a 4" x 4" post in a mound of stone at the South West corner of said claim; thence N 0° 04' W 300 feet to the place of beginning.

All done under the provisions of Chapter Six, of Title XXXII, of the Revised Statutes of the United States, and of an Act of the General Assembly of Arizona, entitled "An Act to Revise and Codify the Laws of the Territory of Arizona," approved March 16, 1901.

This is an Amended Location Notice of the South Star Mining Claim, located by J. B. Neal, H. Shilliam, F. S. Webster

on the 1<sup>st</sup> day of February 1902, and recorded in Book 20 of Records of Mines, at page 134, in the office of the County Recorder of the aforesaid County of Cochise to which reference is hereby made, and this Amended Location Notice is made and posted to correct errors in the description in the said original Location Notice.

Dated and posted on the ground this 21 day of May 1901

Arizona Copper Shipping Mines Co.  
J. B. Neal, agent  
Present Owner



TERRITORY OF ARIZONA,  
County of..... COCHISE } ss.

I, Cam Donald, County Recorder in and for the County and

Territory aforesaid, do hereby certify that the within instrument was filed for record at..... 2:00 o'clock, 9 P.M.,

on this..... day of JUN 2 - 1910 190..., and duly recorded in Book No. 46

of..... MINING Records of..... COCHISE County, Arizona, at pages 353

WITNESS my hand and official seal the day and year first above written.

Cam Donald  
County Recorder.

COMPARED SEP 29 1911

2670

AMENDED  
**Notice of Location.**

LODE CLAIM.

South Star

Dated..... 190.....

Filed and Recorded at request of

Arizona Paper Shipping  
Mines Co

JUN 2 - 1910 A. D. 190

at..... 2:09 P.M.

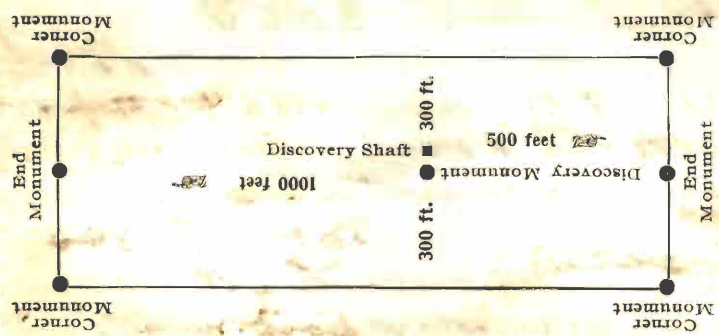
Book 46 Rec of Mines

Pages 353

Cam Donald  
County Recorder.

By..... Deputy Recorder.

The H. H. McNeil Co., Printers, Phoenix



This diagram is to give locator a general idea of plan of location under the new law. The Discovery Shaft can be in the center of claim or any distance from either end desired. In the diagram it is placed 500 feet from one end and 1000 feet from the other. Commence description of claim at a center end monument, giving its distance and direction from center of Discovery Shaft; thence bound the claim in either direction. In description be careful to state locality of claim with reference to some natural object, or permanent monument, as will identify the claim.

(4-691.)

# Certificate of U. S. Surveyor General

AS TO

EXPENDITURES REPORTED AFTER RETURN OF SURVEY OF MINING CLAIM.

I, U. S. Surveyor General for District of Arizona,  
do hereby certify that Five Hundred Dollars' worth of labor has been expended or  
improvements made by claimant or its grantors, <sup>each of</sup> upon <sup>the</sup> mining claims of  
Arizona Copper Shipping Mines Company

known as the MONROE, QUARTZ, SOUTH STAR,  
situate in Cochise mining district,  
Cochise County, Arizona  
in Sections 23 & 24, Township No. 16 S., Range No. 22 E.;

that said improvements ~~consist of~~ in addition to those reported at  
time of survey consist of 3 shafts and additional work in shafts  
No. 1 and 2 on the south Star lode, total value \$821.50. No. 1,  
discovery shaft on the Quartz lode, was reported by the mineral  
surveyor on February 1, 1912, to be 19.5 ft. deep, value \$195.00,  
and such shaft and value is included in my certificate dated  
February 6, 1912.

, and that no portion of said labor or improvements has been  
included in the estimate of expenditures upon any other claim. A copy of the report of  
John A. Rockfellow, U. S. ~~Deputy~~ Mineral Surveyor, dated  
October 28, 1912, is hereto attached.



U. S. Surveyor General for Arizona.

Office of U. S. Surveyor General,

Phoenix, Arizona,

October 30, 1912.



SUPPLEMENTAL REPORT TO SURVEY NO. 2954.

I certify that ~~the~~ labor and improvements have been performed upon the lodes of this survey by the claimants, since the date of survey, as follows:

ON THE MONROE LODE:

No. 4 A shaft, the center of which bears from east center end N. 85° 41' W. 224 feet; Shaft in rock 6 X 4½ ft. 5 ft. deep.  
 Value at \$7.00 per foot \$35.00

ON THE QUARTZ LODE:

NO. 1 Discovery Shaft, the center of which bears from S. center end N. 0° 08' W. 238 feet: Shaft 6 X 4 ft. 30 ft. deep in rock.  
 Value at \$10.00 per foot 300.00

No. 4 A shaft, the center of which bears from S. center end N. 27° 38' E. 148 ft.: Shaft 6 X 4 ft., 11 ft. deep in rock.  
 Value 100.00

ON THE SOUTH STAR LODE:

No. 1 Discovery shaft described as S. 85° 40' E. 321.5 ft. from W. center end: Deepened from 7½ to 11 feet.  
 Value of additional work in rock, 3½ ft. at \$9.00 per foot, 31.50

No. 2 Shaft described as S. 57° 15' W. 236 ft. from point on line 4-1 at S. 85° 40' E. 600.3 ft. from Cor. No. 4, 5 X 4 ft., 7 ft. deep: Shaft enlarged to 6 X 4 ft. 4½ ft. deep.  
 Value of additional work -  
 Enlargement and improvement of original 10.00  
 34½ ft. increased depth at \$10.00 per ft. 345.00

Tombstone, Arizona,  
 October 28, 1912.

*John A. Rockefeller*  
 U. S. Mineral Surveyor.

Sworn and subscribed to before me this 28th day of October, 1912.

My commission expires

*Apr. 25 1915*  
*John A. Rockefeller*

Notary Public.

U. S. SURVEYOR-GENERAL'S FINAL CERTIFICATE ON FIELD NOTES.

Department of the Interior,

OFFICE OF U. S. SURVEYOR-GENERAL,

Phoenix, Arizona,

February 6, 1912.

I, U. S. Surveyor-General for Arizona,

do hereby certify that the foregoing transcript of the Field Notes, return and approval of the survey of the mining claim of

Arizona Copper Shipping Mines Company, known as the NORTH STAR, SHELBY NO. 1, SHELBY NO. 2, MONROE, EMMETT, HOLEBROCK, QUARTZ, SOUTH STAR, situate in Cochise

Mining District, Cochise County, Arizona,

in Section s 23 & 24, Township No. 16 S., Range No. 22 E., and

designated as Survey No. 2954, has been correctly copied from the originals on file in this office; that said Field Notes furnish such an accurate description of said mining claim as will, if incorporated into a patent, serve fully to identify the premises, and that such reference is made therein to natural objects or permanent monuments as will perpetuate and fix the locus thereof.

And I further certify that five hundred dollars' worth of labor has been expended or improvements made upon said mining claim by claimant or its grantors, and that said improvements consist of or for each the North Star, Shelby No. 1, Shelby No. 2, Emmett, Holebrock lodes, and that less than five hundred dollars' worth of labor has been expended or improvements made upon or for each the South Star, Quartz and Monroe lodes, by claimant or its grantors, and that said improvements consist of 41 shafts, total value \$5647. Shaft No. 2 on the Shelby No. 1 lode being for the benefit and development of the Shelby No. 1, North Star and Monroe lodes, and only those lodes, an undivided 1/3 interest therein, value \$340, is properly credited to each of the three named lodes, and that no portion of said labor or improvements has been included in the estimate of expenditures upon any other claim.

I further certify that the plat thereof, filed in the U. S. Land Office at Phoenix, Arizona is correct and in conformity with the foregoing Field Notes.

Frank S. Ingalls,

United States Surveyor-General for Arizona.

4-687.

SURVEYOR-GENERAL'S CERTIFICATE OF APPROVAL OF FIELD  
NOTES AND SURVEY OF MINING CLAIM.

**Department of the Interior,**

*Office of U. S. Surveyor-General,*

Phoenix, Arizona,

February 6, 1912.

I, U. S. Surveyor-General for Arizona,

do hereby certify that the foregoing and hereto attached Field Notes and Return of the Survey of the  
Mining Claim of

Arizona Copper Shipping Mines Company,

known as the  
NORTH STAR, SHELBY NO.1, SHELBY NO.2, MONROE, EMMETT, HOLEBROCK,  
QUARTZ, SOUTH STAR,  
situate in Cochise mining district,

Cochise County, Arizona,

in Section s 23 & 24, Township No. 16 S., Range No. 22 E.,  
designated as Survey No. 2954,

executed by John A. Rockfellow U. S. ~~Deputy~~ Mineral  
Surveyor, October 25 - November 2, 1911, under my instructions dated

September 29, 1911, have been critically examined and the necessary cor-  
rections and explanations made, and the said Field Notes and Return, and the Survey they describe,  
are hereby approved. A true copy of the copy of the location certificate filed by the applicant for  
survey is included in the field notes.

*Frank S. Ingalls*

U. S. Surveyor-General for Arizona,