

9-13-1918 copied ARC 7

4-683

P. Kallad

JAN 22 1918

MINERAL SURVEY No. 3 2 7 4

MAR 1 1918

JUN 13 1918

Arizona Land District.

FIELD NOTES

OF THE SURVEY OF THE MINING CLAIM OF

Calumet ~~AND~~ Jerome Copper Company.

KNOWN AS THE

Remington, Clara, Duluth and St. Paul lodes.

Verde Mining District,

Yavapai County, Arizona

Section 26 and Unsur. 2 Township 16 N., Range No. 2 E. G. & S. R. B. & M.

Surveyed under instructions dated Nov. 2- , 1917

by Alfred B. Colwell
U. S. Mineral Surveyor.

Claim located See location notices. , 19

Survey commenced November 7- , 19 17

Survey completed January 15- , 19 18

Address of claimant Jerome, Arizona.

DATES OF AMENDED LOCATIONS.

~~Remington. Sept. 18-1914~~

~~Duluth, Sept. 18-1914~~

Mineral Survey No. 3274

Feet	Remington lode.
	Beginning at Cor.No.1
	Identical with Cor.No.4, Clara lode of this survey.
	A porphyry stone, 10x10x24 ins. set 12 ins. in the ground, with mound of rock alongside, + at exact corner point and chiseled R-1, C-4, 3274
	Whence The N.W. Cor. Sec. 26 T. 16 N. R. 2 E. G. & S. R. B. & M. bears N. 42° 11' 30" W. - 1241.96 ft.
	Cor.No.3 Duluth lode of this survey, identical with Cor.No. 3 Sur.No.1285 No.Three lode, claimant unknown, bears S. 13° 16' E. - 441.81 ft.
	A rock in place 3 x 4 x 8 ft. chiseled B.R.R.-1, C-4-3274 bears S. 19° 52' W. - 19 ft.
	A rock in place 2x1½x1½ ft. chiseled B.R.R.-1, C-4-3274 bears N. 33° 37' E. - 20.6 ft.
	Thence S. 42° 49' E.
1318.08	Intersect line 4-1 Sur.No.2910 Franklin lode, claimants herein, at S. 84° 33' W. - 172.82 ft. from Cor.No.4
1335.60	Cor.No.3 Clara lode of this survey.
1375.44	Intersect line 2-3 Sur.No.1375 Chautauquan lode, claimants unknown, at S. 31° 03' E. - 42.61 ft. from Cor.No.3
1500.00	To Cor.No.2
	A diorite stone 8x8x20 ins., set 12 ins. in the ground with + at exact corner point and mound of rock alongside and chiseled R-2-3274
	Whence Cor.No.3 Sur.No.1375 Chautauquan lode bears N. 39° 49' 30" W. 166.51 ft.
	Cor.No.4 Sur.No.2910 Franklin lode bears N. 17° 54' E. 157.48 ft.
	Thence N. 47° 11' E.
78.64	Intersect line 3-4 Sur.No.2910 Franklin lode at S. 5° 30' E. - 45.53 ft. from its intersection with line 3-4 Sur.No.1375 Chautauquan lode and 96.85 ft. from Cor.No.4 Sur.No.2910 Franklin lode.
133.39	Intersect line 3-4 Sur.No.1375 Chautauquan lode at S. 79° 41' E. 207.84 ft. from Cor.No.3 and 45.26 ft. from its intersection with line 3-4 Sur.No.2910 Franklin lode.

Feet	
300.00	South end center, a mound of stone.
599.23	To Cor.No.3 A 3 in.iron pipe, showing 30 ins.above the surface, with base of concrete, nail in cement at exact corner point, copper plate on west side stamped R-3-3274 Whence Cor.No.2 Sur.No.3202 Morgan lode, claimant unknown, bears N.45°04'W.-555.85 ft. A rock in place 5x3½x3½ ft.chiseled B+R,R.3-3274 bears N.74°40'E.-21.6 ft. A rock in place, 5x4x3ft. chiseled B.+R.R-3-3274 bears S.88°20'W.-18.5 ft. Thence N.42°49'W.
555.56	Intersect line 1-2 Sur.No.3202 Morgan lode at N.46°49'E 21.82 ft.from Cor.No.2
1500.00	To Cor.No.4 On line 4-5 Sur.No.3203 Nellie Blye lode, claimant unknown at N.46°49'E.206.41 ft.from Cor.No.5, 22.64 ft. from intersection with line 2-3 Morgan lode, Sur.No.3202, and 153.76 ft. from intersection with line 3-4 Lone Star lode, Sur. No. 1374. A rock in place showing 1x1½x½ ft.above ground,+ at exact corner point, chiseled R 4-3274, with mound of rock along side. Whence Cor.No.3 Sur.No.1374 Lone Star lode, claimant unknown bears S.21°56'W.209.89 ft. A rock in place showing 2x2x1 ft.chiseled B+R.R.4-3274 bears S.41°18'E.-23.5 ft. Thence S.47°11'W.
22.64	Intersect line 2-3 Sur.No.3202 Morgan lode at N.42°52'W. 944.44ft.from Cor.No.2 and .14 ft.from its intersection with line 4-5 Sur.No.3203 Nellie Blye lode.
153.36	Intersect line 3-4 Sur.No.1374 Lone Star lode at N.20°39' W.96.68 ft.from Cor.No.3 and 1.07 ft.from its intersection with line 4-5 Sur.No.3203 Nellie Blye lode.
299.23	North end center, a mound of stone.
305.82	Intersect line 5-1 Sur.No.3203 Nellie Blye lode at N.26° 15'W-2.05 ft.from Cor.No.5
427.19	Intersect line 2-3 Sur.No.1374 Lone Star lode at N.67°51' W.253.69 ft.from Cor.No.3

Feet
599.23

To Cor.No.1, The place of beginning.

Clara lode.

Beginning at Cor.No.1

A schist rock 6x8x22 ins. set 12 ins.in the ground,+ at exact corner point, chiseled C,1-3274, mound of rock alongside.

Whence

The N.W.Cor.Sec.26 T.16 N.R.2 E.G.& S.R.B.& M.bears N.26° 23'W.-1066.81 ft.

The N.W.Location corner bears S.84°22'W.-308.5 ft.

A rock in place showing face 2x3 ft.,chiseled B.+ R.C,1-3274 bears S.68° W.-1.75 ft.

Thence S.28°58'E.

531.63 Intersect line 2-3 Sur.No.1285 No.Three lode,claimant unknown,at S.70°54'W.-215.85 ft.from Cor.No.3 and N.70°54' E.375.33 ft.from Cor.No.2

531.76 Intersect line 3-4 Duluth lode of this survey, S.70°52'W 215.83 ft.from Cor. No.3.

1140.70 Intersect line 1-2 Duluth lode of this survey, S.70°52'W.215.83 ft. from Cor. No.2.

1141.23 Intersect line 4-1 Sur.No.2910 Franklin lode at S.84°33'W. 879.23 ft.from Cor.No.4 and N.84°33'E.-620.99 ft.from Cor. No.1

1158.86 To Cor.No.2

A diorite stone 12x 14x21 ins.set 12 ins.in the ground with mound of rock alongside,+ at exact corner point,

chiseled C 2-3274

Whence

Face of rock in place 2x3x4 ft.chiseled B.+R.C 2-3274

bears S.25° E.-3.6 ft.

Thence N.84°22'E.

375.39 South end center, a mound of stone.

709.99 To Cor.No.3

On line 1-2 Remington lode of this survey.

A diorite stone 6x12x24 ins.set 12 ins.in the ground,with mound of stone alongside,+ at exact corner point,chiseled

C 3-3274

Whence

A rock in place 2x1x1 ft.chiseled B.+R.C 3-3274 bears

N.1°48'W.- 44 ft.

Feet A rock in place, 2x1x $\frac{1}{2}$ ft. chiseled B.+ R.C 3-3274 bears N.66°38'W.- 3.0 ft.
 Thence N.42°49'W

17.52 Intersect line 4-1 Sur.No.2910 Franklin lode at S.84°33'W
 172.82 ft.from Cor.No.4

1335.60 To Cor.No.4
 Identical with Cor.No.1 Remington lode of this survey heretofore described.
 Thence S.84°22'W.

45.77 Intersect line 3-4 Sur.No.1285 No.Three lode at N.19°03'W
 450.17 ft.from Cor.No.3

332.57 North end center, a mound of stone.

361.83 To Cor.No.1, The place of beginning.
 Duluth lode.
 Beginning at Cor.No.1
 A rock in place showing face 2x3x8 ft.chiseled D.1-3274 on top and + at exact corner point, with mound of rock alongside. Whence
 The west $\frac{1}{4}$ Cor. Sec.26 T.16 N.R.2 E. G.& S.R.B.& M.bears S.20°07'E.-306.84 ft.
 Cor.No.4 St.Paul lode of this survey bears N.57°44'30"E. 248.13 ft.
 Face of cliff, 10 ft.high, chiseled B.+R.D 1-3274 bears N.57°20'W.-6.3 ft.
 Thence N.70°52'E.

110.87 Intersect the West line Sec.26 T.16 N.R.2 E.G.& S.R.B.& M. at N.0°8'20"W.-324.46 ft.from the West $\frac{1}{4}$ Cor., and S.0°08'20"E. 2307.8 ft. from the N.W. Cor.

227.95 Intersect line 4-1 St.Paul lode of this survey, S.5°28'E. 57.98 ft. from Cor. No. 4.

289.38 Intersect line 3-4 Sur.No.1285 Ella lode at S.52°23'E.- 717.46 ft.from Cor.No.4 and ~~67.35 ft. from its intersection with line 3-4 St.Paul lode of this survey.~~

552.40 Intersect the common line 1-2 Sur.No.2910 Franklin lode and 2-3 St.Paul lode of this survey at S.5°28'E.-150.65ft. from Cor.No.1 ~~Sur.No.2910~~ franklin lode, and 57.20ft. from Cor. No.3 St. Paul lode.

1189.26 Intersect line 4-1 Sur.No.2910 franklin lode at N.84°33'E. 618.83 ft.from Cor.No.1

No° W 40.

Mineral Survey No.3274

Feet.
1191.22 Intersect line 1-2 Clara lode of this survey, S.28°58'E.
1140.70 ft. from Cor. No.1.
1407.05 To Cor.No.2

A diorite rock 6x6x24 ins.set 12 ins.in the ground with mound
of stone alongside, chiseled D,2-3274 and + at exact corner
point Whence
Cor.No.1 Sur.No.2910 Franklin lode bears S.81°0'W.-832.03 Ft.
ft.
Thence N.28°58'W.

304.47 East end center, a mound of rock.
608.94 To Cor.No.3

Identical with Cor.No.3 Sur.No.1285 No.Three lode.
A 2 in.iron pipe showing 4 ins.above a conical base of
concrete,+ at exact corner point and stamped 3-3-1285,
D.3-3274, mound of rock alongside. Whence
A rock 6x6x3 ft.chiseled B.+ R.D.3-3274 bears N.6°15'W.
24.5 ft.
Thence S.70°52'W.

215.83 Intersect line 1-2 Clara lode of this survey at S.28°58'E.
531.76 ft. from Cor. No. 1. and
4.13 ft.from its intersection with line 2-3 Sur.No.1285
No.Three lode.

985.58 Intersect the west line Sec.26 T.16 N.R.2 E.G.& S.R.B.& M.
at N.0°08'20"W.-959.03 ft.from the West ¼ Cor.,and S.0°08'20"E.
1673.23 ft. from the N.W.Cor.
1407.05 To Cor.No.4

Identical with Cor.No.4 Sur.No.1285 Ella lode.
A diorite stone showing 4x8x12 ins.above the ground, chiseled
E.4-1285,D.4-3274,+ at exact corner point, Mound of rock
alongside. Whence
Cor.No.2-3 Sur.No.1285 No.Two and No.Three lodes respect-
ively, bears N.70°45'E.-234.71 ft.
A rock in place 4x3½x1 ft.chiseled B.+R.D.4-3274 bears
N.1°22'E:-12.0 ft.
A rock in place 4x1½x½ ft.chiseled B.+ R.D.4-3274 bears
N.16°08'W.-15.6 ft.
Thence S.28°58'E.

304.47 West end center, a mound of rock.
608.94 To Cor.No.1, The place of beginning.

Feet	St.Paul lode
	Beginning at Cor.No.1
	A schist rock 4x6x24 ins.set 12 ins.in the ground, chiseled S.P.1-3274,+ at exact corner point and mound of rock alongside
	Whence
	The West $\frac{1}{4}$ Cor.Sec.26 T.16 N.R.2 E.G.& S.R.E.& M.bears S.84°10'W-143.90 ft.
	A rock in place 6x9x10 ft.chiseled B.+ R.S.P.1-3274 bears N.11°53'W.-8.5 ft.
	Thence N.70°54'E.
127.59	Intersect line 4-1 Sur.No.2910 Calumet lode, at S.46°25'W 291.16 ft.from Cor.No.4 and 202.53 ft.from its intersection with line 3-4 Sur.No.1285 Ella lode.
324.39	To Cor.No.2
	On line 1-2 Sur.No.2910 Franklin lode at N.5°28'W.99.79ft. from Cor.No.2
	A diorite rock 4x6x24ins.set 12ins.in the ground, chiseled S.P.2-3274,+ at exact corner point, mound of rock alongside
	Whence
	Cor.No.4 Sur.No.2910 Calumet lode bears N.10°22'E.-138.59 ft.
	A rock in place 1x2 $\frac{1}{2}$ x2 ft.chiseled B.+ R.S.P.2-3274 bears S.70°E.-20.8 ft.
	A rock in place 1x2x3 ft.chiseled B.+ R.S.P.2-3274 bears S.50°W.-6.6 ft.
	Thence N.5°28'W.
48.84	Intersect line 3-4 Sur.No.1285 Ella lode at S.52°23'E. 1067.37 ft.from Cor.No.4 and 43.65 ft.from its intersection with line 4-1 Sur.No.2910 Calumet lode.
103.66	Intersect line 4-1 Sur.No.2910 Calumet lode at S.46°25'W 48.06 ft.from Cor.No.4
203.60	East end center, a mound of rock.
350.00	Intersect line 1-2 Duluth lode of this survey, N.70°52'E. 552.40 ft. from Cor. No. 1.
407.20	To Cor.No.3
	On line 1-2 Sur.No.2910 Franklin lode at S.5°28'E.-93.45ft from Cor.No.1
	A schist rock 4x8x24 ins.set 14 ins.in the ground, chiseled side.
	S.P.3-3274. + at exact corner point.mound of rock along

Feet Whence

A rock in place 2x3x4ft. chiseled B.+ R.S.P.3-3274 bears S.48°40'W.-8.2 ft.

Thence S.71°0'W

313.46 Intersect line 3-4 Sur.No.1285 Ella lode at S.52°23'E.-650.11 ft.from Cor.No.4 ~~and N.52°23'W.67.35 ft.from its intersection with line 1-2 Duluth lode of this survey.~~

324.27 To Cor.No.4

A schist boulder 2½x3x7 ft.with + at exact corner point and chiseled S.P.4-3274, mound of rock alongside.

Thence S.5°28'E.

57.98 Intersect line 1-2 Duluth lode of this survey, N 70° 52'E. 227.95 ft. from Cor. No.1.

204.18 West end center, a mound of rock.

407.78 To Cor.No.1, The place of beginning.

Variation at all corners 14°30'E.

Lode lines.

As near as may be determined from present developments the lode lines runs as follows from their respective discovery points.

Remington lode:-S.42°49'E.-1325 ft. and N.42°49'W.-175 ft. to the north end center.

Clara lode:- N.42°47'W.-1185.00 ft. and S.42°47'E.150 ft. to the south end center.

Duluth lode:- S.70°52'W.-1307.05 ft. and N.70°52'E.-100 ft. to the east end center.

St.Paul lode:- S.70°54'W-274.39 ft. and N.70°54'E.-50 ft. to the east end center.

Area.

	Acres	Acres
Total Area Remington lode	20.635	✓

Area in conflict with		
Sur.No.1374 Lone Star lode281	✓
Sur.No.1375 Chautauquan lode267	✓
Sur.No.2910 Franklin lode356	✓
Sur.No.2910 Franklin lode		

Exclusive of its conflict with		
Sur.No.1375 Chautauquan lode113	✓
Sur.No.3202 Morgan lode482	✓
Sur.No.3203 Nellie Blye lode007	✓
Sur.No.3203 Nellie Blye lode		

Exclusive of its conflict with		
Sur.No.1374 Lone Star lode002	✓
Sur.No.3203 Nellie Blye lode		
Exclusive of its conflict with		
Sur.No.3202 Morgan lode007	✓

	Acres	Acres
Sur.No.3203 Nellie Blye lode Exclusive of its conflict with Sur.No.1374 Lone Star and Sur.No.3202 Morgan lodes002	
Total Area Clara lode		13.090
Area in conflict with Sur.No.1285 No.Three lode	2.886	
Sur.No.2910 Franklin lode245	
Total area Duluth lode		19.381
Area in conflict with Sur.No.1285 Ella lode	1.993	
Sur.No.2910 Franklin lode	1.070	
Clara lode of this survey	2.973	
Total area St.Paul lode.		2.949
Area in conflict with Sur.No.1285 Ella lode	1.696	
Sur.No.2910 Calumet lode.....	.228	
Sur.No.2910 Calumet lode Exclusive of its conflict with Sur.No.1285 Ella lode020	
Duluth lode of this survey417	
Duluth lode of this survey Exclusive of its conflict with Sur.No.1285 Ella lode370	

The survey of the lodes of this claim are identical with their respective locations, except when otherwise stated in the notes.

Location

This survey is situated in the N.W. 1/4 Sec.26 T.16 N.R.2 E Gila & Salt River Base & Meridian, except the westerly end of the Duluth lode which is ^{in Sec. 27} ~~upon~~ unsurveyed ~~said~~ Township, and within the Prescott National Forest.

Adjoining Claims

On the North:-
Sur.No.1285-No.One, No.Two and No.Three lodes; Sur.No.1374, Lone Star and Sur.No.3203 Nellie Blye lodes.
On the East:-
Sur.No.3202 Morgan; May and Monster lodes unsurveyed.
On the South:-
Sur.No.1375 Chautauquan, Sur.No.2910 Franklin and Calumet lodes.
On the West:-
Sur.No.1285 Ella lode.
Claimants unknown except Sur.No.2910 which is owned by the claimant herein.

Improvements.

I certify that the value of the labor and improvements upon this claim, placed thereon by the claimant or its grantors is not less than Five Hundred Dollars for each claim, and that said improvements consist of:

Remington lode.

No.1 Discovery Point, At the intersection with the lode line with Tunnel ~~no. 2~~ at S.42°49'E.-175 ft. from the North end center

~~No. 1~~ A tunnel, the mouth of ~~which~~ bears from Cor.No.1, N.74°40'E 362 ft. Running thence S.16°W 216 ft. to breast 5 x 7ft.

Value \$2160

This tunnel was originally planned as a means of common development for the several lodes embraced in this survey. Therefore one quarter of its value is properly credited to each of said lodes.

An undivided one quarter interest for this claim \$540

No. 2 A shaft which bears from Cor.No.1 S.61°E.-445 ft. 620 ft. deep, 6½ x 17 ft. outside dimensions, Timbered throughout.

At the depth of 600 ft. a station has been cut and a cross cut run as follows, S.17°30'W.-300 ft. to point a Thence same course 500 ft. to breast. From point a a crosscut runs S.53°40'W.-500 ft. to breast. The station is 18 x 24 ft. The crosscuts are 5 x 7ft.

Value of Shaft and workings therefrom
Not less than \$50000

This is the main working shaft of the property and the above described workings which are now in process of further extension, constitute a common development for the several lodes of this claim. and for the Triangle lode Spr. No. 3463, owned by the claimant herein.

Value of an undivided fifth interest for this lode.
\$10000

Clara lode.

No. 1 The discovery monument, On the lode line at N.42°47'W.-150 ft. from the south end center.

No. 2 An open cut, running from the discovery monument N.23°E.-18 ft. to mouth. 4 ft. wide, 9ft. face. In mineralized formation

Value \$50

No. 3 An open cut, the mouth of which bears from Cor.No.2 N.65°50'E. 240 ft. Running thence South 20 ft. to 10 ft. face 4 ft. wide.

Value \$50

An undivided one quarter interest in Improvement No. 2 on the Remington lode. Value \$540

An undivided one fifth interest in Improvement No. 3 on the Remington lode Value \$10000

Duluth lode.

- No.1 Duluth lode. The discovery monument, on the lode line at S.70°52'W. 100 ft. from the East end center
- No.2 An open cut, the mouth of which bears from Cor.No.3 S.10°E.-280 ft. Running thence South 20 ft. to face 10 ft high, 4ft.wide. Value \$ 60.00
- No.3 A tunnel, the mouth of which bears from Cor.No.3 S.7°E. 270 ft. Running thence S.43°30'W-58 ft. Thence S.33°20'W. 47 ft. to breast, 4½ x 7ft. Value \$1260
- An undivided one quarter interest in Improvement No.2 on the Remington lode. Value \$540
- An undivided one fifth interest in Improvement No.3 on the Remington lode. Value \$10000
- St. Paul lode.
- No.1 The discovery monument, on the lode line at S.70°54'W. 50ft. from the East end center
- No.2 An open cut, the face of which is on the lode line at S.70°54'W.-70 ft. from the East end center, Running thence N.60°E.-20 ft. to mouth. Face of cut 4ft.wide, 10 ft. high. Value \$60
- No.3 An open cut, the face of which bears from Cor.No.3 S.25°W 165 ft. Running thence West 18 ft. to mouth, 4ft.wide 9ft.face. Value \$40
- An undivided one quarter interest in Improvement No.2 on the Remington lode. Value \$540
- An undivided one fifth interest in Improvement No.3 on the Remington lode. Value \$10000
- Other Improvements
- A shaft which bears from Cor.No.1 Remington lode S.76°55'E 415 ft. said to be 60 ft. deep, claimant unknown.
- An open cut the mouth of which bears from Cor.No.3 Clara lode N.47°30'W.-525ft. Running thence Easterly 10 ft. to 8ft.face, 4 ft.wide, Claimant unknown
- An open cut, the mouth of which bears from Cor .No.3 Clara lode N.51°W.475 ft. Running thence East, 20ft. to 10 ft. face, 4 ft.wide. Claimant unknown.

Instrument.

This survey was made with a C.L.Berger & Sons.transit. The courses were deflected from the true meridian as determined by direct solar observations. The distances were measured with steel tapes.

Report.

The lines of this survey were run upon the ground, as were also the connections to a corner of the public survey, except where traverses are enclosed herewith.

The N.WCor.Sec.26 T.16 N.R.2 E. G.& S.R.B.& M.is a 2 in. iron pipe with brass cap,properly marked.

The west $\frac{1}{4}$ Cor.sec.26 T.16 N.R.2 E.G.& S.R.B.& M.is a 1 in.iron pipe with brass cap,properly marked.

Cors.Nos 2 and 3 Sur.No.1285 No.One,No.Two and No.Three lodes are 2 in.Iron pipes set in mound of concrete, The original stone corners lying alongside.

The remaining corners of conflicting surveys are stones properly set and marked.

Line 2-3 Sur.No.1285 No.One lode is N.70°57'E. ^(Revised) N71°E

Line 4-1 Sur.No.2910 Franklin lode is S.84°33'W.-1500.22 ^{24°37'15" E} ft.

I was unable to identify any corners of the May or Monster lodes(unsurveyed)

Note.

The discrepancies between these field notes and the original and amended location certificates are due to errors in the latter.

Note

The Northwest corner of the Triangle lode,unsurveyed,owned by the claimant herein,bears from Cor.No.1 Duluth lode of this survey,S.7°53'25"E.-351.92 ft.Running thence S.12°0'E.-190 ft. Thence N.77°36'E.-819.68 ft. Thence N.12°0'W 190 ft. Thence S.77°36'W. 819.68 ft. to place of beginning. O.K.

FINAL OATHS FOR SURVEYS.

LIST OF NAMES.

A list of the names of the individuals employed by Alfred B. Colwell
 United States Mineral Surveyor, to assist in running, measuring, and marking the lines, corners, and
 boundaries described in the foregoing field notes of the survey of the mining claim of
Calumet & Jerome Copper Company.
 known as the Remington, Clara, Duluth and St. Paul lodes.
 and showing the respective capacities in which they acted.

M.L. Buckley Jr., *Chainman.*
 _____, *Chainman.*
 _____, *Axman.*
 _____, *Flagman.*

FINAL OATHS OF ASSISTANTS.

~~We~~ I M.L. Buckley Jr.
 and _____, do solemnly swear that ~~we~~ assisted _____
Alfred B. Colwell, United States Mineral Surveyor, in marking the corners and surveying
 the boundaries of the mining claim of Calumet & Jerome Copper Company
 known as the Remington, Clara, Duluth and St. Paul lodes
 represented in the foregoing field notes as having been surveyed by said mineral surveyor and under his
 direction; and that said survey has been in all respects, to the best of our knowledge and belief, faithfully
 and correctly executed, and the corner and boundary monuments established according to law and the instruc-
 tions furnished by the United States Surveyor-General for Arizona

M. L. Buckley Jr., *Chainman.*
 _____, *Chainman.*
 _____, *Axman.*
 _____, *Flagman.*

My Commission Expires May 4, 1921

Subscribed and sworn to by the above-named persons before me this 21st

day of January, 1918

R. W. Warren
Notary Public

My Commission Expires May 4, 1921

FINAL OATH OF U. S. MINERAL SURVEYOR.

I, Alfred B. Colwell, U. S. Mineral Surveyor, do solemnly swear that, in pursuance of instructions received from the United States Surveyor General for Arizona, dated November 2-1917, I have, in strict conformity to the laws of the United States, the official regulations and instructions thereunder, and the instructions of said Surveyor General, faithfully and correctly executed the survey of the Mining Claim of Calumet & Jerome Copper Company, known as the Remington, Clara, Duluth and St. Paul lodes, situate in Verde Mining District, Yavapai County, Arizona, in Section 26 & 27, Township No. 16 N., Range No. 2 E.G. & S.R.B. & M., and designated as Survey No. 3274, as represented in the foregoing field notes, which accurately show the boundaries of said mining claim as distinctly marked by monuments on the ground, and described in the attached copy of the location certificate, which was received by me from the Surveyor General with said instructions, and that all the corners of said survey have been established and perpetuated in strict accordance with the law, official regulations and instructions thereunder; and I do further solemnly swear that the foregoing are the true and original field notes of said survey and my report therein, and that the labor expended and improvements made upon said mining claim by claimant or its grantors are as therein fully stated, and that the character, extent, location, and itemized value thereof are specified therein with particularity and full detail, and that no portion of said labor or improvements so credited to this claim has been included in the estimate of expenditures upon any other claim.

Alfred B. Colwell
U. S. Mineral Surveyor.

Subscribed and sworn to by the said Alfred B. Colwell
U. S. Mineral Surveyor, before me a Notary Public in and for
Yavapai County, State of Arizona. this 16th,
day of January, 1918.

W. Warren
Notary Public

My Commission Expires May 4, 1921

AMENDED

Notice of Mining Location

LODE CLAIM

TO ALL WHOM IT MAY CONCERN:

This Mining Claim, the name of which is the REMINGTON.
Mining Claim, situate on lands belonging to the United States of America, and in which there are valuable mineral deposits, was entered upon and located for the purposes of exploration and purchase by CALUMET-JEROME COPPER COMPANY, An Arizona Corporation;

(Locator must insert either "a citizen of the United States," or "who has declared his intention to become a citizen of the United States.")
the undersigned, on the 18th., day of Sept.,, 1914..

The length of this claim is 1500 feet,
and we claim 50 feet,
in a Northerly direction and 1450
feet in a Southerly direction from
the center of the discovery shaft, at which this notice is posted, lengthwise of the claim, together with
300 feet in width of the surface grounds, on each side
of the center of said claim. The general course of the lode deposit and premises is from the
North to the South,

The claim is situated and located in the VERDE Mining District, in
Yavapai County in the State of Arizona, about One mile
in a Southerly direction from the Town of Jerome, and conflicts
with the Franklin Mining Claim, survey No., 2910, on the Southwesterly
corner, (Cor., No., 2.).

The surface boundaries of the claim are marked upon the ground as follows: Beginning at
A mound of stone,

at a point in a N.42° W. direction 50 feet from
the discovery ~~shaft~~ monument (at which this notice is posted), being in the center of the Northerly
end line of said claim; thence S.48° W. 300 feet to a mound of stone,
No., 1, corner of said claim; thence
S.42° E. 1500 feet to a mound of stone, being at the
No., 2, corner of said claim; thence N.48° E. 300 feet
to a mound of stone at the center of the Southerly end of said claim;
thence N.48° E. 300 feet to a mound of stone, being at the
No., 3, corner of said claim; thence N.42° W. 1500, feet
to a mound of stone, at the No., 4, corner of said claim;
thence S.48° W. 300 feet to the place of beginning.

All done under the provisions of Chapter Six, of Title XXXII, of the Revised Statutes of the United States, and of an Act of the General Assembly of Arizona, entitled "An Act to Revise and Codify the Laws of the Territory of Arizona," approved March 16, 1901.

This is an Amended Location Notice of the REMINGTON,
Mining Claim, located by Joe. Larson & Chas., F. Avery,
on the 6th., day of
January,, 1910, and recorded in Book 88, of Records of Mines, at
page 203, in the office of the County Recorder of the aforesaid County of Yavapai,
to which reference is hereby made, and this amended Location Notice is made and posted to correct
errors in the description in the said original Location Notice

Dated and posted on the ground this 18th., day of Sept.,, 1914..

The Calumet & Jerome Copper Co.,
By Geo. W. Avery, Pres.,

Notice of Mining Location

LODE CLAIM

TO ALL WHOM IT MAY CONCERN:

This Mining Claim, the name of which is the CLARA, Mining Claim, situate on lands belonging to the United States of America, and in which there are valuable mineral deposits, was entered upon and located for the purposes of exploration and purchase by CALUMET JEROME COPPER COMPANY; An Arizona corporation.

(Locator must insert either "a citizen of the United States," or "who has declared his intention to become a citizen of the United States.") the undersigned, on the 18th. day of Sept., 1914.

The length of this claim is 1320 feet, and We claim 1170 feet, in a Northerly direction and 150 feet in a Southerly direction from the center of the discovery ~~shaft~~ monument at which this notice is posted, lengthwise of the claim, together with 297 feet in width of the surface grounds, on each side of the center of said claim. The general course of the lode deposit and premises is from the Northwest to the Southeast.

The claim is situated and located in the VERDE Mining District, in Yavapai County in the State of Arizona, about One mile in a Southerly direction from the Town of Jerome, and is adjoined by the Franklin Mining Claim, survey No., 2910, on the Southerly end line.

The surface boundaries of the claim are marked upon the ground as follows: Beginning at A monument of stone.

at a point in a N.42° W. direction 1170 feet from the discovery ~~shaft~~ monument (at which this notice is posted), being in the center of the Northerly end line of said claim; thence S.84° 37' W. 370 feet to a mound of stone, being the No., 1. corner of said claim; thence S.42° E. 1320 feet to a mound of stone., being at the No., 2. corner of said claim; thence N.84° 47' E. 370 feet to a mound of stone at the center of the Southerly end of said claim; thence N.84° 37' E. 370 feet to a mound of stone being at the No., 3. corner of said claim; thence N.42° W. 1320 feet to a mound of stone at the No., 4. corner of said claim; thence S.84° 37' W. 370 feet to the place of beginning.

All done under the provisions of Chapter Six, of Title XXXII, of the Revised Statutes of the United States, and of an Act of the General Assembly of Arizona, entitled "An Act to Revise and Codify the Laws of the Territory of Arizona," approved March 16, 1901.

~~Witness my hand and the seal of the office of the~~
~~Miner at this date~~

~~in the office of the County Recorder of the aforesaid County of~~
~~for which reference is hereby made, and the same was duly recorded and posted to conform~~
~~with the provisions of the Act to Revise and Codify the Laws of the Territory of Arizona,~~

Dated and posted on the ground this 18th. day of Sept., 1914.

The Calumet & Jerome Copper Co.
BY, Geo. W. Avary, Pres.

STATE OF ARIZONA,

County of _____ } ss.

I, _____, County Recorder in and for the County and State aforesaid, do hereby certify that the within instrument was filed for record at _____ o'clock _____ M., on this _____ day of _____, 19 _____, and duly recorded in Book No. _____ of _____ Records of _____ County, Arizona, at pages _____.

WITNESS my hand and official seal the day and year first above written.

County Recorder.

AMENDED

Notice of Location

LODE CLAIM

Dated _____, 19 _____

Filed and Recorded at request of

The Calumet & Jerome Cop., Co.,

Nov., 19 _____, A. D. 1914.

at 9:00 o'clock, A. M.,

Book 86, of Mines;

Page 440; Records of Yavapai

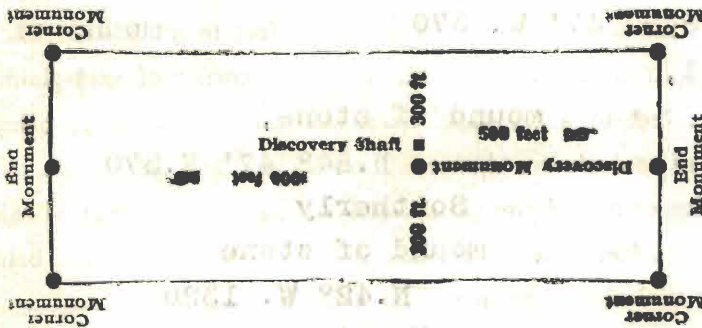
County, Arizona.

(SEAL) **L.S. Colwell,**

County Recorder.

By **James W. Coyne,**

Deputy Recorder.



This diagram is to give locator a general idea of plan of location under the new law. The Discovery Shaft can be in the center of claim or any distance from either end desired. In the diagram it is placed 500 feet from one end and 1000 feet from the other. Commence description of claim at a center end monument, giving its distance and direction from center of Discovery Shaft; thence bound the claim in either direction. In description be careful to state locality of claim with reference to some natural object, or permanent monument, as will identify the claim.

AMENDED
Notice of Mining Location
LODE CLAIM

TO ALL WHOM IT MAY CONCERN:

This Mining Claim, the name of which is the DULUTH
Mining Claim, situate on lands belonging to the United States of America, and in which there are
valuable mineral deposits, was entered upon and located for the purposes of exploration and purchase
by CALUMET JEROME COPPER COMPANY, An Arizona corporation,

(Locator must insert either "a citizen of the United States," or "who has declared his intention to become a citizen of the United States.")
the undersigned, on the 18th. day of Sept., 1914.

The length of this claim is 1450 feet,
and We claim 1400 feet,
in a westerly direction and 50
feet in an Easterly direction from
the center of the ~~discovery~~ monument at which this notice is posted, lengthwise of the claim, together with
300 feet in width of the surface grounds, on each side
of the center of said claim. The general course of the lode deposit and premises is from the East
to the West

The claim is situated and located in the VERDE Mining District, in
Yavapai County in the State of Arizona, about one mile
in a southerly direction from the Town of Jerome, and is adjoined
on the North side line, by the No. 1, No. 2, and No. 3 Mining Claims, all
of Survey No. 1285.

The surface boundaries of the claim are marked upon the ground as follows: Beginning at
Mound of Stone.

at a point in a N. 71° E. direction 50 feet from
the discovery ~~point~~ monument (at which this notice is posted), being in the center of the Easterly
end line of said claim; thence N. 30° W. 300 feet to a mound of stone
No. 4, corner of said claim; thence
S. 71° W. 1450 feet to a mound of stone, being at the
No. 1, corner of said claim; thence S. 30° E. 300 feet
to a mound of stone, at the center of the Westerly end of said claim;
thence S. 30° E. 300 feet to a mound of stone being at the
No. 2, corner of said claim; thence N. 71° E. 1450 feet
to a mound of stone at the No. 3, corner of said claim;
thence N. 30° W. 300 feet to the place of beginning.

All done under the provisions of Chapter Six, of Title XXXII, of the Revised Statutes of the
United States, and of an Act of the General Assembly of Arizona, entitled "An Act to Revise and
Codify the Laws of the Territory of Arizona," approved March 16, 1901.

This is an Amended Location Notice of the ~~mine~~ DULUTH
Mining Claim, located by Joe Larson and Chas., F. Avery;
on the 6th. day of
January, 1910, and recorded in Book 88 of Records of Mines, at
page 202, in the office of the County Recorder of the aforesaid County of Yavapai,
to which reference is hereby made, and this amended Location Notice is made and posted to correct
errors in the description in the said original Location Notice

Dated and posted on the ground this 18th. day of Sept., 1914.

The Calumet & Jerome Copper Co.,
By, - Geo. W. Avery, Pres.,

STATE OF ARIZONA,

County of } ss.

I, County Recorder in and for the County and State aforesaid, do hereby certify that the within instrument was filed for record at o'clock M., on this day of 19, and duly recorded in Book No. of Records of County. Arizona, at pages.....

WITNESS my hand and official seal the day and year first above written.

County Recorder.

AMENDED
Notice of Location
LODE CLAIM

Dated 19.....

Filed and Recorded at request of

The Calumet & Jerome Cop... Co.,

Nov. 19, A. D. 1914.

at 9:00- O'clock A. M.,

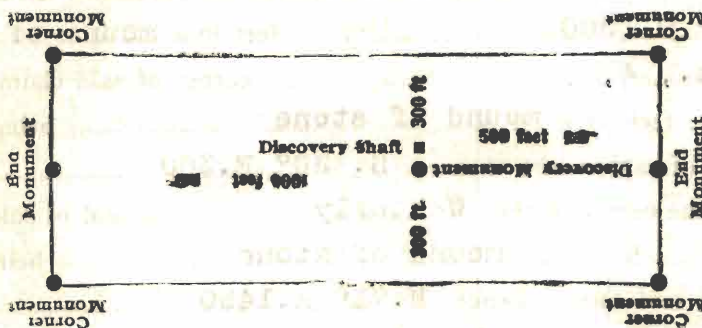
Book 86 of Mines;

Page 441, Records of Yavapai

County, Arizona.

(SEAL.) L.S. Colwell,
County Recorder.

By James W. Coyne,
Deputy Recorder.



This diagram is to give locator a general idea of plan of location under the new law. The Discovery Shaft can be in the center of claim or any distance from either end desired. In the diagram it is placed 500 feet from one end and 1000 feet from the other. Commence description of claim at a center end monument, giving its distance and direction from center of Discovery Shaft; thence bound the claim in either direction. In description be careful to state locality of claim with reference to some natural object, or permanent monument, as will identify the claim.

Notice of Mining Location

20

LODE CLAIM

TO ALL WHOM IT MAY CONCERN:

This Mining Claim, the name of which is the ST. PAUL.

Mining Claim, situate on lands belonging to the United States of America, and in which there are valuable mineral deposits, was entered upon and located for the purposes of exploration and purchase by

Calumet Jerome Copper Company, An Arizona corporation,

(Locator must insert either "a citizen of the United States," or "who has declared his intention to become a citizen of the United States.")

the undersigned, on the 18th. day of Sept., 1914.

The length of this claim is 325 feet,
and We claim 50 feet,
in a Easterly direction and 275
feet in a Westerly direction from
the center of the discovery ~~shaft~~ monument, at which this notice is posted, lengthwise of the claim, together with
200 feet in width of the surface grounds, on each
side of the center of said claim. The general course of the lode deposit and premises is from the
East to the West

The claim is situated and located in the VERDE Mining District,
in Yavapai County, in the State of Arizona, about one mile
in a Southerly direction from the Town of Jerome, is
adjoined by the Franklin Mining Claim, Mineral Survey No., 2910, on the
Easterly end, and conflicts with the Ella Mining Claim, Mineral
Survey No., 1285, on the Westerly end.

The surface boundaries of the claim are marked upon the ground as follows: Beginning at
a mound of stone Idc., West center end of the said Franklin lode,
at a point in a N. 71° E. direction 50 feet from
the discovery ~~shaft~~ monument (at which this notice is posted), being in the center of the Easterly
end line of said claim; thence N. 5° 23' W. 200 feet to a mound of stone
No., 4, corner of said claim;
thence S. 71° W. 325, feet to a mound of stone, being at the
No., 1, corner of said claim; thence S. 5° 23' E. 200 feet
to a mound of stone, at the center of the Westerly end of said claim;
thence S. 5° 23' E. 200 feet to a mound of stone, being at the
No., 2, corner of said claim; thence N. 71° E. 325
feet to a mound of stone at the No., 3, corner of
said claim; thence N. 5° 23' W. 200 feet to the place of the beginning.

All done under the provisions of Chapter Six, of Title XXXII, of the Revised Statutes of the United States, and of an Act of the General Assembly of Arizona, entitled "An Act to Revise and Codify the Laws of the Territory of Arizona," approved March 16, 1901.

Dated and posted on the ground this 18th. day of Sept., 1914.

The Calumet & Jerome Copper Co.,

By., Geo., W. Avery, Pres.,

County of.....

I,, County Recorder in and for the County and

State aforesaid, do hereby certify that the within instrument was filed for record at.....o'clock.....M.,

on this.....day of....., 191....., and duly recorded in Book No.....of

Records of.....County, Arizona, at pages.....

Witness my hand and official seal the day and year first above written.

County Recorder

Notice of Location

LODE CLAIM

Dated....., 191.....

Filed and Recorded at request of

The Calumet & Jerome Cop., Co.,

Nov., 19th., A. D. 1914..

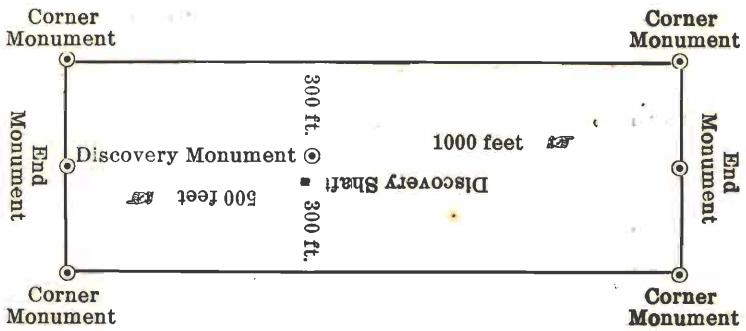
at **9:00- 0'clock,** A. M.

Book **96 of Mines:**

Page **464; Records of Yavapai County, Arizona.**

(SEAL.) **L.S. Colwell,**
County Recorder

By **Benj. J. Powers,**
Deputy Recorder



This diagram is to give locator a general idea of plan of location under the new law. The Discovery Shaft can be in the center of claim or any distance from either end desired. In the diagram it is placed 500 feet from one end and 1000 feet from the other. Commence description of claim at a center end monument, giving its distance and direction from center of Discovery Shaft; thence bound the claim in either direction. In description be careful to state locality of claim with reference to some natural object, or permanent monument, as will identify the claim.

#####

#####

#####

#####

#####

#####

#####

County Recorder

#####

#####

STATE OF ARIZONA, }
COUNTY OF YAVAPAI. } ss.

I, L. S. Colwell, County Recorder in and for the County of Yavapai, State of Arizona, and custodian of the records of such office, do hereby certify that I have compared the foregoing ^{are} copies with, and that the same ~~are~~ full, true and correct copies of Notices of Mining Locations, known as Remington, - Clara, - Duluth, - and St Paul, located by The Calumet and Jerome Copper Company, - By, George W. Avery, President. filed for record on Nov., 19th., A.D., 1914, - At 9:00-O'clock ^{A.M.} and as the same appears of record in my office in Books 86-96 of MINES; Pages, 439-440-441 and 464; ~~#####~~ and of the whole thereof.



IN WITNESS WHEREOF, I have hereunto set my hand and affixed my Official Seal this 26th., day of FEBRUARY, A. D. 1916.

L. S. Colwell
County Recorder.

U. S. SURVEYOR-GENERAL'S FINAL CERTIFICATE ON FIELD NOTES.

Department of the Interior,

OFFICE OF U. S. SURVEYOR-GENERAL,

Phoenix, Arizona,

October 2, 1918.

I, U. S. Surveyor-General for DISTRICT OF ARIZONA,

do hereby certify that the foregoing transcript of the Field Notes, return and approval of the survey of the mining claim of

CALUMET and JEROME COPPER COMPANY

known as the REMINGTON, CLARA, DULUTH AND ST. PAUL LODES,

situate in VERDE

Mining District, YAVAPAI County, ARIZONA,

in Section 26 & 27, Township No. 16 N., Range No. 2 E., and

designated as Survey No. 3274, has been correctly copied from the originals on file in this office; that said Field Notes furnish such an accurate description of said mining claim as will, if incorporated into a patent, serve fully to identify the premises, and that such reference is made therein to natural objects or permanent monuments as will perpetuate and fix the *locus* thereof.

And I further certify that five hundred dollars' worth of labor has been expended or improvements made upon said mining claims by claimant or its grantors, and that said improvements consist of 1 shaft, 5 cuts, 2 tunnels, 2 crosscuts and 1 station, total value \$53,680. of which \$10,000 is reserved for the Triangle lode, Mineral Survey No. 3463.

A one-fourth interest, value \$540. in improvement No. 1 on the Remington lode is properly credited to each of the claims in this survey, and a one-fifth interest, value \$10,000. in improvement No. 2 on the Remington lode is properly credited to each of the four claims in this survey and to the Triangle lode, Sur. No. 3463. and that no portion of said labor or improvements has been included in the estimate of expenditures upon any other claim.

I further certify that the plat thereof, filed in the U. S. Land Office at Phoenix, Arizona, is correct and in conformity with the foregoing Field Notes.

Frank P. Trott,

United States Surveyor-General for Arizona.

SURVEYOR GENERAL'S CERTIFICATE OF APPROVAL OF FIELD NOTES AND SURVEY OF MINING CLAIM

DEPARTMENT OF THE INTERIOR OFFICE OF U. S. SURVEYOR GENERAL

Phoenix, Arizona,

October 2, 1918.

I, U. S. Surveyor General for District of Arizona,

do hereby certify that the foregoing and hereto attached Field Notes and Return of the Survey of the Mining Claim of

CALUMET and JEROME COPPER COMPANY

, known as the

REMINGTON, CLARA, DULUTH and ST. PAUL LODES

situate in VERDE mining district,

YAVAPAI County, ARIZONA

in Section 26 & Unsur. 27, Township No. 16 N., Range No. 2 E., G. &

S. R. B. & M., designated as Survey No. 3274

executed by Alfred B. Colwell, U. S. Mineral

Surveyor, November 7, 1917 - January 15, 1918, under my instructions dated

November 2, 1917, have been critically examined and the necessary cor-

rections and explanations made, and the said Field Notes and Return, and the Survey they describe,

are hereby approved. The certified copy of the location certificate filed by the applicant for survey is

on file in this office and a true copy of said certified copy of said location certificate is included and made

a part of the transcript of the field notes.

Handwritten signature of Frank P. Froth

U. S. Surveyor General for Arizona.