

MINERAL SURVEY No. 3743

ARIZONA

Land District.

FIELD NOTES

OF THE SURVEY OF THE MINING CLAIM OF

KAY COPPER COMPANY

KNOWN AS THE

APRIL, APRIL No.1, APRIL No.2, SKIDDOO FRACTION, HARRIET and DIORITE lodes.

Tip Top

Mining District,

Yavapai

County,

Arizona

Section 4 and 9, Township 8 N., Range 2 E.G.& S.R.M.

Surveyed under instructions dated February 5th., 1921

by Edward L. Haff

U. S. Mineral Surveyor.

Claim located see location notices, 19

Survey commenced February 10, 19 21

Survey completed February 20, 19 21

Address of claimants, ^{Atty.} Fred J. Elliott, Atty. Phoenix, Arizona.

DATES OF AMENDED LOCATIONS.

January 20th. 1921

MINERAL SURVEY NO. 3743			
Claims	M & B Desc.	Improvements	Loc. Notices
	Pg.	Pg.	<u>Red</u> Pg.
April	1	11	1
April No. 1	2	11	3
April No. 2	3	11	6
Diorite	8	13	15
Harriett	6	13	12
Skiddoo Fraction	5	12	9

Feet

MINERAL SURVEY NO. 3743

APRIL lode

Beginning at Cor. No. 1. On line between sections 4&9 T.8 N., R.2 E. G & S.R. M. at N. 89°59' W. 464.87 ft. from the corner to sections 3-4, 9&10, and S.89°59' E. 2176.33 ft. from the $\frac{1}{2}$ Cor.

A granite rock 9 x 13 x 28 ins. set 18 ins in the ground, a cross (x) at corner point, chiseled A-1-3743, with a mound of stone 3 ft. high along side. Whence :-
The corner to sections 3-4, 9&10, T.8 N., R. 2 E. G. & S. R. M. bears S.89°59' E. 464.87 ft.

Thence S.5°34' E.

1500.

To Cor. No. 2

A granite rock 12x12 x 25 ins. set 15 ins. in the ground, a cross (x) at corner point, chiseled A-2-3743, with a mound of stone 3 ft. high along side.

Thence N. 89°59' W.

240.

Electric power line, course northwesterly and southeasterly

301.43

To south end center,

A granite rock 7 x 11 x 26 ins. set 15 ins in the ground, a cross (x) at center point, chiseled S.E.Cen. A - 3743, with a mound of stone 3 ft. high alongside.

602.86

To Cor. No. 3.

A diorite rock 9 x 13 x 25 ins. set 16 ins. in ground a cross (x) at corner point, chiseled (A) - 3 - 3743, with a mound of stone 3 ft. high alongside.

Thence N. 5° 34' W.

160.

Bed of dry gulch 6 ft. wide runs southwesterly.

178.45

Cor. No. 5 April No. 1 lode of this survey.

450.

Electric power line, course northwesterly and southeasterly.

1500.

To Cor. No. 4.

Identical with Cor. No. 4 April No. 1 lode of this survey
On line between sections 4 & 9 T.8 N., R. 2, E. G. & S.R. M. at N.89°59' W. 1067.73 ft. from the corner to sections 3 - 4, 9 & 10 and S.89°59'E. 1573.47 ft. from the $\frac{1}{2}$ Cor.
A granite rock 10 x 14 x 30 ins. set 18 ins. in ground,

- Feet a cross (x) at corner point, chiseled A-4 - A#1-4-3743
with a mound of stone 3 ft. high alongside.
Thence S.89°59' E.
- 301.43 To north end center.
A granite rock 11 x 12 x 28 ins. set 18 ins. in ground
a cross (x) at center point, chiseled N.E.Cen. A-3743,
with a mound of stone 3 ft. high alongside.
- 602.86 To Cor. No. 1, the place of beginning.
APRIL NO.1 lode.
Beginning at Cor. No. 1, Identical with Cor. No.2 Skiddoo
Fraction lode of this survey.
On line 1 - 2 Sur. No.3512 Skiddoo lode, claimant herein
at S.89°01'W. 33.17 ft. from Cor. No. 2.
A diorite rock 12 x 14 x 30 ins. set 18 ins. in ground,
a cross (x) at corner point, chiseled A#1-1-S.F.-2-3743
with a mound of stone 3 ft. high alongside.
Whence :- The $\frac{1}{4}$ Cor. between sections 4 & 9 T.8 N.,R.
2 E. G. & S.R. M. bears S. 81°04'^{15" 20"}40"W. ^{969.53}970. ft.
Thence N.89°01'E.
- 33.17 Cor. No.2 Sur. No. 3512 Skiddoo lode.
300. To north end center, a granite rock 7 x 14 x 26 ins. set
16 ins. in ground, a cross (x) at center point, chiseled
N.E.Cen. A #1 - 3743. with a mound of stone 3-ft high
alongside
- 362.43 To Cor. No.2
A diorite rock 6 x 13 x 25 ins, set 15 ins. in ground,
a cross (x) at corner point, chiseled A # 1-2-3743,
with a mound of stone 3 ft. high alongside.
Thence S.0°02'E.
- 154.06 To Cor. No. 3
On line between sections 4 & 9 T.8 N.,R.2 E. G & S.R.
M. at N. 89°59' W. 1320.60 ft. from the corner to sect-
ions 3-4-9 & 10, and S. 89°59'E. 1320.60 ft. from the $\frac{1}{4}$
corner. A diorite rock 8 x 14 x 30 ins. set 18 ins. in
ground, a cross (x) at corner point, chiseled A# 1-3-
3743, with a mound of stone 3 ft. high alongside.
Thence S.89°59' E.

Feet

252.87 To Cor. No. 4.
Identical with Cor. No. 4 April lode of this survey
hereinbefore described.

Thence S.5° 34' E.

1150. Electric Power line , course N .62°10'W.and S.62°10'E.

1321.55 To Cor. No. 5.

On line 3 - 4 April lode, of this survey.

A quartzite rock 10 x 12 x 28 ins. set 18 ins. in ground
a cross (x) at corner point, chiseled A # 1-5-3743, with
a mound of stone 3 ft. high alongside.

Thence S.89°01'W.

300. To south end center.

A diorite rock 8 x 12 x 30 ins. set 18 ins. in ground
a cross (x) at center point, chiseled S.E.Cen.A #1-3743,
with a mound of stone 3 ft. high alongside.

361.47 Intersect line 4-1 April No.2 lode, of this survey, at
S.22°00' E. 50.04 ft. from Cor. No.4.

600. To Cor. No. 6.

Identical with Cor. No.3 Skiddoo Fraction lode of this
survey. A pine post 4 ft. long 4 ins. sq. set 18 ins. in
ground with mound of earth and stone, a nail at corner
point, scribed A # 1-6 - S.F.-3 - 3743.

Thence N. 5° 34' W.

28.09 Intersect line 3-4 April No.2 lode, of this survey, at
S.84°13' W. 223.62 ft. from Cor. No. 4.

620. Electric Power line, course N.62°10'W.and S.62°10'E.

~~1332.14~~
~~1329.08~~

Intersect line between sections 4 and 9 T.8 N.,R.2 E.
G.& S.R. M. at N.89°59'W. 1668.55 ft. from the corner to
sections 3-4 - 9 & 10, and S.89°59'E. 972.65 ft. from
the 1/4 corner.

1480.52 To Cor. No.1, the place of beginning.

APRIL NO.2 lode

Beginning at Cor. No. 1.

A diorite rock 9 x 16 x 28 ins. set 18 ins. in ground
a cross (x) at corner point, chiseled A.#2-1-3743, with

mound of stone 3 ft. high alongside. Whence :-

The $\frac{1}{4}$ Cor. Between sections 9 & 10 T. 8 N., R. 2 E. G. & S. R. M. bears N. $87^{\circ}33'$ E. 777.41 ft.

Thence S. $84^{\circ}13'$ W.

312.40 To South End Center.

A diorite rock 8 x 14 x 30 ins. set 18 ins. in ground a cross (x) at center point, chiseled S.E. Cen. A #2-3743, with a mound of stone 3 ft. high alongside.

624.80 To Cor. No.2.

Identical with Cor. No.1 Harriet lode of this survey.

A pine post 4 ft. long 4 ins. sq. set 18 ins. in ground with mound of earth and stone, a nail at corner point, scribed A #2-2 - H.-1-3743.

Thence N. $22^{\circ}00'$ W.

1090. Bed of dry gulch 10 ft. wide, runs southwesterly.

1500. To Cor. No.3.

Identical with Cor. No.4 Harriet lode of this survey.

On line 2-4 Sur. No.3512 Southeast Extension of Marietta lode, at S. $84^{\circ}13'$ W. 66.60 ft. from Cor. No.3.

A pine post 4 ft. long 4 ins sq. set 18 ins in ground with mound of earth and stone, a nail at corner point, scribed A #2-3 - H.-4-3743.

Thence N. $84^{\circ}13'$ E.

66.60 Cor. No.3 Sur. No. 3512 Southeast Extension of Marietta lode, and Cor. No. 4 Skiddoo Fraction lode of this survey.

312.40 To North End Center.

A diorite rock 10 x 16 x 28 ins. set 18 ins. in ground a cross (x) at center point, chiseled N.E. Cen. A #2-3743, with a mound of stone 3 ft. high alongside.

401.18 Intersect lines 6-1 and 2-3 April No.1 and Skiddoo Fraction lodes of this survey, at N. $5^{\circ}34'$ W. 28.09 ft. from Cor. No's. 6-3 respectively.

624.80 To Cor. No.4.

A granite rock 16 x 18 x 36 ins. set 18 ins. in ground a cross (x) at corner point, chiseled A #2-4-3743,

with mound of stone 3 ft. high alongside.

Thence S 22° 00' E.

50.04 Intersect line 5-6 April No.1 lode of this survey, at N. 89°01' E. 238.53 ft. from Cor. No.6.

270. Bed of dry gulch 8 ft. wide, runs southwesterly.

1500. To Cor. No.1, the place of beginning.

SKIDDOO FRACTION lode.

Beginning at Cor. No. 1.

On line 1-2 Sur. No.3512 Skiddoo lode, at N.89°01'E.

232.74 ft. from Cor. No.1, and line 2-3 Sur. No. 3512

Southeast Extension of Marietta lode, at S. 5°34'E.19.48 ft. from Cor. No.2.

A granite rock 11 x 14 x 30 ins. set 18 ins. in ground, a cross (x) at corner point, chiseled S.F.-1-3743, with a mound of stone 3 ft. high alongside. Whence :-

The $\frac{1}{4}$ Cor. between sections 4 & 9 T. 8 N., R.2 E.G. & S.R. M. bears S. 77°11' W. 638.56 ft.

Thence N.89°01' E.

35.65 To North End Center.

A granite rock 10 x 12 x 28 ins. set 18 ins. in ground a cross (x) at center point, chiseled N.E. Cen.S.F.-3743, with a mound of stone 3 ft. high alongside.

235. Wagon road, course northeasterly and southwesterly.

335.65 To Cor. No.2.

On line 1-2 Sur No.3512 Skiddoo lode, at S.89°01' W.33.17 ft. from Cor. No.2, and Identical with Cor. No.1 April No.1 lode of this survey hereinbefore described.

Thence S. 5°34' E.

148.38
151.44

Intersect line between sections 4 & 9 T.8 N., R.2 E. G. & S.R. M. at N.89°59' W. 1668.55 ft. from the Cor. to sections 3-4 - 9 & 10, and S. 89°59' E. 972.65 ft. from the $\frac{1}{4}$ Corner.

860.52 Electric Power line, course N.62°10'W and S.62°10'E.

1452.43 Intersect line 3-4 April No.2 lode, of this survey at

- N.84°13' E. 401.18 ft. from Cor. No. 3
- 1480.52 To Cor. No.3
Identical with Cor. No.6 April No.1 lode of this survey hereinbefore described.
- Thence S. 89° 01' W.
300. To South End Center
A diorite rock 8 x 14 x 24 ins. set 15 ins. in ground a cross (x) at center point, chiseled S.E.Cen.-S.F.-3743; with a mound of stone 3 ft. high alongside.
- 335.65 To Cor. No.4
On line 3-4 April No.2 lode of this survey at N.84°13'E. 66.60 ft. from Cor. No. 3, and Identical with Cor. No. 5 Sur. No. 3512 Southeast Extension of Marietta lode.
A pine post 4 ft. long 4 ins. sq. set 18 ins. in ground with mound of earth and stone, a nail at corner point, scribed S.F.-4-3743 and S.E.E.M.-3-3512
- Thence N. 5° 34' W.
810. Electric Power line, course N.62°10'W. and S.62°10'E.
840. Wagon road, course, northeasterly, southwesterly and westerly.
- 1338.01
~~1334.94~~ Intersect line between sections 4 & 9 T.8N., R.2 E. G.& S.R. M. at N.89°59'W. 2004.72 ft. from Cor. to sections 3-4 - 9 & 10 and S. 89°59'E. 636.48 ft. from the $\frac{1}{4}$ Cor.
- 1480.52 To Cor. No. 1 the place of beginning.
- HARRIET lode
- Beginning at Cor. No.1
Identical with Cor. No.2 April No.2 lode of this survey hereinbefore described. Whence :-
The $\frac{1}{4}$ Cor. between sections 9 and 10 T.8N., R.2 E. G.& S.R. M. bears N.86°03'50" E. 1401.53 ft.
- Thence S, 84°13' W.
- 312.40 To South End Center
A Quartzite rock 10 x 12 x 24 ins. set 15 ins. in ground a cross (x) at center point, chiseled S.E.Cen.-H.-3743,

Feet	with mound of stone 3 ft. high alongside.
624.80	To Cor. No. 2. A Diorite rock 8 x 11 x 24 ins. set 18 ins. in ground a cross (x) at Corner point, chiseled H.-2 - 3743, with a mound of stone 3 ft. high alongside. Thence N.22°00' W.
680.	East highwater bank of Agua Fria river, runs southwesterly.
760	Bed of dry gulch 12 ft. wide , runs southwesterly.
980.	Center main channel Agua Fria river, 60.ft. wide, runs southwesterly.
1344.65	Intersect line 2-3 Diorite lode of this survey, at N. 89°58'W. 47.68 ft. from Cor. No.2
1500.	To Cor. No. 3. Not set as it falls on the west bank of the Agua Fria river where a permanent corner could not be established Whence :- Witness Cor. to corner No.3 bears N.84°13'E. 236.90ft. A pine post 4 ft. long 4 ins. sq. set 18 ins, in ground, a nail at Cor. point, scribed W.C.-H.-3-3743 and W.C.- S.E.E.M.-4-3512. Thence from true corner point,N.84°13'E.
91.40	Cor. No.4 Sur. No.3512 Southeast Extension of Marietta lode,(not set) Also intersect line 1-2 Diorite lode of this survey, at N. 5°34' W. 154.01 ft. from Cor. No.2
150.	Center main channel Agua Fria river, 50. ft. wide,runs southwesterly.
236.90	Witness Corner to Cor. No.3 and witness corner to Cor. No.4 Sur.No.3512 Southeast Extension of Marietta lode, hereinbefore described.
250.	Top of East highwater bank Agua Fria river.
312.40	To North End Center. A granite rock 6 x 10 x 24 ins. set 18 ins. in ground, a cross (x) at center point, chiseled N.E.Cen.-H.-3743, with a mound of stone 3 ft. high alongside.
391.40	South end center Sur. No.3512 Southeast Extension of Marietta lode.
501.	Wagon road, course, northeasterly and southwesterly.

Feet
624.80 To Cor. No. 4.
On line 3-4 Sur. No. 3512 Southeast Extension of Marietta lode, at S.84°13'W. 66.60 ft. from Cor. No. 3 and identical with Cor. No.3 April No.2 lode, of this survey heréinbefore described.

Thence S.22°00' E.

410. Bed of dry gulch 10 ft. wide runs southwesterly.
1500. To Cor. No.1 the place of beginning.

D I O R I T E lode

Beginning at Cor. No.1

On line 4-1 Sur. No.3512 Southeast E xtension of Marietta lode, at S.5°34' E. 206.26 ft. from Cor.^{No.}1 and on line 1-2 Sur. No. 3512 Marietta lode, at S.89°58'E. 164.⁵⁰~~50~~ ft. from Cor. No.1.

A cross (x) at Corner point and D.-1-3743 chiseled on an outcrop of rock in place, showing 10 x 15 x 2 ft. above the general surface; with a mound of stone 3 ft. high a -longside. Whence :-

The $\frac{1}{2}$ Cor. between sections 4 and 9 T.8 N.,R.2 E. G. & S.R. M. bears N.22°42'40" W. 113.50 ft.

Thence S. 5° 34' E.

100. West bank of Agua Fria river, runs southwesterly.
1293.74 Cor. No.4 Sur. No. 3512 Southeast Extension of Marietta lode,(not set) and Intersect line 3-4 Harriet lode of this survey at N. 84°13' E. 91.40 ft. from Cor. No.3.
1447.75 To Cor. No.2.

Not set as it falls in the Agua Fria river bed where a permanent corner could not be established; Whence :-
Witness corner for Cor. No.2 bears N.89°58'W. 191.65 ft.
A pine post 4 ft. long 4 ins. sq. set 18 ins. in ground with mound of earth and stone, a nail at corner point, scribed W.C.-D.-2-2743.

47.68 Intersect line 2-3 Harriet lode of this survey, at S.22°E. 155.³⁵ ft. from Cor. No.3.
180. West bank of Agua Fria river

Feet
191.65 ' Witness corner to Cor.' No. 2
298'. ' To South End Center.
A pine post 4 ft. long 4 ins. sq. set 18 ins. in ground with mound of earth and stone, a nail at center point, scribed S.E.Cen.-D.-3743
310. ' Summit of ridge extends northerly and southerly.
599.40 ' To Cor. No.3.
In bed of dry gulch 10 ft. wide runs southeasterly.
A granite rock 12 x 16 x 30 ins. set 18 ins. in ground a cross (x) at corner point, chiseled D.-3 - 3743, with a mound of stone 3 ft. high alongside. Whence :-
A Mesquitte tree 8 ins. in Dia. bears S.15°E. 44.52 ft.
A Mesquitte tree 6 ins. in Dia. bears N.54°E. 25.75 ft.
both blazed and scribed B.T.-(x) D.-3 - 3743

Thence N.5° 34' W.

1447.75 ' To. Cor. No. 4.
A pine post 4 ft. long 4 ins. sq. set 18 ins. in ground with mound of earth and stone, a nail at corner point, scribed D.-4 - 3743

Thence S. 89°58' E.

95. ' Summit of ridge, extends northerly and southerly.

301.40 ' To North End Center.
A pine post 4 ft. long 4 ins. sq. set 18 ins. in ground, with mound of earth and stone, a nail at center point, scribed N.E.Cen.-D.-3743

434.90 ' Cor. No.1 Sur. No. 3512 Marietta lode.

599.40 ' To Cor. No.1 the place of beginning.

Variation at all corners 14° East

All corners of this survey are identical with the respective locations as found marked upon the ground.

L O D E L I N E S

As near as can be determined from present developments the veins of the several lodes embraced in this survey extend from their respective discovery points as follows:-

APRIL lode, 125.ft. N.5°34'W. and 1375.ft. S.5°34'E.
 APRIL NQ1 lode 44.ft. N.5°34'W. and 1436.52 ft. S.5°34'E.
 APRIL No.2 lode 310.ft.N.22°00'W. and 1190.ft. S.22°00'E.
 SKIDDOO FRACTION lode, 38.ft. N.5°34'W. and 1442.52 ft.
 S. 5° 34 ' E.
 HARRIET lode, 44.ft. N.22°00'W. and 1456.ft. S.22°00'E.
 DIORITE lode, 406.75 ft.N.5°34'W. and 1041.ft. S.5°34'E.

A R E A

Total area April lode -----	20.661	Acres
Total area April No.1 lode -----	19.448	"
Total area April No.2 lode -----	20.659	"
Area in conflict with		
April No.1 lode of this survey -----	0.200	"
Total area Skiddoo Fraction lode -----	11.372	"
area in conflict with		
April No.2 lode of this survey -----	0.108	"
Total area Harriet lode -----	20.659	"
Total area Diorite lode -----	19.826	"
area in conflict with		
Harriet lode of this survey -----	0.240	"

L O C A T I O N

This survey is located in the S.E. 1/4 Sec. 4, the N.1/2 and S.E. 1/4 Sec. 9, T. 8 N., R.2 E. G. and S.R. M.

A D J O I N I N G C L A I M S

The adjoining and conflicting claims to this survey are as follows :- On the North :-

Quartzite, March Fraction and Blue Belle lodes, unsurveyed

Claimant herein. Sur. No. 3512 Marietta, and Skiddoo, and Southeast Extension of Marietta lodes, claimant herein.

ON the SOUTH -- Esmeralda lode, unsurveyed claimant herein.

On the WEST -- Southwest Extension of Marietta lode, unsurveyed, claimant herein.

EXPENDITURE OF FIVE HUNDRED DOLLARS.

I certify that the value of the labor and improvements made upon or for the benefit of each lode of this survey by the claimant or its granters, is not less than five hundred dollars, for each lode, and that said improvements consist of :-

No.1 On the APRIL lode, The discovery shaft which is on the lode line at S.5°34' E. 125 ft. from the North end center, 4 x 6 ft. 10 ft. deep in mineralized schist.

Value \$100.00

An undivided one twenty-ninth interest is accredited to this lode, in the KAY No.4 shaft, which bears from Cor. No.1 Skiddoe Fraction lode of this survey, S.14°30'W. 465. ft.

Value \$500.00

No.1 On the APRIL No.1 lode The discovery shaft which is on the lode line at S.5°34' E. 44 ft. from the North end center, 4 x 6 ft. 10. ft. deep, in mineralized schist.

Value \$100.00

No.2 A shaft which bears from Cor. No.1, S.12°40'E. 256.ft. 6 x 8 ft. 10.ft. deep in mineralized schist.

Value \$100.00

No.3 A shaft which bears from Cor. No.1, S.8°30'E. 290.ft. 4 x 8 ft. 8 ft. deep in schist.

Value \$80.00

No.4 A shaft which bears from Cor. No.1, S.8°10'E. 265. ft. 4 x 7 ft. 80.ft. deep, timbered.

Value \$1600.00

An undivided one twenty ninth interest is accredited to this lode, in the Kay No.4 shaft, which bears from Cor. No.1, Skiddoe Fraction lode of this survey, S.14°30'W. 465.ft.

Value \$500.00

On APRIL No.2 lode.

No.1 The discovery shaft which is on the lode line at S.22°

00'E. 310.ft. from the North end center, 4 x 6 ft. 10.ft deep in schist and quartz.

Value \$100.00

No.2 A shaft which bears from Cor. No.3, S.54°45'E. 290.ft. 4 x 8 ft. 10.ft. deep in schist,

Value: \$100.00

No.3 A shaft which bears from Cor., No.3, S.50°00'E. 301.ft. 4 x 6 ft. 8 ft. deep in schist.

Value \$80.00

An undivided one twenty-ninth interest is accredited to this lode in the Kay No.4 shaft, which bears from Cor.

No.1, Skiddoo Fraction lode of this survey, S.14°30'W.

465. ft. Value \$500.00

On SKIDDOO FRACTION lode.

No.1, The discovery shaft which is on the lode line at S.5°34' E. 38 ft. from the North end center, 4 x 6 ft. 10 ft. deep in schist and quartz.

Value \$100.00

No.2 A shaft which bears from Cor. No. 2, S.2°30' E. 320.ft. 5 x 7 ft. 10.ft. deep in schist.

Value \$100.00

An undivided one twenty ninth-interest, Value \$500.00, is accredited to this lode, in an improvement known as the

Kay No.4 shaft, on Sur. No.3512 Southeast Extension of Marietta lode, claimant herein, and which bears from Cor.

No.1, Skiddoo Fraction lode of this survey, S.14°30'W.

465. ft. 6½ x 15 ft. 290.ft. deep Timbered.

Value \$14500.00

This shaft is being sunk for the joint development of all of the lodes of this survey, the four lodes of Sur. No.

3512, known as, Skiddoo, Buckeye, Marietta and Southeast

Extension of Marietta lodes, and ~~nineteen~~ other unsurveyed lodes, known as the Esmeralda, Southwest Extension

of Marietta, Blue Belle, Goodenough, Copper King, Gold Star,

Gold Star Extension, Gold Star Fraction, Dandy Jim, Alice,

Copper Ridge, Drednot, Quartzite, Austin, Dora, Stella,

King Solomon, Okatoe, and Comet No.3 lodes, ^{unsurveyed,} claimant herein. The location of this shaft, on the east side of the river, is accessible to the main Highway, and is the most feasible and economical point as a main working shaft for the joint development of this entire group and the extraction of ore therefrom; It is equipped with a complete plant of machinery, all electrically driven; Drifts and crosscuts can be run from this shaft to cut all of the several lodes and ore bodies under the entire group. This shaft therefore is a common improvement for the joint development of all of the lodes of this group, and an undivided one twenty ninth interest is properly accredited to each lode of this survey.

Value \$500.00

On the HARRIET lode.

No.1, The discovery shaft which is on the lode line at S.32° 00' E, 44 ft. from the north end center, 4 x 6 ft. 10 ft. deep in schist and diorite.

Value \$100.00

No.2, A cut the mouth of which bears from Cor. No.2, N.3°15'W. 170 ft. 4 ft. wide runs S.4°00'E. 26 ft. to a 7 ft. face in schist.

Value \$50.00

No.3, A cut the mouth of which bears from Cor. No.2, N.8°25'W. 227 ft. 5 ft. wide runs S.50°00'E. 12 ft. to a 11 ft. face, at face of cut a tunnel 4 x 6 ft. runs S.50°00'E. 31 ft. to face in schist and diorite.

Value of Cut and Tunnel \$700.00

An undivided one twenty ninth interest is accredited to this lode, in the Kay No.4 shaft, which bears from Cor. No.1, Skiddoo Fraction lode of this survey, S.14°30'W. 465 ft.

Value \$500.00

On the DIORITE lode.

No.1, The discovery shaft which is on the lode line at S.5° 34'E. 406.75 ft. from the north end center, 5 x 8 ft.

- 8 ft. deep in schist and diorite.
Value \$80.00
- No.2, A cut the mouth of which bears from Cor. No.1, S.8°50'W. 144 ft. 6 ft. wide runs N.74°00'W. 15 ft. to a 12 ft. face at face of cut a tunnel 4½ x 6½ ft. runs N.74°00'W.137.ft. to face, in schist and diorite.
Value of cut and tunnel \$2880.00
- No.3, A Tunnel the mouth of which bears from Cor. No.2, N.29° 40'W. 300 ft. 4 x 6½ ft. runs west 15 ft. to face, in Diorite.
Value \$225.00
- No.4, An Open cut the east end of which bears from Cor. No.2, N.51°55'W. 298 ft. 4 ft. wide 10 ft. deep extends west 25 ft. in schist quartz and diorite.

Value \$ 200.00

- No.5, A shaft which is on the lodeline at N.5°34'W. 170 ft. from the south end center, 4 x 7½ ft. 200,ft. deep, timbered.
Value, \$4000.00
- An undivided one twenty ninth interest is accredited to this lode in the Kay No.4 shaft, which bears from Cor. No.1 Skiddoo Fraction lode of this survey, S. 14° 30' W. 465 ft.
Value \$500.00

OTHER IMPROVEMENTS

- An Iron and frame house the N.E. Cor. of which bears from Cor. No.1, Skiddoo Fraction lode of this survey, S.12°E. 220 ft. 12 x 16 ft. course of long side S.1°00'W.
- An iron and frame house the N.E. Cor. of which bears from Cor. No.1, Skiddoo Fraction lode of this survey, S.19°30' E. 230.ft. 12 x 16 ft. course of long side S.1°00'W.
- An iron and frame house the N.E. Cor. of which bears from Cor. No.1, Skiddoo Fraction lode of this survey, S.28°10'E. 250 ft. 12 x 16 ft. course of long side S.1° 00'W. claimant to all herein.

INSTRUMENT

This survey was made with a C.L.Berger and Sons No.2, Transit, The courses were deflected from the true meridian as determined by direct solar observations.

The distances were measured with 100 ft. and 500 ft. steel tapes.

R E P O R T

All lines and ties in this survey were run upon the ground and the courses and distances found to be as herein given.

No suitable bearing objects were available in the survey except as given.

The corner to sections 3-4 - 9 and 10 T.8N.R.2E. G.& S.R. M. is a granite rock showing 8 x 10 x 12 ins. above a mound of earth and stone, properly set and marked, with a mound of stone along side.

The $\frac{1}{4}$ Cor. between sections 4 and 9 T. 8 N., R. 2 E. G. and S. R. M. is a granite rock showing 6 x 10 x 14 ins. above a mound of earth and stone, properly marked; and a mound of stone along side.

The $\frac{1}{4}$ Cor. between sections 9 and 10 T.8N., R.2 E. G. and S. R. M. is a one inch I ron pipe with a brass cap properly set and marked. I find the section line from $\frac{1}{4}$ Cor. to Cor. to Secs. 3, 4, 9 & 10, to be N. 0° 24' 40" W. 2632.4 ft.

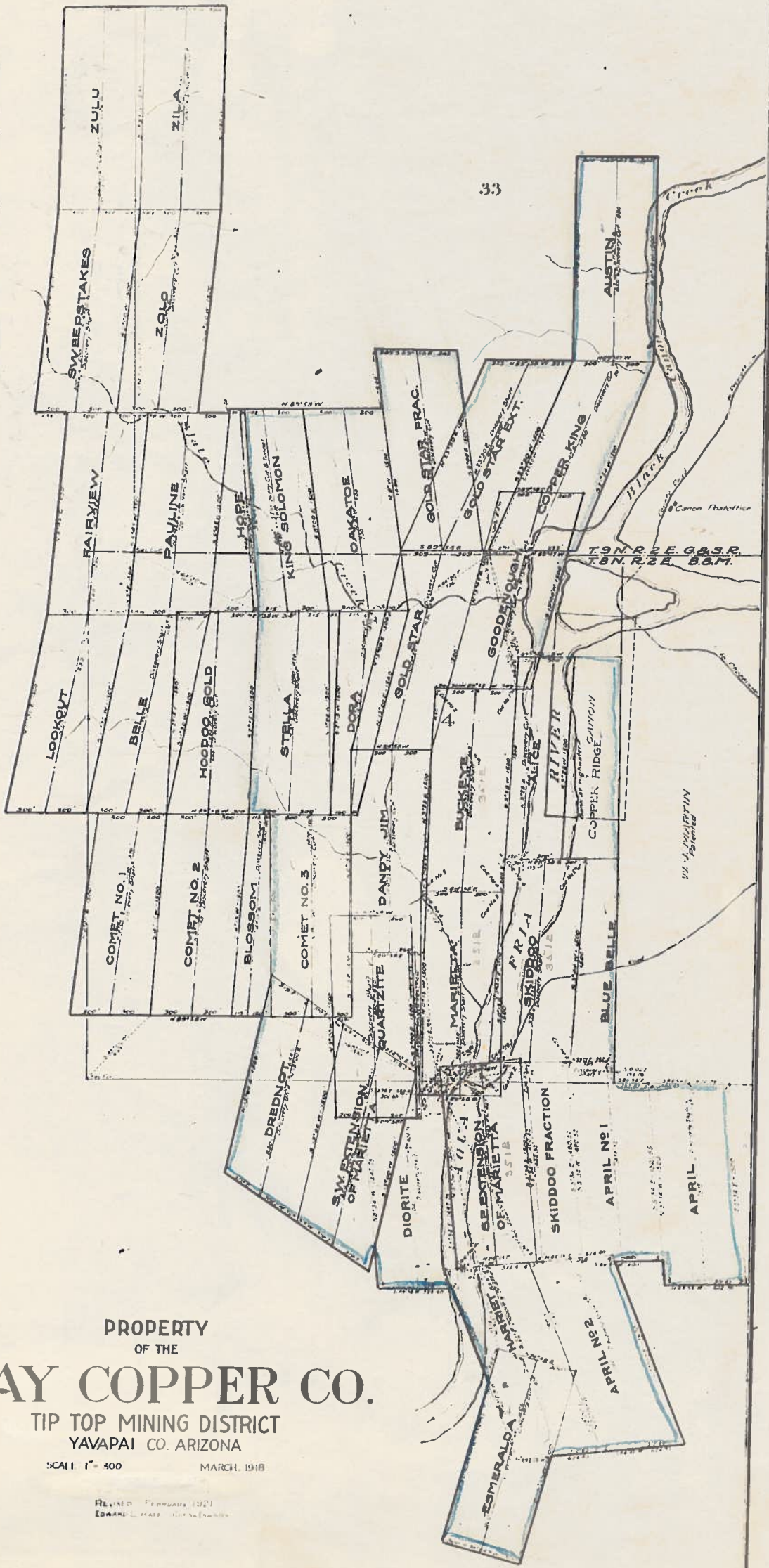
Sur. No. 3512 Skiddoo, Marietta and Southeast Extension of Marietta lodes :-

All corners and end centers are pine posts 4 ins. sq. properly set and marked.

N O T E

The disagreements between these field notes and the location certificates are due to errors in the latter.

4
West
80.00 → x
9
332.8
2245



PROPERTY
OF THE
KAY COPPER CO.

TIP TOP MINING DISTRICT
YAVAPAI CO. ARIZONA

SCALE 1" = 400' MARCH, 1918

REVISED FEBRUARY, 1921
EDWARD L. STAFF, MINING ENGINEER

FINAL OATHS FOR SURVEYS.

LIST OF NAMES.

A list of the names of the individuals employed by Edward I. Haff

United States Mineral Surveyor, to assist in running, measuring, and marking the lines, corners, and boundaries described in the foregoing field notes of the survey of the mining claim of

Key Cepper Company

known as the April, April No.1, April No.2, Skiddoo Fraction, Harriet, and Diorite lodes.

and showing the respective capacities in which they acted.

R. M. Brown, Chainman.

....., Chainman.

....., Arman.

....., Flagman.

FINAL OATHS OF ASSISTANTS.

~~We~~, I, R. M. Brown

~~and~~....., do solemnly swear that ~~we~~ assisted

Edward I. Haff, United States Mineral Surveyor, in marking the corners and surveying

the boundaries of the mining claim of Key Copper Company

Known as the April, April No.1, April N o.2, Skiddoo Fraction,

~~known as the~~ Harriet, and Diorite lodes..

represented in the foregoing field notes as having been surveyed by said mineral surveyor and under his direction; and that said survey has been in all respects, to the best of our knowledge and belief, faithfully and correctly executed, and the corner and boundary monuments established according to law and the instructions furnished by the United States Surveyor-General for

Arizona

R. M. Brown, Chainman.

....., Chainman.

....., Arman.

....., Flagman.

Subscribed and sworn to by the above-named persons before me this 21st

day of February, 1921.

[Signature]

Notary Public,

Maricopa County, Arizona. ⁶⁻¹⁰¹³

My commission expires December 22nd, 1924.

FINAL OATH OF U. S. MINERAL SURVEYOR.

I, Edward L. Haff, U. S. Mineral Surveyor, do solemnly swear that, in pursuance of instructions received from the United States Surveyor General for Arizona, dated February 5th. 1921, I have, in strict conformity to the laws of the United States, the official regulations and instructions thereunder, and the instructions of said Surveyor General, faithfully and correctly executed the survey of the Mining Claim of Kay Copper Company known as the APRIL, APRIL No.1, APRIL No.2, SKIDDOO FRACTION, HARRIET and DIORITE lodes, situate in Tip Top Mining District, Yavapai County, Arizona, in Section 4 and 9, Township No. 8 N., Range No. 2 E. G. & S. R. M., and designated as Survey No. 3743, as represented in the foregoing field notes, which accurately show the boundaries of said mining claim as distinctly marked by monuments on the ground, and described in the attached copy of the location certificate, which was received by me from the Surveyor General with said instructions, and that all the corners of said survey have been established and perpetuated in strict accordance with the law, official regulations and instructions thereunder; and I do further solemnly swear that the foregoing are the true and original field notes of said survey and my report therein, and that the labor expended and improvements made upon said mining claim by claimant or its grantors are as therein fully stated, and that the character, extent, location, and itemized value thereof are specified therein with particularity and full detail, and that no portion of said labor or improvements so credited to this claim has been included in the estimate of expenditures upon any other claim.

Edward L. Haff
U. S. Mineral Surveyor.

Subscribed and sworn to by the said Edward L. Haff
U. S. Mineral Surveyor, before me Miranda W. Olds, a Notary Public
in and for Los Angeles, County, Cal. this 14th
day of March, 1921

Miranda W. Olds
NOTARY PUBLIC
In and for the County of Los Angeles, State of California

U. S. SURVEYOR-GENERAL'S FINAL CERTIFICATE ON FIELD NOTES.

Department of the Interior,

OFFICE OF U. S. SURVEYOR-GENERAL,

Phoenix, Arizona.

May 27, 1921

I, U. S. Surveyor-General for ARIZONA

do hereby certify that the foregoing transcript of the Field Notes, return and approval of the survey of the mining claim of KAY COPPER COMPANY

known as the APRIL, APRIL No. 1, APRIL No. 2, SKIDDOO FRACTION, HARRIET and DIORITE lodes situate in TIP TOP

Mining District, Yavapai County, Arizona

in Section 4 and 9, Township No. 8 N., Range No. 2 E G. & S.R.M., and

designated as Survey No. 3743, has been correctly copied from the originals on file in

this office; that said Field Notes furnish such an accurate description of said mining claim as will, if

incorporated into a patent, serve fully to identify the premises, and that such reference is made therein

to natural objects or permanent monuments as will perpetuate and fix the locus thereof.

And I further certify that five hundred dollars' worth of labor has been expended or improvements made upon said mining claim by claimant or its grantors, and that said improvements

consist of 13 shafts, 4 cuts, 3 tunnels, and 6/29 of the value of

the Kay No. 4 shaft, total value \$13,695.

and that no portion of said labor or improvements has been included in the estimate of expenditures upon any other claim.

I further certify that the plat thereof, filed in the U. S. Land Office at Phoenix, Arizona

is correct and in conformity with the foregoing Field Notes.

Frank P. Trott

United States Surveyor-General for Arizona

4-687

SURVEYOR GENERAL'S CERTIFICATE OF APPROVAL OF FIELD NOTES
AND SURVEY OF MINING CLAIM

DEPARTMENT OF THE INTERIOR
OFFICE OF U. S. SURVEYOR GENERAL

Phoenix, Arizona.

May 27, 1921

I, U. S. Surveyor General for ARIZONA

do hereby certify that the foregoing and hereto attached Field Notes and Return of the Survey of the Mining Claim of Kay Copper Company

known as the APRIL, APRIL No. 1, APRIL No. 2, SKIDDOO FRACTION, HARRIET and DIORITE lodes

situate in Tip Top mining district,

Yavapai County, Arizona

in Section 4 and 9, Township No. 8 N., Range No. 2 E.

G. & S. R. M, designated as Survey No. 3743

executed by Edward L. Haff, U. S. Mineral

Surveyor, February 10 - 20, 1921, under my instructions dated

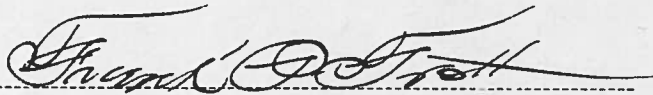
February 5th, 1921, have been critically examined and the necessary cor-

rections and explanations made, and the said Field Notes and Return, and the Survey they describe,

are hereby approved. The certified copy of the location certificate filed by the applicant for survey is

on file in this office and a true copy of said certified copy of said location certificate is included and made

a part of the transcript of the field notes.



U. S. Surveyor General for ARIZONA