

4-683

MINERAL SURVEY No. 3958

ARIZONA Land District.

FIELD NOTES

OF THE SURVEY OF THE MINING CLAIM OF

RAY CONSOLIDATED COPPER COMPANY

KNOWN AS THE

ARGUMENT, EUREKA, and GENEVIEVE Lodes

Mineral Creek Mining District,

Pinal County, Arizona

Section 13, Township 3 South, Range 13 East

Surveyed under instructions dated July 21st., 1924.

by Harry E. Jones,  
U. S. Mineral Surveyor.

Claim located See location notices, 19

Survey commenced November 30th., 1924.

Survey completed December 4th., 19 24.

Address of claimant John H. Page & Company, Att'y.  
Box 1706; Phoenix, Arizona.

DATES OF AMENDED LOCATIONS.

See location notices

Feet MINERAL SURVEY NO. 3958

~~Beginning~~ ARGUMENT Lode - -

Beginning at Cor. No. 1

On line 4-1 Gila Monster lode Sur.No.3606; a 3½ft. ½in. pipe with a 2in. brass cap marked U.S.MINERAL SURVEY NO. 3958-1-A; set 16ins. in ground and surrounded with a substantial mound of earth and rock; whence the loc. mon. bears N.42°20'E. 44 ft.

Cor.1 Gila Monster lode Sur.No.3606 bears N.42°20'E. 142.21 ft. ~~21 ft.~~

The SE. cor. Bedrock lode uns. identical with the SW. cor. Aztec lode uns. bears S.6°35'W. 193.09 ft.

The ½ corner common to Section 13 and 18, T. 3 S. R. 13 & 14 E. respectively bears N. 77° 14' E. 954.69 ft.

No other suitable bearings available.

Thence S. 42° 20' W.

Along line 1-4 Gila Monster lode Sur. No. 3606.

29.92 Intersect the West side line of the Aztec lode uns. identical with the East sideline of the Bed Rock lode uns. at N.0°40'E. 169.78 ft. from the SW. and SE. corners respectively.

87.79 Intersect the NW. end center Gila Monster lode Sur.No.3606.

186.09 Intersect Cor.4 Gila Monster lode identical with Cor.3 Gossin lode both of Sur.No.3606. - -

Along line 3-2 Gossin lode Sur.No.3606.

256.74 Intersect the South end line Bed Rock lode Uns. at S.89° 12' E. 449.15 ft. from the SW. cor.

286.00 Cross center of 5 ft. draw, course SW.

356.00 Cross center of 5 ft. draw, course W,

486.09 Intersect the NW. end center of Gossin lode Sur.No.3606.

786.09 Intersect Cor.2 Gossin lode, identical with Cor.3 Porphyry Dyke lode both of Sur.No.3606.

Along line 3-2 Porphyry Dyke lode, Sur.No.3606.

842.04 To Cor. No. 2

Identical with the intersection of line 3-4 Eureka lode this survey with line 2-3 Porphyry Dyke lode Sur.No.3606, S. 21° 55' W. 694.65 ft. from Cor. 3 said Eureka lode.

Feet	<p>A 3½ft. ½in. pipe with a 2in. brass cap marked U.S. MINERAL SURVEY NO. 3958-2-A; set 12ins. in ground and surrounded with a substantial mound of earth and rock; whence the loc. mon., identical with Cors 2 Porphyry Dyke lode and 4 Ray Heights lode both of Sur. No. 3606 bears S. 42° 20' W. 75.75 ft. No other suitable bearings available.</p> <p style="text-align: center;">Thence N. 47° 40' W.</p>
100.00	To South West End Center, a substantial mound of stone, whence the loc. mon. bears S. 42° 20' W. 75.75 ft.
242.32	To Cor. No. 3
	<p>A 3½ft. ½in. pipe with a 2in. brass cap marked U.S. MINERAL SURVEY NO. 3958-3-A; set 18ins. in ground and surrounded with a substantial mound of earth and rock; whence the loc. mon. bears S. 42° 20' W. 75.75 ft.</p> <p>No other suitable bearings available.</p> <p style="text-align: center;">Thence N. 42° 20' E.</p>
370.67	Intersect the South end line of the Bed Rock lode Uns. at S. 89° 12' E. 125.44 ft. from the SW. cor. identical with Cor. 4 Bonanza lode, Sur. No. 2570A.
450.00	Cross center of 10 ft. draw, course NW.
651.02	Intersect Cor. 3 Bureka lode this survey.
842.04	To Cor. No. 4
	<p>A 3½ft. ½in. pipe with a 2in. brass cap marked U.S. MINERAL SURVEY NO. 3958-4-A; set 18ins. in ground and surrounded with a substantial mound of earth and rock; whence the loc. mon. bears N. 42° 20' E. 44 ft. No suitable bearings available.</p> <p style="text-align: center;">Thence S. 47° 40' E.</p>
142.32	To North East End Center, a substantial mound of stone, whence the loc. mon. bears N. 42° 20' E. 44 ft.
215.70	Intersect the East sideline Bed Rock lode uns. identical with the West sideline Aztec lode uns. at N. 0° 40' E. 209.83 ft. from the SE. and SW. cors. respectively.
242.32	To Cor. No. 1 the place of beginning.

Feet	EUREKA Lode
	Beginning at Cor. No. 1 Identical with loc. mon. and Cor. 4 Genevieve lode of this survey, a 3½ft. ½in. pipe with a 2in. brass cap marked U.S.MINERAL SURVEY NO.3958-1-E;4-G; set 18ins. in ground and surrounded with a substantial mound of earth and rock. The ¼ corner common to Sections 13 and 24, T. 3 S. R. 13 E. bears S. 13° 42' W. 1097.94 ft. No other suitable bearings available. Thence N. 21° 55' E. Along line 4-3 Genevieve lode, this survey.
1083.30	Cross center of 15 ft. draw, course SW.
1279.92	Intersect line 4-1 Bonanza lode, Sur.No.2570A at N.89°04'W. 344.81 ft. from Cor.4.
1443.30	To Cor. No. 2 Identical with loc. mon. and Cor. 3 Genevieve lode this survey; a 3½ ft. ½in. pipe with a 2in. brass cap marked U.S.MINERAL SURVEY NO.3958-2-E;3-G; set 18ins. in ground and surrounded with a substantial mound of earth and rock. Cor.1 Bonanza lode Sur.No.2570A bears S.65°W. 348.82 ft. No other suitable bearings available. Thence N. 85° 23' E.
255.00	Cross center of 10 ft. draw, course SW.
287.32	Intersect line 3-4 Bonanza lode Sur.No.2570A, identical with the West sideline of Bed Rock lode uns. at N.0°49'E. 180.34 ft. from Cor.4 and SW. cor. respectively.
300.00	To North End Center, a substantial mound of stone, identical with loc. mon.
600.00	To Cor. No. 3 Identical with loc. mon. and on line 3-4 Argument lode this survey at N.42°20'E. 651.02 ft. from Cor.3 A 3½ft. ½in. pipe with a 2in. brass cap marked U.S.MINERAL SURVEY NO.3958-3-E; set 16ins. in ground and surrounded with a substantial mound of earth and rock. Cor.4 Bonanza lode Sur.No.2570A identical with SW. cor. Bed Rock lode uns. bears S.56°49'W. 375.46 ft.

Feet Cor. 4 Gila Monster lode identical with Cor.3 Gossin lode both of Sur.No.3606 bears S.48°50'E. 242.37 ft.  
No other suitable bearings available.  
Thence S. 21° 55' W.

210.00 Cross center of 5 ft. draw; course NW.

224.97 Intersect the South end line of Bed Rock lode uns. at S.89° 12' E. 230.28 ft. from the SW. cor.

694.65 Intersect line 2-3 Porphyry Dyke lode Sur.No.3606, identical at N.42° 20' E. 75.75 ft. from Cor. No. 2.  
Also Cor.2 Argument lode this survey, ~~previously described.~~

775.49 Intersect line 1-2 Porphyry Dyke lode, identical with line 4-1 Ray Heights lode both of Sur.No.3606 at S.47°40'E. 28.20 ft. from Cors. 2 and 4 respectively.

1415.65 Intersect line 2-3 Ray Heights lode Sur.No.3606 at S.47° 40' E. 251.51 ft. from Cor. 3. Cor. 4 said lode brs. N.42° 20' E. 600 ft. from Cor. 3 thereof.

1443.30 To Cor. No. 4  
Identical with loc. mon. a 3½ ft. ½ in. pipe with a 2in. brass cap marked U.S.MINERAL SURVEY NO.3958-4-E; set 20ins. in ground and surrounded with a substantial mound of earth and rock. Cor.3 Ray Heights lode Sur.No.3606 bears N.42° 00'30"W. 262.44 ft. No other suitable bearings available.  
Thence S. 85° 23' W.

300.00 To South End Center, identical with loc. mon. a substantial mound of stone.

600.00 To Cor. No. 1 the place of beginning.

-----  
GENEVIEVE Lode  
Beginning at Cor. No. 1  
Identical with loc. mon. A 3½ ft. ½ in. pipe with a 2in. brass cap marked U.S.MINERAL SURVEY NO.3606-1-G; set 18ins. in ground and surrounded with a substantial mound of earth and rock.  
The ¼ corner common to Sections 13 and 24, T. 3 S. R 13 E. bears S.18°22'E. 1073.09 ft.  
No other suitable bearings available.  
Thence N. 21° 55' E.

Feet	
518.00	Cross center of road, bears NE. and SW.
1042.00	Cross center of 15 ft. draw, course W.
1140.00	Cross pipe line, course NW. and SE.
1443.30	To Cor. No. 2
	Identical with loc. mon. A. 3 1/2 ft. 4 in. pipe with a 2 in. brass cap marked U. S. MINERAL SURVEY' NO. 3958-2-G; set 12 ins. in ground and surrounded with a substantial mound of earth and rock. A quartzite boulder 5x2x1 ft. above ground marked B x R 2-G-3958 bears N. 85° 23' E. 12.85 ft.
	No other suitable bearings available.
	Thence - N. 85° 23' E.
284.58	Intersect line 1-2 Bonanza lode Sur. No. 2570A at N. 0° 49' E.
	122.04 ft. from Cor. 1
300.00	To North End Center, a substantial mound of stone identical with loc. mon.
600.00	To Cor. No. 3
	Identical with loc. mon. and Cor. 2 Eureka lode this survey previously described.
	Thence - S. 21° 55' W.
	Along line 2-1 Eureka lode of this survey.
163.38	Intersect line 4-1 Bonanza lode Sur. No. 2570A at S. 89° 04' E.
	255.19 ft. from Cor. 1.
360.00	Cross center of 15 ft. draw, course SW.
1443.30	To Cor. No. 4
	Identical with loc. mon. and Cor. 1 Eureka lode this sur. previously described.
	Thence S. 85° 23' W.
300.00	To South End Center, a substantial mound of stone identical with loc. mon.
600.00	To Cor. No. 1 the place of beginning.

-----  
Mean magnetic variation at all corners is 14° 10' E.  
-----

Lode Lines

As near as can be determined from the present developments the veins of the several locations embraced in this claim extend from their respective discovery points as follows:

Argument lode, N.42°20'E. 553 ft. and S.42°20'W. 289.04 ft.

Eureka lode, N.21°55'E. 301 ft. and S.21°55'W. 1142.3 ft.

Genevieve lode, N.21°55'E. 290 ft. and S.21°55'W. 1053.3 ft.

Areas

Total area Argument lode, 4.684

Area in conflict with:-

Aztec lode uns. 0.009

Bed Rock lode uns. 2.016

Eureka lode this sur. 1.811

Total area Eureka lode, 17.786

Area in conflict with:-

Bed Rock lode uns. 1.198

Bed Rock lode uns. exclusive of its conflict with

Argument lode this sur. 0.946

Bonanza lode Sur.No.2570A 1.196

Porphyry Dyke lode Sur.No.3606 0.025

Ray Heights lode, Sur.No.3606 1.926

Total area Genevieve lode, 17.786

Area in conflict with:-

Bonanza lode Sur.No.2570A 0.887

Location

This claim is located in the S $\frac{1}{2}$  of Section 13, T. 3 S. R. 13 E. G&SRB&M. Mineral Creek Mining District, Pinal County Arizona.

Expenditure of Five Hundred Dollars

I certify that the value of the labor and improvements made upon or for the benefit of each of the locations embraced in this mining claim by the claimant or its grantors is not less than Five Hundred Dollars, and that said improvements consist of:

## Argument Lode

No. 1 Disc. cut 4x12x9 ft. facing SW. bears S.42°20'W.  
553 ft. from NE. end center. Value \$100.00

No.2 tunnel 4x6x20 ft. long running S. bears S.52°02'W.  
197 ft. from the 186.09 ft. pt on line 1-2.  
Value \$200.00

An undivided 1/7th. interest in the East 450 ft. of No.4  
improvement on Genevieve lode this survey, is accredited  
to this lode in the apportionment of improvements in the  
field notes of Sur. No. 3606, Gossin et.al.

Value \$642.85

## Eureka Lode

No.1 Disc. cut 4x14x9 ft. facing NW. bears S.21°55'W. 301  
ft. from the N. end center. Value \$100.00

No.2 tunnel 4x6x15 ft. long running N.60°E. bears S.62°30'  
W. 18 ft. from N. end center. Value \$150.00

No.3 shaft 4x6x25 ft. deep bears S.49°48'E. 47 ft. from  
N. end center. Value \$250.00

No.4 tunnel 4x7x7 ft. long running N.55°E. bears S.53°30'  
E. 390 ft. from Cor.2; Value \$75.00

No.5 tunnel 4x6x20 ft. long running N.60°E. bears S. 48°  
42'E. 386 ft. from Cor.2 Value \$200.00

No.6 cut 3.5x10x8 ft. facing SW. bears N.22°06'E. 730 ft.  
from Cor. 1; Value \$100.00

No.7 cut 4x10x8 ft. facing SW. bears N.26°45'E. 760 ft.  
from Cor.1; Value \$100.00

No.8 cut 5x25x9 ft. face and tunnel 4x6x75 ft. long running  
S.60°E. bears N.34°35'E. 640 ft. from Cor.1;  
Value \$1100.00

No.9 tunnel 4x6x10 ft. long running S.30°W. bears N.40°E.  
638 ft. from S. end center. Value \$100.00

No.10 tunnel 4x6x28 ft. long running S.40°E. bears N.50°E.  
195 ft. from S. end center. Value \$280.00

No.11 tunnel 4x6x28 ft. long running N. bears N.22°06'E.  
390 ft. from Cor. 1; Value \$280.00

No.12 tunnel 4x5x10 ft. long running S.25°E. bears S.40°  
33'E. 130 ft. from N. end center. Value \$100.00



An undivided  $\frac{1}{2}$  interest in the West 750 ft. of improvement No.4 Genevieve lode this survey is accredited to this lode.

Value \$5625.00

Genevieve Lode

No.1 Disc. cut 5x13x10 ft. facing S. bears S.21°55'W.390 ft from N. end center. Value \$ 100.00

No.2 cut 4x130x6 ft. running S.80°W. bears S.40°20'W. 470 ft. from Cor.3; Value \$1000.00

No.3 tunnel 4x3x20 ft. long running N.10°E. bears S.44°05'W. 453 ft. from Cor. 3; Value \$ 200.00

No. 4 Tunnel 6x7x1200 ft. long running N.89°34'E. bears S.40°18'W. 553.6 ft. from Cor. 3;

Note:- This tunnel was used as a main working improvement in the apportionment of valuations in the field notes of Mineral Survey No. 3606, Gossin, et.al. and the East 450 ft. was accredited to said survey inclusive of the Argument unsurveyed, each lode receiving an undivided  $\frac{1}{7}$ th. interest in the said East 450 ft. thereof; The balance of the tunnel or the West 750 ft. is wholly upon the ground of the Eureka and Genevieve lodes of this survey, and therefore an undivided  $\frac{1}{2}$  interest in said West 750 ft. is accredited to each of said lodes. Value  $\frac{1}{2}$  \$5625.00

No.5 tunnel 5x7x15 ft. long running S.15°E. bears S.40°08'W. 622 ft. from Cor.3; Value \$ 150.00

No.6 cut 5x12x12 ft. facing S. bears S.53°56'W. 641 ft. from Cor. 3; Value \$ 100.00

No.7 tunnel 4x6x25 ft. long running N. bears S.56°57'W. 684 ft. from Cor. 3 Value \$ 250.00

No.8 cut 5x12x8 ft. facing W. bears S.38°05'W. 870 ft. from Cor.3; Value \$ 100.00

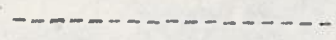
No.9 cut 5x12x8 ft. and tunnel 4x6x75 ft. long running E. bears N.0°10'W. 384 ft. from Cor. 4; Value \$ 850.00

-----  
Other Improvements

A concrete dam 1x20x7 ft. bears S.62°30'W. 77 ft. from N. end center Eureka lode.  
-----

Adjoining Claims

This claim is bounded on the N. by Maud lode, <sup>Unsur.</sup> claimant unknown, Bonanza lode Sur.No.2570A claimant herein; Bed Rock lode uns. Schilling & Sherlock claimant; Aztec lode uns. Schilling & Sherlock claimant; on the E.by Gila Monster, Gossin, Porphyry Dyke and Ray Heights lodes, Sur. No. 3606; Ray Broken Hill Mining Co claimants; on the S. by Public land and on the W. by Lucemore lode uns. claimant unknown.

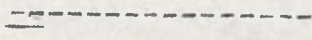


Instrument

This survey was executed with a W. & L. E. Gurley light mountain transit.

The courses were deflected from a true meridian as determined by direct sun observations.

The distances were measured with 50ft and 660 ft. steel tapes.



Report

U. S. L. M. No. 1 in this vicinity to which other lodes have previously been tied, has been destroyed, and since the need for same is now obviated by the projection of the public land survey over this area, I did not re-establish same and tie this survey to it.

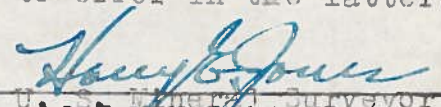
All public land corners to which this survey is tied are pipe with brass caps properly marked.

Cor.4 Bonanza lode Sur.No.2570A is a 4x4 post properly set and marked, Cor.1 Bonanza lode is out and the record course and distance were used for lines 4-1 and 1-2, as well as for line 3-4.

All corners of Sur.No.3606 are 4x4x posts properly set and marked. The S.W.Cor. of the Bed Rock lode, Unsur., is identical with Cor.No.4 of the Bonanza lode, above described. The other corners of the Bed Rock and Aztec lodes are mounds of Stone. This survey is within the original boundaries as staked

upon the ground, and the differences between these notes and the location notices are due to error in the latter.

Insert \*



*Harry B. Jones*  
 U. S. Surveyor.  
 \*I do not check the tie from Cor. 2 Ray Heights lode, Sur.3606, to the  $\frac{1}{4}$  Cor.between Secs.13 and 24, T. 3 S., R. 13 E., nor do I check the course and length of the E. $\frac{1}{2}$  of said line common to said sections.

# FINAL OATHS FOR SURVEYS.

## LIST OF NAMES.

A list of the names of the individuals employed by Harry E. Jones,  
 United States Mineral Surveyor, to assist in running, measuring, and marking the lines, corners, and  
 boundaries described in the foregoing field notes of the survey of the mining claim of \_\_\_\_\_  
 \_\_\_\_\_ Ray Consolidated Copper Company \_\_\_\_\_  
 known as the ARGUMENT, EUREKA and GENEVIEVE Lodes \_\_\_\_\_  
 and showing the respective capacities in which they acted.

\_\_\_\_\_, J. L. Jones, \_\_\_\_\_, *Chainman.*  
 \_\_\_\_\_, B. G. W. Jones, \_\_\_\_\_, *Chainman.*  
 \_\_\_\_\_, \_\_\_\_\_, *Asman.*  
 \_\_\_\_\_, \_\_\_\_\_, *Flagman.*

## FINAL OATHS OF ASSISTANTS.

We, \_\_\_\_\_ J. L. Jones \_\_\_\_\_  
 and \_\_\_\_\_ B. G. W. Jones \_\_\_\_\_, do solemnly swear that we assisted \_\_\_\_\_  
 \_\_\_\_\_ Harry E. Jones, \_\_\_\_\_, United States Mineral Surveyor, in marking the corners and surveying  
 the boundaries of the mining claim of \_\_\_\_\_  
 \_\_\_\_\_ Ray Consolidated Copper Company, \_\_\_\_\_  
 known as the \_\_\_\_\_ ARGUMENT, \_\_\_\_\_ EUREKA, and \_\_\_\_\_ GENEVIEVE lodes \_\_\_\_\_  
 represented in the foregoing field notes as having been surveyed by said mineral surveyor and under his  
 direction; and that said survey has been in all respects, to the best of our knowledge and belief, faithfully  
 and correctly executed, and the corner and boundary monuments established according to law and the instruc-  
 tions furnished by the United States Surveyor-General for \_\_\_\_\_ Arizona. \_\_\_\_\_

\_\_\_\_\_, J. L. Jones \_\_\_\_\_, *Chainman.*  
 \_\_\_\_\_, B. G. W. Jones \_\_\_\_\_, *Chainman.*  
 \_\_\_\_\_, \_\_\_\_\_, *Asman.*  
 \_\_\_\_\_, \_\_\_\_\_, *Flagman.*

Subscribed and sworn to by the above-named persons before me this 10th \_\_\_\_\_

day of December \_\_\_\_\_, 1924.

\_\_\_\_\_  
 \_\_\_\_\_, *Notary Public.*

My commission expires  
 June 23rd. 1927.

4-686.

FINAL OATH OF U. S. MINERAL SURVEYOR.

I, Harry E. Jones, U. S. Mineral Surveyor, do solemnly swear that, in pursuance of instructions received from the United States Surveyor General for Arizona, dated July 21st. 1924, I have, in strict conformity to the laws of the United States, the official regulations and instructions thereunder, and the instructions of said Surveyor General, faithfully and correctly executed the survey of the Mining Claim of Ray Consolidated Copper Company, known as the ARGUMENT, EUREKA, and GENEVIEVE Lodes, situate in Mineral Creek Mining District, Pinal County, Arizona, in Section 13, Township No. 3 South Range No. 13 East G&RR&M, and designated as Survey No. 3958, as represented in the foregoing field notes, which accurately show the boundaries of said mining claim as distinctly marked by monuments on the ground, and described in the attached copy of the location certificate, which was received by me from the Surveyor General with said instructions, and that all the corners of said survey have been established and perpetuated in strict accordance with the law, official regulations and instructions thereunder; and I do further solemnly swear that the foregoing are the true and original field notes of said survey and my report therein, and that the labor expended and improvements made upon said mining claim by claimant or its grantors are as therein fully stated, and that the character, extent, location, and itemized value thereof are specified therein with particularity and full detail, and that no portion of said labor or improvements so credited to this claim has been included in the estimate of expenditures upon any other claim.

Harry E. Jones
U. S. Mineral Surveyor.

Subscribed and sworn to by the said Harry E. Jones, U. S. Mineral Surveyor, before me a Notary Public in and for the County of Maricopa, State of Arizona this 10th day of December, 19 24.

Ralph A. Phillip
Notary Public.

6-1044

My commission expires June 23rd. 1927.

4-688

U. S. SURVEYOR-GENERAL'S FINAL CERTIFICATE ON FIELD NOTES.

Department of the Interior,

OFFICE OF U. S. SURVEYOR-GENERAL,

Phoenix, Arizona.

February 13, 19 25.

I, U. S. Surveyor-General for District of Arizona,

do hereby certify that the foregoing transcript of the Field Notes, return and approval of the survey of the mining claim of

Ray Consolidated Copper Company

known as the ARGUMENT, EUREKA, and GENEVIEVE lodes

situate in Mineral Creek

Mining District, Pinal County, Arizona

in Section 13, Township No. 3 S., Range No. 13 East, and

designated as Survey No. 3958, has been correctly copied from the originals on file in

this office; that said Field Notes furnish such an accurate description of said mining claim as will, if incorporated into a patent, serve fully to identify the premises, and that such reference is made therein to natural objects or permanent monuments as will perpetuate and fix the locus thereof.

And I further certify that five hundred dollars' worth of labor has been expended or improvements made upon said mining claims by claimant or its grantors, and that said improvements consist of 10 cuts, 1 shaft and 14 tunnels, total value \$17,777.85. (6/7 of the value of the east 450 ft. of tunnel No. 4. Genevieve lode, has previously been credited to the claims of Sur. 3606.)

and that no portion of said labor or improvements has been included in the estimate of expenditures upon any other claim.

I further certify that the plat thereof, filed in the U. S. Land Office at Phoenix, Arizona, is correct and in conformity with the foregoing Field Notes.

Charles M. Donohoe

United States Surveyor-General for Arizona.

4-687

**SURVEYOR GENERAL'S CERTIFICATE OF APPROVAL OF FIELD NOTES AND SURVEY OF MINING CLAIM**

**DEPARTMENT OF THE INTERIOR  
OFFICE OF U. S. SURVEYOR GENERAL**

Phoenix, Arizona,

February 13, 1925

I, U. S. Surveyor General for Arizona

do hereby certify that the foregoing and hereto attached Field Notes and Return of the Survey of the Mining Claim of

Ray Consolidated Copper Company

, known as the

ARGUMENT, EUREKA, and GENEVIEVE lodes

situate in Mineral Creek mining district,

Pinal County, Arizona

in Section 13, Township No. 3 South, Range No. 13 East

, designated as Survey No. 3958

executed by Harry E. Jones, U. S. Mineral

Surveyor, November 30 - December 4, 1924, under my instructions dated

July 21, 1924, have been critically examined and the necessary

corrections and explanations made, and the said Field Notes and Return, and the survey they describe,

are hereby approved. The certified copy of the location certificate filed by the applicant for survey is

on file in this office and a true copy of said certified copy of said location certificate is included and

made a part of the transcript of the field notes.

*Charles M. Donohoe*

U. S. Surveyor General for Arizona