

UNITED STATES
DEPARTMENT OF THE INTERIOR
BUREAU OF LAND MANAGEMENT

MINERAL SURVEY NO. 4360

Arizona Land District.

FIELD NOTES

Of The Survey Of The Mining Claim Of

Alvis F. Denison

Known As The

Hillcrest Nos. 1 to 12 inclusive, and Hillcrest No. 21, lode mining claims

Mogollon Rim Mining District,

Coconino County, Arizona

Sections 13 and 24, Township 11 North Range 14 East
18, Township 11 North, Range 15 East

Surveyed under order dated October 22nd, 19 51

by Richard L. Merritt
Mineral Surveyor.

Nos. 1-2- June 10th, 1950
Nos. 3-4-5- July 10th, 1950
Claim located Nos. 6-7-8-9-10-11-12-21-Aug. 1st, 1950

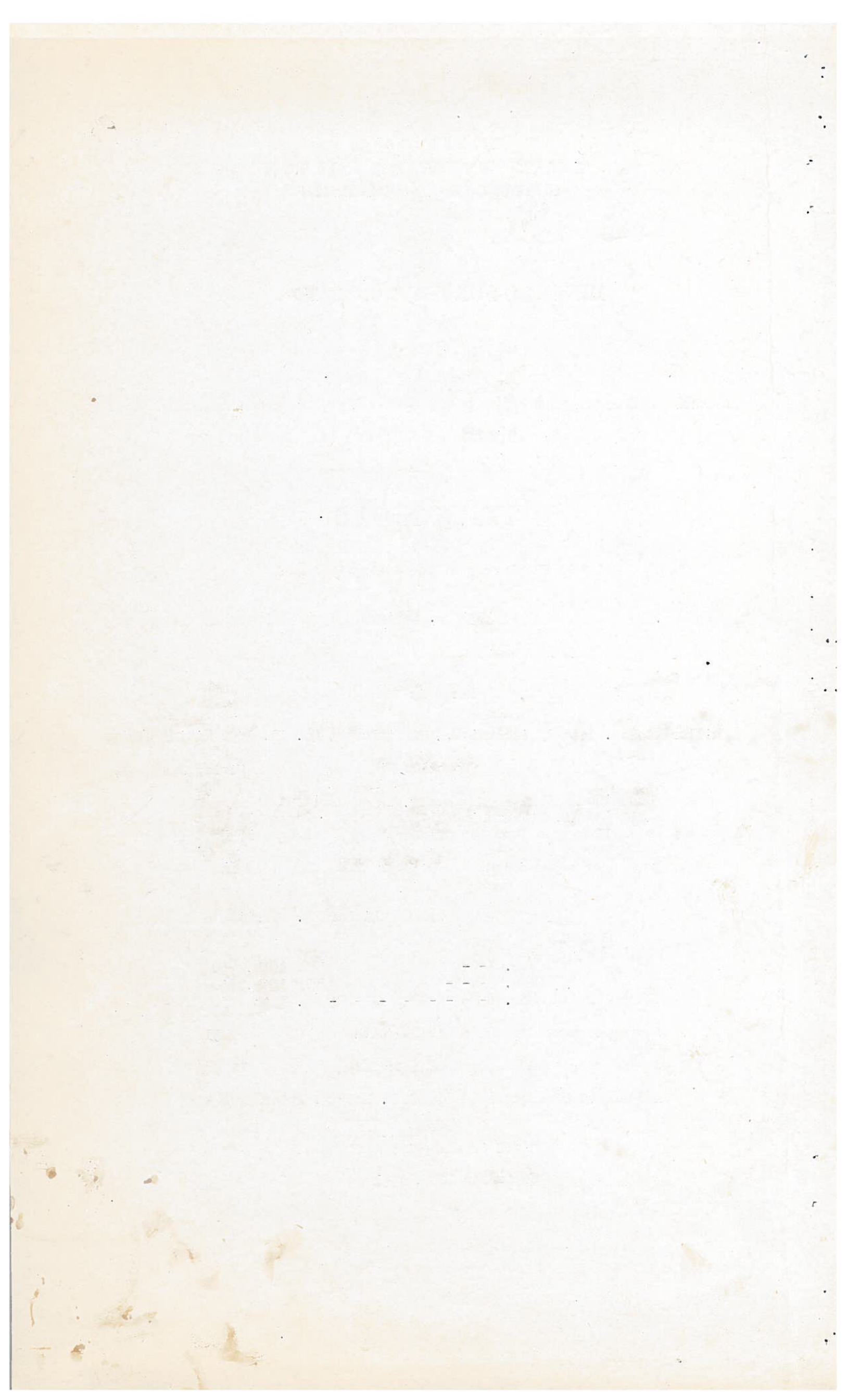
Survey commenced October 24th, 19 51

Survey completed November 28th, 19 51

Address of claimant Joseph H. Morgan, Attorney
Luhrs Building
Phoenix, Arizona

DATES OF AMENDED LOCATIONS

September 10th, 1951



This survey was made with a Berger transit No. 17503, with horizontal limb 5-1/8 ins. diam., having two double opposite verniers, and full vertical circle 5 ins. diam., having one double vernier; the verniers read to one minute of arc; a prismatic eyepiece with colored glass was attached to the eyepiece of the transit for making direct observations upon the sun. The instrument was in good condition at the time of the survey and all adjustments were in good order.

All azimuths in this record were determined by the method of deflection angles referred to the meridian determined by an A.M. altitude observation on the sun, the details of which observation are shown in the calculation sheets submitted for examination. Details of a meridian altitude observation on the sun for latitude and a meridian observation at noon for time are submitted for examination.

The lines were measured with a Lufkin steel tape 500 feet in length, graduated every foot, the first foot being graduated to tenths and hundredths.

All lines and connections of this survey were run by direct methods.

The magnetic variation observed at each corner of this survey gave a uniform value of 15°00' E.

Feet

HILLCREST NO. 3 LODE

At cor. No. 1 of the Hillcrest No. 3 lode, identical with cor. No. 1 of the Hillcrest No. 4 lode of this survey, a location monument a mound of stones, 3 ft. base by 3 ft. high, rebuilt alongside.

On line 2-3 Hillcrest No. 8 lode of this survey.

Set a sandstone, 24 x 12 x 6 ins., 16 ins. in the ground, mkd. X 1 H 3 - 1 H 4 - 4360; from which

The east 1/4 cor. of sec. 13, T. 11 N., R. 14 E., G. and S. R. B. and M., bears S. 07°51'40" E., 460.53 ft. dist.; an iron post, 3/4 ins. diam., 14 ins. above ground, with brass cap firmly set, marked and witnessed as described in the official record.

A pine, 16 ins. diam., bears S. 7°48' E., 11.45 ft. dist., mkd. X B T 1 H 3 - 1 H 4 - 4360.

Thence S. 59°40' W.

300.0 Lode line, identical with a location monument, a mound of stones, 3 ft. base by 3 ft. high; discovery point bears N. 30°20' W., 141 ft. dist.

600.0 Cor. No. 2, identical with cor. No. 2, Hillcrest No. 8 lode of this survey, a location monument, 3 ft. base by 3 ft. high, rebuilt alongside.

On line 1-2 Hillcrest No. 1 lode of this survey.

Set a sandstone, 30 x 10 x 8 ins., 16 ins. in the ground, mkd. X 2 H 3 - 2 H 8 - 4360; from which

A pine, 18 ins. diam., bears S. 17°36' W., 52.04 ft. dist., mkd. X B T 2 H 3 - 2 H 8 - 4360.

Feet	Thence N. 30°20' W.
200.0	Cor. No. 1 Sur. No. 4352 Campbell and Denison No. 1 lode.
1500.0	Cor. No. 3, identical with a location monument, a mound of stones, 3 ft. base by 3 ft. high, rebuilt alongside.
	On line 4-1 Sur. No. 4352 Campbell and Denison No. 1 lode.
	Set a sandstone, 30 x 8 x 5 ins., 16 ins. in the ground, mkd. X 3 H 3 - 4360; from which
	Cor. No. 4 Sur. No. 4352 Campbell and Denison No. 1 lode bears N. 30°20' W., 200 ft. dist.
	A pine, 24 ins. diam., bears N. 40°20' E., 17.16 ft. dist., mkd. X B T 3 H 3 - 4360.
	Thence N. 59°40' E.
300.0	Lode line, identical with a location monument, a mound of stones, 3 ft. base by 3 ft. high; discovery point bears S. 30°20' E., 1359 ft. dist.
600.0	Cor. No. 4, identical with cor. No. 2 Hillcrest No. 4 lode of this survey, and a location monument, a mound of stones, 3 ft. base by 3 ft. high, rebuilt alongside.
	Set a sandstone, 30 x 12 x 4 ins., 16 ins. in the ground, mkd. X 4 H 3 - 2 H 4 - 4360; from which
	A pine, 24 ins. diam., bears S. 55°28' W., 45.42 ft. dist., mkd. X B T 4 H 3 - 2 H 4 - 4360.
	Thence S. 30°20' E.
1500.0	Cor. No. 1, and the place of beginning.
	HILLCREST NO. 4 LODE
	Beginning at cor. No. 1 of the Hillcrest No. 4 lode, identical with cor. No. 1 Hillcrest No. 3 lode of this survey.
	Thence N. 30°20' W.
1500.0	Cor No. 2, identical with cor. No. 4 Hillcrest No. 3 lode of this survey.
	Thence N. 59°40' E.
300.0	Lode line, identical with a location monument, a mound of stones, 3 ft. base by 3 ft. high; discovery point bears S. 30°20' E., 1362 ft. dist.
600.0	Cor. No. 3, identical with a location monument, a mound of stones, 3 ft. base by 3 ft. high, rebuilt alongside.
	Set a sandstone, 30 x 12 x 4 ins., 16 ins. in the ground, mkd. X 3 H 4 - 4360; from which
	A pine, 12 ins. diam., bears S. 71°07' E., 57.4 ft. dist., mkd. X B T 3 H 4 - 4360.

SURVEY NO. 4360

Feet	Thence S. 30°20' E.
1500.0	Cor. No. 4, identical with a location monument, a mound of stones, 3 ft. base by 3 ft. high, rebuilt alongside. On line 2-3 Hillcrest No. 8 lode of this survey. Set a sandstone, 26 x 12 x 10 ins., 16 ins. in the ground, mkd. X 4 H 4 - 4360; from which A pine, 24 ins. diam., bears N. 44°35' E., 23.46 ft. dist., mkd. X B T 4 H 4 - 4360. Thence S. 59°40' W.
300.0	Lode line, identical with a location monument, a mound of stones, 3 ft. base by 3 ft. high; discovery point bears N. 30°20' W., 138 ft. dist.
600.0	Cor. No. 1, and the place of beginning. HILLCREST NO. 8 LODGE At cor. No. 1 of the Hillcrest No. 8 lode, identical with cor. No. 4 Hillcrest No. 5 lode of this survey, and with a location monument, a mound of stones, 3 ft. base by 3 ft. high, rebuilt alongside. On line 1-2 Hillcrest No. 1 lode of this survey. Set a sandstone, 31 x 8 x 7 ins., 16 ins. in the ground, mkd. X 1 H 8 - 4 H 5 - 4360; from which The east 1/4 cor. of sec. 13, T. 11 N., R. 14 E., G. and S. R. B. and M., bears N. 37°18'10" E., 458.46 ft. dist., previously described. A pine, 16 ins. diam., bears N. 32°10' E., 45.9 ft. dist., mkd. X B T 1 H 8 - 4 H 5 - 4360. Thence N. 30°20' W.
300.0	Lode line, identical with a location monument, a mound of stones, 3 ft. base by 3 ft. high; discovery point bears N. 59°40' E., 630 ft. dist.
600.0	Cor. No. 2, identical with cor. No. 2 Hillcrest No. 3 lode of this survey. Thence N. 59°40' E.
300.0	Lode line, Hillcrest No. 3 lode of this survey.
600.0	Cor. No. 1, Hillcrest No. 3 lode, identical with Cor. No. 1 Hillcrest No. 4 lode of this survey.
900.0	Lode line; Hillcrest No. 4 lode of this survey.
1200.0	Cor. No. 4 Hillcrest No. 4 lode of this survey.
1500.0	Cor. No. 3, identical with a location monument, a mound of stones, 3 ft. base by 3 ft. high, rebuilt alongside.

SURVEY NO. 4360

5

Feet	<p>Set a sandstone, 26 x 12 x 10 ins., 16 ins. in the ground, mkd. X 3 H 8 - 4360; from which bears A pine, 16 ins. diam.,/N. 64°31' W., 10.87 ft. dist., mkd. X B T 3 H 8 - 4360.</p> <p>Thence S. 30°20' E.</p>
300.0	Lode line, identical with a location monument, a mound of stones, 3 ft. base by 3 ft. high; discovery point bears S. 59°40' W., 870 ft. dist.
600.0	<p>Cor. No. 4, identical with a location monument, a mound of stones, 3 ft. base by 3 ft. high, rebuilt alongside.</p> <p>On line 1-2 Hillcrest No. 7 lode of this survey.</p> <p>Set a sandstone, 30 x 12 x 6 ins., 16 ins. in the ground, mkd. X 4 H 8 - 4360; from which A pine, 18 ins. diam., bears S. 56°09' W., 27.06 ft. dist., mkd. X B T 4 H 8 - 4360.</p> <p>Thence S. 59°40' W.</p>
900.0	Cor. No. 1 Hillcrest No. 7 lode, identical with cor. No. 1 Hillcrest No. 5 lode of this survey.
1200.0	Lode line, Hillcrest No. 5 lode of this survey.
1500.0	Cor. No. 1, and the place of beginning.
	HILLCREST NO. 5 LODE
	<p>At cor. No. 1 Hillcrest No. 5 lode, identical with cor. No. 1 Hillcrest No. 7 lode of this survey, and with a location monument, a mound of stones, 3 ft. base by 3 ft. high, rebuilt alongside.</p> <p>On line 4-1 Hillcrest No. 8 lode of this survey.</p> <p>Set a sandstone, 26 x 8 x 6 ins., 16 ins. in the ground, mkd. X 1 H 5 - 1 H 7 - 4360; from which The east 1/4 cor. sec. 13, T. 11 N., R. 14 E., G. and S. R. B. and M., bears N. 75°35'40" W., 247.83 ft. dist., previously described.</p> <p>A pine, 30 ins. diam., bears N. 56°20' E., 26.9 ft. dist., mkd. X B T 1 H 5 - 1 H 7 - 4360.</p> <p>Thence S. 30°20' E.</p>
300.0	Lode line, Hillcrest No. 7 lode of this survey.
600.0	Cor. No. 4 Hillcrest No. 7, identical with cor. No. 1 Hillcrest No. 6 lodes of this survey.
843.0	Center of road, bears N. 50°20' W., and S. 50°20' E.
900.0	Lode line, Hillcrest No. 6 lode of this survey.
1200.0	Cor. No. 4 Hillcrest No. 6 lode of this survey.

Feet	
1500.0	<p>Cor. No. 2, identical with a location monument, a mound of stones, 3 ft. base by 3 ft. high, rebuilt alongside.</p> <p>Set a sandstone, 31 x 10 x 4 ins., 16 ins. in the ground, mkd. X 2 H 5 - 4360; from which</p> <p>A pine, 24 ins. in diam., bears S. 25°14' W., 31.1 ft. dist., mkd. X B T 2 H 5 - 4360.</p> <p>Thence S. 59°40' W.</p>
300.0	<p>Lode line, identical with a location monument, a mound of stones, 3 ft. base by 3 ft. high; discovery point bears N. 30°20' W., 85 ft. dist.</p>
600.0	<p>Cor. No. 3, identical with a location monument, a mound of stones, 3 ft. base by 3 ft. high, rebuilt alongside.</p> <p>Set a sandstone, 28 x 12 x 9 ins., 16 ins. in the ground, mkd. X 3 H 5 - 4360; from which</p> <p>A pine, 30 ins. diam., bears S. 66°10' W., 16.68 ft. dist., mkd. X B T 3 H 5 - 4360.</p> <p>Thence N. 30°20' W.</p>
800.0	<p>Cor. No. 2 Hillcrest No. 1 lode of this survey.</p>
1387.0	<p>Center of road, bears N. 75°17' W., and S. 75°17' E.</p>
1500.0	<p>Cor. No. 4, identical with cor. No. 1 Hillcrest No. 8 lode of this survey.</p> <p>Thence N. 59°40' E.</p>
300.0	<p>Lode line, identical with a location monument, a mound of stones, 3 ft. base by 3 ft. high; discovery point bears S. 30°20' E., 1415 ft. dist.</p>
600.0	<p>Cor. No. 1, and the place of beginning.</p> <p>HILLCREST NO. 7 LODGE</p> <p>Beginning at cor. No. 1 Hillcrest No. 7 lode, identical with cor. No. 1 Hillcrest No. 5 lode of this survey.</p> <p>Thence N. 59°40' E.</p>
900.0	<p>Cor. No. 4 Hillcrest No. 8 lode of this survey.</p>
1500.0	<p>Cor. No. 2, identical with a location monument, a mound of stones, 3 ft. base by 3 ft. high, rebuilt alongside.</p> <p>Set a sandstone, 40 x 8 x 7 ins., 20 ins. in the ground, mkd. X 2 H 7 - 4360; from which</p> <p>A pine, 24 ins. diam., bears N. 57°42' W., 40.6 ft. dist., mkd. X B T 2 H 7 - 4360.</p>

SURVEY NO. 4360

Feet	Thence S. 30°20' E.
300.0	Lode line, identical with a location monument, a mound of stones, 3 ft. base by 3 ft. high; discovery point bears S. 59°40' W., 1389 ft. dist.
600.0	Cor. No. 3, identical with cor. No. 2 Hillcrest No. 6 lode of this survey, and a location monument, a mound of stones, 3 ft. base by 3 ft. high, rebuilt alongside.
	Set a sandstone, 27 x 12 x 7 ins., 16 ins. in the ground, mkd. X 3 H 7 - 2 H 6 - 4360; from which
	A pine, 24 ins. diam., bears S. 61°02' W., 19.75 ft. dist., mkd. X B T 3 H 7 - 2 H 6 - 4360.
	Thence S. 59°40' W.
1500.0	Cor. No. 4, identical with cor. No. 1 Hillcrest No. 6 lode of this survey, and a location monument, a mound of stones, 3 ft. base by 3 ft. high, rebuilt alongside. On line 1-2 Hillcrest No. 5 lode of this survey.
	Set a sandstone, 26 x 12 x 8 ins., 16 ins. in the ground, mkd. X 4 H 7 - 1 H 6 - 4360; from which
	A pine, 24 ins. diam., bears S. 77°37' W., 19.94 ft. dist., mkd. X B T 4 H 7 - 1 H 6 - 4360.
	Thence N. 30°20' W.
300.0	Lode line, identical with a location monument, a mound of stones, 3 ft. base by 3 ft. high; discovery point bears N. 59°40' E., 111 ft. dist.
600.0	Cor. No. 1, and the place of beginning.
	HILLCREST NO. 6 LODE
	Beginning at cor. No. 1 Hillcrest No. 6 lode, identical with cor. No. 4 Hillcrest No. 7 lode of this survey; from which
	The east 1/4 cor. sec. 13, T. 11 N., R. 14 E., G. and S. R. B. and M., bears N. 43°08'20" W., 794.19 ft., previously described.
	Thence N. 59°40' E.
1500.0	Cor. No. 2, identical with cor. No. 3 Hillcrest No. 7 lode of this survey.
	Thence S. 30°20' E.
300.0	Lode line, identical with a location monument, a mound of stones, 3 ft. base by 3 ft. high; discovery point bears S. 59°40' W., 1223 ft. dist.
600.0	Cor. No. 3, identical with a location monument, a mound of stones, 3 ft. base by 3 ft. high, rebuilt alongside.
	Set a sandstone, 32 x 18 x 4 ins., 16 ins. in the ground, mkd. X 3 H 6 - 4360; from which
	A pine, 20 ins. diam., bears S. 11°42' E., 27.93 ft. dist., mkd. X B T 3 H 6 - 4360.

Feet	Thence S. 59°40' W.
1320.0	Center of road, bears N. 50°20' W., and S. 50°20' E.
1500.0	Cor. No. 4, identical with a location monument, a mound of stones, 3 ft. base by 3 ft. high, rebuilt alongside.
	On line 1-2 Hillcrest No. 5 lode of this survey.
	Set a sandstone 28 x 12 x 6 ins., 16 ins. in the ground, mkd. X 4 H 6 - 4360; from which
	A pine, 24 ins. diam., bears S. 28°49' E., 14.45 ft. dist., mkd. X B T 4 H 6 - 4360.
	Thence N. 30°20' W.
300.0	Lode line, identical with a location monument, a mound of stones, 3 ft. base by 3 ft. high; discovery point bears N. 59°40' E., 277 ft. dist.
357.0	Center of road, bears N. 50°20' W., and S. 50°20' E.
600.0	Cor. No. 1, and the place of beginning.
	HILLCREST NO. 1 LODE
	Beginning at cor. No. 1 Hillcrest No. 1 lode, identical with cor. No. 1 Sur. 4352 Campbell and Denison No. 1 lode, a sandstone 4 x 10 ins., 8 ins. above the ground, with a mound of stones, 3 ft. base by 3 ft. high, alongside, mkd. X C D 1 - 4352, I mkd. 1 H 1 - 4360 on south side; from which
	The east 1/4 cor. sec. 13, T. 11 N., R. 14 E., G. and S. R. B. and M., bears S. 64°27'40" E., 755.69 ft. dist., previously described.
	A pine, 24 ins. diam., bears N. 76°00' W., 25.15 ft. dist., mkd. X B T C D 1 - 4352, I mkd. 1 H 1 - 4360.
	Thence S. 30°20' E.
200.0	Cor. No. 2 Hillcrest No. 3, identical with cor. No. 2 Hillcrest No. 8 lodes of this survey.
500.0	Lode line, Hillcrest No. 8 lode of this survey.
800.0	Cor. No. 1 Hillcrest No. 8, identical with cor. No. 4 Hillcrest No. 5 lodes of this survey.
913.0	Center of road, bears N. 75°17' W., and S. 75°17' E.
1500.0	Cor. No. 2, identical with a location monument, a mound of stones, 3 ft. base by 3 ft. high, rebuilt alongside.
	On line 3-4 Hillcrest No. 5 lode of this survey.
	Set a sandstone, 30 x 16 x 4 ins., 16 ins. in the ground, mkd. X 2 H 1 - 4360; from which
	A pine, 18 ins. diam., bears N. 8°00' W., 28.51 ft. dist., mkd. X B T 2 H 1 - 4360.

Feet	Thence S. 59°40' W.
300.0	Lode line, identical with a location monument, a mound of stones, 3 ft. base by 3 ft. high; discovery point bears N. 30°20' W., 1427 ft. dist.
600.0	Cor. No. 3, identical with cor. No. 2 Hillcrest No. 2 lode of this survey, and with a location monument, a mound of stones, 3 ft. base by 3 ft. high, rebuilt alongside. Set a sandstone, 26 x 10 x 5 ins., 16 ins. in the ground, mkd. X 3 H 1 - 2 H 2 - 4360; from which A pine, 18 ins. diam., bears S. 80°42' E., 31.06 ft. dist., mkd. X B T 3 H 1 - 2 H 2 - 4360.
	Thence N. 30°20' W.
1174.0	Center of road, bears N. 80°20' W., and S. 80°20' E.
1500.0	Cor. No. 4, identical with cor. No. 1 Hillcrest No. 2 lode of this survey, and with cor. No. 1 Sur. 4352 Campbell and Denison No. 2 lode, and cor. No. 2 Sur. 4352 Campbell and Denison No. 1 lode, a sandstone 8 x 14 ins., 14 ins. above the ground, with a mound of stones, 3 ft. base by 3 ft. high alongside, mkd. X 1 C D 2 - 2 C D 1 - 4352, I mkd. 4 H 1 - 1 H 2 - 4360, on south side; from which A pine, 24 ins. diam., bears N. 83°26' E., 69.55 ft. dist., mkd. X B T 1 C D 2 - 2 C D 1 - 4352, I mkd. 4 H 1 - 1 H 2 - 4360.
	Thence N. 59°40' E.
300.0	Lode line, identical with lode line Sur. 4352 Campbell and Denison No. 1 lode, a mound of stones, 3 ft. base by 3 ft. high; discovery point bears S. 30°20' E., 73 ft. dist.
600.0	Cor. No. 1, and the place of beginning.
	HILLCREST NO. 2 LODGE
	Beginning at cor. No. 1, identical with cor. No. 1 Sur. 4352 Campbell and Denison No. 2 lode, cor. No. 2 Sur. 4352 Campbell and Denison No. 1 lode, cor. No. 4 Hillcrest No. 1 lode of this survey; from which The east 1/4 cor. sec. 13, T. 11 N., R. 14 E., G. and S. R. B. and M., bears S. 88°54'40" E., 1199.93 ft. dist., previously described.
	Thence S. 30°20' E.
326.0	Center of road, bears N. 80°20' W., and S. 80°20' E.
1500.0	Cor. No. 2, identical with cor. No. 3 Hillcrest No. 1 lode of this survey. Thence S. 59°40' W.
300.0	Lode line, identical with a location monument, a mound of stones, 3 ft. base by 3 ft. high; discovery point bears N. 30°20' W., 1208 ft. dist.
600.0	Cor. No. 3, identical with a location monument, a mound of stones, 3 ft. base by 3 ft. high, rebuilt alongside.

Feet	<p>On line 4-1 Hillcrest No. 21 lode of this survey.</p> <p>Set a sandstone, 24 x 12 x 6 ins., 16 ins. in the ground, mkd. X 3 H 2 - 4360; from which</p> <p>A pine, 20 ins. diam., bears S. 15°42' W., 19.88 ft. dist., mkd. X B T 3 H 2 - 4360.</p> <p>Thence N. 30°20' W.</p>
1328.55	Cor. No. 4 Hillcrest No. 21 lode of this survey, identical with cor. No. 1 Sur. 4352 Campbell and Denison No. 3 lode.
1443.55	Center of road, bears N. 69°40' E., and S. 69°40' W.
1500.0	<p>Cor. No. 4, identical with cor. No. 2 Sur. 4352 Campbell and Denison No. 2 lode, a sandstone 6 x 14 ins., 12 ins. above the ground, with a mound of stones, 3 ft. base by 3 ft. high, alongside, mkd. X 2 C D 2 - 4352, I mkd. 4 H 2 - 4360; on the south side; from which</p> <p>A pine, 30 ins. diam., bears N. 19°10' E., 61.17 ft. dist., mkd. X B T 2 C D 2 - 4352, I mkd. 4 H 2 - 4360.</p> <p>Thence N. 59°40' E.</p>
300.0	Lode line, identical with lode line Sur. 4352 Campbell and Denison No. 2 lode, a mound of stones, 3 ft. base by 3 ft. high; discovery point bears S. 30°20' E., 292 ft. dist.
600.0	Cor. No. 1, and the place of beginning.
	HILLCREST NO. 21 LODE
	<p>At cor. No. 1 Hillcrest No. 21 lode, identical with cor. No. 2 Hillcrest No. 9 lode, and a location monument; a mound of stones, 3 ft. base by 3 ft. high, rebuilt alongside.</p> <p>Set a sandstone, 26 x 10 x 8 ins., 16 ins. in the ground, mkd. X 1 H 21 - 2 H 9 - 4360; from which</p> <p>The southeast cor. Sec. 13, T. 11 N., R. 14 E., G. and S. R. B. and M., bears S. 43°39'40" E., 1263.08 ft. dist., an iron post with brass cap, 2 ins. diam., 11 ins. above ground, marked and witnessed as described in the official record.</p> <p>A pine, 24 ins. diam., bears N. 34°32' E., 23.05 ft. dist., mkd. X B T 1 H 21 - 2 H 9 - 4360.</p> <p>Thence S. 59°40' W.</p>
300.0	Lode line, identical with a location monument, a mound of stones, 3 ft. base by 3 ft. high; discovery point bears N. 30°20' W., 1320 ft. dist.
600.0	Cor. No. 2, identical with a location monument, a mound of stones, 3 ft. base by 3 ft. high, rebuilt alongside.
	<p>On line 1-2 Hillcrest No. 9 lode of this survey.</p> <p>Set a sandstone, 30 x 8 x 4 ins., 16 ins. in the ground, mkd. X 2 H 21 - 4360; from which</p> <p>A pine, 12 ins. diam., bears S. 35°06' E., 26.12 ft. dist., mkd. X B T 2 H 21 - 4360.</p>

Feet	Thence No. 30°20' W.
1500.0	<p>Cor. No. 3, identical with cor. No. 4 Sur. 4352 Campbell and Denison No. 4 lode, cor. No. 2 Sur. 4352 Campbell and Denison No. 3 lode, a sandstone 4 x 12 ins., 8 ins. above ground, with a mound of stones, 3 ft. base by 3 ft. high, alongside, mkd. X 4 C D 4 - 2 C D 3 - 4352, I mkd. 3 H 21 - 4360, on the south; from which</p> <p>A pine, 30 ins. diam., bears S. 89°22' W., 10.41 ft. dist., mkd. X B T 4 C D 4 - 2 C D 3 - 4352, I mkd. 3 H 21 - 4360.</p> <p>Thence N. 59°40' E.</p>
300.0	<p>Lode line, identical with lode line Sur. 4352 Campbell and Denison No. 3 lode, a mound of stones, 3 ft. base by 3 ft. high; discovery point bears S. 30°20' E., 180 ft. dist.</p>
600.0	<p>Cor. No. 4, identical with cor. No. 1 Sur. 4352 Campbell and Denison No. 3 lode, a sandstone, 5 x 14 ins., 8 ins. above ground, with a mound of stones, 3 ft. base by 3 ft. high, alongside, mkd. X 1 C D 3 - 4352, I mkd. 4 H 21 - 4360 on the south; from which</p> <p>A pine, 14 ins. diam., bears N. 1°34' W., 10.41 ft. dist., mkd. X B T 1 C D 3 - 4352, I mkd. 4 H 21 - 4360.</p> <p>Thence S. 30°20' E.</p>
1328.55	Cor. No. 3 Hillcrest No. 2 lode of this survey.
1500.0	Cor. No. 1, and the place of beginning.
	HILLCREST NO. 10 LODE
	At cor. No. 1 of the Hillcrest No. 10 lode, identical with a location monument, a mound of stones, 3 ft. base by 3 ft. high, rebuilt alongside.
	On line 4-1 Hillcrest No. 12 lode of this survey.
	Set a sandstone, 30 x 10 x 6 ins., 16 ins. in the ground, mkd. X 1 H 10 - 4360; from which
	The 1/4 cor. bet. secs. 13 and 24, T. 11 N., R. 14 E., G. and S. R. B. and M., bears S. 89°00' W., 220.41 ft. dist., an iron post, 3/4 ins. diam., with a brass cap, 12 ins. above ground, marked and witnessed as described in the official record.
	A pine, 18 ins. diam., bears S. 46°49' E., 31.06 ft. dist., mkd. X B T 1 H 10 - 4360.
	Thence N. 30°20' W.
1500.0	<p>Cor. No. 2, identical with cor. No. 3 Sur. 4352 Campbell and Denison No. 6 lode, cor. No. 4 Sur. 4352 Campbell and Denison No. 5 lode, a sandstone, 4 x 8 ins., 11 ins. above the ground, with a mound of stones, 3 ft. base by 3 ft. high, alongside, mkd. X 3 C D 6 - 4 C D 5 - 4352, I mkd. 2 H 10 - 4360 on the south; from which</p> <p>A pine, 14 ins. diam., bears N. 10°10' W., 18.14 ft. dist., mkd. X B T 3 C D 6 - 4 C D 5 - 4352, I mkd. 2 H 10 - 4360.</p>

SURVEY NO. 4360

Feet	Thence N. 59°40' E.
300.0	Lode line, identical with lode line Sur. 4352 Campbell and Denison No. 5 lode, a mound of stones, 3 ft. base by 3 ft. high; discovery point bears S. 30°20' E., 93 ft. dist.
600.0	Cor. No. 3, identical with cor. No. 3 Sur. 4352 Campbell and Denison No. 5 lode, and cor. No. 1 Sur. 4352 Campbell and Denison No. 4 lode, a sandstone, 6 x 8 ins., 14 ins. above ground, with a mound of stones, 3 ft. base by 3 ft. high, alongside, mkd. X 3 C D 5 - 1 C D 4 - 4352, I mkd. 3 H 10 - 4360 on south; from which A pine, 24 ins. diam., bears N. 13°11' W., 11.18 ft. dist., mkd. X B T 3 C D 5 - 1 C D 4 - 4352, I mkd. 3 H 10 - 4360.
	Thence S. 30°20' E.
1500.0	Cor. No. 4, identical with a location monument, a mound of stones, 3 ft. base by 3 ft. high, rebuilt alongside. On line 1-2 Hillcrest No. 9 lode of this survey. Set a sandstone, 28 x 10 x 4 ins., 16 ins. in the ground, mkd. X 4 H 10 - 4360; from which A pine, 36 ins. diam., bears N. 30°25' E., 23.62 ft. dist., mkd. X B T 4 H 10 - 4360.
	Thence S. 59°40' W.
300.0	Lode line, identical with cor. No. 1 Hillcrest No. 9, cor. No. 1 Hillcrest No. 12 lodes of this survey, and a location monument, 3 ft. base by 3 ft. high; discovery point bears N. 30°20' W., 1407 ft. dist.
600.0	Cor. No. 1, and the place of beginning.
	HILLCREST NO. 9 LODE
	At cor. No. 1 of the Hillcrest No. 9 lode, identical with cor. No. 1 Hillcrest No. 12, lode line Hillcrest No. 10 lodes of this survey, and a location monument, a mound of stones, 3 ft. base by 3 ft. high, rebuilt alongside. On line 4-1 Hillcrest No. 10 lode of this survey. Set a sandstone, 30 x 12 x 6 ins., 16 ins. in the ground, mkd. X 1 H 9 - 1 H 12 - 4360; from which The 1/4 cor. bet. secs. 13 and 24, T. 11 N., R. 14 E., G. and S. R. B. and M., bears S. 72°02'30" W., 503.86 ft., previously described. A pine, 24 ins. diam., bears S. 54°23' W., 53.86 ft. dist., mkd. X B T 1 H 9 - 1 H 12 - 4360.
	Thence N. 59°40' E.
300.0	Cor. No. 4 Hillcrest No. 10 lode of this survey.
900.0	Cor. No. 2 Hillcrest No. 21 lode of this survey.
1200.0	Lode line, Hillcrest No. 21 lode of this survey.

Feet	
1500.0	<p>Cor. No. 2, identical with cor. No. 1 Hillcrest No. 21 lode of this survey.</p> <p style="text-align: center;">Thence S. 30°20' E.</p>
300.0	<p>Lode line, identical with a location monument, a mound of stones, 3 ft. base by 3 ft. high; discovery point bears S. 59°40' W., 1322 ft. dist.</p>
600.0	<p>Cor. No. 3, identical with a location monument, a mound of stones, 3 ft. base by 3 ft. high, rebuilt alongside.</p> <p>Set a sandstone, 30 x 10 x 4 ins., 16 ins. in the ground, mkd. X 3 H 9 - 4360; from which</p> <p style="padding-left: 40px;">A pine, 16 ins. diam., bears N. 29°54' E., 35.8 ft. dist., mkd. X B T 3 H 9 - 4360.</p> <p style="text-align: center;">Thence S. 59°40' W.</p>
300.0	<p>Cor. No. 4 Hillcrest No. 11 lode of this survey.</p>
1500.0	<p>Cor. No. 4, identical with cor. No. 2 Hillcrest No. 12 lode of this survey, a location monument, a mound of stones, 3 ft. base by 3 ft. high, rebuilt alongside.</p> <p>On line 3-4 Hillcrest No. 11 lode of this survey.</p> <p>Set a sandstone, 30 x 9 x 5 ins., 16 ins. in the ground, mkd. X 4 H 9 - 2 H 12 - 4360; from which</p> <p style="padding-left: 40px;">A pine, 16 ins. diam., bears N. 72°06' W., 42.35 ft. dist., mkd. X B T 4 H 9 - 2 H 12 - 4360.</p> <p style="text-align: center;">Thence N. 30°20' W.</p>
300.0	<p>Lode line, identical with lode line Hillcrest No. 12 lode of this survey, a location monument, a mound of stones, 3 ft. base by 3 ft. high; discovery point bears N. 59°40' E., 178 ft. dist.</p>
600.0	<p>Cor. No. 1, and the place of beginning.</p> <p style="text-align: center;">HILLCREST NO. 12 LODE</p> <p>Beginning at cor. No. 1 of the Hillcrest No. 12 lode, identical with cor. No. 1 Hillcrest No. 9, lode line Hillcrest No. 10 lodes of this survey.</p> <p style="text-align: center;">Thence S. 30°20' E.</p>
300.0	<p>Lode line, identical with lode line Hillcrest No. 9 lode of this survey; discovery point bears S. 59°40' W., 919 ft. dist.</p>
600.0	<p>Cor. No. 2, identical with cor. No. 4 Hillcrest No. 9 lode of this survey.</p> <p style="text-align: center;">Thence S. 59°40' W.</p>
300.0	<p>Cor. No. 3 Hillcrest No. 11 lode of this survey.</p>
1500.0	<p>Cor. No. 3, identical with a location monument, a mound of stones, 3 ft. base by 3 ft. high, rebuilt alongside.</p> <p>Set a sandstone, 28 x 8 x 4 ins., 16 ins. in the ground, mkd. X 3 H 12 - 4360; from which</p> <p style="padding-left: 40px;">A pine, 24 ins. diam., bears N. 76°36' E., 22.1 ft. dist.,</p>

Feet	<p>mkd. X B T 3 H 12 - 4360.</p> <p>Thence N. 30°20' W.</p>
300.0	<p>Lode line, identical with a location monument, a mound of stones, 3 ft. base by 3 ft. high; discovery point bears N. 59°40' E., 581 ft. dist.</p>
600.0	<p>Cor. No. 4, identical with a location monument, a mound of stones, 3 ft. base by 3 ft. high, rebuilt alongside.</p> <p>Set a sandstone, 24 x 10 x 4 ins., 16 ins. in the ground, mkd. X 4 H 12 - 4360; from which</p> <p>A pine, 24 ins. diam., bears S. 78°09' W., 24.53 ft. dist., mkd. X B T 4 H 12 - 4360.</p> <p>Thence N. 59°40' E.</p>
1200.0	<p>Cor. No. 1 Hillcrest No. 10 lode of this survey.</p>
1500.0	<p>Cor. No. 1, and the place of beginning.</p> <p>HILLCREST NO. 11 LODE</p> <p>At cor. No. 1, identical with a location monument, a mound of stones, 3 ft. base by 3 ft. high, rebuilt alongside.</p> <p>Set a sandstone, 26 x 12 x 5 ins., 16 ins. in the ground, mkd. X 1 H 11 - 4360; from which</p> <p>The southeast cor. sec. 13, T. 11 N., R. 14 E., G. and S. R. B. and M., bears N. 62°28'50" E., 591.87 ft. dist., previously described.</p> <p>A pine, 16 ins. diam., bears S. 2°46' W., 21.53 ft. dist., mkd. X B T 1 H 11 - 4360.</p> <p>Thence S. 59°40' W.</p>
1500:0	<p>Cor. No. 2, identical with a location monument, a mound of stones, 3 ft. base by 3 ft. high, rebuilt alongside.</p> <p>Set a sandstone, 26 x 10 x 4 ins., 16 ins. in the ground, mkd. X 2 H 11 - 4360; from which</p> <p>A pine, 30 ins. diam., bears S. 44°24' E., 35.06 ft. dist., mkd. X B T 2 H 11 - 4360.</p> <p>Thence N. 30°20' W.</p>
300.0	<p>Lode line, identical with a location monument, a mound of stones, 3 ft. base by 3 ft. high; discovery point bears N. 59°40' E., 169 ft. dist.</p>
600.0	<p>Cor. No. 3, identical with a location monument, a mound of stones, 3 ft. base by 3 ft. high, rebuilt alongside.</p> <p>On line 2-3 Hillcrest No. 12 lode of this survey.</p> <p>Set a sandstone, 30 x 8 x 6 ins., 16 ins. in the ground, mkd. X 3 H 11 - 4360; from which</p>

SURVEY NO. 4360

Feet	A pine, 24 ins. diam., bears N. 25°04' E., 7.86 ft. dist., mkd. X B T 3 H 11 - 4360. Thence N. 59°40' E.
300.0	Cor. No. 2 Hillcrest No. 12, identical with cor. No. 4 Hillcrest No. 9 lodes of this survey.
1500.0	Cor. No. 4, identical with a location monument, a mound of stones, 3 ft. base by 3 ft. high, rebuilt alongside. On line 3-4 Hillcrest No. 9 lode of this survey. Set a sandstone, 32 x 12 x 4 ins., 16 ins. in the ground, mkd. X 4 H 11 - 4360; from which A pine, 16 ins. diam., bears N. 9°30' W., 23.96 ft. dist., mkd. X B T 4 H 11 - 4360. Thence S. 30°20' E.
300.0	Lode line, identical with a location monument, a mound of stones, 3 ft. base by 3 ft. high; discovery point bears S. 59°40' W., 1331 ft. dist.
600.0	Cor. No. 1, and the place of beginning.

Survey No. 4360

AREAS

	Acres
Total area, Hillcrest No. 3 lode	20.661
Total area, Hillcrest No. 4 lode	20.661
Total area, Hillcrest No. 8 lode	20.661
Total area, Hillcrest No. 5 lode	20.661
Total area, Hillcrest No. 7 lode	20.661
Total area, Hillcrest No. 6 lode	20.661
Total area, Hillcrest No. 1 lode	20.661
Total area, Hillcrest No. 2 lode	20.661
Total area, Hillcrest No. 21 lode	20.661
Total area, Hillcrest No. 10 lode	20.661
Total area, Hillcrest No. 9 lode	20.661
Total area, Hillcrest No. 12 lode	20.661
Total area, Hillcrest No. 11 lode	20.661

LOCATION

This survey is located in the NE 1/4, NW 1/4, sec. 24, SE 1/4, SW 1/4, NE 1/4, sec. 13, T. 11 N., R. 14 E., G. and S. R. B. and M., SW 1/4, NW 1/4, sec. 18, T. 11 N., R. 15 E., G. and S. R. B. and M. within the Sitgreaves National Forest.

EXPENDITURES

The improvements and the value of the labor and improvements made upon or for the benefit of each of the lode locations embraced in said mining claim by the claimant or his grantors are as follows:

- | | |
|-------|---|
| No. 1 | The discovery point of the Hillcrest No. 3 lode is on the lode line 141 ft., N. 30°20' W. from the center of line 1-2.
No value. |
| No. 2 | A trench, the west end of which bears N. 45°22' W., 175 ft. from |

SURVEY NO. 4360

- the center of line 1-2 Hillcrest No. 3 lode; 13 ft. wide, 3.5 ft. deep, running N. 63° E., 65 ft.
Value, \$270.
- No. 3 A trench, the south end of which bears S. 73°12' W., 167 ft. from the center of line 1-2 Hillcrest No. 3 lode; 12 ft. wide, 3 ft. deep, running N. 44° W., 45 ft.
Value, \$140.
- No. 4 A trench, the south end of which bears N. 14°04' E., 64 ft. from cor. No. 2 Hillcrest No. 3 lode; 12 ft. wide, 0.5 ft. deep, running N. 10° W., 30 ft.
Value, \$20.
- No. 5 A trench, the south end of which bears N. 18° W., 76 ft. from cor. No. 2 Hillcrest No. 3 lode; 13 ft. wide, 1.5 ft. deep, running N. 10° W., 50 ft.
Value, \$80.
- No. 6 A hole, the center of which bears N. 24°40' W., 120 ft. from cor. No. 2 Hillcrest No. 3 lode; 6 ft. diam., 6 ft. deep.
Value, \$50.
- No. 7 A trench, the west end of which bears N. 4°33' W., 304 ft. from cor. No. 2 Hillcrest No. 3 lode; 13 ft. wide, 2 ft. deep, running S. 80° E., 75 ft.
Value, \$185.
- No. 1 The discovery point of Hillcrest No. 4 lode is on the lode line 138 ft. N. 30°20' W., from the center of line 4-1.
No value.
- No. 2 A trench, the east end of which bears west 305 ft. from cor. No. 4 Hillcrest No. 4 lode; 13 ft. wide, 3.5 ft. deep, running N. 65° W., 50 ft.
Value, \$200.
- No. 3 A trench, the south end of which bears N. 71°19' W., 270 ft. from cor. No. 4 Hillcrest No. 4 lode; 13 ft. wide, 2 ft. deep, running N. 22° W., 50 ft.
Value, \$125.
- No. 4 A trench, the east end of which bears N. 67°22' W., 171 ft. from the center of line 4-1 Hillcrest No. 4 lode; 4 ft. wide, 3 ft. deep, running west 25 ft.
Value, \$50.
- No. 5 A hole, the center of which bears N. 19°30' E., 202 ft. from cor. No. 1 Hillcrest No. 4 lode; 5 x 5 ft., 6 ft. deep.
Value, \$50.
- No. 6 A trench, the south end of which bears N. 10° E., 163 ft. from cor. No. 1 Hillcrest No. 4 lode; 13 ft. wide, 1.5 ft. deep, running N. 20° E., 50 ft.
Value, \$80.
- No. 7 A trench, the west end of which bears N. 30°20' W., 262 ft. from cor. No. 1 Hillcrest No. 4 lode; 13 ft. wide, 3 ft. deep, running N. 65° E., 50 ft.
Value, \$185.
- No. 1 The discovery point of the Hillcrest No. 8 lode is on the lode line 630 ft. N. 59°40' E., from the center of line 1-2.
No value.

SURVEY NO. 4360

- No. 2 A trench, the west end of which bears N. $85^{\circ}20'$ E., 687 ft. from cor. No. 2 Hillcrest No. 8 lode; 13 ft. wide, 2 ft. deep, running S. 65° E., 50 ft.
Value, \$125.
- No. 3 A trench, the west end of which bears S. $70^{\circ}52'$ E., 575 ft. from cor. No. 2 Hillcrest No. 8 lode; 13 ft. wide, 1.5 ft. deep, running S. 84° E., 45 ft.
Value, \$75.
- No. 4 A trench, the west end of which bears N. $43^{\circ}44'$ E., 526 ft. from cor. No. 1 Hillcrest No. 8 lode; 13 ft. wide, 1.5 ft. deep, running S. 76° E., 45 ft.
Value, \$75.
- No. 5 A trench, the west end of which bears N. $50^{\circ}53'$ E., 678 ft. from cor. No. 1 Hillcrest No. 8 lode; 12 ft. wide, 2 ft. deep, running N. 73° E., 50 ft.
Value, \$125.
- No. 6 A trench, the northwest end of which bears N. $50^{\circ}53'$ E., 678 ft. from cor. No. 1 Hillcrest No. 8 lode; 15 ft. wide, 1.5 ft. deep, running S. 58° E., 40 ft.
Value, \$60.
- No. 7 A trench, the south end of which bears S. $59^{\circ}40'$ W., 670 ft. from cor. No. 4 Hillcrest No. 8 lode; 13 ft. wide, 3 ft. deep, running N. 20° E., 45 ft.
Value, \$160.
- No. 8 A trench, the east end of which bears N. $83^{\circ}54'$ W., 182 ft. from cor. No. 4 Hillcrest No. 8 lode; 12 ft. wide, 1.5 ft. deep, running S. 58° W., 30 ft.
Value, \$50.
- No. 9 A trench, the west end of which bears N. $30^{\circ}20'$ W., 523 ft. from cor. No. 1 Hillcrest No. 8 lode; 3.5 ft. wide, 3.5 ft. deep, running N. 40° E., 12 ft.
Value, \$40.
- No. 1 The discovery point of the Hillcrest No. 5 lode is on the lode line 1415 ft. S. $30^{\circ}20'$ E., from the center of line 4-1.
No value.
- No. 2 A trench, the south end of which bears S. $68^{\circ}27'$ W., 265 ft. from cor. No. 2 Hillcrest No. 5 lode; 12 ft. wide, 2 ft. deep, running N. 51° W., 100 ft.
Value, \$225.
- No. 3 A trench, the south end of which bears S. $70^{\circ}40'$ W., 357 ft. from cor. No. 2 Hillcrest No. 5 lode; 12 ft. wide, 1.5 ft. deep, running N. 40° W., 50 ft.
Value, \$80.
- No. 4 A trench, the north end of which bears N. $30^{\circ}20'$ E., 256 ft. from cor. No. 3 Hillcrest No. 5 lode; 12 ft. wide, 1 ft. deep, running S. 39° E., 70 ft.
Value, \$85.
- No. 5 A trench, the north end of which bears N. $42^{\circ}45'$ E., 116 ft. from cor. No. 3 Hillcrest No. 5 lode; 12 ft. wide, 1 ft. deep, running S. 52° E., 40 ft.
Value, \$50.

- | | |
|-------|---|
| No. 6 | A trench, the north end of which bears S. 36°35' E., 520 ft. from cor. No. 4 Hillcrest No. 5 lode; 12 ft. wide, 3 ft. deep, running S. 8° W., 65 ft.
Value, \$200. |
| No. 1 | The discovery point of the Hillcrest No. 7 lode is on the lode line 111 ft. N. 59°40' E., from the center of line 4-1.
No value. |
| No. 2 | A trench, the north end of which bears S. 54° E., 289 ft. from cor. No. 1 Hillcrest No. 7 lode; 13 ft. wide, 3 ft. deep, running S. 37° E., 50 ft.
Value, \$220. |
| No. 3 | A trench, the north end of which bears N. 76°45' E., 365 ft. from cor. No. 1 Hillcrest No. 7 lode; 12 ft. wide, 2 ft. deep, running S. 24° E., 75 ft.
Value, \$190. |
| No. 4 | A trench, the north end of which bears N. 59°40' E., 230 ft. from cor. No. 1 Hillcrest No. 7 lode; 13 ft. wide, 3 ft. deep, running S. 20° W., 25 ft.
Value, \$100. |
| No. 1 | The discovery point of the Hillcrest No. 6 lode is on the lode line 277 ft. N. 59°40' E., from the center of line 4-1.
No value. |
| No. 2 | A trench, the south end of which bears N. 17°17' E., 345 ft. from cor. No. 4 Hillcrest No. 6 lode; 13 ft. wide, 4 ft. deep, running N. 5° W., 55 ft.
Value, \$275. |
| No. 3 | A trench, the south end of which bears S. 67°30' E., 380 ft. from cor. No. 1 Hillcrest No. 6 lode; 12 ft. wide, 2 ft. deep, running N. 30° E., 50 ft.
Value, \$125. |
| No. 4 | A trench, the northwest end of which bears S. 80°25' E., 125 ft. from cor. No. 1 Hillcrest No. 6 lode; 12 ft. wide, 2.5 ft. deep, running S. 61° E., 50 ft.
Value, \$135. |
| No. 5 | A hole, the center of which bears N. 13°25' E., 290 ft. from cor. No. 4 Hillcrest No. 6 lode; 5 ft. diam., 5 ft. deep.
Value, \$40. |
| No. 6 | A trench, the south end of which bears N. 66°45' E., 530 ft. from cor. No. 1 Hillcrest No. 6 lode; 12 ft. wide, 1 ft. deep, running N. 9° E., 75 ft.
Value, \$90. |
| No. 1 | The discovery point of the Hillcrest No. 1 lode is on the lode line 73 ft. S. 30°20' E., from the center of line 4-1.
No value. |
| No. 2 | A trench, the northwest end of which bears N. 71°43' E., 275 ft. from cor. No. 4 Hillcrest No. 1 lode; 14 ft. wide, 3 ft. deep, running S. 47° E., 60 ft.
Value, \$225. |
| No. 3 | A trench, the west end of which bears N. 89°40' E., 161 ft. from the center of line 4-1 Hillcrest No. 1 lode; 12 ft. wide, 1 ft. deep, running S. 67° E., 70 ft.
Value, \$100. |

SURVEY NO. 4360

19

- | | |
|--------|--|
| No. 4 | A trench, the northwest end of which bears N. 76° E., 195 ft. from the center of line 4-1 Hillcrest No. 1 lode; 13 ft. wide, 2 ft. deep, running S. 55° E., 60 ft.
Value, \$125. |
| No. 5 | A trench, the north end of which bears N. 76° E., 275 ft. from the center of line 4-1 Hillcrest No. 1 lode; 12 ft. wide, 1 ft. deep, running S. 25° E., 30 ft.
Value, \$35. |
| No. 6 | A trench, the east end of which bears S. 30°20' E., 75 ft. from cor. No. 1 Hillcrest No. 1 lode; 12 ft. wide, 3 ft. deep, running west 50 ft.
Value, \$165. |
| No. 7 | A trench, the north end of which bears N. 84°50' E., 170 ft. from cor. No. 4 Hillcrest No. 1 lode; 13 ft. wide, 2 ft. deep, running S. 18° W., 65 ft.
Value, \$160. |
| No. 8 | A trench, the north end of which bears S. 65°30' E., 223 ft. from cor. No. 4 Hillcrest No. 1 lode; 13 ft. wide, 2.5 ft. deep, running S. 48° E., 50 ft.
Value, \$145. |
| No. 9 | A hole, the center of which bears S. 59° E., 212 ft. from cor. No. 4 Hillcrest No. 1 lode; 3 ft. wide, 2 ft. deep, running N. 5° W., 4.5 ft., and S. 5° E., 4.5 ft.
Value, \$25. |
| No. 10 | A hole, the center of which bears S. 49°56' E., 247 ft. from cor. No. 4 Hillcrest No. 1 lode; 8 ft. diam., 4 ft. deep.
Value, \$30. |
| No. 11 | A trench, the west end of which bears S. 30°20' E., 40 ft. from cor. No. 4 Hillcrest No. 1 lode; 7 ft. wide, 3 ft. deep, running N. 24° E., 20 ft., thence N. 83° E., 25 ft.
Value, \$50. |
| No. 12 | A trench, the east end of which bears N. 42°15' W., 896 ft. from cor. No. 2 Hillcrest No. 1 lode; 12 ft. wide, 1 ft. deep, running N. 85° W., 70 ft.
Value, \$80. |
| No. 13 | A trench, the west end of which bears N. 42°15' W., 314 ft. from cor. No. 2 Hillcrest No. 1 lode; 12 ft. wide, .5 ft. deep, running N. 43° E., 40 ft.
Value, \$30. |
| No. 1 | The discovery point of the Hillcrest No. 2 lode is on the lode line 292 ft. S. 30°20' E., from the center of line 4-1.
No value. |
| No. 2 | A trench, the west end of which bears S. 80°25' E., 344 ft. from cor. No. 4 Hillcrest No. 2 lode; 13 ft. wide, 3.5 ft. deep, running N. 89° E., 70 ft.
Value, \$290. |
| No. 3 | A trench, the north end of which bears S. 30°20' E., 5 ft. from cor. No. 1 Hillcrest No. 2 lode; 14 ft. wide, 1.5 ft. deep, running S. 33° W., 70 ft.
Value, \$140. |

Survey No. 4360

- | | |
|-------|--|
| No. 4 | A hole, the center of which bears S. 8°50' E., 39 ft. from cor. No. 1 Hillcrest No. 2 lode; 5 ft. diam., 4 ft. deep.
Value, \$40. |
| No. 5 | A trench, the east end of which bears N. 33° W., 1080 ft. from cor. No. 2 Hillcrest No. 2 lode; 12 ft. wide, 1 ft. deep, running S. 80° W., 45 ft.
Value, \$55. |
| No. 1 | The discovery point of the Hillcrest No. 21 lode is on the lode line 180 ft. S. 30°20' E., from the center of line 3-4.
No value. |
| No. 2 | A trench, the east end of which bears S. 19°22' W., 325 ft. from cor. No. 4 Hillcrest No. 21 lode; 14 ft. wide, 3.5 ft. deep, running S. 77° W., 70 ft.
Value, \$350. |
| No. 3 | A trench, the north end of which bears S. 48°40' E., 308 ft. from cor. No. 3 Hillcrest No. 21 lode; 5 ft. wide, 6 ft. deep, running S. 3° E., 9 ft.
Value, \$50. |
| No. 4 | A trench, the north end of which bears S. 42°58' E., 312 ft. from cor. No. 3 Hillcrest No. 21 lode; 12 ft. wide, 1.5 ft. deep, running S. 52° E., 50 ft.
Value, \$80. |
| No. 5 | A trench, the west end of which bears N. 25°40' E., 186 ft. from cor. No. 2 Hillcrest No. 21 lode; 12 ft. wide, 2.5 ft. deep, running N. 56° E., 75 ft.
Value, \$200. |
| No. 1 | The discovery point of the Hillcrest No. 10 lode is on the lode line 93 ft. S. 30°20' E., from the center of line 2-3.
No value. |
| No. 2 | A trench, the east end of which bears S. 41° W., 278 ft. from cor. No. 3 Hillcrest No. 10 lode; 13 ft. wide, 3.5 ft. deep, running S. 24° W., 65 ft.
Value, \$260. |
| No. 3 | A trench, the west end of which bears S. 79°10' E., 215 ft. from cor. No. 2 Hillcrest No. 10 lode; 12 ft. wide, .5 ft. deep, running N. 36° E., 30 ft.
Value, \$30. |
| No. 4 | A trench, the west end of which bears S. 46°18' E., 203 ft. from cor. No. 2 Hillcrest No. 10 lode; 12 ft. wide, .25 ft. deep, running N. 35° E., 50 ft.
Value, \$25. |
| No. 5 | A trench, the north end of which bears S. 77°06' W., 325 ft. from cor. No. 4 Hillcrest No. 10 lode; 12 ft. wide, 2 ft. deep, running S. 16° W., 90 ft.
Value, \$225. |
| No. 1 | The discovery point of the Hillcrest No. 9 lode is on the lode line 178 ft. N. 59°40' E., from the center of line 4-1.
No value. |
| No. 2 | A trench, the east end of which bears N. 3°29' E., 311 ft. from cor. No. 4 Hillcrest No. 9 lode; 13 ft. wide, 3 ft. deep, running N. 65° W., 60 ft.
Value, \$225. |

- | | |
|-------|--|
| No. 3 | A trench, the south end of which bears N. 27°40' E., 402 ft. from cor. No. 4 Hillcrest No. 9 lode; 14 ft. wide, 3 ft. deep, running N. 24° E., 90 ft.
Value, \$335. |
| No. 4 | A trench, the south end of which bears N. 51°32' E., 740 ft. from cor. No. 4 Hillcrest No. 9 lode; 12 ft. wide, 1 ft. deep, running N. 35° W., 40 ft.
Value, \$100. |
| No. 5 | A trench, the east end of which bears S. 66°15' W., 318 ft. from cor. No. 3 Hillcrest No. 9 lode; 13 ft. wide, 2 ft. deep, running S. 47° W., 70 ft.
Value, \$175. |
| No. 6 | A trench, the south end of which bears N. 55°54' W., 240 ft. from cor. No. 3 Hillcrest No. 9 lode; 13 ft. wide, 3 ft. deep, running N. 40° W., 75 ft.
Value, \$280. |
| No. 1 | The discovery point of the Hillcrest No. 12 lode is on the lode line 919 ft. S. 59°40' W., from the center of line 1-2.
No value. |
| No. 2 | A trench, the west end of which bears N. 89°54' E., 602 ft. from cor. No. 4 Hillcrest No. 12 lode; 15 ft. wide, 2.5 ft. deep, running N. 33° E., 75 ft.
Value, \$245. |
| No. 3 | A trench, the south end of which bears N. 36°06' E., 600 ft. from cor. No. 3 Hillcrest No. 12 lode; 13 ft. wide, 1.5 ft. deep, running N. 27° W., 50 ft.
Value, \$80. |
| No. 4 | A trench, the south end of which bears N. 43°39' E., 636 ft. from cor. No. 3 Hillcrest No. 12 lode; 13 ft. wide, 1 ft. deep, running N. 12° W., 70 ft.
Value, \$85. |
| No. 5 | A trench, the south end of which bears S. 59°40' W., 176 ft. from cor. No. 2 Hillcrest No. 12 lode; 13 ft. wide, 2.5 ft. deep, running N. 7° E., 65 ft.
Value, \$170. |
| No. 1 | The discovery point of the Hillcrest No. 11 lode is on the lode line 169 ft. N. 59°40' E., from the center of line 2-3.
No value. |
| No. 2 | A trench, the west end of which bears S. 55°28' E., 344 ft. from cor. No. 3 Hillcrest No. 11 lode; 13 ft. wide, 3 ft. deep, running S. 80° E., 90 ft.
Value, \$335. |
| No. 3 | A trench, the west end of which bears N. 11°15' E., 159 ft. from cor. No. 2 Hillcrest No. 11 lode; 13 ft. wide, 1 ft. deep, running N. 58° E., 50 ft.
Value, \$60. |
| No. 4 | A trench, the south end of which bears S. 30°20' E., 33 ft. from cor. No. 3 Hillcrest No. 11 lode; 12 ft. wide, 1.5 ft. deep, running N. 15° E., 10 ft.
Value, \$20. |

SURVEY NO. 4360

No. 5

A trench, the west end of which bears S. 65°55' E., 332 ft. from cor. No. 3 Hillcrest No. 11 lode; 12 ft. wide, 3 ft. deep, running S. 70° E., 90 ft.
Value, \$280.

OTHER CORNER DESCRIPTIONS

Sur. No. 4352 Campbell and Denison No. 1 lode; Cor. No. 4 is a sandstone, firmly set and properly marked.

OTHER IMPROVEMENTS

A house, the SE corner of which bears N. 1°28' E., 184 ft. from Cor. No. 1 of the Hillcrest No. 8 lode; 20 x 27 ft. in size; the long sides bear west.

FIELD ASSISTANTS

Name	Capacity
William J. Cheek	Chairman

SS

GENERAL INSTRUCTIONS

1. The purpose of this survey is to determine the location and extent of the property described in the plat attached hereto. The survey shall be made in accordance with the instructions hereinafter set forth.

2. The survey shall be made by the surveyor named in the plat, or by his assistants, and shall be completed within the time specified in the plat.

3. The surveyor shall file a true and correct copy of the plat and a copy of the field notes with the Register of Deeds of the County of [] State of [].

4. The surveyor shall be responsible for the accuracy of the survey and for the correctness of the plat and field notes.

5. The surveyor shall be allowed a reasonable fee for his services, to be determined by the court.

6. The surveyor shall be bound to execute the survey in accordance with the instructions hereinafter set forth, and shall not be liable for any error or omission in the survey, unless it is shown that the error or omission was the result of fraud or gross negligence.

7. The surveyor shall be allowed a reasonable fee for his services, to be determined by the court.

8. The surveyor shall be bound to execute the survey in accordance with the instructions hereinafter set forth, and shall not be liable for any error or omission in the survey, unless it is shown that the error or omission was the result of fraud or gross negligence.

FIELD INSTRUCTIONS

1. The survey shall be made in accordance with the instructions hereinafter set forth.

2. The surveyor shall be responsible for the accuracy of the survey and for the correctness of the plat and field notes.

3. The surveyor shall be allowed a reasonable fee for his services, to be determined by the court.

4. The surveyor shall be bound to execute the survey in accordance with the instructions hereinafter set forth, and shall not be liable for any error or omission in the survey, unless it is shown that the error or omission was the result of fraud or gross negligence.

SURVEY NO. 4360

MERIDIAN ALTITUDE OBSERVATION ON THE SUN FOR LATITUDE.

Instrument at Cor. No. 1, Hillcrest No. 8.

October 29th, 1951.

Observed vertical angle to upper limb of sun (direct) 42°34'

Observed vertical angle to lower limb of sun (inverted) 42°02'

Vertical angle to sun's center 42°18'

Correction for refraction and parallax 01'

Corrected vertical angle to sun's center 42°17'

Subtract 42°17' from 90° = 47°43'

Sun's declination October 29th, 1951

G.C.T. = 13°06.7'

Reduced to longitude 110° 48'

$$\frac{110.8}{15} = 7.3866 + 12 = 19.3866$$

$$\begin{array}{r} \text{Equation of time } 16^m 9.2^s \\ 19.3866 \times .18^s \quad \quad \quad \underline{3.5^s} \\ \hline 16^m 12.7^s \end{array}$$

.2702

19.1164 hrs.

$$19.1164 \times .83^s = \underline{15.866'}$$

Declination 13°22.566' = 13°22'34"

Latitude 34°20'26"

MERIDIAN OBSERVATION AT NOON FOR TIME.

October 29th, 1951.

Noon solar time 12.00 Hrs.

$$\begin{array}{r} \text{Add west longitude } \frac{110^\circ 48' 03''}{15} = \\ \hline 7.3867 \text{ ''} \\ 19.3867 \text{ Hrs.} \end{array}$$

$$\begin{array}{r} \text{Less equation of time } 16^m 9.2^s \\ + 19.3867 \times .18^s \quad \quad \quad \underline{3.5^s} \\ \hline 16^m 12.7^s \end{array} = \frac{.27}{19.1167} \text{ Hrs.}$$

$$\begin{array}{r} \text{Zone correction to 105th Meridian Mountain Time } 7. \text{ Hrs.} \\ \hline 12.1167 \text{ Hrs.} \end{array}$$

12.1167 Hrs. = 12h 07m

Watch time observation west limb sun 12h 03m 40s

Watch time observation east limb sun 12h 05m 52s

Average time 12h 04m 46s

Watch slow 2m 14s

A. M. SOLAR OBSERVATION FOR AZIMUTH.

OCTOBER 29TH, 1951.

Transit on Cor. No. 1, Hillcrest No. 8.

Average observed vertical angle		32°08'
Correction for refraction and parallax		<u>1'24"</u>
Corrected altitude		32°06'36"
Latitude		34°20'26"
Average time of observation	9h 48 ^m A.M.	
9.8 hrs. + 7 hrs. =	16.8 hrs.	
Declination 0 ^h G.C.T. =	13°06.7'	
16.8 hrs. x .83 ^m =	<u>+13.94'</u>	
Declination	13°20.64' =	13°20'38"
$\text{Cos. A} = \frac{\text{Sin. Dec.}}{\text{Cos. Lat.} \times \text{Cos. Alt.}} = \text{Tan. Lat.} \times \text{Tan. Alt.}$		
Cos. A =	$\frac{.2307951}{.82569921 \times .8470292}$	= .6831915 x .6275420
Cos. A =	-.3299943 - .4287314	= .7587257
A =		40°38'53"
Average Hor. Angle =		<u>10°18'30"</u>
Course of line 2-1, Hillcrest No.8 S30°20'23" E.		

UNITED STATES
DEPARTMENT OF THE INTERIOR
BUREAU OF LAND MANAGEMENT

CERTIFICATE OF SURVEYOR

I, Richard L. Merritt, Mineral Surveyor,
 hereby certify upon honor that in pursuance of an order received from the Office of
Cadastral Engineering, at Albuquerque, New Mexico,
 dated October 22nd, 1951, I have faithfully and correctly executed the survey
 of the mining claims of Alvis F. Denison
Hillcrest Nos. 1 to 12 inclusive,
and Hillcrest No. 21
(lodes placer, -er-millsite)
situate in
Sections 13 and 24, T. 11 N., 14 E.,
Section 18 T. 11 N., R. 15 E.,
Gila and Salt River Base and Meridian, Arizona, and designated
(State)
 as Survey No. 4360, which is represented in the fore-
 going field notes as having been executed by me and under my direction, and that said
 survey has been made in strict conformity with said order, the Manual of Instructions
 for the Survey of the Public Lands of the United States, and in the specific manner
 described in the foregoing field notes, and I do further certify that the labor ex-
 pended and improvements made upon or for the benefit of the (lode or placer)
 location^s embraced in the said mining claim by claimant— or his grantors
 are fully stated in my report therein, and that the character, extent, location, and
 itemized value thereof are specified therein with particularity and full detail, and
 that no portion of, or interest in, said labor and improvements so credited to this
 claim has been included in the estimate of expenditures upon any other claim.

Prescott, Arizona
(Place)

Richard L. Merritt
(Mineral Surveyor)

November 28, 1951
(Date)

UNITED STATES
DEPARTMENT OF THE INTERIOR
BUREAU OF LAND MANAGEMENT

CERTIFICATE OF SURVEY

[Faint, illegible text consisting of several paragraphs and lines, likely containing survey data and descriptions.]

[Faint illegible text]

[Faint illegible text]

**CERTIFICATE OF APPROVAL OF FIELD NOTES AND SURVEY OF
MINING CLAIM**

**UNITED STATES
DEPARTMENT OF THE INTERIOR**

~~GENERAL LANDS OFFICE~~ BUREAU OF LAND MANAGEMENT
~~PUBLIC SURVEY OFFICE~~ Division of Cadastral Engineering

At Albuquerque, New Mexico

January 23, 19 52

I, Office Cadastral Engineer at Albuquerque, New Mexico

do hereby certify that the foregoing and hereto attached Field Notes and Return of the Survey of the
Mining Claim of Alvis F. Denison

....., known as the
Hillcrest Nos. 1 to 12 inclusive, and Hillcrest No. 21, lode mining claims

situate in Mogollon Rim mining district,

Coconino County, Arizona

in Sections (13 and 24 Township No. 11 North Range 14 East
18 Township No. 11 North, Range No. 15 East

G&SRM Ariz., designated as Survey No. No. 4360

executed by Richard L. Merritt, Mineral

Surveyor, October 24 to November 28, 1951, 19 , under my instructions dated

October 22, 1951, 19 , have been critically examined and the necessary

corrections and explanations made, and the said Field Notes and Return, and the Survey they describe,

are hereby approved. The certified copy of the location certificate filed by the applicant for survey is

included and made a part of these field notes.

Geo. H. Well, Office Cadastral Engineer.

CERTIFICATE OF APPROVAL OF FIELD NOTES AND SURVEY OF
MINING CLAIM

UNITED STATES
DEPARTMENT OF THE INTERIOR

GEOLOGICAL SURVEY

I, _____, Chief of the _____
District Office, do hereby certify that the
field notes and survey of the _____
mining claim, located in _____
County, State of _____, and
containing _____ acres, more or less,
as shown on the map attached hereto,
and the same being a true and correct
copy of the original filed in the
office of the _____
District Office, on this _____ day
of _____, 1933.

[Signature]

Witness my hand and seal of office at _____
this _____ day of _____, 1933.