

2899

Book "I."

4-679

BOOK 2899

(Subdivisions)

May 5-1911

FIELD NOTES

OF THE SURVEY OF THE

PARTIAL SUBDIVISION

OF

TOWNSHIP 9 SOUTH, RANGE 6 EAST,

Of the Gila and Salt River Base and Meridian,

In the State of Arizona,

EXECUTED BY

W. H. Thorn, U.S. Surveyor,

and

W. K. Kierulff, U.S. Transitman,

~~*In the capacity of U.S. Surveyor*~~, under instructions dated July 29, 1914,
issued by the United States Surveyor General to govern surveys included in
Group No. 38, which were approved by the Commissioner of the General Land
Office, September 5, 1914.

Survey commenced February 15, 1915.

Survey completed March 3, 1915.

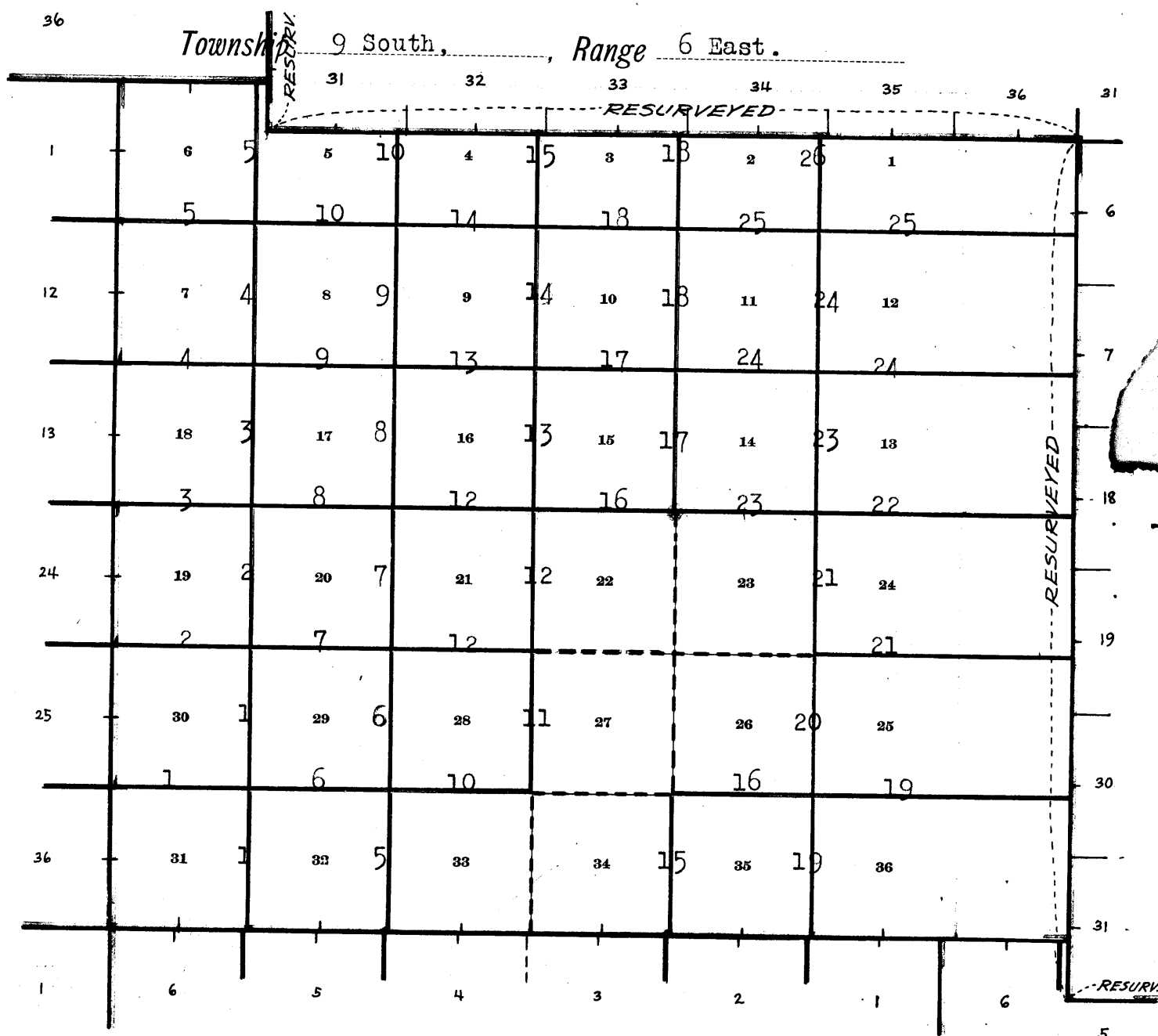
*Resigned under assignment
Instructions dated Sept. 30, 1914.*

1A

Book "I."
(Subdivisions)
Group 38- Arizona.

BOOK 2899

INDEX DIAGRAM.



- _____ Subdivision lines surveyed under this Group.
- _____ Standard lines - Notes in Book "A."
- _____ Township bdrs. - Notes in Book "B."
- _____ Accepted surveys.
- Unsurveyed.

Partial Subdivision of Township 9 South, Range 6 East. 13

Chains.	Survey of Subdivision lines described in the following field notes was executed by W.H.Thorn, U.S. Surveyor, and W.K.Kierulff, U.S. Transitman, their initials "W.H.T." and "W.K.K." being inserted at the beginning and ending of those portions of the notes describing their respective surveys. W.K.K. Survey commenced Feb.18, 1915, and executed with a Young & Son's light mountain transit No.8492, described in Book "A." From recent tests of the solar apparatus on a meridian established by observations on Polaris (see page 11, Book "H.") I know the transit and solar attachment to be in satisfactory adjustment. At 8h. a.m., l.m.t., I set off $32^{\circ} 35\frac{1}{2}'$ N. on the lat. arc; $11^{\circ} 49'$ S. on the decl. arc, and determine a meridian with the solar at the cor. of secs. 31 and 32 on S. bdy. of Tp., established by me, and described in Book "B." Thence I run, N. $0^{\circ} 1'$ E., bet. secs. 31 and 32. Over gently rolling land. .25 Wash, 20 lks. wide, 3 ft. deep, course S- 70° W. 20.50 Wash, 20 lks. wide, 2 ft. deep, course S- 70° W. 39.60 Wash, 50 lks. wide, 3 ft. deep, course S- 70° W. 40.00 Set an iron post 3 ft. long, 1 in. in diam., 18 ins. in the ground (could not set deeper on account of solid rock) in a mound of stone, 2 ft. base, 1 ft. high, for $\frac{1}{4}$ sec. cor. with brass cap, marked S 31 on W., and S 32 on E. half; 1915 on S. rim. No trees within limits. Build a mound of stone $2\frac{1}{2}$ ft. base, $2\frac{1}{2}$ ft. high, W. of cor. 66.30 Wash, 75 lks. wide, 10 ft. deep, course S- 80° W. 80.00 Set an iron post 3 ft. long, 6 ins. in the ground (could not set deeper on account of solid rock) in a mound of stone 3 ft. base, $2\frac{1}{2}$ ft. high, for cor. of secs. 29, 30, 31 and 32, with brass cap, marked T 9 S R 6 E on N. half; S 29 in NE., S 32 in SE., S 31 in SW., and S 30 in NW. quadrants; 1915 on S. rim. No trees within limits. Build a mound of stone 3 ft. base, 2 ft. high, W. of cor. Land, rolling. Soil, stony, 3rd rate. Timber, palo verde. Undergrowth, greasewood brush. ----- West, on a random line, bet. secs. 30 and 31. 40.00 Set temp. $\frac{1}{4}$ sec. cor. 80.00 Intersect west bdy. of Tp. at cor. of secs. 25, 30, 31 and 36, established by me, and described in Book "B." Thence I run, East, on a true line, bet. secs. 30 and 31. Ascend gentle SW. slope. 40.00 Set an iron post 3 ft. long, 1 in. in diam., 26 ins. in the ground for $\frac{1}{4}$ sec. cor., with brass cap, marked S 30 on N., and S 31 on S. half; 1915 on S. rim. No trees within limits. Build a mound of stone 3 ft. base, 3 ft. high, N. of cor. 80.00 Cor. of secs. 29, 30, 31 and 32. Land, gentle SW. slope. Soil, stony, 2nd and 3rd rate. Timber, scattering palo verde. Undergrowth, greasewood and cacti. ----- N. $0^{\circ} 1'$ E., bet. secs. 29 and 30. Over gently rolling land.
---------	---

2. Partial Subdivision of Township 9 South Range 6 East.

Chains.

- 40.00 Set an iron post 3 ft. long, 1 in. in diam., 8 ins. in the ground (could not set deeper on account of solid stone) in a mound of stone, 3 ft. base, $1\frac{1}{2}$ ft. high, for $\frac{1}{4}$ sec. cor., with brass cap, marked
S 30 on W., and
S 29 on E. half;
1915 on S. rim.
No trees within limits.
- 80.00 Build a mound of stone $2\frac{1}{2}$ base, $2\frac{1}{2}$ ft. high, W. of cor.
Set an iron post 3 ft. long, 2 ins. in diam., $1\frac{1}{2}$ ft. in the ground (could not set deeper on account of solid rock) in a mound of stone, 3 ft. base, $1\frac{1}{2}$ ft. high, for cor. of secs. 19, 20, 29 and 30, with brass cap, marked
T 9 S R 6 E on N. half;
S 20 in NE.,
S 29 in SE.,
S 30 in SW., and
S 19 in NW. quadrants;
1915 on S. rim.
No trees within limits.
Build a mound of stone 3 ft. base, $2\frac{1}{2}$ ft. high, W. of cor.
Land, rolling.
Soil, stony, 3rd rate.
Timber, scattering palo verde.
Undergrowth, greasewood and cacti.
At this cor., I set off $11^{\circ}47'S.$, on the decl. arc; and at apparent noon, observe the sun on the meridian. The resulting latitude is $32^{\circ}37' N.$
-
- 40.00 West, on a random line, bet. secs. 19 and 30.
Set temp. $\frac{1}{4}$ sec. cor.
- 80.02 Intersect W. bdy. of Tp., 2 lks. S. of cor. of secs. 19, 24, 25 and 30, established by me and described in Book "B."
Thence I run,
S. $89^{\circ}59'E.$ on a true line, bet. secs. 19 and 30.
Over gradual NW. slope.
- 12.00 Top of low ridge, extends N. and S., 7 chs. dist.; descend E. slope.
- 13.00 Road to Casa Grande, Ariz., brs. NW. and SE. (D. L. O.)
- 17.00 Wash, 25 lks. wide, 3 ft. deep, course NW
Ascend gradual NW. slope to
- 27.00 Over level mesa.
- 40.01 Set an iron post, 3 ft. long, 1 in. in diam., 12 ins. in the ground (could not set deeper on account of solid rock) in a mound of stone, 3 ft. base, $1\frac{1}{2}$ ft. high, for $\frac{1}{4}$ sec. cor. with brass cap, marked
S 19 on N., and
S 30 on S. half;
1915 on S. rim.
No trees within limits.
- 80.02 Build a mound of stone 3 ft. base, 2 ft. high N. of cor.
Cor. of secs. 19, 20, 29 and 30.
Land, rolling.
Soil, stony, 3rd rate.
Timber, scattering palo verde.
Undergrowth, greasewood and cacti.
-
- N. $0^{\circ}1'E.$, bet. secs. 19 and 20.
Over gently rolling land.
- 7.30 Wash, 25 lks. wide, 3 ft. deep, course SE.
- 26.30 Wash, 25 lks. wide, 5 ft. deep, course NW.
- 40.00 Set an iron post 3 ft. long, 1 in. in diam., 26 ins. in the ground for $\frac{1}{4}$ sec. cor., with brass cap, marked
S 19 on W., and
S 20 on E. half;
1915 on S. rim.
No trees within limits. Dig pits $18 \times 18 \times 12$ ins., N. and S. of cor. 3 ft. dist., and raise a mound of earth $3\frac{1}{2}$ ft. base, $1\frac{1}{2}$ ft. high, W. of cor.
- 55.00 Wash, 10 lks. wide, 6 ins. deep, course NW
- 80.00 Set an iron post, 3 ft. long, 2 ins. in diam., 24 ins. in the ground for cor. of secs. 17, 18, 19 & 20, with brass cap,

Partial subdivision of T.9 S., R.6 E.

Chains	marked, T 9 S R 6 E on N. half, S 17 in NE. S 20 in SE. S 19 in SW. and S 18 in NW. quadrants, 1915 on S. rim. No trees within limits. Build a mound of stone 3 ft. base 2 ft. high W. of cor. Land, rolling. Soil, stony 3rd rate. Timber, scattering palo verde. Undergrowth, greasewood brush, and cacti.
40.00	West, on a random line, bet. secs. 18 and 19. Set temp. $\frac{1}{4}$ sec. cor.
80.00	Intersect W. bdy. of tp. 6 lks. S. of cor. of secs. 13, 18 19 and 24 established by me and described in book "B"
40.00	Thence I run S 89° 57' E. on a true line bet. secs. 18 and 19. Over level land. Set, an iron post 3 ft. long 1 in. in diam. 26 ins. in the ground for $\frac{1}{4}$ sec. cor. with brass cap mkd. $\frac{1}{4}$ S 18 on N. and S 19 on S. half, 1915 on S. rim. No trees within limits. Dig pits 18 X 18 X 12 ins. E. and W. of cor. 3 ft. dist. and raise a mound of earth $3\frac{1}{2}$ ft. base $1\frac{1}{2}$ ft. high N. of cor.
80.00	Cor. of secs. 17, 18, 19 and 20. Land, level. Soil, stony 3rd rate. Timber, scattering palo verde. Undergrowth, greasewood brush, and cacti. Feb. 18, 1915.
5.00	Feb. 24, 1915, at 8 h., a.m. I set off, 32° 38' N. on the lat. arc; 9° 40' S. on the decl. arc; and determine a mer. with the solar, at the cor. of secs. 17, 18, 19 and 20.
10.00	Thence I run N. 0° 1' E. bet. secs. 17 and 18. Over level land.
25.00	Ascend gradual S. slope.
40.00	Top of low ridge brs. E. and W. Descend N. slope. Wash, 15 lks. wide, 1 ft. deep, course, N. 60° W. Set an iron post 3 ft. long 1 in. in diam. 26 ins. in the ground for $\frac{1}{4}$ sec. cor. with brass cap mkd. $\frac{1}{4}$ S 18 on W. and S 17 on E. half, 1915 on S. rim. No trees within limits. Dig pits 18 X 18 X 12 ins. N. and S. of cor. 3 ft. dist. and raise a mound of earth $3\frac{1}{2}$ ft. base $1\frac{1}{2}$ ft. high W. of cor.
48.30	Wash, 50 lks. wide, 5 ft. deep, course, W.
80.00	Set an iron post 3 ft. long 2 ins. in diam. 24 ins. in the ground for cor. of secs. 7, 8, 17 and 18, with brass cap mkd. T 9 S R 6 E on N. half, S 8 in NE. S 17 in SE. S 18 in SW. and, S 7 in NW. quadrants, 1915 on S. rim.

4. Subdivision of T. 9 S., R. 6 E.

Chains.

No trees within limits.
 Dig pits 18 X 18 X 12 ins. in each sec. $5\frac{1}{2}$ ft. dist. and
 raise a mound of earth 4 ft. base 2 ft. high W. of
 cor.
 Land, gently rolling.
 Soil, stony, 3rd rate.
 Timber, scattering palo verde.
 Undergrowth, greasewood brush and cacti.

West, on a random line, bet. secs. 7 and 18.

40.00 Set temp. $\frac{1}{4}$ sec. cor.
 80.00 Intersect W. bdy. of tp. 14 lks. S. of cor. of secs.
 7, 12, 13 and 18, established by me and described
 in book "B".
 Thence I run
 S $89^{\circ} 54'$ E. on a true line bet, secs. 7 and 18.
 Over level land.
 21.20 Road to Casa Grande, Arizona, brs. N. and S.
 40.00 Set an iron post 3 ft. long 1 in. in diam. 26 ins. in the
 ground for $\frac{1}{4}$ sec. cor. with brass cap mkd.
 $\frac{1}{4}$ S 7 on N. and
 S 18 on S. half, and
 1915 on S. rim.
 No trees within limits.
 Dig pits 18 X 18 X 12 ins. E. and W. of cor. 3 ft. dist.
 and raise a mound of earth $3\frac{1}{2}$ ft. base $1\frac{1}{2}$ ft. high
 W. of cor.
 54.20 Bend in wash, 50 lks. wide, 10 ft. deep, course, from
 SE. to NE.
 80.00 Cor. of secs. 7, 8, 17 and 18.
 Land, gently rolling.
 Soil, stony, 3rd rate.
 Timber, scattering palo verde.
 Undergrowth, greasewood brush and ocotillos.

N. $0^{\circ} 1'$ E. bet. secs. 7 and 8.

Over gently rolling land.
 10.00 Wash, 10 lks. wide, 1 ft. deep, course, N. 20° W.
 34.75 Wash, 10 lks. wide, 1 ft. deep, course, N. 20° W.
 40.00 Set an iron post 3 ft. long 1 in. in diam. 26 ins. in the
 ground for $\frac{1}{4}$ sec. cor. with brass cap mkd.
 $\frac{1}{4}$ S 7 on W. and
 S 8 on E. half, and
 1915 on S. rim.
 No trees within limits.
 Dig pits 18 X 18 X 12 ins. N. and S. of cor. 3 ft. dist.
 and raise a mound of earth $3\frac{1}{2}$ ft. base $1\frac{1}{2}$ ft. high
 W. of cor.
 52.00 Wash, 15 lks. wide, 1 ft. deep, course, NW.
 70.00 Wash, 15 lks. wide, 2 ft. deep, course, NW.
 80.00 Set an iron post 3 ft. long, 2 ins. in diam. 24 ins. in
 the ground for cor. of secs. 5, 6, 7 and 8 with brass
 cap mkd.
 T 9 S R. 6 E. on N. half,
 S 5 in NE.
 S 8 in SE.
 S 7 in SW. and
 S 6 in NW quadrants, and
 1915 on S. rim.

No trees within limits.

Dig pits 18 X 18 X 12 ins. in each sec. $5\frac{1}{2}$ ft. dist. and
 raise a mound of earth 4 ft. base 2 ft. high W. of cor.
 Land, gently rolling.
 Soil, stony 3rd rate.
 Timber, scattering palo verde.
 Undergrowth, greasewood brush and scattering mesquite.

Partial subdivision of T.9 S., R.6 E.

Chains
West, on a random line, bet. secs. 6 and 7.
40.00 Set temp. $\frac{1}{4}$ sec. cor.
80.00 Intersect W. bdy. of Tp. 12 lks. S. of cor. of secs.
1, 6, 7 and 12, reestablished by me, and described in Book B.
At this cor. I set off $90^{\circ} 37'$ S. on the decl. arc; and
at apparent noon observe the sun on the mer. The
resulting lat. is $32^{\circ} 39\frac{1}{2}'$ N.
Thence I run
S $89^{\circ} 55'$ E. on a true line bet. secs. 6 and 7.
Over level land.
19.75 Road, brs. N. and S.
35.00 Wash, 25 lks wide, 2 ft. deep, course, NW.
37.50 Wash, 25 lks. wide, 2 ft. deep, course, NW.
40.00 Set an iron post 3 ft. long 1 in. in diam. 26 ins. in the
ground for $\frac{1}{4}$ sec. cor. with brass cap mkd.
 $\frac{1}{4}$ S 6 on N. and
S 7 on S. half,
1915 on S. rim.
No trees within limits.
Dig pits 18 X 18 X 12 ins. E. and W. of cor. 3 ft. dist.
and raise a mound of earth 3 ft. base $1\frac{1}{2}$ ft. high
N. of cor.
41.00 Wash, 25 lks wide, 1 ft. deep, course, NW.
80.00 Cor. of secs. 5, 6, 7 and 8.
Land, level.
Soil, stony, 3rd rate.
Timber, scattering palo verde.
Undergrowth, greasewood brush and cacti.
Feb. 24, 1915.

Mar. 3, 1915, From cor. of secs. 5, 6, 7 and 8.
From this cor. a flag in sight at the cor. of secs. 5 and
6, on the N. bdy. of tp. brs. N. $0^{\circ} 1'$ E., Therefore I
run
N. $0^{\circ} 1'$ E. on a true line bet. secs. 5 and 6.
Over level land, through low greasewood brush.
40.00 Set an iron post 3 ft. long 1 in. in diam. 26 ins. in the
ground for $\frac{1}{4}$ sec. cor. with brass cap mkd.
 $\frac{1}{4}$ S 6 on W. and
S 5 on E. half,
1915 on S. rim.
Dig pits 18 X 18 X 12 ins. N. and S. of cor. 3 ft. dist.
and raise a mound of earth $3\frac{1}{2}$ ft. base $1\frac{1}{2}$ ft. high
W. of cor.
80.17 Cor. of secs. 5 & 6 on N. bdy. of Tp. established by me and described
in book "B". in notes of survey of S. bdy. of T.9 S., R. 5 E.
Land, level.
Soil, sandy loam, 1st rate.
No timber.
Undergrowth, greasewood brush.
Mar. 3, 1915.

Feb. 22, 1915, at 9 h., a.m. l.m.t., I set off $32^{\circ} 35\frac{1}{2}'$ N.
on the lat. arc; $10^{\circ} 23'$ S. on the decl. arc; and
determine a mer. with the solar, at the cor. of secs. 32
& 33 on S. bdy. of Tp. established by me and described in book "B".
Thence I run
N. $0^{\circ} 1'$ E. bet. secs. 32 and 33.
Over rolling land.
.20 Wash, 30 lks wide, 2 ft. deep, course, S. 70° W.
9.50 Bend in wash, 30 lks. wide, 2 ft. deep, course from
S. 70° W. to S. 70° E.
40.00 Set an iron post 3 ft. long, 1 in. in diam. 12 ins. in the
ground (could not set deeper on account of solid
rock) in a mound of stone, 3 ft. base $1\frac{1}{2}$ ft. high
for $\frac{1}{4}$ sec. cor. with brass cap mkd.
 $\frac{1}{4}$ S 32 on W. and
S 33 on E. half,
1915 on S. rim.

6.

Partial subdivision of T.9 S.R.6 E.

Chains

	<p>No trees within limits. Build a mound of stone $2\frac{1}{2}$ ft. base $2\frac{1}{2}$ ft. high W. of cor. Wash, 1 ch. wide, 5 ft. deep, course, W. Ascend over low round hill, 30 ft. high. Set an iron post 3 ft. long 2 ins. in diam. 6 ins. in the ground (could not set deeper on account of solid rock) in a mound of stone, 4 ft. base $2\frac{1}{2}$ ft. high for cor. of secs. 28, 29, 32 and 33, with brass cap mkd.</p> <p style="text-align: center;">T.9 S R 6 E. on N. half, S 28 in NE. S 33 in SE. S 32 in SW. and S 29 in NW. quadrants, 1915 on S. rim.</p> <p>No trees within limits. Build a mound of stone 3 ft. base $2\frac{1}{2}$ ft. high, W. of cor. Land, rolling. Soil, stony, 3rd rate. Timber, scrub palo verde. Undergrowth, cacti and ocotilles.</p>
40.00	West, on a random line bet. secs. 29 and 32.
80.03	Set temp. $\frac{1}{4}$ sec. cor. Intersect N. and S. line 3 lks. N. of cor. of secs. 29, 30 31 and 32. Thence I run N. $89^{\circ} 59'$ E. on a true line bet. secs. 29 and 32. Along S. slope of hill, over gently rolling land.
40.01 $\frac{1}{2}$	Set an iron post 3 ft. long, 1 in in diam. 6 ins. in the ground (could not set deeper on account of solid rock) in a mound of stone 3 ft. base 2 ft. high, for $\frac{1}{4}$ sec. cor. with brass cap mkd. $\frac{1}{4}$ S 29 on N. and S 32 on S. half, 1915 on S. rim.
60.00	No trees within limits.
72.00	Build a mound of stone, 3 ft. base $2\frac{1}{2}$ ft. high N. of cor.
80.03	Ascend gentle W. slope. Along S. slope of hill. Cor. of secs. 28, 29, 32 and 33. Land, rolling and broken. Soil, stony 3rd rate. Timber, scrub palo verde. Undergrowth, Greasewood brush, ocotilla and cacti.
8.00	N. $0^{\circ} 1'$ E. bet. secs. 28 and 29.
13.00	Ascend S. slope of round hill about 30 ft. high, to Top of hill. Thence over level top to
31.30	Descend over gradual N. slope to Wash, 75 lks. wide, 10 ft. deep, course, N. 80° W. Ascend S. slope of low ridge.
40.00	Set an iron post 3 ft. long 1 in in diam. 6 ins. in the ground (could not set deeper on account of solid rock) in a mound of stone 3 ft. base $2\frac{1}{2}$ ft. high, for $\frac{1}{4}$ sec. cor. with brass cap mkd. $\frac{1}{4}$ S 29 on W. and S 28 on E. half, 1915 on S. rim.
47.00	No trees within limits. Build a mound of stone, $2\frac{1}{2}$ ft. base 2 ft. high W. of cor. At this cor. I set off $10^{\circ} 21'$ S. on the decl. arc. and at apparent noon observe the sun on the mer. The resulting lat. is $32^{\circ} 37'$ N.
77.00	Top of low ridge, 50 ft. high brs. E. and W. Descend over broken N. slope. Wash, 25 lks. wide, 3 ft. deep, course, W.

Partial subdivision of T.9 S., R.6 E.

7.

Chains
80.00

Set an iron post 3 ft. long 2 ins. in diam. $1\frac{1}{2}$ ft. in the ground (could not set deeper on account of solid rock) in a mound of stone $2\frac{1}{2}$ ft. base 1 ft. high for cor. of secs. 20, 21, 28 and 29 with brass cap mkd.

T 9 S R 6 E on N. half,

S 21 in NE.

S 28 in SE.

S 29 in SW. and

S 20 in NW. quadrants,

1915 on S. rim.

No trees within limits.

Dig pits 18 X 18 X 12 ins. in each sec. $5\frac{1}{2}$ ft. dist. and raise a mound of earth 4 ft. base 2 ft. high W. of of cor.

Land, rolling.

Soil, stony, 3rd rate.

Timber, scattering scrub palo verde.

Undergrowth, greasewood brush, ocotillos and cacti.

40.00

West, on a random line, bet. secs. 20 and 29.

80.04

Set temp. $\frac{1}{4}$ sec. cor.

Intersect N. and S. line, 3 lks. N. of cor. of secs. 19, 20, 29 and 30.

Thence I run

N. $89^{\circ} 59'$ E., on a true line, bet. secs. 20 and 29.

Over rolling land.

40.02

Set an iron post 3 ft. long 1 in. in diam. 6 ins. in the ground (could not set deeper on account of solid rock) in a mound of stone, 3 ft. base $2\frac{1}{2}$ ft. high, for $\frac{1}{4}$ sec. cor. with brass cap mkd.

$\frac{1}{4}$ S 20 on N. and

S 29 on S. half,

1915 on S. rim.

No trees within limits. Pits impracticable.

43.00

Build a mound of stone $2\frac{1}{2}$ ft. base 2 ft. high N. of cor. Bend in wash, 50 lks. wide, 3 ft. deep, course, from SE. to SW.

52.50

Bend in wash, 25 lks. wide, 3 ft. deep, course, SE. to SW.

80.04

Cor. of secs. 20, 21, 28 and 29.

Land, rolling.

Soil, stony, 3rd rate.

Timber, scattering palo verde.

Undergrowth, greasewood brush, ocotillos and cacti.

8.50

N. $0^{\circ} 1'$ E. bet. secs. 20 and 21.

Over low rolling hills.

40.00

Wash, 25 lks. wide, 5 ft. deep, course, SW.

Set an iron post 3 ft. long 1 in. in diam. 22 ins. in the ground (could not set deeper on account of solid stone) in a mound of stone, 3 ft. base $1\frac{1}{2}$ ft. high for $\frac{1}{4}$ sec. cor. with brass cap mkd.

$\frac{1}{4}$ S 20 on W. and

S 21 on E. half,

1915 on S. rim.

No trees within limits. Pits impracticable.

61.00

Build a mound of stone, $2\frac{1}{2}$ ft. base 2 ft. high W. of cor.

80.00

Wash, 50 lks. wide, 3 ft. deep, course SW.

Set an iron post 3 ft. long 2 ins. in diam. 20 ins. in the ground (could not set deeper on account of solid rock) in a mound of stone, $2\frac{1}{2}$ ft. base 1 ft. high, for cor. of secs. 16, 17, 20 and 21, with brass cap mkd.

T 9 S R 6 E on N. half,

S 16 in NE.

S 21 in SE.

S 20 in SW. and

S 17 in NW. quadrants,

1915 on S. rim.

8.

Partial subdivision of T.9 S., R.6 E.

Chains

No trees within limits. Pits impracticable.
Dig pits 18 X 18, 12 ins. in each sec. $5\frac{1}{2}$ ft. dist. and
raise a mound of earth 4. ft. base 2 ft. high
W. of cor.

Land, rolling.

Soil, stony 3rd rate.

Timber, scattering scrub palo verde.

Undergrowth, greasewood, ocotillas and cacti.

West, on a random line, bet. secs. 17 and 20.

40.00 Set temp. $\frac{1}{4}$ sec. cor.80.02 Intersect N. and S. line 3 lks. S. of cor. of secs.
17, 18, 19 and 20.

Thence I run

S. $89^{\circ} 59'$ E. on a true line bet. secs. 17 and 20.

Over rolling land.

40.01 True point for $\frac{1}{4}$ sec. cor. falls in wash, 10 lks. wide,
2 ft. deep, course, SW. therefore at39.26 Set an iron post 3 ft. long 1 in. in diam., 1 ft. in the
ground (could not set deeper on account of solid
rock) in a mound of stone, $2\frac{1}{2}$ ft. base 20 ins. high
for witness cor. to $\frac{1}{4}$ sec. cor., with brass cap, marked

WC $\frac{1}{4}$ S 17 on N. and
S 20 on S. half,
1915 on S. rim.

No trees within limits. Pits impracticable.

80.02 Build a mound of stone, $2\frac{1}{2}$ ft. base 2 ft. high N. of cor.
Cor. of secs. 16, 17, 20 and 21.

Land, rolling.

Soil stony, 3rd rate.

Timber, scattering palo verde.

Undergrowth, greasewood brush, ocotilla and cacti.

Feb. 22, 1915.

Feb. 24, 1915.

N. $0^{\circ} 1'$ E. bet. secs. 16 and 17.

Over rolling land.

10.00 Wash, 25 lks. wide, 2 ft. deep, course, NW. Ascend to

15.00 Top of low hill 30 ft. high, brs. E. and W. Descend N.
slope to20.00 Wash, 20 lks. wide, 1 ft. deep, course, NW. Ascend S.
slope, to

26.00 Top of low hill, 70 ft. high, Descend N. slope.

40.00 Set an iron post 3 ft. long 1 in. in diam. 12 ins. in the
ground (could not set deeper on account of solid
rock) in a mound of stone 2 ft. base $1\frac{1}{2}$ ft. high,
for $\frac{1}{4}$ sec. cor. with brass cap mkd.

$\frac{1}{4}$ S 17 on W. and
S 16 on E. half,
1915 on S. rim.

No trees within limits. Pits impracticable.

Build a mound of stone, $2\frac{1}{2}$ ft. base 2 ft. high W. of
cor.

42.00 Wash, 20 lks. wide, 2 ft. deep, course W.

57.80 Wash, 25 lks. wide, 3 ft. deep, course, W.

Ascend gradual W. slope.

65.00 Wash, 25 lks. wide, 3 ft. deep, course W.

80.00 Set an iron post 3 ft. long 2 ins. in diam. $1\frac{1}{2}$ ft. in the
ground (could not set deeper on account of solid
rock) in a mound of stone, 3 ft. base $1\frac{1}{2}$ ft. high
for cor. of secs. 8, 9, 16 and 17, with brass cap mkd.

T. 9 S. R. 6 E. on N. half,
S 9 in NE.
S 16 in SE.
S 17 in SW. and
S 8 in NW. quadrants,
1915 on S. rim.

Partial subdivision of T.9 S., R.6 E.

9.

Chains

No trees within limits. Pits impracticable.
Build a mound of stone, $3\frac{1}{2}$ ft. base $2\frac{1}{2}$ ft. high W. of cor.
Land, rolling.
Soil stony, 3rd rate.
Timber, scattering palo verde.
Undergrowth, greasewood and cacti.

West, on a random line, bet. secs. 8 and 17.
40.00 Set temp. $\frac{1}{4}$ sec. cor.
80.00 Intersect N. and S. line, at cor. of secs. 7, 8, 17 and 18.
Thence I run, East, on a true line, bet. secs. 8 and 17. Over rolling land.
5.25 Wash, 25 lks. wide, 5 ft. deep, course, NW.
Ascend SW. slope.
10.00 Top of spur, 52 ft. high, brs. NE. and SW.
Descend SE. slope.
35.00 Wash, 25 lks. wide, 3 ft. deep, course, N. 20° W.
40.00 Set an iron post 3 ft. long, 1 in. in diam. 26 ins. in the
ground for $\frac{1}{4}$ sec. cor. with brass cap mkd.
 $\frac{1}{4}$ S 8 on N. and
S 17 on S. half,
1915 on S rim.

No trees within limits.
Dig pits 18 X 18 X 12 ins. E. and W. of cor. 3 ft. dist.
and raise a mound of earth $3\frac{1}{2}$ ft. base $1\frac{1}{2}$ ft. high
N. of cor.
75.00 Wash, 25 lks. wide, 2 ft. deep, course, N. 80° W.
80.00 Cor. of secs. 8, 9, 16 and 17.
Land, rolling.
Soil, stony 3rd rate.
Timber, scattering palo verde.
Undergrowth, greasewood and cacti.

N. 0° 1' E. bet. secs. 8 and 9.
Over rolling land.
38.00 Change to level land.
40.00 Set an iron post 3 ft. long 1 in. in diam. 26 ins. in the
ground for $\frac{1}{4}$ sec. cor. with brass cap mkd.
 $\frac{1}{4}$ S 8 on W. and
S 9 on E half,
1915 on S. rim.

No trees within limits.
Dig pits 18 X 18 X 12 ins. N. and S. of cor. 3 ft. dist.
and raise a mound of earth $3\frac{1}{2}$ ft. base $1\frac{1}{2}$ ft. high
W. of cor.
80.00 Set an iron post 3 ft. long, 2 ins. in diam. 24 ins. in
the ground for cor. of secs. 4, 5, 8 and 9, with
brass cap mkd.
T 9 S R 6 E on N. half,
S 4 in NE
S 9 in SE.
S 8 in SW. and
S 5 in NW. quadrants,
1915 on S. rim.

No trees within limits.
Dig pits 18 X 18 X 12 ins. in each sec. $5\frac{1}{2}$ ft. dist. and
raise a mound of earth 4 ft. base 2 ft. high
W. of cor.
Land level and rolling.
Soil stony and sandy, 3rd and 2nd rates.
Timber, scattering palo verde.
Undergrowth, ocatillas and cacti.

10. Partial Subdivision of T.9 S., R.6 E.

Chains

West, on a random line, bet. secs. 5 and 8.
40.00 Set temp. $\frac{1}{4}$ sec. cor.
80.02 Intersect N. and S. line at cor. of secs. 5, 6, 7 and 8.
Thence I run
East, on a true line, bet. secs. 5 and 8.
Over level land.
40.01 Set an iron post 3 ft. long 1 in. in diam. 26 ins. in the
ground for $\frac{1}{4}$ sec. cor. with brass cap mkd.
 $\frac{1}{4}$ S 5 on N. and
S 8 on S. half,
1915 on S. rim.
Dig pits 18 X 18 X 12 ins. E. and W. of cor. 3 ft. dist,
and raise a mound of earth $3\frac{1}{2}$ ft. base $1\frac{1}{2}$ ft. high
N. of cor.
80.02 Cor. of secs. 4, 5, 8 and 9.
Land, level.
Soil, sandy loam, 1st rate.
No timber.
Undergrowth, greasewood brush.

Feb. 24, 1915.

Mar. 1, 1915.
N. $0^{\circ} 1'$ E. on a true line, bet. secs. 4 and 5.
Over level land.
40.00 Set an iron post 3 ft. long 1 in. in diam. 26 ins. in the
ground for $\frac{1}{4}$ sec. cor. with brass cap mkd.
 $\frac{1}{4}$ S 5 on W. and
S 4 on E. half,
1915 on S. rim.
Dig pits 18 X 18 X 12 ins. N. and S. of cor. 3 ft. dist.
and raise a mound of earth $3\frac{1}{2}$ ft. base $1\frac{1}{2}$ ft. high
W. of cor.
50.30 Intersect S. bdy. of T.8 S., R.6 E., 2.33 chs. S. $89^{\circ} 58'$ W. of
the reestablished cor. of secs. 31 and 32, described
in book "B". At point of intersection I set an iron post
Set an iron post 3 ft. long 2 ins. in diam. 24 ins. in
the ground for closing cor. of secs. 4 and 5, with brass cap
mkd.
C C S. of center.
S 4 in SE. and
S 5 in SW. quadrants,
T 9 S R 6 E on S. half,
1915 on S. rim.
Dig pits 24 X 18 X 12 ins. crosswise on each line, E.,
and W. 3 ft., and S. of cor. 7 ft. dist. and raise a
mound of earth 4 ft. base 2 ft. high S. of cor.
Land, level.
Soil, sandy loam, 1st rate.
Timber, none.
Undergrowth, greasewood brush.

Mar. 1, 1915.

Feb. 23, 1915, at 8 h., a.m. 1 m.t., I set off $32^{\circ} 36\frac{1}{2}'$ N.
on the lat. arc: $10^{\circ} 2'$ S. on the decl. arc; and
determine a mer. with the solar at the cor. of secs.
28, 29, 32 and 33.
Thence I run
East, on a true line bet. secs. 28 and 33.
Over rolling land.
5.00 Wash, 20 lks. wide, 2 ft. deep, course, S. 20° W.
40.00 Set an iron post 3 ft. long 1 in. in diam. 8 ins. in the
ground (could not set deeper on account of solid
rock) in a mound of stone, 3 ft. base 2 ft. high
for $\frac{1}{4}$ sec. cor. with brass cap mkd.
 $\frac{1}{4}$ S 28 on N. and
S 33 on S. half,
1915 on S. rim.
No trees within limits. Pits impracticable.

Partial subdivision of T.9 S., R.6 E.

11.

chains	
	Build a mound of stone, 2½ ft. base 2 ft. high, N. of cor. Ascend NW. slope.
50.00	Top of low ridge, 50 ft. high brs. NE. and SW.
	Descend 30 ft. to
64.90	Wash, 20 lks. wide, 3 ft. deep, course, NW.
	Ascend gradual SW. slope of rocky mountain.
74.50	Change to steep, rocky SW. slope, ascend 180 ft to
80.00	Set an iron post 3 ft. long 2 ins. in diam. 1 ft. in the ground (could not set deeper on account of solid rock) in a mound of stone, 3 ft. base 1½ ft. high for cor. of secs. 27, 28, 33 and 34, with brass cap mkd.
	T 9 S R 6 E on N. half; S 27 in NE. S 34 in SE. S 33 in SW. and S 28 in NW. quadrants, 1915 on S. rim.
	No trees within limits. Pits impracticable.
	Build a mound of stone 2½ ft. base 2 ft. high W. of cor, Land, mountainous.
	Soil stony, 4th rate.
	Timber scattering scrub palo verde.
	Undergrowth, scattering greasewood brush and cacti.
	N. 0° 2' E. bet. secs. 27 and 28.
	Over rough rocky SW. slope.
13.00	Top of spur ridge, slopes to the W. brs. E. and W., 125 ft. above sec. cor.
	Descend over broken NW. slope, 223 ft. to
26.00	Foot of descent.
	Thence over rolling land to
31.00	Ascend SW. slope, 65 ft, to
36.50	Spur ridge, slopes W.
	Descend NW. slope, to
38.00	Change to W. slope.
40.00	Set an iron post, 3 ft. long, 1 in. in diam. 6 ins. in the ground (could not set deeper on account of solid rock) in a mound of stone 3 ft. base 2 ft. high, for ¼ sec. cor. with brass cap mkd.
	¼ S 28 on W., and S 27 on E. half, 1915 on S rim.
	No trees within limits. Pits impracticable.
45.00	Build a mound of stone, 3 ft. base 2½ ft. high W. of cor. Foot of descent; wash, 50 lks. wide, 6 ft. deep, course SW., 52 ft. below ¼ sec. cor.
	Ascend steep SE. slope of mountain, 258 ft. to
62.10	Top of spur ridge, slopes to NE.
	Descend over rough broken NE. slope, 262 ft. to
79.55	Foot of descent.
80.00	Set an iron post 3 ft. long 2 ins. in diam. 8 ins. in the ground (could not set deeper on account of solid rock) in a mound of stone, 3 ft. base 2 ft. high, for cor. of secs. 21, 22, 27 and 28, with brass cap mkd.
	T 9 S R 6 E on N. half; S 22 in NE. S 27 in SE. S 28 in SW. and S 21 in NW. quadrants, 1915 on S. rim.
	No trees within limits. Pits impracticable.
	Build a mound of stone, 3 ft. base 2½ ft. high, W. of cor. Land, mountainous, rough and broken.
	Soil, stony, 4th rate.
	Timber scattering scrub palo verde.
	Undergrowth, cacti.

12.

Partial subdivision of T.9 S. R.6 E.

Chains

	West, on random line bet. secs. 21 and 28.
40.00	Set temp. $\frac{1}{4}$ sec. cor.
79.98	Intersect N. and S. line 2 lks. N. of cor. of secs. 20, 21, 28 and 29.
	Thence I run
	N. $89^{\circ} 59'$ E. on a true line bet. secs. 21 and 28.
	Over rough broken stony ground.
39.99	Set an iron post 3 ft. long 1 in. in diam. 12 ins. in the ground (could not set deeper on account of solid rock) in a mound of stone 3 ft. base 2 ft. high, for $\frac{1}{4}$ sec. cor. with brass cap mkd.
	$\frac{1}{4}$ S 21 on N. and
	S 28 on S. half,
	1915 on S. rim.
	No trees within limits. Pits impracticable.
	Build a mound of stone $2\frac{1}{2}$ ft. base 2 ft. high N. of cor.
45.00	Ascend NW. slope, 115 ft. to
70.00	Top of knoll. Descend N. slope of knoll 50 ft. to
79.98	Cor. of secs. 21, 22, 27 and 28.
	Land rolling and broken.
	Soil, stony 4th rate.
	Timber scattering palo verde, and iron wood.
	Undergrowth, ocotillas and cacti.
	N. $0^{\circ} 2'$ E. bet. secs. 21 and 22.
	Over gradual broken NW. slope.
24.75	Wash, 50 lks. wide, 5 ft. deep, course, N. 20° W.
40.00	True point for $\frac{1}{4}$ sec. cor. falls in wash, 20 lks. wide, 1 ft. deep, course, NW., therefore at
40.80	Set an iron post 3 ft. long 1 in. in diam. 6 ins. in the ground for witness cor. to $\frac{1}{4}$ sec. cor. (could not set deeper on account of solid rock) in a mound of stone 3 ft. base, $2\frac{1}{2}$ ft. high, with brass cap, marked
	W C $\frac{1}{4}$ S 21 on W. and
	S 22 on E. half,
	1915 on S. rim.
	No trees within limits. Pits impracticable.
	Build a mound of stone 3 ft. base $2\frac{1}{2}$ ft. high W. of cor.
80.00	Set an iron post 3 ft. long 2 ins. in diam. 8 ins. in the ground, to solid rock, in a mound of stone, $3\frac{1}{2}$ ft. base 2 ft. high, for cor. of secs. 15, 16, 21 and 22 with brass cap mkd.
	T 9 S R 6 E on N. half;
	S 15 in NE.
	S 22 in SE.
	S 21 in SW. and
	S 16 in NW. quadrants, and
	1915 on S. rim.
	No trees within limits. Pits impracticable.
	Build a mound of stone, $3\frac{1}{2}$ ft. base $2\frac{1}{2}$ ft. high W. of cor.
	Land rolling and broken.
	Soil, stony 4th rate.
	Timber, scattering palo verde and iron wood.
	Undergrowth, ocotillas and cacti.
	West, on random line bet. secs. 16 and 21.
40.00	Set temp. $\frac{1}{4}$ sec. cor.
80.03	Intersect N. and S. line 9 lks. S. of cor. of secs. 16, 17, 20 and 21.
	Thence I run
	S $89^{\circ} 56'$ E. on a true line bet. secs. 16 and 21.
	Over rough rolling land.
40.01 $\frac{1}{2}$	Set an iron post 3 ft. long, 1 in. in diam. $1\frac{1}{2}$ ft. in the ground, to solid rock, in a mound of stone 3 ft. base $1\frac{1}{2}$ ft. high, for $\frac{1}{4}$ sec. cor. with brass cap mkd.
	$\frac{1}{4}$ S. 16 on N. and
	S 21 on S. half,
	1915 on S. rim.

Partial subdivision of T.9 S.R.6 E.

13.

Chains.

No trees within limits. Pits impracticable.
 Build a mound of stone 3 ft. base 2½ ft. high N. of cor.
 57.00 Low ridge, 30 ft. high, brs. N. and S.
 Descend over E. slope.
 63.00 Wash, 15 lks. wide, 2 ft. deep, course, NW.
 Thence over rolling land.
 80.03 Cor. of secs. 15, 16, 21 and 22.
 Land, rolling and broken.
 Soil, stony 4th rate.
 Timber, scattering palo verde and mesquite.
 Undergrowth, ocatillas and cacti with scattering
 greasewood brush.

Feb. 23, 1915.

Feb. 26, 1915.
 N. 0° 2' E. bet. secs. 15 and 16.
 Over broken stony ground.
 27.00 Ascend stony S. slope, 30 ft. to
 32.00 Foot of cliff brs. E. and W.
 33.00 Top of cliff, 125 ft. high.
 34.50 Descend 100 ft. into saddle bet. cliffs.
 35.50 Ascend 100 ft. from saddle, to second cliff, brs. E. and W
 36.00 Descend over NW. slope, 125 ft.
 40.00 True point for ¼ sec. cor. falls on ledge of rock, there-
 fore at
 40.55 Set an iron post 3 ft long 1 in. in diam. 12 ins. in the
 ground, to solid rock, in a mound of stone, 3½ ft.
 base, 2 ft. high, for witness cor. to ¼ sec. cor. with brass cap
 mkd.

W.C. on S. half;
 ¼ S 16 on W., and
 S 15 on E. half,
 1915 on S. rim.

No trees within limits. Pits impracticable.
 Build a mound of stone, 3½ ft. base 2 ft. high W. of cor.
 Ascend S. slope, 80 ft. to
 51.30 Spur ridge, slopes SE.
 Descend N. slope, 234 ft. to
 76.30 Ft. of mountains. Thence over rolling land.
 80.00 Set an iron post, 3 ft. long, 2 ins. in diam. 10 ins. in
 the ground to solid rock, in a mound of stone, 3½ ft.
 base, 2 ft. high, for cor. of secs. 9, 10, 15 and 16,
 with brass cap mkd.

T 9 S R 6 E on N. half;
 S 10 in NE.
 S 15 in SE.
 S 16 in SW. and
 S 9 in NW. quadrants,
 1915 on S. rim.

No trees within limits. Pits impracticable.
 Build a mound of stone, 3½ ft. base 2 ft. high W. of cor.
 Land, mountainous.
 Soil, stony, 4th rate.
 Timber, scattering palo verde and iron wood.
 Undergrowth, ocatillas and cacti.

Feb. 26, 1915.

Mar. 1, 1915, at 9 h. a.m. I set off 32° 39' N.
 on the lat. arc; 7° 47' S. on the decl. arc and deter-
 mine a mer. with the solar at the cor. of secs.
 8, 9, 16 and 17.
 Thence I run East, on random line bet. secs. 9 and 16.
 40.00 Set temp. ¼ sec. cor.
 80.02 Intersect N. and S. line at cor. of secs. 9, 10, 15 and
 16.
 Thence I run
 West, on true line bet. secs. 9 and 16.
 Ascend NE. slope 150 ft. to
 19.00 Top of spur slopes to N.

14.

Partial subdivision of T.9 S., R.6 E.

Chains

	Descend steep NW. slope, 150 ft. to
23.00	Change to gradual NW. slope.
25.00	Change to level land.
32.60	Wash, 25 lks. wide, 3 ft. deep, course, N.
40.01	Set an iron post 3 ft. long 1 in. in diam. 26 ins. in the ground for $\frac{1}{4}$ sec. cor. with brass cap mdkd $\frac{1}{4}$ S 9 on N., and S 16 on S. half, 1915 on S. rim.
	No trees within limits.
	Dig pits 18 X 18 X 12 ins. E. and W. of cor. 3 ft. dist. and raise a mound of earth $3\frac{1}{2}$ ft. base $1\frac{1}{2}$ ft. high N. of cor.
	Ascend over NE. slope, 75 ft. to
60.00	Top of spur, slopes N.
	Descend W. slope, 35 ft. to
66.50	Wash, 25 lks. wide, 3 ft. deep, course, N.
	Ascend NE. slope, 97 ft. to
76.00	Top of spur hrs. NE. and SW., and slopes to N.
	Descend NW. slope of hill, 75 ft. to
80.02	Cor. of secs. 8, 9, 16 and 17.
	Land, mountainous.
	Soil, stony, 4th rate.
	Timber, scattering palo verde and iron wood.
	Undergrowth, ocatillas and cacti.
	From cor. of secs. 9, 10, 15 and 16, I run, N. $0^{\circ} 2'$ E. bet. secs. 9 and 10.
	Over rolling land.
31.40	Wash, 25 lks. wide, 3 ft. deep, course, NE.
40.00	Set an iron post 3 ft. long, 1 in. in diam. 26 ins. in the ground for $\frac{1}{4}$ sec. cor. with brass cap mdkd. $\frac{1}{4}$ S 9 on W., and S 10 on E. half, 1915 on S. rim.
	No trees within limits.
	Dig pits 18 X 18 X 12 ins. N. and S. of cor. 3 ft. dist. and raise a mound of earth $3\frac{1}{2}$ ft. base $1\frac{1}{2}$ ft. high W. of cor.
51.30	Wash, 20 lks. wide, 1 ft. deep. course, NE.
80.00	Set an iron post 3 ft long 2 ins. in diam. 24 ins. in the ground for cor. of secs. 3, 4, 9 and 10, with brass cap mdkd. T 9 S R. 6 E on N. half; S 3 in NE. S 10 in SE. S 9 in SW. and S 4 in NW. quadrants, 1915 on S. rim.
	No trees within limits.
	Dig pits 18 X 18 X 12 ins. in each sec. $5\frac{1}{2}$ ft. dist. and raise a mound of earth, 4 ft. base 2 ft. high W. of cor.
	Land, rolling.
	Soil, stony, 3rd rate.
	Timber, scattering palo verde.
	Undergrowth, greasewood.
	West, on random line bet. secs. 4 and 9.
40.00	Set temp. $\frac{1}{4}$ sec. cor.
80.00	Intersect N. and S. line 6 lks. N. of cor. of secs. 4, 5, 8 and 9.
	Thence I run N. $89^{\circ} 57'$ E. on a true line bet. secs. 4 and 9.
	Over level land.
21.00	Wash, 70 lks wide, 2 ft. deep, course, N. 20° E.
40.00	Set an iron post 3 ft. long 1 in. in diam. 26 ins. in the ground for $\frac{1}{4}$ sec. cor. with brass cap mki. $\frac{1}{4}$ S 4 on N., and S 9 on S. half, 1915 on S. rim.

Chains.

Dig pits 18x18x12 ins., E. and W. of cor. 3 ft. dist., and raise a mound of earth $3\frac{1}{2}$ ft. base, $1\frac{1}{2}$ ft. high, N. of cor.
56.00 Wash, 25 lks. wide, 2 ft. deep, course NE.
72.25 Wash, 10 lks. wide, 2 ft. deep, course NE.
78.25 Wash, 20 lks. wide, 1 ft. deep, course N. 20° E.
80.00 Cor. of secs. 3, 4, 9 and 10.
Soil, sandy loam, 2nd rate. Land level.
Timber, scattering palo verde.
Undergrowth, greasewood brush.
At this cor., I set off $7^{\circ}45'$ S. on the decl. arc; and at apparent noon, observe the sun on the meridian; the resulting lat. is $32^{\circ}40'$ N.

N. $0^{\circ}2'$ E., on a true line, bet. secs. 3 and 4.
Over level land, through scattering undergrowth.
12.50 Wash, 25 lks. wide, 1 ft. deep, course NE.
40.00 Set an iron post 3 ft. long, 1 in. in diam., 26 ins. in the ground for $\frac{1}{4}$ sec. cor., with brass cap, marked
 $\frac{1}{4}$ S 4 on W., and
S 3 on E. half;
1915 on S. rim.
Dig pits 18x18x12 ins., N. and S. of cor., 3 ft. dist., and raise a mound of earth $3\frac{1}{2}$ ft. base, $1\frac{1}{2}$ ft. high, W. of cor.
50.13 Intersect S. bdy. of T. 8 S., R. 6 E., 2.54 chs. S. $89^{\circ}41'$ W. of reestablished cor. of secs. 32 and 33, described in Book "B."
At point of intersection, I
Set an iron post 3 ft. long, 2 ins. in diam., 24 ins. in the ground for closing cor. of secs. 3 and 4, with brass cap, marked
C C S. of center,
S 3 in SE., and
S 4 in SW. quadrants;
T 9 S R 6 E on S. half;
1915 on S. rim.
Dig pits 24x18x12 ins., crosswise on each line, E. and W. 3 ft., and S. of cor. 7 ft. dist., and raise a mound of earth, 4 ft. base, 2 ft. high, S. of cor.
Land, level.
Soil, sandy loam, 1st rate.
No timber.
Undergrowth, greasewood and scattering mesquite.
Mar. 1, 1915.

Feb. 27, 1915: At 9h. a.m., l.m.t., I set off $32^{\circ}35\frac{1}{2}'$ N. on the lat. arc; $8^{\circ}33'$ S. on the decl. arc, and determine a meridian with the solar at the cor. of secs. 34 and 35, on S. bdy. of Tp., established by me, and described in Book "B."
Thence I run,
N. $0^{\circ}2'$ E., bet. secs. 34 and 35, over gentle SE. slope.
36.00 Wash, 75 lks. wide, 10 ft. deep, course SE.
40.00 Set an iron post 3 ft. long, 1 in. in diam., 26 ins. in the ground for $\frac{1}{4}$ sec. cor., with brass cap, marked
 $\frac{1}{4}$ S 34 on W., and
S 35 on E. half;
1915 on S. rim.
Dig pits 18x18x12 ins., N. and S. of cor., 3 ft. dist., and raise a mound of earth $3\frac{1}{2}$ ft. base, $1\frac{1}{2}$ ft. high, W. of cor.
43.40 Wash, 75 lks. wide, 6 ft. deep, course S. 30° E.
56.00 Wash, 25 lks. wide, 3 ft. deep, course S. 30° E.
59.40 Wash, 75 lks. wide, 15 ft. deep, course S. 45° E.
74.10 Wash, 25 lks. wide, 2 ft. deep, course E.
Change to steeper SE. slope of mountain.
80.00 Set an iron post, 3 ft. long, 2 ins. in diam., 24 ins. in the ground for cor. of secs. 26, 27, 34 and 35, with brass cap, marked
T 9 S R 6 E on N. half;

16 Partial Subdivision of Township 9 South Range 6 East

Chains.

S 26 in NE.,
S 35 in SE.,
S 34 in SW., and
S 27 in NW. quadrants;
1915 on S. rim.

Build a mound of stone $2\frac{1}{2}$ ft. base, 2 ft. high, W. of cor.
Land, rolling.
Soil, stony, 3rd rate. Timber, scattering palo verde.
Undergrowth, greasewood brush and cacti.

East, on a random line, bet. secs. 26 and 35.

40.00 Set temp. $\frac{1}{4}$ sec. cor.

80.05 Intersect N. and S. line, 8 lks. S. of cor. of secs. 25, 26, 35 & 36.
Thence I run,

S. $89^{\circ}57'W.$ on a true line, bet. secs. 26 and 35.

Ascend steep E. slope, 145 ft. to

5.50 Rocky spur, slopes S. Descend W. slope, 15 ft. to

11.58 Saddle between rocky ridges. Ascend E. slope, 134 ft. to

13.15 Spur, slopes S. Descend W. slope to

14.50 Ascend E. slope to

16.75 Spur slopes S. Descend rocky SW. slope, 117 ft. to

38.55 Wash, 25 lks. wide, 4 ft. deep, course S.

40.02 Set an iron post 3 ft. long, 1 in. in diam., 26 ins. in
the ground for $\frac{1}{4}$ sec. cor., with brass cap, marked

$\frac{1}{4}$ S 26 on N., and

S 35 on S. half;

1915 on S. rim.

Dig pits 18x18x12 ins., E. and W. of cor., 3 ft. dist., and
raise a mound of earth, $3\frac{1}{2}$ ft. base, $1\frac{1}{2}$ ft. high, N. of
cor.

55.95 Wash, 25 lks. wide, 3 ft. deep, course SE.

60.05 Wash, 20 lks. wide, 2 ft. deep, course S.

61.55 Wash, 25 lks. wide, 2 ft. deep, course SE.

67.05 Wash, 50 lks. wide, 4 ft. deep, course SE.

Ascend SE. slope, 50 ft. to

80.05 Cor. of secs. 26, 27, 34 and 35.

Land, hilly and mountainous.

Soil, gravelly and stony, 3rd and 4th rate.

Timber, scattering palo verde.

Undergrowth, greasewood brush.

Feb. 27, 1915.

Feb. 26, 1915: At 9h. a.m., l.m.t., I set off $32^{\circ}38'N.$ on the
lat. arc; $8^{\circ}55'S.$ on the decl. arc, and determine a meridian
with the solar at the cor. of secs. 15, 16, 21 and 22.

Thence I run,

East, on a random line, bet. secs. 15 and 22.

40.00 Set temp. $\frac{1}{4}$ sec. cor.

79.90 Intersect N. and S. line, 37 lks. S. of cor. of secs. 14, 15, 22
and 23. Thence I run,

S. $89^{\circ}44'W.$ on a true line, bet. secs. 15 and 22.

Over mountainous land. Ascend steep E. slope, 218 ft. to

13.00 Top of spur, slopes S. Descend SW. slope, 100 ft. to

19.90 Wash, 50 lks. wide, 2 ft. deep, course SW. Change to S.
slope.

39.95 Set an iron post, 3 ft. long, 1 in. in diam., 12 ins. in
the ground to bedrock in a mound of stone, 3 ft. base,
2 ft. high, for $\frac{1}{4}$ sec. cor., with brass cap, marked

$\frac{1}{4}$ S 15 on N., and

S 22 on S. half;

1915 on S. rim.

Build a mound of stone, 3 ft. base, 2 ft. high, N. of cor.

Ascend SE. slope, 23 ft. to

43.10 Top of spur, slopes SW. Descend broken W. slope, 137 ft. to

57.20 Wash, 25 lks. wide, 3 ft. deep, course S. Ascend SE. slope,
30 ft. to

63.60 Low ridge, brs. NE. and SW. Descend SW. slope, 30 ft. to

68.60 Wash, 25 lks. wide, 2 ft. deep, course SE.

Thence over gradual E. slope to

78.60 Small rocky ridge, 15 ft. high, brs. N. and S.

Descend gradual W. slope.

79.90 Cor. of secs. 15, 16, 21 and 22.

Partial Subdivision of Township 9 South, Range 6 East. 17.

Chains

Land, mountainous. Soil, stony 4th rate.
Timber, scrub palo verde. Undergrowth, ocotillos and cacti.
At this cor. I set off 8°52' S. on the decl. arc; and at
apparent noon, observe the sun on the meridian; the re-
sulting lat. is 32° 38' N.
W.K.K. Feb. 26, 1915.

W.H.T.
Survey commenced Feb. 23, 1915, and executed with a Young
and Son's light mountain transit NO. 8592, described in
Book "A."
From recent and repeated field tests, I know the transit
and solar attachment to be in satisfactory adjustment.
N. 0° 2' E., bet. secs. 14 and 15.
Over rolling land, through scattering timber and undergrowth.
Ascend SE. slope, 41 ft. to
5.00 Change to E. slope.
9.00 Descend NE. slope.
22.35 Butte, 10 chs. base, 160 ft. high, brs. E. about 40.00 chs.
37.30 Foot of descent 135 ft.
Wash, 60 lks. wide, 1 ft. deep, course N. 20° W.
40.00 Set an iron post 3 ft. long, 1 in. in diam., 26 ins. in
the ground for 1 sec. cor., with brass cap, marked
S 15 on W., and
S 14 on E. half;
1915 in S. rim.
Dig pits 18x18x12 ins., N. and S. of cor., 3 ft. dist., and
raise a mound of earth 3½ ft. base, 1½ ft. high, W. of cor.
80.00 Set an iron post 3 ft. long, 2 ins. in diam., 24 ins. in
the ground, for cor. of secs. 10, 11, 14 and 15, with brass
cap, marked T 9 S, R 6 E on N. half;
S 11 in NE.,
S 14 in SE.,
S 15 in SW., and
S 10 in NW. quadrants;
1915 on S. rim.
Dig pits 18x18x12 ins., in each sec. 5½ ft. dist., and raise
a mound of earth 4 ft. base, 2 ft. high, W. of cor.
Land, rolling.
Soil, sand and gravel, 3rd and 4th rate.
Timber, scattering palo verde and ironwood.
Undergrowth, greasewood brush, ocotillos and cacti.
W.H.T. Feb. 23, 1915.

W.K.K.
March 3, 1915. From cor. of secs. 9, 10, 15 and 16, I run,
East, on a random line, bet. secs. 10 and 15.
40.00 Set temp. 1 sec. cor.
80.35 Intersect N. and S. line, 14 lks. S. of cor. of secs. 10, 11,
14 and 15.
Thence I run,
S. 89° 54' W., on a true line, bet. secs. 10 and 15.
Over level land, through greasewood brush.
40.17 Set an iron post 3 ft. long, 1 in. in diam., 26 ins. in
the ground for 1 sec. cor., with brass cap, marked
S 10 on N., and
S 15 on S. half;
1915 on S. rim;
dig pits 18x18x12 ins., E. and W. of cor. 3 ft. dist.,
and raise a mound of earth 3½ ft. base, 2½ ft. high, N.
of cor.
71.95 Wash, 75 lks. wide, 12 ft. deep, course N.
77.35 Wash, 50 lks. wide, 6 ft. deep, course N.
80.35 Cor. of secs. 9, 10, 15 and 16.
Land, level.
Soil sandy loam, 1st rate.
No timber.
Undergrowth, greasewood brush.
W.K.K. Mar. 3, 1915.

W.K.K. Mar. 3, 1915.

18. Partial Subdivision of Township 9 South, Range 6 East.

Chains.

W.H.T.

Feb. 23, 1915: At the cor. of secs. 10, 11, 14 and 15, I set off $9^{\circ}59'S$. on the decl. arc; and at apparent noon, observe the sun on the meridian; the resulting lat. is $32^{\circ}39'N$.

Thence I run,

 $N.0^{\circ}2'E.$, bet. secs. 10 and 11.

Over level land, through scattering timber and undergrowth.

40.00 Set an iron post 3 ft. long, 1 in. in diam., 26 ins. in the ground for $\frac{1}{4}$ sec. cor., with brass cap, marked

 $\frac{1}{4}$ S 10 on W., and

S 11 on E. half;

1915 on S. rim.

Dig pits $18 \times 18 \times 12$ ins., N. and S. of cor., 3 ft. dist., and raise a mound of earth $3\frac{1}{2}$ ft. base, $1\frac{1}{2}$ ft. high, W. of cor.

60.00 Leave brush, brs. E. and W.

74.30 Road, brs. NW. and SE.

80.00 Set an iron post, 3 ft. long, 2 ins. in diam., 24 ins. in the ground for cor. of secs. 2, 3, 10 and 11, with brass cap, marked

T 9 S R 6 E on N. half;

S 2 in NE.,

S 11 in SE.,

S 10 in SW., and

S 3 in NW. quadrants;

1915 on S. rim.

Dig pits $18 \times 18 \times 12$ ins., in each sec. $5\frac{1}{2}$ ft. dist., and raise a mound of earth 4 ft. base, 2 ft. high, W. of cor.

Land, level.

Soil, sandy loam, 1st rate.

Timber, scattering mesquite.

Undergrowth, greasewood brush and sagebrush.

W.H.T. Feb. 23, 1915.

W.K.K.

March 1, 1915. From cor. of secs. 3, 4, 9 and 10. I run, East, on a random line, bet. secs. 3 and 10.

40.00 Set temp. $\frac{1}{4}$ sec. cor.

80.09 Intersect N. and S. line, 23 lks. S. of the cor. of secs. 2, 3, 10 and 11.

Thence I run,

 $S.89^{\circ}50'W.$, on a true line, bet. secs. 3 and 10.

Over level land.

7.60 Road brs. NW. and SE.

40.04 Set an iron post 3 ft. long, 1 in. in diam., 26 ins. in the ground, for $\frac{1}{4}$ sec. cor., with brass cap, marked

 $\frac{1}{4}$ S 3 on N., and

S 10 on S. half;

1915 on S. rim.

Dig pits $18 \times 18 \times 12$ ins., E. and W. of cor., 3 ft. dist., and raise a mound of earth $3\frac{1}{2}$ ft. base, $1\frac{1}{2}$ ft. high, N. of cor.

80.09 Cor. of secs. 3, 4, 9 and 10.

Land, level.

Soil, sandy loam, 1st rate.

No timber.

Undergrowth, greasewood brush and scattering mesquite.

W.K.K. Mar. 1, 1915.

W.H.T.

Feb. 23, 1915. From cor. of secs. 2, 3, 10 and 11, I run, $N.0^{\circ}2'E.$, on a true line, bet. secs. 2 and 3.

Over level land, through scattering undergrowth.

40.00 Set an iron post 3 ft. long, 1 in. in diam., 26 ins. in the ground, for $\frac{1}{4}$ sec. cor., with brass cap, marked

 $\frac{1}{4}$ S 3 on W., and

S 2 on E. half;

1915 on S. rim;

dig pits $18 \times 18 \times 12$ ins., N. and S. of cor. 3 ft. dist., and raise a mound of earth $3\frac{1}{2}$ ft. base, $1\frac{1}{2}$ ft. high, W. of cor.

Partial Subdivision of Township 9 South, Range 6 East. 19.

Chains.

50.05 Intersect S bdy. of T. 8 S., R. 6 E., 2.71 chs. S. 89° 39' W. of reestablished cor. of secs. 33 and 34, described in Book "B."

At point of intersection, I

Set an iron post 3 ft. long, 2 ins. in diam., 24 ins. in the ground for closing cor. of secs. 2 and 3, with brass cap, marked

C C S. of center,
S 2 in SE., and
S 3 in SW. quadrants;
T 9 S R 6 E on S. half;
1915 on S. rim.

No trees within limits.

Dig pits 24x18x12 ins., E. and W. 3 ft., and S. of cor. 7 ft. dist., and raise a mound of earth 4 ft. base, 2 ft. high, S. of cor.

Land, level.

Soil, sandy adobe, 1st rate.

No timber.

Undergrowth, very scattering mesquite brush.

Feb. 23, 1915.

Feb. 15, 1915: At 8h. 30m., a.m., l.m.t., I set off 32° 35' N. on the lat. arc; 12° 51' S. on the decl. arc; and determine a meridian with the solar at the cor. of secs. 35 and 36 on S. bdy. of Tp., established by W. K. Kierulff, U.S. Transitman, and described in Book "B."

Thence I run,

N. 0° 3' E., bet. secs. 35 and 36.

Over level land, through greasewood brush, 4 to 5 ft. high.

25.00 South end of rocky knoll, 7 chs. long, 3 chs. wide, 50 ft. high, bearing N. and S. brs. W. about 15.00 chs. dist.

40.00 Set an iron post 3 ft. long, 1 in. in diam., 26 ins. in the ground for sec. cor., with brass cap, marked

S 35 on W., and
S 36 on E. half;
1915 on S. rim.

No trees within limits.

Dig pits 18x18x12 ins. N. and S. of cor. 3 ft. dist., and raise a mound of earth 3½ ft. base, 1½ ft. high, W. of cor.

44.60 Wash 20 lks. wide, 2 ft. deep, course S 70° E.

65.00 South end of rocky hill, brs. W. about 12.00 chs. dist.

67.00 Along E. foot of hill.

80.00 Set an iron post 3 ft. long, 2 ins. in diam., 24 ins. in the ground for cor. of secs. 25, 26, 35 and 36, with brass cap, marked

T 9 S R 6 E on N. half;
S 25 in NE.,
S 36 in SE.,
S 35 in SW., and
S 26 in NW. quadrants;
1915 on S. rim.

No trees within limits. Pits impracticable.

Build a mound of stone, 3 ft. base, 2½ ft. high, W. of cor.

Land, nearly level; gradual E. and SE. slope.

Soil, sand and gravel, 3rd rate.

Timber, scattering palo verde.

Undergrowth, greasewood brush, scattering mesquite and cacti.

East, on a true line, bet. secs. 25 and 36.

Descend gradual SE. slope, through scattering greasewood brush.

5.00 Foot of E. slope of hill.

Change to gradual SE. slope.

23.00 Wash 10 lks. wide, 1 ft. deep, course S. 70° E.

33.80 Wash 10 lks. wide, 2 ft. deep, course S. 70° E.

40.00 Set an iron post 3 ft. long, 1 in. in diam., 26 ins. in

20. Partial Subdivision of Township 9 South, Range 6 East.

Chains.

the ground for $\frac{1}{4}$ sec. cor., with brass cap, marked
 $\frac{1}{4}$ S 25 on N., and
 S 36 on S half;
 1915 on S. rim.

No trees within limits.

Dig pits 18x18x12 ins., E. and W. of cor. 3 ft. dist., and
 raise a mound of earth $3\frac{1}{2}$ ft. base, $1\frac{1}{2}$ ft. high, N. of cor.
 68.00 High water mark on W. side of Santa Cruz Reservoir, brs. NE.
 and SW.

70.00 West end of dam, brs. N. 22 chs. dist.

Mud and water of reservoir too deep to chain across; there-
 fore I obtain measurement by triangulation, as follows:

Set a flag on line on E. side of reservoir.

Lay off a base from 70.00 ch. point, N. 20.00 chs.

From N. end of base, flag brs. S $63^{\circ}47'$ E.

Included angles are $90^{\circ}00'$, $63^{\circ}47'$ and $26^{\circ}13'$,
 the sum of which is $180^{\circ}00'$.

Therefore, dist. on sec. line from triangulation
 point to flag is obtained by

Tang. $63^{\circ}47'$ x base or $2.03078 \times 20.00 = 40.61$ chs.
 70.00 chs. + 40.61 chs. =

110.61 Flag point on sec. line on E. side of Santa Cruz Reservoir,
 at high water line, bearing NE. and S. Thence con-
 tinue measurement by chaining through scattering mes-
 quite brush.

162.24 Intersect W. bdy. of Tp. 9 S., R. 7 E., 7.27 chs. south of
 reestablished $\frac{1}{4}$ sec. cor. of sec. 30, described in Book "B."

At point of intersection, I

Set an iron post 3 ft. long, 2 ins. in diam., 24 ins. in
 the ground for closing cor. of secs. 25 and 36, with
 brass cap, marked,

C C W. of center,

S 36 in SW., and

T 9 S R 6 E S 25 in NW. quadrants;

1915 on S. rim.

No trees within limits.

Dig pits 24x18x12 ins., N. and S. 3 ft. and W. of cor. 7 ft.
 dist., and raise a mound of earth 4 ft. base, 2 ft. high,
 W. of cor.

Land gradual SE. slope.

Soil, adobe and gravel, 1st and 3rd rate.

Timber, scattering scrub palo verde.

Undergrowth, greasewood brush, and scattering mesquite
 brush.

From cor. of secs. 25, 26, 35 and 36, I run,
 N. $0^{\circ}30'$ E., bet. secs. 25 and 26.

Over rolling land, through greasewood brush and scrub palo
 verde.

Along foot of E. slope.

10.00 Ascend gradual SE. slope.

16.85 Wash, 20 lks. wide, 5 ft. deep, course S. 60° E.

40.00 Set an iron post 3 ft. long, 1 in. in diam., 20 ins. in the
 ground, to solid rock, in a mound of stone, 2 ft. base,
 6 ins. high, for $\frac{1}{4}$ sec. cor., with brass cap, marked

$\frac{1}{4}$ S 26 on W., and

S 25 on E. half;

1915 on S. rim.

No trees within limits.

Dig pits 18x18x12 ins., N. and S. of cor. 3 ft. dist., and
 raise a mound of earth $3\frac{1}{2}$ ft. base, $1\frac{1}{2}$ ft. high, W. of
 cor.

51.00 Wash, 30 lks. wide, 4 ft. deep, course S. 70° E.

69.60 Wash, 20 lks. wide, 4 ft. deep, course S. 40° E. Ascend.

80.00 Set an iron post 3 ft. long, 2 ins. in diam., 20 ins. in
 the ground, to solid rock, in a mound of stone 2 ft.
 base, 1 ft. high, for cor. of secs. 23, 24, 25 and 26, with
 brass cap, marked

T 9 S R 6 E on N. half;

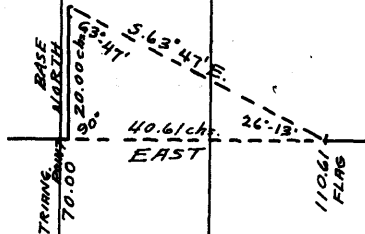
S 24 in NE.,

S 25 in SE.,

S 26 in SW., and

S 23 in NW. quadrants;

1915 in S. rim.



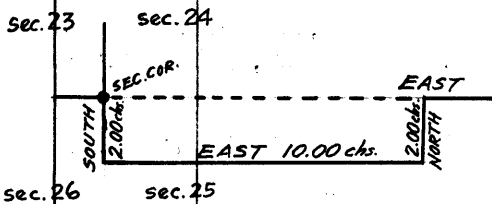
Partial Subdivision of Township 9 South Range 6 East. 21.

Chains

No trees within limits. Pits impracticable.
Build a mound of stone 3 ft. base, 2 ft. high, W. of cor.
Land, rolling.
Soil, gravelly and rocky, 3rd rate.
Timber, scattering palo verde.
Undergrowth, greasewood, sahuarro and cholla cactus.

East, on true line, bet. secs. 24 and 25.
It being impracticable to chain measurement on the true
line on account of perpendicular walls on S. end of hill,
I run an offset line around this obstacle as follows:

From cor. of secs. 23, 24, 25 and 26, I run
South, 2.00 chs. Descend 10.00 ft. to offset
point. Thence
East, 10.00 chs. Ascending.
3.00 Perpendicular walls 150 ft.
high br. N. 2.00 chs. dist.
Continue ascent.
7.70 Top of ascent 70 ft. above
offset point. Descend
30 ft. to
10.00 Offset point, from which
I run



North, 2.00 chs. Ascending; returning to true
sec. line at

10.00 Thence on true line bet. secs. 24 and 25, continuing meas-
urement east from sec. cor.

Ascend SW. slope of hill.

15.60 Top of ascent 50 ft. above 10 ch. point. Descend SE. slope
of hill.

20.60 Foot of hill, brs. NE. and SW., 95 ft. below 15.60 ch.
point. Descend over gradual SE. slope.

40.00 Set an iron post 3 ft. long, 1 in. in diam., 12 ins. in
the ground, to solid rock, in a mound of stone, 3 ft.
base, 2 ft. high, for $\frac{1}{4}$ sec. cor., with brass cap, marked
S 24 on N., and
S 25 on S. half;
1915 on S. rim.

Pits impracticable.

Build a mound of stone, 3 ft. base, 2 ft. high, N. of cor.
Descend gradual E. slope.

42.00 End of spur, sloping SE. brs. N. about 1 ch. dist.

65.00 Enter level land.

88:20 Canal from Santa Cruz Reservoir, 50 lks. wide, 4 ft. deep, course NE.

99.00 Old telephone line, NW. to Casa Grande, SE. to Santa Cruz Reservoir, br. N. 10° E.

162.44 Intersect W. bdy. of T. 9 S., R. 7 E. 7.96 chs. S. 0° 23' W. of
reestablished $\frac{1}{4}$ sec. cor. of sec. 19, described in Book

"B." At point of intersection, I

Set an iron post 3 ft. long, 2 ins. in diam., 24 ins. in
the ground for closing cor. of secs. 24 and 25, with
brass cap, marked

C C W. of center,

S 25 in SW., and

T 9 S R 6 E S 24 in NW. quadrants;

1915 on S. rim.

Dig pits 24x18x12 ins., crosswise on each line, N. and S.
3 ft. dist., and W. of cor., 7 ft. dist., and raise a
mound of earth 4 ft. base, 2 ft. high, W. of cor.

Land, hilly and level.

Soil, stony, volcanic and granite formation, 3rd and 4th
rate, and sandy loam, 1st rate.

No timber.

Undergrowth, greasewood and mesquite brush, and ocotillos
and cacti.

Feb. 15, 1915.

Feb. 22, 1915. From cor. of secs. 23, 24, 25 and 26, I run,
N. 0° 3' E., bet. secs. 23 and 24.

Over mountainous, hilly land.

Ascend SW. slope through greasewood brush and cacti, 271
ft. to

24.37 Top of ridge, brs. S. 10° E. and N. 10° W.

22. Partial Subdivision of Township 9 South Range 6 East.

Chains.

- Thence over E.slope at foot of cliff, 120 ft. high.
 36.20 Spur slopes NE. Descend NW. slope, 120 ft. to
 40.00 Set an iron post, 3 ft. long, 1 in. in diam., 12 ins. in the
 ground, to solid rock, in a mound of stone, 3 ft. base,
 2 ft. high, for $\frac{1}{4}$ sec. cor., with brass cap, marked
 $\frac{1}{4}$ S 23 on W., and
 S 24 on E. half;
 1915 on S. rim.
 No trees within limits. Pits impracticable.
 Build a mound of stone 3 ft. base, 2 ft. high, W. of cor.
 Continue descent of 131 ft. to
 47.46 Ravine, 15 lks. wide, 3 ft. deep, course NE.
 Ascend S. slope, 44 ft. to
 53.17 Spur of mountains, slopes S. 60° E. Thence over broken E.
 slope to
 60.22 Top of ridge, brs. SW. and NE.
 Descend NW. slope, 261 ft. to
 80.00 Set an iron post 3 ft. long, 2 ins. in diam., 24 ins. in
 the ground for cor. of secs. 13, 14, 23 and 24, with brass
 cap, marked
 T 9 S R 6 E on N. half;
 S 13 in NE.,
 S 24 in SE.,
 S 23 in SW., and
 S 14 in NW. quadrants;
 1915 on S. rim.
 No trees within limits. Pits impracticable.
 Build a mound of stone 3 ft. base, 2 ft. high, W. of cor.
 Land, mountainous.
 Soil, stony, granite formation, 4th rate.
 Timber, scrub palo verde.
 Undergrowth, greasewood brush, ocotillos and cacti.

 East, on a true line, bet. secs. 13 and 24.
 Over rolling land, through greasewood brush and scrub
 palo verde.
 7.06 Change to broken N. slope.
 24.00 Saddle divide, change to SE. slope.
 29.80 Ravine, 30 lks. wide, 3 ft. deep, course SE.
 Ascend gradual SW. slope.
 40.00 Set an iron post 3 ft. long, 1 in. in diam., 26 ins. in
 the ground for $\frac{1}{4}$ sec. cor., with brass cap, marked
 $\frac{1}{4}$ S 13 on N., and
 S 24 in S. half;
 1915 on S. rim.
 No trees within limits. Pits impracticable.
 Build a mound of stone, 3 ft. base, 2 ft. high, N. of cor.
 Ascend SW. slope to
 45.00 Descend SE. slope, 75 ft. to
 57.50 Foot of hill, brs. N. 10° E. and S. 10° W.
 60.00 Enter level land.
 70.00 Hill brs. S. 30.00 chs., about 15.00 chs. base, and 100 ft.
 high.
 85.60 Wash, 30 lks. wide, 4 ft. deep, course NW.
 92.90 Old telephone line from Casa Grande to Santa Cruz Reser-
 voir brs. NW. and SE.
 112.20 Canal 50 lks. wide, 3 ft. deep, course NE.
 162.40 Intersect W. bdy. of T. 9 S., R. 7 E., 8.79 chs. S. 0° 4' W. of re-
 established $\frac{1}{4}$ sec. cor. of sec. 18, described in Book "B."
 At point of intersection, I
 Set an iron post 3 ft. long, 2 ins. in diam., 24 ins. in the
 ground for closing cor. of secs. 13 and 24, with brass
 cap, marked, C C W. of center,
 S 24 in SW., and
 T 9 S R 6 E S 13 in NW. quadrants;
 1915 on S. rim.
 No trees within limits. Dig pits 24x18x12 ins., N. and S.
 3 ft., and W. of cor. 7 ft. dist., and raise a mound of
 earth 4 ft. base, 2 ft. high, W. of cor.
 Land, rolling and level.
 Soil, stony and sandy loam, 1st and 4th rate. Timber, scat-
 tering palo verde. Undergrowth, greasewood and mesquite
 brush, ocotillos and cacti. Feb. 22, 1915.

Partial Subdivision of Township 9 South Range 6 East 23

Chains

- Feb. 23, 1915: At 9h. a.m., l.m.t., I set off $32^{\circ}38'$ N. on the lat. arc; $10^{\circ}1'$ S. on the decl. arc; and determine a meridian with the solar, at the cor. of secs. 13, 14, 23 & 24. Thence I run,
- West, on a true line, bet. secs. 14 and 23.
Over nearly level land; gradual N. and NE. slope.
- 0.80 Ravine, 30 lks. wide, 6 ft. deep, course N.
10.00 Ravine, 60 lks. wide, 8 ft. deep, course N. 10° E.
12.00 Ascend over N. end of rocky hill.
19.90 Top of ascent, 100 ft. above 12 ch. point. Descend.
24.90 Ravine, 40 lks. wide, 5 ft. deep, course N. 10° E. 100 ft. below 19.90 ch. point.
36.10 Wash, 100 lks. wide, 12 ft. deep, course N. Thence along foot of N. slope of rocky hill.
40.00 Set an iron post 3 ft. long, 1 in. in diam., 6 ins. in the ground, to solid rock, in a mound of stone, 3 ft. base, 18 ins. high, for $\frac{1}{4}$ sec. cor., with brass cap, marked
S 14 on N., and
S 23 in S. half;
1915 on S. rim.
No trees within limits. Pits impracticable.
Build a mound of stone, 3 ft. base, 2 ft. high, N. of cor.
66.40 Ravine, 30 lks. wide, 5 ft. deep, course N. 10° E.
71.30 Wash, 30 lks. wide, 5 ft. deep, course N.
76.00 Ravine, 50 lks. wide, 8 ft. deep, course N. 20° E. Ascend E. slope.
80.00 Set an iron post 3 ft. long, 2 ins. in diam., 24 ins. in the ground for cor. of secs. 14, 15, 22 and 23, with brass cap, marked
T 9 S R 6 E on N. half;
S 14 in NE.,
S 23 in SE.,
S 22 in SW., and
S 15 in NW. quadrants;
1915 on S. rim.
No trees within limits. Pits impracticable.
Build a mound of stone 3 ft. base, $2\frac{1}{2}$ ft. high, W. of cor.
Land, rolling and nearly level, N. and NE. slope.
Soil, rocky and gravelly, 4th rate.
Timber, scattering palo verde.
Undergrowth, greasewood brush and cacti.
-
- N. $0^{\circ}3'$ E., bet. secs. 13 and 14.
Over rolling land.
Descend gradual NE. slope, through greasewood brush and scattering scrub palo verde.
17.65 Wash, 100 lks. wide, 6 ft. deep, course N. 45° E.
29.35 Wash, 50 lks. wide, 6 ft. deep, course N. 30° E.
40.00 Set an iron post 3 ft. long, 1 in. in diam., 26 ins. in the ground for $\frac{1}{4}$ sec. cor., with brass cap, marked
S 14 on W., and
S 13 on E. half;
1915 on S. rim.
No trees within limits. Dig pits 18x18x12 ins., N. and S. of cor. 3 ft. dist., and raise a mound of earth $3\frac{1}{2}$ ft. base, $1\frac{1}{2}$ ft. high, W. of cor. Thence over level land.
50.60 Wash, 30 lks. wide, 4 ft. deep, course N. 20° E.
73.50 Knoll, 4 chs. in diam., 40 ft. high, brs. W. about 5 chs. dist.
80.00 Set an iron post 3 ft. long, 2 ins. in diam., 24 ins. in the ground, for cor. of secs. 11, 12, 13 and 14, with brass cap, marked
T 9 S R 6 E on N. half;
S 12 in NE.,
S 13 in SE.,
S 14 in SW., and
S 11 in NW. quadrants;
1915 on S. rim.
No trees within limits. Dig pits 18x18x12 ins., in each sec. $5\frac{1}{2}$ ft. dist., and raise a mound of earth 4 ft. base, 2 ft. high, W. of cor.
Land, south half, slightly rolling, gradual NE. slope; north half, level.

24. Partial Subdivision of Township 9 South, Range 6 East.

Chains.	Soil, stone and gravel, 3rd rate; sand and gravel, 1st rate. Timber, scattering scrub palo verde. Undergrowth, greasewood brush, ocotillos and cacti.
40.00	From cor. of secs. 10, 11, 14 and 15, I run, East, on a random line, bet. secs. 11 and 14.
79.98	Set temp. $\frac{1}{4}$ sec. cor. Intersect N. and S. line at cor. of secs. 11, 12, 13 and 14. Thence I run, West, on a true line, bet. secs. 11 and 14. Over level land.
39.99	Set an iron post 3 ft. long, 1 in. in diam., 26 ins. in the ground for $\frac{1}{4}$ sec. cor., with brass cap, marked $\frac{1}{4}$ S 11 on N., and $\frac{1}{4}$ S 14 on S. half; 1915 on S. rim. No trees within limits. Dig pits 18x18x12 ins., E. and W. of cor. 3 ft. dist., and raise a mound of earth $3\frac{1}{2}$ ft. base, $1\frac{1}{2}$ ft. high, N. of cor.
49.80	Wash, 10 lks. wide, 1 ft. deep, course N. 10° E.
53.60	Wash, 15 lks. wide, 1 ft. deep, course N. 10° E.
79.98	Cor. of secs. 10, 11, 14 and 15. Land, level, and gradual NE. slope. Soil, sandy, 3rd rate. Timber, scattering palo verde. Undergrowth, greasewood brush.
28.90	From cor. of secs. 11, 12, 13 and 14, I run, East, on a true line, bet. secs. 12 and 13. Over level land, through greasewood brush. Road brs. SE. and NW.
40.00	Set an iron post 3 ft. long, 1 in. in diam., 26 ins. in the ground for $\frac{1}{4}$ sec. cor., with brass cap, marked $\frac{1}{4}$ S 12 in N., and $\frac{1}{4}$ S 13 in S. half; 1915 on S. rim. No trees within limits. Dig pits 18x18x12 ins., E. and W. of cor. 3 ft. dist., & raise a mound of earth, $3\frac{1}{2}$ ft. base, $1\frac{1}{2}$ ft. high, N. of cor.
54.10	Wash, 30 lks. wide, 4 ft. deep, course NW.
86.66	Old telephone line, brs. NW. to Casa Grande, Arizona, and SE. to Santa Cruz Reservoir.
125.20	Canal from Santa Cruz Reservoir, 50 lks. wide, 4 ft. deep, course NE.
162.31	Intersect W. bdy. of T. 9 S., R. 7 E., 9.58 chs. S. 0° 3' W. of re- established $\frac{1}{4}$ sec. cor. of sec. 7, described in Book "B." At point of intersection, I Set an iron post 3 ft. long, 2 ins. in diam., 24 ins. in the ground for closing cor. of secs. 12 and 13, with brass cap, marked C C W. of center, S 13 in SW., and T 9 S R 6 E S 12 in NW. quadrants; 1915 on S. rim. No trees within limits. Dig pits 24x18x12 ins. crosswise on each line, N. and S. 3 ft., and W. of cor., 7 ft. dist., and raise a mound of earth 4 ft. base, 2 ft. high, W. of cor. Land, level, covered with silt from recent storms. Soil, sandy loam, 1st rate. Timber, scattering palo verde. Undergrowth, greasewood brush, ocotillos and cacti.
12.00	From cor. of secs. 11, 12, 13 and 14, I run, N. 0° 3' E., bet. secs. 11 and 12. Over level land, through scattering greasewood brush and scrub mesquite.
19.70	Leave brush, brs. W. and E. Road brs. NW. and SE.
40.00	Set an iron post 3 ft. long, 1 in. in diam., 26 ins. in the ground for $\frac{1}{4}$ sec. cor., with brass cap, marked $\frac{1}{4}$ S 11 on W., and S 12 on E. half; 1915 on S. rim.

Partial Subdivision of Township 9 South Range 6 East.

BOOK 25 2899

Chains.	Dig pits 18x18x12 ins., N.and S.of cor., 3 ft. dist., and raise a mound of earth $3\frac{1}{2}$ ft. base, $1\frac{1}{2}$ ft. high, W. of cor.
80.00	Set an iron post 3 ft. long, 2 ins. in diam., 24 ins. in the ground for cor. of secs. 1, 2, 11 and 12, with brass cap, marked T 9 S R 6 E on N. half; S 1 in NE., S 12 in SE., S 11 in SW., and S 2 in NW. quadrants; 1915 on S. rim. Dig pits 18x18x12 ins. in each $5\frac{1}{2}$ ft. dist., and raise a mound of earth 4 ft. base, 2 ft. high, W. of cor. Land, level. Soil, sandy adobe, 1st rate. No timber. Undergrowth, greasewood and sagebrush.
40.00	From cor. of secs. 2, 3, 10 and 11, I run, East, on a random line, bet. secs. 2 and 11. Set temp. $\frac{1}{4}$ sec. cor.
79.98	Intersect N. and S. line at cor. of secs. 1, 2, 11 and 12. Thence I run, West, on a true line, bet. secs. 2 and 11. Over level land, through scattering mesquite brush.
39.99	Set an iron post 3 ft. long, 1 in. in diam., 26 ins. in the ground for $\frac{1}{4}$ sec. cor., with brass cap, marked $\frac{1}{4}$ S. 2 on N., and S 11 on S. half; 1915 on S. rim; dig pits 18x18x12 ins., E. and W. of cor. 3 ft. dist., and raise a mound of earth $3\frac{1}{2}$ ft. base, $1\frac{1}{2}$ ft. high, N. of cor.
79.98	Cor. of secs. 2, 3, 10 and 11. Land, level. Soil, sandy adobe, 1st rate. No timber. Undergrowth, scattering mesquite and sagebrush.
40.00	From cor. of secs. 1, 2, 11 and 12, I run, East, on a true line, bet. secs. 1 and 12. Over level land, through scattering greasewood brush and scrub mesquite. Set an iron post 3 ft. long, 1 in. in diam., 26 ins. in the ground for $\frac{1}{4}$ sec. cor., with brass cap, marked $\frac{1}{4}$ S 1 on N., and S 12 on S. half; 1915 on S. rim. Dig pits 18x18x12 ins., E. and W. of cor., 3 ft. dist., and raise a mound of earth $3\frac{1}{2}$ ft. base, $1\frac{1}{2}$ ft. high, N. of cor.
41.80	Wash, 40 lks. wide, 4 ft. deep, course N. 10° W.
78.70	Wash, 30 lks. wide, 3 ft. deep, course N. 20° W.
80.60	Old telephone line, brs. NW. to Casa Grande, Ariz., and SW. to Santa Cruz Reservoir.
121.05	Canal from Santa Cruz Reservoir, 50 lks. wide, 4 ft. deep, course NW.
161.79	Intersect W. bdy. of T. 9 S., R. 7 E., 10.14 chs. S. 0° 19' E. of reestablished $\frac{1}{4}$ sec. cor. of sec. 6, described in Book "B." At point of intersection, I Set an iron post, 3 ft. long, 2 ins. in diam., 24 ins. in the ground for closing cor. of secs. 1 and 12, with brass cap, marked C C W of center, S 12 in SW., and T 9 S R 6 E S 1 in NW. quadrants, 1915 on S. rim.

26. Partial Subdivision of Township 9 South Range 6 East.

Chains.

Dig pits 24x18x12 ins., crosswise on each line, N. and S. 3 ft., and W. of cor. 7 ft. dist., and raise a mound of earth 4 ft. base, 2 ft. high, W. of cor.

Land, level.

Soil, sandy loam, 1st rate; 20 to 50 chs. land covered with silt 6 ins. to 12 ins. deep.

No timber.

Undergrowth, greasewood and mesquite brush.

40.00

From cor. of secs. 1, 2, 11 and 12, I run, N. 0° 03' E., on a true line, bet. secs. 1 and 2. Over level land, through sage brush.

Set an iron post, 3 ft. long, 1 in. in diam., 26 ins. in the ground for $\frac{1}{4}$ sec. cor., with brass cap, marked

$\frac{1}{4}$ S 2 on W., and

S 1 on E. half;

1915 on S. rim;

dig pits 18x18x12 ins., N. and S. of cor. 3 ft. dist., and raise a mound of earth 3 ft. base, 2 ft. high, W. of cor.

50.49

Intersect S bdy. of T. 8 S., R. 6 E., 2.70 chs. S. 89° 56' W. of reestablished cor. of secs. 34 and 35, described in Book "B."

At point of intersection, I

Set an iron post 3 ft. long, 2 ins. in diam., 24 ins. in the ground for closing cor. of secs. 1 and 2, with brass cap, marked

C C S of center,

S 1 in SE., and

S 2 in SW. quadrants;

T 9 S R 6 E on S. half;

1915 on S. rim.

Dig pits 24x18x12 ins. E. and W. 3 ft. and S. of cor. 7 ft. dist., and raise a mound of earth 4 ft. base, 2 ft. high, S. of cor.

Land, level.

Soil, sandy loam, 1st rate.

No timber.

Undergrowth, greasewood and scattering sagebrush.

W.H.T. Feb. 22, 1915.

GENERAL DESCRIPTION.

T. 9 S., R. 6 E., is practically all mountainous or rough and rolling except the north tier of sections and the east half of the east tier. The Saw Tooth Mountains runs through the south west part of the township, and rolling hills and land cut by deep washes and ravines or covered with malpais boulders makes nearly all of the township too rough for any cultivation.

Native grass grows along the washes and small herds of Indian ponies stay in the hills.

The soil is sandy adobe along the north and east boundaries, and the remainder of the township is gravelly or stony.

There is an abundant growth of palo verde and ironwood throughout the township, with some scattering mesquite. The undergrowth consists of scrub mesquite, greasewood brush, ocotillos and cacti.

Santa Cruz Reservoir Dam, about a mile in length is in the southeast part of section 25.

There are no settlers.

No water has been developed.

27 FOR CERTIFICATES OF UNITED STATES SURVEYOR, AND
UNITED STATES TRANSITMAN.

See Book "C" of this Group.

I, _____, U. S. Surveyor, do solemnly swear that, in pursuance of special instructions received from the U. S. Surveyor General for _____ bearing date of the _____ day of _____, 191____, I have well, faithfully, and truly, in my own proper person, and in strict conformity with said instructions, the Manual of Surveying Instructions, and the laws of the United States, surveyed all those parts or portions of _____ of the _____ Meridian, in the State of _____, which are represented in the foregoing field notes as having been executed by me, and under my direction; and I do further solemnly swear that all the corners of said survey have been established and perpetuated in strict accordance with the Manual of Surveying Instructions, and the special written instructions of the U. S. Surveyor General for _____ and in the specific manner described in the field notes, and that the foregoing are the original field notes of such survey.

U. S. Surveyor.

Subscribed by said _____, and sworn to before me }
this _____ day of _____, 191____



APPROVAL.

OFFICE OF THE UNITED STATES SURVEYOR GENERAL,

Phoenix, Arizona, MAR 19____, 1917.

The foregoing field notes of the survey of _____ of the Partial Subdivision of _____

TOWNSHIP 9 SOUTH, RANGE 6 EAST,

of the Gila and Salt River Base and Meridian, in the State of Arizona,

executed by W. H. Thorn, U. S. Surveyor, and W. K. Kierulff, U. S. Transitman, under ~~his~~ special instructions dated July 29, 1914 for Group 38, Arizona, having been critically examined, and the necessary corrections and explanations made, the said field notes, and the surveys they describe, are hereby approved.

Frank O. Frost

U. S. Surveyor General.
of Arizona.

~~I certify that the foregoing transcript of the field notes of the above described surveys in _____, has been correctly copied from the original notes on file in this office.~~